

WEATHER

Aug. 18 91 62
Aug. 19 90 63
Aug. 20 84 63 .07
Aug. 21 90 61 .07

Muleshoe Journal

The Community Of Opportunity-Where Water Makes The Difference



Vol. 69, No. 34

Published Every Thursday At Muleshoe, Bailey County, Texas 79347

MEMBER
TEXAS PRESS ASSOCIATION 20¢

Thursday, August 22, 1991

Saturday Rodeo Draws Large Crowd

Junior Rodeo Attracts Local, Out Of Town Youth

around Muleshoe

A student at the University of North Texas, Selina K. Gonzalez has been named to the summer Dean's List. The Dean's List is an average of between 3.5 and 4.0. Her average was 3.6.

Miss Gonzalez is a chemistry major with a minor in biology. A member of Delta Zeta Sorority, she is president of Eaglettes and the University of North Texas Top 20.

Her parents are Ana M. Gonzalez of Muleshoe and Ramon Gonzalez of Florida.

Capt. L.A. Reinhart, District Supervisor of the Lubbock Highway Patrol District comprising of 21 counties said, "For the month of July, our troopers investigated five fatal accidents, 65 personal injury accidents, and 54 property damage accidents. There were five persons killed and 109 persons injured in these accidents."

Sgt. Charlie Simmons of Plainview stated, "In Bailey County, our troopers investigated one fatal accident, two personal injury accidents and no property damage accidents in the month of July. One person was killed and seven persons were injured in these accidents."

The first football games of the season will be scrimmages with the Ralls Jack Rabbits on Aug. 23. The JV teams will play at 6 p.m. and the Varsity Mules will play at 7:30 p.m.

The Muleshoe Area Hospital District Board of Directors will meet in regular session on August 22 at 7 p.m. in the dining room of Muleshoe Area Medical Center.

The following items are on the agenda:

- I. Call to Order
- II. Reading and approval of prior minutes
- III. Administrator's Reports
 - Hospital Financial and Statistical Reports
 - Healthcare Center Financial and Statistical Reports
- IV. Unfinished Business:
 - Volunteers Plus' Nominations
- V. New Business:
 - Review Budget 1990-91
 - Review 1991-92 Preliminary Budget
 - Review and Consider Tax Rate
 - Consider Advertising for Health Insurance Coverage
 - Consider Advertising for Audit Services
 - Review and consider Q.A. Plan (revised)
- VI. Management Matters
- VII. Executive Session
- VIII. Board action resulting from Executive Session

Cont. Page 6, Col. 4



POTATO HARVEST WINDS DOWN--Saturday morning Stan Barrett, Ken and Lynne Box, and Richard Barrett check out the last of the 1991 potato crop. Saturday was the final day of operation, processing this year's crop. Mrs. Box stated that had it not rained potato harvest would have already been complete. (Journal Photo)

DPS Warns Motorists To Watch For Children

Vacations are ending and children are preparing to return to school. Major V.J. Cawthon, Regional Commander of the Texas Department of Public Safety says that this will create not only a change for our children, but the motoring public must also make some changes as well.

During the summer months, drivers often get out of the habit of being alert for both school zones and school buses. Major Cawthon says that now is the time to get familiar with posted school times in your area. It's important to remember that school zones can be posted by blinking yellow lights or in some areas just a sign posting the school zone times. Either way it's your duty to be alert for our young children, some of whom are attending school for the first time and others who have moved to the neighborhood during the summer months and who may be unfamiliar with the area.

Football Scrimmage Set

Muleshoe's chapter of the Rotary Club met Tuesday, August 20 at the Bailey County Civic Center. About 40 members and eight guests were introduced.

City Council Approves Gas Rate Schedules

It was a short agenda for the Muleshoe City Council Tuesday morning, when they met in regular session.

Jess Winn, manager of Energas, met with the council concerning an ordinance approving rate schedules to be charged by Energas. The council voted unanimously to approve the ordinance.

A discussion was held on an application for matching funds for paving. The group authorized the submission of a Texas Community Development Program application to the Texas Department of Commerce for the Community Development Fund. Dave Marr, city manager noted that this is the same project that was submitted last year.

Cont. Page 6, Col. 1

Brett McCasland presided. He introduced Abel Arguello who was in charge of the program. Arguello introduced Coach Jim Stewart, athletic director at Muleshoe High School who updated the group on prospects for the 1991 football season.

Stewart told the group that the first scrimmage game of the season is scheduled for August 23 in Ralls. The following Friday the team has a scrimmage scheduled in Canyon.

Varsity football coaches this year are Stewart, Ted Johnson, Richard Albertson and Steve Hatfield. The varsity team this year includes: Galin Latham, Brian Rasco, Ricky Flores, Elroy Perez, Brent Hernandez, Kip McCall, Josh Alanis, Ramiro Alarcon, Anthony Garcia, Mike Hardwick, Marvin Lewis, Billy Tósh, Arturo Ruiz, Kevin Morris, Steven Noble, David Serrano, Robert Ybarra, Juan Flores, Steven Wauson, David Quintana, Shane Glover, Timmy Hernandez, Jon Watkins, Mike Friend, Dustin Elliott, Jesse Singletary, Chris Dominguez, and Jonathan Villa.

Stewart noted that a total of Cont. Page 6, Col. 3

Cub Scouts Schedule September Activities

SEPT. 10
BAILEY COUNTY FAIR
Cubs and Scouts need to be at the Scout hut by 9:30 a.m. in uniforms to ride in the parade. Scouts will have a booth at the Civic Center.

SEPT. 12
7 p.m.
Scout Hut Tiger leader training.

SEPT. 24
PACK MEETING
Tuesday at 7 p.m. at the Methodist Church.

OCT. 3
Tuesday Den Leaders training 7 p.m. also will plan for activities at this meeting.

ALL CUBS
START DEN MEETINGS
1st week in September, contact your den leader.

American Angus Association Elects

New Members

Rod and Jerri Wilson of Sudan have been elected to membership in the American Angus Association, according to Dick Spader, executive vice president of the national organization with headquarters in St. Joseph, Missouri.

The American Angus Association, has over 24,000 active adult and junior members. It is said to be the largest beef cattle registry association in the world. Its computerized records include detailed information on nearly 11 million registered Angus.

The Association records ancestral information and keeps records of production on individual animals for its members.

These permanent records help members select and mate the best animals in their herds to produce high quality, efficient breeding cattle which are then recorded with the American Angus Association.

Most of these registered Angus are used by the U.S. farmers and ranchers who raise high quality beef for U.S. consumption.

The Muleshoe Roping Club sponsored a Junior Rodeo Friday and Saturday nights, August 16 and 17 at the Muleshoe Roping Arena.

During the Saturday night performance Deedra Dupler of Lubbock was named Best All Around for the eight and under age group. Best All Around in the 9-12 age division was Kyla Morris of Sudan. Josh Slayden of Muleshoe was named Best All Around in the 13-15 age group and Matt Bohler of Muleshoe was named the Best All Around in the 16-19 age division.

Other winners included:
BARRELL RACE
8 and under

Clayton Brooker of Whiteface, first; Deedra Dupler of Lubbock, second; and Travis Pierce of Sudan, third.

9-12 AGE DIVISION
Brandy Norvell of Farwell, first; Lisa Leffler of Muleshoe, second; and Julie Slayden of Muleshoe, third.

13-15 AGE DIVISION
Jody Morris of Muleshoe, first; Laura Lotz of Whiteface, second; and Bambi Cribbs of Whiteface, third.

Gary Fields and Jim Fields were the Flag Bearers for the Flag Race.

FLAG RACE
8 AND UNDER

Travis Pierce of Littlefield, first; Clayton Brooker of Whiteface, second; and Deedra Dupler of Lubbock, third.

9-12 AGE DIVISION
Kyla Morris of Sudan, first; Bambi Cribbs of Whiteface, second; and Heath Pierce of Sudan, third.

13-15 AGE DIVISION
Laura Lotz of Whiteface, first; Bambi Cribbs of Whiteface, second; and Heath Pierce, third.

CALF RIDING
8 AND UNDER
Cody Morris of Sudan, first; and Deedra Dupler of Lubbock, second.

RIBBON ROPING
13-15 AGE GROUP
Brett Thomas of Lazbuddie, first; Josh Slayden of Muleshoe, second; and Jason Thomas of Lazbuddie, third.

BREAK AWAY ROPING
9-12 AGE DIVISION
Josh Morris of Clay's Corner, first; Zachary Brooker of Whiteface, second; and Brett Norvell of Farwell, third.

13-15 AGE DIVISION

Brett Thomas of Lazbuddie, first; and Josh Slayden of Muleshoe, second.

POLE BENDING
8 AND UNDER

Clayton Brooker of Whiteface, first; Deedra Dupler of Lubbock, second; and Travis Pierce of Sudan, third.

9-12 AGE DIVISION
Kyla Morris of Sudan, first; Zackary Brooker of Whiteface, second; and Lissa Leffler of Muleshoe, third.

13-15 AGE DIVISION
Heath Pierce of Sudan, first; Jody Morris of Muleshoe, second; and Leslie Clawson of Bula, third.

COW RIDING
16-19 AGE DIVISION
Shawn Branscum of Muleshoe, first; and Dusty Rhodes of West Camp, second.

STEER DOBBING
9-12 AGE DIVISION
Kyla Morris of Sudan, first; Zackary Brooker of Whiteface, second; and Julie Slayden, of Muleshoe, third.

13-15 AGE DIVISION
Josh Slayden of Muleshoe, first; Justin Winders of Dodd, second; and Clay Myers of Muleshoe, third.

16-19 AGE DIVISION
Matt Bohler of Muleshoe, first.

STEER STOPPING
13-15 AGE DIVISION
Justin Winders of Dodd, first; and Michael Pharris of Muleshoe, second.

STEER RIDING
9-12 AGE DIVISION
Josh Morris of Clay's Corner, first; and Ky Kennedy of Muleshoe, second.

GOAT RACE

Cont. Page 6, Col. 2

Meet The Mules Tuesday

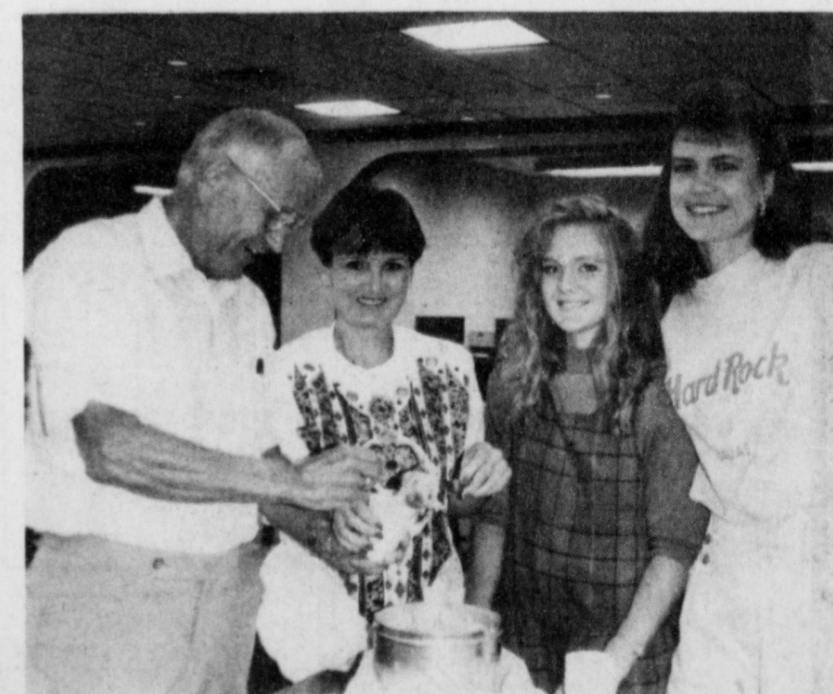
Meet the Mules is scheduled for 7:30 p.m. Tuesday, August 27 at Benny Douglas Stadium.

Those to be introduced will include: football players from seventh grade through Varsity Mules, the Cross Country Team, Cheerleaders, Mini Mule Leaders, Coaches and Administration at High School and Watson Junior High.

Finishing the evening off will be a watermelon feast for everyone attending.



PREVIEWING UPCOMING FOOTBALL SEASON--for the Rotary Club is Coach Jim Stewart, athletic director at Muleshoe High School, at left. He was introduced to the group by Abel Arguello August 20.



FUND RAISING CAN BE TASTY--Sam Damron, at left, helps the Muleshoe High School Senior Class fund by eating homemade ice cream. The project, sponsored by the Muleshoe State Bank, was held August 19 at the bank in cooperation with parents of Seniors. For every cup of ice cream that Project Graduation gave away, the bank donated \$1 to the Senior Class of 1992 for their activities. Serving the ice cream are Jan Crawford, Senior mother, Jill Noble and Jody Field, Senior students. (Journal Photo)



THRIFTWAY and COCA-COLA

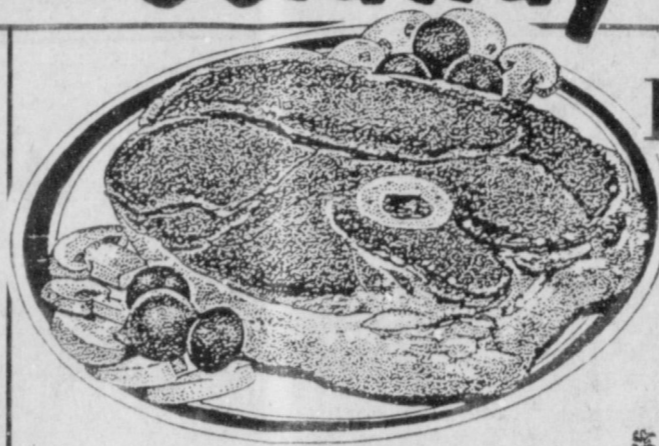
BRING YOU THE *Jetaway-Getaway*

WIN A FABULOUS TRIP FOR FOUR to Disney World

Just Register to win at any participating Thriftway Store. There's no purchase necessary. Your trip includes airfare, hotel accommodations, tickets to Disney World Parks and spending money. Just look for the special Coca-Cola display in Thriftway for all the rules and details.

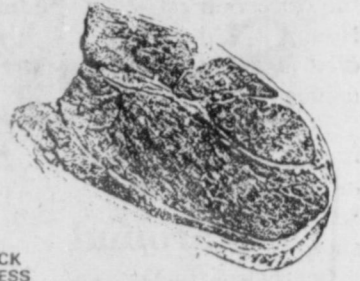
REGISTER TO WIN \$100 Shopping Spree From THRIFTWAY

Each participating THRIFTWAY Store will be giving away Four \$100 Shopping Certificates...Drawings will be held in each Thriftway the weeks of August 18, August 25, September 1 and September 8, 1991.



FAMILY PACK BEEF BONE-IN
Round Steak

\$1.47



FAMILY PACK BEEF BONELESS
Round Steak

\$1.67

Orange Rough Fillets **\$4.77**



FAMILY PACK TENDERIZED BEEF
Round Steak
\$1.87

SIRLOIN TIP ROAST OR
Rump Roast
\$2.47

FAMILY PACK EXTRA LEAN & TENDER BEEF
Cube Steak
\$2.97

GOOCH
Hot Links
\$1.97

JIMMY DEAN REG. OR HOT
Pork Sausage
\$2.37

LAKE LANIER
Ground Chicken
97¢



CITRUS HILL ASSTD.

FROZEN LEMONADE

12 OZ. CAN

3 FOR \$1

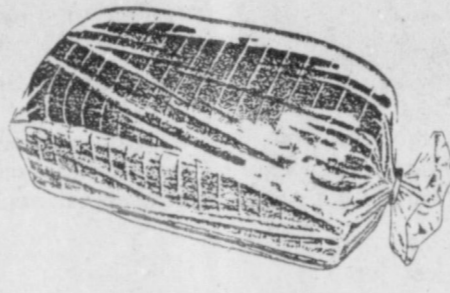


5° OFF LABEL LIQUID

CLOROX BLEACH

GALLON JUG

99¢



ALWAYS FRESH

WHITE BREAD

1 1/2 LB. LOAVES

2 FOR \$1

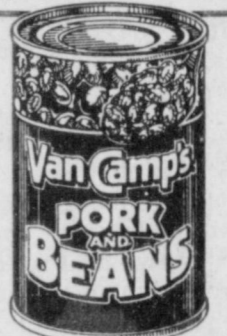


ASSORTED PREMIUM BATH

KLEENEX TISSUE

4 ROLL PKG.

89¢



VAN CAMP'S

PORK & BEANS

16 OZ. CANS

3 FOR \$1



JUMBO ROLL ASSTD. PAPER

HI-DRI TOWELS

59¢



136 OZ. BOX LAUNDRY

SURF DETERGENT

\$5.99



5 LB. BAG ALL PURPOSE

SHURFINE FLOUR

69¢



PEANUT BUTTER CREAMY/CRUNCHY/NO SALT

PETER PAN
18 OZ. JAR
\$1.89



UNCLE BEN'S COUNTRY INN

RICE DISHES
4.4-5.2 OZ. BOX
\$1.29



CHUNK DOG FOOD

TRAIL BLAZER
20 LB. BAG
\$3.99

FRESH
Carrots
2 LB. BAG
48¢



Jalapeno PEPPERS LB. **78¢**

BARTLETT **PEARS** LB. **68¢**

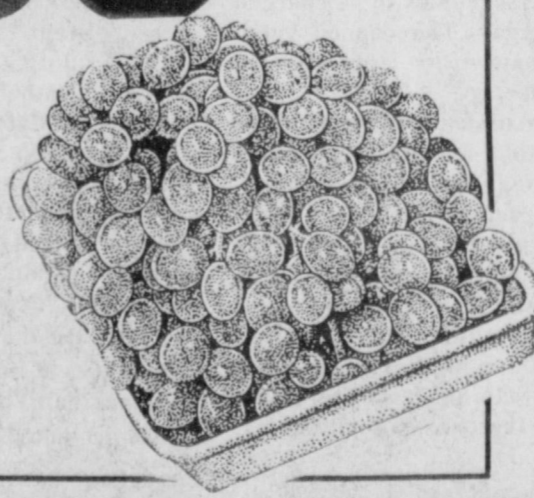
GREEN ONIONS 4 FOR **\$1.00**

FRESH HAWAIIAN **PINEAPPLE** EACH **\$1.38**

WASHINGTON EX-FANCY DELICIOUS **RED APPLES** LB. **88¢**

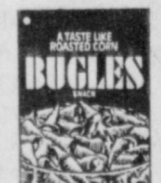
THOMPSON SEEDLESS

Grapes
68¢



NON-DAIRY CREAMER
COFFEE-MATE
22 OZ. JAR
\$2.99

DECAFFEINATED **FOLGERS COFFEE**
13 OZ. CAN
\$2.99



ASSORTED **BUGLES SNACKS**
6 OZ. BOX
99¢



ASSORTED GRINDS **FOLGERS COFFEE**
26 OZ. CAN
\$2.99



GARFIELD ASSTD. **FRUIT SNACKS**
4-5 OZ. BOX
\$1.99

40° OFF LABEL ASSTD.
PLAYTEX TAMPONS
28 CT. PAK
\$4.99

EX-STRENGTH GELCAPS
TYLENOL
2 PAK 50 CT.
\$3.99

SHURFINE LONGHORN 1/2 MOON
CHEDDAR OR COLBY
10 OZ. PKG.
\$1.69



PILLSBURY ASSTD. HUNGRY JACK
BISCUITS
10 CT. CAN
69¢

EL CHARRITO ASSTD. MEXICAN
DINNERS
13-14 OZ. BOX
\$1.49

BLUE BUNNY HI-LITE
ICE MILK
1/2 GAL. CTN.
\$1.39

BLUE BUNNY SUGAR FREE
CITRUS LITES
12 CT. BARS
99¢

AQUA NET ASSTD.
HAIRSPRAY
9 OZ. SIZE
79¢

TEK ASSORTED
TOOTHBRUSHES
EACH
3 FOR \$1

SHEDD'S COUNTRY CROCK
QUARTERS
1 LB. BOX
69¢

SHEDD'S COUNTRY CROCK
SPREAD
3 LB. TUB
\$1.79

CITRUS HILL CHILLED
ORANGE JUICE
64 OZ. JUG
\$1.79

ASSTD. LEAN CUISINE
ENTREES
8.5-11.75 OZ. BOX
\$2.49

- CHICKEN CACCIATORE
- ORIENTAL BEEF
- CHICKEN & VEG.
- SALIS STEAK
- FIESTA CHICKEN

TEENAGE MUTANT NINJA TURTLE
ICE CREAM BARS
4 CT. BOX
\$1.49



ALL VEGETABLE
CRISCO OIL
64 OZ. JUG

\$2.19



401 W. Amer. Blvd.

272-4585



WE ACCEPT FOOD STAMPS...
WE RESERVE THE RIGHT TO LIMIT

PRICES EFFECTIVE
AUGUST 18-24, 1991



ALL TYPES
COCA-COLA
2 LTR. BTL.

99¢

**Billy Williams
Funeral Services
Held Monday**

Funeral services for Billy Frank Williams, 60, were held at 2:30 p.m. Monday, Aug. 19 in the Progress Baptist Church with the Rev. Jerry Cain officiating.

Burial was in Muleshoe Memorial Park Cemetery under the direction of Ellis Funeral Home of Muleshoe. Williams died at 8:50 a.m. Friday at his home.

Born in Clarendon, Williams moved to Muleshoe from Earth in 1953. He married Joyce Scarbrough in 1949 in Muleshoe. He was a farmer.

Survivors include his wife, Joyce; three sons, David Williams of Muleshoe, Billy Don Williams of Lubbock and Terry Williams of Stephenville; a daughter, Peggy Williams of Muleshoe; four brothers, Cecil Williams of Levelland, Clinton Williams of Austin, Nev., and Jesse and Kenneth Williams, both of Amarillo; two sisters, Myrtle Scheller of Phoenix, Ariz., and Wanda Pruitt of Altus, Okla.; and 10 grandchildren.

**Pauline Jamison
Former Muleshoe
Resident Dies**

Funeral services for Pauline Towns Raney Jamison, 76, of Marble Falls were held Sunday, August 18 at 2 p.m. in the First Baptist Church in Marble Falls with Br. Max Copeland officiating.

Burial was in Lakeland Hills Memorial Park under the direction of Clements-Wilcox Funeral Home.

She was born in Chilicothe on August 12, 1915. She was a former resident of the Muleshoe and Lamesa area, before moving to Kingsland and later to Meadowlakes, Marble Falls. She was a member of Dorcas Sunday School Class and a member of the Good Sam Travel Club and Mobile Scout Travel Club. She was preceded in death by her husband, Vernon Jamison, in September 1988.

Survivors include sons and daughters-in-laws, Leon and Wilma Jamison of Marble Falls, Dennis and Sharon Raney of Dallas, six grandchildren; four great grandchildren; a sister, Doris Towns of Kingsland and a host of other relatives.

Memorial contributions may be made to the American Cancer Society.

**News From
Bob Bullock**

Lt. Governor Bob Bullock said today that final passage of H.B. 7 gives the state the opportunity to overhaul Texas' fractured health and human service programs by giving the governor the ability to appoint a board with broad powers to reshape the state's policy.

"No other area of state government needs reform more than our state's fractured health and human services system," Bullock said. "Our current system of 300 separate programs spread among 13 different agencies does not work for the people in need of help or for the taxpayers who want their money spent wisely and efficiently."

"This bill acknowledges that desperate need for reform. We should be careful to note, however, that this legislation is not the solution; it merely opens the door to a solution," Bullock said.

**Helen Lee
Funeral Services
Held At Clovis**

Funeral services for Mrs. Helen Lee, 71, of Clovis, N.M. were held at 2 p.m. Tuesday, Aug. 20 in Parkland Baptist Church with the Rev. Douglas Brooks officiating.

Burial was in Lawn Haven Memorial Gardens under the direction of Steed-Todd Funeral Home. Mrs. Lee died Saturday in Clovis.

Born July 30, 1920, in Snyder, Oklahoma, she had been a resident of Clovis 16 years, moving there from Muleshoe. She had been a resident of Muleshoe 36 years. She was a member of Parkland Baptist Church and the Clovis High Plains Hospital Auxiliary.

Survivors include her husband Melvin E. Lee of Clovis; two daughters, Jean Fulkerson and Lynda Ivy, both of Lubbock; a son, Melvin Monroe Lee of Indianapolis, Indiana; eight grandchildren; two great grandchildren; three brothers, Ray Hammons of Longview, and Milton and Bobby Hammons, both of Ringling, Okla.; three sisters, Kathleen White of Wichita Falls, Loretta Nail of Allentown, Pa., and Rosie Richardson of Ringling, Okla.

Pallbearers were Monie Lee, Travon Lee, Christopher Ivy, Justin Fulkerson, Chanse, Paul and Scott Fulkerson.

Bullock said the legislation will create a governor-appointed Health and Human Services Commission to oversee all health and human service programs. The commission is charged with improving and coordinating services and reducing duplication by consolidating similar programs.

"The people appointed by the governor to oversee these reforms will be well-advised to know that the Legislature and the people of Texas will keep a close watch on their efforts to bring some sense to our health and human service agencies and programs," Bullock said.

Among the commission's first duties will be to consolidate protective and regulatory services, like the state's child protective service, into a new agency and to consolidate all health programs into a new Department of Public Health, Bullock said.

The legislation also provides for a governor-appointed task force to review all state facilities for mental health and mental retardation and recommend improvements, including the possible consolidation of state schools. Bullock said the review could end a 17-year-old federal lawsuit brought against the state's mental retardation institutions.

After the vote, Bullock praised

**Trent Schilling
Funeral Services
Held Friday**

Funeral services for Trent J. Schilling, 19, of Farwell, were conducted Friday at St. Ann's Catholic Church.

Officiating at the mass was Father Timothy Dran, pastor, and Rev. Darris Linder. Burial was in Sunset Terrace Cemetery of Farwell under the direction of Ellis-Blackwell Funeral Home.

Schilling passed away Wednesday, August 14 at Lubbock.

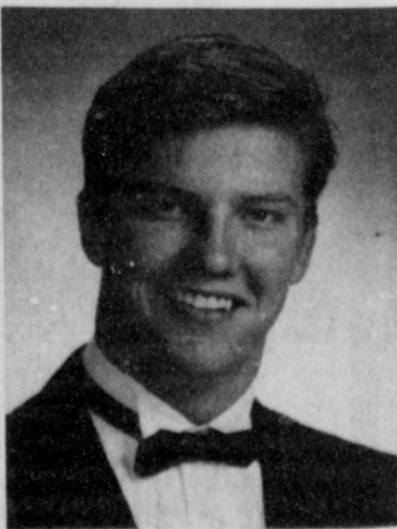
He was born June 30, 1972 in Clovis, N.M., and had lived in Parmer County all his life. Schilling was a 1990 graduate of Farwell High School, where he played football and was active in one-act plays and weightlifting.

He was a sophomore at Texas Tech University, where he was a member of the PIKA Fraternity. He was also a member of St. Ann's Catholic church.

Survivors include his parents, Joe and Eunice Schilling of Farwell; one sister and brother-in-law, Judith and Jeff Alford of Amarillo; two brothers, Jason Schilling of Farwell and Stephen and wife, Karen Schilling, of Farwell.

His grandmother, Serena Buxkemper, of Slaton, also survives. He was preceded in death by a brother, Nicky, in 1969.

The family suggests donations to the O'Brien House at 1522 S. Van Buren St., Amarillo, Texas 79105.



Trent Schilling

Muleshoe Journal © 1991
Established February 21, 1924. Published by Muleshoe Publishing Co., Inc. Every Thursday at 304 W. Second, Box 491, Muleshoe, Texas 79274. Second Class Postage Paid at Muleshoe, Texas 79274.

MEMBER 1991
TEXAS PRESS ASSOCIATION

J. B. Hill, Publisher
Samuel Hill, Vice President/Comptroller
Evelyn Harris, News
Evelyn Adams, Station
Bobbie Mulligan, Advertising
Dorcas Hernandez, Classified

MEMBERSHIP
Muleshoe Journal and Bailey County Journal
Bailey and surrounding counties
Muleshoe Journal and Bailey County Journal
Dumas and Texas 79274
Muleshoe Journal and Bailey County Journal
Dumas, Texas 79274
Yearly \$5.00
Yearly \$3.00

Advertising Rates and Application
Advertisers should check this ad the first day of insertion. The Journal will not be held liable for failure to publish an ad or for misprints or errors in publication, except in the case of the cost of the ad for the first day of insertion. Advertisements for services will be limited to the cost of the portion of the ad that the service cost.

ed Senator Chet Brooks (D-Pasadena) and Mike Monrief (D-Fort Worth) for their work in the House-Senate conference committee which produced the bill.

**Virgil Maxwell
Funeral Services
Held Here**

Funeral services for Virgil E. Maxwell, 79, were held at 4 p.m. Monday, Aug. 19 in the Trinity Baptist Church with the Rev. David Kellar, pastor of the First Christian Church in Dimmitt, officiating.

Burial was in Muleshoe Memorial Park Cemetery under the direction of Ellis Funeral Home of Muleshoe. Maxwell died Sunday in Plains Memorial Hospital in Dimmitt, following a lengthy illness.

Born in Kansas, Maxwell had lived in Muleshoe since 1944. He was a member of Trinity Baptist Church. His wife, Audra, died in 1988.

Survivors include four sons, Jerry and Harold, both of Muleshoe, Virgil of Hereford and Leroy of Dimmitt; a sister, Alice Nelson of Canon City, Colo.; eight grandchildren; and a great grandchild.

The family suggests memorials be made to the Trinity Baptist Church or Cal Farley's Boys Ranch.

Just So!
No father objects to his children asking questions—provided he knows the answers.



Who Knows?

1. What is the monetary unit of the Soviet Union?
2. When did the Ba-

hamas become independent of British rule?
3. Name the sixth U.S. president.

- ANSWERS:**
1. The Ruble.
 2. In 1973.
 3. John Quincy Adams.

**Factory Direct
Hearing Aid Sale
& Consultation
One Day Special
Sat., Aug. 24
9:00-3:00 p.m.**

FREE TEST

Panhandle Hearing Instruments
Heritage House Inn
2301 W. Amer. Blvd.
Room 120
Telephone
1-800-866-4554

We Offer ALL of These Valuable Services:

- FREE electronic hearing tests and evaluation.
- FREE 10-point maintenance check-up for all current hearing aid wearers (all brands)
- Senior Citizen Discount of \$50 off any models of aid.
- Up to \$200 Trade-in on any brand.
- Lowest Prices Anywhere.

Call ahead to avoid waiting.
1-800-866-4554

Featuring:
Staryey
Unimax
OMNI
Electone
Award
In-the-Ear &
Custom Canal Aids
As Low AS
\$398

EXTRA

40% OFF

**YELLOW TICKET
SUMMER
CLEARANCE**

SAVE BIG!

Selected Summer Fashions for the Entire Family

EXAMPLE
Reg. Price \$20
Sale Price \$10
EXTRA 40% OFF \$6

Does not include athletic shoes. Intermediate markdowns may have already been taken. No rainchecks. Sorry, no layaways. All sales are final. Selection will vary by store.

ANTHONY'S

321 Main Muleshoe, Tx. 272-3478

BEEF COUNTRY BASKET
TIME AT DAIRY QUEEN!

\$1.99 ON SALE AUG. 19, THRU SEPT. 1, 1991
FOUR FINGERS PLUS TAX

This week's DQ Value: a delicious Country Basket! Four steak fingers with fries, gravy and Texas toast for a low DQ price! Or six steak fingers for \$2.99! Only at Dairy Queen!

DQ IS VALUE COUNTRY

© Reg. U.S. Pat. & Tm. Off. Am. D.Q. Corp. 717M Reg. U.S. Pat. & Tm. D.Q. Op. Coun. © Tx. D.Q. Op. Coun. At participating Dairy Queen stores.

Journal Files

60 Years Ago

1931

The Journal force is this week indebted to W. F. Buckner for a fine watermelon grown on his farm just across the county line near Earth. Buckner has 45 acres in these melons some of them weighing as much as 70 pounds. He has three trucks now running in disposal of the crop, and he states he is realizing a good profit from them.

50 Years Ago

1941

The second annual National Maize Heading contest will be held at Anton, Texas this year on September 12 and 13, it was announced today. Each contestant pays a small entry fee, but this must be attended to not later than September 10. The winner is presented with \$200 in cash and plenty of publicity. "Contestants from all over the plains are entering already," said H. G. Richards, of the Anton News, "and indications are that this will be one of the greatest events of the South Plains."

40 Years Ago

1951

Mr. and Mrs. Carl Bamert were honored by the Muleshoe Junior Chamber of Commerce as the Farm Family of the Month Monday night with Don Jones of the Lubbock Experiment Station as principal speaker of the evening.

30 Years Ago

1961

According to a nationwide survey, Bailey County has more of its families in the "over \$4,000" income brackets and a smaller proportion of them in the lower income groups than have most places in the West South Central States. Locally, the trend has been toward bigger incomes in recent years, with the result that families have been moving up to higher brackets.

20 Years Ago

1971

The Hale County Soil and Water Conservation District will give area people their first opportunity to view an actual "Moon Rock" on September 9, according to Jimmy Lewis, Unit Conservationist in Hale County. The High Plains Research Foundation will provide the

facilities during their 15th Annual Field Day and the moon rock will be on display in the Kilgore Building at the Research Foundation Headquarters at Halfway, from 10 a.m.-4:30 on September 9. "Representative Bob Price is assisting us in making this rare opportunity available, and will be escorting this display from NASA headquarters in Houston," said Lewis.

10 Years Ago

1981

J.E. Birdwell of Muleshoe has been selected to help lead the Texas A&M University System into the 21st Century as a member of the TAMU's Target 2000 Project Committee. The Target 2000 Project brings together more than 250 prominent Texans and other friends of the university from around the nation to undertake a comprehensive study of the goals

Homemakers

Compile Cookbook

The Lazbuddie Homemakers are in the process of compiling a new community cookbook.

All current and past members of the Lazbuddie Community are encouraged to submit recipes. Please include your name on all recipes.

The Homemakers are interested in all your recipes, and have a special interest in older recipes handed down from generation to generation.

Drop boxes for your recipes will be at the Lazbuddie post office and several businesses throughout the community. The deadline is September 1. For more information, contact Pat Randolph, Box 185, Lazbuddie, Texas 79053, Phone 965-2915.



CELEBRATING YEARS—Mr. and Mrs. Conrad Williams of Stegall will celebrate their 50th wedding anniversary with a reception from 2 p.m to 4 p.m. Saturday, August 24 at the Depot, Heritage Complex, in Muleshoe. Hosts will be their children, Carter and LaJean Williams of Lubbock, Wendell and Peggy Williams of Stegall and Wenonah Williams of Denver, Colorado. Williams and the former Mildred Phipps were married on August 24, 1941 at Stegall. (Guest Photo)

Henry Honored By Society

Kenneth R. Henry, CIC, of Muleshoe was honored this week by the Society of Certified Insurance Counselors for his more than 15 years of "steadfast commitment to leadership and excellence through continuing insurance education."

The honor was conveyed in a testimonial signed by Dr. William T. Hold, CIC, president of the national organization that for over 21 years has administered a comprehensive system of continuing education for insurance professionals.

According to the CIC testimonial, Mr. Henry's commit-

ment to excellence "has been demonstrated through outstanding individual achievement and through the highest levels of professional competence in all areas of the insurance business."

Henry, the owner-agent with the Henry Insurance Agency, earned the CIC designation in 1975 and ranks among the top one percent of agents and producers in America.

More insurance professionals participate in the CIC Educational System than in any other type of insurance education program.



MRS. SERGIO LEAL
(nee Tracie Toland)

Tracie Toland and Leal United In Marriage

The Glad Tidings Church in Sherman, Texas was the setting for the marriage of Tracie Toland of Denison and Sergio Leal of Muleshoe on Saturday, August 10. Pastors Ken Myers of Glad Tidings Church and Larry Myers of Mexico Ministries officiated at the double-ring ceremony.

The bride is the daughter of Mr. and Mrs. James C. Toland of Sherman and Mr. and Mrs. James E. Byrd of Oklahoma City. She is the granddaughter of Mr. and Mrs. Carl H. Toland of Denison and Mrs. C. O. Scott of Heavner, Oklahoma. Tracie graduated from Moore, Okla. High School and State Barber College of Okla City. She is employed by J. Toland's Barber-stylist of Midway Mall.

The bridegroom is the son of Mr. and Mrs. Hector J. Leal of Muleshoe, Texas. He graduated from Muleshoe High and is presently employed by Leal's Mexican Food Restaurant in Muleshoe.

Attendants for the bride were Mrs. Diana Thompson, sister of the bride, from Balch Springs, Texas was matron of honor. Miss Barbie Toland, sister of the bride, of San Marcos, Texas was the Maid of Honor. Miss

Ashley Davis, niece of the bride, was the flower girl. Mr. Zachary Thompson, nephew of the bride, was the ring bearer. Victor Jaramillo, nephew of the groom, was also ring bearer.

Best man was Hector J. Leal, father of the groom, from Muleshoe. Groomsman was Victor Leal, brother of the groom, Whitesboro, Texas. Ushers and Candlelighters were James N. Thompson of Balch Springs and Shawn H. Davis of Sherman, both brother-in-laws of the bride, Loy Triana and Brett King from Muleshoe.

Wedding music was presented by Traci and Troy Werner of Sherman and Laura Leal of Clovis, New Mexico, organist and sister of the groom.

Mr. and Mrs. James C. Toland hosted the Mexican wedding fiesta held at Sheraton Inn, Sherman, Texas. Live music was presented by "El Grupo Maravilla," celebrating the blending of families and friends.

The couple will be at home in Muleshoe after a wedding trip to San Antonio, Texas.

Mr. and Mrs. Hector Leal were hosts to a rehearsal dinner on August 9 at Mr. L's Restaurant in Sherman, Texas.

BREAST CANCER DETECTION UNIT AVAILABLE TO AREA WOMEN



MONDAY, AUGUST 26th
MULESHOE AREA MEDICAL CENTER
708 South 1st
MULESHOE, TEXAS

CALL 272-4524 FOR APPOINTMENT

A Service of
Transamerican Diagnostic Services
(Providing Mammography Services for over 5 years)

According to the American Cancer Society, one out of ten women in the United States will develop breast cancer sometime in her lifetime. It is currently estimated that over 37,000 women die each year as the result of breast cancer.

Ninety percent of breast cancers are diagnosed by women or their physicians finding a lump in the breast. Women who are diagnosed with a lump large enough to feel have a 50 percent five year survival rate. A woman who is diagnosed as having breast cancer by mammography, before a lump can be felt, has a 97% five year survival rate and a 90% 10 year survival rate.

A mammogram can detect a cancer this small, even before it can be felt.

Guidelines For Screening Mammography Established by the American Cancer Society.

I. 35-40 years of age - One baseline mammogram.

II. 40-50 years of age - A mammogram every 1-2 years depending on breast type and risk factor.

III. 50 years of age and over - An annual physical examination and annual mammogram.

IV. Asymptomatic women under 50 years of age with significant high risk factors should be examined at appropriate intervals. These risk factors include previous breast cancer and family history of cancer.

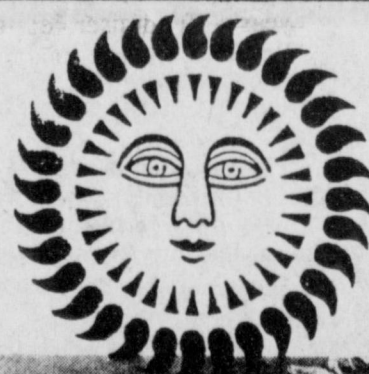
V. A symptomatic woman should have a mammogram at any age when she experiences a mass, nipple discharge, skin changes or unexplained breast pain.

A screening mammogram is an x-ray of the breast using extremely low dosages of radiation (usually comparable to dental x-rays) and is designed to find very early cancers.

A female technologist who is highly trained in mammography will perform the examination.

The charge for the screening mammogram is \$65.00. The Unit accepts cash, check, Visa, Mastercard and American Express.

Now filing Medicare (for your reimbursement)



RED HOT SUMMER SALE

STOREWIDE SAVINGS OF 15% TO 50%



American Country

by Rose Hill

RECTANGULAR TABLE 20" x 48" Height 15" \$89

END TABLE 18" x 24" Height 19" \$89

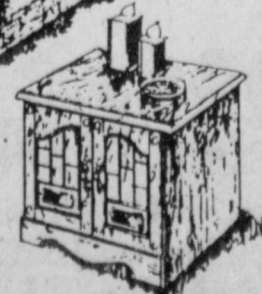
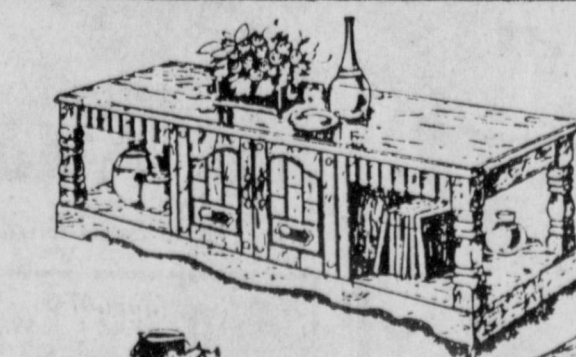
SOFA TABLE 16" x 48" Height 27" \$99

SQUARE TABLE 34" x 34" Height 15" \$99

Selected Hardwoods with Smoked Beveled Glass Ready to Assemble Made in USA

YOUR CHOICE \$98

Rectangular Cocktail, Hexagonal End Table, Square End Table.



ASHLEY FURNITURE INC.

601 MAIN STREET CLOVIS, N.M. 88101

PHONE: (505) 763-7121 We Carry Our Own Paper

Hintons Named By Board

The Rev. and Mrs. Kelton F. Hinton were among 40 people named missionaries by the Southern Baptist Foreign Mission Board August 13 at Colonial Heights (Va.) Baptist Church.

The Hintons will live in Benin, where he will start and develop churches and they will be involved in a variety of outreach ministries.

Since 1988 he has been pastor of the Spanish mission of First Baptist Church in Sanford, N.C.

Born in Shreveport, La., Hinton is the son of Mr. and Mrs. Clitus Hinton of Princeton, N.C. He considers Princeton his hometown and Princeton Baptist Church his home church.

He received the bachelor of

arts degree from the University of North Carolina in Chapel Hill and the master of divinity degree from Southeastern Baptist Theological Seminary in Wake Forest, N.C. He also attended Southwestern Baptist Theological Seminary in Fort Worth, Texas.

He has been a Baptist Student Union missionary to Togo and a Southern Baptist Home Mission Board US-2 missionary, working as pastor of the Spanish mission of Benson (N.C.) Baptist Church.

Born in Friona, Texas, Mrs. Hinton, the former Lauri Burgess, is the daughter of Mr. and Mrs. Jimmie Burgess of Dallas, Texas. While growing up she also lived in Lazbuddie, Dimmitt



REV. AND MRS. KELTON F. HINTON

and Muleshoe, Texas; and Rolla, Kansas. She considers Muleshoe her hometown and First Baptist Church in Sanford her home church. First Baptist Church in Muleshoe and Calvary Baptist Church in Canyon, Texas, also were influential in her Christian growth.

She received the bachelor of science degree from West Texas State University in Canyon. She also attended Southwestern and Southeastern seminaries.

She has been a kindergarten teacher at Pathway Learning Center and a preschool teacher at First Presbyterian Child Development Center, both in Sanford; and a Foreign Mission Board journeyman to Togo.

The Hintons will go to Rockville, Va., in October for a seven-week orientation before leaving for the field.

With more than 15 million members, Southern Baptists are the largest evangelical denomination in America. Their missionary-sending agency, the Foreign Mission Board, is the largest evangelical or Protestant career foreign missionary force based in the United States. With more than 3,800 missionaries in 121 countries, they have a goal to locate 5,000 missionaries in 125 countries by the year 2000. This is the denomination's part in seeing all the world has a chance to hear the story of Jesus Christ.

Chili Cookoff Announced

Organizers of the Texas Boys Ranch Chili and Brisket Cookoff and Craftshow near Lubbock have announced an outstanding entertainment lineup for the third annual event.

Country-western stylist Albert Mendoza and his band will begin the music at 6 p.m. Friday, August 23, followed at 9 p.m. by the noted twin-fiddle swing music of Jody Nix and the Texas Cowboys from Big Spring.

Three to five thousand people are expected to take part in this year's fundraiser at the V-8 Ranch a quarter-mile south of Buffalo Springs Lake on Farm-to-market 835.

Gates will open at noon Friday and at 9 a.m. Saturday, with Bill Martin and the Katch Band to open August 24 activities with an hour of music beginning at noon. The Salt River Show will start at 1 p.m., the Texas Bel-Airs will play at 6 p.m., The Nelsons rock 'n' roll band at 7, the Robin Griffin band at 8 and P.J. Belly and the Lone Star Blues Band at 9, featuring Elvis the Busboy and Miss Ayn.

The craftshow will run from 9 a.m. to 6 p.m. Saturday with its numerous exhibitors, and the chili and brisket cookoff will be held throughout the day. An added attraction this year will be the participation of the Hub City Cruisers Streetrod Club, which will display several of its "highly modified" vehicles.

More than 65 cooks took part in the competition last year.

Trophies will be presented to this year's winners Saturday afternoon, with 7-Eleven Stores to give \$1,000 to the Texas Boys Ranch near Lubbock, in the name of the top chili cook and \$500 in behalf of the brisket contest winner.

Advance tickets are on sale for \$3 at 7-Eleven Stores. They will be \$4 at the gate.

Travel Bureau Announces Tours

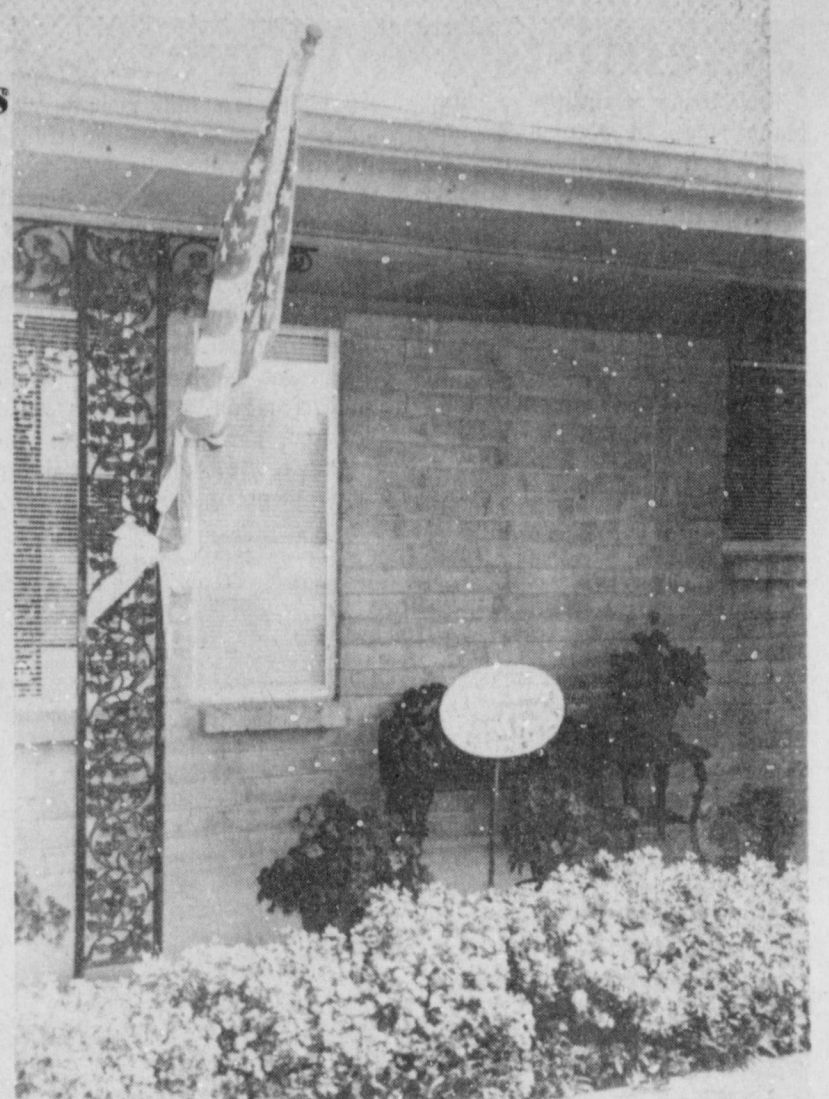
Russian Travel Bureau, in the heat of summer, announces cool tours to the Soviet Union for the Fall, Winter, Spring off-season period.

"We expect a surge in interest in visiting the Soviet Union the rest of this year and during the winter season," stated Caroline Cavalli, President of Russian Travel Bureau, an American-owned 22-year specialist travel company.

"With the advent of the Summit and ever improving relations between our countries, interest in visiting each other is growing, especially among experienced world travellers," she continued.

The company will continue to operate, for the 11th successful year, its well known "Winter Wonderland Tour" featuring Moscow, Leningrad, and the old world cities of Vladimir and Suzal. The contrasts between these 13th century cities and relatively modern ones are the highlight of this special tour itinerary. Included in the tour features are first-class hotels, private baths, full breakfasts and dinners daily in Russia with reserved seating, Intourist English-speaking guides, extensive sightseeing daily, all transfers and portorage, local flight between Moscow and Leningrad plus motorcoach to Vladimir/Suzdal. Additionally an American Russian-speaking Tour Manager will accompany the tour group, which averages only 22 persons, from the USA. Two theatre performances are also included in the program. International flights from New York are via Finnair on a wide-bodied jet with full meals and complimentary movies aloft. Thus, everything is included on this "Winter Wonderland" tour with prices starting at just \$1389 per person twin.

The last night of this 10 day program will be spent in Helsinki capital of Finland before returning to the USA, for anyone desiring a brochure on this tour or other programs contact Russian Travel Bureau 225 East 44th Street New York, NY 10017. Call toll free 800-847-1800 or in NY 212-986-1500.



AWARDED GARDEN SPOT--of the week is the lawn of Ethel Allison at 909 E. Ivy in the Country Club addition. The Jennyslippers made the award based on the yard's well-kept appearance and fine selection of plants. (Journal Photo)

BRIEFS

Iraq admits it was building superguns.

Saudi Arabia offers to end Israel boycott.

Bush rewards Greeks for role in Gulf War.

Tax breaks proposed for base closing victims.

Linda's Kitchen
(Located in Damron Drug)

Will Be Closed
August 26 - September 2
Will Re-Open Sept. 3 at 8 a.m.

*Your Business Is Appreciated &
We Look Forward To Seeing You
When We Re-open!!*

HUNTER'S HEADQUARTERS!

Firearms You Want!!

Remington Express Shotgun Sale **199⁹⁹**
Express pump shotgun, 12 gauge, 26 or 28" vent rib barrel or 20 gauge, 28 or 21" vent rib barrel. One choke tube included. Hardwood stock. (600-2992, 3008, 3032, 3057)

Winchester Ranger Pump Shotgun Sale **209⁹⁹**
28" VT pump shotgun with 3 choke tubes. Walnut finish stock with recoil pad. 12 or 20 gauge. (602-5415, 5423)

Game Load Special

Your Choice:

Remington or Winchester.
2 3/4" - 12 gauge - 6, 7 1/2, 8;
16 gauge - 8; 20 gauge - 7 1/2, 8
Federal. 2 3/4" - 12 gauge - 6, 7 1/2, 8;
16 gauge - 7 1/2; 20 gauge - 6, 7 1/2, 8

Sale **3⁸⁸**

Dove Season Opens
September 1!

We Have Hunting Licenses!

P

O

Y

N

O

R

S

103 Main Muleshoe 272-1552

WE FIT AMERICA
125 DIFFERENT WAYS.

We carry Red Wing Shoes in 125 different sizes and widths to make sure you "feel fit" and feel comfortable all day long. Stop in soon.

AM	M	A	B	C	D	E	F	G	H
8 1/2	9	9 1/2	10	10 1/2	11	11 1/2	12	12 1/2	13

Fair Store
120 Main
272-3500

RED WING SHOES
Made in U.S.A.
Comfort and dependability treated for generations.

Remember Those Back To School Cookouts!

1/2 Beef

\$1⁴⁴ lb.

Cut & Wrapped To Your Specifications

Larry's Own

Breakfast Sausage

6 Lb. Box Sliced

\$1⁵⁰ lb.

Whole Loins

K C Strips

\$3⁹⁹ lb.

Cut & Wrapped To Your Specifications

Larry's Award-Winning Home Cured Bone-In

\$2¹⁹ lb.

Pork Loins

By The Loin

12-15 lb. each

\$1⁷⁹ lb.

Larry's Award-Winning German Sausage

\$2⁰⁹ lb.

Winkler Meat Co.

401 Main 272-4703

Scientists Develop Worldwide Weather, Soil Data Base

For those wanting to help plant crops in Kenya--or anywhere else, for that matter--the Central Texas town of Temple may be the place to turn for information. Temple's Blackland Research Center is putting together a worldwide weather and soil information data base that should assist those managing international resources.

The Blackland center, part of the Texas Agricultural Experiment Station, has developed a reputation for its work with computer models and data bases for agriculture. But its newest project, which is actually three tasks in one, promises to be one of its most complex.

Led by Dr. Paul Dyke, a research scientist, the center will take on the daunting task of turning 17 years' worth of weather information gathered from more than 8,000 sites into useful data. Dyke's team will take that information stored on magnetic tapes and put it into a compact disc format.

The data are compiled by the National Oceanographic and Atmospheric Administration for the World Meteorological Organization. "The problem with a lot of weather data we need is that when it's available, it's stored according to a particular time period for many different locations," Dyke said. "But to use it for a single location, we would have to process a whole data tape. This is just a gigantic effort of sorting it, organizing it and getting it on CD's."

But it's more than that. Dyke also will lead an effort to combine that weather information with soil data already collected in the United States and other places. It would then be used in computer models

that simulate how certain crops might fare in particular locations. Weather and soil data already are used extensively in agricultural computer models throughout the United States, but generally for far more limited areas or purposes. The Blackland center's work would take a much larger--and much less complete--set of data and make it accessible to international groups.



YUM-YUM GOOD--Pedro Maldonado, local UPS delivery man (left); Jim Haley; and Anthur Garcia prepare fajitas at Ben Franklins sidewalk sale.

New Home Loan Program Available

The Texas Veterans Land Board will begin taking applications for home loans up to \$45,000 through the recently expanded Texas Veterans Housing Assistance Program on August 15, Texas Land Commissioner Garry Mauro announced today.

"Increasing the maximum loan amount to \$45,000 brings the program more in line with the realities of today's economy," said Mauro, who serves as chairman of the Texas Veterans Land Board.

The increase in the maximum loan amount from \$20,000 to \$45,000 was made possible by legislation recently signed into law by Gov. Ann Richards. The legislation is effective September 1, 1991.

"A \$45,000 loan will also enable Texas veterans to bid on the hundreds of available RTC and HUD properties that fall into this price range," Mauro said. "Texas real estate professionals are excited about this because it gives them another financing option to help low-to-moderate income Texans become home owners."

The Texas Veterans Housing Assistance Program currently makes 30-year, fixed-rate loans at 8.5 percent for the purchase of a new or existing home.

If a home costs more than \$45,000, Texas veterans can

Rodeo...

Cont. from Page 1
8 AND UNDER

Deedra Dupler of Lubbock, first; Clayton Brooker of Whiteface, second; and Cody Morris of Sudan, third.

9-12 AGE DIVISION
Zachary Brooker of Whiteface, first; Kyla Morris of Sudan, second; and Julie Slayden of Muleshoe, third.

13-15 AGE DIVISION
Leslie Clawson of Sudan, first.

A spokesperson for the Muleshoe Riding Club told the Journal Tuesday morning that they hoped to make this a semi-annual event.

"This probably won't result in a new model. We'll build some kind of user-friendly software that will improve accessibility to data for the models we have," Dyke said.

Much of the soil data hasn't even been collected yet, and part of Dyke's job will be to travel to East Africa, where he will collect detailed information on soil characteristics there.

General soil data is already available in U.S. libraries for

most of the world, but it does not contain enough information on physical and chemical properties of smaller areas.

Dyke will use soil pedons, or cores, for much of that data.

There's also a third angle to the research. Dyke left in mid-July for Australia, where he's working with scientists from that country's National University to see if even more data can be added.

The Australian scientists have developed a computer model that incorporates terrain factors, such as elevation, into crop decisions. Dyke will explore the feasibility of adding such information into a worldwide cropping data base.

"Their models require digital terrain data, and other models don't use it," Dyke said. "One of the questions we'll address is how to go about attaining this for our data base--whether we might scan hard-copy maps or possibly use satellite systems."

Whether the Australian innovations can be incorporated or not, the Blackland center's proposed CD data base will be useful to many.

Among them is the project's funding body, the Rockefeller Foundation, which gave the center a one-year, \$136,000 grant for the work. The foundation often funds agricultural projects in East African nations.

Muleshoe...

Cont. from Page 1

If you ever wanted to experience how the mountain men of the late 1800's lived, you might want to attend the High Plains Muzzle Loaders Rendezvous October 4-5. There will be Primitive/modern camps.

Competitive events will include trail walk, pistol shoot, knife and hawk, Seneca run, Flintlock Rifle Shoot, kids games, Council Fire.

This event is open to men, women and junior divisions (8-15).

Located north of Clovis, Friday will be set-up time with competition beginning at 9 a.m. Saturday.

For more information you may contact Drue Harvey at 1821 Gidding, Clovis, N.M. 88101.

Beginning Sept. 1 House Bill 70 allows a Texas driver to take a Texas Education Agency State Certified, 8 hour driving safety course every year to dismiss most moving traffic tickets.

In 1981 it became mandatory for judges to allow a ticketed driver to take a driving safety course very two years. Since then traffic deaths on Texas highways have decreased by more than 50 percent.

By allowing a ticketed driver to take the 8-hour course every year the Texas Legislature hopes to reduce driving related deaths even further.

Africanized Honey Bee Swarms Expected

Access to computerized soil and weather data will help the foundation make better decisions on the value of such projects, Dyke said.

A U.S. scientist tracking the Africanized honey bee in Mexico said a surprisingly large number of swarms could land in the Rio Grande Valley by next month.

"In September and October a big burst in the valley is likely, given what we've seen in Mexico," said Dr. Orley R. Taylor, a Kansas State University entomologist whose research in the Mexican state of Nuevo Leon is about 150 miles south of the Texas border.

The Texas Rio Grande Valley is ecologically similar to Nuevo Leon, Taylor said, and both are highly attractive to the bees. The Mexican state includes the cities of Monterrey and Nuevo Laredo.

Taylor said Nuevo Leon was inundated by the bees this year in his research, more than 370 swarms were caught. He said countless other swarms were observed landing near baited hives or in trees, but they eluded trappers.

Less than 120 AHB swarms caught in Texas in the same time period. But Dr. John Thomas, Texas Agricultural Extension Service entomologist, estimates that as many as 200 more swarms may have migrated across the U.S. border undetected.

Taylor said the heaviest swarming months in Nuevo Leon were March, April and July.

"In July, it was wild. We had five days of rain and the bees poured in," Taylor said. "We stopped counting at about 120 swarms that month."

During the Africanized bee's first year since arriving in Nuevo Leon, Taylor had expected only 40 percent of the swarms to be Africanized and the rest to be ordinary European honey bees. Instead, more than 90 percent were Africanized.

"The large numbers are partly due to the weather, but the habitat is great," he said. "When I first went into the area, I thought, 'This is going to be bee city,' and it was. The place looks like South Africa. It is more likely home to the bees."

But the large number of swarms wasn't the only obser-

"The end result of this, we hope, is that when these are linked with simulation models and geographical information services, we'll be able to provide better techniques for screening potential production systems," Dyke said.

vation. Taylor said the bee population in Nuevo Leon is rapidly becoming more Africanized as the migrating bees breed with the native population.

Taylor gathered data on the area's genetic baseline by sampling 35 European hives before the AHB's arrival.

"The thing that's very clear is the elimination of European traits, and that's discouraging," Taylor said. "We can get some European characteristics in with a large number of managed bees. But the problem is that if in any area there are not enough domestic bees, or if a beekeeper lets up with requeening, the Africanization quickly occurs."

The Texas Africanized Honey Bee Management Plan, which currently applies to 12 South Texas counties where Africanized bees have been found, calls for all commercial beekeepers to requeen, or put a new, certified European honey bee queen into each hive annually.

Taylor recommends requeening at any time bees in a hive show unusually defensive nature.

He said the more isolated an area is from European bees, the more Africanized the bee population will be the point that "the population is virtually indistinguishable from bees in Africa."

But the farther north the Africanized bee migrates into Texas, the less effect it will have on changing the bee population's characteristics because it is not as adapted to the environment as the typical European bee, Taylor believes.

"As the Africanized bee approaches its climatic limits, which we anticipate will be halfway up through Texas, the Africanized numbers will thin out," he said. "And the areas in Texas with the highest population of Africanized bees will be any area that does not have a high number of managed domestic bees."

HEALTH INSURANCE
CALL Mark Morth 109 S. 1st Muleshoe 272-7519
State Farm Mutual Automobile Insurance Company Home Office Bloomington, Illinois

"We love our traditional home and the efficiency of the Dual Fuel Heat Pump."



The Dual Fuel Heat Pump

This traditional-style home was custom designed and built for Mike and Susan Hutcherson. Its unique features are the great room with its towering twenty-foot ceilings and an elegant spiral staircase. It is cooled and heated with a Dual Fuel Heat Pump.

Dual Fuel Heat Pump Right for any home.

WELCOME TO THE CURRY COUNTY FAIR
August 19 - 24, 1991
Clovis, New Mexico

MONDAY, AUGUST 19 ENTRY DAY
All exhibits in by 6:00 p.m.
Home Arts Bldg. not open for viewing at anytime on Monday.
Exhibits 8:30 a.m. - 6:00 p.m.
Horse Shows 8:30 a.m. - 6:00 p.m.
Weigh and Classify Steers - 2:00 - 6:00 p.m.
Weigh and Classify Swine 5:00 - 7:00 p.m.
Wood Load Class - 6:00 p.m. - Indoor Arena
Western Music Entertainers - Square Dance Platform - 7:00 p.m.
Carnival - Afternoon & Evening
Home Arts & Agriculture Building Closed from 6:00 p.m. until closing for judging. All other exhibits Open for viewing 6:00 p.m. until 10:00 p.m.
TUESDAY, AUGUST 20 - MERCHANTS DAY
All exhibits open for viewing 10:00 a.m. until 10:00 p.m. except Home Arts Bldg. Open at noon.
Weigh & Classify Lambs - 8:00 a.m.
Open Junior Horse Show - 10:00 a.m. - Rodeo Arena
Team Riding - 1:00 p.m. - Rodeo Arena
Junior Market Swine Show - 5:00 p.m. - Swine Show Arena
Dog Obedience Demonstrations - 7:00 p.m. - Grass Show Arena
Carnival - Afternoon & Evening
WEDNESDAY, AUGUST 21 - H & FFA DAY
All exhibits open for viewing 10:00 a.m. until 10:00 p.m.
Breeding Sheep Show - 8:30 a.m. - North Show Arena
Poultry and Birds released 12:00 noon.
Rabbit entries close 1:00 p.m. 40 p.m.
Junior Dairy Show - 4:00 p.m.
Junior Breeding Cattle Show - 5:00 p.m. - Grass Show Arena
Junior Market Swine Show - Following Jr. Breeding Cattle Show
Junior Market Swine Show - 5:00 p.m. - Indoor Arena
Carnival - Afternoon and Evening
THURSDAY, AUGUST 22 - PARENTS DAY
All exhibits open for viewing 10:00 a.m. until 10:00 p.m.
Curry County Youth Horse Show - 10:00 a.m. - Grass Show Arena
Junior Market Swine Show - 5:00 p.m. - Grass Show Arena
Youth Pet Show (Puppies and Kittens) - 7:00 p.m. - Indoor Arena
Fun Divers - 8 p.m. to midnight - Square Dance Platform
CGRA Barrel Race - 7:30 p.m. - Rodeo Arena
Carnival - Afternoon & Evening
FRIDAY, AUGUST 23 - AGRICULTURE DAY
Exhibits open for viewing 10:00 a.m. until 10:00 p.m.
Junior Livestock Sale Meeting - 8:00 a.m. - Indoor Arena - All Exhibitors Attend
Curry County Youth Performance Horse Show - 9:00 a.m. - Rodeo Arena
Horse Show Pitching Qualifying - 1:00 p.m.
Adult Showmanship Contest - 3:30 p.m.
Sheep Dog Trials - 7:00 p.m.
4-H Home Economics and General Sweepstakes Sale - 7:00 p.m. - Grass Show Arena
Junior Livestock Sale - 7:00 p.m. - Grass Show Arena
Square Dancing - 7:00 to 9:30 p.m. - Square Dance Platform
Carnival - Afternoon & Evening
SATURDAY, AUGUST 24 - PIONEER DAY
The Curry County Fair Board wishes to recognize the people who settled this area for their courage and steadfastness in the face of adversity--for being about the development of Curry and Curry County--for their forward looking optimism that brought us where we are today.
Exhibits open for viewing 10:00 a.m. until 10:00 p.m. except Home Arts Bldg.
Dairy Goat Show - 8:00 a.m. - Indoor Arena
AQHA Horse Show - 8:00 a.m. - Rodeo Arena
Old Timers Celebration - 10:00 a.m. - Old House
Anchor Brothers Band - 11:30 a.m. - Old House
Old Timers Dinner - 12:00 Noon - Old House
Old Timers Contest - 2:00 p.m. - Indoor Arena
Horse Show Pitching Championship - 2:00 p.m. - in front of Old House
Sweepers Pull - 2:00 p.m. - Swine Show Arena
Anchor Brothers Band - 4:00 p.m. - Indoor Arena
Anchor Brothers Band - 6:30 p.m. - Indoor Arena
AQHA Horse Show - 7:00 p.m. - Grass Show Arena
Square Dancing - 7:00 to 9:30 p.m. - Square Dance Platform
Cattle Cutting - 5:30 p.m. - Rodeo Arena
Team Penning - 7:00 p.m. - Rodeo Arena
Live Western Music - 8:30 p.m. - Square Dance Floor
Carnival - Afternoon & Evening
Sheep Dog Trials - 7:00 p.m.
***HOME ARTS & AGRICULTURE BUILDING CLOSED IN PREPARATION FOR RELEASE AT 6:00 p.m. ALL EXHIBITS RELEASED AT 10:00 p.m. *These exhibits not picked up Saturday night may be picked up the following week at the Fair Office.**

SELL YOUR HUSBAND

This sewing machine company has been authorized to offer to the public a quantity of new special 1991 WHITE HEAVY DUTY ZIG ZAG sewing machines that are made of METAL and sew on all fabrics, Levi's canvas, upholstery, nylon, stretch, vinyl, silk, EVEN SEWS ON LEATHER! No attachments needed for buttonholes (any size), monograms, hems, sews on buttons, satin stitches, overcasts, darns, appliques and more. Just set dials and see magic happen without old fashioned cams or programmers. These WHITE HEAVY DUTY MACHINES are suitable for home, professional or school room sewing. 10-year limited Warranty.

Your Price with AD \$99.00
Check, cash, Discover, VISA, MasterCard, American Express accepted. Brand new in factory sealed cartons.

THIS OFFER GOOD ONLY AT THIS LOCATION

PLACE: BEN FRANKLIN CRAFTS (Clovis)
HILLTOP PLAZA SHOPPING CENTER (21st and Main)
DATE: THURS. AUG. 22nd THROUGH SUN. AUG. 25th ONLY.
HOURS: THURS. FRI. SAT. 10-7 p.m., SUN. 12-5 p.m.
PHONE: 505-762-2900
Phone Orders Accepted w/ VISA MasterCard American Express Discover

Measles Vaccine A Must

There was a time when measles meant nothing more than a few days of fever, a spotted face and some time home from school. Times have changed.

Parents who still think of measles as a childhood nuisance should think again, said a pediatrician at Baylor College of Medicine in Houston.

"People consider measles a benign disease, but the risk of death from outbreaks in the United States has quadrupled in the past five years," said Dr. Jeffrey R. Starke, an assistant professor of pediatrics at Baylor. "It is unclear whether people have changed, and are somehow more susceptible to measles, or whether the virus that causes measles has changed."

Starke said half of the people who contract measles will develop pneumonia or other complications. One of every 1,000 children who contracts measles develops inflammation of the brain, which can be fatal.

The greatest increase in measles cases is in unvaccinated children under age 5, Starke said. They accounted for 71 percent of the cases in a 1990 epidemic. At greatest risk are children from low-income

families who do not have access to health care, he added.

States require children entering school or licensed daycare facilities to be vaccinated. But that still leaves a large number of children unprotected, Starke said.

"We have to stop thinking of immunizations as a school readiness phenomenon and start thinking about them as a health maintenance requirement for all young children," he said.

Parents should start their children on a regular immunization program at age 2 months. Measles, mumps and rubella vaccines commonly are given together at 12 to 15 months of age, but during measles epidemics a first shot of measles vaccine should be given at 6 months and repeated at 15 months, Starke said. In addition, a measles booster immunization should be given between ages 5 and 12 years.

Although local health authorities provide free or low-cost immunizations, the Centers for Disease Control in Atlanta estimates that in some areas as many as 50 percent of two-year-olds are not vaccinated. These children are at risk for other diseases in addition to measles, Starke said.

"Children who have not been vaccinated for measles have generally not received the vaccines for any of the other preventable diseases," he said. "As a result, we also are seeing increases in cases of mumps and pertussis (whooping cough). Measles is our biggest problem because it is the most contagious and has the highest risks for death and complications."

Measles tend to occur in late fall and winter. Despite media coverage of the 1989 and 1990 epidemics, Starke does not expect to see a significant decrease in cases this year.

"The good news is that we can prevent measles, and several other diseases, by vaccination our children," he said. "The bad news is that many children are not getting vaccinated as early as they should."

BIBLE VERSE



Watch therefore; for ye know not what hour your Lord doth come.

1. Who gave this warning?
2. To whom was he speaking?
3. About what event was he speaking?

Answers:
1. Jesus Christ.
2. To his twelve disciples.
3. The coming of Christ to judgment.

Texans Celebrate Fall Days

With cooler days ahead, Texans in every corner of the state are rolling out the welcome mat for a full schedule of family-style entertainment and special events. Texas hospitality abounds at more than 1,000 festivities, all found in the latest Texas Events Calendar, just released by the State Department of Highways and Public Transportation.

The quarterly calendar, spanning the months of September, October, and November, is recognized as the authoritative list of Texas happenings. From Diez y Seis celebrations honoring Mexican independence to old-fashioned country fairs, the fall calendar tells the when and where of it all.

Texans celebrate the season and the official state dish with numerous chili cookoffs, including two international championships in November. Other happy cooks compete with taste-tempting recipes at barbecue, gumbo, stew, hushpuppy, pinto bean, and rice cookoffs.

Major air shows spotlight spectacular maneuvers by vintage and experimental aircraft, while balloon festivals showcase colorful hot air balloons in all sizes and shapes.

Texans share their traditions at German, Czech, Italian, Greek, and Jewish heritage celebrations, featuring authentic dance, music and foods. And

self-guided trails through rural East Texas offer spectacular displays of colorful fall foliage at its prime viewing peak.

Replete with old-fashioned flea markets, blue grass festivals, antique machinery shows, fall harvest festivals, art shows, and Halloween extravaganzas, the information-packed calendar is free for the asking at any of the highway department's Texas Travel Information Centers; or write Texas Events Calendar, P.O. Box 5064, Austin, Texas 78763.

Tsk Tsk
Husband--You won't succeed in making that dog obey you.
Wife--Nonsense! It is only a matter of patience. I had difficulty with you at first.

Nursing home News

by: Joy Stancell

Tuesday afternoon Claudine Embry, Bonnie Green, Beth Watson, Laverne James, Larronda and Ashley came to shampoo and set the ladies' hair. Helen Free gave manicures.

S. W. Inman was visited by Bobby Free and Mrs. Redwine Wednesday.

Guy Kendall went out to have dinner and visit with his family over the weekend.

To Our Church Family,

We can't begin to tell you how much your prayers, hospital visits and calls meant to us.

For the messages of sympathy, the use of the church and the lovely meal.

We want to express our Thanks.

The family of Van Rogers

Small Business Fails To Support Corporate Income Tax

The state's largest small-business advocacy group today announced it will "vigorously oppose" Lt. Gov. Bob Bullock's franchise tax reform proposal--even though the plan would exempt virtually all of the group's members from the tax.

Robert Howden, director of the 40,000-member Texas Chapter of the National Federation of Independent Business, said that while Bullock's proposal would provide immediate tax relief for many small corporations, it would "open the door to a full-fledged income tax system just a few years down the line. Small-business owners want to make sure that door stays firmly bolted."

Bullock's plan would convert the state franchise tax to 4.5 percent tax on corporate income. Sole-proprietorships, partnerships and close-held corporations (those with fewer than 35 stockholders) would be exempt from the tax.

Howden noted that virtually all family owned and operated businesses would be exempt and that many small corporations now paying a minimum franchise tax would realize an actual tax savings under the Bullock proposal.

But, he said, "As much as this state's small-business owners could use some tax relief, they are not about to latch onto any short-term tax break that paves the way to a permanent personal income tax." And that, Howden said, is the most likely scenario, should Bullock's proposal be adopted.

He noted that, though far less than half of the businesses represented by NFIB-Texas are incorporated, a survey conducted earlier this year found nearly nine of every 10 (87 percent) NFIB-Texas members opposed a corporate income tax. "Our members know that once any type of income tax is accepted, taxing all types of income becomes not only acceptable but politically unstoppable," Howden said.

Noting that the proposal would hit large corporations with \$800 million in new taxes, Howden said: "You don't have to be a political scientist to see that, when the state says it

needs even more money two years from now, big business will say they've already done their part and use their political muscle to extend the income tax to individuals and family-owned businesses."

Howden said his group believes the state's current budgetary problems stem from "too much government growth and too much government spending.

For that reason, he said "NFIB-Texas will vigorously oppose not only this income tax plan but all other major tax increases. We will continue to push for fundamental government restructuring and massive spending cuts."

Patients in Muleshoe Area Medical Center

AUGUST 16

Adriana Toscano, Efrain Garcia, Joe Alarcon, A.C. Bryant, Rosemary Pool, Gladys Hardage, Ray Davis, Ana Arzola, Elodia Reyna, Jean Cole, Eloisa Castanon, B. boy Bastanon

AUGUST 17

Adriana Toscano, Margie Monreal, Guadalupe Garcia, Joe Alarcon, A.C. Bryant, Rosemary Pool, Norma Venegas, Gladys Hardage, Ray Davis, Claude Edwards, Elodia Reyna, Jean Cole, Eloisa Castanon, B. boy Castanon

AUGUST 18

Adrianna Toscano, Margie Monreal, Guadalupe Garcia, Jose Alarcon, A.C. Bryant, Rosemary Pool, Gladys Hardage, Ray Davis, Erika Unruh, Darla Stagner, T.B. Spears, Blanche Aubrey, Elodia Reyna, Jean Cole

AUGUST 19

Adrianna Toscano, Margie Monreal, Guadalupe Garcia, Jose Alarcon, A.C. Bryant, Rosemary Pool, Gladys Hardage, Ray Davis, Erika Unruh, Darla Stagner, T. B. Spears, Blanche Aubrey, Elodia Reyna, Jean Cole



If we're even this late, your next phone bill is on us.

At GTE, our residential repair service is so good, we're willing to guarantee it. From now on, if we don't have your phone line fixed by the time we promise, we'll give you credit for one full month's local service

charges.* Even if we're only one minute late. In order to make a guarantee this good, GTE has invested millions not only in state of the art telecommunications, but also in our people. And we think both are the best in the

business. So if for some reason, our repair service doesn't measure up, please tell us. Any of our GTE employees would be more than happy to honor this guarantee. It only takes about a minute.



THE POWER IS ON

Attention Soybean Producers

CONTINENTAL - COF COMPANY of Plainview

is now contracting

SOYBEANS

for harvest delivery.

For more information call: John at 1-800-858-4094

from 7:30 am to 5:30 pm

*This credit covers local phone charges, monthly charges and any additional charges for Smart Call Services, unlisted numbers and extra directory listings.

Annual Muleshoe Jennyslippers Golf Tournament



FIRST FLIGHT WINNERS---(Left to Right), Ginger Agee 1st, Jeanetta Precure 1st, Sharron Hughes 2nd, Lisa Harrison 2nd, Sabra Srader 3rd, Jana Jenkins 3rd.
(Journal Photo)



SECOND FLIGHT WINNERS---(Left to Right), Lana Banks 1st, Deanna Swart 1st, Beverly Lockmiller 2nd, Denise Lockmiller 2nd, Doris Ford 3rd, Sue Kirkland 3rd.
(Journal Photo)

Closest To The Pin

1st Flight

Sabra Srader

2nd Flight

Doris Ford

3rd Flight

Kay Field

4th Flight

Jan Edwards



THIRD FLIGHT WINNERS---(Left to Right), Charlotte Field 1st, Kay Field, 1st, Henrian Enloe 2nd, Monica Enloe 2nd, Shirley Hicks 3rd, Claudine Elliott 3rd.
(Journal Photo)

Longest Drive

1st Flight

Lisa Wood

2nd Flight

Lana Banks

3rd Flight

Sharon Morris

4th Flight

Shelly Turnbow

5th Flight

Eloise Edwards



FOURTH FLIGHT WINNERS---(Left to Right), Jan Edwards 1st, Susan Summer 1st, Tammy Black 2nd, Shelly Turnbow 2nd, Neats Foster 3rd, Evelyn Riley 3rd.
(Journal Photo)



FIFTH FLIGHT WINNERS---(Left to Right), Charlotte Paige 1st, Lola Walls 1st, Linder Elder 2nd, Jeanine Gunstream 2nd, Ruby Hart 3rd, Mary Holt 3rd.
(Journal Photo)

CLASSIFIEDS 272-4536

CLASSIFIED RATES

15 Words & Under
Minimum Charge \$2.30
Thereafter \$2.00

16 Words & Over
1st Insertion 15 cents per word
2nd Insertion 13 cents per word

CLASSIFIED DISPLAY RATES \$1.75
Per Column Inch

DEADLINES
12 noon Tues. For Thursday Paper
12 noon Friday For Sunday Paper

To receive the reduce rate after the first insertion ad must run continuously.

We reserve the right to classify, revise, or reject any ad. We are not responsible for any error after ad has run once.

1. Personals

CONCERNED About Someone's Drinking? HELP IS AVAILABLE through Al-Anon Call 272-2350 or 965-2870 or come to visit Tuesday and Thursday nights, 8:00 p.m. & through AA call 965-2870 or come visit Tuesday nights, 8:00 at 620 W. 2nd, Muleshoe.

Volunteers Needed Texas Department of Human Services needs volunteers. Good opportunity to brush up on your office skills. For more information, call 272-3981 or go by 209 East Ave. B. T1-32s-4tc

BIRD DOG PUPPIES TO GIVE AWAY TO A GOOD HOME. 272-3540

3. Help Wanted

EXPERIENCE UNNECESSARY-Immediate openings available for persons to re-mail letters! We pay \$60.00 per hundred, plus postage expenses! Easy, exciting, occupation. Information/application? Send self-addressed envelope. P.O. Box 75, Ruckersville, Va. 22968-0075 m3-30s-8tc

MAJOR TELEPHONE CO. now hiring. Technicians, installers Acct/Serv. Reps, Operators. No experience necessary. For information, call 1-219-736-9807 ext. T-8265 8 a.m.-8 p.m. 7 days. c3-31s-6tp (ts)

NEEDED Assistant Manager 40-50 hrs. weekly. Neat in appearance. Must be mature and responsible. Good personality. Apply in person to Stacy Davis at Pizza Hut in Muleshoe. P3-34t-2tc

3. Help Wanted

POSTAL JOBS Start \$11.41 pr hr Carriers, Sorters, Clerks.
Excellent Pay & Benefits. For Examination and Application Information Call 1-206-736-7000 Ext. 9119T6 6AM-10PM/7 DAYS
3-34t-1tp(ts)

4. Houses For Rent

FOR RENT: 3 bedroom, 1 bath house. Call 272-4011. H8-33t-2tc

Large 3 bdrm., 2 bath, carport, extra-large family room, excellent condition with spacious storage areas, over 1900 sq. ft. \$395.00 + deposit. 217 East Elm. Call (806)537-3131. S4-32s-tfc

FOR RENT Remodeled 3 bdrm., 2 bath with fireplace home. (505) 763-5771 or (806) 272-3767. B4-34t-2tc

11. For Sale Or Trade

FOR SALE: Very clean, 1981, 32 foot, Dodge Cruise-Air Motorhome. 33,000 miles, \$17,000.00 Call Eva Nell Stovall-272-3373 S11-29s-tfc

15. Misc.

Build your own recession-proof business with one of America's fastest growing companies. No risk, no investment, just work, with excellent income, and unlimited opportunity. Send Name, Address, and Phone number to: JK, POB 85 Portales, NM 88130 15-33t-5tp

FOR RENT: Large Self Storage rooms with 24 hour a day access. Call J&J Self Storage at 272-4307. S15-28s-tfc

FILLING SCHEDULE for Fall Piano Lessons. Beginner thru Advanced. Ann Johnson 272-5746 J15-31s-tfc

ROUND-UP APPLICATION Pipe-wick mounted on high-boy. 30 in. or 40 in. rows. Cotton, milo, soybeans and Vol. corn. Call: Roy O'Brian 265-3247

NOTES, COMMENT

Advertising is a business-booster.

Time to think is as important as time to work.

It's amazing how stupid television plots can get.

Everyone advertises, whether he or she knows it or not.



Classify Call 272-4536

Amarillo Fair Scheduled

Doug Stone and Pam Tillis will appear in concert at the 1991 Amarillo Tri State Fair on Tuesday night, September 17th. Show time is 8:00 p.m.

A relatively new face on the country music scene, Doug Stone stands out. His smooth baritone propelled his very first single, "I'd Be Better Off (In A Pine Box)", into the Top 5. His straight-ahead country styling has taken radio and the press by storm, and his rugged good looks, quick laugh and down-to-earth attitude have been winning fans across the country. More recent Top 20 recordings are "These Lips Don't Know How To Say Goodbye" and "I Thought That I Was You".

Pam Tillis is the daughter of former CMA Entertainer of the Year Mel Tillis and began writing songs at the age of eleven. So it was natural that

she turned to singing also and has recorded such Top 10 hits as "Don't Tell Me What To Do" and "One of Those Things." Pam Tillis, the singer, songwriter and artist, has come into her own and has a rare talent for taking a great song and making it a classic.

Reserved box seats for the Doug Stone/Pam Tillis Show are \$12.50 each and general admission tickets are priced at \$10.00 each. Purchase tickets in advance for free admission to fairgrounds on the day of the show. Mail orders are being accepted now and should be sent to Tri State Fair, P.O. Box 31087, Amarillo, TX 79120-1087. Add \$1.00 for postage and handling.

A name never harms a man if the man does not harm the name.

-Estonian Proverb.

Sudan News

by Ann Gaston

Seven boys and their sponsors returned Saturday from attending the RA camp at the Plains Baptist Association near Floydada. There were some 500 attending the camp when 135 decisions were made.

Local boys attending were Shane Harper, Brandon Hill, Garrett Flowers, Bryan Conn, Dustin, Provence, D.J. Provence. Sponsors making the trip included James Conn, Darrin Provence and Rev. Cliff Hargrove.

Mrs. Joann Campbell of Borger visited Monday and Tuesday with her daughter and family. Mr. and Mrs. Pat McClanahan. McClanahan had short-stay surgery Monday at Lubbock.

Mike, Denise and Michelle McDonald moved to Lubbock this week where he is to be associated with the Sunset Church of Christ.

Visiting last week with Mrs. Radney Nichols and other relatives were Mrs. Jennifer Nichols and girls, Jodi and Courtney of Spring. Also visiting recently was her grandson, Chad Nichols, also of Spring.

Mr. and Mrs. Pudd Wiseman were weekend visitors with their daughter and son-in-law, Mr. and Mrs. John Kay of Bergstram.

Mrs. Kim McClanahan attended funeral services in Borger Wednesday for her grandmother, Mrs. Ruby Hammond.

Mrs. Winifred Dykes returned home this week after being confined to the Littlefield Hospital last week.

15. Misc.

FAST LOANS

Bad credit. No credit.

Loans up to \$50,000

Upon proof of employment



Call now!



1-800-453-5044

15. Misc.

BIG GARAGE SALE! 913 W. 2nd, Friday and Saturday, 8:00 A.M.-3:00 p.m. Also two cemetery lots for sale. H15-34t-1tc

AVON

has openings for Representatives in MULESHOE For information, Call 272-5607



If you revel in the Bolero, you might like to know this Spanish dance is named for the man who devised the steps: Señor Bolero.



A blue whale 100 feet long and weighing 150 tons makes a ten-ton elephant look small.

8. Real Estate

HOMES FOR SALE BY GOVERNMENT AGENCIES. \$1.00 (U-repair) or \$1600 (move-in). 1-800-564-6500 Ext. HA 12221 for immediate response. 8-33t-5tp

8. Real Estate

FARM FOR SALE 1281 acres, eight irrigation wells, good water, underground lines, 900 acre grain base, home, steel barn, pipe corrals, price reduced, owner finance part. 10 miles north of Hereford. (409)543-5636. H8-32t-8tc

8. Real Estate

Bingham & Nieman Realty

116 E. Ave. C.

George Nieman, Broker

272-5285

272-5286

RICHLAND HILLS
PRICE REDUCED-IMMACULATE 3-2-2 Brick, Cent. A&H, built-ins, newly remodeled kitchen, FP, sunken lv. area w/cathedral ceiling, ceiling fans, earthtone carpets, storage !!!!!!!!!!!!!!!

3-3-2 Brick, Cent. A&H, built-ins, FP, Spktr. sys., storage-wkshp., fenced yd., much more!!!!!!!!!!

PRICED REDUCED-ASSUMABLE LOAN 9 1/2 A.P.R.-3-2-2 Brick, Cent. A&H, built-ins, FP, fans, workshop-storage, fenced yd. !!!!!!!!!!!!!!!

3-2-1 Brick, Cent. A&H, built-ins, fans, fenced yd. \$40!!!!

NICE RESIDENTIAL LOTS/ \$5,000 UP....

Nice-3-2-1 Home, built-ins, heat pump, fans, storm windows, & doors, workshop-storage, fenced yd., & more. \$30's!!!!!!!!!!

NICE 3-3-2 Brick, Heath Pump, built-ins, FP, gameroom, sunroom, finished basement, 2,800+ sq. ft. of lv. area, fenced yd. & more. \$80's!!!!

HIGH SCHOOL
3-2-1 Brick, Cent. heat, FmHA financing to qualified Buyer. \$20's!!!!

4-2-1 Brick + 2 carport, built-ins, Cent. A&H. 2 car Det. garage & workshop, fenced yd. sprinkler sys., Much More. \$40's!!!!

FmHA FINANCING to qualified buyer-3-1-1 Brick, Cent., heat earthtone carpet, st. bldg., fenced yd. !!!!!!!!!!!

2-1 Home, nicely remodeled kitchen & den, Cent., heat, fenced yd., large garage-shop. \$20's!!!!!!!!!!

HIGHLAND AREA
3-2-1 Home, wall furnace, window evap. fenced yd. \$20's!!!!

Nice 3-1-1, heat pump, nice carpets, fenced yd. Much More. \$30's!!!!

LENAU ADD.
2-2-2 Brick, Cent., A&H, built-ins, FP, spktr. sys., fenced yd. Price Reduced!!!!

3-1 Home, Corner lot, wall furn., fenced yd. \$20's

Nice 4-2-2 Carport Home, Cent. A&H, built-ins, FP, Cent. Vac., Office, Sewing area, fenced yard. \$30's!!!!

JUST LISTED-3-2-1 Brick, Cent. heat, built-ins, ceiling fans, fenced yd. \$29,900 "as is"!!!!

JUST LISTED-3-1 1/2-1 Home, Cent. heat, evap. air, nice carpets, cov. patio, fenced yd. st. bldg.!!!!

JUST LISTED-3-2-1 CP Home, Cent. heat, evap. air, built-ins, fenced yd., st. bldg. VERY NICE!!!!

VERY NICE 3-2-2 Brick, 3,000+ sq. ft. of lv. area incl. nice finished basement, built-ins, geothermal A&H energy-eff., loads of closet & storage, on 7.86 acres, fence, stock tank, sideroll, & many more amenities, close to town.

3-2-3 Carport Home on 11 ac. edge of town, Cent. A&H, built-ins, cellar, barns & corral. MAKE OFFER

NICE 3-2-1 Home on 1 acre close to town, Cent. Heat, Evap. Air, Nice Carpets, Remodeled. \$30's!!!!

NICE 3-2-2 Brick on 1 ac. tract on hwy. close to town, Cent. A&H, built-ins, fenced yd., & more \$70's!!!!

RESTAURANT BLDG., LAND., & Equipment-A GOOD BUY!!!!!!

OFFICE BLDG.-7000+ sq. ft. of area, paved parking, excellent location.

GYMNASIUMS STUDIO-BLDG., & Equipment-PRICED TO SELL!!!!!!

COMMERCIAL TRACT 175'x100' (HWY 70 & 84. RR spur acces, approx. 1200 sq. ft. bldg. PRICED TO SELL!!!!

24 ac. W. Hwy 84 8' well, 3 homes, 14 mobile hook ups, & also has veg. & fruit stand!!!!!!!!!!

NEW LISTING

For Sale--3,547 sq. ft. remodeled and renovated brick residence featuring spa and sunroom, located at 622 West 7th Street. Call Mike Caldwell at 272-7535 or 272-5146 for information. C8-32s-tfc

FOR SALE Irrigated Farm close to Muleshoe; 159 acres. Valley Circle Sprinkler. Ready to plow for wheat crop. \$325 per acre. Good terms to right person. 946-3484. C8-34t-8tc

Henry Realty

111 W. Ave. B.

272-4581

Muleshoe, Tx.

New listing- 3 bedroom, 1 bath, stucco, excellent location near high school. Carpet, carport, cellar, large storage house, fenced. Call for appointment.

Special built mobile home with heat pump, 2 bedroom, 2 bath, double carport and large storage building.

Spacious 2 bedroom, 2 bath with one car garage. Fireplace. Ready to move in.

New listing- 2 bedroom, 1 bath, redone for qualified buyer.

3 bedroom, 2 bath, carport, spacious home outside city limits near city on highway. Lot is 85' X 402'. Metal building is 29' by 40'. Great setup for workshop.

COMMERCIAL PROPERTY Ideal location on West American Blvd. 150' highway frontage. A great business opportunity.

Brick veneer restaurant 150 seating. Over 5000 sq. ft. with modern equipment. Ready for operation. Located on U.S. Highway 84 in Muleshoe. 7,000 sq. ft. paved parking. Excellent financing available for qualified buyer.

West American Boulevard 150' frontage. Priced to sell.

MULESHOE AREA



Spring/ Summer '91



BUSINESS DIRECTORY AND SHOPPING GUIDE

CARNE GUISADA
Stew Meat Mexican Style,
Beans, Rice and Corn
Tortillas

\$3.95
w/Flour Tortillas \$4.30 Closed Mondays

Leal's Restaurant
1606 W. Amer. Blvd. 272-3294

Henry Insurance Agency, Inc.

"Serving All Your Insurance Needs Since 1964"

KENNETH R. HENRY
CERTIFIED INSURANCE COUNSELOR
REAL ESTATE BROKER

111 W. AVENUE B
PHONE 904/272-4581
MULESHOE, TEXAS 79347

Picture Framing Excellence

Documents, Landscapes, Still Life, ART LOFT, Portraits, Abstract, Floral, Southwest

Your Irrigation Headquarters

Now Building BBQ Grills & Carports

Come By For Estimate

Irrigation Supply
J.C. & Zona Gatewood

607 E. Amer. Blvd. 272-1466

A Good Reason To Shop Locally In Muleshoe!!

Why go to the bother of driving out of town for your Back-to-School shopping when you can shop locally for everything you need!!

By shopping locally, you not only help yourself, but you help the local economy as well.

Medium Supreme
1 for 8.99
2 for 12.99

Delivery Available
11 a.m. - 1:30 p.m.
and
After 5:00 p.m.

Pizza Hut

1112 W. Amer. Blvd. 272-1213

Combination Motor & Salvage

We specialize in Motor Repairs and Rebuilding!

New & Used Parts Available!

Wrecker Service - 24 Hours A Day!

272-4458

Remember, shopping locally helps our community grow!

Evins Sunshine Conoco Station

Slush Puppies - Ice -
Fountain Drinks - Milk -
Snacks - Model Car Kits

623 W. Amer. Blvd. 272-5216

LIFE - AUTO - FIRE - CROP
- RETIREMENT - HEALTH

FARM BUREAU INSURANCE

DAVID R. TIPPS
AGENCY MANAGER

1612 W. AMERICAN BLVD
P.O. BOX 408
MULESHOE, TEXAS 79347

OFFICE 806/272-4567
RESIDENCE 272-5898
MOBILE 272-6245

Pivot Products Distributors, Inc.

Pivot Products Announces Mini Max Trax

A revolutionary steel wheel for use on Center Pivot irrigation systems that makes Minimum tracks, gives Maximum traction and will never go flat.

710 E. Amer. Blvd. 272-5536

Spring Cleaning?
Let Us Clean Your Drapes, & Bedspreads!

We Also Do Carpet Cleaning & Upholstery Cleaning!

Lambert Cleaners

123 Main 272-4726

ENCHILADA PLATE
3 Enchiladas (Meat or Cheese), With Beans

\$3.95

Closed Tuesdays

Viola's Restaurant

2002 W. Amer. Blvd. 272-3838

WE RECOMMEND **ferti-lome** Lawn & Garden Products

Time To Use **ferti-lome** LAWN FOOD

Kearney Scoggin
Scoggin Ag Center, Inc.
"Where Fertilizer Is Our Business"

1532 W. Amer. Blvd. 272-4613

W.T. services inc.

319 E. American Blvd.
MULESHOE, TEXAS 79347

Mobile Communications
Two-Way Radio Repair

GARY PARKER Technician
Muleshoe - 806-272-4888
Hereford - 806-364-7311

BARGAIN OF THE MONTH

Keepers' Rough Tote

10-Gal. 28" OF CLEAR STORAGE BOXES

2 For **9.99**

Fry & Cox True Value

101 S. 1st 272-4511