

WEATHER

August 4 95 60 .10
 August 5 95 57
 August 6 92 60
 August 7 88 63

Muleshoe Journal

'The Community Of Opportunity-Where Water Makes The Difference'



Vol. 69, No. 31

Published Every Thursday At Muleshoe, Bailey County, Texas 79347

MEMBER TEXAS PRESS ASSOCIATION 20¢

Thursday, August 8, 1991

CED Election, Amendments Scheduled

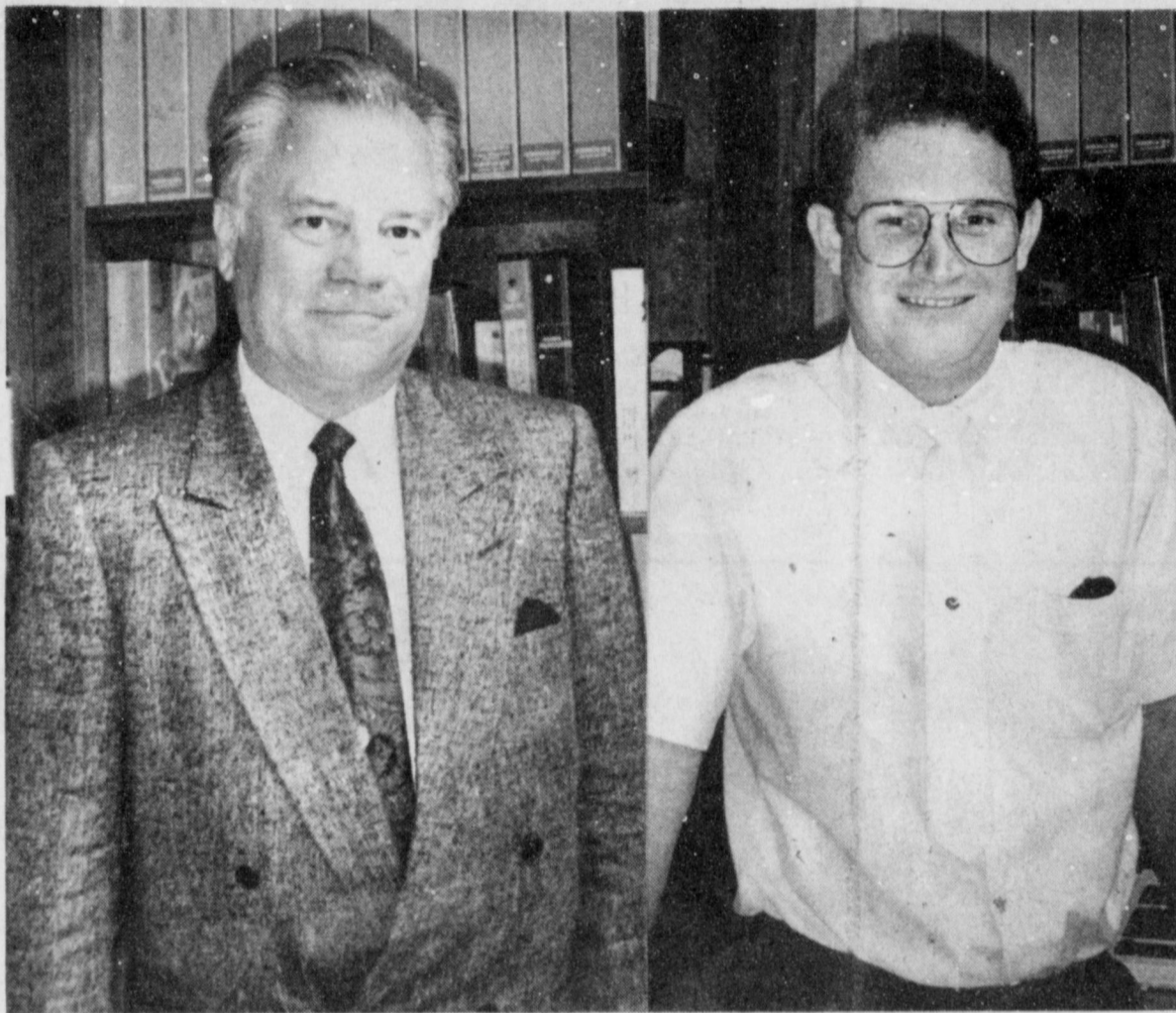
around Muleshoe

Marine Cpl. Aaron Lopez, a 1987, graduate of Muleshoe High School recently returned from Operation Desert Storm and Operation Sea Angel while serving with 5th Marine Expeditionary Brigade, Camp Pendleton, CA.

Operation Desert Storm was the largest deployment of U.S. military forces since Vietnam. The operation was in response to Iraq's invasion of Kuwait and threat to Saudi Arabia.

Operation Sea Angel employed more than 7,000 Army, Navy, Marine Corps and Air Force personnel to assist in a massive relief effort to Bangladesh's southern coast and nearby islands to provide much needed food and supplies to approximately 1.7 million people recovering from a cyclone that claimed 138,000 lives.

He joined the Marine Corps in June 1987.



ROALD [BUCK] JOHNSON

SCOTT TURNER

Airman William R. Gales has graduated from Air Force basic training at Lackland Air Force Base, Texas.

During the six weeks of training the airman studied Air Force mission, organization and customs and received special training in human relations.

In addition, airmen who complete basic training earn credits toward an associate degree through the Community College of the Air Force.

He is the son of Kathy Osburn and stepson of Wendell C. Osburn of Tullia. His father, Donald E. Gales, also resides at Tullia.

The airman is a 1988 graduate of Tullia High School.

Cont. Page 6, Col. 1.

School Board Discusses Leave, Grievance Policies

The Muleshoe Independent School District's school board met at 12 noon Monday, August 5. Curtis Shelburn, board member, gave the invocation after the meeting was called to order by Bill Moore, Superintendent of Schools.

Preliminary discussion was heard on policy regarding employee leaves and absences and the employee grievance policy.

Differences in local and state policies were looked at and the old and proposed new policies were discussed.

"Recent changes in state law and the state board of education rules are requiring us to re-examine and make decisions on both the sick leave and grievance procedure policies," Moore said.

Moore recommended that employees be offered two local sick days and five state sick days. He mentioned that a doctor's statement is necessary after an employee has missed five work days due to illness.

If an employee is out for more than three days due to a family member being ill, the employee is also asked to bring a doctor's statement from the doctor consulted.

Discussing the bereavement policy, it was mentioned that when the death of an employee's family member occurs, the employee is allowed up to five days of leave.

Moore discussed the rules about an employee not using personal business days just previous or immediately after a school holiday. Employees are not to use such leave on days when grade reports are due.

Regarding the board policy about having an employee on jury duty turn in his pay for that work, Moore recommended that employees no longer be required to turn this pay over to the school district. The present policy creates a large paperwork load.

There was some discussion regarding the use of sick leave when an injury covered by workman's compensation occurs.

Moore also mentioned that

last year the Muleshoe Independent School District paid \$12,000 in compensation to employees for unused sick days.

Cont. Page 6, Col. 2

Local Firemen Attend Annual Fire School

School may have been out for children and teenagers, but for 5,000 firefighters from 25 countries and across Texas, school just got underway July 15 through August 2, at the largest firefighting facility in the nation.

These firefighters attended class at the 62nd Annual Texas Firemen's Training Field. The school was hosted by the Texas Engineering Extension Service and sponsored by the State Firemen's and Fire Marshals' Association.

Eight firemen from the Muleshoe Volunteer Fire Department attended this school. For several of these men it is the way they spend their vacations, taking time off work so they might learn more about firefighting and serving our community.

Muleshoe also had one fireman, J.O. Parker, who has for a number of years been an instructor at the school, and this year was no different.

Jack Dunham took a course in Fire Prevention I; Alton Parker, Tony Scholey and John McCutchen took Fire Prevention II; Gary Toombs took a course in Officer and Staff Command; Larry Rasco, and Jimmy Mills took a course in Fire Prevention and Charles Lorange also attended, what he took was not available.

Students practiced battling real fires on mock-ups of ware-houses, automobiles, trucks, heater-treaters, rail-cars and loading terminals. Firefighters attended basic and advanced courses depending on their level of expertise and previous training. Week-long schools were held for Spanish-speaking firefighters as well as firefighters from industry, municipalities and those who work with hazardous materials.

Voters here in the Muleshoe area as well as those across the state will be going to the polls on Saturday, Aug. 10 to cast their vote on two proposed constitutional amendments as well as three county education district propositions.

During the last session of the Legislature, a schoolfinance bill passed which radically alters the way school property taxes are collected and distributed. The bill created 188 county education districts (CEDs) composed of the school districts in each county.

A property tax will be levied and will be distributed equally among school districts within the county education district. This tax will be levied by the county education district.

The election, scheduled August 10 will enable taxpayers in the county education districts to avail themselves of certain exemptions on their homesteads as well as open up the possibility of taxing certain tangible personal property.

Two elections will be held on Aug. 10, a state constitutional amendment election and a school district election.

According to information released by the Secretary of State John Hannah, Jr., The state election involves two constitutional amendments: 1) Proposition 1 to allow certain property tax homestead exemptions and taxation of certain tangible personal property by the county education district; and 2) Proposition 2 which allows the Texas Higher Education Coordinating Board to issue up to \$300 million in general obligation bonds to fund student loans.

The school districts will con-

duct a local option election on behalf of the county education district concerning issues addressed by Proposition 1. This school ballot will be in three parts: 1) whether to adopt a homestead exemption of 20 percent of market value; 2) whether to adopt an additional exemption of \$10,000 for the elderly and disabled; and 3) whether to tax non-income producing tangible property.

If this constitutional amendment fails statewide, the school district election whereby the Voters authorize the exemptions will be disregarded. However, the governing body of the CED might adopt these exemptions under existing provisions of the Constitution.

The results for each question will be added together for the Cont. Page 6, Col. 3

Deadline Nears For SBA Disaster Loan Assistance

An Economic Injury Disaster Loan (EIDL) declaration was made in January 1991 for agriculture-dependent businesses in several West Texas counties. The declaration resulted from agricultural losses due to drought and excessive heat during the 1990 crop year. Walter Fronstin, district director for the Lubbock office of the U.S. Small Business Administration (SBA), said today that the deadline for filing applications under the EIDL declaration is August 26th.

To be eligible for the EIDL loans, a business must have sustained financial losses as a direct result of the drought. Fronstin said, "The loans do not cover physical losses, and farmers and ranchers are not eligible to apply for the EIDL loans. This program is available to small business concerns and small agricultural cooperatives without credit available elsewhere, and must be considered small by SBA's size standards." In addition to agriculture-dependent businesses, nurseries are also eligible to apply for the EIDL loans if they have been affected by the drought.

Cont. Page 6, Col. 3

Kerrs Make Donation To Opportunity Plan

The Lions Club of Muleshoe met in its regular session on July 31 at the Bailey County Civic Center. Richard Edwards, president, introduced several guests who are members of the Ernest Kerr family in addition to several other guests. An announcement was made regarding the broom sale August 7.

Edwards introduced Dick Pylant who in turn introduced Cathryn Wright of the West Texas State University Opportunity Plan. The plan is a non-profit organization that was started in 1954 in Canyon, Texas. It provides financial assistance for students seeking higher education.

Today the plan is worth 5 and a half million dollars and has loaned out over 8 million over the years. Loan funds for the plan can be established by communities, individuals and special groups of people. "Several of the funds have been started by groups here in Muleshoe," noted Mrs. Wright.

"This year the Opportunity Plan's poster child is from Muleshoe. Her name is Annette Crabtree. Recently she graduated from West Texas State University with a degree in management," she said.

"Ms. Crabtree is an example of the type of student the West Texas Opportunity Plan serves." Wright spoke on the need for more dedication on the part of students who receive funds from the plan.

"The fund was started in the late 1960's here in Muleshoe to give students an opportunity for

financial assistance. Ernest Kerr was the chairman of the fund and did a lot to foster interest and further donations to the fund. He was always seeking ways that better uses could be made of the loan fund."

"Contributions came from many school organizations, and the Jaycees organization was a big contributor," she noted.

Wright spoke highly of the way Kerr advised her about various students and expressed her appreciation for the time he took doing this.

"He was busy, but he always took time to help her help the Stegall-Muleshoe fund. Today we add the Kerr name to the Stegall-Muleshoe fund," Wright said.

"Many students who have been helped have come back to Muleshoe to help the community. We are extremely grateful to Ernest Kerr for all he did to help the Opportunity Fund."

It was mentioned that the Lions Club gave \$500 in 1954 through Ernest Kerr's encouragement and the work of Bill Moore to the fund.

On July 31 a check was given for \$2,500 to the Opportunity Plan by Bill Liles, president of the local Land Bank Association in behalf of stockholders and employees of the association. This original gift honored Ernest Kerr's dedication and his contribution to the overall scholarship effort. The Kerr family then matched this \$2,500 gift bringing the total contribution to \$5,000.

- VOTING BOXES CED ELECTION High School Cafeteria AMENDMENTS**
- Precinct 1--Court House
 - Precinct 2--Coliseum
 - Precinct 3--Three Way School
 - Precinct 4--Methodist Church
 - Precinct 5--Bula
 - Precinct 6--Needmore
 - Precinct 7--City Hall

Local ASCS Extends Certification Date

The following information was released this week by Danny Noble of the ASCS office in Muleshoe.

FINAL CERTIFICATION DATE EXTENDED

The final date to certify or request aerial measurement service on all spring seeded crops, conservation use acreage (CU) and ACR has been extended to August 14, 1991. A complete acreage report must be filed including all program crops, sunflowers, peas, soybeans, alfalfa, vegetables, and etc., by this deadline.

MEASURING SERVICE

Remember!!! As soon as we get your farm measured, you will be notified of the measured acreage and you only have five workdays in which to adjust (if any) and certify your acres in this office. Please notify this office if you have to adjust prior to plowing anything up. If you requested measurement service on corn, please be sure that we have completed the request before cutting it for silage or grain. Failure to certify prior to harvesting could cause your farm to be out of compliance.

FAILED ACRES

Any program crop that has failed due to drought, excessive

moisture, hail, or for any other reason beyond the producer's control, must be certified and on ASCS-574 (Disaster Application) filed BEFORE the crop is disturbed in order to be eligible for program benefits.

CROP MAINTENANCE

Producers participating in the 1991 farm programs are expected to care for their program crops to the best of their ability. The County Committee is required by law to consider a temporary reduction in the crop payment yields if it is determined that the crop has not been properly cared for in a good workmanlike manner.

MAINTENANCE OF ACR, CU/PAY, AND CRP

Weed Control measures MUST be carried out in a timely manner on acreage designed as ACR and CU for Pay throughout the calendar year. Weed Control measures also MUST be carried out timely on CRP land throughout the LIFESPAN of the CRP Contract. Failure to control noxious weeds, wind and water erosion, could result in total loss of farm programs benefits and/or your CPR Contract.

"GHOST ACRES"

Acreage of a subsequent crop Cont. Page 6 Col. 1



THRIFTWAY and COCA-COLA

BRING YOU THE *Jetaway-Getaway*

WIN A FABULOUS TRIP FOR FOUR to Disney World

Just Register to win at any participating Thriftway Store. There's no purchase necessary. Your trip includes airfare, hotel accommodations, tickets to Disney World Parks and spending money. Just look for the special Coca-Cola display in Thriftway for all the rules and details.

REGISTER TO WIN \$100 Shopping Spree From THRIFTWAY

Each participating THRIFTWAY Store will be giving away Four \$100 Shopping Certificates...Drawings will be held in each Thriftway the weeks of August 18, August 25, September 1 and September 8, 1991.

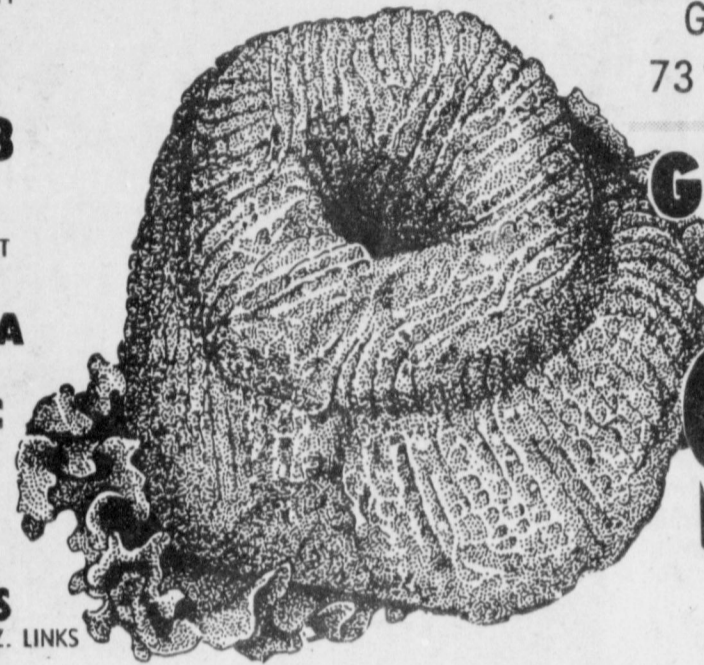


HORMEL SUPER SELECT LEAN TRIM BUTT
PORK ROAST
\$1.28 LB.

WILSON'S MEAT
SLICED BOLOGNA
12 OZ. PKG.
89¢



HORMEL
LITTLE SIZZLERS
10 OZ. PATTIES/12 OZ. LINKS
EACH 99¢



GUARANTEED 73% LEAN FRESH

GROUND BEEF
99¢ LB.

SMALL PKG. \$1.09 LB.

THRIFTWAY/LA TIENDA COUPON ONE COUPON PER FAMILY

ASSTD. BATH

CHARMIN TISSUE

4 ROLL PKG.

79¢

WITH IN-STORE COUPON FIRST 2-4 ROLL PKGS. 79¢ THEREAFTER EA. 99¢ COUPON GOOD THRU 8-14-91

THRIFTWAY/LA TIENDA COUPON ONE COUPON PER FAMILY

PILGRIM'S PRIDE GRADE A

LARGE EGGS

18 CT. CTN.

99¢

WITH IN-STORE COUPON FIRST 18 CT. CTN. 99¢ THEREAFTER EA. CTN. 1.19 COUPON GOOD THRU 8-14-91

ALL TYPES

COCA-COLA

2 LITER BTL.

\$1.09

THRIFTWAY/LA TIENDA COUPON ONE COUPON PER FAMILY

CASSEROLE

PINTO BEANS

4 LB. BAG

99¢

WITH IN-STORE COUPON FIRST 4 LB. BAG 99¢ THEREAFTER 1.39 EACH COUPON GOOD THRU 8-14-91

THRIFTWAY/LA TIENDA COUPON ONE COUPON PER FAMILY

SHURFINE WK/CS GOLDEN CORN OR FANCY CUT

GREEN BEANS

16 OZ. CANS

4 \$1

FOR WITH IN-STORE COUPON FIRST 12 CANS AT 4/1 THEREAFTER 3 CANS FOR 99¢ COUPON GOOD THRU 8-14-91

25 LB. BAG ALL PURPOSE

SHURFINE FLOUR

\$2.99

98 OZ. BOX LAUNDRY DETERGENT

CHEER ULTRA CHEER

\$5.99

12-13 OZ. CAN ASSTD. GRINDS/PERFECT BALANCE

HILL'S BROS. COFFEE

\$1.69

FAMILY SIZE

LIPTON TEA BAGS

24 CT. BOX

\$1.89

LOW CALORIE

EQUAL SWEETENER

50 CT. BOX

\$1.99

KELLOGG'S CEREAL

FROSTED FLAKES

20 OZ. BOX

\$2.79

RED SEEDLESS GRAPES

99¢ LB.

DOLE ICEBERG LETTUCE

59¢ HEAD

SWEET JUICY PEACHES

69¢ LB.

GARDEN FRESH

CORN

EARS

10 \$1

JENO'S ASSTD. PIZZA ROLLS 6 OZ. BOX \$1.19

ASSORTED VARIETIES

JENO'S PIZZA

7.4-8.1 OZ. BOX

89¢

TEXSUN PINK GRAPEFRUIT JUICE 46 OZ. CAN

69¢

BLUE BUNNY ASSORTED

ICE CREAM

5 QT. PAIL

\$2.99

SNICKERS/MILKYWAY/3 MUSKETEERS

ICE CREAM BARS

6 CT. BOX

\$1.79

CHILLED FRUIT DRINK

SUNNY DELIGHT

64 OZ. JUG

89¢



thriftway

401 W. Amer. Blvd.

272-4585

AT AFFILIATED FOODS INC. MEMBER STORE

WE ACCEPT FOOD STAMPS... WE RESERVE THE RIGHT TO LIMIT

PRICES EFFECTIVE AUGUST 4-10, 1991



ASSORTED

WHITE RAIN HAIR CARE

EACH

99¢

• 16 OZ. BTL. SHAMPOO
• 16 OZ. BTL. CONDITIONER
• 7-7.5 OZ. SIZE HAIR SPRAY

Enochs News

by: Mrs. J.D. Bayless

Mrs. Susie Shields and son Derek of Lelia, Lake, a granddaughter, Mrs. Roslyn Sellers and children Kinsly and Feffeny of Seagraves visited her mother and brother, Mrs. Lorella Jones and Wendell Wednesday till Friday.

Mrs. Jack Lane, Millisi Bennett and Denease Duarte were in Lubbock at the District 4-H Fashion Show. Millisi won third place in evening wear.

The Rodger Hatchers from Clovis visited the Jack Lanes Saturday. Mrs. Quesenberry from Muleshoe and the Bobby Quesenberry family from San Antonio visited the Lanes Friday. The Lanes were in Muleshoe Sunday with her mother Mrs. Quesenberry and brother.

Mr. and Mrs. Keith Smith and son from Farwell visited the Lanes Saturday.

Patients In Muleshoe Area Medical Center

JULY 30

Alma Garms, Pablo Casaus, August Edmiston, Berrice Hawkins, Troy Clem, Jean Cole, Evelyn Johnson, Dianne Nieman, Mailey Hall, Farene Harris.

JULY 31

Pablo Casaus, August Edmiston, Clara Lou Jones, Troy Clem, Diane Nieman, Pablo Monreal, Mailey Hall, Farene Harris

AUGUST 1

Pablo Casaus, August Edmiston, Clara Lou Jones, Troy Clem, Diane Nieman, Pablo Monreal, Mailey Hall, Farene Harris

AUGUST 2

August Edmiston, Della Snell, Troy Clem, Gloria Duran

AUGUST 3

Eugene Tigue, August Edmiston, Della Snell, Gloria Duran, Christina Dominguez, Carolyn Craddock

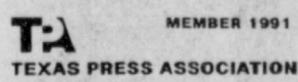
AUGUST 4

Eugene Tigue, August Edmiston, Carolyn Craddock

AUGUST 5

Eugene Tigue, August Edmiston, Carolyn Craddock

Muleshoe Journal © SPS 307-820
Established February 23, 1924. Published by Muleshoe Publishing Co., Inc. Every Thursday at 304 W. Second, Box 449, Muleshoe, Texas, 79347. Second Class Postage Paid at Muleshoe, Texas, 79347.



L.B. Hill, Publisher
Sammy Hill, Vice-President/Comptroller
Eveline Harris, News
Joyce Adams, Sellers
Holly Milhap, Advertising
Diana Bernice, Classified

SUBSCRIPTIONS
Muleshoe Journal and Bailey County Journal
Bailey and surrounding counties
Muleshoe Journal and Bailey County Journal
Elsewhere in Texas \$14.75
Muleshoe Journal and Bailey County Journal
Outside Texas \$16.50
Yearly By Carrier
\$12.50 On Application

Advertisers should check their ad the first day of insertion. The Journals will not be liable for failure to publish an ad or for a typographical error or error in publication except to the extent of the cost of the ad for the first day of insertion. Adjustment for errors will be limited to the cost of that portion of the ad where the error occurred.



We carry Red Wing Shoes in 125 different sizes and widths to make sure you "feel fit" and feel comfortable all day long. Stop in soon.

AM	M	J	C	D	E	RE	RE
9H	9S	8S	7H	7M	4H/4M	8S	9H 7M

Fair Store
120 Main
272-3500



Inventory Reduction SALE

La-Z-Boy
Reclina-Rockers
\$269⁹⁵ & UP

2 Pc. Mayo, One Only
Sofa/Love Seat
Reg. \$1449.90...\$869.90 **40% OFF**

One Only, Sleeper & 2 Recliners
5 Pc. Sectional
Reg. \$2295 **\$1495**

One Only, No Arms, Innerspring Mattress, Blue Velvet
Regular Size Sleeper
\$399

One Only, Plaid, Slight Damage
Sofa Seat
Were \$1295.00...\$779.90 **40% OFF**

One Only
Mayo Sofa
Reg. \$749.95...\$449.95 **40% OFF**

Only 3, Tell City
Swing Rockers
Reg. \$435.00...\$217.50 **1/2 PRICE**

One Only
Round Cocktail
Reg. \$400 **\$200**

5 Only
Occasional Chairs
Reg. \$169.95 **\$109⁹⁵**

Only One
Roll Top Desk
Reg. \$362.50 **\$279⁹⁵**

One Of A Kind
End or Cocktail Tables
Reg. \$269.95 \$135.00
1/2 PRICE

One Only, Square
Lamp Table
Reg. \$279.95
\$140⁰⁰

Floor Lamps
Reg. \$89.95
\$59⁹⁵

One Only
Entertainment Center
Reg. \$1195.00
\$849⁹⁵

6'
Bookcases
Reg. \$229.95
\$179⁹⁵

Indian Rugs
6x9 **\$99⁹⁵**
4x6 **\$49⁹⁵**

Only One, 7 Pc. Tell City
Dining Room Group
Maple, 44x65
Reg. \$1724.00 **\$1035⁴⁰**

Sleeper Mattress/Box Spring Special
Free Pillows With Each Sleeper Mattress/Box Springs Purchase During This Sale - Super Quality & Washable

One Only, Triple Dresser/Headboard/Night Stand
3 Pc. Bedroom Group
Reg. \$1350 **\$899⁹⁵**

4 Pc.
Girls' Bedroom Group
Reg. \$1395 **\$895⁰⁰**

Queen Headboard With Serta Mattress, Spring & Frame..... **\$699⁹⁵**

Cherry Dresser
Reg. \$799.95 **\$560⁰⁰**

Chest
Reg. \$399.95 **\$280⁰⁰**

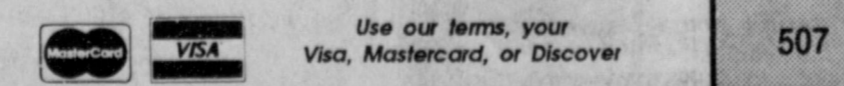
Queen Headboard
Reg. \$239.95 **\$169⁹⁵**

Night Stand
Reg. \$219.95 **\$153⁹⁵**

Vanity & Stool
Reg. \$699.95 **\$478⁹⁵**

Scroll Bed
Reg. \$449.95 **\$319⁹⁵**

No Down Payment On Approved Credit



CALTON FURNITURE
"You're Quality Furniture Store"
507 W. 2nd PORTALES 359-1442



CELEBRATING FIFTY YEARS--of marriage are Mr. and Mrs. J.H. (Buster) Evins of Muleshoe. There will be a reception in their honor held from 2-4 p.m. Sunday, August 11 at the First Methodist Church Fellowship Hall in Muleshoe. Buster and Ethlee Lynn Evins were married August 10, 1941 in Bulah, Texas. (Guest Photo)

Activities That Improve Parenting Skills

- Reverse the game of parent-child. Have the child name two things for the parent to do. They must remember what they have asked the parent to do in order to see that they do it. This can be increased to a larger number of assignments. Example: Pick up the pencil, close the book, write a word, say "Good-bye".
- Make a sentence grow. Start with two or three words and each person adds a word. The next person must repeat what has been said and add a word also, until it becomes too long to be remembered.
- Play, "I am going on a trip, I will take...". The next person repeats, "I'm going on a trip and I will take..." (naming first the object the first person named, then add the name of something he will take, the third person names the first two and adds another. This continues until it becomes too long for anyone to complete correctly.
- Put various items in a small box or a small milk carton (one cup size). Have the child shake and attempt to identify. Examples: rice, pennies, paper clips, rocks.
- What would you do if you received \$50.00? What would

you do if your dog got hurt? What would you do if a man came to the door? What would you do if you saw a stranger go into your house? What would you do if you saw a lion walking down the street by your house? 6. Say silly sentences and have the child repeat them exactly as you have said them. Example: I drink water out of a table. My cat barked all night. Have the child tell what is wrong with them.



- You can eliminate many calories when microwaving chicken by taking off the skin. Dip skinned pieces of chicken in an egg, crumb, and melted butter or margarine mixture (add dried parsley if desired.)
- Place pieces of coated, skinless chicken on a paper towel-lined platter with chicken bones on down side. Cover with another paper towel and microwave for half the specified time.
- Rearrange chicken after half cooking time but don't turn over and microwave for remaining time, or until there's no pink near the bones.
- The past at least is secure. -Daniel Webster.

Journal Files

60 Years Ago

1931
Lazbuddie's Study Club met Thursday, July 2 in the home of Mrs. Joel Treider. Mrs. Treider received and entertained her guests in her lovely back yard. The beautiful trees, flowers, and grass was greatly appreciated by those of us who have treeless homes. Ten members responded to the roll call, and two visitors were present. Our program was on early Texas history and our new member, Mrs. Cecil Matthews, gave an interesting talk on LaSalle in Texas. Delegates were elected at this time to attend the Federation Club meeting in Friona July 25. A fourth of July out-door supper was planned, also, and other business was attended to.

50 years ago

1941
Garden seed may be scarce next year, so J.F. Rosborough, Extension Service horticulturist, advises Texas farm families to pick out some of their best fruits and vegetables and save the seed. He particularly recommends saving the seed of beans, okra, cucumbers, tomatoes, cantaloupes, watermelons, pumpkins, cushaws and sweet corn.

40 Years Ago

1951
Lovely TV actress Cindy Cameron illustrates the remarkable ease of steering in the 1951 Chrysler, by turning the wheel with only fingertip pressure. Any driver can do this, even with the car standing absolutely still, thanks to Hydraguide, the new power steering innovation

Photo Contest Announced

The East Texas Photography Club has announced plans for the Seventh Annual Indian Summer Festival Photography Contest.

The photo contest will be held in conjunction with the Jasper Chamber of Commerce's "Indian Summer Festival" and the East Texas Fair to be held Saturday, October 5, 1991.

Categories in this year's contest include areas of interest for all photography enthusiasts. The categories are: Scenic and Landscape; Animal and Wildlife; Flowers and Plants; Architectural; People; and Open Black and White. A special category, for the second year, is "Lake Sam Rayburn". The winner in that category will have his or her winning photo published on the front cover of the Chamber's 1991 tourism magazine. All photos submitted in that category must be vertical. There will also be a "President's Choice" award for the photograph selected by the President of the Jasper Chamber of Commerce as his favorite photograph.

The contest is open to both amateur and professional photographers; however, photographs that have won in previous Indian Summer Festival Photography Contests are not eligible. Only matted or mounted prints will be accepted (no frames). Prints must not be smaller than 5" x 7" and no larger than 8" x 12". There is a \$2.00 entry fee for each photograph submitted, with no limit for number of entries. Deadline for submission is Wednesday, October 2, 1991. Photos may be mailed to East Texas Photography Club, P.O. Box 1285, Jasper, Texas 75951; or may be dropped off at the Jasper Chamber of Commerce, or the Studio of Wiegand Photography, 145 South Main, Jasper.

To obtain entry blanks and official rules for the contest, send a self-addressed stamped envelope to East Texas Photography Club at the above address.

which lets hydraulic pressure do all the work.

30 Years Ago

1961
Jack Morris, owner of Muleshoe Motor Company, today received a personal congratulatory letter from Lee A. Iacocca, vice president of Ford Motor Company and Ford Division general manager, commending Mr. Morris and his employees for their part in setting a 36 year Ford sales record. Ford car and truck sales during May were higher than any other May since 1925--the heyday of the Model T.

20 Years Ago

1971
During the last meeting of the Mule Memorial Chapter of the Poetry Society of Texas, two poems were presented prizes for the month. Winning were the following poems written by Mrs.

Dale Earns Honors

Wesley Dale, who is attending New England Institute of Technology in West Palm Beach, FL has recently completed his third quarter. He has achieved a 4.0 grade average for the duration and was submitted to the Dean's list for the second and third quarters. He is majoring in a specialized associate degree in Architectural Drafting with skills in Computer Automated Drafting (CAD).

Dale is the son of Bill and Mary Dale, former residents of Muleshoe, who now reside in Port St. Lucie, FL. He is the grandson of Mr. and Mrs. Elmer Cornelison of Muleshoe.

He is a 1988, graduate of Crittenden Co. High School in Marion, KY.

Lonnie Merriott and Mrs. Howard Splawn. "Appreciation" was submitted by Mrs. Howard Splawn and reads, "Words of appreciation How they make one glow. A genuine compliment, Really builds one's ego. Many put in work for years and years. And fight their way through, Their sorrows and tears. They don't necessarily seek for honor and glory. They're just doing their job. It's and old, old story. So speak up and say We thank you so much. And watch them work even harder. More worthy of your trust. Speak a word of encouragement. As you go along the way. And watch peoples reactions. To the complimentary words you say."

10 Years Ago

1981
The second annual Bailey County Fair has been scheduled for August 27-29 at the Bailey County Coliseum. Last year was a very successful one with about 750 people in attendance, according to county reports. Local businesses who put up exhibits last year were pleased with the interest shown by the general public for the commercial booths.

Space for this year's fair for commercial exhibits will be available once again at a cost of \$15.00 for 12x12 space, inside the coliseum.

To Keep Quayle
President Bush has pledged to keep Dan Quayle as his running mate in 1992.

Licensed Nurses To Meet

The Licensed Vocational Nurses of Texas, Lubbock Division 18 will meet Monday, August 12 from 7:00 p.m. to 9:00 p.m. in the O'Brian Room (ground floor) of St. Mary's Hospital.

Our speaker will be Brian Kloos, Registered Pharmacist. He will speak on "Interaction of Drugs". One continuing education unit (C.E.U.) will be achieved by those attending.

All L.V.N.'s need 20 C.E.U.'s.

Updates on continuing education will be discussed. All L.V.N.'s are urged to attend and become involved in L.V.N. A.T. Your professional organization R.N.s are welcome to attend and may become supportive members if they wish. We are here for all nurses and want to help keep them up on legislature and laws that are being passed concerning nurses in Texas.

A door prize will be given. For further information contact Wilma M. Coverdell, President, L.V.N.A.T Lubbock Division 18, 1035 S. 20th St., Slaton, Texas 79364, Phone: 828-4565

Pity The Young
Pity the poor high school kids! They have to walk nearly as far to get their parked cars as we used to walk to school. -Appeal, Memphis.

Back To School Sale

Save 20% On Latest Winter & Fall Fashions

Sale Includes Rocky Mountain & Lee Jeans

Prices Good Through Aug 13

Tiffin II of Earth

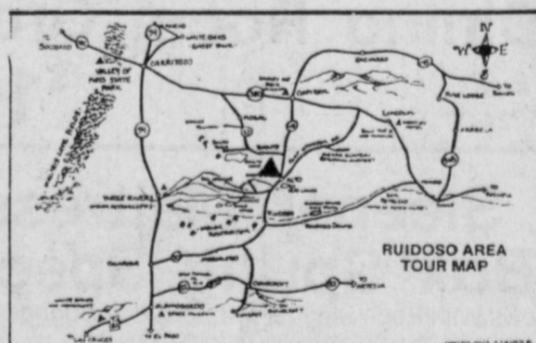
257-2223

Alto Alps Condominium No. 120

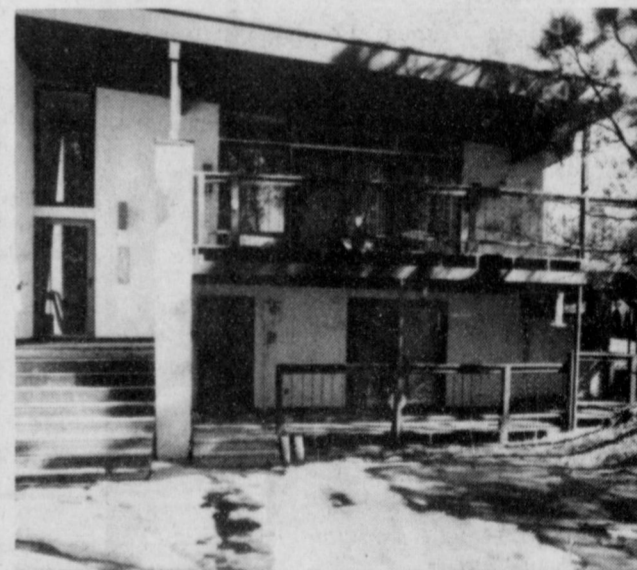
An exclusive custom designed three bedroom, three and one-half bath condominium located in the Alto Alps Complex near Ruidoso, New Mexico.

This condominium is a dramatic 2,152 square foot home with saltillo tile floors on the upper level. Over-scaled windows offer a spectacular view of the pines and mountains.

Exterior maintenance, security, maid service, access to tennis courts, swimming pool, putting greens and clubhouse facilities add extra appeal to this distinctive home. Located near Ruidoso area golf course, the Ski Run Road as well as the new Sierra Blanca Regional Airport.



▲ Denotes Condo Location



Built on a secluded Cul-de-Sac, the spacious grounds and beautiful landscaping nestled in the forest provide a private and serene setting. A large 1200 square foot redwood deck surrounds the condominium.

Professionally decorated with quality furnishings, fabrics, wallcoverings and unique accessories.

Skylighting and extensive interior and exterior lighting.



Fully equipped kitchen with all the amenities.

Master bedroom, large master bath with dressing area and Jacuzzi Tub and two guest bedrooms with private baths located on lower level.

Sale Price Includes All Furnishings

For appointment or more information call:
(915) 683-4691
(806) 272-3747

Going Out of Business

up to... **50%** off

STOREWIDE

Dress & Sport Shirts 50% off	Suits 99 ⁹⁵ Reg. 195.00
Tall Man 50% off	Blazers 39 ⁹⁵ Reg. 105.00
Sport Coat 50% off	Casual Pants 14 ⁹⁵

Back to SCHOOL

All Jeans 50% off	Oversize 7 ⁹⁵ Reg. 16.00
Shorts 50% off	Polo Style 50% off
Swim Suits & Shorts 75% off	Short Sleeve 7 ⁵⁰ Reg. 24.00

BOB'S M. R. shop
502 Main, Clovis

"The difference between classy & class"
9:00-5:30 MON. THRU SAT.



MIXING TICKETS--in preparation for the MAC drawing held Saturday, August 3 in Muleshoe are left to right: Bill Bruce and John Stephens. (Journal Photo)

Musical Drama "Texas" Goes Behind The Scenes

Stephanie Dolle of the box office for the musical drama "Texas" is the niece of Mr. and Mrs. Bill Dolle.

A 1991 graduate of Canyon High School, Dolle was chairman of the Student Council, treasurer of the Key Club and president of the Catholic Youth Organization.

As the show unfolds in the Palo Duro Canyon near Amarillo and Canyon, Texas they will join the company in seeing the show from a different angle, backstage, and be part of the continuing movement there.

From backstage, instead of watching the two horsemen ride with their flags along the ledge at the top of the 600 foot cliff facing the audience, the company will be moving to the edge of the stage, coming in from the sides and perhaps running through the 8 foot deep concrete channel behind which forms a passageway backstage from side to side, and arriving on stage left with enough breath to surge onto the stage with the others in a great wave of singing and dancing.

There is the motion of the technicians pushing sets on and off, the dugout, the wagons, the buildings of the town at the end. They start the horses with the wagon and the surrey and go quickly to pull open the sides of the buildings in place on the side stages to reveal the Austin scene, the ranch house interiors and the St. Louis scene.

There is the constant motion of costumes carrying quick changes to cubicles at the very edge of the stage, a long ways from the costume shop.

There is the uneasiness of the horses toward the end of the first act when they all face the cliff and watch for the great thunderbolt and lightning flash which cleaves a tree in its streak up the 600 foot cliff.

There are the entrances and exits from the stage, sometimes leisurely and sometimes at a dead run as someone entering on stage left has to run almost a quarter of a mile from the dressing rooms.

There is movement as the eighty cast members respond to more than 120 cues.

There is motion as the technicians climb on the hill before the show to string the primacord to make the lightning bolt and as the conductor climbs to the light and sound booth behind the audience to direct the choruses and the light and sound men take their places to manage the effects of the show. Eighty actors, 15 technicians and 6 costumers work back stage.

In addition there is movement at the front of the house. The forty who work there sell the tickets, balance the books, empty the trash, check the rest rooms, lay out the merchandise for the intermission, oversee the house, set out hundreds of cokes to prepare for the floods of orders during the twenty-minute intermission.

The onstage pattern repeats itself in the second half with different buildings, different costumes and movements and scenes. Finally, the riders and horses for the finale take their

places far from the stage, so they can be running full tilt when they ride across it at the end carrying the six flags which have flown over Texas.

There is the turning of the cast on stage to watch the fireworks against the cliff, and the final movement from the stage to the front of the house to say "Good Bye" as the audience leaves.

For tickets write "Texas" Box 268, Canyon, Texas 79015 or call 806-655-2181. Please make your reservations as far in advance as possible as some nights reserve out very early.

Earaches Can Prove Serious

Many young children develop earaches, and for most of them it is more painful than anything they had previously experienced. Although the problem is usually not serious, earaches are definitely a warning signal that something is wrong. It can mean that fungi or bacteria has invaded the ear canal or that an infection has erupted behind the eardrum in the middle ear and is causing pain.

Middle-ear infections, also known as otitis media, are common complications of colds or respiratory infections in children.

"Because a child's eustachian tubes are straighter and shorter than those of an adult, it is much easier for viruses or bacteria from the nose and throat to reach the middle ear and cause infection," said Patricia Evans, M.D., a pediatrician on Methodist Hospital's medical staff.

Acute middle-ear infection can be extremely painful and may be accompanied by ringing in the ear, fever and possibly some hearing loss.

Prompt treatment with antibiotics is mandatory for middle-ear infection is neglected or even postponed, some loss of hearing may result, said Dr. Evans.

"Whatever the cause, home remedies should be avoided unless the parents have checked with their physician. Such remedies may temporarily ease discomfort but it will not correct the problem. In fact, diagnosis is made more difficult by obscuring the doctor's view of the ear canal and eardrum," said Dr. Evans.

If earaches do not subside within 24 hours, a physician should be consulted. Of course, medical help should be sought immediately if the situation is obviously serious and there is extreme pain.

A History Of Fragrance

The fragrance of femininity has long held a powerful allure for men, as history will attest.

Egypt's Queen Cleopatra fascinated such powerful men as Julius Caesar and Marc Antony. Maybe it was her perfumes. The Egyptians—perhaps the first great perfumers—soaked fragrant woods and resins in water and oil, then rubbed themselves with the liquid.

Three Way News by: Mrs. H.W. Garvin

Mr. and Mrs. Bill Key and Sid and Mrs. Bobby Adams visited the ladies sister, Mr. and Mrs. Bud Huff Sunday afternoon. Other visiting with them was a niece and nephew, Geneva Henson of Keller, Texas and Markus Huff and Steve Huff and his friend Honey of Lubbock.

Billy and Tony Newton of Ralls and Amanda Newton of Morton spent 3 days with their grandparents, the Bob Newtons the past week. Amanda is also visiting with her grandparents, the Bob Newtons some this week.

Mr. and Mrs. Marion Walker of Mt. Vernon came Tuesday July 16 for a visit with Mr. and Mrs. Bill Key.

Walter and Leroy Sandefer of Midland spent last Friday with their sister and husband Rose and Dale Nichols.

Kusty and Missa Truell of Bledsoe are the parents of a daughter. Her name is Bailey Page. she was born July 7. She weighed 7 lbs, 4 oz. and is 20 inches long. She is the first child for the couple.

Her grandparents are Mr. and Mrs. Ernest Trull of Bledsoe, Mr. and Mrs. Ernest Ruthardt of Bledsoe. Great-grandparents are Mr. and Mrs. Goldman Stroud of Enochs, and Mrs. L.E. Ruth Ruthardt of Morton.

Mr. and Mrs. Harrie Pollard's grandchildren, Kridon and Chelsea Lewis of Littlefield and Meagan Pollard are visiting their grandparents a few days this week.

Mr. and Mrs. Goldman Stroud were in Bledsoe to see their new great-granddaughter Bailey Page Trull Sunday.

Ellen Bayless was in Mule-

shoe Wednesday and ate lunch with Mrs. Clara Coffman.

We were sorry to hear of the death of Mrs. J.F. McGennis of Lubbock at Methodist Hospital. A former resident of Enochs, she passed away Tuesday night. We offer our sympathy and prayers to her family and friends.

Nursing home News by: Joy Stancell

Clara Weaver's daughter Pat is here visiting.

Buck Ragsdale returned to the Nursing Home Sunday after being hospitalized in the local hospital.

Fern Warren visited Birdie Warren Tuesday and several of the other residents.

Sunday afternoon the Progress Baptist Church came for church services.

Tuesday morning Louise Legg from Me Ma's Ceramic Shop in Sudan brought Ceramics for the residents to paint.

Tuesday afternoon Ashley Larhona, Laverne James, Claudine Embry, Lula Maye Shanks came to shampoo and set the ladies' hair and give a lot of T.L.C. Helen Free gave manicures.

Wednesday afternoon was a great time for Sing-a-Long and "welcome back Glenda" time.

Our warmest Thanks to the A.A.R.P. for their contribution to the Healthcare Center.

Americans pay more for health care—the average U.S. citizen spends \$2,051 a year, the most of all industrialized western nations—and get worse—our infant mortality rates put us dead last among industrialized countries.

What's more, 37 million Americans have no health care protection and about 50 million don't have enough. Meanwhile, companies are getting squeezed as health care costs eat up about 45 percent of profits.

Endometriosis Affects Women's Reproductive System

Endometriosis affects a woman's reproductive system and maybe the reason for severe pelvic pain. This disorder also can cause infertility.

Endometriosis forms when endometrial tissue from the uterus grows in areas of a woman's body such as the ovaries, fallopian tubes, outer surface of the uterus, bowel and other pelvic structures. Endometriosis can cause adhesions, which are abnormal tissue growths that bind organs together.

Patches of endometriosis develop at menstruation when normal endometrial tissue backs up with blood through the fallopian tube. The blood is absorbed by the surrounding, inflamed area, and scar tissue forms. These patches may rupture, or burst, during menstruation.

West Texas Opry Auditions

Auditions for the upcoming 1992 West Texas Opry shows will be held at 7:00 p.m., August 20, at the Lubbock Garden and Arts Center located at 42 and University Avenue.

This talent search is open to all entertainers who have not previously performed on the Opry but would be interested in the possibility of an appearance. The Opry features a country and western theme and all variety of acts along those lines are encouraged to audition.

A sound system will be furnished, but performers will need to provide their own accompaniment.

The purpose of the West Texas Opry is to showcase talent from in and around the West Texas area. Proceeds from the show benefit West Texas music scholarship funds and the Country and Western Artists' Hall of Fame.

For further information contact Maxine Caldwell or Holly Robertson at 806-747-1540.

Ben Franklin Better quality for less

2104 W. Amer. Blvd. 272-3855
Mon. - Sat. 8 a.m. - 8 p.m.
Sun. 12-5 p.m.

Truckload Sale

Fabric 99¢ per yard

New Arrivals
1000's of yards
cotton and poly cotton
45" to 60" widths
Simplicity -McCalls-Butterick
Patterns

33 1/3% OFF Everyday

IT'S
**DOUBLE
VALUE**
TIME AT
DAIRY QUEEN!

\$2.99

FULL MEAL DEAL™
1/4 lb. +
Hungr-Buster,
french fries, drink
& a small sundae.

\$1.99

FUN BUNCH MUNCH™
KID'S MEAL

A meal just for
kids! Your choice
of hot dog,
Hungr-Buster* Jr.,
corny dog or two
steak fingers, plus
drink, french fries
and a DQ treat.
And a fun prize!

**ON SALE JULY 29 -
AUG. 18, 1991**

**THIS WEEK'S
DQ
VALUE**

© Reg. U.S. Pat. & Tm. Off. Am. D.Q. Corp.
*TM. Reg. U.S. Pat. & Tm. Off. D.Q. Corp.
© 1991 D.Q. Corp. All participating Dairy
Queen stores 1/2 lb. cooked weight.

Muleshoe

Cont. from Page 1

Julius R. Briscoe has been promoted in the U.S. Air Force to the rank of staff sergeant.

Briscoe is a communications section maintenance technician at Los Angeles Air Force Base, Calif.

He is the son of Pearl Johnson of Muleshoe.

The sergeant is a 1981 graduate of Muleshoe High

ASCS...
Cont. from Page 1

for harvest planted behind failed acres in the same planting pattern as the initial crop are considered as "Ghost" Acres and not eligible for history credit or price support loans.

"NL" PAYMENTS FOR 1990
There will be no 1990 "NL" payments for 1990 Wheat, Barley, or Oats, since the national weighted average market price was more than the loan rate before reductions.

COMMODITY LOAN
The 1991 commodity loan rates for Bailey County have been established for the following commodities: Cotton, 50.75 cents per lb., based on SLM 1-1/16, Corn, \$1.89 bu., Gr. Sorg., \$3.16 per cwt., Soybeans, \$4.84 bu., Canola, \$6.29 cwt., Flaxseed, \$6.88 cwt., Mustard Seed, \$6.28 cwt., Rapeseed, \$6.90 cwt., Safflower, \$6.55 cwt., Sunflower Oil, \$6.60 cwt., and Sunflower Other Type, \$8.25 cwt..

INTEREST RATE
The loan interest rate for August is 6.375 percent

IMPORTANT REMINDER
Even though Bailey County is approved to hay or graze ACR and CU for Pay during the 5-month restricted period, you must file a request in this office before any haying or grazing takes place until October 15, 1991.

WOOL REFERENDUM
There will be a wool referendum conducted August 19, 1991, through August 30, 1991. Producers are eligible to vote if the producer had an interest as owner or partial owner is one or more sheep that were owned continuously during a single period of at least 30 days during 1990 and the sheep were 6-months old or older. Ballot will be mailed to eligible producers before August 19, 1991, and the ballot box will be located in the Bailey County ASCS Office.

PEANUTS
The final date to submit contracts for additional peanuts is September 15, 1991.

OFFICE CLOSED
This office will be closed Monday, September 2, 1991, in observance of Labor Day.

School and received an associate degree in 1991, from the Community College of the Air Force.

A meeting to select minority representation from Bailey, Cochran, Lamb and Yoakum counties on the Board of Directors of South Plains Association of Governments has been set for 6 p.m. on Tuesday, August 20 in the Cochran County commissioner's courtroom. Interested minority residents in these counties are encouraged to participate in the selection process.

The Family Support Group meeting is scheduled for Monday, August 12 at 7 p.m. in the Muleshoe Area Healthcare Center Conference Room. Any relatives of a Center resident is invited and encouraged to attend, according to Joy Stancell, activity coordinator.

The Second Annual Hereford Jubilee Softball Classic sponsored by Deaf Smith County Chamber of Commerce and Church of the Nazarene, has been set for August 9, 10, and 11.

The jubilee is open to Class "D" Teams and Players only. Entry fee is \$125.00.

USSSA rules apply as well as the three home run rule. You furnish your own blue stitch balls.

Entry fee and roster must be in no later than August 7th. For more information you may call Mark Andrews at 364-7792/364-3429 or Eddie Morton at 364-8386.

The Baylor University Parents League of Lubbock will have a student send-off at 7 p.m. Thursday, Aug. 8.

Returning and new Baylor students and their families are invited to a reception at the home of Sam and Sally Cummings in Lubbock, according to Ms. Cummings. For more information you may contact Ms. Cummings at (806) 799-1802.

Amazon Adventure will be the theme of Vacation Bible School at the Calvary Baptist Church, corner of 18th and Ave. C. Bible School will be held August 12 through 16 from 6:30 go 8:30 p.m. for boys and girls first through sixth grades.

For more information you may call Pastor Rick Michael at 272-4012.

Report: Global population will hit 5.4 billion by mid-year

School Board

Cont. from Page 1

Edwin Cox asked if the proposed new leave policy would create a substitute problem. He also had questions about the "use or lose" policy regarding leave days.

A decision on the new leave policy will be decided next week in a meeting of the board scheduled for August 12 at 7:30 p.m.

A possible change in the employee grievance policy was also discussed due to changes in the State Board of Education rules.

The board approved the hiring of Buck Johnson as Assistant Superintendent of Schools. Johnson's duties in-

Election...

county education district as a whole. If the question fails in one district but passes the CED it is still adopted by the CED.

It is against voter-authorization for the CED to use homestead exemptions and elderly and disabled exemptions. As stated previously, the CED governing body might adopt these provisions following procedures set up under current law.

Perhaps tangible personal property can best be described by what it is not: it is not real property; it is not household goods, which are exempt from taxation by the Texas Constitution it is not intangible property, such as stocks or bonds; and it is not income-producing property. The most obvious targets are cars, boats, airplanes, and RVs.

Ballots will most likely be cast on election day at your regular precinct polling station.

SBA...

Fronstin said the following Texas counties serviced by SBA's Lubbock office may be eligible for the EIDL loans: Bailey, Cochran, Crane, Dawson, Gaines, Hockley, Lamb, Lubbock, Lynn, Parmer, Terry, Ward and Yoakum.

Eligible businesses seeking loan information or application forms may call the SBA's Area 3 Disaster Office in Ft. Worth, toll-free, 1-800-527-7735.

Fire Fighters...

tor-in-charge of the "agro-rescue" course. He says accidents on farms and ranches have increased 30 percent in the last five years.

An accident on a farm outside of Bryan recently claimed the life of a well-known Texas A&M professor. According to Fields, these accidents make it necessary for firefighters to be trained in agricultural rescue.

His students practiced on a grain elevated storage tank, combine, hay swather, hay baler, brush cutter, tractor and auger trailer. Fields says the 30-hour course, which was designed to save lives, drew many volunteer firefighters from rural communities.

Other rescue courses were also taught. One involved high-rise rescue where participants rappelled from a five-story building. These were not your ordinary classes nor your ordinary teachers. Fields is one of 1,000 guest instructors who helped firefighters make the grade in summer school.

August Days

August has a special nostalgia, as the last full month of summer and the last month of vacation for millions of students.

That nostalgia can almost be seen in the August sky. As one writer said, August in the hills and mountains is summer passing, with autumn just beyond the hills.

August days are often hot and depressing--summer's last fling. It's the time for canning and freezing summer's harvest of fresh fruit and vegetables.

The special nostalgia peaks in August's final days--as youngsters pack up to leave home for school, buy new clothes and begin another nine months of study.

The consolation is that football, brisk, clear fall days, and cooler weather are just ahead. But, alas, summer is gone.

clude responsibility of the support staff in the areas of transportation, food service and maintenance.

Johnson says he is "delighted to have this opportunity to return home and serve the school district."

Scott Turner was hired as

new assistant principal of high school. Turner will have responsibilities as Alternative Education Director.

Turner says that he and his family really like Muleshoe. "It is obviously a community that cares," he said. "We are going to have a very good team of employees this year and hope to make the school one of the best in the state."

The following teachers were

hired by the board: Vicki Surret, 2nd grade at Dillman; Ramona Gallardo, 2nd grade at Dillman; Janie Larimore, 5th grade at DeShazo; Ron Welch, teacher-coach in Jr. High; Belinda Steinbock, science in Jr. High; Nina Maldonado, homemaking in high school; and Frank Maldonado, assistant principal in high school.

The board accepted the resignation of Dana Duncan.



MAC BUCK WINNERS--(From Left) Les Bruns was the winner of \$50.00 in MAC Bucks Saturday afternoon; Mattie Grimsley won \$100.00; and Doris Wedel \$75.00. Drawings are held the first Saturday of each month. (Journal Photo)

NOTICE TO POSSIBLE CLAIMANTS FOR GRAIN STORED AT FARMERS COOPERATIVE ELEVATOR OF MULESHOE, TEXAS ©

The United States Department of Agriculture (USDA) under authority of the United States Warehouse Act and with permission of the Board of Directors took control of the grain inventory of Farmers Cooperative Elevator of Muleshoe, Texas, (Including Clays Corner and Enochs, Texas) on July 9, 1991. The grain inventory is being liquidated for the benefit of the owners of the grain. All persons are hereby notified that they must file a claim with the USDA by August 15, 1991, if they believe they are entitled to participate in the distribution of money received from the sale of the grain. The claim must be on a notarized Proof of Claim form provided by the USDA and must be supported by copies of documents specifying the claim or establishing that the claimant delivered grain for storage at the Farmers Cooperative Elevator of Muleshoe, Texas. Copies of the Proof of Claim form may be obtained during normal business hours from the Kansas City Commodity Office at the address listed below, the Bailey County ASCS Office, the Texas State ASCS Office, or at the office of this publication. Claims must be received by the License Compliance Branch, Licensing Authority Division, Kansas City Commodity Office, Post Office Box 419205, Kansas City, Missouri 64141-6205 by the close of business on August 15, 1991. Claims received after that time will not be considered. Grain depositors who are believed to have claims based on a review of the warehouse records have been notified by letter. Persons filing claims in response to that letter need not file additional claims based on this notice.

The proceeds from the sale of the grain, plus interest accrued thereon, will be distributed to persons who own grain stored at Farmers Cooperative Elevator of Muleshoe, Texas, as of close of business on July 9, 1991, as determined by USDA.

Grain Funds will be kept separate by commodity. Each fund will be distributed to persons with valid claims on a pro-rata basis. Claims may be filed against the warehouse bond for losses, if any, not fully covered by the grain funds.

Persons who have sold or agreed to sell grain delivered to Farmers Cooperative Elevator of Muleshoe, Texas, are not eligible to participate in this grain fund or claim against the bond. They should contact the Texas Department of Agriculture (409) 542-3691, regarding any rights they might have under the Texas Law.

PROOF OF CLAIM ©

I, _____, the undersigned, do hereby

(Print)
submit this claim against the grain fund for the following grain, which is

stored at warehouse named _____

located at _____

Warehouse Receipt or Scale Ticket Number	Commodity	Quantity	Lien Holder (State N/A if no liens are on the grain)

Enclosed are copies of applicable warehouse receipts or scale tickets.

This Proof of Claim is executed with full knowledge of the provision of 31 U.S.C. 3729 and 18 U.S.C. 1001 imposing civil and criminal liability on any person who shall make or cause to be made a false, fictitious or fraudulent claim against the United States.

Signed: _____ Date: _____
(Claimant)

Address: _____

Subscribed and sworn to me this _____ day of _____, 1991.

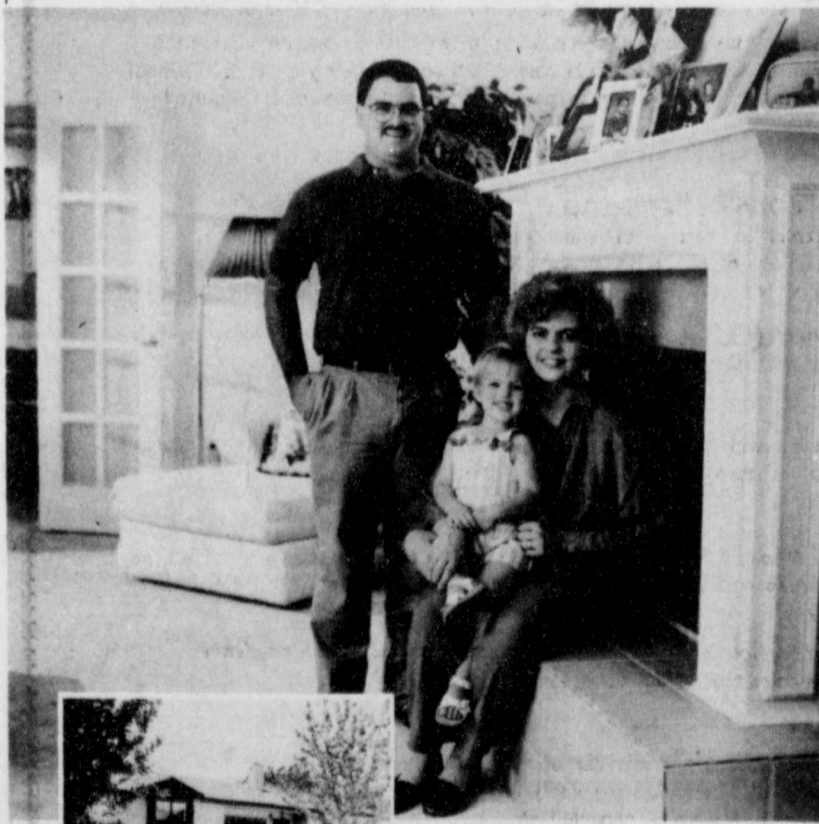
(Notary Seal)

(Notary Public)

County of _____

State of _____ My commission expires _____

"We're enjoying our remodeled home and the economy of the Dual Fuel Heat Pump."



The Vests of Levelland

After a fire damaged the interior of the Vests' home, they remodeled to fit their personal tastes and lifestyle. The living room was enlarged and a new kitchen added. The home is heated and cooled with a Dual Fuel Heat Pump.

Dual Fuel Heat Pump Right for any home.

AARP Warns Texans About Wording Of Constitutional Amendments

Wide4spread confusion among Texas voters about provisions of a proposed constitutional amendment on the August 10 ballot and a referendum on exemption and personal property taxes has prompted the Texas Legislative Committee of the American Association of Retired Persons (AARP) to warn older Texans about casting votes based upon inaccurate information.

J. Kenneth Huff, chairman of the AARP State Legislative Committee, says the 23 member group has been inundated with telephone calls from AARP members and other voters requesting clarification of ballot ambiguities.

"It is important that voters realize that on August 10 they will be concerned with both a statewide constitutional ballot and a school district wide referendum on exemptions and personal property taxes," says Huff. "Amendment 1 on the statewide constitutional referendum must pass on the votes cast in district balloting or tax exemptions will be meaningless," he adds.

Huff explains that if Amendment 1 on the August 10th ballot is passed, it would allow voters in each county education district to adopt certain exemp-

tions from the districts' ad valorem taxation of residences and allow taxation of tangible personal property. If Amendment 1 fails, it will not be possible for any homestead exemptions to be passed by local taxing entities, including additional exemptions for older homeowners.

Huff adds that voting for adoption of homestead exemptions and exemptions for the elderly would not obligate county education districts to levy personal property taxes on non-income producing properties, such as automobiles, boats, and recreational vehicles, although the two measures are linked in the wording of Amendment 1.

Huff points out Amendment 1 must be passed if voters are to have a voice in establishing exemptions for homesteads and the elderly. School district ballots on the same day will give voters the opportunity to vote for or against such exemptions as well as approving or disapproving a district personal property tax.

"Voters should also be aware", Huff says, "that the issues of homestead exemptions, elderly exemptions, and imposition of personal property taxes will be separate ballot

items." AARP is the nation's leading organization for people age 50 and over. It serves their needs and interests through legislative advocacy, research, informative programs and community services provided by a network of local chapters and experienced volunteers throughout the country. The organization also offers members a wide range of special membership benefits, including Modern Maturity magazine and the monthly Bulletin.

Home Sweet Home

This will be remembered as the summer we discovered a place tourists haven't spoiled--home.

-Changing Times.

Annoying

Always forgive your enemies. You'll find that it annoys them so much.

-Record, Columbia, S.C.



LEAGUE OF WOMEN VOTERS OF TEXAS EDUCATION FUND

1212 Guadalupe, Suite 107
Austin, TX 78701-1800

© July 9, 1991

PROPOSITION #2 (SJR 5)

WORDING ON BALLOT: *The constitutional amendment providing for the issuance of general obligation bonds to provide educational loans to students.*

EXPLANATION

This proposed amendment would authorize the legislature to allow the Higher Education Coordinating Board to issue up to \$300 million in general obligation bonds to finance educational loans to Texas students attending Texas colleges and universities. The maximum interest rate would be set by law. An interest and sinking fund would be established to pay the principal of and interest on the bonds as they mature. The legislature could provide for the investment of bond proceeds and establish the interest and sinking fund. The state cannot issue bonds to finance student loans without this constitutional amendment because the Texas Constitution prohibits the legislature from lending the credit of the state without specific authorization in the constitution, and prohibits use of public funds for grants and loans to individuals. Previous amendments authorized issuance of \$85 million for student loans in 1965, \$200 million in 1969, and \$75 million in 1989.

FOR

1. These loans are urgently needed to meet the fall 1991 demand for loans to financially needy students. If this amendment is not approved, approximately 15,000 Texas students (the number who received loans last year) may be unable to attend Texas colleges and universities this year. These loans go only to financially needy students who otherwise could not afford to attend college.

2. The student loan program usually operates as a revolving, self-supporting fund. Because changes in federal loan programs have created large increases in demands for state loans, and because most of the many loans made in recent years are not yet due, the bonds to be issued are necessary to fund the program until payments on recent loans begin to come in. The bonds will be paid back, plus interest, by borrowers, not taxpayers.

AGAINST

1. The state does not need to incur any more debt. The bonded indebtedness of the state now totals \$7.5 billion. General obligation bonds, which accounted for \$2.3 billion in debt at the end of fiscal 1989, reached \$2.8 billion at the end of 1990.

2. This proposed \$300 million debt will not stand alone. The legislature should undertake a comprehensive evaluation of overall state debt before voters are asked to add to it.

PROPOSITION #1 (SJR 42)

WORDING ON BALLOT: *The constitutional amendment to allow the voters of a county education district to adopt certain exemptions from the district's ad valorem taxation for residence homesteads and to provide for the taxation of certain tangible personal property.*

EXPLANATION

The school finance law approved by the 72nd Legislature created 188 new county education districts, composed of single counties or groups of counties. These districts have the limited purpose of levying the required local first-tier tax to raise the equivalent of 72 cents per \$100 of assessed market value and redistributing the proceeds among local school districts within the county education district.

This proposed amendment would authorize the new districts to hold elections to allow voters within the districts to decide whether to grant an exemption on a percentage of the assessed value of residence homesteads; whether to grant an additional exemption on the homesteads of elderly and disabled persons; and whether to impose taxes on certain types of personal property. In the enabling legislation that was passed during the regular session of the legislature, the amount of the homestead exemption was specified as 20 per cent and the exemption for elderly and disabled persons was set at \$10,000. These exemptions would be in addition to the existing \$5,000 homestead exemption, the \$10,000 exemption on homesteads of elderly and disabled persons, and the freeze on property taxes for elderly and disabled persons.

The enabling legislation also directed the county education districts to present the propositions to their voters in an election to be held on August 10, 1991. The wording of the proposals on local ballots will be identical across the state, but the order may vary. Decisions made by voters in a district would apply in that district only, contingent upon the decision of voters statewide on the proposed constitutional amendment which authorizes these elections.

Thus, voters who go to the polls on August 10 will be asked to vote simultaneously on a constitutional amendment and to vote on the local tax options authorized by the proposed amendment. If voters approve the proposed amendment statewide, the locally adopted options would go into effect without delay. This is being done in order to enable the new taxing districts to implement voter decisions in the property tax bills scheduled to go out in October.

PROS AND CONS OF PROPOSED CONSTITUTIONAL AMENDMENT

FOR

1. Trustees of the new county education districts are appointed by local school boards rather than being elected by voters, and thus do not have the discretionary authority to decide whether or not to grant these exemptions or impose these taxes on personal property. Therefore, the power to make these decisions must rest with voters in the county education districts.

2. This amendment would make it possible for homestead exemptions and personal property taxes to be continued, but at the option of voters rather than by action of the county education district board.

AGAINST

1. Passage of this proposed amendment would shift the tax burden from residential property to businesses. It would affect county education districts across the state very differently. Those that are dependent primarily upon residential property would be forced to raise residential property taxes more than those that rely on commercial property.

2. Tax exemptions for some property owners would result in higher taxes for others. Only 259 of the more than 1,050 school districts in Texas currently grant the homestead exemption. This amendment could result in a large increase in property tax exemptions statewide, narrowing the property base that must provide the local share of public school funding, which contributes approximately half of all school funding. This would mean higher taxes for the remaining taxpayers in order to maintain the required local funding.

PROS AND CONS OF COUNTY EDUCATION DISTRICT PROPOSITIONS

The propositions below will be presented to voters at the same time as the proposed constitutional amendment above. Although the language of the propositions will be identical statewide, the order in which they appear on the ballot may vary.

WORDING ON BALLOT: *The taxation of all tangible personal property, other than manufactured homes, in (name of the county education district) that is not held or used for the production of income.*

FOR

This would spread the tax burden over a wider base by generating revenue from non-income producing personal property such as boats, cars, and motorcycles.

AGAINST

Appraisals, verification of property, and collection of the tax create costs to taxpayers that may offset the income generated. Many local governing bodies do not collect this tax because it has a high delinquency rate and is difficult to enforce equitably.

WORDING ON BALLOT: *The exemption of 20 per cent of the market value of the residence homestead from ad valorem taxation in (name of the county education district).*

FOR

If locally-granted homestead exemptions are completely eliminated, homeowners in the local school districts that have been granting homestead exemptions are likely to face large property tax increases. This proposed exemption could cushion the impact of expected increases.

AGAINST

In districts with substantial commercial property, this proposal would shift the tax burden from residential property to business. Districts that are largely residential would suffer losses of tax revenue and would have to raise tax rates to generate the required amount of local funding.

WORDING ON BALLOT: *The exemption of \$10,000 of the market value of the residence homestead of an individual who is disabled and of \$10,000 of the market value of the residence homestead of an individual who is 65 or older from ad valorem taxation in (name of the county education district).*

FOR

This proposal would alleviate the impact of higher school taxes on those most likely to be adversely affected by them.

AGAINST

Property taxes are already frozen for individuals 65 or older and for disabled persons; this proposal would create an even larger exemption. This proposal is not need-based and would exempt many individuals who can afford to pay the higher taxes, increasing the burden on other taxpayers.

SAMPLE

Special Election (Elección Especial)
CED #5 Bailey/Cochran County Education District
(Distrito Educativo del Condado de CED #5 Bailey/Cochran)
August 10, 1991 (10 agosto de 1991)

SAMPLE BALLOT (BOLETA)

COUNTY EDUCATION DISTRICT PROPOSITIONS (PROPOSICIONES DEL DISTRITO EDUCATIVO DEL CONDADO)

INSTRUCTION NOTE: (NOTA DE INSTRUCCION:)
Place an "X" in the square beside the statement indicating the way you wish to vote. (Marque con una "X" el cuadro al lado de la frase que indica la manera en que quiere usted votar.)

NO. 1

The exemption of 20 percent of the market value of the residence homestead from ad valorem taxation in CED #5 Bailey/Cochran County Education District. (La exención del 20 por ciento del precio en plaza del hogar residencial, de impuestos al valor, en CED #5 Bailey/Cochran County Education District.)

- FOR (A FAVOR DE)
 AGAINST (EN CONRTA DE)

NO. 2

The exemption of \$10,000 of the market value of the residence homestead of an individual who is disabled and of \$10,000 of the market value of the residence homestead of an individual who is 65 or older from ad valorem taxation in CED #5 Bailey/Cochran County Education District. (La exención de \$10,000 del precio en plaza del hogar residencial de personas incapacitadas, y de \$10,000 del precio en plaza del hogar residencial del personas de 65 o más años de edad, de impuestos al valor, en CED #5 Bailey/Cochran County Education District.)

- FOR (A FAVOR DE)
 AGAINST (EN CONRTA DE)

NO. 3

The taxation of all tangible personal property, other than manufactured homes, in CED #5 Bailey/Cochran County Education District that is not held or used for the production of income. (Recaudación de impuestos a todos los bienes personales tangibles, con excepción de viviendas fabricadas, en CED #5 Bailey/Cochran County Education District, cuando dichos bienes o se posean ni se utilicen para producir ingresos.)

- FOR (A FAVOR DE)
 AGAINST (EN CONRTA DE)

SPECIAL ELECTION (ELECCION ESPECIAL)
(CONDADO DE) BAILEY COUNTY, TEXAS

AUGUST 10, 1991 (10 de agosto de 1991)

SAMPLE OFFICIAL BALLOT (BOLETA OFICIAL)

PROPOSED CONSTITUTIONAL AMENDMENTS (ENMIENDAS PROPUESTAS A LA CONSTITUCION)

INSTRUCTION NOTE: (NOTA DE INSTRUCCION:)
Place an "X" in the square beside the statement indicating the way you wish to vote. (Marque con una "X" el cuadro al lado de la frase que indica la manera en que quiere usted votar.)

No. 1

"The constitutional amendment to allow the voters of a county education district to adopt certain exemptions from the district's ad valorem taxation for residence homesteads and to provide for the taxation of certain tangible personal property." ("Enmienda constitucional que autorice a los votantes de los distritos escolares a nivel de condado, a adoptar ciertas exenciones de la tributación al valor (ad valorem) en dicho distrito a los hogares residenciales, y a disponer la recaudación de impuestos a ciertos bienes personales tangibles.")

- FOR (A FAVOR DE)
 AGAINST (EN CONTRA DE)

No. 2

"The constitutional amendment providing for the issuance of general obligation bonds to provide educational loans to students." ("Enmienda constitucional que disponga la emisión de bonos con garantía del gobierno destinados a proporcionar préstamos educativos a estudiantes.")

- FOR (A FAVOR DE)
 AGAINST (EN CONTRA DE)

Presented In The Public Interest By:
Muleshoe Co-Op Gins

Charles Moraw, Mgr.

272-4794

Amendment Could Bring Higher Homestead Exemptions

A "yes" vote on Constitutional Amendment No. 1 in the upcoming August 10 election could mean higher homestead exemptions for Texas residents, S.M. True, president of the Texas Farm Bureau said.

That amendment would authorize a County Education District to adopt certain homestead exemptions if approved by voters in that district.

At the same time, True said, the Texas Farm Bureau recommends a vote against Constitutional Amendment No. 2, which would allow the state to sell additional bonds to fund student loans.

"Texas Farm Bureau policy states that we are for increasing homestead exemptions," the president of the state's largest general farm organization said. "It also calls for restricting state indebtedness by limiting issuance of bonds to fund state expenditures."

The statewide passage of Amendment No. 1, which Texas Farm Bureau favors, would allow the three propositions attached to that amendment--if approved by local County Education District voters--to become effective, True stated.

One proposition would allow voters in each County Education District to determine if their district should provide a resident homestead exemption not

to exceed 20 percent of market value but no lower than \$5,000. Another proposition would allow voters in each County Education District to determine if their district should provide an additional disabled and elderly homestead exemption of \$10,000. Texas Farm Bureau favors these propositions, True said.

The Plainview cotton, grain and cattle farmer urged a "no vote" on the third proposition, which would allow the voters in each County Education District to determine if their district should tax non-income-producing personal property such as automobiles, boats and airplanes.

True also urged Texas voters to vote against Constitutional Amendment No. 2. That amendment would allow the Texas Higher Education Coordinating Board to sell up to \$300 million in general obligation bonds to be used for loans to students attending institutions of higher education in Texas.

"We are not against student loans, per se," True said. "But we do not see how the state can afford more debt at the present time."

Valta Hataway Funeral Services Held Wednesday

Graveside services for Valta Hataway, 75, of Snyder were held at 10 a.m. Wednesday in Hillside Memorial Gardens with the Rev. Don Taylor, pastor of First Baptist Church, officiating.

Burial was under direction of the Bell-Cypert-Seale Funeral Home.

Mrs. Hataway died Monday in Lubbock's Methodist Hospital after an illness.

She was born in Burleson. She married Edward E. Hataway in 1934 in Snyder. He died in 1964. She was a homemaker and has worked in cafeterias at Snyder schools. She was a member of North College Baptist Church. A son, B.J. "Goat" Hataway, died in 1988.

Survivors include a daughter, Doris Rollins of Snyder; three sons, Morris of Aledo and Bobby and Emmitt, both of Snyder; a sister, Othell Hataway of Snyder; a brother, Bill Lindley of Muleshoe; 11 grandchildren; and 10 great-grandchildren.

Nursing Home News by: Joy Stancell

Tony Leiker, our social worker hosted Men's Coffee Time Wednesday morning.

The residents busily shucked corn to be prepared for a meal Wednesday afternoon. Helen Free was over-seeer of the operation.

Eva Roberts, birthday February 1, Pluma Walker, May 22, have now come to live in the Healthcare Center. Welcome to the Healthcare family.

The monthly Family Support group meeting is scheduled for Monday, August 12 at 7:00 p.m. in the Conference Room.

Clifton Finley came Wednesday to visit and go shopping for the residents.

The Spanish Assembly of God pastor conducted the Memorial Service for Loney Ballard Thursday morning. He was assisted by Clara L. Jones, Eva Doyle and Lona Embry.

Here it is August. Where has the summer gone?

Mamie Askew delighted by the visit of her grandson Don and his wife Michelle Lewis-sons Chad and Jeremy, Freda and Irene.

Janetta Hukill was visited by her sister-in-law and brother-in-law and nephew this week also Clara Sudduth and her husband.

Letter To The Editor

Dear Editor:

The Fiesta Patio Party, held July 26 at the home of Mr. and Mrs. Doyce Turner, to benefit the American Cancer Society, was a complete success. Thanks to volunteer hosting couples, local unit members and the media. The Gala has raised \$4601.26 to date, with donations continuing to come in. Those unable to attend missed a beautiful summer evening with friends and plenty of food.

The proceeds will go to the Texas Division and Bailey County Unit of A.C.S. to be used for educational service and rehabilitation activities. Patient support programs, such as "I Can Cope", "Can Surmount" and "Reach to Recovery", and for research projects in major centers and hospitals in Texas. A.C.S. also provides hospital beds, dressings, etc., to cancer patients.

We are very grateful for the community's support for this local effort. I speak for the members of the Bailey County Unit and hosting couples, we sincerely appreciate the interest, concern and enthusiasm for this our first event of this kind. The A.C.S. is a very important part of our community and it is

vital that we continue to support its work to provide services for cancer patients here and to educate both the public and health professionals about cancer.

Thank you, Muleshoe and Bailey County Journal, for always being ready and eager to help with the necessary support. Sincerely, Joan Lewis, Crusade Chairman ACS Bailey County Unit

Dear Editor:

Voter approval of Proposition 2 on Saturday, Aug. 10, is vital for thousands of young Texans pursuing their college degrees.

Proposition 2 is a constitutional amendment authorizing the Texas Higher Education Coordinating Board to issue general obligation bonds to fund the state's Hinson-Hazlewood College Student Loan Program.

Without the amendment, there will be no funds for the state's student loan program after March 1992. An unprecedented increase in demand for student loans has depleted this self-supporting program. In 1988, 6,259 students received these loans. Last year the number of student borrowers increased to 26,239.

The Hinson-Hazlewood loan program functioned as a revolving fund between 1977 and 1989. No new bond sales were needed because loan repayments covered the cost of making new loans. But today's unprecedented demand requires

the sale of additional bonds to support our college students.

Our future depends on wise choices today. Vote "yes" for Proposition 2. It will permit deserving young people to help pay for an education they

otherwise might not be able to obtain.

Sincerely
Harry Reasoner
Chairman
Texas Higher Education
Coordinating Board

Driving Safety Tips

Many Americans will take to the road on day trips and relaxing vacations this summer. "But that doesn't mean relaxing your attention to safe driving," says Tony Nicely, president of Government Employees Insurance Company (GEICO).

He offers the following reminders. Wear your seat belt every time you get in the car and be sure your passengers do the same. A seat belt provides a better than 50 percent chance of avoiding serious injury and death in a crash. And seat belt use is required by law in 39 states and the District of Columbia.

Secure all young children in child safety seats. Safety seats are more than 70 percent effective in preventing death and 67 percent effective in preventing serious injuries in a crash. Child restraints are required by law in all 50 states and the District of Columbia.

"Don't drink and drive. At those outings where alcohol is served, designate a driver who doesn't drink in order to provide a safe ride home for those who

do. Drive at or below the posted speed limit. While speed limits may vary, the laws of physics are constant. As speed increases, the force of a crash increases dramatically. Your chances of serious injury or death double with each 10 mph increase over 40 mph.

"Don't take a vacation from common sense behind the wheel," Nicely says. "By taking a few simple precautions you can help assure that you, your family and friends travel safely this summer and throughout the year."

Which Are You?

According to a magazine, there are three kinds of drivers: urban, suburban and bourbon. ---Post, Pittsburgh.

Biggest Nut

It takes hundreds of nuts to hold an automobile together, but only one to jolt it apart. -Herald, Dubuque.

	CALL Mark Morton 109 S. 1st Muleshoe 272-7519
	State Farm Mutual Automobile Insurance Company Home Office Bloomington, Illinois
	STATE FARM INSURANCE

Elva Gregory Funeral Services Held Saturday

Services for Elva Gregory, 79, of Coeur d'Alene, Idaho and formerly of Muleshoe, were held Saturday, July 27, at 10:30 a.m. at Alsip, Funeral Home, Nampa, Idaho. Burial followed at Kohler Cemetery, Nampa, Idaho.

Elva was born May 28, 1912 in Putnam, Okla. and grew up in Muleshoe. She married James L. Gregory in 1932. He preceded her in death September 26, 1984. A son Danny Paul Gregory also preceded her in death July 19, 1968.

Elva was a homemaker, a member of the Grange at Melba, Idaho, the Rebekah Lodge in Nampa, Idaho and the Lake City Senior Center in Coeur d'Alene, Idaho.

Survivors include one sister, Betty Jo Wright of London, Ohio; two brothers, Charles E. Ireton, of Jerome, Id., and Frank M. Ireton of Twin Falls, Id.; three sons, James W. Gregory of Puyallup, Wa., David R. Gregory of Nine Mile Falls, Wa. and J. Robert Gregory of Hayden Lake, Id.; 10 grandchildren and four great grandchildren.

She is also survived by many friends in the Muleshoe Area.

Pauline House Funeral Services Held Monday

Services for Pauline House, 80, of Hereford were held at 10:30 a.m. Monday in Gililand-Watson Funeral Home with the Revs. Clarence Powell and Ed Warren officiating.

Burial was in the Restlawn Memorial Park.

Mrs. House died Friday in Lubbock's St. Mary of the Plains Hospital after a brief illness.

She was born in Holdenville, Okla., and moved from Amarillo to Deaf Smith County in 1951. She married Fred House in July 21, 1928, in Clovis, N. M.. He died in 1976. She was a homemaker and a member of Trinity Baptist Church.

Survivors include three sons, Coy of Hereford, Ray of Fort Stockton and Kenneth of Canyon Lake; two daughters, Freda Daughtery of Michigan and Linda Bullock of Lazbuddie; a brother, Steve Owens of Clovis, N.M.; four sisters, Lorene Akers of Clovis, Juanita Wall and Oneta Loce, both of Texico, N.M., and Edna Gray of Denver City; 19 grandchildren; and 23 great-grandchildren.



At GTE, our residential repair service is so good, we're willing to guarantee it. From now on, if we don't have your phone line fixed by the time we promise, we'll give you credit for one full month's local service

charges.* Even if we're only one minute late. In order to make a guarantee this good, GTE has invested millions not only in state of the art telecommunications, but also in our people. And we think both are the best in the

business. So if for some reason, our repair service doesn't measure up, please tell us. Any of our GTE employees would be more than happy to honor this guarantee. It only takes about a minute.



THE POWER IS ON

*This credit covers local phone charges, monthly charges and any additional charges for SmartCall Services, unlisted numbers and extra directory listings.

CLASSIFIEDS 272-4536

CLASSIFIED RATES

15 Words & Under
Minimum Charge
\$2.30
Thereafter
\$2.00

16 Words & Over
1st Insertion
15 cents per word
2nd Insertion
13 cents per word

CLASSIFIED
DISPLAY RATES
\$1.75
Per Column Inch

DEADLINES
12 noon Tues.
For Thursday Paper
12 noon Friday
For Sunday Paper

To receive the re-
duce rate after the
first insertion ad
must run continous-
ly.

We reserve the right
to classify, revise, or
reject any ad. We are
not responsible for
any error after ad
has run once.

1. Personals

CONCERNED
About Someone's
Drinking?
HELP IS
AVAILABLE

through Al-Anon
Call 272-2350 or
965-2870 or come to
visit Tuesday and
Thursday nights,
8:00 p.m. & through
AA call 965-2870 or
come visit Tuesday
nights, 8:00 at 620
W. 2nd, Muleshoe.

3. Help Wanted

EXPERIENCE UN-
NECESSARY-Immed-
iate openings avail-
able for persons to
re-mail letters! We pay
\$60.00 per hundred,
plus postage expen-
ses! Easy, exciting,
occupation. Informa-
tion/ application?
Send self-addressed
envelope. P.O. Box
75, Ruckersville, Va.
22968-0075
m3-30s-8tc

MAJOR TELEPHONE
CO. now hiring.
Technicians, installers
Acct/Serv. Reps, Op-
erators. No exper-
ience necessary. For
information, call 1-219
-736-9807 ext. T-8265
8 a.m.-8 p.m. 7 days.
c3-31s-6tp (ts)

WANTED: Feed truck
driver. Apply in per-
son at Olton Feed
Yard.
O3-31s-4tc

Wanted: Full or part
time employee. Come
by Fry and Cox, 401
W. 1st, Muleshoe and
pick up an applica-
tion.
F3-31t-4tc.

WANTED: Enthusias-
tic part-time local
salesperson for fast
growing supply com-
pany if interested call
806-296-0080. Send
Resume to P.O. Box
117, Plainview, Tex.
79073 M/F EEOC
W3-31s-1tc

11. For Sale Or Trade

FOR SALE:
Very clean, 1981, 32
foot, Dodge Cruise-
Air Motorhome. 33-
000 miles, \$17,000.00
Call Eva Nell Stovall-
272-3373
S11-29s-tfc

1984 Chevy 1/2 ton
P.U., automatic tran-
smission, air-condition-
er, AM-FM cassette,
dual gas tanks, power
windows, power door
locks, tool box, sliding
rear window, blue and
white-\$6750. Phone
272-3157 8 a.m. to 6
p.m.
9-32t-2tp

For Sale
440 Chrysler Irrigation
Engine. Completely
rebuilt. Delivered. 1
yr. warranty. \$2,500.
(505) 769-1292.
C11-30s-4tc.

FOR SALE: Overhead
camper for pickup-
Ref., stove, sink, full
bed.
Call 946-3417
K11-31s-tfc (S)

Green Beans, Black-
eyed Peas, Yellow and
Zucchini Squash, Okra
and Sweet Corn for
sale. Will pick and
deliver. Call 965-2471.
H11-31s-4tc

PIANO FOR SALE
Wanted: Responsible
party to assume small
monthly payments on
piano. See Locally.
Call credit manager
1-800-447-4266.
11-28s-8tp(ts)

FOR SALE: Wheat
Seed--Cleaned &
Sacked-60 lb. sacks.
\$5.50/bushel. Call
965-2193 or 965-2776
11-29t-8tp



15. Misc.

FILLING SCHEDULE
for Fall Piano Les-
sons. Beginner thru
Advanced. Ann John-
son 272-5746
J15-31s-tfc

Reduce safe and fast
with GoBese Tablets
and E-Vap "Water
Pills". Available
Damron Drug.
1-31t-2tp(t)

ROUND-UP
APPLICATION
Pipe-wick mounted on
high-boy. 30 in. or 40
in. rows. Cotton, milo,
soybeans and Vol.
corn. Call:
Roy O'Brian
265-3247

FOR RENT
Restaurant in Ranch
House Club (Mule-
shoe) Call 272-4261
for more information.
R4-32t-2tc

FOR RENT: Large
Self Storage rooms
with 24 hour a day
access. Call J&J Self
Storage at 272-4307.
S15-28s-tfc

BIRD DOG PUPPIES
TO GIVE AWAY TO
A GOOD HOME.
272-3540



Classify!
272-4536

18. Legals

NOTICE TO ALL PERSONS
HAVING CLAIMS AGAINST
THE ESTATE OF DORTHA
MAE HUMISTON, ONE AND
THE SAME PERSON AS
DORTHA MAE HUMISTON
SMITH

Notice is hereby given that
original Letters Testamentary
for the Estate of Dortha Mae
Humiston, one and the same
person as Dortha Mae Humiston
Smith, were issued on August
5, 1991 in Cause No. 1888,
pending in the County Court of
Bailey County, Texas, to:
Dennis Dale Humiston.

The residence of Dennis Dale
Humiston is Tom Green County,
Texas and the post office
address is:

Dennis Dale Humiston
Aldridge, Aycok,
Actkinson & Hamar P.C.
P.O. Box 286
Farwell, Texas 79325

All persons having claims
against this Estate which is
currently being administered
are required to present them
within the time and in the
manner prescribed by law.

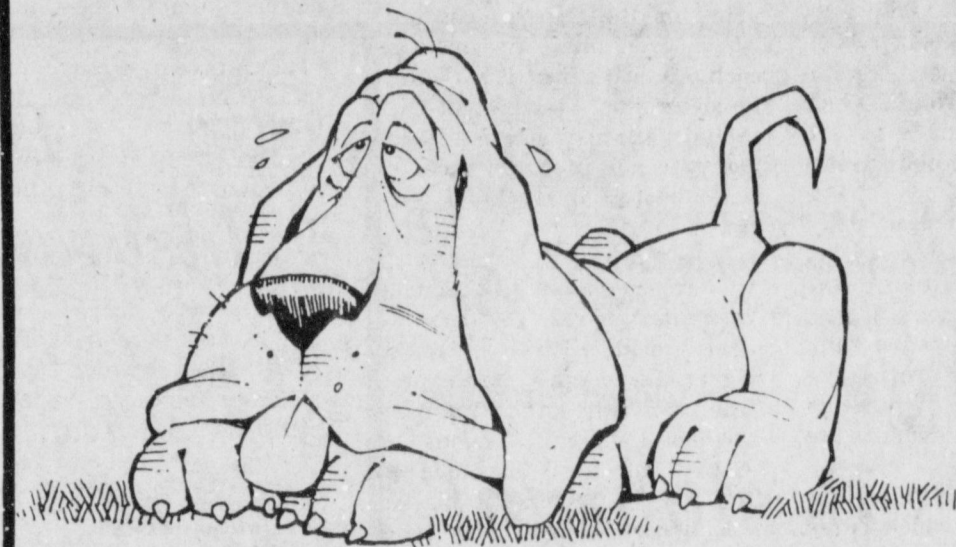
DATED the 5th day of
August, 1991.

ALDRIDGE, AYCOCK,
ACTKINSON & HAMAR, P.C.
P.O. Box 286
Farwell, Texas 79325
Telephone No. 806/481-3361

By Charles F. Aycok
Attorneys for the Estate

A18-32t-1tc

NEED NEW HOMES FOR NEW MEMBERS OF YOUR FAMILY?



When the puppy population has exploded,
advertise for good homes in the Classified.
Or, check out the Homes for Sale columns
for a bigger house for you all!

Muleshoe Journal
Bailey County Journal



People once believed cowslip wine cured insomnia.

8. Real Estate 8. Real Estate 8. Real Estate 8. Real Estate

Bingham & Nieman Realty

116 E. Ave. C. George Nieman, Broker 272-5285
272-5286

RICHLAND HILLS
PRICE REDUCED-IMMACULATE 3-2-2
Brick, Cent. A&H, built-ins, newly
remodeled kitchen, FP, sunken lv. area
w/cathedral ceiling, ceiling fans, earhtone
carpets, storage !!!!!!!!!!!!!!!

3-3-2 Brick, Cent. A&H, built-ins, FP,
Spklr. sys., storage-wkshp., fenced yd.,
much more!!!!!!!!!!

PRICED REDUCED-ASSUMABLE LOAN
9 1/2 A.P.R.-3-2-2 Brick, Cent. A&H,
built-ins, FP, fans, workshop-storage,
fenced yd. !!!!!!!!!!!!!!!

3-2-2 Brick, Cent. A&H, built-ins,
fenced yd., much more!!!!!!!!!!

3-2-1 Brick, Cent. A&H, built-ins, fans,
fenced yd. \$40!!!!

NICE RESIDENTIAL LOTS/ \$5,000 UP....

Nice-3-2-1 Home, built-ins, heat pump,
fans, storm windows, & doors, workshop-
storage, fenced yd., & more. \$30's !!!!!!!!!!!

NICE 3-2-2 Brick, Heat Pump, built-ins,
FP, gameroom sunroom, finished base-
ment, 2,800+ sq. ft. of lv. area, fenced yd.
& more. \$80's!!!!

HIGH SCHOOL
3-2-1 Brick, Cent. heat, FmHA financing
to qualified Buyer. \$20's!!!!

4-2-1 Brick + 2 carport, built-ins, Cent.
A&H. 2 car Det. garage & workshop,
fenced yd. sprinkler sys., Much More.
\$40's!!!!

FmHA FINANCING-VERY NICE 3-2-1
Brick, Cent., A&H, built-ins, cov.
patio, fenced yd., MUCH
MORE!!!!!!!!

FmHA FINANCING to qualified buyer-3-1-1
Brick, Cent., heat earhtone carpet, st.
bldg., fenced yd. !!!!!!!!!!!

2-1 Home, nicely remodeled kitchen &
den, Cent., heat, fenced yd., large
garage-shop. \$20's!!!!!!!!!!

2-2-2 Home, Cent., Heat, Evap. Air,
built-ins, fenced yd., corner lot/ \$30's!!!!!!!!!!

HIGHLAND AREA
3-2-1 Home, wall furnace, window evap.
fenced yd. \$20's!!!!

Nice 2-2-1 Brick, Cent. A&H, built-ins,
HEATED POOL, cov. patio, fenced yd.,
corner lot. \$50's!!!!

VERY NICE 4-2-1 Brick, Cent. A&H,
built-ins, earhtone tiles, util, encl.,
patio, storm doors, grill, spklr. sys.
storm bldg., fenced yd. \$60's

Nice 3-1-1, heat pump, nice carpets,
fenced yd. Much More. \$30's!!!!!!
LENAU ADD.

3-2-2 Brick, Cent., A&H, built-ins, FP,
spklr. sys., fenced yard price REDUCED

3-1 Home, Corner lot, wall furn., fenced
yd. \$20's

Nice 4-2-2 Carport Home, Cent. A&H,
built-ins, FP, Cent. Vac., Office, Sewing
area, fenced yard. \$30's!!!!!!

JUST LISTED-3-2-1 Brick, Cent. heat,
built-ins, ceiling fans, fenced yd. \$29,900
"as is"!!!!

JUST LISTED-3-1 1/2-1 Home, Cent. heat,
evap. air, nice carpets, cov. patio, fenced
yd. st. bldg.!!!!!!

JUST LISTED-3-2-1 CP Home, Cent. heat,
evap. air, built-ins, fenced yd., st. bldg.
VERY NICE!!!!!!

VERY NICE 3-2-2 Brick, 3,000+ sq. ft. of
lv. area incl. nice finished basement,
built-ins, geothermal A&H energy-eff.,
loads of closet & storage, on 7.86 acres,
fence, stock tank, sideroll, & many more
amenities, close to town.

3-2-3 Carport Home on 11 ac. edge of
town, Cent. A&H, built-ins, cellar, barns
& corral. MAKE OFFER

NICE 3-2-1 Home on 1 acre close to town,
Cent. Heat, Evap. Air, Nice Carpets,
Remodeled. \$30's!!!!

NICE 3-2-2 Brick on 1 ac. tract on hwy.
close to town, Cent. A&H, built-ins,
fenced yd., & more \$70's!!!!!!

RESTAURANT BLDG., LAND., &
Equipment-A GOOD BUY!!!!!!

OFFICE BLDG.-7000+ sq. ft. of area,
paved parking, excellent location.

EXCELLENT DOWNTOWN LOCATION-
approx. 3500+ sq. ft. PRICED TO
SELL!!!!

GYMNASIICS STUDIO-BLDG., &
Equipment-PRICED TO SELL!!!!!!

COMMERCIAL TRACT 175'x100' (HWY
70 & 84, RR spur acces, approx. 1200 sq.
ft. bldg. PRICED TO SELL!!!!

24 ac. W. Hwy 84 8" well, 3 homes, 14
mobile hook ups, & also has veg. & fruit
stand!!!!!!!!!!

8. Real Estate

FARM FOR SALE
1281 acres, eight irri-
gation wells, good
water, underground
lines, 900 acre grain
base, home, steel
barn, pipe corrals,
price reduced, owner
finance part. 10 miles
north of Hereford.
(409)543-5636.
H8-32t-8tc

Henry Realty

111 W. Ave. B. 272-4581

Muleshoe, Tx.

New listing- 3 bedroom, 1 bath, stucco,
excellent location near high school.
Carpet, carport, cellar, large storage
house, fenced. Call for appointment.

Special built mobile home with heat pump,
2 bedroom, 2 bath, double carport and
large storage building.

Spacious 2 bedroom, 2 bath with one car
garage. Fireplace. Ready to move in.

New listing- 2 bedroom, 1 bath, redone for
qualified buyer.

3 bedroom, 2 bath, carport, spacious home
outside city limits near city on highway.
Lot is 85' X 402'. Metal building is 29' by
40'. Great setup for workshop.

COMMERCIAL PROPERTY
Ideal location on West American Blvd.
150' highway frontage. A great business
opportunity.

Brick veneer restaurant 150 seating. Over
5000 sq. ft. with modern equipment.
Ready for operation. Located on U.S.
Highway 84 in Muleshoe. 7,000 sq. ft.
paved parking. Excellent financing
available for qualified buyer.

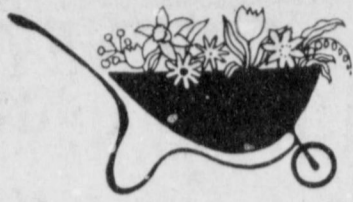
West American Boulevard 150' frontage.
Priced to sell.



IF YOU LIKE BARGAINS... Won't You Classified!

I THINK CLASSIFIED!

MULESHOE AREA



Spring/Summer '91



BUSINESS DIRECTORY AND SHOPPING GUIDE

THE WILBURN
Tostadas topped with beans, rice, taco meat, cheese, lettuce, tomato, guacamole and topped with even more cheese!

\$5.89 Closed Mondays

Leal's Restaurant
1606 W. Amer. Blvd. 272-3294

Henry Insurance Agency, Inc.
"Serving All Your Insurance Needs Since 1964"

KENNETH R. HENRY
CERTIFIED INSURANCE COUNSELOR
REAL ESTATE BROKER

111 W. AVENUE B
PHONE 806/272-4581
MULESHOE, TEXAS 79347

ART LOFT
• Just A Suggestion •

Your Irrigation Headquarters
We now do welding on aluminum pipe & repairs!
We also have a large supply of parts for your irrigation requirements!

Irrigation Supply
J.C. & Zona Gatewood
607 E. Amer. Blvd. 272-4466



Medium Double Cheeseburger
1 for 8.99
2 for 12.99

Delivery Available
11 a.m. - 1:30 p.m.
and
After 5:00 p.m.

Pizza Hut
1112 W. Amer. Blvd. 272-1213

Combination Motor & Salvage
We specialize in Motor Repairs and Rebuilding!
New & Used Parts Available!
Wrecker Service - 24 Hours A Day!

272-4458

Evins Sonshine Conoco Station
Slush Puppies - Ice -
Fountain Drinks - Milk -
Snacks - Model Car Kits

623 W. Amer. Blvd. 272-5216

LIFE - AUTO - FIRE - CROP
- RETIREMENT - HEALTH

FARM BUREAU INSURANCE
DAVID R. TIPPS
AGENCY MANAGER

1612 W. AMERICAN BLVD
P.O. BOX 408
MULESHOE, TEXAS 79347

OFFICE 806/272-4567
RESIDENCE 272-5898
MOBILE 272-6245

Pivot Products manufactures a wide variety of components for center pivot irrigation systems. Among these are flexicouplers used on drive line connections; goosenecks, and furrow arms for drop systems; barbed weights for hose extensions; gearbox brackets and wheel centers to update old or worn components.

NOW COMES MINI-MAX TRAX to replace rubber tires and wheels on small grains and hay or grass fields. This revolutionary double band steel wheel actually closes up the rut made by rubber tires and builds a solid middle to eliminate the tracks around the fields. It raises up the tower structure and helps prevent stuck towers. The level tracks are easy on trucks and other farm equipment crossing them in and out of the fields.

CALL ARNOLD TODAY AT PIVOT PRODUCTS FOR THE COMPLETE STORY!
(806) 272-5536
1-800-288-1805

Pivot Products Distributors, Inc.
Pivot Products Announces
Mini Max Trax

A revolutionary steel wheel for use on Center Pivot irrigation systems that makes Minimum tracks, gives Maximum traction and will never go flat.

710 E. Amer. Blvd. 272-5536

Spring Cleaning?
Let Us Clean Your Drapes, & Bedspreads!
We Also Do Carpet Cleaning & Upholstery Cleaning!

Lambert Cleaners
123 Main 272-4726

Pivot Products Distributors Inc.
710 E. Amer. Blvd. 272-5536

Combination Plate No. 4
CHILE RELLENO,
TACO, ENCHILADA
Beans and Rice

\$5.25
Closed Tuesdays

Viola's Restaurant
2002 W. Amer. Blvd. 272-3838

WE RECOMMEND **ferti-lome** Lawn & Garden Products
Time To Use **ferti-lome** LAWN FOOD

ferti-lome WEED and FEED SPECIAL
Prevent summer weeds Kill spring weeds

ferti-lome

Kearney Scoggin
Scoggin Ag Center, Inc.
"Where Fertilizer Is Our Business"
1532 W. Amer. Blvd. 272-4613

NATIONAL MOTOROLA COMMUNICATIONS SERVICE
W.T. services inc.
319 E. American Blvd.
MULESHOE, TEXAS 79347

Mobile Communications
Two-Way Radio Repair

GARY PARKER Technician
Muleshoe - 806-272-4888
Hereford - 806-364-7311

HARDWARE VALUE OF THE MONTH
TRU-TEST WeatherAll
CAULK VALUE PACK
With Three 10.5-Oz. Tubes **3.49**

Fry & Cox True Value
101 S. 1st 272-1511