



Muleshoe, Sudan art students place...
Page 3



Sarah Johnson named Dist. 2-2a MVP...
Page 6



Missed your paper? Call Bobby Flores at 272-5856

Muleshoe Journal



Striving to be your source for local news

75¢

Volume 91, No. 8

www.muleshoejournal.com

Muleshoe, Texas

February 25, 2010

Muleshoe man jailed after attempt to elude

By Larry Thornton
Managing Editor

District charges are pending against Muleshoe resident Jesse Olivas who led county and area law enforcement officers on a high speed pursuit Saturday, Feb. 20.

According to Capt. John Espinoza, the

incident began at the Bailey County Coliseum, at about 9:45 p.m., where officers observed a red Chevrolet pickup chasing a white Ford Explorer through the parking lot.

When Dep. Andy Dominguez attempted to stop the pickup, the captain said, the driver fled, eastbound on Hwy.

84 (West American Blvd.).

"This person just refused to stop," Espinoza said.

With Bailey County units, and Muleshoe Police Department officers in pursuit, the pickup continued east to the county line before turning onto CR 746 and

heading toward Hwy. 214, where the pickup turned south.

The vehicle, traveling at speeds of more than 100 miles per hour, turned onto CR 1585, where the driver lost control two miles east of Why. 214, and wrecked the pickup.

Capt. Espinoza said

Olivas initially refused to exit the vehicle. When he did, he was placed under arrest for felony evading arrest by Cochran County deputies. Additional charges of aggravated assault with motor vehicle may also be pending.

Olivas was initially transported from the

scene by ambulance. When it was determined he had not received any injuries in the accident he was apparently transported to the Cochran County Jail.

According to Espinoza the initial incident at the coliseum appeared to be domestic related.

Continued on page 2

Change order changed

By Larry Thornton
Managing Editor

The Muleshoe ISD Board of Trustees backed up and punted during Monday's regular meeting, and the agenda item didn't concern the resurfacing of the high school's football field.

At Monday's meeting, Superintendent Dr. Gene Sheets recommended the board members "re-visit" it's approval of a change order that would have bricked the exterior of the wall from the high school's choir room to the science wing.

During the discussion that followed, several of the board members said they'd taken another look at the portion of the

building in question, and didn't see a benefit to adding the brick.

Rescinding the earlier action, Sheets said, would save the district about \$100,000.

Concerning the football field and its surrounding track, Maintenance Director Sam Whalin said the bid specifications should be completed by next week and sent out to contractors who contact the school district.

Another issue, concerning the field work, which was raised by board member Carroll Precure, was about the possibility of seeking a municipal ordinance prohibiting the use of

skateboards, rollerblades and strollers on the track's new surface, or possessing gum or athletic beverages, such as Gatorade™, on the artificial turf of the football field.

While the dumping of a cooler of Gatorade™ on a team's coach might be considered by some to be a normal part of the celebration after a "big win," it was explained that chemicals in the liquid would badly stain the artificial turf.

As for the gum, its adhesive properties mat the turf's fibers requiring them to be cut out of the section.

Precure said he'd

Continued on page 3

Seats sought in May 8 elections

Several candidates have filed for places on ballots for the May 8 elections.

The entities that are holding elections on that date include the City of Muleshoe, the Muleshoe Independent School District, and the Muleshoe Area Hospital District.

Through agreements approved by the governing bodies of these three entities, Muleshoe City Secretary LeAnn

Gallman is conducting the elections, and the primary polling place will be the council chambers at Muleshoe City Hall.

However, in regards to the MAHD election, there will also be a polling place set up in Lazbuddie.

Applications will be accepted at the city secretary's office through March 8.

Candidates who have filed to date are as

follows:

Muleshoe City Council
Dist. 1 - Isidoro Trevino
Dist. 2 - Irene Mason

Muleshoe ISD
Trustee at large - Earl Behrends
Trustee at large - Jay Cage

Muleshoe Area Hospital District
Place 3 - Bill Liles
Place 5 - Zona Gatewood.



Photograph by Larry Thornton

The slogan, "Power to the People," has been used for decades by groups ranging from the college students of the 1960s to the People Power Movement of the Philippines, but the group using the phrase during Monday's chilly temperatures were with C&H Powerline Const. as they worked on the large power lines crossing the city's new park.

Loss to Floydada Whirlwinds sends Mules into three-way district playoff

By Delton Wilhite
Sportswriter

The Mules traveled to Floydada in sole possession of the District

2-2A Championship but had to defeat the Whirlwinds to maintain proprietorship of that championship.

Floydada could force the Mules to share the gold ball with them and Friona with a win.

Floydada had gone down to defeat by the Friona Chieftains on the previous Friday night and were determined not to drop to the third spot in the district race. The Mules got off to a very slow start with over a minute and a half lapsing before Jonathan Perez canned a 3-pointer.

Floydada raced out to a 26-7 lead in the first period with five 3-pointers in the opening period. They led the entire game for a 71-62 win over the Mules and placed two more sets of hands on the gold ball.

The loss by the Mules made it a three-way tie and according to District 2-2A rules should be

settled by a playoff. None of the team's coaches wanted a playoff but preferred a coin flip to decide playoff berths. The district executive committee could have voted to suspend the rules and allow the desired coin flip.

The vote to suspend the rules ended in a 3-3 tie so a pointless playoff was scheduled to be played in Littlefield Thursday, Friday and Saturday. No team would be eliminated so none appeared to play with much fervor. The games appeared to be more akin to a practice than a game.

Substitutions came in the game early and often. Junior varsity players joined their respective varsities for the playoffs and were sent in the games to gain experience at the varsity level.

Friona took the Thursday game over

Continued on page 6



Photograph by Stacy Conner

Mule Nick Hurtado shoots over Friona defenders during a recent game against the Chieftains.

Carolyn's We will re-open on March 1st
Florals & Gifts 106 E. American Blvd. • 272-5911



Muleshoe ISD yearbooks

Orders are being accepted for the 2009-10 Muleshoe yearbook. Before March 12, the cost is \$45, after March 12 the price goes to \$55. Contact Jennifer Gresham at Muleshoe High School, Portable 43A, for additional information, or to place an order.

AA meeting set

Those looking for help with problem drinking can do so at open AA and Al-Anon meetings being held at 7 p.m. each Friday at the First United Methodist Church, at 507 W. Second. Please use the west side entrance. For information about these meetings call 806-965-2870.

Diabetes support group

The Diabetes Support Group will be meeting on the first Tuesday of each month, at 6 p.m., at the Bailey County AgriLife Extension Office.

Alzheimer's support group

Bailey County's Alzheimer's Support Group meets at noon on the second Thursday of each month at Park View Nursing Care Center. Lunch is provided, and anyone is welcome.

Muleshoe chamber banquet

The Muleshoe Chamber of Commerce will host its 60th annual banquet on Saturday, March 27. This year, the banquet will be in the new cafeteria at Muleshoe High School, and will start at 6:30 p.m.

The chamber is also looking for nominations for man, woman, employee, business and farm family of the year, to be recognized at the banquet.

MHS blood drive

Muleshoe High School, and United Blood Services, will be hosting a blood drive on Thursday, March 11, from 9:15 a.m. until 3 p.m., in the donor coach — which will be located in front of the new MHS office. Students 16 years of age must return a signed parental permission slip to donate, which can be given to them at the high school office. For an appointment call Sharon Villa at 272-7309 or 272-7354 or go to www.bloodhero.com and use the sponsor code: muleshoehigh.

Nursing registration

Registration for the LVN Program at the South Plains College School of Nursing in Muleshoe will begin April 1, and run through June 3. This early registration allows time for the testing and paperwork that must be completed by August.

Crops conference set

The Texas AgriLife Extension Service in Bailey County will be sponsoring a Crops Conference on Monday, March 1, from 9 a.m. until noon, at the Bailey County Coliseum in Muleshoe. Topics include, side dressing nitrogen in wheat, and sunflower production. Other information will be available and three CEUs will be offered. For questions or more information please call Curtis Preston at the Bailey County Extension Office at 806-272-4583.

Correction Policy

Although the *Muleshoe Journal* tries to be accurate in the news stories and releases it publishes, the newspaper recognizes that errors occasionally occur.

An effort will be made to correct typographical errors, or misstatements of facts, in news stories voluntarily submitted for publication as soon as possible — if brought to the newspaper's attention in a timely manner, but will not include rerunning the news story or related photographs.

Corrections necessary from inaccurate or illegible information provided to the newspaper will not be published free of charge.

Paid publication items — whether advertisements, obituaries or items that don't meet the criteria for free publication — may be rerun if the original publication includes significant error.

Muleshoe Journal USPS 367820
 Established Feb. 23, 1924 Published by Panhandle Weeklies, LLC.
 Every Thursday at 201 W. Ave. C, P.O. Box 449, Muleshoe, TX 79347.
 Periodicals paid at Muleshoe, TX.
 Postmaster: Send address changes to the Muleshoe Journal, P.O. Box 449, Muleshoe, TX 79347.
 We are qualified members of the Panhandle Press Association, West Texas Press Association and Texas Press Association

Sandra Aven, Publisher © 2010
saven@hearstnp.com

Larry Thornton, Managing Editor
editor@muleshoejournal.com

Terry Brewster, Ad Representative
adsales@muleshoejournal.com

Ad Design / Classified Advertising
advertising@muleshoejournal.com
classifieds@muleshoejournal.com

Subscriptions:
 By Carrier Yearly — \$27
 Bailey County, by mail — \$29
 Elsewhere — \$40
 By E-mail — \$22
 Advertising rate cards on request

West Texas Press Association

Advertisers should check their ad the first day of insertion. The Journal will not be liable for failure to publish an ad or for a typographical error or errors in publications except to the extent of the cost of the ad for the first day of insertion. Adjustment for errors will be limited to the cost of that portion of the ad where the error occurred.

God understands and loves us all

Once every couple of years my wife finds out how blessed she is.

You see, unlike many husbands whose fingers itch to control the remote anytime the TV drifts over to any channel not owned by ESPN, I'd usually rather watch an old movie (make that "always" if it's John Wayne) than pretty much anything ESPN might offer. (Come to think of it, I happened to run across a darts competition on ESPN once, and I really enjoyed that.)

I've always been this way, and I can't seem to help it. The only time sports on TV were ever very tempting to me was in college when I needed to be studying, and then they were amazingly appealing. So is broccoli to a starving man.

My sons who generally hold me in high regard find this aspect of my personality appalling. The fact is, it's largely their fault.

I spent years at football fields and gyms because I loved to watch them and our community's kids play. I'm so glad we were there, and no parent was ever more proud. Hey, I was choir president in a big school and proud of that.

But I'm as proud as I am surprised that I would grow up to father a sports dynasty. (My wife's genes, no doubt.) I'd have been just as proud if they'd been all-star pupils (or excelled in any other area). (They did okay. If you like "slobber-knocking" quarterbacks you've gotta stay eligible.) But I can tell you from experience that athletic



Focus On Faith
Curtis Shelburne

scholarships are not as lucrative as academic ones. Still, I was and am exceedingly proud of those athletes. As coaches say, "They were players."

Not myself a "player" in the praiseworthy sense coaches mean, I've really enjoyed playing some sports (racquetball, tennis, etc.). I'm impressed with exceptional understanding and ability in any field, including athletics. But I confess (and in our society, that's probably not too strong a word), I just don't have much love of watching most sports on TV (whatever shape or size of ball we're talking about). I don't consider that a moral flaw, but it may be.

Sometimes it's embarrassing. One of my sons was especially interested in one game one weekend and asked me what channel ESPN was in our TV lineup. I had to think to remember if we had ESPN. (No worries, we do. More than one.)

But every couple of years, things change. I absolutely love the Olympics, most especially the Winter Olympics, and I am very selfish with the remote when they're on. Given the opportunity, I'll stay up

half the night and wear out the recliner watching downhill skiing and ski jumping and luge and ...

And you're gonna say, yeah, nerd, you probably like curling too. I would if I understood it. I

just can't say I'd really like to play something involving brooms and much sweeping.

But praise be to the God who has given us all such varied gifts and interests! He understands and loves us all.

McDaniel's APPLIANCE 1020 Main Street, Clovis, NM 505-762-4481 or 800-682-7891

Time for new appliances?

WE ARE YOUR HOMETOWN WHIRLPOOL DEALER.

WE NOW CARRY SPEED QUEEN!

Whirlpool

Lance Insurance

Competitive Rates, Variety of Leading Companies For Home, Auto, Commercial and Crop

806-227-2466

Brighten Your Smile For The School Year!

Come in and see J.W. Haltom, Jessica Haltom, Amber Garcia, and Erika Trotter.

- Patient Financing
- Nitrous Oxide Available
- Insurance Welcome
- Emergencies Seen Promptly

\$50 OFF Crowns, Dentures, and Partials (With this coupon, Limit 1 per person)

\$25 OFF Complete Exam and Cleaning (With this coupon, Limit 1 per person)

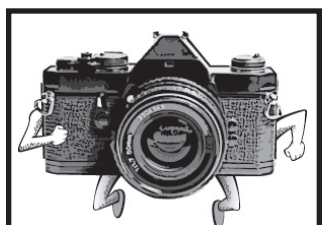
\$150 OFF Bleaching Trays (With this coupon, Limit 1 per person)

DR. J.W. HALTOM 320 E. 8th Street, Littlefield
 Office Hours: Mon. - Thurs. 8-5 / Fri. 8 to noon
FAMILY DENTISTRY For Appt.: 385-6935

Pursuit...

Continued from page 1 and was still under investigation.

Other agencies involved in the pursuit included the Lamb County Sheriff's Department, the Hockley County Sheriff's Department, the Yoakum County Sheriff's Department, and the Texas Department of Public Safety.



Don't forget your photographs

Have some of your photographs "run off?"

Photographs that have been submitted for publication in the *Muleshoe Journal* may be picked up during regular business hours.

At this time, a large number of photographs have been accumulated, and may include your missing photographs.

Looking for one place to get answers to your questions about government benefits and services? USA.gov has you covered. It's your official source for government information.

USA.gov
1 (800) FED-INFO

Need Money for College?

Applications for at least four \$1000.00 scholarships to be awarded this spring by BAILEY COUNTY ELECTRIC CO-OP are due at the Muleshoe office by April 5th.

Applicants must be a high school senior who will graduate this spring or have received their GED.

Seniors graduating in May and will be attending an accredited College, University, Junior/Community College, Trade/Technical School, or Business School and live in the area and have received electric service from Bailey County Electric for at least one year are eligible to apply.

Application forms have been supplied to high school counselor's offices. Full rules of the scholarship program are provided with application forms.

If you need further information, Call Rickie Warren at Bailey County Electric, 806-272-4504

These scholarships are being made available through Bailey County Electric Cooperative and Muleshoe State Bank.



Muleshoe VASE students

The Muleshoe ISD students pictured above attended a recent Visual Art Scholastic Event, which included workshops and activities for the students, along with an opportunity for them to be interviewed by the judge, student research and application, execution and technique, use of elements and principle of art, aesthetics and personal expression. The students who placed with a 4, and received medals included Lilliana Chagolla, charcoal; Michelle Low, oil painting; Adrain Muniz, oil painting; and Josh Guerrero, pencil drawing. Muleshoe's Lilliana Chagolla was also, the district winner for the Youth Art Month Flag contest held in Houston. From left to right are Adrian Muniz, Hilda Rodriquez, Micheal Olivas, Baylee Bessire, Justin Griswold, Josh Guerrero, Sergio Montejano, Ismael Ramirez, Lilliana Chagolla, Stephanie Vasquez and Michelle Low.



Sudan VASE students

Sudan ISD art students attended the Regional VASE contest held in Idalou, on Saturday, Feb. 20th. They received 16 regional medals, and four students won area medals qualifying them for the state competition in April. The students honored included: Div. 1 — Hailee Gonzales, Nancy Delgado, Nathan Briseno, Cheyenne Gonzales, Brooke Lennon and Kylee Schultz; Div. 2 — Gabriela Estrada, Mariana Centano, Mecca Dodd and Ashlee Johnson; Div. 4 — Kathrine Gutierrez. The area medalists and state qualifiers, pictured above, are Nancy Delgado, Gabriela Estrada, Ashlee Johnson and Kathrine Gutierrez.

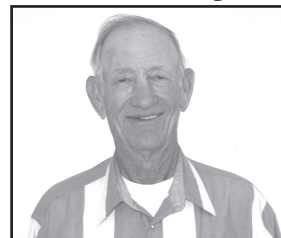
Muleshoe students place at music festival

Several Muleshoe students competed at the Texas State Solo and Ensemble Festival in June by achieving a Superior Rating on a Class 1 Ensemble. The 14 local students include Jonathan Garcia, Xavier Mora, Matthew Dickerson, Mercedes Morin, Belinda Pacheco, Zachary Taylor, Daniela Aburto, Brittany Soliz, Stephanie Vasquez, Cristian Godinez, Juan Guerrero, Erika Rodriguez, Mateo Castillo and Veronica Hernandez.

School board talks tough about turf

Continued from page 1
 superintendent asked, possibly wondering if a civilian or school official could file a complaint, or if it would have to be a law enforcement officer. While the school board members expressed similar desires for the facilities to be as widely used as possible, the were in agreement that steps may need to be taken to protect the school district's property. "We have to keep in mind what we're building it for," said board member David Tipps. "It's something we can all be thinking about," board president Thurman Myers said.

Vote for Jimmy Weaver



Republican Primary
 Parmer County Commissioner
 Precinct 4

I would appreciate your Vote

Political ad paid for by Jimmy Weaver

Thank you for reading the Journal!

VOTE DEBRA REDWINE
 Candidate for
Justice of the Peace



I am Debra Redwine, a candidate for Bailey County Justice of the Peace. I'm reminding you to vote March 2, 2010 in the Republican Primary. Many races will be decided on March 2. As a Republican candidate, I have to be successful in March to be included on the ballot in November. I'd appreciate your vote.

I have worked for Bailey County as the County Attorney's secretary since 2006, working with four different County Attorneys. In this capacity, I've assisted with preparing documents for Criminal and Civil Court, Juvenile Court, the Justice of the Peace Court, and collecting on hot checks for Bailey County merchants in a fair and firm manner. I've learned from assisting in these endeavors that Justice is best administered with fairness and common sense. I think the Citizens of Bailey County deserve a Justice of the Peace that is in the office and makes decisions that are fair and impartial.

With a lifetime background in agriculture, a Bachelor's degree in English Education, experience as a Special Education teacher, and, most recently, experience with the Justice system in Bailey County, I have learned to deal with various and diverse individuals. These experiences will serve me well in the JP office. I will be responsible to the citizens of Bailey County.

Thank you.

A full days work for Bailey County

paid political ad by Debra Redwine



Silveus
 INSURANCE GROUP

and Guy Brockman
are happy to welcome
Suzan Wheeler
to their Muleshoe office.

Come on by our office in
C&H Equipment



For all of your crop insurance needs.

Silveus Insurance Group
Guy Brockman
2501 W. American Blvd.
 Office 806-272-3193
 Guy's Cell 806-946-8075

Re-Elect
C. E. Grant

Bailey County Commissioner
 Precinct 2

March 2, 2010

V
O
T
E



V
O
T
E

- ★ Proven Ability
- ★ Proven Dependability
- ★ Proven Work Ethic

Paid for by C.E. Grant

Senior Citizen News

By Laverne Winn

Everyone! Saturday, March 6, the center will be serving its famous pancake breakfast. We will start serving at 7 a.m. and continue until 11 a.m.

All of you workers on Saturday, come by and eat breakfast with us before going to your work. It is all you can eat, pancakes, sausage, bacon, milk, coffee, orange juice and water, with a variety of syrups.

The cost is only \$5 for adults, and \$3 for children 10 and under. Take outs are available, but you have to pick them up. We do not deliver.

The ticket donations are going great. Our deep appreciation to all of you for your donation. We need the support from all. The center improves the lifestyle of many people. The center provides a nice, clean, warm place for you to come see your friends and have a lot of

fun. The lunches are planned and prepared by strict instructions, from a nutritionists with Texas Tech Health Science Center in Lubbock. Perhaps you have a dish you would like for us to serve, just let us know and we will check it out for nutrition value.

The wonderful wet weather has slowed our attendance some, but we still averaged about 85 citizens per day for

January. The senior center ladies have been at it again. Come by and see all the beautiful green and white decorations for St. Patrick's Day.

We are so lucky to have volunteers that are willing to give their time and talent for the center. Our hats are off to you.

Our prayers and well wishes go to Fred Clements who is having surgery this week. We wish him a speedy

recovery. **Menu for March 1-5:** Monday, March 1 — Barbecue chicken, pork and beans, salad, wheat roll and pudding.

Tuesday, March 2 — Ham with pineapple, black eye peas, scalloped potatoes, salad, cornbread and fruit cocktail cake.

Wednesday, March 3, Grilled steak, gravy, mashed potatoes, green beans, salad, wheat roll and peach cobbler.

Thursday, March 4 — Lasagna, sweet peas, salad, garlic bread, cottage cheese and pears.

Friday, March 5 — Fish or chicken strips, gravy, beans, coleslaw, cornbread and fruit salad.

Heritage Board Report

What a winter! Even though it has been a very unusual winter with many cold and snowy days, progressive things are still happening at the Muleshoe Heritage Center.

The Janes Ranch House, the Carriage House beside it and the

Virginia City Hotel all have new roof. When it gets a little warmer, the Santa Fe Depot will also sport a new roof.

These repairs and others reported by the Heritage Center hostess Delores Harvey were discussed at the monthly board meeting

of the Muleshoe Heritage Foundation Board held Monday, Feb. 15.

Board members attending included foundation president Tom Watson, Sheila and Joe Bob Stevenson, Lonnie Adrian, Jay Cage, Jean Allison, Roger Buhman, Kathy Vandevender and

Harvey.

Sheila Stevenson volunteered to be in charge of painting the large meeting room of the depot and board members approved this repair. Sheila is also in charge of getting a site plan completed. This

Continued on page 5

Independent Marketing Associates Needed For Pre-Paid Legal

Get the money you need when you need it! Now is the time to plan your strategy and consider the advantages of running your own business!

Be Your Own Boss!

Full-Time

Part-Time

Unlimited Income Potential



Call

Larry Rasco
806-559-2197

ldrasco@yahoo.com

BAILEY COUNTY DEVOTIONAL PAGE

"THE FIVE AREA TELEPHONE COOPERATIVE, INC."
West Plains Telecommunications, Inc.
Five Area Systems, Inc. • Plateau Wireless
Five Area Long Distance • Five Area Internet
302 Uvalde Muleshoe, USA (806) 272-5533

Serve Wholeheartedly, as if you were serving the Lord, not men. Ephesians 6:7
MULESHOE VALLEY INC.
2601 W. American Blvd. P.O. Box 631 Muleshoe, Texas
(806) 272-4266
Mobile (806) 946-8763
mviinc@fivearea.com

MCDONALD'S OF MULESHOE
1315 W. American Blvd. • 272-3333
Open at 5 AM every day! i'm lovin' it

PAGO FEED YARD, INC.
Commercial Cattle Feeders
P.O. Box 956, Friona 265-3281
Feller Hughs - Mgr.

MAPLE COOP GIN
927-5501
Maple, Texas

Pizza Hut
1412 W. American Blvd. Muleshoe • 272-4213
Open: Sun.-Mon. 11AM-11PM
Lunch Buffet: Sun.-Fri. 11:30AM-1:30PM
Monday Night Buffet: 6-8PM
PIZZA HUT WING STREET IS HERE!
"Gather round the Good Stuff"

2800 West American Blvd. Muleshoe 272-4296
Ray Lee EQUIPMENT CO., LTD.

MULESHOE PEA & BEAN, INC.
1680 CR 1044, Muleshoe • 272-5589
Nicky Nickels

United Supermarkets

IRRIGATION PUMPS & POWER
Zimmatic W. Hwy. 84
CENTER PIVOTS 272-5597

Muleshoe Journal
www.muleshoejournal.com
201 W. Ave. C, Muleshoe
806.272.4536 FAX 806.272.3567

Interim HEALTHCARE
110 E. Ave. C Muleshoe 272-5549
www.InterimHealthcare.com
LeAnn Altman • Olivia Barrera • Sandra Trillo CSR
James Buie PT • Brenda Testerman RN • Kimberly Burt LVN

Lowe's MARKETPLACE
401 W. American Blvd. • Muleshoe • 272-4585

Facts About The BIBLE BY JOHN LEHTI
FAVORITE BIBLE QUOTATIONS OF OUR PRESIDENTS
WHEN A NEWLY-ELECTED PRESIDENT OF THE UNITED STATES IS SWORN INTO OFFICE, HE TAKES THE OATH OF OFFICE WITH HIS HAND ON THE BIBLE. IT IS CUSTOMARY FOR THE BIBLE TO BE OPEN AT A PAGE OF THE NEW PRESIDENTS CHOOSING WHERE HE HAS SELECTED A VERGE OR QUOTATION—IT IS INTERESTING TO NOTE HOW FITTING THESE QUOTATIONS ARE! FOR INSTANCE, RUTHERFORD B. HAYES, 19TH PRESIDENT (1877-1881) WAS ALMOST DEFEATED IN A HARD-FIGHT AND VERY BITTER ELECTION, WINNING BY ONE ELECTORAL VOTE ONLY! HIS OPPONENTS CLAIMED FRAUD BUT THE ELECTORAL COMMISSION DECIDED IN HAYES FAVOR—LITTLE WONDER THAT HE PICKED THE FOLLOWING QUOTATION FROM THE BIBLE: "THOU HAST THRUST SCORE AT ME THAT I MIGHT FALL; BUT THE LORD HELPED ME." PSALM 118:113
THEODORE (TEDDY) ROOSEVELT, OUR 26TH PRESIDENT (1901-1909) STARTED LIFE AS A SICKLY CHILD BUT EXERCISED VIGOROUSLY AS A BOY TO GAIN GREATER HEALTH AND, AS A YOUNG MAN, WENT OUT WEST TO BECOME A CATTLE RANCHER. THE ROBUST LIFE HE CHOSE WAS EXEMPLIFIED IN HIS MANNER OF SPEECH, AND CERTAINLY IN THE WAY HE LED HIS FAMOUS "ROUGH RIDERS" REGIMENT DURING THE SPANISH-AMERICAN WAR! AS A PRESIDENT, HE FOUGHT HARD AND BOISTEROUSLY AGAINST THE VESTED INTERESTS AND HUGE TRUSTS OF "WALL STREET". HIS ENTIRE LIFE-STYLE IS ECHOED IN HIS FAVORITE BIBLE QUOTATION: "DOERS OF THE WORD AND NOT HEARERS ONLY RECEIVING YOUR O'N SELVES." JAMES 1:22
NEXT WEEK: WHO IS THE WOMAN WHOSE NAME APPEARS BUT ONCE AND ONCE ONLY IN THE BIBLE—AND WHO DOES SHE DO?
SAVE THIS FOR YOUR SUNDAY SCHOOL SCRAP-BOOK

This devotional & directory is made possible by these businesses who encourage all of us to attend worship services.

ASSEMBLY OF GOD
FIRST ASSEMBLY OF GOD
Pastor Ryan Pate
521 South First Street
272-3017
S.S. 9:45 am,
W.S. 10:30 am & 6:00 pm,
Wed. 7:00 pm
EL BUEN PASTOR
415 E. Ave. F • 272-5455
Pastor Domingo Luna -
272-4542
S.S. 9:45 am, W.S. 11 am &
6 pm; Wed. 7 pm

BAPTIST
CALVARY BAPTIST
1733 W. Ave. C.
Rev. Jeff Coffman
CIRCLE BACK BAPTIST
Intersection FM 3397 & FM
298
FIRST BAPTIST
220 West Ave. E
Dr. Stacy Conner
FIRST BAPTIST
Lazbuddie • 965-2126
PRIMERA IGLESIA
BAUTISTA
223 E. Ave. E
Interim Rev. Troy Smith
PRIMITIVE BAPTIST
621 South First
Elder Bernard Gowens, Min.
PROGRESS BAPTIST
Progress, TX
PROGRESS SECOND
BAPTIST
Arthur Hays, Min. - 1st & 3rd
Sundays
RICHLAND HILLS BAPTIST
Bro. Larry Thornton
17th & West Ave. D
S.S. 10 am; W.S. 11 am &
6 pm; Women's Bible Study
Thurs. 6 pm
www.rhbc-muleshoe.org
TRINITY BAPTIST
314 E. Ave. B - Bennie
Wright, Min.

CATHOLIC
IMMACULATE
CONCEPTION
CATHOLIC CHURCH
805 E. Hickory
Leonardo Pahamtang, Min.
**EPISCOPAL -
CHARISMATIC**
ST. CLEMENTS CHURCH
COMMUNION OF CHRIST
THE REDEEMER
Hwy. 214 South • 272-5954
Father Sergio Leal
Sun. W.S. 10:30 am

CHRISTIAN
TRINITY CHRISTIAN
CENTER
1723 W. American Blvd.
272-3877
Reydon Stanford, Pastor
Sun. W.S. 10:30 am
CENTRO CRISTIANO
117 E. Birch St.
Hermanos Barron
S.S. 10 a.m.; W.S. 11 a.m. &
6 p.m.; Wed. 7 p.m.

God Bless You!

LUTHERAN
ST. JOHN LUTHERAN
Lariat, TX • David Symm, Min.
S.S. 10:30 am; W.S. 9:30 am
METHODIST
FIRST UNITED METHODIST
507 W. 2nd St.
S.S. 9:45; W.S. 11:00;
Praise & Prayer 6 PM;
First Sunday of Month
4 PM Parkview Nursing Home
Service
Mon. 9 AM Ladies Bible Stdy;
Tues. 6 PM Adult Bible Stdy;
Pastor Monty Leavell,
272-5517
LAZBUDDIE METHODIST
S.S. 9:30 am; W.S. 10:30 am
Pastor Ken Peterson
965-2121
**EL DIVINO SALVADOR
U.M.C.**
619 E. 5th Street & Ave. G,
Fernando Sanchez, Pastor
272-6888

PENTECOSTAL
UNITED PENTECOSTAL
LIGHTHOUSE
207 East Ave. G
1-800-454-6051
S.S. 10 am; Thursday,
Bible Study 7 pm
**INTER DENOMINATIONAL
NEW COVENANT**
Plainview Hwy.
Steve Claybrook, Pastor
W.S. 10 am; Wed. 7 pm
**MULESHOE COWBOY
FELLOWSHIP**
710 E. American Blvd.
Steve Friskup, Minister
272-5199
Service: 7:30 p.m. Thursday

CHURCH OF CHRIST
LARIAT CHURCH OF
CHRIST
Wesley Roach, Min.
S.S. 10 a.m.; W.S. 11 a.m. &
6 p.m.; Wed. 7:30 p.m.
**LAZBUDDIE CHURCH OF
CHRIST**
Nathan Crawford, Min.
S.S. 9:30 am; W.S. 10:20 am
& 5 pm; Wed. 7 pm
**MULESHOE CHURCH OF
CHRIST**
22nd & W. American Blvd.
S.S. 9:30 am; W.S. 10:20 am
& 6 pm; Wed. 7:30 pm
**16th & AVE. D
CHURCH OF CHRIST**
Curtis Shelburne, Min.
272-4619
S.S. 9:30 am; W.S. 10:30 am;
Growth Gr. 1:30 pm;
Wed. 7:00 pm

If you have changes to make to church information, please contact the Journal at 272-4536.

Antiques & Fine Things
2104 W. American Boulevard
Muleshoe • 272-4217
Trollbeads
every story has a bead!

**TEXAS FARM BUREAU
INSURANCE CO.** FARM BUREAU INSURANCE
1612 W. American Blvd., Muleshoe • 272-4567

**CENTRAL COMPRESS
& WAREHOUSE**
SUDAN, TEXAS

**Deaf Smith
County Grain, Inc.**
Cliff A. Skiles, Jr.
Jeb S. Skiles

MCCORMICK SEEDS, INC.
400 East Ash • 272-3156
Muleshoe, Texas
A COMPLETE LINE OF FIELD SEEDS
Tim McCormick

ST BANK MEMBER FDIC
202 South First 272-4515

**Lal's TORTILLA
FACTORY**
105 E. Ash St., Muleshoe • 272-5772
Phillipians 4; "I can do all things through
Christ who strengthens me."

MULESHOE ANIMAL CLINIC
GENERAL PRACTICE
MVS MULESHOE VET SUPPLY
1430 US Hwy. 84, Muleshoe Office: 272-3061

To place your ad here,
call Terry
at the Journal
272-4536

**BOEHNING
DAIRY**
690 CR 45, Earth
"MILK - A PART OF EVERYTHING
THAT IS GOOD!"

BCEC BAILEY COUNTY ELECTRIC COOPERATIVE ASSOCIATION
A Touchstone Energy Cooperative
Muleshoe — 272-4504 Morton — 266-8600

**WAYNE COPLEY
TRUCKING**
CALICHE, SAND & ROCK PRODUCTS
P.O. Box 63 (806) 272-3697
Muleshoe, Texas 79347 Mobile: (806) 946-8072

J&S Dairy
1260 CR 1038, Muleshoe
272-7706

BAILEY COUNTY DEVOTIONAL PAGE

Obituaries

Stella Peterson

Funeral services for Stella Jean Peterson, 82, were held on Tuesday, Feb. 23, at White Memorial Chapel. Graveside services were held at Resthaven Memorial Park.

Peterson died on Sunday, Feb. 21, 2010. She was born on Feb. 3, 1928, in Coryell, County, to Winston David and Zona Jones Meyers, and married Eugene Griffin Peterson on April 6, 1947, in the Union Community near Slaton. He preceded her in death on March 3, 2002.

She was a housewife, and helped her husband run Peterson Grocery in Woodrow for 15 years.

She was preceded in death by four sisters — Lillie, Ruby Lee, Ola Mae and Faye; and two brothers — R. D. and Charlie.



Stella Jean Peterson

Survivors include a daughter and her husband — Vickie and Gayle Cypert of Lubbock; two sons and their wives — Roy and Brenda Peterson of Fairfield, Randy and Candi Peterson of Abernathy, and a son — Kenneth Peterson of Lazbuddie; three sisters — Betty Taylor of Baird, Va., Ann Garte Miller of Mesa, Ark., and Dartha Hargrove of Amarillo; six grandchildren and two great-grandchildren.

A word to the wise... attend a WISE event

Eighty Watson Junior High school girls recently attended a program at the Science Spectrum in Lubbock. The event was sponsored by Women Involved in Science Endeavors (WISE).

The purpose of WISE is to give girls a chance to meet women professionals and get a firsthand look at careers in science, math, engineering and medicine.

The girls observe women professionals doing demonstrations about their work, complete science experiments and watch a movie at the Omni Theater.

This is the third year for our middle school girls to attend. Last fall, we took 60 young ladies; in the spring we had 40 attend.

Faculty sponsors from Watson Junior High include Dani

School News

By Superintendent Dr. Gene Sheets

Heathington, Kris Langsten, Stacy Meiwes, Virgie Hartline, Angel Hunt, Diana Gallegos, Trudy Krug, Tracy Been and Hollye Hooten.

Some of the activities in which the girls have participated include making lipstick, rockets, and CO2-powered race cars.

The National Weather Service is located in the Science Spectrum and the girls have toured it. The lady who does the Channel 13 weatherspoke to the girls concerning meteorology.

Muleshoe Animal Clinic's own Dr. Belinda Gartin helped the girls dissect a cow's eye and let the girls look at lungs and hearts of different sizes of animals.

The girls practiced excavations and dug for

bones. Another workshop instructed the girls on the proper way to groom and feed pets. This year the girls designed an egg drop experiment.

A favorite activity is sponsored by the Anita Thigpen Perry School of Nursing at Tech. Nursing students are at many different displays talking to girls about smoking, drugs, high blood pressure, CPR and teenage diet.

The girls are able to bring home lots of information. The nursing students have taught the girls how to take blood pressure.

Last year the girls received a stethoscope.

One of the displays had a pregnancy vest that the girls could wear showing them how it felt to be in the ninth month

of pregnancy. By the time the girls left this area, many had an interest in the nursing field.

At the event, breakfast and lunch are provided. The girls and sponsors receive t-shirts, and a bag full of goodies.

The bags have had highlighters, mirrors, flashlights, plus much more.

A speaker encourages the girls to choose careers in science and math. The WISE event is a well-planned, fun day for all involved.

The girls come back after each trip talking about WISE, wearing their t-shirts, writing with unique pens and highlighters, carrying their bags, etc... and now the boys are begging for someone to plan a MISE!

Muleshoe Area Education Foundation

Muleshoe Area Educational Foundation board meeting was held on Feb. 1.

The meeting was called to order by MAEF president Barbara Finney. The minutes were approved as written and the financial report was presented by Finney.

Old business included a report on the building remodeling. The sidewalks are now finished and some paint touch up needs to be done.

Barbara reported that the Ray and Donna West Scholarship and Rotary Scholarship went to two recipients: Elizabeth Rodriguez and Marissa Marquez.

Hellen Adrian, LeAnn Gallman and Rickie Warren were appointed to the board replacing retiring members Patie Partain, Karen Harris and Eileen Morton.

New officers for 2010 are Barbara Finney, president; Sandy Vandivender, vice president; Tiffany Boehning, secretary; Rickie Warren, treasurer; Sharon Grant, publicity chairman; and LeAnn

Gallman, scholarship chairman. Other board member include Hellen Adrian, Alayna Capps, Margaret Heathington, Cindy Purdy, Francis Recio and Chuck Smith.

The most important issue at this time is the need to get more publicity for the MAEF Center. Church newsletters, notes on utility bills, Marquee advertising, and posting a page on Facebook on the internet were all discussed. The goal is to get the website

information out however we can.

The public may now log on to the Muleshoe website at www.southplainscollege.edu. and click on the Muleshoe site.

This website will provide all the information about classes being offered, enrollment dates, paperwork needed for registration, nursing classes, basic college classes, and continuing education classes.

All these can be found

here at the SPC Muleshoe site. It is the hope of the board that more people will take advantage of the opportunity to "learn at home" instead of commuting to other college campuses.

You may now register for the upcoming LVN school at this time as well as pick up information on upcoming credit classes as well as the Continuing Education Classes. Connie Kenmore can help you with all that information.

Heritage board report...

Continued from page 4 plan is necessary before other buildings which have been donated to the center can be placed at the center.

Adrian gave a report about the annual Tour de Muleshoe Bike Ride which will be held on June 19 this year.

This is a very

successful event for the town of Muleshoe as it brings many bike riders, families and friends to the area.

Allison volunteered to begin getting sponsors for this event. Adrian said it was important it is to get these sponsors soon as advertising for the Ride begins soon.

CONTINENTAL CREDIT & TAX SERVICES
206 Main - 272-3673

Se Habla Español **NO APPOINTMENT NECESSARY!**

- Our tax preparation service is guaranteed with our "Complete Trust" policy at no additional charge.
- E-filing is available at no additional charge with your paid tax preparation.

GET YOUR TAX REFUND IN AS LITTLE AS 24 HOURS!

Tax preparation without a loan.
Return options include:
Refund Anticipation Loan (RAL)
Advance RAL
Refund Transfer **Se Habla Español**

See Delfina or Adriana for details.

All loans are subject to the lender's liberal credit policy and credit limitations, if any.

Subscribe to the Muleshoe Journal! 272-4536

WE'VE GOT THE KEY!

AFFORDABLE BAIL BONDS

Muleshoe 806-272-6820
Farwell 806-481-3281
Toll Free 800-687-0897

Janice Clement
New Bail Agent
serving
Bailey and Parmer
Counties

We take all major credit cards and payment arrangements can be made

Sponsored by Clovis Community College and THE CITIZENS BANK OF CLOVIS

La Catrina Quartet

Mar 9

7PM

TICKETS \$15/12
MARSHALL AUDITORIUM

"Youthful energy and mature artistry."
—Los Angeles Times

Ticket prices are \$15 General Admission and \$12 Senior, Military, and Students. Tickets are available at the CCC Cashier Windows, CAFB ITT Office, or at the door the evening of the performance (pending availability). More info: 575.769.4956

www.clovis.edu/culturalarts Tickets / 575.769.4035

MORTON INSURANCE AGENCY

A CROP INSURANCE AGENT THAT CAN TAYLOR A CROP INSURANCE POLICY FOR YOU THAT WILL HELP MAXIMIZE

FUTURE POTENTIAL "FSA SURE PROGRAM BENEFITS"

- *SALES CLOSING DATE 3-15-2010
- *30+ YEARS OF EXPERIENCE WITH INSURANCE/CROPS/LIVESTOCK
- *DEGREED AGRICULTURAL ECONOMIST AVAILABLE TO YOU
- *KNOWLEDGE OF COMMODITY MARKET INTERACTION WITH REVENUE PRODUCTS
- *LICENSED IN TEXAS & NEW MEXICO
- *BILINGUAL

QUOTES ON ALL PRODUCTS AVAILABLE AT THE FOLLOWING TELEPHONE NUMBERS:

1.806.266.5561 or 1.800.490.1608

CROP & LIVESTOCK MPCI, CROP HAIL, AUTO, HOMEOWNERS, FARM/RANCH PRODUCTS

"This institution is an equal opportunity provider and employer"

Sports

Varsity Mules... Continued from page 1

Floydada and got past the Mules on Friday for the first place position in the bracket.

Floydada and Muleshoe went through the motions Saturday.

The Whirlwinds emerged on top to claim the second place spot and the Mules entered the playoffs through the third place door.

The Mules began to battle back against Floydada Tuesday night in the second period.

Beau Avila, Zach Toscano and Tyson Turnbow each dropped in 3-pointers during the period.

Cooper Washington made two baskets from the blocks for four points.

Ryan DeLeon, Turnbow and Isaias Guerra were all two-of-two from the free throw line and each

made a basket.

The Mules scored 18 points to Floydada's 15 in the second period to trail the Whirlwinds 41-25 at the half.

The Whirlwinds caught fire again from behind the arc in the third period with three treys.

Turnbow made two 3-pointers for the Mules and Washington added two baskets.

DeLeon made one free throw as the Mules gave back the three points they had cut from the Floydada lead in the second quarter.

The Mules trailed 55-36 with eight minutes left to play. The Mules pulled out all the stops in the final quarter.

They cut Floydada's lead to seven with 2:15 left in the game. But, they could get no closer and

the Whirlwinds held on for the win.

Perez, Avila and Turnbow all dropped in 3-pointers in the final period.

Toscano had the first bucket of the period and made five charity tosses for seven during the period.

Avila and Guerra both added a basket and Turnbow made two hoops plus a pair of free throws.

The Mules had out scored Floydada 26-16. Turnbow led the Mules with 22 points on the night.

Washington dropped in 12 points and Toscano added 10. Avila finished with eight points, Perez six, Guerra four and DeLeon had three.

Because of the seeding tournament the (18-14, 7-3) Mules had one



Mule Jonathan Perez drives against a Friona player. Photograph by Stacy Conner

workout to prepare for the (15-10, 8-2) Spearman Lynx.

The Mules and

Spearman met in Canyon High gymnasium Tuesday and the winner moves on to play the

District 4-2A champion, (11-1) Sonora Broncos, in the Area round of the playoffs.

Muleshoe's basketball ladies receive all-district honors

By Delton Wilhite
Sportswriter

The coaches of the girl's basketball teams gathered in the Dist. 2-2A meeting Wednesday to elect the All-District selections.

It is very unusual for a girl to be chosen as the league's Most Valuable Player and not get her team in the playoffs.

That happened Wednesday with Muleshoe's Sarah Johnson being chosen as the Dist. 2-2A Most Valuable Player.

"It was a really great honor for Sarah," said Lady Mule Coach Val Acree. "For Sarah to be chosen as the MVP and the Lady Mules are not in the playoffs shows how great a player she is. She had a good season but really showed up to play in district competition."

"She averaged 15.5 points per game, 5.8 assists, and 4.3 rebounds during the season but during district she had 20.3 points, 6.8 assists and 5.2 rebounds. She broke her own single game assist record against Childress with 15 and had a career high 31 points against Tulia."

"She was selected as

the Happy State Bank Athlete of the Week by the *Amarillo Globe News*," continued Acree. "She had made their Athlete of the Week Honor Roll three times. Sarah's career ends in Muleshoe as the Lady Mules all time leader in assists with 528, steals, 281, and 176 made 3-pointers. She is the second leading scorer with 1558 points behind Sara Benham."

"She is being recruited by Seward County College (Kansas), Pratt Community College (Kansas), Lamar Community College (Colorado), Clarendon College (Texas) and Howard County Junior College (Texas)."

"I am very excited about Sarah's future as a college basketball player but I am not excited not seeing her in a Lady Mule uniform next season. I will not just miss her basketball abilities but I will miss her. She is a great kid and the kind that do not come along every day. The Lady Mules will miss number 10," concluded the coach.

Yvonne Gardea was selected as first team All-District by the coaches.

"I was very pleased that

Yvonne was selected," said Acree. "She has improved so much as a basketball player. She was both our second leading scorer and our leading rebounder."

"She averaged 12.5 points and 8.3 rebounds during the season. When we got to district she averaged 14.6 points and 8.2 rebounds per game. She had career highs with 25 points against Childress and 14 rebounds against Floydada."

"Yvonne made the *Amarillo Globe News* Happy State Bank Athlete of the Week Honor Roll once during the season," continued the coach. I am

excited that Yvonne will be back in a Lady Mule uniform for another year. She is becoming one of the better players in this area. Clarendon College is already recruiting her and if she continues to improve she has a chance to become one of the best players to ever wear the Lady Mule uniform," concluded Acree.

The Co-Offensive MVPs were Megan Aleman (Floydada) and Valeria Quiroz (Dimmitt). The Defensive MVP was Regan Anthony (Friona) and the Newcomer of the Year was Tanasia Cornish (Childress).

The remaining members of the All-

District team were

Whitley Beedy (Floydada), Vicky Flemons (Childress) and Steffanee Pond (Tulia). Blanca Suarez (Floydada), Shea Myatt (Dimmitt) and Sasha Estrada (Friona) were also chosen. Rounding out the All-District team were Avery Miller (Floydada), Kasie Harris (Tulia) and Haley Bonilla (Dimmitt).

Three Lady Mules were selected as Honorable Mentions to the All-District squad. They were BreAnn Baca, Val Olivas and Alyssa

Leal.

"BreAnn has improved since I first arrived in Muleshoe," said Acree. "She has been a lot of fun to watch as she has grown up. Any time she is on the court she is playing absolutely as hard as she can with a huge grin on her face. We will miss her next season."

"Val is a junior post and is constantly improving her game. She averaged six points and 7.7 rebounds per game. She is normally at a disadvantage on defense

Continued on page 7

COMPLETE AUTOMOTIVE REPAIR

Burton Service Center

272-5330
Cell: 946-8274

IRRIGATION ENGINES & SERVICE
COMPUTER DIAGNOSTICS
OIL CHANGES STATE INSPECTIONS

803 W. American Blvd., Muleshoe

Five Area Telephone Cooperative, Inc.

53rd Annual Meeting

Saturday, February 27, 2010
10:00 a.m.

Bailey County Coliseum

* Only members of Five Area Telephone Cooperative are included in this membership.

Support the Boosters Who Support Our Teams, Schools and Community!

MULESHOE ANIMAL CLINIC & MULESHOE VET SUPPLY

1430 US HWY. 84, MULESHOE
272-3061 OR 272-4990

FIVE AREA TELEPHONE COOPERATIVE

302 Uvalde Muleshoe, TX
272-5533

Irrigation Pumps & Power

www.drippi.com
West Hwy. 84
Muleshoe • 272-5597

Zimmatic CENTER-PIVOTS

HARTLINE HEATING & A/C

(806) 272-7762
TACLB 023739e

Turn to the Experts

T&S CONCRETE, INC.

Two Locations
Muleshoe • 272-4501
Friona • 250-5066

Terry Copley
Shannon Cochran

BCEC
A Touchstone Energy Cooperative

BAILEY COUNTY ELECTRIC COOPERATIVE ASSN.

305 E. Ave. B, Muleshoe
272-4504

WESTCARD 66

Western "66"

607 N. 1st St.
Muleshoe • 272-4556

LOWE'S MARKETPLACE

401 W. American Blvd., Muleshoe

MV Inc.

2601 W. American Blvd.
P.O. Box 631
Muleshoe, Texas
(806) 272-4266
Mobile (806) 946-8763
mviinc@fivearea.com

Leal's RESTAURANT

1010 W. American Blvd.
Muleshoe, Texas
272-3294

"The Original - Since 1957"

McDONALD'S OF MULESHOE

1315 W. American Blvd.
806-272-3333

CHS

Clovis Hwy. West
Muleshoe • 272-4203
Bruce Bruns, Location Mgr.

GO MULES AND LADY MULES - We're Behind You All The Way!!!!

Muleshoe Tire

107 Main Street, Muleshoe
272-4594

Support Medical of Muleshoe

Brandi Angeley
BRANCH MANAGER

- Oxygen
- Motorized Wheelchairs
- Home Medical Equipment
- Scrubs

RETAIL SHOWROOM
103 S. Main Street
(806) 272-7552 • Fax (806) 272-7561
www.supportmedical.com



Call today and ask about special savings!

REACH Broadband

1.800.687.1258

minsa

Hwy. 84 E. of Muleshoe • 272-5545

Sports

Lady Mules... Continued from page 6

having to guard a player that is two to three inches taller than she is. But she was always battling and we are fortunate to have her back for one more season," continued Acree.

"Alyssa is a sophomore

and came a long way this season. She averaged seven points and six rebounds per game. At times she would drive me crazy but I would remind myself that she was just a sophomore that went from starting on the

freshmen team to starting on the varsity in just one summer."

"She used her speed to beat the other post players down the floor for an easy lay up. I am most proud of Alyssa for her improvement on defense

during the season. Coach Sudduth worked with her on defense and she utilized what she learned during games. I am looking forward to having her for two more years and to see how much she improves in that time."

Muleshoe Ladies Association

The Muleshoe Ladies Association met Wednesday, Feb. 17, for its monthly luncheon. Marlene Martin and Jenny Bamert cooked and served the meal.

Club president Anita Black opened the meeting with a prayer of gratitude led by Deborah Noble.

Noble called the roll, and read the minutes from January's meeting. There were 19 in attendance.

Members having February birthdays include Donna Glover, Glenda Ott, and Helen Templeton.

Judy Wilbanks gave the treasurer's report.

Under old business, it was decided to join the Women's West Texas Golf Association.

Under new business, we discussed getting a new couch for the ladies locker room.

The Jennyslippers Tournament will be held Aug. 14.

The ladies association will be having a concession stand for the Muleskinner Tournament on July 13 and Aug. 1, and will be going to Ruidosa July 8-10.

Playday chairman Pat Kirk award the following card and golf players:

Jan. 20 — Cards, first pat hand, Anita Black.

Jan. 27 — Cards, most points first game, Anita Black and Wilbanks; Golf, most bogeys, Helen Templeton and Wilbanks.

Feb. 3 — Cards, best score second game,



Kay Field, Pat Kirk and Deborah Noble

Templeton and Claudine Elliott.

Feb. 10 — Cards, worst score first game, Anita Black and Matthews.

Kirk divided up the teams with the winning team being Kay Field, Kirk and Noble, with a

score of 72.

The door prize was drawn by Analita Haley, and won by Noble.

The next meeting will be on Wednesday, March 17.

Lazbuddie ISD honor rolls are released

The Lazbuddie Independent School District released the following honor rolls for its fourth six-week period.

The students honored included:

Elementary "A"
Presley Agee, John Henry Schacher, Eric Bartley, Rebecca Berry, Coby Glover,

Anita Martens, Preston Stewart, Sydney Urbantke, Devon Pacheco, Andres Solano and Cambree Glover.

Elementary "B"
Garrison Bohler, Maribel Gomez, Eduardo Martinez, Jerry Reyes, Joshua Cox, Adrian Fernandez, Tyler Haseloff, Miranda Salazar, Avery Timms,

Jesus Arreola, Marisol Gomez, TJB Ballard, Triston Bomer, Bernardo Lopez, Ginsyn McGehee, Casey Bartley, Ashley Scott and Karsyn Youngblood.

Junior High "A"
Micah Vera, Lacey Jesko and Shyann Rainey.

Junior High "AB"
Iridian Fernandez, Juan Samarron, Austyn Steinbock, Albert Moran, Haley Beasley and Ashton Mason.

High School "A"
Shea Scott, Jarrod Jesko, Carrie Beth Gilly, Cassidy Lowe, Lydia Campos,

Katie Chavez, Kayle Jesko and Logan Mason.

High School "AB"
Jessica Estrada, Karina Galaviz, Ross Steinbock, Jordan Mason, Kylie McGehee,

Todd Nichols, Joseline Garcia, Jordan Hernandez, Elias Ramos, Colton Weaver,

Darin Ivy, Kinzi Schacher, Riley Smith and Monica Vera.



Lazbuddie power lifting

Loughorn Angel Samarron competed in the Randall High School Power Lifting meet and came in at third place in his weight division.

MHS choir students place at Frenship UIL event

On Saturday, Feb. 6, MHS choir students competed in the UIL Vocal Solo and Ensemble competition held at Frenship High School.

There are 21 students who have advanced to the State UIL level in June. These students are: In the Madrigal competition — Daniela Aburto, Melissa Mendoza, Devnie Orozco, Jodee Hall, Ali Eagle, Jessica Behrends, Alyssa Martinez, Patrick Mendoza, Isaiah



Guerrero and Alex Flores. In the Solo competition — Garrison Myers, Alexis Rodriguez, Marissa Hernandez, Jodee Hall,

Cassandra Torres, Shayla Carpenter, Natalie Head, Tori Alvarado, Jessica Behrends, Daniela Aburto and Xavier Cuevas.

Lloyd Bradshaw

Candidate for Pct. 4 County Commissioner

To the Citizens of The Lazbuddie Community;

Next Tuesday, **March 2, 2010 is Primary Election Day in Texas.** Early voters can cast their ballots any day this week at the Parmer County Courthouse in Farwell, Texas. Local early voting will be Friday, February 26, 2010 at the Lazbuddie High School.

Please go to the polls and **cast your Vote! Help America, Texas, Parmer County and Lazbuddie select it's leaders!**

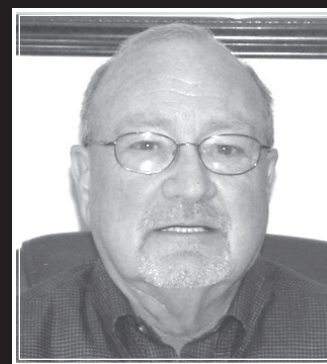
Your friendly support and encouragement is Greatly Appreciated!

Lloyd Bradshaw

Political Ad Paid for by Lloyd Bradshaw

VOTE for James L. Brown

Republican candidate for Bailey County Commissioner Precinct 2



Focus for the Future

Paid for by James L. Brown



in the Primary on Tuesday, March 2, 2010

✓ **Deb Stone, Incumbent, Justice of the Peace**



Serving you with honesty, integrity, and 6 years of experience

Political Ad Paid for by Deb Stone

You're Invited to a Campaign Fundraiser for Victor Leal

Republican Candidate for State Representative - District 87

DATE: Thursday, February 25th

TIME: 5pm to 7pm

PLACE: Bailey County Coliseum

HOST COMMITTEE:

Bruce & Cindy Barrett, Travis & Sue Bessire, James & Diane Brown, Brian & Tiffany Boehning, James & Mary Busby, JD & Julie Cage, Todd & Starla Ellis, Bobby & Bennie Sue Free, Tom & Lori Hartley, Tommy & Jan King, Jay & Sally Messenger, Dr Bruce & Cindy Purdy, Dr Kyle & Bernita Sheets, Tona Simmacher, John & Marilyn Young



Political Ad Paid By Victor Leal Campaign; Jane Juett, Treasurer



March 2

March 2

Get Out & Vote



Garry Shipman


Republican candidate for Bailey County Commissioner Precinct 2

Your vote is appreciated

Paid for by Garry Shipman

WANTED

LOOK WHO'S 40!!!
HE WAS PACKING HEAT
WAY BACK THEN!!!
HAPPY BIRTHDAY!!!!

LOVE YA


We're watching competitions every...  ...day on television and learning about the sports! 

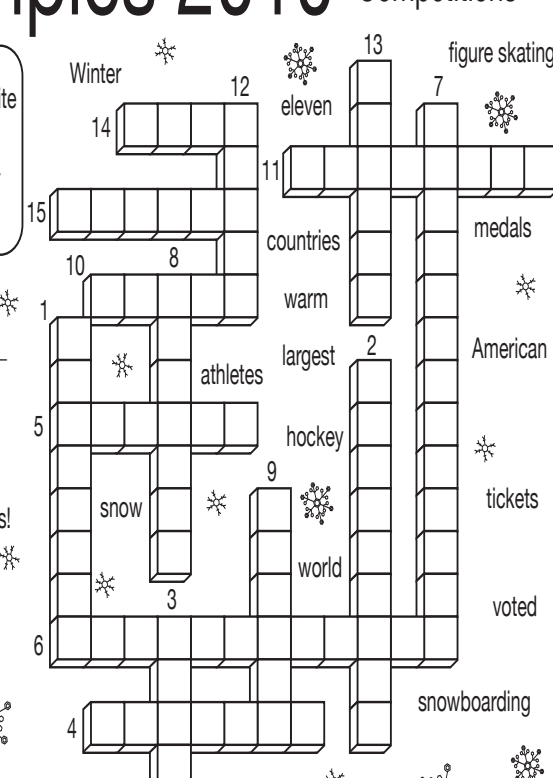
Newspaper Fun!

www.readingclubfun.com Annimills LLC © 2010 V7-N9

Winter Olympics 2010 Sports and Competitions

Yahoo! I love the Winter Olympic Games! Skating, skiing and snowboarding are some of my favorite cold season sports. Watching people from all over the world compete in the Games is such a thrill. What do you know the about the Winter Olympics? **Do this puzzle to find out!**

- About 5,500 _____ are competing.
- They come from more than 80 _____.
- 2010 is the first year that athletes from largely _____ countries of Ghana, the Bahamas, Pakistan and Peru are competing in the Winter Olympics.
- The United States has sent 216 athletes to the Games. It is one of the _____ groups.
- Canada's most popular sport is _____, so Canadians are sure to tune into these games!
- _____ has been an Olympic sport since 1998 and the United States has won more medals in it than any other country.
- This sport is beloved all over the world and will be the most widely viewed (2 words).
- There are 1.6 million _____ being sold to watch the competitions.
- The Royal Canadian Mint has made 615 _____ for the Games!
- The last Olympic gold medal made out of solid gold was given in 1912.
- The International Olympic Committee _____ to include a new event called "Snowboard Cross" into the 2006 Games.
- Speed skater Bonnie Blair held the _____ record for the most Winter Olympics medals (6 medals) before 2010.
- Cross-country Norwegian skier Bjorn Daehlie holds 12 medals, the _____ record for the most medals won.
- The youngest athlete ever to compete in the Winter Olympics was Cecilia Colledge, a figure skater (for Britain in 1932) at _____ years of age.
- The weather in Vancouver has been so warm that they have trucked in _____ for the outside events in the lower areas.
- In 2014, the _____ Olympics will take place in Sochi, Russia.




Which Olympic Sport Is It?

Read the clues to fill in the puzzle with the Olympic sports!

- done in the Alps in Europe for many years; Olympic sport since 1936, includes the downhill event, which is the longest with highest speeds, and the slalom, which has the shortest course with the quickest turns
- newest winter event, very popular with youth in the U.S.
- partly enclosed vehicle on steerable blades racing on iced tracks
- average "flight time" is less than 30 seconds
- combination sport of cross-country skiing and rifle shooting, skills first used by hunters and soldiers
- started as a mix of skiing and acrobatics
- most popular winter Olympic sport worldwide
- went on a 52-year break before returning in 1992, a lot like shuffleboard
- Olympic-style toboggan: steering and speed important
- most popular sport of the host country, Canada
- one of the fastest Olympic sports; athletes go up to 100 miles per hour
- the U.S. almost didn't have a team this year due to lack of funding, but thanks to donations they are competing in 2010

5th Check out our 5th Anniversary extra puzzles this week: **Winter Olympic Sports and February Phrases** They are ready for you to print out: www.readingclubfun.com



Buzz-A-Licious Recipes

Hamburger Casserole

2 lbs. ground beef
1 pkg. tater tots
1 can of cheddar cheese soup
1 can of cream of celery soup
Brown meat; add soups and stir. Put half of the package of tater tots in bottom of casserole dish and pour beef mixture on top of tater tots; layer remaining tater tots on top of beef. Bake at 350 degrees for 30 minutes.

SUDAN ISD

EXCELLENCE IN EDUCATION



WWW.SUDANISD.NET
Hwy. 303 SUDAN, TX 79371
PHONE: (806) 227-2431
FAX: (806) 227-2146

KING AG AVIATION, INC.

Specializing in Aerial Spraying - Insecticide, Herbicide & Seeding - Field Scouting Service

Johnny King Home (806) 227-2211
P.O. Box 189 Fax (806) 946-3659
Sudan, Texas 79371 Mobile (806) 946-7309
Business (806) 946-3399 Vernon Office (940) 552-6102

MULESHOE CATTLE MARKET

The Muleshoe Cattle Market is brought to you each week by Muleshoe Livestock Auction, located east of Muleshoe on U.S. 84. Muleshoe Livestock conducts sales every Saturday, beginning with hogs, sheep and goats at 10 a.m. and cattle following at approximately noon.

Good Luck to all area Stock Show Participants...

FOR INFO. ON SALES OR TO CONSIGN CATTLE - 272-4201

Lamb County 'Relay for Life' set

The Lamb County 2010 Relay For Life has been set for June 11.

The chairman for this years relay will be Todd Trusty. Anyone wishing to have a team, or requesting additional information, is ask to contact Todd Trusty at "tandlstrusty@juno.com."

State Farm®

Providing Insurance and Financial Services
Home Office, Bloomington, Illinois 61710



Nobody takes care of you like State Farm®

Jan McCrary
Agent
324 Phelps, P.O. Box 1189
Littlefield, Texas 79339
Bus: 806-385-4986
Fax: 806-385-4012
jan.mccrary.b32x@statefarm.com



We're at Your Service

Visit the following local businesses for quality service and customer satisfaction

CABINETS LOOKING

Wills Doors & More
Ronnie Wills 806-441-0931
Richard Wills 806-773-1550

A LITTLE TIRED?

Custom Cabinetry & Remodeling
New Cabinets • Refacing Cabinets
Remodel Kitchens • Remodel Baths

If we can't fix it, throw it away!

Sheetrock, Drywalling, Tape & Bed, Patch Up Jobs, Acoustic & Paneling, Small Concrete Jobs, Picket Fences, Bathroom Remodeling, Floor Tile, Sky Lights, Carpets, Garage Doors, Insulation, Etc. Add On's and Roofing - References Available

Handy Randy

We will travel!

Pager: 766-9342 Cell: 806-632-5261
Home: 806-385-3103 Member of BBB of Lubbock Littlefield, TX

A & V Handyman Service

• Concrete • Remodeling
• Metal • Tile • Electrical • Roofing

Gerald Ambriz
806-749-3354

A & V Janitorial Services

Manuel Vasquez
Partner
romeo79347@yahoo.com

(806) 729-3354
(806) 729-7054
302 West 20th
Muleshoe, TX 79347


SHOP THESE MULESHOE MERCHANTS!

NEWTON APPLIANCE

Heating
Air Conditioning
New and Used Appliances
Sales • Service • Installation

"We can beat the competitor's prices" Call Presley for your heating and air conditioning needs.

Locally Owned since 1989
215 Main St., Muleshoe
Open Tues.-Fri. 10-5
806-272-3272



A Touchstone Energy® Cooperative

BAILEY COUNTY ELECTRIC COOPERATIVE ASSOCIATION

305 E. Ave. B
Muleshoe, Texas
272-4504

Carolyn's Florals & Gifts

106 E. American Blvd.
Muleshoe, Texas
272-5911
Open Daily
Fresh Flowers
Great Prices



Lowe's MARKETPLACE

401 W. American Blvd.
Muleshoe, Texas
272-4585



FARMERS

Julie DeBruin
Agent

Call for a free quote
AUTO • LIFE
HOME • BUSINESS

1602 W. American Blvd.
Muleshoe, Texas
272-7548
jdebruin@farmersagent.com

ALVARADO PARTY RENTALS

INFLATABLE BOUNCER
Safe • Affordable
Fun For Kids!
BEST PRICES AROUND

272-5588
2 Hrs. \$50 - 4 Hrs. \$75 - 6 Hrs. \$100
8 Hrs. \$125

Birthday Parties • School Functions • Special Events
DELIVERY, SETUP & PICKUP
SE HABLA ESPANOL. EDDIE & RACHEL ALVARADO
DJ SERVICES ALSO AVAILABLE

2231



RED WING SHOES®
Made in USA



The Fair Store
120 Main 272-3500

To place your ad here, call Terry at the Journal

272-4536

CLASSIFIEDS

Deadline is Monday at 5 PM to place a Classified ad. Call 272-4536.

LEGAL/PUBLIC NOTICE

NOTICE TO CONTRACTORS OF TEXAS DEPARTMENT OF TRANSPORTATION (TXDOT) PROPOSED DEPARTMENT OF TRANSPORTATION CONTRACTS

Sealed proposals for contracts listed below will be received by TxDOT until the date(s) shown below, and then publicly read. CONSTRUCTION/ MAINTENANCE/ BUILDING FACILITIES CONTRACT(S)

Dist/Div: Lubbock
Contract 0905-00-053 for FY 2010 PVMT MARKINGS in LUBBOCK County, etc will be opened on March 10, 2010 at 1:00 pm at the State Office. Plans and specifications are available for inspection, along with bidding proposals, and applications for the TxDOT Prequalified Contractor's list, at the applicable State and/or Dist/Div Offices listed below. If applicable, bidders must submit prequalification information to TxDOT at least 10 days prior to the bid date to be eligible to bid on a project. Prequalification materials may be requested from the State Office listed below. Plans for the above contract(s) are available from TxDOT's website at www.txdot.gov and from reproduction companies at the expense of the contractor.

NPO: 32155
State Office

Constr./Maint. Division
200 E. Riverside Dr. 78704
Austin, Texas 512-416-2540
Phone: 512-416-2540
Dist/Div Office(s)

Lubbock District Engineer
135 Slaton
Lubbock, Texas 79408-0771
Phone: 806-745-4411

Minimum wage rates are set out in bidding documents and the rates will be part of the contract. TXDOT ensures that bidders will not be discriminated against on the grounds of race, color, sex, or national origin.

Published in the Muleshoe Journal February 18, 2010 and February 25, 2010.

NOTICE OF SALE

The Bailey County Commissioners Court will offer for sale to the highest bidder various items of surplus and salvage property (i.e. desk, copier, vehicle etc.). A complete listing of items, and location where they can be inspected, is in the County Judge's office, copies are available.

All bids must be in writing and must refer to the item number being bid on. Bids must be in sealed envelopes marked as follows: "Bid for Purchase of Surplus Property", and submitted to the County Judge's office (300 S. 1st, Muleshoe) no later than 10:00 a.m., Monday, March 8, 2010.

All items will be sold "AS IS". The Court reserves the right to accept or reject any or all bids.

Published in The Muleshoe Journal February 25, 2010 and March 4, 2010.

Muleshoe ISD will be accepting proposals for the demolition of the Muleshoe high school east side bleachers at the football field. Proposals will be due no later than 4:00pm. CST. Thursday March 11th. At the M.I.S.D. administration building located at 514 west Ave. G. Muleshoe, Texas 79347. Information and viewing of site may be arranged by calling Sam Whalin (806) 272-7400 Monday thru Friday between the hours of 8:00 am. and 4:00 pm.. MISD reserves the right to receive and or reject any or all proposals in the best interest of the district.

Published in The Muleshoe Journal February 25, 2010 and March 4, 2010.

SELL IT BUY IT
In the Classifieds
Call 272-4536

HELP WANTED

Four Temp positions: Farm work, 03/25/10 to 12/31/10 @ 12.76 p/hr. Housing provided, 48 hrs p/wk. 3/4 guarantee, transportation and subsistence expenses to worksite paid after 50% completion of contract. Tools, equipment provided at no cost. Min. 3 months experience. Duties: drive, plant, harvest, store grain, repair operate tractor, rock picker, plow, disc, drill, harvest

equipment, sprayer, grain truck, read and speak sufficient English. Larry Ulmer, Fullerton, ND, Interested? Apply at ND Workforce Solutions office job # 210315.

Nursing Staff Needed Muleshoe Area Medical Center has multiple Registered Nurse and CNA positions available. Fax resumes to 806-272-4113, or mail to Muleshoe Area

Hospital District, 708 South First Street, Muleshoe, TX 79347 Attn: Human Resource Department; or e-mail snichols@mahdtx.org.

Hiring two experienced certified electricians. Apply at Minsa, 1-1/4 mi. east of Muleshoe on Hwy. 84.

One Temp position: Farm work, 03/11/10 to 12/31/10 @ 12.76 p/hr. Housing provided, 48 hrs p/wk. 3/4 guarantee, transportation and subsistence expenses to worksite paid after 50% completion of contract. Tools, equipment provided at no cost. Min. 3 months experience. Duties: drive, plant, harvest, store grain, repair operate tractor, rock picker, plow, disc, drill, harvest equip, sprayer, grain truck, read and speak sufficient English. Jim Artz Farms, Souris, ND, Interested? Apply at ND Workforce Solutions office job # 209739.

Full time LVN needed for 2 pm to 10 pm shift. Benefits, competitive pay. Apply in person. Runningwater Draw Care Center, 800 West 13th ST, Olton, Texas. 806-285-2677.

Two Temporary positions: Farm work, 03/20/10 to 12/31/10 @ 12.76 p/hr. Housing provided, 48 hrs p/wk. 3/4 guarantee, transportation and subsistence expenses to worksite paid after 50% completion of contract. Tools, equipment provided at no cost. Min. 3 months experience. Duties: drive, plant, harvest, store grain, repair operate tractor, rock picker, plow, disc, drill, harvest equip, sprayer, grain truck, read and speak sufficient English. Steve Earley, Heaton, ND, Interested? Apply at ND Workforce Solutions office job # 210032.

DRIVER

HOME DAILY

Our Business is Growing! Clovis, NM Area Local and Shuttle Drivers Wanted

* Medical, Dental and Vision
* Paid Holidays & Vacation
CDL-A w/ tank endorsement
2 yrs. tractor trailer exp.

RUAN
800-879-7826

www.ruan.com
Dedicated to Diversity. EOE

Visit us on the web at

www.muleshoejournal.com

Two Temp positions: Farm work, 03/22/10 to 12/31/10 @ 12.76 p/hr. Housing provided, 48 hrs p/wk. 3/4 guarantee, transportation and subsistence expenses to worksite paid after 50% completion of contract. Tools, equipment provided at no cost. Min. 3 months experience. Duties: drive, plant, harvest, store grain, repair operate tractor, rock picker, plow, disc, drill, harvest equip, sprayer, grain truck, read and speak sufficient English. Dough Murray, Jamestown, ND, Interested? Apply at ND Workforce Solutions office job # 210066.

Cargill Cattle Feeders, Bovina, Texas - Full time, temporary feed truck driver position available. Responsibilities include operation, maintenance and daily servicing of feed truck. Applicant should have the ability to lift 50 lbs, operate large machinery and maintain a safe work environment. Schedule includes 2 days off most weeks and hours will average 50-60 straight wage no overtime. Interested applicants should apply in person at Cargill Cattle Feeders, 600 US Hwy 60. (806) 225-4400.

Full time Certified Nurse Aide for 2pm to 10pm shift. Benefits, competitive pay. Apply in person. Runningwater Draw Care Center, 800 West 13th ST, Olton, Texas. 806-285-2677.

Position available, part-time, Monday through Friday must have people skills, computer skills, and generalized office skills. Pick up applications at Muleshoe Chamber of Commerce, Mon. through Fri. deadline for applications is March 5, 2010.

Mystery Shoppers needed. Receive \$500 grocery voucher get paid every shop. Call 877-737-7547.

FOR SALE

Letting complete full/queen FIVE PIECE bedroom suite go, bed, dresser, mirror, nightstand, fully assembled. Still never used, \$500. 806-438-0081.

Sectional, great color, brand new with original tags. List \$2980, sacrifice \$890. Must sell quickly, 806-438-0081.

BRAND NAME queen pillow top mattress and foundation. NEVER USED!!! \$150. Dust mite mattress protector. \$50. 806-438-0081.

Call 272-4536 to place your classified now!!

HOUSE FOR SALE BY OWNER

1006 W. 6th St. 3/2 Approx. 2,000 sq. ft. Den, lvg. room, utility. Lg. bedrooms w/X-Lg. walk-in closets, large master bath. Kitchen- ceramic tile/double oven. 2 water heaters, Cent. H&A, spr. sys. 14x24 workshop/storage. Asking \$89,900. Call Annette 272-4943.

3-pc complete KING orthopedic mattress set, new in plastic, \$295. Dust mite mattress protector \$50. 806-438-0081.

Chenille fabric sofa, loveseat set. 3 pc coffee table set \$99. BRAND NEW!! Solid wood frame. Mfg. Warr. \$550. 806-549-3110.

New mattress sets, twin \$99, full \$145, queen \$175 only at Quality Furniture. 575-769-2575, 601 Main, Clovis.

1986 Camper Trailer, 23 ft. long, bumper pull, sleeps 5, fully equipped \$5,000.00. 806-566-5727 or 272-4071.

Subscribe!!

PROPERTY FOR SALE

Wanted, Mobile Home lot within city limits, 806-566-5727.

REAL ESTATE

Byrd Realty
Ronald Byrd 575-760-1495 Licensed Broker
Crista Bass 806-946-7261 Sales Associate
Carleton Johnson 806-789-4289 Sales Associate

228 Main Street, Muleshoe, Texas
Check all of our listings at www.byrdrealestate.net

ERA Courtyard REAL ESTATE

42/2 two story country home with unique appeal - 1972 sq. ft. living area 5 M. SW of Sudan on FM 298. New stucco on exterior, central heat and air (electric) with formal dining room den, living room, laundry room along with 2 room unfinished basement (not included as living area). Large front and back yard with established trees. Unattached garage with extra room that could be used for game room, apt. or storage. Priced at \$110,000.

3-2-2 Carport approx. 1572 sq. ft. Located at 505 Main, Sudan this is a great home with even better location only 1/2 block from Sudan ISD Campus, central heat & a/c, steel roof, formal living room and den, storm cellar, built in carport and good yard w/established trees. Well built and neat. \$70,000.

Monty Edwards, Agent
(806) 786-5426



We're More Than Just Print
Upload your videos at www.muleshoejournal.com

FEED, SEED & HAY

Oat Seed
Forage Type
800-299-9273
806-258-7394

Time to clean out your garage and closets, sell it here in the Classifieds!!

SERVICES

REX LOWERY
PAINTING
Painting in Muleshoe area over 40 years!
FREE ESTIMATES
Cell 789-9142

Your classified ad here
Call 272-4536

List Your Real Estate For Sale Here!

Vic Coker Land Co.
Agricultural Real Estate

Bailey County
1083 acres of grassland - Trophy Mule Deer area. Good quail & dove hunting. 2 bedroom 2 bath house with fireplace. 2 bedroom bunkhouse with one bath, horse stall & pens, tack room/shop area and garage.
354 acres of expired C.R.P. - good grass cover, good improved pasture or return to dryland production.
Near Muleshoe - 90 acres grass seed farm, 2 center pivots, popular varieties of foundation seed.
West Camp - 320 acres non-irrigated on pavement, 1 stock well, 3 other wells located on property.

Lamb County
Northwest of Earth - 160 acres, excellent soil, lays good, 3 wells, center pivot, good set of pens.
320 Acres Near Earth - 2 sprinklers, 5 wells all tied together lays perfect, excellent soil, good fertility.
NEW LISTING - Springlake area - 320 acres, good soil, 4 wells, 2 sprinklers, good direct payment.

Parmer County
Larzbudde - 108 acres with 2 irrigation wells, with or without sprinkler, good soil, lays good.

Castro County
Dodd area - 156 acres. 600 g.p.m., excellent soils, lays good, good pivot, on pavement.

316 Main Street • Muleshoe, Texas
Office: 806-272-3100 Home: 806-965-2468
Website: www.vicoland.com

Nieman Realty

116 E. Ave. C • George Nieman, Broker • 272-5285 or 272-5286
CHECK OUR LISTING INFO., PHOTOS, ETC. ON-LINE AT WWW.NIEMANREALTY.COM HAVE BUYERS! NEED HOME AND LAND LISTINGS!!

HIGH SCHOOL AREA

- VERY NICE 3-2-2 Brick home, Cent. A&H, built-ins, FP, approx. 2336' lvg. area, auto. spklr, fenced yd, MORE!! \$125K!!
- 3-1 3/2-2 w/workshop, wall furnace heat, window reffrig, plus efficiency apt, storage bldg, fenced yard, corner lot. \$77,000!!
- VERY NICE 3-3-2 CARPORT Home, Cent. A&H, built-ins, fireplace, approx. 2653' living area, covered deck & patio, workshop/storage, cellar!! Auto. spklr. (front yd.) \$140,000!!
- 3-1-1 Home, Cent. A&H, fenced yard, storage building. \$39,500!!

RICHLAND HILLS • PARKRIDGE • HIGHLAND

- NICE 2-1-3 carport Home, carpet, tile, fans, fenced yd., storage bldg. MORE!! \$45K!! REDUCED TO \$35K!!
- 2 NICELY REMODELED DUPLEX UNITS & 1 NEW Duplex unit!! PRICED TO SELL!!
- NICELY REMODELED 3-2-2 Brick, new Cent. A&H, built-ins, FP, 3125' lvg. area, spklr. sys., fenced yard, MORE!! REDUCED \$195K!! MAKE OFFER!!
- NICE 3-2-1 Brick Home, Cent. A&H, built-ins, FP, office, auto. spklr, fenced yd., garage/workshop/storage bldg. in back yd.!! \$147,000 PRICE REDUCED \$110,000.00!!
- 4 bedroom, 5.5 bath, 2 car garage, geothermal (cent. A&H), built-ins, FP, approx. 5100', loads of storage, workshop/storage, RV port, auto. spklr., REDUCED TO \$185K!!
- 2 bedroom, 1.5 bath, 2 car garage, Cent. A&H, built-ins, basement, fenced yard!! \$79,900!! PRICE REDUCED \$74,900!! MAKE OFFER!!
- VERY NICE 3-1 3/2-2 Brick home, Cent. A&H, built-ins, fireplace, thermal windows & doors, metal trim, workshop/storage, fenced yd., MUCH MORE!! \$139,500!!
- VERY NICE 3-2-2 Brick, Cent. A&H, built-ins, FP, fans, basement, cov. patio, 26' x 30' metal insulated bldg. w/A&H, built-ins, fenced yd.!! \$169K!! MAKE OFFER!!
- 3-1 3/4-2 Brick Home, Cent. A&H, built-ins, FP, covered patio, fenced yd., corner lot, storage bldg.!! \$84,900!! "AS IS"
- VERY NICE 3-2-2 brick home, Cent. A&H, built-ins, FP, corner lot, MUST SEE!!! \$130K!!

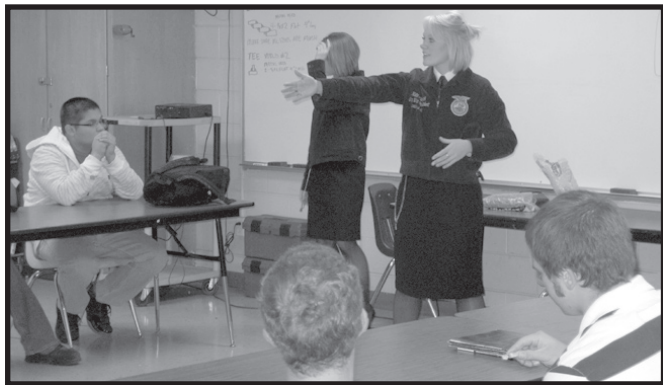
RURAL

- VERY NICE CUSTOM BUILT 3 Bedroom, 3 Bath, 2 car garage home, at edge of town on 80 acres!! Geothermal heat & air, built-ins, fp, ash cabinets, approx. 2544' main lvg. area plus 625' finished basement w/safe & storage, spklr system, beautiful trees and landscaping. circle spklr, 5 wire barbwire fence, 36' x 48' metal insulated bldg w/2 12' doors!! MUCH MORE!!
- VERY NICE 4-3 doublewide (2006) on 7.38 acres, Cent. A&H, built-ins, FP, fenced yd., 25' x 40' Metal Bldg. septic system, domestic well, on pavement close to town!! \$152K \$130K!! MAKE OFFER
- Nice 3-2 Home at edge of town on .8 acre tract, Cent. A&H, built-ins, FP, efficiency apt. or guest cottage, horse barn & corral!! PRICE REDUCED!! \$82,500
- NICE 4.8 acre homesites, close to town, deed restricted!! \$17,500!!
- CLAY'S CORNER - VERY NICE 3-2 3/4-2 Home on 5 acres, approx. 2500' lvg. area, remodeled, Cent. A&H, built-ins, FP, whirlpool tub, fenced yard, 600' workshop/storage!! \$185K !!
- 3-1 3/4-2 Home on 80 acres, Geothermal Heat & Air, 2-10 hp. sub. wells w/unggerground tile across east side. Good productive soil!!! \$130K!!

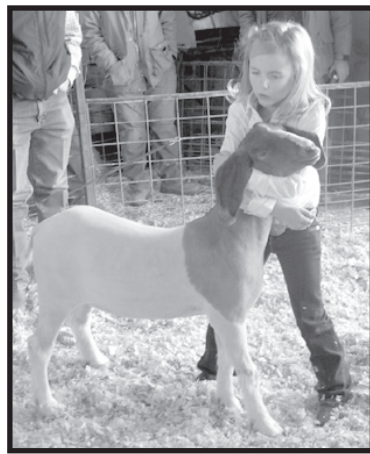
COMMERCIAL

- NICE commercial bldg. w/approx. 3300' plus 1040' upstairs, Cent. A&H, 2 restrooms, MORE!! \$39,500!! MAKE OFFER!!
- NICE OFFICE/SHOP/WAREHOUSE on .7 acre on N. Hwy. 214, Cent. A&H, insulated shop & warehouse, has 1-3/4 bath & 1-1/2 bath!! MUCH MORE!! PRICED TO SELL!! \$85K!!
- 1900' Off. Bldg., 106' x 140' lot on Hwy. 70 and 84!! \$79.5K!! PRICE REDUCED \$62K!!
- VERY NICE CHURCH BLDG. WITH PARSONAGE - Possible Owner Finance!! Price Reduced!!
- GOOD INCOME PROPERTY-LONG TERM LEASE-Approx. 8,075' office bldg. w/approx. 20,000' paved parking area!! PRICE REDUCED \$350K.
- 4.2 acre tract at edge of town, 40' x 60' metal insulated bldg., 2 other sheet iron bldgs., chainlink fenced area, numerous uses!! \$59K!! MAKE OFFER!!
- Approx. 1080' metal building including an office and 3 bay garage/workshop area plus chain link fenced area!! \$39,500!!

In Proud Recognition of Our Future Farmers



2008-2009 Muleshoe FFA Officers
 President, Craig Black; Vice President, Austin Bamert;
 Secretary, Steven Richards; Sentinel, Steven Durben;
 Treasurer, DJ Atwood; Reporter, Alfredo Sanchez;
 Historian, Jose Green; Chaplin, Marisela Campos



2008-2009 Lazbuddie FFA Officers
 Left to Right: Colton Weaver, Treasurer; Justin Schacher,
 Reporter; Kayle Jesko, Secretary; Kinzi Jo Schacher, President;
 Logan Mason, Vice President; James Baca, Sentinel



"Lead Out Loud" is the theme this year as members pledge to show off what makes them premier leaders in their school and communities.

A special guide will appear in next week's edition of The People's Tribune highlighting the Bowling Green, Clopton, Louisiana, Silex and Van-Far FFA Chapters.

More than half a million members around the nation will participate in National FFA Week activities at the local and state levels. The focus of National FFA Week is to tell the community and the country about the great opportunities available through FFA. From its beginnings in 1928 as the Future Farmers of America, the National FFA Organization today reaches out to all 50 states, Puerto Rico and the Virgin Islands. FFA is committed to developing character and leadership skills, as well as preparing members for a lifetime of civic leadership and career success.

Whether it's working with elementary children or serving as a chapter officer, FFA members make a positive difference on those around them. They are success-oriented students who are driven to achieve their goals. FFA builds leaders and leaders impact the future.

FFA members have opportunities to attend national leadership conferences, start their own businesses, and apply for awards and scholarships. Through classroom instruction and hands-on learning, agricultural education and FFA are making a positive difference in the lives of students.

FFA members are future engineers, scientists, teachers and producers. One of every five Americans is employed in the food, fiber and natural resources industries, and FFA members are preparing for one of those 300 careers in agriculture.



We Proudly Support FFA!

Join these local businesses in Recognizing our local FFA members for their hard work.
 We wish you continued success in 2010 & beyond!

J&S Dairy

1260 CR 1038, Muleshoe
 806-272-7706

Russell Spraying

637 Hwy. 214, Lazbuddie
 806-965-2624

Leal's Restaurant

1010 W. American Blvd., Muleshoe
 806-272-3924

Clays Corner Gin

558 Hwy. 214, Muleshoe
 806-965-2176

Muleshoe Valley, Inc.

2601 W. American Blvd., Muleshoe
 806-272-4266

Dale Oil Co., Inc.

413 W. American Blvd., Muleshoe
 806-272-5576

Irrigation Pump & Power Zimmatic

W. Hwy. 84, Muleshoe
 806-272-5597

Capital Farm Credit

1601 W. American Blvd., Muleshoe
 806-272-3010

Five Area Telephone Cooperative, Inc.

302 Uvalde Ave., Muleshoe
 806-272-5533

C.K. Nickels

1580 US Hwy 84, Muleshoe
 806-272-7500

Ray Lee Equipment

2800 W. American Blvd., Muleshoe
 806-272-4296

Dairy Direct

E. of Loves Truckstop, Clovis
 575-762-7997

The Altman Group

310 Main Street, Muleshoe
 806-946-9129

Bailey County Farm Bureau

1612 W. American Blvd., Muleshoe
 806-272-4567

Muleshoe Animal Clinic & Vet Supply

1430 US Hwy. 84, Muleshoe
 806-272-3061

Muleshoe Livestock Auction

P.O. Box 754, Muleshoe
 806-272-4201

Daniel and Mary Jo Schacher

Lazbuddie
 806-965-2389

Lowe's Marketplace

401 W. American Blvd., Muleshoe
 806-272-4585

Blackwater Agri. Assn.

W. Hwy. 84, Muleshoe
 806-272-4962

Muleshoe Tire, Inc.

807 Main Street, Muleshoe
 806-272-4594

Lazbuddie Garage & Supply

P.O. Box 100, Lazbuddie
 806-965-2188

Bailey County Electric Cooperative

305 E. Ave. B, Muleshoe
 806-272-4504

NATIONAL FFA WEEK February 20- 27, 2010