

### WEATHER

April 12	85	44	.00
April 13	80	30	.00
April 14	69	30	.00
April 15	70	30	.00
April 16	81	31	.00
April 17	86	42	.00

# Muleshoe Journal

The Community Of Opportunity-Where Water Makes The Difference

Vol. 69, No. 16

Published Every Thursday At Muleshoe, Bailey County, Texas 79347

MEMBER TEXAS PRESS ASSOCIATION 20¢

THURSDAY, APRIL 18, 1991

## Lyme Disease Victims Steadily Increase

### Six Cases Confirmed In Bailey County

By: Cleta Williams-Jacobson  
Journal Editor

Ask any of the six victims in Muleshoe who have been diagnosed with Lyme Disease, and they will tell you, without hesitation, the horrors they went through for months or even years, before being diagnosed.

Three members of the Sam Harlan family are afflicted with the disease. First to be affected was Barak Harlan, now 13. He started out with a very sore throat, and aching joints -- very much like a very bad case of the flu. He was treated in Muleshoe

before his doctor sent him on to Lubbock to specialists. In Lubbock, the doctors began tests, and started to treat Barak. He ended up in a wheel chair, and with little to no relief. This was last year in March. Barak was sent home, as the doctors said they had done everything they could for him.

Barak constantly ran a low grade temperature, and lost the ability to walk -- as have each of the other victims as the disease progressed -- undiagnosed.

While Barak was so desperately ill, his mother, Jean, also became ill. At first, she thought it was because she was so tired from trying to take care of her ill son. Soon, she too, was suffering from headaches, which nothing, no medication could stop. Then, she too, lost the ability to walk and had to crawl from her bedroom, across the hall to go to the bathroom.

Mrs. Harlan was diagnosed as having arthritis, to inner ear disturbance, to almost a dozen other illnesses. Finally, she was told that her problem was "depression" and she wasn't the only "mature" female victim to be told they were suffering from depression.

Mrs. Harlan continued trips back and forth to Lubbock, and in the meantime, their daughter, Stacy, now 11, began exhibiting many of the same symptoms. Stacy, too, began the treks back and forth to Lubbock, with no doctor in Lubbock being able to find out the cause of the disease each carried.

Sam Harlan became very frustrated. Only he and one daughter had escaped the disease, but it was beginning to take an emotional toll. One of the aspects of the disease is insomnia, along with the inability to eat for long periods of time. Trying to take care of three seriously ill family members, and maintain a large farm operation was 'trying' the very strong faith of Harlan, who is a deacon in the First Baptist

Church of Muleshoe. He has said that faith and knowing he was the only one who 'had' to stay strong, has gotten him through to this point.

As the Harlans struggled to find someone who could diagnose the disease which had invaded his family, Jean heard of a woman in Friona, Barbara Sanborn, who was being treated by a doctor in Dallas for Lyme Disease. This had long been suspected by the Harlan family as the cause of their problems, but no doctor on the South Plains had said this was the Harlan's problem.

In telephone discussions with Barbara Sanborn, Jean Harlan obtained the doctor's name in Dallas, and was told she, the doctor, specialized in Lyme Disease. The Harlans contacted the office of Dr. Audrey Stein-Goldings, a neurologist.

Making an appointment, Sam Harlan took his ill family to Dallas, where intravenous treatment was begun following testing.

In the meantime, 12-year-old Leigh Moraw, daughter of Charles and Sheila Moraw of Muleshoe, and Natasha Ronek, 13, daughter of Richard and Lou Ann Ronek started exhibiting much the same symptoms. They contacted the Harlans, and also made appointments with Dr. Stein-Goldings in Dallas. The Moraws had taken Leigh to a hospital in Lubbock.

Leigh said she cried everytime a doctor there touched one of her joints. Leigh said the unbearable pain was every-  
Cont. Page 7, Col. 1



THEY ALL HAVE SOMETHING IN COMMON--LYME DISEASE--Lyme Disease is on the increase in this area. Pictured above are five of the more than a dozen victims in Bailey County and surrounding counties. From left, standing are Barbara Sanborn, Friona; Jean Harlan and Barak Harlan, Muleshoe. Seated in the wheelchairs are Leigh Moraw and Stacy Harlan, both of Muleshoe. There are two other confirmed cases of Lyme disease in Bailey County. (Journal Photo)

### Cult Awareness Program Slated Here May 3

THE PUBLIC IS INVITED to a 'Cult Awareness' program sponsored by the Adult Probation Department, to be held at the Civic Center in Muleshoe on Friday, May 3, at 7:30 p.m.

Satanism has been described as "America's Best Kept Secret."

This program will be presented by the New Mexico State Police Department and is designed to alert the public and enable us to recognize indications of satanic cults which may exist in our area.

This presentation is graphic and children under sixteen will not be permitted to view films which are included in the presentation unless they are accompanied by a parent.

Handouts will be provided. Artifacts will be displayed and there will be a time for questions at the end of the program.

There will be no charge to attend this program.

## ASCS Reports On New Changes; Sign-Up Dates For Farmers

Danny Noble, CEO of the Bailey County ASCS office has issued his report for mid-April, and includes the following changes and sign-ups:

### 1991 FARM PROGRAM CHANGES

1. It has been determined for 1991 only, that the blank row/rows in a skip row pattern can be used as CU for Payment Acreage. Same rules as 1990 except CU for Pay must be land that was planted or considered planted in one of the past five years.

2. Windstrips and terraces that have been established for conservation compliance that meet at least 160 inches in width, are eligible for ACR and CU for Payment Acreage for

1991.

3. Peanuts are not eligible to be planted on Flex acres.

4. Peas are considered an eligible cover crop is certified as a green manure crop. If any of the above changes would change your intentions in the 1991 farm program, you MUST come back into the ASCS office and make your changes by no later than April 26, 1991. Please call for an appointment at 806-272-4538.

### 1991 PROGRAM SIGNUP

All producers that wish to participate in the 1991 farm program MUST sign up their intentions by no later than April 26, 1991. The ASCS still have many farms to go, so please call for an appointment today (Time is running out). After the operator signs the farm into the program, all other tenants and owners signatures must be obtained and received in the ASCS office by no later than May 10, 1991.

### PAYMENT LIMITATION REMINDER

All payment limitation documentation MUST be filed with the ASCS office or your control office by no later than May 10, 1991, to ensure payment eligibility. May 10, 1991 is also the final date to complete an AD-1026 in the ASCS office or your control office. Failure to file the above forms timely will result in total loss of your 1991 program benefits.

### 1991 SMALL GRAIN ACREAGE REPORT

The final date to certify or request an aerial measurement service for wheat, rye, barley,

oats, and triticale, regardless of use, program or non-program, Cont. Page 6, Col. 1

## City Dads Discuss New Jogging Path

Members of the Muleshoe City Council spent a major part of their Tuesday morning meeting discussing the possibility of constructing a jogging path inside the perimeter of the West Avenue D city park.

Two possible jogging trail maps were presented for perusal of the council.

After considerable discussion, the council asked City Manager Dave Marr to seek additional information, including the type of jogging 'surface' and the possibility of constructing the trail during the fall and winter months when city workers will not be so busy.

Reviewed were the financial reports and City Manager Marr told the council that the city was "just about where we expected to be" with half the year gone by.

He said the city is a 'little ahead' in revenues at this time.

The city manager also informed the board that Cleta Williams-Jacobson, editor of *The Muleshoe Journal* and *Bailey County Journal* would be moving from Muleshoe next week.

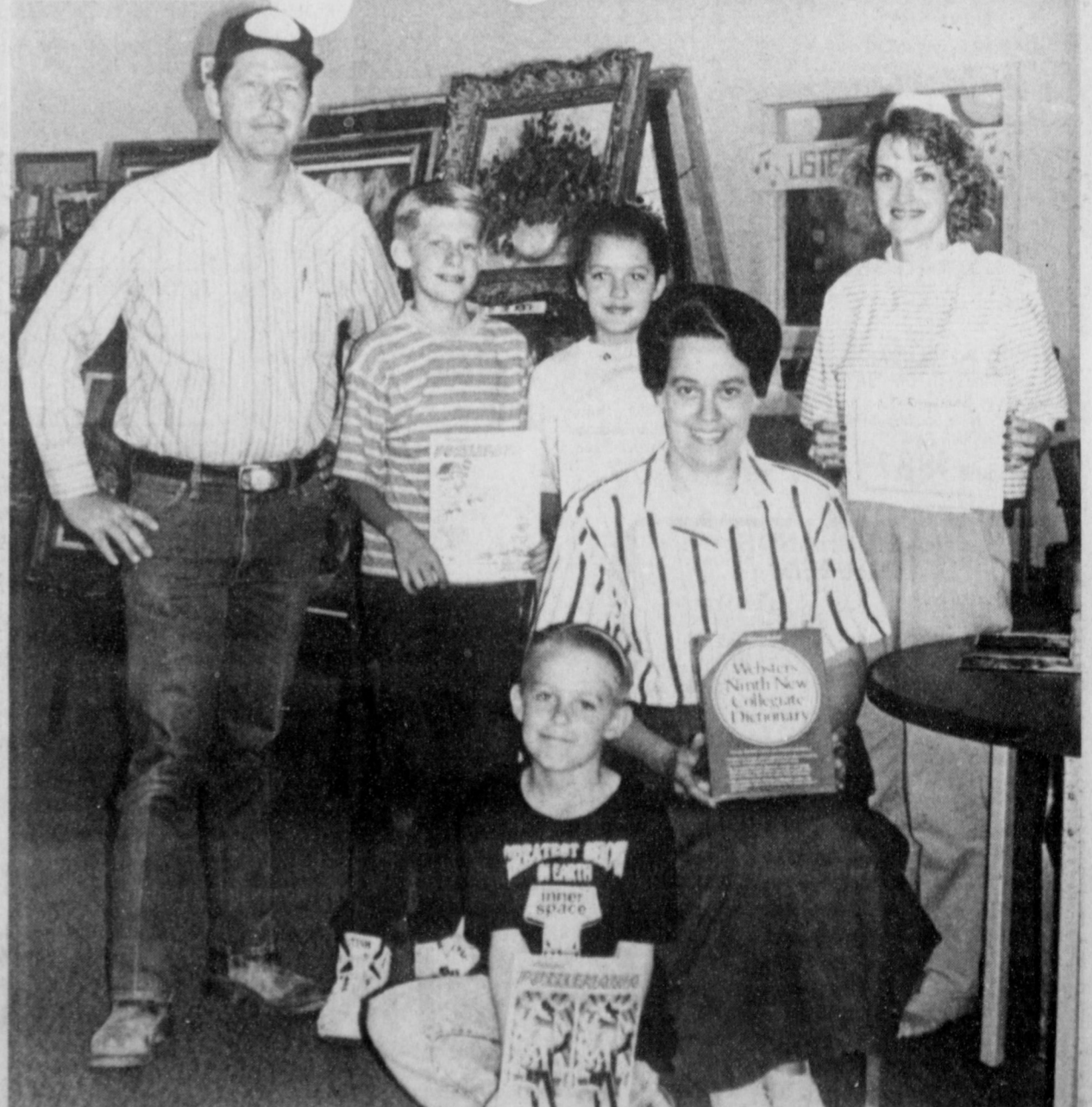
He expressed appreciation for her work and dedication to Cont. Page 6

## School Transfer Applications Now Being Accepted

Students wishing to transfer into the Muleshoe Independent School District for the 1991-92 school year must complete an application for transfer prior to May 1, 1991. Transfer applications may be completed in the Muleshoe ISD Superintendent's office, 514 West Avenue G, during regular business hours.

All transfer applications are subject to approval by the Texas Education Agency.

If you would like to complete a transfer application, or if you have questions concerning a student transfer, you may contact Jean Richardson at the Superintendent's office.



LIBRARY FAMILY OF THE YEAR HONORED--Late Monday afternoon, the Library Family of the Year was honored during National Library Week. Pictured from left, standing are Arnold Price, Justin Price, 12; Larkin Price, 10; and Cindy Barrett, Friends of the Library. Seated in foreground are Westin Price, eight and Kristi Price. They were presented a dictionary, certificate and other commemorative items. (Journal Photo)



Bargain World  
318 Main  
Clovis, New Mexico

# SALE

Stored closed 'til 10:00 a.m. Saturday

**"A SACRIFICIAL WALL TO WALL CLEARANCE OF FLOOR SAMPLES, ONE OF A KIND, DISCONTINUED-AND EVERYDAY BEST SELLERS!! LIMITED QUANTITIES!! FIRST COME-FIRST SERVED!"**

**ONE DAY ONLY**

# SATURDAY

**10 A.M. 'til 6 P.M.**

**A \$250,000.00 INVENTORY OFFERED DIRECT TO THE PUBLIC AT UP TO 60% OFF!**

<p><b>LOVE SEAT SLEEPER</b> Opens with a Twin Size Bed-Small Factory Defect</p> <p><b>1 Only \$97</b></p>	<p><b>BRASS N GLASS COCKTAIL TABLE</b> With 2 Matching End Tables. Priced To Go At</p> <p><b>\$94 Set</b></p>	<p><b>LARGE MAN'S SIZE RECLINER</b> Big Man's Recliner by Brown Velvet Cover, Monsano Wear Dated Fabric.</p> <p><b>Sale \$347</b></p>	<p><b>4 DRAWER STUDENT DESK</b> White with Blue Handles</p> <p><b>2 Only \$49</b></p>	<p><b>BENTWOOD ROCKER.</b> 1 Only-A Real Value at</p> <p><b>\$47</b></p>	<p><b>QUEEN SIZE SLEEPER SOFA</b> -Opens With A Queen Size Bed</p> <p><b>\$297</b> 3 Cushion Style-Nice Looking Cover.</p>	<p><b>4 DRAWER CHEST</b> In Nice Woodtone Finish. 4 Nice Storage Drawers.</p> <p><b>1 Only \$39</b></p>	<p><b>ALL WOOD DAY BED</b> Includes Wood Frame and Nice Interspring Mattress</p> <p><b>\$147</b></p>
---	---	---	---	--	--	---	--

EXTRA SALES HELP    CREDIT CO. ON DUTY    PLENTY OF PARKING    FACTORY REPS. HERE. EXTRA LOADING CREWS    CREDIT TERMS    ONE DAY ONLY    10 HOURS ONLY

<p><b>LIVING ROOM SUITES</b></p> <p>3 PC. EARLY AMERICAN LIVING ROOM SUITE Beautiful long Wearing Nylon Antron Cover. Includes Sofa, Loveseat and Chair.</p> <p><b>Sale \$597</b></p>	<p><b>BEDROOM SUITES</b></p> <p>5 PC. BEDROOM SUITE In Fresh New Black Color. Includes Triple Dresser, Mirror, Large Chest, Full Or Queen Headboard and Nite Stand.</p> <p><b>Sale \$397</b></p>	<p><b>DINING ROOM AND DINETTES</b></p> <p>7 PC. DINING TABLE AND CHAIRS Includes Large Table With Leaf and 6 Chairs. One of Our Best Buys At</p> <p><b>\$297</b></p>
<p>3 PC. RECLINER SECTIONAL Includes 2 Love Seats with Recliners and Wedge</p> <p><b>1 Only \$597</b></p>	<p><b>TWIN BED</b> Complete with Massive Headboard, Footboard, Mattress Set and Rails</p> <p><b>\$197</b></p>	<p><b>OVAL SERVING CART</b> A Gleaming Combination of Brass and Glass</p> <p><b>\$34</b></p>
<p>LOVE SEAT Love Seat in Soft Dark Brown Velvet</p> <p><b>1 Only \$167</b></p>	<p>5 PC. BASSETT COUNTRY STYLE BEDROOM SUITE Includes Dresser, Mirror, Chest, Nite Stand and Headboard. 1 Only By This Leading Manufacturer.</p> <p><b>\$797</b></p>	<p>9 PC. BROYHILL FORMAL DINING ROOM GROUP Includes Buffet, Lighted China, Large Ex. Table, 6 Deluxe Chairs in Soft Oak Finish All 9 Pcs.</p> <p><b>\$997</b></p>
<p>CONTEMPORARY SOFA AND LOVE SEAT Soft Black Antron Cover accented With Brass Trim</p> <p><b>Sale \$397</b></p>	<p>COUNTRY OR CONTEMPORARY 5 PC. BEDROOM SUITES In Lite Oak Finish - Includes Dresser, Mirror, Chest, Nite Stand and Full or Queen Headboard.</p> <p><b>Sale \$397</b></p>	<p>7 PC. CONTEMPORARY CHROME DINETTE SET Table has Formica Top with 6 All Wood Chairs with Padded Seats</p> <p><b>Sale \$197</b></p>
<p>3 PC. GLOBAL LIVING ROOM SET Includes Sofa, Love Seat and Chair. Nice Southwest Print. Big and Beefy Style.</p> <p><b>Sale \$887</b></p>	<p>5 PC. CONTEMPORARY BLACK LAQUER With Walnut Inlays and Brass Accents - Includes Large Dresser, Decorators Mirror, Chest Nite Stand &amp; Headboard. Floor Sample. Clearance Priced.</p> <p><b>Sale \$777</b></p>	<p><b>ODDS &amp; ENDS</b></p> <p>BUNK BED'S Complete With Mattress - 2x6 Wood-Makes into a Twin Bed</p> <p><b>\$187</b></p>

**UP TO 60% OFF**

**Special Purchase Truckload Famous King Koil Mattress Sets**

15 Year Warranty - Top Of Line Features

Twin Size Set.....	\$349.95	\$157
Full Size Set.....	\$449.95	\$197
Queen Size Set.....	\$599.95	\$267
King Size Set.....	\$699.95	\$347

**SALE WILL BE CONDUCTED ON THE PREMISES OF Bargain World**

318 Main-Clovis  
Store Closed 'Til 10:00 A.M. Saturday

<p><b>OCCASIONAL</b></p> <p>6 GUN CABINET BY ASHLEY Lighted on top with Lock storage on bottom</p> <p><b>\$177</b></p>	<p><b>CLOSE OUT CORNER</b></p> <p>DAY BED Pink Hearts with Brass Accents-Sturdy Construction-Beautiful Decorator Style-Limited Supply-Includes Springs &amp; Mattress</p> <p><b>\$157</b></p>	<p><b>10 HOURS ONLY CLOSEOUT CORNER</b></p> <p>3 PC OCCASIONAL TABLE SET Parquet Table Tops</p> <p><b>\$97</b></p>
<p><b>BRASS FINISH PLANT STAND</b></p> <p><b>\$597</b></p>	<p>5 PC DINETTE SET Octagon Shaped Table with glass insert, Brass Pedestal base, 4 Brass Finish Chairs with padded seat. Some Assembly Required</p> <p><b>\$97</b></p>	<p>FAIRMONT DESIGN 7 PC FORMAL DINING ROOM TABLE With 6 Chairs. 1 Only.</p> <p><b>\$747</b></p>
<p>ENTERTAINMENT CENTER Has Glass Door's and Hold's Up to 27 Inch TV. With 2 Drawers on Bottom.</p> <p><b>\$147</b></p>	<p>RECLINER OR ROCKER RECLINER Ladies Size. Beautiful Covers. all The Deluxe Features. 4 Only</p> <p><b>Sale \$297</b></p>	<p>Matching Open-Faced Hutch</p> <p><b>\$347</b></p>
<p>NINTENDO CHAIRS The Newest Thing For Kiddo's &amp; Teens.</p> <p>1 Set <b>\$57</b></p>	<p>ODD CHINA CABINET The Table That Matches Has Sold</p> <p><b>1 Only \$197</b></p>	<p>3 PC. SOFA, LOVE SEAT AND CHAIR 1 Set Only. Extra Nice Camel Back</p> <p><b>\$597</b></p>
<p>ALL WOOD CURIO CABINET Large Size. Lighted on top and bottom</p> <p><b>\$247</b></p>	<p>5 PC. CASTER DINETTE SET Woodgrain Formica Top Table with 4 Caster Chairs.</p> <p><b>\$277</b></p>	<p>7 PC CONTEMPORARY DINETTE SET Sturdy Table with 6 Chairs</p> <p><b>\$197</b></p>
<p>ROCKER AND MATCHING OTTOMAN Mauve in color</p> <p><b>1 only \$167</b></p>	<p>VANITY AND CHAIR In Pink or White-Your Choice</p> <p><b>\$77</b></p>	<p>STANTON SLEEPER AND MATCHING LOVE SEAT Sleeper opens into a Queen Size Bed</p> <p><b>\$597</b></p>

**4 DRAWER CHEST**  
In White Trimmed in your choice of Red or Blue-While They Last

**\$49**  
While They Last.

**NAME BRANDS OFFERED**

- MOTION FURN
- EL RANCHO
- ELEGANCE
- GLOBAL
- BROHILL
- CUSTOM
- KING KOIL
- BASSETT
- ASHLEY
- VAUGHN
- UNIVERSAL
- ORLEANS

AND MANY MORE NOT LISTED

**\*ITEMS SOLD FIRST COME-FIRST SERVED-U-HAUL IT AND SAVE**      **DOORS OPEN AT 10:00 A.M. SHARP 'TIL 6:00 P.M. FOR 8 HOURS!!**

# BARGAIN WORLD FURNITURE

- All Items subject to prior sale
- No Phone Order.
- Delivery Available (at a slight charge)
- No Layaways

318 Main  
Clovis, N.M.

# From The Senate

By: Teel Bigins

It seems that the only news coming out of Austin during this legislative session has been bad. The courts and the Legislature have been endlessly wrangling over public school finance with precious little attention being paid to students and the quality of their education. With demands for State services continually outpacing available State revenues, the budget outlook appears bleak. The official 1990 census figures confirm that representation in the Legislature from rural parts of the State will continue to diminish. The Texas Department of Commerce seems to be coming apart at the seams with

corruption and mismanagement. Court battles ranging everywhere you turn from MH/MR to higher education to workers' compensation insurance and litigation between counties and the State over who pays for housing prisoners in county jails. It hasn't been the cheeriest session.

But I figure a fellow has always got to look on the bright side. There have been some small bright personal moments for me as well as progress in at least one area of public policy.

The first person you see upon entering my Austin office or, more likely than not, the first person you talk to when you call Austin, is Kelley Gilbert. Eager and hardworking, this young girl has had a rough past eight months. Like hundreds of thousands of other military wives, Kelly's husband, Shane, was overseas participating in Operation Desert Storm. On March 19, Shane came home unharmed. When I learned he would be arriving that evening, I went to Kelly and, with a straight face, told her that I would need her to work late that night. She ruined my prank by looking back with an equally straight face, filled with sorrowful eyes and said, "Yes, sir." Obviously I didn't make her work late, and as you might expect, she has been a new person since Shane's return.

Then a few weeks ago, I attended a very special baseball game. The Texas Longhorns played an exhibition game against the Texas Rangers. It would have been worth going to in any event, but what made the game extra special was the fact that the starting pitcher for the Texas Rangers was Nolan Ryan and the starting pitcher for the Texas Longhorns was Reid Ryan, Nolan's son. The Governor was there and so was Ranger's owner, George W. Bush. In fact, they sat next to each other. The Governor, an avid sports fan, and George W. put politics aside for the night and talked baseball throughout the course of the game. The younger Ryan, only a freshman, handled himself well for two innings. His dad, obviously enjoying himself, pitched six full innings.

The Rangers won, but that really wasn't the point. The excitement and enthusiasm in the sold-out stadium for the pitching match-up that will probably never be duplicated was unforgettable.

Finally, in the area of public policy, there is at least one bright spot. I am happy to report that the State Board of Insurance is making progress on adopting rules with regard to deductibles for workers' compensation policies. This amendment to the workers' compensation legislation that I carried in the last special session, provides for the creation of three different types of deductibles plus a negotiated deductible between the policyholder and the insurance company. A review of other states indicated that very few if any of them had enacted deductibles into their workers' compensation laws. Those that had, typically allowed very small deductibles. I made it a point to attend the first State Board of Insurance staff meeting where rules for this section of the bill were to be considered. I made it abundantly clear that my legislative intent was for Texas to have a wide array of deductible options that would result in

significant premium reductions. The initial staff proposal will do just that.

These optional deductibles by law must be available to policyholders before January 1, 1992. I feel strongly that they will afford small business people immediate and substantial reductions in their workers' compensation premiums. Rest assured that I will continue to make a pest of myself at the State Board of Insurance until final rules are adopted.

So even in the midst of one of the toughest legislative sessions in anyone's recollection, you can find some positive developments.

## Nursing home News

by: Joy Stancell

Tuesday morning the residents and other interested parties, displayed crafts they had made or had in their rooms in the day room for everyone to see and enjoy. Refreshments of rice krispie treats and Coke were served.

Tuesday afternoon Laverne James, Olive Cox, Linda Lou,

Claudine Elmby, Beth Watson, Bonnie Green and Nobie Phipps came to shampoo and set the ladies hair. Helen Free gave manicures.

Sunday afternoon the Calvary Baptist Church came for church services.

Wednesday morning Kandy McWhorter County Extension Agent presented a class on Wok Cookery. We all looked on and enjoyed the nice aroma of fried rice and cashew chicken and vegetables as Kandy prepared it in the wok. Even more enjoyable was sampling it. It was a treat to our taste buds.

\*\*\*  
Congratulations to Janetta Hukill on the birth of her new great granddaughter, Madison.  
\*\*\*

Any better Answer  
"I've never heard a man talk so fast in my life."  
"Why shouldn't he? His father was a tobacco auctioneer and his mother was a woman."

**HEALTH INSURANCE**  
CALL Mark Morton 109 S. 1st 272-7519 Muleshoe, Tx.  
State Farm Mutual Automobile Insurance Company Home Office Bloomington, Illinois

## Letter To The Editor

April 11, 1991

Editor  
Muleshoe Journal  
304 W Second  
Muleshoe, TX 79347

To the Editor:

The Lubbock Ronald McDonald House is a home-away-from-home for families of seriously ill children who are hospitalized or receiving treatment in the Lubbock hospitals. In an effort to reduce stress, keep the family intact, and enhance the lives of the families in residence, the House maintains a caring, home-like atmosphere. The Ronald McDonald House allows families to re-establish some sort of normal routine and also provides them with the opportunity to share their concerns with others in the same situation who can truly understand their needs.

Since the opening of this facility in 1988, numerous West Texas and New Mexico families have benefited from the presence of the Ronald McDonald House in our area. Several families from your community have enjoyed the loving, pleasant atmosphere of the House while their children were ill.

The \$10.00 per night donation that each family is asked to pay does not begin to cover the on-going expenses of the House. This amount accounts for only 31% of the income for operations. Donations from individuals, businesses, and civic groups in Lubbock and surrounding communities are relied upon to keep the Ronald McDonald House open and able to serve families of ill children.

On May 3rd and 4th at 7:30 p.m., the Ronald McDonald House Follies will be held at the Lubbock Memorial Civic Center. This is a professionally staged musical variety revue starring our own local talent. It promises to be a wonderful evening filled with fun and music. This is the major fundraiser for the Ronald McDonald House and all proceeds from the show will go toward the operating expenses of the House.

If you or someone you know has benefited from the Ronald McDonald House, please consider a donation of time or money to help keep this valuable resource in our area. Many of those who benefit most from the House are those families who live the greatest distance from the medical center. Someone you know and love may someday need the shelter and comfort which Ronald McDonald House provides. Thank you for your caring support of "The House That Love Built."

Tickets to the Ronald McDonald House Follies may be purchased at Malouf's or at the Ronald McDonald House. Mail ticket request to:  
Molly Hall  
4502 15th Street  
Lubbock, TX 79416  
Donations may be sent to:  
Ronald McDonald House Follies  
1212 Indiana  
Lubbock, TX 79415

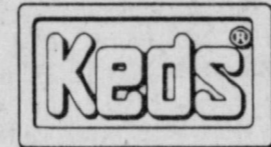
Sincerely,  
Linda Robins, MD  
Board of Directors  
Ronald McDonald House

# ANTHONY'S

Anniversary Special!  
A Step in the Right Direction . . .  
Keds® Canvas Sneakers for Women

REG. \$23.99  
**\$17.99**

Keds® popular canvas sneaker will take you through spring in style. Made with a cotton upper that's machine washable. Choose from white, black, navy or red. Women's sizes 5-10. SAVE \$6



69<sup>TH</sup> ANNIVERSARY SALE



Cotton Denim Shortalls

REG. \$35  
**\$24.99**

Fun in the sun never looked so good. The cotton denim shortalls by Stuffed Shirt® come in solids or stripes. Junior sizes S,M,L. SAVE \$10



Alfred Dunner® Coordinates

**30% off**

Reg. \$34 to \$50 ..... Sale \$23.80 to \$35  
Mix and match the pants, skirts, jacket and short sleeve tops. Polyester-cotton. S,M,L,XL. SAVE UP TO \$15



Girls' 4-14 Fashion Rompers

REG. \$15  
**\$10.99**

MADE FROM EASY CARE BLENDS IN ASSORTED COLORS. SAVE \$4  
SIZES 4-6x  
Reg. \$18, SAVE \$6 ..... **\$11.99**



Haggard® Putter Pants

REG. \$22  
**\$14.99**

The casual putter pant is 60% cotton-40% Fortrel® polyester and styled with an elastic back waist and straight leg. Assorted colors. Men's 34-42. SAVE \$7

## MEN'S

Levi's® 501® Whitewash Jeans  
100% cotton denim with button-fly and straight leg. In whitewash blue, light blue, gray or black. Sizes 29-38.  
**\$24.99**  
SUPER VALUE

Haggard® or Levi's® Dockers® Shorts  
Made from 100% cotton in assorted colors. Sizes 29-42.  
Reg. \$25 ..... **\$17.99**

C.R. & Company® Madras Shirts  
100% cotton with short sleeves. Assorted colors and plaids. S,M,L,XL.  
Reg. \$15 ..... **\$9.99**

Anthony's® Short Sleeve Jumpsuit  
Polyester-cotton with short sleeves and an elastic back waistband. Assorted colors. Sizes S,M,L,XL regular, M,L,XL tall.  
Reg. \$20 ..... **\$13.99**

Hanes® Pocket T-shirts  
Styled with short sleeves and single pocket. 100% cotton in assorted colors. Sizes S,M,L,XL.  
Reg. \$3.99 Each ..... **2/\$7**

Hanes® 3-Pack Underwear  
100% preshrunk cotton. White only.  
Briefs, Reg. \$5.99 3-Pack ..... **\$4.99**  
T-shirts, Sizes S,M,L,XL, Reg. \$7.99 3-Pack ..... **\$6.99**

Anthony's® 6-Pack Sport Socks  
Choose from crew and tube socks in white. One size fits all.  
Reg. \$5.99 to \$6.99 ..... **\$4.99**

NoFade® Short Sleeve Dress Shirts  
Polyester-cotton with single needle tailoring, 2 chest pockets and full cut. White and solid colors. Sizes 14 1/2-17 1/2. SAVE \$3  
Reg. \$11 ..... **\$7.99**

Wembley® Silk Blend Ties  
Polyester-silk in fashion colors and patterns. SAVE \$2  
Reg. \$10 ..... **\$7.99**

E. Joven® by Farah® Slacks  
The belted slack is 70% Trevira® polyester-30% Avril rayon. In black, navy or gray. Young men's sizes 28-34. SAVE \$7  
Reg. \$21.99 ..... **\$14.99**

## WOMEN'S

Anne Leslie® Dusters  
Styled with short sleeves. Made from polyester-cotton in assorted prints. Sizes S,M,L. SAVE \$3  
Reg. \$9.99 ..... **\$6.99**

Casey Renee® Fashion Panties  
100% cotton in assorted styles and colors. Sizes 5-8. Exclusively at Anthony's!  
Reg. \$3 Pair ..... **3/\$6**

Cool Cotton Sleepshirts  
100% cotton with short sleeves. Assorted colors. SAVE \$6  
Buy 1 for \$15 ..... **2/\$24**

Looking Better Every Day! **ANTHONY'S**

**Muleshoe Journal** USPS 367-820  
Established February 23, 1924. Published by Muleshoe Publishing Co., Inc. Every Thursday at 304 W. Second, Box 449 Muleshoe, Texas, 79347. Second Class Postage Paid at Muleshoe, Texas, 79347.  
MEMBER 1991  
**TEXAS PRESS ASSOCIATION**  
L. B. Hall, Publisher  
Sammy Hall, Vice President/Controller  
Clara Williams-Jacobson, News  
Evelene Harris, Society  
Holly Milbap, Advertising  
Dora Tomczak, Classified  
SUBSCRIPTIONS  
Muleshoe Journal and Bailey County Journal  
Bailey and surrounding counties  
Muleshoe Journal and Bailey County Journal  
Elsewhere in Texas \$14.75  
Muleshoe Journal and Bailey County Journal  
Outside Texas, \$18.50  
Yearly By Carrier \$12.50  
Advertising Rate Card on Application  
\*Advertisers should check their ad the first day of insertion. The Journal will not be liable for failure to publish an ad or for a typographical error or error in publication except to the extent of the cost of the ad for the first day of insertion. Adjustment for errors will be limited to the cost of that portion of the ad where the error occurred.



321 Main

272-3178

# Creative Living

by: Sheryl Borden

Information on brunch recipes, the effects of change and stress, and how to make fabric frames will be the featured topic on "Creative Living" on Tuesday, April 23 at 12 noon and Saturday, April 27 at 2 p.m. (All Times are Mountain.) "Creative Living" airs on public broadcasting station, KENW-TV, from Eastern New Mexico University.

Audrey Stehle, representative of the Almond Board of California, will share some wonderful brunch recipes using different forms of almonds. Ms. Stehle will discuss the nutritive value of almonds, show some of the different forms of almonds for cooking and explain the harvesting process. Ms. Stehle lives in Indianapolis, IN.

Susanne Trubey, owner of the SST Consulting Firm in Norman, OK, will discuss change and explain how it causes stress. She further explains that stress varies with the type of change, the way change is perceived and how it is internalized.

Pam Aulson, owner of Patch as Patch Can in Glen Dove, NY; is going to show how to make some fabulous fabric frames, using ready-cut may boards which save a lot of time and are quite inexpensive.

On Tuesday, April 23 at 9:30

## Lazbuddie Home Economics News

The Lazbuddie Homemakers held their monthly meeting on April 2nd. Special guests were Cheryl Engelking and Glenda Jennings.

Ultrasuede belts were the focus for this meeting. Ms. Jennings explained the belt construction and showed different patterns and designs used on these belts. Ms. Engelking explained that butterflies, flowers, and even southwestern designs looked lovely. Both women brought belts made in classes, they had taken on this subject.

Business discussed was the successful St. Patrick's Day Party the Homemakers hosted at the nursing home. Work sheets were signed by the Homemakers for the Book Fair, April 23 and 24. Ribbons were ordered for the Elementary Track Meet on May 17.

Several Homemakers are working with Mrs. Lust's Y.E.S. program. This program, also known as Youth Exchanging with Seniors, brings youth and seniors together with positive results. The Homemakers look forward to seeing this implemented into the community.

Votes were cast by each member for Outstanding Young Homemaker. Results of the election will be given at the May 7 salad luncheon.

Homemakers attending were: Sherry Nichols, Jana St.Clair, Chandra Sanchez, Mary Jo Schacher, Tonjua Scisson, Margie Galvan, Jo Donna Terry, Jaime Carroll, Pat Randolph, Lana Copp, and Reta Mimms.

p.m. and on Thursday, April 25 at 12 noon, "Creative Living" will present information on selecting children's shoes, cooking for kids, and office recycling.

Diane Creston, representative of Huffy Shoes, will talk about selecting shoes for children, will explain what features to look for when buying athletic shoes and will make suggestions for shoe shopping that won't break your pocket-book. Ms. Creston lives in New York city.

Donna Haverstock, representing Norwegian Dairies, is going to share some nutritious recipes and easy how-to tips, using cheese, for kids who cook. Ms. Haverstock lives in Key West, FL.

Because of the growing importance of office recycling, Bill Owen, the County Extension Agent with the Ohio Cooperative Extension Service, will discuss the financial opportunities available with source-separating. Mr. Owen is from Painesville, OH.

"Creative Living" is produced and hosted by Sheryl Borden. The show is carried on more than 100 PBS stations in the United States, Canada, Guam, and Puerto Rico and is distributed by Pacific Mountain Network, Denver, CO. Viewers can request copies of materials offered on the show by sending one 25 cent stamp for each handout requested. Send the stamps, along with your name, address and booklets requested to:

"Creative Living" Requests  
% KENW-TV Station # 52  
Eastern New Mexico University  
Portales, N.M. 88130

### ALMONDS STAR AT BRUNCH

Elegant Apple Crisp  
1 cup cinnamon granols, broken up  
1 teaspoon vanilla  
½ teaspoon almond extract  
2 Pippin apples  
2 tablespoons powdered sugar  
½ cup toasted slivered almonds  
¼ cup butter PLUS 2 tablespoons  
½ teaspoon mace  
2 tablespoons cinnamon-  
1 cup whippin cream

Combine granola and almonds. Simmer ¼ cup butter with brown sugar and cinnamon five minutes; cool slightly. Toss with almond mixture. Blend heavy cream with powdered sugar, vanilla, mace and almond extract; heat gently. Peel and core apples. Slice paper thin and saute in remaining 2 tablespoons butter. To serve, pour ¼ cup almond mixture. Pass remaining almond mixture into each plate; top with apples and ¼ cup almond mixture. Pass remaining almond mixture at table. Makes 4 servings. To microwave, bring mixture to a boil and cook 1 minute on HIGH.

POPOVER PAN MUFFINS  
3 eggs  
¾ cup almond oil  
2 teaspoons vanilla  
2 cups flour  
¾ cup sugar  
2 teaspoons pumpkin pie spice

¾ teaspoon baking powder  
¾ teaspoon soda  
¾ teaspoon salt  
1 cup grated zucchini  
½ cup chopped toasted almonds  
½ cup seedless raisins

Beat eggs and blend with oil and vanilla; set aside. Combine flour, sugar, pumpkin pie spice, baking powder, soda and salt; mix well. Add liquid ingredients

to dry ingredients with zucchini, almonds, and raisins. Stir until just mixed. Spoon batter into six greased popover pans. Bake in center of oven at 375 degrees F for 25 minutes. Makes six popover muffins. To make standard size muffins, divide batter between 18 ( 2½-inch) muffin cups. Bake at 375 degrees F for 20 minutes. Makes 18 muffins.



PTA PRESENTS CEHCK---Glenda Powell, treasurer of the Muleshoe PTA, recently presented Barbara Finney, (left) principal of DeShazo Elementary and Helen Grisby (right) principal at Dillman Elementary, a check from the P.T.A. (Journal Photo)

## Enochs News

by: Mrs. J.D. Bayless

Rev. and Mrs. Donnie Howell went with a group from Llanos Association to work at the Plains Baptist Assembly at Floydada. They worked March 25-29th.

Dale and Rose Nicuols are home after a 10 day fishing trip to Lake Leon at Eastland. They visited Thelma Lindsey, a former resident of Morton and Maple.

In returning home they visited Mrs. Olive Shaw at Post.

Mr. and Mrs. Shorty McCall were in Enochs for a short visit Wednesday. They visited Mrs. Joyce Beasley at the post office and the Harvey Blackstones.

Raymond Vargas got moved. He is living in the E.N. McCall home.

J.E. and Wanda Layton and Mrs. Ellen Bayless also Mrs. Olive Cox of Muleshoe attended the funeral service for Rev. Charlie Shaw at 2 p.m. Wednesday at the Trinity Baptist Church in Post. Rev. Shaw was a former pastor of the First Baptist Church in Enochs. We offer our prayers and sympathy to the Shaw families.

Mr. and Mrs. J.E. Layton received word Sunday of the death of her aunt, Mrs. Viola Dick, in California, after a lengthy illness. We offer our sympathy to all of her relatives.

Mrs. Paula Grant and children, Ashley and Chandler of Lubbock visited her parents, the Dale Nicholls', during the weekend and was visitors at the Baptist Church Sunday morning.

Easter guests in the home of Mr. and Mrs. Jack Stanley were

their daughter and husband, Darlene and Alton Jones of Wolfforth and their daughter.

Rosary for Vincent Vargass 30 of Houston were at 8 p.m. Wednesday, March 27 in the Royal Funeral Home in Parsell. Mass was at 2 p.m. Thursday, March 28 in St. Joseph Catholic Church in Dilley.

Vargas died at 2:30 a.m. He was born in Brownfield, Texas and moved to Dilley after graduation. He moved to San Antonio, then to Houston.

Survivors include his father, Gabriel Vargas Sr. of Dilly; his mother, Buadelupe Martinez of O'Donnell; his step mother, Marcela Vargas of Dilley; three sisters, Elena Maldonado of Bula, Nadine Benavidez of O'Donnell and Lupita Vargas of O'Donnell; four brothers, Joe Vargas of Austin, Dan Vargas of Tahoka, Gabriel Vargas of Dilly and Raymond Vargas of Enochs.

## Pioneer Round-Up Set At Plainview

The sixty-third Pioneer Round-Up, scheduled for Saturday, May 18, will for the thirty-second year, honor a pioneer woman of this area.

Deadline for nominations for the "Pioneer Woman of the Plains" has been set for May 10th, according to Nancy Fowler, chairman of the Program Committee. The Plainview Business and Professional Women's Club is the sponsoring organization of the Pioneer Round-Up.

Entry blanks for the "Pioneer Woman of the Plains" are available to civic clubs, individuals, women's clubs and organizations in Plainview and surrounding areas and may be secured from Mrs. Fowler. All entries must be signed by the organization or individual who is submitting the nomination and must state whether or not she would be able to attend the Round-Up, if selected. The nominee must have been a pioneer resident of the High Plains and be at least 80 years of age. Of most importance, this woman should be one of the early settlers to make her home on the Plains and have a true "pioneer" spirit. A short biography of the nominee must be submitted, including her outstanding contributions to the home, church, community and general welfare of her fellowman.

A panel of judges will select the winner based on information submitted. The number of times a person is nominated will have

## Alan Finney

### To Present

### Trumpet Recital

Alan Finney, son of Mr. and Mrs. Bob Finney of Muleshoe, will present his Senior Trumpet Recital, Sunday, April 21 at 1:30 p.m. in Hemmle Recital Hall, Texas Tech Music Building in Lubbock.

Finney is a 1985, graduate of Muleshoe High School and is currently a Music Performance Major at Texas Tech University.

This recital will be open to the public. A reception will follow in the foyer of Hemmle Recital Hall.

no effect on the selection of the honoree. All entries must be postmarked no later than May 10, 1991. Entry blanks and additional information may be obtained by contacting Mrs. Fowler, 296-5531 or 296-7801.

Announcement of the "Pioneer Woman of the Plains" will be made at the evening activities of the 63rd Pioneer Round-up during the program beginning at 8 p.m. at the Ollie Liner Center.

Alice Doyle, president of the Plainview BPW Club, said other events of this year's Round-Up include the reception beginning at 10 a.m. honoring all pioneers; parade at 2:30 p.m. the supper beginning at 6 p.m. the program at 8 p.m. and the square dance following at 9 p.m., all in the Ollie Liner Center on the south edge of Plainview on Highway 87.

### Revenge

1st Recruit: "What is the first thing you'd do if you got hydrophobia?"

2nd Recruit: "I'd bite the chief."

### Almost Proud

Judge: "Aren't you ashamed to be seen here in court so often?"

Prisoner: "Why no, your honor, I always thought it was a very respectable place."

**WE FIT AMERICA 125 DIFFERENT WAYS.**



1155


We carry Red Wing Shoes in 125 different sizes and widths to make sure you "feel fit" and feel comfortable all day long. Stop in soon.

AAA	M	A	B	C	D	E	EE	EEE
10 1/4	9 5/8	9 1/2	9 3/4	10	10 1/4	10 1/2	10 3/4	11

**Fair Store**  
120 Main  
272-3500

RED WING SHOES  
Made in U.S.A.  
Comfort and dependability treated for generations.

GOT JUST THE REASON FOR BUYING A NEW SET OF WHEELS?



Is this the season for a new set of wheels? Fill your wheel needs from a whole fleet of them listed in the Classifieds. A bike, car, moped, tractor, truck or wheelbarrow — they're all available! Check out the Classifieds — every day, every season, for every reason!

272-4536

Muleshoe & Bailey County Journals

\$2.99

CHICKEN COUNTRY BASKET

FOUR CHICKEN FILLET STRIPS, GRAVY, FRIES, TEXAS TOAST



THIS WEEK'S

DQ VALUE

ON SALE AT DAIRY QUEEN APRIL 15-28, 1991

\$2.49

GRILLED CHICKEN SANDWICH

FEWER THAN 300 CALORIES!



Reg. U.S. Pat. & Tm. Off. Am. D.Q. Corp. TM Reg. U.S. Pat. & Tm. Tx. D.Q. Op. Coun. © Tx. D.Q. Op. Coun. All participating Dairy Queen stores.

# Journal Files

## 1931 AUTOMOBILE LAW REQUIRES LICENSE PAID ON USED CARS WHEN SOLD AND BILL OF SALE FILED IN 10 DAYS

A new law recently enacted by the State Legislature is of interest to every automobile owner within the state in that it requires every person selling, trading or otherwise transferring any used or second hand vehicle required to be registered under the laws of the state, that such disposal shall not be made until such vehicle has been duly registered in the state for the current year. Parties disposing of such vehicle must also deliver to the transferee at the time of delivery of vehicle is made, a license receipt for the current year together with a bill of sale.

The new law which is now effective carries a fine not exceeding \$200 for its violation.

This law also requires that one copy of the bill of sale within 10 days, be filled in the office of the County Tax Collector of the county in which transferee resides, a fee of 25 cents being provided for its recording.

## 1941 UTILITIES COMPANY IS INSTALLING NEW STREET LIGHTS THIS WEEK

Material for Muleshoe's new street lighting system arrived the first of the week, and work on installation of the underground conduit started Tuesday afternoon.

There will be six light standards to the block, carrying 250 candle power lights instead of the old lights of 75 candle power. When the new equipment is in, much of the old lines will be removed. These old lines and street lights will be placed at other points in the residential part of the city, it was stated.

## 1951 LOW TEMPERATURE RENDERING OF LARD IS RECOMMENDED

Your home-rendered lard will be of better quality if you use a low temperature for rendering, nutrition specialists report.

A low temperature is needed to give the greatest yield of lard from the fat and to prevent scorching and sticking, which changes the flavor. Render the lard as promptly as possible after the carcass has been thoroughly chilled-preferably within 24 hours.

## 1961 620 POUND METEORITE FOUND HERE

A grotesque chunk of matter thought by many to be a meteorite is in display on the showroom floor of Fry and Cox Bros.

The 620-lb object presumed by some geologic authorities to have plummeted to earth perhaps a million years ago. The principal basis from this estimated date is due to the fact that there is no evidence of a crater where the object was discovered.

A Muleshoe farmer, Clayton Sanders, stumbled across the hard stone while deep breaking farm land about 24 miles west of Muleshoe. The object was about 20-inches below the surface of a red clay top soil near the Texas-New Mexico state line.

Samples of the object were sent to the Laboratory at Texas Tech in Lubbock for analysis and were discovered to contain considerable olivine and pyroxene.

## 1971 DUST BOWL DAYS

Reminiscent of 'dust bowl' days in the 1930s are present conditions in this area. Sand and tumbleweeds have all but covered fence posts as no moisture and high winds combine to shift the sand and create new sandhills in the area. Less than one half inch of moisture has been received in Bailey County since October 1970, and dryland farmers and ranchers are definitely beginning to feel the effects of the apparently long-lasting drought. Although clouds have teased from time to time, they have moved on out of the area without depositing lifesaving rain.



LIFETIME MEMBERSHIP--Anne Camp, librarian at Muleshoe Public Library, presented a lifetime membership to the Friends Of The Library, to Joyeline Costen Friday afternoon. (Journal Photo)



JENNYSLIPPERS PRESENT CHECK--Friday afternoon Donna Kirk, treasurer of the Jennyslippers, presented Joyeline Costen a check for the Friends Of The Library. The money will be used for the library. (Journal Photo)

## Plants Provide Mental Escape For Inmates

By Kathleen Davis

The women meet daily in a garden, plan landscapes, order flowers from catalogs, talk about husbands, or children or back when they were kids...and think about getting out of prison.

If not a club, it is sort of "prep" school for 13 women in the new horticulture program at the Federal Prison Camp in Bryan, a low-security facility for female convicts. A \$19,865 federal contract to the Texas Agricultural Extension Service has put a horticulturist on staff to certify the inmates as Master Gardeners.

"The point is to provide these women with some skills they can use when they get out," said Lisa Whittlesey, the Extension Service horticulturist who is training the inmates.

Master Gardener certificates are earned after a person completes 50 hours of in-depth gardening instruction, an examination and 50 hours of volunteer work in horticultural science. More than 500 Texas adults have completed the course in the past decade. About 25 states have Master Gardener programs.

But this is apparently the first time in the United States that a Master Gardener course has been offered to prisoners, according to Dr. Diane Relf, consumer horticulturist at Virginia Tech University and one of the Master Gardener originators.

"We have some Master gardeners volunteering at prisons, but I don't know of any others who are certifying the prisoners themselves," Relf said.

The course was expanded for the federal prison in Texas to include classroom and hands-on instruction from 7:30 a.m. until 3:30 p.m. week days for six months.

"A lot of the women have not been in school for a long time," Whittlesey said. "I had to start by teaching about the parts of a plant, watering and different rolls."

Whittlesey is advancing the class through work in the garden, greenhouse and landscaping around the prison grounds. She also plans to teach sections on nursery production and floral design.

Janie Rodriguez, education supervisor at the prison camp, said the course offers a sense of independence for the woman.

"Keeping the inmates busy all seven hours during the day is not a problem with this course," Rodriguez said. "But even though they work hard, it is a sort of freedom they feel from working outside."

"Through Mrs. Whittlesey, we can escape from our situation," said Karen Zieg, 46, who is serving 20 months for bank fraud. "There's a freshness in this program, and she treats us with dignity."

Hard but productive work was cited by the program's first participants.

"I always volunteer for the garden rather than the greenhouse," said 34-year-old Deborah Mapes, serving 18 months for mail fraud. "Maybe it's just seeing the crops produce something useful, more than just flowers."

"We have to work with our minds and our hands," added 48-year-old Ruby Stephens, who has five years to go on a 15-year

from working outside."

According to health officials, Texas women are less likely to use tobacco during pregnancy than are American women in general.

A recent study of Texas women who gave birth in 1989 shows that some 12 percent (compared to 20-25 percent nationally) reported using tobacco during their pregnancies, according to Tom Pollard at the Texas Department of Health (TDH). Pollard is director of the Statistical Services Division, TDH Bureau of Vital Statistics.

Part of the reason why fewer Texans smoke during pregnancy may be linked to Texas' proportionately large Hispanic and black populations. "Forty-four percent of all Texas births occur among these two groups, and Hispanic and black women are less likely to use tobacco during pregnancy than are white, non-Hispanic women," Pollard said.

"Only 17 percent of white mothers in Texas reported using tobacco during pregnancy. But black and Hispanic women in Texas use tobacco even less. Only 11 percent of black and 5 percent of Hispanic mothers reported using tobacco during their pregnancies," he said.

Pollard added that Hispanic women who smoked used fewer cigarettes per day during pregnancy than did either white or black women. On average, he said, Hispanic women smoked five cigarettes a day while blacks or whites smoked 10.

Tobacco use during pregnancy is known to cause problems for both mothers and babies. In 1989, Texas mothers who used tobacco were twice as likely as non-users to have low-birthweight babies (less than 5 pounds, 8 ounces). They also were more than twice as likely have previously borne a premature infant.

Low birthweight is a major cause of infant death. In 1987, for example, 8 percent of Texas' babies with low birthweight died within the first year of life, while only 0.3 percent of babies with normal birthweight died.

Pollard said, "Our data further showed that women who reported tobacco use while pregnant also were more likely to have other health factors which placed their pregnancies at risk. They were more than twice as likely as non-users to have acute or chronic lung diseases."



## Miss Clark, Digby

### Engagement

### Announced

Mr. and Mrs. Gary S. Clark of Irving would like to announce the engagement and approaching marriage of their daughter, Melissa May (Mysti) to Monty Gene Digby, son of Shirley Digby of Perryton and the late Larry Digby.

The couple plans to be married June 9 at Quaker Avenue Missionary Baptist Church in Lubbock. The bride elect graduated from Monterey High School in Lubbock and attended South Plains College. Digby graduated from Olton High School and South Plains College. The bride elect is the granddaughter of Mr. and Mrs. Pete Tarlton of Maple.

drug conviction. "When we go back to the unit in the evening, we're tired enough to go to sleep and not think about things we have no control over."

Rodriguez hopes the program will give the women alternative skills upon release from prison.

"I got lucky. I got in the program as soon as I got here and this has turned my head around," said Judith Green, 41, serving six months for a probation violation.

"We always had a garden at home. But we planted tomatoes at a certain time because our daddy told us to and his daddy told him to," Green said. "I wanted to find out the proper ways of planting."

Green hopes the Master Gardener certificate will write her ticket out of factory work at the end of her sentence.

Prison officials said the program offers some dividends for the system as well.

"We estimate that the greenhouses should pay for themselves within five years because we will be able to grow our own bedding plants instead of purchasing them," said Terri Lane, assistant superintendent at the camp. "All federal institutions have a goal of making themselves more appealing to the public. We want our facility to look more attractive."

Stephens said prisoners have a saying: "You can do your time or let it do you."

"I decided not to waste it," she said of her 15-year sentence. "I've found my niche."

## Richland Hills

### Baptist Youth

### Slave Sale

HELP!! CALL THE AUTHORITIES!!

The Youth at Richland Hills Baptist Church are being auctioned off as Slaves this Sunday night, April 21, and no one seems to care!!

Come to think of it -- there are quite a few things going on with these 6th-12th graders.

Why, they've been acting like scavengers, pretending to be "sheep," and are watching movies at church instead of the Theater.

They have even named their "gang" SOAR.

What do YOU think is happening there?

If you really want to know, come join them on Wednesday nights at 6:30 p.m. For fun-learning; fun-singing; and just plain-fun---SEE YOU THERE!!!

U.S., Albania agree to restore diplomatic relations.

Your Vote and Support Will be Appreciated

**Vote For**

**ARNOLD PRICE**

Candidate for

**School Board Trustee**

DISTRICT I


Election-Saturday, May 4, 1991

**Business Owner Taxpayer**

**3 Children in School System**

Committed - Involved - Interested

-Paid for by Arnold Price



Shop  
Muleshoe  
First

Thank You

The family of Roy Bryant want to thank you for remembering us with your prayers, your visits, the food and flowers during the illness and recent death of Roy. These expressions have been constant reminders of your love and concern.

God bless each of you.

Mickey, Melba, R.E. & Margaret

**"Weight Watchers® knows what you expect from a weight loss plan."**

Joyce Nimetz  
Area Director, at goal weight for over 23 years.

**RESULTS!**

"I'm losing weight like never before." Carol Wilk, Member Houston, TX

"I trust Weight Watchers. It really works." Ann Barry, Member Amarillo, TX

"Believe me, the results are truly amazing." Cathy Holt, Area Manager San Antonio, TX

"Our members are ecstatic." Kathi Elmore, Leader Lubbock, TX

"It's the simplest Weight Watchers program ever." Karen Draper, Area Manager Santa Barbara County, CA

**Our New Personal Choice® Program Offers You 3 Different Food Plans.**

**1.** If you are really motivated to lose weight, Level One is the plan for you. It's a little more structured. But you'll see amazing results.

**2.** You'll get more food choices with Level Two, yet maintain a moderate weight loss. This plan gives you the structure you need with the results you want.

**3.** Level Three allows you to eat more food, and the widest variety of food, while still moving toward your weight-loss goal. You'll get more than enough to eat, and you'll love the results.

**JOIN NOW FOR ONLY... \$12**

Registration Fee ..... \$19.00  
First Meeting Fee ..... \$ 9.00  
Regular Price ..... \$28.00  
**YOU SAVE \$16.00**  
Still only \$9 per week!

**Come to the Weight Watchers meeting nearest you.**

**MULESHOE**  
American Boulevard  
Church of Christ  
2201 West American Blvd.  
Every Wednesday at 12 NOON

**WEIGHT WATCHERS** Call Toll Free  
1-800-359-3131

Offer ends May 11, 1991. Offer valid at participating locations (South Texas, West Texas and Santa Barbara County, CA) Areas 27, 96, 107 only. Offer not valid with any other offer or special rate. Offer valid for new and renewing members only. Offer valid for Traditional Weight Watchers meetings only. Weight Watchers is a registered trademark of WEIGHT WATCHERS INTERNATIONAL, INC. 1991. All rights reserved.



## Lyme Disease

Cont. From Page 1

where except in her back. Then, when he touched her back, and there was no pain, Leigh added, "The doctor put me back in the wheelchair and rolled me out to where Mom and Dad were waiting. He told them 'Get her out of that wheelchair and take her to a psychiatrist.' You could tell my Dad was very angry. He checked me out of the hospital and brought me home."

The Moraws contacted the Harlans, and learned about Dr. Stein-Goldings. They, too, called Dallas and made another appointment. Leigh also went on the intravenous treatment for Lyme Disease, again, following intensive testing. Leigh says she has a lot of trouble 'remembering things.' An example was that a few days ago, she started to call a close friend and could not remember her telephone number. She then started to look for the phone number, and forgot what she was looking for. Memory loss, along with brain infection, are other side-effects of Lyme Disease.

Leigh says that at night, a lot of the time, she cannot go to sleep. She has seen her knees swell more than twice the size they are normally. She is presently confined to a wheelchair, as is Stacy Harlan.

Natasha Ronek could not be interviewed. A quick visit was approved to have her picture made, as she was on 'restrictions' about being around people for a few days. Some of the side-effects from Lyme Disease had flared up for her, and she wasn't feeling too well.

Another side-effect of Lyme Disease is not being able to be in or around crowds of people -- a sense of needing to be more isolated, or alone.

A very sad side-effect, especially for youngsters, is that their friends tend to avoid them, as do their teachers, and many adults.

The youngsters say they miss the camaraderie with their friends, and need to keep in touch. All four youngsters are homebound, and a homebound teacher, Brenda Black, goes from home to home, teaching them.

Incidentally, they are all consistent in showing up on the honor roll when it is released. It is not known at this time, if they will be homebound after this year. Maybe they can go back to school -- then, maybe not. Only time, the possibility of remission, and other factors will determine that.

When Dianne Nieman, wife of local realtor, George Nieman, began exhibiting some of the same symptoms, and could not find any solutions in Muleshoe or Lubbock, she too, made an appointment with Dr. Stein-Goldings at Doctors Hospital in Dallas. At this time, Dianne Nieman is undergoing IV therapy for Lyme Disease.

Other local and area people are currently being tested in Dallas for Lyme Disease, making the long trek back and forth to Dallas.

Barbara Sanborn was visiting in the Harlan home the day the interviews were made. She told of her own long struggle with Lyme Disease, beginning in 1987. She said she went from doctor to doctor trying to find relief. She talked about facial

and jaw pain, as did all the other victims.

She said she lost her memory of all the telephone numbers she ever knew, and had all the accompanying pains in her head and her joints, and that stress triggers very bad attacks.

She said her eyes, ears, and nose bothered her. Both Leigh and Stacy said the sound of a vacuum cleaner really hurts.

"We can't stand that sound." For a long time, Barbara Sanborn could not drive, and just recently started driving a little, for relatively short distances.

Both Jean Harlan and Barbara Sanborn said they are grateful for supportive husbands. The divorce rate among Lyme Disease victims is very high as the spouse without Lyme Disease often 'caves in' under the extreme stress and pressure.

All the victims maintain contact with other Lyme Disease victims they meet in Dallas. They hear stories of families 'Torn apart' from the disease, and maintain the faith that they will come through the disease as closer-knit families themselves.

They all maintained throughout interviews, "We don't blame the doctors around here (Muleshoe and Lubbock). They only have access to information released by the CDC (Center for Disease Control), and the CDC is withholding information."

When asked "Why?" they said, "because Lyme Disease is an incredibly expensive disease."

As this story is written, there are six confirmed cases in Muleshoe; three in Farwell and three in Friona; with at least two victims being treated in Dallas, traveling there from Lubbock.

And what did a recent medical publication say about Lyme Disease? Read for yourself!!

### THE NEW CDC CASE DEFINITION OF LYME DISEASE

"The CDC and the various state health departments have adopted a new case definition of Lyme disease which is very restrictive and will effectively eliminate two-thirds of the past, present and future cases of Lyme disease from being counted. We expect to see a dramatic reduction of cases for 1990, and it will appear that the Lyme problem is going away and the Public Health authorities will be congratulated for doing such a nice job. There will be less pressure on politicians to 'do something.'" According to the new rules:

"1. Physicians must document the presence of an EM erythema migrans, the characteristic rash of Lyme disease - ed.), and it has to be circular and at least 5 cm. in diameter.

"2. If this rash occurs in a county which has never had a reported case of Lyme, and that person has not recently visited and endemic area, even if the physician identifies this as and unequivocal EM rash, with an attached tick and all, this can only be reportable if on two separate blood tests weeks apart, a fourfold rise in antibody titers to *B. burgdorferi* is detected. If the doctor treats the patient immediately, which s/he should, the chances are excellent that there will be no antibody titer rise, as has been well established in the medical literature. I, as a patient, would strongly object to two expensive unnecessary blood tests to probably not confirm a diagnosis which has already been made clinically.

"3. A patient with neurologic symptoms such as headache, stiff neck, fatigue, memory loss, psychosis, with positive blood tests for Lyme and no physician documented rash must be subjected to a spinal tap. The concentration of antibodies to Lyme must be higher in the spinal fluid than in the blood in order for this to be a reportable case. From my experience, this is rarely seen in the late stages of Lyme. There are cases reported in the medical literature of actual isolation of Lyme spirochetes in the spinal fluid of patients with neurologic symptoms whose spinal fluid of

patients with neurological symptoms whose spinal fluids test completely normally. This is clearly evidence that the CDC is following the flawed logic of a particular neurologist from the establishment.

"4. The literature teaches us that when Lyme involved the heart, the most common manifestation, accounting for more than 90% of the cases, there will be first degree heart block, a delay in the conduction on an

electrical impulse from the upper part of the heart to the lower part. The rest of the heart involvements are second and third degree blocks of diffuse heart muscle infection resulting in reduced pumping ability. Guess what? The first degree heart block no longer qualifies this to be a reportable case.

"5. Currently investigational tests such as Western Blots, urine antigen assays, PCR's, T-cell stimulation and immune

complex digests cannot be acceptable.

"By now I think it is obvious that this new definition borders on the ridiculous, and that when the bureaucrats of the CDC, who have undoubtedly never seen or talked to a Lyme patient, team up with Ivory-tower doctors who probably never listened to a Lyme patient, their consensus clearly indicates that they do not begin to understand this disease like those physicians in private practice who see ninety percent of the present patients, follow their ups and downs, and listen to the horrors of broken lives and careers.

"We have just recently begun to see a trend in the Northeast. Some insurance companies are refusing to pay for intravenous treatment in excess of 14 days, since by definition this is curative. We will soon see formal 'practice guidelines' for Lyme disease issued by the Arthritis and Rheumatism Society (I'm not sure of the exact title).

by John Drulle, MD. Dr. Drulle practices medicine in Jackson, New Jersey.

LAUGHTER - a pretty good medicine?

"Dr. Allen Steere, MD, Chief of Rheumatology, Tufts - New England Medical Center, Boston, and pioneering researcher on this illness, says, "Lyme disease is one of the most over diagnosed, overtreated illnesses." *Better Homes and Gardens*, July 1990 and "... almost all people with Lyme disease have a positive test result after the first several weeks of infection." [*Arthritis Today*, May/June, 1990]"

(Editor's note: Because of the extreme interest in Lyme Disease, and the growing number of cases in this area, as yet not acknowledged or accepted by the CDC, another series, including technical information and symptoms, along with suggestions, will be in the Sunday edition of *The Bailey County Journal*.)

Yeltsin urges Soviets reject Central party.

## Three Way 4-H Schedules Benefit For Cystic Fibrosis

"A basketball-free-throw will be held on Monday, April 22 at the Three Way gym, beginning at 5:45 p.m.," reports Jean Parker, Three Way 4-H Club leader. The event is being sponsored by the Three Way 4-H Club," she continued.

"We need everyone to help by donating funds and actively participating; only then will we be able to find a cure for cystic fibrosis, the number-one genetic killer of children and young adults in the U.S. today. In 1989, scientists funded by the Foundation discovered the gene which causes cystic fibrosis.

"In 1990, just one year after this discovery, researchers corrected defective CF cells in laboratory dishes, the first step toward using gene therapy as a treatment for cystic fibrosis.

"These developments demonstrate how the pace of research has increased considerably, and how we can help make CF history by raising much-needed dollars for research," stated Parker.

Everyone can be a winner! Each person who collects \$35 will earn a Foundation T-shirt. Additional prizes are available.

Call Jean Parker at (806) 927-5355 or (806) 927-5315 for details.

Mrs. Parker then concluded, "Please come and join us; get involved. Research is the only answer for the 30,000 children and young adults in this country who suffer from cystic fibrosis."

**Blood Substitute**  
The Food and Drug Administration has given approval to a Boston company to begin the first U.S. tests in humans of a purified blood substitute derived from cow's blood, Boston-based Biopure Corp. said.



LYME DISEASE VICTIM--Natasha Ronek, daughter of Richard and Lou Ann Ronek, is one of the six confirmed victims of Lyme Disease in Muleshoe. Natasha is unable to attend school this year, so is taught at home by homebound teacher, Brenda Black. She hopes to return to school in the fall. (Journal Photo)

TRANSPORTABLE

PORTABLE

MOBILE

PERSONAL

**MOTOROLA INC.**  
CELLULAR INFRASTRUCTURE GROUP  
IS PROUD TO JOIN WITH  
**LIBERTY**  
**CELLULARPHONE**  
NETWORK

**IN PROVIDING QUALITY CELLULAR COMMUNICATIONS TO THE SOUTH PLAINS REGION**

**894-8004**  
Call For Detailed Information

**Rely on me for affordable protection against high medical costs.**

Ask About Health Insurance The State Farm Way

**CALL ME.**  
Mark Morton  
109 S. 1st  
272-7519  
Muleshoe

Like a good neighbor, State Farm is there.

STATE FARM INSURANCE

State Farm Mutual Automobile Insurance Company  
Home Office: Bloomington, Illinois

# THE GOLDEN BOOK ENCYCLOPEDIA



**VOLUME 16-17 EACH \$2.99**

Your children can expand their knowledge with a reference center designed specifically for them.

**VOLUME 20 FREE** with purchase of Volume 2. Additional Volumes weekly at **\$2.99**

All trademarks are the property of Western Publishing Company, Inc. © 1990 Western Publishing Company, Inc.



# Springtime Savings

FRESH FRYER  
**LEG QUARTERS**

10 LB. BAG

LB. **38¢**

SMALL PKG. LB. **48¢**

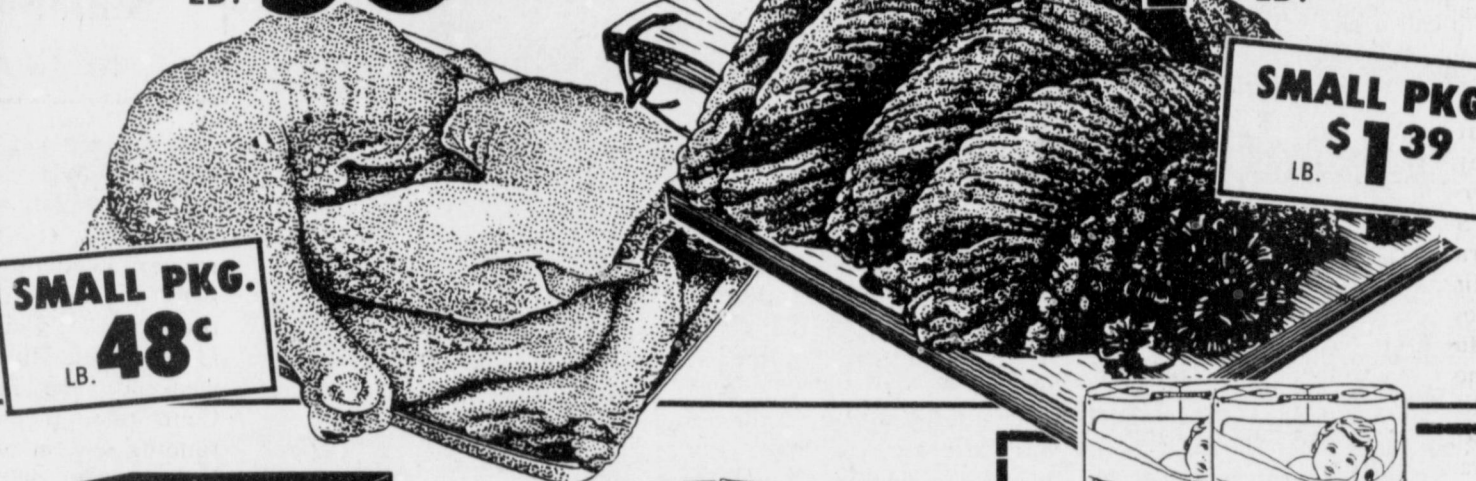
GUARANTEED 73% LEAN FRESH

**GROUND BEEF**

FAMILY PACK

**\$1.19** LB.

SMALL PKG. LB. **\$1.39**



CITRUS HILL FROZEN

**ORANGE JUICE**

12 OZ. CAN

**79¢**



ABSORBENT PAPER

**BOUNTY TOWELS**

JUMBO ROLL

**79¢**



ASSORTED VEGETABLES

**GREEN GIANT**

10 OZ. PKG.

**89¢**



REGULAR ASSORTED

**KOOL-AID**

2 QT. PKGS.

**7 \$1** FOR



BATHROOM

**CHARMIN TISSUE**

4 ROLL PKG.

**79¢**

WITH COUPON

FIRST 4 ROLL PKG. AT 79¢ THEREAFTER 99¢ EACH ONE COUPON PER FAMILY COUPON EXPIRES APRIL 24, 1991



CONV. PKG. - BOYS/GIRLS SMALL/MED./LARGE/EX-LARGE

**LUV'S DIAPERS**

**\$7.99**



175 CT. BOX REG./FREE FACIAL

**PUFF'S TISSUE**

**\$1.09**



\$1.99 SIZE BAG FRITO LAY'S®

**SANTITAS CHIPS**

**99¢**



ORVILLE REDENBACHER ASSTD.

**MICROWAVE POPCORN**

3 CT. BOX **\$1.89**



CAMPBELL'S ASSTD.

**RAMEN NOODLE CUPS**

2.2 OZ. CUP

**5 \$2** FOR

WINESAP

**APPLES**

LB. **39¢**

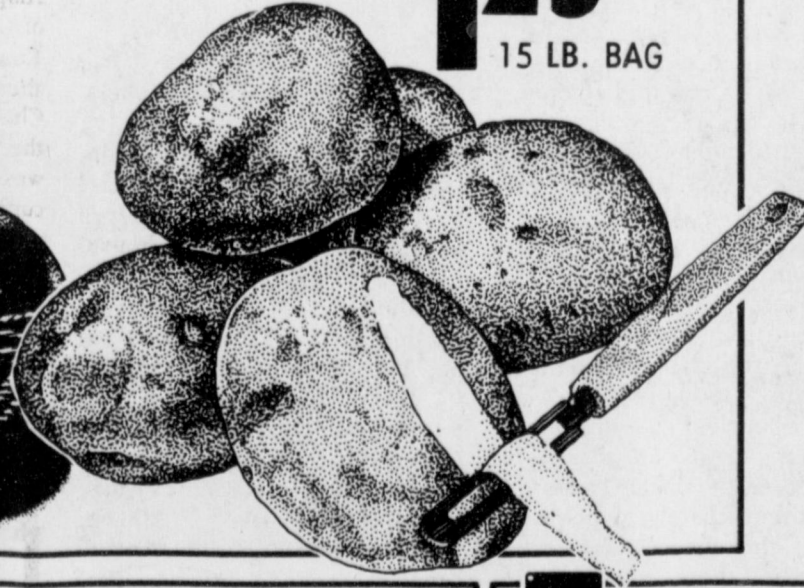


RED

**POTATOES**

**\$1.29**

15 LB. BAG



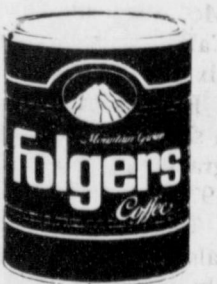
PURE VEGETABLE CRISCO OIL

64 OZ. BTL. **\$2.39**



PLAIN-NO BEANS **HORMEL CHILI**

19 OZ. CAN **99¢**



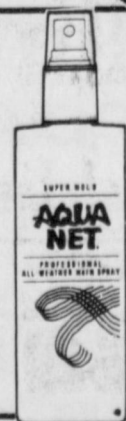
ASSORTED GRINDS **FOLGERS COFFEE**

13 OZ. CAN **\$1.99**



ASSORTED TOTINO'S **PARTY PIZZA**

9.8 OZ. BOX **99¢**



• 8 OZ. PUMP BTL. • 9 OZ. AERO CAN

ASSORTED **AQUA-NET**

EACH SIZE **99¢**



ASSORTED **SUAVE DEODORANT**

EACH SIZE **\$1.49**

• 2 OZ. SIZE • 2.5 OZ. SIZE • 4 OZ. AERO CAN



5¢ OFF LABEL-LIQUID **CLOROX BLEACH**

GALLON JUG **99¢**



401 W. Amer. Blvd.

Muleshoe, Tx.

272-4585

**AT AFFILIATED FOODS INC.** MEMBER STORE

WE ACCEPT FOOD STAMPS... WE RESERVE THE RIGHT TO LIMIT.



ALL TYPES **DR. PEPPER**

6 PK. 12 OZ. CANS **\$1.69**

PRICES EFFECTIVE APRIL 14-20, 1991

THRIFTWAY/LA TIENDA IN AD COUPON



**Funeral Services  
For Dick Minckler  
Held Wednesday**

Funeral services for Dick Minckler, 65, were held at 2 p.m. Wednesday, April 17 in the Muleshoe Church of Christ with Bret McCasland, minister, officiating.

Burial was in Muleshoe Memorial Park under the direction of Ellis Funeral Home of Muleshoe. Justice of the peace Jack Bates pronounced him dead at 3:35 p.m. Friday at his home.

Born Sept. 12, 1925, in Endicott, N.Y., he had been a resident of Muleshoe since July 1946, moving here from Endicott, N.Y. He married Frances Jean Pittman on Sept. 7, 1945, in Clovis, N.M. He was a member of the Muleshoe Church of Christ. He was an automobile mechanic and a veteran of World War II, serving in the U.S. Air Force.

Survivors include his wife, Frances; two sons, Richard Minckler, Jr. of Lubbock and Howard Minckler of Dallas; a daughter, Sherri Eads of Texline; a brother, Howard L. Minckler of Brooksville, Florida; six grandchildren; and two great grandchildren.

The family suggests memorials be made to the Portales Childrens Home in care of the Muleshoe Church of Christ.

**Arnold Morris  
Funeral Services  
Held Wednesday**

Funeral services for Arnold Morris, 93, were held at 11 a.m. Wednesday, April 17 in the First United Methodist Church with the Rev. Richard Edwards, pastor, officiating.

Masonic graveside services were conducted in Muleshoe Memorial Park. Burial was under the direction of Ellis Funeral Home of Muleshoe. Morris died at 10:15 p.m. Saturday in Muleshoe Area Health Care Center.

Born Sept. 29, 1897, in Franklin County, Texas, Morris moved to Muleshoe in 1917, from Petrolia, TX. He married Barbara Grace Johnston on Nov. 27, 1919, in Petrolia. She died March 14, 1986. He was a member of the First United Methodist Church, Muleshoe Masonic Lodge and Scottish Rite-Shrine. He was an automobile mechanic and dealer and owned Arnold Morris Auto Co. from 1932, until his retirement in 1962.

Survivors include a daughter, Barbara Blackman of Muleshoe; two sisters, Mrs. Dovie Mardis of Tucson, Ariz. and Mrs. Opal McCauley of Lake San Marcos, Calif.; four grandchildren; and six great grandchildren.

He was preceded in death by a son, Marshall, in 1985, and a grandson, Brent Blackman, in 1979.

The family suggests memorials be made to your favorite charity.

Senators want to restore IRA deductions.

**Report From  
U.S. Representative  
Larry Combast**

U.S. Representative Larry Combast (R-Texas) expressed satisfaction with today's announced changes to the 1990 Farm Bill from the U.S. Department of Agriculture (USDA) and the Agriculture Stabilization and Conservation Service (ASCS). Combast helped secure modifications to proposed USDA farm program rules before they would have severely impacted feedgrains payment yields and skip row cotton practices during the current crop year. "The proposed regulations would have unfairly changed the rules on farmers," said Combast. "I am pleased with the ASCS's affirmative response to concerns I expressed from both corn and sorghum producers and South Plains cotton farmers."

As a member of the House Agriculture Committee, Congressman Combast relayed his concerns about new record-keeping methods for feedgrains within the USDA. "I wanted to make sure that USDA's regulations clearly followed the intent and guidelines of the Farm Bill legislation we passed last year," said Combast. "The proposed rules resulted in assigning a dryland yield on acreage where irrigated credit should be due. This is the difference between profit and loss for many farmers," said Combast.

After discussion, the USDA modified the formula so that corn and sorghum yields will be based on the total irrigated acreage on the farm. "This will allow producers the flexibility to plant irrigated corn or milo based on market and management factors," said Combast.

Combast also spoke to ASCS officials on behalf of cotton producers. ASCS-proposed rules would have changed the size criteria for skip row planting patterns to require at least four-row skip to the eligible for

**Essie Clayton  
Services Held  
Wednesday In Earth**

Funeral services for Essie Clayton, 84, of Earth were held at the Earth Church of Christ with Denny Sneed, minister, officiating.

Burial was in Earth Memorial Cemetery under the direction of Parsons Ellis Funeral Home of Earth. Mrs. Clayton died at 4:35 p.m. Monday, April 15 in Lamb Health Care Center at Littlefield.

She was born in Hill County, Texas and moved to Earth in 1932, from Borger. She married Elvis C. Clayton on June 28, 1922, in Wichita Falls. He died April 17, 1985. She was a homemaker and a member of the Earth Church of Christ.

Survivors include a son, Cletis A. Clayton of Hot Springs, South Dakota; two daughters, Shirley Sigman of Earth and Evelyn Lewis of Fort Worth; seven grandchildren; and 12 great grandchildren.

the farm program. "This was a severely detrimental change this late in the crop year for those producers who had already prepared land, applied fertilizer and herbicide, all based on the assumption that skip row eligibility would be the same as last year," said Combast.

"Farmers may plant any skip row pattern this year, including the two-and-one pattern, that had been approved for the 1990 crop year," said Combast. "During 1992 through 1995, skip rows must be four rows wide to qualify for farm programs."

**Three Way News  
by: Mrs. H.W. Garvin**

The Three Way track team was in competition at a meet in Brownfield the past weekend.

Mr. and Mrs. R.L. Davis was in Lubbock Friday for medical treatment.

The Three Way Baptist Church will start their spring revival April 14th. Services will be Sunday morning and night, during the week services will be

at noon and 7 p.m. Evangelist is Rev. Richard Smith from Hobbs, N.M. Minister of music is Art Harrison of California. Everyone is welcome to come and worship with the church.

Mr. and Mrs. Herbert Dolle from Littlefield visited their son, the Bill Dolles Sunday afternoon.

Mr. and Mrs. Bob Foley were dinner guests in the home of her parents, the Robert Kindles, Sunday.

Mrs. H.W. Garvin visited her brother, George Tyson, Friday afternoon.

The third, fourth, fifth and sixth grade basketball teams played in the Dudahn basketball tournaments Saturday.

Mr. and Mrs. Jack Lane and Mrs. Obie Standard and son visited Monday in Littlefield with the Amel McChas and V.A. Lanes.

Mr. and Mrs. Iris Holloway from Levelland and Mr. and Mrs. D.A. Williams from Morton visited George Tyson Sunday afternoon.

**Patients In  
Muleshoe Area  
Medical Center**

APRIL 12-15  
FRIDAY

Randall Radford, Isabel Fabela, Corina Rodriguez, Robert Dilts, Zulema Garcia, Faye Martin, Harold Allison, Pearl Cox, Beryl Hollis, John Vaughn, Virgil Obenhaus, Harold Greenhouse, Earl Schmitz, June Pitcock, Leontina Padilla, Floyd Damron, Norene Thomas, Sally Bustillos and Baby Boy

SATURDAY

Randall Radford, Isabel Fabela, Robert Dilts, Zulema Garcia, Maria Sanchez, Norene Thomas, Faye Martin, Harold Allison, Pearl Cox, Beryl Hollis, Araceli Jaime, Virgil Obenhaus, Earl Schmitz, Floyd Damron and Harold Greenhouse

SUNDAY

Habel Rosas, Maria Sanchez, Norene Thomas, Faye Martin, Harold Allison, Pearl Cox, Beryl Hollis, Virgil Obenhaus, Harold Greenhouse, and Floyd Damron

MONDAY

Habel Rosas, Maria Sanchez, Norene Thomas, Faye Martin, Harold Allison, Pearl Cox, Beryl Hollis, Virgil Obenhaus, Harold Greenhouse and Floyd Damron

**CASH  
Owner-  
Financial  
Notes  
806-247-3903**

**Accent On Health**

A heart attack patient in the emergency room is probably not aware that the doctor has choices when ordering life-saving medication.

After the crisis, the patient may wonder why the physician chose a \$2,200 "clot-busting" drug rather than one priced at \$200. Many doctors still question which drug is better for patients: tissue plasminogen activator (tPA) or streptokinase.

Physicians from The DeBakey Heart Center of Baylor College

**Texas  
Senate Week  
In Review**

The Texas Legislature finally passed public school finance reform legislation late Thursday, April 11, with a court master deadline on Monday, April 15. The bill is ready for the Governor's signature which is expected to happen this weekend. The Texas Supreme Court ruled the state's current funding system unconstitutional in October of 1989. The Legislature attempted to solve the funding crisis in four special sessions in 1990, but the last attempt was ruled unconstitutional by the courts and the April 1 deadline was instated. Lieutenant Governor Bob Bullock praised Senator Carl Parker of Port Arthur as the conference committee report on Senate Bill 351 was finally adopted by the full Senate. The Senate vote was 21 ayes to 10 nays, and the House vote was 92 ayes to 57 nays. The bill is scheduled to go into effect September 1 pending acceptance by the courts.

The Senate also passed landmark environmental legislation on Thursday. Senate Bill 1099 sponsored by Senator Steve Carraker of Roby, relates to permitting of hazardous waste facilities. The legislation allows more citizen participation, and provides new siting requirements for hazardous waste disposal. The legislation now goes on to the House.

The Senate and House met today in Joint Session to hear an address by President Carlos Salinas de Gortari of Mexico. President Salinas was met on the front steps of the State Capitol by Governor Ann Richards, Lieutenant Governor Bob Bullock, and Speaker of the House Gib Lewis, and escorted to the Governor's office where they met briefly in private, before going to a reception with the members of the Senate Hispanic Caucus, and members of the House Mexican-American Caucus. President Salinas was then escorted to the House Chamber where he addressed the full Legislature. The address was given in Spanish with copies of the speech given to all participants. This is the first time a President of Mexico has ever given an address to the Texas Legislature. He was in the state to discuss free trade agreements between the United States and Mexico.

of Medicine and The Methodist Hospital in Houston are participating in an international clinical trial that may resolve the issue.

Called GUSTO (Global Utility of Streptokinase and tPA in Occluded Coronary Arteries), the study will involve 40,000 patients in a head-to-head contest of the two drugs used to dissolve the blood clots that cause heart attacks.

"Studies done so far indicate that streptokinase and tPA are almost equally effective in saving lives of heart attack victims, but tPA appears to dissolve blood clots in arteries faster," said Dr. Neal S. Kleiman, assistant professor of medicine at Baylor and regional director for a nine-state area in the United States' GUSTO study.

"Since 'time is muscle' for heart attack patients, it would seem that a drug that restores blood flow to the heart faster would be better. But no study so far has proven that," Kleiman said.

The issue to be resolved by GUSTO, Kleiman said, is whether opening arteries faster with tPA provides enough benefits to justify the extra costs involved.

GUSTO patients will receive the more expensive tPA, streptokinase or a combination of the two clot-busters. Patients will also receive an intravenous dose of the blood-thinner heparin, which has been shown to improve the effectiveness of tPA. Other studies comparing the two drugs have not used intravenous heparin.

Some patients receiving streptokinase will be given heparin by injection under the skin as

it was given in earlier European studies, Kleiman said.

"We need to know if the time difference translates into something meaningful. Will more heart attack patients live? Will hearts be damaged less or heal better?" Kleiman said.

"If those hours don't matter, we ought to stick with the \$200 drug and spend the additional money on other things like finding a way to prevent heart attacks from occurring."

**Sudan News**

by Ann Gaston

Sabrina Faz, daughter of Mr.

and Mrs. David Taz, recently competed in O'Donnell and Canyon for NBTA twirling contest. In O'Donnell she was named Miss Valentine and placed first in solo, strut, and two baton. In Canyon Sabrina also won the title of Miss Lone Star and placed first in solo and strut and received trophies for all her wins. Also recently she competed in Amarillo and placed second in her solo and in three-batons. This contest was an NBTA regional competition and girls came from Kansas, Oklahoma, Arkansas and Texas to compete in this contest.

**BRIEFS**

Bush seeks broader death penalty.

Returning POWs recount fear, beatings in Iraq.

**Ultrasound Credited With  
Saving Twin Sons**

Patricia Horner credits an ultrasound procedure developed at Baylor College of Medicine in Houston for saving the lives of her twin sons.

The procedure, pioneered by Dr. Russell L. Deter, professor of obstetrics and gynecology, allows a baby's individual growth pattern to be determined. A baby may be in danger if regular ultrasound scans in the final three months of pregnancy show differences from the expected growth pattern.

"If babies follow their own growth curves, we know that things are normal inside the uterus. If growth is not 'on the curve,' it may indicate something is wrong," Deter said. "The patient's obstetrician is then alerted that further testing may be required."

Horner was referred for ultrasound fetal growth assessment because she was carrying twins, a condition generally considered to be high-risk. She had ultrasound examinations beginning in the fourth month of pregnancy.

Deter took measurements from the fetus' ultrasound images and created mathematical models to predict growth patterns during the last stage of development. The models also predicted each baby's expected weight and

measurements at birth. The fetal growth assessment procedure now used at Baylor and three other centers in the country differs from that used by most obstetricians because it is tailored to individual babies and is not based on standardized growth characteristics, Deter said.

Horner was scheduled for ultrasound examinations every three weeks during the last three months of her pregnancy. During one visit about seven weeks before the babies were due, one fetus showed a failure to grow.

Further tests determined one baby was showing signs of fetal distress and the twins were delivered by an immediate Caesarian sections.

"The doctor who delivered the boys that evening said if it had been another 24 hours, we would have lost one baby and possible the other," Horner said.

Individualized fetal growth assessment can be used in any pregnancy, but is primarily reserved for high-risk situations involving multiple fetuses or other maternal or fetal conditions.

"Ultrasound used this way has allowed us to do what scientists have always wanted to do: predict the future," Deter said. "In the case of the Horner twins, it saved lives."

**Announcing**  
The Opening Of  
**Harry's Package Store**  
East Of Dimmitt On Highway 86  
Formerly Green's Package Store  
Opening Thursday April 18th  
Harry L. Jones and Debra Owners  
**Watch For Our  
Grand Opening**

**Calling All Gardeners**  
Bedding Plants Are Here!!  
**We Now Have**  
**Bonsai**  
DOUBLE DWARF  
TURF-TYPE  
TALL FESCUE  
Fine Blade  
Drought Tolerant  
**Kristy's Plants**  
710 E. Amer. Blvd. 272-5536  
**BTE Compost Manure & Cottonburrs**  
**Bulk Garden Seed**  
**Pecan Tree Fertilizer**

# Happenings Around Muleshoe Last Week



**CITY TEARING DOWN ABANDONED HOUSES**--Wednesday until noon, this was a house, an abandoned house, but formerly someone's home. By Thursday afternoon, the house had been demolished by city workmen, and the debris carted to the city dump. All that remains is a smoothed over empty lot. This is happening all over the city as the city officials have condemned a number of houses. (Journal Photo)



**VFW PRESENTS CHECK TO MEALS ON WHEELS**--Last Thursday afternoon, Hugh Young, standing left, presented a check to Meals On Wheels on behalf of the Veteran's organization. Accepting the check, center, standing is Sharon Plott. At right, is Glen Williams, president of Meals on Wheels. Seated from left are board members Doris Wedel, Vivian White and T. R. White. (Journal Photo)



**COF C BOARD OF DIRECTORS SERVE LUNCH**--It was a steady crowd that attended the annual Muleshoe Chamber of Commerce and Agriculture Employer-Employee appreciation luncheon at the Bailey County Civic Center. Lots of CofC members, and their employees, took advantage of the offer of baked potatoes with 'all the toppings,' salad, dessert and tea. (Journal Photo)



**PRESENTING PTA PROGRAM**--The entire student body at Dillman Elementary presented a musical program for the PTA Monday night. Pictured are second grade students. The program was under the direction of Mrs Tom Jinks. (Journal Photo)



**A SPECIAL**--Early Childhood, Pre-Kindergarten and Kindergarten students at Dillman Elementary were treated to a visit by, as one student put it "a real live horse", last week. The students gathered around as the riding techniques were explained. (Journal Photo)



**SECOND GRADE STUDENTS**--Mrs Tom Jinks and the second grade class at Dillman Elementary practiced last week for their program at the PTA meeting. The entire student body at Dillman participated in the program. (Journal Photo)

# CLASSIFIEDS 272-4536

## CLASSIFIED RATES

15 Words & Under  
Minimum Charge  
\$2.30  
Thereafter  
\$2.00  
16 Words & Over  
1st Insertion  
15 cents per word  
2nd Insertion  
13 cents per word

CLASSIFIED DISPLAY RATES \$1.75  
Per Column Inch

DEADLINES  
12 noon Tues.  
For Thursday Paper  
12 noon Friday  
For Sunday Paper

To receive the reduced rate after the first insertion ad must run continuously.

We reserve the right to classify, revise, or reject any ad. We are not responsible for any error after ad has run once.

## 4. Houses For Rent

FOR RENT:  
2 Bedroom House.  
Clean and good  
condition. Plenty of  
Storage. Attached  
garage. Call 272-3582.  
W4-10t-4c

## 11. For Sale Or Trade

J.L. Soto, Roofing  
Asphalt shingles, Cedar  
shingles, Hot tar  
roofs. Roof repair,  
new roofs.

272-3072  
No job too big, or too  
small. Free estimates.  
S15-14s-4c

PIANO FOR SALE  
Wanted: Responsible  
party to take on small  
monthly payments on  
piano. See locally.  
Call Manager at 800-  
635-7611.  
M11-15t-6tc

FOR SALE: Three 50-  
HP Electric Motors.  
Phone 272-5035.  
G10-12s-8c

## 15. Misc.

10 FAMILY LARGE  
Garage Sale- Saturday  
April 20th. 8 a.m.-6  
p.m. At Bamert gray  
building. 1/8 mile on  
Friona Hwy. (N.214)  
B15-15s-2tc

\*\*\*  
\$2,000 or more cash  
loan. Cash grants,  
Mastercard and Visa.  
Poor credit history no  
problem. 24 hour free  
message: 1-415-721-  
3744.  
15-15s-8tc

FOR RENT: Large  
Self storage rooms  
with 24 hour a day  
access. Call J&J Self  
Storage at 272-4307.  
S15-1s-tfc

## Sean's Lawn & Garden & Small Engine Repair

"To Serve Community Needs"  
For Sale:  
Repaired Motors &  
Garden Tools  
We Also Have Used  
Bicycles  
603 East Amer. Blvd  
Muleshoe 272-4302

\*\*\*  
ESTATE AND GAR-  
AGE SALE. Anti-  
ques, dolls, tools,  
etc. Everything goes  
- house and lot -  
this Friday, Satur-  
day and Sunday,  
April 19, 20, 21 at  
932 E. 14th  
Littlefield, Texas  
1-16t-1tp

\*\*\*  
WANTED BY FRI-  
DAY EVENING--Good  
used queen size or  
full size bed, includ-  
ing mattress and box  
spring. Double bed is  
alternate. Call 272-  
4536 9 a.m.-5 p.m. or  
272-3092 after 6 p.m.

## 8. Real Estate

\*\*\*  
BARGAIN: 3 lots.  
Muleshoe Memorial  
Park. Call 915-263-  
6338 or 915-267-7902.  
C11-13t-8tc

\*\*\*  
HOUSE FOR SALE:  
Country Club Add.  
919 Ivy. 2-1-1 Brick,  
Heat Pump, FP,  
fenced yard. Call  
272-4131 After 5:00  
p.m.  
P8-12t-tfc

## NOTES, COMMENT

The best speaker is  
brief.

Fishing solves a sur-  
prising number of prob-  
lems.

Never refuse to listen  
to advice, but rarely fol-  
low it.

Those who are smart  
will save some of their  
earnings.

Balanced judgment is  
something one finds in  
few people.

There's no way to accu-  
rately predict what  
people will do.

Carelessness is a great  
killer in the home and  
on the highway.

People who never  
make mistakes are poor  
companions.

The life of the politi-  
cians consists of passing  
the buck and placing  
the blame.

Many of today's  
younger generation are  
strong on high pay and  
weak on hard work.

The art of intelligent  
writing is to make the  
words so simple that no  
one can misunderstand  
you.



## 8. Real Estate

**8. Real Estate**  
\*\*\*  
Too True  
"What is the secret of  
success in life?"  
"I don't really know  
but I fear it is con-  
nected with work!"

**8. Real Estate**  
FOR SALE: 3 Bed-  
room (Study could be  
4th bedroom), 2 Bath,  
Fireplace, Double  
Garage, Sprinkler Sys-  
tem, Deck, Heat  
Pump, 1806 W. Ave.  
I. 272-3759.  
8-15s-2tp

**8. Real Estate**  
RICHLAND HILLS  
IMMACULATE 3-2-2 Brick, Cnt. A&H,  
Built-ins, FP, sunken lv. area with  
cathedral ceiling, ceiling fans, earthtone,  
storage bldg. \$50's!!!!  
3-2-2 Brick, heat built-ins, FP,  
earthtone carport interior &  
exterior, fence. \$80's!!!!

NICE RESIDENTIAL LOTS! \$5,000 UP.....  
\*\*\*  
JUST LISTED- Nice 3-2-1 Home, built-ins,  
heat pump, fans, storm windows & doors,  
workshop-storage, fenced yd., & more.  
\$40's!!!!

\*\*\*  
JUST LISTED-NICE 3-3-2 Brick, Heat  
Pump, built-ins, FP, gameroom, sunroom,  
finished basement, 2800+ sq. ft. of lv. area,  
fenced yd. & more. \$80's!!!!

\*\*\*  
PRICE REDUCED-Nice 3-2-2 Brick, Cent.  
A&H, FP, Earthtone carpets, fenced yd.  
\$60's!!!!

\*\*\*  
HIGH SCHOOL  
3-2-1 Home 1900+sq. ft. of lv. area, heat  
pump, built-ins, FP, fenced yd., storage  
bldg., & much more. \$40's!!!!

\*\*\*  
3-2-1 Brick, Cent. heat, FmHA financing  
to qualified Buyer. \$20's!!!!

\*\*\*  
JUST LISTED 4-2-1 Brick, + 2 carport,  
built-ins, Cent. A&H, 2 car Det. garage &  
workshop, fenced yd., sprinkler sys.,  
Much More. \$40's!!!!

\*\*\*  
2-1/2-1 Brick, fl. furn., Cent. Air, fenced  
yd., & more \$20's!!!!

\*\*\*  
FmHA FINANCING to qualified buyer-  
3-1-1 Brick, Cent. heat, earthtone carpet,  
\$20's!!!!

\*\*\*  
HIGHLAND AREA  
JUST LISTED 3-2-1 Home, wall furnace,  
window evap. fenced yd. \$20's!!!!

\*\*\*  
JUST LISTED-Nice 3-1-1, heat pump, nice  
carpets, fenced yd. Much More. \$30's!!!!

## 18. Legals

### NOTICE TO CREDITORS

Notice is hereby  
given that original  
Letters Testamentary  
for the Estate of  
**BERNICE AMERSON,  
DECEASED,**  
were issued on April  
15, 1991, in Docket  
No. 1873, pending in  
the Count Court of  
Bailey County, Texas,  
to: **Juanita Jarman,  
Executrix.**

The residence of  
the Executrix is in  
Bailey County, Texas;  
the post office address  
is:

**Juanita Jarman  
Route 3, Box 470  
Muleshoe, Texas  
79347**

All persons having  
claims against this  
Estate which is cur-  
rently being adminis-  
tered are required to  
present them within  
the time and in the  
manner prescribed by  
law.

DATED the 15th  
day of April, 1991.

**Juanita Jarman  
Independent Executrix  
J18-16t-1tp**

## Full funding for crop

### insurance a must for farmers

(TEXARKANA)--Texas Agriculture Commissioner Jim Hightower said here that U.S. Agriculture Secretary Clayton Yeutter "should make the disaster payments he has the authority to make, or come to Texas and explain to our flood, freeze and drought victims why he won't!"

Hightower said thousands of Texas producers have been laid low by "too much weather--whether that means too wet, too dry or too cold."

In the 1985 farm bill, Congress gave Yeutter the authority to make federal disaster payments to supplement federal crop insurance coverage of program crops, Hightower said.

"Even combined with federal crop insurance coverage, the disaster payments wouldn't come close to covering our producers' losses," he said, "but we need all the help we can get. It's been a rough year."

Hightower also urged inclusion of federal crop insurance reforms in the final House-Senate compromise package on the 1990 farm bill. The Senate version of the bill contains the reforms, but the House-passed bill does not.

Additionally, Hightower said full funding of the Federal Crop Insurance Corporation (FCIC) is critical if the insurance is going to be available to all producers of program crops like cotton, wheat, corn, rice and grain sorghum. The House Appropriations Committee slashed FCIC funding in half, but the Senate Appropriations Committee has not yet approved an agriculture appropriations bill.

The federal crop insurance program is an ongoing mess," Hightower said, "but a lot of lenders won't make an operating loan to a farmer who doesn't have insurance. If the money isn't restored, we'll have a lot of producers who can't put a crop in the ground. They'll be finished."

In an "action alert" issued Aug. 16, the American Association of Crop Insurers warned: "Some bankers say 50 to 75 percent of farm operating loans will be drastically reduced or denied" if farmers are without crop insurance.

Hightower also called on the FCIC to set the top 1991 coverage level for wheat as high as possible to provide "meaningful coverage--and collateral" for wheat producers. The two fixed-price coverage options have already been set (at \$2.40/bu. and \$2.85/bu., both significantly lower than the 1990 coverage levels), but Yeutter has not yet announced the "market-price election," a coverage option based on the predicted market price. Yeutter is required to offer one coverage level of at least 90 percent of the projected average 1991 market price.

"The FCIC won't set the market-based price election lower than the \$2.85/bu. fixed-price option, but coverage at \$3.00 or more would help some producers qualify for large enough operating loans to get a crop planted," Hightower said. "All we ask is that the Secretary not estimate the market price--and therefore the coverage level--unreasonably low." (For 1990, both the higher fixed-price

and the market-based coverage levels were set at \$3.45/bu.)

Hightower said unusually severe weather had caused economic hardship in several different areas of the state over the past year.

"The Lower Rio Grande Valley froze solid last winter, costing our overall economy \$450 million and 17,500 jobs," Hightower said. "Then last spring, we had record floods that wiped out hundreds of thousands of acres of crop and pastureland in North and East Texas. And parts of South and West Texas are still in the grip of a drought."

"An economist might average it all together and argue that our rainfall and temperatures have been just about perfect," he said, "but our individual producers don't get to average it out like that. They're individually up against the wall, and they need help. But it's not just our farmers and ranchers--every dollar a disaster costs them is the equivalent of removing three dollars from the local and state economy. It affects all of us."

Hightower also urged Congress to pass a bill introduced by Sen. Lloyd Bentsen. Bentsen's bill would in effect extend the provisions of the 1989 disaster assistance law which, with bipartisan congressional support and President Bush's signature, mandated Yeutter to make the disaster payments for 1988-89 losses.

Hightower added that Bentsen agreed with his recommendation that the new legislation include disaster coverage for nursery and floral products, also vera, exotic livestock and aquaculture, all of which suffered extensive damage in the freeze last December.

Hightower also urged support of similar legislation introduced in the U.S. House of Representatives by Reps. Beryl Anthony (D-AR), Jim Chapman (D-TX) and Ralph Hall (D-TX). He noted that Anthony's bill would assist in the restoration of cropland that was severely degraded by flooding and would provide compensation for livestock lost in the spring flooding.

Last spring's flooding caused agricultural losses estimated at \$30 million in Bowie, Red River, Titus, Morris and Cass counties alone, Hightower said. Statewide, crop and livestock losses alone from this year's floods are expected to exceed \$600 million, he said.

Classify! Call

272-4536

## 1. Personals

CONCERNED  
About Someone's  
Drinking?  
HELP IS  
AVAILABLE  
through Al-Anon  
Call 272-2350 or  
965-2870 or come to  
visit Tuesday and  
Thursday nights,  
8:00 p.m. & through  
AA call 965-2870 or  
come visit Tuesday  
nights, 8:00 at 620  
W. 2nd, Muleshoe.

## 3. Help Wanted

SALES REP--  
WANT HIGHER  
INCOME  
National Company  
offers top Commis-  
sions and Bonuses.  
Call on Commercial-  
Industrial-Agri ac-  
counts in this area. Full  
or part-time. We  
provide training. Rewards  
limited only by  
your efforts. Call  
HYDROTEX 1-800-  
999-4712.  
3-15t-4tp

\*\*\*  
LOOK!  
National expanding  
firm has retail pos-  
itions available. \$8.90  
to start--great for  
college students. (806)  
795-9490.  
M3-15s-4tc

\*\*\*  
Help Wanted for  
Garden Center Work-  
Call 272-5536 or come  
by Kristy's Plants at  
710 E. Amer. Blvd.  
Only non-smokers  
need apply.  
K3-15s-2tc

\*\*\*  
CONSTRUCTION jobs  
now hiring all pos-  
itions. Both skilled &  
unskilled. Male & Fe-  
male openings. For  
info. Call (615) 779-  
5505 Ext. J-1104.

\*\*\*  
WANTED: Exper-  
ienced machinist and  
gearhead man. Call  
(806) 238-1596 days or  
238-1328 nights-- after  
9 p.m.  
B3-tfc

\*\*\*  
Clerk Typist Wanted -  
Must type 50 Words  
per minute, minimum.  
Apply in person at  
*Journal*, 304 W. Sec-  
ond.  
3-16t-tfc

## 8. Real Estate

\*\*\*  
Richland Hills--3-2-2  
Brick with fireplace,  
Fenced back yard. See  
506 W. 20th or call  
272-3413 after 5 p.m.  
E8-15s-8tc

\*\*\*  
Priced to Sell! Nice  
3-1/4-1 Brick, Cent.  
A&H, Ceiling Fans,  
Redwood Patio, Fenc-  
ed Yd., Storage  
Bldg. \$30's!! For info  
call 272-4712 or  
965-2214.  
8-15s-4tp

## 8. Real Estate

\*\*\*  
HOUSE FOR SALE- 3  
Bdrm., 2 Bath, Brick,  
Central Heat & Air,  
1585 sq. ft. \$46,500.  
Phone 272-3969.  
8-15t-6tp

\*\*\*  
HOUSE FOR SALE: 3  
Bedroom, 2 full baths,  
Central heat and air.  
Good storm cellar and  
well. On 2 Acres. 3  
miles East on Hwy 70  
and 1 mile North,  
then 200 yards East.  
806-352-1715

## Bingham & Nieman Realty

George Nieman, Broker

116 E. Ave. C.

272-5285 or

272-5286

VERY NICE 4-2-1 Brick, Cent. A&H,  
built-ins, earthtone carpets, util, encl.,  
patio, storm win. & doors, grill, spktr.  
sys., stor. bldg., fenced yd. \$60's!!!!

\*\*\*  
JUST LISTED- Nice 2-2-1 Brick, Cent.,  
A&H, built-ins, HEATED POOL, spktr.  
Sys., fenced yd., corner lot, & more.  
\$50's!!!! LENUAU ADD.  
Nice 4-2-2 Carport Home. Cent. A&H,  
built-ins, FP, Cent. Vac., Office, Sewing  
area, fenced yard. \$30's!!!!

\*\*\*  
3-1 Home, Corner lot, wall furn., fenced  
yd. \$20's!!!!

\*\*\*  
COUNTRY CLUB-PRICE REDUCED on  
this 3-2-2 Brick, Cent. A&H, built-ins, FP,  
2,000+ lv. area, freshly painted, storage  
bldg., fenced yd., much more \$69,900!!!!

\*\*\*  
JUST LISTED- VERY NICE 3-2-2 Brick,  
3,000+ sq. ft. of lv. area incl. nice finished  
basement, built-ins, geothermal A&H,  
energy-eff., loads of closet & storage, on  
7.86 acres, fence, stock tank, sideroll, &  
many more amenities, close to town.  
DON'T MISS THIS!! \$90's!!!!

\*\*\*  
3-2-3 Carport Home on 11 ac. edge of  
town, Cent. A&H, built-ins, cellar, barns,  
& corral. MAKE OFFER!!!!

\*\*\*  
NICE 3-2-1 Home on 1 acre close to town,  
Cent. Heat, Evap. Air, Nice Carpets,  
Remodeled. \$30's!!!!

\*\*\*  
OFFICE BLDG.- 7000+ sq. ft. of area,  
paved parking, excellent location. SHOWN  
BY APPOINTMENT ONLY!!!!

\*\*\*  
GYMNASTICS STUDIO- BLDG. & EQ-  
UIMENT-PRICED TO SELL!!!!

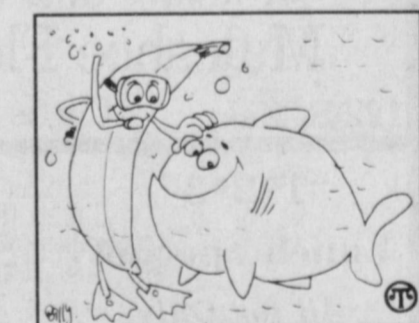
\*\*\*  
RESTAURANT BLDG., LAND., & EQ-  
UIMENT- A GOOD BUY!!!!

\*\*\*  
COMMERCIAL TRACT 175'X100' (Hwy.  
70 & 84, RR spur access, approx. 1200 sq.  
ft. bldg. PRICED TO SELL!!!!

\*\*\*  
24 ac., W. Hwy. 84, 8" well, 3 homes, 14  
mobile home hookups, & also has veg. &  
fruit stand!!!!

## COOKING CORNER

Sauteed Sole Tobago With  
Bananas, Pecans and Lime  
Bananas, America's favorite fruit  
can be used in many deliciously dar-  
ing main dishes. Here's one reminis-  
cing of early days in the faraway  
islands that teams bananas with  
fish.



Sauteed Sole Tobago With  
Bananas, Pecans and Lime

1/2 cup vegetable oil  
8 fillets of sole or flounder  
Flour for dredging  
1/4 cup butter  
2 cups diagonally sliced  
bananas (1/2 inch slices)  
1 cup pecan halves  
1/2 cup fresh lime juice  
1 cup dry white wine or light  
stock  
1/4 cup coarsely chopped fresh  
herb (mint, parsley,  
coriander, basil or tarragon)

Preheat oil in heavy sauté pan  
over medium-high heat. Dredge  
fish fillets lightly in flour. Sauté  
until golden brown, about 3  
minutes each side. Remove to  
warm platter. Pour off excess  
oil and wipe down sauté pan.  
Place pan back on stove over  
high heat; add butter. When  
foamy and just starting to  
brown, add bananas and pecans.  
Toss and cook for 1 minute. Add  
lime juice and wine. Cook for  
another 2 minutes. Add fresh  
herbs. Pour sauce and bananas  
over fish. Garnish with addi-  
tional banana slices and lime  
wedges.  
Yield: 4 servings

Move things no longer needed into MONEY!

# MULESHOE AREA

# Mid-Winter '91

# BUSINESS DIRECTORY AND SHOPPING GUIDE

**HUEVOS RANCHEROS**  
2 Eggs with sauce, beans and corn tortillas  
**\$3.00**  
w/flour tortillas **\$3.35**  
Closed Mondays



**Leal's Restaurant**  
1606 W. Amer. Blvd. 272-3294

**Henry Insurance Agency, Inc.**  
"Serving All Your Insurance Needs Since 1964"




KENNETH R. HENRY  
CERTIFIED INSURANCE COUNSELOR  
REAL ESTATE BROKER

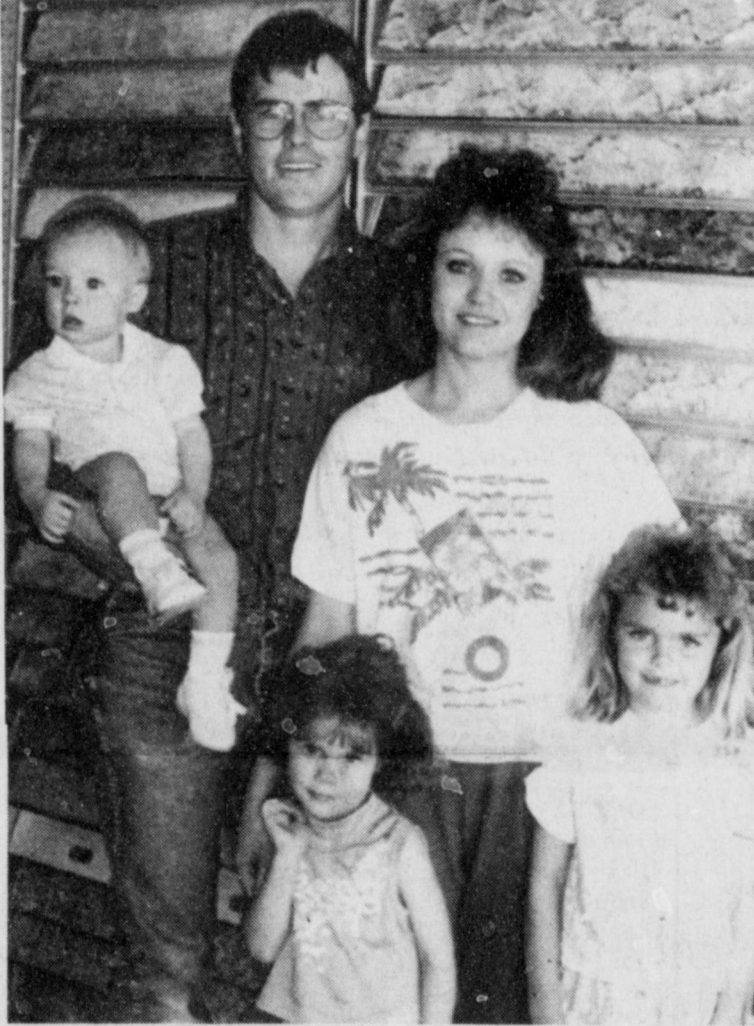


111 W. AVENUE B  
PHONE 706/272-4581  
MULESHOE, TEXAS 79347

New  
**ANTIQUUE**  
Arriving Soon  
THE MULESHOE ART LOFT



**Pivot Products Distributors, Inc.**  
Pivot Products Announces  
**Mini Max Trax**  
A revolutionary steel wheel for use on Center Pivot irrigation systems that makes Minimum tracks, gives Maximum traction and will never go flat.  
710 E. Amer. Blvd. 272-5536



Curtis, Shelli, Jessica, Jamie & Colby  
**Come by and see the crew at Muleshoe Floor Covering!**  
We would like to thank all of our customers for their business. We really appreciate the local and hometown support. It is nice that you can raise your family in a community like ours. Give us a chance to help you on any remodeling job, big or small! Shop at home and save money & time.

**In-Store Special!**  
12 Piece Mix with Rolls  
**\$8.99** plus tax  
**Church's CHICKEN**  
1411 W. Amer. Blvd. 272-5581

**W.T. services inc.**  
319 E. American Blvd.  
MULESHOE, TEXAS 79347  
**Mobile Communications**  
**Two-Way Radio Repair**  
GARY PARKER  
Technician  
Muleshoe - 806-272-4888 Hereford - 806-364-7311



**Early Bird Special**  
**On Tuxedos**  
**10% off**  
FREE Rental Of Shoes!  
**Lambert Cleaners**  
123 Main 272-4726



**Do It Yourself Sale!**  
Tarkett Residential Floor Tiles  
in stock only  
Sure Stick Adhesive Backing  
Many Styles & Qualities Available  
**79¢** sq. ft.  
We Always Offer Competitive Prices!  
**Muleshoe Floor Covering**  
122 S. Main Curtis Carpenter 272-3555

**Muleshoe Floor Covering**  
CURTIS CARPENTER 806/272-3555  
122 MAIN STREET MULESHOE, TEXAS 79347

**Now Installing Underground Pipe.**  
We Have All Your Irrigation Supplies!  
Above Ground Gated Plastic Pipe  
Solar Surge Valves  
**Irrigation Supply**  
J.C. & Zona Gatewood  
607 E. Amer. Blvd. 272-4466

**"1•2•3"**  
**Lunch Special**  
All for Only **\$3.89**  
Delivery Available  
11 a.m. - 1:30 p.m.  
and  
After 5:00 p.m.  
1412 W. Amer. Blvd. 272-4213



- 1) Your choice of a single topping Personal Pizza (Pan or New Thin Crust) or a Pasta dish with meat sauce (Spaghetti or Cavatini®)
- 2) A trip thru the Salad Bar
- 3) Your choice of Iced Tea or a Medium Soft Drink

**We Are Now Open From**  
11 a.m. to 9:30 p.m.  
Orders To Go Welcome  
Closed Tuesdays  
**Viola's Restaurant**  
2002 W. Amer. Blvd. 272-3838



**AUTOMOTIVE VALUE OF THE MONTH**  
**INVISIBLE WINDSHIELD WIPER rain-X 7-Oz. Glass Treatment**  
**1.99**  
While Supplies Last QUANTITIES LIMITED  
**Fry & Cox True Value**  
401 S. 1st 272-4511



**5 Locations To Serve You!**  
Clays Corner - Enochs - Muleshoe  
Pleasant Valley - Old Griffith  
**Farmer's Co-Op Elevators**  
272-7561

**Irrigation Battery Sale**  
**\$29.99**  
Kearney Scoggin  
**Scoggin Ag Center, Inc.**  
"Where Fertilizer Is Our Business"  
1532 W. Amer. Blvd. 272-4613