



# Muleshoe Journal



The Community Of Opportunity-Where Water Makes The Difference

Vol. 69, No. 7

12 PAGES TODAY

Published Every Thursday At Muleshoe, Bailey County, Texas 79347

MEMBER TEXAS PRESS ASSOCIATION 20¢ THURSDAY, FEBRUARY 14, 1991

## Commissioners Approve Annual Audit

around  
muleshoe

\*\*\*  
Texas Health Department at 306 W. Second St. will conduct a Cholesterol Screening Clinic on Wednesday, February 20.

Call for an appointment for the screening at 272-5561. The hours will be 9-noon and 1-4 p.m. There will be a minimal cost of \$4 for the screening.

\*\*\*  
Airman Cary S. Skaggs has graduated from Air Force basic training at Lackland Air Force Base, Texas.

During the six weeks of training the airman studied Air Force mission, organization and customs and received special training in human relations.

In addition, airmen who complete basic training earn credits toward an associate degree through the Community College of the Air Force.

He is the son of Mr. and Mrs. Gary Skaggs, Muleshoe, and a 1990 graduate of Muleshoe High School.

\*\*\*  
Muleshoe Activities Committee (MAC) will have their annual meeting February 19, 7:30 p.m. at the Muleshoe State Bank meeting room.

Dick Pylant will have the program.

All members are asked to please attend the meeting.

\*\*\*  
Cub Scouts, their families, and guests will be attending the annual Blue and Gold Banquet on Friday, February 15, at 6 p.m. at the Methodist Church Fellowship Hall.

Parents are asked to bring a covered dish to adequate to serve your family, plus two guests.

For further information, if needed, call Belinda Morris or Kay Graves.

\*\*\*  
Muleshoe Athletic Boosters will present a Mens', Womens, and Mixed Division Volleyball Tournament, March 7-9.

The double elimination tournament will be played in the Muleshoe Junior High gym.

T-Shirts will be given for first and second places and trophies will be presented 1st through 3rd place teams.

Entry fee is \$45 per team, and deadline for entry is March 1.

A concession stand will be available, and all proceeds will go to the Athletic Boosters.

For additional information, or to enter a team, call Alex Garcia, 8 a.m.-5 p.m. at (806) 272-4390; Marsha Watkins, 272-5632; Vickie Hardwick, 272-4345 or Larry Rasco, 272-5269.

\*\*\*  
Army Pvt. Scottie L. Miller has deployed to the Middle East with American military forces

Cont. Page 6, Col. 3



LIONS CLUB SPECIAL GUESTS--Last Saturday night, the Muleshoe Lions Club held their annual officer installation banquet and awards night at the Muleshoe High School cafeteria. Pictured from left are the Lions District Governor, Billy Fisher, of Lubbock; Charles Lenau, only surviving charter member of the Muleshoe Lions Club; and Marshall Cooper, former director of Girlstown, USA, at Whiteface, who was guest speaker.

## 'Wall Of Cattle' Will Help Consumers Buy More Beef

By: Mary Mahoney

Cattle should continue hitting the market in large numbers next month, keeping beef prices down for consumers through much of February.

Dr. Ernest Davis, livestock marketing economist with the Texas Agricultural Extension Service, said that most market analysts are expecting "A wall of cattle" to move from feed lots to refrigerators before March 1.

"Cattle feeders probably can't escape this extremely large marketing quarter," he said.

Davis said the expected increase in beef supply can be traced to late 1990 feedlot placements.

"Feedlot operators have been placing unusually lightweight steers on feed, however, and that's made predicting their marketing schedules difficult," Davis explained.

Extremely large fed cattle marketings, for example, had been predicted last April and August, yet this did not occur.

Brisk fed cattle marketings in late December and January, however, have already increased meat supplies at supermarkets and provided savings for consumers on many beef cuts.

"The dip in beef prices that we have seen in recent weeks will continue during much of February," said Dr. Dick Edwards, a food marketing specialist with the Extension Service.

"Beef prices are expected to

be off about 10 percent, and grocery specials will put some beef cuts 25 to 30 percent below regular December prices," Edwards said.

"The beef sale pricing window will be closed by the end of February, so consumers may want to buy extra beef for their freezers while the prices are discounted," Edwards said.

Davis noted that first-quarter marketings should make only a ripple in cattle prices, which are expected to remain high through 1991.

Davis expects the U. S. Department of Agriculture's Jan. 1 count of cattle and calves -- to be released early in February -- will indicate the nation's cattle herd continues under 100 million head for the fourth consecutive year.

He said this relatively low supply of cattle in Texas and the rest of the nation helped keep cattle prices high last year, a situation likely to continue this year.

### Unique Generation Helping Elderly And Disabled

On Sunday afternoon, February 10, *The Unique Generation* visited Mrs. Margaret Goforth and Mr. and Mrs. Fred Horn at their respective homes.

The youth group wanted to volunteer their time helping any elder person who might need a "little helping hand." The youth members cleaned the yards of the two homes they visited.

Sponsors of *The Unique Generation* said they would like to thank the members who came out to help: Raquel Guzman, Yvette Barraz, Alex Barraz, Ruben Saldana, Rolando Estrada and Sandy Saldana.

Also, a *BIG Unique Thank You* to Eddie Morris, from Higginbotham-Bartlett for donating working gear to the youth group.

*The Unique Generation* would appreciate any other names and addresses of elderly or handicapped persons who need a "little helping hand."

To add their names to the list, or for further information, call 272-4955 or any *Unique Generation* member.

Animal placement time in feedlots, and size and frame of those going on feed, Davis said, determine marketing schedules.

Davis predicted that for calendar 1991, fed cattle prices are likely to average \$2 to \$3 per hundredweight below 1990 levels. Even though lower feed

### Lazbuddie Fire Dept. Sets Benefit

The Lazbuddie Volunteer Fire Department held election of officers on Monday, February 4, with the following elected:

Glenn Lust, fire chief; Nicky Nickels, assistant fire chief; Orin McBroom, captain; Donnie McDonald, captain; Doug Rice, captain; Bart Burnett, captain; Doyle Weir, secretary/treasurer; LynEldon Randolph, training officer and Phil Brockman, hazardous material officer.

New members of the fire department are Mike Nichols, John Jones, Mort Cross, Danny Schacher, Clint Manning and Scott Holt.

The meeting was held at the new fire station at Clay's Corner. The firemen cleaned the new building, discussed work needed to complete the building's classroom and driveways and the new firemen were issued equipment and trained on operation of the fire trucks.

Chief Lust reminded that even with the new building, located at Clay's Corner, they still have three fire trucks and the ambulance stationed at Lazbuddie.

After the new building is completed, a supper and open house will be scheduled.

The Lazbuddie Volunteer Fire Department and Friona Volunteer Fire Departments will play in a benefit basketball game at the Lazbuddie School gym Saturday, February 16, at 7:30 p.m.

The cost is \$2 per person, with the money to be divided between the two departments.

A concession stand will be provided by the Lazbuddie Senior Class.

The Lazbuddie Volunteer Fire Department says, "Come enjoy a fun time and good food."

Bailey County Commissioners Court heard the annual audit report Monday, presented by Randy Field and Norma Bruce of Sudduth, Field.

They voiced their appreciation for the complete, comprehensive report, which showed the county to be basically in compliance with accounting practices, and the complete audit reflected the financial condition of each

### New Projects For Rotary Discussed

Jackey W. Burris, director of the Bailey County EMS Ambulance Service was to have been speaker for the Muleshoe Rotary Club on Tuesday, but he received an emergency ambulance call and had to leave shortly after arriving for the meeting.

President Bruce Purdy said Terry Hutto will be in charge of the program next week, with Jerry Hicks the following week, then Max King and Robert Lepard.

President Purdy updated the Rotarians on decisions made by the board of directors last week on proposed spring fund raising projects.

One will be a 3-Club Golf Scramble in May. He said it will be held on a Saturday, with a hamburger cook-out. This will include both men and women golfers, and will include anyone who wants to join the tournament, he said.

Again, the Muleshoe Rotary Club will be selling tickets for a trip to Hawaii. It will be given away on July 4th. The format will be the same as the successful sale last year, with tickets at \$5 each. Last year, the Rotarians sold nearly \$4,500 in tickets.

Also, again this year, the Rotary Club will have a hamburger cookout and their baseball throw.

Coming under some discussion was the possibility of giving two \$500 scholarships to graduating seniors from Muleshoe High School.

No final decision was reached, and the Rotarians will vote in the next couple of weeks on how they want to handle the scholarships.

Winner of the Polio Plus drawing was Harvey Bass.

Guests at the meeting were Thurman Myers and Stephan Shelburne.

department in the county government.

Field explained that the audit shows the county to be fairly stable, and he went page by page to explain the functions of the audit, and what they revealed about county finances.

The booklet revealed how each department was set up, and their expenses and assets, as well as overall assets of the county.

Following the report, the county commissioners then approved Sudduth, Field & Co. to do the annual audit for the next three years.

Jackey Wayne Burris, director of the Bailey County Ambulance Service, gave the January report to commissioners.

He said 42 calls were made by the ambulance crews in January. Of this, 28 were emergency calls; nine transfers to other hospitals were made, and five no transport calls were made.

For the month of January, the Ambulance Service billed a total of \$10,770.29. This is an average of \$256.43 for each call.

Collected in the month of January was \$5,081.63.

After a discussion, the commissioners approved members of the EMS crew to receive the series of Hepatitis-B immunizations at a cost of \$120 per person. For those who will be taking the series, it will be a total of \$1,800. If any of the EMS personnel refuse to take the series of immunizations, they will be required to sign a 'release' or 'waiver' not holding the county responsible should they contact Hepatitis.

In another segment of his presentation, the EMS director presented each commissioner and County Judge Marilyn Cox with the following letter:

Dear Bailey County Judge and Commissioners,

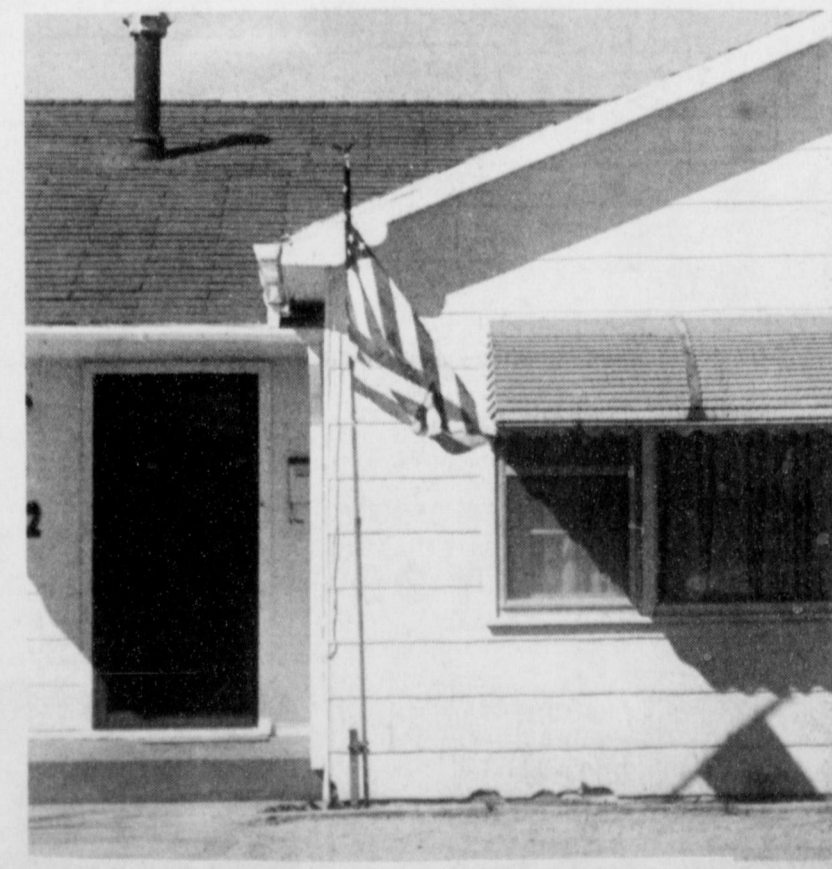
The expenses for repair and maintenance from October 1, 1990 through January 31, 1991 averaged \$968.80 per month. On February 6, 1991, the rear-end went out on 1701 (the large ambulance), price for repairs were \$724.00. A budget amendment was requested on February 8, 1991 due to insufficient amount of funds to pay for repairs. I feel all repairs that have been done in the past months have been done on a cost efficient basis, and could not have been prevented.

Therefore, due to the increased call volume and added demand for EMS services, I am requesting permission to take

Cont. Page 6, Col. 1



THINGS THAT GO BUMP IN THE NIGHT--Fortunately, no serious injuries resulted from the crash of two small sports cars at the intersection of South First Street and Avenue C early Monday night. One toddler received very minor injuries, but was treated at the scene of the accident by personnel from the Bailey County EMS Ambulance Service. (Journal Photo)



MORE LOCAL HOMES DISPLAYING FLAG--Each day, you can see flags in front of more and more homes and businesses in Muleshoe. This has been a continuing and ongoing project for many local people who wish to show their support of the military personnel currently engaged in 'Desert Storm' in the Persian Gulf and Saudi Arabia. (Journal Photo)

You'll Love These Values

**Wilson Bacon**  
 BUY ONE 1 LB. PKG. WILSON  
**Bacon**  
 GET A 12 OZ. PKG. Wilson Meat Franks  
**Free!**

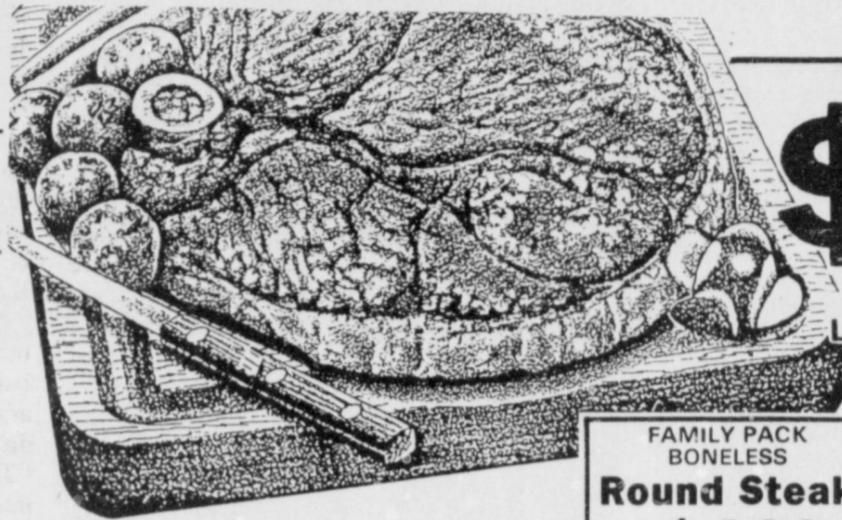


FAMILY PACK BONELESS TOP  
**Sirloin Steak**  
 LB. \$249

HEAVY GRAIN FED BEEF BONELESS

**Rump Roast**

LB. \$269



**Round Steak**

LB. \$178

FAMILY PACK BONE-IN

WHOLE **Smoked Picnics** LB. \$118

HEAVY GRAIN FED BEEF BONELESS **Sirloin Tip Roast** LB. \$259

SUPER LEAN GROUND ROUND QUALITY **Beef** LB. \$229

FAMILY PACK BEEF **K.C. Strip Steak** LB. \$499

FAMILY PACK BONELESS **Round Steak** LB. \$198



SOFT-N-GENTLE **Bath Tissue**  
 4 ROLL PKG. 79¢

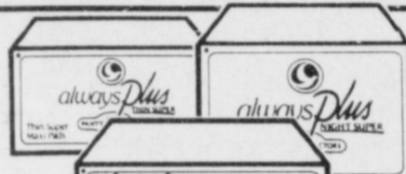
MORRISON **Corn Kits**  
 6 OZ. POUCHES 3 FOR 99¢



SHURFINE **Pinto Beans**  
 2 LB. BAG 59¢



ASSORTED FLAVORS RAGU **Spaghetti Sauce**  
 30 OZ. JAR \$189



NIGHT/PLUS/DOUBLE PLUS **Always Maxi Pads**  
 16-24 CT PKG. \$329



ASSORTED FLAVORS SHURFINE **Ice Cream**  
 1/2 GALLON SQUARE CARTON \$139



ALL TYPES **Coca-Cola**  
 3 LITER BTL \$159

6 PACK/12 OZ. CANS \$199



LIPTON **Tea Bags**  
 100 CT. BOX \$229

NUTRASWEET SWEETENER **Equal**  
 50 CT. BOX \$199

*We Support Our Men and Women In The Middle East!*



ASSORTED **Pop Secret**  
 3 CT. PKG. \$179

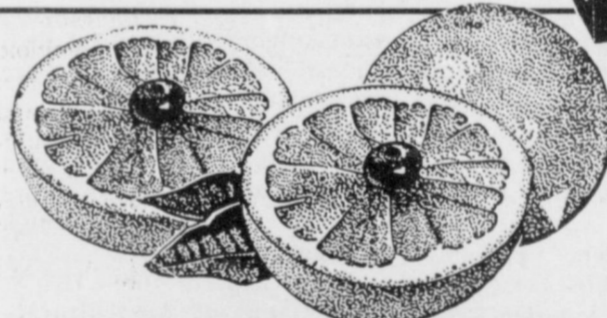
ASSTD. BETTY CROCKER SUPERMOIST **Cake Mix**  
 18 OZ. BOX 89¢



ASSORTED BETTY CROCKER READY TO SPREAD **Frosting**  
 16 OZ. CAN \$129



GOLDEN...RIPE **Sweet Potatoes**  
 3 LBS. \$100



**Ruby Red Grapefruit**  
 6 FOR \$1

COMSTOCK REGULAR OR LIGHT **Cherry Pie Filling**  
 21 OZ. CAN \$109



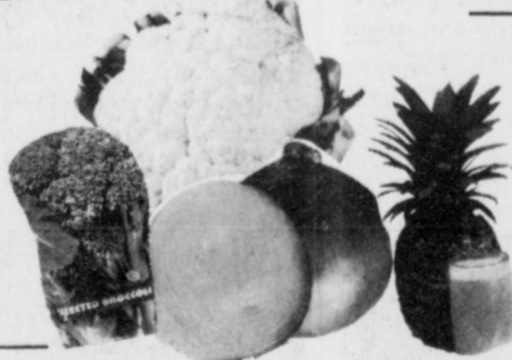
ASSORTED TONY'S **Microwave Pizza**  
 9 OZ. BOX \$129



GERBER'S SECOND FOOD **Baby Food**  
 4 OZ. JARS 3 FOR \$1



FRESH CRISP GREEN **Leaf Lettuce**  
 BUNCHES 2 FOR \$100



MEDIUM **White Onions** LB. 58¢  
 CRISP... **Sno-White Cauliflower** EACH 88¢

LARGE BUNCH GARDEN **Fresh Broccoli** BUNCH 88¢  
 LARGE SIZE FROM MEXICO **Fresh Pineapple** EACH 98¢



TONY'S ASST. MICROWAVE **French Bread Pizza** 6 1/2 OZ. PKG. \$119



ASSORTED **Degree**  
 \$229

NUPRIN **Tablets or Caplets**  
 50 CT. PKG. \$369



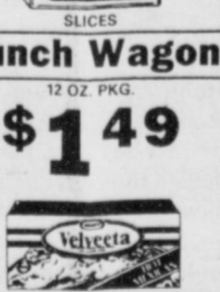
ASSORTED **Suave**  
 \$99¢

WESTERN FAMILY SYRUP OR EXPECTORANT **Triaminic**  
 4 OZ. BTL. \$199



SHEDD'S SPREAD **Country Crock**  
 3 LB. TUB \$149

LUNCH WAGON **Lunch Wagon**  
 12 OZ. PKG. \$149



REG. HOT, QP, MILD MEX. **Velveeta**  
 16 OZ. LOAF \$279



ASSORTED **Pillsbury Biscuits**  
 10 CT. CANS 489¢



FISHER BOY FISH 30 CT. **Nuggets**  
 20 OZ. BOX \$219

HEAT N SERVE **Fish Sticks**  
 1 LB. BOX \$139

BOOTH **Shrimp**  
 1 LB. BOX \$599

BOOTH **Filletts**  
 1 LB. BOX \$249



RHODES WHITE/HONEY WHEAT **Bread Dough**  
 3 LOAF PKG. \$149



YOUR CHOICE **Wrigley's Gum**  
 MIX OR MATCH

10 \$1



401 W. Amer. Blvd. Muleshoe, Tx. 272-4585

AAFFILIATED FOODS INC. MEMBER STORE

WE ACCEPT FOOD STAMPS... WE RESERVE THE RIGHT TO LIMIT

Prices Effective February 10 - 16, 1991



REGULAR OR LIGHT **Cheetos**

REGULAR \$1.79

99¢

**Texas Senate Week In Review**

On Tuesday, February 6, the Texas Senate met in Joint Session with the Texas House at 12 noon to hear Governor Ann Richards deliver her first State of the State Address. Governor Richards presented her vision for a "New Texas" with special emphasis on restructuring state government, calling for a state lottery, ethics reform, and "legendary customer service" by state government to the

**Kim Richardson Funeral Services Held At Morton**

Funeral services for Kim Richardson, 21, of Morton were held at 11 a.m. Tuesday in Ellis Funeral Home Chapel at Morton with Randy Richardson of Broken Arrow, Okla. and Donnye Richardson of Morton officiating.

Burial was in Enochs Cemetery under the direction of Ellis Funeral Home of Morton. Justice of the Peace Phyllis Redman pronounced her dead at 4:44 p.m. Sunday at her residence.

Born Sept. 5, 1969, in Lubbock, Ms. Richardson was a lifetime resident of Morton. She was a member of New Life Ministries of Morton.

Survivors include her parents, Don and Betty Richardson of Morton; and three brothers, Brent Richardson of Lubbock, Randy Richardson of Broken Arrow, Okla., and Darren Richardson of Morton.

**Gabriel Salazar Graveside Services Held Monday**

Graveside services for Gabriel Salazar, 85, were conducted at 10 a.m. Monday, Feb. 11 in Muleshoe Cemetery with the Rev. Mike Doyle, pastor of the Spanish Assembly of God Church, officiating.

Burial was under the direction of Ellis Funeral Home. Salazar died at 10:30 p.m. Thursday in the Methodist Hospital in Lubbock March 20, 1905, in Eagle Pass, he had been a resident of Muleshoe three years, moving here from Fresno, Calif. His wife, Francisca died in April 1986.

Survivors include two sons, Jose L. Villiarreal of Houston and John L. Soto, Jr. of Muleshoe; five grandchildren; and 32 great grandchildren.

Soviet media praises Gorbachev's new political deal.

**HEALTH INSURANCE**  
CALL Mark Morton 109 S. 1st Muleshoe 272-7519

citizens of Texas. Governor Richards singled out the State Board of Insurance for ignoring the needs of the people, and demanded the remaining commissioners resign.

Governor Richards reemphasized her commitment to education by returning the individual schools back to the teachers, parents, and students who attend them, and creating an equitable and stable funding for the schools, but refusing to "level down" or "mandate mediocrity" as a basis for meeting the Supreme Court's April 1 deadline. Lieutenant Bob Bullock indicated that the address was a strong one and that he looked forward to working with the Governor in meeting the challenges ahead.

Pending in the Senate Finance Committee is a package of bills sponsored by Senator Carl Parker of Port Arthur, which will attempt to establish a state-wide property tax to fund Texas public schools. The Parker plan calls for a one-dollar for every 100 dollars of assessed value to replace local school taxes. The funds will then be redistributed to local districts based on the number of students.

Under this plan, local districts will be able to tax an additional 25 cents per 100 dollars of assessed value for local enrichment. This package contains legislation for a constitutional amendment which will allow the voters to decide in a special election their choice for funding-public schools.

In other committee business, the Senate Subcommittee on Water heard testimony on Senate Bill 14, sponsored by Senator Parker, relating to oil and other chemical spills. The bill has received support from environmental groups, as well as the oil and gas industry.

Today the Senate met as the Committee of the Whole Senate for the purpose of hearing presentations from staff members on key components of

redistricting. Every ten years, based on information gathered from the U.S. Census, lawmakers are charged with the task of redrawing legislative and congressional districts using the new population figures. Upon the conclusion of the presentations, the Redistricting Subcommittee on Congressional Districts convened with Senator Eddie Bernice Johnson of Dallas as Chair to organize and prepare for hearings. The Subcommittee on Legislative Districts is expected to meet next week with Senator Bob Glasgow of Stephenville as the Chair.

The Senate stands adjourned until 2:00 p.m., Monday, February 11th.

**Nettie M. Scott Funeral Services Held At Lubbock**

Memorial services for Nettie M. Scott of Lubbock were conducted at 2 p.m. Saturday, Feb. 8 in the Hodges Chapel of the First Christian Church with Dr. Michael Passmore, pastor, officiating.

Cremation was under the direction of Resthaven Funeral Home. Ms. Scott died Thursday at 9 p.m. in the Methodist Hospital in Lubbock following a lengthy illness.

A native of Cisco, she married William Wallace Scott on January 24, 1924, in Stamford. He died December 20, 1949. She had lived in Stamford until 1964, when she moved to Amarillo. She lived in Amarillo for 25 years, returning to Lubbock in December of 1989. She was a member of the First Christian Church in Amarillo.

Survivors include a daughter, Mrs. William S. "Flo S." Brown of Lubbock, formerly of Muleshoe; a sister, Lucille Husbands of Dumas; two grandchildren; and two great grandchildren.

**Floss Baldwin Services Held Here Monday**

Funeral services for Floss S. "Fluff" Baldwin, 79, were held at 2 p.m. Monday, Feb. 11 in the First United Methodist Church with Dr. Darold Baldwin of Snyder and Sam Billingsley, minister of the Lariat Church of Christ, officiating.

Burial was in Plainview Memorial Park Cemetery under the direction of Ellis Funeral Home. Baldwin died at 6:02 p.m. Friday in Muleshoe Area Health Care Center.

Born Jan. 23, 1912, in Paducah, he had been a resident of Muleshoe six years, moving here from Plainview. He was a member of the First Baptist Church, a Honorary Lifetime Member of Whiteface FFA, and served as a trustee of Whiteface Schools from 1946 to 1949 and served as Deacon of Conway Baptist Church in Mission and the Parkview Baptist Church in Plainview. He was a retired farmer. Baldwin married Lois Robinson on July 7, 1934, in Plainview.

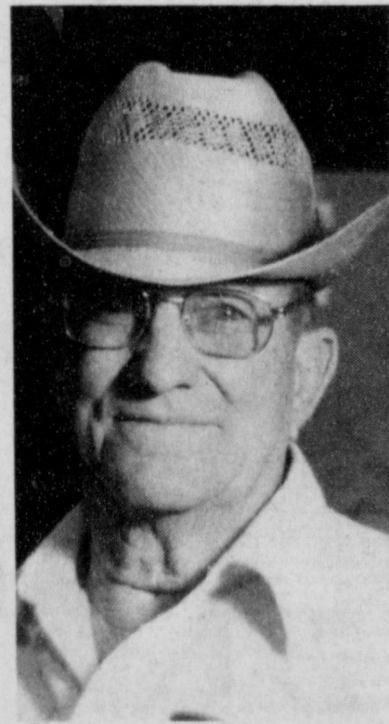
He was a veteran of World

War II, serving in the U.S. Army.

Survivors include his wife, Lois; a son, Larry Baldwin of Whiteface; four daughters, Ruby Matthews of Hobbs, N.M., Floyce Henderson of DeKalb, Sara Petty of Seminole and Darla Rhodes of Muleshoe; three sisters, Bessie Holley and Jo Anna West, both of Albuquerque, N.M. and Lily Wadley of Amarillo; a brother, Milton Baldwin of Jackson, Tenn.; 15 grandchildren; and 13 great grandchildren.

He was preceded in death by a son, Gaylon Baldwin, in 1980.

The family suggests memorials be made to Alzheimers Institute Texas Tech Health Sciences Center, 4th and Indiana, Lubbock, TX 79430.



FLOSS "FLUFF" BALDWIN

**Muleshoe Journal** USPS 367-820  
Established February 23, 1924. Published by Muleshoe Publishing Co., Inc., Every Thursday at 304 W. Second, Box 449, Muleshoe, Texas, 79347. Second Class Postage Paid at Muleshoe, Texas, 79347.

**MEMBER 1991**  
**TEXAS PRESS ASSOCIATION**

L. B. Hall, Publisher  
Sammy Hall, Vice President/Controller  
Crisa Williams-Jacobson, News  
Evelene Harris, Society  
Holly Millsap, Advertising  
Dina Toucan, Classified

**SUBSCRIPTIONS**  
Muleshoe Journal and Bailey County Journal  
Bailey and surrounding counties  
Muleshoe Journal and Bailey County Journal  
Elsewhere in Texas \$14.75  
Muleshoe Journal and Bailey County Journal  
Outside Texas, \$16.50  
Yearly By Carrier \$12.50

Advertising Rate Card on Application  
\*Advertisers should check their ad the first day of insertion. The Journal will not be liable for failure to publish an ad or for a typographical error or errors in publication except in the case of the cost of the ad for the first day of insertion. Adjustment for errors will be limited to the cost of that portion of the ad where the error occurred.

**Health News**

Stuck in traffic behind a bus again? Riding the highway being an 18-wheeler? The effects of breathing a steady stream of diesel exhaust is the subject of a four-year study at Baylor College of Medicine in Houston.

Diesel exhaust contains chemicals that can alter DNA, genetic materials that are the body's basic building blocks. The chemicals alter DNA's structure, changing the way certain cells behave. This can lead to tumor growth and possibly cancer.

It is similar to what researchers in the 1960s and 1970s encountered when studying the effects of cigarettes, said Dr. Kurt Randerath, head of the division of toxicology at Baylor.

"We knew there was a link between cigarettes and cancer, but we did not know the type or amount of chemicals that caused damage," Randerath said. "Today, we do not know how much exposure to diesel exhaust it takes to form cancer cells."

"Our concern is for factory workers, truck drivers or anybody chronically exposed to diesel exhaust," he said. "If we can determine what levels of chemical exposure in diesel exhaust are dangerous, we might be able to limit the

incidence of cancer in these people."

In this study, the DNA of rats exposed to diesel exhaust is examined for carcinogens, cancer-causing agents. Randerath and co-investigator Dr. Erika Randerath are using a type of DNA fingerprinting they developed 10 years ago called carcinogen adduct fingerprinting. It is now used worldwide in labs involved in cancer research.

Each carcinogen in the exhaust creates a reaction in DNA that leaves a marker or "fingerprint." Comparisons with normal DNA show researchers when genetic material has been altered by the chemicals.

"It is hit or miss," Randerath said. "It could take one or it could take 100 exposures to a chemical before DNA is damaged. There is no set pattern. This study will help us understand why tumors occur in some instances and not in others."

Randerath will examine carcinogenic chemicals in diesel exhaust called aromatics, which include benzopyrene and nitro-pyrene.

The study is funded by the U.S. Health Effects Institute which uses funds provided by the Environmental Protection

Agency and the automobile industry to study the health effects of automobile emissions.

**Nola Vea McGee Services Pending**

Services for Nola McGee, 93, were pending with Ellis Funeral Home at press time.

Mrs. McGee died at 12:38 p.m. Tuesday in Muleshoe Area Medical Center.

She was born Aug. 28, 1897, in Boonsville, Ark. and moved to Muleshoe in 1933, from Maude, Okla. She was a homemaker and a member of the First Christian Church.

Survivors include three sons, Burke B. McGee of San Antonio, Harold G. McGee of Ada, Okla., and Bobby L. McGee of Muleshoe; and two daughters, Claudie Bernice Rakes of Roanok, Virginia and Dixie Pauline Barnes of San Antonio.

**Who Knows?**

1. Where was the first public museum in America established?
2. Who incorporated Standard Oil?
3. What is the origin for the name of the state of Indiana?

**Answers:**

1. Charleston, S.C., in 1773.
2. John D. Rockefeller, in 1870.
3. Indiana means "land of the Indians."

**QUITTING BUSINESS SALE**

After 45 Years Of Service to Portales And Surrounding Area, HARRIS STORE For MEN Will Close It's Doors At The Conclusion Of This Sale. . .

**Sale In Progress**

**25% OFF**  
Everything In The Store

**Some Items Already Reduced 1/3 To 1/2**

<b>Suits</b> Sportcoats Red Wing Boots Red Wing Work Shoes	<b>Western Suits</b> Western Sportcoats Western Dress Pants Wrangler Roper Boots (Brown Only)	<b>DICKIES</b> KHAKI WORK CLOTHES
<b>Nunn-Bush Shoes</b> Blue Denim Lees Blue Denim Levis Blue Denim Wranglers	<b>Sweaters</b> Pajamas Nightshirts Robes House shoes Winter Caps Summer Caps Clothes Brushes Suspenders Belts Handkerchiefs Wallets Key Cases Cuff Links Clothing Carrier Bags Rain Coats	<b>Coats</b> Jackets Top Coats Neck Ties Cologne Pen Sets Shoe Shapers Boot Jacks Tie Bars Tie Tacs Tie Racks Magnifiers Manicure Sets Back Gammon Dominoes Dopp Kits Shoe Shine Kits Umbrellas Laundry Bags Novelties
<b>Slacks</b> Pleated Or Regular	<b>Western Shirts</b> Dress Shirts Sport Shirts Knit Shirts Flannel Shirts	<b>PENDLETON WOOLS</b> Caps Robes Coats Throws Shirts Scarves Sweaters Stadium Blankets
<b>Western Hats</b> Dress Hats Munsingwear Underwear Hanes Underwear Socks Travel Alarm Clocks Moustache Grooming Kits Collar Spacer Buttons	<b>Slacks</b> * Sans-A-Belts * Levi Action Slacks * Higgins * Le Tigre	<b>Slacks</b> * Stretch * Boot Cut * Full Cut * 501 * 517 * 13MVZ * Sta Prost
<b>Slacks</b> * Sans-A-Belts * Levi Action Slacks * Higgins * Le Tigre	<b>Slacks</b> * Sans-A-Belts * Levi Action Slacks * Higgins * Le Tigre	<b>Slacks</b> * Sans-A-Belts * Levi Action Slacks * Higgins * Le Tigre

**DRASTIC SAVINGS ON OUR BARGAIN TABLES**

\* No Layaways \* No Refunds  
\* No Exchanges \* No Alterations

**HARRIS STORE FOR MEN**

ALL SALES FINAL 105 W. 2nd Portales 356-5652

**DURING NC + DAYS**  
FROM NOW UNTIL FEBRUARY 23rd

Get NC + 6414, 5990 and 5891 in plateless sizes P80's or P90's for only \$64.43\* per bag MF and Mr only \$66.19\*

**NEW LOW PRICE FOR**  
NC + 8141 W WHITE FOOD CORN in plateless sizes P80's or P90's for only \$64.43\* per bag MF and MR only \$66.19\*

**CALL JAMES L. WEDEL**  
BEFORE FEBRUARY 23rd  
272-5901 or 946-7011  
★ 10 Bag Minimum Order  
Paid For By February 23rd

**America's down to earth seed company**



# Lazbuddie FHA Observes National FHA Week

February 11 through 15 is National FHA Week and the Lazbuddie Future Homemakers of America organization has planned some special events for the week. The week began with a "Sweetheart Banquet" on Saturday, February 9. In addition to the week's various activities, FHA members are selling heart balloons and teddy bears to be delivered to those "Special Someones" on Valentine's Day.

Future Homemakers of America organizations are an integral part of modern home economics classes. Skills learned in the classroom are put into practice in FHA projects, which may include fund-raising, community service, strengthening family bonds, or creative endeavors. At the same time, FHA projects serve to reinforce classroom instruction in life skills.

Mrs. Barbara Lust is Lazbuddie's vocational home economics teacher and FHA advisor. She understands and makes excellent use of this vital link between her classroom instruction and the smooth operation of the FHA organization at Lazbuddie. She stated that the home ec program now stresses the teaching of necessary life management skills that include business and marketing know-how, interpersonal relationships, marriage and family life, child development, consumer skills, proper nutrition, coping with family crises, etiquette, meal preparation, and creative cooking and sewing.

She stated that all of these are to be taught with a special emphasis on building students' self-esteem. Building self-esteem has become a major goal of the vocational home economics program as the need has been recognized. Helping to build strong families of tomorrow is vitally important to our

nation's economic and emotional well-being.

The following report was written by FHA officers, Raquel Guzman and Joele Weaver.

On September 15, 1990, we started the FHA year with a splash. A swimming party was held to welcome new members and to help them become acquainted with the current members. Although the day was rainy, we topped it off by making our own delicious banana splits.

This year, we have a large number of members in FHA. Our 1990-91 officers are: president, Elsa Mendoza; 1st vice-president, Raymond Zamora; 2nd vice-presidents, Jana Vise and Marsha Mendoza; 3rd vice-president, Juanita Ramos; secretary, Susan Alcala; treasurer, Joni Hernandez; reporter, Raquel Guzman; historian, Joele Weaver; and parliamentarian, Christina Perkins.

On December 17, we held our

## Journal Files

### 60 Years Ago

1931

#### 150 GALLONS OF BOOZE IS DUMPED IN PORTALES SEWER

Last Friday evening at 1:30 o'clock Sheriff Jernigan and deputies dumped over 150 gallons of booze into the sewer in the alley between Warnica's and the pool hall.

The booze consisted of beer, whiskey, near whiskey, rattlesnake poison and bonded liquor.

Some was contained in cream cans and iron barrels, and when poured out was of a thick rusty color.

A large crowd witnessed the pouring out, amid tears and watering mouths. They absorbed the fumes but were denied a taste.

It is reported that at the other end of the sewer where the disposal plant is located, that the jack rabbits became so vicious that they whipped several bull dogs.

### 50 Years Ago

1941

#### TEXAS SPEED LIMIT HIKE IS APPROVED RECENTLY

Both the State Senate and

House Committees have approved a bill increasing the daytime speed limit on Texas highways to 60 Miles per hour. The present maximum is 45 miles per hour.

Under a bill as amended by the house group, truck speeds would go from 25 to 50 miles per hour, and those of buses from 40 to 50 miles per hour.

A general nighttime limit of 50 miles per hour is also in the bill.

### 40 Years Ago

1951

#### CLASSIFIED ADS SECTION OF LAND FOR SALE

This 640 acres is well improved, 200 acres in wheat, 40 acres barley, all mineral rights, irrigated. Can be bought for \$135 acre. Will carry a nice loan.

\*\*\*

For Rent: 4 room house with bath, \$30 per month.

\*\*\*

For Sale: 160 acres fair improvements, good cotton land, \$45,000 good loan.

### 30 Years Ago

1961

#### JOURNAL PRINTS SUNDAY EDITION

Sunday, February 5, was a big day for Muleshoe and The Journal. This was the day that the first "Dollar Day" edition of the Journal came off the presses at 7:30 a.m. A copy was delivered to the doorsteps of every Muleshoe citizen. Out of town subscribers received their copy Monday morning.

Due to demand on the part of our advertisers and readers The Journal has contemplated such a move for some time now. Present plans are for a "Dollar Day" edition each month. If our readers and advertisers are interested in receiving future "Dollar Day" editions, let us know by returning the blank on page four of Sunday's paper. Also check the space provided if you would like to receive a weekly Sunday paper as well as the regular Thursday paper.

This move is not only progress for the Journal, but progress for Muleshoe and area. A newspaper reflects the progress of an area and we here at the Journal are proud to have the opportunity of reflecting the progress of Muleshoe and area.

### 20 Years Ago

1971

#### CLASSIFIED ADS

For Rent: Furnished, 3 large rooms and bath. Bills paid \$70.00 per month.

\*\*\*

For Sale: 72 Acres--8 in. well located at Clay's Corner, engine and pipe goes with land. \$475 an acre.

\*\*\*

For Sale: 280 Acres of land, improved and fenced, underground pipe. 80 acres new hay. Cotton feed allotments. Good government check. 5 % loan.

### 10 Years Ago

1981

#### ELEMENTARY SCHOOL RENAMED

In surprise action Monday night, as the first item of business on the agenda, the Muleshoe Independent School District Board of Trustees voted to change the name of Richland Hills Elementary to Neal B. Dillman Elementary School. Dillman attended the school board meeting on a well designed ruse to receive his honor.

in the Lazbuddie community and to prepare them to handle certain circumstances as they participate in the Youth Exchanging with Seniors (Y.E.S.) project coordinator from Lubbock, Mrs. Barbara Lust and Mrs. Marca Morris. Program chairman, Lori McBroom, and Joele Weaver planned a dinner for those who attended. Y.E.S. is a new program that we are very excited about. If you are, or know of any senior citizen who would enjoy and benefit from the company of young students, please contact Lana Copp at 965-2806 or Barbara Lust at 965-2828.

We sold cookbooks to raise money to attend the regional and state FHA meetings in the spring.

We have had many other exciting projects so far this year. FHA at Lazbuddie is going strong!



**PROUD PARENTS AT LAZBUDDIE**--These proud parents were caught holding their flour-sack babies at Lazbuddie High School. This was one of the projects carried out by a Lazbuddie Home Economics Class and was designed to teach responsibility. The babies were five-pound sacks of flour, dressed appropriately in pink or blue, which were not to be left unattended during a week-long trial at responsible "parenting." One student commented that her baby gained a pound-a-day and one of the boys stated that he felt sorry for the girls, who would "really have to do this for the rest of their lives." (Back row, from left) Mrs. Barbara Lust, instructor; Christy Smith, Dee Martinez, Brandon Walker, Rachele Rice, and Joanna Gallman. Front row: Eva Jo Alcala, Sandra Perez, Belynda Waddell, and Stormy Davison.



**LAZBUDDIE NURSERY SCHOOL**--Cory Puckett appears to be amused by Mrs. Barbara Lust's effort to entertain Gatlin Treider and Kelli Harris, during the week-long nursery school, for three and four year olds, at Lazbuddie. This was only one of a number of Lazbuddie FHA projects. (Guest Photo)

## PLEASE HELP!

Do you know one or more of the following list of people? We need your help in locating them. They will lose what they have paid on their cemetery lots if they do not contact Muleshoe Memorial Park Cemetery, 232 Main St., P.O. Box 373, Muleshoe, Tx. 79347, telephone number 272-5727 and make arrangements to pay their balance owed.

Li-ted are names with last known address:

- Roque Puente -- 2215 Independence, Plainview, Tx. 79072
- Gerald Vaughn--Box 87, Muleshoe, Tx. 79347
- Keith Harp -- Muleshoe, Tx. 79347
- Paul Richards -- Muleshoe, Tx. 79347
- Esperanza S. Laredo -- 402 E. Ave. E., Muleshoe, Tx. 79347
- Carroll Merrell -- 514 E. 6th, Muleshoe, Tx. 79347
- Carl Gable -- Route 1 Muleshoe, Tx. 79347
- Eugene Stovall -- 1628 Navaro Dallas, Tx. 75208
- Shady Mowery -- 5505 75th Lubbock, Tx. 79424
- Joe Anguiano -- 715 W. Ave. F., Muleshoe, Tx. 79347
- Raymond J. Gonzales -- Rt. 1 Box 342, Earth, Tx. 79031
- Refugio & Clara Castorena -- 612 Main St., Muleshoe, Tx. 79347
- Doroteo Barron -- 610 E. 6th, Muleshoe, Tx. 79347
- Margarito Gutierrez -- 412 W. 5th, Muleshoe, Tx. 79347

# ANTHONY'S

## BIGGEST 50% OFF

### YELLOW TICKET SALE EVER!

Inventory is OVER!

## ALL Fall & Winter Merchandise MUST GO!

Look for the

# Yellow Tickets on ALL

- Men's Sweaters, Outerwear, Sport & Flannel Shirts, Robes and More
- Women's Sweaters, Outerwear, Tops, Skirts, Separates, Coordinates, Sleepwear
- Juniors' Sweaters, Outerwear, Tops, Skirts, Sweatshirts and More.
- Children's Sweaters, Outerwear, Long Sleeve Tops, Fashion Bottoms and More
- Footwear for the Family - Casual, Dress & Discontinued Athletic Shoes

Example:  
Orig. 29.99  
Sale 19.99  
**EXTRA 50% OFF**  
NOW **9.99**

Additional 50% off will be taken at the register.

## Take an additional 50% Off All Yellow Ticket Items

\* Intermediate markdowns may have already been taken.  
\* Selections may vary by store.  
\* Sorry... no rainchecks.

## Wall Of Cattle

Cont. From Page 1

grain prices are anticipated, lightweight feeder cattle prices will be strong, Davis said, and will continue to squeeze feedlot profit margins.

Davis said slow, deliberate growth is essential to the beef cattle industry's welfare.

He predicted that cattle prices will stay fairly strong until producers get bullish on expansion.

Davis noted, however, that last year's trends in foreign trade could hurt the market, should they continue into 1991.

The USDA reported that during the first 10 months of 1990 cattle imports were 62 percent greater from Mexico and Canada than year earlier levels. At the same time, cattle exports to those countries were 35 percent less.

"Imports will offset a slight drop in domestic production" Davis said, "so beef supplies should remain about the same. But competing meat supplies will be larger."

He reported that beef imports from Australia last year were 39 percent above 1989 levels, adding to an overall eight percent increase in beef and veal imports.

U. S. beef exports to Japan had dropped 20 percent, contributing to a total three percent decline in export sales.

"Under the Japanese beef quota system, we've been assured we'd get a fair share of that trade," Davis said. "Beginning April 1, however, Japan will be discontinuing its quota system, and we'll be competing with the world's exporters."

He said U. S. beef has a good reputation.

"But Japan already has large supplies of frozen U. S. beef in storage," Davis said. "Also, Japanese wholesalers want chilled rather than frozen beef. So U. S. exports could decrease temporarily."

He said on a retail weight basis, U. S. beef consumption declined from 68.9 pounds per person in 1989 to about 67.8 pounds last year. Chicken con-

### Muleshoe...

Cont. From Page 1 participating in Operation Desert Storm.

Desert Storm, the largest deployment of U. S. military forces since Vietnam, is in response to Iraq's invasion of Kuwait and threat to Saudi Arabia.

"It is the presence of (our) dedicated military people that brings America's principles to life and gives them strength and meaning," President Bush said.

Miller, an armor crewmember at Ferris Barracks, Germany, is the son of Joe and Veta Miller of Earth and a 1987 graduate of Springlake-Earth High School.

Swisher County Activities Association will hold a turkey shoot on Sunday, February 17, at 1:30 p.m. The location is Tule Lake, two miles east of Tulia on FM 1318, then two miles north and one mile east.

Cash or prizes will be given and light refreshments will be available.

For more information, call David Gibson, 995-3726; Henry Roach, 995-2477 or Donald Adams, 668-4618.

### For Life Insurance, check with State Farm.

- Permanent Life.
- Term Life.
- Retirement, pension and group plans.
- Universal Life.



Like a good neighbor, State Farm is there.



State Farm Life Insurance Company Home Office Bloomington Illinois

## Farwell Corn Grower State's Best Producer

Greg Howard of Farwell had a tough time deciding where to harvest corn for the irrigated division of National Corn Yield Contest last fall, because the corn in the entire section looked to be extremely uniform.

In the end, the strip he entered in the contest, sponsored by the National Corn Growers Association, yielded an impressive 15,612.8 (278.8 bushels) per acre. That yield was the best in the state of Texas, and the third best in the nation last year. But even more impressive, Howard believes, was that the entire circle averaged nearly as much, at about 15,600 pounds (278.57 bu.).

And, Greg adds, "It was the best yield I've ever had, which was surprising considering the hot, dry, windy weather season we had."

Greg, his brother Mark, and their father W. D. (Dub), produce corn and a few sugar beets on seven center pivot irrigated sections on either side of the Texas-New Mexico border near Farwell. Mark entered the NCGA contest last year, finishing second in the state.

"Our average for the whole farm was about 13,300 pounds (237.5 bushels) per acre," Greg says. His winning hybrid was new Pioneer® brand 3162, which he had planted on the whole circle. "That was the highest yielding corn I've ever grown," he adds. "It was very surprising, since in June when the corn was pollinating, we had several days of dry, windy days when the daily high temperature was well over 100 degrees."

Howard says after the wind stopped blowing and it cooled off a little, there were a lot of people who thought the corn crop wouldn't amount to much this past year.

His center pivots are equipped with water conserving low pressure drop nozzles. "We didn't have more than two inches of rain all summer, so we irrigated more than ever. I put

on 29 acre inches of water, in all" says Howard.

Howard used anhydrous, knifed-in prior to planting, and liquid 10-34-0 applied with the planted, to feed his crop. "In total, we put 280 pounds of actual nitrogen on the corn. We also fertilized with dry broadcast applications of phosphate, sulfur, magnesium, and zinc, based on soil test results."

For weed control, he applied Atrazine in a 10 inch band over the row and cultivated twice. "Cultivation also helps water infiltration, so we feel it helps to make our irrigation efforts more effective," he says.

In the fall prior to planting, he chisel-plowed the field in preparation for planting corn. In the spring, he chiseled again, injecting anhydrous at the same time, disked twice and planted, at a rate of 35,000 seeds per acre.

Weed control was atrazine, in a 10 inch band over the row.

He cultivated the field twice to control weeds and encourage water infiltration. Howard used one application of Capture, applied through special spray nozzles on his irrigation system, to control mites and Southwestern corn borer. "We have to go through the whole pivot and replace the nozzles before we do this, but the spray nozzles break the water into 18 small streams which hit the plants from three different angles, so it coats the entire plant," he says.

Howard says the only thing he'd do differently with his contest corn is harvest earlier. "We didn't get in to harvest the corn until mid-October, and it was very dry. We had a little header loss because of that," he says.



James Hansen, director, NASA's Goddard Institute for Space Studies:

"It is more clear than ever that the world is getting warmer. I think we will see still higher temperatures in the next year or two."



**BILOXI BLUES**--Jeff Hicks of Muleshoe (right) and Richard Lack of Snyder are shown in a scene from the Western Texas College theatre department production of Neil Simon's *Biloxi Blues*. Hicks, a sophomore theatre major, plays the role of Sgt. Toomey, a typically tough DI training army recruits in World War II. *Biloxi Blues* runs Feb. 14-17 and has been dedicated to all those men and women who have served their country and those who are currently in service. (WTC Photo)

## Commissioners Approve

Cont. From Page 1

bids on a 1991 modular, Diesel ambulance.

I feel the advantage of a modular unit, over the cheaper van type, is the van type does not allow enough room to provide the level of service that we provide. When one of our units is down for repairs, we can not provide transfer service. In the past few months we have had to call Lubbock on seven occasions, while this does not affect our expenditure budget these calls could have brought in an average of \$330.00 per call. Or an increase of \$2310.00.

I respectfully submit this request for your consideration. Respectfully yours, Jackey W. Burris Director EMS

The EMS director explained that a new diesel ambulance could be purchased for approximately \$55,000.

He also said the back-up, or transfer ambulance is a 1984 model, and the large emergency unit is a 1985 model with almost 70,000 miles on it.

This was not an agenda item, but was presented by Burris for future consideration.

Because of the 'uniqueness' of Burris' job, where someone would have to be hired to

replace him for him to take vacation time, the commissioners approved allowing him to be eligible to contract himself as a paramedic for vacation purposes as a paramedic would have to be hired while he would be gone.

Judge Cox told commissioners that Joyce Holmes, manager of the Bailey County Coliseum had asked the commissioners to check the grill in the kitchen at the coliseum. She said she believes the grill is a fire hazard due to possible improper installation.

In other action, the county commissioners paid routine bills and heard department reports.

They also turned down a bid for a 1954 pickup and turned down a proposed maintenance agreement for the telephone system at the Bailey County Law Enforcement Center.

They didn't take any action on renovation of the Bailey County jail pending further checking on possibilities for the renovation to meet state regulations.

Approved was a right-of-way easement for Teddy Harrison and the Bailey County judge was authorized to advertise for bids for janitorial service.

Commissioners also approved financial support for the South Plains Association of Governments matching funds plan for studies for a regional solid waste management plan.

Soil conservation worksheets were approved as were bonds for the deputy district clerk, juvenile probation officer and justice of the peace, Precinct Four.

In final actions, the approval was given to release security pledges and pledge new securities and a budget amendment to FY 1991 budget.



BUCKLE UP!

### OUR 10 MOST POPULAR FILTERS ARE ON SALE DURING THE MONTH OF FEBRUARY

RECEIVE A 12% DISCOUNT ON THESE FILTERS

See Your John Deere Dealer For Big Savings on Filters



AR43634 OIL FILTER  
FITS 30, 40 SERIES  
WAS \$7.64 — NOW \$6.72

AR101278 OIL FILTER  
FITS 50 & 55 SERIES  
WAS \$10.14 — NOW \$8.92

AR75603 FITS 30 SERIES TRANS/HYD.  
WAS \$3.97 — NOW \$3.49

AR79679 PRIMARY AIR  
FITS 4430, 40 and 50  
WAS \$27.88 — NOW \$24.53

AR 79680 SECONDARY  
GOES WITH AR79679  
WAS \$16.14 — NOW \$14.20

AR79941 PRIMARY AIR  
FITS 484, 7440, 7445  
COTTON STRIPPERS  
WAS \$20.40 — NOW \$17.95

AR94510 TRANS/HYD.  
FITS 40, 50, 55 SERIES  
WAS \$20.56 — NOW \$18.09

T19044 OIL FILTER  
FITS ALL COTTON STRIPPERS  
WAS \$3.35 — NOW \$2.95

AR50041 FUEL FILTER  
FITS 30, 40 SERIES  
WAS \$7.68 — NOW \$6.76

AR86745 FUEL FILTER  
FITS 50 SERIES  
WAS \$13.60 — NOW \$11.97

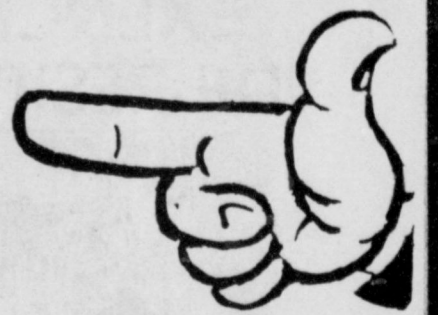


## DENT & CO.

Hwy 84 West  
272-4296  
Muleshoe



## MR. FARMER



Foster Fertilizer features a blend of custom mixed and applied Liquid Fertilizers.

### ALSO

Anhydrous Ammonia and dry fertilizer is available.

A custom service at competitive prices, for a Quality Product.

We have been serving this area for 30 years.

Let us mix and apply your fertilizer according to your Specific Soil Requirements.

'Your Business Is Appreciated'

## Foster Fertilizer

Lazbuddie, Tx.

965-2421

### Congressional Report From Martin Frost

Last week, Congress placed aid to our troops in the Persian Gulf on a fast track and moved on several fronts to recognize the sacrifice and commitment of the nearly half a million military men and women stationed in the region.

To help ease the emotional and financial burdens faced by U.S. military personnel serving in the Persian Gulf, the House and the Senate unanimously approved legislation which grants tax filing relief to American troops and their families.

Under the measure, members of the U.S. armed forces and support personnel taking part in Operation Desert Storm will not have to file their 1990 federal income tax returns until at least six months after their service in the Gulf ends. No penalties or interest will be charged during this period on any tax due for 1990.

In the event that a refund is due a taxpayer serving in the Gulf, the Internal Revenue Service as of April 15 will pay interest on that amount. These provisions apply not only to personnel serving in the Gulf, but to their spouses.

The tax relief bill passed by Congress last week is similar to an executive Order signed by President Bush on January 21, which designated the Persian Gulf area a combat zone. The legislation goes beyond the President's action by following personnel serving in the Gulf as early as August 2, 1990--the date Iraq invaded Kuwait--to be eligible for the extension. The trigger date in the Executive Order was January 17, 1991.

Military pay received by enlisted personnel while serving in the combat zone traditionally has been exempt from income tax and this exemption will be continued under the new policy. The combat zone includes Iraq, Kuwait, Saudi Arabia, Oman, Bahrain, Qatar, United Arab Emirates, the Red Sea, the Gulf of Oman and certain parts of the Persian Gulf, the Arabian Sea and the Gulf of Eden.

The Internal Revenue Service has assured me it is working quickly to implement the combat zone rules. For additional information, taxpayers who may be affected by the new policy can call the IRS toll free at 1-800-TAX-1040.

While hastening to aid the troops taking part in the Gulf War, Congress last week also moved to assist the American veterans who bravely served in past wars. By unanimous votes in the House and the Senate, Congress passed legislation to provide a 5.4 percent cost-of-living adjustment (COLA) to increase the benefits provided veterans with service-connected disabilities and their survivors. The increase will equal the COLA provided to Social Security beneficiaries on January 1, 1991.

In times of trial, whether in the Persian Gulf or in past wars, America has a proud tradition of support for the stalwart men and women who risk their lives for their country. In the coming months, Congress will continue to assure that our troops in the Persian Gulf are given everything they need to accomplish their mission and return home as safely and as soon as possible.

Housing starts lowest since '82 recession.

**Cash Rewards  
Up To \$1,000  
For Information!**

Call  
**Bailey County  
Crime Line  
272-HELP**



### FUNDING VITAL TO IMPROVE CARE OF CHRONICALLY ILL, DISABLED KIDS

According to health officials, one of the most pressing health issues before the 72nd Texas Legislature is adequate funding in the next biennium for the Texas Department of Health's (TDH) services for children with serious medical problems.

Some 17,000-plus children now depend upon the TDH Bureau of Chronically Ill and Disabled Children's Services (CIDC) for medical care and treatment of disabling conditions. And the number of qualified applicants is growing.

These children, suffering from such illnesses as spina bifida, cancer, AIDS, cystic fibrosis, cerebral palsy and leukemia, need continuing assistance. Their needs sometimes include surgery, hospitalization, braces, wheelchairs, physical therapy and other services.

Dr. Robert Bernstein, Commissioner of Health, said that TDH has asked the lawmakers to approve CIDC budgets of \$64.2 million and \$69.2 million, respectively, for the 1992 and 1993 fiscal years. "These requested budgets, are both larger than our current funding (\$54.2 million for FY 1991). That is because they reflect the rising costs of medical care and an almost overwhelming new demand for our services," Dr. Bernstein said.

He said that the requested funding would basically allow TDH to maintain its current level of CIDC service, plus pay 59 percent of the CIDC budget, recently have risen by as much as 14 percent in a given year (1989 to 1990).

The other service improvement, assignment of trained case managers to help client families, is a means of ensuring that children in the program receive appropriate, comprehensive care, without service duplication or undue family stress.

### Three Way News by: Mrs. H.W. Garvin

Mr. and Mrs. Nelson Carsile and the Bill Dolle family attended a birthday dinner honoring Mrs. Terry Hutton Monday evening in Muleshoe.

The Three Way basketball teams played Whiteface Thursday night losing both games. Friday night the Three Way basketball teams played New Life Academy with Three Way winning both games.

Mr. and Mrs. Ralph Davis from Lubbock visited their daughter, the Bill Dolle family, Tuesday.

Mrs. Bobby Kindle spent Tuesday and Wednesday in Lamesa with her daughter, Robin.

Mrs. D.A. Williams from Enochs spent Saturday afternoon with her father, George Tyson.

The Prowel Chemical Company honored the Three Way farmers with a barbecue dinner at the Three Way cafeteria Thursday evening.

Mr. and Mrs. Ben Nelson from Seminole visited her sister, the Robert Kindles, Tuesday.

Several families are attending the Fat Stock show in El Paso. Several of our youths are showing stock.

Mr. and Mrs. Junior Cooper from Morton visited the Robert Kindles Saturday evening.

Although CIDC already uses some case managers, budget restrictions have prevented the bureau from expanding their use statewide.

"Not only are case managers effective," Bernstein said, "we are mandated by the 71st Legislature to make them available. However, when our case-load overflowed last year, and medical costs skyrocketed, we were forced to devote all of our budget, including emergency funding, to paying for direct medical services.

In-home care costs less than hospital care, since family members provide some services which otherwise would require hospital staff. And hospital costs, now accounting for some of the start-up costs for two vital-and cost effective--service improvements.

Dr. Bernstein explained that one improvement, in-home care for CIDC clients, has been tested and proved to be not only better for patients and their families, but also cheaper than hospitalization.

"We already would have offered in-home care statewide if we could have afforded the initial costs of contracting with care providers. There is no question that, when medically feasible, in-home care is less stressful on sick kids and their families than is hospital care," he said.

The Texas Department of Health's (TDH) office of Smoking and Health (OSH) has begun distributing calendars for use by blacks and hispanics to help reverse alarming smoking trends among Texas minorities.

Dr. Robert Bernstein, Texas Commissioner of Health, said, "Blacks bear the greatest burden of disease caused by cigarette smoking."

Figures released by the TDH Cancer Registry show that in 1989, blacks had a lung cancer rate of 107.1 deaths per 100,000 persons compared to 73.4 for whites and 39.4 for hispanics. "What's more alarming," Dr. Bernstein said, "is that the rate for blacks may go up." He said that while smoking among the general population has declined slightly over the years, the rate

among blacks remains high.

Ron Todd, OSH coordinator, explained, "For years, tobacco companies have marketed cigarettes with high nicotine and tar content to blacks. Now, they are trying to attract hispanics as well."

In 1985, tobacco companies spent \$1.4 million for billboard ads in Hispanic areas, more than twice the amount spent for the next most heavily advertised product, liquor.

The calendars are meant to increase minority awareness of both advertising tactics and tobacco's health hazards.

"The two calendars publicize the availability of free resources and materials available through the Office of Smoking and Health. They also refute the illusions used to sell cigarettes to children, women, and minorities," Todd said.

Both calendars feature no-smoking messages, some featuring celebrities such as San Antonio Spurs' player David Robinson. "If you want to smoke on the court, don't smoke off the court," his message reads.

There are bilingual health messages in the Hispanic calendar. For example, a teen-age girl is portrayed reading while smoking. The caption reads, "Usted es capaz de dominar el ingles y espanol (You're able to command both English and Spanish)...And you're still smoking?"

The calendars also feature biographies of role models, and include dates and events of interest to minorities.

Distribution of the 1991 minority health calendars will be limited to such organizations as the MAACP, LULAC, Urban League, G.I. Forum, La Roza Unida, and minority chambers

of commerce. These organizations will distribute the calendars to their members, clients and constituents. For more information on the calendars, contact the Texas Office of Smoking and Health at (515) 458-7402 or 1-800-345-8647.

### Patients in Muleshoe Area Medical Center

#### FRIDAY

Lubertha Steptoe, Justin Moreno, Thelma Bowington, Dorothy Neal, Sherri Shipman, Mildred Nieman, Tracy Ellis, Marie Fritts, Jo Kelm, Salvador Villarreal, Edith Lee, Nelda Mullins, and Alma Ott

#### SATURDAY

Lubertha Steptoe, Juan Fabela, Mildred Nieman, Tracy Ellis, Marie Fritts, Salvador Villarreal, Edith Lee, Generosa Castillo, and Piedad Garza

#### SUNDAY

Lubertha Steptoe, Juan Fabela, Susie Edwards, JC Gatewood, Mildred Nieman, Marie Fritts, Salvador Villarreal, Generosa Castillo, Piedad Garza and Baby Girl Garza

#### MONDAY

Lubertha Steptoe, Juan Fabela, Susie Edwards, JC Gatewood, Mildred Nieman, Marie Fritts, Salvador Villarreal, Generosa Castillo, Piedad Garza, and Baby Girl Garza

### BRIEFS

CNN handed over Noriega's tapes.

Arms pact seals Soviet pullout from Eastern Europe.

## Dr. A.R. Ploudre

Optometríst

Family Vision Care Contact Lens

Texas & New Mexico Medicaid

\*Announcing, New Program of Special Assistance to Provide Vision Care to Low Income Families. - Call For Information.

\*Credit Arrangements Available Upon Prior Approval

762-2951

1515 Gidding St., Clovis, N.M.

## EXENCIONES DE RESIDENCIA



### PUEDEN REDUCIR LOS IMPUESTOS QUE PAGA POR SU CASA

#### Una exencion de residencia

le ayuda a reducir los impuestos sobre la propiedad que tiene que pagar por su residencia reduciendo el valor que se utiliza como base para calcular sus impuestos. Por ejemplo, si su casa esta valorada de \$50,000 y usted recibe una exencion de residencia de \$5,000, usted va a pagar impuestos de residencia como si su valor fuese de \$45,000.

#### Usted puede recibir

una exencion de residencia si usted era el dueño de su casa el primero de enero y la usaba como su residencia principal en la misma fecha. No importa si su residencia es una casa, un condominio o una casa remolque.

#### Hay exenciones

que cualquier persona que es dueño(a) de su residencia puede usar para rebajar sus impuestos escolares. Exenciones adicionales se ofrecen a dueños de residencia que estan incapacitados o tienen 65 años o mas. Otras exenciones pueden ofrecerse a propietarios por distritos escolares, condados, ciudades y distritos escolares.

#### Solicite todas

las exenciones que usted puede recibir en la oficina local del distrito de valoración en la dirección que se cita abajo.

Si usted recibió una exencion para su residencia actual en 1990, usted no necesita solicitar para 1991 a menos que el jefe de valoración pida que haga una nueva solicitud.

Sin embargo, si usted cumplió 65 años o quedó incapacitado antes del primero de enero haga una nueva solicitud para recibir exenciones adicionales.

Si usted no ha recibido una exencion para su residencia actual o si se cambio de su casa, haga una nueva solicitud para 1990.

#### Usted tiene que hacer

su solicitud antes del 1 de mayo de 1991. Comuníquese con su distrito de valoración antes de esa fecha si necesita mas tiempo para hacerla.

Para tener mas informacion usted puede recibir una copia gratis del folleto *Los Derechos, Remedios y Responsabilidades del Contribuyente de Impuestos* en la oficina del distrito de valoración o puede pedirla del Consejo Estatal de Impuestos sobre la Propiedad (State Property Tax Board) en Austin.

**Bailey Co. Appraisal District**  
104 E. Ave. C. 272-5501

# VINEYARD SEED COMPANY

RR 1, Box 147 • Homer, IL 61849 • Ph. 217-688-2770

## Don't leave it to luck...

...leave it to **THE COMPANION HYBRIDS V-68W & V-58W** and get great results everytime!

**Book Now**  
**'Don't Be Left Out'**  
**February 16, 1991**  
Early Payment  
**\$4.75** Discount Per Bag

Planting **VINEYARD** Hybrids **Makes \$ense!**

**Area Dealers:**

**T&M Fertilizer, Inc., Clovis.....(505) 763-3318**  
**Lester Merrll, Clovis.....(505) 683-5287**  
**Gene Paul Jarman, Muleshoe.....(806) 965-2340**  
**Agri-Sprayers, Bovina.....(806) 238-1475**

**Jimmy Christie Seed Co., Inc.**  
Box 81  
Summerfield, Texas 79085  
Kenneth Christie  
806-364-4027

**Bailey Co. Appraisal District**  
104 E. Ave. C. 272-5501

# English & Library Dept. Spotlighted At MHS

The teacher spotlight at M.H.S. this week focuses on instructors in the English department and the librarian. Students in high school are required to have four years of English; in addition, freshman students must take the TAAS (Texas Assessment of Academic Skills) test, and juniors must pass the TAAS Exit-Level test in order to graduate from high school in Texas. Therefore, these teachers must cover a wide variety of subject areas during a school year. The school librarian works closely with the English teachers, especially on library skills and during the writing of research papers.

## JOHANNA WRINKLE

By Rodney Reynolds

According to many students, Mrs. Johanna Wrinkle is one of the best educators in Muleshoe High School. She teaches English IV and vocabulary.

Mrs. Wrinkle was born in Priddy, Texas, and attended high school in Tulia. After graduation, she attended West Texas State University in Canyon. After a period of time spent raising her family, she returned to college at Eastern New Mexico State University and graduated there with both a bachelor and a master's degree. Her specialty areas in secondary education include business and English.

She began her teaching career in Muleshoe and has been teaching here for fifteen years. Her favorite aspect of teaching is seeing the students mature as the year progresses. She enjoys seeing the writing improvement throughout the year. Furthermore, Mrs. Wrinkle enjoys the day-to-day association with the students. This fine teacher combines her caring attitude and academic strictness in order to educate the students of MHS and to help them mature.

Mrs. Wrinkle and her husband Roy have three children: Cynthia Smith of Houston, Sharon Bolding of Mansfield, and Gary Wrinkle of Houston. They also have three grandsons, Jonathan and Mark Alan Bolding and Austin Wrinkle. Two of her children have chosen to follow in their mother's footsteps; Sharon teaches third grade and Gary is an assistant principal. In addition to her love for teaching, Mrs. Wrinkle enjoys playing bridge, reading, and sewing. One of the most enjoyable aspects of her life is her relationship with her grandsons.

## PAT WATSON

By Danny Rodriguez

Mrs. Pat Watson was born in Anton, Texas, where she went to school until the eighth grade. Her father was a minister who pastored a church in Muleshoe in the early fifties; she came to Muleshoe as a freshman in high school. It was during that first year at Muleshoe that she met the young man who would later become her husband. Two years after arriving in Muleshoe, her family moved to Texico, New Mexico, where she graduated from high school. Throughout school she participated in a variety of activities, including sports, speech, and choir.

After graduating from high school, Mrs. Watson spent a number of years raising three sons; she later attended and graduated from ENMU with a Bachelor of Music Education degree, with certification in music and elementary education. Through further studies at Texas Tech, she attained certification in secondary education, with a specialty in English. She taught for one semester at DeShazo Elementary School, followed by ten years as a reading teacher at Watson Junior High School. She is currently in her seventh year at MHS, where she teaches English III and creative writing and is co-sponsor for the yearbook.

Mrs. Watson expressed her love for her students and her desire to see them grow academically and in maturity. She tries to show her faith in

God as much as possible to her students, and she doesn't expect something of her students that she can't give of herself. She expects honesty, integrity, and willingness to learn. She commented, "I believe I can teach any student who will let me." She prepares lesson plans for a class setting but also strives to teach each individual. When asked what advice she would give to people to better their lives, she replied, "Be your own person. Go for the best; don't settle for less. Look for happiness in the right places, and believe that God loves you." This reflects Mrs. Watson's positive attitude about life.

Students admire Mrs. Watson for her teaching of excellence and for her overall attitude toward her teaching responsibilities and her students. She suffered the loss of a grandchild, Martha, in October of this year and appreciates the love and sympathy she and her family felt from the students and faculty at MHS, as well as the community. She and her husband, W.T., have three sons; David of Oklahoma City; Ed of Georgetown, Texas; and Cliff of Longview, Texas. They also have six grandchildren, and they love to spend time with members of their family. Other hobbies include playing the piano and organ, reading, and sewing.

## ALICE LILES

By Tiffany Angeley

The 1990-91 school year will be the eighteenth year of teaching for Mrs. Alice Liles. She taught for several years at Watson Junior High School. For some students, we have been fortunate to have her for two years of English. She currently teaches English I and leadership at MHS.

Mrs. Liles' hometown is Rosenberg, Texas. Most people are aware of where she went to college, or at least they should be. She has obvious pride in being a graduate of Texas A&M University, where she received her Bachelor of Science degree. She later worked toward and received her Master of Education degree at the University of Houston, Victoria.

Mrs. Liles prefers teaching older teenagers and enjoys seeing her students have a sense of humor and a desire to learn. She has enjoyed the move from junior high to high school; this has given her the privilege of seeing her students grow into young adults.

Mrs. Liles' husband, Bill, is the manager of the Muleshoe Federal Land Bank. They have two children: Caroline is a student at Texas Tech University and A.J. attends college at San Marcos, Texas. In addition to her school activities, she is an avid jogger. She also enjoys her new car-maroon, of course! Students and faculty at MHS are pleased to have Alice Liles as a daily part of their lives.

## DAVID GRAY

By Bertha Torres

David Gray is an exceptional teacher who has been teaching for eighteen years. He teaches English at MHS and stated that he enjoys the regimented organization of English and finds it a fascinating subject. One of his goals for this year of teaching is to "have school" more so than in any of his previous years of teaching. If he could change one thing about his profession of teaching, it would be to have less administrative duties and more time for teaching.

Mr. Gray's primary interest, other than teaching, is motorcycling; furthermore, he has an interest in horses. When asked what one word he feels most describes him, he replied, "Efficient."

The issue he most strongly thinks about is family cohesiveness. He feels that unless basic Godly principles are reinstated in the modern family, it will self-destruct.

Mr. Gray finds that it is interesting living in this community because he enjoys knowing many students and seeing

them develop from when he had them in class. For these reasons, Mr. Gray is a respected citizen of Muleshoe and likewise at Muleshoe High School.

## BARBARA MILBURN

By Josh Alanis

Mrs. Barbara Milburn is the librarian at MHS, a position she has held for the past five years. Prior to that, she taught at Watson Junior High School for fifteen and one-half years, followed by one and half years as librarian at DeShazo Elementary School. Before moving to Muleshoe, she taught at Leveland for two years and in Walsh, Colorado, for four years.

Mrs. Milburn grew up in the West Texas area and graduated from Whitharral High School; following graduation, she attended Hardin Simmons University in Abilene. She received her Bachelor of Arts degree from Panhandle State University in Goodwell, Oklahoma, and later attained her library certification from Texas Tech University.

Mrs. Milburn is a special person to students and faculty. She has inspired many by her kindness, her love for people, and her compassion. She has excellent rapport with students of all ages. She was inspired to become a teacher, and later a librarian, because of her love for children and for books. Her feelings are expressed in her statement, "Where else could you get them both at the same time?"

Mrs. Milburn has two children: Jenny Oliver, who is a teacher in the Olton school system, and Bill, a landscape architect from Amarillo. Grandchildren Martin and Laura Oliver and Bill Tom Milburn live close enough for "Mimo" to spoil them, and they are the delights of her life. Barbara is a vital part of the faculty at MHS.

## Interest Rate Cut, Aimed At Boosting Economy

A surprise rate cut by the Federal Reserve Board has prompted bankers to slash prime lending rates by half a percentage point to 9 percent.

"Several of the nation's largest banks have now followed the Fed's leadership and reduced their prime lending rates," noted U.S. Sen. Phil Gramm.

"Prime rates are important and closely watched because they are used to calculate the cost of many industrial and consumer loans," he added, pointing out that such common rates as home equity loans rise and fall with the prime rate.

The Federal Reserve Board decision to cut the key rates that it charges to banks followed a direct call from President Bush in his State of the Union address.

"Sound banks should be making more loans, now. And interest rates should be lower, now," the President said.

The response marked the board's second major interest rate reduction this year, a response that was widely interpreted as part of a major anti-recession effort underway at the Federal Reserve Board.

## LOCAL DISTRIBUTION OPPORTUNITY FOR NATIONAL FIRM

Nation's Leading Car Care Product Co. is now selecting dealers - Partners for A Local Route. Accounts/Territory Protected. Minimum 10K Investment. Nets UP To 60K+ Per Year. 100% Secured.

Call Mr. Coy

NOW!

1-800-771-7722

## News From State Comptroller John Sharp

State Comptroller John Sharp announced today an immediate freeze on hiring and staff pay raises for his office, even through pending freeze legislation would not apply to his agency.

Sharp also announced that he will trim the agency's budget by 8.5 percent in fiscal 1992, in part by eliminating about 80 positions from his staff. "We will accomplish this reduction through attrition and by complying with the hiring freeze outlined in Senate Bill III, currently under review by the Legislature," Sharp said in a presentation prepared for a House Budget Subcommittee Tuesday evening.

"Although the provisions of SB III would not apply to my office, I am complying with the spirit of the law and have instituted such a freeze at the Comptroller's Office as of today. We'll simply have to make do with the fine personnel we have right now. And they're going to have to make do with their current salaries until the end of the fiscal year."

SB III does not apply to "A new occupant of an elective office of state government."

The Comptroller also plans to bolster the State's ailing budget by returning \$6.4 million in unused agency funds to the Treasury at the end of fiscal 1991. That money had been set aside for agency operations and for new computer equipment.

Sharp also asked the Budget Subcommittee for budget transferability authority during the 1992-1993 biennium.

"Last week I announced a comprehensive management audit of this agency," Sharp said in his prepared testimony. "The budget flexibility we are requesting will allow us to implement any recommendations that stem from that audit. Let me also recommend that

you consider granting similar authority to other agencies that may wish to take advantage of management audit suggestions.

"I trust you will find that our plan of cutting back now, trimming our sails for fiscal 1992 and then taking advantage of management audit recommendations, will save the most for the taxpayers while maintaining our agency's essential services."

"We're going to the truck stops, the convenience stores and the wholesale fuel distributors of Texas, cracking down on unscrupulous businesses which cheat both the state and federal government out of the motor fuels taxes they collect on the retail sale of gasoline and diesel," State Comptroller John Sharp said.

Sharp announced that he has signed an agreement with the Federal Highway Administration to operate a joint "Motor Fuels Tax Evasion Project" in cooperation with the Internal Revenue Service and Texas' neighboring states.

"The illegal profits in fuels tax cases are enormous and therefore quite lucrative,"

"The taxes on gasoline are too high already," Sharp said. "For every gallon of gas a Texas motorist buys, 30 cents of that now goes for state and federal motor taxes. Every year the Comptroller's office collects over \$1 billion as the state's share of those taxes."

"The illegal profits in fuels tax cases are enormous and therefore quite lucrative," Sharp said. "Often we trace the money to out-of-state investments and foreign bank accounts."

"As the foreman of one of the

recent grand juries stated after hearing the evidence on a fuel tax case, "This is more profitable than selling drugs and not nearly as risky."

"Well, now we're going all-out to find and prosecute those who create an unfair market advantage at the gasoline pump and cheat taxpayers in the process," Sharp said.

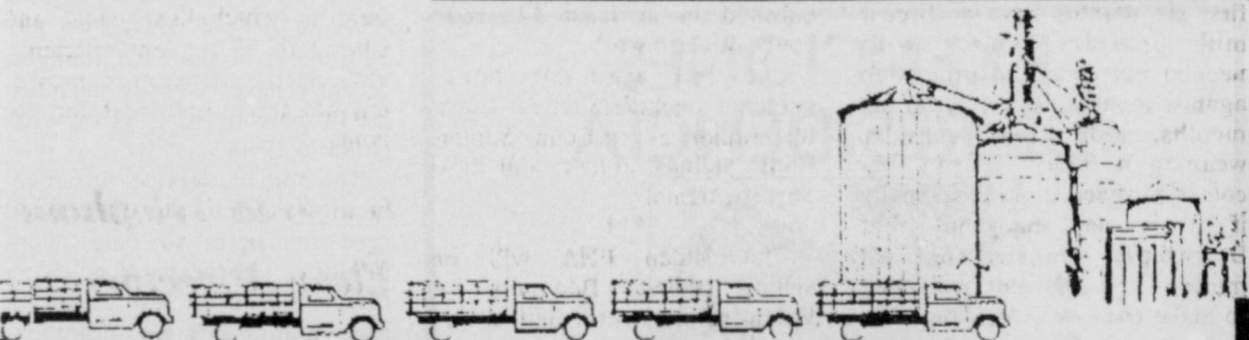
Sharp announced that Texas now joins Indiana and New Jersey as the first three "lead" states to enter into the five-year state-federal project to conduct motor fuels tax audits. Texas will also cooperate with neighboring New Mexico, Oklahoma, Arkansas and Louisiana to investigate motor fuels tax fraud cases.

Under terms of the cooperative agreement, which includes a \$50,000 Federal Highway Administration grant to the state, the Comptroller's office will assign six auditors to investigate fuels tax violations. The IRS will also assign six auditors. The auditors will be stationed in both Comptroller and IRS offices in Dallas, Houston and San Antonio, but will operate statewide.

During a 28-month period ending August 1990, the Comptroller's office conducted over 250 fuels tax audits, discovering more than \$145 million in unpaid state taxes, an average of \$576,000 per case.

In addition, the Comptroller's Office has referred 45 criminal cases in the Travis County District Attorney's Office for felony prosecution of state fuels tax violations. Twenty-four individuals have been indicted and 12 convicted since the Comptroller stepped-up enforcement of the motor fuels tax law in 1989.

**Campbell Tire**  
**Recycling and Disposal**  
Levelland, Texas 79336  
Licensed By State  
For More Information Call - Kary or Jerry  
806-894-2822



# BEAT THE HARVEST LINES!

## VINEYARD SEED COMPANY

RR 1, Box 147 • Homer, IL 61849 • Ph. 217-688-2770

- Plant **FC540** White Cob Yellow
- Yields with major competition
- **2 to 3 points drier** than competition
- Easy Shelling
- Excellent Pericarp Removal

T&M Fertilizer, Inc., Clovis.....	(505) 763-3318
Lester Merrill, Clovis.....	(505) 683-5287
Gene Paul Jarman, Muleshoe.....	(806) 965-2340
Agri-Sprayers, Bovina.....	(806) 238-1475

## Planting **VINEYARD** HYBRIDS Makes \$ense!

Jimmy Christie  
806-357-2556  
806-357-2523

Kenneth Christie  
806-364-4027

Jimmy Christie Seed Co., Inc.

Box 81  
Summerfield, Texas 79085



## Refrigeration Industry Ozone Depletion Critical

In 1928, chemists working at the Frigidaire Division of General Motors created compounds that would replace the dangerous ammonia and sulphur-dioxide mixtures being used as coolants in refrigerant systems.

The new compounds, called chlorofluorocarbons of CFCs, were odorless, non-toxic, non-flammable and very stable. Scientists hailed them as the wonder chemicals of the 20th century, explained Bill Gregg, assistant professor of the the

assistant professor of the two-year refrigeration and air conditioning program at South Plains College.

However by the 1980s, CFCs had earned a reputation as quiet killers. Scientists have discovered that their very stability allows them to seep into the upper atmosphere and bond with the fragile ozone layer, which protects us from the sun's ultraviolet rays and ultimately skin cancer, cataracts and damage to plant and marine life. Chlorine gas is formed as a result of the bonding, and, like a runaway Pacman, begins to gobble up the ozone itself.

## Successfully Weaning Your Child

Weaning a baby from breast or bottle feeding can be a simple transition for both baby and mother. When to start weaning, however, depends on social as well as medical reasons.

According to Lauri Dalrymple, R.N., parent educator at Methodist Hospital, the most important medical advantages to breast feeding occur within the first six months because breast milk provides infants with needed nutrients and protection against many illnesses. After six months, mothers might consider weaning if breast feeding becomes impractical and especially if it is not enjoyable, but Dalrymple stresses that all mothers are different and need to make their own decision.

A common way to wean a baby is to gradually replace one feeding with a bottle, a cup or solids, depending on the infant's age and stage of development. After the child has adjusted to one substitute feeding, a second feeding is replaced, usually at the opposite time of day. At this time, mothers can choose whether to totally wean or to continue on day and night feedings. This method allows the mother's supply of milk to decrease gradually and prevents breast discomfort which can result from missed feedings.

Mothers should remember that the decision to wean should be made carefully, not in response to a bad day or a temporary problem. Although it is generally easier to wean before the child is 18 months old, remember that weaning is a process rather than an event, and it should occur gradually and empathetically over several weeks.

CFCs are also suspected culprits in helping to cause the greenhouse effect and global warming. As a result of their suspected environmental impact, the U.S. Congress passed legislation gradually phasing out their use, and international coalition agreed to cut in half the use of CFCs by 1998.

But there's hope, according to Gregg, a 20-year veteran of the refrigeration industry. Manufacturers of CFCs, such as DuPont, are seeking safe replacements for the compounds, which are currently used in more than \$135 billion worth of equipment in the United States, including air conditioning

### Sudan News by Ann Gaston

Earl and Bill Davison had several guests in their home recently. Their daughter Sue and Jerry Cardwell, Tracy, Brian, and Christopher of Greenville; another daughter, Linda and Stan Wilcox, Joe, Crystal, Tony, Kim, Weston, Brittney, Scott, Missy and Shayla of Hereford. Their son, Bob and Phoebe Davison, Stormy, Brandy, and Molly of Lazbuddie. Guests from Sudan were Mike and Pam Morris, Kayla, and Kody, Mart and Lori Davison, Ashley and Jacie, and Bill Lowe. Halie Fish also visited from Lubbock.

More than 2,600 Texas Tech University students qualified for academic honors lists based on final grades reported for the 1990 fall semester.

Students making the President's List earned a perfect 4.0 grade-point-average. Dean's list recipients earned a 3.5-3.9 grade-point-average during the semester. To qualify for the honor, students had to be enrolled in at least 12 credit hours of class work.

The fall academic honor students include: Shelley Chester, Junior; Joyce Conn, Senior; Eddie Salinas, Junior; and Vicki Surrent, Senior.

The Sudan FHA will be selling Balloon Bouquets for Valentine's. Several balloons in all shapes, sizes and phrases will be offered. Balloons with legs are called Air Walkers for \$9.00 and Helium balloons start at \$7.00 plus two balloons. Mylar balloons start at \$1.50. These also come with one to four balloons. Contact any FHA member for your order, or call 227-2336 for details.

Superintendent Willie McAlpin recently returned from the Mid Winter Conference for School Administrators in Austin. This was held Monday through Wednesday, Jan. 28-30. Some information about the school finance was discussed. The school finance is to be organized by April 1, 1991 or the schools will be closed according to the Supreme Court Ruling. Some of these options were discussed. State wide ad Velorum Tax of \$1.00 by voters, or Placing Caps on local spending, or Consolidating of local school districts. None of which will benefit Sudan.

### Thank You

The family of Allie Horsley would like to thank each of you who helped to make her life in Muleshoe happy. Thank you for your visits, cards, flowers and prayers while she was in the hospital. Your kind words to her and about her were a very real comfort to her and to us. You were so gracious to us at her death. Each expression of love and concern was special. Your prayers saw us through this time. Thank you for your friendship through the years.

systems in more than 90 million cars and trucks and over 100 million home refrigerators. And the refrigeration industry is exploring new technologies to clean and recycle the refrigerants currently in use. That trend will have a future impact on educational training programs which train technicians for the refrigeration industry, he believes.

It is already having an impact on SPC's program in refrigeration and air conditioning. "We have a refrigerant recycling system in place which the students learn how to use during the first semester. The system recycles refrigerants used for all of their lab projects," Gregg said. "To learn the hows and whys of the issue, they also view a videotape and write research papers on the CFC problem," said Gregg.

He feels that the training provided by the SPC program is preparing his students for the transition period from FFCs to safer substitutes. This kind of training in general should mean increased job opportunities for technicians who are trained in recycling and recovery methods. "The refrigeration and air conditioning industry is going to need more skilled technicians who can deal with the often complex problem of retrieving used refrigerant and making it safe for further use," he added.

What does this mean for consumers? Gregg predicts that on the downside taxes levied on companies using CFCs will mean higher costs for consumers in repair and maintenance of home appliances such as home air conditioning systems, refrigerators and freezers. However, he feels that the ultimate savings generated by refrigerant conversion should more than offset the rise in prices for consumers and industry.

For consumers, the future looks bright as future trends include electronic thermostats and dampers which provide zoned temperature control, automatically keeping every room at a pre-set temperature, heating and air conditioning systems controlled by one master thermostat, improved gas burners which heat pools and spas with 97 percent efficiency and electric generators providing hot water and heat for the home.

## 5 - Area Telephone Elects Directors At Annual Meet

Five Area Telephone Cooperative, Inc. recently held its' annual membership meeting, with approximately 300 members and guests attending. They were served chicken fried steak by the Needmore Community Women's Club.

A drawing was held for many prizes.

The nominating committee for 1990, elected to serve at the 1991 annual meeting included Pete Jesko, Bill Jennings, Sharon Dale, Lewis Wayne Shafer and Ray O'Brien, who will be committeeman-at-large.

Nominated from District #2, W-Lazbuddie, were Kirby Burch and Melvin Morris. Kirby Burch was elected to replace Robert L. (Bob) Jones, who retired. Nominated from District #4, Needmore, were Mickey Sowder (incumbent), and Ronnie Barrett. Mickey Sowder was re-elected.

Following the annual meeting the board members met briefly to elect new officers. Bob Foley was elected president; Don Seales, vice president; Billy Tiller, secretary. L. G. Layman, Mickey Sowder, Ernest Trull and Kirby Burch are the other members of the Board of Directors.

The nominating committee for two directorships to be elected at the 1992 annual meeting include Ernest Ramm, Bob Byrd and Joe Simmacher for District #1, Lariat. Lee Embry and Bobby Jack Angeley for District #3, E. Lazbuddie; and Johnny Furgeson and Jack Angeley were elected committeemen-at-large.

The meeting was adjourned after a report was delivered by the manager, Hubert Kidd.

Scientists call for tougher seafood regulations.

## Infants Starting On Solids

"Okay Mikey, open wide for Daddy...Here comes the train... Chug-a, chug-a, chug-a....choo, choo."

Starting down the right track with solid foods is a mouth-opening experience for infants, but it can be a real eye opener for parents. Prepare for messy faces and hands and days when the infant is not in the mood.

"Timing is everything. Avoid starting solid foods when the baby is sick, overly hungry or tired or when you are in a hurry," said Dr. Corinne Montandon, nutritionist at the USDA Children's Nutrition Research Center in Houston.

"At 4 to 6 months, babies give parents certain signals that they are ready for foods," said Montandon, assistant professor of pediatrics at Baylor College of Medicine. "The tongue moves backwards and forwards, the lips close firmly when objects are removed, and babies are much more aware of their surroundings."

Pediatricians recommend single-ingredient cereals, such as rice cereal, as the first solid foods.

"The consistency should be slightly thicker than milk," said Montandon. "Gradually put less liquid in the cereal as the baby adjusts to the new texture."

Add one new food a week, and begin with small food portions--not more than one-half to one teaspoon at a time.

"This gives the baby a chance to accept the new flavor and lets parents pinpoint food reactions such as vomiting, diarrhea, wheezing or rash. If there is a problem, stop using that food and tell your pediatrician," Montandon said.

While there is no right order to add new foods, pediatricians generally recommend following cereals with single-ingredient strained foods: vegetables, fruits and meats. Montandon suggests squash, carrots, peas, pears, applesauce and bananas as first vegetables and fruits.

To cut waste and cost when adding strained meats, freeze small servings in an ice cube tray and store the meat cubes in plastic. Thaw only the amount

needed for one feeding.

Do not heat baby foods or milk in a microwave. It causes pockets of heat that can burn the baby's mouth. Use small, long-handled spoons and serve baby foods from a bowl or plate, not from the jar.

"The saliva on the spoon gets into the jar, and an enzyme in the saliva predigests the food that is not used. The next time you open the jar, the baby food will be liquefied," Montandon

said. "This practice contaminates the food and speeds up spoiling."

As with adult food, throw away all plate leftovers.

First experiences with foods can make a lasting impression. "Make the most of your child's adventures in eating. Give your baby a variety of food flavors, colors and textures--even the ones you may not like," Montandon said.

## SPC Offers Police Academy Course In May

The South Plains College criminal justice education center will offer a basic police academy course May 28-Aug. 15.

The 11-week academy will meet 7 a.m.-6 p.m. Monday through Thursdays and also will include several evening classes in the Law Enforcement/Petroleum Technology Building, Room 115.

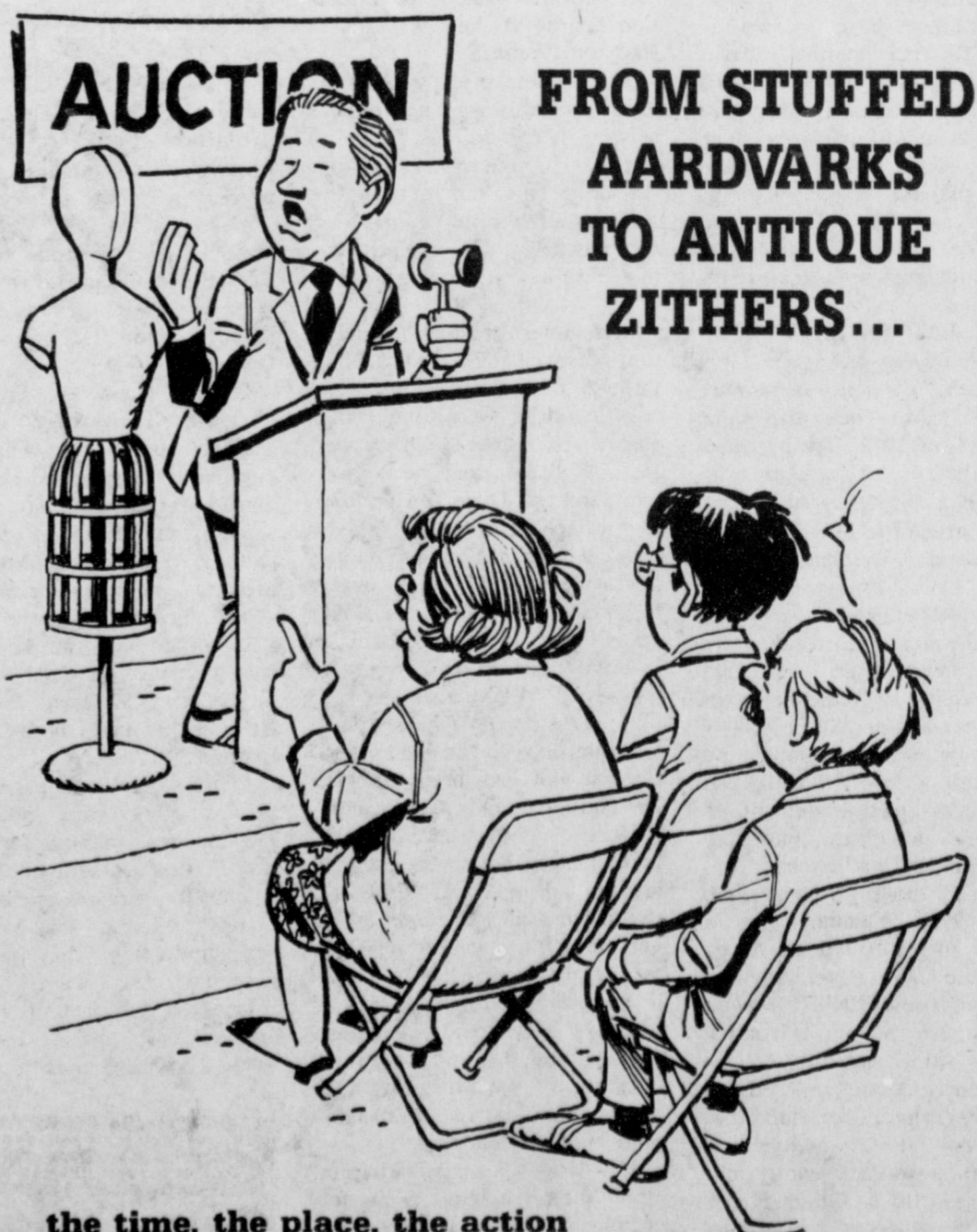
Students successfully completing the academy will be eligible to take the State of Texas licensure examination to be a peace officer, said George Lawless, center director. "Applicants must meet all requirements for admission to the basic police academy which are detailed in our academy handbook," he said. Requests for applications must include a non-refundable fee of \$25, which will be applied to the cost of tuition if the applicant is admitted to the academy. Lawless explained that admission is based on passing scores on entrance qualification examina-

tions.

Applicants also must successfully complete a reading comprehension test, which will be given a 9:30 a.m. and 6:30 p.m. May 6 and 9:30 a.m. May 22 in the SPC Student Assistance Center on the third floor of the library. Cost for the academy is \$445, which includes books, tuition and fees. Campus apartments accommodating up to four persons and equipped with kitchenettes are available at cost of \$560 a person. Students can purchase meals in the College snack bar or at restaurants and other food establishments located throughout the city.

Final date to make application for admission to the basic police academy is May 17. Applications may be obtained from Lawless at the SPC Criminal Justice Education Center, South Plains College, 1401 S. College Ave., Levelland, Texas 79336, (806)894-9611, ext. 342 or 346.

1991 Crop		
	Sale Flat	Month
Feed Corn.....	4.28,-0.01ch	March
White Cobb Yellow.....	4.90,0.33ch	March
Red Cobb Yellow.....	4.48,0.10ch	March
White Food Corn.....	5.80,0.84ch	March
Milo.....	4.14,-0.09ch	March
Soybeans.....	5.12,-0.54sh	March
Wheat.....	2.28,-0.32kwh	KW March
96%		
Prices effective Feb. 12, 1991		
<b>Farmer's Co-Op Elevators</b>		
272-7561		

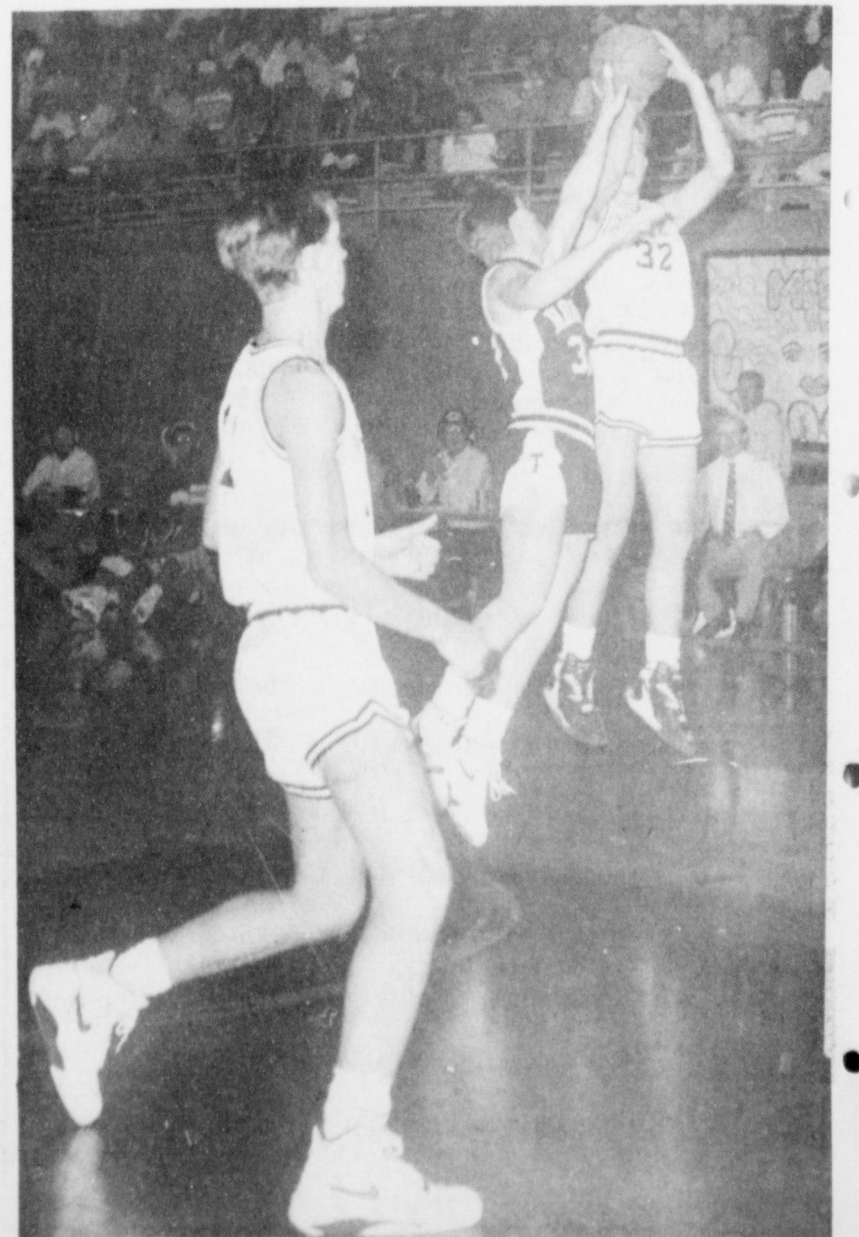
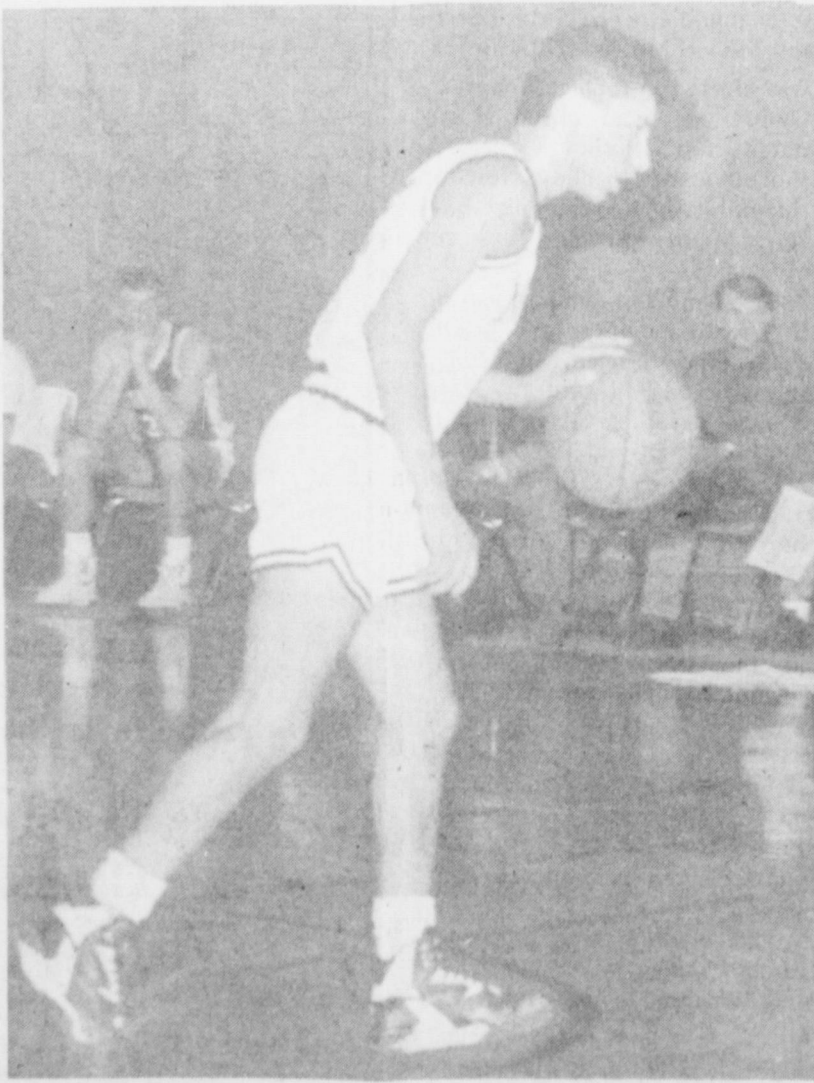
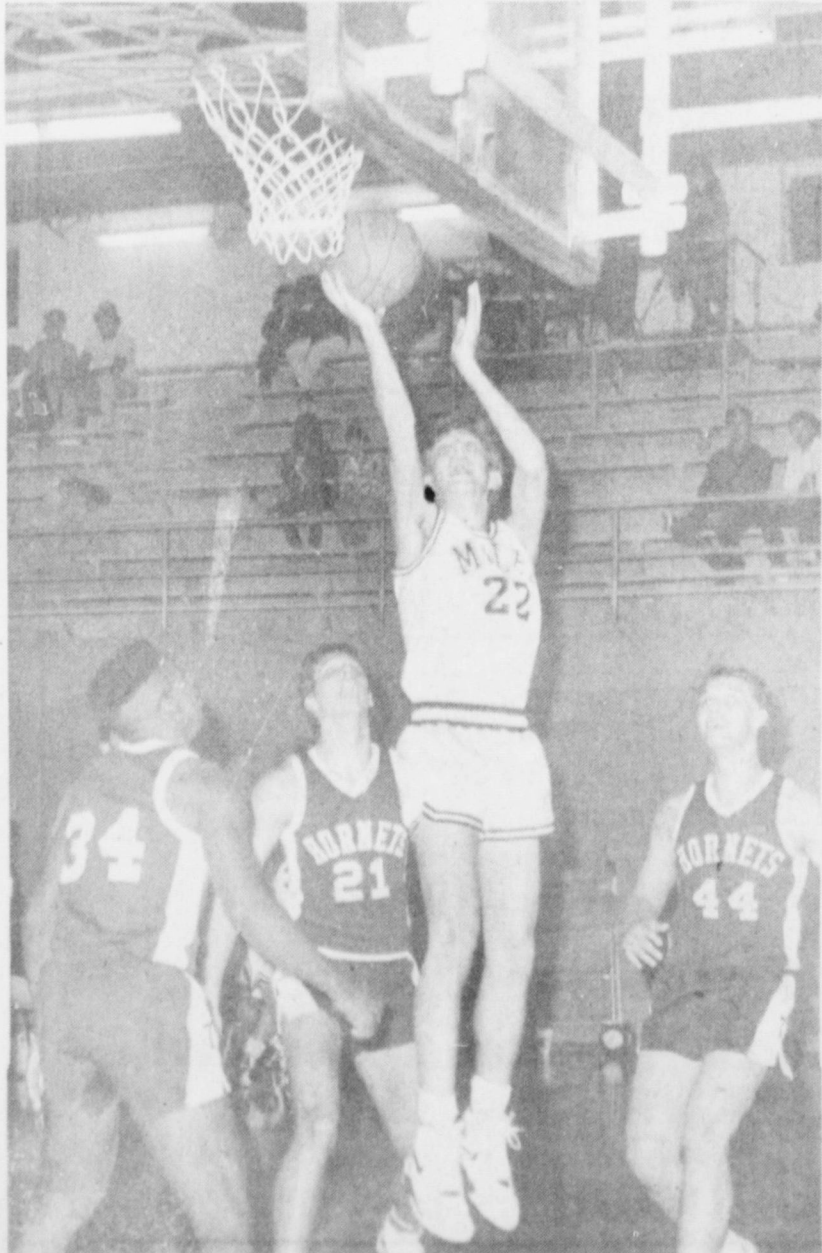
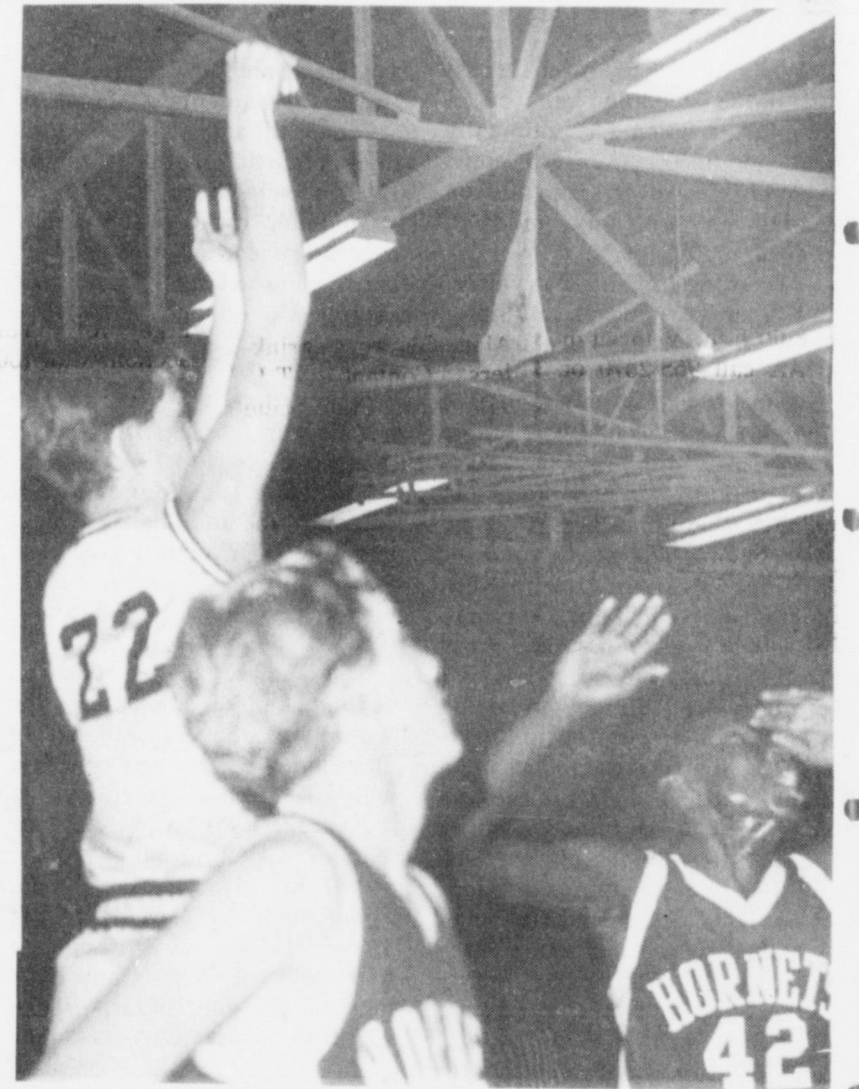
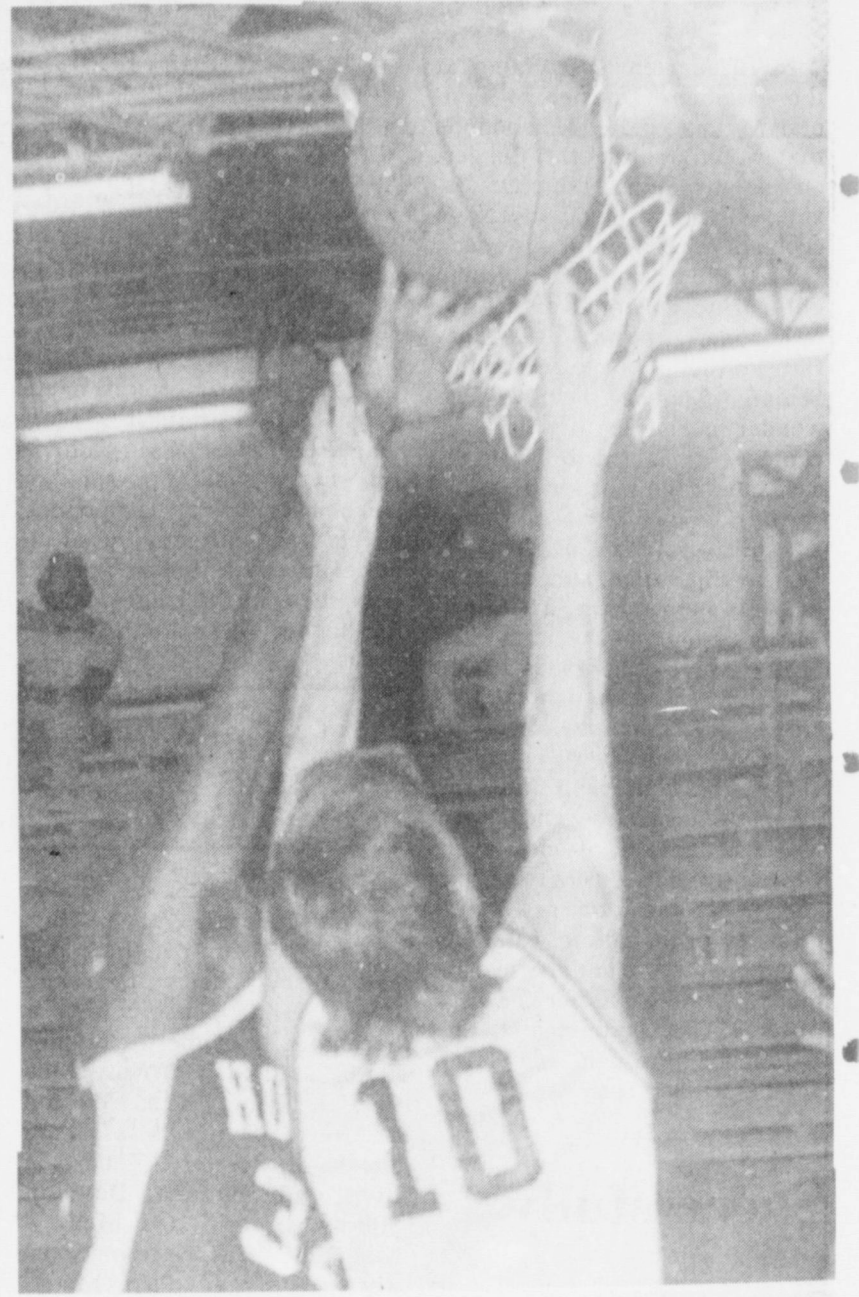
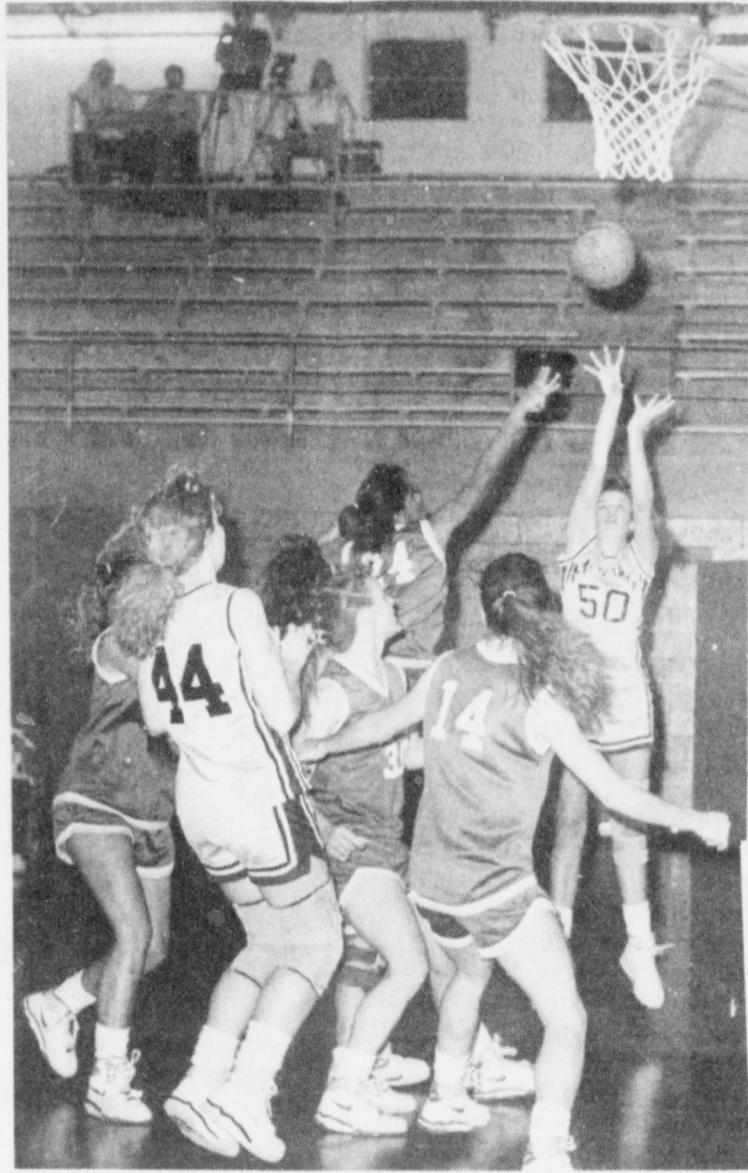
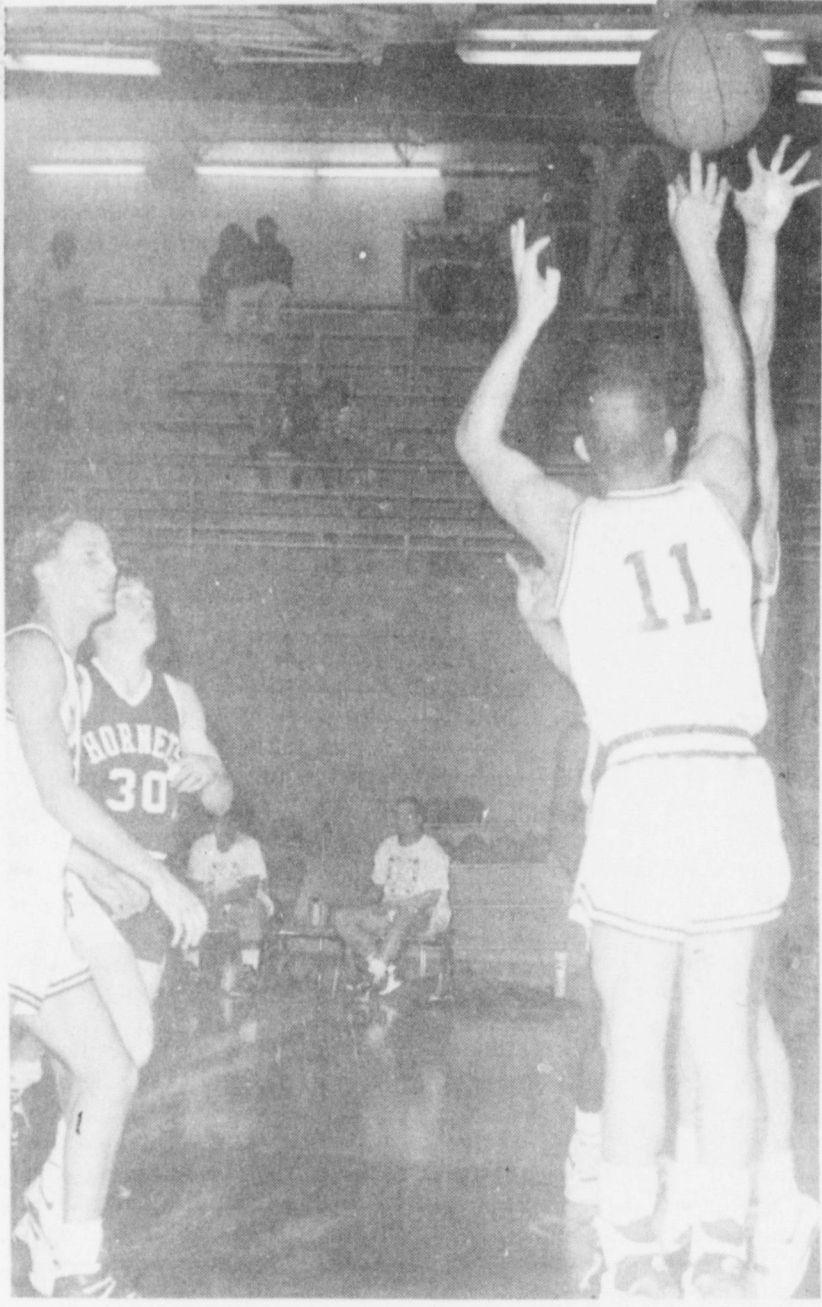


the time, the place, the action  
— like Auction Notices — can be found  
right in sight for readers of the Classifieds!

Great buys for the true believer — of  
the Classifieds — become one now!  
**Muleshoe & Bailey County  
Journals**

# Lady Mules & Mules Basketball

## Continues



# CLASSIFIEDS 272-4536

## CLASSIFIED RATES

15 Words & Under Minimum Charge \$2.30  
 Thereafter \$2.00  
 16 Words & Over 1st Insertion 15 cents per word  
 2nd Insertion 13 cents per word

CLASSIFIED DISPLAY RATES \$1.75  
 Per Column Inch

DEADLINES 12 noon Tues.  
 For Thursday Paper 12 noon Friday  
 For Sunday Paper

To receive the reduce rate after the first insertion ad must run continuously.

We reserve the right to classify, revise, or reject any ad. We are not responsible for any error after ad has run once.

## 1. Personals

**CONCERNED**  
 About Someone's Drinking?  
**HELP IS AVAILABLE**

through Al-Anon Call 272-2350 or 965-2870 or come to visit Tuesday and Thursday nights, 8:00 p.m. & through AA call 965-2870 or come visit Tuesday nights, 8:00 at 620 W. 2nd, Muleshoe.

## 3. Help Wanted

**EASY WORK! EXCELLENT PAY! ASSEMBLE PRODUCTS AT HOME. CALL FOR INFORMATION 504-641-8003 EXT. 6339 G3-7t-2tp(ts)**

**LOCAL SALES REPRESENTATIVE** for leading life insurance organization. Call or write: Sammy Saied, P.O. Box 720, Childress, TX 79201, 817-937-8824. \$3-6t-3tc

**EARN \$300 to \$500 per week** reading books at home. Call 1-615-473-7440 EXT. B805. A3-6t-4tp(ts)

**CONSTRUCTION jobs** now hiring all positions. Both skilled & unskilled. Male & Female openings. For info. Call (615) 779-5505 Ext. J-1104.

**ASSEMBLERS:** Excellent income to assemble products from your home. 504-646-1700 DEPT. P4027. 3-6s-4tp(ts)

**WANTED:** Experienced machinist and gearhead man. Call (806) 238-1596 days or 238-1328 nights-- after 9 p.m. B3-tfc

## 4. Houses For Rent

**FOR RENT:** Nice 2 Bedroom House. Call 272-4011. H4-7t-4tc

## 4. Houses For Rent

3 Bedroom House for rent. 903 W. 8th Street. Call (806)285-2757 in Olton, Tx. B4-7t-4tp

## 9. Automobiles For Sale

**FOR SALE:** 1986 Cadillac Fleetwood Broughm. One owner, low mileage. James Littleton, Earth, Tx. 257-3376. L9-6t-8tp

**FOR SALE:** 1987 Chevy Suburu Silverado. AM/FM Cassette, tilt cruise, new tires. 60,000 miles. Call 272-5037. P4-44t-tfc

**FOR SALE:** 84 Chevrolet Blazer. 4X4 Loaded. 1 owner-\$6,000. Call 806-272-5527 or 272-4246.

## 11. For Sale Or Trade

**PIANO FOR SALE:** Wanted-- Responsible party to assume small monthly payments on piano. See locally. Call credit manager 1-800-447-4266. J11-5t-7tp

## 15. Misc.

We need to buy 100,000 ft. of aluminum pipe 2" to 8". Also side row sprinklers. Contact T.L. Timmons, State Line Irrigation, Littlefield, 806-385-4487. T15-tfc

**FOR RENT:** Large Self storage rooms with 24 hour a day access. Call J&J Self Storage at 272-4307.

## 8. Real Estate

## 18. Legals

### NOTICE TO BIDDERS

Sealed bids for ADDITION TO ELIZABETH B. WATSON JUNIOR HIGH SCHOOL, will be received by Dr. Tom Alvis, Assistant Superintendent for Business, Muleshoe Independent School District, in the Board Room of the Muleshoe Independent School District Administrative Office Building, 514 West Avenue G, Muleshoe, Texas 79347 until 4:00 p.m. Thursday, February 21, 1991. Any bids received after closing time will be returned unopened.

Drawings, specifications and related documents may be acquired from Adling Associates Architects, 7806 Indiana Avenue, Suite 106, Lubbock, Texas 79423, Telephone 806/795-5908.

The Owner reserves the right to reject any or all bids and to waive any or all formalities. A18-6s-2tc

## 15. Misc.

**CUSTOM FARM** 1 to 3 sections from stubble through harvest in Parmer, Castro, Bailey or Curry counties. Like to rent 1/2 section. Call (806)238-1470. 15-5s-8tp

**HOUSE FOR LEASE:** 3-2-1. \$500. a month. \$300. deposit. 1218 W. 14th, Littlefield. 385-3122. Available April. W13-6s-2tc

## 8. Real Estate

## 8. Real Estate

**BAILEY COUNTY LAND FOR SALE**  
 Owner will finance the following acre blocks: 2-80 acres, 3-180 acres, 1920 acres, and 1-277 acres. Wheat, milo and cotton allotments. 1/4 circle of permanent grass. 7 Center Pivots. A Sweet Cattle Set-Up.  
 If interested, contact T.L. Timmons 806-385-4487 806-925-6184 (Day) (Night)

**FOR SALE:** 14x70, 2 bedroom, 2 bath mobile home. Good condition. \$10,000 or will consider any reasonable offer. 272-5489 or 965-2178. D8-5s-tfc

**FOR SALE:** Country Home. 3 Bedroom, 2 Bath. 220 sq. ft. with 3 Acres. 8 miles North of Lazbuddie. K8-51s-tfc

## 8. Real Estate

**HOUSE FOR SALE** in Muleshoe: 3 bedroom, 1 bath. Fenced yard, storage shed. (806) 965-2838. G8-7t-14tc

**HOUSE FOR SALE:** 3 Bedroom, 2 full baths. Central heat and air. Good storm cellar and well. On 2 Acres. 3 miles East on Hwy 70 and 1 mile North, then 200 yards East. 806-352-1715 or 352-1899 in Amarillo. B8-4t-tfc

**FOR SALE:** 100 Horse Power-Electric irrigation motor. Complete. Call 965-2601 before 7:00 in the morning. S15-6s-4tc

## Henry Realty

111 W. Ave. B. 272-4581  
 Muleshoe, Tx.

Just listed- 3 Bedroom, 1 bath, 1 carport storm shelter, good fence. Priced to sell.

2 Bedroom, 1 bath, Perma stone, carpet, fenced, insulated, storm doors and windows; low utilities. Neat, clean and excellent location near High School.

3 Bdrm., 2 bath, spacious home outside city limits, near city on highway. 29x40 metal building. Lot 85'x420'.

**COMMERCIAL PROPERTY-Ideal** location on West American Blvd. 150' highway frontage. A great business opportunity.

**SPACIOUS-2 Bdrm., 2 bath,** with garage. Freshly painted. Fireplace. Ready to move in.

**Brick Veneer Restaurant** 150 Seating, over 5,000 sq. ft. with modern Equipment. Ready for operation Located on US Hwy 84 in Muleshoe. 7000 sq. ft. paved parking. Excellent Financing available for Qualified Buyer.

For Rent 4 BR., 2 Bath, 2 Car Garage, Refrig. Air \$400 per month and you pay utilities. 8 Miles from muleshoe.

## Women At Risk

### For Osteoporosis

Female athletes and dancers and women with eating disorders all have something in common. Some may be at risk for osteoporosis later in life, according to an adolescent medicine expert at Baylor College of Medicine in Houston.

Osteoporosis, a debilitating condition that weakens bones, is prevalent in post-menopausal white females and is tied to menopausal reductions of the hormone estrogen.

Dr. Albert C. Hergenroeder, an assistant professor of pediatrics and chief of adolescent medicine at Baylor, is studying women, ages 16 to middle-20s, who have hypothalamic amenorrhea, a condition related to excessive exercise or dieting that results in infrequent or missed periods. As with menopause, hypothalamic anemorrhea is linked to reduced estrogen.

"Females in their middle teens to early 20s are still building their superstructure of bone," Hergenroeder said. "One thing vital to proper bone growth is estrogen, which allows calcium to be absorbed from the intestine. Calcium is a necessary ingredient in building the skeleton."

The study is focusing on female athletes and dancers and on women with eating disorders. It is a joint project of Baylor's departments of pediatrics, medicine and obstetrics and gynecology, the Children's Nutrition Research Center and The Methodist Hospital of Houston.

"Many of these women have some things in common," Hergenroeder said. "They are very body-conscious and desire to be thin, and they tend to exercise a lot while not consuming enough calories for the exercise they get."

All three also are at high risk for hypothalamic amenorrhea which is associated with reduced bone density.

"Lower bone density in the short term can result in stress fractures commonly seen in runners or dancers," he said. "In the long term, it may put them at risk for osteoporosis."

Typically, postmenopausal women with osteoporosis are given estrogen supplements for bone density; however, bone that has been lost by low estrogen levels cannot be replaced. If women enter the postmenopausal years with low bone density, they are at

greater risk for osteoporosis and its sometimes crippling effects.

Hergenroeder believes there may be preventive measures that women can take early in life to ensure normal bone density. They would include regular exercise and a well-balanced diet. Estrogen therapy may be helpful for those who have missed several consecutive periods, who cannot decrease their exercise or who have eating disorders.

"Twenty years ago, coronary heart disease was thought by medical experts to be a problem of older adults," said Hergenroeder. "But today pediatricians realize that a healthy heart begins in childhood, when nutrition and exercise habits are learned."

"Likewise, if we can identify women at risk for osteoporosis and encourage them while they are still fairly young to adopt certain lifestyle changes, and if they possibly receive estrogen therapy, their risk may be reduced," he said.

Hergenroeder cautioned that not all women with low bone density develop osteoporosis. And many women with normal-range bone density still suffer from stress fractures and osteoporosis-related conditions.

"For most women, exercise leads to increased bone strength," he said. "However, if they over-exercise to the point of missed periods, it may have the opposite effect and harm the bones."

## Letter To The Editor

Dear Editor:  
 I would like to thank all of the Business People who helped sponsor the "Scout" page in your paper.

We appreciate their loyal support.

We have such fine young men growing up in our community.

Our Cub Pack is growing by Leaps and Bounds. Our Troop is growing fast.

Thanks again. We appreciate your coverage of our activities.

Sincerely  
 Betty Griswold  
 Cub Master, Pack 620

Kremlin orders capture of draft-dodgers.

Training parents helps obese children keep weight off.

Classify! Call 272-4536

Call 272-4536

Classify!!!!

## Bingham & Nieman Realty

116 E. Ave. C.

George Nieman, Broker 272-5285 or

272-5286

### RICHLAND HILLS

**IMMACULATE** 3-2-2 Brick, Cent. A&H, Built-ins, FP, sunken lv. area with cathedral ceiling, ceiling fans, earthtones. storage bldg. \$50's!!!!

**NICE RESIDENTIAL LOTS-** \$5,000 UP.....

**PRICE REDUCED-Nice** 3-2-2 Brick, Cent A&H, FP, Earhtone carpets, fenced yd. \$60's!!!!

**NICE** 3-2-2 Brick, Heat pump, built-ins, FP, earhtone carpets, freshly painted, fenced yd., & more. REDUCED TO \$34,900.00!!!!

**3-2-2 Brick** IN CONTRACT ent. A&H, Built-ins. HIGH SCHOOL

**3-2-1 Home** 1900sq. ft. of lv. area, heat pump, built-ins, FP, fenced yd., storage bldg., & much more. \$40's!!!!

**PRICED REDUCED** 3-1-1 Home, earhtone carpets, workshops, cellar, fenced yd.

**2-1/2-1 Brick, fl. furn.,** Cent. Air, fenced yd., & more. \$20's!!!!

**FmHA FINANCING** to qualified, buyer-3-1-1 Brick, Cent. heat, earhtone carpet, \$20's

**NICE** 3-2-1 Brick, built-ins, Heat Pump FP, fans, energy eff., fenced yd., & storage. \$50's!!!!

**JUST LISTED** 2-2-2 Home, Cent. heat, evap. air, built-ins, fenced yd., & more.

**VERY NICE** 4-2-1 Brick, Cent. A&H, built-ins, earhtone carpets, util., encl., patio, storm win. & doors, grill, spktr. sys., stor. bldg., fenced yd. \$60's!!!!

**PRICE REDUCED** 2-2-2 Brick, corner lot, Cent. A&H, spacious rooms, utility, new carpet, & vinyl. cov. patio, fenced yd. \$30's!!!!

**JUST LISTED-Nice** 2-2-1 Brick, Cent. A&H, built-ins, HEATED POOL, spktr. Sys., fenced yd., corner lot, & more. \$50's!!!!

### LENAU ADD.

Nice 4-2-2 carport home. Cent. A&H, built-ins, FP, Cent. Vac., Office, Sewing area, fenced yard. \$30's!!!!

3-2-2 Brick, heat pump, built-ins, nice carpets, fenced yd., & more!!!!

3-1/2-1 Brick IN CONTRACT Air, utility, fenced yd. FmHA financing possible!!!!

3-1 Home, Corner lot, wall furn., fenced yd. \$20's!!!!

**COUNTRY CLUB-PRICE REDUCED** on this 3-2-2 Brick, Cent. A&H, built-ins, FP, 2,000sq. ft. area, freshly painted, storage bldg., fenced yd., much more. \$69,900!!!!

**COUNTRY CLUB** IN CONTRACT Cent. A&H, built-ins, freshly painted, fenced yd.!!!

**JUST LISTED-VERY NICE** 3-2-2 Brick, 3,000sq. ft. of lv. area incl. nice finished basement, built-ins, geothermal A&H, energy-eff., loads of closet & storage, on 7.86 acres, fence, stock tank, sideroll, & many more amenities, close to town. DON'T MISS THIS! \$90's!!!!

3-2-3 Carport Home on 11 ac. edge of town, Cent. A&H, built-ins, cellar, barns, & corral. MAKE OFFER!!!!

NICE 3-2-1 Home on 1 acre close to town, Cent. Heat, evap. air, nice carpets, remodeled. \$30's!!!!

**GYMNASTICS STUDIO- BLDG. & EQUIPMENT- PRICED TO SELL!!!!**

**RESTAURANT BLDG., LAND., & EQUIPMENT- A GOOD BUY!!!!**

**COMMERCIAL TRACT** 175'x100' (Hwy. 70 & 84, RR spur access, approx. 1200 sq. ft. bldg. PRICED TO SELL!!!!

24 ac., W. Hwy. 84, 8"well, 3 homes, 14 mobile home hookups, & also has veg. & fruit stand!!!!

## Seed Contracts

Excellent opportunity for producers with clean land and average water.

### For Information Call

office

1-800-274-4404

evening

806-293-7927



**For Sale**  
**Cock**  
**Pheasants**  
 Jack Little

806-272-4805

# MULESHOE AREA

# Mid-Winter '91

# BUSINESS DIRECTORY AND SHOPPING GUIDE

## ENCHILADA PLATE

3 Enchiladas (meat or cheese) with beans

**\$3.75**

Closed Mondays



## Leal's Restaurant

1606 W. Amer. Blvd.

272-3294



## Henry Insurance Agency, Inc.

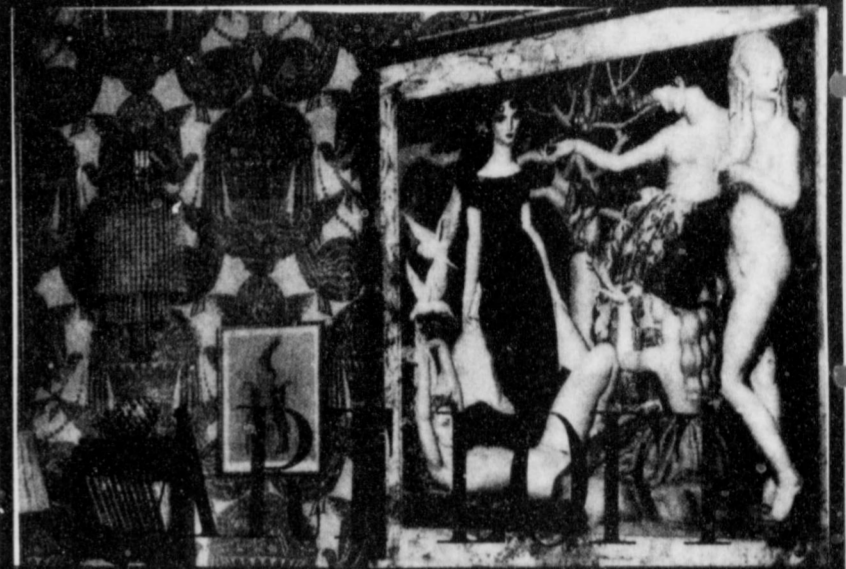


"Serving All Your Insurance Needs Since 1964"

KENNETH R. HENRY  
CERTIFIED INSURANCE  
COUNSELOR  
REAL ESTATE BROKER



111 W. AVENUE B  
PHONE 806/272-4581  
MULESHOE, TEXAS 79347

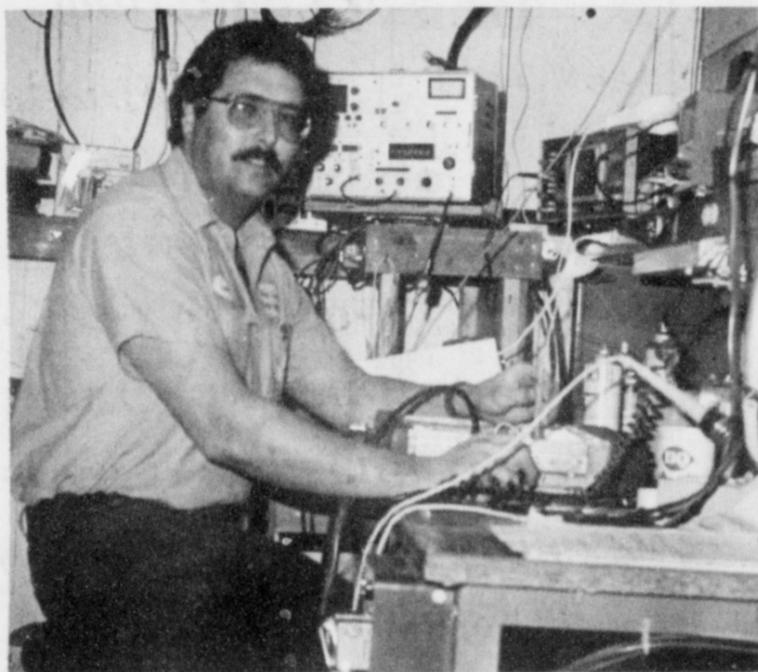


## Pivot Products Distributors, Inc.

*We're Your Complete  
Irrigation Headquarters  
Specializing In Low Pressure  
Drops & Accessories*

710 E. Amer. Blvd.

272-5536



*W.T. Services has been in  
business in Muleshoe for six  
years. We specialize in install-  
ation and repair of all Major  
Brands of Two-Way Radio  
Equipment, including Mobile  
Radios, Base Stations and  
Repeaters.*

*Shop hours are Monday  
thru Friday from 8-5. We can  
also put you in contact with  
area Motorola salesmen for all  
your New Radio Needs.*

Thank You  
Gary Parker, Manager



## W.T. Services, Inc.

318 E. Amer. Blvd. Muleshoe, Tx. 272-4888

## In-Store Special!

Two Big Pieces of Chicken  
(Leg & Thigh), Roll, FREE White Beans & Rice

**\$1.49**  
plus tax



1411 W. Amer. Blvd.

272-5581



## W.T. Services Inc.

319 E. American Blvd.  
MULESHOE, TEXAS 79347

Mobile Communications  
Two-Way Radio Repair

GARY PARKER  
Technician

Muleshoe - 806-272-4888

Hereford - 806-364-7311

*Announcing* **30 TO 50% OFF**  
**WINTER**  
WALLCOVERING SALE  
Muleshoe Floor Covering

122 S. Main

Curtis Carpenter

272-3555

Medium

Pepperoni Supreme Pizza

**\$6.99**

Delivery Available

11 a.m. - 1:30 p.m.

and

After 5:00 p.m.



1412 W. Amer. Blvd.

272-4213

**True Value**  
**BARGAIN**  
OF THE MONTH

**9.99** While supplies last  
2 1/3-Qt. Copper Bottom  
Teakettle

QUANTITIES LIMITED

**Fry & Cox True Value**

401 S. 1st

272-4511



5 Locations

To Serve You!

Clays Corner - Enochs - Muleshoe

Pleasant Valley - Old Griffith

**Farmer's**

**Co-Op Elevators**

272-7561

WE RECOMMEND  
**ferti-lome**  
Lawn & Garden Products

Time To Use  
**ferti-lome**  
LAWN FOOD

Kearney Scoggin

**Scoggin Ag Center, Inc.**

"Where Fertilizer Is Our Business"

1532 W. Amer. Blvd.

272-4613



*Sadie Lewis, presser is  
ready to help you with  
your Spring cleaning, by  
cleaning & pressing those  
Bedspreads & Drapes for  
you.*

## Lambert Cleaners

123 Main

272-4726

## Now Installing Underground Pipe.

We Have All Your Irrigation Supplies!

Above Ground Gated Plastic Pipe

Solar Surge Valves

## Irrigation Supply

J.C. & Zona Gatewood

607 E. Amer. Blvd.

272-4466



**VIOLA'S SPECIAL**  
Taco, Tamale, Enchilada  
(Meat or Cheese) Beans  
and Rice

**\$3.95**

Closed Tuesdays

## Viola's Restaurant

2002 W. Amer. Blvd.

272-3838