



WEATHER

January 26	36	13	.00
January 27	57	13	.00
January 28	60	18	.00
January 29	60	18	.00

Muleshoe Journal

'The Community Of Opportunity-Where Water Makes The Difference'

Vol. 69, No. 5

12 PAGES TODAY

Published Every Thursday At Muleshoe, Bailey County, Texas 79347

MEMBER TA TEXAS PRESS ASSOCIATION 20¢ THURSDAY, JANUARY 31, 1991

Kidd, Purdy 'Man & Woman' Of Year

Local, Area Banks Show Steady Growth

Bank deposits took a dramatic leap from December 31, 1989 to December 31, 1990, according to figures released by local and area banks. On December 31, 1989, bank deposits for eight area banks were \$245,486,000, and had risen by \$24,285,000 to the \$269,771,000 reported at the end of 1990.

For the same period of time, bank loans also rose, but not so dramatically.

Loans ending December, 1989 were \$114,893,000 and had risen by \$1,403,000 to a total of \$116,296,000 on December 31 of 1990.

Muleshoe State Bank, along with First Bank combined with First Bank of Bovina, show deposits of \$87,813,000 ending December 1990, up by \$6,139,000 from the deposits at the same time last year totalling \$81,674,000.

Loans at the same banks were down somewhat, however.

Loans at the last of December in 1989 were \$46,395,000 and decreased by \$1,662,000 to a total of \$44,733,000 ending 1990.

Muleshoe State Bank shows deposits of \$33,982,000 at the end of December, 1990, up by \$255,000 from the \$33,727,000 on deposit on December 31, 1989.

Loans at the bank are down by \$3,018,000 for the same period. Loans were \$21,741,000 ending 1989 and were \$18,723,000 closing out December, 1990.

First Bank of Muleshoe, combined with First Bank of Bovina, show deposits of \$53,831,000 closing out December, 1990. This is an increase of deposits in the amount of \$5,884,000, over the \$47,947,000 shown on December 31, 1989.

Loans for the two banks were \$26,010,000, an increase of \$1,356,000 over the \$24,654,000 shown at the end of 1989.

From Morton, First State Bank shows an increase in deposits of more than \$8 million. Deposits were shown at \$38,816,000 on December 31, 1989 and on the last day of 1990, showed to be \$47,529,000. At the same time, loans at the bank decreased nearly half a million dollars. Loans were \$15,213,000 on December 31, 1990, down by \$462,000 from the \$15,675,000 of a year previously.

Security State Bank of Farwell reported deposits of \$44,650,000 closing out 1990, up \$333,000 from the \$44,317,000 shown on deposit on December 31, 1989.

Loans at the bank were down by \$374,000 for the year. Loans were \$4,763,000 at the end of 1990, compared to \$5,137,000 closing out December, 1989.

Cont. Page 6, Col. 2

Census Shows Decrease In Population

The U. S. Bureau of the Census has tallied preliminary 1990 census figures for Texas counties, U. S. Sen. Phil Gramm reported Friday.

The census figures could change from now until July 15, 1991, he added. Some counties might contest the preliminary figures and will have an opportunity to do so.

According to the senator's report, Bailey County showed a new census figure of 7,064 residents.

Other South Plains and Panhandle counties show the following:

Cochran, 4,377; Garza, 5,143; Hartley, 3634; Andrews, 14,338; Borden, 799; Castro, 9,070; Deaf Smith, 19,153; Gaines, 14,123; Hale, 34,671; Hansford, 5,848; Armstrong, 2,021; Carson, 6,576; Cottle, 2,247; Dickens, 2,571; Floyd, 8, 497; Foard, 1,794; Gray, 23,967; Hall, 3,905; and Lamb, 15,072.

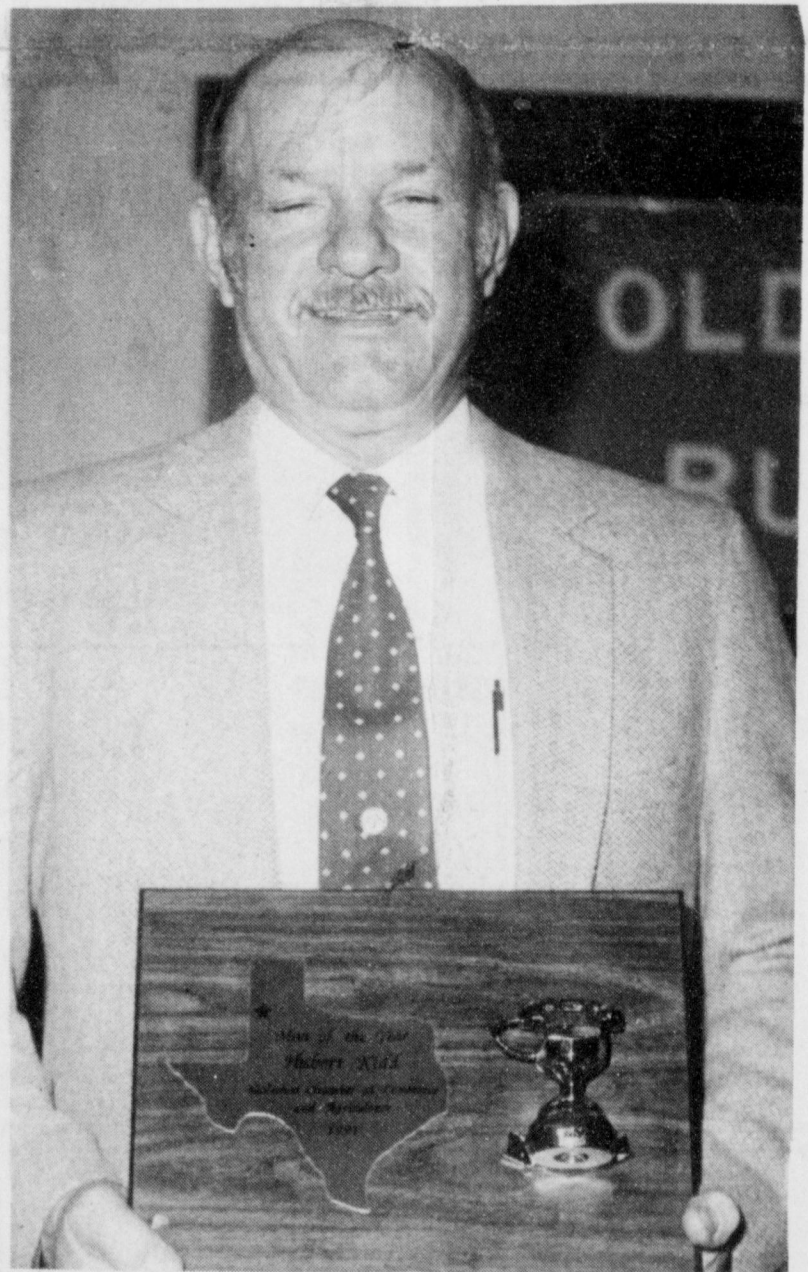
Also, Lubbock, 222,636; Oldham, 2,278; Moore, 17,865; Swisher, 8,133; Hockley, 24,199; King, 354; Terry, 13,218; Hutchinson, 25,689; Motley, 1,532; Parmer, 9,863; Potter, 97,874; Randall, 89,673; Winkler, 8,626 and Yoakum, 8,786.

Four counties in Texas, show populations above one million. They are Harris, Bexar, Tarrant and Dallas counties.

Also, several counties are shown at less than 1,000 population. They include Borden, 799; Kenedy, 460; King, 354; and Loving, 107.



WOMAN OF THE YEAR--Cindy Purdy, active in civic affairs and president of the Board of Trustees of the Muleshoe Independent School District, was named Woman of the Year at the CofC Banquet last Saturday night. (Journal Photo)



MAN OF THE YEAR--Hubert Kidd, manager of Five Area Telephone Cooperative, was named Man of the Year at the Annual Chamber of Commerce and Agriculture Banquet last Saturday night in Muleshoe. (Journal Photo)

Applicator Training Available

At the Winter Ag Conference held on Thursday, January 24, Tony Pardo, Pesticide Specialist from TAEX in Lubbock, briefly discussed the various types of private applicator licenses required now by the Texas Department of Agriculture (TDA).

He discussed the status of each and the length of validity for each type license and stated that persons holding these licenses MUST receive fifteen (15) CEU's (Continuing Education Units) over a five-year period of time.

Of these required CEU's, two are required in Laws & Regulations and one is required in Integrated Pest Management.

Two CEU's were given to those who attended this AG Conference because of the program material given during the conference.

To become a licensed private applicator, a producer must attend a Texas Agricultural Extension Service private applicator training program, make a passing score on a Texas Department of Agriculture (TDA) private applicator examination and submit an application to TDA along with a required \$50 fee. The TDA private applicator license is valid for five years.

Cont. Page 6, Col. 4

MHS Cafeteria Filled For Annual Banquet

Do Unto Others and Golden Rule = Success was the double theme of the 41st annual Muleshoe Chamber of Commerce and Agriculture annual awards banquet Saturday night.

With the late January weather cooperating beautifully, the

Muleshoe High School cafeteria was almost packed for the banquet to see tribute paid to many Muleshoe and area citizens.

Woman of the Year was Cindy Purdy; Man of the Year, Hubert Kidd; Farm Family of the Year, the Larry Hancock Family; Employee of the Year, R. A. Bradley; MAC and Jennyslipper Merchant of the Year, Randy Lewis of Perry's and Conservation Farmer of the Year, Ted Simpson.

Dr. Kenneth Wyatt, a retired Methodist minister (32 years); well-known western artist, author and sculptor; kept the entire audience "rolling in the aisles" for more than 30 minutes with fast-paced humor -- that had a message at the end.

It took awhile to realize that Dr. Wyatt was taking his "text" from the Bible, as he presented the story of "Samson and De'lilah" in a delightful, and humorous, manner. As he talked about the "young man who ran up and down the mountain" he would digress from time to time to tell another humorous story, always returning right to where he left off with Samson's adventures, until he completed the tale.

Dr. Wyatt concluded, "He arose, and he was as any other man. Here was a man who could run down a fox, pick up a very heavy gate and carry it for 15 miles, and melt rope -- but in the end, he was as any other man."

"Communities are like that sometimes. Our ancestors were so strong, and at times we're just living in the past. Maybe not in Muleshoe. But, it happened to this man."

"I know a man who was once wealthy, he lost it all in ten years. Sometimes, we think we're secure in our own strength. That's when we can lose out."

"When we live in the past, on the strength of what our fathers, our grandfathers and our greatgrandfathers did, we can lose everything."

"When we break vows," he added, "we must renew those vows, to our marriage, our family, churches, businesses, Cont. Page 6, Col. 1

Jennyslippers Make Badges For Support

They are selling by the hundreds! And, just what are 'they?' They are the badges currently being made by the Jennyslippers denoting support of the Armed Forces in Saudi Arabia.

Citing: "God Bless The USA -- We Support Our Armed Forces," the badges are being ordered now by the hundreds from all over the area.

Vivian White said the Jennyslippers started out with the thought of encouraging everyone in the Muleshoe vicinity to wear the badges daily to show support for our service people in all the divisions of the Armed Services.

As people started wearing the badges and the word got out -- orders started coming in from everywhere.

More than 100 of the badges were ordered by the Lubbock Co. Courthouse, and through Jennyslipper Nelda Merriott's association with District Clerks, the orders are coming in from District Clerks everywhere.

Mrs. White said that to date, they have made more than 1,000 badges, and have ordered 2,000 more buttons to make the badges.

The cost is a minimal \$1 which barely covers the cost of materials used in making the badges, but as Mrs. White commented, "We are not doing this to make money. We are doing it to denote support."

If you want one of the 'Support' badges, you can call Evelyn Peat at 272-7575; Vivian White at 272-3370; Donna Kirk at 272-3077 or Nelda Merriott at 272-3165.



JENNYSLIPPERS MAKING 'SUPPORT' BADGES--"God Bless America" - We Support Our Armed Forces -- are designated on the badges currently being made by the Jennyslippers. A \$1 donation obtains one of the badges that most Muleshoe people, as well as many other area people are wearing, to designate support for the Armed Forces serving in Saudi Arabia and the mid-east. Shown with a couple of the badges is Jennyslipper Vivian White. (Journal Photo)

around Muleshoe

Routine matters will occupy members of the Board of Trustees of the MISD Monday night when they meet at 7 p.m. in the school administration building.

After opening the meeting, business items will concern to designate Bill Moore as Muleshoe ISD's representative to the Education Service Center Region XVII Regional Advisory Committee for 1990-91; and discuss calendar for the remainder of the 1990-91 school year and take appropriate action.

Informational reports will be given and personnel considerations will be made in executive session with appropriate action being taken in open session.

A board self-evaluation will also be held.

The Muleshoe High School class of 1981 is planning their ten year reunion and need help locating the following people:

Juanita J. Ibarra, Tammy Dawn Knight, Jose Guillermo Orozco.

If anyone knows the whereabouts of these persons, please call Leslie Dale at 272-5176 or Sharon Burris, 272-5383.

Pvt. Albert C. Luera has completed basic training at Fort Jackson, S.C.

He is the son of Marina C. Luera of Clovis, N.M. and brother of Elaine Lozano of Muleshoe.

COUNTY MEETINGS ON 1991 FARM PROGRAM

Bula School House, 8 a.m., Thursday, January 31.

Muleshoe State Bank, 8 a.m., Friday, February 1.

Everyone is urged to attend one of these meetings. It will be of some help to each and everyone.

John Stevens said the Muleshoe Activities Committee (MAC) would hold a drawing on Saturday, February 2, at 2 p.m. MAC will be giving \$400 in MAC Bucks at the drawing at Main Street and Avenue C.

 DEL MONTE TOMATO KETCHUP 32 OZ. BTL. 89¢	 CORN OR VEGETABLE WESSON OIL 48 OZ. BTL. \$1.99	 SPECIAL BLEND BRICK MJB COFFEE 11.5 OZ. BAG \$1.39	 HUNT'S TOMATO SAUCE 8 OZ. CANS 5.99¢ FOR	 SUNSHINE REG./WHEAT/UNSALTED KRISPY CRACKERS 16 OZ. BOX 79¢ HORMEL PLAIN CHILI 19 OZ. CAN 99¢	 CHICKEN OF THE SEA LIGHT WATER/OIL PAK CHUNK TUNA 6 1/2 OZ. CANS 2.99¢ FOR	 REG./UNSCENTED LAUNDRY DETERGENT ULTRA TIDE 70 OZ. BOX \$4.69	 7-UP AND BIG RED 2 LITER 79¢
---	--	---	---	--	---	--	---

- BAKING MIX **\$1.79**
- BISQUICK 40 OZ. BOX
- HUNGRY JACK EX. LIGHT COMPLETE 2 LB. BOX **\$1.29**
- PANCAKE MIX 2 LB. BOX
- LONG GRAIN COMET RICE 28 OZ. BOX **99¢**
- REG./MM SWISS MISS HOT COCOA MIX 10 CT. BOX **\$1.69**
- ORVILLE REDENBACHER ASSTD. MICRO. POPCORN 3 CT. BOX **\$1.99**
- HUNTS TOMATO JUICE 46 OZ. CAN **89¢**
- AMERICAN BEAUTY LONG SPAGHETTI OR ELBO RONI 24 OZ. PKG. **\$1.19**
- ASSTD. VELVEETA & SHELLS 10 OZ. BOX **\$1.59**
- KRAFT DINNER

National Brands sale

- HUNGRY JACK PANCAKE SYRUP 24 OZ. BTL. **\$2.69**
- SUNSHINE TRU BLU CHOC./LEMON/ VAN COOKIES 24 OZ. PKG. **\$1.99**
- SUNSHINE ASSTD./PLAIN SUGAR WAFERS 12 OZ. PKG. **\$1.99**
- KRAFT FREE...ASSORTED SALAD DRESSING 16 OZ. BTL. **\$1.99**
- ROSARITA MED./MILD/HOT PICANTE SAUCE 16 OZ. JAR **\$1.29**
- BRACHS STARLIGHT MINT/RED TWIST/ CANDY 7.5 OZ. PKG. **\$1.19**
- JELLY BEAN/GUMMI BEARS/ SCHILLING BLACK PEPPER 4 OZ. CAN **\$1.49**
- SCHILLING GARLIC SALT 6 1/2 OZ. BTL. **\$1.19**

- MACARONI & CHEESE KRAFT DINNER 7 1/2 OZ. BOX **59¢**
- ASSTD. HUNTS PUDDING 4 CT. PAK **\$1.19**
- SNACK PACK DEL MONTE YEL. CLING SLI./HAL PEACHES 17 OZ. CAN **88¢**
- DEL MONTE FRUIT COCKTAIL 17 OZ. CAN **88¢**
- DEL MONTE HALVES PEARS 16 OZ. CAN **88¢**
- CAMPBELLS ASSORTED CREAM SOUP 5 10 OZ. CANS **\$3.00**
- CAMPBELLS CHICKEN 'N RICE OR CHICKEN NOODLE OS SOUP 5 10 OZ. CANS **\$3.00**
- FRANCO AMERICAN SPAGHETTI S OR TEDDY-O'S 15 OZ. CAN **59¢**

 MARGARINE QUARTERS KRAFT PARKAY 1 LB. BOXES 2.99¢ FOR	 TEXSUN PINK GRAPEFRUIT JUICE 46 OZ. CAN 89¢	 LUNCHEON-REG./LESS SALT/SMOKE SPAM MEAT 12 OZ. CAN \$1.69	 RUFFLES ASSORTED POTATO CHIPS REG. \$1.69 99¢	 PILLSBURY ASSTD. R.T.S. FROSTING 16.5 OZ. CAN \$1.29	 PILLSBURY ASSTD. LAYER CAKE MIXES 18 OZ. BOX 89¢
---	--	--	---	--	--

- HORMEL PORK SAUSAGE **99¢**
- LITTLE SIZZLERS 10 OZ. PATTIES/ 12 OZ. LINKS
- HICKORY SMOKED SLICED SLAB WRIGHTS BACON 12 OZ. PKG. **\$1.29**
- DECKER MEAT SLICED BOLOGNA 12 OZ. PKG. **99¢**
- DECKER MEAT OR BEEF CORN DOGS 1 LB. PKG. **\$1.69**
- PEYTON MEAT WIENERS 12 OZ. PKG. **79¢**
- PEYTON CHORIZO 8 OZ. PKG. **89¢**
- PEYTON COOKED HAM 12 OZ. PKG. **\$3.29**
- LOUIS RICH GROUND TURKEY 1 LB. ROLL **88¢**
- LOUIS RICH TURKEY VARIETY PAK 12 OZ. PKG. **\$1.99**



FAMILY PAK LEAN GROUND BEEF
\$1.69 LB.

SMALL PAK 1 LB. **\$1.79**



BONELESS CORN KING FULLY COOKED WHOLE HAMS
\$1.69 LB.

HALF HAMS **\$1.79 LB.**

- PILLSBURY TL/BM/SM BISCUITS 4 10 CT. CANS **99¢**
- MINUTE MAID FROZEN ORANGE JUICE 4 PAK 12 OZ. CANS **\$3.79**
- WHILE SUPPLIES LAST
- KRAFT SPREAD PARKAY 3 LB. TUB **\$1.99**
- KRAFT HALF-MOON COLBY/CHEDDAR CHEESE 10 OZ. PKG. **\$2.29**
- KRAFT VELVEETA REG./EX. THICK SLICES 12 OZ. PKG. **\$2.39**
- JELLO ASSTD. SNACKS PUDDING 6 CT. PAK **\$1.99**
- BANQUET ASSORTED DINNERS 9 OZ. BOX **\$1.19**
- SAU SEA COOKED SHRIMP 5 OZ. PKG. **\$1.59**
- EGGO BUTTERMILK/HOMESTYLE WAFFLES 11 OZ. PKG. **\$1.39**
- TOTINO'S ASSORTED PIZZA 10 OZ. BOX **\$1.29**

- RED OR GOLDEN DELICIOUS APPLES **99¢ 3 LB. BAG**
- FRESH GREEN BEANS 79¢ LB.
 - PREMIUM RED POTATOES 4 LBS. **\$1.00**
 - RED RIPE CELLO PAK TOMATOES 4 CT. PAK **69¢**
 - FRESH...HOT JALAPENOS 69¢ LB.
 - U.S. NO. 1 RED POTATOES 5 LB. BAG **79¢**
 - U.S. NO. 1 RUSSET POTATOES 5 LB. BAG **79¢**
 - FRESH GREEN CABBAGE 29¢ LB.
 - CELLO PAK RADISHES 4 6 OZ. PKGS **\$1.00**



GOLDEN RIPE BANANAS
3 \$1 LBS.

GARDEN FRESH CUCUMBERS OR BELL PEPPERS **3 FOR \$1**

PURINA DOG CHOW 25 LB. BAG \$7.88	FABRIC SOFTENER FINAL TOUCH 64 OZ. JUG \$1.89	SPEAS FARM APPLE JUICE 64 OZ. BTL. \$1.29	ASSTD. HUNTS-CHUNKY/HOMESTYLE/ TRADITIONAL SPAGHETTI SAUCE 27.5 OZ. CAN 99¢	DEL MONTE REG. CUT/FRENCH SLI. GREEN BEANS 16 OZ. CANS 2.88¢ FOR	DEL MONTE C.S./W.K. GOLD CORN 17 OZ. CANS 2.88¢ FOR	DEL MONTE REGULAR OR CHOPPED SPINACH 15 OZ. CANS 2.88¢ FOR	KRAFT REG./ LIGHT/CHOL FREE MIRACLE WHIP 32 OZ. JAR \$1.89	ASSORTED HI-DRI TOWELS JUMBO ROLL 2.99¢ FOR
--	--	--	--	---	--	---	---	--

- NATIONAL BRANDS SHELF SPECIALS**
- SCHILLING LEMON PEPPER 3 1/2 OZ. BTL. **\$1.69**
 - CARNATION REG. LIGHT BONUS COFFEEMATE 20 OZ. JAR **\$2.19**
 - INSTANT COFFEE REG. DECAF TASTERS CHOICE 7 OZ. JAR **\$4.69**
 - FOR BREAKFAST TOTAL CEREAL 12 OZ. BOX **\$2.99**
 - FOR KIDS TRIX CEREAL 12 OZ. BOX **\$2.99**
 - BETTY CROCKER FAMILY BROWNIE MIX 21 1/2 OZ. BOX **\$1.29**
 - REG. LAUNDRY DETERGENT TIDE LIQUID 128 OZ. JUG **\$8.99**
 - BOLO REG./BEEF/LIVER DOG FOOD 4 15 OZ. CANS **89¢**
 - ASSTD. BATH BAR DOVE SOAP 2 BAR PAK **\$1.99**
 - AUTO DISH DETERGENT SUNLIGHT 50 OZ. BOX **\$2.39**
 - LIQUID DISH REG./BLUE/LEMON CRYSTAL WHITE 40 OZ. BTL. **\$1.29**
 - REG./LEMON AUTO DISH LIQUID PALMOLIVE 50 OZ. BTL. **\$2.29**
 - ASSORTED FACIAL TISSUE KLEENEX 175 CT. BOX **89¢**
 - EXTRA STRENGTH CAPLETS TYLENOL 50 CT. BTL. **\$3.59**
 - CHILDRENS CHEWABLE REG./GRAPE TYLENOL 30 CT. BTL. **\$2.59**
 - DOUBLE STRENGTH MYLANTA II 12 OZ. BTL. **\$4.69**
 - CAPSULES REG./W/VITAMINS DEXATRIM 20 CT. PKG. **\$3.99**
 - BONUS TUBE ASSTD. TOOTHPASTE COLGATE 7.68 OZ. TUBE **\$1.89**
 - ASSORTED ULTRA SLIM FAST 15 OZ. CAN **\$5.49**
 - SYLVANIA SOFT WHITE 60/75/100 WATT LIGHT BULBS TWIN PAK **\$1.09**

THE GOLDEN BOOK ENCYCLOPEDIA

Volumes 2 through 19 only **\$2.99** each.

Volume 20 FREE with purchase of Volume 2.



Our Best to you!

thriftway AFFILIATED FOODS INC. MEMBER STORE

PRICES EFFECTIVE JAN. 27 thru FEB. 2, 1991
 WE RESERVE THE RIGHT TO LIMIT QUANTITIES.

Project To Pinpoint Nematode Damage

U.S. cotton producers will be better positioned to deal with nematodes thanks to intensive surveys now underway to pinpoint damage being caused by these underground pests.

The special project, announced at the 1991 Beltwide Cotton Production Conference in San Antonio, is being made possible by a \$25,000 grant to The Cotton Foundation from Rhone Poulenc Ag Company. The project will include systematic surveys in 12 Cotton Belt states in order to provide U.S. cotton producers with knowledge of where lint yield and quality is being limited by various species of nematodes.

Researchers and extension nematologists estimate that producers lose about \$80 million or 250,000 bales per year due to nematodes -- microscopic organisms which feed on cotton plant roots, draining the plant of energy and reducing water and nutrient uptake. Besides reducing yields directly, nematodes increase the susceptibility of cotton plants to a number of other diseases such as seedling disease and vascular wilts. Exact losses are difficult to diagnose and identification requires a trained nematologist to extract and identify the organisms.

"Thanks to Rhone-Poulenc's support, our cotton scientists will be able to conduct high quality assessments of nematode damage," said Chuck Youngker, Buckeye, AZ producer and Foundation president. "Extension and university nematologists from each of the cotton-producing states are directly involved."

The "Cotton Nematode Survey and Education Program," which began in 1990 and will continue through 1992, is managed by the National Cotton Council. The Council has asked the nematologists involved in the program to submit their proposals to survey nematode damage to the 1991 crop.

"Preliminary surveys indicate that infestations of various species of nematodes are distributed more widely and in higher populations than originally reported," said Dr. Andrew Jordan, director of technical services for the National Cotton Council. "In addition to assessing the damage, scientists involved in the program already are looking at ways to reduce losses to nematodes. The various control methods include plant protection chemicals, genetically-resistant plant varieties, rotation and cultural practices."

Although Root Knot Nematode is the major nematode pest of U.S. cotton, Jordan said

several states are reporting that Reniform nematode is as severe or more severe than Root Knot. Reniform is particularly troublesome in Louisiana and Mississippi while the Columbia Lance species is the major nematode pest in both North Carolina and South Carolina with limited infestation in Georgia.

The loss of four percent of total yield in Arizona to nematodes is typical of losses in other states. Among other percentage losses are: Georgia, 3.5 percent; Louisiana, six percent; New Mexico, three percent; and South Carolina, five percent.

Nursing home News

by: Joy Stancell

Sunday afternoon The New Covenant Church came for church services.

Tuesday morning Louise Legg came and assisted the residents in painting ceramics. Residents participating were Ora Roberts, Effie Smith, Patsy Franklin, Stella Morgan, Pearl Cox, Rosemary Pool, Guy Kendall, Thelma Stearns, Minnie Pettyjohn and Clara Weaver.

Tuesday afternoon Linda Lou, Freida Locker, Claudine Embry, Olive Cox, and Beth Watson came to shampoo and set the ladies hair.

Finnis Kimbrough was visited recently by Jack and Wanda, Ed and Donna Nickles, Jack and Deann Dunlap and Debbie and Nicky Nickles and Johnnie Kimbrough.

We are so pleased to have Mrs. Nieman back with us after being hospitalized.

Muleshoe Journal USPS 367-820
Established February 23, 1924. Published by Muleshoe Publishing Co., Inc., Every Thursday at 304 W. Second, Box 449, Muleshoe, Texas, 79347. Second Class Postage Paid at Muleshoe, Texas, 79347.

MEMBER 1991
TEXAS PRESS ASSOCIATION

L. B. Hall, Publisher
Sammye Hall, Vice President Controller
Cleta Williams-Jacobson, News
Fulene Harris, Society
Holly Millsap, Advertising
Dora Toscano, Classified

SUBSCRIPTIONS
Muleshoe Journal and Bailey County Journal
Bailey and surrounding counties
Muleshoe Journal and Bailey County Journal
Elsewhere in Texas \$14.75
Muleshoe Journal and Bailey County Journal
Outside Texas, \$16.50
Yearly By Carrier
\$12.50

Advertising Rate Card on Application
* Advertisers should check their ads the first day of insertion. The Journals will not be liable for failure to publish an ad or for a typographical error or errors in publication except to the extent of the cost of the ad for the first day insertion. Adjustment for errors will be limited to the cost of that portion of the ad where the error occurred.

MHS Perfect Attendance

SENIORS
Roger Baeza, Josue Barron, Robin Berry, Wendi Bland, Patrick Counterman, Sunny Davis, Rose Espinoza, Sergio Garcia, John Paul Garza, Sally Guzman, Javier Rodriguez, Anna Ruiz and Gena Sharp

JUNIORS
Maria Almanza, Alicia Corrales, Andy Crawford, Dustin Elliott, Jody Field, Ricky Flores, Jill Foster, Courtney Graves, Jason Harmon, Brent Hernandez, Kevin Morris, Jill Noble, Johnny Noble, Adrian Pineda, Margarita Posadas, Jason Redwine, Arturo Ruiz, Corrie Savuto, Misty Sawyer, Ronda Scott and Billy Williams

SOPHOMORES
Kristin Chitwood, Monica Clemmons, Chris Dominguez, Shane Glover, Vanessa Greenhouse, Stacey Langfitt, Gonzalo Lozano, Suzie Martel, Eric McElroy, David Ramirez, Bryan Rasco, Gilrobert Rennels, Adrian Salazar, Ellen Salcido,

Patients in Muleshoe Area Medical Center

JANUARY 25-28 FRIDAY
Michael Ralke, Joshua Perez, Aubrey Blanche, Nina Rials, Louise McGuire, Fred Mapes, Elizabeth King, Melvin Goar, Clenton Harden and Mildred Lambert

SATURDAY
Michael Ralke, Eric Smith, Louise McGuire, Letha Patterson, Melvin Goar, Clenton Harden and Mildred Lambert

SUNDAY
Michael Ralke, Eric Smith, Mildred Lambert, Louise McGuire, Letha Patterson, Melvin Goar and Clenton Hardin

MONDAY
Michael Ralke, Eric Smith, Mildred Lambert, Louise McGuire, Letha Patterson, Melvin Goar and Clenton Harden

Blanca Sanchez, Rodney Stevens, Cory Welch, Brian Wilhite and Dustin Wilhite

FRESHMAN
Americo Aguirre, Gage Angeley, Alberto Cortez, Jeanne Cox, Leo Diaz, Monica Gallegos, Jenna Glover, Lori Hodges, Juan Jaime, Marvin Lewis, Willie Limas, Jose Lozano, Albert Marquez, Chetan Patel, Freddy Perez, Shelby Peterson, Kalam Puckett, Rene Rodriguez, Shane Schuster, Brooke Sinclair, Sonya Smith, Kristina Soto, Courtney Tanksley, Marianne Toombs, Brenna Wheeler and Shawn Wheeler

FIRST SEMESTER PERFECT ATTENDANCE SENIORS
Patrick Counterman, John Paul Garza and Hugo Rodriguez

JUNIORS
Dustin Elliott, Jody Field, Courtney Graves, Kevin Morris, Corrie Savuto, Misty Sawyer and Billy Williams

SOPHOMORES
Monica Clemmons, David Ramirez, Adrian Salazar, Blanca Sanchez, Rodney Stevens, Brian Wilhite and Dustin Wilhite

FRESHMEN
Salome Cisneros, Jeanne Cox, Jenna Glover, Jose Lozano, Shane Schuster, Brooke Sinclair, Sonya Smith, Courtney Tanksley and Shawn Wheeler.

Lazbuddie EMS

The January 1991 meeting for the Lazbuddie EMS organization was held Sunday, January 20. Thirteen members were present.

Outgoing president, Connie Barnes, conducted the meeting and the election of officers for 1991.

New officers are as follows: Cheryl Weaver, director; Robert Smith, assistant director; Joyce McGehee, secretary; Doug Rice, treasurer and Terry Thomas, reporter.

The Lazbuddie EMS Organization would like to take this opportunity to thank Connie Barnes for all her hard work and time in serving as president for the past five years.

The Art Of Relaxation

Relaxation is more than getting away from the workday grind, and it is more than the absence of stress.

Relaxation is positive and satisfying. True relaxation requires becoming sensitive to one's basic needs for peace, self-awareness, thoughtful reflection and the willingness to meet these needs rather than ignoring or dismissing them.

The pressures of everyday life take a heavy toll on the physical and mental well-being of millions of people each year. Medical research into diseases such as high blood pressure, heart disease, ulcers and headaches shows a connection between stress and the development of these ailments.

Unfortunately, some people pursue relaxation with the same concern for time, productivity and activity they show in everyday life. According to Katie Goar, continuing education coordinator at Methodist Hospital, the secret in getting the best results from attempts at relaxation is simple: find those activities which give you pleasure, and when you pursue them, commit your energies to total mental and physical well-being.

Goar offers these suggestions for learning the art of relaxation.

• Check out various community activities available through recreation departments, adult education programs, volunteer work opportunities, college courses, etc.

• Consider exercise such as walking around your neighborhood or in the park, bicycling, dancing, playing golf, swim-

ming, gardening and bowling.

• For the more physically fit, more strenuous exercise can prove most relaxing. Jogging, playing tennis, basketball, handball or squash can give a feeling of wonderful relaxation after an intense workout.

• Creative activities such as painting, drawing, pottery, carpentry, knitting and even cooking for fun also can give a sense of accomplishment as well as the peaceful relaxation of concentrating on something you wish to do.

After discovering your favorite relaxation activity, plan to devote at least one-half hour per day to pursuing it. Most people accept the responsibility to meet deadlines and duties imposed on them, but it is equally important for them to meet the requirements for relaxation periods demanded by their own minds and bodies.

Finally, the art of relaxation is to enter into activities with enthusiasm and personal commitment. Let yourself become completely involved in the relaxation activity chosen. Don't hold back physically or mentally.

Proof Positive

A fanatic is a guy who can't change his mind and won't change the subject.
-Tribune, Chicago.

Now We Know

It takes two things to conduct a successful political campaign: hot issues and cold cash.
-Press, Grand Rapids.

Forgetful Dad

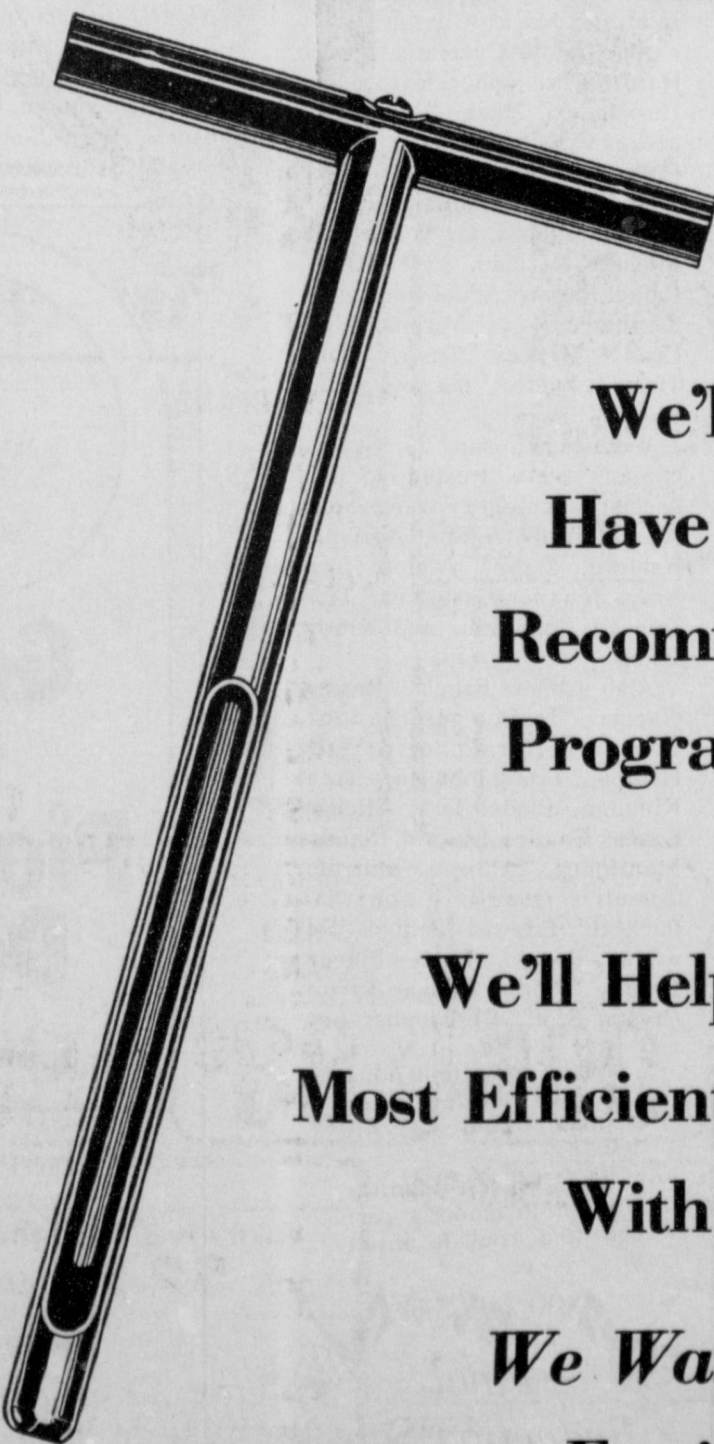
A father who encourages his son to follow in his footsteps has probably forgotten a few.
-Quote Magazine.

Need A Yard Man For 1991 I Can Do Anything You Need Done.



CALL
CAPPY GATEWOOD
ANYTIME
272-5435

Don't Guess - Soil Test



Start Out Right

We'll Get Your Samples, Have Them Analyzed, And Recommend The Best Fertility Program For Your Maximum Economic Yield.

We'll Help You Work Out The Most Efficient Timing And Placement With Fluid Fertilizers.

We Want To Be Your Fertilizer Dealer!

Western "66" Co.

Earth Hwy.

Muleshoe

272-4556

Gone to Pioneer Days
February 5-9, 1991

Don't be surprised if you see a lot of door hangers on farm homes between February 5-9, 1991.

Folks will be out saving 6% on all Pioneer® brand products purchased and paid for during that week.

Save 6% at Pioneer Days February 5-9, 1991, and pick up a free gift.*

See your Sales Representative for details.

Gene Paul Jarman
Muleshoe 806-965-2340



PIONEER
BRAND PRODUCTS

All sales are subject to the terms of labeling and sale documents.
* Registered trademark of Pioneer Hi-Bred International, Inc.
* At participating sales representatives with qualifying purchase.



MRS. O.J. FRANKS

Wedding Shower Honors Mrs. O.J. Franks

The parlor of the First Baptist Church was the scene of a wedding shower honoring Mrs. O.J. Franks, nee Dustie Moynihan, Saturday, Jan. 26. Guests called between the

hours of 10 and 11:30 a.m. A silk floral arrangement in shades of blue and dusty rose accented the serving table which was covered with a white lace over mauve table cloth.

Fruit juice punch, coffee and assorted breads were served from crystal and silver arrangements.

Special guests included Mrs. Janie Moynihan, mother of the bride; and Mrs. Colleen Franks, mother of the groom.

The hostesses gifts were a microwave and vacuum cleaner. Hostesses for the occasion included: Wanda Wiley, Fran Hamilton, Cathy Day, Pat Parker, Coralynn Jarman, Betty Wuerflein, Dorothy Ray Harlan, Betty Carpenter, Jacque Boutell, Dorothy Hanes, Gayle Turner, Frances Hamilton, Beckye Conklin, Sue Holt, Donna Nickels, Maxine Rogers, Linda Nowell, Karen Harris, Venida Collins and Dianne Allison.



David Ryan Bonney

Alex and Lillie Bonney of Clovis, N.M. would like to announce the birth of their son, David Ryan, who was born Friday, January 18 at Clovis High Plains Hospital at 12:12 a.m.

The young man weighed seven pounds and three and half ounces and was 19 and half inches long. He is the couple's first child.

Grandparents are Mr. and Mrs. Ralph Nino of Muleshoe and Mr. and Mrs. Alexandro S. Bonney of Clovis, N.M.

Great grandparents are Virginia P. Nino of Lorenzo, TX and Jose E. Bonney of Clovis, N.M.

Justin Kyle Franks

Brad and Deanna Franks of Lubbock are the proud parents of a son, Justin Kyle, who was born at 6 p.m. Sunday, Dec. 30, 1990, in University Medical Center in Lubbock.

Justin Kyle weighed eight pounds and nine ounces and was 20 and one half inches long. He is the first child for the couple.

Maternal grandparents are David and Linda Jones of Littlefield. Paternal grandparents are Connie and Sandra Franks of Sudan.

Great grandparents are Emma Lee Jones and Mildred Jennings, both of Littlefield; J.C. and Evlon Franks of Amherst and Bud and Ruth Brasher of Marble Falls.



CELEBRATING BIRTHDAYS--Cora Duncan, born January 2, ??; Mennie Pettyjohn, January 26, 1891; and Bernice Amerson, January 27, 1902; (not in order) were among those celebrating birthdays in January at the Muleshoe Area Health Care Center. The Needmore Community Club hosted a party in their honor Thursday afternoon. Creations by Helen provided the flowers and Mr. and Mrs. J. C. Shanks and the Needmore Club provided the music. (Journal Photo)

Ninety-Two Dillman Students Have Perfect Attendance

Ninety-two students from Dillman Elementary, with perfect attendance for the first semester, were recently treated to a pizza lunch with their principal, Mrs. Barbara Finney. This was in accordance with attendance incentives planned and publicized by the school earlier this year.

On Friday, Jan. 18 the following students received their reward: Early Childhood, Joseph Gonzales; Pre-Kindergarten, Venissa Bustillos.

KINDERGARTEN

Jeremy Alfaro, Bailey Barrier, Traci Chapman, Juan Garza, Emma Hernandez, Tamara Norman, Ruben Ovalle, Melissa Pedigo, Christopher Pena, Ryan Powell, Monique Rodriguez, Stephen Seymore, Michael Tosh, Briana Velasquez, Jami Wedel, Chane Williams, and Willie Wimberly

The following First Graders were taken for their lunch out on Monday, Jan. 21: Kyle Atwood, Abraham Baeza, Amanda Bell, A.J. Buhman, Elizabeth Castorena, Monica Chavez, Tucker Crawford, Juan Cruz, Andrew Dominguez, Fabian Febela, Leslie Franco, Blake Gable, Rosario Garza, Fermin Gonzalez, Jessica Gonzalez and Jessica Gonzalez

Also Jaime Guerrero, Jessica Hardt, Christopher Harp, Jose Hernandez, Juan Hernandez, Meagan Hill, Candace Hutto, Elena Loewen, Matthew Luna, Joshua Maddox, Juan Madrid, Jaime Mendoza, Cayla Mitchell, Michael Norman, Eryka Ogas, Rafael Ramirez, Paul Rodriguez, Stephanie Rojas, Veronica Toscano, Mickey Tosh, Cody Turner, Yvette Villa and Laura Wood

Wednesday, Jan. 23, Second Graders were treated to this special lunch. They were: Shari Alanis, Andy Alfaro, Adrienne Ashford, Danny Atkins, Toni Bray, Jennifer Castorena, Terri Duncan, John Ellis and Kinsee Estep

Also Chuck Fabela, Roxann Garcia, Joshua Hernandez, Tommie Hernandez, Cade Hooten, Lisa Johnson, Trent Killough, Fiedel Lira, Michael Lopez, Charles Madrid, Sandra Manriquez, Alfonso Marrufo, Jerrell Otwell, Jonathan Pacheco, Edward Pedigo, DeWayne Pedigo, Lindy Pineda, Brandy Ramm, Ryan Saylor, Crvstal Scott, Christopher Sey-

Who can remember the good old days when a man's word was his bond?

The keenest punishment is to ignore a person who tries to insult you.

Final Reduction Sale
Prices Slashed On Remaining Fall & Winter Merchandise
Tiffin II
Earth, Tx.
257-2223

Raider Cookbook To Benefit Texas Tech Scholarships

David and Dawn Fleming are in the process of collecting recipes for the upcoming "Raider Recipes" cookbook. A portion of the net proceeds from sales of "Raider Recipes" will be used to establish a scholarship through the Ex-Students Association.

The Flemings are trying to secure recipes from every graduating class at Texas Tech since the first commencement service in 1927. Support for "Raider Recipes" has been tremendous. Contributions have been received from students, alumni, faculty and staff of Texas Tech. Some of the better known contributors include President Robert Lawless, former Governor Preston Smith, board Regent Alan White, Dr. Elizabeth Haley-Dean of Home Economics, and W.W. "Windy" Nicklaus-captain of Tech's first football team.

Distributions of "Raider Recipes" has already been set up through the Ex-Students Association, Red Raider Club, Varsity Bookstore, Red Raider Bookstore, Texas Tech Bookstore, and several other stores in the West Texas area.

"Raider Recipes" is still in need of recipes. All alumni, students, faculty, and staff of

Texas Tech are asked to submit their favorite recipes. Each recipe will be followed by the name, degree, year of graduation or attendance, or faculty/staff position at Texas Tech. Anyone interested in contributing should send their recipes, along with the year they graduated or attended, their degree of study, or faculty/staff position to: Raider Recipes, 2701 53rd Street, Lubbock, Texas 79413.

Nursing Home News

by: Joy Stancell

Thursday morning we were so pleased that Mike Doyle came for our devotional. How he does encourage us. Clara Lou Jones and Rue Kimbrough played the piano and led singing.

Audrey Langfitt was visited by Mary Ann Ramirez Thursday afternoon.

We wish to thank all of you who came to our Ribbon tying ceremony Friday afternoon. We were so pleased that you came to help us honor the people in service.



JANUARY BIRTHDAYS--Seven residents of Muleshoe Health Care Center celebrated their birthdays in January and were honored at a birthday party Thursday afternoon. Hosting the party was the Needmore Community Club and Creations by Helen provided the flowers. Mr. and Mrs. J.C. Shanks and the Needmore Club provided the music. Those celebrating birthdays (not in order) Buck Ragsdale, Born January 12, 1912; Floss Baldwin, January 23, 1912; Jeanette Hukill, January 23, 1909; and Hester Robertson, January 21, 1915. (Journal Photo)

Tops Club

Muleshoe TOPS Chapter No. 34 met at 6:30 p.m. Thursday, Jan. 24 in the Heritage Thrift Shop.

Jewell Peeler, co-leader called the meeting to order. The TOPS pledge was recited and the fellowship song sung. The group was also led in a prayer.

Betty Jo Davis, weight recorder, called the roll with 20 members answering with the amount they had lost or gained. Aurora Mata, secretary, read the minutes of the previous meeting and they were approved as read.

Rose Sain was named best loser for the week. Runners-up were Orvdie Burris, first, and Lucille Harp, second.

Principle must be above expediency if our political system is to endure.

1043

WHY BUY A COPY WHEN YOU CAN AFFORD THE ORIGINAL?

There's no reason to settle for second best, when GM Goodwrench parts are readily available and competitively priced. GM Goodwrench parts are designed specifically for your GM vehicle. So they fit right, they work right, and they last longer.

GM Goodwrench branded parts are available only at your GM dealer. So stop in and discover the difference Mr. Goodwrench makes. Get genuine GM parts from Mr. Goodwrench at

Robert D. Green, Inc.
2400 W. Amer. Blvd. 272-4588
It's not just a car, it's your freedom.

Mr. Goodwrench

Gone to Pioneer Days
February 5-9, 1991

Don't be surprised if you see a lot of door hangers on farm homes between February 5-9, 1991. Folks will be out saving 6% on all Pioneer® brand products purchased and paid for during that week. Save 6% at Pioneer Days February 5-9, 1991.

See your Sales Representative for details.

Gene & Francis Franks, Muleshoe, 806-925-6454

Terry Hutton, Muleshoe, 806-272-3711

Gene Paul Jarman, Muleshoe, 806-965-2340



PIONEER
BRAND PRODUCTS

All sales are subject to the terms of labeling and sale documents. *Registered trademark of Pioneer Hi-Bred International, Inc.

Miss Redwine, Cage Repeat Double Ring Vows

and Mrs. Nancy Morris of Austin, all relatives of the groom.



MR. AND MRS. JAY CAGE
[nee Susan Redwine]

Miss Susan Redwine of Lazbuddie became the bride of Jay Cage of Muleshoe in a private ceremony, with only family members attending, Dec. 28 at 5 p.m. in the Lazbuddie Methodist Church. The Rev. Doug Chapman, pastor of the Lazbuddie Methodist Church and the Rev. Richard Edwards, pastor of the First United Methodist Church in Muleshoe, read the double ring vows.

Parents of the couple are Harrol and Charlotte Redwine of Lazbuddie and J.D. and Julie Cage of Muleshoe.

Jeremy Bruns, organist, accompanied Scott Royster as he sang "Theme From Ice Castles", "Flesh of My Flesh" and "The Lord's Prayer."

Vows were exchanged in a candlelight ceremony. The church was decorated with Christmas greenery, a lighted Christmas tree and white candles.

Given in marriage by her father, the bride chose a formal length gown of white lace over satin. She carried a bouquet of white orchids with stephanotis and baby's breath.

Alexandra Cage of Muleshoe, sister of the groom, served as maid of honor. She wore a tea length teal dress.

J.D. Cage served as his son's best man.

The home of Dr. and Mrs. Charles Lewis was the scene of a reception which family and friends attended. Shena Seaton, cousin of the bride registered the guests and Helen Lettunich and Sarah Lettunich, cousins of the groom served cake.

The bride's table featured a three tier wedding cake, decorated with fresh orchids and Christmas greenery.

Following a wedding trip to Florida and the Bahamas, the couple are making their home in Muleshoe.

The bride is a 1989, graduate of Lazbuddie High School and is presently enrolled at ENMU in Clovis School of Nursing where she will receive her LVN in May 1991.

Cage is a 1984, graduate of Muleshoe High School, 1988 graduate of the University of Texas at Austin and is presently

engaged in ranching in Muleshoe, Earth and Tucumcari, N.M.

Out of town guests attending included: Mr. and Mrs. Danny O'Donald and daughters, Melissa and Kimberly, aunt, uncle and cousins of the bride; Mr. and Mrs. Robert C. Cage of Eagle Pass, TX; Mr. and Mrs. Robert W. Alexander of Bandera, TX; Mr. and Mrs. Claude Cage of Colorado Springs, Colo.; Mr. and Mrs. John Lettunich of Eagle Pass, TX; Helen Lettunich of Austin; Sarah Lettunich from Washington, D.C.; Mr. and Mrs. Bill Flannery and daughters, Sylvia and Ann of San Antonio; Barbara, Heather, Mandy and Reed Norwood of Denver, Colo.; Mr. and Mrs. A.C. Frese and children, Adam, Leslie and Austin from Birmingham, Alabama; Mr. and Mrs. Bill Lettunich and children, Alysia, Adam and Trudy of Amarillo;

Lashea Wilson Shower Planned Friday Afternoon

Miss Lashea Wilson, bride elect of Shane Mason will be honored with a bridal shower Friday, Feb. 1 at 2:30 p.m. in the Lazbuddie Methodist Church.

MICROWAVE TIPS

One of the most popular microwave dishes is the stuffed green pepper. It is stuffed with a ground beef mixture and can be cooked quickly in a microwave.

A secret for crisper and brighter-colored pepper is to remove them from the cooking dish immediately after taking them out of the microwave.

Separate and let them stand from five to ten minutes before serving.

Instead of using a slice of cheese over them use grated cheese. It takes about 25 minutes to microwave a circle of stuffed peppers on High.

When individuals desert principles they get into trouble sooner or later.

Journal Files

60 Years Ago

1931
PATRIOTISM
Like other homely virtues, begins at home. It is only given to the few to serve in high places. But all of us have the opportunity to serve at home. Loyalty to the home town is the test of real patriotism. When we neglect to support home trade or home industries we fail in our loyalty to our country and ourselves. Great are the rewards of home town patriotism. Great are the results. It brings prosperity to us and ours, employment for all, activity in business and progress in every direction. With "Our Home Town First" as our slogan the future is assured. We shall steadily step forward to greater and nobler achievements. Lets be patriotic!!!!

50 Years Ago

1941
FRIDAY AND SATURDAY SPECIALS
Carrots and onions, 2 bunches 5 cents; lettuce 2 heads 10 cents; spuds 10 pounds 13 cents; bananas 12 cents dozen; lemons 10 cents dozen; grapefruit 19 cents dozen, 48 pounds flour \$1.19; 1/2 gallon peanut butter 39 cents pound; one pound can pork and beans 5 cents; No. 2 can hominy 2 cans 11 cents; syrup 45 cents gallon; Miracle whip 32 cents quart; steak 18 cents pound; sausage 9 cents pound bacon 16 cents pound; pork chops 17 cents pound; and bologna 7 1/2 cents pound, limit 2 pounds.

40 Years Ago

1951
15 BELOW WEATHER THIS MORNING IS COLDEST RECORD SINCE JAN. 1933
After several days of near zero temperatures the weather man bore down Wednesday night and struck with a 15 below reading on the official thermometer of 8 O'clock this morning. It was the lowest reading in 18 years.
On Feb. 7, 1933, the mercury slid down to 21 degrees below zero, lowest on record since weather has been kept here, beginning with 1921.
Fourteen years elapsed before anywhere near that cold was to be recorded. In January 1947, there were three nights when the mercury went way down below zero, and the climax of the cold spell being reached on Jan. 3, with a low reading of 14 degrees below.

30 Years Ago

1961
MANY PEOPLE STILL USE WRONG MAIL ADDRESS
Although City Mail Delivery has been in effect here for nearly a year, many people still have not supplied their correspondents with the correct street address, local post office officials told The Journal.
In fact, less than half the thousands of statements, letter mail, ect come to the local office with the correct street address they said. They said this entails a tremendous amount of extra and unnecessary work for the office.

IN FASHION

The scarf, because of its versatility, has become a focal point for suits, skirts and leisure clothes. The bandanna, folded in a triangle, makes a stunning sleeveless top for denim jeans and overshirt.

The scarf can also offer the working woman added accessories. Fold a long, oblong scarf to form an attractive sash for a skirt and blouse. An oblong scarf can be folded and wrapped around the neck and used as a blouse.

“More value for your money... that's why State Farm insures more homes than anyone else.”



CALL ME.
Mark Morton
109 S. 1st
272-7519
Muleshoe, Tx.

State Farm
Fire and Casualty Company
Home Office, Bloomington, Illinois



Like a good neighbor, State Farm is there.

Notice To Taxpayers

Pursuant to Section 31.02 of the Texas Property Code, all 1990 taxes will become delinquent on February 1, 1991. Additional penalty and interest will be added if not paid by this date.

Bailey County Appraisal District

104 E. Ave. C.

Muleshoe

272- 5501

ANTHONY'S

FALL & WINTER CLEARANCE SALE

MENS

- Long Sleeve Dress Shirts**
Legacy solid and striped dress shirts. Sizes 141/2-171/2. Reg. \$12 and \$14, Sale \$6 and \$7 **50% off**
- Velour Robes**
Selected styles, assorted colors. One size fits all. Reg. \$18 and \$20, Sale \$9 and \$10 **50% off**
- Long Sleeve Knit Shirts**
Assorted styles and colors. Sizes S,M,L,XL. Reg. \$13.99 to \$39.99, Sale \$6.99 to \$19.99 **50% off**
- Entire Stock Outerwear**
Wide array of styles, including leather. Men's sizes S,M,L,XL. Reg. \$39.99 to \$300, Sale \$19.99 to \$149.99 **50% off**
- Large Group Sweaters**
By Puritan*, Saturdays*, Anthony's*, Megastar*, Zeppelin* and Apparel Workshop*. Reg. \$19.99 to \$45, Sale \$9.99 to \$22.50 **50% off**
- Big Smith* Jackets**
Quilted utility jackets. Reg. \$22.99 to \$27.99, Sale \$11.50 to \$14 **50% off**
- Winter Gloves**
Dress, casual and ski styles. Does not include Isotoner*. Reg. \$3.99 to \$19.99, Sale \$1.99 to \$9.99 **50% off**
- Levi's* Denim Jackets**
Choose from buffalo plaid lined jacket, sherpa lined jacket or whitewash jacket. Reg. \$60 to \$75, Sale \$30 to \$37.50 **50% off**
- Wrangler* Jackets**
Blanket lined jacket. Reg. \$26.99 & \$27.99, Sale \$13.50 & \$14. Brown duck jacket. Reg. \$27.99 to \$31.99, Sale \$14 to \$16 **50% off**
- Entire Stock Alexander Ltd.* Shoes**
Assorted casual styles and colors. Men's sizes 8-12. Reg. \$50 to \$60, Sale \$25 to \$30 **50% off**
- Fleece Sweatshirts**
Assorted colors and prints. Sizes S,M,L,XL. Reg. \$19.99 to \$35, Sale \$9.99 to \$17.50 **50% off**
- Entire Stock Flannel Shirts**
100% cottons and acrylics. Some with quilt lining. Reg. \$7.99 to \$22.99, Sale \$4 to \$11.49 **50% off**

WOMENS

- Famous Maker Sweaters**
By Memphis Jones*, G.A.S.* Western Connection* and Beltoch Pepper*. Reg. \$20 to \$76, Sale \$10 to \$38 **50% off**
- Long Sleeve Knit Tops**
By Adrienne Morgan*, Hot*, Crazy Horse*, TOP, Transformer*, and One Step Up*. Reg. \$8 to \$30, Sale \$4 to \$15 **50% off**
- Long Sleeve Woven Shirts**
By Suddon Impact*, Tribes*, Angique* and Byer*. Reg. \$19.99 to \$30, Sale \$9.99 to \$15 **50% off**
- Dress Blouses**
By Notations*, Yves St. Clair* and Judy Bond. Reg. \$20 to \$40, Sale \$10 to \$20 **50% off**
- Denim Skirts**
Styles by Stuffed Shirt* and H.I.S.* Reg. \$24.99 to \$35, Sale \$12.50 to \$17.50 **50% off**
- Knit Pants and Leggings**
Assorted styles by One Step Up* and A. Byer*. Reg. \$14.99 to \$22, Sale \$7.50 to \$11 **50% off**
- Woven Pants**
Choose from styles by Fundamental Things*. Reg. \$34 and \$35, Sale \$17 and \$17.50 **50% off**
- Related Separates**
By Alfred Dunner*, Donnkenny*, Paquette*, Byer* and Requirements*. Reg. \$24 to \$88, Sale \$12 to \$44 **50% off**
- Entire Stock Active Jackets & Leather Coats**
Popular styles and fashion colors. Reg. \$38 to \$295, Sale \$19 to \$147.50 **50% off**
- Plus Size Related Separates**
Styles by Donnkenny* and Ms. Paquette*. Reg. \$22 to \$46, Sale \$11 to \$23 **50% off**
- Plus Size Tops and Bottoms**
Wide variety of styles and colors. Reg. \$12.99 to \$34, Sale \$6.49 to \$17 **50% off**
- Selected Dresses**
By Arpeja*, Jonathan Martin*, Frejars*, S. Roberts*, S.L. Fashions*, Dawn Joy* and more. Reg. \$36 to \$82, Sale \$18 and \$41 **50% off**
- Party Pants and Jumpsuits**
From Peddler's*, LA Gal* and Ms. Paquette*. Reg. \$42 to \$52, Sale \$21 to \$26 **50% off**
- Fall & Winter Sleepwear, Robes & Loungewear**
Entire Stock. Assorted styles and colors. Reg. \$14 to \$60, Sale \$7 to \$30 **50% off**
- Selected Socks**
Assorted styles in fashion colors to accent your wardrobe. Reg. \$1.67 to \$2.99, Sale 83c to \$1.49 **50% off**
- Jewelry, Handbags and Accessories**
Selected styles of jewelry, handbags, scarves, belts and hair accessories. Reg. \$3 to \$29, Sale \$1.50 to \$14.50 **50% off**
- Selected Shoes and Boots**
Styles by Connie*, ATB*, Viviana*, 7 N. Broadway and more. Reg. \$19.99 to \$9.99, Sale \$9.99 to 29.99 **50% off**

CHILDRENS

- Entire Stock Children's Long Sleeve Tops**
Toddler 2-4T, Reg. \$5.49 to \$16.99, Sale \$2.25 to \$8.49
Boys' 4-7, Reg. \$5 to \$24, Sale \$2.50 to \$11.99
Boys' 8-20, Reg. \$6.99 to \$32, Sale \$3.50 to \$15.99
Girls' 4-6x, Reg. \$5.99 to \$18, Sale \$2.99 to \$8.99
Girls' 7-14, Reg. \$6.99 to \$29.99, Sale \$3.50 to \$14.99 **50% off**
- Entire Stock Children's Outerwear**
Toddler 2-4T, Reg. \$21.99 to \$34.99, Sale \$10.99 to \$17.50
Girls' 4-14, Reg. \$25 to \$60, Sale \$12.50 to \$30
Boys' 4-20, Reg. \$20 to \$52, Sale \$9.99 to \$25.99 **50% off**
- Entire Stock Children's Sweaters**
Toddler 2-4T, Reg. \$7.99 to \$16.99, Sale \$3.99 to \$8.50
Boys' 4-20, Reg. \$11 to \$24.99, Sale \$5.50 to \$12.50
Girls' 4-14, Reg. \$9.99 to \$19, Sale \$4.99 to \$9.50 **50% off**

Selection may vary by store. No rainchecks. 321 Main Muleshoe

Kidd, Purdy

Cont. From Page 1

state, nation and to our Chamber of Commerce. Renew your vows, and say, 'I will.'

"Help our leaders. This is a great, tremendous nation. I pray we not close our eyes to it now."

Doing his usual superb job as master of ceremonies was Max King, who called on George Nieman to give the invocation and Jeri Wiedebush to lead the pledge to the flag.

King said, "A full house makes these things a success, and from looking at all the people here, we're successful."

He thanked the school for providing the facility and the Blue Goose for catering the barbecue brisket meal. He also thanked the Jennyslippers for decorating the cafeteria.

Muleshoe Mayor Darrell Turner welcomed the guests to the banquet.

Making a short talk was outgoing CofC president, Lonnie Adrian. He said the CofC board had done an excellent job during the past year, and recognized CofC Manager Nancy Kidd and Secretary Eufemia Torres for their work.

"I think the City of Muleshoe is great, and it was an honor to serve as CofC president," added Adrian. "I believe we got a lot done."

Robert Montgomery, incoming president said, "I'm excited about serving as president. This is the best community anywhere to live, to work and to raise a family."

"We have something here you don't see in other communities, pride and commitment."

"We will be asking for your comments and your suggestions and will also be seeking your help. We're here for you, for our community."

After Mayor Turner installed the new officers and directors, a past president plaque was presented to Lonnie Adrian. He, in turn, recognized retiring directors Ray Day and Robert Leppard. Other retiring directors were not present.

He also gave "God Ole' Boy" plaques to Mayor Turner and Max King. Nancy Kidd, in return, gave "Good Ole' Girl" awards to Pat (Mrs. Max) King and Gayle (Mrs. Darrell) Turner.

Johnny Furgeson presented the first annual award -- Soil Conservation Farmer of the Year.

He said of the recipient, "He resides in Zone Five in Bailey County and has farmed in Bailey County since 1957. He has 2,400 acres, many of them the same acres he started with in 1957."

"He produces cotton, high residue grains and native grass. He practices good conservation and I am proud to give this award to Ted Simpson."

In making the presentation to Merchant of the Year, Jenny-slipper President Mary Ann Ramirez gave much of his background, including his start with Perry Bros. at Friona, and gave many of his achievements before moving to Muleshoe to

become manager of the Muleshoe Perry's and after coming to Muleshoe. "He is willing to work for the community," said Mrs. Ramirez, giving a background of Perry's. Randy Lewis, Muleshoe manager, was Merchant of the Year.

Again this year, Ray Day presented the Employee of the Year award.

"This man is quite an outstanding example of Service," said Day, "that's what he has provided to Muleshoe for 43 years."

And, added Day, "He's everybody's friend."

It took several minutes to give all of R. A. Bradley's accomplishments before he was called forward to receive his award.

They ranged from Outstanding Sales to District Service; Man of the Year; Past President of the Chamber of Commerce; Kiwanian of the Year; President of the Muleshoe Heritage Foundation; Citizen Through the Years and many other awards.

Larry and Pam Hancock won Farm Family of the Year from the CofC. Cliff Black made the presentation and said they moved to Bailey County in 1978 from the Phoenix, AZ area. Hancock received a Science degree and Pam a degree in Elementary Education, and is a former kindergarten and first grade teacher.

Banks...

Cont. From Page 1

First State Bank of Dimmitt, Earth Branch, showed deposits of \$13,050,000 on December 31, 1989. This had decreased by \$472,000 to \$12,578,000 at the end of December, 1990.

At Earth, loans also decreased during the year. Loans were \$5,260,000 closing out December, 1990, down \$564,000 from the \$5,824,000 shown at the end of 1989.

Friona State Bank showed a large increase in both deposits and loans for the year.

Deposits were \$59,085,000 at the end of 1989, and had increased \$8,931,000 to show \$68,016,000 on December 31, 1990.

Loans for Friona State Bank increased by \$4,184,000 in the year. Loans were \$41,734,000 closing out December, 1990, and were \$37,550,000 at the end of 1989.

From Sudan, First National Bank showed total deposits of \$9,185,000 at the end of 1990, up \$641,000 from the total of \$8,544,000 ending December, 1989.

Loans at the Sudan bank were also up some. Loans were \$4,593,000 closing out December, 1990, up by \$281,000 from the December 31, 1989 figure of \$4,312,000.

After extremely dry, hot temperatures in June, 1990, most producers found they had a 'bumper' crop of cotton, with many irrigated crops producing more than three bales per acre. This attributes to some of the bank growth, according to some of the bankers visited this week.

Hancock was formerly a member of the Rotary Club and Parr is a member of AAUW.

They are the parents of four children.

At this time, they are enlarging their dairy operation, and when completed will have 28 full-time employees milking a herd of 1600 cows, who are expected to produce some 12,000 gallons of milk a day.

Robert Leppard presented the Man of the Year award. He said the recipient was a native of Clarendon and graduated from Clarendon Junior College. He and his wife, Nancy, are the parents to two children, Clay and Cari.

Hubert Kidd formerly lived and worked in Arizona on the Navajo Indian Reservation in rural telephones.

"He then brought his expertise and knowledge to Muleshoe," said Leppard. "He has provided the rural communities here with the newest in technology and most efficient community service."

He outlined many of Hubert Kidd's accomplishments, including his many donations to schools, fire departments and other civic activities.

In 1988, Dr. Bruce Purdy was named Man of the Year. He watched Saturday night as his wife, Cindy, was named Woman of the Year.

Making the presentation was Pat Young, who told some of the background of Cindy Purdy.

She grew up in Galveston and married Dr. Bruce Purdy in 1976 and moved to Muleshoe.

She taught school for a year in Muleshoe, and started a dance and gymnastics school.

After selling her gymnastics practice, she continued to be involved in gymnastics, and has served as a judge for gymnastic events all over the nation.

For the past four years, she has been a member of the Board of Trustees of the Muleshoe Independent School District and is currently serving as board president.

The Purdys are the parents of three sons, and are members of the First Baptist Church. They are active in the Muleshoe Boy Scouts.

Officers for the Muleshoe Chamber of Commerce and Agriculture for 1991 are Robert Montgomery, president; Jeri Wiedebush, vice president; George Nieman, treasurer; and directors Inez Bobo, Lonnie Adrian, Randy Lewis, Cliff Black, Rex Harris, Curtis Carpenter, Pat Young, Kid Castleberry and David Tipps.

Retiring directors were Robert Leppard, Ray Day, Gene Atkins, Leon Logsdon and Merlyn Neel.

Ambassadors and Ambassadors include Guy Wiley, Manuel Elizarraraz, Jody Field, Jason Harmon, Mickey Trussell, Margarita Posadas, Patricia Del Toro, Jac Greene, Ronda Scott and April Watkins.

Progress would be faster if people could go forward on excuses.

Anthony's Offers Military Discount

In a joint announcement today (Thursday), John J. Wiesner, chairman and E. Jackson Smiles, president, C. R. Anthony Company, extended a special 10 percent discount privilege to the immediate family of members of reserve personnel called to active duty as a result of the operation in Saudi Arabia and the Persian Gulf.

"The conflict in the Persian Gulf has placed emotional and financial burdens on these families," said Samiled. "And if our stores can be of service in any way, families can count on our direct support and prayers."

Anthony's operates 215 stores in 17 states with many located near military bases throughout the United States: Tinker Air Force Base, Oklahoma City; Dyess Air Force Base, Abilene, TX; Malstrom Air Force Base, Great Falls, MT; Fort Sill in Lawton, OK; and Fort Bliss

near Las Cruces, NM to name a few.

Families simply show proper identification like dependent ID cards, Service Medical Cards or

County Agent's

Office Making

Program Diskette

Bailey County Agriculture Agent, Spencer Tanksley, announces that he has available in his office a copy of 1991 Farm Program Templates on diskette received from Dr. Jackie Smith, Extension Economist, TAEX, District office in Lubbock.

Anyone who would be interested in having a copy is asked to bring a formatted 5.25" diskette by the Bailey County Extension office in the courthouse. The personnel will be glad to make a copy of the information for your use.

The input sections on these templates are divided into four parts:

General factors which describe the whole farm; factors concerning the acreage planted to the base crop which is eligible for deficiency payments; factors concerning the crop planted on flexible acreage; and factors concerning the use or maintenance of ACR and CUA.

The templates contained on the disk are both for SuperCalc4 and for Lotus 1-2-3, version 2.01 or higher. When using the templates, the user may wish to copy the file to the appropriate subdirectory on the hard disk and execute them from there, or may access them from the floppy disk.

DISCLAIMER STATEMENT: This analysis is provided by the Texas Agricultural Extension Service solely on an "as is" basis. TAEX assumes no liability for the use of this data. Please note that there may be slight errors due to rounding.

This user's manual is distributed in furtherance of the acts of Congress of May 8, 1914, as amended, and June 30, 1914.

copies of recent orders for call up to active duty.

"There are no string attached," Glenn Smith, vice president of marketing, said.

"Whatever the current price is on any item we'll take an additional 10 percent off at the customer service desk, including advertised specials and what we call YELLOW TAG CLEARANCE merchandise."

"We at C. R. Anthony want to do our part during this difficult time period," Wiesner remarked, "and we encourage other businesses to do the same especially those that sell vital commodities like clothing and food."

ONE MINUTE SPORTS QUIZ

By Christian Thorlund

1. How many A.L. East teams had a winning season last year (baseball)?
2. How many A.L. West teams ended with better than .500 records?
3. What N.L. teams played better than .500 ball last year?

Answers:

1. Two, Boston and Toronto.
2. Three, Oakland, Chicago and Texas.
3. Pittsburgh, New York and Montreal (East), Cincinnati, Los Angeles and San Francisco (West).

Cash Rewards
Up To \$1,000

For Information!

Call
Bailey County
Crime Line
272-HELP

TIPS ON - HOW TO WRITE A CLASSIFIED AD THAT SELLS

REFRIGERATOR/FREEZER, General Electric, 19 cu. ft., three years old, gold, automatic ice maker, automatic defrost, like-new condition. \$400 or best offer! Moving, must sell immediately. Call Saturday between 8AM and 9PM. 000-0000

1. Use a KEYWORD. This immediately tells the reader exactly what it is you have to sell.
2. Make your description CLEAR and FACTUAL. State the year, make, model, color, size, and tell what condition the item is. Also state the special features.
3. State the PRICE. Successful Classified advertisers have learned that the price in an ad helps increase the chances for results.
4. If there's a genuine sense of URGENCY, say so. The words, "We're Moving" or "Must Sell Fast" suggests that readers respond immediately.
5. Include your PHONE NUMBER. Classifieds get results fast and often generate immediate sales. If you cannot be available to answer the phone at all times, be sure to specify special calling times such as "after 6 PM" or "Before 11 AM".

If you need assistance ask one of our friendly AD-VISORS to help you word your ad.

CALL 272-4536

Muleshoe and Bailey Co. Journals

MOBILE TELEPHONE

The *CELLULAR ALTERNATIVE
with NO AIRTIME BILLING*

\$45. per month
unlimited calls

Single source networking thru-out
West Texas & Eastern New Mexico.

FEATURES

- ★Telephone or Two-Way Dispatch
- ★Hands-Free Operation
- ★30 Number Memory
- ★Advanced Timer Features
- ★Last Number Redial/Saved in Memory
- ★System Scan and Group Scan
- ★Missed Call Indicator
- ★Horn Alert
- ★Automatic Power Off Timer

MOTOROLA-MIDLAND-UNIDEN-E.F. JOHNSON

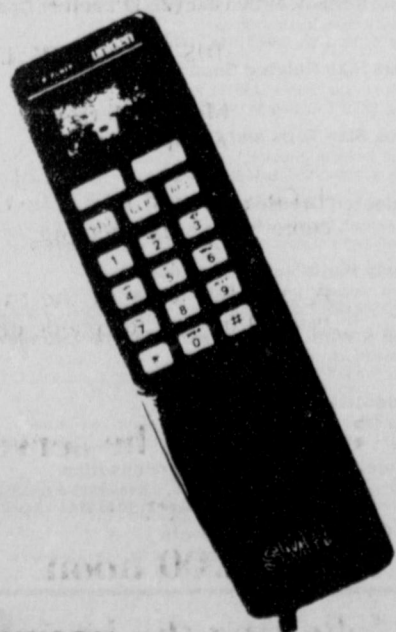
A & B ELECTRONICS, INC.
COMMUNICATIONS SYSTEMS

SALES-Service-Rentals

Mobile Phones & Two Way Radios-Talk Back Paging

800 MHZ Trunking

A & B ELECTRONICS, INC.
COMMUNICATIONS SYSTEMS
3914 N. Prince • 762-4870 • Clovis



Sudan News

By Ann Gaston

A birthday party was hosted for Jewell (Glover) Taylor in her home Sunday, Jan. 13. The party was hosted by her children; Sue and Billy Chester, and Terry, and Mr. and Mrs. Jerry Glover and their families.

Birthday cake with coffee and spiced tea was served to the guests.

The Happy Birthday song was led by a little great-granddaughter, and everyone joined in.

Among those from Sudan attending were; Robert DeLoach, and his mother, Ida; Tommie and Elsie Cate; Lewis and Della Harper; Etherl Beale and Edith Williams were joined by Lillian Cook of Littlefield.

GED AND ADULT EDUCATION CLASSES
GED and Adult Education classes got underway on Monday, January 14 in the Littlefield High School Auditorium. Classes are being held on Monday and Tuesday nights from 7:00-9:00 p.m. of each week. If you have any questions, please call Jeanne Bartley at 933-4380, or Ruby Reid at 385-3102.

Three Sudan students made the honor roll this past semester. Kristi Hargrove had a 3.7 at WTSU carrying 18 hours and playing for the WTSU basketball team. Also Kristi's sister Shelley Chester who attends Texas Tech carrying 18 hours had a 3.66 GPA. Ann Walker attending South Plains and she was able to maintain a 4.0 GPA, in their Cosmetology School.

If you have not been notified about the Citizens of Tomorrow, if you send a brief write-up on your child or children who had their pictures made at the community center in the summer, I will put this with their picture and place it in the paper. Their favorite movie, color, food, toys, pet and names of pet, etc.

FIRST SEMESTER HONOR ROLL
SEVENTH GRADE
Justin Bellar, Marjoe Bigbee, Jerimi Bourland, Roger Huey, Kassie Kinnie and Lee Ray.

SIXTH GRADE
Breanne Baker, Heather Bourland, Kyle Brown, Natasha Bruton, Chad Chester, Heath Harper, Kris Humphreys, Mindy Humphreys, Robyn Kenner, Kyla Morris, Wade Robson and Alicia Seymore.

THIRD GRADE
Sophia Castillo, Erik Edwards, Kasey Humphreys, Tj Ingle, Amber Legg, Aaron Maxwell, Rocky McAdams and Irene Mendoza.

FOURTH GRADE
Rosendo Alcaraz, Bryan Conn, Garrett Flowers, John Gonzales, Nick Hall, Shane Harper, Daniel Jimenez and David Kenner.

Also Russ King, Danya Lance, Courtney Legg, Dustin Provence, Lauren Ray, Michelle Rodriguez, Meghan Surret, Kristy Synatschck, Keevin Tamplin and Joe Luis Valenzuela.

FIFTH GRADE
Elizabeth Apodaca, Jay Carr, Monica Castillo, Bonnie Hall, Fernando Mendoza, Jessica Mendoza, Regina Pierce and Tayloy Whitley.

Andrea Hall has been visiting with her mother Geneva Thomason and aunt Jerry Hergoz while her husband is stationed in the Persian Gulf. Her husband Lt. Commander L.D. Hall has been in the Persian Gulf for several weeks.

Gina McKillip of WTSU in Canyon and Melanie McKillip who is at the US Air Force Academy in Colorado were home for the holidays to visit Carl and Sylvia Burnett and other family and friends.

If you would like to put the names of the soldiers of Sudan or family members who are in the Persian Gulf, please send me a picture and or a write-up of where they are stationed and who their families are, etc...

Holiday visitors in the home of Olin and Dot Nix, were; Janet and Clifford Watson and Seth of Longview, Jeannia and Greg Dykman of Mesquite, and Melissa Nix of Arlington. Also Mike and Shawni Nix, Pam and Rick Humphreys Clint and Mindy, and Dyke and Ann Gaston Kade and Kady.

Visiting for the holidays in the home of Al and Glynna Harrison were Sharla and Kevin George of San Antonio and Jay Harrison of Plainview where he attends Waylon Baptist College.

Jeff and Lee Anne Burk of Louisville and Paula Ellison of Dallas were visitors of Joe and JoAnn Ellison.

Harold and Doris May spent some of the holiday season visiting with their children Mary and Randy Rogers and Nick, and Bernadette May all of Dallas.

WJHS Honor Roll

SIXTH GRADE
Harvey Alfaro, Kristi Bennett, Jamie Bohler, Kenneth Darin Box, Jacob Caswell, John Cowart, James Cox, Amy Elliott, Kyle Elmbry, Cari Faver, Raquel Franco, Sarah Freeman, Twyla Gear, Jo Beth Gilleland, Denice Greenhouse, Stephanie Guerrero, Megan Harlan, Stacy Harlan, Brandi Harrison, Nicholas Haynes, Heather Hooten, Aimee Hugg, Adrian King, Colby Latham, Lissa Leffler and Benjamin Loewen

And Melissa Mata, Kendall McDaniel, Reagan McElroy, Mark McGuire, Isaac Miramontes, Leigh Moraw, Daniel Morris, Kristen Nicholas, Jennifer Patterson, Leslie Powell, Kermit Price, Sandra Quesada, Leslie Radford, Jarrod Redwine, Carolyn Schuster, Shane Scoggin, Kesha Torbit, Ransley Welch, Jeffrey Wheeler and Kandy Wilcox

SEVENTH GRADE
Samantha Caswell, Robbie Clapp, Daniel Garbarino, Candelara Garcia, Jorge Garcia, Suzy Hodges, Holly Hutton, Marla Ivy, Chad Johnson, Irene Logan, Clay Myers, Charles Neeley, Lauri Puckett, Johnny Rodriguez, Rebecca Snell, Dacia Stewart and Koy Wilhite

EIGHTH GRADE
Jason Barrett, Fara Black, Jared Clarkson, Tiffany Copley, Angela Crawford, Tommy Day, Holly Donaldson, Chris Edwards, Geneva Eggers, Bryan Field, Jesus Flores, Jodie Foster, Jimmy Gauna, Julie Gilleland, Keetha Glover, Lance Latham, Audra Lee, Josh Lindt, Lacey Lloyd, Russell McGuire, Jose Mendoza, Latonya Payne, Stephanie Perez, Jeff Pope, Misty Robertson, Rebecca Warren, and Lisa Yeary

FIRST SEMESTER SIXTH GRADE
Kristi Bennett, Jamie Bohler, Jacob Caswell, John Cowart, James Cox, Amy Elliott, Kyle Embry, Cari Faver, Raquel Franco, Sarah Freeman, Twyla Gear, Jo Beth Gilleland, Stephanie Guerrero, Megan Harlan, Stacy Harlan, Brandi Harrison, Nicholas Haynes
And Heather Hooten, Aimee Hugg, Adrian King, Colby Latham, Lissa Leffler, Benjamin Loewen, Melissa Mata, Kendall McDaniel, Reagan McElroy, Mark McGuire, Leigh Morow, Daniel Morris, Kristen Nicholas, Jennifer Patterson, Leslie Powell, Kermit Price, Sandra Quesada, Leslie Radford, Jarrod

Redwine, Carolyn Schuster, Shane Scoggin, Stefan Sutton, Kesha Torbit, Samuel D. Watkins, Ransley Welch, Jeffrey Wheeler and Kandy Wilcox
SEVENTH GRADE

Samantha Caswell, Robbie Clapp, Daniel Gargarino, Candelara Garcia, Jorge Garcia, Suzy Hodges, Holly Hutton, Marla Ivy, Chad Johnson, Jeff Lewis, Irene Logan, Clay Myers, Charles Neeley, Lauri Puckett, Johnny Rodriguez, Rebecca Snell, Dacia Stewart, Kimberlee Vaughn and Samuel Villarreal

EIGHTH GRADE
Jason Barrett, Fara Black, Mikki Bowen, Ryan Clapp, Jared Clarkson, Tiffany Copley, Angela Crawford, Karissa Dale, Tommy Day, Holly Donaldson, Chris Edwards, Geneva Eggers, Bryan Field, Jesus Flores, Jodie Foster, Jimmy Gauna
And Julie Gilleland, Keetha Glover, Christy Holt, Lance Latnam, Audra Lee, Josh Lindt, Lacey Lloyd, Russell McGuire, Jose Mendoza, Latonya Payne, Stephanie Perez, Dink Pitcock, Jeff Pope, Misty Richardson, Rebecca Warren and Lisa Yeary

Three Way News by: Mrs. H.W. Garvin

Mr. and Mrs. James Simpson from Lubbock visited his grandmother Mrs. Jim Simpson Sunday afternoon.

We wish to express our sympathy to the M.T. Gant family on the death of Minnie Gant who was 104 years old. Funeral was held Monday at Three Way Baptist Church with burial at the Morton Memorial Cemetery.

Mrs. Jack Lane visited her mother Mrs. Nettie Quisenberry in Muleshoe Tuesday.

Mrs. Tommy Joe Durham from Lubbock visited her father George Tyson Wednesday.

Mr. and Mrs. R.L. Davis were in Lubbock Monday for a medical checkup.

Geico Offers Tips On Preventing Freezing Pipes

"Freezing pipes are a common problem during the winter months and damage caused by frozen pipes that break can be costly to repair," warns Donn Knight, vice president of the Property Insurance Center of Government Employees Insurance Company (GEICP).

To prevent breakage and flooding, Knight offers the following advice.

Senator Phil Gramm Reports

The Horatio Alger Association has selected U.S. Sen. Phil Gramm of Texas, baseball Hall of Fame member Stan Musial, Joint Chiefs of Staff Chairman Gen. Colin Powell and seven other distinguished Americans to receive the 1991 Horatio Alger Award.

The association was founded more than 40 years ago to promote economic opportunity among America's youth.

Its annual national award is given to 10 Americans "in recognition of their outstanding contributions" in their chosen field.

Each year, the association funds \$250,000 in college scholarships to promising high school students nationwide. It also conducts an annual seminar focusing on career opportunities and public service among young people.

Additional winners of this year's awards are James Clayton, chairman of Clayton Homes, Inc., of Knoxville, Tenn.; John D. Kemp, chief executive officer of the United Cerebral Palsy Associations, Washington; Warren McCain, chairman of Albertson's, Inc., Boise, Idaho; Harold Poling, chairman of Ford Motor Co., Dearborn, MI; Albert Robin, president of the Robin Construction Co., Chicago; Herman Russell, chief executive officer of H.J. Russell & Co., Atlanta; and Fred Turner, chairman of McDonald's Corp., Oak Brook, Ill.

•On particularly cold days, allow inside faucets to drip slowly and open cabinets underneath sinks to allow heat to reach the pipes.

•Insulate pipes. Easy to install pipe insulation is available at most hardware stores.

•Drain all outside spigots. These are highly susceptible to freezing since the pipes run through the walls to the outside. To drain, cut off the water at the valve inside the house that controls the spigot. Then open the spigot itself to allow water remaining in the pipe to drain out completely.

•When you leave your house during cold weather, don't turn off the heat or set the thermostat too low.

•If you have a persistent problem with a certain pipe freezing, special wiring that provides a low level of heat can be attached to the pipe. Consult a plumber or home repair manual for installation information.

LOCAL DISTRIBUTION OPPORTUNITY FOR NATIONAL FIRM

Nation's Leading Car Care Product Co. is now selecting dealers - Partners for A Local Route. Accounts/Territory Protected. Minimum 10K Investment. Nets UP To 60K+ Per Year. 100% Secured.

Call Mr. Coy NOW!
1-800-771-7722

The Annual Meeting of the Members of the



Five Area Telephone Cooperative Inc.



will be held at the

Bailey County Civic Center

Muleshoe, Texas

Saturday, February 2, 1991, 10:00 a.m.

Registration will begin at 9:00 a.m.
The meeting will begin at 10:00 a.m.

ACTION WILL BE TAKEN TO

1. Give members a financial report, progress report, and general condition of the Cooperative.

2. Elect a Nominating Committee for the Annual Meeting to be held in 1992 for Districts #1-Lariat & #3-E. Lazbuddie.

3. Elect two (2) Directors.

DISTRICT #2-W. LAZBUDDIE

DISTRICT #4-NEEDMORE

Melvin Morris
Kirby Burch

Mickey Sowder (incumbent)
Ronnie Barrett

4. Consider and take action upon any other matters that might be presented to come before the meeting.

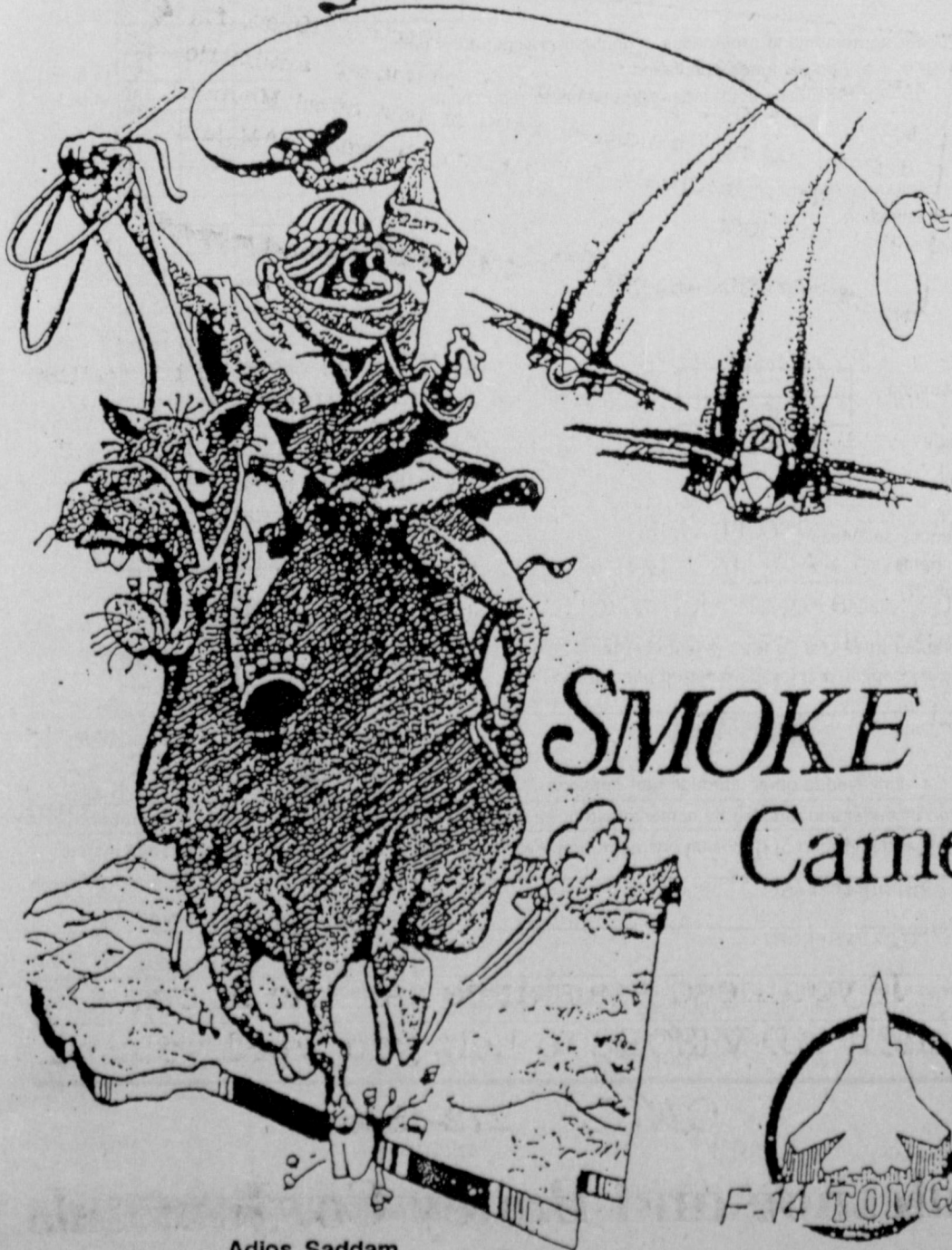
A complete copy of the by-laws of Five Area Telephone Cooperative, Inc. is printed in your telephone directory.

Lunch will be served at 12:00 noon following the business meeting.

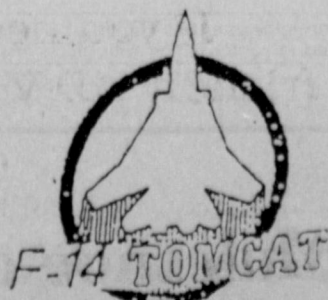
A drawing will be held for gifts.



I'd fly 7,000 miles to



SMOKE a Camel.



Adios Saddam

Lazbuddie Honor Roll

"A" HONOR ROLL SIXTH GRADE
 Heath Brown, Shana Foster, Janis Hernandez, Mandy Magby, Blake Mimms and Edward Terry

SEVENTH GRADE
 Keith Burch, Heather Engelking, Socorro Reyes, Kimberly Smith and Dawn Weir

EIGHTH GRADE
 Eva Jo Alcalá, Joanna Gallman, Ivette Reyes, Rachelle Rice and Timmie Smith

NINTH GRADE
 Gina Jarman and Jarah Redwine

10th GRADE
 Leland Brockman, Craig Russell and Paul Williams

11th GRADE
 Stacey Barber and Frank Gonzales

"A-B" HONOR ROLL SIXTH GRADE
 Enriqueta Alvarez, Lidia Franco, Jennifer Hill, Juan Reyes, Tyler Rice and Justin St. Clair

SEVENTH GRADE
 Travis Barber, Sammy Everett, Marisol Godinez, Katy Jones, Adolfo Mata, Roel Moran and Guy Nickels

EIGHTH GRADE
 Brisa Cuevas, Matthew Elliott, Dee Martinez, Brandy Nelson, Belynda Waddell and Brandon Walker

NINTH GRADE
 Jessica Burch, Jody Copp, Chris Cozby, Dawnda Magby and Brett Thomas

10th GRADE
 Matt Cozby, Raquel Guzman, Joni Hernandez, Erin Jones, Marsha Mendoza, Maria Pacheco, Christina Perkins, Joele Weaver and Mario Zamora

11th GRADE
 Susan Alcalá, Sally Lopez and Holly Morris

12th GRADE
 Doug Barnes, Casey Bradshaw, Britt Engelking, Stacie Hodges, Elsa Mendoza, Jason Morris and Jana Vise

FIRST SEMESTER "A" HONOR ROLL SIXTH GRADE
 Heath Brown, Shana Foster, Mandy Magby and Blake Mimms

SEVENTH GRADE
 Heather Engelking, Socorro Reyes, Kimberly Smith and Dawn Weir

EIGHTH GRADE
 Eva Jo Alcalá, Joanna Gallman, Ivette Reyes, Rachelle Rice and Timmie Smith

NINTH GRADE
 Jessica Burch, Gina Jarman, Dawnda Magby and Jarah Redwine

10th GRADE
 Leland Brockman, Craig Russell and Paul Williams

11th GRADE
 Frank Gonzales

FIRST SEMESTER "A-B" HONOR ROLL SIXTH GRADE

Janis Hernandez, Tyler Rice, Justin St. Clair, Edward Terry, and Tina Walker

SEVENTH GRADE
 Travis Barber, Keith Burch, Sammy Everett, Marisol Godinez, Katy Jones, Jr. Lopez, Adolfo Mata, Julie McDonald, Roel Moran, and Guy Nickels

EIGHTH GRADE
 Matthew Elliott, Jon Colby Miller, Belynda Waddell, Brandon Walker

NINTH GRADE
 Jody Copp, Jodi Morris, Chad Nickels, and Brett Thomas

TENTH GRADE
 Matt Cozby, Raquel Guzman, Joni Hernandez, Erin Jones, Joele Weaver, Eric Williams, Mario Zamora

ELEVENTH GRADE
 Susan Alcalá, Stacey Barber, Holly Morris

TWELFTH GRADE
 Casey Bradshaw, Britt Engelking, Elsa Mendoza, Malessia Smyer, and Jana Vise

Top Ten Songs For The Week

TOP SONGS OF THE WEEK

1. Unanswered Prayers by Garth Brooks
2. Forever Is As Far As I'll Go by Alabama
3. I've Come To Expect It From You by George Strait
4. Rumor Has It by Reba McEntire
5. Come On Back by Carlene Carter
6. Daddy's Come Around by Paul Overstreet
7. Lifes Little Ups And Downs by Ricky Van Shelton
8. It Wont Be Me By Tanya Tucker
9. Brother Jukebox by Mark Chestnutt
10. Never Knew Lonely by Vince Gill

Can't He?
 A quick-thinking sailor came up with a new one when his chief demanded, "How come you're sleeping on the job?"
 "Goodness," replied the sailor, "can't a man close his eyes for a minute of prayer?"

From The Office Of Martin Frost

While our attention was focused on the Persian Gulf crisis, Soviet troops moved into Lithuania on January 13th and fired upon unarmed civilians. The Soviet army's action left 14 people dead and dozens wounded.

I am deeply concerned about the situation in Lithuania and the questions it raises about Soviet President Gorbachev. He told his people that he was not responsible for the attack. Gorbachev said that an army chief in Lithuania ordered the attack and that he learned of it later. However, the Soviet President expressed no regret about the loss of life.

This situation makes me wonder whether Gorbachev is still in control of his country. I certainly hope that he has not become a puppet of the Communist hardliners. It is difficult to completely trust Gorbachev or any Soviet leader in recent times.

However, Gorbachev has given us the best hope for peace between the super-powers. He has appeared to be sincere

about changing the Communist system. He has appeared to be sincere about improving the economy of his nation. Certainly, the changes in Eastern Europe have been most encouraging and could not have been achieved without his leadership.

It would be a very disturbing turn of events if Gorbachev is toppled from power or becomes only a figurehead for a strong military. I fear that the progress we have made in opening the lines of communication between our nations may be damaged. We simply cannot condone the killing of innocent people.

These events in Lithuania come at a very critical time in light of the Persian Gulf situation. We cannot afford to have strained relations with the Soviet Union. So far, Gorbachev has backed our actions, and I would much rather have him on our side against Saddam Hussein. I certainly hope that his problems at home will not complicate our alliance on the Persian Gulf crisis.

I am also concerned that the Soviet military may take the opportunity to move in on the two other Baltic states of Latvia and Estonia. If this happens, it would indicate what direction the Soviet powers are taking.

Enochs News by: Mrs. J.D. Bayless

Visiting in the home of Buford and Margie Peterson during the weekend was her sister, Martha Leake, Joe Bob and Donna Leake of Pagosa Springs, Colo.

Cleo and Leta Hall from Phoenix, Az. were guests in the home of her mother Ellen Bayless Thursday till Wednesday. They also visited in the home of his sister, Wanda and J.E. Layton and the Jarrol Laytons.

Rev. Donnie Howell of Enoch's, Joe Sowder of Three Way went to Big Bend on Monday to look into a Baptist Mission project. They were accompanied by Herschel Wilson of Sunny-

side and Leon Lewis of Muleshoe. All were representing the Llanos Altos Association.

Mr. and Mrs. Curtis Snitker of Hart visited his parents, Clifford and Dixie Snitker Saturday afternoon.

Mrs. Roxie Stroud and daughter Mrs. Lillian Pollard were in Lubbock Monday to visit her daughter and Lill's sister, Mrs. Bonnie Belliveau.

Mrs. Faye Jones and daughter Darlene Alexander and son Kelly Alexander went to Phoenix, Az. to attend the wedding of Darlene's other son, Bret Alexander and Cynthia Cochran they were married Sunday Jan. 13, 1991 at the Desert Rose Chapel in Glendale, Az. Kelly Alexander was best man. Bret Allen Alexander is Staff Sgt. in the Air Force at Phoenix, Az. and Fair Banks Alaska.

Campbell Tire

Recycling and Disposal

Levelland, Texas 79336
 Licensed By State

For More Information Call - Kary or Jerry
806-894-2822

Report Of Condition Muleshoe State Bank Member F.D.I.C.

LEGAL TITLE OF BANK MULESHOE STATE BANK P.O. BOX 1010 MULESHOE, TEXAS 79347-1610				STATE BANK NO. 1631-21
CITY MULESHOE				FEDERAL RESERVE DISTRICT NO. 11 13 16793
COUNTY BAILEY	STATE TEXAS	ZIP CODE 79347-1610	CLOSE OF BUSINESS DATE DECEMBER 31, 1990	

		Dollar Amounts in Thousands			
		Bil	Mil	Thou	
ASSETS					
1. Cash and balances due from depository institutions:	a. Noninterest-bearing balances and currency and coin		3 680		1.a.
	b. Interest-bearing balances		1 600		1.b.
2. Securities			7 950		2.
3. Federal funds sold & securities purchased under agreements to resell in domestic offices of the bank & of its Edge & Agreement subsidiaries, & in IBFs:	a. Federal funds sold		2 510		3.a.
	b. Securities purchased under agreements to resell		-0-		3.b.
4. Loans and lease financing receivables:					
	a. Loans and leases, net of unearned income	19	050		4.a.
	b. LESS: Allowance for loan and lease losses		327		4.b.
	c. LESS: Allocated transfer risk reserve		-0-		4.c.
	d. Loans and leases, net of unearned income, allowance, and reserve (item 4.a minus 4.b and 4.c)		18 723		4.d.
5. Assets held in trading accounts			-0-		5.
6. Premises and fixed assets (including capitalized leases)			504		6.
7. Other real estate owned			915		7.
8. Investments in unconsolidated subsidiaries and associated companies			-0-		8.
9. Customers' liability to this bank on acceptances outstanding			-0-		9.
10. Intangible assets			-0-		10.
11. Other assets			1 475		11.
12. a. Total assets (sum of items 1 through 11)			37 357		12.a.
	b. Loans deferred pursuant to 12 U.S.C. 1823 (j)		N/A		12.b.
	c. Total assets and losses deferred pursuant to 12 U.S.C. 1823(j) (sum of items 12.a and 12.b)		37 357		12.c.
LIABILITIES					
13. Deposits:	a. In domestic offices		33 982		13.a.
	(1) Noninterest-bearing	7	022		13.a.(1)
	(2) Interest-bearing	26	960		13.a.(2)
	b. In foreign offices, Edge and Agreement subsidiaries, and IBFs				13.b.
	(1) Noninterest-bearing				13.b.(1)
	(2) Interest-bearing				13.b.(2)
14. Federal funds purchased and securities sold under agreements to repurchase in domestic offices of the bank & of its Edge & Agreement subsidiaries, & in IBFs:	a. Federal funds purchased		-0-		14.a.
	b. Securities sold under agreements to repurchase		-0-		14.b.
15. Demand notes issued to the U.S. Treasury			225		15.
16. Other borrowed money			-0-		16.
17. Mortgage indebtedness and obligations under capitalized leases			-0-		17.
18. Bank's liability on acceptances executed and outstanding			-0-		18.
19. Notes and debentures subordinated to deposits			443		19.
20. Other liabilities			34 650		20.
21. Total liabilities (sum of items 13 through 20)			-0-		21.
22. Limited-life preferred stock			-0-		22.
EQUITY CAPITAL					
23. Perpetual preferred stock (No. of shares outstanding			-0-		23.
24. Common stock (No. of shares a. Authorized		50,000			24.
	b. Outstanding	50,000			24.
25. Surplus			1 000		25.
26. a. Undivided profits and capital reserves			729		26.a.
	b. LESS: Net unrealized loss on marketable equity securities		22		26.b.
27. Cumulative foreign currency translation adjustments			2 707		27.
28. a. Total equity capital (sum of items 23 through 27)			N/A		28.a.
	b. Losses deferred pursuant to 12 U.S.C. 1823 (j)		2 707		28.b.
	c. Total equity capital and losses deferred pursuant to 12 U.S.C. 1823 (j) (sum of items 28.a. & 28.b)		-0-		28.c.
29. Total liabilities, limited-life preferred stock, equity capital, and losses deferred pursuant to 12 U.S.C. 1823 (j) (sum of items 21, 22, and 28.c)			37 357		29.
MEMORANDA: Amounts outstanding as of Report Date:					
1. a. Standby letters of credit, Total			12		1.a.
1. b. Amount of Standby letters of credit in memo 1.a. conveyed to others through participations			-0-		1.b.

NOTE: This report must be signed by an authorized officer(s) and attested by not less than three directors other than the officer(s) signing the report. I/We, the undersigned officer(s), do hereby declare that this Report of Condition has been prepared in conformance with official instructions and is true

SIGNATURE OF OFFICER(S) AUTHORIZED TO SIGN REPORT: *Kay Mardis*
 NAME AND TITLE OF OFFICER(S) AUTHORIZED TO SIGN REPORT: KAY-MARDIS, CASHIER
 DATE SIGNED: JANUARY 28, 1991
 AREA CODE/PHONE NO: (806) 272-4561

We, the undersigned directors, attest the correctness of this Report of Condition and declare that it has been examined by us and to the best of our knowledge and belief and has been prepared in conformance with official instructions and is true and correct.

SIGNATURE OF DIRECTOR: *Ray Tunney* SIGNATURE OF DIRECTOR: *...* SIGNATURE OF DIRECTOR: *...*

(MAKE MARK FOR NOTARY SEAL) State of TEXAS, County of BAILEY, day of JANUARY 19 91. My commission expires APRIL 10 19 94. Signature Notary Public

SONIC

BROWN BAG

SPECIAL

- 2 REGULAR SONIC BURGERS
- 2 ORDERS OF FRIES
- 2 MEDIUM DRINKS* *Soft Drinks

\$4.49 PLUS TAX

1633 West Amer. Blvd
272-3998

©1991 SONIK INDUSTRIES INC.

Children Say Thanks For Memories

This holiday season over 57,000 boys and girls in Texas felt the love and wonder of Christmas thanks to thousands of Texans across the state, Sunbelt Savings customers, employees and area businesses who became Sunbelt Santas.

J.M. Soliz Funeral Services Held Wednesday

Funeral services for J.M. Soliz, 63, of Morton were held at 11 a.m. Wednesday, Jan. 30 in St. Ann's Catholic Church of Morton with Father Elbert Fadallan, pastor, officiating, assisted by Father Pat Maher, pastor of the Immaculate Conception Catholic Church of Muleshoe.

Burial was in Morton Memorial Cemetery under the direction of Ellis Funeral Home of Morton. Soliz died at 5:40 a.m. Sunday in the V.A. Hospital at Amarillo.

Born April 3, 1927, in Yancey, TX, he had been a resident of Morton since 1951, moving there from Yancey. He married Lupe Soliz on July 16, 1950, in Hondo. He was a member of St. Ann's Catholic Church and the American Legion of Morton. He was a butcher, and a veteran of W.W.II serving in the U.S. Army.

Survivors include his wife, Lupe; seven sons, Juan Soliz, Jr. of Hondo, Leonardo Soliz of Seminole, and Rudy Soliz, Ricky Soliz, Javier Soliz, Able Soliz and Ramiro Soliz, all of Morton; and five daughters, Vangie Leal, and Maria Vela Flores, both of Muleshoe; and Velma Jean Garza, Annavelle Soliz and Sylvia Soliz, all of Morton; six sisters, Trine Garcia of Yancey; Maria Villega of Amarillo, Manuela Bautista, and Francis Moncada, both of Morton, and Mary Ann Guajardo and Irene Hernandez, both of Levelland; two brothers, Ben Soliz of Levelland and Emerico Soliz of Abilene; and 19 grandchildren.

He was preceded in death by one son, Tony Soliz, in 1987.

The 57,000 toys and presents collected during the 1990 Christmas season equals more than the combined total of the first six years of the program!

"Sunbelt Santas truly has a magical effect on people," said Tom Wageman Sunbelt Savings president and Sunbelt Santas spokesperson. "The last two years we have seen a phenomenal increase in the number of toys and presents people have given us for the children. That helps us reach more children than ever before who would otherwise receive nothing for Christmas."

Sunbelt Savings, FSB has sponsored the non-profit program for the past eight years. Sunbelt Santas identifies community groups who serve children in need. They donate all the

Junior New Funeral Services Held At Morton

Funeral services for Junior New, 64, of Tahoka were held at 2 p.m. Monday, Jan. 28 in the First Missionary Baptist Church in Morton with the Rev. Wayne Cullins, pastor, officiating.

Burial was in Morton Memorial Cemetery under the direction of Ellis Funeral Home of Morton. New died at 12:56 a.m. Jan. 20 in Valdez Community Hospital in Alaska.

Born July 4, 1926, in Honey Grove, Tx., he had been a resident of Tahoka since 1980, moving there from Lubbock. He was a former resident of Morton and a mechanic and truck driver. He was a Baptist and a veteran of WW II, serving in the U.S. Army. He married Janie Marie Yeary on July 8, 1950, in Morton.

Survivors include his wife, Janie; a son, Tim New of Valdez, Alaska; a daughter, Sharon Keese of Valdez, Alaska; three sisters, Virgie Mings and Lorene Herlocher, both of Morton, and Thelma Sullivan of Lamesa; three brothers, Walter New of Del Rio, John D. New of Lubbock and Raymond New of Morton; and six grandchildren.

toys and presents they collect to the community organizations who in turn give them to the children and families they serve.

Sunbelt Santas is one of the largest toy drives in Texas. "It is such a warm feeling to see the way people respond to this program and get involved. We couldn't do this without the generosity, kindness and spirit of caring from the people everywhere in our communities. We especially thank KSCS Radio for their support," Wageman said. "On behalf of the children, I want to say thank you to everyone who has helped us bring Christmas into the lives of thousands of children throughout Texas."

Toys collected in Muleshoe were given to children served by the Bailey County Emergency Services.

Lucky
Waiter--How did you find your steak, sir?
Dinner--It was just luck. I happened to move that piece of parsley, and there it was!

Report From Larry Combest

U.S. Representative Larry Combest (R-TX) has voted for two separate pieces of legislation of benefit to American servicemen and women-- past and present. By unanimous vote, both the House of Representatives and the Senate have approved a 5.4 percent cost-of-living-adjustment for veterans' disability payments. The House and Senate also passed legislation extending Internal Revenue Service (IRS) income tax filing deadlines for troops participating in Operation Desert Storm. Congressman Combest is an original co-sponsor of the veterans' cost-of-living adjustment, and co-sponsor of the IRS tax extensions for current service in the Persian Gulf.

"Their sacrifice of service deserves support in every way possible," said Combest. "As legislators, we in Congress have the role of applying fairness and compassion to our laws. The

HEALTH INSURANCE

CALL Mark Morton
109 S. 1st Muleshoe
272-7519

State Farm Mutual Automobile Insurance Company Home Office Bloomington, Illinois

cost-of-living adjustment for disability compensation recognizes a promise made good to our veterans. For those who have served and those who are serving, this is significant testimony to America's keeping faith with its service members." Combest said the cost-of-living adjustment for veterans' disability payments will be retroactive to January 1, 1991.

For American troops serving in the Persian Gulf, the House vote on IRS deadlines allows 180-day filing extensions from the date they leave the area, or if hospitalized in the United States. Eligible servicemen and women will receive interest on any overpayments to the IRS but would be exempt from

paying interest on underpayments. In a separate action by the President on Monday, military pay earned while in the Desert Storm combat zone will be exempt from federal income taxes. The President's action exempts the entire amount of enlisted pay, and the first \$500 earned per month for officers.

NOTES, COMMENT

"They say" has ruined many lives.

No person is free unless they know the truth.

Most people are a little smarter than they seem.

1991 Crop

	Sale Flat	Month
Feed Corn.....	4.37,0.00ch	March
White Cobb Yellow.....	4.90,0.29ch	March
Red Cobb Yellow.....	4.57,0.11ch	March
White Food Corn.....	5.80,0.80ch	March
Milo.....	4.23,;0.08ch	March
Soybeans.....	5.11,-0.53sh	March
Wheat.....	2.32,-0.31kwh	KW March

96%
Prices effective Jan. 29, 1991

Farmer's Co-Op Elevators

272-7561

Statement Of Condition First Bank Member F.D.I.C.

Consolidated Report of Condition of First Bank of Muleshoe
of Muleshoe, Texas and Foreign and Domestic Subsidiaries, a member of the Federal Reserve System,
at the close of business December 31, 1990, published in accordance with a call made by the
Federal Reserve Bank of this District pursuant to the provisions of the Federal Reserve Act.

LEGAL TITLE OF BANK		STATE BANK NO.	
* First Bank of Muleshoe PO Box 565 Muleshoe, Texas 79347-0565		2720-02	
CITY COUNTY STATE ZIP CODE		FEDERAL RESERVE DISTRICT NO.	
Muleshoe BAILEY Texas 79347-0565		11 13 22965	
		CLOSE OF BUSINESS DATE	
		December 31, 1990	
		Dollar Amounts in Thousands	
		Bill Mil Thou	
ASSETS			
1 Cash and balances due from depository institutions:	a Noninterest-bearing balances and currency and coin	5 155	1 a
	b Interest-bearing balances	None	1 b
2 Securities		171 722	2
3 Federal funds sold & securities purchased under agreements to resell in domestic offices of the bank	a Federal funds sold	6 425	3 a
	b Securities purchased under agreements to resell	None	3 b
4 Loans and lease financing receivables:			
a Loans and leases, net of unearned income		26 301	4 a
b LESS: Allowance for loan and lease losses		11 291	4 b
c LESS: Allocated transfer risk reserve		None	4 c
d Loans and leases, net of unearned income, allowance, and reserve (item 4 a minus 4 b and 4 c)		26 010	4 d
5 Assets held in trading accounts		1 600	5
6 Premises and fixed assets (including capitalized leases)		901	6
7 Other real estate owned		70	7
8 Investments in unconsolidated subsidiaries and associated companies		None	8
9 Customers' liability to this bank on acceptances outstanding		None	9
10 Intangible assets		115	10
11 Other assets		1 149	11
12 a Total assets (sum of items 1 through 11)		59 147	12 a
b Loans deferred pursuant to 12 U.S.C. 1823 (j)		None	12 b
c Total assets and losses deferred pursuant to 12 U.S.C. 1823(j) (sum of items 12 a and 12 b)		59 147	12 c
LIABILITIES			
13 Deposits:			
a In domestic offices:		53 831	13 a
(1) Noninterest-bearing		12 733	13 a (1)
(2) Interest-bearing		41 098	13 a (2)
b In foreign offices, Edge and Agreement subsidiaries, and IBFs:		None	13 b
(1) Noninterest-bearing		None	13 b (1)
(2) Interest-bearing		None	13 b (2)
14 Federal funds purchased and securities sold under agreements to repurchase in domestic offices of the bank	a Federal funds purchased	None	14 a
	b Securities sold under agreements to repurchase	None	14 b
15 Demand notes issued to the U.S. Treasury		None	15
16 Other borrowed money		None	16
17 Mortgage indebtedness and obligations under capitalized leases		None	17
18 Bank's liability on acceptances executed and outstanding		None	18
19 Subordinated notes and debentures		None	19
20 Other liabilities		578	20
21 Total liabilities (sum of items 13 through 20)		71 909	21
22 Limited-life preferred stock and related surplus		None	22
EQUITY CAPITAL			
23 Perpetual preferred stock and related surplus (No. of shares outstanding)		None	23
24 Common stock (No. of shares):			
a Authorized		50,000	24 a
b Outstanding		50,000	24 b
25 Surplus (exclude all surplus related to preferred stock)		500	25
26 a Undivided profits and capital reserves		2 000	26 a
b LESS: Net unrealized loss on marketable equity securities		None	26 b
27 Cumulative foreign currency translation adjustments		None	27
28 a Total equity capital (sum of items 23 through 27)		4 738	28 a
b Losses deferred pursuant to 12 U.S.C. 1823 (j)		None	28 b
c Total equity capital and losses deferred pursuant to 12 U.S.C. 1823 (j) (sum of items 28 a & 28 b)		4 738	28 c
29 Total liabilities, limited-life preferred stock, equity capital, and losses deferred pursuant to 12 U.S.C. 1823 (j) (sum of items 21, 22, and 28 c)		59 147	29
MEMORANDA: Amounts outstanding as of Report Date:			
1 a Standby letters of credit, Total		219	MEMO 1 a
1 b Amount of Standby letters of credit in memo 1 a, conveyed to others through participations		None	MEMO 1 b

NOTE: This report must be signed by an authorized officer(s) and attested by not less than three directors other than the officer(s) signing the report.

I, Maxine Donaldson, Cashier of the above-named bank do hereby declare that this Report of Condition has been prepared in conformance with the instructions issued by the Board of Governors of the Federal Reserve System and is true to the best of my knowledge and belief.

Maxine Donaldson
Signature of officer authorized to sign report

We, the undersigned directors, attest to the correctness of this Report of Condition and declare that it has been examined by us and to the best of our knowledge and belief has been prepared in conformance with the instructions issued by the Board of Governors of the Federal Reserve System and is true and correct.

John Kent
Director

Maxine Donaldson
Director

MAKIE MARK FOR NOTARY'S SEAL State of Texas County of Bailey
Sworn to and subscribed before me this 23rd day of January 1991
and I hereby certify that I am not an officer or director of this bank
My commission expires 11-2 19 91
Fred J. [Signature]
Notary Public

HOMESTEAD EXEMPTIONS



CAN LOWER THE PROPERTY TAXES ON YOUR HOME

A homestead Exemption lowers the property taxes on your home by lowering its taxable value. For example, if your home is valued at \$50,000 and you receive a \$5,000 homestead exemption, your home will be taxed as if it were worth only \$45,000.

You qualify for a homestead exemption if you owned your home on January 1 and used it as your primary residence on January 1. It doesn't matter whether your home is a house, a condominium or a mobile home.

Exemptions are available to all homeowners on their school taxes. Additional exemptions are available to homeowners who are disabled or age 65 or over. Other exemptions may be offered to homeowners by school districts, counties, cities, and special districts. All taxing units offer exemptions to disabled veterans.

Apply to your local appraisal district office at the address shown below for all exemptions you may qualify for. Application forms are available at this address.

If you received a homestead exemption on your present home in 1990 you won't need to apply again for 1991 unless the chief appraiser requires you to reapply. However, if you passed your 65th birthday or became disabled before January 1, file a new application to receive additional exemptions.

If you haven't received an exemption on your present home, or if you moved to a new home, make a new application for 1991.

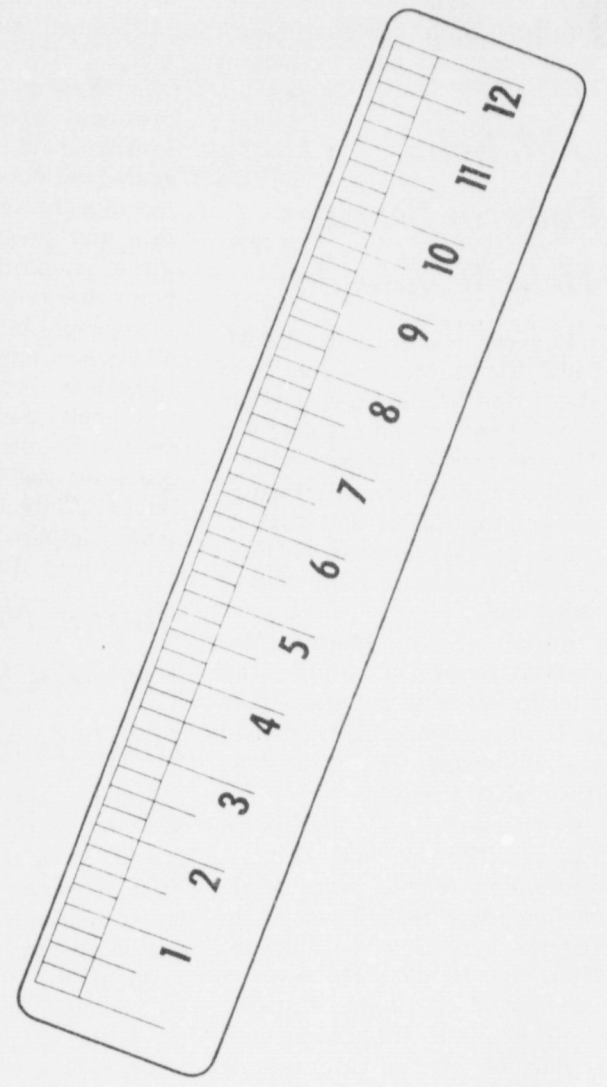
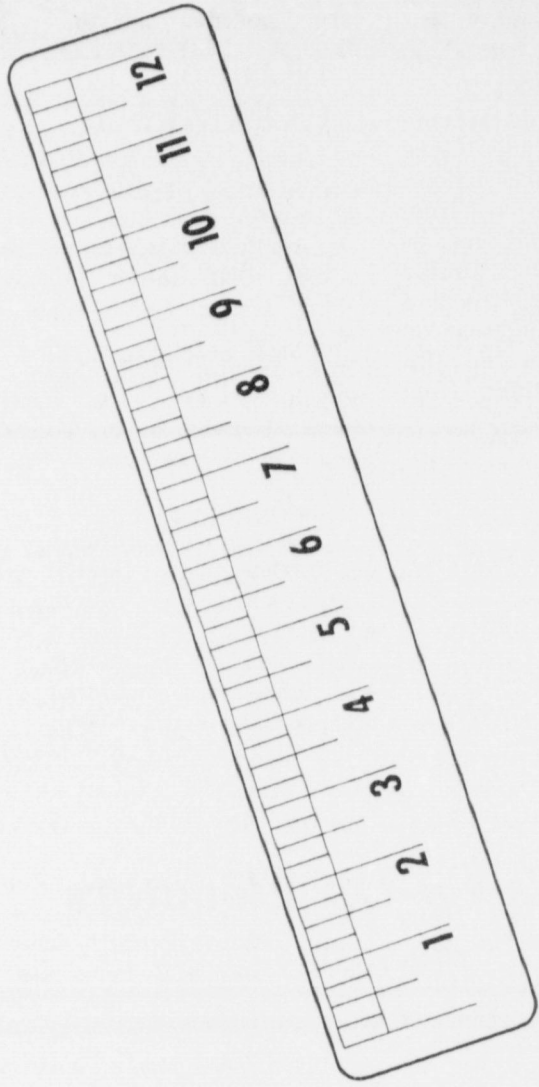
The deadline for applications is April 30, 1991. Contact your appraisal district before then if you need more time.

For more information, get a free copy of the pamphlet, *Taxpayer's Rights, Remedies, Responsibilities*, at your appraisal district office or from the State Property Tax Board in Austin.

Bailey County Appraisal District

Muleshoe Chamber of Commerce Annual Banquet

Saturday, January 26



FARM FAMILY OF THE YEAR
The Larry Hancock Family

Golden Rule Equals Success

THE LONGER WE LIVE the more we realize that the people who want to help themselves can only do so by helping others. It's a basic law of success.

People who begin by asking how they can find success solely within themselves are doomed from the start. The rewards go to people who have searched diligently for ways to help others.

One of the many successful men who have used this principle was James Cash Penney. The fabulous Mr. Penney, starting with a small general merchandise store in Kemmerer, Wyoming, in 1902, built a multibillion-dollar business empire on one simple principle: THE GOLDEN RULE.

For years the Penney stores were called The Golden Rule Stores. And it was Mr. Penney's faith in that principle always treating a customer as he himself would want to be treated — that made them grow and prosper.

But perhaps even more important was Mr. Penney's attitude toward his employees. In the first place, he did not like the word employee, preferring to treat everyone as a partner — associates, he called them. And he devoted himself to treating them as he would want to be treated were the situations reversed. Most of all, he knew that by helping them make money, his own success would be assured.



EMPLOYEE OF THE YEAR
R. A. Bradley, Fry & Cox, Inc.



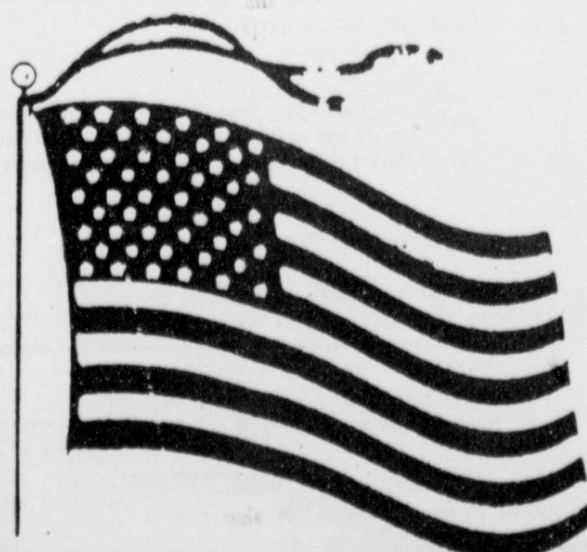
OUTGOING DIRECTORS HONORED
Ray Day, left, and Robert Lepard



CONSERVATION FARMER OF THE YEAR
Mr. and Mrs. Ted Simpson



C OF C GUEST SPEAKER
Dr. Kenneth Wyatt, right, with Cari Kidd



MERCHANT OF THE YEAR
Randy Lewis, Perry's

CLASSIFIEDS 272-4536

CLASSIFIED RATES

15 Words & Under Minimum Charge \$2.30
Thereafter \$2.00
16 Words & Over 1st Insertion 15 cents per word
2nd Insertion 13 cents per word

CLASSIFIED DISPLAY RATES \$1.75
Per Column Inch

DEADLINES
12 noon Tues. For Thursday Paper
12 noon Friday For Sunday Paper

To receive the reduce rate after the first insertion ad must run continuously.

We reserve the right to classify, revise, or reject any ad. We are not responsible for any error after ad has run once.

1. Personals

CONCERNED About Someone's Drinking? HELP IS AVAILABLE through Al-Anon
Call 272-2350 or 965-2870 or come to visit Tuesday and Thursday nights, 8:00 p.m. & through AA call 965-2870 or come visit Tuesday nights, 8:00 at 620 W. 2nd, Mulshoe.

3. Help Wanted

Truck driver needed. Farm Equipment Dealership. Must have class A drivers License. Minimum age 25 years. See John at C&H Equipment in Mulshoe.

CONSTRUCTION jobs now hiring all positions. Both skilled & unskilled. Male & Female openings. For info. Call (615) 779-5505 Ext. J-1104.

WANTED: Experienced machinist and gearhead man. Call (806) 238-1596 days or 238-1328 nights-- after 9 p.m. B3-tfc

4. Houses For Rent

FOR RENT: Two bedroom house. Available February 15. Call 272-4011. H4-5t-4tc

HOUSE FOR RENT: 3 bedroom, 2 full baths, den, living room with fireplace. Fenced backyard. 618 W. 5th. Call 272-4446. D4-4s-3tc

9. Automobiles For Sale

FOR SALE: 1987 Chevy Suburu Silvarado. AM/FM Cassette, tilt cruise, new tires. 60,000 miles. Call 272-5037. P4-44t-tfc

11. For Sale Or Trade

PIANO FOR SALE: Wanted-- Responsible party to assume small monthly payments on piano. See locally. Call credit manager 1-800-447-4266. J11-5t-7tp ***

8. Real Estate

FOR SALE: Country Home. 3 Bedroom, 2 Bath. 220 sq. ft. with 3 Acres. 8 miles North of Lazbuddie. K8-51s-tfc

8. Real Estate

HOUSE FOR SALE: 3 Bedroom, 2 full baths, Central heat and air. Good storm cellar and well. On 2 Acres. 3 miles East on Hwy 70 and 1 mile North, then 200 yards East. 806-352-1715 or 352-1899 in Amarillo. B8-4t-tfc ***

BAILEY COUNTY LAND FOR SALE
Owner will finance the following size blocks: 2-30 acres, 3-160 acres, P220 acres, and 1277 acres. Whole, mile and custom allotments. 1 1/4 circles of permanent grass. 7 Center Pivots. A Sweet Cattle Set-Up.
If interested, contact T.L. Timmons 806-385-4487 806-925-6484 (Day) (Night)

LOUISA'S LETTER

Dear Louisa,
My neighbor has a dog which knocks over my garbage pail every night. I have asked her to stop it but she says she can't. We have no fences. What should I do? We are good friends and I couldn't think of reporting it to the police.
L.G.--Va.

Answer:
A friend of mine once had the same problem and dug a hole in the ground and placed the can in it so that it could not be overturned.
However, I think your friend should shut the dog up at night if he is the only one that bothers your garbage can. Ask her to read this letter.
Louisa

15. Misc.

We need to buy 100,000 ft of aluminum pipe 2" to 8". Also side row sprinklers. Contact T. L. Timmons, State Line Irrigation, Littlefield, 806-385-4487. T15-tfc

Seed Contracts
Excellent opportunity for producers with clean land and average water.
For Information Call
office
1-800-274-4404
evening
806-293-7927

8. Real Estate

MHS Honor Roll

SENIORS
Wendi Bland, Heidi Bohler, Jeremy Bruns, Brian Bush, Kimberly Chance, Latavia Copley, Patrick Counterman, Blain Ferris, Sally Guzman, Michele Holmans, Stacy Knowlton, Shelly Lopez, Jeff McGuire, Damon Parker, Ricky Railsback, Rodney Reynolds, Collin Robison, Danny Rodriguez, Heath Scott, Gena Sharp, Shawna Smith, Monica Swint, Colin Tanksley, Amy Turner, Adela Villa and Marsha Wilson

JUNIORS
Maria Almanza, Tiffany Angeley, Audrey Anzaldua, Mita Bhakta, Cory Collins, Tina Copley, Patricia Del Toro, Jill Foster, Courtney Graves, Scott Gray, Jac Greene, Corley Hutton, Eric Kelley, Galin Latham, Kevin Morris, Jill Noble, Johnny Noble, Steven Noble, Adrian Pineda, Margarita Posadas, Misty Sawyer, Lashelle Scoggin, Virgil Snell, Melissa Toombs, Bertha Torres, Celia Villalobos, Shea Wilbanks and Billy Williams

SOPHOMORES

Amanda Ashford, Dora Barrera,

15. Misc.

FOR RENT: Large Self storage rooms with 24 hour a day access. Call J&J Self Storage at 272-4307. S15-1s-tfc

Kristi Chapman, Sonya Cisneros, Monica Clemmons, Chris Dominguez, Becky Donaldson, Amelia Flores, Carmen Franco, Rosemarie Gloria, Shane Glover, Rebecca Green, Stacie Harris, April Hugg, Jennifer Johnson, Kyle Kenmore, Angie King and Stacey Langfitt
Also Kristi Long, Gonzalo Lozano, Suzie Martel, Aida Martinez, Scott Miramontes, Adrian Salazar, Blanca Sanchez, Mandy Shipman, Douglas Snell, Rodney Stevens, Jody Thomas, Jon Robin Watkins, Steven Wauson, Cory Welch, Summer Wiley, Brian Wilhite and Courtney Williams

FRESHMEN

Brooke Barrett, Leah Bruns, Kelli Caldwell, Mason Conklin, Gail Copley, Jeanne Cox, Shawna Delaney, April Franklin, Johnny Gonzales, Emily Harris, Lori Hodges, Kristin Holmans, Jose Lozano, Stephanie McNutt, Amy Pacheco, Donna Puckett, Stephanie Quintana, Jim Rogers, Shane Schuster, Virginia Sierra, Brooke Sinclair, Sonya Smith, Courtney Tanksley, Marianne Toombs and Shawn Wheeler

FIRST SEMESTER HONOR ROLL

SENIORS
Wendi Bland, Heidi Bohler, Jeremy Bruns, Brian Bush, Kimberly Chance, Patrick Counterman, Blain Ferris, Sergio Garcia, Michele Holmans, Stacy Knowlton, Shelly Lopez, Jeff McGuire, Mary Ann Nunez, Damon Parker, Collin Robison, Danny Rodriguez, Heath Scott, Gena Sharp, Shawna Smith, Monica Swint, Colin Tanksley, Amy Turner, Adela Villa and Marsha Wilson
JUNIORS
Maria Almanza, Tiffany

B.J. CROWLEY'S HOROSCOPE

Week of Feb. 4, 1991
AQUARIUS--Jan. 20 to Feb. 18--How to make more money occupies much of your thinking this week. Watch your spending.
PISCES--Feb. 19 to March 20--Get out of your "nobody loves me" mood. Work reasonable hours. Develop good health habits. When you feel better your mood will take a rapid swing upward.
ARIES--March 21 to April 20--Use your own judgment in reaching a decision concerning your future. Advice from others could be wishy-washy.
TAURUS--April 21 to May 20--Guard your conversation. Someone may take a casual remark you make seriously and try to hold you to it.
GEMINI--May 21 to June 20--This week starts slowly, but picks up momentum as it moves along. You feel a new self assurance.
CANCER--June 21 to July 22--Adjust your schedule to better fill your needs. Improved methods could give you additional time.
LEO--July 23 to Aug. 22--A new hobby could lift you out of the rut you feel entrenched in. Make a list you might be interested in pursuing.
VIRGO--Aug. 23 to Sept. 22--A good week should be coming up. Home life will be serene, the financial picture should look good.
LIBRA--Sept. 23 to Oct. 22--Break the habit of leaving so many projects unfinished. Finish one completely, especially this week.
SCORPIO--Oct. 23 to Nov. 22--Avoid persons who are obvious troublemakers. This is a good week to make plans concerning your future happiness.
SAGITTARIUS--Nov. 23 to Dec. 21--Family projects are favored now. Cut down on unnecessary spending in order to save for that all important something your family wants.
CAPRICORN--Dec. 22 to Jan. 19--Take care of correspondence you have neglected to answer. Be kinder to someone you love.
Couldn't
Lady--I left my pass at home, but I'm one of the officer's wives.
Sentry--"I'm sorry, but I couldn't let you pass even if you were his only wife."

Mita Bhakta, Cory Collins, Tina Copley, Patricia Del Toro, Jody Field, Jill Foster, Jac Greene, Jason Harmon, Yvette Hernandez, and Corley Hutton
Also Erin Kelley, Galin Latham, Jill Noble, Johnny Noble, Steven Noble, Adrian Pineda, Margarita Posadas, Corrie Savuto, Misty Sawyer, Lashelle Scoggin, Virgil Snell, Melissa Toombs, Bertha Torres, Shea Wilbanks and Billy Williams

SOPHOMORES

Dora Barrera, Kristi Chapman, Kristin Chitwood, Sonya Cisneros, Chris Dominguez, Amelia Flores, Carmen Franco, Rosemarie Gloria, Shane Glover, Rebecca Green, Stacie Harris, April Hugg, Jennifer Johnson, Kyle Kenmore, Angie King, Stacey Langfitt, Kristi Long, Gonzalo Lozano and Suzie Martel

Also Aida Martinez, Eric McElroy, Scott Miramontes, Adrian Salazar, Blanca Sanchez, Mandy Shipman, Douglas Snell, Jody Thomas, Cari Turner, Jon Robin Watkins, Steven Wauson, Summer Wiley and Courtney Williams

FRESHMEN

Raquel Baeza, Brooke Barrett, Leah Bruns, Kelli Caldwell, Mason Conklin, Gail Copley, Jeanne Cox, Misty Davenport, Shawna Delaney, Casey Estep, April Franklin, Johnny Gonzales, Emily Harris, Lori Hodges, Kristin Holmans, Stephanie McNutt, Donna Puckett, Stephanie Quintana, Jim Rogers, Ruben Saldana, Shane Schuster, Virginia Sierra, Brooke Sinclair, Sonya Smith, Courtney Tanksley, Marianne Toombs and Shawn Wheeler

Three Way News by: Mrs. H.W. Garvin

Mr. and Mrs. Bill Dolle and Darla met their daughter Mrs. Belenda Austin and Mr. and Mrs. Jack Austin and Starr in Littlefield Saturday evening for Dinner and a visit.

Duwayne Smith from Panhandle visited the Jack Lanes Tuesday.

Mr. and Mrs. Obie Standard and son had New Year's Dinner with her parents, the Jack Lane family.

Mr. and Mrs. Trumin Kelley and Daughter from Beaumont visited the R. L. Davises.

Mrs. Baxter Vaughan and children from Plainview spent Saturday night and Sunday with her parents, the Adolph Witters.

Jay Boyce underwent surgery at Methodist hospital in Lubbock Thursday.

The Kindle family's ate dinner at the Cliff Heirrich home Sunday at noon.

Mrs. Jack Lane and Mrs. Jack Robinson took cake and punch to the rest home Thursday afternoon.

The Three Way fat stock show was held Saturday also the arts and crafts and food show. Several arts and crafts and food was shown. Also lunch was served at noon. About 100 head of livestock were shown by students.

Mr. and Mrs. Rodger Hatcher and girls from Clovis and Mr. and Mrs. V.A. Lane from Littlefield visited the Jack Lane family and attended the stock show.

Stack Kindle from Roswell and Robon Kindle from Lamesa spent the weekend with their parents the Bobbi Kindles.

Mr. and Mrs. R.L. Davis visited George Tyson Sunday afternoon.

Henry Realty

111 W. Ave. B. 272-4581

Mulshoe, Tx.
Just listed- 3 Bedroom, 1 bath, 1 carport storm shelter, good fence. Priced to sell.

2 Bedroom, 1 bath, Perma stone, carpet, fenced, insulated, storm doors and windows; low utilities. Neat, clean and excellent location near High School.

2 Bedroom, 1 bath, fireplace. Lenuu Addition. A \$15,000. **IN CONTRACT**

NEW LISTING-3 Bedroom, 1 bath Lenuu Addition. Well insulated with patio door and windows. Patio with Thermopane window, standing wood burning fireplace, landscaped to perfection with easy care of grounds. Low utility cost. Priced to sell at \$29,500.

3 Bdrm., 2 bath, spacious home outside city limits, near city on highway. 29x40 metal building. Lot 85'x420'. **IN CONTRACT**

COMMERCIAL PROPERTY-Ideal location on West American Blvd. 150' highway frontage. A great business opportunity.

SPACIOUS-2 Bdrm., 2 bath, with garage. Freshly painted. Fireplace. Ready to move in.

Brick Veneer Restaurant 150 Seating, over 5,000 sq. ft. with modern Equipment. Ready for operation Located on US Hwy 84 in Mulshoe. 7000 sq. ft. paved parking. Excellent Financing available for Qualified Buyer.

Bingham & Nieman Realty

116 E. Ave. C George Nieman, Broker 272-5285 or 272-5286

IMMACULATE 3-2-2 Brick, Cent. A&H, Built-ins, FP, sunken lv. area with cathedral ceiling, ceiling fans, earthtones, storage bldg. \$50's!!!!

NICE RESIDENTIAL LOTS- \$5,000 UP.....

PRICE REDUCED-Nice 3-2-2 Brick, Cent. A&H, FP, Earthtone carpets, fenced yd. \$60's!!!!

3-2-2 Home. Heat pump, Built-ins, FP, earthtone carpets. Fenced yd., & more. **PRICE REDUCED--\$30's!!!!**

3-2-2 Brick, Corner lot. Cent. A&H, Built-ins, FP, sunken lv. area, with HIGH SCHOOL

3-2-1 Home 1900sq. ft. of lv. area, heat pump, built-ins, FP, fenced yd., storage bldg., & much more. \$40's!!!!!!!

PRICED REDUCED 3-1-1 Home, earthtone carpets, workshops, cellar, fenced yd.

2-1/2-1 Brick, fl. furn., Cent. Air, fenced yd., & more. \$20's!!!!

FmHA FINANCING to qualified buyer-
3-1-1 Brick, Cent. heat, earthtone carpet, \$20's

HIGHLAND AREA
NICE 3-2-1 Brick, built-ins, Heat Pump, FP, fans, energy eff., fenced yd., & storage. \$50's!!!!

JUST LISTED 2-2-2 Home, Cent. heat, evap. air, built-ins, fenced yd., & more,

VERY NICE 4-2-1 Brick, Cent. A&H, built-ins, earthtone carpets, util., encl., patio, storm win. & doors, grill, splkr. sys., stor. bldg., fenced yd. \$60's!!!!

PRICE REDUCED 2-2-2 Brick, corner lot, Cent. A&H, spacious rooms, utility, new carpet, & vinyl, cov., patio, fenced yd. \$30's!!!!

JUST LISTED-Nice 2-2-1 Brick, Cent. A&H, built-ins, HEATED POOL, splkr. Sys., fenced yd., corner lot, & more. \$50's!!!!

LENAAU ADD.
Nice 4-2-2 carport home. Cent. A&H, built-ins, FP, Cent. Vac., Office, Sewing area, fenced yard. \$30's!!!!

3-2-2 Brick, heat pump, built-ins, nice carpets, fenced yd., & more!!!!

3-1/2-1 Brick, CH. Air, utility, fenced yd., FmHA financing possible!! **IN CONTRACT**

3-1 Home, Corner lot, wall furn., fenced yd. \$20's!!!!

COUNTRY CLUB 3-2-2 Brick, Cent. A&H, built-ins, FP, 2,000+ lv. area, fenced yd., storage bldg., & more!!!!

COUNTRY CLUB Cent. A&H, built-ins, FP, sunken lv. area, fenced yd., & more!!!! **IN CONTRACT**

JUST LISTED-VERY NICE 3-2-2 Brick, 3,000+ sq. ft. of lv. area incl. nice finished basement, built-ins, geothermal A&H, energy-eff., loads of closet & storage, on 7.86 acres, fence, stock tank, sideroll, & many more amenities, close to town. DON'T MISS THIS! \$90's!!!!!!

3-2-3 Carport Home on 11 ac. edge of town, Cent. A&H, built-ins, cellar, barns, & corral. MAKE OFFER!!!!

NICE 3-2-1 Home on 1 acre close to town, Cent. Heat, evap. air, nice carpets, remodeled. \$30's!!!!

GYMNASTICS STUDIO- BLDG. & EQUIPMENT. PRICED TO SELL!!!!

RESTAURANT BLDG., LAND., & EQUIPMENT- A GOOD BUY!!!!

COMMERCIAL TRACT 175'X100' (Hwy. 70 & 84, RR spur access, approx. 1200 sq. ft. bldg. PRICED TO SELL!!!!

24 ac., W. Hwy. 84, 8' well, 3 homes, 14 mobile home hookups, & also has veg. & fruit stand!!!!

Call 272-4536 Classify!!!

MULESHOE AREA

Mid-Winter '91

BUSINESS DIRECTORY AND SHOPPING GUIDE

1	2	3	4	5	6	7	8	9	10	11	12	13	14	15	16	17	18	19	20	21	22	23	24	25
26	27	28	29	30	31	32	33	34	35	36	37	38	39	40	41	42	43	44	45	46	47	48	49	50
51	52	53	54	55	56	57	58	59	60	61	62	63	64	65	66	67	68	69	70	71	72	73	74	75
76	77	78	79	80	81	82	83	84	85	86	87	88	89	90	91	92	93	94	95	96	97	98	99	100
101	102	103	104	105	106	107	108	109	110	111	112	113	114	115	116	117	118	119	120	121	122	123	124	125
126	127	128	129	130	131	132	133	134	135	136	137	138	139	140	141	142	143	144	145	146	147	148	149	150
151	152	153	154	155	156	157	158	159	160	161	162	163	164	165	166	167	168	169	170	171	172	173	174	175
176	177	178	179	180	181	182	183	184	185	186	187	188	189	190	191	192	193	194	195	196	197	198	199	200
201	202	203	204	205	206	207	208	209	210	211	212	213	214	215	216	217	218	219	220	221	222	223	224	225
226	227	228	229	230	231	232	233	234	235	236	237	238	239	240	241	242	243	244	245	246	247	248	249	250
251	252	253	254	255	256	257	258	259	260	261	262	263	264	265	266	267	268	269	270	271	272	273	274	275
276	277	278	279	280	281	282	283	284	285	286	287	288	289	290	291	292	293	294	295	296	297	298	299	300
301	302	303	304	305	306	307	308	309	310	311	312	313	314	315	316	317	318	319	320	321	322	323	324	325
326	327	328	329	330	331	332	333	334	335	336	337	338	339	340	341	342	343	344	345	346	347	348	349	350
351	352	353	354	355	356	357	358	359	360	361	362	363	364	365	366	367	368	369	370	371	372	373	374	375
376	377	378	379	380	381	382	383	384	385	386	387	388	389	390	391	392	393	394	395	396	397	398	399	400
401	402	403	404	405	406	407	408	409	410	411	412	413	414	415	416	417	418	419	420	421	422	423	424	425
426	427	428	429	430	431	432	433	434	435	436	437	438	439	440	441	442	443	444	445	446	447	448	449	450
451	452	453	454	455	456	457	458	459	460	461	462	463	464	465	466	467	468	469	470	471	472	473	474	475
476	477	478	479	480	481	482	483	484	485	486	487	488	489	490	491	492	493	494	495	496	497	498	499	500
501	502	503	504	505	506	507	508	509	510	511	512	513	514	515	516	517	518	519	520	521	522	523	524	525
526	527	528	529	530	531	532	533	534	535	536	537	538	539	540	541	542	543	544	545	546	547	548	549	550
551	552	553	554	555	556	557	558	559	560	561	562	563	564	565	566	567	568	569	570	571	572	573	574	575
576	577	578	579	580	581	582	583	584	585	586	587	588	589	590	591	592	593	594	595	596	597	598	599	600
601	602	603	604	605	606	607	608	609	610	611	612	613	614	615	616	617	618	619	620	621	622	623	624	625
626	627	628	629	630	631	632	633	634	635	636	637	638	639	640	641	642	643	644	645	646	647	648	649	650
651	652	653	654	655	656	657	658	659	660	661	662	663	664	665	666	667	668	669	670	671	672	673	674	675
676	677	678	679	680	681	682	683	684	685	686	687	688	689	690	691	692	693	694	695	696	697	698	699	700
701	702	703	704	705	706	707	708	709	710	711	712	713	714	715	716	717	718	719	720	721	722	723	724	725

LEAL'S SPECIAL
 Enchilada (meat or cheese)
 Taco, Tamale, Beans
 & Rice
\$3.95
 Substitutions Extra
 Closed Mondays
Leal's Restaurant
 1606 W. Amer. Blvd. 272-3294

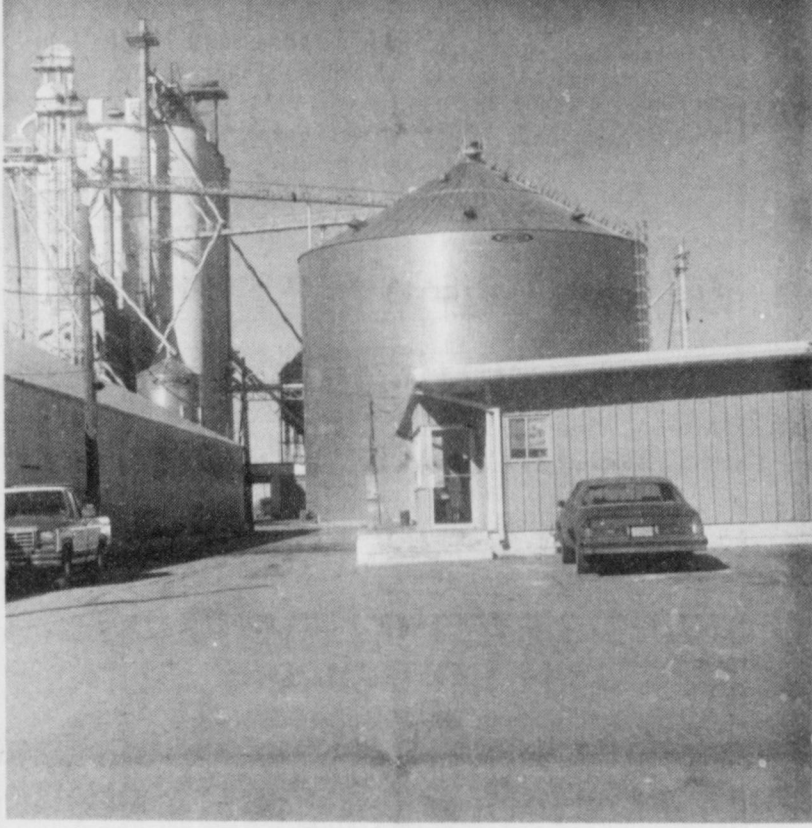


Henry Insurance Agency, Inc.
 "Serving All Your Insurance Needs Since 1964"
 KENNETH R. HENRY
 CERTIFIED INSURANCE COUNSELOR
 REAL ESTATE BROKER
 111 W. AVENUE B
 PHONE 808/272-4581
 MULESHOE, TEXAS 79347





Pivot Products Distributors, Inc.
 We're Your Complete
 Irrigation Headquarters
 Specializing In Low Pressure
 Drops & Accessories
 710 E. Amer. Blvd. 272-5536



Farmer's Co-Op Elevators
 has 5 locations to serve their customers, Clays Corner, Enochs, Old Griffith Elevator, Pleasant Valley and here in Muleshoe.
 Robert Johnson is manager of the main elevator.
 The Farmer's Co-Op Elevators was founded in 1956 and is proud to help you with your Corn and Milo.
Farmer's Co-Op Elevators
 272-7561

In-Store Special!
 Two Big Pieces of Chicken
 (Leg & Thigh), Roll, FREE White Beans & Rice
\$1.49 plus tax
Church's CHICKEN
 1411 W. Amer. Blvd. 272-5581

U.T. services inc.
 319 E. American Blvd.
 MULESHOE, TEXAS 79347
 Mobile Communications
 Two-Way Radio Repair
 GARY PARKER
 Technician
 Muleshoe - 806-272-4888 Hereford - 806-364-7311



Linda Lewis, presser
 is ready to put that sharp crease into those pants, shirts or skirts.
Lambert Cleaners
 123 Main 272-4726

Announcing **30 TO 50% OFF** WINTER WALLCOVERING SALE
 Muleshoe Floor Covering
 122 S. Main Curtis Carpenter 272-3555





Farmer's Co-Op Elevators
 272-7561

Now Installing Underground Pipe.
 We Have All Your Irrigation Supplies!
 Above Ground Gated Plastic Pipe
 Solar Surge Valves
Irrigation Supply
 J.C. & Zona Gatewood
 607 E. Amer. Blvd. 272-4466

Medium Pepperoni Pizza
\$6.99
 Delivery Available
 11 a.m. - 1:30 p.m.
 and
 After 5:00 p.m.
Pizza Hut.
 1412 W. Amer. Blvd. 272-4213



CARNE GUISADA
 (Stew Meat Mexican Style)
 with Beans, Rice and Corn or Flour Tortillas
\$4.50
 Closed Tuesdays
Viola's Restaurant
 2002 W. Amer. Blvd. 272-3838



True Value HARDWARE
7.99 While supplies last
Safeliter™ 3-Way Emergency Light
 QUANTITIES LIMITED
Fry & Cox True Value
 401 S. 1st 272-4511



5 Locations To Serve You!
 Clays Corner - Enochs - Muleshoe
 Pleasant Valley - Old Griffith
Farmer's Co-Op Elevators
 272-7561

WE RECOMMEND ferti-lome
 Lawn & Garden Products
Time To Use ferti-lome LAWN FOOD
 Kearney Scoggin
Scoggin Ag Center, Inc.
 "Where Fertilizer Is Our Business"
 1532 W. Amer. Blvd. 272-4613

