



Consultants Look For Superintendent

Duo Killed In Accident At Progress

Two people lost their lives in a car-train accident at the main crossing at Progress, west of Muleshoe, on Monday afternoon.

DPS Trooper Lacie Kirk, officers from the Bailey County Sheriff's office, and personnel from the Bailey County Ambulance Service responded to a major accident report shortly before 4 p.m. Monday.

At the accident site, they found Reynaldo Santos Gutierrez, 19, had been apparently killed instantly in the accident involving their car and an east-bound Santa Fe train.

Gutierrez's aunt, Dianna H. Gutierrez, 24, of Muleshoe, later died at University Medical Center in Lubbock.

Mrs. Gutierrez was driving a 1986 Oldsmobile south, when the car collided with the train.

Officers said the impact knocked both occupants from the vehicle. The car was pushed off the tracks about 30 feet from the crossing, according to the officer's report.

Bailey County Justice of the Peace Jack Bates was called to the scene where he pronounced Reynaldo Gutierrez dead at the scene.

Mrs. Gutierrez was brought into Muleshoe and CareLink Helicopter was summoned from Lubbock.

Mrs. Gutierrez died at the Lubbock Hospital at 7:41 p.m. on Monday.

Lubbock County Justice of the Peace L. J. Blalack was called to issue a ruling in the death of Mrs. Gutierrez, and ruled her death an accident.

Officers said neither occupant of the car was wearing a seat belt when the accident occurred.

Bailey County Sheriff Jerry Hicks and deputies Don Carter and Benny Clifton helped with traffic control.

The Muleshoe Fire Department was also called to the scene as a precautionary measure.

Methodist Church Welcomes Back Ed Kilbourne

Folk singer and storyteller Ed Kilbourne is returning to Muleshoe on Sunday, July 22.

There will be a covered dish meal at 6 p.m. and concert at 6:45 p.m. in the fellowship hall of the First United Methodist Church.

The pastor and congregation of the church said, "Please join us for an evening the entire family will enjoy."

With what one reviewer called "a touch of James Taylor in his voice and a whole handful of Garrison Keillor in his story-telling style, Ed has become known over the years for his concerts of moving music and insightful monologues."

He began his career in the late 50's and early 60's, singing in folk groups while in high school and college.

Since then, he has performed solo in over 5,000 concerts in Europe, Asia and in almost everyone of the United States.

He and his family make their home in Southern York County, not far from Rock Hill, S.C.



CAR-TRAIN ACCIDENT CLAIMS LIVES OF TWO PEOPLE--Reynaldo Gutierrez, 19, of Wolforth, was pronounced dead at the scene of a car-train accident at Progress Monday afternoon. The driver of the vehicle, 24-year old Dianna Gutierrez, of Muleshoe, died at 7:41 p.m. at University Medical Center in Lubbock, after having been taken there by CareLink Helicopter from the Muleshoe Area Medical Center following the accident. The accident occurred shortly after 3:30 p.m. Monday, at a rail crossing in Progress. (Journal Photo)

MHS Teacher Shares Recent European Trip With Readers

(Editor's note: Each year, for the past several years, Johanna Wrinkle has taken a group of Muleshoe High School students to Europe in the summer. This summer, she took 11 adults on the European tour. In order to cover their tour as completely as possible, the tour will be broken down to about three days at a time until the entire tour is covered. Our thanks to Johanna Wrinkle for providing the information you will be reading in the next several issues of *The Journals*.)

SUNDAY-DAY ONE

June 10, 1990

Nine of our twelve travelers left Lubbock via Delta at 8:00 A.M. Hellen's (Adrian) sister picked up the girls (Gradee and Kristi) as soon as we arrived, then we took the Airtran to Pam Am Terminal 2-W and there

Virginia and Marcia were waiting.

Sharon didn't come until about 11:00 and our group assembled for some group pictures before we departed at 11:55. I did get to visit with my grandsons, Jonathan and Mark, for about thirty minutes.

We flew in a very small plane, six-across, flying over Atlanta, GA; Norfolk, VA and Atlantic City, NJ, to JFK Airport in New York City.

We arrived at 4:15 p.m., so with the one-hour time change it took three hours and fifteen minutes. We changed terminals and checked to see if we could take any kind of city tour during our five-hour layover, but none was available.

So we went to the cafeteria for a snack and to watch the planes take off. Then we took the elevator up a floor to the parking lot and walked about to see the skyline of New York. We could see the World Trade Center and the Empire State Building.

We walked out to the front to take some pictures of the terminal. It started thundering and raining as we took the last pictures. We checked into our gate about 8:00 and found that we would have a delay because of a leaky hydraulic line.

I couldn't help but remember last year's five-hour delay in Baltimore because of a leaky gas line! This wait was not as long, only three hours and Pan Am did serve canned drinks and peanuts. We were getting hungry as we had only snacked.

We met part of our group -- a group of twelve from North Dakota. They were all teachers and farmers and from small communities. All the group were related to each other. I visited with the group leader, Jo Anne Railing, for a long time. She was a very nice person and we found that we had selected

Cont. Page 6, Col. 1

MISD Employees, Others Meet With Consultants

What does it take to find the best superintendent available for the Muleshoe schools?

Two consultants from the Texas Association of School

School Board Has Science

Lab Discussion

Monday night, three teachers from Watson Junior High attended the regular meeting of the board of trustees of the Muleshoe Independent School District.

Doris Scoggin and Sandi Chitwood both spoke in Open Forum about the proposed addition to WJHS which would include new science labs.

Doris Scoggin said they wanted to let the board know that the science teachers want very much to be involved and have some input into the proposed science lab.

She commented, "A Life Science teacher needs certain conditions for growing plants. It makes a lot of difference which side of a school building a new addition needs to be built on."

"We need rooms with sunlight, either with south or west exposure. Or we need a greenhouse, and know that's not feasible."

Sandi Chitwood also said they needed to spend some time with the architects. She cited that presently there is no running water in the science rooms, no fire extinguisher, and that the current science rooms need other items that have not been provided during the past five years.

Not speaking to the board was Barbara Mutschler, who said she just came along for "moral support."

Following a discussion with Tom Jinks, interim superintendent, and with Tom Alvis, assistant superintendent for business, it was determined that the teachers would be meeting with the architect in the near future. "Right now, we are in very preliminary stages of planning for the addition," he said.

It has not been decided at this time whether to plan to construct the addition to the north, east or south side of the current school, and grade measurements will be taken to decide on the most feasible location for the addition to the school.

A discussion on landscaping at DeShazo School was postponed, as were discussions on a search for a superintendent

Cont. Page 6, Col. 4

around
muleshoe

Groups or clubs wishing to book skating parties for any Friday night for the 1990-91 skating season, which runs September 14 through May 17, call 272-4051.

You can also go by the Civic Center and talk to Joyce Holmes and she will be happy to take your bookings.

Boards are busy right now, helping the board of trustees of the Muleshoe Schools in their efforts to find a new superintendent for the Muleshoe Independent School District.

Monday and Tuesday, Dr. E. C. Leslie, retired superintendent from the Lubbock Schools and Tom Jarboe, retired superintendent from the Friona School System, were in Muleshoe on a special mission.

They were conducting profile sessions with community and school groups, and the news media. The consultants want to find out what the community needs and wants in a superintendent.

In the media session on Tuesday afternoon, the only media representative present from Muleshoe was Cleta Williams-Jacobson of *The Muleshoe Journal* and *Bailey County Journal*.

The duo also talked to school board members, teachers, students, central office administrators, principals and assistant principals, PTA and booster club representatives, paraprofessionals, auxiliary personnel, business and professional leaders, civic leaders and retired persons.

The consultants will be developing and printing a brochure

Cont. Page 6, Col. 4

46th Annual Earth Rodeo This Weekend

This is the weekend for the biggest 'Little' Rodeo in the southwest.

The 46th annual Earth Rodeo will be held Friday and Saturday nights.

Everything gets underway with the annual parade, which begins at 6:30 p.m. It will begin at the Earth City Park, then move westward to the rodeo grounds.

Hats Off To Earth is the theme of the parade this year, with large cash prizes awarded in many categories.

The parade will be followed by a hamburger cookout and barbecue to be served by the Earth Lions Club at the show barn on the rodeo grounds.

There will be a charge for the hamburger cookout. Also, a free barbecue will be served to everyone holding a rodeo ticket before the rodeo begins on Saturday.

Cost of admission to the rodeo grounds will be \$5 for adults and \$3 for children.

On Friday night, the 1990 Little Miss Cowgirl and Queen will be crowned. The contestants will be judged on riding skills and poise.

Rodeo time is 8:30 p.m. each evening.

Events will include calf roping, bareback riding, saddle bronc, barrel races, bull riding, bulldogging, team roping, girls' breakaway roping and mixed team roping.

Slack will be on Saturday morning at 8 a.m.

Trophy buckles will be awarded to first place winners in each event.

Lynn Wallace Rodeo Company will be furnishing the rodeo stock.

Attend The Annual Jamaica Sunday

Activities Start at 12 Noon at Immaculate Conception Catholic Church

CHECK THESE SPECIALS

Savings

HEAVY GRAIN FED BEEF BONELESS FAMILY PAK		\$1.68
CHUCK STEAK	LB.	
HEAVY GRAIN FED BEEF BNLS. ARM FAMILY PAK		\$1.88
SHOULDER STEAK GREAT FOR THE GRILL	LB.	
HEAVY GRAIN FED BEEF BONELESS CALIFORNIA		\$1.68
ROAST	LB.	
WILSON'S		
MEAT FRANKS	12 OZ. PKG.	88¢
WILSON'S SLICED		
MEAT BOLOGNA	12 OZ. PKG.	\$1.28
ARMOUR'S PRE-COOKED CHICKEN FRIED		
BEEF PATTIES	LB.	\$1.38
BEEF		
OX TAILS	LB.	\$1.68
BEEF TRIPE		
MENUDO	LB.	38¢



FAMILY PAK
COUNTRY STYLE
PORK RIBS OR
PORK STEAK
\$1.48 LB.

FAMILY PAK
HEAVY GRAIN FED BEEF
BONELESS
CHUCK ROAST
\$1.48 LB.



DETERGENT



2% LOW FAT OR
1/2% LOW FAT



REGULAR FRIED



SLICES



BATHROOM

ULTRA OXYDOL

42 OZ. BOX

\$2.89

SHURFINE MILK

GALLON JUG

\$1.88

BANQUET CHICKEN

28 OZ. BOX

\$1.99

LUNCH WAGON

12 OZ. PKG.

99¢

CHARMIN TISSUE

4 ROLL PKG.

99¢



JUMBO ROLL
SCOTT

PAPER TOWELS

69¢



22 OZ. BTL.
40° OFF LABEL REG./MT. SPRING

DAWN DISH LIQUID

99¢



CONV. PAK BOYS/ GIRLS
SMALL/ MED./ LGE./ EX-LGE.

PAMPERS DIAPERS

\$8.99



ALL TYPES
CORN CHIPS
FRITOS
12.29 SIZE
\$1.59

CALIFORNIA JUICY SWEET
NECTARINES

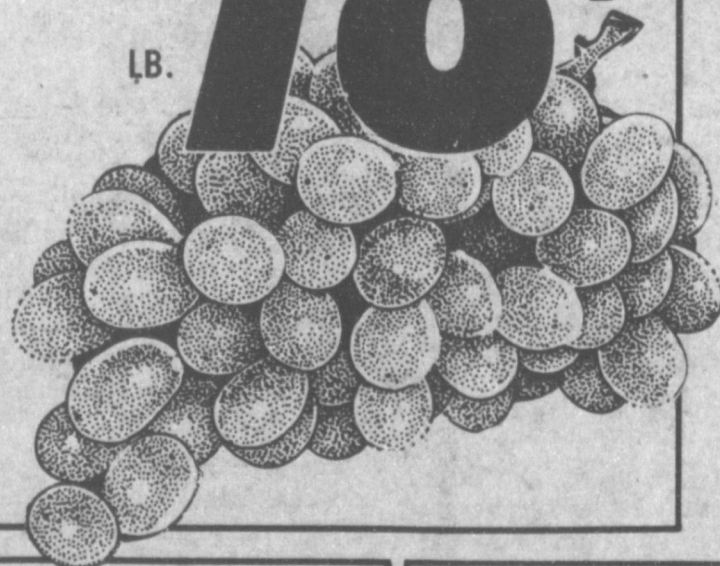
LB. **68¢**



THOMPSON SEEDLESS

GRAPES

LB. **78¢**



2.00 OFF LABEL
LIQUID DETERGENT
WISK
4 CT. JUG
\$7.99



BUY 3 GET 1 FREE
BATH BARS
SHIELD
4 CT. PAK
\$2.19



25¢ OFF LABEL
MRS. BUTTERWORTH'S
SYRUP
24 OZ. BTL.
\$2.59



SHURSAVING ASSTD.
SANDWICH
COOKIES
2 LB. PKG.
\$1.59

GARDEN FRESH

BROCCOLI

LB. **58¢**

SNO-WHITE

CAULIFLOWER

HEAD **88¢**

ITALIAN SWEET

RED ONIONS

LB. **38¢**

HONEYDEW

MELONS

LB. **48¢**

RED RIPE SLICING

TOMATOES

2 LBS. **\$1.00**

FRESH ZUCCHINI

SQUASH

LB. **48¢**



PURINA
CAT CHOW
3.5 LB. BAG
\$2.79



BEEF CHUNKS-DOG FOOD
ALPO
15 OZ. CANS
6 PACK
\$1.99



ASSTD. HEALTH BREAK
YOGURT
1/2 GAL. CTN.
\$1.99



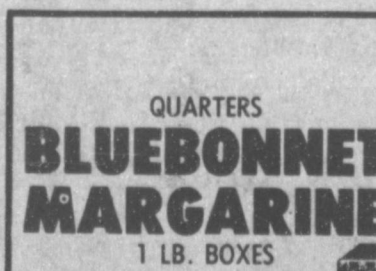
VAN DE KAMP MINCED
FISH STICKS
26 OZ. PKG.
\$3.49



ASSORTED
AERO./ NON AERO.
BRECK HAIRSPRAY
7-8 OZ. SIZE
89¢



ASSTD. TOOTHPASTE
AQUA-FRESH 4.3 OZ. PUMP **\$1.69**
100 CT. REG. STRENGTH/ 60 CT. MAX
ECOTRIN BTL. **\$4.99**
150 CT. ORIG./ 96 CT. ASSTD. E-X
TUMS BTL. **\$2.99**
SINUS CAPLETS/ TABLETS
CONTAC 24 CT. PAK **\$3.29**
MASSENGILL ASSTD.
DOUCHE 2 CT. PAK **\$1.49**



QUARTERS
BLUEBONNET MARGARINE
1 LB. BOXES
2 \$1 FOR



SHURFINE LONGHORN
CHEDDAR OR COLBY
16 OZ. PKG.
\$2.79

SUGAR FREE ASSTD.
KOOL-AID
8 QT. CAN
\$2.79

REGULAR ASSTD.
KOOL-AID
2 QT. PKG.
6 \$1

SUGAR SWEET ASSTD.
KOOL-AID
2 QT. PKG.
69¢



AT AFFILIATED FOODS INC.
MEMBER STORE

WE ACCEPT FOOD STAMPS...
WE RESERVE THE RIGHT TO LIMIT

PRICES EFFECTIVE
JULY 15-21, 1990



ASSORTED
PEPSI COLA
2 LITER
\$1.19

Methodist Hospital Develops Kidney Transplant Program

As part of its commitment to be a comprehensive organ transplantation center for West Texas and Eastern New Mexico, Methodist Hospital was the site of a successful kidney transplant July 11.

Baird Helfrich, M.D., a renal transplant surgeon, performed the transplant, which involved a kidney donation from father to son. O.L. Avant, M.D., a urological transplant surgeon, removed the donor kidney from the father. The patient was referred for transplantation by Jeffrey Hoggard, M.D., and C.J. Wheeler, M.D.

Dr. Helfrich has been involved in renal transplants since 1976 at Georgetown University Hospital. He served as director of the Division of Transplantation at Georgetown from 1979 to 1988 and was a member of the Methodist Medical Center Transplant Program in Dallas from May 1988 to May 1990. He was appointed medical director of Methodist Hospital's renal transplantation program in May

Harrington Cancer Center Offers Lifestyles Seminars

Harrington Cancer Center is offering Lifestyles Seminars on July 26, August 2 and August 9 from 1:15 to 2:30 p.m. in the Harrington Cancer Center Amphitheatre at 1500 Wallace Blvd. in Amarillo.

These seminars are designed to help cancer patients and their partners learn how to talk with each other and their health care providers about the changes in their intimate relationships after a diagnosis of cancer or cancer treatment and how to deal with these changes.

The seminars are conducted by Gerald Rogers, a Certified Sex Counselor. He will be assisted by trained members of the Sexual Health Team at the Harrington Cancer Center.

There is no charge for this seminar. Call (806) 359-HOPE, ext. 238 or 1-800-274-HOPE for more information.

The program is supported by grant funding from the Meadows Foundation.

1990.

"Kidney transplants are performed at 230 organ transplantation centers across the country, but the closest one to Lubbock is 300 miles away. A program is necessary at Methodist Hospital to meet the service needs of kidney transplant patients in the West Texas region," said William D. Poteet, III, FACHE, president/CEO of Methodist Hospital.

Numerous other physicians from anesthesiology, pathology, immunology, cardiology, infectious diseases and other specialties are active participants in the transplant program.

The hospital recently has been approved for a kidney transplant program. The lengthy process involved:

Medicare Supplement

Video Available

A new 10-minute video on Medicare supplement insurance is being distributed by the State Board of Insurance for use by senior citizen service organizations around the state.

The video, called "Changes in Medicare Supplement Insurance," is available on loan from the Senior Concerns and Issues Section of the Board. The film was produced by the National Association of Insurance resulting from the repeal of the Medicare Catastrophic Care Act.

Also available is a video entitled "Insurance Tips for Senior Citizens: Buying Medicare Supplement Insurance," which was produced by the Senior Concerns and Issues Section of the State Board of Insurance. Copies of both videos were sent to Agriculture Extension Service district offices and Texas Department on Aging area directors for use in their lending libraries.

Organizations that wish to show either or both videotapes may write: State Board of Insurance Senior Concerns & Issues (016-4)

P.O. Box 149091
Austin, TX 78714-9091
(512-463-6515)

•Obtaining membership in the United Network for Organ Sharing (UNOS) so that patients can be registered in the national organ network;

•Obtaining approval from Medicare as a transplant center;

•Conducting in-hospital professional education programs to meet the specialized needs of the transplant patients;

•Appointing a renal transplant coordinator for staff, patient and family education programs; and

•Establishing a formal, multidisciplinary renal transplant program.

In Texas about seven out of 100 dialysis patients are candidates for a transplant. More than 9,000 kidney transplants are performed annually in the United States, but more than 17,500 people are currently on the waiting list for cadaver donor kidneys.

Kidney transplant surgery lasts three to four hours. After surgery the transplant patient begins an immunosuppressive therapy that prevents the body

Barry Cowart Elected To American Angus Association

Barry Cowart has been elected to membership in the American Angus Association, reports Dick Spader, executive vice-president of the national organization with headquarters in St. Joseph, Missouri.

The American Angus Association, with over 24,000 active adult and junior members, is the largest beef cattle registry association in the world. Its computerized records include detailed information on nearly 11 million registered Angus.

The Association records ancestral information and keeps records of production on individual animals for its members. These permanent records help members select and mate the best animals in their herds to produce high quality, efficient breeding cattle which are then recorded with the American Angus Association. Most of these registered Angus are used by the U.S. farmers and ranchers who raise high quality beef for U.S. consumption.

from rejecting the new organ. The immunosuppressive drug Cyclosporine has contributed in recent years to the increased success of transplantation.

A transplant patient can return to normal activity after six to eight weeks of recovery.

Senior Concerns To Conduct Regional Workshop

The Senior Concerns and Issues Section of the State Board of Insurance will conduct a one-day regional workshop in Houston on July 31, 1990, for professionals who work with older Texans. The conference is scheduled from 9 a.m. to 3 p.m. at the Harris County offices of the Texas Agriculture Extension Service located in Bear Creek Park 2.

Subjects to be covered include Medicare supplement, long-term care insurance, specified disease policies and misleading advertising.

This training workshop is part of the SBI's effort to address insurance problems facing Texas's 3.7 million seniors. The Houston workshop offers those who were unable to attend the previous Austin workshop a first-hand opportunity to receive current insurance information.

While the workshop is designed for professionals involved with older Texans, it is open to senior citizens and the public on a space available basis. For reservations and more information, please call Daryl King, Senior Concerns and Issues, State Board of Insurance (512) 463-6515.

CBOT Analysts

Reactions To

USDA Crop Report

The Chicago Board of Trade (CBOT) will offer analysis of the U.S. Department of Agriculture (USDA) Crop Production report by live satellite broadcast on August 9. This report is one of the most important of the growing seasons as it is the first such report based on actual figures and respond to questions from the press.

As many farmers own satellite dishes, the CBOT is making

details of the broadcast public so they may watch or tape the program for viewing at their convenience.

The broadcast will start at 3:30 p.m. (Central Daylight Time), Thursday, August 9. It will be transmitted via Westar IV, Channel 13, (Transponder 7D), Audio 6.2 and 6.8 Mhz.

One Reason

First Doc-Why did you choose to be a specialist?

Second Doc-Because my patients never get me out of bed at night, they never die, and they never get well.

NOTICE!

Leal's Restaurante Will Close
At 3:00 p.m. Sunday,
July 22nd!

We Will Re-open On Tuesday,
July 24th At The Regular Time!

Open Tuesday - Sunday
Closed Mondays

1606 W. Amer. Blvd. 272-3294

Muleshoe & Bailey County Journals

TO PUBLISH

PICTURES WILL BE TAKEN IN COLOR

PICTURES OF LOCAL CHILDREN
(RURAL INCLUDED)

TAKEN IN NATURAL COLOR

FREE NO OBLIGATION!

Help us make this a good feature - take your children to Perry's, Monday, 11 a.m. to 6:30 p.m.

A Professional Child's photographer from A.J.'s Studios will take several poses in COLOR. Please dress your children to take FULL ADVANTAGE OF COLOR PHOTOGRAPHY.

Your will be shown all proofs in NATURAL COLOR for your selection of the pose you wish to appear in this newspaper at a later date. NOTE: The picture of your children will RUN IN BLACK AND WHITE in the Muleshoe or Bailey County Journals.

Your may, if you wish to however, ORDER COLOR PHOTOGRAPHS for your own use from the representative - but this is entirely up to you.

11 a.m. To 6:30 p.m.

Perry's
July 23, 1990

For appointment Call Tiffany Angeley - 965-2768

ONE MINUTE SPORTS QUIZ

By Christian Thorlund

1. Who is the manager of the Atlanta Braves?
2. For whom does Matt Nokes play baseball?
3. When is the National League to add two teams?
4. Whom did Joe Louis defeat to win the heavyweight title?
5. Who is the football coach at Clemson University?

Answers:

1. Bobby Cox.
2. The New York Yankees.
3. 1993.
4. James Braddock.
5. Mark Hatfield.

ATTENTION

Your only local media of general circulation that qualifies for & has a 2nd class newspaper subscribers mailing permit.
U.S. Post Office Approved.

Muleshoe Journal USPS 367-020
Established February 23, 1924. Published by Muleshoe Publishing Co., Inc. Every Thursday at 306 W. Second, Box 449 Muleshoe, Texas, 79347. Second Class Postage Paid at Muleshoe, Texas, 79347.

Member 1990

TEXAS PRESS ASSOCIATION

L. B. Hall, Publisher
Sammye Hall, Vice President, Controller
Clea Williams-Jacobson, News
Evelene Harris, Society
Holly Milsap, Advertising
Yara Trosain, C. Staffed

SUBSCRIPTIONS
Muleshoe Journal and Bailey County Journal
Bailey and surrounding counties
Muleshoe Journal and Bailey County Journal
Elsewhere in Texas \$16.75
Muleshoe Journal and Bailey County Journal
Outside Texas, \$16.50
Yearly by Carrier \$17.50

Advertising Rate Card on Application
*Advertisers should check their ads the first day of insertion. The Journals will not be liable for failure to publish an ad or for a typographical error or errors in publication except to the extent of the cost of the ad for the first day insertion. Adjustments for errors will be limited to the cost of that portion of the ad where the error occurred.

Over 400,000 Prizes Available Win Up To \$1000 In Cash!

Convenient Cash

Stop by your favorite Allsup's Store to pick up your game piece and game rules. Up to \$50,000 in cash and over 400,000 free instant prizes will be given away. You can win one of 5 top cash prizes of \$1,000 playing Allsup's Convenient Cash. Come play Allsup's Convenient Cash and become a winner with us.

<p>ASSTD. FLAVORS</p> <p>KOOL-AID</p> <p>2 QT. PKGS.</p> <p>6 \$1</p> <p>FOR</p>	<p>ALL VARIETIES</p> <p>PEPSI-COLA</p> <p>6 PAK/12 OZ. CANS</p> <p>\$2.09</p>
<p>HERSHEY'S-PLAIN/ALMOND/KIT KAT/ REESES PEANUT BUTTER CUPS</p> <p>CANDY BARS</p> <p>3 \$1</p> <p>FOR</p>	<p>BOYER-SMOOTHIE/ PEANUT BUTTER CUPS/</p> <p>MALLO CUPS</p> <p>3 \$1</p> <p>FOR</p>
<p>OCEAN SPRAY ASSTD.</p> <p>JUICES</p> <p>10 OZ. BTL.</p> <p>59¢</p>	<p>16 OZ. PLASTIC</p> <p>HEFTY CUPS</p> <p>20 CT. PKG.</p> <p>99¢</p>
<p>Store Wide Grocery Sale Shop our Many Discounted Grocery Items</p> <p style="font-size: 2em; font-weight: bold;">Allsup's</p> <p>318 W Amer. Blvd. 272-4862</p> <p style="text-align: center;">PRICES EFFECTIVE July 19 - 25, 1990</p>	
<p>SAUSAGE EGG & BISCUIT</p> <p>EACH</p> <p>69¢</p>	<p>SAUSAGE ON A STICK</p> <p>EACH</p> <p>99¢</p>

Baby Shower Honors Mrs Starla Ellis, Son

The home of Sheree Hunt was the scene of a baby shower Sunday, July 15 honoring Colt Black Ellis, son of Todd and Starla Ellis.

Starla Ellis, Sally Ellis, grandmother of Colt, of Muleshoe; Donna Black, grandmother of Colt, of Muleshoe; Lisa Clayton, aunt of Muleshoe; Mrs. Ralph Black, great grandmother, of Muleshoe greeted the guests as they called between the hours of 2 and 3 p.m.

Lisa Clayton of Muleshoe registered the guests from a table covered with a mauve table cloth and accented with a decorative baby bottle with blue and white jellybeans.

The hostesses served thumb-print cookies, with blue centers, iced tea with lemon slices and coffee from a silver service and china cups for coffee.

A white floor length lace table cloth covered the serving table which was accented with a white basket with assorted small baby gifts tied with a blue and white ribbon. The honoree's corsage consisted of white carnations with blue ribbon and blue baby socks twirled into the arrangement.

The hostesses gifts were a blue stroller and the centerpiece from the serving table.

Hostesses for the occasion included: Phyllis Angeley, Pam Atwood, Lori Bearden, Donna Green, Mary Hicks, Maureen Hooten, Lavon Hunt, Debbi Hutto, Kay Lepard, Judy Moore, Rhonda Meyers, Norma Prather, Kathryn Taylor, Richelle Watkins and Jackie Jean Whatley.

Tops Club

Muleshoe TOPS chapter No. 34 met at 6:30 p.m. Thursday, July 12 at the Heritage Thrift Shop. Jewell Peeler, co-leader, called the meeting to order and led the group in the TOPS pledge and a prayer. Alma Robertson led the fellowship song.

Betty Jo Davis called the roll with 14 members responding with the amount they had lost or gained. Minutes of the previous meeting were read by Aurora Mata.

Best loser for the week was Aurora Mata. Rose Sain was first runner-up and Mary Edmiston and Jewell Peeler tied for second runner-up.

Charlotte Campbell celebrated her birthday and received a gift from the club.

A brief explanation of the contest which will begin next week was given.

Rose Sain gave the highlights of her trip to England.

The group was dismissed with the goodnight song.

Host Families

Exchange Students Needed

According to Johanna Wrinkle, Community Coordinator for International Education Forum, opportunities are available for local families to host a foreign exchange student in their home. These are high school students from various countries and cultures throughout the world and are all interested in learning about the American way of life.

Mrs. Wrinkle says, "We need host families who will provide room, board and a caring family atmosphere. Students bring their own spending money and have complete medical and accident coverage. All students have been carefully screened and fulfill strict guidelines regarding English language skills, maturity and academic qualifications."

International Education Forum is a non-profit student exchange organization based in California and has been bringing students to the United States since 1981. The academic-homestay visits are generally 3.5 or 10 months in length with the student living with the host family while attending high school.

Host families have the opportunity to review the student applications and select from available students regarding preference as to sex, nationality, interests and hobbies, etc. If anyone is interested in this unique culture sharing opportunity, call Mrs. Wrinkle, community coordinator, at 806-272-3673.



SYLVIA BYNUM

You can never tell how much money a man is making by what he says he is making.



STARLA ELLIS AND COLT BLACK ELLIS

Fannie Mae Black Celebrates 80th Birthday

The back yard of Kenneth and Darlene Henry was the site of a 80th birthday celebration for Mrs. B.H. Black (Fannie Mae Conaway). The event was hosted by her children, Marlene and Ernest Martin and Darlene and Kenneth Henry.

The afternoon began with informal visiting and reminiscing with family and friends followed by a fajita cook-out with all the trimmings, rounding the evening out with the opening of gifts and cards.

The "chef" for the evening was Mrs. Black's grandson-in-law, Bobby Jack Angeley, who fed 60 guests.

Family and friends attended

Sylvia Bynum Competes In Grand National Finals

Sylvia Bynum, granddaughter of James and Betty Glaze and daughter of Eddie and Harriet Bynum, competed in the ATTA Grand National Finals (American Trampoline and Tumbling Association) June 30-July 3 in Rockford, Illinois. Sylvia placed 14th in the nation in double-mini tramp and 29th in power tumbling. Sylvia is a member of MUD team in Lubbock (Marilyn's Upside-downers).

The double-mini tramp event begins with a run to approach the apparatus, then performing a mounter or spotter skill, finishing with a dismounting skill into a 12 inch landing mat. The power tumbling event requires a great deal of power. The competitor must be very powerful to complete the difficult passes down the 100 foot mat. A pass begins with a run, followed by a series of either five or 10 continuous skills. Strength and endurance are the key to this event.

In order to compete in the Grand National Finals, a competitor has to score a number of points in meets throughout the state. A team to represent the United States is selected through three trial competitions. Those competing are selected from the top competitors in each event. This team will compete at the World Championships which will be held October 11 in Essen and Dillenburg, West Germany.

BIBLE VERSE

"Whatsoever ye do, in word or in deed, do all in the name of the Lord Jesus, giving thanks to God the Father through him."

1. Who is the author of the above advice?
2. To whom was he writing?
3. Upon what occasion?
4. Where may this verse be found?

- Answers:
1. Paul the Apostle.
 2. The Christians in the church at Colosee.
 3. To counteract the influence of false leaders who had come into the church.
 4. Colossians 3:17.

Water Best Drink On Hot Days

A nutritionist with the Texas Agricultural Extension Service recommends drinking water instead of iced tea or soda to quench your thirst.

On hot days like these, it's important to increase your fluid consumption. The best way to do this is by drinking water, according to Dr. Bethann Witcher.

"The body needs more fluids when it's exposed to extreme heat, or during exercise, fever, infections or even when traveling to high altitudes," she said.

Iced tea, like other drink, is okay in moderation, Witcher said. However, you should not drink it with every meal, especially in the heat. Tea is a diuretic that takes fluid out of the body.

If you don't like the taste of water, try adding a twist of lemon, lime, orange or tangerine to improve the flavor, she said.

Drinking water is just as important as eating the right types of food, Witcher said. Here are some water facts:

- The body contains 40-50 quarts of water.

- Two to three quarts of water are lost daily through perspiration, urine and breathing and must be replaced.

- As little as three percent reduction of body weight from water loss can affect strength and endurance.

- A 15-20 percent water loss can be fatal.

- Water helps the digestive process.

- In the form of perspiration, water sets up a self-cooling system during exercise.

- Water carries nutrients to the cells and removes wastes.

- A healthy complexion depends on water-enhanced skin

tone.

•Joints are lubricated by water.

"On the curative side, water can often help relieve headaches and decrease premenstrual bloating," Witcher said. "Also, drinking large glasses of water during the day and right before meals can help curb your appetite and avoid impulse snacking to help you maintain or lose weight."

Witcher said that when nutritionist suggest drinking six to eight glasses of liquid each day, they mean water. Caffeine-or alcohol-containing beverages are not recommended because they are diuretics.

"Drinking sufficient water will help you look and feel your best," Witcher said.

Brad & Shelli Stegall

Honored With

Farwell Party

Around 30 friends and relatives attended a farwell party for Brad and Shelli Stegall Sunday night, July 15, at the home of Frank and Mary Stegall in southwestern Bailey County.

Brad Stegall has accepted a coaching position in the Stephenville School system. Shelli Stegall will receive her degree from West Texas State University, Canyon, in December. She also plans to teach.

Brad and Shelli Stegall both attended Three Way Schools. Brad graduated in 1984, and Shelli graduated from Grady High School in 1987.

Shelli is the daughter of former Three Way residents, Tommy and Doyleene Terrell, who have just moved to Albany, TX, where both are teaching.

Mary Kay Cosmetics

1/2 price Sale On

All Glamour Products In Stock!

Josie Flowers

272-3865

46TH ANNUAL EARTH

RODEO

BIGGEST RODEO IN THE SOUTHWEST

"FOR THE SIZE OF THE TOWN"

EARTH TEXAS

JULY 20-21, 1990

8:30 P.M. FRIDAY & SATURDAY

TROPHY BUCKLE FOR FIRST PLACE WINNERS IN EACH EVENT



ADMISSION
Adults \$5.00 - Students 12 & Under \$3.00

BARBECUE

Served Saturday Night 6:00 to 8:00
(Free with purchase of Rodeo Ticket)

TRCA APPROVED CONTESTANTS

EVENT	ONE GO-AROUND	FEE
Calf Roping	\$50.00
Bareback Riding (open)	\$50.00
Saddle Bronc Riding (open)	\$50.00
Girl's Barrel Race	\$50.00
Bull Riding (open)	\$50.00
Bulldogging	\$50.00
Team Roping (ropers choice)	\$80.00
(Limit 2 times)		
Girl's Break-Away Roping	\$50.00
Mixed Team Roping	\$80.00
Slack will be Friday night after show		

Rodeo Stock Furnished by Lynn Wallace Rodeo Co.

RODEO DANCE NIGHTLY
Music by West Texas Express



Earth Roping Club

Earth, Tx.



SONIC Beach Burger 50's COMBO

- REGULAR SONIC BURGER
- ORDER OF FRIES
- MEDIUM COKE*
- OR OTHER SOFT DRINK.

\$2.29 PLUS TAX

1633 W. Amer. Blvd.
272-3998

SONIC
FASTER & BETTER THAN EVER!
© 1990 Sonic Industries Inc.

Journal Files

60 Years Ago

1930-

TWISTER STRIKES FARWELL WITH PROPERTY LOSS

A tornado which struck Texico-Farwell, 25 miles northwest of here early Tuesday night, did several hundred dollars worth of damage, but fortunately no one was killed, and, as far as can be learned, no one injured. The twister struck about 7:00 p.m. and due to a heavy sand storm at the time, was upon the town before it was visible.

The 366 Tourist Camp, which is practically new, was unroofed. Only two cottages were occupied, but these people escaped without injury. The old power house at Farwell was completely demolished and several garages, store awnings and many small buildings were torn up.

50 Years Ago

1940

MULESHOE POST OFFICE JUMPS UP TO SECOND CLASS

Showing a Gain of \$2,365 Business last year Muleshoe Post Office went to second class designation last week according to Postmaster, A.J. Gardner, who has received such information from the U.S. Post Office Department, Washington.

A few years ago this post office was elevated to that distinction, but because postal receipts did not keep up to par, reverted to the lower class at the end of the year. Since then, because of the growth of the

town and surrounding country, it is believed the present designation will hold for the future.

Grade elevation of a post office is based on postal receipts of that particular office, Gardner explained, such receipts required being about \$9,400 annually of which the office gets credit for 85 percent of the total, or about \$8,000.00.

40 Years Ago

1950

CLASSIFIED ADS

For Sale: 2 bedroom house with garage. Desirable location \$6,000.

For Sale: 954 acre ranch. Fenced, cross fenced, and an all weather road with \$25,000 worth of improvements, 1/2 minerals. Well located close to town, plenty of good water. Price \$55 per acre.

30 Years Ago

1960

Grocery specials advertised this week in the Journal included: No. 1/2 can tuna 25 cents; No. 2 1/2 can peaches 25 cents; 4 ounce can vienna sausage 19 cents; 46 ounce can pineapple juice 29 cents; quart jar sour or dill pickles 25 cents; 16 ounce jar peanut butter 33 cents; cake mix 3 for 89 cents; fryers 35 cents pound; picnics 29 cents pound; sliced bacon 53 cents pound; 5 pound can ham, ready to eat, \$3.98; chuck roast 43 cents pound; round steak 79 cents pound; flour 5 pounds 39 cents; and coffee 69 cents pound.

20 Years Ago

1970

DR. ALLGOOD BEGAN PRACTICE HERE THURSDAY

On Thursday, July 23, Doctor Homer Allgood began practice at West Plains Memorial Hospital. He and his family have recently moved here from Mobile, Ala.

Dr. Allgood is a graduate of Alabama Medical School and interned at Jefferson Davis Hospital in Houston. He served as an Air Force surgeon and spent one year in residence in internal medicine.

The doctor said that he found specializing did not suit his wide range of interest in the medical field, so he is engaged in general medicine practices.

10 Years Ago

1980

SENIOR CITIZENS NEW HOUSING LOAN CLOSED

Finally, it is a dream come true! Early Wednesday afternoon, the loan was closed to start construction on the long-awaited Senior Citizens housing complex in Muleshoe.

Members of the Muleshoe Housing Authority Board and interested persons met at the office of a local attorney for closing of the FHA Loan in the office of a local attorney for closing of the FHA Loan in the amount of \$528,000.



GARDEN SPOT OF THE WEEK--The front yard of the home of Nick and Jatonne Black, 1621 West Avenue C, was chosen as this week's garden spot. Each week, judges from the Jennyslippers choose a garden spot, from nominations made by the Muleshoe residents, at the Chamber of Commerce. (Journal Photo)

Children Not Immune To Mental Health Problems

In today's complex and fast-paced society, children can experience as much pressure as adults. Factors like divorce of parents and peer pressure can contribute to stress, which can lead to emotional problems or even mental illness. The Texas Medical Association urges parents to watch for early signs of emotional or mental problems. Mental health is vital to a child's happiness, success, and positive development to adult life.

Three categories of mental health exist: emotional, behavior and social-relationship. Trouble coping with situations or too narrow a range of emotions are examples of emotional difficulties. Behavior problems arise when a person refuses or is unable to control his or her own behavior. If a child's daily life is impaired by the number or quality of friendships, social-relationship problems can occur.

"Many more people are in need of mental health services than receive them, including children," stated Frank P. Schuster, Jr., M.D., an El Paso psychiatrist and chairman of TMA's Committee on Mental Health and Mental Retardation. However, "early detection and treatment of a mental health problem can greatly contribute to the success of treatment," Dr. Schuster explained. Treatment of mental or emotional problems is especially important, because the state of mental health can affect physical health.

To help create an emotionally happy and healthy environment for your child:

- promote a positive self-image by encouraging your child's strengths.
- create emotional well-being by helping your child recognize, control, and express emotions in appropriate ways.
- encourage healthy behavior.

- promote social well-being by encouraging your child to develop and maintain friendships.

Parents should be alert to the many symptoms of mental health problems. For example, if your child is depressed, you may notice sadness, excessive guilt, or changes in eating and sleeping patterns. Other signs to watch for if you are concerned about your child's

mental health include difficulty in school, complaints of physical pain with no cause, lack of concentration, an inability to make friends, and strong fears, such as phobias. Any of these could mean your child may have mental health problems.

If you are concerned about your child's mental health, consult your family doctor or pediatrician. Many treatment options are available, ranging from short-term outpatient therapy to long-term inpatient psychiatric hospitalization. Your physician can help you choose the treatment that is best for your child.

The Texas Medical Association is a professional organization of more than 29,000 physician and medical student members. It is based in Austin and has 119 component county medical societies around the state. The Association represents more than 80 percent of the state's physicians, and its goal is to improve the health of Texans through the professional and personal development of its members.

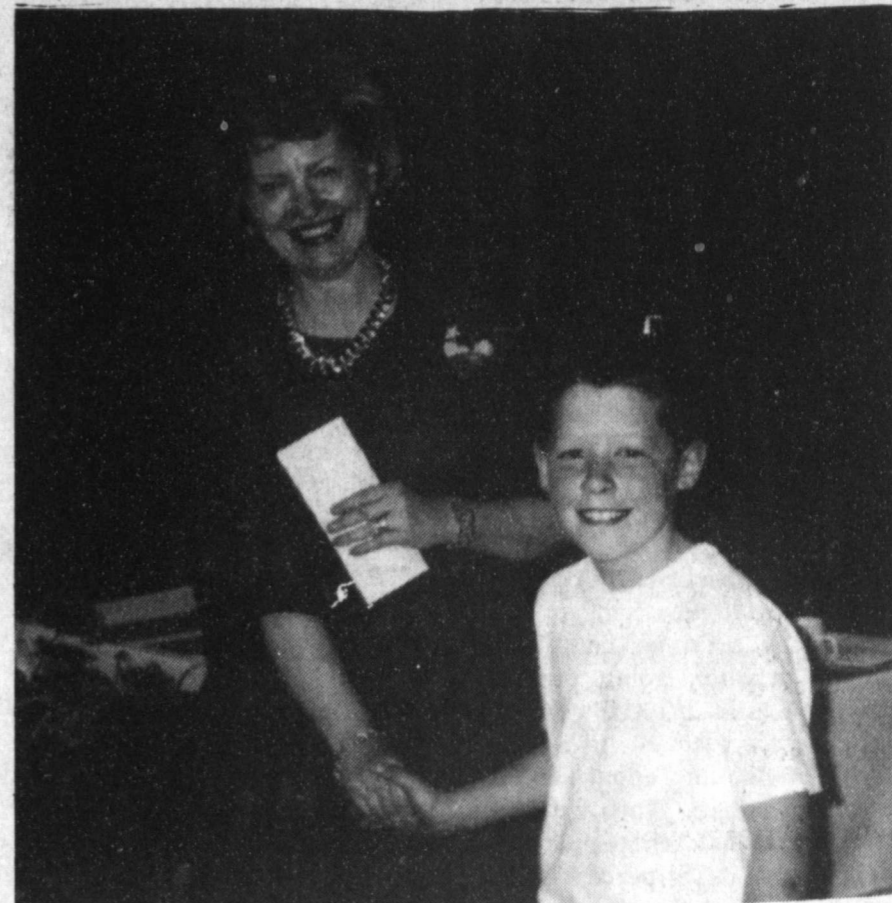
Jacoby Jennings Wins Contest

Jacoby Jennings, a student at Lazbuddie Elementary School, was recently named national winner of the Big Tex Coloring Contest. As a result, he was presented a \$25 gift certificate for himself while his school received \$500. The presentations were made to Jacoby and Mrs. Anne Farris, principal, by Lynn Shuttlesworth of Arnet Brokerage Company for the Big Tex Company at the school's annual awards assembly.

Entries were judged and finalists were selected by pro-

fessional artists. Creativity and artistic talent were among the criteria used for final selections. Mrs. Verena McAdams, Jacoby's teacher, supplied the Big Tex label and encouraged Jacoby's winning entry into the contest.

Jacoby, a basketball and sports enthusiast, is the nine-year-old son of Jim Don and Kim Jennings. His grandparents are Bill and Pug Jennings of Lazbuddie, Jim and Shirley Northern of Houston, and Jack and Ginger LaRue of Tucson, Arizona.



JACOBY JENNINGS AND MRS. ANNE FARRIS

ATTENTION COTTON FARMERS!

For Precise Economical Application Of Pix With A Ground Sprayer

Call:

Hall Bros. Spraying, Inc.

946-3375 or 946-3422

Library News

By Anne Camp

Kids in the Summer Reading Club at the Muleshoe Library are reading "up a storm." At the end of the first week over 100 boys and girls have joined kids all over the State of Texas in reading for summer fun, and found that they can do this right along with other fun activities...

We had a good crowd of 56 on the first "Film and Fun" day Friday afternoon. Most of the kids had already read and turned a list of 10 books read, and had earned a Certificate and a chance to "Go-for-it" in the Mystery box, and received treats and small prizes provided by the sponsoring merchants--one prize won was the giant beach ball from Gordon Wilson Appliance--won by Vanessa Orozco. We really are thankful for our generous supporters...two more this week--the Spudnut Shop, Beth Webb, who sponsors every year...and The Muleshoe City Swimming pool, with prizes of a free ticket to swim.

Kids are encouraged to read mysteries, spy stories, and detective stories to go along with this year's theme. *There is still time to come to the library and join!*

Co-Ed Softball Tournament

Sponsored by Shugart Studios

July 27 - 29, 1990

to be held at the

Levelland Industrial Park

Entry Fee - \$100⁰⁰

\$90⁰⁰ entry fee (If Paid Before July 27th)

Deadline - Thursday, July 26th

1st thru 5th place Team Trophies

1st Place Individual Ball Bags

2nd Place - Individual T-Shirts

MVP - Male & Female

Golden Glove Award - Male & Female

No Out of Park Homeruns

ASA Umpires

For More Information Call Dedra or Landra

at 1-800-894-4322 Weekdays, 8-5 p.m.

Weeknights - 1-806-229-6219

and ask for Dedra

All Proceeds Go To Charity

Mark Hale Walk Again!

Texas Country Music Report

TOP TEN SINGLES

1. The Dance...Garth Brooks
 2. He Walked On Water...Randy Travis
 3. Love Without End, Amen...George Strait
 4. Nobodys Talking...Exile
 5. Walk On...Reba McEntire
 6. If You Could Only See Me Now...T. Graham Brown
 7. On Down The Line...Patty Loveless
 8. Dancys Dream...Restless Heart
 9. Island...Eddy Raven
 10. Good Times...Dan Seals
- PICK OF THE WEEK
Marty Stuart's "Hillbilly Rock" on MCA Records

Follow Me!!

To The

Annual Stockholders Meeting

Of The

Farmer's Co-Op Elevators

Friday, July 20

Muleshoe High School Cafeteria

7:00 p.m.

Dannys Hens & Fins
of Lubbock

Will Cater The Meal

2 New Directors Will Be Elected

Be Sure To Attend!!!

Door Prizes Will Be Given!!!

European Trip

Cont. From Page 1

four of the same extra tours so we felt that we would have lots in common.

We had a good dinner on the plane. The flight was six hours and fifty minutes to London Heathrow. We flew 3,458 miles and arrived in London at 12:00 noon. We left JFK at 12:05 (5:05 London Time -- five hours difference).

MONDAY - DAY TWO
June 11, 1990

I dozed some last night. I had a window seat next to two men so it was hard to get in and out. We flew over Ireland and southwest into London. At 3:00 a.m., Texas time, it was light outside. We only had juice and coffee for breakfast. This was a surprise to us!! We arrived in London at 12:00 noon and were met by an HCA representative and as soon as we had our suitcases we drove into London.

This took about forty-five minutes from Heathrow Airport. He took us to the beautiful Scandic Crown Hotel. The bathroom had a built-in hair dryer and in the bedroom was a built-in trouser press. We were just south of Victoria Station on Vaux Bridge Road.

With the train so handy, it was no problem going out to Windsor Castle. We only had to change once. Round trip was 3.90 pounds, or about \$8.00 American dollars. Since we had the minimum of ten people we were given a 25 percent discount which helped. Queen Elizabeth was to be out at the castle the next week for the Ascot so we were unable to tour the castle. We did see the Queen Mary doll collection and doll house. The doll house is really a miniature castle with ornate furniture.

After shopping for a couple of hours in the town of Windsor we headed back to the train station. We decided to detour about two blocks before and walk down to the river. This proved to be worthwhile as we saw the home of Sir Christopher Wren. He designed dozens of churches in London, including St. Paul's Cathedral which we toured Tuesday.

We arrived back to our hotel about 6:30 and our guide, Henry Herbst, had arrived. He had finished a tour in Brussels in the morning and had flown in during the afternoon. Several went straight to their rooms but seven of us decided to walk down to get some fish and chips and walk to Westminster Abbey, Big Ben and Parliament. We did this and walked onto the bridge over the Thames River. We certainly had a good hotel location.

At this time, it was 9:00 and we felt that we needed to head back. After a block we decided to ride a double-decker bus back to the hotel. It cost 50 pence, or about \$1.00. By this time we were truly ready for bed as it was 11:00.

From the time we got up Sunday morning until 11:00 London time, we had been up close to thirty-six hours. But, this way we were into the time pattern of England.

We decided after a 747 air-

plane ride, a train ride, and a bus ride, plus many blocks of walking, that we had finished a full and fantastic day. We had an interesting experience with our "fish and chips" meal. We bought some just as the place closed so we had to take them with us, so we found a park and ate there on the benches.

TUESDAY - DAY THREE
June 12, 1990

The Scandic Crown Hotel was truly a lovely place to stay. Our room looked out over the train station. The breakfast that we had proved to be the best we were to have on the trip. We had dried fruit, fresh fruit, and cooked fruit. We also had dry cereal, juice, milk, coffee, with an assortment of bread, sweet rolls, etc.

We went on our morning tour of the city. We drove by Lambeth Palace, Arch of Canterbury, across south of the Thames, to St. Paul's Cathedral. We stopped for a short tour of the Cathedral. We went to the Westminster Bridge, Westminster Abbey, Big Ben, Southwark, London Bridge, Trafalgar Square, Picadilly Circus, Fleet Street, #10 Downing Street, to Buckingham Palace and the Changing of the Guards.

By now it was raining slightly and a policeman said that the Changing of the Guards was cancelled, which I guess was his idea of a joke, because after a while they did have it, but they all had on raincoats to protect their good-looking uniforms so that was disappointing. We still took lots of pictures.

We divided into two groups, according to what we wanted to do the rest of the day. Three of the group wanted to go to Harrod's and shop and the rest of us walked down to tour Westminster Abbey. I like this church more than any other I have ever seen. It has all the history of England. It contains tombs of Elizabeth I, Edward the Confessor, Henry VII, and many other kings.

The Poet's Corner contains the tombs of Alfred Lord Tennyson, Charles Dickens, Geoffrey Chaucer, and others.

From here we took the underground to Tower Hill and visited the Tower of London which was started by William the Conqueror after he gained control of England in 1066. It served as a fortress, a residence, a prison, and now a museum for the Royal jewels of Queen Elizabeth II. I never dreamed that there would be so much to see here. We spent several hours and actually a visitor should have all day.

One of the wardens took us on a tour. Families of the wardens live within the walls. They are selected from men who have served twenty-two years in the military so it's an honor to be selected as a warden. It makes a pleasant semi-retirement.

A chapel is in one corner where Anne Boleyn, the second wife of Henry VIII is buried. Church services are held here each Sunday for the residents of the Tower. Right outside the

church is the place where Anne's head was decapitated.

The room that held the instruments of torture was closed. We visited the rooms where Sir Walter Raleigh spent thirteen years of his life before being put to death.

We walked along "Elizabeth's Walk" where she walked during her two months imprisonment before becoming the Queen of England.

A military museum was also on the grounds but we did not visit this. We did, however, visit the Crown Jewels Collection. To say this was breathtaking is just not enough. The vault contained several crowns covered with diamonds, rubies and emeralds. Several sceptors and numerous necklaces and bracelets were displayed in cases and closely guarded. These were all in a vault.

Before going into the vault, we saw items such as punch bowls, swords, goblets, etc. that were gold, inlaid with jewels. I was so glad of the opportunity to visit the Tower. We had such good guide and he posed with us for some pictures. He had a good sense of humor so it was easy to give him a good tip.

After we left the Tower we rode the underground to Covent Gardens. The first thing that we did was eat. This area has some neat shops and eating places. We then walked to Picadilly Circus and waited until the lights all came on so we could take some pictures. The spot is called the Center of London. It has a statue to Eros, the Goddess of Love.

Marilyn, Taleta, Winnie, and Marshall took the taxi back to the hotel and we rode the bus at 70 pence to Westminster Abbey so that Lonnie could take pictures at night. We then rode the bus from the Abben to the hotel for 50 pence. We arrived about 10:30 and wake-up call next day was to be at 5:15.

The room rate posted in the room was 125 pounds, which is about \$240.00 in American money. The Scandic Buffet was 6.50 or about \$12.00. A tour would be the only way to afford the hotel!!

(Days four, five and six will be in the next issue. Stay with us for the European Panorama.)

Rotary...

Cont. From Page 1

speaker, and cited a better delivery time, which in turn would help the customer.

In response to a question, he said the Postal Service was re-organized in 1970, with all federal government subsidies being stopped.

Prior to the guest speaker taking the floor, President Bruce Purdy discussed the visit next Tuesday by the District Governor, and said Rotary Anns will be welcome to attend the next meeting.

He said the officers and directors had approved Rotary helping with Mule Days, and said the Rotarians may cook again, as they did on July 4th.

Also, the Rotary had agreed to take booth sales for the Fair in September, and Bill Liles was unanimously chosen to head up the booth sales for the club.

According to the president, the two boys who attended Camp RYLA have returned, and two girls are getting ready to attend Camp RYLA. They will report on their experiences after the girls return.

A brief report was given on the July 4th project, and President Purdy said Jim Crawford had sold over 100 tickets for the Hawaiian trip.

He also said Rotary will be working on several projects throughout the year to keep the money coming in, and talked briefly about the slow-down in attendance.

Tommy Gunstream was winner of the Polio Plus drawing.

Chris Gikas was a visiting Rotarian from the Texico-Farwell Club; and other guests were Jack Glover, Kevin King, Reagan McElroy, Eric McElroy, Dewayne Castleberry and Rotary Ann Judy Watson.

Penny-pinching people are often dollar losers.

MAPLE BRANCH
Bailey Co. Sheriff's
Office
916-3300

TASB Consultants

Cont. From Page 1

about the superintendent's position; receiving and processing all applications and selecting most qualified candidates for the board's review and evaluation.

The men will also assist the board in posting notices of all public meetings; keep the public informed of the progress of the search; assist the board in evaluating candidates and selection of those to be interviewed; review legal requirements, in-

terview procedures, and time schedules for semifinalists' who will meet with the board and assist the board in preparing questions and developing procedure for interviewing candidates.

There are many other services to be provided by the consultant specialists, and being natives of this area, they will be fully cognizant of the needs of a school in West Texas.

The work at this point is just

Lab Discussion

Cont. From Page 1

(pending outcome of a Tuesday night meeting); and a visit with the school architects, who plan to attend a Monday, July 23 school board meeting.

After a lengthy discussion on school personnel health insurance, the proposal was tabled pending checking into other options.

It was decided to grant a six percent increase across the board for the principal's budgets.

Board President Cindy Purdy reported on an upcoming TASB convention; and interim superintendent Tom Jinks reported that use of drug dogs for the schools will continue.

Asst. Supt. Tom Alvis reported on the status of the underground storage tank, and said two wells will be drilled within the next three weeks.

Elizabeth Watson, assistant superintendent for instruction said in service training will begin on Tuesday, August 14 for the ten new teachers. This

the preliminary. Applications will be accepted until October 20 and around October 29, the MISD board will choose the applicants for semi-final interviews.

At this point, a large number of applications will be weeded out to about 10-15 to be screened further by the consultants.

They will take closer looks at several to be interviewed. Then, around the first weekend in November, the field of candidates will be narrowed to 2-4 for further interviews.

The first weekend in November, the field will be narrowed to the final ones, and the final interview will be around the second weekend in November, when the finalists and their spouses will both be interviewed.

Then, the next weekend, board members will probably visit the homesite of the top candidates, and a final decision will be made around November 15.

The target time for a new superintendent will be around January 1, 1991.

In the interim, Tom Jinks, longtime Muleshoe educator, administrator and assistant superintendent, will act as superintendent for the Muleshoe Independent School District.

Wanted:
Host Families!
Host a Foreign Exchange
High School Student




I.E.F., a non-profit organization, has a number of teenage English-speaking students from Europe and Asia (German, Spanish, Japanese and ten other nationalities) who will be arriving in the U.S. this August. Each one is looking forward to living with an American family for 3, 5, or 10 months. YOU could be one of these families! Learn another culture and share yours.

Call your Community Coordinator:
Johanna Wrinkle
272-3673
OR 1-800-255-8339
INTERNATIONAL EDUCATION PROGRAM
P.O. Box 800
San Ramon, CA 94583

Come One, Come All!

To The Annual Immaculate Conception Catholic Church Jamaica

Sunday, July 22nd

Top Drawing Prizes:

**1st Prize - \$300⁰⁰ 2nd Prize - \$200⁰⁰
3rd Prize - \$100⁰⁰**

You Need Not Be Present To Win!

Activities Start at 12:00 noon until 7:00 p.m.

All Kinds of Games For Children and For The Older Crowd!

Nick Black will be inside the Catholic Center performing his Magic Acts!

The Guadalupanas will be selling Homemade Tamales, Nachos, Tacos and other Homemade Mexican Plate Items.

Live Music All Day Long

KMUL Will Have A Live Broadcast on KMUL's AM Station


Noe's Used Cars
501 N. 1st 272-4007

Viola's Restaurant
2002 W. Amer. Blvd. 272-3838

El Jacalito Tortilla Factory
516 N. 1st. 272-5556

and lots more
**FOOD FOOD
FOOD FOOD!!**

THE TOWN & COUNTRY DIFFERENCE



**COME EXPERIENCE
THE TOWN & COUNTRY
DIFFERENCE**

FOR ALL APPLICANTS

If...
You're looking for a better job and career opportunities, you should be talking to us. We are 900 employees, 140 stores and growing.

We are hiring energetic, ambitious, career oriented personnel to join the Town & Country team. Our policy is to promote from within those individuals who are top performers. Over 90% of our District Managers began as cashiers or Store Managers with our company.

STORE MANAGERS - Starting at \$1300 - 1650 month
ASSISTANT MANAGERS - Starting at \$4.55 per hour
CASHIERS - Starting at \$4.00 per hour

We offer an excellent variety of benefits including health insurance, paid sick leave, paid vacations, retirement plan, and a stock purchase plan.

If you're an aggressive self starter with a retail or fast food management background, apply in person at TOWN & COUNTRY FOOD STORES #72 and #134.

DRUG TEST REQUIRED
AN EQUAL OPPORTUNITY EMPLOYER

THE TOWN & COUNTRY DIFFERENCE

Letter To The Editor

140 Colonial Park Drive
Santa Rosa, CA 95403
July 11, 1990

Dear Editor:

I have just arrived home weary but with many happy memories of the 4th of July celebration and of the High School Re-union.

If I could do so I would to personally give a big thanks in appreciation to all those who gave so much time and effort to make it a great success that it was.

Muleshoe is a great town and it will always be "home" to me.

Sincerely,
Mary Holt Garth

July 13, 1990

The Editor:

I appreciate the fine efforts of the Ex-Students Association of Muleshoe which sponsored the reunion of the classes of 1926-1965 on July 7. The day was truly enjoyable.

My guest was Mary B. Moore Ovenhaus who graduated from Sudan High School. After witnessing her great many of the first-graders and fourth-graders which she had taught in her 39 years of the teaching profession, or their parents, I believe the day could have been appropriately designated "Mary B. Ovenhaus Day."

She said to me, "It was a very humbling experience, and it makes me wish I had tried even harder to have been a good teacher."

Sincerely,
Geraldine Robbins Mahaffey
Class of 1937
307 North Eleventh
Carlsbad, N.M. 88220
505 885-6480

July 10, 1990

TO: All Muleshoe High School

Graduates and Especially the Class of 1946

As most of you know, a great number of you participated in our All School Reunion since its beginning through the class of 1965, last weekend July 7.

We know that everyone had a wonderful get together and an enjoyable day. It seems that with everything good there has to be some sadness, and we, also, had our part of that.

During the afternoon, our classmate, one of the most adored girls in the class of 1946, was felled with a heart attack, and was transported to Lubbock Methodist Hospital by their Helicopter service, and still remains in the CCU unit.

Our understanding is that they got Maxine Eubanks Trapp stabilized Saturday night and that her heart damage is to the back of her heart, for this we are thankful.

The expense of this absolutely necessary treatment is astronomical in cost and even with the best of Hospitalization Insurance can still leave the patient with huge deficit expenditures. With these thoughts in mind, and remembering Mackey Trapp as the vibrant, friendly person she is, her classmates are opening an account at the Muleshoe State Bank, to be known as the "Maxine Trapp Recovery Fund."

We earnestly solicit from each of you any contribution that you can make for this classmate of ours and superfine representative of our school and community, which is known for its love and helping hand to those that need us.

This fund will be administered by three of her classmates, Pat Bennett Glasscock, Don Bryant, and Jess "Pesky" Winn. Any withdrawal from this account will be by check and signed by two of the three above mentioned classmates.

Contributions, and please do the best you can, should be made to the "Maxine Trapp Recovery Fund," and mailed to the Muleshoe State Bank, 101 American Blvd., Muleshoe, TX

79347, or to any of the following people:

Don Bryant
Rt. 1, Box 835
Muleshoe, TX 79347

Pat Glasscock
2109 East 2nd St.
Portales, N.M. 88130

Jess P. Winn
1910 W. Ave. D
Muleshoe, TX 79347

UPDATE:

ADDENDUM NUMBER /
July 10, 1990

A later report concerning Maxine Trapp's condition is as follows:

On Tuesday the hospital ran an angiogram on Maxine and the test showed that the backside of her heart was completely dead and that a quadruple bypass is a necessity and will have to be done as soon as Maxine's strength is such that the surgery can be performed. So where we were looking at a mountain of expenses before, that figure now becomes almost unbelievable, and necessitates even a greater effort on our behalf.

We have just now destroyed our original check and doubled the size of it, and will give until it hurts if it will save or help save the life of our friend and class mate, Maxine Eubanks Trapp. Hoping everyone feels as we do, and will do all they can to make this easier for Maxine.

ADDENDUM NUMBER TWO
July 11, 1990

Sometime during the night of July 10, Maxine had yet more trouble with her heart and her attending doctors decided that the quadruple by pass was a necessity immediately or as soon as she could be prepared for it. One main artery was completely blocked and the other three were individually each more than 50 percent blocked. As we write this message, Maxine is in surgery, pray for her well being. Claudine Embry is in Lubbock with her and has promised to let us know, as soon as is evident, the results of this operation. So

still another addendum will be added as soon as her successful completion of this surgery is completed, and she is stabilized.

ADDENDUM NUMBER 3
July 11

Claudine Embry called us last night on or about 8:30 p.m. and reported that Maxine had gotten through the by pass surgery very well and when Joe and Claudine left to come home, that Mackey was responding with a nod of her head to yes and no questions. She is still in Constant Care CCU unit, but if everything progresses well, she will probably go to a private room in the CCU unit sometime today, Thursday, or no later than Friday. When this happens, the last paragraph to this letter will be mailed and we will certainly hope and pray that Mackey will progress physically, to the Maxine we all love and have for so many years.

FINAL ADDENDUM
NUMBER FOUR
July 15

Maxine was moved into a private room in the CCI Unit last Friday, and her progress has been continually better since the operation has been accomplished. Of course, she is in much pain caused by the operation itself. Everyone that is in touch with Mackey now feels as though it will just take time and healing, and faith in God and she will be as good as new.

Let us apologize for the length of time to get this correspondence to you, but we wanted Mackey to be as near out of danger as she could be and we feel that she is that. So with all sincerity and happiness, we again make the solicitation of you for the "Maxine Trapp Recovery Fund," as it is so stated at the beginning of this letter.

Don Bryant
Pat Glasscock
Jess P. "Pesky" Winn

Life is hard to those who make it hard.

Census Bureau Takes Statistics In Area

Local representatives of the U. S. Census Bureau will revisit selected area households to conduct its Survey of Income and Program Participation (SIPP), William F. Adams, director of the bureau's Denver regional office announced. He said the new survey began July 2.

SIPP is a nationwide continuing survey introduced in the fall of 1983. It is one of the nation's largest, with about 20,000 households participating.

The Census Bureau publishes periodic reports with information from the survey. Subjects covered include the following:

- Jobs and earnings.
- The economic effects of unemployment, disability, and retirement.
- How taxes affect personal spending.
- Participation in programs such as Social Security, Medicare, Medicaid, and food stamps.

Information from SIPP helps policy makers and administrators determine how well government programs are serving the public and how changes in programs and policies will affect the public.

Here are some facts on health

insurance based upon a 28-month survey period ending in May 1987 (the sample size limits accurate reporting to national figures only):

• About 28 percent of U. S. residents lacked health insurance for at least a month during the period.

• The survey showed that seven percent of the population was covered for six months or less.

• Thirty percent of men lacked continuous health insurance during the period compared with 27 percent of women.

• Some 52 percent of Hispanics lacked insurance for at least a month. Other proportions were 38 percent for Blacks and 26 percent for Whites. Private health insurance covered 90 percent of Whites and 75 percent of Blacks and Hispanics for at least one month.

• One half of persons aged 18 to 24 had no insurance for a month or more, and 12 percent were covered for under seven months.

The truth is the ultimate goal of all mankind, and is worth the effort to obtain it.

Lazbuddie Cheerleading Camp

July 23-27

9:00 a.m. - 11:00 p.m.

in the new gym

Camp Fee 20.00



For More Information
Call Stacy at
965-2156

A&M

SIDEWALK SALE DAYS

BARGAINS EVERYWHERE

Sale July 21st 1990 Only

We Carry The Name Brands You Have Learned To Trust:

STARLIGHT TRADING INC.

Come On Time!

Lots To Choose From

Tanks, Shirts, Shorts & Sets Hurry! Hurry!

Example:	Was: \$599	Now: \$300
	\$999	\$499
	\$1189	\$589
	\$1429	\$699
	\$699	\$349

Camp Shirt

Was: \$1439	Now: \$729
\$1125	\$599
\$2549	\$1299

Be Here First!

Was: \$1729	Now: \$879
\$1999	\$999
\$1749	\$899

And More!

MULESHOE STORE ONLY

ONE DAY SALE

Saturday, July 21

Here Are Just Some Of Our Super Specials

Hurry On In!!!

Laredo

WESTERN BOOTS

Was: \$4799	Now: \$2499
\$3899	\$1799
\$4299	\$2499

GOPHER ACTIVEWEAR

Was: \$1499	Now: \$600
\$1599	\$650
\$1999	\$800
\$2199	\$849

Super Super Buys

HOBIE TEE SHIRTS

Was: \$1999	Now: \$799
\$1299	\$519

Hurry! Hurry!

Was: \$1499	Now: \$680
\$2099	\$840

Shorts:

Was: \$2499	Now: \$999
\$2299	\$920

And For That "Work Out" Sweats

Shirts	Suits
Was: \$999	Was: \$3999
Now: \$399	Now: \$1599
\$1499	\$599
\$1599	\$650
\$2699	\$900
\$499	\$299
\$899	\$449

By: Gopher, Ross, California Lifestyle, A-Line Trading, Hobie, Delta Apparel, Herman

WHILE THEY LAST!

Wrangler

Jeans

Was: \$2099	Now: \$1499
\$2499	\$1299
\$2199	\$1349

Blouse \$2499

Super Buys!

Block

Was: \$1899	Now: \$999
\$1599	\$749
\$1699	\$899
\$2299	\$1099

Pants

Shorts

Jackets

Was: \$1899	Now: \$1199
\$2099	\$1299
\$2199	\$1399
\$2599	\$1599
\$2999	\$1799

Special Colors & Styles

3 Locations To Better Serve You

- 2600 E. Mabry Dr., Clovis, N.M. 505-762-7717
- 1601 S. Ave. D. Portales, N.M. 505-356-8543
- 1302 W. American Blvd., Muleshoe, Tex. 805-272-5571

All Stores Open Monday - Saturday 7:30 a.m. - 6:00 p.m. Sundays 11:00 a.m. - 5:00 p.m.

Hurry!!!

Nursing Home News

by: Joy Stancell

Our thanks to our Chaplain Rev. Mike Doyle, who is always here for us.

We wish to extend our heart felt sympathy to the Jack Knowles' family on the death of their loved one.

Martha Smaltz was visited by Frances Billinsley and Gladys Hardage Monday.

Buck Ragsdale went out with his wife, Maxine, Monday.

Bernice Amerson is out at this time visiting with her sister, Lorene.

Ottillie Wisian visited in the home of her son and daughter-in-law, Hilbert and Sherry Wisian, over the weekend.

Minnie Pettyjohn was visited Wednesday afternoon by Delmer and Bret.

Mamie Askew was visited recently by her grandsons, Arthur Charles and Kenneth Splawn.

Happy Birthday this month to Eva Doyle, July 17th and Maria Orozco July 4th.

We really appreciate Susie Vela, Bonnie Green, Claudine Embry, Beth Watson, Helen Free for their help in the beauty shop Tuesday. Dustie Moynihan gave manicures.

Mozelle Ripee received several cards, gifts and a big bouquet of flowers as well as visits from her friends and family on her birthday, Friday.

Each week of every month, J.C. Shanks comes to give the men haircuts. Clifton Finley comes on Wednesday to go shopping for the residents. Barbara Blackman comes to visit and run the juice cart and when she leaves she leaves behind a pretty bouquet of flowers. Glenda Jennings comes on Wednesday for a Sing-A-Long. Alda Odom comes to read and visit with the residents. Mike Doyle comes back Thursday morning to have coffee with the men later he along with Zora Bellar and Clara L. Jones lead us in a devotional.

Mike Doyle made and served

snow cones to the residents and visitors before the cook-out Tuesday.

Tuesday afternoon Laverne James, Beth Watson, Linda Low, Claudine Embry and Bonnie Green came to shampoo and set the ladies hair.

Guy Kendall along with his family are up in the cool pines in New Mexico this week.

Mrs. Upjohn's guest at the cook-out Tuesday were her daughter and son-in-law, Pat and Delmer Clements. Lucy Faye and Patricia Thatcher were guests of Eric Smith. Ora Roberts guest was her son, James Duncan. Bernice Amerson's sister, Juanita Jarman, attended with her. Ruby Lee attended with Ernest Kerr. Mrs. Knowles attended with her husband, Jack. Maxine Ragsdale was a guest of her husband, Buck Ragsdale. Ruth Bruns was a guest of Edith Bruns. Holly Milsap was the guest of her mother, Pearl Cox. Thelma Sterns' daughter, Joyilene Costen, attended with her. Grace Scarbrough was a guest of Effie Smith.

Cora Duncan watched the parade Wednesday outside by her home, in the shade of a tree, with her family, Ruby and Gordon.

John Seid received a visit from Evelyn Ziegenfuss Monday afternoon.

Mildred Nieman was visited by her son and daughter-in-law, Mr. and Mrs. Curtis Clevenger, recently. Also her sister and brother-in-law, her husband Erwin and daughter, Judy.

John Seid received a visit from Evelyn Ziegenfuss Monday afternoon.

Rickey Barrett Receives Master Agent Award

Rickey Barrett of Muleshoe has received the Master Agent Award from Texas Farm Bureau for his outstanding sales during 1989.

The Master Agent Banquet was the first ever held to present awards to 21 of the best salesmen out of Texas Farm Bureau's sales force of 650 statewide. This is the highest honor bestowed to Career Agents of Texas Farm Bureau.

Barrett was presented with a gold lapel pin in the shape of Texas for his two years of top salesmanship.

The awards were presented by Paul Lancaster, Regional Sales Manager of Southern Texas and Don Grantham, Regional Sales Manager of Northern Texas.

Barrett has been an insurance agent for Texas Farm Bureau since 1982. He was raised in Muleshoe and farmed for eleven years before becoming an agent. He has four children.

The Needmore Community Club will host our monthly birthday party Thursday, July 26 at 3 p.m. We invite the friends and family of our residents to attend.

Residents having a July birthday are Mozelle Rippee, July 6, 1919; John Seid July 25, 1900; Ella Faubus, July 29, 1898. Happy birthday to each of you.

Sunday, July 8th The Muleshoe Singers came to sing and play gospel music for the residents.

Friday afternoon Harold and Avis Carpenter from the Oklahoma Lane Community came to have a Sing-A-Long with the residents.

Minnie Pettyjohn received a visit from her youngest brother and his wife from Oklahoma Friday. Also her daughter and son-in-law, Delmer and Pat Clements.

Mildred Nieman was visited by her son and daughter-in-law, Mr. and Mrs. Curtis Clevenger, recently. Also her sister and brother-in-law, her husband Erwin and daughter, Judy.

John Seid received a visit from Evelyn Ziegenfuss Monday afternoon.

We trust you had a safe and enjoyable 4th holiday. The Healthcare Center participated in the celebration with a cook-out with our chef being Conrad Cumpion, hosted by the Healthcare Center, volunteers and residents families. Entertainment included Mr. and Mrs. Pearson and their wagon and mules and music and song by Camilo Espinoza. We wish to express our thanks to all of the above and to Lona Embry,



RICKEY BARRETT

Johnnie, Lucy Faye Smith, Pat Clements, Betty Ramage, Joyilene Costen, Holly Milsap. We too enjoyed the parade. We think it was the best ever. It was a thrill to see the Horsley family and all of the floats and all that participated.

The Joy Choir from the First Baptist Church came Friday to sing gospel songs with the residents. Following the music and songs refreshments of finger sandwiches and punch were served to all attending and residents in their rooms and staff.

Jack Knowles was visited by his sister and brother-in-law Monday.

Sunday afternoon the Calvary Baptist Church came for church services.

Deadline Set For Junior Beef Show

More than \$14,000 in premiums will be awarded to exhibitors in Junior Steer and Junior Beef Heifer competition at the 73rd Annual Panhandle South Plains Fair in Lubbock September 22-29.

Members of 4-H Clubs and Future Farmers of America chapters from 23 South Plains area counties are eligible to compete in the Junior Steer show. Those counties are Bailey, Borden, Briscoe, Castro, Cochran, Crosby, Dawson, Dickens, Floyd, Gaines, Garza, Hale, Hockley, Kent, Lamb, Lubbock, Lynn, Motley, Parmer, Scurry, Swisher, Terry and Yoakum.

The deadline for entering the fair's livestock shows has been moved up this year, according to General Manager Steve Lewis, who attributed the action to steadily increasing entries during the past five years.

The deadline this year is Monday, August 20, which, Lewis said, "should give both exhibitors and fair officials plenty of time." He noted that many other fairs have entry deadlines as early as eight weeks before the show.

The Junior Steer and Junior Beef Heifer shows will feature an announcer this year, Lewis said, adding that Dick Vestal of Baird has been selected for the job.

Greg Martin of Englewood, Colo., will begin judging Junior Steer entries at 10 a.m. Saturday, September 29. Bob Benson will serve as superintendent of the show, with Dennis Poole and Darrell Dromgoole assisting.

Junior Steer divisions include British breeds and crossbred/other breeds. In both divisions, champions and reserve champions will collect \$200 and \$100

respectively, with banners. The show's grand champion will receive \$1,250 plus a trophy and the reserve grand champion will be awarded \$1,000 and a trophy.

Last year's grand champion steer and reserve grand champion steer were both exhibited by Brandon Bird of Post.

Cash prizes, ranging from \$100 to \$20, are awarded through 10th place in the steer show.

Exhibitors are limited to two steers and must have owned or cared for the animal for at least 90 days prior to the show. All entries must be certified by the supervising county extension agent.

The Junior Beef Heifer entries will be judged by Kenny Smarr of Bryan beginning at 8 a.m. Saturday, Sept. 29. Andy Vestal will serve as superintendent, with David Gibson and Lee Howard assisting.

All 4-H and FFA members in Texas are eligible to compete, but entries are limited to 150 animals. Each exhibitor may enter three heifers. Entries received after the 150-heifer limit has been reached will be

returned.

All breeds are eligible to compete and each breed champion will receive \$100, with the reserve breed champion earning \$75. A cash prize of \$500 and a trophy will be awarded to the supreme grand champion heifer, while the supreme reserve grand champion heifer will receive \$250. Cash prizes, ranging from \$100 for 1st to \$10 for 8th, will also be awarded.

Last year's top winners were Sy Olson of Dimmitt, supreme grand champion heifer, and Jon David Roberts of Hale Center, supreme reserve grand champion heifer.

IN FASHION

Most designers are in agreement that women no longer must wear matched sets in garments. Their softly tailored jacket works from day to evening with all kinds of fashion pieces.

The two newest jacket lengths fall somewhere around the waist or well below the hip.

Senate failed to override Bush veto on Amtrak.

Thank You

We would like to express our deep appreciation and thanks to everyone for the food, flowers, visits, phone calls, cards, letters and prayer and kindnesses shown our family to comfort us in memory of our loved one.

May God Bless You!!!!

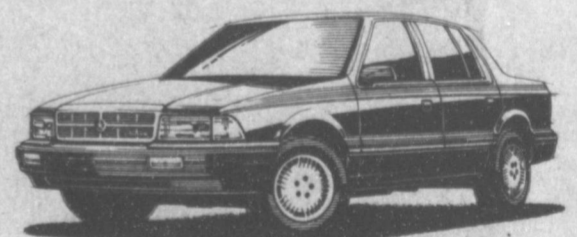
Evelyn Northcutt & family

FACTORY AUTHORIZED CLEARANCE



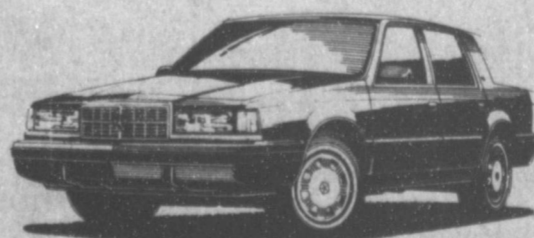
UP TO \$1000 CASH BACK!

Dodge Colt offers aerodynamic styling, room for five, and the convenience of a hatchback for all your gear. Now get \$750 cash back, \$1000 on Colt GL & GT, and a low clearance price.



\$750 CASH BACK!

Dodge Spirit is a sedan with plenty of performance, plenty of room for the family, and plenty of value too. Get \$750 cash back now. Don't miss your chance to save!



\$1000 CASH BACK!

Dodge Dynasty is the luxury sedan you can afford to drive. It combines comfort, convenience and style. Plus, you'll enjoy a low clearance price and \$1000 cash back too.



\$2000 CASH BACK!

Dodge D150 full-size pickups are tough to beat. With the highest pickup cash back around - \$2000! \$1500 on Club Cab. \$1000 on diesel models. Save big now, before it's too late!

HURRY! TIME TO MOVE ON BIG CASH BACK AND LOW CLEARANCE PRICES.

The '91's are coming soon, so now's the time to move! We're clearing out our inventory to make room. Now you can save big on a full lineup with low clearance prices. And big cash back on most models, too.

*Must buy from stock.
BUCKLE UP...AND PLEASE DRIVE SAFELY.

Advantage: Dodge

Muleshoe Motor Co.

1225 W. Amer. Blvd.

272-4251



SAE 15W/40 FLEET HEAVY DUTY 10 TBN MOTOR OIL

MULTIPURPOSE PREMIUM PROTECTION FOR GASOLINE & DIESEL ENGINES

Conoco Multipurpose lubricants help you reduce your inventory and the risk of misapplication.

SAE 15W/40

Fleet Heavy Duty 10 TBN Motor Oil 2.59 Gallon

12.95 5 Gal. Pail 142.45 55 Gal. Drum

SAE 30W

Fleet Heavy Duty 10 TBN Motor Oil 2.49 Gallon

12.45 5 Gal. Pail 136.95 55 Gal. Drum

BULK LUBRICANTS DIESEL FUEL



HOTTEST BRAND GOING*

TECHNICAL ASSISTANCE GASOLINE

CONFUSED ABOUT HYDRAULIC OILS?



Why gamble with off brands, unknowns, and re-runs, when you can buy Conoco Super Hydraulic oils for less \$?

These universal oils are excellent for systems with pumps of all types. They meet the most rigid specifications. Available in the popular ISO viscosity 32, 46, and 68.

CONOCO SUPER HYDRAULIC OIL

1.99 Gallon

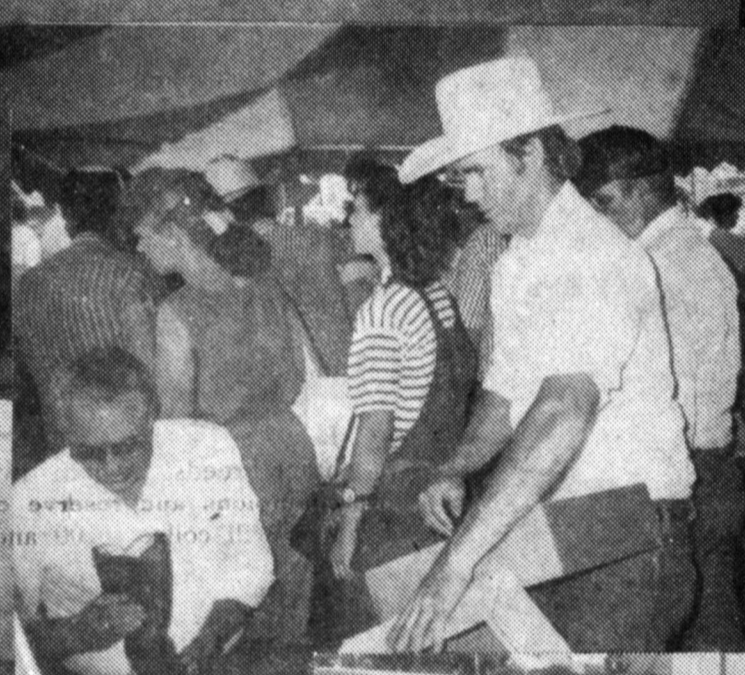
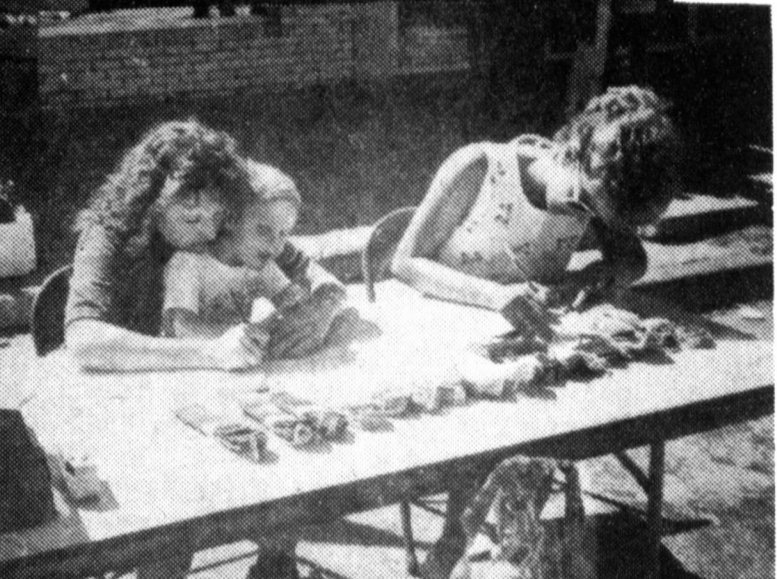
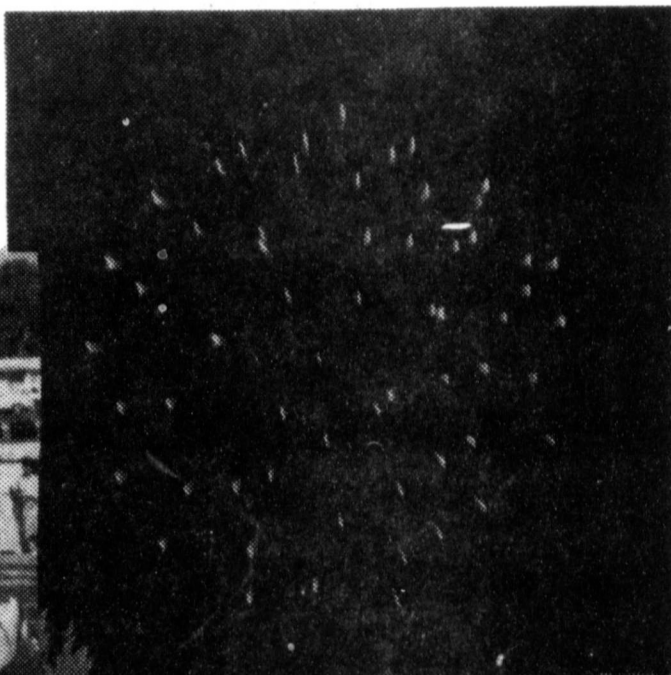
109.45 55 Gal. Drum 9.95 5 Gal. Pail

Morrison Oil Company

P.O. BOX 750 MULESHOE, TEXAS

272-4688

More 4th of July Happenings In Muleshoe !!



Fire Department

News

by: Ralph Sanchez

On July 22-27, the Muleshoe Fire Department will send ten firemen to the 61st Annual Municipal Texas Firemen's Training School at Texas A&M University in College Station Texas. Each fireman will receive forty hours of training in fire fighting, fire rescue, emergency dispatching and fire prevention.

The firemen that will be attending are Alton Parker, J.O. Parker, Charles Lorange, Jimmy Mills, Larry Rasco, Jack Dunham, Ralph Sanchez, John McCutchen, Tony Scolley and Raul Torres.

Alton Parker has attended Texas A&M fire school for the past fourteen years. Parker has received training in Fire Fighting one, two, three and four; Fire Prevention one, two and three; Public Safety Emergency Service Dispatching one and Fire Rescue Practices. This year he will receive training in Public Safety Emergency Service Dispatcher two.

Charles Lorange has attended Texas A&M fire school for the past seven years. Lorange has received training in Fire Fighting, one, two, three and four; Fire Prevention, one; Fire Department Pump Operation and Public Safety Emergency Service Dispatcher. This year he will receive training in Methods of Teaching Fire Service Subjects.

Jimmy Mills has attended Texas A&M fire school for the past three years. Mills has received training in Fire Prevention, one, two, and three. This year he will receive training in Fire Prevention, four.

Larry Rasco has attended Texas A&M fire school for the past three years. He has received training in Mass Casualty-Transportation Emergency, and Fire Service Rescue Practices. This year Rasco will receive training in Fire Prevention, four.

J. O. Parker has attended Texas A&M fire school for the past eleven years. He has received training in Fire Fighting, one, two, and three; Fire Prevention, one, two and three; Methods of Teaching Fire Ser-

Former Morton

Resident Dies

In Indiana

Funeral services for Myrle Hopkins, 69, formerly of Morton were held at 11 a.m. Monday in Ellis Funeral Home Chapel in Morton with Rev. Elvin Criswell who is a retired Baptist minister from Tucumcari, N.M. officiating. Interment was in Morton Memorial Cemetery under direction of Ellis Funeral Home of Morton.

Mrs. Hopkins died at 6:20 a.m. July 12, at the home of a daughter in Ft. Wayne, Indiana.

She moved to Indiana in November, 1989, from Azle, TX where she had lived from 1985 to 1989. She also formerly lived in Perryton.

She was born August 10, 1920 in Gorman and was a homemaker. Her husband, Robert Hopkins, preceded her in death in December, 1976.

Her survivors include a son, Fred W. Kee Jr., of Bakersfield, CA; a daughter, Sondra Whitmore of Ft. Wayne, Ind.; a sister, Aby Rossen of Levelland and a brother, C. K. Stegall of Azle, TX. She is also survived by two grandchildren, Eric Wilkins of Irving, TX and Stefanie Whitmore, Ft. Wayne, Ind.

vice Subjects; Fire Service Practices, one and two; and has been an instructor for three years. This year he will be instructing Agro-Rescue. Parker received a letter from Texas A&M University stating this:

Dear Mr. Parker,
The Texas Firemen's Training School is pleased to request your services as a guest instructor during the Municipal Texas Firemen's Training School to be conducted July 22-27, 1990 at Texas A&M University. In order to conduct this week of intensive training, we must depend upon highly qualified and experienced personnel made available by municipalities, industries, Manufacturers, state and federal agencies and the armed services. We would appreciate your serving in the capacity indicated on the instructor roster enclosed.

Fire Service Agro-Rescue Texas A&M University Jack Dunham, Ralph Sanchez and John McCutchen have attended Texas A&M fire school for one year. Dunham has received training in Fire Department Pump Operations and this year he will receive training in Methods of Teaching Fire Service Subjects. Sanchez has received training in Fire Fighting, two and this year he will receive training in Fire Prevention, one. McCutchen has received training in Fire Fighting, one and this year he will receive training in Fire Fighting, two.

Scolley and Torres will be attending fire school for the first time. Scolley will receive training in Fire Fighting, one and Torres will receive training in Fire Service Rescue Practices, one.

Retired Maple

Farmer Funeral

Held At Morton

Services for Augustine M. Chavez, of Morton, and formerly of Maple, were conducted at 2:30 p.m. Monday at St. Ann Catholic Church in Morton, with Father Elbert Fadallan, pastor, officiating. Burial was in Morton Memorial Cemetery under direction of Ellis Funeral Home in Morton.

He died at 8 a.m. Friday, July 13, in St. Mary's Hospital in Lubbock, following an illness.

He was born November 30, 1911 in White Oaks, N. M. He was married to Juanita Chavez Zamora on February 18, 1939 in Carrizozo, N.M. He was a farmer and a member of St. Ann's Catholic Church in Morton.

His survivors include his wife, Juanita Chavez; five sons, Dick Chavez, Bledsoe; John Chavez, Jerry Chavez and Paul Chavez, all of Morton and Roger Chavez, Whiteface; two daughters, Julia Lemley, Plains and Mary Lou Morales, Whiteface; two sisters, Virginia Farmer, Alamogordo, N.M. and Stello Vullo, Tularosa, N.M.; two brothers, Eloy Chavez, Alamogordo, N.M. and Juan Chavez, Clovis, N.M.; 22 grandchildren and 13 great-grandchildren.

**Cash Rewards
Up To \$1,000**

For Information!

**Call
Bailey County
Crime Line
272-HELP**

Health Warning For Diabetics

Dr. Carlos Verdonk, an endocrinologist at Scott and White and Associate Professor at Texas A&M University College of Medicine, said that in addition to knowing the risks to their feet, diabetics need to store their insulin properly and they need to also guard against dehydration and sunburn.

Lori Pettigrew, an endocrine nurse clinician at Scott and White, explained that "any temperature above 78 degrees will cause damage to insulin and that any temperatures above 86 degrees will seriously impede the accuracy of the blood sugar monitoring devices. Pettigrew recommended that patients store their insulin in a dry styro-foam cooler if they do

not have home or car air-conditioning. She said patients should not store these devices in the refrigerator because it is too damp and will damage the insulin and the monitoring devices.

Becoming dehydrated or sunburned can cause blood sugar levels to increase, Pettigrew said. She recommended that patients with diabetes "drink plenty of non-calorie containing fluids and use sunscreens and lip balms with an SPF of at least 15".

Most patients with diabetes are aware of the special problems related to their disease, however, during the heat of the summer these problems become even more pronounced.

Three Way News

by: Mrs. H.W. Garvin

Darlele and Darla Dolle visited Mrs. H. W. Garvin Friday afternoon.

Mrs. Bobby Kindel and Robin were in Lamesa Monday on business.

Mrs. Bill Dolle and Darla were in Lubbock Wednesday on business.

Mrs. Beck Martin from Canyon spent Thursday night with her sister, Mery Kindel. They went to Roswell Friday and Saturday to be with a sister who is in a Roswell hospital.

Mr. and Mrs. Joe Sowder and Joe's mother, Opal Ruth Sowder, from Muleshoe spent the weekend in Logan, N.M. visiting their daughter the Jack McCarty family.

We know old men who remember the compliments that came to them as little boys.

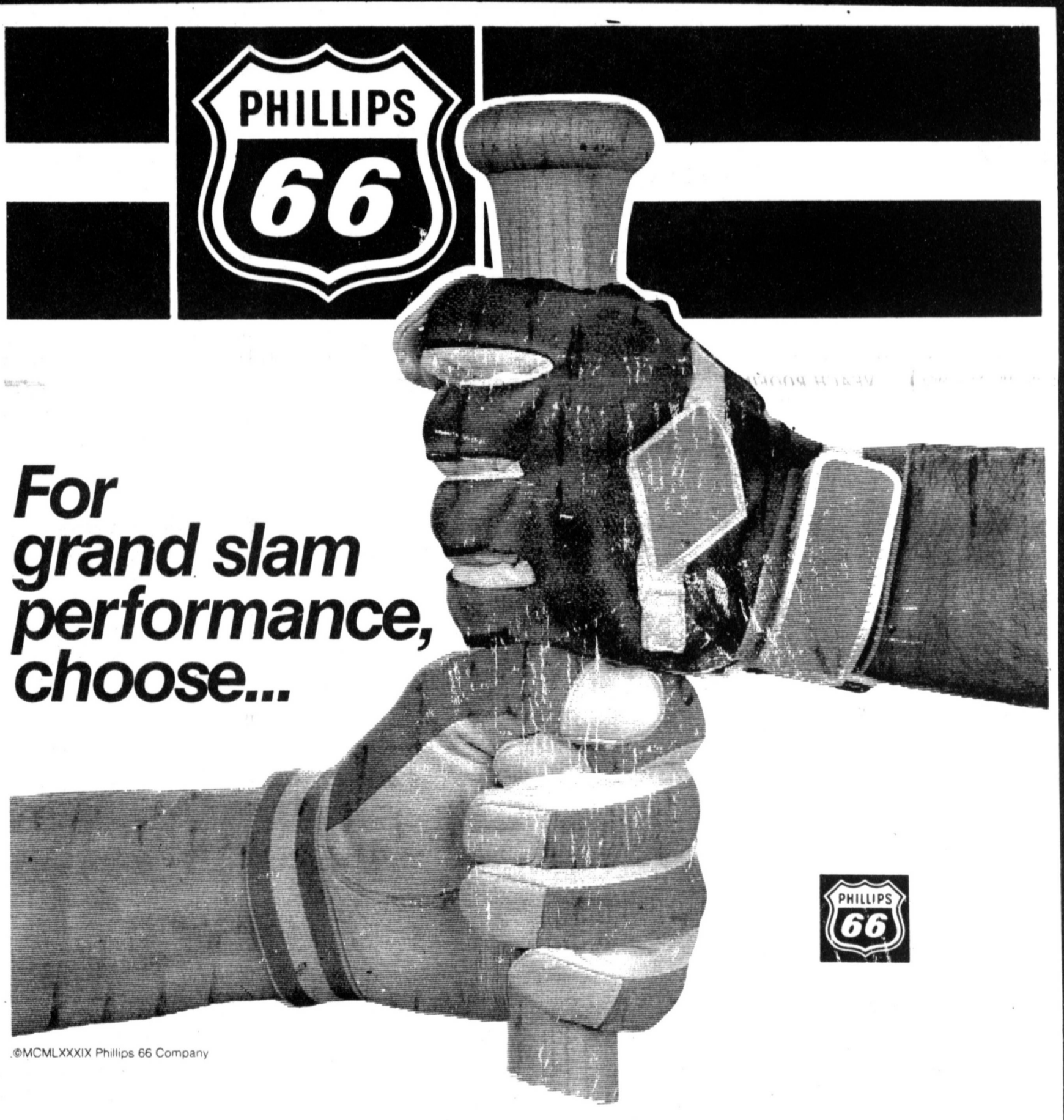
Dial Before You Dig!

Call Energas Company 48 hours before you plan to dig in streets, alleys or easements. We will mark the location of all our pipelines free of charge. Be certain you're safe. Call Energas before you dig.



ENERGAS
1-800-692-4694

Thank You
We would like to thank all of our friends, neighbors, and relatives for their telephone calls, cards, prayers and help during Mr. Vaughans recent heart surgery.
J.D. Vaughan
Beatrice Vaughan & children



For grand slam performance, choose...



**SUPERCLEAN[®]
PREMIUM
UNLEADED**

AVAILABLE NOW!

At Our FUELCARD Station At 715 W. Amer. Blvd.
or Call 272-4556 for Farm Delivery

Western "66" Company

Earth Hwy Muleshoe 272-4556

	1990 Crop		1990		Month
	Pool Cash Advance	Flat	Contract Basis		
Feed Corn.....	Mkt.....	4.59,-0.06	No Bid.....	July	
White Cobb Yellow.....	4.50.....	5.00,0.17	No Bid.....	July	
Red Cobb Yellow.....	4.00.....	4.73,0.01	No Bid.....	July	
White Food Corn.....	5.00.....	6.00,0.73	No Bid.....	July	
Milo.....	Mkt.....	4.00,-0.39	No Bid.....	July	
Soybeans.....	No Pool..	5.23,-0.76	-0.95.....	July	
Wheat.....	No Pool..	2.80,-0.22		KC July	

103%
Prices effective July 17, 1990

Farmer's Co-Op Elevators
272-4335

CLASSIFIEDS 272-4536

CLASSIFIED RATES

15 Words & Under
Minimum Charge
\$2.30
Thereafter
\$2.00
16 Words & Over
1st Insertion
15 cents per word
2nd Insertion
13 cents per word

CLASSIFIED
DISPLAY RATES
\$1.75
Per Column Inch

DEADLINES
12 noon Tues.
For Thursday Paper
12 noon Friday
For Sunday Paper

To receive the re-
duce rate after the
first insertion ad
must run continous-
ly.

We reserve the right
to classify, revise, or
reject any ad. We are
not responsible for
any error after ad
has run once.

1. Personals

CONCERNED
About Someone's
Drinking?
HELP IS
AVAILABLE
through Al-Anon

CALL 272-2350 or
965-2870 or come to
visit Tuesday nights,
8:00 p.m. or Saturday
mornings at 10:30 a.m.
and through AA call
965-2870 or come visit
Tuesday nights, 8:00
at 620 W. Second,
Muleshoe.

3. Help Wanted

ADDRESSERS wanted
immediately! No ex-
perience necessary.
Excellent pay/ Work
at home. Call toll-
free: 1-800-395-3283.
A3-29t-8tc

SALESMAN
NEEDED:
Experience preferred
but will train. Appli-
cations can be picked
up at 1302 W. Amer.
Blvd. No phone calls.
A3-29t-tfc

WANTED: Exper-
ienced machinist and
gearhead man. Call
(806) 238-1596 days or
238-1328 nights-after
9 p.m.
B3-25s-tfc

ATTENTION: Postal
Jobs! Start \$11.41/
hour! For application
info call (1) 602-838-
8885, Ext. M-10191, 6
a.m.-10 p.m., 7 days.
P-2/s-4tp

MULESHOE AREA HOSPITAL

District

Now Accepting Applications
For All Departments

Now Hiring:

MEDICAL CENTER DIETARY
•Cooks helpers •Dishwashers
HEALTHCARE CENTER NURSING
•Licensed Vocational Nurses
•Nurse Aides

For inquiries contact Mona Rosco
at 272-4524 between 8 am - 5 pm
Monday-Friday.

-Equal Opportunity Employers-

11. For Sale Or Trade

FOR SALE: 7-month-
old Gibson refrigera-
tor with a 10 yr.
Golden Warranty. Call
272-3495.
P11-29t-2tp

FOR SALE: 14 x 72
Trailer Mobile Home.
2 bdrm, 1 bath. Good
condition. Priced to
sell -- Call 272-4356.
F11-28t-4tc

FOR SALE: Tandem
axle trailer, 6'x14'.
Call 806-272-4159,
leave message.
W11-28t-2tc

For Sale: Bailey
County Memorial Park
Garden 1 Block 122-
Lots 5 and 6. Call
806/791-5605.
P11-28s-7tp

Priced To Sell: Dia-
mond C Utility Trail-
ers-2 sizes; 1 car
hauler. See at Jarman
Seed or call 965-2738.
P11-28s-2to

FLUTE for sale. Art-
ley flute. Excellent
condition. Call Danny
Shipman at 272-4596
for more information.
11-26s-6tp

15. Misc.

WANTED: Silage cut-
ting. Have 5820 John
Deere cutter with
Kemper head and
supporting trucks.
Call 913-567-4513.
J15-27t-2m-sc

VEACH ROOFING
All Types. Built Up-
Gravel Composition
*Cedar
*Free Estimates
*Work Guaranteed
Jerry Veach, Owner,
272-3208 or 293-5617
15-24s-13tp

REDUCE safe and
fast with GoBese Tab-
lets and E-Vap "Water
Pills." Available at
Damron Drug.
1-24t-6tp

ROUND-UP
APPLICATION
Pipe-wick mounted
on high-bov. Row
Crops. CRP. Vol.
Corn, 30" or 40"
rows. Roy O'Brian,
265-3247.
B11-23t-tfc

9. Automobiles For Sale

FOR SALE: 1984 Chry-
sler Fifth Avenue,
Silver Gray. Nice Car.
And a 1980 Chevy 1/2
ton Pick-Up with top-
per. Standard Shift,
17w mileage. 272-7575
H9-26s-tfc

3. Help Wanted

18. Legals

NOTICE OF OPPORTUNITY

Notice is hereby
given that South
Plains Community Ac-
tion Association, Inc.
is seeking Financial
Assistance from the
U.S. Department of
Transportation under
the Section 18 Grant
Program. Grant funds
will be used to con-
tinue providing Rural
Public Transportation
on a demand response
bases with 24 hour
notice. These services
are for all communi-
ties in Bailey, Coch-
ran, Garza, Hockley,
Lamb, rural area of
Lubbock, Lynn, Terry
and Yoakum counties.
The system will pur-
chase computer and
office supplies, fuel,
maintenance, contract
services, printing ser-
vices and insurance.
Special provisions for
transporting the El-
derly and Handicap-
ped are available.
Fares will be charged
for all transportation.
However, persons re-
ceiving services under
CSBG, SSI, Medicaid,
and JTPA may qualify
for subsidized fares.

Copies of the grant
proposal are available
for inspection by the
public at 411 Austin
Street, Levelland.

Any person wishing
to request a public
hearing on the pro-
posed project must
submit that request in
writing to South
Plains Community Ac-
tion Association, Inc.,
411 Austin Street, Le-
velland, Texas prior to
August 10, 1990.
S18-28t-3tc

8. Real Estate

HOUSE FOR SALE: 3
bedrooms-2 baths; 723
W. Ave. F. Call
272-5498

BIBLE VERSE

"Bear ye one ano-
ther's burdens, and so ful-
fill the law of Christ."

1. Who was the au-
thor of the above ad-
vice?
2. To whom was he
writing at the time?
3. How can one obey
the command?
4. Where may these
words be found?

Answers:

1. Paul, the Apostle.
2. The Christians liv-
ing in Galatia.
3. By being forgiv-
ing and helpful to one's fel-
lowmen.
4. Galatians 6:2.

18. Legals

Newly Formed Dairy Industries Coalition

The nation's dairy farmers
and producers announced the
formation of a Dairy Industry
Coalition to communicate
national policy on industry
issues such as Bovine Somato-
tropin (BST), also known as
"bovine growth hormone,"
(BGH). The Coalition, consisting
of the National Milk Producers
Federation (NMPF) and the
National Dairy Promotion and
Industry, health care profession-
als and consumers about the
safety of milk in conjunction
with the BST issue.

BST is a protein hormone
produced naturally in the pitui-
tary gland of all cattle. The
protein is now being synthe-
sized through biotechnology by
a group of pharmaceutical
companies, which says supple-
mental BST will enhance milk
production. While proponents
and opponents of BST supple-
mentation await a decision from
the U.S. Food and Drug
Administration (FDA) on
whether BST can be marketed
commercially, the Dairy Coali-
tion is maintaining a policy of
neutrality on the decisions made
by dairy farmers whether to use
or not sue BST.

tion is to act as a steward for
the industry in protecting the
integrity of milk. It is the dairy
industry's responsibility and
desire to communicate the facts
about the safety of milk and
milk products, and the Coalition
is following through," Barr
added.
One of the many elements in
the Coalition's education cam-
paign is the establishment of
the Dairy News and Information
clearinghouse to provide ob-
jective information on BST and
milk safety. A scientific advisory
panel will oversee the develop-
ment of informational program
materials and other educational
activities.

Although the FDA has found
no evidence indicating that food
derived from BST-supplemented
cows is unsafe for human
consumption, critics of BST
continue to raise questions
about milk safety.

In 1986, FDA Commissioner
Frank Young testified before a
Congressional committee on the
reasons behind the FDA authori-
zation of human consumption of
milk and meat derived from
animals treated with bovine
growth hormone in the clinical
trials.

"This permission is based on
the safety of bovine growth
hormone to humans. Although
the amino acid sequences of
growth hormones from various
animal species are quite similar,
these hormones are 'species
specific' in certain respects.
None of the growth hormones
isolated from a number of
animal species, including bovine
growth hormone (BST), have
been shown to be biologically
active in humans," Young
testified.

"The dairy industry is caught
in the crossfire between the
pro-biotech and anti-biotech
forces," said James C. Barr,
chief executive officer of NMPF.
"The proper role of the Coali-

"Being neutral on BST
supplementation by farmers in
no way reflects neutrality or
passivity about the integrity of
our produce," said Barr.
"Through the DNIC, key
audiences such as physicians
and other health care providers
will receive sound scientific
information about milk upon
which to base sensible recom-
mendations," commented Barr.

To assist the media and
health care professionals in
educating the public about milk
safety, the DNIC will make
available the names of scientists
and nutrition experts as well as
copies of scientific papers and
abstracts; arrange interviews;
and maintain newspaper and
magazine articles, reports,
transcripts and press releases
from a variety of sources on file.
A toll-free telephone number,
1-800-34 DAIRY, will allow
specific questions from the
media to be handled on a
one-to-one basis.

"The work of the DNIC will
help limit the potential for
unwarranted public concern
based on incomplete or
erroneous information about
milk," said Barr. "Dairy pro-
ducers want public perception to
match the reality: Milk always
has been, is now, and will
continue to be the same safe,
good source of nutrients," Barr
said.

The Dairy Industry Coalition
is committed to communicating
about the continuing safety and
wholesomeness of milk and milk
products.

LEGAL NOTICE

The Three Way Independent School District,
Maple, Texas, will be receiving bids for a
portable modular classroom building at the
Three Way Schools. Bids will be received at
the Superintendent's office until 8:00 P.M.,
July 26, 1990, or may be mailed directly to:

Don W. Parker, Superintendent
Three Way Independent School District
P. O. Box 60
Maple, Texas 79344
Plans and Specs may be acquired from:
Don W. Parker, Superintendent
Three Way I.S.D.
P. O. Box 60
Maple, Texas 79344

to obtain further information concerning the
bidding process, and or plans and specifica-
tions, call (806) 927-5531.

The Board of Trustees of Three Way
Independent School District reserve their
right to reject any and all bids, and waive all
formalities that are in the best interest of the
school district.

Signed:
Don W. Parker, Superintendent
Three Way I.S.D.
Maple, Texas
T18-29t-2tc

8. Real Estate

House For Sale: 3
bdrm, 2 bath. On
farm. 1.5 acres land.
6 1/2 miles East of
Muleshoe on Hwy. 70.
Call 272-2350 or 965-
2781.
P8-28s-4tpS

8. Real Estate

FOR SALE OR RENT:
3 bedroom brick home
with fireplace. Located
3 miles west of Earth
on Highway 70. 272-
3056.
J8-16t-tfc

8. Real Estate

BAILEY COUNTY LAND
FOR SALE
Owner will finance the following size
blocks: 2.80 acres, 3.160 acres, 1-320
acres, and 1-277 acres. Wheat, milo and
cotton allotments. 1 1/4 circles of
permanent grass. 9/8 Center Pivots. A Sweet
Cattle Set-Up.
If interested, contact T.J. Timmons
806-385-4487 (Day) 806-925-6484
(Night)

Shop
Muleshoe
First!

Bingham & Nieman Realty

116 E. Ave. C George Nieman, Broker 272-5285 or 272-5286

RICHLAND HILLS
IMMACULATE 3-2-2 Brick, Cent. A&H,
built-ins, FP, sunken lv. area with
cathedral ceiling, ceiling fans, earthtones,
storage bldg. \$50's!!!

NICE RESIDENTIAL LOTS-\$5,000 UP...

3-2-2 Brick, large corner lot, Cent. A&H,
built-ins, basement area, & more!!!!

NICE 3-2-2 Brick, earthtone carpets, Cent.
A&H, FP, built-ins, fenced yd. \$70's...

3-2-2 Home, heat pump, built-ins, FP,
earthtone carpets, fenced yd., & more.
PRICED TO SELL!!!!

3-2-2 Brick, corner lot, Cent. A&H,
built-ins, FP, patio. \$60's...

HIGH SCHOOL

3-2 Home, remodeled, heat pump, storm
win. & doors, fans, stor. bldg., fenced yd.
\$20's!!!!

PRICE REDUCED 3-1-1 Home, earthtone
carpets, workshop, cellar, fenced yd....

IMMACULATE 2-1-1 Home, Cent. A&H,
nicely remodeled, storm win. & doors,
fenced yd., cellar. \$20's!!!!

2-1 1/2-1 Brick, fl. furn., Cent. Air, fenced
yd., & more. \$20's!!!!

HIGHLAND AREA

VERY NICE 4-2-1 Brick, Cent. A&H,
built-ins, earthtone carpets, util., encl.
patio, storm win. & doors, grill, spktr.
sys., stor. bldg., fenced yd. \$60's!!!!

3-1-1 Home, corner lot, wall heat, fenced
yd. \$20's!!!!

3-2-1 Brick, Cent. A&H, built-ins, FP,
fenced yd., stor. bldg. \$40's!!!!

2-2-2 Brick, corner lot, Cent. A&H,
spacious rooms, cov. patio, fenced yd.
\$40's.....

LENAU ADD.

3-1 1/2 Home, Cent. heat, evap. air, new
paint & cabinet top, fenced yd., stor. bldg.
\$30's!!!!

NICE 4-2-2 carport Home, Cent. A&H,
built-ins, FP, Cent. Va., Office, Sewing
area, fenced yd. \$40's....

3-1 Home, corner lot, wall furn., fenced
yd. \$20's!!!!

COUNTRY HOMES

3-1-2 Home on 4.25 ac. on pavement close
to town, 2 large (barns-workshop).
\$50's.....

3-2-3 carport Home on 11 ac. edge of
town, Cent. A&H, built-ins, cellar, barns,
& corral. \$50's!!!!

NICE 3-2-1 Home on 1 acre close to town,
Cent. heat, evap. air, nice carpets,
remodeled. \$30's!!!!

COMMERCIAL TRACT 175'X100' (Hwy.
70 & 84, RR spur access, approx. 1200 sq.
ft. bldg. PRICED TO SELL....

3-2 Home on 1 acre close to town, Cent.
A&H, built-ins spacious rooms, stor-
workshop. \$40's!!!!

3-2-2 Brick on 25 acres close to town,
Cent. A&H, built-ins, shop, barn, good
fence, & more....

3-1-1 Home on approx. 5 acres, edge of
town, dom. well & irrig. well, barns, &
more. \$20's!!!!

2-1 Home, 20 acres, sub. pump, sprinkler,
barns, & corral. \$40's....

Nice 3,500 sq. ft. office bldg. across from
Courthouse. PRICED TO SELL!!!!

8. Real Estate 8. Real Estate

Henry Realty

111 W. Ave. B. 272-4581
Muleshoe, Tx.

Country Club Addn.-3 Bdrm, 2 bath, 2 car
garage. Brick, central heat and air.
Spacious rooms with carpet. On corner lot.
Fireplace. Fenced back yard with above
ground swimming pool-4 ft. deep. Dish-
washer, built-in cook top and electronic
digital oven. Dream home at low price!

2 Bedroom, 1 bath, fireplace, Lenau
Addition. A good buy. \$15,000.

NEW LISTING 3 Bedroom, 1 bath Lenau
Addition. Well insulated with storm door
and windows. Patio room with Thero pane
windows and free standing wood burning
stove. Landscaped to perfection with easy
care of grounds. Low utility cost. Priced to
sell.

3 Bdrm., 2 bath, spacious home outside city
limits, near city on highway. 29x40 metal
building. Lot 85'x420'.

COMMERCIAL PROPERTY-Ideal location
on West American Blvd. 150' highway
frontage. A great business opportunity.

SPACIOUS-2 Bdrm., 2 bath, with garage.
Freshly painted. Fireplace. Ready to move
in.

RICHLAND HILLS-3 bedroom, 2 bath, 1
car garage Brick Home. Central heat and
air, carpet, shop, storm cellar. Storage for
motor home, metal trim, beautiful yard.
Built in range and oven, plus washer and
dryer.

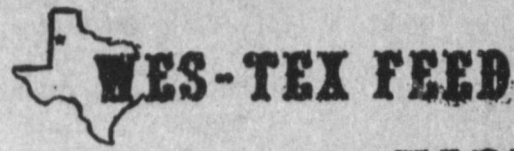
3 Bedroom, 2 bath, carpet, large living
room. Excellent condition, near high school.
Priced to sell.

**MULESHOE
AREA**

**Spring/
Summer '90**



**BUSINESS
DIRECTORY
AND
SHOPPING GUIDE**



YARDS, INC.

Custom Cattle Feeding

Wes-Tex Feed Yards, Inc.

272-7555



Henry

Insurance Agency,

Inc.

"Serving You Since 1964"

KENNETH R. HENRY
CERTIFIED INSURANCE
COUNSELOR
REAL ESTATE BROKER



111 W. AVENUE B
PHONE 806/272-4581
MULESHOE, TEXAS 79347

161 Days, Hours, Minutes
Whatever, it still isn't
3864 long until
231840 CHRISTMAS
THE MULESHOE
ART LOFT
away



W.T. Services Inc.

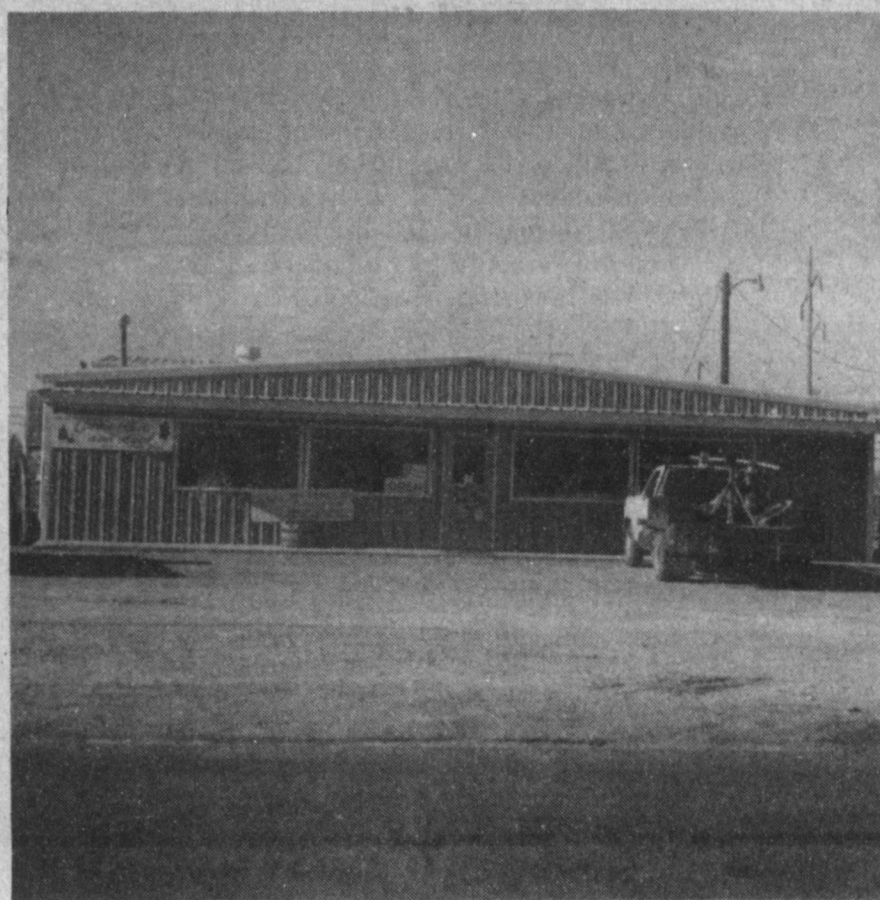
319 E. American Blvd.
MULESHOE, TEXAS 79347

**Mobile Communications
Two-Way Radio Repair**

GARY PARKER
Technician

Muleshoe - 806-272-4888

Hereford - 806-364-7311



Pivot Products located at 710 E. Amer. Blvd. is ready to take care of all your irrigation needs whether it's repairing your old system or building a new one.

They have parts & service for most irrigation systems. They also specialize in Center Pivot moving and structural repairs of pivots.

They have drip irrigation parts and other lawn and garden supplies.

Come by and visit with Arnold and the friendly personnel today about all your irrigation needs.

**Pivot Products
Distributors, Inc.**

710 E. Amer. Blvd.

272-5536



Closed Mondays
1606 W. Amer. Blvd.
272-3294

TOPPED SOPAIPILLA
Sopaipilla topped with
ground beef, cheese, lettuce,
tomato & guacamole

\$4.79



**Pivot Products Distributors,
Inc.**

*We're Your Complete
Irrigation Headquarters
Specializing In Low Pressure
Drops & Accessories!*

710 E. Amer. Blvd.

272-5536

**Solar Surge Values
Are Now On Sale For
\$695⁰⁰ to \$895⁰⁰**

*We have a large supply of parts
for your irrigation requirements!*

Irrigation Supply

J.C. & Zona Gatewood

607 E. Amer. Blvd.

272-4466

Viola's Restaurant

2002 W. Amer. Blvd.

272-3838

Closed Tuesday



**No. 2
COMBINATION
PLATE**

Chile Relleno, 2
Enchiladas (Meat or
Cheese)

\$4.75

Irrigation Battery Sale

\$28⁰⁰

w/exchange

Scoggin Ag Center, Inc.

"Where Fertilizer Is Our Business"

1532 W. Amer. Blvd.

272-4613

**5 Locations
To Serve You!**

•Clays Corner •Enochs •Muleshoe
•Pleasant Valley •Old Griffith

**Farmer's
Co-Op Elevator's**

272-4335



6.99 While supplies last
2-Pk. 20-Oz.

Protectant 101628P
QUANTITIES LIMITED



ARMOR ALL

Fry & Cox, Inc.

401 S. 1st.

272-4511