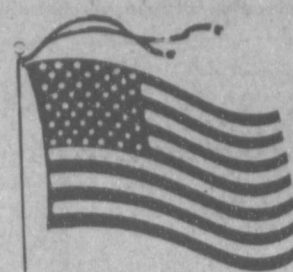


## WEATHER

April 1	66	35	.00
April 2	70	40	.00
April 3	65	39	.00
April 4	72	35	.00

# Muleshoe Journal

The Community Of Opportunity-Where Water Makes The Difference



Vol. 68, No. 14

12 PAGES TODAY

Published Every Thursday At Muleshoe, Bailey County, Texas 79347

MEMBER 1990  
TEXAS PRESS  
ASSOCIATION

20¢

THURSDAY, APRIL 5, 1990

## Commissioner Run-Off Election Tuesday

### around muleshoe

Community Committee will meet Thursday, April 5, at 7 p.m. in the Muleshoe State Bank meeting room.

It is very important for all clubs, organizations, churches, individuals to be represented.

"We will start planning the Mule Days, and highlight July 4th events," said Nancy Kidd, manager of the Muleshoe Chamber of Commerce and Agriculture.

\*\*\*

Muleshoe High School classmates of 1980 are reminded to please RSVP now for the 10th year class reunion on July 7.

Needed are your information and pictures, whether you plan to attend or not so the books and program can be completed.

You may enclose your payment with your RSVP or pay later.

If you have questions, call Shelly Turnbow at 272-5719.

\*\*\*

All parents of juniors are urged to attend a junior parent meeting Thursday, April 5, at 5:30 p.m. at the Old Corral.

At this time, a discussion will be held on Project Graduation for 1990-91 seniors.

\*\*\*

All MHS seniors take note: Applications for the Kristy Landers Memorial Scholarship are available from the MHS counselor or call 272-4488, nights. Final date to turn in the application form is April 13.

\*\*\*

Two of the 1989-90 Lady Mules' basketball team members have attained additional honors, according to Coach Davis.

Wendy Green was chosen to play on the West Team in the Golden Spread All-Star basketball game at Amarillo tonight, Thursday.

Gametime is 8:30 p.m. in the Amarillo Civic Center.

Heather Hutton was chosen to the third team, TABC All-Region basketball team.

\*\*\*

Jayson L. Vincent, son of Kenneth H. and Ruth P. Vincent, Sudan, has been promoted in the U. S. Air Force to the rank of airman first class.

Vincent is an apprentice air traffic control operator with the 2040th Communications Squadron at Cannon Air Force Base, N.M.

\*\*\*

Students wishing to transfer into the Muleshoe Independent School District for the 1990-91 school year must complete a request for transfer by April 30, 1990. All transfer requests will be sent to the Texas Education Agency for approval.

Anyone having questions or wishing to complete a request for transfer may contact Jean Richardson at the school superintendent's office no later than 5 p.m. on April 30.

\*\*\*

Army Capt. Danny M. Carter has arrived for duty in West Germany.

He is a battalion supply officer with the 84th Ordnance Battalion.

Carter is the son of Don R. and Delores W. Carter of Amherst.

The captain graduated from Amherst High School in 1974, and received a master's degree from the Florida Institute of Technology, Melbourne, in 1989.



**BAND ENTERTAINS AT DINNER THEATER**--Under direction of band director Mark Heidel, forefront, the Muleshoe Mighty 'M' Concert band provided part of the entertainment for the annual Fine Arts Booster Club's Dinner Theater Monday night. Next week, the band will be in competition in Lubbock. You are encouraged to attend and back the band's performance. (Journal Photo)

## New Hospital Administrator Introduced To Rotary Club

Tuesday's Rotary speaker is a near (or nearby?) native. Richard Murphy, who took over the helm as administrator at Muleshoe Area Medical Center on Monday, spoke to the Rotary after being

asked by Dr. Bruce Purdy to be the speaker.

Murphy said he had exactly 23 minutes notice that he would be the speaker for Rotary, but, in a positive, and short, manner,

made himself acquainted with a number of Rotarians, who are also local agriculture and business leaders.

As Dr. Purdy was called to the hospital on an emergency, the speaker was introduced by Rotarian (and Muleshoe Area Hospital District President) Tim 'Buck' Campbell.

Murphy came to Muleshoe from a 'rural' hospital 185 miles from Muleshoe. He said Colorado City has a population of 5,000 with 15,000 county residents. He said that basically, his 11 years with Colorado City, and a number of years before that with a hospital in Sweetwater had provided him a heritage of small hospitals.

He compared the two hospitals and said Colorado City had a 39-bed hospital and 50-bed nursing home, much like the operation in Muleshoe.

"All rural hospitals face basically the same problems," said Murphy. "They are all looking for physicians willing to make their home in a rural setting. They are all looking for other professionals, including registered nurses, lab technicians and x-ray technicians."

He told the Rotarians that most everyone was aware that government interest in paying for health care had declined since 1983, and it was a daily battle to obtain funds for hospitals, especially rural hospitals, to keep their doors open.

"It takes the cooperation of every resident that the small rural hospital serves to make it successful," said the speaker. "Where services are not available, arrangements then can be made elsewhere."

In listing things that sold him on Muleshoe, Murphy first cited the great community effort, and the more than 90 percent positive vote to create the hospital district. "That's not true in a majority of hospitals," he added, "and I include the hospital at Colorado City."

He told briefly about his family background. While attending Abilene Christian College following his graduation from Clovis High School, Murphy met his wife, Barbara.

They are the parents of four

## Gubernatorial Candidates, Others Also On Ballots

Tuesday will be election day again in Bailey County.

Five offices for the Democratic Party and two for the Republican party will be listed on ballots to be distributed to all voting boxes in the county.

All seven Democratic voting boxes will be open in the county, and the Republican voting box in the rear of the Muleshoe Public Library will be open 7 a.m.-7 p.m. on election day.

Today, at 5 p.m., will be the final date to vote absentee in the run-off election in the office of Bailey County District Clerk Barbara McCamish.

Only one local race will be listed on either ballot. This is the run-off election between the two candidates for Bailey County Commissioner, Precinct Four.

Listed on the ballot for commissioner will be Bula farmer and former cotton gin operator, Bennie Claunch.

Longtime Muleshoe businessman Alfonso Posadas is his opponent.

Both are political newcomers, and are seeking the commissioner slot being vacated by Rudolph Moraw, who is retiring at the end of 1990.

Vying for a spot on the ballot for the November general election are gubernatorial candidates Jim Mattox and Ann W. Richards.

Democratic state treasurer opponents on the ballot will be Tom Bowder and Nikki Van Hightower.

Justice, Supreme Court, Place Two, will have Bob Gammage and Ross Sears in the run-off, while Frank Maloney will face Morris L. Overstreet, for Judge, Court of Criminal Appeals, Place One.

On the Republican run-off ballot are Wes Gilbreath and Grady Yarbrough, each seeking a place on the general election ballot for commissioner of general Land office.

Richard McIver and Rick Perry are both vying for commissioner of agriculture.

## July 4th, Mule Days Parade Information

Summer is celebration time, and along with celebrations -- come the parades -- traditionally enjoyed by everyone.

In conjunction with two upcoming celebrations -- July Fourth and Mule Days -- the Muleshoe Chamber of Commerce and Agriculture has released the rules for parades for the two celebrations for July and August.

This year, the parade theme for both parades will be "Unity" 1990.

Rules include for floats: all entries must have signs on both sides of the float with the name of the sponsoring club or organization. The sign should show the name or theme of the float, if any, and be readable from a distance of ten yards.

For antique cars and unique vehicles (separate classes): all entries must have signs indicat-

ing the make, model and year displayed prominently either on both sides or on the front and rear of the car. The sign should also give the name of the owner and/or driver.

Other cars: cars carrying a dignitary or dignitaries must also have a sign or signs indicating who the dignitaries are, by both title and name, displayed in rule 2 above.

Riding clubs: the Chamber will secure judges to judge by the rules of the American Association of Sheriff Poses and Riding Clubs.

Commercial: All entries must have signs on both sides of the entry with the name of the sponsoring business. The sign should show name or theme of entry and should be readable from a distance of ten yards.

Cont. Page 6, Col. 1

## Ten MHS Students In Regional Contests

Several students qualified for the Regional UIL Tournament in Odessa on April 21. Congratulations go out to each student for representing Muleshoe High School in such a splendid way.

Those qualifying for regional competition, and their events, are as follows:

Dustin Elliott won third place in Science; Adelaido Godinez won second place in Lincoln-Douglas Debate; Jason Clarkson

won third place in Lincoln-Douglas Debate; Stephanie Cox was in third place in Poetry Interpretation and Brandon Mullins won first place in Prose Reading.

Also, Patricia Del Toro won second place in Prose Reading; Kimberly Chance won third place in Prose Reading; Jason Harmon won first place in Informative Speaking; Steve Garcia won second place in Informative Speaking and Jason Clarkson won first place in Persuasive Speaking.

The Area One Act Play Contest will be held Saturday, April 7 in the Muleshoe High School Auditorium. Contest action begins at 1 p.m. when Canyon High School presents the first show, *Tom Jones*.

At 1:45, Muleshoe High School will present their play, *Romeo and Juliet*. At 2:30, Sanford Fritch will go on stage with their show, *The Curious Savage*, and Friona Will follow at 3:15 with their play, *The Crucible*.

The cost for seeing the shows will be \$2 for the entire afternoon. The two winning plays will advance to the Regional Tournament in Odessa, to be held on Friday, April 20. The contest is held at Odessa High School.

Muleshoe High School cast members for *Romeo and Juliet* are:

Jason Clarkson, Greg Combs, Andy Langfitt, Kip McCall, Amy Turner, Stephanie Cox, Michelle Holmans, Virgil Snell, Clarence Lewis, Brett Pylant, Cory Collins, Marsha Wilson, Chris Dominguez, Kyle Kenmore and Mark Hicks.

Crew members include: Guy Wiley, Cary Skaggs, John Orozco, Jeff Bradley, Kimberly Chance, Tami Randall and Brandon Mullins.

## Lazbuddie Youth Continue Contests In Stock Judging

Members of the Lazbuddie FFA Livestock Judging team competed at WTSU, Canyon and in Clarendon over the weekend.

Last Friday, at WTSU in Canyon, the team placed 10th high out of 53 teams in the Cattle competition. Members of the team were Casey Russell, Casey Bradshaw, Jason Morris and Lance Ivy.

Competing individually in the horse judging were Clint Farris and Kirk Jesko.

Eric Williams and Craig Russell competed in dairy cattle judging.

On Saturday, at Clarendon, the judging teams placed 17th high out of 51 teams entered.

Members of the cattle judging team were Casey Russell, Casey Bradshaw, Jason Morris and Lance Ivy.

Individually, Justin Morris placed 39th, out of 110 individuals entered in the horse judging; and Clint Farris placed 47th out of 110 individuals in the horse judging.

Today, Thursday, the judging teams are competing in Abilene, and will be in competition in the area contest this Saturday at Texas Tech, Lubbock.



**HOSPITAL ADMINISTRATOR INTRODUCED**--Tuesday at noon, Tim 'Buck' Campbell, left, president of the Muleshoe Area Hospital District board, introduced Richard Murphy, right, new administrator for Muleshoe Area Medical Center. Murphy spoke briefly to the Rotary Club. (Journal Photo)

## Jennyslipper Easter Egg Hunt - Saturday - New City Park

10 a.m. - ages 1 & 2

12 noon - ages 5 to 7

11 a.m. - ages 3 & 4

1 p.m. - ages 8 to 10



 <b>CHICKEN OF THE SEA</b> <b>IN OIL OR WATER</b> <b>LIGHT</b> <b>CHUNK TUNA</b> 6.5 OZ. CAN <b>49¢</b>	 <b>KRAFT</b> <b>MIRACLE WHIP</b> 32 OZ. JAR <b>\$1.79</b>	 <b>KELLOGG'S</b> <b>RICE KRISPIES</b> 13 OZ. BOX <b>\$1.19</b>	 <b>BONUS BAG</b> <b>PURINA</b> <b>HI-PRO DOG FOOD</b> 30 LB. BAG <b>\$8.99</b>	 <b>ASSORTED</b> <b>HILLS BROS. COFFEE</b> 39 OZ. CAN <b>\$4.89</b>	 <b>TEXSUN PINK</b> <b>GRAPEFRUIT JUICE</b> 46 OZ. CAN <b>99¢</b>	 <b>LAUNDRY</b> <b>SURF DETERGENT</b> 147 OZ. BOX <b>\$5.99</b>	 <b>FABRIC SOFTENER</b> <b>DOWNY</b> <b>LIQUID</b> 64 OZ. JUG <b>\$1.99</b>
--	---	--	--	--	--	--	---

# NATIONAL BRANDS

## Save

 <b>ALL NATURAL</b> <b>WESSON OIL</b> 24 OZ. BTL. <b>99¢</b>	 <b>DEL MONTE</b> <b>KETCHUP</b> 32 OZ. PLASTIC BTL. <b>99¢</b>	 <b>DEL MONTE</b> <b>TOMATO SAUCE</b> 8 OZ. CANS <b>5 99¢</b>	 <b>EARTHTONE-</b> <b>ASSORTED</b> <b>HI-DRI PAPER</b> <b>TOWELS</b> JUMBO ROLL <b>2 99¢</b>	 <b>ALL TYPES</b> <b>3 LITER</b> <b>COCA-COLA</b> <b>\$1.59</b>
--	---	---	--	---

<b>HORMEL LITTLE SIZZLER</b> 12 OZ. LINKS OR ROLL OR 10 OZ. PATTIES <b>99¢</b> <b>WILSON'S CORN KING REG./POLISH SMOKED SAUSAGE</b> LB. <b>\$1.79</b> <b>WILSON'S SLICED MEAT BOLOGNA</b> 1 FULL LB. <b>\$1.49</b> <b>WILSON'S SMOKED-A REAL TREAT PORK CHOPS</b> LB. <b>\$2.49</b> <b>WILSON'S SLICED JALAPENO BOLOGNA</b> 12 OZ. PKG. <b>\$1.19</b> <b>OSCAR MAYER REG. OR BUN LENGTH WIENERS</b> 1 LB. PKG. <b>\$1.59</b> <b>OSCAR MAYER SLICED COOKED HAM</b> 12 OZ. PKG. <b>\$3.29</b> <b>LOUIS RICH SLICED SMOKED TURKEY BREAST</b> 6 OZ. PKG. <b>\$1.59</b> <b>LOUIS RICH TURKEY SLICED BACON</b> 12 OZ. PKG. <b>\$1.69</b> <b>OWEN'S ASSTD. FROM SPRING CREEK FARMS PORK SAUSAGE</b> 2 LB. ROLL 1 LB. ROLL <b>\$1.89</b> <b>25¢ COUPON ON ITEM AT THIS TIME OWEN'S REGULAR OR HOT SAUSAGE &amp; BISCUITS</b> 12 OZ. PKG. <b>\$1.79</b>	 <b>HORMEL CURE 81</b> <b>"AMERICA'S PREMIUM BONELESS HAM"</b> FULLY COOKED 3 TO 4 LB. AVG. <b>BONELESS HALF HAM</b> <b>\$2.69</b>	 <b>BLACK LABEL SLICED "THE SUNDAY BACON" REG./LOW SALT/MESQUITE</b> <b>HORMEL BACON</b> 1 LB. PKG. <b>\$1.69</b>	 <b>COUNTRY STYLE "LOTS OF MEAT" PORK RIBS</b> LB. <b>\$1.69</b>	 <b>SUPER SELECT LEAN TRIM CENTER CUT PORK CHOPS</b> LB. <b>\$2.39</b>
--	--	---	--	--

<b>JENOS ASSORTED PIZZA ROLLS</b> 6 OZ. PKG. <b>99¢</b> <b>STILWELL BREADED OKRA</b> 24 OZ. PKG. <b>\$1.29</b> <b>STILWELL ASSORTED FRUIT COBBLERS</b> 32 OZ. BOX <b>\$2.19</b> <b>HALF-MOON COLBY OR MILD CHEDDAR KRAFT CHEESE</b> 16 OZ. PKG. <b>\$3.00</b> <b>KRAFT MILD CHEDDAR/COLBY/MONT. JACK SHREDDED CHEESE</b> 8 OZ. PKG. <b>\$2.00</b> <b>TOUCH OF BUTTER KRAFT SPREAD</b> 3 LB. TUB <b>\$2.00</b>	<b>EXTRA THICK OR REG. AMERICAN KRAFT SINGLES</b> 12 OZ. PKG. <b>\$2.00</b> <b>KRAFT PHILADELPHIA CREAM CHEESE</b> 8 OZ. PKG. <b>\$1.00</b> <b>KRAFT GRATED PARMESAN CHEESE</b> 8 OZ. CAN <b>\$3.00</b> <b>KRAFT CHEEZ WHIZ</b> 16 OZ. JAR <b>\$3.00</b> <b>KRAFT VELVEETA</b> 32 OZ. BOX <b>\$4.49</b> <b>KRAFT JALAPENO OR FRENCH ONION DIP</b> 8 OZ. TUB <b>69¢</b>	<b>WASHINGTON RED OR GOLDEN DELICIOUS APPLES</b> 3 LB. BAG <b>99¢</b> <b>CALIFORNIA BROCCOLI</b> BUNCH <b>69¢</b> <b>SNOW WHITE CAULIFLOWER</b> HEAD <b>89¢</b> <b>SEEDLESS RED GRAPES</b> LB. <b>89¢</b> <b>SWEET AND JUICY NAVEL ORANGES</b> 3 LBS. <b>\$1.00</b> <b>SWEET AND JUICY CANTALOUPE</b> LB. <b>59¢</b>	 <b>CALIFORNIA ICEBERG LETTUCE</b> 2 HEADS <b>79¢</b>
--	---	---	--

<b>GRANULATED IMPERIAL SUGAR</b> 5 LB. BAG <b>\$1.89</b>	<b>LONG GRAIN COMET RICE</b> 14 OZ. BOX <b>FREE</b> BUY ONE-GET ONE	<b>KRAFT ASSORTED BARBECUE SAUCE</b> 18 OZ. BTL. <b>\$1.00</b>	<b>60 SML./44 MED. OR 32 LARGE HUGGIES DIAPERS</b> CONVENIENCE PKG. <b>\$8.99</b>	<b>SPAM ASSORTED LUNCHEON MEAT</b> 12 OZ. CAN <b>\$1.59</b>	<b>HUNT'S ASSORTED SPAGHETTI SAUCE</b> 27.5 OZ. CAN <b>99¢</b>	<b>HORMEL VIENNA SAUSAGE</b> 5 OZ. CANS <b>2 89¢</b>	<b>OCEAN SPRAY CRANAPPLE JUICE OR CRANBERRY JUICE</b> 48 OZ. BTL. <b>\$2.29</b>	<b>HUNT'S ASSORTED SNACK PAK PUDDINGS</b> 4 PK. CTN. <b>\$1.19</b>
--	--	--	---	---	--	--	---	--

<b>KINGSFORD CHARCOAL LIGHTER</b> 32 OZ. BTL. <b>\$1.89</b> <b>IMPERIAL BROWN SUGAR</b> 2 LB. BAG <b>\$1.19</b> <b>IMPERIAL POWDERED SUGAR</b> 2 LB. BAG <b>\$1.19</b> <b>INSTANT NESTEA TEA</b> 3 OZ. JAR <b>\$2.89</b> <b>DECAFFEINATED COFFEE</b> <b>\$2.99</b> <b>HILLS BROS. HERSHEY SEMI SWEET CHOCOLATE CHIPS</b> 12 OZ. PKG. <b>\$1.69</b> <b>GLADIOLA BISCUIT MIX</b> 3 OZ. PKGS. <b>89¢</b> <b>GLADIOLA YELLOW OR WHITE CORNBREAD MIX</b> 3 OZ. PKGS. <b>89¢</b> <b>QUAKER MASA TRIGO</b> 8 LB. BAG <b>\$2.99</b> <b>HUNT'S TOMATO PASTE</b> 2 6 OZ. CANS <b>89¢</b> <b>STEWED HUNT'S TOMATOES</b> 14.5 OZ. CAN <b>69¢</b>	<b>HUNT'S TOMATO JUICE</b> 46 OZ. CAN <b>99¢</b> <b>TEXSUN ORANGE JUICE</b> 46 OZ. CAN <b>\$1.39</b> <b>JOLLY TIME MICROWAVE REG./BUTTER POPCORN</b> 3 PK. CTN. <b>\$1.59</b> <b>COMSTOCK APPLE/APPLE CINNAMON PIE FILLING</b> 21 OZ. CAN <b>\$1.19</b> <b>DEL MONTE PINEAPPLE JUICE</b> 46 OZ. CAN <b>\$1.19</b> <b>DEL MONTE REG. OR LITE FRUIT COCKTAIL</b> 16-17 OZ. CAN <b>79¢</b> <b>DEL MONTE YELLOW HALVES/SLICES CLING PEACHES</b> 16 OZ. CAN <b>79¢</b> <b>DEL MONTE YELLOW HLVS./SLI. LITE CLING PEACHES</b> 16 OZ. CAN <b>79¢</b> <b>DEL MONTE REG. OR LITE PEAR HALVES</b> 16 OZ. CAN <b>79¢</b> <b>DEL MONTE ASSORTED PINEAPPLE 'N JUICE</b> 15 OZ. CAN <b>59¢</b> <b>DELUXE MACARONI &amp; CHEESE KRAFT DINNERS</b> 2 14 OZ. BOXES <b>\$3.00</b>	<b>KRAFT DINNER VELVEETA SHELLS</b> 2 12 OZ. BOXES <b>\$3.00</b> <b>EXTRA THICK AND CHUNKY HUNT'S MANWICH</b> 15.5 OZ. JAR <b>\$1.19</b> <b>PEANUT BUTTER CREAMY/CRUNCHY PETER PAN</b> 40 OZ. JAR <b>\$4.99</b> <b>GEHARDT JUMBO TAMALES</b> 28 OZ. CAN <b>\$1.49</b> <b>RIPE SLICED OR CHOPPED VLASIC OLIVES</b> 27 OZ. CAN <b>69¢</b> <b>VLASIC BABY DILLS OR DILL SPEARS</b> 16 OZ. JAR <b>\$1.39</b> <b>SCHILLING MIX FOR SPAGHETTI SAUCE</b> 3 15 OZ. PKGS. <b>\$1.00</b> <b>SCHILLING SEASONING FOR TACO MIX</b> 3 1% OZ. PKGS. <b>\$1.00</b> <b>KRAFT ASSORTED SALAD DRESSING</b> 8 OZ. BTL. <b>\$1.00</b> <b>KRAFT MAYONNAISE</b> 32 OZ. JAR <b>\$2.00</b> <b>NABISCO RITZ CRACKERS</b> 18 OZ. BOX <b>\$2.19</b>	<b>NABISCO WITH PEANUT BUTTER RITZ BITS</b> 10% OZ. BOX <b>\$2.19</b> <b>CHIPS AHoy OR CHEWY CHIPS AHoy</b> 18 OZ. BAG <b>\$2.39</b> <b>NABISCO COOKIES</b> 18 OZ. BAG <b>69¢</b> <b>KRAFT REGULAR OR MINI MARSHMALLOWS</b> 10.5 OZ. PKG. <b>\$3.00</b> <b>CARROLL SHELBY'S CHILI MIX</b> 2 4 OZ. BAGS <b>79¢</b> <b>COLGATE INSTANT ASSORTED SHAVE CREAM</b> 11 OZ. CAN <b>79¢</b>	<b>ASSORTED ULTRA SLIM FAST</b> 14 OZ. CAN <b>\$5.99</b> <b>SYLVANIA SOFT WHITE 60-75-100 WATT LIGHT BULBS</b> 2 PAK. <b>99¢</b> <b>COLGATE ASSORTED TOOTH PASTE</b> 64 OZ. TUBE <b>\$1.49</b> <b>COLGATE ASSORTED TOOTHBRUSH</b> 1 CT. PKG. <b>89¢</b> <b>COLGATE ASSORTED MOUTHWASH</b> 12 OZ. BTL. <b>\$1.69</b>
--	---	--	--	---



**thriftway**

WE RESERVE THE RIGHT TO LIMIT QUANTITIES.







# Miss Nix, Dykman United In Marriage

In a formal, double ring ceremony, Miss Jeannia Gay Nix became the bride of John Dykman Saturday night, March 17 at the First United Methodist Church in Sudan. Doug Markham of the Praise Temple Church in Littlefield read the marriage vows.

Parents of the couple are Mr. and Mrs. Mike Nix of Sudan and Mr. and Mrs. Kenneth Dykman of Fremont, Michigan.

Grandparents of the couple are Mrs. Hazel Reeves of Paul, Idaho Mrs. Beulah Moody of Rupert, Idaho, Mr. and Mrs. Olin Nix of Sudan, and Mr. and Mrs. Authur Dykman of Fremont, Michigan.

The church was decorated with a center candelabra and two heart candelabras on each side with white tapers, pink and blue assorted flowers with baby's

breath and greenery entwined.

Janet and Cliff Watson sang "Our Love" and "I'll Be There", and Janet and Cliff Watson and Melissa Nix sang "Flesh Of My Flesh." Pat Watson from Muleshoe and Sherri Markham from Littlefield presented a variety of classics as piano and organ prelude music. Kason Huddleston from Canyon played the piano for the reception held in the fellowship hall.

Given in marriage by her parents, the bride wore a formal length white gown of satin and crystalline decorated with Venise imported lace adorned with pearls, iridescents and flowerette sartin whipped embroidery. The gown had an illusion neckline with a wedding band collar. The bodice was elongated with extra heavy hand beaded lace with

pearls, iridescents and satin embroidery. The waistline was elongated in front curving upward to form a "U" in back. Wide wire ruffles formed a short sleeve over the shoulders with sheer net hand beaded extensions to the wrist. Multi-tiered wide crystalline ruffles formed the shirt, cascading down the back extending into a semi-cathedral train. A large satin candy-box bow topped the ruffles.

Her head piece was made of Venise flowerette lace re-embroidered with an array of pearls, highlighted with ball pearl leaves. It was caught at one side with a nosegay flower spray of lace and pearl leaves. The entire headband was adorned with pearl sprigs. At the back of the headpiece was a double pouf imported silk illusion.

The bride carried out the tradition of "Something Old" carrying a lace handkerchief from

her grandmother Dot. "Something New" was pearl earrings, she bought for the occasion, "Something borrowed" was a white new Testament she borrowed from her mother, and "Something blue" was the blue flowers in her bouquet. The bride wore a green garter for St. Patrick's Day.

Melissa Nix served as her sister's maid of honor, and Janet Watson, sister of the bride, served as matron of honor. Bridesmaid was Stephanie Upshaw. They wore royal blue dresses fitted to the waist cut to a "V" at the front neck and waist, in the back they were accented with a soft bow.

The dresses had tea length skirts and elbow length sleeves. They each carried a blue and pink bouquet of flowers.

Todd Precord served as best man. Groomsmen were Ted Grund and Greg Mottashed. The groom wore a black tuxedo with a white shirt, bow tie and cummerbund. The groom's attendants wore black tuxedos with royal blue bow tie and cummerbund.

Kady Gaston, niece of the bride and Amber Dykman, niece of the groom, served as flower girls. Kade Gaston, nephew of the bride, served as ring bearer.

Ushers were Clifford Watson, brother in law of the bride, and Tom Dykman, brother of the

groom.

The bride is a 1985, graduate of Sudan High School, currently attending SMU and will graduate in May. Dykman graduated from Central Michigan College in 1987. The couple plan to make their home in Dallas.

## Going Away

## Reception Honors

## Tom Rigsbys'

Tom Rigsby, former president of the First National Bank at Sudan, and his wife, Julie, were honored with a going away reception on Thursday, March 15 in the community room of the bank. Hosting the event was the bank employees and the Sudan Chamber of Commerce.

Aproximately 50 guests from Sudan went by to visit and wish them well.

The table was covered with a navy blue gathered cloth and the centerpiece was a basket filled with navy and mauve flowers.

Cookies were served on navy and crock platters and the punch was served from a crock spicket.

The Rigsbys' were presented a silver platter from the Chamber of Commerce and Rigsby was given desk accessories from the bank.

Their children were also there to greet the guests.

Rigsby has accepted a position with the United New Mexico Bank in Ruidosa, N.M.

## Golden Wedding Anniversary Reception Honors Spurgeons

J.D. and Bobbie Spurgeon of Lake Thomas, formerly of Muleshoe, were honored with a 50th wedding anniversary reception Sunday, April 1 at the Bailey County Civic Center.

Hosting the event were their children and grandchildren, Lanelle and Gary Skaggs, Cary and Janna, of Muleshoe; Vanda and Frank Browning of Roswell, N.M. and children, Amy and Hailee; a foster daughter, Loraine and Norman Clouse and children, Jamie and Sheila; and an inherited family, Gary and Nancy Palmer of Golden, Co. and two daughters Robin and Linda.

The honorees greeted guests between the hours of 2 and 4 p.m. Janna Skaggs registered the guests from a table covered with an ecru linen and lace table cloth accented with a brass five candle candelabra, a framed wedding picture of the couple and a memory/guest register book.

A gold wedding cake, punch, and coffee were served from brass and crystal serving appointments by Nancy Palmer, Lorraine Clouse and Amy Browning.

The serving table was covered with an ecru lace and satin table cloth. The gold tiered wedding cake was topped with a

bouquet of flowers.

Spurgeon and the former Bobbie Sisk were married on March 28, 1940, in Levelland and resided there until March 1958, when they moved to Muleshoe to open and operate Spurgeon's Machine. In January 1980, they moved to Lake Thomas.

On Saturday, J.D. and Bobbie were surprised with a "This Is Your Life" video in which their 50 years of married life was portrayed.

## Annual Easter Egg Hunt

## Planned Saturday

Come one, come all to the Jennyslippers annual Easter Egg Hunt Saturday, April 7. This year there will be different times for different age groups. The hunt gets underway at 10 a.m. and will conclude at 1 p.m.

The Easter Bunny will be there to help out in the tight spots and to hand out the prizes that will be won.

A fun day has been planned for each age group. There will be a drawing for the unclaimed prizes at the end of each hunt.

"We are expecting to have a policeman there to help keep things in order" said Rancee' Rudd, chairman. "No parents will be allowed in the area where the children will be hunting the eggs. This is to make it a little more fair for the children who want to hunt by themselves. Hope to see you there."

## AGE GROUPS AND TIMES

1 year to 2 year olds 10 a.m. with a 20 minute time limit on the hunt.

3 to 4 years, 11 a.m.

5 to 7 years 12 noon

8 to 10 years 1 p.m.

"We hope to see all the children at the New City Park on Avenue D starting at 10 a.m.

"Happy Easter to each and everyone in the Muleshoe area from the Jennyslippers."



**SONIC**  
**BURGER & SHAKE**  
**CAR HOP SPECIAL**

**\$2.19 PLUS TAX**

**REGULAR SONIC BURGER**  
**REGULAR SONIC SHAKE**

REGISTER TO WIN A CALIFORNIA WEEKEND TRIP FOR 2 (BEACH PARTY GUESTS OF HONOR)

1633 W. Amer. Blvd.  
272-3998

©1990 SONIC INDUSTRIES INC.



MR. AND MRS. J.D. SPURGEON

## Shower Honors Mrs. Tipps, Daughter

The home of Ann Mount was the scene of a baby shower Saturday, March 31 honoring Liz and Kelsey Tipps.

Guests were greeted by Mrs. Tipps, Kelsey and Martha Tipps between the hours of 1:30 and 3 p.m.

A southwest theme was carried out in table decorations. The honoree's corsage was made of baby orchids.

Fruit, thumbprint cookies, and mint tea was served from baskets.

Special guest was Martha Tipps, paternal grandmother of Hereford.

The hostess gift was a stroller. Hostesses for the occasion included: Cindy Barrett, Ann Mount and Debbie Hutto.



LIZ TIPPS

## IN FASHION

With a little practice you can mix prints and create new outfits to brighten the last weeks of winter. A good rule is not to mix more than three patterns.

Red, white and black blend well when mixing prints. To mix two bold patterns, let one be outstanding while the other should be used as accent only.

## NOTICE OF RIGHT TO NOMINATE BY PETITION

The Farmers Home Administration (FmHA) is accepting nominations for nominations for County Committee election for Bailey County. This notice is issued to inform eligible voters of the right to nominate candidates by petition. Copies of the petition and instructions on it completion can be obtained from your local FmHA office.

Persons nominated should have an interest in a farm as an owner, tenant, or sharecropper within the county or area in which activities of the county or area committee are carried out. They must be citizens of the United States or aliens lawfully admitted to the United States for permanent residence, and be well qualified for committee work. Spouses of those persons who meet the eligibility criteria are also eligible for nomination for election to the county committee. Nominations must be received in the Bailey County Office no later than May 19, 1990. FmHA committee elections are open to all eligible voters without regard to race, color, religion, national origin, age, political affiliation, marital status, sex, and/or handicap.

## Buddy's Country Kitchen

Located 1 Block East of Traffic Light on Hwy 114  
201 E. Washington Open 7 Days A Week 6:30 a.m. - 9 p.m. 266-8963

## All You Can Eat

### Noon Buffett

Mon. - Fri.

**\$4<sup>25</sup>**

### Sunday Buffett

**\$5<sup>95</sup>**

## Senior Citizens Sunset Special

5:30 p.m. - 6:30 p.m.

Buy One Meal at regular price and get Second Meal

FREE with a Senior Citizens Card

Bring A Friend

## Best Catfish West Of New Orleans

Friday Night Catfish & Chicken Bits

All You Can Eat **\$5<sup>25</sup>**

Includes - Baked Potato, Onion Rings or Fries, Homemade Slaw, Hush Puppies and Tartar Sauce

## Children's Menu

All Items Under

**\$2<sup>00</sup>**

Dessert Included







**OFF TO GIRL SCOUT FAIR**--Girl Scout Troops 300 and 228 attended Girl Scout Fair at the Lubbock Civic Center Saturday. Scouts from Troop No. 300 attending were: Lisa Marie Ramirez, Elizabeth Torres, Adrienne Ashford, Casey Tosh, Karen Wimberley, Vienna Hernandez, Magan Tipps, Olimpica Hernandez, Diana Gable, Rosa Recio, Jennifer Pacheco, Chyla Torres. (Not pictured: Stephanie Kirk). Troop 228 attending were: Angela Castorena, Shawna Dale, Priscilla Aguirre, Jennifer Castorena, Iesha Norman, Brenna Farley, Tori Tosh, Natasha Norman, Melissa Aguirre and Cynthia Villarreal. Also attending were Donna Kirk and Flonita Ashford; Mary Ann Ramirez, Troop 300 leader; Lela Villarreal, Troop 228 leader, and her assistant, Charlie Villarreal. (Journal Photo)

## Membership Drive Gets Underway

Beginning on April 1, the Muleshoe Jennyslippers kicked off their annual membership drive which will culminate with a quarterly meeting on April 10.

Each Jennyslipper member is urged to enlist at least one new member during this promotion. If you have ever considered becoming a part of this worthwhile

organization, now is the time! From January to December the Jennyslippers unite and spend their time promoting Muleshoe, raising money for various causes, and mostly having fun! Each Jennyslipper contributes as much or as little time and talent as she chooses to each cause. No one is pressured or pushed, but

everyone is encouraged and welcomed!

These red-vested ladies have become a vital part of Muleshoe's citizenship. Whatever your age or interest, the Jennyslippers offer something for YOU!

On April 10, at 7 p.m. the Green Room of the Bailey County Civic Center will be the site of the quarterly meeting of the Jennyslippers. At this meeting, new members will be welcomed, refreshments will be served, and all will be entertained. Lonnie Adrian will be a special guest and will present a program on what else--Photography!! Rumor has it there will be a surprise skit by a couple of the more versatile Jennyslippers.

So, all you Jennyslippers, slip on your working vest and enlist those new members! Lets make this our most fulfilling year ever!

See you at the quarterly meeting, Tuesday, April 10, at 7 p.m. at the Bailey County Civic Center.



**ALL ABOARD**--Muleshoe Girl Scout Troops 300 and 228 boarded a Migrant Council bus Saturday morning and went to Lubbock to the Girl Scout Fair. (Journal Photo)

## GOLDEN GLEAMS

The web of our life is of a mingled yarn, good and ill together.

--Shakespeare.

Life is a tragedy wherein we sit as spectators for awhile, and then act out our part in it.

--Jonathan Swift.

## Walk-A-Thon

### Re-scheduled

### Sunday Afternoon

Calling all boys and girls in the area, the Jennyslippers Annual Walk-A-Thon has been re-scheduled for Sunday afternoon, April 6 from 2 to 5 p.m. at the New City Park. Due to the bad weather the walk-a-thon had to be postponed from an earlier date.

Its not to late for anyone wishing to earn a nice prize and



### New Arrivals

#### Scott Anthony Sain

Staff Sergeant Timothy Sain and Wendy Sain are the proud parents of a son, Scott Anthony, who was born at 8:40 a.m. Thursday, March 8 in the Upper Heyford Royal Air Force Base Hospital in Upper Heyford, England.

Scott weighed seven pounds and four ounces and was 21 inches long. He has a brother, Andy, three and half years.

Grandparents are Rose and Walter Sain of Muleshoe, and the late Ruby Busby.

Great grandmother is Dora Clark of Mangum, Okla.

Staff Sergeant Sain is in the United States Air Force and he and his family live in Bicester, England. He is stationed at the Upper Heyford Royal Air Force Base in Upper Heyford. They moved there in May 1989 and will be there two more years.

He enlisted in the Air Force in Feb. 1983.

#### Steven Keyna

Ruben and CoRina Reyna are the proud parents of a son, Steven, who was born at 5:55 p.m. Thursday, March 29 in Muleshoe Area Medical Center.

Steven weighed seven pounds and four ounces. He is the first child for the couple.

Grandparents are Lilly Reyna of Muleshoe and Antonio and Aurora Mtz of Pearsall.

at the same time help in a worthwhile community project. Pledge sheets may be picked up at the library, so get busy and collect a lot of pledges, the more pledges the bigger the prize you can earn, and be at the New City Park at 2 p.m. Sunday with your walking shoes on.

Rest stops will be set up along the way and refreshments will be served.

All Proceeds will go toward the fire works for the fourth of July celebration.

If you already have a pledge sheet, come on out and join in the fun and earn a prize.



**ENGAGEMENT ANNOUNCED**--Ms. Patricia Maxwell of Canyon and Virgil Maxwell of Friona announce the engagement and approaching marriage of their daughter, Charlotte Chamaine Maxwell to Terry Lynn Dunlap, son of Ruby Dunlap of Kermit. Vows will be exchanged at 2 p.m. Saturday April 21 in the Chapel of Trinity Fellowship Church of Amarillo. Miss Maxwell is a graduate of Canyon High School and is employed by The Dance Boutique of Amarillo. Dunlap is a graduate of Kermit High School. He attended Angelo State University and is now attending West Texas State University. He is employed by Reynolds Aluminum Recycling and Wendy's. The couple will make their home in Canyon while Dunlap finishes school. (Guest Photo)

1990 Crop		1990		Contract Basis	Month
Pool Cash Advance	Sale Flat	Contract Basis	Month		
Feed Corn.....Mkt.....	4.55,-0.12	0.05	May		
White Cobb Yellow.....	4.50	5.00,0.13	0.35	May	
Red Cobb Yellow.....	4.00	4.69,-0.04	0.20	May	
White Food Corn.....	5.00	6.00,0.70	0.65	May	
Milo.....Mkt.....	3.75,-0.57	-0.45	May		
Soybeans.....No Pool.....	5.08,-0.78	-0.95	May		
Wheat.....No Pool.....	3.32,-0.32	-0.41	KC May		

96 1/8%  
Prices effective April 3, 1990  
**Farmer's Co-Op Elevators**  
272-4335

# True Value

HARDWARE STORES

## TRU-TEST PAINTS

The best protection your home can wear

11.98\* Gallon Flat Acrylic Latex House Paint stands up to tough weather. Colors.

13.98\* Gallon Satin Acrylic Latex House Paint sheds dirt, so low sheen stays beautiful. See how sheen stays beautiful. See how sheen stays beautiful. See how sheen stays beautiful.

16.98\* Gallon Gloss Acrylic Latex House Paint for exterior siding, trim, shutters.

Be Sure To Check Our Circular For More Great Sale Prices!

# Fry & Cox, Inc.

401 S. 1st Muleshoe 272-4511

Where Is The Easter Bunny?

## Home Cured Bone-In Hams

\$1.89 lb

### Larry's Bacon

2 lb. Pkg

\$1.59 lb

### Larry's Own Sausage

2 lb Sticks

\$1.25 lb

### Larry's Own All Meat Hamburger Patties

2 lb Pkg

\$1.55 lb

### Soy Protein Patties

5 lb Box

\$1.19 lb

Let Us Smoke Your Easter Turkey!

# Winkler Meat Co.

401 Main 272-4703



## Sprint Service For Speech-Hearing-Impaired

The Public Utility Commission last week selected Sprint Services to provide a statewide Dual-Party Relay Service that will enable hearing- and speech-impaired Texans to fully utilize the telephone network. The service will be available in all parts of the state by September 1, 1990.

Sprint Services is a subsidiary of United Telecommunications, which also owns US Sprint. Sprint Services began offering full operator services in April 1989. Texas will be the first state in which Sprint Services will provide statewide relay service.

In making the award, the Commission considered four factors required by law: the charge for the service, the service enhancements offered, the technological sophistication of the network, and the proposed date for beginning service. PUC Chairman Paul Meek said, "Sprint Services was judged to have submitted the proposal that best met these criteria and best served the needs of the hearing- and speech-impaired communities in Texas."

Hearing- and speech-impaired telephone customers currently

use computers or TDDs (telecommunications devices for the deaf) to communicate by telephone. But without relay services these customers can communicate only with other individuals who also have such equipment.

With the relay system, a customer will be able to make a call by typing a message on a TDD or computer and transmitting it to a specially-trained operator with similar equipment. The operator receiving the electronic message then orally communicates the message to the person being called.

Conversely, any person will be able to dial the dual-party relay center to call a hearing- or speech-impaired customer. The relay operator would transmit the caller's message electronically to the customer's TDD or computer.

The legislation creating the statewide relay service funded it through an assessment on local and long-distance telephone companies, which may pass these costs on to their customers in a surcharge. The PUC staff estimates that if all the costs are passed on to customers, the typical Texan would pay only about 64 cents a year.

A 13-member advisory committee established by the Legislature worked with the PUC staff to ensure that the relay system will meet user needs. The advisory committee was especially concerned about adequate operator training and public education on how to properly use the system.

Chairman Meek believes the advisory committee is providing valuable information while the dual-party relay service is being developed. "The creation of an advisory committee prior to development and implementation is helping to ensure that our relay service truly meets user needs," Chairman Meek said.

The advisory committee includes 11 representatives of various consumer advocacy organizations and two representa-

tives of telephone utilities. In addition, two utility representatives assist the committee.

Advisory committee members include Eileen Alter, Randy Barlow, Ed Bosson, Pat Craven, Hank Erkel, Ruth Foradory, Jerry Hassell, Scott McCollough, and Rosemary Stapp, all of Austin; Geneva Hill of Dallas; Jim Barton of Grapevine; Rosa Perea of Lubbock; and Laura Kowalik of San Antonio.

A \$1 million pilot relay system -- ordered by the PUC in the last GTE Southwest rate case -- is already serving thousands of hearing- and speech-impaired

customers in the area around Dallas, Fort Worth and Denton. Information obtained from the pilot project will be used to implement the statewide service.

## Hospital Administrator

Cont. From Page 1

daughters. Two of the daughters are married; one is a senior in Colorado High School; and a 13-year old.

Murphy said he and his wife believe in being active in community affairs, and they plan to continue to be active in the community where they live.

"One thing I want to make clear to you," said Murphy, "I was not looking for employment when this opportunity came up. I was offered the job through friends I have worked with in the past."

"Basically, I am employed by Methodist Hospital."

He was very positive about the atmosphere of the community, the people of the community and the potential of the hospital.

"This hospital will take hold, will be stable, and be here for a long time," he concluded.

At the end of his presentation, he answered several questions posed by Rotarians.

## Area Farmers Win Corn Contest With '89 Yields

A farmer from Farwell won first place and a farmer from Texico, N.M. won second place in state corn yield contests held in 1989.

Wayne McClaran, Farwell, recently placed first in the Ridge-Till Irrigated division of the National Corn Growers Association National Corn Yield Contest in Texas with a yield of 217.23 bushels per acre.

McClaran, who farms near Farwell, planted his winning entry, Pioneer 3168, on April 13, 1989, in 40-inch rows at a planting rate of 31,000 seeds per acre. The 36-acre field which produced the winning entry had been planted to cotton in 1988. The crop was grown using a conventional tillage system, and planted with a John Deere 7100.

McClaran's contest entry received approximately 250 pounds of nitrogen and 75 pounds of phosphate on a per-acre basis. Weed control was achieved by a preplant incorporated application of Lasso at 3.00 quarts per acre.

A winner in the irrigated category, McClaran used furrow irrigation to water the crop.

McClaran's winning yield was harvested September 28, 1989, at 18.60 percent moisture.

Rusty Rucker was second in the same division with a yield of 161.80 bushels per acre.

Rucker, a Texico, N.M. farmer, planted his winning entry, Pioneer 3124, in 40-inch rows at a planting rate of 27,540 seeds per acre. The 30-acre field which produced the winning entry had been planted to soybeans in 1988. The crop was grown using a Ridge-Till tillage system, and planted with a Buffalo planter.

Rucker's contest entry received approximately 180 pounds of nitrogen, 60 pounds of phosphate and 10 pounds of potash on a per-acre basis. Weed control was achieved by a post-emergence application of Atrazine at 2.00 pounds per acre. Rucker also used a broadcast application of 1.25 pounds of Ambush to control insects.

A winner in the irrigated category, Rucker used furrow irrigation to water the crop.

Rucker's winning yield was harvested October 4, 1989, at 21.50 percent moisture.

## STATE CAPITAL



## HIGHLIGHTS

By Lyndell Williams  
TEXAS PRESS ASSOCIATION

AUSTIN - Amid predictions the special session was derailed, Texas House members killed a \$450 million school finance reform plan that opponents say is too complicated and the governor says is too costly.

The session ended Wednesday, but Gov. Bill Clements will call legislators into a second session to attempt to comply with a Texas Supreme Court order to equalize public school funding.

Despite its Republican sponsor, Kent Grusendorf of Arlington, some 57 of the House's 60 GOP members voted against the bill.

This bloc, coupled with 12 of 18 Hispanic members, doomed the measure which would have required a second special session to fund it with a new tax bill.

The real roadblock is the unwillingness of some lawmakers, bent on a collision course with Clements' veto stamp, to draft legislation in line with the \$300 mil-

lion in new funds that Clements says is available.

The governor has won the first skirmish.

## Whose Pockets Lined?

Just days after she wiped out former Gov. Mark White's comeback bid by charging that he "lined his pockets" at the public's expense, Ann Richards has to defend herself against similar media reports, including:

■ A sweetheart home mortgage loan made to her by an Austin bank shortly after it became a major repository of state funds;

■ A \$10,000 contribution from NCNB of North Carolina just seven months after she successfully lobbied to kill a bill on the House floor which targeted the out-of-state bank; and

■ Her interest in 100 acres near the proposed intersection of a state highway, and her efforts to get the majority partner appointed to that highway's advisory construction board.

## CDs for Collateral

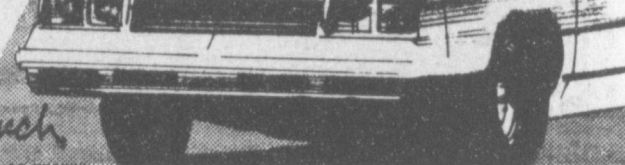
In the matter of the home mortgage loan, in 1983, Richards received \$250,000 at the prime lending rate from United Bank of Texas after it became a repository for up to \$100 million a day in state funds.

The chairman of United Bank, Ruben Johnson, was later convicted on a bank fraud charge.

The Richards campaign denied any sweetheart deal and said the collateral for the prime rate loan was two \$100,000 CDs.

## PERFORMANCE-TESTED GO WITH GM PARTS!

Go With Performance-Tested and proven GM Quality Parts, SAVE Now On Our Two Spring Service Specials... and Go With GM Parts!



Mr. Goodwrench

Transmission Service Special

\$55.95

Front-end Alignment Rear Wheel Drive Cars Only and 1/2 Ton Pick-up

\$31.50



Robert D. Green, Inc.

2400 W. Amer. Blvd.

272-4588

## Changes Are Predicted In Farming Techniques

Within three years, U. S. farm production techniques will flip-flop, a national proponent of sustainable agriculture believes.

"By 1993, what is now considered alternative agriculture will be conventional," said Robert Rodale, Rodale Press Inc. chief executive officer. "Conventional production will be seen as an alternative. The change will be so rapid. Whether an agriculture university can function in this atmosphere is the question."

Rodale, who oversees a \$4 million research budget for low input farming, spoke during a recent Perspectives on Sustainability in Agriculture, Clayton

Fund symposium at Texas A&M University.

Calling himself an advocate of sustainability not an environmentalist, Rodale said he prefers making changes through education, market development and "more moderate means" than mandatory legislation. But the American public is demanding changes, he added.

"The public gives to the farmer an assignment to do to the land what (the public) wants," Rodale said. "About every 100-120 years, the public gives the farmer a new assignment."

He classified U.S. farming eras as "settlement" from 1600-1750, "expansion" from 1750-1862 and "industrialization" from 1862 to the present. Americans now are issuing a new assignment, he said, toward sustainability, health and a clean environment.

University professors and land grant specialists will not facilitate the change, Rodale believes, because areas of expertise are too narrowly defined. The entomologist's studies often do not incorporate the weed scientist's, for example, Rodale pointed out. He called the emerging leaders "systematists" who can incorporate all the factors of a farm operation for the overall picture.

"You have to look at a farm the way a farmer does," Rodale said. "I think the farmer is the last operating generalist in our society. He has to look at everything on a farm."

"Agriculture is about a lot more than growing food and fiber," Rodale said. "My contention is that it is about the use of land; the way Americans carry out the American mission to this continent."

## Parade...

Cont. From Page 1

Individual riders or walkers: all entries will be grouped with likeness. They may be on bikes, mules, horses, in wagons, on foot, etc.

Animals: will be judged on uniformity of pair or group, grooming, tack, gear, showmanship, and parade-ability.

And, under general rules: all entries must line up at the Boy Scout grounds located at the south end of Main Street one hour prior to parade time. No entry which consists of people on foot may unreasonably detain the progress of the parade. Any such entry which slows the parade will be asked to let the parade pass. Any entry with children must be accompanied by an adult.

You may pick up your parade entry blank for either or both parades at the Muleshoe Chamber of Commerce and Agriculture office at 215 South First, Muleshoe.

## VOTE

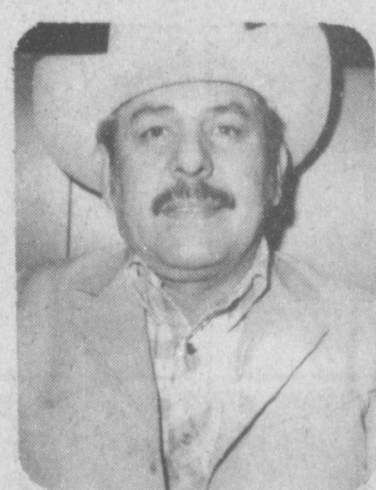
For

Alfonso Posadas

in the April 10th Run-Off Election

For

Bailey Co. Commissioner Prec. 4



Alfonso Posadas

*I sincerely thank everyone for your support in the Democratic Primary, March 13.*

*Again, I ask for your vote of confidence in the Run-Off Election, April 10th.*

Pd. Pol. Adv.

## INTRODUCING ... The Super IRA!!

*Did you know if you are self-employed that you can contribute up to 15% of your income or \$30,000.00 a year with the same simplicity of an IRA.*

*See your agent at Bailey Co. Farm Bureau and ask him about a simplified employee pension plan, or SEPP.*



Southern Farm Bureau  
LIFE INSURANCE COMPANY  
JACKSON, MISSISSIPPI

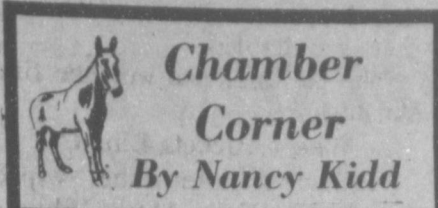
- Over \$20 Billion of Life Insurance in force
- Over \$620 Million of Annuity Assets
- Rated "A+" (Superior) by A.M. Best Co.

**Bailey County Farm Bureau**

1612 W. Amer. Blvd.

272-4567





## Chamber Corner

By Nancy Kidd

The Muleshoe Chamber of Commerce and Agriculture served a good crowd of members and guests on Thursday, March 29th at the Bailey County Civic Center. We appreciate the mem-

### W.A. Mace

### Graveside Services Conducted Here

Graveside services for W.A. (Alvin) Mace of Farwell were conducted at 2 p.m. Wednesday, April 4 in Muleshoe Memorial Park with Condly Billingsley, Church of Christ minister, and the Rev. Rick Sullivan, First Baptist Church pastor, of Farwell officiating.

Burial was under the direction of Ellis Funeral Home. Mace died Monday at his home.

Born March 16, 1908, in Lelia Lake, TX, he had been a resident of Farwell since 1940, moving there from Lilia Lake. He was a farmer and a member of the Farwell Church of Christ. He married Juanita Simmons Jan. 2, 1932. She died in 1973. He married Vivian Knox on Nov. 10, 1975, at Childress. She died March 28, 1987.

Survivors include a son, Jimmie Mace of Farwell; a sister, Minnie Jones of Harlingen; and two grandchildren.

### Mack Mc Lendon Funeral Services Held At Morton

Funeral services for Mack McLendon, 53, of Morton were held at 11 a.m. Tuesday, April 3 in the Morton First Missionary Baptist Church with the Rev. Jimmy Hardy, pastor, officiating assisted by the Rev. Roy Shaw, retired Baptist minister of Post.

Burial was in Morton Memorial Cemetery under the direction of Ellis Funeral Home of Morton. McLendon died at 1:30 p.m. Saturday in Morton Manor Nursing Home.

Born June 1, 1936, in Hockley County, he was a retired truck driver and a veteran of the Korean War, serving in the U.S. Army. He moved to Morton eight years ago from California.

Survivors include five daughters, Sabrina Kearney of Parris, Calif., Sharice Freeland of Tacoma, Wash., Shawna Evans of Anaheim, Calif., and Tamee McLendon and Wendy McLendon, both of Upland, Calif.; his parents, Mr. and Mrs. Wesley McLendon of Morton; two sisters, Tempy Black of Riverside, Calif. and Lois Meador of Morton; a brother, David McLendon of Chino, Calif.; and 11 grandchildren.

A little gleam of time between two eternities; no second chance to use forever more!

-Thomas Carlyle.

bers who showed their appreciation to the Board of the Chamber by coming to the meal.

A very **BIG THANKS** goes to the sponsors for the Muleshoe Chamber of Commerce and Agriculture's Membership Appreciation Lunch, including:

General Telephone Company, Bamert Seed Company, K C Muffler Mfg. Inc., Five Area Telephone Co-op Inc and Barrett Produce for supplying the super spuds for the meal.

### THANK YOU ALL CORRECTION

The check donated to the Chamber of Commerce at the membership appreciation lunch from General Telephone Co. was a contribution and not a sponsor check. This had already been done. We are very appreciative of the contribution, and of all the sponsors of that day.

The Chamber is hosting a circus on Wednesday, April 11th. The show will be at the Boy Scout grounds. There will be two performances, 5 and 7 p.m. If you're called to buy tickets you will pay for kids to go to the circus. We do have two ladies calling businesses for sale of tickets, collecting donations and delivery of tickets. Thank you for your contribution.

When you send your nomination for the man, woman, and farm family of the year to the Chamber, please have information about your nominee. We need to know why you think they should be nominated. You may mail or bring by the office this information:

### Graciana Gonzalez Services Held Here Wednesday

Services for Graciana I. Gonzalez, 68, were held at 2 p.m. Wednesday, April 4 in the Immaculate Conception Catholic Church in Muleshoe with Father Patrick Maher, pastor, officiating.

Rosary was celebrated at 7 p.m. Tuesday in Ellis Funeral Home Chapel.

Burial was in the Muleshoe Cemetery under the direction of Ellis Funeral Home. Mrs. Gonzalez died at 12:45 p.m. Saturday in Edinburg Hospital.

Born Dec. 18, 1921, in Madero Tamps Mexico, she had been a resident of Amarillo six years moving there from Muleshoe. She was a housewife and a member of the Immaculate Conception Catholic Church. She married Anselmo V. Gonzalez on June 5, 1943, in Madero Tamps.

Survivors include her husband, Anselmo V. Gonzalez; four sons, Raul Gonzalez, Gonzalo Gonzalez and Jose Manuel Gonzalez, all of Amarillo, and Anselmo Gonzalez Jr. of Lovington, N.M.; four daughters, Blanca Mora of Amarillo, Mary Barraz of Muleshoe, Hope Castillo of Texico, and Irma Diaz of Edinburg; two sisters, Luisa Aguillon and Juana Pina, both of Madero Tamps; a brother, Margarito Infante of Madero Tamps; and 25 grandchildren.

Man of the Year  
Woman of the Year  
Farm Family of the Year  
Reason for Nomination

It's time now to think about the Chamber of Commerce and Agriculture's annual banquet. The date is Thursday 26th at the high school cafeteria and auditorium at 7 p.m. The meal will be catered by the Blue Goose. You have been introduced to the guest program. This will be an evening you don't want to miss. Mrs. Mary Marxen from Ft. Myers, Fla., is a vivacious entertainer in her early 50s.

Within seven months she was a nun, a secretary, a big band singer, a wife, stepmother, and dog breeder. She says that not many women can make that claim.

Here's one of her messages, "You take yourself with you wherever you go." Marxen enjoys most entertaining audiences with songs, jokes, quotations and the lessons of personal experience in her positive mental attitude.

"As long as somebody wants me to come and I still have something to give or share, I will do it." She remarks, "Sometimes I'm really tired and I don't want to give a talk, but I've learned that the minute you do this giving, everyone feels better, as long as you're cheerful about it."

### Three Way News by: Mrs. H.W. Garvin

We wish to express our sympathy to the family of F.L. Stigel who was buried Friday at Resthaven in Lubbock.

Mr. and Mrs. R.L. Davis visited Mr. and Mrs. George Tyson Monday evening.

Mr. and Mrs. Bill Dolle and Darla were dinner guests in the home of his parents, Mr. and Mrs. Herbert Dolle, in Littlefield Sunday and celebrated Darla's birthday.

Joe Sowder, Jack Roberson and Rev. Rodger Foot took the Three Way Baptist R.A. Boys to a track meet at Farwell Saturday.

Mr. and Mrs. Rayford Masten attended the golden wedding anniversary of her cousin, Mr. and Mrs. Delbert Mouser in Littlefield.



GRACIANA I. GONZALEZ

### Patients in Muleshoe Area Medical Center

MARCH 29-APRIL 2 THURSDAY  
Corina Reyna and Baby Boy Reyna, Clif Griffiths, Mozelle Rippee, Ray Edwards, Clio Middlebrooks and Connie Nigh  
FRIDAY  
Abraham Mendoza, Fred Horn, Letha Patterson, Clif Griffiths, Ray Edwards, Clio Middlebrooks and Connie Nigh  
SATURDAY  
Abraham Mendoza, Letha Patterson, Clif Griffiths, Clio Middlebrooks and Connie Nigh  
SUNDAY  
Abraham Mendoza, Letha Patterson, Clif Griffiths, Donna Redwine, Clio Middlebrooks, Debbie Freman and Connie Nigh  
MONDAY  
Abraham Mendoza, Letha Patterson, Clif Griffiths, Donna Redwine, Clio Middlebrooks, Debbie Freeman and Connie Nigh

## Diabetic Camp Asks For Registrations

Every summer, over 300 young people between the ages of six and eighteen attend a very exclusive camp near Gainesville. The entrance requirements are strict: the child must have diabetes.

Too often, regular summer camps turn away a child with diabetes because of their special diet and medical needs. But Camp Sweeney, organized over 40 years ago, is a place for the child to learn while having fun. All of the activities of a regular summer camp are offered: horseback riding, swimming, boating, fishing, arts and crafts, riflery, archery, movies, dances, and carnivals.

At Camp Sweeney a 24 hour medical staff skilled in the knowledge of juvenile diabetes, gives campers supervision and attention. At daily medical lectures the campers learn the vital importance of balancing their insulin intake, and their diet in order to live longer, healthier, and happier lives.

Diets are formulated according to each individual's needs, giving the diabetic valuable examples of how to exchange foods to include an occasional "treat" so he won't feel left out around his friends at home.

Camp Sweeney is located ten miles northeast of Gainesville Texas, near the Oklahoma border. Camp facilities include six air-conditioned cabins, lodge, hospital, and various staff cabins and a pavilion where arts and crafts and rainy day activities such as country and western dancing are enjoyed. Camp Sweeney also has two tennis courts, basketball/volleyball courts, soccer and baseball fields, a swimming pool, horseback riding, archery, riflery, and a 34 acre lake where the children enjoy paddle-boating, canoeing, rowing, and fishing.

Camp Sweeney has never denied admission to any child with diabetes. The only requirement is to have diabetes and be between the ages of 6 and 18. Each year approximately 75% of all campers receive

scholarship aid which is funded by donations from friends, Foundations, and United Way Agencies.

The first three-week Session will begin on June 10 and end on June 29; Session two will be held from July 1 to July 20; and the

final Session is set for July 22 to August 10.

For more information please write the Southwestern Diabetic Foundation, Inc. P.O. Box 918, Gainesville, Texas 76240, or call 817-665-9502.

### Funds Released To Modernize

### Salt Water Venture

The U. S. International Boundary and Water Commission has earmarked \$300,000 to modernize the system which keeps salt out of the lower Rio Grande, U. S. Sen. Phil Gramm announced Monday.

Gramm said the funds will be spent to rehabilitate the Morillo Drain, including upgrading a pumping plant and repairing the 75-mile channel at Anzalduas Dam. These facilities were constructed 20 years ago and now need substantial repair, Gramm said.

The senator noted that the salt control project is a joint U.

S.-Mexico venture and that Mexico will match the U. S. share, pushing the total amount budgeted for the project to \$600,000.

"For the benefit of border residents and the health of the Rio Grande, it is important that this project continue to divert high-salinity water away from the Rio Grande," Gramm said.

The senator noted that the project allows naturally occurring saltwater from Mexico to be channeled directly into the Gulf of Mexico, bypassing the Rio Grande.

## ATTENTION

### Kirby Sales & Service

1012 E. 3rd.  
Portales, N.M. 88130  
1-505-356-6110

### Introducing the 1990 Kirby Generation 3 Vacuum Cleaner.

We now have a self-propelled Kirby Vacuum Cleaner and it is real easy to push LADIES!

Call for a free home demonstration.  
Day or Night

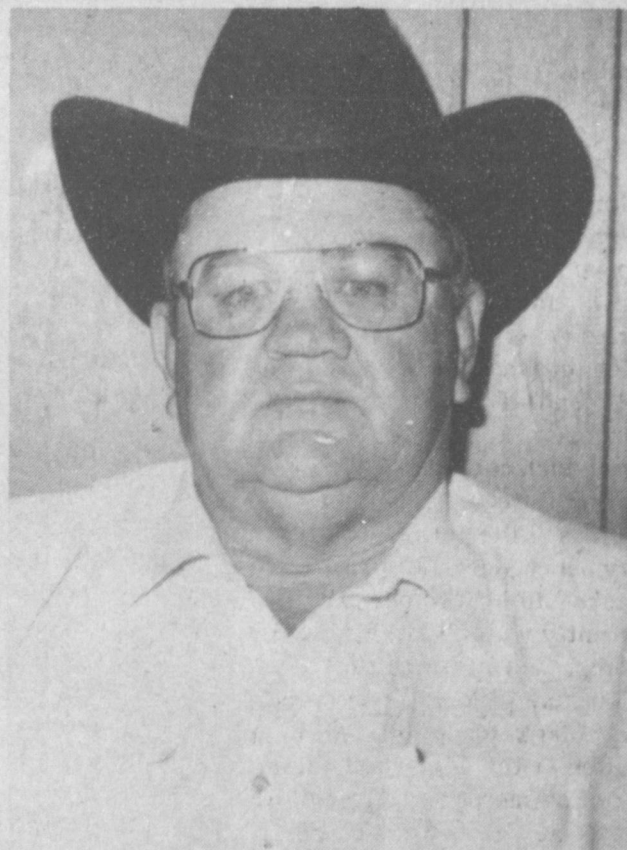
1-505-356-6110

Joe Ennis, Distributor

## Bennie Claunch

For  
Commissioner  
Precinct 4

Landowners  
Of  
Bailey County,  
Precinct 4



Bennie Claunch

Support

Bennie Claunch  
For

Bailey County Commissioner

VOTE

Bennie Claunch

April 10, 1990

Your vote & Support For Bennie Claunch

Will Be Appreciated.

Adv. Pd. For By Landowners & Concerned Citizens Of Bailey County

"The last thing my old mower cut was the cost of a new Snapper."



Retail \$569.95

- Trade in your old mower
- And cut the cost of a new Snapper Walk Mower
- For example, add up the savings shown for model 21405P with a 4 hp engine and 21" deck

SNAPPER

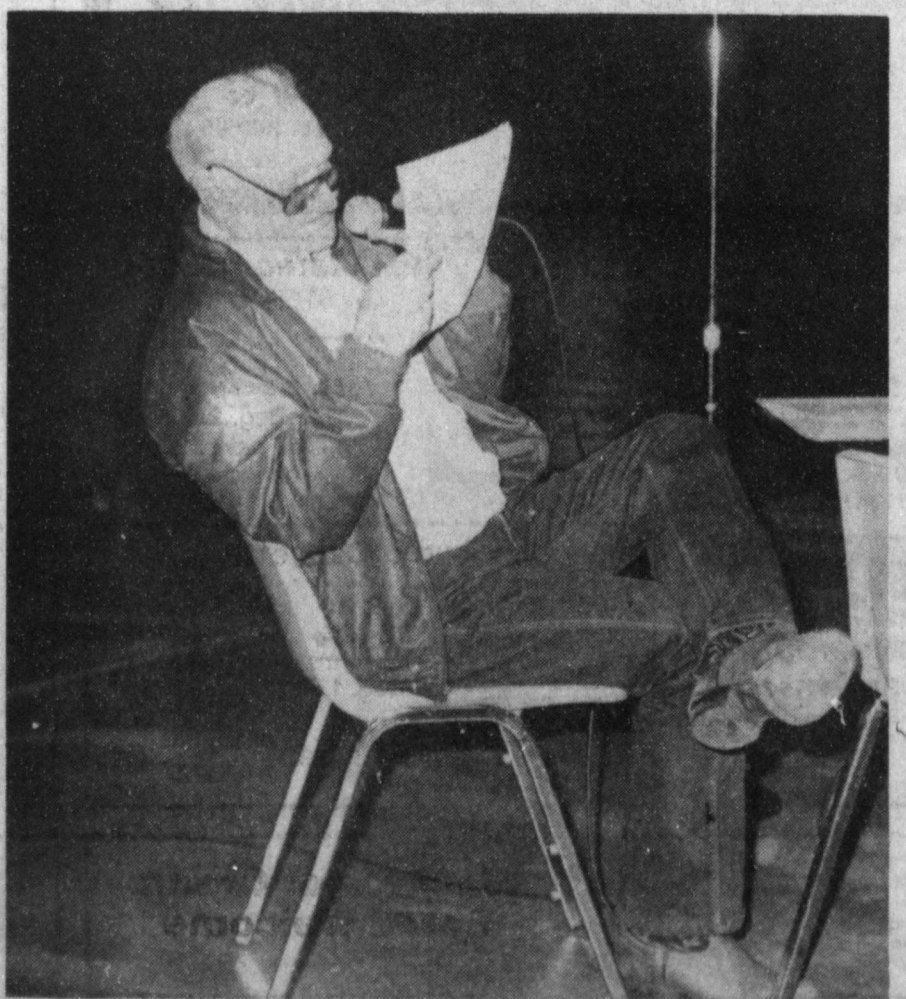
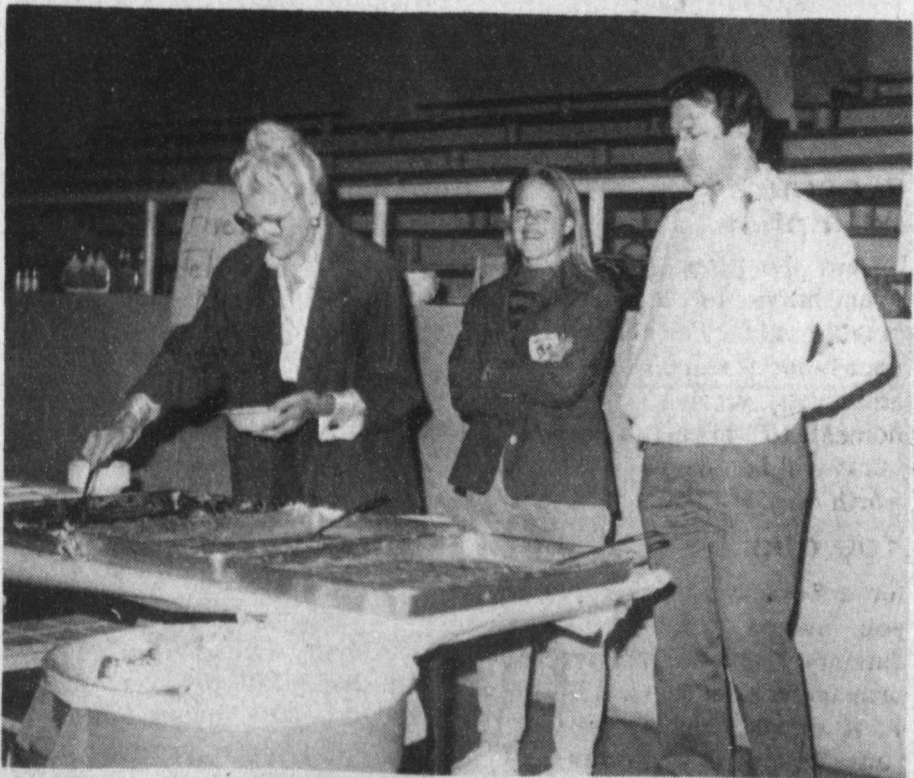
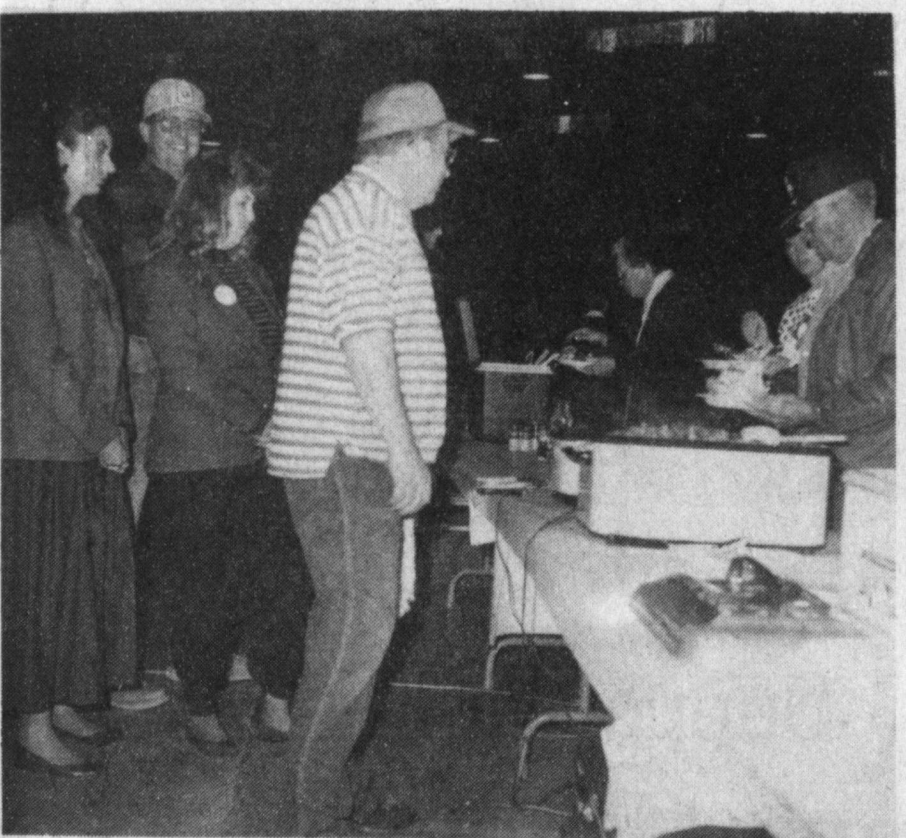
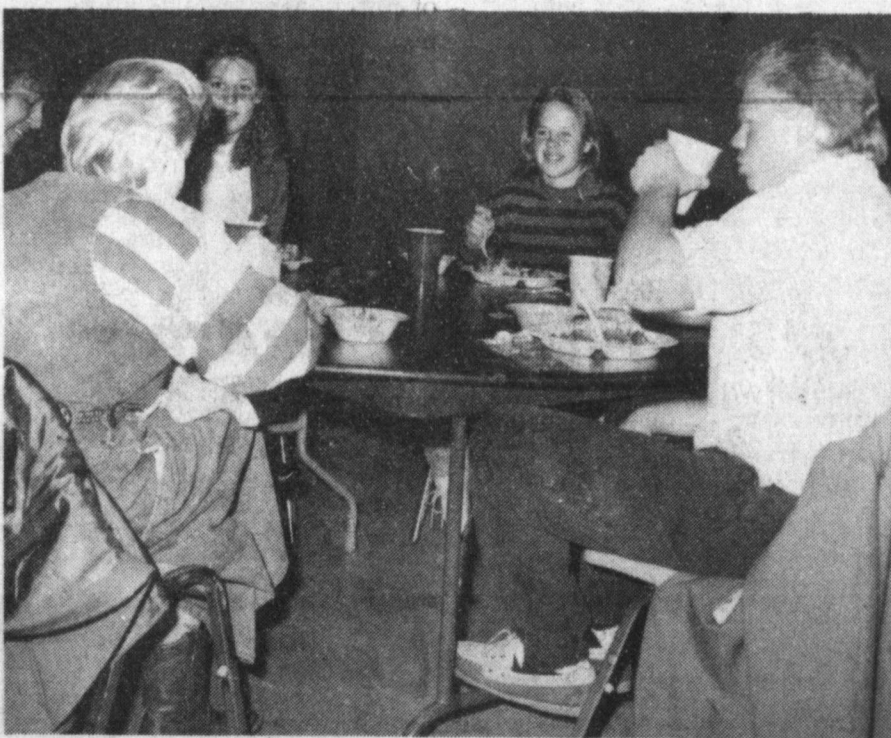
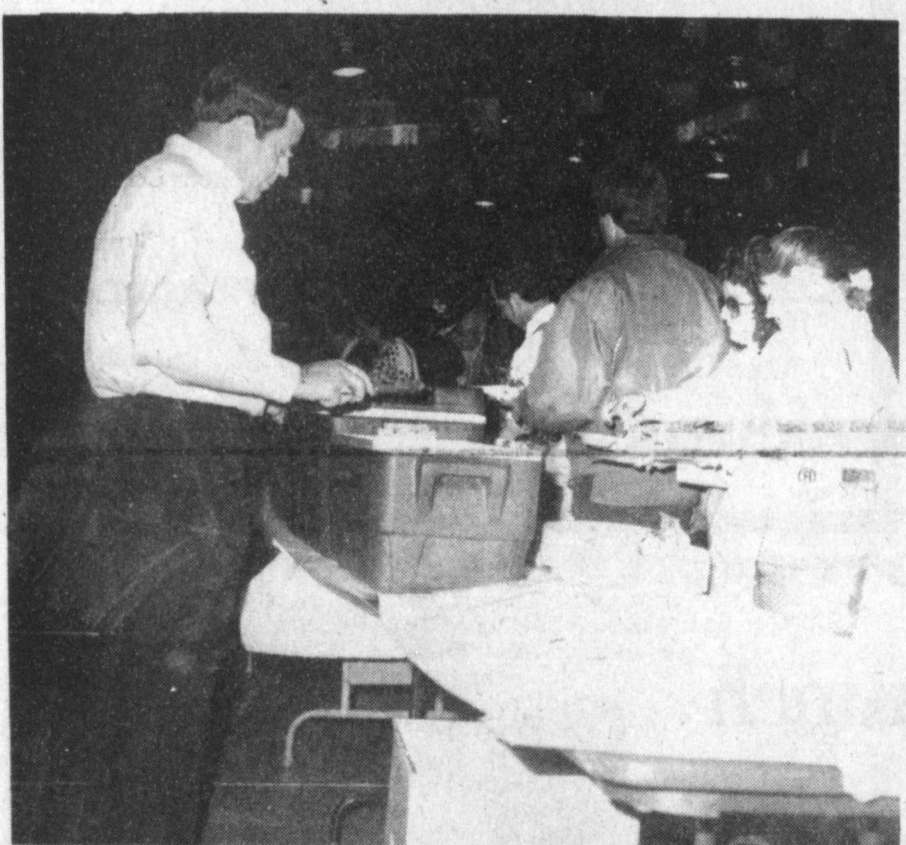
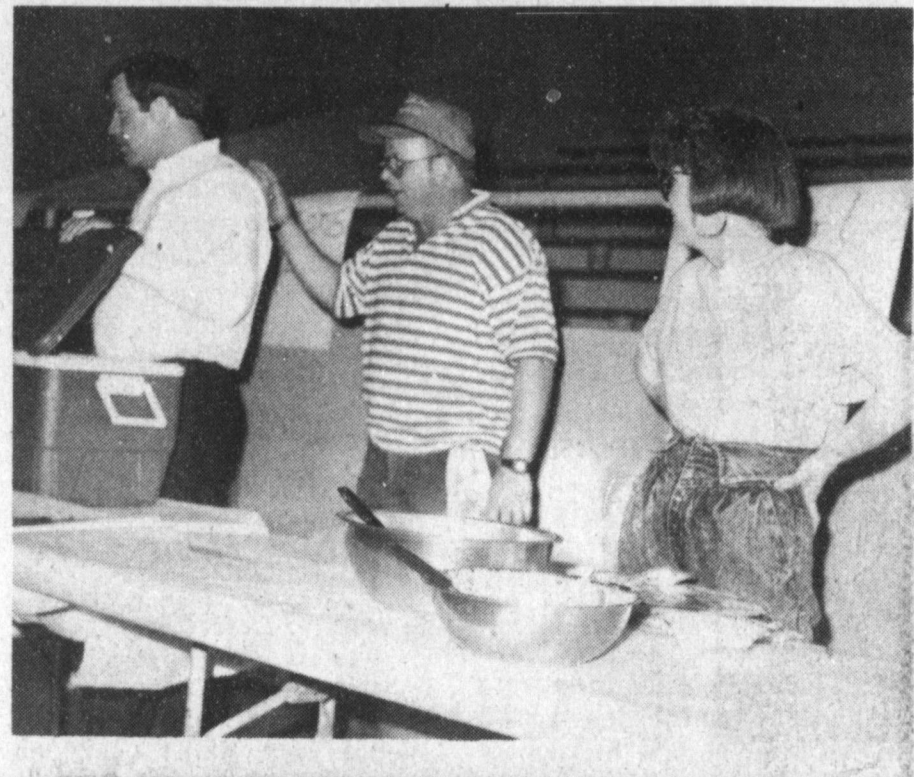
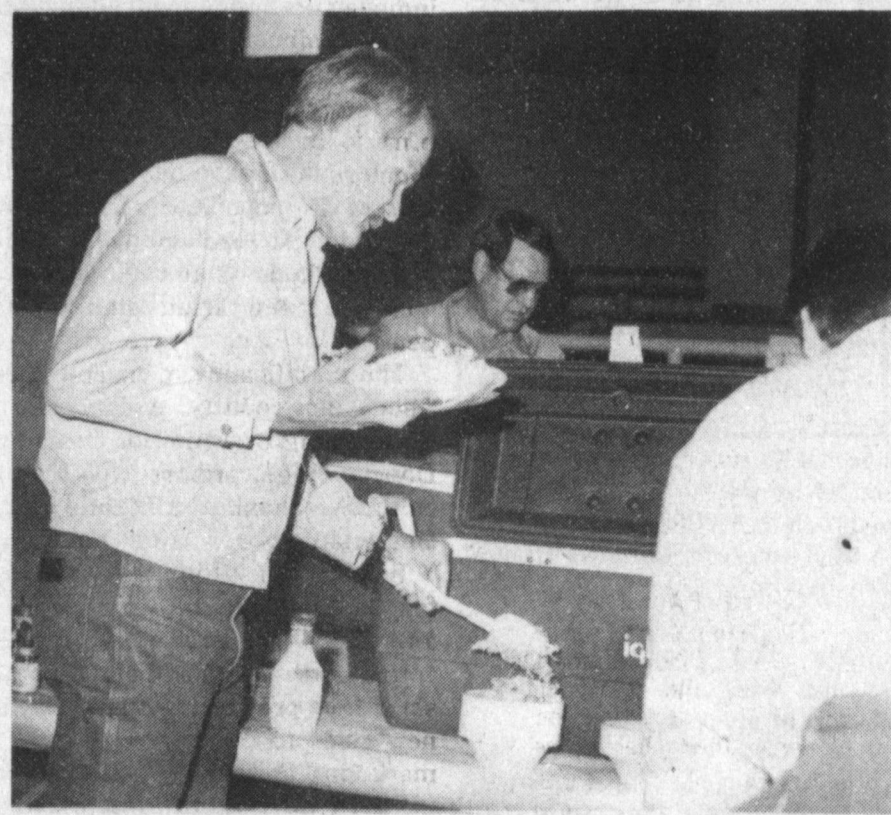
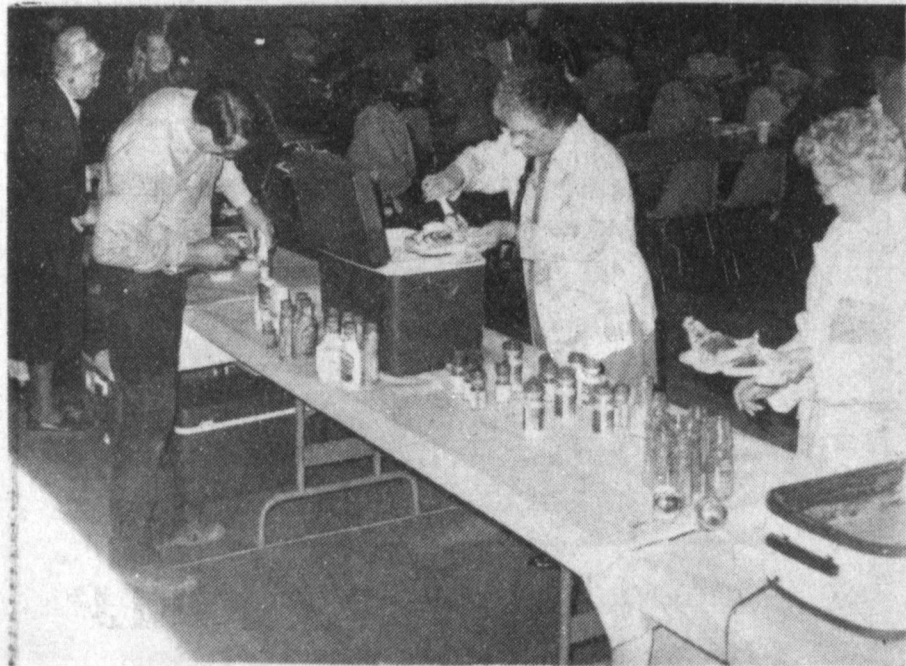
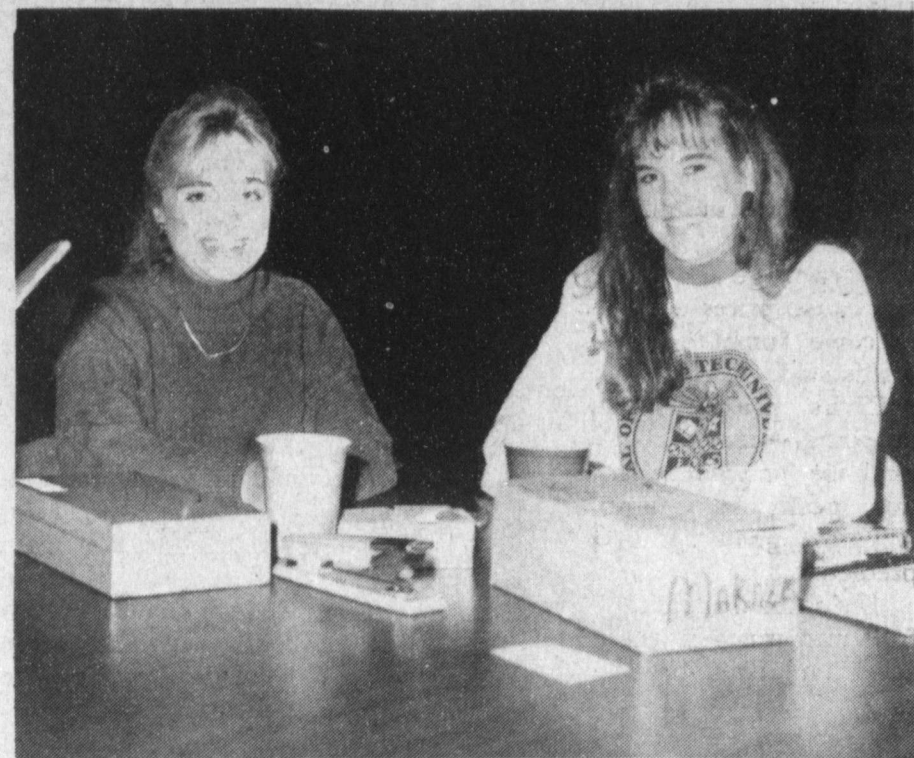
A&M Farm and Ranch Supply, Inc.

1302 W. Amer. Blvd. Muleshoe, Tx. 272-5571



# CofC Member/Employee Luncheon Thursday

Approximately 250 Enjoy 'Super Spuds' With All The Trimmings





## Lower Produce Prices Expected In April

April will bring an end to high produce and fruit prices that erupted following the late December freeze, according to a food marketing expert at Texas A&M University.

Dr. Dick Edwards of the Texas Agricultural Extension Service said vegetables planted after the freeze will hit the market in April.

"Adequate supplies of green beans, squash, tomatoes, sweet corn, cabbage and green onions will cause prices on those items to come tumbling down," Edwards said.

Citrus prices also will be dropping—but not as dramatically as those for produce—as production peaks in California and Arizona growing areas, he predicted.

"Additional supplies of grapefruit and oranges will result in sales on citrus products," he said.

Other produce items coming to market on normal schedule will be cauliflower, artichokes, asparagus, carrots, celery and eggplant.

"Normal April production from Mexico of cantaloupes, bell peppers and cucumbers will cause special prices on these items," he said.

Consumers wanting "sweet" slicing onions will find the first of these varieties from Texas being marketed in April.

"For best prices," Edwards said, "wait at least two weeks after the first ads are seen, since prices generally drop sharply as marketings continue."

Promotions on California-grown strawberries should cause prices to drop to around 50 cents a pint, Edwards said.

Other big news at supermarkets in April will concern special promotions relating to the beginning of the baseball season and the celebration of Easter and Passover.

"The most discounted Easter menu item will be ham," Edwards said. "Prices for bone-in hams will range from 99 cents to \$1.09 a pound, but some restrictions may apply such as total grocery purchases. Boneless canned or pre-baked hams

with a honey glaze also will be discounted up to 25 percent."

Other discounted items for Easter will be eggs, cake mixes, coffee and ice cream. Easter baskets and items needed for the Easter egg hunt also will be available at special prices shortly before the day arrives.

Edwards said that Easter also is a time for plants and flowers for gift-giving. Besides traditional Easter lilies, other choices include tulips, mums, daffodils and orchid corsages.

Retailers also will feature food items for preparation of the Passover meal. Matzo, gefilte fish, borscht, whitefish, herring and a variety of wines will be discounted in many stores.

To welcome the baseball season, retailers will promote hot dogs, buns, relish, catsup, mustard, potato chips and soft drinks.

In the frozen food area, look for discounts on frozen broccoli, cauliflower and strawberries, as well as frozen and canned pineapple tidbits, slices and juice, Edwards said.

"At the meat counter, expanded supplies of catfish and poultry will result in good buys," he said. "Catfish in some form should be on sale every week in April, with best buys on filets, nuggets and whole fish."

Poultry prices should range from whole birds at 49 cents a pound to leg quarters at 30 cents and breasts (with ribs attached) at \$1.19. Beef and pork prices, although trending upward, will feature specials tied to seasonal events. Pork specials will include chops, ribs, roasts and sausage.

"April beef specials will feature chuck roasts, rib roasts and ground meat, with rib roasts competing with ham for the Easter dinner," Edwards said.

### Word of Advice

Woman's Club Speaker: "And, ladies, don't turn away the wanderer seeking food at your door. It's only then that wives will know what a relief it is to see a man eat a meal without finding fault with the food."

## Postage Rate Hike Hurts Businesses

The corner auto mechanic will feel the squeeze of a proposed postage rate hike more than a national fast food chain, said a Texas Christian University marketing professor.

"I think it is definitely going to hurt the smaller advertisers," said Dr. Shannon Shipp, assistant professor of marketing in TCU's M. J. Neeley School of Business.

The Postal Service is seeking an average 17 percent increase for third-class postage from the Postal Rate Commission. If approved, the hike will become effective next February.

While larger advertisers will

be able to consider different methods of reaching their target audience, Shipp said smaller ones lack the business volume to consider alternative media.

"Smaller advertisers really don't have that many options, especially advertisers whose products or services are restricted to a smaller geographic area," he explained. "They are going to get socked with the bill is what it comes down to."

The resulting blow means direct mail will be less flashy, according to Shipp. Advertisers who are at the limit of their budget will be cutting into production to balance the rising

postage costs.

"Some advertisers are going to be forced to use cheaper means," Shipp said. "They'll be doing things that allow them to reduce their total cost, such as using half-page ads instead of full-page ones."

Shipp doubts direct mail advertisers will leave the print medium for radio or television because broadcast doesn't allow people to absorb a message at their convenience. He notes that print ads may be referred to days later, while details of a broadcast message may be lost if the listener or viewer is not completely attentive.

## Ginners' Meet Highlighting Area Events

Ways cotton producers can gain higher yields, premium quality and greater profits during the 1990s will be outlined in a seminar today, Thursday, during the annual trade show and convention of the Texas Cotton Ginners' Association. The convention annually draws more than 6,000 ginners, producers, officials and others in the industry.

The seminar will be conducted by the Texas Agricultural Extension Service from 1:15 to 4:30 p.m. in the banquet hall of the Memorial Civic Center, Lubbock, site of the convention. It will conclude the 33rd annual meeting of Plains Cotton Growers, which is open to all interested persons.

The significance of marketing fiber quality will be explained in the opening presentation by Dr. Don Ethridge, professor of agricultural economics at Texas Tech University.

Beginning in 1991, the system for grading cotton will change, and this will impact on the way cotton is marketed. Ethridge will show how producers can use the new rules to do a better job of marketing their crop.

The growth and development of cotton, and how this related to improved yield, quality and

profit, will be reviewed by Stephanie Johnson Hake of Memphis, Tenn. A former county farm adviser for the California Cooperative Extension Service, she is a consultant to the University of California at Davis in development of a bulletin on cotton production.

How culture and environment influence fiber development will be discussed by Kater Hake, director of the Cotton Physiology Education Program of the National Cotton Council, Memphis, Tenn.

The influence-breeding and selection have on fiber quality and yield will be explained by Dr. John R. Gannaway, cotton breeder with the Texas Agricultural Experiment Station, Lubbock.

How production and harvesting practices influence fiber

quality and yield will be outlined by Dr. James R. Supak, Extension Service cotton agronomist at Lubbock.

Dr. Robert Metzger, Extension Service cotton agronomist at College Station, will be moderator.

**Cash Rewards  
Up To \$1,000  
For Information!**

**Call  
Bailey County  
Crime Line  
272-HELP**

## Dr. A.R. Ploudre

Optometrist

\*Family Vision Care

\*Contact Lenses

(505) 762-2951

\*Texas Medicaid

1515 Gidding St., Clovis

Hours: Monday through Friday

8:00 a.m. to 12 noon

1-5 p.m.

Saturday, 8 a.m.-12 noon

Credit arrangements available upon prior approval.

**WINNER IN MS READATHON**--Amber Richardson, Lazbuddie, shows her trophies from the National Multiple Sclerosis Society that were presented her for her part in the MS Readathon recently at Lazbuddie. (Guest Photo)

## HOMESTEAD EXEMPTIONS



### CAN LOWER THE PROPERTY TAXES ON YOUR HOME

#### A homestead Exemption

lowers the property taxes on your home by lowering its taxable value. For example, if your home is valued at \$50,000 and you receive a \$5,000 homestead exemption, your home will be taxed as if it were worth only \$45,000.

#### You qualify

for a homestead exemption if you owned your home on January 1 and used it as your primary residence on January 1. It doesn't matter whether your home is a house, a condominium or a mobile home.

#### Exemptions are available

to all homeowners on their school taxes. Additional exemptions are available to homeowners who are disabled or age 65 or over. Other exemptions may be offered to homeowners by school districts, counties, cities, and special districts. All taxing units offer exemptions to disabled veterans.

#### Apply to

your local appraisal district office at the address shown below for all exemptions you may qualify for. Application forms are available at this address.

If you received a homestead exemption on your present home in 1989 you won't need to apply again for 1990 unless the chief appraiser requires you to reapply.

However, if you passed your 65th birthday or became disabled before January 1, file a new application to receive the additional exemptions.

If you haven't received an exemption on your present home, or if you moved to a new home, make a new application for 1990.

#### The deadline

for applications is April 30, 1990. Contact your appraisal district before then if you need more time.

For more information, get a free copy of the pamphlet, *Taxpayers' Rights, Remedies, Responsibilities*, at your appraisal district office or from the State Property Tax Board in Austin.

**Bailey County  
Appraisal District**

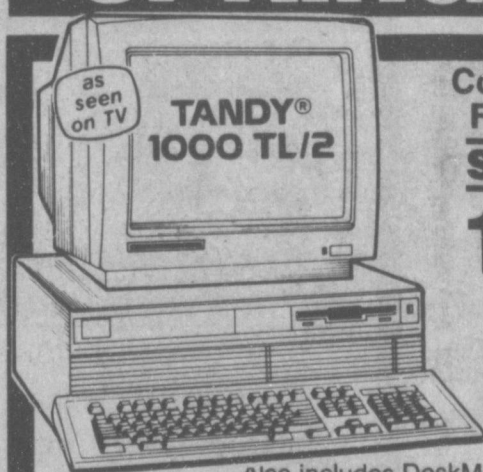
104 E. Ave. C

272-5501

## Radio Shack AMERICA'S TECHNOLOGY STORE

DEALER

## SPRING ELECTRONICS SALE!



### Complete Office System For Home or Business

Save \$819<sup>75</sup>

**1599<sup>00</sup>**

Reg. Separate Items 2418.75

With CM-5 color monitor and 20 MB SmartDrive™. #25-1602/1043/1045/1333. Substitute a 40 MB SmartDrive (#25-1046) for only \$100 more!

Also includes DeskMate® software, DeskMate Q&A Write, Lotus Spreadsheet for DeskMate and a mouse!



### Daisy Wheel Printer Cut 57%!

DWP 230 By Tandy

Save \$260

**199<sup>95</sup>** Reg. 459.95

Perfect letter-quality printing. #26-2812

### Ultralight, Ultracompact 8mm Camcorder

Model 151 MovieCorder® By Realistic

\$200 Off

**799<sup>00</sup>**

Reg. 999.00

Hi-Fi AFM for Superior Sound

With Softcase, AC Charger and Battery

So small, so light you can carry it anywhere! 8-1 power zoom.

With macrofocus. Includes case and accessories. #16-852



### VHS VCR With On-Screen Programming

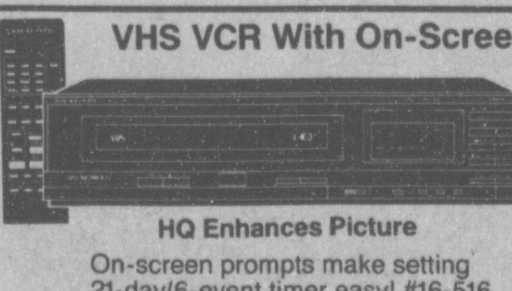
Model 28 By Realistic®

Save \$120

**279<sup>95</sup>**

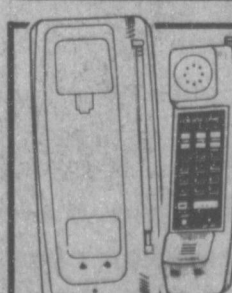
Reg. 399.95

Remote batteries extra



HQ Enhances Picture

On-screen prompts make setting 21-day/6-event timer easy! #16-516



### Cordless Telephone

ET-421 By DUOFONE®

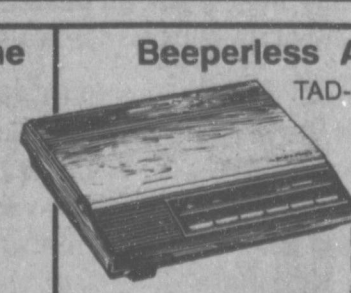
Save \$40

**799<sup>95</sup>**

Reg. 119.95

30-number speed-dialer. #43-558

Tone/pulse dialing



### Beepless Answerer

TAD-325 By DUOFONE

Cut \$40

**799<sup>95</sup>**

Reg. 119.95

No remote to carry. Dual cassettes. #43-396



### FM Stereo Headset

By STEREO-MATE®

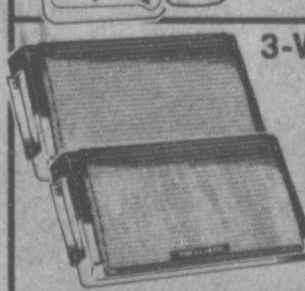
24% Off

**2288**

Reg. 29.95

Folds to Pocket Size

Enjoy hands-free listening. #12-144



### 3-Way Car Speakers

By Realistic

HALF PRICE!

**349<sup>95</sup>** Pair

Reg. 69.95

Digital ready, 5 1/4" woofer. #12-1711



### AM/FM Stereo Car Cassette

By Realistic

20% Off

**799<sup>95</sup>**

Reg. 99.95

Digital tuning. #12-1924



### Premium Audio Cassette Tapes

SUPERTAPE® By Realistic

Cut 40%

Reg. 1.49

**89¢** Each

XR-60 #44-921

Reg. 1.99

**119** Each

XR-90 #44-922

## Wilson Appliance, Inc.

A Radio Shack Dealer

117 Main

272-5531

\*SWITCHABLE TONE/PULSE phones work on both tone and pulse lines. In areas having only pulse (rotary dial) lines, you can still use services requiring tones. FCC registered. Not for party lines. We service what we sell.

**Most Major Credit  
Cards Welcome**



## Santa Fe Sells Two Branches In Local Area

The American Railway Corporation (AMERAIL) purchased three branch lines in the Lubbock and Plainview areas from Santa Fe Railway, Bruce H. Borland, chairman of AMERAIL, has announced. AMERAIL, headquartered in Chicago (Lake Bluff) is a subsidiary of TEMCO Corporation, a railcar leasing

firm. The sale includes 138 miles of trackage in the South Plains of West Texas. The 27-mile Floydada Subdivision will be operated as the Floydada and Plainview Railroad while the 47-mile Lehman Subdivision and 64-mile Seagraves Subdivision will be combined into one operation, the Seagraves, Whiteface and Lubbock Railroad.

able to do over those lines," Lee F. Fox, Santa Fe's assistant vice president of asset management at Chicago, said. "The process of selling branch lines to short-line operators is an ongoing program at Santa Fe to ensure continued rail service in areas where independent operators can improve productivity and efficiency," Fox said.

One affected shipper has already contacted the new owner concerning equipment needs. "We think there's a nice fit for shippers on that line should they need equipment due to our association with TEMCO," McClure said. "One shipper has already asked us to manage his fleet."

AMERAIL has hired an experienced railroad manager to oversee day-to-day operations. He has worked with other shortline operations and has extensive experience with rail operations involving grain, petroleum and cotton.

Terms of the sale were not disclosed.

No Santa Fe employees will be affected by the sale.

"The best way to run a business like this is in partnership with affected shippers and communities," Richard C. McClure, president of AMERAIL, said. "We plan to offer good service sensitive to shippers' needs."

"An independent short-line operator should be able to run an efficient, profitable operation more closely tailored to local customers' needs than we were

### Texas A&M scientists treat migraine headaches with hyperbaric oxygen

COLLEGE STATION — Just about everyone gets a headache now and then, but folks who get migraines have REAL headaches.

Probably no more than one headache in 10 is actually a migraine attack, but they still afflict some 25 million persons in the United States. Attacks can last for hours or days and can be disabling while they last.

Scientists at Texas A&M University believe breathing high-pressure, or hyperbaric, oxygen can consistently relieve the pain of migraines — often within a half hour.

"We were able to provide complete relief to all but one of the patients we studied," said Texas A&M physiologist Dr. William Fife, director of the university's Hyperbaric Research Laboratories. "And in only one case did treatment extend beyond 29 minutes."

The treatment involves breathing pure oxygen while in a hyperbaric chamber similar to the pressure chambers used to treat divers suffering from decompression sickness, or "bends," said Fife, a scientist who has overseen research by more than two dozen students who later became physicians.

Fife believes hyperbaric oxygen therapy offers migraine sufferers a potentially valuable alternative to treatment with drugs.

## Texas Senate Week In Review

Texas legislators will be off to a fast start this week as a second special session begins to reform the way the state's public schools are funded.

The current special session began Monday (April 2) just five days after the Legislature adjourned without passing a bill to equalize the distribution of funds among the state's 1,068 public school districts.

Lawmakers face a May 1 deadline, imposed by the State Supreme Court, to correct funding disparities between rich and poor school districts.

Lt. Gov. Bill Hobby, presiding officer of the Senate, said last week the Senate will probably pass the same \$1.3 billion school funding bill approved during the just-ended session. That Senate bill was substituted in the House for a \$511 million first-year funding plan ultimately defeated in the House by a vote of 101-45.

In the House, Speaker Gib Lewis has given House members a 10-day deadline for bringing a bill to the floor for a vote.

The Senate may also resume efforts this week to reform the state's judicial selection process although a federal appeals court said last week the state is not under an immediate order to enact reforms until appeals are heard in late April.

The court's new order gives lawmakers a temporary reprieve from a previous order to change the way the state selects its district judges.

Last year, a federal district judge ruled that the countywide, at-large system of electing judges is discriminatory because it dilutes the minority vote in the state's most populous counties.

Also this week, the Senate Health and Human Services Committee will hear continued testimony from officials at the Department of Human Services (DHS) on a projected \$850 million deficit at the agency.

Without additional funding from the state, a number of DHS programs that serve some of the state's neediest citizens face cutbacks.

DHS Commissioner Ron Lindsey and DHS board chairman Rob Mosbacher are scheduled to testify before the committee this week.

Lindsey was criticized during his last appearance before the Health and Human Services Committee for failing to provide figures on the magnitude of the DHS deficit. Those figures are expected to be available to senators at this week's meeting.

## STATE CAPITAL



## HIGHLIGHTS

By Lyndell Williams  
TEXAS PRESS ASSOCIATION

AUSTIN — Legislators rested briefly as yet another special session ended in failure, then returned this week to make another attempt to reform public school financing and received a welcome reprieve on court reform.

A federal appeals court, acting on its own initiative, told state lawmakers to take their time in making any changes in the way Texas elects district judges in nine urban counties.

The 5th U.S. Circuit Court of Appeals in New Orleans said the state would not be put under any pressure to change its system of selecting judges "until this court has finally disposed of this appeal" on the merits of the case.

### Back Burner Issue

After the court's announcement, Sen. John Montford, D-Lubbock, said, "The pressure cooker valve has been opened and the steam is gone. We're pushing it to the back burner."

This 30-day session will expire May 1, the deadline the Texas Supreme Court has ordered for equalizing public school finance.

Gov. Bill Clements repeated his no-new-taxes warning, and promised to keep lawmakers in session beyond May 1, if necessary.

But Democratic leaders continued to ignore Clements' warning, and also waved off the threat of the closing of public schools before the end of the semester.

The Supreme Court can close public schools across Texas on May 2 if the Legislature doesn't abide by its court order, but the leadership isn't overly nervous, explaining they believe the court will recognize good faith efforts.

Unspoken is the awareness that several high court justices are also up for election, and may feel an angry backlash if they close the schools near the semester's end.

### Hobby Blames Mosbacher

Lt. Gov. Bill Hobby blamed the Department of Human Services' \$334 million deficit on its chairman, Rob Mosbacher Jr., and accused the agency of misleading the Legislature last year with artificially low projections of caseloads.

Mosbacher, a Republican candidate to replace Hobby as lieutenant governor, said the Democratic leader's remarks were designed to help Mosbacher's opponent, Democrat Bob Bullock.

Turning to the school finance

crisis, Hobby predicted senators will pass a \$1.2 billion education bill and called for a tax increase to cover equalization and the DHS deficit.

### House Needs 10 Days

Speaker Gib Lewis said House members could resolve their party of the school finance problem in the first 10 days of the new session, and Ways and Means chairman James Hury predicted the plan would include a half-cent sales tax hike against the governor's wishes.

The bill's sponsor, Rep. Kent Grusendorf, R-Arlington, said he "could support a tax bill if it funded something meaningful for education." He is opposed in the general election by Kay Taebel of Arlington.

The trick to getting a tax bill past the governor is to pass it early, allowing enough time to override it with a two-thirds vote in both houses. However, 51 House votes or 11 Senate votes can sustain the veto.

The seven Republicans in the Senate can not stop an override if voting breaks along party lines.

There are 60 Republicans in the House, including Grusendorf, but his statement signals GOP strength could be diluted to allow an override, which didn't endear him to Clements.

### The Political Trail

On the campaign trail, Attorney General Jim Mattox said he has "sufficient information" to believe that state Treasurer Ann Richards used illegal drugs at the time she was a 46-year-old elected official who was sworn to uphold the law. Ten years ago, Richards was

46 and a Travis County commissioner.

The Mattox accusation dramatically reopened the question of Richards' past drug use, and GOP nominee Clayton Williams apologized for his first big gaffe, a campfire joke comparing bad weather to rape and saying, "If it's inevitable, just relax and enjoy it."

Richards called it typical Mattox low-down tactics and went about her business of touring the state to get out her runoff vote.

"I think Mattox is a desperate man," Richards said. "I think he must have had a bad poll come back."

Former Texas Secretary of State Jack Rains and Harris County Judge Jon Lindsey criticized Agriculture Commissioner Jim Hightower as a professional politician who does not have the backing of farmers and ranchers.

They endorsed his opponent, state Rep. Rick Perry.

### Other Highlights

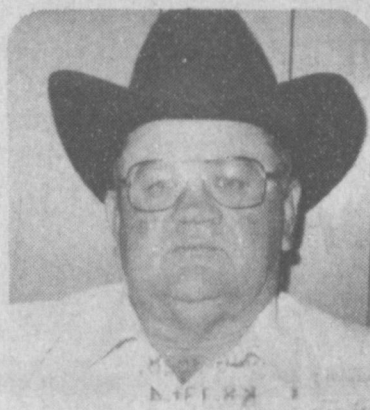
■ A bankrupt gun store partly owned by Speaker Lewis owes the state more than \$24,000 in delinquent sales taxes. Aides to Lewis said the taxes will be paid, "even if the stockholders have to pay them out of their own pockets."

■ Texas ranks fourth nationally as the most popular travel destination, making it a \$17 billion industry, says the Texas Travel Industry Association.

Sweden's prime minister resigns over stiffer reforms.

Satellites launched to test ability to destroy missiles.

## Elect Bennie Claunch

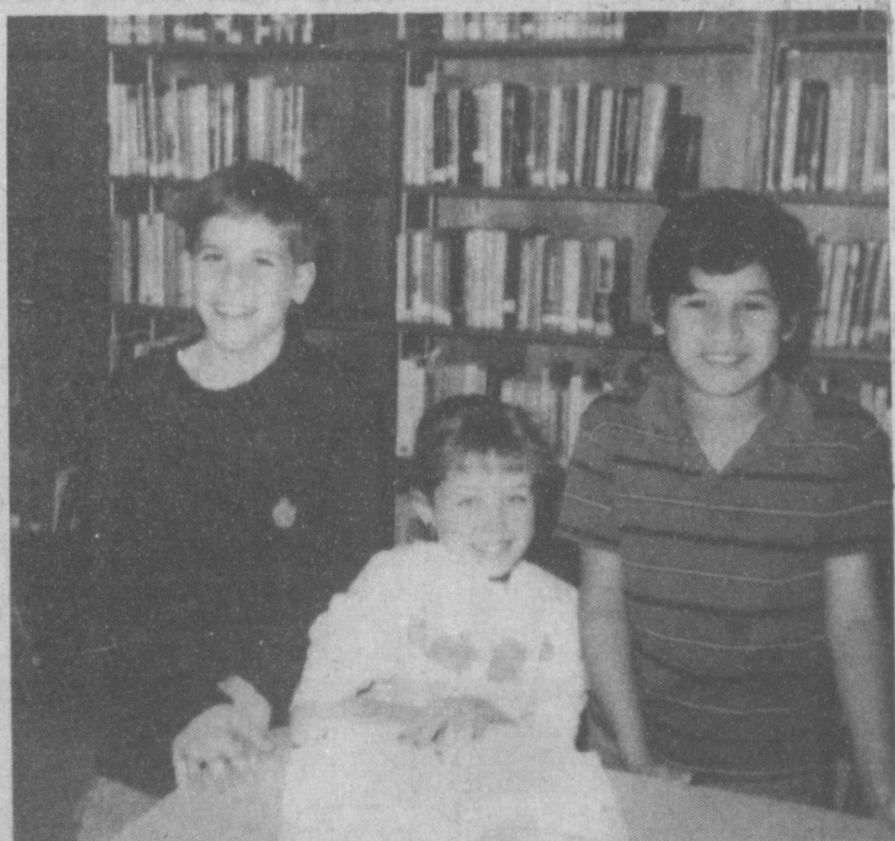


Bailey Co. Commissioner Precinct 4

Thanks for your support in the Democratic Primary.

I sincerely solicit your continued support & vote in the April 10th Run-off Election.

Pd. Pol. Adv.



SCHOOL WINNERS IN POSTER CONTEST--Brice Foster, left, was school winner in a national poster contest, sponsored by the U. S. Department of Justice, Immigration and Naturalization Service. Shelbi Robinson, center, was third place winner and Rigo Cuevas was second place winner. (Guest Photo)

## TAXPAYERS' Rights, Remedies, Responsibilities

Want to learn more about the property tax system? That's possible by reading a pamphlet the State Property Tax Board has written and made available at the local appraisal district office.

It's called "Taxpayers' Rights, Remedies, Responsibilities" and it may help you save money. Learn about tax relief available through

- homestead exemptions
- disabled veteran exemptions
- special productivity value for farm, ranch, and timber land
- tax deferral for over-65 homeowners

You'll learn how your property is appraised. That way, you can decide if the appraisal district's value is reasonable.

If you think it isn't, the pamphlet tells you how to prepare an appeal to the appraisal review board. You'll learn the types of protests the appraisal review board can hear and useful evidence to bring to your hearing.

Important dates in the tax year are listed. You'll know what your responsibilities are and when you are obligated to satisfy them.

"Remedies" is free to taxpayers. Ask for yours today at

**Bailey County Tax Appraisal District**

104 E. Ave. C. Muleshoe 272-5501

**State Property Tax Board**

Box 15900 Austin, TX 78761-5900



## YOU BE THE JUDGE

### Responsibilities Of The County Judge

Presiding Officer, Commissioners Court

Chief Budget Officer

Promote County Prosperity

Judicial Duties

You can see there is more to the County Judge's job than routine misdemeanor cases. A whole lot more. The evidence of experience, qualifications, skills, and abilities tips the scales in favor of B.K. Buske for County Judge.

A responsible choice. Vote April 10.

### Experience, Qualifications, Skills & Abilities

Has chaired numerous boards, committees. Worked with all types of groups - Cub Scouts to Senior Citizens, from neighborhood to nationwide in scope. Served as Chief Executive (Mayor) of municipal government over five years.

Skilled through many years of guiding the budget process to obtain the highest return for the funds available. Served in financial planning capacity for businesses, civic organizations, charitable institutions, trusts, and city government.

Cooperated with commissioners' court to fund bond issue for new industry bringing millions of dollars into our economy. Organized efforts for responsible, steady growth.

Audited courses in Law School plus years of application of statutes and ordinances pertinent to the protection of the public. Combined common sense and education to fairly administer the law.

**B.K. Buske**  
For Parmer County Judge

Pd. Pol. Adv. By Candidate, From



# CLASSIFIEDS 272-4536

## CLASSIFIED RATES

15 Words & Under  
Minimum Charge  
\$2.30  
Thereafter  
\$2.00  
16 Words & Over  
1st Insertion  
15 cents per word  
2nd Insertion  
13 cents per word

CLASSIFIED  
DISPLAY RATES  
\$1.75  
Per Column Inch

DEADLINES  
12 noon Tues.  
For Thursday Paper  
12 noon Friday  
For Sunday Paper

To receive the re-  
duce rate after the  
first insertion ad  
must run continuous-  
ly.

We reserve the right  
to classify, revise, or  
reject any ad. We are  
not responsible for  
any error after ad  
has run once.

## 1. Personals

**CONCERNED**  
About Someone's  
Drinking?  
**HELP IS**  
**AVAILABLE**  
through Al-Anon  
CALL 272-2350 or  
965-2870 or come to  
visit Tuesday nights,  
8:00 p.m. or Saturday  
mornings at 10:30 a.m.  
and through AA call  
965-2870 or come visit  
Tuesday nights, 8:00  
at 620 W. Second,  
Muleshoe.

**FOR YOUR**  
**WEDDING,**  
**BIRTHDAY,**  
anniversary, congrat-  
ulations, shower, holi-  
day, or any occasion  
cakes, or cookies: Call  
Lora Wallace 272-5006  
or (272-4301 and leave  
message). Have lots of  
new "89"- "90" char-  
acter pans!  
W1-13t-2tp

## 3. Help Wanted

**WE NEED:** Full time  
LVN Charge Nurse for  
3-11 shift. Modern  
up-to-date facility with  
superior rating from  
Texas Department of  
Health. Group insur-  
ance, meals, life insur-  
ance, and 2 weeks  
vacation after 12  
months employment.  
EEOC Employer. Con-  
tact Jo Blackwell,  
Adm. or Joan Ahrhart,  
R.N., D.O.N. at Prairie  
Acres Nursing Home,  
201 E. 15th. Friona,  
Texas 79035 (806) 247-  
3922.  
p3-12s-4tc

**FOR Buddy's Country**  
Kitchen in Morton.  
Needing a cook,  
back-up or part time  
and chance for fulltime  
Need references. Call  
266-8963.  
B3-14t-2tc

## 4. Houses For Rent

**REPAIR HOUSE** in  
exchange for rent. Call  
915-446-2820.  
B-12s-8tc

Shop  
**Muleshoe**  
First

## 5. Apts. For Rent

**WHY RENT?** Homes  
for \$1.00. Reposs. Gov't  
give away programs!  
For information 1-708-  
742-1142 Ext. R-6976A  
PS-13t-2tp(t)s

## 9. Automobiles For Sale

**FOR SALE:** 1982 Mon-  
te Carlo. Very clean.  
Call 272-4759 or see at  
519 W. 8th.  
9-13t-4tp

## 11. For Sale Or Trade

**FOR SALE:** 1982 Lin-  
coln Continental. Also  
a Baldwin Player Or-  
gan. Call 272-3318.  
S11-13t-4tc

## 8. Real Estate

**HOUSE FOR SALE:** 4  
Bedrooms, 1 Bath, 1  
Car Garage. Also Com-  
mercial. (505) 763-  
4846 Home; (505) 763-  
4841 Business.  
B8-14t-3tc

**FOR SALE:** 3-Bed-  
room red brick house.  
1815 W. Ave. C; Call  
272-3767.  
B8-13t-tfc

**FOR SALE:** 2 Bedroom  
house to be moved.  
946-3628.  
K8-13t-4

## 8. Real Estate

## 8. Real Estate

### Henry Realty

111 W. Ave. B. 272-4581  
Muleshoe, Tx

**RICHLAND HILLS-2** Bdrm, 2 bath, 2 car  
garage Brick Home on the market with  
central heat and air, all carpet, automatic  
yard sprinkler.

**NEW LISTING** 3 Bedroom, 1 bath in Lenau  
Addition. Well insulated with storm door  
and windows. Patio room with Thero pane  
windows and free standing wood burning  
stove. Landscaped to perfection with easy  
care of grounds. Low utility cost. Priced to  
sell.

**3 Bdrm., 2 bath, spacious home** outside city  
limits, near city on highway. 29x40 metal  
building. Lot 85'x420'.

**COMMERCIAL PROPERTY**-Ideal location  
on West American Blvd. 150' highway  
frontage. A great business opportunity.

**RURAL HOME-3 Bdrm., 2 bath, large den**  
on one acre with many extras. Fenced with  
barns, fruit trees, extra storage, storm  
cellar, and satellite dish. Priced to sell.

**SPACIOUS-2 Bdrm., 2 bath, with garage.**  
Freshly painted. Fireplace. Ready to move

**JUST LISTED- Outside city- 3 Bdrm., 2**  
bath, garage on one acre. Carpet with  
drapes and blinds. Dishwasher. Good  
storage.

**3 Bedroom, 2 bath, carpet, large living**  
room. Excellent condition, near high school.  
Priced to sell.

### Bingham & Nieman Realty

116 E. Ave. C

272-5285 or 272-5286

**RICHLAND HILLS**  
**JUST LISTED-IMMACULATE-ENERGY**  
**EFFICIENT** 3-2-2 Brick, Cent. A&H,  
built-ins, FP, sunken lv. area with cathedral  
ceiling, ceiling fans, earthtones, storage  
bldg., much more!!!!150's

**NICE 3-2-2 Brick, 2,300' + lv. area,**  
earthtone carpets, built-ins, FP, Cent.  
A&H, fenced yd. & more \$70's!!!!

**4 NICE RESIDENTIAL LOTS PRICED**  
**FROM \$5,000.00!!!!**

**NICE 3-2-2 Home, HEAT PUMP, built-ins,**  
FP, earthtone carpets, fenced yard, & much  
more. **PRICED TO SELL!!!!**

**JUST LISTED- Nice 3-2-2 Brick on large**  
corner lot, Cent. A&H, built-ins, storm  
windows & doors, large basement, much  
more!!!!

**JUST LISTED - 3-2-2 Brick on corner lot,**  
Cent. A&H, built-ins, FP, cov. Patio &  
more. \$60's!!!!

**VERY NICE 3-3-2 Brick Home, Cent. A&H,**  
built-ins, FP, Wtr. Sftnr., auto. spklr., Cov.  
Patio, Stor.-Shop, & much more!!!!

**NICE 3-2-1 Brick Home, Cent A&H,**  
built-ins, large den with fireplace. Fenced  
yard, storage bldg. \$40's!!!!

**PRICE REDUCED 2-2-2 Brick, corner lot,**  
Cent. A&H, spacious rooms, utility, cov.  
patio, fenced yard, & much more. \$40's!!!  
**HIGH SCHOOL!**  
2-1-1 Brick, fl. furnace, CA, fenced yard  
& more. \$20's!!!!

**PRICE REDUCED 3-1-1 Home earthtone**  
carpets, fenced yard, storm cellar &  
workshop!!!!

**JUST LISTED-VERY NICE 3-1-1 Brick,**  
Cent. heat, Evap. air, DW, earthtone  
carpets, nice deck area, fenced yd., st. bldg.  
& much more. \$30's!!!!

**3-2 Home, nicely remodeled, Heat pump,**  
storm windows & doors, well insulated,  
ceiling fans, fenced yd., storage bldg. &  
more!!!!\$20's

GEORGE NIEMAN, BROKER

**JUST LISTED - NICE 2-2 Home, large**  
kitchen-dining area, storage bldg., benched,  
& more. \$17,000!!!!

**LENAU ADD.**

**JUST LISTED - 3-1-1/2 Home, Cent. heat,**  
Evap. air, new paint and counter-top,  
fenced yd., storage bldg., & more. \$30's!!!!

**3-1 Home on corner lot, wall heat, fenced**  
yd. \$20's!!!!

**NICE 4-2-2 carport HOME, Cent. A&H,**  
built-ins, FP, Cent. Vac., Office, Sewing  
Area, fenced yard, & MUCH MORE.  
\$40's!!!!

**COUNTRY HOMES**

**JUST LISTED-NICE 3-3-2 Brick Home on**  
one acre tract at edge of town, Cent. A&H,  
built-ins, FP, sunroom, office sauna, wet  
bar, auto. spklr., fenced yd., plus other  
amenities!!!!

**NICE 3-2 Home on 1 acre on pavement close**  
to town, Cent. A&H, built-ins, large  
kitchen, lv. rm., den, utility, large  
storage-workshop, & more!!!!\$50's!!!!

**JUST LISTED 3-2-2 Brick on 25 acres, close**  
to town, Cent. A&H, built-ins, shop, barn,  
new 4 wire fence all around, much  
more!!!!

**3-2-3 carport Home on 11 acres at edge of**  
town, Cent. A&H, built-ins, storm cellar,  
barns, & corrals. \$50's!!!!

**3-1-1 Home on approx. 5 acres at edge of**  
town, domestic well and irrig. well, barns &  
more. \$20's!!!!

**VERY NICE 3-2-1 Home on 1 acre, close to**  
town. Cent. Heat, Evap. air, nice carpets,  
nicely remodeled. \$30's!!!!

**2-1 Home, 20 acres, sub. pump, sprinkler,**  
barns & corrals. \$40's!!!!

**EXCELLENT COMMERCIAL TRACT 175' x**  
100', Hwy. 70 & 84, railroad spur access at  
rar, approx. 1200 sq. ft. bldg. **PRICED TO**  
**SELL!!!!**

**NICE 3,500 sq. ft. office bldg. across from**  
Courthouse. **PRICED TO SELL!!!!**

**JUST LISTED-NICE COMMERCIAL BLDG.**  
ON MAIN HIGHWAY, Approx. 2800 feet of  
area, suitable for various types of business.  
Possible Owner Financing to qualified  
Buyer. \$20's!!!!

DIANNE NIEMAN, BROKER

## Sudan News

By Ann Gaston

Those celebrating birthdays  
March 25 to March 31 include:

March 25, Joe Salem; March  
26, Philda Dudgeon, Bill Bard-  
ner, Kristan Humphreys and  
Edwin Harper; March 27, Janae  
Allison Bellar, Jerry Garza, Ken  
Williams, Kendra Whitten, Kar-  
in Whitten and Dennis Whitley.

March 28, Karyn Tollett, Patty  
Miller, Brittney Burns, Lula  
Burnett, and Robyn Kenner;  
March 29, Mark Hanna and Dana  
Ray Dudgeon; March 30, Billy  
Chester, and Tim Williams; and  
March 31, Laverne Harper, Mike  
Hanna and Ryan Netherland.

The morning group of the  
United Methodist Women met  
Monday morning, March 19 for  
their regular session. Mrs.  
Wayne Rogers was the hostess  
for the meeting. Mrs. Richard  
Black presided in the absence of  
the chairman, Mrs. E.C. Min-  
yard.

The Bible study on the book of  
Psalms was continued. Mrs.  
J.W. Olds presented lesson  
number four on the "Royal  
Psalms."

During the business, the  
minutes of the previous meeting  
were read, reports of committees  
were given, cards were signed to  
be mailed to several church  
families.

The meeting closed with a  
prayer by Mrs. Jim Hawthorne.  
Others present were: Mrs. Edwin  
Harper, Mrs. Rodney Nichols,  
Mrs. F.M. Smith, Ms. Bert  
Vereen and Mrs. Ray May.

## 8. Real Estate

B.A. and Madge Beauchamp  
attended the O.L. Turner 60  
anniversary party in Rising Star  
last weekend. They also were  
able to visit with Bobbie and  
Jimmy Carpenter and family.  
The Carpenters' are formerly of  
Sudan.

Mr. and Mrs. Dennis Nix of  
Lamesa were here to visit his  
brother, Mr. and Mrs. Olin Nix  
Saturday and to attend the  
wedding of Jeannia and Greg  
Dykman.

Mrs. Pete Carmichael, Leslie  
and Chisholm Dolgener and Sue  
Davis all of Andrews attended  
the Nix-Dykman wedding on  
Saturday. Mrs. Carmichael is  
Olin Nix's sister.

Janet and Clifford Watson and  
Seth of Longview were here to  
visit Janet's parents, Mr. and  
Mrs. Mike Nix, and to attend her  
sister's wedding. Melissa Nix of  
UTA in Arlington also visited and  
served as maid of honor in the  
Nix-Dykman wedding. Janet was  
the matron of honor.

The Fireman's Auxiliary is  
trying to get together another  
community cookbook, and good  
community recipes are needed. If  
you have anything you would like  
to put in the cookbook please  
contact one of the following  
members or mail to: Fireman's  
Auxiliary, P.O. Box 651, Sudan,  
TX 79371. Numbers to call:  
Norma Burnett, 227-2024; La-  
Rhonda Hill, 227-2328; Louise  
DeLaRiva, 227-2488; Dorothy  
Hill, 227-2489; Ann Carson,  
227-2235; Shonda Hill, 227-2587;  
or Joyce Conn, 227-2525.

All recipes will have to be  
turned in by June 1, 1990.

The fireman's auxiliary met  
Monday March 12. Willie Mae  
Rice gave a very informative  
demonstration on flower arrang-  
ing. The arrangement was given  
away in a drawing. A community  
cookbook was discussed and the  
nomination was passed to have  
one. Also a meal for the Sudan  
Rescue School was decided on for  
Sunday of that weekend. Mem-  
bers present were; Norma,  
Dorothy, Louise, Shonda and  
LaRhonda.

The Child Development Class  
of Sudan High School recently  
toured West Plains Area Hospital  
in Muleshoe. In connection with  
their study of pregnancy, labor  
and delivery they toured the  
Labor Room, Delivery Room,  
Surgery, Recovery Room, the  
Maternity Ward and the Infant  
Nursery.

The tour was led by Mary  
Swint, head nurse. In addition to  
giving a thorough explanation of  
each area of the hospital and its  
specialized equipment, she also  
answered students' questions  
about expenses involved.

The students are completing a  
project of estimating the cost of  
having and caring for a new  
baby.

272-4536  
THINK CLASSIFIEDS CALL

## 17. Seed and Feed

## 17. Seed and Feed

### Seed Contracts

Excellent opportunity for producers with  
quality land and average water. For  
non-programs acreage.

### For Information Call

office  
806-293-4404

evening  
806-293-7927

**LAND FOR SALE:** 7,000 acres of irrigated  
land. Will sell any part, or all. Sprinkler,  
fenced, and water tanks for cattle in each  
circle. Good cattle operation and excellent  
living quarters. Land is good for vegetables  
or grains. Near Earth, Texas. Will also sell  
or lease.

**Randy Johnson**  
(806) 272-3056

Students in the class are Elisa  
Aguilar, Happy Azua, Darrin  
Collins, Toni Flores, Jean Mur-  
illo, and Veta Smith. The teacher  
is Mrs. Lanette Whitley.

The Methodist Senior Supper  
was held on Tuesday night at 7  
p.m. The western theme was  
used throughout the evening.  
Fried chicken, potato salad,  
beans, hot rolls, relish's and ice  
cream bars were served.

The place mats were made of  
Levis with bandanas for napkins.  
Ryan Netherland and Corey  
McAdams were the servers. The  
speaker was Kenneth Wyatt from  
Tulsa. His wife, Veda, accompan-  
ied him to the banquet. Book-  
markers made of popsicle sticks  
with wooden state of Texas at the  
top were the souvenirs. The  
bookmarkers had each persons  
name written on it. Dorothy  
Drake was the M.C.

## Three Way News

Mr. and Mrs. Obie Standard  
and son returned Tuesday from a  
trip to California to attend a  
wedding of his brother.

Ron Foley underwent surgery  
in Methodist Hospital Tuesday.

Mrs. George Tyson spent  
Tuesday in Methodist Hospital.

Mrs. Ada Long from Amarillo  
spent Monday night and Tuesday  
morning with Mrs. H.W. Garvin.

Mr. and Mrs. Bill Dolle and  
Darla returned home Friday after  
a week sight seeing in California.

Mrs. Rayford Masten, Mrs.  
Robert Kindie from Maple and  
Mrs. D.A. Williams visited Mr.  
and Mrs. George Tyson Wednes-  
day evening.

Mrs. H.C. Toombs joined her  
husband at Lake Kemp Thursday  
for a fishing trip.

Mrs. Bill Dolle visited Mrs.  
H.W. Garvin Saturday afternoon.

The Baptist ladies of Three  
Way honored the Three Way  
High School seniors and their  
parents with a dinner and  
program Wednesday night. Rev.  
Rodger Foot said the invocation  
followed by a program by the  
Lollie and Pops group from  
Petersburg. Then a speaker, Pat  
Six youth minister from Trinity  
Baptist Church in Lubbock.

Mr. and Mrs. Carol Fleming  
from Brownfield and Ima Flem-  
ing from Alta visited Mrs. H.W.  
Garvin and Mr. and Mrs. George  
Tyson Thursday.

## BIBLE VERSE

"By this is my Father  
glorified, that you bear  
much fruit, and prove to  
be my disciples."

1. Who is the author of  
this statement?
2. To whom was he  
speaking?
3. What was the occasion  
of this statement?
4. Where may this verse  
be found?

Answers:

1. Jesus.
2. To the eleven disciples.
3. After the Last Supper,  
while Jesus and the eleven  
were enroute to the Garden  
of Gethsemane.
4. John 15:8.

**Cash Rewards**  
**Up To \$1,000**  
**For Information!**  
Call  
**Bailey County**  
**Crime Line**  
**272-HELP**



# MULESHOE AREA



## Mid-Winter '90



## BUSINESS DIRECTORY AND SHOPING GUIDE

**WES-TEX FEED  
YARDS, INC.**

*Custom Cattle Feeding*

**Wes-Tex Feed Yards, Inc.**

272-7555

**Henry  
Insurance Agency,  
Inc.**

"Serving You Since 1964"

KENNETH R. HENRY  
CERTIFIED INSURANCE  
COUNSELOR  
REAL ESTATE BROKER

111 W. AVENUE B  
PHONE 806/272-4581  
MULESHOE, TEXAS 79347

**LOME  
BROWS**

ART  
LOFT

All Irrigation Supplies

Underground Plastic Pipe

Above Ground Gated Plastic Pipe

Solar Surge Valves

**Irrigation Supply**

J.C. & Zona Gatewood

607 E. Amer. Blvd. 272-4466



Pictured (L-R) Back Row--Arthur Graves, Rob Donaldson, Gary Albertson, Milton Norman, Phil Kent and Bob Donaldson. Front Row (L-R)- Willard Norman, Randy Norman and Jerome Clemmons.

**Leal's Restaurant**

**THE WILBURN**

Tostadas topped with beans, rice, taco meat, cheese, lettuce, tomato, guacamole and topped with even more cheese!

**\$5.89**

Closed Monday

1524 W. Amer. Blvd. 272-3294

**W.T. services inc.**

319 E. American Blvd.  
MULESHOE, TEXAS 79347

Mobile Communications

Two-Way Radio Repair

GARY PARKER  
Technician

Muleshoe - 806-272-4888 Hereford - 806-364-7311

**Pivot Products Distributors,  
Inc.**

**Frontier Hybrid Seed Corn**

3030B

**\$38.00** a bag

710 E. Amer. Blvd. 272-5536

*We appreciate all of  
our customers and look  
forward to serving you in  
the future.*

**Lambert Cleaners**

123 Main 272-4726

**Early Bird  
Specials**

**Rent Your Tux's  
By The  
End of April  
And Get  
A**

Tired of looking at that  
Old Carpet?

*We have a large inventory of  
Used Carpet!*

*Check with us before you buy.*

**Muleshoe Floor Covering**

122 S. Main Curtis Carpenter 272-3555

**VIOLA'S  
DELUXE DINNER**

Chile Relleno, Taco,  
Enchilada (Meat or  
Cheese), Chalupa, Beans  
and Rice

**\$6.95**

Closed Tuesday

**Viola's Restaurant**

2002 W. Amer. Blvd. 272-3838

**15% Discount**

**Lambert  
Cleaners**

123 Main 272-4726

**1•2•3  
Lunch Special**

1) Your choice of a single topping Personal Pizza or a Pasta Dish with meat sauce (Spaghetti or Cavatini)

2) Trip thru the Salad Bar

3) Your choice of Iced Tea or a Med. Soft Drink

**All for Only \$3.69**

**Pizza Hut.**  
Makin' it great!

1412 W. Amer. Blvd. 272-4213

**WE RECOMMEND  
ferti-lome**

Lawn & Garden Products

**Time To Use  
ferti-lome  
LAWN FOOD**

Kearney Scoggin

**Scoggin Ag Center, Inc.**

"Where Fertilizer Is Our Business"

1532 W. Amer. Blvd. 272-4613

**5 Locations  
To Serve You!**

•Clays Corner •Enochs •Muleshoe  
•Pleasant Valley •Old Griffith

**Farmer's  
Co-Op Elevators**

272-4335

**True Value**  
OF THE MONTH

**6.99** Your choice  
Shovel or Garden  
Rake

139568/138693  
QUANTITIES LIMITED

**Fry & Cox, Inc.**

401 S. 1st 272-4511