

Weather

March 8	65	27	.00
March 9	68	30	.00
March 10	79	50	.00
March 11	79	43	.00
March 12	65	36	.00
March 13	75	48	.00
March 14	75	26	.00

Muleshoe Journal

'The Community Of Opportunity-Where Water Makes The Difference'



Vol. 68, No. 11

12 PAGES TODAY

Published Every Thursday At Muleshoe, Bailey County, Texas 79347

TA TEXAS PRESS ASSOCIATION

20¢

THURSDAY, MARCH 15, 1990

Marilyn Cox Wins Judge Election

New Laws On Pesticides Are Discussed

On January 1, 1990, new pesticide laws went into effect in the State of Texas, and Bailey County Extension Agent Spencer Tanksley visited the Muleshoe Rotary Club on Tuesday to explain the new laws.

"Everyone is affected by the new laws," said Tanksley. "You may think just the farmer is affected, but that is not true. The businessman, and the household owner is also affected."

He went on to explain that the pesticides can still be purchased with the old applicator card, but the card does not allow a person to supervise the application of the pesticide. In order to do this, the person with the pesticide must have a current Private Applicator License.

He said the license is obtained by the individual attending a training meeting of three and a half to four hours, using a study guide booklet, then passing a test administered by the Texas Department of Agriculture from Lubbock.

"The rumor is that the test is not easy," added the county agent.

He also said that the fee for the license is \$50 for five years, or \$10 per year, to be paid for five years in advance.

He also expects additional training hours to be added for each year, as much as five training or (CEU) hours per year. This is currently required of commercial applicators.

Other and more stringent laws are also expected to be 'tacked on' in the future.

Tanksley said a training meeting is scheduled for Muleshoe on Wednesday, March 28, beginning at 8 a.m. in the arena at the Bailey County Civic Center.

As a luncheon will be served, he asked that those planning to attend call in and make reservations, and also go by the Extension office at the Bailey County courthouse and pick up a Study Guide Booklet.

After fielding a number of questions from Rotarians at the meeting, Tanksley explained how the Extension Service affects everyone's life in a community, stating that what affects home, family and people, affects the Extension Service.

"Our main emphasis is Socially, Economically and Environmentally," he concluded.

Rotarian Paul Poynor was in charge of the meeting for the day.

President Terry Hutto said the next four programs are the responsibility of Herb Parks, George Nieman, Bruce Purdy and Curtis Shelburn.

Don McElroy will be heading up a committee to name workers to help in the concession stand at the junior high track meet scheduled for Muleshoe on March 24. Rotarians will be signed up for various shifts in the concession stand, and helping on the field during the day.

Robert Lepard reported on the annual Mule Kicker Relays held in Muleshoe last weekend, and thanked the Rotarians who helped with it.

Harvey Bass was winner of the Polio Plus Drawing for the week.

It was reported that Rotarian Olan Burrows is currently hospitalized at Muleshoe Area Medical Center.

Visitors at the Tuesday meeting included Treg Manning, Starla Ellis, Julie Cage, Cindy Parry, James Cox, Reagan McElroy, Eric McElroy, Kyle Kenmore, Hank Hester, Cyle Marr and John Bryan Covart.



MULES WIN FIRST IN 1600 RELAY SATURDAY--With the second and third place winners flanking them late Saturday afternoon, the runners from the Muleshoe Mule 1600 relay team show off their plaque received for winning first in the 1600 relays. From left, the second place team is from Kress and the third place team on the right is from Farwell. In the center, from left, team members include Hector Sanchez, Clay VanSandt, Corley Hutton and Johnny Noble. (Journal Photo)

Lady Mules Win Championship In Relays; Mules Finish Third

With a number of schools represented, the Muleshoe Varsity Girls' track team walked off with the first place honors at the Third Annual Mule Kicker Relays in Muleshoe last weekend while the Varsity Mules placed third in the boys' events.

For the girls, Muleshoe had 208 points; Nazareth was second at 109; Kress, third with 106; Hale Center was fourth with 71 and Farwell, fifth at 70.

In the boys events, the scoring went this way: Farwell, first with 143; Ralls, second at 134; Muleshoe, third, 110; Hale Center, fourth, 58; Kress, fifth, 39; Happy, sixth, 20; Happy JV, seventh, 18; Muleshoe JV, eighth, 12 and Nazareth was ninth with eight points.

The first place Lady Mules showed Amber Green, first in both the triple jump and long jump, with Monica Clemmons third in Long Jump.

Monica was also second in high jump, while Erin Kelly placed third.

Monica Swint was first in both the shot put and discus and Channa Hardwick was second in shot put and third in discus.

The Lady Mules won the 400 meter relay.

Erin Kelley placed first in the 100 m. hurdles and the 800 m. relay team of Amber Green, Becky Donaldson, Monica Swint and Monica Clemmons placed second.

Blanca Sanchez was second in the 400 m. run; and Erin Kelly was first in the 300 m. hurdles.

Monica Clemmons was second in the 200 m. run and Heather Hutton was first and April Hugg, second in the 1600 m. run.

Monica Clemmons, Blanca Sanchez, Amber Green and Erin Kelly placed first in the 1600 m. relay.

Below is Coach Tom Duncan's report on the boys' events last Saturday:

The Annual Mule Kicker relays were held last Saturday, March 10, with the Farwell boys and Muleshoe girls teams capturing the team championship plaques.

Winners of the relay plaques

were Ralls Boys (400 meter relay) and Kress girls winning the 800 meter relay.

The Mules re-kindled that spark of specialness in capturing the 1600 meter relay, outdistancing Ralls by 30 yards on the girls side of the ledger. The Lady Mules captured in grand style the 400 meter and 1600 meter relay plaques.

To both the boys' and girls' relay teams, it was a job well done and a day for each fan to be ecstatic about. The thinclads from Muleshoe just absolutely, both boys and girls, improved and competed well.

Not wishing to steal Coach Bob Davis' thunder, I will just report

on the boys side of the action.

We had the kind of effort and improvement I expected. These youngsters had great improvement and showed a strong competitive spirit.

In relation to the other area meets with our district schools involved, we are, and will be, very competitive by the time we get to the April 6-7 district meet at Friona.

These are the Mules' results: 3200 m. run, Andy Crawford, second at 11:46.40; 800 m. run, Corley Hutton, second at 2:08.61; 110 m. high hurdles, Ramiro Alarcon, second with 17.79 and Kip McCall, fourth at 18.78.

Cont. Page 6, Col. 3

WJHS Students Win History Fair Awards

Last week was Public School Week, and in conjunction with the special week, students at Watson Junior High School held a History Fair.

WJHS is very pleased to announce the winners of the History Fair:

EIGHTH GRADE

Shawna Delaney, grand prize, with her Farmhouse.

First Place to Shane Schuster, Pony Express; Kelli Caldwell and Jeanne Cox for Jamestown.

Second place winners were Brooke Barrett, Map of U.S.; Jenna Glover, Lewis and Clark Expedition; Frank Guzman, Battle of Gettysburg; Lori Hodges, Report; Kristin Holmans, First American Flag; Sonya Smith, Declaration of Independence and Darrell Whitaker, Farm.

Third place winner was Scott Springfield for his Hiroshima A-Bomb and honorable mention went to Cathy Espinoza and Tina Garcia for reports.

SEVENTH GRADE

Emily Bomer won grand prize for the Old Tascosa Courthouse.

In first place were Mikki Bowen, 6-Flags of Texas; Jared Clarkson; Computer and Pueblo; and Holly Donaldson, Presidents of the Republic.

By the time the final ballot box was in at the Bailey County Clerk's office Tuesday night, one definite upset marked Tuesday's Primary Election for the County.

With 48 percent of Bailey County's registered voters going to the polls, Democrat Marilyn Cox upset incumbent Bailey County Judge Jim Watson 906-406 to take the Democratic bid for county judge. Candidate Robert Alanis received 275 votes in the election.

Mrs. Cox will face Republican James Warren in the November General Election. Warren ran on the Republican ticket unopposed.

For County Commissioner, Precinct Four, an April 10 runoff will be held between Bennie Claunch and Alfonso Posadas.

Posadas received 177 votes and Claunch had 92 votes to lead the slate of four candidates for the commissioner post currently held by Rudolph Moraw, who did not seek re-election.

Terry Sowder received 81 votes and Jodie Barrett had 46 votes for the post.

Incumbent Commissioner for Precinct Two, Don Seales, was ousted by C. E. Grant Jr. by a vote of 216-124.

There are no candidates on the Republican ticket for either of the commissioner posts for the general election.

With more than 3,600 registered voters in Bailey County, some 1,621 Democrats and 145 Republicans went to the polls Tuesday, for 48 percent of the registered voters.

Although statewide, Democrats Jim Mattox and Ann W. Richards stayed close in the Democratic bid for Governor, Bailey County overwhelmingly went for Jim Mattox, who received 872 of their votes. Mark White received 235 and Richards got 213 votes.

On the Republican ballot, Bailey County opted for Clayton Williams, with 68 votes, over closest contender, Kent Hance, who received 53 votes.

Statewide, Williams was the undisputed winner of the Republican bid for governor, and will face the winner of the Mattox-Richards runoff in November.

Bailey County Democrats also went for John Odam for Attorney General over Dan Morales, by a vote of 680-494.

Tom Bowden got Bailey County's nod for State Treasurer, with 444 votes. Other contenders were Karen Friend, 265; Armando Gutierrez, 216 and Nikki Van Hightower, 176.

Another race creating statewide interest on the Democratic ticket was that of Commissioner of Agriculture.

Incumbent Jim Hightower faced six opponents, but received more than 50 percent of the Bailey County vote, at 645.

His closest contender was Neal Burnett of Plainview, who received 276 votes.

Robert (Bob) Krueger received the county's approval for Railroad Commissioner at 770 votes

Lazbuddie ISD Slates Election For 2 Members

At Lazbuddie, the terms of Jerry Engelking and Melvin Morris will be expiring as members of the board of trustees of the Lazbuddie Independent School District.

On May 5, two new members will be elected.

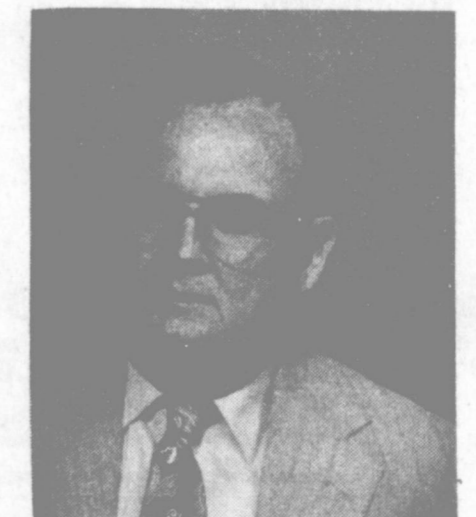
Morris has filed for re-election to the board and Robert Gallman has filed as a candidate for the school board.

Final date to file as a candidate is Wednesday, March 21, at 5 p.m.

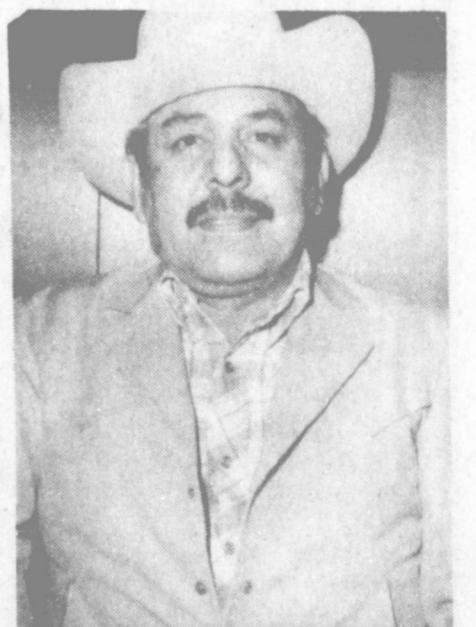
Interested persons may file at the Lazbuddie School.



MARILYN COX



C. E. GRANT JR.



ALFONSO POSADAS



BENNIE CLAUNCH

\$\$\$ SHOP THESE FOOD SPECIALS ... FOR \$\$\$ SAVINGS!

ALL PURPOSE
Gold Medal Flour
 5 LB. BAG
\$1.09

SALTINES
 SHURFINE SALTINE
Crackers
69¢
16 OZ. BOX

Campbell's Tomato Soup
3 \$1
10.7 OZ. CANS

PILGRIM'S PRIDE
Fryer Breast
\$1.58
LB.

Pork Chops
\$2.68
LB.

Whole Hams
\$1.78
LB.
Half Hams \$1.88

Beef Briskets
\$2.28
12 OZ. PKG.

Peyton's Chorizo
98¢
8 OZ. PKG.

Wilson's Bacon
\$1.68
1 LB. PKG.

Cottonelle
3 \$2.49
FOR 4 ROLL PKGS.

Smoked Sausage
\$1.38
12 OZ. PKG.

Pork Sausage
\$1.78
1 LB. ROLL

ALL TYPES Pepsi Cola
99¢
2 LTR. BTL.

HEALTH & BEAUTY
Flex
\$1.88
7.5 OZ. BTL.

Carrots
38¢
1 LB. BAG

Potatoes
38¢

Grapefruit
4 \$1
FOR

NUPRIN
Nuprin
\$2.99
30 CT. BT.

Lotion
\$3.59
4 OZ. BTL.

Razors
\$2.69
10 CT. PKG.

Onions
4 \$1
BUNCHES

Fresh Broccoli
88¢
STALK

Seedless Grapes
\$1.19
1 LB.

Spray 'n Wash
\$2.09
22 OZ. BTL.

Oven Cleaner
\$1.89
16 OZ. CAN.

Cauliflower
98¢
EACH

Fresh Broccoli
88¢
STALK

Seedless Grapes
\$1.19
1 LB.

Delicious Apples
49¢
LB.

Banquet Fried Chicken
Chicken
\$1.99
28 OZ. BOX

Frosting
\$1.19
16 OZ. CAN.

Cake Mix
79¢
18 OZ. BOX

DAIRY SPECIALS
Singles
\$1.99
12 OZ. PKG.

MinuteMaid Orange Juice
\$1.49

Towels
59¢
100% COTTON

Cake Mix
79¢
18 OZ. BOX

Velveeta
\$1.79
16 OZ. PKG.

Cheddar
\$2.29
16 OZ. PKG.

Banquet Pot Pies
2.79¢
7 OZ. BUNCHES

Towels
59¢
100% COTTON

Prices effective March 11-17, 1990

thriftway
 WE RESERVE THE RIGHT TO LIMIT QUANTITIES.



GIRL SCOUT WEEK--Mayor Darrell Turner signed a proclamation Friday afternoon proclaiming the week of March 11-18 as Girl Scout Week. (From Left) Mary Ann Ramirez, Nelda Merriott and Cheryl Maddox, look on as Mayor Turner signs the proclamation reading: Whereas, Girl Scouting is the world's largest voluntary organization for girls; and Whereas, Girl Scouting is committed to meeting the changing needs of girls; and Whereas, it challenges Girl Scouts to learn new skills, try new activities and explore other cultures, in a spirit of adventure; and Whereas, Girl Scouts are inspired to the highest ideals of character, conduct, patriotism and service that they may become happy and resourceful citizens. Whereas, the motivating force in Girl Scouting is a spiritual one. Now, therefore, I, Darrell Turner, by virtue of the authority vested in me as mayor, do herenow proclaim this week, March 11-18, 1990, Girl Scout Week in Muleshoe, Texas. (Journal Photo)



TRYING OUT NEW CHAIRS--Saturday morning D. B. Ivy was caught by a *Journal* photographer trying out one of the new chairs purchased for Muleshoe Health Care Center with money raised through the Christmas Card Project. The Center has received six chairs with tables and have six bedside tables ordered. Sammie Ethridge, who has chaired the project 18 years, looks on.

Girl Scout Week Celebrated Here

This week, March 11 to 17 has been designated Girl Scout Week here in Muleshoe as well as all over the World.

The local Girl Scouts are working toward the Girl Scout Week Patch. The girls will learn the Girl Scout Promise, Law and traditions in order to earn this patch. Parents of Brownie and Junior Scouts are asked to be sure requirements are completed and signed each day. Cadettes and Seniors must complete one activity each day and may sign their own sheet. To receive this patch, the girls must complete two activities each day and pages must be returned to the leader by March 28. The Permian Basin Girl Scout Council's original patch was adapted this year.

On Sunday the girls were to attend worship services wearing their uniform.

On Monday, March 12 the girls were to follow the worldwide Girl Scout/Girl Guide slogan of "Do a good turn daily" and do a secret good deed. A *Girl Scout is a sister to every other Girl Scout* and they were to do something special for a sister Girl Scout. Honor your country by taking part in a flag ceremony or flying their flag at home or at an outside activity.

Tuesday, March 13 is World of Well Being day and the scouts are to teach a man or boy a household chore, and make a list of important telephone numbers they should know. Examples of these are emergency number, parent's work number and an emergency neighbor's number. Help where they are needed by finding a hazard in their home or neighborhood and removing the

Sudan CofC

Plans Pot

Luck Banquet

The Sudan Chamber of Commerce has scheduled a Pot Luck Banquet for Saturday, March 17 at 7 p.m. in the Sudan High School Cafeteria. John Harris, sports director of KCBT-TV in Lubbock, will be the featured speaker.

Students to be honored during the meal will be the 1989, football team, the girls and boys basketball teams and their respective coaches.

A Youth Leadership Award will be awarded during the evening to a senior boy and girl. The three top nominees for Farm Family of the Year include: Mr. and Mrs. Steve Edwards, Mr. and Mrs. Corley Baker and Mr. and Mrs. Greg Lance. Nominees for the Man of the Year are Cliff Hargrove, Theron Hill and Greg Lance; Woman of the Year Lucy Kent, Peggy Ray and Denece McDonald. Nominees for Citizen Thru the Years include Dorothy Drake, Wayne Rogers and Doris May.

Admission to the banquet will be either a vegetable dish, salad or a dessert to feed your family plus at least four other persons. The Chamber will furnish the meat, ham, brisket, turkey and chicken, tea, coffee and bread.

You do not have to be a chamber member to attend the banquet so the Chamber of Commerce is asking everyone to make plans now to attend the banquet.

It is The only international language that has endured is double talk.

ATTENTION Your only local media of general circulation that qualifies for & has a 2nd class newspaper subscribers mailing permit. U.S. Post Office Approved.

Muleshoe Journal USPS 367-620
 Established February 23, 1924. Published by Muleshoe Publishing Co., Inc., Every Thursday at 304 W. Second, Box 449, Muleshoe, Texas, 79347. Second Class Postage Paid at Muleshoe, Texas, 79347.

Member 1990
TEXAS PRESS ASSOCIATION

L. B. Hall, Publisher
 Sammie Ethridge, Vice President/Controller
 Clara Williams, News
 Evelyn Harris, Society
 Holly Millsap, Advertising
 Dora Tuerksen, Classified

SUBSCRIPTIONS
 Muleshoe Journal and Bailey County Journal
 Bailey and surrounding counties \$14.75
 Muleshoe Journal and Bailey County Journal
 Outside Texas, \$16.50
 Yearly By Carrier \$12.50

Advertising Rate Card on Application
 *Advertisers should check their ad the first day of insertion. The Journal will not be liable for failure to publish an ad or for a typographical error or errors in publication except to the extent of the cost of the ad for the first day insertion. Adjustment for errors will be limited to the cost of the portion of the ad where the error occurred.

hazard. They should locate the best place in their house to go in case of a tornado and tell their family where it is.

Wednesday, March 14 was World of Today and Tomorrow Day and the scouts should name two ways to conserve water, in a newspaper read an international, state or local story and an editorial. They should find out what time it is at Juliette Low's birthplace. Find out the length of their feet in centimeters as well as find out what the low and high temperatures are for the day. And learn what a record temperature is for this date.

Thursday, March 15, World of the Arts Day. Among other things the girls are to do, they should read at least ten pages in a book for their own enjoyment, Make a sketch, find a picture or find in the community examples of two different kinds of architecture. They should also do their best to help others learn about being a Girl Scout by creating a poster

about Girl Scouting.

Friday, March 16 in World of People day, and they should list at least one way they showed respect for others or respected authority. They should also help people by donating a canned good. They should also learn to be considerate of how others feel, be a friend and encourage a family member to help discover their heritage.

On Saturday, March 17, World of Out of Doors Day they should protect and improve the world around them by collecting something to recycle, decorate a litter bag and give it to someone else to use and be observant while they are walking, riding their bike or running.

These are only a few of the things the girls must do in order to receive the Girl Scout Week Patch.

The Muleshoe Girl Scouts have 53 registered members and 16 adults as well as a waiting list of girls. On Monday, Lela Villarreal

and her assistant, Linda Tosh meet with eight Brownies and five Junior Scouts, Troop No. 228.

Cheryl Pucket is leader of Troop No. 322 which meets on Tuesday. Cheryl Maddox and her assistant, Pam Hancock meet on Tuesday with Troop No. 200.

On Thursdays Rhea Morris and Terry Radford, leader and assistant of Troop No. 152, meet and Mary Ann Ramirez, leader, and assistant, Linda Tosh, meet with Troop No. 300.

These leaders and assistants are all volunteers. The portrait of Girl Scout volunteers are first, Girl Scout volunteers care, they are committed, work hard, successful Girl Scout volunteers enjoy life, they are understanding, generous, have a sense of humor, confident, and have faith, they believe. "Girl Scout volunteers are special" said Betty F. Pillsbury, National President, "Not everyone can be one. Some try and don't succeed. But those that do are special, some of the most special people in the world. People just like you."

Ben Franklin

Better quality for less!

2104 W. Amer. Blvd. 272-3855
 Mon. - Sat. 8 a.m. - 8 p.m. Sun. 12 - 5 p.m.



TREE & SHRUB Sale

Arizona Ash - Cottonless
 Cottonwood - Silver Maple -
 Fruitless Mulberry - Globe Willow

\$13⁹⁹ 5 gal. Container

Jonathan Apple - Red Delicious Apple -
 Hale Haven Peach - Red Haven Peach -
 Santa Rosa Plum

5 gal. Containers

Fruit Trees \$13⁹⁹

Emerald Green Arborvite
 5 gal. Container
 \$13⁹⁹

Hybrid Tea Everblooming Roses
 \$4⁹⁹
 2 gal. Container

Crape Myrtle

Pink - Purple - Red

\$4⁹⁹

Bedding Plants

Tomatoes -
 Petunias -
 Peppers
 6 pack

99c

Fruit Trees

Bing Cherry
 Moor Park Apricot
 Elberta Peach

\$8⁹⁹ pkg

Shrubs

Althea (Purple or Red)
 Forsythia- Honeysuckle-
 Pussywillow

\$3⁹⁹ pkg.

Grapes

Concord or Thompson
 Seedless

\$5⁹⁹ 2 per pkg.

Lawton
 Blackberries \$5⁹⁹ pkg.

Lombardy Poplars

5 per pkg.
 \$6⁹⁹ pkg.

Hyponex
 Top Soil.....\$2.39
 (10 lb. bag)

Manure.....\$2.39
 (10 lb. bag)

Organic Peat...\$2.39
 (10 lb. bag)

Super Lawn Food.\$6.99
 (10 lb. bag)

Weed & Feed.\$6.99
 (18 lb. bag)

EXENCIONES DE RESIDENCIA



PUEDEN REDUCIR LOS IMPUESTOS QUE PAGA POR SU CASA

Una exencion de residencia
 le ayuda a reducir los impuestos sobre la propiedad que tiene que pagar por su residencia reduciendo el valor que se utiliza como base para calcular sus impuestos. Por ejemplo, si su casa esta valorada de \$50,000 y usted recibe una exencion de residencia de \$5,000, usted va a pagar impuestos de residencia como si su valor fuese de \$45,000.

Usted puede recibir
 una exencion de residencia si usted era el dueño de su casa el primero de enero y la usaba como su residencia principal en la misma fecha. No importa si su residencia es una casa, un condominio o una casa remolque.

Hay exenciones
 que cualquier persona que es dueño(a) de su residencia puede usar para bajar sus impuestos escolares. Exenciones adicionales se ofrecen a dueños de residencia que estan incapacitados o tienen 65 años o mas. Otras exenciones pueden ofrecerse a propietarios por distritos escolares, condados, ciudades y distritos escolares.

Solicite todas
 las exenciones que usted puede recibir en la oficina local del distrito de valoracion en la direccion que se cita abajo.

Si usted recibio una exencion para su residencia actual en 1989, usted no necesita solicitarla para 1990 a menos que el jefe de valoracion pida que haga una nueva solicitud.

Si embargo, si usted cumplio 65 años o quedo incapacitado antes del primero de enero haga una nueva solicitud para recibir exenciones adicionales.

Si usted no ha recibido una exencion para su residencia actual o si se cambio de casa haga una nueva solicitud para 1990.

Usted tiene que hacer
 su solicitud antes del 1 de mayo de 1990. Comuniquese con su distrito de valoracion antes de esa fecha si necesita mas tiempo para hacerla.

Para tener mas informacion usted puede recibir una copia gratis del folleto *Los Derechos, Remedios y Responsabilidades del Contribuyente de Impuestos* en la oficina del distrito de valoracion o puede pedirla del Consejo Estatal de Impuestos sobre la Propiedad (State Property Tax Board) en Austin.

Bailey County Appraisal District
 104 E. Ave. C. 272-5501



CELEBRATING SIXTY YEARS--Clayton (Charley) and Edith Graef will celebrate their 60th Wedding Anniversary Saturday, March 17 with a reception in their home, 702 W. Lee, Dimmitt. The couple will receive guests between the hours of 2 and 4 p.m. They are asking no gifts please, the presence of friends and loved ones is the best gift of all. (Guest Photo)



WESTERN DAY AT DILLMAN ELEMENTARY--Mrs. Dropps and her kindergarten class at Dillman Elementary all dressed in Western attire Friday. (Journal Photo)

MISS MARY BOBO' BOARDING HOUSE RECIPES

TIPSY SPICE COOKIES
 1/4 C. Jack Daniel Whiskey
 1 8-oz. pkg. dates, chopped
 1 C. raisins
 1 C. pecans, chopped
 2 sticks butter, softened
 1 1/2 C. sugar
 3 eggs
 3 C. plain flour
 1 tsp. baking soda
 1 1/2 tsp. cinnamon
 1/4 tsp. salt
 1/2 tsp. nutmeg
 1/2 tsp. cloves
 Pour Jack Daniel Whiskey over raisins and dates, and let it soak for an hour or more. Blend butter and sugar with mixer until light and fluffy. Add eggs, one at a time, beating well after each. Combine all dry ingredients. Stir into sugar mixture. Fold in fruit mixture. Drop by teaspoonsfuls onto greased cookie sheet. Bake at 350 degrees for 12 to 15 minutes until lightly brown. Makes 6 doz.

Applesauce Adds Zesty Zip To Traditional Recipes

Applesauce isn't only a side dish for pork chops and baked ham. It can add a zesty zip to many traditional recipes and dishes. This April the International Apple Institute will celebrate the many versatile uses for this tasty treat during Applesauce Month. Here are thirty ways you can enjoy applesauce during April and all throughout

spring:

FOR BREAKFAST

1. Spoon warm applesauce over pancakes, waffles or french toast instead of the traditional maple syrup.
2. Pour over link sausages.
3. Mix into oatmeal or other hot cereals.
4. Grate cheddar cheese over a bowl of warm applesauce.
5. Whip applesauce and butter together and spread over toast or English muffin.

FOR KIDS

6. Freeze applesauce, then whip in a blender for spoon-emp-up "slushie."
7. Substitute applesauce for jelly in a peanut butter sandwich.
8. Spread applesauce over toast, top with pre-cooked bacon and cheese and grill.
9. Fold into favorite gelatin recipes before chilling.
10. Mix granola into bowl of applesauce for a crunchy surprise.
11. Spoon applesauce over scoop of cottage cheese.
12. Mix applesauce with plain yogurt and dash of cinnamon.
13. Freeze individual portions of applesauce and include in brown bag lunches. By lunchtime, the sauce will have thawed while keeping the rest of the lunch cool and fresh.
14. Stuff a half an acorn squash with sausage, top with applesauce and bake.
15. Mix with chopped chicken breast, walnuts and celery and stuff in a pita for twist to a Waldorf Salad.

FOR SNACKS

16. Dip raw vegetables into a mixture of sourcream, horseradish and applesauce.
17. Mix hunks of cheddar and Muenster cheeses into bowl of applesauce.
18. Fold into oatmeal raisin cookie recipe.
19. Blend applesauce, club soda, bananas and strawberries together for refreshing spring cooler.
20. Add chopped nuts, pears, raisins and apple chunks into bowl of applesauce.

FOR DINNER

21. Mix applesauce and mustard into baked beans.
22. Serve over potato pancakes
23. Fold into favorite meatball or meat loaf recipe.
24. Mix applesauce, wine and lemon juice. Serve over chicken breasts.
25. Brush over fish fillets before broiling.

FOR DESSERT

26. Mix applesauce, raisins, chopped walnuts and a dash of cinnamon together and let stand four hours. Serve topped with whipped cream.
27. Spoon warm applesauce over bowl of ice cream or custard.

28. Pour over toasted pound-cake.
29. Stuff crepes with warm applesauce, top with whipped cream.
30. Top gingerbread with applesauce and scoop of butter brickle ice cream.



BEST OF PRESS

Pass The Buck
 Nothing is impossible--if you don't have to do it yourself. -Grit-

Journal Files

60 Years Ago

1930
LUNCHEON CLUB VOTES TO ORGANIZE KIWANIS CLUB HERE TUESDAY, 25

At a regular monthly meeting of the Merchants' Luncheon Club at McCarty's lunch room Tuesday afternoon, it was voted that a meeting would be held on March 25 for the purpose of organizing a Kiwanis Club for Muleshoe. At this meeting Mr. W.C. Rylander, district manager and organizer of Kiwanis Clubs will be present and will be the principal speaker, showing the work and benefits of a Kiwanis Club and its value to a town.

50 Years Ago

1940
JAUNTY JOURNALETES
 When some Muleshoe women get to Heaven, all the recording angel will be able to say is "Well you certainly did run up some nice charge accounts."

40 Years Ago

1950
FRIONA-MULESHOE PAVING
 A Muleshoe lady who gave a dinner party not long ago met Dr. Green on the street the next day and said "I'm sorry you weren't able to come. "It would have done you good." It has already done me good" he replied. "I've had to prescribe for three of the guests."

UNDERWAY

Work is to begin shortly on the 12 mile strip of paving on the highway between Muleshoe and Friona, completing the gap in highway 214. The gap is in Parmer County.

Contractor is Ernest Loyd of Fort Worth. Employees of Mr. Loyd were looking about for living quarters in Muleshoe Friday and Saturday of last week.

30 Years Ago

1960
 A local department store advertised the following items in the Journal this week: infants crib sheets 88 cents; gauze diapers \$2 doz; children's knit polo shirts 59 cents or 2 for \$1; receiving blankets 3 for \$1; toddlers cotton pajamas \$1.59; children's boxer shorts 3 pair \$1; and boys short sleeve sport shirt \$1.

20 Years Ago

1970
WELCOME TO MULESHOE
 We welcome the Robert Lunsford family to Muleshoe. They live at 823 Ave D and attended the Church of Christ. Lunsford is sub-forman for Pioneer Natural Gas. He formerly held the same position in Littlefield. He and his wife, Frankie, have three daughters, Sally 7, Betsy 2 and Susan 1.

10 Years Ago

1980
ROCK-A-THON ROCKS OVER \$7 THOUSAND

George Washington didn't sleep here, but Muleshoe residents can safely say "George Washington Rocked Here!" and rock he did, for 14 hours during the DECA-MD Rock-A-Thon at the coliseum last weekend. He and Stephen Johnson, also a Muleshoe High School teacher, rocked in the Muscular Dystrophy fund raiser. Johnson completed the 24 hour Rock-A-Thon still rocking in his rocking chair.

A total of 74 of the 117 young people who started the Rock-A-Thon at 7 p.m. Friday were still rocking at 7 p.m. on Saturday. They had a goal of \$5,000 and when the event was over, had pledges of \$7,193.

Mikhail Gorbachev, Soviet President:

"Unless democracy is strengthened and insured by corresponding mechanisms, democracy will perish and we'll lose."

Dick Cheney, Secretary of Defense, in S. Korea:
 "We are not going to move precipitously. Our commitment remains strong. The threat remains undiminished."

- MARCH 15-21 THURSDAY**
ODDFELLOWS LODGE
 7 p.m.
TOPS
 6 p.m.
KNIGHTS OF COLUMBUS
 8 p.m.
CHAMBER OF COMMERCE
 11:30 a.m.
FRIDAY
KIWANIS CLUB
 6:30 a.m.
SATURDAY
ALTEEN
 10:30 a.m.
MONDAY
SWCD DISTRICT BOARD MEETING
 7 a.m.
TUESDAY
REBEKAH LODGE
 7:30 p.m.
TRIANGLE C.B. CLUB
 8 p.m.
CITY COUNCIL
 8:30 a.m.
ATHLETIC BOOSTERS
 7:30 p.m.
ALCOHOLIC ANONYMOUS
 8:30 p.m.
ALPHA ZETA PI
 7:30 p.m.
XI OMICRON XI
 7:30 p.m.
ROTARY CLUB
 12 noon
WEDNESDAY
DUSTY PRAIRIE EXTENSION CLUB
 2:30 p.m.
LIONS CLUB
 12 noon

INTRODUCING WEIGHT WATCHERS® NEW 1990



Weight Watchers New Fast & Flexible Program lets you live your same lifestyle, eat regular meals with family and friends, even go to your favorite restaurant and still lose weight fast!

JOIN NOW FOR ONLY...

\$10
 Registration Fee ... \$19.00
 First Meeting Fee ... \$ 9.00
 Regular Price ... \$28.00
YOU SAVE \$18.00
 Offer ends March 24, 1990



Here's how it works. You'll learn what to eat and how much while making choices that fit your lifestyle. You'll get positive group support, the motivation to keep you going and you'll learn new, easy-to-live-with eating habits.
 Yes, it's all part of the New Fast & Flexible Program. It's the Smart way to lose weight and keep it off!
 So you see, Weight Watchers New Fast & Flexible Program has it all. It's FAST... it's FLEXIBLE and it WORKS! Join today.

There is a Weight Watchers meeting near you.

MULESHOE
 American Boulevard Church of Christ
 2201 West American Boulevard
 Mon: 5:30 pm

MULESHOE
 The Old Corral
 1008 West American Blvd.
 (Lunch Purchase Required)
 Wed. 12 Noon

NOTHING WORKS LIKE WEIGHT WATCHERS!
 CALL TOLL FREE
1-800-359-3131

TAXPAYERS' Rights, Remedies, Responsibilities

Want to learn more about the property tax system? That's possible by reading a pamphlet the State Property Tax Board has written and made available at the local appraisal district office.

It's called "Taxpayers' Rights, Remedies, Responsibilities" and it may help you save money. Learn about tax relief available through

- homestead exemptions
- disabled veteran exemptions
- special productivity value for farm, ranch, and timber land
- tax deferral for over-65 homeowners

You'll learn how your property is appraised. That way, you can decide if the appraisal district's value is reasonable.

If you think it isn't, the pamphlet tells you how to prepare an appeal to the appraisal review board. You'll learn the types of protests the appraisal review board can hear and useful evidence to bring to your hearing.

Important dates in the tax year are listed. You'll know what your responsibilities are and when you are obligated to satisfy them.

"Remedies" is free to taxpayers. Ask for yours today at

State Property Tax Board

Box 15900 Austin, TX 78761-5900

Bailey County Tax Appraisal District

104 E. Ave. C. Muleshoe 272-5501

SONIC STEAK N TATER'S
STEA SANDWICH AND ORDER OF TATER TOTS
\$2.59 PLUS TAX
 1633 W. Amer. Blvd.
 272-3998
 Muleshoe
 ©1990 SONIC INDUSTRIES INC.

March Produce Price Near Normal

Consumers can expect produce supplies and prices to approach "near normal" levels in March for the first time since the devastating December freeze.

Dr. Dick Edwards, economist in marketing and food distribution with the Texas Agricultural Extension Service, said consumers should find plentiful supplies of cabbage, spinach, lettuce and greens such as kale, collard and turnips, broccoli and brussels sprouts.

"From Mexico will come ample supplies of strawberries, bell peppers, cucumbers and cantaloupes," he said. "The Chilean fruit supply will dwindle toward the end of March, but there should be plentiful early month supplies of peaches, plums, nectarines and grapes."

In late March, snap beans, sweet corn and squash from Florida will be coming to market. The fresh asparagus season also opens this month, with some special supermarket sales announcing its arrival.

Good buys also will be available on all varieties of apples and pears, white potatoes and sweet potatoes, Edwards said.

The crop of grapefruit from Arizona and California, which was not affected by freezes, is being harvested, and some will find its way into Texas supermarkets this month.

"Look for specials on some oranges and grapefruit as these supplies become ample," Edwards said.

With the Lenten season at hand, discounts will be found on seafood. Ash Wednesday was the last day of February, and food retailers will feature seafood in many forms during the six weeks before Easter, Edwards said.

"Look for specials on fresh

white fish fillets, ocean perch, cod, hoki and oreo dory. Farm-raised catfish and salmon also will be featured. In frozen foods, fish fillets, fish sticks and entrees with fish, shrimp or scallops will be advertised," he said. Besides seafood, poultry products will be price leaders in the meats section.

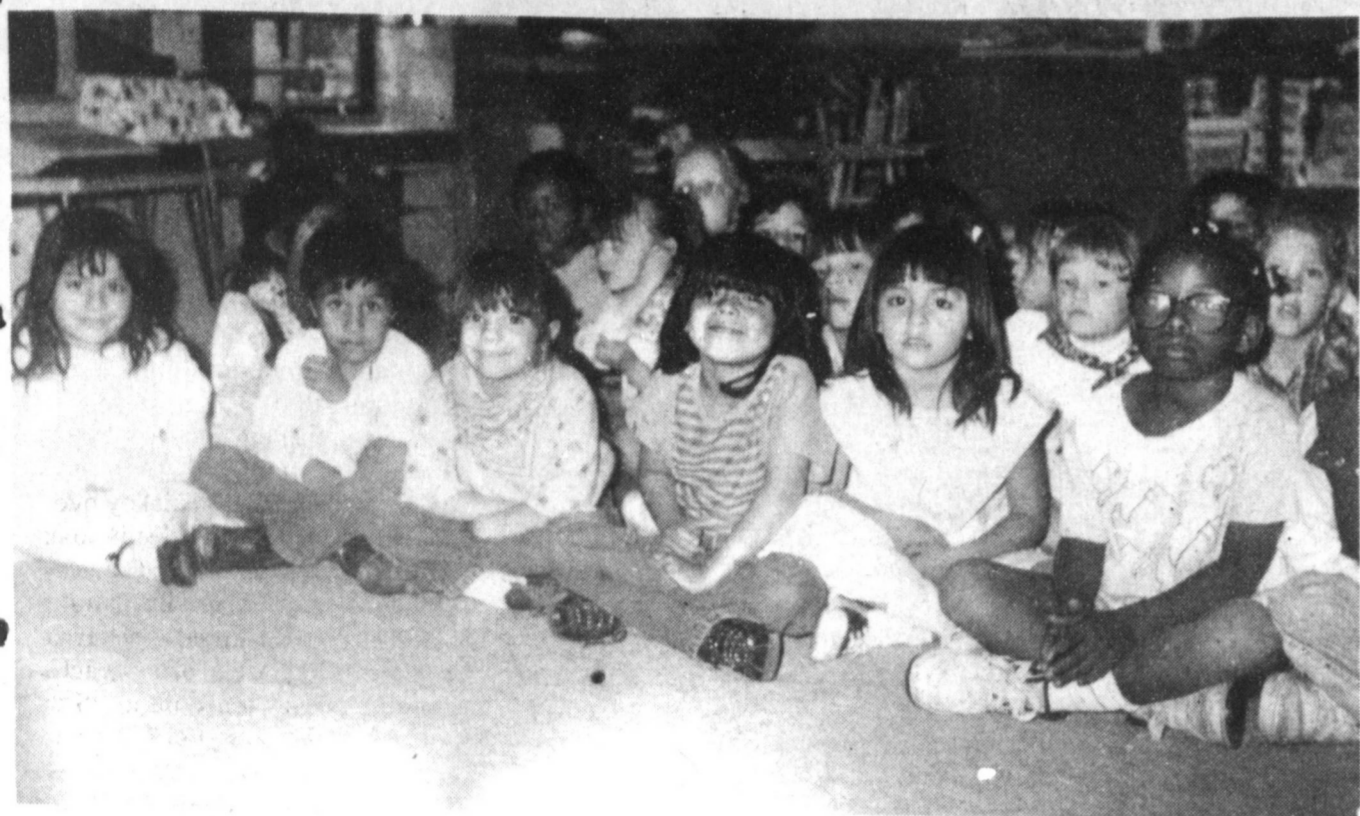
"Whole birds will be priced at 49 cents a pound, with leg-thigh cuts at 29 cents a pound. Bone-in chicken breasts will sell at \$1.29 a pound. Turkeys also will be good buys at 89 cents a pound."

Traditional cuts of beef and pork also will be on special.

"Beef round steak, chuck steak, chuck roast and ground meat will be featured. Pork specials will include pork chops, pork steaks and sausage," the economist said.

Geared to St. Patrick's Day observances on March 17 will be sales of an additional cut of beef-corned beef brisket-and such companion items as rye bread, canned sauerkraut and fresh cabbage. Many supermarkets will feature Irish stew and other foods associated with Ireland to help celebrate this day.

March also is National Frozen Food Month, and special promotions will direct consumers to frozen dessert items, as well as frozen microwave meals and vegetables.



STORY TIME AT DILLMAN ELEMENTARY--This classroom at Dillman Elementary were all gathered around their teacher Friday afternoon when a *Journal* photographer happened by. These kindergarten students seemed to be enjoying a story their teacher was reading. (Journal Photo)

Creative Living

by: Sheryl Borden

Information on using paper bags and conducting trunk showings will be the featured topics on "Creative Living" on Tuesday, March 20 at 12 noon and Saturday, March 24 at 2 p.m. (All times are Mountain.)

Helen Hatton, representing The American Paper Institute will show a dozen or more household uses for brown paper bags. As recycling becomes more and more important as a means of preserving our environment and preventing the overcrowding of landfills, using paper products will continue to be a good choice for all consumers. Ms. Hatton lives in Toronto, Canada.

Jacqueline Davis, fashion designer for Lady J in Clovis, N.M., will explain how a trunk showing is conducted in stores throughout the country which carry the Lady J line of women's apparel. She will present one of her original designs called the Wonder Accessory.

On Tuesday, March 20 at 9:30 p.m. and on Thursday, March 22 12 noon, "Creative Living" will present information on a "7-Day Dress Demo" and recipes using pistachios.

Joanne Wallace, President and Founder of Image Improvement, Inc. in Salem, OR, will demonstrate the "7-Day Dress Demo," traveling for a week usually means packing at least seven different outfits, with accessories, shoes and purses for each of the different looks--which can be cumbersome. Joanne, who travels frequently, will demonstrate fashion magic. She has chosen colors, styles, and even the size of the accessories to be correctly proportioned for her. But the same concept will work for anyone who travels.

Karen Dahlinger, representative for the California Pistachio Commission in Fresno, CA, is going to share some interesting facts about pistachios and then demonstrate several recipes that are fairly low in calories.

California pistachios add an elegant flair and a touch of sophistication to foods. Even when the calories are on the lighter side, the rich, robust flavor of pistachios can still be enjoyed.

"Creative Living" is produced and hosted by Sheryl Borden. The show is carried on more than 100 PBS stations in the United States, Canada, Guam and Puerto Rico and is distributed by Pacific Mountain Network, Denver, CO. Viewers can request copies of materials offered on the show by sending one 25 cent stamp for each handout requested. Send the stamps, along with your name, address and booklets requested to:

"Creative Living" Requests
% KENW-TV Station #52
Eastern New Mexico University
Portales, N.M. 88130

CALIFORNIA PISTACHIO PASTA SALAD

6 ounces rotini or shell macaroni
Oregano Dressing
1 cup each chopped tomato and blanched pea pods
Pepper
Parmesan cheese (optional)
Salted water
2 cups torn fresh spinach
1/4 cup chopped shelled natural California pistachios

Cook rotini in boiling, salted water according to package directions; drain. Marinate hot rotini in Oregano Dressing; cool at room temperature. Combine with spinach, tomato, pea pods, pistachios and pepper to taste. Sprinkle with Parmesan cheese. Makes 8 servings. Recipe can be halved. Less than 200 calories per serving.

Oregano Dressing: Combine 1/4 cup each oil and red wine vinegar, 1/4 teaspoon crushed oregano and 1/8 teaspoon garlic powder. Makes 1/2 cup.

CALIFORNIA PISTACHIO STEAMED HALIBUT

1 pound halibut steaks
3 lemon slices
1/2 cup sliced celery
1 tablespoon oil
1 cup chopped tomato
1/4 cup chopped shelled natural pistachios
Salt and Pepper
Water
1/4 cup diagonally sliced green onions

1/4 teaspoon thyme, crushed
Season halibut with salt and pepper; top each steak with a lemon slice. Put steaks on heat-proof plate; place on rack over 1/2 inch simmering water in skillet. Cover and steam 10 minutes per inch of thickness or until fish flakes easily when tested with fork. Saute celery and green onions in oil; add tomato and thyme and heat thoroughly. Add pistachios; mix well. Spoon over halibut steaks. Makes 3 servings. Less than 300 calories per serving. ****

CALIFORNIA PISTACHIO CINNAMON MERINGUES

2 egg whites (at room temperature)
1/2 teaspoon each vanilla and ground cinnamon
1/2 cup sugar
1/2 cup chopped shelled natural pistachios

Beat egg whites, vanilla and cinnamon until soft peaks form. Gradually add sugar; beat until stiff peaks form. Fold in pistachios. Drop by teaspoonfuls onto cookie sheet lined with brown paper. Bake at 325 degrees F for 20 minutes. Turn oven off and leave meringues in oven until cool. Makes 3 dozen. Less than 25 calories per meringue.

Saturday Night Accolade

Teacher--What is the Order of the Bath?"
No answer.

Teacher--"Come, some of you must know what the order of the bath is."

Pupil--"Well, at our house it's pa first, then ma, then us kids and then the hired girl."

The best way to get a day's work done is to work a full day.

Library News

by Anne Camp

New at the Library: Books, plays, and T.V.- Many books have been produced in plays, and now on T.V., *Phantom of the Opera* which airs March 18th and 19th on NBC is a good example of these. The struggle of good and evil has been a recurrent theme in all literature. It is a struggle that lurks behind almost every action in *The Phantom of the Opera*, by French novelist Gaston Leroux.

If you are a student of literature or if you just enjoy a frightening horror story you will want to see this mini-series on T.V.-and maybe share it with a group of friends. The library has activity guides, provided by N.B.C. that will make it a great group activity. These may be picked up (as long as they last) this week at the library.

Body and Soul, Ralph McInery's new suspense thriller promises to be just as good as his popular "Father Dowling" books that were on T.V. His main character in this (one of a series) is Andrew Broom, a mid-western lawyer, who becomes embroiled from page one, in marital mahem and murder. Try it, we think you will be coming back for more.

The new laminating machine is being used more as people hear about it. The minimum charge for it's use is 75 cents, and for each additional foot is 75 cents. You can get several small items and one larger item for the initial 75 cents charge. For more information on this or other services call the library at 272-4707.

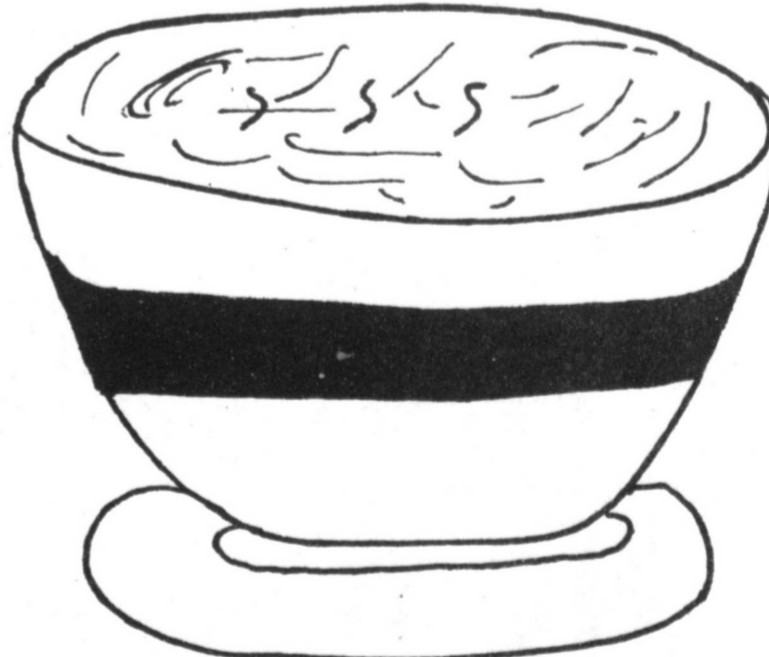


A GIRL SCOUT LEADER LIVES HERE--Mary Ann Ramirez's home is one of several homes in Muleshoe displaying a green sign stating "A Girl Scout Leader Lives Here." These signs were placed in the yards of all local Girl Scout leaders. Mrs. Ramirez serves as chairman of the local unit of Girl Scouts as well as being a leader.

Chili Luncheon

Health Care Center
(Nursing Home)

In The Yellow Dining Room



Friday, March 16

11:30-1:30

Menu:

Chili Cornbread Fruit Cobbler Drink

\$3.50

Proceeds Will Go To Buy Nameplates And Room Numbers For Residents Rooms

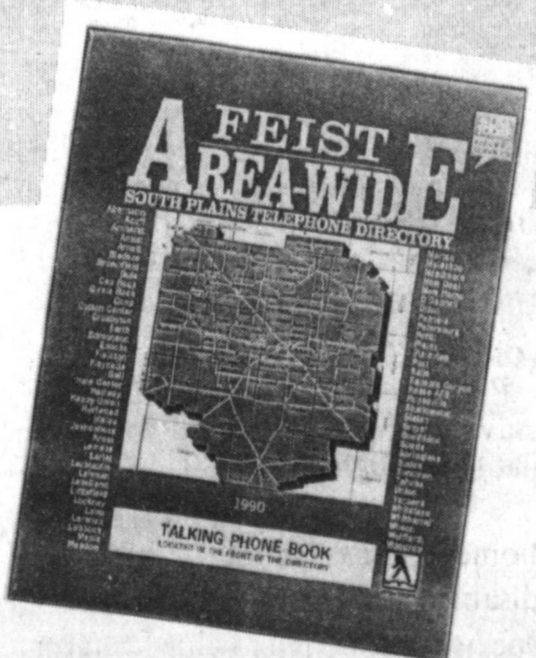
PLEASE COME!!!

The Book With The Most Used Pages In The South Plains, Has Been Delivered!

The Feist Area-Wide Telephone Directory.

Pick Up Extra Complimentary Copies At:

Muleshoe Chamber of Commerce
215 S. 1st • Muleshoe



FEIST PUBLICATIONS, INC.
Box 98
Spearville, Kansas 67876

We Go Everywhere!

Muleshoe's Tax Rebate Check Shows Increase

State Comptroller Bob Bullock said Friday that sales tax rebates to Texas cities are up almost five percent so far this year as compared to last year.

The March rebate checks sent to cities this week totaled \$69 million, an increase of nearly 13 percent over last March's payments.

"The increase for the first three months of the year is right in line with our forecast of five to six percent growth in taxable sales for this year," Bullock said.

In the four counties surveyed each month by *The Journal*, Muleshoe is the only city to reflect an increase in current monthly payments.

Muleshoe's share of the rebate money was up 3.79 percent for the current payment, with a check of \$15,417.40 being sent to the city, compared to the figure of \$14,854.23 for the same period last year. To date for the year, Muleshoe still shows 6.01 percent down from last year, with yearly payments to date of \$56,079.86, compared to the \$59,666.10 at the same time a year ago.

From Cochran County, Morton received a current payment of \$4,122.50, down by 18.07 percent from the \$5,031.95 received for the same time a year ago. To date for the year, Morton's payments are \$15,120.64, down by 7.55 percent from the \$16,356.05 at the same time last year.

Littlefield received a current check for \$15,237.49, down 8.78 percent from the \$16,704.69 received for the same period a year ago. Their 1990 payments to date are \$57,927.04, down by 16.79 percent from the 1989 figures of \$69,618.52.

From Parmer County, Friona's 1990 payments to date are \$27,261.71, down by 5.22 percent from the \$28,762.19 received at

this time last year. Currently, they are showing a decrease of 0.98 percent for their current payments. Their latest payment was \$7,038.21, down from the \$7,107.71 received for the same period last year.

Houston received \$12 million, the state's largest payment and an increase of 15 percent over last March's payment. Dallas received the state's second largest payment of \$7.4 million, an increase of seven percent over last March's payment. San Antonio received \$4.1 million and Austin received \$3.1 million.

Payments to counties totaled \$7.3 million this month, compared to \$5.9 million last March. The 23 percent jump over last March's payments is partly due to the increased number of counties collecting sales tax now, Bullock said.

This month's checks include taxes collected on January sales and reported in February by businesses filing monthly tax returns.

Also included with March checks were quarterly payments totaling \$139 million for the state's six metropolitan transit authorities and one city transit department. The payments to MTAs reflect taxes collected in November, December and January.

Merchants collect the sales taxes and send them to the Comptroller's office with their tax returns. The state keeps its six percent share and each month sends cities and counties their portion of the sales tax. All local sales taxes must be approved by local voters and may be used for any legal city or county expenses. Most areas put the money in their General Fund and use it for operations like fire fighting, maintaining roads and law enforcement.



1990 BAILEY COUNTY EMS ORGANIZATION OFFICERS--Friday night, assuming office for the 1990-91 year were these new officers for the Bailey County EMS organization. Pictured from left are Joe Don Prather, vice president; Starla Ellis, treasurer; Kim Black, president; Cindy Brown, secretary and Kem Bales, historian/reporter. The organization donates their 'volunteer pay' back to the ambulance service in the form of purchased equipment for the ambulances. (Journal Photo)

Mule Relays

Cont. From Page 1

Hector Sanchez was third at 54.34 and Clay Vansandt, fourth at 55.01 in the 400 m. dash; Kip McCall placed third at 40.00 and Ramiro Alarcon, sixth, with 48:20 in the 300 int. hurdles.

Corley Hutton had 25.24 for sixth place in the 200 m. dash and Andy Crawford posted 5:21.72 to take fourth place in the 1600 m. run.

At 3:40.84, the 1600 m. relay team of Hector Sanchez, Johnny Noble, Corley Hutton and Clay Vansandt, placed first.

In field events, Danny Rodriguez was first in pole vault at 10'.

Jesse Singleterry placed second in high jump at 5'8" and Clarence Lewis was sixth in triple jump at 33'6 3/4".

Junior Olivarez was first in discus at 117'8"; Mike Friend, second, with 113'8"; Jesse Singleterry, fourth at 111' 1/2" and Tim Hernandez, sixth with 104'9".

In shot put, Mike Friend was first at 44'8 1/2"; Tim Hernandez, fifth at 36'9" and Junior Olivarez was sixth with 35'5 1/2".

Coach Duncan also added: The Mules had a lot of success last Saturday, and that's great. Our task now is to keep improving and be ready for that next meet (taking it one at a time), Friona on March 17.

We had a lot of great things occur Saturday. Like junior Danny Rodriguez vaulting 10' after being out for a year. Mike Friend improved a full 4' in the shot over last week.

Junior Olivarez competing so well after being out for a year.

Then, as far as running was concerned, Corley Hutton, Andy Crawford, Kip McCall, Hector Sanchez and a score of others made dramatic improvement.

Our relays will continue to improve and then off to district

we go, and it's going to be enthusiasm all the way.

We will be going to the Chieftain Relays at Friona next Saturday.

We will be going to the Chieftains Relays at Friona next Saturday. Since we have spring break this week, I urge the kids to get as much extra work out time as possible and the bus will be leaving at 7:15 a.m. Saturday.

Also, on behalf of the track coaches and athletic department, I would like to take this moment to say a heartfelt thanks and well done to those officials, helpers, timer/finish judges, press box

workers, award presenters, announcer, trumpet soloist and hurdle setters.

History Fair...

Cont. From Page 1
VanLeer, Alamo.

SIXTH GRADE

Tyson Moncrief won grand prize with World Time Line.

Second places went to Travis Copley, Nile Riber; Barak Harlan, Erupting Volcano; Marla Ivy, Bermuda Triangle; John Rodriguez, Ziggurat of Ur and Rebecca Snell, King Tut's Tomb.

In third place were Orlando Arredondo and Manuel Fabela, Castle; Matt Davis, Mt. St. Helen's Volcano; Mandy Seales, World War I Battlefield; Kimberlee Vaughn, World War I; Michelle Williams, Great Sphinx.

Honorable mention went to Samantha Caswell, Berlin Wall; Donna Davis, African Art; Summer Gibbons, Aztec Ornament; Tracey Hurtado, Pyramid of the Maya; Sharon Johnson, Normandy D Day; Melissa Morales, Egyptian Pyramid; Adam Nelson, Roman Chariot; Holly Norris, Sumerian Technology; Crystal Sharp, Flags of the World; Samuel Villareal, Noah's Ark; Dennis Reeder and Wayne Palmer, Castle; Stephanie Gilaim, Berlinda Cavazos and Marcos Reyes, Middle Century Castle.

Students who placed grand prize, first, or second, will advance to the regional history fair on April 6, at Wayland Baptist University, Plainview.

MAPLE BRANCH

Bailey Co. Sheriff's Office
946-3300

1990 Crop

	Pool Cash Advance	Sale Flat	1990 Contract Basis	Month	
Feed Corn.....	Mkt.....	4.37	.070.05	May
White Cobb Yellow.....	4.50	5.00	.280.35	May
Red Cobb Yellow.....	4.00	4.50	.000.20	May
White Food Corn.....	5.00	6.00	.840.65	May
Milo.....	Mkt.....	3.66	-0.46-0.35	May
Soybeans.....	No Pool.....	5.25	-0.76	May
Wheat.....	No Pool.....	3.26	-0.32	KC May

95 3/4%

Prices effective March 13, 1990

Farmer's Co-Op Elevators
272-4335

MULESHOE TEXAS



OUTGOING EMS OFFICERS--Friday night, these were some of the outgoing officers for the Bailey County EMS organization. Pictured from left are Jackey Burris, vice president; Starla Ellis, treasurer and Curby Brantley, Jr., president. Not shown is Mary Hicks, secretary. (Journal Photo)

Crushing Retort

First Chorine (quarrelling in dressing room)--Not only that, but you get uglier every day.

Second Ditto--Another thing that I can do and you can't.

Satisfied Passengers

"All this talk about back seat drivers is bunk. I've driven a car for ten years and I've never had a word from behind."
"What sort of car?"
"A hearse."

NOTICE

The Board of Directors of
PLAINS COTTON COOPERATIVE ASSOCIATION
has declared a progress payment of over
\$10,000,000
to members of the PCCA Marketing Pool.
Members of the Pool should pick up their
checks at their local coop gin after

March 15.



Serving cotton producers since 1953

Nothing Runs Like a Deere



Truckload Oil Sale 10% Discount On John Deere Oils

Torq-Gard Supreme And Hy-Gard

Quarts Torq-Gard Supreme

AR63218 Reg. \$1.25 Now \$1.13

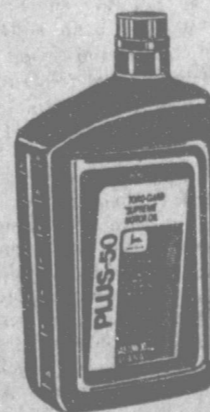
5 Gallon Torq-Gard And Hy-Gard

Reg. \$25.00 Now \$22.50

55 Gallon Torq-Gard And Hy-Gard

Reg. \$220.00 Now \$198.00

1 gallon Hy-Gard also available



Torq-Gard Supreme Plus 50

(Extends Change Interval 50 Hours)

30 wt priced 15/40 available

TY6392..Qt.....Reg. \$1.35Now ...\$1.21

TY6393..5 Gal....Reg. \$25.50Now ...\$22.95

TY6394..55 Gal...Reg. \$245.00Now ...\$220.50

Oil Special Offer Good Thru March 30

with a 25 gallon minimum

Nothing Runs Like a Deere



Dent & Co.

2800 W. Aber. Blvd.
Muleshoe
272-4296



IRRIGATION PUMPS AND POWER RECEIVE AWARD--Center front, Wayne Peterson, and Sandy Peterson accepted an award from Zimmatic for "Zimmatic Outstanding Sales" recently. The award was presented during a convention held in Orlando, Fla.

Local Irrigation Firm Awarded Outstanding Sales

Irrigation Pumps & Power of Muleshoe was presented the "Zimmatic Outstanding Sales" Award at the Lindsay Manufacturing Co. National Dealer Convention held January 12, 13, and 14, 1990, in Orlando, Florida. According to Bob Snoozy vice president of Marketing for Lindsay, "This award signifies a

commitment by the dealer to provide their customers with the latest in irrigation system technology and more importantly to provide timely professional service".

During the convention, Irrigation Pumps & Power personnel heard Richard Brock, president of Brock & Associates, a nationally known consulting firm of Milwaukee, Wisconsin, outline the factors he believes that will make the ag sector prosper during the nineties. Other training sessions provided dealers with the information to meet the needs of agricultural community with economical, efficient and environmentally safe irrigation technology.

Taking part in the awards ceremony were Gary Parker (president & CEO of Lindsay Mfg.Co.), Tim and Tammy Black, Wayne and Sandy Peterson, Bob Snoozy (V.P. of Marketing Lindsay Mfg. Co.), and Jack Bloomer (Regional Manager Lindsay Mfg. Co.).

(Guest Photo)

Lazbuddie Honor Roll

PRINCIPALS "A" HONOR ROLL

- 12TH GRADE**
Mia Jennings
- 11th GRADE**
Elsa Mendoza
- NINTH GRADE**
Leland Brockman and Craig Russell
- EIGHTH GRADE**
Gina Jarman and Dawnda Magby
- SEVENTH GRADE**
Rachelle Rice
- SIXTH GRADE**
Julie McDonald and Socorro Reyes

"A-B HONOR ROLL"

- 12th GRADE**
Lanse Ivy, Gerardo Mata, Kevin McGehee and Eddie Zamora
- 11th GRADE**
Stacie Hodges, Juanita Ramos and Raymond Zamora
- 10th GRADE**
Stacey Barber and Frank Gonzales
- NINTH GRADE**
Matthew Cozby, Raquel Guzman, Joelle Weaver, Paul Williams, Amy Willingham and Mario Zamora
- EIGHTH GRADE**
Jessica Burch, Jody Copp, Jonas Hernandez, Troy McBroom, Jodi Morris, Jarah Redwine and Chad Weaver
- SEVENTH GRADE**
Eva Jo Alcalá, Joanna Gallman, Jon Colby Miller, Latonya Payne and Ivette Reyes
- SIXTH GRADE**
Travis Barber, Keith Burch, Heather Engelking, Sammy Everett, Veronica Franco, Marisol Godínez, Adolfo Mata, Roel Moran and Dawn Weir

Patients in Muleshoe Area Medical Center

MARCH 9-12 FRIDAY

Cruz Torres, Jo Miller, Anthony Alvarez, William Bradshaw, Barry Lewis and Elizabeth King

SUNDAY
Cruz Torres, Amelia Reza, Emma Schuster, Barry Lewis and Elizabeth King

MONDAY
Juan Rercles, Jr., Glen Williams, Cruz Torres, Amelia Reza, Jonathan Cunningham, Rafael Franco, Emma Schuster, Barry Lewis, Elizabeth King and Loretta Gregory

MOVING
Mechanic: "My advice is to keep that car of yours moving."
Owner: "Why?"
Mecanic: "Well, if you ever stop, the cops will think it's an accident."

Export EXPO 1990 Plans Area Conference

This month's Export Expo 1990 conference for small business has been rated as a "Best Buy" by international trade experts from across the nation, according to Walter Fronstin, district director of the U.S. Small Business Administration (SBA) in Lubbock. "Conference registration nationwide is limited to 1,500 and will be filled on a first-come-basis," Fronstin said. "We want West Texas business firms to get a chance at this 'Best Buy'."

Fronstin said, "Small business operators looking for information on how to export and to benefit from a growing global economy, should not miss EXPORT EXPO 1990 which will be held in Seattle, Washington March 27-30." The conference is being co-sponsored by the SBA and AT&T and is the first of its kind ever organized specifically for small business.

"For one low price of \$150, participants can select from over 30 'how-to' workshops, meet with buying delegations from around the world, and have a say in how the U.S. might change its policies to make it easier for small businesses to export," Fronstin said.

The registration fee also includes luncheons, banquets, receptions and materials. The conference will feature an exhibit area which will showcase more than 300 products of small businesses who are ready to export.

"Where but at this conference can you see some of the best ideas for small business from all across the nation under one roof," Fronstin said. "From Europe to the Pacific Rim, and beyond, American business products are in great demand. The potential for the small business person to participate in the international marketplace is huge, and this conference is designed to help participants enter the global market, and to match buying delegations from around the world with small businesses who have goods and services they need."

"The smart business person will get on the bandwagon now and become a part of the global economy," Fronstin said. "Their next profits could come from

NOTICE OF TARIFF CHANGE TO CENTRANET® SERVICE

GTE Southwest Incorporated gives notice of its proposed tariff changes to CentraNet® service, which is a Central Office-based service that provides PBX-type features to multi-line business customers and is currently being offered in all company wire centers where such facilities exist to provide the service.

The Public Utility Commission of Texas approved a generic tariff for CentraNet® service up to 100 lines in Docket No. 7652. The proposed tariff revision would establish specific rates for CentraNet® services involving 101 to 400 lines. Other proposed revisions involve the rate applicable to changes, additions, or deletions to the data bases and a new rate is proposed for additional trunks.

The names of the three CentraNet® packages have changed from Standard, Premium, and Deluxe to CentraNet® 1000, CentraNet® 2000, and CentraNet® 3000, respectively. Direct Call Pickup has been added to the three CentraNet® packages while Multiple Call Park and Shared Speed Call 30 have been added to CentraNet® 2000, and Speed Call 30 and Call Forward Busy/No Answer Split have been added to CentraNet® 3000. Flexible Night Answer and Automatic Route Selection also have been added as new optional features.

The proposed changes and new service offerings have been assigned Docket No. 9251, and pursuant to Section 43(d) of the Public Utility Regulatory Act will become effective June 23, 1990. Rates for service will be applicable to customers who subscribe to the service as well as existing customers. Therefore, there will be no effect on any other rates of the company. The company's gross annual revenues will increase by approximately \$399,600, or less than one percent annually.

The proposed rates are on file with the Public Utility Commission of Texas, and are available for public inspection at the offices of GTE Southwest Incorporated. Persons who wish to intervene or otherwise participate in these proceedings should notify the Commission. The deadline to intervene in this docket is 3:00 p.m., April 9, 1990.

A request to intervene, participate, or for further information, should be mailed to the Public Utility Commission of Texas, 7800 Shoal Creek Blvd., Suite 400N, Austin, Texas, 78757. Further information may also be obtained by calling the Public Utility Commission Consumer Affairs Division at (512) 458-0223 or (512) 458-0227 or (512) 458-0221 teletypewriter for the deaf.

GTE GTE Southwest Incorporated

doing business in Canada, Mexico, New Zealand or the Far East." He added, "The EXPORT EXPO 1990 conference can help clear up much of the 'mystery' of exporting, and will feature experts who will teach exporting basics and introduce participants to the opportunities of markets beyond their traditional trading

Swine Producers Asked To Attend Lubbock Seminar

All area swine producers have an opportunity to attend an in-depth Artificial Insemination Seminar to be held on Saturday, March 24, 1990, at the Livestock Arena at Texas Tech University which is located at Main Street and Indiana Avenue in Lubbock.

The program begins at 9 a.m. and will conclude at 3 p.m. with many top resource people to be on hand to discuss the following topics.

- 1) Use of Artificial Insemination in Swine
- 2) Detection of Estrus in Gilts and Sows
- 3) Training Boars and Collection of Semen
- 4) Obtaining Liquid and Frozen Semen
- 5) Methods Use-Inseminating Sows and Gilts
- 6) Evaluation of Semen Collected on the Farm
- 7) Extending Semen Collected on the Farm

This should be an excellent program for all area swine producers to attend. More information about this seminar can be obtained at your local Extension office or from the Department of Animal Science at Texas Tech University.

boundaries."

Fronstin said, "This conference isn't just for interested small businesses or new-to-exporting firms. It is also designed to assist companies which are already exporting. It will feature an 'International Business Center' where firms can be matched with interested foreign buyers. The center will also provide translators, meeting rooms, fax machines and other business services."

For more information, call SBA at (806) 743-7462.

Looney Over Lids

"The first thing Maud did with her legacy was to buy a dozen new hats." "Ah! I was afraid the money would go to her head."

BIBLE VERSE

"All things therefore whatsoever ye would that men should do unto you, even so do ye also unto them."

1. Who is the author of this saying?
2. By what name is it known?
3. Of what discourse is it a part?
4. Where may it be found?

Answers:

1. Jesus.
2. The Gold Rule.
3. The Sermon on the Mount.
4. Matthew 7:12.

An individual isn't hopeless until he loses his desire for knowledge.



HAVING A CHAT WITH THE TEACHER--Muleshoe High School and Watson Junior High held their Open Houses' last Thursday night in their schools. Open House is held every year so as that the student's parents are able to visit with their child's teachers and review work they are doing. Shown visiting with Mrs. Lucy Faye Smith are Mr. and Mrs. J.R. Copley and unidentified students.

(Journal Photo)

BUMPER TO BUMPER
Auto Parts

WIN A FREE S-10

FRAM AUTOLITE
BUMPER TO BUMPER
CHEVY S-10 TRUCK GIVE-A-WAY

Enter the Fram/Autolite-Bumper To Bumper 1990 Chevy S-10 Truck Give-A-Way at your participating Bumper To Bumper Auto Parts Store. You don't have to buy anything but you'll want to with prices like ours. Enter until April 7, 1990.

BUMPER TO BUMPER—BE THERE!

Fram Oil Filter
for Cars & Light Trucks

2 for
\$5.00
Limit 2

PH8A

Berryman Favorites

- 13 oz. carb and choke cleaner #0113
- 16 oz. fuel system cleaner #0116
- 16 oz. engine degreaser #1116

\$1.59 each

ZEREX ANTI FREEZE

Unsurpassed Protection Under Even the Most Extreme Conditions

\$5.79 gallon

Permatex® Gasket Maker

- Ultra Blue 77 BR
- Ultra Copper 101 BR
- RTV Silicone 6 BR

\$2.59 each

Rockhill IGNITION PARTS

STARTER SOLENOID SWITCH, new, not rebuilt. Fits most GM cars and light trucks #SS200 **\$6.95** each

12 VOLT COIL HEAVY DUTY UNIVERSAL Fits many popular cars and light trucks. #UC-12 **\$6.95** each

EIS Remanufactured Master Cylinders AS LOW AS

\$17.95 each

w/trade in

Strongarm Trunk Support

\$11.95

4000, 4002, 4101, 4103

Gas charged and installs in minutes. Give your trunk a new lift.

PRICES GOOD THRU MAR. 19TH

Bratcher Motor Supply

107 E. Ave. B. Muleshoe, Tx. 806-272-1288

No Drinking and Driving

Do You Want To Save Your Fruit?

Spray blossoms now with

KDL Potassium

Gives early season Frost protection down to 26 degrees fahrenheit for up to 30 days.

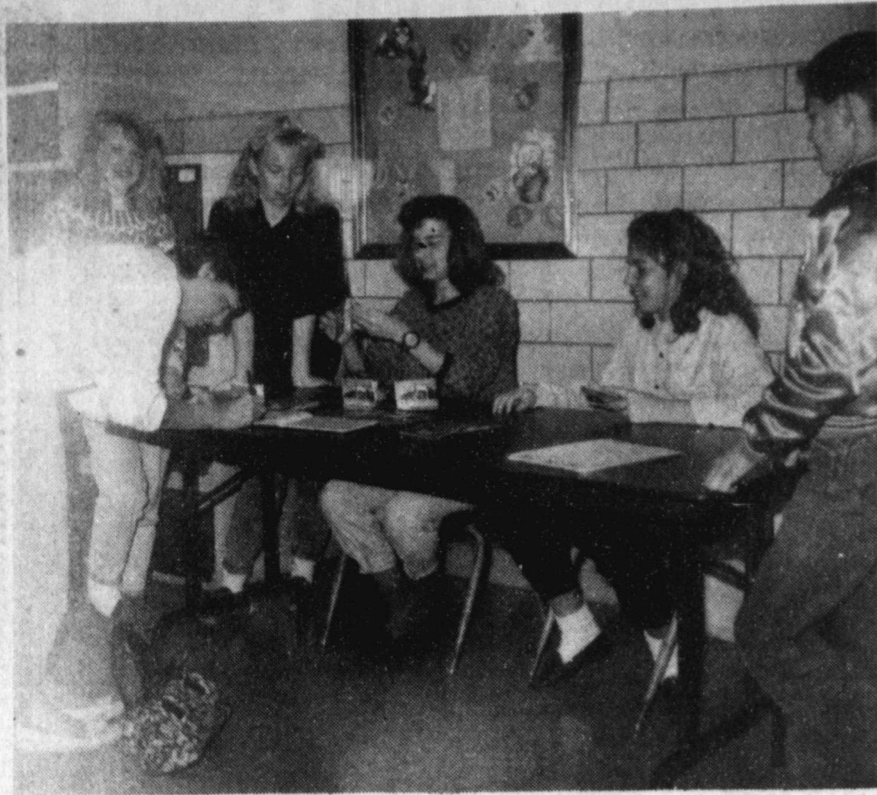
Spray 3 or 4 days before anticipated frost. 1 quart will do 10 trees.

Texas Sweet 1015-Y Onion Plants!

Now available at

Kristy's Plants

710 E. Amer. Blvd.
272-5536



OPEN HOUSE REGISTRATION AT WJHS—Students from Watson Junior High are shown registering parents, friends, and fellow students last Thursday night during Open House held at the school. The History Fair was also held in conjunction with Open House. (Journal Photo)

Rural Development Bill Gets Attention

The words, "home-owned" or "locally-managed" mean a lot to those of us who prefer to do business with home town folks we know and trust. The same phrases may be coming back to the business of local government with H.R. 3581, The Rural Economic Development Act. The rural development bill allows local, regional and state governments to make the decisions about where and how they want these federal funds spent for the most important projects in their communities. This comprehensive legislation reaches out to rural counties in West Texas with populations of 50,000 people or less.

A 16-member state review panel of representatives from rural areas will prioritize requests for economic assistance from communities and county governments. Under the rural development bill, communities can submit plans to this panel of rural representatives from their own state. Certain priorities in one community may not be a priority for another community.

There are a number of projects local communities may apply for through their state review panel. Rural communities can receive federal funds for construction or expansion of plants and facilities or expansion of existing businesses. Small businesses—those with less than 30 employees—can apply for loans not available through the Small Business Administration (SBA). Many city officials in the 19th District may wish to help existing small businesses through similar efforts they have used in attracting new businesses.

Towns needing emergency alternative drinking water sources or improved capacity for treatment of sewage can seek priority funding for projects required to meet declared health emergencies. Rural electric cooperatives would receive assistance to help development needs in their communities. County extension services will be involved in training rural people in how

to start new businesses.

The House Agriculture Committee, on which I serve, passed the Rural Economic Development Act on February 27. Given the hardships faced by rural residents, the House of Representatives is expected to consider the bill this week.

In Congress, I have sponsored and fought for several rural development initiatives and I believe the Rural Economic Development Act will help keep our main street merchants in business. It is time we finally evened the odds for small businesses in rural areas and provide a needed shot in the arm for Rural America.

Delma A. Mann Graveside Services Held Wednesday

Graveside services for Delma A. Mann, 85, were conducted at 2 p.m. Wednesday, March 12 in Muleshoe Memorial Park with the Rev. Dennis Hayes, minister of the Nazarene Church, officiating, assisted by the Rev. Jimmy Williams.

Burial was under the direction of Ellis Funeral Home. Mrs. Mann died at 9:16 p.m. Monday in Muleshoe Area Medical Center.

Born Nov. 25, 1904, in Hobart, Okla., she moved to Muleshoe in September 1951, from Pasadena, TX. She was a homemaker and a member of the Church of the Nazarene. She married James Monroe Mann on November 15, 1924, in Hobart, Okla. He died in 1976.

Survivors include a son, Franklin Mann of Saginaw; three daughters, Weynana June Perkins of Pasadena, Joyce Darlene Prather of Muleshoe and Myrtle Ladelle Foster of Vernon; a brother, Lee Mason of Clovis, N.M.; 15 grandchildren; 39 great grandchildren; and one great great grandchild.

Render Income-Producing Personal Property Now

Jim Robinson, executive director of the State Property Tax Board (STPB), recently reminded business owners that they must file property rendition forms with local appraisal district offices by April 2, 1990.

The legal deadline for renditions is actually March 31, 1990 which falls on a Saturday this year. As a result, the 1990 deadline has been moved to the first working day after March 31. Property owners may receive a 30-day extension, but must file a written request with the appraisal district by April 2, 1990.

A rendition is a report a property owner files each year, listing taxable property he owns or manages as of January 1.

"The law requires certain property owners to file renditions every year," noted Robinson.

Anyone who owns or manages income-producing personal property on January 1 must file a rendition statement with the local appraisal district. "businesses, for instance, must report their inventories, furniture and equipment, machinery and equipment, and other tangible business property on a rendition.

Thomas Merritt Funeral Services Set Today

Funeral services for Thomas Julian Merritt, 69, of Las Cruces, N.M. will be held at 10 a.m. today, Thursday, March 15 in Ellis Funeral Home Chapel of the Chimes with the Rev. Gaylon Isaacs, a Baptist minister from Portales, N.M., officiating.

Burial will be in Muleshoe Memorial Park under the direction of Ellis Funeral Home. Merritt died at 8:30 a.m. Sunday in Las Cruces Memorial Hospital.

Born May 9, 1920, in Vine-mont, Alabama, he had been a resident of Las Cruces 16 years, moving there from Minneapolis, Minnesota. He was a retired carpenter.

Survivors include three sons, Tommy Merritt of Clovis, N.M., J.D. Merritt of Roswell, N.M., and Bobby Merritt of Las Cruces, N.M.; two daughters, Patsy Merritt of Van Nuys, Calif. and Kimberly Wells of South Haven, Mich.; two sisters, Mary Grace Ryder and Alma Jane Weathers, both of Alabama; five brothers, Gene Merritt, Bill Merritt, Frank Merritt, Jim Merritt and Charles Merritt, all of Alabama; eight grandchildren; and three great grandchildren.

MHMR Provides Health Care For This County

Mrs. Jamey L. Henderson, Director of Quality Assurance with the Central Plains MHMR Center notified the Journal this week that Central Plains MHMR Center is responsible for the care, treatment, rehabilitation, and habilitation of many Texas citizens.

Personnel of this facility/center are committed to providing these services in a manner which preserves the dignity and the basic human rights of every citizen under its jurisdiction.

Any client, relative of a client, or representative of a client who has a complaint, comment, or suggestion regarding the health, safety, welfare, or legal and human rights of a patient or client of this center is invited and urged to submit them in writing to:

Chairperson
Public Responsibility
Committee
P.O. Box 1374
Plainview, TX 79072
The Public Responsibility Committee is an independent, impartial body. None of its members are employees of this facility/center.

Members of the responsibility committee include: Joy Stancell, Bailey County; Lowell Bilbrey, Floyd County; Norvene Owen, Hale County; Jane Spain, Lamb County; Wilburn Martin, Motley County; Curtis Murphree, Parmer County; and Valoise Davenport, Swisher County.

It is to their benefit to do so because chief appraisers use the rendition reports to establish the property's fair taxable value," Robinson explained.

"When business personal property isn't rendered, the chief appraiser is forced to estimate the value," he added.

The chief appraiser may also require other property owners or managers to render property; if so, the chief appraiser will send a notice and the appropriate rendition form.

While only business personal property must be rendered, anyone may voluntarily file a rendition with the appraisal district. Texas law does not require a property owner to render a home or other real property, but Robinson pointed out that homeowners who do render are in a better position to exercise their rights as taxpayers, for several reasons.

First, by filing a rendition, property owners ensure that the correct address will be on their value notices, notices of hearings which may be scheduled if they protest the appraisal of their property, and on their tax bills.

"It is essential that property owners receive this information in a timely manner," said Robinson. "For instance, if the tax collector cannot deliver a tax bill because of an incorrect address, the property owner is still responsible for paying the taxes plus penalties that result from late payment."

Second, rendition is an opportunity for a property owner to record an opinion of the property's value.

Third, by recording an opinion that the chief appraiser must send the owner a notice before placing a higher value on the property. This notice allows the property owner time to gather information to protest the appraisal if the proposed value is too high.

If a property is appraised by more than one appraisal district, the property owner should file a rendition in each appraisal district office.

Property owners whose homes were damaged last year by a storm, flood, or fire may also file a special type of rendition report with chief appraisers, called a report of decreased value. The deadline for filing this report for 1990 is April 2.

Rendition and report of decreased value forms are available at local appraisal district offices. The law requires that the property owner provide all information requested on the form. Noted Robinson, "It is a criminal violation to make false statements on renditions and reports of decreased value."

Rendition forms and decreased value reports are confidential and not open to public inspection.

For more information, contact the local appraisal district office or the STPB Tax Information Section at (512) 329-7901.

Definition

"Thinking," said the little boy, "is when your mouth stays shut and your head keeps talking to itself."

-Earle Missile, Red Ban, N.J.

Three Way News

by: Mrs. H.W. Garvin

Prowl Chemical hosted a barbeque supper in the Three Way cafeteria Thursday evening for the farmers and families of the community.

Mrs. D.A. Williams from Enochs visited her parents the George Tysons Thursday eve.

Mr. and Mrs. Joe Sowder attended a trustee meeting of the Baptist Church in Floydada Tuesday evening.

The community received rain Saturday and Sunday morning amounts close to an inch in both rains.

Mr. and Mrs. Bobby Kindler were in Lubbock Saturday on business.



HAVING CONFERENCE WITH THEIR TEACHERS—Students of Ms. Chastain visit with during Open House held last Thursday night at Muleshoe High School. Parents and their children visited with the student's teachers in their respective schools. (Journal Photo)

The family of Jeffrey D. Noble would like to thank everyone for the expressions of love and concern you have shown. Words cannot express the gratitude we feel for all the support, prayers, food, flowers, cards, and memorials. Jeffrey was loved by many people and we are blessed with so many caring friends whose strength and love has helped us through.

Danny, Cynthia and Johnny Noble
F.H. and Jewell Gable
Jim and Bettye Noble

AUCTION

Saturday, March 17, 1990 — Sale Time: 9:07 a.m.

LOCATED: Floydada, Texas — 216 South Main Street (Across Street West From Oden Chevrolet).

MARTIN & CO. & MRS. DAVID LEWIS — Owners

Telephones: Gary Bennett - (Night) (806) 983-5120 or (Day) (806) 983-3713 or Bennie Reagan - (806) 469-5217

The Martin & Co. has been in business for 50 years and is quitting business, and due to the death of Mrs. Lewis' husband, the following will be sold at Public Auction — Any announcement Sale Day takes precedence.

NOTE: WE WILL START SELLING INSIDE THE STORE AT 9:07 A.M. THEN AT ABOUT 1:00 P.M. WE WILL SELL OUTSIDE ON FARM EQUIPMENT AND TRACTORS UNTIL FINISHED THEN RETURN BACK INSIDE THE STORE.

<p>TRACTORS, ANTIQUE TRACTORS, LOADER TRACTOR —</p> <ul style="list-style-type: none"> 1-1981 International 986 Diesel Tractor, Cab, No T.A. Dual P.T.O., Dual Hyd., Axle Duals, 18.4x38 Rubber, Weights, (2341 Hours) 1-1977 International 886 Diesel Tractor, T.A. Cab, A/C, Dual P.T.O., Dual Hyd., 18.4x34 Rubber, Weights, (2700 Hours) 1-1966 Farmall 806 Diesel Tractor, Cab, T.A. 3-pt. W.F., Dual Hydraulics, 16.9x34 Rubber 1-1937 Farmall F-20 Gas Tractor, Restored, Kept Inside & Will Run 1-McCormick Deering WD-9 Diesel Wheel tractor 1-Farmall G Gas Tractor, Front Mount Crane, T.F. <p>AG-GATOR SPRAYER, SCHOOL BUS, COTTON STRIPPER —</p> <ul style="list-style-type: none"> 1-Ag-Gator Self Propelled 754 Sprayer, 750 Gallon 1-International 16-10" Grain Drill, Needs New Engine 1-SA Dual Wheel, Ag-Gator Transport Trailer 1-1969 Ford 600 School Bus, Rigged With 5 Bunks, Butane Refrigerator, Butane Cook Stove 1-International 90 Bush Cotton Stripper & Basket <p>SERVICE TRUCK, PICKUP, IMPLEMENT TRAILER —</p> <ul style="list-style-type: none"> 1-1963 Chevrolet C-60 Service Truck, With Hoist Rack, P.T.O. Winch, Model CS 260 Air Compressor Powered By 4 Cylinder Engine, Truck Has 4 Speed & 6 Cylinder Engine 1-1980 Chevrolet Custom Deluxe 10 Pickup, 4 Speed, 6 Cylinder Engine 1-SM 21' Triple Axle Implement Trailer <p>EQUIPMENT —</p> <ul style="list-style-type: none"> 1-International 500 6 Row Air Planter, Accra Plant Opener 1-International 6 Row Rolling Cultivator 1-Cisco 21' 3-pt. Field Cultivator 1-Krause 21' Tandem Disc 1-International 21' 430 Tandem Disc 1-International 16-10" Grain Drill, Press Wheels 1-BoBar 6 Row, 3-pt. Chemical Applicator 1-Belly Mount Sprayer With 2-200 Gallon Poly Tanks 1-M&W 6 Row 1821 Rotary Hoe 1-Bushnell T.T. 200 Gallon Sprayer, 8 Row Booms 1-6 Row Hydraulic Roadweeder 1-D.D.B. 6 Row Cultivator With Gauge Wheels 1-3-pt. 6 Row Lister 1-3-pt. 7 Row Lister 1-Graham Home 15 Shank D.T. Plow, Cont. Plow, L.C. 1-Graham Home 11 Shank, D.T. Cyl. Control Plow, L.C. 1-Noble 21' Mulcher Harrow 1-3-pt. 7' Box Blade 1-3-pt. 9' Blade 1-Eversman D.T. V-Ditcher 1-SM D.T. V-Ditcher 1-SM 4 Row Stakecutter 1-3-pt. Crane 1-3-pt. 10 Shank Sweep Plow 1-Portable 6'x16' Grain Auger With B&S Engine 1-12-Volt 25 Gallon Spot Sprayer 1-SM Wire Roller 	<p>TANKS, TRAILERS —</p> <ul style="list-style-type: none"> 2-2000 Gallon Water Tanks 1-500 Gallon Water Tank On 4 Wheel Chassis 1-1000 Gallon Pressurized Diesel Tank 1-385 Gallon Pressurized Fuel Tank On 4 Wheel Chassis 1-300 Gallon Fuel Tanks And Stands 1-250 Gallon Propane Tank On 4 Wheel Chassis 1-110 Gallon Fuel Tank 1-Cobey 14' Metal 4 Wheel Grain Wagon 2-5th Wheel 20' Steel Flatbed 4 Wheel Trailers 1-Pickup Bed 2 Wheel Trailer 1-4 Wheel Trailer Chassis 1-5th Wheel 4 Wheel Trailer Chassis, Coil Link Axles, Steel Runners <p>IRRIGATION —</p> <ul style="list-style-type: none"> 1-KMP Lake Pump With Chevrolet 292 Engine 1-WHEE 3" Lake Pump With B&S Engine 1-Wisconsin Air Cooled Engine Mounted On Small 2 Wheel Chassis For Lake Pump 1-Air Riving Machine 1-50 H.P. Gearhead 1-Lot 4"x30' Flowline 1-Lot 1 1/2" Irrigation Tubes 1-Lot 4"x30' Gated Pipe, 40" Rows <p>TRACTOR & TOOL MAKEUPS —</p> <ul style="list-style-type: none"> 2-6 Row 4x4 Single Bar Tool Carriers 3-Sam Stevens Dikers 1-Butane Filler Hose 1-Hinkler Tractor Cab 1-Set Hydraulic Fold Markers 1-Lot International Tractor Weights 2-16.9x34 Tractor Tires And Rims 1-Lot Noble Harrow Parts 1-Lot Shanks & Clamps <p>SHOP EQUIPMENT —</p> <ul style="list-style-type: none"> 1-Antique Weaver Press 1-M&W Hydro-Gauge Dynamometer 1-Wright 2 Ton Chain Hoist 1-ingersoll-Rand Type 30 Air Compressor With 3 H.P. Electric Motor 1-Forney 180 Amp. Electric Welder 1-Soux Valve Grinding Machine 1-B&D 1/2" Super Service Valve Relacer 1-South Bend Model A Precision Metal Lathe 1-Lot Electric Drills 1-Lot Tool Boxes 1-Tuxco Diesel Fuel Rator-Tester 1-Crumbliss Generator & Alternator Tester 1-Spears Air Compressor With Tecumseh Engine 2-Nozi-Rator Diesel Injector Testers 1-Hydraulic Sleeve Puller 1-Snap-On Torch Wrench 1-Lot Tractor Stands & Special Tools 1-Proto Torch Wrench 1-Lot Drill Bits 1-Spears Air Compressor With Tecumseh Engine 1-Fleetwood 5 Speed Drill Press 1-Weldmaster Acetylene Cutting Torch 1-Craftsman Acetylene Cutting Torch 1-Battle Car 1-Lot Bolt Cutters 1-Blackhawk 10 Ton Floor Jack 2-Blackhawk 4 Ton Floor Jacks 1-Large Shop Anvil 1-Lot Various Work Benches 2-International High Pressure Washers (For Parts) 	<p>MICRO FISHING, MANUALS</p> <ul style="list-style-type: none"> 1-Bell & Howell Micro Fish And Film 1-Fairchild Video Player With Tapes 1-Lot Metal Display Shelving 3-Sweep Racks 1-Farmall F-20 Parts Catalog 1-Lot Farmall Tractor Manuals 1-Lot International Manuals: Combines, Cotton Strippers 1-New International 3'x5' Power Lawn Sign <p>WEIGHT BENCH, TV'S —</p> <ul style="list-style-type: none"> 1-DP Set A Pin Weight Lift Bench 3-Used Television Sets <p>STORE MERCHANDISE, PARTS (New) —</p> <ul style="list-style-type: none"> 1-Lot Delco Ignition Parts, F/G IHC Planter Boxes, Planter Parts, Stripper Parts, Combine Parts, Combine & Stripper Augers, Sway Blocks, Bearings, IHC Belts, 2 IHC Combine Sckles, New Cultivator & Home Sweeps Rodweeder Parts, Chain Rack, Chain & Cutter, Bat & Brushes, Gaskets, Hydraulic Hose, Trailer Jacks, Asprator For 95 Stripper, Krause Oneway, Tandem & Plow Parts, New Discs, Bolts & Screws, Roll Pins, International Sockets & Wrenches, International Tractor Parts, Fuel & Oil Filters, Hitch Pins, Dickey John Monitor, Air Planter Drums, Lot Items Too Numerous To Mention <p>STORE MERCHANDISE, PARTS, (Used) —</p> <ul style="list-style-type: none"> 1-Lot Gas Lawn Mowers, Tires & Wheels, Axl Dual Hubs, Used Discs, Small Gas Engine (B&S), Crossover Toolbox, Used Tractor Parts & Much, Much More
---	---	---

Five Star Auctioneers
P. O. Box 1030 - Plainview, Texas 79073-1030

JAMES G. CRAVE	(806) 296-7252
MERVIN W. EVANS	(806) 293-8195
BENNIE REAGAN	(806) 469-5217
JIM SUMMERS	(806) 864-3611
JIMMY REEVES	(806) 864-3362

Winch Truck Available On Sale Day
Terms of Sale: CASH - All Accounts Settled Day Of Sale
Lunch Will Be Available
We Are Agents And Agents Only
NOTE: PLEASE BRING YOUR OWN CHECK BOOK
IF YOU HAVE NOT ESTABLISHED YOURSELF WITH OUR COMPANY
PLEASE BRING BANK LETTER

For
**Complete Lawn
Service**

Call
**4-D Fertilizer
Co.**
272-4807

Free Estimates

"We Care About Quality"

READY FOR THE FUTURE

WE SALUTE GIRL SCOUT WEEK

March 11-17, 1990



Training For Leadership...

Girl Scouts! Where opportunities for making new friends, developing minds and discovering special talents are available to girls in your community and around the world! Congratulations to this fine organization and our special thanks to them during their anniversary week.

TROOP 228
 Leader: Lela Villarreal
 Asst. Leader: Linda Tosh
 Cynthia Villarreal
 Tori Tosh
 Shawna Dale
 Jennifer Castorena
 Priscilla Aguirre
 Iesha Norman
 Rea Gonzales
 Melissa Pineda
 Kimberly Dickerson
 Natasha Norman
 Angela Castorena
 Brenna Farley
 Melissa Aguirre
 Cassandra Florez
 Alma Gonzales

TROOP 322
 Leader: Cheryl Puckett
 Asst. Leader: Anita Johnson
 Maria Carrion
 Kayna Puckett
 LaRhonda Copley
 Melissa Lozano
 Heather Jaramillo
 Cmafri Lewis
 Larkin Price
 Kimberly Anzaldua
 Misti Johnson
 Melissa Williams

TROOP 200
 Leader: Cherie Maddox
 Asst. Leader: Pam Hancock
 Chelyn Maddox
 Bobbie Benham
 Marissa Beversdorf
 Latisha Morris
 Lela Hancock
 Kristal Griffiths
 Lessa Gable

TROOP 152
 Leader: Rhea Morris
 Asst. Leader: Terry Radford
 Marthella Lewis
 Kimberlee Vaughn
 Lacy Morris
 Aimee Hugg
 Leslie Radford

TROOP 300
 Leader: Mary Ann Ramirez
 Asst. Leader: Linda Tosh
 Shari Alanis
 Diana Gable
 Viena Hernandez
 Stephanie Kirk
 Lisa Marie Ramirez
 Megan Tipps
 Elizabeth Torres
 Karen Wimberley
 Adrienna Ashford
 April Garcia
 Cami Kenemer
 Jennifer Pacheco
 Rosa Recio
 Chyla Torres
 Casey Tosh
 Olimpica Hernandez



Proudly Sponsored By The Following Civic-Minded Businesses:

- | | | | |
|--|---|--|----------------------------|
| Bailey County Farm Bureau | Pizza Hut | Kristy's Plants | W.T. Services, Inc. |
| Leal's Restaurant | Lambert Cleaners | First Bank | Viola's Restaurant |
| Farmer's Co-Op Elevators | Chubby's Beauty Shop | Valley Grain Products Inc. | |
| Irrigation Pumps & Power | Decorator's Floral & Gifts | Glenna's Beauty Retreat | |
| Alex's Tire Service | Muleshoe Trade Center | Pivot Products Distributors, Inc. | |
| Muleshoe Livestock Auction, Inc. | Posada's Radiator | Wes-Tex Feed Yards, Inc. | |
| Ronald Ashford Electrical Inc. | Williams Bros. Office Supply | | |
| Ana's House of Beauty | Muleshoe Truck & Auto Service Center | | |
| Muleshoe Retail Merchants Association | Noble T.V. & Appliance | | |



1990 Mule Kicker Relays

Saturday, March 10



CLASSIFIEDS 272-4536

CLASSIFIED RATES

15 Words & Under
Minimum Charge
\$2.30
Thereafter
\$2.00

16 Words & Over
1st Insertion
15 cents per word
2nd Insertion
13 cents per word

CLASSIFIED
DISPLAY RATES
\$1.75
Per Column Inch

DEADLINES
12 noon Tues.
For Thursday Paper
12 noon Friday
For Sunday Paper

To receive the re-
duce rate after the
first insertion ad
must run continous-
ly.

We reserve the right
to classify, revise, or
reject any ad. We are
not responsible for
any error after ad
has run once.

1. Personals

CONCERNED
About Someone's
Drinking?
HELP IS
AVAILABLE
through Al-Anon
CALL 272-2350 or
965-2870 or come to
visit Tuesday nights,
8:00 p.m. or Saturday
mornings at 10:30 a.m.
and through AA call
965-2870 or come visit
Tuesday nights, 8:00
at 620 W. Second,
Muleshoe.

FOR YOUR Wedding
Cakes, Decorated
Cakes (Such as Ham-
burger, Pizza Cakes)
Portrait or Cartoon
Cakes. For loved ones
or office friends. Call
Ann Johnson, 272-
5746.
J1-9s-tfc

3. Help Wanted

ENMU-Clovis will ac-
cept applications for
part time instructors:
Computer Information
Systems and Life
Sciences. Bachelor De-
gree required -- Mas-
ters Preferred. Send
resume and transcripts
to Dean of Instruction
ENMU-Clovis
417 Schepps Blvd.
Clovis, New Mexico
88101
E3-11t-5tc

Earn \$300 to \$500 per
week Reading Books at
home. Call 615-473-
7440 Ext. B805.
A3-11t-2tp

WANTED: Accepting
applications for part-
time sales clerk. Apply
in person. Ince Oil Co.,
121 W. Amer. Blvd.
13-11t-2tc

AIRLINES NOW
HIRING
flight attendants,
many other positions!
\$17,500-\$58,240. Call
(1) 602-838-8885 Ext.
X-10191.
C3-10s-4tp

ATTENTION: HIR-
ING! CRUISE SHIP,
CASINO, HOTEL
JOBS! FREE TRAVEL
BENEFITS! Details (1)
602-838-8885 Ext. Y
10191.
C3-10t-4tp

3. Help Wanted

SALES OPPORTUNITY
For local person in the
MULESHOE and sur-
rounding area to
represent our National
Lubrication company.
A Full-Time sales
position High com-
missions. Opportunity
for advancement.
Knowledge of farm
and/or industrial e-
quipment helpful.
Product training when
hired. For interview
CALL 1-800-999-4712.
P3-10s-2tp

ATTENTION:
Excellent Income for
Home Assembly Work
Info. Call 504-646-1700
DEPT. P4027.
B3-9s-4tp

9. Automobiles For Sale

BUY GOVERNMENT
Seized and surplus
vehicles from \$100.
Fords, Chevys, Cor-
vettes, etc., in your
area. For info call
1-602-842-1051 ext. A-
2841.
A9-11t-2tp

11. For Sale Or Trade

TWO CEMETERY lots
for sale. Muleshoe
Memorial Park Ceme-
tery. 481-3658 after
6:00 p.m.
G11-8s-tfc

8. Real Estate

FOR SALE: Really nice
modernized older
home. Huge rooms, 3
baths, fireplace, sits
on 1/4 of a block. Heat
pump and refrigerated
air. Call 272-3267 or
272-3304 after 6:00
p.m.
A8-9s-tfc

REPRO'S, REPRO'S,
REPRO'S. Finance
Company desperate to
sell. No credit - no
problem. We deliver.
Call 806-894-8187.
B8-9t-8tc

ATTENTION:
FIRST TIME home
buyers. Two & three
bedroom mobile
homes. No credit. We
deliver. Call 806-894-
7212.
B8-9t-8tc

3-BEDROOM, 2-bath,
double-wide mobile
home for sale.
272-3438.
C8-5s-tfc

ONE MINUTE SPORTS QUIZ

By Christian Thorlund
1. Who is Derrike
Cope?
2. Who won the recent
Aetna Challenge golf
tournament?
3. What woman first
won the U.S. singles cham-
pionship 4 consecutive
years?
4. Who is the "Stanley"
of the Stanley Cup?
5. Where did Vince
Lombardi play football?

Answers:
1. NASCAR pro, who
recently won the Daytona
500.
2. Lee Trevino.
3. Helen Jacobs, 1932-25.
4. Lord Preston Stanley,
former governor-general
of Canada.
5. Fordham U.

8. Real Estate 8. Real Estate

Henry Realty

111 W. Ave. B. 272-4581
Muleshoe, Tx.

RICHLAND HILLS-3 bdrm, 2 bath, 2 car
garage Brick Home, new on the market with
central heat and air, all carpet, automatic
yard sprinkler.

NEW LISTING 3 Bedroom, 1 bath in Lenau
Addition. Well insulated with storm door
and windows. Patio room with Thero pane
windows and free standing wood burning
stove. Landscaped to perfection with easy
care of grounds. Low utility cost. Priced to
sell.

3 Bdrm., 2 bath, spacious home outside city
limits, near city on highway. 29x40 metal
building. Lot 85'x420'.

COMMERCIAL PROPERTY-Ideal location
on West American Blvd. 150' highway
frontage. A great business opportunity.

RURAL HOME-3 Bdrm., 2 bath, large den
on one acre with many extras. Fenced with
barns, fruit trees, extra storage, storm
cellar, and satellite dish. Priced to sell.

SPACIOUS-2 Bdrm., 2 bath, with garage.
Ereshly painted. Fireplace. Ready to move

JUST LISTED- Outside city- 3 Bdrm., 2
bath, garage on one acre. Carpet with
drapes and blinds. Dishwasher. Good
storage.

3 Bedroom, 2 bath, carpet, large living
room. Excellent condition, near high school.
Priced to sell.

Bingham & Nieman Realty

116 E. Ave. C. 272-5285 or 272-5286

RICHLAND HILLS
JUST LISTED-IMMACULATE-ENERGY
EFFICIENT 3-2-2 Brick, Cent. A&H,
built-ins, FP, sunken lv. area with cathedral
ceiling, ceiling fans, earthtones, storage
bldg., much more!!!!150's

4 NICE RESIDENTIAL LOTS PRICED
FROM \$5,000.00!!!!

NICE 3-2-2 Home, HEAT PUMP, built-ins,
FP, earthtone carpets, fenced yard, & much
more. **PRICED TO SELL!!!!**

JUST LISTED- Nice 3-2-2 Brick on large
corner lot, Cent. A&H, built-ins, storm
windows & doors, large basement, much
more!!!!

JUST LISTED - 3-2-2 Brick on corner lot,
Cent. A&H, built-ins, FP, cov. Patio &
more. \$60's!!!!!!!

VERY NICE 3-3-2 Brick Home, Cent. A&H,
built-ins, FP, Wtr. Sftnr., auto. spktr., Cov.
Patio, Stor.-Shop, & much more!!!!!!!

NICE 3-2-3 Brick, Cent. A&H, built-ins, FP,
fenced yd., spktr., & much more!!!!!!!

NICE 3-2-1 Brick Home, Cent. A&H,
built-ins, large den with fireplace. Fenced
yard, storage bldg. \$40's!!!!

PRICE REDUCED 2-2-2 Brick, corner lot,
Cent. A&H, spacious rooms, utility, cov.
patio, fenced yard, & much more. \$40's!!!

HIGH SCHOOL
JUST LISTED-3-2-2 nicely
remodeled \$17,000!!!!

2-1 1/2-1 Brick, fl. furnace, CA, fenced yard
& more. \$20's!!!!

NICE 2-1 1/2-1 Home, corner lot, built-ins,
nice carpet, heat pump, fenced yard,
storage bldg. & more!!!!

PRICE REDUCED 3-1-1 Home earthtone
carpets, fenced yard, storm cellar &
workshop!!!!

JUST LISTED-VERY NICE 3-1-1 Brick,
Cent. heat, Evap. air, DW, earthtone
carpets, nice deck area, fenced yd., st. bldg.
& much more. \$30's!!!!

GEORGE NIEMAN, BROKER

Steroid Use Can Result In Harmful Side Effects

Use of anabolic steroids to
improve athletic abilities can
cause severe--even lethal--side
effects, according to an article
published in the March issue of
Texas Medicine.

"Many athletes are willing to
forego their health later for the
rewards and honor associated
with winning," Scott C. Holden,
Dr. David Calvo and Dr. James

C. Sterling write in the Texas
Medicine article. Texas Medicine
is the official journal of the Texas
Medical Association.

Holden is a medical student at
The University of Texas South-
western Medical Center at
Dallas. Dr. Calvo and Dr.
Sterling are partners in the Fort
Bend Orthopaedic and Sport
Medicine Associates in Sugar

Land.

Anabolic steroids are com-
pounds derived from testoster-
one, a male hormone, or
prepared synthetically and are
used to promote body growth.
Among their legitimate uses is
the treatment of various forms of
anemia. Athletes, however, take
steroids in doses as much as
eight times higher than recom-
mended for medical purposes,
the authors say.

The authors say side effects
from anabolic steroids use can
range from minor problems such
as headaches, acne and water
retention to increased risk of
cancer and cardiovascular
disease.

"The effects are seen in the
structures associated with the
distribution, metabolism and
excretion of the drugs and
endocrine structures which
produce hormones similar to
anabolic steroids," they state.
"The male and female reproduc-
tive systems may be compro-
mised due to anabolic steroid
usage. Females may experience
some masculination due to the
androgenic nature of the
compounds."

Among the side effects from
steroid use are abnormal liver
function, jaundice and mood
disturbances. Steroids also are
a weak cancer-causing agent and
can promote growth of already
existing tumors, they say.

Athletes who use steroids may
be at risk of irreversible
cardiovascular disease. This is
because steroid use can lower
levels of high-density lipopro-
teins in the circulation, which
have been associated with an
increase risk of coronary artery
disease and heart attack, Holden,
Calvo and Sterling say.

Use of anabolic steroids by
Olympic and collegiate athletes
has not decreased, despite the
fact that they have been banned,
the authors state.

"This is evidenced by the
number of positive tests for
steroid use in collegiate athletics,
professional sports, and the
Olympic games," they wrote.

The authors added that steroid
use remains high despite
conflicting reports on their
effectiveness in increasing
athletic ability.

"The side effects associated
with steroid use may seem to be
sufficient to curb the use of these
drugs," the authors concluded.
"However, when one considers
the premium placed on winning
in most of the world and the
rewards associated with winning,
it is not surprising that athletes
would put themselves at risk."

TMA is a professional organ-
ization of more than 29,000
physician and medical student
members. It is based in Austin
and has 117 component county
medical societies around the
state. The Association
represents more than 80 percent
of the state's physicians, an its
goal is to improve the health of
Texans through the professional
and personal development of its
members.

17. Seed and Feed

17. Seed and Feed

Seed Contracts

Excellent opportunity for producers with
quality land and average water. For
non-programs acreage.

For Information Call

office
806-293-4404

evening

806-293-7927

8. Real Estate 8. Real Estate

LAND FOR SALE: 7,000 acres of irrigated
land. Will sell any part, or all. Sprinkler,
fenced, and water tanks for cattle in each
circle. Good cattle operation and excellent
living quarters. Land is good for vegetables
or grains. Near Earth, Texas. Will also sell
or lease.

Randy Johnson

(806) 272-3056

272-4536


CALL

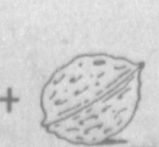
THROUGH THE CLASSIFIEDS!

SELL-RENT-TRADE OR BUY

Trivial SOLVE THE REBUS BY WRITING
IN THE NAMES OF THE PICTURE
CLUES AND ADDING OR SUBTRACTING THE LETTERS.

WHAT COULD A
DOGHOUSE BE
CALLED?

M +  =

H +  =

-bon -n

=

MULESHOE AREA



Mid-Winter '90



BUSINESS DIRECTORY AND SHOPPING GUIDE

WES-TEX FEED YARDS, INC.

Custom Cattle Feeding

Wes-Tex Feed Yards, Inc.

272-7555



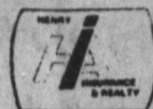
Henry



Insurance Agency,
Inc.

"Serving You Since 1964"

KENNETH R. HENRY
CERTIFIED INSURANCE
COUNSELOR
REAL ESTATE BROKER



111 W. AVENUE B
PHONE 806/272-4581
MULESHOE, TEXAS 79347



We're here to help!

ART LOFT

All Irrigation Supplies

Underground Plastic Pipe

Above Ground Gated Plastic Pipe

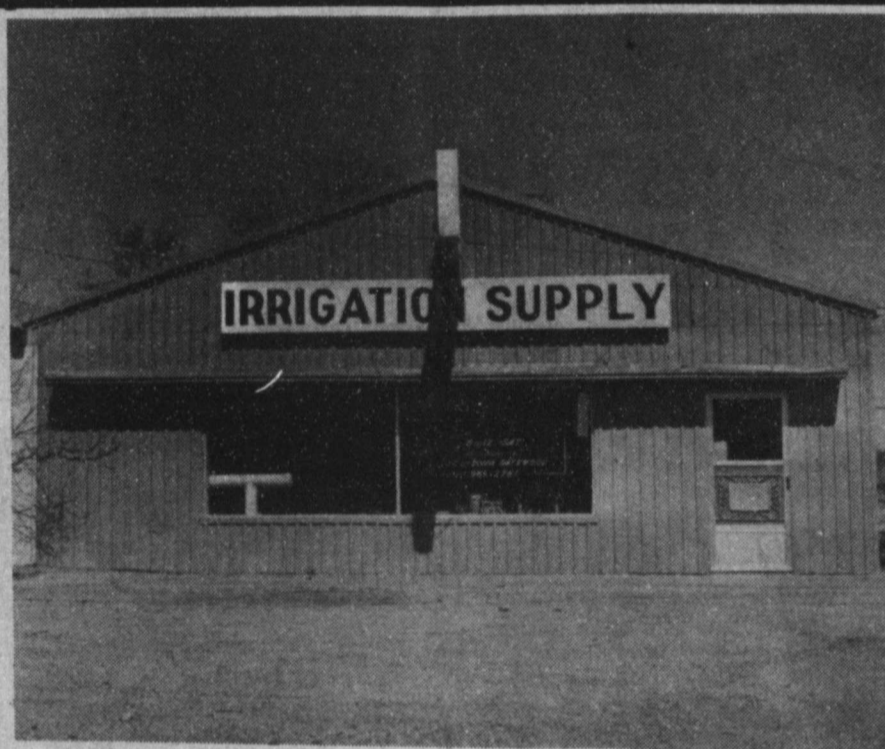
Solar Surge Valves

Irrigation Supply

J.C. & Zona Gatewood

607 E. Amer. Blvd.

272-4466



Irrigation Supply will celebrate their
first anniversary in May!

They have a good stock of irrigation
parts, such as:

- Gates, gate gaskets, and socks for gated pipe
- Squeeze Valves
- Swing Check Valves
- Parts for repairing risers
- Hydrants and parts
- Plastic and aluminum fittings
- Some aluminum pipe
- Underground Irrigation pipe
- Solar Surge Valves
- Irrigation Tubes
- Above ground plastic gated pipe
- And much more

They also have parts for installing
leech lines and septic tanks.

Irrigation Supply looks forward to
serving you, the farmer, and will do
their best to supply all your irrigation
needs.

Come by and visit anytime!

J.C. & Zona Gatewood

Irrigation Supply

607 E. Amer. Blvd. Muleshoe

272-4466

Leal's Restaurant

ENCHILADAS
& TACOS

2 Meat or Cheese
Enchiladas & 2 Tacos

\$3.95

Closed Monday



1524 W. Amer. Blvd.

272-3294



W.T. SERVICES INC.

319 E. American Blvd.
MULESHOE, TEXAS 79347

Mobile Communications

Two-Way Radio Repair

GARY PARKER
Technician

Muleshoe - 806-272-4888

Hereford - 806-364-7311

We will be featuring our
Tux's by First Class at the
Fine Arts Booster's
Dinner Theater,
April 2!



Lambert Cleaners

123 Main

272-4726



ENCHILADA
PLATE

3 Enchiladas (Meat or
Cheese) with beans

\$3.95

Closed Tuesday

Viola's Restaurant

2002 W. Amer. Blvd.

272-3838

WE RECOMMEND
ferti-lome
Lawn & Garden Products

Time To Use
ferti-lome
LAWN FOOD

Kearney Scoggin

Scoggin Ag Center, Inc.

"Where Fertilizer Is Our Business"

1532 W. Amer. Blvd.

272-4613



5 Locations

To Serve You!

- Clays Corner •Enochs •Muleshoe
- Pleasant Valley •Old Griffith

Farmer's

Co-Op Elevators

272-4335

Put down a new floor covering
without putting down any money.



Muleshoe Floor Covering

122 S. Main

Curtis Carpenter

272-3555

3 Point Play Specials

(Meat Lovers, Cheese Lovers or Pepperoni Lovers)
Pan, Thin 'N Crispy or Hand Tossed Traditional

\$8.99 each

2 for \$12.99



Makin' it great!

1412 W. Amer. Blvd.

272-4213



2.49 Your Choice
Super Hard Shell
Wax 16-Oz. Liquid or
9.5-Oz. Paste 1123/223
QUANTITIES LIMITED



Fry & Cox, Inc.

401 S. 1st

272-4511