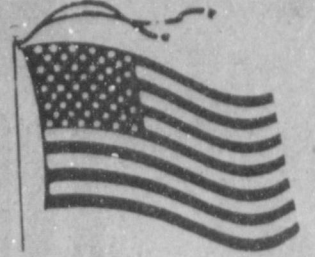


# Muleshoe Journal

'The Community Of Opportunity-Where Water Makes The Difference'



## Weather

February 1	64	34	.00
February 2	(Not Recorded)		
February 3	(Not Recorded)		
February 4	64	12	.00
February 5	(Not Recorded)		
February 6	66	14	.00
February 7	63	16	.00

Vol. 68, No. 6

12 PAGES TODAY

Published Every Thursday At Muleshoe, Bailey County, Texas 79347

MEMBER 1990  
**TA** TEXAS PRESS ASSOCIATION **20¢** THURSDAY, FEBRUARY 8, 1990

# 35 County Youth Enter Houston Show

## around muleshoe

Calvary Baptist Teens are selling Great Valentine Cookies again this year.

The cost is \$3.50 each and they are decorated and delivered within the city limits.

To place an order, contact any Calvary Baptist Teen or call 272-5319 or 272-4012.

The Teens say, "Thanks for helping us go to camp."

Harvey Bass notified *The Journal* that the next MAC drawing will be on the first Saturday in March, at the downtown location in Muleshoe.

The Muleshoe Eastern Star Chapter will sponsor a blood drive for United Blood Services on Friday, February 9, at the Muleshoe State Bank meeting room.

Hours will be 10 a.m.-6 p.m.

A general membership meeting of MulePlex Production Co. is scheduled for 6 p.m. on Friday, February 9, in the Muleshoe State Bank meeting room, according to Pat Prater, chairman.

All members of the MulePlex Production Co., and any other interested individuals are asked to attend, said Mrs. Prater.

Saturday evening, February 10, the Muleshoe Square Dance Club will hold their Anniversary Dance.

Events begin at the Civic Center at 6:30 p.m. with a salad supper. Pre-rounds get underway at 7:30 p.m., with the Grand March at 8 p.m., followed by dancing.

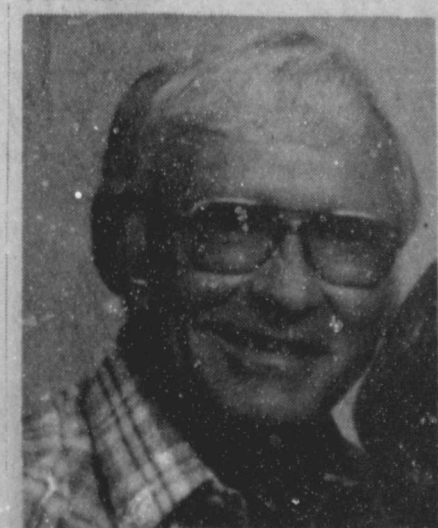
Among the 250 students named to the Dean's honor roll for the fall 1989 semester at Sul Ross State University, Alpine, was Leslie Langfitt Pearce of Muleshoe, who had a 4.0 gpa.

Undergraduate students who are enrolled for 12 or more semester hours and maintain a grade point average of 3.3 or better are eligible for the Dean's list. Graduate hours are not included in dean's list computations.

## Bob Stovall Funeral Held Here On Tuesday

Funeral services for long-time local civic leader and businessman Bob Stovall, 52, were conducted at 2 p.m. Tuesday, Feb. 6, in the First Baptist Church in Muleshoe, with Rev. Barry Bradley, minister, officiating. Interment was in Muleshoe Cemetery under direction of Ellis Funeral Home of Muleshoe.

Bob Stovall was born August 1, 1937 in Olton, TX and moved to Muleshoe in 1965 from Clovis. He was owner and operator of Bob Stovall Printing. He was married to the former Eva Nell Thomas on August 28, 1958 in Friona.



BOB STOVALL



**OH, NO!! NOT AGAIN!!!**--In the background, behind a shattered store window, Forrest Shannon, manager of the Town and Country Stores in Muleshoe, surveys the latest damage at the Town and Country store at the Crossroads. Saturday night, an out-of-control vehicle crossed the intersection at an angle and struck the southwest corner of the building, dislodging the brick front, and caving the store in to the checkout area. Although the vehicle left the scene, officers located the vehicle, then later a female juvenile suspect was taken to the Bailey County Law Enforcement Center for questioning about the latest attempt to turn Town and Country into a drive-in. Less than a year ago, a pickup struck the front of the same store, caving in bricks, and shattering windows. (Journal Photo)

## Lazbuddie FFA Youth Exhibit At Friona Livestock Show

A number of Lazbuddie students exhibited at the annual Parmer County Livestock Show in Friona last week.

Lazbuddie FFA members who exhibited their animals, and their placings were:

**SHEEP FINE WOOL LIGHTWEIGHT**  
Craig Russell, third; Casey Russell, sixth and Jodi Morris, seventh.

**MEDIUM WEIGHT**  
Jana Vise, sixth.

**HEAVY WEIGHT**  
Dawnda Magby, fifth.  
**FINEWOOL CROSS**

**LIGHT WEIGHT**  
Krista Smith, fourth and Casey Russell, fifth.

**HEAVY WEIGHT**  
Shana Foster, second; Eric

Williams, fourth and Jodi Morris, fifth.

**HAMPSHIRE LIGHT WEIGHT**

Cont. Page 6, Col. 4

## Rotary Club Conducts Brief Stovall Memorial

It was a sad day for the Muleshoe Rotary Club Tuesday, as the business meeting opened with a brief memorial service to honor the memory of longtime Rotarian Bob Stovall.

Bret McCasland led the group after a silent prayer, and President Terry Hutto eulogized the popular local businessman who died early Sunday morning.

President Hutto asked Rotarians to spend some of their leisure hours assisting Eva Nell Stovall at the Bob Stovall Printing Co. as she gets ready to re-open the business after his Tuesday afternoon funeral.

He also said Ellis Funeral Home was reserving a section of seats so members of the Rotary Club and their Rotary Anns could sit as a group at the funeral.

The next four programs will be the responsibility of Bret McCasland, Mark McClanahan, Don McElroy and Charles Moraw.

Tom Bonds was winner of the Polio Plus drawing for the day.

Dave Marr was in charge of the program and introduced Police Chief Wayne Holmes, who gave an update on the upcoming 9-1-1 Emergency Telephone project.

Chief Holmes gave a background on the operation, which began in Muleshoe with a joint meeting of all law enforcement and emergency services.

He said the group drew up plans to present to South Plains Association of Governments, also known as SPAG, and the plans were approved for this county.

The state legislature had mandated that all counties with populations above 120,000 have the 9-1-1 emergency service operational by 1995. Local authorities

opted to include the service in Bailey County and the area.

He said 50 cents is added to each telephone bill in the state to help pay for the system, as well as a surcharge on long distance intrastate calls.

According to the chief, the Cont. Page 6, Col. 5

Twenty-four 4-H members and 11 FFA members from Bailey County will be joining other 4-H and FFA members from throughout the state for showing competition at the upcoming Houston Livestock Show, Feb. 17 through March 4 at the Astrohall.

These 4-H and FFA exhibitors compete in one of two divisions of the Houston Livestock Show - the junior show division. The other division, the open show, attracts its exhibitors from the world's agricultural industry, primarily professional breeders and ranchers.

Entries in both the open and junior shows combine with horse

## Lunchroom To Cooperate In Heart Month

The three school cafeterias in the Muleshoe Schools will be cooperating with the American Heart Association by serving "Heart Healthy" lunches during the week, beginning February 12.

Jean Whalin, school lunchroom supervisor, reports that the lunch menus have been planned to include as little fat as possible and emphasize foods that help individuals maintain a satisfactory cholesterol level. These include fruits, vegetables, poultry and fish.

Teachers throughout the MISD are spending time discussing with their students the benefits of proper diet and exercise in prevention of cardiovascular disease.

They are calling attention to the heart healthy aspects of the meals they will be eating in the cafeterias during the week.

The fourteen students in the Advanced Food Science and Nutrition class at Muleshoe High School, under the direction of their teacher, Marquitas Adamson, will place decorations and information in the High School Cafeteria to call the students' attention to the importance of heart healthy foods.

At Mary DeShazo Elementary and Dillman Elementary, students and teachers will be making posters and decorations for their respective cafeterias.

Students ARE what they EAT!! This is the message that the American Heart Association hopes to get across to students during this busy week of healthy heart awareness activities.

show entries to make the Houston Livestock Show the world's largest.

Bailey County 4-H'ers entering the show include Katie Black, Jacen Claunch, John Bryan Cowart, Robin Cowart, Andy Crawford, Angela Crawford, Brittany Young, Amy Harrison, Brandi Harrison, Jill Hodges, Lori Hodges, Suzy Hodges and Holly Huckaby.

Also, Keila Kennedy, Ky Kennedy, Justin Lee, Vaden McCaul, Brenda Mudford, Angel Pearson, Russell Pollard, Larry Robertson, Colin Tanksley, Courtney Tanksley and Joshua Tooley.

Muleshoe FFA students with entries are Kyle Embry, Daniel Morris, Jeffrey D. Noble, Johnny Noble, Donny Strawbridge, Steven Wauson, Jeffrey Wheeler and Wade Wheeler.

FFA students from the Three Way School are Marc Tucker, Sheila Tucker and Chad Welch.

Representing 841 Texas 4-H clubs and FFA chapters, the junior show is expected to exceed Cont. Page 6, Col. 1

## 4-H Youth At Fort Worth To Exhibit

Several Bailey County youth attended the Southwestern Livestock Show in Ft. Worth recently, reports Spencer Tanksley, County Extension Agent.

The following placements were achieved by Bailey County 4-H'ers:

**COURTNEY TANKSLEY** - Champion American Cross. Steer weight was 1148 pounds and it was First Place in the Middle Weight Class.

**COLIN TANKSLEY** - First Place, Lt. Heavy Weight, European Cross Steer.

**COLIN TANKSLEY** - First Place, Lt. Medium Weight, European Cross Steer.

**JACEN CLAUNCH** - Second Place, Lt. Weight Polled Hereford.

**JACK HOLLOWAY** - Sixth Place, Heavy Weight, European Cross Steer.

The Bailey County Extension office said, "Our congratulations to these youth! Other 4-H youth will be attending major livestock shows at El Paso, San Antonio, San Angelo and Houston.

"Results from those shows will be forthcoming as they are available," added Tanksley.



**PREPARING FOR HEART HEALTHY MEALS**--This group of lunchroom workers is getting ready to provide Heart Healthy meals to students at Muleshoe High School and Watson Junior High School as a part of American Heart Month. Shown from left are Lee Vinson, Jean Whalin, lunchroom supervisor; Rebeca Lozano, Kay Ramage, Lanell Stansell and Margaret Stevens. The lunchrooms at both DeShazo and Dillman Elementaries are also participating in the project. (Journal Photo)



# 911 Emergency Telephone Installation Continuing

By 1993 the Advisory Commission on State Emergency Communications in Austin plans to implement 911 telephone systems in most Texas counties.

The Texas Legislature passed House Bill 911 in 1987 which charged the advisory commission with the task of designing and implementing 911 emergency telephone systems at the minimum level (Automatic Number Identification) in the state.

"Although the bill mandated counties with a population of 120,000 or more to implement the service, other counties requested the system," said Mary Boyd, executive director of the advisory commission. Only 16 counties chose not to have the system.

Boyd said 10 years ago, less than 30 cities had basic systems that allowed a caller to dial 9-1-1 to summon help. The 911 operator had to rely on the caller for all information regarding the telephone number, address and type of emergency. These systems were implemented with federal funds from the Law Enforcement Administration.

Presently, 27 counties have enhanced systems, which involve either the Automatic Number Identification (ANI), Automatic Location Identification (ALI), and/or Selective Routing, said Glenn Roach, program manager of the advisory commission.

About two-thirds of Texans have access to one of these county-wide systems, but most are in major cities, he said.

The ANI system only displays the telephone number of the caller. ALI is capable of displaying the address of the telephone from where 9-1-1 is dialed, and selective routing provides automatic dispatch of the call to the appropriate safety headquarters.

The ANI system is being implemented now, but a long-term goal is to have the "full-blown" system where necessary, Boyd said. The ANI system equipment can easily be modified later for ALI and selective routing.

Boyd said residents pay a 50-cent telephone service fee for 911 each month. Also required is a monthly surcharge of less than one percent on intrastate long-distance services.

One critical problem counties face is developing an addressing system for rural areas, she said.

Many rural residents today do not get mail by a street address but rather by a rural route and

mail box number, said Don Blanton of Conroe, president elect of the Texas Association of County Engineers and Road Administrators.

"A fully enhanced 911 system displays both the address and name of the caller on a screen to expedite response to emergencies," he said. "But if a caller calls from a rural route at present, the screen will show no address."

Rural addressing is an expensive process and counties do not have the resources, personnel or funds to get it done, Boyd said. The U. S. Census Bureau has provided a start with base maps, which are more detailed than many county maps.

"We're trying desperately to find financial resources," she said. "We've tackled it the best way we could and have come up with planning tools such as hand

### Three Way News by: Mrs. H. W. Garvin

We wish to express our sympathy to the Pete Tarlton family on the death of Mrs. Tarlton's mother, Ora Gandy, who was buried Saturday in Morton.

Mrs. Bill Dupler visited Mrs. H.W. Garvin Thursday morning.

Mrs. Roger Hatcher and girls from Clovis, N.M. spent Thursday and Friday with her parents, the Jack Lanes'. Roger Hatcher came over Friday and had supper with the family.

Several families attended the Five Area Telephone meeting in Muleshoe Saturday.

Josh Robinson spent Sunday visiting Jonithan Bennett.

Mrs. Joe Sowder has been in Arkansas the past two weeks taking care of her new granddaughter. Joe left Thursday for a visit with his son, the Mike Sowder family and bring Mrs. Sowder home.

Mrs. H.W. Garvin visited her brother, Mr. and Mrs. George Tyson Friday afternoon.

Mrs. W.T. Simpson spent most of the week in Lubbock with her mother who is a patient in Methodist Hospital.

books . . . that at least give commissioners knowledge of how to go about implementing an addressing system."

The cost of Montgomery County's rural addressing and mapping system was about \$80,000, Blanton said. This was shared by the groups cooperating in the project, which included several utility companies serving the county as well as the appraisal district, other groups and the commissioners court.

Challenges also exist for those in very remote areas who cannot afford a 24-hour answering service that is required of the 911 system, Boyd told county officials at the annual County Judges and Commissioners Conference Jan. 23-25.

"911 is such a catalyst in bringing public safety groups together. Typically, the fire station, police and ambulance service have their own phone numbers and their own territory," Boyd said. "911 brings them under one umbrella and they begin to communicate."

The educational course work offered during the County Judges and Commissioners Association Conference was coordinated by the V. G. Young Institute of County Government, a part of the Texas Agricultural Extension Service, and the county officials. Judges and commissioners who attended all sessions earned continuing educational credits, also mandated by the state legislature.

### Guerra Infant Graveside Services Held Wednesday

Graveside services for Christopher Ryan Guerra, infant son of Larry and Sylvia Guerra of Lubbock, were conducted at 2 p.m. Wednesday, Feb. 7 in Rest Haven Memorial Park in Lubbock with Father Cruz of Lubbock officiating.

Burial was under the direction of Guajardo Funeral Home. The infant was stillborn Sunday in University Medical Center.

Survivors in addition to his parents include his grandparents Manuel and Pauline Guerra of Levelland and Elfonzo and Margarita Posadas of Muleshoe; and his great grandparents, Maria Guerra of Levelland, Sheurnina Segovia of Mercedes and Juanita Garza of Plainview.

### Patients in Muleshoe Area Medical Center

JAN. 30-FEB. 5  
TUESDAY  
Sonia Murillo, Lillie Wuerflein, Nora Burch, Olene Watts, Lucille Branscum, Conrad Williams, Tracy Angeley, Orbey Jarman, Hattie Jones and Muriel Lewis  
WEDNESDAY  
Sonia Murillo, Lillie Wuerflein, Olene Watts, Lucille Branscum, Conrad Williams, Muriel Lewis and Orbey Jarman  
THURSDAY  
Amy Peterson, Olene Watts, Lucille Branscum, Conrad Williams, Orbey Jarman, and H.H. Patterson  
FRIDAY  
Rudy Gonzales, Jr., Amy Peterson, Olene Watts, Lucille Branscum, Conrad Williams, Yvonne Bara and H.H. Patterson  
SATURDAY  
Rudy Gonzales, Jr., Jeffrey Wall, Dorothy Merriott, Mary Butter, Lucille Branscum, Joyce Gist, and H.H. Patterson  
SUNDAY  
Rudy Gonzales, Jr., Jeffrey Wall, Dorothy Merriott, Mary Butter, Anthony Casanova, Joyce Gist and H.H. Patterson  
MONDAY  
Rudy Gonzales Jr., Jeffrey Wall, Dorothy Merriott, Mary Butter, Anthony Casanova, Joyce Gist and H. H. Patterson.

### IRAs Save Today

Working persons interested in tax deferred savings and a likely tax deduction may be interested in starting or continuing an Individual Retirement Arrangement (IRA).

All IRA savings are tax deferred, meaning no tax has to be paid on earned interest or gains until the funds are withdrawn. If you meet the eligibility requirements, you may be able to realize significant tax savings by deducting the annual maximum IRA \$2,000 contribution on your tax return.

Generally, you can claim the maximum \$2,000 IRA deduction if neither you nor your spouse is an active participant in an employer-maintained retirement plan, regardless of the amount of your adjusted gross income (AGI). The full deduction also applies, if you or your spouse is an active participant in an employer-maintained retirement plan, if your adjusted gross income is less than \$40,000 as a married person filing jointly, or \$25,000 as a single.

If you (or, in the case of couples, either spouse) are an active participant in an employer-maintained retirement plan, your maximum allowable deduction for your IRA will begin to "phase out" when your AGI reaches \$25,000 (\$40,000 for a married couple filing jointly). When your AGI, as a single, reaches \$35,000 (\$50,000 for a married couple filing jointly), no deductions are allowed for IRA contributions. Nondeductible contributions, however, can make up the difference between the amount deductible and \$2,000.

In recent years, spouses of employed taxpayers have been able to have IRA accounts even if they receive no compensation.

Additional information is available in free IRS Publication 590, *Individual Retirement Arrangements (IRAs)*. It can be obtained by using the order form in your tax package or by calling toll-free, 1-800-424-3676.

### IN FASHION

The newest lounge-wear is an unbeatable combination of comfort and style. A white cotton and polyester jumpsuit, in a small print and nipped elastic waist, is just right for at-home chores.

For dress-up lounge-wear, a combination of tapestry print pants and a roomy velour top is most attractive.

**Muleshoe Journal** USPS 367-830  
Established February 23, 1974, Published by Muleshoe Publishing Co., Inc., Every Thursday at 304 W. Second, Box 449, Muleshoe, Texas, 79347, Second Class Postage Paid at Muleshoe, Texas, 79347.

Member 1990  
**TEXAS PRESS ASSOCIATION**

L. B. Hall, P. J. Lohr, Sammie Hall, The President Controller, Clara Wilcox, News, Evidene Haritz, Society, Holly Millip, Advertising, Dixie Tocco, Classified

SUBSCRIPTIONS  
Muleshoe Journal and Bailey County Journal \$4.75  
Muleshoe Journal and Bailey County Journal Outside Texas, \$16.50  
Yearly by Carrier \$12.50

Advertising Rate Card on Application  
\*Advertisers who place their ads the first day of insertion. The Journal will not be liable for failure to publish an ad or for a typographical error or error in publication except to the extent of the cost of the ad for the first day insertion. Adjustments for errors will be limited to the cost of the first portion of the ad where the error occurred.

## Ben Franklin

Better quality for less

2104 W. Amer. Blvd. Mon.-Sat. Sun.  
772-3855 8 a.m.- 8 p.m. 12- 5 p.m.

### IT'S TIME TO PLANT!

Althea-Double Red & Purple, Forsythia Gold, Honeysuckle Zabeli, Pussy Willows, Pink & Red Weigela

## Bushes

\$3.99 each

Lombardy Poplar (5 per pkg.), Cottonless Cottonwood, Silver Maple, Fruitless Mulberry, Globe Willow, Weeping Willow

## Trees

\$6.99 each

Jonathan Apple, Red Delicious, Yellow Delicious, Elberta Peach, Hale Haven Peach, Red Haven Peach

## Fruit Trees

\$6.99 each

Crepe Myrtle (Pink-Purple-Red), Old Fashion Purple Lilac, Mock Orange

## Bushes

\$4.99 each

Concord Grape - 2 per pkg.  
Thompson Seedless Grape 2 per pkg.  
Lawton Blackberries 5 per pkg.

\$5.99 a package

Bing Cherry, Santa Rosa Plum, Dwarf Jonathan Apple, Dwarf Moorpark Apricot, Dwarf Elberta Peach

## Trees

\$8.99 each

Hyponex  
Organic Peat 40 lb. bag.....\$2.99

Top Soil.....40 lb. bag.....\$2.99

Manure.....40 lb. bag.....\$2.99

Potting Soil.....40 lb. bag.....\$3.99

Large Selection  
Ferry-Morse  
Seeds  
Seed Starter Trays \$2.99

1/2 in. 50 ft. 2 ply vinyl  
Garden Hose \$3.47

72 ct.

# AUCTION

## Farm Equipment — Antiques

Saturday, February 10, 1990 — Sale Time: 9:37 a.m.

LOCATED: From Hart, Texas, 5 miles North on F.M. Highway 168 then 7 miles East on F.M. Highway 928 to Farm Headquarters then 2 miles South on Field Road; OR From Nazareth, Texas, 6 miles South on F.M. Highway 168 then 7 miles East on F.M. Highway 928 to Farm Headquarters then 2 miles South on Field Road; OR From Tulia, Texas, 8 miles West on Highway 86 then 5 miles South on F.M. Highway 1424 then 4 1/2 miles West on F.M. Highway 928 then 1/2 mile South to Farm Headquarters then 2 miles South on Field Road. NOTE: Watch For Direction Signs On Sale Day.

### ESTATE OF FOWLER McDANIEL

Telephone: Daniel McDaniel — (806) 627-4218 (Day)

The following will be sold at Public Auction — Any announcement Sale Day takes precedence.

#### TRACTORS, MOTOR GRADERS, COMBINES —

- 1—John Deere 4010 Industrial Diesel Tractor, With John Deere 740 Front End Loader, 7' Bucket, 23.1x26 Rubber, (No. 3-6)
- 1—John Deere 70 LFC Tractor, W.F. 3-6, 15.5x38 Rubber
- 1—Huber-Warco Model 10-D Diesel Motor Grader
- 2—Adams Diesel Motor Graders, (Need Repair)
- 2—John Deere 105 Gas Combines, (For Repair Or Parts, No Headers)

#### ANTIQUE TRACTORS, COMBINES, FARM EQUIPMENT —

- 12—McCormick-Deering 2236 Wheeland Tractors
- 3—McCormick-Deering 1530 Wheeland Tractors, (1 Has Steel Wheels, With Lugs)
- 5—Farmall Regular Gas Tractors
- 16—Farmall F20 Gas Tractors
- 6—Farmall F30 Gas Tractors
- 2—7 Steam Engine Rims
- 6—Case Model P. D.T. Combines
- 1—Antique Threshing Machine
- 1—Large Lot Antique Farm Equipment (John Deere Hay Balers, Hay Rakes, Onways, Manure Spreader, Disc Plows, Binders, Mouldboards)

#### TRUCKS, PICKUPS, CARS, BUS —

- 1—1973 Chevrolet C-65 T.A. Grain Truck, 427 Engine, 5 Sp. 2 Sp. 22' Metal Grain Red, T/C Hoist
- 1—1962 Chevrolet 1.A. Truck, 427 Engine, 5 Sp. 2 Sp. 22' Metal Red, With Enslage Boards
- 1—1960 Chevrolet S.A. Truck, With Oswald Ensilimixer 613A Enslage Box
- 1—1949 Chevrolet S.A. Truck, With Oswald Ensilimixer Enslage Box, (For Repair Or Parts)
- 10—1948 To 1958 Chevrolet S.A. Trucks, (For Repair Or Parts)
- 8—1973 To 1978 Chevrolet Pickups, (Rebuilders Or Parts)
- 1—1975 Ford 1/2 Ton, 4 Wheel Drive Pickup, (Needs Repairs)
- 12—1967 To 1972 Chevrolet Pickups, (Rebuilders Or Parts)
- 5—1960 To 1966 Chevrolet Pickups, (Rebuilders Or Parts)
- 23—1948 To 1959 Chevrolet Pickups, (Rebuilders Or Parts)
- 4—1930 To 1947 Chevrolet Pickups, (For Parts)
- 10—Various Models & Makes Cars, (For Parts)
- 1—1968 Chevrolet School Bus, 292 Engine, 4 Sp. Trans.

#### TRACTOR & TOOL MAKEUPS —

- 1—Lot John Deere Tractor Weights & Weight Brackets
- 1—Lot John Deere Tractor Side Panels (Some Like New)
- 2—20" 8" Rod Rollers
- 2—3-1/4" 21" Double Diamond Toolbars
- 1—3-1/4" 14" Double Diamond Toolbars
- 3—14" Planter Diamond Toolbars
- 3—John Deere Orchard Shanks
- 24—John Deere Lister Beams & Bottoms
- 40—Stubble Mulch Shanks (Various Makes)
- 1—Lot Tandem Disc Shalts, (New)
- 1—Lot Water Furrow Bullets
- 1—Large Lot Hydraulic Cylinders
- 1—Lot Rolling Cultivator Fenders
- 1—Lot John Deere Planter Boxes
- 1—Lot John Deere Insecticide Boxes
- 1—Lot Diamond Toolbar Clamps & Spacers
- 1—Lot Tractor Wheels & Tires
- 1—Lot Impement Wheels
- 1—Lot Busters, Sweeps

#### IRRIGATION —

- 4—Moline 605 Irrigation Engines
- 4—Ford 428 Irrigation Engines
- 3—Crysler Flathead 6 Cylinder Irrigation Engines
- 1—Ford Flathead 6 Cylinder Irrigation Engine
- 25—Peerless Gearheads, (Various H.P. Ratios & Conditions)

#### NON-CLASSIFIED —

- 1—20' Van Box Trailer, (Old)
- 2—Cement Mixer Units, (Truck Mount)
- 1—Lot Items Too Numerous To Mention

NOTE: 60 Years Accumulation Of Farm Equipment & Farm Related Items.

### Five Star Auctioneers

P. O. Box 1030 - Plainview, Texas 79073-1030

- JAMES G. CRUCE (806) 296-7252
- ERVIN W. EVANS (806) 293-8195
- BENNIE REAGAN (806) 469-5217
- JIM SUMMERS (806) 864-3611
- JIMMY REEVES (806) 864-3362

WINCH TRUCK AVAILABLE ON SALE DAY  
Terms of Sale: CASH — Lunch Will Be Available  
All Accounts Settled Day of Sale  
NOTE: PLEASE BRING YOUR OWN CHECK BOOK  
IF YOU HAVE NOT ESTABLISHED YOURSELF WITH OUR COMPANY,  
PLEASE BRING BANK LETTER.  
NOT RESPONSIBLE FOR ACCIDENTS  
We Are Agents And Agents Only





MR. AND MRS. JIMMY DAREN LEWIS  
[nee Kayla Leann Bayless]

## Miss Kayla Bayless, Lewis United In Marriage

Miss Kayla Leann Bayless and Jimmy Daren Lewis exchanged marriage vows at the First Baptist Church of Monahans on Saturday, December 30, with Jerry Field, uncle of the bride, of Miami, Oklahoma, officiating.

The bride is the daughter of the late Ikey and Billie Bayless and the groom is the son of Jake and Helen Lewis of Monahans.

Vows were exchanged in a 7 p.m. ceremony in a setting of brass arch candelabra and two spiral candelabras with votive candles lining the altar, all trimmed with white ribbon.

Providing traditional wedding selections were Billy Field of Grandbury, TX and Marilyn Orr, who also accompanied the soloists, Terry Jones and Heather White, all of Monahans. Songs included "Always" and "Nobody Loves Me Like You Do".

The bride chose a candle light silk gown designed by Gallina featuring a scalloped square neckline with pearls and lace

trim. The bodice featured a lower waistline with pearl and lace trim and full length sleeves with bows attached to each shoulder, with a full silk skirt. She wore a flower wreath, full length veil with a bow in the back.

Her bridal bouquet consisted of an assortment of fresh flowers.

Kelly Poyner, sister of the bride, of Durango, CO, served as matron of honor. Bridesmaids were Lexie Lewis, sister of the groom, of Monahans, Shannon Vick, niece of the bride, and Shelly McKellar, both of Augusta, GA.

They were attired in T-length dresses of royal blue taffeta and velvet. They carried a single rose with baby's breath and a royal blue ribbon.

Whitney Mitchell of Monahans served as flower girl.

Jay Thomas of Monahans served as best man and groomsmen were Joe Lewis, brother of the groom, Wayne Wilmon of Monahans, and Buddy Adcock of Electra, TX. Tate Poyner of Muleshoe served as ringbearer.

Candlelighters were Lexie Lewis and Cody Field, nephew of the bride, of Augusta, GA.

The groom and groomsmen wore a black crown collection formal tuxedo.

The couple plan to make their home in Durango, Colorado.

### Tops Club

TOPS chapter No. 34 met at 6 p.m. Thursday, Feb. 1 at the Heritage Thrift Shop. Laverne James, leader, called the meeting to order with the TOPS pledge, fellowship song and a prayer.

Orvdie Burris called the roll with 15 members present. Minutes of the previous meeting were read and approved. A new member, Marian Wilson, was welcomed.

Ruth Clements gave the treasurer's report. Alma Robertson and Ruth Clements received gifts from their secret pals.

It was awards night and Laverne James, Jewel Peeler and Mollie Davis received charms for perfect attendance for 1989.

Alene Bryant, Mollie Davis, Evelene Harris and Alma Robertson received charms for being runners-up to the six months best loser.

Cleta Robertson received a first place certificate for being best loser in division two. Evelene Harris received second place and Aurora Mata was the alternate.

For division three, Alma Robertson received first place, Ruth Clements, second, and division four winners were Mollie Davis, first.

Mae Chambers, sister of Ruth Clements, visited the meeting.

Best loser for the month of January was a tie between Betty Jo Davis and Lucille Harp. Jewel Peeler and Laverne James tied for first runner-up and Mary Edmiston and Ernestine Steinbock tied for second runner-up.

For the week, Charlotte Campbell was best loser. First runners-up were Aurora Mata and Alma Robertson, first and Rose Sain, second.

The meeting was adjourned with the goodnight song.

## Local AHA Plans Radio Day

The Bailey County Division of the American Heart Association met for their regular meeting on Friday, February 2 at the Old Corral Restaurant. Linda Turner, president, opened the meeting. Minutes of the previous meeting and a treasurer's report were read by Dorothy Turner. It was reported that \$100 was collected last month in memorials and money already given for Radio Day.

Radio Day is set for Saturday, February 10 from 7 a.m. to 3 p.m. Winston Allison, coordinator of Radio day, stated that this annual project of the Bailey County Division of the AHA provides an excellent opportunity

for our community to work together in a united effort to help in the fight for the prevention of heart disease. The American Heart Association is fighting this country's number one killer, heart and blood vessel disease, and the Muleshoe area can help to win that fight! So, come Saturday, start your day by tuning in KMUL radio and help to make this day a success in this community.

Georgia Pena, Program Chairman, reported on the Heart Healthy week, stating that pictures will be taken of the cafeteria workers. Watson Junior High will be conducting the Save A Sweetheart program and Jump Rope for Heart will continue until February 7 with pledges being collected the following week.

With the final discussion of Radio Day the meeting was adjourned.

### Words of Wisdom

It is hard to believe that America was founded to avoid taxation!

-Mira, Puerto Rico.

### No One

No one goes before his time—unless, of course, the boss leaves early.

-Record, Columbia, S.C.

### Smart

The wise man doesn't expect to find life worth living; he makes it that way.



New Arrivals

Bethenie LeAnn Sanchez is happy to announce the birth of her baby sister, Brianna Nycote. Brianna was born January 15 in Northwest Texas Hospital at Amarillo at 12:28 p.m.

The little miss weighed seven pounds and ten ounces and was 19 and half inches long.

The girls parents are Chandra and Junior Sanchez of Amarillo.

Grandparents are Louise and Jerry Engelking and Janie and Evaristo Sanchez, all of Lazbuddie.

Great grandparents are Louella and J. W. Isham of Dimmitt, Florence Engelking of Lazbuddie and Juanita Sanchez of Santa Rosa, Texas.

The girls are members of the fifth generation with their great great grandmother, Martha Anderson of Olney.

**H&R Block**  
wants to  
save you  
money.

We dig for every deduction and credit to which you are entitled. We'll find you the biggest tax refund you have coming. Put us to work for you.

**H&R BLOCK**  
America's Tax Team  
224 W. 2nd 272-3332  
Weekdays 9-6  
Sat. 9-5



MISS SUZANNE WILLIAMS

## Wedding Shower Honors Miss Suzanne Williams

The home of Mrs. Willis Wood was the scene of a wedding shower Sunday, Feb. 4 honoring Miss Suzanne Williams, bride elect of Ken Wilhelm.

The honoree, her mother, Ann Williams; Bonnie Wilhelm, Mother of the prospective groom; Jane Williams and Rene Martin, grandmothers of the bride elect; and Marsha Williams, sister of the bride, greeted the guests as they arrived between the hours of 2:30 and 4:30 p.m. Tonya Gray registered the guests.

Glenn Yell served thumbprint cookies, mints, nuts, and hot spiced cider from crystal and silver appointments.

The serving table was covered with a white lace table cloth and accented with a bride and groom on a pedestal base. The honoree's corsage consisted of burgundy baby roses accented with rose colored ribbon.

Special guests included Ann Williams, mother of the bride elect; Bonnie Wilhelm, mother of the prospective groom; Rene Martin and Jane Williams, grandmothers of the bride elect; Marsha Williams, sister of the honoree; Terrie and Rochelle Smith, cousins of the honoree; and Sandra Martin, aunt of the bride elect.

The hostesses gift was an Oster Kitchen Center. Hostesses for the occasion included: Mrs. Gary Shipman, Mrs. C.W. Dale, Mrs. LynEldon Randolph, Mrs. Elton Bass, Mrs. J.D. Phipps, Mrs. Dale Burden, Mrs. Keith Turner, Mrs. Don Taylor, Mrs. Max Bush, Mrs. Terry Yell, Mrs. Curby Brantley, Jr., Mrs. James Collins, Mrs. Preston Cargile, Mrs. Beth Webb, Mrs. Harold Britton, Mrs. Willis Wood and Mrs. Harvey Bass.

## HOMESTEAD EXEMPTIONS



### CAN LOWER THE PROPERTY TAXES ON YOUR HOME

#### A homestead Exemption

lowers the property taxes on your home by lowering its taxable value. For example, if your home is valued at \$50,000 and you receive a \$5,000 homestead exemption, your home will be taxed as if it were worth only \$45,000.

#### You qualify

for a homestead exemption if you owned your home on January 1 and used it as your primary residence on January 1. It doesn't matter whether your home is a house, a condominium or a mobile home.

#### Exemptions are available

to all homeowners on their school taxes. Additional exemptions are available to homeowners who are disabled or age 65 or over. Other exemptions may be offered to homeowners by school districts, counties, cities, and special districts. All taxing units offer exemptions to disabled veterans.

#### Apply to

your local appraisal district office at the address shown below for all exemptions you may qualify for. Application forms are available at this address.

If you received a homestead exemption on your present home in 1989 you won't need to apply again for 1990 unless the chief appraiser requires you to reapply.

However, if you passed your 65th birthday or became disabled before January 1, file a new application to receive the additional exemptions.

If you haven't received an exemption on your present home, or if you moved to a new home, make a new application for 1990.

#### The deadline

for applications is April 30, 1990. Contact your appraisal district before then if you need more time.

For more information, get a free copy of the pamphlet, *Taxpayers' Rights, Remedies, Responsibilities*, at your appraisal district office or from the State Property Tax Board in Austin.

## Bailey County Appraisal District

104 E. Ave. C

272-5501

**Valentine Youth Dance**  
Saturday, February 10, 1990  
9:00 p.m. - 1:00 a.m.  
American Legion Hall  
Music Provided By: Scotty

\$3<sup>00</sup> a person      \$5<sup>00</sup> a couple  
Bring a Date!





**FIVE GENERATIONS**--Callie Smith, seated in center, is celebrating her 92nd birthday today, Thursday, Feb. 8. Five generations of her family reside in Muleshoe and the unique thing is there are approximately 22 years difference in each generation. Standing, Ruby Green, left, and her daughter, Bertha Stockman: (Seated from left) Melissa Coker, Callie Smith and Diana Coker, daughter of Ms. Stockman and mother of Melissa. Melissa is the only girl in the fifth generation, according to Ms. Stockman. (Guest Photo)

## Creative Living

by: Sheryl Borden

Information on Tennessee Cooking, interior decorating, and color selection will be the featured topics on "Creative Living" on Tuesday, February 13 at 12 noon and Saturday, February 17 at 2 p.m. (All times are Mountain.)

Patricia Mitchamore, from Nashville, TN has written a cookbook called *The Spirit of Tennessee Cookbook*. The cookbook has wonderful recipes as well as interesting stories and history of the Tennessee area. Pat believes that like the glaze for a roast ham or the dressing for the salad, the topping of a fine evening is the tall tale told at the end of the meal. She will recount some of her favorite tall tales as she prepares some of her favorite recipes from the cookbook.

Kaye Willmon, interior decorator with Inside Source Design in Albuquerque, N.M., is going to discuss how to survive building a new home. She'll discuss making a color board, talk about the selection of carpet and fabric, as well as share some insight in how to make that dream home all it should be.

Suzi Holder, with the New Mexico 4-H office in Las Cruces, will discuss the importance of color selection and then demonstrate how to make color ribbon flowers. They are not only quick and easy to make, your children might even like to help you.

On Tuesday, February 13 at 9:30 p.m. and repeated on Thursday, February 15 at 12 noon, "Creative Living" will present information on interior decorating, using recycled paper, and preparing "Meals in Minutes."

Kaye Willmon, interior decorator with Inside Source Design in Albuquerque, N.M. is going to discuss how to survive building a new home. She'll explain how to make a color board, talk about some suggestions for making your dream home a reality.

Carolyn Jabs, author of a book called *Reuses* and spokesperson for the American Paper Institute from New York, will demonstrate making numerous favors and decorations for special occasions out of recycled paper.

Cathy Voit, home economist with Reynolds Metals Co. in Richardson, TX, will demonstrate a one-plate dinner that cooks in 3 minutes! So even when you're in a hurry, there is no need to miss out on the good taste and nutrition of a home cooked meal.

"Creative Living" is produced and hosted by Sheryl Borden. The show is carried on more than 100 PBS stations in the United States, Canada, Guam, and

Puerto Rico and is distributed by Pacific Mountain Network, Denver, CO.

### PLASTERED HOT FUDGE SAUCE

1 cup sugar  
 1/4 cup unsweetened cocoa, sifted  
 1 teaspoon instant coffee granules  
 2 Tablespoons Jack Daniel's Whiskey  
 1 cup heavy cream  
 1/4 cup butter  
 Dash of salt  
 Combine sugar, cocoa, coffee, and salt in saucepan. Mix Jack Daniel's Whiskey with cream; add to sauce and stir until sauce is smooth. Cook over medium heat, stirring constantly. When sugar has dissolved, add butter and cook until thickened, about 5 minutes. Serve warm. Makes 2 cups.



**MAYOR SIGNS PROCLAMATION**--Monday morning, Mayor Darrell Turner signed a proclamation designating February American Heart Month in Muleshoe. Mayor Turner asks the residents in Muleshoe to join him in supporting the American Heart Association. Linda Turner, right, and Wanda Wiley, look on as the Mayor signs the proclamation. (Journal Photo)

## February Proclaimed American Heart Month

Mayor Darrell Turner issued a proclamation Monday morning designating February as American Heart Month and urged Muleshoe citizens to support the lifesaving mission of the American Heart Association: to prevent disability and death from cardiovascular diseases and stroke.

In the proclamation, Turner indicated that heart and blood vessel diseases are the leading killers in the nation, Texas and Muleshoe.

Mayor Turner asked for the support from the residents of Muleshoe for the American Heart Association's, campaign against heart disease, stroke, hypertension and related disorders.

"Cardiovascular diseases caused nearly one million of our country's deaths in the last year and will cost our country more than \$88 billion in 1990 for physician and nursing care, hospital and nursing home services, and medications, as well as the lost occupational output as a result of disability," the mayor said.

In 1989, the mayor said,

Muleshoe raised nearly \$4800 for educational programs and research. This year's goal is \$6100.

The American Heart Association is the nation's largest voluntary health organization dedicated to the reduction of disability and death from cardiovascular diseases and stroke, which annually kill almost one million Americans. Last year the AHA spent more than \$150 million for research support and public and professional education and community programs.

# COUNTRY BASKET!

**\$1.99** FOUR FINGERS SALE PRICE JAN. 29 - FEB. 18, 1990

Delicious country-fried steak fingers, golden fries, Texas toast, and Dairy Queen's own special gravy. Six-finger basket: SALE PRICE \$2.99.

ON SALE IN **DQ COUNTRY**

Reg. U.S. Pat. & Tm. Off. Am. D.Q. Corp. TM Reg. U.S. Pat. & Tm. Tx. D.Q. Op. Coun. © Tx. D.Q. Op. Coun. At participating Dairy Queen stores.

## ANTHONY'S Valentine's Gift Ideas

**SAVE 25% and 30% MORE**

**Super Buy**

Basset-Walker® Fleece Separates for Men  
**7.97**  
 Your Choice Tops or Pants  
Basset-Walker® fleece separates are made from a heavyweight 9 oz. blend. The long sleeve top features crewneck styling. The pull-on pant has an elastic waistband with an inner drawstring. In your choice of basic and fashion colors to mix and match. Machine washable. Men's sizes S,M,L,XL.

**Save 30%**

New! Bugle Boy® Denim Jeans for Juniors  
**16.97 to 24.97**  
Reg. 24.99 to \$38. Bugle Boy® denim jeans are made from 100% cotton and come in your choice of five styles. For junior sizes 3-13.

**Save 35% to 40%**

Men's Long Sleeve Dress Shirts  
**7.97** **12.97**  
Reg. 13.99 Reg. 19.99  
Made from an easy care blend and styled with a seven-button front. In assorted colors. Men's sizes 14 1/2-17 1/2.

**Save 35%**

4-Piece Camisetto for Women  
**Sale 12.97**  
Reg. 19.99. This alluring 4-piece lingerie set includes the camisole, panty, garter and stockings. In black or white. Women's sizes S,M,L.

**Save 1/3**

Men's Bill Blast® Fashion Briefs  
**Sale 3 for 5.97**  
Reg. 3 for 8.99. Made from easy care blends in your choice of colors. Sizes S,M,L.

**Save 1/3**

Women's Lace Trimmed Panties  
**Sale 1.97**  
Reg. 2.99 Pair. Made from soft cotton or nylon and trimmed with feminine lace. In your choice of fashion colors. Women's sizes S,M,L.

**Super Buy**

Selected Fashion Handbags  
**30% Off**  
Sale 10.49 to 13.99... Reg. 14.99 to 19.99. Choose from leathers, vinyls and fashion fabrics. Styles and colors may vary by store.

**Save up to 30%**

Girls' Woven Print Tops  
**3.97** **4.97**  
4-6x 7-14  
Reg. 5.99 to 6.99. Made from polyester-cotton for cool comfort and easy care. In assorted prints.

**Super Buy**

Playtex® Bras and Girdles  
**25% Off**  
Sale 4.12 to 25.13... Reg. 5.50 to 33.50. Save now on selected Playtex® bras and girdles.

**Store Hours: Mon.-Sat. 9-6 p.m.**

**ANTHONY'S**  
 We're Good at Making You Look Great!

321 Main 272-3478

Reg. prices effective through Sunday, February 11, 1990.





**LAZBUDDIE 4-H MEMBER SHOWS FIVE-COUNTY RESERVE CHAMPION STEER**--Casey Bradshaw of Lazbuddie, and member of the Parmer County 4-H, exhibited his 1,232-pound large frame steer to the five-county reserve grand championship at the Hereford Young Farmers Livestock Show at the Bull Barn in Hereford. Casey also picked up reserve showmanship honors. (Guest Photo)

## Houston Show

Cont. From Page 1

12,000 entries this year. A variety of animals are shown in the junior show division: market steers, market swine, market sheep, market poultry, beef and dairy heifers, breeding sheep, goats, commercial steers and breeding rabbits.

The four market animal categories represent animals raised by the exhibitor as food sources. Top animals in each of these categories are eligible for their individual market auctions. Total money paid in 1989 at the four junior show auctions exceeded \$4.5 million.

"Our Show, the world's largest livestock show, attracts some of the finest breeders and ranchers from throughout the world," said Steve Woodley, Houston Livestock Show and Rodeo assistant manager. "Yet, during the second week of livestock show competition, the young 4-H and FFA exhibitors take over the Astrodome."

"We feel these outstanding youngsters exemplify the purpose behind our event -- to

benefit youth and support education," he added.

In addition to the upcoming livestock show competition, a series of lectures, seminars and live animal demonstrations again will be on the calendar for the month of February - the International Stockmen's School. Held Feb. 14-17, at the Marriott Hotel Astrodome and the Astrodome complex, this school focuses on lectures and seminars delivered by agricultural experts from throughout the world.

New shows scheduled for the open show division of the 1990 Houston Livestock Show are the Braford Open Cattle Show and the Romagnola Open Cattle Show.

Horse show activities officially kick off the upcoming Houston Livestock Show and Rodeo beginning Thursday, Feb. 15 with cutting horse competition. The National Cutting Horse Association's World Championship Finals is scheduled for Thursday - Sunday, Feb. 15-18.

Also, a celebrity cutting horse contest featuring nationally known figures and local celebrities will be held on two of those days, Thursday and Friday, Feb. 15-16. The 1990 Horse Show also will feature competition from six breeds.

Bar-b-que cooking fans can enjoy the World's Championship Bar-B-Que Contest beginning Friday, Feb. 16 at 4 p.m. in the northwest corner of the Astrodome parking lot. Judging for the contest begins on Saturday, Feb. 17 at 7 p.m.

The streets of downtown Houston will fill with hundreds of thousands of spectators for the 52nd annual downtown rodeo parade. The parade, featuring 6,000 trailriders, marching bands

and colorful floats, will begin following the Conoco 10K Rodeo Run.

Starting at 10 a.m. downtown, this year's race is expected to draw 4,500-5,000 runners. All entry fees will be donated to the Show's scholarship fund. A total of \$52,000 in entry fees was donated to the Show after the 1989 event.

Also scheduled for Saturday, Feb. 17 at the Astrodome complex are fiddling, hay hauling, horse-shoe pitching and washer pitching contests. Winning quilts from the Go Texan quilt contest also will be on display in the Astrodome's west wing through March 4.

Additionally, hundreds of colorful commercial exhibits will fill the Astrodome and Astroarena complexes Feb. 17 through March 4.

Racing pigs take to the tracks during the special pig racing event, held Saturday, Feb. 17 through Monday, Feb. 26. Sponsored by Budweiser Beer and KPRC-TV, these races will be held as follows: Saturday, Feb. 17, 3 p.m.; Sunday, Feb. 18, 2 and 4 p.m.; Monday, Feb. 19, Wednesday, Feb. 21, 10 a.m., 2 and 4 p.m.; Thursday, Feb. 22-Friday, Feb. 23, 4 p.m.; Saturday, Feb. 24, 10 a.m.; and Sunday, Feb. 25-Monday, Feb. 26, 10 a.m., 2 and 4 p.m.

Also, Combat Insecticide and Pine Sol will sponsor the Wild West Show, a series of specialty acts held in the Astrodome's main cattle arena. This show begins Monday, Feb. 19 and continues through Monday, Feb. 26 at 7 p.m. nightly.

Across the street in the Astrodome, each rodeo performance will be enhanced with a special video feature and fireworks display sponsored by Sea World of Texas. A new feature of the 1990 Houston Rodeo, sponsored by Houston Coca Cola and KIKK Radio, will be a special visual presentation of the American flag, along with an indoor fireworks display choreographed to the national anthem.

### Three Way Art And Craft Show

Had 179 Entries

The Three Way Craft Show, held in conjunction with the Three Way Stock Show on January 27, had 179 entries.

High Point Individual was Robin Tooley with a total of 34 points; Second High Point Individual was Monty Turney, with 23 points.

Students receiving Best of Show awards were: Denise Duarte, Scott Pollard, Maribel Lopez, Monty Turney, Robin Tooley, Cynthia Bennett, Keith Kindle, Melinda Turney, Kara Heinrich, Bobby Sowder, Sandra Jasso, and Missy Jeffcoat.

Adults receiving Best of Show awards were: Joann Blakey, Rhonda Anglin, Michelle Standard, Kelly Heinrich, Paula Foley, Mary Kindle and Don Parker.

The craft show was sponsored by the Three Way 4-H Club. Judge was Gail Gladden, the County Extension Agent from Cochran County. Assisting with the show was Kandy McWhorter, CEA from Bailey County.

## Lazbuddie...

Cont. From Page 1

Krista Smith, eighth.  
MEDIUM WEIGHT  
Holley Morris, seventh.  
LIGHT HEAVY WEIGHT  
Seth Black, first and Breed Champion; Eric Williams, fourth and Josh Morris, sixth.

HEAVY WEIGHT  
Dawnda Magby, fifth.  
JUMBO  
Shana Foster, second.

SUFFOLK  
HEAVY WEIGHT  
Jana Vise, second.  
SOUTHDOWN  
LIGHT WEIGHT  
Eric Williams, second.

HEAVY WEIGHT  
Shana Foster, first and reserve breed champion.

OTHER BREEDS  
LIGHT WEIGHT  
Jody Copp, second.  
HEAVY WEIGHT  
Craig Russell, fourth.

SWINE  
CHESTER WHITES  
HEAVY WEIGHT  
Jody Copp, second and Justin Puckett, sixth.

DUROC  
MIDDLE WEIGHT  
Justin Puckett, fourth.  
HEAVY WEIGHT  
Shena Seaton, first and breed champion.

HAMPSHIRE  
LIGHT MIDDLE WEIGHT  
Mandy Magby, seventh.  
LIGHT HEAVY WEIGHT  
Shena Seaton, second.

HEAVY WEIGHT  
Jody Copp, second.  
CROSSES  
LIGHT HEAVY WEIGHT  
Mandy Magby, seventh.

HEAVY WEIGHT  
Shena Seaton, first.  
Shena Seaton was the junior showmanship winner in the swine division.

STEERS  
BRITISH BREEDS  
Class I  
Seth Black, first and breed champion.

OTHER BREEDS  
Class III  
Seth Black, second.

The best way to crash the "social circle" is not to care whether you get in it or not, while making some money.

## Rotary Memorial

Cont. From Page 1

charges locally gain about \$1,400 per month to help pay for the system, which will cost about \$44,000 to install, with some input, amounting to nearly \$15,000 from SPAG to help.

Chief Holmes also said Five Area Telephone Cooperative has worked long and hard to install the proper equipment and for the past two years, persons who are subscribers to Five Area have their 9-1-1 calls transferred to the 272-4200 emergency number at the Muleshoe Police Department to be handled by the police dispatcher.

He said they had tried to work with GTE on lines into the police department, but GTE required a charge of almost \$200 per month for two telephone lines which would not be used until October, 1991. "We just could not do that," he added.

He explained how the system will work, and the telephone number of the caller will be flashed onto a screen in front of the police dispatcher immediately when the telephone rings the

9-1-1 number. A computer will print out additional information for the dispatcher, and eventually give the exact address where the call is placed from.

A slight problem has come up in trying to identify rural locations, he added. We tried to go for street signs, "But, they would make one heck of a target."

He also said the system will not just cover Bailey County, but go into other counties Five Area Telephone Cooperative serves in the area.

In response to another question, about whether or not the caller's voice would be recorded, the chief said, "Any telephone call has been recorded at the police department, on each line, for the past 10 years."

In answer to another question, he added that GTE has an antiquated office in Muleshoe, and extensive remodeling of the telephone equipment will be needed before the 9-1-1 system can become operational.

## Introductory Special

**NEW Unlead Plus Gasoline**

Higher Octane & Keep Clean Detergent Additives For Fuel Injectors & Carburetors.

Unlead Plus 89 Octane 1.08<sup>9</sup> a gal.

Unlead 86 Octane 1.06<sup>9</sup> a gal.

Super Unlead 90 Octane 1.14<sup>9</sup> a gal.

You'll Notice The Difference In Your Car's Performance With The First Tank!

Your Discount Station With Full Service!

**Evins Sonshine Station**

623 W. Amer. Blvd. Muleshoe 272-5216

## Lazbuddie FFA Shows Livestock At El Paso

Three Lazbuddie FFA youth won honors at the annual El Paso Livestock Show, according to Lazbuddie Vo-Ag instructor, Rick Copp.

In the swine division, Shena Seaton won fifth place with a heavy Cross; Justin Puckett was fifth with a light weight Duroc; and Jody Copp won sixth place with a heavy weight Chester.

Brice Redwine also exhibited a pig in the show.

Several students were exhibiting lambs on Monday.

Bailey Co.

### Political Calendar

Bailey County Judge

Marilyn Cox

Jim Watson

Robert R. Alanis

District Judge

Jack Young

Commissioner Prec. 4

Terry Sowder

Alfonso Posadas

Jodie Barrett

Bennie Claunch

Commissioner Prec. 2

C.E. Grant

Don Seales

**VOTE!**

# TREE Sale

Trees Will Be Arriving Friday, February 9th

Have you been wanting a tree that's BIG enough to look like one? These are a perfect size and affordable too!



## Shade and Evergreens

1 3/4" - 2" Balled and Burlap

Ash Cedar Elm Redbud

Mimosa Honeylocust

Sycamore Texas Red Oak

Globe Willow Weeping Willow

Japanese Black Pine

Austrian Pine

Cottonless Cottonwood

(Fruit Trees Available Next Month)



**Kristy's Plants**

710 E. Amer. Blvd.

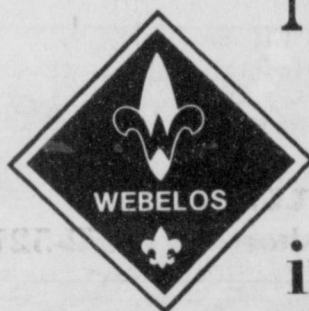
272-5536



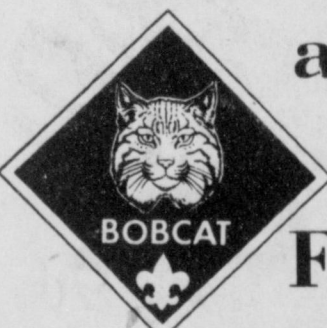
# BOY SCOUTS OF AMERICA



## NATIONAL BOY SCOUTS WEEK FEBRUARY 4-10



Boy Scouts build the characters of its members and they, in turn, build a bigger and stronger America for all of us. They stand for individual integrity, love of country, of God and of our fellow man.



As the Boy Scouts of America go into their 80th year this February, let's all join in heartfelt thanks to all the young Scouts and their dedicated leaders.



Support your local Boy Scouts now!



Proudly Sponsored by the following Civic-Minded Businesses:

*Bingham & Nieman Realty*

*Pivot Products Distributor*

*Alex's Tire Service*

*Kristys Plants*

*Bruce Inc.*

*Lambert Cleaners*

*Bernice's Beauty Shop*

*Richland Hills Texaco*

*Glenna's Beauty Retreat*

*Serv-All Thriftway*

*Valley Grain Products Inc.*

*Church's Fried Chicken*

*W.T. Services*

*Chubby's Beauty Shop*

*Wes-Tex Feed Yards, Inc*

*Noble TV & Appliance*

*Viola's Restaurant*

*First Bank*

*Irrigation Pumps & Power*

*Posada's Radiator Shop*

*Dairy Queen*

*Leal's Restaurant*

*Farmers Co-Op Elevator*

*Muleshoe Trade Center*

*Retail Merchants Association Of Muleshoe*







### Former Resident Managing Editor Of Springfield Sun

Ninie Glasscock, 42, a native of Muleshoe, has been named editor-general manager of the Springfield Sun, Springfield, KY effective February 12. Larry R. Coffey, president of Landmark Community Newspapers, Inc. (LCNI), Shelbyville, KY, parent of The Springfield Sun, made the announcement.

As Sun editor and general manager, Glasscock will be responsible for total operational control of the 4,100-circulation weekly with a staff of seven people.

She has served as assistant editor of The Lebanon Enterprise, Lebanon, KY. She joined The Enterprise as a reporter in October 1979 and was promoted to assistant editor in June 1987. The Lebanon Enterprise is also an LCNI newspaper.

Glasscock's colorful, powerful writing for The Lebanon Enterprise in the past 10 years has earned her 20 first place and 26

second and third place Kentucky Press Association and LCNI awards for feature, news and editorial writing. She was the recipient of the 1985 Kentucky School Boards Association Award of Excellence for Education Reporting for a series on school closings in Marion County. In 1986 she earned the Kentucky Heart Association Jesse Stewart Memorial Media Award for a series on heart disease in Marion County, and the Metro Louisville Journalism Award for a story about Marion Countian Richard Pile.

She is a graduate of the 1987 charter class of Leadership Lebanon/Marion County and the first president of that organization's alumni association. She is a founding member of and performer in the Lebanon Theatre Company. She was deeply involved in various school activities, and has served as Lebanon Elementary PTO president and vice president.

Glasscock and her husband, Tommy, have five children.

### Who Knows?

1. The Boy Scouts of America was founded on what date?
2. Amsterdam is the capital of what country?
3. What is the measurement of a kilowatt-hour?
4. Who was known as the "Lion of Judah"?
5. What is the February birthstone?

### Answers:

1. February 10, 1910.
2. The Netherlands.
3. The expenditure of 1,000 watts for one hour.
4. Haile Selassie, emperor of Ethiopia.
5. The amethyst.

### Mail Delivery Fails

The U.S. Postal Service says it's reducing the areas in the country where one-day and two-day mail delivery is promised. Thus service to the public declines once more--on the eve of another rise in the price of stamps.

The Postal Service attempts to put the best face on this admission of failure by saying it has conducted 29,000 interviews to learn what the public wants most. That the PR line goes--is dependable service and mail delivery at the same time each day. (How many hours were wasted to learn what any school child knew already?)

The service can't be dependable with one-day and two-day delivery in many areas though private delivery services can, often at comparable rates.

Long experience shows that the U.S. Postal Service has not been dependable for years. Often letters from one part of a city to another suburb require three or four days for delivery. From

nearby states delivery time is often five days.

Mail is too often left in the wrong box, at the wrong house or sent to the wrong city. Occasionally a letter or parcel is damaged--by machines which are doing most of the sorting these days. This happens less frequently with private carriers.

There may be no answer to the dilemma. Postal employees are almost locked in for life; it's difficult to fire anyone, the union being quite strong. It even threatened a strike against the nation a few years back, which would have crippled many business and ruined some.

Private carriers which are not hidebound and hamstrung by powerful unions plus civil service armor outperform the Postal Service regularly and consistently. That's why they have taken so much business away from the subsidized Postal Service. They will continue to do so as service continues to decline.

### Abraham Lincoln

Abraham Lincoln was born in a log cabin in Hardin County, Kentucky, on February 12, 1809. His ancestors were from Norwich, England, where so many Americans were to serve in the U.S. 8th Air Force in World War II.

Some of the Lincolns who emigrated to America settled in Massachusetts, some in Pennsylvania and some in Virginia. The future president's grandfather settled in Jefferson County, Kentucky.

Lincoln's father lived in Kentucky and also in Indiana (Spencer County). When Abraham was 21 he moved to Illinois. He worked a farm hand, took part in an Indian war and became a partner in a general store in New Salem.

He became postmaster and a deputy surveyor. At 25 he was elected to the state legislature, and later moved to Springfield, the new capital. There he opened a law office, having studied law. In 1846 he was elected to Congress.

Lincoln opposed the

extension of slavery, and the institution in general, though he didn't propose to abolish slavery in the South. Even in 1856, when he made his famous speech at the founding of the Republican Party, he made no such proposal.

Nominated for president in 1860, after a famous series of debates with Stephen Douglas in 1858 in a losing Senate race, he won because the Democrats split and nominated two candidates.

Lincoln offered to guarantee slavery in the South until the people could vote on the question in a referendum, but he insisted states could not secede from the Union. On this issue he was adamant and willing to invade the South and wage war to have his way.

Whether this was the best course, because of the terrible cost of the Civil War, has long been debated. When Lincoln shrewdly turned the war into a crusade against slavery, he won world support and ended the chances of British and French recognition of the South.

### Farmer's Tax Guide Due To Arrive

Area farmers who wish to improve their skills in marketing their products can find help at two workshops being held in February by the Texas Agricultural Extension Service. The programs will focus on use of futures and options in developing a marketing plan, said Dr. Jackie Smith, Extension Service agricultural economist and marketing specialist.

An introductory futures and options workshop will be held Feb. 13-14 at the Texas A&M University Agricultural Research and Extension Center, north of the Lubbock airport. An intermediate level workshop for more experienced users of futures and options will be held at the center on Feb. 15. The training will be from 9 a.m. until 4 p.m. each day.

"While some aspects of marketing aren't in your control, others can be affected by your timely, informed action," Smith said. Taking advantage of the things you can determine, such as when and how you price your product, will increase your feeling of control in your business and help you be a better manager, he said.

Participants in the first workshop will learn how futures markets operate and how to use them; use of commodity options as price insurance; how to figure your local price from futures prices; how to work with a broker; market prospects for cotton and when to use different pricing strategies.

This workshop will cost \$20. A notebook and materials will be furnished.

The second workshop, Feb. 15, will help participants be better able to evaluate alternative marketing strategies for use in their marketing plan. Registration will be \$10.

Topics will include cotton market outlook, basis update,

technical analysis, the 1990 farm bill, and basic price risk management strategies.

Dr. Carl Anderson, cotton marketing specialist for the Extension Service, will be the primary instructor for both sessions. He will be assisted by Smith.

Preregistration isn't required for either workshop. Spouses are encouraged to attend at no extra cost. Lunches won't be provided.

More information is available from local county agents of the Extension Service, or from Smith, telephone (806) 746-6101.

### ONE MINUTE SPORTS QUIZ

By Christian Thorlund

1. What hockey team was the 1st expansion team (1974) to win the Stanley Cup?
2. What horse was the first to win the Triple Crown?
3. In 1937 War Admiral won the Triple Crown. What horse won money honors that year?
4. What was Ty Cobb's lifetime batting average?
5. How many times has Denver gone to the Super Bowl?

### Answers:

1. The Philadelphia Flyers.
2. Sir Barton, 1919.
3. Seabiscuit.
4. It was .367.
5. Four times, 1978, 1987, 1988 and 1990.

**Republican  
Political Calendar**  
*Bailey County Judge*  
**James Warren**

**YOU**  
make the difference  
**Donate Blood  
Friday,  
February 9th  
10 a.m. - 6 p.m.**  
**United Blood Services**

Counting the population isn't the only thing the Census is good for.

The Census helps decide how much federal, state and local funding your community may be entitled to for things like clinics, hospitals and other essential services. So fill out your Census form and help make a mark on your community.

**Answer the Census. It counts for more than you think.**

**Dr. A.R. Ploudre**  
Optometrist

\*Family Vision Care      \*Contact Lenses  
\*Texas Medicaid

Hours: Monday through Friday      Saturday,  
8:00 a.m. to 12 noon 1-5 p.m.      8 a.m.-12 noon

Credit Arrangements available upon prior approval.

(505) 762-2951      1515 Gidding St., Clovis

**True Value** HARDWARE STORES

## Yard & Garden Helpers

 <b>4.99</b> Lawn Food With Crabgrass Control stops weeds, establishes roots. 25-33	 <b>18.88</b> Drop Spreader offers handle-mounted flow control. Perfect for fertilizer, seed. 43864	 <b>29.88</b> Garden Cart is ready for lots of yard work with 6 1/2-cu. ft. heaped capacity, rugged frame, 20-in. wheels. 556-763		
 <b>299.88</b> 3 HP	 <b>399.88</b> 5 HP	 <b>1688.00</b> 5-HP Chain-Drive Tiller cuts 14 to 25-in. path. Adj. depth, sturdy handle. 501C	 <b>1688.00</b> 14-HP 45-in. Ground-Engaging Lawn Tractor with an electric start Briggs & Stratton engine 1/C engine. 600	 <b>15.66</b> 28-in. Lopper cuts crisply with Teflon-S <sup>®</sup> -coated blade and vinyl grips. 52791
 <b>199.95</b> 3.5-HP, 22-in. Lawn Mower is self-propelled, with front-wheel cog drive, 8-in. wheels, fingertip drive control.	 <b>133.00</b> 19-in. Electric Mower with high-amp motor, 7-in. high-impact wheels and flip-over handle that folds for storage. 695	 <b>7.88</b> 8-in. Pruning Shears have Power-Link <sup>®</sup> design. Teflon-S <sup>®</sup> -coated blade. 20591		
 <b>199.88</b> 3.5-HP, 21-in. Rear Bagging Mower has a fully-baffled deck and high-lift blade.	 <b>8.99</b> Grass Shears have stainless-steel carbide-edged blades that resist rust. 20672	 <b>5.99</b> Liquid Fruit Tree Spray has four-way power to control insects and diseases. 3217	 <b>2.44</b> Pruning & Tree Wound Dressing helps heal and protect. 7 oz. 58718	

**Fry & Cox, Inc.**

401 S. 1st      Muleshoe      272-4511



## Sudan News

By Ann Gaston

\*\*\*  
 Gary Boyles is home recovering from knee surgery. He was released this past week.

\*\*\*  
 Mr. and Mrs. Troy Waller of Amarillo visited with his mother, Mr. and Mrs. Waymon Gordon and attended worship services with them at the FBC.

\*\*\*  
 Mr. and Mrs. John Corley and girls of Lubbock visited during the weekend with her parents, Mr. and Mrs. James Withrow and sister, Mr. and Mrs. Greg Lance and Maegan.

\*\*\*  
 Visiting in the home of Mr. and Mrs. Bob Drake this past weekend was her sister.

\*\*\*  
 Debbie Bingham and Allison of Lubbock were here last weekend to visit with her mother, Juanda Fields, her brother, Gary Fields, and her brother, Mr. and Mrs. Jimmy Fields and family. Also visiting were Kit and LaRhonda Fields of Littlefield.

\*\*\*  
 Mr. E.A. Harris, father of Bonita West, was hospitalized last week.

\*\*\*  
 Mr. Lee Williams was hospitalized in Lubbock and had surgery on Tuesday. He is the grandfather of Quincy, Quinten and Tia Lee.

### BIRTHDAYS

Feb. 4-Johnny King and Shawnda Wood

Feb. 5-Cheri Ford, and Marsha Wiseman

Feb. 6-Danielle Nettles

Feb. 7-Jayson Vincent, Mitzi Glascock and Sabrina Faz

Feb. 8-Pat Kent, Kristen Lyle, Mae White, Laura Pickrell, and Kim Brotherton

Feb. 9-Curtis Chester

Feb. 10-Sandra Johnson and Kyle Downs

### ANNIVERSARIES

Feb. 4-Mr. and Mrs. Bobby Jack Markham and Mr. and Mrs. Mark Priest

Feb. 7-Mr. and Mrs. Theron Hill

Feb. 9-Mr. and Mrs. Orville Hill and Mr. and Mrs. Russell

Ingle

\*\*\*  
 Four students from Sudan have been named to the president's and deans lists at South Plains College for the 1989 fall semester.

To be selected for the president's honor list, students must maintain a 4.0 or straight A grade point average while carrying a minimum of 12 semester hours.

Honor students selected to the dean's list at SPC have maintained a minimum 3.25 grade point average in their studies.

Named to the president's list from Sudan is Michael Bartley.

Named to the dean's list are Shelly Chester, Karen Duarte and Teena Newman.

A total of 153 students were named to the president's list at SPC and 386 students were named to the dean's list.

\*\*\*  
 The second grade classes of Sudan I.S.D. have been studying RULES and LAWS in social studies. As a result of that study, they toured the Lamb County Jail on Wednesday, January 24, 1990.

Deputy Sheriff Jerry Collins showed the students the De-Fox cell, the fingerprinting room, and the women's cell.

Upstairs, the second graders were shown the recreation room, kitchen, monitor room, cell block and the isolation room.

One of the prisoners spoke to the children about drug abuse.

Deputy Sheriff Collins concluded the tour with a question and answer session.

The classes were sponsored by Mrs. Peggy Lawrence and Mrs. Mary Smith. Mr. Rick Hill drove the school bus.

\*\*\*  
 Twenty six Sudan junior and senior high band students participated in the A-AA South Plains Honor Band Clinic-Concert last weekend in Lubbock. The students won the right to attend by competing against other A-AA band students in the area earlier in the month. In fact, thirty three schools were represented at the tryouts.

Sudan placed 11 members and three alternates in the high school band. While nine members and three alternates made the junior high band. Only Abernathy, Hale Center, and Sundown placed more students

in the bands.

The students traveled to Monterey High School Friday for an all day clinic (7 hours), spent the night in Lubbock, and then rehearsed for four more hours Saturday morning. After a short afternoon of free time at South Plains Mall, the bands performed the music they had been working on at a grand concert at Monterey. Honor bands from the other school classifications also performed at the concert.

The junior high band clinician was Dr. Charles Trayler, the band director at Dalhart High School. Ray Lashaway, band director at McCamey was the clinician for the high school band.

## Pay as You Go

Most people think of taxes only at the end of the year, but, due to the "pay as you go" system of U.S. taxes, some may need to "think" taxes quarterly. Any person who receives income on which there is no income tax withholding may need to make estimated tax payments.

Any taxpayer who might owe more than \$500 in unpaid federal taxes at the end of the year needs to estimate how much the total income will be for the year. Then, after estimating how much tax would be due on that income, he or she needs to determine how much will not be covered by tax credits and income tax withholding.

In general, a taxpayer will have to make estimated tax payments for 1990 if:

- the amount to be paid with the 1990 tax return at the end of the year will be \$500 or more, and

- less than 90 percent of the total tax liability will be covered by withholding and tax credits, or

- withholding and tax credits will be less than 100 percent of the 1989 taxes.

Estimated tax payments may be made quarterly by sending in Form 1040-ES to the address listed in the instructions for the taxpayer's area. Credit for such payments is made on Form 1040 when the taxpayer files a return for the year. Forms 1040A and 1040EZ may not be used because they do not contain lines for the payments. Further information is contained in Publication 505, *Tax Withholding and Estimated Tax*. The free publication and Form 1040-ES may be ordered by calling toll-free, 1-800-424-3676.

---  
 Most people overvalue compliments and undervalue constructive criticism.

## Farmers Told They Will See Less Federal Dollars

While citizens of Texas are seeing fewer and fewer dollars coming out of Washington for social and economic programs, they're asking state government to take over the responsibilities, according to a panel of state officials who spoke to the Texas Farmers Union convention in Dallas Friday.

State Senator Steve Carriker of Roby told the group that the "Reagan Revolution" which deregulated many industries and cut social programs drastically, has served as a way for the federal government to "absolve itself" of many of its previously-held responsibilities. Carriker says that has resulted in state governments being forced to "pick up the slack."

But, Carriker told the farmers that there may be advantages to states who take the lead in developing regulatory agendas where agricultural products are

concerned. Carriker pointed to state-run programs which encourage the production of alternative crops and require country-of-origin labeling on food products.

In addition, Paul Lewis, who leads the Texas Department of Agriculture's International Marketing Division, says the state has begun to take the lead in developing foreign markets for Texas-grown farm products. He told the group the federal government seems to only be interested in the volume of agricultural exports the U.S. can sell. "It is not with the goal of exporting volumes and volumes of farm products that TDA undertakes its marketing program," he said. "We want to export value."

Lewis called on the Farmers Union members to get personally involved in the debate over the general Agreement on Tariffs and Trade negotiations going on in Geneva. Lewis said GATT is the "biggest open door to an end run" he's seen on farm policy matters. "What they (the Bush Administration) couldn't accomplish in the 1985 farm bill, they're going for through GATT." The U.S. negotiating team to the GATT has proposed a phase-out of current domestic farm programs which are "trade-distorting." Lewis says that proposal would destabilize the farm economy and the food supply and encourage the farmers to write letters and organize meetings to discuss the proposal.

TDA's Economic Development Coordinator, Brian Muller, said his department is working to implement loan programs for farmers and rural entrepreneurs who previously depended on federal loan monies for start-up and operating capital. He said the Texas Linked Deposit Program, the Texas Agricultural Finance Authority, and the Rural Micro-enterprise Program have all helped to make financing

more affordable and available to Texas agriculture.

Muller says that about 4.5 million dollars of the 5 million the legislature allocated to the Linked Deposit Program has been used as start-up financing for enterprise ranging from a macaroni plant to the ostrich industry, which he says, "is booming in Texas."

Mike Dunn, a Washington, DC lobbyist for the National Farmers Union, who moderated the panel, says many states are funding new programs to "do things that the federal government has abdicated itself from doing." He said states need to work to protect farm product markets for commodities like beef and pork which are threatened by conglomerate control of large meat packers. "States need to pass and enforce anti-trust laws that the feds aren't enforcing before we lose all our market competitiveness," he said.

## LOUISA'S LETTER

Dear Louisa,

I am a sophomore in college and the boy I am engaged to is also in college. Our parents want us to finish our education and we plan to do that. But I see lots of young couples who are married and keeping on with their school work and I wonder if we could not do the same thing?

T.S.-Ohio

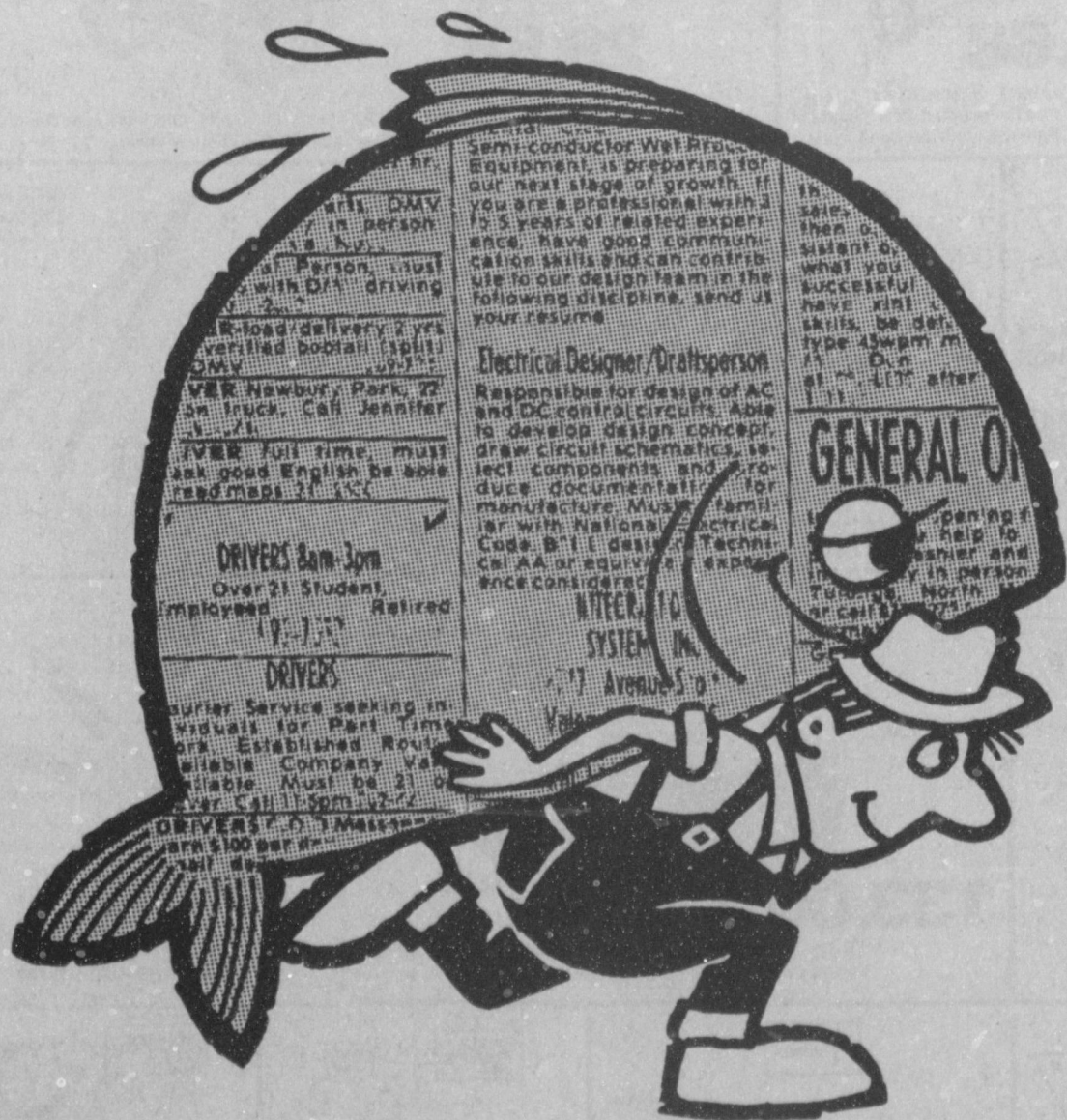
Answer:

It is tough going unless you have financial independence. Adjusting to marriage is something that requires tolerance, patience and emotional stability and when these needs are added to the pressure put on students in school today, it takes a great deal of love and will power to come through happily and successfully.

Louisa

Shop  
 Muleshoe  
 First!

# CATCH THE SAVINGS



You'll hook your limit of interested buyers with ads you place in the classifieds. And our rates won't swamp your profits!

**Muleshoe & Bailey Co.**

**Journals**  
 272-4536



## ZIMMERMAN HYBRIDS



### " White Seed Corn Specialists "

We have more on-going white hybrid research than any other seed company; which has resulted in exceptional grain quality from hybrids adaptable to tough High Plains growing conditions

- No. 1 1989 National White Food Corn Test: Halfway, TX.
- No. 2 1989 National White Food Corn Test: Halfway, TX.

All Zimmerman White Hybrids ranked in top 20 of 80 entries in National White Food Corn Test: Halfway, TX. 1989

Zimmerman White Hybrids ranked in top 10 in National White Food Corn Tests since 1986.

### " Highest Quality Yellow Hybrids, "

- Z-27Y: Top performer in ensilage tests with high yield grain harvestability.
- Z-20Y: Excellent Food Grade Grain with high test weight.

YOUR ZIMMERMAN HYBRIDS DEALERS are:

- SCOGGIN AG CENTER Muleshoe, TX. 272-4613 1532 w. Amer. Blvd.
- JERRY DON GLOVER Lazbuddie, TX. 965-2162
- SOUTHWEST AGRI-SERVICES Dodd, TX. 965-2338
- JIM ALLISON Muleshoe, TX. 272-5291

The proven performance of Zimmerman Hybrids will put the odds in your favor at harvest time.



# CLASSIFIEDS 272-4536

### CLASSIFIED RATES

15 Words & Under  
Minimum Charge  
\$2.30  
Thereafter  
\$2.00

16 Words & Over  
1st Insertion  
15 cents per word  
2nd Insertion  
13 cents per word

CLASSIFIED  
DISPLAY RATES  
\$1.75

Per Column Inch

DEADLINES  
12 noon Tues.  
For Thursday Paper  
12 noon Friday  
For Sunday Paper

To receive the reduce rate after the first insertion ad must run continuously.

We reserve the right to classify, revise, or reject any ad. We are not responsible for any error after ad has run once.

### 1. Personals

CONCERNED  
About Someone's  
Drinking?  
HELP IS  
AVAILABLE  
through Al-Anon

CALL 272-2350 or 965-2870 or come to visit Tuesday nights, 8:00 p.m. or Saturday mornings at 10:30 a.m. and through AA call 965-2870 or come visit Tuesday nights, 8:00 at 620 W. Second, Muleshoe.

FOR YOUR Wedding Cakes, Decorated Cakes (Such as Hamburger, Pizza Cakes) Portrait or Cartoon Cakes, Special Valentine Cakes, For loved ones or office friends. Call Ann Johnson 272-5746.  
J1-5s-tfc

### 3. Help Wanted

ATTENTION!  
HIRING!  
Cruise Ship, Casino, Hotel Jobs! Free Travel Benefits! Details. (1) 602-838-8885. Ext. Y-10191.  
C3-6t-4tp(ts)

ATTENTION:  
Earn Money Reading Books! \$32,000/year Income Potential. Details (1) 602-838-8885 Ext. Bk-10191.  
C3-6t-4tp(ts)

AIRLINES  
NOW HIRING!  
Flight Attendants, Many Other Positions! \$17,500-\$58,240. Call (1) 602-838-8885 Ext. X-10191.  
C3-6t-4tp(ts)

HELP WANTED: LVN or RN to complete Mobile Insurance Physicals. Must draw blood. Flexible hours. Call 1-800-692-4485. E3-5s-3tc

### 5. Apts. For Rent

APARTMENTS FOR RENT: 1 or 2 bedrooms. Furnished and unfurnished. Some bills paid. 272-7575. P5-2t-tfc

### 11. For Sale Or Trade

FOR SALE: Portable Welder on trailer. Call 946-3352 after 7:00. 11-5t-4tp

FOR SALE: Kenmore 17.5 Cubic Ft. Upright Freezer, \$200. 19" Portable Color TV, \$125. Regulation Size Pool Table, \$200. Call 965-2125 after 5 p.m. 11-5s-2tp

### 15. Misc.

#### Grooming Services

by Keva Peterson



Monday thru Friday

8:00 a.m. to 6:00 p.m.

Complete grooming of all breeds by appointment only!

Keva Peterson

315 W. Ave. K. 272-3473

### 17. Seed and Feed

150 BAGS COTTON Seed. 1st Year From Certified '88 Crop. Popular Variety. 946-3352 after 7:00 pm. 17-6t-4tp

### NEED EXTRA SPACE IN YOUR BARN?

Let us pay Cash for your unwanted or outdated planting seed. Free pick up service. Cash paid for your planting seed when picked up. Write approx. # of bags of cottonseed, grain sorghum, corn, or other seed to:

Bio-Soil  
P. O. Box 98556  
Lubbock, TX 79499  
Please include phone number!

### 8. Real Estate

2 BEDROOM HOUSE  
For Sale in Muleshoe. 219 W. 11th. Call 247-2330. M8-6t-6tc

FOR SALE: Really nice modernized older home. Huge rooms, 3 baths, fireplace, sits on 1/4 of a block. Heat pump and refrigerated air. Call 272-3267 or 272-3304 after 6:00 p.m. A8-3t-tfc

FOR SALE BY OWNER: 3 bedroom, 3 1/2 bath Brick home. Den, formal living room and dining room, kitchen and utility, double garage, lots of storage, storm cellar, in good location. Also included 2-bedroom rent house. Call 272-3353. G8-5t-8tc

FOR SALE OR RENT: 2 bedroom, 2 full bath mobile home, on 45'x150' fenced lot. Call 272-5435. after 5 p.m. G8-49t-tfc

### 18. Legals

NOTICE  
TO ALL PERSONS  
HAVING CLAIMS  
AGAINST THE  
ESTATE OF  
GLENN ROCKEY,  
DECEASED

Notice is hereby given that original Letters Testamentary for the Estate of Glenn Rockey, Deceased, were issued January 15, 1990 in Cause No. 1817, pending in Probate Court, Bailey County, Muleshoe, Texas, to

Mayme R. Rockey  
The residence of such Independent Executrix is Bailey County, Texas. The address is:

Mayme R. Rockey  
314 W. 9th Avenue  
Muleshoe, Texas  
79347

All persons having claims against the Estate which is currently being administered are required to present them within the time and manner prescribed by law.

Dated: January 31, 1990.

Terri H. Budow  
State Bar No. 10301920  
2711 N. Haskell  
Dallas, Texas 75204  
(214) 828-7997  
ATTORNEY FOR THE ESTATE

18-6t-1tp

### 8. Real Estate

### 8. Real Estate

#### Henry Realty

111 W. Ave. B. 272-4581  
Muleshoe, Tx.

NEW LISTING: 3 bedroom, 1 1/4 bath, 1 car garage, carpet, central A/H, fenced yard, storm windows; shop building, good condition in a good location.

3 Brdm., 2 bath, spacious home outside city limits, near city on highway. 29x40 metal building. Lot 85'x620'.

3 Brdm., 1 bath, completely remodeled, edge of city on highway.

COMMERCIAL PROPERTY-Ideal location on West American Blvd. 150' highway frontage. A great business opportunity.

RURAL HOME-3 Brdm., 2 bath, large den on one acre with many extras. Fenced with barns, fruit trees, extra storage, storm cellar, and satellite dish. Priced to sell.

SPACIOUS-2 Brdm., 2 bath, with garage. Freshly painted. Fireplace. Ready to move in.

JUST LISTED-Outside city - 3 Brdm., 2 bath, garage on one acre. Carpet with drapes and blinds. Dishwasher. Good storage.

3 bedroom, 2 bath, carpet, large living room. Excellent condition, near high school. Priced to sell.

FOR SALE: 320 acres of dry land in the Goodland area. 272-4622. K8-4t-10tc

3-BEDROOM, 2-bath, double-wide mobile home for sale. 272-3438. C8-5s-tfc

### PET CARE

#### Treating Man's Best Friend to a Decent Funeral

Over 350 million Americans know the pain of losing their favorite pet. For children, it is often their first encounter with death. To compound the grief, the owner is faced with burying his favorite dog, cat or parakeet in a shoebox or even worse—a plastic bag.

"We lost three dear old pets over a very short time period and there were no pet cemeteries in Lima. After we were forced to bury our pets in shoeboxes and plastic bags, we decided there should be an inexpensive and dignified way to bury pets," says Mike McCormack, owner of Pet Rest Inc.

In order to give families a better way to bury their pets, McCormack developed pet burial kits. Each kit includes a properly sized burial receptacle, a funeral manual, a name tag and a sympathy card.

The receptacle is fashioned after the futuristic floton missile in which Mr. Spock's body was jettisoned into space in Star Trek II. McCormack decided on this design because he wanted nothing morbid.

The satin-lined containers come in four sizes and are available in ebony and ivory. They range in price from \$19.99 for the smallest to \$79.99 for the large size. Once sealed they are completely air- and water-tight. Pet Rest also has a lawn marker for \$34.95 that can be engraved with the pet's name and a short message.

For more information about the pet burial kit or to order, call 1-800-444-0881, or send a self-addressed, stamped envelope to: Pet Rest Inc., P.O. Box 953, Lima, OH 45802.

### HEALTH TIPS

#### Are Your Health Problems Yeast-Connected?

Tiredness, depression, headaches and poor memory: Just about everybody suffers from one of these conditions once in a while. But if you experience these symptoms frequently, you may have a yeast-connected problem.

"All sorts of health problems from premenstrual syndrome to psoriasis," says William G. Crook, M.D., "could be related to the common yeast, *Candida albicans*, and can be controlled by a change in diet."

If you are sick, Dr. Crook, co-author of *The Yeast Connection Cookbook*, suggests having a complete examination done by your physician. If afterward, however, your doctor says he "can't really find anything wrong" with you, you should take steps to revise your diet.

Apart from avoiding chemically treated foods, Dr. Crook suggests the following:

- Avoid foods you're allergic to for a month or two, then try them again. If there is no reaction, eat the food occasionally.
- Eat more vegetables.
- Bake, broil or steam vegetables.
- Eat lean meats and fish, but not every day.
- Eat eggs once or twice a week if you're not allergic to them.
- If you're not allergic to grain products, eat more oatmeal, oat bran, whole or shredded wheat, brown rice, rice cakes, barley and millet.
- Avoid sugar and foods that contain simple carbohydrates, including corn syrup, white flour, white rice and honey.
- Use dairy products with

caution—many people are allergic to them but don't know it.

"Avoid fruits for about three weeks, then begin eating them on a trial basis to see if they trigger a reaction."

"Drink bottled or filtered water."

"Expand and diversify your diet to avoid repetitive eating. The more frequently you eat a food, the more likely you are to develop an allergy to it."

According to Dr. Crook, those most at risk for yeast-connected health problems include people who have taken repeated or prolonged courses of antibiotic drugs, people sensitive to tobacco smoke, perfumes or fabric odors, and people who crave sugar.

Ask your local bookstore for *The Yeast Connection Cookbook* or order by phone by calling Professional Books, 1-800-372-7665.

If you think you suffer from the Yeast Connection, do not hope for a magical cure. The best and most long-lasting health is due not to miracle medicines but to a carefully planned diet, a healthy lifestyle and common sense.



Allergies to common foods could be causing your health problems

caution—many people are allergic to them but don't know it.

"Avoid fruits for about three weeks, then begin eating them on a trial basis to see if they trigger a reaction."

"Drink bottled or filtered water."

"Expand and diversify your diet to avoid repetitive eating. The more frequently you eat a food, the more likely you are to develop an allergy to it."

According to Dr. Crook, those most at risk for yeast-connected health problems include people who have taken repeated or prolonged courses of antibiotic drugs, people sensitive to tobacco smoke, perfumes or fabric odors, and people who crave sugar.

Ask your local bookstore for *The Yeast Connection Cookbook* or order by phone by calling Professional Books, 1-800-372-7665.

If you think you suffer from the Yeast Connection, do not hope for a magical cure. The best and most long-lasting health is due not to miracle medicines but to a carefully planned diet, a healthy lifestyle and common sense.

Correct? It seems that modern statesmen can't tell a lie either. The correct name for it is an "official denial."

—Star, Minneapolis.

Lost Retreat The era of hiding behind mother's skirt ended when the hemline got out of reach.

Think Classifieds 272-4536

### TIPS FOR STUDENTS

#### Testing Techniques They Don't Teach You in School

The best students are not necessarily the smartest, nor those who work the hardest, but rather they are the ones who have mastered the techniques of proper studying and test-taking.

Almost any student can dramatically raise his grades by learning to study effectively, according to Veltiszar B. Bautista, author of *Improve Your Grades: Effective Test-Taking Techniques Not Taught in School*.

"My knowledge isn't based on hearsay," he says about the study tips he offers in his book. "It's based on my own practical experience in studying and taking tests. In my high school and college days, I was an average student. But when I went back to college several years later, while I was raising a family and had a full-time job, I became an honor student after learning basic skills and using study and test-taking techniques."

Bautista, a former journalist and author of the bestselling *Book of U.S. Postal Exams*, offers the following suggestions from his book:

- Set short-term and long-term goals for accomplishing academic excellence. Write down those goals and accomplish them, one at a time.
- Use key words in remembering dates, formulas and other important numbers. For

example, associate numbers with events or persons you know about.

"Use a study system, such as the one popularly known as the SQ3R: Survey, Question, Read, Recite and Review."

"When reading, do 'ideaculling,' the process by which you pick up key words from every sentence, and connect these ideas by the 'Link System.'"

"In multiple choice or true/false tests, be on the lookout for sentences that contain words such as all, only, none, never, always, usually and generally. If the choice contains one of these words, it's usually not the answer."

Intended for junior high, high school and college students, *Improve Your Grades* is available for \$9.95 plus \$2 shipping from Bookhaus Publishers, P.O. Box 299-N, East Detroit, MI 48021. The book is an encyclopedic and a common-sense approach to improving academic performance.

Albert Shanker, president of the American Federation of Teachers, compares Bautista's insight to that of Dale Carnegie, Norman Vincent Peale, and Masters and Johnson. He adds that *Improve Your Grades* "offers a positive attitude, helpful techniques and enlightening anecdotes to those who feel the need to improve."

### Bingham & Nieman Realty

116 E. Ave. C.

272-5285 or 272-5286

RICHLAND HILLS  
JUST LISTED-IMMACULATE-ENERGY EFFICIENT 3-2-2 Brick, Cent. A&H, built-ins, FP, sunken lv. area with cathedral ceiling, ceiling fans, earhtones, storage bldg., much more!!!!150's

4 NICE RESIDENTIAL LOTS PRICED FROM \$5,000.00!!!!

JUST LISTED- Nice 3-2-2 Brick on large corner lot, Cent. A&H, built-ins, storm windows & doors, large basement, much more!!!!

JUST LISTED - 3-2-2 Brick on corner lot, Cent. A&H, built-ins, FP, cov. Patio & more. \$60's!!!!!!

VERY NICE 3-2-2 Brick Home, Cent. A&H, built-ins, FP, Wtr. Sftnr., auto. spkrl., Cov. Patio, Stor.-Shop, & much more!!!!!!

HIGHLAND AREA  
NICE 3-2-2 Brick home (2 story), on corner lot, Cent. A&H, built-ins, and much more. LET'S LOOK TODAY!!!!160's

NICE 3-2-1 Brick Home, Cent. A&H, built-ins, large den with fireplace. Fenced yard, storage bldg. \$40's!!!!

PRICE REDUCED 2-2-2 Brick, corner lot, Cent. A&H, spacious rooms, utility, cov. patio, fenced yard, & much more. \$40's!!!

HIGH SCHOOL  
JUST LISTED-COZY 2-1 Home, nicely remodeled, fenced yard, & more \$17,000!!!!

2-1 1/2-1 Brick, fl. furnace, CA, fenced yard & more.\$20's!!!!

NICE 2-1 1/2-1 Home, corner lot, built-ins, nice carpet, heat pump, fenced yard, storage bldg. & more!!!!!!

PRICE REDUCED 3-1-1 Home earhtone carpets, fenced yard, storm cellar & workshop!!!!

JUST LISTED-IMMACULATE 3-2-2 Brick, Cent. A&H, built-ins, energy efficient, ceiling fans, shop-storage bldg., fenced yard, much more.\$40's!!!!

3-2 Home, nicely remodeled, Heat pump, storm windows & doors, well insulated, ceiling fans, fenced yd., storage bldg. & more!!!!!!\$20's

LENAU ADD.  
3-1 Home on corner lot, wall heat, fenced yd. \$20's!!!!!!

COUNTRY HOMES  
JUST LISTED-NICE 3-3-2 Brick Home on one acre tract at edge of town, Cent. A&H, built-ins, FP, sunroom, office sauna, wet bar, auto. spkrl., fenced yd., plus other amenities!!!!!!

JUST LISTED 3-2-2 Brick on 25 acres, close to town, Cent. A&H, built-ins, shop, barn, new 4 wire fence all around, much more!!!!!!

3-2-3 carport Home on 11 acres at edge of town, Cent. A&H, built-ins, storm cellar, barns, & corrals. \$50's!!!!!!

3-1-1 Home on approx. 5 acres at edge of town, domestic will and irrig. well, barns & more.\$20's!!!!!!

VERY NICE 3-2-1 Home on 1 acre, close to town, Cent. Heat, Evap. air, nice carpets, nicely remodeled. \$30's!!!!

2-1 Home, 20 acres, sub. pump, sprinkler, barns & corrals. \$40's!!!!

EXCELLENT COMMERCIAL TRACT 175' x 100', Hwy. 70 & 84, railroad spur access at rar, approx. 1200 sq. ft. bldg. PRICED TO SELL!!!!!!

NICE 3,500 sq. ft. office bldg. across from Courthouse. PRICED TO SELL!!!!!!

JUST LISTED-NICE COMMERCIAL BLDG. ON MAIN HIGHWAY, Approx. 2800 feet of area, suitable for various types of business. Possible Owner Financing to qualified Buyer.\$20's!!!!!!

GEORGE NIEMAN, BROKER

DIANNE NIEMAN, BROKER

### 8. Real Estate

PROPERTY FOR SALE  
ON THE Co-op Gin Road. 272-4006. 8-5s-6tp

### 18. Legals

FOR SALE OR RENT: House in Lenuau addition. 3 bedroom, 1 bath. 965-2838. G8-5s-4tc

LAND FOR SALE: 7,000 acres of irrigated land. Will sell any part, or all. Sprinkler, fenced, and water tanks for cattle in each circle. Good cattle operation and excellent living quarters. Land is good for vegetables or grains. Near Earth, Texas. Will also sell or lease.

Randy Johnson  
(806) 272-3056