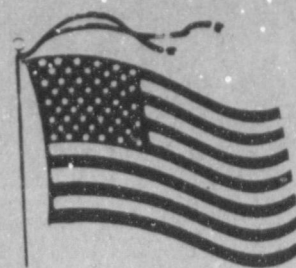


### WEATHER

January 14	62	22	.00
January 15	68	25	.00
January 16	71	26	.00
January 17	66	20	.00

# Muleshoe Journal

*'The Community Of Opportunity-Where Water Makes The Difference'*



Vol. 68, No. 3

10 PAGES TODAY

Published Every Thursday At Muleshoe, Bailey County, Texas 79247

Member 1989  
TEXAS PRESS ASSOCIATION

20¢

Thursday, January 18, 1990

## Commissioners Talk About EMT Classes

around  
muleshoe

\*\*\*  
Tuesday night, in action in Littlefield, the Lady Mules defeated the Lady Wildcats by a score of 61-55. Amy Harrison was leading scorer at 14.

The Littlefield Wildcats fell to the Mules, 73-62. High pointer was Frank Precure, with 23 points.

The teams will play Dimmitt, in Watson Junior High School gym, tomorrow, Friday night. Action should get underway at for the varsity teams at 6:30 p.m.

\*\*\*  
The Muleshoe Blood Advisory Board reports that the blood drive held on Sunday at the Immaculate Conception Catholic Church drew 31 units of blood.

This helped to answer the critical blood shortage the local area is facing, according to Kay Graves.

She added, "We want to thank Alfonso Posadas for spearheading the drive, and all of those who donated."

\*\*\*  
Sgt. Charlie Simmons of the Plainview office for the Lubbock Highway Patrol District, said, "In Bailey County, our troopers investigated no fatal accidents, one personal injury accident, and no property damage accidents in the month of November, 1989."

\*\*\*  
Marine Lance Cpl. Charles M. Kessler, son of Louis J. and Nella Kessler of Sudan, recently reported for duty at Marine Corps Base, Camp Lejeune, N.C. A 1987 graduate of Sudan High School, he joined the Marine Corps in April, 1988.

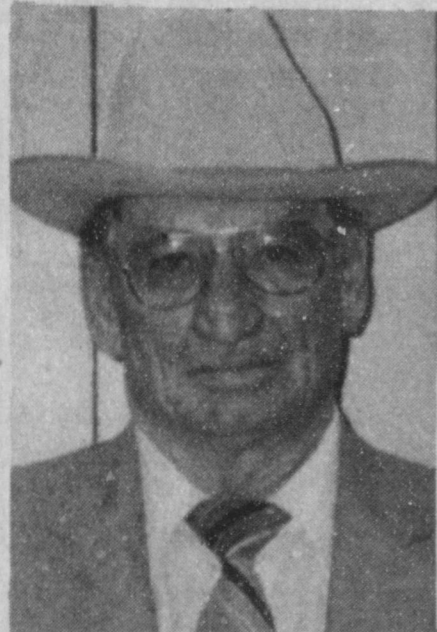
\*\*\*  
On Saturday, January 6, Muleshoe 4-H members exhibited in the Parmer County Lamb Jackpot held in Friona.

Holly Huckaby, first place, heavyweight fine wool, ninth place light heavyweight medium wool and fine wool champion.

Kayla Magby, ninth place light weight medium wool; Kourtnee Magby, 16th place middleweight medium wool. Shane Schuster, third place heavyweight fine wool cross and sixth place heavyweight medium wool. Carolyn Schuster, third place lightweight southdown.

\*\*\*  
The LST Association is looking for LST shipmates for reunions with old shipmates. The Association reunion will be held in St. Louis in September, 1990.

For information write: United Cont. Page 6, Col. 3



JAMES WARREN



**FRIEND OF EDUCATION AWARDS PRESENTED**--Monday morning, at the MISD administration office, Dr. Lawrence Ward, superintendent, presented *Friend of Education* awards for the first time to, from left, Tommie Merritt, Margie Merritt, Sonic Drive In; Gil Lamb, Channel 6; Bill Gilbert, Serv-All Thriftway; Stacy Davis, Pizza Hut; Alex Duran, artist; Tom Crane, KMUL Radio; Judy Watson, West Texas Ranger; Donald Harrison, Muleshoe Fire Chief; Clea Williams, *Muleshoe/Bailey County Journals*; and Bob Donaldson, Pay-n-Save. (Journal Photo)

## Ten Local People, Businesses Get Friend Of Education Award

Monday morning, 11 local business people met in the school administration building for a special presentation.

Dr. Lawrence Ward, superintendent, explained why the special awards were being presented.

"Every year, there are a number of people, clubs and businesses who do some very special things for the Muleshoe schools," said the superintendent. "The school administrators began noting and discussing the benefits on school attendance when some businesses got involved in the school's October attendance drive."

"October is the month the Texas Education Agency takes an attendance count for funding

### James Warren Announces For Judge

James Warren, Republican candidate for Bailey County Judge, has made the following statement concerning his candidacy:

"I, James Warren, was raised in Bailey County, educated in rural schools and Muleshoe High School. I played a little football for Muleshoe High School.

"After graduation, I married a local girl, Fern Smith. After serving in the army in World War II and returning to Bailey County, we raised our family and educated them in Muleshoe Schools.

"Linda lives in Lubbock; Jim is with the highway patrol in Lubbock and Richard lives in Muleshoe and is in the agricultural business.

"I have four years of county government as County Commissioner. I gained much experience in those few years with budgets and government procedures. I served on the financial committee with the SPAG Board which operates on a very large budget.

"Fern and I have seen Bailey County and Muleshoe become what it is today by also being in Cont. Page 6, Col. 1

purposes," he added. "The Muleshoe schools get about \$1450 of state funding for each student who is present for four weeks in October. Each day a student is absent, the school, and the tax payers, lose about \$72.50.

### City Council Votes Settlement In Litigation

Prior to going into executive session Tuesday morning, the Muleshoe City Council met for a relatively short session.

Frank Goodman, GTE representative, met with the council to inform them that with the next printing of the telephone directory, it will be different.

He explained that the book will print the entire Brownfield division in one book. He said it will be a large book, printed in alphabetical order.

Goodman also wanted to get the feeling of the council, "because we don't want you to feel like you are losing your identity, being toward the back of a large book."

He was assured that the council had no objection to the larger telephone directory.

He also said some places have been identified in the telephone system needing repairs. The GTE representative said repairs would be ongoing during the current year.

City Manager Dave Marr explained to the council that the Five Area Telephone Cooperative Inc., had asked the city for two easements 'for future use' to expand their cable system. One is across the west end of the Sandarosa water field, and the other would run along Railroad Avenue to the Five Area headquarters building.

With little discussion, the easements were approved, with no payment involved.

With the arrival of City Attorney Michael Caldwell, the city council went into executive session to discuss the re-districting suit filed against the city.

City Manager Marr said the Cont. Page 6, Col. 2

Several local businesses backed the school's attendance drive."

He added, "it made a difference, estimated to be about two percent. Since the schools have approximately 1635 students, two percent represents about 32 students.

"At \$72.50 per student per day, the school and the tax payers saved approximately \$23-20 per day. For the 20 day counting period, the savings were approximately \$46,400.

"This savings is equal to a 2.73 cent tax rate," added Dr. Ward.

Dr. Ward asked all 11 administrators to prepare a list of all people, clubs, or businesses who have done things "above and beyond the call of duty" for MISD students anytime during the school year. The administrators submitted 66 possible winners. The full list was put together and then administrators were asked to rank the top ten in order.

The results were tabulated, and on Monday morning, the recipients each received a framed "Friend of Education" award. The certificate reads, "This Cont. Page 6, Col. 6

### Floyd Jamboree Auditions Set For This Sunday

Auditions for the annual Floyd (NM) Lions Club Country Jamboree will be Sunday, January 21 at the Floyd School cafeteria.

Registration for auditions will begin at 2 p.m. (MST). All registrants will be auditioned.

All numbers must be country western or gospel.

As in the past, the Country Jamboree has had one band for all performers, therefore, there will be no auditioning of bands. Only individuals or groups will be auditioned. To save time, it is requested that those auditioning know their material.

The 40th annual production will be March 29-31 in the Floyd School gym.

For further information contact Phillip Russell, 505-478-2427; Larry Buchanan, 505-478-2359 or Bruce Lee, 505-478-2271.

Bailey County commissioners found themselves in a 'quandry' Tuesday afternoon, while at the same time, facing a full agenda to discuss.

Getting underway at 2 p.m., the commissioners quickly disposed of several items of business, including the payment of routine county bills, and considering the county treasurer report.

They also heard a presentation by Allen Taylor, insurance representative, who discussed current insurance coverage on the courthouse building. He accompanied Inez Bobo, of Bobo Insurance, to the meeting.

After County Clerk Barbara McCamish read the minutes of the previous meeting at 2:25 p.m., this was followed by Bailey County Judge Jim Watson asking for an 'executive session' to talk with Joyce Holmes, manager of the Bailey County Coliseum.

Judge Watson was cautioned by the county clerk that no executive session was shown on the agenda, so commissioners could not go into the executive session.

At 2:28 p.m., Judge Watson again asked for the executive session, and commissioners court was recessed for several minutes while the law was researched.

Going back into open session four minutes later without having held an executive session, the item concerning the coliseum was not discussed in open court.

Judge Watson said Sheriff Jerry Hicks had asked for an executive session to discuss personnel matters, but since it was not listed on the agenda as an executive session, that portion of the agenda was also not considered.

Commissioners approved a budget amendment and then held a discussion on compensatory time, as they amended the personnel policy for the county to reflect several changes.

Approximately an hour was spent discussing the Bailey County Ambulance Service.

No representative of the Bailey County Ambulance Service was present, and Judge Watson said he had been asked by Jim Fitzgerald, director of the ambulance service to approach the commissioners about a raise for the fulltime EMT employees of

the service.

He said Fitzgerald had made a comparison study between the salaries of the EMTs employed by the ambulance service, and the Precinct 'road hands.' The figures showed that one EMT is employed at something over \$600 per month, and another two were receiving salaries of \$1,030 per month. Roadhands in all four precincts receive \$1,464 per month.

The commissioners said the salary discrepancy is because the road hands (maintainer operators) are highly skilled individuals.

They also said the road hands operate \$120,000 machinery.

However, no road hand is Cont. Page 6, Col. 4

### Red Raider Club Member At Rotary

Although he was a 'last minute' program, Tim Chambers of the Texas Tech Red Raiders Club, filled in admirably for Rotarian Max King Tuesday. King's program failed to show up, and Chambers was a guest of Scott Campbell, but he gave an impromptu discussion of the victorious Texas Tech Red Raiders and their successful 9-3 football season.

He reminded Rotarians that the Red Raiders won the All American Bowl game against Duke, although they went into the game as definite underdogs.

However, Duke had not counted on strong James Gray, who gained 280 rushing yards during the game, along with four touchdowns.

"Duke didn't expect to get a whipping," said Chambers.

He said the Red Raiders ended the season 16th in the country in the UPI poll; 17th in the New York Times poll; and 18th in the country by both AP and USA-CNN.

He said he believed that the early season win over A&M set the tone for the conference for the Red Raiders this year. "It was exciting to finish ahead of A&M," added Chambers.

Cont. Page 6, Col. 1



**ALL STATE THREE WAY EAGLES**--From left, Jessie Haros, first team punter; Mario Guillen, honorable mention, deep back; and Efrain Guillen, honorable mention offensive end. It was also learned that from Lazbuddie's six-man team, Michael Williams was named second team quarterback and Kevin McGehee, honorable mention, offensive end. (Journal Photo)

## Bailey County Junior Livestock Show

Friday & Saturday - January 19-20

Bailey County Coliseum

JUDGING

Swine- 4 p.m. Friday

Lambs - 9 a.m. Saturday

Cattle - 1 p.m. Saturday



# ANTHONY'S January Clearance SALE

## Take an additional 25% Off All Yellow Ticket Items

We've already reduced our fall and winter merchandise by 1/3, now you can take an additional 25% off the already low yellow ticket prices on clearance items. The 25% savings will be taken off at the register.

For Example

Original Price . . . 29<sup>99</sup>  
Yellow Ticket . . . 19<sup>97</sup>

---

With an Additional  
25% Off  
Now Only  
**14<sup>97</sup>**

## Save 25% OFF the Yellow Ticket!

<p><b>Take an Additional 25% Off Entire Stock Winter Outerwear for the Family</b></p> <p><small>Choose from a wide variety of fall and winter styles and colors. In sizes for men, women, juniors', children and toddlers.</small></p>	<p><b>Take an Additional 25% Off Women's and Juniors' Fall and Winter Dresses and Sportswear</b></p> <p><small>Save now on selected fall and winter dresses and related separates. Women's sizes 8-18 and S,M,L. Juniors' 3-13 and S,M,L.</small></p>	<p><b>Take an Additional 25% Off Large Selection Men's Long Sleeve Dress Shirts</b></p> <p><small>Save on styles by Van Heusen®, NoFads® and our own Anthony's® brand. Choose from assorted colors and patterns. Sizes 15-17 1/2.</small></p>
<p><b>Take an Additional 25% Off Entire Stock Children's Fall and Holiday Dresses</b></p> <p><small>Save on our entire stock of fall and holiday dresses for infants' 12-24 months, toddlers' 2-4T and girls' 4-6x and 7-14.</small></p>	<p><b>Take an Additional 25% Off Select Group Women's Dress and Casual Shoes</b></p> <p><small>Step out in style with savings on selected shoes including our 7 N. Broadway® fashion pump featuring the flex sole for all day comfort. In black, taupe, navy or red. sizes 5 1/2-11M, 7-9N.</small></p>	<p><b>Take an Additional 25% Off Women's Fall and Winter Fashion Sleepwear</b></p> <p><small>Choose from a wide variety of gowns, robes and fashion fleece loungewear. Made from warm winter blends including soft flannels. Assorted colors. Women's sizes.</small></p>
<p><b>Take an Additional 25% Off Large Group Toddlers' and Girls' Fashion Sweaters</b></p> <p><small>Save on selected fashion sweaters for toddler girls and boys and for girls' sizes 4-6x and 7-14. Choose from assorted styles and colors.</small></p>	<p><b>Take an Additional 25% Off Large Group Men's Casual and Fashion Pants</b></p> <p><small>Choose from a wide variety of styles. Made from cotton and cotton-polyester blends in assorted colors. Sizes 28-36.</small></p>	<p><b>Take an Additional 25% Off Select Group Men's Long Sleeve Sport Shirts</b></p> <p><small>Choose from a wide variety of styles in your choice of button-down and spread collar styles. Men's sizes S,M,L,XL.</small></p>

<p><b>Take an Additional 25% Off Women's Handbags, Small Leather Goods and Accessories</b></p> <p><small>You'll find terrific savings on selected handbags, billfolds, check clutches, belts, scarves and more. Assorted styles and colors.</small></p>	<p><b>Take an Additional 25% Off Men's Fashion Fleece Separates and 2-Piece Jog Suits</b></p> <p><small>Save on fleece tops and bottoms or fashion jog suits. Choose from a wide variety of styles and colors. Men's sizes S,M,L,XL.</small></p>	<p><b>Take an Additional 25% Off Special Group Men's Long Sleeve Knit Shirts</b></p> <p><small>Save now on a large group of long sleeve knit shirts in your choice of styles and colors. In men's sizes S,M,L,XL.</small></p>
---	--	---

## Plus These Special Purchase Values!

Special Purchase Values listed below do not qualify for an additional 25% Off

<p><b>Juniors' Fashion Knit Tops and Leggings</b></p> <p><b>Your Choice 7<sup>97</sup></b></p> <p><small>Tops, Reg. 14.99 and 16.99. Choose from assorted tops in 100% cotton or cotton-polyester blends. Sizes S,M,L. Leggings, Reg. 12.99. Made from polyester-cotton knit with an elastic waist. Assorted colors. Sizes S,M,L.</small></p>	<p><b>Women's Knit Tops and RLM® Pants</b></p> <p><b>Your Choice 8<sup>97</sup></b></p> <p><small>Tops, 14.99. The dolman sleeve top is 100% polyester and features a crewneck and banded bottom. Sizes 8-20. Pant, Reg. 12.99. The RLM® casual pant has a full elastic waistband and comes in assorted solid colors. 8-20.</small></p>
<p><b>Women's Pykettes® Long Sleeve Blouses</b></p> <p><b>Sale 12<sup>97</sup></b></p> <p><small>Reg. 19.99. Made from 100% polyester for easy care. Choose from solids and prints in fashion and holiday colors. Sizes 8-18.</small></p>	<p><b>Spencers® Toddlers' Training Panties</b></p> <p><b>Sale 3 for 2<sup>97</sup></b></p> <p><small>Reg. 1.29. Made from 100% cotton with triple thick absorbent panel. In pastel colors. Reg. 1.99 each. <b>Sale 3 for 3.97</b></small></p>
<p><b>Women's Haggard® Reflections® Pants</b></p> <p><b>Sale 15<sup>97</sup></b></p> <p><small>Reg. 24.99. Made from 100% Dacron® Viscose® polyester. Belted pant has a plain front. In basic and fashion colors. Sizes 8-18 petite and 8-20 average.</small></p>	<p><b>Entire Stock Teddy Bear® Bedding</b></p> <p><b>25% Off</b></p> <p><small>Sale 5.24 to 22.49 . . . Reg. 5.99 to 29.99. Save on sheets, bumper guards, duster, comforters, blankets and much more.</small></p>
<p><b>Juniors' 2-Piece Fashion Fleece Sets</b></p> <p><b>Sale 12<sup>88</sup></b></p> <p><small>Reg. 22.99. The long sleeve pullover tops and pull-on pants are made from 100% acrylic and come in assorted colors. Junior sizes S,M,L.</small></p>	<p><b>Selected Fashion Comforters</b></p> <p><b>Sale 19<sup>97</sup></b></p> <p><small>Reg. 24.99 to 34.99. Made with a polyester-cotton face and nylon ticoat backing. In twin, full, queen and king sizes.</small></p>
<p><b>Girls' Hanes Her Way® 3-Pack Cotton Panties</b></p> <p><b>Sale 2<sup>97</sup></b></p> <p><small>Reg. 3.49. HANES HER WAY® 100% cotton panties come in your choice of white, colors or fashion prints. In girls' sizes 4-14.</small></p>	<p><b>Cannon® Convolted Mattress Pad</b></p> <p><b>Sale 10<sup>97</sup></b></p> <p><small>Full, Reg. 19.99 . . . 13.97 Queen, Reg. 24.99 . . . 16.97 Twin, Reg. 15.99 . . . 10.97 King, Reg. 29.99 . . . 19.97</small></p>
<p><b>Rest Easy with Suzanne Bed Pillows</b></p> <p><b>Sale 2 for \$7</b></p> <p><small>Reg. 3.99 each. The ticking is an 80% polyester-20% cotton blend with a 100% polyester fill. In blue or beige. Standard sizes only.</small></p>	<p><b>Coordinating Percalé Sheet Sets</b></p> <p><b>Sale 9<sup>97</sup></b></p> <p><small>Full Sheet Set, Reg. 19.97 . . . 14.97 Queen Sheet Set, Reg. 25.97 . . . 19.97 Twin, Reg. 13.97 . . . 9.97 King Sheet Set, Reg. 29.97 . . . 24.97</small></p>

Mon. - Sat.  
9:00 - 6:00 p.m.

Sale prices effective through January 21, 1990.



321 Main Muleshoe 806-272-3478

# ANTHONY'S

We're Good at Making You Look Great!

### Iva Mae Burke Funeral Services Held At Morton

Funeral services for Iva Mae Burke, 81, of Morton were held at 11 a.m. Tuesday, Jan. 16 in the First Missionary Baptist

### Mrs. Martinez Funeral Services Held Thursday

Rosary for Antonia Hernandez Martinez, 78, of Morton was celebrated on Tuesday and Wednesday in Ellis Funeral Home Chapel at Morton. Funeral services were conducted at 11 a.m. today, Thursday, January 18 in St. Ann Catholic Church with Father George Therkedam, pastor, officiating.

Burial was in Morton Memorial Cemetery under the direction of Ellis Funeral Home of Morton. Mrs. Martinez died at 9:05 p.m. Monday in the Methodist Hospital at Levelland.

Born May 10, 1911, in Bastrop, she had been a resident of Morton since 1940, moving there from Cotulia. She was a homemaker and a member of St. Ann Catholic Church at Morton. She married Baldo L. Martinez on Nov. 16, 1929, in Bastrop.

Survivors include her husband, Baldo; a daughter, Estella Flores of Morton; a son, Baldo Martinez of Altan; a sister, Santos Gonzalez of Wisconsin; a brother, Fermin Silveira of Wisconsin; 42 grandchildren; 40 great grandchildren; and five great great grandchildren.

### Dixie Barnes Funeral Services Held Monday

Funeral services for Dixie M. Barnes, 95, were held at 2 p.m. Monday, Jan. 15 in the Lazbuddie Methodist Church with the Rev. Charles Broadhurst, pastor of the First Baptist Church in Friona, officiating, assisted by the Rev. Don Kimbrough, retired Baptist minister from Friona.

Burial was in Lazbuddie Cemetery under the direction of Ellis Funeral Home. Mrs. Barnes died at 4:50 p.m. Friday in Prairie Acres Nursing Home in Friona.

Born July 25, 1894, in Collin County, TX, she moved to Lazbuddie in the fall of 1931, from Anna, Collin Co. She was a homemaker and a member of the Lazbuddie First Baptist Church. Her husband, Perry Simpson Barnes died in 1949.

Survivors include three daughters, Mrs. Jimmie Seaton of Lazbuddie, Mrs. Joe S. Menefee of Friona, and Mrs. David F. Donnell of Richwood, TX; a sister, Mrs. Margaret Edwards of Clovis, N.M.; 22 grandchildren; 33 great grandchildren; and eight great great grandchildren.

Church of Morton with the Rev. Mike Hanks, minister of the First Assembly of God Church, officiating.

Burial was in Morton Memorial Cemetery under the direction of Ellis Funeral Home. Mrs. Burke died at 9:45 a.m. Sunday in St. Mary's Hospital in Lubbock.

Born February 23, 1908, in Stidham, Okla., she moved to Morton in 1926, from Hanna, Okla. She was a retired store clerk retiring from St. Clairs Department Store, and a member of the First Missionary Baptist Church. She married Shelton (Jack) Burke on March 11, 1929, in Portales, N.M.

Survivors include her husband, Jack; four sons, Buster Stevens of Clifton, Kenneth Burke of Morton, Dwayne Burke of Sapulpa, Okla. and Penn Tom Burke of Morton; two sisters, Hazel Holloman of Lubbock, and Rosie Smith of Morton; 10 grandchildren; 14 great grandchildren; and a great great grandchild.

### Senior Civics Class To Present Assembly Program

Celebrating the 200th birthday of the Bill of Rights, the senior civic students of Muleshoe High School will present an assembly program in the Muleshoe High School auditorium this morning, Thursday, January 18 at 10:45. Each of the four civic classes, under the sponsorship of their teacher, Mrs. Jean Allison, will present a short skit demonstrating one of the different rights covered in the Bill of Rights.

Through dream sequences, the students will dramatize some of these freedoms and what could happen if these rights are not protected and appreciated. It is the belief of the students that many Americans do not understand these freedoms, and they are hopeful that this program will bring a wider appreciation for these personal freedoms.

The public is extended a special invitation to attend this assembly program on Thursday, January 18 at 10:45 a.m.

Air Force has picked sites for rail-based MX.

**Muleshoe Journal** USPS 367-820  
Established February 23, 1974. Published by Muleshoe Publishing Co., Inc., Every Thursday at 304 W. Second, Box 449, Muleshoe, Texas, 79347. Second Class Postage Paid at Muleshoe, Texas, 79347.

**Member 1990  
TEXAS PRESS  
ASSOCIATION**

L. B. Hall, Publisher  
Sammye Hall, Vice President/Controller  
Cleta Willis, News  
Evelyn Harris, Society  
Holly Millsap, Advertising  
Dora Toussan, Classified

**SUBSCRIPTIONS**  
Muleshoe Journal and Bailey County Journal  
Both in and surrounding counties  
\$4.75

Muleshoe Journal and Bailey County Journal  
Outside Texas, \$16.50  
Yearly By Carrier  
\$12.50

Advertising Rate Card on Application

\*Advertisers should check their ad the first day of insertion. The Journal will not be liable for failure to publish an ad or for a typographical error or errors in publication except to the extent of the cost of the ad for the first day insertion. Adjustment for errors will be limited to the cost of that portion of the ad where the error occurred.

**SONIC**

**BROWN BAG SPECIAL**

THE BROWN BAG SPECIAL FROM SONIC!

- TWO BURGERS!
- TWO FRIES!
- TWO MEDIUM DRINKS!

PACKAGED HOT 'N READY TO EAT IN OR CARRY OUT FOR JUST...

**\$4.49**

PLUS TAX

W. Amer. Blvd.  
272-3998

©1990 SONIC INDUSTRIES INC.

**SONIC**  
FASTER & BETTER THAN EVER!



## Journal Files

### 60 Years Ago

#### 1930 COUNTY ROAD FUND TO GET 1930 AUTO LICENSE FEES

All the taxes collected from automobiles, truck, trailer and other motor vehicle registrations for the year of 1930 in Bailey County will go into the county's road and bridge fund, augmenting it several thousand dollars over income of previous years, Bailey County taxpayers will be glad to learn. This new law was passed by the last legislature and in only a few large counties of the state will any of the funds go to the state for expenditure by the highway commission.

### 50 Years Ago

#### 1940 BEAVERS SPECIALS FRIDAY AND SATURDAY

Bananas 4 cents pound; mixed nuts 18 cents pound; onions, 5 pounds 10 cents; 14 ounce bottle catsup 10 cents; sour pickles 14 cents quart; peanut butter 25 cents quart; hominy 2-2 pound cans 15 cents; grapefruit juice 46 ounce can 15 cents; 3 No. 2 cans tomatoes 25 cents; 3 dozen oranges 25 cents; lettuce 4 cents head; celery 10 cents bunch; Irish potatoes 10 pounds 19 cents; salad dressing 22 cents quart; and strawberry preserves 2 pounds 35 cents.

### 40 Years Ago

#### 1950 DALLAS FIRM GETS CONTRACT FOR CONSTRUCTION NEW CO-OP BUILDING

Contract for construction of a new headquarters building in Muleshoe for Bailey County Electric Cooperative Tuesday was awarded to Dolph Construction Company, of Dallas.

The new building will go up on lots owned by the cooperative at the corner of East First Street and Avenue B in Muleshoe. This is only a half block east of the postoffice, one block east of Main Street. Plenty of parking space will be available around the building.

The new building will be modern in every particular, and will be the pride and joy of the membership and a source of pride to everyone in the community.

The cooperative was organized in 1938, began operations in 1939. It now has 2535 members and has a total investment now of \$1,458,286.12.

### 30 Years Ago

#### 1960 CALVARY BAPTIST FIRST SERVICE IN NEW CHURCH HOME SET SUNDAY

The Calvary Baptist Church is in the process of moving into their new building located on West Ave. C and 18th St.

The first services in the new location will be held Sunday, Jan. 17. The Sunday school begins at 10 a.m., and the morning worship begins at 11:30 a.m.

with the evening worship service beginning at 7 p.m.

Construction on the new church began last July using volunteer labor from the membership along with the hiring of some of the work done they have progressed far enough along that now services can be held in the new building in comfort, though the building is not finished.

The building when finished, will have beautiful pink Palo Duro brick on the outside with beautiful interior decoration.

There is plenty of off street parking space on the lot east of the building adjoining the lot which the building is on.

### 20 Years Ago

#### 1970 CENSUS WORKER APPLICATIONS BEING ACCEPTED CLARENCE E. MASON ANNOUNCED

Clarence E. Mason has announced that applications will be accepted from 45 county residents to work as census takers in Bailey County.

The workers will contact county residents for the 1970 census and fill in report forms for the government.

Mason said all applicants should be available to work 30-40 hours per week and a phone and car are mandatory. Those chosen will be paid \$2 an hour and the county crew chief will be paid \$2.50 per hour.

Monday noon is the deadline to apply for a position as 1970 census taker. A written test will be administered all applicants.



MRS. GARCIA'S ROOM RECEIVES CHECK---(Front Row From Left) Eric Posadas, Melissa Aguirre, Kala Johnson, Jeremy Tosh, Miguel Martinez, Barbara Morales; (Second Row) Vicky Martinez, Black Gartin, Lela Hancock, Michael Martinez, Kyla Hahn, Christi Adrian, Dusty Elliott, Jesse Reyes (Back Row) Leesa Gable, Manuel Flores, Crystal Wheeler, Laramie Wood and Greyson Rennels are all in Mrs. Garcia's class at Dillman Elementary. Last week Beverly Parker presented the class a check for having the largest number of parents sign up for PTA. (Journal Photo)



FUN AT THE BEACH---Two kindergarten classes at Dillman Elementary School were treated to a winter day at the beach last week. All of the students took their bathing suits, sun glasses and beach towels and enjoyed the day at the beach (in cafeteria) complete with hot dogs and all the trimmings. (Journal Photo)

### Muleshoe Firemen's Auxiliary News

By Ann Clements

On January 15, 1990 at 7:30 p.m. on Monday night, the Firemen's Auxiliary had their monthly meeting.

Nine members were present out of fifteen. The present members are hoping for more members to attend next month.

The new officers began their year term: they are Becky Churchman, president; Renee Rudd, vice president; Cindy Magby, secretary; Mary Wauson, treasurer, Linda Tosh, scrap book and Ann Clements, reporter. Renee Rudd will be in charge of the telephone committee.

The bi-laws will show change of meeting time: Second Monday of the month at 7:30 p.m.

Bi-laws two, three and nine

will be combined and clarified.

The Auxiliary's Sweetheart for 1989, was chosen. He was chosen for the outstanding work in the fire department for helping the auxiliary. His name will be revealed next month. His name will be added to our plaque.

It was voted to have Cindy Magby demonstrate the art of painting on T-shirts. If any member wants to learn bring a shirt to the next meeting.

Door prize was won by Deana Rasco. She will bring the door prize next month.

Linda Tosh and Renee Rudd brought refreshments which were enjoyed by all. The meeting was adjourned.

Balanced judgment is the difference between wisdom and foolishness.

The human being who seeks the truth has a long way to go.

## Pep Ex-Students Plan Annual Homecoming

The Pep Ex-Students Association extends a cordial invitation to all former students, teachers, employees and friends of Pep to their 30th annual Homecoming on Saturday, January 27 said Ida Simmacher.

Registration will begin at 5 p.m. The registration name card will serve as the banquet ticket. The price will be \$5.00.

A catered meal will begin at 6:30, which will be followed by a meeting of the Ex-Student's Association with president Gery Franklin presiding. Recognitions will be made by Alice Kester.

Classes of 1933, 1943, 1955, 1963, 1973, and 1983, will hold their class reunions, which will begin at 2:30 p.m.

The Ex-Students Association will award a \$300 scholarship to a high school graduating boy and girl, to be paid to the colleges of their choice. To be eligible, the senior or parent must be an ex-student of Pep, and must attend Homecoming to register for the scholarship. The publicity committee would appreciate being contacted as soon as possible as to whom is eligible for the scholarship, as they wish to recognize these students.

A country and western dance with music provided by the Panhandle Drifters from Amherst will last from 9 p.m. to 1 a.m. The public is invited and we encourage everyone to

attend" Ms. Simmacher continued. Tickets will be \$5 per person.

"We would like this Homecoming to be the best ever, so we encourage everyone associated with Pep to make the effort to return home" said Ms. Simmacher.

Anyone needing information should contact Ida Simmacher at 933-4344, Anna Belle Walker at 933-4696, or McLinda Hughes at 933-4627.

### NOTES, COMMENT

Too much hard work kills the desire to play.

Real service: Filing a small job as if it were a big job.

The best way to sleep soundly is to live sensibly and think sanely.

The hardest task in life is to refuse to be tempted by false honors.

### Friendship Club

The Friendship Club met Thursday, Jan. 11 in the home of Pauline Guinn, hostess, with Sammie Ethridge as co-hostess.

Mrs. Guinn, president, called the meeting to order. Roll call was answered by giving a Bible verse or a New Year's resolution. Minutes of the previous meeting were read and the treasurer's report was given by Gladys Darsey, secretary/treasurer.

Following the business session, refreshments were served to the following members and Wilma Smith, a visitor; Rob Damron, Jewell Griffith, Adelyn Swafford, Maud Young, Gladys Darsey and Pauline Guinn and Sammie Ethridge.

The meeting was closed with a prayer by Maud Young.

*Friends and relatives, in what ever way you may have shared the celebration of J.C and Odessa Shanks' fiftieth wedding anniversary, we thank you for making it a happy and memorable occassion.*

J.C and Odessa Shanks  
Gerald and Family  
Donald and Family

JUST ARRIVED...Peavey PA Systems

SP2A Speakers	\$400.00 ea.
SP3 Speakers	\$350.00 ea.
CS400 Power Amp	\$500.00 ea.
CS800 Power Amp	\$700.00 ea.
MDII Stereo Mixer	
8 channel	\$700.00 ea.
12 channel	\$1,000.00 ea.

Gibson Epiphone Guitars | All Peavey Guitars 25% OFF

Save up to \$200.00

PA Systems For Church Installation Also  
Prices Good Thru January 27th

Baldock's Music note

416 1/2 MAIN | 762-6775

• INTRODUCING •

# Weight Watchers® New...

Wouldn't it be wonderful if you could keep right on eating the foods you love, living the same lifestyle, and still lose weight FAST? That's exactly what Weight Watchers incredible new FAST & FLEXIBLE Program is all about.

Go to your favorite restaurant, go to parties, enjoy your everyday life with family and friends while eating three delicious meals plus an evening snack. Yes, it's all part of Weight Watchers new Fast & Flexible Program. It's the smart way to lose weight and keep it off!

So, get smart...get started...join Weight Watchers today!

JOIN NOW FOR ONLY... **\$14**

Registration Fee ....\$19.00  
First Meeting Fee ..\$ 9.00  
Regular Price .....\$28.00

YOU SAVE \$14.00  
Offer ends January 27, 1990

Sheila Falk, Area Director

Come to the Weight Watchers meeting nearest you.

MULESHOE  
The Old Corral  
1008 West American Blvd.  
(Lunch Purchase Required)  
Wed. 12 Noon

MULESHOE  
AMERICAN BLVD.  
CHURCH OF CHRIST  
2201 W. Amer. Blvd.  
Monday 5:30 p.m.  
Opening January 22

NOTHING WORKS LIKE WEIGHT WATCHERS!  
CALL TOLL FREE 1-800-359-3131





**CLASS RECEIVES CHECK**---Mrs. Carol Williams' class at Dillman Elementary received a check last week from the Elementary P.T.A. for having the next largest number of parents sign up for P.T.A. Back Row From Left: Christopher Seymore, Zack Barrett, Chris Otwell, Tommy Barrera and Raul Sanchez. Middle Row: Sandra Manriquez, Westin Price, Adrienne Ashford, Dan Williams, Arturo Perez, Lupita Franco, Raymona Toscano and Moises Garcia. On Knees: Lindsey Altman, Cade Hooten, Roxann Garcia, Penny Churchman, Jesus Tovar and Shari Alanis. (Journal Photo)

### Mr And Mrs J.C. Shanks Celebrate Anniversary

One hundred and fifteen friends and relatives of Mr. and Mrs. J.C. Shanks attended their 50th wedding anniversary reception on Sunday, January 14 between the hours of 2 and 4 p.m.

Hosting the occasion were their children and grandchildren: Mr. and Mrs. Gerald Shanks of Muleshoe; Mr. and Mrs. Donald Shanks, Tonya and Tim of Springdale, Ark. and Mr. and Mrs. Jeep Shanks, Nikki and Kami of Sunray.

The registry table was covered with a white cloth and lace topper and accented with a brass candlestick and a small pair of white doves. Brenda Robiison presided at the table.

Covering the serving table was a floor length taffeta cloth and battenburg lace runners. At the center of the table were three brass candlesticks with crystal votive cups, a white Bible on a brass easel opened to Matthew 19:4-6 and a small pair of white doves. Crystal appointments were used to serve the tiered wedding cake, pineapple punch, nuts and mints. Granddaughter, Tonya Shanks and granddaughter-in-law, Patricia Shanks served the guests.

Family photographs were on display as well as the many greeting cards the couple received. Cards took to the reception by guests were taken to the special table by great-granddaughters, Nikki and Kami Shanks.

Members of Shank's family in attendance were his sister, Elsie Tarr of Farwell, a niece, Jean

Ellis of Hart, and a cousin and husband, Grace and J.B. Bates of Pep, N.M.

Out of town relatives of Mrs. Shanks' family who attended were her sister, Juanita Aiman of Riverside, CA; her brother and wife, Cleo and Ruby Vaughn, a sister-in-law Tiddle Vaughn and two nieces, Linda Webb and Gaynelle Brown, all of Amarillo,



**MIGRATE TEACHER HONORED**---After ten years of service at the Texas Migrate Center in Muleshoe, Esther Contreras has resigned and is moving to San Angelo where she will return to college, majoring in journalism in order to write childrens books. Ms. Contreras began her career with Texas Migrate Center while still a teen ager and has worked with the program as Center Director, two years; head teacher, four years; and teacher, three years. In the winter the center has approximately 30 children ranging in age from three to five years. In the summer months approximately 65 children attend the center, ranging in age from six weeks to six years. The program serves migrant and seasonal families. During a reception in her honor, Nancy Kidd, manager of the Muleshoe Chamber of Commerce and Agriculture, presented her a plaque. (Journal Photo)

### Kindergarten

#### Classes Enjoy

#### Day At Beach

The children in Mrs. Boyd and Miss DePalma's kindergarten

classes ended a unit of study about winter by celebrating Winter Beach Day.

Mrs. Boyd and Miss DePalma felt that this helps students recognize a difference between cold and warm weather activities. And that it is also a way to end

the hum drum of a long winter of staying inside, it motivates the children to be watching for warmer weather and to look forward to spring.

The children celebrated by a picnic of hot dogs, chips, lemonade, fruit, and "Snow Food". This is food that is white in color such as pop corn and marshmallows.

All of the children took beach towels, sunglasses, water toys, swimsuits and just about anything you would take to the beach. Everyone shared the food they took and picniced on their beach towels. Everyone enjoyed the winter beach day.



**HAVING FUN AT SCHOOL**---These kindergarten students at Dillman Elementary School seem to enjoy a winter day at the beach, in cafeteria, completing a unit of study on winter. (Journal Photo)

### Muleshoe Singing Group

The Muleshoe Singers met Saturday, Jan. 13 in the fellowship hall of the Trinity Baptist Church at 7 p.m. Marvin Sowder from Earth gave the invocation.

There were 23 present including seven from Earth, one from Farwell, and seven from Clovis, N.M.

"Mrs. Odessa Shanks was on the sick list" said Clara Coffman. "We missed her, not being able to help with the music."

Mrs. Ann Miranda from Earth and Mrs. Maydell Pope from Clovis, N.M. played the piano for the Clovis quartet.

Art Purman took his accordion and accompanied Mrs. Opal Blackburn playing the piano. They played several numbers. "We enjoyed the accordion also quartet from Clovis and the quartet from Earth" Mrs. Coffman continued.

Clarence Pope from Clovis, N.M. gave the benediction.

"Come and join us we think you will enjoy the gospel singing" Mrs. Coffman added.

#### GOLDEN GLEAMS

Train a child in the way he should go; and when he is old he will not depart from it.

---Proverbs 22:6.

A child tells us in the street what its father and mother say at home.

---The Talmud.

Teach your child to hold his tongue; he'll learn fast enough to speak.

---Benjamin Franklin.

If there must be trouble let it be in my day, that my child may have peace.

## Grooming Services

by Keva Peterson



Starting January 22, 1990 Monday thru Friday 8:00 a.m. to 6:00 p.m.

Complete grooming of all breeds by appointment only!

**Keva Peterson**

315 W. Ave. K.

272-3473

## Notice To All Taxpayers

Pursuant to Section 31.02 of the Texas Property Code, all 1989 taxes will become delinquent on February 1, 1990. Additional penalty and interest will be added if not paid by this date.

**Bailey County Appraisal District**

104 E. Ave. C.

Muleshoe

272-5501

# Mid-January Sale

Golden West



**Antifreeze**

6<sup>99</sup> Gal.

Exide



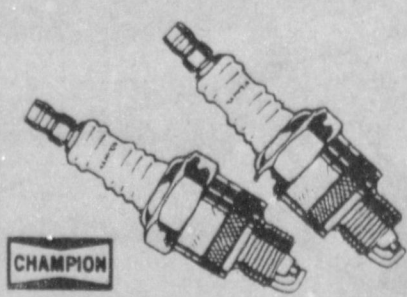
**Batteries**

40 Month..... 34<sup>88</sup>  
50 Month..... 39<sup>88</sup>  
60 Month..... 49<sup>88</sup>



Havoline Motor Oil 10-30, 5-30, 10-40

87¢



Resistor Spark Plug Sale 1<sup>09</sup> Each. Sizes for most domestic cars.  
Non-Resistor Spark Plug Sale 99¢ Small engine spark plugs not included.



97¢

WD-40 Penetrating Spray. Stops squeaks almost anywhere. Penetrates and frees binding parts. 6 oz. aerosol can. (723-4198)

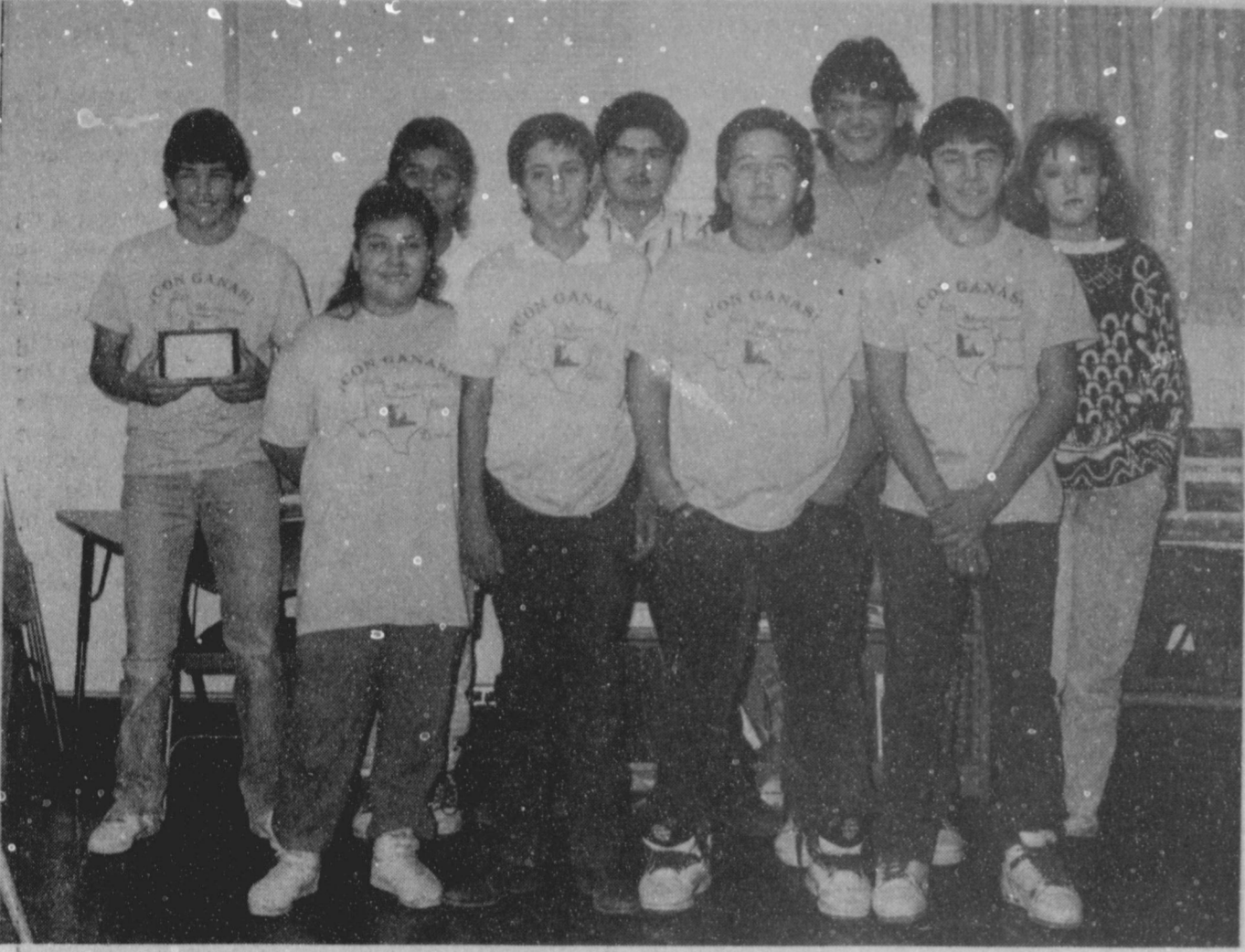
**P O Y N O R S**

103 Main

Muleshoe

272-4552





**THREE WAY STUDENTS RECEIVE AWARDS**--Gerrardo Guitron, Three Way High School freshman, far left, received a plaque as "Most Improved" boy at camp near Floydada last weekend. The other students, not in order, are Victoria Gandara, Luis Fierro, Luis Haros, Albert Mendoza, Melissa Bennett, Jesse Gutierrez, Johnny Salazar and Joaquin Gutierrez, all received certificates for their participation in the Life Management Skills Retreat. (Journal Photo)

### Rotary

Cont. From Page 1

The speaker said Texas Tech was very business-like preparing for the bowl game, but said the first five games for next fall will be on the road.

First game for the Raiders will be against Ohio State and they will play the Miami Hurricanes in Lubbock on October 27.

In 1992, the opening game for the Red Raiders will be against the Oklahoma Sooners. In 1994, added Chambers, the Red Raiders will play Nebraska and Oklahoma back to back.

He also talked about the Old Sambo's Restaurant now being the Red Raider Club with 5,100 sq. ft. It includes a gift shop, that between September 9-January 10, sold over \$20,000 in gifts.

He said that when the Red Raider coaches come to Muleshoe for Red Raider Day, they will be bringing gift items to

### Warren...

Cont. From Page 1  
the farming industry and Fern being employed by the First Bank.

"As your County Judge, I believe Muleshoe and Bailey County can continue to be strong. Fern and I would like to be a part of this continued growth.

"As your County Judge, I will always be of service to you. The Judge's office will be open to all citizens of Bailey County.

"Your vote and influence will be appreciated in the coming elections.

"Thank you,  
James Warren  
Candidate for County Judge"

Muleshoe to sell.

Chambers also said, "We are always looking for new members. You don't have to be a Texas Tech graduate," he commented, "you just have to be a Texas Tech fan."

Chambers also gave membership costs. For \$25 per year, you can be an associate member; and the \$100 membership brings added benefits.

He also talked briefly about the basketball season for both male and female players and talked some about the upcoming baseball and track seasons.

Prior to the guest speaker's comments, President Terry Hutto asked Scott Campbell to report on the 90 Percent Club fajita dinner last Thursday night, and Campbell talked about how good the food was.

Two Rotarians said their names were left off the news release about the club. Not attending the fajita dinner, but also members of the 90 Percent Club are Jerry Hicks and Max King.

On July 4, a name of a lucky

### Council...

Cont. From Page 1  
tentative approval of district lines was given, and the proposal will now return to the attorneys representing the local men who have asked for the re-districting of the city.

It is expected to take some more dialogue, and planning before the new district lines are finally approved.

winner will be drawn. The winner of the Rotary Give-Away will have their choice of a trip to Hawaii or \$1,000 in Rotary Bucks, which can be spent in Muleshoe.

President Hutto also talked briefly about the March Track Meet in Muleshoe, and possible plans for that activity.

He also read an article from the January 10 edition of *The Wall Street Journal*. The *Journal* in a front page story, said the very "first" Rotary Club in U.S.S.R. has been established in

an communist country has been established in Warsaw.

Herb Parks was winner of the Polio Plus drawing.

Visitors at the meeting included Farwell visiting Rotarians Walter Hughes and Mark Williams. Other guests were Steve Shields, Glen Watkins, Fred Maxcey and Rotary Ann Judy Watson.

### Muleshoe...

Cont. From Page 1

States L.S.T. Association, P. O. Box 8769, Toledo, Ohio 43623; or contact: Bob Garner LST 461, HC 52, Box 362, Hemphill, TX 75948 (409) 579-3732. \*\*\*

### BEST OF PRESS

#### Pedal Pinchers

Shoe salesman to woman customer: "Let's start with the larger sizes and work down until we get that stab of pain we're looking for."

-Des Moines Tribune.

## Commissioners

Cont. From Page 1

required to attend school, pass tests and become state-certified as are the emergency personnel at the ambulance service, it was pointed out in commissioners court.

Judge Watson also told commissioners that Fitzgerald had informed him that the volunteers could not answer emergency calls after 5 a.m. on workdays, as each volunteer is employed elsewhere.

The judge suggested to commissioners that the county pay for volunteers to attend an EMT class, which will cost about \$300 per potential EMT, he said.

Then, according to the judge's presentation, as classes must have 15 students, the expected completion rate is around 10, who finish the school and receive their certification.

He explained to commissioners

### Three Way Students

### Win Certificates,

### Plaque At Retreat

The Region XVII Service Center sponsored a Life Management Skills Retreat at a camp near Floydada January 12-14. Gerardo Guitron, a Three Way High School freshman, received a plaque for "Most Improved" boy at camp.

Recipient of the award was chosen by all the other students who participated in the retreat from surrounding area schools, Loop, Lockney, Plainview, Seagraves, Spur and Three Way.

Victoria Gandara, Luis Fierro, Luis Haros, and Albert Mendoza, junior high students, all received certificates for their participation at the LMS Retreat.

Melissa Bennett, Jesse Gutierrez, Johnny Salazar, all junior high school students, and Joaquin Gutierrez, high school freshman, also received certificates for their participation in the LMS Retreat that took place December 8-10, 1989.

The students were accompanied by Ron Walker, principal; Frances Duarte, MSRTS Record Clerk; and Bobby Soliz, maintenance.

that the volunteers could then make 30 ambulance calls each, free, to pay the county back for their school. He estimated it would cost \$5,000 to have such a school conducted.

Although he said it would not eliminate the present 14 volunteers who serve the ambulance service, "it would provide free ambulance calls for approximately 10 months while new volunteers made 'free' ambulance calls to pay back their schooling.

R. L. Scott, commissicner for Precinct One questioned "How will this affect our ambulance service?" He received no answer to his question.

On questioning, the judge said he had not consulted with Bailey County Ambulance director Dr. Bruce Purdy, who reserves the option to approve any emergency personnel who work on the ambulances under his license.

After a lengthy discussion, it was suggested by Commissioner Joey Kindle that such a proposal be studied further before any decision was made.

It was noted that most of the volunteer ambulance personnel

### She Stops to Conquer

The man next door says his daughter has now reached the age where she is attracted to the simple things in life--boys.

-The Cleveland Plain Deal.

do not keep their checks received for ambulance calls for personal use. Most of them donate their checks for ambulance calls to the Bailey County EMS organization to help add new equipment to the two ambulances operated in Bailey County.

### Education...

Cont. From Page 1

certificate is awarded to you in appreciation of your dedication to education in the Muleshoe Independent School District for the 1989-90 school year. The appreciation and indebtedness of the administration and the professional staff are herein gratefully acknowledged."

The ten recipients, listed in alphabetical order, as the awards were presented, included: Alex Duran; Cleta Williams, Bailey County/Muleshoe Journals; Tom Crane, KMUL Radio; Donald Harrison, Muleshoe Fire Department; Bob Donaldson, Pay-n-Save grocery; Stacy Davis, Pizza Hut; Tommy and Margie Merritt, Sonic Drive In; Bill Gilbert, Thriftway grocery; and Judy Watson, West Texas Ranger.

Dr. Ward said the top vote-getter was the Sonic Drive-In.

Runners-up for the award, in alphabetical order were Jimmy Cabrera, Houston; Dairy Queen; Dr. Robert Lepard; and the Muleshoe Police Department.

The superintendent concluded by expressing the appreciation of the school, all the administrators and the community for the businesses, and congratulated them on their awards.

### Thank You

We are so thankful for the many acts of love and kindness you have shown our family during our time of sorrow. The visits, food, flowers, cards, and prayers have been so helpful in sharing a burden that would have been impossible to bear without our dear friends.

Our sincere and heartfelt gratitude.

Cap Goodwin

Bobby, Richard, Java, Bill, and families



## Attend The Annual Bailey Co. Junior Livestock Show

Friday & Saturday

January 19-20

Bailey County Coliseum



### Stock Show

### Schedule of Events:

Thursday, January 18

Stock weigh-in

Friday, January 19

4 p.m. - Swine Show

Saturday, January 20

9 a.m. - Sheep Show

1 p.m. - Cattle Show

Bailey County 4-H and Muleshoe FFA

Will Have A Concession Stand

Available Both Days.

Brought To You By:

**Farmer's Co-Op**

**Elevators**

Five Locations To Serve You

272-3448



# FULL MEAL DEAL!™



**\$2.69**

SALE PRICE  
JANUARY 1-28, 1990  
At participating Dairy Queen stores

With the Full Meal Deal, you get a juicy 1/4 lb. Homestyle® Hungr-Buster®, golden fries, a 16 oz. soft drink, and a 5 oz. Dairy Queen sundae.

ON SALE IN



COUNTRY



# Market Development; Research On Corn Set

## TEXAS CORN-A PROFITABLE CROP FOR THE NINETIES?

New corn production problems present major challenges to Texas corn farmers in the new decade. "Solving the problems of aflatoxin, insects, diseases and marketing will require the unified support of all Texas corn farmers," according to Weldon Davis, Chairman of the Texas Corn Producers Board (TCPB). Davis is farmer at Hart, Texas. "Finding solutions will determine the future profitability of corn production in Texas," Davis added.

### CORN PRODUCTION IN TEXAS

Corn was a minor crop in Texas

## Patients in Muleshoe Area Medical Center

JAN. 11-15 THURSDAY

Avelina Belez, Gregoria Flores, Addie Lancaster, L.T. Johnson, I.M. Lambert, Ellis Scrifres, Scott Campbell, Rosie Toscano, Pauline Green, Gloria Orozco, Wilma Thompson, Jackie Harris and Julie Claunch

FRIDAY

Avelina Belez, Anthony Casanova, Addie Lancaster, I.M. Lambert, Ellis Scrifres, Rosie Toscano, Pauline Greene, Julie Gilliland and Jackie Harris

SATURDAY

Jeff Long, Princess Pineda, Billy E. Wall, Beatrice Gonzalez, Ona Coffey, Pauline Greene, Donna Hartline, Addie Lancaster and Gerasid Phipps

SUNDAY

Beatrice Gonzalez, Ona Coffey, Donna Hartline, Billy E. Wall, Addie Lancaster and Gerasid Phipps

MONDAY

Beatrice Gonzalez, Ona Coffey, Donna Hartline, Billy E. Wall, Addie Lancaster and Gerasid Phipps

until the early seventies but, with the introduction of new hybrids that were well-adapted to Texas climate and soil and with changes in production practices, it has become one of the major crops of the state. The state average annual production grew from a 39 million bushel average in 1970-1973 to an average of 162 million bushels for the period of 1976-1979. This four-fold increase came so fast that it created many marketing problems. Surplus stocks, with prices below the cost of production, threatened the new crop. The challenge facing Texas corn farmers was to find new markets for their crop and, at the same time, work for programs that would control the price-depressing surplus.

The rapid increase in Texas corn production was, at first, concentrated in the Texas High Plains. In 1980, fifty-nine percent of Texas production was grown within a seven-county area. The far-sighted growers in this area voted to establish the Texas Corn Producers Board to develop new corn markets and fund research that would make corn production more profitable.

The attraction of the newly-developed markets increased corn planting in other areas of the state. At the time, the use of the government ARP reduced the High Plains acreage. Now the TCPB area produces about 31 percent of the state's total. Major corn production has spread to the Blacklands, Gulf Coast, and Lower Rio Grande regions.

### TCPB SUCCESS

It is no accident that, within the seven-county TCPB area, about 30-35 percent of the production is contracted for food uses at premiums ranging from \$1.25 to \$2.00 per cwt. above regular market prices. A major corn refinery producing corn starch and fructose is located in the TCPB headquarters town of Dimmitt. At this time, another corn food product plant is under construction in the area. It will

start by contracting about 25,000 acres. Harç work, effective TCPB leadership, and producer support in the TCPB area made it happen.

### MARKET DEVELOPMENT AND RESEARCH

Texas has many areas that can produce food grade corn. With climatic conditions just right to produce high quality corn, Texas has an excellent potential for developing markets, not only in Texas but throughout the world, for its premium corn. The interest in corn industrial uses continues to build, and with proper promotion and research, Texas producers can share in this growth.

In recent years, many innovations have made corn an attractive product to a wide range of industries. Ethanol, corn sweeteners, bio-degradable plastics, and a long list of new corn products are good for economic reasons. Even more important, many of them help to improve the environment and make a healthier world. Texas corn farmers can keep this momentum going for U.S. corn and, specifically, Texas corn. There are no limits to the potential if Texas corn farmers properly promote their crop through a statewide checkoff program.

### TCPB SEEKS TERRITORY EXPANSION

New problems have developed with the relocation of a major portion of Texas corn production to other regions of the state. New insects and diseases have adapted to corn. That, along with an explosive increase in aflatoxin, actually threatens the entire industry. Through research and education, these problems can be solved.

"Texas farmers have never backed away from their problems, but instead, have worked to solve them", Chariman Davis said. "Why should TCPB be limited to just seven counties? With the interest and concern shown by corn farmers in other Texas regions, TCPB believes these producers want, and will support, a statewide corn check-off program. Through research and education, production problems can be solved, old markets expanded, and new markets developed. It will be up to the

corn farmers to give the leadership and funding to make it work.

"The referendum, concluding April 4, 1990, will give Texas corn farmers the opportunity to determine whether or not they will have a statewide checkoff program. The success or failure of the referendum will determine the profitability of corn production in Texas for the next decade", Davis concluded. For additional information call 1-800-666-8506.

### Money Talk

By Charles B. Carson  
Dow Theory Forecasts

Most people would agree the crumbling of communism in Eastern Europe and improved relations with the Soviet Union have positive economic implications.

However, there are losers in this scenario; one is the defense sector.

Trimming of the defense budget -- estimates are that as much as \$180 billion could be cut from defense budget over the next 5-6 years -- will have serious ramifications for smaller businesses in the field as well as those tied to programs whose futures are now doubtful.

There will be survivors, especially firms tied to important programs and those involved in defense communications and surveillance activities.

Also, those defense contractors with diversified operations will be able to weather the storm.

## Parmer County Political Calendar

Parmer Co.  
Judge  
Leland Gustin

## Cotton Council To Demonstrate Project

In an effort to improve the flow of U.S. cotton to market, the National Cotton Council's Information Systems staff is providing industry members with a demonstration of the organization's Electronic Warehouse Receipt Pilot Project in Las Vegas this week.

The demonstration is part of an "Emerging Computer Technology Show-and-Tell" held January 11-12 at the 1990 Beltwide Cotton Conferences, sponsored by the Council, USDA and others.

Successful pilots of the Electronic Warehouse Receipt Project were begun by the Council in the fall of 1989 to determine the industry's ability to transfer fiscal receipts via computer. In the projects, only electronic receipts were used to record and transfer ownership of cotton bales. The Council furnished participants the necessary software and expertise to run it.

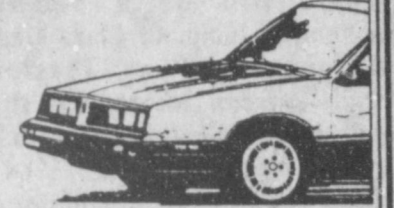
The warehouse participants in the pilot are Panhandle Compress in Quanah; and Rolling Plains Cotton Compress in Sweetwater. The electronic re-

ceipts are also being handled by Paymaster Gin in Quitaque, USDA-ASCS, several cotton merchants and four banks.

"Even though the project is on a very limited scale right now, we feel it has tremendous potential for streamlining the flow of cotton through the marketing chain," said Joe Wyrick, the Council's Information Systems director. "Demonstrating this system at the Beltwide Cotton Conferences and increasing industry awareness is a key step in helping us get this technology into industry members' hands much faster."



## Windshield Replacements



For

Full Size Chevy Pick-up '73-'87 Models  
**\$125<sup>00</sup>**

Full Size Chevy Pick-up '88-'90 Models  
**\$295<sup>00</sup>**

Full Size Ford Pick-up '80-'86 Models  
**\$145<sup>00</sup>**

Full Size Ford Pick-up '87-'90 Models  
**\$158<sup>00</sup>**

Prices Apply While Supplies Last

## Mohawk Auto Parts

1701 W. Amer. Blvd.

272-4425

## DOC STEWART ANNOUNCES THE ANNUAL WHITE SALE

LOW INTEREST RATES!

ALL '90 MODELS SPECIALLY PRICED!

**BUICK**  
DEALER INCENTIVES UP TO \$2000!

**CHEVROLET**  
REBATES UP TO \$1000!

**GEO**  
REBATES UP TO \$1000!

FIRST-TIME BUYER CASH BACK!

LIMITED TIME OFFER!

## DOC STEWART CHEVROLET • GEO • BUICK

2500 MABRY DRIVE

CLOVIS, NEW MEXICO

(505) 763-4465

## Doc Stewart Chevrolet -Buick -Geo of Clovis

Is Proud To Announce



Roy Whitt Has Joined Our Sales Staff

Roy Whitt is a longtime resident of the Muleshoe Area and has been in business in Muleshoe for over 30 years.

Roy invites everyone to stop by and see him at Doc Stewarts or call him at home, 272-3058, or on his mobile phone, 272-3505. For a Better Deal from a larger inventory

See Roy At

## Doc Stewart Chevrolet -Buick -Geo

2500 E. Mabry Drive

Clovis, N.M.

505-763-4465



## TFB Will Feature Meet-The-Candidate

A "Measure-the-Candidate" program involving 1990 gubernatorial hopefuls will highlight the Texas Farm Bureau Leadership Conference, January 21-23, at the Dallas-Fort Worth Airport Hyatt Regency Hotel.

The "measure-the-candidate" format will enable state and county Farm Bureau leaders to offer questions to gubernatorial candidates as they go into the primary campaign. The primary elections will be held March 13.

That candidate program will be held the morning of January 22. Also on that same morning schedule will be legislative goals addressed by TFB President S. M. True of Plainview. TFB Executive Director Vernie R. Glasson will deliver his report that morning.

The January 22 afternoon format includes county presidents, commodity, legislative, membership and young farmer and rancher conferences.

There will be a reception and exhibits sponsored by TASCO,

the group purchasing affiliate of TFB, at 6:30 p.m. on the evening of January 21.

The commodity conferences will include the following topics:

Hay and forage -- Hay production and hay marketing; peanuts -- The check-off program, peanut program; fruit and nut -- production overview and the changing fungicide picture.

Poultry -- animal welfare update; Texas Poultry Federation priorities; waste management and implementing policies through regulatory agencies.

Rice -- expanding markets; U.S. rice situation; sheep and goats -- Outlook for mohair industry; zoonosis control; soybeans -- soybean supply/demand situation; soybean promotion and research.

Wildlife -- whitetailed deer in Texas; managing for profit; quail management; beef -- weed and brush control; beef outlook for 1990; brucellosis video; cotton -- 1990 cotton legislation; supply/demand outlook.

Dairy -- future of marketing orders; animal waste management systems; implementing policy through regulatory agencies; wheat and feed grains -- supply/demand situation; aflatoxin management; Hessian fly damage.

The January 21 evening

## Water Meeting Slated At Dimmitt On Tuesday

The High Plains Center Pivot Irrigation Conference will be held at the Castro County Exposition Building, 403 SE 4th St., Dimmitt, on Tuesday, January 23. Sponsoring the conference are Castro, Bailey, Lamb and Farmer County Extension Agents -Agriculture and Extension Agents-Entomology.

The morning session will begin at 8:30 a.m. with registration and an opportunity to view exhibits reports Spencer Tanksley, CEA-Agriculture, Bailey County.

Tanksley also reminded that this center pivot meeting in Dimmitt will qualify those attending for three CEU's for the commercial/non-commercial and private applicator licenses.

There will be several topics of interest including: Economics of Center Pivot Irrigation Systems; Update on Pesticide Labeling and Use for Chemigation; and Update on Pesticide Applicator License

conferences will include spokesman training, animal welfare, rural health insurance; and county fiscal responsibility.

The three-day program will conclude at noon, January 23.

FDA approves drug that dissolves blood clots.

U.S. closes ports to Panamanian-flag vessels.



### Six Pounds, Fifteen Ounces. Great American Investor.

When little Jonathan was born a week ago, his parents began buying him U.S. Savings Bonds, the Great American Investment. "We're already saving for the day Jonathan goes to college," his mother says. Bonds pay competitive rates, and now can be completely tax-free when used for your child's education. Call us to find out more.



1-800-US-BONDS

## Clara Gast Benefit Set At Cargiles

There will be a benefit luncheon in honor of Clara Gast on January 23 at Preston Cargile's farm, located on the north side of highway 84 just west of Lariat.

Mrs. Gast was hospitalized about two years ago. While she was in the hospital, paralysis set in and she spent many more weeks in the hospital than she had intended to spend. Even after months of painful therapy, she still needs nursing care.

The women of St. John's Lutheran Church in Lariat will operate the snack bar at the Cargile farm during their farm sale. They plan to serve such items as: barbecue sandwiches, ham and cheese sandwiches, chips, pies and beverages. Proceeds from the snack bar will go to help Clara Gast of Farwell.

The women from St. John's said they hope the farm sale will draw people from all over the area who know Smokey and Clara Gast.

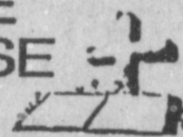
They have also opened an account at Security State Bank to help the Gasts.

"Smokey and Clara didn't

want help as long as insurance covered everything, but now they could use some help," said Carla Kaltwasser.

Anyone who needs more information about the fund raising effort should contact Mrs. Kaltwasser or Mrs. Cargile.

### BIBLE VERSE



"Have you believed because you have seen me? Blessed are those who have not seen and yet believe."

1. Who was the author of the above statement?
2. To whom was he talking?
3. Upon what occasion?
4. Where may this verse be found?

#### Answers:

1. Jesus.
2. To his disciple, Thomas, often known as "the Doubter."
3. Upon the occasion of Jesus' appearances to his disciples following his resurrection.
4. John 20:29.

1990 Crop					
	Pool Advance	Cash Flat	Sale Basis	Sale Basis	Month
Feed Corn.....	4.39	4.39	0.03	.....	March
White Cobb Yellow.....	4.10	5.00	0.38	.....	March
Red Cobb Yellow.....	4.00	4.52	0.11	.....	March
White Food Corn.....	5.00	6.00	0.94	.....	March
Milo.....	3.71	3.71	-0.35	.....	March
Soybeans.....	No Pool	5.00	-0.68	.....	January
Wheat.....	No Pool	3.74	-0.28	.....	KW Mar.

95%  
Prices effective Jan. 16, 1990

**Farmer's Co-Op Elevators**  
272-4335

## HOMESTEAD EXEMPTIONS

### CAN LOWER THE PROPERTY TAXES ON YOUR HOME

A homestead Exemption lowers the property taxes on your home by lowering its taxable value. For example, if your home is valued at \$50,000 and you receive a \$5,000 homestead exemption, your home will be taxed as if it were worth only \$45,000.

**You qualify** for a homestead exemption if you owned your home on January 1 and used it as your primary residence on January 1. It doesn't matter whether your home is a house, a condominium or a mobile home.

**Exemptions are available** to all homeowners on their school taxes. Additional exemptions are available to homeowners who are disabled or age 65 or over. Other exemptions may be offered to homeowners by school districts, counties, cities, and special districts. All taxing units offer exemptions to disabled veterans.

**Apply to** your local appraisal district office at the address shown below for all exemptions you may qualify for. Application forms are available at this address.

If you received a homestead exemption on your present home in 1989 you won't need to apply again for 1990 unless the chief appraiser requires you to reapply.

However, if you passed your 65th birthday or became disabled before January 1, file a new application to receive the additional exemptions.

If you haven't received an exemption on your present home, or if you moved to a new home, make a new application for 1990.

**The deadline** for applications is April 30, 1990. Contact your appraisal district before then if you need more time.

For more information, get a free copy of the pamphlet, *Taxpayers' Rights, Remedies, Responsibilities*, at your appraisal district office or from the State Property Tax Board in Austin.

**Bailey County Appraisal District**

104 E. Ave. C      272-5501

# Don't Guess - Soil Test

**Start Out Right**

**We'll Get Your Samples, Have Them Analyzed, And Recommend The Best Fertility Program For Your Maximum Economic Yield.**

**We'll Help You Work Out The Most Efficient Timing And Placement With Fluid Fertilizers.**

**We Want To Be Your Fertilizer Dealer!**

## Western "66" Co.

Earth Hwy      Muleshoe      272-4556

**Bailey Co.**

### Political Calendar

**Bailey County Judge**

Marilyn Cox  
Jim Watson  
Robert R. Alanis

**District Judge**

Jack Young

**Commissioner Prec. 4**

Terry Souder  
Alfonso Posadas  
Jodie Barrett  
Bennie Claunch

**Commissioner Prec. 2**

C.E. Grant  
Don Seales

# VOTE!



# CLASSIFIEDS 272-4536

**CLASSIFIED RATES**  
 15 Words & Under  
 Minimum Charge \$2.30  
 Thereafter \$2.00  
 16 Words & Over  
 1st Insertion 15 cents per word  
 2nd Insertion 13 cents per word  
**CLASSIFIED DISPLAY RATES**  
 \$1.75  
 Per Column Inch  
**DEADLINES**  
 12 noon Tues.  
 For Thursday Paper  
 12 noon Friday  
 For Sunday Paper  
 To receive the reduce rate after the first insertion ad must run continuously.  
 We reserve the right to classify, revise, or reject any ad. We are not responsible for any error after ad has run once.

## 1. Personals

**CONCERNED**  
 About Someone's Drinking?  
**HELP IS AVAILABLE**  
 through Al-Anon  
 Call 272-2350 or 965-2870 or come to visit Tuesday nights, 8:00 p.m. or Saturday mornings at 10:30 a.m. and through AA call 965-2870 or come visit Tuesday nights, 8:00 at 620 W. Second, Muleshoe.

WILL DO house cleaning and have references. Call at 965-2984. 1-2s-3tp

DKK Custom Farming. Contact Keihm Smith at 965-2629 or 965-2189. 1-1s-8tp

## 3. Help Wanted

**HOME BOUND TEACHER**  
 for Early Childhood Intervention Program. Texas Education Agency Prudential: M.R., Early Childhood, Kindergarten, or Related Field. Contact Jane Crouch (806) 293-4475. C3-2t-4tc

NEED experienced bookkeeper, secretary, with computer experience. Apply at Jim Cramer and Co. EEO. Call 272-7511. C3-2s-4tc

## 5. Apts. For Rent

APARTMENTS FOR RENT: 1 or 2 bedrooms. Furnished and unfurnished. Some bills paid. 272-7575. PS-2t-tfc  
 FOR RENT: Furnished 1 bedroom garage apartment. Water paid. See at 202 W. 8th after 5 or 6 p.m. CS-2s-tfc

## 8. Real Estate

**Henry Realty**  
 111 W. Ave. B. 272-4581  
 Muleshoe, Tx

**NEW LISTING:** 3 bedroom, 1 1/2 bath, 1 car garage, carpet, central A/H, fenced yard, storm windows, shop building, good condition in a good location. \*\*\*

3 Brdm., 2 bath, spacious home outside city limits, near city on highway. 29x40 metal building. Lot 85'x620'. \*\*\*

3 Brdm., 1 bath, completely remodeled, edge of city on highway. \*\*\*

**COMMERCIAL PROPERTY:** Ideal location on West American Blyd. 150' highway frontage. A great business opportunity. \*\*\*

**RURAL HOME:** 3 Brdm., 2 bath, large den on one acre with many extras. Fenced with barns, fruit trees, extra storage, storm cellar, and satellite dish. Priced to sell. \*\*\*

**SPACIOUS:** 2 Brdm., 2 bath, with garage. Freshly painted. Fireplace. Ready to move in. \*\*\*

**JUST LISTED:** Outside city - 3 Brdm., 2 bath, garage on one acre. Carpet with drapes and blinds. Dishwasher. Good storage. \*\*\*

3 bedroom, 2 bath, carpet, large living room. Excellent condition, near high school. Priced to sell. \*\*\*

**LAND FOR SALE:** 7,000 acres of irrigated land. Will sell any part, or all. Sprinkler, fenced, and water tanks for cattle in each circle. Good cattle operation and excellent living quarters. Land is good for vegetables or grains. Near Earth, Texas. Will also sell or lease.

**Randy Johnson**  
 (806) 272-3056

## 9. Automobiles For Sale

FOR SALE: 1983 Chevrolet Capri. 4-door, clean, one owner. Actual miles 34,000. 272-4908. G9-1s-4tc

**"ATTENTION!"**  
**GOVERNMENT SEIZED VEHICLES** from \$100. Fords, Mercedes, Corvettes, Chevys. Surplus Buyers Guide. 1-602-838-8885 EXT. A10191. C9-1s-4tp

## 8. Real Estate

FOR SALE OR RENT: 2 bedroom, 2 full bath mobile home, on 45'x-150' fenced lot. Call 272-5435, after 5 p.m. G8-49t-tfc

**LOT FOR SALE:** Richland Hills. Great view. 710 W. 20th. 140x140'. Call 272-4344 or 272-3510. J11-52t-tfc

3-BEDROOM, 2-bath, double-wide mobile home for sale. 272-3438. C8-47s-tfc

## NEWS VIEWS

*Margaret Thatcher, British Prime Minister, on Panama attack:*

"Someone has to uphold democracy. It was a courageous thing to do."

*George Bush, President:*  
 "I hope to sign by June 1990 a conventional arms treaty that significantly reduces levels of conventional forces in Europe."

*Hans Modrow, East German Premier:*  
 "East Germany's new intelligence services will be under direct control of the Government"

## STATE CAPITAL



**HIGHLIGHTS**  
 By Lyndell Williams  
 TEXAS PRESS ASSOCIATION

AUSTIN--Weary Texas legislators heard last week they will be convened in yet another special session - date unknown - as unanticipated fallout from the judicial election reform issue exploded around their district offices.

Meanwhile, when the candidate filing window closed, both Democrats and Republicans had fielded full slates for the spring primaries, further assuring voters that judicial elections will be discussed deep and wide in the next 15 weeks.

Gov. Bill Clements, reacting to a federal judge's ordering of special, non-partisan elections for state district judges, said he will call lawmakers to Austin to write new law.

This makes two issues that the Legislature must resolve this spring to avoid expensive reform ordered by the court system.

Second fiddle, at least momentarily, is the public school finance issue, which some predict will cost taxpayers \$4-5 billion.

A State Board of Education committee unanimously adopted a school finance plan costing \$16 billion over the next five years.

**Court Ordered Elections**  
 Judge Lucius Bunton of Midland ordered that 1990 elections for state district judges be postponed until May, and be conducted as non-partisan, single-member district elections.

The heads of both the Democratic and Republican parties protested the order for non-partisan elections, and incumbent judges and sympathetic legal voices objected to the unfamiliar single-member districts requirement.

Clements, a Republican, called on Attorney General Jim Mattox, a Democrat, to seek a stay of Bunton's order.

**Parties Want Elections**  
 But Mattox wants the 115 judicial elections to be held in single-member districts on a partisan basis during the regular party primaries. He is joined in that point of view by the minority rights groups, and both state party chairmen.

When Mattox declined, Texas Secretary of State George Bayoud hired John Hill, former AG and Texas Supreme Court Chief Justice, to pursue the stay.

Bayoud said Texas law does not provide for non-partisan elections, and the special elections will cost Texas taxpayers several million dollars.

**Elective or Appointive?**  
 Neither Bunton's court order nor Texas law specifies who will conduct and pay for the non-partisan elections.

Bunton's order stems from a lawsuit claiming the present at-large election system discriminates against minorities. He found that it does and ordered the remedy.

A basic conflict is that minority rights groups want to make judicial elections more local, and thus more political, while top state leaders and judicial minds seek to make them less political-that is, appointive instead of elective.

Bunton, as the ruling judge, stands in a maelstrom caused by two strong trends in public opinion.

**Timing Is Critical**  
 What is the remedy? We will find out after Clements calls lawmakers to Austin to rewrite the ground rules, which is what all principles wanted to do in the first place.

The timing is critical, and Clements is pursuing that now. If he calls a special session immediately, lawmakers could meet for as long as one month in a 15-week campaign season.

That means that while many

of them are wrangling in Austin, their challengers are roaming the campaign trails back home at will.

Maybe that's a way for Clements to get some quick action on the appointive plan. Hurry up and vote before the damage back home gets out of control.

But remember that minority leaders are probably even more suspicious of an appointive plan than they are of at-large elections.

The appointive plan has built-in opposition from incumbent minority lawmakers, as well as minority candidate challengers back home.

**Top Campaign Issue**  
 Clements could wait until after the primaries, sometime between mid-March and the court-ordered May special elections.

Either way, unless a stay is enforced sometime this week, the state will begin spending money on a special election that may not be held.

And either way, the issue of judicial elections has shot into prominence as the number one issue of the primary elections.

**Other Highlights**  
 ■ The Lower Colorado River Authority approved a \$2.9 million member rebate of profits earned because of increased electricity sold during December's record cold temperatures.

■ Democratic gubernatorial candidate Ann Richards joined a growing list of candidates who are unveiling ethics plans.

■ David Joost, director of administration for the Texas Racing Commission, said the commission is moving to correct management problems outlined in a state audit of the new agency.

■ Federal regulators closed the 110-year-old First National Bank of San Marcos after a series of losses exhausted its capital. The bank reopened as a branch of Victoria Bank & Trust Co. of Gonzales.

## B.J. CROWLEY'S HOROSCOPE

**Week of January 15th, 1990, CAPRICORN--Dec. 22 to Jan. 19--**Change your style. Raving and ranting will get you nowhere. You can achieve much greater happiness with a calmer approach to life.

**AQUARIUS--Jan. 20 to Feb. 18--**Resolve now to make church an important part of your life. Your future happiness depends upon it. Set a good example.

**PISCES--Feb. 19 to March 20--**Someone with new and fresh ideas joins you in a business venture. Success is guaranteed. Together you make a great team.

**ARIES--March 21 to April 22--**A telephone call brings you a message causing great joy for you. A trip increases your happiness and optimism for the future.

**TAURUS--April 21 to May 20--**Set shorter term goals for yourself. You become discouraged easily because the projects you plan are not realistic.

**GEMINI--May 21 to June 20--**Resolve to improve your mind this year. Read material which requires effort and concentration.

**CANCER--June 21 to July 22--**Make a schedule which takes the hustle and bustle out of your daily life. Take time to smell the flowers. Limit the number of meetings you attend.

**LEO--July 23 to Aug 22--**If an older relative doesn't approve of your selection of a mate, don't let it worry you. If you are happy, the one who is being obstinate will come around.

**VIRGO--Aug. 23 to sept. 22--**A trip will be especially enjoyable now. Plan your wardrobe. A new hairstyle will give you a lift.

**LIBRA--Sept. 23 to Oct. 22--**Get your finances in order. Start this year with a sensible budget and stick with it. Put aside a special savings for a summer vacation.

**SCORPIO--Oct. 23 to Nov. 22--**You are going to be just as happy as you make up your mind to be. There is no excuse for you to exhibit erratic behavior.

**SAGITTARIUS--Nov. 23 to Dec. 21--**You don't have to go far to find all kinds of interesting people and events. Look around you. Take a walk or get in your car and drive around.

**HCR REAL ESTATE**  
 NICE 3-1 1/4 Brick. Central heat and air. 3 ceiling fans, fenced back yd., workshop & storm windows.  
 3-1 free standing fireplace, ceiling fans in every room, built-in double oven, bar, large storage house and Bar-B-Q Grill.  
 2-2-1 Carport Mobile Home, central heat, carpet floors, storage house, barn & water well on .06 acres.  
**Call Thersie Reid**  
 272-5318

**Bingham & Nieman Realty**  
 272-5285 or 272-5286  
 116 E. Ave. C  
**RICHLAND HILLS**  
**JUST LISTED-IMMACULATE\* ENERGY EFFICIENT** 3-2-2 Brick. Cent. A&H, built-ins, FP, sunken lv. area with cathedral ceiling, ceiling fans, earthtones, storage bldg., much more!!!!!!\$150's  
 4 NICE RESIDENTIAL LOTS PRICED FROM \$5,000.00!!!!  
**JUST LISTED-** Nice 3-2-2 Brick on large corner lot, Cent A&H, built-ins, storm windows & doors, large basement, much more!!!!  
**PRICE REDUCED VERY NICE** 3-2-3 Home, Cent. A&H, built-ins, FP, fans, spktr. sys., fenced. 60's!!!!  
**HIGHLAND AREA**  
 NICE 3-2-2 Brick home (2 story), on corner lot, Cent. A&H, built-ins, and much more. LET'S LOOK TODAY!!!!160's  
 NICE 3-2-1 Brick Home, Cent A&H, built-ins, large den with fireplace. Fenced yard, storage bldg. \$40's!!!!  
**PRICE REDUCED** 2-2-2 Brick, corner lot, Cent. A&H, spacious rooms, utility, cov. patio, fenced yard, & much more. 40's  
**HIGH SCHOOL**  
**JUST LISTED-COZY** 2-1 Home, nicely remodeled, fenced yard, & more \$17,000!!!!  
 2-1 1/2-1 Brick, fl. furnace, CA, fenced yard & more. \$20's!!!!  
 NICE 2-1 1/2-1 Home, corner lot, built-ins, nice carpet, heat pump, fenced yard, storage bldg. & more.!!!!  
**PRICE REDUCED** 3-1-1 Home earthtone carpets, fenced yard, storm cellar & workshop!!!!  
**JUST LISTED-IMMACULATE** 3-2-2 Brick, Cent. A&H, built-ins, FP, energy efficient, ceiling fans, 15'x30' shop-storage bldg., fenced yd. & much more. \$40's!!!!  
**GEORGE NIEMAN, BROKER**  
**DIANNE NIEMAN, BROKER**



Call 272-4536 THROUGH THE CLASSIFIEDS! SELL-RENT-TRADE OR BUY