



# WEATHER

December 24	48	-2	.00
December 25	54	16	.00
December 26	63	16	.00
December 27	62	15	.00

# Muleshoe Journal

The Community Of Opportunity-Where Water Makes The Difference

Vol. 67, No. 52

8 PAGES TODAY

Published Every Thursday At Muleshoe, Bailey County, Texas 79347

Member 1979  
TEXAS PRESS  
ASSOCIATION 20¢

Thursday, December 28, 1989

## Hospital Dominates First Half Of 1989

(Editor's Note: The first half of 1989 saw farmers frustrated through the lack of enough moisture to plant dryland crops. But the dominant news was pending legislation to allow the creation of a Hospital District in portions of Bailey and Parmer Counties. The creation of the district was approved on June 20, 1989.)

### JANUARY

Late in December, copies of *Trails and Tales of Bailey County* as compiled by the Jennysippers arrived at the Muleshoe Library, just in time for Christmas distribution.

The few extra copies of the history book sold out very quickly. Peggie Hicks was the winner of the annual 'Bowl Game' football contest. A first time winner, she beat out her husband and son. On the first day of January, oaths of office were administered to

Jerry Hicks, sheriff; Linda Elder, county attorney; Gerry Pierce, constable; Rich Magby, constable; Joey Kindle, Commissioner, Precinct III; R. L. Scott, Commissioner, Precinct I and Bailey County Judge Jim Watson.

Tye Watkins, son of Randy and Richelle Watkins, was born January 4, to become the *First Arrival* for 1989. Tye has one brother, Sam, who was nine years of age when he was born.

High wind and burning cotton burrs combined to cause a major traffic tie-up just south of Hub. One person was injured in a three-vehicle accident which occurred during the worst of the smoke blowing across the highway.

Mules took the district basketball opener from Tulia. They had a 61-55 victory over the Hornets.

Allsup's Convenience store in Muleshoe became the victim of an

armed robber. The man, armed with a handgun, took nearly \$100 from the store clerk.

In district action, the Mulettes overpowered the Lady 'Cats from Littlefield for a 70-32 victory.

In the annual Bailey County Junior Livestock Show, Gage Angeley won the swine division and Holly Huckaby took the senior showmanship. Courtney Tanksley won junior showmanship.

For the first time, a varsity baseball program was included in the MHS sports program. Practice was scheduled to begin on January 30.

Wade Wheeler won the lamb division, Colin Tanksley the swine division and Holly Huckaby won the Jimmie Dale Black award to conclude the Bailey County Junior Livestock Show.

Muleshoe Production Co. started making plans for a theatre production. Plans were made to stage the production late in June.

### FEBRUARY

Justin St. Clair exhibited the top swine and Sheldon Mason the top lamb at the annual Lazbuddie Junior Livestock Show.

At the Three Way Annual Junior Livestock Show, Lisa Lower had the grand champion swine and Joshua Tooley the grand champion lamb.

An arctic cold front dropped morning temperatures to -1 degree, freezing water pipes, and leaving wind and snow behind.

John A. Chisholm was named administrator of West Plains Medical Center. He assumed his duties on February 1. Chisholm agreed to a four month contract. He came to Muleshoe from Amarillo.

Low temperatures, ranging from -1 to 12 degrees, kept city water workers very busy, checking for broken and frozen water meters and shutting off water from burst frozen water pipes.

Cheryl Pink, of SPS Economic Development, gave a very 'positive' report at the annual Muleshoe Area Industrial Foundation dinner meeting.

Adrienne Willingham, Jonessa Jennings and Mia Jennings, all students at Lazbuddie High School, earned the right to compete at the state level in Austin. They beat out such competition as Amarillo High School and Dumas High School in the computer team contest.

J. O. Parker was presented a plaque as the Firemen's Auxiliary 'Sweetheart' for assistance to the Muleshoe Fire Department auxiliary activities.

Less than an inch of rain fell 'far short' of the moisture needed to replenish area depleted water supplies.

Glen Williams, director of the Meals on Wheels program, warned that a shortage of funds may force a 'shut down' of the program that provides a hot meal five days a week to the elderly and disabled.

Michele Cox and Jeff Hicks from Muleshoe High School, and Sonia Cisneros and Matt Bohler from Watson Junior High School were crowned royalty at the annual Sweetheart Festival.

The long-awaited cross arms were being installed at several Santa Fe Railway crossings in Muleshoe.

### MARCH

High Plains Underground Water Conservation District reported that Bailey County needed 6-8 inches of rain, or farmers would have a hard time trying to plant and grow crops on dryland this year.

Johnny Gonzales won the annual Bailey County Spelling Bee, sponsored by *The Muleshoe Journal* each year. Second place went to Hector Arzola and Stephanie Perez won third place.

Bob Stovall was named 'Man of the Year' and Vivian White 'Woman of the Year' at the Muleshoe Chamber of Commerce and Agriculture annual banquet. R. A. and Marie Bradley were chosen as 'Citizens Through The Years.'

Joe and Darla Rhodes, 'Merchants of the Year,' Terry Hutton's family was 'Farm Family of the Year,' Billy Tiller, Conservation Farmer of the Year and Starla Ellis was named 'Employee of the Year.'

West Plains Medical Center became the first hospital in the state to be approved for funding from Medicare as their emergency room was approved for 24-hour observation of Medicare patients.

Muleshoe started gearing up to host more than 30 teams in the Mule Kicker Relays.

Muleshoe Production Co. moved into full swing, with several meetings to plan for a summer production. The name of the company was changed to Muleplex Production Co.

The Texas Health Department set up an emergency measles clinic after an outbreak of measles in Lubbock. Targeted were persons 12 months to 33 years of age.

John Chisholm reported that West Plains Medical Center was nearing completing requirements to meet Medicare certification.

Ann Carson and Mike McDonald were named 'Woman' and 'Man' of the Year at the Sudan Chamber of Commerce banquet.

Bailey County Commissioners adopted two tax abatement resolutions to help attract new industry to the county.

The Texas House of Representatives approved creation of the Muleshoe Hospital District. The next step was to obtain Senate approval, then the measure would go to Governor Clements for signing.

James Roy Jones was named to the Muleshoe City Council to replace Ronnie Shafer, who recently moved from Muleshoe.

### APRIL

Two Muleshoe men, Gilberto Reyes and Jose Alfredo Acosta, were killed northeast of Muleshoe in a two-vehicle county road intersection crash.

The Muleshoe Independent School District Board of Trustees named Jim Stewart athletic director and head football coach, following the resignation of Dale Keeling.

*Elizabeth, The Queen* was presented by Kerry Moore's drama department at the Muleshoe Fine Arts Booster Club's annual Dinner Theatre.

*He Done Her Wrong or Wedded, But No Wife* was chosen by the Muleplex Production Co. for their first presentation in June.

Jim Hartline announced that 24 new housing units would be constructed at the Farm Labor Housing Complex on East Sixth Street.

Muleshoe High School varsity baseball was well underway, the first 'ever' MHS baseball team was making a good showing in the area.

A newly formed band gave their first performance, never realizing they would become locally famous. The band is called *The Nifty-50 Band*.

As city and school elections neared, six candidates had filed for the two positions on the school board; and two persons had filed for the

Cont. Page 6, Col. 1

### around muleshoe

Unfortunately, the following Dear Santa letter was received in *The Journal* offices on the day after Christmas.

However, we are reproducing it here, hoping that the young gentleman received his greatest desires for Christmas.

Dear Santa,

How are you doing at the North Pole? Is it fun there? Are the elves hard at work?

I hope I get a Layer Tag Helmet and a Dino Rider Brontosaurus. I would also like all the Teenage Mutant Turtles and anything else you can think of.

Please bring my baby brother, Jameson, a toothbrush, because he likes mine very much.

Love from,  
Jeffre Skipworth  
Kindergarten

At 10 a.m. tomorrow, Friday, the Bailey County Commissioners will meet in special session with the following items to consider:

Approve the minutes of the previous meeting; payment of routine county bills; open bids for purchase of motor grader for Precinct Two; ALTA information; R. A. Bradley to discuss Heritage Center work; and consider purchase of truck for Precinct Four.

David Gison, Swisher County Extension Agent, has announced a turkey shoot to be held at Tulia on January 7, 1990.

It will be from 1:30 p.m. till dark at Tule Lake, two miles east of Tulia on FM 1318 and then two miles north and one mile east.

Cash or turkeys will be given said Gibson.

Light refreshments will be available at the shoot.

### Keith Morris

### Lucky Winner Of New Pickup

Despite cold temperatures, a record crowd attended the annual Muleshoe Activities Committee (MAC) Christmas drawing at the Bailey County Civic Center on Saturday afternoon.

First to be given away were three gigantic Christmas stockings stuffed with toys and games. The winners were Janell Verner, Harvey Bass Appliance; Irene Splawn, Higginbotham and Violet Nicholas, Sonic Drive In.

Turkey winners were Sandra Martin, Ann Williams, Lorraine Lynch, Sandy Chavez, Kathy Ballard, Flonita Ashford, Betty Griswold, Fernanda Chavez, Ramon Olivarez, Dorothy Mathiesen, Phyllis Angeley, Glenda Friend and Margrethe Taylor.

Winners of the MAC Bucks started with Fernanda Chavez, \$100; Clyde Holt, \$200; Betty Griswold, \$250.; Olga Chavez, \$300; Mario DeHoyos, \$350.; Diane Skipworth, \$400; H. B. Ruthardt, \$400 and Pat Randolph, \$500.

The grand finale came with the awarding of the fire engine red Jenny/MAC pickup. The lucky winner was Keith Morris of Muleshoe.



CHRISTMAS DAY, 1989--On Thursday and Friday of last week, the morning low temperatures were -0, and the daytime temperatures stayed 15 degrees or below. But, this scene was common on Monday, December 25, 1989, as the temperature reached 61 degrees in Muleshoe. An outdoor game of basketball featured Mike Mills (with the basketball) shirtless, and perspiring. The game was at the Kenneth King home on West Second Street. It was no white Christmas for Muleshoe. (Journal Photo)

## Water District To Soon Begin Annual Water Measurement

Now that groundwater levels have been allowed to stabilize following the 1989 pumping season, High Plains Underground Water Conservation District No. 1 Technical Division

### Local Youth Receives 'Nod' For Academy

U. S. Representative Larry Combest (R-Texas) has nominated 23 students from the 19th Congressional District to U.S. military service academies.

Walter Lackey of Muleshoe is among his nominees.

Congressional nomination is the most frequent route for application to the service academies.

Students can also be nominated by the President or Vice President of the United States, through military service of a parent, or through Reserve Officer Training Corps (ROTC). Nominees from Combest are evaluated by the academies, and then offered an appointment based solely on their merits.

"These young men and women who have applied are among the well-rounded and highly-motivated qualified candidates the academies look for in developing the future military leaders of this nation," said Combest.

"Those outstanding military leaders have often become the great national leaders in American history. It is an honor to nominate these fine young students to our service academies and I wish them every success in the appointment process."

In the Spring, the three academies will announce their selections for the prestigious appointments.

Lackey was nominated to attend the Naval Academy.

staff will begin making annual depth-to-water measurements at area well sites starting January 2, 1990.

The Water District maintains a network of more than 1,000 privately-owned water wells throughout its 15-county service area. Each year, field personnel visit each well site to make a depth-to-water measurement.

During the measurement, a steel tape coated with a few feet of blue carpenter's chalk is lowered into the well. On the part of the tape that enters the water, the chalk turns a darker shade of blue. By subtracting the length of the darker blue area from the total length of the tape lowered into the well, the current depth-to-water is determined.

A vinyl sticker showing the assigned well number, the depth-to-water measurement and the date of the measurement is attached to equipment at the well site for the well owner and/or landowner's information.

The same observation wells are measured each year, and the data collected during the January and February 1990 measurements will be compared to the previous year's data to determine any changes in the water levels in the Ogallala Formation.

Maps showing the location of each observation well in a county or portion of a county served by the Water District are published annually in the April issue of the District's newsletter, *The Cross Section*.

Tables listing the observation wells in each county and the depth-to-water measurement at one, five and 10-year intervals are included in this special issue. The annual average water level changes in feet for one, five and 10-year intervals are also published.

Technical Division staff will be traveling to each well site in blue and white Water District vehi-

cles. Staff members will be happy to answer any questions from landowners and/or producers while the depth-to-water measurement is being made.

For more information, contact the High Plains Underground Water Conservation District No. 1, 2930 Avenue Q, Lubbock, Texas 79405 or call (806) 762-0181.

### Rotary Club Held Business Meet Tuesday

With 30 members absent Tuesday, the day after Christmas was not a good day to hold a Rotary Club meeting.

But, in accordance with Rotary rules and regulations, the 23 members and eight or nine guests met at the Bailey County Civic Center for the regular meet.

Kenneth Henry was supposed to have had the program, but he was one of those absent, so President Terry Hutto conducted a business meeting instead.

He reported that 15 showed up for Christmas caroling on December 19, and said the caroling is growing every year. Following the caroling, the group went to Hutto's house for refreshments.

He named a nominating committee, composed of Scott Campbell, Tom Bonds, Ted Barnhill and Max King, to name a new slate of officers for the upcoming year. The nominating committee will make their selection during the next week for placement on the ballots.

The Rotary president also told those present that a letter is being drawn up, to be given to Rotary members who are consistently absent. He said that members who miss four meetings in a row, or five in a quarter

Cont. Page 6, Col. 5



**SURPRISE, SURPRISE, SURPRISE**--Joy Stancell, activity coordinator for Muleshoe Area Health Care Center, was surprised with a number of gifts from residents and their families. (Journal Photo)



**A LAP THROW FOR EVERYONE**--Tuesday afternoon, during the Christmas party at Muleshoe Area Health Care Center, lap throws, made by Vivian White, right, and Barbara Marlow, were presented to each of the residents. Eric Smith was one of the happy recipients of a lap throw. (Journal Photo)

**Lip--Stick Experience**

A bishop was condemning the use of cosmetics by girls. "The more experience I have of lipstick," he declared, warmly, "the more distasteful I find it."

**A Kind of Fruit**

Shorty: So you call yourself a vegetarian, and here you are working on a beefsteak with onions. Fatty: Yes, you may call this a beefsteak, but I call it forbidden fruit.

**Creative Living**

by: Sheryl Borden

Information on helping children to read, weekend cooking, and interesting things to use for decorating will be the featured topics on "Creative Living" on Tuesday, January 2 at 12 noon and Saturday, January 6 at 2 p.m. (All times are Mountain.)

Anne O'Malley, representing World Book, Inc. in Chicago, IL, will tell about a program called Early World of Learning. This program is a self-paced learning readiness program for children. The program addresses 105 different skills and concepts desirable for kids to learn before entering kindergarten. The program is designed to give parents the tools they need to work and play creatively with children to instill self-confidence and positive attitudes toward learning while having fun at the same time.

Marilyn Wilkerson represents the United Dairy Assn. and will demonstrate weekend cooking. This method allows for control in what goes into these recipes rather than have extra sodium and fat in many of the prepackaged foods on the market. Marilyn is from Rosemont, IL.

Suzi Holder, with the 4-H and Youth Development Office in Las Cruces, will show some inexpensive things to make to hang on the wall. Suzi will show how to make a frame for art work, show how to cover bulletin boards and share some inexpensive ways for displaying posters.

On Tuesday, January 2 at 9:30 p.m. and repeated on Thursday, January 4 at 12 noon, "Creative Living" will present information on creole cooking and furniture staining.

**ATTENTION**

Your only local media of general circulation that qualifies for & has a 2nd class newspaper subscribers mailing permit. U.S. Post Office Approved.

Creole cooking is a special brand of cooking not found anywhere else in the world. Christy Waters, former Marketing Home Economist with Southwestern Public Service Co., will tell about the interesting history of creole and cajun cooking. Christy will also prepare some delicious and very typical cajun recipes.

Homer Formby will talk about different ways to stain wood, explain how to determine if wood is soft or hard and demonstrate the use of a rubbing stain which is much easier and more effective. Mr. Formby is a third generation furniture refinisher.

"Creative Living" is produced and hosted by Sheryl Borden. The show is carried on more than 100 PBS stations in the United States, Canada, Guam and Puerto Rico and is distributed by Pacific Mountain Network, Denver, CO. Viewers can request copies of materials offered on the show by sending one 25 cent stamp for each handout requested. Send the stamps, along with your name, address and booklets requested to:

"Creative Living" Requests  
% KENW-TV Station #52  
Eastern New Mexico University  
Portales, N.M. 88130  
\*\*\*\*\*

**WEEKEND COOKING**

**BROCCOLI-MUSHROOM SOUP**

3 Tablespoons butter  
¼ cup chopped shallots or green onion

1 cup shredded Swiss cheese  
3 cups cooked broccoli flowerets

2 cups sliced fresh mushrooms  
½ recipe Basic Cream Soup Base

¼ cup grated Parmesan cheese

Melt butter in large skillet. Saute shallots 2 minutes. Stir in mushrooms; saute until tender, about 3 minutes more. Heat Cream Soup Base to boiling; reduce to low heat. Stir in

cheeses until melted. Do not boil. Stir in broccoli and sauteed vegetables. Heat to serving temperature. Serve immediately.

**CREAM SOUP BASE**

¾ cup butter  
2 tablespoons instant chicken bouillon

9 cups milk  
¼ cup all-purpose flour  
½ teaspoon seasoned salt  
½ teaspoon pepper

Melt butter in medium-sized saucepan. Stir in flour, bouillon and seasonings until smooth. Remove from heat. Gradually stir in milk. Bring to boiling over medium heat, stirring frequently. Boil and stir 1 minute. Remove from heat. Divide evenly between 2 containers. Use immediately or keep up to 1 week, covered in refrigerator. The base can also be frozen up to 1 month. Thaw in the refrigerator.

**CREAMY ITALIAN**

2 tablespoons butter  
1½ cups shredded zucchini  
½ recipe Basic Cream Soup Base  
1½ cups shredded Provolone

cheese  
1 cup thinly sliced onion  
1 teaspoon Italian seasonings  
½ cup tomato paste  
1½ cups chopped cooked carrots

Melt butter in medium-sized skillet. Saute onion until tender, about 6 minutes. Stir in zucchini and seasoning; saute 2 minutes longer. Set aside. Heat cream of Soup Base to boiling; reduce heat to low. Stir in cheese until melted. Do not boil. Stir in tomato paste. Add carrots and sauteed vegetables. Heat to serving temperature. Serve immediately.

**IN FASHION**

Once you've purchased your party dress for a special occasion had shoes dyed-to-match, there's one more important accessory.

You would not wear an everyday hairstyle to a special event. Tell your cosmetologist the style of your dress and she will suggest a complimentary style. A long formal gown is enhanced if the hair is pulled up leaving softness around the face.

**SEASON'S GREETINGS**

To Our Customers and Friends

Life & Health Insurance

Vic Benedict

Insurance Agency

721 W. Ave. C. 272-5266



**1989 Crop**

	Pool Cash Advance	Sale Flat	Sale Basis	Month
Feed Corn.....	4.36.....	4.36.....	0.05.....	March
White Cobb Yellow.....	4.10.....	5.10.....	0.40.....	March
Red Cobb Yellow.....	4.00.....	4.48.....	0.12.....	March
White Food Corn.....	5.00.....	6.00.....	0.96.....	March
Milo.....	3.78.....	3.73.....	-0.32.....	March
Soybeans.....	No Pool.....	5.18.....	-0.50.....	Jan.
Wheat.....	No Pool.....	3.68.....	-0.41.....	KW Mar.

95½%  
Prices effective Dec. 26, 1989

**Farmer's Co-Op Elevators**

272-4335

**Muleshoe Journal** USPS 267-620  
Established February 22, 1924. Published by Muleshoe Publishing Co., Inc., Every Thursday at 308 W. Second, Box 485, Muleshoe, Texas, 79461. Second Class Postage Paid at Muleshoe, Texas, 79461.

**Member 1989**  
**TEXAS PRESS ASSOCIATION**

L. B. Hall, Publisher  
James Hall, Vice President/Consultant  
Clara Williams, News  
Evelyn Harris, Society  
Judy Milway, Advertising  
Dora Tynes, Classified

**SUBSCRIPTIONS**  
Muleshoe Journal and Valley County Journal  
Retail and surrounding counties \$14.75  
Muleshoe Journal and Valley County Journal  
Outside Texas, \$14.50  
Yearly by Courier \$17.50

Advertising Rate Card on Application  
\*Advertisements should state all the facts of insertion. The Journal will not be liable for failure to publish an ad or for a typographical error or error in publication except in the amount of the cost of the ad for the first day insertion. Advertiser for errors will be limited to the cost of the first insertion of the ad where the error occurred.

**LIMITED TIME OFFER**

**GUARANTEED REBATE.**

**IF THE REBATE GOES UP, CHRYSLER WILL PAY THE DIFFERENCE.\***

**WAY TO GO CHRYSLER-PLYMOUTH!**

**1990 PLYMOUTH GRAND VOYAGER LE** From the Family of America's Best Selling Minivans!

**\$1000 GUARANTEED! or 3.9% A.P.R.\***

- Front Wheel Drive
- 3.3-Liter Multipoint Fuel Injected V-6 Engine
- Storage Size and Car Like Handling
- 7 Passenger Seating
- Ligate Intermittent Wiper for Rearward Visibility
- Standard Luggage Rack
- Full Gauge Instrument Panel
- Power Door Locks
- Electronic Speed Control

**1990 NEW YORKER FIFTH AVENUE**

The All New Prestigious Addition to the New Yorker Line.

**\$1000 GUARANTEED!**

- Smooth, Responsive new 3.3-Liter V-6 engine
- More legroom than the biggest Cadillac\*\*
- Automatic Temperature Control Air Conditioning
- Ultra-drive, the World's Most Advanced Automatic Transmission
- Crystal Key 5 Year or 50,000 Mile Chassis Care Warranty\*\*

**1990 PLYMOUTH LASER**

**RS Turbo Model Voted One of Car and Driver's Ten Best**

**\$1000 GUARANTEED!**

- Cockpit Style Interior
- Compact Disc Player with Six-Speaker Sound System Available on RS & RS Turbo
- D-60 M.P.H. in 6 seconds (RS Turbo Model)
- 5-Speed Manual Overdrive Transaxle
- Responsive 1.8-Liter Overhead Cam Multipoint Injection Engine

**THERE'S NO REASON TO WAIT ON THAT NEW CAR!**

\*Must take delivery from new dealer stock by January 21st. See dealer for details and guarantee claim form. See dealer for adult only vehicles with cash back. Rebate guaranteed through Sept. 30, 1990. \*\*Excludes normal maintenance, adjustments and certain wear items. See a copy of limited warranty at dealer. †Short term A.P.R. financing is for qualified retail buyers through Chrysler Credit on new '90 stock. Longer term rates available. \*\*Comparison to Cadillac Brougham.

**Muleshoe Motor Co.**

"Car Capital Of The West Plains"

1225 W. Amer. Blvd. 272-4251

way to go.

**CHRYSLER Plymouth**

**• INTRODUCING •**

**Weight Watchers®**

**New...**

**FAST & FLEXIBLE PROGRAM**

Wouldn't it be wonderful if you could keep right on eating the foods you love, living the same lifestyle, and still lose weight FAST? That's exactly what Weight Watchers incredible new FAST & FLEXIBLE Program is all about. Go to your favorite restaurant, go to parties, enjoy your everyday life with family and friends while eating three delicious meals plus an evening snack. Yes, it's all part of Weight Watchers new Fast & Flexible Program. It's the smart way to lose weight and keep it off! So, get smart...get started...join Weight Watchers today!

**JOIN NOW FOR ONLY... \$14**

Registration Fee \$19.00  
First Meeting Fee \$9.00  
Regular Price \$28.00

**YOU SAVE \$14.00**  
Offer ends January 27, 1990

Sheila Falk, Area Director

Come to the Weight Watchers meeting nearest you.

MULESHOE  
The Old Corral  
1006 West American Blvd.  
(Lunch Purchase Required)  
Wed. 12 Noon

**NOTHING WORKS LIKE WEIGHT WATCHERS!**

Offer ends January 27, 1990. Offer valid at locations listed above 27, 96, 1401 only. Offer valid for new & returning members only. Offer not valid with any other offer or discount. Weight Watchers is a trademark of WEIGHT WATCHERS INTERNATIONAL, INC. WEIGHT WATCHERS INTERNATIONAL, INC. 1989

CALL TOLL FREE **1-800-359-3131**



**WINNERS AT THE MAC CHRISTMAS DRAWING**--Pictured are several of the winners at the annual Muleshoe Activities Committee (MAC) drawing, held at the Bailey County Civic Center. Those shown won MAC Bucks, turkeys, or giant toy and game stuffed Christmas stockings. A large crowd was on hand for the drawing. (Journal Photo)

## Journal Files

### 50 Years Ago

1939

**THE "BABY" TRACTOR IS THE LATEST MEMBER OF THAT FAMILY INCREASING EFFICIENCY OF THE FARMER TODAY**

Livestock motive power is gradually going into the discard and the American farmer is rapidly becoming a machine farmer. Indeed it is already predicted that a matter of a few years before horseless and muleless farmers will become common as already there are numerous farmers who are today operating their agriculture business entirely with machinery.

Plenty of older citizens can look back and recall the days when their fathers or grandfathers pulled the bell-cord over Old Black as she ambled down the corn or cotton rows dragging that simple Georgia stock, or a little later on hitched to a double-shoe implement that doubled the work capacity; but all that has long passed out of the farming picture, except in a very few rare instances.

Today no farm is modern, in the latest and truest sense of that word if it be not mechanized. Farmers have always been handicapped in their business by lack of capital to buy the necessary machinery with which to operate their farms in the most efficient manner possible. In these later years that handicap is being more and more realized, and more money is being invested in the necessary implements with which to meet modern farming competition and to produce crops on better paying basis. Farmers are gradually becoming manufacturers and industrialists of the ranking type, as they keep up with all their crops, soils, overhead and other expenses incident to the profitable carrying on of their business.

Twenty years ago there was an average of 4.1 horses and mules on the farms of this nation; today that number has been reduced practically 50 percent.

### 40 Years Ago

1949

**CLASSIFIED ADS**

For Sale: 3 section farm, well

located, 2 sections wheat, balance in cotton. One third wheat goes. Priced at only \$50 per acre, with terms to suit buyer. Or will split this up and sell any part.

For Sale: 160 acres, good level land, 2 houses, irrigation well, has some Johnson grass. But a good farm for \$160 per acre.

### 30 Years Ago

1959

**CLASSIFIEDS**

For Rent: 2 bedroom house, living room, kitchen and bath \$35 per month.

For Sale: 80 Acres located west of Muleshoe, good 8" well on Nat. Gas 26-A cotton Priced \$30,000.

For Sale: 70 Acres, good 8 inch well. This priced to sell at \$22,000.

### 20 Years Ago

1969

Grocery specials advertised in the Journal this week included: 5 pounds flour 35 cents; 3 pounds shortening 75 cents; 5 cans spinach \$1; No. 2 can chili 65 cents; No. 2 1/2 can tamales 35 cents; No. 303 can applesauce 5 for \$1; No. 2 can apple or lemon pie filling 3 for \$1; 2 pound jar strawberry preserves 59 cents; 5 No. 303 cans corn \$1; whole fryers 29 cents pound; sirloin steak 98 cents pound; sliced bacon 79 cents pound; pork roast 39 cents pound; pork chops 98 cents pound; and ground chuck 79 cents pound.

Shop  
Muleshoe  
First!

## Patients in Muleshoe Area Medical Center

December 21, 1989

Adrianna Martinez, Priscilla Orozco, Anna Andrade, Ollie Sebring, Ona Coffey, Ruby Willman, Debbie Weir, Sylvia Reyes, Ashley Hartline, Letha Patterson and Robert Kimbrough.

December 22, 1989

Eusanna Gloria, Scott Veliz, David Casavco, Wenona Gibson, Ollie Sebring, Ona Coffey, Ruby Willman, Otilie Wisian, Letha Patterson and Robert Kimbrough.

December 23, 1989

Scott Veliz, David Casaveo, Kacey Fields, Rudy Gonzales, Jr., Miguel Acevedo, Gregoria Salazar, T. J. Tucker, Julia Ann Roming, Wenona Gibson, Ollie Sebring, Ona Coffey, U. J. King, Connie Bruns, Johnette Marlow, Clio Middlebrooks, Erin Pena, Winona Spears, Rosie Martin, Ross Goodwin, Letha Patterson and Robert Kimbrough.

December 24, 1989

Olmos Alejandro, Ivan Sandoval, Miguel Acevedo, Josie Salazar, Generosa Castillo, David Knapp, Tosha Garza, Gregoria Salazar, T. J. Tucker, Wenona Gibson, Ollie Sebring, Ona Coffey, Connie Bruns, Johnette Marlow, Clio Middlebrooks, Erin Pena, Winona Spears, Rosie

Martin, Ross Goodwin, Letha Patterson and Robert Kimbrough.

December 25, 1989

Miguel Acevedo, Josie Salazar, Generosa Castillo, David Knapp, Tosha Garza, T. J. Tucker, Wenona Gibson, Ollie Sebring, Ona Coffey, Abraham Flores, Connie Bruns, Ramon Berlanga, Clio Middlebrooks, Erin Pena, Winona Spears, Rosie Martin, Ross Goodwin and Sylvia Bennett.

December 26, 1989

Miguel Acevedo, Josie Salazar, Generosa Castillo, David Knapp, Tosha Garza, T. J. Tucker, Wenona Gibson, Ollie Sebring, Ona Coffey, Abraham Flores, Connie Bruns, Ramon Berlanga, Clio Middlebrooks, Erin Pena, Winona Spears, Rosie Martin, Ross Goodwin and Sylvia Bennett.

Shop  
Muleshoe  
First!

Cash Rewards  
Up To \$1,000  
For Information!  
Call  
Bailey County  
Crime Line  
272-HELP

I am hanging up my cap, turning in my badge and retiring from the service.  
December 29, 1989  
I will always cherish the memories of delivering your mail and I thank you for the kindness shown me in the past years.

Melvin Griffin  
Your Mail Carrier

## All Toys & Games

# 10% - 50% Off

In Stock Only!

424481  
**12.99**  
Baby Bottoms™ Doll is very soft and she comes with 2 pretty outfits! 14 in. 3 & up. 1520

**1990**  
Happy New Year  
And Many Thanks

424473  
**16.49**  
Color Change Barbie™ Make-Up Head. Make-up appears, disappears. 3-up. 7306

Johnson's  
Deicer  
**89¢**

**PARKER BROTHERS**  
MONOPOLY  
257639  
**7.49**  
Deluxe Monopoly® celebrates the anniversary of this real estate classic. 7

Ice Melt  
10 lb. **2.79**  
25 lb. **6.49**  
50 lb. **12.99**

NIKKO  
423210  
**34.49** Batts. not incl.  
Radio-Controlled Turbo Tornado offers full-function control. 16296

Ice Scrapers  
**49¢**

424820  
**15% off**  
All Tractors & Plows  
Massey Ferguson Tractor with steerable front end, rubber tires. 113300

The staff of Muleshoe Area Healthcare Center wishes to thank all those who donated food for the Staff break room last week.

13th Annual  
**Festival of Gospel Music**  
New Year's Eve Singing  
Worship Service — 6:00 p.m.  
Singing Begins — 6:30 p.m.

- Hear the Following Groups:  
Proclaimers — Dora, New Mexico  
Freedom Bound — Portales, New Mexico  
Butch Taylor Quartet — Portales, New Mexico  
Southside Singers — Lubbock, Texas  
Sandhills Quartet — Muleshoe, Texas  
Gospel Notes — Muleshoe, Texas
- Congregational Singing Will Also be Featured
- Fellowship, Food and Fun Will be Provided
- Sing out the "Old Year", Sing in the "New Year"
- No Collection will be taken

Come and Enjoy This Festive Occasion With Us  
**CHURCH OF CHRIST**  
West 21st & American Blvd. — — — Phone 272-4256  
Muleshoe, Texas

# Fry & Cox, Inc.

401 S. 1st 272-4511

**Cordelia Heath  
Funeral Services  
Held Wednesday**

Funeral services for Cordelia Heath, 91, of Farwell were held at 1 p.m. Wednesday, Dec. 27 in the Farwell First Baptist Church with the Rev. Rick Sullivan.

Burial was in Castro Memorial Gardens at Dismitt, under the direction of Ellis Funeral Home. Mrs. Heath died at 8:58 p.m. Sunday in Roosevelt General Hospital in Portales, N.M.

Born March 28, 1898 in Tribby, Okla., she had been a resident of Farwell since 1976, moving there from the Lazbuddie community where she had resided since 1925. She was a homemaker and a member of the Farwell First Baptist Church. She married Claude Heath on Nov. 14, 1915 in Tribby, Okla. He died April 17, 1984.

Survivors include a daughter, Lois Faye "Harvey" Hudnell of Farwell; a brother, R.M. McClain of Drumright, Okla.; four grandchildren, Nancy and Johnny Warrick of San Antonio, Janell and Jimmy Jordan of Farmington, N.M., Sue and Robert Harmon of Portales, N.M. and Wayne and Callalya Hudnell of Baton Rouge, Louisiana; seven great grandchildren, Renee and Kenneth Dilbeck and J.W. Warrick, all of San Antonio, Bob and Ronda Harmon of Portales, N.M., Brenda and Jay Hammond of Hobbs, N.M., Bryce Harmon of Alameda, Calif., Justin and Jennifer Jordan of Farmington, N.M., and Eric Hudnell of Baton Rouge, Louisiana; and four great great grandchildren, Kyle and Bryan Dilbeck of San Antonio, and Jayson and Jeffery Hammond of Hobbs, N.M.

**Funeral Services  
Held Tuesday For  
Oma Melissa Lytle**

Funeral services for Oma Melissa Lytle, 95, of Silvertown were held at 2 p.m. Tuesday, Dec. 26 in the First United Methodist Church of Morton with the Rev. Duane Knowlton, First United Methodist Church minister from Silvertown, officiating, assisted by the Rev. Al Jennings, pastor.

Burial was in Morton Memorial Cemetery under the direction of Ellis Funeral Home of Morton. Mrs. Lytle died at 12:30 a.m. Sunday in Tulia Care Center.

Born Oct. 20, 1894, in Melbourne, Ark., she had been a resident of Silvertown since 1983, moving there from Morton. She was a homemaker and a charter member of the Morton United Methodist Church of Morton. She married Ed Lytle on June 3, 1911, in Longworth, TX. He died June 20, 1977.

Survivors include three sons, Hugh Lytle of Elfrida, Ariz., Ray Lytle of Talihima, Okla., and Floyd Lytle of Danville, Calif.; three daughters, Lola Mae Stephens of Silvertown, Verna Brown of Bledsoe and Darlene Neal of Lubbock; two sisters, Dora Holder of San Diego, Calif., and Sabra Peeples of Roby; a brother, Bill Hanna of Sweetwater; 12 grandchildren; 30 great grandchildren; and 11 great great grandchildren.

She was preceded in death by two sons, Jack Lytle on Aug. 3, 1944, and Maurice Lytle on April 7, 1981.

**Three Way News  
by: Mrs. H.W. Garvin**

There has been an outbreak of flu and stomach virus in our community with several very ill.

The Three Way High School were in a basketball tournament over the weekend with Three Way girls winning second place and boys losing. The Three Way junior high then played in a tournament at Cotton Center Saturday with the Three Way boys winning first and girls losing.

Mr. and Mrs. Mike Sowder and son from Arkansas and Mrs. Jack McCarty and children from Logan spent the weekend with their parents, the Joe Sowders.

# New Year's Greeting



BLUE BONNET QUARTERS  
**MARGARINE**  
1 LB. BOX  
**2 FOR \$1**



CHEESE SPREAD 2 LB. BOX  
**KRAFT VELVEETA**  
**\$4.49**

SHURFINE SOUR CREAM 2 8 OZ. CTNS. **89c**  
SHURFINE FREN. ONION/GR. CHILIES  
DIPS 1/2 PT. CTN. **69c**  
KRAFT 100% NAT. 1/2 MOON CHEESE COLBY/MONT. JACK/CO-JACK/CHEDDAR 10 OZ. PKG. **\$2.19**



ABSORBENT PAPER JUMBO ROLL  
**HI-DRI TOWELS**  
**59c**

**SALT JOWLS** FOR NEW YEARS-DRY LB. **49c**

CAROLINA BRAND SMOKED FULLY COOKED BONELESS-2-2 1/2 LB. AVG. **\$1.19**  
**TURKEY PICNICS** LB. **\$1.99**  
SELECT LEAN TRIM CENTER CUT  
**PORK CHOPS** LB. **\$1.59**  
COUNTRY STYLE "LOTS OF MEAT"  
**PORK RIBS** LB. **\$1.69**  
OSCAR MAYER 1 LB. PKG.  
**SLICED BACON** **\$2.29**  
WILSON TENDER LEAN SMOKED  
**PORK CHOPS** LB. **\$1.39**  
ARMOUR'S PRE-COOKED CHICKEN FRIED  
**BEEF PATTIES** LB. **\$1.69**  
OSCAR MAYER SLICED  
**COOKED HAM** SMOKED/HONEY/BOILED/LOWER SALT 6 OZ. PKG. **\$2.99**  
OSCAR MAYER SLICED SMOKED/LOWER SALT 12 OZ. PKG. **\$2.49**  
"A PARTY TREAT" OSCAR MAYER LITTLE  
**COCKTAIL SMOKIES** LB. **\$2.49**

SOLO 9 IN. PARTY PLATES 15 CT. PKG. **\$1.29**  
SOLO PARTY BOWLS 12 CT. PKG. **59c**



MORRISON **POUCH MIX** 6 OZ. PKG. **3 \$1**  
MEXIKITS BISKITS CORNKITS PANKITS



ASST. SALON SELECTIVES **SHAMPOO & CONDITIONER** 15 OZ. BTL. **\$1.99**

ASPIRIN-CAPLETS/TABLETS 50 CT. BTL. **\$2.49**  
NA/AERO SALON SELECT. **HAIR SPRAY** 7-8 OZ. SIZE **\$1.99**  
VICKS **VAPO RUB** 1 1/2 OZ. JAR **\$2.19**

JEWEL GREEN **LIMES**  
**10 FOR \$1**



TANGY YELLOW **LEMONS** 5 FOR **\$1.00**  
NEW CROP **HASS AVOCADOS** 2 FOR **89c**  
CALIFORNIA **GREEN ONIONS** 4 BUNCHES **\$1.00**  
GARDEN FRESH **BELL PEPPERS** 4 FOR **\$1.00**  
FRESH **YELLOW ONIONS** LB. **19c**  
TEXAS RUBY RED LARGE SIZE **GRAPEFRUIT** 3 FOR **\$1.00**

ALL PURPOSE **RUSSET POTATOES** 20 LB. BAG **\$1.99**



# ings 1990



*The Time Has Come*  
FOR A HAPPY NEW YEAR!

May your year be filled with love, hope and happiness. We thank you for your patronage.

FRESH FAMILY PAK  
**GROUND BEEF**  
3 LB. PKG. OR MORE  
**\$1.29**  
LB.

LEAN TRIM FAMILY PAK  
**PORK CHOPS**  
8-11 ASSTD. CHOPS  
**\$1.49**  
LB.

ALL TYPES 3 LITER BOTTLE

**COCA-COLA**  
**\$1.29**

NEW! ONION SOUP 99¢

ALL TYPES POTATO CHIPS®  
**RUFFLES**  
\$2.69 SIZE  
**\$1.69**

RANCH STYLE REGULAR/JALAPENO BLACKEYED  
**PEAS**  
15 OZ. CANS  
**3 FOR \$1**

HAIRERS

**7KKS** 207 OZ. SIZE **\$2.49**

**BLADES** 5 CT. PKG. **\$2.69**

**AZORS** EA. **\$2.09**

100% Pure Minute Maid 100% CONCENTRATED ORANGE JUICE

MINUTE MAID ASSORTED  
**ORANGE JUICE**  
12 OZ. CAN  
**\$1.19**

Q&Q VERMICELLI

Q&Q VERMICELLI

Q&Q VERMICELLI 5 QZ. PKG.  
**\$1**  
FOR

SHURFINE  
**EGG NOG**  
QT. CTN.  
**99¢**

BANQUET  
**CHICKEN NUGGETS** 10 OZ. BOX **\$1.99**

ORE-IDA SHREDDED 24 OZ. PKG.  
**HASH BROWNS** **\$1.29**

BACARDI ASSTD.  
**MIXERS** 10 OZ. CAN **\$1.49**

SOLO 16 OZ. PARTY CUPS 20 CT. PKG.  
**99¢**

**AF** AFFILIATED FOODS INC.  
PRICES EFFECTIVE  
DECEMBER 24-30, 1989

**thriftway**

WE ACCEPT FOOD STAMPS...WE RESERVE THE RIGHT TO LIMIT

## Hospital District

Cont. From Page 1

two positions open on the Muleshoe City Council.

The Ricky Powell family, Ricky, Glenda and children, were named the Library Family of the Year during annual Public Library Week.

The Lazbuddie FFA Livestock Judging team, Casey Russell, Casey Bradshaw, Sheldon Mason and Jason Morris, were notified they would be competing at state level.

The Muleshoe High School Mighty 'M' Band won its fifth consecutive sweepstakes award. Lubbock Cooper High School was the only other 3A band in the district to win that honor this year.

Muleshoe's Jennyslippers announced an Oklahoma tour bus would be stopping overnight in Muleshoe. Full entertainment was being planned for the visiting tourists.

SPS announced a 'substantial' rate decrease for rural users, with city customers to receive a smaller decrease.

The State of Texas approved the proposed Muleshoe Area Hospital District, and plans were being made for local citizens to vote on the proposal.

### MAY

Myrtle Creamer, long-time AARP member, and two time former president of AARP, was presented a National Award, the 1989 National Community Service award.

Oath of office was administered by District Judge Jack Young to the first board of directors for the Muleshoe Area Hospital District. They included Tim 'Buck' Campbell, president; Derrell Jennings, vice president; Robert E. Finney, secretary; Neal Caswell and Vance Wagon. The board set June 20 for the MAHD election.

West Plains Medical Center still struggled to keep the doors open until after the June 20 MAHD election.

Brandon Wilson, MHS senior, won two state medals, in the Lincoln-Douglas debate and Persuasive Speaking.

A. V. Wood was re-elected as city councilman and Troy Stegemoeiler was elected to replace Tommy Gunstream, who chose not to seek re-election.

Around three-fourths of an inch of rain made dryland crop prospects a little brighter for the area.

Richard Ring and Heather Hutton received the *Fighting Heart* awards at the annual Muleshoe High School Athletic Banquet.

Lisa Noble was named valedictorian, and Andrew Espinoza, salutatorian, for the MHS 1989 graduating class.

In mid-May, the lack of moisture was keeping dryland crop planting at a standstill.

Rachel Snider, nursing home administrator, said roof and plumbing repairs would be imperative in the near future in order for the nursing home to stay in operation.

Seventy-six MHS seniors walked across the stage to receive graduation diplomas. It was one of the smallest graduating classes in many years.

Senator Phil Gramm was in Muleshoe for the official ribbon cutting at the new city airport.

Chad Welch and Carrie Kindle were presented the *Fighting Eagle* award at the Three Way Athletic Banquet.

Nine Muleshoe High School youths were preparing for a 15-day tour of Europe in June.

### JUNE

Eddie Zamora and Ginger Jesko were winners of the *Longhorn Spirit* award at the Lazbuddie Athletic Banquet.

Early in June, the lack of moisture still prevented planting of dryland crops, and the crop prospect looked dismal.

A 'surprise' Saturday afternoon tornado totally destroyed the home of J. D. and Julie Cage and damaged the home of Bill Jim and Marlene St. Clair. No one was at either home when the tornado stayed on the ground for 20 minutes, and was seen as far away as Sudan.

Public meetings were scheduled at Lazbuddie and Muleshoe for citizen input into the upcoming MAHD election.

Rain helped add a little moisture to a very dry area, but still kept dryland farmers from planting.

Registration for the spring 1990 semester at South Plains College will be January 11-12, according to Bobby James, registrar and dean of admissions.

Persons who have pre-registered need to pay their tuition and fees from 8:30 a.m.-4:30 p.m. Jan. 11 in the SPC Student Center. Evening registration is scheduled that day from 5:30-7:30 p.m.

Regular registration will be 9 a.m.-noon and 1:30-4 p.m. Jan. 12.

Registration at the SPC Lubbock campus, located at 1302 Main, will be 9 a.m.-1 p.m. and 4-7 p.m. January 9-10.

**Political Calendar**  
Bailey Co. Judge  
Marilyn Cox  
Jim Watson  
District Judge  
Jack Young  
Commissioner Prec. 4  
Jodie Barrett

VOTE!

**HOLIDAY**

CONEY COMBO

• Ex-Long Cheese Coney  
• Medium Soft Drink

Simplify the hectic holiday hustle-bustle with an easy-to-eat-there-or-take-home Holiday Coney Combo from Sonic. It's an extra long cheese coney with zesty chili plus a medium soft drink.

\$2.29

Plus Tax



1633 W. Amer. Blvd.  
272-3998

**SONIC**

© 1989 SONIC INDUSTRIES INC.

The Muleshoe Chamber of Commerce and Agriculture held a breakfast for members to hear about the proposed Hospital District. About 30 people attended the breakfast.

St. Mary of the Plains Hospital at Lubbock sent representatives to visit with the temporary MAHD board about possibly affiliating with the Lubbock Hospital.

Methodist Hospital of Lubbock also sent representatives to Muleshoe to offer assistance in re-grouping and re-organizing the hospital.

The proposed MAHD continued to be the dominant news in the area as people were making up their minds whether or not to give approval to the district.

Plans were continuing for the Mulepler Production Co.'s upcoming Family Fun Night, scheduled for June 29-30.

A whopping 91.6 percent of voters in Bailey County and over 80 percent of the voters in Parmer County voted 'FOR' the proposed Muleshoe Area Hospital District.

Light rains continued to add moisture, but it still fell far short of the amount needed to produce crops.

The Muleshoe Area Hospital District Board of Directors began negotiations with the board from West Plains Medical Center to obtain the hospital and nursing home.

A Lazbuddie woman, Dana Merrill, 23, was dead at the scene of an accident northwest of Lazbuddie on a county road. The driver of the other vehicle involved in the intersection crash was hospitalized from injuries she received.

(In the Sunday *Bailey County Journal*, the last half of 1989 will be outlined. Several new problems 'cropped up' during the last half of the year.)

### Lazbuddie School Names Favorites

Senior Javier Moran and junior Juanita Ramos have each been chosen as the Lazbuddie High School boy and girl Student of the Month for the month of November.

Lazbuddie Junior High School Student of the Month was awarded to eighth grader Chad Nickels and sixth grader, Joanna Gallman.

These students were selected by a teacher committee from a list of nominees.

Attitude, scholarship, citizenship, and service were the factors in determining nominees.

#### L.H.S. PERSONALITY SELECTIONS

Miss LHS, Mia Jennings; Mr. LHS, Michael Williams.

Most Beautiful/Handsome, Mia Jennings and Michael Williams.

Most Popular, Mia Jennings and Eddie Zamora.

Most Talented, Mia Jennings and Michael Williams.

Best All Around, Mia Jennings and Kevin McGehee.

Most Athletic, Mia Jennings and Michael Williams.

Most Courteous, Mia Jennings and Gerardo Mata and Casey Bradshaw.

Most Friendly, Diana Cozby and Sandra Martinez and Eddie Zamora.

Most Studious, Mia Jennings and Gerardo Mata.

Most Dependable, Diana Cozby and Mia Jennings and Raymond Zamora.

Wittiest, Kathy Pate and Casey Russell.

### Rotary...

Cont. From Page 1

are not to be allowed to continue to be members. The letter is "a kind of a warning, but more of an invitation to get our attendance back up," said Hutto.

He talked about the Polio Plus drawing, then called on Buck Campbell to further explain the project.

Campbell said Polio Plus now has \$1,500 but the Polio Plus money was mixed in with the regular Rotary operating funds, so more funds are needed in order to reach the Rotary goal.

He explained that Polio Plus, which provides polio inoculations at eight and a half cents each, are being administered world-wide.

Campbell said that once polio is eradicated, the funds left will be used in other health-related problems throughout the world.

President Hutto also reminded the group of the District Conference in April, scheduled to be held at the Inn of the Mountain Gods in New Mexico.

He announced the names of the 90 percent attendance club who are invited to his fajita cookout on January 11. They include Harvey Bass, Travis Bessire, Max King, Buck Campbell, Scott Campbell, Kenneth Henry, J. D. Cage, Jerry Hicks, Tom Bonds, Bret McCasland, Curtis Shelburn, Bob Stovall, David Tipps, Lawrence Ward and Cleta Williams.

Tom Bonds was winner of the Polio Plus drawing for the week.

Visitors at the meeting included two visiting Rotarians, J. B. Sudderth of the Farwell Club and Jay Messenger of the Southwest Abilene Rotary Club. Other guests were Gant Barnhill, Reagan McElroy, Sam Feagley, Kevin King, Duane K. Castleberry and Gary L. Hailey.

#### Wrong Number

A very strict lady was called out of the bed one morning at 5 a.m. The following dialogue ensued:  
Voice: Hello.  
Lady: Hello.  
Voice: How are you this morning?  
Lady: Alright.  
Voice: Then I guess I must have the wrong number.

**Cash Rewards**  
**Up To \$1,000**  
**For Information!**

**Call**  
**Bailey County**  
**Crime Line**  
**272-HELP**

**W-W**  
**SUNDOWNER**  
**NECKOVER**

**ABILENE TRAILER SALES**

HORSE • STOCK • COMBO

Hwy 83 Bus. N.  
3608 Pine, Abilene, Tx.  
915-673-7841  
**FINANCING AVAILABLE**

Open Thru Saturday, 12-30-89,  
For Sales & Service

# PERRYS

Sale Starts...  
DECEMBER 26th!


SPECIAL PURCHASE

\$1 \$2 \$3

EA. EA. EA.

WHILE  
QUANTITIES  
LAST!

We want our loyal customer's to be able to take advantage of first choice on some new extra "special" merchandise going on sale December 26th. You will be able to choose from a large assortment of ... \$1, \$2, and \$3 items. Just our way of saying "Thanks" for shopping PERRYS.



We Suggest You Shop Early  
For Best Selection

# CLASSIFIEDS 272-4536

## CLASSIFIED RATES

15 Words & Under  
Minimum Charge  
\$2.30  
Thereafter  
\$2.00

16 Words & Over  
1st Insertion  
15 cents per word  
2nd Insertion  
13 cents per word

CLASSIFIED  
DISPLAY RATES  
\$1.75

Per Column Inch

DEADLINES  
12 noon Tues.  
For Thursday Paper  
12 noon Friday  
For Sunday Paper

To receive the re-  
duce rate after the  
first insertion ad  
must run continuous-  
ly.

We reserve the right  
to classify, revise, or  
reject any ad. We are  
not responsible for  
any error after ad  
has run once.

## 1. Personals

CONCERNED  
About Someone's  
Drinking?  
HELP IS  
AVAILABLE

through Al-Anon  
CALL 272-2350 or  
965-2870 or come to  
visit Tuesday nights,  
8:00 p.m. or Saturday  
mornings at 10:30 a.m.  
and through AA call  
965-2870 or come visit  
Tuesday nights, 8:00  
at 620 W. Second,  
Muleshoe.

DKK Custom Farm-  
ing. Contact Keith  
Smith at 965-2629 or  
965-2189.  
1-49t-8tp

## 3. Help Wanted

URGENTLY NEED  
DEPENDABLE PER-  
SON to work without  
supervision for Texas  
oil Co. in Muleshoe  
area. We train. Write  
H.V. Dickerson, Pres.,  
SWEPCO, Box 961005,  
Ft. Worth, Tx. 76161.  
M3-52t-1tp

## ACT IN TV COMMERCIALS HIGH PAY

No Experience.....All  
Ages Kids, Teens,  
Young Adults, Fam-  
ilies, Mature People,  
Animals, Etc. Call  
Now! Charm Studios  
1-800-837-1700  
EXT 8385  
C3-49s-20tp

## TOWN & COUNTRY FOOD STORES

We are seeking career  
minded individuals for  
part time and full time  
employment. Must be  
dependable, have good  
customer relations,  
work, learn, and con-  
tribute. Applications  
available at both  
stores. Drug test re-  
quired.  
G3-42t-tfc

ATTENTION - HIR-  
ING! Government jobs  
- your area. Many  
immediate openings  
without waiting list or  
test. \$17,840 - \$69,485.  
Call 1-602-838-8885.  
Ext. R10191.  
3-52s-4tpts

## 4. Houses For Rent

FOR RENT: 1 small  
unfurnished house.  
Call 272-3107.  
M4-49t-tfc

## 9. Automobiles For Sale

ATTENTION - GOV-  
ERNMENT SEIZED  
VEHICLES from \$100.  
Fords, Mercedes, Cor-  
vettes, Chevys. Sur-  
plus Buyers Guide.  
1-602-838-8885. Ext. A  
10191.  
9-52s-4tpts

FOR SALE: 1988 Che-  
vrolet Beretta, Dark  
Blue, 5-Speed, Air  
conditioned, Excellent  
Condition. Call (806)  
965-2682 after 6:00  
p.m.  
H9-51s-4tc

## 11. For Sale Or Trade

FOR SALE: 800 D Mita  
Copier. Good Shape.  
All Attachments. Call  
806-272-4595.  
J11-52s-2tc

PIANO FOR SALE  
Wanted: Responsible  
party to assume small  
monthly payments on  
piano. See locally. Call  
Credit Manager at  
1-800-233-8663.  
N11-50t-7tp

FOR SALE 1-GE 40 hp  
irrigation motor, real  
good. 3-Woodline 8  
inch pumps. Call 965-  
2658.  
T11-50t-6tc

## 8. Real Estate

FOR SALE: Property of  
Longview Baptist  
Church, approximately  
3 acres with buildings.  
Land is next to FM  
pavement located a-  
bout 15 miles south-  
west of Muleshoe. Sale  
of property will be with  
sealed bids directed by  
the Llanos Altos Bap-  
tist Association. Direct  
inquiries to Rev. Joe  
Vernon, First Baptist  
Church, Earth: 257-  
2036 or Rev. Dale  
Berry, Trinity Baptist  
Church, Muleshoe:  
272-4015. Association  
reserves the right to  
refuse any unaccept-  
able bids.  
L8-51t-4tc

ATTENTION - GOV-  
ERNMENT HOMES  
from \$1 (U-repair).  
Delinquent tax prop-  
erty. Repossessions. Call  
1-602-838-8885. Ext.  
GH10191.  
8-52s-4tpts

3-BEDROOM, 2-bath,  
double-wide mobile  
home for sale.  
272-3438.  
C8-47c-tfc

HOUSE FOR SALE:  
3-2-2 brick, isolated  
master suite, sprinkler  
system, storage build-  
ing, lots of extras. 1914  
W. Ave. F. Phone  
272-4804.  
B8-49t-7tc

FOR SALE in Richland  
Hills by owner. 3  
Bedroom, 2 bath red  
brick home. 1815 W.  
Ave. C. Call 272-3767.  
B8-48t-tfc

FOR SALE OR RENT:  
2 bedroom, 2 full bath  
mobile home, on 45'-  
150' fenced lot. Call  
272-5435, after 5 p.m.  
G8-49t-tfc

## 8. Real Estate

## 8. Real Estate

### Henry Realty

111 W. Ave. B. 272-4581  
Muleshoe, Tx.

NEW LISTING- 3 bedroom, 1 1/4 bath, 1 car  
garage, carpet, central A/H, fenced yard,  
storm windows, shop building, good  
condition in a good location.

3 Brdm., 2 bath, spacious home outside city  
limits, near city on highway. 29x40 metal  
building. Lot 85'x620'.

3 Brdm., 1 bath, completely remodeled,  
edge of city on highway.

COMMERCIAL PROPERTY-Ideal location  
on West American Blvd. 150' highway  
frontage. A great business opportunity.

RURAL HOME-3 Brdm., 2 bath, large den  
on one acre with many extras. Fenced with  
barns, fruit trees, extra storage, storm  
cellar, and satellite dish. Priced to sell.

SPACIOUS-2 Brdm., 2 bath, with garage.  
Freshly painted. Fireplace. Ready to move  
in.

JUST LISTED-Outside city - 3 Brdm., 2  
bath, garage on one acre. Carpet with  
drapes and blinds. Dishwasher. Good  
storage.

3 bedroom, 2 bath, carpet, large living  
room. Excellent condition, near high school.  
Priced to sell.

## STATE CAPITAL



## HIGHLIGHTS

By Lynell Williams  
TEXAS PRESS ASSOCIATION

AUSTIN-While the price of  
natural gas rose with the cold  
front, so did the tempers of many  
Texas state district judges, one  
of whom accused the attorney  
general of selling them down the  
river.

Capitol halls and state agencies  
sloved for the holidays, but the  
judges were locked in battle  
against a federal judge, Attorney  
General Jim Mattox and minority  
interest groups.

At issue is how Texas will re-  
structure elections of state district  
judges to give minority candidates  
a better shot at winning.

Mattox met with Hispanic lead-  
ers and endorsed a plan to hold  
single-member elections by leg-  
islative districts in some counties.

They say an appointment plan  
pushed by the governor is a device  
to take away the voters' rights to  
elect minority judges.

## 8. Real Estate

LOT FOR SALE: Rich-  
land Hills. Great view.  
710 W. 20th. 140x140'.  
Call 272-4344 or 272-  
3510.  
J11-52t-tfc

The plan would force incumbent  
judges, elected at-large last time,  
to select a district in which to run,  
whether or not they reside there.

The judges fear it will cause a  
political party grab bag fiasco in  
most elections.

### Judges Fight Back

Several judges met shortly  
before Christmas to decide how to  
respond.

One contingency was a lawsuit  
by State District Judge Ted Poe  
to restrain Mattox, as the state's  
lawyer, from signing anything on  
their behalf.

Another was a resolution con-  
demning Mattox, who they say  
intervened uninvited to represent  
them, for settling the issue with-  
out even consulting his clients.

### Ethics, Rights Votes

Legally, Mattox is violating  
state bar ethics, they say, and his  
settlement will leave them with no  
basis for legal appeal.

Politically, he is a candidate  
who has traded their legal rights  
for black and Hispanic votes.

Poe didn't shirk from ripping  
Mattox, a candidate for governor,  
for selling them out for his  
political gain.

"Mattox is the only lawyer I  
know who handles cases in the  
interest of himself and not his  
clients. He doesn't represent me,"  
Poe said.

"If I were in a courtroom right  
now and had to choose between  
being represented by Jim Mattox  
or Duffy Duck, I'd favor retaining  
Mr. Duck," Poe said.

"He sold us down the river,"  
echoed Judge Bill Harmon.

### Campaign Spending

Campaign insiders and out-  
siders predict Clayton Williams,  
Republican candidate for gover-

nor, is on the way to a primary  
spending record.

They predict he will have  
between \$3 million and \$4 million  
by mid-January, most of it his own  
money.

At this same point in the 1986  
race, Mark White and others had  
spent only \$2 million each.

In contrast, GOP challengers  
Kent Hance, Tom Luce and Demo-  
crat front-runner Ann Richards  
will probably have spent only one  
million. Mattox will have stock-  
piled about \$4 million, but has  
spent relatively little.

### Brown Eyes Showdown

State Sen. Buster Brown, R-  
Lake Jackson, is headed for a  
showdown in the Texas Supreme  
Court after the 1st Court of Ap-

peals in Houston ruled him in-  
eligible to run for attorney general  
because last session he voted to in-  
crease retirement benefits for that  
office.

Brown, who was knocked off  
the 1986 ballot on this issue, has  
deliberately set himself to be a test  
case.

### Campaign Happenings

The GOP state party chairman  
returned the filing fee of Houston  
entrepreneur Tommy Fatjo, saying  
recent revelations of a business  
failure weakens his candidacy for  
comptroller.

Instead, the party will likely  
back Mike Toomey, Gov. Bill  
Clements' chief of staff.

Former U.S. Ambassador Bob  
Krueger named a campaign treas-  
urer and said he will formally an-  
nounce next week for the Texas  
Railroad Commission seat being  
vacated by Hance.

Wes Gilbreath, Houston busi-  
nessman running for Texas Land  
Commissioner, blasted incumbent  
Garry Mauro for "conflicts of in-  
terest, sweetheart leases, one-bid  
contracts and outlandish travel ex-  
penses."

Gilbreath finished first in the  
GOP primary for U.S. Senate, but  
lost the run-off election.

### Other Highlights

State Sen. Chet Edwards, D-  
Duncanville, launched a campaign  
to capture the congressional seat of  
retiring U.S. Rep. Marvin Leath  
of Waco.

Former state Rep. Anthony  
Hall, the Houston city councilman  
who lost a congressional bid to  
state Sen. Craig Washington, was  
named chief of Houston's mass  
transit agency.

Gov. Clements appointed  
the first Republican state district  
judge in Travis County history.  
Austin lawyer Will Wilson Jr. suc-  
ceeds Harley Clark, who vacated  
the bench earlier this year.

Agriculture Commissioner  
Jim Hightower announced for re-  
election, saying his third term  
would be his last.

Think Classifieds Call  
272-4536

## Bingham & Nieman Realty

116 E. Ave. C.

272-5285 or 272-5286

RICHLAND HILLS  
JUST LISTED-IMMACULATE, ENERGY  
EFFICIENT 3-2-2 Brick, Cent. A&H,  
built-ins, FP, sunken lv. area w/ cathedral  
ceiling, ceiling fans, earthtones, storage  
bldg., much more! \$50's!!!!!!!

4 NICE RESIDENTIAL LOTS PRICED  
FROM \$5,000.00!!!!!!!

JUST LISTED-Nice 3-2-2 Brick on large  
corner lot, Cent. A&H, built-ins, storm  
windows & doors, large basement, much  
more!!!!!!

PRICE REDUCED, VERY NICE 3-2-3  
Home, Cent. A&H, built-ins, FP, fans,  
spktr. sys., fenced. 60's!!!!!!

HIGHLAND AREA  
NICE 3-2-2 Brick home (2 story), on corner  
lot, Cent. A&H, built-ins, and much more.  
LET'S LOOK TODAY!!!!!!60's

NICE 3-2-1 Brick Home, Cent. A&H,  
built-ins, large gen w/fireplace. Fenced  
yard, storage bldg. 540's!!!!!!

PRICE REDUCED 2-2-2 Brick, corner lot,  
Cent. A&H, spacious rooms, utility, cov.  
patio, fenced yard, & much more. 40's!!!!!!

HIGH SCHOOL  
JUST LISTED-COZY 2-1 Home, nicely  
remodeled, fenced yard, & More \$17,000!!!!

2-1/2-1 Brick, fl. furnace, CA, fenced yard  
& more. \$20's!!!!!!

NICE 2-1/2-1 Home, corner lot, built-ins,  
nice carpet, heat pump, fenced yard,  
storage bldg. & more!!!!

PRICE REDUCED- 3-1-1 Home earthtone  
carpets, fenced yard, storm cellar &  
workshop!!!!

3-1/2-1 Brick, Cen. built-ins, fenced  
yard, much more **SOLD**

3-2 Home, nicely remodeled, Heat pump,  
storm windows & doors, well insulated,  
ceiling fans, fenced yd., storage bldg. &  
more!!!!\$20's!!!!

NICE 3-2-1 Brick, Cent. A&H, built-ins,  
fenced yard, covered patio, earthtone  
carpets, & much more. \$30's!!!!!!

LENAU ADD.  
2-1 home, floor furnace, fireplace, fenced  
yard, & more. \$15,000!!!!

PRICE REDUCED - 3-1-1 Home, nicely  
remodeled, fenced yd. & more. \$28,500!!!!

COUNTRY HOMES  
JUST LISTED-NICE 3-3-2 Brick Home on  
one acre tract at edge of town, Cent. A&H,  
built-ins, FP, sunroom, office, sauna, wet  
bar; auto. spktr., fenced yd., plus  
other amenities!!!!!!

JUST LISTED 3-2-2 Brick on 25 acres, close  
to town, Cent. A&H, built-ins, shop, barn,  
new 4 wire fence all around, much more!!!!

3-1-1 home on approx. 5 acres at edge of  
town, domestic well & irrig. well, barns &  
more. \$20's!!!!!!

VERY NICE-3-2-1 Home on 1 acre, close to  
town, Cent. Heat, Evap. air, nice carpets,  
nicely remodeled. \$30's!!!!!!

2-1 home, 20 acres, sub. pump, sprinkler,  
barns & corrals. 540's!!!!!!

EXCELLENT COMMERCIAL TRACT 175' x  
100', Hwy. 70 & 84, railroad spur access at  
rar, approx. 1200 sq. ft. bldg. PRICED TO  
SELL!!!!

NICE 3,500 sq. ft. office bldg. across from  
Courthouse. PRICED TO SELL!!!!

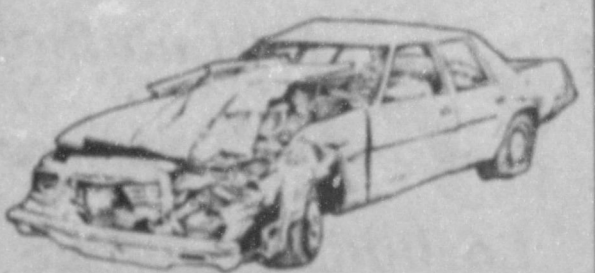
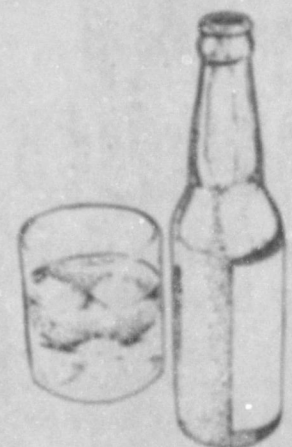
JUST LISTED-NICE COMMERCIAL BLDG.  
ON MAIN HIGHWAY, Approx. 2800 feet of  
area, suitable for various types of business.  
Possible Owner Financing to qualified  
Buyer. \$20's!!!!

"Season's Greetings From Our Home To Yours!"

GEORGE NIEMAN, BROKER

DIANNE NIEMAN, BROKER

DRINKING AND DRIVING  
CAN ADD UP.



PLEASE AVOID DWI  
DURING THE NEW YEAR

TEXAS DEPARTMENT OF PUBLIC SAFETY

# 1989-90 Lazbuddie Longhorns & Lady Horns



16. Joede Weaver



8. Amy Willingham



2. Joni Hernandez



7. Lori McBroom



10. Tisha Orozco



20. Erin Jones



11. Jana Vise



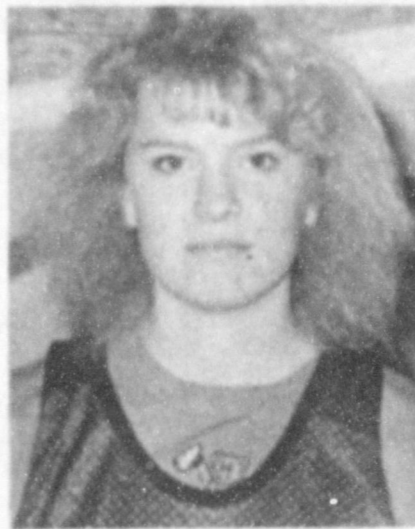
13. Jerri Cozbey



4. Christina Perkins



5. Stacie Hodges



19. Brittini Engelking



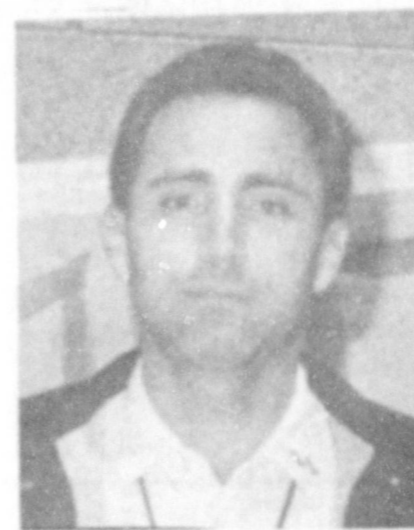
12. Malessia Snyder



Mgr. Becky Botkin



15. Mia Jennings



Coach Mike Carroll

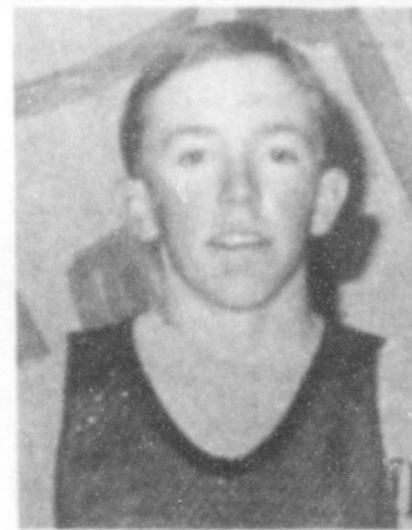


Mgr. Connie Flores

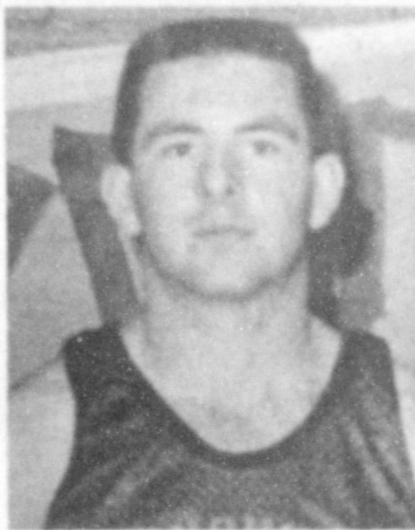
Not Pictured:  
Holley Morris  
Diana Cozbey



11. Mario Zamora



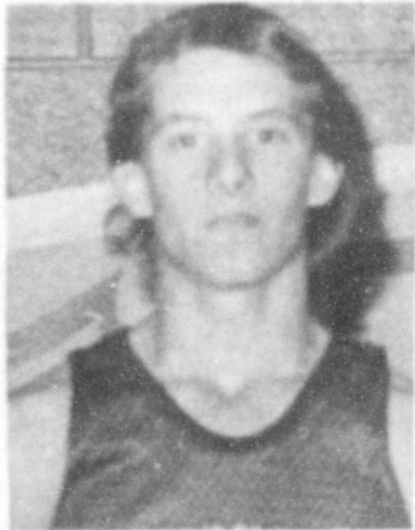
7. Jason Morris



19. Craig Russell



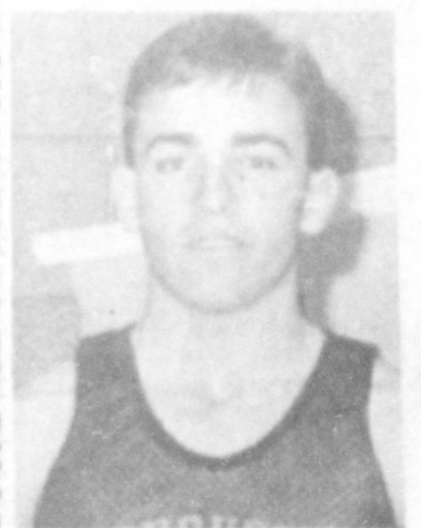
29. Filemon Guzman



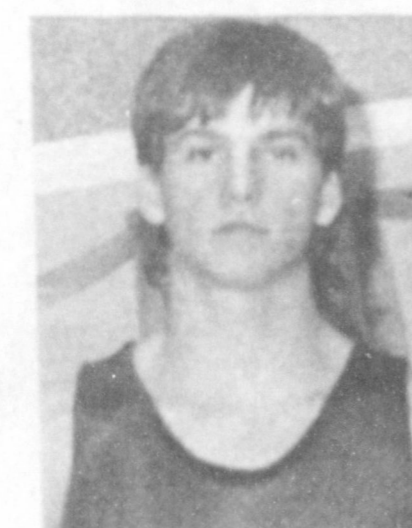
6. Monty Foster



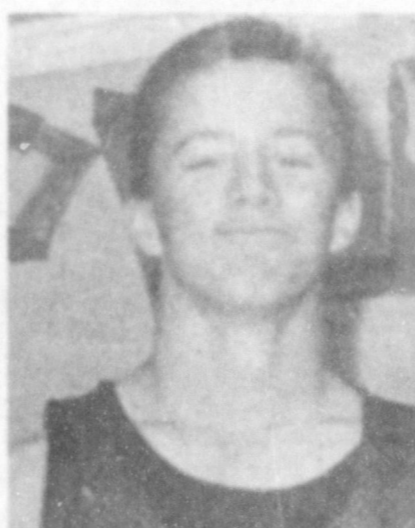
12. Frank Gonzales



10. Paul Williams



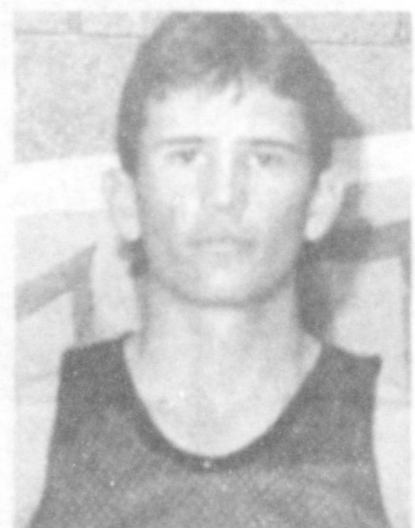
28. Matt Cozbey



24. Leland Brockman



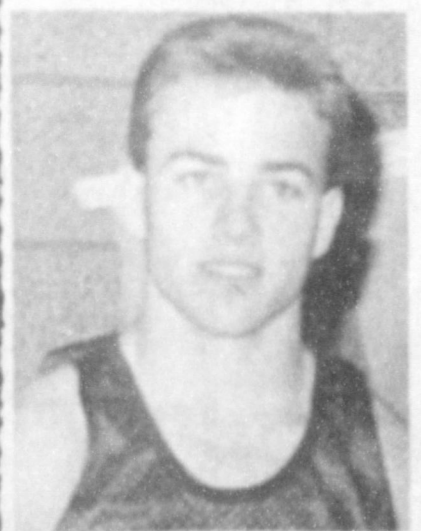
25. Eric Williams



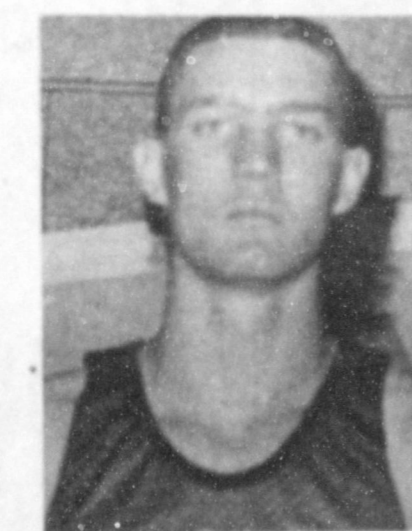
5. Casey Bradshaw



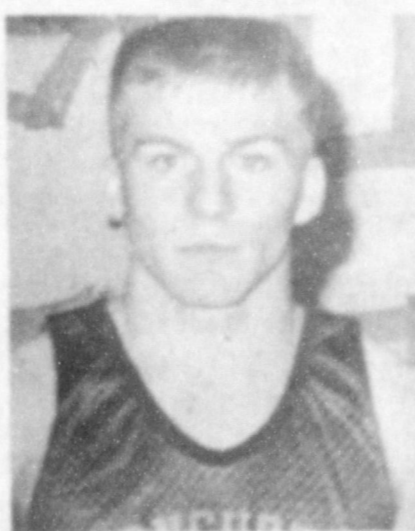
21. Clint Farris



15. Michael Williams



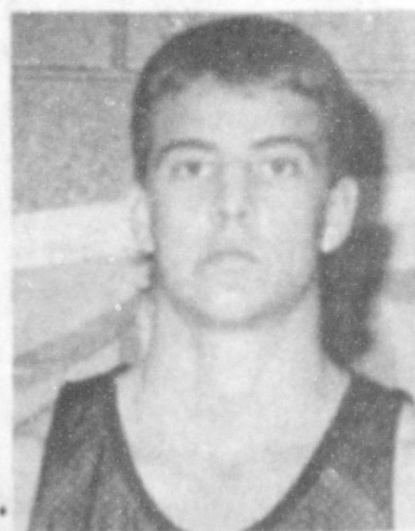
3. Kevin McGehee



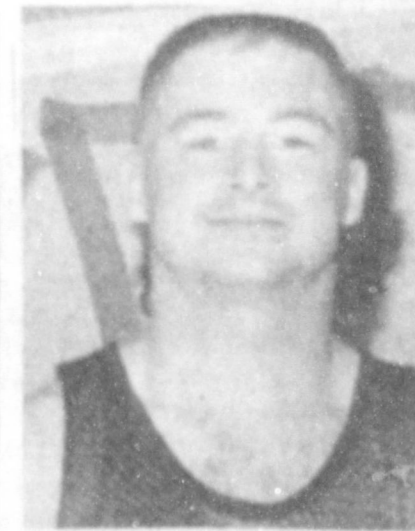
9. Kirk Jesko



2. Gerardo Mata



22. Doug Barnes



23. Casey Russell

Proudly Sponsored by the Following Longhorn Supporters!

*Lazbuddie Feeders – Bovina Feeders*

*Wilbur-Ellis Co.-Tide Division*

*Farmer's Spraying Service*

*B&W Cafe*

*Farmer's Co-Op Elevators*

*Lazbuddie Garage & Supply*

*North Lazbuddie Gin*

*Foster Fertilizer, Inc.*

*Sherley-Anderson-Lazbuddie Elevator*

*Five Area Telephone Cooperative, Inc.*