

WEATHER

September 24	65	35	.00
September 25	73	42	.00
September 26	80	39	.00
September 27	80	38	.00

Muleshoe Journal

The Community Of Opportunity-Where Water Makes The Difference



Vol. 67, No. 39

10 PAGES TODAY

Published Every Thursday At Muleshoe, Bailey County, Texas 79347

20¢ Thursday, September 28, 1987

Jennyslippers Host CofC Women's Meet

around Muleshoe

Alton Parker, reporter for the Muleshoe Athletic Booster Club, said the Boosters have adopted a noise maker for all football games.

He said it is a plastic one gallon jug with enough small rocks in it to make a noise--and is painted black and white.

The Booster Club says to make a noise maker and bring it to the games and *Back the Mules* no matter what team is playing.

Glen Williams of the Bailey County Aging and Health Care office issued the following reminder:

The Panhandle South Plains Fair at Lubbock will have the Senior Citizens Day on September 28. All persons over the age of 60 are admitted free.

For those requesting transportation by the Senior Citizen Van, please contact Edd Harp at 272-4693 or Bailey County Aging Department at 272-3647.

SPS Employee In Fifth Place At Albuquerque

For the first time last Sunday, Art Sammaron, who is an SPS employee in Muleshoe, entered his first marathon.

A runner since he was in junior high school at Earth, Sammaron ran Sunday in the Duke City Marathon at Albuquerque. He placed fifth, and brought home a \$300 check.

He competed with approximately 800 runners in the marathon.

He was accompanied to Albuquerque by his wife, Kimberly, and son, Eric.

After his successful first marathon, he says he is preparing for other marathons, and is trying to make the 'right timing' for the Boston Marathon.

Rotary Club Video Boosts 'Motivation'

Several visiting Rotarians were at the noon meeting of the Muleshoe Rotary Club. From the Texico-Farwell Club were Harry Sheets, Johnny Atkinson, Luther Thompson and Charles Aycok. J. E. McKillip attended from the Portales Rotary Club, and Ted Holder, the District Rotary Governor's representative from Levelland, was also at the meeting. Tim Campbell had a guest, Jay Bennett, from Dallas.

Rotary president Terry Hutto asked Max King to explain his proposal for fining absent Rotary members. Max said he believed people NOT attending the meeting should be the ones to be fined, not those whose partner is not present. It was voted to drop the partnership fining, and assess a fine of \$1 per meeting on persons who miss meetings. In two months, depending on attendance, the partnership idea will be brought up again. There was 85 percent attendance at the Tuesday meeting, according to President Hutto.

District Rotary Governor Ted Holder suggested that the Muleshoe Rotary Club rejoin the Rotary News Network, at a cost of \$40 per year. He said it would be in cooperation with the Levelland Noon Club, the other Levelland Rotary Club and Littlefield Rotary Club. The club voted to rejoin the News Network.

Dr. Tom Bond suggested that a



A HIGH-TONE STYLE SHOW, JENNYSLIPPER STYLE--Saturday morning, visitors at the Eighth Annual Chamber of Commerce Women meeting in Muleshoe, received a special treat with a style show, presented by local models shown above. The humorous and unusual style show delighted all those present, as the Jennyslipper models strolled about, exhibiting the very 'latest' in fashions for the group present. Included in the story accompanying this picture is a description of each of the fashions modeled by (from left) Patsy Chance, Nelda Merriott, Audrey Langfitt, Marjorie Merritt, Norma Bruce and Kathryn Taylor. (Journal Photo)

Lubbock Area Child Service Receives National Recognition

Texas Attorney General Jim Mattox Thursday thanked his hardworking child support enforcement staff in Lubbock for helping Texas become the No. One most improved child support program in the nation.

"We couldn't have done it without you," Mattox said in a letter to all office employees. "You did everything we asked of you, and you set some new records of your own."

Mattox recently received the "Most Improved Program" award from the National Child Support Enforcement Association. The award recognized th

enormous improvements the Texas child support program has made under the Attorney General's leadership.

"I can't think of an honor that better reflects the tremendous progress we've made on behalf of thousands of Texas children," said Mattox, who assumed res-

School Board Sets Tax Rate For '89-90

It was a relatively short meeting for the Board of Trustees for the Muleshoe Independent School District Monday, despite a double meeting being conducted.

Just a few minutes were spent in approving the proposed 1989-90 school tax rate. All members were present except Sam Harlan and Ed Cox. A sixteen cent hike was approved, which would take the \$.85 cent rate to \$1.01 for the next year.

On page 6, see the tax rate charges on counties contiguous to Bailey County for comparison purposes.

When the members went into the regular meeting, the discussion of the teacher Career Ladder was the biggest discussion.

State mandated changes will be implemented in Muleshoe as the board agreed to follow recommendations on handling the Career Ladder for local professional people.

A brief report was made by the board president; the superintendent, Dr. Lawrence Ward, had a very brief report on settlements from a bankrupt insurance company, and said all settlements have not been completed.

Assistant Superintendent for Business reported on a school owned underground storage tank and the process being used to monitor the well.

Mrs. Elizabeth Watson, assistant superintendent for instruction reported on adult education classes, which begin next week; and said 12 appraisers have been approved in Lubbock for evaluating teachers.

The meeting was dismissed at approximately 8:45 p.m.

responsibility for the program in 1983. "Those children are the real winners."

"We tackled a problem Texas had ignored for years, and we came up with some no-nonsense solutions. We are making it socially unacceptable not to pay your child support in Texas. I credit creative management, hard work and a dedicated staff for this improvement -- and this award."

Russell McKinnon, executive director of the National Child Support Enforcement Association, said the award "represents a true triumph of commitment over pessimism, of dedication over obstacles."

"Thousands of young children today are better off because Texas no longer is a haven for those who want to run out on their parental responsibilities," McKinnon said in presenting the

Cont. Page 6, Col. 1



GIRL SCOUT REPRESENTATIVES PRESENT CERTIFICATE OF APPRECIATION--Nelda Merriott, left, and Mary Ann Ramirez, right, representing the Muleshoe Girl Scouts, presented Darrell Ellyson, center, with a certificate of appreciation early Tuesday afternoon. Ellyson, owner of Plains Heating and Air Conditioning of Littlefield and Lubbock, donated a new heating/air conditioning unit to the Girl Scout Little House in Muleshoe. On Tuesday, he brought three of his own employees to Muleshoe to install the new unit. (Journal Photo)

U.S. Air Force Thunderbirds To Appear At Cannon A.F.B.

Cannon's airshow officials are inviting the public to watch the exciting U.S. Air Force Thunderbirds Oct. 8 at 2 p.m. as part of the annual Community Appreciation Day. Gates open at 8:30 a.m.

The popularity of air shows has increased in recent years and part of the reason is due to the aerial demonstrations in high-tech fighter aircraft performed by groups such as the Thunderbirds.

It was nearly 47 years ago when American military aviation entered a new era with a sound of thunder. The jet age was born.

While the jet grew in popularity, 22 of America's best set out to prove the safety and reliability

of this new breed of aircraft. This group, known as the Thunderbirds, was the U.S. Air Force's official aerial demonstration team.

Since their first show of aerial artistry in 1953, the team has grown to approximately 140 people with the growing complexity in air craft. During that time, the Thunderbirds travelled throughout the United States and to 52 countries around the world. They've logged 2,913 performances before nearly 224 million people.

Prime ministers, presidents, foreign dignitaries, celebrities and countless fans turn out to meet and watch the team, giving

the Thunderbirds the unofficial title of America's "Ambassadors in Blue."

Naturally, the most visible part of the Thunderbird team is its aircraft. The squadron currently flies the General Dynamics F-16 Fighting Falcon, a multi-role combat fighter.

Beginning in the F-84G Thunderjet, the team performed its first aerial demonstration June 8, 1953. Later, they moved to the swept-wing F-84F Thunderstreak in 1955. The squadron entered the supersonic era when it began flying the F-100C Super Sabre in 1956. The move to the Super Sabre made the Thunderbirds the first supersonic demonstration team in the world.

The F-100C was traded for the F-105 Thunderchief in 1964, but the transition was short lived as the "Thud" flew only six official air demonstrations. Instead of cancelling the entire 1964 schedule, the squadron quickly returned to the F-100, but this time using the air refuelable "D" model. The Thunderbirds performed in a total of 1,111 shows during the five seasons they flew the two Super Sabre models. It's the most flown aircraft in the squadron's history.

In 1969, the squadron adopted the F-4E Phantom II and flew it in its first demonstration during graduation ceremonies at the U.S. Air Force Academy.

The Thunderbirds began flying their first non-bombardier

aircraft when the team switched to the sleek T-38A Talon in 1974. During the T-38's tenure, the squadron was proclaimed the first official bi-centennial organization in the Air Force. They are the only flying unit so recognized.

In 1983, a third decade of Thunderbird excellence was ushered in with the team's move to America's newest frontline fighter, the F-16 Falcon. Today, the Falcon helps continue the proud Thunderbird tradition—presenting modern air power around the nation and throughout the world.

Letter To The Editor

Starla Ellis
110 East Avenue F
Muleshoe, TX 79347

Dear Editor:

Due to circumstances beyond my control, I am resigning my position with Bailey County EMS effective September 25, 1989. I have truly enjoyed my position and having the opportunity to serve my community.

I have considered it an honor and a privilege to be a part of Bailey County EMS. I have always felt it to be a Number One rural emergency medical service. I believe that the people of Bailey and Parmer Counties are very special and have always trusted my abilities and for this "I THANK YOU". There are no words to express my appreciation to the volunteers of Bailey County EMS who have helped make this Service such a success.

Yours truly,
/s/ Starla Ellis

Personal income, consumer spending, both jumped in July.

Enochs News

by: Mrs. J.D. Bayless

Visitors at the Baptist Church Sunday night were Mr. and Mrs. Tom Byars and son, Scott, of Seminole, Mrs. Wilma Petree and Ina Roberts of Lubbock. Following church services a fellowship was held in the fellowship hall of the church in honor of Mrs. Winnie Byars, who moved to Seminole Tuesday, Sept. 26. She will be missed so much. She lived near Enochs in the same house for 44 years and is a member of Enochs First Baptist Church.

Merry Christmas Miller of North Pole, Alaska and Kevin Allen Key of Fairbanks, Alaska announce their wedding which will be October 14th in the home of Kevin's mother and step dad, Ken Heaps, at 4 p.m. in Fairbanks, Alaska. Merry works at the Santa Claise Store and Kevin has a job at I.R.S.

Mr. and Mrs. Dale Nichols spent Thursday night with their son, Mr. and Mrs. Donnie Nichols and family.



MAYOR WELCOMES GUESTS--On Satuday morning, Muleshoe Mayor Darrell Turner is emphatic as he welcomes out of town guests to the Jennyslipper convention in Muleshoe. He told the representatives to enjoy themselves while here.

(Journal Photo)

Shop
Muleshoe
First!

Thank You
We would like to thank each and everyone for the cards and prayers during the loss of our loved one.

Gene & Eva Payne

Thank You
We want to express our appreciation to everyone for the cards, flowers and food. Also everyone who visited Juanita during her extended stay in the Nursing Home and hospital. A Special thanks for all the prayers.

The Family of Juanita Snow



OUT OF TOWN VISITORS--Pictured are three of the out of town Women from Chambers of Commerce from the Panhandle, who attended the Eighth Annual Women in Chambers of Commerce, sponsored by the Muleshoe Jennyslippers in Muleshoe. The woman from the left is from Amarillo, while the other two represent the Memphis CoFC.

(Journal Photo)

Annie Pugh Dies At Dalhart

Annie M. Pugh, 84, died Friday, Sept. 22 in Dalhart. Arrangements are by Schooler-Gordon Funeral Directors of Dalhart.

Born in Texas County, Mrs. Pugh had been a retail sales clerk in Tullia and Hereford for many years.

Survivors include two daughters, Patricia White of Dalhart and Margaret Durben of Muleshoe; a son, Mike Pugh of Muleshoe; a step son, Bill Pugh of Oklahoma City; a sister, Katherine Jones of Childress; 11 grandchildren; and 11 great grandchildren.

Patients in Muleshoe Area Medical Center

sept. 21-25 THURSDAY

Ernestina Bara, Felipa Fabela, Angela Cash, Carolyn Kirby, Baby Girl Kirby, Beth Bermea, Luthor Hall, Maria DeLaO, Elizabeth Tipps, Lucy Rocha, and L.H. Lewis

FRIDAY

Ernestina Bara, Felipa Fabela, Angela Cash, Beth Bermea, Luthor Hall, Maria DeLaO, Shara Taylor, Thomasita Yruegas, Lucy Rocha and L.H. Lewis

SATURDAY

Johnny Chappell, Luther Hall, Thomasita Yruegas, Carrie McCormick, Lydia Gutierrez and L.H. Lewis

SUNDAY

Johnny Chappell, Luther Hall, Thomasita Yruegas, Carrie McCormick, Lydia Gutierrez and L.H. Lewis

MONDAY

Geneva Thomasson, Luther Hall, Lydia Gutierrez, Johnny Chappell, Thomasita Yruegas, Carrie McCormick, Cal Ray Hood and L.H. Lewis

Everyone has a plan and all of them begin with getting someone else to do the work.



WELCOME FROM THE CoFC--Robert Montgomery, president of the Muleshoe Chamber of Commerce and Agriculture gave a welcome to the out of town representatives at the Jennyslipper convention in Muleshoe last weekend.

(Journal Photo)

Cash Rewards
Up To \$1,000
For Information!
Call
Bailey County
Crime Line
272-HELP

CLEARANCE

On All 1989

Fords - Plymouths - Dodges -
Chryslers

Priced To Sell

Including

Pickups - Thunderbirds -
Tempos - Escorts - Dodge Colts -
Dodge Spirits - Dodge Shadows -
Chrysler New Yorkers



"Car Capital Of The West Plains"

Muleshoe Motor Co.

1225 W. Amer. Blvd.

272-4251

Muleshoe Journal
Established February 23, 1924. Published by Muleshoe Publishing Co., Inc., Every Thursday at 306 W. Second, Box 401, Muleshoe, Texas, 79347. Second Class Postage Paid at Muleshoe, Texas, 79347.

Member 1989
TEXAS PRESS ASSOCIATION

L. S. Hall, Publisher
Suzanne Hall, Vice Publisher
Cora Williams, News
Evelyn Harris, Secretary
Holly Milling, Advertising
Dora Trawson, Classified

SUBSCRIPTIONS
Muleshoe Journal, 2nd Bailey County Journal
Bailey and surrounding counties
\$14.75
Muleshoe Journal and Bailey County Journal
Outside Texas, \$16.50
Yearly By Carrier
\$12.50

Advertising Rate Card on Application
Advertisers should check their ads the first day of insertion. The Journal will not be liable for failure to publish an ad or for a typographical error or error in publication except in the amount of the ad for the first day insertion. Adjustment for errors will be limited to the cost of that portion of the ad where the error occurred.

Create Your Own

HOMECOMING

Mum or Garter

We Have Silk Mums,
Ribbons, Footballs,
Helmets, Letters, Glitter,
Cowbells & Anything
You Need In Area School Colors



PERRYS

303 Main

Muleshoe

272-4620

Journal Files

60 years ago

1929

SHEKIFF CAPTURES TWO MEN, WITH 'THE MAKIN'S' OF QUANTITY OF LIQUOR

The sheriff's department is well supplied with sugar, yeast and material necessary for making liquor. The new supplies were obtained Wednesday about noon when a Ford truck, loaded to capacity with these items, was taken on the highway about two miles west of town. The load consisted of 11 sacks of sugar, two cases of yeast, two sacks of rye and what is said to be the main part of a large still, besides five galvanized tanks of about 30 barrel capacity each. Eight large pieces of sheet copper were also in the shipment. The driver, who gave his name as Williams, is in the county bustle here, his bond has been set at \$1,000, which had not been supplied at noon Thursday.

With the driver of the truck was a boy, about 12 years old, who gave his name as Foster of Clovis.

50 years ago

1939

MULESHOE SCHOOL OPENED TUESDAY 19 TEACHERS

Muleshoe public schools formally opened Tuesday morning with an enrollment of 491, 254 of that total being in high school, and 237 in grammar school.

The Chapel exercises were attended by all enrolled pupils, the entire faculty and many parents and school patrons. Superintendent W.C. Cox was in charge of the program.

40 years ago

1949

THREE FOURTHS OF TEXAS FAMILIES HAVE ELECTRICITY

It is estimated that almost three fourths of Texas farm families now have electricity in their homes. That's a good indication of better living on Texas farms, says W.S. Allen, extension agricultural building engineer of Texas A&M College.

To get the most benefit from all electrical equipment, Allen suggests that you plan the entire wiring system carefully and see that the wiring job itself is done right. Make accurate plans for the wiring system when you build that new house or re-model the old one.

30 years ago

1959

BAILEY COUNTY'S FIRST BALE GINNED AT MAPLE SATURDAY

Bailey County's first bale of

1929 cotton was ginned Saturday morning at the Casey Gin in Maple Community. It was produced on the Alice Ann Greener farm.

The seed cotton weighed 1670 pounds and the finished bale of lint cotton weighed 460 pounds. It produced 780 pounds of seed.

The producer received 50 cents per pound for the lint, and the gin processed it free.

Gin owner M.E. Casey said that prospects in that part of the county are "the best since 1949".

1969

20 years ago

'NO MORE BIG CITY SHOPPING SPREES FOR ME'

This was overheard when a Muleshoe customer returned after a city shopping trip where the hustle and bustle and "Don't Care" attitude of big city clerks was encountered.

Recognition, fellowship and trust are basic needs, and you will find all of these attributes in Muleshoe. You can shop here with confidence, with friends and neighbors to help you find what you need at a price you want to pay.

Your shopping habits and buying skills have thrown the spotlight on Muleshoe and caused other communities to cast envious eyes in our direction.

Your knowledge of merchandise keeps these merchants busy constantly looking for bigger and better values to pass on to you.

Muleshoe merchants take great pleasure in knowing you can find the identical items in Muleshoe that you can find in any shopping district--and in most cases for less money.

You can shop in Muleshoe with confidence. The shopkeepers here are your friends. Their purpose is to supply you with the best quality merchandise at the lowest possible price.

10 years ago

1979

Grocery specials advertised this week in the Journal included: Gladiola flour 5 pound bag 29 cents; sugar 5 pounds 99 cents; 1 pound can coffee \$2.19; 18 ounce peanut butter \$1.19; 15 ounce can pear halves 2 for \$1; vienna sausage 2 cans 89 cents; potted meat 4 cans \$1; 6 1/2 ounce can tuna 69 cents; avocados 4 for \$1; cucumbers 25 cents pound; potatoes 10 pounds 98 cents; spare ribs \$1.49 per pound; pork chops \$1.89 pound; pork steak \$1.49 pound; and 12 ounce package Little Sizzlers \$1.09.

Nature covers all her works with a varnish of beauty.

-Schopenhauer.



LIBRARY RECEIVES CHECK--Kappa Kappa Iota sorority supports the Muleshoe Area Public Library every year by joining the Friends of the Library as a group. Izetta Shain, treasurer (right) presented Anne Camp, Librarian, the check for membership. Other officers of Kappa Kappa Iota are Lucy Faye Smith, president; Linda Marr, vice president; Jean Allison, secretary; and Virginia Bowers, historian. "The Library is very grateful for their continued support," said Mrs. Camp. (Journal Photo)

SEPT. 28-OCT. 4 THURSDAY

ODDFELLOWS LODGE
7:30 p.m.
MULESHOE SQUARE DANCE CLUB
8 p.m.
TOPS
6:30 p.m.

FRIDAY
KIWANIS CLUB
6:30 a.m.
AARP
11:30 a.m.

SATURDAY
AL-ANON & ALTEEN
10:30 a.m.

SUNDAY
GUADALUPA SOCIETY
2 p.m.

MONDAY

AAUW
7 p.m.
MULESHOE 4-H CLUB
7 p.m.

TUESDAY
REBEKAH LODGE
7:30 p.m.
ROTARY CLUB
12 noon
ALPHA ZETA PI
7:30 p.m.
XI OMICRON XI
7:30 p.m.
EASTERN STAR
8 p.m.
ATHLETIC BOOSTERS
7:30 p.m.
ALCOHOL ANONYMOUS
8:30 p.m.
WEDNESDAY
LIONS CLUB
12 noon

FROSTY FRESH FRUIT

1 quart buttermilk
1 cup sugar
1 teaspoon almond extract
1/8 teaspoon salt
1 cup fresh blueberries
1 cup fresh peaches, diced and peeled
1 cup fresh strawberries, sliced
In large bowl, combine buttermilk, sugar, almond extract, and salt; mix well. Gently stir in fruit. Pour into 9-inch square pan. Freeze until firm. To serve, let stand at room temperature 10 minutes before cutting.

Earth's crammed with Heaven, and every common bush afire with God.

Discover: The World Of Science To Air Soon

Science teachers in GTE Southwest's four-state operating area are being encouraged to take advantage of a special program supporting their efforts to foster children's enthusiasm for science.

The *Discover: The World of Science* School Program is a corporate endeavor that capitalizes on the power of television as an educational resource. It makes available free teaching guides correlated to each feature episode of the nationally acclaimed public television series *Discover: The World of Science*. The guides supply topics for class discussion and contain creative ideas for science projects or experiments that teachers can use to inspire student interest and imagination.

Discover: The World of Science will air once a month, from October through February. Underwritten solely by GTE Corporation, *Discover: The World of Science* premieres Oct. 11 on public television stations across the country. (In North Texas, the program will air on Dallas-based KERA Channel 13).

"The *Discover: The World of Science* public television series is a fascinating adventure in education," said Rex Timms, vice president, public affairs, GTE Southwest. "GTE is proud to support the program. It is an excellent complement to our

long-standing commitment to improved student performance in math and science."

Discover: The World of Science television episodes cover a range of topics. Included in the upcoming season are shows examining how penguins communicate with each other and tell one another apart; why researchers are looking at bear hibernation to shed light on the treatment of kidney disease; how to design a machine powered with energy supplied by a falling brick; and how scientists are planning to safeguard the U.S. from killer bees.

"The program is an excellent resource for enhanced activities in the classroom, adding significantly to a teacher's repertoire of instructional ideas," he said.

All Eleven

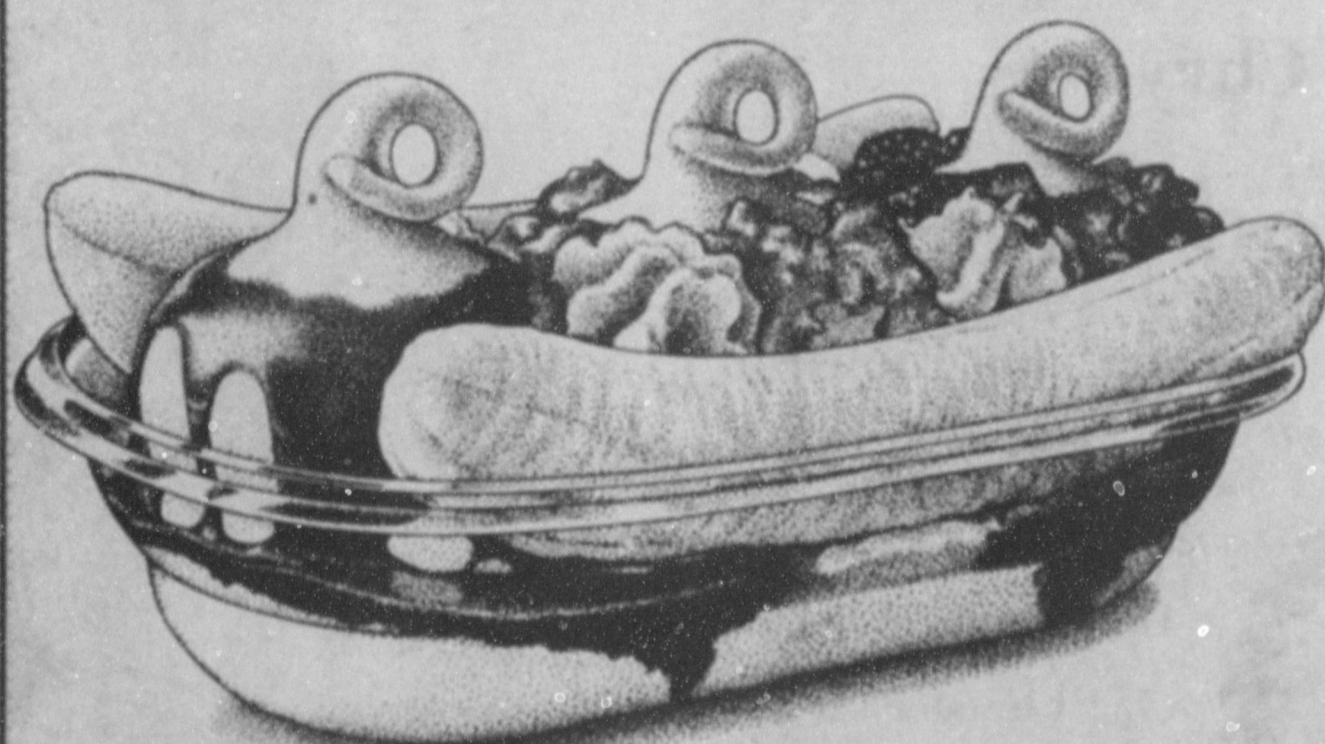
The Britisher was talking of coincidences: "The most amazing thing happened to me at the races. It was the eleventh day of the the eleventh month. My boy was eleven that day. We lived in a house numbered eleven, and I arrived on the course at eleven. Later in the day I found that eleven horses were to run in the big race, so I backed the eleventh horse on the card."

"And it won!"
"No. It came in eleventh."

You Are Invited
To a
50th Anniversary Reception
Honoring
Mr & Mrs Don Bruns
Sunday, Oct 1, 2-4 p.m.
Old Depot, Muleshoe

(No Local Invitations Were Mailed)
No Gifts Please!

BANANA SPLIT!



\$1.19*

SALE PRICE
SEPT. 25-OCT. 1, 1989

DAIRY QUEEN soft serve, surrounded by fresh bananas. With your favorite toppings: strawberry, pineapple, and chocolate. And plenty of whipped topping, too!

ON SALE IN



AT YOUR BOILING POINT ABOUT ALL THAT JUNK



...and what to do with it?

Don't get in a stew about all that useless junk and stuff lying about your attic and garage! Your recipe for quick cash and more space is to call us at the classifieds. Let us help you get out of hot water and collect some cool cash too!

Muleshoe & Bailey Co.
Journals

272-4536

*Reg. TM Am. D.Q. Corp. ©1989 Tex. D.Q. Op. Coun.
*At participating Dairy Queen stores

Creative Living

by: Sheryl Borden

Information on kitchen gadgets and new information in the area of diabetes treatment will be the featured topics on "Creative Living" on Tuesday, October 3 at 12 noon and on Saturday, October 7 at 2 p.m. (All times are Mountain.)

Mary Ellen Payne, former Extension Home Economist in Clayton, New Mexico, will demonstrate new and useful kitchen equipment on the market. Some of these so called "kitchen gadgets" are more for looks than for use, but some are very helpful to have in the kitchen. Mary Ellen will show an array of items, from a salad spinner to a green bean slicer to a garlic machine.

Dr. Lois Jovanovic-Peterson, research scientist in Santa Barbara, California, serves as a spokesperson for Boehringer-Mannheim Diagnostics. She will discuss three major new areas of diabetes treatment and explain

Xi Omicron Xi Meets In

Vourazeris Home

Tuesday night, Sept. 19, 13 members of Xi Omicron Xi met in the home of Sylvia Vourazeris where a meal of chicken crepes, salad and chocolate eclairs was served.

A business meeting was held with various committees making their reports and plans being discussed for the new chapter year.

A program on Young Adult Literature was presented by Diana Harrison and included a brief history of the development of Young Adult Literature and the changes that have occurred over the years and especially in the most recent years.

Members present included: Dawn Williams, Susan Wedel, Jacque Boutell, Pat Young, Gingor Caldwell, Nancy Barrier, Annette Bonds, Kathy Franks, Gayla Gear, Diana Harrison, Alice Liles, Barbara Mutschler and Sylvia Vourazeris.

the role of self blood glucose monitoring for all diabetics.

On Tuesday, October 3 at 9:30 p.m. and repeated on Thursday, October 5 at 12 noon, "Creative Living" will present information on furniture refinishing and paper recycling.

Furniture refinishing can be a lot of work, but Lynn Gerhart, spokesperson for a line of furniture refinishing products called QRB, will show how to take much of the hard work out of it. QRB stands for Quickly Restores Beauty. Lynn is from Boynton Beach, Florida.

Carolyn Jabs is an author and a paper recycling consultant to the American Paper Institute. Carolyn will show some exciting rainy day projects for children. Ms. Jabs lives in New York.

"Creative Living" is produced and hosted by Sheryl Borden. The show is carried on more than 100 PBS stations in the United States, Canada, Guam and Puerto Rico and is distributed by Pacific Mountain Network, Denver, CO. Viewers can request copies of materials offered on the show by sending one 25 cents stamp for each handout requested. Send the stamps, along with your name, address and booklets requested to:

"Creative Living" Requests
% KENW-TV Station #52
Eastern New Mexico University
Portales, N.M. 88130

DIABETIC RECIPES HOT AND SPICY TURKEY CHILI

1 green pepper, diced
1 small onion, diced
2 tablespoons vegetable oil
2 teaspoons chili powder
1 can (14 oz.) tomatoes
1 can (16 oz.) kidney beans
2 cups turkey, cooked and diced

1 teaspoon sugar
1/2 teaspoon salt
1/2 teaspoon red pepper
1/2 cup water
1 cup Monterey Jack cheese, shredded
corn chips

In skillet over medium heat, cook green pepper and onion in hot oil 8-10 minutes until tender; stir occasionally. Stir in chili powder; cook 1 minute. Stir in remaining ingredients except cheese and chips; bring to boiling. Cover and simmer for 10 minutes, stirring occasionally. Serve with cheese and chips.

Microwave: In a 2-qt. dish, microwave green peppers, onion, oil and chili powder 3 minutes on high. Add remaining ingredients except cheese and chips. Microwave, covered, 5-7 minutes on high, stirring halfway through the cooking time.

SEAFOOD MELON SALAD

1 honeydew melon or cantaloupe
1 cup celery, chopped
1 pkg. (2.5 oz.) walnuts, chopped
1 head lettuce (optional)
1 can (6 oz.) crabmeat, shredded, or 1/2 lb. shrimp, boiled and diced
1/2 cup lite mayonnaise
1/2 teaspoon salt

1 cup grapes, seedless
1/2 cup water chestnuts, sliced
Peel and dice melon into 1/4 cubes. Chop celery and walnuts in food processor. Place all ingredients into large mixing bowl and blend lightly. May be served on 6 large salad plates lined with lettuce. Chill if not served immediately. Makes 6 servings.

MARINATED SLAW

2 small heads cabbage
2 carrots
1 onion
1 green pepper
7/8 cup sugar
1 teaspoon dry mustard
1 teaspoon celery seed
2 teaspoons sugar
1 tablespoon salt
1 cup vinegar
1/2 cup oil
Shred cabbage and carrots

separately by hand or in food processor; set aside. Chop onion and green pepper. In a large bowl, place half the cabbage, all the carrots, onion, and pepper. Add the rest of the cabbage. Sprinkle the 7/8 cup of sugar over the top. Mix remaining ingredients in a small saucepan. Heat to boiling and pour over salad. Cover at once. Refrigerate at least 4 hours or overnight. Mix at serving time.



CHAMBER OF COMMERCE AMBASSADORETTES--(From left) Ana Mendoza, Heather Hutton, Amy Montgomery, Christi Pena and Holly Huckaby, served coffee, juice and an assortment of sweet breads at the Jennyslipper convention Saturday morning at the Bailey County Civic Center. (Journal Photo)

Bentley's

Muleshoe

FINAL DAYS!

Every Item On Every Rack Is Reduced
Racks Of Clothes Priced From 1.99 to 9.99

All Other Merchandise Slashed
50% - 75% Off

Hurry In

Before We Close Our Doors
Last Day Is Sat. Sept. 30

This Is The Last Chance To Take Advantage
Of Great Bargains At...

Bentley's

Personal Checks

Smart Fashion

Open

Mon.-Sat. 9-6

All Sales Final - No Layaways

110 S. MAIN ST. MULESHOE, TX. PHONE 272-4119

No Approvals - No Holds

30
Color
Photos

\$10.99

1-10x13 99¢ Deposit
1-8x10 10¢ Due at
2-5x7 Pick up
2-3x5 (plus tax)
16-King Size Wallets
8-Regular Size Wallets



AT

Anthony's

321 Main 272-3478

Date: Wed. & Thurs.
Oct. 4-5

Photo Hours:
9 a.m. - 6 p.m.



WE USE
KODAK PAPER

Shugart's
inc.

Group charge
99¢ per person

Use
Kodak
PAPER
for a Good Look

FOR CREATIVE COLOR PORTRAITS

Jennyslippers Host Convention

Cont. from Page 1

tures two sporty hip pockets. Dainty carmine exercise shoes complete this leisure day outfit and are just perfect for those quick jobs to the fridge.

And now -- our own bathing beauty from the balmy beaches of the Bahamas, Audrey Langfitt. Our trendy lady of the 80's makes a striking fashion statement in her crimson bikini with dazzling dots - complemented with matching headgear. Lovely legwear calls attention to your own gorgeous gams as you modestly strut about in our sassy show-stopper. In our daring swimwear for the mature jet-set, you'll be the sexy sweetheart of the silver surf!

It's party time! And there's pure excitement in the air as Marjorie Merritt makes her grand entrance to the biggest party in West Texas. Wearing a pretty pink outfit with plunging neckline and dropped yoke, our Newark model also exhibits soft shoulders with spaghetti straps. Her delightful bell skirt just skims the tops of her West Texas dancing footwear. This evening attire gives you a glimpse of femininity at it's finest!

As Norma Bruce enters -- Next, there's the perfect outfit for the back-to-college young lady. She'll be the center of attraction at the pep rally or her psychology class in our top of the line college attire. From her fashionable butterfly sleeves, her terrific turtleneck and her lipstick red skirt with its precious poodle to the genuine banana clip in her hair, she's the cutest of college

Child Service...

Cont. from Page 1

award to the Attorney General. "The situation in Texas is different today, because one high-ranking official made it his business to care about child support."

Mattox also announced that total child support collections in Texas set another record this year at \$133.2 million, up from fiscal 1988's \$96.2 million. In 1983, the year before Mattox took over the program, collections totalled \$18 million.

The number of families looking to the Attorney General's office for help has increased from 177,000 in 1983 to 360,000 last year to 436,000 by the end of August. The percentage of paying cases has more than doubled over the past six years.

The Lubbock Child Support Office, which provides services to 16 South Plains counties, also set a new record this year as collections hit \$3,658,024, up from \$2,710,291 in fiscal 1988. The Lubbock office caseload grew from 7,684 last year to 9,457 at the end of August.

In addition to the staff in Lubbock and other child support offices, Mattox praised the state's judges and law enforcement community for helping in the aggressive efforts to establish and enforce child support orders.

The Lubbock Office serves clients in Bailey, Cochran, Crosby, Dawson, Dickens, Floyd, Gaines, Garza, Hale, Hockley, Lamb, Lubbock, Lynn, Motley, Terry and Yoakum counties.

cuties. Her yummy yellow stockings and attractive college foot gear complete this darling college outfit.

And now, Kathryn Taylor, our London model moves onto the business scene in the outfit you've been waiting for -- designed especially for the busy lady executive! It features a businesslike boxy jacket over a sharp knife-pleated skirt. An expensive and versatile rope necklace lends just a touch of elegance. On her feet, we see the perfect modern slippers for the busy working executive. These will take her from an early sunrise breakfast on the way to the London underground to a brisk walk to her downtown office - to a limousine ride to the Ritz for dinner. You, too, can be the epitome of fashion, as our lady executive is.

This was followed by Mary Moore and Cara Juan Schuster giving a history of the Muleshoe Heritage Foundation and the renovation work done on the old Santa Fe Depot and Janes Ranch House. They also told of the meetings and decisions to be made for land to place the landmark buildings, as well as plans for the buildings when they were completed.

The Depot is now the Senior Citizen meeting complex, and is also used for dinners and receptions.

The group toured both the Janes House and The Depot followed by a presentation of Professional Women's Hairstyles by Pat Young, using models Tish Young and Norma Bruce.

At noon, the luncheon was catered by Dani Heathington's Blue Goose.

In the afternoon, several presentations were made. Memphis won a certificate and blue ribbon for first place in the scrapbook division; Muleshoe won a red ribbon for second place and Amarillo was presented a white ribbon for third place.

Memphis and Dumas each received awards for traveling the farthest distance and Memphis was presented a plaque for having the most people at the meeting.

Special speaker was Magann Rennels of Muleshoe's Channel 6. She outlined her life, and told of her father, Gil Lamb, beginning the nationally-famous Mule Train News, the beginning of Radio Station KMUL, and how the Lambs and Magann and her husband, Jack, started Channel 6 cable television in Muleshoe, with all local programming.

Auburn And Tennessee To Meet In Classic Game

When Auburn won the Southeast Conference championship last season, one of the easiest hurdles on its league schedule was Tennessee. The Volunteers fell with a huge thud, 38-6. 1989 will not be a repeat. Tennessee is 3 and 0 as against being 0 and 3 at this time last season, its biggest win being a 24-6 upset of U.C.L.A. three weeks ago. But

Louvenia Garlington, assisted by Hellen Adrian, showed the group how to use scarves.

Workshops were led by Ruby Green on the Bar-B-Que; Renee Rudd and Linda Tosh on the Easter Egg Hunt; Bobbie Harrison on the Mule Shoe games; Billie Downing on Scholarships; Evelyn Peat on Tourism and Mary Ann Ramirez on the Walkathon.

Following a jewelry presentation by Beth Gandy, the Nifty Fifties Band presented a special musical skit for the group before the 4 p.m. dismissal.

A number of door prizes were also given during the day.

Junior High Football Report

Last week was the opening for the 1989 Watson Junior High School football season.

Playing last Thursday and Saturday, against Denver City, the Junior High School Mules came away with one victory and three losses.

Here's how the action looked:

EIGHTH GRADE BLACK
In action in Muleshoe on Thursday, it was a stingy defensive game all the way, with only six points put on the scoreboard.

There was no scoring in the first half of the game, but in the third, Denver City managed six points.

For Muleshoe, Jason McClanahan had three carries for 65 yards; John Limas carried six times for 40 yards and Jayson Williams had three carries for 17 yards.

This Thursday, the eighth grade black team will travel to Littlefield to take on the Littlefield eighth graders.

EIGHTH GRADE WHITE
The eighth grade white team fell to Denver City last Saturday by 28-0 in action at Denver City.

The coaches, Roy Donaldson, Dale Gilbreath and Steven Hatfield said, "The kids played hard -- they just couldn't get the offense going."

Their next game is October 7, when they take on the Plainview Red team, at Plainview.

SEVENTH GRADE BLACK
It was a victorious seventh grade black team that took on the Denver City seventh grade last Thursday night at Muleshoe.

They went back to the locker room with a 14-0 victory over Denver City.

It was a scoreless game in the first quarter, but the Mules, Edward Rodriguez scored on a 25

Adult Night Classes Start Tuesday Night

Elizabeth Watson, assistant superintendent for instruction for Muleshoe Independent School District, reminds it's time to start the free classes for adults.

She said English, reading, arithmetic, science, government, and other courses will be taught at night at Watson Junior High School. Classes are for adults with less than a high school diploma.

Mrs. Watson says this program is designed to improve a person's ability to secure employment; qualify for a job promotion; achieve a certificate of high school equivalency (GED); and to become a more efficient consumer and a more active citizen.

Supplementary areas of instruction include consumer edu-

cation, occupational opportunities and requirements, health education, citizenship, government, home and family life, science, history and literature.

Classes are also available for adults who cannot read, write, or speak English.

The assistant superintendent

said the first class will be Tuesday, October 3, at 7 p.m. in Watson Junior High School. Classes will meet on Tuesday and Thursday evenings from 7-9 p.m.-9:30 p.m.

Mrs. Watson said adults may enroll anytime that classes are in session. For further information, call Elizabeth Watson at 272 3325.

NOTICE:

Anyone who has questions about the strange message that appeared on page six of last week's Muleshoe Journal paper is invited to attend a meeting about

"Esperanto: The International Language."

The meeting will be at 705 West Third St., Muleshoe, 3 p.m. Sunday, October 1.

Atendu kaj lernu la lingvu internacia. Dankoni!

TAX RATES

COUNTIES CONTIGUOUS TO BAILEY COUNTY

COUNTY	CITY	87-88	88-89	89-90
BAILEY:	MULESHOE	.81	.85	1.01
	THREE WAY	1.20	1.1954	1.23
PARMER:	BOVINA	.93	.93	.93
	FARWELL	1.214	1.2239	1.29
	*FRIONA	.77	.77	.77
	LAZBUDDIE	.95	.98	.98
LAMB:	AMHERST	.83	.79	.81
	*LITTLEFIELD	.88	.8733	1.0947
	OLTON	.99	.95	.95
	SPADE	1.17	1.16	1.12
	SPRINGLAKE-EARTH SUDAN	.809	.8059	.8059
COCHRAN:	MORTON	.965	.965	.965
	WHITEFACE	.36	.3850	.4310
	GALESDOE	.60	.64	.64
OTHERS:	*DIMITT	.684	.684	.874
	LUBBOCK	.90	.90	1.20
	*FLOYDADA	.69	.66	.71
	*TULIA	.92	.96	1.00
DISTRICT 2AAA AVERAGES		79.20	79.96	91.01
AVERAGE FOR COUNTIES AROUND US		86.52	86.80	90.21

* 2AAA schools

THE BOB HARMON FORECAST

Sat., Sept. 30, - Major Colleges - Div. 1-A

Air Force	38	*Colorado State	21
Akron	30	*Bowling Green	10
Alabama	42	*Vanderbilt	7
*Arizona State	21	Missouri	16
Arkansas	40	Texas-El Paso	6
*Army	49	Harvard	10
Auburn	28	Tennessee	14
Brigham Young	42	*Utah State	6
Central Michigan	26	*Miami, OH	7
Clemson	33	*Duke	7
Colorado	24	*Washington	21
*East Carolina	23	Louisiana Tech	14
Florida	23	Mississippi State	20
*Fullerton State	24	Nevada-Las Vegas	23
*Georgia	23	South Carolina	10
*Hawaii	27	New Mexico	10
*Houston	38	Temple	6
*Indiana	35	Toledo	6
*L.S.U.	37	Ohio U.	7
*Louisville	24	Cincinnati	14
Miami, FL	27	*Michigan State	14
*Michigan	21	Maryland	10
*Minnesota	34	Indiana State	7
*NE Louisiana	22	SW Louisiana	20
*Nebraska	33	Oregon State	13
*North Carolina	24	Navy	13
*North Carolina State	45	Kent State	10
North Texas	31	*Kansas State	10
*Northern Illinois	23	Western Illinois	13
Notre Dame	49	*Purdue	6
*Ohio State	28	Boston College	10
Oklahoma	32	*Kansas	7
*Oklahoma State	22	Wyoming	21
*Oregon	21	Arizona	13
*Pacific	24	Long Beach State	20
Penn State	27	*Texas	13
*Stanford	28	San Jose State	13
*T.C.U.	26	S.M.U.	13
*Texas A & M	28	South'n Mississippi	21
Texas Tech	23	*Baylor	17
*Tulane	23	Iowa State	21
Tulsa	24	Iowa	17
*U.C.L.A.	26	California	24
*Utah	28	San Diego State	17
*Virginia	40	William & Mary	10
*Wake Forest	24	Rice	15
*Washington State	30	Southern California	28
*West Virginia	27	Pittsburgh	20
*Western Michigan	26	Eastern Michigan	20

Other Games - East

*American International	24	Southern Connecticut	10
*Buffalo State	23	Brockport	13
Central Connecticut	23	*New Haven	20
*Colby	26	Hamilton	24
Delaware Valley	27	*Bridgit	7
*Gettysburg	23	Johns Hopkins	14
Hofstra	28	*Suffalo U.	12
*Indiana U., PA	42	Clarion	7
Ithaca	31	*Springfield	10
Lycoming	27	*Lebanon Valley	14
*Marist	26	Hampop	13
Phyrrous	22	Lewis	21
Shippensburg	26	*California State, PA	14
*Slippery Rock	28	Lock Haven	16
*Susquehanna	34	Oakton, PA	7
Towson, NY	27	*Bowdon	13
*Union, CT	27	Albany, NY	21
*Wagner	27	Alfred	20
Washington & Jefferson	34	*Grove City	6
*Waynesburg	23	Thiel	10
*Westminster	25	Urbana	14
West Chester State	42	*Bloomburg	10
*Widener	21	Juniata	10
*Williams	27	Tulsa	17
Wittenberg	24	*Allegheny	17

Other Games - Midwest

*Ashland	23	Finley	14
Augustana, IL	20	*North Park	13
Augustana, SD	24	Northwest Omaha	17
Baldwin-Wallace	32	*Oberlin	14
Bethany, KS	28	*Kansas Wesleyan	12
Carthage	21	*Shipp Wesleyan	12
Central Arkansas	26	*Kearney	13
*Coe	21	Lake Forest	12
*Dayton	24	Maryhurst	10
DePaul	22	Chadron	20
*Drake	22	Alma	10
Evangel	23	*Graceland	13
*Fairleigh	23	Northwestern Michigan	23
Georgetown, KY	37	*Evanston	17
*Grand Valley	42	Wayne State, MI	14
Gustavus Adolphus	27	*Macomber	14
Heldrefing	6	Maskingum	13
*Hillsdale	29	Saginaw Valley	10
Indiana State	26	*Wabash	21
*Iowa State	25	Iowa Wesleyan	6
Lamar	20	Grinnell	7
Missouri Valley	40	Terrac	10
Missouri-Rolla	40	*Lincon	10
NE Missouri	35	*Missouri Southern	20
*North Dakota State	34	South Dakota U.	10
*North Dakota U.	21	Montevideo	14
*Northwestern, IA	30	Hastings	7
*Northwood	24	Michigan Tech	22
*NW Missouri	23	Central Missouri	21
Praburg	37	*SE Missouri	17
*SE Oklahoma	23	Southern Arkansas	8
*South Dakota State	23	Marion	8
*St. Cloud	26	Northwestern Colorado	20
*SW Baptist	26	Missouri Western	24
SW Minnesota State	28	Wrona State	10
Texas A & I	23	*Cameron	10
*Tulsa	28	Millon	20
William Jewell	24	*Mid-America	8
William Peace	23	Lippert Iowa	23
Wittenberg-Stevens Point	24	*Wacoan-LaCrosse	21

Other Games - South & Southwest

Abilene Christian	22	Eastern New Mexico	20
Auburn A & M	24	*Abilene	6
Angelo State	23	West Texas	7
*Arkansas Tech	24	West Texas	7
*Carlson Newman	26	Catawba	14
Central Florida	24	*North Alabama	17
*Centre	31	Sewanee	12
Concord	26	Catawba	14
*Dallas State	23	Tennessee Martin	21
*East Texas	24	Central Oklahoma	22
*Elizabeth City	23	Kentucky State	13
*East Valley	23	*Mississippi	14
Emory & Henry	25	Clark	14
*Fairleigh	23	Wingate	20
Gardner-Webb	23	Bridgewater, VA	14
*Hampden-Sydney	27	*North Carolina Central	24
Hampson	26	Lane	10
*Hickory	24	*Mississippi College	23
Jacksonville State	23	*Elon	10
Lenoir-Rhyne	20	NE Oklahoma	14
*Liberty	22	*Henderson	17
*Oachita	24	East Central Oklahoma	14
*Oklahoma	23	Morris Brown	7
*Oklahoma State	23	Alabama	21
*Oklahoma State	23	Troy	22
*Oklahoma State	23	*Randolph-Macon	13
*Oklahoma State	23	*West Georgia	21
*Oklahoma State	23	West Liberty	14
*Oklahoma State	23	*Ole Miss	18
*Oklahoma State	23	*Tennessee	13
*Oklahoma State	23	*Tennessee	13

Other Games - Far West

*Cal Poly	21	Northridge	13
*Cal State	40	San Francisco State	7
*Claremont	21	Whittier	14
*Claremont	21	*Hayward	14
*Claremont	21	San Diego State	17
*Claremont	21	*Lewis & Clark	17
*Claremont	21	Fugate Sound	17
*Claremont	21	*Occidental	10
*Claremont	21	*Santa Clara	7
*Claremont	21	San Diego State	21
*Claremont	21	*San Diego U.	14
*Claremont	21	Cal Lutheran	20
*Claremont	21	*Humboldt	14
*Claremont	21	*Colorado Mines	21
*Claremont	21	Eastern Oregon	7

Presented in the public interest by:

Farmer's Co-Op Elevators

Muleshoe High School



52. Clarence Lewis

Proudly Presented by:

WES-TEX FEED

YARDS, INC.

Player of the Week

Pat Dye's Auburn Tigers haven't been asleep either. After clobbering Pacific, 55-0, they whipped Southern Mississippi 24-3. However, the Vols don't lie down when the Tigers come to town. They tied Auburn 20-20 in 1987 and beat them 38-20 in 1985. It will be close..Auburn.

Clemson was another league champion last year, losing only to North Carolina State in the Atlantic Coast Conference. Duke took the biggest beating from the Tigers, a 49-17 shellacking that really blew the roof off the beginning of an undefeated season. The Blue Devils were 5-0 at the time, but they were still able to post a respectable 7-3-1 record. Duke is hosting the match-up this year, but it'll probably be all Clemson at Wallace/Wade Stadium.

The Pac-10 and Big Eight will rap knuckles in Seattle Saturday as powerful Washington is the home team for the third time in four weeks. This one's against equally powerful Colorado. The Huskies are coming off a conference battle at Arizona and the Buffaloes are going on the road for the first time this season after three big home victories over Texas, Colorado State, and Illinois. We're picking Colorado.

In the "smile-and-frown" department, the forecast-against-average through games of September 16th is exactly .750 with 392 winners and 131 losers. Georgia will be favored as it entertains South Carolina, and West Virginia hosts Pittsburgh in an Eastern headliner that the Mountaineers are picked to win.

Bob Stovall Printing
 No Job Too Large
 Or Too Small!!
 Visit Bob Stovall For
 All Your Commercial
 Printing!
 221 E. Ave. B. 272-3373
 T.C.U. vs. S.M.U.

Noble TV & Appliance Service
 Brian Noble
 For All Your T.V.
 & Appliance Repairs,
 Call Noble TV & Appliance
 106 E. Ave. B. 272-3115
 Washington State vs. Southern California

Ask Us About Family
 Insurance Review!
 Call Ricky Barrett, Tommy
 Sisemore or David Tipps
Bailey County Farm Bureau
 • LIFE • CROP
 • AUTO • HOME
 1612 W. Amer. Blvd.
 272-4567
 Seagraves vs. Morton

Shipman's Body Shop
 Joe & Gary Shipman
 410 N. 1st 272-4408
 Auto Painting
 FREE ESTIMATES
Muleshoe Auto Parts
 Danny Shipman, Mgr.
 217 N. 1st 272-4596
 "We Appreciate Your Business"
 Tulane vs. Iowa State

Muleshoe Truck & Auto Service Center
 "We Appreciate Your Business"
 301 N. 1st 272-5111
 Supporting The Mules On
 To A Winning Season!!
 John Grippando H.E. Reeder
 Bovina vs. Higgins

FOOTBALL CONTEST
Grand Prize: \$50⁰⁰
 Weekly Prizes
 1st **\$10** Plus *3000 MAC Buck Tickets
 2nd **\$750** Plus *2000 MAC Buck Tickets
 3rd **\$500** Plus *1000 MAC Buck Tickets
Weekly Winners
 1. Raul Lozano 2. Debbie Weir 3. Richard Orozco

Evins Sunshine Station
 "We Are A Full Service Station"
 623 W. Amer. Blvd. 272-5216
 Come in and see
 Kenneth for all
 your gas & oil needs.
 Dimmitt vs. Abernathy

Henry Insurance Agency, Inc.
 KENNETH R. HENRY
 CERTIFIED INSURANCE COUNSELOR
 REAL ESTATE BROKER
 111 W. Ave. B. 272-4581
 Florida vs. Mississippi State

Wilson Drilling Co.
 Box 405 272-5521
 Stanley Wilson Dee Puckett
 Tx. Lic. 02628W
 NM. Lic. WD1152
 U.C.L.A. vs. California

Farmer's Co-Op Elevators
 5 Locations To Serve You
 Clays Corner Enochs
 Muleshoe Old Griffith
 Pleasant Valley
 272-4335
 Hereford JV vs. Farwell

SUPPORT THE MULES
CONTEST RULES
 1. IN EACH ADVERTISEMENT YOU WILL FIND A GAME LISTED. CIRCLE THE TEAM YOU THINK WILL WIN. The person's score that most closely matches the TIE BREAKER SCORE will be declared the winner. If several persons are still tied the prize money will be split.
 2. The contestant must be 12 years of age or older.
 3. Only one entry per person may be made for any one contest.
 4. Bring your entry blank by The Journal office by 5:00 p.m. Friday, or if mailed, the entry must be postmarked no later than 5:00 p.m. Friday. Write "FOOTBALL CONTEST" on the mailed entry, and mail to P.O. Box 449, Muleshoe, Texas 79347.
 5. Circle the winners and WRITE IN THE SCORE of the tiebreaker game. This score will be used to break weekly as well as determine the grand prize winner. Decision of The Journal's scoring judges will be final.
 6. Check the team you think will win; 10 points for first place, 6 points for second place and 4 points for third place.
 7. To count for the grand prize, entries must be on official blank printed in the paper.

Official Entry Blank

Name _____
 Address _____
 Phone _____

TIEBREAKERS

Lockney vs. Sudan
 Colorado vs. Washington

Viola's Restaurant
 For The Best Mexican Food
 Come To Viola's!!!
 Open 11 a.m. - 9:30 p.m.
 Closed On Tuesdays
 2002 W. Amer. Blvd.
 272-3838
 Oklahoma State vs. Wyoming

WES-TEX FEED YARDS, INC.
 Custom Cattle Feeding
 272-7555
 Muleshoe, Texas 79347
 Texas A & M vs. South'n Mississippi

Western Drug Co.
 "For All Your Prescription Needs Visit The Friendly People At Western Drug"
 144 Main 272-3106
 Texas Tech vs. Baylor

The Finest in Mexican Food... Since 1957
Leal's
 MEXICAN FOOD RESTAURANT
 Backing The Mules 100%!!
 Closed On Mondays
 1524 W. Amer. Blvd.
 272-3294
 Arizona State vs. Missouri

MULESHOE MULES Varsity Schedule	JUNIOR VARSITY Schedule	FRESHMEN Schedule
Sept. 8 BROWNFIELD H 8:00	Sept. 7 BROWNFIELD T 7:00	Sept. 7 BROWNFIELD T 5:00
Sept. 15 SHALLOWATER T 8:00	Sept. 14 SHALLOWATER H 7:00	Sept. 14 SUDAN JV T 6:00
Sept. 22 DENVER CITY** H 8:00	Sept. 21 DENVER CITY T 7:00	Sept. 21 DENVER CITY T 5:30
Sept. 29 GREENWOOD T 8:00	Sept. 28 LITTLEFIELD H 7:00	Sept. 28 LITTLEFIELD H 5:30
Oct. 6 RIVER ROAD+ H 8:00	Oct. 5 RIVER ROAD T 7:00	Oct. 5 RIVER ROAD T 5:30
Oct. 13 DIMMITT* T 7:30	Oct. 12 DIMMITT* H 7:00	Oct. 12 DIMMITT* H 5:30
Oct. 20 FLOYDADA* H 7:30	Oct. 19 FLOYDADA* T 7:00	Oct. 19 FLOYDADA* T 5:30
Oct. 27 TULIA* T 7:30	Oct. 26 TULIA* H 7:00	Oct. 26 TULIA* H 5:30
Nov. 3 FRIONA* H 7:30	Nov. 2 FRIONA* T 7:00	Nov. 2 FRIONA* T 5:30
Nov. 10 LITTLEFIELD* H 7:30	Nov. 9 LITTLEFIELD* T 7:00	Nov. 9 LITTLEFIELD* T 5:30

* District Games ** Homecoming + Parents Night

W.T. services inc.
 319 E. American Blvd.
 MULESHOE, TEXAS 79347
Mobile Communications
 Two Way Radio Repair
 GARY PARKER Technician Muleshoe - 806-272-4858
 Hereford - 806-364-7211
 Levelland vs. Dumas

Combination Motors And Salvage
 Gerry Pierce
 Day: 806-272-4458
 Night: 806-272-5057
 Rt. 2 Box 240 Muleshoe, Tx. 79347
 24 hour TOWING SERVICE
 Oregon vs. Arizona

Irrigation Pumps & Power, Inc.
 ZIMMATIC® SALES & SERVICE
 PARTS & SERVICE FOR ALL BRANDS CENTER PIVOTS
 W. Hwy 84 Muleshoe 272-5597
 West Virginia vs. Pittsburgh

Scoggin Ag Center Inc.
 1532 W. Amer. Blvd. 272-4613
 Kearney Scoggin
 Supporting The Mules All The Way!
 Penn State vs. Texas

DAMERT TRUSTWORTHY
 Specializing In Native Grasses & Millets
 Rt. 3 Box 1120 272-5506
 Tulsa vs. Iowa



TRYING TO PUT THE HALT ON--Muleshoe Mules join together to try to bring down Denver City Mustang Brent Chamberlain, carrying the ball, last Friday night in action at Benny Douglass Stadium in Muleshoe. Shown in the far background, racing in to help, is Andy Langfitt, No. 40. (Journal Photo)

Quail Season Begins Nov. 4: Few Birds Seen This Year

Quail hunting prospects will range from excellent to poor across Texas this season depending on location, but most hunters are likely to see fewer birds than last year.

Quail season is Nov. 4-Feb. 25 statewide. The bag limit is 15 per day, with a possession limit of 45.

Don Wilson, quail program leader for the Texas Parks and Wildlife Department, said 1989-90 bobwhite quail prospects are extremely difficult to predict because of spotty rainfall patterns across the state during the spring and summer. "Some hunters are going to find some pretty good shooting, while those in the next county might not find a bird," Wilson said.

Quail census routes, however, indicate that prospects statewide are well below the long-term average. "Some of the traditionally good quail hunting areas showed the worst counts on record," Wilson said.

These topsy-turvy census counts are especially noticeable in the top three quail hunting ecological areas: the Cross Timbers, Rolling Plains and South Texas, he said.

In the Rolling Plains west of Fort Worth, counts were only half the long-term average. The main bright spots in that region were in the Clay and Wichita County areas around Wichita Falls, Wilson said.

Counts in the Rolling Plains of West Texas also were about half the long-term average. Observers counted as many as 60 quail on some routes, but saw none on others. "This results from varying rainfall patterns that caused good quail production in some areas and poor production in others," Wilson explained.

Bright spots in the Rolling Plains may be along the western edge of the region near the Panhandle, and along the Red River. Some of the better counts came from Archer, Fisher, Runnels, Throckmorton and Kent Counties.

The South Texas Plains, which usually produce good quail hunting, had counts that rank near the worst since the census project started in 1976. Wilson said 57 percent of the lines showed lower counts than last year, which was considered a poor year for quail, and 18 of 21 lines (86 percent) were below the long-term average.

Wilson said good counts came from Atascosa and Jim Hogg Counties, and fair numbers were recorded in Frio and LaSalle Counties.

The Edwards Plateau in Central Texas generally has only marginal quail habitat, but counts in that region indicate quail populations are at average levels.

Combust Urges People To Write Letters

When Congress passed catastrophic health care legislation in 1987, an overwhelming majority of the House of Representatives believed it was a vote for a health care plan which would benefit

senior citizens. The handful of us who voted against the bill predicted that the Medicare Catastrophic Coverage Act of 1988 would be a catastrophe due to the staggering mandatory surtax which is being charged to older Americans.

When opposition from scattered groups of senior citizens began after the bill became law, many lawmakers perceived the movement merely as a nuisance by a few so-called wealthy senior citizens and assumed the majority of America's elderly would think Congress was doing them a great favor. They couldn't have been more mistaken.

Since last year, the small, grassroots movement has turned into a nationwide wave of opposition to the Catastrophic Coverage Act. Because I strongly opposed this measure and voted against the bill two years ago, I have urged West Texans to "keep the heat on" and help me fight the battle against this terribly unfair and short-sighted law. Their national letter-writing campaign was so successful that mail delivery to the House of Representatives was put several weeks behind schedule during the summer because of the flood of letters against the health care plan.

And now many of the staunchest supporters of the catastrophic care law in Congress are finally listening to what senior citizens are saying about the surtax and the supposed benefits of the law. Some of my colleagues who at first backed the catastrophic package are so concerned about flaws in the law that they are joining me in calling for repeal of the care plan. Although the reforms which have been proposed thus far have not offered the needed changes, the fact that the tide is turning for reform and repeal is encouraging. I have personally met with President Bush and discussed my opposition to this plan. I was joined by several other members of Congress during this meeting, all of

whom expressed concern about the catastrophic health program.

Credit for the change in attitude can be given directly to the older Americans who spoke up in letters and phone calls opposing the catastrophic care plan. Although many people have the idea that they have no voice in their government, this issue proves that citizens can and do have an active role in the way the nation is governed. Changes to the health care law have become a key topic of discussion and concern both on Capitol Hill and in Congressional districts throughout the country. The issue is usually the first item mentioned at town hall meetings, and senior citizens are coming out in great numbers to voice

their opposition to the law.

I am heartened to see the emergence of a government "of the people, by the people and for the people." West Texans are realizing their clout in Washington, and I encourage them to keep their letters and telephone calls coming. Their voices do make a difference.

Answered Him

He appeared before the company officer charged with using insulting language to his sergeant.

"Please Sir," he protested, "I was only answering a question."

"What question?"

"Well, sir, the sergeant said 'What do you think I am' and I told him."

Open Letter To The Public

September 18, 1989

The Chamber of Commerce and Agriculture stands behind our schools in their endeavor to educate and mold our children into strong and mature young adults.

As the Muletrain Advertiser, annual staff, comes to your door selling an ad for the year book you do your part to encourage and boost their efforts and moral with a smile and a check, then the MULECHEX will be available to that student, and the "buck" will pass around Muleshoe again as these students spend their MULECHEX in our stores in our town.

Thanks from your chamber manager--Nancy Kidd.

Yearbook Staff
Muleshoe High School
Muleshoe, Texas

Muletrain Advertiser
Muleshoe, Texas

Dear Advertiser:

Muleshoe High School has always appreciated the community support shown our students and school. Least of this support is certainly not the wonderful response always shown our students selling ads for the Muletrain, the MHS yearbook.

We, the staff of the 1989-90 yearbook realize that often your advertising dollar spent with us has not shown you any measurable results insofar as increased sales might be concerned. We have a plan to rectify that: MULECHEX

What is it?

MULECHEX are coupons issued to purchasers of the 1989-90 yearbook.

*each MULECHEX may be cashed in only with advertisers in the new yearbook

*value of each MULECHEX is \$1.00

*MULECHEX may be used on any single purchase (only one per purchase) of \$10.00 or more. (To you, Advertiser, this means you will never be giving more than a 10 percent discount. Ex.: Purchase of \$10.00-one MULECHEX = \$9.00 cash paid; \$20.00-one MULECHEX = \$19.00 (only 5 percent)

*1989-90 MULECHEX will expire Sept. 1, 1990.

How does this help you?

*Your business will be listed among those who support our kids and our school by your participation in the MULECHEX program

*As you receive MULECHEX, you will begin to recognize the exposure that before, you may not have been getting.

*Because of the discount, (never exceeding 10 percent), more students business will stay in Muleshoe; this means increased sales for you.

How does it help us?

*MULECHEX gives us an opportunity to help you, and you have helped us so much!!

*Through MULECHEX, our students can buy a yearbook at savings because of the dollar off they will receive from you.

*We have the opportunity to sell more yearbooks because of the fringe benefits of MULECHEX.

All things considered, how can either of us go wrong and When you purchase your ad for the 1989-90 Muletrain, you agree to participate in the program.

If you should have any questions, please contact Mrs. Hellen Adrian or Mrs. Pat Watson, our sponsors, at the high school. As always, we appreciate you and thank you for your support.

Sincerely
Stacy McElroy (Editor)
Yearbook Staff
1989-90

FALL IS FOR PLANTING

Garden Mums - Shasta Daisies
Pansies - Dianthus -
Flowering Cabbage

Clearance Sale On Trees & Shrubs

Now is the time to plant your
Bluebonnet Seeds!


We have Diazinon
Crystals for Grubs!

We Will Be Open Sat
Until 3 p.m. For This Sale

**Kristy's
Plants**

1504 W. Amer. Blvd.
272-5536





**RONNIE HOLT
INSURANCE
AGENCY**

SPECIALIZING IN CROP,
LIFE & HEALTH INSURANCE

Ronnie Holt
P.O. Box 304
Western 66 Office Building
Muleshoe, Texas 79347
Office: (806) 272-3614
Residence: (806) 965-2842

STATEMENT OF OWNERSHIP, MANAGEMENT AND CIRCULATION		
1. TITLE OF PUBLICATION		
Muleshoe Journal	0 0 5 6 7 8 2 0	9-28-89
Frequency of Issue	Weekly	Annual Subscription Price \$16.50
2. COMPLETE MAILING ADDRESS OF KNOWN OFFICE OF PUBLICATION (Street, City, County, State and ZIP Code (for printing))		
304 W. Second Muleshoe, Texas 79347, Bailey		
3. COMPLETE MAILING ADDRESS OF THE HEADQUARTERS OR GENERAL BUSINESS OFFICES OF THE PUBLISHER (for printing)		
304 W. Second Muleshoe, Texas 79347, Bailey		
4. FULL NAMES AND COMPLETE MAILING ADDRESSES OF PUBLISHER, EDITOR, AND MANAGING EDITOR (This form MUST NOT be blank)		
PUBLISHER (Name and Complete Mailing Address)		
L.B. Hall 1007 W. 7th Muleshoe, Texas 79347		
EDITOR (Name and Complete Mailing Address)		
Clara Williams 705 W. Third Muleshoe, Texas 79347		
MANAGING EDITOR (Name and Complete Mailing Address)		
L.B. Hall 1007 W. 7th Muleshoe, Texas 79347		
5. OWNER (If owned by a corporation, its name and address must be stated and also immediately thereunder the names and addresses of all stockholders owning or holding 1 percent or more of total amount of stock. If not owned by a corporation, the names and addresses of the individual owners must be given. If owned by a partnership or other unincorporated firm, its name and address, as well as that of each individual must be given. If the publication is published by a single proprietor, his name and address must be stated. (This must be completed for each issue.)		
FULL NAME		
COMPLETE MAILING ADDRESS		
L.B. Hall 1007 W. 7th Muleshoe, Texas 79347		
Clara Williams 705 W. Third Muleshoe, Texas 79347		
6. KNOWN BONDHOLDERS, MORTGAGEES, AND OTHER SECURITY HOLDERS OWNING OR HOLDING 1 PERCENT OR MORE OF TOTAL AMOUNT OF BOND, MORTGAGE OR OTHER SECURITY OF THIS ISSUE (This must be completed for each issue.)		
FULL NAME		
COMPLETE MAILING ADDRESS		
7. FOR COMPLETION BY NONPROFIT ORGANIZATIONS AUTHORIZED TO MAIL AT SPECIAL RATE (Section 3752, BSM) AND THE NATIONAL ARCHIVE AND RECORDS SERVICE OF THE NATIONAL ARCHIVE FOR FEDERAL GOVERNMENT PUBLICATIONS (Check one)		
<input type="checkbox"/> NOT CHANGED DURING PRECEDING 12 MONTHS		
<input type="checkbox"/> CHANGED DURING PRECEDING 12 MONTHS		
8. STATE AND NATURE OF CIRCULATION		
9. SALES THROUGH DEALERS AND CARRIERS, STREET VENDORS AND COUNTER SALES		
10. SALES THROUGH MAIL		
11. TOTAL SALES THROUGH ALL CHANNELS		
12. COPIES NOT SOLD THROUGH SALES CHANNELS		
13. TOTAL DISTRIBUTION (Sum of 10, 11, and 12)		
14. COPIES NOT DISTRIBUTED		
15. TOTAL (Sum of 13 and 14)		
16. I certify that the statements made by me above are correct and complete		

Mr. Corn Farmer



We are now
accepting feed
&
food corn
at
215 E. Amer. Blvd.
or the
Main Elevator
in Muleshoe.

Come by either location
in Muleshoe and discuss
our food corn program
today.

**Farmer's Cooperative
Elevators**

Muleshoe 272-4335

CLASSIFIEDS 272-4536

CLASSIFIED RATES

15 Words & Under
Minimum Charge \$2.30
Thereafter \$2.00
16 Words & Over
1st Insertion
15 cents per word
2nd Insertion
13 cents per word

CLASSIFIED DISPLAY RATES
\$1.75
Per Column Inch

DEADLINES
12 noon Tues.
For Thursday Paper
12 noon Friday
For Sunday Paper

To receive the reduce rate after the first insertion ad must run continuously.

We reserve the right to classify, revise, or reject any ad. We are not responsible for any error after ad has run once.

1. Personals

PAINTING: Interior & Exterior. Call 272-4874 H1-30s-tfc

CONCERNED
About Someone's Drinking?
HELP IS AVAILABLE
through Al-Anon
Call 272-2350 or 965-2870 or come to visit Tuesday nights, 8:00 p.m. or Saturday mornings at 10:30 a.m. and through AA call 965-2870 or come visit Tuesday nights, 8:00 at 620 W. Second, Muleshoe.

needed: Companion to elderly lady, Bovina area, nitetime preferred. House, time off, salary negotiable. Call 806-238-1431 or 265-3836. 1-39t-4tp

REDUCE safe and fast with GoBese Tablets and E-Vap "Water Pills." Available at Danron Drug. D1-35t-8tpt

Call your local used cow dealer for 7 day a week dead stock removal. 965-2903 or 1-800-692-4043. cl-57t-tfc

3. Help Wanted

We are taking applications for parttime sales clerks. Apply in person. Muleshoe Fina, 102 West American Blvd. F3-39t-2tc

"ATTENTION: Earn Money Reading Books! \$32,000/year income potential. Details. (1) 602-838-8885 EXT Bk10191. 3-39s-4tp

"ATTENTION-Hiring! Government jobs-your area. Many immediate openings without waiting list or test. \$17,840-\$69,485. Call 1-602-838-8885. EXT R10191. 3-39s-4tp

Stop Muleshoe Print

3. Help Wanted

LICENSED Beauty Operator wanted. Call Helen at Main Street Beauty Salon, 272-3448. M3-38s-tfc

11. For Sale Or Trade

SMALL deer chihuahua. Recently won Best of Show at Bailey County Fair. Stud service available. Call 946-3654 or 272-3607. D11-38t-4tc

PIANO FOR SALE: Wanted - Responsible party to take on small monthly payments on piano. See locally. Call manager at 800-635-7611, anytime. M11-38s-6tpt(ts)

FOR SALE: Tomatoes, Bell Peppers, Okra on Highway 84 By-Pass-Littlefield. B.E. Turner. (806) 385-5980. T11-36t-tfc

15. Misc.

FOR SALE: Tandy 1000 EX computer; IBM-PC compatible; 640K main memory; 5 1/2" and 3 1/2" disk drives; color monitor; software includes: Wordperfect 5.0 word processor, Microsoft QuickBASIC 4.5, Microsoft Quick C 2.0; Microsoft Macro Assembler 5.1; Peachtree Complete Business II Accounting software; all manuals and many tutorial and other books. Sacrifice at \$1,000. 272-5378, ask for Marc Steele. C15-39t-tfc

GARAGE SALE: Lots of baby clothes, some furniture, clothes, and lots of miscellaneous. 920 E. Gum. 9:30-5:00, Saturday. H15-39t-1tc

Ernie's Roofing

Specializing in flat roofs, shingles and Build-up roofs. Residential-Commercial Free estimates, References, work guaranteed. L1s-33s-tfc

Bus. 505-762-6510

17. Seed and Feed

SELECT-TAM 105 Wheat Seed. Call 965-2695 or 965-2266. 17-38s-6tp

Guess
Father: Well, son, how are your marks at school?
Son: Underwater.
Father: What do mean?
Son: Below C level.

Honesty
Canvasser: I say, sonny, is your mother at home.
Small Boy: Yes Sir.
Canvasser (after knocking in vain): I thought you said she was at home.
Small Boy: Yes, sir, but I don't live here.

8. Real Estate

FOR SALE: 6 acres. Grazing land. Brick Home, 2 bathrooms, large den, fireplace. Double garage. Earl Peterson, 965-2938. P8-39t-1tp

FOR SALE: 3-1-1 House. New Heat Pump, Ceiling Fans. Excellent Condition. Asking \$28,500. 312 Avenue K. During working hours, Call 272-5501. Nights and Weekends, Call 272-5866. B8-39t-4tc

FOR SALE: 3-1-1 House. Heat Pump. Fenced Yard. Excellent condition. Asking \$28,500. 305 Avenue K. During working hours, call 272-4528. Nights & weekends, call 272-4346. W8-39s-tfc

Double Wide Mobile Home for sale. During day 272-4613 and after 8 p.m. 272-4081. Scoggin Ag Center. P. O. Box 452. S8-37s-tfc

FOR RENT OR SALE: Double Wide, 3 bedrooms, 2 baths, formal dining, extra large living room. Call 965-2856 after 8 p.m. 8-36s-8tp

8. Real Estate

FOR SALE: Charming 3 BR house; new carpet; 1 bath; covered patio; shop; single garage. 272-3262. 405 E. Dallas. 8-37s-8tp

FARM LAND FOR SALE: 177 acres dryland with full allotment. 177 acres irrigated with full allotment. 946-3474. C8-35t-tfc

THROUGH THE CLASSIFIEDS!

Call 272-4536

SELL-RENT-TRADE OR BUY



CONSUMER ALERT

by Jim Mattox
Attorney General

Nutrition

Don't Bite on Advertised Claims

Consumers rightfully expect accurate information about the nutritional value of the foods they buy. Unfortunately, some advertised nutrition claims are misleading and deceptive.

For example, the Attorney General's Office alleged that a recent national soup company advertisement misrepresented the fiber content of some products by including high and low fiber soups in the same ad. Another ad claimed certain soups contained "10 percent of your daily requirement" of calcium when, without adding milk, the soups contain two percent or less of the recommended daily allowance for calcium.

Some ads mislead consumers by blurring the distinction between certain nutrition claims and possible health benefits. An ad may falsely imply a single high fiber, low fat product can prevent "some kinds of cancer." A complete high fiber, low fat diet has been proven to help reduce colorectal cancer, but not other types of cancer.

Another deceptive ad may link

the low fat, low cholesterol content of a food with a reduced risk of some forms of heart disease, but fail to disclose that the food is high in sodium which may increase the risk of heart disease.

Get Reliable Nutritional Information
Advertising is used to sell a product or service and is not always a reliable source of nutritional information. Consult independent sources, such as health care providers, nutritionists, or consumer publications and books.

Read The Labels
On most food labels, the major ingredient is required to be listed first, followed by the second most prominent ingredient, and so on. If the first ingredient is sugar, for example, you know that there is more sugar than anything else in the food.

Know What It Means
Low calorie means there should be no more than 40 calories in each serving.

Reduced calorie foods must contain at least one-third fewer calories

than similar foods in which the calories are not reduced.

Imitation must be indicated if some part of the nutrition is artificially replaced. For example, some cheese products are not 100 percent cheese.

Sugarless can be very deceptive because it only refers to table sugar, or sucrose. The product may contain corn syrup, honey, or some other sweetener which has as many calories as sucrose.

Organic describes foods produced using non-chemical methods. To be marketed in Texas, organic products must carry a certified label from the Texas Department of Agriculture.

Low cholesterol does not necessarily mean a food is low in saturated fats.

If you have complaints about deceptive food advertisements or any other consumer problem, call your nearest Consumer Protection Office in Austin, Dallas, El Paso, Houston, Lubbock, McAllen or San Antonio. The Attorney General's Office is the people's law firm. We're here to help you.

Cash Rewards
Up To \$1,000
For Information!
Call
Bailey County
Crime Line
272-HELP

8. Real Estate 8. Real Estate

Bingham & Nieman Realty

116 E. Ave. C

272-5285 or 272-5286

RICHLAND HILLS
BEAUTIFUL COUNTRY VIEW OVERLOOKING AREA - 3-2-2 Brick, Cent. A&H, built-ins, FP, 2000+ sq. ft. of lv. area, loads of storage, auto, spkrl., fenced yd., & MUCH MORE. \$70's!!!!!!

4 NICE RESIDENTIAL LOTS PRICED FROM \$5,000.00!!!!!!

JUST LISTED-Nice 3-2-2 Brick on large corner lot, Cent. A&H, built-ins, storm windows & doors, large basement, much more!!!!!!

IMMACULATE 3-2-2 Home, corner lot, Cent. A&H, built-ins, FP, loads of storage & closet space, much more!

VERY NICE 3-2-3 Home, Cent. A&H, built-ins, FP, fans, spkrl. sys., fenced. PRICED TO SELL!!!!

HIGHLAND AREA
NICE 3-2-2 Brick home (2 story), on corner lot, Cent. A&H, built-ins, and much more. LET'S LOOK TODAY!!!!160's

NICE 3-2-1 Brick Home. Cent. A&H, built-ins, large den w/fireplace. Fenced yard, storage bldg. \$50's!!!!!!

PRICE REDUCED 2-2-2 Brick, corner lot, Cent. A&H, spacious rooms, utility, cov. patio, fenced yard, & much more. 40's!!!!

VERY NICE 3-2-1 Brick. Cent. A&H, built-ins, FP, storm windows & doors, covered patio, fenced yard, corner lot. 50's!!!!!!

HIGH SCHOOL
JUST LISTED-COZY 2-1 Home, nicely remodeled, fenced yard, & More \$17,000!!!!

2-1 1/2-1 Brick, fl. furnace, CA, fenced yard & more. \$20's!!!!!!

NICE 2-1 1/2-1 Home, corner lot, built-ins, nice carpet, heat pump, fenced yard, storage bldg. & more!!!!

\$600 TOTAL MOVE-IN POSSIBLE to qualified Buyer on this 3-1-1 Brick, Cent. Heat, Evap. Air, built-ins, fenced yard. \$27,000!!!!!!

PRICED REDUCED FOR QUICK SALE! Nice 2-1-1 Home, Cent. Heat, carpets, workstorage area, and much more. \$19,950.00!!!!!!

DIANNE NIEMAN, BROKER

JUST LISTED-IMMACULATE 3-2-2 Home, Cent. A&H, earthtone carpets, loads of closet & storage space, covered patio, beautiful fenced yard with large trees. Don't miss this one!!!!\$40's!!!!!!

PRICE REDUCED-IMMACULATE 3-2-3 Brick Home, Pump Sys., built-ins, fenced basement w/FP, spkrl. s. much more. \$50's!!!!!!

PRICE REDUCED- 3-1-1 Home earthtone carpets, fenced yard, storm cellar & workshop!!!!

NICE 3-2-1 Brick, Cent. A&H, built-ins, fenced yard, covered patio, earthtone carpets, & much more. \$30's!!!!!!

3-1 1/2-1 Brick, Cent. A&H, DW, fenced yd. & more. \$30's!!!!!!

LENAU ADD.
Very nice 3-1-1 Home, WB stove enclosed patio, storm windows & doors, well insulated, beautifully landscaped. LET'S LOOK TODAY!!!!

JUST LISTED - 3-1-1 Home, nicely remodeled, fenced yd. & more. \$30,000.00!!

COUNTRY HOMES
\$4,250.00 CASH, "AS IS, WHERE IS" - 2-1 Stucco on .21 acre at edge of town!!!!!!

JUST LISTED-3-2-2 Brick on 25 acres, close to town, Cent. A&H, built-ins, shop, barn, new 4 wire fence all around, much more!!!!

3-2 Home on 1 acre, Cent. A&H, built-ins, & much more!!!!!!

VERY NICE-3-2-1 Home on 1 acre, close to town, Cent. Heat, Evap. air, nice carpets, nicely remodeled. \$30's!!!!!!

2-1 home, 20 acres, sub. pump, sprinkler, barns & corrals. \$40's!!!!!!

EXCELLENT COMMERCIAL TRACT 175' x 100', Hwy. 70 & 84, railroad spur access at rar. approx. 1200 sq. ft. bldg. PRICED TO SELL!!!!!!

NICE 3,500 sq. ft. office bldg. across from Courthouse. PRICED TO SELL!!!!!!

JUST LISTED-NICE COMMERCIAL BLDG. ON MAIN HIGHWAY, Approx. 2800 feet of area, suitable for various types of business. Possible Owner Financing to qualified Buyer. \$20's!!!!!!

GEORGE NIEMAN, BROKER

8. Real Estate 8. Real Estate

WHITT - REID

Muleshoe 272-3611
201 Main Real Estate Insurance
Sales & Appraisals



"OLD JOHN DEERE BUILDING"
For Sale at a very reasonable price

Home Phones

Roy Whitt, C.R.E.A. 272-3058
Certified Real Estate Appraiser
Thursie Reid George Poteet Sandra Chancy
272-5318 272-4047 925-6727
We have buyers for farm land...

Henry Realty

111 W. Ave. B. 272-4581
Muleshoe, Tx.

3 Brdm., 2 bath, spacious home outside city limits, near city on highway. 29x40 metal building. Lot 85'x620'.

3 Brdm., 1 bath, completely remodeled, edge of city on highway.

COMMERCIAL PROPERTY-Ideal location on West American Blvd. 150' highway frontage. A great business opportunity.

4 Brdm., 2 bath, 2 car garage, central heat/air, large SOLD rpet, near down town. Excellent condition.

RURAL HOME-3 Brdm., 2 bath, large den on one acre with many extras. Fenced with barns, fruit trees, extra storage, storm cellar, and satellite dish. Priced to sell.

SPACIOUS-2 Brdm., 2 bath, with garage. Freshly painted. Fireplace. Ready to move in.

JUST LISTED-Outside city - 3 Brdm., 2 bath, garage on one acre. Carpet with drapes and blinds. Dishwasher. Good storage.

3 bedroom, 2 bath, carpet, large living room. Excellent condition, near high school. Priced to sell.

2 bedroom, 1 bath, completely remodeled. Ideal first home in excellent location.

Crane Hunters Need Federal Permit

The Texas Parks and Wildlife Department reminds sandhill crane hunters they need a free federal permit in addition to a valid hunting license to hunt cranes in any of the state's three hunting zones.

Ron George, sandhill crane program leader, said hunters also need to be aware that the areas for sandhill crane hunting have been expanded to include an area bounded roughly by Childress, Abilene and Junction on the west, and Interstate Highway 35 and 35-W on the east. It opens portions of the Rolling Plains, Cross Timbers and the northern Edwards Plateau ecological areas to crane hunting during the open season.

Sandhill crane hunters are reminded that season dates and zones are set by the department to protect the endangered whooping crane which migrates through Texas to wintering areas on the Texas Coast. Sandhill hunters should be alert to verifying their target species during any hunting outings.

Season dates are: Zone A, Nov. 11-Feb. 11; Zone B, Nov. 25-Feb. 4; Zone C, Jan. 6-Feb. 11. Shooting hours are one-half hour before sunrise to sunset. The bag limit is three per day, six in possession.

Permits may be obtained by submitting in writing the name and address of each hunter to any TPWD Office or the Buffalo Lake National Wildlife Refuge, or the Muleshoe NWR, Box 549, Muleshoe, TX 79347, (806) 946-3341.

Bomb detector not good enough for certain bombs.

Longhorns, Silverton Tie

It was a group of wide-eyed Silverton Owls who saw the Lazbuddie Longhorns take an early lead Friday night, but taking advantage of a very 'thin' Longhorn team from injuries and illness, the Owls came from behind to tie the game, 20-20.

Lazbuddie's Head Football Coach C. W. Williams said he had two starters out of the game from illness, Kevin McGehee and Kirk Jesko.

But, despite them being out, Eddie Zamora put the first Longhorn points on the board in the first, on an 18-yard gallop by Eddie Zamora. The PAT failed. In the second, the Longhorns struck again on a 41-yard TD pass from Michael Williams to Doug Barnes, but again the attempt for the extra point failed.

This period, the Owls put their first points on the scoreboard on an 11-yarder from Kendall Minyard to Danny Hill, but the PAT was no good.

Michael Williams again found Doug Barnes in the third, and he scored on a 28-yarder. This time, Michael Williams made the extra point.

Not to be outdone, the Silverton Owl defense dug in in the fourth, and Silverton came back with two TDs.

Wayne Henderson scored from six yards out, with the EP failing, then Bradley Brunson made a two-yard TD plunge for the Owls and also made the extra point.

At the end of the game, it was Lazbuddie 20-Silverton 20.

Michael Williams was 13-19 in passing for 224 yards and two TDs. He also had 23 tackles in

the game. In receptions, Douglas Barnes had six receptions for 134 yards and two touchdowns.

Next Friday night, the Lazbuddie Longhorns will be playing

at home. They will play Groom at 7:30 p.m. Preceding the varsity game, the Lazbuddie JV will take on Bethel Christian varsity team.



GETTING READY TO INSTALL NEW HEATING/AIR CONDITIONING UNIT AT GIRL SCOUT LITTLE HOUSE--Tuesday afternoon, employees of Plains Heating and Air Conditioning of Littlefield and Lubbock, were in Muleshoe to install a new heating/air conditioning unit at the Girl Scout Little House on West Second St. Pictured from left are Daryl Hawkins, Tony Alvarado and Pat Dillon. The new unit, and labor to install the unit was donated by Darrell Ellyson, owner of Plains Heating and Air Conditioning. He was presented a certificate of appreciation by representatives of the Muleshoe Girl Scout organization. (Journal Photo)



AMBASSADORETTES PRESENT FLAGS--Members of the Muleshoe CofC Ambassadors presented the American and Texas flags to officially open the Jennyslipper convention in Muleshoe last Saturday. Pictured from left are Christi Pena, Holly Huckaby and Ana Mendoza. (Journal Photo)

1989 Crop				
	Pool Cash	Sale	Sale	Month
	Advance	Flat	Basis	
Feed Corn	4.35	4.40	0.12	Dec.
White Cobb Yellow ...	4.10	4.85	0.35	Dec.
Red Cobb Yellow	4.00	4.60	0.22	Dec.
White Food Corn	5.00	6.00	1.06	Dec.
Milo	3.75	3.68	-0.14	Dec.
Soybeans.....	No Pool	5.07	-0.16	Dec.
Wheat.....	No Pool	3.51	-0.34	KC Dec.

103%
Prices effective September 22, 1989

Farmer's Co-Op Elevators
272-4335

CATTLE FEEDERS GRAIN COTTON
TRADING & HEDGING
FUTURES & OPTIONS

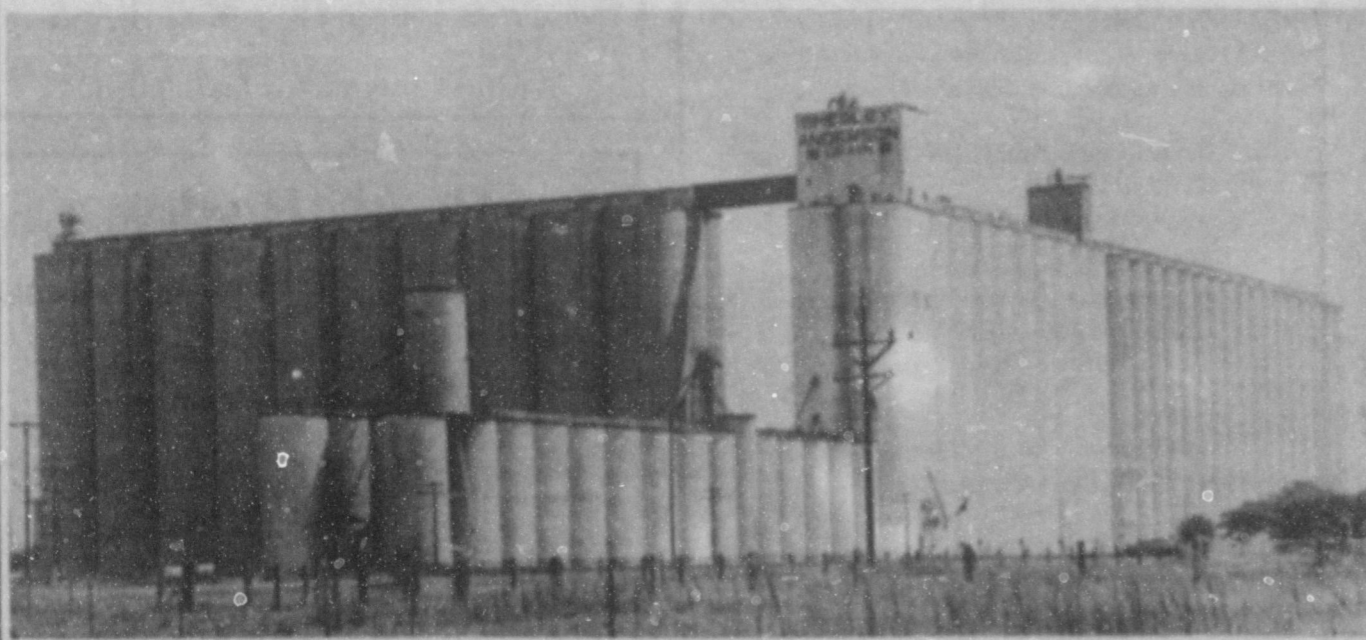
Wes Tex Futures, Inc.

P.O. Box 324 • 114 East Avenue C
Muleshoe, Texas 79347
Telephone 806/272-5585

Roderick Moss

ATTENTION: CORN HARVESTERS!

We Appreciate Your Business



Sherley-Anderson Grain Co.-Lariat
Lonnie McFarland-Don Gartin-John McFarland



Sherley-Anderson-Lazbuddie
David Anderson-Scott Brown-Ray Stanley

Ready To Serve You This Harvest Season!

SHERLEY-ANDERSON ELEVATORS

Capacity 600,000 Bushels
SHERLEY-ANDERSON-RIEA
ELEVATOR
Parmer, Texas
295-3585

Capacity 6,500,000 Bushels
SHERLEY-ANDERSON GRAIN COMPANY
Lariat, Texas
Okla. Low 825-2545

W. M. SHERLEY (1897-1974)
G. M. D. ANDERSON, JR.
J. A. PITMAN (1897-1959)

Members
PANHANDLE GRAIN DEALERS ASSN.
TEXAS GRAIN DEALERS ASSN.
NATIONAL GRAIN DEALERS ASSN.

Capacity 6,000,000 Bushels
SHERLEY GRAIN COMPANY
Bovina, Texas
238-1521 Main Office

Capacity 3,000,000 Bushels
SHERLEY-ANDERSON-PITMAN, INC.
Forwell, Texas
481-3343