

Presbyterian Circles Meet On Last Thursday

The newly organized Women's Association circles of the First Presbyterian Church met last Thursday afternoon and evening. Circle No. 1 met at the home of Mrs. Wheatley with Mrs. Bill Everest as co-hostess with 27 members present.

A brief missionary playlet, "Review of Community Ministerial," was given by Mrs. Harold Strand, Mrs. J. A. Fairley, Mrs. Tom Donnelly and Mrs. Chester Russell. The program was in charge of Mrs. Ralph O'Dell.

At the close of the meeting, delicious refreshments were served. Circle No. 2 met Thursday afternoon at the home of Mrs. R. L. Paris, with 21 members present.

The program was "Working Together in the Community" and given by Mrs. Ott Strock and Mrs. John Cochran, Jr.

Mrs. Mack Reasner, who recently moved here from Indianapolis, Ind., was a guest.

The hostess served delicious refreshments. The Mary Gilbert Circle met Thursday evening at the home of Mrs. John Gates with Mrs. Wayne Paulin as co-hostess.

The program was "World Fellowship" and was in charge of Mrs. R. Rodke and Mrs. Wayne Paulin. Mrs. Lilly Johnson and Mrs. Minnie McDaniel, members of a Negro church, were guests and gave interesting talks.

Eleven members and three new members, Mrs. Raymond Lamb, Mrs. Wayne Griffin and Mrs. E. E. Finney, were served delicious refreshments.

Have you seen a Shaw-Walker truck? You can buy them through the Advocate, Shaw-Walker dealers in Artesia.

DOES ARE TO SPONSOR CHUCK WAGON SUPPER
Mrs. J. W. Jones, president of the Artesia Drive of Does, announced the Does are sponsoring a chuck wagon supper for the Elks and their ladies at 7 o'clock Wednesday evening in the Elks building.

The dress for the evening is Western garb and a delicious Western meal is planned.

METHODIST MEN TO MEET TONIGHT
The monthly meeting of the Methodist Men's Club will be held at 6:45 o'clock tonight, with a meal planned prior to the program. Men of the community interested were invited to attend.

Mrs. Wheatley Gives Program On 'New Mexico Village Art'
Mrs. Rex Wheatley gave an interesting program on "New Mexico Village Art" at a meeting of P.E.O., Chapter "J" Friday afternoon at the lovely country home of Mrs. E. P. Malone on Cotton-

wood, with Mrs. M. C. Ross as co-hostess.

The hostesses served delicious refreshment to 18 members and a guest, Mrs. Ernest Malone, Jr.

The next meeting will be Friday, March 3, at the home of Mrs. Stanley Carper, with Mrs. Bertha Van Wyngarden as co-hostess.

that the following described property, to-wit:

1 Wilson Mogul Hoist, No. H-10, w/ Clutch and Transmission and Hill & Foster Automatic Cathead Complete W/2-PA-100 International Engines No. EE-302219 and No. EE-301694.

1 4 1/2"x41' Baash-Ross Square Grief Stem, No. S-5.

1 No. 16-P (6"x16") Wilson Snyder Power Driven Slush Pump Complete W/ V-Belts, V-Belt

Shaves and Driven by Buda JL-1355 Engine. Pump No. 9181, Engine No. 241037A.

1 L-17 Emco Oilbath Rotary Table, No. R-12.

1 Set 4 1/2" Baash-Ross Roller Drive Bushing No. B-6.

1 4-Sheave Gumbo Buster Traveling Block, No. B-4.

1 7" Ideal Spring Casing Hook, No. H-3.

1 1 1/2 KW Kohler Light Plant, No. P-7.

1 6" No. 100 oilwell swivel, No. S-15.

1 2 1/2"x45' Grizzly Rotary Hose.

1 1 1/2"x1100' Rotary Drilling Line.

1 96' Jack Knife Derrick Complete w/ Crown Block, Sub Structure and Motor Support.

4177' 4 1/2" OD NTCO. Smls. IUE Drill Pipe W/2 Tool Joints.

2 5 1/2"x30' Hughes Drill Collars, Ser. Nos. C-13, C-14.

1 Greenhead Line Scale.

1 Tube "D" Abercrombie 3000 lb. Mud Gauge.

1 2" American Release Valve.

1 4 1/2" BJ Drill Pipe Elevator, No. E-9.

1 Set (2) 72" BJ Elevator Links, No. L-7.

1 Set (2) 4 1/2" BJ Rotary Tongs w/2 Extra 6 1/2" OD Heads.

1 Halliburton Measuring Line.

1 Model JS American Overshot Complete W/ Slips, No. O-17.

1 7'x12' Tool House, No. H-22.

1 1100 Gallon Butane Tank, No. T-18.

1 125 Bbl. Steel Water Tank, T-23.

1 Hughes Tool Co. Type "J" Core Barrel, No. B-16.

1 Set Varco Drill Pipe Slips.

1 Martin-Decker Multiplex Weight Indicator.

Miscellaneous Drill Pipe Subs, Standpipe, Connections and Hand Tools, now with said property above described and making there with a complete drilling rig;

will be sold on the 8th day of March, 1950, at the hour of 10:00 A. M. on the front steps of the City Hall located at the corner of Fifth and Main Streets in the City of Artesia, Eddy County, New Mexico.

at public auction and sold to the highest and best bidder, under and by virtue of (Chapter 25, Section 11 of the Session Laws of 1925) of the Laws of the State of New Mexico and the terms of a Chattel Mortgage made and entered into on August 27, 1947, by and between F. B. Marshall, Leon C. Smith and Chas. Rupe, doing business as Marshall, Smith and Rupe, and Barney Cockburn, to secure a Note in the amount of \$21,000, bearing interest at the rate of 4 1/2% per annum until paid, together with 10% of the amount as attorney fees, together

with the costs of this sale and Notice; and default having been made in the payment of said Note and in the performance of certain other conditions of this Mortgage.

DATED this 2nd day of February, 1950.

William M. Siegenthaler, Attorney for Barney Cockburn

11-41-P-47

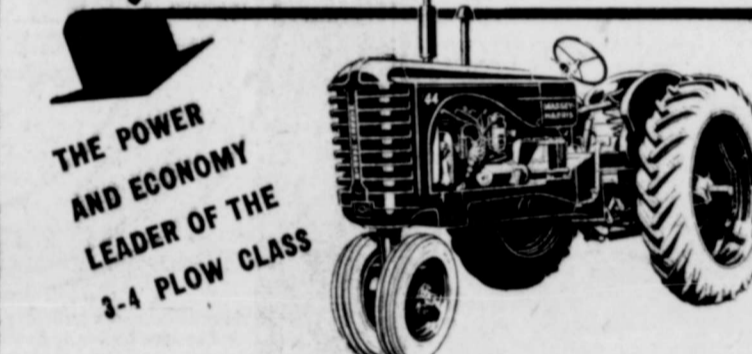


HORN OF PLENTY

Massey-Harris Implements Are Star Performers!

Call or Write for Free Demonstration Before You Buy

HUSKY, Dependable Power



THE MASSEY-HARRIS 3-4 PLOW "44"

Here's a 4-cylinder husky that's built for more than just average conditions... a tough, versatile, dependable tractor, the "44" walks away with the most stubborn 3-4 plow jobs on your farm. It's out on a tough field job that you really get to know the "44." That you really discover its lugging ability and economy. You take heavy plowing and discing jobs in stride... plant, cultivate, haul seemingly with no effort.

And you do it on less fuel! There are more acres of work in every tank of gas with the "44." More furrows plowed, more rows planted, more dollars and cents savings in every operation. See us soon for complete details on the Massey-Harris 3-4 Plow "44." Get the power and economy leader for your farm.

VALLEY MACHINERY CO.
900 South First, P. O. Box 939 Phone 582-W
YOUR MASSEY-HARRIS DEALER

Tune in
meet the band

6:30 to 6:45 P. M.
Presented by the
Monday
Wednesday
Friday
ARTESIA
ELECTRIC CO.

KSVP PROGRAM SCHEDULE

1450 ON YOUR DIAL
Subject to Change without Notice

TUESDAY AFTERNOON 12:00 Personality Time 12:15 Farm & Market News 12:30 Local News 12:35 Melody Scrapbook 12:45 News 1:00 Ranch House Boys 1:15 Treasure Chest 1:30 Taps in Pops 2:00 News 2:05 It's Reminiscent Rhythm 2:30 Georgia Jamboree 2:50 American 3:30 Past 24 Hours in New Mexico 3:45 Tin Pan Alley 4:00 News 4:05 Revolving Rhythm 4:30 Record Shop 4:50 Straight Arrow 5:30 B-Bar-B Riders 6:00 Gabriel Heatter and the News 6:15 Fulton Lewis, Jr. 6:30 Official Detective 6:45 Bill Henry and the News 7:00 Local News 7:15 Saddlebag Express 7:30 Mysterious Traveler 7:40 Commentator 7:55 Mutual Newscast 8:30 Dance Band 8:00 I Love a Mystery 9:15 Dance Orchestra 9:30 Dance Orchestra 9:45 Mutual Reports the News 10:00 Sportscast 10:15 Sign Off	WEDNESDAY 6:59 Sign On 7:00 Farm & Home Hour 7:00 News 7:05 Church of Christ 7:10 1450 Club 7:15 Local News 7:40 1450 Club 8:00 News 8:05 Background for Breakfast 8:15 Eddie Arnold Show 8:30 Top of the Morning 8:45 Meet the Band 9:00 Variety Time 9:30 Morning Devotional 9:45 Novelty in Rhythm 10:00 News 10:05 Harmonies for the Housewife 10:20 Western Jamboree 10:45 Excursion in Science 11:00 This Rhythmic Age 11:15 Your Morning Concert 11:45 Voice of the Army 12:00 Personality Time 12:15 Farm and Market News 12:30 Local News 12:35 Melody Scrapbook 12:45 News 1:00 Ranch House Boys 1:15 Treasure Chest 1:30 Matinee Melodies 2:00 News 2:05 It's Reminiscent Rhythm 2:30 Georgia Jamboree 2:50 American 3:15 Religion in the News 3:30 Past 24 Hours in New Mexico 3:45 Accent on Melody 4:00 News 4:05 Revolving Rhythm 4:30 Proudly We Walk 4:50 Mark Trail 5:30 Tom Mix 6:00 Gabriel Heatter and the News 6:15 Fulton Lewis, Jr. 6:30 Meet the Band 6:45 Twilight Serenade 6:55 Bill Henry and the News 7:00 Local News 7:05 Saddlebag Express 7:30 Family Theater 7:40 1450 Club 8:00 News	THURSDAY 6:59 Sign On 7:00 Farm & Home Hour 7:00 News 7:05 County Agent 7:10 News 7:15 1450 Club 7:20 Local News 7:40 1450 Club 8:00 News 8:05 Background for Breakfast 8:15 Eddie Arnold Show 8:30 Top of the Morning 8:45 Meet the Band 9:00 Variety Time 9:30 Morning Devotional 9:45 Novelty in Rhythm 10:00 News 10:05 Harmonies for the Housewife 10:20 Western Jamboree 10:45 Excursion in Science 11:00 Trade Winds Tavern 11:15 Your Morning News 11:45 Naval Air Reserve Show 12:00 Personality Time 12:15 Farm and Market News 12:30 Local News 12:35 Melody Scrapbook 12:45 News 1:00 Ranch House Boys 1:15 Treasure Chest 1:30 Taps in Rhythm 2:00 News 2:05 It's Reminiscent Rhythm 2:30 Georgia Jamboree 2:50 American 3:30 Past 24 Hours in New Mexico 3:45 Accent on Melody 4:00 News 4:05 Revolving Rhythm 4:30 Proudly We Walk 4:50 Mark Trail 5:30 Tom Mix 6:00 Gabriel Heatter and the News 6:15 Fulton Lewis, Jr. 6:30 Meet the Band 6:45 Twilight Serenade 6:55 Bill Henry and the News 7:00 Local News 7:05 Saddlebag Express 7:30 Family Theater 7:40 1450 Club 8:00 News	FRIDAY MORNING 6:59 Sign On 7:00 Farm & Home Hour 7:00 News 7:05 Church of Christ 7:20 1450 Club 7:35 Local News 7:40 1450 Club 8:00 News 8:05 Background for Breakfast 8:15 Eddie Arnold Show 8:30 Top of the Morning 8:45 Meet the Band 9:00 Variety Time 9:30 Morning Devotional 9:45 Novelty in Rhythm 10:00 News 10:05 Harmonies for the Housewife 10:20 Western Jamboree 10:45 Excursion in Science 11:00 This Rhythmic Age 11:15 Your Morning Concert 11:45 Voice of the Army 12:00 Personality Time 12:15 Farm and Market News 12:30 Local News 12:35 Melody Scrapbook 12:45 News 1:00 Ranch House Boys 1:15 Treasure Chest 1:30 Taps in Rhythm 2:00 News 2:05 It's Reminiscent Rhythm 2:30 Georgia Jamboree 2:50 American 3:30 Past 24 Hours in New Mexico 3:45 Tin Pan Alley 4:00 News 4:05 Revolving Rhythm 4:30 Proudly We Walk 4:50 Mark Trail 5:30 Tom Mix 6:00 Gabriel Heatter and the News 6:15 Fulton Lewis, Jr. 6:30 Meet the Band 6:45 Twilight Serenade 6:55 Bill Henry and the News 7:00 Local News 7:05 Saddlebag Express 7:30 Family Theater 7:40 1450 Club 8:00 News
---	---	---	--

Mac PENNEY DAYS

THAT'S THE THRIFT IN US!
COME EARLY...SAVE GREEN FOLDING MONEY!

IT'S THE THRIFT IN US!

Chenille SPREAD
SPECIAL PURCHASE FOR THESE TWO **2⁶⁵**
GREAT MAC PENNEY DAYS!

Hobnail Bed Spread with Matching Bullion Fringe. Large Double Bed Size 90x105. Comes in all white and solid colors.

IT'S THE THRIFT IN US!

Chenille ROBES
HURRY! DON'T MISS THIS TERRIFIC BUY! **3⁰⁰**

Made of Heavy 2-ply Yarn in close gauge Chenille. Colors are Melon, Turquoise, Blue, Gold and White. Sizes 12 to 44.

IT'S THE THRIFT IN US!

COTTON DRESSES
Assorted Styles and Patterns in these smart Cottons. Fast to Washing. Sizes 15 to 44.

2 for 2⁸⁸

IT'S THE THRIFT IN US!

SWEAT SHIRTS
Extra Heavy Weight, Silver Grey. **88[¢]**
STOCK UP NOW!

Half Slip
Rayon Knit with Lace Trim! **77[¢]**

Rayon Panties
Band Leg Style **2 pairs 45[¢]**

Rayon Slips
Lace Trimmed **1⁰⁰**

Rayon Gowns
Sheer Loveliness! **88[¢]**

Diapers
27x27 Inch Birdseye **1⁷⁵**

Garment Bags
Holds Eight Garments **88[¢]**

Men's T-Shirts
Absorbant Cotton **2 for 1⁰⁰**

Men's Cotton Undershirts
3 for 1⁰⁰

Men's Broadcloth Briefs & Shorts
2 for 88[¢]

Children's Training Pants
3 pair 50[¢]

Men's Sanforized CHAMBRAY Work Shirts
1⁰⁰

SPECIAL PRICE NYLON HOSIERY!

FULL FASHIONED 34 GAUGE, 15 DENIER **88[¢]**

88¢ is nothing-at-all to plunk down for wisp-sheer luxury nylons! Especially when they're first quality! And certainly when they're in your favorite shades! Just for our Special Penney Days Event! Hurry in—quick! Sizes 8 1/2 to 10 1/2.

MEN'S ARMY TWILL SHIRT AND PANTS SETS

FULL CUT, RUGGED PANTS **2⁰⁰**
SIZES 29 to 42

DRESS STYLE SHIRTS **9⁰⁰**
SIZES 14 to 17

You'll save yourself plenty during Mac Penney days! These first quality long wearing Sanforized* army twill sets are ruggedly built. Pants are roomy, cuffed and have sturdy pockets. Shirts are dress style with two flap pockets. A great team, a terrific buy! Get yours now!
Silver Gray Matched Sets . . .
Shirt 2.49 Pants 2.98

Power Use—

(Continued from Page One) plant additions to be made at Amarillo, Moore County and Roswell.

The addition at the Amarillo East Plant, a new 37,500 kilowatt turbo-generator, will make the plant the largest of Southwestern Public Service Company's 10 base load plants.

The Roswell and Moore County additions will both be 18,750 kilowatt units, and both are being added to those plants because of increasing industrial developments in the area surrounding them.

No other section of the country has shown a faster rate of growth than this area. Keeping the electric service pace with the growth in industries, businesses, farms and ranches, and homes in the territory has been the motivating force in Southwestern Public Service's expansion program.

With all phases of the economy of the area growing, there has been an increased demand for electric service from all classifications of customers, commercial, industrial, residential, and the 15 REA cooperatives who purchase power from the company.

The company's fiscal year ends on Aug. 31, and on that date in 1949 it was serving nearly 116,000 electric customers. A year earlier, the total had been 107,000 and when the company was organized in its present form in 1942, it served only 66,000 customers.

Increases in customers and generating capacity go hand in hand with another indication of growth, peak load. Peak load is best described at the maximum usage of electricity at one hour during the course of the year.

The electric utility business embraces a multitude of special skills and on Southwestern Public Service Company's payroll you'll find power engineers, lighting specialists, agricultural engineers, draftsmen, almost any kind of specialist used in modern business today.

The number of people employed by the company has more than quadrupled in the last seven years. There are now more than 1,700 fulltime employees working at the system offices and in the six divisions through which the company operates.

The electric utility business embraces a multitude of special skills and on Southwestern Public Service Company's payroll you'll find power engineers, lighting specialists, agricultural engineers, draftsmen, almost any kind of specialist used in modern business today.

An interesting, but little known, phase of the operation of an elec-

tric light and power company is its financing.

Electric service must be ready at the flick of a switch, and if every customer flicked the switches in his home or business simultaneously there would have to be generation, transmission and distribution facilities available at that instant to meet that maximum demand. You can't store electric service.

The necessity of having always to be ready for a maximum demand for electric service necessitates a large investment in plant and facilities. The investment in plant and equipment per worker in the electric light and power industry is one of the largest in the country.

Turnover in investment is another phase of finance in which the electric industry is different from many others. On an average, it takes between four and five years of sales to equal the investment in plant and equipment.

It takes "new" money—investment money—to expand the facilities of an electric light and power company. Southwestern Public Service Company has enjoyed outstanding success at securing the "new" money necessary to its expansion.

The company's advertising program has pointed out recently that nearly everyone owns, either directly or indirectly, the nation's business-managed electric light and power companies. The common stockholders of these companies, and there are more than three million of them, are, of course, the direct owners.

In the case of Southwestern, there are approximately 10,000 owners, the common-stockholders. The largest holder of common shares owns less than 2 per cent of the stock issued, freeing the company of any element of single control.

Most of the bonds and debentures, and large blocks of the preferred stock, are held by insurance companies and banks. Fifty insurance companies have invested the funds of their policyholders in Southwestern Public Service Company securities.

Let's take a look at Southwestern's plans for financing the 20-million-dollar expansion program proposed for 1950.

Ten per cent of the amount of money needed for the 1950 construction program will come from undistributed income and miscellaneous cash sources, leaving 90 per cent, or 18 million dollars, to be raised by the sale of securities.

An offering of shares of common stock, which is already under way, is expected to provide \$5,200,000 of the needed money. Another \$13,250,000 will come from the sale of bonds and debentures, most of them, as was pointed out earlier, being purchased by insurance companies.

"New" money is new in every sense of the word. It provides capital for the expansion of the electric facilities of the area so that those facilities can keep abreast of the rapid gains that have been made in all phases of economic activity. It brings new payrolls in construction and improvement, more tax revenues and additional permanent payrolls as more em-

GOING GREAT FOR GOPHERS - - By Maver

Illustration of a basketball player in a Minnesota jersey with text: 'A. B. U. "WHITEY" SKOOG. HIGH-SCORING FORWARD FROM MINNESOTA. CONSIDERED THE STANDOUT PLAYER IN GOPHER CASE HISTORY. FIRST MODERN MINNESOTA PICKED FOR ALL-CONFERENCE HONORS AS A SOPHOMORE. WITH WHITEY IN FORM MINNESOTA MIGHT END ITS CONFERENCE TITLE DROUGHT—THEY TIED FOR THE HONORS IN 1937 BUT HAVEN'T WON SINCE 1919. HE MIGHT ALSO GIVE THEM THEIR FIRST CONFERENCE SCORING LEADER SINCE 1917—HAGG 6'7" LAST SEASON.'

Potpourri—

(Continued from Page One) light, tann to a durn! Now this sport is important; that the meat king, being it on the sly-us; then dunk the moony jorrels immediately in a sauce pan of hot, ruttered bowls. Your sweats will goom! (Noaitor's Ed. This lesspee is on the revel. I sighted it my-trill!)

Heart Drive—

(Continued from Page One) proclamation of Mayor Oren C. Roberts and that on that day workers will be on the streets taking contributions, in exchange for which they will give small lapel hearts, designating that the wearers have given to the cause. Robinson said at the meeting Saturday that 65 per cent of the funds collected will remain with the chapter and 10 per cent with the state association. The remaining 25 per cent will go to national headquarters, and of it half will go to medical schools for research in heart ailments and their treatment.

The state co-chairman said that in New Mexico there were about a thousand deaths from rheumatic fever, a disease which leads to serious heart disease, in 1948. Research in rheumatic fever is but one phase of the general program in the over-all activities of the American Heart Association.

The entire area benefits from this influx of "new" money brought about by the expansion of the Southwestern Public Service Company. The entire area should reap the benefits, because it is the growth of the area which has made the expansion program possible.

Oil Report—

(Continued from Page One) Burnham Oil Co., Vandeventer State 1, NW NW 22-18-28; H. N. Smith, Leeman 1, NE SW 10-26-24 Drilling Report Nunn & Geiser, Hastie SW NW 18-17-28. Drilling at 470. Malco, Resler & Yates, State 102, SE NW 25-18-27. Drilling at 1290. Ralph Nix, Nix-Hall 1, SE SE 21-21-29. Drilling at 2873. York & Harper, Bear 1-X, NW NW 20-24-29. Drilling at 1779. Humble Oil & Refining Co., Federal-Hobbs 1, SE SE 24-20-24. Drilling at 7853. Forest E. Levers, Levers 12-B, SW NE 34-16-29. Total depth 2666; preparing to shoot. Stanley L. Jones, Inc., Jonell-State 14, NW SW 13-18-27. Total depth 2124; plugged back to 2065; shut down for orders. S. P. Yates, State 1-F, SW SW 10-17-28. Total depth 705; shut down for orders. R. E. McKee, State 1-E, NE NW 18-18-29. Drilling at 2080. General American of Texas, Keel ey 30-C, SE NE 25-17-29. Total depth 3240; testing. Kersey Drilling Co., MRY-State 3, NW SW 30-18-28. Drilling at 1959. S. P. Yates, State 1-G, NW SW 25-18-28. Drilling at 2672. Suppes & Suppes, Miller 5, NE NE 6-18-29. Drilling at 2377. C. T. McLaughlin, Beddingfield-State 1, NW NW 31-17-28. Drilling at 2260. American Republics Corp., Robinson 16-A, NE NE 34-17-29. Drilling at 581. Magnolia Petroleum Corp., Hamilton-Federal 1, SE NE 5-20-24. Drilling at 37. Jones & Watkins, La Esperanza-State, NW NW 10-19-29. Drilling at 790. Malco, Resler & Yates, State 103, SE NW 22-18-28. Total depth 2325; cleaning out

SCOTT'S SCRAP BOOK

Illustration of a man in a hooded cloak with text: 'WANT A LITTLE OAK IN YOUR HOME? PLANT AN ACORN IN HALF AN ORANGE SHELL AND TRIM THE ROOTS AS THEY GROW THROUGH THE RIND. SCRAPPS HOW LONG HAVE CLOVES BEEN USED TO SWEETEN THE BREATH? OVER 4,000 YEARS. BLINKERS FORM A PECULIAR HEADRESS WORN BY THE ARAB WOMEN OF OMAN. MAYBE IT IS THE FORERUNNER OF THE CAVALIER'S MASK.'

Bulldogs—

(Continued from Page One) hrough Saturday night, with 11 chool entered. Carlsbad is seeded to win, with Dexter counted as second best. Third and fourth-place seedings went to Hagerman and Carrizoz, respectively. Other schools entered are Captain, Ruidoso, Roswell, Weed and Hondo.

at 1800. Humble Oil & Refining Co., O. A. Pearson et al 1, SW NW 2-16-25, wildcat. Moving in rotary. Marion C. Welch, Lackawanna 9, NE NE 21-18-28. Total depth 2410. Burnham Oil Co., Vandeventer-State 1, NW NW 22-18-28. Rigging up cable tools. I. N. Smith, Leeman 1, NE SW 10-26-24. Drilling at 40.

Esterbrook and Sheaffer Fine-line pens and pencils at The Advocate.

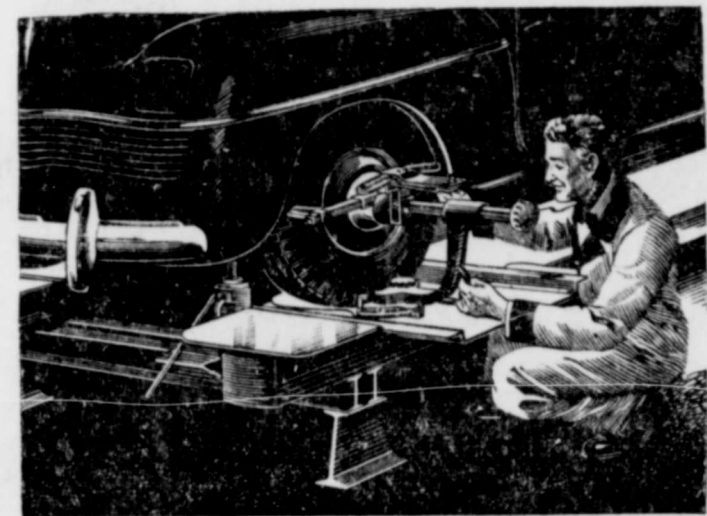
Transfer file boxes of many types for sale at The Advocate.

Officers REA—

Other former directors who received pins and their terms of service and offices: Carrol Jackson, from the time the co-op was organized in 1936 to 1942, vice president three years, treasurer two years; R. E. Coleman, from organization to 1942, president two years, manager two years; E. A. White, March, 1940, to September 1948, vice president two years, president six years; J. R. Standly, March, 1940 to September 1946, vice president five years.

VETERANS! Drafting Service House Plans FHA Approved G.I. Leo Williams Phone 314-M

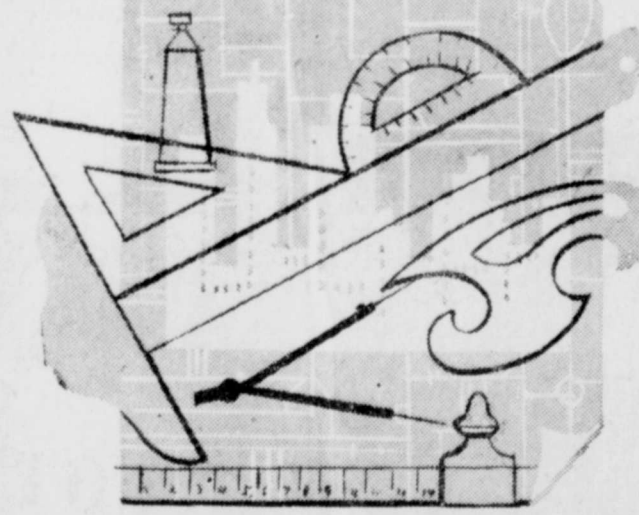
BEAR TIRE AND CAR SAVING SERVICE



This is the "Bear" Machine that adds thousands of miles to your tires and saves your car. Expertly operated by O. M. Doss, who has had many years experience in wheel aligning, wheel balancing, wheel straightening, frame straightening. Your "Bear" Service Man quickly detects, corrects those hazards with his Bear Balancing and aligning equipment and adds both safety and pleasure to your driving. Come in today.

MIDWAY MOTORS

201 North First Phone 930



blueprint for the future—

—and the sure success of the outcome of this blueprint—for you and for your family—lies in every penny you save! Don't delay building this important foundation for the future... start a savings account here today. No deposit is too small.

PEOPLES STATE BANK

Member Federal Deposit Insurance Corporation Capital \$100,000 Surplus and Reserve \$100,000

FRED WATSON INITIATED INTO KAPPA SIGMA FRAT

Fred Watson, son of Mr. and Mrs. Neil B. Watson of Artesia, was one of 17 initiates of Kappa Sigma fraternity at the University of New Mexico, Albuquerque, admitted at a ceremony Sunday.

Present directors who received five-year pins: Roger Durand, since September, 1940, secretary eight years; S. O. Higgins, since January, 1941, vice president a year.

The two employees who received 10-year pins: Ernest V. Templar, since August, 1938 and Mark Marsh since 1939.

The meeting was attended by 91 voting members out of a membership of 727.

Prior to the meeting, a barbecue dinner was served 295 members and families and guests. Individual cakes, inscribed, "REA" were served.

Skip ink in 2 oz. bottles or quarts at The Advocate.

Index cards of all kinds at The Advocate.

MONEY TO LOAN On Ranches, Farms and Improved City Property, Low Interest Rates—Long Term Loans. W. O. MONTGOMERY 221 1/2 North Main Phone 422 Roswell, New Mexico

MOVING? Artesia Transfer & Delivery Co. Nothing Too Small or Too Large 110 North First Phone 668-M

Robert Bourland INSURANCE Artesia Auto Co. PHONE 52

SUBSCRIBE TO THE ADVOCATE

ANNOUNCING

Mr. Howard Brown, mechanical technician, is now connected with our repair department.

He is widely experienced, faithful and competent. All work guaranteed.

See us for free estimate on your repair needs.

WE'VE BUILT OUR REPUTATION ON Reliable Service

Advertisement for Minneapolis Moline M.M.M. Genuine Parts. Includes illustration of a tire and text: 'Good reputations are built on good performance. Good service by our high standards is a combination of... prompt service... fair prices... and fair dealing... first class workmanship... large stock of genuine MM precision parts... reliability and a neighborly regard for your equipment. Our steady volume of service work we feel is due largely to our reputation for dependable service. We cordially invite you to enjoy the same satisfying service we extend to our many customers.'

Artesia Implement & Supply Co. 808 South First Phon 93

SHAW-WALKER

STEEL FILES

\$58.75 Letter Size

- Pre-war quality
• Best low-priced file with roller-bearing slides
• Non-slip follower in drawer
• Attractive baked enamel Olive Green finish
• The famous Shaw-Walker "Built Like a Skyscraper" all-welded construction
• Letter and Legal sizes



The Artesia Advocate Typewriters—Office Supplies—Phone 7



"Mom Sure Can Pack Delicious Lunches" ... but most of all she sure buys delicious Bread! Mom says all the original wheat richness is in this bread, because it is "slo-kneaded, slo-baked." Ask for Ross Bakery Products at Your Grocery.

Distributors of FRESHE BREAD ROSS BAKING COMPANY Home Owned and Operated

PAINT to MATCH ALL COLORS KOMAC COLORIZER PAINTS 1,322 COLORS



- ALL FINISHES
• ALL SIZES

ARTESIA PAINT & GLASS

824 South First Phone 369-W

Maljamar News

(Mrs. Kenneth Shields)

Wednesday morning Mrs. Ed Strickland, Jr., was surprised with a coffee given her by friends. She was to be hospitalized in a hospital at Hobbs Friday for six days, a lovely gift was given her by the group. Those attending were Mmes. Weston Mills, John Leo, Ralph McGill, Artice O. Vowell, Oscar Doughty, George James, Walter W. White, Noble Melton, John Farmer, James McMurray, and Lacy Dunlap.

Mr. and Mrs. Herbert C. Hunter had as dinner guests Sunday of last week, Rev. and Mrs. James Barton of Artesia.

Mrs. Gilbert Iverson received word Saturday, Feb. 11, that her mother had suddenly died in Texas and Mr. and Mrs. Iverson left that day. Mrs. Iverson will spend several days there, but Mr. Iverson returned Monday.

Mr. and Mrs. P. W. Lewis of Eunice spent Sunday of last week with Mr. and Mrs. L. J. Kelly.

Maljamar is becoming quite interested in square dancing these days. A number of couples have been practicing Tuesday and Friday nights at the Son Taylor barn. Last Tuesday night Bill McPherson and Mr. and Mrs. John Lively of Artesia were guests and assisted the group with the calling. Several square dancing dresses are in the making and it was suggested that if one would like to keep up with her husband or partner to have a shirt made of the same material as the dress.

Mr. and Mrs. Floyd McCarthy enjoyed a Japanese dinner at the home of Mr. and Mrs. Tom Ansley in Lovington Tuesday evening of last week, prepared by Mrs. Henry Harada, who also taught them a Japanese card game.

Mrs. Kenneth Shields entertained the Wednesday Bridge Club at her home last week. High scores went to Mrs. Cliff Whitefield and Mrs. L. J. Kelly. Refreshments were served to Mmes. Harold Adams, E. R. McKinstry, Garel Westall, Charles Tyer, and Cliff Whitefield, Loco Hills, and F. H. Alexander, Herbert C. Hunter, and L. J. Kelly.

The Kawanee Sewing Club met with Mrs. John Leo Thursday. The program was on embarrassing moments by the members and actual experiences of some of the residents. Those attending were Mmes. M. P. Blakley, Artice O. Vowell, Son Taylor, Bertha Crenshaw, White Oaks, Luther Kelley, Dru Taylor, Floyd McCarthy, Ira Pleasant, W. D. Wilson, Ralph McGill, F. H. Alexander, Herbert C. Hunter, James McMurray, Carl Winkles, Kenneth Shields, Lacy Dunlap, and Ed Strickland, Jr.

The Double Six Club met at the home of Mr. and Mrs. M. P. Blakley last Friday night. Those attending were Mr. and Mrs. I. F. Wooten, Mr. and Mrs. Bob Patterson, Mr. and Mrs. Aubrey Northam, Mr. and Mrs. Luke Taylor, and Mr. and Mrs. Dale Kennedy.

The Maljamar Recreation Club gave a pig to Monroe Smith Thursday noon at the Maljamar Cafe.

Mr. and Mrs. Carl Winkles had as houseguests Thursday Mr. and Mrs. Ralph Winkles of Burkbernett, Texas.

Mr. and Mrs. Ed Strickland, Jr. have a house guest, Mrs. Strickland's sister, Mrs. Joe Tarver of Vernon Texas. She is to care for the two Strickland youngsters, while Mrs. Strickland is hospitalized.

Mr. and Mrs. Lacy Dunlap took their small daughter to Denver City Friday night to the home of Mr. and Mrs. Roy Dunlap, and they took her visiting with them to Fort Worth over the week end, where she visited in the Arlen Dunlap home.

Mr. and Mrs. Dru Taylor had as overnight guests Friday Mrs. Steve Taylor and Mrs. Claire Fowler of Hobbs.

Druella and Cecilia Holeman gave a Valentine party for their friends Friday evening. Red punch

was served to Mrs. Jack Phillips and Bill, Loco Hills; Mrs. Son Taylor, A. C. and Ayla Sue; Mr. and Mrs. Dick Hicks and Larry, Fullerton field, Texas; Mrs. Milton West, John and Garry; Mrs. C. D. Potts, Tommy, Doris and Joyce; Mrs. Oscar Loyd, Janice Kay and Judy; Steven and Sue Irish, Wanda Jean Pleasant, Nancy and Carol Hoover, Ann Gann, Lovington; Patsy Vowell, Brenda Farmer, Larry Loyd, Freddie, Edith and Ray Northam, and Jim and Bob Patterson.

Mr. and Mrs. Weston Mills had as all-day guests Sunday of last week, her sister, Mrs. Loren Counts, and Mr. Counts and children, Dona Joy and Lorie, of Roswell.

Taylor Montieth of Lovington spent Wednesday visiting with Mr. and Mrs. Dru Taylor.

Visitors at the Son Taylor home last week were Mr. and Mrs. L. D. Richardson and son, Gale, of Loco Hills and overnight guests were Rayfield Dixon and Dick Taylor of Tatum.

Mr. and Mrs. Bobby Heald moved to Fort Worth Thursday.

H. B. Taubman and Frank Jacobson of Dallas were visitors in Maljamar Saturday.

Bus' Brown Enters Surveying Work In Artesia For Himself

James H. (Bus) Brown has resigned his position with the Texas-New Mexico Pipe Line Company and has gone into business for himself at Artesia in surveying and consulting work, he has announced.

Until he finds desirable office space, he will operate from his residence at 1308 Merchant Avenue.

Brown was brought here in 1940 by Texas-New Mexico Pipe Line Company and later was transferred to Midland, Texas. He was transferred back to Artesia in 1946 and has been located here since. He said the company wanted to move him back to Midland, but that he prefers to stay here, where he has his home and has made many friends and his boys are in school.

Pilot Club Benefit Canasta Party To Be Friday Evening

The Artesia Pilot Club will sponsor a benefit canasta party in the basement of the Masonic Temple at 7:30 o'clock Friday evening to raise funds for the furnishing of an office for the North Eddy County health nurse.

Everyone is invited and instructions will be provided for those not familiar with canasta.

The cost of admission is 75 cents a person, and a door prize of \$25 is to be given.



Meets
Wednesday, 7:30 P. M.
I.O.O.F. Hall, 510 West Main

Dr. Kathryn Behnke

Palmer Graduate Chiropractor

105 South Roselawn, Artesia

Office Phone 861

Evening and Emergency 656-M

Office Hours: Daily except Wed.
9:30 to 12:30; 1:30 to 5:30

Listen to Radio Station KSWs
Tues. and Fri., 4:15 P. M.
for Chiropractic Health Message

THE VALUE EVENT OF THE MONTH! SAVINGS IN EVERY DEPARTMENT!

At your ANTHONY STORE in Artesia!



WEDNESDAY ONLY!

ONE DAY ONLY!

LADIES BLOUSES \$1
Made of rayon Jersey and rayon Crepe. Gay Spring colors. Sizes Small, Medium and Large.

Doors Open 8:30 A.M. - Close 5:30

\$ DAY ONLY \$. . .
LADIES SLIPS \$1
Made of easy to wash rayon crepe, with lots of lace both top and bottom, adjustable straps. Colors are white, blue and pink. Sizes 32 to 42.

\$ DAY ONLY \$. . .
BOYS SHIRTS \$1
Boys sizes from 8 to 16 years. Made of fast color sarforized flannel, (usual \$1.98 quality) two-way sport collar, guaranteed fast color.

\$ DAY ONLY \$. . .
BED PILLOWS \$1
Large fluffy feather pillows, covered with feather proof ACA ticking. Here is quality you'd usually pay from 1.29 to 1.59 each.

LARGE GROUP Springs, Summer COTTONS 3 yds. \$1

RAYON PANTIES
LADIES AND GIRLS
4 pr. \$1
Made of long wearing circular stripe knit rayon. Colors are white, blue, pink. **DOLLAR DAY ONLY!**

CANNON TOWELS
3 for \$1
Large assortment of colors and patterns. Bath size 20x40 inches. Stock up now at these low prices. **TOWELS 2 for \$1** Extra Large

RAYON GOWN \$1
Ladies rayon knit Gowns. Super value for Dollar Day.

TRAINING PANTIES \$1
KNIT COTTON - SPECIAL
Sizes 1 to 6 **7 pair \$1**

Large Flour SACKS \$1
BLEACHED AND MANGLED
5 for \$1

Receiving BLANKETS \$1
ALL COTTON PINK AND BLUE
3 for \$1

UNDERSHIRTS \$1
Men's cotton knit. Sizes 34 to 42. **3 for \$1**

Men's Sweat SHIRTS \$1
Random Grey cotton
Sizes 42 to 46 only. **\$1**

MEN'S SOCKS \$1
Usual 55c and 75c **4 pair \$1**

MEN'S HNDKFS. \$1
Large Size **12 for \$1**

PURE SILK SCARVES

\$1 VALUE SCOOP!
Printed silk scarves. Generous big size. **DOLLAR DAY ONLY!**

RAYON PETTICOATS \$1
Flounce Bottom. Dainty lace trim. Med., Lge., X-Lge. **2 for \$1**

MENS WHITE TEE SHIRTS

2 for \$1 Flat Knit with proper fit neck. Sizes small, med. and large. Slight irregulars of 79c quality.

KNIT BRIEFS \$1
3 for \$1

CANVAS GLOVES \$1
White 12 oz. Canvas **4 pair \$1**

Eyelet BATISTE \$1
39 Inch Wide Solid White yd. **\$1**

Men's Work SHIRTS \$1
Sanforized blue and grey chambray. Sizes from 14 to 17. Dollar Day Only! **\$1**

MEN'S BLUE JEANS \$1
Sizes 38 and 40 only. Riveted pockets, Sanforized. 8 and 9 oz. denim. **\$1**

MENS OXFORDS \$5
Big Tableful Odds and Ends, formerly priced up to \$12.75. Sizes from 6 to 12. Pair

WESTERN SHIRTS 3.00 Each
Form fitting, 3-button cuff, 2 Western pockets, dyed ovan pearl buttons. Made of famous Kohinoor Gabardine. Sizes 14 1/2 to 16.

SPECIAL VALUE!
WORK SHOES \$3
Lucky day for you men if you wear sizes from 9 1/2 to 12! Few smaller sizes. Formerly sold from 5.90 to 9.90.

Ladies DRESSES \$3
One rack full of Smart Dresses you'll wear this Spring and early summer. FORMERLY PRICED FROM 5.90 to 8.90.

SPECIAL VALUE!
FELT HATS \$3
Special group Men's 6:90 and 8:90 quality. Genuine fur felt Hats. Brown Blues, Greys. All sizes to 7 1/2.

New Improved Quality
BATH SETS \$1
Multi-color center design on heavy duty chenille rug with lid cover to match. Fringe edge.

Anthony's
THE C.R. ANTHONY CO.
Artesia

Brown Frame Heel NYLON HOSE \$1
Irregulars of nationally advertised 1.79 quality hose. All popular Spring shades.



Scott's LAWN FOOD
Not a stimulant but a wholesome nourishing meal for western lawns. You can feed 2500 sq ft for only \$2.45.

It's a breeze. Take a Scott's Spreader, apply nourishing LAWN FOOD. Then sow Scott's SEED. You don't need as much because there are 3,000,000 seeds in each pound. 99.91% weed-free, and no coarse, scraggly grasses. 1 lb \$1.45 5 lbs \$6.95 25 lbs \$32.75

Scott's Spreaders—Sturdy, all steel, rubber tired. Precision built to sow seed, apply Lawn Food. Medium lawn size \$10.85. Double capacity \$17.50.

Brainard-Corbin Hardware Company

"A Dependable Source of Supply Since 1908"

327 West Main Phone 103

GI Bill Enables Vets To Finance Homes, Business

The GI Bill has enabled World War II veterans to finance more than 10 billion dollars in home, farm and business loans over the last five years, according to the Veterans Administration.

The 10 billion dollar mark was passed in December. By year end, VA had approved GI loans for nearly 1,900,000 veterans in a total principal amount of \$10,029,000,000.

More than 9.4 billion dollars of this went into the construction and purchase of homes. Business loans totalled 358 million dollars and farm loans 206 million dollars.

These loans are made by banks, insurance companies and other private lending institutions, with VA issuing a guaranty to the lender against loss on a portion of the loan. The guarantys totalled about 4.8 billion dollars through December.

Veterans are continuing to make a splendid repayment record in

connection with their GI loan obligations, VA said. More than 146,000 have repaid loans totalling 570 million dollars, while the others, with few exceptions, are meeting their periodic payments promptly.

Rates Of Farm Wages Are Up

New Mexico farm wage rates, including board and room, on Jan. 1 averaged \$101 a month or \$9 a month higher than on Jan. 1 last year, according to C. R. Keaton, assistant extension economist in marketing. Farm wage rates with house furnished averaged \$120 a month, or \$1 less than on Jan. 1, 1949.

Per-day farm wage rates in New Mexico averaged \$3.20 on Jan. 1, a drop of 20 cents from the previous year. Hourly wage rates with board and room remain the same—64 cents.

Average hourly cash earnings on Jan. 1 for the nation as a whole ranged from 90 cents in the Pacific region to 41 cents in the East South Central states. Hourly earnings were also under 50 cents in the South Atlantic states. In the Mountain states, New England and the West North Central states, earnings were above 60 cents per hour.

As workers employed at monthly and weekly rates usually put in few hours of work per month or week in January than in October, their hourly equivalent pay is higher, Keaton explains. This raises the hourly composite even though wage rates decline.

Farmers in the United States were paying workers an average of 58.7 cents per hour in cash wages on Jan. 1, a decrease of 1.4 cents from a year earlier. The number of hired workers on farms in the week of Dec. 18-24 was slightly less than last year. A small increase in family employment, however, kept total farm employment at 7,150,000 about the same as a year earlier.

Hens Need Grit And Oyster Shell At All Times, Says Rierison

Hens need both oyster shell and grit to do a good job of egg laying, says County Agent Dallas Rierison. Flock owners are sometimes confused about these requirements, thinking that the two materials accomplish the same thing he says. Rierison explains that oyster shell supplies the hen additional calcium or lime, which she needs to make egg shells. The oyster shell also provides calcium for bone formation. A hen that lays 200 eggs a year will put into her eggs about 14 times as much calcium as is found in her body. So, keep oyster shell before hens at all times, the county agent advises poultrymen.

Grit, a hard substance that does not dissolve, stays in the gizzard, where it aids in grinding grains and tough feeds, Rierison says. The grit makes up for the hen's lack of teeth. Gravel, granite, and quartz make the best grits. Keep grit in an open hopper where hens can get at it anytime, he advised.



HEADS MARINE VETS—Major General William A. Worton, USMC retired, now chief of police of Los Angeles, California, has been elected president of the Fifth Marine Division Association. A native of Boston, Massachusetts, he entered the Marines in 1917 and was wounded in World War I while serving with the Sixth Marine Regiment. He received the Legion of Merit for services as chief of staff of the Third Amphibious Corps during the occupation of North China in 1945.

County Agents Have Busy 1949, Reports Shows

County agricultural extension agents in New Mexico had a very busy year in 1949, according to a summary of agents' annual reports for the last year. Here are some figures on the way in which extension work was carried on in the state during 1949:

New Mexico county agricultural agents made 34,878 farm or home visits to 24,081 different farms or homes. They interviewed 82,842 persons who called at the county extension offices and handled 66,950 telephone calls about farm, ranch and home problems.

The agents held 3043 method demonstrations, with 38,077 in attendance and conducted 456 training meetings with a total attendance of 8105.

Newspapers and radio stations also helped to spread scientific information about farming, ranch-

ing and homemaking. County agents furnished information for 6252 news stories and made 1053 radio broadcasts. More than 125,000 extension circulars and experiment station bulletins were distributed on request.

Hangar Flying

"Sug" Hazel flew to Chanute Kan., Thursday, taking Mrs. Osce Pearson of Artesia, Mrs. Sethyn Hodges of Tucson, Ariz. and Mrs. Zelma Kah of Middletown, Ohio. Mrs. Kah is the supreme worthy high priestess of the Order of White Shrine. The ladies attended a White Shrine meeting in Chanute.

"Chuck" Spangler flew to Borger, Texas, Thursday, where he visited a sister.

Charles Henson, hangar boy at the airport, is sporting a new car, a 1930 Ford sedan.

Charles McNallen, a member of the Artesia squadron of the CAP, commenced his flight training recently. He is taking his instruction in the L-4 which is assigned to the Artesia CAP squadron. His instructor has been Robert Ehle.

J. R. Lund flew to El Paso Thursday on business.

T. Davis and Johnny Cockburn flew in to Artesia Thursday in Cockburn's Beech Bonanza.

Herb Termain returned from Fayetteville, Ark., Wednesday afternoon.

Representatives of the fifth-grade science class visited the airport Thursday afternoon in order

UNPAID BILLS? INCOME TAX?

THE WIFE NEEDS A NEW COAT!

A (Strictly) Personal Loan from Us will Solve Your Problem.

ASK US ABOUT IT TODAY!

LOAN

ARTESIA INVESTMENT COMPANY

200 BOOKER BUILDING PHONE 871

'FOUND LOVE' AT 79 AND 17



"WE'VE FOUND THE LOVE we've sought for so long," says 79-year-old Thomas Brownfield, holding on his knee his 17-year-old West Virginia bride, Ellen June, in their Mt. Summit, Pa., farm home. Kerosene lamp at left and guns (right) are standard equipment in mountain homes of the district. (International Soundphotos)

to learn how a weather report is received. They were entertained by Mrs. "Sug" Hazel, who treated them to a pop, and by Charles Henson, who showed them around the airplanes. At the time when a weather report was to be received Mrs. Hazel allowed the

group to listen and explained what each report meant. Those who attended were James Siford, Charlene Morgan, Gretchen Petty, Melba Morgan, and Charles Hogsett.

Bill Jackson soloed his first Piper Cub Thursday. He was a pilot in the Army but it has been a number of years since he has flown.

Wool Production In World Is Still Prewar Average

The world wool output or production is still below average. Production for 1949 is now estimated at 3780 million pounds, including

both apparel and carpet wools, grease basis. This is 10 per cent above 1948, but about 4 per cent below the 1936-40 average.

The U.S. and Canada continued their downward trend in 1949 and indications are that there will be no increase in 1950.

U.S. sheep numbers may level off this year at 28 million head and by Jan. 1, 1951, show some slight increase.

To aid the situation, the new Agricultural Act has provisions for the support of wool prices at a level somewhere between 60 and 90 per cent of parity—new formula—to encourage an annual production of 360 million pounds of shorn wool.

BALL POINT PENS by Fineline, the student's choice at \$1.50. Artesia Advocate, office supplies.

READ THE ADS

DUNN'S GARAGE
Used Cars Are Better

1938 Plymouth
1950 Ford 1/2-ton Pickup
1947 Chevrolet Aero Sedan low mileage
1940 Ford Tudor

Dunn's Garage
"For Better Service"

Fireside Fashions



Velveteen trousers and sweater.

By VERA WINSTON

IT'S NICE to get a chance to be a stay-at-home and wear a pretty piece of interior design. This attractive outfit consists of black velveteen trousers with hip pockets cut in one with the rest of the garment. A string tie of self cord is looped at the waist. Worn with the trousers is a red jersey sleeveless sweater blouse with ball fringe at the neck and armhole.

2 HELD IN RECORD DOPE SEIZURE



Phillip V. Shear (left) and Isador Halitzer under arrest.



Part of the \$2,400,000 worth of heroin (right) and paraphernalia. A \$2,400,000 DOPE CACHE, biggest seizure in New York City history, is in hands of police and federal agents with arrest of Phillip V. Shear, 31, Coney Island, and Isador Halitzer, 31, Brooklyn. Part of the cache, pure heroin, was found in one-ounce packages after a woman detective, Margaret Leonard, caught Halitzer "delivering" a package by taping it under arm rest of a hotel telephone booth. Shear was waiting in a car outside. (International Soundphotos)

PRINCIPALS IN 'MERCY KILLING'



Dr. Hermann N. Sander and his wife during court hearing.



Mrs. Abbie Borroto Daughter of victim

CHARGED WITH FIRST DEGREE MURDER in connection with the "mercy" death of a cancer patient, Mrs. Abbie Borroto (bottom, left), 59, of Manchester, N.H., Dr. Hermann N. Sander (top) is shown with his wife during a recess in his court hearing. Freed in \$25,000 bail, Sander said he does not consider himself "guilty of any legal or moral wrong." Pictured (bottom, right) is Elsie Borroto, daughter of the dead woman, whose father had described Dr. Sander as a "wonderful man." (International)

ARTESIA BUSINESS DIRECTORY

A Thumbnail Classification of EMERGENCY and IMPORTANT PHONE NUMBERS and ADDRESSES Artesia Advocate, 316 W. Main—Call Us—Ph. 7

- EMERGENCY**
- Fire ----- Tell Central
 - Police, Tell Central, or Call ----- Ph. 198
 - Red Cross ----- Phone 328-W
 - Ambulance ----- Ph. 707
- AUTOMOTIVE**
- Artesia Auto Co., Wrecker Service ----- Ph. 52
- PLUMBING AND HEATING**
- L. C. Bivins Plumbing & Heating, 301 North Roselawn ----- Phone 682
- COMMERCIAL PRINTING**

Southeast Engineering Company

General Surveying
Oil Field, Water Rights,
Farm and Ranch, Town Lots,
General Engineering and Drafting

509 West Main St. Phone 475
Artesia, New Mexico

NOW! Servel Gas Refrigerators at terms YOU can afford!

only \$5 down and \$5¹⁰ per month

buys a big, roomy 6-foot 1950 Servel Gas Refrigerator (Model BN-600-A)! See the new Servels at Southern Union Gas Company!

SPECIAL TERMS END FEBRUARY 28

★

See these features in the new Servel

- ✓ 90-second Quick-Change Interior allows you to adjust shelf space to suit your needs!
- ✓ Big Frozen Food Compartment
- ✓ Plenty of Ice Cubes in Trigger-Release Trays
- ✓ Two Dew-Action Fresheners for Fruits and Vegetables
- ✓ Special Egg Storage Tray
- ✓ New classic lines that will never grow old, never "date" your Kitchen

Servel
The GAS Refrigerator

The freezing system in every Servel sold by Southern Union is guaranteed for ten years!

Southern Union Gas Company

"Helping Build New Mexico"

Telephone 1000 505-7 West Main

LANDSUN

LAST TIMES TODAY
TUESDAY

"Davy
Crockett
Indian
Scout"

COMING
FRIDAY - SATURDAY

GENE AUTRY

"Sons of
New Mexico"

Scenes Taken at
N.M.M.I. in Roswell

OCOTILLO

LAST TIMES TODAY
TUESDAY

ALLAN LADD

"Chicago
Deadline"

WED. - THURS.
TWO BIG FEATURES

"Cassidy of
Bar 20"

and

"The Hideout"

LANDSUN THEATER

WED. - THURS. - FEB. 22 - 23

IT HAS EVERYTHING!



"TERRIFIC!"
—SEVENTEEN



"EXCITING!"
—TIME



"UNUSUAL!"
—NEWSWEEK

"POWERFUL!"
—RED BOOK

"BRILLIANT!"
—COSMOPOLITAN

"EXTRAORDINARY!"
—LOOK



EVERYONE CHEERS THE PICTURE WITH GUTS!

"Home of The Brave"

with Douglas Dick • Frank Lovejoy • James Edwards • Steve Brodie • Jeff Corey • Lloyd Bridges • Produced by Stanley Kramer • Directed by Mark Robson • Associate Producer Robert Strickland • Screenplay by Carl Foreman • Based on the original play by Arthur Laurents • Musical Score by Dimitri Tiomkin • Released thru United Artists

WHICH IS DEFENDANT? COURT ASKS



WHICH TWIN is the defendant?—is what an Amarillo, Tex., court wants to know. With robbery charges dismissed against Leo Rader in a grocery holdup, the court wants to try twin brother Edward, but they refuse to identify themselves. Even attorney Bill Culwell (rear) can't seem to tell which is which. (International Soundphoto)

Support Program For Dairy Products Announced By USDA

A program to support farm prices of manufacturing milk and butterfat from January, 1950, through March, 1951, at national average prices of approximately \$3.07 per hundredweight for manufacturing milk of 3.95 per cent butterfat (yearly average test) and approximately 60 cents per pound for butterfat has been announced recently by the U.S. Department of Agriculture. The program will support the price of all milk.

The support program was announced for the next 15 months so as to extend through the next full marketing year for dairy products. The prices announced are within the range specified by the Agricultural Act of 1949 which requires that farm prices of milk and butterfat be supported at levels between 75 and 90 per cent of parity. The support prices represent about 79 per cent of the parity equivalent price for manufacturing milk, as parity is estimated under the new parity formula. The parity equivalent price for manufacturing milk is 88.5 per cent of the U. S. average parity price of all milk sold by farmers at wholesale to plants and dealers.

FOR SALE — Student's two-ring zipper binders, sturdily constructed of quality materials for long life. Several colors and finishes. Artesia Advocate.

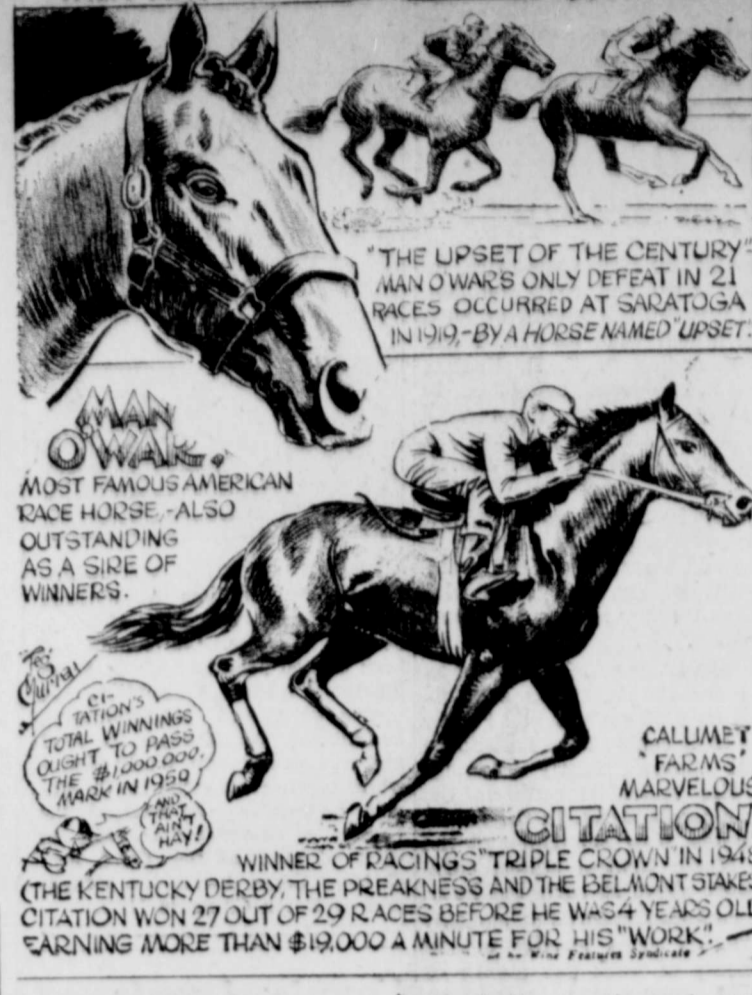
COTTON BAGS HAVE MANY USES AROUND FARM

After they have been emptied of their contents, cotton bags may be used for lots of things around the farm. They may be used as containers for seed, food or other products, as wiping cloths or covers for equipment, or they may be converted into slip covers, draperies or other useful articles for the farm home.

The re-use value of cotton bags and the savings of loss breakage more than offset the difference in price between cotton containers and other types.

READ THE ADS

THEN AND NOW By Feg Murray



Benefits Must Be Applied For Under Social Security

Social security benefits to 65-year-old workers and to the families of workers who die are not paid automatically. J. Hassler Strickland, manager of the Roswell Social Security office, cautioned. In every case where payments are due a claim must be filed with the Social Security office to start the ball rolling. The law places a limit on the number of back payments that can be made when a claim is not filed promptly and no more than three months' back benefits can be paid.

When a 65-year-old worker stops work, he should get in touch with the Social Security office without delay, Strickland said. When a worker dies, someone in the family should make it a point to inquire about possible benefits to the survivors. In either case, if action is delayed more than three months

after death or retirement, one or more monthly payments might be lost.

Hope Application For Rural Phones Is One Of Seven

To date, seven applications for rural telephone loans in New Mexico, including one from Hope, have been received by Rural Electrification Administration authorities, and are now under consideration at the end of the first three months of the new program. REA also received 18 inquiries from prospective borrowers in the Sunshine State.

More than 140 applications and 1117 inquiries have been received from 36 states so far. Kansas tops the list with 14, and Texas is next with 12. Seventeen states have four or more applications each. The rural telephone loan pro-

gram was set up last Oct. 28, under an amendment to the Rural Electrification Act of 1936. REA began receiving formal applications for loans at the first of the year. Under the new legislation, REA is authorized to make loans to finance the improvement, expansion, construction, acquisition and operation of telephone lines, facilities or systems to furnish and improve telephone service in rural areas. Principal loan requirements in the law are that loans be made so they will result in providing adequate telephone service to the widest practical number of rural subscribers and that the loans be self-liquidating within the 35-year period allowed.

ZIPPER RING BINDERS for students. Good quality, variety of finishes. Artesia Advocate, office supplies.

Honeymoon Bound



HAPPILY married Jacque Mercer, "Miss America of 1949" is shown with her husband, Douglas Cook, in Phoenix, Ariz., as they prepared to leave on their honeymoon. The new Mrs. Cook, 18, and her 20-year-old mate, were childhood sweethearts. (International Soundphoto)

Artesia Lodge No. 28 A. F. & A. M.

Meets Third Thursday Night of Each Month. Visiting members invited to attend these meetings.

STATE ENGINEER'S OFFICE

Number of Application RA-8, Santa Fe, N. M., January 26, 1950. Notice is hereby given that on the 23rd day of January, 1950, in accordance with Chapter 131 of the Session Laws of 1931, Ara N. Buel for the Luella A. Buel Estate of Artesia, County of Eddy, State of New Mexico, made application to the State Engineer of New Mexico for a permit to change place of use of 34.14 acre feet of artesian water per annum by abandoning the irrigation of 11.38 acres of Subdivision Part E 1/2 SW 1/4, Section 20, Township 16 S., Range 26 E., Acres 9.08. Subdivision Part SE 1/4 NW 1/4

SW 1/4, Section 20, Township 16 S., Range 26 E., Acres 2.30 and commencing the irrigation of 11.38 acres of land described as follows: Subdivision SW 1/4 SW 1/4, Section 20, Township 16 S., Range 26 E., Acres 0.80. Subdivision SE 1/4 SW 1/4, Section 20, Township 16 S., Range 26 E., Acres 3.38. Subdivision NE 1/4 SW 1/4, Section 20, Township 16 S., Range 26 E., Acres 2.20. The lands to be moved from to be dried up in any further irrigation by artesian water. No additional rights or above those set forth in Declarations Nos. RA-8 and RA-9.

Appropriation of water from all sources combined to be limited at all times to a maximum of 3 acre feet per acre per annum.

Any person, firm, association, corporation, the State of New Mexico or the United States of America, deeming that the granting of the above application will be truly detrimental to their rights in the waters of said underground source, may protest in writing the State Engineer's granting approval of said application. The protest shall set forth all protestant's reasons why the application should not be approved and shall be accompanied by supporting affidavits and by proof that a copy of the protest has been served upon the applicant. Said protest and proof of service must be filed with the State Engineer within ten (10) days after the date of the last publication of this notice. Unless protested the application will be taken up for consideration by the State Engineer on that date, being on or about the 7th day of March, 1950.

JOHN H. BLISS,
State Engineer. 11-31-T-15

ESTERBROOK FOUNTAIN PENS, the ideal student's pen, only \$1.75, your choice of points. Artesia Advocate.

Makes Cancer Find



AN ASSOCIATE of the Institute of Cancer Research in Philadelphia, Dr. Irene Corey Diller is pictured at a meeting of the American Association for the Advancement of Science in New York. Dr. Corey reported finding fungi present in every type of human cancer studied in her laboratory during past 13 months. She warned that the tests were not conclusive. (International)

"AND I THOUGHT THE A-BOMB WAS TOPS!"



PHONE 943
STEVE W. MASON
LOW INTEREST RATE, LONG TERM,
FARM, RANCH AND CITY PROPERTY LOANS.
209 Carper Building Artesia, N. M.

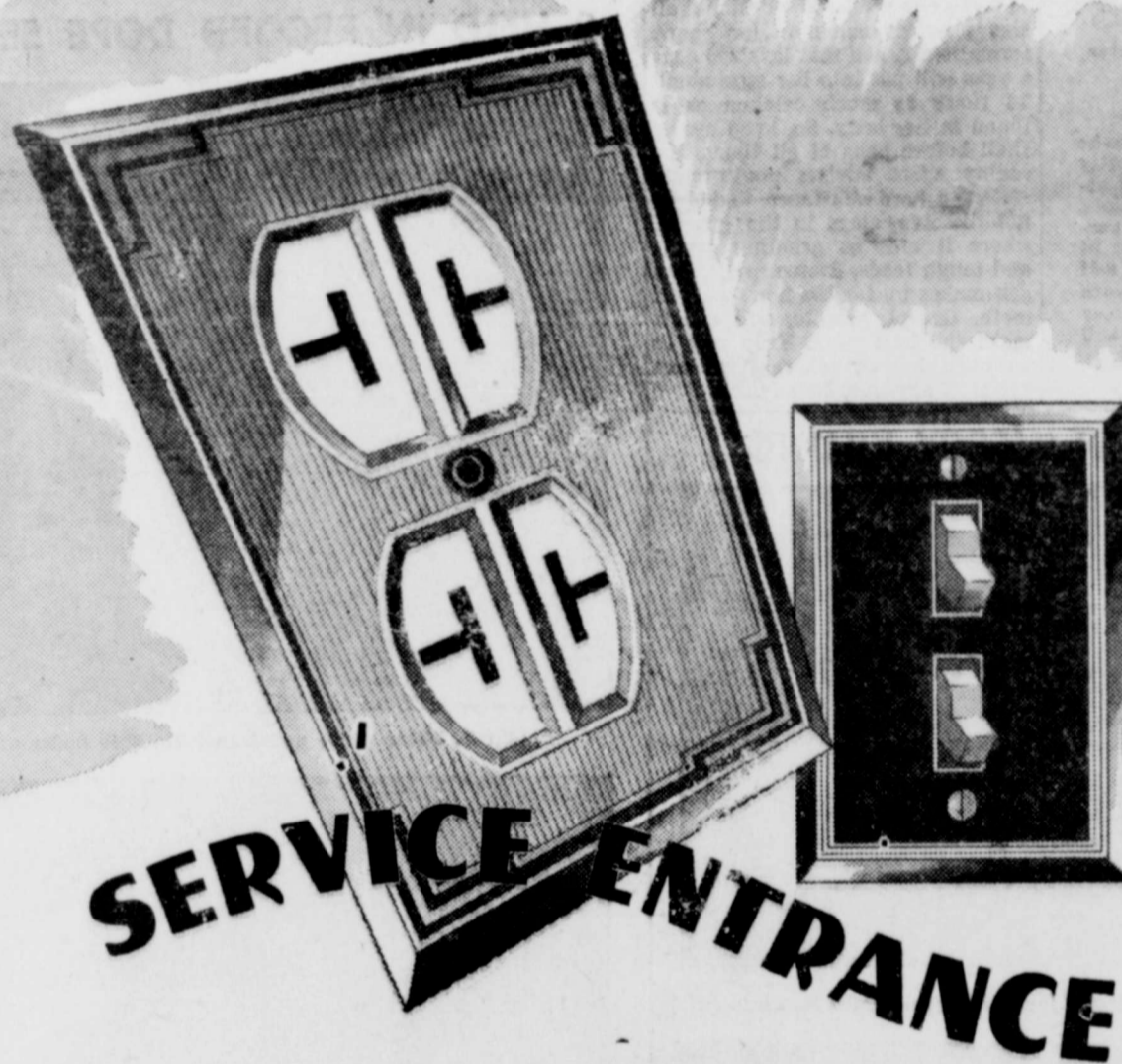
WE FEATURE LONG-TERM, REASONABLE INTEREST LOANS

Through Major Life Insurance Companies

On Business, Residence, Farm
and Ranch Properties
Also F.H.A. or F.H.A.-GI Loans
Preserve Those Precious Papers on Film!
We Do Microfilming.

CURRIER ABSTRACT CO.

102 Booker Building Phone 470



Upstairs, downstairs . . . all through the house! Electricity's on the job 24 hours a day . . . making household chores easier . . . living more gracious. Saving countless hours of your precious time and energy. You see, electricity's energy IS untiring. Whether you "plug in" or flick a switch . . . you get just the assistance you need. The cheery sight-saving glow of your Certified Lamp, for example . . . or the undeniable convenience of your electric home laundry.

Yes, the many outlets and switches throughout your home make up a "service entrance" you can count on. Neat, compact . . . efficient. And so economical. Low-cost, dependable electricity makes it that way!



SOUTHWESTERN PUBLIC SERVICE COMPANY

25 YEARS OF GOOD CITIZENSHIP AND PUBLIC SERVICE

Mid-West Auto Supply
General Electric Appliances
100 Main Phone 525

TEXACO SERVICE STATION
Cecil Mitchell
WASHING - GREASING ACCESSORIES
115 South First

CITY CAB
PHONE 550
24-HOUR SERVICE
205 North First Street
Cecil Smith

Barbecue
STEAKS SPECIAL LUNCHES DINNERS
Sundays Chicken and Turkey Dinners
DIXIE BAR-B-Q
Bob and Ellen Jewell

HAZEL FLYING SERVICE
Flight Instructions
Charter Trips
Crop Dusting
Sales and Service
Municipal Airport Phone 910

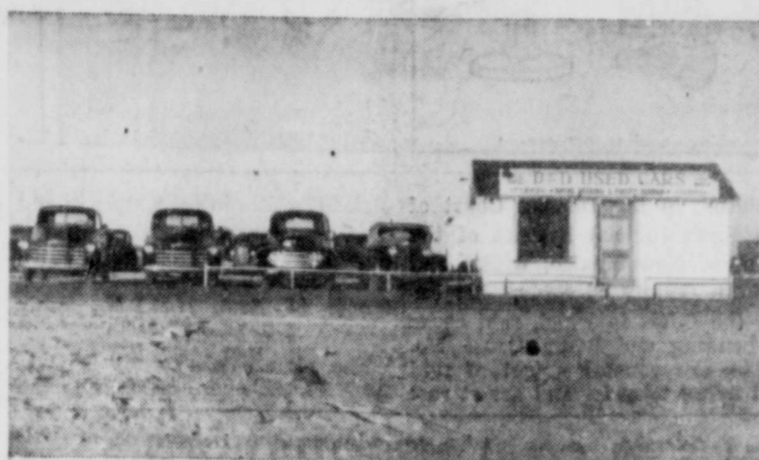
McCaw
ANTI-FREEZE
CHEVRON STATION
Washing - Greasing - Polishing
Atlas Tires, Batteries and Accessories
9 North First Phone 45

ARTESIA

BUSINESS AND PROFESSIONAL

REVIEW

D. & D. Handle Fine Line Used Cars



D. & D. Car Sales on North First Street, the Roswell highway, pictured above, offers a fine line of used cars and trucks, clean and ready to drive away. Wayne Deering and E. L. (Frosty) Durham, owners, are always happy to show you over the lot and help you select a used car to fit your needs. And terms can be arranged.

FOUND WITH \$37,150 -- BRINK'S?



ARRESTED IN DETROIT, Americo Depletto, 35 (left), and John Gach, 35, are being investigated in connection with the \$1,500,000 Brink's robbery in Boston. A paper bag containing \$37,150 in cash was found in their car. Also arrested were Steve Settles, 29, Steve Vitale, 25, and Mrs. Dorothy Green Gach, 22, Gach's bride of a few weeks. Gach is a pal of Purple gang chief Harry Fleisher. (International)

Shop In Leisure At Roach Grocery



Here is the Roach Grocery at 307 South Fifth Street, where you can shop in a friendly atmosphere and with Mr. and Mrs. J. C. Roach at your service. There will be found a wide variety of staple and fancy groceries. And you can do your shopping in a leisurely manner, as there are no parking meters to worry about.

CULLIGAN SOFT WATER SERVICE
113 S. Third Phone 574-W
Ray F. Lewis, Jr., Mgr.

CUMMINS HOUSE OF TIME
Diamond Engagement and Wedding Rings
Watches, Silver, Jewelry
Stones Mounted
Booker Bldg., 110 S. Fourth

Mixed Drinks
Cold Beer Shuffle Board
Open 7 A. M. until 11 P. M.
Open until Midnight Saturdays
NORTHSIDE BAR
Roswell Highway

Top Service Guaranteed At Snow White

Mr. and Mrs. C. H. Winters, owners and operators of the Snow White Washateria, 804 Dallas, invite you to patronize their laundry, guaranteeing that your clothes will be snow white.

They are open from 5 o'clock in the morning to 6 o'clock in the evening, Monday until Saturday noon. You can also have your clothes wet washed or rough dried. The laundry is equipped with a large tumbler, where you can have your clothes dried for a small extra charge any time and especially during bad weather.

The Snow White Washateria also has pickup and delivery service.

Mr. and Mrs. Winters formerly owned and operated the Sacramento Store, before moving to Artesia in 1946.

CARLSBAD BOY WINS CALF CONTEST

Julius Roberson of Carlsbad has been selected as the New Mexico champion 4-H Holstein Calf Club boy for 1949, the Holstein-Friesian Association of America has announced. Selection was based upon young Roberson's records in keeping his Holstein calf.

His records will be entered in national competition to name a champion 4-H Holstein Calf Club boy or girl in the United States.

San Juan Farm Wife Tops State In Canning Food

A busy New Mexico farm wife canned 1448 quarts of food in her "spare time" last year to win honors at the state's top canner.

Mrs. Julia Wheeler of Waterflow, San Juan County, has been named winner of the annual canning contest sponsored by the National Garden Institute, in co-operation with the New Mexico Extension Service. As an award she received a silver vegetable dish.

Mrs. Wheeler prepared all her canned foods on a coal range. Her other activities include raising a truck garden and family orchard, feeding 17 harvest hands during haying season, teaching a Sunday school class, playing the organ for the Womens Relief Society, and keeping up with her church club meetings.

As if that weren't enough, she also puts in a few hours a week driving a tractor or embroidering tea towels.

Winners of the National Garden Contest in previous years have been Mrs. Serafino Lujan, Santa Fe, 1947, and Mrs. Arthur Smith, Springer, 1948.

Wool Production To Be Supported At 90 Per Cent

Wool production for 1950 will be supported at 90 per cent of the parity price of wool on March 15, according to the U.S. Department of Agriculture.

The schedule of support prices by grades will be announced about April 1, the normal marketing period for shorn wool.

Two significant changes relating to price differentials between grades and to the method of purchasing wool from producers have been made in the program for 1950. First, under the current U.S. program purchase prices, while reflecting 90 per cent of parity, will follow the 1949 average market price relationship between grades.

In the other major changes in the program, producers will be given an opportunity to decide after appraisal whether or not they want to sell their wool to the department.

'National 4-H Club Week' Is To Be March 4-12

New Mexico's 8000 4-H Club boys and girls and 600 local volunteer leaders are now making plans to observe "National 4-H Club Week," March 4-12. In observing the week, they will join with the nation's 1,850,000 members in 82,000 clubs under the guidance of 225,000 leaders.

"The objectives of 'National 4-H Club Week' are to tell the 4-H story to the general public through newspapers, radio, local exhibits, and special programs," explains L. S. Kurtz, state 4-H Club leader. "It is also a week when all 4-H Club members take stock of what may be needed for the completion of their goals."

"In other words, 'National 4-H Club Week' is a 'check-up' week—a 'get-set' week. In addition, it's an 'open-house' week, when members get together to welcome new members, to exchange ideas, and to inform parents and neighbors about new developments in their 4-H club programs."

Club officers, leaders, and county extension agents are in charge of arrangements for local observance of the week, Kurtz says.

STUDENT'S ZIPPER BINDERS, Two-Ring, Choice of Colors and Finishes. Artesia Advocate.

Statewide purchases totaling \$1,457,833 of U.S. Savings Bonds last month brought the total series of May 1, 1941, to \$180,957,736.

For the next five or six months, investments in Series E Bonds are expected to show increases over the same months of previous years because of purchases by World War II veterans who will be reinvesting proceeds of their dividend checks from National Service Life Insurance policies, Feather said. Checks are arriving daily and will bring to New Mexico a total of more than six and a half million dollars by July 1.

STUDENT'S ZIPPER BINDERS, two-ring, choice of colors and finishes. Artesia Advocate.

SUBSCRIBE TO THE ADVOCATE

McCAW
Hatchery and Poultry Farm
BABY CHICKS
Book your order now. First quality poultry and eggs. Feed and Poultry Supplies.
McCAW Hatchery & Poultry Farm
13th and Grand Phone 485

McCAW
Hatchery and Poultry Farm
BABY CHICKS
Book your order now. First quality poultry and eggs. Feed and Poultry Supplies.
McCAW Hatchery & Poultry Farm
13th and Grand Phone 485

Artesia Electric Co.
A. W. HARRAL, Owner
Electrical Contracting - Refrigeration Service
206 Main Street, Artesia, New Mexico

Chinese Dishes
American and Mexican Dishes
KING'S CAFE
109 W. Main Phone 697

PREACHER & IRA JUNK YARD
We Buy
We Sell
We Trade
North on Roswell Highway

"Say It With Flowers"
The Floore Floral Co.
106 South Tenth Phone 312
Member Florist Telegraph Delivery Service

City Animal Hospital
BOARDING - GROOMING
Ranchers Supplies and Vaccines
711 North Virginia, Roswell, N. M. — Roswell Phone 964

SNOW WHITE WASHATERIA
Open 5 A. M. to 6 P. M.
Monday until Saturday Noon
WET WASH
ROUGH DRY
804 Dallas Phone 516

MANN REXALL DRUG
Phone 87
N. M. Stewart C. E. Mann

Colon Therapy Foot Correction
Dr. Esther Seale
Former Instructor Los Angeles College of Chiropractic
Office Hours: 9-12, 2-6 Phone 375, 521 West Main

Gambles Battery Values!
VARCO "DELUXE"
24-Month Guarantee \$11.45 Exchange
"Regular" 12-Month Guar. \$6.95 Exchange
"Super Active" 30-Month Guar. \$14.45 Ex.
Homer G. Borland, Owner
Gambles
AUTHORIZED DEALER
The Friendly Store
Sizes for All Cars

"Landscaping Our Specialty"
EVERGREENS - SHRUBS - SHADE TREES
BULBS - PERENNIALS
CALLAWAY NURSERY
Day Phone 924-J Night Phone 1354-W
1000 Block North Mesa, Carlsbad, New Mexico
"Serving All Southern New Mexico"

Wilburn Floor Covering Co.
Linoleum - Venetian Blinds
115 South Third St. Phone 796-W

Mermis Welding Service
GENERAL WELDING
CONTRACT WELDING - PIPE LINE WORK
Phone 186-W (Nights 293-W) 200 N. Freeman

Williams Lumber Co.
Lumber and All Kinds Building Material
Builders Hardware
Oil Field Timbers Mine Timbers
Quality at a Fair Price!
West of Artesia Phone 095-J1

"BRUSH ON A NEW WALL"
DRAMEX INTERIOR WALL FINISH
Makes Sad Rooms Glad 601 Second St. Phone 102 Covers All

New and Used Auto Parts
WELDING SERVICE
BUD'S WRECKING YARD
Roswell Highway

HOT BISCUITS
Home Made Pies and Chili
Jumbo Hamburgers
Willie Cafe
101 West Texas

Green & Mays
GROCERIES
SERVICE STATION
Open 6:30 to 8:30
Northside on Roswell Highway

JACK'S SERVICE STATION
H. H. (Jack) Staggs
Gulf Products
Washing - Greasing
Tires - Accessories
201 North First Phone 792-W

USED CARS TRUCKS - PARTS
D & D Car Sales
North First St., Roswell Highway

HOME-COOKED DINNERS and SHORT ORDERS
THE IDEAL
Coffee Shoppe
ROY PHILLIPS
305 South First

Roach Grocery
MARKET - FRUITS - VEGETABLES - GROCERIES
307 South Fifth Mr. and Mrs. J. C. Roach Phone 299-W

COMPLETE FEED SERVICE
CECIL A. SMITH
A Feed for Every Need. Groceries. Fresh Yard Eggs Daily
Half Mile West of Artesia on Hope Highway



NUMEX ETHYL

NEW MEXICO ASPHALT AND REFINING CO.

NUMEX REGULAR



Farm Census To Be Taken This Spring In Nation

The Bureau of Census is now making plans for its 1950 census of agriculture.

When the census is taken this spring, during April, the average farmer will be required to furnish about 80 to 100 items of information. The number of questions asked will depend on the kinds of crops grown and the classes of livestock raised.

In March, a copy of the questions to be asked will be mailed to every rural boxholder in New Mexico. Along with the questions there will be a letter from the director of the census asking farmers to fill out the questionnaire and have it ready when the census taker calls in April.

The farm census will include questions on population and housing as well as on farming operations.

IN THE DISTRICT COURT OF EDDY COUNTY, STATE OF NEW MEXICO

JOAN BIRCHELL,
Plaintiff,
vs.
ROBERT BIRCHELL,
Defendant.

NOTICE OF PENDENCY OF SUIT THE STATE OF NEW MEXICO TO:

ROBERT BIRCHELL,
Defendant.

YOU ARE HEREBY NOTIFIED that Joan Birchell as plaintiff, has filed a suit against you in the District Court of Eddy County, New Mexico; that the object of said action is to obtain a divorce on the ground of cruel and inhuman treatment, dissolving the marriage entered into between you and the plaintiff on March 8, 1947 and to obtain custody of the child of said marriage.

YOU ARE FURTHER NOTIFIED that unless you enter your appearance in said cause on or before the 5th day of May, 1950, judgment will be rendered against you by default.

ROY O. SAGE, Carter Building, Carlsbad, New Mexico, is attorney for the plaintiff.

WITNESS MY HAND AND SEAL of the District Court of Eddy County, New Mexico, this 16th day of February, 1950.
(SEAL) Marguerite E. Waller, Clerk of the District Court.
Blanche G. Hegg, Deputy
15-41-T-21

NOTICE STATE ENGINEER'S OFFICE

Number of Application RA-1433-5. Santa Fe, N. M., February, 9, 1950.

Notice is hereby given that on the 7th day of February, 1950, in accordance with Chapter 131 of the Session Laws of 1931, A. B. Harris of Artesia, County of Eddy, State of New Mexico, made application to the State Engineer of New Mexico for a permit to appropriate shallow ground water from the Roswell Artesian Underground Basin by drilling a well 16 inches in diameter and 275 feet in depth at a point in the SW 1/4 SE 1/4 SW 1/4 of Section 28, Township 17, South, Range 26 East, for the purpose of supplementing water obtained from Well No. RA-1433 for the irrigation of 160 acres of land described as follows:

- Subdivision NE 1/4 SW 1/4, Section 28, Township 17 S., Range 26 E., Acres 40.
- Subdivision NW 1/4 SE 1/4, Section 28, Township 17 S., Range 26 E., Acres 40.
- Subdivision N 1/4 SW 1/4 SE 1/4, Section 28, Township 17 S., Range 26 E., Acres 20.
- Subdivision SW 1/4 NE 1/4, Section 28, Township 17 S., Range 26 E., Acres 20.

Odd Fact

An Englewood, Colo., man, who was kind enough to stop and drive to the station house a policeman whose patrol car was stalled on the road, was surprised, upon reaching their destination, to have the policeman thank him for the ride and hand him a ticket for speeding and driving through a red light.

Wife Preservers



When only a few drops of lemon are needed, pierce the fruit with a fork and keep it for later use.

IN ROSWELL
Tues. Eve., Feb. 28



Benefit of
Roswell Kiwanis Club's
Charitable Funds
Prices \$2.40 (Incl. tax)
Tickets at Tode's

HAPPY PRINCE ALY ANNOUNCES BIRTH OF DAUGHTER



MEETING NEWSMEN OUTSIDE THE CLINIC in Lausanne, Switzerland, Prince Aly Khan (shown at extreme left) announces that his wife, glamorous movie star Rita Hayworth, has given birth to a five-and-a-half-pound baby daughter. At right, Rita is shown shortly before the "blessed event." (International Radiophoto)

28, Township 17 S., Range 26 E., Acres 40.

Subdivision S 1/4 SW 1/4 SE 1/4, Section 28, Township 17 S., Range 26 E., Acres 20.

Appropriation of water from all sources combined to be limited at all times to a maximum of 3 acre feet per acre per annum.

Some of the above lands also have partial rights to artesian water under File RA-1657.

Any person, firm, association, corporation, or the State of New Mexico or the United States of America, deeming that the granting of the above application will be truly detrimental to their rights in the water of said underground source, may protest in writing the State Engineer's granting approval of said application. The protest shall set forth all protestant's reasons why the application should not be approved and shall be accompanied by supporting affidavits and by proof that a copy of the protest has been served upon the applicant. Said protest and proof of service must be filed with the State Engineer within ten (10) days after the date of the last publication of this notice. Unless protested, the application will be taken up for consideration by the State Engineer on that date, being on or about the 21st day of March, 1950.

JOHN H. BLISS,
State Engineer.
13-31-17

NOTICE OF DISSOLUTION OF PARTNERSHIP

NOTICE IS HEREBY GIVEN that the Partnership of Boyd-Cole Motor Company, a firm composed of Thomas M. Boyd and G. Taylor Cole, has been dissolved by mutual agreement as of the 27th day of January, 1950; and all persons are notified that neither of the undersigned has any authority to incur any obligations of any kind against said firm, or enter into any contracts or other transactions on behalf of said firm.

DATED this 27th day of January, A.D., 1950.
THOMAS M. BOYD,
G. TAYLOR COLE.
11-41-T-17

IN THE PROBATE COURT OF EDDY COUNTY, STATE OF NEW MEXICO.

IN THE MATTER OF THE ESTATE OF PEARL ABERNATHY, DECEASED. No. 1603

NOTICE OF APPOINTMENT OF ADMINISTRATOR

Notice is hereby given that the undersigned was, on the 26th day of January, 1950, appointed Administrator of the estate of Pearl Abernathy, Deceased, by the Honorable M. F. Sadler, Probate Judge of Eddy County, New Mexico. THEREFORE, all persons having any claim or claims against said estate, are hereby notified to

file the same with the County Clerk of Eddy County, New Mexico within six months from the date of the first publication of this notice, to-wit: January 31, 1950, as provided by law, or the same will be barred.

H. G. WATSON,
Administrator.
9-41-T-18

NOTICE OF PENDENCY OF SUIT

STATE OF NEW MEXICO TO: George S. Spencer, if living, if deceased, the unknown heirs of George S. Spencer, deceased, impleaded with the following named defendants against whom substituted service is sought to be obtained, to-wit: The following named persons by name, if living, if deceased, their unknown heirs, George S. Spencer; Anna M. Spencer; John R. Blair; W. S. Shoemaker; C. D. Thompson; Martin F. Keolling; J. H. Crawford; Susie Crawford Whaley, also known as Mrs. Susie L. Whaley; Georgia Crawford Green; Myal Green; Charles D. Crawford; John H. Crawford; Martin E. Berry; Fannie

MUGGS AND SKEETER



C. Hudson, also known as Fannie Carson Hudson and all unknown claimants of interest in the premises adverse to the estate of the plaintiff, GREETINGS: You are hereby notified that a suit has been filed against you and each of you, by Susie M. Allen, as

plaintiff, in the District Court of the Fifth Judicial District of the State of New Mexico, within and for the County of Eddy, that being the Court in which said cause is pending and being Cause No. 11433, the general object of said suit being to quiet and set at rest

plaintiff's title in fee simple in and to the property described in the Complaint in said cause, situated in Section 19, Township 17 South, Range 26 East, N.M.P.M., Eddy County, New Mexico. The plaintiff's attorney is Donald S. Bush, whose office is in the

Booker Building, Artesia, New Mexico. You, and each of you, are hereby further notified that unless you enter your appearance in said cause on or before the 18th day of March, 1950, judgment will be rendered against you in said cause by default.

WITNESS my hand and the seal of said Court this 24th day of January, 1950.
Marguerite E. Waller, Clerk of the District Court.
Blanche G. Hegg, Deputy
9-41-T-13

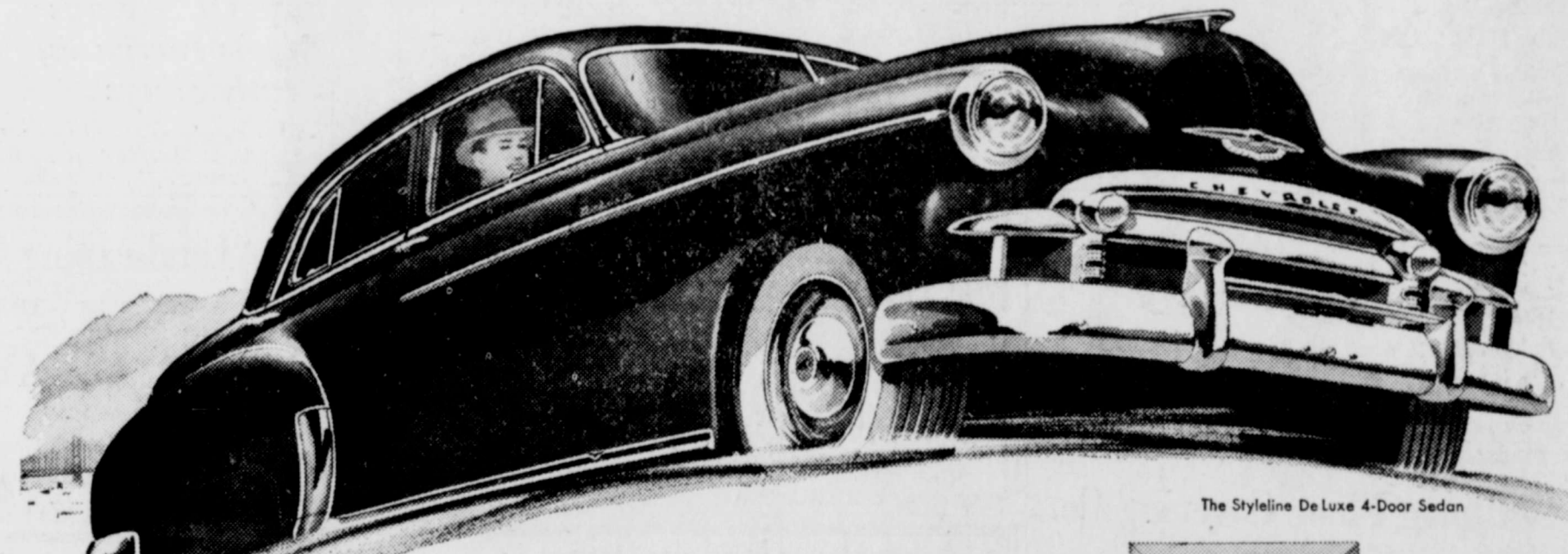
'LIAR!' YELLS LEWIS IN COAL NEGOTIATIONS



THIS WAS THE SCENE at renewed negotiations between soft coal operators and the United Mine Workers in Washington where John L. Lewis (right) called operator George Love (third left) "a liar by the clock." Love had quoted Lewis as telling Conciliation Director Cyrus Ching "I hold the men in the palm of my hand." At the table (clockwise) are Hugh Lee, Indiana operator; Harry Moses, Pittsburgh operator; Love, Pittsburgh, operators' spokesman; Frank Amos, Pittsburgh operator; John T. Jones, UMW; Harvey Cartwright, conference chairman; Truman Johnson, West Virginia operator; Lewis, UMW president.

Chevrolet alone

in the low-price field gives you all that's beautiful . . . all that's thrilling . . . all that's thrifty!



The Styleline De Luxe 4-Door Sedan

FIRST . . . and Finest . . . at Lowest Cost!

CHEVROLET

Yes, you can expect the new standard of powerful, dependable low-cost performance from the 1950 Chevrolet . . . just as you can look to it for the new standard of beauty, driving and riding ease, and all-around safety.

For Chevrolet, and Chevrolet alone in the low-price field, brings you all that's new, all that's thrilling, and all that's thrifty for '50!

Only this car brings you the eye-catching, pride-inspiring beauty of new Style-Star Bodies by Fisher—widely recognized as the world's standard of fine coachcraft—at lowest cost.

Only this car offers you a choice of the finest standard or automatic drive, as well as the finest performance with

economy from two great, more powerful Valve-in-Head engines, at lowest cost.

Only this car gives you the luxurious comfort and riding smoothness of the United Knee-Action Ride . . . and the stability and road-steadiness of the largest, heaviest automobile in its field . . . at lowest cost.

That's why record numbers of men and women are visiting their Chevrolet Dealers' showrooms in all parts of the country . . . inspecting, praising and placing their orders for this great new 1950 Chevrolet . . . and pronouncing it "America's Best Seller, America's Best Buy."

Come in. See Chevrolet for 1950—first and finest at lowest cost!

Chevrolet—and Chevrolet alone—brings you all these advantages at lowest cost! NEW STYLE-STAR BODIES BY FISHER . . . NEW TWO-TONE FISHER INTERIORS . . . CENTER-POINT STEERING AND UNITIZED KNEE-ACTION RIDE . . . CURVED WINDSHIELD WITH PANORAMIC VISIBILITY . . . BIGGEST OF ALL LOW-PRICED CARS . . . PROVED CERTI-SAFE HYDRAULIC BRAKES . . . EXTRA-ECONOMICAL TO OWN, OPERATE AND MAINTAIN.

POWERGLIDE AUTOMATIC TRANSMISSION

Here is low-cost motoring's first automatic drive, with Chevrolet's exclusive Powerglide Automatic Transmission and 105-h.p. Valve-in-Head Engine, most powerful in its field.

*Combination of Powerglide Transmission and 105-h.p. Engine optional on De Luxe models at extra cost.

AMERICA'S BEST SELLER . . . AMERICA'S BEST BUY!

GUY CHEVROLET COMPANY

101 West Main

Phone 29

ANNOUNCING!

The Re-Opening under New Management

TRAVELER'S CAFE
205 NORTH FIRST STREET

Now Operating

Specializing in Fine Steaks and Chicken

Open 24 Hours a Day!

A. B. TEDFORD, Prop.