



WEATHER

January 29	51	23	.00
January 30	50	21	.00
January 31	54	22	.00
February 1	73	39	.00

Muleshoe Journal

The Community Of Opportunity-Where Water Makes The Difference

Vol. 67, No. 5

12 PAGES TODAY

Published Every Thursday At Muleshoe, Bailey County, Texas 79347

20¢

Thursday, February 2, 1989

Pollard, Tooley, Lowe Three Way Show Winners

St. Clair, Mason Lazbuddie 'Tops'

Lazbuddie does not have a cattle division in their annual livestock show for youngsters from the Lazbuddie school. Nonetheless, they had a big show with their lambs and swine last Saturday afternoon.

Lazbuddie's livestock show has been held in the Precinct Barn at Lazbuddie for the past couple of years, affording more area, and easier to watch.

Justin St. Clair, son of Tommy and Jana St. Clair, exhibited the grand champion swine this year and Dustin Weir, son of Doyle and Debbie Weir, had the reserve grand champion swine.

The senior showmanship was won by Sheldon Mason, son of Darryl and Billye Mason, while Brett Thomas, son of Randy and Terry Thomas won the junior showmanship.

[Lazbuddie stock show pictures will be in the Sunday, February 5 edition of the Bailey County Journal]

In the lamb division, Sheldon Mason had the grand champion lamb and Ginger Jesko, daughter of Lee Dennis and Brenda Jesko, had the reserve champion.

Sheldon won senior showmanship and Jodi Morris, whose parents are Gary and Sheryl Morris, won the junior showmanship award in the lamb division.

Lazbuddie's show results are as follows:

SWINE

LIGHTWEIGHT
Shena Seaton, Cole St. Clair, Jerry Dosier, Jason Thomas, and Shena Seaton.

LIGHT MIDDLE WEIGHT
Dustin Weir, Sheldon Mason.

Cont. Page 6, Col. 3



Harvey Bass, chairman of the Muleshoe Activities Committee, has announced that the next MAC drawing will be at 2 p.m. on Saturday, April 1, in downtown Muleshoe.

In the drawing, \$600 will be given away. More details will be released later.

Spencer Tanksley, the Bailey County Extension Agent, said Texas wheat producers will vote in late February and early March to elect five board members. Producers will also decide on a proposal to change the wheat check-off assessment limit to one cent per bushel for research, market development, and service.

Bailey County Judge Jim Watson said Bailey County Commissioners Court will meet in Special Session in the Bailey County courthouse at 10 a.m. on Friday, February 3.

Included on the agenda following reading of the minutes of the previous meeting are payment of routine county bills; open bids for gasoline for county vehicles and miscellaneous items.

The fall 1988 Dean's Honor Roll at Wayland Baptist University, Plainview, includes Randall Hamilton of Muleshoe.

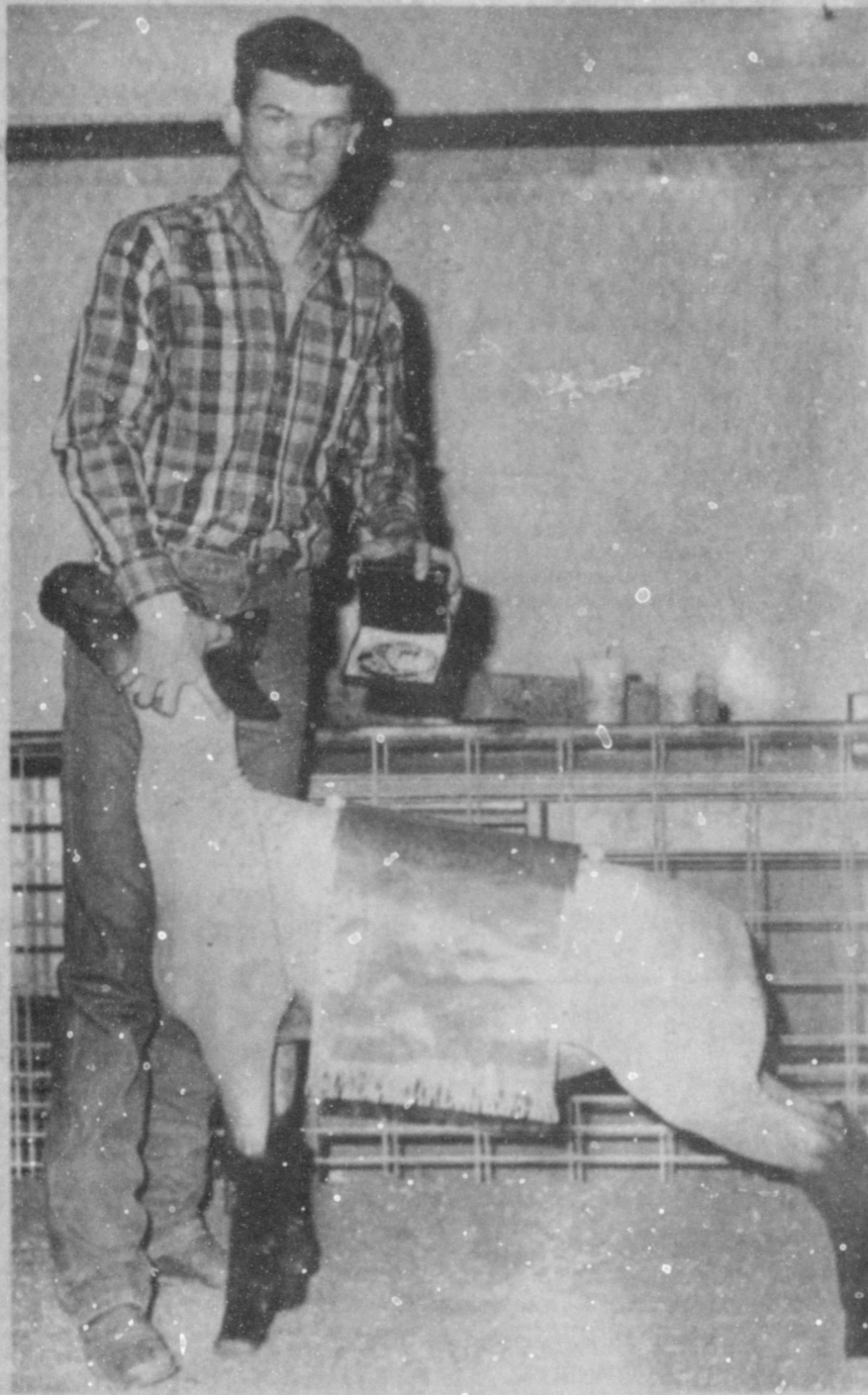
Hamilton, a freshman, posted a 3.50 grade point average (GPA) for the recently-completed term. He is the son of Mr. and Mrs. Elbert Hamilton of Muleshoe.

Dr. Phyllis Musgrove, dean of instruction and student development.

Cont. Page 6, Col. 6



ST. CLAIR HAS TOP SWINE AT LAZBUDDIE--Justin St. Clair had the grand champion swine at the Lazbuddie Junior Livestock Show last Saturday afternoon. (Journal Photo)



LAZBUDDIE'S TOP LAMB--Last Saturday afternoon, Sheldon Mason showed his lamb to the grand champion honors at the Lazbuddie Junior Livestock Show. (Journal Photo)

MHS Debate Trio Speak At Rotary

Rotary hosted three Muleshoe High School debate students Tuesday at noon -- and the trio set out to involve the audience in their discussion in a Lincoln-Douglas debate.

They said they would be talking about "Values," and would be asking questions of the audience, and that--they really did, catching more than one Rotarian completely off-guard.

Brandon Wilson, Jason Clarkson and Adelaido Godinez quickly caught the audience up in their discussion, and before it was over, a lively discussion took

place. Using the phrase, "The best government is that which governs least," was the focus of their discussion.

Starting off with an unprepared (to debate) Rotary President George Nieman, the trio moved on to Rotarian, MHS Coach Wade Littlefield.

For instance, the young men talked about the Civil Rights Movement, and how the government stepped in and forced people to accept the Civil Rights program for minorities.

Local Man Shot Tuesday In Lubbock

According to Lubbock Police Chief Tom Nichols, Robert (Robbie) Vaughn, 22, of Muleshoe, was shot one time by a Lubbock police officer around 6:30 p.m. Tuesday evening near an apartment complex in Lubbock.

Chief Nichols said officers with the Street Crimes Unit were staking out two suspects regarding two stolen vehicles and stolen property.

When the officers identified themselves to Vaughn and another suspect, who escaped, the men attempted to flee in the vehicles, according to police reports.

As the two suspects attempted to escape, officers said they again identified themselves and ordered the men to stop, added the chief.

Vaughn was said to have emerged from a vehicle, which he pointed at an officer.

He was shot after again trying to flee, added the officer's report.

Vaughn underwent emergency surgery late Tuesday at Lubbock General Hospital, where it was reported to be in serious, but stable condition, by hospital officials.

The Lubbock police said they knew the identity of the second suspect in the events, and were expecting to issue a warrant for his arrest.

Junior High School Science Group Make Lubbock Field Trip

Students of the Watson Junior High Science Club traveled to Lubbock last Tuesday for a field trip. First stop for the club was the Texas Tech University Health Sciences Center.

There, a visit to the gross anatomy lab of the Medical School provided the opportunity to view both plasticized and preserved human body parts.

After a break for donuts, students were taken to the clinical supervision lab of the School of Nursing.

The tasks and career possibilities in nursing were discussed. In the School of Allied Health, a member of the staff demonstrated some of the physical therapy equipment. Some of the club members tested their strength and learned how the computer helps evaluate information.

After lunch, the group went to the Texas Tech University Museum. There they saw works of art, animals, fossils and historical displays.

Before returning home, students toured the Ranching Heritage Center. There homes, ranch buildings and artifacts provided a glimpse of the past.

Eighth grade members taking the trip were Tracy Puckett, Paula Ruthardt, Kristi Chapman, Stacey Langfitt, Lenny Pineda, Steven Wauson, Jesse Singleterry and Robert Fisk.

Seventh graders included Marianne Toombs, April Franklin, Virginia Sierra, Kelli Caldwell, Juan Jaime, Stephanie McNutt, Jeanne Cox, Courtney Tanksley, Chad McCormick, and Nicole Alanis.

Sponsors of the group are H. B. Mardis, Doris Scoggin and Beatrice Garcia.

It was a very big day at the Three Way School last Saturday, as it was the annual Three Way Junior Livestock Show.

Activities got underway at 9 a.m. with judging of the Craft and Food entries, followed by the Cattle Show at 10 a.m. with cattle breeder Doug Walden of Littlefield acting as judge.

Russell Pollard had the grand champion steer and Joshua Tooley had the grand champion heifer. Reserve grand steer was exhibited by Joshua Tooley and Daniel Reeves had the reserve champion heifer.

Also exhibiting in the heifer show were Melanie McCaul, and Marvin McCaul. Other exhibitors in the steer division were Chad Welch and Robin Tooley.

Jerry Schaeffer judged the Pet Show at 11 a.m., and then the show broke for lunch, resuming at 1:30 p.m. with the Lamb Show.

Kirby Rankin of Lubbock was the judge for the lamb and swine shows.

Joshua Tooley had the grand champion lamb and Lisa Lowe showed the grand champion swine.

Joshua Tooley had the reserve champion lamb and Russell Pollard showed the reserve champion swine.

Daniel Reeves won showmanship in the steer/heifer division; Carrie Kindle won lamb showmanship and Sheila Tucker, swine showmanship.

Other results are as follows:

FINE WOOL LAMBS LIGHTWEIGHT
Joshua Tooley, Daniel Reeves, Marvin McCaul, Cynthia Bennett and Jonathan Bennett.

HEAVYWEIGHT
Melissa Bennett, Jonathan Bennett, Monty Turney, and Melissa Bennett.

FINE WOOL CROSS
Robin Tooley, Carrie Kindle, Joshua Tooley, Daniel Reeves, Melanie McCaul, Edward Dunn and Melissa Bennett.

SOUTH DOWNS
Marvin McCaul, Robin Tooley, Joshua Tooley, Robin Tooley and Daniel Reeves.

HAMPSHIRE LIGHTWEIGHT
Robin Tooley, Becky Mowery, Scott Pollard and Jonathan Bennett.

HEAVYWEIGHT
Joshua Tooley, Joshua Tooley, Becky Mowery and Melanie McCaul.

SUFFOLK LIGHTWEIGHT
Carrie Kindle, Melinda Turney, Robin Tooley and Rebecca Robertson.

HEAVYWEIGHT
Cynthia Bennett, Melissa Bennett, Russell Pollard and Jonathan Bennett.

SWINE CHESTER WHITES
Daniel Reeves, Russell Pollard, Melanie McCaul, Marc Tucker and Kyle Kindle.

DUROC
Marc Tucker, Melanie McCaul, Sheila Tucker, Robin Tooley, Joshua Tooley and Daniel Reeves.

HAMPSHIRE LIGHTWEIGHT
Marvin McCaul, Marc Tucker, Sammy Soliz and Chris Locke.

HEAVYWEIGHT
Lisa Lowe, Russell Pollard, Cont. Page 6, Col. 1



SWINE RECEIVES TOP HONOR AT THREE WAY--Lisa Lowe, a student at Three Way High School, showed her Hampshire to the grand championship during the Three Way Junior Livestock Show last weekend. (Journal Photo)



TOOLEY HAS GRAND CHAMPION LAMB--Joshua Tooley, exhibited the grand champion lamb, a Hampshire, during the annual Three Way Livestock Show last weekend. (Journal Photo)

 HUNT'S TOMATO SAUCE 8 OZ. CANS 699¢	 FOR YOUR LAUNDRY AJAX DETERGENT 125 OZ. BOX \$2.99	 BATHROOM WH./ASSORTED DELSEY TISSUE 4 ROLL PKG. 89¢	 BRICK REG./PERK/ADC GRIND FOLGERS COFFEE 13 OZ. BAG \$1.89	 CHICKEN OF THE SEA IN OIL OR WATER CHUNK TUNA 6.5 OZ. CAN 59¢	 THICK/SUPER TRIM SM./MED./L3. ASSTD. CT. HUGGIES DIAPERS CONV. PKG. \$9.98	 REG. OR NO SALT CUT GREEN BEANS, C.S./W.K. GOLDEN CORN OR SPINACH DEL MONTE MIX OR MATCH VEGETABLES 15-17 OZ. CANS 289¢	 6 PK. 12 OZ. CANS PEPSI COLA AND FLAVORS \$1.38
--	---	--	---	---	---	--	---

SUNSHINE REG./UNSALTED KRISPY CRACKERS 16 OZ. BOX 79¢	SWISS MISS REG. W/MARSHMALLOWS 12 CT. BOX \$1.49	HOT COCOA MIX 12 CT. BOX \$2.19	WESSON OIL 48 OZ. BTL. \$1.79	MICRO POPCORN 3 PAK. \$2.39	POPcorn 30 OZ. JAR 99¢	AXAJ LIQUID 22 OZ. BTL. 79¢	AXAJ CLEANSER 2 14 OZ. CANS 79¢	PINESOL 15 OZ. BTL. \$1.29
---	--	---	---	---	--------------------------------------	---	---	--

National Brands Sale

SYLVANIA STANDARD 60-75-100 WATT LIGHT BULBS 2 PAK. 89¢	THREE-WAY BULB EACH \$1.39	FACIAL TISSUE 175 CT. BOX 89¢	FOLGERS COFFEE 8 OZ. JAR \$3.99	FOLGERS COFFEE 8 OZ. JAR \$4.99	DOW CLEANER 20.4 OZ. SIZE \$1.69	DOW CLEANER 17 OZ. SIZE \$1.69	DOW CLEANER 22 OZ. SIZE \$1.69	DOW OVEN CLEANER 16 OZ. SIZE 99¢	FANTASTIC 22 OZ. SIZE \$1.19	VIVID BLEACH 32 OZ. SIZE \$1.79	FRUIT COCKTAIL 17 OZ. CAN 79¢	DEL MONTE YELLOW HALVES/SICES 15 OZ. CAN 79¢	CLING PEACHES 46 OZ. CAN \$1.29	PINEAPPLE JUICE 46 OZ. CAN \$1.19	PRUNE JUICE 32 OZ. BTL. \$1.19	SALAD DRESSING 16 OZ. BTL. \$1.89
---	--	---	---	---	--	--	--	--	--	---	---	--	---	---	--	---

 SM./CRUNCHY PEANUT BUTTER PETER PAN 18 OZ. JAR \$1.89	 PLAIN REG./JALAPENO WOLF CHILI 15 OZ. CAN 99¢	 PURINA CHUCK WAGON DOG FOOD 20 LB. BAG \$6.99	 ALL VEGETABLE WESSON OIL 48 OZ. BTL. \$2.19	 BORDEN HI-PROTEIN MILK GAL. \$2.09
---	---	---	---	--



SHUR FINE BONELESS FULLY COOKED 93% FAT FREE-6 TO 8 LB. AVG.

WHOLE HAMS

\$1.79

COUNTRY STYLE LOTS OF MEAT

PORK RIBS

\$1.38

LEAN TRIM FAMILY PAK 8 TO 11 ASSORTED CHOPS

PORK CHOPS

\$1.38

SHUR FINE BONELESS FULLY COOKED 93% FAT FREE-3 TO 4 LB. AVG.	OSCAR MAYER BUN LENGTH	BEEF FRANKS 1 LB. PKG. \$1.69
HALF HAMS 1 LB. \$1.89	CHEF'S PANTRY FINE COOKED CHICKEN	FRIED PATTIES 1 LB. \$1.29
COOKED HAM 12 OZ. PKG. \$2.99	FROM SPRING CREEK FARMS OWEN'S REG./HOT/MILD/SAGE	PORK SAUSAGE 1 LB. ROLL \$1.69
CHOPPED HAM 12 OZ. PKG. \$1.99	FROM SPRING CREEK FARMS OWEN'S REG./HOT/MILD/SAGE	PORK SAUSAGE 2 LB. ROLL \$3.37
HORMEL BLACK LABEL REG.-LOW SALT SLICED BACON 1 LB. PKG. \$1.49	OWEN'S SAUSAGE & BISCUITS	WILSON'S SLICED MEAT BOLOGNA 12 OZ. PKG. 89¢
LITTLE SIZZLERS 12 OZ. LINKS-ROLL OR PORK SAUSAGE 10 OZ. PATTIE'S EA. 99¢	WILSON'S REG./POL./BEEF/CHEESE SMOKED SAUSAGE	1 LB. \$1.99
OSCAR MAYER BUN LENGTH MEAT WIENERS 1 LB. PKG. \$1.59		
PEYTON'S MEXICAN CHORIZO 8 OZ. PKG. 89¢		

FROZEN AND DAIRY SPECIALS

 CITRUS HILL REG./WITH CALCIUM ORANGE JUICE 12 OZ. CAN 99¢	 MARGARINE PARKAY 16 OZ. BOXES 2.99¢
--	--

ASSORTED VARIETIES JENO'S PIZZA 7.4 OZ. 99¢	REGULAR OR EXTRA THICK VELVEETA SLICES 12 OZ. PKG. \$1.59
POT PIES 2 7 OZ. BOXES 79¢	HALFMOON CHeddar OR COLBY KRAFT CHEESE 10 OZ. PKG. \$1.89
FRIED CHICKEN 28 OZ. BOX \$2.79	VELVEETA 2 LB. BOX \$3.79
FRUIT PIES 26 OZ. BOX \$1.29	PILLSBURY B.M./SM./TND/LAYER BISCUITS 4 10 CT. CANS 89¢
BREADED OKRA 24 OZ. PKG. \$1.29	PILLSBURY MICRO BROWNIES 14 OZ. BOX \$1.69
	KRAFT GRATED PARMESAN CHEESE 8 OZ. SIZE \$2.79
	EASY TO USE PARKAY SPREAD 16 OZ. TUB 79¢

FRESH CALIFORNIA

NAVEL ORANGES

4 LBS. FOR \$1

SEEDLESS GRAPES 1 LB. \$1.09	WHITE ONIONS 3 LBS. FOR \$1.00
SNOW WHITE CAULIFLOWER EA. 99¢	BROCCOLI 1 LB. 69¢
CELLO TOMATOES 2 FOR 98¢	



TEXAS RUBY RED GRAPEFRUIT

4 LBS. FOR 89¢

FABRIC SOFTENER DOWNY LIQUID 96 OZ. JUG \$2.99	PAPER WH./EARTHTONE HI-DRI TOWELS JUMBO ROLLS 5 \$3	HEAVY DUTY LIQUID LAUNDRY AJAX DETERGENT 64 OZ. BTL. \$1.99	KRAFT REG./LIGHT MIRACLE WHIP 32 OZ. JAR \$1.79	ALL PURPOSE FLOUR GOLD MEDAL 5 LB. BAG 99¢	BETTY CROCKER ASSORTED HAMBURGER HELPER 5 1/2-9 OZ. BOX \$1.09	WITH BEANS REG./JALAPENO WOLF CHILI 15 OZ. CAN 79¢	HUNT'S MEAT/MSHRM./TRAD. SPAGHETTI SAUCE 27.5 OZ. CAN 99¢	ASSORTED BEVERAGE TROPICANA TWISTERS 46 OZ. BTL. BUY ONE-GET ONE FREE
--	---	---	---	--	--	--	---	---

BAND-AIDS 50 CT. PKG. \$1.89	JOHNSON'S BABY CONDITIONER 11 OZ. BTL. \$2.59	COCKTAIL JUICE 6 PAK. \$1.49	BETTY CROCKER FUDGE BROWNIE SUPREME 23 1/2 OZ. BOX \$1.89	KRAFT MINIATURE/JET PUFFED MARSHMALLOWS 16 OZ. PKG. 89¢
FIRST AID TAPE 100' 99¢	SHOWER TO SHOWER REG./UNSCENTED BODY POWDER 8 OZ. SIZE \$1.89	DINTY MOORE BEEF STEW 24 OZ. CAN \$1.79	KELLOGG'S CORN FLAKES 18 OZ. BOX \$1.69	AMERICAN BEAUTY ELBO RONI 2 10 OZ. PKGS. 99¢
ADHESIVE PADS 10 CT. PKG. \$1.49	DEODORANT PANTY SHIELDS CAREFREE 28 CT. PKG. \$1.69	HORMEL DEVILED HAM 4.5 OZ. CAN 79¢	KELLOGG'S FROOT LOOPS 15 OZ. BOX \$2.59	BETTY CROCKER BLUEBERRY MUFFIN MIX 13 OZ. BOX \$1.59
COTTON BALLS 55 CT. PKG. 99¢	STAYFIRE REG./SUPER MAXI-PADS 30 CT. PKG. \$3.59			
DENTAL RINSE 12 OZ. BTL. \$1.99	STAYFIRE MINI-PADS 12 CT. PKG. \$1.39			
DENTAL FLOSS 50 YD. SIZE 99¢	JOHNSON'S REG./GENTLE BABY SHAMPOO 11 OZ. BTL. \$2.59			
SINUS TABLETS 20 CT. PKG. \$3.69	VELVEETA 'N' SHELLS KRAFT DINNER 12 OZ. BOX \$1.29			
TYLENOL 100 CT. PKG. \$5.99	MILKY WAY-SNICKERS-3 MUSKETEERS CANDY BARS 6 PAK. \$1.89			
TYLENOL 20 CT. PKG. \$2.59	COMSTOCK CHERRY REG./LITE PIE FILLING 21 OZ. CAN 99¢			
COLD CAPLETS 24 CT. PKG. \$3.99	FRANCO AMERICAN SPAGHETTI SAUCE 2 15 OZ. CANS 99¢			
PEDIACARE 4 OZ. BTL. \$2.99	CAMPBELL'S BEEF OR SIRLOIN BURGER CHUNKY SOUP 19 OZ. CAN \$1.29			
BABY POWDER 14 OZ. PKG. \$1.99				

Quality Service Selection Savings

PRICES EFFECTIVE JANUARY 29-FEBRUARY 4, 1989

thriftway

WE RESERVE THE RIGHT TO LIMIT QUANTITIES.

Diabetics Go Undetected And Stay In 'Danger'

An estimated 411,000 people in Texas have diabetes and an equal number probably have the disease and do not know it, says the Texas Medical Association.

Diabetes occurs when the pancreas gland cannot produce insulin. Insulin helps the body metabolize carbohydrates (starches) and glucose (sugars).

Diabetes is detected in blood or urine tests. Sugar in the urine and a high level of sugar in the blood are the first signs that the body is no longer using food the way it should. Symptoms of diabetes include frequent urination (the body's attempt to get rid of the large amount of sugar in the blood) and constant thirst.

People who seem most likely to develop diabetes are over forty,

overweight, a blood relative of a diabetic, or a woman who gives birth to large babies (over nine pounds). Mexican-Americans and blacks also are most likely to develop diabetes. In addition, the longer a person has the disease, the more likely complications may develop.

Such risks include diabetic eye disease or retinopathy, nerve disease of the feet (neuropathy), and chronic kidney failure. These conditions are treatable, with the best results coming from early recognition during regular medical checkups.

Diabetic retinopathy is a leading cause of vision problems, such as cataracts and glaucoma, and blindness. Diabetics should have their eyes examined regularly for signs of changes in the retina.

Neuropathy is common among diabetics because circulation to the feet is impaired. Diabetic foot

complications will result in about 2,400 amputations in Texas this year, but taking good care of the feet can help the diabetic avoid amputations.

Another diabetic-related complication is chronic kidney failure. This condition occurs when waste products and chemicals gradually build up in the blood, and the kidneys become unable to limit the amount of water in the urine.

TMA reminds you that diabetes is an easily detectable disease that can be managed and controlled. Maintaining the correct body weight, controlling high blood pressure, smoking cessation, and careful monitoring of blood sugar levels with diet and exercise or medications, if necessary, help the diabetic maintain good health. In addition, regular medical checkups can detect complications early.

The Texas Medical Association is a professional organization with nearly 29,000 physician and medical student members. It is located in Austin and has 116 component county medical societies around the state.

A foolish idea a day keeps the mind working at least.

The harm of pressure groups is the suppressing of individual thinking.

There is no law against courtesy, even at home and at the wheel of a car.



LA PLACITA RIBBON CUTTING HELD MONDAY--Edward and Linda Orozco, who are well known in the Muleshoe area recently opened the La Placita Restaurant on Main Street. Members of the Muleshoe Chamber of Commerce and Agriculture and Muleshoe Mayor Darrell Turner conducted a ribbon cutting ceremony at the restaurant Monday morning during the grand opening. (Journal Photo)

Rural Texas Can Remain Very Vital

Maintaining the vitality of rural Texas--that's the purpose of the Rural Information Center recently established by the Texas Agricultural Extension Service.

The center, located at Texas A&M University, provides a direct link to a national databank and other resources available at the state and national level, including the National Agricultural Library in Washington, D.C.

"We primarily want to help local government officials, citizen groups and other interested parties obtain information on a wide range of topics," said Doug Steele, an Extension associate in community development who is coordinating the center.

Steele said that the center is a cooperative effort with the Extension Service at the national level and the National Agricultural Library, both units of the U.S. Department of Agriculture.

"We want to give individuals, organizations and government entities quick access to timely information for decision-making," Steele said. "The center serves as a clearinghouse for information requests by bringing together state and national resources."

"Through computer linkages, a vast array of information sources can be accessed that can help individuals and groups deal with local and state problems and concerns," Steele said. "For example, such issues as rural health care, water quality and waste disposal are of major concern in many areas."

Steele said that the center should be of particular help in dealing with information requests on economic revitalization, local government planning projects, funding sources, community change and research studies designed to maintain the quality of life in rural communi-

ties. Requests for information can be directed to Steele in Room 12 of the Agriculture Building, Texas A&M University, College Station, Texas 77843, or by calling (409) 845-8914 from 8 a.m. to noon Monday through Friday.

Tax Tips To Help!

DO YOU QUALIFY FOR THE 28% TAX RATE?

For 1988, there are two tax rates, 15% and 28%, for each filing status. All of your taxable income will be taxed at the lower 15%.

*If your filing status is "Married Filing Jointly" or "Qualifying Widow(er)," and your taxable income is \$29,750 or less.

*If your filing status is "Head of Household," and your taxable income is \$23,900 or less.

*If your filing status is "Single," and your taxable income is \$17,850 or less.

*If your filing status is "Married Filing Separately," and your taxable income is \$14,875 or less.

Taxable income is your adjusted gross income reduced by your allowable exemptions and your standard deduction or itemized deductions. Income in excess of the above amounts is taxed at the 28% rate and may also be subject to an additional five percent rate adjustment as well as a five percent exemption surcharge.

Do you have questions about how the tax laws affect your return? Call your local H&R Block office.

Patients In West Plains Medical Center

FRIDAY, JAN. 27

Kyle Hahn, Fermin Gonzalez, Jr., Ebony Russ, Joe Bob Orozco and Lucille Harp

SATURDAY, JAN. 28

Aracely Flores, Doug Duncan and Sean Shipman

SUNDAY, JAN. 29

Valerie Chilton, Allie Barbour, Maria Castaneda and Sean Shipman

MONDAY, JAN. 30

Valerie Chilton, Allie Barbour, Maria Castaneda and Sean Shipman

GRAIN PRICES

FEED CORN... 4.80 cwt
WCY... 5.70 cwt
RCY... 5.00 cwt
WHITE FOOD CORN... 6.85 cwt
MILO... 4.07 cwt
SOYBEANS... 7.00 cwt
NEW WHEAT... 3.58 cwt

98%
Prices January 31, 1989
MARKETS COURTESY OF FARMERS CO-OP ELEVATORS
Muleshoe, Texas
272-4335

HOMESTEAD EXEMPTIONS



CAN LOWER THE PROPERTY TAXES ON YOUR HOME

A homestead Exemption

lowers the property taxes on your home by lowering its taxable value. For example, if your home is valued at \$50,000 and you receive a \$5,000 homestead exemption, your home will be taxed as if it were worth only \$45,000.

You qualify

for a homestead exemption if you owned your home on January 1 and used it as your primary residence on January 1. It doesn't matter whether your home is a house, a condominium or a mobile home.

Exemptions are available

to all homeowners on their school taxes. Additional exemptions are available to homeowners who are disabled or age 65 or over. Other exemptions may be offered to homeowners by school districts, counties, cities, and special districts. All taxing units offer exemptions to disabled veterans.

Apply to

your local appraisal district office at the address shown

Bailey County Appraisal District

104 E. Ave C 272-5501

below for all exemptions you may qualify for. Application forms are available at this

If you received a homestead exemption on your present home in 1988, you won't need to apply again for 1989 unless the chief appraiser requires you to reapply.

However, if you passed your 65th birthday or became disabled before January 1, file a new application to receive the additional exemptions.

If you haven't received an exemption on your present home, or if you've moved to a new home, make a new application for 1989.

The deadline

for applications is April 30, 1989. Contact your appraisal district before then if you need more time.

For more information, get a free copy of the pamphlet, *Taxpayers' Rights, Remedies, Responsibilities*, at your appraisal district office or from the State Property Tax Board in Austin.

Sale

\$64.95 SALE PRICE

-\$10.00 MANUFACTURER'S REBATE

\$54.95

YOUR COST AFTER REBATE

Save. Evans Jewelry

416 Main 762-0410
HURRY! REBATE ENDS MARCH 10, 1989

ADDITIONAL MARKDOWNS!

SALE PRICE

Take an extra

25% Off

Bentley's

Yellow Ticketed Merchandise

Sorry...no layaways on clearance merchandise. Applies only to winter merchandise in stock. no special orders.

Does Not Include Chicago Merchandise
Watch For Yellow Sign Toppers

Merchandise from our Chicago store acquisition has recently been added!

Save 75% and more on this special collection of high quality clothing!

Hurry...limited time only.

Bentley's

SMART FASHION

MULESHOE
110 Main 272-4119
Open Mon-Sat
9-6

Wedding Shower Honors Mrs. Shipman



DEANA SHIPMAN

Alpha Zeta Pi Sorority Plans Valentine Dance

Alpha Zeta Pi Sorority held its first meeting of the year on January 3 at the home of Starla Ellis. She and Mary Stegemoeller served a meal of baked potatoes with a choice of butter, sour cream, bacon, cheese and chives as toppings. Pumpkin cake with or without icing was offered for dessert.

Rhonda Myers, president, thanked the members for their participation in the Christmas party for a class at Dillman Elementary, for taking the gifts to the Christmas family and for helping at the youth New Year's Eve Dance, sponsored by Beta Sigma Phi City Council.

It was announced that the Beta Sigma Phi Valentine's Dance will be on February 11 from 8 p.m. to 1 a.m. at the Muleshoe Country Club. Cost of the dance will be \$10 per couple or \$5 a person. Money from the dance will go toward a charitable project.

The next meeting will be held in the home of Lori Davison.

Mrs. Ellis presented a program on stress and the members present took a "stress test".

Those present were Pam Atwood, Cindy Barrett, Stephanie Barrett, Shelli Carpenter,

Shelly Carver, Starla Ellis, Rhonda Myers, Lyn Vandiver, Staci Burris, Leslie Dale, Leslie Denney, Brenda Hawkins, Mary Stegemoeller, Connie James, Sandy Watson and Lisa Whalin.

The sorority also met on Jan. 17 at 7 p.m. Chicken casserole, tossed salad with dressing, hot rolls and chocolate ribbon cake was served by Lori Davison, in her home.

Pam Atwood, vice-president, told the pledges of their pledge test on March 24. Mrs. Atwood will give a sample test out to pledges at the March 7 meeting. President Rhonda Myers reminded the chapter of the Valentine's Dance set for Feb. 11.

A Beta Sigma Phi City Council meeting will be held on February 1 at 5:30 p.m. at the Old Corral, and all council members are urged to attend.

Members voted on chapter sweetheart to be announced at the dance.

Ms. Davison gave a program on how to make your own giant Christmas card for a front yard decoration.

Those in attendance were Pam Atwood, Cindy Barrett, Shelli Carpenter, Stephanie Barrett, Lori Davison, Starla Ellis, Lyn Vandiver, Rhonda Myers, Leslie Dale, Leslie Denney, Debbie Eblen, Brenda Hawkins, Mary Stegemoeller and Lisa Whalin.

AARP Holds

Regular Monthly

Meeting

The regular monthly meeting of chapter 3169 of A.A.R.P. was held Friday, January 27. Leon Lewis gave the opening prayer.

It was reported that 24 members and seven guests enjoyed a covered dish luncheon. Special guest were the Gospel Notes who entertained with gospel singing.

Officers for the new year were installed by Pauline Guinn. These officers include: Sammy Ethridge, president; Clara Lou Jones, vice-president; Dorothy Bowers, secretary; Muriel Lewis, treasurer.

The remaining business was conducted and was adjourned by conducted and the meeting was adjourned with a prayer by Buster Kittrell.

The next meeting will be Feb. 24 at 11:30 a.m.

Never, no never, did nature say one thing and wisdom say another. —Edmund Burke.

Nature encourages no looseness, pardons no errors. —R.W. Emerson.

The home of Lynne Box was the scene of a wedding shower Sunday, January 29 honoring Deana Shipman.

Sherri Shipman, Deana Shipman and Lynne Box greeted the guests as they arrived between the hours of 2 and 3 p.m. Guests were registered by Nancy Barnhill.

Bobbie Dunham and Louvenia Garlington served punch, coffee and cookies from brass appointments.

The serving table was covered with an ecru antique crochet table cloth with embroidered insets.

Special guests included Sherri Shipman, mother of the groom.

The hostesses gifts were a microwave and stand. Hostesses for the occasion included: Joyce Holmes, Louvenia Garlington, Sharon Grant, Lynn Box, Bobbie Dunham, Janette Burden, Linda Nowell, Doris Scoggins, Sandy Chitwood, Nancy Barnhill, Sandy Turner, Carlean Hamilton, Sandy Peterson, Frances Bruns, Judy Moore, Anna Copeland, Jan Pierce, Polly Oliver, Freda Long, Linda Elder and Genice Atkins.



WJHS STUDENTS PARTICIPATE IN READING PROGRAM--Receiving special recognition Monday afternoon were the students who participated in the Bluebonnet Reading Program, then voted on their own favorite books from the 20 selections offered. Three of the students' names were drawn to be included in a special drawing in Houston, where the authors of 'favorite books' will be honored in the near future. (Journal Photo)

Students Participate In Bluebonnet Program

Forty one students from Watson Junior High School recently participated in the Blue-

bonnet Reading Program and voted on their favorite book.

WJHS Librarian Jane Rudd explained, "The purpose of the reading program is to encourage Texas children to read more books, to explore a variety of current books, to develop powers of discrimination and to identify their favorite titles through the voting process."

Certificates were presented to the students who participated. From this group, two students were selected by drawing, to represent WJHS in a drawing in Houston. If selected in that drawing, the student will be involved in the presentation of the award to the winning author at a luncheon during Texas Library Convention, April 13, in Houston.

Students winning the local drawing were Jason Osuna and Julie Gilliland, with Lance Latham being named alternate.

Mrs. Rudd also said Bluebonnet books consist of a list of 20 books, chosen each year for grades three through six. To be eligible to vote, each student must read or listen to five books read aloud from the list.

Students participating in the Bluebonnet Reading program this year, and voting for their favorite included:

Chad Page, Kourtnee Magby,

Anna Mendoza, Naomi Fernandez, LaTonya Payne, Mikki Bowen, Chris Edwards, Gregoria Marrufo, Heather Villalobos, B. J. Vasquez, Jimmy Gauna, Rashia Kirven, Jason Osuna, Jason Barrett, Russell McGuire, Maria Corrales, Chris Page, Josh Lindt, Todd Shipman and Dink Pitcock.

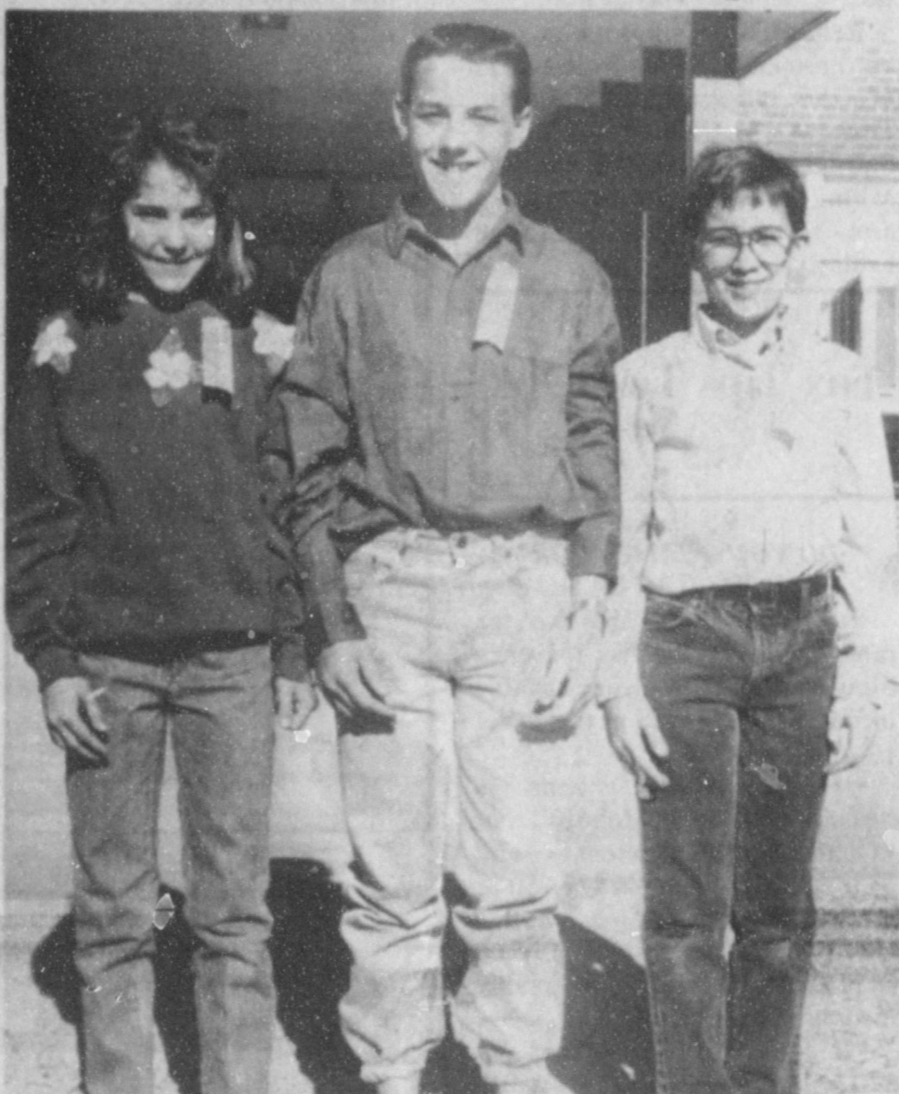
Also, Julie Gilleland, Nathan Noble, Ryan Clapp, Amanda Wolfe, Jeff Pope, Jimmy Bonhjam, Brent Lingnau, Jonathan Flores, Cindy Hurtado, Jenny Gloria, Jose Mendoza, Monica Chavez, Jason Carlson, Mandy Braddock, Kristi Turner, Jackie Burciago, Gilbert Castorena, Lance Latham, Nathan Nelson, Manuel Rubio and Efrin Corrales.



Best of Press

It is Marriage is love parsonified. —Gosports-Pensacola, Fla.

Nice Trick Personality consists of acting natural and impressing people at the same time. —Herald, Dubuque, Ia.



WJHS STUDENTS TOP WINNERS--Monday, when the names were drawn for Watson Junior High School students to be represented in a drawing at Houston, these were the winners. They are, from left, Julie Gilliland; Lance Latham, alternate and Jason Osuna. They participated in the Bluebonnet Reading Program. (Journal Photo)

MISSISSIPPI MUD CAKE

1 1/4 Cps. strong coffee, 1/4 Cp. dark rum, 5 1-oz. squares unsweetened chocolate, 1 CP (2 sticks) butter or margarine, 1 tsp. baking soda, 2 eggs, 2 Cps. sugar, 1 tsp. vanilla, 2 Cps. flour, and 1/8 tsp. salt

Place coffee and rum in a saucepan and heat to a simmer. Add the chocolate and butter or margarine. Cook, stirring occasionally, until both are melted.

Remove from the heat. In a large bowl, beat the eggs. Gradually beat in the sugar until the mixture is thick. Beat in the vanilla and the chocolate mixture. Turn the batter into a greased and floured tube pan. Bake in a 275 F degree oven for 1 1/2 hours, or until the cake tests done with a toothpick. Transfer to a rack to cool. Yields 16 servings.

FEET HURT?

DR. PATRICK CRAWFORD
Podiatrist (Foot Specialist)

PROVIDING THE MOST UP-TO-DATE TREATMENT FOR ALL TYPES OF FOOT DISORDERS INCLUDING

- Arch Pain
- Bunions
- Calluses
- Corns
- Flat Feet
- Hammertoes
- Heel Pain
- Nail Problems
- Sports Injuries
- Work Injuries

Amarillo Foot Clinic 2913 S. Georgia St

Offices also in Borger and Pampa

For Appointment Call Collect (806)358-7363

ANNUAL CLEARANCE SALE

50% REDUCTIONS

MERLE NORMAN STUDIO

Latrell's FASHIONS

1519 W. Amer. Blvd.

272-3159

WHY WAIT FOR YOUR TAX REFUND WHEN YOU CAN GET YOUR MONEY FAST!

Use H&R Block's Rapid Refund Program

It's a loan against your expected federal income tax refund. Available whether H&R Block prepares your tax return or not.

IT'S FAST! H&R BLOCK

For more details or to see if you qualify call H&R Block now.

BROWN BAG IT!

2 REGULAR BURGERS 2 ORDERS OF FRIES 2 MEDIUM COKES*

Perfect for carry-out convenience or enjoying in your car! Just head to your nearest Sonic Drive-In and tell 'em you want to Brown Bag It!

\$3.99 PLUS TAX

(Junior Brown Bag...\$2.49)

SONIC 1633 W. American Blvd.
272-3998

Muleshoe Journal

Established February 23, 1924. Published by Muleshoe Publishing Co., Inc. Every Thursday at 304 W. Second, Box 449, Muleshoe, Texas 79347. Second Class postage paid at Muleshoe, Texas 79347.

Member NATIONAL NEWSPAPER ASSOCIATION
WEST TEXAS PRESS ASSOCIATION
PANHANDLE PRESS ASSOCIATION

L.B. Hall - President & Publisher
Sammy Hall - Vice-President & Circulator
Clara Williams - News
Evelene Harris - Society

SUBSCRIPTIONS
Muleshoe Journal and Bailey County Journal
Bailey and Surrounding Areas
Muleshoe Journal and Bailey County Journal
Elsewhere in Texas \$14.75
Muleshoe Journal and Bailey County Journal
Outside of Texas \$16.50
Yearly by Cash \$12.50
Advertising rates listed on application

1104

American Made For Comfort.

Extra narrow to extra wide
SIZES 6-15/A, B, C, D, E, EEE
Sizes/widths vary by style
MADE IN U.S.A.

Fair Dept. Store
272-3500

RED WING SHOES

Mrs. Lepard, Kate Honored With Shower

The home of Joan Lewis was the scene of a baby shower Saturday, January 28 honoring Kay and Katherine "Kate" Amber Lepard.

Guests were greeted between the hours of 2 and 3:30 p.m.

Following the nursery theme, the tables were decorated with red, white and blue bears.

Crystal appointments were used to serve an assortment of cookie bars. Hot coffee and tea were also served. The honoree's corsage consisted of navy and white teddy bear with navy hearts.

Special guests included: Mary Lindsey and Dixie Lepard, both of Brownfield and grandmothers of Kate.

The hostesses gifts were a Fisher Price carseat, Graco stroller and animal mobile.

Hostesses for the occasion included: Joan Lewis, Charlotte Field, Hollye Hooten, Doris Vandiver, Alice Liles, Glenda Trussell, Marilyn Wilson, Lyn Vandiver, Jeana Littlefield, Glenda Dale, Leslie Denny, Diane Brown and Khristi Phelps.



KAY LEPARD

CALENDAR OF EVENTS

FEB. 2-8

THURSDAY, FEB. 2 ODDFELLOWS LODGE 7:30 p.m. HOBBY CLUB 2 p.m. KNIGHTS OF COLUMBUS 8 p.m. TOPS CLUB 6 p.m. COMMISSIONERS COURT 10 a.m.	MONDAY, FEB. 6 AAUW 7:30 p.m. MULESHOE 4-H CLUB 7 p.m.
FRIDAY, FEB. 3 KIWANIS CLUB 6:30 a.m.	TUESDAY, FEB. 7 ATHLETIC BOOSTERS 7:30 p.m. ALCOHOLIC ANONYMOUS 8:30 p.m. ALPHA ZETA PI 7:30 p.m. XI OMICRON XI 7:30 p.m. EASTERN STAR 8 p.m. REBEKAH LODGE 7:30 p.m. ROTARY CLUB 12 noon
SATURDAY, FEB. 4 ALCOHOLIC ANONYMOUS 10:30 a.m. AL-ANON 8:30 a.m. ALATEEN 8:30 a.m.	WEDNESDAY, FEB. 8 LIONS CLUB 12 noon
SUNDAY, FEB. 5 GUADALUPANA SOCIETY 2 p.m.	

AMALIE

Better than it has to be.®



Wiedebush and Company is having another Truckload Oil Sale.

Amalie Products

Now

10% Off Regular Price

Buy 10 Cases, Drums, or 5-Gallon Cans
Get One Unit FREE!

Good Dec. 1, 1988 - Jan. 31, 1989

Wiedebush & Co.

1620 W. American Blvd.

272-4281

Keeping Records Necessary

To Develop Workable Plan

Do you know exactly how much money comes into and goes out of your household? If you do not, you are among the many Americans who do not keep good financial records.

This is the fourth and final article in the series on financial management.

Keeping records may not be enjoyable to you, but it is necessary if you wish to develop a workable spending plan. It must be a cooperative effort between all members of your household. The person best qualified should assume the major responsibility of keeping the records. However, everyone must cooperate and contribute.

To master recordkeeping, you must first organize a work space. You will need a table and facilities for storing records. Second, develop a recordkeeping system. This is a step-by-step procedure that helps you forecast income, estimate money needed for goals, plan spending, record how money was used and review family money management. Develop a simple system to get

you started in your recordkeeping. Then, as you use it, make changes in it if necessary.

Some suggestions for getting started with a recordkeeping system include:

Keep all cash register tapes and receipts for bills paid in one place (box or drawer) until they can be filed or recorded in a monthly recordkeeping book or on a computer. Be sure that each tape or receipt identifies the amount of money spent and for what (groceries, personal items, household items).

Have each person record money spent and its use, then give it to whomever is keeping the monthly records.

Have each person record money spent and its use, then give it to whomever is keeping the monthly records.

Decide which family member(s) will pay the bills and record the spending plans and expenditures. Also decide when the recording will be done--weekly, every two weeks or monthly. Accurate plans and records must be kept for all money. Otherwise,

you cannot spot leaks and improve your finances.

Set a specific time--once a month or more frequently in the beginning--for a family council to evaluate goals, spending plans and records of how money was used and to plan spending for the next month.

Along with your spending plan, your recordkeeping system is one of the two primary tools to help you control your money and be happy with its use. These two tools can give your family an opportunity to plan together how money will be spent and to establish financial goals for the whole family.

If you have questions or would like additional information about financial management, contact your local county Extension Home Economist, Kandy K. McWhorter.

Hopefully

The one thing that most men can do better than anyone else is to read their own writing.

—News, N.C.

FEBRUARY CLEARANCE

50% OFF

Take an additional
50% Off all
previously reduced
yellow ticket fall
and winter sale
merchandise.
You'll find
savings in all
departments!

ALL YELLOW TICKET ITEMS

Does not include white ticketed merchandise. Applies only to yellow ticketed fall and winter merchandise. Intermediate markdowns may have already been taken. Sorry, no layaways.

ANTHONY'S

Example

Regular 19.99
Yellow
Ticket 14.97
NOW 7.47

ANTHONY'S™

We're Good at Making You Look Great!

Store Hours:

Mon. - Sat. 9 A.M. - 6 P.M. Closed Sunday

321 Main

Muleshoe

272-3178



THREE WAY GRAND CHAMPION STEER--Russell Polard, student at Three Way School, exhibited the grand champion steer.

MHS Debaters

Cont. from Page 1

"Lots of people didn't want it," they said, "especially people in the south didn't believe blacks deserved their civil rights."

"At times, such as many things the governments gets into, they tend to over-react."

They said our government does govern a lot, but still governs less than Communist Russia.

"Values are what we hold for ourselves, what we think is important," said Jason Clarkson,

Three Way...

Cont. from Page 1

Kyle Kindle and Daniel Reeves.

SPOT

Chris Locke, Jarrod Sowder, Robin Tooley, Russell Pollard, Joshua Tooley and Joshua Tooley.

YORKSHIRE

Marvin McCaul, Daniel Reeves and Scott Pollard.

CROSSBREDS

Sheila Tucker, Lisa Lowe, Chris Soliz, Marc Tucker, Joshua Tooley, Kyle Kindle and Robin Tooley.

as he compared a person's values to the Rotary 4-Way Test.

Another question asked was "Does government interfere so much that it interrupts our values and our freedom?" Most of the group tended to not think that way.

When Dr. Bruce Purdy was asked what decisions he had made during the last couple of days, he responded, "The very nature of my business is to make multiple decisions daily for the well-being of people, based on my medical training." The young men said this projected his good will toward people and that decisions are being made where nobody will be harmed and everybody will be helped.

According to Dr. Tom Bonds, "most decisions made with the government, or by the government, is with the intent of being for the betterment of a community."

Brandon, Jason and Adelaido said this is the way they work up two or three topics for future debates. "We have to try to open

up and argue both ways," they said.

The debaters were introduced by Kerry Moore, who was in charge of the program for the day.

Rotary President George Nieman said the Fine Arts Boosters said they will be operating the concession stand themselves during the district track meet in Muleshoe in March. The Rotarians decided to check into alternative ways to help provide food for the many tracksters, coaches and others who will be in Muleshoe that day.

President Nieman also said Rotary needed to be thinking about a fund raiser. He said some members preferred an assessment instead of a fund raising project.

The president said Rotary funds are used for the Diabetic Camp (\$300) and for Camp RYLA each summer for a boy and girl (\$275 each).

Jerry Hicks was the winner of the Polio Plus drawing.

Rotary guests included the three guest speakers, Norma Jean DelToro, student guest; Brett Pylant, Kevin King, Amy Montgomery, Connie James and Duane Castleberry.

Lazbuddie...

Cont. from Page 1

Lori Bradshaw, Brian Dosier and Casey Bradshaw.

MIDDLE WEIGHT

Justin St. Clair, Jason Thomas, Dawn Weir, Tyler Rice, Dawn Weir and Lori Bradshaw.

LIGHT HEAVY WEIGHT

Dustin Weir, Brett Thomas, Julie McDonald, Brice Redwine, Kirk Jesko, and Joshua McDonald.

MIDDLE HEAVY WEIGHT

Dawn Weir, Brice Redwine, Mandy Magby, Tyler Rice, Gina Jarman and Jason Thomas.

HEAVY WEIGHT

Ginger Jesko, Adam St. Clair, Casey Bradshaw, Brett Thomas, Jerry Dosier and Mandy Magby.

LAMBS

FINE WOOL

LIGHT WEIGHT

Casey Russell, first and breed champion; Dawnda Magby and Mandy Magby.

HEAVY WEIGHT

Casey Russell, Jody Copp, second and reserve breed champ and Seth Black.

FINE WOOL CROSS

LIGHT WEIGHT

Sheldon Mason, first and breed champion; Ginger Jesko, Casey Russell and Seth Black.

HEAVY WEIGHT

Casey Russell, first and reserve breed champion; Jana Vise and Holley Morris.

HAMPSHIRE

Sheldon Mason, first and the breed champion; Ginger Jesko, Jana Vise and Mandy Magby.

HEAVY WEIGHT

Shana Foster, Krista Smith and Dawnda Magby.

SUFFOLK

LIGHT WEIGHT

Seth Black, first and breed champion; Jodi Morris, Jody Copp and Shana Foster.

HEAVY WEIGHT

Dawnda Magby, first and reserve breed champion; Ginger Jesko, Sheldon Mason and Holley Morris.

SOUTHDOWN

Edward Terry, first and breed champion; Jodi Morris, second and reserve breed champion; Edward Terry, Jody Copp and Jody Copp.

City Police Report

Either the issuance of bad checks, or persons arrested for the issuance of bad checks, kept the Muleshoe City Police Department very busy during the past week.

Five persons were arrested on charges of issuing bad checks. They paid fines and restitutions and were released.

Charges were filed and warrants issued for six persons for the issuance of bad checks.

In other action, three thefts were reported: along with one person arrested for no drivers license and expired license plates and two criminal mischief reports were received, along with one report of criminal trespassing, and one report of harrasment. One person was arrested for public intoxication and one forgery report was received.

Sheriffs Office Report

Driving While Intoxicated certainly led the list of those booked into the Bailey County jail during the month of January, at 21.

Also, eight persons were jailed for public intoxication; two on capias; two for investigation of burglary; and one each for issuance of bad check, burglary of a habitation, DPS warrants, revocation of probation, out of county warrant, hindering apprehension and one for burglary of a coin machine. Two persons were jailed for misdemeanor theft.

JANUARY DWI ARRESTS

Duran Velasquez, Manual A. Lujan-Perez, Patrick Yeager, Gilbert Reyes, Andrew Arguello, Reynaldo Reyes, Ernesto Hurtado, Rolando Saucedo, Jose Torres and Ruben Barrera.

Also Bobby Ray Dodd, Alvin Dean Lawson, Adam Rios, Erasmo Castillo, Roy Quiroz, Cesario Rodriguez, Jose

G. Alvarado, Brent Allen Mote, Solomon Madrid, R. G. Bennett IV and Macario Maldonado.

Muleshoe...

Cont. from Page 1

ment at Eastern New Mexico University-Clovis, announced the Dean's Honor Roll for the fall semester.

The students listed below completed twelve or more hours of credit at the Clovis campus only and earned a grade point average of 3.5 or better.

Students from Muleshoe on the Dean's Honor Roll are Russell D. Daily, Tracy M. Daily, and Zanna L. Huckaby.

Three Way's volleyball tournament is scheduled for February 9-10-11.

T-shirts will be presented first, second and third place.

Applications may be obtained by calling Jarod Sowder at 946.3617.

Nature never makes excellent things for mean, or no uses.

—John Locke.



Congratulations



To The Winning Champions

...To the Farming Youth and 4-H & F.F.A.

Members on their efforts towards a good

Livestock Show and to all who worked on it.

Muleshoe Livestock Auction, Inc.

272-4201

Muleshoe, TX.

TRIUMPH

TRIUMPH SEED CO., INC.

Food Grade Corn

1595

"SUPER CORN"

- Proven seedling vigor and cold tolerance.
- High food corn quality with excellent yields.
- Grows fast and stays healthy.

1650FG

"WHITE COB YELLOW"

- Bred for high yield on food corn acres.
- Very lush green growth and stay green.
- Excellent food corn quality with very heavy test weight.

1990W

"EARLIER SEASON WHITE"

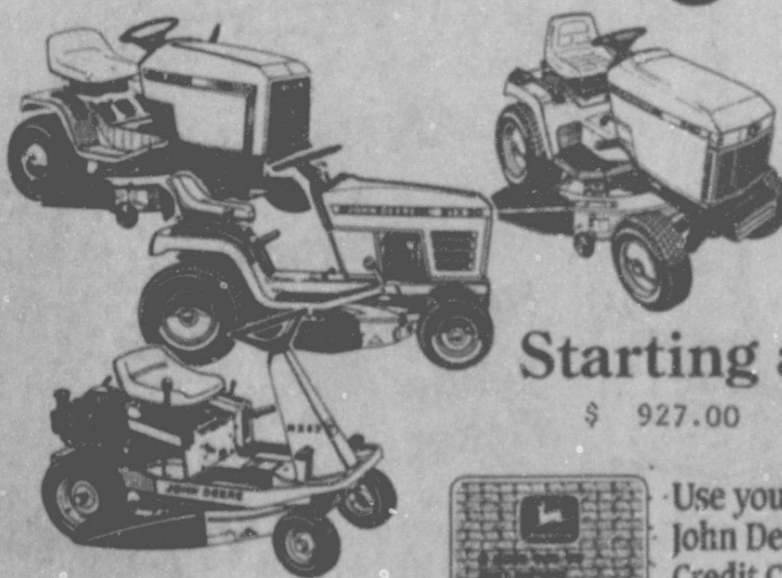
- Food corn quality and kernel texture excellent.
- Outstanding productivity and very good stalk.
- Dries down about 5 days quicker than other whites.

Wiedebush & Company

272-4281

1620 W. American Blvd.

Winter Sale Bonanza! Put the freeze on financing



Starting at \$ 927.00

Use your John Deere Credit Card

There's no better time to buy a John Deere than right now. Get a great price on John Deere riding mowers and lawn tractors, PLUS waive financing charges until March 1, 1989, with no payments until April 1, 1989.* So, spring into spring with the right products at the right price... right now.

Nothing Runs Like a Deere®

DENT & CO.

Hwy. 84 East
Muleshoe, Tx 806-272-4296

*Qualified purchases 19.8% A.P.F. and 50% minimum monthly finance charge after March 1, 1989, except as otherwise required by law. 30% down payment required.



MULES' TALE



Co-Editors Justine Hanes & Esther Acosta

Thursday, February 2, 1989

Official Publication of Muleshoe High School Written and Edited by Students of the Muleshoe Schools

Mighty "M" Band Members Make All-Region

SCAC Club News

The Student Community Action Club met on January 19, 1989 at the home of Lisa Noble. President Christy Mata asked Selina Gonzales to lead a prayer. Secretary Lisa Noble read the minutes of the previous meeting and summarized the Christmas activities.

Selina then introduced the guest speaker, Kerry Moore. Mr. Moore was presented a white carnation boutonniere by the members for being this month's citizen of the month. Mr. Moore told about himself and about being a teacher who is active in the community. This was followed by a question and answer session with the members asking questions on such things as One Act play, the Muleshoe Production Company, and the importance of community involvement.

Lisa then read a card of thanks and encouragement from the History Book Committee. It was announced that the club would sponsor the basketball concession stand of January 27. The members were also reminded that members would be needed as porters for the tour group which will visit in May through June. Nominations for citizen of the month were accepted.

The next meeting was set on Thursday, February 16 at Leal's restaurant. The members were asked to think about a possible community activities before the next meeting.



ALL REGION BAND

SIGN UP NOW

Visit Aggie Land this Summer
Fabulous, Fun Filled Days
12 Days--4 Nights

ITINERARY:

- 1st Day--Depart Dallas/Ft. Worth International Airport at 4:35 a.m. All passengers travel FIRST CLASS aboard Air Aggie Uni-engine Jumbo Jet. Parachutes that open on impact will be issued to all passengers!
- 2nd Day--In Air
- 3rd Day--In air
- 4th Day--In air
- 5th Day--Arrive College Station 10:44 p.m. at the fantastic Aggie Hilton-Basement Annex for dinner consisting of cornbread, with buttermilk extra.
- 6th Day--After chitterling

breakfast, board the special tour flatbed truck (chair optional) for complete tour of City of College Station (9:30-9:40 a.m.). Then free time for shopping, followed by a fantastic seven course meal (one armadillo and a six-pack).

Varsity Baseball

First Time

For Muleshoe

This year Muleshoe High School will have a varsity baseball team. Coach Anderson, former pitcher for the Whitesox will be coaching the team. When it was announced that there would be a baseball team, several students turned in permission slips. As many as forty-eight students, ranging from freshmen to seniors, are interested in playing. Practices began on January the thirtieth, at the Babe Ruth park.

Since Muleshoe has never had a team before, the season will be a tuff one. However, Coach Anderson is looking forward to an exciting season, and so are the students. Practices will be held everyday at 4:00. Nineteen students will be chosen to represent the Muleshoe Baseball team. Coach Anderson states that everyone trying out will have an equal chance to make the team. So, good luck to all those trying out!

7th Day--Tour the country side in the relaxing comfort of a rebuilt International Combine. Some continue on by tractor to Brian (optional).

8th Day--Back to College Station for a tour of the campus (both buildings). Everyone will get to see the book in the library.

9th Day--Board the now repaired Air Aggie Uni-engine Jumbo Jet to D/FW. (Only three quick stops: two for fuel and one for directions.)

10th Day--In Air
11th Day--In air
12th Day--Arrive D/FW between 9:00 a.m. and midnight depending on weather conditions and fuel leakage.

Only \$49.50 per couple,
\$69.27 single

MHS Students

Receive Honors

Students at Muleshoe High School recently selected their choices for Mr. and Miss MHS and Prince and Princess of Friendship. Nominees in each category reflect the large number of students who are well liked and respected in MHS. The final tally, however, revealed Jeff Hicks and Michelle Cox as choices for Mr. and Miss MHS. Daniel Olivas was selected as Prince of Friendship; a tied vote placed Selina Gonzalez and Amber Green both as Princess of Friendship. Runners-up for Mr. and Miss MHS are Salvador Olivarez and Lisa Noble, and Andy Langfitt was runner-up for Prince of Friendship. Because of the tied vote, a runner-up for Princess was not named.

Jeff is the son of Jerry Hicks and Shirley Hicks; Michelle's parents are Mr. and Mrs. Beth Cox; Daniel is the son of Jose and Paul Olivaz, but he currently resides with Mr. Jane Foster; Selina is the daughter of Ana Gonzalez; Amber's parents Mr. and Mrs. Corky Green; Andy is the son of Mr. and Mrs. Herb Langfitt; Lisa's parents are Sandy and Deborah Noble, and Salvador is the son of Mr. and Mrs. Salvador Olivarez.

Concurrently with the voting for student-selected honors, the faculty at MHS selected the Best All-Around students, Jeff Hicks and Lisa Noble. They also chose Jaime Reyes and Justine Hanes as the Best Citizens of MHS. Runners-up in these categories include Andrew Espinoza and Michelle Cox as Best All-Around and Daniel Olivas and Norma Jean Del Toro as Best Citizens. Parents of these students include Mr. and Mrs. Camillo Espinoza, Felix and Virginia Reyes, Frank and Dorothy Hanes, and Mr. and Mrs. Rey Del Toro.

It takes patience to improve the human race and it also takes time.

The All-Region band is a band combining students from several bands into a single performing unit. In our particular region, we have five schools which compete for the AAA North Zone South Plains Honor Band. These schools include Muleshoe, Littlefield, Lubbock Cooper, Roosevelt, and Floydada. Students from each of these bands compete for ninety-eight positions in the Honor band. The students audition for the band through a tryout judged by a panel of two to three judges in our district. A set instrumentation is decided upon by the directors prior to the audition, and the students performing the best on their tryout qualify as a member of the All-Region band.

The Muleshoe Mighty "M" band had fifty-seven students tryout for the All-Region band. Out of the fifty-seven that tried out forty-one made it. Mr. Heidel, the Mighty "M" band's director, is extremely pleased with the results of Saturday's tryouts. Not only did Muleshoe host the tryouts, but we placed the largest number of students in the band. During the past three

years, The Mighty "M" band has had the largest number of students in the All-Region band of any competing schools, with 47, 45, and 41. The number has decreased yearly, but so has the overall size of the All-Region band. This year, the All-Region band is thirty members smaller than the one of last year. In essence, Muleshoe is putting fewer people into the band, but taking a larger percentage of the band's total membership. Last year the Mighty "M" band had 35 percent of the total All-Region band, but this year they have 41.8 percent of the total.

Mr. Heidel, band director, is especially satisfied with this year's band. This year's Mighty "M" band made a first division at the Texas Tech University Marching Festival, a first division at the UIL District Marching Contest, and now has placed the largest number of students in the AAA North Zone All-Region band for the third straight year. The Mighty "M" band will be competing in April for their fifth straight sweepstakes trophy.

History Of Jimmy Dale Black Award And 1989 Recipient

Jimmy Dale Black was a MHS graduate. During his high school years, he was an active participant of the F.F.A. organization and here he displayed great leadership and involvement. For his efforts he held many honors and offices. After his high school years, he still displayed a great concern for the betterment and the achievements of others in F.F.A. When his son, Tom Black, was high school age he carried on the tradition of Black competitiveness, and followed in his father's footsteps.

Due to the time, effort and hardwork Jimmy Dale contributed to the F.F.A. organization, many of his friend, relatives and people he had helped repay him each year by donating money to buy a plaque in memory of his efforts. This was begun in 1973 and today the tradition is still carried on, and his achievements are still remembered through the concern and caringness of the Muleshoe community.

His daughter, Becky Black, stated, "I hope his memory will continue, and his enjoyment of F.F.A. may also be experienced and cherished by others."

Holly commenced showing when she was only nine. Since then she has exhibited a wide range of different types and breeds of animals. In the past two years Holly has added steers to her usual showing of just

lambs and hogs. Besides her participation in the Bailey County Stock Show, Holly has also exhibited her animals at the State Fair in Dallas, El Paso, San Antonio, and Houston.

When asked what her favorite animal to show was, Holly replied with, "I enjoy showing lambs the most because you can control the animal. In showing steers, sometimes they get wild and you have no control over it. When showing lambs you actually have control of them, you have your hands on them. Showing hogs requires no hands. The person showing just walks along behind it. Lamb showing shows you have control of the animal, not the animal controlling the showmen."

Furthermore, she continued with, "The Jimmy Dale Black award is one of the highest awards given at the Bailey County Junior Livestock Show and I feel honored to receive it."

The Jimmy Dale Black award is given annually to a deserving young person who demonstrates exceptional ability in showmanship at the Bailey County Livestock Show. Holly Huckaby, MHS junior, received the award this year. Becky Black, senior at MHS, is the daughter of Jimmy Dale Black and both she and Holly shared their ideas with the Mule's Tale staff for this edition of the paper.



HOLLY HUCKABY, BECKY BLACK



JAIME REYES



JUSTINE HANES



LISA NOBLE



MICHELLE COX



SELINA GONZALEZ



JEFF HICKS



AMBER GREEN



DANIEL OLIVAS

MULESHOE AREA



Winter '89



BUSINESS DIRECTORY AND SHOPPING GUIDE

**WES-TEX FEED
YARDS, INC.**

Custom Cattle Feeding



Wes-Tex Feed Yards, Inc.

272-7555

Henry Insurance Agency, Inc.

"Serving All Your Insurance Needs"

111 W. Ave. B. 272-4581

KENNETH R. HENRY
CERTIFIED INSURANCE COUNSELOR
REAL ESTATE BROKER

Discover
**The Sweet Smell
of Success!**

Potpourri



**Muleshoe
Art Loft**



SILVER CHIC
Giving Grey Hair
New Meaning

New Look New Light
New Attitude New Opportunity

Ana's House Of Beauty
109 Ave. B. 272-4152



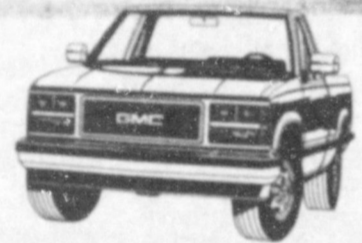
El Nuevo Leal's Restaurant

THERESA SPECIAL
Taco Meat Topped With
Melted Cheese, Lettuce,
Tomatoes & Guacamole.

\$4²⁵

31 Years Of Business In Muleshoe
Closed Mondays
1542 W. Amer. Blvd. 272-3294

ROBERT D. GREEN, INC.
"Pick-Up Truck Headquarters"



4WD Sierra SLX Series 1500 Wideside Pickup

2400 W. American Blvd. (806)272-4588


El Nuevo Leal's Restaurant, owned and operated by Jesse & Irma Leal, began business in May 1957. They specialize in serving the highest quality of Mexican food at the most reasonable price.

Following the family tradition, the Leal's children, Laura and Hector, have opened a Leal's Restaurant in Clovis, New Mexico.

**Pivot Products
Distributor, Inc.**

We're Your Complete
Irrigation Headquarters,
Specializing In
Low Pressure Drops & Accessories

W. Hwy. 84 272-5134



UAT services Inc.
319 E. American Blvd.
MULESHOE, TEXAS 79347

**Mobile Communications
Two-Way Radio Repair**

GARY PARKER Technician Muleshoe - 806-272-4888 Hereford - 806-364-7311



B & B Medical Supply



Glucometer

(806) 272-3707 (817) 663-2084
516 S. 1st ST. BOX 549
MULESHOE, TX 79347 QUANAH, TX 79252
MARK BENEDICT, C.R.T.T. Where the Patient is No. 1



CHIMICHANGA (Meat Burrito)
Deep Fried, Topped with Bear
Sauce and Cheese (With Chile
Con Carne 65¢ Extra)

\$3²⁵

Viola's Restaurant
2002 W. Amer. Blvd.
272-3838




Now you can get the same good food and service at two locations:

El Nuevo Leal's Restaurant
1542 W. American Blvd.
Muleshoe
3100 E. Mabry Drive
Clovis

**Higginbotham Bartlett
Comanche Peanuts**

1/2 Price
While Supply Lasts



"Quality & Service
At The Right Price"

272-3351 215 Main

Scoggin Ag Center, Inc.
**We Fix Flats
All Types!**

In Our Area Visit With Kearny Scoggin
At Scoggin Ag Center, Inc.

1532 W. American Blvd. 272-4613

**5 Locations
To Serve You!**

- *Clays Corner
- *Enochs
- *Muleshoe
- *Pleasant Valley
- *Old Griffith

Farmer's Co-Op Elevators

Pick-Up Seat Exchange
Complete Seat Overhaul



Replacement Springs Molded Carpets

**McCormick's
Upholstery and Drapery**
1009 S. 1st Muleshoe, Texas 79347
806-272-1660

**MHS
Honor Roll**

**MULESHOE HIGH SCHOOL
FIRST SEMESTER
HONOR ROLL**

SENIORS
Esther Acosta, Krystal Angley, Mary Lou Bastardo, Shelly Berry, Becky Black, Jason Brazeal, Debbie Brown, Jeremy Carpenter, John Chamberlain, Jimmy Cisneros, Carol Copley, Michelle Cox, Julie Crittenden, Norma Jean Del Toro, Andrew Espinoza, Troy Evins, Selina Gonzales, JoAnn Gutierrez and Justine Hanes.

Also Jeff Hicks, Kevin King, Clint Leonard, Matthew Madrid, Christy Mata, Christine McCune, Shawn Nieman, Lisa Noble, Jaime Olivarez, Joe Orozco, Shawn Rejino, Susan Rejino, Jaime Reyes, Dusty Rhodes, Mandy Robertson, Tim Shipman, Brandon Wilson and Chris Young

JUNIORS

Tessa Akens, Ronnie Gail Barrett, Jenny Bennett, Jason Clarkson, Kelly Conklin, Stephanie Cox, Virginia Espinoza, Sharla Evins, Michelle Finney, Leticia Garcia, Ad Godinez, Amber Green, Kimberly Harris, Amy Harrison, Holly Huckaby, Heather Hutton, Marcy Jaramillo and Jimmy Johnson

Also Walter Lackey, A.J. Liles, Jackie Luna, Lucy Marquez, Raymond Martinez, Candace McCune, Stacy McElroy, Amy Montgomery, Brenda Mudford, Brandon Mullins, Jeffery Noble, Gloria Orozco, Christy Pena, Frank Precure, Brett Pylant, Stacy Stroud, Tricia Underwood, Noel Vourazeris, Kendra Wilson, and Tisha Young

SOPHOMORES

Roger Baeza, Wendi Bland, Jeremy Bruns, Greg Combs, Sunny Davis, Brandi Estep, Jennifer Fagin, Blain Ferris, Hector Flores, Dayna Hamilton, Stacy Knowlton, Jesus Martinez, Jeff McGuire, Maryann Nunez, Richard Peterson, Burnley Riley, Collin Robison, Danny Rod-

riguez, Shawna Smith, Monica Swint, Colin Tanksley, Amy Turner, Marsha Wilson and Michael Wright

FRESHMEN

Maria Almanza, Mita Bhakta, D'Anne Box, Cory Collins, Tina Copley, Andy Crawford, Patricia Del Toro, Sheila Dinwiddie, Dustir Elliott, Jody Field, Ricky Flores, Jill Foster, Jason Harmon, Charla Holt, Corley Hutton, Erin Kelley and Shane Kirk

Also Galin Latham, Adam Lopez, Jill Noble, Steven Noble, Kevin Osuna, Adrian Pineda, Margarita Posadas, David Quintana, Michael Richardson, Lashelle Scoggin, Ronda Scott, Virgil Snell, Melissa Toombs, Mickey Trussell and Shea Wilbanks

**THIRD SIX WEEKS
HONOR ROLL**

SENIORS

Krystal Angeley, Mary Lou Bastardo, Shelly Berry, Becky Black, Jason Brazeal, Debbie Brown, Jimmy Cisneros, Carol Copley, Michelle Cox, Julie Crittenden, Norma Jean Del Toro, Diane Enos, Troy Evins, Selina Gonzales, JoAnn Gutierrez and Justine Hanes

Also Jeff Hicks, Kevin King, Clint Leonard, Matthew Madrid, Christy Mata, Christine McCune, Shawn Nieman, Lisa Noble, Joe Orozco, Yolanda Pena, Latonia Pruitt, Shawn Rejino, Susan Rejino, Jaime Reyes, Richard Ring, Mandy Robertson, Tim Shipman, Allan Vinson, Shannon Williams and Brandon Wilson

JUNIORS

Tessa Akens, Ronnie Gail Barrett, Jenny Bennett, Jason Clarkson, Kelly Conklin, Stephanie Cox, Virginia Espinoza, Sharla Evins, Michelle Finney, Leticia Garcia, Ad Godinez, Amber Green, Wendy Green, Michelle Gutierrez, Kimberly Harris, Amy Harrison, Armando Hernandez, Holly Huckaby, Heather Hutton, Marcy Jaramillo, Jimmy Johnson and Andy Langfitt

Also Clarence Lewis, A.J. Liles, Jackie Luna, Lucy Mar-

quez, Raymond Martinez, Brenna Matthews, Candace McCune, Stacy McElroy, Amy Montgomery, Dustie Moynihan, Brenda Mudford, Jeffery Noble, Gloria Orozco, Christy Pena, Frank Precure, Brett Pylant, Shonda Strahan, Stacy Stroud, Lisa Torres, Tricia Underwood, Noel Vourazeris, Kendra Wilson and Tisha Young

SOPHOMORES

Roger Baeza, Wendi Bland, Jeremy Bruns, Sunny Davis, Michelle Dent, Brandi Estep, Jennifer Fagin, Blain Ferris, Dayna Hamilton, Stacy Knowlton, Jesus Martinez, Jeff McGuire, Maryann Nunez, Richard Peterson, Burnley Riley, Collin Robison, Shawna Smith, Monica Swint, Colin Tanksley, Amy Turner, Marsha Wilson and Michael Wright

FRESHMEN

Maria Almanza, Mita Bhakta, D'Anne Box, Cory Collins, Tina Copley, Andy Crawford, Patricia Del Toro, Seila Dinwiddie, Jody Field, Jill Foster, Jason Harmon, Charla Holt, Corley Hutton, Shane Kirk, Galin Latham, Adam Lopez and Jill Noble

Also Steven Noble, Kevin Osuna, Ross Parish, Adrian Pineda, Margarita Posadas, David Quintana, Michael Richardson, Misty Sawyer, Lashelle Scoggin, Ronda Scott, Virgil Snell, Melissa Toombs, Mickey Trussell, Celia Villalobos and Shea Wilbanks

People who never make mistakes are poor companions.

Flattery can move mountains and gullible human beings.

NOTICE

"Advertisers should check their ad the first day of insertion. *The Journals* will not be liable for failure to publish an ad or for a typographical error or errors in publication except to the extent of the cost of the ad for the first day insertion. Adjustment for errors will be limited to the cost of that portion of the ad where the error occurred."

**Chet Edwards
Continues Goal
To Lt. Governor**

Having reported raising \$850,000 in the last fifteen months, Senator Chet Edwards has said he has made a major step toward formally announcing his intention to run for Lt. Governor. Edwards said, "In October 1987 I set a target of raising \$750,000 by the end of 1988. My goal was to establish strong credibility for a 1990 race for Lt. Governor. We have accomplished that goal."

Senator Edwards noted that he is very encouraged by the statewide contributions. "I am especially gratified that we raised significant contributions from all parts of Texas. It shows that I have a strong base of support throughout Texas," Edwards said. Senator Edwards' report shows he has raised money from Amarillo, Lubbock, El Paso, Laredo, Austin, Corpus Christi, Waco, Dallas, Houston, The Valley, Tyler, San Antonio and other cities.

"I believe the voters want positive, new leadership for Texas. With that message and hard work, I am increasingly convinced I could win the 1990 Lt. Governor's race. My strength has always been grassroots politics, not money. In 1978, at age 26, I came within 186 votes of defeating Phil Gramm for Congress, even though he outspent me five-to-one. In 1982, I was elected to the Texas Senate despite being outspent nearly three-to-one," Edwards said.

"Establishing fundraising credibility was the last major step toward my formal announcement for the 1990 Lt. Governor's race. The only question remaining is when I announce, and it is my intention to announce that in the near future," Senator Edwards concluded.

Larger debts sometimes force one into larger earnings.

Never underestimate your own ability; other people will do it for you.



FLIPPING FOR A POINT--Michelle Cox, No. 22, lofts the ball toward the basket in an attempt to make a point during the Mulette-Tulia Hornette basketball game in Muleshoe last Friday night. The Mulettes lost to the Hornets.



**ONE MINUTE
SPORTS QUIZ**

By Christian Thurlund

1. What was the score of the Clemson-Oklahoma Citrus Bowl game?
2. Who is Dennis McKinnon?
3. How did Tony Dorsett recently make headlines?
4. In what sport is Mario Lemieux well known?
5. The Boston Bruins recently played three Soviet

hockey teams. What was the outcome?

The Answers:

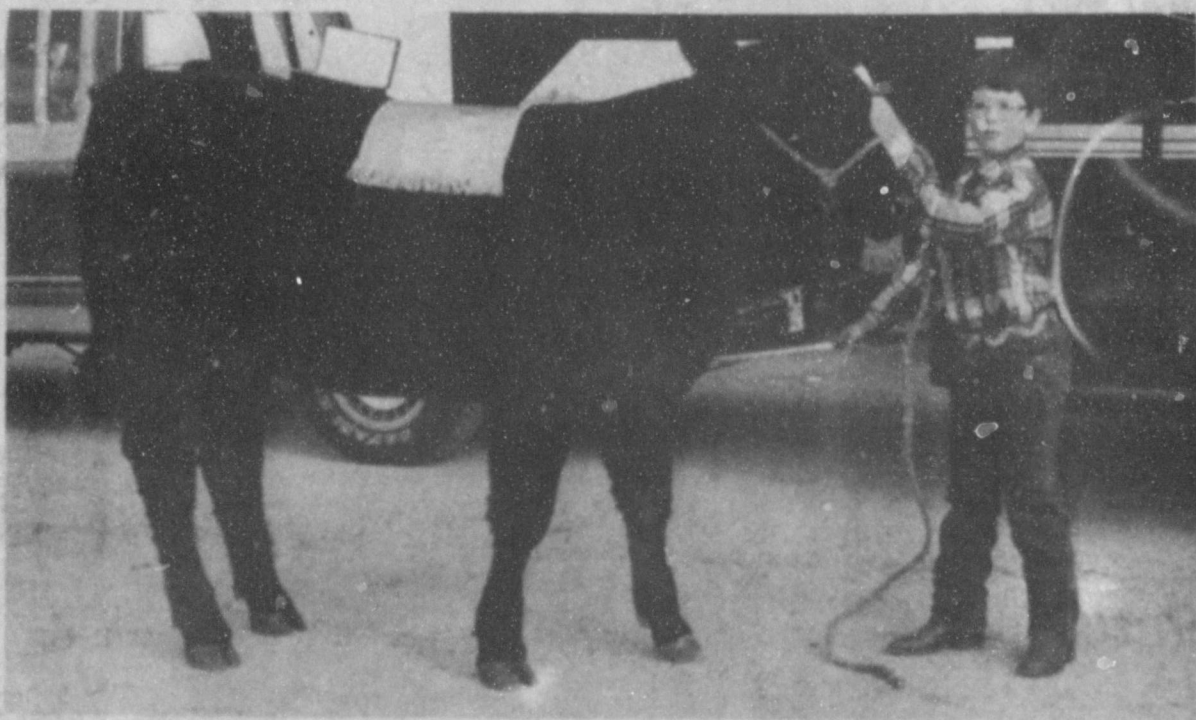
1. 13-6 Clemson.
2. Chicago Bears receiver.
3. He pleaded guilty to driving while impaired by alcohol.
4. Professional hockey (Pittsburgh Penguins).
5. The Bruins lost all three games.

Smart Scotchman

Two Scotchmen tossed to see who would pay for the dinner. The winner called, "heads." The loser called, "Fire!" and escaped in the confusion.

Congratulations

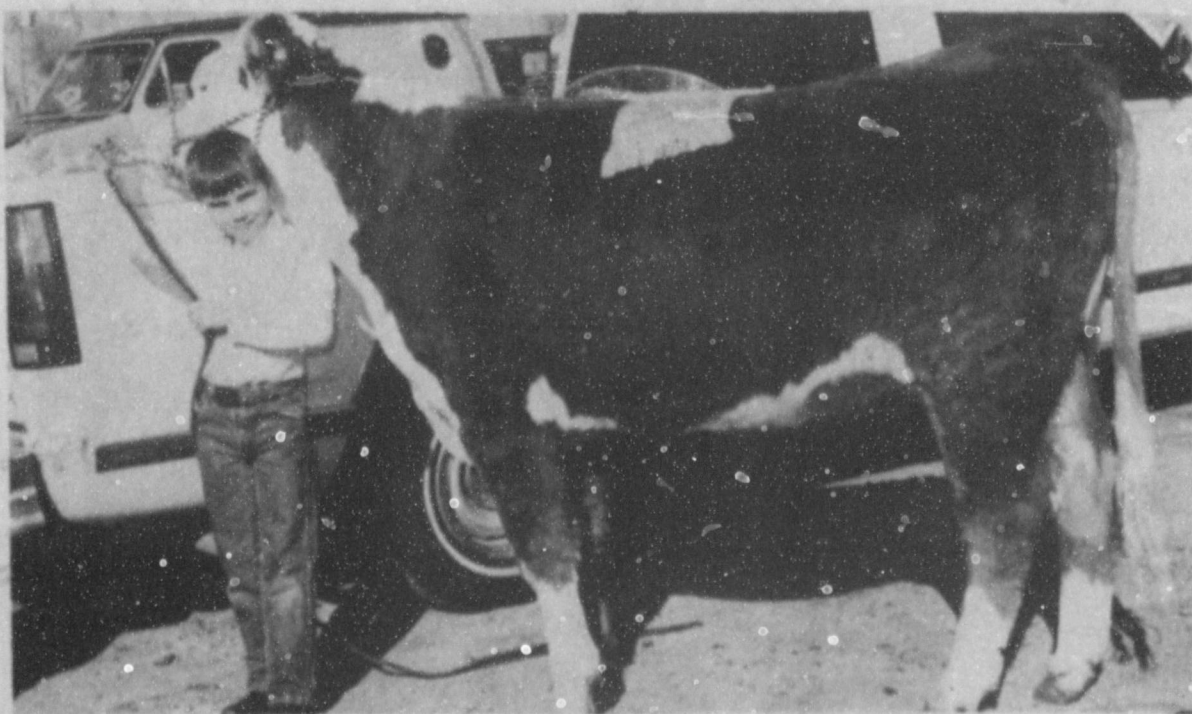
To The Winners Of The Three Way Livestock Show



**GRAND CHAMPION HEIFER
Joshua Tooley**



**GRAND CHAMPION STEER
Russell Poliard**



**RESERVE CHAMPION HEIFER
Daniel Reeves**



**RESERVE CHAMPION STEER
Joshua Tooley**

Wes-Tex Feed Yards, Inc.



WORKING IN A CONGESTED AREA--It's a tangle of Mules and Hornets as the two teams tangled in WJHS gym in Muleshoe last Friday night. Despite a valiant effort by the Mules, they lost out to the Hornets in the game.

From The State Senate

By: Tell Bivins

While the first day of the 71st legislative session is reserved for ceremony, the commotion that accompanies it lasts through the first week and into the second.

Interspersed between the "get to know you appointments," the settling-in process begins. Just getting a feeling for the place is an important part of the process. Being assigned your official parking space, learning that you can dial all numbers within the Capitol with only five digits, learning where you can grab a quick sandwich and a bowl of soup in the members lounge, are all part of the process.

The legislative process starts slowly. It's the way the system was designed to work. During the first week the Senate was rarely in session more than 30 minutes per day. At this point -- all of the bills that have been pre-filed and those being currently filed are read in the Chamber and simply referred to committee.

There is no debate on the floor because there is nothing to debate. With the exception of the State Affairs and Finance Committees, most of the committees only hold a short organizational meeting during the first week.

As time passes, however, and bills are heard by the various committees and reported back to the floor, the hours spent in Session will increase. Toward the end of the Session in May, under pressure to deal with a great number of pending bills, the time spent in Session will increase dramatically.

The committee system is the backbone of the Texas Senate. A member's committee assignments more than anything else will shape his tenure in the Senate. Lt. Governor Hobby traditionally announces three committee assignments on the opening day of the session. There was a slight break with tradition this year when committee assignments were not announced until the second day of the Session. I

had advance notice, however.

At a reception the night before the swearing in, Governor Hobby came over to me and asked if we could discuss business for a moment. We stepped over to the side of the room and sat down at a large table. There he pulled a piece of paper out of his pocket where he had listed all the Senate members on one side and all the committees across the top.

As he ran his finger across the paper he cleared his throat and said to me, "Teel, I would like it if you would serve on the National Resources Committee, Economic Development Committee, and the Jurisprudence Committee." I was extremely pleased with the appointments. I thanked him and told him that the assignments were a great way to top off the evening.

When you look at my background and the interest of Senate District 31, you have got to be very pleased with the committee appointments. Natural Resources deals with energy issues, water issues, and agricultural issues.

Economic Development is, of course, vital to our part of Texas and is often times overseen by the more populous areas. So having a member on the important committee from Senate District 31 is great.

The Jurisprudence Committee deals with all of the civil statutes from the Family Code to the Business Code. I was extremely pleased when Senator Bob Glasgow, the chairman of the Jurisprudence Committee, asked me to chair a sub-committee on business bills that come to the Jurisprudence Committee. This is particularly exciting when you consider I am the only freshman senator to chair a subcommittee.

While the second week of my term in office was filled with mostly housekeeping matters, two important substantive events occurred. The first with regard to my bill calling for a constitutional

amendment to prohibit a state income tax. Senator Caperton, the chairman of the Senate Finance Committee, indicated that the bill would get a hearing in his committee. This is very significant in view of the fact that the constitutional ban has passed the House of Representatives on several occasions, but was never granted a hearing in the Senate Finance Committee.

Secondly, Senator Robert McFarland of Dallas and I co-authored and introduced a bill calling for a constitutional amendment to allow a Freeport exemption in Texas. Throughout the campaign I discussed my view of the Legislature's role in economic development:

To create a climate for doing business that is more favorable than in any other state. The Freeport exemption is a critical step in accomplishing that goal. Senator McFarland and I were both pleased to learn that the Governor has declared this piece of legislation an emergency.

The significance of this declaration is, one, it can be dealt with the first sixty days of the legislative session; and, two, that upon passage of the constitutional amendment by the voters of Texas in November, this revision can take immediate effect.

Now that the process has begun my excitement level and anxiety level have begun to stabilize. Everything is still very new, but gradually I can things beginning to fall into place. So far I am pleased by what I see.

Comptroller Asks Increase In One Tax

State Comptroller Bob Bullock said Friday that if the Legislature wants to get an additional \$274 million in federal money for health care programs, it could do so by earmarking matching money from an increase in the cigarette tax.

Bullock said a seven-cent per package increase--bringing the total tax to 33 cents -- would raise \$166 million in state money, which would earn \$274 million in federal matching money for hospitals and extended Medicaid services.

"There are those who will say this is a tax increase, but in my opinion, it's not. It's an exchange of seven cents per smoker per package for \$274 million in federal money which taxpaying Texans have already sent to Washington," Bullock said.

Bullock said that "for every \$1.15 Texans send to Washington, we get only \$1 back -- and that's not our fair share."

Bullock said that the 60-40 federal-to-state matching program "is the kind of deal we ought to be doing every day, particularly when it involves taxing a known health hazard to help pay for health care."

Bullock said a 33-cent per pack tax would move Texas from 13th for fourth among the states in cigarette taxes. He said that California voters last fall overwhelmingly approved increasing cigarette taxes to 35 cents per pack.

He added that the threat of bootlegged cigarettes coming in to Texas had been taken into consideration in the revenue figures he used.

The federal money could be used for extended Medicaid services, including needy children, nursing home payments and services for pregnant women. He said that health specialists estimate that the combined \$400 million in state and federal money would cover the most pressing needs of financially troubled hospitals and the extended Medicaid program.

Parents & TV

Parents have a special responsibility in seeing what television children watch. Many have abdicated that responsibility.

What concerns many church and other community groups, is the increasingly controversial programming on cable television during daylight and early evening hours.

In the past most near-pornographic or promiscuously graphic films have been shown in the wee hours. Degenerate life, violence, sadism, etc. are now sometimes aired early in the evening or during the day.

Parents should be aware of this threat and control cable-TV viewing. There is a locking mechanism available for parents who wish to lock out cable.

In Fashion

Children wearing sizes 7-14 can look forward to colorful pastels in mixed patterns. Sweaters of multiple pastels come in geometric, floral and butterfly patterns. These are worn with solid pastel skirts and pants.

Denims continue an upward trend on the fashion scene. Jeans hold their place, as expected, because of their comfort. Now, it seems, denim is fashioned in suits for city wear.

A shirtdress in denim with a full skirt, large buttons and contrasting belt is chic for city wear. High-waisted stone-washed and striped denim skirts are worn with denim work shirts or cotton sweaters.

Free Nonride

Few things in life are more satisfying than parking on what's left of the other fellow's nickel.

Just One Head Injury



CAN CHANGE YOUR MIND

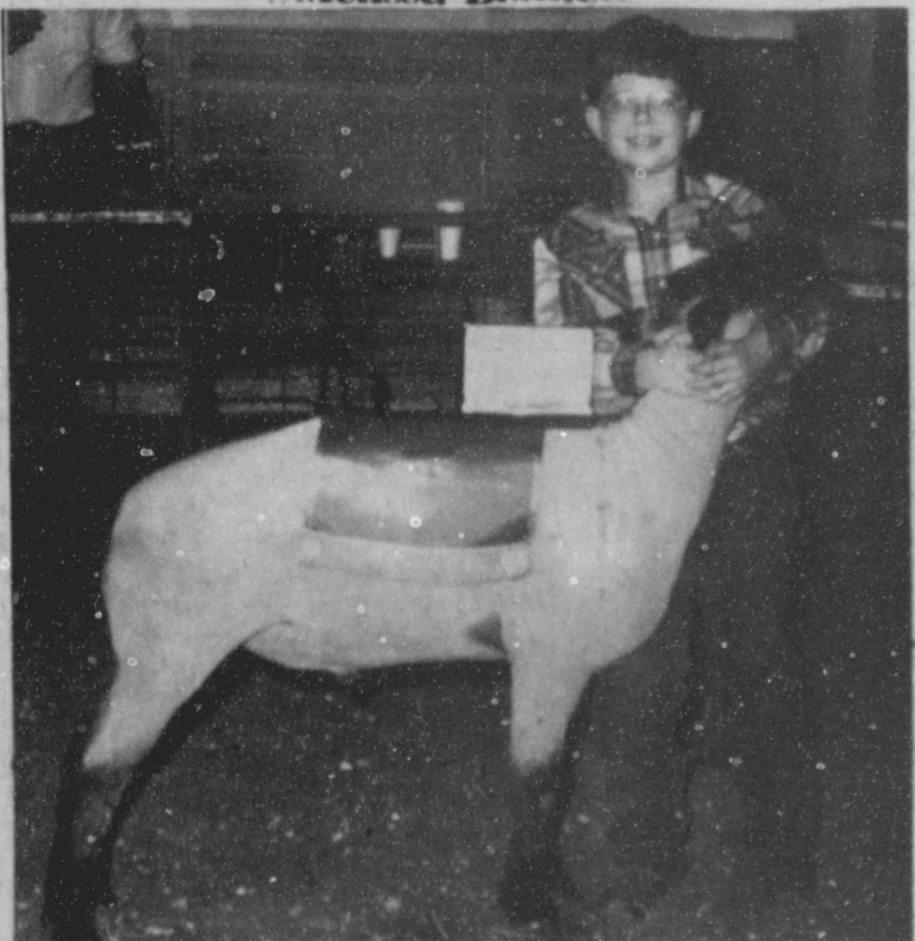
A reminder from the DPS Troopers.



BREED CHAMPION FINE WOOL
Melissa Bennett



BREED CHAMPION CROSS
Robin Tooley



GRAND CHAMPION LAMB
Joshua Tooley



BREED CHAMPION SOUTHDOWN
Marvin McCaul

Congratulations

To The Winners
Of The
Three Way
Livestock Show

Farmer's

Co-Op Elevator





Unpredictable Forecast? Shop The Classifieds

272-4536

CLASSIFIED RATES Minimum Charge \$2.30
Consecutive Insertions Minimum Charge \$2.00
CLASSIFIED DISPLAY RATES \$1.75 Per Column Inch
DEADLINES 12 noon Tuesday For Thursday Paper 12 noon Friday For Sunday Paper <i>We reserve the right to classify, revise, or reject any ad. Not responsible for any error after ad has run once.</i>

1. Personals

CONCERNED
About Someone's Drinking?
HELP IS AVAILABLE
through Al-Anon
Call 272-2350 or 965-2870 or come to visit Tuesday nights, 8:00 p.m. or Saturday mornings at 10:30 a.m. and through AA call 965-2870 or come visit Tuesday nights, 8:00 at 620 W. Second, Muleshoe.

Mary Kay Cosmetics
Josie Flowers
272-3865

1. Personals

A.J.T.P.A.... Staff person will be available at Muleshoe Community Action on Tuesdays 9:30-3:30 to discuss applications and available services.
s1-1t-16tc

FOR REGISTERED
Child care, full time or drop-in's. 272-3036.
d1-2t-4tc

FRANK'S
Refrigeration & Appliance Service Parts & Repairs.
817 Gum
Muleshoe, Texas
79347
PHONE
Home 272-3822
fl-6s-tfc

Call your local used cow dealer for 7 day a week dead stock removal. 965-2903 or 1-800-692-4043.
c1-37t-tfc

I WILL DO babysitting in my home. Full time and drop-ins. 2 years and older preferred.
Call 272-5977.
b1-4s-4tc

WOMAN WHO WILL stay with elderly in home, fulltime or part-time, 13 years experience in Nursing Home & Home Health Care Service. Call 272-5696.
c1-5s-2tc

OWN YOUR OWN APPAREL or shoe store. Choose from: JEAN/SPORTWEAR, Ladies, Men's, Children/Maternity, Large sizes, Petite, Dancewear/Aerobic, Bridal, Lingerie or Accessories Store. Add color analysis. Brand Names: LIZ CLAIBORNE, HEALTHTEX, CHAUS, S.E. ST MICHELE, FORENZA, BUGLE BOY, LEVI, CAMP BEVERLY HILLS, ORGANILUCIA, over 2000 others. Or 113.99 one price designer, multi tier pricing discount or family shoe store. Retail prices unbelievable for top quality shoes normally priced from \$19. to \$60. Over 250 brands 2600 styles. \$17.900 to \$29.900. INVENTORY, TRAINING, FIXTURES, AIRFARE, GRAND OPENING, Etc Can open 15 days. Mr. Loughlin (612) 888-4228.
p1-5t-1tpts

3. Help

Wanted
MAN EXPERIENCED in irrigation well repair. Call 806-238-1596 day or 238-1328 nights.
b3-49s-tfc

SALES OPPORTUNITY
For local person in the Muleshoe area to represent our National Lubrication Company. A Full-Time sales position High Commissions. Opportunity for advancement. Knowledge of farm and/or industrial equipment helpful. Product training when hired. For interview call 1-800-443-1506 or send resume to HYDROTEX - DEPT 2406-G, P.O. Box 560843 Dallas TX 75356
p1-2tp-5t

SOUTH PLAINS COMMUNITY ACTION ASSOCIATION, INC.
Are taking applications for a neighborhood Center Aide. People interested may apply at the Bait County Community Action Center, 804 West American Blvd. in Muleshoe, TX. Person to contact is Janie Mejia, Phone 272-5130 in Muleshoe.
Persons Applying Must Be: 1. Interested in people oriented activities. 2. Able to establish relationships with people. 3. Able to Communicate orally and in Written Form. 4. Able to gather and record single facts accurately. 5. Respectful of the Confidential aspects of information. 6. Interested in the purpose and aims of the Community Action Programs and express a desire to inform others of the Community Action Concepts.
SOUTH PLAINS COMMUNITY ACTION is an equal opportunity Employer.

4. Houses

FOR RENT 3 bedroom, 1 bath, \$300./month. Call 272-4011.
h4-5s-4tc

Not Telling
Mother, to 7-year-old daughter: "Please go and see how old Mrs. Smyth is this morning."
Daughter, after returning: "Mrs. Smyth says it's none of your business how old she is."

5. Apts.

For Rent

NICE- Large one bedroom range and refrigerator furnished. Good Location. Water Paid. Deposit Required. 272-7575.
h5-5t-tfc

NICE- Large one bedroom Furnished. Water Paid. Deposit Required. 272-7575.
h5-5t-tfc

8. Real Estate

3-2-1 **STUCCO**. Close to town on Hwy. 2 bedrooms downstairs, 1 bedroom and bath upstairs. Fire place. A must see on 100x400 lot. Call Whitt Reid Real Estate 272-3611 or Thursie Reid, 272-5318.
w18-3s-tfc

FOR SALE 160 acres irrigated farm land Northeast of Muleshoe, \$600.00 per acre fully allotted. Call 272-4823 after 5:30 272-3659.
j8-3t-tfc

TWO BEDROOM, 1 bath, garage, carpeted, fenced back yard. Kitchen appliances, washer, dryer and chest freezer included. One block from the high school. Call 272-5405.
p8-5s-9tp

8. Real Estate

3BEDROOM BRICK on 3 acres of land, 2/car detached garage, fireplace, built-ins, Central heat with a house well. Barn and corrals. Country Club Addition. Call 272 3390 or 272-4010.
a18-3s-8tc

FOR SALE: 2 bedroom 1 bath mobile home on 60 x 100 lot with 2 car carport in Country Club Addition.

NICE 3 bedroom, 2 bath house, 2 miles west of Muleshoe. With large barn. Nice location. Call 946-2340.
d8-25s-tfc

Parmer County Farm For Sale

Very good 160 acres, all under ground tile, 8 inch well, 7 miles east of Farwell, call after 6:00 p.m. 481-3444.
w8-5s-3tc

9. Automobiles

For Sale

Is It True You Can Buy Jeeps for \$44 through the U.S. government? Get the facts today! Call 1-312-742-1142 Ext. 6976-A.
p9-3t-4tp

The man who is superstitious isn't interested in the truth.

11. For Sale

FOR SALE (1) Beige Wail-Hugger Recliner, Good Shape - \$50.00 (1) 2-Piece Sectional Couch, Earth-Tone Color - \$400.00, (1) Stereo Cabinet with AM/FM Radio, 8-Track Player, and Turn-Table, Head-Phones, Good Condition - \$75. (1) Sears Exercise-Rowing Machine - \$75.00
Call 272-4863 after 5 p.m.
p11-4s-4tp

FOR SALE: 5 weaning size registered Limousine Bulls. (806) 272-4934. Buster Evins e11-4t-tfc

1983 14x80 **MANATEE MOBILE HOME** 3 bedroom, 2 bath. Large bedrooms, storm windows, assumable loan. 263.68/month. Call 965-2364 after 5:00 p.m.

KITCHENETTES
272-4533

15. Misc.

MATURE CHRISTAIN lady will clean home, do odd jobs, Care for elderly. (806) 272-3027 have references.
b1-4s-4tc

18. Legals

PUBLIC NOTICE

The Muleshoe Independent School District and cooperating schools are accepting bids for the lease/purchase of twelve school buses that meet Texas School Bus Specifications. Specifications are available from Tom Jinks, Muleshoe I.S.D. Business Office, 514 West Avenue G, Muleshoe, Texas 79-347.

Sealed bids must be received by 2:00 p.m., Wednesday, February 8, 1989. Bids received after stated time will not be considered. The Board of Trustees reserves the right to reject any or all bids and to waive formalities.
m18-4s-5tc

Of Course, It's Nonsense
Son: "Pa what is the difference between a cat and a comma?"
Pa: "I don't know. What is it?"

Son: "A cat has claws at the end of its paws, and a comma is a pause at the end of a clause."
Little Cool
"I would like to meet you again," he murmured as they glided through the waltz. "What about letting me have your telephone number?"
"It's in the book," she told him.
"Good!" "What's your name?"
"You'll find that in the book too."

8. Real Estate 8. Real Estate

Henry Realty

111 W. Ave. B Muleshoe 272-4581

FOR LEASE 3 bdrm room and dining area, immediate occupancy near high school.

3 Bdrm., 2 bath, spacious home outside city limits, near city on highway. 29'x40' metal building. Lot 85'x620'.

3 Bdrm., 1 bath, completely remodeled, edge of city on highway.

RURAL HOME 3 bdrm, 2 bath, large den on one acre with many extras, fenced with barns, fruit trees, garden, extra storage, storm cellar and satellite dish.

4 bdrm., 2 bath, 2 car garage, central heat/air, large utility, carpet, near down town. Excellent condition.

James F. Hayes & Co.

AGRICULTURAL REAL ESTATE

Vic Coker- Agent

Full Section at Lazbuddie... 3 wells, 1 sprinkler, some native pasture, ON pavement, Good Allotments.

590 Acres Near Baileyboro-allotted, some grass, windmill water.

354 Acres in 2 tracts South of Muleshoe-All Cultivated & Allotted, good soil, Pavemtn.

120 Acres Near Muleshoe-Allotted, good soil, 6 in. pump.

530 Acres South of Dodd-6 wells, 2 1/2 miles of pipe, 3 bedroom, 2 bath home, Stell Barn EXCELLENT SOIL & WATER. Will Divide.

310 Main Suite 103
272-3100
home 965-2468

Whitt-Reid Real Estate

Homes, Farms, Ranches, Commercial
201 Main 272-3611

Think Classified!



KNOW THE WEATHER

Despite predictions of weather forecasters that a greenhouse effect is certain to result in warmer winters and in problems because of the melting of the earth's ice caps, there are skeptics in Florida.

Between 1975 and 1985 Florida experienced four hard freezes which killed off citrus trees which had survived for many decades up to that time. On a latitude line running from Tampa on Florida's west coast to the Atlantic, millions of dollars worth of trees were lost in the area north of that line. Some were lost, inland, below it.

Whole groves were virtually wiped out by these severe and unexpected freezes. The folks who lost their groves in these recent years feel talk about a warming effect now taking place is unconvincing.

Palm trees in Florida as well as citrus were killed in the last decade by unusually severe cold waves. Most of the damage was to coconut palms, which now are usually not planted even sixty or seventy miles south of Tampa.

But they used to grow in this area. Some old homes were surrounded by them a few decades ago. One can't find many there now. So folks in these parts of the Sunshine State don't yet accept all the talk about a greenhouse effect. And that can be seen in current plantings of citrus groves. They're being planted further and further south.

The Final Straw

The new warden of the prison was finding it difficult to get a telephone call through to a friend on the outside. Exasperated, he shouted to the operator: "My dear young lady, do you know who I am."
"No," came the sweet reply, "but I know where you are."

Kind Counsel

"Did you do these problems at home?" asked the teacher.
"Yes," replied the boy in the sixth grade.
"Then," advised the veteran of the blackboard, "you'll have to ask your father not to help you any more; you're beyond where he left off, Harold."

BINGHAM & NIEMAN REALTY
272-5285 or 5286

116 E. Ave. C.
PRICES REDUCED UP TO \$7,000 on 2 & 3-1-1 Brick Homes, Cent. heat, Energy Efficient. PRICED FROM \$23,500!!! Approx. \$600.00 total move-in, payments based on income for qualified Buyers!!!!

RICHLAND HILLS
IMMACULATE 3-2-2 Brick, corner lot, Cent. A&H, built-ins, FP, loads of storage & closet space, much more!

PRICE REDUCED-3-1-1 Brick, Cent. Heat, Evap. air, built-ins, fenced yard.....

JUST LISTED-Very nice 3-2-3 Home, Cent. A&H, built-ins, FP, fans, spktr. sys., fenced. PRICED TO SELL!!!!
JUST LISTED-VERY NICE-3-2-2 Brick Home, Cent. A&H, built-ins (inc. kitchen ctr., compactor, & microwavet, Jacuzzi, loads of storage, basement, aut. spktr. sys. & Much More!!!!!!

HIGHLAND AREA
JUST LISTED - Nice Large 2-2-2 Brick, Cent. A&H, utility, cov. patio, fenced yard & more!!!!!!!!!!!!!!!!!!!!

VERY NICE 3-2-2 Brick, Cent. A&H, newly remodeled kitchen with built-ins, storm windows, fenced yard, storage bldg. and much more!!!!

NICE-3-2-2 Brick Home (2 story), on corner lot, Cent. A&H, built-ins, and much more. LET'S LOOK TODAY!!!!!! 60's

2-2-1 carport Brick, Cent. A&H, built-ins, fenced yard & much more. PRICED TO SELL!!!!

NICE 3-2-1 carport home 2 living areas, priced under \$20 per sq. ft., fenced yard, workshop-storage, & more!!!!!!!!!!!!

NICE 3-1/4-1 Brick Home Cent. A&H, built-ins, large den w/fireplace, fenced yard, storage bldg. \$50's!!!!

HIGH SCHOOL
NICE 2-1/2-2 Home, corner lot, built-ins, nice carpet, heat pump, fenced yard, storage bldg. & more!!!!!!!!!!!!

3-1-1 home, corner lot, Cent. A&H, built-ins. \$30's.....

PRICE REDUCED FOR QUICK SALE! Nice 2-1-1 Home, Cent. Heat, carpets, work-storage area, and much more. \$19,950.00!!!
DIANNE NIEMAN, BROKER

IMMACULATE-3-2-1 1/2 carport, Brick Home, Cent. A&H, built-ins, nice finished basement with fireplace, spktr. sys., & much more!!!!!!

NICELY remodeled 2-1-1 home, stove & ref., fenced yard, storage-workshop, & more. \$20's!!!!

LENAU ADDITION
COZY 3-1/2-1 home, Cent. heat, nice earthtone carpets, fenced yard, storage bldg., & more!!!!!!

3-1-1 home, Cent. A&H, utility, storage bldg., cellar, gas grill & more. \$20's!!!!

COUNTRY HOMES
NICE 3-2-2 Brick on 1 acre on pavement, close to town, DW, WB stove, utility, storm windows, doors. \$50's!!!!

VERY NICE-3-2-1 Home on 1 acre, close to town, Cent. Heat, Evap. air, nice carpets, nicely remodeled. \$30's!!!!

HOME TO BE MOVED, Nice 4-3-2 Home. Cent. A&H, built-ins, fireplace, loads of storage & closet area, 2150 sq. ft. of living area, much more, \$40's!!!!!!!!!!!!

2-1 home, 20 acres, sub. pump, sprinkler, barns & corrals. \$40's!!!!

Nice, well maintained Self-Service Laundry. 34 washers, 16 dryers in nice, modern building, excellent location. Books available to qualified Buyer.

SALE OR LEASE nicely remodeled office bldg. with over 3,000 sq. ft. of area, excellent location across from Courthouse. PRICED TO SELL!!!!

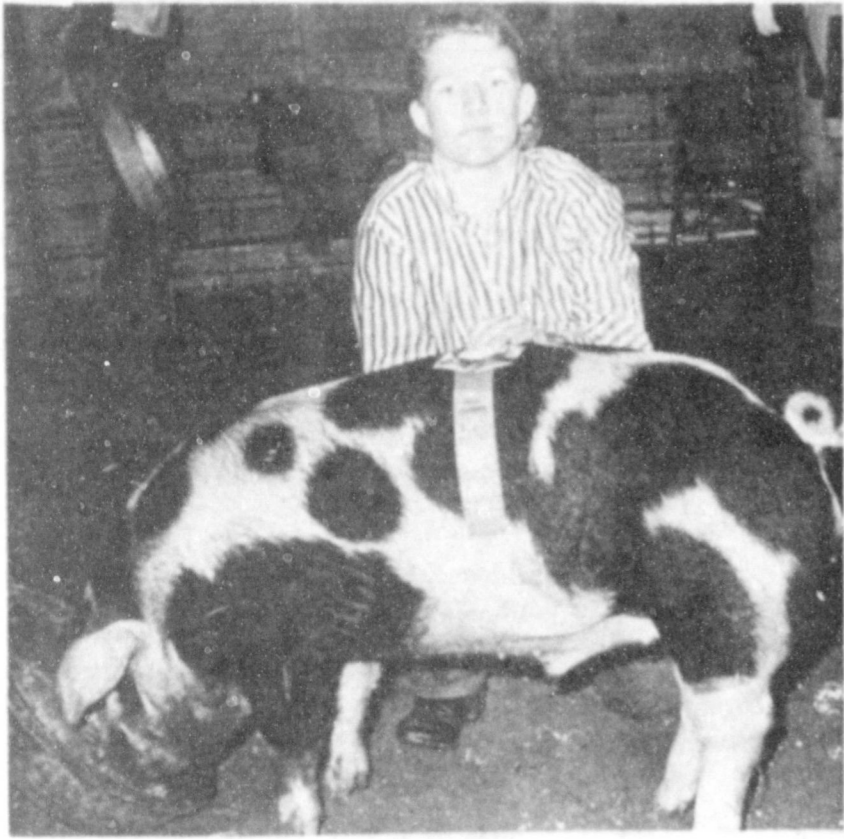
APPROX. 3,000 sq. ft. bldg. Railroad frontage. CASH PRICE \$15,000.00.

69+ acres, improved pasture, 8" well, undgrd. line, fenced, plus nice 3-2-2 home, Cent. A&H, built-ins, utility, storm cellar, nice shop. & much more. close to town!!!!

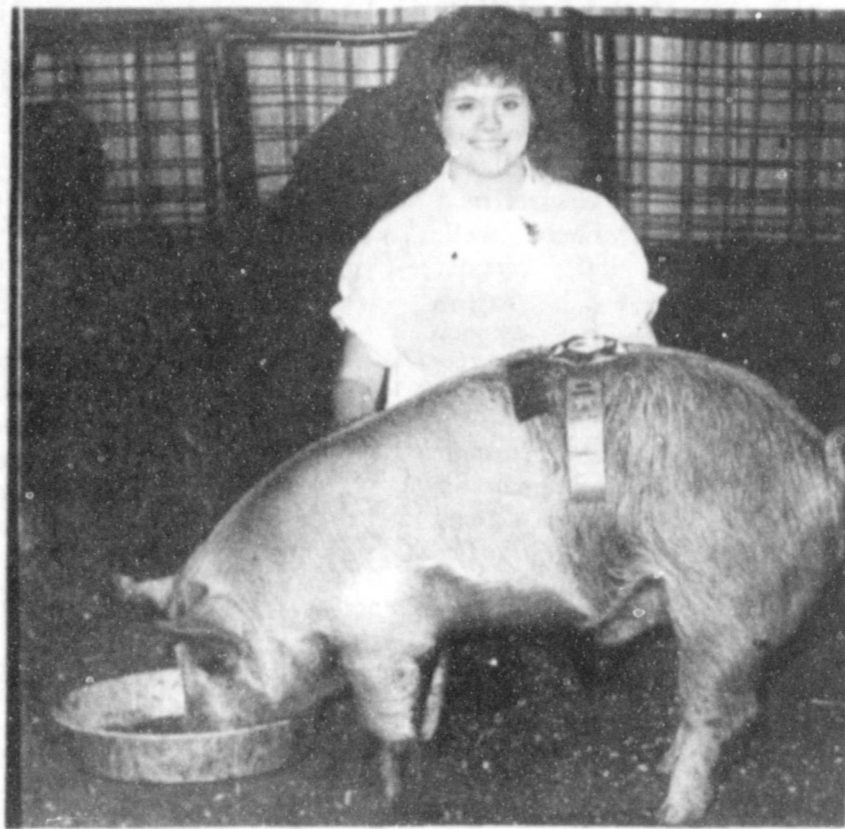
GEORGE NIEMAN, BROKER

CONGRATULATIONS

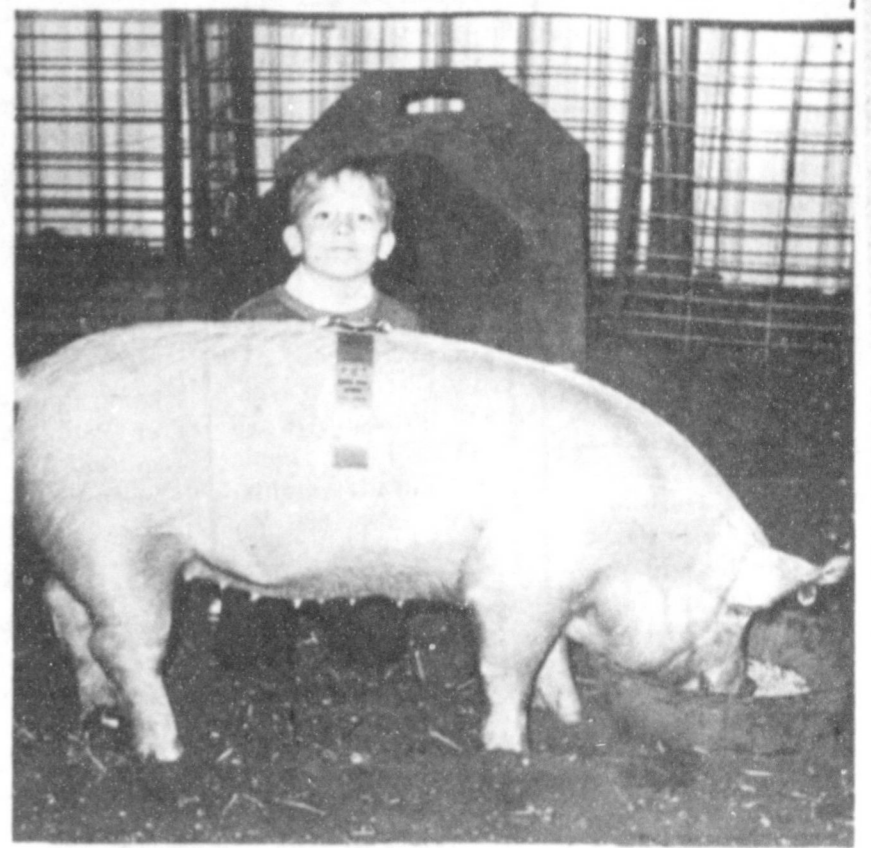
To The Winners Of The Three Way Livestock Show



BREED CHAMPION SPOT
Chris Locke



BREED CHAMPION CROSS
Sheila Tucker



BREED CHAMPION YORKSHIRE
Marvin McCaul



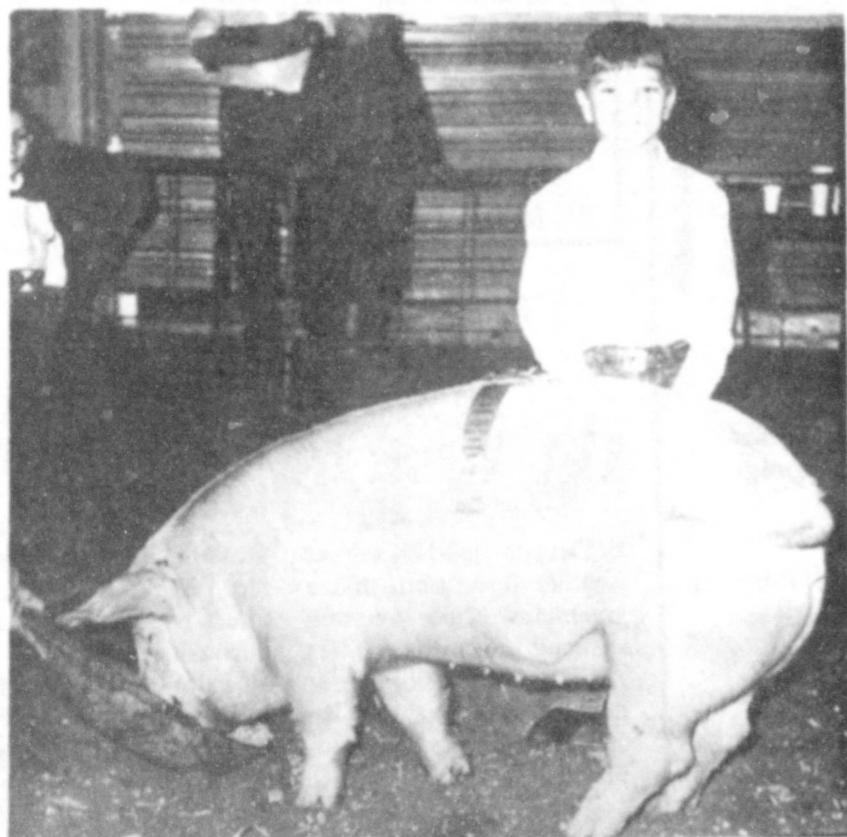
BREED RESERVE HAMPSHIRE
Russell Pollard



GRAND CHAMPION SWINE
Lisa Lowe



BREED CHAMPION DUROC
Marc Tucker Shown By Carrie Kindle



BREED CHAMPION CHESTER
Daniel Reeves



SHOWMANSHIP HONORS
Sheila Tucker, Pig Division; Daniel Reeves, Cattle Division; Carrie Kindle, Lamb Division



BREED CHAMPION SUFFOLK
Carrie Kindle

Proudly Presented By The Following Merchants:

Serv-All Thriftway

1st Bank of Muleshoe

Claunch Gin

Maple Butane

Viola's Restaurant

Silvers Butane Co.

Scoggin Ag. Center

Cox Auto Supply Co.

Morton Delinting, Inc.

Muleshoe Animal Clinic



Luper Tire & Supply, Inc.

Morton Insurance Agency

Crocket Pump & Machine, Inc.

Sanders Fertilizer & Chemical, Inc.

A&M Farm And Ranch Supply