

BANQUETS

FFA-FHA Banquet Held

See Below

BUSINESS

Area Economy Healthier

See Below

LOCAL

Wheat Aphid A Problem

See Page 3

WEATHER

|       |    |    |     |
|-------|----|----|-----|
| May 1 | 77 | 51 | .00 |
| May 2 | 84 | 41 | .00 |
| May 3 | 68 | 33 | .00 |
| May 4 | 68 | 35 | .00 |

# Muleshoe Journal

*'The Community Of Opportunity-Where Water Makes The Difference'*



12 PAGES TODAY

Published Every Thursday At Muleshoe, Bailey County, Texas 79347

20¢

Thursday, May 5, 1988

## 3-Way FFA-FHA Honors Banquet Held Friday



Remember, the next BIG MAC drawing will be held Saturday, May 7. To be given away will be \$25, \$50, \$75, and \$100 in MAC Bucks.

The trailer will be at the usual place between Higginbotham-Bartlett and Perry's on Main Street.

Gather your MAC tickets and make your way to Main and Ave. C at 2 p.m. on Saturday, May 7.

Businesses are also reminded that MAC ticket stubs must be in the hopper by 1 p.m.

Pat Moore said the Bailey County Memorial Park Committee is in the process of making a proposal to David K. Langston, trustee, Bailey county Memorial Park, to buy the cemetery at Muleshoe.

The committee will meet again tonight, Thursday, prior to making the proposal late this week.

To make donations toward the purchase of Bailey County memorial Park, call Pat Moore at 272-4575.

The Allegro Bell Choir of the First United Methodist Church will present a free concert of music on Sunday, May 8, at 4:30 p.m. It was explained that this time was chosen to allow those in the community who would like to hear the bells played come to that and still be able to attend the Sunday evening service of their home church.

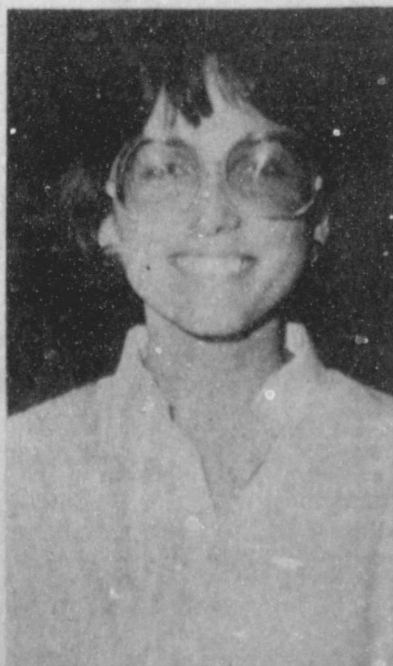
The concert will be 45 minutes in length and will demonstrate the various aspects of handbell ringing. "If you have never heard the beauty of the handbells, you will be in for a treat," said a church spokesperson, adding, "Remember -- May 8 at 4:30 in the fellowship hall of the First United Methodist Church. We hope to see you there."

Cont. Page 8, Col. 1

### Kirk To Receive Smith TLTA Scholarship

Muleshoe resident Donna Kirk will receive the Texas Land Title Association's (TLTA) E. Gordon Smith Scholarship Award on Saturday, May 14, during the TLTA Annual Convention in Houston.

This award is given in recognition of outstanding performance at the TLTA Land Title School of Texas. Kirk was one of 100 people who took the final



DONNA KIRK



**SPEAKER WELCOMED BY FFA-FHA AT THREE WAY**--Last Friday evening, a good crowd was at the Three Way School cafeteria for the annual FFA-FHA honors banquet. J.J. Duarte, left, FFA president and Stacy Kindle, right, FHA president, welcomed David Frazier, center, to their school. Frazier, a native of Melrose, N.M., west of Clovis, told the students and guests he was very comfortable at Three Way, as Melrose is a school not much larger than the Three Way School. (Journal Photo)

### Jack Reeves Receives State Chapter Farmer Recognition

It was a very festive night at Three Way last Friday night, when the Three Way FFA and FHA conducted their combined annual banquet.

In a setting of white table covers, centered with blue, gold and red streamers, candles and flowers, the FFA-FHA and their special guests enjoyed a relaxed dinner and heard an excellent speaker.

Following an opening ceremony by the FFA officers, and invocation by Superintendent Don Parker, J. J. Duarte, FFA president, introduced special guests and Jarrod Sowder introduced special guest speaker, David Frazier.

Frazier, a native of Melrose, N.M., is currently Ag Ambassador from Texas Tech University, Lubbock.

He assured the group that he was from Melrose, a very small village west of Clovis, N.M. and is familiar with small schools and small towns.

In order to relax his listeners and make them receptive to his 'serious' remarks, Frazier gave several light-hearted events of his past life, including being a little nervous, and what to do if you feel you are going to panic.

He said youth are facing a long highway, and along that highway they will run head-to-head with Reality and Failure.

"We don't need to be afraid of who we are or what we want to

### WJHS Students Take Honors At Plainview

Last weekend, Watson Junior High School had several participants in the History Fair held in Plainview.

Sixth grade winner of the James W. Marshall Presidential Citation Award was Mark Garcia.

First place winners from the sixth grade include:

Jeanne Cox, Salt map and report on Honduras; Mark Garcia, computer program over the Trojan War; Shane Schuster, Project over Australia, with report; Frank Guzman, Mayan Temple; Emily Harris, Dutch windmill; Chad Freeman, Project on Space Flight; April Franklin, Egyptian Pyramid and temple; and Mason Conklin, Roman house.

Second place winners from the sixth grade were: Ruben Saldana, Project over Vietnam War; Chad McCormick, The Trojan horse; and Kelli Caldwell, Poster and report on Australia.

Results of the seventh grade History Fair were:

First place and Presidential Citation, plus Hope Owen Award for Special Achievement to Gilbert Rennels for his display of the Allred Administration.

Another first place winner was Rebecca Green, Dust Bowl Days. Winning second place were Joe Hernandez, Pirate ship; Chad Green, Dog-run cabin; Bryan Rasco, Arrowhead collection; and Stacey Langfitt, Barbed wire.

Winning third place were Coleen Dodd, 6666 Ranch; David Lutz, Barbed wire; Eric Cisneros, Alamo heroes; and Cory Welch, Battle of San Jacinto.

## Bank Deposits, Loans Increase As Area Economy 'Picks Up'

Local and area banks have taken a 'great leap' in deposits during the past year, according to Statements of Condition reported at the end of March, 1988.

Deposits at the banks have increased by some \$37,573,451.

Loans at the banks also increased during the year, but not by such a dramatic measure.

Loans were \$101,194,882 at the end of March, 1988, a \$4,792,122 increase over the \$96,402,760 reported at the same time a year ago.

Locally, Muleshoe State Bank and First Bank (including the First State Bank of Bovina) reported total deposits of \$84,593,000, and at this time a year ago, had deposits of \$66,529,000 for an increase during the year of

\$18,064,000.

Loans for the two local banks increased \$1,678,000. Loans at the two banks showed \$39,422,000, and were \$41,100,000

### DPS Safety Film Shown For Rotary

Jess Winn, in charge of the Rotary program for Tuesday, re-introduced Bert Sinclair, DPS Safety Education officer from Lubbock.

However, it took a little light-hearted banter between Winn and Rotarian Gil Lamb before the actual introduction could be made.

Sinclair presented a safety film entitled "You Have A Choice."

According to remarks made by Sinclair, wrecks are an epidemic and people need to carefully consider their "emotional state" before getting behind the wheel of a vehicle.

According to the film, most accidents are a direct, or indirect cause, of most accidents.

A DPS Trooper from Georgia, speaking on the film, said that too often, drivers are trying to deal with a problem instead of having their mind on what they're doing -- and this includes when they start driving.

He commented, "Be aware of stress and emotions you are feeling before driving. Take steps or take care of the problems before getting behind the wheel and change your attitude about safety," he stressed.

Alcohol and driving is the biggest driving problem today, according to the safety officers. They also said nearly one-half of all traffic deaths happen with people thinking they have everything under control. Actually, their thinking has been distorted by alcohol, and they are not capable of logical thinking.

Cont. Page 8, Col. 2

closing out March this year.

At Muleshoe State Bank, deposits were \$45,449,000 closing out March, 1988 and were \$31,325,000 at the same time a year ago, for an increase of \$14,124,000.

Loans at the bank also increased during the year by \$5,076,000. Loans were \$13,640,000 at the end of March 1987 and closing out March this year were \$18,716,000.

For First Bank of Muleshoe, combined with First State Bank, Bovina, total deposits were \$39,144,000 at the end of March this year, up \$3,940,000 from the \$35,204,000 of a year ago. Loans at the bank showed a decline however, of \$3,398,000 for the year. Loans were \$25,782,000 at the end of March last year, and were \$22,384,000 to close out March this year.

First State Bank of Friona reported \$57,957,560 on deposit at the end of March, 1988, an increase of \$6,709,755 during the past year, as the March 1987

Cont. Page 8, Col. 1

### School Board, Mayor Election Set Saturday

Saturday is election day in Muleshoe for both the Muleshoe Independent School District and the City of Muleshoe.

Four candidates have filed their intention to seek the two positions open on the MISD Board of Trustees.

Voting hours will be 7 a.m.-7 p.m. in the Muleshoe High School cafeteria.

Candidates for the MISD Board of Trustees include incumbent Lyndon Huckaby; Terry Hutto, Aoel Arguello and Curtis Shelburne.

Election for mayor is scheduled by the City of Muleshoe. Polls will be open 7 a.m.-7 p.m. in the Muleshoe City Hall.

The only candidate is incumbent Mayor, Darrell Turner.

be, and need to work to make the best of ourselves," he told the young people. "Like the Bumble Bee, who has never been told he can't fly -- that he's too heavy, too cumbersome, you've got to fly," said Frazier.

"You've got to realize where you want to go with the future, and don't let anyone stop you. Take a stand, on everything, and people will follow you," he said.

The speaker talked about Failure. "People fear the 'first day,' and have mental failures," according to Frazier. "They build walls, and have built-in failures from the toddler stage," he added. "The future holds so many things and we don't know what to expect, so we need to make the best of every minute. 'If Only' are words you don't want to even have in your vocabulary."

He stressed surviving the environment of failure, admonishing, "The future is as bright as YOU can make it"

Frazier closed with this -- "If Cont. Page 8, Col. 2

### Tucker, Duarte Top Graduates At Three Way

The valedictorian and salutatorian for the Three Way Independent School District has been named for the 1987-88 school year.

Valedictorian is Kelly G. Tucker, son of Mr. and Mrs. Ernest Tucker of Maple.

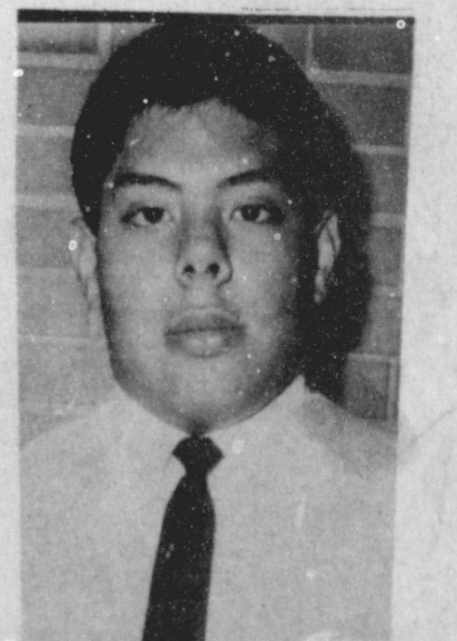
Kelly plans to attend Texas Tech University in the fall.

Salutatorian is John J. Duarte, son of Mr. and Mrs. Johnny Duarte of the Stegall community.

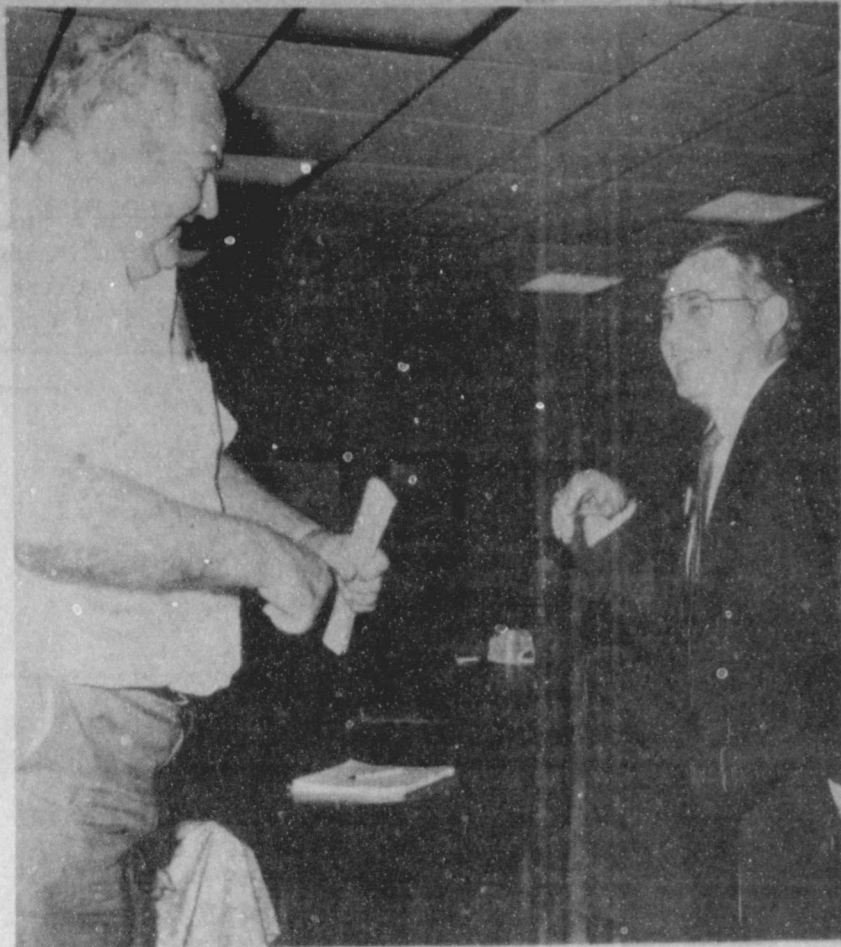
J. J. also plans to attend Texas Tech University.



KELLY G. TUCKER



J. J. DUARTE



**CONGRESSIONAL CANDIDATE IN MULESHOE**--On Monday afternoon, Gerald McCathern, right, was in Muleshoe on the campaign trail to take on Republican incumbent Larry Combest for U.S. Congressional office in the general election in November. While at the Muleshoe State Bank, Jess Winn, left, stopped by the community room at the Muleshoe State Bank, adjacent to the Energas offices, where Winn serves as manager.

(Journal Photo)

## Congressional Candidate Visits Muleshoe Monday

Monday afternoon, Gerald McCathern, Democratic candidate for U. S. Congressman, was in Muleshoe meeting with interested citizens.

McCathern met with a group of people during a luncheon prior to a meeting at the Muleshoe State Bank community room.

He centered his discussion on both the agriculture situation and the oil industry.

Speaking of agriculture, he discussed the fair trade situation, and says he is against the threatened Presidential veto of the new Congressional trade bill.

He advocates that for each \$1 million in goods imported into our country, that country must take \$1 million in goods back with them.

McCathern also said the largest textile importer into the U. S. is Red China.

The U. S. grows, gins, and mills cotton, said McCathern. The farmer pays local, city, county and U. S. taxes to keep the government going. The ginner pays taxes, his employees pay taxes and the cotton is milled into thread in southern U. S. mills who all pay taxes. The retailer pays taxes on the shirts, his business and others. All pay a fair share of taxes says McCathern. But, Red China pays no taxes of any kind -- they ship the shirt to the retail merchant who pays local retail taxes -- and that does nothing to keep the government going, he added.

McCathern said imports need to be slowed down, to put more money in the U.S. treasury.

According to McCathern, Japan controls the U. S. economy, and says the biggest part of lobbying money against the trade bill is coming from foreign countries.

He also says the U. S. is spending \$1 million per day protecting Kuwait oil, and that today 42 percent of the oil used in the U. S. is imported, but by 1992, 65 percent of the oil will be imported.

The candidate, who will be facing Republican incumbent Larry Combest in the November general election, also touched on grain export; the Nicaraguan situation and other national and world concerns.

When asked how he planned to push through bills when he was only 'one man, one vote,' he said he would start building a voting 'bloc' one by one by one. "Our problems are their problems," said McCathern, speaking of the other legislators. "We must impress that the problems are not just for farmers but for all rural America."

**Shop  
Muleshoe  
First**

## CTA Discusses Year's Activities During Banquet

The Muleshoe Chapter of the Texas Classroom Teachers Association held its annual end-of-year banquet at Leal's Restaurant on Friday, April 29.

### Jimmy Gleason Presented Award At Convocation

Jimmy Gleason was presented the Harris County Veterinary Medical Association Auxiliary Award at the Honors Convocation of the College of Veterinary Medicine. His father, Jerry Gleason, operates the Muleshoe Clinic in Muleshoe.

Thus, he is quite familiar with restraining, breeding, grooming, clipping, etc. of animals and equally adept in the preparation of surgical equipment, radiographing and x-ray filming. Additionally, he is a former recipient of the 4-H Gold Star Achievement Award.

As an undergraduate, he was a member of the Corps of Cadets and participated in the Student Council on National Affairs (SCONA). He is also an active member of the Saddle & Sirolo Club and Alpha Gamma Rho Fraternity. Jimmy currently serves as vice president of the Fourth-Year class and represents his class on the Professional Student Council.

Special CTA guest Elizabeth Watson, members, their spouses and guests enjoyed a Mexican food meal.

A discussion of the past year's activities, including a report on the state convention attended by outgoing president Mary Helen Perez and president-elect Alice Liles, was the program for the evening.

This was followed by a presentation of next year's officers. They are president, Alice Liles; president-elect, Ginger Reedy; secretary, Betty Chamberlin; treasurer, Margaret Gleason.

The banquet then was adjourned for informal fellowship among the members and guests.

## Lazbuddie High School Honor Roll

### FIFTH SIX WEEKS 12TH GRADE

Steve Bradshaw, Amy Daniel, Tim Lust and Omar Sanchez.

### 11TH GRADE

Elizabeth Gauna, Connie Gonzales, Jonessa Jennings, Ginger Jesko, Adrienne Willingham.

### 10TH GRADE

Mia Jennings and Eddie Zamora.

### 9TH GRADE

Elsa Mendoza, Oscar Aguirre, Casey Bradshaw, Stacie Hodges, Jason Morris, Casey Russell, Jana Vise and Raymond Zamora.

## Curtis Shelburne For Muleshoe School Board



- Continued quality education for our children.
- A "pay-as-you-go" financial policy in district expenditures.
- A balanced curriculum between academic and extra-curricular activities.
- A commitment to retaining local control.

**I ask for your vote on Saturday, May 7**  
(Absentee voting is open through May 3.) Pd. Pol. Ad

## Mother's Day Special

11 am to 9 pm

Open All Day

We Appreciate Our Customers From Muleshoe.

Everyone Is Invited To:

**Panchita's Mexican Food Restaurant**

257-3991

400 E. Main

Earth

## First Bank

### Statement Of Condition March 31, 1988

Consolidated Report of Condition of First Bank of Muleshoe and Foreign and Domestic Subsidiaries, at the close of business on March 31, 1988, a state banking institution organized and operating under the banking laws of this state, a member of the Federal Reserve System. Published in accordance with a call made by the State Banking Authority and by the Federal Reserve Bank of this District.

| LEGAL TITLE OF BANK   | STATE BANK NO               |
|---|-----------------------------|
| First Bank of Muleshoe  | 2720-02                     |
| Box 565   | FEDERAL RESERVE DISTRICT NO |
| Muleshoe, Texas 79347   | 11 13 22965                 |
| CITY  | CLOSE OF BUSINESS DATE      |
| Muleshoe  | March 31, 1988              |
|   | Dollar Amounts in Thousands |
|   | Bil. Mil. Thou.             |
| <b>ASSETS:</b>  |                             |
| 1. Cash and balances due from depository institutions:  |                             |
| a. Noninterest-bearing balances and currency and coin   | 2 887                       |
| b. Interest-bearing balances  | 425                         |
| 2. Securities   | 23 412                      |
| 3. Federal funds sold and securities purchased under agreements to resell in domestic offices of the bank and of its Edge and Agreement subsidiaries, and in IBFs     | 2 100                       |
| 4. Loans and lease financing receivables:   |                             |
| a. Loans and leases, net of unearned income   | 18 971                      |
| b. LESS: Allowance for loan and lease losses  | 255                         |
| c. LESS: Allocated transfer risk reserve  | NONE                        |
| d. Loans and leases, net of unearned income, allowance, and reserve (item 4.a minus 4.b and 4.c)  | 18 716                      |
| 5. Assets held in trading accounts  | NONE                        |
| 6. Premises and fixed assets (including capitalized leases)   | 880                         |
| 7. Other real estate owned  | 183                         |
| 8. Investments in unconsolidated subsidiaries and associated companies  | NONE                        |
| 9. Customers' liability to this bank on acceptances outstanding   | NONE                        |
| 10. Intangible assets   | 161                         |
| 11. Other assets  | 1 013                       |
| 12. Total assets (sum of items 1 through 11)  | 49 777                      |
| <b>LIABILITIES</b>  |                             |
| 13. Deposits:   |                             |
| a. In domestic offices:   |                             |
| (1) Noninterest-bearing   | 8 379                       |
| (2) Interest-bearing  | 37 070                      |
| b. In foreign offices, Edge and Agreement subsidiaries, and IBFs:   |                             |
| (1) Noninterest-bearing   | NONE                        |
| (2) Interest-bearing  | NONE                        |
| 14. Federal funds purchased and securities sold under agreement to repurchase in domestic offices of the bank and of its Edge and Agreement subsidiaries, and in IBFs | NONE                        |
| 15. Other borrowed money  | NONE                        |
| 16. Mortgage indebtedness and obligations under capitalized leases  | NONE                        |
| 17. Bank's liability on acceptances executed and outstanding  | NONE                        |
| 18. Notes and debentures subordinated to deposits   | NONE                        |
| 19. Other liabilities   | 540                         |
| 20. Total liabilities (sum of items 13 through 20)  | 45 989                      |
| 21. Limited-life preferred stock  | NONE                        |
| <b>EQUITY CAPITAL</b>   |                             |
| 22. Perpetual preferred stock (No. of shares outstanding)   | NONE                        |
| 23. Common stock (No. of shares):   |                             |
| a. Authorized   | 50,000                      |
| b. Outstanding  | 50,000                      |
| 24. Surplus   | 2 000                       |
| 25. Undivided profits and capital reserves  | 1 288                       |
| 26. Cumulative foreign currency translation adjustments   |                             |
| 27. Total equity capital (sum of items 23 through 27)   | 3 788                       |
| 28. Total liabilities, limited-life preferred stock, and equity capital (sum of items 21, 22, and 28)   | 49 777                      |

**MEMORANDA:** Amounts outstanding as of Report Date

1 a Standby letters of credit, Total 130

1 b Amount of Standby letters of credit in memo 1 a conveyed to others through participations NONE

NOTE: This report must be signed by an authorized officer(s) and attested by not less than three directors other than the officer(s) signing the report.

I, Phil Kent - Vice President, of the above-named bank do hereby declare that this Report of Condition

has been prepared in conformance with the instructions issued by the Board of Governors of the Federal Reserve System and the State Banking Authority and is true to the best of my knowledge and belief.

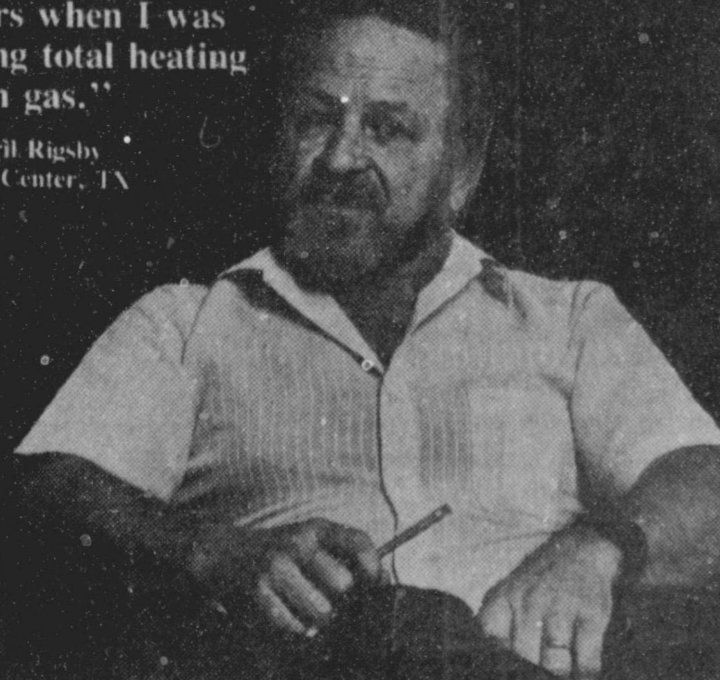
We, the undersigned directors, attest to the correctness of this Report of Condition and declare that it has been examined by us and to the best of our knowledge and belief has been prepared in conformance with the instructions issued by the Board of Governors of the Federal Reserve System and the State Banking Authority and is true and correct.

Signature of officer authorized to sign report: Phil Kent  
Director: Jerry Sturtevant  
Director: ...  
Director: ...  
Sworn to and subscribed before me this 19th day of March, 19 88

## "My Total Utility Bills Are About \$50 a Month Less . . ."

than they have been in previous years when I was doing total heating with gas."

Sheriff Rigby Hale Center, TX



## Dual Fuel Heat Pump

People Who Own 'Em Love 'Em

Check with these and other heat pump dealers in your area:

- Bomer Electric Muleshoe, TX
- Bruce and Matthews, Inc. Muleshoe, TX
- Southwestern Geo-Thermal Muleshoe, TX



**ADULT EDUCATION CLASSES END FOR YEAR**--Last Thursday night, the adult education classes conducted at Watson Junior High School during the past several months concluded last Thursday night, with a reception. Almost 100 adults were enrolled in classes. This class is representative of the four full classes conducted through the fall and early spring. The 'students' worked on learning English as a Second Language--and did very well all year.

(Journal Photo)

**Round-up Set  
At Dillman  
This Friday**

On Friday, May 6, Dillman Elementary will pre-register students who are eligible for kindergarten or pre-kindergarten for the 1988-89 school year. Registration will be in the Dillman Gym 8 a.m.-4 p.m. To be eligible for kindergarten, children must be five years

old by September 1, 1988. To be eligible for pre-kindergarten, children must be four years old by September 1, 1988 and must also meet one of the following requirements: (1) have limited knowledge of and comprehension of the English language, or (2) are from a family who is eligible to receive free or reduced price lunches. Pre-kindergarten students who are already attending school do not need to register for kindergarten. Parents need to bring the student's Social Security number.

The pre-kindergarten classes will operate on a half-day basis only, with classes being from 8-11 a.m. or from 12:30-3:30 p.m. Kindergarten will operate on a full-day basis.

Parents are asked to bring the child's birth certificate and immunization records when enrolling. All children who enroll for kindergarten or pre-kindergarten on May 6 will also be screened for speech and language that day, so parents are urged to bring their children with them.

Please contact Mrs. Barbara Finney, principal at Dillman Elementary School, if there are questions, at phone number 272-7541.

If it were left to some folks, it would be a crime to smile.

Paying cash is one way to stop spending your money foolishly.

**WJHS  
Honor Roll**

**FIFTH SIX-WEEKS  
SIXTH GRADE**

Americo Aguirre, Gage Angel, Brooke Barrett, Leah Bruns, Kelli Caldwell, Mason Conklin, Gail Copley, Jeanne Cox, Misty Davenport, Shawna Delaney, April Franklin, Chad Freeman, Kris Fuller, Lena Garcia, Mark Garcia, Emily Harris, Lori Hodges, Kristin Holmans, Chad McCormick, Brian Osuna, Donna Puckett, Stephanie Quintana, Allie Riley, Ruben Saldana, Shane Schuster, Brooke Sinclair, Sonya Smith, Courtney Tanksley, Jackie Thomas, Brenna Wheeler, Shawn Wheeler and Andy Wilson.

**SEVENTH GRADE**

Amanda Ashford, Dora Barrera, Jeff Bradley, Michael Cearley, Kristin Chitwood, Eric Cisneros, Sonya Cisneros, Becky Donaldson, Amelia Flores, Rose Marie Gloria, Shane Glover, Veronica Gonzales, Rebecca Green, Vanessa Greenhouse, Stacie Harris, Robin Hovland, April Hugg, Jennifer Johnson, Kyle Kenmore, Angie King, Stacey Langfitt, Susie Martel, Rachel McAdams, Scott Miramontes, Tracy Puckett, Gilbert Rennels, Shannon Robertson, Blanca Sanchez, Cristal Sargent, Mandy Shipman, Douglas Snell, Jody Thomas, Adam Vourazeris, Jon Robin Watkins, Cory Welch, Summer Wiley and Dustin Wilhite.

**EIGHTH GRADE**

Maria Almanza, Audree Anzaldua, Mita Bhakta, D'Anne Box, Cory Collins, Tina Copley, Andy Crawford, Patricia Del Toro, Dustin Elliott, Jody Field, Ricky Flores, Jill Foster, Courtney Graves, Jason Harmon, Neal Haynes, Charla Holt, Corley Hutton, Erin Kelley, Shane Kirk, Galin Latham, Adam Lopez, Mike Mata, Kip, McCall, Jill Noble, Steven Noble, Kevin Osuna, Adrian Pineda, Margarita Posadas, David Quintana, Michael Richardson, Lashelle Scoggin, Ronda Scott, Virgil Snell, Melissa Toombs, Mickey Trussel, Celia Villalobos, April Watkins and Audrey Williams.

**Sudan News  
By: Evelyn Ritchie**

It was reported that Beryl Lance who is a resident of the Mulshoe Nursing Home has been feeling better as of Wednesday.

Mrs. Katie Turner is now a resident at Knights Rest Home in Littlefield and welcomes visitors.

Edith Williams and sister, Lillian Cook of Littlefield spent Sunday and Monday visiting their sister, Mr. and Mrs. Horace Turpin and family in Slaton. The group ate lunch in the Slaton Senior Citizens Center Monday.

Sudan athletes were in competition Saturday at the South Plains College in Levelland when Chris Griggs placed first in High jump with 6-2.

Jimmy Kyle Glasscock placed 2nd in the 3200 meters with 10:36.0. Chris Griggs also placed 3rd in the 110 meter hurdles with 15.41.

Elliot King placed 2nd in the 100 meters with 11.0 and David McDaniels placed first in the 400 meters with 50.96.

Anthony Williams placed 2nd in the 200 meters with 22.58 and the Sudan team placed 3rd in the 1600 meter relay.

Krista Kirkland of Spearman placed first in the girls 3200 meters with 13:09.10 and 2nd in the 1600 meters with 6:05.78. Krista is a former Sudan student at SHS.

Mrs. Charlie Lyle and Mrs. Lucille Porter of Houston visited recently with their son and grandsons, Mr. and Mrs. Charlie Lyle, Kristin and were also here to meet their newest member of the family, Charlie Brandon who was born Wed., April 13.

Mattie Benton of Mulshoe visited several days recently with her sister, Polly Kent.

Marie Beckett was released Wednesday from the Littlefield Medical Center where she had been a patient for a few days.

Jerry Walker and family of Hereford visited during the weekend with his parents, Mr. and Mrs. Ted Walker.

Houston Black returned from Dallas last week where he visited his son, Donald and family and other family members.

Mrs. Estelle Lowe recently heard from Mr. and Mrs. David Rowe, former Sudan residents and David was City Marshall. They are presently living in LaPorte, Texas where he has accepted a job as a truck driver.

JoGaye Mapp and Dusty of Hobbs, N.M. visited during the weekend with her parents, Mr. and Mrs. Wayne Doty and other family members.

Mrs. Kenny Wilson (Sharon) of San Antonio visited recently with her parents Mr. and Mrs. Bernard Wilson.

Floyd Wilinon of Odessa and Mr. and Mrs. Alan Smith of Tucson, Ariz. visited some last week with their mother and grandmother, Mrs. Mary Wilinon.

Mr. and Mrs. Dud Walker of Calif. visited last week with their neices, Mr. and Mrs. Don Lewis and Oletta Reece and other family members.

Kathy Powell will be going to U.I. L. State competition in Austin next week in Accounting and Carmen Ramos will be going in Prose Interpretation. Congratulations to both these girls for representing Sudan in this.

TEXAS CERTIFIED NURSERMAN  
TCN  
MEANS  
PROFESSIONAL!  
Danny's  
Tree & Landscape  
Service  
P.O. Box 382  
Mulshoe, Tx 79347  
806/272-5711

**Lazbuddie  
Jr. High  
Honor Roll**

**FIFTH GRADE**

Stacey Barber, Holley Morris, Susan Alcala, Marsha Autry, Jerri Cozby, Frank Gonzales and Filemon Guzman.

**7TH GRADE**

Leland Barber, Craig Russell, Becky Botkin, Matt Cozby, Raquel Guzman, Erin Jones, Joele Weaver, Eric Williams, Paul Williams and Amy Willingham.

**6TH GRADE**

Dawnda Magby, Jarah Redwine, Lori Bradshaw, Jessica Burch, Gina Jarman, Troy McBroom, Jodi Morris and Brett Thomas.

REMEMBER  
**Mother's Day**

**Bud Vases.....\$7.50 & up**  
**Corsages.....\$8.50 & up**  
**Orchid Corsages.....\$10.00 & up**  
**Foliage Plants.....\$10.00 & up**  
**Blooming Plants.....\$16.50 & up**  
**Balloon Bouquets...\$12.50 & up**

**Decorators Floral & Gifts**  
616 S. 1st Mulshoe 272-4340

**Start Your Mother's Day Celebration**  
At Summit Savings  
All Mothers Register For A Precious Moments Figurine To Be Given Away At 4 p.m.  
Friday, May 6, 1988  
Come in anytime this week to register. You do not have to be present to win.  
304 Main 272-5527

**Make Mother's Life Easier.**

**Make This Mother's Day Special With A New KitchenAid Dishwasher.**

**Superba Selectra**

- Solid-state electronic touch controls with five cycle selections: SOAK & SCRUB POTS/PANS, NORMAL, LIGHT/CHINA, QUICK WASH and RINSE HOLD.
- Start pad with memory; repeats last cycle automatically.
- SURE-SCRUB Multi-Level Washing System.

Model KUDS21S

**Superba Classic**

Woodgrain control panel accents make the Superba Classic the perfect choice for the traditional kitchen.

- Easy-to-use push-button controls with four cycle selections: SOAK & SCRUB POTS/PANS, NORMAL, LIGHT/CHINA and RINSE HOLD.
- SURE-SCRUB Multi-Level Washing System.
- SURE-TEMP Water Heating.

Model KUDS21C

**Superba Monterey**

Choose the Superba Monterey for the contemporary kitchen. A rich black control panel, accented in silver and grey, echoes today's in-demand high-tech look while it complements popular European-style cabinetry.

Model KUDS21M

**Wilson Appliances, Inc.**  
117 Main 272-5531

**To Mom With Love**  
Mother's Day Is May 8

**20% Off All Dresses**  
Thru Saturday

**Lookin' Good**  
206 Main Phone 272-5052

# Journal Files

## 60 Years Ago

1928  
**SWIMMING POOL OPEN TO PUBLIC**  
 Mrs. R.L. Faulkner announces that she has opened her swimming pool for the summer, the pool having been filled last week. This pool is one of the best to be found anywhere, being of concrete construction with dressing booths nearby. Bathing suits may be had at the pool, or upon using your own suit the fee for swimming being somewhat less. Mrs. Faulkner has had everything overhauled and put in fine shape for the coming season.

## 50 Years Ago

1938  
**SUGGESTION:**  
 The Muleshoe Citizen who feels he is Not Getting Anything Out of His Community--Might Try Putting Something In It.

## WIND AND HAIL HIT HERE SOME CROP DAMAGE

Tuesday afternoon following a fierce windstorm of 30 minutes duration out of the south west, Muleshoe and surrounding area was visited by a heavy rain, accompanied by considerable small hail.

The ground was white with hail, while many homes roofs were covered solidly, resembling a heavy snowfall. Water overflowing bar pits, ran down streets like mill races. Some window panes in houses were broken out and roofs that were not in best of conditions leaked like sieves.

## 40 Years Ago

1948  
**CONSTRUCTION OF JONES FARM STORE IN MULESHOE TO BEGIN NEXT FEW DAYS**

Construction will begin in the next few days on the future home of the Jones Farm Store in Muleshoe. F.W. "Chief" Jones, who will own and manage the new enterprise said today, noting

the store will be located on a track of ground 102 feet wide by 300 feet deep, situated between the Santa Fe tracks and the King Bros. elevator and storage plant. It will face the Plainview Highway.

Mr. Jones said the first part, a building 50 by 62 feet in dimensions, will be rushed to completion as materials and workman can be secured.

He expects to operate a complete farm store, handling feed, seeds, grain, fertilizer, insecticides, livestock remedies, and will do custom spraying of livestock and crops, soil testing, etc.

## 30 Years Ago

1958  
**WESTERN DRUG IS MOVING TO NEW LOCATION THIS WEEK**

Western Drug, operated by Harry and Wilma Waddle is in the process of moving into their enlarged store, just south of St. Clair's on Main Street. Harry reported Thursday that they expect to be practically all moved by the weekend.

At the present the store is operated partly in both its old and new location.

The new location in the Gilbreath building gives the Walgreen agency store approximately 3000 square feet space. All departments have been enlarged, and new fixtures have been installed in all departments except the fountain.

## 20 Years Ago

1968  
**BOTH LANES OPEN ON NEW HIGHWAY 84**

Both lanes are now open for travel on West U.S. Highway 84. Ray Bradley, engineer, said the north lane was opened shortly after noon Thursday after one year and one month of work on the stretch of Highway which connects with the Parmer County four lane Highway near Lariat.

Bradley warns motorists to note the opening and use both lanes to avoid head-on collisions.

## 10 Years Ago

1978

Grocery specials advertised in the Journal this week included: coffee \$2.59 pound; 3 ounce jar instant tea \$1.29; 3 pound can Crisco \$1.59; 5 ounce can vienna

sausage 3 for \$1; 15 ounce can pears 2 for 89 cents; 8 ounce can tomato sauce 5 for \$1; 14 1/2 ounce can tomatoes 3 for \$1; 14 1/2 ounce can fruit cocktail 2 for 79 cents; evaporated milk, tall cans 39 cents; 29 ounce can peaches 2 for \$1; vine ripe tomatoes 3

pounds \$1; 10 pound bag potatoes 79 cents; oranges or apples 3 pounds \$1; pork chops \$1.39 pound; picnic hams, 6-8 pound average \$1.59; pork link sausage \$1.89 pound; and spare ribs \$1.19 pound.



**SPARKY VISITS ELEMENTARY SCHOOL STUDENTS**--Last Friday afternoon during an Electrical Safety Program presented by Ron Montgomery, Kay Davis and David Faver, Sparky visited the students at Mary DeShazo Elementary. Posing with Sparky is Jarrod Redwine, Coleman Strahan, Alphozo Mendoza and John Bryan Calvert, all third grade students. (JOURNAL PHOTO)

## 'Sparky' Visits Mary DeShazo School

Friday afternoon, Ron Montgomery, manager of the local Southwestern Public Service; Kay Davis, marketing representative for SPS; and David Faver, safety and training coordinator; along with Sparky visited Mary DeShazo Elementary School and presented a program on Electricity Safety.

They explained about glass insulators and how they hold power lines up off utility poles and if insulators were not used, electricity would travel down the pole to the ground. They also explained how the linemen wear insulated gloves, leather on the outside, to handle wires. Holes in

these gloves could cause electrocution and how the linemen's lives depend on the gloves. Linemen also wear hard hats for protection.

"Electricity is in nature". They showed electricity in Jacobs ladder, electricity jumping from one piece of wire to another, makes an arc.

"Fly kites in wide areas, never around power lines. If the kite should get in a power line, leave it alone."

**Muleshoe Journal** USPS 367-620  
 Established February 24, 1924. Published by Muleshoe Publishing Co., Inc. Every Thursday at 304 W. Second, Box 449, Muleshoe, Texas, 79347. SECOND CLASS POSTAGE paid in Muleshoe, Texas, 79347. U.S. Post Office approved.

**TA TEXAS PRESS ASSOCIATION** Member NATIONAL NEWSPAPER ASSOCIATION WEST TEXAS PRESS ASSOCIATION

L.B. Hall-President & Publisher  
 Sammie Hall-Vice President & Controller  
 Clea Williams-News  
 Danett Buch-Advertising  
 Evelene Harris-Society  
 Little Nino-Bookkeeping

**SUBSCRIPTIONS**  
 Muleshoe Journal and Bailey County Journal  
 Muleshoe By Carrier \$12.50  
 Muleshoe Journal and Bailey County Journal  
 Bailey County & Surrounding Counties By Mail \$14.75  
 Muleshoe Journal and Bailey County Journal  
 Elsewhere in Texas \$16.50  
 Advertising rate card on application

## Reception Honors Maurice Kinnies'

Mr. and Mrs. Maurice Kinnie were honored with a 50th wedding anniversary reception Saturday, April 23 in the Sudan Community Center, hosted by their children, Debbie Brisco of Brighton, Colo., Becky Otwell of Muleshoe, Donnie Kinnie and Larry Kinnie of Lubbock, John Kinnie of Sudan, Nell Stanley of Lazbuddie, Freida Shirley of Plainview. Another son, Ron, of Portland, Oregon could not attend. He called them wishing them a happy anniversary.

The serving table was accented with a blue floral arrangement accented with baby's breath.

A traditional three-tiered cake and punch were served from crystal appointments. The cake was topped with a gold "50".

Mr. and Mrs. Kinnie were married on April 23, 1938, in Lula, Oklahoma.

\*\*\*\*\*  
**THANK YOU!**  
**MERCHANTS AND CITIZENS OF MULESHOE**  
 For your donations and contributions to our Third Annual Celebrity TV Auction which was held last Saturday in the Bailey County Civic Center Arena. It was another big success only because you all helped in so many ways and contributed so much. The Auction raised approx. \$4500.00 and will be used to begin renovation on the old Janes house. Our ultimate goal is to finally create a Heritage Center which will be a park like development and a permanent home for the historic old buildings which have been such an important part of early Bailey County history.  
 Thank you again and again....  
 The TV Auction Committee  
 and  
 The Muleshoe Heritage Board  
 \*\*\*\*\*

**Helen's Shoes**  
 224 S. Main Muleshoe, Tx.  
 10 a.m. - 5 p.m. Mon. thru Sat.

**Clearance Sale**

**20 - 70% Off All Merchandise**

For Mother  
**Daniel Green House Shoes'**

**Handbags 30 - 70% Off**

**Hose 40 - 70% Off**

**Belts 40 - 70% Off**

**Sale Ends June 4th**

**CALENDAR OF EVENTS MAY 5-11**

**THURSDAY, MAY 5**  
**ODDFELLOWS LODGE**  
 7:30 p.m.

**HOBBY CLUB**  
 2 p.m.

**TOPS CLUB**  
 6:30 p.m.

**FRIDAY, MAY 6**  
**KNIGHTS OF COLUMBUS**  
 6:30 p.m.

**MONDAY, MAY 9**  
**COMMISSIONERS COURT**  
 10 a.m.

**SCHOOL BOARD**  
 7 p.m.

**TUESDAY, MAY 10**  
**WMU**  
 2:30 p.m.

**ALCOHOLIC ANONYMOUS**  
 8 p.m.

**ART ASSOCIATION**  
 2 p.m.

**MULESKINNERS**  
 7:30 p.m.

**REBEKAH LODGE**  
 7:30 p.m.

**ROTARY CLUB**  
 12 (noon)

**YOUNG HOMEMAKERS**  
 7 p.m.

**JENNYSLIPPERS**  
 12 (noon)

**MASONIC LODGE**  
 7:30 p.m.

**WEDNESDAY, MAY 11**  
**LIONS CLUB**  
 12 (noon)

106 E. American Blvd. 272-5074

**JOE'S BOOT SHOP**

Old St. Clair's Building Muleshoe

Biggest "Little" Boot Shop in Texas

**LOOK**  
**What's New!**  
**Kids Justin Ropers**  
**\$45.00**  
 Navy, Gray, Red & Brown

Something Special For Mom  
 May 8th

Silk Corsages and Flowers

Gift Selections

Specials On Dinnerware

"We have Something Special for everyone's Mother."

Something Special

**Ben Franklin**  
 Better quality for less  
 2104 W. Amer. Blvd. Mon. - Sat. Sun.  
 272-3855 8 a.m. - 8 p.m. 12 p.m. - 5 p.m.  
 For Your Shopping Convenience

**Happy Mother's Day!**  
 Sunday, May 8th

**Heaven Sent**  
 Eau de parfum  
 2 fluid oz.  
**\$6.49**

**Assorted Chocolates**  
 7.2 oz. gift box  
 Reg. \$4.49  
**SPECIAL \$3.82**

**Spice Rack**  
 Wooden filled  
 with six favorite spices  
**\$8.99**

**Chopper Plus**  
 by Sunbeam  
 "The biggest little helper in the kitchen"  
**\$19.99**

**Glue Gun**  
 Cordless  
**\$19.99**

**Thermal Server**  
 1 Liter  
 pump pot for hot and cold beverages  
**\$5.99**

**Center Bowl**  
 10 in.  
 crystal glass by American Whitehall  
**\$6.99**

**Jewelry Box**  
 walnut wood finish  
 Reg. \$18.99  
**\$9.49**

**Tummy Trimmer**  
 rowing exerciser  
**\$4.75**

**Assorted Chocolates**  
 14 oz. gift box  
 Reg. \$4.50  
**SPECIAL \$2.99**

## Delta Kappa Gamma International Meets In Olton

Epsilon Delta chapter of Delta Kappa Gamma Society International met in the community room of the Olton State Bank for their April meeting. Laura Maxey was in charge of the brunch. Geraniums in different colors decorated the room and were then given as door prizes. Barbara Kinnison gave the program on "Can We Talk-Effective Communication". She had as her guest, Pam Poole who sang several selections as a way

of communicating. The meeting adjourned with the reading of the Collect, Loretta Reid, president, presided over the business meeting.

The next meeting will be in Muleshoe in May at the Old Depot for a Founders Day Banquet and Installation of new officers. Special guests will be members of the newly organized chapter from Littlefield.

Those from Sudan attending the Olton meeting were Cynthia King, Loretta Reid, Hazel May, Peggy Lowrance and Maxine Nichols.

The Epsilon Delta chapter met for the March birthday party in the community room of the Sudan First National Bank. Susan Baker was chairman of hostesses. A brunch and birthday cupcakes were served to members from Olton, Muleshoe, Littlefield and Sudan. Elsie Wilson led the birthday message. Esther Marie Graham and Oneta Gary, both of Olton were in charge of the program on "The Personal Touch".

The business meeting was presided over by Loretta Reid and the following were elected for the 1988-89 biennium: president, Virginia Bowers, Muleshoe; vice president, Oneta Gary, Olton; first vice president, Esther Marie Graham, Olton; secretary, Patsy Fisher, Sudan; and treasurer, Norma Jo Prather, Muleshoe.

The meeting closed with the singing of the Delta Kappa Song led by Oneta Grey.

Those attending from Sudan were Evelyn Milam, Elsie Wilson, Mary Tollett, Susan Baker, Peggy Fisher, Cynthia King, Jana Synatschk, Patsy Fisher, Donna Lance, Pam Wiseman, Hazel May, LaDelta Vernon and Loretta Reid.



### Jenna LeAnn Rasco

Wesley and Dana Rasco are the proud parents of a daughter born at 7:32 p.m. Saturday, April 30 in West Plains Medical Center.

The young lady weighed seven pounds and 12 ounces and has been named Jenna LeAnn. She has an older sister, Shani Laine, three and half years of age.

Grandparents are Mr. and Mrs. Curtis Smith of Muleshoe and Mrs. and Mrs. Odell Rasco of Lubbock.

Great Grandparents are Mr. and Mrs. Marvin Crawford, Sr. of Hamlin, Mrs. Paul Smith of Matador, Mae Owen of Muleshoe and Elbert Rasco of Littlefield.



**DISTRICT F.F.A. PRESIDENT**---Mandy Carr was chosen president of the Littlefield District F.F.A. Association for the 1988-89 school year on Tuesday, April 26. The daughter of Mr. and Mrs. Kenneth Carr, she will preside over fifteen schools and approximately 350 F.F.A. members. She will attend the Area I Leadership Camp in Clarendon; Area I Convention in Lubbock and the State F.F.A. Convention in San Antonio in July. (GUEST PHOTO)

### Camarillo In Weekly Senior Spotlight

"If I could be reincarnated I would be an eagle", said Rosa Camarillo, "That way I could fly free".

A 18 year old senior at Sudan High School, Rosa is being featured this week in the Sudan High School Senior Spotlight. She was born on Nov. 24, 1969. It was reported that she is a very prompt person but if late to a class, she uses the excuse, "How can a person go to their locker, get their books, go to the bathroom, and get to class in five minutes."

Rosa said, "I'm not quite sure if I am going to college or join the

Marines right now, but I know I am going to pursue my career somehow."

She is secretary of Auto Mechanics. She said that her best friend is her cousin, Rosa. "One thing I will never forget about SHS is my friends" Rosa said. She stated that she has shared many memories with her friends. These memories will stick with her forever. Her best advise to underclassmen is "Just hang in there---old SHS really came through."

### Enochs News

By Mrs. J. D. Bayless

Mr. and Mrs. Leon Dupler of Andrews visited in the home of their daughter, Mr. and Mrs. Jarrol Layton and children, Sunday. Ashley went home with her grandparents.

Visiting the Clifford Snitkers the past week was Mrs. Inez Sanders, Mrs. Morris Phillips and Mrs. J.C. Snitker.

Visitors at the Baptist Church Sunday were Mrs. Gertrude Dees and son, Kenneth of Silt, Colo. Kelly Mosser of Slaton and three children of the Eddie Thomas' of Wolfforth.

Visitors at the Baptist Church Sunday were Bro. Lewis Mowery of Three Way, Mrs. Gertrude Dees and son, Kenneth of Silt, Colo. the three children of the Eddie Thomas' of Wolfforth, and Kelly Mosser of Slaton and Gary Price of Amarillo.

Spending the weekend with Mr. and Mrs. Goldman Stroud were their grandchildren, Britany and Monty Kirby of Three Way.

### Kristi Hargrove

#### Sudan Lions Club

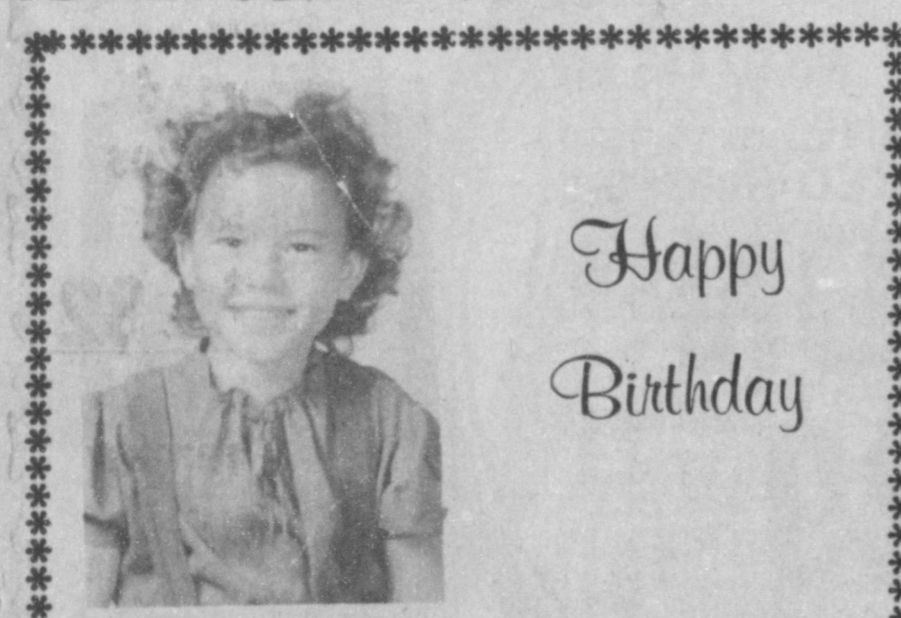
#### Sweetheart

Kristi Hargrove, daughter of Mr. and Mrs. J.B. Hargrove, was selected recently as the new sweetheart of the Sudan Lions Club. Other candidates were Kay Lynn Gordon and Mandy Carr. President Bob Summers stated that after excellent speeches as to why the candidates wished to be the sweetheart, ballots were cast four times by members before a winner was selected. "Each girl had pleasing qualities and any one of the three would have made an excellent sweetheart" he said.

Teena Newman is the new Queen, replacing Donice Holly who will be graduating.

Donice represented the Sudan Lions Club recently at the Holiday Inn Civic Center in Lubbock in the 2T2 District Queen's contest. She presented a speech, was interviewed by the three judges, and had to answer questions at random. "Although she did not place, she represented the Sudan Club well" Summer said.

Attending from Sudan were Jim Ingle, Mr. and Mrs. John Humphreys, Ronnie Smith, Teena Newman, Mr. and Mrs. Tom Rigsby, Bob Summer and Donice.



### 'Grandma' Shower

#### Honors

#### Winona Dudgeon

A "Grandma" shower was held Sunday afternoon in the home of Georgeann Rasco honoring Winona Dudgeon.

The table was covered with a white lace table cloth and accented with a bear holding a multi-colored balloon bouquet.

#### Mrs Glidewell

#### Honored With

#### Baby Shower

The community room of the Sudan First National Bank was the scene of a baby shower Friday, April 22 honoring Mrs. Larissa Glidewell.

Special guests included Bonita West of Sudan, mother of the honoree; Mrs. Dennis West and daughters, and Mrs. Brad West and sons, of Arch, N.M.

The serving table was covered with a red cloth with a white lace overlay and accented with a bear and helium filled balloons.

Cookies and punch were served from crystal appointments.

The hostesses gift was a Playskool Deluxe Baby Monitor. Hostesses for the occasion included: Darlene Bellar, Lula Burnett, Marge Cardwell, Jon Ann Ford, Sandra Franks, Mary Harper, Lucy Kent, Cynthia King, Zanelle Martin, Loretta Reid, Evelyn Ritchie, Charls Ann Williams, Jane Wiseman and Bette Withrow.

Cookies and punch and nuts were served from crystal appointments.

Special guests were Mr. and Mrs. Roy Don Dudgeon and Danny Ray of Dimmitt, and Oleta Reece and Thelma Lewis both of Sudan.

The honoree received a diaper bag and two sets of clothes for her new grandson, Danny Ray.

Hostesses for the occasion included Loretta Reid, Susan Baker, Cheryl Kinzie, LaDelta Vernon, Marge Cardwell, Peggy Lowrance, Donna Lance, Pee Wee Lance, Ruth Baker, Francis Gardner, Nancy Davis, Lucy Kent, Zanelle Martin, Juanda Fields and Charls Ann Williams.

#### West Plains

#### Hospital Report

APRIL 28

Ransley Welch, David Ramirez, Vickie May, Bill Martin, Yaunda Martin, Rod Springfield and L.T. Johnson.

APRIL 29

David Ramirez, Vickie May, Bill Martin, Sandra Longley, Debbie Hutto, Dana Rasco and L.T. Johnson.

APRIL 30

David Ramirez, Vickie May, Bill Martin, Sandra Longley, Debbie Hutto, Dana Rasco, Baby Girl Rasco and L.T. Johnson.

MAY 1

Trey Pederson, Opal Robinson, Bill Martin, Sandra Longley, Debbie Hutto, Dana Rasco, and Baby Girl Rasco.

MAY 2

Trey Pederson, Cipriano Torres, Margaret Hamilton, Sandra Longley, and Monica Pacheco.

We would like to express our sincere appreciation to everyone for the many acts of kindness and concern during the loss of our loved one, Ell Northcutt.  
May God Bless You!  
Ed & Evelyn Northcutt & Family

**Announcing**  
Dianne and Winston Allison have purchased Decorators Nursery & Floral now  
Decorators Floral & Gifts  
We look forward to continuing to serve all your floral, plant or memorial needs.  
616 S. 1st 272-4340

**Two ways to flower Mom with love.**

Send the FTD® Swan Bouquet \$27.50 or the FTD Preserve Jar Bouquet. \$22.50  
Mother's Week begins May 2. Just call or visit us today.

**Decorators Floral & Gifts**  
616 South First Muleshoe 272-4340

**Does your Mother need a break from the kitchen?**

If she does, then Sunday May 8, is Mother's Day and the kitchen help at Leal's Restaurant is preparing some hot & delicious Mexican food dishes just for your loved one.

So Sunday, don't disappoint your Mother by not taking her to Leal's Restaurant for the finest in Mexican food.

**Leal's Mexican Food Restaurant**  
1524 W. Amer. Blvd. 272-3294

## Bank Deposits

Con't. From Page 1

deposit amount was \$51,247,805. Also, loans had increased some \$2,663,981 during the year, as loans shown at the end of this March were \$25,934,490, compared to the \$23,270,509 shown a year ago.

From Sudan, First National Bank shows a slight increase in deposits and a slight decrease of loans during the past year. Deposits were \$11,395,047 at the end of March, 1988, up \$849,185 from the \$10,545,862 shown a year ago. Loans decreased \$131,563 for the same period. Loans were \$3,846,987 closing out March this year, and at the end of March 1987, were \$3,978,550.

At Morton, First State Bank showed an increase of \$4,228,936 in deposits for the year. They reported deposits of \$34,088,778 at the end of March a year ago, and on March 31 this year,

## Muleshoe...

Con't. From Page 1

Several Texas Tech University students recently were accepted into the Honor Society of Phi Kappa Phi, one of the highest academic honors awarded at the university.

New members, which included two students from Muleshoe, were honored at an initiation banquet April 27 in the University Center. Drummond speaker was R. Wayne Drummond, dean of the College of Architecture.

The two local students were Donna Nell Horn Corder, daughter of Wanda Cockerham, Muleshoe and Kacy Karol Henry, daughter of Marsha Henry, Wolfthorpe and formerly of Muleshoe.

\*\*\*

Marine PFC Christopher C. Hernandez, son of Mickey and Lala Hernandez of Muleshoe, recently completed the Administrative Clerk Course at Marine Corps Base, Camp Pendleton, Calif.

He received instruction on typing and preparation of naval correspondence, and was introduced to the basic office functions performed by all Marine Corps administrative sections.

A 1985 graduate of Muleshoe High School, he joined the Marine Corps in August 1987.

\*\*\*

If you have not received a Feist Area-Wide Directory and would like a copy, Toni Eagle, manager of the Muleshoe Chamber of Commerce and Agriculture, says they are available at the CoC, 215 South First St.

\*\*\*

The 1988 Muleshoe Commemorative Belt Buckles are still available. Cost of the buckles are \$25, plus tax.

The 1988 buckle is the first buckle of a planned five-year series.

\*\*\*

deposits were \$38,317,714. Loans at the bank decrease! by some \$806,833. Loans were \$10,975,129 at the end of March last year, and at the same time this year, were shown to be \$10,168,296.

Security State Bank of Farwell had an increase in both deposits and loans during the past year. Deposits were \$45,101,384 at the end of March this year, compared to \$388,859,463 a year ago, for an increase of \$6,241,921. Loans at the bank increased by

## Rotary...

Con't. From Page 1

According to the safety officers every driver should have a commitment to make safety a deliberate part of driving. Use of the seat belt is an enhancement to safety, as well as asking yourself if you are ready to drive.

Rotary President Tommy Gunstream reminded the Rotarians of the Rotary Conference at Plainview this weekend, and said Rotarians will be charged only for sessions they actually attend.

Bill Liles suggested the purchase of a film for new members, and what is expected to new members. Approval was given to purchase the film.

Kid Castleberry won the Polio Plus drawing, and was presented a \$10 gift certificate.

Guests at the meeting included Suzanne McCasland, Martin Chandler, Texico-Farwell Rotary Club; and Danny Skaggs.

## Banquet...

Con't. From Page 1

you think you can't -- YOU'RE RIGHT!"

Three Way Superintendent Don Parker presented a very special award to Jack Reeves -- the Honorary State Chapter Farmer Membership.

Howard Tooley, vo-ag teacher at Three Way, said other awards had not arrived, and would be presented during the Awards Assembly on May 20.

Appreciation awards were presented Jan Tooley and Jean Parker.

FHA officers for 1988 were Stacy Kindle, president; Melinda Turney, vice president - programs; Bryan Kindle, vice president - achievements; Sheila Tucker, vice president - projects; Mario Guillen, vice president - recreation; Carrie Kindle, vice president, public relations; Kelly Tucker, vice president - HERO/FHA; Norma Rubalcava, secretary; Jessie Lowe, parliamentary; Lisa Howe, vice president, star events; Sandra Mendoza, Power of One and Jo Beth Massey, sponsor.

The FFA officers for 1987-88 are J. J. Duarte, president; Jarrod Sowder, vice president; Bryan Kindle, secretary; Kelly Tucker, treasurer; Albert Belz, reporter; Saul Guillen, sentinel and Howard Tooley, advisor.

\$1,162,455 for the same period of time. Loans at the bank were \$9,889,146 closing out March this year, compared to the \$8,726,691 of a year ago.

Citizens Bank of Earth showed an increase in deposits of \$1,479,654 during the year. Deposits were \$15,785,615 at the end of March this year, and were \$14,305,961 closing out March

last year, for an increase of \$1,479,654.

Loans at the bank were \$10,255,963 at the end of March this year, and closing out March 1987 were \$14,305,961, for an increase of \$1,479,654.

Loans for the bank were \$10,255,963 on March 31 this year, compared to the loans of \$10,029,881 at the same time last year, for an increase of \$226,082.



STATE CHAPTER FARMER PLAQUE AWARDED--Jack Reeves, left, longtime parent-worker with the Three Way FFA, was presented an honorary State Chapter Farmer Degree during the annual FFA-FHA banquet at Three Way last Friday night. Congratulating Reeves is Howard, Tooley, right, Three Way vo-ag instructor.

(Journal Photo)

We must continue the pursuit of excellence in the Muleshoe Independent School District.

We must work together for the best possible education for all children.

We must maintain open lines of communications between parents, teacher & school administrators.



Abel Arguello

"I would like to have the opportunity to work for you and with you for the good of all children."

Please use your vote on May 7th to allow me to do this for you.

Pd. Pol. Ad.

## Muleshoe Truck & Auto Service Center

Is Moving To  
301 N. 1st

Open At Our New Location On  
May 9th

Mechanics:

Mike Hill John Grippando H.E. Reeder



## Muleshoe State Bank

### Statement Of Condition March 31, 1988

PUBLICATION COPY - COMMERCIAL BANK  
CONSOLIDATED REPORT OF CONDITION (Including Domestic and Foreign Subsidiaries)

STATE 035 (3-87)

<568>

| LEGAL TITLE OF BANK   |        | STATE BANK NO               |          |
|---|--------|-----------------------------|----------|
| Muleshoe State Bank   |        | 1631-21                     |          |
| Drawer K  |        | FEDERAL RESERVE DISTRICT NO |          |
| Muleshoe, Texas 79347   |        | 11 13 16793                 |          |
| CITY  | COUNTY | STATE                       | ZIP CODE |
| Muleshoe  | Bailey | Texas                       | 79347    |
| CLOSURE OF BUSINESS DATE  |        | March 31, 1988              |          |
| Dollar Amounts in Thousands   |        |                             |          |
| <b>ASSETS</b>   |        |                             |          |
| 1. Cash and balances due from depository institutions:  |        |                             |          |
| a. Noninterest-bearing balances and currency and coin   |        | 1,828                       | 1 a      |
| b. Interest-bearing balances  |        | 200                         | 1 b      |
| 2. Securities   |        | 8,783                       | 2        |
| 3. Federal funds sold and securities purchased under agreements to resell in domestic offices of the bank and of its Edge and Agreement subsidiaries, and in IBFs     |        | 6,716                       | 3        |
| 4. Loans and leases, net of unearned income:  |        |                             |          |
| a. Loans and leases, net of unearned income   | 23,120 |                             | 4 a      |
| b. LESS: Allowance for loan and lease losses  | 736    |                             | 4 b      |
| c. LESS: Allocated transfer risk reserve  |        |                             | 4 c      |
| d. Loans and leases, net of unearned income, allowance, and reserve (item 4 a minus 4 b and 4 c)  |        | 22,384                      | 4 d      |
| 5. Assets held in trading accounts  |        | 0                           | 5        |
| 6. Premises and fixed assets (including capitalized leases)   |        | 400                         | 6        |
| 7. Other real estate owned  |        | 1,319                       | 7        |
| 8. Investments in unconsolidated subsidiaries and associated companies  |        | 0                           | 8        |
| 9. Customers' liability to this bank on acceptances outstanding   |        | 0                           | 9        |
| 10. Intangible assets   |        | 0                           | 10       |
| 11. Other assets  |        | 995                         | 11       |
| 12. Total assets (sum of items 1 through 11)  |        | 42,625                      | 12       |
| <b>LIABILITIES</b>  |        |                             |          |
| 13. Deposits:   |        |                             |          |
| a. In domestic offices  |        | 39,032                      | 13 a     |
| (1) Noninterest-bearing   | 5,275  |                             | 13 a (1) |
| (2) Interest-bearing  | 33,757 |                             | 13 a (2) |
| b. In foreign offices, Edge and Agreement subsidiaries, and IBFs  |        | 0                           | 13 b     |
| (1) Noninterest-bearing   | 0      |                             | 13 b (1) |
| (2) Interest-bearing  | 0      |                             | 13 b (2) |
| 14. Federal funds purchased and securities sold under agreement to repurchase in domestic offices of the bank and of its Edge and Agreement subsidiaries, and in IBFs |        | 0                           | 14       |
| 15. Demand notes issued to the U.S. Treasury  |        | 112                         | 15       |
| 16. Other borrowed money  |        | 0                           | 16       |
| 17. Mortgage indebtedness and obligations under capitalized leases  |        | 0                           | 17       |
| 18. Bank's liability on acceptances executed and outstanding  |        | 0                           | 18       |
| 19. Notes and debentures subordinated to deposits   |        | 0                           | 19       |
| 20. Other liabilities   |        | 369                         | 20       |
| 21. Total liabilities (sum of items 13 through 20)  |        | 39,513                      | 21       |
| 22. Limited-life preferred stock  |        | 0                           | 22       |
| <b>EQUITY CAPITAL</b>   |        |                             |          |
| 23. Perpetual preferred stock (No. of shares outstanding)   | 0      |                             | 23       |
| 24. Common stock (No. of shares):   |        |                             |          |
| a. Authorized   | 50,000 |                             | 24       |
| b. Outstanding  | 50,000 |                             | 24       |
| 25. Surplus   |        | 1,000                       | 25       |
| 26. Undivided profits and capital reserves  |        | 1,000                       | 26       |
| 27. Cumulative foreign currency adjustments   |        | 112                         | 27       |
| 28. Total equity capital (sum of items 23 through 27)   |        | 3,112                       | 28       |
| 29. Total liabilities, limited-life preferred stock, and equity capital (sum of items 21, 22, and 28)   |        | 42,625                      | 29       |
| <b>MEMORANDA: Amounts outstanding as of Report Date:</b>  |        |                             |          |
| 1. a. Standby letters of credit, total  |        | 7                           | MEMO 1 a |
| 1. b. Amount of Standby letters of credit in memo 1. a conveyed to others through participations  |        | 0                           | MEMO 1 b |

NOTE: This report must be signed by an authorized officer(s) and attested by not less than three directors other than the officer(s) signing the report.

I/We, the undersigned officer(s), do hereby declare that this Report of Condition has been prepared in conformance with official instructions and is true to the best of my (our) knowledge and belief.

SIGNATURE OF OFFICER(S) AUTHORIZED TO SIGN REPORT: Kay Mardis

DATE SIGNED: 4-26-88

NAME AND TITLE OF OFFICER(S) AUTHORIZED TO SIGN REPORT: Kay Mardis, Cashier

AREA CODE/PHONE NO: 806-272-4561

We, the undersigned directors, attest the correctness of this Report of Condition and declare that it has been examined by us and to the best of our knowledge and belief has been prepared in conformance with official instructions and is true and correct.

SIGNATURE OF DIRECTOR: James A. Cox

SIGNATURE OF DIRECTOR: [Signature]

SIGNATURE OF DIRECTOR: [Signature]

State of Texas, County of Bailey, ss

(MAKE MARK FOR) Sworn to and subscribed before me this 26th day of April 1988

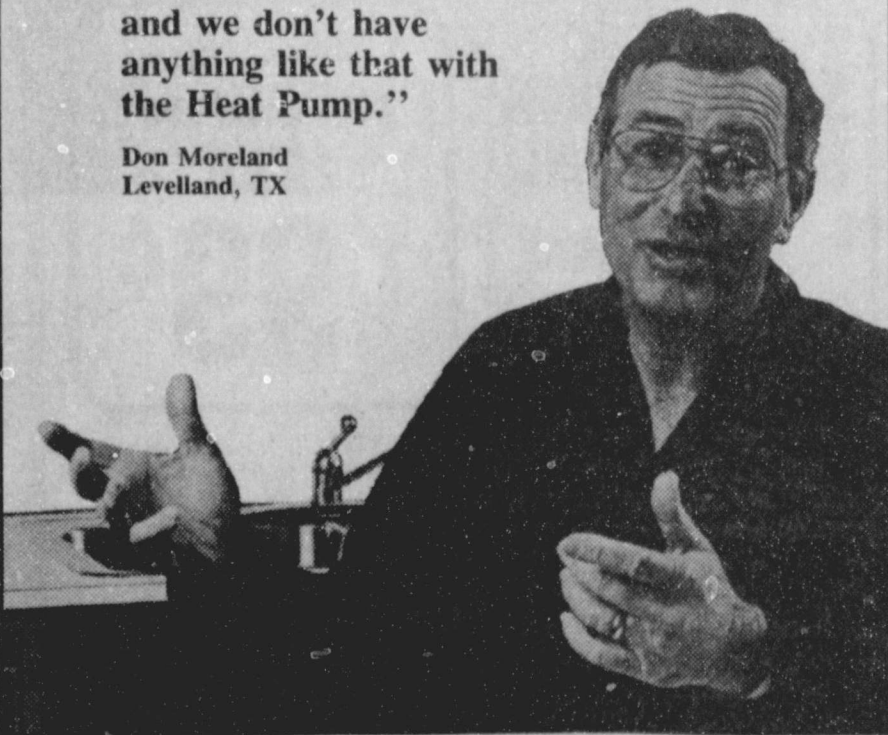
DEBBIE HARTLINE, Notary Public, My Comm. Exp. Feb 8 1992

Signature Notary Public: Debbie Hartline

## "A Lot of Homes' Registers Are All Dirty and Black . . .

and we don't have anything like that with the Heat Pump."

Don Moreland  
Levelland, TX



## Dual Fuel Heat Pump

People Who Own 'Em Love 'Em

Check with these and other heat pump dealers in your area:

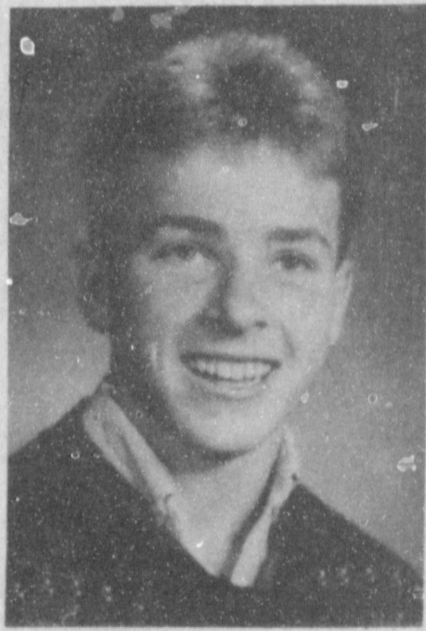
Bomer Electric Muleshoe, TX    Bruce and Matthews, Inc. Muleshoe, TX    Southwestern Geo-Thermal Muleshoe, TX

# Area School Activities



Amy McGehee

LHS--At the high school regional track meet held Saturday, April 30, in Levelland, two Lazbuddie students won places. Amy McGehee was fourth in the 100 meter run, and Michael Williams placed second in the mile. Michael qualified to go to the state meet to be held on May 14. Each of these students has done an outstanding job in track. Amy competed at the state meet two years ago.



Michael Williams

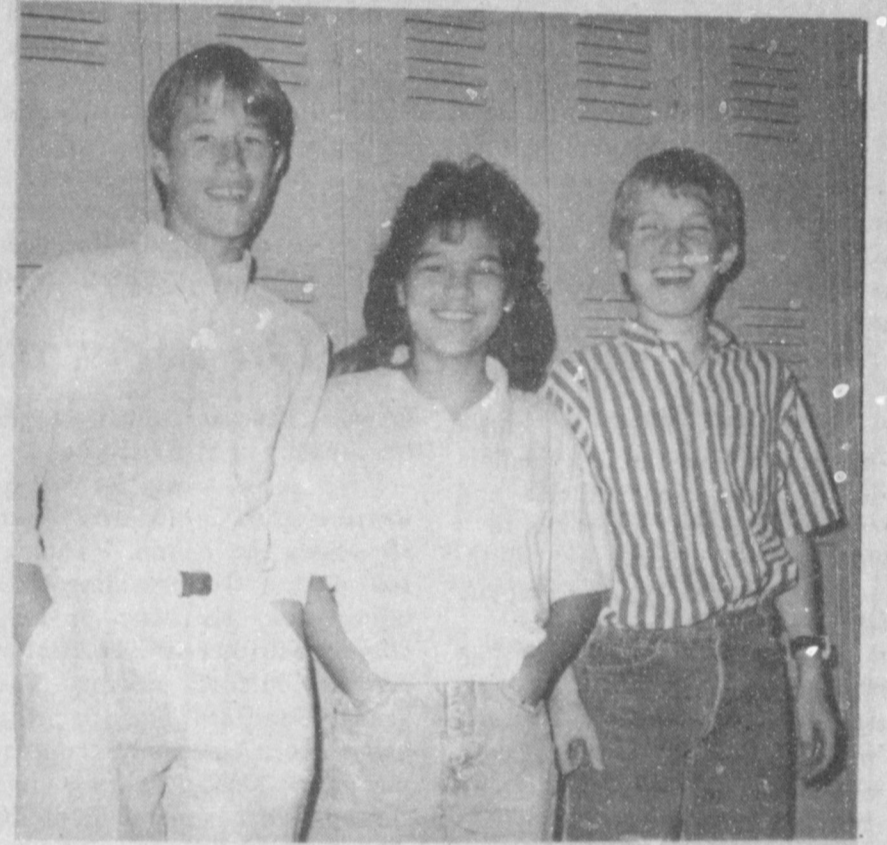
**U.I.L. PARTICIPANTS FROM JUNIOR HIGH SCHOOL INCLUDE:** JUNIOR HIGH NUMBER SENSE, Kevin Osuna, Patricia Del Toro, Galin Latham, Cory Collins. JUNIOR HIGH SPELLING, Mita Bhakta, Jason Harmon, Cari Turner, and Mickey Trussell. SIXTH GRADE READY WRITING, Stephanie Quintana, April Franklin, Kelli Caldwell and Shawn Wheeler. SEVENTH GRADE SCIENCE, Summer Wiley, Cari Turner, Tracy Puckett, and Steven Wausan. EIGHTH GRADE SCIENCE, Shane Kirk, Kevin Osuna, Neal Haynes, and Dustin Elliott. SIXTH GRADE ORAL READING, Jaime Williams, Kris Fuller, Allie Riley, Andy Wilson, Chad McCormick, Shawna Delaney, Sonya Smith, Kelli Caldwell, Jeanne Cox, Cathy Espinoza, Shane Schuster, and Stephanie Quintana.



Junior High Number Sense



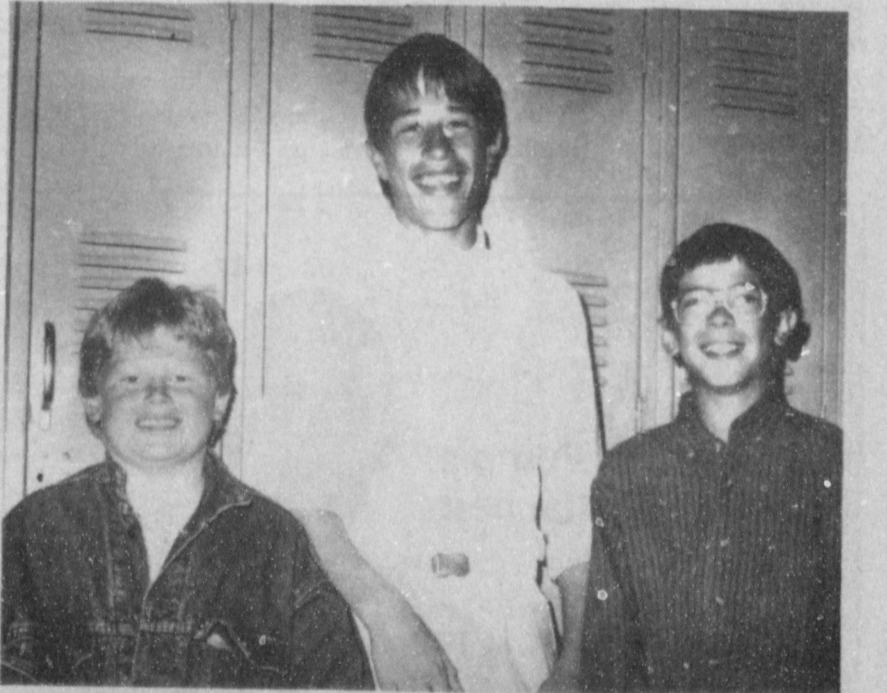
7th Grade Science



6th Grade Ready Writing



Junior High Spelling



Junior High Ready Writing



6th Grade Oral Reading



**DISTRICT WINNERS**--The Lazbuddie High School girls golf team placed first in their district. Ginger Jesko was district medalist. Amy McGehee placed fourth, high individual after tying for third. At the regional meet, Ginger was second medalist, which qualifies her to compete in the state competition May 11-13. Pictured are the Lazbuddie girls golf team: Amy McGehee, Jonessa Jennings, coach Hardy Carlyle, Ginger Jesko, and Mia Jennings. Lazbuddie's boys golf team placed fifth in district.



8th Grade Science



**THEY'RE WINNERS**--Lazbuddie's Junior High boys have shown remarkable athletic teamwork this year, winning their district first in football, then continuing with a first place in basketball, and now a first in track. Pictured are: back row, Matthew Cozbey, Luis Gonzales, Craig Russell, Frank Gonzales, Paul Williams, Manuel Marrufo, and track coach, C.W. Williams. Third row: Tony Gonzales, Brett Thomas, Mario Zamora, Chad Evans, Joe Tagle, Troy McBroom, and Jonas Hernandez. Second row: Stacie Barber, Monty Foster, Filemon Guzman, Leland Brockman, Eric Williams, and Herman DeLao. Front row: Kirk Jesko, Ricky DeLao, Chris Cozbey, Elpidio Pacheco, Ruben DeLao, Erasmo Moran, and Rogelio Pacheco. Football and basketball coaches not pictured are Richard Luscombe and Mark Scisson.

### Survey Shows Cattle On Increase

A record number of cattle made last year through feedlots in the Texas South Plains and nearby regions, according to a just-released study by Southwestern Public Service Company (SPS).

SPS annually prepares a Fed Cattle Survey covering feedlots in its service area. The electric utility serves a 52,000-square-mile area comprising the South Plains and Panhandle of Texas, eastern and southeastern New Mexico, the Oklahoma Panhandle, and southwestern Kansas.

Feedlots in the SPS service area fed 5,406,975 head of cattle last year, a 2.9 percent increase over 1986, according to the survey. The previous record was 5,259,779 head of cattle fed in 1984.

"These latest statistics demonstrate the cattle-feeding business is prospering in this part of the country," said Seth Thomason, manager of agricultural and industrial power. "The growth of this business shows how important cattle feeding is to our area's economy."

Total one-time capacity of the feedlots surveyed in 1987 was 2,728,255 head, up from the total capacity of 2,594,975 head in 1986.

Additionally, the survey found that 4,758,886 cattle were slaughtered last year at packing plants in the SPS service territory, down 312,991 from 1986. Fourteen beef-packing plants are in the SPS service area, Thomason said, noting the

facilities have an annual slaughter capacity of 5,107,153 head.

"We get requests for Southwestern's Fed Cattle Survey from all across the nation," Thomason said. "By providing this information, we hope to help stimulate further development in the agricultural sector. The area's feedlots and packing plants were extremely cooperative and helpful during this survey. We commend them for their assistance."

#### Three-Way News

By: Mrs. H.W. Garvin

Mr. and Mrs. Jack Lane were in Lubbock Thursday on business.

Mr. and Mrs. Andrew Wittner spent the week end in Dallas visiting relatives.

Mrs. H.W. Garvin visited her brother, Mr. and Mrs. George Tyson, Friday afternoon.

Mr. and Mrs. Pete Tarlton and D.V. Terrell returned home Thursday after fishing at Amstead Lake several days.

Mrs. Joe Sowder visited her father, Mr. and Mrs. A.G. Taylor, in Muleshoe Saturday.

Mrs. W.T. Simpson and Mrs. Jim Simpson were in Lubbock Friday on business.

The survey lists each feedlot in the SPS area, and the lot capacities and number of cattle fed, by counties. Thirty-one counties in the SPS service area have feedlots.

The report includes charts of the number of feedlots surveyed, number of feedlots with 1,000-head capacity or above, growth of the feedlot industry and one-time feedlot capacity.

Copies of the report and survey are available at SPS offices across the Company's service area or from Thomason, SPS main office, Tyler at Sixth Street, Amarillo, TX 79170.

A special 24x28 wall map showing feedlot and packing-plant locations also is available upon request.

### Fox

"We're More Than Movies"

#### New Hours:

Monday-Friday 2-10 p.m.  
Saturday 11 a.m.-10 p.m.  
Sunday 1-8 p.m.

#### New Releases:

- Beverly Hills Cop II
- Death Wish 4
- Stakeout
- Inner Space
- Flowers In The Attic
- The Pick-Up Artist
- Less Than Zero
- Adventures In Babysitting
- Hiding Out
- The Untouchables
- Date With 'An Angel'

#### Coming Soon:

- Return Of Living Dead Part II
- Steel Dawn
- Real Men
- Baby Boom
- Can't Buy Me Love
- Principal
- Like Father Like Son
- Over 100 Spanish Movies

#### Arcade &

#### Snackbar

- 16 Flavors Ice Cream
- Sundaes
- Popcorn
- Candy
- Every

Monday & Tuesday  
Rent One Movie--Get A FREE  
Scoop Of Ice Cream  
(one for each movie)

803 W. American Blvd.  
Muleshoe  
272-5981

## Wheat Aphid Concentration Growing

Wheat producers in Bailey County need to begin serious surveillance of their crop for buildup of Russian wheat aphids, cautions County Extension Agent Spencer Tanksley.

Reports of rapid increases in populations of the pest are coming in from many areas across the Texas High Plains, Tanksley said. Last year, the insect increased rapidly during April, he noted.

The Russian wheat aphid appeared in the U. S. in March 1986 near Muleshoe. Since then, it has spread into 14 western states and has cost wheat farmers an estimated \$50 million, says Dr. Pat Morrison, Texas Agricultural Extension Service entomologist at Lubbock.

"The cold weather of January and February slowed the aphid's activity, but they are emerging in force now," Tanksley said. The insect overwinters on wheat and certain other grass host plants.

The Russian wheat aphid is easily windblown when winged females disperse from infested fields, the Extension agent said.

As the aphids feed on wheat leaves, they inject a toxin which causes the leaves to turn purplish, often with longitudinal white streaks. This becomes more apparent as more aphids feed on the leaf for a longer time. Infested leaves can ultimately become almost white.

Heavily infested plants may also exhibit a flattened appearance, with tillers lying almost parallel to the ground.

The aphids tend to prefer the uppermost leaf or leaves of a plant. Infested leaves will curl tightly, much like a soda straw. Because of the location of the aphids within infested plants, they aren't easily visible to superficial examination.

Economic thresholds, or treatment levels, haven't been determined for small grains grown in the U. S. However, in South Africa, treatment is recommended when 10 percent of the plants are infested at the growth stage (Feekes 6) when

the first node of the stem is visible.

A plant is considered infested when only one tiller or leaf has aphids present.

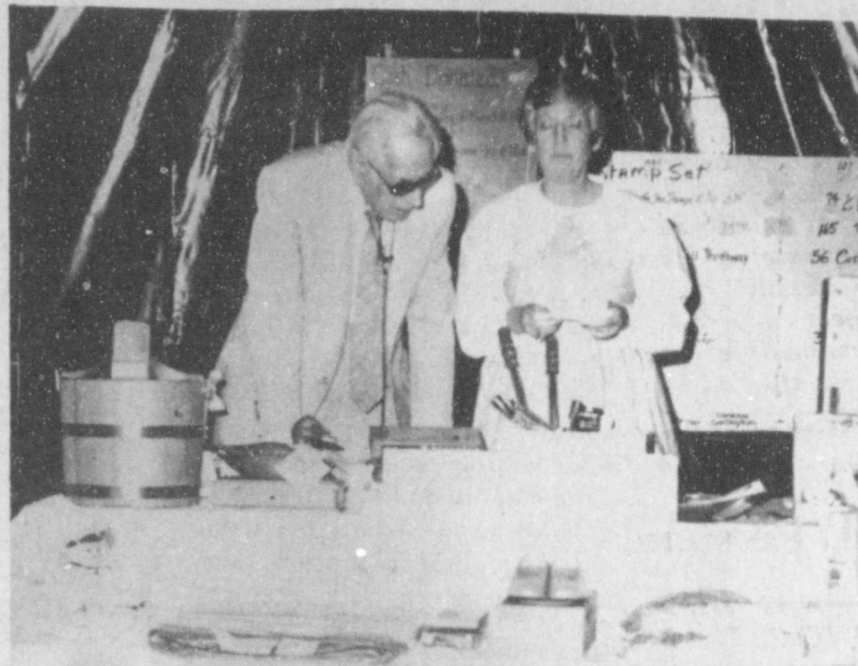
If heavy reinfestation occurs following treatment, a second application is recommended when the flag leaf is first visible and 10 percent of the tillers are infested.

Most damage is done between the time when the flag leaf first appears (Feekes 8) and the head is first visible (Feekes 10.1). Treatment strategy is aimed at protecting the flag leaf because of the major contribution it makes to the eventual

yield.

Growers need to consider grazing and yield potential when making treatment decisions. In some cases, it might not be profitable to treat with insecticides.

Several registered systemic insecticides are effective in controlling the pest. Systemics are needed because the aphids are inside the curled leaves, protected from contact insecticides. Growers should consult the insecticide label for small grain restrictions, since grazing and pre-harvest intervals vary for different products, cautioned Tanksley.



**LOOKING OVER THE AUCTION ITEMS**--Last Saturday afternoon, Gil Lamb, left and daughter, Magann Rennels, served as auctioneers for the annual Heritage Foundation Auction held at the Bailey County Civic Center. A lot of items were bid on and sold during the evening. (Journal Photo)

## EXCEL

Frona Division  
Is interviewing

Tuesdays, Wednesdays and Thursdays  
at the Frona Plant  
between 8:30 and 11:30 A.M. CDST.

Interviews Friday are taken at the Texas Employment Division in Hereford, Texas beginning at 2:00 P.M. CDST.

We Are Looking for  
**PRODUCTION WORKERS**

Equal Opportunity Employer

## It Takes A Tractor This Good To Earn A Warranty This Good



### The MAGNUM 5-Year/5,000-Hour Warranty

MAGNUM means more! But there's much more to a MAGNUM tractor than meets your eye. Because behind the more powerful engines, the more efficient transmissions and the high-visibility cabs...

Stands the best warranty in the business: The MAGNUM tractor 5-year/5,000-hour warranty, whichever occurs first.\* A warranty that gives you coverage, from

top to bottom, front to back. It's the best warranty in the business. By far.

The way MAGNUM tractors are built there's a good chance you'll never need to take advantage of this advantage.

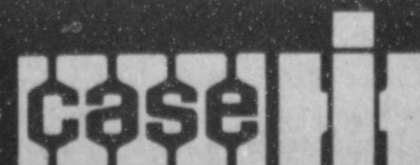
Come on in and look over the all-new MAGNUM tractors. And ask us for details on the best warranty... and the best tractors in the business.

\*Excluding tires, which are covered by their own manufacturers' warranties. A \$200 deductible applies to each repair after the first year.

## C & H Equipment

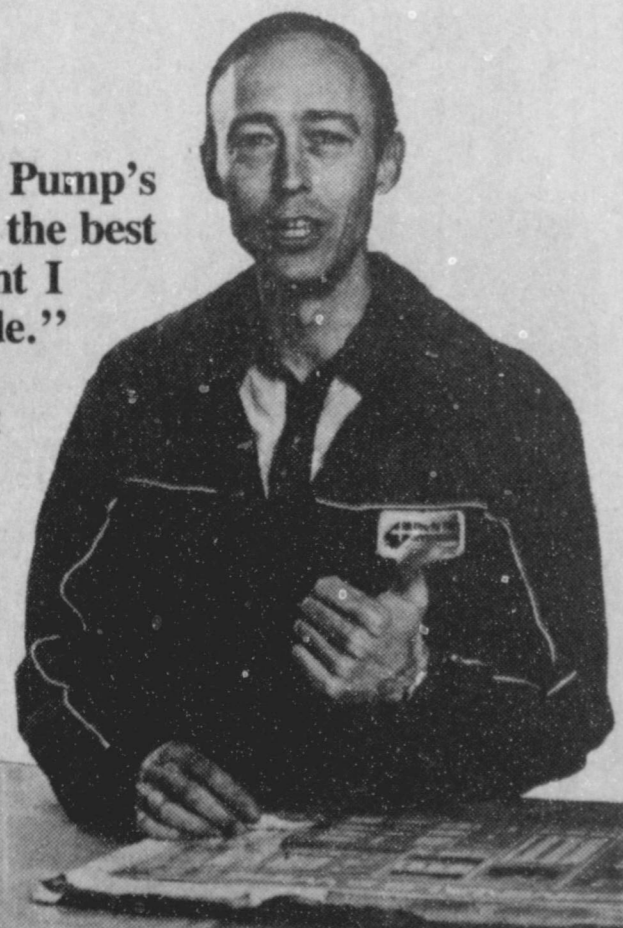
Hwy 84 West Muleshoe

272-5514



"The Heat Pump's probably the best investment I ever made."

Jerry Bruns  
Muleshoe, TX



## Dual Fuel Heat Pump

People Who Own 'Em Love 'Em

Check with these and other heat pump dealers in your area:

Bomer Electric  
Muleshoe, TX

Bruce and Matthews, Inc.  
Muleshoe, TX

Southwestern Geo-Thermal  
Muleshoe, TX



# Muleshoe Journal

# Classified

Call 272-4536

**CLASSIFIED RATES**  
Per Word.....\$.15  
Minimum Charge \$2.30

**Consecutive Insertions**  
Minimum Charge \$2.00

**CLASSIFIED DISPLAY RATES**  
\$1.75  
Per Column Inch

**DEADLINES**  
12 noon Tues.  
For Thursday Paper  
12 noon Friday  
For Sunday Paper  
We reserve the right to classify, revise, or reject any ad. Not responsible for any error after ad has run once.

**8. Real Estate**

**HOUSE** for sale or rent 2-1 home wall heat, carpet just outside city limits call 272-5527 day or 272-3914 night. 8-17s-4tp

**FOR RENT**, lease or sale, 2 bdrm, 1 bath house near school. Terms available. Call 817-663-5857 or 817-663-2084. b8-14s-tfc

**4 BEDROOM HOME** in good location. Fenced in yard with storage building. 1621 W. Ave. C. Call 894-3889. s8-15s-tfc

**FOR SALE-3 bdrm**, 2 bath, fireplace, large living area, central heat & air (ref), 2 car carport- built ins, washer, dryer and ref. underground sprinkler, satellite system, fenced back yard, 1780 sq. ft., 2 large storage buildings, also 1300 sq. ft. office building, central heat & air (ref), 2 bdrm mobile home can be used for rental. Call day or night 806-272-5151. g8-14s-tfc

**4 BDRM** home in good location fenced in yard with storage building. 1621 W. Ave C. Call 894-3889. s8-15t-tfc

**FOR SALE BY Owner**, Richland Hills, 3-2-2, Central A-H, lots of storage, nice location. 272-5194. f8-16s-8tc

**Krebs Real Estate**  
272-5788  
Listings Appreciated

**9. Automobiles For Sale**

**BUY GOVERNMENT** Seized Vehicles from \$100. Fords, Chevys, Corvettes, etc. For info call (602) 842-1051 ext 2841. 9-16t-4tpp

**10. Farm Equip. For Sale**

**8 LATE** model zimmers, 3" & 4" Subs complete, good 292 and 305 engines, 60 & 80 hp gear drives, and other equipment located near Muleshoe. Call 806-272-5597. c10-14s-tfc

**11. For Sale Or Trade**

**219 acres** heavy turf grassland-50 acres native, 160 acres improved grasses. Irrigation possible. Good fences. 29% down, balance 10 years owner will carry notes. 806-946-3474. c11-18s-tfc

**Perseverance**  
Lady Golf Novice (after tenth swipe of the ball)—"Thank goodness, it's gone at last."  
Caddie—"It isn't the ball that's gone, miss—it's your wrist watch."

**8. Real Estate**

**JAMES F. HAYES & CO. AGRICULTURAL REAL ESTATE**  
Vic Coker-Agent  
806) 965-2468

\* **160 ACRES** South of Clovis lays good, good water, **SOLD** soil, Center Pivot Sprinkler Fully **SOLD**. A nice one!

**2 LABORS SOUTH OF MULESHOE** Longview Area, Good Soil, fully allotted Call for more details.

**460 ACRES WEST OF BOVINA** on State Line. 300 gallon water, good soils, 70 Acres of grass, good allotments, terms available!

**313 ACRES** on Farmer County-Castro County line. 2 wells, 2 tailwater pits, good allotments, steel barn, terms available.

**2-160 Acre** tracts northwestern Lamb County good water-2 wells on each farm good soil; lay good, Immediate possession.

**1-210 Acre Farm-Lamb County:** Steel barn & other improvements, 2 wells lots of underground pipe good soil & lays good. Immediate possession available.

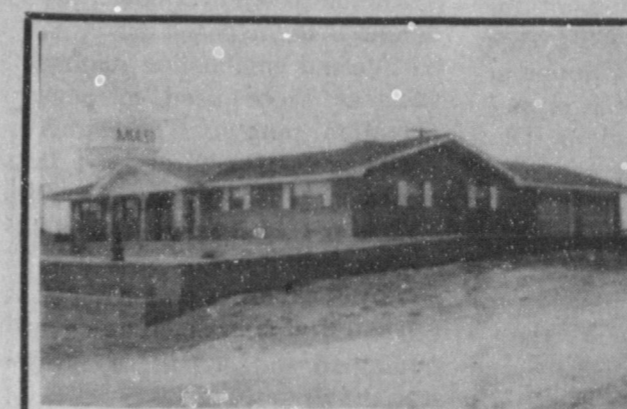
**1297 Acres - Eastern Lamb County,** 8 circle sprinklers with well motors. Allotments, Alfalfa, Improved grasses, houses, barns & other improvements. Excellent water. Ideal Livestock or Vegetable operation. Call for further details.

**120 Acres - Bailey County - West of Muleshoe.** Allotted, will accommodate a circle sprinkle. Some terms possible.

\* In cooperation with a New Mexico Broker.

Call Vic for Farm & Ranch Appraisals

**8. Real Estate**



FEATURED THIS WEEK BY:

**Whitt-Reid Real Estate**

One of the most attractive homes in Muleshoe. It has the highest elevation, overlooking the city to the front, and with a beautiful Western Ranch View of green wheat and cattle to the rear. It has 3 bedrooms, 2 full baths, double garage, and much more in over 2100 Square feet of living space, and over 600 feet in the garage. Let us show you this home that would cost \$110,000 to duplicate, and it can be yours for only \$79,500.00.

**201 Main Street 272-3611**  
**Roy Whitt** **Thursie Reid**  
Broker Sales People  
Certified Appraiser

**Think Classified!**

116 E. Ave. C BINGHAM & NIEMAN REALTY 272-5285 or 5286

**PRICES REDUCED UP TO \$7,000** on 2 & 3-1-1 Brick Homes, Cent. heat, Energy Efficient. PRICED FROM \$23,500!! Ap-prox. \$600.00 total move-in, payments based on income for qualified Buyers!!!

**RICHLAND HILLS IMMACULATE** 3-2-2 Brick, corner lot, Cent. A&H, built-ins, FP, loads of storage & closet space, much more!

**PRICE REDUCED-3-1-1** Brick, Cent. heat, Evap. air, built-ins, fenced yard....

**MAKE OFFER** 3-1/2-1 Home, Cent. heat, evap. air, built-ins, fenced yard, detached storage-garage. Nice locations. \$30's

**HIGHLAND & STEWART JUST LISTED-VERY NICE-3-2-2** Brick, Cent. A&H, newly remodeled kitchen with built-ins, storm windows, fenced yard, storage bldg. and much more!!!!

**SPACIOUS-3-2-2** Brick Home on corner lot, Cent. A&H, built-ins, fireplace, loads of storage, 2900 plus sq. ft. of LV. area lots of extras, undgrd. sprinkler sys., fenced yard. A GREAT BUY!!!

**NICE 3-2-2** Brick Home (2 story), on corner lot, Cent. A&H, built-ins, and much more. LET'S LOOK TODAY!!!!

**JUST LISTED-3-2-1** all heat, carpet **IN CONTRACT** LOOK TODAY!!!!

**JUST LISTED-3-2-1** carport Brick, Cent. A&H, built-ins, fenced yard, & much more. PRICED TO SELL!!!!

**HIGH SCHOOL** 3-2-1 Brick+2 carport, Cent. A&H, built-ins, fenced yard, Eff. Apt. or workshop & storage area. \$40's!!!!

**NICE 3-2-2** home, Cent. A&H, utility, large fenced yard with lots of trees. \$40's!!!!

**JUST LISTED- Very well kept** 3-1/2 Home, Cent. heat, nice carpets, storm windows, storage bldg. & more. \$40's!!!!

**3-1-1** home, corner lot, Cent. A&H, built-ins. \$30's.....

**3-1-1** home, nice carpets, floor furnace, evap. air, built-ins, storage & more. \$30's!!!!

**IMMACULATE-3-2-1+2** carport, Brick Home, Cent. A&H, built-ins, nice finished basement with fireplace, sprklr. sys., & much more!!!!

**8% A.P.R. FINANCING TO QUALIFIED BUYER** on this 3-2 Brick, Cent. A&H, built-ins, 2 fireplaces, nice large rooms, sprinkler sys.!!!!  
**DIANNE NIEMAN, BROKER**

**8. Real Estate**

**Henry Realty**  
111 W. Ave. B Muleshoe 272-4581

**JUST LISTED-2** Bdrm., 1 bath, large utility, nice fenced yard in Country Club Addition. Owner financing available.

**ONE ACRE** sites for home construction. 3 miles East of Muleshoe on Hwy. 3 lots remain.

**3 Br., 2 bath**, spacious home outside city limits, near city on highway. 29'x40' metal building. Lot 85'x620'.

**3 Br., 1 bath**, completely remodeled, edge of city on highway.

**OUTSIDE** city limits, 3 bdrm, 2 bath, utility, new kitchen, carport, built in oven & cooktop, wood burning fireplace, 2 car garage with one electric opener, house sits on 1 acre lot. Owner would consider trade for smaller house in town.

**2 Bdrm. - 1 Bath**, New **SOLD** downtown. Priced To Sell.

**4 Bdrm., 2 Bath, 2 Car Garage**, Central Heat/Air, Large Utility, Carpet, near downtown. Excellent condition.

**FOR LEASE**, 2 bdrm, 1 bath, rock home near high school in excellent condition.

**Kenneth R. Henry Broker**  
272-4581  
**Judy Coker Agent** 965-2468

**Sudderth Realty, Inc.**  
109 FIFTH STREET  
(806) 481-3288 (806) 481-9194  
FARWELL, TEXAS  
Realtors/Certified Appraisers  
WE NEED FARM LISTINGS

**17. Seed & Feed**

**FOR SALE** large lot of Plains & W.W. Spar Blue Stem grass seed. Will sell for \$12.50 small orders. Large orders negotiable. Call after 7 pm 405-393-2135. 17-16t-6tp

**18. Legal**

**LEGAL NOTICE**  
The City of Muleshoe will accept bids on a backhoe. Bids will be opened in the City Manager's office on Friday, May 13, 1988 at 1:00 p.m. Sealed bids should be at City Hall before that time. The bid will be awarded at the council meeting at 8:30 a.m. on Tuesday, May 17, 1988. Specifications may be obtained in the office of the city secretary during normal business hours. The City reserves the right to accept or reject any and all bids.  
c18-18s-2tc

**Stumped**  
"I don't know how to fill out this question, sir."  
"What is it?"  
"It says: 'Who was your mother before she was married?' I didn't have any mother before she was married."

Muleshoe Journal 272-4536 For Your Classifieds Call

**1. Personals**

**WANTED TO BUY:** 10 used side rolls. Top prices paid. Day phone 385-4487, night phone 925-6484. s1-10s-tfc

**MARY KAY COSMETICS** Josie Flowers 272-3865, tube lipstick available. f1-49s-tfc

**FRANK'S** Refrigeration & Appliance Service Parts & Repairs 817 Gum Muleshoe, Texas 79347

Phone Business 272-5090 Home 272-3822. f1-6s-tfc

**DEPENDABLE** child care in my home. Fun & educational. Call 272-5316. s1-16t-8tc

**CONCERNED** About Someone's Drinking? HELP IS AVAILABLE through Al-Anon Call 227-2350 or 965-2870 or come to visit Tuesday nights, 8:00 p.m. or Saturday mornings at 11:00 a.m. at 1116 W. American Blvd., Muleshoe.

**3. Help Wanted**

**FEDERAL, STATE AND CIVIL SERVICE JOBS.** Now Hiring. Your area. \$13,550 to \$59,480 immediate openings. Call 1-(315) 733-6062 Ext #F1800. 3-17t-5tpts

**EXPERIENCED** mechanic with own tools, excellent pay plan and fringe benefits. We provide paid advanced training. Stevens Chevrolet Oldsmobile Hereford, Tx 1-364-2160. s3-18s-3tc

**GET PAID** for reading books! \$100.00 per title. Write: PASE-D883, 161 S. Lincolnway, N. Aurora, IL 60542. 3-18t-8tp

**ZERO DOWN SEMINARS** is seeking an assertive individual to conduct no money down real estate seminars. \$5,000 to \$10,000 Part Time, \$9,000 to \$25,000 Full Time possible. Call (208) 385-0313..Dept. 12. c3-18t-3tfc

**4. Houses For Rent**

**FOR RENT** large 2 bdrm house. Carpeted 272-3498. 4-17t-2tpp

## Irrigation Hazards Increase When Handling Aluminum

As producers begin land preparation for the 1988 growing season, they should watch for potential hazards and correct them to prevent irrigation-related injuries.

Ken Carver, High Plains Underground Water Conservation District No. 1, Assistant Manager, reminds producers to use extra care when moving irrigation pipe.

Aluminum irrigation pipe coming in contact with overhead power lines is the most commonly reported farm accident. Many people have been killed or severely injured when the pipe they were handling came in contact with power lines.

Carver urges irrigators not to load, unload or stack aluminum pipe underneath or near power lines. Producers should always look up to be sure no power lines are overhead before moving irrigation pipe. Small animals hiding in irrigation pipe should be dislodged by pounding on the pipe rather than raising the pipe to a vertical position.

"An electrical hazard that people may not think of is an improperly grounded electric control box on a center pivot or electric irrigation pump. This can cause the control box to be 'hot' even though it is turned off," Carver says.

Center pivot wires damaged by rodents and/or livestock can short out and send 440 volts of

**Bertha Hardage**

### Funeral Services Held Monday

Funeral services for Bertha Hardage, 83, were held at 2 p.m. Monday, May 2 in the First Baptist Church with the Rev. Jimmy McGuire, pastor of the First Baptist Church of New Deal, officiating, assisted by the Rev. Barry Bradley, pastor of the Muleshoe First Baptist Church.

Burial was in the Oklahoma Lane Cemetery under the direction of Ellis Funeral Home of Muleshoe. Ms. Harding died at 8:25 p.m. Saturday in Central Plains Hospital at Plainview.

Born Jan. 19, 1905, in Stephenville, she had been a resident of the Lazbuddie Community since 1936, moving there from Seymour. She was a homemaker and a member of the Muleshoe First Baptist Church. She married Lacy Monroe Hardage on Sept. 3, 1922, in Seymour. He died July 3, 1981.

Survivors include two sons, Wayne Hardage of Vernon and Bill Hardage of Plainview; a daughter, Mrs. Dortha Mason of Clovis, N.M.; a sister, Mrs. Audrey Ady of Burkburnett; six grandchildren; and five great grandchildren.

electricity through the sprinkler system, he adds.

These hazards can be prevented through proper precautionary measures. Farmers should visually inspect all equipment for loose wires and animal damage prior to operation. All equipment should be inspected for proper installation and grounding. Defective or damaged equipment should be repaired immediately.

An inexpensive electrical tester, which is available at most hardware stores, allows producers to easily check their equipment for any electrical current which may be passing through the unit.

Carver adds that producers should watch for other potential electrical dangers such as the grounding connections made over painted or enameled surfaces, terminating aluminum and copper conductors within the

same connection, lack of a grounding electrode at the pivot, failure to properly ground the pump and/or motor frames, and loose conductor terminations.

Another often overlooked farm danger is the exposed drive shaft on internal combustion engines, such as those used to power irrigation pumps. These drive shafts normally turn at 1,750 revolutions per minute and will not stop unless the engine is switched off.

Carver says that clothing and other objects can easily become entangled and pull the operator into the driveshaft.

In August 1961, 10-year-old Gloria Contreras was scalped when her hair became entangled in the driveshaft of an irrigation pump she was drinking from. The girl lost 40 percent of her

scalp in the Deaf Smith County accident.

Snug fitting clothing in good repair is less likely to get caught in machinery than clothing with rips and tears. Gloves should also fit well for the same reason. Shirt

tails and pant legs should be tucked in. Clothing made of cotton is preferred over synthetics for field safety. Cotton clothing is more likely to tear if entangled, while synthetics could stretch and cause the wearer to

be pulled into the shaft.

For additional irrigation safety tips, contact the High Plains Underground Water Conservation District No. 1 office, 2930 Avenue Q, Lubbock, TX or call (806) 762-0181.

### ELECT Terry J. Hutto

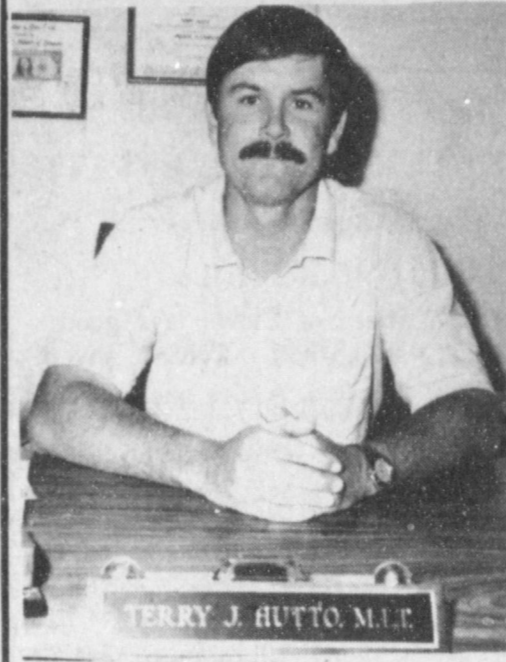
Muleshoe ISD School Board Trustee

Saturday, May 7, 1988

I Am For:

- ★ Strong Academics
- ★ Being sure my tax dollars are being spent wisely
- ★ My kids are just beginning their school years.

Pd. Pol. Adv.



### Enochs News

By: Mrs. J.D. Bayless

We express our sympathy to the family of Rev. Edd Thomas of Smyer. The Thomas' had spent the winter in Del Rio, and were ready to come home and died instantly. He is the father of Mrs. Mary Graves of Enochs, and Eddie Thomas of Wolforth.

Kelly Mosser of Slaton spent a few days the past week with his grandparents, Mr. and Mrs. E.N. McCall they took him to Lubbock Sunday and their parents, Mr. and Mrs. Steve Mosser of Lubbock met them at Mr. and Mrs. Robert Georges' and they all had dinner with the Georges'.

Mrs. Dale Nichols visiting Monday till Wednesday spent her daughter, the James Grants'.

Mrs. Goldman Stroud visited a sister-in-law, Mrs. Frankie Stroud, in Clovis, N.M. Monday.

Mr. and Mrs. Buford Peterson have been to visit their son and family Mr. and Mrs. Morris Peterson at Hillsboro.

Mrs. Ellen Bayless was in Littlefield Wednesday on business and visited Mrs. Alberta Bryant.

Rev. David Graves preached in a revival at the Baptist Church at Bledsoe Monday through Sunday, there were 24 decisions made.

Rev. Ray and Olene Cunningham of Lubbock spent Wednesday night with her sister, Mrs. Ellen Bayless.

# Attention

## ALL Beef Producers: May 10th Determines Your Future

In this year of elections, the last thing you need is someone else talking to you about politics or your responsibility to other beef producers. It's a busy time of the year, and you've got your mind on your operation, not on going to town.

But, on Tuesday, May 10th, if you don't stop for a few minutes, go to your County Extension Office and vote, you'll miss the referendum that decides the fate of the Beef Checkoff Program.

Just a couple of years ago, our industry was being beaten up, and we were backing up . . . taking it. But we got our backs up and did something. We drew a line in the dust. We began to fight back. And you know what . . . it's working. Many people are eating beef more often, and the newspaper headlines read that beef is coming back.

Now, we're not telling you how to vote. That's your business. But, on Tuesday, May 10th, the National Beef Checkoff Program is going to continue, or it's going to stop dead in its tracks.

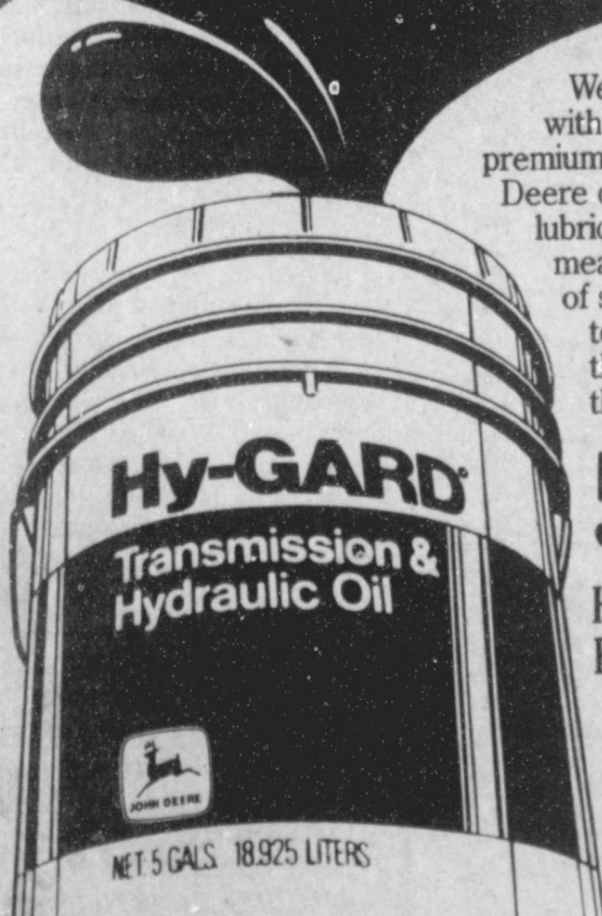
It's totally up to you. So take a trip to your County Extension Office and vote. You'll be glad you did.

## Vote May 10th

Beef Checkoff Referendum at your  
County Extension Office

Don't let someone else determine your future.

## A GREAT GUSHER SALE



We've been hit with a gusher of premium-quality John Deere oils and lubricants. That means an overflow of savings are yours today. Stop in for the best prices of the season.

5-gal.  
Hy-GARD® Oil  
Reg. \$27.92  
Now \$20.94

Ask us about our new low-sulfate antifreeze for diesel engines.

**Dent & Co.**

W. Hwy. 84 Muleshoe 272-4296