

WEATHER

January 18 5 1/2 inches of snow
 January 19 16 1 1/2" snow
 January 20 32 12 .Tr
 January 21 25 13 .Tr

Muleshoe Journal 20c

'The Community Of Opportunity - Where Water Makes the Difference'



Vol. 64, No. 4

12 Pages Today

Published Every Thursday At Muleshoe, Bailey County, Texas 79347

Thursday, January 22, 1987

Thick Snow Blanket Covers Area

Saturday's Blizzard Closes One Highway

A wide area, including the Muleshoe and Bailey County area, was snow covered after the biggest winter storm for the winter of 1986-87 slammed through the area during the past week.

The onslaught of wintry weather caused a rash of accidents on the highways in the county late last week, before drivers began to take the weather and road conditions seriously and slow down.

However, despite several accidents, no injuries were reported.

Only one accident was checked within the city limits of Muleshoe, and that one occurred on Tuesday afternoon, with no injuries.

Employees of the Texas Department of Highways and Transportation worked almost around the clock to clear the highways of snow. Around midnight on Saturday night, Highway 214 south of Muleshoe was closed for several hours as high wind quickly built the heavy snowfall into tall drifts across the highway, reported at times to be taller than a car.

Some six snow removal vehicles and two maintainers were operated by state employees.

At the same time, city workmen were attempting to clear as much snow as possible from major city streets. At presstime, tall piles of snow in the middle of streets and on corners were mute evidence of the heavy snowfall.

Schools in the area were not closed, but most started an hour later to give buses and private vehicles an opportunity to crawl over icy, snowpacked streets.

School buses were traveling only on paved roads, and in some instances, found it to be a "little rough" driving.

Many activities were cancelled or postponed as the heavy snow curtailed planned activities and events.

On Saturday, the hog show to conclude the Bailey County Junior Livestock Show went on as planned, but animals were moved out immediately following the show, to allow the exhibitors and their families to get the animals home.

On Sunday afternoon, a power outage in the northeast part of town was said to be weather-related, according to Ron Montgomery, manager of Southwestern Public Service Company in Muleshoe. Montgomery said the power outage lasted for approximately one hour.

City workmen were very busy all day on Tuesday, turning off water to businesses and residences where the low Monday morning temperature caused water pipes to burst when they started thawing out.

At mid-week, the National Weather Service predicted a warming trend to carry over into the weekend, and temperatures that had been as low as 1 above zero, were expected to climb into the mid-50's during the day, along with warm southwest winds. The warm winds were expected to make quick work of the drifted and piled snow.

Tanksley Top Pig Winner

As a near-blizzard raged outside, the second half of the Bailey County Junior Livestock Show was held Saturday at the Bailey County Civic Center and Coliseum. The second half of the annual show, the swine show, got underway at 9 a.m., and concluded late Saturday afternoon.

Exhibiting the grand champion pig was Courtney Tanksley, who showed a 238 pound Hampshire. Andy Crawford had the reserve grand champion with his 255 pound Hampshire.

Winner of the showmanship award in the swine division was Lisa Black, and Colin Tanksley received the Jimmy Dale Black award.

Results of the swine show areas follows:

HAMPSHIRE HEAVY WEIGHT
 Courtney Tanksley, first, breed champion and grand champion; Andy Crawford, second, reserve breed champion and reserve grand champion; Michael Angeley, third; Todd Bessire, fourth; Preston Gable, fifth; Greg Young, sixth and Shane Schuster, seventh.

MEDIUM WEIGHT
 Greg Young, first; Mike Dunham, second; Angela Crawford, third; Scotty Spies, fourth; Brooke Sinclair, fifth and Heath Scott, sixth.

LIGHT WEIGHT
 Larry Wauson, first; Courtney Tanksley, second; Amy Harrison, third; Jeffrey Noble, fourth; Heath Scott, fifth; Jeff-

rey Noble, sixth and Ronda Scott, seventh.

OTHER PURE BREED
 Holly Huckaby, first and breed champion; Micheal Angeley, second and reserve breed champion; Jason Harmon, third; Ross Parish, fourth; ussell Ross Parish, fourth; Russell Brown, fifth; Chad McCormick, sixth and Justin Gardner, seventh.

SPOT
 Kelley Tucker, first; Steven Wayne Wauson, second; Lisa Lowe, third and Curtis Tucker, fourth.

SPOT LIGHT WEIGHT
 Lisa Lowe, first and breed champ; Sheila Tucker, second; Brent Black, third; Monty Black, fourth and reserve breed champ and Mark Tucker, fifth.

YORK HEAVY WEIGHT
 Robin Moore, first and reserve breedchampion; Gage Angeley, second; Bryan Kindel, third; Robin Moore, fourth; Tonya Copley, fifth; Marianne Tombs, sixth and Troy Watson, seventh.

LIGHT HEAVY WEIGHT
 Sheila Tucker, first; Russell Brown, second; Todd Bessire, third; Eric McElroy, fourth; Bryan Kindel, fifth; Mark Tucker, sixth and Steven Wayne Wauson, seventh.

MIDDLE WEIGHT
 Dondee Stewart, first; Preston

Cont. Page 8, Col. 1



GRAND CHAMPION SWINE--A happy Courtney Tanksley, daughter of Mr. and Mrs. Spencer Tanksley, is happily posing with her Grand Champion Hog, a Hampshire. The Hamp won the championship at the Bailey County Junior Livestock Show last Saturday.

AROUND MULESHOE

 A town hall meeting will be conducted by the Jennyslippers on Sunday, January 25, 2:30-5 p.m. in the Bailey County Civic center.

The discussion will be all about the upcoming Bailey County History book to be published later this year by the Jennyslippers.

They encourage and urge all interested persons to be present for the meeting.

 Toni Eagle, manager of the Muleshoe Chamber of Commerce and Agriculture, said early this week, "The Muleshoe Chamber of Commerce and Agriculture will be holding a membership drive on Tuesday, January 27 and Wednesday, January 28."

"During this membership

Cont. Page 8, Col. 2

Low Texas Economy Shown In Bank Deposits And Loans

Despite a depressed economy on the South Plains, along with virtually all of the State of Texas, the two Muleshoe banks, combined with six area banks, show an increase in both deposits and loans for the final quarter of 1986.

Deposits at the eight banks surveyed show deposits on the final day of December, 1986 to be \$237,542,881, up by \$4,489,347 over the \$233,053,534 on deposit at the end of December in 1985.

For the same eight banks, loans took a dramatic upward swing for the same final quarter of the year. Loans at the banks were shown to be \$94,459,042 at the close of the books on December 31, 1986, and had increased by \$19,913,789 to \$114,372,831 at the end of

December, 1986.

Locally, deposits at the two Muleshoe banks were down slightly during the year. Deposits were \$67,588,000 at the end of December, 1985 down by \$385,000 from the \$67,203,000 shown on deposit closing out 1985.

Loans at the banks had increased, however, with loans of \$41,492,000 closing out 1985, up by \$10,661,000 over the \$41,492,000 shown on loan at the end of 1986.

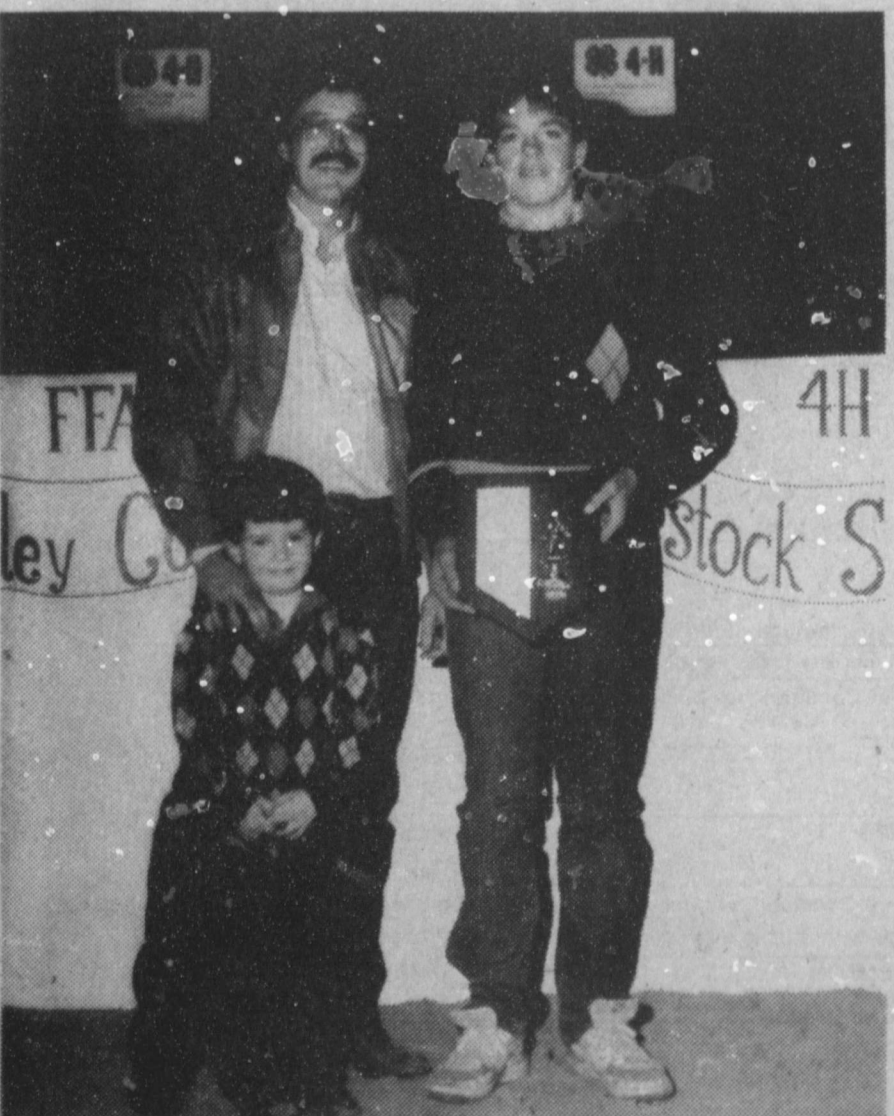
Muleshoe State Bank had deposits of \$36,223,000 at the end of December in 1986, compared to the \$35,109,000 closing out December 1985, for an increase in deposits of \$1,114,000.

Loans at Muleshoe State Bank also increased, greatly, with \$27,268,000 on loan at the close of the books on December 31, 1986, an increase of \$8,626,000 over the loans of \$18,642,000 at the end of the previous year.

At First Bank, deposits were down by \$1,499,000 for the year, with deposits of \$30,980,000 on December 31, 1986, and \$32,479,000 closing out December, 1985.

Loans at First Bank were

Cont. Page 8, Col. 5



JIMMY DALE BLACK AWARD WINNER--This year, Tim Black, left, had the honor of presenting the annual Jimmy Dale Memorial Award to Colin Tanksley, son of Mr. and Mrs. Spencer Tanksley, right. Black's young son, helped present the annual award.

Rotary Plans Big Program For Tuesday

Max King was in charge of presenting the program for the Muleshoe Rotary Club on Tuesday at noon, and had a slide presentation.

Featured on the slide presentation were Larry Curley and Moe, and a hunting trip to Colorado. According to the slides, and King, the group saw beautiful scenery, and lots of trout. However, they (all the trout) regrettably got away.

During a business meeting Clifton Finley was elected treasurer for 1987-88 and it was announced that the Rotary would have a very special program next Tuesday.

Todd Ellis will be in charge of the program, and will feature the Flight for Life, medical helicopter from St. Mary's Hospital in Lubbock.

Following the Rotary program, the helicopter will be on display for the public beginning at 1 p.m.

Visitors at the Tuesday meeting included Pam Hancock, a Hancock youngster and Cecil Osborne, along with Danette Bunch.

Water Tanks, Depository Faced Action

It was a major financial discussion Tuesday morning for members of the Muleshoe City Council, when they met in regular session. The financial discussion followed the opening of bids for a depository of city funds.

After thoroughly discussing the proposals presented by Muleshoe State Bank and First Bank of Muleshoe, the bid proposed by First Bank was accepted on recommendation of Muleshoe City Manager Dave Marr, who said the First Bank bid offered the biggest interest rates.

Two water storage tanks were discussed, with necessary repairs outlined, such as new roofs needed. Bill McMorris and Associates, Inc., city engineers, suggested that one roof be repaired at an estimated cost of \$47,500 and the other tank be totally replaced for some \$117,720.

The city engineer said the old ground storage tanks were original railroad tanks, constructed in the 1920's and it was not feasible to invest a lot of money in repairs, when replacement was much more feasible.

Further study will be taken before a final decision is made on the water tanks.

Briefly discussed was a program for sealcoating approximately 20 percent of the city streets this year, and further discussion on the airport. Marr said FAA is still processing paperwork on the new airport for Muleshoe.

Will Planning, Estate Taxes Workshop Focus Next Week

"Will writing is difficult for many people," says Dr. Wayne A. Hayenga from Texas Agricultural Extension Service. One of the most difficult parts is to pick out the people who will do things for your family.

There are three main actors to be selected. They are the Executor, the Trustee and the Guardian if a person has minor children.

The Executor, also called the personal representative, takes charge of a deceased person's estate immediately after death. He needs to find the will, offer it for probate and after appointment, carries out the duties cited in the will and required by law. "Simplified, the duties are to collect all the decedent's

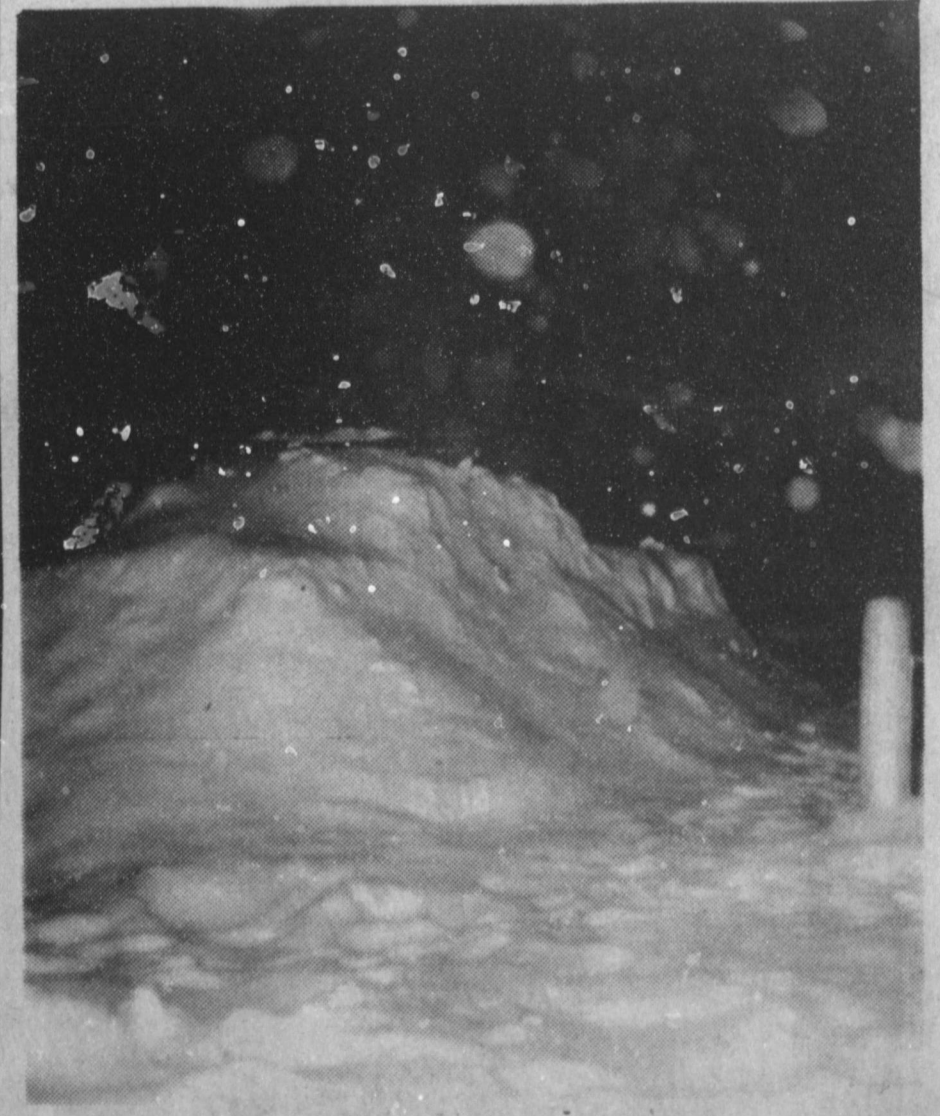
property, file the needed reports with the proper authorities, and distribute the property to the heirs after all claims and taxes were paid."

"What is the hardest job? "Probably collecting the decedent's property," says Hayenga. "How does the Executor know when he has found all of the property? He really doesn't, he just hopes he does."

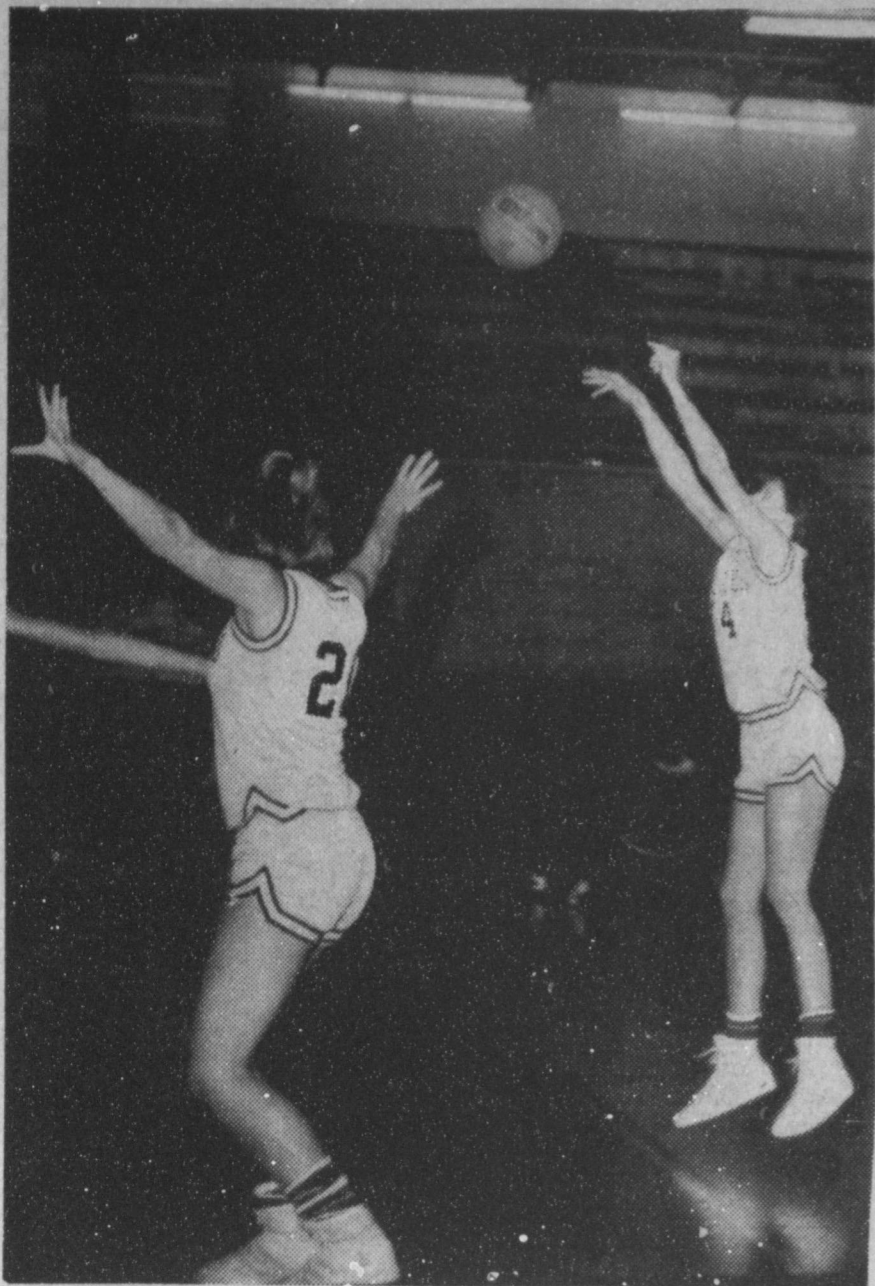
The other duties, filing reports and distributing the property are more administrative acts. Even if they are burdensome tasks, an Executor can hire a competent attorney and / or accountant to assist him.

A Trustee is a difficult job, though. A Trustee is charged

Cont. Page 8, Col. 2



MOTHER NATURE - A PRANKSTER?--Although this just looks like a pile of snow, if you will check it very closely, you will find the same thing a Muleshoe City Police Department patrolman found early Sunday morning. All you can see is a portion of the light bar from the top of his patrol car, and the antenna.



EASY LAY-UP--With a teammate keeping the Tulia Hornettes at bay, Amy Bean, No. 24, goes up for an easy two points in action in Muleshoe last Friday night. This was the district opener for the Mulettes.

SANDHILLS PHILOSOPHER

Editor's note: The Sandhills Philosopher on his Johnson grass farm on Sandy Acres thinks he has an answer to another national problem this week.

-0-

Dear Editor:

If you've listened to interview shows like "Meet The Press" or "This Week With David Brinkley" you've noticed that politicians don't answer questions, they address them.

"Yes," one will say when asked what he thinks ought to be done about the deficit: "the deficit certainly has to be addressed by Congress this year."

The only trouble is, when a politician addresses a problem, his letter comes back stamped "Addressee Unknown."

Politicians are good at identifying problems, but the effort exhausts them and they lose interest or run for cover when it comes to solving them.

Take the problem of students' failure in math. There's an uproar in Washington over the fact public school students are making low grades in mathematics. It's said Japanese kids for example are far ahead of American kids when it comes to figures.

Some officials contend we should spend more money on better teachers, other say kids ought to be given more home

work or kept in after school I guess to practice the multiplication tables. Everybody agrees something ought to be done about it, but the question is What?

This is an example of the leaders running in circles trying to find the answer when the answer is right in front of them.

If Japanese kids are doing better in math than American kids it ought to be plain to see: they have longer-lasting batteries in their hand calculators.

You can't expect a kid to find out what 12 times 12 is or what the square root of 18 is if his calculator's battery is dead.

Yours faithfully,
J.A.

SPC Schedules Cosmetology Exams

The next cosmetology pre-entrance exam at South Plains College will be given Wednesday (Jan. 21), according to Pinny Jacquez, counselor.

Exam time is 9 a.m. in the SPC Student Assistance Center, located on the third floor of the library. Fee is \$5.

Classes for the next quarter in cosmetology begin March 2. Additional pre-entrance exams for SPC's one-year program in cosmetology are scheduled January 28, February 4 and February 11.

For more information, contact the SPC counseling office at (806) 894-9611, ext. 387.

Three-Way News

by Mrs. H.W. Garvin

Mr. and Mrs. Rodger Chaffen and children were dinner guests in the Bill Dolle home Sunday. Mr. Chaffen is minister of Maple Church of Christ.

Mrs. H.W. Garvin was a dinner guest in the home of her brother Mr. and Mrs. George Tyson Sunday.

Mr. and Mrs. Rodger Hatcher and daughter from Clovis, N.M. visited her parents, the Jack Lanes, Sunday.

Mr. and Mrs. S.G. Long visited Mr. and Mrs. George Tyson Sunday afternoon.

Mr. and Mrs. Bud Huff visited their son, the Paul Huffs in Wolforth Sunday.

Mr. and Mrs. George Tyson spent Monday night in Lubbock visiting their daughter, the Tommy Joe Durhams.

We wish to express our sympathy to Mrs. Jack Reeves and family on the death of her brother Lewis Hodge who was buried at Bowie this past week.

The Three Way basketball teams hosted Bledsoe Tuesday night with the Three Way boys winning and girls losing to Bledsoe.

Several Three Way youths had stock in the Bailey County fat stock show in Muleshoe over the weekend. Three Way youth won several awards.

At A&M We're Buying Them Again! "Aluminum Cans"

One day only at each of our locations:
2600 Mabry Dr., Clovis N.M.
1601 S. Ave. D. Portales, NM
1302 W. American Blvd. Muleshoe, Texas

Special Purchase

Cash Price: **22¢** a lb.
* Coupon Bonus: **3¢** a lb.
Total Price: **25¢** a lb.

Buying Times on Special Days Only
7:30 A.M. To 6:00 P.M.

Buying Day For Muleshoe "Only" Thursday-Jan. 22nd, 1987

Mary Jane Morgan Graveside Services Held Wednesday

Opal Beck Local Woman's Sister Dies

Graveside services for Mary Jane Morgan, 66, were conducted at 2 p.m. Wednesday, Jan. 21 in Bailey County Memorial Park with Curtis Shelburne, minister of the 16th and Ave. D. Church of Christ, officiating.

Burial was under the direction of Ellis Funeral Home of Muleshoe. Miss Morgan died at 9 a.m. Monday in the Methodist Hospital in Lubbock.

Born May 19, 1920, in Hereford, she had been a resident of Muleshoe six years, moving from Austin. She was a secretary and a member of Order of Mayflower Descendants and Daughters of American Revolution, and a Methodist.

Cassandra Rush Services Held At Plainview

Funeral services for Cassandra Rae Rush, infant daughter of Mr. and Mrs. Ray Rush of Plainview were held at 11 a.m. Tuesday in the First Baptist Church of Plainview with the Rev. Bob Morrow, staff member of Teen Acker in Sterling, Colo., officiating.

Interment was in Babyland Memorial Park under the direction of Lemons Funeral Home. Cassandra died at 1 p.m. Saturday in the Methodist Hospital in Lubbock following an illness.

She was born on April 13, 1986, in Plainview.

Survivors include her parents; a brother, Robert Allen of Plainview; her grandparents, Mr. and Mrs. L.H. Rush of Waldron, Ark., Irene Brill of Lansas, Mr. and Mrs. John Wimberly of Estes Park, Colo., and Mr. and Mrs. A.H. Morrow of Wellsboro, Pa.

The family suggests memorials be made to the Cass Rush Memorial Fund.

Ray Rush is a former Muleshoe resident.

Survivors include two sisters, Mrs. Jean Cole and Mrs. Virginia Wyer, both of Muleshoe.

Funeral services for Opal Beck, 31, of Aurora, Colo. are pending with Blackburn-Shaw Funeral Home in Amarillo. She died at 5:30 a.m. Monday, January 19 at her home in Aurora.

She was born on Dec. 10, 1955 and married David Beck. Survivors include her husband, David of Aurora; a son, Gregory Carter; her mother, Novella England of Aurora, Colo.; her father, M.L. England of Comanche; a sister, Penny Smith of Muleshoe; and her grandmother, Bernice Holdeman of Muleshoe.

COLLEGE STATION — Duellin violins was what folks came to see, but what they came to hear was far removed from such folk favorites as "Boil that Cabbage Down" or "Orange Blossom Special."

Nearly 150 curious music lovers came to a darkened theater stage at Texas A&M University to witness what was probably a first — some of the most difficult violin solos ever written played on a violin that was barely a week old.

The event was the comparison of a 280-year-old Stradivarius played by a graduate of Juilliard School who also played one made by a Texas A&M biochemist only four years ago, and another the researcher had just finished.

Members of the audience, many of whom probably had no formal music training but knew what they liked, marked secret ballots provided by the biochemist, Dr. Joseph Nagyvary.

The scientist, who has earned worldwide attention for his biochemical research into the sound of classical violins, arranged for acclaimed British violinist Catherine Lord to play all the instruments.

Report of Condition Muleshoe State Bank

PUBLICATION COPY - COMMERCIAL BANK CONSOLIDATED REPORT OF CONDITION (Including Domestic and Foreign Subsidiaries)

STATE 035 (3-86) <241

LEGAL TITLE OF BANK		STATE BANK NO	
Muleshoe State Bank		1631-21	
Drawer K		FEDERAL RESERVE DISTRICT NO	
Muleshoe, Texas 79347		11 13 16793	
CITY	COUNTY	STATE	ZIP CODE
Muleshoe	Bailey	Texas	79347
CLOSE OF BUSINESS DATE			
December 31, 1986			
Dollar Amounts in Thousands			
		Bil	Mil
		Thou	
ASSETS			
1. Cash and balances due from depository institutions:			
a. Noninterest-bearing balances and currency and coin		2	786
b. Interest-bearing balances		300	
2. Securities		5	856
3. Federal funds sold, and securities purchased under agreements to resell in domestic offices of the bank and of its Edge and Agreement subsidiaries, and in IBFs			
		2	443
4. Loans and lease financing receivables:			
a. Loans and leases, net of unearned income		27	757
b. LESS: Allowance for loan and lease losses		419	
c. LESS: Allocated transfer risk reserve		-0-	
d. Loans and leases, net of unearned income, allowance, and reserve (item 4.a minus 4.b and 4.c)		27	268
5. Assets held in trading accounts			
		-0-	
6. Premises and fixed assets (including capitalized leases)			
		457	
7. Other real estate owned			
		133	
8. Investments in unconsolidated subsidiaries and associated companies			
		-0-	
9. Customers' liability to this bank on acceptances outstanding			
		-0-	
10. Intangible assets			
		-0-	
11. Other assets			
		1	316
12. Total assets (sum of items 1 through 11)			
		40	559
LIABILITIES			
13. Deposits:			
a. In domestic offices		36	223
(1) Noninterest-bearing		5	823
(2) Interest-bearing		30	400
b. In foreign offices, Edge and Agreement subsidiaries, and IBFs		-0-	
(1) Noninterest-bearing		-0-	
(2) Interest-bearing		-0-	
14. Federal funds purchased and securities sold under agreement to repurchase in domestic offices of the bank and of its Edge and Agreement subsidiaries, and in IBFs			
		-0-	
15. Demand notes issued to the U.S. Treasury			
		195	
16. Other borrowed money			
		-0-	
17. Mortgage indebtedness and obligations under capitalized leases			
		-0-	
18. Bank's liability on acceptances executed and outstanding			
		-0-	
19. Notes and debentures subordinated to deposits			
		-0-	
20. Other liabilities			
		591	
21. Total liabilities (sum of items 13 through 20)			
		37	008
22. Limited-life preferred stock			
		-0-	
EQUITY CAPITAL			
23. Perpetual preferred stock (No. of shares outstanding)			
		-0-	
24. Common stock (No. of shares a. Authorized)			
		50,000	
b. Outstanding		50,000	
25. Surplus			
		1	000
26. Undivided profits and capital reserves			
		1	551
27. Cumulative foreign currency translation adjustments			
		-0-	
28. Total equity capital (sum of items 23 through 27)			
		3	551
29. Total liabilities, limited-life preferred stock, and equity capital (sum of items 21, 22, and 28)			
		40	559
MEMORANDA: Amounts outstanding as of Report Date:			
1. a Standby letters of credit, Total		6	
1. b Amount of Standby letters of credit in memo 1.a conveyed to others through participations			

NOTE: This report must be signed by an authorized officer(s) and attested by not less than three directors other than the officer(s) signing the report.

I/We, the undersigned officer(s), do hereby declare that this Report of Condition has been prepared in conformance with official instructions and is true to the best of my knowledge and belief.

SIGNATURE OF OFFICER(S) AUTHORIZED TO SIGN REPORT DATE SIGNED

SIGNATURE OF OFFICER(S) AUTHORIZED TO SIGN REPORT AREA CODE/PHONE NO.

STATE OF TEXAS COUNTY OF Bailey

Sworn to and subscribed before me this 13th day of January 19 87

and I hereby certify that I am not an officer or director of this bank.

My commission expires 3-18 19 90

Thanks

To Everyone That

Donated & Helped With

The

Food, Toys & Clothing Drive

For

The Needy Families

At Christmas

The Jennyslippers



Farm Bureau Leadership Conference Set January 25-27

More than 700 state and county Farm Bureau leaders will meet here Jan. 25-27 for the annual Texas Farm Bureau Leadership Conference at the Stouffer-Wyndham Hotel, Northwest. Registration will begin Sunday, Jan. 25.

Highlight of the conference will be a legislative dinner Jan. 27 for state officials, legislators and county Farm Bureau leaders. TFB President S.M. True of Plainview will outline the farm organization's legislative objectives at that dinner.

Priorities include protection of agriculture's sales tax exemptions, fair treatment for agriculture in appropriations and budget considerations, liability insurance reforms and farm labor.

Another highlight of the conference will be a tour of the State Capitol the afternoon of Jan. 27 when Farm Bureau leaders will meet with their respective legislators.

True will open the conference at 10 a.m. Monday, Jan. 26, with a talk on 1987 organization goals. TFB Executive Director Warren Newberry will outline the purpose of the conference. Dr. Jim Bob Brame, president of the Texas Medical Association, will discuss "Insurance Liability - A Growing Crisis."

Subjects to be covered at a general session on Monday evening, January 26, include tax reform and farm credit. Jeff Harper, CPA, Avery, Texas, will discuss the tax reform act of 1986. Bill McClain, Waco, TFB comptroller, will outline effects of tax reform on county Farm Bureau operations. Marvi Duncan, Washington, D.C., member of the Farm Credit Administration board, will discuss the future of farm credit.

Farm Bureau leaders invited to attend the conference include county Farm Bureau presidents, chairmen of commodity, state affairs, national affairs, policy development, rural health, membership and young farmer & rancher committees.

County leaders from 13 state commodity divisions will participate in the conference. These

include beef cattle, cotton, dairy, feed grains, peanuts, pecans, rice, sheep and goats, soybeans, wheat, poultry, forestry and hay and forage.

The 14th commodity division, citrus, will meet at a later time and place. There are 204 county Farm Bureaus in Texas which have at least one commodity represented by a state division.

County Farm Bureau presidents will meet during the conference to review organization programs and services. The national affairs/policy development conference will cover issues affecting agriculture in the 100th Congress.

Farm Bureau's national legislative priorities include: farm bill changes, land-use legislation, pesticide bill, tax changes, immigration reform, agricultural appropriations, minimum wage and trade.

The membership committee chairmen will meet to develop plans for membership maintenance and recruitment. TFB is

Hamilton, Smith Elected SPS Vice Presidents

The Board of Directors of Southwestern Public Service Company (SPS) has elected Henry H. Hamilton and Albert A. "Pete" Smith as vice presidents of the Company.

Hamilton, 48, was named vice president of production. Smith, 42, was named vice president of generation plant design and construction.

Hamilton was born in Carlsbad, N.M. He received his bachelor's degree in mechanical engineering from New Mexico State University. He is a veteran of the U.S. Army.

He joined SPS in 1963 as a plant engineer at Cunningham Station power plant near Hobbs, N.M. He has been plant manager at Cunningham, at Nichols Station near Amarillo, and at Harrington Station near Amarillo. In 1976 he was named production superintendent; he was promoted to group manager of production in 1977; he was

the largest state Farm Bureau with 323,799 member families.

The young farmer & rancher committee chairmen will discuss how to motivate more young farmers and ranchers into participating in legislative activities.

Texas A&M joins forces with 35 foreign institutions to tackle world problems

COLLEGE STATION — A total of 35 foreign institutions ranging from a Chinese technological university to a French petroleum institute have officially joined with Texas A&M University to share ideas and cooperate in programs designed to advance academic knowledge.

Texas A&M has entered into 13 such agreements within the past year.

University officials say the worldwide agreements are evidence of the commitment Texas A&M President Frank E. Vandiver made almost five years ago to develop an academic network to tackle "Four Horsemen" type problems, particularly famine and pestilence.

"Scholarly scientific and technical ties are infinitely stronger and more lasting than political or military alliances," Vandiver said.

Definition

The World: A big ball which revolves on its taxes.

—Soundings, Newport, R.I.

Sudan New By Evelyn Ritchie

Mrs. Craig Doty and Kimberly have been in Munday to visit her mother, Mrs. Joyce Thompson and Andy and also her sister, Terri Brown of Rhineland.

Lauri Ann Damron of Angelo State U. has been home visiting her parents, Mr. and Mrs. Julian Damron and other family members during the holidays.

Mrs. Elizabeth Walden visited in Fort Worth during the holidays with her granddaughters, Charity Van Ness and Babby and Mike Hopkins. She accompanied her sister, Elmer and Jim Anna Peterson of Las Cruces, N.M. and while there she hosted a luncheon at Neimans for Charity and Steve White, Babby and Mike Hopkins, Lila Van Ness, Tiffany Van Ness and the Peterson's. She also visited with Jackie and Pat Van Ness while there.

Holiday visitors with Mr. and Mrs. Joe Burt Markham were their children, Jimmy, Mr. and Mrs. Bonner Markham and children of Ama and Mr. and Mrs. Terry Gillen and children of Plainview.

Home Truth

Some folks want to check government spending and others want to spend government checks.

—News, Jacksonville, Fla.

Phenomenon!

Men are funny—pat them on the back and their heads will swell!

—Call, San Diego.



GOING FROM THE OUTSIDE—Sergio Gonzales, No. 24, tries a long basket in the Mules' season opener against the Tulia Hornets in Muleshoe last Friday night. Despite snow and cold, the games were played.

Half Day Half Price SALE

Thursday, January 22nd

12 Noon to 6 PM 1 DAY ONLY

You'll find savings of 50% and more on fall and winter merchandise for you, your family and your home.

Just a sample of our savings for you!

Assorted Bedspreads 1/2 Price	Ladies Knitwear, Jewelry Belts, & Hand Bags 1/2 Price	Ladies Nylon Sleepwear 1/2 Price
Mens, Womens & Childrens Shoes 1/2 Price	Assorted Womens & Juniors Dresses 1/2 Price	Infants, Toddlers, Boys & Girls Sportswear 1/2 Price
Mens Assorted Jeans & Corduroy's 1/2 Price	Mens Sweaters, LS Woven Shirts & Fleece Tops 1/2 Price	Juniors & Womens Sweaters, LS Woven Shirts & Fleece Tops 1/2 Price

Hurry in while quantities last and the selection is at it's best!

Intermediate markdowns may have been taken on original prices. Selections may vary by store. Does not include entire stock.

Quality is part of the bargain!

ANTHONY'S

Mon.-Sat. 8 a.m.-6 p.m. Sun 1 p.m.-5 p.m.

272-3478

★ AUCTION ★

10 a.m. Tuesday, Jan. 27, 1987
Deck Farms • Mission, Texas

Tractors

- 8650 John Deere c/a duals, 3pt PTO
- 4650 John Deere c/a MFWD Ps
- 8640 John Deere c/a duals
- 4840 John Deere c/a duals
- 4640 John Deere c/a
- 4240 John Deere c/a
- 4240 John Deere c/a
- 4230 John Deere c/a
- 4030 John Deere c/a
- 3010 John Deere diesel Ps
- 1466 International c/a duals
- 826 International Hydro
- 656 International Hi-crop Hydro
- 80 SAME 4-WD diesel
- 430 Case diesel
- 816B Allis Chalmers backhoe loader

Combine & Vehicles

- 1—Gleaner Combine 1976 model
- 1—1982 Ford F150 Pickup
- 1—1980 Ford F250 Pickup
- 1—1978 Ford F350 Service Truck

Equipment

- 1—425 JD Offset Disk 15'
- 1—770 IHC Offset Disk 21'
- 1—480 IHC Tandem Disk 21'
- 1—122 Athens Tandem 23'
- 1—105 JD Disk Harrow
- 1—4600 JD 5 btm Rollover Moldboard
- 1—642 IHC 4 btm Rollover Moldboard
- 1—1100 JD Field Cultivator
- 1—900 JD 13 shank v-Chisel
- 1—Kewanee 7 shank Ripper
- 1—1408 JD Shredder
- 1—400 JD Rotary Hoe
- 1—JD Bedder 6 row
- 1—IH Bedder 5 row
- 1—MKI Stanhay 16 row Planter
- 1—Jumbo Stanhay 8 row Planter

- 1—870 Stanhay 8 row Planter
- 1—981 Stanhay 8 row Planter
- 1—SKM JD Planter Sled
- 4—Gandy Granular Applicator Boxes
- 6—Spray Rigs
- Nurse Tanks w/pumps
- 5—Pressure Fert. Tanks
- 1—300 gal. Frontier Saddle Tank Set
- 1—Laserplane Land Leveling System
- 2—Reynolds 8CF & 12P Scrapers
- 1—Atlas DP16 Land Plane
- 2—Ditcher Blades
- 2—Cabbage Harvesters
- 16—Thompson 3 axle Cabbage Trailers
- 2—Onion Loaders
- 1—Thompson Hyd. Dump Trailer
- 8—Broccoli Trailers
- 1—4 row Onion Knife

Irrigation Equipment

- 1—2800 AC diesel Engine
- 1—4660 JD diesel Engine
- 1—6404 JD Engine
- 1—1054 SAME 4 cyl diesel Engine
- 1—Lister diesel Engine
- 1—195GK Waukesha 6 cyl Engine
- 1—PTO 10" Pump
- 2000—Irrigation Tubes 1", 1 1/2", 2"
- 350—10" Alum. Gated Irrigation Pipe
- Gated Pipe Hydrants, Tees, Plugs, Valves, Meters

Shop Equipment

- 4—diesel Storage Tank
- 1—500 gal diesel Transport Trailer
- 1—Lincoln Electric Welder
- 1—Quincy 31024 Air Compressor
- 1—Gantry Crane w/chain hoist
- 1—100 amp JD Battery Charger
- 2—JD Hyd. Jacks 12 & 20 ton
- 2—Portable Fiberglass Field Toilet Units

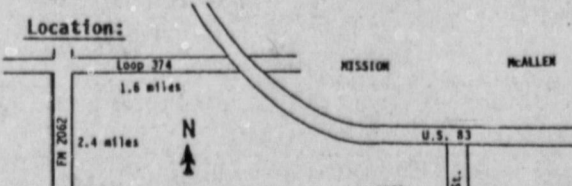
Miscellaneous Items Too Numerous To Mention

Auctioneer's Notes: Southwest Auction Co., Inc. has been commissioned to sell at absolute auction all farm equipment previously used by Deck Farms of Mission, Texas. This is a very clean set of farm equipment. Anyone interested in any vegetable planters, cultivators, trailers or field tools should not miss this sale. Every piece will sell.

Terms & Conditions: All merchandise purchased must be paid for sale day with U.S. cash or good check with proper I.D. All items sold as is—where is.

Loaders: Will be available. All machinery purchased must be picked up by January 30, 1987.

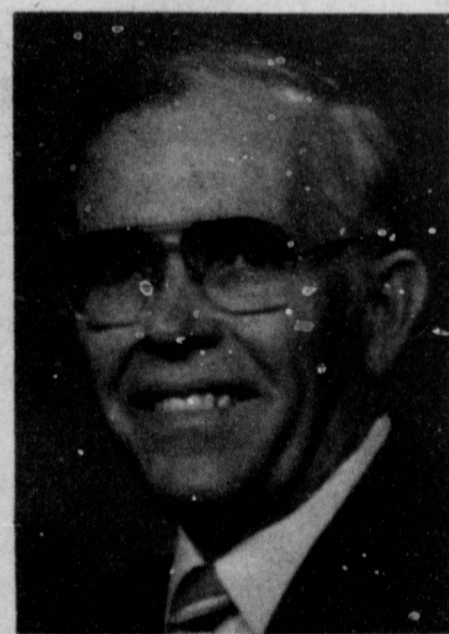
For Information: Steve Deck—512-381-b189; David Carson, Odis Hill—214-532-5501



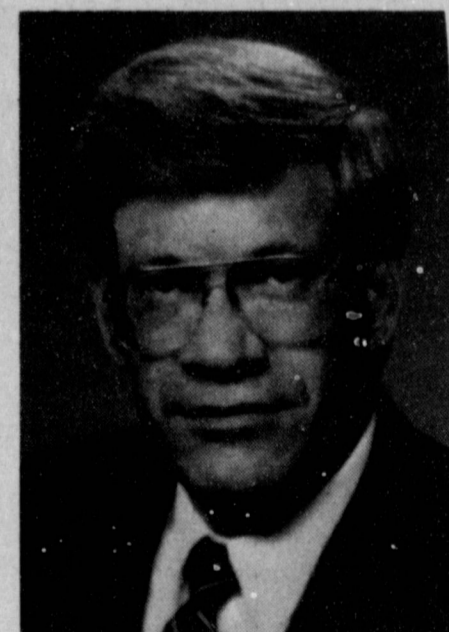
SALE CONDUCTED BY

Southwest Auction Co., Inc.

HOWE, TEXAS 75059 • 214/532-5501
David Carson TXE 117-006379



HENRY H. HAMILTON



ALBERT A. "PETE" SMITH

Muleshoe Journal USPS 367-820
Established February 23, 1924. Published by Muleshoe Publishing Co., Inc. Every Thursday at 804 W. Second, Box 409, Muleshoe, Texas 79347. Second Class postage paid at Muleshoe, Texas 79347.

MEMBER 1987
TEXAS PRESS ASSOCIATION

L.R. Hill, President & Publisher
Sammy Hall, Vice President & Controller
Clyde Williams, News Editor
Eugene Harris, Society Editor
Holly Milligan, Advertising Editor
Nina Bookkeeping

SUBSCRIPTIONS:
Muleshoe Journal and Bailey County Journal: Bailey and surrounding counties.
Muleshoe Journal and Bailey County Journal: Elsewhere in Texas \$14.75.
Muleshoe Journal and Bailey County Journal: Outside of Texas \$18.50.
Yearly by Carrier \$12.50.
Advertising rate card on application.

Journal Files

60 Years Ago

1927
ANNOUNCING THE MOST BEAUTIFUL CHEVROLET IN CHEVROLET HISTORY—with these amazing price reductions: The Coach \$595 was \$645; The Touring \$525 was \$535; The Coupe \$625 was \$645; The Roadster \$525 was \$535; The Sedan was \$735 was \$695; The Sport Cabriolet \$715, entirely new model with rumble seat; The Landau was \$745; 1 Ton Truck \$495 and 1/2 Ton Truck \$395.

50 Years Ago

1937
15.14 INCHES RAIN REGISTERED HERE IN 1936
There was a total of 15.14 inches of rainfall registered in Muleshoe for 1936 according to the U.S. Weatherman. This was a slight increase over the rainfall for the previous year, which totaled 14.90 inches.

The rainfall recorded here during the past 15 years shows an average precipitation of 16.12 inches. The lowest annual precipitation recorded here shows 13.99 in 1922, while the highest was 23.53 in 1925.

The hottest day of last year was August 14 when the temperature went up to 108 degrees, while the coldest day was January 30, when the mercury dropped to two degrees below zero.

40 Years Ago

1947
PASSENGER CAR OUTPUT BOOSTED IN FOURTH QUARTER

Passenger car production showed marked improvement in 1946's final quarter despite numerous obstacles and handicaps. The last three months passenger car output topped that of the entire first six months.

Truck output reached levels just below the pre-war high.

While far below capacity expectations a rate of motor vehicle production was achieved in the final quarter which if maintained could result in 3,200,000 cars and 1,200,000 motor trucks in a 12 month period.

30 Years Ago

1957
EPIDEMIC OF MEASLES CAUSES 203 ABSENTEES

An outbreak of measles, reaching epidemic proportions, has caused a drop of more than 200 in attendance in Muleshoe elementary school.

The County Health Doctor, reported that the large number of cases of measles could be considered an epidemic among children at this time.

Out of the normal enrollment of 835, there were 203 absentees Wednesday, most of whom could be considered to be ill.

By grades, the absentees were: first grade, 37 absent; second grade, 55; third grade, 47; fourth grade, 45; and fifth grade, 19 absent.

20 Years Ago

1967

FIVE KILLED IN COUNTY DURING '66

Five persons were killed in accidents in Bailey County in 1966, the State Highway Patrol reports.

A check of the list also reveals that 51 persons were injured in the 66 accidents investigated and the property damage stands at \$84,200.00

So far this year (1967) 35 citations have been given and 83 written warning tickets.

One accident, with injuries has been investigated and three accidents with no one injured. Property damage so far this month totals \$1,900.00

10 Years Ago

1977
NEW DRIVE IN FORMALLY OPEN WITH CEREMONY

With an appropriate ceremony in icy wind and fast dropping temperature Friday morning at 10 a.m. the Sonic Drive In was officially opened in a ribbon cutting ceremony.

Several dignitaries attended the formal opening of Muleshoe's newest business to open its doors on West American Blvd. The restaurant was expected to open officially for business around 1 p.m.

Rebekah Lodge

Preceding the Rebekah Lodge meeting Tuesday evening, a pot luck dinner was served. Velma Howell offered a prayer of thanks.

Lodge was opened by Renee' Rudd, Noble Grand. Minutes of the previous meeting were read and approved.

The District Deputy President, Fern Davis, and staff were introduced and installed the following officers for the ensuing term:

Terie Snell, Noble Grand; Pat Langfitt, Vice Grand; June Green, secretary; Ina Wilemon, treasurer; Sanci Robinson, right support to the Noble Grand; Opal Talley, left support to the Noble Grand; Novella Price, Chaplain; and Linda Tosh, conductor.

Also Mary Parish, left support to Vice Grand; Audrey Langfitt, right support to Vice Grand; Lena Hawkins, outside guardian; Ona Berry, right support of chaplain; Patsy Chance, left support of chaplain; Mary Franklin, right support of Past Noble Grand; Velma Howell, left support of Past Noble Grand; and Ruby Green, Rebekah Flag Bearer.

The officers were declared installed into their stations by the Deputy Marshall Sandra Robinson.

In the good of the order, the Past Noble Grand, Renee' Rudd was presented her collar by her mother, Mary Franklin, and sister-in-law, Linda Tosh.

Lodge was closed with a word of prayer by Lena Hawkins.

I will not be revenged, and this I owe to my enemy; but I will remember, and this I owe to myself.—C.C. Colton



LUNCH TIME AT NURSING HOME—District Judge and Mrs. Jack Young visit with the residents of Muleshoe Nursing Home at noon Friday before joining them for lunch, in their new dining room.

Sudan News

by

Evelyn Ritchie

Holiday visitors with Mrs. Esther Meeks were her children and grandchildren.

Mr. and Mrs. Pete Boyd and Petey of Portales, N.M. and Mr. and Mrs. Steve Turner and family of Eunice, N.M. were holiday guests with their mother and grandmother, Mrs. Frances Gardner and Bill.

Mr. and Mrs. Richard Jackson and Brandon of Llano were New Years visitors with her parents, Mr. and Mrs. Bob Edwards and sister, Mr. and Mrs. Eugene Lopez and family and brother, Mr. and Mrs. Pete Edwards and Jonathan.

Mrs. Opal Pennington spent some of the holidays in Morton with her daughter, Mr. and Mrs. Billy Gerik and family. Also those visiting here with her during part of the holidays were Mr. and Mrs. Billy Gerik, Terry, Robin Taylor and girls of Lubbock and other family members joined them in Morton for Christmas Day.

Sherry Blackwell of Dallas and Mr. and Mrs. Don Park and children of Earth were holiday visitors with their parents and grandparents, Mr. and Mrs. Percy Harlin. Others joining them were Terry Farr of Reese AFB and Dimple Struve of Lubbock. They also had Christmas dinner in Littlefield with Mr. and Mrs. Buster Hodge. Terry and Devin Watson both of Reese AFB also visited some this week with them.

Mrs. Doris Harper accompanied her children, Mr. and Mrs. Pat Brown and girls to Ruidoso, N.M. for the holidays. Joining them were her other daughter Mr. and Mrs. Steve Traweck and family of Reklaw.

Holiday visitors with Mr. and Mrs. Henry Williams were their sons, Mr. and Mrs. James Carol Williams and Jimmy Williams of Horse Shoe Bend and Mr. and Mrs. David Williams, Lee and Jay of Lubbock. James Carol and his wife, Vickie also visited with her parents, Mr. and Mrs. Early Bartley and other family members.

CALENDAR OF EVENTS

JAN. 22-28

THURSDAY, JAN. 22

MULESHOE SQUARE

DANCE CLUB

8 p.m.

ODDFELLOWS LODGE

7:30 p.m.

HOBBY CLUB

2 p.m.

TOPS CLUB

6:30 p.m.

FRIDAY, JAN. 23

AARP

11:30 a.m.

KIWANIS CLUB

6:30 a.m.

TUESDAY, JAN. 27

REBEKAH LODGE

7:30 p.m.

ROTARY CLUB

12 (noon)

ATHLETIC BOOSTERS

7:30 p.m.

ALCOHOLIC ANONYMOUS

8 p.m.

WEDNESDAY, JAN. 28

LIONS CLUB

12 (noon)



JUDGE VISITS NURSING HOME—Friday, District Judge and Mrs. Jack Young joined Jim Swanner, administrator of Muleshoe Nursing Home, and Joy Stancel, activities coordinator at the nursing home, and had lunch with residents in their new dining room. From left: Martha Young, Joy Stancel, Jim Swanner and District Judge Jack Young.

Living well is the best revenge.—George Herbert
Neglect will kill an injury sooner than revenge.—Owen

New Classes In
Beginner's Tole Or
Decorative Painting
Tues. 9 a.m.-12 Jan 27-Feb. 24
or
Thurs. 9 a.m.-12 Jan. 29-Feb. 26
Afternoon or Night Classes
Can Be Arranged
To Enroll Call
Syble Hewitt
247-3632 Friona

HOMESTYLE
"Full Meal Deal"
only—**\$2.59**
Monday, Jan. 19 thru Sunday, Feb. 15
The sweetest deal in town is the Dairy Queen Full Meal Deal. With a juicy quarter-pound Homestyle Hungry-buster. Golden french fries. Your favorite ice-cold soft drink. And a creamy 5-ounce Dairy Queen sundae with your choice of topping. The \$2.59 Full Meal Deal. It's a steal.

CALENDAR OF EVENTS
JAN. 22-28
THURSDAY, JAN. 22
MULESHOE SQUARE
DANCE CLUB
8 p.m.
ODDFELLOWS LODGE
7:30 p.m.
HOBBY CLUB
2 p.m.
TOPS CLUB
6:30 p.m.
FRIDAY, JAN. 23
AARP
11:30 a.m.
KIWANIS CLUB
6:30 a.m.
TUESDAY, JAN. 27
REBEKAH LODGE
7:30 p.m.
ROTARY CLUB
12 (noon)
ATHLETIC BOOSTERS
7:30 p.m.
ALCOHOLIC ANONYMOUS
8 p.m.
WEDNESDAY, JAN. 28
LIONS CLUB
12 (noon)

1987 New Years Resolutions
1. Lose 15 Pounds Fast
2. Be Healthier
3. Save Money
JOIN WEIGHT WATCHERS!

Notice!
Offer Extended Thru Jan. 31, 1987 Due To Emergency Weather Conditions

"I want to invite you to a Weight Watchers meeting at NO CHARGE before January 31, 1987."

Discover the newest additions to our new, improved Quick Start Plus. Now, besides our food plan and motivating discussions and group support, we've added an optional Exercise Plan and a wonderful new Self-Discovery Plan that helps change your eating habits. All together, our new, improved Quick Start Plus Plan will help you live a healthier, happier and slimmer life.

Please be my guest at a Weight Watchers meeting of your choice. For the very first time, this offer is being made in this area.

MULESHOE CHURCH OF CHRIST
16th and Avenue D
Thur. 6:30 pm
BEGINNING THURSDAY JANUARY 8, 1987

Then, when you decide to join, pay only \$12.00 including registration and first meeting fee. After you join, you'll receive your first week program materials including food program orientation.

Regular Fees
Registration \$13.00
First Meeting Fee \$ 7.00
TOTAL \$20.00
NOW YOU PAY ONLY... \$12.00
YOU SAVE \$8.00

Vivian Aron Lipman
Area Director

For more information call Robin Taylor at 272-3196

JOIN WEIGHT WATCHERS NOW!
1-800-692-4329

Know Your Chamber Of Commerce

Toni Eagle, Mgr.

This past year has been a particularly good one for the Chamber of Commerce and Agriculture. The Chamber had made strides in its growth and revitalization. But even as we have grown, old ideas weigh us down and slow the progress.

Commerce and Agriculture. What comes to mind when you hear these words? The office in City Hall? The directors? The staff? What comes to your mind? The Chamber is not an office or a place, not one person and certainly not one idea. The Chamber is a combined effort of a group of concerned citizens willing to work toward a better community.

The Chamber is YOU, the MEMBERS, and What YOU make it.

The Chamber is a business man, who takes time to attend meeting and help with ideas and planning. On his coffee breaks he sometimes visits a fellow business person on behalf of the Chamber.

The Chamber is giving, not only of ones funds, but of oneself. Talents are shared with others. It is a young woman, who is willing to paint windows in time for Christmas for other businesses. Sometimes painting until the early hours of the morning. It's a photographer who takes time out of a busy schedule to help the Chamber with a money making project. And he is also one of the very first to volunteer for the membership drive teams.

The Chamber is a couple devoting 37 years of service and still leading the way as a key figure with the Muleshoe Activities Committee.

It is a gentleman who donates a wagon, mule team, and his free time to promote Muleshoe and the Chamber in area towns.

It is the knowledge that every dentist in Muleshoe is a member of the Chamber of Commerce.

The Chamber is whole organizations and clubs belonging and supporting activities. It is a group of men putting up and taking down Christmas decorations in their spare time and also participating in every parade that Muleshoe hosts.

Its businesses that give their all to help when you need them. The business' resources are the Chamber's resources. It is dialing 3310 or 4578 and asking for help and getting an immediate "Anything you need" answer.

The Chamber is a farmer helping with activities, when the situation is bleak at home. Forgetting his own problems for a while to help someone else.

It is a small business paying what they can even though they are open part time.

It is a young woman with the courage to begin her own business while still helping Mom and Dad run the family business. She joins the Chamber and the first thing she and her partner ask is "Can we be on one of the committees and help out?"

The Chamber is individuals, just working folks, being individual members. They do not own their own businesses but they still care and they know the importance of the Chamber.

It is a new business locating in town and before their doors are open their investment is paid for the year.

The Chamber is businesses decorating for the holidays and even dressing up for Halloween to help the Chamber and promote their business.

It is businesses and individuals cleaning and fixing up their businesses and homes. And in some cases even donating funds and supplying materials to help others also clean and fix-up.

The Chamber is a President who gives countless hours to the Chamber. He attends all meetings, has not only a wife, but a nagging manager on his case as well, not only appoints committees, but serves on them, handles all kinds of problems, (some of which would make your hair curl) and still has time to support, encourage and be enthusiastic.

The Chamber is picking up the local newspaper and finding three stories about the Chamber's activities on the front page. Or turning on the radio or TV and hearing our announcements ran countless times.

The Chamber is City employees who help out each and every day. They supply information, extra hands, ideas, needed machines and items, knowledge, encouragement and countless other things.

It is a lady that single handed takes on a king size job of promoting shopping in Muleshoe and does a fantastic job of it.

The Chamber is serving on the new Membership Teams for up-coming Membership Drive because you, as a member, know that membership is our main support and without backing from the membership the projects and work isn't possible.

It is a new director who returns from a week-long business trip, calls the Chamber office to check on things and see what he can do to help out.

It is friends dropping by to visit, offering an idea, or just a word of praise or encouragement. It is times when everything has gone wrong, no one shows up, we have four dozen

spudnuts left, the till is empty, to find a huge balloon bouquet on my desk or a rose with a note that says "It's O' Tay Buckwheat!". It is friends keeping us going.

The Chamber is a family sharing in the work. It is husbands that hold down two jobs and still have time for what they call "Honey Do." It is young people that help by putting up posters, cutting and coloring or setting up chairs. It is a mother that fills out forms, organizes files, and up-dates lists for the Chamber office when we are swamped.

The Chamber is a manager and secretary, who greatly enjoy their jobs and the people they work with, and wish to say Thanks.

The Chamber is working because you believe in Muleshoe, not because you have to. It is being involved because you care; not because it is expected. If the Chamber isn't living up to your expectations. If the Chamber is not progressing fast enough for you. If the Chamber isn't getting things accomplished, that your feel need to be done, then maybe you should become more involved.

The Chamber is YOU, the MEMBERS and what YOU make of it!!!!

Spicer-Uppers For Sunday Suppers

So you thought you could only eat muffins for breakfast? Now, Wolferman's, the makers of what many regard as the ultimate English muffin, offer you some delicious recipe ideas for those cozy stay-at-home Sunday evenings.



Wolferman's rich, robust muffins, each two inches thick, make the difference for this tasty, quick-to-prepare shrimp recipe.

BROILED SHRIMP SANDWICH

COMBINE in bowl 1 lb. cooked chopped shrimp, 1 bunch thin-sliced green onions, 2 T. lemon juice, 1/4 cup chili sauce or catsup, and 1 T. mayonnaise.

SPREAD above mixture onto 8 lightly buttered and toasted Wolferman's Original English Muffin halves.

BLEND 4 T. mayonnaise, 1 T. lemon juice, 2 egg yolks, and 1/3 C. shredded cheddar cheese.

BEAT 2 egg whites until firm.

FOLD mayonnaise mixture into whites.

SPREAD above mixture over shrimp filling on muffins.

BROIL 3-4 minutes.

Serve open-face.

This recipe, the muffins, and other tempting delectables come from Wolferman's free "Good Things To Eat" catalogue. Call toll free 1-800-255-0169.

Muleshoe Young Homemakers

The Muleshoe Young Homemakers met Tuesday, January 13 at the 16th and Ave. D. Church of Christ for their regular business meeting.

Members attending were: Nancy Barrier, Suesy Barron, Nancy Benham, Sheila Black, Terry Byers, Linda Cogliandro, Pam Hancock, Donna Kirk, Beverly Layton, Terry Marricle, Kim Nichols, Glenda Powell, Darla Poyner, Pam Prather, DeAnna Rasco, Juana Shelbourne, Linda Wimberly, Lisa Holt and Tammy Ramm.

Refreshments were provided by Donny Kirk, Glenda Powell, Tonya Wall and Darla Poyner. The ladies served cupcakes, chocolate chip cookies and iced tea.

Sherri Nusser from the Department of Health led a program on child nutrition. Members were encouraged to share their child's eating be-

haviors, likes and dislikes.

January 27 will be craft night. The next business meeting will be Tuesday, February 10. Everyone is encouraged to take salad and their recipe for a "Guess What Program."

Young Homemakers will sponsor skating Feb. 13, at the Civic Center.



CELEBRATES SIXTY YEARS--Mr. and Mrs. Dee Clements will be celebrating their 60th. wedding anniversary with a reception Sunday, Jan. 25 from 1 to 3 p.m. in the Bailey County Civic Center, hosted by their children and grandchildren. Clements and the former Ruth Chaney were married on Jan. 30, 1927 in Paducah.

Bridal Selections
For
Melissa Satrapoulos
Bride Elect Of
Mark Burden
Art Loft
1529 W. Amer. Blvd. 272-9485

Ruffles ALL VARIETIES
Potato Chips REGULAR \$1.39
NOW ONLY **\$1.19**

PRICES GOOD JANUARY 22, 23, 24, 1987 WHILE SUPPLIES LAST

Filled With Steaming Hot Coffee
ALLSUP'S Coffee Mugs 99¢
REFILLED FOR ONLY 25¢

Golden Brown and Delicious
ALLSUP'S French Fries 49¢

ALLSUP'S CONVENIENCE STORES

Your Super Bowl Snack Headquarters

If It's Borden's... It's Not to Be Good
BORDEN'S Cottage Cheese 12 OZ. CTN. 79¢

BORDEN'S Homo Milk GAL. CTN. \$2.29
BORDEN'S Frostlicks 6 CT. PAK \$1.19

ALLSUP'S Hot Links Perfect for 1/2 Time Snacks 69¢ EACH

Coke \$2.19 16 oz. 6 pk.

Golden Gleams
A man that studieth revenge keeps his own wounds green.
—Francis Bacon

At **A&M** We're Buying Them Again!
"Aluminum Cans"

One day only at each of our locations:
2600 Mabry Dr., Clovis N.M.
1601 S. Ave. D. Portales, NM
1302 W. American Blvd. Muleshoe, Texas

Special Purchase
Cash Price: 22¢ a lb.
* Coupon Bonus: 3¢ a lb.
Total Price: 25¢ a lb.

Buying Times on Special Days Only
7:30 A.M. To 6:00 P.M.

Buying Day For Muleshoe "Only"
Thursday-Jan. 22nd, 1987

* Coupons can be used on any purchase of A&M up to 50% of purchase.

SALUTE To Our LEADERS OF TOMORROW

We Believe Our Youth Of Today Will Provide Effective Leadership Tomorrow!!

LEADER OF TOMORROW---Our leader of tomorrow for this week is Steve Garcia, the 13 year old son of Mary Bonham and Albert Garcia. Steve is an 8th grader at Watson Junior High and enjoys pizza as his favorite food and Karate, as his hobbies Steve enjoys playing video games and working with computers. His favorite color is navy blue and math and annual staff is his favorite subjects. We are proud to recognize this young man as a "Leader of Tomorrow".

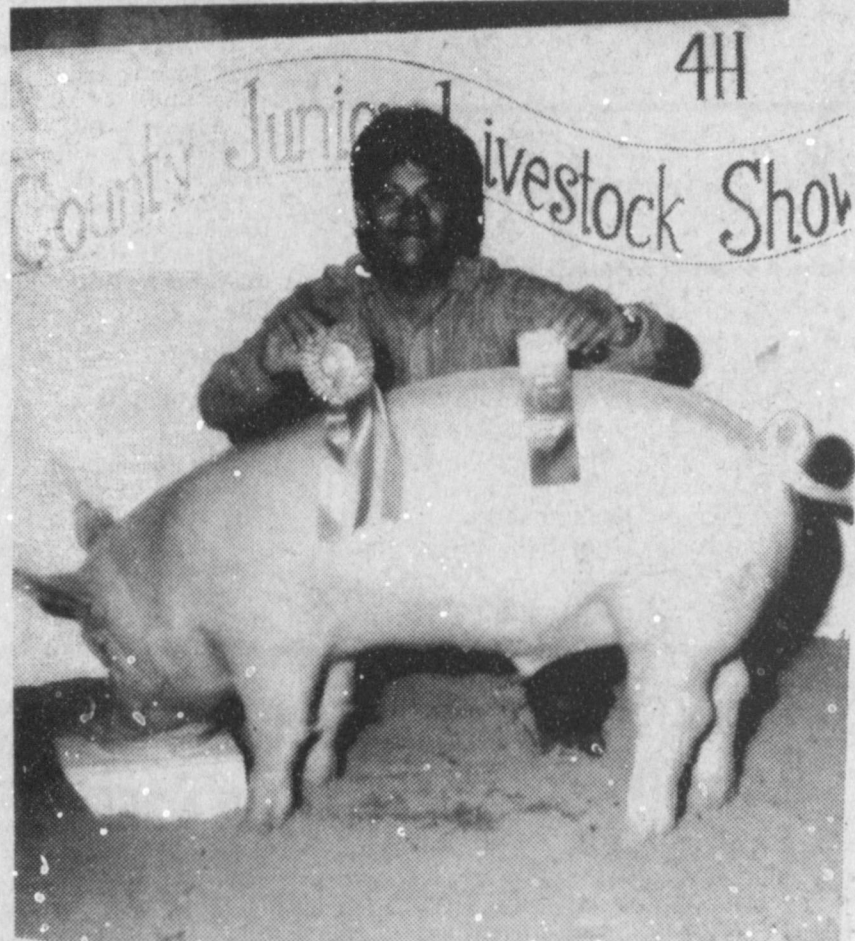
PROUDLY PRESENTED BY:

Pay-n-Save
QUALITY AND SERVICE

Congrat



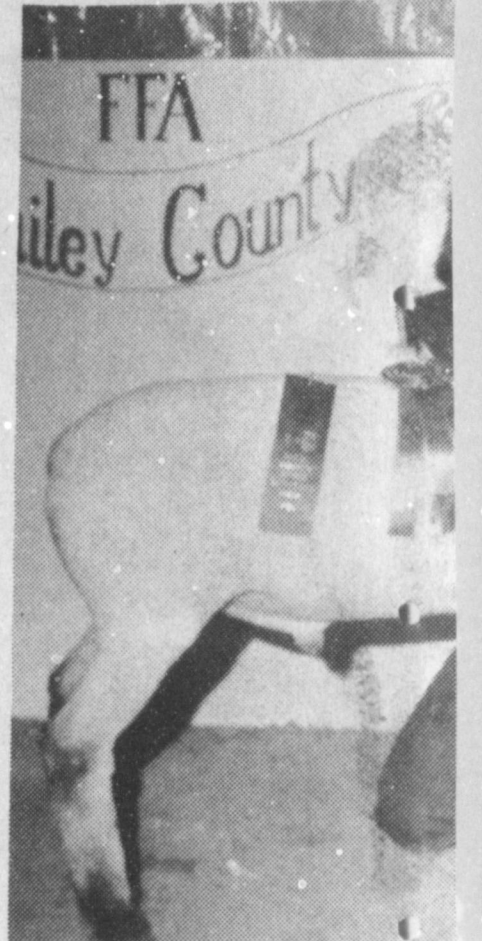
To All Who
The Bailey County Junior Livestock Show
 January 16, 1987



BREED CHAMPION--Shawn Rejino is shown here with his Light Weight York Hog that was a breed champion at the Bailey County Junior Livestock Show Saturday.



BREED CHAMPION--Tiffany Angeley is shown here with her Lightweight Chester Hog that was a breed champion at the Bailey County Junior Livestock Show Saturday.



BREED CHAMPION--This Finev champion at the Bailey County Junior Livestock Show Saturday being shown by Holly Huckaby, owner.



RESERVE CHAMPION SWINE--The Reserve Champion Swine of the Bailey County Junior Livestock Show Saturday was shown by Andy Crawford. The swine was also a Breed Champion of the Heavy Weight Hampshires.



BREED CHAMPION--Kourtnee Magby is shown here with her American Cross Steer that was a breed champion at the Bailey County Junior Livestock Show Friday.



BREED CHAMPION--Samantha Southdown Lamb that was a breed champion at the Bailey County Junior Livestock Show Friday.



BREED CHAMPION--Amy Harrison is shown here with her Heifer which was a Breed Champion at the Bailey County Junior Livestock Show Friday.



BREED CHAMPION--Brooke Sinclair is shown here with her Southdown Lamb which was a breed champion at the Bailey County Junior Livestock Show Friday.

Proudly Presented By
 Paco Feed Yard
 Joe's Boot Shop &
 Riverside Terra Co
 KC Muffler & Mfg.
 Muleshoe Truck &
 JLC Company
 Wes Tex Feed Yard
 James Crane Tire Co
 Five Area Telephone
 Cooperative Inc.
 Muleshoe Fertilizer

culations

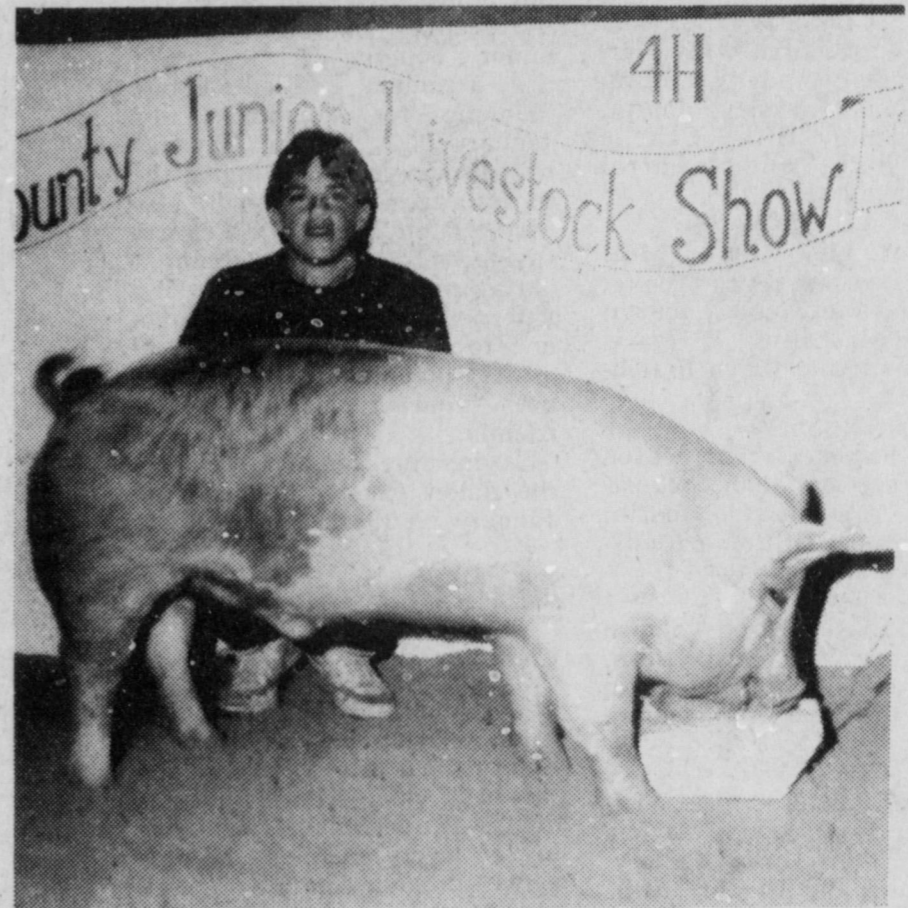
winners of
Junior Livestock Show
 Jan 17, 1987



Pol Cross Lamb was a breed champion at the Bailey County Junior Livestock Show Friday, he is the winner.



BREED CHAMPION---Lisa Lowe is shown here with her Light Weight Spot Hog that was a breed champion at the Bailey County Junior Livestock Show Saturday.



BREED CHAMPION---Colin Tanksley is shown here with her Cross Hog that was a Breed Champion at the Bailey County Junior Livestock Show Saturday.



Caswell is shown here with her Light Weight Duroc Hog that was a breed champion at the Bailey County Junior Livestock Show Friday.



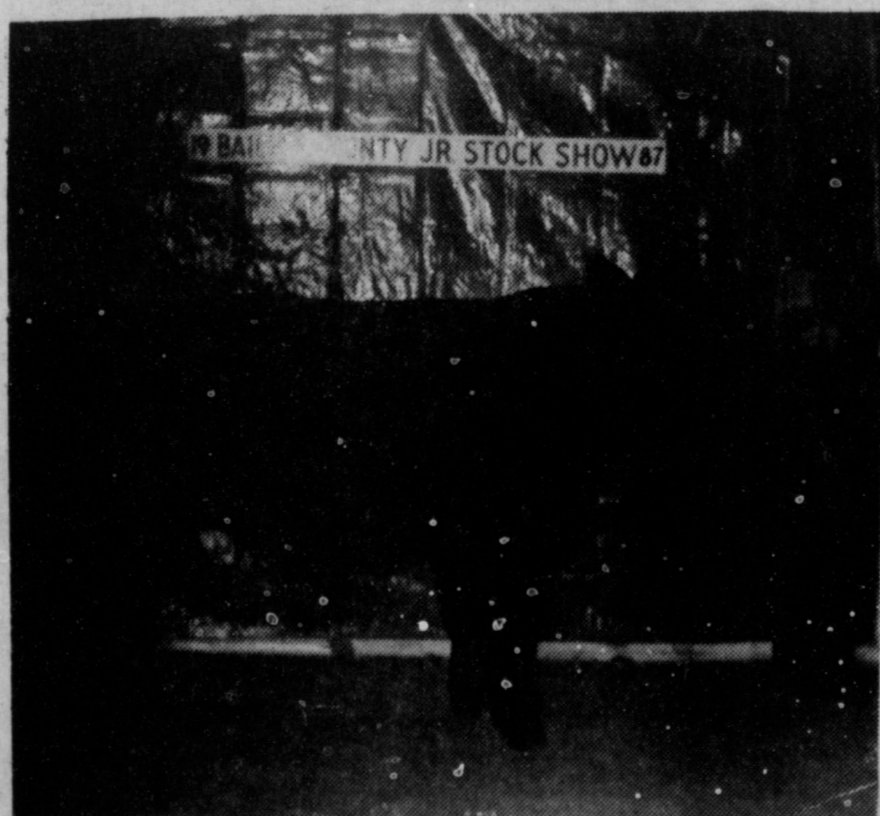
BREED CHAMPION---Brooke Sinclair is shown here with her Light Weight Duroc Hog that was a breed champion at the Bailey County Junior Livestock Show Friday.



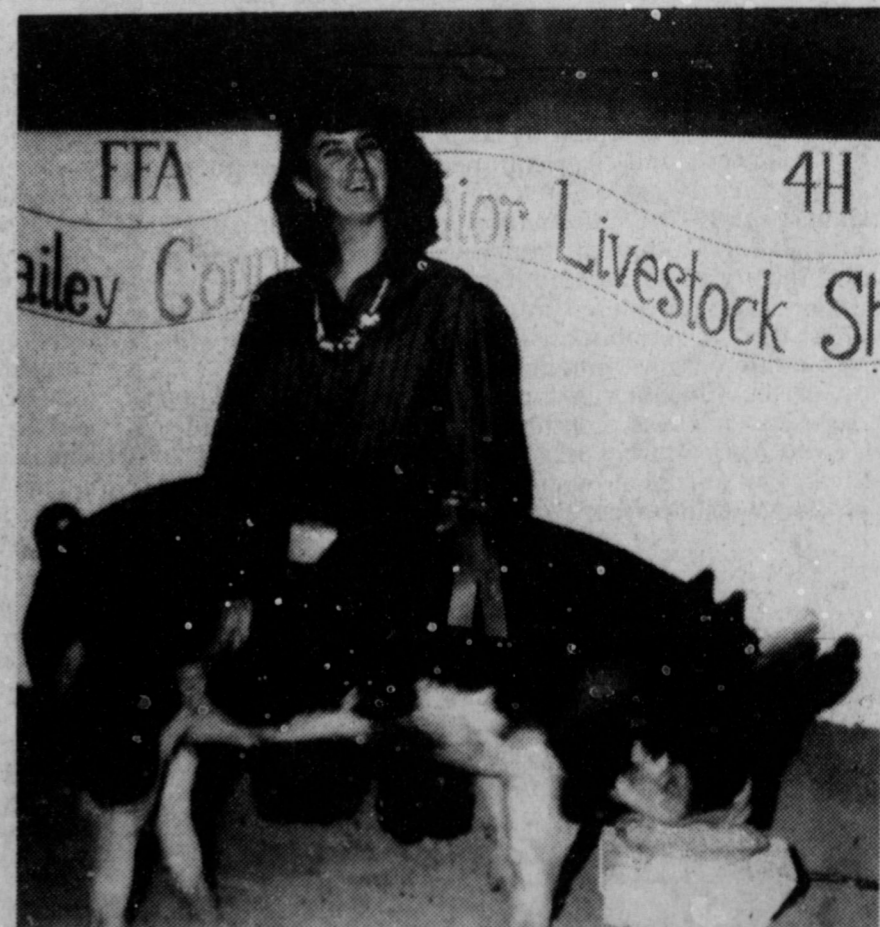
GRAND CHAMPION SWINE---Courtney Tanksley is shown here with her Heavy Weight Hampshire hog that was the Grand Champion at the Bailey County Junior Livestock Show Saturday.

The Following Merchants:

Country Junction
 Corp.
 Inc.
 Auto Center



BREED CHAMPION---Greg Young is shown here with his Medium Pure Breed Steer that was a breed champion at the Bailey County Junior Livestock Show Friday.



BREED CHAMPION---Holly Huckaby is shown here with her OPB Hog that was a breed champion at the Bailey County Junior Livestock Show Saturday.



Co.

Pig Winners

Cont. from Page 1

Gable, second; John Killingsworth, third; Colby Chaney, fourth; Scotty Spies, fifth; Scott Kline, sixth and Dondee Stewart, seventh.

LIGHT WEIGHT

Shawn Rejino, first and breed champion; Curtis Tucker, second; Michael Duncan, third; Gary Price, fourth; Amy Harrison, fifth; Kelley Tucker, sixth and Tonya Copley, seventh.

CROSS CLASS I

Chad McCormick, first; Angela Gable, second; Curtis Tucker, third; Justin Gardner, fourth; Marianne Tombs, fifth and Kasey Whatley, sixth.

CROSS CLASS II

Kasey Whatley, first; Brent Black, second; Angela Gable, third; Larry Wauson, fourth; Shawn Wheeler, fifth; Gary Price, sixth and Sheila Tucker, seventh.

CROSS CLASS III

Courtney Tanksley, first; Robin Moore, second; Monty Black, third; Brent Black, fourth; Ross Parish, fifth and Ronda Scott, sixth.

CROSS CLASS IV

Scott Bickel, first; Amy Harrison, second; Andy Crawford, third; Colin Tanksley, fourth; Chris Young, fifth; Charlie Reyna, sixth; and Carrol Copley, seventh.

CROSS CLASS V

Tonya Copley, first; Mike Dunham, second; Greg Young, third; Preston Gable, fourth; Ross Parish, fifth; Travis Copley, sixth and Dalyn Bratcher, seventh.

CROSS CLASS VI

Shane Schuster, first; Jason Harmon, second; Shane Schuster, third; Angela Gable, fourth; Jason Harmon, fifth and Melissa Toombs, sixth.

CROSS CLASS VII

Colin Tanksley, first; Shawn Wheeler, second; Mike Born, third; Lisa Black, fourth; Justin Gardner, fifth and Chris Young, sixth.

CROSS CLASS VIII

Angela Crawford, first; Tiffany Angeley, second; Angela Crawford, third; Eric McElroy, fourth; and Gage Angeley, fifth.

CHESTER

HEAVY WEIGHT
Colin Tanksley, first; Shawn Wheeler, second; Carrol Copley, third; Chris Young, fourth and Monty Black, fifth.

LIGHT WEIGHT

Tiffany Angeley, first and breed champion; Mike Dunham, second and reserve breed champion; Andy Crawford, third; Lisa Lowe, fourth; and Kasey Whatley, sixth.

DUROC

HEAVY WEIGHT
Todd Bessire, first; Kelley Tucker, second and Neal Watson, third.

LIGHT WEIGHT

Brooke Sinclair, first and breed champion; Russell Brown,

second and reserve breed champion; Dalyn Bratcher, third; Mike Born, fourth and John Killingsworth, fifth.

Estate....

Cont. from Page 1

with owning and managing property, often for a long time, as compared to an Executor's job which is often accomplished in a year or two. A Trustee also spends money as directed and often the Trustee has discretion of how money can be spent and may be allowed to pay some beneficiaries more than others.

The guardian of the person of a minor child is the substitute parent of a child. The guardian is responsible for the health and welfare of the person. The guardian of the estate of a person is in charge of the person's property. This person is closely supervised by the court system. Most professional advisors suggest naming a guardian of the person in a will, but if property is involved, put the property in a trust for the minor's benefit.

At a seminar entitled "Estate Planning for Tomorrow" on January 29, 1987, Dr. Hayenga will discuss the selecting of the representatives. He will also discuss income and estate saving tools in estate planning.

Hayenga, an Economist and Attorney, is an excellent teacher. He brings out the focus of estate planning as it affects both your family and your friends.

To join the seminar, come to the Bailey County Coliseum on January 29, 1987 at 9:00 A.M.

Muleshoe....

Cont. from Page 1

drive, the Chamber hopes to contact every non-member to inform them of the projects and the hard work the Chamber is doing. The Chamber would like to see every business become active in the Chamber," she concluded.

As of Tuesday, following a banking holiday on Monday to celebrate the birthday of Dr. Martin Luther King, First Bank understands the word "floating." Tommy Gunstream can explain the meaning to anyone who asks him.

1986 Cotton Ginned 23,468 Bales On 1-14-87



AGGIE VISITORS IN MULESHOE--Last week, some 30 agriculturally related students from Texas A&M University, along with an ag-instructor, visited a part of two days in Muleshoe hosted by the Muleshoe Aggie group. They toured several facilities in and around Muleshoe. Here, the group is pictured at the Bailey County Civic Center and Coliseum, along with local hosts.

Local Aggies Host A&M Tour

Several days ago, Muleshoe had a "different" type of invasion. Some 39 Aggies along with an instructor, visited in Muleshoe area, touring several animal and farm operations.

Coordinated locally by Dr. Jerry Gleason, a 1958 graduate of Texas A&M University, the group first visited the Muleshoe Animal Clinic on their arrival in several A&M vans.

At the Muleshoe Animal Clinic, they were told all about the clinic's large and small animal practice.

This was followed by a tour of Valley Grain Products, Inc. coordinated by Max Crittenden, field rep. He is an ANSC graduate, as well as his wife, Marilyn.

Crittenden showed the A&M students the grain holding facilities, and explained the process for making corn into a flour-type product which is shipped by rail to California for further processing.

Experimental economics allows researchers to scientifically test theories

COLLEGE STATION—Economists around the country are now testing their economic theories in the laboratory in a new field called experimental economics.

Dr. Raymond Battalio of Texas A&M University is among more than 100 scholars nationwide participating in the emerging new field of experimental economics.

"For the most part, economics has been a descriptive and theoretical science, but in recent years researchers have been seeking to put their study of market forces and economic behavior on a sounder scientific, or predictive, footing," Battalio explained.

"Experimental economics is breathing new life in the field and has already begun to produce some pragmatic results," said Battalio, adding that until about 10 years ago nobody had tested Adam Smith's basic economic principle pertaining to equilibrium prices resulting from producers with the lowest costs and buyers who put the highest value on the items produced.

"Since then, there have been over 100 experiments testing the theory, and sure enough they found Adam Smith was right," said Battalio, whose own research draws the same conclusion.

Texas A&M publication suggests ways to winter-proof your home

COLLEGE STATION—With Jack Frost nipping at your nose, the Center for Energy and Mineral Resources at Texas A&M University says it's not too late to complete a winter checklist for keeping the house warm and saving on utility bills.

The list suggests checking windows, doors and other obvious places where air leaks begin, but also obscure places such as wall outlets, switch plates and attic doors that let cold air in.

To save money, lower thermostat settings to at least 68 degrees during the day and even lower at night before going to bed for substantially lower heating bills. Homeowners are also advised to check their heating equipment for efficiency and safety or arrange for a maintenance check by a heating and cooling contractor or repair service.

Homeowners with a fireplace should make sure to clean excess creosote out of the chimney and lower the thermostat to 50-55 degrees when the fireplace is in use. Heated air from the rest of the house will be lost, but the furnace won't use nearly as much fuel.

In addition, the center suggests changing heating filters at least once a month for efficiency and to provide proper attic ventilation to keep insulation dry. Blocking or closing off turbine ventilators with plastic bags or other devices is not a good practice since it hinders attic ventilation and moisture control.

Missiles On Rails
President Reagan, moving to expand modernization of the U.S. nuclear arsenal, decided to step up work on a small, single-warhead missile and also buy 50 more giant MX missiles to be placed on railroad cars and shuttled from base to base in times of crisis.

Low Economy

Cont. from Page 1

increased by \$2,035,000 for the same period, with loans of \$12,189,000 at the end of December, 1985 increasing to \$14,224,000 to close out December, 1986.

From Morton, First State Bank showed an increase in both deposits and loans during 1986, with deposits of \$32,970,752 on December 31, 1986, up by \$1,522,248 over the \$31,448,504 on deposit at the end of December the previous year.

Loans at First State Bank, Morton, increased during the past year by \$9,363,602. Loans were \$12,358,637 to close out December 1986, an increase over the \$2,995,035 at the end of December of the previous year.

Security State Bank, Farwell showed an increase in deposits, but a decrease in loans for the same period of time. Deposits were \$42,637,349 closing out 1986, up by \$2,850,782 from the \$39,786,567 of December 31, 1985.

At the Farwell bank, loans

were decreased during the year. Loans were \$5,238,083 at the end of December, 1986, down by \$1,731,401 from the \$6,969,484 at the same time the previous year.

From Earth, Citizens Bank reported a slight decrease in both deposits and loans for the past year. Deposits on December 31, 1986 were \$14,017,782, down by \$298,458 from the \$14,316,240 on the same date in 1985.

Citizens State Bank showed loans of \$10,012,400, a decrease of \$16,179 from the figure of \$10,028,579 the previous December.

Friona State Bank showed slight increases in deposits and loans for the period December, 1985 through December, 1986. Deposits increased by \$191,745 during the year with \$52,135,524 shown on deposit on December 31, 1986, compared to \$51,943,779 at the same time the previous year.

Loans at Friona State Bank increased by \$1,348,266 during the year, with loans of \$27,539,197 on December 31, 1985, increasing to \$28,887,463 to close out December, 1986.

From Bovina, First State Bank reported deposits of \$20,223,589, as of December 1986, up by \$1,525,252 over the \$18,698,337 reported on deposit on December of the previous year.

However, loans at First State Bank decreased by \$51,265 for the same period, with loans of \$11,946,774 at the close of the books on December 31, 1986, compared to the \$11,998,039 on loan at the same time the previous year.

First National Bank in Sudan showed a slight increase in loans, and a decrease in deposits during 1986. Deposits were down by \$917,222 at the close of December, 1986 with \$8,354,885 on deposit, compared to \$9,272,107 at the end of December, 1985.

Loans at the First National Bank in Sudan increased for the year by \$340,032. A total of \$4,437,740 was on loan closing out December, 1986, compared to \$4,097,708 at the same time in December, 1985.

Democrats and Defense

The Democratic Leadership Council, created primarily by moderate Democrats from the South and West, is pushing a platform of strong defense and arms control as the solution to what they see as the Democrats' image of weakness on defense.

School Nurse Awareness Celebrated

The week of January 19-23 was designated as School Nurse Awareness Week in Texas, according to H. John Fuller, MISD superintendent. He said, "Muleshoe ISD would like to recognize two outstanding registered nurses as full time members of their staff."

"Mrs. Betty Jo Davis has been with Muleshoe ISD for 20 years and is based at Neal B. Dillman Elementary. Mrs. Janie Moynihan joined the staff two years ago and is based at DeShazo Elementary. Both nurses provide services to the entire school district, added Fuller.

He said, "The professional registered nurse is recognized as a health specialist in the educational setting. It is understood that a mentally, emotionally and physically healthy child is better capable of taking advantage of quality education."

"The school nurse strengthens the educational process by administering the health program which is focused on the promotions of healthy lifestyles, the provision of specialized health services to meet the needs of individual students, and the prevention of illness or injury," commented the superintendent.

Each campus will be recognizing the nurses in the Muleshoe district throughout the week.

At A&M We're Buying Them Again! "Aluminum Cans"

One day only at each of our locations:
2600 Mabry Dr., Clovis N.M.
1601 S. Ave. D, Portales, NM
1302 W. American Blvd.
Muleshoe, Texas

Special Purchase
Cash Price: **22¢** a lb.
* Coupon Bonus: **3¢** a lb.
Total Price: **25¢** a lb.

Buying Times on Special Days Only
7:30 A.M. to 6:00 P.M.

Buying Day For Muleshoe "Only"
Thursday-Jan. 22nd, 1987

*Coupons can be used on any purchase of A&M up to 50% of purchase.

The Chamber Is Working For A Better Tomorrow For Muleshoe!

Darrell Turner
Summit Savings Association

"As a Financial institution, we realize how very important economic growth is. Promoting existing business and helping establish new businesses is the main job of the Chamber of Commerce and Agriculture. We at Summit Savings want to be a part of this effort.

Some goals can only be attained by cooperative efforts and the Chamber of Commerce and Agriculture is our vehicle to the attainment of these goals."

The Chamber sends out information on the businesses of Muleshoe and Bailey County to numerous publications, one of which is the Directory of Texas Manufacturers.

The Chamber also provides information to the contract procurement center in Lubbock. This program will provide assistance in bidding on government contracts.

Investment in the Chamber is four dollars for an individual ten dollars base for business monthly. Remember, the Chamber of Commerce and Agriculture works for Muleshoe and for you.

It is the only organization whose reason for being is the promotion of the Muleshoe area.

The Chamber Needs You, To Help Muleshoe Grow
Muleshoe Chamber Of Commerce & Agriculture
215 S. 1st Box. 356 272-4248

KEEP THAT GREAT GM RIDE

AND SAVE!
Offer Good Thru January

Now's a great time to replace those worn shock absorbers. With *genuine* GM shock absorbers. Save on our winter service special... available for a limited time only.

Four GM Shock Absorbers Installed Tax Included \$69⁹⁵

Struts Not Included

And they come with a Lifetime Limited Warranty, so you know they're going to work right. See us for details.

Robert D. Green
272-4588 2400 W. Amer. Blvd.

Mr. Goodwrench
No One Knows your GM Vehicle Better... No One!

GM QUALITY SERVICE PARTS

Public Hearing Slated Friday On Brucellosis

A public hearing of the Texas Animal Health Commission will be held here Jan. 23 at 10 a.m. in the TAHC office, 210 Barton Springs Road, Austin, Texas.

Cannon AFB Sets Auction January 29

A public auction of surplus government property will be held Jan. 29 at Cannon Air Force Base by the Defense Reutilization and Marketing Office.

Items to be auctioned include office equipment, office furniture, television sets, clothing, electronic equipment, household equipment and furniture and miscellaneous items.

Items will be on display beginning Jan. 22 from 8 a.m. to 3 p.m. weekdays at DRMO, Bldg. 215 at Cannon AFB.

Registration to bid will begin at 8 a.m. on Jan. 29 in the Noncommissioned Officers' Open Mess, Bldg. 840 at Cannon. The auction will begin in the NCO Open Mess at 9 a.m.

A complete list of items, sale terms and the condition of the items is posted at DRMO.

Bidders must be present and register to bid on items. Mailed bids cannot be accepted. Items purchased may be paid for by cash, or a guaranteed instrument such as a cashier's check, money order, etc. Personal and business checks will not be accepted. Items may be removed the day of the sale, provided they are paid for in full.

For more information, contact Mr. Ralph Flory, Bldg. 215, Cannon AFB or call (505) 784-2437.

The purpose is to discuss proposed changes in the Texas brucellosis regulations to bring the state program into compliance with federal guidelines and to discuss other proposals by the Commission which would apply to Texas, pending approval by the federal government of this state's request for classification for Class B status.

Federal regulations apply to herds under quarantine and in essence will tighten regulations in this category including an extension of the minimum quarantine period for an infected herd from 120 days to 180 days following removal of last reactor. Others include whole herd vaccination in infected herds but would allow the epidemiologist to exempt vaccination of cattle over 12 months of age, lowering of mandatory vaccination ages for heifers in infected herds, movement of heifers from an infected herd, and tests required before entering quarantined feedlots and quarantined pastures.

First point testing: all livestock markets would test eligible cattle for brucellosis. Of the 152 livestock markets in Texas, 140 currently do first point testing. There are 12 markets which do not. Approval of Texas as a Class B state would mandate these markets also do first point testing.

Proposals relating to Texas becoming a Class B state include:

Special control counties: this would place counties with a high infection rate and a high market cattle identification reactor rate into a special category so that this rule would apply; all test eligible, non-vaccinated female cattle, not from certified ownership, shall be held for retest within 45 to 120 days after sale at new owner's expense.

A special control county would be one with a 12 month accumulative herd infection rate exceeding 3 percent of the county's herd population and an adjusted accumulative MCI reactor rate exceeding 2.75 reactors per 1,000 cattle tested.

STATE CAPITAL HIGHLIGHTS



By Lyndell Williams
TEXAS PRESS ASSOCIATION

AUSTIN—The Texas Legislature convened last week, and while pro- and anti-tax factions danced daintily around that issue, the Texas prison system first neared, then surpassed the court-ordered capacity level.

Last week's big show saw U.S. Sens. Lloyd Bentsen and Phil Gramm, and U.S. Speaker of the House Jim Wright on hand to welcome Texas legislators to what may well be the toughest session of the century, but the grimness was evident everywhere.

Before the first week ended, Comptroller Bob Bullock leveled the dire news: a prediction of a \$5.8 billion shortfall, the largest ever in Texas history.

Shortly thereafter, departing Gov. Mark White addressed the members and urged them to

raise taxes rather than make sub-human cuts to the budget. The top leadership seems to be set on making the temporary sales tax hike permanent while expanding the sales tax base.

Clements Mum

House Speaker Gib Lewis is reconciled to the fact that taxes will have to be increased, as is Lt. Gov. Bill Hobby, both Democrats. Bullock says by spreading the sales tax burden around fairly, the rate can perhaps be dropped.

Still tight-lipped on the subject is incoming Gov. Bill Clements. San Antonio legislators met with him last week, and afterwards one told reporters Clements had left the door open to a tax hike, but Clements didn't respond to that bait.

Tax Bill Coming

Everyone knows that the Democrat-dominated House and Senate are going to throw a tax bill on Clements' desk to sign.

And since he campaigned against tax hikes, Clements must hold firm until that time comes. And if he finally signs a tax bill, it must be because one man, even a governor, can't stand up to the Legislature.

That is the scenario that has been implied in campaign promises, and recent history shows that modern Texas

voters remember campaign promises a little longer than their horse and buggy predecessors.

Pre-Inauguration Crises

While this was going on, the Texas prison board nearly shut down the prisons because capacity was just a few prisoners away from full. By mid-week, capacity slacked off. The next day, more prisoners poured in and the level was surpassed. The board had to decide whether to shut prison doors. Mind you, this is all before

the new governor has been inaugurated. And he wanted that job!

As if that weren't enough, earlier the Department of Human Services board (all Mark White appointees) told the Legislature they weren't going to recommend cuts for their agency, like other agencies are doing (as requested).

A mini-revolt in a state agency: Thank you, but you lawmakers can make those cuts yourselves and take the blame.

"H&R Block's TAX FORECASTER™ will tell you what the most sweeping tax changes in history mean to you."

— Henry Block

At H&R Block we know you're concerned how tax reform will affect you. Our new Tax Forecaster™ service provides a written analysis of how you'd come out under the new laws so you'll know whether your tax would go up or down.



H&R BLOCK
THE INCOME TAX PEOPLE

IT'S AVAILABLE WHETHER WE PREPARE YOUR RETURN OR NOT.

224 W. 2nd Wkdys 9-6 Sat. 9-5 272-3332

Report of Condition 1st Bank

Consolidated Report of Condition of First Bank

of Muleshoe, Texas, and Foreign and Domestic Subsidiaries, at the close of business December 31, 1986, a state banking institution organized and operating under the banking laws of this state and a member of the Federal Reserve System. Published in accordance with a call made by the State Banking Authority and by the Federal Reserve Bank of this District.

LEGAL TITLE OF BANK	STATE BANK NO.		
First Bank of Muleshoe	2720-02		
Box 565	FEDERAL RESERVE DISTRICT NO.		
Muleshoe, Texas 79347	11 13 22963		
CITY	STATE	ZIP CODE	CLOSE OF BUSINESS DATE
Muleshoe	Texas	79347	December 31, 1986

ASSETS	Dollar Amounts in Thousands			
	Bil	Mil	Thou	
1. Cash and balances due from depository institutions:				
a. Noninterest-bearing balances and currency and coin		2,893		1 a
b. Interest-bearing balances		100		1 b
2. Securities		15,969		2
3. Federal funds sold and securities purchased under agreements to resell in domestic offices of the bank and of its Edge and Agreement subsidiaries, and in IBFs		None		3
4. Loans and lease financing receivables:				
a. Loans and leases, net of unearned income	14	393		4 a
b. LESS: Allowance for loan and lease losses		169		4 b
c. LESS: Allocated transfer risk reserve		None		4 c
d. Loans and leases, net of unearned income, allowance, and reserve (item 4.a minus 4.b and 4.c)		14,224		4 d
5. Assets held in trading accounts		None		5
6. Premises and fixed assets (including capitalized leases)		919		6
7. Other real estate owned		120		7
8. Investments in unconsolidated subsidiaries and associated companies		None		8
9. Customers' liability to this bank on acceptances outstanding		None		9
10. Intangible assets		None		10
11. Other assets		377		11
12. Total assets (sum of items 1 through 11)		35,202		12
LIABILITIES				
13. Deposits:				
a. In domestic offices:				
(1) Noninterest-bearing		30,980		13 a
(2) Interest-bearing	5,570			13 a (1)
(2) Interest-bearing	25,410			13 a (2)
b. In foreign offices, Edge and Agreement subsidiaries, and IBFs:		None		13 b
(1) Noninterest-bearing		None		13 b (1)
(2) Interest-bearing		None		13 b (2)
14. Federal funds purchased and securities sold under agreement to repurchase in domestic offices of the bank and of its Edge and Agreement subsidiaries, and in IBFs		None		14
15. Demand notes issued to the U.S. Treasury		None		15
16. Other borrowed money		None		16
17. Mortgage indebtedness and obligations under capitalized leases		None		17
18. Bank's liability on acceptances executed and outstanding		None		18
19. Notes and debentures subordinated to deposits		None		19
20. Other liabilities		338		20
21. Total liabilities (sum of items 13 through 20)		31,318		21
22. Limited-life preferred stock		None		22
EQUITY CAPITAL				
23. Perpetual preferred stock (No. of shares outstanding)	None			23
24. Common stock (No. of shares):				
a. Authorized	50,000.00			24
b. Outstanding	50,000.00			24
25. Surplus		2,000		25
26. Undivided profits and capital reserves		1,384		26
27. Cumulative foreign currency translation adjustments				27
28. Total equity capital (sum of items 23 through 27)		3,884		28
29. Total liabilities, limited-life preferred stock, and equity capital (sum of items 21, 22, and 28)		35,202		29
MEMORANDA: Amounts outstanding as of Report Date:				MEMO
1.a Standby letters of credit, Total		5		1 a
1.b Amount of Standby letters of credit in memo 1.a conveyed to others through participations		None		1 b

NOTE: This report must be signed by an authorized officer(s) and attested by not less than three directors other than the officer(s) signing the report.

Phil Kent, of the above-named bank do hereby declare that this Report of Condition

has been prepared in conformance with the instructions issued by the Board of Governors of the Federal Reserve System and the State Banking Authority and is true to the best of my knowledge and belief.

We, the undersigned directors, attest to the correctness of this Report of Condition and declare that it has been examined by us and to the best of our knowledge and belief has been prepared in conformance with the instructions issued by the Board of Governors of the Federal Reserve System and the State Banking Authority and is true and correct.

State of TEXAS County of Bailey ss

Sworn to and subscribed before me this 13th day of January 19 87

Signature of officer authorized to sign report: Phil Kent
Director: David H. Ellis
Director: [Signature]
Director: [Signature]



UP FOR TWC—Debbie Brown, No. 30, goes up for two points last Friday night, when the Mulettes played the Tulia Hornets in Muleshoe. Debbie went above the Hornette defenders for the points.

Ward Bros. Tractor Co.

Is Now Taking Consignments For

Annual Farm Machinery Auction To Be Held

February 26 & 27, 1987

If you have farm machinery to list on sale bill, please call us. Listings needed before February 9, 1987.

Ward Bros. Tractor Company

Clovis, NM

(505) 762-2612 or (505) 762-1015

Sudan News

by Evelyn Ritchie

Karen Rich of Vernon and Todd Engram of Lubbock visited during the New Years weekend with their parents and grandparents, Mr. and Mrs. Jack Engram.

Holiday visitors with Mr. and Mrs. Connie Hill were Mr. and Mrs. Ronnie Hill and boys of Roswell, N.M., Mr. and Mrs. Larry Durham and family and Mr. and Mrs. Dale Johnson and Tyler all of Lubbock. Joining them Christmas day for dinner was Mr. and Mrs. Lloyd Gilreath.

Mr. and Mrs. Joe Salem have returned from Dallas where they visited during the holidays with their daughter, Bett Kiorioh and family and also Mr. Salem's sister, Mrs. Jennie Haddad.

Earlier in the Christmas week and here for the LOWTS program were Rev. and Mrs. Mert Cooper and Dr. and Mrs. Malouf Abraham all of Canadian, Texas and Mr. and Mrs. George Rushing and girls of Friona. Joining the group for dinner were Dr. Robert Salem of Lubbock, Rev. and Mrs. Pitts Davis and Sarah. Some 163 persons attended the program that day when the Abrahams presented the program. Mrs. Abraham is the Mayor of Canadian.

**
Holiday visitors with Mr. and Mrs. Terry Tennyson, Rick and Star were Mr. and Mrs. B.W. Lambert and Chris Dunn all of Lamesa, Mr. and Mrs. Savoy Tennyson of Stephenville, Mr. and Mrs. Joe Boucher, Eric, and Benjamin of Colo. Springs, Colo.; Mr. and Mrs. Joe Valdez and Bryan Dunn of Arizona.

Mr. and Mrs. Ed Henley and Darlene were in Sulphur, Okla. to visit his parents, Mr. and Mrs. J.R. Brewer and other family members. Following their return, their children, Mr. and Mrs. Jody Henley and Shawnda of Ft. Sill enroute to Ft. Hood visited with them as did their daughter, Mr. and Mrs. Johnny Champion and Santana of Peter-

sburg.

Visiting during the holidays with Mr. and Mrs. L.J. Deeny and boys were her parents, Mr. and Mrs. D.O. Keener and brother, Mr. and Mrs. Donald Keener and family and her sister-in-law, Sharon Keener and children all of Borger.

Mr. and Mrs. Connie Franks and Holly were in Okla. City during part of the holidays when Holly had to have allergy tests made and they also visited in Ada, Okla. with her brother, Mr. and Mrs. Hugh Brasher. Sandra's parents, Mr. and Mrs. Bud Brasher of Austin joined them there.

Mr. and Mrs. Doyle Mapp and Dusty were visitors Tuesday night with her parents, Mr. and Mrs. Wayne Doty and were in Lubbock Wednesday when Dusty underwent ear surgery.

Christmas visitors with Mr. and Mrs. Freddy Legg and family were her parents, Mr. and Mrs. Olin Hays of Alba and other family members including Mr. and Mrs. Carl Reed, Scott Reed Leslee Reed all of Levelland, Mr. and Mrs. Mark Reed and Carlous and Kenneth Hill all of Lubbock.

Mr. and Mrs. Wayne Swart were in Rule during the week-end to attend the wedding of a long time family friend. They went on to Abilene to visit their son, Mr. and Mrs. Roger Swart, Dusty and Julie.

They hosted a dinner Christmas Day when those attending were Mr. and Mrs. Roger Swart, Dusty and Julie of Abilene, Mr. and Mrs. James Humphreys and Krystal and Mr. and Mrs. Bud DeLoach and Mr. and Mrs. Terry Swart, Kelsey and Shannon all of Sudan and Mrs. Ruth Swart of Littlefield.

Visitors on New Years Day with Mrs. Vesta Hunt were her children, Mr. and Mrs. Alvin Richards, Mr. and Mrs. Kenneth Richards, Dean and Keena Sue all of Sudan, Mrs. Donna Jean Beanware, Mr. and Mrs. Johnny Bowyer, Shawn, Brett and Heather of Brock, Mr. and Mrs. Bobby Richards, Michael Don and Shakara and Alvin Richards, Jr. all of Sudan.

Mr. and Mrs. Tim Gage of Waco, Mr. and Mrs. Dale Moore and Mr. and Mrs. Buddy

Hayes of Austin were holiday visitors with their parents and grandparents, Mr. and Mrs. Ves Patterson.

Holiday visitors with Mrs. Joy Logan were her children, Mr. and Mrs. Roy Hunter and family of Amarillo, Mr. and Mrs. Randy Jordan and family of Breckenridge and Mr. and Mrs. Cary Logan of Amarillo.

Pearl Opal was in Amarillo during the holidays to visit her son, Mr. and Mrs. Butch Finley and family.

Mr. and Mrs. Ken Dawson and family of Tulia were holiday visitors with her parents, Mr. and Mrs. Bill Nix. Joining them were his dad, Raymond Nix and their son, Mr. and Mrs. Tim Nix and boys all of Sudan, Craig Miller of Winona, Miss. and also Joyce's mother, Mrs. Bula Coker of Earth.

Holiday visitors with Mr. and Mrs. Matt Nix were their children, Mr. and Mrs. Mike Nix and family of Belton and Mr. and Mrs. Reagon Cox and family of Muleshoe, Mr. and

Mrs. Cody Crittenden of Muleshoe and Debbie Norwood and family of Austin.

Mr. and Mrs. Mike Nix and family of Belton and Mr. and Mrs. Bruce Waters and family of Louisiana and Mark Lane of Lubbock were all holiday visitors with their parents and grandparents, Mr. and Mrs. Frank Lane.

Mr. and Mrs. James McClanahan of Findley, Ohio were holiday visitors with their son, Mr. and Mrs. Pat McClanahan and Shannon.

Mrs. Josephine Fisher and Cdr. Rodney Fisher of New Orleans, La. were in California during part of the holidays when they went to watch the Wayland Flying Queens in their tournament held in Riverside, Azusa and Los Angeles. They also visited with her brother, Mr. and Mrs. Ramon Lowe in Mission Viejo while there. Their daughter and sister, Missy was among the team members who played for the Queens and Missy made 21 points, had at least 17 assists, app. 12

rebounds and 16 steals, for the Flying Queen during the games. She made many passes and blocks.

Mr. and Mrs. Mike Fisher and family were in San Angelo during part of the holidays to visit her parents, Mr. and Mrs. William Jackson.

Mr. and Mrs. John Burnett hosted a family get together Christmas when their sons, Mr. and Mrs. Charles Burnett and Mr. and Mrs. Carl Burnett joined them. Also Gina McKillip's friend, James Tiller of Littlefield and Mr. and Mrs. Otto Blackman of Globe Ariz. visited during the holidays. Joining them for Christmas Day dinner was Bessie Lee Burckle.

The Littlefield area Jr. Livestock show and sale has been set for Jan. 21-24 with 4-H and FFA chapters from Amherst, Littlefield, Spade and Sudan participating.

Edward Fisher of Sudan is the President for 1987 while James Blackwell is vice pres.; Guy Hufstедler is Sec. trea., and James Synatschk Reporter.

Director will be Mike Tucker, Kim Kloiber, George Tooley, Edward Fisher, James Blackwell, Bud Anderson, Don Harper, and Guy Hufstедler. Vocational Ag teachers are Kenneth Carr, Todd Gregory, Rick Ensor and Homer Lowrance.

Tommy Moss of Sudan is among the Honorary Directors and those from Sudan who are department Superintendents include Gaylon Burns, Bob Summer, Don Harper and James Synatschk.

Judges are Preston Faris of Sonora for the sheep; Swine judge will be Frank Hersmeyer; and Preston Faris, The Steers.

On Wed. Jan. 21, barns will be open to receive animals until 10:00 p.m.

Livestock must be in barns by 10:00 a.m. on Thursday, Jan. 22 and weighing of all animals begins at 10:30.

The grand opening of the show will be at 9:00 a.m. followed by judging of sheep, then swine, pee wee swine and then the steers.

Sat., Jan. 12, the auction sale of steers, swine and sheep begins at 1:30 p.m. All rules are as in the past. more chatter

Immaculate Conception Catholic Church

Father Patrick Maher

Northeast of City

First Baptist Church

220 West Ave. E.

Berry Bradley, Pastor

Emmanuel Baptist Church

Iglesia Bautista Emmanuel

107 East Third

Isaia's Cardenas, Pastor

Trinity Baptist Church

314 E. Ave. B.

Rev. V.L. "Buster" Huggins

Primitive Baptist Church

Corner of Ithaca St. and Fir Ave.

Elder Glen Williams, Pastor

Circle Back Baptist Church

Intersection FM 3397 & FM 298

946-3676

Calvary Baptist Church

1733 W. Ave. C.

Rev. Darrel Martin

Primitive Baptist Church

621 South First

Elder George Johnson, Pastor

Muleshoe Baptist Church

8th and Ave. G.

Bob Dodd, Pastor

Progress Baptist Church

Paul Brigham, Pastor

Progress, Texas

Richland Hills Baptist Church

17th and West Ave. D.

David McAdams, Pastor

St. Matthew Baptist Church

Corner of West Boston & West Birch

M.S. Brown, Pastor

Progress Second Baptist Church

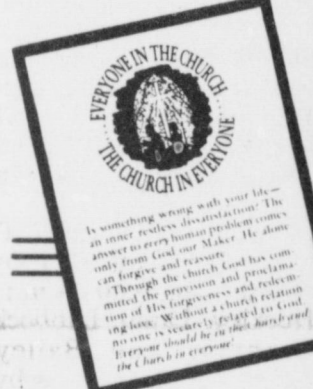
1st and 3rd Sunday

Clifford Slay, Pastor

A Miracle

Modern medicine with its wonder drugs is truly miraculous; it gives protection against almost every disease of the body. But no doctor has any medicine to protect the human spirit from the stresses and strains of life.

There's only one protective medicine for the spirit; it is called faith in God. Not just any God, mind you, but the God whom the Bible proclaims, the Creator and Father of us all, the sovereign King of the universe. Faith in Him means to live by His will and make Him the one great purpose of life. For one who does that, life holds no fears and death is only the final doorway to fulfillment—that medicine protects the spirit for eternity; that is The Miracle.



DANCING WITH GLEE?—Greg Garcia, No. 22, appears to be dancing with glee as it appears the ball is going into the basket during last Friday night's district opener with the Tulia Hornets.

We would like to thank the EMT personnel who responded so quickly and efficiently to our call during the bad weather Saturday afternoon.

Thank You
Wayland & Evelene Harris

Western Drug 114 Main 272-3106	Bruce Inc. 272-5244	Dairy Queen 1204 W. American 272-3412
Serv-All Thriftway 401 W. American Blvd. 272-4739	Lindsey Jewelry 202 Main 272-3355	Kemp's Discount Furniture 414 W. American Blvd. 272-5023
Farmers Spraying Service Lazbuddie 965-2624	Lee's Western Wear 1910 W. American Blvd.	Fry & Cox, Inc. 401 S. 1st 272-4511
Attend The Service Of Your Choice	Irrigation Pumps & Power West Hwy. 84 272-4483	Bratcher Motor Supply 107 E. Ave. D. 272-4288
Muleshoe IGA Supermarket 402 Main 272-4244	Bobo Insurance 108 E. Ave. C. 272-4264	Five Area Telephone Cooperative Inc. 302 Uvalde 272-5522
West Tex Feed Yards 272-7555	American Valley Inc. Hwy. 84 W. 272-4266	Attend The Church Of Your Choice

Muleshoe Journal

Classified

Call 272-4536

FOR YOUR CLASSIFIEDS CALL MULESHOE & BAILEY COUNTY JOURNALS

CLASSIFIED RATES
 First Insertion
 Per Word.....\$15
 Minimum Charge \$2.30

Consecutive Insertions
 Per Word.....\$13
 Minimum Charge \$2.00

CLASSIFIED DISPLAY RATES
 \$1.75
 Per Column Inch

Blind Ad Rates
 50% More

DEADLINES
 12 Noon Tues.
 For Thursday Paper
 12 noon Friday
 For Sunday Paper
 We reserve the right to classify, revise, or reject any ad. Not responsible for any error after ad has run once.

1. Personals

MARY KAY COSMETICS Josie Flowers
 272-3865
 1-49s-tfc

HOME REPAIRS
 R.M. Saldana Construction, licensed and bonded plumber. Specialized in cement, carpenter work, remodeling, painting, acoustical ceilings, 272-4995.
 \$1-16s-tfc

IF YOUR house needs a face lift - call the House Doctors - Betty or Curtis Carpenter, 272-4686 or 965-2485. We will give free estimates on acoustical ceilings, wall texturing, wall papering, taping and bedding, interior and exterior painting, and misc. handy man jobs!
 1-3s-4tp

OPEN YOUR OWN beautiful shoe store. LADIES - CHILDRENS - MENS. All first quality merchandise. Over 200 top name brands-Over 1500 styles *Gloria Vanderbilt *9 West *Evan Picone *Andrew Geller *Liz Claiborne *Capeizo *Bandolino *Bass *Bear Traps *Calico *Reebok *Stride Rite *Buster Brown *Candies *L A Gear *Cherokee *Florsheim *Freeman *Bostonian and many more. \$12,900 to \$39,900 includes beginning inventory, training-fixtures and grand opening promotions. Call Today, Prestige Fashions 501-329-2362.
 1-3s-2tpts

PRETTY PUNCH embroidery now available. Free instructions - call Nelda 925-6634.
 1-3s-4tp

ARE YOU looking for someone to do housework for you? Please call 925-6795.
 1-3s-4tc

TIFFIN !!
SPECIAL THRU Jan. 31, 100% cotton, 6 oz. dress weight denim. Two types dark blue rinse black & baby blue. 60 inches wide, \$6.98 a yard. January clearance continues with futher mark downs. Shop Tiffin II, Earth.
 1-4t-1tc

CONCERNED About Someone's Drinking? HELP IS AVAILABLE through Al-Anon Call 227-2350 or 965-2870 or come to visit Tuesday nights, 8:00 p.m. or Saturday mornings at 10:30 a.m. at 1116 W. American Blvd., Muleshoe

1. Personals

NEW CREDIT CARD!
 No one refused Visa/Mastercard. Call 1-619-565-1522 ext. C3511 TX 24 hrs. 1-4t-3tpts

HALF PRICE! Flashing arrow signs \$299! Lighted, non-arrow \$289! Unlighted \$249! Free letters! See locally. Call today! Factory: 1 (800) 423-0163, anytime.
 1-4t-1tpts

3. Help Wanted

PLAINS MEMORIAL HOSPITAL RN positions available, full & part time, shift preference, excellent salary 10.50 to 12.50 per hour, plus shift differential, D.O.E. New progressive management, increased utilization, excellent staff & working conditions. Contact Vicki Buckley RN, BSN, DON, at 1-806-647-2191 or send resume to P.O. Box 278, Dimmitt, Texas 79027.
 p3-2s-4tc

IMMEDIATE opening for registered nurse, 7 days on, 7 days off schedule. Stable staff & good working conditions. Contact Miss Ahanna Parker, Director of Nursing, Littlefield Medical Center, 385-6411.
 L3-4t-3tc

4. Houses For Rent

SMALL unfurnished home for rent. Call 272-3107.
 m4-1s-tfc

RUIDOSO CHALET: 4 bedroom for rent by day, weekend, or weekly. Call 505-257-2622. Owner Dr. Albertson.
 a4-49t-tfc

HOUSE FOR RENT. 2 bedroom, double carport, fenced backyard, large metal storage building, in back. Near school. Call 817-663-5857.
 b4-4t-tfc

5. Apts. For Rent

FOR RENT unfurnished 2 bedroom apartment call 965-2188 or 272-4754.
 s5-37t-tfc

HOUSE for sale 3 bdrm, 2 bath, storage shed, Geo-thermal heat & air conditioning, in ground swimming pool. 272-3117.
 L8-1t-tfc

8. Real Estate

2,048 SQ. FT. Brick 3-2-2 1 acre tract 30x40, fab steel barn, paved drives, 6 ft. block fence. Nicely landscaped. Located Intersection highway 54 & Farm market 1731- 1 1/2 north of Maple. 793-7734 or 946-3452.
 18-43s-tfc

8. Real Estate

HOUSE FOR SALE located in Lazbuddie 3 bdrm, 2 baths, utility, garage, brick, big lot, private well. If interested call 965-2126 or 965-2191.
 f8-32s-tfc

Bingham & Nieman Realty
 116 E. Ave. C
 272-5285
 272-5286

"We Appreciate Your Business!"

George & Dianne Nieman

James F. Hayes & Co.
 Agricultural Real Estate
 Vic Coker - Agent
 (806) 965-2468

SMALLWOOD REAL ESTATE BROKER
 232 Main 272-4838

EATING OUT

by Rose Hughes

One of the best guides to the newest craze among American travelers—bed and breakfast seekers—is Norman Simpson's "Bed and Breakfast American Style."

This book in the Berkshire Traveler Series (Harper & Row) divides the nation into sections. Simpson lists his favorite bed and breakfast homes in each

He describes them on one page, then gives directions how to find each and notes restrictions (such as no smoking, etc.).

In back of the book is an index of rates. There one can find if he or she can afford this or that inn or private home. Many are famous and attract guests because of their historical importance.

After Wisconsin listings—the inns and homes of each state are listed by states alphabetically—one will find a few pages about Canadian bed and breakfast stops. And the author adds one more listing, for a guest house in Nelson, New Zealand!

These bed and breakfast accommodations are found in private homes, mansions, guest houses, farm houses, country and village inns, small hotels, seaside and mountain lodges, etc. Simpson may have visited more of them than anyone else in his twenty years of writing Bed and Breakfast guide-books.

The tolerance of variety is the mark of intelligence.

It's always easy to find an excuse for delaying hard work.

8. Real Estate

Sudderth Realty, Inc.
 Realtors/Auctioneers
 Farwell, Texas
 481-3288

Drawer 887 109 5th St.

Licensed in Texas, New Mexico and Oklahoma
 Certified Appraisers

J.B. Sudderth, Broker **Daren Sudderth, Broker**
Jimmie Mace, Sales Associate

15. Misc.

UNTIL APRIL 1, 1987, BOB'S PUMP & MACHINE OF FRIONA WILL CONTINUE CHARGING .95 PER FOOT FOR PULLING AND SETTING OF 6-INCH AND 8-INCH IRRIGATION PUMPS \$1.25 A FOOT FOR 10-INCH PUMPS. WE ALSO HAVE A FEW GOOD USED BOWLS, GEAR HEADS, AND SO FORTH.....

Call Bob Clark
 Day 247-3236
 Night 247-2252
 c15-2s-4tc

18. Legals

FDIC Property Sealed Bid Sale

1725 Avenue D
 Muleshoe, Texas
 3 Br-1 1/4 Bath, Brick, single family home.

Bids will be accepted until 2:00 p.m. on February 16, 1987 at the office of Whitt-Reid Real Estate, 201 Main, Muleshoe, Tx.

The Bids will be opened at that time. The public is invited to be present.

For information: Call Roy Whitt at Whitt-Reid Real Estate 806-272-3611 or call FDIC, Jerry King, 806-794-2008, ext. 360.
 f18-2t-4tcc

CONTRACTOR NOTICE OF TEXAS HIGHWAY CONSTRUCTION

Mowing of State Department of Highways and Public Transportation Right-of-Way

Sealed bids for mowing highway right-of-way will be received, publicly opened and read on January 30, 1987, at the Lubbock District Office, 601 Slaton Road, Lubbock, according to the following time schedule:

Interstate 27, Farmer, Terry 'North', Terry 'South', Castro, Floyd, and Dawson 'North' at 9:00 a.m.; Dawson 'South', Hockley, Lamb, Lubbock 'A', Lubbock 'B', Cochran, and Bailey at 1:00 p.m.; Yoakum, Hale, Crosby, Gaines 'West', Gaines, 'East', Lynn, and Swisher at 3:00 p.m.

A pre-bid conference will be held at 10:00 a.m. on January 26, 1987, at the Lubbock District Office, 601 Slaton Road, Lubbock.

The State Department of Highways and Public Transportation, in accordance with the provisions of Title VI of the Civil Rights Act of 1964 (78 C.F.R., Part 8), issued pursuant to such Act, hereby notifies all bidders that it will affirmatively insure that the contract entered into pursuant to this advertisement will be awarded to the lowest responsible bidder without discrimination on the grounds of race, color, or national origin, and further that it will affirmatively insure that in any contract entered into pursuant to this advertisement, minority business enterprises will be afforded full opportunity to submit bids in response to this invitation and will not be discriminated against on the grounds of race, color, or national origin in consideration for an award. Plans and specifications are available at the Maintenance Office for the above mentioned counties and at the office of J.W. Gooch, Director of Programs, 601 Slaton Road, Lubbock, Texas.

Usual rights reserved.
 s18-3t-2tcc

The State Of Texas
 To: Paulino Garza

Defendant, Greeting:
 You are hereby commanded to appear by filing a written answer to the Plaintiff's Petition at or before ten o'clock A.M. of the first Monday after the expiration of forty-two days from the date of the issuance of this citation, same being Monday the 2nd day of March 1987, at or before ten o'clock A.M. before the Honorable 287th Judicial District Court of Bailey County, Texas, at the Court House of said County in Muleshoe, Texas.

Said Plaintiff's Petition was filed in said court, on the 17th day of July A.D. 1986, in this cause, numbered 5568 on the docket of said court, and styled, *In The Matter Of The Marriage Of Maria Eva Garza And Paulino Garza* Defendant.
 The names of the parties to the cause are as follows: *In The Matter Of Marriage Of Maria Eva Garza*

15. Misc.

THINK CLASSIFIED

18. Legal

NOTICE TO CONTRACTORS

Sealed bids addressed to the City of Muleshoe, Texas will be received at the City Hall until 8:30 AM, February 17, 1987 and then publicly opened and read for furnishing all plant, labor material and equipment, and performing all work required for seal coating city streets.

Bids shall be submitted in sealed envelopes upon the blank form of the proposal attached hereto and marked in the upper left hand corner.

All proposals shall be accompanied by a cashier's check or certified check upon a national or state bank in the amount of five (5%) percent of the total maximum bid price payable without recourse to the City or a bid bond in the same amount from a reliable surety company, as a guarantee that bidder will enter into a contract and execute performance bond within ten days after notice of award of contract to him. The bid security must be enclosed in the same envelope with the bid. Bids without check or bid bond will not be considered.

The successful bidder must furnish performance and payment bonds upon the forms which are attached hereto in the amount of 100% of the contract price from an approved surety company holding a permit from the State of Texas to act as surety or other surety acceptable to the Owner.

The right is reserved to reject any and all bids and to waive any informality in bids received.

Plans, specifications and bidding documents may be obtained at the office of Bill R. McMorris & Associates, Inc., 6300 Canyon Dr., Amarillo, Texas 79109, upon deposit of fifty (\$50.00) Dollars per set which sum so deposited will be refunded, provided the prospective bidder complies with one of the following requirements: (1) If no proposal will be submitted: All documents will be returned to the office of the Engineer not later than 48 hours before the time and date of receiving proposals; or (2) If proposal is submitted: All documents are returned in good condition at the time and date of receiving proposals. Provided the prospective bidder complies with neither of the two above requirements, the sum of Fifty (\$50.00) Dollars shall become the property of the Engineer.

CITY OF MULESHOE, TEXAS
 Darrell E. Turner, Mayor

18-4t-2tc

BIBLE VERSE
 "Ye will surely say unto me this proverb, Physician, heal thyself."
 1. Who made the above statement?
 2. To whom was he speaking?
 3. Upon what occasion?
 4. Where may this verse be found?

Answers to Bible Verse
 1. Jesus.
 2. The people in his hometown of Nazareth.
 3. His first visit to Nazareth after inaugurating his ministry.
 4. Luke 4:23A.

18. Legal

CONCERNED About Someone's Drinking? HELP IS AVAILABLE through Al-Anon Call 227-2350 or 965-2870 or come to visit Tuesday nights, 8:00 p.m. or Saturday mornings at 10:30 a.m. at 1116 W. American Blvd., Muleshoe

18. Legals

FDIC Property Sealed Bid Sale

1725 Avenue D
 Muleshoe, Texas
 3 Br-1 1/4 Bath, Brick, single family home.

Bids will be accepted until 2:00 p.m. on February 16, 1987 at the office of Whitt-Reid Real Estate, 201 Main, Muleshoe, Tx.

The Bids will be opened at that time. The public is invited to be present.

For information: Call Roy Whitt at Whitt-Reid Real Estate 806-272-3611 or call FDIC, Jerry King, 806-794-2008, ext. 360.
 f18-2t-4tcc

CONTRACTOR NOTICE OF TEXAS HIGHWAY CONSTRUCTION

Mowing of State Department of Highways and Public Transportation Right-of-Way

Sealed bids for mowing highway right-of-way will be received, publicly opened and read on January 30, 1987, at the Lubbock District Office, 601 Slaton Road, Lubbock, according to the following time schedule:

Interstate 27, Farmer, Terry 'North', Terry 'South', Castro, Floyd, and Dawson 'North' at 9:00 a.m.; Dawson 'South', Hockley, Lamb, Lubbock 'A', Lubbock 'B', Cochran, and Bailey at 1:00 p.m.; Yoakum, Hale, Crosby, Gaines 'West', Gaines, 'East', Lynn, and Swisher at 3:00 p.m.

A pre-bid conference will be held at 10:00 a.m. on January 26, 1987, at the Lubbock District Office, 601 Slaton Road, Lubbock.

The State Department of Highways and Public Transportation, in accordance with the provisions of Title VI of the Civil Rights Act of 1964 (78 C.F.R., Part 8), issued pursuant to such Act, hereby notifies all bidders that it will affirmatively insure that the contract entered into pursuant to this advertisement will be awarded to the lowest responsible bidder without discrimination on the grounds of race, color, or national origin, and further that it will affirmatively insure that in any contract entered into pursuant to this advertisement, minority business enterprises will be afforded full opportunity to submit bids in response to this invitation and will not be discriminated against on the grounds of race, color, or national origin in consideration for an award. Plans and specifications are available at the Maintenance Office for the above mentioned counties and at the office of J.W. Gooch, Director of Programs, 601 Slaton Road, Lubbock, Texas.

Usual rights reserved.
 s18-3t-2tcc

The State Of Texas
 To: Paulino Garza

Defendant, Greeting:
 You are hereby commanded to appear by filing a written answer to the Plaintiff's Petition at or before ten o'clock A.M. of the first Monday after the expiration of forty-two days from the date of the issuance of this citation, same being Monday the 2nd day of March 1987, at or before ten o'clock A.M. before the Honorable 287th Judicial District Court of Bailey County, Texas, at the Court House of said County in Muleshoe, Texas.

Said Plaintiff's Petition was filed in said court, on the 17th day of July A.D. 1986, in this cause, numbered 5568 on the docket of said court, and styled, *In The Matter Of The Marriage Of Maria Eva Garza And Paulino Garza* Defendant.
 The names of the parties to the cause are as follows: *In The Matter Of Marriage Of Maria Eva Garza*

Sudan News by Evelyn Ritchie

Holiday visitors with Mr. and Mrs. Maurice Kinnie were Mr. and Mrs. Jerry Shirley and family of Plainview, Mr. and Mrs. Ray Stanley and family of Lazbuddie, Mr. and Mrs. Larry Kinnie and Mr. and Mrs. Donnie Kinne and families of Lubbock; Mr. and Mrs. Jerry Ottwell and family of Muleshoe, Mr. and Mrs. Philip Briscoe of Whitesboro and Mr. and Mrs. Addis Purvis and family of Artesia, N.M. joining them were Mr. and Mrs. John Kinnie and family of Sudan.

Holiday visitors with Mr. and Mrs. U.J. King were their children and grandchildren, Mr. and Mrs. Terry Evans and family of Littlefield, Mr. and Mrs. Byron West and family of Brownfield, Mr. and Mrs. Morris Pery of Portales, N.M., Skokie King of Dallas. They were all at the home of their other daughter, Mr. and Mrs. Rusty Gore and family in Needmore for their Christmas dinner. Joining them also from Sudan was their son, Rick.

Michelle Gaston of Angelo State has been home from college with her parents, Mr. and Mrs. Wix Gaston and Dawn. While here they visited with her grandmother, Mrs. Tray Gaston. Others joining them for the holidays were Wix's sister, Mr. and Mrs. Joe Price of San Antonio. They all went out one day for dinner in observance of Wix and Joan's wedding anniversary on the 28th.

Holiday visitors with Mr. and Mrs. J.C. Doty were their daughter, Mr. and Mrs. Mike Robinson and Lindsey and Michael of Lubbock and joining them for Christmas dinner were Mr. and Mrs. Craig Doty and Kimberley, Eva Doty and Verdine Gann. Also joining them were Sherri's mother, Mrs. Joyce Thompson and Andy of Monday and her sister, Terri Brown of Rhineland.

Mr. and Mrs. Hubert Dykes were in Amarillo during some of the holidays to visit their son, Mr. and Mrs. Don Dykes and family and then went on to Okla City to visit her sister, Mr. and Mrs. Alvin Heston. Don and his family also came here for a visit during the holidays.

Dr. Delbert Serratt and Julie of Amarillo visited during the holidays with his mother, Mrs. Louzell Serratt and also visited were Karen and Joseph Cargo all of Amarillo. Delbert brought the evening message at the FBC in absence of the pastor.

Mr. George Schuster of Lockney was a Sudan visitor Monday.

Roy Graves was recently taken to the Amarillo hospital.

Holiday visitors with Mr. and Mrs. Clavis Bridwell were their children & grandchildren, Mr. and Mrs. Jerry Bridwell and Clay of Houston, Mrs. Belinda Garnett and Shawna and Mr. and Mrs. Gary Messersmith and Ashley all of Lubbock, Chris Bensing of Fort Hood, and also Mrs. Bridwell's sister, Corene Lawson of Lubbock and her niece and nephew, Clay and Earlene Latimer of Henet, Calif.

Mr. and Mrs. Jerry Bridwell and Clay of Houston visited during the holidays with her parents, Mr. and Mrs. Glenn Gatewood and other relatives and friends.

Holiday visitors with Mrs. W.L. Rice were her daughter, Mr. and Mrs. Jim Holt and Bill of Georgetown and Dale Rice of Lubbock. Also visiting this week has been her niece, Willie King of Tulsa, Okla.

Visiting during the New Years holidays with Mr. and Mrs. Andrew Blair and family were his parents, Mr. and Mrs. Willis Blair of Rupert, Idaho, and his sisters, Mr. and Mrs. Daniel Blair and Lauren of Clovis, N.M. and Sharla Blair of Lubbock.

Billie Doty was in Lubbock Saturday to attend funeral services for her uncle, Clavis Isaacs. Services were held at Rest Haven Cemetery.

Storewide Savings

THE MORE YOU BUY...THE MORE YOU SAVE!



ABSORBENT PAPER
DELTA TOWELS

39¢
ROLL



SHURFINE FROZEN
ORANGE JUICE

12 OZ. CAN
59¢



BETTY CROCKER SUPERMOIST
CAKE MIXES

18 OZ. BOX
68¢



HORMEL
LITTLE SIZZLERS

12 OZ. PKG.
99¢



WOLF BRAND CHILI WITH BEANS
CHILI

15 OZ. CAN
79¢



KEBBLER ZESTA
SALTINES

16 OZ. BOX
79¢



ALL TYPES
Cokes

2 LIT. BTL.
99¢



KLEENEX FACIAL
TISSUE

250 CT. BOX
99¢

You Can Always Depend on Thriftway Quality... Great Savings Too.

Shop These Grocery Specials Today!

GROCERY SPECIALS



WILSON'S SLICED MEAT
BOLOGNA

1 LB.
\$1.39

WILSON'S SLICED
BACON

1 LB. PKG.
\$1.59

WILSON'S REG./POLISH/BEEF SMOKED
SAUSAGE

1 LB.
\$1.99

WILSON'S MEAT
FRANKS

REG./HONEY CURED JUST FOR US 93% FAT FREE
12 OZ. PKG.
89¢

WILSON'S HAM'S
CHUCK ROAST

HEAVY GRAIN FED BEEF BONELESS
1 LB.
\$1.39

80% LEAN FRESH
GROUND CHUCK

1 LB.
\$1.49

HEAVY GRAIN FED BEEF BML.
CHUCK STEAK

1 LB.
\$1.69

BONELESS SKIRT MEAT FOR
FAJITAS

1 LB.
\$1.79

GOLDEN RIPE
BANANAS

3 LBS.
\$1

BURBANK BAKING
POTATOES

3 LBS.
\$1

Purple Top
Turnips

FRESH HOT
1 LB.
39¢

JALAPENOS

1 LB.
69¢

Celery Hearts

PKG.
79¢

NO. 1 IDAHO
RED ONIONS

4 LBS.
\$1.00



WHEEL OF FORTUNE

GENERAL MILLS CEREAL
CHEERIOS

15 OZ. BOX
\$1.99

GENERAL MILLS CEREAL
RAISIN NUT BRAN

14 OZ. BOX
\$1.79

GENERAL MILLS CEREAL
GOLDEN GRAHAMS

18 OZ. BOX
\$2.39

BETTY CROCKER ASST. HAMBURGER
HELPER

BOX
99¢

DAIRY SPECIALS

CHEESE SPREAD
VELVEETA LOAF

2 LB. BOX
\$3.19

Hungry Jack
BISCUITS

10 OZ. CAN
59¢

QUALITY
KRAFT DIPS

8 OZ. TUBS
59¢

MARGARINE QUARTERS
BLUE BONNET

1 LB. BOXES
\$1

FROZEN FOODS

TYSON SOUTHERN FRIED
OR FLAIN CHUNKS
CHICK 'N QUICK

12 OZ. PKG.
\$2.79

SHURFRESH
ICE CREAM

1/2 GAL. SQ. CTN.
\$1.59

ORE-IDA
TATER TOTS

4 LB. BAG
\$2.99

HEALTH AND BEAUTY AIDS

EXTRA STRENGTH
TYLENOL TABLETS

60 CT. BTL.
\$4.29

SUAVE CONDITIONER OR
SHAMPOO

16 OZ. BTL.
\$1.59

ALOE VERA SKIN
LOTION

10 OZ. BTL.
\$1.59

AF AFFILIATED FOODS INC. **We're proud to give you more!**

STAMP COPY

**WE ACCEPT FOOD STAMPS
WE RESERVE THE RIGHT TO LIMIT QUANTITIES**

PRICES EFFECTIVE
JAN. 18-24, 1987

THRIFTWAY