

## WEATHER

September 21	86	62	.00
September 22	84	60	.00
September 23	88	60	.77
September 24	85	56	.85

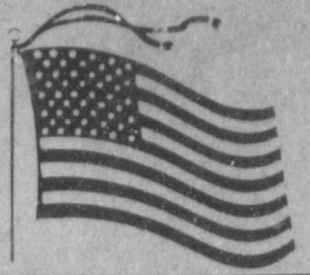
Moisture to date: 18.23

# Muleshoe Journal

20¢

'The Community Of Opportunity - Where Water Makes the Difference'

Foreman Company  
Box 68



Vol. 63 No. 38

10 Pages Today

Published Every Thursday At Muleshoe, Bailey County, Texas 79347

Thursday, September 25, 1986

## AROUND MULESHOE

\*\*\*  
Jeff Price, vocational ag teacher at Muleshoe High School, has announced an organizational meeting to form a Young Farmer Chapter, Tuesday, September 30 at 7:30 p.m. at the ag building.

All interested farmers of all ages are encouraged to attend.

\*\*\*  
In the Sunday Bailey County Journal, homecoming king for the Lazbuddie School Homecoming should have been named Scott Miller, instead of his brother, Kurt. They are both the sons of Mr. and Mrs. Mike Miller.

\*\*\*  
Ray Day had the program for the Muleshoe Rotary Club on Tuesday at noon, and introduced Barry Moynihan, choir and youth director of the First Baptist Church.

Moynihan gave a very informative program on foster care and child abuse.

Other guests at the Rotary meeting were Tim Morris, Walter Hughes, Richard Gee, Kathy Day, Carol Cox, Jim Mace and J. B. Sudduth and Sam Damron.

\*\*\*  
Marine Cpl. Jesse B. Carrion, son of Solomon and Feliz Carrion of Muleshoe, recently completed the Noncommissioned Officer Leadership Course.

During the course at Marine Corps Air Station, El Toro, CA, Carrion studied personnel administration, Marine Corps Cont. Page 6, Col. 5

## New Officers

## Directors Named

## For Chamber

Chamber of Commerce members elected new officers recently. When the votes were tallied the following were elected.

Ron Montgomery, president, Southwestern Public Service Co.; Tom Bonds, vice president, dentist; Mike Hahn, treasurer, James Crane Tire Co.; and Charles Moraw, past president, Muleshoe Co-op Gin, as advisor.

New directors elected were the following: James Lee, Farm Bureau Insurance; Todd Ellis, Ellis Funeral Home; Fred Clements, Southwestern Public Service Co.; and Phil Kent, First Bank; along with Billie Downing, Jennislipper representative, Farm Bureau Insurance.

Headover directors are Eddy Morris, Higginbotham-Bartlett Co.; Margie Merritt, Sonic; Brad Poyner, Poyner's; Tub Angeley, agriculture; Tim McCormick, McCormick Seed Co., Elaine Burgess, Muleshoe State Bank.

Retiring officers and directors are Charles Moraw, Gerald Reid, Chuck Smith, Roger Williams, Brian Pohlmeir, Phil Kent, Kathryn Taylor and Thursie Reid, Jennislipper Rep.



**DESECRATED HEADSTONE**--This damage to the 'St. Clair' grave marker was done last Saturday or Sunday night during an apparent 'beer party' at the old Muleshoe Cemetery. Vandals smashed several grave markers, tore loose large, heavy vases and urns, and did other damage.

## Mules Will Clash With Wolverines

This week, the Muleshoe Mules will travel out of town for their first game 'away' this year. However, the trek to Springlake-Earth is only approximately 20 miles, when they will play the Springlake-Earth Wolverines, coming into the game with a 2-1 record for the year.

At 3-0 for the year, the Mules are showing their teeth, and kicking up their heels, but should not be too complacent over the S-E team, who lambasted Motley County last Friday night 59-0. The lop-sided score shows that the Wolverines must be doing something right.

That is the second time for the Wolverines to have a big top-sided score against an opponent this year, while the Mules have racked up 76 points, while giving up 43 points to their three opponents.

Head Football Coach Dale Keeling said team injuries will be insignificant this Friday night, but early in the week, many of the players are fighting the flu. All the ill players are expected to be on their feet for the Friday night game at 8 p.m. at the Springlake-Earth school football field.

To date this season, after three games, the Mules' statistics look like this:  
The Mules have rushed 139 times for 764 yards, averaging 5.5 yards per carry; while their opponents have carried 100 times for 379 yards, an average of 3.3 yards per carry.

In passing, the Mules have attempted 35, completed 13 for 220 yards, an average of 37.1

percent completion rate for 16.9 yards per completion or 6.3 yards each attempt. The Mules have been intercepted four times.

Their opponents have completed 15 of 57 attempts at passing for 242 yards, a 26.3 percent average completion, or 16.1 average yards per completion or 4.2 average yards per attempt, and have been intercepted one time.

The Mules have punted nine times for 322 yards an average of 35.8 yards for each punt.

Muleshoe has 44 first downs, six of them through passing, while their opponents have 25 first downs, seven of these through passing and two through penalties. This is a total of 50 first downs, for the Mules to 34 for their opponents.

The Mules have 17 penalties for 169 yards and four fumbles lost to 15 penalties for 130 yards and six fumbles lost for their opponents.

Thus far in the 1986 football year, Todd Bessire has carried 29 times for 233 yards, an average of eight yards per carry; Armando Del Toro has 40 carries for 225 yards, an average of 5.6 yards each time;

Cont. Page 6, Col. 3

## 3 - Way Eagles

## Are Continuing

## Winning Ways

Last Friday night, the Three Way Eagles continued the winning streak established last year, when they defeated Cotton Center 44-6.

In the first quarter, Saul Guillen lobbed a 54 yard pass with the extra point failing. Robert Zamora latched onto the next pass of 52 yards, with the EP again failing. Shawn Walls made the extra point when Zamora again received a 30 yard TD pass from Guillen.

Guillen found his brother Oscar in the second quarter for a 13 yard TD with Curtis Tucker making the extra point. Jarrod Sowder lofted a 28 yard pass to Oscar Guillen who made it into the end zone and Tucker made the extra point.

At halftime, the score was 36-0 for Three Way.

In the third, the combination of Saul Guillen-Oscar Guillen held true for a three yard pass TD and again Tucker made the extra point.

Cotton Center made their only points in the game on a 25 yard run by Less Atchley and their extra point attempt failed.

Three Way had 237 yards rushing and had 15 completions for 28 attempts through the air for 180 yards.

Cotton Center showed 26 yards rushing and 27 yards passing for the game.

## Soggy Fields Stop Area Corn Harvest

## Light Hail Is Reported Old Cemetery To Leave Some Damage

## Is Marked By Vandals

Deputy Sheriff Jim Esquibel, assisted by Ellis Funeral Home personnel, were busy cleaning up and checking vandalism done at the Muleshoe Cemetery over the past weekend.

Sheriff Bob Henderson said more than \$1,500 in damage was done in the cemetery, apparently at night, by vandals, who appeared to have had a 'beer party' in the cemetery.

Several grave markers were broken, smashed or damaged. Large, heavy urns were broken loose and used to smash the markers, and left lying around the graves.

Beer cans were strewn throughout a portion of the cemetery, as well as cups from a local drive-in.

Although the cemetery is county-owned and maintained, Ellis Funeral Home helps care for the cemetery, explained Frank and Todd Ellis, who supervised the clean-up of the damage and debris.

The funeral home operators also temporarily repaired damage as much as they could, although visible signs of the extensive damage can be noted throughout the west part of the Muleshoe Cemetery, known as the 'Old Cemetery.'

As the graves were desecrated by the vandals who apparently held a drinking party in the cemetery, Sheriff Henderson is asking for public assistance in apprehending the persons who desecrated the graves. "We will hold the names in strictest confidence," said the sheriff, "If you have any knowledge of the persons who did this damage and vandalism, please contact our office, or one of our officers."

He said this is the first time major damage has ever been reported from either of the two cemeteries in or near Muleshoe.

## Three Way Residents Win Honors At Fair

The community of Three Way was well represented during the Lubbock South Plains Fair this week, with a number of winners designated.

Categories and winners include:

### LIVESTOCK

In the open barrow show, Kamy Williams placed sixth with her lightweight Hampshire barrow.

Lisa Lowe will show her sheep on Saturday in the Junior Lamb Show.

### CROPS

Wheat - Ron Foley, second place.

Pearl Millet - Charles Latimer, first place and Ron Foley, second.

Sudan Grass - Curtis Tucker - first.

Soybeans - Bryan Kinkle, first.

Other Grasses - Kamy Williams, first.

### VEGETABLES

Tomatoes - J. J. Duarte - second.

Field Pumpkin - Adrian Medina, first.

Green Peppers - Ollie Williams, second.

Peas, Edible 1 - Jessie Medina, third.

Sunflowers - Oil Type - Charles Latimer, first.

### CANNING

Lisa Lowe - Blackeye Peas - first.

Lisa Lowe - Beans - third.

### BAKED GOODS- JUNIOR DIVISION

Fruit Muffins - Carrie Kindel, first.

Jalapeno Muffins - Kamy Williams, first.

There's an old farmer expression, "It's too wet to plow," and that expression certainly holds true these days in Bailey County and the surrounding area.

All harvesting and field work has come to a complete halt after several days of rain that has left fields and turn rows soggy and impassable.

Although corn harvest is getting underway, the harvest has come to a complete stop, and National Weather Service predicts no relief in sight for farmers who are trying to get corn out of the fields.

Muleshoe has officially received nearly one and three quarters of an inch of rain for the first two days of the week, with additional moisture predicted in the wake of dying hurricane 'Newton' as it treks out of the area.

Some damage was reported from hail in southeast Bailey County, in the Bula area.

Bennie Claunch at Bula, said they had received three inches of rain during the past two days, with some damaging hail south of Bula on Monday afternoon.

"We have had a lot of rain in the last two weeks," said Claunch.

At the Muleshoe National Wildlife Refuge, Al Jones said they had received some 1.52 in rain, with no hail for the first part of this week.

"All the lakes have water and some are full," said Jones.

He also said sandhill cranes were expected to start coming in at the Refuge today, Thursday, September 25.

In the West Camp community, Eugene Shaw said they had received a little over an inch of rain on Monday and Tuesday, with some hail, but little damage. He said the turnrows were too bad to get down them to check on possible damage.

More hail was reported to the east of his farm, and some cotton bolls were damaged and leaves stripped.

In the Clay's Corner area,

Marilyn Engelking said they had received .6 on Tuesday night with no hail. They did manage to cut some corn on Monday before it rained on Monday afternoon.

At Maple, the Maple Co-op Gin said they received less than half an inch of rain this week, but from previous rains, the fields are too wet to get into for harvesting operations.

Some damage from hail had been reported from near the New Mexico state line to the west of Maple.

East of Lazbuddie at Foster Fertilizer, Demp Foster said 2.1 inches of rain had been reported

Cont. Page 6, Col. 3

## Armando Porras

## Takes First

## For This Week

This is the third week of the annual Merchant's Football Contest, and once again, the lead has changed -- with a male taking first place.

Three contestants, and three contestants only, missed three games to take the top three places for the week.

In first place was Armando Porras, a familiar name in the contest for the past several years. He missed three games and was only 26 points away on the double tiebreakers. Second place winner was Adele Tompkins. She also missed three games, but was 31 points away on the tiebreakers; and in third place was a youngster, Darryl McCamish. Darryl missed three games but was 46 points wrong on the double tiebreaker.

With three new winners this week, and many weeks to go on, the contest will probably change many times before the grand prize winner is announced late in November.

Weekly winners receive \$6 and 10 points for first place; \$3 and six points for second place and \$2 and three points for third place.

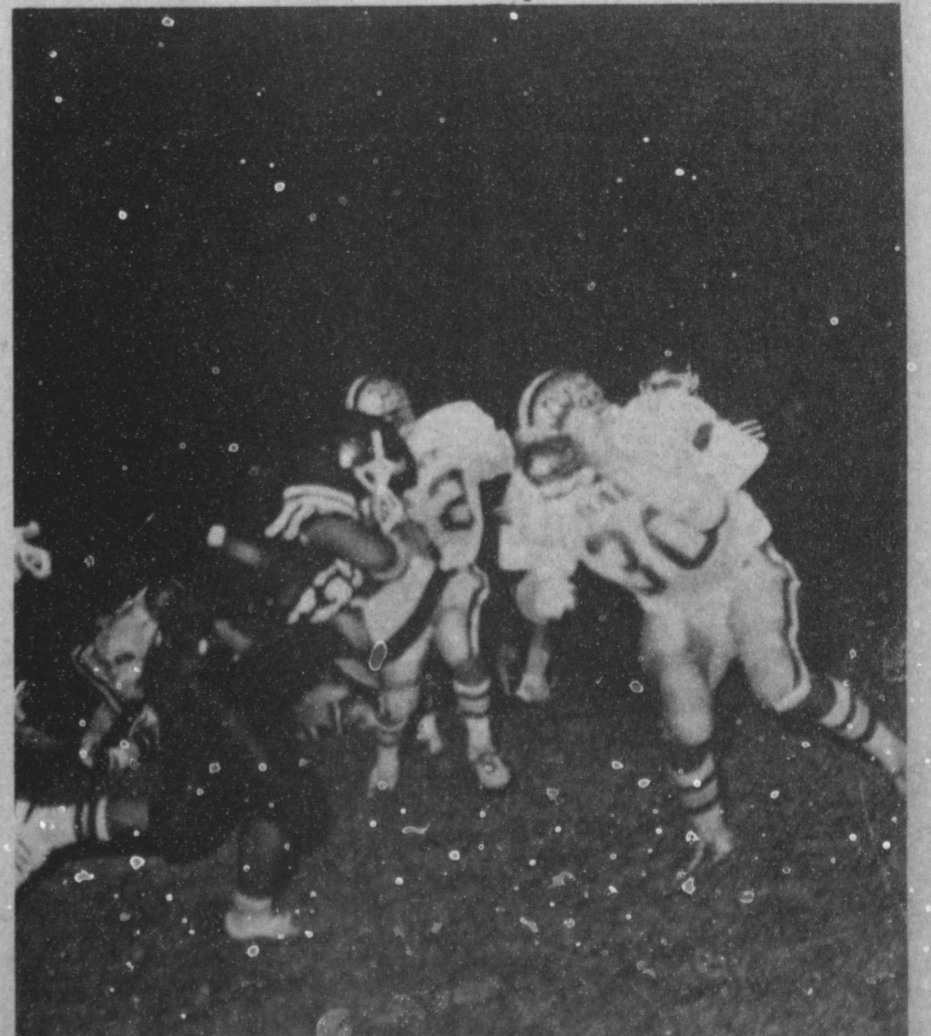
Grand prize winner will be the contestant who has accumulated the most points by the time the contest is ended.

One contestant failed to put the winner of a game on his contest entry blank for the latest contest. It did not keep him from becoming a winner this time, but it could have made the difference between losing out or gaining a weekly prize and points.

Thanks for your entries -- and keep them coming in!



**ONE INJURED SATURDAY MORNING**--Almost at the west city limits of Muleshoe Saturday morning shortly after 8 a.m., Muleshoe resident, Charles Walker, 20 was injured when a resident of Clovis, N.M. turned in front of him while making a left turn. Walker was going around the New Mexico vehicle at the time he turned. Walker was taken to West Plains Medical Center by ambulance for treatment of injuries received. The Clovis man refused treatment.



**MAKING HEADWAY**--As the Muleshoe Mules dominated the entire first half of the Muleshoe-Hart football game last Friday night, the Mules managed more than 200 yards of offense before halftime. The victory made three in a row for the Mules.

# 86 FOOTBALL 6 CONTEST

Grand Prize: \$100.00

Contest Winners  
Last Weeks Winners

1. Armando Porras
2. Adile Tompkins
3. Darryl McCamish



Weekly Prizes

1st \$6  
2nd \$3 3rd \$2



CONTEST RULES:

1. Pick the winner of each of the games contained in the advertisements on this page. Write the name of the teams you think will win opposite the game number in the blanks provided on the official blank.
2. The contestant must be 12 years of age or older.
3. Only one entry per person may be made for any one contest.
4. Bring your entry blank by The Journal office by 5:00 p.m. Friday, or, if mailed, the entry must be postmarked no later than 5:00 p.m. Friday. Write "FOOTBALL CONTEST" on the mailed entry, and mail to P.O. Box 449, Muleshoe, Tex. 79347.
5. Mark the winners and *WRITE IN THE SCORE* of the tiebreaker game. This score will be used to break weekly as well as determine grand prize winner. Decision of The Journal's scoring judges will be final.
6. Check the team you think will win; 10 points for first place, 6 points for second place and 4 points for third place.
7. To count for grand prize, entries must be on official blank printed in the paper.

**1. OUR SAVING THING: DON'T PAY TILL SPRING!** Call For FREE Estimate On Carrier Heat Pumps Today!!


SAVE with lower heating costs. Carrier high efficiency delivers! SAVE with no payments or interest charges till April, 1987.



**Bomer Electric**  
272-5175  
S.M.U. VS T.C.U.

**2. Ben Franklin** Open 8-8 Mon.-Sat. Sun 12-5  
Better quality for less  
2104 WEST AMERICAN BLVD. PH. 272-3855  
175 ct.

**Facial Tissues**  
73¢  
Kleenix or Coronet  
TULSA VS HOUSTON



**3. Henry Insurance Agency, Inc.**  
KENNETH R. HENRY  
CERTIFIED INSURANCE COUNSELOR  
REAL ESTATE BROKER  
RONNIE HOLT

111 W. AVENUE B MULESHOE, TEXAS  
PHONE 806/272-4581

PITTSBURGH VS WEST VIRGINIA



**4. No Job Too Large Or Too Small**  
Visit Bob Stovall For All Your Commercial Printing

**Bob Stovall Printing**  
221E. Ave. B 272-3373

OHIO STATE VS UTAH



**5. "For All Your Prescription Needs Visit The Friendly People At Western Drug"**

**Western Drug Co.**  
114 Main 272-3106  
NEW MEXICO VS SAN DIEGO STATE



Official Entry Blank


name \_\_\_\_\_  
address \_\_\_\_\_ phone \_\_\_\_\_

1. \_\_\_\_\_ 7. \_\_\_\_\_  
2. \_\_\_\_\_ 8. \_\_\_\_\_  
3. \_\_\_\_\_ 9. \_\_\_\_\_  
4. \_\_\_\_\_ 10. \_\_\_\_\_  
5. \_\_\_\_\_ 11. \_\_\_\_\_  
6. \_\_\_\_\_

TIEBREAKER  
BAYLOR VS TEXAS TECH  
OKLAHOMA VS MIAMI, FLA.

**Muleshoe Fertilizer** 7.  
Cares About Your Farming Profit  
Come By And Talk To  
Kearney, Preston & Jason Scoggin

Home 272-4846 Mobile 272-3001  
Hwy 70 Office 272-3443  
CALIFORNIA VS SAN JOSE STATE



**Dearborn** 8.  
STOVE COMPANY - DALLAS, TEXAS  
A Division of Addison Products Company

**JB**  
We Are Your Dealers For  
JB Paint And Dearborn Heaters

Higginbotham-Bartlett Co.  
215 Main 272-3351  
CINCINNATI VS KENTUCKY



**9.**

Come in now until Nov. 1 and receive 10% off Christmas Catalogue items, of \$100 or more. New Christmas items arriving daily

1/4 Ct. Marquise Diamond \$850.  
Set in 14 Karat gold Reg. 1,100.

**Lindsey Jewelry**  
202 Main 272-3955  
FLORIDA VS MISSISSIPPI STATE



**10.**

**Winterizer Fertilize**  
5,000 Square Feet \$9.95

Protect You Lawn, Trees & Shurbs This Winter  
Decorators  
Floral & Nursery  
616 S. 1st 272-4340  
GEORGIA TECH VS CLEMSON





**1986 "MULES" Football Schedule**

Sept. 5	Home	Olton	M-24 0-14
Sept. 12	Home	Boys Ranch	M-34 BR-13
Sept. 19	Home	Hart	8:00
Sept. 26	There	Spring Lake-Earth	8:00
Oct. 3	There	Lockney	8:00
Oct. 10	There	Friona*	7:30
Oct. 17	Home	Floydada*	7:30
Oct. 24	Home	Littlefield*	7:30
Oct. 31	There	Tulia*	7:30
Nov. 7	Home	Dimmitt*	7:30

\* District 2-AAA

**6.** Ask Us About Family Insurance Review!! Call Gene Atkins, Ricky Barrett or James Lee  
Free-No Obligation Available to Anyone

**Bailey Co. Farm Bureau Ins.**  
1612 W. American Blvd. 272-4567  
MARYLAND VS NO. CAROLINA STATE

**11.**

"Three Locations Too Serve You"

Enochs  
Clays Corner Muleshoe  
**Farmers** 272-4335  
**Co-Op Elevators**  
INDIANA VS MISSOURI





# Creative Living

by Sheryl Borden

When she's asked why Creative Living has enjoyed such a tremendous response from viewers all across the country, Sheryl Borden is quick to answer "luck and timing". The popular food, consumer, sewing and craft show with host Sheryl Borden airs every Tuesday and Thursday at 12 noon, on Tuesday evenings at 9:30 pm and at 2:00 pm on Saturday on KENW-TV. (All times are Mountain).

"I think there is a renewed interest in the family as a unit, and people (men and women) are interested in the same basic concepts that are important to the family that our mothers, fathers and grandparents were concerned with," says Sheryl.

She continues, "The main difference between then and now, in terms of these basic principles of home management, cooking, sewing, etc., is that we want to do the job faster and make use of modern technology."

Based on this concept, Creative Living combines the best of yesterday with today's modern technology, new appliances and products, and presents up-to-date information in an easy-to-understand format. Viewers from all across the country have commented that this is what appeals to them most about the show. "Its things their mothers and fathers didn't have time to teach them because they were working outside the home," Sheryl continues.

As the trend toward more and more women working outside the home continues, the need for basic information relating to the home arts must be provided in other means -- and television is an excellent tool for doing just that.

Since the show is produced in a magazine format, each half-hour show features two or three different topics presented by experts in various fields and representing major businesses across the country. Besides the current, up-to-date information presented on the show, viewers can become acquainted with people representing interesting career fields. The show is fast-paced, but down to earth and continues to grow each year in terms of viewers and new stations carrying Creative Living.

The new season begins Tuesday, September 30 at 12 noon (with a repeat on Saturday, October 4 at 2:00 pm). The first show will feature segments on orange ideas and batik. B. J. Doerfling is with Sunkist Growers, Inc. in Van Nuys, CA, and she will share some ideas and recipes for using oranges, as well as discuss the nutritional value of oranges and explain the differences between Valencia and Navel oranges.

Carol Koenig, a food stylist

who has her own business called Celebrations, will demonstrate how to do batik, which is an ancient art. The word batik is Indonesian and means "wax writing". Carol is from Mesilla Park, NM.

On Tuesday, September 30 at 9:30 pm Nancy Boyle, a home economist with Sharp Electronics from Paramus, NJ, will demonstrate how to prepare a complete gourmet meal in the microwave oven. Also Dominique Isbecque, a color consultant and spokesperson for 800-FLOWERS, New York, will discuss flowers and personalities.

On Thursday, October 2 at 12 noon Creative Living will feature three more interesting topics. Deniece Schodield is the author of two delightful books: *Confessions of an Organized Housewife* and *Confessions of a Happily Organized Family*, and she travels the country as a spokesperson for Era Plus. She will share some tried and true tips for time organization.

Patricia Godfrey, home economist for The Pillsbury Co. from Minneapolis, MN will explain how to snack and still maintain good nutrition in a segment called "Nutritious Nibbles".

Finally, Beth Kathan, a home economist for The Oster Co. from Indianapolis, IN will demonstrate how to use the blender and quickly and easily prepare homemade babyfood.

A new 62-page booklet accompanies the new series with information included from almost every program. The booklet sells for \$5.95 (including postage and handling) and may be ordered from KENW-TV, Portales, NM 88130. The booklet is called "What a Creative Idea!"

Creative Living is a production of KENW-TV, the public television station serving Eastern New Mexico and West Texas.

### PICK O' THE CROP -- ORANGES

Oranges are not only delicious, but easy-to-peel and are perfect for snacks, a breakfast fruit or a dessert. A few oranges or a basketful makes an ideal gift for almost any occasion.

### ORANGE CHICKEN IN A SKILLET

1 broiler-fryer (about 2 1/2 lbs.) cut in serving-size pieces, 2 Tbsp. salad oil, 1 medium onion, sliced, Grated peel of 1/2 orange, 1 tsp. dried tarragon leaves, crushed, 1/2 tsp. garlic salt, 2 oranges, peeled, cut in cartwheels

In large skillet, lightly brown chicken in oil; pour off fat. Add onion, orange peel, tarragon and garlic salt. Cover; cook over low heat for 40 to 45 minutes until tender. Remove chicken to serving dish; keep warm. Add orange cartwheel slices to pan

drippings; heat. Serve over chicken. Makes 4 servings. NOTE: Pan drippings can be thickened, if desired.

### RICE A LA ORANGE

This recipe idea is simple, but what a sensational side dish! To 3 to 4 cups hot cooked rice, stir in 1 tsp. fresh grated orange peel, 1 orange, peeled and cut in bite-size pieces and one of the following: 1/4 cup chopped nuts (any variety), sliced green onions, sliced ripe olives or toasted sesame seed.

### ORANGE TWO-BEAN SALAD

1/2 cup Italian or Caesar Dressing, Grated peel of 1/2 orange, 2 oranges, peeled, cut in half cart-wheels, 1 can (16 oz.) cut green beans, drained, 1 can (15 oz.) red kidney beans, drained, 1 small onion, sliced, separated into rings

Combine all ingredients. Chill; stir occasionally. Makes 6 servings (about 5 1/2 cups).

### FRESH ORANGE AND BANANA AMBROSIA

4 oranges, 2 large bananas, sliced, 1 container (4 oz.) frozen whipped topping, thawed, 1 Tbsp. honey, Grated peel of 1/2 orange, 1/4 cup shredded coconut, toasted

With knife, peel oranges over bowl to reserve juice. Cut oranges in half-cartwheel slices. To reserved juice, add banana and orange slices; stir gently. Combine whipped topping, honey and orange peel. Serve over fruit; sprinkle with coconut. Makes 6 servings (about 4 cups).

## Muleshoe Area Retired Teachers Met Friday

Muleshoe Area Retired Teachers met on Friday, Sept. 19 for a luncheon meeting which was held in the fellowship hall of the 16 and Ave. D. Church of Christ.

During the meal, Margie Moore played the tape "Prescription For the Happy Life" by Dr. Charles Jarvis, which produced many good laughs.

Maxine Ragsdale, president, then introduced Jewel Foster, District XVII president from Lubbock, who gave a report on the District Presidents meeting which had been held in Austin. Her report included discussions on Health Insurance, retirement fund, and the need for increased membership.

Minutes of the previous meeting were read by Mary B. Obenhaus and Lois Witherspoon gave treasurer's report.

Those attending were: Guests, District XVII president Jewel Foster, Lucille Adams, and Fannie Pillow, all of Lubbock, and Wanda Lewis of Muleshoe; New members were: Mabel Wolfe, Muleshoe and Jo Ann Blakey and Eloise Prewett, both of Rogers, N.M.; also Maxine Ragsdale, Margie Moore, Mary B. Obenhaus, Lois Witherspoon, Carrie Lee Bishop, Lena Hawkins, Josephine Mitchell, Robin Taylor and Jean Moore.

## Rebekah Lodge

Muleshoe Rebekah Lodge No. 114 met Tuesday, Sept. 16 at 7 p.m. for a pot luck supper.

The meeting was called to order by Renee Rudd. The chaplain gave the opening prayer which was followed by roll call and the minutes of the previous meeting.

Initiation was held for two new members, Gary Mike Hill and Carol Williams.

Lodge was closed with a prayer.

When a judge departs from the letter of the law he becomes a law-breaker.

-Francis Bacon.

The judge is nothing but the law speaking.

-Benjamin Whichcote.

CALENDAR OF EVENTS  
SEPT. 25-OCT. 1  
THURSDAY, Sept. 25  
MULESHOE SQUARE DANCE CLUB  
8 p.m.

TOPS CLUB  
6:30 p.m.

ODDFELLOWS LODGE  
7:30 p.m.

HOBBY CLUB  
2 p.m.

FRIDAY, Sept. 26

AARP  
11:30 a.m.

KIWANIS CLUB  
6:30 a.m.

TUESDAY, Sept. 30

REBEKAH LODGE  
7:30 p.m.

ROTARY CLUB  
12 (noon)

WMU  
2:30 p.m.

ATHLETIC BOOSTERS  
7:30 p.m.

ALCOHOLIC ANONYMOUS  
8p.m.

WEDNESDAY, Oct. 1

LIONS CLUB  
12 (noon)



BEST DECORATED--Rebecca Lee, daughter of Mr. and Mrs. James Lee, won the trophy for the best decorated bicycle in the bicycle parade sponsored recently by the Muleshoe Jennyclippers. Following the parade the group were treated to a watermelon feast.

## Senior Citizens

The Muleshoe Senior Citizens met in the fellowship hall of the First United Methodist Church for a covered dish luncheon Monday, Sept. 22. D. Head gave thanks for the meal.

Eight were present from the nursing home. There were approximately 30 members present with one visitor, Mrs. Josephine Mitchell.

Mrs. Odessa Shanks gave a welcome to all present, then Mrs. Mae Wilterding introduced Mrs. Mitchell, who presented the program. She played several numbers on the piano. Cards were sent to Mrs.

Lottie Bickel, who is in the hospital; Mrs. Wenona Gibson and Mrs. Sadie Howard, wishing them a speedy recovery, and to Mrs. Myrtle Chambliss who lost her sister.

The three members having birthdays were Homer Milsap, Mrs. Eva Ashford and Mae Wilterding. Mrs. Shanks accompanied the group as they sang the birthday song.

D. Head expressed thanks to those who sent cards and for their prayers during his stay in the hospital.

Mrs. Shanks had a report from Lubbock stating Senior Citizens Day in Lubbock will be Thursday, Sept. 25; the van will be going if anyone would like to go. You are asked to call Edd Harp or Glenn Williams if you would like to take the bus to Lubbock.

# Welcome To Muleshoe



WELCOME TO MULESHOE--This week we welcome Mr. and Mrs. Tony Palma and son Mark, age 8, to Muleshoe. The Palma's come to Muleshoe from New York where Tony was Director of Operations for Burger King Restaurants. Tony and Mary are the new owners of "The Hungry Mule Steakhouse" (formerly K-Bobs) here in Muleshoe. As hobbies Mary enjoys reading and Tony likes to play golf. We would like to give this couple a "Hearty Muleshoe Welcome"!

## James Crane Tire Co.

322 N. 1st

GOODYEAR

272-4594

Henry Insurance Agency

272-4581

111 W. Ave B.

Damron Rexall Drug

272-4210

308 Main

# Fall Baby Sale

Save up to 30%  
Infants' long sleeve novelty tops

sale **39¢**  
Or 2 for **\$7**

Reg. 4.99 each. These long sleeve novelty tops are made from soft polyester-cotton with crewneck styling. Assorted appliques for boys and girls. Sizes 12-24 months.

---



**ansa**

Save 25%  
2-pack ansa baby bottles

sale **\$3**  
2 for

**EASY FOR BABY TO HOLD**

Reg. 2 for 3.99. The ansa bottle is designed for little hands, a design that a baby can hold, carry and use. Safe for microwave, dishwasher and sterilizing. Comes with hood, color and nipple.



**Anthony's**  
disposable diapers

2 bags for **\$15**  
Or 7.99 a bag

Made with the same great features as the high priced brands: Baby-tailored fit for no sag contouring, restorable laps, stay-dry outer covering and a Moisture-Minder double thick stretch to carry wetness away from baby's skin. Choose the 48-count bag in medium (12-22 lbs) or the 32-count bag in large (over 22 lbs).

272-3478      Quality is part of the bargain!      321 Main      Welcome

# ANTHONY'S

Mon. - Sat. 8 a.m. - 6 p.m. Sun 1 p.m. - 5 p.m.

## Baby Shower Honors Mrs. Kathy Ambriz

Mrs. Kathy Ambriz and Kristen Linnae were honored with a baby shower Sunday, Sept. 21 at 3 p.m. in the



### Mandy J Brantley

Curby and Kay Lynn Brantley are the proud parents of a daughter, Mandy J. Brantley, who was born at 4:57 a.m. Sunday, Sept. 21 in the Methodist Hospital at Lubbock.

Mandy J. weighed eight pounds and 11 ounces and was 21 inches long. She is the first child for the couple.

Grandparents are Donald and Norma Prather and Curby and Mary Janis Brantley, all of Muleshoe.

Great grandparents are Mrs. Myrtle Puckett and Mrs. T. J. Brantley, both of Muleshoe, and Mr. and Mrs. Joe Combs of Leedy, Okla. and Mr. and Mrs. Hugh Prather of Erick, Okla.

### James Nicholas Johnson

Kenneth and Jackie Johnson of Muleshoe are the proud parents of a son, James Nicholas, born Sunday, Sept. 7 in St. Mary's of The Plains Hospital in Lubbock.

The young man weighed eight pounds and three ounces and was 21 inches long. Nicholas has two sisters, Julie 7 and Kendra 6 years of age.

Grandparents are Mr. and Mrs. J.R. Johnson of Muleshoe and Mr. and Mrs. J.C. Withrow of Littlefield.

Great grandparents are Geneva Williamson of Roscoe and Lola Lenz of Littlefield.

### Christopher Ryan Kindle

Joey and Carolyn Kindle of Maple are the proud parents of a son born Sunday, Sept. 14 in Clovis High Plains Hospital at Clovis, N.M.

The young man weighed nine pounds and three ounces and was 22 inches long. He has been named Christopher Ryan. He has two brothers, Keith 8 and Jonathan 5 years of age.

Grandparents are Mr. and Mrs. R.R. Kindle and Mr. and Mrs. Avery Quick of Maple.

Great grandmother is Cora Fowler of Morton.

## RECIPE

By Sarah Ann Sheridan  
Potato Pancakes

- 5 or 10 raw potatoes, peeled and grated
- 1 medium sized onion, peeled and grated
- 3 to 5 eggs
- salt to taste
- solid vegetable shortening

Grate onion into potatoes. Add eggs and mix well; salt to taste. Melt 1 teaspoon shortening over bottom of frying pan. Spoon batter into small frying pan or griddle, making small pancakes, one at a time. With spoon, spread batter flat over bottom of pan. Fry until golden brown on both sides. Grease pan well after each pancake, to keep batter from sticking.

community room of Summit Savings.

Guests were greeted by the honoree and registered by Rosalinda Chavez.

Mrs. Yolanda Gardea, Mrs. Lola Pacheco and Mrs. Mary Ambriz served cake, cookies, mints, nuts and punch from crystal appointments.

The serving table was covered with a white lace tablecloth over pink and accented with an arrangement of pink silk flowers in a basket. The honoree's corsage was white and pink, made of baby socks.

Special guests were Mary Ambriz and Patricia Mudford, grandmothers of Kristen Linnae; and Brenda Mudford, aunt of Kristen Linnae.

The hostesses gifts were a stroller and bumper guard. Hostesses for the occasion included: Rosalinda Chavez, Mary Ambriz, Erma Leal, Laura Leal, Sandy Buenrostro, Ida Pacheco, Lola Pacheco, Adélinda Mendoza, Benita Gauna, Candy Reyna, Susie Rodriguez, Yolanda Gardea, Maria Alvarado, Helma Rojas and Gloria Castorena.



MRS. KATHY AMBRIZ AND KRISTEN LINNAE



BEST COSTUME---Brandon Lee, son of Mr. and Mrs. James Lee, was awarded the trophy for the best costume in the bicycle parade sponsored recently by the Muleshoe Jennyslippers. His sister, Rebecca, was awarded the trophy for the best decorated bicycle.



BICYCLE PARADE---These youngsters are anxiously awaiting the announcement of the winners in the Bicycle Parade held recently. Muleshoe Jennyslippers presented trophies for the "Best Decorated" bicycles. Following the parade they were all treated to a watermelon feast.

Happy 40th

Not Getting  
Older--Just  
Better

Love

G.B. R&R.

## Journal Files

### 60 Years Ago

1926  
MULESHOE COUNTRY GETS  
5.65 INCHES RAIN IN FOUR  
DAYS

On last Friday a slow, cold rain began to fall and continued for four days and nights. The temperature fell to 36 degrees on Muleshoe's line and summer wearing apparel. Overcoats and overshoes were very much in vogue.

A light snow fell in Amarillo, so the paper stated. Damage was claimed in many parts of the country. Bailey County farmers report very little damage.

### 50 Years Ago

1936  
Dr. and Mrs. A.E. Lewis and son, Charles Gilbert, returned to Muleshoe the later part of last week from a few days vacation trip to Fort Worth where they visited the Frontier Celebration and to Dallas for the Centennial celebration.

### 40 Years Ago

1946  
DRIVERS LICENSE  
Most all drivers license for Bailey County will expire this fall (two years from date of

issuance).  
All car owners must secure a renewal of their drivers license if they expect to continue operating a car on the highways of the state.

A highway patrolman is in Muleshoe every second and fourth Wednesday to issue new licenses.

You should send in your application for renewal before expiration date on your license.

### 30 Years Ago

1956  
DON'T TAKE EM  
The postmaster issued a stern warning to persons who have been taking the new ball point pens from the lobby of the postoffice. He said that the pens are government property, and theft of same is punishable in the same manner as theft of any government property. Besides they are not worth much, even if you do take one.

Mr. and Mrs. Albert Davis and daughters visited in Hobbs, N.M. Sunday.

### 20 Years Ago

1966  
ROAD SINKS, PUMPS  
BLAMED  
Because irrigation wells in the area apparently have resulted in underground cave ins, Bailey County Commissioners have had to load zone a road in the YL neighborhood.

At their session this past week, the commissioners voted to load zone a one mile strip on the YL farm to market road.

Explained County Judge Glen Williams: "a sunken spot in the road was apparently created by irrigation wells having pumped out a cavity underneath."

### 10 Years Ago

1976  
FRIENDS HONOR  
MRS. Green

There was an appreciation Birthday Party in honor of Mrs. Dorothy Green in the Nursing Home dining room, Sunday, September 19, 1976, from 2:30 to 3:30 p.m.

Punch, coffee and cookies were served by the hospital staff and hospital auxiliary.

# SALUTE

To Our  
LEADERS  
OF  
TOMORROW

*We Believe Our Youth Of Today Will  
Provide Effective Leadership Tomorrow!!*



LEADER OF TOMORROW---Our Leader of Tomorrow for this week is Sue Haire, the daughter of Vera Haire and the late Lloyd Haire. Sue is a Junior at MHS, where she is involved in the Mighty "M" Band as a drum major and is an honor student. Sue was the winner this past summer of the essay contest sponsored by the Rebekahs. She won a trip to the United Nations and traveled over 3,000 miles over eight states, Washington D. C. and Ontario, Canada. We are proud to recognize this young lady as a "Leader of Tomorrow."

PROUDLY PRESENTED BY:



Now In Stock  
Ladies

# Wrangler

Jeans & Tops



LEE & ELLA DUNBAR

ee's WESTERN WEAR, INC.

1910 W. American Blvd.

Phone 806/272-4663

MULESHOE, TEXAS 79347

# Medical Computer To Help Hospital

By SARAH BARNES  
Avalanche-Journal Staff  
A donation of \$210,000 worth of computer equipment by American Telephone & Telegraph Co. will allow the Texas Tech University Health Sciences Center to provide important medical information to rural health care providers, Texas Tech officials said Monday.

Addressing HSC staff and AT&T officials Monday, Texas Tech president Lauro Cavazos said that with the donation the school can set up a network, called KARENET, which will allow rural hospitals in El Paso and Muleshoe to access information from the Health Sciences Center.

KARENET, or Kellogg Affiliated Remote Environments Network, is chiefly being funded by a \$1.5 million grant from the W.K. Kellogg Foundation, a philanthropic organization founded in 1930 to provide grants in areas of health, economic development, and education. The grant was awarded last November and will cover a three year period.

## 3-Way Fair...

Cont. From Page 1  
Cookies-Choc. Chip - Ollie Williams, third.  
Quick Breads - Norma Rubalcava, Honorable Mention.  
BAKED GOODS  
ADULT DIVISION  
French Bread - Charlotte Davis, third.  
Biscuits - Charlotte Davis, second.  
Ginger Bread - Charlotte Davis, third.  
Chocolate Fudge - Charlotte Davis, third.  
Peanut Butter Fudge - Charlotte Davis, third.  
Any Other Fudge - Charlotte Davis, Honorable Mention.  
Rolled Cookies - Charlotte Davis, third.

CRAFTS  
SR. YOUTH DIVISION  
Hooked Rug - Melinda Turney, third.  
Wood - Melinda Turney, Honorable Mention.  
Wall Hanging - Melinda Turney, Honorable Mention.  
CRAFTS  
JUNIOR DIVISION  
Metalcraft - Kamy Williams, first.  
Neddlepoint - Lisa Lowe, third.  
Stitchery - Carrie Kindle, third.  
Wall hanging (Small) - Lisa Lowe, Honorable Mention.  
Christmas Ornament - Kamy Williams - Honorable Mention.  
CLOTHING  
Jacket (Unlined) - Melinda Turney, third.  
Pant Suit - Sheila Tucker - Honorable Mention.  
Blouse - Melinda Turney, Honorable Mention.

dean of the TTUHC School of Nursing.

"The Kellogg grant and the AT&T donation allows the health sciences center to further its mission of improving the level of health care available to all people in the 108 county region we serve," Dean Langford said.

The system will allow the hospitals access to a myriad of information, including details about diseases and what steps hospital staff should go through to treat burn patient, for example. Dean Langford said the system will be developed over the next two years and more hospitals may be provided access to the network in the future.

"The network will improve health care delivery not only in rural counties but also in urban areas by allowing a better exchange of information and knowledge," Dean Langford said.

She noted the sites in El Paso and Muleshoe were chosen because of their unique aspects.

More specifically, El Paso's facility will give the health sciences center an opportunity to utilize their system with a clinic primarily treating indigent, underserved Hispanics. The Muleshoe facility will provide the health sciences center an opportunity to work with a rural community's medical care facilities.

The software products, which will provide the programs needed for gaining access to the bank of information, are being developed by the faculty and staff of the TTUHC Schools of Nursing, Medicine and Allied Health as well as the Texas Tech College of Business Administration.

David Grimes, AT&T area vice president for the major markets said Texas Tech was chosen for the equipment donation because of its commitment in developing advanced technology to improve the economic viability of West Texas.

"With decreasing government participation in the funding of research and development in universities, more and more responsibility has fallen on private business. AT&T is committed to furthering computer research on the nation's college campuses," Grimes said.

## ONE MINUTE SPORTS QUIZ

1. George Foster plays pro baseball for which team?
  2. Former USFL player Jim Kelly is playing for which NFL team?
  3. What year was Jerry West the NBA scoring leader?
  4. Who holds the record for the most consecutive field goals in football?
- Answers to Sports Quiz  
1. Chicago White Sox.  
2. Buffalo Bills.  
3. 1970.  
4. Garo Yepremian.



MARKER OVERTURNED--This marker at the grave of the late Tom Smith, was smashed over onto the side during an apparent drinking party in the Muleshoe Cemetery last weekend. Much damage was done at the cemetery.

## Mules-Wolverines

Cont. From Page 1

Michale Dunham has 42 carries for 194 yards, or 4.6 yards average per carry; Michael Angeley has 18 carries for 91 yards, an average of 5.1 yards per carry; Sidney Lewis has five carries for 17 yards, an average of 3.4 yards each time; Johnny Garcia has five carries for four yards, an average of .8 per carry.

Johnny Garcia has attempted 25 passes, completing nine for 190 yards, for a 36.0 completion rate, with an average of 21.1 yards per completion, 7.6 yards per attempt and one touchdown; Michael Angeley has completed four of 10 attempts for 30 yards, an average percentage of 40.0 with a completion rate of 7.5 yards, or 3.0 completion yards per attempt, and one touchdown.

Receiving the passes have been Armando Del Toro three for 60 yards, and average of 20.0 yards each reception; Todd Bessire, three for 38 yards, an average of 12.7 yards each reception; Jerry Mendoza, two for 70 yards, an average of 35.0 yards each; Scott Bickel, two for 21 yards, an average of 10.5 yards each; and Shawn Bussey has one for 26 yards; Sidney Lewis, one for four yards and Michael Dunham one for one yard.

Armando Del Toro has a total of 285 yards, and three touchdowns; Todd Bessire has a total of 273 yards and one touchdown; Michael Dunham has 195 yards and three touchdowns; Johnny Garcia has 194 yards; Michael Angeley has 121 yards and three touchdowns; Jerry

Mendoza has 70 yards; Shawn Bussey, has 26 yards; Sidney Lewis has 21 yards, one touchdown; Scott Bickel has 21 yards.

Greg Young has kicked four extra points.

## Emergency Medical Service Is Honored

Perhaps no other factor is as important following a serious injury or sudden illness as the time it takes to begin medical treatment.

According to the Texas Department of Health (TDH), any delay between the onset of trauma and the start of competent treatment increases the severity of the emergency and can needlessly lead to disability or death of the victim. Also, studies show that as many as 25 percent of victims of accidents or sudden illness underestimate the seriousness of their situation--they do not recognize that an emergency exists.

Texas Commissioner of Health, Dr. Robert Bernstein, said, "It is always up to the victim or a witness to decide if an injury or illness is an emergency. But if there is any doubt, the victim should get medical help immediately." He added that the fastest way to receive medical attention is to call an emergency medical service (EMS).

"Thousands of Texans owe their lives and current health to EMS teams, which ensure speedy medical assistance and special transportation to trauma victims around the clock," Dr. Bernstein said.

To honor EMS personnel and the services they provide daily, Gov. Mark White has proclaimed September 21-27 Emergency Medical Service Week in Texas. The observance coincides with national EMS Week, sponsored by the American College of Emergency Physicians. A highlight of the Texas observ-

ance is the Statewide EMS Conference to be held in Austin September 26-27 at the Austin Hilton Inn.

TDH regulates more than 1,000 EMS firms in Texas. The department's Bureau of Emergency Management certifies EMS technicians and their trainers, develops tests, and approves EMS courses. It also licenses EMS vehicles, including ambulances, helicopters, and fixed-wing aircraft. The bureau currently certifies nearly 35,000 persons to practice emergency medical service, including about 20,000 members of EMS firms and about 15,000 law enforcement, fire, and other emergency personnel.

## Muleshoe...

Cont. From Page 1

history and traditions, military courtesy and the principles and techniques of effective leadership. He also participated in close order drill and a rigorous physical fitness program.

A 1982 graduate of Muleshoe High School, Muleshoe, he joined the Marine Corps in August 1984.

\*\*\*

Ralph Glover was reported Wednesday morning to be in 'guarded' condition in Valverde Hospital in Del Rio after stroke he had last Friday.

Cards may be sent to him at Valverde Hospital, 8CP3, Box 40, Highway 40, Del Rio, TX 78840.

30 YEARS OF SERVING YOU

Autumn Sale

ALLSUP'S CONVENIENCE STORES

PRICES GOOD SEPT. 25, 26, 27, 1986 WHILE SUPPLIES LAST

30 YEAR ANNIVERSARY SPECIAL

ALLSUP'S TALLSUP

32 OZ. CUP 39¢ FOR ONLY

ALLSUP'S FRENCH FRIES ONLY 49¢

ALLSUP'S BURRITOS EACH \$1.49

Spam 12oz 1.39

Del Monte Green Beans Corn Spinach Peas 3/1.00

Heinz 32oz Tomato Ketchup 1.69

BORDEN'S BUTTER MILK 1/2 GAL. CTN. 99¢

BORDEN'S ASSORTED ICE CREAM 1/2 GAL. RND. CTN. \$1.69

Chicken of the Sea Tuna 6 1/2 oz cans 2/1.19

2-liter Dr. Pepper 89¢

# Country Basket

## SALE \$1.89

Crisp, tender, chicken-fried fingers of 100% beef, golden fries, Texas toast and creamy country gravy. That's the one and only Dairy Queen Country Basket. So come on by for the Texas taste that's just this side of heaven—now at a heavenly sale price!

Friday, Sept. 19 thru Sunday, Sept. 28

NOW WITH FOUR NEW SAUCES

Dairy Queen



## Rain...

Cont. From Page 1

during the first two days of this week with no hail. Again, fields were too soggy to be able to plow.

harvest corn. Some corn yields at Lazbuddie were reported to be very good, around 11,000 pounds per acre.

National Weather Service said the rains would continue at least until the weekend, and in some instances, would be very heavy rains, as the hurricane continued to dissipate and move out of the area.

Field operations were expected to be halted for several days until sunny weather had time to dry out the fields and turnrows.

## NEWS VIEWS

Lawrence Chimerine, economist, on economy:

"We would need several more months of significant increases and more widespread gains in the components to indicate the economy was accelerating."

Opening Soon  
**Tiffin II**

A Department Store  
In  
**Earth, Texas**  
715 E. Hwy 70  
257-2223

# The Unexpected: Big Problem For Farmers

In these tough economic times for farmers, an accident that inflicts personal and financial losses could be "the last straw."

Since agriculture is one of the most hazardous industries in this country, farm safety merits particular attention, and that's the purpose of National Farm Safety Week, Sept. 21-27.

Theme of this year's observance is "Be Protected from the Unexpected."

Last year more than 3,000 farm residents died in work, home, public and traffic accidents and nearly 300,000 more were disabled, points out Dr. Gary Nelson, safety engineer with the Texas Agricultural Extension Service, The Texas A&M University System.

Only use of a crystal ball could prevent all accidents, but many accidents that occur on farms and ranches could be prevented if people took the time to protect themselves from the unexpected.

A rollover protective structure (ROPS) and safety belt should be integral parts of any farm tractor, emphasizes Nelson. The combination of these two safety devices is a proven lifesaver.

Machinery guards can protect operators from the unexpected, adds Nelson. Many machine operators fail to replace damaged or missing guards and, therefore defeat the purpose of these safety features. All guards should be kept in place and in good condition, and a machine should always be turned off before unclogging or servicing takes place.

Personal protective equipment (PPE) is used in many industries to help reduce the severity of workplace accidents, and agricultural workers could benefit from this type of equipment, Nelson points out. Hard hats protect the head from falling objects and from low obstacles. Safety shoes with steel toes and skid-resistant soles not only protect feet, they also reduce the chance of falls. Precious eyesight can be saved by wearing safety glasses-flying particles, irritating dust and powerful chemicals threaten vision. Acoustic ear muffs or inserts help avoid serious hearing loss which can result from operating noisy machinery.

One way to reduce the risk of farm accidents is to remove hazards from buildings and lots, contends Nelson. Not only is a well-maintained place safer, but it also makes work easier. Farm and ranch owners should conduct periodic safety checks of the house, yards, lots and outbuildings to discover potential trouble. Hazardous materials should be removed or ways to protect against unremovable hazards should be devised. Family and employees should be involved in these safety checks so they also are aware of potential risks.

Broken steps, wobbly ladders, loose guards and any equipment in need of repairs should be fixed. To avoid the risk of fire, farmers should get rid of any unnecessary flammable or combustible materials. When hunting for hazards, it's a good idea

to obtain a fire safety checklist from a local fire department and inspect heating and electrical systems, says Nelson.

Accident prevention is often a matter of forethought and troubleshooting. Many lives and millions of dollars could be saved each year if more agricultural producers would take time to protect themselves, their families and their employees from the unexpected, adds Nelson.

## Bank Credit Revitalizes West World

Westworld Community Healthcare, Inc., announced today that it has entered into a newly revised, long-term financing agreement with a group of banks led by Bank of America. The other banks are National Westminster Bank and M Bank. This new agreement amends an existing \$50 million credit facility with this same group of banks.

Michael D. Dunn, chairman, president and chief executive officer, said that, "This new credit facility provides the Company with the necessary financing to meet operational requirements for the near and longer term." While specific terms were not released, Mr. Dunn said that "This agreement, the latest step in our previously announced restructuring of the Company, incorporates a variety of flexible features and variables that will allow Westworld to continue to provide the quality healthcare services on which our rural communities have come to depend."

Maintaining its leadership in the delivery of rural healthcare, Westworld Community Healthcare, Inc. (WCHI-NASDAQ), with total assets as of June 30, 1986 of \$167.3 million, now operates thirty eight distinct healthcare systems plus two clinical specialty programs in otherwise unaffiliated hospitals, in fifteen states. The Company also offers services through Westcare, its rural HMO, in conjunction with nine of its healthcare systems in four states.



Warren Rudman, Senator (R-NH) on deficit:  
"It's kind of a moment of truth around here, to try to do something to keep down the deficits and help the economy."

Les AuCoin, Rep. (D-Ore), on defense budget:  
"This is not a perfect bill, but this represents the most significant breakthrough I have seen in my 12 years in Congress"

### Enochs News

by

Mrs. J.D. Bayless

Mrs. Mamie Adams had eye surgery last Tuesday in Lubbock, and her son, Bobbie spent the night with her sister-in-law in Lubbock, Mrs. Genita Harris.

Mrs. Goldman Stroud of Enochs and Mrs. Alma Maxey of Littlefield went on a trip to Jacksonville to visit Mrs. Maxey's son, and friends, they drove on to Louisiana, and visited there and to Hico where Mrs. Stroud visited a brother-in-law and family they left Tuesday and returned home Saturday.

Keith Price harvested the first load of milo and brought it to the Enochs Farmers Co-op Elevator Friday, Sept. 12, 1986.

Mrs. Linda Logdson of Lubbock brought her children Tannin and Keily out to spend the weekend with their grandparents, Mr. and Mrs. Bobbie Adams.

Rain received Saturday night ranged from 1 1/2 to 2 and 4 tenths in our area, the wheat farmers were proud of the rain.

Mr. and Mrs. Chester Coffman of Big Spring visited in the home of his sister, Mrs. Hellen Bayless Sunday afternoon.

Mrs. Doris Huff and Mrs. Bill Key picked up Marcus Huff at Levelland and drove to Wolf-forth Friday and visited Mrs. Huff's other son, Mr. and Mrs. Paul Huff and family also Steve Huff in Lubbock.

Mrs. Bill Key and Mrs. Doris Huff went to the Fair in Muleshoe Saturday.

### Texas A&M scientists say over-the-counter drug causes liver damage

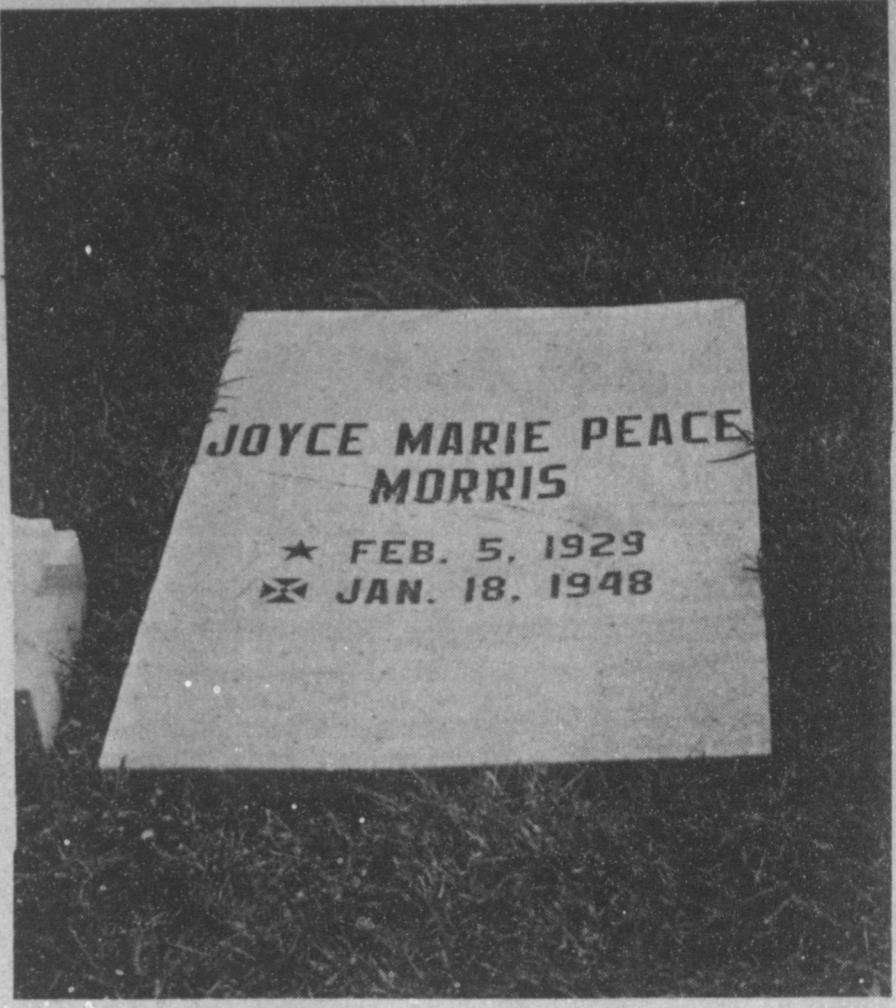
COLLEGE STATION — A popular over-the-counter drug sold as a protein supplement but also widely used as a sleeping aid causes liver damage that may be permanent, even in relatively small doses, says a just-published medical study by Texas A&M University scientists.

The drug, known as L-tryptophan, is available without prescription from health food stores, drug stores, some major supermarkets and discount stores.

Texas A&M's study is the first to link L-tryptophan to liver problems, said medical anatomy scientist Dr. Michael Trulson, who studied the effects of the compound on rats.

The findings, published in a recent issue of the Journal of Nutrition, also found that L-tryptophan enlarged liver blood vessels called sinusoids, said Trulson, who collaborated with Texas A&M anatomy researcher Dr. H. Wayne Sampson on the project.

"The present data demonstrate that doses of L-tryptophan, within the range commonly used by humans for the purpose of sleep induction, produce abnormal morphology (structure) of the liver," the scientists concluded.



SMASHED MARKER—A flat grave marker at the grave of Joyce Moore, was smashed when a large urn was slammed into it last weekend at the Old cemetery. Beer cans littered the area of the most damage.

Our idea of a pleasant life is to have more income than expense and little or nothing to do.

Whenever an advertisement offers you something free, read the small print.

Neither nations nor people are equal; but they should have free and equal opportunity.

The Bible still out-sells any book published, and whether you believe it or not, it is still being read.

## Your Automotive Headquarters

# P O Y N O R S

103 Main

Muleshoe

272-4552

### Courthouse News

#### WARRANTY DEEDS

Pamela R. Reid to United States of America (FHA)---All of the East 62' of Lot Number (18), Block Number (3), Muleshoe Park Addition to the Town of Muleshoe, Bailey County, Texas.

Bistec, Inc., formerly Southwestern Mr. Burgers, Inc., to Anthony J. Palma and wife, Mary Palma---Lots No. 1 and 2, Block No. 1, Ashford and Baker Subdivision to the Town of Muleshoe, Bailey County, Texas.

Reagan L. Cox and wife, Marilyn N. Cox to Dairy Queens of West Texas, Inc.---Lots (6) and (7), Block Number (1), Legion Addition to the Town of Muleshoe, Bailey County, Texas.

Mary Florence Walker, Iris Wilma Butts and Virginia Ruth McCarty to Security State Bank Littlefield, Texas---The South-easterly 65 feet of Lots (4), and (5), Block (2), Pool Addition to the Town of Muleshoe, Bailey County, Texas.

Doris Latain Buch to D.T. Garth---An undivided one-half interest in the West 2, 3, all of 4 to 7, Pool, Muleshoe, Bailey County, Texas.

Vernice Upton Garth to D.T. Garth---An undivided one-fourth interest in all of one house on 1024 West 2nd, Pool, Muleshoe, Bailey County, Texas.

Jay Crofoot, Jim Kassahn and Ed C. Barrett to the City of Beginning at the Southwest corner of the property herein described said corner being a point in the West line of Survey 4, League 205, Garza County School Lands, Whence the Southwest corner of League 220, Castro County School Lands, Bailey County, Texas.

#### COUNTY COURT

Jose Luis Delao, DWI, 20 Days in Jail, \$250 Fine 1 Year Probation

Curtis Mark Green, Theft, 6 Months Probation

Lusky A. Green, Theft, 6 Months Probation

Joe Robert Gonzales, Order of Dismissal

Conrado Segura, Jr., DWI, Second Offense, \$1000 Fine, One Year in Jail

Paul Guaranu, Order of Dismissal

Manuel Gurrerrez, Order of Dismissal

Leopoldo Anguiano, Jr., DWI, 20 days in jail, \$250 fine, One Year Probation

Juan Jose Ortega, DWI, 20 Days in Jail, \$250 Fine, One Year Probation

Billy Scott Enos, DWI, 20 Days Jail, \$250 Fine, One Year Probation

#### DISTRICT COURT

Bailey County Appraisal District ET AL Vs. Keith Blair, Notice of Dismissal

Bailey County Appraisal District ET AL Vs. Blas V. Alvarado ET AL, Notice of Dismissal

Bailey County Appraisal District ET AL Vs. Jack T. Dunham and DBA Dunham App., ET AL, Notice of Dismissal

Bailey County Appraisal

District ET AL Vs. D. A. Williams, Judgment

Bailey County Appraisal District ET AL Vs. Ricky Barrett, Judgment

Bailey County Appraisal District ET AL Vs. Joe Villareal, Judgment

Bailey County Appraisal District ET AL Vs. Charlie Hanks, Ind. and DBA Charlie's Originals, Judgment

Bailey County Appraisal District ET AL Vs. Victor Contreras, Judgment

Bailey County Appraisal District ET AL Vs. Marvin Davenport, Judgment

Bailey County Appraisal District ET AL Vs. Herbert W. Chaney, Judgment

Bailey County Appraisal District ET AL Vs. Jerry Harrison, Judgment

Bailey County Appraisal District ET AL Vs. Trey Cattle Company, Inc., Judgment

Bailey County Appraisal District ET AL Vs. Alphonzo Mendoza ET AL Vs. Glen Watkins Ind. and DBA Muleshoe Country Club Pro Shop, Judgment

Bailey County Appraisal District ET AL Vs. Bernado R. Olivas AKA Bernado R. Olivas ER AL, Judgment

Bailey County Appraisal District ET AL Vs. Ely J. Shafer AKA C. J. Shafer AKA Jim Shafer Ind. and DBA Shafer Dry Cleaning ET AC Judgment

### Yellow Page Look-A-Like Is Confusing

South Plains businesses are warned to be on the look out for a mailing from a telephone directory company entitled "Texas Professional Listings Directory" out of Harlingen, Texas. The company's solicitation for business resembles an invoice from the telephone company yellow page people. The number of calls to the Bureau from business indicates that an unusually large number of these have been mailed to local businesses.

The "Phone invoice" is printed on "Yellow Page" paper and has both the yellow page emblem and the "fingers do the walking" emblem at the top of the form. It should be noted that the use of the uncopied emblems is legal. BBB officials in the South Texas have scheduled a series of meetings to persuade the company officials to cease or modify their misleading advertising.

In order to avoid mistakenly paying this confusing look-a-like invoice, business managers should be especially careful that their bookkeepers, accountants, etc. know about this mailing.

CONTACT: Alan Bligh 763-5554

### ARE YOU PUTTING ME ON?



MAKE THE CONNECTION FOR SAFETY!

### Longhorn Roundup



By: Lazbuddie Journalism Class

#### LONGHORN ROUNDUP

Lazbuddie Elementary School has added a new program to its curriculum. Lazbuddie's elementary principal, Mrs. Anne Farris, explained, "The gifted/ talented education program will be geared to help students develop skills in creative/critical thinking and problem solving." She added, "A flexible program will be provided to allow the students to develop and achieve to their fullest potential and to make increased contributions within the community, state, and nation." Mrs. Mary Reed-Farris has been employed as the instructor for the new program. At this time, there are ten

students enrolled in the gifted/ talented program. Mrs. Anne Farris stated, "As designed by the State of Texas and approved by the local Board of Education, the initial enrollment in this program must include only three to five percent of the total student population in grades K through 5."

Jarah Redwine, daughter of Bobby and Debra Redwine, and a 5th grader at Lazbuddie, showed her horse, "Hollywood Jr.", at the South Plains Fair on Saturday, September 20th. She received a cup and a 1st place ribbon in Western Riding. She also received a 2nd place ribbon in Western Showmanship.

Sheena Seaton and Brett Thomas, both students at Lazbuddie, showed pigs at the South Plains Fair in Lubbock on Saturday.

Mrs. Farris' gifted/talented class took a field trip to the Don Harrington Discovery Center in Amarillo on Saturday, September 20th. They were accompanied by some of the students' parents. While there, the group saw two films: "Eggman," a

film designed by computers, and "The Space Shuttle: An American Adventure." The second film is a documentary using actual footage taken aboard three Space Shuttle flights in 1984. Mrs. Reed-Farris and her class toured the Discovery Center, worked on computers, saw a black hole, and a display of fish.

Lazbuddie school pictures will be taken on Tuesday, September 30th.

Juniors will order senior rings on Tuesday, September 30th.

Lazbuddie girls cross-country track team will compete at Hereford on Saturday, September 27th.

The FFA and 4-H participants will be showing lambs at the South Plains Fair on Saturday, September 27th.

The Lazbuddie 4-H club had its first meeting of the new 4-H year on Monday, September 8th, at the Methodist Church fellowship hall. Reports given concerning different 4-H projects were as follows: Jason

Thomas, Deon Gallman, and Dustin Weir-bucket calves; Jim Allen-livestock judging; Brett Thomas-swine; Audra Allen-photography; and Joanna Gallman-embroidery.

Enrollment in 4-H increased to twenty-one members and nine leaders. Officers were elected. They are: Casey Bradshaw, president; Susan Redwine, vice-president; Brett Thomas, secretary - treasurer; and Jim Allen, reporter.

### West Plains Hospital Report

**PATIENTS IN WEST PLAINS MEDICAL CENTER**  
**SEPTEMBER 19**  
Emma Schuster, Lottie Bickel, Emma Pena and Diane Sifuentes.

**SEPTEMBER 20**  
Lottie Bickel.

**SEPTEMBER 21**  
Fernando Toscano and Dan Folk.

**SEPTEMBER 22**  
Fernando Toscano, Dan Folk and Deanna Salinas.

#### Immaculate Conception Catholic Church

Father Patrick Maher  
Northeast of City

#### First Baptist Church

220 West Ave. E.  
Berry Bradley, Pastor

#### First United Methodist Church

507 W. 2nd Muleshoe  
Bill Kent, Pastor

#### El Divino Salvador Methodist Church

5th and Ave. D  
Jose M. Fernandez, Pastor

#### Emmanuel Baptist Church

Iglesia Bautista Emmanuel  
107 East Third

#### Trinity Baptist Church

314 E. Ave. B  
Rev. V.L. "Buster" Huggins

#### Muleshoe Church Of Christ

Cloviss Hwy  
David Allessandro, Pastor

#### 16th & Ave. D Church Of Christ

Sunday 10:30 a.m.  
Evening 6:00 p.m.  
Wednesday 8:00 p.m.

#### Spanish Assembly Of God

East 6th and Ave. F.  
Luis Campos, Pastor

#### St. John Luthern

Sunday School & Bible Classes 9:30 a.m.  
Church Services 10:30 a.m.

#### Muleshoe Baptist Church

8th and Ave. G.  
Bob Dodd, Pastor

#### Primera Iglesia Bautista

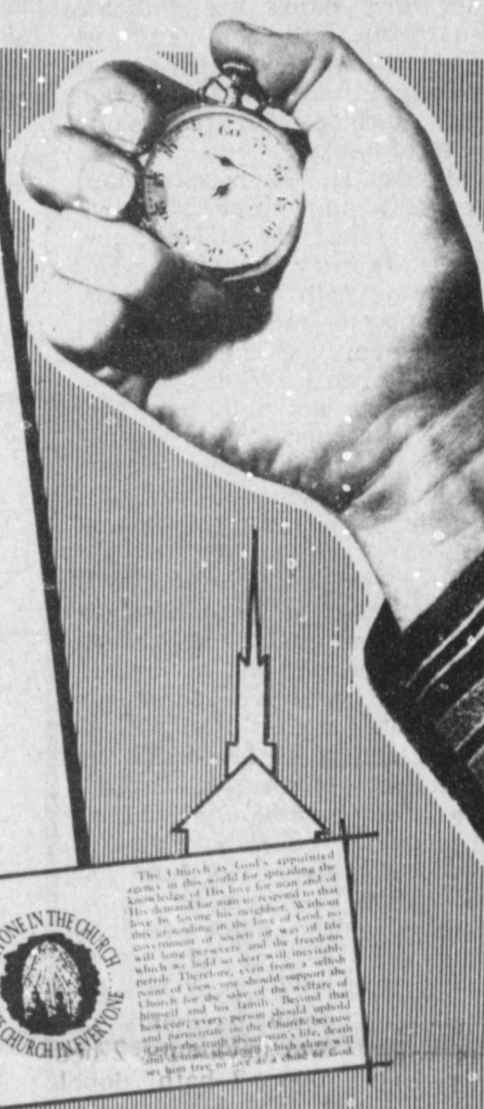
223 E. Ave. E.  
Roy Martinez, Pastor

### A VITAL PART

A stop watch is a vital part in many sports. For instance, in track man races against time. The stop watch has enabled us to compare races of one generation with that of another. In football it is a race to end up with the highest score when time runs out.

The Church is a vital part in man's life. The Church offers comfort, love, peace, and understanding. Just as we wouldn't leave the watch out of football, don't leave out the vital part in the greater things of life.

ATTEND CHURCH REGULARLY



#### Jehovah Witness

Friona Hwy  
Boyd Lowery, Pastor

#### Calvary Baptist Church

1733 W. Ave. C.  
Rev. Darrel Martin

#### Circle Back Baptist Church

Intersection FM 3397 & FM 298  
946-3676  
Ron Linberger, Pastor

#### United Pentacostal Lighthouse Church

207 East Ave. G.  
Rev. J.A. Torres

#### The Community Church

Morton Hwy  
H.D. Hunter, Pastor

#### Church Of The Nazarene

9th and Ave. C.  
Glen Michael, Pastor

#### New Covenant Church

Plainview Hwy  
Sunday 10:00 a.m.  
Wednesday 7:00 p.m.  
Jimmy Lowe, Pastor

#### Longview Baptist Church

965-3413  
B.C. Stonecipher, Pastor

#### Progress Baptist Church

Paul Brigham, Pastor  
Progress, Texas

#### Progress Second Baptist Church

1st and 3rd Sunday  
Clifford Slay, Pastor

#### St. Matthew Baptist Church

Corner of West Boston & West Birch  
M.S. Brown, Pastor

#### Richland Hills Baptist Church

17th and West Ave. D.  
Brock Sanders, Pastor

#### Lariat Church Of Christ

Sunday School 10:00 a.m.  
Worship 11:00 a.m. & 6:00 p.m.  
Wednesday Services 7:00 p.m.  
Sam Billingsley, Minister

#### Primitive Baptist Church

Corner of Ithaca St. and Fir Ave  
Elder Glen Williams, Pastor

#### Templo Calvario

507 South Main  
Sunday 10:00 a.m.  
Sunday Evening 7:00 p.m.  
Evangelistic Services  
J.L. Soto, Pastor

#### First Assembly Of God

Ron Dysart  
9:45 Sunday School  
11:00 Morning Worship  
6:30 Evening Services  
7:30 Mid Week Services  
272-3984

#### Primitive Baptist Church

621 South First  
Elder George Johnson, Pastor

**Western Drug**  
114 Main 272-3106

**Baker Farm Supply**  
1532 W. Amer. Blvd. 272-4613

**Farmers Spraying Service**  
Lazbuddie 965-2624

**Main Street Beauty Salon**  
272-3448 115 Main

**Muleshoe IGA Supermarket**  
272-4244 402 Main

**Robert D. Green, Inc.**  
272-4588 2400 W. Amer. Blvd.

**Muleshoe Fertilizer**  
Office 272-3443 Home 272-4081 Mobile 965-2256

**1st Bank**  
202 South First 272-4515

**John's Custom Mill**  
272-4373 523 E. Amer. Blvd.

**Irrigation Pumps & Power**  
272-4483 West Hwy. 84

**Farmers Co-Op Elevators**  
272-4490

**American Valley Inc.**  
Hwy. 84 W. 272-4266

**Dairy Queen**  
1204 W. Amer. Blvd. 272-3412

**James Roy Meat Market**  
506 W. Amer. Blvd. 272-4361

**Lookin' Good**  
206 Main 272-5052

**Five Area Telephone Co-Op Inc.**  
302 Uvalde 272-5533

**Bratcher Motor Supply**  
107 E. Ave. D. 272-4288

**Attend The Church Of Your Choice**



Knowing where to look is half the battle!

Every time, the Classifieds give you columns of employment opportunities, real estate buys, cars, rentals, merchandise to purchase, services for hire. Look into the world of Classifieds. You could discover something special!

Muleshoe Journal



# Muleshoe Journal

# Classified

Call 272-4536

**CLASSIFIED RATES**  
 First Insertion Per Word.....\$.15  
 Minimum Charge \$2.30

Consecutive Insertions Per Word.....\$.13  
 Minimum Charge \$2.00

**CLASSIFIED DISPLAY RATES**  
 Per Column Inch

Blind Ad Rates 50% More

**DEADLINES**  
 12 Noon Tues. For Thursday Paper  
 12 Noon Fri. For Sunday Paper  
*We reserve the right to classify, revise, or reject any ad. No responsible for any error after ad has run once.*

**1. Personals**

**LONG DISTANCE PHONE BILL TOO HIGH! UNLIMITED long distant service \$100 per month.** For more information send stamped self-addressed envelope to JVI ENTERPRISES, Box 306-C Sudan, Tx 79371. 1-37s-4tp

**SALE! 50% OFF!** Flashing arrow sign \$269! Lighted, non-arrow \$259! Nonlighted \$229! Free letters! Few left. See locally. 1 (800) 423-0163, anytime. 1-39t-1tpts

**Kenneth Evins' Handyman Service**  
 Painting Remodeling Repairing And More  
 Call: 965-2759  
 Muleshoe, Tx 79347

Do you need someone dependable and experienced to doctor and tend your pasture cattle? Will also do fencing. Call Dennis 965-2871. s1-38t-tfc

**3. Help Wanted**

**MAKE \$700 to \$1200** monthly processing mail from your home. No experience necessary. As long as you know how to read and write English you can do it. Work part time or full time!!! For free details enclose a self-addressed envelope. World Worker, Tx. 47534 Athens 13310, Greece. 3-39t-4tpts

**EASY ASSEMBLY WORK!** \$714.00 per 100. Guaranteed payment. No Sales. Details--Send Stamped Envelope: ELAN-6469 3418 Enterprise, Ft. Pierce, FL 33482. 3-36t-8tpts

**AIRLINE JOBS** \$17,800 to \$68,500 /Year, Now Hiring. CALL JOB LINE 1-518-459-3535 Ext. A-6696. For info. 24HRS. 3-39t-3tpts

**HELP WANTED** cook, experience preferred Muleshoe Country Club 272-4250. m3-38s-4tc

**4. Houses For Rent**

**RUIDOSO CHALET:** 4 bedroom for rent by day, weekend, or weekly. Call 505-257-2622. Owner Dr. Albertson. a4-49t-tfc

**5. Apts. For Rent**

**FOR RENT** unfurnished 2 bedroom apartment call 965-2188 or 272-4754. s5-37t-tfc

**8. Real Estate**

14'x60' 2-1/2 \$500.00 down, \$153.00 per month, 12 years at 14.875% apr. Super nice. Call DON 1-806-763-5319, Collect. a8-30s-tfc

**FOR SALE** 3 bedroom house, 2 bedroom house at reduced price will carry the papers after small down payment. 272-4005. p8-38t-tfc

**8. Real Estate**

**FOR SALE:** Nice 3 bdrm, 1 1/2 baths, carport, shadow box patio cover, central heat, evap. air. Located near schools, call 272-5038. w8-32t-tfc

14'x76' Fleetwood, 3-2 \$99.00 down, \$189.00 per month, 10 years at 13.5% apr. Call DON 1-806-763-5319 Collect. a8-30s-tfc

**WEST TEXAS** largest selections of repossessed mobile homes 2 & 3 bedrooms available, low low down payments. Call 1-800-792-0032. Mustang Mobile Homes. m8-16t-tfc

882 Shult nice house. \$99.00 down, \$225.00 per month, 180 months at 13.5% apr. Call DON 1-806-763-5319 Collect. a8-30s-tfc

**HOUSE FOR SALE** 3 bedrooms, 2 bath, double garage, new central heating, air conditioning, plumbing, fixtures, roof drive way, carpet. In the high school area reasonable price 272-4446. d8-37t-tfc

**WANT a Solitaire Home?** Save 3 1/2 yrs interest? 1983 14x84 3 bdrm, 2 bath. Like new. Financing available. No equity required. s3-38t-3tc

**FOR SALE:** Small down payment. Take over payments, 2 bedroom, 2 bath, double wide mobile home. Super nice. 272 5010. b8-29t-tfc

**\$99 DOWN**

On a 1983 **DOUBLEWIDE** with fireplace. Hard board siding 1680 Sq. ft. of living space for only \$457 per month, this super nice home will not last long or come by A-A Mobile Homes in Lubbock or ASK FOR DON or call collect. 763-5319 today, 180 months at 14.75% A.P.R. a8-31s-tfc

**Bingham & Nieman Realty**  
 116 E. Ave. C  
 272-5285  
 272-5286  
 "We Appreciate Your Business!"  
 George & Dianne Nieman

14'x80' BENDIX 3-2 with ac. completely refurbished. New Carpet. For only \$258.00 per month, Call Don 1-806-763-5319 Collect or Come by A-1 Mobile Homes in Lubbock. \$875.00 DOWN 14.875% APR 144 months. a8-30s-tfc

**HOUSE FOR SALE** located in Lazbuddie 3 bdrm, 2 baths, utility, garage, brick, big lot, private well. If interested call 965-2126 or 965-2191. f8-32s-tfc

**James F. Hayes & Co.**  
 Agricultural Real Estate  
 Vic Coker - Agent  
 (806) 965-2468

**8. Real Estate**

**PIERCE REAL ESTATE**  
 482-9188  
 TEXICO, N.M.

**CHARLOTTE PIERCE BROKER**  
 400 Craig Street  
 Texico, N.M.  
 (505) 482-9188  
 Fully Licensed  
 In New Mexico & Texas

**RAISE YOUR KIDS IN THE COUNTRY! CONSIDER THESE:**

Very nice 3-bedroom brick home located at 914 Hickory.

3-bedroom house approx. 8 miles Northwest of Muleshoe, on paved West Camp Road, with 40 acres of land presently used as horse farm, with 6" irrigation well, motor and roll-type sprinkler. Also has barns, shop building, and lots of extras. Owner would sale house and 2 acres.

3-bedroom home approx. 3 1/2 miles West of Muleshoe, on Clovis highway, on small tract with room for horses.

**J. B. Sudderth, Broker**  
**Daren Sudderth, Broker**  
**Jimmie Mace, Sales Associate**

**SMALLWOOD REAL ESTATE BROKER**  
 232 Main 272-4838

**9. Automobiles For Sale**

Save \$\$\$ By Calling  
  
 Al Nuttall  
 At 272-4588  
 Robert D. Green

1983 GMC Suburban, Sierra Classic, 6.2 L Diesel, dual air and all other extras. Excellent condition, priced to sell. Call 272-4001 after 8 p.m. e9-39t-4tc

**10. Farm Equip. For Sale**

2 MODEL 1260 valley center pivot with pumps, located near Friona, if interested call First National Leasing Inc. Omaha, Neb. 1-800-228-4411. 10-39t-7tp

**11. For Sale Or Trade**

1973 Dodge Mini Motor Home. Loaded, Power Plant, dual refrigerator air, air ride, power steering and brakes. 21 ft. long. 360 engine, \$7000. Call 272-3510 day, 272-3469 night and weekends. L11-39t-6tc

**THE CAMPING SEASON** is over. One 16 ft. camper **FOR SALE**, with all conveniences. Call 272-4994, or see at 1515 W. Ave. B., C.H. Millap. Worth The Money. m11-39t-2tc

**11. For Sale Or Trade**

**FOR SALE:** New posts and rails for wood yard fence. Call after 6 p.m. 965-2732. p11-31t-tfc

**FOR SALE:** 120 Acres of irrigated farmland. Owner finance. Call 214-492-5769 after 9 p.m. m11-31s-8tpts

**13. Property For Lease**

**FARM STORAGE** for lease 60'x100' barn, flat storage. Government approved, write to Box 449, Muleshoe, Texas 79347. 113-36s-8tp

**15. Misc.**

**LARGE Mobile Home** space for rent. Just out of city limits call 272-3767. 15-37s-4tp

**17. Seed & Feed**

**ATTENTION FARMERS** We are buying corn. Birdwell Cattle Feeders. Phone 946-3321. b17-36s-tfc

**Too Late To Classify**

**REGISTERED CHILD** care in my home call 965-2380. k1-39t-1tc

**RECEPTIONIST FOR** Bailey County Electric Coop. Muleshoe office must be proficient in use of typewriter also PC experience helpful. Qualifications requirements and job application forms available at 305 E. Ave. B. Also 2 general office clerks parttime. Applications taken thru Oct. 2, 1986. EOE 3-39t-2tc

**70 GMC PU - V8** Automatic cosmetically marginal but runs great. Engine OH in May 86-Transmission rebuilt just before that. Good rubber. \$1100 272-4737 w11-39t-2tc

**STATE CAPITAL HIGHLIGHTS**  
 By Lyndell Williams  
 TEXAS PRESS ASSOCIATION

**RAISE CASH THROUGH THE CLASSIFIEDS**

**IF YOU LIKE BARGAINS... You'll Like Classified!**

**CLASSIFIED ADS... GET RESULTS!**

**CLASSIFIED ADS... GET RESULTS!**

**CLASSIFIED ADS... GET RESULTS!**

**CLASSIFIED ADS... GET RESULTS!**

**CLASSIFIED ADS... GET RESULTS!**

**CLASSIFIED ADS... GET RESULTS!**

**CLASSIFIED ADS... GET RESULTS!**

**CLASSIFIED ADS... GET RESULTS!**

**CLASSIFIED ADS... GET RESULTS!**

**CLASSIFIED ADS... GET RESULTS!**

**CLASSIFIED ADS... GET RESULTS!**

**CLASSIFIED ADS... GET RESULTS!**

**CLASSIFIED ADS... GET RESULTS!**

**CLASSIFIED ADS... GET RESULTS!**

**CLASSIFIED ADS... GET RESULTS!**

re-election campaign as the pro-tax movement grows in the House.

He has actively entered the House Chamber to marshal the pro-tax forces there and dispel criticism of his leadership.

**Carrot and Stick**

Pressure on Lewis and his allies comes varying in the form of the carrot and the stick.

A carrot, or a conciliatory overture, was offered by the Senate, which suggested \$160 million more in budget cuts, half of it to higher education.

**Southern Primary Passed**

Meanwhile, the Senate passed a bill to have Texas join 13 other Southern states in a regional presidential primary, and increase the state's clout in presidential politics.

Sponsors said Texas was "tired of being pushed around by a coalition of Northeast states."

The bill, which moves the primary date from early May to early March, also cleared a House panel last week.

Some Texas Republicans now favor the bill, seen as helping Vice President George Bush win the 1988 nomination. But Texas GOP chairman George Strake still opposes it and predicts it will fail in the House.

**Clements Jabs White**

On the campaign trail, Clements said White should not veto the pari-mutuel wagering bill, and he said White's poor relations with Ronald Reagan and the White House results in loss of federal aid to Texas energy, agriculture and defense sectors.

Clements suggested his own administration's relations with then-President Jimmy Carter were "constant" and "in touch," which some pointed out may be stretching it a bit.

Clements took an active part in defeating Carter in Texas in '80, just as White tried hard to defeat Reagan in '81.

The maneuver was aimed to soothe the heart of the Senate-House clash on budget cuts.

But another stick came in the form of a threat by pro-tax House members, again led by Luna, to block the postponement of state pension payments.

Lewis and his conservatives seek to delay the pension payments for 12 months to lower the state's deficit. Luna's move would maintain the state's indebtedness, keep the need for new revenues, and force the tax hike.

**Cocaine use depletes key cardiac enzymes, increases heart attack risk**

**COLLEGE STATION** - Routine abuse of cocaine may increase the risk of sudden and unexpected heart attack by depleting key enzymes in the body, concludes a medical study by Texas A&M University researchers.

Although public attention has focused on single overdoses of cocaine in the deaths of figures like basketball star Len Bias and comedian John Belushi, routine use of smaller doses reduces levels of at least four enzymes linked to heart activity, says the study.

Depletion of the enzymes, which function as catalysts to create chemical reactions needed to sustain life, was still evident in rats two months after cocaine use had stopped, said Dr. Michael Trulsson, an associate professor of anatomy with Texas A&M College of Medicine.

**Did Your Copy Of The Paper Disappear?**



**Call Your Carrier!**

**MURRAY LEMONS**  
 East of Main  
 West of Main to 17 Street  
 272-4608

**KENNETH MAXWELL**  
 West of 17th Street  
 272-5498

**JOANN GUITERREZ**  
 Lenau and Country Club  
 272-5410

MULESHOE  
AREA

# Fall '86

BUSINESS  
DIRECTORY  
AND  
SHOPPING  
GUIDE

tropical sno Hawaiian Shave Ice

Come Try  
Something Yummy!!

New Hours  
2 p.m. - 9 p.m.

**Tropical Sno**

1516 W. American Blvd.

Come In and Let

**Bill Kinard**

help you with your  
parts needs



21 years with Muleshoe Motor Co.

**Muleshoe Motor Company**

1225 W. American Blvd. 272-4251

True Value

2.85

Gallon  
Summer Coolant & Winter  
Antifreeze has Alugard, formu-  
lated to protect even aluminum  
systems against overheating.



**Fry & Cox, Inc.**  
401 S. 1st. 272-4511

Now Open For  
**Breakfast**

6 a.m. - 11 a.m.

Bring this ad and get Free Coffee with  
your Breakfast

w/ Salad Bar Friday-Catfish..... \$4.69  
Saturday - 6 oz. Strip..... \$5.75  
Sunday Chicken Teriyaki..... \$4.69

**The Hungry Mule  
Steakhouse**

1008 W. American Blvd. 272-7517



Main Street Beauty Salon  
Located at 115 Main and is owned  
and operated by Helen Lopez.

Other operators are, Sheri Pugh,  
Jose Gonzalez and Sherry Wisian.

Sheri Pugh and Jose Gonzalez  
attended a Beauty Seminar, at the  
Holiday Inn in Clovis. They were  
instructed in Minking and  
Highlighting Techniques along  
with being introduced to a new

perm, for highly bleached hair.  
Their Seminar was held by Matrix.

Helen and the girls at Main  
Street Beauty Salon invite you to  
come by or call 272-3448 for an  
appointment, they invite drop-ins  
too. You may also buy costume  
Jewelry, Cosmetics and all your

hair care products at  
Main Street Beauty Salon.

They have Redkin and  
Lamar products in  
stock.



**Main Street Beauty Salon**

3

Locations

To Serve You

**Farmer's Co-Op  
Elevators**

Clays Corner Enochs Muleshoe  
Phone 272-4335



**Bewitch Them!**

Turn heads with a  
smashing new look!

Come in and let Glenna  
or Pat give you a new updated  
image.

**Glenna's Beauty Retreat**

207 Ave. G. 272-3092

**Savor**

the best in Mexican  
food by eating at  
Leal's

**Leal's El Nuevo Restaurant**

1542 W. American Bl. 272-3294

**Bruce Refrigeration & Electric**

XIT Drive

Owner - Bill Bruce

Providing Complete, Professional Service &  
Maintenance on heating, air conditioning and  
commercial refrigeration

Featuring

Borg Warner - York - Luxaire



For the best Mexican  
food in town-

Come to Viola's!!

**Viola's Restaurant**

2002 W. American Blvd. 272-3838

**Fall Is In The Air!**

It is time for a new you!  
Try a new hair style or  
perm.

Call one of our operators today  
for an appointment.

**Main Street Beauty Salon**

115 Main 272-3448

**The Energy Sol-A-Terra  
Saver**



You can stay comfortable 12 months out of  
the year, and save money on your utility  
bills. With water and a little electricity you  
can use Sol\*A\*Terra heat pump efficiency  
to heat and cool your home. Sol\*A\*Terra  
is quiet, safe, economical, and reliable,  
and no chimney is required. You can own  
a Sol\*A\*Terra heat pump today!

**Southwestern Geothermal**