



WEATHER

June 8	92	59	.38
June 9	87	59	.80
June 10	84	51	.00
June 11	83	55	.00

Total for year to date: 9.78

Muleshoe Journal

'The Community Of Opportunity - Where Water Makes the Difference'

Vol. 63 No. 23

8 Pages Today

Published Every Thursday at Muleshoe, Bailey County, Texas 79347

Thursday, June 12, 1986

Severe Weather Damages County, Area Crops



The Youth Employment Service of Muleshoe is open for business and needing jobs for the young people signed up. Several of the local youth have already filled out an application and are ready to put their skills to work for you, said Muleshoe Chamber of Commerce and Agriculture manager, Toni Eagle.

Many of the youth provide their own tools and transportation, she said. Types of jobs they can handle are mowing, typing and office help, waiting tables, cleaning both inside and outside the home, care of small children, painting and numerous other types of work.

To place a work order with Y.E.S., call the CofC office at 272-4248 and the CofC will contact the worker, send them to you, and you can discuss your needed work.

Della Snell, animal control officer for the City of Muleshoe, said the annual rabies clinic for cats and dogs is scheduled for Wednesday, June 18, 2-5 p.m. at the old fire station, across the street from the Muleshoe City Police Department in the 200 Block of East Ave. B.

The rabies vaccine will be \$6, plus \$1 for a city tag. Other vaccine available during the clinic will be DHL, \$14, Parvo, \$7.50; FVRCP, \$9.50 and D/M, \$7.50.

J.D. Adams said the Muleshoe Area Pioneer Reunion for 1986, is scheduled for Friday, July 4, at 2 p.m. in the Civic Center meeting room.

Following a program and the awarding of prizes, refreshments will be served.

Adams reminded that anyone who has resided within 100 miles of Muleshoe for at least 25 years is considered to be a pioneer.

Five students from Muleshoe are among 396 Eastern New Mexico University students named to the 1986 semester Dean's Honor Roll.

Dean's Honor Roll students from Muleshoe include, Becky Sharisse Jones, senior elementary education major, cum laude; Cindy G. Hardy, senior business administration major, summa cum laude; sophomore medical technology major Polly D. Harrison, magna cum laude; sophomore graphic design major Michael Del Toro, cum laude; and senior elementary education major Carol J. Williams, summa cum laude.

A special 'deal' for fathers is being offered for Father's Day, on Sunday, June 15.

All kids are asked to take their fathers to the Mule Putt Miniature Golf Course that afternoon, after 2 p.m., and they can play free golf.

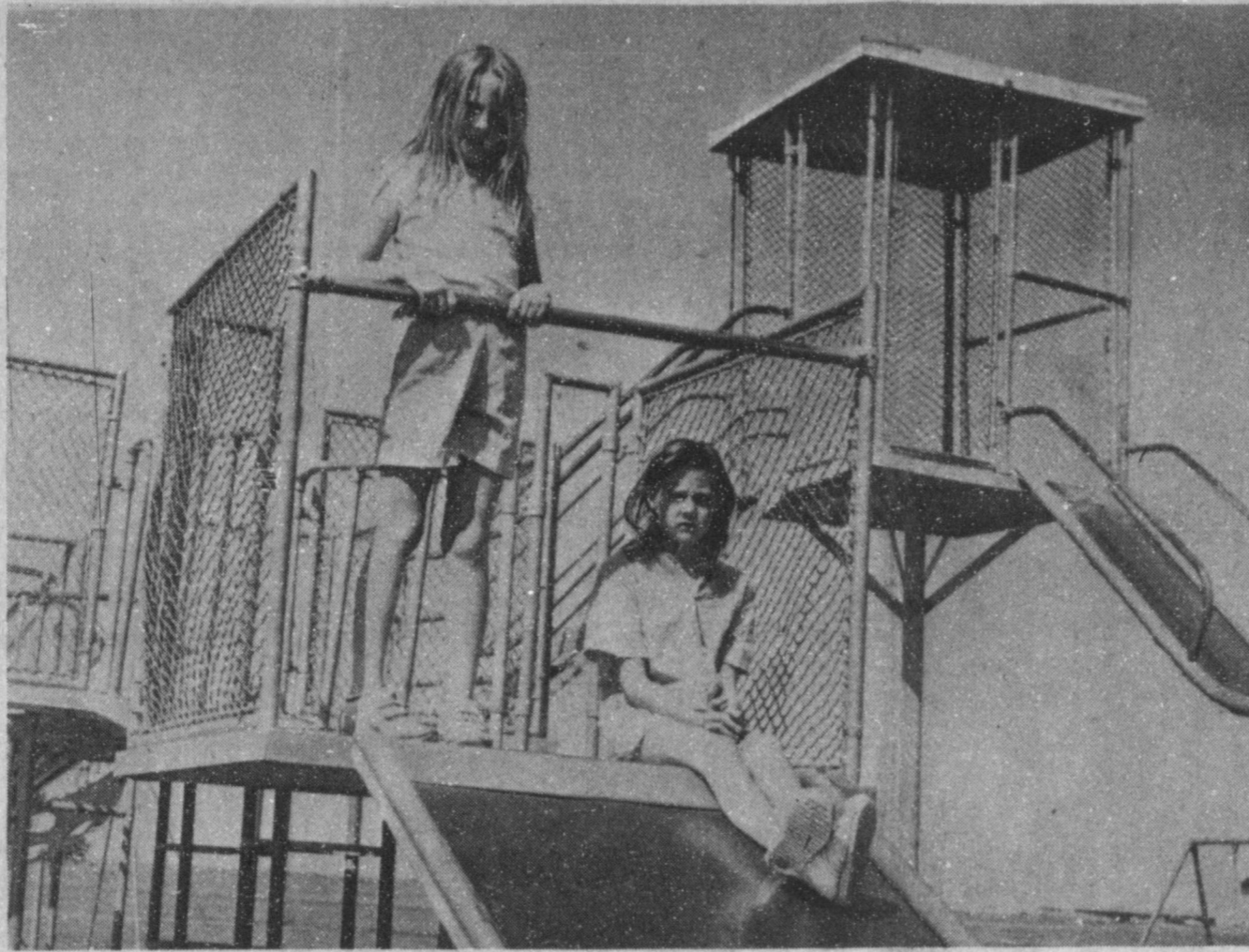
A 'Partner' Tournament is scheduled at the Mule Putt Miniature Golf Course beginning this week. Entry fee is \$5 per player for the tournament, and three games will be played prior to the fourth and championship game on Friday, June 27.

The games may be played anytime in June prior to the championship games. Trophies will be awarded for first through third places.

Calvary Baptist Church youth are still attempting to raise additional funds for church camp this summer, and are offering their services in many ways to residents who can use them for yard work, odd jobs, cleaning vehicles, and collecting aluminum cans.

To obtain the services of any of these hard-working church youth, call 272-3738; 272-4012 or 272-3273.

It will be 'ladies' night' for the Muleshoe Lions Club when they host the annual officer installation banquet at the Bailey County Civic Center at 7 p.m. on Thursday, June 12.



TAKING ADVANTAGE OF WARM, SUNNY DAYS--Monday morning, these sisters were captured on film as they took advantage of bright, sunny skies, and no school for the summer. On the playground equipment in the city park were Kristi Chapman, 10 and Jackie Chapman, eight, daughters of Mr. and Mrs. Larry Chapman. Sunshine returned fully to the area Monday and Tuesday, following several days of rain and threatening weather conditions. Although water was standing around much of the playground equipment, it failed to dampen the enthusiasm of the youngsters.

SCAC Students Are Proud Of Their Many Achievements

By: Jean Allison
The Student-Community Action Club of Muleshoe High School has had a very productive and rewarding year. One of the highlights of the year was on Awards Day at MHS when Mrs. Ruth Hall, president of the Muleshoe Heritage Foundation, presented

the club with a certificate of recognition. This honor was presented to the club for outstanding service to the Muleshoe Heritage Foundation over the past three years. Accepting the award were the past year's officers and sponsors: Loy Triana, President; Mike Holt, vice president; Sherri Stovall, secretary; Stacy

Smith, treasurer; Susan Lunsford, reporter; Debbie Isaac, historian; and sponsors Jean Allison and John Gully.

The Student-Community Action Club met for its last meeting of the year in the home of Kristy Landers on Tuesday, May 13, to meet prospective members. The meeting was called to order by the president, Loy Triana, and he asked Mike Harris, a visitor, to bring the prayer. Minutes were read by the secretary, Sherri Stovall, and she also read the club's by-laws for the new member prospects. The treasurer, Stacy Smith, gave the treasurer's report and made a motion that the club use \$300 to bid on items at the 'Celebrity Auction' to be held on Saturday, May 24.

New officers for the coming year were elected, and include, Debbie Isaac, president, Leah Bell, vice president; Casey King, secretary; Darren Albertson, treasurer; Jennifer Green, reporter and Elizabeth Posadas, historian.

Following plans for helping with the Celebrity Auction, the group adjourned to the city park for volleyball after refreshments.

Prospective new members who joined the club included, Elizabeth Posadas, Richard Muyschondt, Jennifer Green, Sue Haire, Lindal Bethel, Beth Sanders, Debra Lackey, Sergio Gonzalez, Johnny Garcia, Chris Palos, Greg Young, Tisha Cox, Shawn Bussey, Susan Mendoza, Brandon Carpenter, Abby Martinez, Susie Leal, Michael Angeley, Amy Bean, Shannon Berry, Rudy Gonzalez and Armando Del Toro.

On Saturday, May 24, a large number of SCAC members worked at the 'Celebrity Auction' which was held at Channel 6, Muleshoe, sponsored by the Muleshoe Heritage Foundation.

This auction was held to do restoration work on the Muleshoe Depot and the Janes Ranch House, both now located at the Muleshoe Heritage Center. SCAC members worked as announcers, runners and generally did any job which was needed done on this day.

SCAC was responsible for getting live entertainment which was heard periodically throughout the day over Channel 6. The Student-Community Action Club would like to take this opportunity to say a hearty 'thank you' to the following performers who helped make the 'Celebrity Auction' such a resounding success:

Kenneth Precure, vocal; Roy Whitt and his organ; Laura Leal

local taxing jurisdictions.

"We've had several large banks in Houston and Dallas file for extensions -- leaving another \$9.6 million on hold until these banks file their returns with the allocation reports in mid-June," Bullock said.

Banks are granted extensions if they pay 90 percent of the tax due.

Bailey County received a check in the amount of \$7,813.23 as their share, while the City of Muleshoe got a check for \$10,968.65 and the Muleshoe ISD received \$16,014.80.

For Cochran County, the check was \$2,049.60; and the City of Morton received a check in the amount of \$2,408.30; and the Morton ISD got a check for \$7,691.46.

The City of Littlefield received a check in the amount of \$7,612.15; and the Littlefield ISD's check was for \$16,207.88.

Also in Lamb County, the City of Earth received a check in the amount of \$1,335.40 and the Springlake-Earth ISD got \$2,594.05.

The City of Sudan received \$1,911.62 and Sudan ISD got \$1,660.94.

Parmer County got a check for \$5,411.73; The City of Farwell received \$997.49; the City of Bovina, \$2,026.67 and the City of Friona, \$10,160.87. Farwell ISD got \$3,517.26; the Farwell Hospital District, \$114.02 and Friona ISD received \$10,182.35.

Taxing jurisdictions in Harris County received \$11.6 million. The Houston Independent School District received \$3.7 million and the city of Houston got \$2.8 million. Payments to taxing units in Dallas County totaled \$11.7 million. Dallas ISD's payment was \$4.3 million and the city of Dallas received \$3.3 million.

Tarrant County check totaled \$3.4 million and total collections in Bexar County were \$2.4 million. Travis County taxing

Wild Weekend Produces Hail, Heavy Rain, Funnels

There is one 'old saying' that area residents are really paying attention to these days, and it is "You CAN get too much of a good thing!" And, in this county, as well as surrounding counties, residents have gotten somewhat of too much of a good thing--rain, accompanied by damaging hail and winds.

"We're looking at a pretty big mess right now," says Bailey County Extension Agent Spencer Tanksley early on Tuesday afternoon. Tanksley spent Monday and Tuesday morning touring county farms and assessing problems left behind driving rainfall and hailstorms.

"The very heavy rains this past weekend really put us behind," he said. "From the two days of the weekend, we had more total damage than the previous 10 days of cool, wet weather that preceded this weekend."

There are some pluses, he reminded. Basically, the corn crops benefitted as corn thrives in wet, cool weather.

Another plus is that the soil profile is totally wet again, after being completely dry some three weeks ago.

And, range pastures are in their prime right now and within two weeks will be greening up. Improvement is already being noted and the pastures will be carrying livestock a long way with the pasture in such good conditions.

There are some major problem areas, however, according to the county agent.

A number one problem is that the wheat crop is ready to harvest, and although a very small percentage has been cut already, farmers are waiting for the fields to dry enough and will be cutting each and everyday that they can get into their fields.

A lot of crops are standing with surplus water; black stem rot is showing up in some crops; and small grains have really been hurt by hail in some areas. Weeds are starting to grow, and

will be giving major problems as producers cannot get into the fields to control them.

Tanksley said the cotton crop has taken the brunt of the last three weeks of rain and hail. "Cotton cannot tolerate the type of weather we have had the last three weeks," he commented. "We have had a lot of washed out cotton, rows have filled with silt and sand; rows are filled with surplus water, and seedling disease, including Estacado blight, has hit the young cotton. A lot of cotton is now to matchstems, where it was hit by hail, that cotton is gone--lost."

He said the northern part of the county has been the hardest hit by hail, especially in the West Camp, Progress and Y-L areas.

Small hail slammed West Camp and Progress, and damaged other crops such as corn, potatoes, soybeans, wheat and destroyed the cotton.

Cont. Page 6, Col. 3

Muleshoe City

Council Okays

Two Resolutions

Members of the Muleshoe City Council made quick work of a light agenda Tuesday morning, and their first meeting for the month of June was over almost before it got started.

After approval of the minutes of the last meeting, the council considered changes in a resolution passed during the meeting of May 20, and authorized participation in the 1986 Texas Community Development Program.

According to figures approved, the city's cost to participate in the program in the event it is funded for the City of Muleshoe, will be some \$27,000. The program would allow for paving of a large number of streets in Muleshoe that have never been paved.

Total for the project, if funded, will be \$402,458.

New Covenant Church School Has Graduation

The fifth annual awards banquet and graduation exercise for the New Covenant Christian Academy was held at the Civic Center on Thursday, May 29th.

Guest speaker for the evening was Pastor Dorman Duggan from the Community Church of Hereford, Texas. Joyce Wilbanks presented special music. The theme of the banquet was patriotic and a banner entitled "United We Stand Divided We Fall" was placed over the speaker's table. A Revolutionary War flag was below the banner and flags flanked the sides of a Revolutionary War scene on the other side of the room. Tables were decorated with red, white, and blue streamers and bouquets. A buffet style candle-lit meal was served to some eighty guests.

After the meal students from NCCA sang a medley of patriotic songs. Pastor Duggan then spoke about the liberty we have as Americans and how each of us should set goals and aim to achieve those goals.

Sports awards were presented to the students by Jimmy Low. NCCA is a member of the High Plains Christian Athletic Association. The boys won third place in football. Both boys and girls placed third in basketball while the girls placed second in volleyball for the season.

Louise Bradley presented "B" Honor Roll certificates to Justin Bradley, Sharon Bradley, James Campbell, Brad Helton, Carolyn Hurtado, Jerry Jaquess, and JoAnna Jaquess. "B" Honor Roll is 90-94 while "A" Honor Roll is 95-100 and Johnny Jaquess was the only student to receive an "A" Honor Roll certificate. A perfect attendance certificate was presented to John Hurtado.

Students who attended the

West Texas Student Convention of ACE this year at the Big Country Baptist Encampment were Berna Hurtado, Carolyn Hurtado, John Hurtado, Brad

Cont. Page 6, Col. 2



BERNA HURTADO



SHARON BRADLEY

Cont. Page 6, Col. 1

Cont. Page 6, Col. 1

Three-Way News by Mrs. H.W. Garvin

Mrs. Beulah Toombs from Maple and her daughter, Mrs. Merlin Roberts, of Morton were in Lubbock Monday on business.

Mr. and Mrs. Rodger Hatcher and baby from Clovis were supper guests in the home of her parents, the Jack Lanes, Monday evening.

Mrs. W.E. Latimer was in Lubbock Tuesday and Wednesday on business and visiting her daughter, the Paul Wylies.

The community received a big rain and hail Wednesday evening destroying some cotton.

Mrs. Billy Knox from Lubbock spent the week end with her parents, the Andrew Witters.

Robin Kindie, a college student at Roswell, N.M. spent the week end visiting her parents, the Bobby Kindies.

W.T. Landers Local Man's Brother Dies

Funeral services for W.T. Landers, 94, of Lubbock were held at 4:30 p.m. Saturday in Resthaven Chapel with Bruce Logue, minister of Green Lawn Church of Christ, officiating.

Interment was in Resthaven Memorial Park under the direction of Resthaven Funeral Home. Landers died at 6:35 p.m. Thursday in John Knox Village Medical Center following a lengthy illness.

Born in Johnson County, he married Callie Belcher in 1917, in Abernathy. She died in January of 1975. Landers then married Josephine Thomas on Jan. 29, 1976, in Portales, N.M. He moved from Eastland to Hale County in 1901, where he farmed for many years. In 1966, he moved to Lubbock from Abernathy. He was a member of Green Lawn Church of Christ.

Survivors include his wife, Josephine; a daughter Edna Dykes of Lubbock; a brother, Arthur Landers of Muleshoe; and two grandchildren.

Angels Of Mercy of West Plains Medical Center

Summertime, Children, and Accidents:

Almost 10,000 American children were killed in accidents in 1978, more than four times as many as died from cancer, the next leading cause of death. While "accident" is used to describe unintentional injuries to the human body, it is an unfortunate term because it connotes acts of fate beyond human power to control. In fact, the majority of such events can be prevented through changes in life style or in the environment, or both.

The opportunities for prevention become self-evident when childhood deaths resulting from accidents are analyzed by type. Almost half of such deaths are associated with motor vehicles. Failure to place small children in car safety restraints and to enforce wearing seat belts among older children as well as dangerous driving constitute major risk factors.

Accidents other than motor vehicle constitute the leading cause of children's deaths. Risk factors include both lack of appropriate supervision and exposure to environmental hazards. Drownings account for 8% and residential fires for 6% of deaths. Access to toxic substances in the home such as drugs, cleaning agents, and plant sprays presents another class of risks. Poisoning deaths have declined sharply with the advent of child proof packaging but they still account for 4% of the deaths resulting from other than motor vehicle accidents among children under 5 years of age. Each year ingestion or inhalation of lead causes central nervous system damage or mental retardation in 6,000 children and death for another 300 or 400.

Summertime is a time for fun and vacation; a time when families have more time to spend together. Let us all be watchful and strive to keep ALL of our children safe from any harm.

T. Wilson RN DON WPMC

The Three Way ladies study club met Tuesday at the church for Bible study and a luncheon.

Carey Kindie, daughter of Mr. and Mrs. James Kindie, of Maple plays with the South Plains Duster basketball team. The team played in Clovis, N.M. the past week with Carey's team winning the AAU state championship Saturday at Clovis. Miss Kindie won All Star player. The team will play

in national competition in West Virginia July 27th.

Mr. and Mrs. Jack Lane were supper guests in the home of his parents in Littlefield Thursday evening and visited his sister, Mrs. Bert Pierce.

Funeral services for Mrs. Ethel Robinson of Maple were held Friday at the Three Way Baptist Church with Rev. John Cockrell holding the services.

Mrs. Robinson died Wednesday in her home north east of Maple. Burial was in Cochran Memorial Cemetery.

Mrs. H.W. Garvin and Mrs. S.G. Long visited Mrs. George Tyson Saturday afternoon.

The Three Way seniors returned home Friday evening from their senior trip to Dallas and the Padre Island. Sponsors are Mr. and Mrs. Williams.

The community received more rain Saturday night and Sunday evening. Farmers are very busy trying to cut wheat and get the cotton and feed planted.

Mr. and Mrs. Bill Dolle and Darla spent Sunday in Lubbock visiting.

The Joe Wheeler family attended a family reunion at Sundown Sunday and also

visited her mother, Mrs. Fred Carter, in Levelland.

The community received more rain Sunday night, amounts from 2 inches to almost 3 inches.

It's not very difficult, in spring weather, to feel too tired to work.

McDaniel's Presents

GREATEST BUYS ON EARTH AT OUR...



SELL-A-BRATION SALE

SALE ENDS JUNE 29th

TOP 21 SALE SPECIALS

- A beautiful 3 piece contemporary sectional covered in a solid beige herculon velvet. Attached back cushions on this sectional which includes a built-in ottoman, corner section, & queen size sleeper. Reg. Price 2299.95 Super Close out special at 999.95
- A great close out bargain if you happen to want a solid velvet dove grey sofa. All loose reversible cushions, with wood trim on the arms. Super price on this one. Reg. 669.95 As Is Price 309.95
- You get a choice of colors on this special deal. A queen size sleeper with innerspring mattress. All loose cushions. Your choice of beige stripe or rose stripe in a herculon print. Reg. 829.95 Close Out Deal 479.95
- A bold brown/rust plaid Colonial sleeper at a bold close out price. A real bargain. Reg. 649.95 Close Out Price 329.95
- Close out on single seat cushion traditional sofa. It's covered in a multi-colored floral with loose back & seat cushions & has extra accent pillows to boot. Super deal! Reg. 1089.95 As Is 509.95
- One of this sale's best deals. A matching sofa & love seat in your choice of dark rust, blue stripe, or pale grey-blue. All reversible cushions for long wear. Super traditional-modern look. Reg. 1504.95 As Is Price 799.95 both pcs!
- Only one bentwood rocker in natural wicker finish. A super buy if you need a bentwood rocker. Reg. 159.95 As Is 99.95
- We want to say goodbye to this contemporary sofa covered in off white herculon with touches of several pastel colors. Low profile look will go in lots of decors. Reg. 699.95 As Is Price 339.95
- Swivel rocker in green, brown, blue satin Reg. 299.95 As Is 129.95
Swivel rocker in rose or blue-highback Reg. 289.95 As Is 129.95
Accent chair with wooden legs in blue or rust Reg. 225.00 As Is 109.95
Overstuffed chair in solid baby blue or brown Reg. 349.95 As Is 179.95
- Check out our "Bargain Room" for odd tables which have discounts from 40-75% off!
- Close-out on this three piece wicker wrapped floor sample group by Comfort Designs. Modern look. Old fashion price! Reg. 740.00 Close out bargain 319.95 all 3 pieces!
- Group by Lane of brass & glass tables in a contemporary design. Features both square & rectangular coffee tables, end tables, sofa tables, burching tables, & lamp tables. Each is 30% off regular price.
- 2 piece table group by Hyundai. All oak construction with parquet-look tops. Features one end table & coffee table. Reg. 264.95 Sale 199.95
- Contemporary bedroom group by Universal featuring a large triple dresser, double landscape mirror, large chest of drawers, headboard & 2 night stands. All at a great low price. Reg. 1899.95 Floor sample price 1149.95
- The solid oak "Windjammer" group has long been a favorite of boys & girls for their very own room. All pieces are 30% off each this sale month.
- Super close-out bargain-Modern Thomasville oak solids & veneer triple dresser, 2 twin mirrors, headboard, & 2 night stands (no chest) make up this beautiful group. Reg. 2024.95 As Is Price 999.95
- Close out on twin china/curio cabinets. Design with a contemporary touch in oak veneers with mirror backs & adjustable shelves & glass doors. Reg. 1159.95 As Is Each 499.95
- One of the best deals in our sale. From Link-Taylor is a round pedestal solid oak table with built-in walnut lazy susan & 4 side chairs. Traditional design. Reg. Price 3049.95 A Floor Sample Price 849.95
- Universal's most popular dining suite, "Winston II" in oak solids & veneers. Medium finish helps this group go with almost any decor. Large double pedestal table, & six cane backed chairs. Reg. 1639.95 For only 1049.95
Matching china only 599.95
- We are closing out all of our wood table dinette sets by Stoneville. Your choice of 3 styles all featuring oval table tops with 4 chairs on casters & upholstered on backs & seats. Truly a comfortable set up & great bargain. Reg. 1339.95 On Sale 899.95
A super summer look. Beveled-edged glass table to perch on a wicker-wrapped 4-legged base. Six cane chairs with upholstered seat cushions. Reg. 1995.95 Sale priced at 1139.95 As Is.
- All Dinettes in stock 30-50% Off

ALL GIFT SHOP ITEMS 10-50% OFF

ALL GUN CABINETS 30-40% OFF

ALL RECLINERS 10-40% OFF

ALL WALL DECOR AND CLOCKS 25-50% OFF

ALL CEDAR CHESTS 30% OFF

ALL LAMPS AND PICTURES 30-50% OFF

1020 MAIN 1013 MITCHELL 762-4481

MAYTAG RANGES

Maytag Ranges White 30 inch Gas Range SALE \$380.00

Electric Self Clean Range - Almond Regular \$709.95 SALE \$635.00

Kitchen-Aid KECS-1340BC-33 inch Electric Cooktop Brushed Chrome-One Only SALE \$269.00
KGCS-1340-Almond Gas 33 inch Cooktop SALE \$385.00
KDC-21A-Built-in Dishwasher Regular \$569.95 SALE \$495.00

APPLIANCES

Frigidaire RE 33A-Almond Electric Self Clean Range SALE \$475.00

RG-45C-40 inch Electric Range White or Almond On SALE \$540.00

G-30PC White Gas Range SALE \$335.00

CALORIC

EXR-247-26 Electric Double Oven-Continuous Clean SALE \$635.00

JENN AIR

C301 Triple Cooktop SALE \$675.00

S125 30" Self Clean Range \$1350.00

M140 Large Capacity Microwave SAVE \$170.00

TELEVISIONS

Quasar-TT4278xW-16 inch Remote Control-Color Monitor Set. SALE \$420.00

Quasar-TU9844WS-25 inch Color Console with Remote Control SALE \$745.00

Quasar-A3232WW-12 inch Black and White-Teletable Regular \$149.95 SALE \$95.00

Zenith-19 inch Color Remote Control SALE \$415.00

Zenith-20 inch Color Cube Style Remote Control \$479.00



Creative Living

with Sheryl Borden

Information on buying a vacuum cleaner and Verosol specialty shades will be presented on "Creative Living" on June 17 and 21. Stan Jankiewicz, Vice-President of Sales and Marketing for Verosol U.S.A. will show examples of Verosol specialty shades as solutions for problem windows, such as A-frames, bay, skylights and arch windows. Stan is from Pittsburgh, PA.

Another guest, Mary Bernardon, Director of the Hoover Home Institute in North Canton, OH will go over some basic information on buying a vacuum cleaner. She will explain how all vacuum cleaners operate and then talk about different carpets that require special cleaning techniques. The category of specialty floor care products is unique and Mary will show some of these.

Information on a new product from Swift and Co., buying sergers, and kitchen appliance considerations for the 80's will be featured on the show on June 19. Mary Jo Bergland is a home economist with Swift and Co. from Glen Ellyn, IL, and she will demonstrate some of

the uses for one of their newer products--brown and serve rolled sausage. It's pre-cooked, can be prepared in the microwave oven and comes in three different flavors.

Joy Best, Extension Home Economist in Roosevelt County, Portales, NM will discuss what to look for if you're interested in buying a serger--one of the hottest new items in the home sewing field.

Finally, Ellen Cheever, a kitchen designer with the Maytag Co. from Sacramento, CA will talk about new considerations when planning kitchen appliances and their locations. "Creative Living" is produced and hosted by Sheryl Borden. The show airs on KENW-TV, Channel 3 in Portales on Tuesday and Thursday at 12 noon and on Saturday at 2:00 pm. (All times are Mountain).

SELECTING AN OVERLOCK MACHINE

Not only do overlock sewing machines sew faster--up to 1500 stitches per minute--then conventional sewing machines, they trim, stitch and overcast seams as they sew. Because of these features, the overlock sewing machine can be a special boon to the busy homemaker. Using an overlock saves time and gives a professional appearance to items constructed.

Overlock sewing machines are specialized, but they do not replace the conventional sewing machine. Overlocks form interlocking looped stitches using one or two needles and one or two loopers. The overlock stitch is more like crochet or knitting than the stitch of a conventional machine.

There are three basin types of overlock machines--two-thread, three-thread and four-thread. The three-thread is the most versatile--it seams, finishes edges, blind hems, and does a rolled edge. Some three-thread models can convert to two-thread stitching.

A two-thread overlock is least versatile because it has only one looper. It is generally used to finish fabric edges and sew flat seams. Some machines do a two-thread narrow rolled hem.

Two types of four-thread overlock machines are available. Four-thread machines use two needles and two loopers. One type trims, overlocks seams and stitches a chain stitch. The overlock stitch is formed by two threads and the chain stitch is formed by two threads. The other type stitches a four-thread overlock stitch which is similar to the three-thread overlock, but an additional line of stitching is done through the middle of the stitch.

Four-thread overlocks can

generally be converted to two-thread models by using one needle and one looper. Some models can sew with three threads--one needle and two loopers.

There are a number of features to consider carefully when selecting an overlock machine. The major concern for prospective owners is the threading process. Check to be certain the machine has a coded threading system--colors, symbols or numbers may be used.

The tension dials may be marked with numbers to indicate degree of tension, but some machines have only + or - signs. The tension system differs from machine to machine.

The presser foot of an overlock machine is much larger than that of a conventional machine. The pressure on most models can be adjusted to the weight of fabric being sewn.

The throat plate of presser foot will have a special stitch former that is not found on a conventional machine.

The stitch length adjustment procedure varies from machine to machine. Determine how easily this adjustment can be made for regular seams and/or

rolled edges. A power switch that turns the machine on and off should be present. This switch may or may not be connected to a light. A light should be included if at all possible.

Although the cutting knives are made to last for many hours of sewing, it is important to determine how easy they are to change.

Needles for overlock machines may be special or conventional in design. Determine what type is required and be certain they are readily available. Be sure to select the correct size for the fabric type being sewn whether using a special or conventional needle.

As you try out the machines--try several models and brands--thread them several times. Notice how easy the machine is to start and stop stitching. Is it easy to raise and lower the presser foot? Does the light illuminate the sewing area sufficiently? Is the instruction manual well-illustrated and easy to read?

Finally, before you purchase a machine, check the warranty and dealer services available. What does the warranty cover and for how long? Who makes

good on the warranty--the manufacturer or the dealer? Does the dealer offer new owner lessons? Will special classes be available to you after you have learned to use it? Does the dealer have a complete and consistent supply of the parts and accessories you will need? Consider the machine's price in light of all these factors. Take plenty of time to make a decision that will provide the best performance and true

Life is a wave which in no two consecutive moments of its existence is composed of the same particles.

John Tyndall.

satisfaction. Sometimes it is smarter to pay a little more--especially when good service and peace of mind are involved.

For All Your

Local News

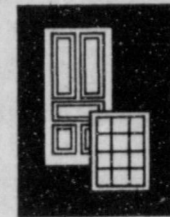
Or Club Activities

Call 272-4536

Or Come By

The Journal Office

Quality Doors & Energy-Efficient Windows Reasonably Priced!



Jenkins

Doors and Windows

820 W. 6th
Amarillo, Texas

Ph. 1-806-372-4336

TX. 1-800-692-4066

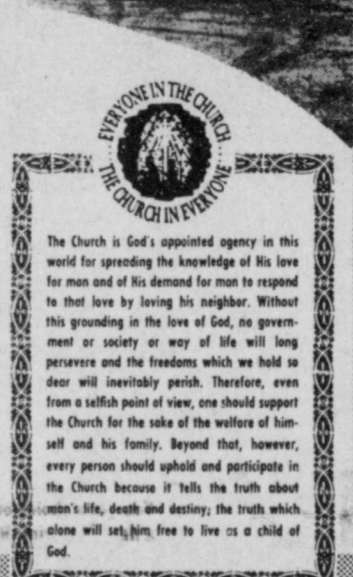


Plenty of ROOM!

Have you ever, when on a vacation, in the peak of the tourist season, looked and looked along the highway for a roadside park with an empty table so that your family could have a picnic lunch and rest? Then, of course, all might travel refreshed. How nice it is to come upon a park like this one, with the breeze blowing across the water.

Isn't it wonderful that there is always plenty of room at the House of God? There is always a church where you can receive spiritual food, and sweet rest of the soul. The church holds out its arms in welcome to all, inviting everyone to come and learn of God. Won't you attend this week?

"Come unto me, all ye that labour and are heavy laden, and I will give you rest." Matthew 11:28.



Colman A.D. Sr.

- Immaculate Conception Catholic Church**
Father Patrick Maher
Northeast of City
- First United Methodist Church**
507 W. 2nd Muleshoe
Bill Kent, Pastor
- El Divino Salvador Methodist Church**
5th and Ave. D.
Jose M. Fernandez, Pastor
- First Baptist Church**
220 West Ave. E.
Berry Bradley, Pastor
- Emmanuel Baptist Church**
Iglesia Bautista Emmanuel
107 East Third
Isaias Cardenas, Pastor
- Muleshoe Baptist Church**
8th and Ave. G.
Bob Dodd, Pastor
- Primera Iglesia Bautista**
223 E. Ave. E.
Roy Martinez, Pastor
- Longview Baptist Church**
Phone 965-3413
B.C. Stoncipher, Pastor
- Progress Baptist Church**
Progress, Texas
Paul Bringham, Pastor
- Progress Second Baptist**
1st and 3rd Sunday
Clifford Slay, Pastor
- Richland Hills Baptist Church**
17th and West Ave. D.
Brook Sanders, Pastor
- United Pentacostal Lighthouse Church**
207 East Ave. G.
Rev. J.A. Torres

Trinity Baptist Church
314 E. Ave. B.
Rev. V.L. 'Buster' Huggins

Calvary Baptist Church
1733 W. Ave. C.
Rev. Darrel Martin

Muleshoe Church Of Christ
Clovis Hwy.
David Alessandro, Pastor

Church Of Christ 16th & Ave. D
Sunday - 10:30 a.m.
Evening - 6:00 p.m.
Wednesday - 8:00 p.m.

Circle Back Baptist Church
Intersection FM 3397-FM 298
946-3676
Ron Linebarger, Pastor

Spanish Assembly Of God
East 6th and Ave. F.
Luis Campos, Pastor

St. John Lutheran
Sunday School & Bible
Classes 9:30 a.m.
Church Services 10:30 a.m.
Rev. Mac Bearss, Pastor

New Covenant Church
Plainview Hwy.
Sunday - 10:00 a.m.
Wednesday - 7:00 p.m.
Jimmy Lowe, Pastor

Church Of The Nazarene
9th and Ave. G.
Glen Michael, Pastor

Jehovah Witness
Friona Hwy. Boyd Lowery,
Pastor.

The Community Church
Morton Hwy.
H.D. Hunter, Pastor

Lariat Church Of Christ
Sunday School-10: a.m.
Worship 11:00 a.m. & 6:00 p.m.
Wednesday Services-7:00 p.m.
Sam Billingsley, Minister

First Assembly Of God
Ron Dysart
9:45 Sunday School
11:00 Morning Worship
6:30 Evening Services
7:30 Mid Week Services
272-3984

Primitive Baptist Church
621 S. First
Elder George Johnson, Pastor

Primitive Baptist Church
Corner of Ithaca St. and Fir
Ave.
Elder Glen Williams, Pastor

Templo Calvario
507 S. Main
Sunday-10:00 a.m.
Sunday Evening-7:00 p.m.
Evangelistic Services
J.L. Soto, Pastor

St. Matthew Baptist Church
Corner of West Boston & West
Brich
M.S. Brown, Pastor

Pearson Construction 272-5244	Lindsey Jewelry 202 Main 272-3355	Ana's House Of Beauty 109 Av. B. 272-4152
Bruce Inc. 272-5114	Bobo Insurance 108 E. Av. C 272-4264	Del Toro Plumbing 516 W. 9th 272-4446
Wes Tex Feed Yards 272-7555	Bratcher Motor Supply 107 E. Ave. D. 272-4288	Lee's Western Wear 1910 W. American Blvd. 272-4663
Farmer's Spraying Service Lazbuddie 965-2624	American Valley Inc. Hwy 84 W. 272-4266	Robert D. Green, Inc. 2400 W. American Blvd 272-4588
Serv-All Thriftway 501 W. American Blvd. 272-3412	Western Drug 114 Main 272-3106	Fry & Cox, Inc. 401 S. 1st 272-4511
Dairy Queen 1204 W. American Blvd. 272-3412	Kemp's Discount Furniture 414 W. American Blvd 272-4483	Irrigation Pumps & Power W. Hwy. 84 272-4483

Muleshoe Journal USPS 367-826
Established February 23, 1924. Published by Muleshoe Publishing Co., Inc. Every Thursday at 304 W. Second Box 469, Muleshoe, Texas, 79347. Second Class postage paid at Muleshoe, Texas, 79347.

MEMBER 1986
TEXAS PRESS ASSOCIATION

J.B. Hall-President & Publisher
Sammye Hall-Vice-President & Controller
Cleta Williams-News
Everette Harbo-Society
Holly Hillarp-Advertising
Lillie Nino-Bookkeeping

SUBSCRIPTIONS:
Muleshoe Journal and Bailey County Journal
Bailey and surrounding counties \$12.45
Muleshoe Journal and Bailey County Journal
Elsewhere in Texas \$13.45
Muleshoe Journal and Bailey County Journal
Outside of Texas \$14.75
Yearly by Carrier \$12.50
Advertising rate card on application.

LYCEUM THEATRE

presents

EASTER OPRY

GOSPEL ROADSHOW

Saturday
June 14th - 8 p.m.

Lyceum Theatre - 411 Main - Clovis
All Seats \$3.00

An evening of old time Gospel Music

Wedding Shower Honors Mr. And Mrs. Langfitt

Sherry and Keith Langfitt were honored with a wedding shower Thursday, May 15 from 7 to 9 p.m. in the community room of Summit Savings.

Sherry Langfitt and Pat Langfitt greeted the guests and Leslie Langfitt registered guest.

Minerva Martinez and Glenda Bush served punch and thumbprint cookies from crystal appointments.

The serving table was covered with a white lace table cloth with a blue underlay, and accented with an arrangement of spring flowers in blues and

yellow. The honoree's corsage consisted of blue silk flowers with various kitchen gadgets made into it.

Special guests included: Pat Langfitt, mother of the groom; Audrey Langfitt, grandmother of the groom; and Leslie and Stacy Langfitt, sisters of the groom, all of Muleshoe.

The hostesses gifts were a toaster oven, towel set and bathroom rug set. Hostesses for the occasion included: Glenda Bush, Carolyn Harris, Minerva Martinez, Opal Talley, Vanda Wilcox, Vanda Wilcox, Adell Tompkins, Dorothy Green, Carol Kennemer and Margrette Graves.

Rebekah Lodge

Muleshoe Rebekah Lodge No. 114 met Tuesday, June 3 and honored the applicants from the United Nations Tour with a reception at 7 p.m. Those applicants attending were Beth Sanders, her mother, Cathi Franks and Sue Hair with her mother Vera Hair.

Certificates and a pin were presented to these girls. The pin to be worn by Sue Hair as she makes the trip to the United Nations and Canada.

Following the reception Mary Franklin, Noble Grand called the lodge to order. The opening prayer was given by Teric Snell and the American Flag was presented by Lori Tosh. The roll was called and the minutes of the previous meeting were read by Patsy Chance.

Election of officers was held with the following results: Noble Grand-Renee' Rudd, vice grand-Teric Snell.

An application for membership was read from Dollie Scales, Lori Tosh, Ruby Green, and Thursie Reid were placed on the interviewing committee.

The financial report was given by Ina Wilemon. The lodge was closed with a prayer by Maude Young.

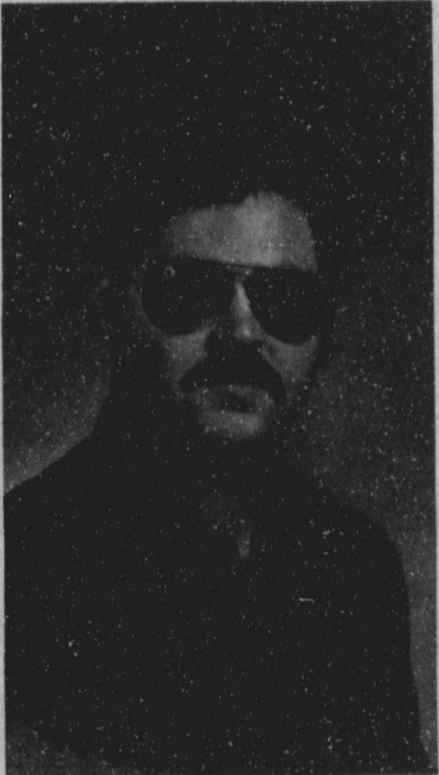
Muleshoe Native Receives Degree From WBU

A Muleshoe native was among the 232 students who received degrees during Wayland Baptist University's 76th Spring Commencement April 26.

Glen LaMonte (Monty) Phipps was awarded the bachelor of science in occupational education (BSOE) degree, with a major in business administration and a major in criminal justice.

Phipps, who now makes his home in Plainview, attended Muleshoe High School.

He is the son of Mrs. Betty Phipps of Lubbock, Virgil Phipps of Brownfield and the Son-in-law of Richard and Dorothy Turner of Muleshoe.



MONTY PHIPPS

Just Right

A dress should be tight enough to show there's a woman inside of it-but loose enough to show that she's a lady.
-Record, Columbia, S.C.

Always

The man who thinks he knows everything always irritates those of us who do.
-Record, Columbia, S.C.



MRS. KEITH LANGFITT

Buying Lean Beef Takes Consumer Knowledge

It's good to know that lean beef is as low in calories and cholesterol as chicken, but how do you tell what's "lean"?

With some label information and knowledge of beef cuts, answers a Texas A&M Agricultural Extension Service specialist.

Nutritionist Mary K. Sweeten says consumers can easily find low-fat, low-calorie beef at the meat counter if they'll read the package labels.

"When you're shopping for lean cuts of beef, the simplest thing to do is to look for Nutri-Facts labels," she says.

The Nutri-Facts program, which is sponsored by the beef industry, is now found in many supermarket chain stores.

Participating stores display cards in the meat case that show the calories, fat, cholesterol and other nutrients per 3-ounce trimmed serving for various cuts of meat.

"The U.S. Department of Agriculture has also established some policies on labeling meat and poultry that can help consumers select lean beef," Sweeten points out.

The nutritionist explains that "Extra lean" will be reserved for products containing no more than 5 percent fat, while "lean" and "low fat" will be used only on products with less than 10 percent fat. In either case, the amount of fat must be stated on the label.

The new USDA regulations also define "light," "lite," "leaner," and "lower fat" as terms that can be used on products which have at least 25 percent less fat than the majority of that product in the marketplace.

She notes that labels with any of those terms must explain the comparison on the label. So, for example, a label for "leaner" ground beef might state, "This product contains 20 percent fat, which is 33 percent less fat than is in most ground beef."

Processors have one year to change their labels according to the USDA regulations, but many will voluntarily comply prior to that deadline, she says.

"Consumers who shop at stores that don't use NutriFacts, or who find the label terminology confusing, can back on some basic knowledge about different cuts of meat," says the nutritionist.

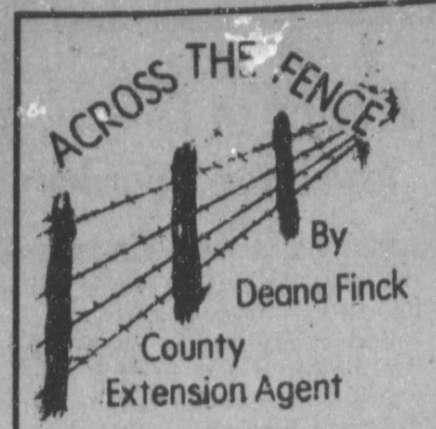
Sweeten says the American Diabetes Association classifies familiar beef cuts according to

their fat content, after trimming the visible fat. The systems helps diabetics carefully calculate their daily intake of nutrients, but can be useful to any consumer who's trying to keep track of calories and fat.

Lean cuts of meat, with the fat removed, have 7 grams of protein, 3 grams of fat and 55 calories per ounce. The standard cuts which fit in this category include: baby beef, chipped beef, chuck, flank steak, tenderloin, plate ribs, skirt steak, (fajitas) bottom and top round, rump and spare ribs.

Medium fat meat, also with the fat removed, has 7 grams of protein, 5 grams of fat, and 75 calories per ounce. In this category are canned beef, corned beef, ground beef with 15% fat, ground round and rib eye.

The cuts which have the most fat, even when trimmed of all visible fat, include: brisket beef, corned beef brisket, ground beef with more than 20% fat, ground chuck, hamburger, rib roasts, rib steak.



Making a move is serious business, especially if you've lived in a home for years, paid off the mortgage, and have a lifetime of things collected inside it. One nationwide survey indicated that 72% of people over 65 owned their own home and 84% of that group owned it "free and clear". Of those who had paid their mortgage off, half lived in a home built before 1940.

But what happens when that home becomes just too big, or requires too much maintenance? Then you may want to look around at some other options.

Most seniors look for living accommodations in the same general locations as family and friends. But some also head for a favorite spot that offers recreation, special scenery, or warmer weather.

Regardless of which geographic area you choose, you'll probably want to look for easy care housing that is energy efficient. But many senior citizens are not sure what to look for beyond that. Here are some things to think about

when looking at housing options whether it's a house, duplex, apartment, or group living arrangement:

- Are community support services available?
- Location of cultural activities; City bus, senior citizen van, taxi service;
- Nearby stores, medical facilities, banks;
- Will stores (especially drug stores) deliver;

- Visiting nurses agency; Meals-on-Wheels; Bookmobile service;
- Outside the dwelling look for the following:

What is the distance from parking to the door?

Are all the walkways smooth to prevent falls and make any snow or ice removal less difficult?

Is there adequate outside lighting?

Inside the dwelling look for the following:

Are the doors wide enough for wheelchairs and walkers?

Can the doors and windows be easily locked?

Is there an adequate number of windows for natural lighting in each room?

Are there telephone outlets in each room?

Are kitchen and bath storage areas within easy reach?

Can the bath facilities be easily and safely used?

Carefully choosing housing based on its safety and convenience as well as the geographic location, will help insure you're happy in a new home.

Card Of Thanks

I would like to express my deep appreciation for all the cards, flowers, visits and concern shown during my recent hospitalization and surgery.

It's great to live in a community where so many people can be called "friend."

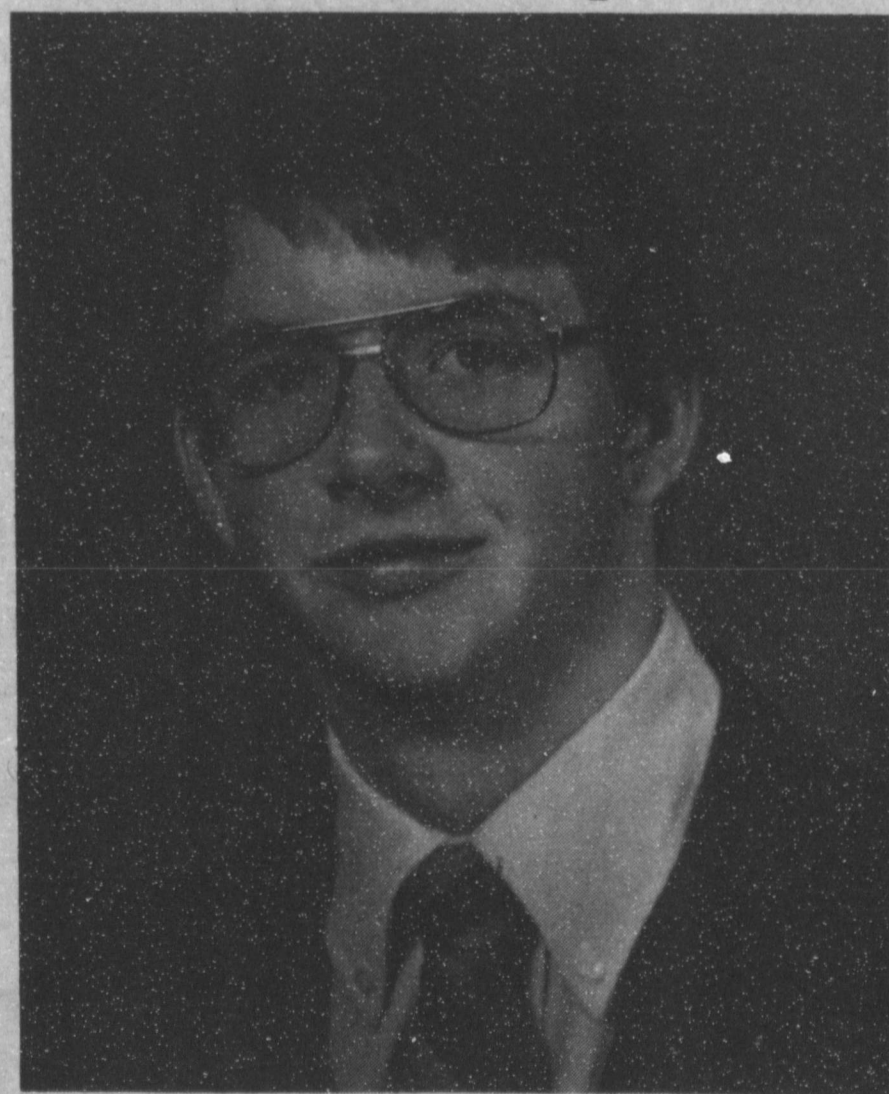
God bless each of you.

Junior Mills

SALUTE

LEADERS
OF
TOMORROW

We Believe Our Youth Of Today Will
Provide Effective Leadership Tomorrow!



LEADER OF TOMORROW--Our "Leader of Tomorrow" for this week is Mike Harris. Mike is the son of Mr. and Mrs. Royce Harris and a 1986 graduate. During his years at M.H.S., Mike was the 1986 class salutatorian and a member of FCA, FTA, SCAC, Student Council and a member of the Computer problem-solving team. Mike was awarded numerous scholarships at graduation and plans to attend North Texas State University and major in radio/TV/film. We are proud to recognize this fine young man as a "Leader of Tomorrow."

PROUDLY PRESENTED BY:



Ben Franklin

Better quality for less

2104 W. Amer. Blvd. 272-3855 Mon-Sat. 8 am - 8 p.m. Sun 12-5 pm

Father's Day Sale

6" Personal Fan \$6 ⁹⁷	23 Drawer Storage Cabinet \$10 ⁹⁷
Tool Tender II \$4 ⁴⁹	First Alert Ready-Lite Jr. Rechargeable lite \$15 ⁹⁵ Reg. 24.97
Vinyl 2 Tubing Chaise Lounge \$6 ⁹⁷	22 1/2" Porcelain Happy Cooker \$33 ⁹⁷
Old Spice Refresher Set \$8 ⁹⁹ Reg. 13.85	English Leather Gift Sets Cologne \$5 ⁴⁹ After shave Saxon After Shave 2.5fl. oz. \$3 ⁶⁷

We Don't Sprinkle We Water!



Up to 60 ft. diam.
area 1/2" per hour.

As natural as falling rain.

A Guaranteed Water-soaker!

\$34⁹⁵

Save \$2⁵⁰ With This Ad!

Tom Flowers

272-4154

Bridal Shower Honors Ms. Tawna Stewart

Ms. Tawna Stewart, bride elect of Danny Ward, was honored with a bridal shower Sunday, June 8 from 2 until 4 p.m. in the fellowship hall of the Muleshoe Church of Christ.

Guests were greeted by Tawna Stewart, Ruby Ward and Carol Stewart and registered by Lisa Stewart of Portales, N.M.

Carol Williams and Shelley Pickering served sheet cake, decorated with the bride's chosen colors of dusty rose and blue, fruit punch, nuts and mints, served from brass and crystal appointments.

The serving table was covered with an ecru lace cloth with a dusty rose underlay and accented with a brass candelabra with blue tapers and an arrangement of silk blue magnolia blossoms, dusty rose stephanotis and

Watsons Graduate

From Texas Tech

Clifford and Janet Watson graduated from Texas Tech University during the spring commencement ceremonies held May 17. Watson received a Bachelor of Science degree in the field of Mechanical Engineering and Mrs. Watson received a Bachelor of Science degree in Elementary Education, with a reading specialization.

Mrs. Watson, daughter of Mr. and Mrs. James Mike Nix of Sudan, is a 1982, graduate of Sudan High School, where she was involved in various school activities. While a student at Texas Tech she was an active member of High Riders and served as corresponding secretary for that organization. She received intensified applications of teaching through the T.A.P.E. program, a division of the education department at TTU.

Watson, a 1981, graduate of Muleshoe High School, is the son of Mr. and Mrs. W.T. Watson of Muleshoe. He actively participated in school activities while a student at MHS and was a member of Saddle Tramps at Texas Tech, for which he served as first vice president and chaplain. He was reporter for the honor society Phi Eta Sigma.

Mr. and Mrs. Watson will be making their home in Longview, where he will be employed as plant engineer for the Tatum, Texas, plant of Texas Utilities Co. Mrs. Watson plans to enter the teaching profession as an elementary teacher.



JANET WATSON

greenery. The honoree's corsage consisted of dusty rose roses and blue stephanotis tied with ivory ribbons, made by Jo Harmon.

Special guests included: Carol Stewart of Portales, N.M., sister of the bride elect; Ruby Ward, mother of the prospective groom; Lisa Stewart, sister of the honoree; and the honoree's daughter, Dacia Stewart.

The hostesses gifts were a gas grill, brass hall tree and microwave cookware. Hostesses for the occasion included: Ginger Reedy, Jane Foster, Carol Williams, Sharon Williams, Christi Whitt, Shelley Pickering, Glenda Powell, Margaret Gleason, Janie Gibbons and Frances Minkler.

Also Lillie Barnhouse, Julie Broyles, Barbara Milburn, Claudine Embry, Stacy Burris, Mary Janice Brantley and Jo Harmon.



CLIFFORD WATSON

TOPS CLUB

Muleshoe TOPS Club chapter No. 34 met at 6:30 p.m. Thursday, June 6 in the meeting room of Bailey County Electric.

Laverne James, president, called the meeting to order. The TOPS pledge was recited and the fellowship song sung. Clara Lou Jones called the roll with 15 members present.

Ruth Clements gave a treasurer's report. The ribbon contest ended and it was reported that Nan Gatlin was the winner and won a charm. A new money contest will begin tonight, Thursday.

Those celebrating their birthdays this week were Ruth Clements, Mabel Wolfe, Ernestine Steinbock and Wanda Kemp. The club sang happy birthday to them.

Theresa Davis was named weekly best loser and runners up were Rose Sain, first; and Lou Knowles, second.

Best loser for the month was Zeffa Shafer. Lou Knowles was first runner up and Lavelle Parker was second runner up. KOPS Queen for the month was Mac Provence.

The meeting was closed with the singing of the goodnight song.



TAWNA STEWART

Avon Products To Give Unique Scholarships

The Avon Products Foundation Inc. will award \$50,000 in 1986 to women around the country who want careers in sales.

"These scholarships are unique," said Mary Quinn, manager of the Foundation. "The funds can be used for expenses that help a woman attend school, like childcare and transportation, as well as tuition and books."

The program is in cooperation with the Business and Professional Women's (BPW) Foundation, an organization that promotes economic equity for working women.

"Although this marks the first 'Avon scholarship' for women in sales, 'Avon has supported the BPW Career Advancement Scholarship Program since 1972," Quinn said.

To qualify, women must be 25 years or older; the head of household with a critical financial need and currently enrolled in a program leading to a career in sales.

Individual awards from \$500 to \$1,000 will be given to 50 to 65 recipients.

Scholarship applications will

be available from July 1 to Sept. 1. Applications must be submitted by Sept. 15. Award winners will be announced Dec. 15.

Additional information and applications are available by sending a self-addressed business size envelope with two first class stamps to: Avon Scholarships for Careers in Sales, Business and Professional Women's Foundation, 2012 Massachusetts Avenue, N.W., Washington, D.C. 20036.

Barely

We hear that this year's bathing suits are barely big enough to keep a girl from being tanned where she ought to be.

-Punch.

Journal Files

60 Years Ago

1926
TEN ACRE FARMS MAKE IDEAL HOMES

A ten acre farm makes an ideal home stated a local farmer who owns and operates a farm of this type. His early corn is about four feet high and will be in the tassel in side of a week. Three acres of onions are looking wonderful, irish potatoes are making rapidly, peanuts, sweet potatoes, watermelons and cantalopes and all kinds of small truck.

The cow and chicken is also one of the factors of income on this ten acre home.

The Muleshoe country is rapidly attracting the truck farmer, the dairyman, the poultry farmer and the row crop farmer is here to stay also.

50 Years Ago

1936
IMPROVE MAIN STREET

Tuesday morning the city commission of Muleshoe started some badly needed repair work on Main Street. The work is being done mostly to experiment with some materials already owned by the city. Many of the worst rough places are being filled in with gravel, hot tar and asphalt. The work is being done by local men.

The city has no as yet received any money of the W.P.A. project. The application was held up due to lack of funds but according to report there is a possibility of the city receiving some funds in July.

40 Years Ago

1946
REDWINE HELPS TO OCCUPY NIPPON

With the eighth Army in Japan-Technician Fifth Grade Dalton L. Redwine, Muleshoe is now serving with the famous first Calvary Division in the present occupation of the Nippon Capitol.

Overseas 15 months, Redwine was a member of the Americale Division prior to coming to the 7th Calvary Regiment. He wears the Asiatic-Pacific Theatre Ribbon with one star for Leyte; American Theatre Ribbon, Phil-

ippine Liberation Ribbon, Victory Ribbon, Good Conduct Ribbon, and the Occupational Ribbon.

30 Years Ago

1956
CLASSIFIED ADS

FARM HAND WANTED-- Would like to hire experienced, capable worker. Have nice 3-room house Job should last at least through crop year. Wages \$200 month and up. Would consider single man for wheat harvest.

FOR SALE--Fryers \$1 each; 6 miles NE of Muleshoe. Phone Y05-3596

20 Years Ago

1966
David L. Sudduth, DPA and associated with Williams and Merriman, has been elected a member of the American institute of Certified Public Accountants.

Owen Jones, who was injured in an accident in Lubbock in April, has returned home and was able to attend Lions Club Wednesday. Oddly enough, he was enroute to a district Lions' meeting when the accident occurred.

10 Years Ago

1976
Grocery specials advertised this week in the Journal included: 3 pound can Crisco \$1.29; 12 ounce can spam 99 cents; No. 1 1/2 can pineapple 39 cents; No. 3 can sweet potatoes 49 cents; No. 300 can beef tamales 39 cents; No. 300 can refried beans 29 cents; No. 2 1/2 can peaches 49 cents; 5 pound bag sugar 98 cents; 6 bottle carton, 32 ounce, Coca Cola \$1.39; tomatoes 29 cents pound; fresh okra 29 cents pound; cantaloupes 19 cents pound; 2 pound bag sausage \$2.57; 1 pound bag sausage \$1.29; fully cooked boneless hams \$2.59 pound; bacon \$1.49 pound; rib steak \$1.19 pound; and eggs 49 cents pound.

Sincerity is a pleasing and vanishing virtue.

CALENDAR OF EVENTS

JUNE 12-JUNE 18

THURSDAY, JUNE 12

FRIENDSHIP CLUB
2:30 p.m.

ODDFELLOWS
7:30 p.m.

HOBBY CLUB
2 p.m.

MULESHOE SQUARE DANCE CLUB
8 p.m.

TOPS CLUB
6:30 p.m.

FRIDAY, JUNE 13

KIWANIS CLUB
6:30 a.m.

MONDAY, JUNE 16

MOONLIGHT EXTENSION CLUB
7:30 p.m.

TUESDAY, JUNE 17

ALCOHOLIC ANONYMOUS
8 p.m.

MASONIC LODGE
7:30 p.m.

REBEKAH LODGE
7:30 p.m.

ROTARY CLUB
12 (noon)

TRIANGLE CB CLUB
8 p.m.

CITY COUNCIL
8:30 p.m.

WEDNESDAY, JUNE 18

LIONS CLUB
12 (noon)

DUSTY PRAIRIE EXTENSION CLUB
2:30 p.m.



TEXANS ARE INTO FIFTH AVENUES!

We believe the folks in Texas know what top of the line luxury is all about! So we bring you Chrysler Fifth Avenue, with over 49 standard luxury features.

Start with air conditioning to keep you cool under the hot Texas sun. Then move on to tinted glass, power windows, power steering and power brakes, trip odometer, luxury steering wheel and more!

ONLY
\$15,425



OVER \$1,586 LESS THAN OLDS 98.†

And with Fifth Avenue, you can go first class without the high price. With it's long list of luxury features, Fifth Avenue leaves little to be desired. Test drive one and see for yourself.

QUALITY BACKED BY CHRYSLER'S 5 YEAR/50,000 MILE PROTECTION PLAN.*

*Based on a sticker price comparison of comparably-equipped vehicles. **See limited warranty at dealer. Powertrain and outer body rust-through. Excludes leases. Restrictions apply. **Dealer price includes destination charges, excludes title and taxes.

FOR A GREAT DEAL, SEE THE MEN IN BLUE AT...

Muleshoe Motor Co.

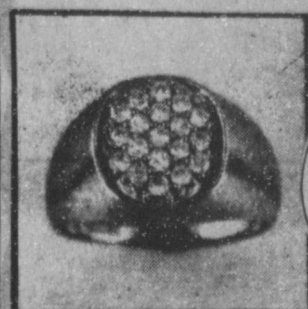
101 W. Amer. Blvd.

272-4501



Especially for

DADS



Similar Style Gents
1 carat dia. ring
Reg. \$2,100.00
NOW \$1,470.00



A great selection of
watches from \$49.50

Gents Ring
Reg. \$350.00
NOW \$245.00

TREAT Your Father Royally With A Gift Of
DIAMONDS Or GOLD From:

202 Main

Lindsey Jewelry

272-3355

Certification Deadline Set For July 15

Danny Noble, County Executive Director of the ASC office, reminds county farmers and ranchers of a final certification date coming up in mid-July.

FINAL CERTIFICATION

The final date to request aerial measurement service or certify to all spring seeded crops, conservation use acres, and ACR, is July 15, 1986.

Noble says a complete acreage report must be filed including all program crops, sunflowers, soybeans, alfalfa, vegetables, and other crops by this deadline.

An accurate certification is very important, stressed Noble, so don't guess. The reported acreage cannot differ from the measured acreage by more than the larger of 1.0 acre or five percent, or the commodity is ineligible for program benefits.

FAILED ACRES

Any cotton that has failed due to drought, excess rains, or for any other reason beyond the producers control, must be certified and an ASCS-574 (Disaster Application) filed before the crop is disturbed and replanted to a different commodity. All required ACR must be maintained for the failed acres. These requirements must be met for the cotton to be eligible for program benefits.

MAINTENANCE OF ACR

Don't forget that ACR (set-aside) requires a cover crop. ACR land must be free of weeds and maintained in a workmanlike manner throughout the calendar year. Don't jeopardize your program benefits by neglecting to properly farm this acreage, warned Noble.

Checks...

Cont. From Page 1

districts received a total of \$1.9 million. El Paso County payments totaled \$739,173.

The Legislature in 1984 brought banks under the franchise tax for the first time and allocated receipts from the tax to cities, counties, school districts and other local taxing units where the banks are located.

Banks are taxed at the same rate as other Texas corporations. Previously, bank stocks were subject to local property taxes. The Legislature exempted the stocks from Property taxes, substituting the new bank franchise tax. Collections are prorated among local taxing units based on their tax rates.

SCAC...

Cont. From Page 1

at the piano; pupils of Mrs. Elaine Damron, Lisa Hamilton, Selina Gonzalez, Julie Crittenden, Kelly Conklin, Heather Hutton, Michelle Finney, Stacy McElroy, Jeremy Bruns and Dana Hamilton; Mr. and Mrs. Bobby Burris, duct; Mr. and Mrs. Larry Martin, duct; Jenny Oliver and her Jazzercise group; Mr. and Mrs. Barry Cowart, straight from Arkansas, comic musical duct; the Muleshoe High School Jazz Band; the Gospel Notes; vocal by R.A. Bradley, Jacque Baker, Jeanine Gable and Dwayne Lloyd; Turner Paine and the Bordertown Four, Farwell; and the Larry Buchanan Band from Floyd, N.M.

This group of outstanding entertainers helped make Saturday, May 24, a very enjoyable day for all who were tuned to Channel 6. At the end of the day, all concerned felt a tremendous feeling of accomplishment, as they have worked for over three years to help preserve some of the Muleshoe area's colorful past. Truly, 1985-86 has been a successful year for SCAC members and the Muleshoe Heritage Foundation.

GRAIN STORAGE AGREEMENT

This is to advise producers that Great Plains Foods has been approved to operate under the Uniform Grain Storage Agreement as successor to Ray Griffiths and Sons, Inc.

INTEREST RATE

The loan interest rate for June is 6.500 percent.

ADVANCE PAYMENTS

The ASC is in the process of mailing out 1986 advance payments. Noble says to please bear with them and they will get your cash advance and your certificate (CCC-6) out as quickly as possible.

1986 WHEAT POLL

On June 18, 1986, the ASC will be mailing out a ballot to all producers who have a 1986 wheat base. The Food Security Act of 1985, requires the Secretary to conduct a poll of eligible wheat producers to determine whether they favor the imposition of mandatory limits on the production of wheat, which will result in wheat market prices that are at least 125 percent of the cost of production as determined by the Secretary.

Graduation...

Cont. from Page 1

Helton, Jerry Jaquess, Jack Bradley, and Sharon Bradley. At the state convention Sharon Bradley and Jack Bradley placed first in the puppet and marionette division, Jack Bradley placed second with his science project, and Sharon Bradley placed first with his essay about capital punishment. John Hurtado placed third in track, and Jerry Jaquess placed third in soccer kick and wood sculpture. These students qualified to go to the ACE National Convention at North Texas State University and received a certificate for their efforts there.

Lynda Low presented a ribbon to Carolyn Hurtado for having completed the most PACE's in the junior division. Johnny Jaquess received a ribbon for the highest average in the junior division.

In the senior division Jack Bradley received a plaque for the most PACE's completed. Sharon Bradley and Jerry Jaquess tied for the highest PACE average and each received a trophy.

A PACE is a packet of Accelerated Christian Education curriculum. Sixty PACE's is considered a year's work.

Jerry Jaquess received a digital block for being chosen as the most improved student. He gained 2.2 grade levels on his achievement test this year as well as last year.

Carolyn Hurtado was presented a cash gift for being able to recite more than a hundred verses of scripture at one time.

The Christian Character Award is considered the most outstanding award. This year Sharon Bradley was chosen for that award and received a portable television and radio combination.

The highlight of the evening was the presentation of a diploma to graduate Berna Hurtado. Berna is the daughter of Mrs. Julia Hurtado of Muleshoe. She is presently employed at K-Bob's restaurant.

Jesse Helms, Senator (R-NC), on farm lending program:

"Some farmers are hopelessly burdened with debt and cannot be rescued even with our most generous programs."

THREATENING CLOUDS--As the last storm system for a few days moved across the county to the west of Muleshoe, at least three funnels were spotted dangling from the heavy, dark clouds. The storm deposited several inches of rain in the Lazbuddie area on its trek to the northeast.

Severe Weather

Cont. From Page 1

But large hail fell in the Y-L community, and damaged lots of things, according to the county agent. Crops were destroyed, along with gardens, trees, alfalfa, wheat, and also damaged were structures, including homes and barns, and trailers.

The county agent said most of the surplus water is from the Longview Baptist Church area to Needmore, and playa lakes are full around Bula, Enochs and Maple.

He said most of the county has received at least five inches of rain in the last two weeks, to some areas receiving more than nine inches.

Until last Saturday and Sunday, said the county agent, the Stegall-Maple area was too dry for farmers to plant, now, over the past weekend, they received two and a half through four inches.

Farmers are faced with weeds, and fields too wet to cultivate and plow. Tanksley said the farmers will be cleaning up their fields, but it will take time.

A lot of farmers will still plant cotton, in fact, most plant cotton, in order to be eligible to receive deficiency payments, said Tanksley. But, there will not be much re-planting, he added. Most farmers will switch to grain sorghum, sunflowers or soybeans. And, with the switch, Tanksley said the farmer will be selling his crop on the open market, as he will be ineligible for the government programs.

"I feel like if we have good summer weather, and a good fall, we will see some bountiful crops harvested from this area," concluded Tanksley. "Maybe in a couple or three weeks, I can paint a lot better picture, without the dismal negatives we are facing right now. Today, the sun is shining again, and now, very soon, we can start moving again."

Severe weather levelled a triple whammy at Bailey County Saturday and Sunday.

A very severe storm moved into the county late Saturday night, spawning one reported funnel cloud some seven miles west of Muleshoe, followed shortly by the report of a tornado on the ground just to the northwest of Muleshoe.

Heavy rain, accompanied by constant thunder and lightning slowly moved through the area, depositing more than an inch of rain.

Some twister damage was reported at Progress, but no one was injured.

On Sunday afternoon, severe weather moved to the southeast of Muleshoe, leaving heavy hail in eastern Bailey County, along with hard rain that washed young crops.

On Sunday night, high wind, twisters, funnel clouds, and heavy hail slapped southern and southeastern Bailey County, again leaving high water and a lot of roads closed for several hours.

Weather spotters and law enforcement officers spent hours of very busy time, assisting stranded motorists and keeping wary eyes on threatening skies.

As a 'last gasp' on Monday afternoon, as an extensive storm system was in the final stages of moving out of the area, several hundred Muleshoe residents watched from one to three funnels dangle from clouds that moved to the north and northeast, from west of Muleshoe. Although no rain fell on Muleshoe, the Lazbuddie area

City Police Report

According to the Muleshoe City Police 'media board' Sunday night, in recent days, officers handled the following items:

One arrest for worthless checks, with fine paid and restitution made; one arrest for failure to appear, with fine laid out in jail; one attempted burglary at Wilson Appliance, with \$100 damages done to a metal door; one reported tele-

phone harrassment and one, one vehicle accident checked, involving a car and light pole.

Education is not to be confused with going to college--not these days.

Happy 33rd,
Randy!

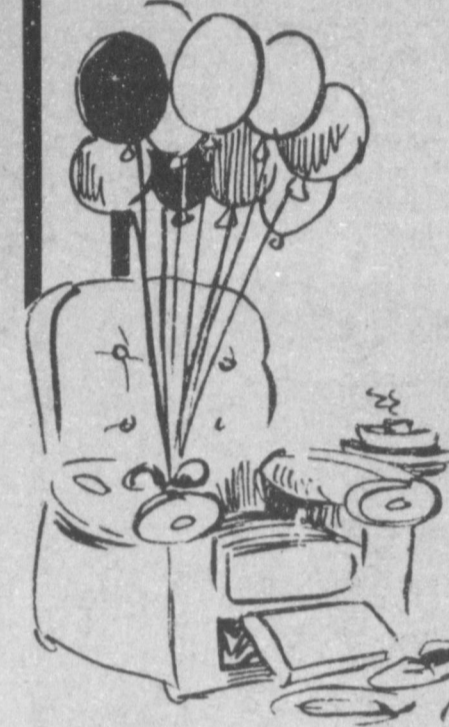
Your Mom and Grandma

BALLOON POP!!!

For
Father's Day
June 15th

Balloon
Creations

109 E. Ave. B 272-4152



PRICES EFFECTIVE
JUNE 12, 13, 14, 1986

WHILE SUPPLIES
LAST!!!

Cheer Detergent

\$3.09

King Size



Poor Boy Sandwich

89¢



ALLSUP'S 30 YEAR COMMEMORATIVE

MUG

FILLED WITH YOUR FAVORITE
FOUNTAIN DRINK

99¢
EA.
REFILLED FOR 49¢

Hot Dogs

2/99¢

BARBECUE
SANDWICH

99¢
EA.



FRESH HOT
FRENCH FRIES

49¢
SERVING

BORDEN'S SINGLE BARS/
ICE CREAM
SANDWICHES

4 \$1
FOR

BORDEN'S
ICE CREAM

1/2 GAL.
RND. CTN. \$1.69

BORDEN'S
BUTTER-
MILK

1/2 GAL.
CTN.

\$1.19

BORDEN'S 8 OZ.
SOUR CREAM
AND DIPS

2 99¢
CTNS.

Large 10oz Burrito

99¢
each

WE SELL
MONEY ORDERS

19¢

ALLSUP'S
ICE

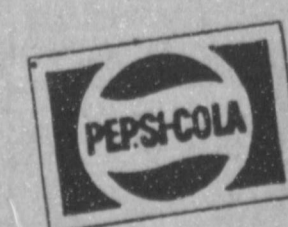
8 LB.
BAG

\$1.09

MOVIE & VCR
RENTALS

The Very Best in
Home Video
Entertainment!

ALL YOU NEED
IS YOUR TV!



6 pk. 12oz Cans
PEPSI-COLA

\$1.69

Farming Is Enough
Of A Gamble!

Stack The Odds In Your Favor
Plant NC + Sorghum!

Makes a lot - Stands so you can
harvest what you make!



Matt Phelps

925-6485



Muleshoe Journal

Classified

Call 272-4536

Enochs News
by
Mrs. J.D. Bayless

Mrs. Wilma Petree visited her son, Kenneth Petree and family at Clovis, New Mexico Saturday.

Clarence Shults of Sundown underwent surgery at Methodist Hospital in Lubbock Friday, he is the brother of Mrs. Clifford Snitker.

Mrs. Etta Layton spent Monday with her granddaughter, Mrs. Jerry Nichols and family.

Mrs. Robert George of Lubbock and daughter, Marthan from Lakeside, Az. spent Monday night with Mrs. Georges parents, Mr. and Mrs. E.N. McCall. Two other grandchildren came too, Kim and Kerry Mosser of Slaton.

Bro. Bret Legg of Levelland preached at the Baptist Church Sunday.

Mrs. Donna Baldridge, husband and grandchildren Beckie and Kerre of Clovis, N.M. were dinner guests in the home of Mrs. Wilma Petree Sunday.

Visiting in the home of Mr. and Mrs. Edd Autry Saturday afternoon were Mrs. Nannie Blackman of Littlefield and Mrs. Blanche Autry of Muleshoe.

Mr. and Mrs. Douglas Cash a daughter, Mr. and Mrs. Danny Meeks and a son, Mr. and Mrs. Buster Cash and family of Weatherford, spent the weekend with his sister, Mr. and Mrs. Jerry Thomas, Mrs. Cash gave an early birthday party for her mother, Mrs. Howard Aubrey of Muleshoe. Other guests Saturday were, her daughter, Miss Sheryl Waltrip of Lubbock, another brother, Mr. and Mrs. Dudley Cash and family of Portales, N.M. Mr. Aubrey, Mrs. Nannie Blackman of Littlefield and Mr. and Mrs. Pete Thomas visited with them.

THINK CLASSIFIED

CLASSIFIED RATES
First Insertion
Per Word.....\$.15
Minimum Charge \$2.30
Consecutive Insertions
Per Word.....\$.13
Minimum Charge \$2.00

CLASSIFIED DISPLAY RATES
\$1.75
Per Column Inch

BLIND AD RATES
50% More

DEADLINES
12 noon Tues.
For Thursday Paper
12 Noon Fri.
For Sunday Paper

We reserve the right to classify, revise, or reject any ad. Not responsible for any error after ad has run once.

1. Personals

HOME REPAIRS
F.M. Saldana Construction, licensed and bonded plumber. Specialized in cement, carpenter work, remodeling, painting, acoustical ceilings. 272-4955.
sl-16s-tfc

SLIGHT PAINT DAMAGE. Flashing arrow sign. \$285. Lighted, non-arrow \$265! Nonlighted \$239! Free letters! Few left. See locally. 1(800)423-0163, anytime.
1-24t-1tpts

JERRY'S ROOFING & Painting. Roofing & painting-all types. Call for free estimate. Jerry Helton 272-3836.
h1-21t-tfc

FURNITURE Upholstering & repairs. Burrows Upholstery Shop 209 W. 2nd Phone 272-4255 Home Phone 272-5722.
b1-41t-tfc

OWN YOUR OWN
Jean-Sportwear, Ladies Apparel, Childrens/Maternity, Large Sizes, Petite, Dancewear or Accessories Store. Jordache, Chic, Lee, Levi, Izod, Gitano, Guess, Calvin Klein, Sergio Valente, Evan Picone, Liz Claiborne, Members Only, Gasoline, Healthtex, Cherokee, over 1000 others. \$14,300 to \$25,900 Inventory. Training, Fixtures, Grand Opening etc. Can open 15 dyas. Mr. Keenan (305) 678-3639.
1-24t-1tpts

3 Family Garage Sale
toys, games, furniture & appliances. Tommy Terrell Maple, Texas, Thursday, Friday & Saturday.
1-24t-1t

MARY KAY COSMETICS Josie Flowers 272-3865
1-40s-tfc

OPEN YOUR OWN
beautiful \$13.99 one price ladies discount shoe store. All first quality merchandise. Nationally known brands *Nike *Liz Claiborne *Evan Picone *Soft Spots *Cherokee *Famolare *Kangaroos *Bass *Moo-ties Tooties and many more. Handbags - accessories and childrens shoe also available. \$19,000.00 includes beginning inventory-instore training - chrome and glass fixtures-grand opening promotions and round trip air fare. Call today. Prestige Fashions 501-329-2362.
1-24t-1tpts

1. Personals

FRANK'S REFRIGERATION AND APPLIANCE SERVICE
Parts and Repair
104 E. Ave. B
Muleshoe, Texas
Bus. Ph. 272-5090
Home Ph. 272-3822

Kenneth Evans Handyman Service
Painting Remodeling Repairing. And more.
Call: 965-2759
Muleshoe, Texas 79347

Mr. Farmer Yes we make Hydraulic and Air Conditioner Hoses.
Muleshoe Auto Parts
217 N. 1st
272-4596
m1-23t-ttfc

CONCERNED About Someone's Drinking? HELP IS AVAILABLE
through Al-Anon
Call 227-2350 or 965-2870 or call 227-2350 or come to visit Tuesday nights, 8:00 p.m. or Saturday mornings at 10:30 a.m. at 1116 W. American Blvd., Muleshoe.

3. Help Wanted

GOVERNMENT JOBS
\$16,040 - \$59,230/yr. Now Hiring. Call 805-687-6000 Ext. R-6226 for current federal list.
3-20t-16tpts

EASY ASSEMBLY WORK! \$714.00 per 100. Guaranteed Payment. No Sales. Details-Send Stamped Envelope: ELAN-6469 3418 Enterprise, Ft. Pierce, FL 33482.
3-24t-9tpts

GENERAL SHELTERS of Texas, Inc.
The fastest growing manufacturers of portable buildings, is seeking a dealer in the area for retail sales of portable buildings. Lot and small investment required. Excellent opportunity to expand existing business with low risk.
Contact Mike Wulf
General Manager
817-422-4547
g3-23s-8tpts

RESPONSIBLE PERSON
Wanted to own and operate candy vending route. Pleasant business with high profit items. Can start part time. Cash investment of \$3996 to \$12,996. Call 1-800-328-0723

EAGLE INDUSTRIES
26 Years of Service.
3-24t-2tpts

AREA SUPERVISOR
Sharp, ambitious women needed to hire and train demonstrators. Unusual, quality gift and decoration line. Work from your home. Weekly paycheck, bonus, trips. Free training, free sample kit, no investment. Call collect or direct 915-692-7542.
3-23s-2tpts

4. Houses For Rent

RUIDOSO CHALET: 4 bedroom for rent by day, weekend, or weekly. Call 505-257-2622 or 915-943-9021. Owner Dr. Albertson. a4-49t-tfc

HOUSE FOR RENT
call after 6:00 505-482-3429. 1825 W. Ave. C.
p4-23t-2tc

FOR RENT: 2 bdrm house call 272-3442. n4-23s-7tc

5. Apts. For Rent

NICE one bedroom unfurnished apartment for rent call 272-3107.
m5-24t-tfc

8. Real Estate

40 ACRE HORSE FARM on paved west camp road 8 miles northwest of Muleshoe, in the Muleshoe School District. Nice 3 bdrm. home, double garage, barn, corral, stalls, metal shop bldg. 15 acres of permanent grass, remainder in wheat for grazing. Good 6" irrigation well & motor & side roll sprinkler, plus other various pieces of equipment. Call Pierce Real Estate, Texico, N.M. 505-482-9188.
p8-20s-tfc

328 acres being the E/2 of Section 128, Block A, Melvin, Blum & Blum, Bailey County. Approximately 300 acres in cult., \$82,000. 83.6 ac. cotton base 265# yield; 147.7 ac. sheat base 18 bu yield; 74.7 grain sorghum base 43 bu yield. Contact the Federal Land Bank Association of Muleshoe. Ph. 806-272-3010.
f8-16s-tfc

ATTENTION MOBILE HOME OWNERS
Your house is worth more now than ever, come take advantage of low interest rates. By trading in your house today if you have a '78 model or older house it is time to trade into a new better built home. We need good used houses and pay top dollar. Call Don at A-1 MOBILE HOMES, today at 763-5319 collect.
a8-21t-8tc

480 acres being the W/2 and the SW/4 of Section 21, Block Z, W.D. & F.W. Johnson Subdivision, Bailey County, \$216,000. Contact the Federal Land Bank Association of Muleshoe. Ph. 806-272-3010.
f8-16s-tfc

FOR SALE 4 bdrm, 2 bath, home in Lenau Addition. \$4,000 down assumable loan. Call 505-762-6057 or 505-763-5534, ask for Stephen.
c8-22t-8tc

FOR SALE: 3 bedroom, 2 bath, 2 detached garages near DeShazo. By appointment 272-5732 after 5:00.
g8-22s-tfc

3. Help Wanted

15. Misc.

Government Land. Delinquent tax property available at ultra low prices. For information call 1-619-565-6491 ext. L727. 24 hrs.
15-22t-3tpts

FRIENDS GET TOGETHER. have a learn to dance party at your place. The Fun Dancers. \$15-23t-8tcls

8. Real Estate

WEST TEXAS largest selections of repossessed mobile homes 2 & 3 bedrooms available. low low down payments. Call 1-800-792-0032. Mustang Mobile Homes. m8-16t-tfc

3 Br. 1 1/4 bath, dbl car garage, brick, Formal DR, indoor Jacuzzi, fireplace w/ bookshelves, walk-in closets, fenced, covered deck, 8 years old, large storage building. Call 272-3993 or 272-3994. 702 Aveunc J.
s8-24t-tfc

Krebs Real Estate
1004 W. 6th
Telephone 272-3191

Choice quarter section, good terms, 30 a hog farm, automatic, too cheap.

HENRY REALTY

111 W. Ave. B
Muleshoe, Texas
272-4581

BEST BUY OF THE WEEK
Country Club Addition - 3 BR - 2 bath - Brick Veneer Corner Lot and Central H/A/C, well insulated with storm doors and windows. Call today for an appointment.

James F. Hayes & Co.
Agricultural Real Estate
Vic Coker - Agent
(806) 965-2468

SMALLWOOD REAL ESTATE BROKER
232 Main 272-4838

Bingham & Nieman Realty
116 E. Ave. C
272-5285 272-5286
"We Appreciate Your Business!"
George & Dianne Nieman

9. Automobiles For Sale

1981 suburban Silverado, loaded. Located at C&H Equipment 272-5514 between 7:30 & 6:00.
o-23t-3tp

ASSUME payments with low equity on 1984 Ford Tempo. Call 272-4318 or after 6:00 257-3896.
9-24t-2tp

11. For Sale Or Trade

1984 Chevy Tra Tech Van, low mileage, excellent condition, all the extras. Call 272-4739, ask for Ray or 272-4356.
d11-22s-4tc

FOR SALE profitable dry cleaning business, will train, no phone inquiries, see Cleve or Frances at Bland Cleaners.
b11-24t-tfc

15. Misc.

J.B. Sudderth Realty, Inc.

Phone (806) 481-3288
Drawer 887 - 109 5th St.
Farwell, Texas 79325

REALTOR®

Licensed in Texas, New Mexico and Oklahoma

WE SPECIALIZE IN ESTATES CERTIFIED APPRAISERS
J.B. Sudderth, Broker
Daren Sudderth, Broker

15 Misc.

HOUSE TO BE MOVED: Nice 3 bedroom, call 272-3566 or 272-4201.
m15-17s-tfc

16. Livestock

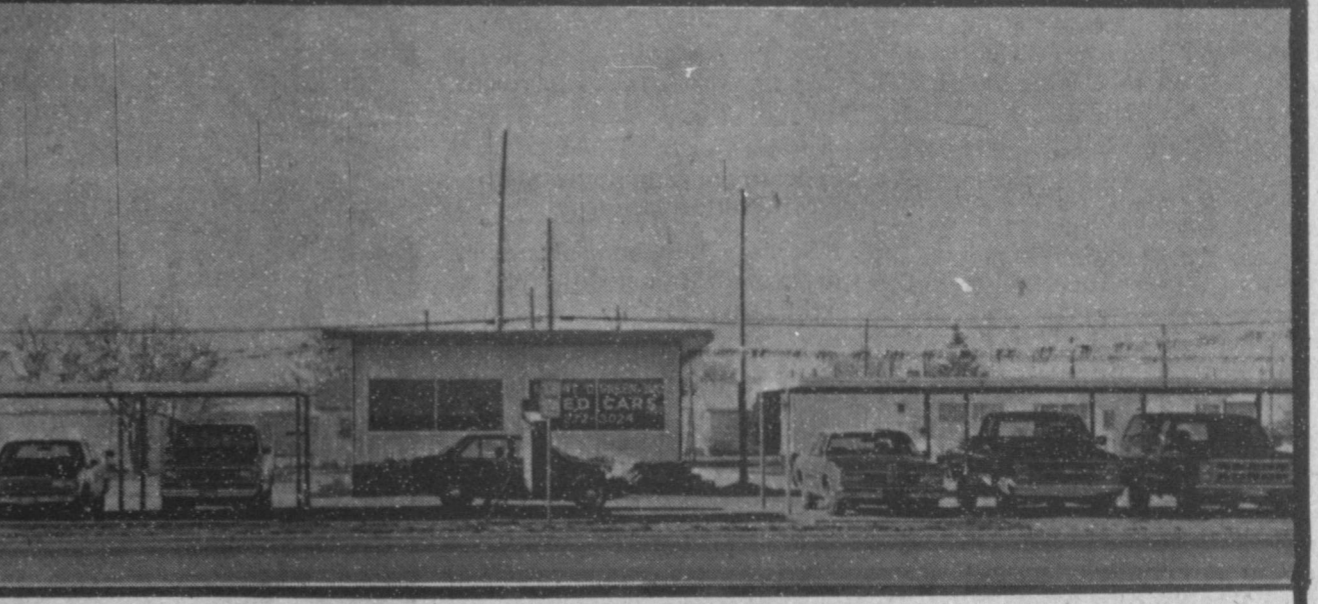
CALL YOUR LOCAL Used Cow Dealer for 7-day a week free dead stock removal. 806-965-2903 collect 1-800-692-4435.
h16-33t-tfc

17. Seed & Feed

FOR SALE: Soybean seed call 272-4084.
17-23s-4tp

WANTED alfalfa grinding hay call 806-373-1096 or 806-249-2824.
h17-23s-8tc

The mother's heart is the child's schoolroom.
-H.W. Beecher-



Sales & Service Open Sat. 8 a.m. - 5 p.m.

1985 Buick Sommerset \$9595	1985 Chevy Blazer \$11,900	1984 Celebrity 4 dr \$6295
1978 Cougar XR7 \$2995	1981 Jimmy 4 Wheel Drive \$5995	1984 Civic 1500S \$6795
1982 Malibu 4 dr \$4295	1979 Blazer 4 Wheel Drive \$4495	1984 S15 Jimmy \$9895

Robert D. Green Inc.
2400 W. American Blvd. 272-4588
1400 W. American Blvd. Phone 272-3024

GM QUALITY SERVICE PARTS

Sudan News by Evelyn Ritchie

CHURCH OF CHRIST NEWS
Church Homecoming is to be held Sunday, June 29--make plans to attend.

Those planning on going to camp June 21-26 need to get in their registration form as soon as possible.

The First United Methodist Church will be holding their Vacation Bible School on June 9-13 from 9:00 a.m.-11:30 a.m. All children through the 6th grade are encouraged to come and join the fellowship and Bible study.

"Ways Bible People Lived" is to be the theme with children learning through crafts, baking, and exploring history of what life was really like in Bethlehem during the Bible days. There will be a "Bible Bee" that proves to be very interesting and enjoyable to the children.

Parents are invited to attend on Friday when persons attend will be wearing "Bible Day" costumes and other enrichment will be throughout the morning.

All children ages through the 6th grade are invited to attend.

The Baptist Bible School has been postponed from June 9-13 until July 7-11.

Continental Singers will be in the High School Auditorium on Friday, June 20th. Becky Byerley, daughter of Mr. and Mrs. Elroy Rasco will be among the choir members on this tour.

The Sudan High School Hornet Band twirlers will be at State twirling competition on Monday when the trio will compete at 4:18 and Kathy Powell soloist will be performing at 5:18. Mr. and Mrs. Willie

McAlpin will be accompanying the three girls, Dannelle Provence, Kathy Powell & Cheri Ford.

The 5th, 6th & 7th grade band students were treated to a Pizza Party held in the old gym recently. They played games and ate pizza.

It was reported that the annual Spring Sting-Auction netted \$920 at the concert when a good crowd turned out for the annual event.

Mrs. Vickie Williams of Marble Falls arrived this week to visit her parents, Mr. and Mrs. Early Bartley and brother, Mr. and Mrs. Gene Bartley and family. She was also here to attend graduation exercises when her nephew, Lee Bartley was among the 24 graduates of Sudan High School.

Pill Bellar and Sara Woods left Tuesday for Copeville where they went to attend funeral services for their aunt, Mrs. Arlis Gambrell who died Monday morning.

Edith Williams spent the weekend in Clovis with her son, Gedonne Williams who had surgery again on his broken hip.

Mr. and Mrs. Bob Beale and April of Wolforth visited Saturday in the home of his parents, Mr. and Mrs. Allen Beale.

Waymon Gordon visited in Austin last weekend with their son, Mr. and Mrs. Paul Gordon and family. Waymon's sister and brother-in-law stayed here with his wife Letha, who was unable to accompany him.

Little Dribbler Girls Held a Pizza Party May 23 in the Old Gym when they met for games, and ate pizza and were measured for their jackets.

Visiting during the weekend with Mr. and Mrs. Joe Ellison were Mr. and Mrs. Mac Ellison, Mr. and Mrs. James Wigginton, Mr. and Mrs. Herman Cockerham, all of Itasca and Ruth Ellison of Richardson, Mr. and Mrs. Gene Glagg of Decatur, Paula Ellison of Dallas and Mr. and Mrs. Cliff Stephens and Brandon of Midland. They were all here also to attend the wedding of Lee Anne Ellison and Jeff Burk on Friday night.

Among out of town visitors here Friday night to attend the wedding of Lee Anne Ellison and Jeff Burk were Rev. and Mrs. Kerry Hurst and children of Lubbock. They also visited Mr. and Mrs. Hershel White.

Laura Powell was home from WTSU in Canyon for the weekend with her parents, Mr. and Mrs. Donald Powell.

Brad Franks of Levelland visited Friday with his parents, Mr. and Mrs. Connie Franks and attended the wedding of Lee Anne Ellison and Jeff Burk.

Best of Press
True
A smile is one curve that looks just as good on a man as it does on a woman.

-Chronicle, Toledo.
A Difference
A single man can be a fool and not know it. But it's different with a married man.
-Enquirer, Cincinnati.

Cowboy Camp Meet Outdoor Christian Experience Slated

Come join us for an OUTDOOR CHRISTIAN EXPERIENCE! The first Palo Duro Cowboy Camp Meeting will be June 12-15 and will be 1 1/2 miles east of Gruver, TX at the rodeo arena. There are many family activities planned, including a team roping with silver buckles and Bibles for the winners. We will all be camping outdoors and eating family style with all meals provided. There is no charge, but contributions will be greatly appreciated.

The camp will open Thursday evening with supper and worship service. The cowboy theme will be spiritually led by Dennis McKinley, Fort Worth, TX and Wayne Stockstill, Upland, CA. Wayne has preached at many camp meetings, and Dennis is a PRCA calf roper and is involved with the Rodeo Ministry.

We have lots of activities planned for all four days, so don't miss a minute. The hayride and singing around the campfire are sure to be favorites. If you play an instrument be sure and bring it.

For further information contact Keith or Merry Bateman, Box 511, Gruver, TX. Telephone 806-733-2129 or 2252.

West Plains Hospital Report

PATIENTS IN WEST PLAINS MEDICAL CENTER, INC.

JUNE 6
MULESHOE-Frances Hamilton, Reydestel Monriquez and Adelina Gonzales. FARWELL-Kathy Curtis.

JUNE 7
MULESHOE-Reydestel Monriquez and Elizabeth Edwards. FARWELL-Howard Carlyle.

JUNE 8
MULESHOE-Elizabeth Edwards. FARWELL-Howard Carlyle. FRIONA-Elvira Montero.

JUNE 9
MULESHOE-Elizabeth Edwards. FARWELL-Howard Carlyle. FRIONA-Elvira Montero.

Texas A&M chemist says Stradivarius's secret

was a water-borne fungus
COLLEGE STATION — A Texas A&M University chemist who made headlines several years ago for his discoveries about Stradivarius violins has uncovered another important secret that may account for their special sound.

Dr. Joseph Nagyvary, professor of biophysics and biochemistry, said new evidence shows the wood Stradivari used to make his violins was soaked in water — not dry seasoned as is commonly believed. Modern violins are made with wood that has been dry seasoned, a process Nagyvary says is a great mistake and diminishes the quality of sound.

Nagyvary said microscopic examination of wood samples taken from several violins made by Stradivari, Guarneri and other important 17th and 18th century Italian craftsmen revealed century-old traces of fungi that altered the shape of the wood cells. The fungi could have come only from water immersion, he said.

JEFF H. DAVIS, M.D., A.A.F.P.

Charter Fellow American Academy of Family Practice
Member American College of Allergists
Associate Fellow American Association for Clinical Immunology and Allergy
Member Joint Council of Allergy and Immunology

Announces the opening of his practice for diagnosis and treatment of inhalant and food allergy.

Present Family Practice will be continued.

MEDICAL CENTER CLINIC

2222 W. 24th STREET
Plainview, Texas

293-5161

Energy Efficiency Projects Recognized

Innovative energy efficiency projects, as well as projects using renewable energy resources, could win state recognition, it was announced recently in Austin. The Public Utility Commission of Texas is seeking nominations for participants in the National Awards for Energy Innovation Program. The program, a joint project of the U.S. Department of Energy (DOE) and the states, will recognize successful projects that have achieved significant public benefit since January 1, 1983. Governor Mark White will present awards to the Texas projects. Five projects will be recommended to DOE to receive national recognition.

Winning projects will be selected on the basis of the project's potential in the following areas:

- *Innovation -- How is the project unique?
- *Transferability -- Could the project be used by others?
- *Energy Savings -- How much and what type of energy was saved?
- *Economic Impact -- What specific economic benefits resulted?

Individuals, as well as all non-federal public and private sector businesses or community organizations, may submit nominations.

The deadline for applications is June 6, 1986. Applications for the Texas Awards for Energy Innovation/Technology Transfer '86s should be submitted to:

Glenda Lormand
Energy Efficiency Division
Public Utility Commission of Texas
7800 Shoal Creek Boulevard,
Suite 400-N

Austin, Texas 78757
Applications should include the following information:

- *Name, telephone number, and organizational title of the person submitting the application.
- *Complete mailing address of person or organization submitting the application.
- *A brief description of the organization (no longer than one page) -- including information regarding its type and size and its mission and the reason for promoting energy innovation.
- *A brief description of the project, including funding information (total project cost and what part is federally funded).

For further information or a copy of the program brochure, call Glenda Lormand at (512) 458-0306.

MAKE DAD'S DAY!

Sunday June 15



on Action RECLINERS BY Lane

THE GIFT THAT WILL MAKE EVERY DAY SEEM LIKE FATHER'S DAY

A gift that will thank Dad for the years he's given you, for years to come. A superbly crafted Action Wall Saver® or Rocker Recliner. Ready to cradle him in soothing comfort with deeply padded backs and seats. In styles that are ruggedly handsome. Covered in good looking, wear-resistant fabrics. With an all-steel reclining mechanism that's easy-to-operate and backed by a limited lifetime warranty. All at exceptional savings. So you can make Dad's Day without breaking your budget.

specially priced from **\$269⁰⁰**

featured: "The Spoiler" Wall Saver® or Rocker Recliner

Let Dad have it soft, while you get hard-to-find savings on this tuck-back contemporary. The Wall Saver® needs just inches of space from the wall for full reclining. With thickly padded pillow arms, deep reversible seat, in man-sized proportions.

\$399⁰⁰

POYNORS

103 Main Muleshoe 272-4552



\$399⁰⁰ Reg. **\$629⁰⁰**
Samson-Biggest Chair Lane Makes



\$269⁰⁰ Reg. **\$349⁰⁰**
Traditional Wall Saver® or Rocker Recliner with tufted contours and matched welting.



\$269⁰⁰ Reg. **\$349⁰⁰**
Handsome Wall Saver® or Rocker Recliner with deeply tufted back, seat and arms.



\$299⁰⁰ Reg. **\$379⁹⁵**
Sleek Wall Saver® or Rocker Recliner with deeply tufted pillow back and footrest.



\$269⁰⁰ Reg. **\$349⁹⁵**
Luxurious Wall Saver® or Rocker Recliner has extra deep seat and pillow back.

For

Father's Day

ANRI

RARE PURCHASE



SPECIAL

\$75

Issue price \$195.00

AUTHENTIC
6" ANRI
WOOD CARVINGS

Limited Editions
of 2500



General George Custer Wyatt Earp
An original ANRI wood carving imparts a special spirit in its owner who should know that every piece is a culmination of artistry, pride and uncompromising craftsmanship.
Makes A Great Gift For Dad.
only at ...

Stanley's GIFTS

769-0007 Hilltop Plaza