

NEWS BRIEFS

Sandoval discharged

By MARSHALL STINNETT
Journal writer

Emilio Cortez Sandoval, Jr., received a directed verdict of not guilty by Judge Gordon H. Green, Tuesday. Sandoval had been charged with delivering a controlled substance to a confidential informant.

The Judge's order came after the state had concluded testimony and rested its case. The Judge ruled that the state had not presented enough evidence for a conviction. According to Judge Green's order, Sandoval was "discharged from all further liability up to the charge for which he has herein been tried."

Scott's son promoted

By MARSHALL STINNETT
Journal writer

Rick Scott, who is the son of Barbara Scott, secretary in the Bailey County Sheriff's Office, has been named chief of police at Wolfforth.

Scott was formerly a sergeant with the Wolfforth Police Department. He has been with Wolfforth's police department since 1995. He serviced for two years as a military police officer and four years as a narcotics officer in the U.S. Army.

Education course

SPECIAL TO THE JOURNAL

COLLEGE STATION — Texas Cooperative Extension is planning a comprehensive educational course for those new to production agriculture.

Dates and locations for this year include Nov. 11-14 in Amarillo.

Meetings and topics are broken down into four sessions

Registration is \$1,000 per operation, but the fee pays only a small part of the cost, said Jason Johnson, program coordinator.

Registration deadline is Oct. 1. More information or a registration packet can be obtained from Stan Bevers at sbevers@tamu.edu or (940) 552-9941.



Drawing date: Saturday, Oct. 26
Winning numbers: 8-11-24-33-37-48
Estimated jackpot: \$12 million
Winners: 0
Next drawing: Wednesday, Oct. 30
Estimated jackpot: \$15 million

On this date in history

Oct. 28 — Post established in San Antonio. Intermittently occupied before the Civil War. On September 11, 1890, the post was renamed Fort Sam Houston (1845).

Oct. 28 — Fort Chadbourne established on Oak Creek, 30 miles above its junction with the Colorado River. Troops were withdrawn March 23, 1861; reoccupied May 25, 1867; finally abandoned December 1867 (1852).

LOCAL WEATHER

Some sun with few showers possible for Thursday. Highs in the upper 50s with lows in the low 30s. Friday, Times of sun and clouds with highs in low 50s and lows in low 30s according to the National Weather Service's Tuesday forecast. Saturday, partly cloudy continuing through Tuesday. Highs in the low 60s, lows in the low 30s.

Office Manager Marshall Stinnett can be reached at 272-4536 or ctyankee@fivearea.com

Missed your paper? Call carrier Yolanda Martinez at 272-4536 during business hours, 8:30 a.m.-5 p.m.

Tuesday is election day

By MARSHALL STINNETT
Journal writer

Next Tuesday, November 5, is the election day in Texas and across the nation. However, there have already been 260 votes cast in Bailey County, 173 early and 87 absentee.

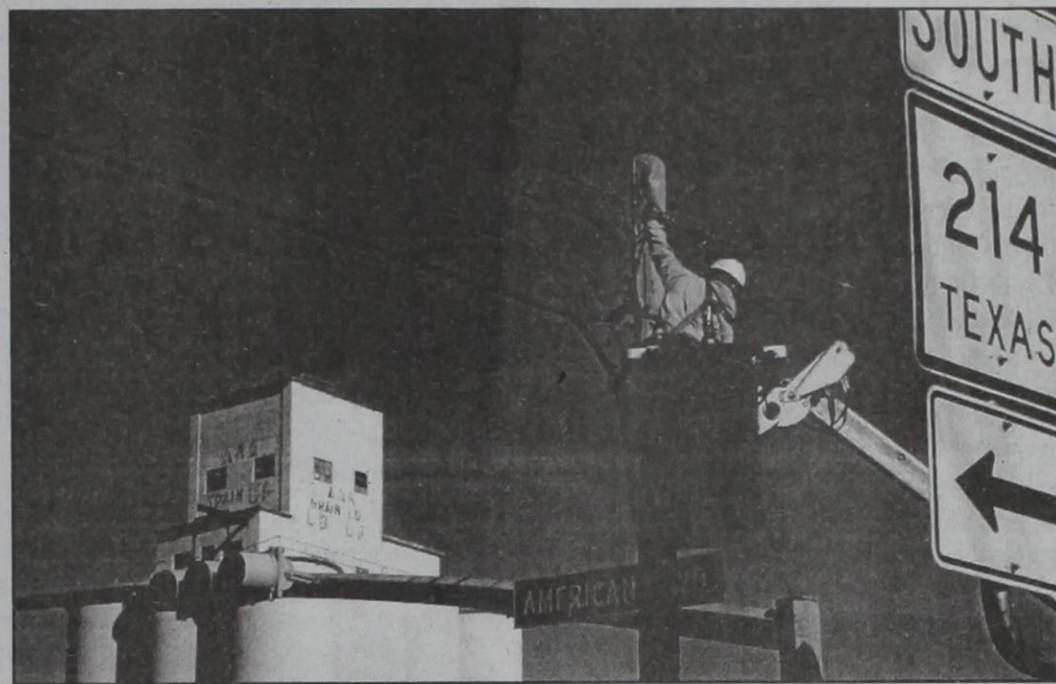
In the last presidential election (2000)

Bailey County voters cast 2103 votes out of a voter registration of 3869. There were 578 early and absentee votes cast in the 2000 election. In 1998, the last off-year election, there were 3750 registered voters. That year 1852 votes were cast, and 550 of them were early or absentee.

By all accounts, this is the most expensive and the nastiest election in Texas history. The question is, will the voters still come out and vote or will they be turned off.

The three top offices in Texas are consid-

see VOTING on page 2



Journal photo: Beatrice Morin

Lines going down

Russell Byers waits for a signal to cut down the old copper wires. He is a construction line worker

Out with the old and in with the new

SPECIAL TO THE JOURNAL

Traffic was at a standstill for only a few minutes Tuesday morning at the intersection of Hwy 84 and FM 214. Five Area Telephone/West Plains Telecommunications employees worked quickly in removing the copper cables from the road as they were

being cut down.

A new fiber optic cable was installed prior to the removal of the copper cables into the Lenau addition which is considered state of the art in digital service.

The new cable currently runs underground on north first under the

railroad tracks.

The cable is a new digital loop carrier which provides regular dial tone and also broad band services such as DSL, a high speed internet service. According to Sandy Vandevender, the copper cables had been there since 1950.

School board accepts Whalin's resignation

The Muleshoe Independent School Board met Monday night in regular session and accepted the resignation of fourth grade teacher Malia Whalin. Her resignation will be effective at the end of the 2002 fall

semester. Whalin becomes the second teacher to resign this semester. Kindergarten teacher, Shirley Aguirre's resignation was accepted at the October 14 meeting.

In other business the

board conducted a regular quarterly review of Superintendent Dr. Gene Sheets, in executive session. No action was taken.

The board approved the Textbook Committee for the 2002-2003 school

year. Textbooks for adoption in the school year 2003-2004 are social studies, grades 1-12; social studies (Spanish), grades 1-6, pre-kindergarten and economics with emphasis on free enterprise.

High school members of the committee are Jim Daniel and John Gulley. Junior high members selected are Jennifer Givens, Barbara Mutschler

see SCHOOL on page 3

Dimmitt Bobcats overrun Mules 24-20

By DELTON WILHITE
Journal sportswriter

On a soggy Bobcat Field in Dimmitt the Mules struggled on both sides of the ball in the first half. The Mules could only manage 88-yards of total offense before intermission. The Bobcats were hitting on all cylinders with 147-yards rushing and 33 more through the air.

Dimmitt owned a 10-0 lead at intermission but a very determined Mule team returned to the field for the second half. The Mules put 20 points on the board in the second half to take a 20-17 lead with only 59 ticks showing on the clock.

Matthew Sanders returned the Mules final kick from the Dimmitt 22 to the Mule 38. Lee Brown made a circus catch on his knees to advance the Bobcats to the 15. Tyler Myatt caught Nicky Gauna's next two tosses to seal the victory for Dimmitt at 24-20.

"No excuses" said Mule coach David Wood. "They came out and beat us. It was a good Friday night high school football game. We came out on the short end and now we have to bounce back."

"We must act like men and be Muleshoe Mules. We came out the second half and did what we needed to do. We just let them score a couple too. The difference was us not scoring in the first half. There will be another day."

see FOOTBALL on page 2



Journal photo: Mike Hahn

Tackling a cat

Muleshoe's Brian King gets a hold of a Dimmitt running back during Friday night's game, against the Bobcats.

AROUND MULESHOE

Craft show slated

The Annual Sandhills Arts and Crafts Show has been scheduled for Saturday, November 9 from 9 a.m. to 4 p.m. at the Olton Ag Pavilion at 110 Avenue D in Olton. The cost is \$1 for adults. Door prizes will be given throughout the day. Proceeds will benefit the Olton Community. Everyone is invited to attend.

Driver's License Office closed

The Driver's License office will be closed on Friday, Nov. 1 and Mon., Nov. 11, Veteran's Day and will resume to regular hours on Monday, Nov. 4 and Tues., Nov. 12.

Investment agent offers program

Katherine Schraeder, the Edward Jones investment representative in Muleshoe, will host a free program on Thursday, November 7 at 5:30 p.m. for investors seeking information on wills, trusts and other estate-planning topics.

Experts will discuss the difference between wills and trust and answer common estate-planning question.

For more information about the program or to reserve your seat, call Heather Foley at 806-272-4102 or toll free at 888-272-4102. If you are unable to attend at the above time, additional viewing opportunities are available.

4-H fruit sale continues

Bailey County 4-H'ers are once again selling fruit as a project. There are several "mixed fruit" boxes available as well as "straight boxes" (one kind of fruit). In addition, there are choices of cheese or sausage items and snack/meat items, including pecans. Contact the Extension office or a 4-H student at 272-4583 if you wish to order. Orders will go off on November 20 and expect delivery

between December 7 and 15.

School news

Parents and others interested in activities in the Muleshoe Independent School District can learn about changes in the current week's activities by calling 272-7669. The information line is also updated for changes in the school schedule due to bad weather.

Public calendar

Nov. 1 — 5:00 to 7:00 p.m. Junior Class will host the pre-game turkey dinner at the High School Cafeteria before the Muleshoe-Cooper game. Tickets are \$6 for adults and \$4 for children. Deliveries and take-out orders will be 5:00 to 7:00 p.m. Call 272-7306 for deliveries.

Nov. 2 — 2:00 to 5:00 p.m. Calvary Baptist Church will take a look at the theology of Luther, Calvin and Qwingli in the 16th Century held at the community room of Friona State Bank. Admission is free. For information or for pre-registration call 806-250-3000.

Nov. 4 — 6:00 p.m. Signups and information meeting for Muleshoe wrestling at Bailey County Coliseum meeting room. Wrestlers age 6-15 and parents are invited to attend.

Nov. 5 — The Bailey County Democratic Party Victory Celebration and Election Watch will include a chili supper at the Bailey County Coliseum front meeting room after the polls have closed, or 8 p.m. Open to any and all wishing to celebrate the local Democratic Candidates' and to watch statewide elections.

Also Nov. 5 — Basketball season tickets for adults and students will go on sale at the school administration office. Ticket prices are \$12 for

FOOTBALL

from page 1

In the second half the Mules showed the world why they have so much confidence in the Hammer play. A.J. Flores carried 27 times in the second half with almost all of them being the Hammer. Flores gained 202 yards in the final half as the Mules went on top for the first time with only 59 seconds remaining in the game.

After allowing Dimmitt 147 yards on the ground in the first half the Mule defense answered the call to hold the Bobcats to only 41-yards rushing in the final half. However, Guana threw for 77 yards and that was enough offense to push past the Mules.

Joel Salcido, after moving to varsity because of injuries suffered by the Mules early in the season, has improved with each outing and recovered three Bobcat fumbles. Flores finished the night with 38 rushes for 253 yards and two TDs.

The Mules final home appearance will be Friday night as the Lubbock Cooper Pirates visit Benny Douglas Stadium. It is a must win situation for the Mules to have any hopes of a share of the District 2-3A Championship.

The Pirates are coming into the game following a stinging

defeat at the hands of Littlefield. Friday night will be Senior Night in Muleshoe.

AAA CARPET CLEANING
Commercial Residential
Scotch Guard Available
24-Hour Emergency Service
"Free Estimates"

Jim Phillips
owner

Cell: (505) 799-6210
Office: (505) 482-9510




1104




The Fair Store
120 Main 272-3500


MULESHOE ATHLETIC BOOSTER CLUB Players of the Week




COWART



HEATHINGTON



FLORES



SCOTT

Noted Mules for the Dimmitt game were offensive line, offensive player; Joel Cowart, defensive; Tatom Heathington, special teams; A.J. Flores, player of the week; and Glenn Scott, slobberknocker.

VOTING

from page 1

ered very close with the Republicans leading in most polls in the Governor's and the U.S. Senate races. The Lt. Governor's race between Dewhurst and Sharp is considered too close to call.

There are three qualified write-in candidates, James W. "Jim" Wright for U.S. Senate; Elaine Eure Henderson and Earl W. (Bill) O'Neil, both for governor. The rest of the candidates are in the sample ballot on page 6 of today's Journal.

Voting locations in Bailey

- County:
- *Precinct 1 voting box 1, Courthouse
 - *Precinct 2 voting box 2, Civic Center
 - *Precinct 3 voting box, 3-Way School
 - *Precinct 4 voting box 4, Church of Nazarene
 - *Precinct 4 voting box 5, Enoch Baptist Church
 - *Precinct 4 voting box 6, Needmore Community Center
 - *Precinct 4 voting box 7, Muleshoe City Hall
- For additional information call the Bailey County Clerk's Office at 272-3044
- Bailey County polls are open from 7AM to 7PM.

CRANES

from page 1

adjacent county roads are likely to see the cranes feeding in farm fields after leaving refuge lakes.

Refuge personnel will be available to provide information. The refuge office and visitor center located two miles west of highway 214 contains wildlife oriented exhibits and will be open from 7:00 a.m. until 12:00 noon. Visitors arriving later in the day to view the cranes when they return to the lake during the evening should drive to Paul's Lake or White Lake at sunset, or around 6:00 p.m..

The wildlife besides cranes that might be seen include prairie dogs and burrowing owls along the Paul's Lake tour route and shore birds such as American avocets, sandpipers and various duck species at Upper Paul's Lake. The interpretive nature trail near the refuge campground offers wildlife viewing for the species that include great horned owls, scaled quail, northern flickers, loggerhead shrikes, and various warblers as well as other bird species.

There have been 6,500 cranes observed on the ref-

uge although more are arriving daily. Crane numbers normally peak on the refuge around mid-November when thousands are usually present, roosting on refuge lakes and leaving at sunrise to feed in adjacent farm fields and returning at sunset.

The lesser sandhill cranes have historically wintered in the South Plains after returning from their nesting grounds in Canada, Alaska and Siberia. The birds normally mate for life, raise one chick each year, and live as long as twenty years.

Texas Tech receives top 50 ranking

SPECIAL TO THE JOURNAL LUBBOCK — Texas Tech University is ranked 43rd among the top 50 public research institutions in the country, according to a new ranking from the University of Florida.

"We are keenly aware of our forward momentum at Texas Tech" said David J. Schmidly, president of Texas Tech. "But it is very positive to have other organization recognize our progress. We will continue to move up in the ranking of America's Top 50 public research universities."

The University of Florida publication, Top American Research Universities 2002, compares 600 public and pri-

vate universities in nine different categories. In order to rank among the top 50, an institution must score in the top 25 in one of the nine categories and conduct at least \$20 million annually in federally supported research.

Categories include: total research federal research, endowment assets, annual giving, national academy members among faculty. Faculty awards, doctorates granted, postdoctoral appointments and median SAT score.

Texas Tech ranked 19th nationally in annual giving at \$115.8 million and conducted \$21.5 million in federal research.

Texas Tech's total re-

search of \$68.2 million ranked 85th nationally. Endowment assets of \$316.5 million ranked 46th nationally. The 139 doctorates granted in 2001 ranked Texas Tech 68th, while the average undergraduate SAT score of 1075 ranked 131st nationally.

The University of Florida report is meant to offer analysis and data useful for understanding American research university performance.

"One of the strategic goals of Texas Tech University is to move up the ranking charts among public research universities in the country," said Schmidly. "According to this publication, we are achieving that goal by ranking 43rd."



Holiday Arts AND CRAFTS FAIR

Come see where all the excitement is on **NOV. 1-3** It's all at the North Plains Mall.

North Plains Mall will host the Holiday Arts and Crafts Fair

Friday, November 1st thru Sunday, November 3rd.

Vendors from New Mexico, Texas and Colorado will be displaying jewelry, wreaths, trees, ceramics, cookware, candles, pictures, and original handcrafted art and much more throughout the mall.



North Plains Mall

Muleshoe Journal USPS 367820
Established February 23, 1924. Published by Triple S Publishing, Inc. Every Thursday at 304 W. Second, P.O. Box 449, Muleshoe, TX 79347.
Periodicals Postage paid at Muleshoe, TX.
POSTMASTER: Send address changes to the Muleshoe Journal, P.O. Box 449, Muleshoe, TX 79347.
We are qualified members of:
Panhandle Press Association, National Newspaper Association, West Texas Press Association and Texas Press Association

WEST TEXAS PRESS ASSOCIATION MEMBER 2002

PPA Panhandle Press Association

TA TEXAS PRESS ASSOCIATION

Scot Stinnett, Publisher
Lisa Stinnett, Vice-President/Comptroller
Marshall Stinnett, Office Manager
Beatrice Morin, City Editor
Leah Bell, Advertising
Yolanda Martinez, Office Assistant

© 1990

SUBSCRIPTIONS: Muleshoe Journal
By Carrier Yearly - \$22.00
Bailey County — by mail - \$24.00
Elsewhere - \$26.00
Advertising Rate Cards on Application

Advertisers should check their ad the first day of insertion. The Journals will not be liable for failure to publish an ad or for a typographical error or errors in publications except to the extent of the cost of the ad for the first day of insertion. Adjustment for errors will be limited to the cost of that portion of the ad where the error occurred.

SCHOOL

from page 1

and Donna Green. DeShazo Elementary will be represented by Connie Alanis, Nancy Benham, Sandra Richards, Nora Burris, Sue Durham, Kim Berry, Angie Pierce and Dora Toscano. Textbook Committee members from the administration are Don Wood, Vince Erdmann, Sheila Joyner, Debbie Gallman and Todd Newberry.

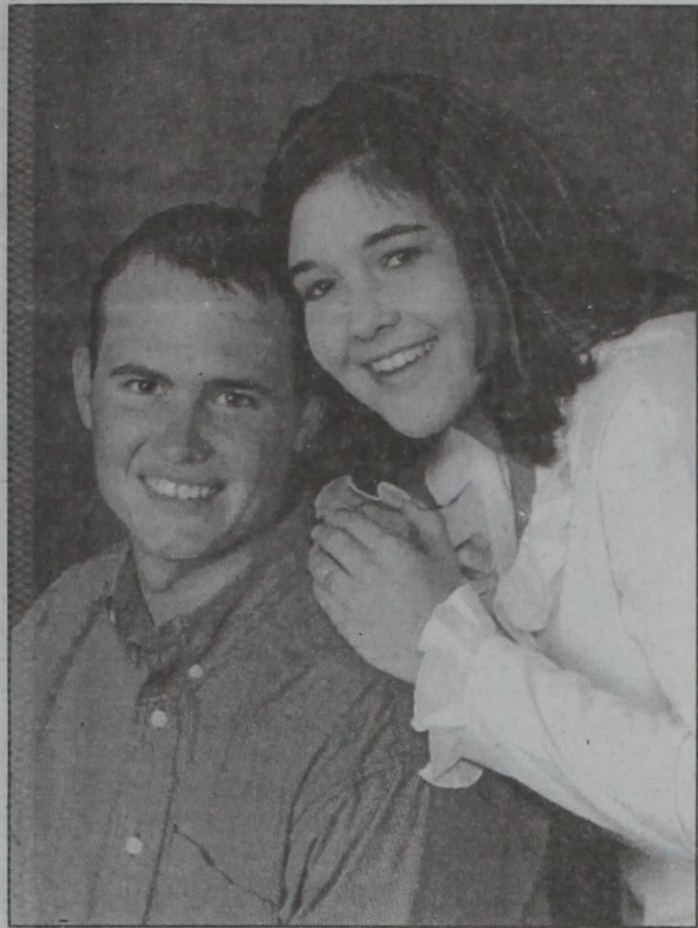
The board gave special honors recognition to six Watson Junior High Choir members, Gerardo Gomez, Jamie Hall, Castle Crawford, Calli Hancock, Morgan Baca and Elizabeth Symm. These students, along with high school students Janice Pacheco and Christina Orozco, were named to the All-Region Choir.



photo: Clay Kidd

Employee of the month

The Muleshoe Chamber of Commerce has selected Gale Wilcox as the employee of the month for October. She is employed at Alco Discount Store and the County Jail. Pictured (left to right) are Mike Holt, Dave Moore (District Manager of Alco), Gale Hargrove, Wilcox, Eileen Morton, Jan Thompson and Sherri Harrison.



DOTY-HENRY

Craig and Sherri Doty of Sudan announce the engagement of their daughter, Kimberly Renette, to Beau Cameron Henry of Muleshoe. The prospective groom is the son of David and Belinda Head of Muleshoe and the late Bobby Henry and the grandson of Pat Nickels of Lubbock, Marcia Mardis of Hereford, and Marshal and JoAnn Head of Muleshoe. The bride-elect is the great-granddaughter of Verdie Gann and the granddaughter of LaFern Doty and Joyce Thompson all of Sudan. The bride-elect is a graduate of Sudan High School and is now attending South Plains College. She is employed by Sprint PCS of Lubbock. The prospective groom is a graduate of Muleshoe High School and is attending Texas Tech University. The marriage is scheduled for December 28, 2002 in the First Baptist Church of Sudan at three o'clock in the afternoon. All friends and family are welcomed to attend this joyous occasion.

Funding to aid interactive high school education courses

SPECIAL TO THE JOURNAL
South Plains College has been awarded \$161,322 from the Telecommunications Infrastructure Fund (TIF) Board and will use the funds to continue updating educational technology.

"South Plains college will use the funding to upgrade interactive television networks to offer more college courses through interactive television, upgrade computer labs for student use and provide equipment allowing faculty to do video streaming over the Inter-

net," explained Dr. Kelvin Sharp, vice president for academic affairs.

"Educational technology addresses a diversity of learning styles and also increases the opportunity for more students to attend college classes, via the Internet and interactive television in the classroom, for example.

The Board awarded \$19.5 million in Higher Education Technology Advancement grants to more than 100 institutions of higher education throughout Texas. Funding is

based on student enrollment.

"This noncompetitive grant reached out to every public and private two year and four year college and university in Texas," said Dirk Jameson, TIF's executive director.

"Technology is becoming commonplace for students throughout Texas, and in collaboration with the institutions of higher education, TIF is fostering infrastructure that can assist in 'Closing the Gaps' for all Texas students in the school system.

The outcome of this grant

will have positive implications for education and lifelong learning for years to come" he added.

The Texas Higher Education Coordinating Board's plan, 'Closing the Gaps,' emphasizes participation, success, excellence and research to increase educational opportunities for all Texans.

The TIF funding is designed to provide colleges and universities stronger infrastructure and modern technology, including video conferencing equipment and workstations.

Museum to exhibit art

The Amarillo Museum of Art is pleased to announce the upcoming exhibition by artist Carlos Callejo, Hecho en Tejas.

The exhibition will open to the public on November 3, at 1 p.m. A preview reception for Museum members will take place November 2, 7 to 8:30 p.m., preceded by a gallery talk by Museum Director Patrick McCracken at 6:30 p.m. The Hecho en Tejas exhibition will be on view at the Museum November 3, through January 5, 2003.

Call the Museum for more information at 371-5050 or e-mail amoa@actx.edu.

Carolyn's Christmas Creations
is your Platinum Dealer for Demdaco **WILLOW TREE ANGELS** AND ACCESSORIES
* Stop by and see Carolyn's wonderful selection of new, aged and retired pieces!
224 W. 2nd St. Muleshoe 272-5911
All Major Credit Cards Accepted

New Covenant Church

We are a ministry family. People to wait on the Lord with. People to laugh with, cry and enjoy Him with. We are so excited to be a part of each other, and the Lord's ministry together. We are asking Him to empty us, to dump us out as His voice to the world in whatever way He chooses. We are prayerfully, passionately, pressing hard after the person of Jesus Christ. "To know Him and make Him known."
Phillipians 3:10

We invite you to come be a part of our community outreach we call the 5th Annual Noah's Ark Fling

Thanks to our generous community, this year will be the best yet. Our desire is to reach Muleshoe and surrounding communities with the saving message of Jesus Christ and provide a protected environment for the children of our communities.

The event, cosponsored by New Covenant Church and Trinity Baptist Church, will be held October 31 from 5:30 to 8:30 p.m.

We will have booths, rides, prizes, candy, drinks and entertainment for all. We only ask that you bring a canned product to donate to the Bailey County Food Pantry. Also, 184 Christ, a popular youth singers and songwriters, will be performing during the festival.

Our heartfelt thanks to our awesome community and local business owners for their generous cash contributions. Hope to see you there!

Pastor Steve Claybrook
Contact: 965-2864

INVENTORY CLEARANCE
THE BANKER SAYS "TOO MANY - THEY GOTTA GO!"

03 DODGE RAM 1500 • AUTO • TILT/CRUISE • CD • CHROME WHEELS #35093 MSRP \$20,405 \$17,595	02 DODGE DAKOTA QUAD CAB SLT • V8 • AUTO • ALL POWER • OH CONV. GROUP • TRAILER TOW • HD SERVICE GROUP #25209 MSRP \$25,395 \$21,295	03 DODGE RAM 1500 QUAD CAB • SLT • 4.7L V8 • AUTO • ALL POWER • CD #35029 MSRP \$26,640 \$21,995
03 DODGE RAM 2500 QUAD CAB 4X4 • HIGH OUTPUT CUMMINS TURBO DIESEL • 6 SPEED • AIR • TILT/CRUISE • AM/FM/CD • TRAILER TOW #35022 MSRP \$35,680 \$31,995	03 DODGE RAM 3500 QUAD CAB 4X4 • SLT • CUMMINS TURBO DIESEL • AUTO • ALL POWER • CASS/CD #35024 MSRP \$39,010 \$35,395	03 DODGE DURANGO SPORT • 4.7L MAGNUM V8 • AUTO • TILT/CRUISE • POWER LOCKS/WINDOWS • AM/FM/CD • ALUM WHEELS #35087 MSRP \$27,590 \$24,395

USED VEHICLES

DODGE DIESELS 96 CLUB CAB 2500 MSRP \$16,995 99 QUAD CAB 2500 MSRP \$20,995 01 QUAD CAB 2500 MSRP \$27,995 01 QUAD CAB 3500 MSRP \$23,995 01 QUAD CAB 3500 MSRP \$27,995 01 QUAD CAB 2500 MSRP \$23,995	SPORT UTILITIES 99 DODGE DURANGO MSRP \$16,995 00 DODGE DURANGO MSRP \$18,995 02 CHEVROLET 9-10 BLAZER MSRP \$16,995 02 CHEVROLET 9-10 BLAZER MSRP \$16,995 97 GMC JIMMY MSRP \$10,995	VANS 99 DODGE G-CARAVAN MSRP \$12,995 01 DODGE G-CARAVAN MSRP \$15,995 02 DODGE G-CARAVAN MSRP \$17,995 02 DODGE G-CARAVAN MSRP \$17,995 02 FORD WINDSTAR VAN SE MSRP \$19,995
--	--	--

7 YEAR 70,000 MILE POWERTRAIN PLEDGE

Save Over \$3,600 On These Brand New 03 Model Heavy Duties!

And! Chrysler Will Match Your Down Payment Up To \$1,000!*

FOR HASSLE FREE FINANCING APPROVAL CALL 1-800-311-6273

You're going to like our family

Benders **CHRYSLER DODGE**
 Family of dealerships 3400 Mabry Drive, Clovis
 762-4511 • 1-800-466-4513
 www.benderauto.com

1. \$1,500 Factory Rebate to Dealer. 2. \$2,000 Factory Rebate to Dealer. *On selected models up to \$1,000. All Vehicles +TT&L, WAC.

Cross Country teams will compete in Region I meet

The Lady Mule cross-country team ran away with the District 2-3A title. Ashley Gutierrez set the pace for the Lady Mules by completing the two-mile course in Lubbock, s Mae Simmons Park in a time of 13:24 to place fifth. Brandi Wood was the second Lady Mule to cross the finish line in 13:51 for ninth and with a 13:55 Jessica Withrow took tenth. Mindy Locker, s 14:12 was good for twelfth, Eva Pylant was thirteenth with a 14:13 and Gradee Adrain placed fourteenth with a time of 14:25. "We knew when the season began that we had a very good and determined team," said Muleshoe cross-country coach Cary Sudduth. "Team effort is a big part of winning a district title and these girls were not going to be denied."

"We know Perryton, Canyon and Borger all have strong teams in the North district but as far as the rest of the Region we know very little about them. We think we are competitive regionally — we feel we have a chance to qualify for Austin. These kids are competitors." The Mules earned the right to compete at the Region I Meet by placing third in District 2-3A. Federico Arzola completed the three-mile course in 19:35 to pace the Mules

with a ninth place finish. Eric Villa was 15th with a 21:30 and Chris Pena took 16th with a 21:36. Rudy Gonzales finished 18th in 21:45 and Jimmy Franco was 19th with a time of 27:41.

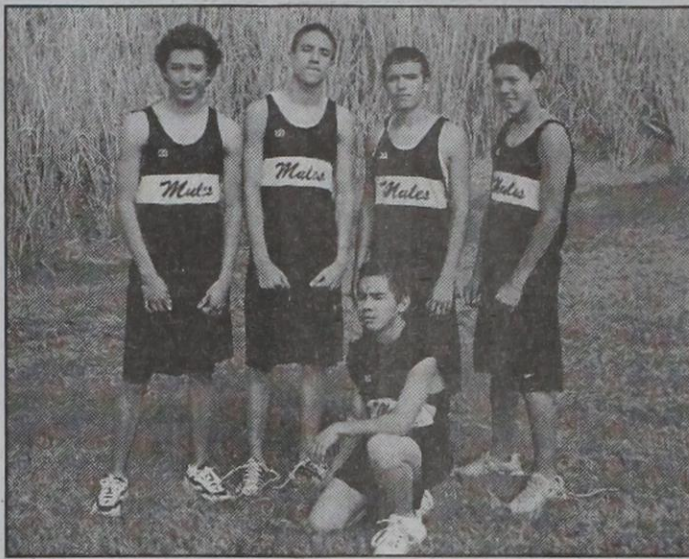
"These young men represented Muleshoe well and have gotten better as the season progressed. They were seldom able to work out as a team with two of them also playing football." Continued Sudduth. "We were proud to have a team that advanced."

The JV Lady Mules domination in the District 2-3A Meet would indicate the Lady Mules will continue to be strong in cross-country. The Lady Mules scored a perfect 15 by grabbing the first five places. Hillary Tipps set the pace with a first place finish with a time of 14:42. Mitci Hawkins was second with a 14:46 and Cassandra Gonzales was third with a 14:51. Jody Hawkins placed fourth with a 15:12 and Jamie Carpenter rounded out the top five with a 15:18. The "Black Wave" of runners did not stop. Amber Cowart was sixth with a 15:30, Paje McRoberts placed ninth with a 15:49 and Irene Torres was sixteenth with an 18:15. "It was very impressive to watch all those

black jerseys cross the bridge and head for the finish line in a group. I was really pleased with the performance of all our kids in the District Meet and now we begin to get ready to run in the Regional Meet," added Sudduth.

The Lady Mules will

compete in the Region I Meet in Mae Simmons Park at 12:00 noon Saturday November 2 and the Mules will run at 12:30. The top three teams at region earn the right to travel to Austin for the Texas State Meet.



Left to right, Rudy Gonzales, Chris Pena, Eric Villa, Federico Arzola, kneeling, Jimmy Franco



Left to right, Jessica Withrow, Branki Wood, Ashley Gutierrez, Lindsey Wood, Eva Pylant, Mindy Locker, Gradee Adrain

JV Mules steamrolled the Bobcats

The Dimmitt Bobcats did not have enough players to field both JV and freshman football teams. The Mules combined their teams when the Bobcats visited Muleshoe Thursday night. Even though the field in Benny Douglas Stadium was wet and soggy it did not seem to slow the Mules as they steamrolled the Bobcats 44-6. The Mules scored early and often in the first half utilizing a plethora of personnel. Following the opening kick the Mules stripped the ball from the Bobcats and recovered the loose ball on Dimmitt, s 19-yard line. On the Mules first offensive play Raul Munez scored on a 19-yard run. The Mule defense stifled the Dimmitt offense and forced them to go three and out on their second possession. Muniz returned the Bobcat punt to the Dimmitt 33 to give the Mules their

night. Caleb Heinrich went 17-yards on a counter for the Mules second TD. On the Mules sixth offensive play Eric Sanchez hooked up with Rudy Gonzales on the Mule sideline. The Sanchez-Gonzales connection covered 54 yards for the Mules third tally of the first period. Freddy Tovar and Rodrigo Mendoza teamed up to strip the Bobcats of the ball on their first play after the third Mule TD. The Mules recovered on Dimmitt, s 17. Sanchez located Derek Purdy open in the end zone to push the Mule lead to 24-0 with 3:39 remaining in the first period.

The Mules would put up one more TD before the first quarter ended. Sanchez called his own number on the quarterback option from the Shotgun. Kory Atwood set him free with a block and Sanchez scrambled 26-yards

Dimmitt, s only score came on a 30-yard two-play drive after recovering a Mule miscue. Landon Wilson answered the Bobcat tally with a 35-yard TD run on a quarterback option around the Mules right end. Sanchez was holding for the PAT but a high snap forced him to scramble. Sanchez tossed a two-point conversion pass to Muniz as he was being dragged to the turf. The Mules owned a 38-6 advantage at intermission. Neither team could find paydirt in the third period but the Mules recovered a Bobcat miscue late in the final frame. With only 1:32 remaining in the game Sanchez tossed to Tyler Sheets along the Mule sideline. Sheets tipped the ball and then made the grab in stride and rambled 60 yards for the Mules final tally. The freshman and JV Mules travel to Lubbock Cooper to

Courtesy photos by Lonnie Adrain

Jr. High cross country set top finishes

At the District 2-3A cross-country meet the seventh and eighth grade teams run together as one team. The Jr. High Lady Mules took third in the meet and the Mules moved up a place with a second place finish. Chelsi Hawkins led the Lady Mules by placing third and Ashley Grumbles finished sixth. Gini Sheets took eighth, Abby Lawrence finished 14th and Samantha Toscano was 19th. Erica Sanchez placed 20th, Kelsey Tipps was 31st and Jacy Lawrence took 35th. Natasia Daniel ran 37th, Ashley Scolley was 41st, Caitlin Wills ran 45th and Kimberly

Buffham placed 48th. The girls ran the same course as the varsity girls teams ran in Mae Simmons Park. Timothy Conner paced the Mules with a third place finish and Steven Martinez followed in fourth place. Dustin Barker ran fifth, Colby Carpenter was tenth and Colt Ellis finished eleventh. Julio Bustillos was 14th and Jordan Marlow took 15th for the Mules.

"Our kids all competed well and gave it there all in Lubbock," said Muleshoe Jr. High cross-country coach Amy Carlisle. "I was really proud of each and every one of our runners."

Harrison wins contest

By LEAH BELL

Journal writer

Thirty-three contestants participated with Alan Harrison winning the *Journal's* week eight football contest.

Harrison missed only five games to take home the \$25 first place prize.

Week eight's \$15 second prize went to the Shonda Black missing 6 games. Her tie-breaker score was 71.

Third place went to Kim Black also missing six. Her tie-breaker score was 79.

Claire Brown missed seven games and hit the tie-breaker score on the nail.

College games gave contestants problems this week. Louisiana-Monroe's win over Utah State was tied with Dimmitt's victory over Muleshoe as the most missed games of the contest. Only eight contestants guessed these games correctly.

In fact, five of the seven college games in the contest ended up being among the top ten most missed games of the week.

Eleven entrants missed Michigan's loss to Iowa.

Only one high school matchup made the top ten most missed games of the week.

Muleshoe's loss to Dimmitt caught twenty-five people off guard and tied for first place with Utah State at Louisiana-Monroe as the most missed games of the week.

College games giving contestants problems were: Iowa at Michigan, Northern Illinois at Western Michigan, LSU at Auburn, Utah State at Louisiana-Monroe and USC at Oregon.

Women dominated the week eight contest, winning seven of the top ten spots.

Rounding out the top ten finishers in week eight were: Claire Brown, 4th; Shelby Harrison, 5th; Sandra Orozco, 6th; John Graves, 7th; Travis Bessire, 8th; Jerry Morris, 9th and William Orozco, Charlotte and Terri Smith partnership and John M. Gonzales tied for 10th.

Some other contestants and their finishes were: Bruce Bruns, 11th; Veronica Gonzales, 12th; and Isaac Nicolas, 13th.

Please join us Nov. 8, 9 & 10!

CLASSIC COUNTRY CHRISTMAS

*'Tis the month before Christmas and all through the store,
Joe's elves are decorating and stocking the shelves galore!
A party we're having November 8th, 9th and 10th,
A Classic Country Christmas is just a hint!
We'll have cookies and punch, all for free!
And on Saturday tidbits of steak from the Big Texan, you'll see!
The trees are all decorated, the evergreens hung,
We have that perfect gift for family and friends, old and young!
And don't forget Daisy, Spot, Cowboy or 'ol Rover,
Our feed department has gifts for them all over!
Country Junction is packed with unique gifts, western and other,
And remember, wrapping is free, so you don't have to bother.
We look forward to having you as our Christmas guest,
And wish for you and your family that Christmas 2002 is the best!*

<p>Specials throughout the Store! Country Junction ☆ 10% off all Christmas Decorations ☆ Register to win a \$70 Christmas Wreath</p> <p>Boots ☆ Ariat Smooth Ostrich \$199⁰⁰ ☆ Ariat & Justin Full Quill Ostrich \$399⁰⁰</p> <p>Hats ☆ Bailey 100x Pure Beaver \$399⁰⁰ ☆ Bailey 20x \$249⁰⁰ ☆ Bailey 10x \$179⁰⁰ ☆ Bailey 5x \$99⁰⁰</p> <p>Register at Joe's for a gift at other local businesses as part of the Community Christmas Open House!</p>	<p>Storewide Specials!</p> <p>Free Refreshments More Giveaways!</p>	<p>See the special creations of area western artists during the Christmas Open House!</p> <p>La Ti Da — Original designs, jewelry, fur & leather purses Jayne Simmons Williams — Painting in pastel, oil, acrylic & watercolor Kathy Craig Rhodes — Painting and pencil drawings</p> <p>Win a \$200 Gift Certificate!</p> <p>Be one of six persons drawn to eat the HUGE 72 oz. Steak Dinner from the . . .</p> <p>BIG TEXAN STEAK RANCH AMARILLO, TEXAS</p> <p>Register at Joe's Oct. 26-Nov. 7! Six finalists will be drawn LIVE on the KTQM morning show on Nov. 8. The six lucky finalists will try to eat the 72 oz. steak and all the trimmings on Saturday, Nov. 9 at Joe's! The winner gets a \$200 gift certificate from Joe's! Come and watch and get a free sample of the Big Texan's fabulous steak, fresh from the grill!</p>
--	---	--

JOE'S BOOT SHOP
and COUNTRY JUNCTION
CLOVIS, NM • 1-800-658-6378

2600 Mabry Drive • Clovis, NM
Open 9-6 Friday, Nov. 8 • 9-7 Saturday, Nov. 9
1-5 p.m. Sunday, Nov. 10

Yesterday. Today. Tomorrow.

86 years of ag lending services.



Muleshoe Credit Office • 806.272.3010 • www.agmoney.com

• Farm & Ranch Loans • Operating Equipment & Livestock Loans • Rural Home Loans
• Agribusiness Loans • History of Patronage Payment • Recreational Land Loans



Jennifer Jinks, Justin Grissom marry in Fort Worth

Mr. and Mrs. Tom and Jo Jinks announce the marriage of their granddaughter, Jennifer Marie Jinks to Justin Carl Grissom, both of Fort Worth, Texas held Saturday, July 27, 2002, in the St. Andrews Catholic Church of Fort Worth. The Rev. J. Mark Smith and Father Luke Robertson officiated at the wedding ceremony.

Parents of the couple are Mr. and Mrs. Tim and Vicki Jinks, formerly of Muleshoe and both graduates of MHS, and Mr. and Mrs. Glen and Karen Whitaker and Mr. and Mrs. Carl and Carol Grissom all of Fort Worth.

The couple stood before an altar centered by a regal arrangement of majestic flowers and candlelight. The arrangement was dedicated in loving memory to Dalton Earl Grissom (grandfather of the groom).

The wedding selections were performed by Classical Guitarist Mr. Michael Dailey. For the seating of the mothers, grandparents and other family members and for the processional of the attendants, Mr. Dailey performed "Air on a G String" by Bach. For the processional of the bride he performed "Jesu Joy of Man's Desiring" by Bach and for the Recessional he performed "Bouree in E Minor", also by Bach.

Escorted and given in marriage by her father, the bride was attired in a Venus style white formal gown and a veil with Austrian crystals and satin edging. Complementing the bridal ensemble was a nosegay of exquisite casablanca white lilies and misty blue. Sheer organza ribbon complemented her bouquet.

For the traditional something new was the bride's gown and veil with her lovely accessories. She borrowed her paternal grandmother's blue topaz dinner ring, which she carried with her bouquet, and she wore the traditional blue garter.

Mrs. Kristina Kay Bowman and Mrs. Amanda Gooding, friends of the bride, attended the bride as matrons of honor. Miss Melissa Lynn Gardner and Miss Cari Louise Reed, both friends of the bride, and Miss Krysta Jan Rinard, cousin of the bride, served as bridesmaids. The bridal attendants wore identical floor length gowns and each held bouquets of the beautiful white lilies. Miss Bethany Ann Whitaker, sister of the groom, served as flower girl and was attired in a lovely gown featuring an empire waist with pleated front. The mothers and grandmothers, wearing beautiful long flowing gowns, also carried bouquets of the exquisite casablanca lilies.

Attending the groom as best man was Mr. Brandon Robert McElroy, friend of the groom. Groomsmen were Mr. Joe Andrew Barrientose and Mr. Matthew Joseph Schneider, both friends of the groom, and Mr. Ryan Michael Newcomb, cousin of the groom, and Mr. Austin Tomas Jinks, brother of the bride. Mr. Timothy Seth Jinks, brother of the bride carried the rings atop



Mr. and Mrs. Justin Carl Grissom

a lace pillow accented with ribbons and flowers.

The groom was attired in a black tuxedo with silver and black vest, black shirt, and silver tie. The groom's attendant, the father of the bride and the ring bearer wore black tuxedos with silver and black accents.

Others who were important assistants and officiants before and during the ceremony were the greeters, Michele Lee Grissom, sister of the groom and Taveus Kade Phillips, nephew of the groom. The lector was Mrs. Stephanie Lotz, friend of the bride, cantor was Miss Alissa Grissom, cousin of the groom and importantly carrying out the wedding ministry was Mrs. Susan McGowan and Mrs. Angela Rodriquez.

A reception immediately fol-

lowed in the parish hall of the church. While photographs of the wedding party were being taken, guests were ushered into a magical fairy tale setting of greenery with table settings of white and silver all gleaming with candlelight in unique arrangements with lovely candle holders. Photographs of the bride and the groom were displayed from all ages of their lives to the current wedding portraits of the bride, one being displayed of her in her bridal gown and veil in full length on a golden easel. Hors D'oeuvres were served by friends and relatives that were prepared by a caterer at several tables in the room, as well as fancy desserts and drinks. A great jazz combo provided music for the guests as they awaited the bride and groom. The traditional

first dance was then played for the couple when they arrived, followed with a dance of the bride and her father then the groom with his mother. Toasts were given by the best man and bride's father, followed by others in the party. The couple cut the beautifully decorated wedding cake, which was designed by the bride, and slices were graciously served to the friends and family.

Before leaving for a honeymoon at the Mediterranean Bed and Breakfast in Dallas, the bride and groom were escorted to their car with love and God's blessings on them.

The bride is a graduate of Arlington Heights High School and will be a senior education major this fall at Texas University of Arlington, Texas. She currently holds a managerial position at Starbucks in Fort Worth.

The groom is a high school graduate and is attending TCC working on his degree in law enforcement. He is working with Bass Brothers Security in Fort Worth. The couple reside in Fort Worth, Texas.

There were many out of town wedding guests, some travelling from New York and California as well as other parts of Texas.

Grandparents present were Mr. and Mrs. Eileen Langevin and Ms. Dorris Grissom, grandparents of the groom, all of Fort Worth. Ms. Mary Williams, of Fort Worth and Mr. and Mrs. Tom and Beverly Jo Jinks, of Muleshoe, grandparents of the bride.

A rehearsal dinner and party was held at the Reata Restaurant in Fort Worth, hosted by the groom's parents. A bridal brunch

was given at the Montgomery Street Antique Mall Tea Room. The hostesses for the brunch were the bride's three aunts, Ms.

Tammie Vaughn of Fort Worth, Mrs. Jan Rinard of Lubbock, and Ms. Paula Pass of Las Vegas, N.M.

M-PYRE AUTO SALES, INC.

SATISFACTION IS OUR #1 GOAL
Samuel Billingsley
Another Satisfied Customer



1112 W. American Blvd.
Muleshoe, TX
806-272-7777
Open: Mon.-Sat.
9 am -6 pm

Don't come to pieces looking for the right vehicle

We'll Build A Better Deal For You!
Stop In For Monster Savings!

Westin RANCH HAND EQUIPMENT DEALER

Dear Fellow West Texans:

When I first ran for Congress, I promised I would bring honest, disciplined leadership to the problems facing us. I have tried to do that.

During this Congress we passed many important pieces of legislation. We passed the largest tax reduction in history. We strengthened both our military and our homeland security against terrorism. We enacted a comprehensive farm bill and educational legislation. All of this, in my view, will benefit the people of West Texas.

While these accomplishments will improve the lives of people here in West Texas, I believe there are still great challenges ahead. We must have a comprehensive energy plan that promotes, not restricts, oil and gas production. We must provide our citizens with better access to affordable health care. I believe with the strong leadership of President George W. Bush, we can accomplish this. With your vote I believe these things can be accomplished.

Sincerely,

CONGRESSMAN

Larry Combest
Combest An Experienced Leader For West Texas



PAID FOR BY COMBEST CONGRESSIONAL COMMITTEE, JANE ANNE STINNETT, TREASURER

Medicare Supplement Insurance...

The State Farm Way!

- flexible • affordable
- backed by good neighbor service



Call State Farm Agent:

Mark Morton
101 Main Street
Muleshoe, TX
806-272-7519



Like a good neighbor, State Farm is there.®

statefarm.com™

State Farm Mutual Automobile Insurance Company
Home Office: Bloomington, Illinois

Call for details on coverage, costs, restrictions and renewability

Note: These policies are not connected with or endorsed by the United States Government or the Federal Medicare Program.

P-98415 12/00

Interim labeling guidelines are "good start"

SPECIAL TO THE JOURNAL
The U.S. Department of Agriculture's interim voluntary country of origin labeling guidelines provide a good foundation for the development of a market-driven country of origin labeling program, according to Curtis Preston, Bailey County Extension Agent.

"I believe these interim guidelines are a good start towards addressing some of the complexities surrounding the issues. The USDA should be commended for proposing the

guidelines and for allowing a 180 day reaction and comment period. This process allows various audiences in our industry to assess mandatory COL labeling before it goes into effect in September 2004," says Curtis Preston.

Under the guidelines, fresh and frozen muscle cuts of beef may be labeled at retail to indicate their country of origin. The guidelines provide uniform criteria for participating retailers. A retailer can label a commodity with

"United States Country of Origin" if certain criteria are met.

For beef, the covered commodities must be derived exclusively from animals born, raised and processed in the U.S., including animals that were born and raised in Alaska or Hawaii and transported for a period not to exceed days through Canada to the U.S. and processed in the U.S., said the USDA guidelines. In April 2003, officials will begin developing the plan for mandatory labeling,

based on input from the voluntary program.

"It is important to remember that these are voluntary guidelines, and there is opportunity for all parties to comment on how to improve and modify this system before the mandatory guidelines are developed. We can get sense of the success of the program, and then give suggestions to the USDA on how these guidelines could improve, before the program becomes mandatory," says Preston.

A Note of Thanks

We believe the decision our mother, Zudell Haroski, made to cease dialysis treatments was one that she made with complete confidence and knowledge of her final destination. Her faith was deep, quiet and inspiring.

Please accept our heartfelt "Thank You" for lifting us up in prayer, for telephoning, sending cards and stopping by Muleshoe Motor to check on us.

We are unable to convey to each of you just how much your acts of kindness helped to make our journey in unknown territory less stressful and how much more help we were to Mom because of you and those acts. None of us knew what the last phase of her journey would entail and we could not have made it without your support.

God Bless and Keep You All.

Wanda & Larry Hooten Kay & Richard Sims
Betty & Doug Deal Debbie Denton

GENERAL ELECTION (ELECCION GENERAL) BAILEY COUNTY, TEXAS (Condado de Bailey, Texas) NOVEMBER 5, 2002 (5 de noviembre de 2002) OFFICIAL BALLOT (BOLETA OFICIAL)

INSTRUCTION NOTE: Vote for the candidate of your choice by placing an "X" in the square beside the candidate's name. Place an "X" in the square beside the statement indicating the way you wish to vote. You may cast a straight-party vote (that is, cast a vote for all the nominees of one party) by placing an "X" in the square beside the name of the party of your choice. If you cast a straight-party vote for all the nominees of one party and also cast a vote for an opponent of one of that party's nominees, your vote for the opponent will be counted as well as your vote for all the other nominees of the party for which the straight-party vote was cast. You may vote for a write-in by writing in the name on the line provided and darkening in the box provided to the left of the line.

(NOTA DE INSTRUCCION: Vote por el candidato de su preferencia marcando con una "X" el cuadro al lado del nombre del candidato. Ponga una "X" en el cuadro al lado de la frase que indica la manera en la cual usted quiere votar. Usted podrá votar por todos los candidatos de un solo partido político ("straight-ticket") marcando una "X" en el espacio cuadrado a la izquierda del nombre de ese partido político. Si usted votar por uno de los partidos políticos y también vota por el contrincante de uno de los candidatos de dicho partido político, se contará su voto por el contrincante tanto como su voto por todos los demás candidatos del partido político de su preferencia. Usted podrá votar por inserción escrita escribiendo el nombre del candidato en la línea provista y llenando completamente el espacio cuadrado a la izquierda de la línea.)

Candidates for: (Candidatos para:)	<input type="checkbox"/> Republican (Republicano)	<input type="checkbox"/> Democratic (Democrático)	<input type="checkbox"/> Libertarian (Libertariano)	<input type="checkbox"/> Green (Verde)	Write In (Voto Escrito)
United States Senator (Senador de los Estados Unidos)	<input type="checkbox"/> John Cornyn	<input type="checkbox"/> Ron Kirk	<input type="checkbox"/> Scott Lanier Jameson	<input type="checkbox"/> Roy H. Williams	<input type="checkbox"/> _____ Write-In (Voto Escrito)
United States Representative, District 19 (Representante de los Estados Unidos, Distrito Núm. 19)	<input type="checkbox"/> Larry Combest		<input type="checkbox"/> Larry Johnson		
Governor (Gobernador)	<input type="checkbox"/> Rick Perry	<input type="checkbox"/> Tony Sanchez	<input type="checkbox"/> Jeff Daiell	<input type="checkbox"/> Rahul Mahajan	<input type="checkbox"/> _____ Write-In (Voto Escrito)
Lieutenant Governor (Gobernador Teniente)	<input type="checkbox"/> David Dewhurst	<input type="checkbox"/> John Sharp	<input type="checkbox"/> Mark David Gessner	<input type="checkbox"/> Nathalie Paravicini	
Attorney General (Procurador General)	<input type="checkbox"/> Greg Abbott	<input type="checkbox"/> Kirk Watson	<input type="checkbox"/> Jon Roland	<input type="checkbox"/> David Keith Cobb	
Comptroller of Public Accounts (Contralor de Cuentas Públicas)	<input type="checkbox"/> Carole Keeton Rylander	<input type="checkbox"/> Marty Akins	<input type="checkbox"/> Bowie Ibarra	<input type="checkbox"/> Ruben L. Reyes	
Commissioner of the General Land Office (Comisionado de la Oficina General de Tierras)	<input type="checkbox"/> Jerry Patterson	<input type="checkbox"/> David Bensen	<input type="checkbox"/> Barbara A. Hernandez	<input type="checkbox"/> Michael B. McInemey	
Commissioner of Agriculture (Comisionado de Agricultura)	<input type="checkbox"/> Susan Combs	<input type="checkbox"/> Tom Ramsay	<input type="checkbox"/> Vincent J. May	<input type="checkbox"/> Jan Woodward Elioessoff	
Railroad Commissioner (Comisionado de Ferrocarriles)	<input type="checkbox"/> Michael L. Williams	<input type="checkbox"/> Sherry Boyles	<input type="checkbox"/> Nazirite R. Flores Pel	<input type="checkbox"/> Charles L. Mauch	
Chief Justice, Supreme Court (Juez Presidente, Corte Suprema)	<input type="checkbox"/> Tom Phillips	<input type="checkbox"/> Richard G. Baker	<input type="checkbox"/> Eugene J. Flynn		
Justice, Supreme Court, Place 1 (Juez, Corte Suprema, Lugar Núm. 1)	<input type="checkbox"/> Mike Schneider	<input type="checkbox"/> Linda Yanez	<input type="checkbox"/> Juanah Parker		
Justice, Supreme Court, Place 2 (Juez, Corte Suprema, Lugar Núm. 2)	<input type="checkbox"/> Dale Wainwright	<input type="checkbox"/> Jim Parsons		<input type="checkbox"/> Brad Rockwell	
Justice, Supreme Court, Place 3, Unexpired Term (Juez, Corte Suprema, Lugar Núm. 3, Duración Restante del Cargo)	<input type="checkbox"/> Wallace B. Jefferson	<input type="checkbox"/> William E. Moody			
Justice, Supreme Court, Place 4, Unexpired Term (Juez, Corte Suprema, Lugar Núm. 4, Duración Restante del Cargo)	<input type="checkbox"/> Stephen Wayne Smith	<input type="checkbox"/> Margaret Mirabal			
Judge, Court of Criminal Appeals, Place 1 (Juez, Corte de Apelaciones Criminales, Lugar Núm. 1)	<input type="checkbox"/> Tom Price	<input type="checkbox"/> John W. Bull	<input type="checkbox"/> Stephan Kinsella	<input type="checkbox"/> Robert C. (Rob) Owen	
Judge, Court of Criminal Appeals, Place 2 (Juez, Corte de Apelaciones Criminales, Lugar Núm. 2)	<input type="checkbox"/> Paul Womack	<input type="checkbox"/> Pat Montgomery			
Judge, Court of Criminal Appeals, Place 3 (Juez, Corte de Apelaciones Criminales, Lugar Núm. 3)	<input type="checkbox"/> Cathy Cochran	<input type="checkbox"/> J. R. Molina		<input type="checkbox"/> Ollie Ruth Jefferson	
Member, State Board of Education, District 15 (Miembro de la Junta Estatal de Educación Pública, Distrito Núm. 15)	<input type="checkbox"/> Bob Craig	<input type="checkbox"/> David Schaeffer	<input type="checkbox"/> Brent A. Russenberger		
State Senator, District 31 (Senador Estatal, Distrito Núm. 31)	<input type="checkbox"/> Teel Bivins				
State Representative, District 88 (Representante Estatal, Distrito Núm. 88)	<input type="checkbox"/> Warren Chisum				
Chief Justice, 7th Court of Appeals District (Juez Presidente, Corte de Apelaciones, Distrito Núm. 7)	<input type="checkbox"/> Phil Johnson	<input type="checkbox"/> Floyd Holder			
District Judge, 287th Judicial District (Juez del Distrito, Distrito Judicial Núm. 287)		<input type="checkbox"/> Gordon Houston Green			
County Judge (Juez del Condado)		<input type="checkbox"/> Marilyn K. Cox			
District Clerk (Secretario del Distrito)		<input type="checkbox"/> Elaine Parker			
County Clerk (Secretario del Condado)	<input type="checkbox"/> Sherri Bessire Harrison				
Sheriff, Unexpired Term (Sherife, Duración Restante del Cargo)	<input type="checkbox"/> Richard Wills				
County Treasurer (Tesorero del Condado)	<input type="checkbox"/> Donna M. Kirk				
Justice of the Peace, Precinct No. 1 (Juez de Paz, Precinto Núm. 1)	<input type="checkbox"/> Herman L. Morrison				
County Commissioner, Precinct No. 2 (Comisionado del Condado, Precinto Núm. 2)		<input type="checkbox"/> C. E. Grant			
County Commissioner, Precinct No. 4 (Comisionado del Condado, Precinto Núm. 4)		<input type="checkbox"/> Jerry W. Damron			

Constitutional Amendment Election (Eleccion Sobre Enmiendas a la Constitucion)

- For (A Favor De)
- Against (En Contra De)

"The constitutional amendment authorizing the commissioners court of a county to declare the office of constable in a precinct to be dormant if the office has not been filled by election or appointment for a lengthy period and providing a procedure for the reinstatement of the office." ("La enmienda constitucional que autoriza a la corte de comisionados de un condado a declarar inactivo el cargo de condestable en un precinto si el cargo no fue llenado por elección o nombramiento por un periodo de tiempo prolongado y que contiene un procedimiento para la restitución del cargo.")

SCHOOL LUNCH MENUS

LAZBUDDIE October 30

Lunch — Chicken Spaghetti, hamburgers (PK-1), hot pockets, green beans, mixed vegetables, pineapple, salad, jell-o, cottage cheese, yogurt, milk variety

October 31

Lunch — Fish (PK-1), pizza, egg rolls, black-eyed peas, okra gumbo, macaroni & cheese, peaches, salad, jell-o, cottage cheese, yogurt, milk variety

November 1

Lunch — Manager's Special, milk variety

MULESHOE ELEMENTARIES

October 30

Breakfast — Breakfast burrito, assorted cereal, w/toast & jelly, assorted juice, milk variety

Lunch — Ham & cheese sandwich, hamburger w/lettuce and pickle, seasoned green beans, potato chips, pineapple, milk variety

October 31

Breakfast — poptart, assorted cereal, w/toast & jelly, assorted juice, milk variety

Lunch — baked potato with butter & cheese, pizza, tossed salad, pears, oatmeal cookies, milk variety, ranch dressing

November 1

Breakfast — cinnamon roll, assorted cereal, w/toast & jelly, assorted juice, milk variety

Lunch — BBQ on a bun, hamburger w/lettuce and pickle, seasoned green beans, peaches,

milk variety

November 4

Breakfast — Cheese toast, assorted cereal, w/toast & jelly, assorted juice, milk variety

Lunch — Nachos, hamburger w/ lettuce and pickle, campfire baked beans, spanish rice, pears, milk variety

November 5

Breakfast — Breakfast pizza, assorted cereal, w/toast & jelly, assorted juice, milk variety

Lunch — Soft-chicken fajita taco's, pizza, seasoned green beans, tossed salad, rosey applesauce, milk variety

November 6

Breakfast — Biscuit & sausage, w/cream gravy, assorted cereal, w/toast & jelly, assorted juice, milk variety

Lunch — Chicken Nuggets, w/roll & gravy, hamburger w/lettuce and pickle, mashed potatoes, seasoned broccoli, pineapple, milk variety

November 7

Breakfast — Cinnamon rolls, assorted cereal, w/toast & jelly, assorted juices, milk variety

Lunch — Chef salad, pizza, seasoned corn, potato rounds, cinnamon apple dessert, milk variety

November 8

Breakfast — Breakfast on a biscuit, assorted cereal, w/toast & jelly, assorted juice, milk variety

Lunch — Chicken pot pie, hamburger w/lettuce and pickle, tossed salad, peaches, brownies, milk variety

MULESHOE SR/JR HIGH November 1

Breakfast — Donut & cinnamon glaze, breakfast burrito, assorted cereal, w/toast & jelly, assorted juice, milk variety

Lunch — Chicken pot pie, chef salad, tossed salad, assorted chilled fresh fruit, brownie, milk variety

November 4

Breakfast — Breakfast pizza, donut & cinnamon glaze, assorted cereal, w/toast & jelly, assorted juice, milk variety

Lunch — Chicken fried steak, texas toast & gravy, chef salad, tossed salad, oven fries, mashed potatoes, assorted chilled fresh fruit, chocolate pudding, milk variety

November 5

Breakfast — French toast stix, w/syrup, breakfast burrito, assorted cereal, w/toast & jelly, assorted juice, milk variety

Lunch — Chili dog, baked potato w/butter & cheese, tossed salad, oven fries, baked beans, assorted chill fresh fruit, chocolate chip cookies, milk variety

November 6

Breakfast — Cinnamon rolls, pancake & sausage, w/syrup, assorted cereal, w/toast & jelly, assorted juice, milk variety

Lunch — Nacho Grande, chef salad, tossed salad, seasoned corn, assorted chilled fresh fruit, bluebell rainbow, milk variety

November 7

Breakfast — Biscuit & sausage, w/cream gravy, texas cinnamon toast, assorted cereal, w/toast & jelly, assorted juice, milk variety

Lunch — Turkey and dressing, w/roll, mashed potatoes, seasoned green beans, mixed fruit, w/marshmallows, milk variety, brown gravy

November 8

Breakfast — cheese toast, poptart, assorted cereal, w/toast & jelly, assorted juice, milk variety

Lunch — Soft chicken fajita tacos, chef salad, tossed salad, rice, Santa Fe rice, campfire baked beans, fresh fruit, assorted chilled rice krispie treat, milk variety

GUNS KNIVES INDIAN ARTIFACTS COLLECTIBLES JEWELRY

GUN & KNIFE SHOW

LUBBOCK FAIRGROUNDS
corner of Ave. A & 4th Street
Sat., Nov. 9 — 9 am to 5 pm
Sun., Nov. 10 — 10 am to 5 pm

"Early Bird Special" — 2 Adults for the price of one first hour each day!
Information Contact Don or Kim Hill (830) 257-5844
e-mail: info@texasgunandknifeshows.com website: www.texasgunandknifeshows.com

GUNS KNIVES INDIAN ARTIFACTS COLLECTIBLES JEWELRY

Name Brand Appliances & Electronics Available Through Our

SELECT BUYERS CLUB

COMPAQ PRESARIO COMPUTER WITH 17" MONITOR AND PRINTER

\$95 Per Month

Select Products for Select Customers

0% DOWN*
100% FINANCING*
LOW MONTHLY PAYMENTS*

- TVs • VCRs • DVD Players • Camcorders
- Stereos • DVD/CD Changers • Microwaves
- Computers • Refrigerators • Gas/Electric Ranges
- Washers/Dryers • Heating/Cooling Units

SE HABLA ESPANOL

CONTINENTAL CREDIT

LOANS \$100-495 • WHILE YOU WAIT OR BY PHONE
206 S. Main • Muleshoe • 272-3673

THANKS FOR READING THE JOURNAL!

Christian Unity Is a Priceless Thing

I spent some time in Lubbock this week attending some wonderful meetings and being reminded of what a priceless thing Christian unity really is.

I was reminded that among Jesus' last words was his prayer that all of his disciples "might be one" so that the world would believe that God the Father had sent the Son.

I was reminded that the job of God's people is not to create unity. God has already done that through Christ on a cross. Our job is to cherish, recognize, and celebrate the unity that all of

ceived so I wouldn't be lonely. Not to put too fine a point on it, I told him that he was created solely for my satisfaction. I hoped he'd bear that in mind.

Alas, I'm afraid Mom & Dad's plan went somewhat awry. My younger brother has never given me the deference and respect I, the reason for which he was created, deserve. He's been a little slow to accept the facts about his existence.

But we're still brothers, and it would be really silly for us to behave as if we weren't. We have the same parents. We had nothing to do with that. Our "brotherhood" was a gift, a given, an act of grace, that we in no way earned. And, most of the time, I'm proud to claim him! But we're brothers whether I claim him or not! If I don't, well, that's just silly.

Thank God that all of God's children are one! On our better days, I hope we like it, but we're brothers and sisters whether we like it or not!

We're family whether you praise the Lord with a pitch pipe or an 80-piece orchestra or a bagpipe solo! Our Father is bigger than that. I can't believe God cares how he is praised, just as long as he is!

We're family whether you are premillennial, or amillennial, or postmillennial, or panmillennial. It'll all pan out in the end, and I just want to be with all the family whenever! Our Father is bigger than our end-times theology.

God is a big God who unites us through nothing less powerful than the blood of his Son. Disunity? It's a big sin, bigger than any issue that's less big than the very divinity of Christ. Disunity dishonors Christ's sacrifice. It's a slap in our Elder Brother's face.

Curtis Shelburne is minister of the 16th & D Church of Christ in Muleshoe.



Focus On Faith
Curtis Shelburne

those who have accepted his sacrifice already have as brothers and sisters of Christ and children of the Father.

That reminds me...

I've always tried to be an exemplary brother to my two-years-younger sibling. It was for his own good that I thought I should explain to him how we both came to be. Yes, I admitted, I must have been quite a surprise! Mom was 42 and Dad was 44 when I was born. Sane people who already have three almost-grown kids don't plan to start a new family at that stage of life, do they? But, surprise!

Trying to be helpful to Jim, though, I tried to explain to him that he was indeed planned. Yes, he could know beyond a shadow of a doubt that my parents conceived and raised him with a serious purpose in mind. He was to be my companion. He was to be my playmate. He was con-

Richard Barton's

Used Car Madness

Thursday October 31st
Friday November 1st
Saturday November 2nd

\$29 DOWN DELIVERS!

USED CARS START AT \$1,990!

NO PAYMENTS TIL NEXT YEAR

'00 Ford Focus LX \$7,788
'01 Pontiac Grand Am SE \$10,888

Richard Barton
The Country Store Where Deal' in Is Easy! Guaranteed!

PONTIAC EXCITEMENT PASS IT ON
BUICK Its All Good!
GMC We are professional grade.

3300 Mabry Drive Clovis, NM 88101 505-762-2986 / 1-888-569-1900

Why would you go ANYWHERE ELSE?

LOW PRICES! Nobody Beats Our Deals!!

QUALITY SERVICE BEST Maintenance and Repair in the Business

COURTEOUS STAFF We'll Treat You Right!

HIGHEST TRADE ALLOWANCES

2002 Pontiac Grand Am SE \$222 DOWN PASS IT ON \$14,450

\$3000 CASH BACK OR 0.0% FINANCING FOR 60 MONTHS

2003 GMC SIERRA SLE 4 DR. \$317 DOWN WALK AWAY FOR \$250 OR \$25,940

2002 GMC SONOMA SLS X-CAB \$228 DOWN WALK AWAY FOR \$14,874 OR \$27,680

2002 GMC Sierra SLE X-Cab \$23,390 \$20,888
99 Chevy Tahoe LS 4x4 \$21,488

99 GMC Suburban SLE \$20,888
01 GMC Sierra SLE X-Cab \$23,390 \$20,888
01 Nissan Maxima GXE \$16,988
99 Chevy Silverado \$16,888
99 Chevy Blazer LS 4x4 \$14,988
01 Chevy Impala \$13,988
00 Pontiac Montana Van \$13,888
00 GMC Jimmy SLE 4x4 \$12,988
02 Pontiac Grand Am SE \$12,888
01 Chevy Malibu \$8,988
00 Saturn SL200 \$8,888
01 Pontiac Sunfire SE \$8,688
01 Chevy Cavalier \$7,888
98 Olds 88 Sedan \$7,788
00 Kia Sephia LS \$6,688
98 Ford Taurus SE \$6,388
01 Ford Escort \$6,388
00 Dodge Neon \$4,988

3300 Mabry Drive Clovis, NM 88101 505-762-2986 / 1-888-569-1900
www.richardbarton.com

Landowners and operators offered tool for decision-making

SPECIAL TO THE JOURNAL
MULESHOE — Farm Service Agency (FSA) has launched the "Base and Yield Update Option Analyzer (BYA)", an interactive web-based tool for landowners and operators to use in evaluating and calculating base and yield options for direct and counter-cyclical payments. The web-based calculator can be found at <http://www.fsa.usda.gov/pas/farbill/tools.asp>

"The 2002 Farm Bill affords producers the opportunity to update bases and yields allowing them to take advantage of yield improve-

ments due to improved technology resulting in government payments that are more in line with actual production," said Kim Hanlin, County Executive Director in Bailey County.

According to Hanlin, base and yield data currently on file at USDA service centers has been frozen since 1985.

The new tool is based on software developed by Texas A&M University's Agriculture Food and Policy Center (AFPC) in cooperation with the U.S. Department of Agriculture (USDA) and FSA. The analysis program helps pro-

ducers evaluate the economic consequences of selecting different base and yield options on a case-by-case basis for each of their respective operations. When using the analyzer program, producers will need to provide information including planted acres, yields and types of crops grown. The software will prompt producers to enter projected crop prices and various base and yield options that will be used to estimate six years of payments for each crop.

"Making changes to base and yield data is not a pencil and paper decision. Without the web-based tool, pro-

ducers would be confronted with an impossible task," said Hanlin.

FSA recognizes that there are numerous on-line base and yield calculators available to producers, but the Texas A&M model is the only program that has been certified and adopted by FSA and is therefore the only version that FSA supports with confidence.

Hanlin emphasized, "The agency fully supports educated consumers making informed decisions about their operations and encourages producers to use any and all calculation tools available to them, but return to the FSA

version when making final decisions."

Landowners interested in receiving direct and counter-cyclical payments may begin to sign-up for the 2002 and 2003 crop years on October 1, 2002 and have until April 1, 2003 to make base and yield elections for the new farm program. If no election is made by the April 1, 2003 deadline, the farm's bases will default to the 2002 base, plus oilseeds if applicable. This is especially important for those farms that did not participate in the 1996 farm program and whose records currently show no base acres.

"Although the decision to change existing base and yield data is ultimately that of the landowner and FSA or its employees cannot make those decisions for a producer; we will be more than willing to assist producers. We also encourage producers to work with and seek assistance from their local county Extension Agent," said Hanlin.

For more information on the base and yield calculator or related information, please contact your local FSA county office at 806-272-4538 or visit the national FSA web site at <http://www.fsa.usda.gov>.

ENTER MULESHOE JOURNAL'S NEW & IMPROVED FOOTBALL CONTEST!

UP TO \$150 DOLLARS WILL BE AWARDED EACH WEEK

1st Place-\$25 2nd Place-\$15 3rd Place-\$10
NEW! PERFECT GAME BONUS \$100

• RULES •

- Circle your choice as the winning team in each of the 18 games below.
- The entry with the most correct selections will win. In the event of a tie, the entry which picks the closest to the actual tie breaker score will win.
- Entries may be mailed to Muleshoe Journal, P.O. Box 449, Muleshoe, TX 79347 or dropped off at the office during business hours (8:30-5:00). Please mark the envelope FOOTBALL CONTEST.
- Entries for this week's contest must be received at the office or post-marked by **5 P.M. MONDAY, NOV. 4, 2002.**
- Muleshoe Journal employees are not eligible to win the contest.
- Decision of the judges will be final.

PERFECT GAME BONUS

If you can choose every game correctly and be within 10 points of the tiebreaker score, we'll throw in a \$100 bonus! Turn your entries in early because only the first perfect entry (if any) from each week is eligible for the \$100 bonus!

GAMES OF NOV. 7-11, 2002

You must fill in every blank!

Name: _____
 Address: _____
 Phone: (_____) _____
 Date turned in: _____ Hour: _____

TIE BREAKER



LITTLEFIELD
 AT
BROWNFIELD
 Combined Total of Both Teams: _____



Leal's RESTAURANT
 1010 W. American • 272-3294
BOOKER
 AT
WHITE DEER
 Tyrel Gear #55

MULESHOE MOTOR CO.
 1225 W. American • 272-4251
CANYON
 AT
PERRYTON
 Joseph Gonzalez #2

Wilson Drilling Co.
 W. Hwy. 84 • 272-5521
PLAINVIEW
 AT
PALO DURO
 Jordan Dale #51

Dale Oil Co., Inc.
 413 W. American • 272-5576
MULESHOE
 AT
SLATON
 A.J. Flores #33

Bailey County Farm Bureau
 1612 W. American • 272-4567
OKLAHOMA
 AT
TEXAS A&M
 Ryan Marricle #60

Maple Coop Gin
 Maple • 927-5501
EAST CAROLINA
 AT
HOUSTON
 Rey Martinez #61

James Crane Tire Co.
 107 Main St. • 272-4594
VERNON
 AT
CHILDRESS
 Tatom Heathington #4

West Camp Gin, Inc.
 West Camp • 925-6681
HALE CENTER
 AT
FLOYDADA
 Bryan King #35

McDonald's of Muleshoe
 1315 W. American • 272-3333
IDAHO
 AT
NORTH TEXAS
 Andrew Reeves #84

Five Area Telephone
 West Plains Telecommunications
 302 Uvalde • 272-5533
OREGON
 AT
WASHINGTON STATE
 Matt Sadler #10

Muleshoe Animal Clinic
 Muleshoe Vet Supply
 1430 US Hwy. 84 • 272-4990
LOUISIANA TECH
 AT
SAN JOSE STATE
 Luis Sanchez #63

Dent & Co.
 2800 W. American • 272-4296
KENT STATE
 AT
CONNECTICUT
 Glen Scott #52

McCormick Seeds, Inc.
 400 E. Ash • 272-3156
IOWA STATE
 AT
KANSAS STATE
 Landon Sheets #11

AZTECA MILLING L.P.
 E. Hwy. 84 • 272-6701
ATLANTA
 AT
PITTSBURGH
 Louis Simpson #80

M-PYRE AUTO SALES, INC.
 1112 W. American • 272-7777
HOUSTON
 AT
TENNESSEE
 Kyle Yell #12

Muleshoe Co-Op Gin
 Darwin Robertson • 272-4794
INDIANAPOLIS
 AT
PHILADELPHIA
 JV Kory Atwood #52

DOWN THE STREET

By LEAH BELL
Journal writer

Down the street this week, Family Nurse Practitioner Kate Sawal will be leaving her position at the South Plains Health Provider Clinic here in Muleshoe on November 8.

I talked with her at church on Sunday and Sawal told me that her plans are to find a nursing position in Miami, Florida.

She'll be living with her son until her plans are finalized.

"I don't want to work at night any longer. I should be able to find a nursing position that allows me to work during the day," she said. "It's important for me to be on a schedule similar to my son and his family."

All the girls in the office want to wish Sawal much luck and let her know that she will be missed.

They also hope *Journal* readers and clinic patients will let Kate know how much her service to this community is appreciated. So, if you know Kate and see her around town, do just that!

Norma Bruce, Judy Davenport and Dave and Clara Sudduth got a chance to see George Strait in concert in Lubbock a couple of weeks ago.

Bruce reports that the concert was very crowded and very enjoyable.

Rama Smalling mentioned going to the same concert. She didn't go with the Bruce group, but reported having a great time as well.

Charles Hamilton is recovering nicely from triple-bypass heart surgery he had about a month ago.

His wife, Margaret, told me that he's feeling stronger every day. He should be back at work for a couple of hours a day in the next week or so.

I asked her about his heart attack and it turns out that Charles didn't have an attack or even a "history" of heart problems.

"He passed out at work (C&H Equipment) in July and that's what started the whole thing," said Margaret. "He was riding his bike the day before he passed out. Not only that, but he had enclosed our patio and painted the trim of the house just this summer."

After he passed out, Charles ended up taking a battery of tests over next two months. Doctors finally determined that he should have surgery.

Margaret said that she never expected doctors to find the amount of blockage they did. Charles had 90 to 95 percent blockage in three areas.

"He didn't have any symptoms. He had just recently started acting tired." She added, "And I still couldn't keep up with him!"

Doctors expect him to be more energetic once he recovers completely.

"I don't know how I'm going to ever keep up with him now," she joked.

Throughout the whole ordeal, Margaret suffered from dangerously high blood pressure which was at least partially stress related. She is still trying to control her blood pressure with three different medicines.

Mary Hicks called the *Journal* office with an update on her sons, Randy and Gary Watkins.

Randy is in his third year anesthesiology residency at Texas Tech University Medical Center in Lubbock.

His wife, Richelle, currently works for a fertility clinic in Lubbock. She has also been a labor and delivery nurse and nurse recruiter.

Randy and Richelle left Muleshoe over ten years ago. While here, they ran the EMS service.

The couple has two sons at home, Tye, 13, and Ryan, 10.

Richelle has a son, Sam, adopted by Randy many years ago, who is in the Navy and stationed in Hawaii.

Sam is married to Kathleen and they have two sons.

Gary is in the Dallas area working for H.C.F.S., a hospital collection agency.

Although unsure of his exact title, Mary told me that his job is computer related and requires billing knowledge among other things.

Gary has been considering returning to college to acquire his master's degree, possibly pursuing a degree in accounting.

J.K Adams called the *Journal* office last week to report .87 of an inch of rain on Wednesday, Oct. 23. As of this writing, he hadn't reported any amounts from Friday or Saturday's rains. The Bell place received about four inches of rain last week.

Charlotte Holt stopped by the office last week to tease me about getting her football contest partner's name wrong.

She and Terri Smith won second place in the week seven contest. I reported that she and Terri Martin won.

"Terri hasn't been a Martin for lots of years," Holt said.

Terri, I apologize. Guess I'm starting to show my age.

Superintendent Gene Sheets was recently the object of a practical joke perpetrated by Dawn Williams and Lisa Whalin, who works for Sheets.

Dawn and Lisa have been walking three miles each evening as part of their exercise routine. Sheets lives in the same neighborhood as they do and always pretends to swerve his gray Lincoln in their direction, as if to run over them, when he catches them walking. Because of this, Dawn and

Lisa decided to pull their own prank.

They sweet-talked Lacy Kirk, retired DPS trooper and self-proclaimed prankster, into serving Sheets with a complaint stating: "two THIN, white female street walkers then, and there said you did attempt to pick up said streetwalkers, with the hood of your suspicious looking gray Mercury four-door vehicle."

Sheets' retribution? As ordered by the fake complaint, a spoken apology: "I, said perpetrator (Sheets), do solemnly promise not to pick up said street walkers anymore. I will pull over and give them the right of way whenever I see them."

The report was, of course, factually written by Dawn and Lisa.

This is where I came in. Dawn called my office last week and asked a favor.

Neither she nor Lisa had heard anything from Sheets about the "complaint," and she was dying to hear what he had to say about it. So, I called him up, claiming that I had received a "tip" from an anonymous source who had told me about the complaint. I stated that I wanted to give him a chance to comment on the subject be-

fore the story hit the paper.

Immediately, I heard uproarious laughter. Sheets said, "They've gone too far now! Lisa, get in hear!"

I refused to release the name of my informant (as all good journalists do), but he was savvy. I won't disclose the rest of our conversation, but suffice

it to say, I am now on Sheets' "list" along with Lisa and Dawn.

Sheets claims to have a long memory. I hope he's just "foolin'."

If you see the superintendent around town, ask him about his unofficial comment to the *Journal*. It was worth a real chuckle.

Jennyslippers plan sidewalk art contest in honor of the Cranefest

SPECIAL TO THE JOURNAL

The Jennyslippers will be sponsoring a sidewalk art contest in conjunction with Cranefest, which is scheduled for Saturday, November 2.

The art contest will be held on Main Street with registration beginning at 10:30 a.m. in the old Joe's Boot Shop parking lot. The Contest will begin at 11:00 a.m..

All participants will be given 45 minutes to complete their chalk drawings, which are required to be of birds or animals in the nature setting. Chalk will be provided. Judging will be at noon and awards will be presented at 1:30 p.m..

First, second, and third place winners will

be chosen in each of four age groups: Preschool through 2nd grade, 3rd through 5th grade, junior high, and high school.

Winners will receive Mule-bucks, which can be spent just like cash at many of Muleshoe's local businesses.

Entry forms for the contest will be made available at all Muleshoe schools, or can be picked up at the Muleshoe Chamber of Commerce office.

Entry forms should be submitted to Donna Kirk in the County Treasures's Office at the Bailey County Courthouse by Wednesday, October 30th, but entry forms will be accepted on the morning of the contest.



HOLD ON TO YOUR HOLIDAY CASH

Your first payment is not due until February 2003!

Plus, Chuck gives bigger discounts than anyone on quality used vehicles!

 <p>2002 Ford ESCORT • LOW MILES! • FACTORY WARRANTY! • Power windows/locks • Automatic • Cruise • Am/Fm stereo CD player • Much more!</p> <p>ONLY \$139 MONTH</p>	 <p>1997 Nissan EXTRA CAB • 4 wheel drive • Sporty 5 speed • Air conditioning • White in color • Am/Fm stereo cassette • Much more!</p> <p>ONLY \$179 MONTH</p>		
 <p>1999 Ford EXPLORER • FULLY LOADED! • LOW MILES! • Leather interior • New tires • Very clean • Am/Fm stereo CD player • Much more!</p> <p>ONLY \$209 MONTH</p>	 <p>1999 Ford EXPEDITION • FULLY LOADED WITH GOODIES! • Leather interior • 3rd row seat • Triton V-8 • Very clean inside • LOW MILES!</p> <p>ONLY \$299 MONTH</p>		
 <p>1992 Pontiac FIREBIRD • Good looking car • 6 speed • Nice audio system WAS \$5,995</p> <p>ONLY \$3,995</p>	 <p>2000 Chevrolet CAVALIER • Very low miles! • Factory warranty • CD player</p> <p>ONLY \$127</p>	 <p>1998 Chevy S-10 EXTENDED CAB • Sport truck • Professionally dropped!</p> <p>ONLY \$169</p>	 <p>1999 Chevy ASTRO VAN • Loaded! • 7 passenger • Alloy wheels • Nice!</p> <p>ONLY \$169</p>
 <p>1995 Chevy C1500 SILVERADO • Extended cab • Good looking truck!</p> <p>ONLY \$199</p>	 <p>1998 Chevy BLAZER 4x4 • Loaded! • Air conditioning • Am/Fm CD player</p> <p>ONLY \$199</p>	 <p>1998 Chevy BLAZER • Loaded! • Low miles • Very clean!</p> <p>ONLY \$209</p>	 <p>1996 Lincoln MARK VIII • FULLY LOADED!</p> <p>ONLY \$239</p>

DEFERRED PAYMENT OFFER ENDS SOON - HURRY IN!

All used vehicles subject to prior sale + TT&L. *Down payment, if any, not deferred, OAC. †48 months @ 8.9% apr. ‡60 months @ 7.9% apr. §72 months @ 7.9% apr. ¶20% down, OAC.



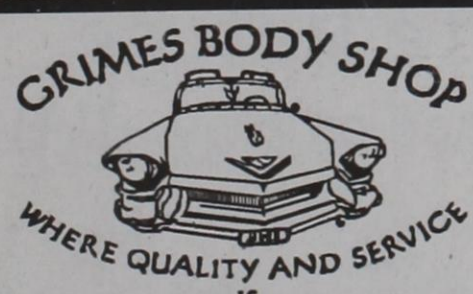
Chuck

DAGGETT

Wholesale & Tradeins

(505) 359-0947 • 620 S Ave C • Portales, NM

SERVING OUR BAILEY COUNTY CUSTOMERS FOR OVER 45 YEARS



Legendary

<ul style="list-style-type: none"> • CERTIFIED BY ALL MAJOR INSURANCE COMPANIES • CERTIFIED TECHNICIANS • QUALITY WORKMANSHIP • LIFETIME GUARANTEE 	<ul style="list-style-type: none"> • 24 HR. WRECKER SERVICE • RENTAL CAR AVAILABILITY • FREE LOAN CARS • FREE PICKUP & DELIVERY • FREE DETAIL SERVICE
--	--

DEDUCTIBLE PAYOUT PLANS AVAILABLE

GRIMES BODY SHOP IS THE ONE TRUE LEADER WHERE YOUR CONCERNS ARE OUR PRIORITY.

FOR AUTOBODY REPAIRS & ASSISTANCE ON INSURANCE CLAIMS CALL: 806-272-3939

LEGEND HAS IT. IT TAKES LESS TIME TO DO A THING RIGHT THAN TO EXPLAIN WHY YOU DID IT WRONG!



Journal photo: Beatrice Morin

All region choir

The Texas Music Educators Association held the Junior High all-Region Choir Auditions on Saturday, October 19, at Hutchinson Junior High School in Lubbock. Over 450 students auditioned for 210 spots in the choir. Six Watson Junior High School students made the choir. Junior high students are (back row, from left) Gerardo Gomez, bass-mixed choir; Jamie Hall, soprano 1 - treble choir; high school students are Janice Pacheco, soprano 1-treble choir and Christina Orozco, soprano 1-mixed choir; other Jr. high students are Castle Crawford, soprano 2-treble choir; (front row, from left) Calli Hancock, soprano 1-treble choir; Morgan Baca, alto-treble choir; and Elizabeth Symm, alto-mixed choir. These students will join the other Region Choir members and perform a concert on November 23, at Monterey High School in Lubbock.

STUDENT COMMUNITY ACTION CLUB

The Student-Community Action Club held its second meeting of the year this past Monday, October 21, 2002 at 7:30 PM in the home of Mindy Locker.

Erica Whalin called the meeting to order and asked Landon Sheets to give the opening prayer. Bailey Barrier read the minutes from last months meeting.

Jodi Hawkins gave the treasurers report and introduced the guest speaker, Dan Throckmorton, and presented him with a boutonniere.

Mr. Throckmorton and Don Wood were the citizens of the month for September and October, but Mr. Wood was not able to attend.

Mr. Throckmorton spoke to the club about upcoming fundraisers to restore the Janes Ranch House roof and furnishing the log cabin.

Old business discussed included helping the Bailey County Food Pantry and deciding on the clubs next fundraiser.

New business included a discussion about the upcoming Fall Festival with which club members are expected to help.

A Citizen of the Month for November was chosen and will be our next guest speaker. Bailey Barrier will contact the citizen.

The next meeting will be on November 18, 2002 at 7:30 PM in the home of Tyrel Gear.

Computer classes continue

The first in a series of four Community Computer classes was held Tuesday evening, October 22. Twenty-eight eager and willing participants were introduced to technology basics in the two computer labs at Muleshoe High School. Instructors April Smith and Chris Mardis enlisted the help of several Student Commu-

nity Action Club members, Web Mastering and Business Computer Programming students, Gina and Courtney Mardis and Cade Smith. Topics covered in the class include operating systems, keyboarding skills, word processing, desktop publishing, spreadsheet, database and computer programming.

TOPS NEWS

The Muleshoe TOPS No. 34 met on Thursday, October 17 at the Muleshoe Church of Christ. Laverne James leader, called the meeting to order, with the TOPS pledge. The fellowship song was led by Alma Robertson and a prayer by James. Linda White called the roll with 10 members weighing in.

Elaine Coburn read the minutes of the previous meeting and they were approved as read.

Best loser of the week was Rose Sain. First runner-up was Retha

Knowels and second runner-up was Lucille Harp.

Alma Robertson celebrated her birthday that day and members sang Happy Birthday to her. She received a gift from the "birthday box."

The meeting was closed with the singing of the "Goodnight" song led by Alma Robertson.

The previous TOPS meeting held October 10 met with 8 members weighing in. The best loser of the week was Rose Sain. Runners-up were Lucille Harp, first and Mollie Davis, second.

The Muleshoe Journal wants to be your local news source!

If you have story or photo ideas, let us know!

Muleshoe Journal

304 W. 2nd Street or P.O. Box 449, Muleshoe, Texas 79347
Fax 272-3567 email: ctyankee@fivearea.com

END OF GAME NOTICE

Hurry In For These Six!

MOUNTAINS OF GOLD
Game #254 (\$2)
Mountains of Gold
*Overall Odds are 1 in 3.66

REEL IN THE MONEY
Game #310 (\$1)
Reel in the Money
*Overall Odds are 1 in 4.71

Snake Eyes
Game #352 (\$1)
Snake Eyes
*Overall Odds are 1 in 4.88

These games will close on **November 30, 2002.**

You have until **May 29, 2003** to redeem any winning tickets for these games.

3 TIMES LUCKY
Game #289 (\$3)
3 Times Lucky
*Overall Odds are 1 in 4.01

CROSSWORD
Game #351 (\$3)
Crossword
*Overall Odds are 1 in 3.13

PRIDE OF TEXAS
Game #709 (\$5)
Pride of Texas
*Overall Odds are 1 in 3.57

You can claim prizes of up to \$599 at any Texas Lottery retailer. Prizes of \$600 or more are redeemable at one of the 22 Texas Lottery Claim Centers or by mail. Questions? Call the Texas Lottery Customer Service Line at 1-800-37-LOTTO (1-800-375-6886).
NOTICE: A Scratch Off game may continue to be sold even when all the top prizes have been claimed. *The odds listed here are the overall odds of winning any prize in these games, including break-even prizes. Must be 18 years or older to purchase a ticket. © 2002 Texas Lottery.

looking for a great local plan

\$300 MIN.

\$40.00

- * 800 Anytime Mins.
- * 3500 Nights/Weekends
- * Statewide Toll Free

Free Nation Wide Long Distance

Cellular 2000

912 XIT Drive
Littlefield, Texas
806-385-1472

CELLULARONE
Authorized Dealer

605 W. American Blvd.
Muleshoe, Texas
806-272-7523

4TH ANNUAL CRANEFEST

Saturday, Nov. 2nd

Muleshoe Wildlife Refuge

(18 miles south of Muleshoe on Hwy. 214)

SUNRISE BREAKFAST
6:30-9:00 AM
AT THE REFUGE OVERLOOK
Breakfast tickets are available from Muleshoe State Bank or the Chamber office

SIDEWALK ART CONTEST
Ages 4-18
Prizes will be awarded to four age divisions: Preschool-2nd grade; 3rd-5th grade, Jr. High and High School
Register for the art contest on Saturday from 10:30-11:00 AM on the north end of Main Street

Come see thousands of birds lift off at sunrise!

For information, call the Muleshoe Chamber of Commerce office at 272-4528.

Golden Anniversary
Herschell and Patsy Parker
will be celebrating their
50th Wedding Anniversary
on November 1, 2002

Herschell R. Parker and Patsy Blair were married November 1, 1952 in Clovis, New Mexico. They lived in Muleshoe until March 10, 1967, when they moved to Graham, Texas. Patsy received her LVN training and worked at West Plains Hospital for thirteen years. Ten of those years were spent as Dr. B.O. McDaniel's scrub nurse. After the Parkers moved, she worked for Graham General Hospital for eleven years as scrub nurse, then assistant supervisor of surgery. She then took a job at Hexcel until her retirement. While in Muleshoe, Herschell worked for Bailey County Electric Cooperative and Five Area Telephone Cooperative for thirteen years. He was then employed by Hexcel until his retirement. To the marriage were born three children: David Parker of Newcastle, Texas; William Woody Parker of Breckenridge; and Herschell Parker Jr., who died as an infant. The Parkers have seven grandchildren: Robert Parker of Weatherford; Jesse Parker of Graham; Angela Parker and David F. Parker Jr., both of Ft. Worth; Donna Little of Possum Kingdom Lake; and Jerry Don Shelton and Sheila Luna, both of Breckenridge. They also have two great-grandchildren: Remie Shelton and Miriya Little.

OBITUARIES

ALICE N. WHITLEY

Graveside services were held Thursday Oct. 24 at Ozona Cemetery in Ozona, Texas for Alice N. Whitley, 103, of Littlefield. The Rev. Bobby Broyles of the First Baptist Church of Earth officiated. Burial was in Ozona Cemetery.

Parsons-Ellis Funeral Home-Earth handled arrangements.

Mrs. Whitley was born July 2, 1889 in Robertson County, Texas. She died Tuesday, October 22, 2002 in the Hospitality House in Littlefield.

She married Noel Jackson Whitley in Runnels County, Texas on January 1, 1918. He preceded her in death, February 29, 1960.

Mrs. Whitley lived in Ozona from 1955-1980, where she was a member of the Ozona First Baptist Church. She lived in Odessa from 1980 to 1994. She was a member of the Emmanuel Baptist Church of Odessa. For the past eight years he has lived in Littlefield. She was a homemaker.

She is survived by two daughters, Evanel Winders of Earth and Jo Campbell of Odessa; four grandchildren; and seven great-grandchildren.

R.L. BREWSTER

Graveside services were held Thursday, Oct. 24 at the Bailey County Cemetery for R.L. Brewster, 72 of Muleshoe. Sam Billingsley officiated. Burial was in the Bailey County Cemetery.

Ellis Funeral Home handled arrangements.

Mr. Brewster was born December 21, 1929 in Spur, Texas. He died Monday, Oct. 21 in the Covenant Medical Center in Lubbock.

He married Evalyn Cooper in Lamesa on February 28, 1947.

He moved to Muleshoe in 1993 from Levelland. he was a veteran of the U.S. Army Reserves. He was a farmer and a member of the Church of Christ.

Mr. Brewster is survived by his wife; three sons, Alton Wayne of Lubbock, Marion of Muleshoe and Monty of Midland; a daughter, Sharon Leighdear of Watauga, Texas; Three sisters, Iris New of Arkansas, Gladys Terry of Midland and Bessie Lee Phillips of Littlefield; a brother, D.I. Brewster of Van Horn; and six grandchildren.

E.A. WALKER

Services were held Mon-

day at First Baptist Church in Farwell for E.A. Walker, 91 of Denison, Texas. The Rev. Greg Smith of Calvary Baptist Church of Denison officiated. Burial was in the Old Littlefield Cemetery, Littlefield.

Ellis Funeral Home of Muleshoe handled arrangements.

Mr. Walker was born April 2, 1911 in Cherry Mound, Texas. He died October 24 in Denison.

He married Wanda Laverne Womack in Clovis, NM on July 12, 1941.

Mr. Walker lived in Denison since November 1993 moving from Farwell where he lived since 1925. He was a member of the Calvary Baptist Church in Denison. He served in the Army Air Force during WWII. Mr. Walker worked as a farmer.

Survivors include his wife; sons and daughter-in-law, Jim and Jo Walker of Pilot Point, Texas, Ron and Brenda Walker of Garland, Texas, Randy Walker of Denison, Mrs. Jack (Jackie) Walker of Vega, Texas; three sisters, Mintora Leard of Lebanon, Ore., Geneta Poole of Amarillo, Margaret Poole of Aurora, Colo., also eight grandchildren, six great-grandchildren and nieces and nephews.

DEXTER BAKER, SR

Church services were held Thursday at the First Baptist Church in Sudan for Dexter Baker, Sr., 83 of Sudan. The Rev. Cliff Hargrove and Rev. Robert Roecker, pastor officiated.

Ellis Funeral Home of Sudan handled arrangements.

Mr. Baker was born February 17, 1919 in Chillicothe, Texas. He died October 28 in Sudan.

He married Ruth Jennings in Amherst, Texas on November 24, 1944.

He had lived in Sudan since 1924 moving from Chillicothe. He served on the Sudan Independent School Board, was a member of the Sudan Masonic Lodge #1241 32nd Degree Mason. He was a member of the First Baptist Church of Sudan where he taught Sunday School for many years. He served in the United States Navy during WWII and he was a farmer.

Survivors include his wife; three sons, Dexter Jr. and Larry Baker both of Sudan, Mark Baker of Lubbock; two daughters, Kay Neal of Dickinson, Texas and Betty Poyner of Muleshoe; one sister, Pee Wee Lance of Sudan;

two brothers, Calvin Baker of Sudan and Billy Baker of Spearman; 14 grandchildren, and 24 great-grandchildren.

The family suggests memorials be made to the First Baptist Church Mission Fund, P.O. Box 125, Sudan, Texas 79371, or Vista Care Hospice, 4418 Olton Rd., Plainview, Texas 79072.

BOB DAVISON

Graveside services were held Thursday at the Sudan Cemetery for Bob Davison, 67 of Sudan. Rev. Robert Roecker, pastor of First Baptist Church of Sudan officiated.

Ellis Funeral home of Sudan handled arrangements.

Mr. Davison was born June 11, 1935 in the Sudan community. He died October 29 in Lamb Healthcare Center in Littlefield.

He married Pheba Groom

in Muleshoe on April 11, 1976.

He had lived in the Sudan Community all of his life. He was a member of The First Baptist Church of Sudan. He graduated in 1953 from Sudan High School. He was a Sudan Volunteer Fireman for a number of years. He was a trucker and a farmer.

Survivors include his wife; one son, Mart Davison of Sudan; five daughters, Cheryl Morris of Muleshoe, Molly Shaffer of London, England, Pam Merriman, Stormy Apodaca and Brandy Pollard all of Sudan; two sisters, Sue Cardwell of Portales, New Mexico and Linda Wilcox of Hereford; thirteen grandchildren and two great-grandchildren.

The family suggests memorials be made to the Sudan EMS.

HOSPITAL NEWS

The Muleshoe Area Medical Center reports the following patient load.

Oct. 17 — Samuel Alvarado, Jr., James Edwards, Lou Jones, Leslie Mills, Miracle F. Samarron, Shyla Samarron, Donnie D. Stewart and Barbara M. Windle.

Oct. 18 — Samuel Alvarado, Jr., Lou Jones, Lonnie Kruger, Leslie Mills, Miracle F. Samarron, Shyla Samarron, Donnie D. Stewart

and Barbara M. Windle.

Oct. 19 — None reported.

Oct. 20 — None reported.

Oct. 21 — Lou Jones, Patricia A. Moore and Anna Zacharias.

Oct. 22 — Lou Jones and Patricia A. Moore.

Oct. 23 — Flora M. Bridwell, Luciano Daniel, Patricia A. Moore and Virgie Schaaf.

Oct. 24 — Flora M. Bridwell, Virgie Schaaf and Audrey L. Whitaker.


ATTENTION

KIRBY SALES & SERVICE
Joe Ennis, Distributor
Same Location, New Phone Number
505-763-9749
207 W. 7th - Clovis, NM


Basketball Shoes

In Stock: Black & White, Green & White


new balance



new balance



new balance



\$64.95

Reg. \$88
BOYS & GIRLS
SIZES
Layaway your size today!

Style #880

WILLIAMS ATHLETICS

1405 W. American Blvd. • Muleshoe • 272-6853

DON'T CROSS YOUR FINGERS.
YOU'VE MADE
THE RIGHT CHOICE.

KC Muffler & Mfg., Inc.

The Right Choice Since 1979



4" EXHAUST FOR DIESEL PICKUPS
Systems in-stock & ready to install on the Ford Powerstroke, Dodge Cummins & Chevrolet Duramax!

HIGH PERFORMANCE K&N AIR FILTERS

PERFORMANCE EXHAUST SYSTEMS
for Domestic & Imports

425 N. 1st • Muleshoe • 272-5333

Subscribe today! 272-4536



HOLD ON
TO YOUR
HOLIDAY
CASH!

Your first payment is not
due until February 2003!

Plus the
factory will
match your
down payment!
In addition to the
regular factory
rebates!..

2002 Ford
MUSTANG COUPE

- 3.8L engine • Sporty 5 speed transmission • Rear deck spoiler
- Power windows • Power door locks • Power seat
- Am/Fm stereo cassette & CD player
- Premium sound system
- Cruise control
- Much more!



7710241

SAVE
\$2,945

MSRP \$14,800
ONLY **\$15,885** OR **\$210** DOWN

1ST PAYMENT
NOT DUE UNTIL
FEBRUARY

2003 DODGE
STRATUS SXT

- 2.4L engine • 4-speed automatic transmission
- Light Almond Pearl metallic clearcoat finish
- Power windows • Power door locks
- Am/Fm stereo cassette & CD player
- Low-back bucket seats
- Much more!



090011

SAVE
\$2,123

MSRP \$14,400
ONLY **\$16,317** OR **\$215** DOWN

1ST PAYMENT
NOT DUE UNTIL
FEBRUARY

2003 DODGE
DURANGO SPORT

- 4.7L "Next Generation" Magnum V-6 engine
- 5 speed automatic transmission
- Power windows • Power locks
- High-back bucket seats
- Trailer tow package
- Fog lamps
- More!



0132724

SAVE
\$3,345

MSRP \$21,140
ONLY **\$24,795** OR **\$329** DOWN

1ST PAYMENT
NOT DUE UNTIL
FEBRUARY

2003 Jeep
GRAND CHEROKEE 4x4

- 4.0L "PowerTech" I-6 engine • 4-speed automatic transmission
- Power windows • Power door locks • Power heated mirrors
- Premium high-back bucket seats
- 16" All-terrain white letter tires
- Trailer tow package
- Fog lamps
- More!



7710241

SAVE
\$3,506

MSRP \$21,220
ONLY **\$27,724** OR **\$369** DOWN

1ST PAYMENT
NOT DUE UNTIL
FEBRUARY

Defer your 1st payment until February available on all used cars too!

<p style="font-size: 0.7em;">1995 CHEVY C1500 EXTENDED CAB</p> <p style="font-size: 0.7em;">MSRP ONLY OR</p> <p style="font-size: 0.7em;">\$8,895 \$179</p>	<p style="font-size: 0.7em;">2000 FORD TAURUS</p> <p style="font-size: 0.7em;">MSRP ONLY OR</p> <p style="font-size: 0.7em;">\$8,950 \$147</p>	<p style="font-size: 0.7em;">2002 PONTIAC SUNFIRE SE</p> <p style="font-size: 0.7em;">MSRP ONLY OR</p> <p style="font-size: 0.7em;">\$8,995 \$124</p>	<p style="font-size: 0.7em;">2000 DODGE INTREPID</p> <p style="font-size: 0.7em;">MSRP ONLY OR</p> <p style="font-size: 0.7em;">\$11,400 \$187</p>	<p style="font-size: 0.7em;">2000 FORD F-150 SUPER CAB XLT</p> <p style="font-size: 0.7em;">MSRP ONLY OR</p> <p style="font-size: 0.7em;">\$13,400 \$185</p>
<p style="font-size: 0.7em;">2002 CHRYSLER TOWN & COUNTRY LX</p> <p style="font-size: 0.7em;">MSRP ONLY OR</p> <p style="font-size: 0.7em;">\$18,500 \$256</p>	<p style="font-size: 0.7em;">2001 JEEP GRAND CHEROKEE 4x4</p> <p style="font-size: 0.7em;">MSRP ONLY OR</p> <p style="font-size: 0.7em;">\$18,800 \$264</p>	<p style="font-size: 0.7em;">1999 FORD F-350 CREW CAB 4x4 XLT</p> <p style="font-size: 0.7em;">MSRP ONLY OR</p> <p style="font-size: 0.7em;">\$19,500 \$422</p>	<p style="font-size: 0.7em;">2002 FORD EXPEDITION 4x4 XLT</p> <p style="font-size: 0.7em;">MSRP ONLY OR</p> <p style="font-size: 0.7em;">\$24,400 \$338</p>	<p style="font-size: 0.7em;">2002 FORD EXCURSION LTD 4x4</p> <p style="font-size: 0.7em;">MSRP ONLY OR</p> <p style="font-size: 0.7em;">\$26,300 \$363</p>

DEFERRED PAYMENTS AND MATCHING DOWN PAYMENTS END SOON - HURRY IN!

Illustrations may vary. All vehicles subject to prior sale. Rebates assigned to dealer. *Down payment, if any, not deferred. OAC. **Selected Chrysler models. †1000 maximum. ‡2000 factory rebate. ††945 dealer discount. †††1000 factory rebate. ††††1000 factory matching down payment. †††††1500 factory rebate. ††††††1000 factory matching down payment. †††††††945 dealer discount. ††††††††1000 factory rebate. †††††††††1000 factory matching down payment. ††††††††††1500 factory dealer cash. †††††††††††48 months @ 9.5% apr. ††††††††††††60 months @ 8.5% apr. †††††††††††††72 months @ 7.5% apr. ††††††††††††††72 months @ 6.95% apr. ††††††††††††††20% down, OAC.

Need
a truck?
CALL
CHUCK!

Chuck
DAGGETT

Ford Jeep

(505) 356-8581 1115 N Chicago Portales, NM

Check out our website:
cdagg.com

On the first curve from
Clovis in Portales



A longtime resident and
staff member of Lazbuddie ISD
is retiring:

Hardy Carlyle

There will be a retirement
reception for Mr. Carlyle
on November 10, 2002
in the school cafeteria
from 1:00 p.m. until 3:30 p.m.

From 11:00 a.m. to 1:00 p.m., the senior class will
be hosting a luncheon for anyone who has had to
travel a long distance to attend the reception.

If you would like to come and visit with Mr.
Carlyle, we welcome you to attend and show him
how much he has meant to our community and
school.

We're asking everyone to spread the news to
family members and friends!

BAILEY COUNTY DEVOTIONAL PAGE

Edward Jones
 Locally, talk with
KATHERINE SCHRAEDER
 220 S. Main St. - Muleshoe
 806-272-4102 Member SIPC

Muleshoe Country Club

Hwy. 84
 Muleshoe, TX
 272-4203

AGRILIANCE

RONNIE HOLT INSURANCE AGENCY
 Specializing in Crop Insurance
 218 Main, Muleshoe TX 272-4271

MAPLE COOP GIN
 927-5501
 Maple, Texas

Lowe's MARKETPLACE
 401 W. American Blvd. • Muleshoe • 272-4585

minsa corporation
 P.O. Box 484 272-5545
 Muleshoe, TX
 FAX (806) 272-5135 (800) 852-8291

MULESHOE PEA & BEAN, INC.
 1680 CR 1044 272-5589
 Muleshoe, TX

SAIN IRRIGATION & MACHINES
 Complete Pump Service
 W. American Blvd. 272-4397
 Walt Sain Muleshoe, TX 272-4148

J&S Dairy
 West of Muleshoe
 272-7706 Muleshoe, TX

FARMERS INSURANCE GROUP
 AUTO • HOME • LIFE • BUSINESS • HEALTH
 1602 W. American Blvd. • 272-7548
 Laurie Winchell, Insurance Agent Muleshoe, Texas

VIOLA'S
 Mexican Food Restaurant
 Open Tues - Sat. till 8:30 pm. Sun. till 2 pm. Closed Monday
 2002 W. American Blvd. • Muleshoe • 272-3838

RTM DAIRY
 Hwy. 84 & Airport Rd. • 965-3000
 Muleshoe, Texas

WES-TEX FEED YARDS, INC.
 Custom Cattle Feeding
 272-7555 Muleshoe, TX

WESTERN DRUG
 & Something Special Gifts
 1411 W. American Blvd. 272-3106 Muleshoe

FARMERS CO-OP ASS'N
 of ENOCHS
 "Your Farmers Owned Gin"
 Chemicals • Seed • Fuel & Oil • Fertilizer
 806-927-5511 Wade Baker, Mgr.

MULESHOE LIVESTOCK AUCTION
 Muleshoe, TX • Sale Every Saturday
 Clayton, C.L. & Thurman Myers • 272-4201

BLACKWATER AGRI ASSN. INC.
 West Hwy. 84
 Muleshoe, Texas
 272-4962

Leal's 107 E. Ash
 Muleshoe, TX
Tortilla Factory, Inc. 272-5772

MV ALLEY INC.
 2601 W. American Blvd.
 P.O. Box 631
 Muleshoe, Texas
 (806) 272-4266
 Mobile (806) 946-8763
 mvilnc@livearea.com

341 *Facts About The BIBLE* BY JOHN LEHTI

This is a dramatized version of facts taken from the Book of Genesis intending to show some of the customs of these ancient and traditional times

ABRAM IN EGYPT
 PHARAOH HAS SENT MANY GIFTS TO ABRAM, AFTER HAVING BEEN TOLD OF THE WONDROUS BEAUTY OF SARAI—THIS, OF COURSE, IS THE OPENING MOVE BY PHARAOH TO OBTAIN SARAI FOR HIMSELF....

... ABRAM, ALTHOUGH A PROSPEROUS MAN, HAS NEVER SEEN SO MUCH WEALTH BEFORE IN HIS LIFE....

IT IS AS I HAVE FEARED! PHARAOH WANTS SARAI FOR HIMSELF OR HE WOULD NOT SEND SO MANY PRESENTS!

... AND ABRAM CAN NOT REFUSE THE GIFTS, THAT WOULD BE AN UNFORGIVABLE INSULT TO PHARAOH! BUT IF HE ACCEPTS THE PRESENTS, HE CAN'T REFUSE PHARAOH'S FUTURE REQUESTS, EITHER!

... NOR DOES HE HAVE LONG TO WAIT FOR THE REQUEST! SHORTLY, THE APPROACH OF A CHARIOT CAN BE HEARD!

... IT IS PHARAOH'S ROYAL MESSENGER, COME NOW TO PRESENT A CLAIM FOR ABRAM'S BEAUTIFUL "SISTER"! AND NOW ABRAM WAITS WITH A COLD DREAD IN HIS HEART, AS THIS MESSENGER APPROACHES HIS TENT!

Next Week
 A SAD FAREWELL!

SAVE THIS FOR YOUR SUNDAY SCHOOL SCRAPBOOK

This devotional & directory is made possible by these businesses who encourage all of us to attend worship services.

- | | |
|---|--|
| <p>ASSEMBLY OF GOD
 FIRST ASSEMBLY OF GOD
 521 South First Street • 272-3017
 Jack Stone, Min. • 272-3984
 S.S. 9:45 am, W.S. 11 am & 6:30 pm,
 Wed. 7:30 pm</p> <p>EL BUEN PASTOR
 415 E. Ave. F • Pastor Felix Cadena
 S.S. 9:45 am, W.S. 11 am & 6 pm; Wed. 7 pm</p> <p>BAPTIST
 CALVARY BAPTIST
 1733 W. Ave. C. Rev. Jeff Coffman</p> <p>CIRCLE BACK BAPTIST
 Intersection FM 3397 & FM 298
 Circle Back • 946-3676</p> <p>FIRST BAPTIST
 220 West Ave. E.
 Dr. Stacy Conner</p> <p>FIRST BAPTIST
 Lazbuddie • 965-2126</p> <p>PRIMERA IGLESIA BAUTISTA
 223 E. Ave. E, Rev. Greg Guzman</p> <p>PRIMITIVE BAPTIST
 621 South First,
 Elder Cleveland Bass, Min.</p> <p>PROGRESS BAPTIST
 Progress, TX</p> <p>PROGRESS SECOND BAPTIST
 Arthur Hays, Min.
 1st & 3rd Sundays</p> <p>RICHLAND HILLS BAPTIST
 17th & West Ave. D
 Jason Schwoppe, Pastor</p> <p>ST. MATTHEWS BAPTIST
 Corner of W. Boston & W. Birch
 Floyd R. Monroe, Min.</p> <p>THREE WAY BAPTIST
 927-5467</p> <p>TRINITY BAPTIST
 314 E. Ave. B, Benny Wright, Min.</p> <p>CATHOLIC
 IMMACULATE CONCEPTION CATHOLIC CHURCH
 805 E. Hickory, Joseph Augustine, Min.</p> <p>CHARISMATIC EPISCOPAL
 ST. CLEMENTS
 1536 W. American Blvd. • 272-5954
 Father Sergio Leal
 Sun. W.S. 10:30 am</p> <p>CHRISTIAN
 TRINITY CHRISTIAN CENTER
 1723 W. American Blvd. • 272-3877
 Reydon Stanford, Min.</p> | <p>CHURCH OF CHRIST
 LARIAT CHURCH OF CHRIST
 Sam Billingsley, Min.
 S.S. 10 a.m.; W.S. 11 a.m. & 6 p.m., Wed. 7 p.m.</p> <p>LAZBUDDIE CHURCH OF CHRIST
 Nathan Crawford, Min.
 S.S. 9:30 am; W.S. 10:20 am & 5 pm; Wed. 7 pm</p> <p>MULESHOE CHURCH OF CHRIST
 22nd & W. American Blvd.
 Harry Riggs, Min.
 S.S. 9:30 am; W.S. 10:20 am & 6 pm; Wed. 7:30 pm</p> <p>16th & AVE. D CHURCH OF CHRIST
 Curtis Shelburne, Min. • 272-4619
 S.S. 9:30 am; W.S. 10:30 am;
 Growth Gr. 1:30 pm; Wed. 7:00 pm</p> <p>LUTHERAN
 ST. JOHN LUTHERAN
 Lariat, TX-David Symm, Min.
 S.S. 10:30 am; W.S. 9:30 am</p> <p>METHODIST
 FIRST UNITED METHODIST
 HISPANIC MINISTRIES
 E. 5th and E. Ave. D
 Pastor Benito Cavazos</p> <p>FIRST UNITED METHODIST
 507 W. 2nd St.
 Pastor Brad Reeves</p> <p>LAZBUDDIE METHODIST
 S.S. 9:30 am; W.S. 10:30 am
 Rev. Randy Thomas • 965-2121</p> <p>EL DIVINO SALVADOR U.M.C.
 619 E. 5th Street & Ave. G, Muleshoe
 Javier Rodriguez, Pastor; 272-6888</p> <p>NAZARENE
 NEW VISION CHURCH OF THE NAZARENE
 814 W. Ave. C • 272-3622
 Vance Roberts, Pastor-S.S. 10 & 11 am; W.S. 7 pm</p> <p>PENTECOSTAL
 UNITED PENTECOSTAL LIGHTHOUSE
 207 East Ave. G • 1-800-454-6051
 S.S. 10 am; Thursday, Bible Study 7 pm</p> <p>INTER DENOMINATIONAL
 NEW COVENANT
 Plainview Hwy., Steve Claybrook, Pastor
 W.S. 10 am; Wed. 7 pm</p> <p>MULESHOE COWBOY FELLOWSHIP
 First Assembly of God Fellowship Hall
 Steve Friskup, Minister—272-5199
 Service: 7:30 p.m. Thursday</p> |
|---|--|

BRUCE, INC. HEATING & AIR CONDITIONING
 TACL-8003360C, LP08638
 OFFICE (806) 272-5114
 FAX (806) 272-5323

REFRIGERATION
 BILL L. BRUCE
 PRESIDENT
 Hwy. 214 North
 Muleshoe, TX 79347

Antiques & Fine Things
 of Muleshoe
 2104 W. American Blvd. • 272-4217

FIRST AG CREDIT Muleshoe
 272-3010 • Fax 272-5388
 1601 W. American Blvd. • P.O. Box 424 • Muleshoe, TX

THE CONNECTION WAREHOUSE
 RadioShack 272-5532
 AND THE RENTAL PLACE - 272-4037
 117 Main • Muleshoe, Texas

Little Real Estate & Appraisal Services
 Residential • Commercial • Farm & Ranch
 272-4805
 MOBILE: 946-7965 Muleshoe FAX: 272-3729

IRRIGATION PUMPS & POWER
ZIMMATIC CENTER-PIVOTS
 W. Hwy. 84 272-4483

1315 W. American Blvd.
 272-3333
 Muleshoe, TX
 Now open at 5:30 a.m. every day!

McDonald's

United Supermarkets

New Tex Truck Parts & Service
 107 E. 5th St. • Muleshoe
 272-4106 or 800-918-9048
 4200 Mabry Drive • Clovis, NM
 (505) 762-7186 or (877) 762-9112

MULESHOE MOTOR CO.
 1125 W. American Blvd. 272-4251

Decorators Floral & Gifts
 616 South First 272-4340
 Muleshoe, TX

Boehning Dairy
DRINK MORE MILK.
 Brian & Tiffany Boehning Earth, Texas

Henry Insurance Agency
 "Serving You Since 1964"
 111 West Avenue B 272-4581
 Muleshoe, TX

Jarman Seed
PIONEER. 801 W. American Blvd.
 Muleshoe, TX • 272-5985

JAMES CRANE TIRE CO., INC.
 107 Main 272-4594
 Muleshoe, TX

PACO FEED YARD, LTD.
 Commercial Cattle Feeders
 P.O. Box 956 265-3281
 Friona, TX
 Feller Hughs-Mgr

McCormick Seeds, Inc.
 400 East Ash • Muleshoe
 272-3156
 Tim McCormick Roland McCormick

AG AVIATION
 2 1/2 miles North on HWY 214
 272-3066 FAX 272-8981
 P.O. Box 68 • Muleshoe, TX

Muleshoe Feed Barn
 311 W. American Blvd. HI-PRO
 Muleshoe, TX
 272-5626

WEST CAMP GIN, INC.
 Better Ginning & Courteous Service
 Rt. 2 Box 1000 • 925-6681
 Muleshoe, TX

ST BANK MEMBER FDIC
 202 South First 272-4515

BAILEY COUNTY ELECTRIC COOPERATIVE ASSN.
 Muleshoe — 272-4504 Morton — 266-8600

"THE FIVE AREA TELEPHONE COOPERATIVE, INC."
 West Plains Telecommunications, Inc.
 Five Area Systems, Inc., Plateau Wireless
 Five Area Long Distance - Five Area Internet
 302 Uvalde Muleshoe, USA (806) 272-5533

TEXAS FARM BUREAU INSURANCE CO.
 1612 W. American Blvd. • 272-4567 • Muleshoe

MULESHOE ANIMAL CLINIC
 GENERAL PRACTICE
 1430 US Hwy. 84 • Muleshoe Office: 272-3061

CENTRAL COMPRESS & WAREHOUSE
 SUDAN, TEXAS

WINKLES TRUCKS, INC.
 Box 757 (806) 247-2724
 Friona, TX

- Two locations to serve you -
 1900 W. American Blvd. 272-5337
 107 E. American Blvd. 272-3978
 Muleshoe, TX

NURSING HOME NEWS

Nancy Lemons brought ceramics for the residents to paint Thursday morning. Residents participating were Delphine Gruda, Howard Awbrey, Oattie Chester, Bootie Tiller, Mary Johnson, Aline Locke, Gladys Wilson, Alvin Isaacson, Diane Copley, Grace Plyer, Clydetta Mitchell.

Zona Gatewood directed a music devotional Thursday morning. Diane Copley quoted scriptures and gave word of encouragement.

Thursday afternoon, Joe and Clara Harbin and June Conway from the 16th and D Church of Christ baked and served pies to the residents.

Friday afternoon, the Muleshoe Retired Teachers included the residents in the their monthly meeting by having their meeting at Park View. Jack and Debbie Stone gave a gospel music and song concert. An assortment of finger foods and punch were served from tables decorated in a fall theme. The teachers received a tour of Park View following the program.

Saturday afternoon, Harold and Mary Jo Burge hosted the bingo bash. The

Burges served refreshments following the games.

Sunday afternoon, the Primitive Baptist Church came for church services.

Monday afternoon, Ann Williams came to visit the staff and residents. Ann delivered one of her homemade cakes to the staff.

Tuesday afternoon, Ruby Henderson, Edna Pearson, Beverly Wagnon, Dolores Garrett, Eva Nell Dale, Mary Jo Burge and Claudine Embry shampooed and set the ladies hair.

The Rev. Gary and Judy Hubbard from the Earth Methodist Church came Tuesday morning and directed a music and hymn devotional. Dale Whinery of California was a special guest.

Peggy Dent visited Park View on Tuesday. Peggy visited the residents and donated several nice puzzles for the residents pleasure.

William Bill Lambert, our new resident, has been visited by his daughter, Mary Lou Vandegreft of Cheyenne, Wyoming, his granddaughter, Sandra Nunn of Lexington, N.C., Theresa Stanford of Muleshoe, and Rev. Jack and Debbie Stone.

Susie Whatley was visited by Jean Kemp, her son, George Whatley, Ed and Donna Nickels, Bobby Quesenberry, Anna B. Lane, Nadine Macha and Joe Embry.

Harold and Mary Jo Burge and Wanda and Buster Kittrell served coffee and doughnuts to the residents Wednesday morning. Mr. Burge directed the reading and discussion time.

Buster Kittrell, Loyce Killingsworth and Rev. Steve Claybrook directed the singspiration/devotional time following coffee time.

Hattie Heathington's family came to Park View on Saturday to honor her with a birthday party. Hattie received many cards, gifts and flowers in addition to birthday cake, punch and visits.

Lora Dales family brought lunch and ate with lora in one of the sun rooms in celebration of Lora's birthday.

Delphine Gruda's daughter and son-in-law, Sherry and David Jenkins and Delphine's little "baby" puddles of the canine persuasion visited her recently.

Ricky Hunter receives visits from his mother Joyce Hunter daily.

Carbon monoxide poisoning can kill instantly

Houston — Every year hundreds of people die from carbon monoxide poisoning, most while they sleep.

"Carbon monoxide is an odorless, sightless gas that binds to the hemoglobin in the blood, which carries oxygen throughout the body,"

said Dr. William Ondo, a neurologist at Baylor College of Medicine in Houston. "So if you have a certain amount of carbon monoxide in your system, even if you're surrounded by oxygen, you will feel as though you are suffocating."

Ondo said high-level exposure to carbon monoxide can kill someone instantly. Minimal exposure can cause neurological damage, headaches, dizziness, sleepiness and nausea. These symptoms usually do not surface until a couple days after exposure.



VFW
Post 857
American Legion
Post 403

will celebrate
VETERAN'S DAY
with a
FREE Breakfast

November 11, 2002
at 6:00 a.m.

All veterans,
spouses, family,
widows or
widowers are
invited to attend at

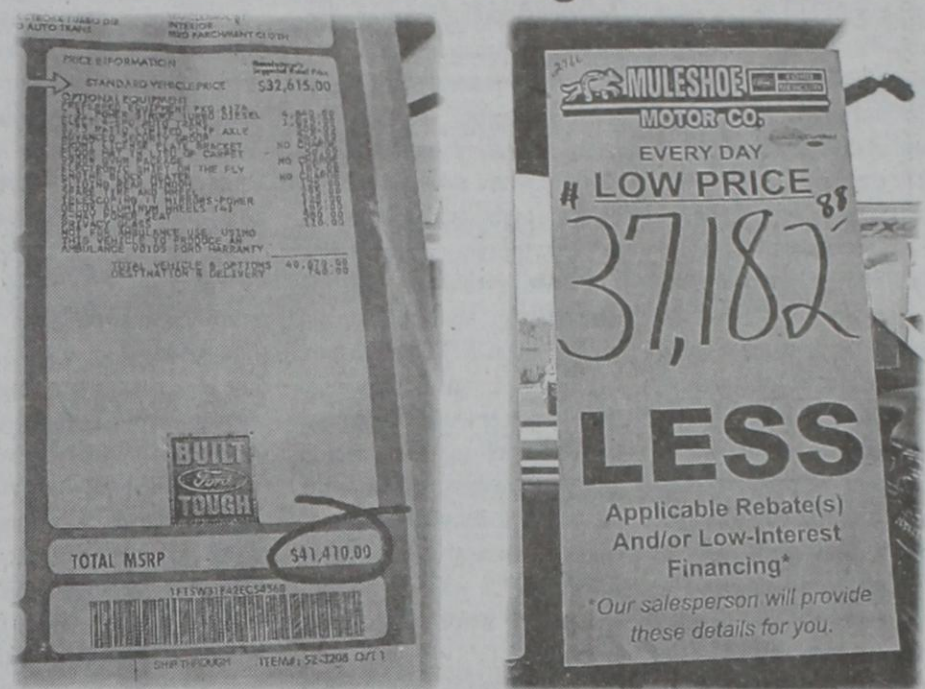
AMERICAN LEGION HALL
1500 W. AVE. B
MULESHOE, TEXAS

Car Buying Like You Want It To Be.
Car Buying Like It Should Be.
All Prices Clearly Marked.

See the Muleshoe Motor Co. sales team for details.

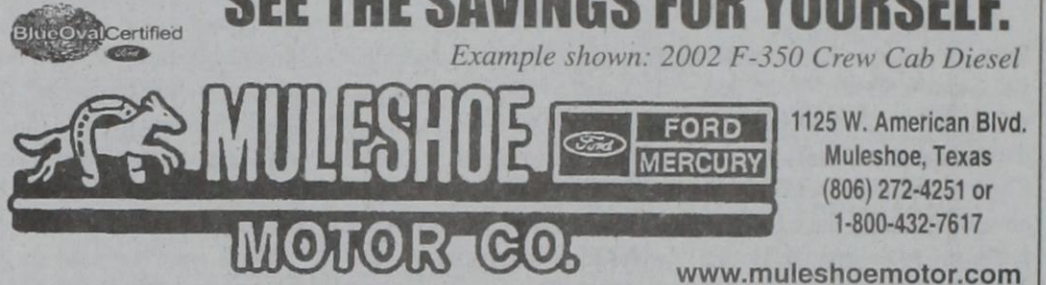
ALL NEW, EVERY DAY LOW PRICE

Look for the Orange Stickers.



SEE THE SAVINGS FOR YOURSELF.

Example shown: 2002 F-350 Crew Cab Diesel



MULESHOE MOTOR CO.
1125 W. American Blvd.
Muleshoe, Texas
(806) 272-4251 or
1-800-432-7617
www.muleshoemotor.com

You're Invited to A Weekend Pleasure
Muleshoe's Christmas Open House

SATURDAY & SUNDAY
NOVEMBER 9-10

...and it was always said of him, that he knew how to keep Christmas well, if any man alive possessed the knowledge.
From A Christmas Carol by Charles Dickens

May that be truly said of everyone at
Carolyn's Christmas Creations
224 West 2nd St. • Muleshoe • 272-5911
In the tradition of keeping Christmas well...
• Rare Mark 1 & 2 Hummels • Bing & Grondahl Christmas Plates
• Antiques & Fine Furniture • Life-Sized Bronzes • Gift Items
• Thousands of Ornaments & Decorations
• Stained Glass Art by Elaine Case, Nature Art by Kay Crane
& Wood Carvings by Craig Kirkwood

10% Storewide
on Sat. & Sun., Nov. 9-10
Register any day to win a \$500 Gift Certificate to be given away Dec. 20

Credit Cards Accepted
OPEN 7 DAYS
Saturdays 10-7
Sundays 1-6

Treat yourself to a truly unusual store!

Lasting Impressions Floral & Gifts

DOOR PRIZES AND REFRESHMENTS
Bring A Friend!

516 South First
272-4287
OPEN HOUSE HOURS:
SAT. 10-5, SUN. 2-5

We Gift Wrap

Home for the Holidays
Our first "Big Event" of the season!

SHEREE'S ATTIC...
STERLING SILVER JEWELRY SPECIAL: BUY ONE PIECE, GET A SECOND ITEM* AT 1/2 PRICE
• All Fashion Jewelry 20% Off
• Homemade candies & peanut brittle for sale

STOREWIDE SALE ON FALL & WINTER FASHIONS 20-40% OFF

• Register to win \$25 & \$50 Gift Certificates
• Merle Norman Holiday Gifts available
Open House hours:
Sat. 10-6, Sun. 1-5

1519 W. American Blvd. • 272-3459
*Equal or lesser value

Register at each location Saturday & Sunday Nov. 9th & 10th for a chance to win one of five traveling door prizes!

The holidays start here!

DECORATORS
Floral & Gifts
616 S. 1st St. • 272-4340
Refreshments Served
Door Prizes

Open House Hours:
Sat. 10 am-4 pm
Sun. 1-4 pm

Antiques & Fine Things
2104 W. American Blvd. • 272-4217
OVER 14,000 SQ. FT. OF ANTIQUES, COLLECTIBLES & GIFTS

OPEN HOUSE SPECIAL
10% OFF
PARTICIPATING VENDORS
Special Hrs. Sat. 10-6, Sun. 1-5
Our Traveling Door Prize is a \$100 Gift Certificate!
Credit Cards & Layaways

LETTER TO THE EDITOR

Dear Editor,

I am writing in response to the letters by Filemon Guzman and Victor Leal regarding the economy and other issues raised by them.

First, there is the issue of questioning a person's patriotism just because they voice an opinion criticizing our President or government. Theodore Roosevelt, a great Republican President, said, "To announce there must be no criticism of the President or that we are to stand by the President, right or wrong, is not only unpatriotic and servile, but is morally treasonable to the American public."

Second, Mr. Guzman states that our military, who did and are doing a wonderful job in Afghanistan and everywhere in the world had to be rebuilt? That they were decimated by years of combat? If that were so, how in the world have they managed to do such a great job? This is just a plain misstatement of facts. Our military has been and is, the best in the world.

Third, Mr. Guzman states that Bush "inherited a poor economic situation as a result of the tax and spend policies of the Democrats during the final years of the Clinton Administration." This is almost laughable since the Republicans controlled the House and Senate during much of the 90's, particularly at the end of his administration, and since at the end of 2000, 82 percent of Americans felt the economy was good. Last month it was 54 percent saying the economy was good, slightly higher, but compare it with only 41 percent now, a 13 percent drop in one month, a drop of 41 percent in two years. One registered Republican told the New York Times, "We need to feel safe about the economy, too." But Americans don't feel safe and here's why: On the economic measures that matter most, working families are much worse off today than we were two years

ago.

1. 14 million Americans who want jobs are out of work or working part-time involuntarily, an increase of 4 million from October 2000, and in Texas for that same time period the figures are 653,000 persons and a loss of almost 48,000 jobs (82,500 if you include manufacturing). Unemployment nationwide is now at about 5.9 percent and in Texas it is 6.1 percent.

2. The percentage of those living in poverty rose to 11.7 percent, the highest rate in a decade, in Texas the rate is 15.2 percent.

3. More than 41 million American are uninsured, up 1.4 million since 2000. Health care costs have exploded, rising more than 13 percent in 2002, and expected to increase 15 percent in 2003, the greatest jump since the early 1990's. Employee share of health care premiums increased 27 percent for individual coverage and 16 percent for family coverage.

4. Retirement security has been eviscerated for millions. IN Texas, over \$11 billion has been lost in 401k savings and personal bankruptcy filings for the second quarter of 2002 in Texas, are up 18,606.

5. Federal and state budgets have gone from boom to bust, with surpluses reported in January 2001 all but erased. The federal budget will end the year in deficit for the first time since 19997, and the 10-year \$5.6 trillion budget surplus projected in January 2001 has plunged over 94 percent, with last year's "millionaire tax cut" causing 31 percent of that decline.

6. The "war on terrorism" is costing billions of dollars, and is necessary. If there is a war with Iraq, the figures range from total troop commitments to those two areas to be at the very least \$4 billion dollars per day. The cost of oil will rise to a new high, and our economy will suffer greatly. Of course if it is absolutely necessary, we must do it. However, we must be sure that it is necessary and is not just to grab oil for Exxon and Chevron. Many economists declare that having the war with Iraq hanging over the heads of Americans depressing the stock market and causing Americans to spend less.

7. There is one good area of the economy that has saved us from a free-fall, and that is real estate sales and new homes sales. With the Fed dropping interest rates over 11 times in a year (a first), the mortgage rates now are lower than I can remember.

There are some fairly quick remedies to the economic fix we find ourselves in. Supply-siders, like Mr. Leal, favor trickle down, economics. We have just seen in recent months just how well that works. It doesn't work well because of greed. Rather than pass down (trickledown) profits to consumers or employees, huge salaries and bonuses for CEO's with stock options are paid out, with huge gains from tax-sheltered offshore accounts (talk about unpatriotic)! I am sure that Mr. Guzman and Mr. Leal both agree that when employees work hard for a company, they should reap the rewards, as do the shareholders. There has to be a good balance of supply and demand.

Right now, we need to get money into the hands of consumers, those with demand, because the pendulum has swung too far the other way. An immediate way to do that is a tax cut in the form of cutting payroll taxes. Extend unemployment benefits for those who lost their jobs due to 9-11 or the aftermath of Enron-like fiascoes. These are the people who will spend money, which will get our economy moving again. We need to put probably another \$100 billion in the economy over the next year, according to Paul Krugman, an economist from the New York Times, but how can we pay for it? By putting a hold on further tax cuts for the very afflu-

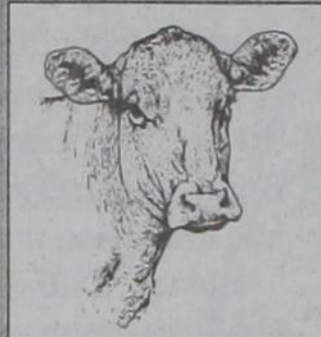
ent, until we can see ourselves in a better position to give an across-the-board tax cut to everyone, including the middle-class working families. We have to address these economic issues soon or

we cannot fund the urgent issues of education, social security, or healthcare.

Last, the bottom line is this: In the 90's through 2000, we had unprecedented prosperity and in

two short years, we are in a mess. The question I have for the readers is "Are you better off now than you were two years ago?"

LINDA MCGONAGILL
Democratic chairwoman



Muleshoe Cattle Market

SATURDAY, OCT. 26, 2002

REPRESENTATIVE SALES

1201 cattle, 402 hogs, 261 sheep and goats for a total of 1864 livestock were sold at the October 26th sale. Market steady, to lower with fair demand due to the wet and muddy conditions. This much moisture should spark a healthy demand for stocker cattle to go to wheat when it dries up. Bred cows showed a big upturn in demand with some selling as much as 50-75 per head higher.

The Muleshoe Cattle Market is brought to you each week by Muleshoe Livestock Auction, located east of Muleshoe on U.S. 84. Muleshoe Livestock conducts sales every Saturday, beginning with hogs, sheep and goats at 10 a.m. and cattle following at approximately noon.

FOR INFORMATION ON SALES OR TO CONSIGN CATTLE, CALL (806) 272-4201

Seller, City	#	Type	Wt.	CWT or PH
Jorge Lopez, Portales	Hol. Str	205 lbs.	at \$106.00
Steve Miewes, Hereford	3 Mxd Str	250 lbs.	at \$117.00
Steve Miewes, Hereford	Char. Str.	345 lbs.	at \$107.00
Versave Tovar, Earth	Blk. Bull	305 lbs.	at \$109.00
Carl McInroe, Hereford	2 Blk. Bulls	365 lbs.	at \$206.00
Ellawese Norman, Mlsh	Char Str.	440 lbs.	at \$ 93.00
Joe Miller, Amherst	2 Red Strs.	458 lbs.	at \$ 91.00
Diamond Y, Mlsh	2 Blk Bulls	478 lbs.	at \$ 88.00
Briana Azua, Sudan	2 Char. Strs	500 lbs.	at \$ 84.00
Perez Ranch, Vaughn, NM	67 Mxd. Strs.	831 lbs.	at \$ 78.25
Perez Ranch, Vaughn, NM	40 Mxd. Strs.	735 lbs.	at \$ 73.25
Earl Green, Denver City	Red Hfr.	395 lbs.	at \$ 88.00
Carl McInroe, Hereford	8 Mxd. Hfrs.	413 lbs.	at \$ 87.50
Carl McInroe, Hereford	7 Mxd. Hfrs.	536 lbs.	at \$ 77.50
Don Bandy, Bovina	Blk. Hfr.	410 lbs.	at \$ 88.00
Joe Miller, Amherst	7 Mxd. Hfrs.	451 lbs.	at \$ 82.00
Diamond Y, Mlsh	2 Limo Hfrs.	468 lbs.	at \$ 85.00
F.M. Farms, Brownfield	7 Mxd. Hfrs.	473 lbs.	at \$ 83.50
Ramon Wisler, Seminole	5 Mxd. Hfrs.	523 lbs.	at \$ 78.50
Black Hills Ranch, Carrizozo, NM	14 Mxd. Hfrs.	609 lbs.	at \$ 76.00
Tim Addison, Plains	2 Brang Hfrs.	685 lbs.	at \$ 72.50
JCL Inc., Sudan	Grey Pair	\$720.00
W.M Goldstone, Denver City	Brwn WF Pair	\$670.00
Frog Scott, Vega	Red Cow P7	\$640.00
7-C Cattle, Bovina	Char Cow P	\$635.00
Carl McInroe, Hereford	BWF Cow P5	\$610.00
Carl McInroe, Hereford	2 Red Cows P	\$550.00
Carl McInroe, Hereford	Red Cow	1215 lbs.	at \$ 36.50
Maxwell Ranch, Carrizozo, NM	7 Blk. Cows	1079 lbs.	at \$ 37.25
Norris Conklin, Mlsh	Gray Cow	1275 lbs.	at \$ 35.00
Vince Schilling, Hobbs, NM	Red Cow	940 lbs.	at \$ 36.25
Charles Mize, Ropesville	Red Cow	850 lbs.	at \$ 35.00
Joe Miller, Amherst	Red Bull	2010 lbs.	at \$ 45.00

"THE GRAY PAGES" BUSINESS DIRECTORY

AUTO BODY REPAIR/PAINT

Bear's Collision Center
BURRIS COLLISION CENTER
Jackey W. Burris, Owner
402 North First-Muleshoe
272-3031 or 946-8655
Free Estimates
Come see us for all your auto body repair and glass needs!
Experienced Technician
I-Car Certified • PPG Certified
Auto Glass Repair & Replacement

COSMETICS

MARY KAY®
Barbara Justiss
Independent Beauty Consultant
1818 W. Avenue D
Muleshoe, Texas 79347
Home: 806-272-5419
Mobile: 806-683-6386
Web page: www.marykay.com/bjustiss
e-mail: bjustiss@fivearea.com

FUELS

West Texas Gas, Inc.
and
GASCARD®
• 24 Hour Gasoline & Diesel
• Propane
• Dripoil
• L.P.G. Motor Fuel
• BBQ & RV Bottles & Parts
• Holland BBQ Grills
Open: M-F 7:30 to 5:30; Sat. 7:30 to Noon
North 1st St., Muleshoe TX
(806) 272-3157

INSURANCE

Laurie Winchell
Insurance Agent
FARMERS
Call for a Free Quote.
• HEALTH • AUTO • LIFE
• HOME • BUSINESS
1602 W. American Blvd., Muleshoe
272-7548 • FAX 272-4756

PEST CONTROL

PHILLIPS
PEST CONTROL
• Serving ALL ornamental lawn, turf care & pest needs
• Fertilizers • Free Estimates
• We carry **Ferti-lome** products.
• Over 25 years of experience!
272-5760 TX Lic. #314308

TORTILLERIA

Los invitamos a que vicite **LA TORTILLERIA SAN FRANCISCO**
Los martes y los jueves para que lleve sus tortillas calientitas
De las 6 de la mañana hasta las 10.
De la mañana sabados y domingos venga para que sabore el rico menudo y la rica barbacoa de cabeza para comer aqui o para llevar. Tambien, tenemos un gran surtido de hierbas medicinales y especias Mexicanas. ¡Los esperamos!
403 MAIN • MULESHOE
272-3502 • Sr. y Sra. Aurelio Cuevas

AUTO REPAIR

• All Phase General Mechanical
• Electrical • A/C • Front-End • Brakes
HI-TEK AUTOMOTIVE
Complete Diagnostic & Repair Center
Foreign & Domestic
322 N. 1st • 272-3480
Joe Flores & Shawn Rejino, Owners

CUSTOM FARMING/HARVESTING

Albo's Custom Harvesting
NEWEST, MOST COST EFFICIENT EQUIPMENT
for combining Black-Eye Peas, Milo, Etc. Also, Wheat Planting (One No Till Drill, One Regular) & Shredding
272-5385 or 946-8841

GIFTS

Shopper's Little Helper
CAROLYN'S
Christmas Creations
224 W. 2nd • Muleshoe • 272-5911
OPEN 7 DAYS A WEEK
CREDIT CARDS ACCEPTED
FREE DELIVERY EVERY DAY
OPEN THANKSGIVING DAY
• Gift Baskets • Gift Certificates • Home Decor
• Antique & Fine Furniture • Bronzes • Much More!

LONG TERM CARE FACILITY

Muleshoe Area Healthcare Center
Park View
1100 W. AVE. J • MULESHOE, TX 79347
• Long Term Care
• Respite Care
• Special Care Unit for victims of Alzheimers & related dementias
For Info. Contact Ruth Kitchens
(806) 272-7578
www.mahdservices.org

RENTALS

THE RENTAL PLACE
Furniture, Appliances, TVs, Electronics, Etc.
FREE DELIVERY
103 MAIN ST.
272-4037 • Muleshoe

VEHICLE ACCESSORIES

KC MUFFLER & MFG., INC.
♦ 4" Exhaust for Diesel Pickups
♦ High Performance K&N Air Filters
♦ Performance Exhaust Systems
♦ Pickup & Car Accessories
♦ Chrome Tips
"Serving this area since 1979"
425 N. 1st-Muleshoe-272-5333

CONSTRUCTION

TAPIDERO CONSTRUCTION
Dirt Work • Concrete
Backhoe Service
(505) 273-4376
P.O. BOX 42 • CAUSEY, NM • FAX (505) 356-1706

ELECTRONICS

THE CONNECTION WAREHOUSE
RadioShack Dealer
Catch the Digital Wave!
• Digital Satellites • Digital Cell Phones
• Digital Cameras • DVD • Music
• Computer Access • And More!
117 Main • 272-5532 • Muleshoe
Don't forget our Appliances & Free Delivery!

HANDY MAN

GARY'S HANDYMAN SERVICE
Gary L. Johnson
Home: 272-3740
Cell: 946-9774
• Light Plumbing • Electrical • Sheetrock Repair
• Minor Roof Repair • Light Hauling • Mowing • Etc.

Rent this spot for only **\$15.17 a month!**
6 month commitment
Call 272-4536 for details.

OFFICE SUPPLIES

Williams Brothers Office Supply
FAX Service
Computer Supplies
Printer Paper
Computer Stationery
Complete Line of Office Supplies
1405 W. American Blvd.
Muleshoe • 272-3113

TIRES

GOODYEAR
JAMES CRANE TIRE CO., INC.
107 Main Street
(806) 272-4594
Mike Hahn, Owner

VIDEO RENTAL

MOVIES FOR RENT OR SALE
ENGLISH & SPANISH TITLES
If we don't have it, we'll get it for you!
Estrada's Video
303 W. 15th St. • 272-5433
10 am-10 pm DAILY Jose & Virginia Estrada, Owners

THE GRAY PAGES
SMALL AD—\$3.50/WK.*
MED. AD—\$5/WK.*
LARGE AD—\$7/WK.*
*26 week commitment
Call Leah at 272-4536 for details!

They Call Me...
MR. FIX IT!
ALL TYPES OF REPAIRS & SERVICES
Stephen L. Phillips
(806) 946-9069
"You name it, I can fix it!"
• Residential • Agricultural • Ace Pump
Repair • Service Calls on Sprinklers • Etc.

There are potential customers who would do business with you if they were reminded & urged to do so!

Journal Classifieds

STOP & SHOP

Deadlines are 5 p.m. Friday

Call 272-4536

October 31, 2002

LEGALS

NOTICE TO CONTRACTORS OF PROPOSED TEXAS HIGHWAY IMPROVEMENT CONTRACTS

Sealed proposals for highway improvement contracts will be received by the Texas Department of Transportation (TxDOT) until the date(s) shown below, and then publicly read.

CONSTRUCTION/ MAINTENANCE CONTRACT(S)
District: Lubbock
Contract 6075-25-001 for SEAL COAT in LAMB County, etc will be opened on December 05, 2002 at 1:00 p.m., at the State Office for an estimate of \$1,298,847.83.

Plans and specifications are available for inspection, along with bidding proposals, and applications for the TxDOT Prequalified Contractor's list, at the applicable State and/or District Offices listed below. Bidders must submit prequalification information to TxDOT at least 10 days prior to the bid date to be eligible to bid on a project.

Prequalification materials may be requested from the State Office listed below. Plans for the above contract(s) are available from TxDOT's website at www.dot.state.tx.us and from reproduction companies at the expense of the contractor. NPO: 7982.

ACTKINSON
Attorney for Estate
State Bar No.: 00835700
P.O. Box 286
Farwell, Texas 79325
Telephone: (806)481-3361
Facsimile: (806)481-9060

Published in the Muleshoe Journal on October 31.

AUTOMOBILE

1-800-CHARITY! DONATE YOUR vehicle directly to the original, nationally acclaimed Charity Cars. 100% charity - not a used car dealer/fundraiser. 1-800-CHARITY (1-800-242-7489), www.800charitycars.org

BUSINESS OPPORTUNITY

ELECTRICITY & TELEPHONE! Get paid every time someone pays their electric and telephone bills! Call 1-800-969-7426 (pre-recorded overview). Visit: http://www.homebizexpos.com/Personal_Pages/ACN-Texas.htm

DRIVERS WANTED

DRIVER - COMPANY - CONTRACTORS. No NYC - Super Regional 10-14 days out. Pay for experience: up to 33 cpm Company, 82 cpm Contractors. 1-800-454-2887, Arnold Transportation.

DRIVER - COVENANT TRANSPORT - Leader in miles 9 years in a row. Now hiring experienced teams, solos and trainers. Owner Operators - Solos/Teams 83 cents. Call 1-888-MORE PAY (1-888-667-3729).

DRIVERS-NO EXPERIENCE? Low or no cost CDL Training available. Meals, lodging and transportation provided. Tuition reimbursement. \$1000 bonus. OTR, Regional, Dedicated Freight. Swift Transportation, 1-800-231-5209.

DRIVERS - MORE MILES, more money. 90% no touch, late model assigned conventionals. No experience? Tuition reimbursement available. USA Truck, 1-800-237-4642.

DRIVERS - SW REGIONAL, home on weekly basis. Teams start .34 cpm, OTR start 32 cpm. Six months OTR experience w/CDL-A. Ask for Harold/Bob, National Freight, 1-800-666-0380.

OPERATOR / DRIVER. GROWING medical waste company seeking responsible and motivated employee to drive and operate medical waste disposal unit. CDL required with clean driving record. Drug Test and Physical required. Competitive pay and full

DRIVERS WANTED

benefits offered. Will be required to relocate to the Dallas/Ft. Worth area. Send resume to Positive Impact Waste Solution, P.O. Box 14692, Odessa, Texas 79768 or call 1-915-550-6286.

OWNER OPERATORS/FLATBED! You work hard. Now earn what you're worth. Expanding Flatbed Division/Long Haul & Regional available/average \$1.05+ per mile/no forced dispatch: Call CRST, 1-800-366-6361.

SEEKING TANKER DRIVER to deliver diesel in Fort Worth area. 3 to 5 years experience, days, base pay \$40,000, benefits. Call Simons Petroleum, 1-800-256-2056.

HELP WANTED

LEADERS WANTED! LOOKING for 3-5 strong leaders - Texas area. National company, Youngevity, expanding locally. Strong communication skills. Earn up to \$50,000 first year. Paid vacations/bonuses. Call 1-800-779-6893, or email RawlsExprs@aol.com. Also part-time positions.

FINANCIAL SERVICES

\$\$\$CASH\$\$\$ - IMMEDIATE CASH for structured settlements, annuities, real estate notes, private mortgage notes, accident cases, and insurance payouts. J. G. Wentworth, 1-800-794-7310.

CREDIT CARD DEBT? Stop collection calls. Cut finance charges. Cut payments up to 50%. Debt consolidation. Fast approval. No credit check. Avoid bankruptcy. National Consolidators, 1-800-270-9894.

FOR SALE

HIGH QUALITY - LOW PRICES, Wolff Tanning Beds. Payments from \$25/month. Home delivery. Free color catalog. Call today, 1-888-839-5160, www.np.etstan.com

MUST SELL! 7 person spa - never used. MSRP \$4999, will sacrifice \$2499. Includes cover. Also, 5 person spa. Never used. \$1999. Will deliver. Call Icon Health & Fitness, 1-800-980-7727.

SAWMILL \$3895. NEW Super Lumbermate 2000. Larger capacities, more options. Manufacturer of sawmills, edgers and skidders. Norwood Sawmills, 252 Sonwil Drive, Buffalo, NY 14225. 1-800-578-1363, Ext. 300-N.

REAL ESTATE

LAND BARGAIN: BEAUTIFUL N.E. Texas piney wood acreage. Private lake and horse stables. As low as \$24,900. Call Texas Land and Lakes, 1-800-707-8988.

HELP WANTED

MANAGER TRAINEE \$525/wk avg. Call 766-7175

Yard Maintenance person wanted. You must know how to weld. Apply in person. Located 1 1/2 miles South of Farwell on State Line Road.

Muleshoe Country Club is looking for a bookkeeper. Salary will be based on capability and computer experience. Please contact the club in person.

Need extra Christmas money - Sell Avon. 40% earnings small starting fee. Call 1-800-384-1084.

SERVICE

Get that special piece of furniture refinished in time for the holidays. Established Furniture Refinishing Co. from Lubbock now in Muleshoe. Call *A Finishing Touch* for a free estimate. 272-3522.

A Helping Hand. Handyman services, odd jobs, minor house repairs. Reasonable rates. Kyle (505) 693-9551

Revolutionary new weight loss product! Burns fat, blocks cravings, boosts energy! 806-272-4570

FOR SALE

USED APPLIANCES FOR SALE WASHERS, DRYERS, FREEZERS, REFRIGERATORS. CALL 272-3091

Star Craft Pop-Up Camper \$3000 - \$500 Call 272-3091

1999 Suburban, 4x4 with leather, loaded, excellent condition, \$22,000. Work - 272-5514; home - 272-3418

89 Ford Astro Runs good. Asking \$850.00. Call 272-3637 leave message.

LOST AND FOUND

LOST DOG - large white 6 month old Great Pyrenees. Lost in the Lariat area. Call 806-825-2000.

Need to give animals away? If so, we'll run your "FREE" pet ads one time for FREE! Call 272-4536 for info.

Want results? Call the Journal 272-4536

REAL ESTATE

COLORADO RANCH SALE. 35 acres - \$59,900. Magnificent mountain ranch at 8,000' elevation. Mix of meadows with spring-fed ponds, aspen, and pines. Stunning views, virtually surrounded by federal lands. Nearby Telluride. Must see! Good terms. Call Colorado Land & Ranches, 1-866-353-4809.

HELP WANTED

Allsup's Convenience Stores is seeking personnel for its stores in Muleshoe, Earth, Friona and surrounding areas. Ideal candidates must be honest, dependable, enjoy working with the public and be detail-oriented.

We offer competitive wages plus medical, dental, life insurance, profit sharing and paid vacations. For immediate consideration please apply at the Allsup's nearest you.

Park View Muleshoe Area Healthcare Center is now accepting applications for the following positions: Licensed Nurses - Part-time for evening shift (2 p.m.-10 p.m.) and Full-time for night shift (10p.m. - 6 a.m.) RN's for weekend coverage. Contact Terri Brown, RN, DON, 1100 W Ave J, Muleshoe, Texas 79347, (806)272-7578

NOW HIRING

Minsa has several positions available in our Production facility. We are looking for hard-working individuals to fill these positions. If interested, please come to the main office at Minsa 1 1/2 mile east and fill out an application. EOE

Earn Extra Income \$200-\$500 weekly mailing travel brochures. For more information send a self-addressed stamped envelope to: AmeriLink Travel, P.O. Box 612290, Miami, FL 33261

The Muleshoe Police Department is accepting applications for one full time dispatcher. High school diploma or GED required. Shiftwork. Upon employment, subject may be required to pass a drug test. Apply at Muleshoe Police Department, 215 E. Ave. B, Muleshoe, TX. EOE, ADA

LVN needed for Day Shift, apply in person or Call Summer Johnson at Cochran Memorial Hospital 806-266-5565.

FARM PROPERTY FOR SALE

USDA-FSA FARM SERVICE AGENCY FARM PROPERTY FOR SALE

PROPERTY LOCATION: APPROXIMATELY 11 MILES WEST OF MULESHOE

LEGAL DESCRIPTION: 4.978 ACRES OF LAND, 2 DWELLINGS, 2 BARN, SHED AND METAL PENS. OUT OF THE SW/4 OF SECTION 27, BLOCK Z, WD 7 FW JOHNSON SUBDIVISION, BAILEY COUNTY, TEXAS.

FSA'S MINIMUM BID IS: \$12,820.00
TIME: 10:00 O'CLOCK A.M. (OR WITHIN 3 HOURS THEREAFTER)
DATE: NOVEMBER 5, 2002

PLACE: MAIN FRONT AREA OF THE EASTERLY COURTHOUSE DOOR (BEING THE DOOR FACING STATE HIGHWAY 214) IN MULESHOE, BAILEY COUNTY, TEXAS

FOR SPECIFIC INFORMATION CONTACT THE FSA FARM LOAN MANAGER, JOYCE M. THOMPSON, 111 E. AVE. D, MULESHOE, TX 79347, (806)272-4538.

REAL ESTATE

For lease beginning Jan. 1 in Bailey County, 6 miles west of Muleshoe. 3,800 prime acres (2,000 ac. are irrig.) Call 901-758-5156 or 941-928-8838

House for Sale. 505 E. Chicago. Contact Pat Chisholm, (806) 934-7801 work; (806) 934-3755 home; (806)681-1008 cell or 272-5263. Financing available!

For Sale 318 acres land Parmer Co. 1/2 mi Clays Corner on Hwy 145. Land only, no buildings. 2 irrig. wells; 1 ml under ground tile, 1 domestic water well. Lays good, very productive. 100 acres sow or wheat. Priced to Sell. 806-250-3414.

640 acres - Lazbuddie. Full allotments, good establishment yields, good water, 4 sprinklers, 4 wells, improvements. Call 806-965-2895, mobile 806-946-9413

PETS

Kittens to give away Call 272-5895 or 272-4846

*213 E. Elm Street - 3 bdrm, 1 bath, large den.
*616 W Ave D - 3 bdrm, 2 bath, with apartment, VA-Repo.

HCR
110 N. 25 Mile Ave., Suite C
Real Estate
806-364-4670

Vic Coker Land Co.
Agricultural Real Estate

- **10,000 Head Feed Yard** - Between Earth and Muleshoe. Very good condition. 2 Feed Trucks, 1 large Loader. Includes 160 Acres with 2 Wells and Center Pivot Sprinkler.
- **Earth-Sprinklake Area** - 160 Acres, Good Water, 1 Well, Center Pivot. Immediate Possession Possible.
- **132 Acres** - Non-irrigated near Muleshoe, Allotted, Lays good.
- **2-160 Acre tracts** - North and Northwest of Muleshoe. Both have sprinklers, will divide. Very reasonably priced.
- **774 Acres** of Native grass and 90 Acres Cultivated. Coyote Lake Area, Bailey County.
- **West Camp Area** - 480 Acres, 2 Brick Homes, 3 Center Pivot Sprinklers, Fenced. Permit process underway
- **320 Acres**, Parmer County. 2 sprinklers, good water, excellent soil, on pavement
- **Great Home in Muleshoe**, 4-3-3, brick, Cent. A&H, fireplace, built-ins, living areas, large kitchen, dishwasher, double oven, large refrigerator, lots of storage, tile roof, outdoor barbecue, sprinkler system front and back.
- **40 Acres near Muleshoe**, irrigated farm with side-roll sprinkler, nice barn, pens, outbuildings, 3 bedroom, 2 bath, all electric manufactured home. **Priced Reduced**
- **Country Living with horse barn and roping Arena**, 3-2-2, large kitchen, 2 living areas, basement, above ground pool, Muleshoe Area.
- **Two labors South of Muleshoe**, All cultivated, very good dryland, bases & yields.

316 Main Street Muleshoe, Texas
Office 806-272-3100 Home 806-965-2468

Nieman Realty

116 E. Ave. C • George Nieman, Broker • 272-5285 or 272-5286

RICHLAND HILLS - PARKRIDGE AREA

- NICE LOTS AVAILABLE, CALL FOR DETAILS!!!!
- VERY NICE 3-2-1 Brick, Elec. Heat Pump, built-ins, nice carpet, 1680' lv. area, fenced yd., MORE!! \$60K!! RH-2

HIGHLAND AREA

- Nice 2-1-1 Home, wall furnace heat, win. evap. air, stove, corner lot!! \$29.5K!!

COUNTRY CLUB AREA

- VERY NICE 2-1-1+1 Carport Brick Home, Cent. A&H, stove, nice, carpet, covered patio, fenced yd., MORE!! \$41,900!!
- VERY NICE 2-2-2 Home, 3 bdrms, FP, 2000+ lv. area, nice carpet & tile, loads of storage, fans, sunroom, fenced yd., concrete cellar/patio, storage bldg., corner lot!!!

IN CONTRACT AREA

- 2-1-3 carport home, wall heat, carpet & tile, fenced yd. stor. bldg. \$18K!!
- 3-2 Home, corner lot, fl. furn. heat, fenced yd. \$25K!! HS-10
- NICE 3-2-2 carport, Home, Cent. A&H, built-ins, guest cottage, workshop, storage, MORE!! \$48K!! HS-4
- EARTH-4-2-2 carport home, Heat Pump, fans, storage-workshop!! \$35K
- VERY NICE 2-2-2 carport Mobile Home, Cent. A&H, built-ins, utility, deck w/hot tub, storage/workshop, fenced yd., MORE!! \$28,500!! HS-9
- NICE 3-1-1 Home, Cent. A&H (Heat Pump), nice carpet & tile, fans, fenced yd., stor./shop bldg.!! MORE!! \$39K!! HS-2
- 2-1-1 Home, wall furnace heat, win. evap. air, stove, corner lot!! \$30K!! HS-3
- 2-1-1 home, floor furnace heat, new roof!! \$13,500!! HS-5

COMMERCIAL

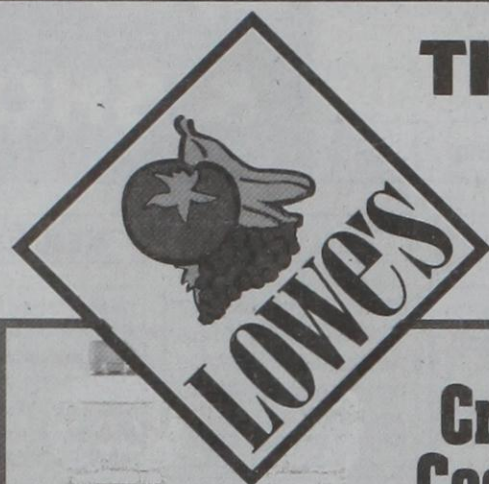
- HWY 84/70-GREAT LOCATION-2870 retail, 16640 shop, 6000 paved, RR spur w/loading docks, 3.44 acre tract!!!

- GREAT LOCATION-13,000 sq.ft. bldg. Cent. A&H, paved parking!! \$85K!!!
- EXCELLENT BUSINESS LOCATION-Approximately 6,550 sq.ft. building, high traffic area!! \$115K!!!
- NICE six unit office complex, Cent. A&H, restroom facilities, and also has a nice one bedroom and two bedroom rental units. \$39.5K!!!
- HWY. 84-150' frontage, office, warehouse, truck dock, railroad spur access, with or without fuel storage tanks!! \$30K!!!
- GOOD INCOME PROPERTY - approx 3490' bldg., paved parking, good net lease!! PRICED TO SELL!!
- VERY NICE 2300' bldg., Cent. A&H, 175' frontage on Hwy 84 & 70!! MUCH MORE!!!
- 140'X100' tract on Hwy. 84 & 70, 1760' bldg., 1500' storage, 2400' cov. area, paved parking!! \$49.5K!!!
- RANCH HOUSE CLUB/RESTAURANT!! \$70K!!!
- Approximately 2,000' shop plus 450' office, cent. heat, evap. air, 250' x 100' tract on Hwy 84!! \$35K!!!

RURAL

- 2-1-1 carport home on one acre, wall heat, evap. air!! \$12K!!!
- STEGALL AREA-GOOD 160 acre farm!! PRICED TO SELL!!!
- EXCELLENT DAIRY LOCATION-1120 ac., 7 circles, 20 wells, very nice 3-2-3 Home w/basement, 40' x 60' barn w/30' x 40' shed, 3 mil. lb. grain facility, add. 3 bdrm. home, 2 mobile homes, on pavement convenient to Muleshoe, Clovis, Portales, & 5K head permit. Could be split if needed!!
- W. of SUDAN-NICE 3-3-2 Brick Home, 5 acre tract on Hwy. 298, Cent. Air & Heat, built-ins, large Quonset Barn, MORE!!! \$95K!!!
- PRICE REDUCED - 108 acres or 7 acre tract on Hwy. 70, approx. 2100' office area, 16,900' commercial bldg. w/loading dock, 3,400' warehouse, new well, 2,800' runway!!!
- GOOD 160 acre farm, fully allotted, 2 wells, valley circle!!!

BRING IN YOUR X-SAVINGS CARD. LOWE'S X-SAVINGS CARD REQUIRED AT THE TIME OF PURCHASE TO EARN REWARD POINTS.



THE BEST BUYS



...you can save all month long, by using your x-tra savings coupons!

<p>Crisco Cooking Oil ASSORTED 48 OZ. BTL.</p>	<p>C&H Sugar PURE CANE 4 LB. BAG</p>	<p>Gold Medal Flour ALL PURPOSE 5 LB. BAG</p>
<p>Lowe's or Shurfine Milk ALL VARIETIES GALLON JUG</p>	<p>EACH With 1 Reward Coupon 1 item per coupon</p>	<p>Pet-Ritz Deep Dish Pie Shell 2 PACK 12 OZ.</p> <p>Libby's Pumpkin Pie Mix 30 OZ. CAN</p>
<p>Jimmy Dean Breakfast Sausage 1 LB. PKG.</p>		<p>3 Lb. Bag Golden Delicious Apples</p>

Here's How It Works!

Lowe's is giving you deep discounts on many of the items you purchase everyday! For each dollar you spend at Lowe's, we will give you a point. After 50 points (or \$50), you will receive a Lowe's X-tra Savings Reward Coupon.

Reward Coupon. This coupon can then be redeemed for deep discounts on selected items.

Each month, Lowe's will select from our most popular items in the store and deeply discount them for our X-tra Savings Reward Coupon holders. Present your coupon and receive incredible savings on selected items.

X-tra Savings Reward Program

- Each Dollar You Spend Is Worth ONE (1) Point. • After you earn 50 points, you will receive a Lowe's X-tra Savings Reward Coupon.
- Use your Lowe's X-tra Savings Reward Coupon to get deep discounts on one of the selected items.
- Only ONE (1) item can be purchased with each Reward Coupon. • Items will be changed monthly.

X-tra REWARD ITEMS FOR OCT.-NOV. 2002! X-tra

<p>Lay's® Potato Chips PRE-PRICED \$2.99</p>	<p>Pace Picante Sauce 16 OZ. JAR</p>	<p>Coca-Cola, Dr Pepper or Sprite 6 PACK 8 OZ. CANS</p>	<p>7 lb. Bag of Ice</p>	<p>Shurfine Ice Cream 1/2 GAL. ROUND</p>	<p>Campbell's Supper Bakes 17-21 OZ.</p>	<p>VIP Frozen Fruits WHOLE STRAWBERRIES, SLICED PEACHES OR MIXED FRUIT 16 OZ. BAG</p>	<p>Cool Whip Whipped Topping 8 OZ. TUB</p>	<p>Kraft Cheese Spread ASSORTED 5 OZ. JAR</p>	<p>Quaker Instant Oatmeal 12 TO 16 OZ. BOX</p>
<p>Xtra Laundry Detergent PRE-PRICED \$2.99 129 OZ.</p>	<p>Charmin Bath Tissue REGULAR 4 ROLL</p>	<p>Chinet Paper Plates 25 CT. 9 INCH OR 15 CT. 10 INCH</p>	<p>E-Z Foil Turkey Roasting Pan EACH</p>	<p>EACH With 1 Reward Coupon 1 item per coupon</p>	<p>Owens Sausage Biscuits 12 OZ.</p>	<p>Wright Sliced Ham or Honey Ham 1 LB. PACKAGE</p>	<p>Valle Rojo Chile Pods 8 OZ. BAG</p>	<p>Dole Cole Slaw 16 OZ. BAG</p>	
<p>Reynolds Oven Bags FOR TURKEYS OR BRISKETS 2 PACK</p>	<p>Keebler Graham Cracker Pie Crust 10 INCH</p>	<p>Jet-Puffed Marshmallows 16 OZ. BAG</p>	<p>Betty Crocker Instant Potatoes SELECT GROUP 8.2-7.8 OZ.</p>		<p>Busset Potatoes 5 LB. BAG</p>	<p>Fresh Celery Stalk</p>	<p>8 OZ. PKG. Whole Snow-White Mushrooms</p>	<p>Premium Wrapped Iceberg Head Lettuce</p>	<p>Candy or Caramel Apples INDIVIDUAL PACKAGE</p>
<p>Mrs. Cubison's Dressing 10-12 OZ. BOX</p>	<p>Bruce's Cut Yams 29 OZ. CAN</p>	<p>Eagle Brand Milk 14 OZ. CAN</p>	<p>French's French Fried Onion 2.8 OZ. CAN</p>	<p>Libby's Vegetables CANNED 28-29 OZ.</p>	<p>Early California Ripe Olives 6 OZ. CAN</p>	<p>Green Giant Whole Asparagus Spears 15 OZ. CAN</p>	<p>Snow Cap Lard 4 LB. PAIL</p>	<p>Lowe's Chile Powder 6 OZ. BAG</p>	<p>Maseca Corn Flour 4.4 LB. BAG</p>

Why shop at your neighborhood Lowe's Supermarket?...
Our Prices are LOWER!

SPECIAL REWARDS GOOD OCT. 16TH THRU NOV. 27TH, 2002

Prices Good At Muleshoe Stores Only!



LOWE'S GAS LOCATIONS: Lubbock: 19th & Frankford

WE HAVE MONEY ORDERS, CHECK CASHING AND PHONE CARDS.

WESTERN MONEY UNION TRANSFER

The Fastest way to send money worldwide.

ACCEPTED IN SELECT LOWE'S STORES...



The X-tra Savings Reward Program Good at Lowe's Muleshoe Stores Only!

Offer valid October 16 thru November 27, 2002. Points are not transferable between stores. No substitutions please on X-tra Savings Reward Items. Only one item may be purchased at the special deep discount per Reward Coupon.