

WEATHER

September 8 94 - 58  
September 9 94 - 60  
September 10 93 - 61  
September 11 92 - 63 .05

# Muleshoe Journal

'The Community Of Opportunity - Where Water Makes the Difference'



20¢

Vol. 62 No. 39

14 Pages Today

Published Every Thursday at Muleshoe, Bailey County, Texas 79347

Thursday, September 12, 1985

## Fair Starts Thursday; Expect Record Entries

\*\*\*

### Mules, Morton Indians To Tangle Here Friday

They're coming right off a heartbreaking, devastating 35-0 season opener with the Portales Rams, and have been working hard all week, so the Muleshoe Mules are expected to be ready for traditional rivals, The Morton Indians.

Indians will be invading Mule territory Friday night for their annual battle. Benny Douglass will be the site of the grinding action that can always be noted when these two teams meet.

Gametime is 8 p.m. and this will be the first home game of the season for the Mules. They are expected to be healthy and ready to play Friday night, and maybe, just maybe, they will be

taking some of their revenge for last week's loss out on the Indians.

New Muleshoe athletic director and head football coach, Dale Keeling, is really finding his work 'cut out for him', with very few returning starters, and inexperience on the part of the players.

Last Friday night, Morton blasted former powerhouse, Denver City, out of the saddle, at 28-6. Morton started out the season picked to win their district, but not according to their head coach, Tony Mauldin.

Coach Mauldin says he knows it's one thing to be picked to win the district crown, but it's another to be wearing it at the end of the season.

"We know we'll have to work harder and try to improve every game. Everyone will be shooting at us."

Morton has nine offensive and seven defensive players back from their 6-2-2 team of a year ago. Thus, they are starting out in a very good position to be among the leaders throughout the South Plains.

Be sure to go out Friday night and back the Mules -- show you are a full devotee of "Mule Mania."



Ray Day was in charge of the program for the Muleshoe Rotary Club at noon on Tuesday, and presented a VCR program on "Motivation" by Zig Ziglar.

It was reported to be a very interesting film on positive thinking and motivation.

The film stressed how much input, or what you put in your mind, affects your output. According to the motivational film, you have a better outlook if you take a positive approach to everything.

Guests at the meeting were Joe Moser and Bryce Kimbrey.

Air Force Capt. Robert H. Haseloff, son of Henry L. Haseloff of Farwell, and grandson of Hope Shuman, also of Farwell, has been chosen company grade officer of the quarter for the 52nd Tactical Fighter Wing in West Germany. Haseloff, a fighter pilot with the 480th Tactical Fighter Squadron, was selected in competition among contemporaries for professional skill, duty performance and exemplary conduct.

He is a 1974 graduate of Texas A&M University, College Station.

Lazbuddie Young Homemakers are currently taking orders for Del Cerro pecans at \$3.75 per pound.

They suggest that in order to secure your pecans for all holiday baking, call Joann McDonald at 965-2475.

### Muleskinners Choose Officers; Set Meeting Date

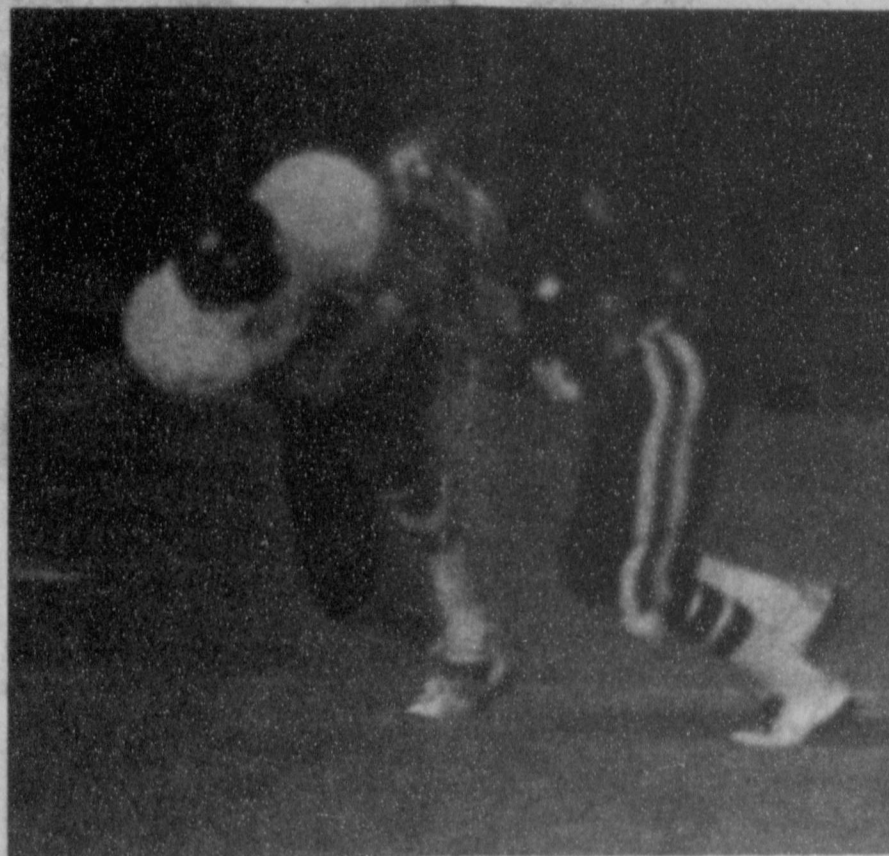
First meeting for the Muleshoe Muleskinners was held Thursday, September 5. The reporter said it was a good meeting, with several prospective members and interested persons, with a lot of enthusiasm shown.

New officers for the Muleskinners include Donald Harrison, president; Jack Templar, vice president; Toni Eagle, secretary treasurer; with activity members John Fried, Jack Bates and R.B. Cunningham.

An annual membership fee of \$10 was established for each member, and meetings will be held on the first Thursday of each month at the Muleshoe Fire Department.

Upcoming activities include a parade at Dimmitt on September 14; Maize Days Parade at Friona on September 28, and to observe the month of October as the 200th anniversary of the mule in the United States.

"It's going to be a lot of fun and we would like to see everyone, both in Muleshoe and the surrounding areas, bring your families and join us," said the Muleskinners reporter. "Our next meeting will be October 3."



GETTING PHYSICAL--This is typical of the action you can see on the football field for the next few weeks. This picture is from the Mules-Rams game at Portales last Friday night. Be sure you follow the Mules -- back them as they go through the 1985 football season.

### Ranching Center Plans Are Full-Steem Ahead

Kim Allan Williams, a restoration architect, from Austin, was in Muleshoe again last week to guide the Muleshoe Heritage Foundation Board of Directors in advancing plans on several projects.

The Muleshoe Heritage Foundation and the Bailey County Commissioners Court have initiated an architectural and cultural heritage project for this area of West Texas. The Bailey County Heritage Ranching Center, to be located just east of the Bailey County Civic Center and Mule Putt Miniature Golf Course, promises to offer a collection of three of the most significant historical structures in this area.

They will establish a unique meeting and social center and provide an informative and productive educational and history archive center. Three structures, the Santa Fe Depot, the Janes Ranchhouse and Bunkhouse, and the Muleshoe Ranch Cookhouse will be relocated onto county-owned property. At this time, the depot

has already been moved to its permanent location.

While Williams was in Muleshoe, he met with Ron Montgomery of SPS in Muleshoe and Johnny Ribber, engineer for SPS, from Levelland, to determine the most feasible way to run the lines to the depot and to Janes house to supply electricity.

Cont. Page 6, Col 1

### Donna Noriega Takes First In Fall Contest

It's official -- the first of the annual merchant's football contests has gone into the books, and the winner determined.

If you missed more than five games on the first contest for this year, you were completely out of the running, but for this week only.

Six persons missed five games in the contest, so by virtue of closely checking the double tie-breaker, the winner was determined.

One game was discarded and did not count for or against any contestant, as no game score could be determined. This was the Purdue-Pittsburgh game. Another game, the Mississippi-Memphis State game went against each and every player, as no one predicted the tied score for that game.

Donna Noriega, a fairly new name in the local contest, was the first place winner for this first contest. She missed five games, guessing both the winners in the tie breaker games, but missing out on five regular games. Mrs. Noriega was also only 26 points off on the tiebreaker scores.

Richard Engelking, a familiar name in the football contest, was second. He also missed five games, but was 42 points away on the tiebreaker scores; and in third place was Larry D. Ross, also with five misses. He was 50 points away on the tiebreaker scores.

Also missing five games, and their tiebreaker scores were Scott Calvert, 52; Cindy Barrett, 62 and Terie Snell, 69 points.

All other contestants missed six or more games. Remember, if you do not predict the winner of the tiebreaker game, that also counts against you.

Each of the first three places receive checks and points toward the grand prize of \$100 at the end of the contest. First place is \$6, and 10 points while second place is \$3 and six points and third place is \$2 and four points.

Each year, the contest comes right down to the wire before a winner can be determined, so join in the fun for mental exercise, and the possibility of being the winner of the \$100 grand prize.

### Bailey, Surrounding Counties Expected To Be Participating

Vegetables and fruits, crops and crafts are all being 'babied along' to enter in the Annual Bailey County West Plains Fair, scheduled to be held at the Bailey County Civic Center September 12-14, according to Bailey County Extension Agent Spencer Tanksley.

Growing larger each year, the fair is sponsored by the Extension Advisory Committee, Muleshoe Rotary Club and the Bailey County Commissioners Court.

Entries will be accepted from both youth and adults who reside in Bailey, Parmer, Lamb or Cochran Counties. Entries will be checked into the Bailey

County Civic Center 9 a.m. to 9 p.m. on Thursday, September 12. Booths will also be set up during the same hours.

On Friday, September 13, judging will be held 9 a.m. to 1 p.m., at which time the fair will open up to the public until 6 p.m.

Saturday will be the big day of the fair, as it will be open to the public 10 a.m. to 6 p.m.. An added feature this year will be the 2 p.m. pet show.

Fair participants will have the added incentive of the cash drawings to be held on Friday afternoon and again on Saturday. You must be present at the drawings to be eligible for the \$50 to \$100 cash prizes.

On Friday, at 2-4 and 6 p.m., drawings will be held for \$50 cash each time; and on Saturday, drawings for \$50 will be at 10-12 and 4, with drawings for \$100 cash scheduled for 2 and 6 p.m.

At the 6 p.m. Saturday drawing, a special drawing will be conducted. If a person on the other drawings was not present to claim their prize, a second name will be drawn. The second name will win one-half of the designated cash, with the other half being reserved for a final drawing on Saturday at 6 p.m.

The drawing can be for up to \$300 cash, said Tanksley.

According to the county agent, Bill Liles is committee chairman for the booths at the fair this year, and free booth space will be designated for all youth groups who wish to have a food and/or drink booth, he said.

Bill Liles can be contacted at 272-3010 to reserve booth space, or call Paul Wilbanks at 272-3106.

Fair catalogs are available at this time at the Bailey County Extension office in the courthouse. Included in the catalogs are all the categories for entries

Cont. Page 7 Col. 2

### 5,000 Acres Lost In Sunday Fire On Local Ranch

It was bone-tired members of the Muleshoe Fire Department who returned to Muleshoe from Birdwell Ranch late Sunday. They had been called to the ranch for a pasture fire shortly after four p.m. and spent some six or more hours battling the stubborn blaze.

J.E. Birdwell said some 5,000 acres of pasture and grassland burned, along with four miles of fence.

He said the pasture and grassland has a value of \$4 per acre in damage if rains come right away to start the pasture growing again. If it does not rain, the value of the damage done to the land will be considerably higher.

Also, the fence has been valued at \$1,000 per mile.

Firemen arriving to fight the blaze found themselves hampered in attempting to get their vehicles to the fire's location. They finally had to walk in with shovels and dig firebreaks to stop the advancing fire.

### Mexican Independence Celebration Scheduled

Sunday, September 15, will be a big day in this area for persons of Mexican heritage, when they will once again celebrate Mexican Independence Day.

Events will be held during the afternoon and evening in celebration.

At 3 p.m. Sunday, there will be a Mexican Charreara Rodeo at Jeff Smith's arena, east of Muleshoe on Highway 70. Scheduled to be at the rodeo will be Charros from Plainview and El Paso. Admission will be \$4 for adults and \$2 for children.

It has been reported that there will be lots of Mexican food available all during the afternoon at the arena.

In the evening, at 8 p.m., a dance and the queen coronation will be held at La Mulita (the old Gibson's building). Playing for the dance will be Los Rieleros del Norte from Ojinaga, Chih. Mexico.

Mary Ann Ybarra, daughter of Mr. and Mrs. Jesse Ybarra, of Needmore will be crowned festival queen; Carmen Elizabeth Ramos, daughter of Mr. and Mrs. Fernando Ramos, also

of Needmore, is princess and Martha Alvarado, daughter of Mr. and Mrs. Salomen Alvarado of Muleshoe, was a contestant.

Outgoing queen is Martha Diaz, who will relinquish her crown to the new queen.

One special event preceding the day of the celebration was

Cont. Page 6, Col. 2



MARY ANN YBARRA



CARMEN ELIZABETH RAMOS



MARTHA ALVARADO

**MULESHOE  
AREA**

**FALL '85**

**BUSINESS  
DIRECTORY  
AND  
SHOPPING GUIDE**

Photography With Personalized  
Individual Attention  
STUDIO WEDDINGS  
ANNIVERSARIES  
COMMERCIAL FRAMES

Photography by Lonnie

1/4 Mile N. Lonnie & Sue Gibson  
On Friona Hwy. 272-5151

Sale Ends Sept. 14

Polyflex 12<sup>95</sup> **JB**  
Satin-X 9<sup>95</sup>

plumbing, electrical, skil tools,  
heaters, heat lopes & other items

Higginbotham-Bartlett Co.  
215 Main 272-3351

**In Store  
Specials**

For Anniversary Week  
Sept. 16-21

Art Loft

1529 W. Amer. Blvd. 272-9485



**In a hurry?**

Why not use our  
convenient drive-in  
window?

**Chick-n-Dock**

1411 W. Amer. Blvd. 272-5581



Inez, Marie & Arlene

**Art Loft**

20th Anniversary  
Celebration

September 16-21

1529 W. Amer. Blvd. 272-3485

**Arriving Daily !**

Fall Winter  
Sweaters & Coats

By: Jennifer Gil &  
Melissa Lane

Missy - Petite - Ladies sizes

**Famous Fashions & Fabrics**

127 Main 272-5056

You'd give her the world if you could.  
She'd settle for just a piece of it.

Wrap up your savings with our diamond specials

A diamond is Forever  
Lay Away now for Christmas



Lindsey Jewelry

202 Main 272-9355

**Berryman B12**

Carburetor, Choke Spray

Reg. 2<sup>99</sup>

**99<sup>c</sup>**

**P O Y N O R S**

103 Main Street WHITE'S STORES, INC. M 272-4552

3  
Locations  
To  
Serve You

**Farmer's Co-op Elevators**

Clays Corner Muleshoe Enochs  
Phone 272-4335

For a totally unique  
cut call one of the  
girls at Main Street  
Beauty Salon  
today!

**Main Street Beauty Salon**

115 Main 272-3448



Introducing  
**Rosie Lopez**  
Our HECE  
Student

**Damron Drug**

308 Main 272-4210



Bewitch Everyone!  
Treat yourself to  
a new hairdo  
for fall!

**Glenna's Beauty Retreat**

207 Ave. G. 272-3092

Model 4413

**HOOVER  
Convertible  
Cleaner**

**59<sup>95</sup>**

Reg. 89<sup>95</sup>

**Fry & Cox, Inc.**

401 S. 1st 272-4511

Now Is The Time To  
Get Your Fall Clothing  
Cleaned For Those  
Cool Days Ahead.

**Lambert Cleaners**

123 Main 272-4726

# Texas '85 Crime Rate Feflects A Big Increase

The crime rate and number of major crimes reported in Texas during the first half of 1985 increased, according to statistics furnished by the Texas Department of Public Safety.

"Compared to the first six months of 1984, the crime rate for the first half of 1985 was up eight per cent to 3,111.7 crimes per hundred thousand population," said Colonel Jim Adams,

DPS director. "The number of major index crimes reported for the same period was 497,524, an increase of almost 10 per cent."

All major crime categories showed increases in the number of offenses reported.

Rape led the four violent crime categories, increasing 13.8 per cent. Aggravated assault, murder and robbery

were up 9.6 per cent, 8.7 per cent and 3.1 per cent respectively.

"Motor vehicle thefts rose 12.4 per cent," Adams pointed out. "Burglary increased 8.3 per cent and theft was up 10.6 per cent."

Of the total index crimes reported, 21 per cent were cleared by arrests in the first half of 1985. The value of property stolen during the commission of the index crimes was estimated at over 585 million dollars, with approximately 230 million dollars in stolen property recovered by police.

"Two Texas law enforcement officers were killed in the line of duty by criminal action in the first six months of this year," Adams said. "Two officers lost their lives in duty-related accidents."

The DPS also said a total of 1,733 assaults on officers were reported.

DWI arrests in the first half of 1985 were up 2.6 per cent, totaling 68,717. Drup arrests increased 14.4 per cent to 31,913.

The crime statistics were derive from reports submitted by 790 law enforcement agencies in the state.

### NEWS VIEWS

**Donald Regan, White House chief of staff:**

"We're very sympathetic to the plight of the farmer, and what we're trying to do is to see how much and how far we can be helpful to them."

**Li Xiannian, Chinese President:**

"Good political relations are an indispensable condition of the development of economic cooperation."

**Muleshoe Journal** USPS 367-820  
Established February 23, 1924. Published by Muleshoe Publishing Co., Inc. Every Thursday at 304 W. Second, Box 449, Muleshoe, Texas, 79347. Second Class postage paid at Muleshoe, Texas, 79347.

**MEMBER 1985 TEXAS PRESS ASSOCIATION**

L.B. Hall-President  
James Woods-Vice President  
Cleta Williams-News  
Evelyn Harris-Society  
Holly Millsap-Advertising  
Lille Nino-Circulation/Classified  
Sammy Hall-Bookkeeper

**SUBSCRIPTIONS:**  
Muleshoe Journal and Bailey County Journal  
Bailey and surrounding counties \$12.95  
Muleshoe Journal and Bailey County Journal  
Elsewhere in Texas \$12.95  
Muleshoe Journal and Bailey County Journal  
Outside of Texas \$13.50  
Yearly by Carrier \$13.50  
Advertising rate card on application.

## Charles G. Lewis D.D.S.

Announces

The Association  
OF

Robert L. Lepard D.D.S.

Monday-Friday

8a.m.-5p.m.

121 w. Ave. B

Make sure your  
next loan is easier  
to pay back

A good loan should be one you can manage on your income.

The Federal Land Bank can tailor a payment plan to fit your income patterns and cash flow. The long-term feature of Land Bank loans helps keep your payments manageable.

At the Land Bank, we want to make sure your loan is as easy to pay back as it is to get in the first place. Stop by and see how we can help.



**Federal Land Bank  
Association Of  
Muleshoe**

272-3010

**AgriPro™ certified seed  
gives you the seed,  
the whole seed and  
nothing but the seed.**



- Consistent high yielder all across the Plains.
- Certified to be pure and clean.
- Can outyield bin run grain by more than 5 bushels per acre.
- Short straw, outstanding lodging resistance and disease protection.
- Large kernels; good test weight grain.
- Protects against soilborne, stem rust and wheat streak.

AgriPro and AgriPro are trademarks of Nickerson American Plant Breeders, Inc., P.O. Box 2955, Mission, KS 66201. The Disclaimer of Warranty and Limitation of Remedy on each bag of seed sold is part of the terms of the sale.



- Early maturing, semi-dwarf.
- Short, strong straw.
- Certified; contains no chaff, straw or dirt.
- Can outyield bin grain by more than 5 bushels per acre.
- Good for grazing.
- Protects against soilborne mosaic, stem rust, wheat streak and Hessian Fly.

AgriPro and AgriPro are trademarks of Nickerson American Plant Breeders, Inc., P.O. Box 2955, Mission, KS 66201. The Disclaimer of Warranty and Limitation of Remedy on each bag of seed sold is part of the terms of the sale.



- Fast-growing semi-dwarf for grazing or grain.
- Certified; inspected for purity and cleanliness.
- Very early maturity for doublecropping.
- Protection against soilborne mosaic, stem rust, wheat streak and Hessian Fly.

AgriPro and AgriPro are trademarks of Nickerson American Plant Breeders, Inc., P.O. Box 2955, Mission, KS 66201. The Disclaimer of Warranty and Limitation of Remedy on each bag of seed sold is part of the terms of the sale.

Riverside/Terra -  
Muleshoe

AgriPro and AgriPro are trademarks of Nickerson American Plant Breeders, Inc., P.O. Box 2955, Mission, KS 66201. U.S. Plant Variety Protection granted or applied for AgriPro wheat varieties. Unauthorized multiplication prohibited. The Disclaimer of Warranty and Limitation of Remedy on each bag of seed sold is part of the terms of the sale.

Copyright © 1985 NAPB.

# WHIRLPOOL APPLIANCE SPECTACULAR

Hurry!  
Get Our Best Deals  
on These Fine Appliances!

17.0 Cu. Ft. Refrigerator



Big  
In  
Size!  
Small  
In  
Price!

\$498

Model ET1 SCXCVR W/Trade

Our Low Prices  
Can Make Your World  
a Little Easier!

Whirlpool AUTOMATIC WASHER



Large Capacity  
Only 24" Wide!

\$348

W/T

Model LA3400XF

EASE YOUR WASH DAY  
CHORES!

Whirlpool UNDERCOUNTER DISHWASHER



Heavy  
Normal  
Cycle.

\$318

Model DV1098XL

GREAT FEATURES, LOW PRICE!



priced  
to move!

\$299

W/Trade

Model FJR423W

Credit Terms Available!!

**Wilson** APPLIANCE, INC.

117 MAIN STREET

MULESHOE, TEXAS 79347

PHONE 806/272-5531

PRICES EFFECTIVE  
SEPT. 12-14, 1985

OPEN 24 HOURS A DAY  
GROCERIES, SOFT DRINKS-  
SNACKS- HOT COOKED FOODS-  
SELF SERVE GAS-MONEY ORDERS-  
WHILE SUPPLIES LAST

**ALLSUP'S**  
CONVENIENCE STORES

**SUPER IN-STORE SPECIALS FROM ALLSUP'S**

KingsFord Charcoal \$1.79  
Reg. or Mesquite 10 lb Bag

Shurfine Crackers 2/69¢  
1 lb Box box

Pork & Beans 5/1.00  
16 oz cans

Shurfine Sandwich Bags 3/1.00

TEXAS HAM & CHEESE  
**SANDWICH**  
Fast Hot \$1.39  
REGULAR \$1.79

AMERICA'S FAVORITE  
**CORN DOGS**  
COOKED FOOD  
SPECIAL  
AS FEATURED  
ON TV  
FOR  
2 \$89¢

BORDEN'S HI-PRO MILK 1/2 GAL. CTR. \$1.09

TV SPECIALS  
NORTHERN WHT./ASSTD. \$1.09

ICE CREAM SANDWICHES/  
DRUMSTICKS  
BORDEN'S NOVELTIES 6 CT. CTR. \$1.09

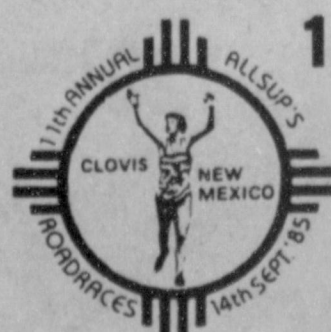
BATH TISSUE 4 ROLL PKG. \$1.09

PEPSI FREE-PEPSI LIGHT-REG. OR DIET  
12 oz. cans \$1.79

ALL GRINDS COFFEE  
HILLS BROS. 1 LB. CAN \$2.18

PEPSI-COLA 6-pack \$1.79

SPAM REG. OR SMOKED  
LUNCHEON MEAT 12 OZ. CAN \$1.38



**11TH ANNUAL ALLSUP'S ROAD RACES**

THIS SATURDAY, SEPTEMBER 14, 1985  
7:00 A.M. CLOVIS, NEW MEXICO  
PICK UP YOUR ENTRY FORM AT YOUR NEARBY ALLSUP'S STORE

## The Creative Woman

By Sheryl Borden

On September 17 and 21, Jewell Limacher, former Extension Home Economist from Roswell will demonstrate soft sculpture projects on "The Creative Woman" show. "The Creative Woman" show. Soft sculptures can be considered an art as well as a craft. It's an inexpensive project -- most of the supplies will be items you already have on hand and even with a limited knowledge of sewing, you'll be able to create many different soft sculpture projects.

Three topics will be presented on September 19. Don Fandre believes microwaves are for cooking and common sense approach is very easy to understand. He represents the Rubbermaid Co., and he's going to show how TV dinners, frozen entrees and frozen vegetables can be cooked in the microwave oven very successfully. Don's

from San Francisco. Cathy McCreery, a home economist with the Reynolds Metals Co. from Dallas believes we should enjoy entertaining and that it can be a breeze when you plan ahead and learn to use certain products to simplify cooking, storing and clean up. She will prepare three recipes that will be prepared ahead of time, which gives the hostess time to get the house, table and herself looking as attractive as the food. She will also discuss garnishes, table settings, containers, centerpieces and napkins.

A final segment on the show will be presented by Ann Hurt, a designer from New York, and author of a book called *Country Samplers*, which is an *Oxmoor House* publication. Ann will discuss and give examples of decorating ideas using samplers.

"The Creative Woman" is produced and hosted by Sheryl Borden. The show airs at 12 noon on Tuesday and Thursday, and at 2:00 pm on Saturday. (All times are Mountain Standard).

Viewers can request copies of printed materials offered on the show by calling on KENW-TV's toll-free telephone lines. The number in New Mexico is: 1-800-432-2361, out-of-state: 1-800-545-2359 and Portales and Roosevelt County: 562-2112.

### PTA Sponsoring Membership

### Contest

The Muleshoe PTA is sponsoring a "Membership Contest". Toni Eagle reported that the class with the most paid memberships following the Monday, Sept. 16 meeting will receive a prize.

A \$25.00 first prize and a \$15.00 prize will be awarded at both Dillman Elementary and Mary DeShazo schools.

Grandparents memberships, as well as parents memberships will count toward the prizes.

### Who Can?

Progress always involves a certain amount of risk. After all, you can't steal second base and still keep one foot on first.

-Exchange.



**CHECK PRESENTATION**--Joyce Holmes, manager of the Muleshoe PTA Miniature Golf Course, presented the Jennislippers a check in the amount of \$70.00 during the noon meeting of the Jennislippers Tuesday. This check was the Jennislippers winnings from a Miniature Golf Tournament held this summer with several clubs participating. Vivian White, Jennislippers President, accepted the check on behalf of the Jennislippers.

### Boneless Chicken Products

Whole chicken generally costs less per pound than cut-up chicken parts and boneless meat products. But it may not always be the best buy in terms of cost or convenience.

"Boneless chicken products have been a welcome addition to the market which suit today's lifestyle," says Marilyn Haggard, a Texas A&M University Agricultural Extension Service nutritionist. "They cook quickly, go well in casseroles, skillet and one-dish meals and make it easier to cater to the family's preference for certain parts of the chicken."

Although the cost per pound for these products is higher than whole chicken, you have to consider that you're not paying for bones, skin and fat that will be discarded, she says.

Different chicken products vary considerably in the amount of edible meat they provide.

According to Dr. David Mellor, Extension poultry specialist, the approximate amount of edible product you would get from one pound of a chicken is as follows:

Wing, 54%; drumstick, 67%; whole broiler, 70%; whole cut-up broiler, 70%; thigh, 79%; split breast, 80%; whole breast, 85%; whole boneless broiler, 100%; breast filet, 100%; boneless thigh, 100%.

The nutritional value of bone-

less chicken products is the same as whole chicken and bone-in parts, but the calorie count will still depend on how you prepare the poultry.

By not eating the skin, you reduce the calories for a 3-ounce serving of chicken from 126 to 107, says Haggard. But if you bread and fry boneless chicken products you're almost doubling those calories.

As with any type of chicken, baking or broiling will keep the calorie count down, says the nutritionist.

### BIBLE VERSE

*When I consider Thy heavens, the work of Thy fingers, the moon and the stars, which Thou has ordained, what is man that Thou art mindful of him? and the son of man, that Thou visitest him?"*

1. Can you locate this quotation in the Bible?  
2. Who is the author of it?

### Answers

1. Psalm 8:3-4.  
2. David, great king of the Jews, who died about 1016 B.C., according to Josephus, Jewish historian.

## Nutritional Needs Of Older Adults

Research is now being done that will lead to more complete answers about the nutritional needs of older adults, says Dr. Alice Hunt, a nutritionist with the Texas A&M University Agricultural Extension Service.

"But much is already known that can help older adults stay well-nourished during the later years," she adds.

Hunt says it's known that older adults need the same nutrients as they did when they were younger. The amount of calories they need, however, is usually reduced as they become less active.

Other nutrient needs may be increased, Hunt points out. For example, the post-menopausal woman may need more than the Recommended Dietary Allowance (RDA) of 800 milligrams of calcium.

"No nutrient can slow the aging process," states the specialist. "Research has not identified any vitamin or mineral which can prolong life, prevent cosmetic changes such

as hair loss or skin wrinkling, or protect from diseases like arthritis, cancer or heart disease."

Hunt notes that taking a supplement with no more than the RDA for each vitamin or mineral usually will not be harmful for older adults. But taking large doses of some vitamins and minerals can be toxic, interfere with the absorption of other nutrients or block the action of certain medications.

"Growing evidence suggests that the way a person eats throughout life influences the chances of developing such health problems as heart disease, cancer, osteoporosis and diabetes," the specialist says. "If a person has inherited tendencies toward developing certain diseases, good nutrition may also help to slow down the process of development."

Hunt stresses that eating a variety of nutritious foods is one of the keys to a long, healthy and productive life. To get needed nutrients, she says to choose foods from the basic food groups, including milk and cheese; meats, poultry, fish and beans; vegetables and fruits, and breads and cereals.

The man who fears nothing is as powerful as he who is feared by everyone.

-J.C.F. Schiller.

## Sudan CofC Meets, Discuss Coming Events

The Sudan Chamber of Commerce and Agriculture met Tuesday, Sept. 3 at 7:30 p.m. in the community room of the First National Bank with Tom Rigsby, president, presiding.

A discussion was held on Something Special V, sponsored by the Chamber of Commerce, to be held on Saturday, Sept. 14 at 7:30 p.m. in the high school auditorium. Included on the program will be teen talent, a ventriloquist, country and western, contemporary gospel and country gospel music.

Admission will be four dollars for adults, teens, two dollars; and children under 12 will be admitted free.

The annual banquet to be held in March was also discussed. The county wide picnic that the Chamber will sponsor, to celebrate the Sesquicentennial of Texas and to announce the winners of the essay for junior and senior high school students has been changed from May 25, 1986 to May 18, 1986.

Those present for the meeting were: Sammy Crowson, Mike McDonald, Bernard Wilson, Jerry Ray, Hoyt Robertson, Cindy Davis, Norma Burnett, Mary Olds, Tom Rigsby, and Jonelle Bandy.

Prices Good Thursday & Friday

Men Levi Tex Twill **\$17<sup>13</sup>**  
Reg. \$22<sup>00</sup>

**BOYS WRANGLARS**  
Students 25-30  
Boys 8-14  
**\$13<sup>13</sup>**

Register For **\$25.00**  
Gift Certificate  
(Must Be 18 yrs old)  
Must Be Present  
To Win Drawing  
At 5:00 p.m.  
Friday 13th

ATB Luggage 3 Piece Set **\$44<sup>13</sup>**  
Available Blue Tan

Mens Ladies & Childrens Pre-Washed Jeans 501 **\$20<sup>13</sup>**  
Reg. \$25

**ANTHONY'S**  
321 Main Muleshoe Phone 272-3478

Open Daily Mon.- Fri. 8-6  
Saturday 8-7  
Sundays 1-5

## Welcome To Muleshoe



**WELCOME TO MULESHOE**--We are happy to welcome Dr. and Mrs. Robert Leopard to Muleshoe. Robert and Kay Leopard come to Muleshoe from Sweetwater where he was in apprenticeship for a year with a dental office. Kay and Robert were raised in Brownfield and attended Tech. Robert attended the Baylor Dental school and Kay taught school for four years. As hobbies they both enjoy sports, such as hunting, fishing, and jogging. Robert also enjoys amateur archaeology. Dr. and Mrs. Robert Leopard belong to the Muleshoe Church of Christ.

### James Crane Tire Co.

322 N. 1st



272-4594

### Henry Insurance Agency

111 W. Ave. B.

272-4581

### Damron Rexall Drug

308 Main

272-4210

# Journal Files

## 60 Years Ago

1925  
WATER WORKS MEET HELD WED.

The City officials held a meeting at the court house last Wednesday to talk over the matter of installing water works in our city. Plans were made for a survey of our city to be presented to the city officials. If it is satisfactory then the city will call an election and vote bonds for the water works.

There is nothing we need so badly as we do a good water system right here in town. Lets have a first class water system in our city at once.

## 50 Years Ago

1935

LOCALS  
Pat Bobo left Saturday afternoon of last week for Rhome where he will visit relatives. He plans to take medical treatments at Mineral Wells while away.

The city of Sudan has made application for a loan and grant of \$25,000 with which to construct a city hall there. Applications for other projects will also be made.

## 40 Years Ago

1945  
NEW SCHOOL SITE BEING IMPROVED

A well has been put down on the location for the Three Way school. The land has been surveyed and ground staked off for the school buildings and teacherages.

Four teacherages now in the old districts will be moved to the new site. The frame school building at Maple will be moved to the new location.

The moving and foundation contracts have already been let for these jobs.

The R.E.A. is now bringing the high line up to the new location.

Things are really shaping up to let the contract for the new building.

Seldom has there been such a fine spirit of cooperation as displayed by the people of the new Three Way district. These people are really proud of their set-up.

## 30 Years Ago

1955  
GET ACQUAINTED PARTY FRIDAY

"Get Acquainted Night" is set for 8 o'clock tomorrow (Friday) night at high school auditorium in Muleshoe when teachers in the schools here will meet the people.

Each community in the district will have the opportunity to put on a 3 or 4 minute stunt. After that the entire crowd will play games.

To cap the evening off, the crowd will be served Muleshoe watermelon. The Chamber of Commerce is sponsoring the event, an annual affair here.

## 20 Years Ago

1965  
SEARS ROEBUCK LOCATES HERE

Sears Roebuck and Co., will open an order house in Muleshoe this morning at the corner of Main and Ave. B., it was announced Wednesday. The store will be located in a building formerly occupied by Hamilton's Store.

Many items will be specially stocked and priced for the opening, it was announced.

Favors are to given and drawings are planned as opening features.

## 10 Years Ago

1975  
STORE IN A SCHOOL: SCHOOL IN A STORE

Muleshoe High School will have a School Store right in it's building this year. The store is called "DECA Merchandise" and will be operated by Distributive Education Students. Distributive Education is a vocational training program for retail, wholesale service selling.

Miss Sharon Kay Kelton of Muleshoe is the 1975 Miss Wheatheart of the nation.

She was named Saturday night during the Miss Wheatheart National Beauty Pageant in the Perryton High School Auditorium.

### Can't Stop

Marriage is like sneezing. Even when you feel it coming on you can't stop it.

-Globe, Mason City, Ia.

\*\*\*\*\*  
**SAVE MONEY WITH HOME SEWING**--Sewing at home for savings takes careful planning to make sure the investment pays off. "Consider the value of the time spent sewing as well as your out-of-pocket costs," says Alma Fonseca, a clothing specialist with the Texas A&M University Agricultural Extension Service. Sewing children's garments is usually more economical than buying them. This is because children's clothes are often simple, have less detail, require little fabric and have a short life use.



**WINNER OF BIKE**--Terry Nickell, manager of the local Anthonys, (r.) congratulates David Wooten (l.) who was the winner of the BMX Mongoose Bike in the Levi Annual Super Week drawing recently. David is the son of David and Barbara Shields of Muleshoe. Davids' name will now go to the head office in Oklahoma City where he will have a chance to win a Computer to be drawn for in the near future.

## We Don't Grant Diplomas,



## But We Do Grant Student Loans!



We Can Take Care Of Those Financial Worries, & Help You Achieve That Dream...

### How? With A Student Loan!

- Maximum \$2500 per year
- Flexible
- Low Interest
- Application, Easy & Fast
- Convenient Repayment Terms
- Opportunity Available To All Regardless Of Race, Color, Religion, Sex, Age or Marital Status.

**MULESHOE STATE BANK**

101 West American Blvd.

MEMBER FDIC

Phone 806/272-4561

# SATURDAY ONLY

- 8 O'Clock a.m.**  
25% off Any Reg. Price Item
- 9 O'Clock**  
Junior Lee Riders & Lee Baggies **21<sup>97</sup>**
- 10 O'Clock**  
Mens **Hagger** Pinstrip Suit  
Coat & pant **59<sup>97</sup>**
- 11 O'Clock**  
Asst. Pattern **Blanket Throws**  
Reg. 19<sup>99</sup> **14<sup>97</sup>**
- 12 O'Clock NOON**  
Childrens **Coats** 25% off
- 1 O'Clock**  
Ladies **Levi Bendover** **14<sup>97</sup>**

**LayAways Accepted** **Round The Clock Sale!** **Bargains In Every Department**

**11 O'Clock** Blanket Throw Sale

**Noon 12:00** Childrens Coat Sale

**1 O'Clock** Levi Bendover

**2 O'Clock** Shoe Sale

**3 O'Clock** Mens 501 Sale

**4 O'Clock** Luggage Sale

**5 O'Clock** Ladies Coat Sale

**6 O'Clock** Western Shirt Sale

**7 O'Clock** Wranger Sale

**8 O'Clock** A.M.

**9 O'Clock** P.M.

**Open** **Close**

**1/3 Down**

A.M. 25% off Reg. price  
P.M. 1/2 Price Sale

- 2 O'Clock**  
Buy Any OF Men, Ladies, and Childrens dress shoes at regular price  
Second pair at **1/2 Price.**  
(half price on or lower price) No Athletic Shoes
- 3 O'Clock**  
Mens **Original 501**  
Reg. 19<sup>99</sup> **15<sup>97</sup>**
- 4 O'Clock**  
Samsonite And American Tourister Luggage **60% off**
- 5 O'Clock**  
Entire Stock of Ladies Coats **25% off**
- 6 O'Clock**  
Mens ATB Long Sleeve Western Shirts **9<sup>97</sup>**
- 7 O'Clock**  
Men Wrangler **Jeans** **13<sup>97</sup>**
- 8 O'Clock P.M.**  
Buy Any Item At Regular Price second at half price

321 Main 272-3478

# ANTHONY'S

## Ranching Center

Cont. from Page 1

It was decided that underground lines seemed the best way and Williams advised the board to start making plans to get a trench dug from the main service line to the depot.

Members of the Heritage board said they hoped this would be a volunteer effort, and asked that anyone interested, who has the equipment, volunteer the use of their equipment to get the trenches dug.

Williams also told the board he thought the depot needs to stay at the height that it has been set down to enable the heating and cooling units to be installed, along with easier access to plumbing.

He explained that the depot must be reinforced and made safe before ramps and decks can be installed for easy entry into the building. Then, the foundation will be covered with a 'skirt' and will be given a finished look.

After that time, volunteers will be sought for work inside the depot, such as pulling nails from walls and floors; cleaning out of unnecessary debris; chipping off old paint and repainting walls; and repairing and refinishing the floors.

Any volunteer work would be most welcome, emphasized the board.

Plans are for the depot building to be used for a Senior Citizen Activity and Service Center, to be open on a daily basis for meetings, special events and activities by senior citizens.

The architect talked with electricians and heating and cooling specialists and asked for bids and estimates for the necessary work in these areas. He also spent some time at the Janes ranch house with the board's newest member, Roland McCormick, determining the condition of the house and the feasibility of moving it successfully.

The board has received a low bid from Dewey Henry House Movers, Plainview, and after discussing his credentials and experience, board members decided to give him the contract.

The house was donated by Jim Kassahn, and he also gave a donation of \$10,000 to help move the house and bunkhouse. At this time, a lot of work

must be done on the inside of the house in order to get it ready to move, explained the Heritage board, and again volunteer workers are being sought to remove outside stucco from the fireplaces and chimney, plumbing in the basement, basement windows to be removed and ceilings to be removed. Also the carport near the back door must be removed, plaster from the walls inside the bunkhouse must be removed, and a temporary floor put in.

R.A. Bradley and Donald Phelps have already volunteered to help with the project, and the board has expressed their appreciation to the duo for their offer to help.

### Celebration...

Cont. from Page 1

the presentation of three cash prizes to lucky ticket holders. Carlos Madrigal was given \$1,000 cash; Kay Harris won \$300 cash and Juanita Salas was given \$200 cash.

Sponsors of the cash event said they would like to express their sincere appreciation to everyone who participated in the event, and purchased tickets. Funds will be used for community events, such as the very large cash contribution made by the Sponsoring Knights of Columbus organization to the Muleshoe Heritage Foundation to be used on the depot project.

On the eve of September 16, 1810, Father Don Miguel Hidalgo y Costilla, a priest in the small town of Dolores, Mexico, shouted the now famous "grito de Dolores." The grito, or cry, was a call for the independence of Mexico against the tyranny Spanish rule.

Now, 175 years later, that historic event is still celebrated by Mexican and Americans of Mexican descent.

Formerly, the celebration was held at the Catholic Church, but for the last couple of years or so, the celebration has been held at the Bailey County Civic Center.

This year, for the first time, with an expanded celebration, it will be held during the afternoon at Jeff Smith's arena, then conclude a La Mulita, which was established about three months ago.

Last Thursday, during a meeting, the Muleshoe Foundation Board voted to make a new membership available. The board will offer a sustaining membership for anyone who will give 100 man hours free to the Foundation, or 1,000 man hours from an organization.

Memberships continue to come in from recent community meetings, and the Heritage Foundation board has expressed their sincere appreciation for the interest shown. They encourage persons who have not become members to talk to one of the board about 'coming on board' and joining the project.

The Golden Mule Shoe membership is available for those giving \$1,000 or more and names will be placed on a large plaque, with a golden mule shoe, and will be hung in one of the historical buildings in the Heritage Center.

The Homesteader is available for donations of \$500 or more and will be placed on an appropriate plaque and hung. Both the previously mentioned memberships are Charter and Lifetime memberships.

The Sesquicentennial membership, for \$150, is a charter membership for the Sesquicentennial year only, but names will be inscribed on a large wooden plaque in the shape of 'Texas' and will be hung with the other plaques.

Other one year charter memberships, are the Wrangler for \$15 and the Muleskinner for \$25.

A gift of \$100 or more will be noted on a large plaque and displayed. A Memorial or Honorium gift of \$100 or more, given in memory of someone deceased or to honor someone still living, will be appropriately inscribed and a plaque will be hung.

You may send your memorial gifts to the Memorial Chairman, Jenne McVicker, P.O. Box 766, Muleshoe, TX 79347 and a card will be sent to the person you designate.

Memberships and contributions may be sent to the Muleshoe Heritage Foundation % Glen Williams, treasurer, at the Bailey County Courthouse.

The world is his who can see through its pretension.  
-R.W. Emerson.

# FAIR TIME

## Special!

### For 3 Days

### Only

### Subscribe To

## Muleshoe & Bailey County Journals

### For

### 1/2 price



(Bailey & Surrounding Counties Only!)

Checks or money orders must be postmarked Saturday, September 14.

Name: .....  
 Address: .....  
 City: .....  
 Zip Code: .....

# Playmates Annual Fall Anniversary Sale

Sept. 13 & 14  
Friday & Saturday  
Sept. 16 & 17  
Monday & Tuesday

4 DAYS ONLY-RECORD BREAKING PRICES

Boys 1 Rack  
**DRESS SLACKS**  
40% OFF

Girl's Early Fall 1 rack  
**30% OFF**

Boys' & Girls  
**Jeans**  
30% OFF

ENTIRE INVENTORY  
**20% OFF**  
Dresses, Baby Dept., Jogging Suits, Winter Coats, Sweaters, Billy The Kid Groups

SORRY, AT THESE PRICES...  
NO LAYAWAYS  
NO ALTERATIONS  
NO REFUNDS

# Playmates & young girls

1015 W. 2nd, Portales  
Grand & Main, Clovis

## ATTENTION MR. FARMER!

Plant the new variety of wheat that made the big yields plus high grazing!!

If you're going to graze cattle, plant the new varieties of wheat:

Certified Mustang, Certified Hawk, Certified Ram

These wheat are wide bladed, have high grazing potential plus yield potential of over 100 bushels per acre on irrigated land.

The increase in grazing will off set the cost of seed over planting your own seed.

The state of Nebraska says that you can increase your yield from 3 to 7 bushels per acre over non-certified seed by planting certified WHEAT seed.

One bushel increase in yield will more than pay for the certified seed over using your own seed. The extra increase is profit to you.

We Have The Following Varieties Of Wheat Seed:

- |                       |                        |                   |
|-----------------------|------------------------|-------------------|
| Certified Hawk Wheat  | Certified Newton Wheat | Certified Ram     |
| Certified Rocky Wheat | Certified Sage Wheat   | Certified TAM 105 |
| Certified Wings Wheat | Certified Vona Wheat   | Certified Mustang |

We Also Have Rye, Rye Grass & Triticale Fro Pasture.

## McCormick Seeds Inc.

400 East Ash

Muleshoe, Texas

272-3156



**B&C KOUNTRY KITCHEN**--Ribbon cutting ceremonies were conducted by the Mulshoe Chamber of Commerce and Agriculture Monday afternoon for the B&C Kountry Kitchen, a new restaurant, located in the 100 block on Main Street. The owners of the new business are Connie Dominguez and Barbara Pearson, both experienced in all phases of restaurant operations.

## Something Special Set

If you enjoyed Something Special I, II, III, and IV, then you will especially love Something Special V, planned for Saturday, September 14, at 7:30

### Annual Meet Is Saturday

Bailey County Farm Bureau's annual meeting is scheduled for Saturday September 14, at 6:30 in the high school cafeteria in Mulshoe and the Farm Bureau directors, insurance agents, and their wives, will prepare a free meal of barbecue and homegrown vegetables.

Sam Harlan, county president, said the main purpose of the annual meeting is to adopt policies for the coming year.

Four directors will be elected. Directors up for re-election are Lewis Dale, Sam Harlan, and Curby Brantley Sr.

"All Farm Bureau members are invited to attend this meeting," said Harlan, adding, "but only agricultural producers may vote or be elected to an office, according to the county by-laws."

Among special guests attending will be S.M. True, president of Texas Farm Bureau, Plainview.

Leslie Langfitt, Loy Triana and Rod Muyschondt will report on their trip to the Texas Farm Bureau Citizenship Seminar in San Angelo in June.

During the meeting, President Harlan will give his annual report. Also, Sudduth-Field Company will give the organization's financial report and Agency Manager, James Lee, will report on insurance services.

This year, in addition to drawings for free annual Farm Bureau membership and gift certificates for TASCOS and Safemark products, the insurance agents, James Lee, Gene Atkins and Rickey Barrett, will contribute several items as door prizes.

These include a 4-place setting of stoneware, salad bowl set, Little Playmate ice chest, coffeemaker, blender, can opener, spin/cast fishing rod and reel, bubble gum machine, as well as other special items.

Jacque Baker and Curtis Carpenter of Baker Farm Supply are also giving two gift certificates for mounting and balancing a set of tires, and a TK74 battery.

p.m. in the Sudan High School auditorium.

Each of the preceding four Something Special productions, co-sponsored by the Sudan Chamber of Commerce and the Anchor Brothers Band, has proven to grow in scope and entertainment.

The fifth Something Special is no exception, with tried and proven acts and entertainment, along with some new innovations to delight and entertain anyone attending.

Family-oriented, Something Special is geared to provide the best in music, comedy and entertainment for everyone in the family, and each time, the audience proves to include people of all ages.

So, don't miss Something Special V. A visitor from California, who attended the show in April said, "It's one of the best shows I've ever seen, and no one from this area should miss the next one."

Included in the line-up for the evening are Cecil Caldwell, Lubbock, country and western; Kenneth Precure, Mulshoe, country and western; Julie Harris, Lubbock, country and western; teen talent, Littlefield and Sudan, with a couple of delightful surprises; Lori Pickett, Lubbock, gospel; Clifford and Janet Watson, Mulshoe, gospel; Anchor Brothers Band, Sudan, gospel and Ron Lineberger, Circle Back, ventriloquist.

### Fair...

Cont. from Page 1

plus rules for entering and judging.

Entry classifications are agriculture, textiles, arts and crafts, culinary, canning, food preservation and fine arts.

A highlight each year of the fair are the booths and exhibits by the Mulshoe merchants and agri-related businesses. Anyone interested in an educational booth may contact Wilbanks or Liles, or a member of the Mulshoe Rotary Club.

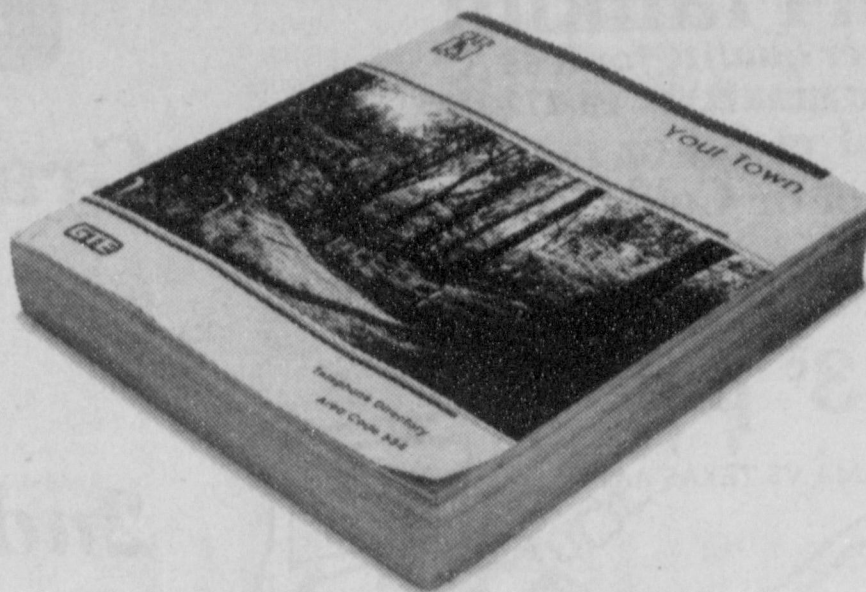
A \$50 cash prize will be presented the best commercial booth and a \$25 prize given the best food booth, added Tank-sley.

### Yum Yum

Summer is that season of the year when a housewife can put anything on a lettuce leaf and call it a special salad.

—Journal, Greensboro, N.C.

# We're going to rewrite your phone book soon.



## Do you want us to make any changes?

Before the presses roll on the new edition of your phone book, take a minute to check:

Make sure you're listed correctly. Or tell us if you'd like more listings (the kids, a relative, or your spouse, for example).

After all, it's your phone book. When you see your name in print, it ought to be the

way you want to see it.

So, if you want any changes or additions, let us tell you what the charges might be, if any. Just call our business office now.



Your local independently owned True Value® Hardware Store has national chain-buying power.

**TRU-TEST PAINTS**

*True Value* HARDWARE STORES

MasterCard VISA

PAINT FACTORY-TO-YOU SAVINGS!  
Over 6,000 True Value Hardware Stores & Home Centers Own 3 Efficient Tru-Test Paint, Stain & Aerosol Factories. 75,000 Gallon Daily Capacity.

Paint Now Pay Later

# Fall Paint Savings

<p><b>9.98*</b> Gallon E-Z Kare™ Sat-N-Hue™ Latex Flat Finish is fully washable. Easy cleanups with soapy water. Choose from 39 colors and white. EZF</p>	<p><b>9.98</b> Gallon Solid Color Latex Stain lets you see the wood texture under a fade and water-resistant finish. 10 colors and white. EZF</p>	<p><b>10.98*</b> Gallon WeatherAll Latex Flat Finish puts years between painting jobs. For primed wood, more. 26 colors, black, white, custom colors. HPX</p>	<p><b>8.98*</b> Gallon Latex Flat House Paint resists mildew, blistering. For exterior wood, brick, stucco, more. Easy soap and water cleanup. White. M</p>
---------------------------------------------------------------------------------------------------------------------------------------------------------------	-------------------------------------------------------------------------------------------------------------------------------------------------------	-------------------------------------------------------------------------------------------------------------------------------------------------------------------	-----------------------------------------------------------------------------------------------------------------------------------------------------------------

## The Hot Weather Fertilizer

- Promotes Lush Green
- Iron For Long Lasting Green
- Won't Burn
- Urea Nitrogen Quality
- Use Now To Revitalize Your Grass

**ferti-lome**  
**LAWN FOOD PLUS IRON**

**ferti-lome**  
**BAGWORM & TENT CATERPILLAR KILLER**

Kill Bagworms Now Before Its Too Late

**ferti-lome**  
**BROAD SPECTRUM LIQUID FUNGICIDE**

Kill Fungus in the Grass

**ferti-lome**  
**BERMUDA GRASS WEEDER**

**New!**

- Kills Weeds
- Kills Crabgrass
- Kills Dandelions
- Kills Goatheads
- Kills Sandburs

**ferti-lome**  
**Systemic SCALE INSECT SPRAY**

Spray Now To Kill Scale On Bushes, Trees & Other Plants Use With Malathion For Quick Kill.

**Baker Farm Supply**  
1532 W. Amer. Blvd. 272-4613

<p><b>4.99</b> Gallon Flat Latex Wall Paint provides a high-hiding finish on all interior wall and ceiling surfaces. 7 decorator colors and white. YF</p>	<p><b>8.98</b> Gallon Clear Wood Sealer &amp; Preservative penetrates, protects and waterproofs bare exterior wood. Allows natural weathering. CWC</p>	<p><b>12.98</b> Gallon E-Z Kare™ Latex Flat Enamel leaves an easy-to-care-for scrubbable finish on walls and trim. Choose from 39 colors &amp; white. EZ</p>	<p><b>6.98</b> Gallon White Latex House Paint puts an economical flat finish on wood, brick, stucco, more. Low-chalking, fade-resistant formula. L-24</p>
---------------------------------------------------------------------------------------------------------------------------------------------------------------	------------------------------------------------------------------------------------------------------------------------------------------------------------	------------------------------------------------------------------------------------------------------------------------------------------------------------------	---------------------------------------------------------------------------------------------------------------------------------------------------------------

# Fry & Cox, Inc.

401 South First

272 - 4511

# Back The Mules FOOTBALL CONTEST

- Last Weeks Winners**  
 1. Donna Noriega  
 2. Richard Engelking  
 3. Larry D. Ross

**Ben Franklin**  
 Better quality for less  
 2104 WEST AMERICAN BLVD PH. 272-3855  
 51 ct 6.4 oz  
 'hot or Cold  
**Foam Cups**  
**43¢ pkg**  
 ALABAMA VS TEXAS A&M

**Grand Prize : \$100.00**  
**Weekly Prizes**  
**1st \$6**  
**2nd \$3 3rd \$2**

*Most Brilliant Way  
 For A Man To Show  
 His Love,*  
**4C**  
*A Quality Diamond Of  
 A Carat Or More.*  
**Lindsey Jewelry**  
 202 Main 272-3955  
 KANSAS STATE VS. NORTHERN IOWA

**Chicken - Fry**  
 Buy one Get one for \$1.50  
 Come by today you could be the  
 winner of 2 tickets to the  
**Muleshoe-Morton Football game!**

**CONTEST RULES:**  
 1. Pick the winner of each of the games contained in the advertisements on this page. Write the name of the teams you think will win opposite the game number in the blanks provided on the official blank.  
 2. The contestant must be 12 years of age or older.  
 3. Only one entry per person may be made for any one contest.  
 4. Bring your entry blank by The Journal office by 5:00 p.m. Friday, or, if mailed, the entry must be postmarked no later than 5:00 p.m. Friday. Write "FOOTBALL CONTEST" on the mailed entry, and mail to P.O. Box 449, Muleshoe, Tx. 79347.  
 5. Pick and write in the score of the tiebreaker game. This score will be used to break weekly as well as grand prize winners. Decision of The Journal's scoring judges will be final.  
 6. Check the team you think will win; 10 points for first place, 6 points for second place and 4 points for third place.  
 7. To count for grand prize, entries must be on official blank printed in the paper.

**R-BOB'S STEAKHOUSE**  
 ARIZONA VS WASHINGTON STATE

**Shop & Save  
 The Thrifty Way**  
**Serv-All Thriftway**  
 401 W. Amer. Blvd. 272-4739  
 MARYLAND VS BOSTON COLLEGE

Let Stanley Wilson  
 or Dee Puckett Show you  
 how you can save on your  
 heating and cooling.  
**Southwestern Geothermal Systems**  
 W. Hwy. 84 272-5557  
 BRIGHAM YOUNG VS WASHINGTON

**OFFICIAL ENTRY BLANK**

NAME \_\_\_\_\_  
 ADDRESS \_\_\_\_\_  
 PHONE \_\_\_\_\_

1 \_\_\_\_\_  
 2 \_\_\_\_\_  
 3 \_\_\_\_\_  
 4 \_\_\_\_\_  
 5 \_\_\_\_\_  
 6 \_\_\_\_\_  
 7 \_\_\_\_\_  
 8 \_\_\_\_\_  
 9 \_\_\_\_\_  
 10 \_\_\_\_\_  
 11 \_\_\_\_\_  
 12 \_\_\_\_\_  
 13 \_\_\_\_\_

**TIEBREAKER**

TULSA VS TEXAS TECH  
 T.C.U. VS TULANE

**JB**  
**Paint Sale Ends Sept. 14**  
 Polyflex.....\$12.95 gal  
 Satin-x.....\$9.95 gal  
**Higginbotham-Bartlett Co.** 10  
 215 Main 272-3351  
 NOTRE DAME VS MICHIGAN

"Three Locations  
 To Serve You"  
 Enochs - Muleshoe - Clays Corner  
**Farmers Co-Op Elevators**  
 272-4335  
 CALIFORNIA VS OREGON STATE

**Your One-Stop  
 Headquarters For Gas  
 & Snacks**  
**B&D Target Gas** 11  
 323 W. Amer. Blvd.  
 PENN STATE VS TEMPLE

"Let Us Fix All Your  
 Scratches & Dents"  
**Shipman & Sons  
 Body Shop** 5  
 410 N. 1st 272-4408  
 CLEMSON VS V.P.I.

**Henry Insurance Agency, Inc.**  
 KENNETH R. HENRY  
 CERTIFIED INSURANCE COUNSELOR  
 REAL ESTATE BROKER  
 RONNIE HOLT  
 111 W. AVENUE B PHONE 806/272-4581  
 MULESHOE, TEXAS  
 IOWA STATE VS UTAH STATE 7

**See Us For All Your  
 Commercial Printing.**  
 No Job Too Large  
 Or Too Small  
**Bob Stovall Printing** 12  
 221 E. Ave. B 272-3373  
 SAN JOSE STATE VS STANFORD

"Come Visit Us  
 For All Your  
 Prescription Needs"  
**Western Drug Co.** 6  
 114 Main 272-3106  
 VANDERBILT VS KANSAS

For All Your Case - IH parts,  
 Service and New equipment  
 See  
**Wooley International  
 Inc.** 13  
 W. Hwy. 84 272-5514  
 SYRACUSE VS MISSISSIPPI STATE

**1985 VARSITY FOOTBALL SCHEDULE**

- Sept. 13 MORTON H 8:00  
 Sept. 20 FRENSHIP T 8:00  
 ★ Sept. 27 FRIONA (HC) H 7:30  
 ★ Oct. 4 FLOYDADA T 7:30  
 ★ Oct. 11 IDALOU H 7:30  
 ★ Oct. 18 DIMMITT T 7:30  
 ★ Oct. 25 TULIA H 7:30  
 ★ Nov. 1 LITTLEFIELD T 7:30



'85 MG Clinic Will Be Held September 20-21

The Northwest Texas Chapter of the Myasthenia Gravis Foundation will hold their annual Melba Bandy Masters Clinic, free for the diagnosis and treatment of myasthenis gravis.

In cooperation with Hi Plains Hospital in Hale Center, the chapter is planning the clinic for Friday and Saturday, September 20-21. It will begin both mornings at 9 a.m. at the hospital with Dr. Tether conducting, with the assistance of Dr. Hugh Wilson, Jr. of Hi Plains Hospital and Dr. Gilmer B. Johnson of Plainview.

Dr. Tether will be with the clinic for the 15th year. He is an associate professor of Neurology at the University of Indiana Medical Center, Indianapolis, and is one of the foremost authorities on the disease, myasthenia gravis.

His private practice is devoted exclusively to the diagnosis and management of MG.

On Friday, September 20, Dr. Tether will be the guest speaker for the Northwest Texas Chapter meeting, to be held in the sanctuary of the Church of Christ, directly across the street from the main entrance of the hospital, at 7:30 p.m.

Following his talk will be a question and answer session.

Costly

Today it costs more to amuse a child than it used to cost to educate his father.

Sante Fe Magazine.

considered a very informative program. Every myasthenia gravis patient, his family, and friends, as well as his physician, will be welcome to attend.

Melba Bandy Masters, for whom the clinic was named, died of MG in 1961. Mrs. Masters, wife of Everett Masters of cotton Center, struggled to stay alive for 10 years after she was diagnosed. The Masters' family physician was the late Dr. D.R. Foster of Hale Center, and through his acquaintance and friendship with Dr. Tether, Mrs. Masters became Dr. Tether's first patient and the first MG clinic was held in 1961 in Hale Center, just a few months after Mrs. Masters' death.

An appointment is necessary, and you may call 806/839-2471, ext. 36; or in Muleshoe J.E. or Jenne McVicker at 272-4741.

Notre Dame Gets Nod Over Michigan

Notre Dame opens its season against Michigan, one of the only teams - if not THE only one - that holds an overall series lead over the Irish. Notre Dame has won three of their last four meetings, but Michigan still holds a big edge of 11 to 5. The Wolverines lost to Brigham Young in the Holiday Bowl last December 24-17, and finished with a rather miserable - for them - 6-5 season in 1984. Notre Dame, rated 16th in the country, won 7 and lost 4. Saturday? Notre Dame.

U.C.L.A. and Tennessee aren't exactly gridiron strangers, but it's been seven years since they've faced each other. The

Farmers Being Offered Risk Management Short Course

If farmers are going to survive financially, they will have to manage risks. Managing risks is what an upcoming shortcourse by the Texas Agricultural Extension Service is all about.

The shortcourse is slated for Oct. 1-3 at the Computer Training Center at Stiles Farm near Thrall. The farm is located on U.S. 79 about a mile east of Thrall or six miles east of Taylor.

"Purpose of the shortcourse is to acquaint crop producers with numerous yield and price strategies," points out Dr. Ashley Lovell of Stephenville, Extension Service economist.

Lovell notes that a microcomputer will be used during the shortcourse as a tool for

evaluating strategies for managing yield and market risks.

Included in the training will be crop insurance, summarizing information for risk evaluation, crop enterprise budgets, accounting reports, cash flow projections, and whole farm production and financial planning.

Computer software will be featured during evening ses-

sions. A day also will be devoted to market outlook, grain futures, commodity options and options hedging, says Lovell.

Because the training facility at Stiles Farm can only accommodate a limited number of people, interested individuals should register as soon as possible by calling Romermy Pivonka at Texas A&M University at 409-845-1861.

BEST OF PRESS

Safest

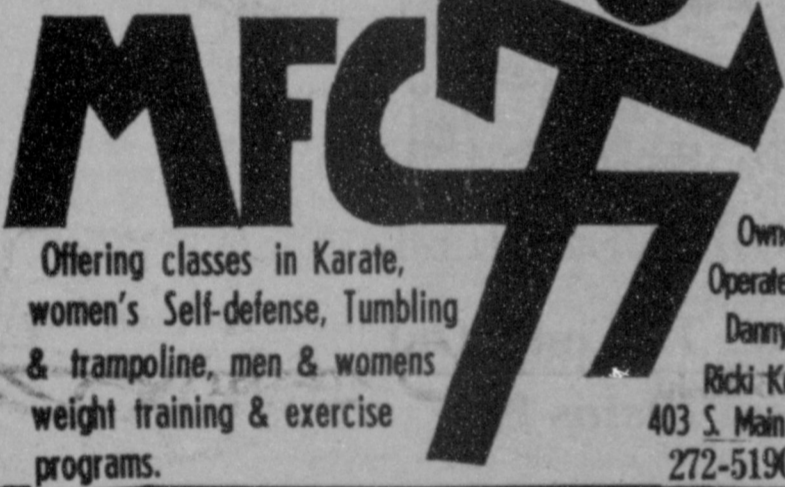
The safest side for a person to take in an argument between two friends is the outside. -Eagle, Dothan, Ala.

Always

No matter in what direction a tax is hurled, it always hits the ultimate consumer. -World-Herald, Omaha.

"Muleshoe Fitness Center"

Starting Beginners Karate Women's Exercise Program



Offering classes in Karate, women's Self-defense, Tumbling & trampoline, men & womens weight training & exercise programs.

Owned & Operated By Danny & Ricki Kelley 403 S. Main 272-5190

Bruins won 13-0 in 1978, evening the 7-game series at 3-3-1. The Vols and the Uclans both played in post-season games last year, U.C.L.A. upsetting Miami in the Fiesta Bowl 39-37 while Tennessee was nosed out by Maryland in the Sun Bowl 28-27. Saturday, Tennessee is both the host and the favorite.

The Atlantic Coast Conference challenges the Southeast Conference (or vice versa) as North Carolina entertains Louisiana State. The L.S.U. Tigers "inherited" the 1984 Southeast Conference title vacated by Florida by posting an 8-2-1 season record, 4-1-1 in the league. The Tar Heels finished thrid in the ACC, and will be the underdog vs the Tigers Saturday.

After a strong 8-2-1 year in 1983, the Panthers of Pittsburgh fell on hard times in 1984. By winning their final two games, they salvaged a poor 3-7-1 season. Ohio State, on the other hand, won the Big Ten title with an overall 9-2 record. However, the Buckeyes' hard time came in the Rose Bowl as Southern California upset them 20-17. Ohio Sate should beat Pitt this week.

Some quickies: Arizona State will win over host Michigan State. Arkansas is favored over Mississippi. Baylor is an underdog to home-standing Georgia. and West Virginia will whip Duke's Blue Devils.

Advertisement for "LEADERS OF TOMORROW" featuring a photo of a young girl and the text "We Believe Our Youth Of Today Will Provide Effective Leadership Tomorrow!".

Advertisement for "The Bob Harmon Forecast" featuring a large table of college football results and forecasts for various divisions and games.

LEADER OF TOMORROW---Our Leader of Tomorrow for this week is the six year old daughter of Gary and Hollye Hooten, Heather Hooten. She has one sister, Amy and a brother, Cade. Heather is in the first grade at Dillman Elementary and is a very good student and a hard worker. She enjoys reading, coloring and playing outside. At home she loves to go to the farm with her father. Heather enjoys swimming, snow-skiing and gymnastics. Heather would like to be a school teacher when she grows up.



Sponsored By: Wes Tex Feed Yards

**Allie B. Snyder  
Funeral Services  
Held Monday**

Funeral services for Allie B. Snyder, 80, of Tucumcari, N.M. were held at 11 a.m. Monday, Sept. 9 in the Ellis Funeral Home Chapel of the Chimes with the Rev. Jesse Allen of Tucumcari officiating, assisted by the Rev. Virgil Ichtertz of the Calvary Baptist Church of Friona.

Rebekah graveside service was conducted at the Muleshoe Cemetery. Burial was under the direction of Ellis Funeral Home of Muleshoe. Mrs. Snyder died at 9:20 p.m. Friday in Trigg Memorial Hospital at Tucumcari.

A native of Hot Springs, Ark., Mrs. Snyder was born on Nov. 30, 1904, and married Frank Snyder on Dec. 13, 1924, in Muleshoe. She had been a resident of Tucumcari for three and one half years moving from Friona where she had resided eight years. She had previously lived in Muleshoe from 1923 to 1971. She was a member of the Lesbia Baptist Church of Tucumcari and Muleshoe Rebekah Lodge No. 114. She was a

housewife. Survivors include her husband, Frank; one daughter, Mrs. Joy Morgan of Tucumcari; one son, Charles Snyder of Tucumcari; two sisters, Lucy Jones and Joann Mills, both of Friona; three brothers, Bill Chitwood of Charlie, L.O. Chitwood of Friona, and Al Chitwood of Brownwood; seven grandchildren; and 13 great grandchildren.



ALLIE B. SNYDER

**Enochs News**  
by  
**Mrs. J.D. Bayless**

**Local Man's  
Grandmother  
Dies At Bonham**

Services for Lattie Henry, 99, of Bonham were held at 4 p.m. Tuesday, Sept. 10 in Cooper-Sorrells Chapel in Bonham.

Burial was in Willowwild Cemetery under the direction of Cooper-Sorrells Funeral Home. Mrs. Henry died at 11 p.m. Sunday at Bonham.

Survivors include five daughters, Lottie Brian of Blue Mountain, Faye Lambert of Muleshoe, Gladys Isabell of Krum, Lena Caldwell of Bonham, and Imogene Bethel of Blue Mountain; 14 grandchildren, including Leslie Lambert of Muleshoe; 15 great grandchildren; 40 great great grandchildren; and several great great grandchildren.

She was preceded in death by her husband in 1951, and a son in 1960.

**Alma Chapman  
Services Held  
At Earth**

Services for Alma "Dear Mom" Chapman, 94, of Earth were held at 2 p.m. Friday, Sept. 6 in the Earth First Baptist Church with the Rev. Joe Vernon, pastor, officiating.

Interment was in Dimmitt Cemetery under the direction of Parsons-Ellis Funeral Home of Earth. Mrs. Chapman died at 11 p.m. Wednesday in Cantabury Villa Nursing Home of Dimmitt.

She was born on July 10, 1891, in Kaufman County and moved to Earth sixty years ago from Texico, N.M. She was a housewife and a member of the Earth First Baptist Church.

Survivors include one daughter, Jo Jones of Earth; one sister, Virginia Smoke of Oklahoma City, Okla.; five grandchildren; 11 great grandchildren; and 11 great great grandchildren.

She was preceded in death by a daughter, Ethel McNeill and an infant daughter.

Visiting in the home of Mr. and Mrs. Goldman Stroud Sudnay were their son, Glenn Stroud of Muleshoe, and a daughter, Mr. and Mrs. Craig Kirby and children of Three Way.

Mrs. J.D. Bayless was a dinner guest in the home of Mrs. Clara Coffman in Muleshoe Saturday, other guests was Mrs. Coffman's daughters, Maudie and Wendell Speck of near Muleshoe and Mrs. Jeannie Rundell and son, Rhyne of Loraine, Texas also Sandra and Dusty Puckett of Plainview, they all had a garage sale at Mrs. Coffman's.

In returning home Saturday Mrs. J.D. Bayless visited in the home of Mr. and Mrs. Thomas Lee Harper.

Mrs. Etta Layton gave a party for the Baptist women at her home Thursday afternoon there were 9 present, Mrs. J.E. Layton, Mrs. Rose Nichols, Mrs. Louise McCall, Mrs. Wilma Petree, Mrs. J.D. Bayless, Mrs. Winnie Byars, Mrs. Clifford Snitker, Mrs. Bill Key and Mrs. Layton.

Refreshment of punch, lemonade and cookies were served.

**NOTES --- COMMENTS**

Most bargains are not bargains.

An orator isn't always a thinker.

Advice is usually expensive, one way or the other.

We suspect taxes will get higher for some in years to come.

# It's Fair Time!

## 1985 Bailey County West Plains Fair September 12, 13, 14



The Following Businesses Urge You To Come Out  
And Attend The Bailey County West Plains Fair

**John's Custom Mill**

**Albertson's Shop For Men**

**Bobo Insurance**

**Farmers Co-Op Elevators**

**Lookin' Good**

**Main Street Beauty Salon**

**Muleshoe Co-Op Gins**

**Cliff Allen Saddle Shop**

**Muleshoe Floral & Gift**

**Baker Farm Supply**

**Muleshoe Trade Center**

**Black Insurance**

**Lambert Cleaners**

**Famous Fashions & Fabrics**

**Shipman & Son Body Shop**

**The Honey Comb**

**Terry Field Ins.**

**Decorators Nursery & Floral**

**Serv-All Thriftway**

**First Bank**

**Glenna's Beauty Retreat**

**Lindsey Jewelry**

**Higginbotham-Bartlett**

**Hochheim Prairie Farm Mutual Ins.**



**True Value**  
HARDWARE STORES

**HARDWARE VALUE OF THE MONTH**

**7.99** While Supplies Last

2,101-Pc. Nut & Bolt Center with asst'd accessories in 25 double-bin drawers. Heavy-duty plastic cabinet. 802101  
QUANTITIES LIMITED

**True Value**  
HARDWARE STORES

**TOOL VALUE OF THE MONTH**

**6.99** While Supplies Last

Both for Lawn & Shrub Rakes have spring-tempered steel teeth and solid hardwood handles for many years of service. 2P  
QUANTITIES LIMITED

**Fry & Cox, Inc.**  
401 S. 1st 272-4511



**18. Legal Notice**

**18. Legal Notice**

**8. Real Estate For Sale**

NOTICE OF PUBLIC SALE  
9-9-85

Massey-Ferguson Credit Corporation will offer the following repossessed equipment for sale to the highest bidder for cash. (Financing upon approved credit.)

- Equipment:  
1-MF50C Tractor SN#9A324101  
1-MF300A Loader SN#2485  
1-MF54A Backhoe SN#3478  
1-JD4010 Tractor SN#2582  
Date of Sale: 9-26-85  
TIME of Sale: 11:00 A.M.  
Place of Sale: Fry & Cox Inc.  
401 South First St  
Muleshoe, Texas

The equipment will be sold as is, without warranty. For further information, contact Lloyd L. Turner telephone number 806-797-3443

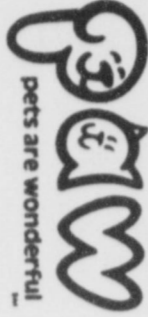
**HENRY REALTY**  
\*\*\*  
111 W. Ave. B  
Muleshoe, Texas  
272-4581

U.N. calls for sanctions against S. Africa. Opponents of smokeless tobacco seek warning labels.

**11. For Sale Or Trade**

**11. For Sale Or Trade**

CARPORTS & AWNINGS  
On Sale thru August at a 25% Discount.  
806-293-1720 Days  
293-7665 Nites  
p11-31s-tfcts



\*\*\*\*  
There are some things more important than getting rich--a fact that many people learn too late in life.

**West Plains Hospital Report**

**WEST PLAINS MEDICAL CENTER**

Sept. 6, Betta Lancaster, Leandro Saucedo, Elizabeth Harden and Zeffa Shafer of Muleshoe; Roke Acosta, Friona; Kathy Foster, Farwell; Judy Brockman, Lazbuddie

September 7, Betta Lancaster, Roke Acosta, Cecil Ward and Berta Kitchens of Muleshoe; Kathy Foster, Farwell; Margie Monreal, Friona

Sept. 8, Betta Lancaster, Roke Acosta and Cecil Ward, Muleshoe; Kathy Foster, Farwell; Margie Monreal, Friona

Sept. 9, Betta Lancaster, Roke Acosta and Cecil Ward of Muleshoe; Kathy Foster, Farwell; Margie Monreal, Friona.

**Wheat Disease Attacked**

Even though Texas harvested a record 187 million bushel wheat crop this year, producers suffered millions of dollars in yield and quality losses due to disease and insects -- principally from leaf rust and the Hessian fly. The newly expanded statewide Texas Wheat Producers Board and the Texas Agricultural Experiment Station has entered into an agreement designed to bring a halt to these annual losses, according to Cagle Kendrick, Stratford, Chairman of Texas Wheat Producers Board. Kendrick said that the contract calls for the Board to provide some \$155,000.00 over a three year period from its 1/2 cent per bushel self-assessment program, to TAES to enhance its on-going statewide wheat breeding efforts in an attempt to develop resistance to these maladies in current or new varieties of both hard and soft wheats.

In signing the agreement, Dr. Neville P. Clarke, TAES Director at College Station, indicated that specifically, the producer funds will be used by the Station to support expanded research on project H-6599, "Wheat Cultivar Improvement and Germplasm Enhancement", for "Development of Multiple Pest Resistant Wheat". The project is under the direction of Dr. W.D. Worrall, Wheat Breeder, and Dr. J.E. Slosser, Crops Entomologist, at the Texas A&M University Research and Extension Center at Chillicothe-Vernon. Even though directed from the Chillicothe-Vernon Center, the work will be coordinated with plant pathologists at other stations and varieties suitable for the various areas of the state will be tested at other research centers, especially Bushland (Amarillo), Dallas, Overton, Temple, College Station and Corpus Christi.

Minimum tillage and other cultural practices that have been designed to decrease cost of production and that are increasing in popularity in some areas will be studied to determine the effects they may have on perpetuation of the disease and insect problems under Texas climatic conditions.

In announcing the amendment of the current budget to include the stepped-up research, Kendrick indicated that the statewide, farmer-elected 15-man Board was unanimous in their belief that along with expanded market development the disease and insect genetic control was the item most expected from local supporting producers in each of their areas of representation.

**Definition**

Charm: A way of getting the answer yes without having asked any clear questions.

-Bee, Davisville, R.I.

**Immaculate Conception Catholic Church**

Father Patrick Maher  
North East of City in Morrison Addition

**First United Methodist Church**

507 W. 2nd, Muleshoe  
Bill Kent, Pastor

**El Divino Salvador Methodist Church**

5th And Ave. D  
Jose M. Fernandez, Pastor

**First Baptist Church**

220 West Ave. E.  
Berry Bradley, Pastor

**Emmanuel Baptist Church**

Iglesia Bautista Emmanuel  
107 East Third  
Isaias Cardenas, Pastor

**Muleshoe Baptist Church**

8th And Ave. G.  
Bob Dodd, Pastor

**Primera Iglesia**

East Third And Ave. E.  
Roy Martinez, Pastor

**Longview Baptist Church**

Phone 965-3413  
B.C. Stonecipher, Pastor

**Progress Baptist Church**

Paul Brigham, Pastor  
Progress, Texas

**Progress Second Baptist Church**

1st And 3rd Sunday  
Clifford Slay, Pastor

**Richland Hills Baptist Church**

17th And West Ave. D.  
Brock Sanders, Pastor



**NET**

One of the definitions for a net is a trap or a snare. A net is used to catch a fish. There are times in every man's life when, like Job, he feels that God has trapped him in a net. Job 19:6 reads, "Know now that God hath overthrown me, and hath compassed me with his net."

But our troubles and afflictions are never caused by our God. Moreover, His Word says He is ever faithful to deliver His people. The Psalmist asserts: "Mine eyes are ever toward the Lord; for he shall pluck my feet out of the net."  
How wonderful are His promises. These promises are proclaimed from the pulpit by your pastor each week for the blessing and edifying of God's people. Won't you attend church this week and partake of this blessing?

The Church is God's appointed agency in this world for spreading the knowledge of His love for man and of His demand for man to respond to that love by loving his neighbor. Without this grounding in the love of God, no government or society or way of life will long persevere and the freedoms which we hold so dear will inevitably perish. Therefore, even from a selfish point of view, one should support the Church for the sake of the welfare of himself and his family. Beyond that, however, every person should uphold and participate in the Church because it tells the truth about man's life, death and destiny, the truth which alone will set him free to live as a child of God.



Coleman Adv.

**St. Matthew Baptist Church**

Corner of West Boston & West Birch  
M.S. Brown, Pastor

**Templo Calvario**

507 South Main  
Sunday - 10:00 a.m.  
Sunday Evening - 7:00 p.m.  
Evangelistic Services  
J.L. Soto, Pastor

**Primitive Baptist Church**

Corner of Ithaca St. And Fir ave.  
Elder Glen Williams, Pastor

**Primitive Baptist Church**

621 South First  
Elder George Johnson, Pastor

**Circleback Baptist Church**

Intersection FM 3397-FM 298  
946-3676  
Ron Linebarger, Pastor

**Trinity Baptist Church**

314 E. Ave B.  
Rev. V.L. 'Buster' Huggins

**Calvary Baptist Church**

1733 W. Ave. C.  
Rev. Darrel Martin

**Muleshoe Church Of Christ**

Clovis Hwy  
David Alessandro, Pastor

**16th & Ave. D. Church Of Christ**

Sunday - 10:30 a.m.  
Evening - 6:00 p.m.  
Wednesday - 8:00 p.m.

**First Assembly Of God**

521 South First  
Rev. Steve Davis

**Spanish Assembly Of God**

East 6th And Ave. F.  
Luis Campos, Pastor

**St. John Luthern**

Sunday School & Bible Classes 9:30 a.m.  
Church Services 10:30 a.m.  
Rev. Mac Bearss, Pastor

**New Covenant Church**

Plainview Hwy  
Sunday - 10:00 a.m.  
Wednesday - 7:00 p.m.  
Jimmy Lowe, Pastor

**Church Of The Nazarene**

9th And Ave. C.  
Glen Michael, Pastor

**The Community Church**

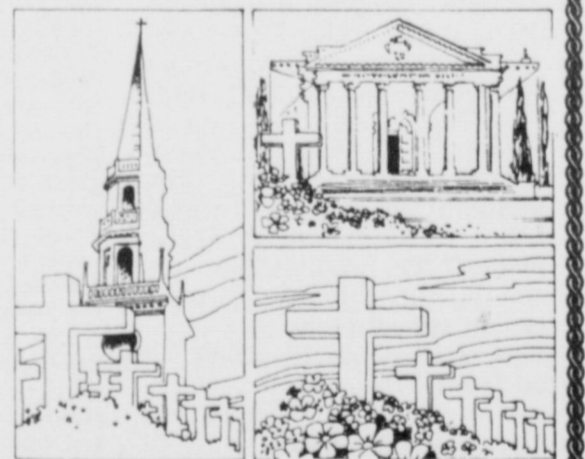
Morton Hwy  
H.D. Hunter, Pastor

**United Pentacostal Lighthouse Church**

207 East Ave. G.  
Rev. J.A. Torres

**Jehovah Witness**

Friona Hwy  
Boyd Lowery, Pastor



This feature is published in the interest of a better community, and is sponsored by the following civic minded business firms. Attend The Church Of Your Choice.

<p><b>Muleshoe Truck &amp; Auto Center</b> Plainview Hwy.</p>	<p><b>Farmers Co-op Elevators</b> 11 North 1st 272-4490</p>	
<p><b>Famous Fashions &amp; Fabrics</b> 127 Main 272-5056</p>	<p><b>1st Bank</b> 202 South First 272-4515</p>	<p><b>Irrigation Pumps &amp; Power</b> West Hwy. 84 272-4483</p>
<p><b>Lookin' Good</b> 206 Main 272-5052</p>	<p><b>Dairy Queen</b> 1204 W American 272-3412</p>	<p><b>James Roy Meat</b> 506 W American 272-4361</p>
<p><b>Western Drug</b> 114 Main 272-3106</p>	<p><b>Bratcher Motor Supply</b> 107 E. Ave. D 272-4288</p>	<p><b>Baker Farm Supply</b> 1532 W American 272-4613</p>
<p><b>5-Area Telephone</b> 302 Uvalde 272-5533</p>		<p><b>Farmers Spraying Service</b> Lazbuddie 965-2624</p>



**3 DAYS ONLY**

**AN INCREDIBLE SPECIAL PURCHASE OFFER!**

**BUY ONE,  
GET ONE...  
FREE!!**



**GENUINE  
ACTION RECLINERS BY LANE®  
AUTHORIZED SALE!**

**If you don't need 2 of these famous Action Recliners  
...bring a friend and share the cost!**

It's a great idea! Buy one famous Action Wall-Saver®, rocker recliner or recliner at the regular price...get the second of equal value FREE! Choose from any of these styles in a variety of colors. We have them all! Buy one, get one FREE!

**FEATURED EXAMPLE:**

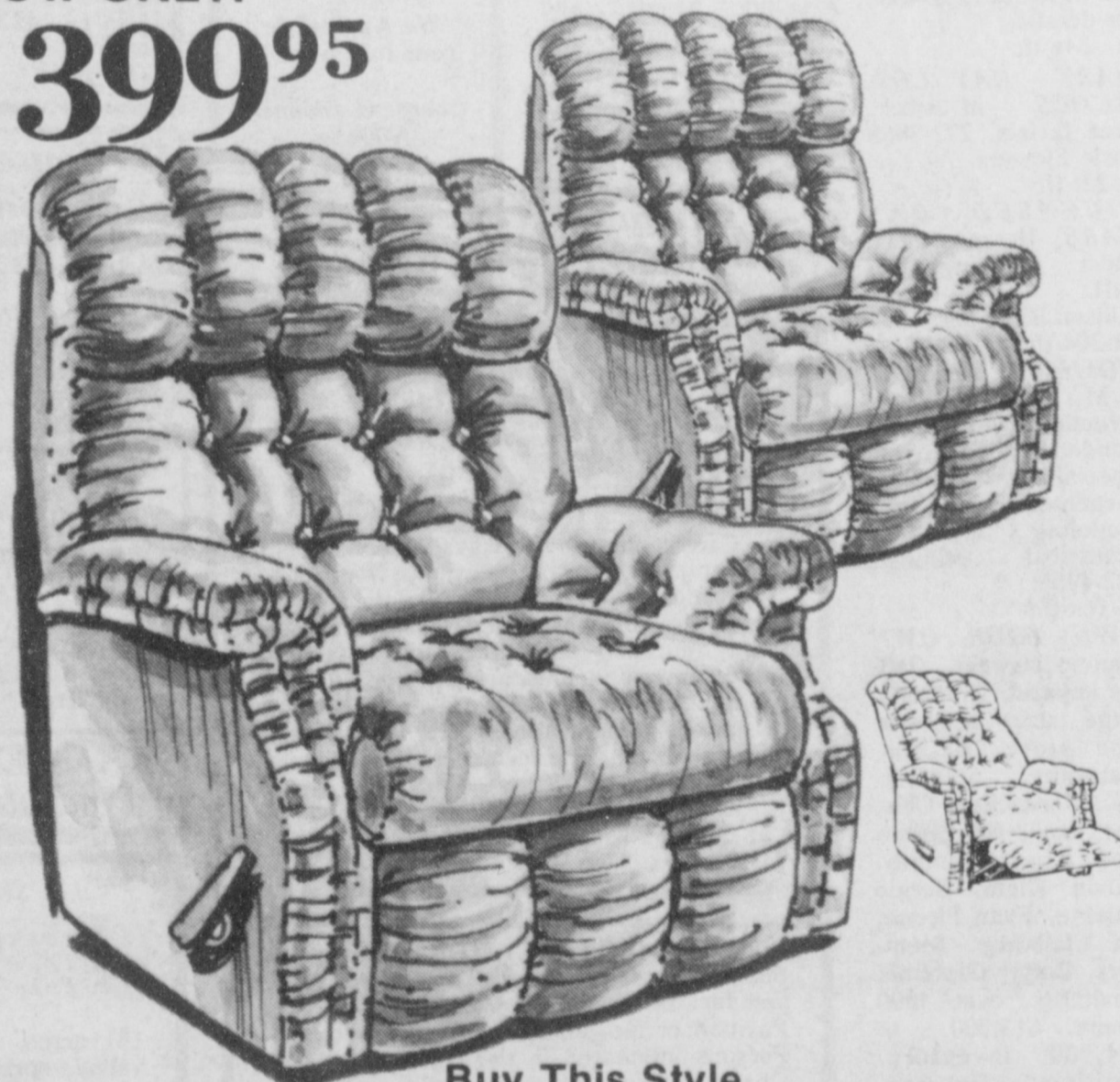
**Rustler**  
Bold styling with button tufted back and flared arms make this handsome restler recliner an ideal choice. All the Action luxury features, and deep seated comfort equal lasting enjoyment!

**Buy This Style...** Choice Of Colors.  
Get A Matching Recliner FREE!

**NOW ONLY!**

**\$ 399<sup>95</sup>**

*Action*  
RECLINERS BY  
**Lane®**



**Buy This Style...**  
Get A Matching Wall-Saver®FREE!

**The Sabre**  
Super cushioned luxury in a full size Wall-Saver® or Rocker Recliner. Button tufted and deep padded vertical puff head cushion.

Choice Of Colors.

**NOW ONLY!**  
**\$ 599<sup>95</sup>**



**Buy This Style...**  
Get A Matching  
Wall-Saver®FREE!



**NOW ONLY!**  
**\$ 499<sup>95</sup>**

**The Topper**  
Sit back and relax in a Rocker Recliner or Wall-Saver® with tufted back and soft roll arms in a velvet cord look.

Choice Of Colors.

**P O Y N O R ' S**

272-4552

White Stores, Inc.

103 Main