

WEATHER

August 4	100	67
August 5	97	60
August 6	99	62
August 7	106	62 .05

# Muleshoe Journal

'The Community Of Opportunity - Where Water Makes the Difference'



Vol. 62 No. 34

12 Pages Today

Published Every Thursday at Muleshoe, Bailey County, Texas 79347

Thursday, August 8, 1985

## Mule Day Festival Is This Weekend

### Social Security Representative Rotary Speaker

Carl Thompson of the Clovis Social Security office was guest speaker for the Muleshoe Rotary Club Tuesday at noon. He gave the history of Social Security to Rotarians, and explained how SS works, how it operates, sources of funds and the importance of SS in this area.

He said young people paying into SS now will not be receiving as many benefits as current older participants. Thompson explained that some benefits are being done away with in the current and future budgets, and will be affecting SS payments for future recipients.

According to the SS representative, people need to check their SS records every three years, because an amount is held from most everyone's check to go into the Social Security fund.

Social Security was established to help the elderly maintain a standard of living.

This is the 50th year of Social Security, which Thompson said is fortunately, basically out of politics.

Jeff Smith outlined the Mule Day Festival scheduled activities, and spoke on newly added attractions for this year.

Guests during the meeting included Harry Sheets, Tommy McKillip, Stacy Harlan and Lewis Scoggin.

### Teenager Dies After Shooting Here On Monday

What started out Monday night as a family dispute turned to tragedy as a 15 year old Muleshoe resident, Martina Rincon, apparently shot herself at the family's apartment.

Shortly before 9:30 p.m., an ambulance was dispatched to an apartment at the Muleshoe Housing complex in the east part of Muleshoe "where a woman has fainted." Simultaneously, officers were notified to go to the emergency room at West Plains Medical Center, so Deputy Hal Bynum went to the hospital.

Muleshoe City Police Officer Jay Livingston went to the housing complex after an officer was summoned to assist there, and found the ambulance crew attempting to handle a hysterical woman, who was later identified as the mother of the young girl. Joining Livingston at the housing complex were Det. Sgt. Julian Dominguez, Sgt. Richard Bonham, Lt. Wayne Holmes, and DPS Troopers Lacie Kirk and Jim Cook.

It was found that after the girl apparently shot herself in a closet in the family home, her father took her to the hospital; where she was pronounced dead by Justice of the Peace Jack Bates at 10:45 p.m.

Justice of the Peace Bates said he is withholding a ruling pending further investigation.

She had lived in Muleshoe for the past five years.

Services are pending for Martina Rincon with Rix Funeral Directors of Hereford. Rosary was at 8 p.m. Wednesday in the Rix Chapel.

The 15-year-old was born at Hereford and would have been a freshman at Muleshoe High School in the fall. She was a Catholic.

Her survivors include her parents, Mr. and Mrs. David Rincon; two brother, David Jr. and Ray, of the home; a sister, Angie, of the home; grandparents, Mr. and Mrs. Santos Rincon of Muleshoe and Mr. and Mrs. Juan Delgado of Indiantown, Fla.



RIDE 'EM COWBOY--As a skittish steer attempts to get out of the way, this mule rider takes off, lariat ready to latch around his horns. This is action such as can be seen during the mule rodeo held in conjunction with the Mule Day Festival, as annual fund-raising event for Girlstown, U.S.A. Jeff Smith, coordinator, says a full day of activities will be planned during the festival, and cordially invites the entire area to participate in the fund-raising activities to benefit the more than 50 young girls at Girlstown.

## Bailey County Agent Given Two Special State Awards

Spencer D. Tanksley of Muleshoe, Bailey County Extension Agent for 13 years, has been honored by the Texas Agricultural Extension Service Special-

ists Association with its award for distinguished achievement.

He was presented a plaque and letter of commendation during the annual meeting in Austin of the Texas County Agricultural Agents Association.

Dr. Tommy G. Welch of College Station, president of the specialists' association, presented the award to Tanksley Wednesday evening as "a dedicated agricultural education who has developed outstanding programs enhancing agricultural production, resource conversation and community life in Bailey County."

Welch is an Extension specialist, brush and weed control specialist.

The Extension Specialists' Association represents some 250 subject matter educators in the Texas A&M University System who support the local program of county Extension agents. The agents are professional educators who live and work with the people in a designated county and form the basic unit of the Texas Agricultural Extension Service.

The specialists form an effective link between the county agents and the research and teaching staffs of the Texas

A&M University System.

Tanksley was cited for his use of specialists in conducting a variety of educational programs, particularly and ongoing water conservation program. That effort has united food corn growers and a grain processor to increase irrigation efficiency by using soil moisture tensiometers; optimized soil fertility to increase response to irrigation, and improved water use efficiency by designing waste water utilization program for the processing plant.

He also was praised for a Cont. Page 6, Col. 5

### Duo Charged With Burglary

What started out early Monday morning to be a routine traffic stop for Muleshoe City Police Officer Jay Livingston turned into much more than a 'routine stop' before it was over.

Around 2 a.m. Monday, Officer Livingston was stopping a car on North First Street, occupied by two young men. After briefly questioning the men, the officer discovered a large amount of quarters in the vehicle.

On questioning the men, one from Lubbock, and the other from Shallowater, it was determined that more investigation was needed.

More than \$150 in quarters and dimes were discovered in the vehicle, along with suspected burglary tools, and keys to vending machines.

The officer, along with City Police Officer Gary Maddox and Patrol Sergeant Richard Bonham, called for a wrecker to take the vehicle in, and for a locksmith to open the trunk of the car.

One of the young men gave a statement to officers, and told them of various machines, in different cities, including Muleshoe, where they had used the vending machine master keys to open the coin boxes without having to pry the machine open.

It was discovered that they opened machines at Shafer's Bell Station and the Valley Motel in Muleshoe; three machines in Levelland and one machine in Lubbock on Sunday night.

Both were taken to the Bailey County jail and charged with burglary of a coin operated machine. Bond for the suspects was set at \$1,000 each.

### Around Muleshoe

Funeral services are pending with Ellis Funeral Home for Griselda Bustillos, age two, who choked to death on a piece of meat, which lodged in her throat.

She died at 8:20 p.m. Tuesday, at West Plains Medical Center.

She was born October 15, 1982. Her parents are Mr. and Mrs. Ramon Bustillos.

Doctors will be conducting athletic physicals for all junior high and high school boys who plan to participate in the athletic programs at the two schools.

The physicals will be for boys from Muleshoe and surrounding area schools, and will be in the Cont. Page 6, Col. 1



COUNTING THE QUARTERS--Early Monday morning at the Muleshoe City Police Department, City Patrolman Jay Livingston was busy counting quarters. The quarters, more than \$150 worth, were confiscated after two young men were arrested for investigation of burglary of coin operated machines.

What does the well-dressed mule wear these days? And what does the well-dressed local merchant wear these days -- especially when they are participating in the Mule Days Festival celebration? Visit Muleshoe this Saturday and find out. Prizes will be awarded the best dressed mule team and the best dressed store personnel.

Activities for the annual Mule Days Festival get underway early on Saturday morning, and will be fast-paced during the entire day and evening.

At 6:30 a.m., the hot air balloons will take to the air from Jeff Smiths farm two miles east, and one-half mile south of Muleshoe on Highway 70.

The event will be followed by the special 10-K run; the two-mile run and a special run for youngsters, which will start off from KMUL Radio's parking lot at 8 a.m.

Back at the Smith farm, the ever-popular turtle races will be conducted at 8:30 a.m., with the Arts and Crafts festival getting underway in the barn at 9 a.m.

There will be live entertainment throughout the morning.

Special this year for the 10 a.m. parade will be several very unusual entries for this part of the country.

Bruce Parr of Black, near Friona, will be bringing his stagecoach, and will be leading off the parade. The stagecoach has been in the Rose Bowl Parade, the Cotton Bowl Parade and Macy's Thanksgiving Parade. The stagecoach has gold overlay. He will also be bringing a surrey and other mule and horse drawn vehicles.

Parr said his stage coach will be at the rodeo arena following the parade and available for rides, with all proceeds from the rides being donated to Girlstown, U.S.A. His stage coach is named the Tejas (friendly) KIID (Kim, Ira, Iva and Donna) Express.

Also scheduled for the parade is an authentic chuck wagon from the Charles Goodnight former ranch. It is a Butcher Knife Chuckwagon, with a canvas cover. The Odessa Chuck Wagon Gang will be

### Kid's Cooking School Slated

Something special is coming up, especially for kids, on Thursday, today, at 2 p.m. at the 16th and Avenue D Church of Christ, sponsored by the Bailey County Extension Office.

Christye Coppage, SPS Home Economist, will be teaching a Kid's Cooking School.

Although there is no age limit, the Home Economist said the youngster needs to know how to read a recipe.

Demonstrations will include the use of a microwave oven, electric skillet and blender.



AND, THE WINNER IS--Jeff Smith was not the winner in this battle with the tractor in the background late Saturday evening. He slammed into the tractor tire Saturday as the tractor was turning off a county dirt road onto the Y-L pavement. Smith received minor injuries in the accident.



## Bridal Shower Fetes Miss Mendoza

Florinda Mendoza was honored with a bridal shower Sunday Aug. 4 from 3 until 4 p.m. in the Catholic Center.

Guests were greeted by the honoree and registered by Margie Alarcon.

Margie Alarcon, Dora Friana, and Francis Perez served cake, punch, cookies, nuts and mints from crystal punch bowl and serving pieces, silver nut bowl, silver and crystal mint bowl.

The serving table was covered with a pink with white lace tablecloth and accented with an arrangement of white daisies and a mixture of pink and maroon carnations in a crystal vase. The honoree's corsage consisted of white carnations, pink and maroon daisies, with pink ribbon.

The hostesses gifts were cookware, crock pot, toaster, dishes, and a crystal tumbler set.

Hostesses for the occasion included: Margie Alarcon, Maria Alfar, Lupe Balza, Feliz Carrion, Maria Elena Diaz, Anita Flores, Clara Flores, Antonia Guzman, Lola Hernandez, Avelina Madrid and Aurora Mata.

Also Maria Mata, Patricia Mata, Lola Pacheco, Ortenia Mendoza, Francis Perez, Margarita Posadas, Teresa Valdez, Eneida Saucedo, Dora Triana, Esther Ybarra, Celia Mendoza, Rosa Vela and Ermila Pineda.



FLORINDA MENDOZA

### Amarillo Tri State Fair Names Judges

Final selection of judges for the competition in the livestock events at the 1985 Tri State Fair has been completed. Lynn Griffin, fair manager, has announced the names of the judges, who represent six states. Bill Conley of Clarksdale, Missouri will judge the Open and Junior Angus Shows. Hereford cattle will be judged by Sam Paylor of Brookville, Kansas, Dr. Stephen Hammack, Stephenville, Texas will judge the Shorthorn cattle and the Simmental cattle. Longhorn cattle will be judged by Dr. Joe Knowles, Borger, Texas. The Open Sheep Show will be judged by Gil Engdahl, San Angelo, Texas. Rick Maloney of Duncan, Oklahoma will place animals in the Junior Barrow Show. Junior Lambs will be judged by Kyle Smith of

Seminole, Texas. Dr. David Ames, Fort Collins, Colorado will place the Junior Steers. Capons will be judged by Dr. William Cawley, College Station, Texas. Charles Ojersdorf of Peoria, Arizona will judge the bantams and rabbits will be placed by Bob Berry of Lubbock, Texas. More than 2,000 head of animals are expected at the fair, scheduled for September 16-21.

#### Yum, Yum

Summer is that season of the year when a housewife can put anything on a lettuce leaf and call it a special salad.

-Journal, Greensboro.

### Letter To The Editor Policy

The Muleshoe Journal and Bailey County Journal welcomes letters to the editor on issues of concern to readers. Such letters must meet certain qualifications in order to be considered for publication.

Letters must bear the writers signature, address and phone number in order that the authorship may be confirmed. Under some circumstances we will delete the name of the writer, if, in our judgement, the request to do so is justified.

Letters should not exceed 250 words and must meet standards of good taste as well as legal guidelines. Letters attacking another person, a church or specific religion will not be published. Comments on issues are encouraged in order to maintain a forum for discussion of public views.



SPC NURSES CAP LVN PROGRAM--Seven students in South Plains College's Associate Degree Nursing program received their LVN caps in ceremonies held recently at the Levelland campus. Back row, left to right: Mattie Hicks, instructor in vocational nursing, Jeanette Humiston of Muleshoe, Della Reece of Levelland, Belinda Saenz and Wanda Young, both of Littlefield, and Barbara Bennett, assistant professor of vocational nursing and coordinator of the ADN program. Front row, left to right: Juanita Camacho and Janice Demons, both of Levelland, and Waver Edwards of Lubbock. (SPC Photo)

### \$45,000 Penalty Heads List Of Commission Pollution Fines

The Railroad Commission fined Crude Processing, Inc. of Leakey \$45,000 this week for numerous pollution violations over several years on the Riggs lease in Frio County.

Eleven other operators received penalties totalling \$38,000 for violations of Commission well plugging rules.

Commission inspectors documented multiple pollution violations at the Riggs lease including salt water leakage at a disposal well; unauthorized, unlined pits full of salt water, oil, and oil and gas waste materials; oil and salt water dumped on a gravel road; and leaks in storage tanks.

In addition to levying the \$45,000 penalty, the Commission order directs Crude Processing to plug the salt water disposal well on the lease, clean up pollution, drain and backfill all pits, and revoke the company's oil reclamation plant

and salt water disposal permits.

The largest total plugging penalty, \$10,000, was assessed to W.D.I. Norris of Dallas for failure to plug one well each on the Nash and R.F. Martin leases, Jack County. Company representatives did not appear at a Commission-called hearing on the matter. Commission rules require that a well be brought back into production or plugged within 90 days after it becomes inactive.

Other operators also failed to appear at Commission-called hearings on plugging violations and were fined for the violations. They included Burns Oil Co. of Houston, \$6,000 for one well on the Lanny Aldridge lease, Coleman County, and one well on the Aldridge "A" lease, Rannels County; Drillway, Inc. of Wichita Falls, \$6,000 for two wells on the Paul Fetsch lease in Cooke County; B.D. Click Co.

of Abilene, \$5,000 for one well on the Dickenson "A" lease, Jones County; and Royalon Petroleum of Vancouver, Canada, \$5,000 for one well on the Jerry Johnson lease, Hill County.

Agreed settlements were reached with six other operators for well plugging violations. They included G.C. Walters, Jr. of Dallas, \$2,500 for one well each on the Alvis Calame lease, Freestone County, and the R. Stephens and Henry Jackson leases, Limestone County; Wimberley-Mayes, Inc. of Breckenridge, \$500 for one well on the J.H. Harris #1 lease, Throckmorton County; Risa Energy Corp. of Corpus Christi, \$500 for one well on the Ledwig Oil Unit lease in DeWitt County; May Oil Venture of Brownwood, \$1,000 for one well on the May lease, Eastland County; Gary Oil and Gas of Beaumont, \$500 for one well on the W.F. Weed et al lease, Jefferson County; and Delaware Visa Energy Corp. of Denver, Colo., \$1,000 for one well on the R.L. Reed lease, Parker County.



**ACTION PEOPLE LIKE THE CLASSIFIEDS!**

You don't need a cheerleader to urge on the action you'll get from one of our classified ads. For plenty of action from your ad, call us and let us help you write up a sure-fire winner!

**Muleshoe & Bailey County Journals**  
CALL CLASSIFIED 272-4536

# Galante

Invites

You  
To



## OPEN HOUSE

On

### Mule Day Festival

August 10, 1985

11 a.m. To 4 p.m.

**Come And Look Over Our Facilities**

3 Miles East Of Muleshoe  
On Highway 70





## Miss Puckett James United In Marriage

Miss Connie Dianne Puckett became the bride of Bill James in a candlelight ceremony at 6 p.m. Saturday, June 22 in the Progress Baptist Church. Rev. Paul Brigham read the double ring vows.

Parents of the couple are Mr. and Mrs. John H. Puckett and Mr. and Mrs. Willie James, all of Muleshoe.

Vows were exchanged before an archway with candelabras on either side accented with white tapers. The couple lit a unity candle which was accented by blue satin ribbon and bows. Satin bows with candles marked the pews.

Mr. and Mrs. Clifford Watson of Lubbock sang "Up Where We Belong" and "Faithfully".

Given in marriage by her father, the bride chose a formal length white taffeta, with overlay, gown featuring a high lace neckband and a lace accented off-the-shoulder V-yoke. Lace accented the elbow length puff sleeves. The gathered skirt, attached to the fitted waistline, was extended in the back to form a chapel length train. Her fingertip veil was attached to a picture hat. Her bridal bouquet consisted of white silk roses,

with small blue flowers and ribbon accented with greenery.

Kristi Campbell of Muleshoe served as maid of honor. Bridesmaids were Stacy Smith and Polly Harrison, both of Muleshoe. Tiffany Copley served as flower girl.

Tim James of Floydada served as best man. Groomsmen were Richard Suddeth of Richardson and Darin Shaw of Muleshoe. Jordan Pool of Muleshoe was ring bearer.

Candlelighters were Fonda

Ross of Olton and LaTavia Copley of Muleshoe. Ushers were Larry Beene and Orvis Burris, both of Muleshoe.

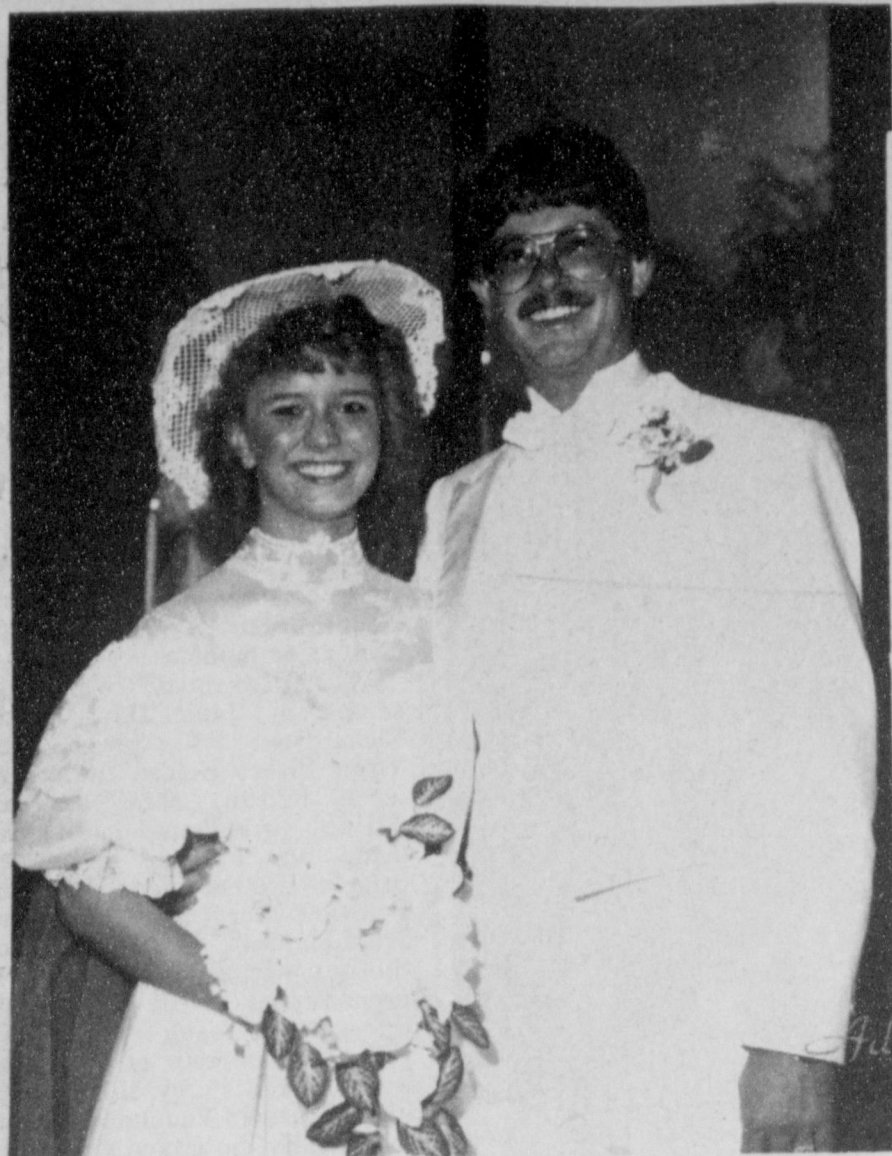
Following the ceremony, a reception was held in the fellowship hall of the church. Servers were Lisa Whalin and Tina Ruthardt.

Following a wedding trip to San Antonio, the couple will make their home in Lubbock.

Both are graduates of Muleshoe High School and James graduated from West Texas State University at Canyon.



"VISIONS OF THE SOUTHWEST"---Charlotte McMurry, a Watercolorist from Clovis, N.M. will be displaying "Visions of the Southwest" at the Muleshoe Public Library during the month of August. She is a member of the Muleshoe Art Association, Pintores Art League of Clovis and the Clovis-Portales Arts Council. "Visions of the Southwest" were recently displayed at the New Mexico Arts and Crafts Fair in Albuquerque, N.M., which was seen by an estimated 33,000 people. Mrs. McMurry will present a demonstration for the Muleshoe Art Association during their October meeting.



MR. AND MRS. BILL JAMES (nee Connie Dianne Puckett)

## RECIPE

By Sarah Ann Sheridan

### Eggplant Casserole

- 1 small eggplant medium tomatoes, sliced
- 2 medium green peppers, chopped
- 2 medium onions, chopped
- Seasoning: salt, pepper, garlic salt, sugar
- 3/4 lb. sharp Cheddar cheese, sliced 1/8 inch thick.

Slice unpeeled eggplant 1/4 inch thick. Parboil until partially tender. Place layer eggplant slices in casserole.

Add a layer of sliced tomatoes, filling spaces with chopped green peppers and onions.

Sprinkle lightly with each of the seasonings. Add a layer of cheese.

Repeat until casserole is filled, ending with cheese.

Cover; bake 30 minutes at 400 degrees until steaming.

Remove cover, reduce heat to 350 degrees and cook another 30 minutes or until eggplant is tender and sauce thick and golden.

### BEST OF PRESS

#### Know How

Genius: The guy who gets out of work by doing a job right the first time. -Scoop, Winter Harbor.

#### Hard To Do

The fact that figures don't lie is a good reason to stick to a diet. -Courier, Waterloo, Ia.

### Journal Society Policy

A processing charge of \$3 is made when a photo accompanies any wedding, engagement, or anniversary with the exception of anniversary of 50 years or more.

Five dollars will be charged for any shower picture taken by the Journal and \$3 charged for any shower picture accompanying a story. Pictures may be picked up after the article appears in the paper.

Wedding, engagement, and anniversary stories must be in the Journal office by Monday noon for the Thursday paper, and by Thursday noon for the Sunday paper.

After that time, stories will be run on a space available basis. Any wedding more than two weeks old, when received, will be edited and only the basic information will be included.

Shower pictures will not be taken without a 24 hour notice and copy must be in the office by 5 p.m., Monday for the Thursday paper and 5 p.m. Thursday, for the Sunday paper.

## Journal Files

### 60 Years Ago

1925

The Springlake people are going to build a \$3,000 Church building.

\*\*\*

The Journal has been authorized to announce that the people of Bailey County are invited to attend the public laying of the corner stone of the court house at 4 o'clock p.m. Saturday, August 8th.

The Judge wishes it be known that the ceremonies under the auspices of the

People of Bailey County, and everybody is expected to attend.

### 50 Years Ago

1935

Friday night of last week this section was visited by a strong wind that apparently did considerable damage to crops in the eastern part of Bailey County necessitating some replanting; but the following night this entire area was visited by a fine downpour of rain that alleviated the condition of these replanters furnishing plenty of moisture to germinate and bring up the seed.

### 40 Years Ago

1945

NEW THEATRE FOR MULESHOE UNDERWAY CONSTRUCTION BY MOELLER FAMILY

Muleshoe will have another theatre in the near future. The Moeller family, owners of the Valley Theatre, announced Monday they hope to have their second theatre, the Palace ready for use during the rush autumn season.

They began tearing down the old building on Main Street that formerly housed the Palace, closed since shortly after the outbreak of the war.

A new building, 25 by 100 feet in dimensions is to be erected at once. Seats have been left in the theatre and are practically new. The new Palace will seat 250 persons.

### 30 Years Ago

1955

First National Bank of Muleshoe will begin business this coming Monday morning, Aug. 1 at 9 a.m. The bank recently organized, will open in temporary quarters in the Gilbreath building, West 1st. and Avenue B.

### 20 Years Ago

1965

Mr. and Mrs. Frank Ellis and three sons have returned from a trip to California. Ellis, who is president of the Muleshoe Lions Club, attended the international convention of Lions, held in Los Angeles July 7-10, now the world's largest service organization.

### 10 Years Ago

1975

A new high-band radio console has been installed at the Law Enforcement Center. Irene Splawn, radio dispatcher for 18 years, says the unit should be hooked up by September 1. A new 300 foot tower has been erected south of Muleshoe, along with a metal building housing an auxiliary generator to enable constant radio communications by all law enforcement agencies (State, County and City) in the event of power failure. This is a city, county endeavor with the South Plains Association of Governments, the coordinating agency for federal funding.

### Sudan News by Evelyn Ritchie

Mr. and Mrs. Mike Fisher were in San Angelo during the weekend with her parents and brought Tanya and Shannon back with them following a two weeks vacation there.

Heather and Justin Harrison have been in Lubbock for the past ten days visiting their

dad, the Clay Harrisons.

Wendy Knox, daughter of Mr. and Mrs. Jimmy Knox of Abernathy, visited this week with her grandparents, Mr. and Mrs. R.B. Knox.

Bradley Lynskey, son of Mr. and Mrs. Jeff Lynskey of Lubbock visited last week with his granddad, Bud Provence and uncles, Mr. and Mrs. Darren Provence and Mr. and Mrs. Damon Provence.

### Muleshoe Journal

Established February 23, 1924. Published by Muleshoe Publishing Co., Inc. Every Thursday at 304 W. Second, Box 449, Muleshoe, Texas, 79347. Second Class postage paid at Muleshoe, Texas, 79347.

MEMBER 1985 TEXAS PRESS ASSOCIATION

L.B. Hall - President  
James Woods - Vice President  
Cleta Williams - News  
Evelyn Harris - Society  
Holly Millsap - Advertising  
Lilla Nuno - Circulation - Classified  
Sammy Hall - Bookkeeper

1985 SUBSCRIPTIONS  
Muleshoe Journal and Bailey County Journal  
and surrounding counties \$12.95  
Muleshoe Journal and Bailey County Journal  
elsewhere in Texas \$12.95  
Muleshoe Journal and Bailey County Journal  
Outside of Texas \$13.95  
Yearly by Carrier \$11.50  
Advertising rate card on application

Bridal Selections  
Of  
Cindy Issac  
Art Loft

1529 W. Amer. Blvd.

272-9485

**Ben Franklin**  
Better quality for less  
2104 WEST AMERICAN BLVD. MULESHOE  
PH. 272-3855 STORE HOURS 8 a.m. - 8 p.m.

OPEN SUNDAY 12 -5 p.m.



MULE DAYS

Almond-Brown  
White  
Wire Grid  
Chairs  
Reg. 7.97 \$4.77

Mens Ely  
Long Sleeve  
Western  
Shirts  
2 Pockets  
Pearl Buttons \$9.97

8" Live Plant  
Hanging Baskets \$6.97

Coke  
Diet Coke Caffeine Free Coke  
6 Pk 12 Oz. Cans \$1.49

Jellies  
Values To 5.97  
\$1.87

Brown & Tan  
Vinyl Tube

Chaise Lounge  
Reg. 9.97 \$6.97

Facial Tissue  
Kleenex  
175 Ct 74¢ Box

Aladdin  
Imaginary Line  
Tablets  
No. 2125 - 1st Grade  
No. 2225 - 2nd Grade  
77¢

Coke  
Tab \$1.49  
Sprite  
Diet Sprite

MULE DAYS!

SALE  
Sale

50% Off

And Much More  
Thursday - Friday

Saturday

ANTHONY'S

321 Main

Muleshoe

8-6 Daily



# Afternoon Ceremony Unites Miss Vaughn, Stancell



MR. AND MRS. STEVEN FRANK STANCELL  
(nee Elaine Vaughn)

Miss Elaine Vaughn became the bride of Steven Frank Stancell in a double ring ceremony at 2 p.m. Friday, June 7 in the Farwell Church of Christ. The ceremony was performed by Ralph Gates, former minister of the Farwell Church of Christ, now serving as minister of the Fairmont Prk Church of Christ in Midland.

Parents of the couple are Mr. and Mrs. LaVerne Vaughn of Farwell and Mr. and Mrs. Bennie Stancell of the West Camp Community.

Wedding music was presented by Janie Day, Deann Richardson, J.R. Sewell, and Virgil Fiske. Before the songs were begun, Mrs. Juanita O'Hair, grandmother of the bride, was ushered in by the bride's brother, Eric Vaughn. Following were Mr. and Mrs. J.V. Stancell, grandparents of the groom, and Thelma Tallent, grandmother of the groom. As the quartet sang "There Is Love", the mother of the bride was ushered in by the bride's brother, Devin Vaughn. She was followed by the groom's mother, who was escorted by Kyle Stancell, brother of the groom. J.R. Sewell and Deann Richardson sang "Follow Me" as the bride's attendants entered. The quartet sang "The Wedding March" as the bride came down the aisle with her father. Following the prayer the quartet sang "Father, Hear The Prayer We Offer." For the recessional they sang "The Lord Bless You and Keep You" and "The Lord My Shepherd Is."

Vows were exchanged before a white archway entwined with ficus benjamina foliage, baby's breath, and rosebuds in the bride's chosen colors of America beauty rose and pink. Beneath the archway on top of a wide table sat the white unity candle nestled in mounds of fern flanked on either side by white tapered candles. On each side of the archway were two white spiral candelabras entwined with baby's breath and baker's fern, marked by large American beauty rose bows. Church pews were decorated with satin American beauty rose bows and white doves.

Presented in marriage by her father, the bride wore a formal gown of white chiffon. The Victorian neckline was edged in Chantilly lace with a yoke of English net covered with Schiffl lace and seed pearls and finished with a wide Chantilly lace ruffle. The bodice was enhanced with Chantilly lace

and seed pearls and long ribbon-trimmed bishop sleeves that were caught at the wrists by a deep cuff of Chantilly lace.

The full gathered skirt was cut to floor length in front, tapering down to create a chapel length train in back. It featured rows of lace ruffles and ribbon encircling the entire skirt. Compoeting the ensemble was a manta of silk illusion with a scalloped pencil finished edge. The manta was attached to a profile cap covered in Chantilly lace and seed pearls.

The bride carried a tapered cascading bouquet of American beauty roses, stephanotis, baby's breath, white mini-carnations, and plumosa fern atop a white Bible, which the groom's mother carried as a bride.

Carrying out the traditional theme of something old, something new, something borrowed and something blue, her dress was something new, and for something blue she wore a blue garter, which was given to her by her aunt, Mrs. Joye Breedlove. The white Bible served as something old and borrowed.

Rhonda Waddell, cousin of the bride of Lazbuddie, served as maid of honor, and Sharla Stewart of Farwell was bridesmaid. Belynda Waddell of Lazbuddie and Jill Stevens of Houston, both cousins of the bride, served as flower girls.

Guests were registered by DeAnn Curtis, cousin of the groom. The registration table was covered with a cloth of white linen with an overlay of white eyelet embroidery. A three-branch candelabra with American beauty roses and love birds accented the table, along with a white plume pen and the white bride's book.

Carey Stancell, brother of the groom, served as best man, and Brian White was groomsman.

Candlelighters were Kyle Stancell, brother of the groom; and Kevin Taylor, cousin of the groom, of Roswell, N.M. Ushers were Eric Vaughn, Byron Vaughn, and Devin Vaughn, all brothers of the bride.

Following the ceremony a reception, hosted by the bride's parents, was held in the fellowship hall of the church.

Mrs. Kent Vaughn, cousin of the bride, of Earth served the cake with the assistance of Kelly Davis. Gwen Morgan of Lubbock served the punch.

Sharing hostess duties at the reception were Joye Breedlove of Littlefield, Dorothy Vaughn of Dimmitt, Maudie Taylor of Roswell, N.M., Linda White, Flo Davis, and Tommie Fulcher.

During the reception, wedding bell rice bags were distributed by Amber Vaughn, cousin of the bride, of Dimmitt and Kimberly Taylor, cousin of the groom, of Roswell, N.M.

Coordinating the wedding and reception and serving as special assistant to the bride was Joye Breedlove, aunt of the bride, of Littlefield.

The bride is a graduate of Farwell High School and attended Abilene Christian University one year. She is presently attending Aladdn Beauty College in Abilene.

Stancell also attended Farwell High School and is currently a sophomore pre-med student at Abilene Christian University in Abilene. The couple will make their home in Abilene.

Mr. and Mrs. Bennie Stancell were hosts Thursday, June 6 at Poor Boy's Steak House in Clovis, N.M. for a rehearsal dinner honoring their son and his fiancée.

Pre-wedding courtesies included a bridal shower in the home of Mrs. Flo Davis of Oklahoma Lane. Co-hostesses were: Johnnie Althoff, Jan Billingsley, Kelly Davis, Tommie Fulcher, Sharon Grant, Wanda Mayfield, Eunice Schilling, Betty Stewart, Linda White, Sherry White and Nelda Wilhite.

A lingerie shower was given in the home of Mrs. Kent Vaughn at Earth.

Out of town wedding guests were registered from Urbana, Ill.; Canyon, Dimmitt, Littlefield, Earth, Lazbuddie, Houston, Chactaw, Okla.; Campbell, CA; San Antonio, Slaton, Roswell, N.M.; Snyder, Alamogordo, N.M.; Midland, Clovis, N.M.; Springlake, Muleshoe, and Lubbock.

#### BEST OF PRESS

Which Are You?

According to a popular magazine, there are three kinds of drivers: "urban, suburban and bourbon."

-Post, Pittsburg.

## Creative Woman

by Sheryl Borden

Information on choosing toys, the language of flowers and the importance of early pregnancy testing will be presented on "The Creative Woman" show on August 13 and 17.

Kay Willis is a consultant to Fisher-Price Toys, and she will talk about several important points parents should consider when choosing toys. Quality toy companies consider it their primary responsibility to construct toys that are safe, functional and durable. Parents are still responsible for seeing that their children play safely. Mrs. Willis is from Rutherford, New Jersey and the mother of ten children and much of what she will share will be based on first-hand experience.

Another guest is a color and floral specialist and her name is Domingue Isbecque. She's a consultant to 800-FLOWERS, a new, nationwide flowers-by-phone service that you can dial 24 hours a day -- toll-free -- for quality, guaranteed arrangements. Ms. Isbecque will tell about the history of flowers, explain what the color and type of different flowers means, and what message it conveys. She will also talk about the psychology of color and discuss when to send flowers. Ms. Isbecque is from New York.

Another part of the show will be presented by Dr. Sheldon Cherry, of New York's Mt. Sinai Hospital. He is the author of *Understanding Pregnancy and Childbirth*. Dr. Cherry outlines important do's and don'ts for the mother-to-be and will explain some of the sophisticated techniques available today to make pregnancy a safe and pleasant experience.

Information on a new product from Pellon Corp., gifts to make and a health up-date on

osteoporosis will be presented on the show on August 15.

Quilter's Secret is a new product from Pellon and at first glance it will look like another bolt of interfacing. It is fusible but on one side will be printed lines. This product cuts down the time involved in piecing quilts to about half. Jane Schenck is the Educational Director for Pellon, and she's from New York. Ms. Schenck will show how to use this product and talk about the obvious advantages of using the Quilter's Secret.

Most people find a great deal of satisfaction in making gifts for someone they care for. Jewell Limacher, former Extension Home Economist from Roswell will share two very useful and very clever gifts to make yourself. One is a crayon and coloring book carrier and kids and parents alike will enjoy this. The other item is a travelers organizer and this gift would be ideal for men and women. Both items are fairly easy to make and the cost comparison between making them and buying comparable ones is very interesting.

Osteoporosis is a women's problem for the most part. It's painful, disfiguring and debilitating, but it can be prevented and it's progression can be halted, if diagnosed early. The first part of the show will be a health up-date on osteoporosis.

"The Creative Woman" is produced and hosted by Sheryl Borden. The show airs on KENW-TV, channel 3 in Portales on Tuesday and Thursday at 12 noon and at 2:00 p.m. on Saturday.

\*\*\*  
An earthworm has five pairs of hearts in the front of his body.

## Epsilon Delta Met Recently In Sudan

The Epsilon Delta chapter of Delta Kappa Gamma Society International met July 9 in the home of Loretta Reed in Sudan for a planning meeting for the coming year of work.

The theme for the programs was announced--"A Time To Endow". The programs are to follow this theme in some way associated to the field of education and teacher professionalism.

Several of the Muleshoe members were named as chairmen for the various programs during the year. Dates for state and national meetings were also announced so the member can plan schedules to attend.

Following the business meeting a salad luncheon was served to members while some chapter committees met to plan the work for the year.

Lucy Faye Smith, chairman of the State Ceremonials Committee, gave a brief report of the work she will be doing and some of the plans she has made for the coming year.

Those members attending from Muleshoe were Virginia Bowers, Joyline Costen, Georgia Pena, Lola Pylant, Lucy Faye Smith and Johanna Wrinkle.

SALUTE

LEADERS  
OF  
TOMORROW

To Our TOMORROW

We Believe Our Youth Of Today Will  
Provide Effective Leadership Tomorrow!

LEADER OF TOMORROW--Our Leader of Tomorrow this week is Emily Harris. Emily will be a fourth grader at Mary DeShazo this year, and is the daughter of Mr. and Mrs. Royce Harris. Emily's favorite subject is art. She would like to be a school teacher when she grows up. Emily's hobbies are collecting erasers and stickers and playing with her cabbage patch kid. Emily plays the piano and is an excellent student in school. We salute Emily, as a future Leader of Tomorrow.

PROUDLY PRESENTED BY:

# IT'S Mule Days

Special Groups  
Sale Merchandise

1/2 price



Albertsons Shop For Men

228 Main

272-3000



# Miss Hicks, Benedict United In Marriage

Miss Ray Ann Hicks became the bride of Ross Wilfred Benedict in a candle light ceremony Friday, July 12 at 7 p.m. in the First Baptist Church of Lazbuddie. The Rev. Jim D. Standridge of San Antonio read the double ring vows.

Parents of the couple are Mrs. Gary Hicks of Muleshoe and Mr. and Mrs. Jack Benedict of Wimborne, Alberta Canada.

The church was decorated with spiral candelabras with lavender votive candles across the front. Palm greenery back dropped the stage. The unity candle was in the center of the stage accented with white roses. Candle holders with greenery lined each pew down the center aisle.

Traditional "Wedding March" was played by Marcella Jinnings of Lazbuddie, "Two Little Children," song written for the bride and groom by Gary Wilcox, "This Is The Day," "Take All Of Me," duet by Laura Zomora and Brad Trieder.

Given in marriage by her brother, Scott Hicks, the bride wore a white taffeta gown accented by a stand up neckline trimmed with Alencon lace and simulated pearls. The illusion front and back neck yoke was

trimmed with Scheffli embroidery and simulated pearls. The fitted bodice was trimmed with Alencon lace and pearls and the dropped basque waistline was balanced by Juliet sleeves with a full pick up skirt and hemline that extended to a cathedral train.

The bridal bouquet consisted of white roses, gardenias and orchids amidst greenery, pearls and white ribbon atop a white Bible given to the bride by her parents.

Mrs. Pam Hoare of Wimborne, Alberta Canada, sister of the groom, served as matron of honor. Bridesmaids were Susan Erion of Wimborne, Alberta Canada; Shawn Hicks, cousin of the bride, of El Paso; and junior bridesmaids were Kia Morris, and Mandy Cleavenger, both of Lazbuddie, and Mary Catherine Smith of Corpus Christi.

Miriam Wilcox of Lazbuddie served as flower girl.

Rob Wall of Winnipeg, Manitoba Canada served as best man. Groomsmen were Craig Erion of Wimborne, Alberta and Larry Zamora of Lazbuddie; junior groomsmen were Cade Morris and Benjamin Zamora, both of Lazbuddie and Justin Winders of Earth.

Candlelighters were Shawn Smith and Shane Smith, both of Lazbuddie. Ring bearer was Christopher Hoare, nephew of the groom, of Wimborne, Alberta. Trent Hicks, cousin of the bride, of El Paso was the usher.

Following the ceremony, a reception was held in the fellowship hall of the First Baptist Church of Lazbuddie. Miss Cara Smith registered the guests.

Following a wedding trip to points in Canada, the couple will make their home in Wimborne, Alberta Canada.

The bride attended elementary school at Lazbuddie public school and high school at the First Baptist Church of Lazbuddie. Also Ravenscrest Bible School at Estes Park, Colorado and taught kindergarten two years at the First Baptist Church.

Benedict attended elementary school at Wimborne, Alberta; junior high at Torrington, Alberta; high school at Trochu, Alberta; and Ravenscrest Bible

School at Estes Park, Colo. He also attended Olds College at Olds Alberta, majoring in agriculture and mechanics. He is presently engaged in farming and cattle.

Out of town wedding guests included: Mr. and Mrs. Larry E. Hicks and family of El Paso; Mrs. Louise Willingham of Idaho; Bart Torrchstone of San Antonio; Kathy Menefee of San Antonio, Rev. and Mrs. Jim D. Standridge of San Antonio, and Tracey Jones of San Antonio.

Also Mr. and Mrs. Garland Flanagan of Oklahoma, Mr. and Mrs. Steve Phillips and family of Paris, Texas; Mrs. Willeta Houston of Waco, Mrs. Bobby Smith of Corpus Christi, Mr. and Mrs. Alex Benedict of Wimborne, Alberta Canada; Bonnie Benedict of Wimborne, Alberta Canada.

And Mr. and Mrs. Russ Civiklewich of Red Deer, Alberta, Canada; Winnie Benedict of Wimborne, Alberta, Canada; Mr. and Mrs. Sid Fraser of Edmonton, Alberta, Canada; Rob Wall of Winnipeg, Manitoba, Canada; Mr. and Mrs. Jack Benedict and family of Wimborne, Alberta, Canada; and Mr. and Mrs. Clive Hoare and family of Wimborne, Alberta, Canada.

An outdoor pool rehearsal party was held on July 11 at the home of Mr. and Mrs. Ted Trieder. A Texas style barbeque was served to friends and neighbors along with the wedding party. Friends of the bride hosted the party.

## RECIPE

By Sarah Ann Sheridan  
Cabbage In Mustard Sauce

- 4 cooked cabbage wedges
- 1 c sour cream
- 1 T prepared mustard
- 1 T minced onion
- 1/4 t salt
- 1/8 t pepper
- 1 T chopped onions

While cabbage cooks (about 15 minutes), in small saucepan over low heat, combine sour cream, mustard, onion, salt and pepper. Heat through. Sprinkle with onions. Serve over hot, drained cabbage. Serves 4.

## Kimberly Doty

### Honored On

### Second Birthday

Kimberly Doty, daughter of Mr. and Mrs. Craig Doty, was honored on her second Birthday with a party held in the park.

Individualized cupcakes, homemade milky way ice cream and punch were served to the guest and honoree.

Grandmothers were also honored guest and included Lafert Doty and Verdie Gann.

Others attending were Tiffany and Kelli Flowers, Dustin and D.J. Provence and Tracey, Kelli and Bo Baker and Jonathan Edwards.

Each guest was presented a party favor of candy and balloons.

A late birthday gift to Kimberly was a new cousin, Lindsey Robinson, new daughter of Mr. and Mrs. Mike Robinson of Lubbock.

## Lamb Co. Fair Parade Slated For August 24

Hundreds of multi-colored balloons will be released at the depot to signal the beginning of the Lamb County Fair Parade at 10:00 a.m., Saturday August 24th.

Tags on the balloons will instruct the finders of the balloons to "look inside". The instructions inside will read "Congratulations! Present this balloon and tag to the announcer at 12:00 noon on Festivities Day, Saturday, August 24, 1985 at Laguna Park in Littlefield, Texas and receive a prize! If you are from the farthest away from Littlefield, you will win \$50 cash!"

Many events are scheduled for this week-long Lamb County Fair, the first in 20 years in Lamb County, and sponsored by the Littlefield Chamber of Commerce and Agriculture. General Admission is only \$1.00 per person to the fair building at the Lamb County Agriculture and Community Center and all parking is free.

"Festivities Day" at the end of the fair week (August 31st) will provide family entertainment at Laguna Park with games, contests, bands, booths and a giant barbeque wagon. Excellent barbeque sold by the plate for \$4.00 adults and \$2.00 children, is catered by the Yellowhouse Ranch Barbeque of Littlefield. All proceeds to benefit the Littlefield Chamber of Commerce and Agriculture to help defray the expenses of Fair Week.

A week at the Fair something for everyone. For further information contact Susan Garms, Littlefield Chamber of Commerce and Agriculture, P.O. Box 507, Littlefield, Texas 79339 or phone 806-385-5331.

In case of rain the Festivities Day activities will take place on Saturday, September 7.



MR. AND MRS. ROSS WILFRED BENEDICT (nee Ray Ann Hicks)

## Enochs News

by

Mrs. J.D. Bayless

them Thursday.

\*\*\*

Mrs. Winnie Byars is home after going to the Padre Islands with her son, Tom Byars and family.

\*\*\*

Edd Autry is home again from the Littlefield Medical Center, this is the second trip for him to the hospital recently, get well soon Edd.

\*\*\*

Guy Sanders fell the past week she helped him up then they both fell it hurt her back, get well soon to both of you.

\*\*\*

Mrs. Juanita Snow of Muleshoe visited her sisters, Mrs. Edward Crume and Mrs. Etta Layton the past week, Mrs. Layton also visited the Crumes with Mrs. Snow.

\*\*\*

Mr. and Mrs. Elwood Autry took his sister, Ony Bryant home to Grand Junction Colo. last Tuesday she has been here visiting with them for a week.

Visiting in the home of Mr. and Mrs. E.N. McCall one day the past week was Mrs. Brenda George, of Lubbock, Kim Mosser of Slaton, Lorie and Leslie DeBusk from Lawton, Oklahoma.

\*\*\*

Guest in the home of Mr. and Mrs. Clifford Snitker Monday through Wednesday was Mrs. Stanley Snitker and Erica Snitker of Amarillo, Texas and Clindy Snitker from California.

\*\*\*

Visiting Mr. and Mrs. Bill Key was Vaughna Hamilton from Roswell N.M. Mr. and Mrs. Mairon Walker of Mt. Vernon Texas spent Wednesday and Thursday with them. Bryan, Jerry and Brent Walker of Lovington, N.M. visited with

## If You Need Help

It's  
**Y.E.S.**  
(Youth Employment Service)  
Call  
**272-4248**

## Welcome To Muleshoe



WELCOME TO MULESHOE---This week we welcome Jack Reamy to Muleshoe. Reamy comes to us from Cleveland, Texas where he was associated with the Charter Community Hospital as a Controller of the 115 bed facility, he is now the new Administrator of the West Plains Medical Center here in Muleshoe. He and his wife, Jane, have three children, Michael, who is a Junior at Stephen F. Austin University; Cynthia, who is a Freshman at Howard Payne University and Spencer, who will be a Senior at Muleshoe High School this year. The Reamys plan to move to Muleshoe in the very near future. We would like to send out a "Hearty" Muleshoe welcome to this fine family.

## James Crane Tire Co.

322 N. 1st

**GOODYEAR**

272-4594

Henry Insurance Agency

272-4581

111 W. Ave B.

Rexall Drug

308 Main

# WHIRLPOOL APPLIANCE SPECTACULAR

Hurry!  
Get Our Best Deals  
on These Fine Appliances!

**Whirlpool** UNDERCOUNTER DISHWASHER  
Heavy Normal Cycle.  
**\$318**  
Model DV1098XL  
GREAT FEATURES, LOW PRICE!

17.0 Cu. Ft. Refrigerator  
Big In Size!  
Small In Price!  
**\$498**  
Model ET1 SCXCVVR W/Trade

Our Low Prices  
Can Make Your World  
a Little Easier!

priced to move!  
**RCA 19" diagonal**  
**\$299**  
W/Trade  
Model EJR423W

**Whirlpool** AUTOMATIC WASHER  
Large Capacity  
Only 24" Wide!  
**\$348**  
W/T  
Model LA3400XF  
EASE YOUR WASH DAY CHORES!

Credit Terms Available!!

**Wilson APPLIANCE, INC.**

117 MAIN STREET

MULESHOE, TEXAS 79347

PHONE 806/272-5531



## Measured Acres Must Be Reported Very Soon

As August rolls on, several reminders have been issued by Danny Noble, County Executive Director of the ASCA office in Bailey County. He says the following:

**MEASURING SERVICE**  
Remember!!! As soon as we get your farm measured, you will be notified of the measured acreage and you have only five workdays in which to adjust (if any) and certify your acres to this office. In the past, we have had some producers that have been notified and failed to meet their certification deadline; therefore, the farm is ineligible for all program benefits, and liquidated damages will be assessed.

**MAINTAINING SET-ASIDE**  
Many spot checks have been made and there are still some farms being neglected too long. Please remember that ACR (set-aside) land MUST be maintained in a workmanlike manner throughout the calendar year. We are sure that you get tired of hearing this over and over, but some producers don't realize how important this matter is. We know that your farms need all the help they can get, so don't jeopardize

your farm by letting your ACR land go. In other words, no weeds.

**HAYING AND GRAZING ACR**  
Haying and/or grazing of ACR is approved for spring seeded covers just like small grain covers. You must:

1. Sign a request prior to haying or grazing.
2. Sign an agreement not to sell the hay or grazing.
3. State if the hay will be fed or acreage is grazed by your livestock or other producer's livestock.
4. Pay \$10 per farm cost for farm visit.

**PROVEN YIELDS**  
If you intend to prove an actual yield for 1986 or future years, bring your production evidence in as soon as possible. If you intend to prove your corn yield, it must be appraised prior to cutting for silage. There will be a charge of \$30 for the first plot plus \$15 for each additional plot.

**1985 LOAN RATES**  
The 1985 loan rates for Bailey County have been established on the following commodities: Rye, \$2.23 bu.; Wheat, \$3.30 bu.; Barley, \$212. bu.; Oats, \$1.52 bu.; Corn, \$2.75 bu.; Grain Sorghum, \$4.44 cwt and Upland Cotton, \$7.50 lb., based on SLM 1-1/16.

**INTEREST RATE**  
The loan interest rate for August is 7.750 percent."

### Muleshoe...

Cont. from Page 1

Muleshoe High School gym Sunday, August 11, at 1 p.m.

Also, physicals for junior and high school girls from Muleshoe and the surrounding area, who will be in the athletic programs, will be at 1 p.m. on Sunday, August 18, at the same location.

First day of workout for the football players will be Monday, August 12, and the first day in pads for the players will be Friday, August 16.

Visiting in the home of Myrtle Creamer and Clea Williams this week is a daughter and sister, Monnie (Creamer) McBride, of Plano.

Muleshoe Independent School District Superintendent H. John Fuller said he would encourage all parents of students, and all taxpayers to attend the school budget hearing this week.

Superintendent Fuller said the budget hearing will be conducted at 8 p.m. on Thursday, August 8, in the school administration office.

Joyce Holmes, manager of the Bailey County Civic Center, said fall and winter youth skating will be starting up again September 20.

She said sponsors for the skating are needed. Interested groups may check with her at the Civic Center.

Don't forget, the Mule Putt Miniature Golf Course has an ongoing tournament, with players taking to the course on Friday and Saturday nights.

There's still time to pay your \$5 entry fee and join the fun at the Mule Putt Golf Course.

### WTSU Schedules Orientation For All New Students

West Texas State University has scheduled its sixth Buffalo Branding orientation program for Aug. 24-26. Director Jim Holston and 60 counselors will use the time to ease the college transition for participating freshmen and transfer students.

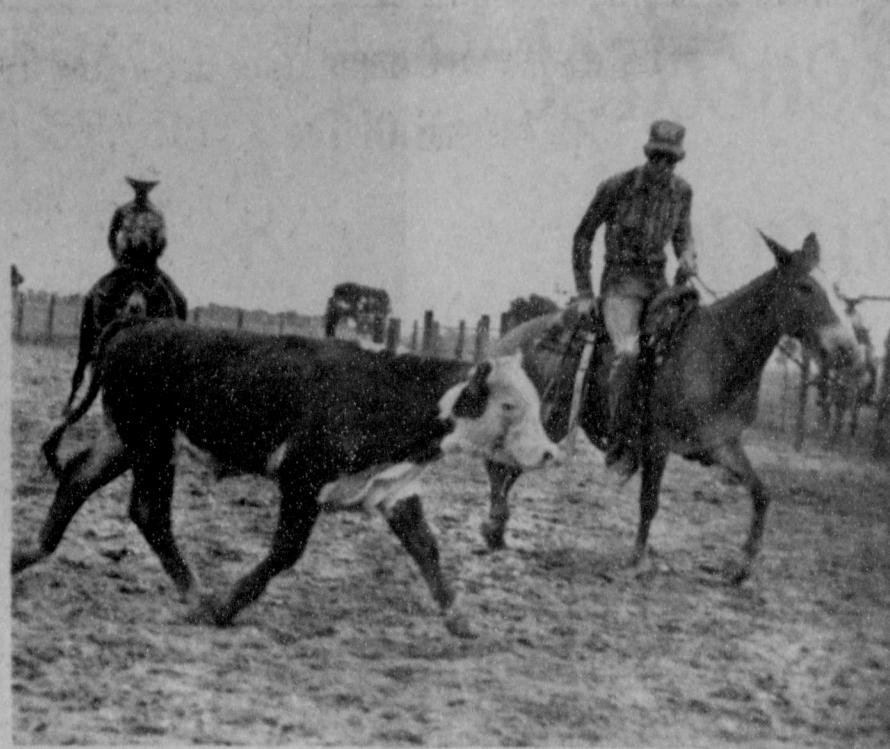
Last summer, 580 students enrolled in Buffalo Branding. Central to the program is a series of Survival Skills Workshops. They cover topics such as dating, money management, diet and fitness, partying sensibly, time management and study skills.

Participants also may beat the registration rush by purchasing their housing and meal tickets, parking permits, textbooks, and mail boxes and by applying for financial aid two days before most of the upperclass students return to campus.

But Buffalo Branding is not all business. With dances, movies, games, rappelling clinics, a bonfire, and a Spirit Walk from campus to Kimbrough Memorial Stadium, students will get to know one another in casual settings too.

For further information call WTSU's Office of Student Affairs, 656-2741.

How True  
The harder some folks work, the harder others have to work to correct their mistakes.  
-Gosport, Pensacola.



**ANYONE FOR A CUTTING MULE?**--It's for real, there will be mule cutting in the annual mule rodeo this Saturday during the Mule Day Festival. This shows some of the action from the mule cutting during the rodeo last year. Also there will be plenty of other action at the arena.

## '85 Farm Bill Package Fails To Be Completed

Congressman Larry Combest (R-Texas) announced today that the House Agricultural Committee adjourned for the month-long August recess on August 1 without completing action on its 1985 Farm Bill package.

Late Thursday evening, Congress ended its budget impasse and gave final approval to a deficit reduction plan. Once the budget resolution was passed by both the House and Senate, Ag Committee members were notified that the tentative farm package exceeded Congressional budget guidelines by \$10.1 billion.

"At that time, some of my ag colleagues and I voted to remain in session until the farm bill could be completed within budget constraints," Congressman Combest said. "Our farmers are entitled to know the substantive details of the farm package now so that long range farming plans can be

made. We could have spent the necessary time in committee to bring the farm bill closer to budget rules before returning to our districts," Combest said. "However, the majority of the Ag Committee argued that the programs would have to be reworked and voted to adjourn until September 4," Combest added.

Combest noted that, "If we come back in September and reopen the bill we could possibly spend another four weeks and be right back where we started. I do not want to change the entire bill, I am reasonably satisfied with it at this time. Our efforts should now be directed to cutting some of the optional spending in the farm package which is not directly related to the farm support program rather than reworking the entire bill," Combest said.

Combest pointed out that the adjournment may result in ag members returning to their districts, making promises about the farm bill and determined to fulfill those promises when the August recess ends September 4.

"The 1985 Farm Bill must be designed first and foremost for the farmer, anything less is a disservice to American agriculture and its producers," Combest concluded.

### Enochs News by Mrs. J.D. Bayless

Mr. and Mrs. Dennis Turney and children spent Monday till Saturday night seeing and did some fishing and visiting a uncle Mr. and Mrs. John Autry a Lake Phalcon.

Mr. and Mrs. Dannie Petree and family of Lubbock were in route home from their vacation Colorado, and came by to visit his mother, Mrs. Wilma Petree.

Mrs. Nadene Parr and daughter, Dena Sue of Lubbock and Winnie Bays were dinner guest in the home of Mr. and Mrs. E.N. McCall Saturday. Also Mrs. Brenda McCall visited with them.

Goldman Stroud was in Oklahoma last weekend visiting relatives.

Mrs. Nadene Parr and Dena Sue spent Saturday night with her mother, Mrs. Winnie Bays, and attended Church with her at the Baptist Church Sunday morning.

Mr. and Mrs. Glendale Taylor and baby from Tatum, New Mexico visited her grandparents, the Edd Autry's Sunday.

Mrs. and Mrs. Goldman Stroud visited their son, Mr. and Mrs. Gene Stroud and family at Dimmitt, Friday and Saturday.

Mrs. Nadene Parr and daughter, Dena Sue of Lubbock visited her mother, Mrs. Winnie Bays Saturday night and Sunday and was a visitor at the Baptist Church Sunday morning.

### ONE MINUTE SPORTS QUIZ

1. Who won the Panasonic Las Vegas Invitational Golf Tournament?
2. Who won the LPGA GNA tournament?
3. Name the winner of the Virginia Slims Tennis championship.
4. Jerry Royster plays pro baseball for what team?
5. Name the final four teams vying for the NCAA title.

### Answers To Sports Quiz

1. Curtis Strange.
2. Jan Stephenson.
3. Martina Navratilova.
4. San Diego Padres.
5. St. John's, Villanova, Georgetown and Memphis State.

### Extension Sets

#### 'Octoberfest'

#### Date, Schedule

Where can a person over 55 "getaway to" for: --three days and nights of fun-filled activities --learning opportunities -- other lively, fun, life-loving people -- fantastic food and special events in -- natural lakeside surroundings -- with all the modern conveniences?

There may be many places in Texas that offer such fare but not many can match "Octoberfest" an Extension camp for people 55 and over, says Deana Finck, Bailey County Extension agent for Home Economics. Five sessions are scheduled for this fall: October 1-4, 8-11, 15-18, 22-25 and October 29 - November 1.

#### Agent...

Cont. from Page 1

cattle improvement program which stressed breed selection and enrichment of forage quality and increased weaning weights by 50 to 100 percent over old commercial operations. The specialist also noted his annual irrigation and agricultural conference; his continuing programs in cotton, corn and vegetable production, and his work with youths in the 4-H programs.

A native of Burnet, Tanksley holds a B.S. in animal science from Texas A&M and a M.S. in general agriculture from West Texas State University. Prior to becoming Bailey County Agent, he served two years as assistant agent in Wilbarger County and a year as livestock manager of the Stiles Foundation Farm at Thrall.

He is active in TCAAA, having served as district director. The county agents association presented him its Distinguished Service Award in 1980. In 1979, Tanksley was named the Outstanding Young Man by the Muleshoe Jaycees.

Some of the featured educational presentations will include: cooking demonstrations, family life, gardening, astronomy, history and travel programs.

A variety of learning centers will offer "hands-on" experience in areas such as oil painting, bread making, archery, needlecrafts, and chair caning.

Participants will also have opportunities to go for boat rides, nature hikes, or fish on the water of Lake Brownwood. Card and table games, tennis, horseshoes, and volleyball will be available at all times.

Evenings will be filled with such special social events as dances, "A Night in the Old West," and a big talent show.

Each camp is limited to the first 100 participants and the cost is only \$78 per person for three days of activity, so contact your county Extension agent, Deana Finck, for details now, at 272-4583.

Get away to "Octoberfest" -- stretch your dollars and your mind, says the Home Economics agent.



### NEWS VIEWS

Donald Regan, White House chief of staff:

"We're very sympathetic to the plight of the farmer, and what we're trying to do is to see how much and how far we can be helpful to them."

Li Xiannian, Chinese President:

"Good political relations are an indispensable condition of the development of economic cooperation."

William H. Gray III, (D-Pa), chairman, House Budget Committee:

"The House is firmly committed to achieving at least \$56 billion in deficit reduction this year..."

## MULESHOE TRADE CENTER

*New Furniture Too Expensive?*

**See John For Good Used Furniture.**

130 Main272-4906

## MULE DAYS!

### Specials

Thursday Night

Prime Rib Dinner ..... \$5.89  
w/Salad Bar

Friday Night

Fresh Catfish ..... \$4.29  
All You Can Eat w/Salad Bar

Saturday

Get Your Steak Cut Any Size You  
Want (Even A 2 Pounder) - K-Bobs  
Will Price Accordingly!

All Prices Include Salad Wagon!

# K-BOB'S

1008 W. Amer. Blvd.272-7517

**WE'RE COMMITTED TO SERVE YOU BETTER.**

**FamilyValue DRUG CENTER**

<b>CALADRYL</b> Lotion 6 oz.  <b>2.69</b>	<b>ASPERGUM</b> Orange 16's Cherry 16's  <b>1.29</b>	<b>DURATION</b> Nasal Spray Regular .5 oz.  <b>1.99</b>	<b>DENTAGARD</b> Toothpaste 2.7 oz.  <b>.89</b>		
<b>REACH</b> Toothbrush Medium  <b>1.19</b>	<b>JOHNSON &amp; JOHNSON</b> Waxed Dental Floss 50 Yd.  <b>.79</b>	<b>CORRECTOL</b> Tablets 30's  <b>2.19</b>	<b>GOODNEWS</b> Gillette Razor 5's  <b>1.19</b>	<b>EQUAL</b> Low-Calorie Sweetener Packets 100's  <b>3.19</b>	<b>MURINE</b> Eye Drops .5 oz.  <b>1.49</b>
<b>LADY SPEED STICK</b> Deodorant Scented 1.5 oz.  <b>1.49</b>	<b>EVEREADY</b> Super Heavy Duty Size C or Size D 2's  <b>.99</b>	<b>Q-TIPS</b> Cotton Swabs 300's  <b>1.79</b>	<b>TYLENOL</b> Extra-Strength Caplets 24's  <b>1.99</b>	<b>CEPACOL</b> Mouthwash Gargle 12 oz.  <b>1.77</b>	<b>SUDAFED</b> 30 mg Tablets 24's  <b>1.83</b>
<b>DIMETAPP</b> Tablets 24's  <b>2.59</b>	<b>BAUSCH &amp; LOMB</b> Sensitive Eyes Saline Solution 8 oz.  <b>2.29</b>	<b>BAUSCH &amp; LOMB</b> Daily Cleaner 1.5 oz.  <b>2.69</b>	<b>TINACTIN</b> Antifungal Cream 1% 15gm  <b>2.99</b>		

All prices good thru August 19, 1985 at all Family Value Drug locations. We reserve the right to limit quantities.

## Damron Drugs

308 Main272-4210



# Mattox Warns IRS Intercept Deadline Near

Attorney General Jim Mattox is urging all families who are owed child support payment by non-custodial parents to act quickly in applying for the new, expanded IRS Intercept program.

"Any custodial parent who is owed at least \$500 in court-ordered child support is eligible to apply for this program," Mattox said, "but those persons must act now to meet the August 9 deadline for 1986 federal tax returns."

"Parents who cannot meet this deadline or who are not owed at least \$500 can still apply for the other child support enforcement services available through the Attorney General's Office," he said, "and I would strongly encourage them to do just that."

The IRS Intercept program is a joint federal-state program through which federal income tax refunds of non-custodial parents who are behind on child support payments may be intercepted for the child support. In

the past the program was restricted to families receiving Aid to Families with Dependent Children, but changes in federal law recently expanded the program to families not on welfare.

Mattox's Child Support Enforcement Division has held a series of public meetings to explain the program and help parents fill out applications.

To apply, a parent must file applications with Mattox's Office and provide copies of the court order for child support and the current payment record. For those not on welfare, a \$20 filing fee must be charged.

"The number of phone calls and applications being received by my Office indicate a tremendous interest in this program," Mattox said. "The State has collected almost \$6 million this year for families on welfare, and we estimate that as much as \$7 million could be obtained in the next year for families not receiving welfare."

For additional information, contact the nearest Attorney General's Child Support Enforcement Office or call toll-free 1-800-252-3515.

### Can't Add

Federal aid to education should start with the teaching of arithmetic in Washington.

-Herald, Austin, Minn.

Woe unto him that is never alone, and cannot bear to be alone.

-P.G. Hamerton.

## SANDHILLS PHILOSOPHER

Editor's note: The Sandhills Philosopher on his Johnson grass farm on Sandy Creek discusses the Federal budget this week, half-heartedly.

Dear editor:

One of the worst things a politician can do is to become boring. Congress, wrangling over a budget for the past several weeks, has just about reached that point.

It's sort of like a bunch of weather forecasters arguing over what tomorrow's forecast will be. Whatever they agree on has little bearing on what the weather will do, just as whatever budget Congress agrees on has very little to do with what the government will spend.

A Federal budget is like our foreign policy. It sounds good on paper but the rest of the world doesn't pay any attention to it. Washington has a debt ceiling the Treasury absolutely can not borrow beyond, so when it needs more money Congress raises that ceiling. It's like a parent forbidding his child to have more than one piece of candy after supper. When the kid sets up a howl for more, the parent outsmarts him by letting him have two. By the end of the week he's eating all he wants and, like the Federal government, headed for a stomach ache.

The trouble with voting for a budget that really controls spending is that too many Congressmen have the ability to look beyond the needs of the country to their own re-election. As a famous Speaker of the House once said, getting re-elected is a Congressman's first duty. With that accomplished, he is free to vote his conscience occasionally just to see how it feels.

You know, Washington is now borrowing money to pay the interest on money it's already borrowed. If you know of any bank that operates on that system, I wish you'd let me know. I'd like to take my place in line before it reaches through the lobby, down the street, around the block and clear across town.

Yours faithfully,  
J.A. Toombs.

## Three Way News

by Mrs H.W. Garvin

Mrs. Jack McCarty and children from Logan, N.M. spent part of the past week visiting her parents, the Joe Sowders, Mr. and Mrs. A.G. Taylor and Opal Ruth Sowder from Muleshoe and Mike Sowder from Maple were in the Joe Sowder home Thursday night for dinner.

Robin and Stacy Kindle and Jeana Percy were in San Angelo the past week for Jeana and Robin to enroll in college.

Mr. and Mrs. George Tyson and Mrs. H.W. Garvin spent the week end at Lake Brownwood attending the 30th annual Tyson reunion. Over 75 attended the reunion this year.

Mr. and Mrs. Rayford Masten attended the Masten reunion in Lubbock the past week end and also visited her parents Mr. and Mrs. Clarence Benton.

Mr. and Mrs. S.G. Long spent the week end in Canyon and Amarillo visiting their children.

Mr. and Mrs. C.A. Williams spent the week end in Dallas attending the Golden wedding anniversary of his parents.

Mr. and Mrs. Jack Lane were dinner guest in the Joe Sowder home Sunday.

Mrs. James Gillentine from Lubbock spent Wednesday with her mother, Mrs. H.W. Garvin.

Mrs. Minnie Dupler was a dinner guest in the Bill Dupler home Sunday.

The Monticela Chemical company honored the farmers in the community with a barbecue supper at the Three Way cafeteria Tuesday night and demonstrated the chemical round up.

Janie Webb from Dallas is visiting her parents, the H.C. Toombs.

## Because Of A Computation Error The Three Way I.S.D. Tax Rate Should Read 1.1549 Instead Of The 1.2702 Which Previously Ran. The Corrected Notice Of Calculation Is As Follows:

SCHOOL DISTRICT: THREEWAY INDEPENDENT SCHOOL DISTRICT

### NOTICE OF CALCULATION OF EFFECTIVE TAX RATE, ESTIMATED UNENCUMBERED FUND BALANCES, AND DEBT SCHEDULE

I, Jerry Hicks, assessor/collector for ThreeWay Independent School District, in accordance with Sec. 26.04, Property Tax Code, have calculated \$ 1.1549 per \$100 of value as the tax rate which may not be exceeded by more than three percent by the governing body of the Three Way I.S.D. without holding a public hearing as required by the code.

The estimated unencumbered fund balance for Maintenance & Operation fund: \$ 23,570.00  
The estimated unencumbered fund balance for Interest & Sinking fund: \$ 100,000.00

The following schedule lists debt obligations that 1985 property taxes will pay: NONE

[Expand worksheet as necessary to list debt obligations. If the unit needs additional space, refer the reader to the portion of the notice of the effective tax rate for this debt schedule. See examples.]

*Jerry Hicks* Chief Appraiser  
August 2, 1985

### CALCULATIONS USED TO DETERMINE EFFECTIVE TAX RATE

#### I. DATA

1. 1984 Total tax levy from the 1984 tax roll	\$ 446,428
2. 1984 Tax rate (\$ <u>1.19</u> M&O and \$ <u>-0-</u> I&S)	\$ <u>1.19</u> /\$100
3. 1984 Debt service (I&S) levy	\$ <u>-0-</u>
4. 1984 Maintenance and operation (M&O) levy	\$ <u>446,428</u>
5. 1984 M&O taxes on property in territory that has ceased to be a part of unit in 1985	\$ <u>-0-</u>
6. 1984 M&O taxes on property becoming exempt in 1985	\$ <u>144</u>
7. 1984 M&O taxes on taxable value lost because property is appraised at less than market value in 1985	\$ <u>-0-</u>
8. 1985 Total taxable value of all property	\$ <u>38,782,020</u>
9. 1985 Taxable value of new improvements added since Jan. 1, 1984	\$ <u>-0-</u>
10. 1985 Taxable value of property annexed since Jan. 1, 1984	\$ <u>-0-</u>
11. 1985 Tax levy needed to satisfy debt service (I&S)	\$ <u>-0-</u>
12. Rate to raise 1984 tax levy due to appraisal roll errors (lost dollars divided by the difference of 1985 taxable values minus over-65 homesteads taxable values) [\$ <u>1645</u> ÷ (\$ <u>38,782,020</u> - \$ <u>431,370</u> ) × 100]	\$ <u>.00</u> /\$100
13. Rate to regain taxes lost in 1984 due to appraisal roll errors (lost dollars divided by the difference of 1985 taxable values minus 1985 over-65 homesteads taxable value) [\$ <u>1645</u> ÷ (\$ <u>38,782,020</u> - \$ <u>431,370</u> ) × 100]	\$ <u>.00</u> /\$100
14. 1984 M&O taxes used to regain lost 1983 levy	\$ <u>2626</u>
15. 1985 Taxable value of over-65 homesteads with frozen taxes	\$ <u>431,370</u>
16. Frozen M&O levy of over-65 homesteads with frozen taxes	\$ <u>722</u>
17. Frozen I&S levy of over-65 homesteads with frozen taxes	\$ <u>-0-</u>
18. Rate to generate reduced state aid or receive maximum equalization allotment (amount of lost aid or additional levy for equalization, divided by 1985 taxable values minus 1985 over-65 homesteads' taxable value, × 100) [\$ <u>44,239</u> ÷ (\$ <u>38,782,020</u> - \$ <u>431,370</u> ) × 100] (If both lost aid and equalization apply, use larger amount of the two.)	\$ <u>.1153</u> /\$100

#### II. CALCULATION

##### MAINTENANCE AND OPERATION (M&O) TAX RATE

1. (A) 1984 Total tax levy (Data 1)	\$ 446,428
(B) Subtract 1984 debt service levy (Data 3)	\$ <u>-0-</u>
(C) Subtract 1984 taxes on property no longer in unit (Data 5)	\$ <u>-0-</u>
(D) Subtract 1984 taxes on exemptions (Data 6)	\$ <u>144</u>
(E) Subtract 1984 taxes on productivity valuation (Data 7)	\$ <u>-0-</u>
(F) Subtract frozen M&O levy of over-65 homesteads (Data 16)	\$ <u>722</u>
(G) Subtract 1984 M&O taxes used to regain lost 1983 levy (Data 14)	\$ <u>2626</u>
(H) Adjusted 1984 M&O levy	\$ <u>442,936</u>
2. (A) 1985 Total taxable value of all property (Data 8)	\$ <u>38,782,020</u>
(B) Subtract 1985 value of new improvements (Data 9)	\$ <u>-0-</u>
(C) Subtract 1985 value of annexed property (Data 10)	\$ <u>-0-</u>
(D) Subtract 1985 value of over-65 homesteads (Data 15)	\$ <u>431,370</u>
(E) Adjusted 1985 taxable value for M&O	\$ <u>38,350,650</u>
3. (A) Divide the adjusted 1984 M&O levy (1-H above) by the adjusted 1985 taxable value for M&O (2-E above) (\$ <u>442,936</u> ÷ \$ <u>38,350,650</u> )	\$ <u>.011549</u>
(B) Multiply by \$100 valuation	× \$100
(C) Effective M&O rate for 1985	\$ <u>1.1549</u> /\$100

##### INTEREST AND SINKING (I&S) TAX RATE

4. (A) 1985 I&S levy needed to satisfy debt (data 11)	\$ <u>-0-</u>
(B) Subtract frozen I&S levy of over-65 homesteads (Data 17)	\$ <u>-0-</u>
(C) Adjusted 1985 I&S levy	\$ <u>-0-</u>
(D) 1985 Total taxable value of all property (Data 8)	\$ <u>38,782,020</u>
(E) Subtract 1985 value of over-65 homesteads (Data 15)	\$ <u>431,370</u>
(F) Adjusted 1985 taxable value for I&S	\$ <u>38,350,650</u>
(G) Divide the adjusted 1985 I&S levy (4-C above) by the adjusted 1985 taxable value for I&S (4-F above) (\$ <u>-0-</u> ÷ \$ <u>38,350,650</u> )	\$ <u>-0-</u>
(H) Multiply by \$100 valuation	× \$100
(I) Effective I&S rate for 1985	\$ <u>-0-</u> /\$100

##### APPRAISAL ROLL ERROR RATE

5. (A) Rate to raise 1984 levy due to appraisal errors (Data 12)	\$ <u>.00</u> /\$100
(B) Add rate to regain taxes lost due to errors (Data 13)	+ \$ <u>.00</u> /\$100
(C) Total rate to adjust for appraisal roll errors	\$ <u>.00</u> /\$100

##### TOTAL EFFECTIVE TAX RATE FOR 1985

6. (A) Effective M&O rate (3-C above)	\$ <u>1.1549</u> /\$100
(B) Add effective I&S rate (4-I above)	+ \$ <u>-0-</u> /\$100
(C) Add rate to adjust for appraisal roll errors (5-C above)	+ \$ <u>-0-</u> /\$100
(D) 1985 Effective Tax Rate	\$ <u>1.1549</u> /\$100

1985 Effective Tax Rate is the tax rate published as required by Sec. 26.04, Property Tax Code.

##### STATE AID/EQUALIZATION ENRICHMENT AID RATE

7. Rate to replace reduced state aid or qualify for maximum equalization (Data 18)	\$ <u>.1153</u> /\$100
--	------------------------

## Long-term credit to buy or improve land.

When you make the land your life... you need to look for a specialist when selecting a lender. At your Federal Land Bank Association our specialty is long-term credit to agriculture. At the Land Bank we have funds to help you finance a sound project.

**Federal Land Bank Association**  
of Muleshoe

Federal Land Bank 316 Main 272-3010







# Come To Muleshoe And Attend The Mule Day Festival



## Sat. August 10

*Spudnut Shop*

*Glenna's Beauty Retreat*

*Western Drug*

*Lambert Cleaners*

*Serv-All Thirtway*

### MULE DAY FESTIVAL SCHEDULE

- 6:00 a.m. Omelet Races (Breakfast)
- 6:30 a.m. Hot Air Balloon Races
- 8:00 a.m. 10-K Run
- 8:30 a.m. Turtle Races
- 9:00 a.m. Arts & Crafts Festival
- 10:00 a.m. Parade - Downtown Muleshoe
- 12:00 Noon Bar-B-Que  
Odessa Chuck Wagon Gang
- 12:30 p.m. Fiddling Contest  
Texas Old Time Fiddlers Assoc.
- Mule Stick Races  
Special Run for Children Under Six
- 1:00 p.m. Mule Rodeo
- 5:00 p.m. Sky Divers
- 6:00 p.m. Mule Races
- 7:30 p.m. Party (Supper Served)  
Muleshoe Vol. Fire Dept.
- 8:30 p.m. Dance (Live Band)  
Wooden Nickel Band
- Morning entertainment -  
Flatland Blue Grass Band

*McCormick Seeds, Inc.*



*El Nuevo Leals Restaurant*

*Muleshoe Trade Center*

*Black Insurance Agency*

*Muleshoe Floral & Gift*

*Main Street Beauty Salon*

*Johns Custom Mills*

*Antiques & Junk*

*Higginbotham-Bartlett Co.*

*Farmers Co-op Elevator*



Unless noted: All events are 2 miles East of Muleshoe Hwy. 70, then 1/2 mile south. For more information call: Jeff Smith (806) 965-2148 or 965-2886 - Muleshoe, Tex. 79347

*Albertsons Shop For Men*

*JLC Company*

*Sponsored By The Following Civic-Minded Businesses:*

*Famous Fashions & Fabrics*

*Muleshoe Livestock Auction, Inc.*

*Cliff Allen Custom Saddle Maker*





### Gas Production Down From Same Period Last Year

Railroad Commission Chairman Buddy Temple has announced that Texas oil and gas wells produced 448,421,643 Mcf (thousand cubic feet) of gas in April, down 4.12 percent from April 1984. In March of this year, gas production totaled 466,131,594 Mcf.

Through April, Texas wells produced 1,895,848,440 Mcf of gas this year. Through the same period last year, the state had produced 1,944,826,091 Mcf of gas.

Marketed gas production in April totaled 356,682,258 Mcf and reflected a 6.25 percent decrease from the April 1984 volume. In March, the state produced 382,250,493 Mcf of gas in this category.

Marketed production is the gas left after liquid hydrocarbons have been separated on the lease from the "wet" gas that is usually produced at the wellhead. It also does not include gas that is reinjected into the producing reservoir to maintain gas pressure, gas that is used to fuel production-related equipment on the lease site, or gas that is otherwise not marketed.

Exports of Texas-produced gas in April totaled 169,566,963 Mcf and reflected a 2.83 percent

### Day Funeral Services Held On Wednesday

Funeral services for Kenneth Day, 48, father of Ray Day, manager of Servall Thriftway of Muleshoe, were conducted at 10 a.m. Wednesday at Hubbard Kelley Funeral Home in Odessa.

Day, a resident of Odessa, was killed in a vehicle accident around 11 p.m. Sunday night.

His survivors include, other than his son, Ray, of Muleshoe; another son, two daughters and seven grandchildren.

### Mrs. Hubbard Former Muleshoe Resident Dies

Funeral services for Mrs. L.H. "Helen" Hubbard, 65, of Tyler were held at 2 p.m. Saturday in the First Assembly of God Church with the Rev. J.T. Davis, the Rev. T.J. Taylor and the Rev. Derwood Dubose officiating.

Interment was in Tyler Memorial Park under the direction of Lloyd James Home of Tyler. Mrs. Hubbard died early Thursday at her residence after a short illness.

Mrs. Hubbard was born Jan. 24, 1920, in Okmulgee, Okla. and had lived in Tyler 33 years. She and her husband were founders of Glad Tidings Assembly of God Church, where he has been pastor the past 26 years. Mrs. Hubbard was secretary of the Tyler Section of Women's Ministries and was coordinator of Tyler Section Missionette. She was leader of the children's church and had served as a North Texas delegate for 26 years.

She was coordinator of Education for Glad Tidings Assembly of God Church.

Rev. and Mrs. L.H. Hubbard are former pastors of the First Assembly of God Church here in Muleshoe.

Survivors include her husband, Rev. L.H. Hubbard, Tyler; three daughters, Mrs. Sharon Jean Taylor, Tyler, Mrs. Lynette Adams, Troup, and Mrs. Joy Green, Tyler; her father, H.W. Clymore, Tyler; two brothers, Charles Clymore, Longview, and Paul Clymore, Beaumont; a sister, Mrs. Georgia Rose Kirby, Shreveport, La.; and nine grandchildren.

If desired, memorials may be made to the Glad Tidings Assembly of God Church Missionaries.

increase from April of 1984. March exports of Texas-produced gas totaled 198,935,066 Mcf.

Texas gas production in April came from 205,085 oil wells and 46,465 gas wells.

### T.L. 'Buddy' Free Services Held In Earth Monday

Services for T.L. "Buddy" Free, 77, of Earth were held at 2 p.m. Monday, Aug. 5 in the Earth First Baptist Church with the Rev. Joe Vernon, pastor, officiating, assisted by the Rev. Bill Watson, pastor of the First United Methodist Church.

Masonic graveside services were conducted in the Earth Memorial Cemetery. Interment was under the direction of Parsons-Ellis Funeral Home of Earth. Free died at 7:50 a.m. Saturday in South Plains Hospital at Amherst.

A native of Cooke County, Free was born January 4, 1908, and had been a resident of Earth since 1928, moving there from Big Spring. He married Irene Orteg on April 24, 1982, at Earth. He was a farmer and a member of the Earth First Baptist Church, Earth Masonic Lodge and a Shriner. He was also Lamb County Commissioner.

Survivors include his wife, Irene; a son, Billy Free of Stephenville; a daughter, Mrs. Joan Chapman of Spring; two sisters, Mrs. Annie Runyon of Muleshoe and Mrs. Sallie Gooch of Earth; a brother, G.E. Sage Free of Muleshoe; seven grandchildren; and five great grandchildren.

### Samuel Blackwell Funeral Services Held Tuesday

Funeral services for Samuel David Blackwell, 83, were held at 4 p.m. Tuesday, Aug. 6 in the Trinity Baptist Church with the Rev. David Everts, pastor of the Spegleville Baptist Church of Waco, officiating, assisted by the Rev. V.L. Huggins, pastor of the Muleshoe Trinity Baptist Church.

Burial was in Bailey County Memorial Park under the direction of Ellis Funeral Home. Blackwell was pronounced dead at 9:30 a.m. Sunday two miles west of Muleshoe by Justice of the Peace Jack Bates, who ruled death due to natural causes.

Blackwell was born on Jan. 6, 1902, in Fannin County, and had been a resident of the Muleshoe area since 1955. His wife, Jewel, died in 1977. He was a farmer and a member of the Trinity Baptist Church.

Survivors include a sister, Mrs. Bertha Mae McCrea of Marble Falls, Tex.; a brother, Joe Blackwell of Marble Falls, Tex.

**BIBLE VERSE**

*If ye will obey my voice indeed, and keep my covenant, then ye shall be a peculiar treasure unto me above all people; for all the Earth is mine.*

1. To whom was the above promise made?
2. Through whom was it given to these people?
3. Where were the children of Israel at this time?
4. Where may this promise be found?

**Answers to Bible Verse**

1. The children of Israel.
2. Moses.
3. At the foot of Mt. Sinai.
4. Exodus 19:5.

**GOOD DEED**

Eddie Walsh was riding his bicycle home from the job he took to pay for college when he came upon a bag full of money, and less than an hour later he turned it over to police, who counted \$90,000 in \$10 bills.

### Genealogical Society's Annual Workshop Set

The South Plains Genealogical Society's annual, summer Family History Workshop will be presented 9 a.m. to 4:30 p.m., Saturday, August 17 at the Municipal Garden & Arts Center, 4215 University Avenue, Lubbock. A special Scottish accent in the form of tartan banners and books on Scotland will be part of this year's workshop session. No admission is charged.

Books, quarterlies and maps for individual research will be supplied by SPGS from its workshop collection and by members of the organization. Members will also be on hand to assist visitors in locating study materials at the informal event.

### Funeral Services For Earth Woman Scheduled Today

Funeral services for Ollie Belle Jones, 87, of Earth, are scheduled for 11 a.m. today, Thursday, at the First Baptist Church in Earth with Rev. M. Baldwin, pastor from Plainview and Rev. Joe Vernon, Earth First Baptist Church minister, officiating. Burial will follow in the Earth Memorial Cemetery under direction of Parson-Ellis Funeral Home of Earth.

Mrs. Jones died at 12:50 a.m. Tuesday at High Plains Hospital in Hale Center following an illness.

She was born August 16, 1897 in Hale County and was a housewife. Mrs. Jones was a member of the Earth First Baptist Church and Woodmen of the World.

She married Sam Jones in 1923 in Hale County. He preceded her in death in 1959.

She is survived by two sons, Carl Jones and Keith Jones, both of Earth; one daughter, Lucille Wheat of Andrews; eight grandchildren and 14 great-grandchildren.

### E.E. 'Ike' Engelking Services Held

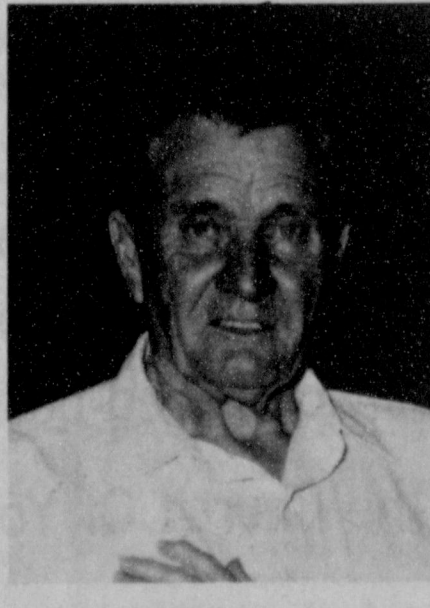
### At Lazbuddie

Services for E.E. "Ike" Engelking, 75, were held at 2 p.m. Tuesday, Aug. 6 in the Lazbuddie Methodist Church with the Rev. Les Burrus, pastor, officiating, assisted by the Rev. Lewis Crenshaw.

Interment was in Bailey County Memorial Park under the direction of Ellis Funeral Home. He died at 8:37 a.m. Sunday in Clovis High Plains Hospital at Clovis, N.M.

A native of Newkirk, Okla., Engelking was born on Sept. 2, 1909, and moved to the Muleshoe and Lazbuddie area in 1932. He married Florence Bland on April 16, 1932 in Newkirk. He was a farmer and a Lutheran.

Survivors include his wife, Florence; two sons, Richard E. Engelking and Jerry Engelking, both of Muleshoe; one daughter, Betty Embry of Farwell; one sister, Marie Engelking of Newkirk; seven grandchildren; and nine great grandchildren.



E.E. "IKE" ENGELKING

### West Plains Hospital Report

PATIENT IN WEST PLAINS MEDICAL CENTER  
Aug. 3 -Kathrine Williams, George Torres, Oneita Wagnon, Chris Brantley, and Joe Valero  
Aug. 4 -Katherine Williams, George Torres, Oneita Wagnon and Joe Valero  
Aug. 5 -Katherine Williams, Oneita Wagnon, George Torres and Joe Valero.

Free classes for beginners and advanced genealogists are scheduled for 10 to 11 a.m. and 1:30 to 2:30 p.m.

Family history charts and other research supplies will be available for purchase. A number of used books relating to history and genealogy will also be for sale, with proceeds going to assist the Genealogy Department of Lubbock's Mahon Library.

In consideration of the West Texas Scottish Heritage Society whose annual summer picnic is scheduled for 6 p.m., August 17 at the Garden & Arts Center, SPGS will have a special table of Scottish family history materials for use by persons wishing

to pursue this area of research prior to attending the picnic. This collection will remain for research after the 4:30 p.m. closing hour of the genealogical workshop. Colorful, authentic Scottish plaid tartans will be

displayed at the workshop. The Scottish picnic is open to anyone who brings a covered dish of food to share. The two lineage groups cooperate in encouraging the study of history and genealogy.

### ANNOUNCEMENT

H & R Block is offering a Basic Income Tax Course starting September 5th. There will be a choice of morning or evening classes held at the H & R Block office at 224 W. 2nd St.

The twelve week course is taught by experienced personnel and certificates are awarded to all graduates. While thousands of job opportunities are available, graduates are under no obligation to accept employment with H & R BLOCK.

Registration forms, brochures and a schedule of classes may be obtained by contacting the H & R BLOCK office at 224 W. 2nd 272-3332.

# BACK-TO-SCHOOL SPECIALS

**BORDEN'S HOMO MILK**  
\$1.99  
GALLON JUG

SHURFINE SUGAR	5 LB. BAG	\$1.39
SHURFINE ALL GRINDS COFFEE	1 LB. CAN	\$1.89
DELSEY BATH ASSTD. COLORS TISSUE	4 ROLL PKG.	99c
HI-DRI PAPER TOWELS	2 JUMBO ROLL	\$1.00
SHURFINE MACARONI & CHEESE	5 7 1/2 OZ. BOXES	\$1
SHURFINE PORK & BEANS	4 16 OZ. CANS	\$1

SHURFRESH QTRS. MARGARINE 2 1 LB. PKGS. 89c  
SHURFRESH IND. SLI. AMER. CHEESE 16 OZ. PKG. \$1.59  
KRAFT HALFMOON LONGHORN CHEDDAR ON COLBY CHEESE 10 OZ. PKG. \$1.69  
SHURFINE SANDWICH W/LOCK TOP BAGS 3 80 CT. BOXES \$1  
CARNATION EVAPORATED MILK 2 12 OZ. CANS 89c  
PETER PAN PEANUT BUTTER 16 OZ. JAR \$1.59

**BORDEN'S ASSORTED ICE CREAM**  
\$1.69  
1/2 GAL. RND. CTN.

**COKE**  
6-PK 12 OZ. CANS \$1.39

SHURFINE SALTINE CRACKERS	2 16 OZ. BOXES	\$1
SHURFINE ALUMINUM FOIL	2 12x25 ROLL	\$1
SHURFINE SALT	26 OZ. BOX	29c
EAGLE BRAND MILK	14 OZ. CAN	\$1.25
BIC DISPOSABLE LIGHTERS	EACH	69c
BIC DISPOSABLE SHAVERS	5 CT. PKG.	69c

SYLVANIA LIGHT 80-75-100 WATT BULBS	2 CT. PKG.	\$1.19
NOTEBOOK FILLER 10 1/2" X 8" PAPER	200 CT. PKG.	59c
HERLITZ RULED THEME 3-SUBJECT BOOK	EACH	79c
BIC STICK BLACK OR BLUE PENS	10 CT. PKG.	99c
SCHOOL YEL./ASSTD. COLORS PENCILS	8 CT. PKG.	59c

**Fast Hot**  
REGULAR \$2.09  
**POOR BOY SANDWICH**  
\$1.59  
EACH

**MOVIE & VCR RENTALS**  
The Very Best in Home Video Entertainment!  
**ALL YOU NEED IS YOUR TV!**

**COOKED FOOD SPECIAL**  
**HOT LINKS**  
**2 FOR 99c**

**PRICES EFFECTIVE AUG. 8-10, 1985**

OPEN 24 HOURS A DAY  
GROCERIES-SOFT DRINKS-SNACKS-HOT COOKED FOODS-SELF SERVE GAS-MONEY ORDERS WHILE SUPPLIES LAST

**ALLSUP'S**  
CONVENIENCE STORES

**Show A Profit & Irrigation**  
You Can With A Full Efficient Electric Lockwood Pivot  
**Try Our Prices!**  
5% Interest On Leasing  
**Sales & Service**  
**Hi-Plains Irrigation Consultant**  
Office 293-1580 Nite 293-4786



**Sudan**

**News**

by Evelyn Ritchie

The 21st Annual Crain reunion was held in Abilene this past weekend. Those attending from Sudan were Mr. and Mrs. R.E. (Bud) DeLoach, Mr. and Mrs. Wayne Swart, Mr. and Mrs. Robert DeLoach and Chip and Mr. and Mrs. James Humphreys and Krystal.

There were 53 family members present.

LaQuita Weaver and her four grandchildren, Chris, Shanae, Brandi and Trent of Amherst visited Sunday with their mother and grandmother, Edith Williams and attended church services with her. Dale Weaver, Alane and Charlie Bishop also joined the group in her home bringing home made ice cream. They enjoyed the noon meal and visiting.

Mary Tollett placed third in the recent Women's Walk-a-Thon held at the Civic Center in Lubbock recently.

Others attending were Verdine Gann who also entered the walk-a-thon and Mr. and Mrs. Jack Ingram, Marvin Tollett, Peal Davieaux and Louise Gatewood.

Marvin was presented an award plaque for Outstanding Senior Citizen.

Visiting with Mr. and Mrs. Marvin Tollett this week has been their daughter and grandchildren, Zerlina Shafer, Rehnea Kimble, Ashlee and Garrett all of Beaumont. Also joining them has been their son, Mr. and Mrs. Burck Tollett and Zack of Spade. They were all in Spade Tuesday night for dinner with Burck's family.

Toby, Amy and Tori, children of Mr. and Mrs. Jerry Berryhill have been in Durant, Oklahoma this week visiting their grandparents, Mr. and Mrs. H.T. Berryhill.

Mr. and Mrs. Richard Oaks and Kelly and Jason of Hobbs, N.M. visited during the week with Mr. and Mrs. Jerry Berryhill.

Mr. and Mrs. Royce McAdams have returned from vacationing the past several days at Lake Brownwood.

Gary Fields, son of Mr. and Mrs. L.S. Fields is home for the rest of the summer from Tarleton College in Stephenville.

Marge Nelson and grandson Leland visited Tuesday with Mr. and Mrs. John Williams and Mrs. Estelle Lowe.

Visiting with Mr. and Mrs. Percy Harlin have been her sister-in-law, Mrs. Effie Taylor of San Antonio, and her sister, Pauline Furr of Wells Point, Texas. While here they visited in Lubbock with Clovis Bridwell who was hospitalized at the Methodist hospital and with Mrs. Harlin's cousin, Edith Beadle at Brentwood Manor. They all also visited in Littlefield with Mrs. and Mrs. Bob Taylor and in Earth with her daughter, Mrs. and Mrs. Don Parks and family attended the rodeo and bar-b-que. Their grandson, Leslie Park of Earth has also been here visiting with them.

Happy Birthday, Mary Lou, on the 3rd.

Kim Phipps and family will be moving to Dallas in the near future to make their home. Kim has been with the Farm Bureau Insurance Co.

Mr. and Mrs. Gery Donnell and family have returned from vacationing in Dallas, San Angelo and Abilene.

Mr. and Mrs. Connie Franks and Holly left Tuesday for Marble Falls upon learning of the death of her sister, Brenda Thompson.

Heather Grey of Tahoka has been here visiting her cousin, Sherry Capers and Annette and Mr. and Mrs. B.A. Beauchamp and Derwin.

Jonelle Bandy has been in Levelland and Littlefield most of the past several days with her dad, Joe Foster, who has been ill.

Krystal Humphreys was released Friday from the Littlefield Medical Center following emergency treatment after an injury to her throat. She is the daughter of Mr. and Mrs. James Humphreys.

Ila Ruth Gilreath has returned from vacationing in Virginia with her son, Mr. and Mrs. Max Gilreath and family.

Loretta Reid, Suzanne and Jill hosted a dinner recently for her aunts and uncles who were visiting with Mr. and Mrs. Dail Burnett and Mr. and Mrs. John Burnett. Included were Mrs. Billy Joe Paulsen of Willows, Calif., Myrtle Davis of Modesto, Calif., Mr. and Mrs. Dutch Burnett and Paul of Cross Plains, Mrs. Sylvia Burnett of El Paso and Mr. and Mrs. R.C. Burnett and Mrs. Mae Phillips of Causey, N.M. Others joining them were Mr. and Mrs. Russ German and family of El Paso, Sam Burnett of Littlefield, Mr. and Mrs. Charles Burnett and Mr. and Mrs. Carl Burnett and family all of Sudan.

Mr. and Mrs. Wayne Doty visited during the weekend in Hobbs, N.M. with their daughter, Mr. and Mrs. Doyle Mapp.

Wayne and Wanda Swart, Terry and Deanna Swart, and James and Kathy Humphreys and Krystal attended the funeral of their grandmother, Mrs. Jessie Condren of Littlefield last Wednesday morning. Mrs. Condren passed away Monday evening at the age of 93. Wayne

and Wanda also attended the graveside services in Chillicothe, Texas that evening.

Mr. and Mrs. Jay Ford, Robert Ford and Carey Harrison of San Angelo visited over the weekend with Mr. and Mrs. John Williams and Mrs. Estelle Lowe.

The Jay Fords are in the process of moving to Sudan or in this area and brought some of their belongings as they came last week.

Terri Brown of Munday has been here visiting her sister, Mr. and Mrs. Craig Doty and Kimberly.

Mr. and Mrs. Mike Robinson and Lindsey of Lubbock visited recently with her parents, Mr. and Ms. J.C. Doty and brother, Mr. and Mrs. Craig Doty and other family members.

Mr. and Mrs. Tom Rigsby have returned from vacationing last week in Ruidoso, N.M.

Mr. and Mrs. Ronnie Baker of Lubbock visited Sunday

afternoon with her mother, Mrs. Mayble Haragan.

Ann Arnold and Jana returned to San Antonio Monday following a visit here with her mother, Mrs. Ester Meeks and also Mrs. Floy Arnold.

Steve and Michael Ford, sons of Billy John Ford of Lubbock, visited during the weekend with

their grandparents, Mr. and Mrs. Byron Ford.

Mrs. Ruby Davis of Dallas visited last week with her mother, Mrs. Daisy Ford and sister, Mr. and Mrs. R.B. Knox

Mr. and Mrs. Kim Ingram and family of Amarillo have been here visiting his parents, Mr. and Mrs. Jack Ingram.

**Wilson**  
117 Main 272-5531

**VIDEO RENTAL**

Tape Rental	Disc Rental
Tape player with 2 movies \$10.99	Disc player with 3 movies \$10.99
Sat.-Mon. \$13.99	Week end Sat.-Mon. \$12.99

ASK THE HEARING AID SPECIALISTS FOR A FREE TEST ON OUR MODERN ELECTRONIC EQUIPMENT

**FREE HEARING TESTS**

**Beltone**  
HEARING AID CENTER  
1305 Thornton Clovis, N.M.  
505-762-7992

**Bailey County Colliseum**  
August 9, 1985  
9:00 - 12:00  
272-4114

**Immaculate Conception Catholic Church**  
Father Patrick Maher  
Northeast of City in Morrison Addition

**First United Methodist Church**  
507 W. 2nd, Muleshoe  
Bill Kent, Pastor

**El Divino Salvador Methodist Church**  
5th And Ave. D.  
Jose M. Fernandez, Pastor

**First Baptist Church**  
220 West Ave. E.  
Berry Bradley, Pastor

**Emmanuel Baptist Church**  
Iglesia Bautista Emmanuel  
107 East Third  
Isaias Cardenas, Pastor

**Muleshoe Baptist Church**  
8th And Ave. G.  
Bob Dodd, Pastor

**Primera Iglesia**  
East Third And Ave. E.  
Roy Martinez, Pastor

**Longview Baptist Church**  
Phone 965-3413  
B.C. Stonecipher, Pastor

**Progress Baptist Church**  
Progress, Texas  
Paul Brigham, Pastor

**Progress Second Baptist Church**  
1st And 3rd Sunday  
Clifford Slay, Pastor

**Richland Hills Baptist Church**  
17th And West Ave. D.  
Brock Sanders, Pastor

**Circle Back Baptist Church**  
Intersection FM 3397-FM 298  
946-3676  
Ron Linebarger, Pastor

**St. Matthew Baptist Church**  
Corner of West Boston & West Birch  
M.S. Brown, Pastor

**Primitive Baptist Church**  
Corner of Ithaca St. And Fir Ave.  
Elder Glen Williams, Pastor

**Templo Calvario**  
507 S. Main  
Sunday - 10:00 a.m.  
Sunday Evening - 7:00 p.m.  
Evangelistic Services  
J.L. Soto, Pastor

**Dairy Queen**  
1204 W. American 272-3412

**Kemp's Discount Furniture**  
414 W. American 272-5023

**Irrigation Pumps & Power**  
W. Hwy. 84 272-4483

*Where to...?*

Did you ever look down railroad tracks and wonder where they went... or put your ear to the track, listen to the hum, and try to guess when the train would reach you? These questions we may have asked when we were children, but as adults it is time to ask... Are we headed in the right direction? Are we prepared for things in the future regardless of when they will arrive? Choose now the path you will take. Let the church help guide you.

"Oh that my ways were directed to keep thy statutes!"

The Church is God's appointed agency in this world for spreading the knowledge of His love for man and of His demand for man to respond to that love by loving his neighbor. Without this grounding in the love of God, no government or society or way of life will long persevere and the freedoms which we hold so dear will inevitably perish. Therefore, even from a selfish point of view, one should support the Church for the sake of the welfare of himself and his family. Beyond that, however, every person should uphold and participate in the Church because it tells the truth about man's life, death and destiny; the truth which alone will set him free to live as a child of God.

EVERYONE IN THE CHURCH  
THE CHURCH IN EVERYONE

**St. Matthew Baptist Church**  
Corner of West Boston & West Birch  
M.S. Brown, Pastor

**Primitive Baptist Church**  
Corner of Ithaca St. And Fir Ave.  
Elder Glen Williams, Pastor

This feature is published in the interest of a better community, and is sponsored by the following civic minded business firms.

Attend The Church Of Your Choice.

<b>Dairy Queen</b> 1204 W. American 272-3412	<b>Bratcher Motor Supply</b> 107 E. Ave. B. 272-4288	<b>Wes Tex Feed Yards</b> 272-7555	<b>American Valley, Inc.</b> W. Hwy. 84 272-3565
<b>Kemp's Discount Furniture</b> 414 W. American 272-5023	<b>Western Drug</b> 114 Main 272-3106	<b>Fry &amp; Cox, Inc.</b> 401 S. 1st 272-4511	<b>Farmer's Spraying Service</b> Lazbuddie 965-2624
<b>Irrigation Pumps &amp; Power</b> W. Hwy. 84 272-4483	<b>Serv-All Thirtway</b> 401 W. American 272-4739	<b>Robert D. Green, Inc.</b> 2400 W. American 272-4588	<b>Muleshoe Truck &amp; Auto Center</b> Plainview Highway



# Muleshoe Journal

# Classified

Call 272-4536

**CLASSIFIED RATES**  
1st Insertion  
Per Word .....\$15  
Minimum Charge....\$2.30  
2nd Insertion  
Per Word .....\$13  
Minimum Charge....\$2.00

**CLASSIFIED DISPLAY RATES**  
\$1.70  
per column inch

**BLIND AD RATES**  
50% more

**DEADLINES**  
12 Noon Tues.  
for Thursday paper  
12 Noon Fri.  
for Sunday paper

WE RESEKVE THE RIGHT TO CLASSIFY REVERSE OR REFJECT ANY AD. NOT RESPONSIBLE FOR ANY ERROR AFTER AD HAS RUN ONCE.

**1. Personals**

**ATTENTION: POTATO FARMERS** want to buy potatoes at your farm bulk loaded on our semi-trucks. Contact Colorado Potato Co., Trinidad Colorado 303-846-4404. 1-28s-8tc

**FURNITURE** Upholstering & repairs. Burrows Upholstery Shop 209 W. 2nd Phone 272-4255 Home Phone 272-5722. b1-41t-tfc

**NEED YARDWORK?** Call 272-3789 or 272-3380 Jerry Bob Graves & Sergio Gonzalez. a1-25s-tfc

**HOME REPAIRS** F.M. Saldana Construction Licensed and bonded plumber. Specialized in cement, carpenter work, remodeling, painting, acoustical ceilings. 272-4955. s1-16s-tfc

**HELTON'S** Roofing and Exterior Painting, Mobil Home Roofs our speciality. Also the best in Ag. products. Call Jerry Helton 272-3836, 915 Gum, Muleshoe, Tx. h1-8t-tfc

**FOR SALE**  
Bailey County Diet Center Includes:  
Some furnishings, starting inventory, training & schooling. Call: Greta McCormick 272-5487 or 272-4477. 1-11t-tfc

**CONCERNED About Someone's Drinking? HELP IS AVAILABLE** through Al-Anon Call 227-2350 or 965-2870 or Call 227-2350 or come to visit Tuesday nights, 8:30 p.m. or Saturday mornings at 10:30 a.m. at 1116 W. American Blv., Muleshoe.

**OPEN YOUR OWN** beautiful Children's Store. Infant to Pre-Teen. Nationally known brands \*Health Tex \*Don-moor \*Lee, \*Levi, \*Chic, \*Buster Brown, \*Izod, \*Her Majesty \*Nannette \*Feltman and many more. Furniture-accessories and toys by Gerber and Nod-A-Way. \$14,900.00 to \$17,900.00 includes beginning inventory - training-fixtures-grand opening promotions and round trip air fare for one. Call today. We can have your store opened in 15 days. Prestige Fashions 501-329-8327. 1-32t-1tpts

**1. Personals**

**LICENSED DAY CARE** 18 mos. and older. Openings for fall. Call Diane Allison 272-3304. a1-30s-tfc

**WOULD LIKE** to do house cleaning call Pat at 272-5828. 1-31t-4tc

**MARY KAY COSMETICS** in stock. Free facials. 272-3865 Josie Flowers. fl-22t-tfc

**DEMONSTRATE** Toys and Gifts. No Collecting, Delivering or Cash Investment! Free Kit! CALL DONNA (806) 293-9128. 1-31s-4tp

**OWN YOUR OWN** Jean - Sportswear, Ladies Apparel, Childrens, Large Size, Combination Store, Accessories. Jordache, Chic, Lee, Levi, E Z Street, Izod, Esprit, Tomboy, Calvin Klein, Sergio Valente, Evan Picone, Liz Claiborne, Members Only, Organically Grown, Gasoline, Healthtex, over 1000 others. \$13,300 to \$24,900 inventory, training, fixtures, grand opening etc. Can open 15 days. Mr. Loughlin (612) 888-6555. 1-32t-1tpts

**3. Help Wanted**

**EXCELLENT IN-COME** for part time home assembly work. For info. Call 504-641-8033 Ext. 8911. 3-24t-4teotpts

**GOVERNMENT JOBS** \$16,040 - \$59,230/yr. Now Hiring. Call 805-687-6000 Ext. R-6226 for current federal list. 3-32t-8tpts

**3. Help Wanted**

**EXCELLENT IN-COME** for part time home assembly work. For info. Call 504-641-8033 Ext. 8911. 3-24t-4teotpts

**GOVERNMENT JOBS** \$16,040 - \$59,230/yr. Now Hiring. Call 805-687-6000 Ext. R-6226 for current federal list. 3-32t-8tpts

**8. Real Estate For Sale**

**HENRY REALTY**  
\*\*\*  
111 W. Ave. B  
Muleshoe, Texas  
272-4581

**J.B. SUDDERTH REALTY INC.**  
Drawer 887  
Farwell, TX 79325  
Ph. 806-481-3288

\*\*\*  
181 acres, one 6 in and one 8 in well, valley sprinkler, west of Progress on highway. Owner financing available.

\*\*\*  
472 acres, four wells with electric motors, two late model valley low-pressure sprinklers. Wheat crop included. Priced at \$650 per acre. Owner will finance.

\*\*\*  
177 acres with zimmatic sprinkler near Lazbuddie. Good water area. Priced at 875 per acre. Owner says sell.

\*\*\*  
320 acres irrigated E of Farwell on hwy with circle sprinkler 2-8 in. wells approx. 200 ft of water lays nearly perfect.

\*\*\*  
155 acres irrigated with circle sprinkler, excellent water area, North East of Muleshoe

\*\*\*  
320 a, 3-8 in wells, circle sprinkler, 3 mi SE Clays Corner

\*\*\*  
158 a, 3 good wells, circle sprinkler, elevator and new office building on highway. Progress area.

**3. Help Wanted**

**HELP WANTED:** Full time year around farm worker. Call 965-2259 daytime or 272-3257 after 6. t3-28t-tfc

**4. Houses For Rent**

**RUIDOSO CHALET:** 4 bedroom for rent by day, weekend, or weekly. Call 505-257-2622 or 915-943-4261. Owner Dr. Albertson. a4-49t-tfc

**5. Apts. For Rent**

**FOR RENT:** 1 large bedroom apt. Call 965-2188 or 272-4754 after 6:00 p.m. s5-32t-tfc

**8. Real Estate For Sale**

**FOR SALE:** Brick home in Richland Hills addition. 2 Bed. 2 Bath. Cent. A&H. Fenced yard, Built-ins, Extras. 806-253-2046. 8-28t-8tp

**DEALER REPOES!** Finance company has several 3 bedroom mobile homes to liquidate immediately. Example: 3 bedroom -2 bath with shingle roof, garden tub, etc.. Includes delivery and insurance. Several 16' wides.

**WE TAKE TRADES-ANYTHING OF VALUE!**

Mobile Home Liquidators  
6325 Canyon Drive  
Amarillo, Texas  
806-358-3257  
m8-31s-2tcts

**3. Help Wanted**

**Bingham & Nieman Realty**  
116 E. Ave. C  
272-5285\*\*\*272-5286

"We Appreciate Your Business!"

George & Dianne Nieman

**9. Automobiles For Sale**

81 **FORD COURIER** AM-FM cassette, protective bed cover, slide apart rear window, runs great \$3,200 986-4354 Springlake. F9-31s-2tc

**GOV'T SURPLUS** Cars and Trucks Under 4100. Now available in your area. Call 1-619-565-1522. 24hrs. 9-30t-3tpts

1980 Model Ford F250 heavy duty-C-6 automatic transmission, 400 CI engine, heavy duty rear axle, new radial tires, and a service body. Runs on propane or gasoline. Call after 8:00 p.m. 925-6485. p9-24t-tfc

1978 Mercury Cougar XR7 Loaded, Excellent condition. See at 919 Ivy or call 272-4131 after 5:00 p.m. p9-23t-tfc

**8. Real Estate For Sale**

**HOUSE FOR SALE** by owner. 523 W 9th. 3 Bdrm., 2 bath. Call after 5:00 p.m. or weekends 272-3790 8-30s-4tp

**11. For Sale Or Trade**

"Good company and good discourse are the very sinews of virtue."  
Izaak Walton

**FOR SALE - 21** piece encyclopedia set. Includes: 21 piece Lexicon Universal Encyclopedia, Medical and Health set, Life Cycle Library, Child Horizons set, 8 piece Childrens Classics, Outdoors Encyclopedia, Funk and Wagnalls Dictionary, Home and Auto Repair Set. \$1500.00 value. Price negotiable 272-4356

**8. Real Estate For Sale**

**FOR SALE** or Rent 3 Bedroom 903 W. 8th Muleshoe call 806-285-2757. Olton, Tx. b8-25t-tfc

**NEW 14x56 2** bedroom, 1 bath close out prices. Perfect for lake or mountain retreat. Ask for Shelby 763-5319 collect. a8-29t-tfc...

**NEW BRICK HOME** \$500.00 down, small monthly payment. Call today Realtor 272-3611. w8-4t-tfc

**FOR SALE BY OWNER:** 3 bdrm, 3 bath brick home, large fenced yard-lots of storage and storm cellar. Call for appointment 272-3592 located 1810 W. Ave. C. d8-7t-tfc

**REPOSESSED 14 & 16** wide mobile homes from \$99 to \$500 down. Delivery included. 6 month free lot rent. Call 1-800-792-0032. m8-25t-tfcts

For Sale, House and Lot located at 215 W Ave 1, Muleshoe, Tx to the highest bidder for cash. Sealed bids only. Bid forms available at office. Bids to be opened 2:00 p.m. on 8/16/85. Dwelling for sale as is, will require renovation, specific restrictions available at FmHA office located in Pool Building at the corner of Ave D and South 1st St, Muleshoe. The Government reserves the right to reject any and all bids. F8-30s-4tc

**11. For Sale Or Trade**

**FOR SALE:** 1977 Honda Goldwing Full Touring Setup 15 Cu. Ft. cargo trailer. Many Extras. Phone 272-4625 after 6pm. 618 West 5th ll-30t-4tp

**FOR SALE** Two cemetery lots in Bailey Co. Memorial Park Call 915-388-4635 or write to C.M. King Box 244 Kingsland, Tx 78639. k11-23t-tfc

**FOR SALE:** Green Beans, Cucumbers, later Blackeyed Peas and Okra. Call 965-2696 or 965-2761. 11g-32t-4tp

**FARM EQUIPMENT** 1460 IHC Combine with platform. Excellent condition 429,500 Ph 1-800-835-1020. 11k-32t-2tc

**12. Household Goods**

**LARGE GARAGE SALE** 2mi N. on Friona Hwy. Fri. Aug. 9 and Sat. Aug. 10 from 9-6. Lots of everything. b12-32t-1tc

**7 FAMILY GARAGE SALE** Saturday Aug. 10th 9AM - 5PM Western Auto Building 216 S. Main Antique Dishes, Bedspreads, Drapes, Linens, Kitchen Supplies, 3 Instamatic cameras. Daisey Churn, Toys, Books, Childrens Clothes, Vacuum Cleaner, Stereo 8 Track Record Player. Pig Feeders, Chicken Feeders, Lots of Tools. 12b-32t-1tc

**15. Misc.**

**CLOVIS FLEE MARKET** Open every Sat. and Sunday. Corner of Prince and Brady. g15-32t-1mc

**17. Seed & Feed**

**BIRDWELL CATTLE** Co. Coyote Lake, We are buying wheat & barley 806-946-3321. b15-23t-tfc

Round-up applications cotton, soybeans, maize, layout, tip-wick mounted on highboy 30 inch or 40 inch rows. Call Roy O'Brian 265-3247. o17-26s-tfc

**11. For Sale Or Trade**

**FOR SALE:** 1977 Honda Goldwing Full Touring Setup 15 Cu. Ft. cargo trailer. Many Extras. Phone 272-4625 after 6pm. 618 West 5th ll-30t-4tp

**FOR SALE** Two cemetery lots in Bailey Co. Memorial Park Call 915-388-4635 or write to C.M. King Box 244 Kingsland, Tx 78639. k11-23t-tfc

**FOR SALE:** Green Beans, Cucumbers, later Blackeyed Peas and Okra. Call 965-2696 or 965-2761. 11g-32t-4tp

**FARM EQUIPMENT** 1460 IHC Combine with platform. Excellent condition 429,500 Ph 1-800-835-1020. 11k-32t-2tc

**12. Household Goods**

**LARGE GARAGE SALE** 2mi N. on Friona Hwy. Fri. Aug. 9 and Sat. Aug. 10 from 9-6. Lots of everything. b12-32t-1tc

**7 FAMILY GARAGE SALE** Saturday Aug. 10th 9AM - 5PM Western Auto Building 216 S. Main Antique Dishes, Bedspreads, Drapes, Linens, Kitchen Supplies, 3 Instamatic cameras. Daisey Churn, Toys, Books, Childrens Clothes, Vacuum Cleaner, Stereo 8 Track Record Player. Pig Feeders, Chicken Feeders, Lots of Tools. 12b-32t-1tc

**15. Misc.**

**CLOVIS FLEE MARKET** Open every Sat. and Sunday. Corner of Prince and Brady. g15-32t-1mc

**17. Seed & Feed**

**BIRDWELL CATTLE** Co. Coyote Lake, We are buying wheat & barley 806-946-3321. b15-23t-tfc

Round-up applications cotton, soybeans, maize, layout, tip-wick mounted on highboy 30 inch or 40 inch rows. Call Roy O'Brian 265-3247. o17-26s-tfc

**17. Seed & Feed**

**WANT TO HARVEST** Corn, Beans, Milo, Sunflowers. Will cut and haul corn 40C per CWT milo-35C. 8820 John Deere combines 40-38-30 inch rows. Happy, Texas 806-488-2252 or 2460. s17-29s-1mc

**Too Late To Classify**

**ABANDONED:** Female, white German Shephard puppy -- will give away to good home -- 946-3676. (Approximately 5 mo. old) 15-32t-2tp-ttc

**FOR SALE:** 9 yr old Gelding horse. Gentle, good riding horse. Call 965-2694. p11-32t-2tc-ttc

**August 6**

On August 6, 1945, a superfortress named "Enola Gay" and piloted by Col. Paul Tibbets arrived over Hiroshima, Japan.

It carried the first atom bomb used in war and dropped it on that city of 343,000. Sixty percent of the metropolis was devastated.

Another was dropped five days later on Nagasaki; the two killed 70,000 people and made another 120,000 homeless, in addition to injuring thousands of others.

Japan sued for peace within days. Thus the two atomic bombs proved the psychological and military shock that ended the war.

**Know THE Weather**

What role do the sun's ultraviolet rays play in molding the earth's weather?

Ultraviolet rays from the sun are short wave rays which, curiously, tend to heat the earth's equatorial zone more than the polar zones, for example. This has a great effect on the winds which circle the earth, as can readily be seen--heat being a producer of wind and cloud.

Generally speaking, when the sun's ultraviolet rays are more numerous than usual, the greater area of the United States is due for stronger west-east weather movements and wetter weather.

Fewer ultraviolet rays from the sun mean warmer and drier weather for most of the country.

**Too Late To Classify**

**ABANDONED:** Female, white German Shephard puppy -- will give away to good home -- 946-3676. (Approximately 5 mo. old) 15-32t-2tp-ttc

**FOR SALE:** 9 yr old Gelding horse. Gentle, good riding horse. Call 965-2694. p11-32t-2tc-ttc

**August 6**

On August 6, 1945, a superfortress named "Enola Gay" and piloted by Col. Paul Tibbets arrived over Hiroshima, Japan.

It carried the first atom bomb used in war and dropped it on that city of 343,000. Sixty percent of the metropolis was devastated.

Another was dropped five days later on Nagasaki; the two killed 70,000 people and made another 120,000 homeless, in addition to injuring thousands of others.

Japan sued for peace within days. Thus the two atomic bombs proved the psychological and military shock that ended the war.

**On Coke**

The magazine "Consumer Reports"--a non-profit publication which tests products--recently tested the new Coke against the old, and against Pepsi, with 95 tasters. It also analyzed content.

Despite the amount of protest registered in the media about the new product of number-one, both the new Coke and Pepsi were preferred to the old Coke.

As for analysis, all three contained about the same amount of sugar. There was a difference in taste--and thus flavoring is what the current ruckus is about. (All three are about 99 percent carbonated water and sugar.)

As for the public's final verdict on taste; the magazine says only time will tell.

**11. For Sale Or Trade**

**CARPORTS & AWNINGS** On Sale thru August at a 25% Discount. 806-293-1720 Days 293-7665 Nites p11-31s-tfcts

**15. Misc.**

**SHOP AROUND FOR THE BEST PRICE THEN SEE OUR PRICES** 60% OFF 14K GOLD&DIAMONDS EVERY DAY **BI-WIZE HEALTH MART** 902 Main b15-23s-tfc 247-3010

**15. Misc.**

**SHOP AROUND FOR THE BEST PRICE THEN SEE OUR PRICES** 60% OFF 14K GOLD&DIAMONDS EVERY DAY **BI-WIZE HEALTH MART** 902 Main b15-23s-tfc 247-3010

**Satellite T.V. System**  
Complete System  
10' Mesh Dish - LNA 100' - Pole  
100' Cable - Jack  
Large Dish - Small Price

**\$1095<sup>00</sup>**

Installation Available

**Wilson**  
Appliances, Inc. 272-5531  
117 Main

**True Value HARDWARE STORES**

**BARGAIN OF THE MONTH**  
**6.99** While Supplies Last  
**Swing-Arm Clamp Lamp** with adj. metal arm, large shade, porcelain socket. 32 in. long. 100 W. White. S1-WH  
QUANTITIES LIMITED

**HARDWARE VALUE OF THE MONTH**  
**6.99** While Supplies Last  
**Resettable Combination Padlock** lets you choose the 4-digit sequence. Hardened shackle, brass case. 175-D  
QUANTITIES LIMITED

**TOOL VALUE OF THE MONTH**  
**10.88** While Supplies Last  
**Lopper** slices stray branches with Teflon-S<sup>®</sup>-coated upper blade. Hardwood handles, vinyl grips. 523761  
QUANTITIES LIMITED

**Fry & Cox, Inc.**  
401 S. 1st 272-4511



MULESHOE  
AREA

FALL '85

BUSINESS  
DIRECTORY  
AND  
SHOPPING GUIDE

Photography With Personalized  
Individual Attention  
STUDIO WEDDINGS  
ANNIVERSARIES  
COMMERCIAL FRAMES

Photography by Lonnie

1/4 Mile N. On Friona Hwy. Lonnie & Sue Gibson 272-5151



**\$2.00 REBATE**

**M-D SILICONE SEALANTS**

Save money and energy with this terrific M-D \$2.00 rebate offer. M-D Silicone Rubber Sealant is our best around-the-house sealant. Long-lasting, interior and exterior applications.

**\$5.00** Sale Price  
**-2.00** Manufacturer's Rebate

**\$3.00** Your Cost After Rebate

Limit: 3 tubes of Silicone Sealant per family/address

**Higginbotham-Bartlett Co.**

215 Main 272-3351

We Have Several  
Tables Of Items  
At  
Reduced Prices!

Art Loft

1529 W. Amer. Blvd. 272-9485



Vera Flores  
& Irma Acosta  
Your Cooks  
At The

**Chick-n-Dock**

1411 W. Amer. Blvd. 272-5581



Farmers Co-op Elevators was founded in 1956 and now has three locations: Clay's Corner, Enochs, and two here in Muleshoe.

Robert Johnson is the General Manager, with Johnnie Williams managing the Triple A Elevator, Shorty McCall manager of the Enochs elevator and Boone Allison is at Clay's Corner.

**This Week Only**

Fashion Hose ..... **\$1.00** pair  
Spring & Summer Dresses ... **30% Off**  
KoKo Knits ..... **30% Off**  
1 Group Bags ..... **1/2 price**

**Famous Fashions & Fabrics**

127 Main 272-5056

**Mule Days**

**Sal-A-Bration**

Famous Fragrances

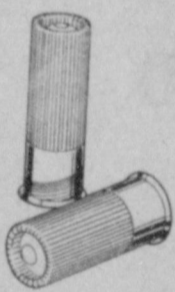
Opium - Obsession - Vanderbilt - Youth Dew - White Shoulders - Giorgio - Oscar De La Renta - Chanel 5 - White Linen  
**Many Diamonds Reduced 30-45%**

Layaway Now For Christmas

Winn & Hutton Butane Lighters **1/2 price**

Lindsey Jewelry

202 Main 272-9355



**Concorde**

Game Load  
Shotgun Shells

Game Load Shotgun Shells are precision loaded and tested for reliability. Choice of .12 or .20 gauge. 25-count boxes. 063-9610-9612

**3<sup>18</sup>**

Reg to 3.99

**P O Y N O R S**

103 Main Street WHITE'S STORES, INC. 272-4552

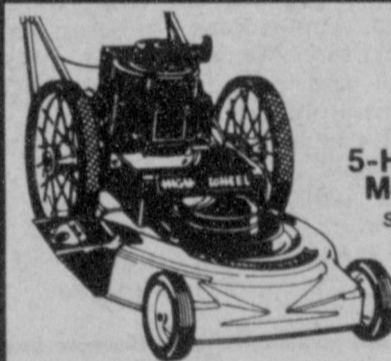
**Our 1/2 Price**

**Sale Is**

**In Progress**

**Lookin' Good**

206 Main 272-5052



**LAWN CHIEF**

5-HP, 22-Inch High-Wheel Rotary Mower has belt-driven blade for crankshaft protection. Ideal for cutting under fences and hedgerows. Big 16-in. rear wheels roll over bumpy lawns. With full underdeck baffles for strength. 92C

**\$299<sup>95</sup>**



**Fry & Cox, Inc.**

401 S. 1st 272-4511

**3  
Locations  
To  
Serve You**

**Farmer's Co-op Elevators**

Clays Corner Muleshoe Enochs  
Phone 272-4335

Now Is The Time To  
Get Your Fall Clothing  
Cleaned For Those  
Cool Days Ahead.

**Lambert Cleaners**

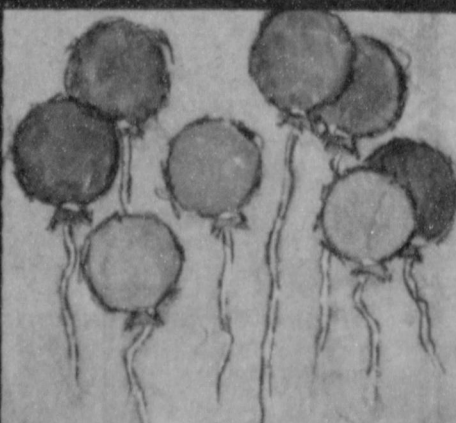
123 Main 272-4726



Get ready for Back-to-School with a new hairdo. Call one of the girls at Main Street Beauty Salon for an appointment today!

**Main Street Beauty Salon**

115 Main 272-3448



Each of us is a part of all that surrounds us - and every joy we feel is

Come By & See  
Our New Line  
Of  
Greeting Cards  
by Flavia.

**Damorn Drug**

108 Main 272-4210



Call Glenna Or Pat  
Today For That  
New Fall Hairdo.

**Glenna's Beauty Retreat**

207 Ave. G. 272-3092