

SCHOOL
Rotary Hosts School Board
—See Below

WEATHER
Ice, Snow A Winter Reminder
—See Below

POLITICS
Candidates File For Office
—See Below

WEATHER

January 3	36	15	.00
January 4	48	19	.00
January 5	30	19	.00
January 6	30	14	.05

Muleshoe Journal

'The Community Of Opportunity-Where Water Makes The Difference'



Ice Storm Keeps Motorists Crawling On Highways

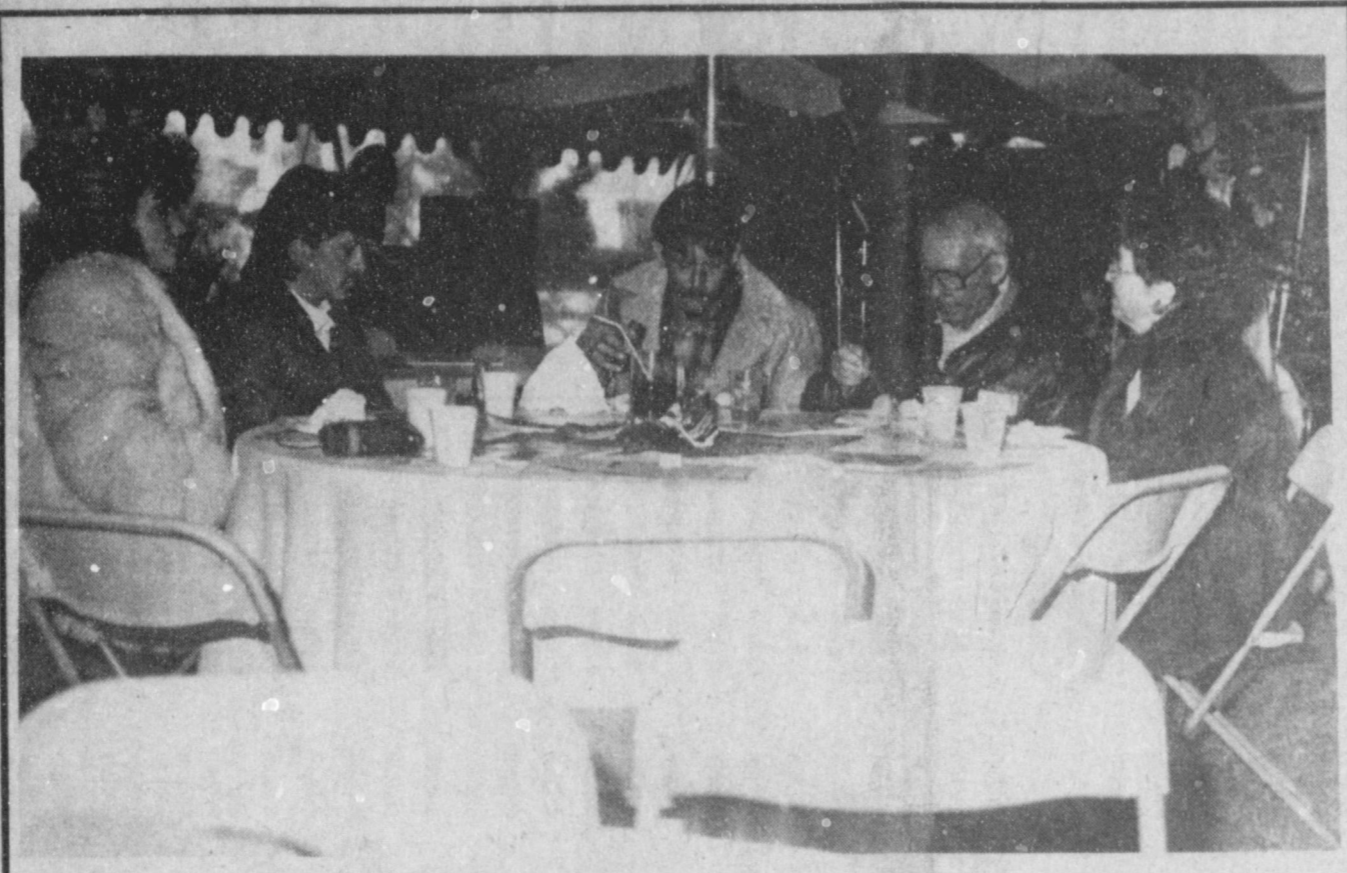
around muleshoe

Around 1:30 p.m. Tuesday, a local man, Tony Guzman, 34, lost his life in an accident at the Needmore Co-op Gin. Guzman was apparently trapped between a payloader and a truck while loading bales of cotton. He was pronounced dead by Justice of the Peace Jack Bates at the scene of the accident at 2:18 p.m. At presstime, funeral services for Tony Guzman were pending at Ellis Funeral Home in Muleshoe.

Alpha Zeta Pi will present a youth dance at the American Legion Hall in Muleshoe on Saturday, January 9, 8 p.m. to midnight. The dance is for Muleshoe Youth Center members and other young people their age. Admission will be \$3 for members and \$4 for non-members. Providing the music will be Scotty Snipes of Clovis.

Youth of the Calvary Baptist Church will again have special Valentine Cookies. The nine inch sugar cookie will be decorated with your message and delivered to the recipient. To reserve your cookie, call 272-5319 or 272-4012, or see any member of the Calvary Baptist youth department. The proceeds will be used for church camp this summer.

Abel A. Leal, a high school sophomore at New Mexico Cont. Page 6, Col. 2



IT WAS A ONCE IN A LIFETIME "TAILGATE PARTY"--Last Friday, New Year's Day, a 'Once In A Lifetime' event was held at the entrance to the Cotton Bowl in Dallas. Dick J. Reavis, center, had just completed his National Tour of Texas Monthly Magazine. The Tailgate Party, officially ending the year long tour, drew a number of special guests, including from left, Vicki Reavis and Joe Reavis, Fairfield; and to Dick J. Reavis' right, his parents, Mr. and Mrs. Dick Reavis of Dumas. In the background are Cindy Renee' and the Partytimers, a Dallas-based band.

No Major Accidents Reported During Ice, Snow Storm Here

After just a few days of slightly warmer weather, winter again set in Monday and Tuesday in the form of an ice and snow storm. The ice storm began early Tuesday morning in the form of freezing drizzle, a condition that prevailed through the day. In the night on Tuesday, a light dusting of snow fell, with less than an inch being recorded. Although it was business 'as usual' in the area, and all schools remained open, traffic was slowed to a crawl on the icy streets and highways.

According to the National Weather Service (NWS), a flow of warm, moist air overran a cold air mass, producing the freezing rain over the northwest section of Texas. Then, right behind the 'Siberian Express' came bitter cold temperatures, sleet, freezing rain and drizzle and snow. The same type weather conditions were expected to continue into the weekend. NWS cautioned motorists that with the constant cloud cover, and little to no sunshine for the rest of the week, driving conditions will remain hazardous. Low temperatures and a continuing chance of freezing drizzle or snow continues in the forecast through Saturday, according to the NWS. Snow accumulations could be as much as 5-7 inches in this area, said the weather forecast. Cont. Page 6, Col. 5

SPC Local Registration Going On Now

Registration for the winter classes of South Plains College Division of Continuing Education in Muleshoe will continue through January 13. Registration is being conducted at the Curriculum Office in the Muleshoe School District Administration Building. Classes begin on Monday, January 18, and books will be sold on the first night of the class. A minimum enrollment of fifteen persons is required for a course. This semester, classes offered include Beginning Spanish, to be held on Monday, 5:30-10 p.m. at Muleshoe High School; College Algebra, Monday, 6:30-9:30 p.m., Muleshoe High School; American Government, Functions, Tuesday, 6:30-9:30 p.m.; and College Composition and Rhetoric, Thursday, 6:30-9:30 p.m., Muleshoe High School. In order to enroll in one of the courses, persons must be a high school graduate or possess the GED certificate. Persons without the GED may apply for probationary enrollment to the Dean of Continuing Education at South Plains College, Level-land. For additional information, contact the Curriculum Office, Administration Building, Muleshoe, (806) 272-3325.

Candidates Fill County Slots For Election

Now, it's all over until the Super Tuesday Primary on March 8. The final candidates have filed and will be out diligently campaigning until the day of the Primary. In Bailey County, filing for office in the Democratic Party have been Jerry Damron, for Precinct Chairman, Voting Box Six; Linda Elder, incumbent, for Bailey County Attorney; and Kathleen Hayes, incumbent, for Bailey County Tax Assessor. R.L. Scott, incumbent Bailey County Commissioner, Precinct One, is opposed by H.E. Newsom and James W. Meason. Joey Kindle, incumbent Commissioner of Precinct Three, did not draw an opponent. Seeking the position as Sheriff of Bailey County are Deputy Sheriff Jerry Hicks and Ray Rutherford. Rich Magby has filed for Constable, Precinct One; and Gerry Pierce has filed for Constable, Precinct Three. Both are incumbents.

Texas Monthly Nomad Winds Up Texas Tour At Dallas Cotton Bowl

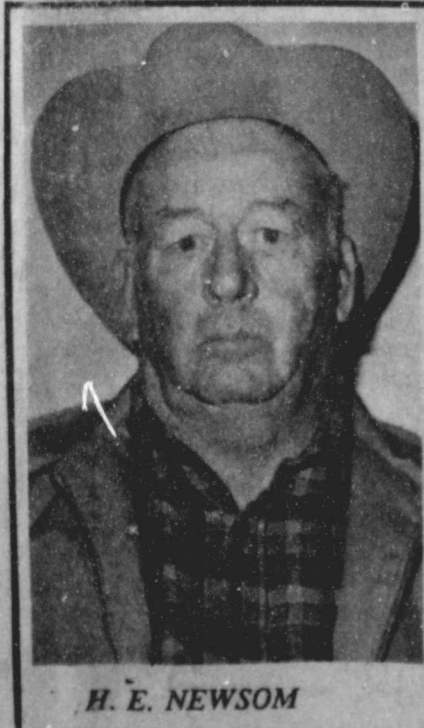
It was easy to ignore cold, windy weather last Friday in Dallas, when a group of people met at the entrance of the Cotton Bowl for Texas Monthly Magazine's 'Tailgate Party' for the just completed National Tour of Texas, driven by TM Senior Editor Dick J. Reavis. During 1987, starting out at the Cotton Bowl on January 1, Reavis drove every mile of paved road in the state, adding more than 102,000 miles to the odometer of a Chevrolet Suburban, the National Car of Texas. Clela Williams, a special guest, was accompanied to the Tailgate Party by her mother, Myrtle Creamer, also of Muleshoe; a sister, Mrs. Weldon (Monnie) McBride, of Plano. Hosted by Texas Monthly Magazine and Chevrolet, the Tailgate Party was held in a bright red and white tent, complete with forced-air butane heaters to help offset some of the 39 degree temperature. Tables were set up and decorated with red and blue

bandanas, confetti, and current copies of Texas Monthly. Throughout the morning, until shortly before kickoff time at the annual Cotton Bowl Classic, the TM staffers, Chevrolet personnel and Reavis' friends, were entertained by Cindy Renee' and the Partytimers, a Dallas band. Most of the group attended the Texas A&M - Notre Dme Football game. Reavis did not give a formal talk during the morning, but in conversation, gave indications that he was rather happy that the year was over. By making the National Tour of Texas, Reavis

had fulfilled a lifetime dream, one that became more and more difficult, especially in the last two months. He said he was running a little behind during the final two months of the Tour, and had to drive more miles each day, something he had not anticipated when he started out in January, 1987. The TM senior editor is still 'sold' on Texas and Texans, and continues to believe Texans are the 'friendliest' people who can be found, anywhere. During his nomad-type year, Reavis only made it to his home Cont. Page 6, Col. 5

H.E. Newsom Announces Candidacy

H. E. Newsom has announced his candidacy for the office of Commissioner for Bailey County Precinct One. "I have been in the Dirt Moving Business for forty years in Bailey County," said the candidate. "I am retiring this year and will be a full time commissioner. "I plan to see as many people as possible prior to the election on March 8th. "It will be almost impossible to see everyone, and I earnestly solicit your vote and support in the Democratic Primaries on March 8th." Pd. Pol. Adv.



H. E. NEWSOM

Crawford Takes Annual Bowl Contest 'Win'

Evidently, upsets got to a lot of entrants in the final football contest of the year -- the Annual Bowl Game Contest. And now, the anticipation is over. Winning the contest for this year is veteran football contest entrant, Jimmie Crawford. He was one of only two persons missing five games in the contest. However, Crawford was only 30 points away on the double tiebreaker score. Jerry Gleason was 33 points off, to barely miss out on the final check presented until September. The Journal would like to take this opportunity for everyone who has shown an interest in the contest for this year -- your interest and participation keeps the contest going -- and it will be back in September.

School Board Presents Project 2000 To Rotary

It's "Project 2000" and the Muleshoe Independent School District is very excited about it. And what is Project 2000? It is the future of the Muleshoe Independent School System, and what will be happening to the local schools by the year 2,000, and the youngsters who are kindergarten students right now and will be high school seniors in 2,000. Rotarian Sam Harlan, who is also a member of the Board of Trustees of the MISD was in charge of the special program Tuesday for the Muleshoe Rotary Club. MISD Superintendent John Fuller was first speaker, and said the Project 2000 is a statewide community-school effort. "Communities thrive and exist on a healthy school system," said the superintendent. "And, schools, good schools, bring new people, and new industry to a community. Without good schools, communities tend to shrivel up and die." He was followed by Board Member Cindy Purdy and Sam Harlan, who gave out fact sheets about upcoming school challenges. With the state dropout rate 33

percent, Muleshoe's dropout rate is between 10-15 percent. In 1985, Texas possessed the Cont. Page 6, Col. 3



SCHOOL BOARD PRESENTS ROTARY PROGRAM--Tuesday at noon, five of the seven members of the Muleshoe Independent School District Board of Trustees presented the weekly program for the Muleshoe Rotary Club. Pictured from left are board members Howard Watson and Cindy Purdy; Board President Julie Cage; and Rex Harris and Sam Harlan, board members. Also speaking briefly on 'Project 2,000' was MISD Superintendent H. John Fuller.

ENMU Clovis

Eastern New Mexico University-Clovis
417 Schepps Blvd. • Clovis, New Mexico • 769-2811

Spring Registration Jan. 11-12, 1988

Jan. 11 - Returning Students
(Only students enrolled of ENMU-Clovis during the Fall 1987 semester.)

Jan. 12 - New and Readmission Students

Please Notice -
Students should report on both days according to this alphabetical schedule. If you cannot register personally, a friend or relative may come in and register for you at the appointed times. If you miss your turn, you will need to register during the evening registration period.

8:50am S and T
9:50am A and B
10:50am L and M
11:30am U through Z
1:00pm Closed for Lunch
4:30 - 5:30pm Evening Registration

1:00 - 1:50pm N through R
2:00 - 2:50pm H through K
3:00 - 3:50pm C and D
4:00 - 4:30pm E through G
4:30 - 5:30pm Closed

Applications for admission should be completed prior to registration.
Pick up forms in room 126, 8 a.m.-4:30 p.m.
January 4-8

SPRING 1988 Schedule of Classes

Dept	Course Section	Hours	Course Title	Days	Time	Instructor
ACCT	201 231	4	ELEMENTARY ACCOUNTING (1st Sem)	M	6:00pm - 9:30pm	JONES
ACCT	201 232	4	ELEMENTARY ACCOUNTING (1st Sem)	W	6:00pm - 9:30pm	PROTHRO
ACCT	201 233	4	ELEMENTARY ACCOUNTING (1st Sem)	Th	12:15pm - 3:45pm	PROTHRO
ACCT	201 234	4	ELEMENTARY ACCOUNTING (1st Sem)	Th	6:00pm - 9:30pm	GARRETT
ACCT	203 231	4	ELEMENTARY ACCOUNTING (2nd Sem)	M	6:00pm - 9:30pm	PROTHRO
ACCT	203 232	4	ELEMENTARY ACCOUNTING (2nd Sem)	T	12:15pm - 3:45pm	PROTHRO
ACCT	203 233	4	ELEMENTARY ACCOUNTING (2nd Sem)	Th	6:00pm - 9:30pm	JOHNSON
ACCT	206 231	3	COMPUTERIZED ACCOUNTING I	M	6:45pm - 9:15pm	MURRAY
ACCT	207 231	3	COMPUTERIZED ACCOUNTING II	T	6:45pm - 9:15pm	MURRAY
ACS	102 231	3	STUDY SKILLS	W	6:45pm - 9:15pm	HEFNER
ACS	102 232	3	STUDY SKILLS	Th	9:00am - 11:30am	HUMPHREY
ANTH	123 231	3	NEW MEXICO: ENCHANTED LANDS & DIVERSE CULTURE	T	6:45pm - 9:15pm	GUTIERREZ
ART	101 231	3	BEGINNING DRAWING I	M	6:00pm - 8:30pm	DEFOOR
ART	101 232	3	BEGINNING DRAWING I	M	6:00pm - 8:30pm	ALCANTER
ART	101 233	3	BEGINNING DRAWING I	T	9:00am - 11:30am	DEFOOR
ART	102 231	3	BEGINNING DRAWING II	M	5:15pm - 7:45pm	DEFOOR
ART	106 231	3	DESIGN	Th	4:00pm - 6:30pm	MAGGS
ART	205 231	3	INTRODUCTION TO COMPUTER ART I	W	4:00pm - 6:30pm	DEFOOR
ART	210 231	3	PHOTOGRAPHY	M	9:00am - 11:30am	MCGREERY
ART	210 232	3	PHOTOGRAPHY	W	6:45pm - 9:15pm	BURTON
ART	212 231	3	STUDIO BASICS	Th	6:45pm - 9:15pm	MCGREERY
ART	221 231	3	BEGINNING PAINTING I	W	6:45pm - 9:15pm	DEFOOR
ART	231 231	3	BEGINNING CERAMICS	Th	6:45pm - 9:15pm	DEFOOR
ART	251 231	3	LETTERING	T	6:45pm - 9:15pm	FUZEY
ART	262 231	3	ARTS & CRAFTS FOR ELEMENTARY TEACHERS	W	6:45pm - 9:15pm	BASSETT
ART	281 231	3	ARTS & CRAFTS FOR ELEMENTARY TEACHERS	W	6:00pm - 8:30pm	WALLACE
ART	293 231	3	TFS ART/CHOICE OF MEDIA	T	6:00pm - 8:30pm	DEFOOR
ART	293 232	3	TFS ART/JEWELRY CASTING	Th	6:45pm - 9:15pm	LARUE
BAD	115 231	3	HUMAN RELATIONS, RESUMES & INTERVIEWS	T	9:00am - 11:30am	SCHMIDT
BAD	151 231	3	INTRODUCTION TO BUSINESS	M	6:45pm - 9:15pm	TURNER
BAD	151 232	3	INTRODUCTION TO BUSINESS	Th	4:00pm - 6:30pm	HECHT
BAD	211 231	3	BUSINESS COMMUNICATION	M	9:00am - 11:30am	CROWDER
BAD	201 232	3	BUSINESS COMMUNICATION	W	9:00am - 11:30am	CROWDER
BAD	201 233	3	BUSINESS COMMUNICATION	Th	6:45pm - 9:15pm	CROWDER
BAD	216 231	3	BUSINESS LAW II	Th	6:45pm - 9:15pm	WELLS
BAD	281 231	3	REAL ESTATE LAW	T	6:45pm - 9:15pm	WELLS
BAD	283 231	3	REAL ESTATE APPRAISALS	Th	6:45pm - 9:15pm	WRIGHT
BAD	285 231	3	REAL ESTATE FINANCE	M	6:45pm - 9:15pm	CHRISTESSON
BCT	228 231	3	WOODWORKING I	W	6:45pm - 9:15pm	OBORNY
BCT	228 232	3	WOODWORKING I	Th	6:45pm - 9:15pm	OBORNY
BCT	231 231	3	HOME REPAIR AND MAINTENANCE	T	6:45pm - 9:15pm	MADDOX
BCT	238 231	3	WOODWORKING II	W	6:45pm - 9:15pm	OBORNY
BCT	238 232	3	WOODWORKING II	Th	6:45pm - 9:15pm	OBORNY
BCT	239 231	3	TPCS BCT/MASONRY FOR HOMEOWNERS	Th	6:45pm - 9:15pm	MADDOX
BEAS	111 231	3	PRINCIPLES OF TYPEWRITING	M	6:45pm - 9:15pm	CROWDER
BEAS	111 232	3	PRINCIPLES OF TYPEWRITING	T	9:00am - 11:30am	TRUJILLO
BEAS	111 233	3	PRINCIPLES OF TYPEWRITING	Th	6:45pm - 9:15pm	GILLESPIE
BEAS	120 231	3	INTRODUCTION TO APPLICATION SOFTWARE	M	6:45pm - 9:15pm	DEFOOR
BEAS	120 232	3	INTRODUCTION TO APPLICATION SOFTWARE	T	6:45pm - 9:15pm	KIZER
BEAS	120 233	3	INTRODUCTION TO APPLICATION SOFTWARE	W	6:45pm - 9:15pm	DEFOOR
BEAS	120 234	3	INTRODUCTION TO APPLICATION SOFTWARE	Th	12:15pm - 2:45pm	DEFOOR
BEAS	120 235	3	INTRODUCTION TO APPLICATION SOFTWARE	Th	6:45pm - 9:15pm	MURRAY
BEAS	120 236	3	INTRODUCTION TO APPLICATION SOFTWARE	F	9:00am - 11:30am	MURRAY
BEAS	123 231	3	ELEMENTARY SHORTHAND II	M & W	8:30am - 9:45am	TRUJILLO
BEAS	123 232	3	ELEMENTARY SHORTHAND II	M & W	5:15pm - 6:30pm	TRUJILLO
BEAS	131 231	3	INTERMEDIATE TYPEWRITING (1st Sem)	M & W	10:00am - 11:15am	TRUJILLO
BEAS	131 232	3	INTERMEDIATE TYPEWRITING (1st Sem)	T	6:45pm - 9:15pm	TRUJILLO
BEAS	140 231	3	WORD PROCESSING I	T	9:00am - 11:30am	DEFOOR
BEAS	140 232	3	WORD PROCESSING I	T	6:45pm - 9:15pm	HAMMONS
BEAS	140 233	3	WORD PROCESSING I	Th	6:45pm - 9:15pm	STOODARD
BEAS	140 234	3	WORD PROCESSING I	S	9:00am - 11:30am	STOODARD
BEAS	201 231	4	SECRETARIAL ACCOUNTING (1st Sem)	T	12:15pm - 3:30pm	TRUJILLO
BEAS	202 231	4	SECRETARIAL ACCOUNTING (1st Sem)	T	6:00pm - 9:15pm	DAVIDSON
BEAS	203 231	4	SECRETARIAL ACCOUNTING (2nd Sem)	Th	8:30am - 11:45am	SCHMIDT
BEAS	231 231	3	INTERMEDIATE TYPEWRITING (2nd Sem)	Th	6:45pm - 9:15pm	CROWDER
BEAS	231 232	3	INTERMEDIATE TYPEWRITING (2nd Sem)	M & W	10:00am - 11:15am	TRUJILLO
BEAS	233 231	3	ADVANCED TYPEWRITING	T	6:45pm - 9:15pm	CROWDER
BEAS	240 231	3	WORD PROCESSING II	W	6:45pm - 9:15pm	STOODARD
BEAS	241 231	3	BUSINESS MATHEMATICS & CALCULATING MACHINES	W	12:15pm - 2:45pm	TRUJILLO
BEAS	241 232	3	BUSINESS MATHEMATICS & CALCULATING MACHINES	W	6:45pm - 9:15pm	HARRIS
BEAS	253 231	3	OFFICE PRACTICE	M & W	8:00pm - 9:15pm	TRUJILLO
BIOL	113 231	3	BIOLOGY FOR GENERAL EDUCATION	M	6:00pm - 8:30pm	WELLS
BIOL	113 232	3	BIOLOGY FOR GENERAL EDUCATION	M	6:00pm - 8:30pm	WELLS
BIOL	122 231	3	GENERAL BIOLOGY OF MICRO ORGANISMS	T	6:00pm - 8:30pm	WELLS
BIOL	122 232	3	GENERAL BIOLOGY OF MICRO ORGANISMS	T	6:00pm - 8:30pm	WELLS
BIOL	122 233	3	GENERAL BIOLOGY OF MICRO ORGANISMS	T	6:00pm - 8:30pm	WELLS
BIOL	122 234	3	GENERAL BIOLOGY OF MICRO ORGANISMS	T	6:00pm - 8:30pm	WELLS
BIOL	122 235	3	GENERAL BIOLOGY OF MICRO ORGANISMS	T	6:00pm - 8:30pm	WELLS
BIOL	122 236	3	GENERAL BIOLOGY OF MICRO ORGANISMS	T	6:00pm - 8:30pm	WELLS
BIOL	122 237	3	GENERAL BIOLOGY OF MICRO ORGANISMS	T	6:00pm - 8:30pm	WELLS
BIOL	122 238	3	GENERAL BIOLOGY OF MICRO ORGANISMS	T	6:00pm - 8:30pm	WELLS
BIOL	122 239	3	GENERAL BIOLOGY OF MICRO ORGANISMS	T	6:00pm - 8:30pm	WELLS
BIOL	122 240	3	GENERAL BIOLOGY OF MICRO ORGANISMS	T	6:00pm - 8:30pm	WELLS
BIOL	122 241	3	GENERAL BIOLOGY OF MICRO ORGANISMS	T	6:00pm - 8:30pm	WELLS
BIOL	122 242	3	GENERAL BIOLOGY OF MICRO ORGANISMS	T	6:00pm - 8:30pm	WELLS
BIOL	122 243	3	GENERAL BIOLOGY OF MICRO ORGANISMS	T	6:00pm - 8:30pm	WELLS
BIOL	122 244	3	GENERAL BIOLOGY OF MICRO ORGANISMS	T	6:00pm - 8:30pm	WELLS
BIOL	122 245	3	GENERAL BIOLOGY OF MICRO ORGANISMS	T	6:00pm - 8:30pm	WELLS
BIOL	122 246	3	GENERAL BIOLOGY OF MICRO ORGANISMS	T	6:00pm - 8:30pm	WELLS
BIOL	122 247	3	GENERAL BIOLOGY OF MICRO ORGANISMS	T	6:00pm - 8:30pm	WELLS
BIOL	122 248	3	GENERAL BIOLOGY OF MICRO ORGANISMS	T	6:00pm - 8:30pm	WELLS
BIOL	122 249	3	GENERAL BIOLOGY OF MICRO ORGANISMS	T	6:00pm - 8:30pm	WELLS
BIOL	122 250	3	GENERAL BIOLOGY OF MICRO ORGANISMS	T	6:00pm - 8:30pm	WELLS
BIOL	122 251	3	GENERAL BIOLOGY OF MICRO ORGANISMS	T	6:00pm - 8:30pm	WELLS
BIOL	122 252	3	GENERAL BIOLOGY OF MICRO ORGANISMS	T	6:00pm - 8:30pm	WELLS
BIOL	122 253	3	GENERAL BIOLOGY OF MICRO ORGANISMS	T	6:00pm - 8:30pm	WELLS
BIOL	122 254	3	GENERAL BIOLOGY OF MICRO ORGANISMS	T	6:00pm - 8:30pm	WELLS
BIOL	122 255	3	GENERAL BIOLOGY OF MICRO ORGANISMS	T	6:00pm - 8:30pm	WELLS
BIOL	122 256	3	GENERAL BIOLOGY OF MICRO ORGANISMS	T	6:00pm - 8:30pm	WELLS
BIOL	122 257	3	GENERAL BIOLOGY OF MICRO ORGANISMS	T	6:00pm - 8:30pm	WELLS
BIOL	122 258	3	GENERAL BIOLOGY OF MICRO ORGANISMS	T	6:00pm - 8:30pm	WELLS
BIOL	122 259	3	GENERAL BIOLOGY OF MICRO ORGANISMS	T	6:00pm - 8:30pm	WELLS
BIOL	122 260	3	GENERAL BIOLOGY OF MICRO ORGANISMS	T	6:00pm - 8:30pm	WELLS
BIOL	122 261	3	GENERAL BIOLOGY OF MICRO ORGANISMS	T	6:00pm - 8:30pm	WELLS
BIOL	122 262	3	GENERAL BIOLOGY OF MICRO ORGANISMS	T	6:00pm - 8:30pm	WELLS
BIOL	122 263	3	GENERAL BIOLOGY OF MICRO ORGANISMS	T	6:00pm - 8:30pm	WELLS
BIOL	122 264	3	GENERAL BIOLOGY OF MICRO ORGANISMS	T	6:00pm - 8:30pm	WELLS
BIOL	122 265	3	GENERAL BIOLOGY OF MICRO ORGANISMS	T	6:00pm - 8:30pm	WELLS
BIOL	122 266	3	GENERAL BIOLOGY OF MICRO ORGANISMS	T	6:00pm - 8:30pm	WELLS
BIOL	122 267	3	GENERAL BIOLOGY OF MICRO ORGANISMS	T	6:00pm - 8:30pm	WELLS
BIOL	122 268	3	GENERAL BIOLOGY OF MICRO ORGANISMS	T	6:00pm - 8:30pm	WELLS
BIOL	122 269	3	GENERAL BIOLOGY OF MICRO ORGANISMS	T	6:00pm - 8:30pm	WELLS
BIOL	122 270	3	GENERAL BIOLOGY OF MICRO ORGANISMS	T	6:00pm - 8:30pm	WELLS
BIOL	122 271	3	GENERAL BIOLOGY OF MICRO ORGANISMS	T	6:00pm - 8:30pm	WELLS
BIOL	122 272	3	GENERAL BIOLOGY OF MICRO ORGANISMS	T	6:00pm - 8:30pm	WELLS
BIOL	122 273	3	GENERAL BIOLOGY OF MICRO ORGANISMS	T	6:00pm - 8:30pm	WELLS
BIOL	122 274	3	GENERAL BIOLOGY OF MICRO ORGANISMS	T	6:00pm - 8:30pm	WELLS
BIOL	122 275	3	GENERAL BIOLOGY OF MICRO ORGANISMS	T	6:00pm - 8:30pm	WELLS
BIOL	122 276	3	GENERAL BIOLOGY OF MICRO ORGANISMS	T	6:00pm - 8:30pm	WELLS
BIOL	122 277	3	GENERAL BIOLOGY OF MICRO ORGANISMS	T	6:00pm - 8:30pm	WELLS
BIOL	122 278	3	GENERAL BIOLOGY OF MICRO ORGANISMS	T	6:00pm - 8:30pm	WELLS
BIOL	122 279	3	GENERAL BIOLOGY OF MICRO ORGANISMS	T	6:00pm - 8:30pm	WELLS
BIOL	122 280	3	GENERAL BIOLOGY OF MICRO ORGANISMS	T	6:00pm - 8:30pm	WELLS
BIOL	122 281	3	GENERAL BIOLOGY OF MICRO ORGANISMS	T	6:00pm - 8:30pm	WELLS
BIOL	122 282	3	GENERAL BIOLOGY OF MICRO ORGANISMS	T	6:00pm - 8:30pm	WELLS
BIOL	122 283	3	GENERAL BIOLOGY OF MICRO ORGANISMS	T	6:00pm - 8:30pm	WELLS
BIOL	122 284	3	GENERAL BIOLOGY OF MICRO ORGANISMS	T	6:00pm - 8:30pm	WELLS
BIOL	122 285	3	GENERAL BIOLOGY OF MICRO ORGANISMS	T	6:00pm - 8:30pm	WELLS
BIOL	122 286	3	GENERAL BIOLOGY OF MICRO ORGANISMS	T	6:00pm - 8:30pm	WELLS
BIOL	122 287	3	GENERAL BIOLOGY OF MICRO ORGANISMS	T	6:00pm - 8:30pm	WELLS
BIOL	122 288	3	GENERAL BIOLOGY OF MICRO ORGANISMS	T	6:00pm - 8:30pm	WELLS
BIOL	122 289	3	GENERAL BIOLOGY OF MICRO ORGANISMS	T	6:00pm - 8:30pm	WELLS
BIOL	122 290	3	GENERAL BIOLOGY OF MICRO ORGANISMS	T	6:00pm - 8:30pm	WELLS
BIOL	122 291	3	GENERAL BIOLOGY OF MICRO ORGANISMS	T	6:00pm - 8:30pm	WELLS
BIOL	122 292	3	GENERAL BIOLOGY OF MICRO ORGANISMS	T	6:00pm - 8:30pm	WELLS
BIOL	122 293	3	GENERAL BIOLOGY OF MICRO ORGANISMS	T	6:00pm - 8:30pm	WELLS
BIOL	122 294	3	GENERAL BIOLOGY OF MICRO ORGANISMS	T	6:00pm - 8:30pm	WELLS
BIOL	122 295	3	GENERAL BIOLOGY OF MICRO ORGANISMS	T	6:00pm - 8:30pm	WELLS
BIOL	122 296	3	GENERAL BIOLOGY OF MICRO ORGANISMS	T	6:00pm - 8:30pm	WELLS
BIOL	122 297	3	GENERAL BIOLOGY OF MICRO ORGANISMS	T	6:00pm - 8:30pm	WELLS
BIOL	122 298	3	GENERAL BIOLOGY OF MICRO ORGANISMS	T	6:00pm - 8:30pm	WELLS
BIOL	12					

Student Services available at

ENMU-Clovis

Counseling -
Plan to talk with a counselor before you register. The counselors can help you plan your course work or file a degree plan. Call 769-2811, ext. 121.

Tutoring -
Available in the Skills Development Center, ext. 149.

Tuition and fees

District Students: (Credit/Audit)
1 to 3 hours.....\$19.00 per hour
Each additional hour
up to 12.....\$17.00 per hour
13 to 18 hours. No Additional charge
(19 and above.....\$17.00 per hour)
(NON-REFUNDABLE)
Non-District
Students.....\$20.00 per hour
Out-of-State
Students.....\$53.00 per hour



Eastern New Mexico University-Clovis
417 Schepps Blvd. • Clovis, New Mexico • 769-2811

Dept	Course Section	Credit Hours	Course Title	Days	Time	Instructor
ENG	104 231	3	ENGLISH COMPOSITION & RESEARCH	T	9:00am - 11:30am	RYAN
ENG	104 232	3	ENGLISH COMPOSITION & RESEARCH	T	6:45pm - 9:15pm	HOWELL
ENG	104 233	3	ENGLISH COMPOSITION & RESEARCH (Will be taught on the Word Processor)	W	12:15pm - 2:45pm	WALTER
ENG	104 234	3	ENGLISH COMPOSITION & RESEARCH	W	6:45pm - 9:15pm	HOWELL
ENG	104 235	3	ENGLISH COMPOSITION & RESEARCH	Th	9:00am - 11:30am	WALTER
ENG	104 236	3	ENGLISH COMPOSITION & RESEARCH	Th	6:45pm - 9:15pm	RYAN
ENG	109 231	3	ENGLISH COMPOSITION & RESEARCH (HONORS)	M	6:45pm - 9:15pm	WALTER
ENG	201A 231	3	TYPES OF LITERATURE/SHORT STORY	Th	9:00am - 11:30am	HOLES
ENG	221 231	3	SURVEY OF ENGLISH LITERATURE	W	6:45pm - 9:15pm	WALTER
ENG	235 231	3	ADVANCED COMPOSITION	T	4:00pm - 6:30pm	TOOD
ET	109 231	3	DRAFTING I - LAB	T	6:00pm - 9:30pm	BAILEY
ET	110 231	3	DRAFTING II - LAB	T	6:00pm - 9:30pm	BAILEY
ET	112 231	3	DESCRIPTIVE GEOMETRY	W	6:45pm - 9:15pm	OBORNY
ET	121 231	2	PRACTICAL WOODWORKING	W	6:45pm - 9:15pm	OBORNY
ET	121 232	2	PRACTICAL WOODWORKING	Th	6:45pm - 9:15pm	PICKLE
ET	205 231	4	COMPUTER ASSISTED DRAFTING	Th	6:00pm - 9:15pm	JORDAN
ET	273 231	3	WELDING TECHNOLOGY	Th	6:45pm - 9:15pm	JORDAN
ET	293 231	3	TPS ET/ADVANCED WELDING	M	6:45pm - 9:15pm	JORDAN
ET	293 231	1	TPS ET/FCC LICENSE PREPARATION (1-25 to 3-2)	M & W	7:00pm - 9:00pm	MELENDEZ
FIN	145 231	2	PERSONAL FINANCE MANAGEMENT	Th	6:45pm - 9:15pm	BURDELL
FIN	201 231	3	PRINCIPLES OF FINANCE	T	6:45pm - 9:15pm	CHRISTESSON
FIN	265 231	3	REAL ESTATE FINANCE	M	6:45pm - 9:15pm	TOOD
FR	102 231	4	BEGINNING FRENCH (2nd Sem)	W	6:00pm - 9:15pm	TOOD
FR	293 231	1	TPS FR/CONVERSATIONAL FRENCH (2nd yr)	W	7:00pm - 8:00pm	TOOD
GEOG	103 231	3	ENVIRONMENT & MAN	Th	6:45pm - 9:15pm	POWEROY
GEOL	113 231	3	THE GEOLOGICAL ENVIRONMENT	W	6:00pm - 9:15pm	POWEROY
GEOL	113L 231	1	LABORATORY FOR GEOL 113	W	6:00pm - 9:15pm	HARDWAY
HIST	101 231	3	SURVEY OF AMERICAN HISTORY TO 1865	W	6:45pm - 9:15pm	HARDWAY
HIST	102 231	3	SURVEY OF AMERICAN HISTORY SINCE 1865	W	9:00am - 11:30am	HARDWAY
HIST	122 231	3	SURVEY OF WESTERN CIVILIZATION (2nd Sem)	T	6:45pm - 9:15pm	HOWARD
HIST	203 231	3	NEW MEXICO	M	6:45pm - 9:15pm	WORLEY
HFT	180 231	1	CARDIOVASCULAR FITNESS	W	5:30pm - 6:20pm	O CONNELL
HPE	103 231	1	RACQUETBALL (Cannot be taken for Audit)	T	10:00am - 11:45am	O CONNELL
HPE	103 232	1	RACQUETBALL (Cannot be taken for Audit)	T	7:15pm - 9:00pm	MAGGIO
HPE	103 233	1	RACQUETBALL (FOR WOMEN ONLY) (Cannot be taken for Audit)	W	3:00pm - 4:45pm	O CONNELL
HPE	103 234	1	RACQUETBALL (Cannot be taken for Audit)	Th	7:15pm - 9:00pm	MAGGIO
HPE	104 231	1	ADVANCED RACQUETBALL (Cannot be taken for Audit)	M	7:15pm - 9:00pm	OLIVARES
HPE	104 232	1	ADVANCED RACQUETBALL (Cannot be taken for Audit)	W	7:15pm - 9:00pm	O CONNELL
HPE	115 231	1	PERSONAL DEFENSE	W	6:45pm - 8:45pm	CASAREZ
HPE	117 231	1	BEGINNING BASKETBALL	Th	7:00pm - 8:40pm	BEST
HPE	122 231	3	WEIGHT CONTROL, FITNESS & NUTRITION	W	6:45pm - 9:15pm	BEST
HPE	126 231	1	SLIMNASTICS	M & W	10:00am - 10:50am	STINNETT
HPE	126 232	1	SLIMNASTICS	M & W	4:00pm - 4:50pm	BLANDINO
HPE	126 233	1	SLIMNASTICS	M & W	6:00pm - 6:50pm	STINNETT
HPE	126 234	1	SLIMNASTICS	T & Th	9:00am - 9:50am	HOUSE
HPE	126 235	1	SLIMNASTICS	T & Th	12:00pm - 12:50pm	BLANDINO
HPE	126 236	1	SLIMNASTICS	T & Th	5:00pm - 5:50pm	MARRIOTT
HPE	127 231	1	AEROBIC DANCE	M & W	9:00am - 9:50am	BEST
HPE	127 232	1	AEROBIC DANCE	M & W	12:00pm - 12:50pm	BLANDINO
HPE	127 233	1	AEROBIC DANCE	M & W	5:00pm - 5:50pm	TURNER
HPE	127 234	1	AEROBIC DANCE	T & Th	4:00pm - 4:50pm	BLANDINO
HPE	127 235	1	AEROBIC DANCE	T & Th	6:00pm - 6:50pm	TURNER
HPE	128 231	1/NC	INDIVIDUALIZED HEALTH & CONDITIONING (Cannot be taken for Credit)	TBA		O CONNELL
HPE	130 231	1	SOCIAL DANCE/COUNTRY WESTERN	W	7:15pm - 9:00pm	STEPHENS
HPE	130 232	1	SOCIAL DANCE/COUNTRY WESTERN	Th	7:15pm - 9:00pm	STEPHENS
HPE	205 231	1	VOLLEYBALL	T	7:00pm - 8:40pm	BEST

Dept	Course Section	Credit Hours	Course Title	Days	Time	Instructor
RED	100 231	3	BASIC READING SKILLS	Th	6:45pm - 9:15pm	
REL	101 231	3	OLD TESTAMENT	M	6:45pm - 9:15pm	BERGSTROM
REL	203 231	3	THE PROPHETS	M	9:00am - 11:30am	BERGSTROM
SOC	101 231	3	INTRODUCTORY SOCIOLOGY	M	6:45pm - 9:15pm	HEFNER
SOC	101 232	3	INTRODUCTORY SOCIOLOGY	T	9:00am - 11:30am	HEFNER
SOC	215 231	3	MARRIAGE AND THE FAMILY	T	4:00pm - 6:30pm	HEFNER
SPAN	102 231	4	BEGIN SPANISH AS A SECOND LANGUAGE (2nd Sem)	T	6:00pm - 9:15pm	MARTINEZ
SPAN	102 232	4	BEGIN SPANISH AS A SECOND LANGUAGE (2nd Sem)	Th	6:00pm - 9:15pm	RIDDLE
STAT	213 231	4	STATISTICAL METHODS I - LAB	T	6:30pm - 11:45am	HICKS
STAT	213 232	4	STATISTICAL METHODS I - LAB	T	6:00pm - 9:15pm	HICKS
THTR	251 231	3	ORAL INTERPRETATION OF LITERATURE	Th	6:45pm - 9:15pm	WHITE
ZOOL	211 231	3	HUMAN ANATOMY	M	12:15pm - 3:30pm	WILLS
ZOOL	211L 231	1	HUMAN ANATOMY LAB	M	12:15pm - 3:30pm	WILLS
ZOOL	211 232	3	HUMAN ANATOMY	W	6:00pm - 9:15pm	WALDEZ
ZOOL	211L 232	1	HUMAN ANATOMY LAB	W	6:00pm - 9:15pm	WALDEZ
ZOOL	212 231	3	HUMAN PHYSIOLOGY	W	2:30pm - 5:45pm	WILLS
ZOOL	212L 231	1	HUMAN PHYSIOLOGY LAB	W	2:30pm - 5:45pm	WILLS
ZOOL	212 232	3	HUMAN PHYSIOLOGY	Th	6:00pm - 9:15pm	BOYD
ZOOL	212L 232	1	HUMAN PHYSIOLOGY LAB	Th	6:00pm - 9:15pm	BOYD

Cannon Air Force Base On-Base Classes

Registration for active-duty Military Personnel Only will be held
January 7, 1988 8:30 a.m. to 11:30 a.m.
Crosswinds Recreation Center

Dept	Course Section	Credit Hours	Course Title	Days	Time	Instructor
ACCT	201 240	4	ELEMENTARY ACCOUNTING (1st Sem)	T	6:00pm - 9:30pm	COLLFLOWER
BAD	201 240	3	BUSINESS COMMUNICATION	T&Th	11:00am - 12:15pm	CROWDER
BAD	215 240	3	BUSINESS LAW I	W	6:45pm - 9:15pm	
CIS	115 240	3	INTRODUCTION TO COMPUTER INFORMATION SYSTEMS	Th	6:45pm - 9:15pm	KARVOSKY
COMM	101 240	3	INTERPERSONAL COMMUNICATION	M	6:45pm - 9:15pm	HERBERT
ECON	221 240	3	PRINCIPLES OF MACRO ECONOMICS	Th	4:00pm - 6:30pm	CHRISTESSON
ENG	102 240	3	ENGLISH COMPOSITION	M&W	12:00pm - 1:15pm	HODGES
ENG	102 241	3	ENGLISH COMPOSITION	Th	6:45pm - 9:15pm	HODGES
ENG	104 240	3	ENGLISH COMPOSITION & RESEARCH	M	6:45pm - 9:15pm	HODGES
ENG	233 240	3	TECHNICAL WRITING	T	6:45pm - 9:15pm	WALTER
ET	104 240	3	AIRFRAME AND POWER PLANT MECHANICS GENERAL M	M	6:45pm - 9:15pm	
FPT	205 240	3	AIRCRAFT FIRE FIGHTING & RESCUE	W	6:45pm - 9:15pm	DIFRANCESCA
FPT	206 240	3	FIRE FIGHTING TACTICS & STRATEGY	Th	6:45pm - 9:15pm	CROUCH
FPT	206 240	3	TPS FPT/INDIVIDUAL RESEARCH PROJECT	TBA		
HIST	102 240	3	SURVEY OF AMERICAN HISTORY SINCE 1865	T	6:45pm - 9:15pm	HARDWAY
MATH	100A 240	4	BASIC ARITHMETIC & INTRODUCTORY ALGEBRA	W	6:00pm - 9:15pm	HOBBS
MATH	102 240	4	FUNDAMENTALS OF ALGEBRA	W	6:00pm - 9:15pm	WARMUTH
MATH	107 240	3	INTERMEDIATE ALGEBRA	W	6:00pm - 9:15pm	WARMUTH
MATH	110 240	3	COLLEGE ALGEBRA	Th	6:45pm - 9:15pm	HOWARD
MATH	111 240	3	PLANE TRIGONOMETRY	T	4:00pm - 6:30pm	WOOD
MATH	123 240	3	CALCULUS I	M	6:45pm - 9:15pm	
MATH	131 240	3	CALCULUS II	T	6:45pm - 9:15pm	HOWARD
MGT	201 240	3	PRINCIPLES OF MANAGEMENT	M&W	12:00pm - 1:15pm	CHRISTESSON
PHYS	151 240	3	GENERAL PHYSICS LAB	M	6:00pm - 9:15pm	WEES
PHYS	151L 240	1	GENERAL PHYSICS LAB	M	6:00pm - 9:15pm	WEES
PSCI	102 240	3	AMERICAN NATIONAL GOVERNMENT	M	6:45pm - 9:15pm	HARDWAY
PSY	101 240	3	INTRODUCTORY PSYCHOLOGY	W	6:45pm - 9:15pm	POPESCU
PSY	101 241	3	INTRODUCTORY PSYCHOLOGY	Th	4:00pm - 6:30pm	ATES
SOC	215 240	3	MARRIAGE AND THE FAMILY	T&Th	12:00pm - 1:15pm	HEFNER

Journal Files

60 Years Ago

1928
PROSPECTS GOOD FOR NEW COTTON GIN IN MULESHOE
 Prospects are good for a new cotton gin in Muleshoe this year. Several hundred acres of cotton were signed up last Saturday by farmers in this community and many hundred acres more is expected within the next week. Signing up for this acreage means the assurance of a first class gin being located here, which is very badly needed. Last year the gin at this place burned down and

was not rebuilt, thus causing many farmers to have to haul their cotton to other towns, while many did not plant any cotton at all. Every effort is being made to remedy this situation, as Muleshoe has many hundred acres of fine cotton land. Any farmer who wishes to plant cotton, call at one of the business houses in town and sign your name with the amount you are likely to plant. This is done merely to get an estimate of the acreage and does not bind you in any way in the event conditions are unfavorable.

Latest Arrivals



Cody Dillon Kirby

Mr. and Mrs. Craig Kirby of Three Way are the proud parents of a son born at 6:48 p.m. Tuesday, Dec. 29 in the Methodist Hospital at Lubbock. The young man weighed eight pounds and 14 ounces and was 21 inches long. He has been named Cody Dillon. He has a sister, Brittany, 10 and a brother, Monty, six years of age.

Grandparents are Mr. and Mrs. Reuel Kirby of Three Way and Mr. and Mrs. Goldman Stroud of Enochs.

Great Grandparents are Mr. and Mrs. J.G. Arnn of Muleshoe and Mrs. Ann McCain of Lubbock.

Dylan Reed Burrows

Mr. and Mrs. Randy Burrows of Dallas are the proud parents of a son, Dylan Reed, who was born in Dallas on Dec. 30, 1987.

The young man weighed eight pounds and one ounce. He is the first child for the couple.

Grandparents are Mr. and Mrs. Max Bush and Mr. and Mrs. Olan Burrows, all of Muleshoe.

CALENDAR OF EVENTS JANUARY, 7-13

THURSDAY, JAN. 7
 KNIGHTS OF COLUMBUS
 8 p.m.

TOPS CLUB
 5:30 p.m.

ODDFELLOWS LODGE
 7:30 p.m.

HOBBY CLUB
 2 p.m.

FRIDAY, JAN. 8
 KIWANIS CLUB
 6:30 a.m.

MONDAY, JAN. 11
 COMMISSIONERS COURT
 10 a.m.

SCHOOL BOARD
 7 p.m.

TUESDAY, JAN. 12
 REBEKAH LODGE
 7:30 p.m.

ROTARY CLUB
 12 (noon)

YOUNG HOMEMAKERS
 7 p.m.

MULESHOE MULE
 SKINNERS
 7:30 p.m.

WMU
 2:30 p.m.

ALCOHOLIC ANONYMOUS
 8 p.m.
 ART ASSOCIATION
 2 p.m.

JENNYSLIPPERS
 12 (noon)

MASONIC LODGE
 7:30 p.m.

WEDNESDAY, JAN. 13
 LIONS CLUB
 12 (noon)

indicates that total purchases has been around \$375,000 for 1937.

Oil and gasoline dealers agree that this particular business in Muleshoe has shown a considerable increase. There were more new and second hand automobiles, tires and accessories sold last year than during any other single year for some time passed.

Business transacted at the local post office shows a big increase, while deposits at the local bank have run highest in history. Labor conditions have shown a considerable improvement, WPA projects actually having to be closed down temporarily for lack of required labors.

40 Years Ago

1948
SUB ZERO WEATHER ACCOMPANIES SNOW
 Sub-zero weather hit the Muleshoe country Wednesday night along with a two inch snowfall. The official thermometer registered a low of 1-2 degrees below zero. Snow fell intermittently Wednesday. Moisture content was recorded at .11 inch, and the territory thus began the new year of 1948 in proper manner.

30 Years Ago

1958
1957 WETTEST YEAR SINCE 1951 WITH 18.27 INCHES
 Muleshoe experienced one of the wettest years since 1951 during the year just ending, according to the official measurement of rainfall by R.J. Klump, observer for the U.S. Weather Bureau here. Total moisture recorded here

was 18.27 inches, more than has been measured officially here since 1951 when 21.34 inches fell. Part of the moisture during 1957 was from snows in February, March and November, and from a series of hail storms during the late summer.

September was the wettest month of the year with 3.88 inches of moisture. June was next with 3.24, followed by October, May, April and July. December was the driest month with only .03 of an inch recorded.

In addition to three measurable snows, the weather man also threw in some hail, and scared lots of area folks with tornadoes and threats of tornadoes during the summer months.

Only 16 of the past 37 years recorded more rainfall than fell in 1957. Last year, 1956, only 8.32 inches fell in Muleshoe and 14.69 was recorded in 1955.

20 Years Ago

1967
TEXAS DRIVERS LICENSE TO BEAR COLOR PHOTO

The local drivers license office of the Department of Public Safety opened at 8 a.m. Tuesday, January 2.

The office is located at the corner of West Second and Ave E (West door on south building). A total of 17 persons made application for renewals during the first day of the local operation.

Mrs. Eugene Black has been named Drivers' License Clerk and will keep the office open

from 8 a.m. to 5 p.m.

Tuesday and Wednesday of each week. C.D. Fitzgerald, examiner, will be in the office to give written tests and drivers tests between the hours of 8 a.m. and 5 p.m. Fitzgerald is stationed at Dimmitt.

Mrs. Black trained at the Dimmitt and Lubbock offices where she was taught the operation of the color photo

camera. Applications for renewal are placed inside the machine and as the person is photographed, a picture of the applications is also taken. It is returned to the applicant.

Co. Homer Garrison Jr., director of the Texas Department of Public Safety, reminded Texans that a color photograph became a standard part of all drivers' license issued after Monday, January 1.

Creative Living

by Sheryl Borden

Information on furniture refinishing and a demonstration using a new gingerbread mix will be featured on "Creative Living" on Tuesday, January 12 at 12 noon and repeated on Saturday, January 16 at 2:00 pm on KENW-TV. (All times are Mountain).

Homer Formby is a household word in the area of furniture refinishing. He's a leading authority on the care and refinishing of fine wood. Mr. Formby will demonstrate furniture refinishing by using a product called a Face Lift. It's a three-step system that restores dull furniture without complete refinishing. Homer will also share hints on the best way to get paint off wood and on keeping furniture looking beautiful and in top condition. He's from German Town, TN.

Zella Junkin represents Wilton Enterprises and General Mills. Zella is going to show a new food product on the market from General Mills. It's called Gingerbread Cookie and Cake Mix, and she will show how to make rolled cookies from this mix. Zella lives in Woodridge, IL.

On Tuesday, January 12 at 9:30 pm and also on Thursday, January 14 at 12 noon, three interesting topics will be presented on "Creative Living". Kids can-do patterns will be demonstrated by Jean Benson, owner of Critter Crafts in Pasco, WA. She will show how to make a variety of stuffed critters all from the same circle pattern. Most of these are simple enough for kids to enjoy making for themselves or as gifts to others.

Nell Stewart is a dedicated consumer advocate with the Texize, Co., and she will explain the results of the Project Kidsmart Survey taken by the Texize Co. This survey involved thousands of fourth-grade students throughout the country. A guest appearance will be made by McGruff, the crime fighting dog! Nell is from New York.

Also, Joanne Wallace, President and founder of Image Improvement Inc. will discuss non-verbal and verbal communication. Joanne is from Salem, OR. number is 1-800-432-2361, out-of-state: 1-800-545-2359 and Portales and Roosevelt County: 562-2112.

QUESTIONS AND ANSWERS REGARDING FURNITURE REFINISHING

1. What kind of furniture should I consider for refinishing?

Some people believe that only fine antiques should be refinished, but actually, any good, wooden furniture can be converted from serviceable into a treasured piece. It doesn't matter how dark or checked the finish is. If the piece is varnished, lacquered, or shellacked, Formby's Refinisher will restore it. This Refinisher is not recommended for paint, polyurethane, or other synthetic finishes.

2. Why should I bother refinishing?

It's more economical than buying new furniture or going to dip and strippers. It's a very reasonable way to have quality furniture. It's also a very satisfying creative outlet when you use a method that eliminates most of the mess and drudgery which is usually associated with refinishing.

3. What do I need to get started?

To dissolve and restore the old, built-up finish, you need a refinisher. To add a protective finish to the refinished piece, you'll need Tung Oil Finish. To work these products, use Refinishing Pads or fine steel wool. That's it.

4. How do I protect a refinished piece?

I recommend a Tung Oil Finish. Tung oil is simply an extraordinary varnish derived from the tung nut. Unlike ordinary varnishes, lacquers and shellacs which sit on the surface of the wood, my Tung Oil Finish feeds down into the wood and begins protecting from the inside out. It's like no other finish.

For other questions and answers on furniture refinishing by Homer Formby, you can request a free pamphlet called "Homer Formby's Furniture Fact Book" from KENW-TV.



GIRL SCOUTS ON THE GO—Muleshoe Girl Scouts were busy during the Christmas holiday season. Some of the activities they were involved in included troop Christmas parties, making gifts for the nursing home as well as taking part in collecting food, clothes and toys for the needy of Muleshoe. They also gathered at the Scout Hut and made decorations for the Girl Scout Christmas tree and enjoyed refreshments. Richelle Watkins is shown along with some of the scouts who participated in collecting food and clothes for the needy.

Girl Scouts Prepare For Cookie Sale

The Juniors, Brownies and Daisy Girl Scouts all enjoyed a busy December. Many had Troop Christmas parties, some made gifts for the Nursing Home and all took part in collecting food, clothes and toys for the needy of Muleshoe.

On Saturday afternoon, December 12, all the girls gathered at the Girl Scout Little Hut for refreshments and a workshop in which they made all kinds of beautiful decorations for their Girl Scout Christmas tree. Parents stopped by to see the handwork of the girls and to enjoy refreshments and visit

with other parents and troop leaders. Richelle Watkins came by in the ambulance to pick up the items collected by the girls and to enjoy a brief visit and refreshments with the Girl Scouts.

The girls are now gearing up for their big event of the year - the Girl Scout Cookie Sale! They will begin taking orders on Friday, January 8 and will continue through January 23. Cookies will arrive for distribution around the 18th of February. The Scouts are excited about the neat prizes and

camperships they can earn through the sale of the cookies. 1988 promises to be a year of fun and growth for the Girl Scouts!

SONIC
 The Real Brown Bag Special
\$3.99
 2 REG. BURGERS
 2 ORDERS OF FRIES
 2 MEDIUM COKES
*Or other soft drinks
 1633 American Blvd.
 272-3998
©1987 Sonic Industries, Inc.

Leal's Restaurant

Wishes you and yours a
 Very Happy, Peaceful & Prosperous
 New Year.

We appreciate your support in the last 30 years. We want to inform you we are closed for re-modeling and will advise you of our re-opening.

We are looking forward to serving you and yours again real soon.

Leals and Staff

1542 W. American Blvd. 272-3294

Luc
 Ser
 At
 Fun
 John
 King
 Clovis
 Stone
 Inte
 Terr
 under
 Todd
 Mrs.
 in Clo
 Bor
 Carmi
 the yo
 attend
 South
 from
 Schoo
 attend
 School
 where
 in 1930
 She
 August
 with D
 office
 Bank
 married
 ville,
 were
 moved
 In
 Eastern
 working
 degree
 She co
 on a p
 Johnso
 ment
 named
 the Ye
 mother
 honor
 ative
 Associ
 Mrs.
 the Bo
 the Re
 after
 active
 Club,
 Altru
 the of
 years.
 She
 work,
 on b
 ground
 is thou
 cafeter
 primar
 and a
 project
 possibl
 "Doc"
 comm
 In 11
 Bible
 odist
 en an
 50 ye
 Dr. an
 Texas
 They
 futher
 High
 Sur
 band,
 Clovis
 Marci
 Nancy
 Ariz.
 Johns
 sister
 mi, Ill
 The
 orials

**Lucille Johnson
Services Held
At Clovis**

Funeral services for Lucille Johnson, 79, of Clovis, N.M., were held Saturday, Jan. 2 in Kingswood Methodist Church in Clovis, N.M. with Dr. Cyril Stone officiating.

Interment was in Sunset Terris Cemetery in Farwell under the direction of Steed-Todd Funeral Home of Clovis. Mrs. Johnson died on Dec. 31 in Clovis High Plains Hospital.

Born on Feb. 23, 1908, in Carmi, Ill., Mrs. Johnson was the youngest of 12 children. She attended a one room school in Southern Illinois and graduated from Carmi Township High School in 1925. She later attended Missouri Baptist School of Nursing in St. Louis where she received her degree in 1930.

She moved to Farwell in August of 1930, and worked with Dr. Scott Johnson, whose office was in the Security State Bank building. In 1931, she married Dr. Johnson in Nashville, Ill. Their three children were born in Farwell. They moved to Clovis in 1946.

In 1949-50, she attended Eastern New Mexico University working toward her Masters degree in Nursing Education. She continued her association, on a part time basis, with Dr. Johnson's office until his retirement in 1982. In 1958, she was named New Mexico Mother of the Year, and was the youngest mother ever being given the honor of being state representative of the American Mothers Association.

Mrs. Johnson worked with the Boy Scouts, Girl Scouts and the Red Cross, both before and after World War II. She was active in the Clovis Woman's Club, was a charter member of Altrusa, worked with the PTA in the official capacity for many years.

She was active in church work, both teaching and serving on boards and layed the groundwork and planned what is thought to be the first school cafeteria put into operation, primarily for needy children, in and around Farwell. "This project could never have been possible without the help of 'Doc' and other men in the community.

In 1908 members of the adult Bible class of Kingswood Methodist Church sponsored a golden anniversary celebration for 50 years of medical service by Dr. and Mrs. Johnson, to west Texas and Eastern, N.M. area. They aided many children to further their education in both High School and College.

Survivors include her husband, Dr. V. Scott Johnson of Clovis, N.M.; two daughters, Marcia Cole of Farwell, and Nancy Currier of Scotsdale, Ariz.; a son, Dr. V. Scott Johnson of Portales, N.M.; a sister, Teresa Mauntel of Carmi, Ill.

The family requests memorials be made to the Minis-

terial Student Fund at Kingswood Methodist Church, Clovis, N.M., American Cancer Society of Bruce Home for Boys at Clovis.

**Robert Earl Stroud
Funeral Services
Held Tuesday**

Funeral services for Robert Earl Stroud, 60, were held at 2 p.m. Tuesday, Jan. 5 in Ellis Funeral Home Chapel of the Chimes with Sister Grace Wooten, pastor of the First Assembly of God Church in Littlefield, officiating.

Burial was in Bailey County Memorial Park under the direction of Ellis Funeral Home of Muleshoe. Stroud died at 10:45 p.m. Friday in the Methodist Hospital in Lubbock.

Born April 6, 1927, in Sulphur Springs, TX, he moved to Muleshoe in 1943, from Bailey-boro community. He was a ginner and a veteran of the Korean War serving in the Marines.

Survivors include a daughter, Kathy of Washington state; his mother, Reba Stroud of Muleshoe; a sister, Mrs. Inez Nicewarner of Littlefield; a brother, Billy Stroud of Lufkin; and two grandchildren.

**Estevan Salazar
Funeral Services
Held Monday**

Services for Estevan Salazar, 3 year old son of Janie Salazar of Earth, were held at 11 a.m. Monday, Jan. 4 in Parsons-Ellis Funeral Home in Earth with Gas O'Bryant, Church of Christ minister of Olton, officiating.

Burial was in Springlake Cemetery under the direction of Parsons-Ellis Funeral Home. Estevan died at 5:30 p.m. Dec. 31 in Lubbock General Hospital.

He was born on Nov. 20, 1984, in Amherst.

Survivors include his mother, Mrs. Janie Salazar of Earth; grandparents, Mr. and Mrs. Pancho Salazar of Earth; two sisters, Eva Salazar and Lucy Salazar, both of the home; and three brothers, Able Salazar, Simon Salazar and Philip Salazar all of the home.

**BIBLE
VERSE**



"A soft answer turneth away wrath: but grievous words stir up anger."

1. Where is the quotation found in the Bible?
2. Who is the author?
3. What is the value of the book?
4. What king helped preserve these words?

**Answers to
Bible Verse**

1. Proverbs 15:1.
2. Solomon.
3. Something of a guide for practical living.
4. Hezekiah.

Sudan News

by
Evelyn Ritchie

Mr. and Mrs. Billy Gore, and Mr. and Mrs. Randy Gore and girls, Mr. and Mrs. Rusty Gore and girls, and Mr. and Mrs. Greg Harper and Jennifer were in Odessa Christmas Eve to be with their son and brother, Mr.

**Sandhill
Philosopher**

Editor's note: The Sandhills Philosopher on his Johnson grass farm on Sandy Acres seems to get thrown by a problem he can't handle.

Dear Editor:
I guess financiers would laugh at me for asking, but what I want to know is how do you buy dollars? What do you buy them with? Other dollars?

The papers have been full of news lately about the rise and fall of the dollar on the world market. For example, here's a report I read in the paper: "In Tokyo, the dollar closed at 123.50 yen, slightly lower than Monday's close of 123.55."

I can see how you can swap a dollar for 123.50 yen, but if you live in Muleshoe and want to buy some dollars but have no yens, how do you do it? I won't ask why, if you have some dollars, you'd gain by swapping them for some more dollars. Of course, if somebody wants to swap me \$5 bills for \$1 bills, I'm ready to trade.

You can now see that when it comes to world finance, I don't any more know what I'm talking about than Wall Street stock brokers who said there was no way for the stock market to crash.

Therefore, speaking from the natural freedom of expression that comes with ignorance, I have a financial suggestion to rid the world of the fluctuating American dollar, the Japanese yen, the English pound, German mark, French franc, Italian lira, and, for all I know, that arctic bear skin and the jungle conch shell, or anything else people use for money, not counting credit cards.

The names of all currencies should be abolished and a single, universal term adopted world-wide for all money. No more of this up-and-down, my dollar is worth more than your yen.

The problem then becomes, what should this universal money be called?

In view of how most governments and lots of people handle it, the universal term for money should be Squander.

Yours faithfully,
J.A.

and Mrs. Billy Wayne Gore, Stephanie and Dennis.

Mr. and Mrs. Bob Summer visited in Fort Worth during the holidays with her mother and brother, Ila Ruth Gilreath and Mr. and Mrs. Max Gilreath and children.

Mr. and Mrs. Bob Drake have returned from visiting in Houston during the holidays with their daughter, Mr. and Mrs. Bill Meyer and girls.

Mr. and Mrs. Phil Gordon and Kay Lynn were in Olney during the holidays to visit her mother, Mrs. Vera Thomas.

Mr. and Mrs. G.C. Ritchie have returned from Santa Fe where they spent the holidays with her nephew, Mr. and Mrs. Danny Watson and family, and joining them were Mr. and Mrs. Arb Rylant, Kim, Tammi and Mark and Wade Knudson, all of Oak Harbor, Washington, Jan and April Lamphere of Dallas, Mr. and Mrs. Dewayne Phillips and children of Farwell, and Mr. and Mrs. Lee Watson of Bloomfield, N.M.

Holiday visitors with Mr. and Mrs. R.C. Williams were their children, Ellen and family of Lubbock and Mr. and Mrs. Lynn Williams and family of California.

Mr. and Mrs. Tommy Cate have returned from Pullman, Washington where they spent the holidays with their son, Dr. and Mrs. Rodney Cate and family.

Sherri Doty and Kimberley have been visiting during the holidays in Munday with her mother, Mrs. Joyce Thompson & Andy and other family members.

Mr. and Mrs. Dale Masten and family of Evins, Colo. spent the holidays here with their parents, and grand parents, Mr. and Mrs. W.C. Masten and Mr. and Mrs. Billy Chester and other family members. The children, Brad, Stacey and Ryan remained here for a longer visit and plan to return to Colo. Saturday or Sunday.

Holiday visitors with Mrs. W.L. Riche and Willie Mae were Dale Rice of Lubbock, Mr. and Mrs. Douglas Rice of Dallas, Rhonda Holt, Bill and Tony of Georgetown, Mr. and Mrs. Jimmy Holt and Michael of Amarillo, and joining them were Mr. and Mrs. Gary Gatewood and family of Sudan.

Mr. and Mrs. Reagan May of Chapel Hill, N.C. visited recently with his parents, Mr. and Mrs. Ray May.

Holiday visitors with Mr. and Mrs. Adrian Martin were her sisters, Gladys Landrum and Louise Boyles and also a friend, Debbie Moore all of Phoenix; and the Martins sons, Mr. and Mrs. Steve Martin, Erin, Nicholas and Lindzi of Shallowater and Mr. and Mrs. Kyle Martin and family of Sudan.

Holiday visitors with Mr. and Mrs. Henry Williams and Jimmy were their children, Mr. and Mrs. James Carroll of Marble Falls and Mr. and Mrs. David Williams and boys of Idalou.

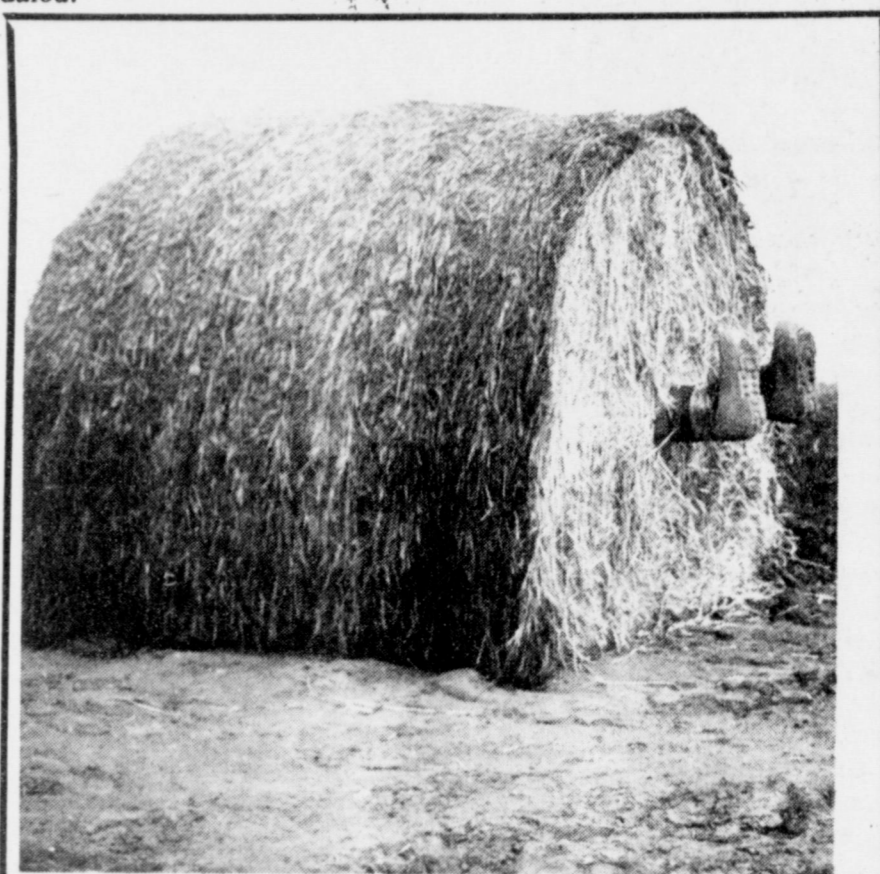
Louzell Serratt visited in Amarillo during the holidays with her sons, Dr. and Mrs. Delbert Serratt and Mr. and Mrs. Kenneth Serratt and their families.

Rev. and Mrs. Jerry Dodson and Jody were in Brownwood during the holidays with her parents and also their sons, Jerry Dale and Jeff.

Visiting during the holidays with Mr. and Mrs. Connie Hill were their children, Mr. and Mrs. Ronnie Hill and boys and Mr. and Mrs. Larry Durham and family and Sandra Johnson and Tyler all of Lubbock.

Mr. and Mrs. Paul Gordon and children of Round Rock were holiday visitors with his family, Mr. and Mrs. Waymon Gordon and Mr. and Mrs. Phil Gordon and family.

Jewel Rich was a surgical patient recently in Methodist Hospital and its reported that she remains in ICU.



ALL WOUND UP IN HIS WORK--Startling passersby on Highway 214 south of Muleshoe, on the Jack Schuster farm, this round bale of hay is sprouting irrigation boots on one end and on the other end, out of sight, is a baseball cap. The hay bale is near the highway, and can clearly be seen.

**Make A
New Year
Rule...**

Read The Journals

**\$12.50
By Carrier**

**\$14.75
By Mail In Bailey County
And Surrounding Areas**

**\$16.50
By Mail Elsewhere**

**Muleshoe Journal/Bailey County
Journal**
P.O. Box 449
Muleshoe, Texas 79347

**With Church's Low Prices,
You Get A Great Meal
For Less.**

Family Orders

	8 pieces	12 pieces	16 pieces
Dark	\$5.59	\$8.38	\$11.18
Mixed	\$5.99	\$8.98	\$11.98
White	\$7.99	\$11.98	\$15.99

Country Fried Steak Platter
\$2.99

with mashed potatoes or fries, gravy, cole slaw and roll

Also Available:

Southern Fried Catfish & Crispy Nuggets



1411 W. Amer. Blvd.

272-5581

Muleshoe Journal USPS 367-820
Established, February 23, 1924. Published by Muleshoe Publishing Co., Inc. Every Thursday at 304 W. Second, Box 449, Muleshoe, Texas 79347. Second Class postage paid at Muleshoe, Texas 79347.

MEMBER
1987
TEXAS PRESS ASSOCIATION

Member
NATIONAL NEWSPAPER ASSOCIATION
PANHANDLE PRESS ASSN.
WEST TEXAS PRESS ASSOCIATION

L.B. Hall, President & Publisher
Sammy Hall, Vice President & Controller
Cleta Williams, News
Evelene Harris, Society
Dannett Blomch, Advertising
Lillie Nino, Bookkeeping

SUBSCRIPTIONS
Muleshoe Journal and Bailey County Journal
Bailey and surrounding counties
Muleshoe Journal and Bailey County Journal
Elsewhere in Texas \$14.75
Muleshoe Journal and Bailey County Journal
Outside of Texas \$16.50
Yearly by Carrier \$12.50
Advertising rate card on application

*Advertisers should check their ad the first day of insertion. The Journal will not be liable for failure to publish an ad or for a typographical error or errors in publication except to the extent of the cost of the ad for the first day of insertion. Adjustment for errors will be limited to the cost of that portion of the ad where the error occurred.

**MEET
THE
CANDIDATES**

The Journal has been authorized to announce the following candidates for public office:

- SHERIFF**
Jerry Hicks
- COMMISSIONER**
Precinct 1
R. L. Scott
H. E. Newsom
Precinct 3
Joey Kindle

New Director, Committeemen To Be Elected

Bayley County voters residing in District Director's Precinct Three will cast their ballots for a board member and two county committeemen during the High Plains Underground Water Conservation District No. 1 election, Saturday, January 16, 1988.

A.W. 'Webb' Gober, of Farwell, is the incumbent Precinct Three Director seeking reelection to a four-year term. District's Precinct Three consists of the portions of Bailey, Castro and Parmer Counties which lie within the Water District service area.

Board members oversee all Water District activities, including legal, financial and business matters. During their monthly meetings, they set long-range goals and direct the District staff through the manager.

Nick Bamert of Route One, Muleshoe, and Jarrold Layton of Route Two, Morton, are the County Committeemen candidates. County committeemen meet regularly to make recommendations concerning water well permits and agricultural water conservation equipment

loan applications.

Committeemen keep directors advised on their county's water-related needs as well as serving as a local contact for water conservation problems or opportunities.

Votes may be cast from 7 a.m. to 7 p.m. on election day at the Bailey County courthouse, 300 South First Street, Muleshoe. Margrethe Taylor will be the presiding judge.

Absentee balloting, which began on December 28, 1987, ends January 12 during normal business hours at the Bailey County Courthouse, County Clerk's office, Muleshoe. Barbara McCamish will serve as election clerk.

The election returns will be made to the Secretary of the High Plains Water Conservation District No. One Board of Directors for canvassing in accordance with the Texas Election Code.

Muleshoe...

Cont. From Page 1

Military Institute, has been named to the Superintendent's List for academic achievement for the first semester of the 1987-88 school year. He is the son of Mr. and Mrs. Jesse Leal, Muleshoe.

To qualify for the Superintendent's list at NMMI, a cadet must have a minimum grade point average of 3.50 on a 4.0 scale and an A in deportment.

Forrest Creamer continues to show slow improvement at Desert Spring Hospital at Las Vegas, NV.

He has been in the hospital since being involved in a vehicle accident on December 11.

Special Muleshoe

Pewter Buckle

Still Available

The Muleshoe Chamber of Commerce and Agriculture now has commemorative Muleshoe Buckles available at the CoC, 215 South First Street.

These buckles, which are made of pewter, are selling for only \$25, plus tax, and only 500 commemorative buckles will be cast this year. This buckle is the first of a series to be available for the next five years.

To reserve a numbered buckle, go by the CoC office and place a prepaid order. Shipment will be in approximately four weeks.

At this time, proofs are on display at the Chamber office, and will be given away in drawings scheduled in the near future.

In order to obtain your 'special' number, make your reservation NOW!

Never argue with friends over a nonessential.



BOWL GAME CONTEST WINNER--Lillie Nino, left, Journal bookkeeper, presented a check in the amount of \$50 to Jimmie Crawford, who won the annual Bowl Game Football Contest. Crawford was one of two entrants to miss only five games, but was closer on the tiebreaker scores.

Rotary Program

Cont. From Page 1

second highest birth rate in the nation among females aged 12-15; in Muleshoe, 14 adolescents were documented to have given birth last year.

It is estimated that 40 percent of minority youth are functionally illiterate -- and that a large number of our children live in poverty. Some 42 percent of the students in Muleshoe Schools are living below the poverty level established by the federal government.

About 12 percent of all school children are served as handicapped or disabled and require special services. In the Muleshoe ISD, 10.6 percent of the children are served as handicapped or disabled and require special services.

Although 1.35 million students in grades K-12 receive bilingual services nationally, only 29 percent of the schools provide instruction in both the native language and English. Muleshoe ISD provides English as a second language, but does not provide bilingual instruction at this time.

The state board of Education long-range plan calls for restructuring coordinated academic-vocational programs to provide relevant preparation for priority occupations. Muleshoe ISD is currently evaluating the future status of all vocational training programs.

By the year 2000, Texas will be a 'minority' majority state. Currently, Muleshoe ISD is 52 percent Hispanic, two percent Black and 42 percent Caucasian.

Over one half of the prisoners in Texas institutions did not finish high school.

It cost approximately \$11,500 per year to house a prisoner while it costs less than \$4,000 per year to educate a high school student.

Also taking part in the presentation were board members Rex Harris and Howard Watson. Board members Lyndon Huckaby and Gordon Wilson were not present.

Following the presentation and a question and answer session, Rotarians were given a survey sheet to give information about what they (the Rotarians) would like to see incorporated into the Muleshoe School System by the year 2,000.

In another announcement, MISD Board President Julie Cage announced that the State School Board Forum to consider candidates for the elections this year has been postponed until shortly before election time in the fall.

Guests other than the school board members included Matt Phelps, Jay Cage, Johnny Atkinson and Clea Williams.

Good Idea

Few question the benefit of taking a brisk early-morning walk. Few take such walks.

Young As You Feel

It has been observed that women live longer than men. Possibly because they remain girls for so many years.

—Courier, Craig, Col.

Texas Monthly...

Cont. From Page 1
near Austin one time during the year. He took a few days out of his driving schedule in September to go home.

He also took out a few days to

Weather...

Cont. From Page 1

The Muleshoe area has had nighttime low temperatures in the teens for the past eight to ten days, and temperature is expected to be in the single digit figures for Wednesday night.

As motorists had slowed down on the slick and icy streets, no accidents had been reported in Muleshoe by press-time, and no accidents had been reported in the immediate Muleshoe area.

Several overturned vehicles dotted the highways to the southeast of Muleshoe on Tuesday as motorists failed to take the icy roads into consideration as they drove.

Very few cancellations were noted due to the icy roads, although some cancellations were expected if the conditions in the area worsened.

go 'coon-hunting' when he was near Fairfield; and visited his parents, Mr. and Mrs. Dick Reavis, at Dumas for Christmas.

Three times, he took 'unscheduled' times out, when he was laid up in motels along the many miles he traveled, recuperating from bouts with the flu. His worst illness occurred when he was in the Big Spring area, he added, when he was in bed for four days -- very sick.

And now--what's in the future for the TM Senior Editor? How will he 'top' his feat during the past year? Reavis said he has one more story for Texas Monthly Magazine, then will take a year leave of absence.

Reavis has been commissioned to do a book about Mexico--so will be leaving in mid-January for Mexico, and his next adventure. He is looking forward to his year in Mexico, and for the latest adventure for a truly modern-day nomad.

Those who enjoy his talents and look forward to reading his stories in Texas Monthly Magazine will just have to 'go on hold' until he returns from Mexico in 1989. In the meantime, his personal adventures will continue.

SCS Hosting Wind Strip Conference

A conference to discuss how farmers can use wind strips to reduce erosion on cropland will be held in Lubbock on Tuesday, January 12.

The meeting will start at 9:30 a.m. at the Holiday Inn Civic Center in Lubbock. Registration will start at 8 a.m.

Jim district conservationist for the USDA Soil Conservation Service at Muleshoe, said farmers, conservationists and others interested in the use of wind strips are invited to attend.

"In cooperation with SCS, Texas Tech University scientists have completed a three year study to analyze the feasibility of using perennial grass wind strips to reduce erosion," Lutz said. "The study indicates that wind strips are an efficient way to reduce erosion on cropland in West Texas."

Three farmers using the practice will speak during the conference. They are Ronald Thuett, Post; Sonny Lupton, Shallowater; and Coy Franks, Matador.

Texas Tech research scientists Dr. Richard Zartman, Dr. Bob Davis, and Dr. Sherman Phillips are also on the program.

Wilson Scaling, chief, SCS Washinton, will speak during a noon luncheon.

The meeting, schedule to end by 4 p.m. is being sponsored by Texas Tech, SCS, the Lubbock County Soil and Water Conservation District, and the High Plains Underground Water Conservation District No. 1.

Better than it has to be.®

Wiedebush and Company is having another Truckload Oil Sale. You can buy quality Amalie Products at 10% off regular prices.

Buy 10 Cases, drums or 5 gallon cans and get ONE UNIT FREE.

The way our oil prices are going up, this program could very easily save you as much as 25% in the coming months.

This offer good January 1, 1988 through March 1, 1988.

Wiedebush & Co.

1620 W. American Blvd. 272-4281

Property Tax Relief

A New Tax... Starting January 1, 1988

6 1/2% For sales made in the county

Sales Not More Than	Tax	Sales Not More Than	Tax	Sales Not More Than	Tax	Sales Not More Than	Tax
.07	.00	5.46	.35	10.94	.70	16.23	1.05
.23	.01	5.61	.36	10.99	.71	16.38	1.06
.38	.02	5.76	.37	11.15	.72	16.53	1.07
.53	.03	5.92	.38	11.30	.73	16.69	1.08
.69	.04	6.07	.39	11.46	.74	16.84	1.09
.84	.05	6.23	.40	11.61	.75	16.99	1.10
.99	.06	6.38	.41	11.76	.76	17.15	1.11
1.15	.07	6.53	.42	11.92	.77	17.30	1.12
1.30	.08	6.69	.43	12.07	.78	17.46	1.13
1.46	.09	6.84	.44	12.23	.79	17.61	1.14
1.61	.10	6.99	.45	12.38	.80	17.76	1.15
1.76	.11	7.15	.46	12.53	.81	17.92	1.16
1.92	.12	7.30	.47	12.69	.82	18.07	1.17
2.07	.13	7.46	.48	12.84	.83	18.23	1.18
2.23	.14	7.61	.49	12.99	.84	18.38	1.19
2.38	.15	7.76	.50	13.15	.85	18.53	1.20
2.53	.16	7.92	.51	13.30	.86	18.69	1.21
2.69	.17	8.07	.52	13.46	.87	18.84	1.22
2.84	.18	8.23	.53	13.61	.88	18.99	1.23
2.99	.19	8.38	.54	13.76	.89	19.15	1.24
3.15	.20	8.53	.55	13.92	.90	19.30	1.25
3.30	.21	8.69	.56	14.07	.91	19.46	1.26
3.46	.22	8.84	.57	14.23	.92	19.61	1.27
3.61	.23	8.99	.58	14.38	.93	19.76	1.28
3.76	.24	9.15	.59	14.53	.94	19.92	1.29
3.92	.25	9.30	.60	14.69	.95	20.07	1.30
4.07	.26	9.46	.61	14.84	.96	20.23	1.31
4.23	.27	9.61	.62	14.99	.97	20.38	1.32
4.38	.28	9.76	.63	15.15	.98	20.53	1.33
4.53	.29	9.92	.64	15.30	.99	20.69	1.34
4.69	.30	10.07	.65	15.46	1.00	20.84	1.35
4.84	.31	10.23	.66	15.61	1.01	20.99	1.36
4.99	.32	10.38	.67	15.76	1.02	21.15	1.37
5.15	.33	10.53	.68	15.92	1.03	21.30	1.38
5.30	.34	10.69	.69	16.07	1.04	21.46	1.39

7 1/2% For sales made in city

Sales Not More Than	Tax	Sales Not More Than	Tax	Sales Not More Than	Tax	Sales Not More Than	Tax
\$.19	\$.01	5.53	.41	10.86	.81	16.19	1.21
.33	.02	5.66	.42	10.99	.82	16.33	1.22
.46	.03	5.79	.43	11.13	.83	16.46	1.23
.59	.04	5.93	.44	11.26	.84	16.59	1.24
.73	.05	6.06	.45	11.39	.85	16.73	1.25
.86	.06	6.19	.46	11.53	.86	16.86	1.26
.99	.07	6.33	.47	11.66	.87	16.99	1.27
1.13	.08	6.46	.48	11.79	.88	17.13	1.28
1.26	.09	6.59	.49	11.93	.89	17.26	1.29
1.39	.10	6.73	.50	12.06	.90	17.39	1.30
1.53	.11	6.86	.51	12.19	.91	17.53	1.31
1.66	.12	6.99	.52	12.33	.92	17.66	1.32
1.79	.13	7.13	.53	12.46	.93	17.79	1.33
1.93	.14	7.26	.54	12.59	.94	17.93	1.34
2.06	.15	7.39	.55	12.73	.95	18.06	1.35
2.19	.16	7.53	.56	12.86	.96	18.19	1.36
2.33	.17	7.66	.57	12.99	.97	18.33	1.37
2.46	.18	7.79	.58	13.13	.98	18.46	1.38
2.59	.19	7.93	.59	13.26	.99	18.59	1.39
2.73	.20	8.06	.60	13.39	1.00	18.73	1.40
2.86	.21	8.19	.61	13.53	1.01	18.86	1.41
2.99	.22	8.33	.62	13.66	1.02	18.99	1.42
3.13	.23	8.46	.63	13.79	1.03	19.13	1.43
3.26	.24	8.59	.64	13.93	1.04	19.26	1.44
3.39	.25	8.73	.65	14.06	1.05	19.39	1.45
3.53	.26	8.86	.66	14.19	1.06	19.53	1.46
3.66	.27	8.99	.67	14.33	1.07	19.66	1.47
3.79	.28	9.13	.68	14.46	1.08	19.79	1.48
3.93	.29	9.26	.69	14.59	1.09	19.93	1.49
4.06	.30	9.39	.70	14.73	1.10	20.06	1.50
4.19	.31	9.53	.71	14.86	1.11	20.19	1.51
4.33	.32	9.66	.72	14.99	1.12	20.33	1.52
4.46	.33	9.79	.73	15.13	1.13	20.46	1.53
4.59	.34	9.93	.74	15.26	1.14	20.59	1.54
4.73	.35	10.06	.75	15.39	1.15	20.73	1.55
4.86	.36	10.19	.76	15.53	1.16	20.86	1.56
4.99	.37	10.33	.77	15.66	1.17	20.99	1.57
5.13	.38	10.46	.78	15.79	1.18	21.13	1.58
5.26	.39	10.59	.79	15.93	1.19	21.26	1.59
5.39	.40	10.73	.80	16.06	1.20	21.39	1.60

For more information call 1-800-252-5555

Bob Bullock

Texas Comptroller of Public Accounts

Muleshoe Journal

Classified

Call 272-4536

CLASSIFIED RATES
Per Word...\$15
Minimum Charge \$2.30

Consecutive Insertions
Minimum Charge \$2.00

CLASSIFIED DISPLAY RATES
\$1.75
Per Column Inch

DEADLINES
12 noon Tues.
For Thursday Paper
12 noon Friday
For Sunday Paper
We reserve the right to classify, revise, or reject any ad. Not responsible for any error after ad has run once.

1. Personals

MARY KAY COSMETICS Josie Flowers 272-3865. f1-49s-tfc

STORAGE ROOMS & office space for rent call 272-4754. s1-53t-tfc

STILL MAKING sawdust...cabinet work, remodeling, add ons. Bob Copeland Jr. 272-5283. c1-1t-2tc

Z-NEW CREDIT CARD-No one refused! Major Credit Cards & More Get Your Card Today! Call 1-518-459-3734 Ext. C6695E 24 HRS. t1-53t-3tpp

CONCERNED About Someone's Drinking? **HELP IS AVAILABLE** through Al-Anon Call 272-2350 or 965-2870 or come to visit Tuesday nights, 8:00 p.m. or Saturday mornings at 11:00 a.m. at 1116 W. American Blvd., Muleshoe.

8. Real Estate

FOR SALE 1978 Windsor Mobile home, 14 x 70. Phone 272-4083. b8-1t-2tc

FOR SALE by owner brick home 3-2-2 Central H/A (Gas), automatic sprinkler system, nice view Richland Hills owner-agent. 272-5629. l8-1t-8tc

FOR SALE beautiful 4 bedroom, 2 bath home at the edge of town, on 1/2 acre. Full grown trees, lots of flowers, water well. NO CITY TAXES, all the amenities of country life, with the convenience of town very close by. All this and more at an unbelievable price. Call now at 272-3813 or 272-5422. w8-2s-tfc

FOR RENT with option to buy 3 bdrm., 2 full baths, central A/H. 2 acres of land. Good well & storm cellar. 3 miles east on Highway 70, 1 mile north on YL road, 200 yards east. Call anytime 806-352-1715. b8-1t-2tc

9. Automobiles For Sale

FOR SALE: 1979 Buick Electra. One owner, good condition. would make good second car. 272-3089. y9-53t-tfc

8. Real Estate 8. Real Estate

JAMES F. HAYES & CO. AGRICULTURAL REAL ESTATE
Vic Coker-Agent
(806) 965-2468

640 ACRES- 4 electric sprinklers, steel pens with concrete bunks, domestic well, all fenced. Best soil & water. Rare opportunity, good value.

320 ACRES of prime farmland Southwest of Hub in Parme County. Excellent water: 3 8" wells and 1 tailwater pit. This farm is clean. Top notch in every respect.

160 ACRES IN LAMB COUNTY- Excellent water, electric sprinkler, fully allotted, fenced, prime opportunity for first time buyer.

160 ACRES North of Lazbuddie. 1 8" well, clean, lay good. Excellent terms Available!

160 ACRES - 2 Wells - Excellent Water, fully allotted, good check. Soil that will grow anything.

Call Vic if you need farm & ranch appraisal work done.

Have A Merry Christmas & A Happy New Year!

From the Vic Coker family and James F. Hayes & Co.

8. Real Estate 8. Real Estate

Henry Realty

111 W. Ave. B. Muleshoe 272-4581

SPACIOUS-2 bedroom, 1 bath, 1-car garage, storm cellar, Good location. \$19,000.....

JUST LISTED 2 Br., 1 large utility. Nice fenced Country Club Addition. Financing available. \$21,000.

ONE ACRE sites for home construction. 3 miles East of Muleshoe on Hwy. 3 lots remain.

FOR LEASE 3 bedroom, 2 bath, large living room, kitchen and dining. Excellent condition, near high school.

3 Br., 2 bath, spacious home outside city limits, near city on highway. 29'x40' metal building. Lot 85'x620'.

3 Br., 1 bath, completely remodeled, edge of city on highway.

VACANT LOT for Mobile home immediate possession.

Kenneth R. Henry Broker
272-4581
Judy Coker Agent 965-2468

8. Real Estate 8. Real Estate

WHITT-REID REAL ESTATE

201 Main Office 272-3611

\$600 total move in cost - 3 bedroom, single garage homes - for those who qualify.

2 Bedroom, single garage home. Reduced for quick sale, \$22,000. 25H8

3 Bedroom Brick Home - Richland Hills Addition - over 2000 sq. Ft. of living space, \$56,000. 5H9

- We Need Listings**
- We need irrigated & dry
 - Acreage on pavement
 - Nice 3 bedroom homes

Roy Whitt 272-3058
Thursie Reid 272-5318
Certified Appraiser

BIBLE VERSE

"A soft answer turneth away wrath: but grievous words stir up anger."

1. Where is the quotation found in the Bible?
2. Who is the author?
3. What is the value of the book?
4. What king helped preserve these words?

Answers to Bible Verse

1. Proverbs 15:1.
2. Solomon.
3. Something of a guide for practical living.
4. Hezekiah.



ONE MINUTE SPORTS QUIZ

1. What was the score of the San Francisco-Chicago NFL game?
2. What college football player recently won the Maxwell Award?
3. Who is Michael Jordan?
4. What amount (reportedly) did the Tokyo Giants offer Dave Righetti in a 3-year contract?
5. Who is Mack Brown?

Answers

1. 41-0, San Francisco.
2. Don McPherson, of Syracuse.
3. Star of the Chicago Bulls (NBA) who recently scored 52 points in one game.
4. Righetti's agent says the Giants offered the Yankee relief ace \$20,000,000 for 3 years.
5. New football coach at the University of North Carolina.

Who Knows?

1. Name the new secretary of labor.
 2. What is the lowest point on the continent of Asia?
 3. Name the largest lake in the world.
 4. What branch of the Armed Services was abolished in 1950?
 5. What is a cygnet?
- Answers to Who Knows?**
1. Mrs. Ann Dore McLaughlin.
 2. The Dead Sea.
 3. Caspian sea between Asia and Europe.
 4. The Cavalry.
 5. A baby swan.

8. Real Estate 8. Real Estate

116 W. Ave. C BINGHAM & NIEMAN REALTY 272-5285 or 5286
We have homes for as little as \$600.00 total move in cost, with payment scheduled according to income for qualified buyers!!!!

RICHLAND HILLS
IMMACULATE 3-2-2 Brick, corner lot, Cent. A&H, built-ins, FP, loads of storage & closet space, sprinkler sys.!!!!

PRICE REDUCED-3-1-1 Brick, Cent. heat, Evap. air, built-ins, fenced yard....

JUST LISTED-3-1 1/2 Home, Cent. heat, evap. air, built-ins, fenced yard, detached storage-garage. Nice location. \$40's!!!!

HIGHLAND & STEWART
3-1 1/4-1 Home, wall furnace heat, evap. air, fenced yard. Nice home in a nice area. \$20's!!!!

3-2-1 detached Cent. A&H, built-ins!!!!

SPACIOUS3-2 1/2-2 Brick Home on corner lot, Cent. A&H, built-ins, fireplace, loads of storage, 2900 plus sq. ft. of LV. area lots of extras, undrgrd. sprinkler sys., fenced yard. A GREAT BUY!!!

JUST LISTED-Nice 3-2-2 Brick Home (2 story), on corner lot, Cent. A&H, built-ins, and much more. LET'S LOOK TODAY!!!

2-1-1 home, wall heat, evap. air, fenced yard. \$20's....

PARKRIDGE
IMMACULATE 3-2-2 Brick Home Cent. A&H, built-ins, fireplace, energy efficient, nicely decorated, plus beautifully landscaped yard. \$50's!!!!

HIGH SCHOOL
JUST LISTED-3-2-2 home, corner lot, nice carpet, fenced yard. \$30's!!!!

3-1-1 home, corner lot, Cent. A&H, built-ins. \$30's.....

PRICE REDUCED-Spacious 3-2 Brick, Cent. A&H, built-ins, 2400+ sq. ft. of lv. area, den w/FP, fenced yard, storage bldg., & much more. \$60's!!!!

JUST LISTED-3-1 home, nice carpets, new roof, storm windows & much more. \$20's!!!!

NICELY REMODELED 3-2-1 carport home, Cent. heat, evap. air, built-ins, utility, earhtone carpets, ceiling fans, covered patio, fenced yard & more. \$30's!!!

3-2-1 1/2 carport home, Cent. A&H, built-ins, fireplace, fenced yard & more. \$40's!!!!

JUST LISTED-NICE 2-1-1 home, wall furnace heat, earhtone carpets!!!!

LENAU ADDITION
4-2-2 carport home Cent. A&H, built-ins, fireplace, approx 3000 sq. ft. of lv. area.!!!

DIANNE NIEMAN, BROKER

"MERRY CHRISTMAS AND A HAPPY NEW YEAR"

JUST LISTED-Nice 3-2-1 Brick, 2,000+ sq. ft. of lv. area, very well kept!!! \$40's!!!!

NICE 3-2-2 Brick, Cent. A&H, built-ins, fenced yard. \$40's!!!!

3-2-2 carport home, corner lot, nicely remodeled. \$30's....

JUST LISTED-COZY 3-1 1/2-1 home, Cent. heat, nice earhtone carpets, fenced yard, storage bldg., & more!!!!

JUST LISTED-3-1-1 home, Cent. A&H, utility, storage bldg., cellar, gas grill, & more. \$20's!!!!

COUNTRY CLUB
3-2-2 Brick, Cent. A&H, built-ins, fenced yards, & more. \$50's!!!!

COUNTRY HOMES
JUST LISTED-2-2-1 brick home on 1 acre on pavement, close to town, Cent. A&H. \$40's!!!!

JUST LISTED-2-1-1 1/2 carport home on 1 acre on pavement close to town, built-ins, wall furnace heat, evap. air, satellite system, and fenced area for horses or calves. \$20's!!!!

3-1-2 home, 1/2 acre, Cent. A&H, new paint, nice carport, cellar. \$30's!!!!

2-1 home, 20 acres, sub. pump, sprinkler, barns & corrals. \$40's!!!!

SPACIOUS3-2 1/2-2 Brick Home on 5 acres, Cent. A&H, built-ins, fireplace, sunroom, finished basement, sprinklers sys., storage bldg., horse barn, calf barn, corrals & much more. Close to town. **MUST SEE TO APPRECIATE!!!!**

3-1 home on .59 acres on highway at edge of town plus 1-1 mobile home for rental unit, storage, or workshop. A GOOD BUY!!!!

LARGE BUILDING on 2 lots, paved parking....

JUST LISTED-Nice, well-maintained Self-Service Laundry, 34 washers, 16 dryers in nice, modern building, excellent location. Books available to qualified Buyer.

NICELY remodeled office bldg. with over 3,000 sq. ft. of area, excellent location across from Courthouse. PRICED TO SELL!!!!

APPROX. 3,000 sq. ft. bldg. Railroad frontage. CASH PRICE \$15,000.00

GEORGE NIEMAN, BROKER

AUCTION

Every Saturday, 1 p.m.
Horses - Saddle - Tack
Lots Of Misc.
Triple S Auction Service
Smyer, TX 234-2405
Lance Folsom, Auctioneer
Bob Smith, Owner Operator
Confinements Welcomed

18. Legal

CONTRACTOR NOTICE OF TEXAS HIGHWAY CONSTRUCTION

Mowing of State Department of Highways and Public Transportation Rights-of-Way.

Sealed bids for mowing highway rights-of-way will be received, publicly opened and read on January 25 and 26, 1988, at the Lubbock District Office Training Center, 601 Slaton Road, Lubbock, at 10:00 a.m.

Bids will be opened in January 25 for the following contracts: Parmer; Terry; Hockley; Lubbock S.E.; Bailey; Hale; Garza; Lynn; I.H. 27; S.H. 114; U.S. 84 N.W.; and U.S. 84 S.

Bids will be opened on January 26 for the following contracts: Castro; Floyd; Dawson; Lamb; Lubbock N.E.; Cochran; Yoakum; Crosby; Gaines; Swisher; U.S. 62 W.; and U.S. 87 S.

The State Department of Highways and Public Transportation, in accordance with the provisions of Title VI of the Civil Rights Act of 1964 (78 C.F.R. Part 8), issued pursuant to such Act,

hereby notifies all bidders that it will affirmatively ensure that the contract entered into pursuant to this advertisement will be awarded to the lowest responsible bidder without discrimination on the grounds of race, color, or national origin; and further that it will affirmatively ensure that in any contract entered into pursuant to this advertisement, minority business enterprises will be afforded full opportunity to submit bids in response to this invitation and will not be discriminated against on the grounds of race, color, or national origin in consideration for an award. Plans and specifications are available at the Maintenance Office for the above mentioned counties and at the office of Woody Marcy, Maint. Const. Supt., 601 Slaton Road, P.O. Box 771, Lubbock, Texas, 79403-0771.

Usual rights reserved. s18-1t-2tcc

GRAIN PRICES
YELLOW CORN...3.55 cwt
YELLOW FOOD CORN 3.80 cwt
WHITE FOOD CORN. 4.75 cwt
MILO.....300 cwt
SOYBEANS.....548cwt
NEW WHEAT. 259 cwt
COMMODITY CERTIFICATES
104 1/2
Prices-January 5, 1988
MARKETS COURTESY OF FARMERS CO-OP ELEVATORS
272-4335 Muleshoe, Texas

Think Classified!

Anniversary Sale



ALL GRINDS MOUNTAIN GROWN
FOLGER'S COFFEE
3 LB. CAN
\$5.99



FOR THE BATHROOM
CHARMIN TISSUE
4 ROLL PKG.
99¢



ABSORBENT PAPER
BOUNTY TOWELS
ROLL
69¢
EACH



ALL TYPES
COCA-COLA
2 LITER BOTTLE
99¢

HORMEL W/ BEANS
CHILI
15 OZ. CAN
89¢

HORMEL REG./ HOT PLAIN
CHILI
15 OZ. CAN
99¢



SUNSHINE KRISPY
CRACKERS
1 LB. BOX
79¢



LUNCHEON MEAT
SPAM
12 OZ. CAN
\$1.49



SUNNYFRESH GRADE A
JUMBO EGGS
DOZEN
59¢



DECKER QUALITY SLICED
BACON
1-LB. PKG. **\$1.28**

U.S.D.A. GRADE A PILGRIM'S PRIDE
WHOLE FRYERS
48¢
LB.

DECKER QUALITY SLICED
BOLOGNA 12 OZ. PKG. **99¢**

DECKER QUALITY MEAT
FRANKS 12 OZ. PKG. **89¢**

HORMEL PORK SAUSAGE YOUR CHOICE
LITTLE SIZZLERS 12 OZ. LINKS OR .10 OZ. PATTIES **\$1.19**

HILLSHIRE FARM REG./ POLISH FLAVOR SEAL
SMOKED SAUSAGE PAK LB. **\$1.99**

U.S.D.A. GRADE A PILGRIM'S PRIDE FRYER
DRUMSTICKS LB. **78¢**

U.S.D.A. GRADE A PILGRIM'S PRIDE
FRYER THIGHS LB. **78¢**

U.S.D.A. GRADE A PILGRIM'S PRIDE SPLIT
FRYER BREASTS LB. **\$1.29**

FRESH EXPRESS DELUXE COMBO/ PEPPERONI
LARGE PIZZA YOUR CHOICE. 2 FOR **\$5.99**

HUNT'S TOMATO-RAMA

HUNT'S **TOMATO SAUCE** 5 8 OZ. CANS **\$1.00**

HUNT'S SQUEEZE **KETCHUP** 32 OZ. BTL. **\$1.19**

HUNT'S **TOMATO PASTE** 2 8 OZ. CANS **79¢**

HUNT'S ASST. **SPAGHETTI SAUCE** 27 OZ. CAN **\$1.39**

HUNT'S **MANWICH** 15 OZ. CAN **99¢**

FOR CLEAN COOKING **WESSON OIL** 48 OZ. BTL. **\$1.99**

HUNT'S ASST. SNACK PACK **PUDDINGS** 4 CT. PAK **\$1.19**

GEBHARDT **REFRIED BEANS** 2 16 OZ. CANS **\$1.00**

ROSARITA MILD/ MED./ HOT **PICANTE SAUCE** 16 OZ. JAR **\$1.29**

BORDEN **HI-PRO MILK** 1 GAL. **\$2.59**

BORDEN **YOGURT** 3 8 OZ. ASSORTED **\$1.00**

BORDEN **FROSTICKS** 6 PAK. **\$1.29**

THRIFTWAY SHOPPERS SPECIALS

CHICKEN NOODLE **CAMPBELL'S SOUP** 3 10 3/4 OZ. CANS **\$1.00**

ENRICHED FLOUR **GLADIOLA** 5 LB. BAG **79¢**

ASST. GLADIOLA **POUCH MIXES** 3 6 OZ. FOR **89¢**

COMET **LONG GRAIN RICE** 14 OZ. BOX **49¢**

VLASIC POLISH/ KOSHER **CRUNCHY DILLS** 32 OZ. JAR **\$1.59**

DOG FOOD **GRAVY TRAIN** 25 LB. BAG **\$6.99**

DOG FOOD **KIBBLES & BITS** 20 LB. BAG **\$6.99**

20" OFF LABEL-CLEANER **PINE-SOL** 15 OZ. BTL. **\$1.29**

DROP INS-BLUE/ GREEN **VANISH** 1.7 OZ. BTL. **99¢**

ASST. ADJUSTABLES **RENUZIT** 7.5 OZ. SIZE **99¢**

MARS/ M & M'S ASST. **CANDIES** 6 CT. PAK **\$1.99**

RED RIPE SALAD
TOMATOES
39¢
LB.

U.S. NO. 1 BAKING
POTATOES
5 \$1
LBS.

DAIRY SPECIALS

SHURFRESH PURE
CORN OIL MARGARINE
1 LB. QTRS **69¢**

SHURFRESH
CINNAMON ROLLS
9 1/2 OZ. ROLLS **\$1.19**

Redeem Your **Special Olympics** Coupons Here!

REG./ PLUS CALCIUM CITRUS HILL FROZ. **ORANGE JUICE** 12 OZ. CAN **99¢**

ASST. POTATO CHIPS **PRINGLES** CAN **\$1.49**

CREAMY/ CRUNCHY PEANUT BUTTER **JIF** 28 OZ. JAR **\$2.99**

35" OFF LABEL REG./ UNSCENTED **BOUNCE SHEETS** 40 CT. BOX **\$2.19**

BATH BARS **ZEST** 3 CT. PAK **\$1.69**

LAUNDRY DETERGENT **BOLD** 42 OZ. BOX **\$2.19**

50" OFF LABEL REG./ MOUNTAIN SPRING **DAWN LIQUID** 32 OZ. BTL. **\$1.79**

TOOTHPASTE **CREST** 6.4 OZ. TUBE **\$1.49**

REG./ PEPPERMINT MOUTHWASH **SCOPE** 24 OZ. BTL. **\$2.99**

NORM DRY/ NORM OILY HEAD & SHOULDERS **LOTION SHAMPOO** 11 OZ. BTL. **\$3.39**

REG./ UNSCENTED/ POWDER **SURE ROLL-ON** 1 1/2 OZ. SIZE **\$1.99**

TEXAS **ORANGES** 5 LB. BAG **\$1.79**

WASHINGTON EX-FANCY RED **DELICIOUS APPLES** 3 LB. BAG **\$1.19**

WASHINGTON **D'ANJOU PEARS** LB. **39¢**

EXOTIC FRUIT **KIWI** 3 FOR **\$1.00**

CALIFORNIA FRESH **CARROTS** 2 LB. BAGS **\$1.00**

Double Green Seals On Wednesday

HAVE A PROSPEROUS NEW YEAR

Prices Effective JAN. 3-9, 1988

401 West Amer. Blvd. **SERVE-ALL** 272-4739

THRIFTWAY