

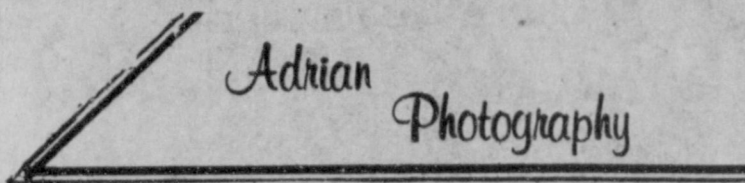
MULESHOE AREA

Fall

BUSINESS DIRECTORY AND SHOPPING GUIDE.

Families:

It's time to start thinking about family portraits for Christmas. We also have a complete line of personalized Christmas cards.



218 W. 2nd 272-3487

Special of the Week

3 piece Dinner \$2⁹⁹

Wednesdays
All You Can Eat Fish \$3⁹⁹

Meal Includes: Cole Slaw, A Salad, French Fries, Hushpuppies, Red Beans, Cobbler & 3 Kinds Of Fish.



1411 W. American Blvd. 272-5581

On Sale! Nov. 8-17

Hanes Too in the Spotlight



110 MAIN Hurst Department Store 272-5640

For The Best Mexican Food

From Coast to Coast,

Come To El Nuevo Leal's

El Nuevo Leal's

1542 W. Amer. Blvd 272-3294



Irma & Jessie Leal

El Nuevo Leal's Restaurant is located at 1542 W. Amer. Blvd in Muleshoe. Jessie and Irma have been serving the people of Muleshoe fine Mexican food for the past 27 years.

Leals is known for the best Mexican food in the Southwest. People are known to come from miles around just to eat Jessie's enchiladas. Leals still has the lowest prices around for Mexican food. Jessie has not raised his prices in the last three years.

Jessie says "Mi Casa es su Casa"

Thursday Night Special

6 oz. **Sirloin** 8 oz.
\$4⁶⁵ With Salad Bar & Choice of Potato \$5²⁵

Friday
Fish
\$3⁵⁰

Sunday
Buffett
\$3⁹⁵

Dinner Bell

2103 Amer. Blvd 272-3460

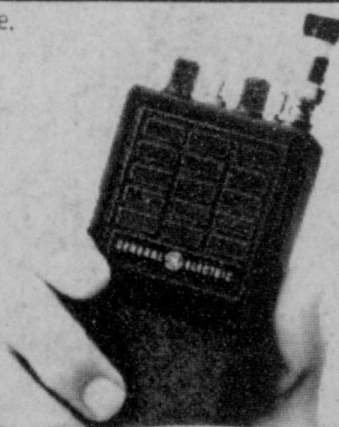
Hair Styling For Men-Women

Come In For An Individual, Easy-Care Styling Session That Will Create An Even Lovelier You!

Glenna's Beauty Retreat

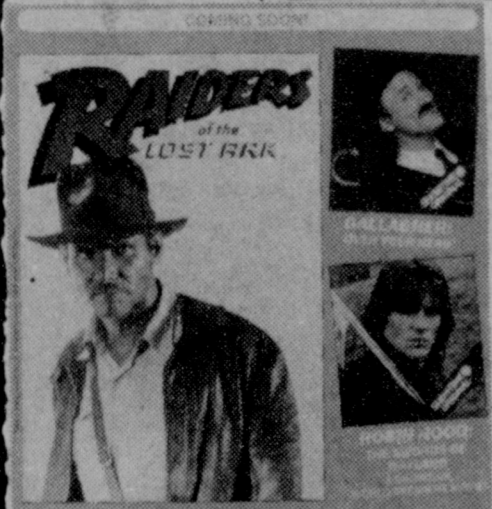
207 Ave. G 272-3092

If you've been looking for a high-performance, portable radio that isn't high in price, General Electric has the radio for you. It's the MPI™ Hand-held radio. The MPI packs the power and durability of a much larger radio into a small, affordable unit. The MPI is small enough to fit in your pocket, but it delivers the range and quality of sound that you expect to find in radios twice its size. For industrial, professional, or business use, you won't find a better hand-held radio for your money. And it's available right now.



Two-Way Radio

319 E. Amer. Blvd. of Muleshoe, Inc. 272-4888



Call Today And Find Out How You Can Get SHOWTIME!

Muleshoe Antenna Co.

220 W. 2nd 272-3310

Famous Fashions & Fabrics

We Are Now Receiving New Fall & Winter Merchandise Daily

Main Street Beauty Salon

We have a complete selection of Hoover vacuum cleaners in stock.

Fry & Cox, Inc.

401 S. First 272-4511

3 Locations To Serve

You,

Farmer's Co-op Elevators

Clays Corner
Muleshoe Enochs
Phone 272-4335

We now have the new style of Snap-In Letter Belts by Trailbuster.



Lee's WESTERN WEAR, INC.

1910 American 272-4663



Come by & look over the many new items we have received for your gift selections.

FREE Gift Wrapping

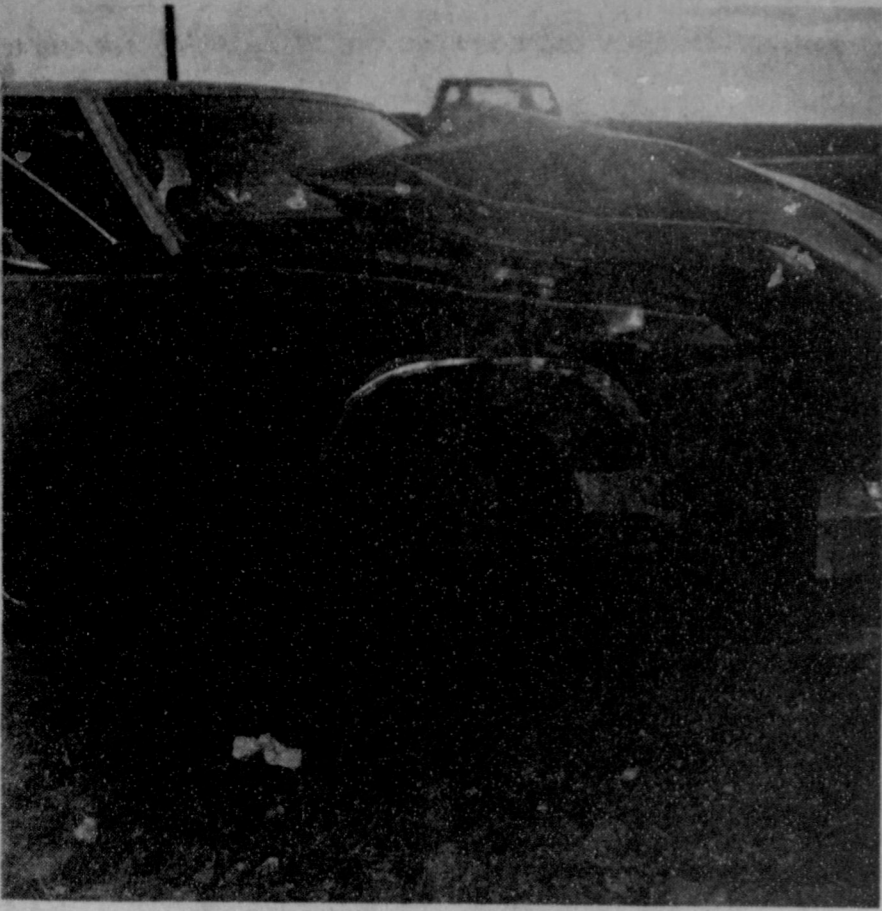
Damron Drug

308 Main 272-4210

We Now Have Lone ST★R Fine Assorted Chocolates

Art Loft

1529 American 272-3485



ONE INJURED IN WRECK--The driver of this car was taken by ambulance to West Plains Medical Center for treatment following an accident around 5 p.m. on Monday about nine miles east of Muleshoe on Highway 70. The driver of the other vehicle involved was not injured. Tuesday at noon, a woman was taken by ambulance to the local hospital for treatment of injuries received in a two vehicle accident at East Third and American Blvd.

Sarpalius Discusses "Education Forums"

Senator Bill Sarpalius announced today the scheduling of three "Education Forums" to discuss the recently passed Education Reform Act and other education issues in preparation for the upcoming regular session of the legislature.

"With the recent implementation of House Bill 72, the school reform law, and House Bill 246, the curriculum reform law, we are keenly aware of the various problems and misconceptions that have arisen throughout the educational community with respect to these two comprehensive Acts," the Senator said.

Part of the recent special

session, Sarpalius met with a number of teachers and administrators to discuss the recommendations of the Select Committee on Education. Additionally, he invited all teachers and administrators to a forum to discuss these proposals. Unfortunately, attendance was poor when this forum was held.

"We understand that the Education Reform Act is not a perfect document; in fact, there are certain provisions in the Act that we opposed, specifically with respect to competency testing and inadequate funding of the proposed career ladder program. It is our intent to rectify these and certain other issues in the upcoming regular session of the legislature," the Senator added.

"With a goal of the best possible education for the children of Texas, we are again seeking input from the educational community so that we may work together to fine tune the Education Reform Act," the Senator remarked. Sarpalius said that he and his staff have traveled throughout the Panhandle in order to solicit the advice and opinions of experienced teachers and administrators. He added, "Sadly, it is impossible to meet with all ninety school districts of the Panhandle in the short time remaining before the next regular session."

Senator Sarpalius said he plans to hold additional forums in different parts of Senatorial District 31 so that he can solicit input from teachers, administrators and parents on the future direction of public education in Texas.

Be just before you are generous.
-R.B. Sheridan.

Herring Receives Heroism Award

Ray Herring of Munday barely crawled into an electric utility truck bucket July 6, 1983, to rescue a fellow Knox County man and was awarded the 1983 Texas Rural Heroism Award for his lifesaving efforts.

The search is under way for a 1984 rural hero, says Ben Bullard of Waco, president of the Texas Farm and Ranch Safety Council which presents the annual award.

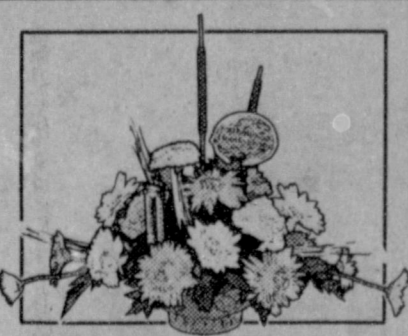
The 1984 recipient will be announced April 1, 1985, at the 46th annual Texas/Southwestern Safety Conference and Exposition to be held at the Shamrock Hilton Hotel in Houston.

Headline for submitting 1984 entries will be March 1, 1985, Bullard said. Send all nominations to Texas Farm & Ranch Safety Council, Box 489, Waco, Texas 76703.

Herring received his award last March in Dallas for saving Ray Longan, a Knox County co-op serviceman.

To qualify for the honor, a candidate must have performed a heroic act of human-lifesaving within Texas during 1984, and it should be related to farming or ranching, Bullard noted.

Nominations should include a written account of the incident and the names addresses and telephone numbers of all persons involved. Newspaper clippings and photos should also accompany the nominations when available, Bullard said.



A Thanksgiving gift with all the trimmings. Send the Nut Bowl™ Bouquet from your FTD® Florist.

Decorator's Nursery & Floral
616 South First Street
272-4340
Send your thoughts with special care.™

*Registered trademark of Florists' Transworld Delivery Association.

Letter To The Editor

November 7, 1984

Ms. Cleta Williams
Bailey County Journal
304 West 2nd
Muleshoe, Texas 79347

RE: Proposition Two
Dear Ms. Williams:
On behalf of Texas Tech University and Texas Tech University Health Sciences Center, I want to express my sincere appreciation for your coverage of Proposition Two. Your editorial support and informative articles on the Proposition certainly provided the foundation for its passage.

Media scrutiny and coverage of vital issues such as Proposition Two is essential to intelligent and informed action by voting citizens. Thank you again. All of us who care about Texas Tech and the other fine institutions of higher education in Texas will not forget your helpful role on this truly crucial matter.

Sincerely,
Lauro F. Cavazos, Ph.D.
President
Texas Tech University

He that ruleth over men must be just.
-Samuel 3:3.

Muleshoe Journal U.S.P.S. 167-820
Established February 23, 1924. Published by Muleshoe Publishing Co., Inc. Every Thursday at 304 W. Second, Box 449, Muleshoe, Texas, 79347. Second Class postage paid at Muleshoe, Texas, 79347.

MEMBER 1984
TEXAS PRESS ASSOCIATION

U. B. Hall-President
James Woods-Vice President
Cleta Williams-News
Evelene Harris-Society
Holly Millsap-Advertising
Little Nina-Circulation/Classified
Sammye Hall-Bookkeeper

SUBSCRIPTIONS:
Muleshoe Journal and Bailey County Journal
Bailey and surrounding counties \$11.95
Muleshoe Journal and Bailey County Journal
Elsewhere in Texas \$12.95
Muleshoe Journal and Bailey County Journal
Outside of Texas \$13.95
Yearly by Carrier \$11.50
Advertising rates and on application.

New home starts up 8.9 percent in September. Sparky Anderson named AL Manager of the Year. Optimism comes out of first meeting between Duarte and rebels.

Thank You

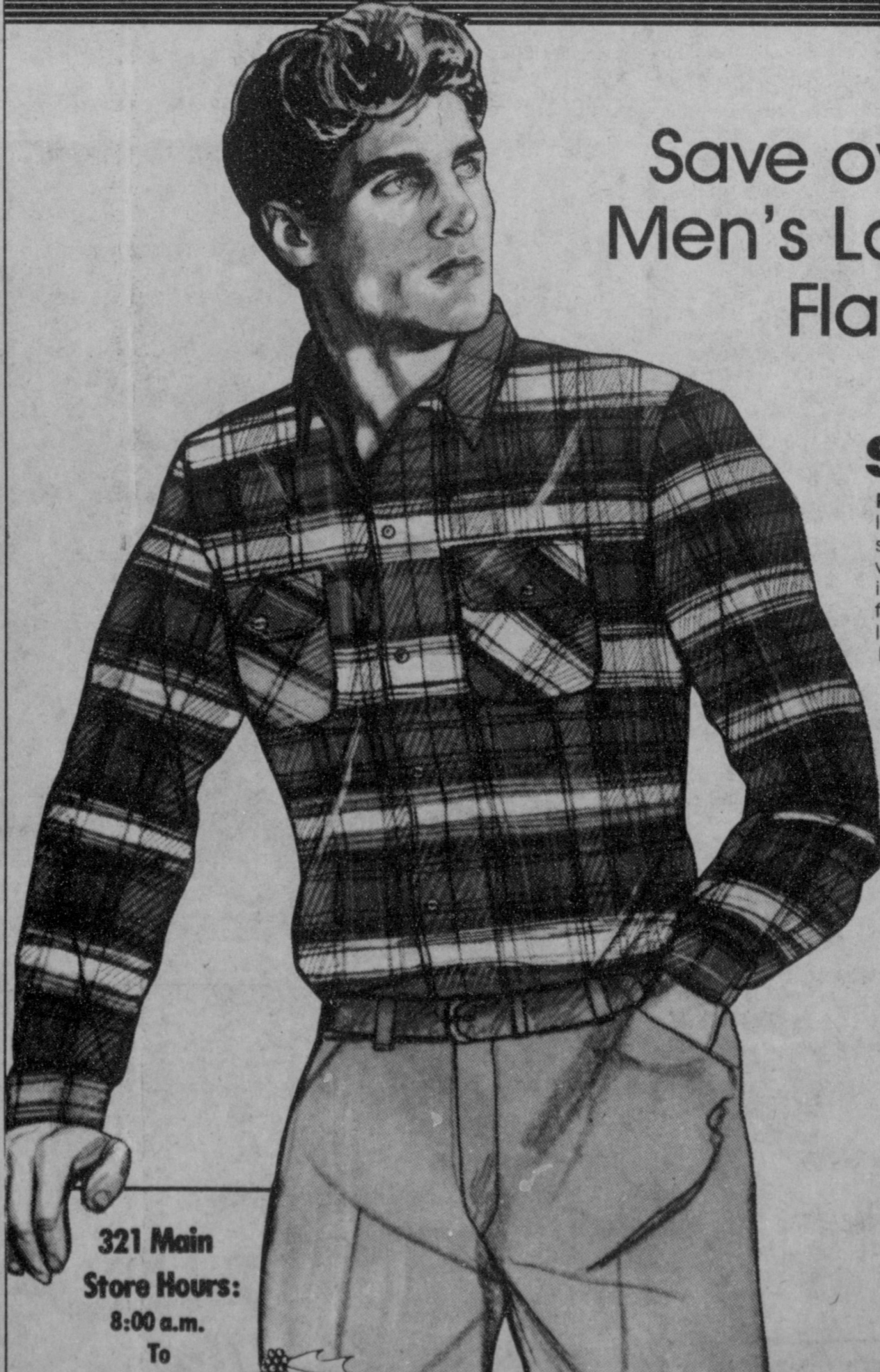
The 1984-85 Lazbuddie Senior Class Would Like To Say Thank You To The Following Muleshoe/Lazbuddie Patrons For Supporting Their Halloween Carnival & Auction. The Donations Will Be Used To Help Finance Our Senior Trip In The Spring. Our People In The Lazbuddie Community Also Appreciate Your Support.

Muleshoe State Bank
Summit Savings Association
Bill Liles
Lindsey Jewelry
Dinner Bell
The Fair Store
K-Bobs
Farmers Coop Elevator
Wilson Drilling Co.
Pivot Products Distributor's Inc.
Chick-n-Dock
Dairy Queen
Anns T-Shirt Unlimited
Pete Jesko Family
Treider Electric
Sherly-Anderson Elevators
Jerry Engelking Family
Jimmy Weaver Family
Terri Bruster Family
Ana's House of Beauty
A & M Farm Supply
Albertsons Shop for Men
Art Loft
Ben Franklin
Fry & Cox
Hurst
Western Drug
Muleshoe Floral & Gifts
San Francisco Cafe
Muleshoe Electric
James Roys Meat Market
Leal's Lee's Western Wear
Viola's Mexican Food
Sonic
Pay-N-Save
Serv-All Thriftway
Ronald Elliott Family
John Deere
Baker's Farm Supply
Wiedebush & Company

Five-Area Telephone
Sanitary Barber Shop
Robert D. Green
Wooley International
AVI
Muleshoe Animal Clinic
Mohawk Auto
Muleshoe Motor Co.
Dale Oil Co.
SPS
Western 66
Coop Gin
Fair Store
Main Street Beauty
White's
Anthony's
Lambert's Cleaners
Perry's
Bratcher Motor Supply
Lookin' Good
Something Special
Buddies Shoes
Spudnut
Antiques & Junk
Harvey Bass Appliance
Gordon Wilson Appliance
Muleshoe Auto Parts
Morrison Oil
Burton Service Center
Earl Ladd & Sons
Case
First Bank of Muleshoe
Bailey County Journal
Honey Comb
Adrian's Photography
Decorator's Nursey & Floral
Williams Brothers
IGA Super Market
Damon Drug
Higginbotham- Bartlett

super saturday

at Anthony's



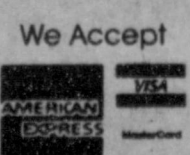
Save over 40% on Men's Long Sleeve Flannel Shirts!

sale **3⁹⁷**

Reg. 6.99. The traditional chill-busters... long sleeve flannel shirts, made of the softest 100% cotton! They're a great way to top jeans, with styling that includes 2 chest pockets and other favorite features for masculine good looks. Choose from a large variety of handsome plaids, men's sizes S,M,L,XL.



FREE Gift Wrapping with each purchase!

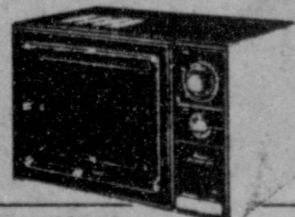


321 Main
Store Hours:
8:00 a.m.
To
6:00 p.m.

ANTHONY'S

SMALL WONDER

Amana
COMPACT
MICROWAVE OVEN



Model ML-10

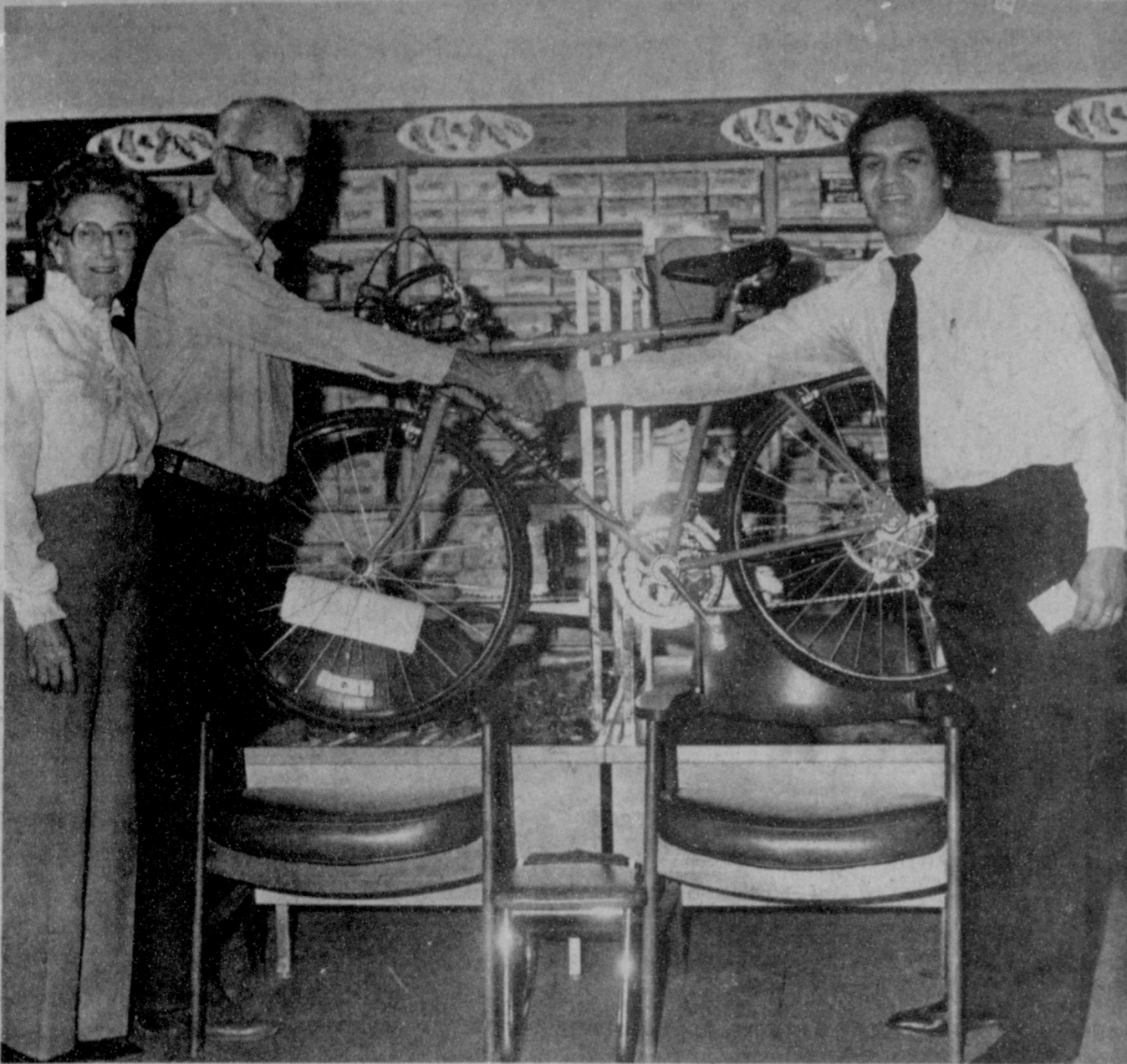
\$ **199⁹⁵**

Save space and cook fast and easy with this Amana microwave oven. Its compact size fits almost anywhere and you get many wonderful "big oven" features.

- 500 WATTS OF COOKING POWER cooks in just 1/2 the conventional time
- DEFROST CONTROL thaws frozen food fast
- EASY DIAL TIMER has adjustable speeds to 20 minutes
- SEE-THROUGH DOOR AND INTERIOR LIGHT make it easy to see food as it cooks
- REMOVABLE COOKING TRAY catches spills and boilovers
- AMANA MICROWAVE OVEN COOKBOOK

Buy the Amana Compact Microwave Oven at:

Harvey Bass Appl.
122 S. 1st 272-3030



WINNER OF BIKE--Mr. and Mrs. Willie Waddell, left, of Rt. 1, Muleshoe, happily accept a 10 speed bicycle from David Garcia, manager of C.R. Anthonys. The bicycle was one of four given by 24 area Anthony stores in Wranglers' "Live It To The Limit Sweepstakes." There other prizes, a three wheeler, an AMX Sports Car, and an AM/FM Stereo Headset will be drawn for in the C.R. Anthony General office at Oklahoma City on November 26.

OES Plans Christmas Party

The regular meeting of Muleshoe chapter No. 794, Order of the Eastern Star was held Tuesday evening, Nov. 6 in the Masonic Hall, with Eulaine Phillips, Worthy Matron, and Bob Phillips, Worthy Patron, presiding.

The Bible was placed upon the altar, Pledge of Allegiance was recited in unison and

Xi Omicron Xi Christmas Social Plans Made

Xi Omicron Xi met Tuesday, Nov. 6 at 7:30 p.m. in the home of Gayla Toombs, with Lindy Schuster as co-hostess.

Plans for the Christmas Social were discussed and a tentative date of December 20 was set.

The group sponsored Bingo at the nursing home this month and plans were made to do this again in January.

The group sponsored Bingo at the nursing home this month and plans were made to do this again in January.

Ruth Hall of the Muleshoe Heritage Foundation presented the program. She told of plans to move two historical buildings to the west side of Muleshoe. These include the Janes Ranch House (Muleshoe Ranch Cookhouse) and the Depot.

Members were served refreshments of taco salad, bean dip and guacamole salad.

Those present included: Gayla Toombs, Rickie Warren, Jana St. Clair, Debbi Hutto, Pat Black, Sheri Hawkins, Alice Liles, Linda Marr, Cindy Purdy and Lindy Schuster.

"America" was sung. Routine business was transacted.

Mrs. Mary Sue Eakes of Happy chapter No. 562, Deputy Grand Matron of District two, section three, Grand Chapter of Texas, OES made her official visit to the chapter.

She brought greetings from the Worthy Grand Matron, Mrs. Beulah Speer, of Idalou and the Worthy Grand Patron, Wayne Jones of Fort Worth. She gave instructions and information regarding chapter proceedings. She was presented a money corsage and honored with a dinner at K-Bob's Steak House. The invocation was given by Frank Hinkson.

Texas Miss U.S. Teen Pageant Set

Applications are now being accepted from girls 13 thru 19 for the Miss Texas U.S. Teen Pageant.

The Texas winner will receive \$250 in cash, one year college scholarship, all expense trip to the national pageant including airfare, jewelry, color portrait, crown, banner, trophy, and a host of gifts and products.

In addition to the state title, awards will be given in leadership, friendship, and photogenic categories.

The Texas pageant will be held at the North Park Inn in Dallas. Judging is based on poise, personality, school, and community involvement.

Over \$100,000 in cash and tuition scholarships will be offered at the national pageant. Miss U.S. Teen will receive a four year college scholarship, Caribbean vacation, \$1,000 cash, watch, jewelry, perfume, make-

up, complete modeling portfolio, TV and personal appearances, crown, banner, trophy and a year of travel and excitement. The national pageant will be video taped for television.

For further information contact: Carole Clements, National Director, Miss U.S. Teen, P.O. Box 1229, Auburn, Al 36830 or call (205) 745-6875 IMMEDIATELY.

Alpha Zeta Pi

Met Tuesday

In Bonds Home

On Tuesday, Nov. 6 the Alpha Zeta Pi chapter of Beta Sigma Phi held their first meeting of November in the home of Annette Bonds.

Homemade banana splits with all the trimmings and iced tea were served.

A brief business meeting was held. Old business was discussed and upcoming events were discussed and voted on.

Plans were shown and suggested for the Christmas Bazaar being held Nov. 30 and Dec. 1 at the Bailey County Civic Center, by Lyniece Goodnough

and Traci Matsler for the program.

Members present included: Jan King, Paula McMeans, Lynice Goodnough, Barbara Young, Annette Bonds, Gina Smith, Tammy Black, Debbie Fred, Traci Matsler, Gwyn Murray, Rhonda Myers, Marilyn Crittendon, Roxi Johnson and Susan Wedel.

Come By And Get Your Holiday Gift Certificates Today!



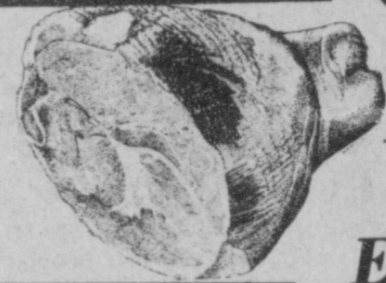
35 lb **Family Pack \$69⁹⁹** 2 lb Bag \$1⁵⁰ lb

20 lb **Freezer Pack \$36⁹⁹**

Be Sure To Check Our Low Hamburger Specials Every Week

Save on your Christmas

Hams \$1⁸⁹ lb



Bring your Holiday Turkeys in & Let us smoke them for you.



Country Style

Pork \$1⁶⁹ lb

Winklers Have Smoked Turkeys For Sale

We do Wild game processing

Winkler Meat Co.

401 Main

272-4703



ROSTER

- 10 Hector Flores
- 12 Lester Burks
- 20 Mike Precure
- 22 Loy Triana
- 24 Andy Copley
- 32 Mark Moton
- 40 John Isaac
- 42 Jeff McCarty
- 44 Rob Donaldson

Our wishes for good luck and many successes follow you for your season. Do us proud. You are the **NEW GENERATION!!** Ray Day and All Thriftway Employees

Dairy Queen knows what makes a burger better.

NEW HOMESTYLE Hungr-buster 99¢

Let's get right to the meat of the matter. What makes our new Homestyle Hungr-buster[®] so much better is the beef. A quarter-pound of 100% pure beef to be exact, in a real homestyle patty made especially to be juicier, more tender and more flavorful. Made to your order, and topped just the way you want it. Come taste the new Homestyle Hungr-buster[®] at Dairy Queen. There's no better burger. Because there's no taste like home.

Monday thru Sunday, Nov. 5-Nov. 18, 1984

Dairy Queen

"Just keeps on getting better."



Journal Files

60 Years Ago

1924

Irish potatoes for sale at 3 cents pound, eight miles west of Muleshoe.

FOR SALE--One year subscriptions to the Muleshoe and one year to Dallas Semi-weekly Farm News for \$2.00 good on renewals or new subscriptions.

50 Years Ago

1934

The Goodland School started Monday morning after closing for cotton picking. There were not so many started to school Monday.

30 Years Ago

1954

Dollar Day specials at a local department store included: boys or girls school oxfords \$2; cotton socks 5 for \$1; mens dress socks 3 pair \$1; mens new fall dress slacks \$5; men's flat knit Tee-shirts 3 for \$1; non skid back rugs or bath sets \$1; cotton sheet blankets \$1; Garza sheets (guaranteed for not less than 100 washings) size 81x99 -- \$1.79; wash cloths 12 for \$1; bath towels 2 for \$1; chenille bed spreads (full bed size) \$3.88 each.

20 Years Ago

1964

A local grocery store featured the following specials in their ad in the Journal this week: quart jar Miracle Whip 49 cents; canned milk 3 tall cans 39 cents;

46 ounce can tomato juice 25 cents; No. 303 can fruit cocktail 17 cents; No. 303 can pumpkin 19 cents; No. 2 1/2 can yams 19 cents; eight ounce carton whipping cream 39 cents; two pound carton cottage cheese 59 cents; lettuce two heads 29 cents; four pound bag apples 29 cents; pumkins (all sizes) 5 cents pound; sirloin steak 19 cents pound; chuck roast 49 cents pound; ground beef 3 pounds \$1; stew meat 69 cents pound; and fryer breasts two pound package 98 cents.

10 Years Ago

1974

L.E. Bratcher, who farms three miles west of Muleshoe produced the first bale of cotton for the Muleshoe Co-op Gin this year. The bale was ginned from 2260 pounds of seed cotton, producing 515 pounds of lint and 900 pounds of seed.

ONE MINUTE SPORTS QUIZ

1. Who is the 1984 PGA player of the year?
2. Jan Stenerud plays pro football for what team?
3. Who was the LPGA top money winner in 1984?
4. Darrell Porter is known in what pro sport?
5. What year did Wilt Chamberlain first lead the NBA in scoring?

Answers To Sports Quiz

1. Tom Watson.
2. Minnesota Vikings.
3. Betsy King.
4. Baseball.
5. 1960.



CHRISTMAS CARD PROJECT--The Muleshoe Hospital Auxiliary Christmas Card project is under way again this year, and the first donation was received from Janie and Rudolph Maraw. Proceeds from this project will be used to purchase a movie projector for the nursing home. Contributions may be made at Muleshoe State Bank, First National Bank, Poyner's White Stores or by mailing to the Muleshoe Hospital Auxiliary 708 S. First St., Muleshoe, Tx. 79347 or given to any auxiliary member.

THE 25 1/2 BUDGET--It's very difficult to tell any family how much they should spend on food, clothing, shelter, transportation and other items, because all families are different, says family finance expert Nancy L. Granovsky. But financial counselors at some of the non-profit consumer credit counseling services have developed a simple, easy to understand system called the 25 percent budget, says Granovsky, a home economist with the Texas A&M University Agricultural Extension Service. To make this budget work, you divide your monthly take home pay into four equal parts. Assign 25 percent for housing, 25 percent for food, 25 percent for monthly loan payments and 25 percent for

everything else, she explains. While using the 25 percent budget and 25 percent for everything else, she explains. While using the 25 percent budget guideline may not be helpful to every family, it does provide a benchmark, especially for those who are not budgeting at all and may be experiencing some financial difficulty, says the home economist.



LATEST ARRIVALS

Jeffery Cade Stevens

Mr. and Mrs. Blake Stevens are the proud parents of a son born at 1 a.m. Friday, Nov. 9 in West Plains Medical Center.

The young man weighed eight pounds and seven ounces and has been named Jeffery Cade. The couple have one other child, Mica, two years of age.

Grandparents are Duane and Frances Stevens and Joe Pat and Jerie Wagnon, all of Muleshoe.

Great grandparents are T.R. and Vivian White, Oneita Wagnon and Sena Stevens, all of Muleshoe, and Tommy and Bonnie Lamb of Texarkana.

Amanda Beth Locke

Mr. and Mrs. Ferris Locke are the proud parents of a daughter, Amanda Beth, born at Clovis High Plains on Sunday,

Oct. 28.

Amanda Beth weighed seven pounds and six ounces. She has four half sisters and one half brother.

Grandparents are Mr. and Mrs. L.W. Core of Muleshoe and Mrs. Wanda Locke of Lubbock.

STUDY SHOWS CONSUMER STEAK PREFERENCES--Many American consumers still prefer higher grades of steak, but a significant number -- especially in the west and south -- are willing to buy lower grade, leaner cuts with less fat. Those are the findings of consumer preference tests conducted in four cities by researchers at Texas A&M University's Agricultural Market Research and Development Center. The study showed that consumer ratings of steaks prepared at home generally agreed with USDA grading standards, which are based on the amount of fat within the lean. But about 25% of the consumers in the sample found leaner beef acceptable in terms of its eating quality and indicated they would buy it, said Dr. Robert Branson, project director.

The problems of life are usually those matters which, after all, do not amount to very much.

Haq Babur, M.D.

Announces The Opening Of His Office For

Neurosurgery Practice

(Adult & Pediatric)

November 21, 1984

2000 W. 21st ST.

Clovis N M

Call 505-762-3700

For Appointment

(Across From Clovis Hospital)



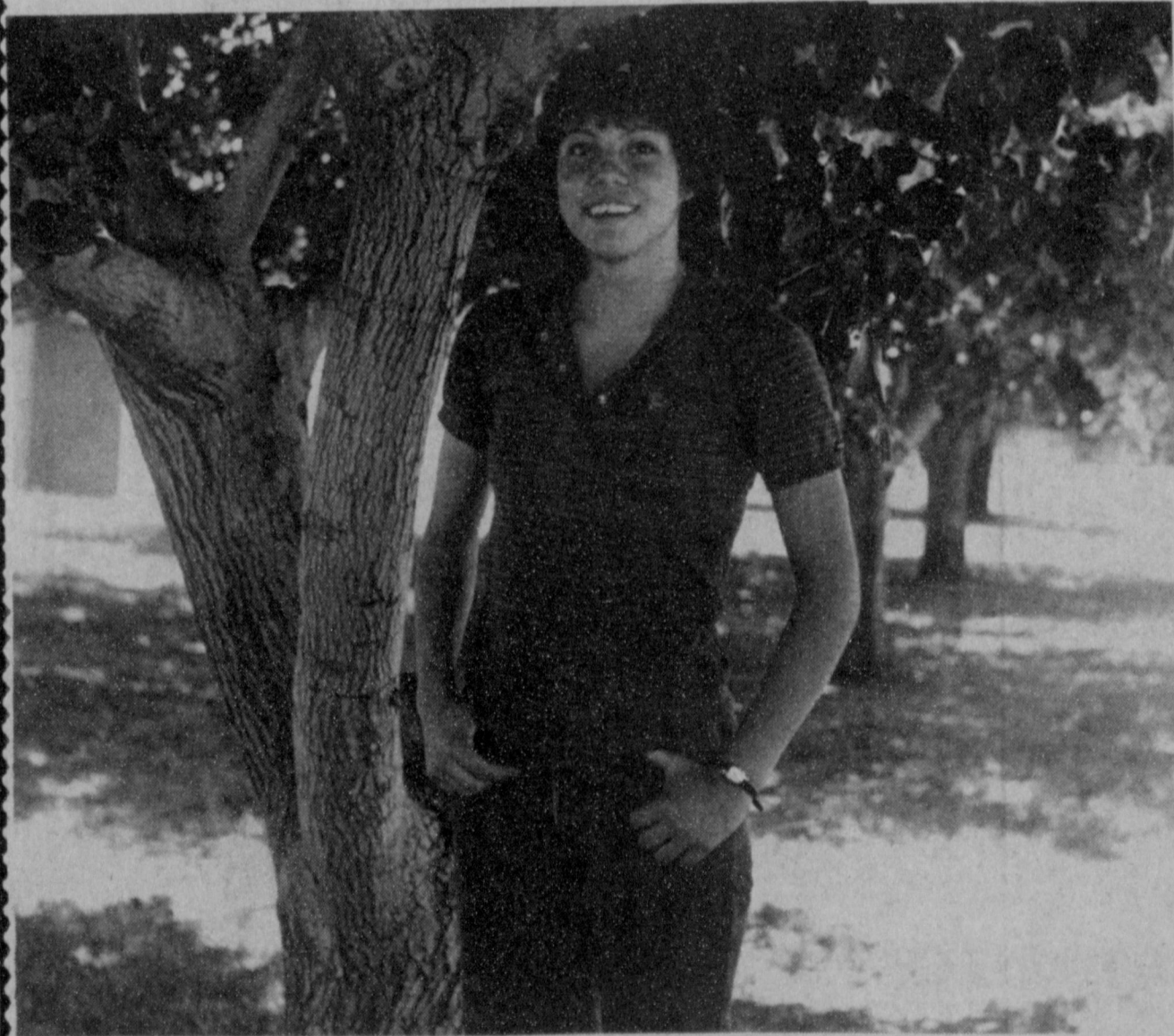
NEW STORE HOURS

**7:30 A.M. till 7:30 P.M.,
MONDAY
THROUGH SATURDAY**

Saluting

**LEADERS
OF
TOMMORROW**

*We Believe Our Youth Of Today Will
Provide Effective Leadership Tomorrow*



LEADER OF TOMORROW--Our leader of tomorrow this week is Mary Lou Bastardo, an 8th grader at Watson Junior High School. Her parents are Robert and Martha Bastardo and she has one sister, Penny, a junior at Muleshoe High School. Mary Lou likes Soccer, Baseball, Basketball, Track and Art as hobbies and her favorite food is seafood. She excels in track and basketball and as extra curricular subjects she is taking band, basketball, & track. We salute this young lady as a leader of Tomorrow.

PROUDLY PRESENTED BY:



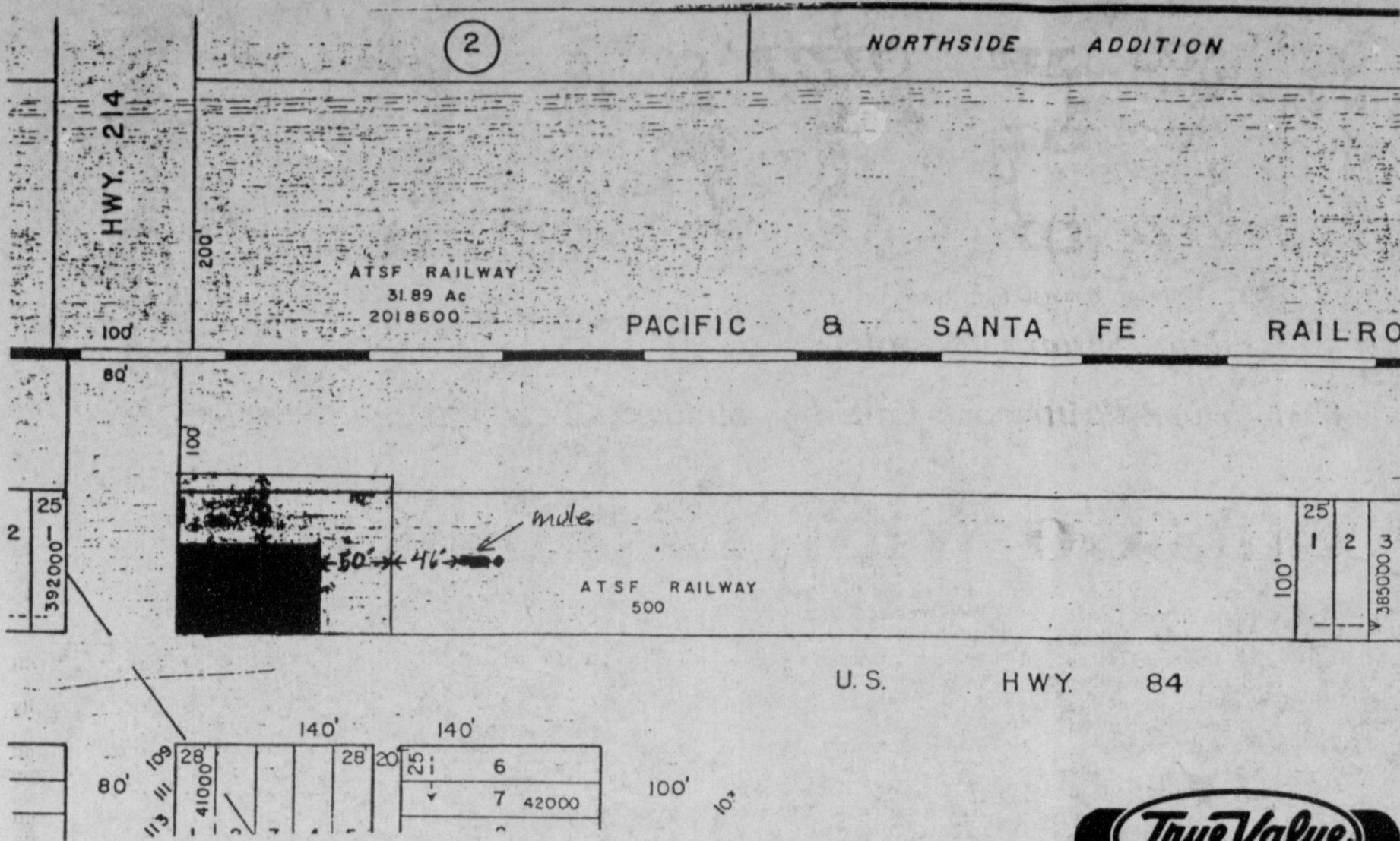
<p>SELF BASTING, WITH TENDER TIMER</p> <p>SHURFRESH TURKEYS 10-12 LB. AVG. OR 12-14 LB. AVG.</p> <p>79¢ LB.</p>	
<p>COOKED FOOD SPECIAL AS FEATURED ON TV</p> <p>FRESH COOKED READY TO GO BURRITOS</p> <p>2 FOR 99¢</p>	<p>COOKED FOOD SPECIAL AS FEATURED ON TV</p> <p>W FREE SMALL COFFEE OR HOT CHOC.</p> <p>2 SAUSAGE & BISCUITS FOR 99¢</p>
<p>BOLOGNA, SALAMI, LUNCHEON LOAF</p> <p>LUNCH MEATS</p> <p>DECKER 6 OZ. PKG. 69¢</p>	<p>CONOCO</p> <p>ANTI-FREEZE</p> <p>\$3.59</p>
<p>HOME FOR THE HOLIDAYS</p> <p>BORDEN'S BUTTERMILK 1/2 GAL. CTN. \$1.09</p>	<p>BORDEN'S WHIPPING CREAM 1/2 PINT CTN. 59¢</p>
<p>FALL AT WAREHOUSE SALE</p>	
<p>SHURFINE SUGAR 5 LB. BAG \$1.49</p>	<p>BORDEN'S ICE CREAM 1/2 GAL. RND. CTN. \$1.79</p>
<p>SUGAR FREE 7-UP</p> <p>DR. PEPPER 2 LITER 99¢</p>	<p>INSIDE FROST 75 100 WATT SYLVANIA LIGHT BULBS 2 CT. PKG. 88¢</p>
	<p>ALL BRINDS HILLS BROS. COFFEE 1 LB. CAN \$2.19</p>
	<p>ZEE PAPER TOWELS 49¢</p>
	<p>KRAFT MACARONI & CHEESE 7 1/4 OZ. 4/\$1.00</p>

ALLSUP'S
CONVENIENCE STORES

OPEN THANKSGIVING

ICE-MILK-BREAD-FRESH PRODUCE-SOFT DRINKS-SNACKS-BROWN & SERVE ROLLS-CHIPS & DIPS WHILE SUPPLIES LAST!

PRICES EFFECTIVE
NOVEMBER 15-17, 1984



Farm...

Con't From Page 1
committee.

WOOL AND MOHAIR
January 31, 1985 is the final date for filing 1984 wool application for the wool incentive program.

1984 COOPERATING GINS
All gins in Bailey County except for Maple Co-op Gin have certified the use of bagging and ties that meet CCC requirements to place cotton in the CCC Loan program.

COMMUNITY COMMITTEE ELECTION

Ballots will be mailed to eligible voters on November 23, 1984. The last day to return

ballots is December 3, 1984. Ballots will be counted at the county ASCS office on December 5, 1984. Please vote for the farmer of your choice and return it to this office, added Noble.

FEDERAL CROPS FINAL PLANTING DATE
The final planting date for wheat and barley is November 15, 1984. This is for Federal crop purposes.

FOREIGN INVESTMENT
Foreign investors buying land are required by law to report any purchase or sale to the USDA within 90 days of the transaction. Penalties can amount to 25 percent of the fair market value of the property. Forms are available at the ASCS office in Muleshoe.

City...

Con't From Page 1
don't anticipate any type of traffic problem, in fact, we can see where maybe some traffic problems could be eased right away."

No decision was made at the November meeting as to whether or not to write the letter of approval to the Santa Fe Railway, waiting to hear from the general public. A decision will be announced at the December 18 meeting of the city council.

In other action, Muleshoe City Secretary read the proposed ordinance which would annex 88.75 acres of land northwest of the City of Muleshoe to the city. The final reading of the ordinance will be on December 18. No one attended the meeting to object to the proposed annexation of land that would take in both sides of the highway to the 1760 'Y' on West Highway 84.

Following a discussion, a bid from IBM for a new computer for the city was approved unanimously.

Marr said, "The bids we opened on October 23, 1984, contained bids on four hardware configurations. Two system configurations from each of the vendors, NCR and IBM.

"Both of the vendors produce good equipment and have

reliable service delivery systems."

He suggested the council approve the IBM bid as it is the lowest bid when compared with the NCR bid, and will allow the city to do a software conversion initially rather than a complete software purchase. It also will allow expansion in the future, he added, plus maintenance for the IBM will save the city \$3,311 annually over the maintenance cost as proposed by NCR.

Also briefly discussed were proposed improvements to grade crossings on the Santa Fe Railway and said the city has approved closing the crossings while the work is being done.

Contest...

Con't From Page 1

grand prize as he was first place in the sixth contest for 10 points, and had a third place win in the seventh contest for an additional four points.

Still leading the pack are Danny May and Mrs. John Hayes, who each have 20 points.

The contest is beginning to wind down, and with the points accumulated, it is still anybody's (almost) contest. The grand prize winner will receive a check in the amount of \$100 for their efforts this fall.

Texas A&M book is consumer guide to Texas insurance

COLLEGE STATION — "Understanding Texas Insurance" — the very title of the newest book from the Texas A&M University Press promises a lot.

The author, Houston attorney Douglas Caddy, delivers with a consumers' guide that deals in layman's language with life, health, automobile, property and casualty and business insurance, in addition to retirement ramifications of insurance.

"Understanding Texas Insurance" (156 pages, \$12.50) includes a foreword by Dr. Henry C. Dethloff, head of the Texas A&M University History Department.

"In the interest of providing a service to the people of Texas and to the insurance industry, this brief survey reviews the development of the insurance business and seeks to identify and explain the choices available to the public," notes Dethloff, adding that no attempt is made to advocate any particular kind of insurance.

◆ **BEST IN THE FIELD** ◆

PARTS

R.O.U.N.D.U.P.

Buy one battery at regular price

Get a second battery at 1/2 price

See us today.
Offer ends November 30.

Reynolds & Young, Inc.

803 W. American 272-4236

BARGAIN OF THE MONTH

While Supplies Last
9⁹⁹

3 1/2-Qt. Slow Cooker
Tenderizes meats and simmers in good flavor. Almond. 3100MB
QUANTITIES LIMITED

TOOL VALUE OF THE MONTH

While Supplies Last
7⁷⁷

11-Pc. Wrench Set
Contains 6 standard and 5 metric wrenches of drop-forged chrome-vanadium steel in pouch. 1161AM
QUANTITIES LIMITED

HARDWARE VALUE OF THE MONTH

While Supplies Last
10⁸⁸

20-Ft. 18/3 SVT Reel Light
With metal case, grounded bulb guard, more. Bulb not incl. 44610
QUANTITIES LIMITED

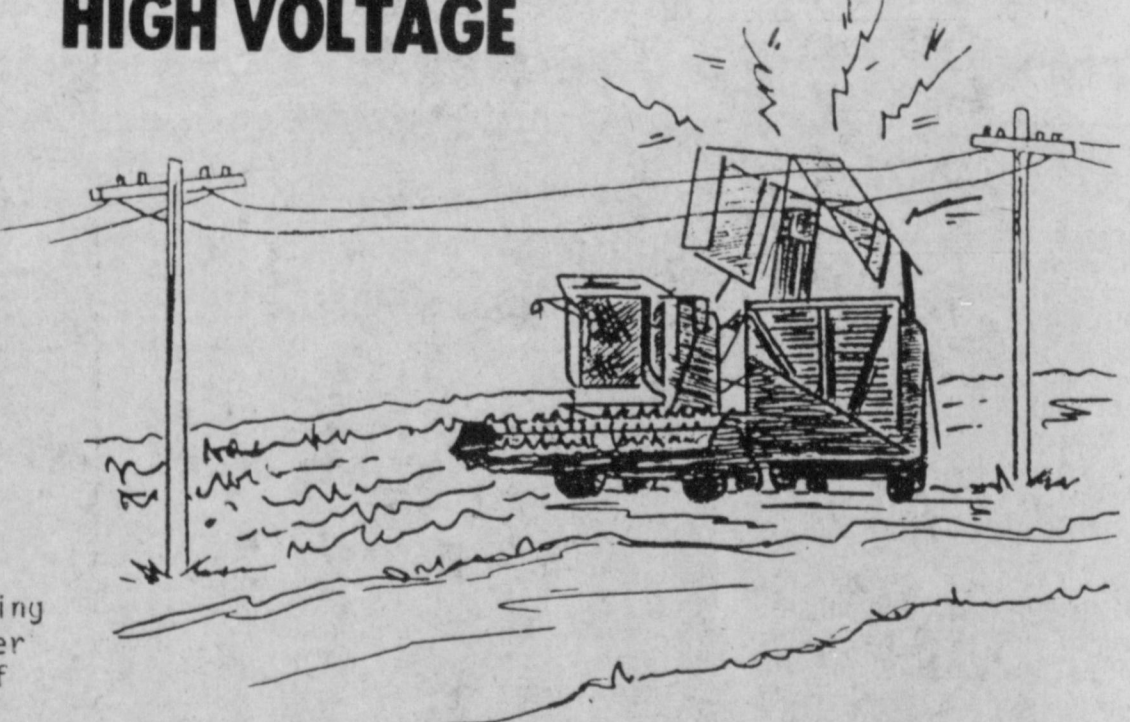
Fry & Cox, Inc.

401 S. 1st.

272-4511

DANGER! HIGH VOLTAGE

COTTON HARVEST IS HERE AGAIN and BAILEY COUNTY ELECTRIC COOPERATIVE ASSN. urges extreme caution when operating farm equipment near electric lines!



In recent years, many tragic incidents have occurred involving cotton module builders and power lines. The extended portion of the cotton module builder can come into contact with overhead electric lines if the operator is not very careful. The same problem exists with overhead baskets on cotton strippers.

We urge farmers and their employees to be alert to these potential hazards and to take every possible precaution to avoid serious injury... or even death! When you are moving a module builder, be sure the packer arm is lowed as far as it will go. When using a stripper with an overhead basket, be sure to check for overhead lines before dumping.

If some piece of equipment DOES contact these 7200 volt lines, it is important that you or the operator not try to simply back away. The line could break, or if it's already broken, it could tangle in the equipment and break again, compounding the problem and increasing the danger. Jump clear of the machine, being sure NOT to touch the ground and the machine at the same time. Move quickly away at a right angle to the power line. Then call the Cooperative office whether or not the line is broken so they can help you.

REMEMBER -- a little precaution is ALWAYS worth the time it takes !!

BAILEY COUNTY ELECTRIC COOPERATIVE ASS'N

PHONE 272-4504

P. O. DRAWER N
MULESHOE, TEXAS 79347



Back The Mules Football CONTEST



Now That Football Season
Is Over!

Get Out And Support
The
Cross Country Team

And The
Muleshoe
Basketball Teams

1st \$6
2nd \$3 3rd \$2

CONTEST RULES:

1. Pick the winner of each of the games contained in the advertisements on this page. Write the name of the teams you think will win opposite the game number in the blanks provided on the official contest blank.
2. The contestant must be 12 years of age or older.
3. Only one entry per person may be made for any one contest.
4. Bring you entry blank by The Journal office by 5:30 p.m. Friday, or, if mailed, the entry must be postmarked not later than 5:30 p.m. Friday. Write "FOOTBALL CONTEST" on mailed entry, and mail to P.O. Box 449, Muleshoe, Tx. 79347.
5. Pick and write in the score of the tiebreaker game. This score will be used to break weekly as well as grand prize winners. Decision of The Journal's scoring judges will be final.
6. Check the team you think will win; 10 points for first place, 6 points for second place and 4 points for third place.
7. To count for grand prize, entries must be on official blank printed in the paper.

1 **K-Bob's**
Is Now OPEN
6 a.m. - 10 p.m.
K-BOB'S STEAKHOUSE
1008 W. Amer. Blvd.
7 Days a week
ARKANSAS VS. TEXAS A&M

7 Eat With Us After
Each Football Game
Dinner Bell Cafe
2103 Amer. Blvd. 272-3460
CLEMSON VS. MARYLAND

2 "Let Us Fix All Your
Scratches & Dents"
**Shipman & Sons
Body Shop**
410 N. 1st 272-4408
BOSTON COLLEGE VS. SYRACUSE

8 "Three Locations
To Serve You"
Enochs - Muleshoe - Clays Corner
**Farmers Co-op
Elevators**
272-4335
PENN STATE VS. NOTRE DAME

3 "Your Cleaning Business
Is Always Appreciated Here"
Lambert Cleaners
123 Main 272-4726
WISCONSIN VS. MICHIGAN STATE

9 "Come Visit Us For All
Your Prescription Needs"
Western Drug
114 Main 272-3106
COLORADO VS. KANSAS STATE

4 See Us For All Your
Commercial Printing.
No Job Too Large
Or Too Small
Bob Stovall Printing
221 E. B 272-3373
STANFORD VS. CALIFORNIA

10 **Henry Insurance and Realty**
KENNETH R. HENRY
CERTIFIED INSURANCE COUNSELOR
REAL ESTATE BROKER
111 W. AVENUE B
PHONE 808 / 272-4581
MULESHOE, TEXAS
OHIO STATE VS. MICHIGAN

5 Your One-Stop
Headquarters For Gas
& Snacks
B&D Target Gas
323 W. American Blvd.
SOUTHERN CAL VS. UCLA

11 "Your Dealer For Jones-
Blair Paints and Dearborn Heaters"
Dearborn **JB**
STOVE COMPANY - DALLAS, TEXAS
A Division of Aulison Products Company
Higginbotham-Bartlett Co.
215 Main 272-3351
MEMPHIS STATE VS. TULANE

OFFICIAL ENTRY BLANK

NAME _____

ADDRESS _____ PHONE _____

1 _____

2 _____

3 _____

4 _____

5 _____

6 _____

7 _____

8 _____

9 _____

10 _____

11 _____

12 _____

13 _____

TIEBREAKER

SMU VS TEXAS TECH

TEXAS VS TCU

Winners:

1. James Hanson
2. Dr. Jerry Gleason
3. Juan L. Garza

6 **Ben Franklin**
Better quality for less
2104 W. American Blvd Open 9 a.m. to 8 p.m.
Trival Pursuit Game
\$19⁹⁷
ILLINOIS STATE VS. WICHITA

13 We Design & Manufacture
Fine Jewelry
Jim & Jan Crawford
J.L.C. Company
213 S. 1st
GEORGIA VS. AUBURN

12 Shop & Save
The Thrifty Way
Serv-All Thriftway
NEBRASKA VS. OKLAHOMA

West Plains Hospital Report

PATIENTS IN WEST PLAINS MEDICAL CENTER

Nov. 9 - Mary Whitson, Heriverto Galvaniz, Vashti Fowler, Sandra Monriques, Victoria Torres, Ruby Alexander, Ricky Vaughn, Doris Herrington, Bryan Rasco, Madge Clements, A.J. Commons, Johnny Burch, Mike Morris, Cleo Bellar, Gregorio Torres, Andrea Garza, III, Melissa Garcia and Tyree Stevens.

Nov. 10 - Mary Whitson, Cleo Bellar, Beta Lancaster, Vashti Fowler, Sandra Monriquez, Victoria Torres, Melissa Garcia, Ruby Alexander, Ricky Vaughn, Doris Herrington, Blanche Aubrey, Bryan Rasco, Madge Clements, A.J. Commons, John Burch, Mike Morris, Tyree Stevens and Baby Boy Stevens.

Nov. 11 - Mary Whitson, Cleo Bellar, Beta Lancaster, Vashti Fowler, Sandra Monriquez, Monroe Roberts, Ruby Alexander, Ricky Vaughn, Doris Herrington, Blanche Aubrey, Madge Clements, A.J. Commons, John Burch, Mike Morris, Tyree Stevens and Baby

Terrell R. Johnson Former Muleshoe Resident Dies

Services for Terrell Randall Johnson, 42, of Rosenberg, Tx., formerly of Muleshoe, were held at 11 a.m. Wednesday, Nov. 14 in Davis Funeral Home in Rosenberg.

Burial was in Wilcox, Ariz. Johnson died Monday morning in Rosenberg.

Johnson was born and raised in Muleshoe, where he attended the Muleshoe schools. He moved to Rosenberg approximately one year ago from Wilcox, where he had lived eight years.

Survivors include his wife, Wanda; two sons, Scott and Jeff, both of the home; his father, Terrell Randall Johnson, Sr. of Wilcox, Ariz. He was the nephew of Randy Johnson of Muleshoe.

Harrison Infant

Services Pending

Funeral services for John Harrison, 6 months old son of Ricky and Joyce Harrison of Albuquerque, are pending with Steed-Todd Funeral Home. He died Saturday at his home in Albuquerque, N.M.

Survivors include his parents; two sisters, Christy and Laura, of the home; one brother, Ricky, of the home; and grandparents John and Jean Harrison of Clovis, N.M. and Ray and Zora Stroud of Muleshoe.

Muleshoe Woman's Sister Dies

At Friona

Funeral services for Elizabeth Carmichael, 69, of Friona were held at 2:30 p.m. Sunday, Nov. 11 in the Sixth Street Church of Christ in Friona with D. L. Harguess, a Church of Christ minister, officiating, assisted by Leon Talley, minister.

Interment was in Friona Memorial Park under the direction of Ellis-Blackwell Funeral Home of Friona. Mrs. Carmichael died at 9 a.m. Friday in High Plains Baptist Hospital in Amarillo.

A native of Sherman, Mrs. Carmichael was a former long-time Berger resident and had lived in Parmer County 32 years. She was a retired first and third grade teacher in the Friona schools and was a member of the Church of Christ.

Survivors include her husband; one son, Danny of Big Spring; one daughter, Susie Knox of Los Alamos, N.M.; two sisters, Leta Engle of Canyon and Gladys Darsey of Muleshoe; one brother, Nelson McMahan of Matador; and three grandchildren.

Rug Doctor.

Cleans office carpets and upholstery too!

When your business office needs a good cleaning, try Rug Doctor and save.



Rent the Rug Doctor at:

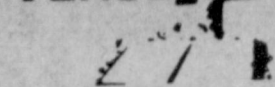
Muleshoe IGA

Main & Ave. D.

Boy Stevens.

Nov. 12 - Mary Whitson, Cleo Bellar, Beta Lancaster, Vashti Fowler, Sandra Monriquez, Monroe Roberts, Ruby Alexander, Ricky Vaughn, Doris Herrington, Blanche Aubrey, Madge Clements, A.J. Commons, John Burch, Mike Morris, Tyree Stevens and Baby Boy Stevens.

BIBLE VERSE



Before him shall be gathered all nations: and he shall separate them one from another, as the shepherd separateth the sheep from the goats.

1. Where does this quotation occur in the Bible?
2. Who spoke these words?
3. To what event do they refer?
4. Does this quotation appear elsewhere in the Bible?

Answers to Bible Verse

1. Matthew 25:32.
2. Jesus in a parable.
3. The last judgment.
4. No.

LINK FOUND

BOSTON -- Lou Gehrig disease may be caused by a protein that prevents healthy nerve cells from growing to replace damaged cells, says a study released recently.

Ten Commandments Of Firearm Safety

Accidents with firearms don't just happen. They are caused by ignorance, carelessness or disregard for safety rules.

With hunting season at hand, now is a good time to review firearm safety rules, says Spencer Tanksley, county Extension agent with the Texas Agricultural Extension Service, Texas A&M University System.

He lists these "Ten Commandments of Firearm Safety:"

1. Treat every gun with the respect due a loaded gun.
2. Watch that muzzle! Be able to control the direction of

the muzzle even if you should stumble.

3. Be sure the barrel and action are clear of obstructions and that you have only ammunition of the proper size for the gun you are carrying.

4. Be sure of your target before you pull the trigger; know identifying features of the game you hunt.

5. Unload guns when not in use. Take down or have actions open; guns should be carried in cases to the shooting area.

6. Never point a gun at anything you do not want to shoot; avoid all horseplay with a firearm.

7. Never climb a fence or tree or jump a ditch with a loaded gun; never pull a gun toward

you by the muzzle.

8. Never shoot a bullet at a flat, hard surface or water; at target practice be sure your backstop is adequate.

Store guns and ammunition separately beyond the reach of

children and careless adults.

10. Avoid alcoholic beverages before or during shooting.

Fire at Postal Service headquarters causes \$100 million in damages.

MULESHOE TRADE CENTER

New Furniture Too Expensive?

See John For Good Used Furniture.

130 Main

272-4906

A&M
NEW STORE HOURS
7:30 A.M. till 7:30 P.M.
MONDAY THROUGH SATURDAY

Video Rental
Rent disc Player & 3 Movies
\$12⁹⁹ overnight
Saturday Til Monday - Same Price

Wilson
Appliances

117 MAIN 272-5531

Attend The Church Of Choice

Immaculate Conception Catholic Church

Father Patrick Maher
Northeast of City in
Morrison Addition

Latin American Methodist Mission

Jose M. Fernandez, Pastor

Emmanuel Baptist Church

Iglesia Bautista Emmanuel
107 East Third
Isaias Cardenas, Pastor

Church Of The Nazarene

9th and Ave. C.
Jimmie Williams, Pastor

Muleshoe Baptist Church

8th and Ave. G
Bob Dodd, Pastor

First United Methodist Church

507 W. 2nd, Muleshoe
Bill Kent, Pastor

The Community Church

Morton Highway
H.D. Hunter, Pastor

Templo Calvario

507 South Main
J.L. Soto, Pastor

United Pentacostal Gospel Lighthouse Church

207 East Ave. G.
Rev. J.A. Torres

Spanish Assembly Of God

East 6th and Ave. F
Luis Campos, Pastor

Primera Iglesia Bautista

East Third and Ave. E
Roy Martinez, Pastor

Longview Baptist Church

Phone 946-3413
B.C. Stonecipher, Pastor

Progress Baptist Church

Donald G. Proctor, Pastor
Progress, Texas

Muleshoe Church Of Christ

Clovis Hwy.
David Alessandro, Pastor

New Covenant Church

Plainview Hwy.
Jimmy Low, Pastor

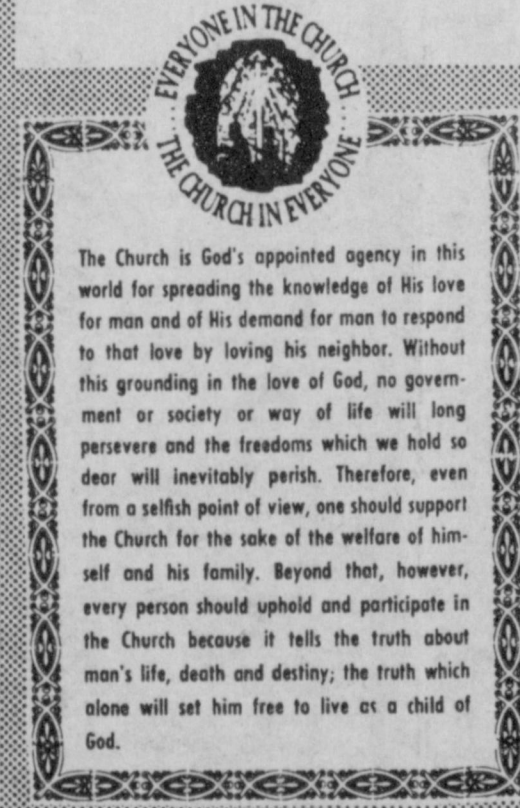
Take a Second Look

On your first look, you may think that this little girl is riding a rocking horse, but look again. It is not a rocking horse but a little donkey.

About animals now, and children. Donkeys were one of the first animals to be tamed by man, and are gentle animals when they are not practicing the quality of being stubborn.

The quality of gentleness somehow reminds us of our Saviour, the Wonderful One.

Parents, teach your children about Jesus, who admonished us to let the little children come unto Him. Our Lord would remind us that the little ones are precious to the Father. We invite you to take the children to church this week.



The Church is God's appointed agency in this world for spreading the knowledge of His love for man and of His demand for man to respond to that love by loving his neighbor. Without this grounding in the love of God, no government or society or way of life will long persevere and the freedoms which we hold so dear will inevitably perish. Therefore, even from a selfish point of view, one should support the Church for the sake of the welfare of himself and his family. Beyond that, however, every person should uphold and participate in the Church because it tells the truth about man's life, death and destiny; the truth which alone will set him free to live as a child of God.

©Coleman Adv.

Supported By The Following Merchants To Encourage A Christian Community!!!

Wes Tex Feed Yards	Margie Hawkins Manager	Bratcher Motor Supply	Robert Green, Inc. Oldsmobile, GMC, Pontiac, Buick Dealer	American Valley, Inc.
Kemp's Discount Furniture		Western Drug	Chick-n-Dock	Farmers Spraying Service
Irrigation Pumps & Power	Serv-All Thriftway We're Proud To Give You More		Hochheim Prairie Farm Mutual 122 East E Avenue B	Main Street Beauty Salon
				EPY INC. & COX



Jehova Witness
Friona Hwy.
Boyd Lowery, Pastor

First Assembly Of God
521 South First
Rev. Steve Davis



First Baptist Church
220 West Ave. E.
Berry Bradley, Pastor

Progress Second
Baptist Church
1st and 3rd Sunday
Clifford Slay, Pastor

Calvary Baptist Church
Rev. Darrel Martin
1733 W. Ave. C.

St. John Luthern
Lariat, Texas
Herman J. Schelter, Pastor

Trinity Baptist Church
314 E. Ave. B.
Rev. V.L. 'Buster' Huggins

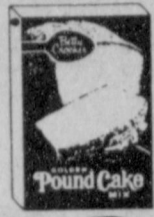
Richland Hills Baptist
17th and West Ave. D
Brock Sanders, Pastor

16th & Ave. D.
Church Of Christ
16th & Ave. D
James Johnson, Minister

St. Matthew
Baptist Church
Corner of West Boston &
West Birch
M.S. Brown, Pastor

Primitive Baptist Church
621 South First
Elder George Johnson

HARVEST OF BARGAINS



BETTY CROCKER
**POUND
CAKE MIX**

16 OZ.
BOX

98¢



DELICIOUS MEALTIME TREAT!

**RANCH STYLE
BEANS**

15 OZ.
CANS

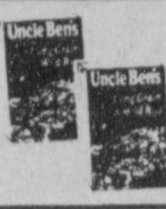
3 \$1.00



OCEAN SPRAY
**CRANBERRY
JUICE**

48 OZ.
BTL.

\$1.79



UNCLE BEN'S
**LONG GRAIN
WILD RICE**

6 OZ.
BOX

\$1.19



YELLOW
**JOLLY TIME
POPCORN**

2 LB.
PKG.

89¢

REGULAR OR UNSALTED
SUNSHINE KRISPY CRACKERS

16 OZ.
BOX

79¢

KRAFT VELVEETA
SHELLS & CHEESE DINNERS

12 OZ.
BOX

\$1.09



CARNATION TALL
EVAPORATED MILK

13 OZ.
CANS

2 99¢

PEPPERIDGE FARMS MIX FOR HERB OR CORNBREAD

STUFFING

8 OZ.
PKG

69¢

KRAFT MARSHMALLOW

CREME

2 7 OZ.
JAR

\$1.00

SCHILLING GROUND
CINNAMON

1 1/8 OZ.
CAN

69¢

RED LABEL
KARO SYRUP

QUART
BTL.

\$1.69



BETTY CROCKER
**ASSORTED
CAKE MIXES**

18 OZ.
BOX

79¢



OCEAN SPRAY WHL./STRAIN.
**CRANBERRY
SAUCE**

300 CAN

59¢



REGULAR OR BUTTER FLAVOR

**CRISCO
SHORTENING**

3 LB.
CAN

\$2.49



SHURFINE GRANULATED
SUGAR

5 LB.
BAG

\$1.49



KRAFT SALAD DRESSING
**MIRACLE
WHIP**

32 OZ.
JAR

\$1.69



LIBBY'S
PUMPKIN

303
CAN

59¢

SWANSON BEEF OR CHICKEN

BROTH

3 14 OZ.
CANS

\$1.00



BREAD & BUTTER CHIPS KOSHER-POLISH-NO GARLIC
SPEARS VLASIC
PICKLES

24 OZ.
JAR

99¢



SYLVANIA 60-75-100 WATT
LIGHT BULBS

2 CT.
PKG.

88¢



DEL MONTE WHOLE
**GREEN
BEANS**

16 OZ.
CAN

49¢

SHURFINE WHOLE
**SWEET
POTATOES**

23 OZ.
CAN

69¢

KITCHEN TESTED
**GOLD MEDAL
FLOUR**

5 LB.
BAG

89¢



KRAFT AMER./PIM./SWISS

SINGLES

12 OZ.
PKG.

\$1.69



KRAFT PHILADELPHIA CREAM

CHEESE

8 OZ.
PKG.

79¢



CHEESE SPREAD,

**KRAFT
VELVEETA**

2 LB.
BOX

\$3.29



KRAFT HALFMOON LONGHORN

CHEESE

16 OZ.
PKG.

\$2.49



KRAFT QUARTERS

PARKAY

1 LB.
PKG.

59¢

PET RITZ DEEP DISH
PIE SHELLS

12 OZ.
PKG.

98¢

BORDEN'S CREAMY
EGG NOG

QUART
CTN.

89¢

SHURFRESH WHIPPING
CREAM

3 1/2 PINT
CTNS.

\$1.00

BORDEN ASSORTED
ICE CREAM

1/2 GAL.
RND. CTN.

\$1.59

PET RITZ
CHEERY PIE

26 OZ.
PKG.

\$1.69

MRS. SMITH'S PUMPKIN
CUSTARD PIE

26 OZ.
PKG.

\$1.59

PET RITZ BIG
PIE SHELLS

2 CT.
PKG.

98¢

DOWNYFLAKE FROZEN
WAFFLES

12 OZ.
BOX

69¢

SUNKIST 100% PURE
ORANGE

12 OZ.
CAN

\$1.19

Mon. - Sat. 8:00 a.m. -

9:00 p.m.

Sun Only 9:00 a.m. -

7:00 p.m.



515 W. Amer. Blvd