

Weather

January 29	62	22
January 30	63	24
January 31	50	18
February 1	58	19

MULESHOE JOURNAL



20¢

'The Community of Opportunity-Where Water Makes the Difference'

Vol. 61, No. 5

8 Pages Today

Published Every Thursday at Muleshoe, Bailey County, Texas 79347

Thursday, February 2, 1984

Farmers "Put Off" '84 Farm Program Signup

★★★ ★★★★★★★★ ★★★★★

Reserve Established On '83 Wheat; Feed Grain Reopened

According to the Bailey County ASCS office, Secretary of Agriculture John R. Block has established a farmer-owned grain reserve for 1983-crop wheat with a trigger release level of not less than \$4.45 and annual storage payments to farmers of 26.5 cents per bushel.

Block also said the U.S. Department of Agriculture will open reserve V for the first time to 1983-crop feed grains. USDA on May 31, 1983 closed reserve V to additional entries of 1982-crop feed grains because grain from this reserve was to be used in the department's payment in kind program.

placed in the new reserve, he said.

Barley and sorghum reserve loans may be transferred to reserve V, he said. Reserve V corn and oats are currently in release status and their entry into this reserve will not be permitted until release is terminated.

Block said today's announcement does not change the rule prohibiting entry of additional quantities of a commodity into a reserve when the commodity is in release status.

Annual storage payments for grain placed in the reserve will be 26.5 cents per bushel for wheat, corn and barley, 20 cents per bushel for oats and 47.32 cents per hundredweight for sorghum, Block said.

"Interest will be assessed for the first year of the agreement at the interest rate applicable to the regular loan but will be waived for the second and third years except during certain

Farmers may place their grain in these reserves on maturity of regular Commodity Credit Corporation loans, he said.

The trigger release level for the new reserve wheat -- reserve VI -- will be the target price rate in effect for the then current crop year, but not less than the 1984-crop target price of \$4.45 per bushel, Block said. Wheat in the other grain reserves also may be

Five Area Telephone Plans Annual Meet

The 1984 Five Area Telephone Cooperative's 27th annual meeting will take place this Saturday, February 4 in their new warehouse building in Muleshoe. Registration will begin at 8:30 a.m. and continue until 10 a.m., with the meeting scheduled to start at that time.

Included in the annual event is a business meeting, drawings for door prizes and a noon meal. All members of the Cooperative will receive a door prize.

The Directorship for three districts are up for election this year. Present directors now serving are Richard Black, Secretary-Treasurer from District 5, Bob Foley from District 6 and Rex Griffiths, Vice President from District 7. Bylaws for the Cooperative require a minimum of two nominees for each district and the terms are for three years. A nominating committee met on Wednesday, January 11 and nominated persons to fill expired terms in these districts.

Those nominated include:

Nazarene

Church Will Have Guest Speaker

The Church of the Nazarene in Muleshoe has announced they will have a special speaker on Friday, February 3, at 7:00 p.m.

Rev. Roy Copelin, missionary to the Republic of the Philippines, will be present for that service. His presentation will include a message, slides, and items from the field and dress of the Philippines.

Rev. and Mrs. Copelin were appointed as missionaries in 1954 and have served since that time in the Philip-



REV. ROY COPLIN

ppines. They have taught in the Bible College there, and Rev. Copelin also served as the director of the college. From 1980-1983, Rev. Copelin has served as Mission Director. They have three children, Carolyn, Ray and Kathleen.

District 5-Maple: Bob Foley and Earnest Tucker; District 6-Bula: Richard Black and Leonard Pierce; District 7-Lehman: Rex Griffiths and Raymond Lewis. Members of the nominating committee were Bill Boyles, Bennie Silhan, Jack Fisher, Jack Ferguson, Mike Abbe, Ernest Trull and Ray O'Brian.

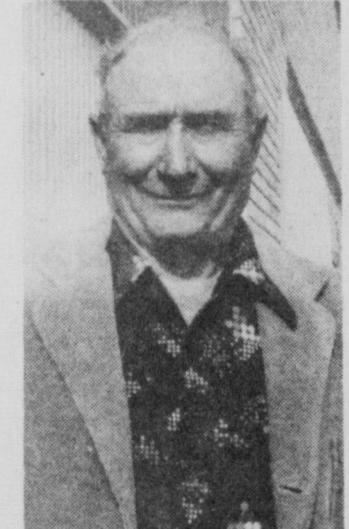
As mentioned before, this will be the 27th annual meeting of the Cooperative. Although it was incorporated in April of 1950, the first annual meeting was not held until January 18, 1957, after the first service was established.

According to records and history, the Cooperative was formed when a group of

Cont. Page 6, Col. 2

R.O. Gregory Files For Precinct Three Slot

R.O. Gregory, long-time Bailey County resident, has authorized the Journal to announce his candidacy for the position of County Commissioner of Precinct One, subject to the upcoming Democratic primaries.



R.O. GREGORY

Gregory is a native of Idalou and graduated from Idalou High School, moving to Muleshoe and Bailey County in the fall of 1946 where he engaged in farming. He has farmed for 38 years in Bailey County and in Precinct one. About 15 years ago, he also became involved in the blacksmithing business and is the owner of Leo's Blacksmith. The business is now managed by his son-in-law, Butch Vandiver.

The candidate is the father of three children, all of whom graduated from Muleshoe High School. Gregory and his wife, Fern are members of the First United Methodist Church in Muleshoe.

About his candidacy, Gregory had this to say: "I am familiar with all types of large equipment, having farmed. I also feel that my business experience qualifies me to be able to make firm, fair and unbiased decisions."

Gregory is familiar with all the roads and citizens in



FUTURE SHOWMEN...These two youngsters were really getting a kick out of the Bailey County Junior Livestock Show last week, and looks like they might just agree with the judges' choices. At any rate, they had a good time. The boy under the hat is Cody Owens, and his partner is Becky Welch. Cody is age three and Becky is five.

Soil Moisture Lacking Despite 1983's Wet Fall

In spite of the heavy fall rains, the southern High Plains does not have as much moisture in the soil as most producers anticipate. Some portions of Bailey County need from 4-6 inches and some as much as 8 inches of moisture.

For the third year in a row, the abundantly wet fall weather has fallen short in

wetting the total soil root zone profile. This year the annual soil moisture deficit survey team found conditions generally running 60 to 80 percent of field capacity. Approximately 50 percent of field capacity is already the wilting point for soils in our area. The total plant available water now in the root zone is actually as low as 20 percent of a particular soil's potential in the drier areas to only as much as 60 percent in wetter areas. The moisture is evenly distributed throughout the soil profile.

Last year's winter snows blanketed the area and contributed to more uniformly wet soil down to the two foot level with a drier profile below. This year the moisture deficits vary widely across the entire southern High Plains with the areas of greater need for water generally corresponding to those counties which have received the smallest amount of rainfall since September. For example, the extreme western area of Parmer, Bailey and Cochran

counties are dry, including a stretch sweeping across Deaf Smith into Castro County. To the east, soils are holding more moisture than last year at this time.

The rainfall distribution table for the southern High Plains Counties shows the average range of precipitation received between September one and January 15. It suggests a correlation with the soil moisture deficits. However, there are many more areas without

Cont. Page 6, Col. 3

Commissioners Will Consider Right-Of-Way Easement

The Bailey County Commissioners' Court will meet in a special session in the Courthouse today (Thursday), February 2, beginning at 10 a.m. Business will continue until all items on the agenda are covered.

A meeting with SPAG representatives is scheduled regarding a Detox Center for the area. Also the audit for the year ending September 30, 1983 will be reviewed.

Commissioners will consider granting an easement across county right-of-way for the installation of an irrigation pipeline in Precinct 111.

A ratification of a contract with the Bailey County Appraisal District will also be considered, along with

1984 Stock Show Placings Corrected

In our haste to get all of the winners and placings of the Bailey County Junior Livestock Show for 1984 in the Sunday edition of the Journal, a couple of mistakes have been called to our attention. For the mistakes, we apologize, and would like to set the records straight, now.

In the Poland Swine class, Breed Champion honors went to Robin Moore, daughter of Mr. and Mrs. Dewey Moore, and reserve breed champion honors went to Troy Watson, son of Mr. and Mrs. Howard Watson. We had it printed just the reverse.

Also, on the Reserve Champion Swine (over-all), Colin Tanksley exhibited his York barrow to this honor, rather than Russell Young. Colin is the son of Mr. and Mrs. ...

February 24 Final Date For Signup

Many area farmers are "hanging back" on signing up in the 1984 Farm Program in the hope that changes will be made in the requirements.

Danny Noble, Bailey County ASCS executive Director told the Journal Tuesday that only 75 farms out of a possible 1100 estimated farms in Bailey County had been signed into the 1984 program. The final date for sign-up is February 24, and is fast approaching.

Despite some speculation that there will be some changes in the 1984 program, Noble told the Journal that "As of now, there are no changes from the original 1984 farm program plans - nor do I expect any." There could possibly be some additions to the program, but no basic changes are expected.

Noble says that there are no major changes or differences between the 1983 and 1984 programs, although there has been some talk to the contrary. According to the Bailey County executive, the only significant change is that ACR or set-aside land (ACP of 1983) will be required to have a cover crop in 1984. This same requirement however, was included in the 1983 program, but many farmers side-stepped it by saying they planned to plant a wheat crop on the set-aside land. This year, that will not be possible, since set-aside and lay out requirements specify that cover crops will have to be planted by the final planting date for the commodity. Approved covers for set aside acres will be established within the next few days. There will be no

mechanical tillage to keep set aside acres except in the case of extreme need, and then that practice will have to be approved by the state ASCS offices. Further details on set-aside practices are available at the ASCS office. Noble urges all Bailey County producers to go ahead and sign up for the 1984 program early, to avoid a last minute rush. "A farmer can sign up before February 24, and still have until that date to make any changes or withdraw from the program. Farmers who make changes after the final sign up date will be subject to liquidated damage assessments."

"Producers do not have to give their intended acreage for 1984 in order to sign up for the program," Noble pointed out, "they just have to designate the commodity they intend to participate in."

Although a general feeling among farmers indicates that the 1984 programs do not offer much in the way of incentive for participation, the PIK Wheat program and the possibility of cotton deficiency payments are a couple of saving points in the program's favor.

The 1984 Farm Program for wheat, feed grains and cotton do not contain any paid diversions, but certain percentages in acreage reduction will be mandatory if producers choose to participate. There are no advance deficiency payments in the program for 1984.

Those producers who make the decision to participate in the 1984 program will be required to limit their planted acreage to no more than 70 percent of their farm's wheat base. Acreage bases for cotton, feed grains and wheat will be the average of the acreage planted and considered planted to each particular crop in the years of 1982 and 1983.

With regard to the wheat program, farmers may divert an additional 10-20 percent of their base and receive PIK equal to 15 percent of the established yield times the acres diverted.

Cont. Page 6, Col. 1

Rotary Hears Chief Talk On FBI School

The Muleshoe Rotary met Tuesday, January 31 for their regular weekly meeting at the Civic Center meeting room. Guests were Clifton Finley and Miss Lee Moraw, daughter of Charles Moraw.

Dave Marr was in charge of the program for the day and introduced Muleshoe Chief of Police Les Irvin, who gave a talk and slide presentation on his 11 weeks of training this past summer at the Federal Bureau of Investigation's National Academy at Quantico, Virginia.

Irvin showed slides of various buildings at the Academy and told the group that the training was co-educational, and that attendance was by invitation only.

The Chief explained the purpose of various buildings and of the training program. Showing slides of the dorms, firing ranges and recreational rooms. He also showed slides of a gym, which contains two basketball courts in the same area.

Irvin explained that transportation and room and

board for the 11 week course if paid for by the FBI, and he expressed his appreciation to those at Rotary and to all of Muleshoe for the opportunity to attend.

The classes are held un-

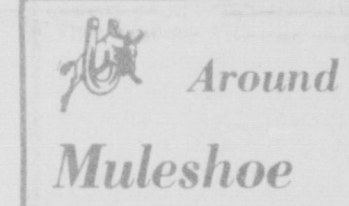
Mules Out Distanced By Dimmitt Varsity

The Muleshoe Mules met the Dimmitt Bobcats in Dimmitt on Friday, January 27 for a conference game, and came away lacking 10 points to equal the Dimmitt scoring attack. Dimmitt won the game 60-50.

Muleshoe scored 36 percent from the field, making 19 out of 53 field goal attempts, while Dimmitt's percentage was 46 percent making 23 out of 50 tries.

In free throws, the Mules fared a little better, making 12 out of 18 for 67 percent. Dimmitt made 14 out of 26 tries for 54 percent.

Leading the scoring for



The Muleshoe Mules and Mullettes will play Friona, there on Friday, February 3, with games beginning at 5 p.m. On February 10, they will meet Tulia there beginning at 5 p.m. On February 14, Muleshoe Varsity Boys will play Dimmitt in Muleshoe for their last regular conference game.

Underdenominational Services will be held in the Community Room of the Muleshoe State Bank at 101 West American Blvd. beginning Friday, February 3 at 7:30 p.m. They will also be held on Sunday, February 5 at 4 p.m. They will last one hour. No collections will be taken and no literature sold.

Second Lt. Bryan W. Bequette, son of Gary W. and Patricia M. Bequette of 2369B 33rd St., Los Alamos, N.M., has completed an infantry officer basic course at the U.S. Army Infantry School, Fort Benning, Ga.

He is a 1983 graduate of Eastern New Mexico University at Portales.

His wife, Tara, is the daughter of Henry and Becky Taylor or 616 W. Ave. D, Muleshoe, Texas.

Help in filing income tax returns is available at the Bailey County Family Planning Center, 222 W. 2nd Street, Muleshoe. Workers trained by Internal Revenue Service through their VITA (Volunteer Income Tax Assistance) Program can help taxpayers fill out simple income tax forms: 1040A and 1040EZ. The Center is open from 8 a.m. until 5 p.m. Monday through Friday. For further information, call 272-5130.

The Texas Corn Growers will have their 11th annual meeting on Monday, February 6, 1984 in the Exposition Building at Dimmitt, Texas. The meeting starts at 9:30 a.m. with special guest speaker, Governor Mark White. Other guest speakers

Cont. Page 6, Col. 4

New Phone Options Available With Change

Some General Telephone customers are asking: "Do all the changes mean an end of the telephone business or

is it a new beginning? How do the changes affect GTE customers?" According to E.L.

"Buddy" Langley, president of General Telephone Company of the Southwest, his company will still provide customers with traditional end-to-end telecommunications service, if customers desire. "But," he added, "the changes brought by ongoing deregulation and the divestiture Jan. 1, 1984 of AT&T and the Bell operating companies are making new options available to customers."

Although there is some frustration among customers and companies as these changes are introduced, customers can now buy or lease telephone instruments, select from a variety of repair and warranty options, install their own house wiring or employ the telephone company of an outside vendor to install it, and subscribe to various long-distance calling services.

Langley emphasized that General Telephone of the Southwest is still a full service provider for customers who prefer to have their telephone equipment and services provided by the company. "An over simplified summary of changes basically means General Telephone and other local telephone companies now provide the network for completing local calls and for connecting customers to the long-distance carrier," Langley said.

"We are similar to what has been the norm for years with electric, gas and water companies. We provide and are responsible for the distribution network up to a designated point on the customer's premises. The customer is responsible for the lines and instruments beyond that designation point."

He explained deregulation has been going on for several years as state and federal controls have been eliminated and competition has been introduced, particularly in the areas of telephone instruments and long-distance service. Divestiture of AT&T changes the way all local telephone companies receive long-distance revenues.

Texas Small Business Continues To Increase

The number of new small businesses in Texas continued to increase last year, a report from the U.S. Small Business Administration showed today.

SBA's Office of Advocacy said that new business incorporations in Texas during the first six months of 1983, just about all representing small firms, rose 11.96 percent. The six-month total for 1983 was 22,625. The 1982 total was 20,208.

For all of 1983, SBA estimated that new business incorporations in the nation reached a new record of about 600,000. The estimate was based on Dun & Bradstreet data. The national record set in 1981, 580,000 was set in 1981. In 1982, new business incorporations totaled about 560,000.

Philip J. O'Jibway, director of SBA's office in Lubbock said today, "The six-month statistics, and the national record set in 1983, clearly show that the number of small firms in Texas continues to increase."

"From measurable filings, we found that new business starts from January-September 1983 totaled 66,572 vs. 58,950 in the similar 1982 period," O'Jibway said.

"While these figures un-

doubtedly represent a small part of new businesses started, they again reflect the increased number of men and women going to work for themselves."

New business starts in the construction industry rose 42.2 percent during the nine-month period. Other industry increases were:

Manufacturing, 13.1 percent; transportation, communication, electric gas and sanitary services, 15.2 percent; wholesale trade, 11.2 percent; retail trade, 8.9 percent; finance, insurance and real estate, 33 percent, and services 6.2 percent. New starts in the mining industry declined 22.4 percent.

RANDGEAR Now Available Randolph Gearhead



20 Hp. to 750 Hp.


WE CAN SAVE YOU MONEY — COME IN AND CHECK WITH BUTCH OR R. O. BEFORE YOU BUY

Leo's Blacksmith & Machine

310 W. American Blvd. 272-4418

A Job Well Done!

Bailey County Livestock Show



SPOTTED POLAND WINNER...Holly Huckaby, daughter of Mr. and Mrs. Lyndon Huckaby, showed her Spotted Poland to reserve breed champion at the Bailey County Livestock Show.

Servall Thriftway

Three Way News

By Mrs. H.W. Garvin

Several from the community attended the wedding of Tammy Davis and Boyd Keith Blair at the Calvery Baptist Church in Lubbock Saturday morning.

The community had freezing drizzle, and snow the past week.

Mr. and Mrs. Larry Travathan and children from Canyon spent the weekend with his parents the S.G. Long.

Mrs. H.W. Garvin visited her brother the George Tysons Sunday afternoon.

Mr. and Mrs. Tommy Terrell and children spent the weekend in Lubbock with her mother, Mrs. Margie Davis.

Kevin and Robin Reeves both students at South Plains College in Levelland spent the weekend with their parents the Jack Reeves.

West Plains Medical Center

PATIENTS IN WEST PLAINS MEDICAL CENTER

Jan. 27-Allie Browning, Juan Rodriguez, Flois Toten, Michael Masestes, Beverly Gowing, Ethel Harding, Faith A. Wall, Sallie Schuster, Myrtle Pruitt, Chess Phelps, Barbara Young, Hattie Jones, Charlene Varela and Emma Kane.

Jan. 28-Allie Browning, Juan Rodriguez, Ethel Harding, Ella Hallford, Sallie Schuster, Myrtle Pruitt, Pearl Cox, Jimenez Madrid, Dolly Hughes and baby boy and Emma Kane.

Jan. 30-Juan Rodriguez, Ethel Harding, Ella Hallford, Sallie Schuster, Myrtle Pruitt, Pearl Cox, Jimenez Madrid and Emma Kane.

Want Ads Pay Call 272-4536

Arthur J. Weinstein, M.D. and R. Joe Cannon, M.D. of Eye Associates of New Mexico announce the opening of their office at 2000 West 21st Street, Suite A-1 Clovis, New Mexico 88101 762-2445

Practice limited to medical and surgical diseases of the eye

Congratulations!!!!

GREAT JOB!




HEAVY WEIGHT BREED CHAMP HAMPSHIRE...Tracey Tunnell, son of Mr. and Mrs. Wayne Tunnell, took first place and breed championship with his heavyweight Hampshire at the Bailey County Livestock Show.

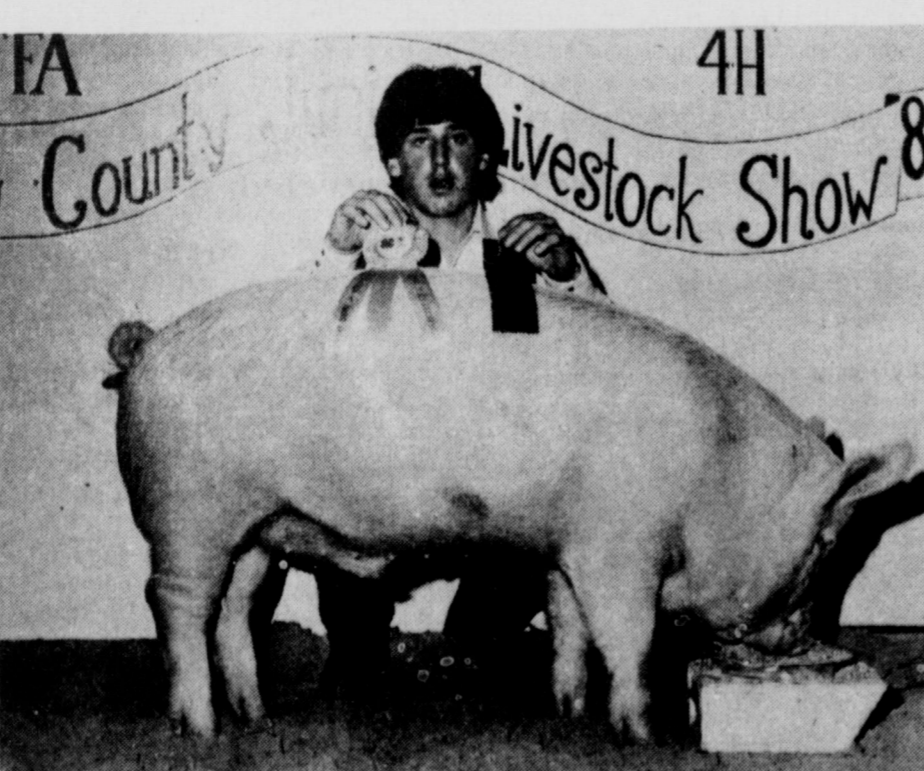
John's Custom Mill

GREAT JOB!

Bailey County Junior Livestock Show



CHAMPION CHESTER WHITE...Colin Tanksley, son of Mr. and Mrs. Spencer Tanksley, showed the Chester White Breed champion during the Bailey County Livestock Show.



CHESTER WHITE RESERVE CHAMP...Mike Dunham, son of Mr. and Mrs. Jack Dunham, showed the reserve champion Chester White during the Bailey County Livestock Show.

Bailey Co. Electric Co-op

"I want to keep good customers coming back, so I'm recommending XL-72aa again this year."

It takes a long time to build a good business reputation. So I only recommend a product if I know it works. That's why I'm recommending XL-72aa again this year.

Oh, I don't grow corn myself, but I do hear what my customers say about it. And when they brag about yields, even in a tough year like last, I know XL-72aa has to be good.

Come to think of it, they brag about XL-72aa no matter what the weather—or the soil type. Maybe that's why they ask for it year after year.

A long time ago, I learned that the best way to keep a customer is to keep giving him what he wants. Around here, that's XL-72aa.

Who's recommending only his best?

I am.



DEKALB-PFIZER GENETICS

DEKALB is a registered brand name. Numbers designate hybrids and varieties. As a condition of sale please note statement of limited warranty and remedy on DEKALB-PFIZER GENETICS orders and tags.

8th Mules Show "Mule Pride" Against Littlefield

Coach Roy Donaldson gave the following information concerning the 8th grade Mules' basketball performance:

"The 8th Mules displayed 'Mule Pride' in the finest form Monday night against Littlefield. This was a game we really wanted to win. The rivalry goes back to a cancelled football game in the fall and two prior basketball games in which the Mules came out on the short end of the score.

In the first basketball match up against Littlefield, the Mules were ahead most of the game but fell 3 points behind just before the game finished. We were forced to attack the ball and foul to try to force last minute turnovers, but only fell another 6 points behind and wound up losing by 9 points.

The second match came in our tournament. We had played Abernathy, a very tough team, exceptionally well the day before and a hard game like that can sometimes take the sharp edge out of a team if you have to play the next day. This is just what happened. As the saying goes, "We just couldn't buy a bucket." We once again lost the game, this time by 14 points.

A team meeting, resulting in personal dedications to a team that would carry "Mule Pride," began to show the desire to win

Griffith

Services Held

At Lockney

Services for Harold Walter Griffith, 71, of Lockney were held at 2 p.m. Tuesday, Jan. 31 in the College and Third Avenue Church of Christ of Lockney with Frank Duckworth, minister, officiating. Assisted by Earl Cantwell, minister of the Rock Creek Church of Christ.

Interment was in the Lockney Cemetery under the direction of Moore-Rose Funeral Home of Lockney. Griffith died at 9 a.m. Sunday at St. Mary of the Plains Hospital in Lubbock following a lengthy illness.

He was born April 26, 1912, in the Lone Star Community and married Mary Ilene Harris April 1, 1934, in Floydada. He was a former school board member, a retired farmer and an elder at College and Third Street Church of Christ at Lockney.

Survivors include his wife; three sons, Harold Dean and Dennis, both of Austin, and Duane of Plainview; three brothers, Elton D. and Herbert L., both of Lubbock, and Chester E. of Dallas; three sisters, Mrs. Kline Nall and Dorene Harbin, both of Lubbock and Lanell Webber of Fort Worth; and six grandchildren.

following the Christmas break. We played Adrian within 5 points, next losing by only 1 point to Amherst and next was to come yet another chance at defeating Littlefield.

The 1st quarter was sparked by the enthusiasm and hustle of Shannon Simnacher. Aggressiveness makes things happen. Johnny Garcia scored 7 points and Warren McDonald scored 4, and at the same time we held the Wildcats to only 1 field goal and 2 free shots, making the 1st quarter score Mules 11 - Littlefield 4.

The second quarter was more of the same with Ronnie Perez playing outstanding defense and scoring 1 point. Johnny Garcia put in another 4 points. Warren added 7 points and Greg Garcia 2. Littlefield's

Boyd Services

Held Tuesday

At Sudan

Funeral services for Bobby Jane Boyd, 44, of Sudan were held at 2:30 p.m. Tuesday, Jan. 31 in the First Baptist Church of Sudan with the Rev. Truman Johnson, pastor, officiating.

Graveside services were conducted in Hanable cemetery at Hanable, Texas at 11 a.m. Wednesday. Burial was under the direction of Ellis Funeral Home of Muleshoe. Miss Boyd was dead on arrival at South Plains Hospital in Amherst at 7:30 a.m. Sunday.

A native of Ft. Worth, Miss Boyd was born Aug. 13, 1939, and had lived at Sudan since 1956, moving there from Palo Pinto County. She was a domestic worker and a member of the Sudan First Baptist Church. She is survived by her mother, Sarah Leola Clark of Sudan.

Local Woman's

Grandson Dies

At Lubbock

Funeral services for David Decker, 3, of Lubbock were held at 2 p.m. Tuesday, Jan. 31 in St. Elizabeth's Catholic Church with the Rev. William Hanley officiating.

Interment was in Resthaven Memorial Park under the direction of Resthaven Funeral Home. He was pronounced dead at 11:01 a.m. Sunday at Methodist Hospital after drowning in a pond.

He was born Aug. 11, 1980, in Lubbock. Survivors include his father, Henry Decker of Fort Sill, Okla.; his mother, Judy Decker of Lubbock; and grandparents, Mrs. B.A. Dearing of Muleshoe and Mr. and Mrs. Gerald Decker of Stuttgart, Ark.

scoring improved as they scored 9, but still they were falling farther behind. The 1st half score was Muleshoe 25, Wildcats 13.

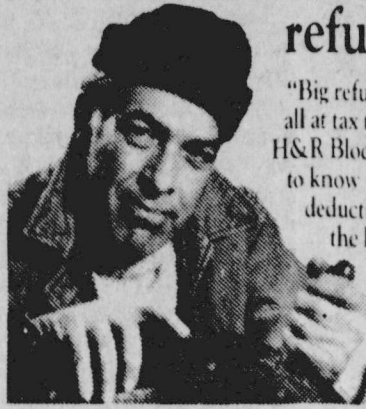
The third period was a cold spot for the Mules. We came out with good shots but for some reason were cold. It wasn't until about 1 or 2 minutes deep in the 4th quarter before we shook off the cold spell. Michael Harrison kept us in the game, however, as he played sound defense and added 4 points. Johnny Garcia also added 2 more. Littlefield was just the opposite, as they couldn't seem to miss and added 12 points, making it Mules 31, Littlefield 29.

It was close the rest of the way as both teams played good basketball. Johnny Garcia added another 5 points and Warren McDonald 4 points. With 29 seconds left in the game, Williams, Littlefield's high scorer, sank a 15 footer and tied the game up at 40 - 40. We played for 1 shot. We stalled the ball down to 10 seconds and tried to work it in under, but things seemed to

be shut down pretty tight. With 3 seconds, Ronnie Perez penetrated inside the land and shot a 12 foot jump shot off the backboard to put the Mules 2 points up. The horn went off, but officials said time had been called by the Wildcats with 2 seconds

left. They made a long pass, which was batted down by Warren McDonald and the game ended Mules 42, Wildcats 40. It was a great experience to watch our athletes keep their composure so well throughout the entire game."

"I find the big catches. Block finds me the big refunds."



People who know their business go to **H&R BLOCK**

Wkdays 9-6 Sat. 9-5

224 W. 2nd

272-3332

"Big refunds are the best catch of all at tax time. That's why I go to H&R Block. My preparer is trained to know where to look for every deduction and credit. And over the long haul, that means more money in my pocket."

Number of minorities in graduate school increase at A&M

COLLEGE STATION—Texas A&M University has admitted 113 new black and Hispanic students for graduate studies this fall and 12 other minority students will enter the university's two medical programs, announced President Frank E. Vandiver.

Dr. Vandiver said Texas A&M's gains in minority students pursuing advanced and professional degrees are even better than the university's administration had predicted.

"We are greatly encouraged by the success we are having this year attracting highly qualified minority students to our programs beyond the bac-

calaurate level," he said. "This, of course, did not just happen. We've had a lot of people working hard to make it happen."

ROBERT D. GREEN, INC.
2400 W. AMERICAN BLVD. — MULESHOE, TEXAS 79347
— HOME OF THE GREEN MACHINES —
Terry Yell
Sales Representative
272-4948

GOOD NEWS! WE'VE GOT MICHELIN AND THEY'RE PRICED RIGHT
MICHELIN WE PUT AMERICA ON RADIALS
POYNORS
WHITE STORES, INC.
103 Main 272-4552

Attend The Church Of Your Choice



MULESHOE CHURCH OF CHRIST

Clovis Highway
John A. Boor, Minister

JEHOVAH WITNESS

Friona Highway
Boyd Lowery, Pastor

IMMACULATE CONCEPTION CATHOLIC CHURCH

Father Patrick Maher
Northeast of City in Morrison Edition

ST. MATTHEW BAPTIST CHURCH

Corner of West Boston and W. Birch
M.S. Brown, Pastor

NEW COVENANT CHURCH

Plainview Highway
Sunday - 10:00 a.m.
Wednesday - 7:00 p.m.
Jimmy Low, Pastor

FIRST ASSEMBLY OF GOD

521 South First

CHURCH OF THE NAZARENE

9th and Ave. C
Jimmie Williams, Pastor

FIRST CHRISTIAN CHURCH

130 W. Ave. G
Dick Tarr, Pastor
Sunday School - 10:00 a.m.
Worship 11:00 a.m.

LATIN AMERICAN METHODIST MISSION

5th and Ave. D
R.Q. Chavez, Pastor

THE COMMUNITY CHURCH

Morton Highway
H.D. Hunter, Pastor

PROGRESS SECOND BAPTIST CHURCH

1st and 3rd Sundays
Clifford Slay, Pastor

FIRST UNITED METHODIST CHURCH

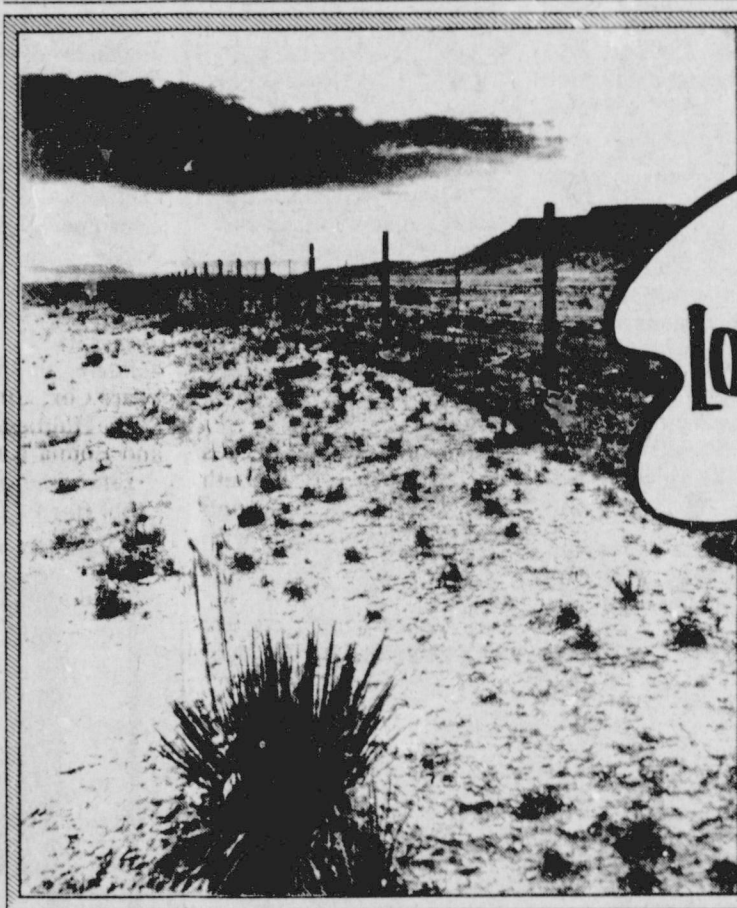
507 W. 2nd, Muleshoe
Bill Kent, Pastor

ST. JOHN LUTHERAN

Lariat, Texas
Sunday School - 10:00 a.m.
Worship Service - 11:00 a.m.
Herman J. Schelker, Pastor

CALVARY BAPTIST CHURCH

1733 W. Ave. C



Loneliness

Absolute loneliness is probably the most terrifying experience that man can ever know on this earth. We have but to remember the shipwrecked Robinson Crusoe who cried, "I would gladly exchange five years of my life for but one word from another human being." A high price for a single utterance, but who of us would not pay it had we been the abandoned sailor.

And yet how many of us become like Robinson Crusoe on this single flower in the desert cut off from our own kind by our own choosing. Shipwrecked on a desolate island in our loneliness for our fellow man — stranded in the desert of barren waste by our disinterest in the common good of the community in which we live. And in turn, being forgotten by those who love us and need our love. We should surely thank God each day for the warm love of our family; for the true community we live in and for the church which is the focal point of all worthwhile things in that community. Begin now to take an active part in your church. For there is no loneliness when we walk with God and our fellow man.



EVERYONE IN THE CHURCH
THE CHURCH IN EVERYONE

PRIMITIVE BAPTIST CHURCH

621 S. First

LONGVIEW BAPTIST CHURCH

Phone 946-3413
B.C. Stonecipher, Pastor

16 TH AND AVE. D CHURCH OF CHRIST

James Johnson, Minister
Sunday - 10:30 a.m.
Evening - 6 p.m.
Wednesday - 8 p.m.

PROGRESS BAPTIST CHURCH

Donald G. Proctor, Pastor
Progress, Texas

FIRST BAPTIST CHURCH

220 West Ave. E
J.E. Meeks, Pastor

EMMANUEL BAPTIST CHURCH

Iglesia Bautista Emmaneul
107 East Third
Isaias Cardenas, Pastor

RICHLAND HILLS BAPTIST CHURCH

17th and West Ave. D
Brock Sanders, Pastor

SPANISH BAPTIST MISSION

East Third and Ave. E
Roy Martinez, Pastor

TRINITY BAPTIST CHURCH

314 Ave. B
V.L. "Buster" Huggins

SPANISH ASSEMBLY OF GOD

East 6th and Ave. F
Luis Campos, Pastor

MULESHOE BAPTIST CHURCH

8th and Ave. G
Bob Dodd, Pastor

UNITED PENTECOSTAL GOSPEL

LIGHTHOUSE CHURCH
207 E. Ave. G.

TEMPLO CALVARIO

507 S. Main
Sunday - 10:00 a.m.
Sunday evening - 7:00 p.m.
Evangelistic Services
J.L. Soto, Pastor

Supported By The Following Merchants To Encourage A Christian Community

Western Drug Co.

Margie Hawkins
Dairy Queen Manager

Muleshoe Co-op Gins

American Valley Inc.

First National Bank
"Home Owned"

Irrigation Pumps & Power

Baker Farm Supply Inc.

5-Area Telephone Cooperative Inc.

Bratcher Motor Supply

James Roy Meat Market Co.

Farmers Co-op Elevators
3 Locations To Serve You

Farmers Spraying Service

TODAY'S PORTRAIT... TOMORROW'S TREASURE

2 (8x10s) • 3 (5x7s)
15 wallets
TRADITIONAL POSES ONLY
PORTRAIT PACKAGE ONLY \$12.95 (95¢ DEPOSIT)

Poses our selection • Beautiful backgrounds available
• Plus \$1.00 sitting fee for each additional subject in same portrait

Thursday & Friday 10-1 2-6
Saturday 10-1 2-5

Anthony's
CR ANTHONY CO.

Wedding Shower Honors

Mr. and Mrs. Franks

Mr. and Mrs. Gene Franks were honored with a wedding shower Saturday, Jan. 28 from 7:30 until 9 p.m. at the Civic Center.

Guests were greeted by Mr. and Mrs. Gene Franks and Mr. and Mrs. Francis Franks, Sr. and registered by Beth Sanders.

Kay Lynn Prather and Pat Seymore served assorted cookies, nuts, punch and coffee from crystal and silver appointments.

The serving table was

covered with a white table cloth with a white skirt extending to floor length and accented with a silk floral arrangement in shades of pink and burgundy with pink tapered candles. The honoree's corsage consisted of pink carnations.

Special guests included: Mr. and Mrs. Francis Franks, Sr., Francis Franks, Beth Sanders and Patty O'Malley.

The hostess gift was a money tree. Hostesses for the occasion included: Mr. and Mrs. Curby Brantley, Mr. and Mrs. Gene Paul

Jarmon, Mr. and Mrs. Melvin Seymore, Mr. and Mrs. David Seymore, Mr. and Mrs. R.L. Scott, Mr. and Mrs. Darrell Turner, Mr. and Mrs. Kenneth Precure,

Mr. and Mrs. C.E. Grant, Mr. and Mrs. Doug Crawford, Mr. and Mrs. Billy Roberts, Mr. and Mrs. C.L. Saylor and Mr. and Mrs. Alton Burton.

Birthday Party

Honors

Danya Lance

Danya Lance was honored on her third birthday recently with a party held in the home of her parents, Mr. and Mrs. Bo Lance.

Smurf cake, ice cream and punch were served to the guests.

Attending were John Chester, Corey Lowrance, Kristy Symatschkh, Ryan and Staci Masten, Jennifer and Candace Lynn, Doug and Laci Boyles, Monty and Kyla Edwards, Cheri and Hyla Ford, Mandy and Muffin Davis, Garrett Flowers, Johnathan Martin, T.J. Ingle, Breanne Baker, Wendy Ray, Dustin Provence.

And Shelley Chester and Zack, Tracey Provence, Peggy Lowrance, Jana Synatschk, Tanya Masten, Kelly Flowers and Tiffany, Dana Martin and Lance, Nell Ingle, Phyllis Lynn, Lisa Boyles, Susan Baker, Jackie Joe Williams, Charls Ann Williams, Mrs. Estelle Lowe, Jimmy and Paula Ford, Mrs. O.O. Baker, Nancy Davis and Pee Wee Lance.

Poetry

Contest

Scheduled

\$1,000 grand prize will be offered in the upcoming poetry contest sponsored by the World of Poetry newsletter. There are 100 prizes in all, totaling over \$10,000.

"We want to encourage new poets, especially those who have never entered a poetry contest before," says Contest Director Joseph Mellon. "We expect our efforts to produce exciting new discoveries!"

For a free brochure of rules and prizes write, World of Poetry, 2431 Stockton Blvd., Dept. G., Sacramento, California 95817.

Creative Woman

By Sheryl Borden

Two topics will be presented on "The Creative Woman" show on February 7 and 11. These will be tole painting and preparing sauces in the microwave oven. Elizabeth Dixon, an artist from Kress, Texas will display several articles representing different surfaces that can be painted on. She will discuss brushes, paints and other supplies needed to do tole painting. She will explain the difference between tole painting and decorative painting.

Another guest will be Donovan Fandre from Fresno, California. Mr. Fandre is a chef for Rubbermaid Company and he has his own television show in California called "Microwaves are for Cooking". His approach to microwave cooking is definitely a common sense approach and he will demonstrate how to prepare sauces in the microwave oven.

On February 9 and 12, the topics will be landscape applique, buying telephones and cooking with zucchini. Kathy Albright, a quilting instructor with The Quilt Works in Albuquerque will demonstrate landscape applique, which is a free-form type of applique.

Laura Jacobs, the County Extension Agent from Farwell, Texas will discuss the many different types of telephones on the market, what features to look for and what hidden costs may be reflected in your telephone bill.

Also on the show will be home economist and dietician Jan Newquist, with the Associated Milk Producers, Inc. in Albuquerque. Mrs. Newquist has the perfect solution for what to do if one member of the family likes

zucchini, but others do not. Mrs. Newquist will share her ideas as well as two recipes using zucchini.

"The Creative Woman" is produced and hosted by Sheryl Borden. The show airs at 12 noon on Tuesday and Thursday, at 2:00 p.m. on Saturday and at 7:00 p.m. on Sunday on KENW-TV, Channel 3 in Portales. The show is also carried in New Mexico by KRWG-TV in Las Cruces and by KNME-TV in Albuquerque, as well as stations throughout the country via the satellite feed by Pacific Mountain Network.

Viewers can request copies of printed materials offered on the show by calling on KENW-TV's toll-free telephone lines. In New Mexico, the number is: 1-800-432-2361, out-of-state: 1-800-545-2359 and in Portales and Roosevelt County: 562-2112.



MR. AND MRS. GENE FRANKS

Zia Scholar Award Recently Established At ENMU

Eastern New Mexico University has recently established the Zia Scholar Award. The scholarship is awarded to students who have demonstrated a high potential for academic and career success.

The Zia Scholars recipient receives \$500 per academic year and is required to maintain high grades and make normal progress toward a degree for the award to be continued.

Recipients will be chosen on the basis of rank in their graduating class, score on the American College Test (ACT) or Scholastic Aptitude Test (SAT) and achievements in other areas.

Transfer students must have a cumulative grade point average of 3.5 or above to apply. Final selections will be made by the Office of Admissions.

A gift of \$400 to the Zia Scholars Program, increased by a \$100 contribution from the University, will assure a scholarship for an outstanding student. The award will be named for a donor or firm, unless they prefer to remain anonymous. Memo-

ria awards may also be established. A contribution will automatically make one a member of the Zia Club. Recipients of the Zia Scholars Award will receive a Zia Scholars pin and special recognition at commencement.

Gifts in a lesser amount can be added to other gifts to provide assistance to deserving students. For more information, call Frances Richardson, director of Development at ENMU, at 505-562-2412.

In Fashion

Other suggestions by the designers for the 1984 Winter Olympian Team are to wear a cotton undergarment next to the skin. This is most important because it absorbs and evaporates perspiration.

Add layers according to temperature with at least one wool layer and choose a zippered outer garment.

A wool hat provides warmth and protection from the sun.

Journal Files

50 Years Ago

1934

At a local department ENMU Offers

'Alcoholism' Workshop

Eastern New Mexico University's Office of Continuing Education will be sponsoring a workshop on "Alcoholism Awareness" on consecutive Saturdays, Feb. 4 and 11. The Feb. 4 session will run from 8 a.m. -- 9 p.m., while the Feb. 11 session will run from 8 a.m. -- 5 p.m. The workshop will be held in Room 101 of the Education Building.

Alcoholism is a major problem in America that, directly or indirectly, touches the lives of about 36 million Americans. This workshop is being presented to increase public awareness of alcoholism, its hazards, prevention, early warning signs, treatment and after-care.

Faculty for the workshop will include: Dr. Natividad Macaranas, program director and professor of psychology at ENMU; Dr. Mary Bubliss, medical director of the Central Plains Comprehensive Community Mental Health/Mental Retardation Center in Plainview, Texas; Dick Cantwell, executive director of the S. Eddy County Council on Alcoholism; Lt. Kathy Foley, a drug/alcohol abuse officer at Cannon AFB; Dr. Mike Shaughnessy, assistant professor of psychology at ENMU; Dr. Mike Nystul, assistant professor of psychology at ENMU; and Betty Null, ENMU counselor.

Those completing the course can receive one semester hour of credit in psychology or education foundations.

An on-site registration will be conducted between 10-10:30 a.m. on Feb. 4 in the Education Building if maximum enrollments have not been reached.

store the following specials could be found: one sheet (81x99) and two cases 98 cents set; women's silk hose 98 cents pair; boys overalls four pairs 98 cents; children's oxfords 98 cents pair; men's work shirts 98 cents each; slip on and jacket style sweaters 2 for 98 cents; printed broad cloth 4 yards \$1.; and fast color prints 4 yards \$1.

30 Years Ago

1954

a local grocery store advertised the following specials in the Journal this week: No. 303 can pumpkin 12 1/2 cents; No. 303 can fruit cocktail 22 cents; No. 2 can pincapple 25 cents; No. 303 can corn 19 cents; No. 303 can peas 22 cents; No. 1 tall

can salmon 49 cents; 14 ounce can deep brown beans 14 cents; No. 1/2 can vienna sausage 19 cents; Crisco 3 pound can 65 cents; 10 pound bag flour 79 cents; honey spice cake mix 35 cents box; sliced bacon 57 cents pound; loin or T-bone steak 33 cents pound; chuck roast 23 cents pound and hamburger meat 29 cents pound.

20 Years Ago

1964

Red Harris has been named Muleshoe State Bank

customer of the Week. He farms nine miles east of Muleshoe and has banked at the Muleshoe State Bank ever since it has been in business. He attends the North Side Church of Christ.

10 Years Ago

1974

Max King was named as the Jaycees Outstanding Young Man of the Year at the annual Jaycees Bosses Night Banquet held Friday night, Jan. 25 at the Muleshoe Country Club.

TAX ACCOUNTING
WHITE UP
QUARTERLY REPORTS

Robin E. Davis

TAX SERVICE

2433 S. FAIRWELL AVE.
LITTLEFIELD, TEXAS 79330

406/385-6425

True Value
HARDWARE STORES

TOOL VALUE OF THE MONTH

White Supplies Last
3.29

16-Oz. Nail Hammer
High carbon steel claw hammer with hickory handle. 3 1/2 HFN
Quantities Limited

True Value
HARDWARE STORES

BARGAIN OF THE MONTH

White Supplies Last
7.99

Moist and Dry Heating Pad
Sponge included for moist heat. 3 heat settings, "on" light. 1819
Quantities Limited

True Value
HARDWARE STORES

HARDWARE VALUE OF THE MONTH

White Supplies Last
4.44

Enamelled Wood Toilet Seat
Dial-On hinges for easy installation. Colors: 400CMX
Quantities Limited

Fry & Cox, Inc.

401 S. First • 272-4511

You Are Invited To A Retirement Tea Honoring

Berdie Welch
Earth Postmaster

Sat. February 4 - 3:00-4:20 p.m.
Citizens State Bank Coffee Room

No Gifts, Please

A Job Well Done!



LIGHT WEIGHT YORKSHIRE...Showing his light weight York to breed champion and reserve grand champion of the Swine Show at the Bailey County Livestock Show was Colin Tanksley, son of Mr. and Mrs. Spencer Tanksley.

Production Credit Association

GIFT BOX VALENTINE CANDY ASST. QUALITY CHOCOLATES LARGE SELECTION ALL SIZES **\$2.50 UP TO \$13.00 EACH**

COOKED FOOD SPECIAL AS FEATURED ON TV. FRESH COOKED & DELICIOUS **CORN DOGS 2.89¢ FOR**

ASSORTED FLAVORS JELLO 3 OZ. 3/99¢	SHURFINE 14 OZ. CATSUP 49¢	APPLES 5/\$1.00
SHURFRESH MED. EGGS 1 DOZ. \$1.09	MARYLAND CLUB COFFEE 1 LB. CAN \$1.79	ALLSUPS BREAD 1 1/2 LB. LOAF 2/\$1.00
BORDENS ASST. FLAVORS ICE CREAM 1/2 GAL. RND CTN \$1.69	BORDENS HI PRO MILK 1/2 GAL. CTN \$1.19	

ALLSUP'S MONEY ORDERS 29¢ EACH UP TO \$200

ALLSUP'S HOT COFFEE 12 OZ. CUP 29¢	16 OZ. NON-RETURNABLE 6 PK. PEPSI MT. DEW, PEPSI LIGHT, DIET PEPSI \$1.79
CHILI DOG EA. 49¢	BURRITO EA. 59¢
	FRESH COOKED FRIED PIE EA. 39¢

ALLSUP'S CONVENIENCE STORES

- WHILE SUPPLIES LAST
- SELF SERV GAS
- OPEN 24 HOURS FOR YOUR CONVENIENCE
- PRICES EFFECTIVE FEBRUARY 2 - 4, 1984

Muleshoe Journal

Published February 2, 1984. Published by Muleshoe Publishing Co., Inc. Every Thursday at 8:00 a.m. Second Floor 401 S. First, P.O. Box 7047, Muleshoe, Texas 79347.

MEMBER 1984

TEXAS PRESS ASSOCIATION

Many Factors Important In Lowering Cholesterol

A low-cholesterol diet alone is no insurance against coronary heart disease.

"Although cholesterol has received a great deal of publicity, it is not the only factor associated with heart attacks," says Dr. Alice Hunt, a nutritionist with the Texas A&M University Agricultural Extension Service.

"High blood pressure, smoking, obesity and physical inactivity are also involved," she adds. "So those concerned about heart disease really need to examine several different lifestyle changes they can make to reduce this risk."

For example, restricting total calories to reduce weight is effective in lowering cholesterol levels for anyone, but especially for those who are overweight, says Hunt.

Because physical activity is also an important factor in keeping cholesterol levels

Rebekah Lodge Meeting Held Tuesday

The Muleshoe Rebekah Lodge No. 114 met Tuesday evening with Dimple Sims, Nobel Grand, presiding. Fourteen members were present. The American flag was presented by Opal Talley, flagbearer, escorted by Dorothy Chance, Warden, and Joylene Costen, conductor.

The opening prayer was given by acting chaplain, Juanita Busby. The minutes and roll call were read by Fern Davis, secretary.

The installing team went to Friona on Monday evening, Jan. 16 and installed their new officers. The installing team consisted of Adele Tompkins, District Lodge Deputy; Thrusie Reid, Ona Berry, Ina Wilman and Ruby Green. On Tuesday evening, Jan. 14 they were in Hereford and Thursday evening they were in Dimmitt to install their officers.

Refreshments were served by Dorothy Chance, Ranetta Dawson, Jessie Robinson and Fern Davis.

low, the American Heart Association advocates regular exercise. Studies show an inverse relationship between exercise and cholesterol levels, she explains. Many people who eat large amounts of fat and cholesterol, but are also heavy exercisers -- like athletes or laborers -- have normal cholesterol levels.

A recent study by the National Heart, Lung and Blood Institute which showed that reducing cholesterol with diet and drugs can reduce the risk of heart disease, has generated more public interest in low-fat diets, says the nutritionist.

But not everyone needs to be concerned with cholesterol, she says, since it's estimated that only about 25 percent of American adult men and women need to lower their cholesterol levels.

If you are considering a low-cholesterol diet, Hunt suggests having your blood cholesterol level checked by your doctor. If it is above 240 mg/dl, your doctor may recommend that it be reduced.

A cholesterol-lowering diet involves restricting consumption of meat, eggs and shellfish while also reducing overall fat consumption to less than 30 percent of your calories.

Even with such a diet, cholesterol reductions may not be highly significant. Participants in the National Heart, Lung and Blood Institute study who were on low-cholesterol diets for 7 to 10 years reduced their levels by an average of only four percent.

Those participants who took the cholesterol lowering drug had an 18-25 percent drop. Since all the participants were already in a high risk category for heart disease, the strict diets and drug treatment were understandable, says Hunt.

A low cholesterol diet may not be necessary for everyone, but a well-balanced diet is, says Hunt.

Trimming the visible fat from meat, using cooking methods other than frying, and not overeating fried foods will do a lot to moderate fat consumption in any diet, she notes.



LEASE A PAINTING...Cara Juan Schuster is shown with a painting which along with several others will be leased to the public during the Muleshoe Art Association's Lease a Painting Program. These paintings are on display at the Corral Restaurant.

AARP Installs New Officers

The American Association of Retired Persons met Friday, Jan. 27 at the Civic Center at 11:30 a.m. for a covered dish luncheon and regular meeting. After the luncheon, which was served to 14 from the nursing home, five new members and 32 members, the meeting was called to order by the president, Leon Lewis.

J.C. Shanks gave the invocation, Maud Young led the Pledge of Allegiance and the program chairman, Myrtle Creamer, introduced Bill Liles. Liles spoke to the group on the Industrial Development Corporation and the New Motel to be constructed in Muleshoe across the Highway from the Civic Center.

Clara Lou Jones introduced Mildred Mitchell who gave a talk on income tax forms for the elderly.

A letter was read from the school superintendent concerning the Patriotic program to be conducted at the schools during Feb. 20, 21, 22 and 23. Mrs. Bob Sanders will represent the AARP for that program.

Clara Lou Jones installed the officers for the following year. They are as follows: Leon Lewis, president; Mary Farley, vice president; Lena Hawkins, secretary; Alice Moore, and Kathrine Sanders as board members, then Lewis installed Mrs. Jones as treasurer.

The following committee's were appointed: kitchen committee, Alice Moore, Lida Wilhite and Jewel McNatt; telephone committee, Maud Young, Ruth Timms and Ranetta Dawson; community service,

Mae Provence; legislative, Owen Jones; program and reporter, Myrtle Creamer; public relations, Muriel Lewis; and membership, Myrtle Chambless.

The five new members are Mr. and Mrs. Floyd Grimsley, Martha Buck, Clifton Finley and Cleta Williams. Visitors were: Mr. and Mrs. W.E. Goforth and Bill Liles.

Clarence Wilhite gave the closing prayer.



John-David Joseph Hughes

Mr. and Mrs. Mark Hughes of Clovis, N.M. are the proud parents of a son born at 1:05 p.m. Jan. 28 in West Plains Medical Center in Muleshoe.

The young man weighed six pounds six ounces and has been named John-David Joseph. He has an older sister, Rebecca, three years of age.

Grandparents are Mr. and Mrs. Ashley Grady of Clovis, N.M. and Mr. and Mrs. Ed Hughes of Tucson, Ariz.

Great grandparents are Mr. and Mrs. John Koran of Florida.

Education is the art of learning to read.

Painting Lease Program Set Friday

The Muleshoe Art Association is giving the people an opportunity to have a piece of original art in their home with a lease program.

The Art Association will lease a painting with the option to buy Friday, Feb. 3 from 9:30 until 11 a.m. A painting may be leased for \$15.00 a year. You also have the option to purchase the painting with the price reduced by the lease cost.

Paintings may be viewed at the Corral Restaurant. Some of the artists who are leasing their paintings are Terry Gill, B. Laney and Gennie Siefert, of Clovis, N.M.; Francis Steigall and Mildred Williams of Goodland; Betty Embry of Farwell; Blanche Lenderson, Juaree Smallwood, Carrie L. Bishop, Debbie Brooks and Cara Juan Schuster, all of Muleshoe.

Money from the lease program is used for the Spring Art Show.

For more information you may contact Cara Juan Schuster at 946-3626 or Mildred Williams at 946-3311.

Washington, DC Tour Scheduled May 29-June 1

A group of Plains, Tx. and Tatum, N.M. area students and adults will be touring Washington, D.C. May 29 through June 1. Twenty-five people have registered for the tour. An additional 10-15 will be accepted. It was reported to the Journal that students and adults from the Muleshoe area will be welcome.

The group will spend four days and three nights in the Washington, D.C. area. The trip will be highlighted by tours to the White House, Capitol, Supreme Court, Smithsonian, Mt. Vernon and Arlington Cemetery.

Cost of the trip is \$535 which includes round trip air fare, all meals and lodging. Adult supervision will be provided at a ratio of one to three.

To register you may call 505-398-6650.

"The Fingertip World of Classifieds" Call 272-1536

Hearty Stews Chase Winter Chills



Winter Barley Stew

2 tablespoons vegetable oil	1 cup water
2 lb. beef stew meat, cut into 1-inch cubes	1/2 cup Quaker Scotch Brand Pearled Barley*
1 cup chopped onion	1 teaspoon salt
2 cups carrot slices	1/2 teaspoon thyme leaves, crushed
1 can (16 oz.) whole tomatoes	1 bay leaf
1 can (8 oz.) tomato sauce	1 clove garlic, crushed

In 4-qt. saucepan or Dutch oven, heat oil. Add stew meat and onion; brown meat on all sides. Add carrot; cook just until tender (5 to 10 min.). Add remaining ingredients; mix well. Cover; bring to a boil. Reduce heat; simmer, covered, about 1 to 1-1/2 hours or until meat and barley are tender, stirring occasionally. Makes 6 to 8 servings.

*NOTE: Substitute 3/4 cup Quaker Scotch Brand Quick Pearled Barley, if desired. Add barley after stew has simmered 40 minutes. Continue simmering about 20 minutes or until meat and barley are tender.

For more easy-on-the-budget recipes and a host of shopping tips, write for your free copy of "Stretching Food Dollars," a new booklet from The Quaker Oats Company. Send name and address to: QUAKER "Stretching Food Dollars" Booklet Offer, P.O. Box 11257, Chicago, IL 60611.

On a chilly evening, there's nothing quite as welcoming as a steaming bowl of stew. Hearty, satisfying and flavorful, stews can be the starting point for a bounty of budget-stretching winter meals.

Like most one-dish meals, stews give the cook many advantages. They can be prepared in advance and refrigerated or frozen. Many stews actually benefit from reheating because the flavors have a chance to mingle. Stews are easy to prepare, and last minute preparation is minimal when stew is on the menu. A salad and bread may be the only accompaniments you'll need.

Stews are versatile, too. Most stews can move easily from family dinner table to party buffet by simply doubling the recipe ingredients. Variety is no problem either. Since every country has one or more traditional recipes, there's a stew to fit every cook's taste and budget.

Budget-stretching stewing chickens and less tender cuts of meat are perfect for the stew pot. Beef chuck, pork and lamb shoulder, beef short ribs and lamb shanks are less expensive than their more tender counterparts. And, they benefit from the long, slow cooking process. For addi-

tional savings, stock up on meat and poultry specials. Buy as much as you can use, date and freeze in moisture-vaporproof wrap. Cutting up whole chickens and cubing meat before freezing saves preparation time later and hastens thawing.

Meat alone does not a stew make, however. Seasonal vegetables and a cereal grain, such as barley, are the other essential ingredients. Both important nutrients as well as satisfying flavor for mere pennies a serving.

TEST NOW!

Doctors and other scientists have some new answers for people with a peptic ulcer.

THEN: A few years ago, bland diets and lots of milk were a way of life for ulcer patients.

NOW: Researchers have recently found milk causes an increase in stomach acid. Fortunately, doctors have ways to treat ulcers. There are effective medicines that help the ulcer to heal. If you fear you have an ulcer see your doctor. You can get help.

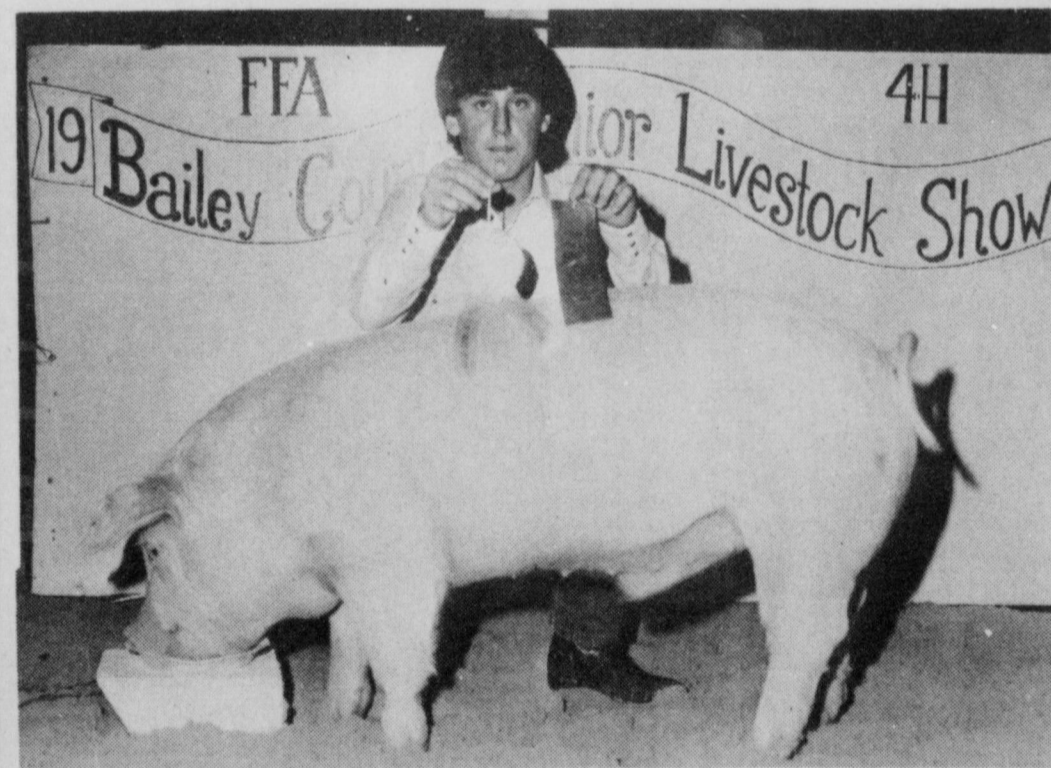
This information comes from Smith Kline & French Laboratories, a leader in gastrointestinal research and therapeutics.

Lookin' Good AND d'Galsion CREATIVE COLOUR Join Together In Helping You To Look Your ULTIMATE BEST!

- Complete color analysis
- Fabric draping
- Special daylight lighting
- Personal color palette
- Make-up analysis and tips
- Color coordinated cosmetics

Appointments Being Made Call Feb. 2-3-4 9:30-4:30 272-5052 DONNA SMITH Certified Color Consultant

GREAT JOB!



YORK RESERVE BREED CHAMP...Mike Dunham, son of Mr. and Mrs. Jack Dunham, exhibited his heavy weight Yorkshire to first place and reserve breed champion during the local livestock show last week.



RESERVE CHAMPION POLAND...Troy Watson, son of Mr. and Mrs. Howard Watson, exhibited his Poland swine to second place and reserve breed championship at the Bailey County County Livestock Show.

Watson Alfalfa

MULESHOE TRADE CENTER

New Furniture Too Expensive?

See John For Good Used

Furniture

130 Main

272-4906

Make Plans Now To Attend The...

SPIRITUAL LIFE CRUSADE

With

Jim & Pam King

★ GOSPEL RECORDING ARTISTS

★ DYNAMIC 'WORD' MINISTRY



Sunday, Feb. 5 at 10:30 A.M. and 6:30 P.M.
Mon. through Wed. 7:30 P.M.

FIRST ASSEMBLY OF GOD

The Church On The Grow!

521 S. First
In Muleshoe

Nursery Provided

For More Information Call 272-3017

A gift of beauty from Merle Norman



The Beauty Bonus. Yours free with any \$8.50 purchase of Merle Norman cosmetics.

The Merle Norman Beauty Bonus. A collection of four essential Merle Norman cosmetics in a sampler size. Moisture Emulsion, Liquid Makeup, Creamy Flo-Matic Mascara and a regular size Lipstick. All yours as our gift especially for spring. But please hurry. An offer this good can't last long. This offer is good through March 15, 1984, while supplies last. One to a customer.

MERLE NORMAN
The Place for the Custom Face

Latrell Hysinger

1519 W. American Blvd.

WITH THIS COUPON

Farm Program

Con't From Page 1

Participants in the PIK program in 84 for wheat will not receive wheat from CCC stocks. Producers will agree if in the program, to first use their outstanding price support loans. Those who have no such loans and who are unable to harvest for PIK will not receive a PIK payment. Land designated for conservation acres must have been devoted to row crops of small grains in two of the last three years.

No offsetting nor cross compliances will apply to any of the 1984 farm programs. Contracts signed on wheat, feed grains and cotton will be considered as binding.

Although the USDA is urging producers to comply with the 1984 program, a big decision is faced by the farmers. Some will participate, it is presumed, using the possibility of a cotton deficiency payment as a stop gap measure, say officials.

One point in fact remains on the 1984 Farm Program horizon; and, that is: if any disaster or other payments should be made available to farmers in 1984 - only those signed up in the program will be eligible to receive such payments; other wise, the farmer will be on his own.

Farm meetings are being held in many parts of the country by ASCS officials in an effort to explain the details of the 1984 program. A final meeting on this subject

will be held on Thursday, February 2 at 6:30 a.m. in the old Bula School. A meeting was also scheduled for Tuesday evening at 7 p.m., January 31 in the Bailey County Courthouse.

Five Area...

Con't From Page 1

people saw the need for rural telephone service in our areas. Since the large telephone companies did not want to service the rural areas, R.E.A. was approached and a committee was set up to establish a working agreement with the REA in Washington. This Committee was made up of W.R. Damron, C.E. Roark, J.H. Angeley, Hughes Smith, Chester Seiff, R.C. Gaede and Glen Williams.

Records reveal that in the past 35 years, there have been fifty directors serving the Cooperative to help provide adequate and dependable telephone service to the six counties served by Five Area Telephone Cooperative.

All members are urged to attend the annual meeting this Saturday.

Show...

Con't From Page 1

Mrs. Spencer Tanksley, Russell Young had a breed Champion Duroc.

Our sincere apologies to these exhibitors and to any others that we might have inadvertently misplaced.

Soil Moisture

Con't From Page 1

adequate pre-plant moisture than the table indicates. (see table enclosed)

Those fall rains came hard and fast with high intensity storms that generally created heavy runoff. As a result, most areas picked up very little deep moisture and lost even more potential deep soil water to hardpans which are so prevalent and increasingly severe this year.

The number of survey sites with serious compaction layers has increased since last year. However, Mike Risinger, Lubbock SCS soil scientist, also commented he is seeing more breaking plows and deep chiseling in operation this year than ever before.

The team measured soil moisture deficits in 190 neutron tube sites over the 15 counties, with cooperation of local landowners. Site selection was based on soil type and variations in the saturated thickness of the Ogallala aquifer.

The soil moisture deficit map is published as a tool to give producers a better picture of soil moisture reserves over the entire area. It can help them to make more informed irrigation decisions and help them avoid both over or under irrigating in the spring. It can also give an indication of potential production.

The map's soil moisture deficit readings are a measure of how much water is

still needed to wet the soil in the crop root zone to field capacity. The sample indicates general trends over the area, but does not predict exact soil moisture conditions on any given farm. Each landowner needs to check his individual farm soil moisture to determine its water needs.

The survey is a cooperative effort by the Soil Conservation Service and the High Plains Water District.

High Plains Rainfall Distribution by County from Sept. 1 - Jan. 15, 1984 is as follows: (in inches) Armstrong: 7.5-9.5; Bailey: 4-6; Castro: 2.5-7; Cochran: 6-8; Crosby: 9 (one site); Deaf Smith: 3-5; Floyd: 9-12+; Hockley: 5-12+; Lamb: 4-12; Lubbock: 9-16; Lynn: 11-20; Parmer: 2-6; and Randall: 1-9.

Evangelist...

Con't From Page 1 signed to appeal to all age groups. Pam, an accomplished musician has arranged much of the music for their three long play albums.

The Crusade will continue through Wed., Feb. 8th at 7:30 p.m. each night.

Rotary...

Con't From Page 1 der the direction of the University of Virginia and officers who complete the courses receive 11 college credits. The class was made up of 250 officers, Irvin stated. The course includes instruction in the fields of education, communication, forensic and behavioral sciences, police management, law, firearms and physical training.

Muleshoe...

Con't From Page 1 will include Jim Hightower, Texas Commissioner of Agriculture and John Ford, USDA Deputy Secretary of Agriculture. Also, Senator Bill Sarpalis will address the meeting after a free barbeque lunch at 12:30. Farmers, businessmen and others are urged to attend.

Bailey County Farm Bureau will hold a Board of Directors meeting on February 2, Thursday at 7:30 p.m. in the Muleshoe Farm Bureau Office. All Directors are urged to attend.

Filing period for the May Primary will be from January 7 through February 6.

Elections of local interest will be sheriff, tax assessor/collector, county attorney and commissioners for Precincts One and Three.



The Journal has been authorized to announce the following candidates for public office:

SHERIFF
Tom Watson
Bob Henderson

Tax Assessor/Collector
Kathleen Hayes

State Senator
Bill Sarpalis

U.S. Congress
Don R. Richards
Tom M. Richards

Co. Commissioner Precinct 1
R.L. Scott
G.L. Hoss/Gilson

R. O. Gregory

Co. Commissioner Precinct 3
James Warren

Joey Kindie

Court Officials Record Quiet Week

In both Municipal and Justice courts in Bailey County and Muleshoe last week, filings and disposals were light.

In Municipal Court, Judge Linda Huckaby reported a total of nine new cases filed last week and a total of 12 disposals with fines paid.

Those cases filed included two for no drivers license, and one each on the following: invalid MVI, bad check, public intoxication, unregistered vehicle, fail to control speed, running stop sign and failure to identify self. Cases disposed of in Municipal Court included two each for expired MVI, bad checks, and running stop sign. One case each was disposed of on the following violations: no drivers license, failure to identify self, expired license plates, speeding, violation of city ordinance and assault.

In Justice Court, Justice of the Peace Jack Bates reported a total of twenty filings, and 13 disposals for the period from January 24 to January 30, 1984.

Cases filed in Justice Court included fourteen for speeding, two for public intoxication. One case each was filed on the following listed violations: hunting geese out of season, hunting

without duck stamp, failure to stop at stop sign, no operators license. Cases disposed of in that Court during the same time

included ten for speeding; and one each for: no operators license, hunting out of county without license and no motor carrier authority.

Some people say a lot by not saying much.

The "charge it" habit gets to be expensive, in time.

A fanatic is simply an individual who knows that he is right.

There's always the danger of remembering too much.

Religion, to many people, is meant for other people.

Experience is something to be purchased if it's worth having.

Atlas - Hotpoint - Magic Chef
Rick's Repair Service
Open For Business: January 2, 1984
To Repair All Small Appliances & Lawnmowers
Rick T. Galt, Owner
Maple (806) 927-5595

A&M FARM AND RANCH SUPPLY
OPEN ALL DAY SATURDAY

Prices Effective thru Feb. 4

Schauber
6 AMPERE 6 VOLT 12 VOLT BATTERY CHARGER Model 0174 05 1984 \$29.95 Recharge average 6 or 12 volt battery in from 3 to 7 hours. For jump, pick-up truck, RV's. Automatic-coolant protected.

CASITE
Oil and Air Filters 199
CF1A CF35 oil filters. CFA113 air filter.

Automatic Nozzle 33.50
Designed for farm use on diesel fuel or gasoline pumps. Rugged, heavy duty, high flow, shuts off automatically when vehicle tank is full.

Hydraulic Bottle Jack 8 Ton 39.00 12 Ton 49.00
Compact, lightweight, high in hydraulic pressure stroke.

Cool Shade Cab Rack 57.95
Cool shade cab-rack with top extensions of 3 1/2" used for stacking materials such as lumber, pipe, ladders, etc. For GM, Dodge, and Ford.

The New Jacques Lounge

Featuring: Wayne Crume

Wed. & Friday 5:30- 9:00

Wed.-Ladies Night

Blue Margarita &

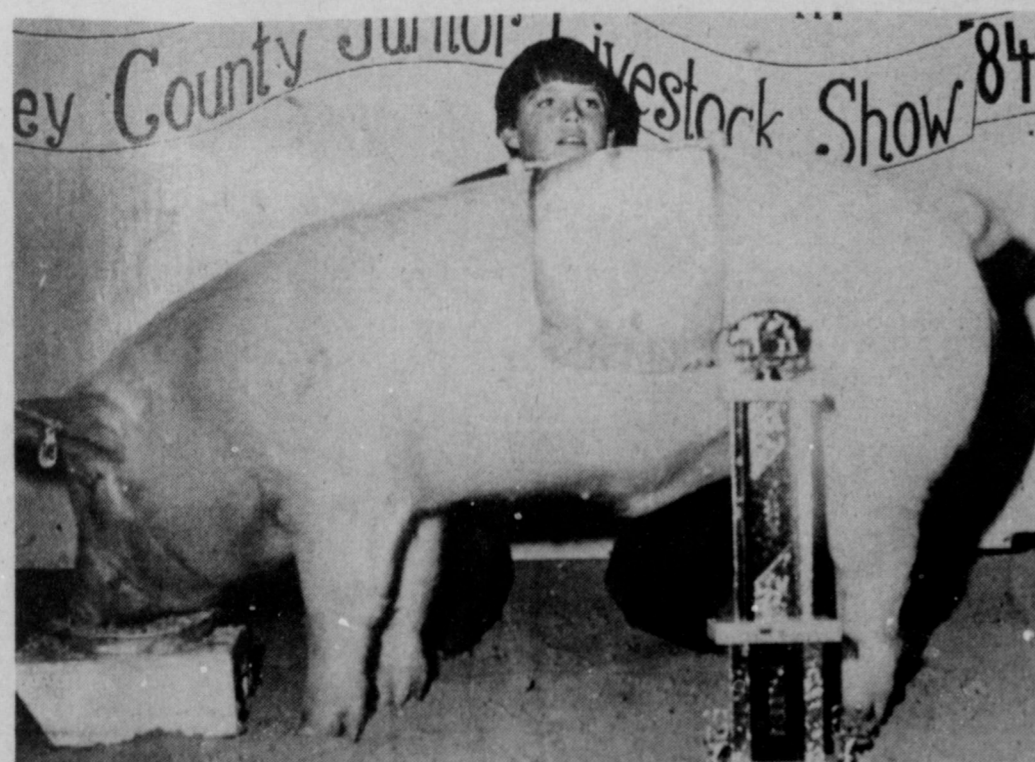
The New Green Margarita

Watch for the opening of Jacques newly expanded Lounge.

CONGRATULATIONS



MEDIUMWEIGHT DUROC RESERVE CHAMPION...Showing the first place and reserve champion Duroc in the Bailey County Livestock Show as Russell Young, son of Mr. and Mrs. John Young.



HAMPSHIRE MEDIUMWEIGHT RESERVE CHAMPION...Exhibiting his hamshire medium weight to a first place, then on to the reserve breed champion was Colin Tanksley, son of Mr. and Mrs. Spencer Tanksley.

Farmer's Co-op Elevators

CONGRATULATIONS



CROSS RESERVE BREED CHAMPION--Russell Brown son of Mac Brown, exhibited his heavyweight Cross to reserve breed championship after taking first place in the Bailey County Livestock Show.



SPOTTED POLAND BREED CHAMP...Steve Roberts, son of Mr. and Mrs. Burley Roberts exhibited the Spotted Poland breed champ and first place; also the reserve breed champ at the Bailey County Livestock Show.

Paco Feed Yard

**BUY
SELL
AND
TRADE
WITH...**

Classified Ads

DEADLINE FOR CLASSIFIED ADS IS TUESDAYS AND FRIDAYS 11:00A.M

CLASSIFIED RATES
1st Insertion Per Word...\$15
Minimum Charge...\$2.30
2nd Insertion Per Word...\$13
Minimum Charge...\$2.00
CARD OF THANKS
Per Word...\$20
CLASSIFIED DISPLAY
\$1.70...per column inch
BLIND AD RATES
50% more
DEADLINES
11 a.m. Tues for Thurs.
11 a.m. Fri. for Sun.
WE RESERVE THE RIGHT TO CLASSIFY REVISE OR REJECT ANY AD. NOT RESPONSIBLE FOR ANY ERROR AFTER AD HAS RUN ONCE.

AFTER DEADLINE???
You can call 272-4536 until 5:00 p.m. on Friday and Tuesday and get your **WORD AD** in **TOO-LATE-TO** in the next issue!!! Tuesday for Thursday and Friday for Sunday.

1. PERSONALS

CONCERNED about someone's drinking **HELP IS AVAILABLE** through Al-Anon. Call 227-2350 or 965-2870 or come to visit Tuesday nights. 8:00 p.m. at 1116 W. American Boulevard, Muleshoe.

3. HELP WANTED

PROCESS MAIL AT HOME \$75.00 per hundred! No experience. Part or full time. Start immediately. Details sent self-addressed stamped envelope to C.R.L. 5288, P.O. Box 3149, Stuart, Fl. 33495. 3-21-4tp

Jobs Overseas - Big money fast. \$20,000 to \$50,000 plus per year. Call 1-216-453-3000, Ext. 26047. 3-5t-1tp

MEN AND WOMEN 17 - 62 TRAIN NOW FOR CIVIL SERVICE EXAMS

No High School Necessary Positions Start As High As **\$10.21 HOUR**
• POST OFFICE • CLERICAL
• MECHANICS • INSPECTORS
KEEP PRESENT JOB WHILE PREPARING AT HOME FOR GOVERNMENT EXAMS
Write & Include Phone No. To: **National Training Service, Inc.** % Muleshoe Publishing Co. P.O. Box 449 Muleshoe, Tx 79347 3-2t-4tp

4. HOUSES FOR RENT

SKIING IS GREAT
Save \$\$ Nice 2 Bedroom Ruidoso House, Cable T.V. Steve Allredge 806 456-7192, or Bob Allredge 806 983-2912. 4-1s-tfc

5. APTS. FOR RENT

3 Room Furnished Apt. for rent, in Muleshoe, all bills and Cable T.V. Paid. \$250 a month plus \$100 deposit. Call Maurine Routon at Farwell 1-825-3555. 5-2t-tfc

FOR RENT: 2 bedroom unfurnished apartment, with some bills paid. Call 965-2188 or 272-4754. 5-2s-tfc

8. REAL ESTATE FOR SALE

FOR SALE BY OWNER: 3 br, 2 bath brick home. Fireplace, carpeted, garage. Beautiful yard & covered patio. Close to high school. 272-3402 or 272-3839. 8-19s-tfc

EXTRA NICE 3-1/2-1. New carpet, paneling through out. Screened in patio. Call 4541 or 5671 after 5:00 p.m. Ask for Debby. 8-13t-tfc

House For Sale in Earth. 3 Bdrm, 2 Bath, Refrigerated air, central heat, fireplace. Approximately 1800 sq. ft. \$26,000. Lowe Real Estate 257-2073 8-5t-2tc

8. REAL ESTATE FOR SALE

New Listing For Sale By Owner: 3 Br, 1 Bath, 1 Car Garage. Central Heat, Corner Lot. Priced to Sell. 402 E. Austin St. 272-4738 8-41t-tfc

KREBBS REAL ESTATE

If it's Real Estate you want, we have it or can get it. -Appraisals- Tele. 272-3191-office and residence.

Bingham & Nieman Realty

116 E. Ave. C 272-5285 *** 272-5286

"We Appreciate Your Business!"
George & Dianne Nieman

NEW HOMES

No Down Payment
Low Monthly Payment
You May Qualify!
272-4266

AMERICAN VALLEY INVESTMENTS REALTORS

Thursie Reid 272-3142
Karen Harris 272-5183
Lucille Harp 272-4693
Derrrell Matthews 965-2127
Rex Harris 272-5183
8-2t-tfc

Henry Realty

111 W. Ave. B Muleshoe 272-4581

315 Acres on HWY West of Muleshoe, 5 Wells, Underground Pipe, Lays Excellent, Owner Financing.

800 Acres West of Muleshoe on HWY Excellent Improvements. Priced Right to Sell. Owner Financing.

38 Acres West of Muleshoe, 6 Inch Well, Sideroll, All Wheat.

One Acre Sites For Home Construction. 3 Miles East of Muleshoe on HWY.

2 Bedroom Home. 4 Rooms Remodeled. Storage. 2% down Owner Financing.

8-51s-tfc

FOR SALE BY OWNER
Large Brick Home on 10 acres. Plus 32' x 50' insulated shop building, small barn, fruit orchard, excellent well with sprinkler system. Locate 2 1/2 miles from city limits. 593,500. Call 272-4957. m8-4s-tfc

8. REAL ESTATE FOR SALE

J.B. SUDDERTH REALTY, INC.
Drawer 887
Farwell, Tx. 79325
Ph. 806-481-3288

160 Acre on Hwy. N.W. of Muleshoe, 2 Wells, Excellent Financing. Priced for Immediate Sale.

320 Acre, 3-8 Inch Wells, 1 Circle. Lays Excellent Oklahoma Lane Area.

320 Acre, 1 Circle, 2-8 Inch Wells, Good Water Area. Oklahoma Lane Area.

A Very Nice 3 BR, 1 1/2 Bath, House. Interior just painted. Central H&AC. Insulated, garage, incinerator, corrals, and small feed shed. On small 7/10 Acre, fenced, on Hwy. in Lariat. Only \$20,000. Possible Owner Financing.

50 acres in edge of Muleshoe 6 inch electric well, Barn, Corral, side roll Sprinkler, City Water. Owner says Sell. 8-46s-tfc

9. AUTOMOBILES FOR SALE

For Sale: 1973 El Camino. 350 Engine, with Headers, Mag Wheels, Need to Sell QUICKLY!! 946-3437 9-36s-tfc

For Sale: 1980 Chevrolet 1/2 ton Pickup. 4 speed, 4 wheel drive. Air and other extras. Call 272-4515 from 8 a.m. to 5 p.m. 9-44s-tfc

10. FARM EQUIP. FOR SALE

60 Horse Electric Motor - Two 40 Horse Electric and a 25 Horse Electric Motor. All are vertical. Contact 965-2842. h10-5s-2tc

FOR SALE: Avenger 3 Wheel Hoe Hands with spray tanks attached. Call First National Bank. 272-4515. 10-21t-tfc

FOR SALE
In Line Booster Pump 25 horse power.

90 Horse power Peerless standard gear head 4-3.

70 Horse power Peerless gear head 6-5.

100 Horse power Newman Electric Motor. Call 806-272-4869. f10-5s-1mc

11. FOR SALE OR TRADE

FOR SALE BY OWNER: 12 x 64 Schult Chateau Trailer House. Phone 925-6710 or 272-3735. 11-3s-4tp

FOR SALE: 14 x 56 Mobile Home located 1/2 mile North of Enochs. 927-5550. 11-3t-4tp

Pea-Green Hay FOR SALE In the Barn. Call 272-3842 or 272-3692. s11-4s-tfc

FOR SALE - 14 x 84 Mobile Home Unfurnished - 3 bedroom 2 bath Masonite Siding - House Top Roof - Call 272-4022 After 5 p.m. or weekends. 11-3s-tfc

PIANO FOR SALE
Wanted: Responsible party to assume small monthly payments on spinet console piano, can be seen locally. Write (include phone number) Credit Manager, P.O. Box 478, Lockhart, Tx. 78644-0478. ill-4t-6tcts

FOR SALE: Baled Milo stalks. Call 933-4324. d11-5s-4tc

15. MISCELLANEOUS

For Sale: Used Olympia International Omega 303 copy machine. Clean and in good condition. Asking \$500.00. Contact King Grain Co. 272-4541. 15-46s-tfc

HONEY FOR SALE
Nick Landers
334 W. Ave. J.
272-3096
15-5t-tfc

HOME REPAIRS. F.M. Saldana Construction - Licensed and bonded plumber. Specialize in cement, carpenter work, remodeling, painting, acoustical ceilings. 272-4955. 15-16s-tfc

Tree & Shrubbery Trimming, Lawn Thatching, Stump Removal, Dormant spraying & feeding.
Custom Tree & Landscape Service, Box 2704, Amarillo, Texas, 79102. 373-4593. c15-3t-8tc

Balloons EXPRESS
Let Our Clowns Deliver Your Valentine
A Bouquet of Balloons
Call 965-2857
15-5t-3tc

15. MISCELLANEOUS

SIGNS PAINTED
Exterior-house painting
Kenneth King
272-3817
15-5t-2tc

Treflan \$119.00 5 gal. can \$697.00 30 gal. drum
Call 806-272-4737
Watson Chemical (Jimmy Watson)
For Any Chemical Will Deliver Substantial Order.
w15-5t-3tc

8. REAL ESTATE FOR SALE

3 Bedroom, 1 bath, paneled, fully carpeted, aluminium siding, storm windows, storage building. Call 272-5415. 18-5t-2tc

18. LEGAL NOTICES

NOTICE OF RATE CHANGE REQUEST AND STATEMENT OF INTENT

Notice is hereby given that **BAILEY COUNTY ELECTRIC COOPERATIVE ASSOCIATION** (the "Utility") intends to change its purchased power adjustment for electric utility service effective February 17 1984. Under the present tariff the Utility pays an incentive credit to members of the irrigation class participating in a load management program and additionally credits all consumers with any reduction in power costs less demand ratchet cost resulting from load management. To correct this double payment of benefits the utility proposes to recover 1/2 of the incentive credits actually paid through its power cost adjustment. The increase requested over test year revenues is \$149,359.00 or less than 2%.

The changes are applicable to all areas and all customers served by the Utility. The classes and numbers of Utility customers affected are as follows:
Residential 2,734
Irrigation 2,801
Commercial
under 50 KVA 373
over 50 KVA 78
Implementation of the proposed changes is subject to approval by the appropriate regulatory authority. A statement of intent including the proposed revisions of tariff and schedules and a statement specifying in detail each proposed change is available at the general office of the Utility located at 305 East Avenue B, Muleshoe, Texas.
Persons who wish to intervene or otherwise participate in these proceedings should notify the Commission as soon as possible. A request to intervene, partici-

18 LEGAL NOTICES

Opinions are necessary in life, but it is not necessary that anyone else agree with yours.
The Guarantee Customer-But do you really refund the price of these hose if they fail to turn out holeproof?
Salesman-My dear madam, we do it every day.

When a child, or an adult, gets the idea to play, you might as well let 'em play.

No greatness exists unless it's based upon principle and not upon profits.

Some people are never happier than when they're getting others into difficulties.

Public speaking is easy. It's the thinking before you speak that's hard.

Education isn't complete if all that the student gets is a trained mind.

When the world entirely fits your notions, you will be the only person on it.

Poor work, completed, is usually better than brilliant performance postponed.

The NEW Jacques Discount Liquors
505-762-6485
3600 Mabry Drive
Clovis, New Mexico

SCHMITT SOHNE LIEBFRAUMLICH 750 \$419	KAYSER PIESPORTER MICHELBERG 750 \$539
SEBASTIANI EYE OF THE SWAN 750 \$499	CANADIAN MIST Liter \$769
SMIRNOFF VODKA 175 \$1239	OLD CHARTER 10 Yr. Old - 750 \$799

LARGEST LINE OF IMPORTED BEER & WINES
COLD KEGS TO GO
Coors, Bud, Schlitz, Michelob, Miller Lite, Lowenbrau

FOR YOUR VALENTINE

A Valentine Love Line

COMPOSE YOUR OWN VALENTINE MESSAGE...IT'S EASY TO DO!!!

Enclosed Please Find My Special Prepaid...
Valentine Love Line
Compose Your Own Message Below


Name _____
Address _____
City _____ Total Inches _____ Total Amt. Enclosed _____

ALL ADS MUST BE PREPAID
DEADLINE FOR LOVE LINES IS FEBRUARY 10th
MAIL CHECK OR BRING AD TO
MULESHOE JOURNAL
304 W. 2nd 272-4536
P.O. Box 449 Muleshoe, Tx. 79347

To: Mary
Have A Happy Valentine's Day
From: John
3 inch ad \$5⁰⁰

To: Joe
Be My Valentine
From: Alice
2 inch ad \$3⁰⁰

To: Jill
I Love You
From: Mark
1 inch ad \$2⁰⁰



We're Proud of You!



HEAVYWEIGHT RESERVE DUROC...Exhibiting his heavyweight Duroc to a first place and reserve breed championship was Shawn Wheeler, son of Mr. and Mrs. Carl Wheeler.

H & J Equipment

'83 Houston Livestock Show Offers Top Entertainers

The largest line-up of star entertainers in Houston Rodeo history is on tap for the 1984 Show, February 22 - March 4 in the Astrodome. Show President E. Norwin Gerhart announced that 21 star entertainers would perform at this year's show. "We are pledged to bring our rodeo fans the very best in family entertainment. These stars offer the best there is in the music industry today and at a ticket price that even competes with a night out at the movies!"

Ticket prices are the same as in 1983, \$4 and \$8. Gerhart noted that the Show is the Southwest's premier charity event, with all of our net proceeds going to support our scholarship, research and other renown programs which benefit youth and support education. "So, when you bring your family out to the Rodeo, you're seeing a top show at a price you can afford and investing that ticket dollar in the future of some deserving young Tex-

as who may go to college on a Show scholarship." Leading off the rodeo line up is Waylon Jennings and Lacy J. Dalton on February 22; followed by Ray Price and John Conlee on February 23; Anne Murray on February 24; Merle Haggard and Sylvia on February 25 for matinee and evening performances; The Oak Ridge Boys on February 26 for two performances; Gladys Knight and the Pips and the Commodores on February 27; Roy Clark and

Lee Greenwood on February 28; and, Janie Fricke and George Strait on February 29. March gets off to a blazing start with Conway Twitty and T.G. Sheppard on March 1; followed by Larry Gatlin and the Gatlin Brothers Band, on March 2;

AG CHECK-OFF SYSTEM

The recent amendment to the Texas Constitution that passed in the general election has legalized the Texas agricultural check-off system. Although the Texas Agricultural Check-off Act was passed in 1967 and re-voked in 1969, it was declared unconstitutional by the Supreme Court in 1975, notes an economist with the Texas Agricultural Extension Service, Texas A&M University System. Now that the act has been legalized through the election process, agricultural commodity groups will be able to proceed in setting up check-off or "self-help" programs. In these programs growers pay a certain fee when they sell their product so as to finance educational, research and market development projects for the benefit of their particular product.

Charley Pride and Reba McEntire for two performances on March 3; and the rodeo concludes with Eddie Rabbitt and Crystal Gayle on March 4 for matinee and evening performances on March 4.

All rodeo performances take place in the Astrodome, where the Rodeo uses the finest concert-quality sound system available. Show provided closed circuit big screen television makes every seat in the Astrodome an excellent one for viewing all the rodeo action as well as the close-up views of the stars the thousands of fans come to see.

Tickets are on sale now by mail by contacting the Rodeo Ticket director, Houston Livestock Show and Rodeo, P.O. Box 25395, Houston, Texas 77005-3595. Or, tickets may be purchased through all Ticketmaster and Ticketron outlets.

Admission to the livestock show and horse show events are included in the cost of a rodeo ticket. The only horse arena event not covered by this policy is the National Cutting Horse Association World's Championship Finals, which take place February 16-19 in the Horse Arena. Tickets for this five

performance event are \$7 for each performance and may also be ordered from the ticket director.

Classified Ads
Are The Link
Between Buyer And Seller
Call 272-4536

"ATTENTION"
FARMERS—RANCHERS & DEALERS

WARD BROS. TRACTOR, INC. IS NOW TAKING CONSIGNMENTS FOR THEIR ANNUAL FARM MACHINERY AUCTION TO BE HELD MARCH 1 & 2nd, 1984. THIS IS THE LARGEST FARM MACHINERY AUCTION IN THE SOUTHWEST WITH BUYERS FROM SEVERAL DIFFERENT STATES. LISTINGS FOR CONSIGNMENTS NEED TO BE IN BY FEB. 7, 1984. FOR FURTHER INFORMATION CONTACT: WARD BROS. TRACTOR, INC. CLOVIS, N.M., PHONE 505-762-2612 OR 505-762-1015.


GREAT JOB!!!!



BREED CHAMPION POLAND... Robin Moore, daughter of Mr. and Mrs. Dewey Moore, exhibited her Poland swine to a first place and breed championship during the Bailey County Livestock Show.

Riverside Terra Co.

Spruce Up For Spring!
JOIN THE
Muleshoe Art Association
Annual Lease Program




9:30 - 11:00 A.M.
Friday, Feb. 3
Corral Restaurant
Dining Room

- ★ New Paintings
- ★ Home, Office Or Business
- ★ Various Types For Any Decor
- ★ Reasonable Price

MAKE YOUR SELECTIONS EARLY!

CONGRATULATIONS!!



TOP OF THE SHOW... Exhibiting a Cross, Andy Crawford, son of Mr. and Mrs. Jim Crawford, took first place, breed championship and topped it all off with Grand Champion during the Bailey County Livestock Show last week.

Muleshoe Pawn Shop

CONGRATULATIONS



BERKSHIRE BREED CHAMPION... Showing the Berkshire heavyweight breed champ and first place swine was Jeff Vinson, son of Mr. and Mrs. Buria Vinson. He was one of the county youth showing for the FFA.

Mohawk Auto Parts

Nation Will Salute Hospitalized Vets

The nation salutes its hospitalized veterans during the week of February 14 and the Veterans Administration is inviting citizens nationwide to visit the nearly 90,000 patients in its medical facilities.

The VA, which administers veterans medical and benefits programs, has also mounted an effort to encourage Americans of all ages to serve as hospital volunteers year-round.

Over 50 national volunteer groups and veterans organizations have joined in the effort.

With the First Lady as honorary patron and Harry Morgan, star of *AFTERMASH*, as honorary chairman, the program's theme is "Nothing hurts like being forgotten - Nothing helps like being remembered."

Morgan, who plays the Chief of Staff at a fictional VA hospital in the *AFTERMASH* show, is featured on radio and television spot announcements.

World War II Navy veteran John Chuchola, in a wheelchair, personifies the salute on the informational printed material urging participation.

"In addition to honoring our veterans and volunteers," said VA Administrator Harry N. Walter, "this is an opportunity for us to share with the public the professional excellence of the VA's health care system which is the nation's largest."

The system includes 172 medical centers, 16 domiciliarys and 99 nursing home care units throughout the country.

Walters noted that "volunteerism is critical to the quality of care provided those who have served their country in time of need."

During Fiscal Year 1983, 79,000 volunteers provided 11.9 million hours of service to hospitalized veterans. The value of their participation, based on the generally accepted average value of \$6.50 per hour, would be \$77.2 million. Volunteers also generated \$10 million dollars in donations.

Volunteers are involved in everything from patient care and recreation to administration and transportation assistance.

Examples of volunteer services range from helping in home rehabilitation of stroke patients to supervised youth groups from pre-school through junior high school in one-to-one "adopted grandparent" activity.

Because of the rising age level of the veteran population, there is a growing emphasis on geriatrics and services for the terminally ill and their families.

The groups supporting the drive to get more volunteers are members of the VA Voluntary Service's National Advisory Committee. In addition to major veterans groups they include

organizations such as the Red Cross, the American Association of Retired Persons, the ELKS and the Salvation Army.

About 60 percent of all VA volunteers are affiliated with a group or organization, ranging from very large national ones to local clubs and churches. Those without organizational affiliation are recruited by VA staff members.

If you want to join in the salute to veterans, or volunteer on a longer-term basis, call the VA medical facility nearest you. Tell them you want to participate and they'll tell you all you need to know.

Name Brands Sale!

ADDITIONAL SPECIAL VALUES THURS., FRI., SAT.

VICKS 24 CT TABLETS HEADWAY	\$2⁴⁹	RIGHT GUARD Bronze Can DEODORANT 10 Oz.	\$3⁵⁵
ECOTRIN 36 CT. ARTHRITIS TABLET	\$1⁷⁵	STRI-DEX 42 Ct. MEDICATED PADS	\$1⁶⁷
CORICIDIN 24 Ct. COLD TABLET	\$2²⁹	PANADOL CHILDREN'S LIQUID 30 Ct.	\$1⁸⁹
CORICIDIN -D- 24 Ct. COLD TABLET	\$2⁴⁹	PANADOL CHILDREN'S TABLETS 30 Ct.	\$1⁷⁹
BEN GAY LOTION	\$1⁹⁸	NICE & SOFT 200 Ct. FACIAL TISSUE	81¢
AFRIN NASAL SPRAY	\$2⁷⁹	SOLO BATH REFILL CUPS 90 Ct. 3 1/2 Oz.	91¢

Pay-n-Save
QUALITY AND SERVICE

515 West American 272-4406