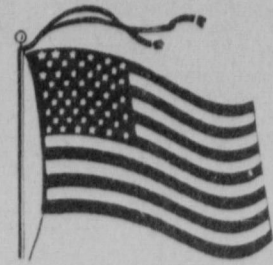


### Weather

January 22	44	16
January 23	45	19
January 24	46	19
January 25	53	20

# MULESHOE JOURNAL



20¢

'The Community of Opportunity-Where Water Makes the Difference'

Vol. 61, No. 4

10 Pages Today

Published Every Thursday at Muleshoe, Bailey County, Texas 79347

Thursday, January 26, 1984

## Mason, Holt Take Top Honors At Lazbuddie

### Around Muleshoe

Filing period for the May Primary will be from January 7 through February 6.

Elections of local interest will be sheriff, tax assessor/collector, county attorney and commissioners for Precincts One and Three.

Also, all democratic party offices for the county, (county chairman and seven precinct chairmanships) will be on the ballot.

Almeth and Delphene McConnell spent the weekend in Midland and attended the Shelton-Roberts wedding.

M.D. Gunstream is reported to be doing well after open heart surgery last week, according to employees at the First National Bank, where he is President.

A "Parent Seminar" on parent-teen communication will be held in Muleshoe on three consecutive Monday nights.

### K Of C Set Free Throw Contest

The Knights of Columbus Free Throw Contest has been scheduled in Muleshoe for 2 p.m. on Saturday, January 28 in the Muleshoe High School Gym.

Local competition is being sponsored by the K of C Council 7173 of Muleshoe. All boys and girls from age 11 to 14 are eligible to participate. Contestants will be required to furnish proof of age and written parental consent.

With competition beginning on a local level, winners in Muleshoe will progress through district, regional and state contests. International champions will be selected from among state winners. All contestants locally will receive participation certificates and all winners will receive awards.

Some of the rules on the local level are outlined here. Each contestant will be allowed 15 consecutive free throws from the foul line. Winning contestants who are tied will progress to the second round where they will shoot five free throws. If there is a tie after the second round, then those tied will shoot five additional free throws. Successive rounds of five free throws each will continue until one contestant emerges as the winner.

Entry blanks for the event are available at Muleshoe Junior High School and at Mary DeShazo. For further information on the contest, contact Frank Torres at 272-4605 or Mike Perez at Muleshoe Super Market.

### MJHS Students Selected To All Region Band

Several Jr. High band students competed for positions in the All Region Band Saturday in Olton. Those selected were Elizabeth Posadas, Torey Cox, Emilie Martinez, Shelli Fried, Karen Kenemer, Carmen Espinoza, Melissa Leal, and Greg Garcia. Alternates were Ronnie Perez and David Wooten.

These students will travel to Lubbock Thursday to rehearse with clinician Sam Robertson of Snyder. They will then give a public concert Saturday night at Monterey High School in Lubbock beginning at 5:30 p.m. Tickets will be available at the door.



GRAND CHAMPION LAMB...Sean Mason, son of Mr. and Mrs. Darrell Mason of Lazbuddie showed his Hampshire lamb to a grand champion win in the recent Lazbuddie Junior Livestock Show. Sean was also the winner of the sheep showmanship class, and received an award for that win also.



GRAND CHAMPION BARROW...Cheryl Holt, daughter of Mr. and Mrs. Cal Slack of Lazbuddie exhibited the grand champion barrow at the annual Lazbuddie Junior Livestock Show on Saturday, January 22. The show was judged by Muleshoe Vo-Ag Instructor Carl Wheeler.

## Citizens Reminded Of Due Date On Property Taxes

An important deadline occurs next week for property owners in Bailey County and all of Texas. Dale Jones, Chief Appraiser for Bailey County Appraisal District reminds citizens that local property taxes assessed for 1983 are due by the end of January.

"Taxes not paid before Feb. 1 are delinquent and begin to accrue penalty and interest," Jones says.

He points out that delinquent 1983 taxes will incur a six percent penalty and one percent interest charge on Feb. 1. Charges continue to add up at the combined rate of two percent per month or portion of a month that the taxes remain unpaid, until they reach a total of 18 percent on July 1.

After that, interest accrues at one percent a month. Taxes delinquent for a year would incur penalty and interest charges of 24 percent of the original tax.

Under Texas law, according to Jones, taxes are owed on property whether or not the owner receives a tax bill, and there are only three exceptions to the Feb. 1 delinquency date: When the option of split payment is offered by a local government; when tax bills are mailed after Jan. 10, or when a tax-rate rollback election succeeds in lowering a tax rate after tax bills are mailed initially.

Not all taxing units offer the split-payment option. When it is available, half of the 1983 tax must have been paid before Dec. 1, 1983. The second half is due before July 1 this year. Penalty on a delinquent second half-payment is 12 percent of the tax due, and interest will be added at one percent a month from July 1 on.

In some taxing units, tax bills may have been mailed after Jan. 10, or a successful tax-rate rollback election may have necessitated mailing corrected tax bills by a unit other than a school district. In both cases, the delinquency date is postponed and the new date must appear on the most recent tax statement, but penalty and interest will be added if taxes aren't paid before the new date.

Further penalty can be incurred by a tax delinquent on July 1. If a private attorney-rather than the city, county or other public staff attorney-is contracted to collect delinquencies after July 1, up to 15 percent of the total tax, penalty and interest may be added to defray the cost of those collections.

Jones notes that the Property Tax Code does provide some relief for taxpayers who are unable to pay delinquent tax, penalty and interest all at one time. A property owner aged 65 or over may file a sworn affidavit with the appraisal

district to defer paying any or all delinquency amounts on his homestead. However, the amounts are still owed on the property and continue to increase until paid or until the property changes hands.

Another option, but one which must be in a written agreement between the tax collector and property owner, is to pay delinquent tax, penalty and interest in installments over a period of not more than 36 months. With this option, too, the tax is still considered due.

### Life At West Point Described To Rotary

The Muleshoe Rotary met at noon on Tuesday, January 24 for their regular weekly meeting, with two new members present. Those new members are Sam Harlin and Wayne Holmes.

Rotarians voted to donate \$100 to the Bailey County Junior Livestock Show, which will go toward premiums for contestants this year. The show begins with weigh-ins on Wednesday and showing will run through Friday afternoon.

A reminder was given to members that from March 29 to April 21 is the District

## City Accepting Bids On Sewer Lift Station

According to Dave Marr, Muleshoe City Manager, in consideration of future potential growth in the City of Muleshoe and in an effort to "Key down" costs of a proposed sewer lift station and force main, the City of Muleshoe has asked for sealed bids on all plant, labor material and equipment; and performing of all work required for that lift station.

Bids will be received at the City Hall until 8:30 a.m. on February 14 and then will be publicly opened and read at that time. Bids are to be submitted in sealed envelopes on the blank form of the proposal and should be accompanied by a cashier's check or certified check up on a national or state bank in the amount of five percent of the total maximum bid price; or bid bond in the same amount from a reliable surety company as a guarantee that the bidder will enter into a contract and execute performance bond within ten days after notice of the award of contract to him.

The bid security is to be enclosed with the bid. Any bids submitted without check or bid bond will not be considered. The City reserves the right to reject any and all bids and to waive an informality in bids received.

Plans, specifications and bidding documents may be secured from the office of Bill R. McMorries and Associates, Inc., 6300 Canyon

Drive, Amarillo, Texas 79109 upon the deposit of \$50 per set. The deposit will be refunded upon the return of all documents in good condition to that office, not later than 48 hours prior to the time for receiving bids; or, the contractor submits a bid and all documents returned in good condition to McMorries & Associates, Inc. at the time bids are opened.

In addition to bids being taken on the proposed sewer lift station and force main, the city has also advertised for sealed bids on all plant, labor, material and equipment, and performing of all work required for the seal coating of city streets. The bids on this work will also be received at the City Hall until 8:30 a.m. on February 14, 1984 at which time they will be publicly opened and read.

## Post Office Advises Careful Addressing

"If you want your valentines to be delivered on target and on time, you can help the postal service by addressing them properly, the Officer-In-Charge of the Muleshoe, Texas Post Office said today.

"A return address should be the first address a person puts on an envelope," Mr. Vigil said. "If there is a delivery problem, it will

## Near Asphyxiation Occurs Here Monday

Thanks to the quick-thinking actions of three employees of Fry and Cox, Inc. Monday morning, a near tragedy was averted in Muleshoe.

Rene Torres, an employee, called bookkeeper Maudie Speck to tell her that he "didn't think he could come to work, something is wrong with the baby," when Mrs. Speck realized he sounded disoriented and something was wrong at the Torres home.

She told Billy Reese, who enlisted the aid of Jim Burgess and Roy Simpson. The trio quickly drove to the Torres home on West Ave. K.

Reese and Burgess went inside the house and found Mrs. Torres on a couch, unresponsive and unconscious. Torres met Simpson outside with the limp baby in his arms. Simpson immediately placed Torres and the baby in his vehicle, turned on the air conditioner and headed for West Plains Medical Center. Arriving there,

Simpson carried the baby inside and informed nurses that another asphyxiation victim was on the way to the hospital.

Although an ambulance had been called from Fry and Cox, it was dispatched to the wrong address. Not waiting, Reese and Burgess picked up the unconscious form of Betty Torres, loaded her into their pickup, rolled down the windows and also headed for the hospital.

Medical personnel worked with the baby, reviving her almost immediately, but continued to work with Mrs. Torres for something more than 30 minutes before getting responses from her.

At noon on Monday, Mrs. Torres had regained full consciousness, the baby was up walking around, and Torres was praising the Fry and Cox personnel who worked swiftly to save them.

Torres said he had taken a shower and dressed in the bathroom after starting his car in the garage to warm it up before his wife and baby got inside to take him to work. "I just couldn't stay awake," he said, "and sat down for a minute in the bathroom. I couldn't figure out what was happening to me because I had been up for quite awhile."

Torres said he finally got to his feet and went to the kitchen where he found the unconscious body of his daughter. He then found his wife, unconscious in the garage near the kitchen door. He carried his wife to the couch and tried to help his baby.

His fellow employees arrived and took over from there. It was believed that a combination of the car running in the garage, with the garage door closed, and a vent which was about half off a heating unit, caused

## Adult Showmanship Class Adds Variety

The annual Lazbuddie Junior Livestock Show kicked off at 1:30 p.m. on Saturday, January 22, with a good number of entries in both lambs and swine. There were no steer class this year due to the fact that the steers were owned by brothers and they did not wish to compete in that manner.

Taking top honors in the swine division was Cheryl Holt, whose light weight pig was named Grand Champion. Reserve Champion title went to Scott Holt with his heavy weight pig. Susan Redwine won Showmanship honors in the swine division.

Exhibiting the Grand Champion lamb in the Lazbuddie Show was Sean Mason. Reserve Champion title went to Tammy Vise. Sean Mason also won the showmanship title in the Lamb show.

In the adult showmanship class, which is probably one of the most entertaining in the show, top female entry

was Darla McBroom. Since the women take the event a little more seriously, all entries did a good job. In the Men's showmanship event however, that is another story. By hook or crook, winner of that title was Mike Miller. A lot of good natured cheating goes on in that class, but a lot of fun comes out of it. The winners in the adult showmanship were awarded a coupon book from McDonald's.

Judges for the adult class were Terry Jesko, Sean Mason and Rick Copp. Judge for the Junior Livestock Show was Carl Wheeler, Muleshoe Vocational Ag instructor.

The swine light weight class was the first to be judged in the show. Taking first place in that division was Cheryl Holt, 2. Donny Holt, 3. Dusty Jesko, and 4. Terry Jesko.

In the heavy weight swine division, first place was captured by Scott Holt, 2. Susan Redwine, 3. Russell Brown, 4. Dusty Jesko and 5. Brian Glover. No breed championship was awarded in the swine divisions due to the small amount of entries.

The sheep division had quite a few more entries and judging began with the Finewool class. Taking first place in the Finewool was Todd Daniel, 2. David Schacher, 3. Brian Glover, 4. Holly Morris, 5. Wendy Jarman, 6. Jana Vise. The winners of first and second place were awarded Breed Championship in the finewool, respectively.

In the Hampshire Sheep division, light weight class, Sean Mason was first. Second place went to Sheldon Mason, 3. Leland Brockman and 4. Todd Daniel.

In the Heavy Weight Hampshires, Tammy Vise won. Con't Page 6, Col. 1

## Land Purchase Could Yield New Fire Station

On Tuesday, January 17, an executive session was held by the Muleshoe City Council, regarding the possible purchase of land.

On Tuesday, January 24, City Manager Dave Marr told the Journal that the City had entered into contract with Archer, Daniels and Midland, who are connected with Texas Sesame, to purchase a tract of land.

The proposed purchase

Con't Page 6, Col. 1



CHEATING?...WHO?ME?...A lot of entertainment was provided onlookers at the Lazbuddie Livestock Show last Saturday when the adult showmanship classes took place. The women's division was taken seriously, but the men engaged in a lot of horse-play and general confusion. However, fun was had by all.

# Southwestern Rodeo Contestants Will Compete For \$243,350

Entries in the Southwestern Exposition and Fat Stock Show Rodeo, scheduled for 22 performances Jan. 25 through Feb. 5 at Will Rogers Coliseum, will be contesting for \$243,350, reports W.R. Watt Jr., Stock Show president/manager.

The entry list includes 80 bareback riders, 88 saddle bronc riders, 110 bull riders, 200 calf ropers, 200 steer wrestlers, and 41 wild horse race entries.

Included in the entry list is Roy Cooper of Durant, Okla., the holder of the all-

around championship for 1983 and the record of total earnings in a single season -- over \$153,390 last year.

Cooper has been a regular at Fort Worth, entering the calf roping event for a number of years. He also is the world champion calf roper.

Other world champions will be here also. They include Brad Gjermundson of Marshall, N.D., saddle bronc champion; Brad Ford of Kersey, Colo., bareback champion; Cody Snyder of Redcliff, Alberta, Canada, bull riding champion; and

Joel Edmondson of Columbus, Kan., steer wrestling champion.

The list also includes many past world champions, and members of the top 15 event contenders. One name, notably, in the entry list is Don Gay of Mesquite, Texas, holder of seven world champion titles for bull riding. Gay will be returning to the rodeo contest arena after a year off because of injuries.

Some of the roughest and best known bucking stock in the rodeo business will be in the draw for cowboys during

the Fort Worth Rodeo. Bulls with names such as Wipe Out, Bullwinkle, Hang Fire and Joe Kool, and broncs named Dunn Gonne, Crazy Snake, Hi Ball and Daredevil will be in the lineup. These animals all have been voted by the top cowboys who contested at the recent National Finals Rodeo, the sport's "Super Bowl," as the best buckers of 1983.

The man in charge of assembling the stock is rodeo production manager Neal Gay of Mesquite, Texas. He has arranged to have stock from six other rodeo contracting firms besides his own to furnish bucking animals here. Gay's string will be joined by animals from Del Hall of Hulbert, Okla., James Harper of Lake Charles, La., Ralph Morgan of Lauderdale, Miss., Jim and Marvin Shoulders of Henryetta, Okla., and Harry Vold of Fowler, Colo.

Gay, as well as the cowboys who try to ride them, regard bucking rodeo stock as athletes. The bulls and

broncs have their own individual personalities and bucking styles as they contest one-on-one with their human contestants.

Joe Kool, one of Gay's featured bulls, is considered a pet at his Mesquite Rodeo Ranch. The bull has long been one of rodeo's best bucking bulls, appearing at eight National Finals Rodeos with only one bullrider making a qualified ride.

Wipe Out, a big, tan, long-horned bull, was out 23 times during the summer of 1983 at Gay rodeos and only allowed two complete eight second qualifying rides.

Judges for the rodeo events this year will be Buddy Lytle of Byhalia, Miss., Royce Smith of Challis, Idaho, and Jim Jacobson of Bozeman, Mont. Ms. Ellen Backstrom of Wickenburg, Ariz., will return as rodeo secretary, and Bob Tallman of Sparks, Nev., will serve as rodeo announcer.

Tickets for the stock Show Rodeo are available at the

box office in the lobby of Will Rogers Coliseum from 9 a.m. until 5 p.m. daily, including Sunday. Tickets are \$6 for Monday through Friday matinees, \$8 for Monday through Thursday night rodeos, and \$10 for Friday nights and all weekend performances.

**Classified Ads**

**Call 272-4536**



Tired of peeling carrots? Drop them into boiling water. Let stand five minutes then drop them in cold water. The skins should slip right off.



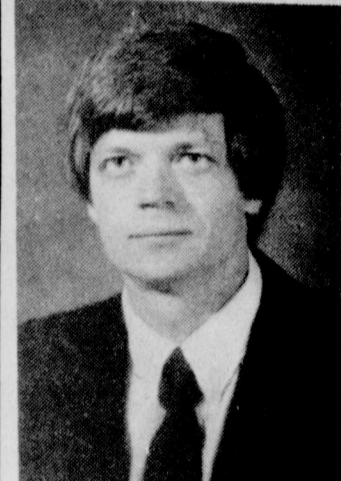
**Robin E. Davis**

TAX ACCOUNTING  
WRITE UP  
QUARTERLY REPORTS

TAX SERVICE

2433 S. FARWELL AVE.  
LITTLEFIELD, TEXAS 79339

806/385-6925



## Financially Speaking

SUDDUTH FIELD & CO.

### INFORMATION RETURNS WHAT YOU DON'T KNOW CAN HURT YOU

Wage statements (W-2's) are familiar to everyone, and employers and employees alike understand that wage information must be accurately reported to the IRS. 1982 legislation provided stricter reporting requirements for other kinds of income as well. Whether you are a payer or a recipient of such income, you can simplify your dealings with the IRS by knowing and following the rules.

Generally, such income is reported on forms in the number 1099 series. The payer of the income must issue a form to the recipient by January 31, 1984, and file a copy with the IRS by February 28, 1984. Recipients should report the amounts and sources on their personal tax returns exactly as they appear on the 1099's that they receive. "Lumping" amounts together or using a different source name can confuse the IRS and cause you to be billed for additional taxes.

In addition to the familiar interest and

dividend income 1099's, your broker is now required to file Form 1099-B reporting stock, bond, and commodity sales and other exchange transactions. 1099-G must be used by governmental units to report payments such as unemployment compensation and, for the first time, state and local income tax refunds of \$10 or more.

Businesses must use Form 1099-MISC to report payments of \$600 or more made to any person for "service performed." This form must also be used to report sales of \$5,000 or more of consumer products to anyone for resale.

Other 1099's are required for All-Savers Certificate interest, original issue discounts, patronage distributions, and profit-sharing and retirement plan distributions.

Penalties for failing to file these information returns or to provide correct social security numbers to those required to prepare these returns have been increased substantially.

Consult your tax advisor to be sure you're meeting the requirements.

## Sarpaulis Named To Monitor Nuclear Waste

Lieutenant Governor Bill Hobby on January 12 announced the appointment of State Senator Bill Sarpaulis (D-Herford) to serve with legislators from other States to monitor the disposal and storage of high-level radioactive waste.

The National Conference of State Legislatures has organized the working group under the provisions of the Nuclear Waste Policy Act of 1982 which mandates legislative involvement in facilities selection for disposal sites. The legislative group will act as a forum to air legislative views on all aspects of the Department of Energy's (DOE) high level radioactive waste siting program. In addition, the group will be advised of the latest technological advancements in testing and drilling programs for such waste.

"The disposal of high level nuclear waste is a problem which we must be fully prepared to deal with," Lieutenant Governor Hobby said. He added, "I am pleased to have a legislator with the background of Senator Sarpaulis collecting information and presenting our views before the committee. His district is concerned with the siting problem, and therefore it is important that he have first-hand information about what is going on at the national level on this critical issue."

## Seminar Planned For Horse Judges

Individuals involved in judging and showing horses will have an opportunity to take part in a special seminar at Texas A&M University, Jan. 28.

The occasion is a Horse Show Judges Seminar hosted by the Texas A&M Horsemen's Association.

The seminar will be at the Animal Science Pavilion and will get under way at 8:30 a.m., announces Dr. Dough Householder, horse specialist with the Texas Agricultural Extension Service, Texas A&M University System.

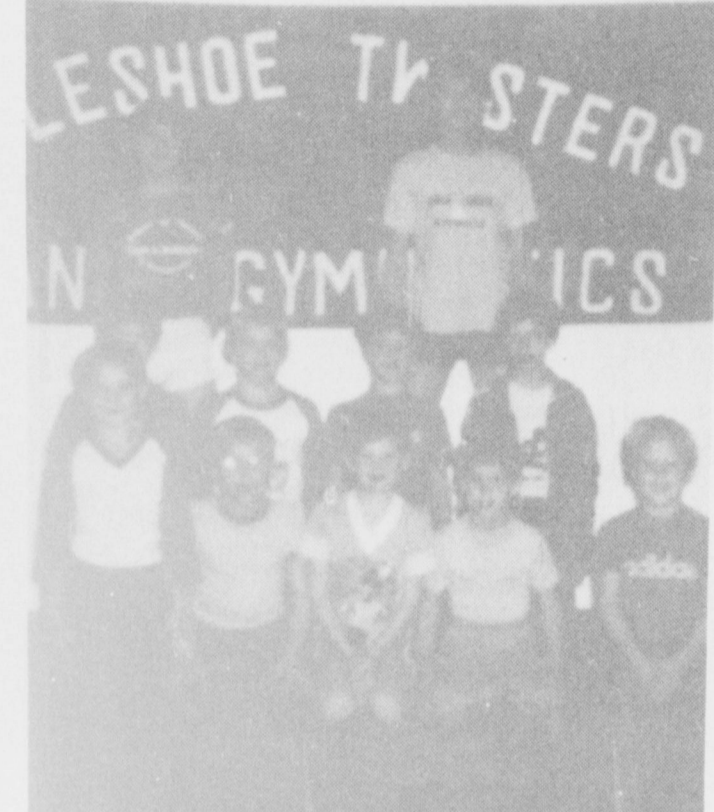
"Horse shows and showing activities have a tremendous influence on persons involved in the horse industry," says Householder. "This seminar is designed to help individuals fully understand and subsequently improve show judging and exhibiting."

Householder invites experienced horse show judges, prospective judges,

breeders and exhibitors to take part in the seminar.

He says that halter as well as performance classes (showmanship, horsemanship, western riding, trail, reining, hunt seat pleasure and hunter horsemanship) will be critiqued and placed under horse show conditions by breed association judges. Mechanics of judging, arena routines, pattern scoring systems and other key points will be discussed and demonstrated.

Householder adds that the seminar would be particularly helpful to youth involved in horse judging programs.



**TWISTERS HOST MEET...** Gymnasts from all over the West Texas area competed in an optional meet recently hosted by the Twisters. Each gymnast received place ribbons in each event. Back Row (L-R) Michael Angeley, Jay Hawkins; Middle Row, Jeff McGuire, Brent Coker, Mark Haberer, Collin Robison; Front Row, Casey Estep, Blake Coker, Evan Kelly, Jarrod Busby and Ryan Haberer.

**MULESHOE TRADE CENTER**

New Furniture Too Expensive?

See John For Good Used Furniture

130 Main 272-4906

## WINTER VALUES

OFFER GOOD JANUARY 26, 27, 28, WHILE SUPPLIES LAST!

<b>FRITO CORN CHIPS</b> 139 Reg. \$1.69 Now	<b>SHURFINE SUGAR</b> 5 lb. 139
<b>SHURFRESH EGGS</b> Med. \$1.09	<b>CRISCO SHORTENING</b> 3 lb. 239
<b>BURRITOS</b> 59¢ ea.	<b>ALLSUP'S MILK</b> gallon 209
<b>CORN DOGS</b> 59¢ ea.	<b>SHURFRESH KETCHUP</b> 14 oz. 59¢
<b>FOUNTAIN DRINK</b> 32 oz. 39¢	<b>POTATOES</b> \$1.19 10 lb. Bag

**ALLSUP'S MONEY ORDERS**

UP TO \$299 **29¢** EACH

**RATH FRANKS**

12 OZ. PKG. **79¢**

**RATH COOKED HAM**

5 OZ. PKG. **\$1.39**

**BORDENS CHOCOLATE MILK**

QT. CTN. **79¢**

**HILLS BROTHERS ALL GRINDS COFFEE**

1 LB. CAN **\$1.85**

**PEPSI**

6 pk 16 oz. **1.89**

**FAST 'N HOT BREAKFAST SANDWICH**

REG. \$1.69 **99¢**

**COOK FOOD SPECIAL**

AS FEATURED ON TV.

**B.B.Q. SANDWICH**

**99¢** EACH

**ALLSUP'S CONVENIENCE STORES**

OPEN 24 HOURS EVERY DAY THERE'S ONE NEAR YOU

**A&M FARM AND RANCH SUPPLY**

Prices Good thru **January 28th**

**Men's Riverside Flannel Shirts**

**30% OFF** Regular price.

Pretty plaids to fit almost any size man. Sizes S-M-L, Tall and X-sizes.

**Range Rider**

Shell and lining of 100% DuPont nylon taffeta with Zepel® finish. Insulated with Walls' unique blown fibers of Dacron®. Hologram® polyester. Quilted construction with square quilt pattern, 2 smooth patch pockets, pile collar and 1 way exposed zipper. Men's colors: Taupe. Women's colors: Navy or Tan.

**Trail Boss**

Shell and lining of 100% DuPont nylon with water repellent Zepel® finish. Insulated with Walls' unique blown fibers of Dacron®. 11 polyester. Diamond quilt body, patch type front pockets, pile collar. Silver or Tan.

**Men's California Coats**

**1995 SAVE 21%**

Style B31-313 (top) features pile lined 3 piece attached hood with drawstring adjustment. Sueded corduroy yokes and sleeve trim. Pile lining.

Style B34-318 (left) features warm shearling lining and hood. Durable stain and water repellent finish. Roomy sweatshirt shirt pockets.

**AFT Nylon Jacket with Pile Collar**

SAVE 25% **32.95**

Range Rider

**Top-Of-The-Line Blizzard Suit**

**66.38 SAVE 25%**

Tough outershell of 400 denier DuPont nylon oxford with urethane coating. 100% DuPont nylon taffeta lining and 8 oz. Dacron® Hologram® 808 polyester fiberfill insulation. Quilt lining, pile collar, 2 chest pockets with snap flaps and 2 lower patch pockets with snap flaps. 2 way leg zippers to the waist. Elastic stirrups. Black.

**"Jack Pot Roper" ATF Nylon Jacket**

SAVE 24% **24.95** Youth's

100% DuPont nylon taffeta outershell and inner lining with Zepel® finish. Insulated with Walls' unique blown fibers of Dacron®. Hologram® polyester. 2 front patch pockets, bulky knit collar and set in sleeves with bulky knit cuffs. Tan/Bronze or Slate/Navy.

**Ruff Neck Duck Work Coat**

SAVE 22% **29.95** Men's

Outershell 100% cotton duck with blanket lining. Corduroy collar, front yoke with concealed pocket in left side. Brass front zipper, slash pockets with flannel lining, banded cuffs and band with take up snaps. Bi-swing back. Granite gray duck.

**Thinsulate Wilderness Jacket**

SAVE 30% **33.00**

Outershell of 65% polyester/35% cotton down proof nylon lined with 100% DuPont nylon taffeta. Insulated with Thinsulate®. Molded front zipper, zip thru collar, front body seams, set in sleeves, and elastic bottom. 2 bellows chest pockets with nap flap. Chest pockets sewn in body seam. Storm fly.

**Ranger Sherpa Lined Parka**

SAVE 16% **36.88**

Outershell of 100% cotton duck. Upper body lining of 100% polyester sherpa pile. Sleeves and lower body lined with 100% nylon taffeta quilted to 4 oz. Dacron® Hologram® 808 polyester fiber fill insulation. Corduroy collar, set in sleeves with concealed knit cuffs. 1 way front pockets and 1 way front zipper with storm fly. Snap on hood. Brown or Gray duck.

**Thinsulate Everest Parka**

SAVE 30% **46.00**

Outershell of 60% cotton/40% nylon with warm and incredibly lightweight Thinsulate® insulation. Lined with 100% DuPont nylon taffeta. Zip thru collar, snap fly over zipper and drawstring at the waist. Zippered chest pockets, gusset sleeve cuffs. Concealed hood in the collar.

## New SPS Executives Named By Directors

Three Southwestern Public Service Company executives were recently elected vice presidents and officers of the Company by the electric utility's board of directors, it was announced by Bert Ballengee, SPS president and chief operating officer.

Gary L. Gibson, director of marketing and administration since 1982, becomes vice president, marketing and administration.

James B. Matthews, chief engineer, generation plant design and construction, since early 1983, was named vice president, generation plant design and construction.

W.T. Seitz, chief engineer, general engineering, since early 1983, was

appointed vice president, engineering and operations. Gibson started work with SPS as an engineer in the Company's Borger district in 1964. He has also served as a power sales engineer, manager of industrial services and an manager of consumer services.

A native of Borger, Texas, Gibson earned a bachelor's degree in electrical engineering at Texas Tech University, and a master of business administration degree at West Texas State University. He is a member of the Texas Society of Professional Engineers, the Institute of Electrical & Electronic Engineers and the City of Amarillo Electrical Board. He is a trustee of the Texas 4-H Youth Foundation and is active in activities of the West Texas Chamber of Commerce.

Matthews began his SPS career in 1949 as a maintenance mechanic's helper and auxiliary operator at the Company's Moore County, Texas, power plant. He has also held positions as a plant engineer, assistant plant manager at the Moore County plant; plant manager at Cunningham Station, Hobbs, N.M.; project engineer consultant; and engineering manager and group manager, generation plant design.

A native of Vera Okla., Matthews received a bachelor's degree in mechanical engineering in 1949 from Oklahoma State University at Stillwater. He is a registered professional engineer in Texas, and is a member of the Texas Society of Professional Engineers, the National Society of Professional Engineers, and the American Society of Mechanical Engineers. He served in the U.S. Air Force as a pilot from 1942 to 1946, attaining the rank of captain.

Seitz joined SPS as a

junior engineer in 1951. His later duties also included positions as power sales engineer, senior design eng-

ineer, senior operating engineer, division superintendent, manager of planning, and group manager in general engineering.

### W-2 Forms

### Due Employees By February

Employees who have not received a W-2, Wage and Tax Statement, by February 1 should contact their employer to be sure they have the correct address, the Internal Revenue Service says.

Even if an employee is unable to get a W-2 before the tax filing deadline, the return must be filed by April 16. (This year, April 15 falls on Sunday.) The IRS reminds taxpayers that they must have a W-2 from every employer they worked for during the year. If it is impossible to obtain a W-2 from an employer, the employee should either obtain a Form 4852, Substitute Wage and Withholding Statement, from the IRS or attach a signed and dated statement showing the tax withholding information for the missing W-2 and attach it to the tax return, according to the IRS.

### Junior High Honor Students

**EIGHTH GRADE**  
Amy Bean, Misti Brewer, Ali Cage, Brandon Carpenter, Torey Cox, Jodi Ferris, Jerry Bob Graves, Jennifer Green, Chaun Gunstream, Sue Haire, Stacey Haley, Joey Heathington, Karen Kennemer, Lisa Laredo, Caroline Liles, Art Muirilo, Richard Muyschondt, Britta O'Tay, Rachel Pineda, Steve Powell, Mary Jane Sanches, Julie Seymour, Lisa Silguero and Melissa Ward.

**SEVENTH GRADE**  
Debbie Brown, John Chamberlin, Edmund Clements, Carrol Copley, Julie Crittenden, Norma DelToro, Andrew Espinoza, Justine Hanes, Holly Huckaby, Christy Mata, Blanca Mendoza, Mychelle Stout and Brandon Wilson.

**SIXTH GRADE**  
Ronnie Gail Barrett, Kelly Conklin, Virginia Espinoza, Michaelle Finney, Jason Fuller, Adelaido Godniez, Amber Green, Michelle Gutierrez, Kimberly Harris, Heather Hibbard, Abel Leal, A.J. Liles, Brant McMeans, Frank Precure, Cary Skaggs, Stacy Stroud, Misty Taylor, Lisa Triana, Kendra Wilson, and Tisha Young.



One set of triplets is born in about every 9,216 births.

### West Plains Medical Center

#### PATIENTS IN WEST PLAINS MEDICAL CENTER

Jan. 20--Alma Fivash, Harry Freeman, Michael Maestas, Jarrod Redwine, Jane Griffiths, Sallie Schuster, Myrtle Pruitt, Chelsi Woods, R.J. Sanderson, Marvin Anderson, Lori Ellis, Norma Guerrero and baby boy, Yolanda Bell, Beverly Gowing and baby boy, Hattie Jones and Guadalupe O'Compos.

Jan. 21--Hattie Jones, Alma Fivash, Guadalupe O'Campos, Irvin Ott, Alma Ott, Michael Maestas, Beverly Parker, Sallie Schuster, Myrtle Pruitt, Chelsi Woods, Troy Wright, R.J. Sanderson, Marvin Anderson, Leslie Denny and baby boy.

Jan. 22--Alma Fivash, Irvin Ott, Michael Maestas, Beverly Parker, Sallie Schuster, Myrtle Pruitt, Dale Burden, Troy Wright, R.J. Sanderson, Stella Ortiz and baby boy, Hattie Jones, Guadalupe O'Campos and Alma Ott.

Jan. 23--Alma Fivash, Irvin Ott, Michael Maestas, Beverly Parker, Sallie Schuster, Myrtle Pruitt, Dale Burden, Troy Wright, R.J. Sanderson, Estella Ortiz and baby boy, Hattie Jones, Guadalupe O'Campos and Alma Ott.

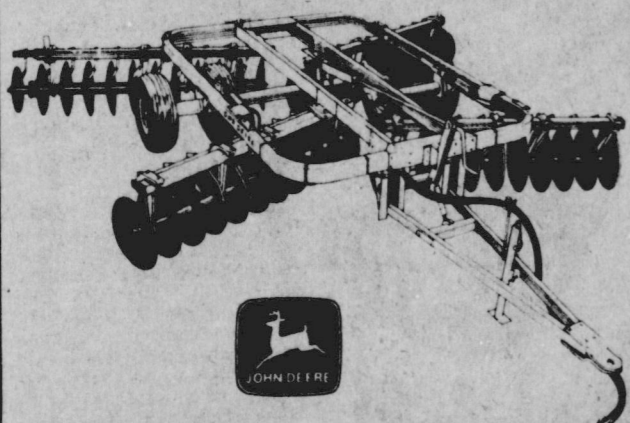
Please call Energas Company 48 hours before you dig in streets, alleys or easements.

Energas Company will mark the location of underground pipes, lines with yellow topped stakes, yellow flags or yellow spray paint.

There is no charge for this service.

## JOHN DEERE BOTTOM-LINE SPECIALS

Get a 5 or 10 percent discount on these new tillage tools AND pay no finance charge until March 1, 1984



Here's why it makes good dollar-saving sense to buy now. Depending on the tillage tool you choose (see chart below) our dealership will give you our best deal and then deduct another 5 or 10 percent from the latest suggested retail base price. For example, this extra discount on an 18 1/2-foot 235 Disk saves you more than \$1,100.

Finance with John Deere and finance charges will be waived to March 1, 1984. Or lease, and your lease payments will be discounted comparable in value to the waiver of finance charge.

And remember, if you buy during November or December you'll qualify for the 1983 investment tax credit and depreciation.

Machine	Discount from Suggested Retail Price
Moldboard Plows	5 percent
Chisel Plows	5 percent
Field Cultivators	10 percent
Disks	10 percent
Mulch Tillers	10 percent
Mulch Finisher	10 percent

\*Availability of John Deere financing and leasing plans subject to approval of credit. Leases not eligible for cash rebates or for cash in lieu of waiver. This offer may be reduced in value or withdrawn at any time.

### DEALS YOU CAN FARM WITH

## Dent-Rempe, Inc.

1516 W. Amer Blvd.

272-4296

## "ATTENTION"

### FARMERS—RANCHERS & DEALERS

WARD BROS. TRACTOR, INC. IS NOW TAKING CONSIGNMENTS FOR THEIR ANNUAL FARM MACHINERY AUCTION TO BE HELD MARCH 1 & 2nd, 1984. THIS IS THE LARGEST FARM MACHINERY AUCTION IN THE SOUTHWEST WITH BUYERS FROM SEVERAL DIFFERENT STATES. LISTINGS FOR CONSIGNMENTS NEED TO BE IN BY FEB. 7, 1984. FOR FURTHER INFORMATION CONTACT: WARD BROS. TRACTOR, INC. CLOVIS, N.M., PHONE 505-762-2612 OR 505-772-1015.

# Congratulations 1984 LAZBUDDIE STOCK SHOW CHAMPIONS



GRAND CHAMPION LAMB...Sean Mason, son of Mr. and Mrs. Darrell Mason, showed the Grand Champion Lamb, also breed champion and first place light weight Hampshire, during the Lazbuddie FFA Livestock Show Saturday.



GRAND CHAMPION...Last Saturday during the Lazbuddie FFA Livestock Show, Sheryl Holt, daughter of Mr. and Mrs. Cal Slack showed the Grand Champion Barrow. It also won breed champion and first place.



RESERVE CHAMPION LAMB...Showing the Reserve Champion, breed champion and first place lamb at last weekend's Lazbuddie FFA Livestock Show was Tamey Vise, daughter of Mr. and Mrs. Dale Vise.



RESERVE CHAMPION BARROW...Exhibiting the Reserve Champion Barrow at the Lazbuddie FFA Livestock Show last Saturday was Scott Holt, son of Mr. and Mrs. Cal Slack. His barrow was a Hampshire heavyweight.

## Lazbuddie Garage & Supply

- North Lazbuddie Gin
- Lazbuddie Grain
- Farmer's Spraying Service, Inc.
- Five Area Telephone Cooperative
- Tide Products, Inc.
- Sherley-Anderson Grain
- Lazbuddie Elevator

## Bridal Shower Honors Miss Tamara Gilliland

Miss Tamara Gilliland, bride elect of Bobby Gover, was feted with a bridal shower Saturday, Jan. 7 from 3 until 4 p.m. in the home of Mrs. Tom Flowers.

Guests were greeted by the honoree; her mother, Jessie Robinson; and Dolores Gover, mother of the prospective groom, and registered by Dee Kinard.

Michelle Lane served thumbprint cookies, nuts, mints and hot apple cider with red hats from gold and crystal appointments.

The serving table was

### Birthday Party

### Honors

### Justin Harrison

Justin Harrison was honored Saturday on his fifth birthday with a party at the Show Biz Pizza Place in Lubbock.

Pizza, cake and cokes were served and the group played games. They were also entertained by "Billy Bob", "Beach Bear" and "Fatz".

Those attending included: Kyla Morris, Alisha Seymore, Shane and Heath Harper, Kris Humphreys, Bo Baker, Chad Chester, Courtney and Casie Legg, Heather Harrison and Amber Legg, all of Sudan.

Also Amy and Michael Reasoner of Levelland and Austin Muller of Littlefield. Others attending were his grandmother, Mrs. Louise Legg; and aunts, Velma Reasoner of Levelland and Cindy Legg, of Sudan. Also Pam Morris, Doyleene Seymore, Mary Ann Harper and the honoree's mother, Nancy Legg.

covered with a white lace over burgundy cloth and accented with an arrangement of burgundy carnations, burgundy poppies and white baby's breath. The honoree's corsage consisted of burgundy carnations.

Special guests included: Mrs. R.D. Gilliland, grandmother of the bride; Mrs. A.W. Gover, grandmother of the prospective groom; Mrs. Troy Thomas, grandmother of the bride; Kelly Gover, sister of the prospective groom; Mrs. Butch Gardner and daughter, Sharla of Portales, aunt of the bride; Mrs. J.R. King and Mrs. John Stevens, aunts of the bride, of Muleshoe; Mrs. Bobby Jones of Plainview, aunt of the bride; and Mrs. Eric Smith of Muleshoe, aunt of the bride.

The hostesses gift was a vacuum cleaner. Hostesses for the occasion included: Mrs. David Hamblen, Mrs. Charles Harvey, Mrs. Robert Hunt, Mrs. Eugene Houston, Mrs. Dale Burden, Mrs. Ronnie Spies, Mrs. Alice Dominguez, Glenna Raney, Mrs. Sawnie Branscum, Mrs. Carlin Long, Mrs. Royce Turner, Betty Carpenter, Mrs. Tommy Merritt, Mrs. Lonnie Merritt and Mrs. Bob Donaldson.

### In Fashion

Designers are softening the suit-look by creating them in knits.

The knit suit has a thigh-length cardigan jacket with a slim skirt.

Some ensembles feature a bold striped cardigan with a solid skirt.

Some designers mix knit cardigans with wool skirts.



MISS TAMARA GILLILAND

## Creative Woman

By Sheryl Borden

Topics to be presented on "The Creative Woman" show on January 31 and February 4 include mola applique, cooking with brown rice and the last travel up in the 5-part series. Jewell Limacher, Extension Home Economist in Roswell will demonstrate Mola Applique, which is a form of reverse applique. Mola Applique is a colorful applique and it reveals several layers and colors of fabric.

Diane Duncan, home economist and spokesperson with The Rice Council for Market Development in Houston will discuss brown rice and its nutritional value and will demonstrate how to use brown rice in our cooking.

Barbara Gillam, the travel editor for Glamour Magazine will present part five of the travel tips for businesswomen.

On February 2 and 5, the topic will be "Mini Meals" and Vickie Willis, home economist with Southwest-

ern Public Service Co. in Roswell will present the entire program. Mini meals is directed at persons or households with only one or two persons. This could be young adults starting out on their own, newlyweds, empty nesters and senior citizens. Mrs. Willis will discuss recipe conversion, equipment for cooking smaller amounts, and also share several recipes designed for one or two persons.

"The Creative Woman" is produced and hosted by Sheryl Borden. The show airs at 12 noon on Tuesday and Thursday, at 2:00 p.m. on Saturday and at 7:00 p.m. on Sunday on KENW-TV, Channel 3. Viewers can request copies of printed materials offered on the show by calling on KENW-TV's toll-free telephone lines. In New Mexico the number is: 1-800-432-2361, out of state: 1-800-545-2359 and Portales and Roosevelt Co.: 562-2112.

## Claudine's Country Club Comments By Claudine Elliot

The Muleshoe Country Club Ladies Association had their first meeting for 1984, Wednesday, Jan. 18th, and what a nice way to begin the year with 40 ladies in attendance for our luncheon! It was a beautiful snow covered day and the ladies were so ready to have a day out. The lunch was

served by D. and J. Home-cooking and was very delicious. Dana and Jana are spoiling us with all their good food. We really love their meals.

Marlene Martin is our president this year and Marlene St. Clair is our vice president -- so with this combination we are looking for a great year. They are planning some new activities for us along with all the help from their other officers and members.

A business meeting was held and all reports were made. Committees are making their plans for the new year. The ladies were staying for an afternoon of card playing.

Neats Foster is our Play-day Chairman and she gave out the awards that have been won since our last meeting in October. Awards were given to the following: Oct. 26th. to Analita Haley; Nov. 9th to Dorothy St. Clair and Jeanetta Precure; Nov. 16th. to Neats Foster and Jeanetta Precure; Nov. 30th. to Dorothy St. Clair and Analita Haley; Dec. 7th. to Analita Haley; Dec. 16th to Jeanetta Precure and Analita Haley.

We were very happy to have so many ladies out for our luncheon. We are looking forward to new ideas from our ladies to make our Ladies Association a bigger and better one this year. We meet the third Wednesday of each month for our luncheon and business meeting.

D. and J. Homecooking will serve our meals. Each Wednesday afternoon is Ladies Playdays and golf and cards are always a nice way to spend your Wednesday afternoons.

So keep your Wednesdays free for a day out, ladies. You deserve it!

See you next month.

**Flattery**  
Lady--My husband was a tramp, too, but he suddenly decided to make a man of himself!

Tramp--No wonder, lady, with a beautiful woman to inspire him.

Lady--Well, come in and I'll see about some sandwiches.



**FOOD PROCESSOR PROGRAM...**Christy Waters, home economist for Southwestern Public Service presented the program on food processors to the Moonlight Extension Club, Dusty Prairie Club and Progress Extension Clubs. There were 20 members in attendance for this meeting. Ms. Waters demonstrated the many uses and conveniences of a food processor. She prepared two dishes, pineapple sour cream pie and Chinese Chicken.

### 'Grandma' Shower Honors Evelyn Ritchie

A surprise "Grandma" shower honoring Evelyn Ritchie was held Thursday in the home of Mrs. Glen Cardwell.

The serving table was covered with a white lace cloth and accented with a "baby on a pink crochet cloud" surrounded by greenery and flanked on either side with candles.

Sausages, finger sandwiches, cookies were served from crystal and hot spiced

tea and coffee were served from a silver service.

The honoree was presented a corsage of baby sock roses in blue and also a money tree along with other gifts to be sent to her son, Mr. and Mrs. Steve Ritchie in San Diego.

Special guests included: Debbie Phillips, Christie and Michael, aunt and cousins of the baby. Christie and Michael assisted in opening the gifts.

Arthur J. Weinstein, M.D.  
and  
R. Joe Cannon, M.D.  
of  
Eye Associates of New Mexico

announce the opening of their office at  
2000 West 21st Street, Suite A-1  
Clovis, New Mexico 88101  
763-3445

Practice limited to medical and surgical diseases of the eye

**JANUARY Clearance**  
CONTINUING ON  
ALL OUR FURNITURE  
EALY FURNITURE  
601 MAIN CLOVIS, N.M. 763-7121

**3 BIG DAYS...  
Thursday, Friday, Saturday!**

25% OFF all previously yellow-ticketed marked-down merchandise\*

\*Applies only to yellow ticketed or tagged merchandise which has been reduced for clearance. Does not apply to regular merchandise which is on sale for a limited time or to other merchandise in regular advertising, or in circulars.

Example of savings for you this weekend!

Original price	\$21
Yellow ticket price	\$15.99
with the extra 25% CFF your final price	\$8.99

**ANTHONY'S**

ask for our  
**"Full Meal Deal"**

**\$2.59**  
Only at participating stores.

If you're looking for a great meal and a great deal, look at all you get for just \$2.59

- Quarter-pound, 100% pure beef Hungr-buster® made to order.
- French Fries.
- Medium soft drink.
- 5-oz. D.Q. Sundae, your choice of topping.

At \$2.59 it's not just a deal, it's a steal!

**Dairy Queen**

1 pre-cooked weight ©Copyright 1984 Tex. D. Q. Corp. Council. All Rights Reserved. TM Trademarks of the Tex. D. Q. Corp. Council. Registered Trademark Am. D. Q. Corp.



**MAKING A PRESENTATION...**The Moonlight Extension Clubs presented the Extension Service with a punch bowl to be used for Extension programs such as 4-H Clubs, Extension Clubs and public programs presented by the Extension Office. The presentation was made by Linda Huckaby (Right) of the Moonlight Extension Club, accepting the gift was Linda Mullin, (Left) County Extension Agent.

### Journal Files

#### 50 Years Ago

1934  
Texas cotton mills handled 89 percent more bales of cotton in 1933, than they did in 1932, considerably increasing the cloth production in the state.

#### 30 Years Ago

1954  
**LOCAL MARKETS** --- Cream, lb. 65 cents; Eggs,



**NEW ARRIVALS**

Craig James Denney

Mr. and Mrs. Scott Denney are the proud parents of a son born at 4:58 a.m. Jan 21 in West Plains Medical Center. The young man weighed seven pounds ten ounces and has been named Craig James. He is the first child for the couple.

Grandparents are Joe Mack and Beverly Wagon of Muleshoe and Joe and Mary Denney of Hurst. Great grandparents are Roy and Faye Hawthorn of Odessa, J.W. Craig of Sweetwater and Christine McAndrew of Ft. Worth.

William Waylon Bowery

Mr. and Mrs. Andy Bowery of Mission, Texas are the proud parents of a son born at 9:35 a.m. Jan. 12.

The young man weighed six pounds nine ounces and was 19 inches long. He has been named William Waylon. The couple have two other children, Shasta, six and Samantha, four years of age.

Grandparents are Francis Gardner of Sudan, Jamie Bowery of Farwell, Mr. and Mrs. Magness of Farwell and Mr. Bowery of Mission.

Garrett Blake Gowing

Mr. and Mrs. Bob Gowing of Friona are the proud parents of a son born at 12:53 a.m. Jan. 20 in West Plains Medical Center in Muleshoe.

The young man weighed six pounds and six ounces and has been named Garrett Blake. He is the couple's first child.

Grandparents are Gene and Wynell Radford of Buffalo, Oklahoma and Robert Gowing of Missouri.

Great grandparents are Matt and Floyd Dutton of Friona.

**Muleshoe Journal**  
Established February 23, 1936. Published by Muleshoe Publishing Co., Inc. Every Thursday at 301 W. Second, Box 491, Muleshoe, Texas, 79347. Second Class postage paid at Muleshoe, Texas.

**MEMBER 1984**  
TEXAS PRESS ASSOCIATION

L.B. Hall, President  
James Woods, Vice President  
Stanley James, Secretary  
Eugene Harris, Treasurer  
Clyde Williams, Advertising Manager  
Norman Hall, Bookkeeper

**MEMBER SHIP:**  
Muleshoe Journal and Bailey County Journal  
Muleshoe Journal and Bailey County Journal  
Muleshoe Journal and Bailey County Journal  
Muleshoe Journal and Bailey County Journal  
Muleshoe Journal and Bailey County Journal  
Muleshoe Journal and Bailey County Journal

Subscription rates: \$11.00 per year in advance. Single copies 35¢.

### Shopping For Home Computer

A home computer may be just another household appliance, but purchasing one is certainly not like buying a refrigerator or stereo set.

Home computers are being mass produced, but they are not a mass product with a high degree of standardization, says Bonnie Piernot, a specialist with Texas A&M University's Agricultural Extension Service home economics program.

Computers are powerful tools designed to be used in highly individual ways, so consumers will probably never find it as simple to select a home computer as other appliances, she says.

The more a consumer knows about how computers work and what they can do, the easier it will be to do a system to his or her needs, says the specialist. This requires becoming familiar with the jargon and the wealth of information about microcomputers that is now readily available.

Trade magazines and books, computer user groups, adult education and community college courses and friends who own computers are all excellent resources, she notes.

Before buying a computer, Piernot suggests that you identify your needs and those of all potential users in your family. Typical home computer applications in-

clude word processing, games, educational programs, data base management, financial record-keeping and telecommunications.

To help determine what models to consider, try to project what you will do with your computer in a year's time, says Piernot.

Microcomputer prices range from under \$100 to over \$5000, but machines under \$300 have limited capabilities. Since system prices vary from computer to computer and there is no one best machine for everyone, consumers should try to balance their needs against their budget.

According to Piernot, a specialist in family financial management, the addition of a home computer requires careful budgeting, since there are many hidden costs.

In addition to the cost of the basic computer, you will need to budget for software, which can be expensive. Word processors, for example, can cost as much as \$500.

Other necessary expenses could include blank storage disks or cassette tapes and a small television set or video monitor, says the specialist. A desk, chair and lamp are also part of the typical home computer workspace as well.

Piernot also recommends budgeting for a magazine subscription, a few books

and a few classes to help you get started. "Budgeting time can be equally important," she says, "since it may take several weeks or even months for you to become familiar with your computer and to learn how to use it effectively."

#### Lazbuddie

#### Young

#### Homemakers

The Lazbuddie Young Homemakers held their regular monthly meeting on Thursday, January 5, in the cafeteria of the Lazbuddie School.

The program was given by Debbie Smith of Lazbuddie. She is an Amway distributor, and in her presentation of her line of makeup, she displayed a wide array of products.

Debbie Magby volunteered to have a make-over during the program. Mrs. Smith gave an educational program, and gave many do's and don'ts of facial care. Mrs. Smith presented a door prize, which was won by Marleen Bennett. She also presented each club member with an assortment of samples.

The Young Homemakers gave Mrs. Smith a gift which was provided by Janice Bradshaw.

The business meeting was called to order by president, Lana Copp. Joann McDonald gave the financial report. Members told about the Christmas gifts they had delivered to the Senior Citizens.

Plans were made for "Ladie's Night Out" which is scheduled for Friday, February 3.

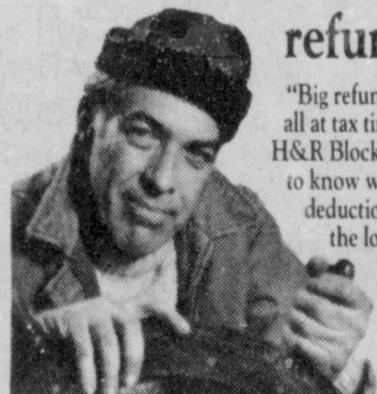
Refreshments of cherry cobbler and cookies were served by hostesses, Debra Redwine and Vickie Burch. The door prize was drawn by Amy Owen.

Members present were: Ellen Gallman, Joann McDonald, Debbie Magby, Reta Mimms, Marca Morris, Amy Owen, Debra Redwine, Susie Renner, Debbie Smith, Debbie Weir, Marleen Bennett, Lana Copp, Vickie Burch, Cindy Cargile and advisor, Cassandra Cargile.



**LAZBUDDIE YOUNG HOMEMAKERS...**Debbie Smith (Left) was presented a gift by Marca Morris (right) at the Lazbuddie Young Homemakers regular monthly meeting Jan. 5. Ms. Smith presented a demonstration on a line of make-up.

"I find the big catches. Block finds me the big refunds."



"Big refunds are the best catch of all at tax time. That's why I go to H&R Block. My preparer is trained to know where to look for every deduction and credit. And over the long haul, that means more money in my pocket."

People who know their business go to **H&R BLOCK**

224 W. 2nd Wkdays 9-6 Sat. 9-5 272-3332

### FALL & WINTER MERCHANDISE

# 30% OFF

EXCLUDING JEWELRY AND ACCESSORIES

SEPARATE SLACKS - - A PLUS

AT **2 FOR 1**

NO LAYAWAYS NO REFUNDS CASH ONLY

NO ALTERATIONS NO EXCHANGES

VISA MASTERCARD ARE WELCOME

**London Lady**  
762-0149

"IN THE CASTLE,  
13th & MITCHELL"

### Wedding Shower Honors

#### Mrs. Carl Bamert

Mrs. Carl Burnett (nee Sylvia Ginn) was honored with a wedding shower Saturday, Jan. 21 in the home of Mrs. Phillip Gordon.

The serving table was covered with an ecru table cloth over brown and accented with a fall floral arrangement.

Cookies, punch and coffee were served from crystal appointments.

Special guests included: Mrs. John Burnett, mother of the groom, and Mrs. Charles Burnett, sister in law of the bride.

The Hostesses gift was a set of cookware. Hostesses for the occasion included: Mrs. Burnice May, Mrs. Malcom Martin, Mrs. Hal-

bert Harvey, Mrs. O.J. Parrish, Mrs. Arnold Beckett, Mrs. Nolan Parrish, Mrs. Orville Hill, Mrs. Bobby Carson, Mrs. Jerry Bailey, Mrs. Edgar White, Mrs. James P. Arnold, Mrs. Seva Ray, Mrs. Darren Provenge, Mrs. Butch Hall, Mrs. Billy Chester, Mrs. Bob Summer, Mrs. Kermit Whitten, Mrs. Noble Dud-

geon, Mrs. Fred Mecks, Mrs. Patty Miller, Mrs. Theron Hill, Mrs. L.R. Cole, Mrs. Philip Gordon, Mrs. Sam DeLaRiva, Mrs. Gilbert Churchman and Mrs. Tommy Moss.



The Great Seal of the U.S. has 13 of each of these items: stars, stripes, clouds, arrows, laurel leaves, berries, feathers in each wing and tail, and rows in the pyramid.

**Classified Ads**  
**Are The Link**  
**Between Buyer And Seller**  
Call 272-4536

**True Value**  
HARDWARE STORES  
**HARDWARE VALUE OF THE MONTH**

**True Value**  
HARDWARE STORES  
**BARGAIN OF THE MONTH**

**REDDY HEATER**  
50,000 Btu. Model R50 Reg. \$244<sup>95</sup>  
NOW **\$179<sup>95</sup>**  
**REDDY HEATER GARAGE & SHOP HEATER**  
Portable, uses just 2 1/2 gallons of kerosene or fuel oil per day and less electricity than a light bulb, to keep garage or shop warm and comfortable. Heats instantly and safely.

**Hamilton Glass Products**  
White Supplies Last **999**  
**Beveled-Edge Door Mirror**  
14x50-in. door mirror of float-plate glass. TSSB1450  
Quantities Limited

**White Supplies Last**  
**377** Apron (Men's) (Imp.)  
White Supplies Last  
**Winter Olympic Ski Cap**  
100% acrylic knit cap with the official Olympic and snowflake design. Ass'd colors. 8350-73  
Quantities Limited

**Fry & Cox, Inc.**

401 S. First 272-4511

### Hurst Department Store

110 MAIN

Where The Customer Comes First, Always

272-5640

### FURTHER REDUCTIONS

ALL DANSKIN  
**TIGHTS**  
**LEOTARDS**  
**Leg Warmers**  
**10% OFF**

SPECIAL GROUP OF  
**LADIES COORDINATES**  
**1/2 price & BELOW**

FURTHER REDUCTIONS ON ALL  
**CHILDRENS CLOTHING**

BOYS WERE \$24.00  
**SWEATERS**  
MUST GO GO FOR **\$10.99**

ROB ROY BOY'S VELOUR WERE \$24.00  
**SHIRTS** WERE \$14.99  
NOW **\$9.99**

ALL LADIES AND JUNIORS WERE 1/3 OFF  
**FALL SWEATERS**  
NOW ALL **1/2 price**

LADIES CRAWDAD & PERSONALITY

**SHOES \$10.99**  
NOW FOR ONLY

**COME SEE OUR NEW SPRING KORET COORDINATES!**

## Lazbuddie Show

Cont. From Page 1

exhibited the first place lamb. In second place was Tim Lust, 3. Scotty Mitchell and 4. Shawnda Mitchell.

Breed Champions in the Hampshire Class were: Sean Mason Champion and Tammy Vise, reserve.

Exhibiting in the Suffolk Sheep, light weight division, Guy Brockman took first place. Second place went to Shane Mason, 3. Tammy Vise, 4. Ginger Jesko and 5. Tim Lust. In the heavy weight Suffolks, first place went to Ginger Jesko, 2. Tammy Vise, 3. David Schacher, 4. Wes Jarman, 5. Jana Vise. Breed Champion in the Suffolks were: Champ, Ginger Jesko; Reserve, Guy Brockman.

In the last sheep class judging, in light weight Southdowns, Kurt Miller placed first. Second also went to Kurt Miller, 3. Sharon Glover, 4. David Schacher, 5. Dawnda Magby. In the Heavy Weight class, Todd Daniel was first,

2. Guy Brockman and 3. Jana Vise.

Breed Champion in the Southdown class went to Kurt Miller, with reserve going to Scott Miller.

Banners for the grand Champion and reserve champions of the show were provided by Muleshoe Co-Op Gin, along with belt buckles for showmanship winners. Sherley-Anderson Grain of Lazbuddie sponsored the trophies for the winners and belt buckles awarded to the Breed Champions were sponsored by Gene Paul Jarman and Pioneer Seeds.

The Lazbuddie Show was held in the old Farmer's Co-op Building just west of Lazbuddie, and provided an indoor setting for the event, according to Rick Copp, Vo-Ag Instructor at Lazbuddie. Copp was the general superintendent of the show and supervised the activities.

## Two ENMU Grid Members All-American

Two members of the 1983 Eastern New Mexico University Greyhound football team have been selected to the NAIA Academic All-America football team. Will Wright, a linebacker, and Eddie Clement, a punter, were selected to the Division I defensive team.

Wright, a junior math major, had a grade point average of 3.25. Wright led the Greyhound defense in solo tackles with 28 through the 10 regular season games, and was second in assists with 54.

Clement, a senior math/science major, averaged 37 yards per punt for the Greyhounds. His longest punt of the season was 62 yards. He maintained a 3.35 grade point average.

The Greyhounds were 8-2-1 this year.

## '84 FARM INCOME TO IMPROVE

1984 should bring some improvement in Texas farm income over the depressed conditions of recent years, says an economist with the Texas Agricultural Extension Service, Texas A&M University System. Farm income could increase 10 to 15 percent over 1983 due to slightly higher prices, fairly steady production costs and continued improvement in demand for farm commodities. The potential for over-production of crops is there, however, and if this happens, farmers will once again be facing surplus commodities and depressed markets.



**THEY ARE WINNERS...** Coach Roy Donaldson's 7th grade Mules won second place in the recent Olton Tournament. Kent Hargis is also coach for this team. From back, left to right: Jeff Whatley, Daniel Olivas, David Sanders, Bradley Long, Mike Dunham, Joe Martinez, Second row: Edward Hurtado, Chad Garlington, Bennie Parker, Richard Ring, Shawn Rejino, Esteven Sandoval, Dusty Rhodes. Front Row: Bradley Wilson, Shawn Nieman, Shane Barris, Kevin King, Billy Murphy, Johnny Horn. Kneeling: Steven Guzman and Jeff Hicks.



**7TH GRADE WINNERS...** Muleshoe's 7th grade girls basketball team placed third in the Olton Tournament on January 19-21. Shown here with their trophy are: Back to front-left to right: Julie Crittenden, Michelle Cox, Debbie Brown, DeAnn Halford, coach, Susan McCarty, Krystal Angeley, Mary Lou Bastardo. Front row: Mychelle Stout, Becky Vela, Selina Gonzalez, Laurel Dillard, JoAnn Gutierrez and Ester Acosta.

## Severe Compaction Found In High Plains Soil

The tap root of a cotton plant is its lifeline. Pinch it off, squeeze it down or block its growth path through the soil and plant yields will suffer. Hard pans, dense compacted soil layers under the soil surface, are probably affecting yields over as much as 40 percent of the land farmed on the High Plains in 1983, and if not broken up will again reduce yields in 1984. These pans are so dense that it is difficult for plant cases, hard pans also slow moisture from moving deeper into the soil, which increases runoff.

High Plains Water District staff, measuring field moisture over the High Plains, are finding moderate to severe compaction is widespread. It not only affected cotton tap roots, but every other crop grown on the High Plains, forcing the plants to squeeze back their root systems into smaller, less efficient laterals across the top of the pans.

Mike Risinger, Lubbock Soil Conservation Service soil scientist, explained that when a plant root grows through the loose, cultivated layer and hits a soil pan, it will be diverted horizontally. It may grow into the compacted layer a short distance, but then slow down dramatically, or even quit growing altogether. "The rate of root growth is proportional to the resistance it meets," Risinger said. "The harder the layer the slower the growth and the more yield is affected."

"Hard pans severely restrict infiltration of rainfall and increase erosion. We're finding that soil moisture readings taken this winter are significantly lower in soils with severe pans."

"Random soil moisture

samples at 139 sites measured by the District in December indicated dense compact soil layers over 75 percent of the area. About 24 percent had none to light pans, but of the 8 percent with no pan readings, virtually every field had been chiseled or deep broken since harvest. Pans were severe in 25 percent of the sites. Compaction was moderate in 37 percent of the samples and moderate to severe in 13 percent of the samples."

"There are probably more

pans this year, and they are especially dense now," said Risinger. "It's worse than typical because last year's abnormally wet spring drove producers into the field with sand fighters, some as many as nine times, usually the first day the field was dry enough to get into. The conditions were optimal for soil compaction. The same conditions occurred this fall as farmers rushed back into deep wet fields to harvest after unseasonable rains."

Even when the ground appears dry near the sur-

face, severe compaction will result when heavy equipment rolls through a field where the soil is moist.

The most evident symptom of a compact soil layer is a shallow root system, growing horizontally. It is especially noticeable in tap root crops such as cotton. The best way to determine the effects of a hardpan is to dig a hole at least three feet deep and look for crop roots in the subsoil. If the roots have penetrated that deep, chances are you do not have a serious hard pan

problem. Another check is to push a sharp, steel small diameter rod into the soil at a slow uniform rate. The force required should be constant for a depth of eight to ten inches unless a plowpan is present.

"Once a pan develops on the High Plains, it won't cure itself," said Risinger. To prevent a dense compacted layer, he recommends confining equipment tracks to the same row every year. Run a chisel behind the tractor tires every year, deep chisel at an angle across the field every other year, and consider deep breaking the field every third to fifth year, depending on moisture conditions.

It is nearly impossible to

## Local Court Action Lighter In Past Weeks

Filings in Municipal and Justice Courts over the past two weeks time have been relatively light in comparison with some weeks before.

In Municipal Court from January 10 - 23, a total of 21 cases were filed; and, a total of 29 cases were disposed of during the period.

Filings in Municipal Court with Judge Linda Huckaby included: seven for bad checks, three for running stop signs and defective lights, and two for violation of city ordinance. There was one filing each on the following violations: expired plates, no commercial drivers license, speeding, illegal parking, no drivers license and exhibition of acceleration.

Cases paid in Municipal Court included six for speeding and six for bad checks. Four violations were paid on city ordinance violations, and three each on defective lights and running stop sign. Two cases were disposed of on illegal parking and two for expired plates. One case each was disposed of on the following: minor in possession of

alcoholic beverage, expired MVI, failure to yield right of way.

Justice of the Peace, Jack Bates reports a total of 29 cases filed and 55 disposals in Justice Court for the period from January 10-23.

Those cases filed included 22 for speeding, two for no drivers license and one each for the following: expired MVI, no motor carrier authority, no registration papers in truck, failure to stop at stop sign, and public intoxication.

Cases disposed of and

ines paid in Justice Court during the same period included 35 for speeding, four for expired MVI and four for no brakes on trailer. Also, two for defective tail lamps and failure to stop at stop signs. One case each was disposed of on the following: public intoxication, permitting unlicensed minor to drive, hunting without license, no registration in truck, failure to drive in single lane and no drivers license. There were also two disposals on possession of drug paraphernalia.

prevent some soil compaction, but making sure every trip is justified and combining operations for fewer passes will pay off in better yields and soil moisture.

## WBU Names Honor Students

The fall 1983 Dean's Honor Roll at Wayland Baptist University includes two students from Muleshoe.

Students named to the list for the recently-completed term include Marilyn Crittenden, post graduate, 4.00, and Joel Bratcher, senior, 4.00.

The Dean's Honor Roll is announced at the end of each term by the Academic Vice President's Office and lists the names of students who posted at least a 3.50 grade point average on a 4.00 scale and who carried at least 12 semester hours.

## Taxes...

Cont. From Page 1

until paid, and penalty and interest accrue on any unpaid balance.

Under certain conditions, a tax collector may choose to follow steps allowed by law to seize personal property, which is then sold to satisfy delinquent taxes.

Property owners should contact the appraisal districts or local tax offices with any questions about delinquent taxes or payment and to find out if collection for taxing units in the appraisal district may have been consolidated in the appraisal office or in a particular tax office.

## Land...

Cont. From Page 1

involves a 140' by 200 foot tract at 4th Street and Highway 84; and the proposed purchase is being considered with the purpose in mind of building a new fire station at some time in the future on the land, Marr said.

## Rotary...

Cont. From Page 1

they may obtain a balanced attendance at the school.

Physical endurance is of extreme importance, Hammer stated. He also gave a description of the every-day life of a West Point Cadet. Hammer advised that anyone interested in attending West Point should start preparations for entrance when they are a junior in High school. He also advised that if a person desires a career in the Army, the West Point Academy is the place to go.

## Tragedy...

Cont. From Page 1

the near lethal fumes in the Torres home.

Meters showed dangerous levels of carbon monoxide in the home around an hour after the Torres family was removed.

Torres said Monday afternoon he expected to take his family home probably on Tuesday morning.

## Muleshoe...

Cont. From Page 1

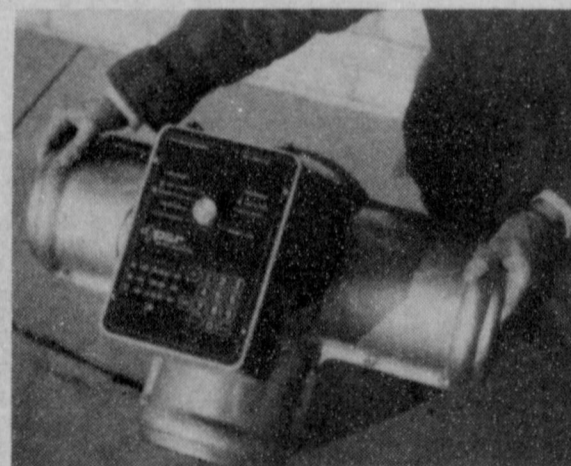
evening, beginning January 16 and running through January 30, in the Muleshoe State Bank Community Room, and will begin at 7 p.m. and last until 9 p.m. The meetings are sponsored by the Muleshoe High School Homemaking Department in conjunction with the Catholic Family Service, Inc. Pre-registration is requested due to the limited space available. Call 272-3080 at the Home Ec department to register. There is no charge, however donations will be appreciated.

The Hockley County Senior Citizens Association Inc. is sponsoring a charter bus trip to New Orleans and the World's Fair May 29 through June 5. Cost for the eight-days will be \$595.

A deposit of \$100 will hold a reservation, with the balance due Feb. 15. For more information call 806 894-2228 or write Hockley County Senior Center 1202 Houston Street Levelland, Tx. 79336, care of Ruth Warren, Tour Coordinator.

## Pivot Products Distributors Introduces

-- The P & R Surge System --  
The Ultimate Surge Flow Unit



### FEATURES

durable - all cast aluminum with stainless hardware  
 portable - 55 lbs., 24" wide  
 weatherproof - electronics sealed in control box  
 Serviceable - valve body opens. Control box is detachable for storage and opens to actuator and rechargeable battery  
 user friendly - instructions for programming on face

This compact light weight unit is combined with the most complete programmable controller yet devised. This rugged efficient unit diverts water flow with a very minimum of turbulence and negligible back pressure. The unit can be programmed for just one set of surge cycles on a set watering time, with the option to also program a second surge setting of a different watering time on an indefinite number of surge cycles. Any standard 12 volt car battery will give the P&R Surge Systems long life in the field. The controller's memory battery pack is recharged off the main power supply and the unit can store the program for over 1 year.

Contact Pivot Products Dist. now to have one or more of these units in time for prewatering which incidentally is the most preferable time to have the Surge Flow unit. Orders received prior to February 1, 1984, will have the best chance of March delivery. Call today 272-5134, or come by Pivot Products Distributors West highway 84 in Muleshoe, Texas

## PIVOT PRODUCTS DISTRIBUTORS, INC.

West Highway 84

Telephone 806/272-5134 or 806/272-5536

MULESHOE, TEXAS 79347

## MF MF MF MF MF MF MF MF MF

# January Savings!



See us this month for Inventory Reduction savings on selected Massey-Ferguson machinery. Get the equipment you need...at savings and financing you'll like!



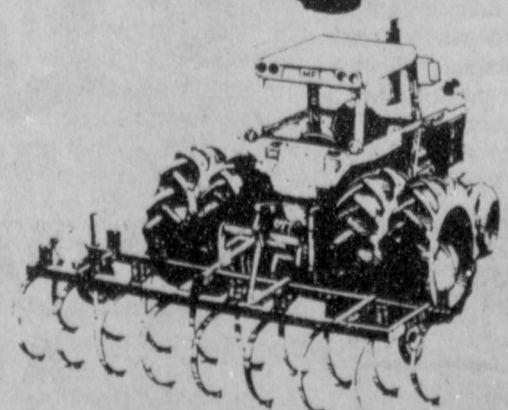
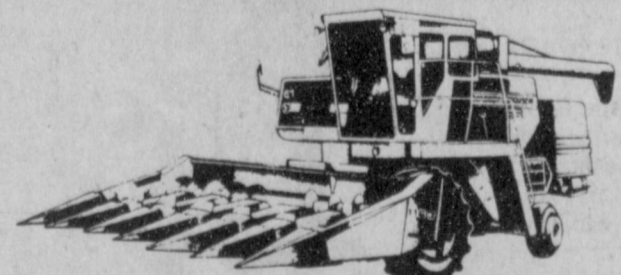
### MF TRACTORS

- Big Factory Discounts
- Plus Your Choice of 9.9% APR financing OR waiver of finance charges to June 1, 1984 when you finance with MF.



### MF COMBINES

- Big Factory Discounts
- Plus Your Choice of 9.9% APR financing OR waiver of finance charges to August 1, 1984 when you finance with MF.
- Used Combines...your choice of 6.9% APR financing or waiver of finance charges to February 1, 1985.



Money-Saving Offers on MF Tillage Implements, Drills, Tractor Loaders, Swathers and Rectangular Balers, too.

HURRY! OFFERS END JANUARY 31st!



Your Business Machines

## FRY & COX, INC

401 S 1st St Muleshoe Texas

272-4511

**BUY  
SELL  
AND  
TRADE  
WITH...**

# Classified Ads

**DEADLINE FOR CLASSIFIED ADS IS TUESDAYS AND FRIDAYS 11:00A.M**

**CLASSIFIED RATES**  
1st Insertion Per Word...\$1.15  
Minimum Charge...\$2.30  
2nd Insertion Per Word...\$.13  
Minimum Charge...\$2.00  
**CARD OF THANKS**  
Per Word...\$.20  
**CLASSIFIED DISPLAY**  
\$1.70...per column inch  
**BLIND AD RATES**  
50% more  
**DEADLINES**  
11 a.m. Tues for Thurs.  
11 a.m. Fri. for Sun.  
WE RESERVE THE RIGHT TO CLASSIFY REVISE OR REJECT ANY AD. NOT RESPONSIBLE FOR ANY ERROR AFTER AD HAS RUN ONCE.

**AFTER DEADLINE???**  
You can call 272-4536 until 5:00 p.m. on Friday and Tuesday and get your WORD AD in TOO-LATE-TO in the next issue!!! Tuesday for Thursday and Friday for Sunday.

**1. PERSONALS**

Own your own Jean-Sports-wear, Ladies-Apparel, Combination Accessories, Large Size store. National brands: Jordache, Chic, Lee, Levi, Vanderbilt, Izod, Guay Saz, Esprit, Britannia, Calvin Klein, Sergio Baleante, Evan Picone, Caliborne, Members Only, Bill Blass, Organically Grown, Health-tex, 300 others, \$7,900 to \$24,900, inventory, airfare, training, fixtures, grand opening, etc. Mr. Loughlin (612) 888-6555. 1-41-1tp

**CONCERNED** about someone's drinking **HELP IS AVAILABLE** through Al-Anon Call 227-2350 or 965-2870 or come to visit Tuesday nights. 8:00 p.m. at 1116 W. American Boulevard, Muleshoe.

**2. LOST AND FOUND**

Lost Dock and Dixie 2 German Shepherds, Black and Tan with red collar. Reward offered. Call 272-3483. 2-2s-tfc

**3. HELP WANTED**

Wanted: Texas Migrant Council wants a One on One handicapped aide. Must have own car and insurance. High School Diploma required. Preferably someone who has worked with handicapped children. Some travel required, paid benefits. Contact David Gutterrez, Director of Texas Migrant Council, 101 E. Ave. B. No phone calls please. 3t-3t-4tc

Waitress needed, talk to manager in person at Pizza Hut. p3-4t-tfc

**MEN AND WOMEN 17-62 TRAIN NOW FOR CIVIL SERVICE EXAMS**

No High School Necessary Positions Start As High As \$10.21 HOUR  
• POST OFFICE • CLERICAL  
• MECHANICS • INSPECTORS  
KEEP PRESENT JOB WHILE PREPARING AT HOME FOR GOVERNMENT EXAMS  
Write & Include Phone No. To: **National Training Service, Inc.** % Muleshoe Publishing Co. P.O. Box 449 Muleshoe, Tx 79347 3-2t-4ttp

**3. HELP WANTED**

**SALES AGENT WANTED**  
National known calendar manufacturer and specialty advertising company offers an opportunity for an industrious self-starter for full or part-time work. We need a sales oriented person to present our exclusive calendars, business gifts and extensive advertising specialty assortment to firms within the business community. The Thos. D. Murphy Co. is a pioneer in the advertising field since 1888, so you know we're here to stay. If you can organize your own time and determine your own success, write: Richard E. Fisher, The Thos. D. Murphy Co., P.O. box 382, Red Oak, Iowa 52566 or call 712-623-2591, ext. 12. 3-2t-3ttp

**4. HOUSES FOR RENT**

**SKIING IS GREAT** Save \$5. Nice 2 Bedroom Ruidoso House, Cable T.V. Steve Alldredge 806 456-7192, or Bob Alldredge 806 983-2912. 4-1s-tfc  
House for rent, 2 bedroom, partially furnished. Call 272-3888. a4-4t-tfc

**5. APTS. FOR RENT**

3 Room Furnished Apt. for rent, in Muleshoe, all bills and Cable T.V. Paid. \$250 a month plus \$100 deposit. Call Maurine Routon at Farwell 1-825-3555. 5-2t-tfc

**FOR RENT:** 2 bedroom unfurnished apartment, with some bills paid. Call 965-2188 or 272-4754. 5-2s-tfc

**8. REAL ESTATE FOR SALE**

Nice 2 bedroom, 1 bath & garage in Lenau Addition. Central Heat, Large Kitchen, Patio. Mid 20's. 272-3123. b8-4s-tfc

**J.B. SUDDERTH REALTY, INC.**  
Drawer 887  
Farwell, Tx. 79325  
Ph. 806-481-3288

160 Acre on Hwy. N.W. of Muleshoe, 2 Wells, Excellent Financing. Priced for Immediate Sale.

320 Acre, 3-8 Inch Wells, 1 Circle. Lays Excellent. Oklahoma Lane Area.

320 Acre, 1 Circle, 2-8 Inch Wells, Good Water Area. Oklahoma Lane Area.

A Very Nice 3 BR, 1 1/2 Bath, House. Interior just painted. Central H&AC. Insulated, garage, incinerator, corrals, and small feed shed. On small 7/10 Acre, fenced, on Hwy. in Lariat. Only \$20,000. Possible Owner Financing.

50 acres in edge of Muleshoe 6 inch electric well. Barn. Corral, side roll Sprinkler, City Water. Owner says Sell. 8-46s-tfc

**3. HELP WANTED**  
National known calendar manufacturer and specialty advertising company offers an opportunity for an industrious self-starter for full or part-time work. We need a sales oriented person to present our exclusive calendars, business gifts and extensive advertising specialty assortment to firms within the business community. The Thos. D. Murphy Co. is a pioneer in the advertising field since 1888, so you know we're here to stay. If you can organize your own time and determine your own success, write: Richard E. Fisher, The Thos. D. Murphy Co., P.O. box 382, Red Oak, Iowa 52566 or call 712-623-2591, ext. 12. 3-2t-3ttp

**8. REAL ESTATE FOR SALE**

**HOUSE FOR SALE BY OWNER:** 3 bedroom, 1 1/2 bath and garage. See at 510 E. Dallas or call anytime 272-3328. Assumable FHA loan at 8 1/4 percent interest. 8-3s-tfc

**EXTRA NICE** 3-1 1/2-1. New carpet, paneling through out. Screened in patio. Call 4541 or 5671 after 5:00 p.m. Ask for Debby. 8-13t-tfc

**FOR SALE BY OWNER:** 3 br, 2 bath brick home. Fireplace, carpeted, garage. Beautiful yard & covered patio. Close to high school. 272-3402 or 272-3839. 8-19s-tfc

**New Listing For Sale by Owner:** 3 Br, 1 Bath, 1 Car Garage, Central Heat, Corner Lot. Priced to Sell. 402 E. Austin St. 272-4738 8-41t-tfc

**FOR SALE BY OWNER** Large Brick Home on 10 acres. Plus 32' x 50' insulated shop building, small barn, fruit orchard, excellent well with sprinkler system. Locate 2 1/2 miles from city limits. \$93,500. Call 272-4957. m8-4s-tfc

**KREBBS REAL ESTATE**  
If it's Real Estate you want, we have it or can get it. Appraisals. Tele. 272-3191-office and residence.

**Bingham & Nieman Realty**  
116 E. Ave. C  
272-5285 \*\*\* 272-5286  
"We Appreciate Your Business!"  
**George & Dianne Nieman**

**NEW HOMES**

No Down Payment  
Low Monthly Payment  
You May Qualify!  
272-4266  
**AMERICAN VALLEY INVESTMENTS REALTORS**  
Thursie Reid 272-3142  
Karen Harris 272-5183  
Lucille Harp 272-4693  
Derrell Matthews 965-2127  
Rex Harris 272-5183 8-2t-tfc

**Henry Realty**  
111 W. Ave. B  
Muleshoe  
272-4581

315 Acres on HWY West of Muleshoe, 5 Wells, Underground Pipe, Lays Excellent, Owner Financing.

800 Acres West of Muleshoe on HWY Excellent Improvements. Priced Right to Sell. Owner Financing.

38 Acres West of Muleshoe, 6 Inch Well, Sideroll, All Wheat.

One Acre Sites For Home Construction. 3 Miles East of Muleshoe on HWY.

2 Bedroom Home. 4 Rooms Remodeled, Storage Cellar. 10% down Owner Financing. 8-51s-tfc

**FOR YOUR WANT ADS CALL 272-4536**

**9. AUTOMOBILES FOR SALE**

Nice Vega, 2 door, Rebuilt Motor. New tires. Call 272-4696. p3teOtc

Pick-up For Sale: 1977 1/2 Ton GMC with Propane. Call 272-3732. t9-4t-2tc

Clean 1972 Chrysler New Yorker. Good tires. 272-3850 or 272-3659. M9-3t-2tc

For Sale: 1973 El Camino. 350 Engine, with Headers, Mag Wheels, Need to Sell QUICKLY!! 946-3437 9-36s-tfc

For Sale: 1980 Chevrolet 1/2 ton Pickup. 4 speed, 4 wheel drive. Air and other extras. Call 272-4515 from 8 a.m. to 5 p.m. 9-44s-tfc

**10. FARM EQUIP. FOR SALE**

**FOR SALE:** Avenger 3 Wheel Hoe Hands with spray tanks attached. Call First National Bank. 272-4515. 10-21t-tfc

**11. FOR SALE OR TRADE**

**FOR SALE:** Down-Filled Ski Jacket, Men's Size Medium. Also Woman's Jacket & bib. Woman's Size Large. Phone 925-6713 after 10 p.m. or before 8 a.m. 11-4t-2tp

**FOR SALE BY OWNER:** 12 x 64 Schult Chateau Trailer House. Phone 925-6710 or 272-3735. 11-3s-4tpp

Pea-Green Hay FOR SALE In the Barn. Call 272-3842 or 272-3692. s11-4s-tfc

**FOR SALE - 14 x 84 Mobile Home** Unfurnished - 3 bedroom 2 bath Masonite Siding - House Top Roof - Call 272-4022 After 5 p.m. or weekends. 11-3s-tfc

**FOR SALE:** 14 x 56 Mobile Home located 1/2 mile North of Enochs. 927-5550. 11-3t-4tpp

**PIANO FOR SALE**  
Wanted: Responsible party to assume small monthly payments on spinet console piano, can be seen locally. Write (include phone number) Credit Manager, P.O. Box 478, Lockhart, Tx. 78644-0478. ill-4t-6tets

**14. FARM PROPERTY TO RENT**

Available for rent, 160 acre farm-land, 2 miles north of Muleshoe. 2 wells, weak water. Call City National Bank Trust Department, Plainview, (806) 293-1311. C14-3t-2tc

**15. MISCELLANEOUS**

For Sale: Used Olympia International Omega 303 copy machine. Clean and in good condition. Asking \$500.00. Contact King Grain Co. 272-4544. 15-46s-tfc

**HONEY FOR SALE**  
Nick Landers  
334 W. Ave. J.  
272-3096  
15-5t-tfc

**Bruce & Matthews Inc.** Refrigeration & Electrical Contractor's, Heating, Cooling, Appliance service. 424 N. First, 272-5114. 15-44t-tfc

Doberman, German Shepherd Puppies to be given away. Call 946-3336. 15-3s-4tc

**HOME REPAIRS.** F.M. Saldana Construction Licensed and bonded plumber. Specialize in cement, carpenter work, remodeling, painting, acoustical ceilings. 272-4955. 15-16s-tfc

**15. MISCELLANEOUS**

**Tree & Shrubbery** Trimming, Lawn Thatching, Stump Removal, Dormant spraying & feeding. Custom Tree & Landscape Service, Box 2704, Amarillo, Texas, 79102. 373-4593. c15-3t-8tc

**18. LEGAL NOTICES**

**NOTICE OF RATE CHANGE REQUEST AND STATEMENT OF INTENT**  
Notice is hereby given that BAILEY COUNTY ELECTRIC COOPERATIVE ASSOCIATION (the "Utility") intends to change its purchased power adjustment for electric utility service effective February 17, 1984. Under the present tariff the Utility pays an incentive credit to members of the irrigation class participating in a load management program and additionally credits all consumers with any reduction in power costs less demand ratchet cost resulting from load management. To correct this double payment of benefits the utility proposes to recover 1/2 of the incentive credits actually paid through its power cost adjustment. The increase requested over test year revenues is \$149,359.00 or less than 2%. The changes are applicable to all areas and all customers served by the Utility. The classes and numbers of Utility customers affected are as follows:  
Residential 2,734  
Irrigation 2,801  
Commercial under 50 KVA 373  
Commercial over 50 KVA 78  
Implementation of the proposed changes is subject to approval by the appropriate regulatory authority. A statement of intent including the proposed revisions

**18. LEGAL NOTICES**

**THE STATE OF TEXAS**  
To: Ramon Gonzalez Defendant, Greeting:  
You are hereby commanded to appear by filing a written answer to the Plaintiff's Petition at or before ten o'clock A.M. of the first Monday after the expiration of forty-two days from the date of the issuance of this citation, same being Monday the 5th day of March 1984, at or before ten o'clock A.M. before the Honorable 287th Judicial District Court of Bailey County, Texas, at the Court House of said County in Muleshoe, Texas.  
Said Plaintiff's Petition was filed in said court, on the 18th day of January A.D. 1984, in this cause, numbered 5085 on the docket of said court, and styled, ANA MARIA GONZALEZ Plaintiff, vs. RAMON GONZALEZ Defendant.  
The names of the parties to the cause are as follows:

of tariff and schedules and a statement specifying in detail each proposed change is available at the general office of the Utility located at 305 East Avenue B, Muleshoe, Texas.  
Persons who wish to intervene or otherwise participate in these proceedings should notify the Commission as soon as possible. A request to intervene, participate, or for further information should be mailed to the Public Utility Commission of Texas, 7800 Shoal Creek Boulevard, Suite 400N, Austin, Texas 78757. Further information may also be obtained by calling the Public Utility Commission Consumer Affairs Division at (512) 458-0223 or (512) 458-0227, or (512) 458-0221 teletypewriter for the deaf.  
CAMPBELL MCGINNIS ATTORNEY FOR THE UTILITY  
Mc18-3t-4tcc

**18. LEGAL NOTICES**

**ANA MARIA GONZALEZ** are Plaintiffs and **RAMON GONZALEZ** are Defendants  
A brief statement of the nature of this suit is as follows, to wit:  
Establishing and foreclosure of plaintiff's Judgment Lien on all of defendant's interest in the following real property: All of Lot Eight (8) and the Easterly six feet of Lot Nine (9), Block Three (3), Highland Addition to the City of Muleshoe, Bailey County, Texas.  
The Commissioners' Court reserves the right to reject any or all bids and to waive formalities.  
Gordon H. Green  
County Judge  
g18-3t-4tcc

**18. LEGAL NOTICES**

**NOTICE TO ALL PERSONS HAVING CLAIMS AGAINST THE ESTATE OF R.L. ROUBINEK, DECEASED**  
Notice is hereby given that original letters testamentary upon the Estate of R.L. Roubinek, Deceased, were issued to me, the undersigned, on the 23rd day of January, 1984, in the proceeding indicated below my signature hereto, which is still pending, and that I now hold such letters. All persons having claims against said estate, which is being administered, in the County Court below named, are hereby required to present the same to me at the address below given, before suit upon the same are barred by the general statutes of limitations, before such estate is closed, and within the time prescribed by law.  
My post office address is 1511 West Avenue B, Muleshoe, Texas 79347.  
Dated this the 23rd day of January, 1984.  
Katie C. Roubinek  
Katie C. Roubinek, Executrix of the Estate of R.L. Roubinek, Deceased, No. 1588, County Court, Bailey County, Texas. 18-4t-1tp

**18. LEGAL NOTICES**

**THE STATE OF TEXAS**  
To: Ramon Gonzalez Defendant, Greeting:  
You are hereby commanded to appear by filing a written answer to the Plaintiff's Petition at or before ten o'clock A.M. of the first Monday after the expiration of forty-two days from the date of the issuance of this citation, same being Monday the 5th day of March 1984, at or before ten o'clock A.M. before the Honorable 287th Judicial District Court of Bailey County, Texas, at the Court House of said County in Muleshoe, Texas.  
Said Plaintiff's Petition was filed in said court, on the 18th day of January A.D. 1984, in this cause, numbered 5085 on the docket of said court, and styled, ANA MARIA GONZALEZ Plaintiff, vs. RAMON GONZALEZ Defendant.  
The names of the parties to the cause are as follows:

**18. LEGAL NOTICES**

of tariff and schedules and a statement specifying in detail each proposed change is available at the general office of the Utility located at 305 East Avenue B, Muleshoe, Texas.  
Persons who wish to intervene or otherwise participate in these proceedings should notify the Commission as soon as possible. A request to intervene, participate, or for further information should be mailed to the Public Utility Commission of Texas, 7800 Shoal Creek Boulevard, Suite 400N, Austin, Texas 78757. Further information may also be obtained by calling the Public Utility Commission Consumer Affairs Division at (512) 458-0223 or (512) 458-0227, or (512) 458-0221 teletypewriter for the deaf.  
CAMPBELL MCGINNIS ATTORNEY FOR THE UTILITY  
Mc18-3t-4tcc

**18. LEGAL NOTICES**

**THE STATE OF TEXAS**  
To: Ramon Gonzalez Defendant, Greeting:  
You are hereby commanded to appear by filing a written answer to the Plaintiff's Petition at or before ten o'clock A.M. of the first Monday after the expiration of forty-two days from the date of the issuance of this citation, same being Monday the 5th day of March 1984, at or before ten o'clock A.M. before the Honorable 287th Judicial District Court of Bailey County, Texas, at the Court House of said County in Muleshoe, Texas.  
Said Plaintiff's Petition was filed in said court, on the 18th day of January A.D. 1984, in this cause, numbered 5085 on the docket of said court, and styled, ANA MARIA GONZALEZ Plaintiff, vs. RAMON GONZALEZ Defendant.  
The names of the parties to the cause are as follows:

**18. LEGAL NOTICES**

**ANA MARIA GONZALEZ** are Plaintiffs and **RAMON GONZALEZ** are Defendants  
A brief statement of the nature of this suit is as follows, to wit:  
Establishing and foreclosure of plaintiff's Judgment Lien on all of defendant's interest in the following real property: All of Lot Eight (8) and the Easterly six feet of Lot Nine (9), Block Three (3), Highland Addition to the City of Muleshoe, Bailey County, Texas.  
The Commissioners' Court reserves the right to reject any or all bids and to waive formalities.  
Gordon H. Green  
County Judge  
g18-3t-4tcc

**18. LEGAL NOTICES**

**NOTICE OF RATE CHANGE REQUEST AND STATEMENT OF INTENT**  
Notice is hereby given that BAILEY COUNTY ELECTRIC COOPERATIVE ASSOCIATION (the "Utility") intends to change its purchased power adjustment for electric utility service effective February 17, 1984. Under the present tariff the Utility pays an incentive credit to members of the irrigation class participating in a load management program and additionally credits all consumers with any reduction in power costs less demand ratchet cost resulting from load management. To correct this double payment of benefits the utility proposes to recover 1/2 of the incentive credits actually paid through its power cost adjustment. The increase requested over test year revenues is \$149,359.00 or less than 2%. The changes are applicable to all areas and all customers served by the Utility. The classes and numbers of Utility customers affected are as follows:  
Residential 2,734  
Irrigation 2,801  
Commercial under 50 KVA 373  
Commercial over 50 KVA 78  
Implementation of the proposed changes is subject to approval by the appropriate regulatory authority. A statement of intent including the proposed revisions

**18. LEGAL NOTICES**

**ANA MARIA GONZALEZ** are Plaintiffs and **RAMON GONZALEZ** are Defendants  
A brief statement of the nature of this suit is as follows, to wit:  
Establishing and foreclosure of plaintiff's Judgment Lien on all of defendant's interest in the following real property: All of Lot Eight (8) and the Easterly six feet of Lot Nine (9), Block Three (3), Highland Addition to the City of Muleshoe, Bailey County, Texas.  
The Commissioners' Court reserves the right to reject any or all bids and to waive formalities.  
Gordon H. Green  
County Judge  
g18-3t-4tcc

**18. LEGAL NOTICES**

**THE STATE OF TEXAS**  
To: Ramon Gonzalez Defendant, Greeting:  
You are hereby commanded to appear by filing a written answer to the Plaintiff's Petition at or before ten o'clock A.M. of the first Monday after the expiration of forty-two days from the date of the issuance of this citation, same being Monday the 5th day of March 1984, at or before ten o'clock A.M. before the Honorable 287th Judicial District Court of Bailey County, Texas, at the Court House of said County in Muleshoe, Texas.  
Said Plaintiff's Petition was filed in said court, on the 18th day of January A.D. 1984, in this cause, numbered 5085 on the docket of said court, and styled, ANA MARIA GONZALEZ Plaintiff, vs. RAMON GONZALEZ Defendant.  
The names of the parties to the cause are as follows:

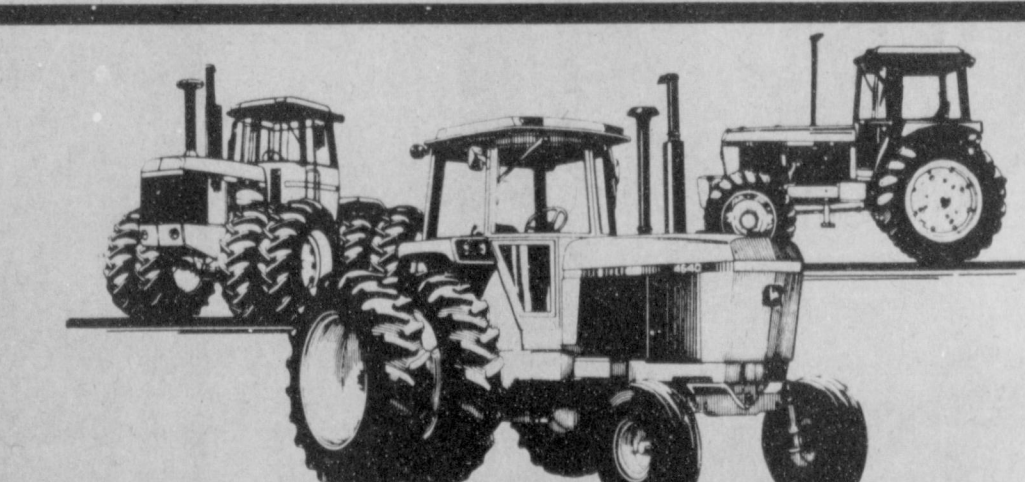
**18. LEGAL NOTICES**

**ANA MARIA GONZALEZ** are Plaintiffs and **RAMON GONZALEZ** are Defendants  
A brief statement of the nature of this suit is as follows, to wit:  
Establishing and foreclosure of plaintiff's Judgment Lien on all of defendant's interest in the following real property: All of Lot Eight (8) and the Easterly six feet of Lot Nine (9), Block Three (3), Highland Addition to the City of Muleshoe, Bailey County, Texas.  
The Commissioners' Court reserves the right to reject any or all bids and to waive formalities.  
Gordon H. Green  
County Judge  
g18-3t-4tcc

**JOHN DEERE**

## BOTTOM-LINE SPECIALS

Bottom-line closeout specials on 40 Series tractors...plus finance charge waiver to March 1, 1984, or rebate in lieu of waiver



Model	Cash Rebate in Lieu of Waiver		
	Nov. '83	Dec. '83	Jan. '84
40-hp 2040	\$ 175	\$125	\$ 75
50-hp 2240	225	150	100
60-hp 2440	250	175	100
70-hp 2640	300	200	125
80-hp 2840	325	250	150
90-hp 4040	500	350	200
110-hp 4240	525	375	225
130-hp 4440	575	425	250
155-hp 4640	750	550	325
180-hp 4840	825	600	350
179-hp 8440	975	700	425
228-hp 8640	1,200	875	525

The supply of new John Deere 40 Series tractors is going...and someday will be gone. So check our bottom-line deals on 40- to 80-hp models, including those with mechanical front-wheel drive...on 90- to 180-hp models, including those with Power Front-Wheel Drive...and on the two 4-wheel-drive models.  
Finance with John Deere and finance charge will be waived to March 1, 1984. Or, on any of the models you can take a cash rebate in lieu of waiver as shown here...but notice that buying during November or December gives you the biggest cash rebate. Leasing is another option. Our discounted lease payments are comparable in value to the waiver of finance charge.  
For 1983 investment tax credit, buy and take delivery during November or December. Plus, you can take the same 1983 depreciation deduction as you would have if you'd bought earlier in the year.  
(Offer subject to tractor availability.)  
Availability of John Deere financing and leasing plans subject to approval of credit.  
Leases not eligible for cash rebates or for cash in lieu of waiver.  
This offer may be reduced in value or withdrawn at any time.

### DEALS YOU CAN FARM WITH

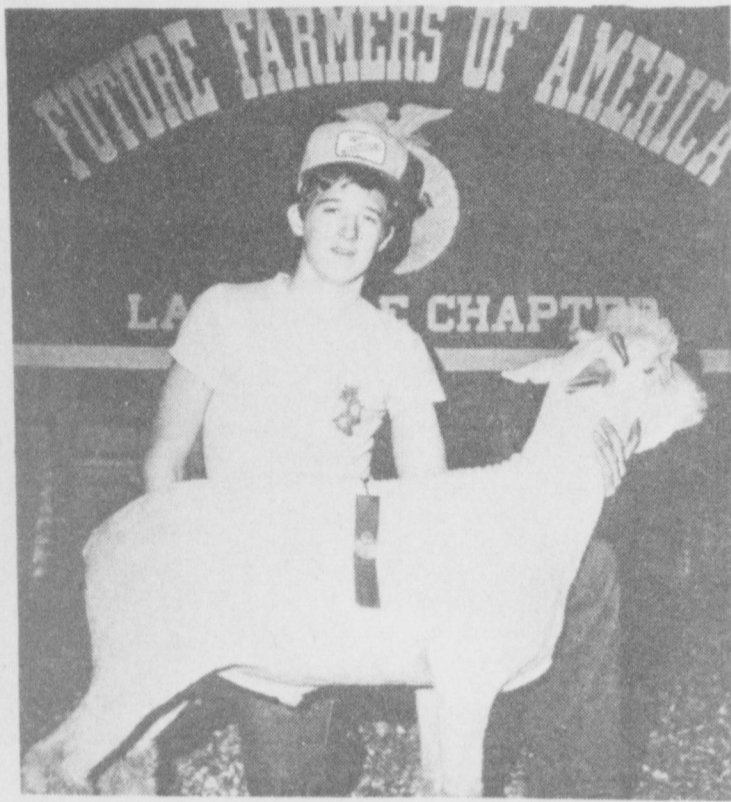
## Dent-Rempe, Inc.

1516 W. American Blvd. 272-4296

# Congratulations

1984

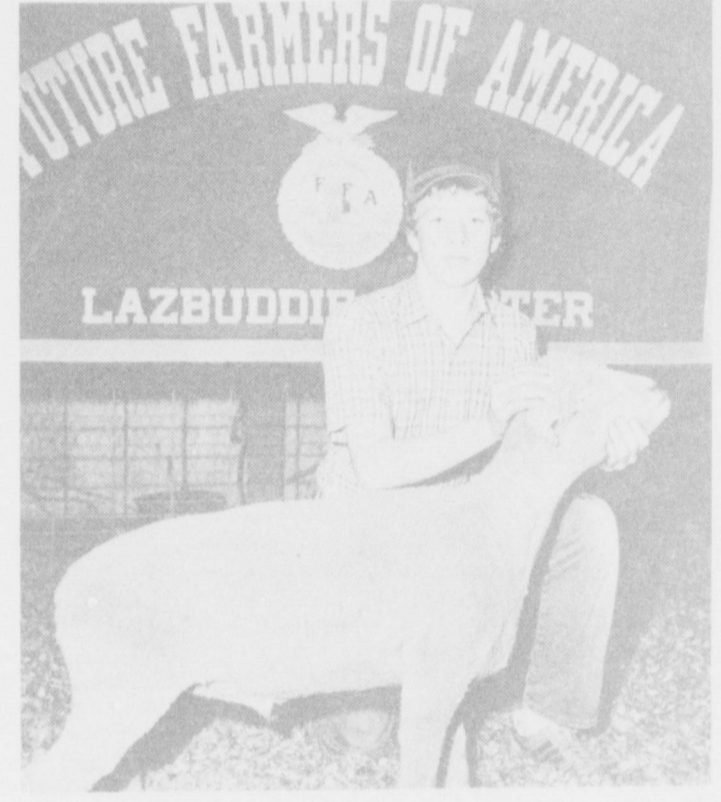
## LAZBUDDIE STOCK SHOW WINNERS



**FINE WOOL BREED CHAMPION**...Showing the Fine Wool breed champion and first place winner was Todd Daniel, son of Mr. and Mrs. Jim Daniel.



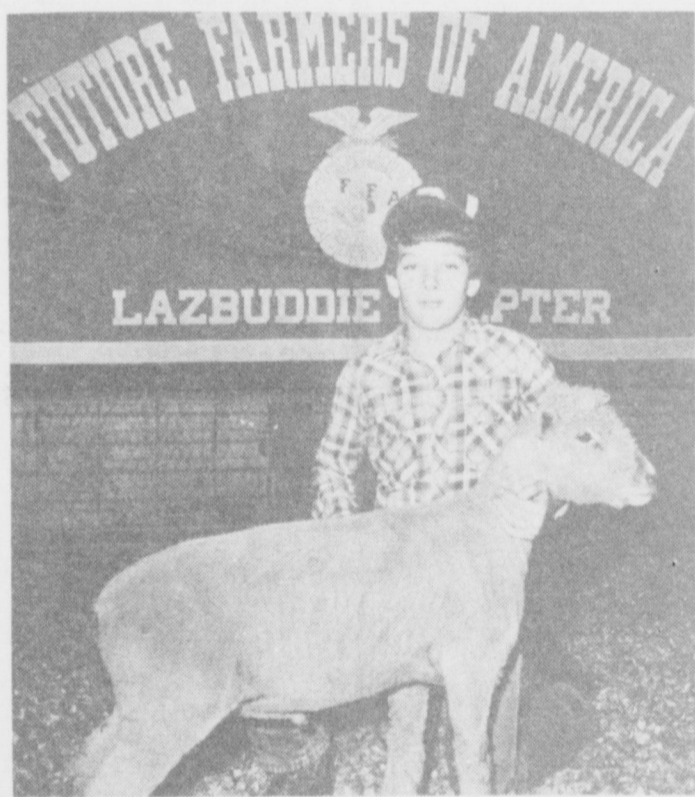
**HEAVYWEIGHT SUFFOLK LAMB IS BREED CHAMPION**...Ginger Jesko, daughter, of Mr. and Mrs. Lee Dennis Jesko, exhibited the heavyweight Suffolk to breed championship at the Lazbuddie FFA Livestock Show.



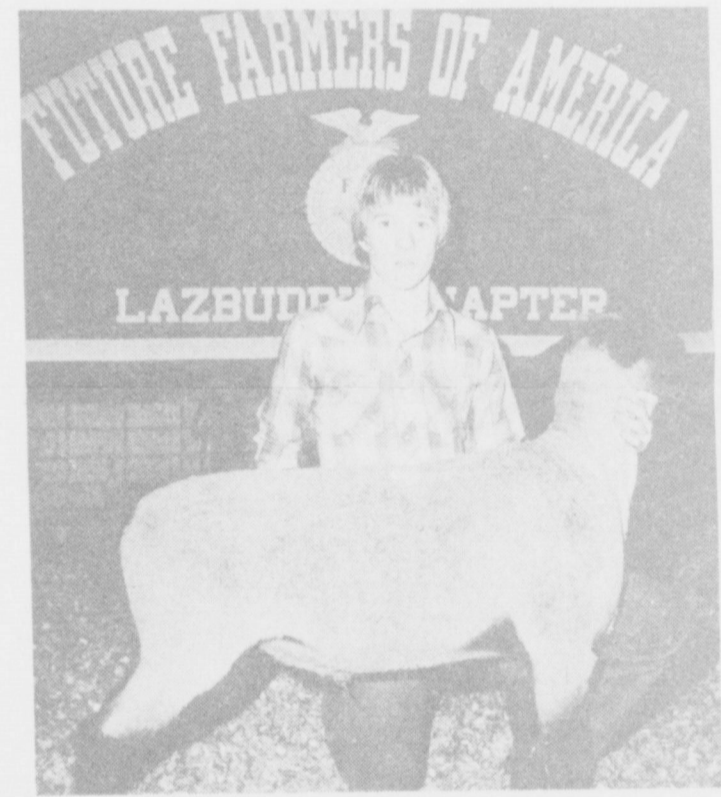
**SOUTHDOWN BREED CHAMPION**...Kurt Miller, son of Mr. and Mrs. Mike Miller, exhibited his Southdown lamb to breed championship during the Lazbuddie FFA Livestock Show last Saturday.



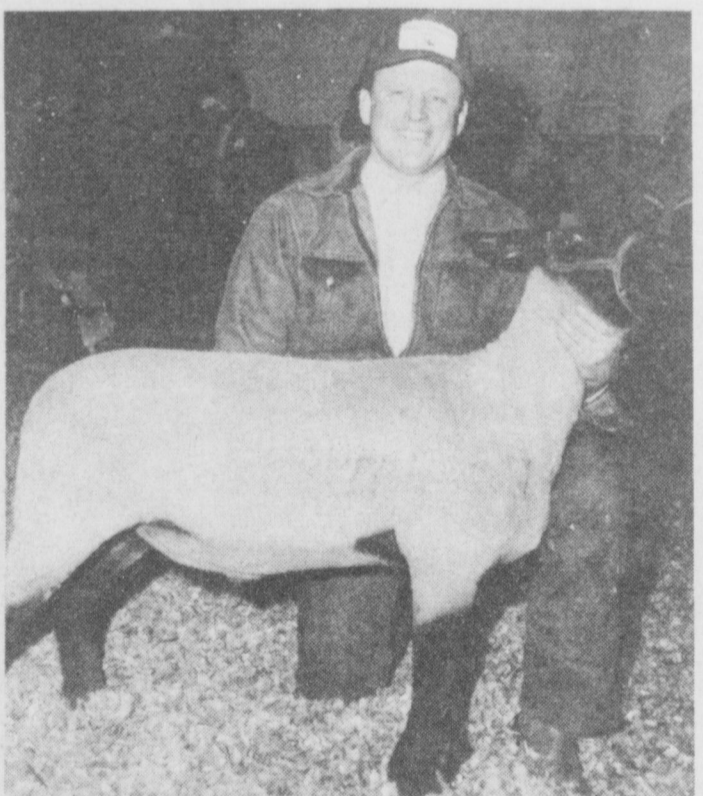
**FINE WOOL RESERVE BREED CHAMPION**...David Schacher, son of Mr. and Mrs. Eugene Schacher, showed his light weight Fine Wool Lamb to reserve breed champ, and first place.



**RESERVE BREED CHAMPION SOUTHDOWN**...Showing the Reserve Breed Champion Southdown Lamb at the Lazbuddie FFA Livestock Show was Scott Miller, son of Mr. and Mrs. Mike Miller.



**RESERVE BREED CHAMPION SUFFOLK**...Exhibiting the Reserve Breed Champion Suffolk at the Lazbuddie FFA Livestock show as Guy Brockman, son of Mr. and Mrs. Phil Brockman.



**ADULT MEN'S SHOWMANSHIP**...Mike Miller is all smiles after winning the adult men's showmanship award at the Lazbuddie FFA Livestock Show.



**SWINE SHOWMANSHIP**...Susan Redwine, daughter of Mr. and Mrs. Harrol Redwine was presented the Swine Showmanship Award at the Lazbuddie FFA Livestock Show.



**WOMEN'S SHOWMANSHIP**...Darla McBroom won the adult women's showmanship award at the Lazbuddie FFA Livestock Show.

Sponsored By:

# Lazbuddie Ag Boosters