



Weather

| | | |
|-------------|----|----|
| November 13 | 74 | 36 |
| November 14 | 75 | 42 |
| November 15 | 72 | 23 |
| November 16 | 62 | 26 |

MULESHOE JOURNAL

'The Community of Opportunity-Where Water Makes the Difference'

Volume 60, No. 46

12 Pages Today

Published Every Thursday at Muleshoe, Bailey County, Texas 79347

Thursday, November 17, 1983

Muleshoe Cross Country Team Wins State Title

Around Muleshoe

The Perryton Ranger who caught the single TD pass for the Ranger in their game against the Mules last Friday night was Roger Bocox, 1000 yard rusher for the team, rather than the talented newcomer we mentioned Mike McKinley. Who says sports writers don't get involved?

Reports from Rev. James Williams, formerly of Muleshoe, indicate that his 4 year old daughter Misti has come through surgery on her kidney relocation and is doing as well as possible at this time. She is in room 517 in Methodist Hospital at Lubbock, Texas.

Tickets are available at school offices for the Post-Muleshoe game on Friday, November 18, or may be purchased at the gate. The Mules will be the "home team" Friday night.

The American Agriculture Movement, Inc. will have a National Delegates meeting in Amarillo, Texas on November 18th and 19th at the Ramada Inn on I-40 East. There will be a press conference at 10:00 a.m. on November 18th at the Ramada Inn. Tommy B. Willis, National President, and David Senter, National Director, will discuss, "Life after PIK", and 1985 Farm Bill and the 1984 Presidential Elections.

Saturday, Nov. 19, the ladies of Needmore will again serve their Thanksgiving supper starting at 6 p.m. Tickets will be \$2.50 for children under 12 years

Education Topic Of PTA Meet

The Muleshoe Elementary P.T.A. in conjunction with other South Plains Area Council P.T.A.'s would like to urge all local PTA members and other interested community members to attend a special meeting on Thursday, November 17, 1983 at 7:00 p.m. in the Lamb County Ag and Community Center located on the Levelland Highway in Littlefield, Texas.

Featured speaker for the meeting will be Raymond Bynum, Texas Commissioner of Education. Mr. Bynum will be addressing current issues in education.

Everyone concerned with the future of education is encouraged to attend this meeting.



STATE CHAMPIONSHIP CROSS COUNTRY...The Mule Varsity Cross Country runners made it "two in a row" last Saturday, as they raced for the finish line and another State Title for Muleshoe in the 1983 State Cross Country Races. (From back to front, L to R) Tony Rojas, Ronnie Logsdon, Allen Beasley, Coach Jerry Johnson, Danny Sanchez, Norman Perez, Aldo Almanza, Tony Luna and David Medlin.

Muleshoe Mules Battle Post For Area Championship

The Muleshoe Mules will take one more step up the ladder of success this Friday night as they travel to Levelland to meet the quick moving Post Antelopes. The Antelopes come into the battle for Area playoffs with a 10-1-0 record, falling only to the Littlefield Wildcats.

Muleshoe earned the title of Bi-District Champs last Friday as they played the Perryton Rangers winning to the tune of 10-8. Coach Windy Williams told the Journal that "These kids did a tremendous job. They probably played as good an offensive game as they have all season."

We dropped the ball three or four times, but were able to overcome it. "I felt like our game plan went just like we had it laid out, and we were able to pick Perryton apart." Williams stated that Perryton only had about three good defensive plays, but they were able to keep us from scoring a couple of times, when we could and should have, he stated.

The Mules are very excited about the game this Friday, and well they should be. They are going into the game with some district and bi-district action under their belts, which makes them a lot more experienced, more

seasoned and just a little tougher. These kids have really got just "Class."

Williams had nothing but praise for his coaching staff. "nobody but myself knows what kind of job these guys have done this year. They had a great defensive game plan last week, and every-

ON FRIDAY, NOVEMBER 18, THE MULESHOE MULES WILL LEAVE MULESHOE FROM THE FOOTBALL FIELD AT 4:30 P.M. WITH A POLICE EXCORT. THEY WILL COME DOWN MAIN STREET. ALL MERCHANTS AND BUSINESSMEN IN MULESHOE AND ESPECIALLY ON MAIN ARE ASKED TO FLY THEIR "MULE FLAGS" THAT DAY AND STEP OUT WHEN THEY HEAR THE SIRENS TO CHEER THE MULES ON THEIR WAY.

thing went off without a hitch.

This week, Williams said, the Mules will finally be playing someone who is comparable in size and quickness to the Mules. The Antelopes are tough - make no mistake. They have a 2,000 yard rusher in Milton

Bruns Wins First; Contest Tie Remains

Well, folks, this is just one of those contest that you're not going to believe. Besides being way off on the games picked (some missed as high as 12 games) the tie-breaker scores were in double numbers all the way.

At any rate, taking first place this week, was a newcomer to the ranks of the Journal's contest winners. Bruce Bruns took first by missing only three points. In fact, his was the only entry missing three points. Bruns was 24 points off in the tiebreaker, but claims the prize due to the game he got correctly. He will receive a check for \$6 and 10 points.

Taking second place was a previous winner who already has amassed a total of ten points with various wins. Scott Calvert will take another second place win this week, along with a check for \$4 and six more points, giving him a total number of points at 16. Calvert missed five points and was ten points off in the tie breaker score.

In third place this week is "Doc" Jerry Gleason. Doc also missed five games and was 16 points off in the tie breaker scores. He will receive a check for \$2 and a total of 4 points for his entry. Gleason has been a better than average contender in the year's past in the contest, but has managed to stay just out of the money this year.

The overall contest points still remain deadlocked between Raymond Villalobos and Debbie Weir, both with a total of 20 points each. However, we have a new second place contestant this week, with the addition of

Scott Calvert. Calvert's previous ten points plus the six he earned this week, boosts him up to a total of 16 and well within firing distance of first place.

Next in line with a total of 12 points overall is James Hanson. So, as you can see, a big win by any of these people could secure first or knock the current leaders out. Seems like our entries are falling off some, but this is definitely not the time to be quitting. If you've been keeping up with the contest, you know that almost every week, we've had new winners. So keep those entries coming in, people.

Several contestants are Con't On page 8, Col. 2

Mules Make It Two Years In A Row

A team of happy individuals plus one tired but satisfied coach returned to Muleshoe this past week end with their second state championship win under their belts.

Coach Jerry Johnson and his Mule Varsity Cross Country team participated a week ago in Lubbock in regionals to win second place and a right to go on to state competition. They were beat out by a team from Boy's Ranch. This week, however, the tables were turned, and Johnson's runners came up with the first place points for the State Championship for the second year in a row. Boy's Ranch placed third in state, while Roma placed second.

The cross country team, comprised of Tony Luna, Aldo Almanza, Ronnie Logsdon, David Medlin, 22nd with 17:45; Tony Rojas, 36th with 18:09; Allan Beasley, 65th with 19:04 and Danny Sanchez, 75th with 19:27.

Muleshoe's boys were the defending state Champs from 1982 and the win at that time was the first state championship ever won by Muleshoe High School.

According to coaches of this event, the cross country runner is a self-motivated, self-governed athlete. He knows the steps and requirements necessary to insure a good performance. This type athlete knows too,

Con't Page 6, Col. 5

School Board Okays Bids On Building

Students at Dillman Elementary may soon have an indoor play area available to them. This is the only campus in the MISD that has no facilities for in-door play. In a regular Muleshoe Independent School Board trustee meeting on Monday, November 14, trustees voted to call for bids on an all purpose (gym type) building for the Dillman Campus. The building would be financed out of reserve funds if bids are accepted by the local board. Bids for the building will be considered at the regular meeting scheduled for December 12 by board members.

Betty Jennings, director of special education at MISD gave an informal report to the trustees which highlight-

ed the number of faculty members in the program, the number of students involved, and particular program activities for the 1983-84 school year.

Superintendent of schools, H. John Fuller gave trustees a report of the activities planned for American Education Week. These activities include open house for Dillman and DeShazo Elementaries on Tuesday, November 15, and a meeting sponsored by the local PTA's in Littlefield on Thursday, November 17 featuring Raymond Bynum, Texas Commissioner of Education, as speaker. Fuller also gave a report of the number of library books checked out from the four campus libraries during the first six weeks.

Reports were given by trustees Gordon Wilson, Julie Cage and Ronnie Holt which pertained to their experiences at the TASB convention recently held in San Antonio. Highlights of the convention centered around computer literacy and merit pay for teachers, the trustees reported.

A financial report was given by Assistant Superintendent Tom Jinks, and

Con't Page 6, Col. 1

Tax Rebate Checks Down For October, Up For Year

State Comptroller Bob Bullock recently sent city sales tax rebate checks a full week early because many taxpayers paid by the 20th of last month-as all taxpayers will be required to do this month.

"We're sending these checks early because 134,000 Texas taxpayers paid before the deadline," Bullock said. "This kind of cooperation among taxpayers is helping us avoid new and higher taxes. It's obvious this change will help local governments put these tax revenues to work faster in their cities."

City sales tax rebate check for Muleshoe this period ending November 4, 1983 amounted to \$19,607.74, down from the

comparable payment of \$25,904.28 of the prior year. Total 1983 payments to date for Muleshoe, however, were up with \$182,521.43 recorded against \$177,311.29 in 1982 payments. This reflects a 2.94 percent change to date.

The City of Dimmitt received a net payment of sales tax rebates for this last period in the amount of \$19,779.63, up slightly from the \$18,503.19 at the same time last year. Payments to date for 1983 in Dimmitt are down considerably, with \$122,885.93 showing for 1983 against \$131,046.10 for total 1982 payments to date. This reflects a minus 6.23 percent change for Dimmitt. Two other towns in Castro

County also show minus figures for this period, leaving the entire county with a minus 4.63 percent change to date.

In Cochran County, the City of Morton reflected a

Con't Page 6, Col. 6

Valley Grain President Speaks To Rotarians

The Muleshoe Rotary met at noon on Tuesday, November 15 for their weekly meeting, with guests being Larry and J.E. McKillip and Tom Walters.

Willard Pittman, owner and President of Valley Grain, Incorporated was presented as speaker for the program by Lucky Spurlock.

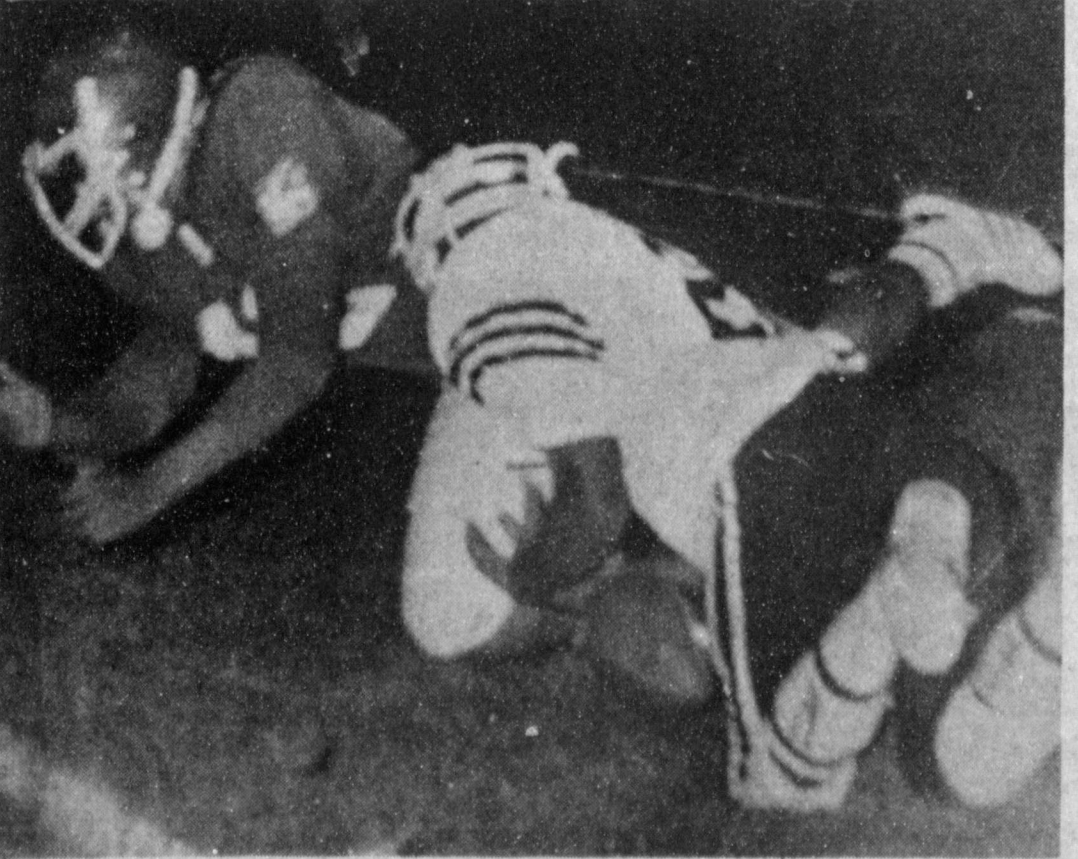
The grain company president gave a brief resume on the history of Valley Grain which first started in 1955 in California. Pittman said that the Company decided to switch from feed corn to specialty corn in 1957, and began supplying Frito-Lay and other companies with their product.

Then, Pittman said, Valley Grain started producing their first prepared Masa in 1963. In January, 1978 the Muleshoe Valley Grain elevators were started and in 1983 Valley Grain's Masa Plant in Muleshoe began production.

The President of Valley Grain explained to the group that the Company is family owned. Pittman has one son and two sons-in-law involved in the operations.

According to the operations in Muleshoe, Pittman indicated that some 30 to 60 people are employed. They are currently running on a 24-hour a day schedule of

Con't Page 8, Col. 1



YOUR LOSS - OUR GAIN...This is what Mule Mark Moton seems to be saying to Perryton quarterback, after a fumble gave the ball to the Mules. The Mules dominated the game throughout the night even though no scoring was done prior to the fourth quarter. This was the 13th time the Mules have played Perryton - so it was time for a change.



CELEBRATION TIME...Muleshoe Mule players, coaches, cheerleaders and even some fans got in on the celebration festivities late last Friday night in Dumas as Muleshoe edged Perryton out of the playoffs and took the Bi-District title for the first time in several years. A trophy was presented to the Mules which can be seen in the top row of the photo. The excitement of the moment was catching.

Vet Housing Program Approved By Voters

Texas Land Commissioner Garry Mauro proclaimed the approval of Proposition 7 in the constitutional amendment election Tuesday as a "great victory for the veterans and the people of Texas." With over 70 percent of the voters approving the proposal, eligible Texas veterans will be able to borrow up to \$20,000 to purchase a home under the Veterans Housing Assistance Program.

The amendment authorized the Veterans Land Board to issue \$500 million in bonds for the Veterans Housing Assistance Program and an additional \$300 million for the continuation of the Veterans Land Program.

"Thanks to the support of the veterans organizations, lending institutions, real estate professionals, home-builders and thousands of individual Texans, we will be able to launch this program which will be beneficial not just for veterans, but for the entire state economy," Mauro stated.

"Governor Mark White, Lieutenant Governor Bill Hobby, Speaker of the House Gib Lewis and all members of the Texas leg-

islature are to be congratulated for their efforts in passing and supporting this innovative program," Mauro stated.

The Veterans Housing Assistance Program will create 45,000 new jobs and stimulate the construction of 25,000 new homes. Money from the housing program will generate \$3.5 billion for the Texas economy. Also, because existing lending institutions will administer the loan program, no new state bureaucracy will be created.

"In addition to all these benefits, the Veterans Housing Assistance Program, like the Veterans Land Program, will not cost the taxpayers one penny," Mauro said.

"I am proud to see the people of Texas agree in overwhelming numbers that we don't need to do our veterans a favor, just repay one," Mauro said.

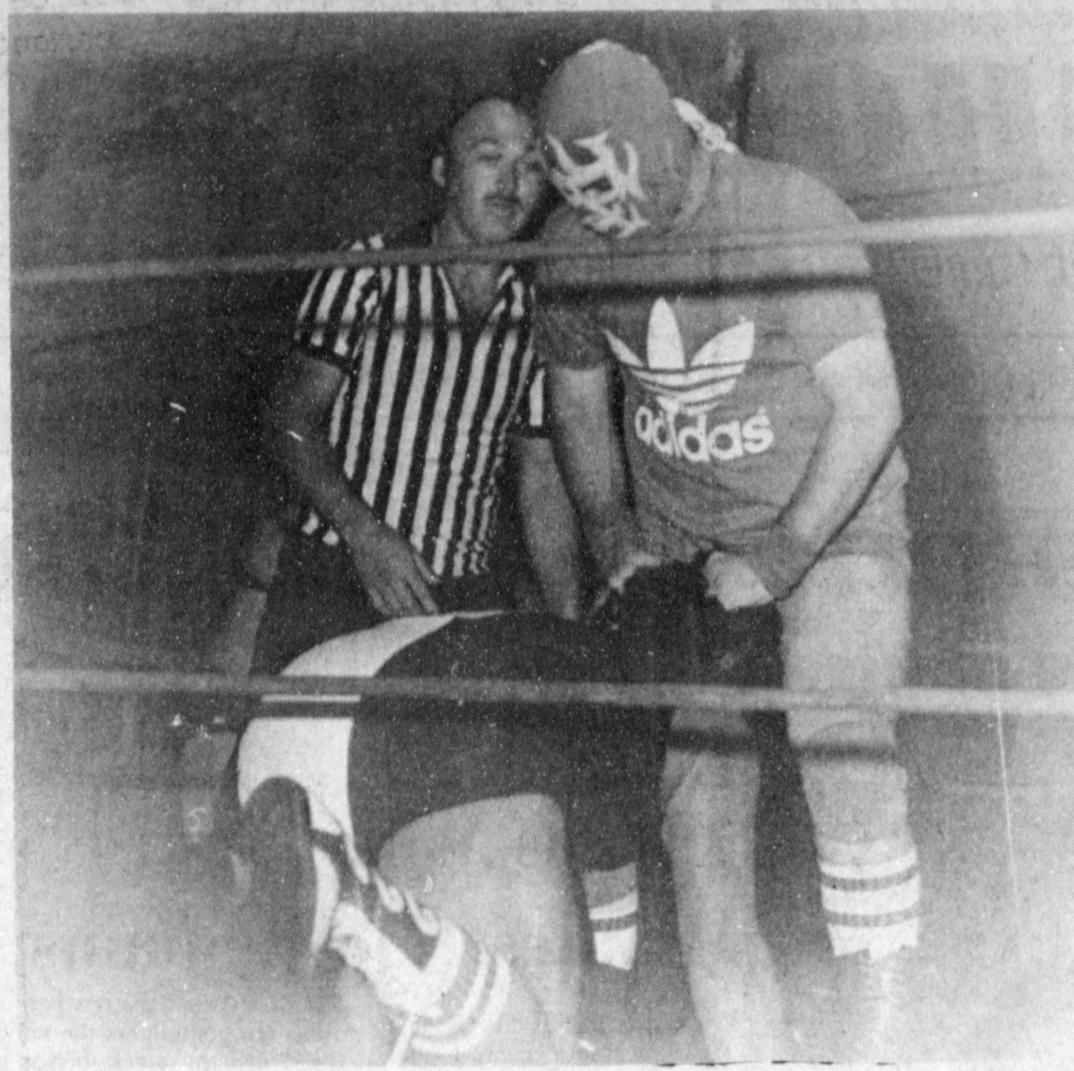
Firefighters Report



By Wayne Peterson

We have closed another month of 1983 and fire calls and losses are still at a healthy low number. Seven calls were received in October using a total of 81 man hours and 113 miles total on seven units. Types of fires included: grass and trash, auto, two frame homes, one mobile home, a false alarm and one investigation.

The Muleshoe Emergency Medical Technician Association is instructing an 8 hour American Red Cross Multimedia Standard First Aid course at this time, at the Department. This group of trained men and women have recently organized on behalf of the well-being of fellowmen. This course covers simple first aid to Basic Life support measures. The course is co-or-



WHO IS MR. MULESHOE?...That was the question Monday night when Mr. Muleshoe and the Mexican Super Star met in the square circle. The referee caught Mr. Muleshoe pulling the hair of the Super Star bringing him to his knees. Monday night's wrestling was sponsored by the FFA Boosters.

minated by Larry Rasco, assisted by Royce Harris, Stacey Barnhill, Bryan Taylor, Mark Benedict and Wayne Wauson. These people may be talked into giving a repeat performance to other groups or clubs. Call one of these members if interested or you feel sick or faint.

Classified Ads
Call 272-4536

Local Woman's Brother Dies At Lubbock

Funeral services for Robert Biles, 50, of Lubbock were held at 2 p.m. Tuesday, Nov. 15 at Franklin-Bartley Chapel with the Rev. Hank Scott of Bacon Heights Baptist Church officiating.

Interment was in Peaceful Gardens Cemetery under the direction of Franklin-Bartley Funeral Home. Biles died at this home Sunday night.

A native of Dozier, Biles was born Nov. 16, 1932, and served in the U.S. Navy during the Korean conflict. He moved to Lubbock in 1950 and owned Robert's Custom Building of Lubbock. He was a member of Bacon Heights Baptist Church.

Survivors include one daughter, Deitra Kirkpatrick of Lubbock; two sons, Doug and Dempsey, both of Lubbock; his father, Roy Biles of Oklahoma; three sisters, Lorene McEndree of Two Buttes, Colo., Ruth Wimberly of Muleshoe and Goldie Brown of Las Cruces, N.M.; two brothers, Eugene of Lubbock and Ed of Sunset; and one granddaughter.

SHUGART COUPON
Wed. Nov. 23
Pay Pay-N-Save
515 W. American Blvd

GIVE OUR PICTURES FOR CHRISTMAS

19¢ WALLET SIZE COLOR PORTRAITS 99¢

ASK About Our FREE 8 x 10 OFFER Extra charge for GROUPS

Featuring
The New Satellite Dishes
6' - 8' - 10' & 12' Dishes
Receive Over 60 TV Channels
In Crystal Clear Reception
Gordon Will Be Happy To Demonstrate The Dish For You

Financing Available

Wilson
Appliances

117 MAIN 272-5531

Muleshoe Journal (ISSN 367-100)
Established February 23, 1914. Published by Muleshoe Publishing Co., Inc. Every Thursday at 304 W. Second, Box 442, Muleshoe, Texas. "M" Second class postage paid at Muleshoe, Texas 79241.

TA MEMBER 1983
TEXAS PRESS ASSOCIATION

L.S. Hall President
James Woods Vice President
Shirley Farmer News Editor
Evelyn Harris Secretary

SUBSCRIPTIONS:
Muleshoe Journal and Bailey County Journal
Bailey and surrounding counties... \$10.50
Muleshoe Journal and Bailey County Journal
elsewhere in Texas... \$11.00
Muleshoe Journal and Bailey County Journal
Outside of Texas... \$12.50
Yearly by Carrier... \$13.50
Monthly by Carrier... \$1.15
Advertising rate and application

By Spencer Tanksley
County Extension Agent

The best crime fighting technique doesn't rely on elaborate equipment or police efforts. Instead, it depends on neighbors. Keep in mind some ways you and your neighbors can protect each other. Keep an eye on each other's property. Ask responsible neighbors to watch your livestock buildings and farm machinery. Do the same for them.

Going away? Don't advertise it. Arrange with a neighbor to pick up mail and newspapers, cut grass, and give your place a "lived in" look.

Be observant. If you see a suspicious person or vehicle on your neighbors farm report it at once. Write down a description of the person or the license number. You may be witnessing a theft.

Consider organizing a neighborhood watch program in your community. In many farming areas, volunteer teams send out two person patrols at night. They monitor suspicious activities and use CB radios to keep in touch with a base station and the police or

Sheriff. Ask your local law enforcement agency for more information.
Be cautious. Buy only from reputable dealers. Don't support thieves by

buying stolen property.
Report all crimes promptly. The faster you report, the more likely that the thief will be caught.
For additional information and assistance in preventing rural crime, contact your local law enforcement agency, or your County Extension Agent.
Nothing is sillier than silly laughter.
-Catullus.

Following the retirement of Alex H. Williams, C.P.A.

WILLIAMS, ADAIR, SUDDUTH & CO.
CERTIFIED PUBLIC ACCOUNTANTS

announces the continuation of the business under the name

SUDDUTH FIELD & CO.
CERTIFIED PUBLIC ACCOUNTANTS

at the present location and phone number
208 W. 2nd - Muleshoe, Texas - 272-4291

David L. Sudduth, C.P.A. Randall L. Field, C.P.A.

ALLSUP'S
CONVENIENCE STORES

- WHILE SUPPLIES LAST
- SELF SERV GAS
- OPEN 24 HOURS FOR YOUR CONVENIENCE
- PRICES EFFECTIVE NOV. 17-19, 1983

SELF BASTING-WITH TIMER SHURFRESH TRADITIONAL QUALITY FOR THANKSGIVING!

TURKEYS
10-14 LB. AVG. **69¢** LB.

BORDEN'S PREMIUM QUALITY

BORDEN'S EGG NOG qt. **\$1.29**

ASST. COLORS & WHITE FACIAL TISSUE **KLEENEX** 175 CT. BOX **59¢**

SWIFT-VIENNA **SAUSAGE** 5 OZ. CANS **2.88¢**

BORDEN'S NUTTY BUDDY'S OR ICE CREAM SANDWICHES 8 PACK **\$1.19**

BORDEN'S WHIPPING CREAM 1/2 PINT CTR. **49¢**

RED TAG SPECIALS
20% OFF

SHURFINE OR DEL MONTE **PINEAPPLE** 2/\$1.00

SHURFINE **SUGAR** 5 LB. BAG **\$1.39**

SHURFINE **FLOUR** 5 LB. BAG **59¢**

SHURFINE **COFFEE** 1 LB. CAN **\$1.79**

AS FEATURED ON TV COOKED FOOD SPECIAL
BURRITOS FOR **2.99¢**

DR. PEPPER 10 OZ. **\$1.29**

SHURFINE **TUNA** 6 1/2 OZ. **59¢**

HUGGIES **DIAPERS** **\$2.79**

BANANAS EA. **5¢**

Jacques Discount Liquors
3800 Mabry Drive
Clovis
762-6485

WINE OF THE WEEK
Bell 'Aglo
\$3.79
750 Free Wine Tasting

| | | |
|---|---|--|
| Pabst Blue Ribbon Hot or Cold \$8.69 | Evan Williams 750 \$6.09 | Fleishmans Vodka 175 \$8.09 |
| Cutty Sark Liter \$14.49 | Calvert Extra 175 \$13.69 | Seagrams 7 Liter \$8.19 |
| Importers Gin Liter \$4.99 | Carlo Rossi 3 Liter \$4.69 | Colony Wine 5 Liter Port-A-Tab \$9.99 |

LARGEST LINE OF IMPORTED BEER AND WINES
Coors, Bud, Schlitz, Michelob, Miller Lite, Lowenbrau

COLD KECC TO GO

Congratulations!!

For The Professional Touch



218 W. 2nd 272-3487

Congratulations

Tops & Pants Jackets & Sleeveless Muscle Shirts

Ann's T-Shirts Unlimited

124 East Ave. B. 272-5633

CONGRATS!

Cross Country Varsity Team

Bingham-Nieman Realty

116 Ave. C 272-5285

Congratulations,

Cross Country Team

Bratcher Motor Supply

107 E. Ave. B 272-4288

Congratulations
Let's Back Our School Kids 365 Days A Year!



515 West American 272-4406

Congratulations
To Our Varsity Cross Country Team For Their State Win.

congratulations

We are proud of our Cross Country & proud of our Schools

Five Area Telephone Cooperative Association, Inc.

302 Uvalde 272-5533

CONGRATULATIONS

This Week's Special
6 PK. 16 OZ. Pepsi \$1⁷⁹

Ince Fina AT THE CROSS-ROADS

Congrats

A Job Well Done

Albertson's

Shop For Men

228 Main 272-3000

CONGRATULATIONS,

Your Home-Owned & Home-Operated Clothing Store

Fair Store

120 MAIN 272-3500



1983 State Winners-(L to R) Aldo Almanza, Tony Rojas, Alan Beasley, Danny Sanchez, Ronnie Logsdon, Coach Jerry Johnson, Tony Luna, Norman Perez and David Medlin.

Congratulations

Farmer's Cooperative Elevators

Muleshoe - Enochs Clay's Corner

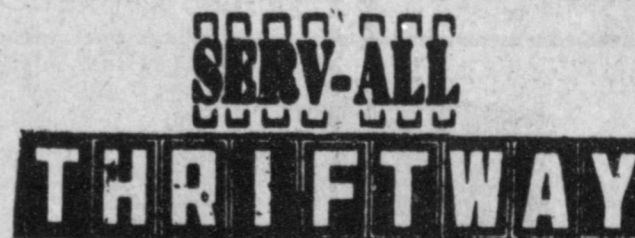
113 N. 1st 272-4335



"Mirror Mirror" and eyeshadow too. Merle Norman has a beautiful offer for YOU! 1219 West American Blvd. 272-3459

Congratulations

Argus Quartz Watch \$999 Ladie's & Men Gold & Silver



501 W. American 272-4739

Congrats

We're proud of all our kids and their activities.

Bailey County Electric Cooperative Association

305 E. Ave. B. 272-4504

We're proud of you and we knew you could!!!!!!!!!!!!

Western '66'

Earth Highway 272-4556

CONGRATULATIONS

Happy To Back Our Schools McCormick Seed

400 East Ash Avenue 272-3156

Congratulations

For The Best In Mexican Food

Leal's

1542 W. American 272-3294

CONGRATULATIONS!



Phillips Driscopipe For Vertical Earth Coupled Systems Available

Wilson Drilling

Hwy 84 West 272-5521

CONGRATULATIONS

Let Us Take Care Of Your Banking Needs

1st National Bank

Your Home-Owned Bank

202 South 1st Member FDIC 272-4515

Journal Files

50 Years Ago

1933
The Muleshoe Motor Co. unloaded a carload of Ford V-8 cars here last week, several of them being already sold.

The Thanksgiving turkey market is rather erratic this year, according to local buyers. It opened at 9 cents per pound for No. 1 birds, went up to 11 cents Monday and then dropped to 8 cents per pound Tuesday.

30 Years Ago

1953
Mr. and Mrs. Byron Gwynn and Mr. and Mrs. Joe Walker spent Sunday in

Sigma Kappa

Initiates

Belinda Wheeler

The Gamma Iota chapter of SIGMA KAPPA Sorority initiated Belinda Wheeler on October 22. Belinda is a sophomore at Texas Tech University in Lubbock (majoring in pre-law). She is the daughter of Mr. and Mrs. Joe Wheeler of Goodland.

SIGMA KAPPA Sorority is a national social sorority which was founded on November 9, 1874 at Colby College in Waterville, Maine. During SIGMA KAPPA'S 28th year on campus, the chapter was being reorganized under the supervision of a National SIGMA KAPPA rush team.

SIGMA KAPPA has actively participated in Phi Gamma Delta Olympics, Founder's Day banquet, plus being the winners of a spirit stick at the Texas Tech-Texas A&M Pep Rally during the fall term. Sigma Chi Derby Days, Greek Week, Spring Formal, and Sing-Song are the activities which are being planned for the spring semester.

Springlake.

Mr. and Mrs. Joe Simancher and daughters were in Rhineland over the weekend.

20 Years Ago

1963
The Muleshoe Mules tromped the Dimmitt Bobcats Friday night to finish 3-AA conference play and moved into bi-district where they will meet Denver City here next Friday night.

10 Years Ago

1973
The Muleshoe State Bank is in the process of moving this weekend and will be open for business in their new facilities at 101 West American Blvd. Monday morning.



Daniel Ray Gaddis

Mr. and Mrs. Justin Gaddis of Clovis, N.M. are the proud parents of a son born at 5:31 a.m. Nov. 10 in West Plains Medical Center in Muleshoe.

The young man weighed seven pounds ten ounces and has been named Daniel Ray. He has a brother, Joshua, two and half years of age.

Grandparents are Pete and Anita Wilt and Fred and Laura Gaddis, all of Clovis, N.M.

Great grandmother is Hazel Gaddis of Tucumcari, N.M.

Labor is never a burden to the man who loves his work; but has anyone ever seen the guy?



CHRISTI SCHUSTER

Creative Woman

By Sheryl Borden

Three topics will be presented on "The Creative Woman" show on November 22 and 26 and these include terrariums, cooking for kids, and plan-ahead breakfasts. Terrariums are the ideal houseplants -- for any time of the year, for any season, and they're unaffected by the changes in weather. Mary Johnson, a creative homemaker from Portales will demonstrate how to make a terrarium.

The term "latch-key" generation refers to kids who come home from school with their parents away at work. Christy Kirk will be a guest on the show and she has some good tips for safety in the kitchen and some recipes for kids to prepare themselves. Christy is home economist with the Reynolds Metals Co. in Los Angeles.

The last segment on plan-ahead breakfasts will be presented by Sheryl Borden. It will include some organizational suggestions, as well as a recipe for a Banana-Orange Energy Drink that can be taken to school or work in case you're running late in the mornings and don't have time for a sit-down breakfast.

On November 24 and 27, the entire show will be on make-up analysis and application and it will be presented by Barbara Acker, an esthetician with ImaJanation Beauty Salon in Lubbock. Using a model, Mrs. Acker will discuss contouring, layering and basic skin care as well as make-up application. "The Creative Woman" is produced and hosted by Sheryl Borden.

Budget For Holiday Spending

Many families do not recall ever making a conscious decision on how much money to spend for Christmas gifts and other holiday items, says home economist Nancy Granovsky.

Christmas spending can have a snowballing effect, where a spending level or end point is never identified, says Granovsky, who is with the Texas A&M University Agricultural Extension Service.

Sudan Girl

Named District

Miss FTA

Christi Schuster, daughter of Mr. and Mrs. George Schuster of Sudan, a senior at Sudan High School, was named Miss Future Teacher of America at the district meeting held in Plainview Thursday.

She will be representing this area in State competition in Austin in the near future. Her speech was on "Teaching" and why she wants to become a teacher. She was named Outstanding Candidate.

Christie was also first runner up recently in a speech contest at the State Farm Bureau in Regional competition in Lubbock. Her speech was on "Free Enterprise".

She is a member of Who's Who in American High Schools and National Honor Society and was named to the National Society of Distinguished High School Students. She is serving as district treasurer in FTA and is also a Drum Major for the Sudan Hornet Marching Band.

Unless principle restrains selfishness, there is no hope for a person, nation or a world.

Any modern youngster can readily explain why he needs a better automobile than his parents.

The average individual thinks all of his problems could easily be solved if his income increased enough.

Advertising offers for easy credit or no finance charges until after the holidays and the emotions associated with Christmas gifts tempt us to overspend. "Unfortunately, the thrill of purchase often escapes when the bills come due, and some families wind up in financial trouble after the first of the year," she explains.

According to Granovsky, a specialist in family resource management, consumers can take these steps to control their holiday spending:

- * Make a budget and stick to it. Set spending limits before you get involved in shopping.
- * Have a game plan for

shopping. Prepare a gift list and try to avoid impulse purchases or budget a specific amount just for impulse buying.

* Use your imagination to save money. Some alternatives include making a tax deductible charitable contribution in another's name; an IOU for services like babysitting or housecleaning; making gifts such as baked goods or plant cuttings yourself; giving a seldom used possession or "family heirloom" to a family member who has admired it; or shopping at thrift and garage sales.

* Shop early to take advantage of sales, better choices and faster service.

* Plan for next year. Advance planning allows you to shop at sales throughout the year. You can also set up a special savings account to save for the holidays. But

avoid special "holiday accounts," cautions Granovsky unless they pay the same rate of interest as other savings plans.

How much should you plan to save for holiday spending? Some financial counselors suggest allowing 1 1/2 percent of your gross income plus ten percent of that amount for last minute purchases, says the home economist.

We're of the opinion there are too many leaders for the followers available.

The first sign of intelligence is to appreciate those who don't agree with you.

Chinese proverb: He who deliberates fully before taking a step will spend his entire life on one leg.

Sale Now In Progress! Check For Storewide Savings



A. Pier Mirror Set
Includes antique-look, glass-top table and 63" vertical mirror with bronze finish.

\$139

B. Striking Mirror
37 x 50" rectangular mirror with intricately carved frame in a shiny golden finish to enhance the design.

Very Special \$79

C. Decorator Mirror
29 x 39" Rectangular decorator mirror with beautiful carved-look frame.

\$38



"the store that gives you a good deal for a good deal less."

763-7121 CLOVIS 601 MAIN

OPEN DAILY 9 to 6

ANTHONY'S

LIMITED TIME!

BARGAIN ANNEX

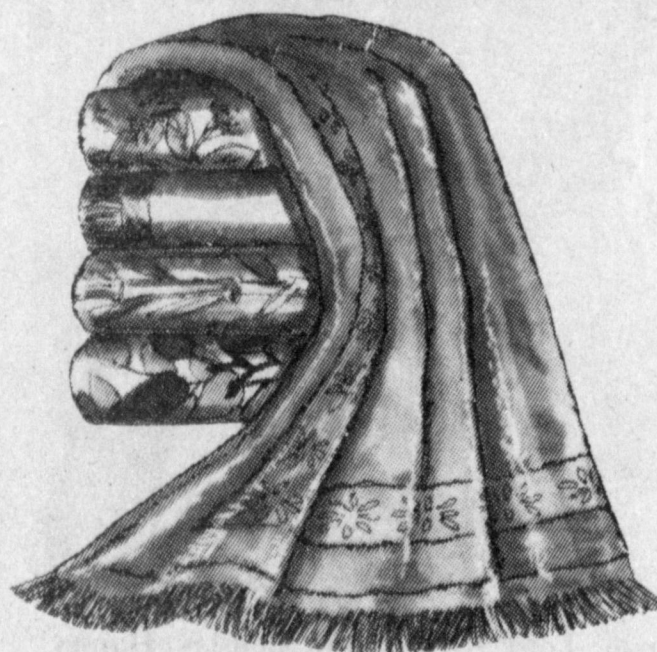
320 Main Street (Located in the Old Western Auto Building)



Just Arrived

Your Choice
Twin, Full,
Queen Or King
QUILTED BEDSPREADS

Special Purchase 19.88



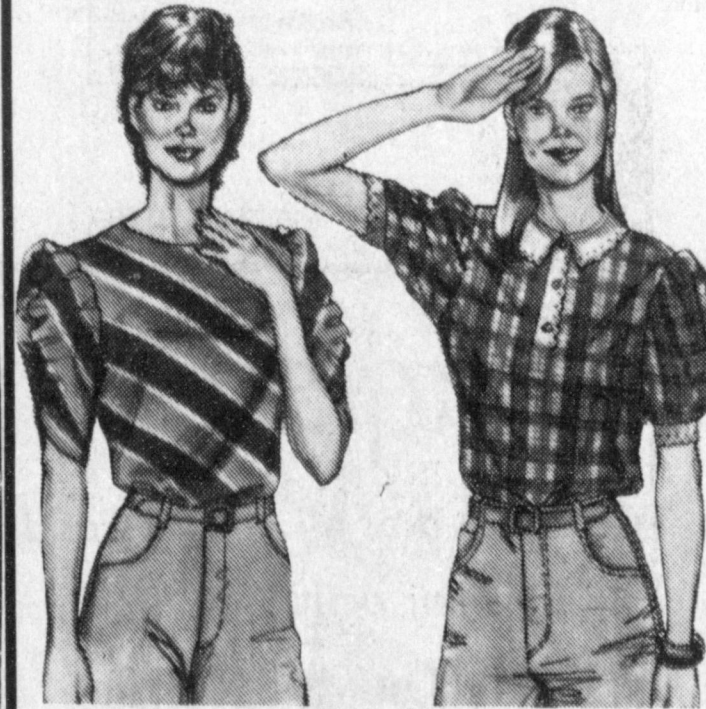
Beautiful Colors
STRATFORD BATH TOWELS

10 FOR 19.88



Men's Corduroy & Denim
FASHION JEANS

9.88



One Rack
LADIES & JUNIOR TOPS

8.88

TRIO BATH TOWELS..... 3 for 12.88
CHALLENGER BLANKETS 3 for 12.97
ASSORTED LINENS..... 1/2 PRICE
WICKER ACCESSORIES..... 1/2 PRICE
SHEET SETS..... Priced to Clear
LUGGAGE..... 1/2 PRICE
MUNSINGWEAR SOCKS..... 97¢

MEN'S FLANNEL SHIRTS..... 4.47
MENS S.S. SHIRTS..... 3.88
SKI JACKETS..... 19.88
INSULATED COVERALLS..... 29.88
INSULATED VESTS..... 15.88
MEN'S SHIRTS..... 8.88
FASTBAK SHOES..... 9.88

LADIES PULL-ON PANTS..... 7.88
BRUSHED NYLON GOWNS..... 5.88
NINO VALENTINO JEANS..... 14.88
ANGELA BRAS..... 1.97
NYLON PANTIES..... 6 For \$6
PLAYTEX & BALI BRA'S..... 1/2 PRICE
AND MUCH, MUCH MORE.....

Millions In Cash Offered In National Teen-ager Program

A record \$3 million in cash and tuition scholarships will be available through the Miss National Teen-Ager program for 1984, according to Sybil S. Shaffer, national director.

Program arrangements are being made at this time on both regional and state levels. Teen-age girls, ages 13 through 18, who are interested may contact the Miss National Teen-Ager program, which has offices at 215 Piedmont Avenue N.E., in Atlanta, Georgia, 30308.

Each regional and state winner will receive a cash scholarship and a four-year tuition scholarship to Oklahoma City University of a value of \$15,000. Oklahoma City University offers Bachelor of Arts, Science and Masters Degrees in a number of areas including music.

The judging is based solely on scholastic achievement-leadership, poise-personality and appearance.

Mrs. Shaffer emphasized that one of the primary goals of the program is to provide scholarships to participants who may not be a regional or state winner. In order to further this, Eckerd College of St. Petersburg, Florida awards in each regional and state program a \$10,000 tuition scholarship to the senior citizenship winner and a \$10,000 scholarship to the underclass citizenship winner.

The citizenship award is judged solely on scholastic achievement and leadership. Each regional and state citizenship winner is then considered for one of ten regional tuition scholarships of \$16,000 each and one of two national tuition scholarships of \$24,000 each. Both national scholarship winners receive a \$10,000 cash scholarship, each of the four runners-up will receive \$5,000 and ten \$1,000 cash scholarships will be awarded which cash scholarships may be used at the college of the recipients choice or in conjunction with a tuition scholarship.

Johnson & Wales College of Providence, Rhode Island awards in each regional and state program a two-year tuition scholarship to obtain an Associate in Science Degree to the participant with potential in the field of Business, Computer Systems, Food Service or Hospitality-related programs. The value of this award is \$7,000 and any participant in a regional or state program has the right to apply to Johnson & Wales for a full four-year tuition scholarship to obtain an Associate in Science Degree and a Bachelor of Science Degree in which the national recipient will receive a \$1,000 cash scholarship for expenses from the National Teen-Ager Foundation, which award has a total value of \$15,000.

Millikin University of Decatur, Illinois awards each regional and state winner a \$4,000 tuition scholarship. Each participant has her option of presenting the talent of her selection or an oral essay. Barbizon International awards each state winner a full Modeling Course scholarship and the participant in the national pageant with potential in the field of Acting a full Acting Course scholarship and \$1,000 for expenses from the National Teen-Ager Foundation. Each state winner will receive an all expense paid trip to compete in the national pageant where each state, the District of Columbia, Puerto Rico and the Virgin Islands will be represented.

The national winner will receive a \$10,000 cash scholarship, each of the four runners-up will receive \$5,000 and ten \$1,000 cash scholarships will be awarded which cash scholarships may be used at the college of the recipients choice or in conjunction with a tuition scholarship.

The national winner will receive a personal appearance contract and a trip to Hawaii, Alaska, Hollywood, New York and the Caribbean. Parents or teenagers interested in this program may write for free information to Miss National Teen-Ager, 215 Piedmont Avenue, N.E., Atlanta, Georgia 30308.

Each state winner will receive an all expense paid trip to compete in the national pageant where each state, the District of Columbia, Puerto Rico and the Virgin Islands will be represented.

The national winner will receive a \$10,000 cash scholarship, each of the four runners-up will receive \$5,000 and ten \$1,000 cash scholarships will be awarded which cash scholarships may be used at the college of the recipients choice or in conjunction with a tuition scholarship.

The national winner will receive a personal appearance contract and a trip to Hawaii, Alaska, Hollywood, New York and the Caribbean. Parents or teenagers interested in this program may write for free information to Miss National Teen-Ager, 215 Piedmont Avenue, N.E., Atlanta, Georgia 30308.

Nov. 10-Goldie Parker, James Robertson and Nora Burch
Nov. 11-Lena Taylor, Pearl Cox, Alpha Laney, Larry Rudd, Lewis Sanders and Maggie Daniel
Nov. 12-Delfina Martinez and E.C. Wofford
Nov. 13-Chad Porter, E.E. Engleking and David Johnson
Nov. 14-Trinidad Sanchez and Justin Winders
DISMISSED
Nov. 10-Alberto Garcia, Ozell Cherry, Christie Constance and Eloy Pena
Nov. 12-Nora Burch, Chris Reyes, Nora Gaddis and baby boy, Pearl Cox and Feliz Rodriguez
Nov. 13-Eland C. Wofford



CHEESE SNACK...Basic foods, cheese and vegetables, point the way to snacks.

Mohair Is Quality Natural Fiber

A growing consumer interest in quality natural fibers and natural fiber blends is putting more Texas mohair in the stores.

Mohair -- a fiber of exceptional strength and luster -- comes from angora goats raised primarily in west-central Texas, says consumer information specialist Beverly Rhoades.

As a fabric, mohair has many qualities that appeal to today's consumers, says Rhoades, who is with the Texas A&M University Agricultural Extension Service.

Cannon AFB Plans Karate Open House

Karate enthusiasts need to put Nov. 19, 1983 on their calendars. On that date, Cannon AFB will hold a Karate Open House.

The tournament, open to all-comers, is scheduled to begin at 10:30 a.m. with eliminations in 35 divisions.

Registration begins at 8 a.m. at the base gymnasium, and closes at 10 a.m. A \$5 late registration charge will be levied for those missing the closeout time.

Entry fees are \$12 for one event, \$20 for two events, \$25 for three or more events and \$25 for five person teams.

Trophies will be awarded to the top three finishers in each division with medals to team members in the team event.

All black belt holders are asked to attend an official's meeting at 9 a.m. to discuss the rules and receive ring assignments. The schedule of events for the day is: 8 a.m. to 10 a.m., forms competition; and fight elimination following the forms competition.

Soft, foam type equipment and mouthpieces are mandatory in all divisions. Men must wear groin protectors while regulation Karate or Kung-Fu uniforms must be worn, with elbow-length sleeves by all competitors.

Further information can be obtained by calling tournament director Frank Royster at (505) 784-3311, Ext. 2526, or base athletic director TSgt. Roxane Wise at (505) 784-3311, Ext. 2440 or Ext. 2466.

Rhoades, who is with the Texas A&M University Agricultural Extension Service.

Mohair is exceptionally soft and gives a luxury feel to sweaters and knits.

Because the fiber completely absorbs and holds dyes, it takes deep clear colors. It also blends well with other natural fibers like wool and even synthetics, says Rhoades.

"Employed women and those who travel frequently will find mohair fabrics especially easy to care for," says Rhoades. The fibers are very strong, so they don't crush or pill. "A mohair garment will come out of a suitcase virtually the same way it went in," she adds.

"Although mohair can cost more than other types of fabrics, the consumer gets excellent quality for the price," says Rhoades, "because it lasts and keeps its quality for years." That makes mohair fabric especially suitable for "investment dressing".

Due to its natural fire resistance, mohair fabric is now being used for upholstery and home furnishings, including drapes, notes the specialist.

Shoppers can look for fiber content listing or the angora goat symbol of the Mohair Council on labels to find mohair fabrics. For consumers who can't find it in local stores, Rhoades suggests turning to the mail-order and specialty catalogs.

With 97 percent of the mohair produced in the United States coming from Texas, the fiber is an important industry for the state, Rhoades says.

Texas producers raise about 34 million dollars worth of mohair each year and market it to 30 wool and mohair warehouses in the state.

Cheese Varieties Inspire Snacks

What does it take to make a good snack? One way to go is to pick from basic foods such as cheese, vegetables or wheat crackers.

Cheese is a good choice to have in the refrigerator because it's nutritious and provides a quick snack. Real American cheese melts easily for a hot dip for vegetables, chips and crackers. It takes only moments to broil Swiss cheese as a topping for vegetables on a large cracker. Mix Colby and Cream cheeses with water chestnuts and give them a roll in sesame seeds for a cold snack.

Mild, nutlike Edam and

RRC Cuts

Greyhound

Rate Increase

The Railroad Commission has reduced a 15 percent rate increase sought by Greyhound Lines Inc., approving a 6.4 percent increase in fares and rates. The new charges will apply to most bus companies providing the same services in the state.

Greyhound originally asked the Commission to approve a 15 percent increase in passenger fares and express rates and a 25.7 percent increase in charter coach charges. Today's Commission action allows the 6.4 percent increase for all these categories.

The new rates and charges will give Greyhound an operating ratio of 90 percent, according to the RRC's Transportation Division staff. The operating ratio is the ratio of total operating expenses (all expenses except taxes and interest) to total operating revenue. Testimony from other bus companies was also studied by the Commission.

The staff also noted that the Commission could later investigate the rates if the labor costs of the affected bus companies begin to decrease.

Gouda are interesting when scooped out of their waxed coatings with a small melon ball cutter, then put back in the shell. Or, mix either of the cheeses with cream, mustard and ground ham for a spread served from the shell.

Strong cheeses like blue-veined Gorgonzola and Blue may be blended with Cream or Neufchatel for a spread, dip, or made into small balls, rolled in parsley.

Let your guests take the cheese challenge with a snack tray made from genuine cheeses, all made in America: a sharp Cheddar cheese wedge; smoky tasting, half-moon slices of Provolone; mild Muenster triangles; creamy Brie to spread on vegetables with a butter knife or firm and somewhat salty Fontina in small wedges. They're a perfect foil for an assortment of fall fruits or vegetables.

ZIPPY SPINACH DIP

Yield: approx. 3 cups
1 package (10 oz.) frozen chopped spinach
1/4 cup (1/2 stick) butter
1/3 cup chopped onion
3 tablespoons flour
2 cups light cream OR half and half
1 1/2 cups (6 oz.) shredded American cheese
2/3 cup salsa ranchera

(mild or hot)
2 teaspoons Worcestershire sauce
Salt and pepper to taste
Nacho chips

Cook spinach according to package directions; drain well; set aside. Melt butter in medium-sized saucepan. Saute onion until tender, about 3 minutes. Stir in flour until well blended. Remove from heat. Stir in cheese until completely melted. (If necessary return to low heat to finish melting cheese. Do not boil.) Stir in salsa, Worcestershire sauce, salt and pepper. Stir in spinach. Serve warm with nacho chips.

BIBLE VERSE

"Return, ye backsliding children, and I will heal your backsliding."

1. Who uttered the above reproach?
2. To whom was it directed?
3. By what nickname was this prophet known?

Answers to Bible Verse
1. God, through Jeremiah the prophet.
2. Israel.
3. The "Weeping Prophet."

Doggone Comfortable!
WITH OUR LONGEST WEARING SOLE
SuperSole Pecos Pull-on
SIZES 6-13
B-EEE
Not all sizes in all widths.

Red Wings
HURST DEPT. STORE

super saturday
at Anthony's

FAST BAK

Save up to 25% on Kids' Velcro FastBak Shoes!

Reg. 10.99 and 11.99. Boys and girls can get moving in Anthony's FastBak velcro athletic shoes! These best-selling nylon and leather shoes have unique Velcro closures that make them easy to slip on or off...important for little hands. Choose from navy or light grey for boys' sizes 2 1/2-6, youths' sizes 11 1/2-2, or children's sizes 5-11.

sale **883**

This Saturday Only!
ANTHONY'S
321 Main Street • Open 8 to 6

West Plains Medical Center

ADMITTED

Nov. 10-Goldie Parker, James Robertson and Nora Burch
Nov. 11-Lena Taylor, Pearl Cox, Alpha Laney, Larry Rudd, Lewis Sanders and Maggie Daniel
Nov. 12-Delfina Martinez and E.C. Wofford
Nov. 13-Chad Porter, E.E. Engleking and David Johnson
Nov. 14-Trinidad Sanchez and Justin Winders
DISMISSED
Nov. 10-Alberto Garcia, Ozell Cherry, Christie Constance and Eloy Pena
Nov. 12-Nora Burch, Chris Reyes, Nora Gaddis and baby boy, Pearl Cox and Feliz Rodriguez
Nov. 13-Eland C. Wofford

"The Fingertip World of Classifieds"
Call 272-4536

19 Wed. Nov. 23
RING SIZE WALLET CREATIVE COLOR PORTRAITS FOR ONLY **99¢**

Kodak paper. For a Good Look at the Times of Your Life. TM

GIVE OUR PICTURES FOR CHRISTMAS

Extra Charge for GROUPS NO LIMIT

Shugart's inc. ASK About Our FREE 8 x 10 OFFER

COLOR PHOTOS

Pay-N-Save
515 W. American Blvd.

Christmas OPEN HOUSE

Christmas is coming
The season is here
We are having a preview
To fill you with cheer.
Favors and doorprizes
Just waiting for you
With lovely arrangements
To enjoy and to view.

Sunday, November the 20th
Two until five o'clock
DECORATORS
Nursery & Floral
618 South First
272-4340 or 272-3660

Best Wishes To All This Christmas Season

School Board

Cont. From Page 1

bank balances were reviewed. Expenditures in each school function were examined and current bills were approved and paid.

Board members also heard an audit report on the school for the 1982-83 year, presented by Dave Sudduth of Sudduth, Field and Company. The audit was approved by the board.

Bids were opened at the Monday meeting for items advertised "for sale" by the Auto Mechanics Department. The high bidder was awarded the "sale" on each item.

Superintendent Fuller also gave a tax collection report to the members, indicating that the 1983 tax collection percentage is ahead of the 1982 tax collection rate. At least 41 percent of the 1983-84 budget has already been collected.

The board met in executive session for consideration of personnel, and following the executive meeting they re-convened in regular session. As a result of the session, Brenda Black was employed as Homebound teacher for the 1983-84 school year.

Visitors and school officials were recognized at the meeting. They were:

Charles Brewer, Pat Brewer, Virginia Bowers, Lanelle Skaggs, Milton Oylert, Betty Jennings, Tom Jinks, Elizabeth Watson and H. John Fuller. All trustees were also present.

Fuller also gave a report of school activities emphasizing American Education Week Activities and the local PTA meeting on Monday, November 21 in the DeShazo Cafeteria.

Bloom Is Off The Rose For Traditional Games

It rarely happens, but for the first time in many many years much of the bloom is off the rose for some of the traditional games that regularly signal the conclusion of the college football season.

Pittsburgh - Penn State: the Panthers are two-time losers, the Nittanians had been beaten four times prior to last week's game with Notre Dame. Michigan - Ohio State: in place of battling for the Big Ten championship and the Rose Bowl trip as they do year after year, the two powers - with low - are scrambling for second place in the conference. Southern Cal -

"Instand Offense Milton" would be one of the main men in the attack on the Mules Friday. Williams is a running back who has run about 2,000 yards this year and scored over 30 TD's for the Antelopes.

"Our quarterback, Kirkpatrick, has a good arm," Williams said, but indicated that the Post crew prefers to keep the game on the ground. "We are really not

Mules Play Post

Cont. From Page 1

that big, but we've got a lot of quickness and some speed," Williams pointed out and stated that the primary threat to the Mules from the Antelopes will come from Williams carrying the ball. He has a couple other good receivers in Price and Dolby.

The Post Athletic director told the Journal that he had a lot of respect for the Mules and their coaching staff. "The Mules have good quickness in both offense and defense and they will be tough to move the ball against. The Antelopes would like to keep the ball on the ground, but they may not be able to - and if they go to the air, they may have the same trouble.

All in all, from the sound of things, the Post-Muleshoe game will be another out and out defensive game. The Mules will have to shut down the quarterback and Williams in order to contain the 'Lopes, but Coach Thompson will be likely to have a few other tricks in his bag for this game. They have an average of 350 offensive yards rushing, while giving up 190 average defensively.

The winner of the Bi-District tilt between Post and Muleshoe will take on the winner of the Electra-Crane game which will be played on Saturday, November 19. That winner will be declared area champion and move another step up that ladder.

So, all you hometown football fans, Levelland is lots closer than Dumas was, and these guys need our

U.C.L.A.: before last Saturday's games, the Trojans had an unheard-of record of four losses, and U.C.L.A., even though it may win all the marbles in the Pac-10, had been beaten three times. Mississippi - Mississippi State: the old days of Ole' Miss power are the more recent days of State power are down the drain this year as the two teams, prior to November 12th, had a combined total of twelve losses! Prizes for the winners of some of the above may be strictly bragging rights.

Pittsburgh is at home for its annual battle with Penn State, and when there's so little daylight between the two, the home-field could make the difference. What a difference a year makes. Last year the outcome of the contest eventually led to a national championship for Penn State. The winner Saturday, Pittsburgh.

With the exception of Iowa's trip to the Roses in 1982, Ohio State and Michigan have represented the Big Ten in Pasadena every year since 1969. Not this year. However, the Wolverines are favored to make up for last year's 24-14 loss to the Buckeyes and finish in second place in the league.

U.C.L.A. squeaked by Southern California 20-19 last November to grab the Pac-10 title and the Rose Bowl spot. This year, with everything at stake for the Bruins, U.C.L.A. is a slight favorite again.

support. Get your tickets early. They may be purchased at the Muleshoe High School, Business Administration office and Jr. High School at a cost of \$4 for adults and \$3 for students. They may also be purchased at the gates.

Drag out the blankets, thermos and warm clothes (black and white of course) and go watch the Mules play some football. Game time is at 7:30 p.m. in the Levelland High School stadium, with the Mules being the home team. Muleshoe fans will sit on the West side of the field.

GO FOR IT MULES - YOU CAN DO IT!!!!!!

Team...

Cont. From Page 1

that he has no one to blame but himself when he doesn't excel. He knows the "musts and must nots" of the game.

Cross-country running beginning to come into its own, with the many events being scheduled throughout the U.S. and other countries. Even here in Muleshoe, races pitting individuals against one another at their own speed have become very popular.

It takes a special kind of athlete to train and perform well in this event - perhaps, this is what makes the individuals and the teams that win so special themselves.

Congratulations Mules, you've set another record and made our community proud of you and your efforts and intestinal fortitude.

Rebate Checks

Cont. From Page 1

net payment this period of \$7,239.05, down some from the \$7,547.79 of the comparable payment of 1982. Total payments to date for 1983 for Morton are \$42,633.29, also down from the \$45,266.42 of 1982 payments to date, reflecting a minus 5.82 percent change. Whiteface, another city in Cochran County was also down giving the county a minus 12.74 percent change.

Levelland, the largest reporting city in Hockley County showed a net payment this past period of \$87,298.73, down from the \$98,290.17 at the same time last year. Levelland was also down in 1983 payments to date, with \$609,789.47 showing for 83, as compared to \$670,149.32 in 1982. This reflects a minus 10.20 percent change to date. The entire county reflects a minus 14.30 percent change with three other small cities included in the count.

In the city of Littlefield, in Lamb County, a net payment for this period was received amounting to \$30,950.40, down by almost \$8,000 from the \$38,247.35 of 1982. Total payments to date for Littlefield amount to \$226,139.30, also down from the \$228,815.75 of 1982 - a minus 1.17 percent change to date. With three other cities in Lamb County showing minus figures and one showing a plus, the entire county is reflected at a minus 2.24 percent to date overall.

Friona, located in Parmer County received a net payment this period of

\$10,325.68, down from the \$14,113.95 of the prior year. Total 1983 payments to date for Friona amount to \$84,219.43, also down from the \$89,152.74 of 1982. Two other towns in Parmer County - Bovina and Farwell - also report minus figures for this period, giving the entire county a minus 5.18 percent change to date.

Starting in November, all taxpayers will be required to file by the 20th of the month instead of by the last day of the month.

The earlier deadline set by the Legislature will bring in \$500 million more for the current state budget without a tax increase.

Bullock said this month's early payments "show that Texas merchants have accepted this change in the same spirit it was suggested - to save us from a tax increase." Bullock's office

has been working with trade and professional organizations to inform taxpayers of the change.

Houston received the biggest check, for \$19 million, computed with \$18.5 million for the same period last year. Dallas got \$12 million, computed with \$10.9 million last November.

San Antonio's check was for \$6.1 million, computed with \$5.2 million for the same period last year.

Austin's payment of \$4 million pushed its 1983 total payments to \$26.4 million, up 15.7 percent over the total by this time last year.

Fort Worth's payment was for \$3.5 million, bringing that city's 1983 year-to-date payments to \$24.6 million, up 5.3 percent over 1982.

Bullock also sent checks to the state's two Metropolitan Transit Authorities. Houston's MTA check for \$22.4 million pushed its 1983 total payments to \$147.6 million.

PERMANENT HAIR REMOVAL

UNWANTED HAIR REMOVED SAFELY & PERMANENTLY

EASTERN NEW MEXICO ELECTROLYSIS

Desiree Clementi
Registered Electrolysis

116 W. 21st, Clovis 505-762-0221

Enjoy
Thanksgiving Dinner
at
Nina's Place
304 Main at Damron Drug 272-4210
Thursday and Friday, November 18-19
Beginning at 11 a.m.
\$4.50 per plate

| | |
|-----------------------------|-----------------|
| Turkey & Stuffing | Giblet Gravy |
| Cranberry Sauce | Mashed Potatoes |
| Green Beans | Fruit Salad |
| Pumpkin Pie or Pumpkin Cake | |

The Bob Harmon Forecast

| Sat., Nov. 12—Major Colleges—Div. 1-A | | Division 1-AA (Continued) | |
|---------------------------------------|-----------------------|--|-----------------------|
| Arizona 26 | San Jose State 14 | Maine 34 | Springfield 6 |
| Boston College 31 | Holy Cross 14 | Marshall 27 | V.M.I. 20 |
| Bowling Green 27 | Kent State 17 | Massachusetts 24 | Northeastern 10 |
| Brigham Young 33 | Utah 21 | McNeese State 21 | Lamar 13 |
| California 24 | Stanford 14 | Middle Tennessee 35 | Tennessee Tech 6 |
| Cincinnati 27 | Miami (Ohio) 10 | Murray State 24 | Western Kentucky 17 |
| Clemson 23 | South Carolina 14 | Nevada-Reno 33 | Montana State 7 |
| Fresno State 28 | Northern Arizona 14 | North Texas 23 | Texas-Arlington 13 |
| Hawaii 18 | Pacific 13 | NE Louisiana 28 | NW Louisiana 10 |
| Houston 27 | Texas Tech 16 | Pennsylvania 24 | Dartmouth 20 |
| Illinois 45 | Northwestern 6 | Princeton 30 | Cornell 20 |
| Iowa 51 | Minnesota 10 | SE Louisiana 27 | Nicholls State 24 |
| Kansas State 24 | Colorado 20 | SW Missouri 24 | NE Missouri 13 |
| L.S.U. 23 | Tulane 13 | Tenn.-Chattanooga 26 | East Tennessee 13 |
| Maryland 31 | No. Carolina State 13 | Tennessee State 38 | No. Carolina A & T 7 |
| Memphis State 28 | Arkansas State 10 | Texas Southern 31 | Prairie View 10 |
| Michigan 24 | Ohio State 23 | Towson State 28 | James Madison 17 |
| Mississippi 28 | Mississippi State 26 | Western Carolina 28 | Appalachian State 14 |
| Missouri 25 | Kansas 7 | William & Mary 26 | Richmond 24 |
| Nevada-Las Vegas 27 | Long Beach State 21 | Youngstown 40 | Morehead State 14 |
| New Mexico State 24 | West Texas 13 | Other Games—East | |
| New Mexico 23 | San Diego State 17 | American Int'l 31 | New Haven State 12 |
| North Carolina 30 | Duke 13 | Cent'l Connecticut 23 | Lowell 17 |
| Northern Illinois 27 | Ohio 14 | Other Games—Midwest | |
| Notre Dame 28 | Air Force 17 | Cent'l State, Ohio 49 | Dist. of Columbia 0 |
| Oklahoma State 31 | Iowa State 7 | St. Norbert 24 | Fordham 13 |
| Oregon 26 | Oregon State 17 | Other Games—South & Southwest | |
| Pittsburgh 27 | Penn State 20 | Abilene Christian 28 | Howard Payne 7 |
| Purdue 27 | Indiana 16 | Alabama A & M 31 | Savannah State 6 |
| S.M.U. 23 | Arkansas 21 | Central Arkansas 35 | Harding 6 |
| So. Mississippi 20 | East Carolina 14 | Central Florida 28 | Fort Lewis 16 |
| SW Louisiana 21 | Louisiana Tech 20 | East Texas 27 | Angelo State 23 |
| Temple 24 | Rutgers 21 | Elon 20 | Mars Hill 10 |
| Tennessee 29 | Kentucky 17 | Fort Valley State 33 | Albany State 7 |
| Texas A & M 28 | T.C.U. 12 | Gardner-Webb 23 | Wofford 17 |
| Texas-El Paso 26 | Weber State 20 | Georgia Southern 23 | Valdosta State 14 |
| Texas 21 | Baylor 10 | Lenoir-Rhyne 25 | Catawba 20 |
| Toledo 24 | Central Michigan 22 | Mississippi Col. 27 | Delta State 14 |
| U.C.L.A. 27 | S'thern California 13 | North Alabama 28 | Jacksonville State 20 |
| V.P.I. 26 | Virginia 22 | Quachita 22 | Henderson 21 |
| Washington 24 | Washington State 17 | S. F. Austin 24 | Sam Houston 13 |
| West Virginia 24 | Syracuse 10 | Southern Arkansas 28 | Ark.-Monticello 13 |
| Western Michigan 24 | Eastern Michigan 12 | SW Texas 33 | Texas A & I 10 |
| Wisconsin 30 | Michigan State 15 | Tenn.-Martin 27 | Lane 12 |
| Wyoming 23 | Colorado State 20 | Wayne, Mich. 30 | Kentucky State 14 |
| | | West Georgia 24 | Liberty Baptist 17 |
| Major Colleges—Division 1-AA | | | |
| Akron 27 | Austin Peay 12 | Other Games—Far West | |
| Boise State 27 | Idaho 21 | Cal-Davis 48 | Sonoma State 6 |
| Boston U. 45 | Morgan State 6 | Cal Poly 26 | Santa Clara 21 |
| Brown 27 | Columbia 14 | Central Oklahoma 30 | Eastern New Mex. 13 |
| Colgate 26 | Connecticut 14 | Cent. Washington 35 | Western Oregon 13 |
| Delaware State 35 | Howard 13 | Chico State 27 | San Francisco St. 21 |
| Delaware 28 | Bucknell 13 | East'n Washington 28 | Portland State 10 |
| Florida A & M 24 | Bethune-Cookman 21 | Northridge 26 | Humboldt 14 |
| Furman 37 | The Citadel 7 | Occidental 27 | Azusa 13 |
| Harvard 27 | Yale 10 | Puget Sound 34 | Eastern Oregon 6 |
| Idaho State 30 | Montana 10 | Sacramento State 24 | Hayward State 21 |
| Jackson State 23 | Alcorn 10 | Simon Fraser 21 | Oregon Tech 7 |
| Lafayette 24 | Lehigh 23 | Southern Oregon 38 | West'n Washington 10 |

True Value

HARDWARE STORES

Winter! COUPON SALE

Coupons Good Thru November 25

| | | | |
|--|---|---|---|
|  \$1.69 w/coupon W/O Coupon \$2.09 LIMIT: One Coupon per Customer |  89¢ w/coupon LIMIT: One Coupon per Customer |  99¢ w/coupon LIMIT: One Coupon per Customer |  \$1.49 w/coupon LIMIT: One Coupon per Customer |
|  79¢ w/coupon W/O coupon 99¢ LIMIT: One Coupon per Customer |  \$13.98 w/coupon W/O coupon 16.98 LIMIT: One Coupon per Customer |  \$2.99 w/coupon W/O coupon 4.99 LIMIT: One Coupon per Customer |  \$1.88 w/coupon W/O coupon 2.98 LIMIT: One Coupon per Customer |
|  \$5.99 w/coupon W/O coupon 7.99 LIMIT: One Coupon per Customer |  \$8.95 w/coupon W/O coupon 13.99 LIMIT: One Coupon per Customer |  \$6.99 w/coupon W/O coupon 8.99 LIMIT: One Coupon per Customer |  \$5.99 w/coupon W/O coupon 7.99 LIMIT: One Coupon per Customer |
|  \$2.99 w/coupon W/O coupon 4.99 LIMIT: One Coupon per Customer |  \$19.99 w/coupon W/O coupon 24.99 LIMIT: One Coupon per Customer |  \$1.09 w/coupon W/O coupon 1.99 LIMIT: One Coupon per Customer |  \$2.99 w/coupon W/O coupon 3.99 LIMIT: One Coupon per Customer |

Reynolds & Young Inc.

Fry & Cox, Inc.

Phone Center 401 S. First 272-4511



BACK THE MULES FOOTBALL CONTEST



1st \$6

2nd \$3 3rd \$2

CONTEST RULES:

1. Pick the winner of each of the games contained in the advertisements on this page. Write the name of the teams you think will win opposite the game number in the blanks provided on the official contest blank.
2. The contestant must be 12 years of age or older.
3. Only one entry per person may be made for any one contest.
4. Bring your entry blank by The Journal office by 5:30 p.m. Friday, or, if mailed, the entry must be postmarked not later than 5:30 p.m. Friday. Write "FOOTBALL CONTEST" on mailed entry, and mail to P.O. Box 449, Muleshoe, Tx. 79347.
5. Pick and write in the score of the tiebreaker game. This score will be used to break weekly as well as grand prize winners. Decision of The Journal's scoring judges will be final.
6. Check the team you think will win; 10 points for first place, 6 points for second place and 4 points for third place.
7. To count for grand prize, entries must be on official blank printed in the paper.

Grand Prize \$100

OFFICIAL ENTRY BLANK

NAME _____

ADDRESS _____ PHONE _____

| | |
|---------|----------|
| 1 _____ | 9 _____ |
| 2 _____ | 10 _____ |
| 3 _____ | 11 _____ |
| 4 _____ | 12 _____ |
| 5 _____ | 13 _____ |
| 6 _____ | 14 _____ |
| 7 _____ | 15 _____ |
| 8 _____ | 16 _____ |

TIEBREAKER

MULESHOE _____ VS. _____ POST _____

Congratulations

- 1st- Bruce Bruns
- 2nd- Scott Clavert
- 3rd- Dr. Jerry Gleason



Weekly Schedule :

Muleshoe Vs. Post

At Levelland, Friday, November 18, 1983. 7:30 P.M.



1

Jones-Blair Company

Higginbotham-Bartlett Co.
215 Main 272-3351
WYOMING VS. COLORADO STATE

2

"Your Independent Store Cares More"

MULESHOE SUPERMARKET
HOME OWNED AND HOME OPERATED

U.C.L.A. VS. S'THERN CALIFORNIA

3

"We Appreciate Your Business"

Joe Shipman & Sons Body Shop

410 N. 1st 272-4408
TEXAS A&M VS. T.C.U.

4

Farmers Co-op Elevators

"3 Locations To Serve You"
272-4335

ENOCHS MULESHOE
CLAY'S CORNER

S.M.U. VS. ARKANSAS

5

Come To See Us For All Your Beauty Needs.

Main Street Beauty Salon

115 Main 272-3448
PURDUE VS. INDIANA

6

Eat With Us After Each Football Game

Dinner Bell Cafe

2103 Amer. Blvd. 272-3460
NEW MEXICO VS. SAN DIEGO STATE

7

For The Best Insurance For Your Money - See Your Independent Agent:

Terry Field Ins.

223 E. Ave. B 272-5551
MISSISSIPPI VS. MISSISSIPPI STATE

8

Home Of:
"The Green Machine"

Robert D. Green, Inc.

2400 W. American 272-4588
MICHIGAN VS. OHIO STATE

9

Come To Lees' For All Your Western Wear

Lees Western Wear

1910 W. Amer. Blvd. 272-4663
HOUSTON VS. TEXAS TECH

10

We Can Take Care Of All Your Car Repairs

Muleshoe Body Shop

402 N. First 272-4246
WASHINGTON VS. WASHINGTON STATE

11

Henry Insurance and Realty

"SERVING ALL YOUR INSURANCE NEEDS"

111 W. AVENUE B — MULESHOE, TEXAS — PHONE 808/272-4681
TEXAS VS. BAYLOR

12

"Your Business Is Always Appreciated Here"

Lambert Cleaners

123 Main 272-4726
TEXAS-EL PASO VS. WEBER STATE

13

"The Upper Crust Of The Donut World"

Your Favorite Coffee & Sandwich Shop

Spudnut Shop

328 Main 272-3542
TEMPLE VS. RUTGERS

14

"Your Home Owned Bank"

1st National Bank

202 S. 1st. 272-4515
PITTSBURGH VS. PENN STATE

15

Make Our Store Your Favorite Place To Shop

SERV-ALL THRIFTWAY

OREGON VS. OREGON STATE

16

Your One-Stop Quick Shop Headquarters

GAS & SNACKS

B & D Target Gas

223 W. Ave. B
KANSAS STATE VS. COLORADO

Rotary...

Cont. From Page 1

operations. In the building of the Masa Plant at Muleshoe, and getting it underway, Pittman stated that many things were learned which helped efficiency even in the California plants.

Pittman stressed the fact that "...it is an art to make Masa." Valley Grain developed its own process after 20 years of research.

The grain President pointed out "Valley has always stressed quality, and it is our intent to always maintain quality in our products as a number one priority."

Pittman called to the attention of those present that 29 Masa products are produced now in the Muleshoe plant. At this time, Valley Grain has a finished product plant in California producing \$2.5 million in revenue per year with no promotions.

The Valley Grain executive said that it was "nice to be able to produce products - high quality products - in order to satisfy potential customers. Pittman pointed out that the masa Valley Grain produces quality products.

The president of the company said the masa produced is used for many products, including taco shells and serve several major companies such as Ortega and Mountain Pass. The finished masa is distributed in Canada, England, Holland, Japan and several other foreign countries.

Pittman indicated that within 18 months, the Muleshoe Plant would be running at full capacity.

When asked his opinion in relation of the price of food corn in 1984, Pittman commented: "The fence to fence planting or over planting of food corn in 1984 could result in a reduction of the market prices."

Contest...

Cont. From Page 1

still strong contenders with ten points each. They are: Ina Dennis, Lula Mae Shanks, Bobby Gleason, Kathleen Hayes, Sam Whalin, Gerald Shanks and Jo Wood, along with this week's winner Bruce Bruns.

The contests are getting more difficult as it comes down to the wire, so it takes a lot of figuring and studying to get the entries correct. Be sure that you put the NAME of your winning team in the blank space provided, rather than the score. We cannot grade an entry that is not completed according to directions.

Now's the time to really get behind our Muleshoe Mules - call it Mule Pride, Mule Mania, Black Magic or whatever - our boys have class. They stand a good chance to take it to the top, but they need the support of the town and the citizen's in it. These are our kids -- and Coach Windy Williams along with each member of his coaching staff has done a tremendous job with the kids. Not only have they taught them about football, they've helped in the "making of men". As citizens, we've got a youthful community that we can be proud of and who are the leaders and businessmen of tomorrow. Go to the game Friday as Muleshoe takes on Post - 7:30 p.m. in Levelland. You'll be glad you did. GO BIG MULES.

Commissioners...

Cont. From Page 1

A transfer in the amount of \$185,000 was made from Road and Bridge General funds to be divided among each of the four precincts. Routine county bills were paid and other miscellaneous items were taken care of.



WHICH WAY DO I GO NOW, COACH?...This might well be the statement that Mark Moton has in mind as he looks down the throats of several tough Perryton players. Mark had a lot of good rushing yardage in the game Friday, for the Bi-District title. This week, the Mules meet Post in Levelland at 7:30 p.m. Friday - BE THERE!!!!

Local Man Named To Grain Sorghum Producers Board

A long-time farmer and resident of Bailey County, Delbert Watson was installed recently by the Texas Grain Sorghum Producers Board as one of four new directors. Watson's name and efforts are well-known in the field of grain sorghum production. Other directors named were George Reeves of Dalhart, Jack Cobb of Plains and Weldon Shelton of Lamesa.

The new board members will serve six year terms on the board which administers the programs of the sorghum check off established in the Texas High Plains by a referendum of sorghum producers in 1969. The directors are elected by the producers who are affected by the sorghum check off.

Following the installation of new directors, the board elected officers. Albert Scheele of Lockney is the board's new chairman. Scheele previously served as vice chairman. The new vice chairman is Jim Dowty of Dumas. Dennis Anthony of Friona was elected secretary-treasurer. These officers

were elected to two year terms. Other members of the twelve-man board are: Jack Crowl of Morse, Bob Gillispie of Gruver, Loyall Turner of Spearman, Ralph Mabry of Lubbock and K.B. Parish of Springlake.

Texas Grain Sorghum Producers Board (TGSPB) conducts and directs grain sorghum promotion through market development, research and education. Its greatest efforts are directed toward establishing and improving markets for Texas sorghum. The work is financed by a refundable assessment of five cents (5 cents) per ton of sorghum deducted at the time of first sale.

Commodity checkoff programs are vital to establishing and maintaining world markets for U.S. feed grains. They provide funding for U.S. Feed Grains Council, a non-profit corporation which expands export markets for U.S. feed grains through a network of fourteen offices with programs in 50 countries of Latin America, Europe, the

Middle East, Africa and Asia.

Council activities promote the sale of and demand of U.S. feed grains through technical information and assistance programs. Farmers in the United States depend upon the Council to promote the sale of corn and grain sorghum in world markets. This work is financed jointly by producers and agri-business with two thirds of the funding from producer checkoff programs.

There are statewide sorghum checkoff programs in Kansas and Nebraska. Corn producers have established statewide check offs in Kansas, Nebraska, Iowa, Illinois, Wisconsin, Virginia and North Carolina.

Muleshoe...

Cont. From Page 1 of age and \$4.50 for adults. A drawing will also be held for a king size quilt. You may buy your supper tickets and make your donation to the ladies at the door. With each donation you will receive a ticket for the drawing.

JP, Municipal Court Dockets 'Lighten Up'

In Municipal Court, Judge Linda Huckaby reported a total of 14 cases paid and 16 new additional cases filed during the week.

Of those paid, five were for expired MVIs, two for violation of city ordinance, two for expired plates and two for speeding. One each was disposed of on making alcohol available to a minor and one for violation of city ordinance-leash law.

Those cases filed included five for no drivers license, three for disorderly conduct, two for public intoxication, two for expired plates and two for speeding. One case each was filed for improper left turn and expired MVI.

In Justice Court, JP Jack Bates recorded a total of 23 filings this week and fifteen cases disposed of. In cases filed, nine were for speeding, three for defective stop lamps, two for expired MVI and two for having ducks in possession during closed season. One case each was filed on the following offenses: no brakes on trailer, no lease on file, misuse of farm

tags, hunting without license, unregistered vehicle and using equipment not approved on public roadway. JP Court disposed of 11

teen cases this week. Nine for speeding, two were for defective stop lamps, two for expired MVI and one each for no drivers license and illegal left turn.

Dial (806) 272-4296
DENT - REMPE
 Sales - Service
 Muleshoe, Texas

Nothing Drives Like A "Deere"

| | |
|---|-----------|
| New 484 Strippers | 42,000.00 |
| New 283 Strippers | 11,900.00 |
| Used '80 484 Strippers | 32,500.00 |
| Used '79 484 Strippers | 22,500.00 |
| Used '79 JD 8820 Combine with 645 corn head | 57,000.00 |
| Used JD 4600 plow | 5,500.00 |
| Used 21' Krause Wing fold disk | 3,950.00 |
| Used JD 606 Rotary Cutter | 800.00 |
| Used JD 2280 Windrower w/JD230 auger platform & #30 hay cond. | 19,500.00 |

ROBERT D. GREEN, INC.
 2808 W. AMERICAN BLVD. - MULESHOE, TEXAS 79347
 - HOME OF THE GREEN MACHINES -
 Terry Yell
 Sales Representative
 HOME PH. 272-4948

Check Our 'Winter' Coupon Sale This Paper

True Value HARDWARE STORES
TOOL VALUE OF THE MONTH

Master MECHANIC®
 359
 While Supplies Last
 15-in. Multi-Bar
 Ideal for pulling and pounding nails, scraping, prying. Forged, tempered steel. MMMB-15
 Quantities Limited

Fry & Cox, Inc.
 401 S. 1st 272-4511

"Pick a Phone, Any Phone?"

Just because a phone will plug into your wall jack, it doesn't mean that it will work.

Why?
 Well, for instance, let's look at a phone that will be used on a party-line. Since customers share a common line to the telephone company switching office, each phone has it's own special ringing-cycle setting which allows the phone to know when it should ring on the party-line.

Even if you have a 'Private Line', you still may have problems.
 Single-line customers may also have special dialing or ringing requirements that are not apparent. So, they purchase a new phone and sadly discover that it won't work. This is especially true for customers who may be considering a cordless telephone or even a universal dialing telephone, a clock radio that offers telephone access capability or any other special telephone service.

Trading in your dial phone could be asking for trouble.
 The joy of owning your very own Touch Tone® phone could turn into tragedy if your phone line is designated for a rick or pulse phone. A pushbutton pulse phone will work on most lines, since it also duplicates the signal of a regular dial phone. However, a Touch Tone® phone emits a 'beeping' tone that requires special equipment to recognize the signal. Some dial phones, even if you have Touch Call Service, are not compatible under certain circumstances.

So, if you decide to buy a new telephone, take the time to stop by your neighborhood GTE Phone Mart and see if your particular line has any special limitations. It could possibly save you a lot of frustration and money.

Gener! Telephone GTE

Join The Big 'Shoot-Out' AT LEE'S

Pre-Christmas Sale **WESTERN WEAR!**

Looking For Good Christmas Buys?
 How About An Early-Bird Sale?
 At Lee's Saturday-November 19

5 A.M. to 6 A.M. 40% OFF
 6 A.M. to 7 A.M. 30% OFF
 7 A.M. to 8 A.M. 20% OFF
 8 A.M. to 12 Noon 10% OFF

FREE COFFEE SIGN-UP FOR FREE HAM DRAWING AT 5 P.M.

Sale Includes Everything In Store Including Boots Except Items Already Marked For Sale

no layaways, Exchanges, Refunds Or Alterations

ee's WESTERN WEAR, INC.
 1910 American 272-4663

KMUL
 REMOTE BROADCAST
 6 A.M.-NOON

Hance Critical Of '84 Cotton Program

U.S. Rep. Kent Hance recently criticized Secretary of Agriculture John Block's plan requiring a 25 percent acreage reduction program for 1984's upland cotton crop, saying the plan encourages overproduction and could be a burden on the 1984 budget.

"Although Secretary Block said we have made progress in bringing cotton supplies into line with demand," Hance noted, "his latest plan will attract only limited participation from cotton farmers."

"Farmers believe that higher prices for their crops are on the way," Hance added, "and the Agriculture Department's announced cotton program will encourage farmers to plant row to row and fence to fence. If they do that, we will be faced with a surplus carry-over and lower prices, and any benefits of the Payment-In-Kind (PIK) program will be lost."

Hance said the USDA needs to provide an incentive for American farmers to participate in a set-aside program.

"If the farmers do not participate in large numbers," Hance added, "it is quite possible that a deficiency payment of 26 cents a pound will be made to all farmers in the program. The impact on the federal budget would be staggering."

Hance pointed out that a plan calling for a 15 percent mandatory set-aside with an additional, but optional, 15 percent "Plant for PIK" paid diversion has drawn the support of the Texas Association of Cotton Producers Organizations (TACPO). The producer steering committee of the National Cotton Council also supports a plan requiring a 15 percent set-aside with an additional paid diversion program. However, the producer steering committee did not set a specific set-aside percentage for the paid diversion. The committee supports an option that would limit carryover to approximately 4 million bales.

"The 'Plant for PIK' program supported by TACPO gives farmers the option to set aside an additional 15 percent of their base acres," Hance said. "Farmers would not produce cotton on this additional acreage, but would be eligible for the loan price on the established yield of the idled farmland they diverted. Additionally, farmers would retain ownership of the cotton and could sell it at their discretion."

"Under this proposal," Hance pointed out, "the farmer is encouraged not to overplant, and the burden on the budget is lessened dramatically."

ARTHRITIS FACTS

Eddie Albert And The Arthritis Foundation Team Up Against Arthritis

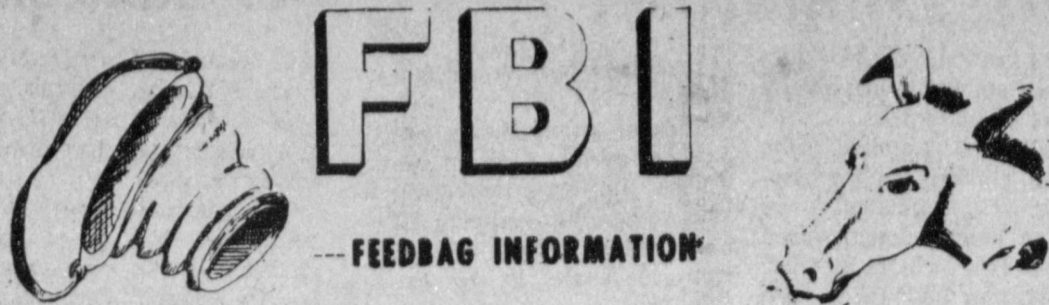


As part of a national arthritis education program, Albert is offering free copies of the Arthritis Foundation's 36-page booklet *Arthritis Basic Facts*, which provides information on detecting arthritis, avoiding quack remedies and managing the disease through a regimen of exercise, rest and medication.

The booklet is being made available through the cooperation of Menley & James Laboratories, a SmithKline Beckman company, manufacturer of Ecotrin, the leading enteric or coated aspirin. Each booklet offers coupons for Ecotrin and, for each booklet requested, Ecotrin will donate 50 cents to the Arthritis Foundation.

Free copies of the booklet are available through local pharmacies or retail stores in your area. Or they can be obtained by writing to Ecotrin for Arthritis, P.O. Box 9509, Dept. P., Clinton, Iowa 52736.

At Muleshoe Junior High



Junior High Football Presents United Front

Coach Roy Donaldson, Jr. High athletic director, made the following comments about the 1983-84 Jr. High football season:

"The seventh and eighth grade Mules played their last game of the 1983 football schedule last week. Both the seventh and eighth grade teams finished extremely strong. The seventh grade defeated the Tulia Hornets 36 to 12, giving them a faultless district record. Our boys continue to improve week after week and finished the season against the Hornets with their most awesome offensive attack of the year. If I had to pick an offensive player of the week, it would have to be Billy Murphy.

Murphy simply refused to be kept out of the end zone defensively.

We played extremely well as a team. I don't feel we had a defensive weak spot all night long. The only sad note of the seventh grade game was the injury of Daniel Olivias. We all wish him a speedy recovery and are anxious to see him back in school.

Now the 8th grade played the toughest defensive game that I've seen them play. I've had many comments from our high school coaches concerning the outstanding ability of our defensive team.

The Hornets soundly defeated us last year, and I think they were stunned at

goal line for a safety, making it 10-0. We tried an on-side kick and it worked perfectly, giving the ball back to us, but time ran out before we could capitalize.

It was a tough, well played game that showed a lot of character in our kids. That's what football is all about.

I just want to say thanks to the cheerleaders, twirlers, student body and fans for their support. That special treatment after the game was extra special to me. It showed me we're truly united as MJHS."



A bird can focus its eyes more quickly than any other living creature.

Mary's Lines

Annuals are now ten dollars through November 15. So hurry and buy your annuals now.

The seventh and eighth grade played their last football game against the Tulia Hornets Thursday, October 3. The seventh grade swamped the Hornets 36-12 and are District Champions. The eighth grade lost with the score of 10-0.

MJHS had their last pep-rally of the year, Thursday, to cheer on the Mules

and tell them how much we love them. The pep-rally was very fascinating. The cheerleaders were very talented when they danced to the song Maniac.

Again we would like to remind you that time is running out to buy your annuals. So please hurry!!!



The Ross Ice Shelf, an ice sheet in Antarctica, is 500 to 1,500 feet thick and covers an area the size of France.

Your Authorized

ATARI

Sales & Service

Dealer

Williams Bros. Office Supply

322 MAIN

272-3113

ATTEND THE CHURCH OF YOUR CHOICE

EMMANUEL BAPTIST CHURCH

Iglesia Bautista Emmaneul
107 East Third
Isaías Cardenas, Pastor

16th & AVE. D CHURCH OF CHRIST

James Johnson, Minister
Sunday - 10:30 a.m.
Evening - 6 p.m.
Wednesday - 8 p.m.

RICHLAND HILLS BAPTIST CHURCH

17th and West Ave. D
Brock Sanders, Pastor

SPANISH BAPTIST MISSION

East Third and Ave. E
Roy Martinez, Pastor

TRINITY BAPTIST CHURCH

314 Ave. B

PROGRESS BAPTIST CHURCH

Donald G. Proctor, Pastor
Progress, Texas

SPANISH ASSEMBLY OF GOD

East 6th and Ave. F
Luis Campos, Pastor

UNITED PENTACOSTAL GOSPEL LIGHTHOUSE CHURCH

207 E. Ave. G
Rev. Don Green

MULESHOE BAPTIST CHURCH

8th and Ave. G
Bob Dodd, Pastor

FIRST BAPTIST CHURCH

220 West Ave. E
J.E. Meeks, Pastor

FIRST ASSEMBLY OF GOD

521 South First

NEW COVENANT CHURCH

Plainview Highway
Sunday - 10:00 a.m.
Wednesday - 7:00 p.m.
Jimmy Low, Pastor

CHURCH OF THE NAZARENE

9th and Ave. C
Jimmie Williams, Pastor

LONGVIEW BAPTIST CHURCH

Phone 946-3413
B.C. Stonecipher, Pastor

FIRST CHRISTIAN CHURCH

130 W. Ave. G
Dick Tarr, Pastor
Sunday School - 10:00 a.m.
Worship 11:00 a.m.

LATIN AMERICAN METHODIST MISSION

5th and Ave. D
R.Q. Chavez, Pastor

THE COMMUNITY CHURCH

Morton Highway
H.D. Hunter, Pastor

CALVARY BAPTIST CHURCH

Rev. Darrel Martin
1733 W. Ave. C

PROGRESS SECOND BAPTIST CHURCH

1st and 3rd Sunday
Clifford Slay, Pastor

FIRST UNITED METHODIST CHURCH

507 W. 2nd, Muleshoe
Bill Kent, Pastor

ST. JOHN LUTHERAN

Lariat, Texas
Sunday School - 10:00 a.m.
Worship Service - 11:00 a.m.
Herman J. Schelter, Pastor

PRIMITIVE BAPTIST CHURCH

621 S. First
Elder George Johnson

MULESHOE CHURCH OF CHRIST

Clovis Highway
John A. Boor, Minister

JEHOVA WITNESS

Friona Highway
Boyd Lowery, Pastor

The Hand that rocks the cradle...

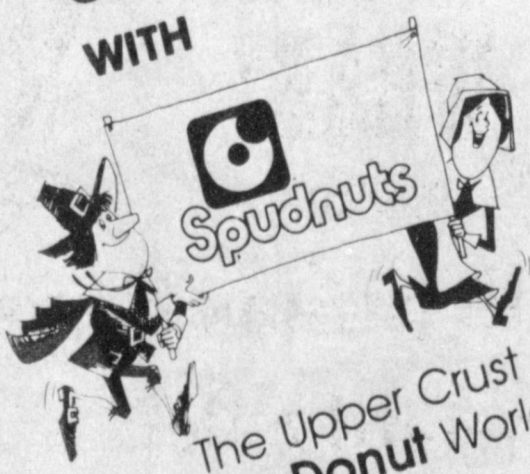
... How true that a mother's influence can be so great... "The Hand that rocks the cradle rules the world." Perhaps the child pictured here will, in the future, not be rocking a doll, but a precious new life. The influence brought to bear on her life now may be passed on to many others. Take your children to Church and train them in the ways of the Lord.

EVERYONE IN THE CHURCH

The Church is God's appointed agency in this world for spreading the knowledge of His love for man and of His demand for man to respond to that love by loving his neighbor. Without this grounding in the love of God, no government or society or way of life will long persevere and the freedoms which we hold so dear will inevitably perish. Therefore, even from a selfish point of view, one should support the Church for the sake of the welfare of himself and his family. Beyond that, however, every person should uphold and participate in the Church because it tells the truth about man's life, death and destiny, the truth which alone will set him free to live as a child of God.

THIS THANKSGIVING SEASON
THANK SOMEONE SPECIAL

WITH



The Upper Crust of the Donut World.

50¢ OFF

50¢ OFF

Spudnuts DOZEN DONUT DISCOUNT COUPON

Expires Nov. 24th.

50¢ OFF

50¢ OFF

We Now Make All-Occasion Cakes-Come See

Spudnut Shop

328 So. Main Muleshoe 272-3542

Muleshoe Co-op Gins

TEMPLO CALVARIO
507 S. Main
Sunday - 10:00 a.m.
Sunday evening - 7:00 p.m.
Evangelistic Services
J.L. Soto, Pastor

IMMACULATE CONCEPTION CATHOLIC
Father Patrick Maher
Northeast of City in Morrison Edition
ST. MATTHEW BAPTIST CHURCH
Corner of West Boston and W. Birch
M.S. Brown, Pastor

American Valley, Inc.

Dairy Queen Margie Hawkins Manager

Bratcher Motor Supply

Robert Green, Your Inc. Oldsmobile, GMC, Pontiac, Buick Dealer

Farmers Spraying Service

Kemp's Discount Furniture

Western Drug

Muleshoe Body Shop

Main Street Beauty Salon

Irrigation Pumps & Power

Serv-All Thriftway
We're Proud To Give You More You

MULESHOE SUPERMARKET
HOME OWNED AND HOME OPERATED

Copy & COX

Checklist Aids Cotton Harvesting Decision

West Texas cotton farmers, beset all summer by dry, hot weather and all year by difficult decisions, are facing another tough choice as harvest time approaches. With much of the area's cotton acreage suffering through a cold spring and dry summer, lower than average yields and possibly reduced quality are expected. Many producers are wondering whether it will pay to harvest their crop.

The decision is further complicated by recent freeze

damage to areas north of Lubbock, noted Dr. James Supak, cotton agronomist with the Texas Agricultural Extension Service.

To help producers resolve their questions, Supak and another Extension specialist have developed a worksheet for estimating the cotton yield required to cover the individual's cost of harvest. Working with Supak was Elston K. Grubaugh, agricultural mechanization engineer.

"The real question is whether the income from harvesting the crop will pay for the costs of harvesting and ginning, with some additional return for unpaid labor," Supak said.

Many producers are concerned about losing their costs of production up to this point if they abandon the crop, the agronomist said. "These costs are really not relevant to this decision," he stressed. They are "sunk" costs and won't change, whether or not the crop is harvested, he explained.

Likewise, depreciation, interest on equipment and other fixed costs won't appreciably change whether or not the crop is harvested, the agronomist said.

"This means the decision really boils down to whether the harvested cotton will cover out-of-pocket or cash costs of harvest," Supak stressed.

Supak and Grubaugh analyzed a number of different situations, using different cotton prices, costs and assumptions regarding ownership of land. They devised their worksheet so that these variables can be adjusted by the individual producer to reflect his personal situation.

The two specialists concluded that the sensitive range of yields in this decision is probably from about 40 to 90 pounds of lint. "If the projected yield is less than 40 pounds, it probably won't pay to harvest," they said. "If the projected yield is over 90 pounds, it probably will pay to harvest."

"If the projected yield is between 40 and 90 pounds, the producer should definitely use the worksheet to fill in his own expectations, costs and rental situation."

Projecting yields in order to make the decision isn't easy, the Extension specialists agreed. But they offered some suggestions for doing this.

With drought stressed cotton, it will take approximately 450 bolls to produce one pound of lint as opposed to non-stressed cotton which usually produces one pound of lint per roughly 325 bolls. This means it takes 135 bolls per 100 inches (three paces) or 216 bolls per 13-feet of 40-inch rows (1/1000 acres) or 216,000 bolls from stressed cotton to produce a bale.

To estimate the yield potential of a given field, make five to ten boll counts at various locations in the field, the specialists advised. If the stand is uniform, counts can be obtained from three-pace or 13-foot strips. However, if the stand is not uniform, boll counts should be made from 131-foot strips.

The checklist includes an example situation for a producer who (1) is renting his land, (2) has his own two-row, tractor-mounted stripper, (3) has his cotton custom modulated and hauled to the gin, and (4) expects to put his cotton in the loan

with grad 42 (SLM, Light Spot), staple 31, and micronaire of 3.0 to 3.2.

In this example, the out-of-pocket costs for stripping were estimated to be \$9 an acre including hired labor. This includes fuel, oil, lubrication and repair. No allowance is included for depreciation and other fixed costs because these will be incurred regardless of the situation.

A custom rate for modulating and hauling of \$85 per module was used. This is based on \$50 for the modulating operation and \$35 for the hauling to the gin of each module. Each module was assumed to make seven bales due to expected low turnout (15 percent), instead of the more normal 10 bales.

Ginning, bagging and ties were charged at \$2.20 per hundredweight of seed cotton, based on a 15 percent turnout. Seed credit was allowed at \$160 per ton for 0.4 tons of seed per 480-pound bale.

All of these costs and returns were calculated on a lint pound basis to allow calculation of break-even yield.

The loan price for the example grade, staple and micronaire (42:31; 3.0-3.2) cotton in Lubbock is 43.0 cents per lint pound. "This value was used for the cotton price since supply and demand conditions don't appear to warrant a more optimistic assumption," the specialists said.

Deficiency payments will be made for each pound of established program yield for 1983 PIK planted base acreage qualifying under ASCS regulations. However, with no Federal Disaster Program, deficiency payments do not enter into

break-even harvest calculations.

Rental arrangements will also affect the decision because the renter normally has to pay for stripping all the cotton while he sells only his share. In this example, a traditional one-fourth share arrangement is used. Had this been a cash rent arrangement, the rent would not have been included because it is also a "sunk" cost which is unaffected by the harvest decision, the Extension agronomist explained.

The worksheet includes a section for calculation of a break-even yield. This is the yield of cotton which will just cover the out-of-pocket stripping costs and costs for modulating, hauling, ginning, and other necessities.

In this example, the break-even yield was calculated to be about 32 pounds of lint—with 24 pounds net to the renter.

This figure shows there is no return at this yield for unpaid labor, nor is there room for error in estimating the yield, quality or costs, Supak noted.

A number of factors aren't included in the worksheet, but should be considered by the producer, the Extension specialists cautioned.

First, a zero yield may affect a producer's established program payment yield for subsequent years. Thus there is some benefit to harvesting a yield which barely covers out-of-pocket costs. "This benefit will vary depending upon each producer's situation," Supak said.

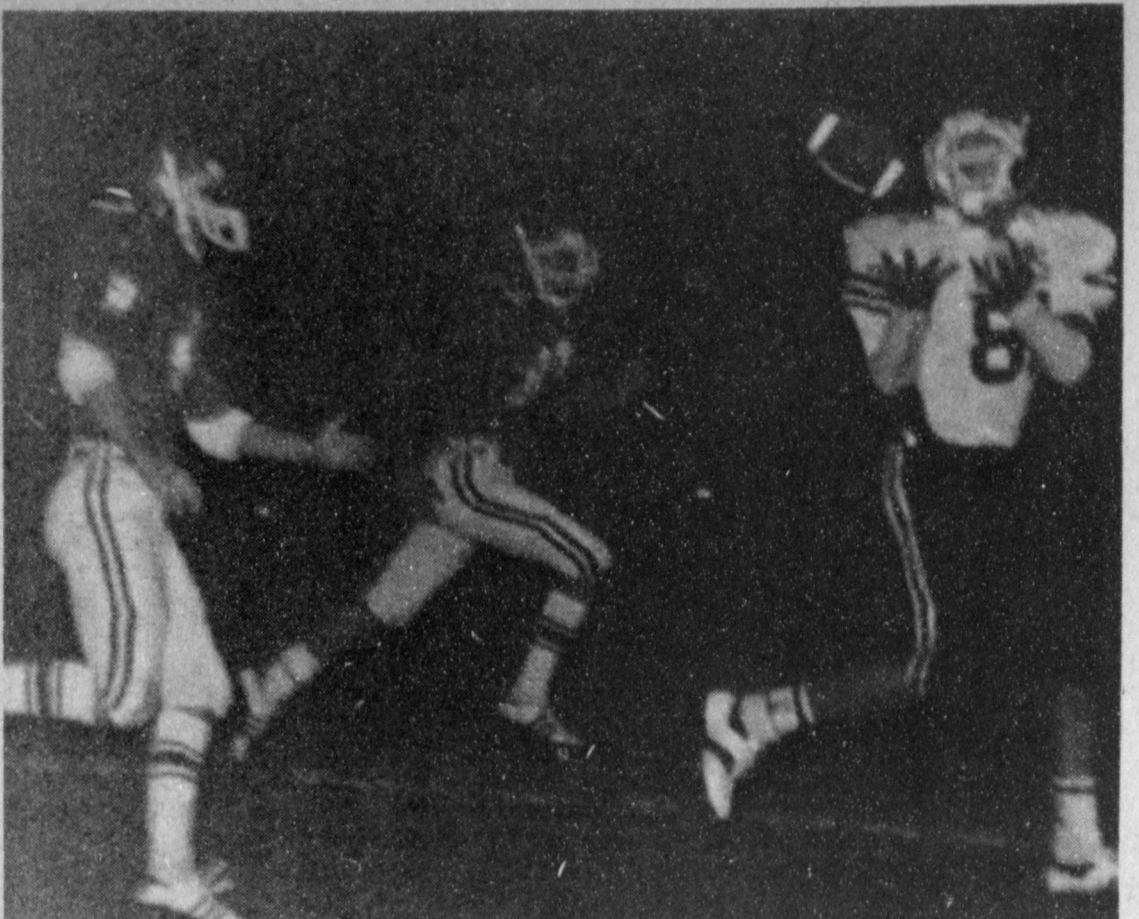
Second, if the crop is going to be plowed under, it may be more beneficial to do so promptly to eliminate further depletion of soil moisture and retention of plants that serve as hosts for insects and diseases.

Nothing increases the admiration of children for their parents like a large estate division among the heirs. ****

A wise man never tries to convince a foolish man; he lets the foolish man think that he has been convinced. ****

When you find an individual who knows everything, give him no advice and, above all else, take none from him. ****

The day will never arrive when wars will be fought without trained men or won by yielding to one's foes.



GARCIA GOES FOR ANOTHER ONE... Hector Garcia, Mule's #81 got in quite a bit of action last Friday in collecting passes via Jeff Hamilton. The Mules edged out the Rangers 10-8 in the last minutes of the game.

Spinal Check-ups Being Offered

During November

The Texas Chiropractic Association has announced that more than 1300 doctors of chiropractic throughout the state have agreed to provide complimentary screening for problem conditions of the spine during November.

According to Dr. Don H. Handley, president of the Texas Chiropractic Association, chiropractic offices in the State of Texas will operate as screening centers for persons who have not had regular spinal health examinations. This preventive measure is being offered as a community service in conjunction with SPINAL HEALTH MONTH, which has been designated by Governor Mark White, during November.

"Our purpose is to screen out spinal conditions which may be health threatening. There is a shocking number of people who have spinal and postural defects and do not know it. There is no charge for this service," Dr. Handley said.

According to Dr. Handley, an estimated three out of four people in the State of Texas have spinal health problems of which they are not aware. Unless there is pain or an impairment of mobility or performance, most often these problems

go undetected until they become severe. "The Texas Chiropractic Association and its member doctors are concerned about the high number of structural health problems.

'The Fingertip World Of Classifieds'
Call 272-4536



BALANCED FARMING OF THE FUTURE

For Soil Rebuilding, Release The Biological Energy Trapped In Your Crop Residue.

Get Your Fertility Insurance Today,

For Next Year's Profits, Use Humalace NOW!

Ted Millen - 806-965-2733

Sandhills Philosopher

Editor's note: The Sandhills Philosopher on his Johnson grass farm on Sandy Acres thinks he has discovered a new cattle market.

Dear editor:

Can you tell me how I can get in touch with the purchasing agents at the Pentagon in Washington? I'd like to do some business with them.

According to an article I read last night, a Senate investigating committee has found that the Navy paid a defense contractor \$800 a piece for 20 vinyl-covered dining room chairs.

Also, the Air Force paid \$9,609 for a small wrench that sells for \$1.50 in a hardware store. It paid \$7,417 for a piece of ordinary steel wire 1-16th of an inch thick and 3 inches long. It paid \$1,000 for a plastic cap to go on the leg of a stool. If it was a 3-legged stool, that's \$3,000 per stool. If 4-legged, \$4,000. Don't know if they make 5-legged stools.

The list of over-priced items went on and on.

All I've got to say about this is, How do you get in touch with the guys in the Pentagon in charge of buying? I'd like to do some business with them. I've been selling my calves on the wrong market.

For example, if they'll pay \$800 for an aluminum, plastic-covered dining room chair, they ought to leap at the chance to pay \$2,000 for a 400-pound calf I've got out here. I've got a roll of barbed wire I'll let go for \$350. I've got some bailing wire I'll sell for \$2 a foot.

I would offer to sell them a monkeywrench I have out here, but I figure that Senate Committee has thrown all the monkeywrenches at the Pentagon it has any use for.

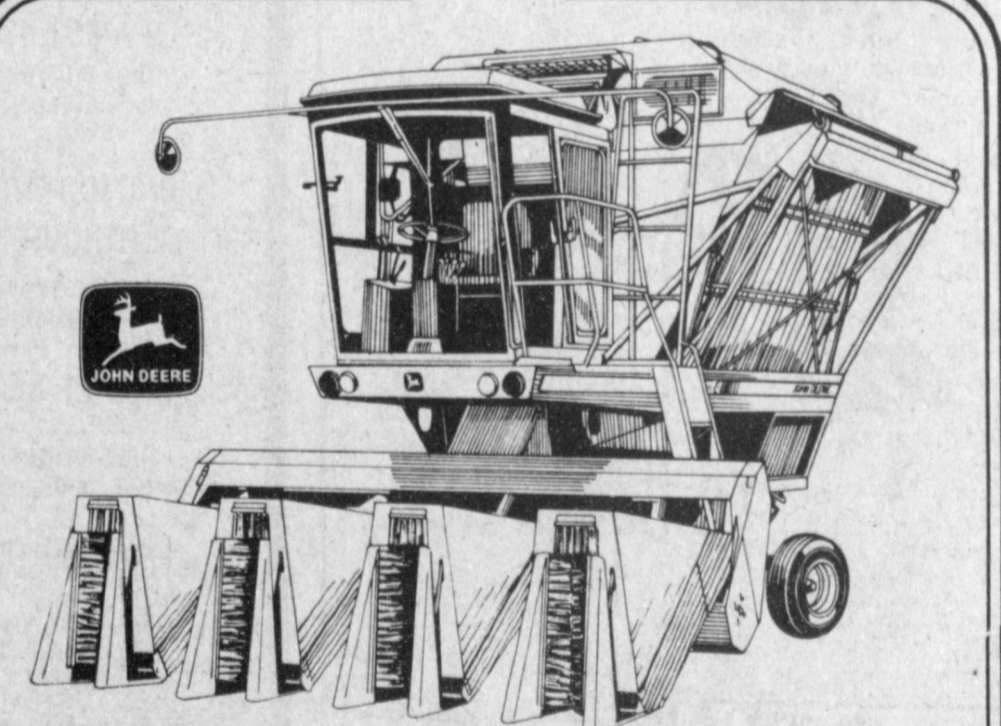
Yours faithfully,
J.A.



MULESHOE FFA ATTENDS NATIONALS... Several members of the Muleshoe Future Farmers of America recently attended the National FFA Convention held in Kansas City. From L to R: G.T. Dickerson, Gene Dickerson, Sunny Bayless, Kristi Spies, Craig Hunt, Steven Etheridge and Michael Barrett. The Dickersons were sponsors for the group.

| MULESHOE INDEPENDENT SCHOOL DISTRICT | | | |
|--|------------------------|-------------------------------------|----------------------------|
| COMBINED STATEMENT OF REVENUES, EXPENDITURES, AND CHANGES IN FUND EQUITY | | | |
| ALL GOVERNMENTAL FUND TYPES AND ALL TRUST FUNDS | | | |
| Year Ended August 31, 1983 | | | |
| | Governmental Fund Type | | Total Memorandum |
| | 10 General Fund | 20/30/40 Special Revenue Fund | Only August 31, 1983 |
| REVENUES | | | |
| Local, Intermediate, Out-of-State (Excluding Non-Revenue Receipts) | | | |
| | \$1 515 588 | | 1 515 588 |
| State Program Revenues | 1 960 535 | | 1 960 535 |
| Federal Program Revenues | 182 069 | 407 844 | 589 913 |
| Total Revenue | 3 658 192 | 407 844 | 4 066 036 |
| EXPENDITURES | | | |
| Instruction | 1 833 393 | 325 168 | 2 158 561 |
| Instructional Administration | 78 950 | 32 436 | 111 386 |
| Instructional Resources and Media Services | 84 311 | 9 454 | 93 765 |
| School Administration | 219 345 | | 219 345 |
| Guidance and Counseling Services | 74 860 | 33 688 | 108 548 |
| Health Services | 39 680 | 1 009 | 40 689 |
| Pupil Transportation - Regular | 159 684 | | 159 684 |
| Pupil Transportation - Exceptional Children | 1 008 | | 1 008 |
| Co-curricular Activities | 103 383 | | 103 383 |
| Food Services | 239 216 | | 239 216 |
| General Administration | 238 505 | 250 | 238 755 |
| Plant Maintenance and Operations | 388 748 | 492 | 389 240 |
| Facilities Acquisition and Construction | 474 664 | | 474 664 |
| Community Services | | 12 951 | 12 951 |
| Total Expenditures | 3 935 747 | 415 448 | 4 351 195 |
| OTHER RESOURCES AND (USES) | | | |
| Other Resources | 504 | | 504 |
| Total Other Resources and (Uses) | 504 | | 504 |
| Excess (Deficiency) of Revenues and Other Resources Over Expenditures and Other Uses | (277 051) | (7 604) | (284 655) |
| Beginning Fund Equity, September 1 | 741 680 | 25 276 | 766 956 |
| Increase (Decrease) in Fund Equity Residual Equity Transfer | 58 353 | | 58 353 |
| Ending Fund Equity, August 31 | \$ 522 982 | 17 672 | 540 654 |

JOHN DEERE 484 COTTON STRIPPER DOUBLE-BARRELED BONUS OFFER



For October: Take advantage of a waiver of finance charge plus \$4,000 rebate...or, without waiver, a \$5,925 bonus for a new John Deere 484 Stripper

During October, your local John Deere dealer offers you an unbeatable double-barreled bonus offer on a new 484 Stripper. Look at your choice with this double-barreled offer from John Deere: First, buy a new 484 now and receive a \$4,000 cash bonus; plus, if you finance with John Deere, finance charges will be waived until the first month of the 1984 harvest. Or... Second choice: buy a new 484 during October, pay cash or finance with John

Deere, without waiver, and receive a \$5,925 cash rebate. These John Deere offers are in addition to the special deal your dealer will make on a new 484 Stripper. And, if you purchase now, you can qualify for substantial tax savings from investment tax credit (ITC) and depreciation. All is in your favor for buying a new John Deere 484 Stripper now. See your dealer for details on this double-barreled bonus offer.

*Availability of John Deere financing subject to approval of credit. This offer may be reduced in value or withdrawn at any time.

Dent Rempe, Inc.

1516 W. American Blvd.

272-4296

USED VEHICLE CLEARANCE

- 1981 Olds 98 Cpe. **\$9395⁰⁰**
- 1981 Bonneville 4 Dr. **\$8995⁰⁰**
- 1979 Pont. Catalina 4 Dr. **\$4395⁰⁰**
- 1983 Delta '88 4 Dr. **\$9395⁰⁰**
- 1977 T-Bird **\$1595⁰⁰**
- 1982 Chevrolet Crew Cab **\$11,900⁰⁰**
- 1979 Ford 3/4 Ton **\$5195⁰⁰**
- 1981 Chev. 4-W Drive **\$8995⁰⁰**

Robert D. Green, Inc.
2400 W. Amer. Blvd.
272-4588

**BUY
SELL
AND
TRADE
WITH...**

Classified Ads

DEADLINE FOR CLASSIFIED ADS IS TUESDAYS AND FRIDAYS 11:00A.M

CLASSIFIED RATES
1st Insertion Per Word...\$15
Minimum Charge...\$2.30
2nd Insertion Per Word...\$13
Minimum Charge...\$2.00
CARD OF THANKS
Per Word...\$20
CLASSIFIED DISPLAY
\$1.70...per column inch
BLIND AD RATES
50% more
DEADLINES
11 a.m. Tues. for Thurs.
11 a.m. Fri. for sun.
WE RESERVE THE RIGHT TO CLASSIFY REVISE OR REJECT ANY AD. NOT RESPONSIBLE FOR ANY ERROR AFTER AD HAS RUN ONCE.

1. PERSONALS

Own your own Jean-Sports-wear, Infant-Preteen, Ladies Apparel, Combination. Accessories, or Large Size store-National brands: Jordache, Chic, Lee, Levi, Vandербuilt, Izod, Gunne Sax, Esprit, Britannia, Calvin Klein, Sergio Valente, Evan Picone, Claiborne, Healthtex, 300 others. \$7,900 to \$24,000, inventory, air fare, training, fixtures, grand opening, etc. Mr. Loughlin (612) 888-6555. 1-46t-1tpts

CONCERNED about someone's drinking **HELP IS AVAILABLE** through Al-Anon Call 227-2350 or 965-2207 or come to visit Tuesday nights. 8:00 p.m. at 1116 W. American Boulevard, Muleshoe.

3. HELP WANTED

Beauticians Needed. 272-3448. t1tc-37t-tfc

Now Accepting Job Applications for Hurst's Department Store, former St. Clair. Send Application to P.O. Box 530 or to Hurst's Department Store, 327 N. Burlington, Spur, Tx. (806) 271-3351. Opening November 15th. t1tc-42s-tfc

Registered Nurse Visiting Nurse Supervisor for Bailey and Parmer Counties, excellent Negotiable salary & benefits. Monday - Friday 8-5 Contact Visiting Nurse Service Inc. Lubbock (806) 793-9067. 3-44t-8tc

U-Haul Dealership's Available. No Investment Required. For more information, Call 1-800-692-4026. 3-46s-4tc

Efficiency Industries is now looking for qualified Man in the Muleshoe area. Experience not necessary, write Larry White, Box 96, Dumas, Tx. 79029. 3-45t-4tc

5. APTS. FOR RENT

Don't throw your money away on Rent! Invest it in ownership. Call Collect Mark Bruns, A-1 Mobile Homes Lubbock; 763-5319. 5-tfc-35t

For Rent, One Bedroom unfurnished apartment. Call 965-2188 or 272-4754. 5-45s-tfc

AFTER DEADLINE???

You can call 272-4536 until 5:00 p.m. on Friday and Tuesday and get your WORD AD in TOO-LATE-TO CLASSIFY in the next issue!!! Tuesday for Thursday and Friday for Sunday.

8. REAL ESTATE FOR SALE

For Sale: 3 Bedroom, 2 bath fireplace, unfurnished Mobile home 925-6773. 8-44t-tfc

FOR SALE BY OWNER: 3 br, 2 bath brick home. Fireplace, carpeted garage. Beautiful yard & covered patio. Close to high school. 272-3402 or 272-3839. 8-19s-tfc

320 Acre Farm For Lease. 10 miles E. of Muleshoe on Hwy 70. Call Collect (214) 521-3168, Ext. 229, Dallas 8-44s-6tcts

EXTRA NICE 3-1/2-1. New carpet, paneling through out. Screened in patio. Call 4541 or 5671 after 5:00 p.m. Ask for Debby. 8-13t-tfc

Large 3 Bedroom, 2 bath, Country Kitchen, Living room, Den Celler under the house. \$5,000.00 down, owner will carry. Call (806) 381-9300 or 335-1880. 8-46t-tjl

FOR RENT: 400 Acres, 4 wells, 3 pumps, Cash or crop All or part - one mile East of Muleshoe. Call (806) 799-5881 or (806) 795-3001. 8-3tp-46t

For Sale: 2 bedroom, 1 bath garage, new carpet, central heat, large lot. 272-4759 or 272-4663. 8-46t-tfc

NEW HOMES

No Down Payment
Low Monthly Payment
You May Qualify!

AMERICAN VALLEY INVESTMENTS REALTORS

Rex Harris John Craig
Broker Builder

Bingham & Nieman
Realty

116 E. Ave. C
272-5285 *** 272-5286

"We Appreciate Your Business!"
George & Dianne
Nieman

8. REAL ESTATE FOR SALE

New Listing For Sale By Owner: 3 Br, 1 Bath, 1 Car Garage, Central Heat, Corner Lot. Priced to Sell. 402 E. Austin St. 272-4738 8-41t-tfc

KREBBS REAL ESTATE
If it's Real Estate you want, we have it or can get it.
-Appraisals-
Tele. 272-3191-office and residence.

M.B. SUDDERTH REALTY, INC.
Drawer 887
Farwell, Tx. 79325
Ph. 806-481-3288

160 Acre on Hwy. N.W. of Muleshoe, 2 Wells, Excellent Financing. Priced for Immediate Sale.

320 Acre, 3-8 Inch Wells, 1 Circle. Lays Excellent. Oklahoma Lane Area.

320 Acre, 1 Circle, 2-8 Inch Wells, Good Water Area. Oklahoma Lane Area.

A Very Nice 3 BR, 1 1/2 Bath, House. Interior just painted. Central H&AC. Insulated, garage, incinerator, corrals, and small feed shed. On small 7/10 Acre, fenced, on Hwy. in Lariat. Only \$20,000. Possible Owner Financing. 8-46s-tfc

9. AUTOMOBILES FOR SALE

1978 Honda Hawk 400 cc, 7,300 miles. All the accessories. Like New. \$1,050.00. Phone 272-4496. 9-46s-4tc

1982 Grand Prix Broughm Pontiac, low mileage, A1 condition loaded with equipment. Sunroof. Call in Bovina 238-1536. 9-45t-4tc

For Sale: 1980 Chevrolet 1/2 ton Pickup. 4 speed, 4 wheel drive. Air and other extras. Call 272-4515 from 8 a.m. to 5 p.m. 9-44s-tfc

FOR SALE: 1973 El Camino. 350 Engine, with Headers, Mag Wheels, Need to Sell QUICKLY!! 925-6761. 9-36s-tfc

1980 Honda Express-Good Condition. Would Make Good Christmas Gift. 272-3366. 9-46t-2tp

FOR SALE: 1974 Cutlass. Call 272-5648 after 5 p.m. 9-46t-4tc

Good 74 Vega, 509 E. Austin. 272-4696. 9-45t-tfc

10. FARM EQUIP. FOR SALE

FOR SALE: Avenger 3-Wheel hoe hands with spray tanks attached. Call First National Bank. 272-4515. 10-21t-tfc

2390 Case Tractor, duals included. Case Warranty available. Estate must sell. Call 965-2731. 10-41s-tfc

Sincerity is a pleasing and vanishing virtue. ****

11. FOR SALE OR TRADE

House for sale in Lenua Addition, Qualified buyer, Assume FHA Loan, 3 bedroom, 272-4956. 11-38s-tfc

For Sale -- 4 Lots in Bailey County Memorial Park, 647-2245. After 8 p.m. 11-4tc-46s

FOR SALE: 3 br, 2 bath unfurnished mobile home. For information call: 272-5370. 11-23t-tfc

Hand-tools, Electric Saws & other. Like New in Chest. 272-4171. 705 W. Ave. J. 11-46s-2tc

15. MISCELLANEOUS

1978 Honda Hawk 400 cc, 73,000 miles all the accessories Like new \$1,050.00. Phone 272-4496. 15-45t-4tc

Would like to buy used-outdoor playhouse for children. Please call 925-6737. Joy Glover. 15-45t-4tc

OPENINGS in Registered Child Care Home. Call 272-3222. 15-34t-tfc

For Sale or Lease: Country Home 2 1/2 miles East of Muleshoe 3 bedroom - 1 3/4 bath - Large Utility Room Fireplace - Carpet - Fully Draped, Fenced Yard - Also adjoining lot - Call before 8 or after 7 p.m., 925-6742. 15-44s-8tp

Bruce & Matthews Inc. Refrigeration & Electrical Contractor's, Heating, Cooling, Appliance Service. 424 N. First. 272-5114. 15-44t-tfc

For Sale: Used Olympia International Omega 303 copy Machine. Clean and in good condition, Asking \$500.00. Contact King Grain Co. 272-4541. 15-46s-tfc

For Rent: Mobile Home Spaces. One Mile West on Highway. Call 272-3767. 15-43t-tfc

For Sale: Used carpet, a lot of it, \$40.00 all. 946-3664. 15-44t-tfc

Baby-sitting in my home. Good care and lots of fun. Hot meals good snacks. Call 272-3223 or come by 522 West 5th. 15-46s-4tc

Firewood-Order Now for your Oak Firewood. 272-3987 After 6:00 Any Time on Sat. or Sun. Wayne. 15-38t-tfc

Sears Kenmore Dryer for Sale. Call 272-5415. 15-46t-1tc

HOME REPAIRS. F.M. Saldana Construction. Licensed and bonded plumber. Specialize in cement, carpenter work, remodeling, painting, acoustical ceilings. 272-4955. 15-16s-tfc

HONEY FOR SALE

Nick Landers
334 W. Ave. J.
272-3096
15-5t-tfc

WE BUY USED FURNITURE AND APPLIANCES
CALL 272-3030
HARVEY BASS
APPLIANCE
15-5t-tfc

16. LIVESTOCK

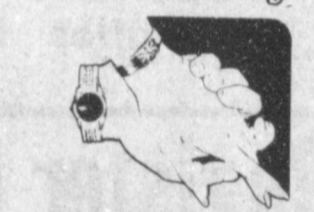
Would like to sell 300 cows, all one raising of cows all one brand. Or would like to have fields for them. Call 505-763-6856. 16-45t-4tc

CELEBRATING? TELL EVERYONE IN THE JOURNAL

Congratulations



Happy Birthdays



Happy Anniversary



Announce A... Quinceañera

OR 15 Años



BUNDLES OF JOY
To place a birth announcement with picture, call 806-272-4536 between 9 a.m. and 5 p.m. Monday through Friday. At a minimal cost, you may place your picture and announcement and receive a souvenir edition of the paper containing your baby's announcement.

FOR THAT SPECIAL OCCASION
How about an idea that's bright, and fresh, and new! How about marking that special birthday, anniversary, graduation, Valentine, or other event with one of our special ads. Announce it in the newspaper to the entire area. The cost is minimal, and you will find your friends will envy your ingenuity. Call The Journal for more information.

Some Of Our Headings:
BIRTHDAY, BALLOONS, BELLS, BEST WISHES, CONGRATULATIONS, QUINCEANERA, 15 ANOS GRADUATION, OR ANY OTHER SPECIAL DAY.
We will use your picture.
Check with us at 304 West Second Street, or call us at 806-272-4536. Open 9 a.m. to 5:30 p.m. Mon.-Fri.: Till noon Sat.
Write us:
MULESHOE PUBLISHING CO. CLASSIFIED DEPT. P.O. BOX 449 Muleshoe, Tx. 79347
Deadline: noon Tuesday for Thursday noon Friday for Sunday

So True
Too many of us are like wheelbarrows: useful only when pushed and easily upset.

-Herald, Miami.

No More Worries
Just put your troubles in your pocket--the one with the big hole in it.
-Telegram, Worcester.

Which Direction
Many people are like signposts. They spend their lives pointing in the right direction, but never go that way themselves.
-Tribune, Ames, Ia.

Area Grads In Theatre Production

The Western Texas College theatre department will open its fall season with the production of "Major Barbara" on December 8-11. Tickets are \$4 for adults and \$2 for children. Reservations can be made by calling the box office at 915 573-8511, extension 234. "Major Barbara," written by George Bernard Shaw, is set in London in 1906. It revolves around Barbara Britomart, the daughter of an armaments millionaire who joins the Salvation Army but resigns when it accepts her father's donation. Described as a high comedy, the play was made into a movie in 1941 with a cast which included Rex Harrison and Deborah Kerr.

With Regard To A Card Of Thanks

With Regard to a Card of Thanks: Quite often a Card of Thanks in a newspaper can meet needs which can't very easily be solved in any other way. It is not only a gracious expression of gratitude but also courteously expresses the services and kindness of the many whom a personal note of thanks cannot be mailed to those names and addresses are not known. You can arrange your personal card of thanks through the classified department in person or by telephone. Muleshoe Journal-304 W. 2nd or Call 272-4536 Mon-Fri. 9-5.

DEALERS WANTED!



Cash in on a growing market! Energy costs are soaring...and wind turbines provide an ideal solution. We have the best:
• Patented Rotor
• Lowest Cut-in Speed
• Successfully Tested at Rocky Flats, Colo.

DON'T WAIT! CALL TODAY 1-800-255-5110 ASK FOR MR. RALPH HARRISON

Jeff Combs and David Pruitt from Muleshoe will be appearing in the cast of the show. Combs has been cast as Stephen and Pruitt as Bilton.

15. MISCELLANEOUS

\$2000 REWARD
For the arrest and conviction of person(s) responsible for putting dirt in the crank case of two spreader trucks parked at Bovina Feeders, Inc. on or before 10-30-83. Call: B.L. Martinez at 364-8315, or 825-2103 or 481-3303. 15-45s-1mc

1/2 OFF Offer Expires 11-21-83
Beautiful Imperial & Deluxe Photo Albums
Beautiful See Thru Photo Albums Pages **1/2 OFF**

COUPON Expires 11-21-83
1/2 OFF
Developing & Printing color print film
On any 110, 126 or 35mm color print roll less 15¢ DISC
No Limit **NOTICE COUPON MUST ACCOMPANY ORDER**
Overnight or Free

COLOR REPRINT SPECIAL 10 ONLY 99¢

KODAK FILM SALE
STOCK UP NOW FOR THE HOLIDAYS PLUS Expires 11-21-83 **\$1.00 Refund Certificate**

| | |
|--|-------------------|
| | CP135-N 2.39 |
| | CP135-N 2.99 |
| | C110-24 2.29 |
| | CG 110-24 2.89 |

PHOTO KWIK
501 W. Amer.
Mon-Fri 9:30 - 6:00
Sat 11-2

Financially Speaking

Randall L. Field, C.P.A.
SUDDUTH FIELD & CO.

BARE BONES TAX PLANNING

Although the variations are almost endless, most income tax savings plans involve one or more of six basic principles. Simply stated, they are as follows:
1. *splitting income* among several family members, or entities, in order to get more of it taxed at lower tax brackets.
2. *shifting income* to years of lower tax rates (years when income will be less and therefore taxed at lower rates).
3. *shifting deductions* to years when tax rates or levels of taxable income will be higher.
4. *converting* ordinary (fully taxable) income into long-term capital gain (only 40% taxable).
5. *deferring* tax liabilities by use of various tax shelters allowing you interest-free use of tax dollars.
6. Obtaining legitimate tax-deductible status for expenditure that increase you standard of living.
Most income tax savings plans embrace one or more of these six basic principles. The trick is in picking those which will work and in staying away from those which are unsound applications, or for some other reason are inadvisable.
Every taxpayer has a right to so conduct his affairs to minimize his tax liability. He can avoid higher taxes by arranging for his income to be exposed to the lowest possible tax rate in a number of legitimate ways. Pick and choose the methods which work best for you, then implement them at the right time and in the proper way.
Proper tax planning requires the assistance of a qualified professional. Every financial decision has tax consequences. A telephone call to your accountant before you complete a transaction is the first step in good tax planning.

1. PERSONALS

Thanks and appreciation for the flowers, food, the prayers and sympathy that was shown with the passing of our loved one. Thanks to Dr. Gregory and Dr. Alford and the nurses at West Plains Hospital. May God Bless You The Wall Family

1. PERSONALS

We would like to express our sincere thanks and appreciation for the flowers, food, cards and prayers given us in the loss of our loved one. The Ernest E. Martin Family

1. PERSONALS

OPEN HOUSE



10 a.m. - 4 p.m. Sat., Nov. 19

A & M IS CHANGING TO MEET THE NEEDS OF THE ENTIRE COMMUNITY

Nels Anderson - Owner

Charles Hartman - General Manager

Herbert Miller - Store Manager

FREE!

Pepsi, 7-Up,
Dr. Pepper

Large Expansion
Of The
Clothing Dept.
Wrangler,
Walls, Key
And More!

**20¢
Chili
Dogs**

FREE!

Suckers &
Balloons

Register For These Doorprizes!

- 1 - 42 Month Battery 36" Value
 - 4 - 50 Lb. Dog Food 9¹/₂ Ea. Value
 - 4 - 50 Lb. Hi-Pro Dog Food 10⁵⁹ Ea. Value
 - 1 - Walls Western Coat No.7892 44⁵⁰ value
 - 3 - Sideswipes 29⁹⁵ Ea. Value
 - 3 - Mini Sideswipes 20⁹⁵ Ea. Value
 - 1 - Sanborn Air Tank 34⁹⁵ Value
 - 1 - Case Of 12 WD-40 9 Oz. 27⁵⁰ Value
 - 6 - Quaker State Thermometer 9⁹⁵ Ea. Value
 - 4 - Oil Change Needs Including:
1 Fram Oil Filter, 1 Fram Air Filter And
5 Qts Of Oil, 12⁵⁰ Ea. Value
 - 6 - Pair Mens Wrangler Jeans 17⁴⁹ Ea. Value
 - 12 - Pairs Boys/Student
Wrangler Jeans 12⁴⁹ to 16⁹⁵ Value
- Drawings Throughout The Day**

FREE!

Coffee

**Storewide
Specials**

Name
Brand
Toys

For The Youngster
Of All Ages!

FREE!

Popcorn

**Come In Saturday And Meet All Our Friendly Staff While Taking
Advantage Of Our Storewide Specials.**



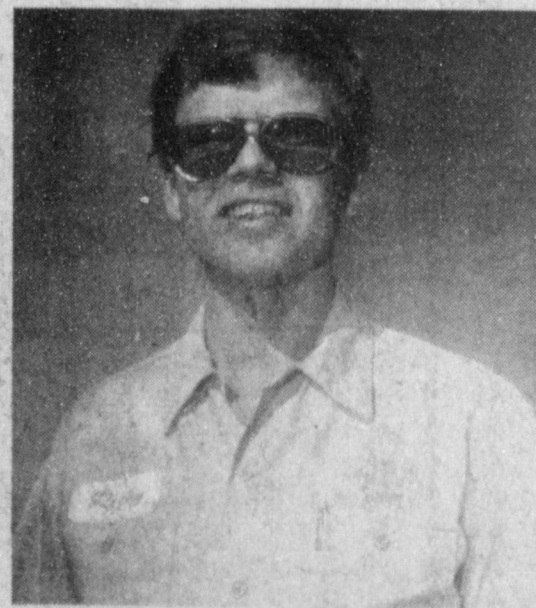
Sherry Sisco



David Castorena



Herb Miller, Manager



Ricky Kennemer



Jamey Chauncey