

Weather

November 14	57	27
November 15	47	20
November 16	56	20
November 17	57	30

MULESHOE JOURNAL



20¢

'The Community of Opportunity-Where Water Makes the Difference'

Volume 59, No. 46

12 Pages Today

Published Every Thursday at Muleshoe, Bailey County, Texas 79347

Thursday, November 18, 1982

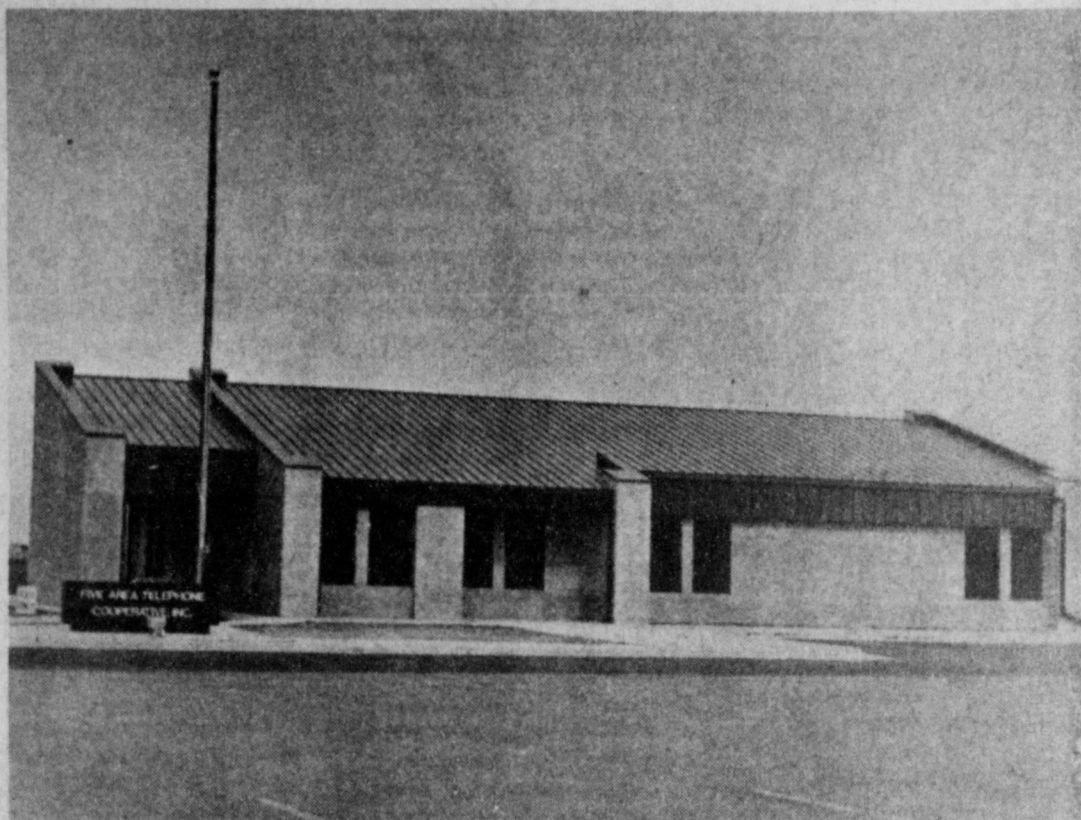
Five Area Open House Scheduled Sunday

Around Muleshoe

The Richland Hills Baptist youth will sponsor skating Friday, November 19 from 7 until 9 p.m. at the Bailey County Civic Center. Admission is \$1.

The First Assembly of God Youth will have a bake sale on November 20 at the Pay and Save Grocery, beginning at 9 a.m. For those wishing to order special orders in advance, please call 272-4688 or 272-3644.

James (Son) Wisenhunt, who farms in the community of Sudan and does business in Muleshoe is a patient in the VA hospital at Albuquerque, New Mexico at this time. While recently in the VA hospital in Amarillo he fell and suffered injury to his back and is paralyzed in both legs. He is still undergoing tests at this time to determine his injury. Friends remembrances by cards and letters would be greatly appreciated at this time. The mailing address is 2100 Ridgcrest Dr. SE, Bldg. 3, Ward 6, Albuquerque, NM 87108.



A NEW HOME--Five Area Telephone Cooperative, Incorporated will celebrate the grand opening of their new facilities on Sunday, November 21. The Coop has been a chartered cooperative for some 26 years and after 33 years of work, has accomplished their new buildings and home.

Cross Country Mules Win First State Team Crown

The Muleshoe Mules Cross Country Team captured the boys Class 3A State Cross Country crown at Georgetown, Texas last Saturday, November 13. According to Coach Robert Brandon, this is the only state team championship ever won in the history of Muleshoe High School. "These boys are mostly self-motivated and work hard at what they do.

I'm very proud of them and for us," Brandon stated. Muleshoe's first place was won with a total of 48 points, with Mathis placing second with 59 points. Falfurrias placed third with 74, Boys Ranch with 99, fourth and Poet fifth with 137 points. A total of twelve teams participated with three from each four regions. Coach Brandon stated that there were approximately 100 runners in the contests.

Tony Luna, a sophomore, placed the Muleshoe runners with a fourth place finish and a time of 16:05. Aldo Almanza placed eighth with a 16:16 time and according to the report from Brandon, the contest was pretty close between Muleshoe and Mathis up to the first two runners, but then Muleshoe's last three runners outran the last three Mathis runners. Martin Mendoza placed 17th with a time of 16:50, Tony Rojas 19th with a time of 16:55 and Henry Carrion 24th with a time of 17:04. Ronnie Logsdon and Allen Beasley also ran placing 32nd and 85th respectively.

Tolk Opens Power Plant To Visitors This Weekend

Employees of Southwestern Public Service Company will show off their second coal-fired power plant, Tolk Station Unit No. 1, near Muleshoe, Texas, Saturday and Sunday (November 20 and 21), and everyone in the SPS service area is invited to the open house, said Dave Davitt, local manager in Muleshoe. The new coal-fired unit will be of significant help in Southwestern Public Service Company's effort to hold down the rising costs for the fuels required to generate electricity, Cavitt said. When it is generating at capacity, the 561,000-kilowatt Tolk Unit No. 1--the largest unit ever built by SPS--will be able to supply the electricity needs of 225,000 people.

'82 Christmas Parade Deadline November 26

The deadline for entries in this year's Christmas Parade is only a little more than a week away. All those wishing to participate in the parade are reminded that the deadline is Friday, November 26. So far, only a few organizations have turned in their forms. This year marks the 23rd year for the Muleshoe Christmas Parade, and all groups are encouraged to enter. The parade has featured color guards from various military installations in our area in the past, many times from Cannon Air Force Base. This year, the color guard will once again be provided by Cannon, but the addition of their recently formed drill team. Several floats have entered

Court Dockets Full In Past Ten Days

Justice of the Peace Tana Holmes and Judge Linda Huckaby in Municipal Court have been busy the past week or so with a number of incidents. In Municipal Court 19 offenders paid fines for violations and a total of 28 cases were filed from the period from November 9 through November 16. In Justice Court, JP Tana Holmes filed a total of 69 cases from November 5 through November 16 and disposed of 43 cases on the dockets.

In Municipal Court three fines each were paid on the following violations: failure to yield right of way; two each on expired stickers, failure to appear, exhibition of acceleration, violation of city ordinance & bad checks. One fine each was paid on the following: no liability insurance, unsafe backing, expired license plate, theft of city property, failure to use headlights after dark and failure to leave information at the scene of an accident.

Cases filed in Municipal Court, included ten for speeding, two each for the following violations: reckless damage, violation of city ordinance, expired plates, exhibition of acceleration, running stop sign. One case each was filed on the following violations: bad check, failure to leave information at the scene of an accident, theft of city property, disorderly conduct, failure to use headlights after dark, expired MVI, no drivers license and public intoxication.

In Justice Court, Justice of the Peace Tana Holmes filed 31 speeding cases, four for possession of drug paraphernalia, and three each for the following: no registration papers in truck, operating a motor vehicle

without a drivers licence, expired MVI stickers, defective tail lamps and violation of written promise to appear. Two cases each were filed on the following: no commercial operators license, operating an unregistered trailer, operating an unregistered vehicle, operating a motor vehicle on the wrong side of the road, and theft. One case each was filed for the following: operating unregistered in Texas, over registered weight, no stop lamps on truck, public intoxication, failure to stop at stop sign, violation of drivers license restrictions, no lease on file, defective mud flaps, and being over allowed gross weight.

Cases disposed of in Justice court included ten for speeding, five for operating a motor vehicle without license, three for operating an unregistered motor vehicle and three for defective brake lamps. Two

Cont. Page 8, Col. 1

Members To Help Celebrate Opening

This Sunday, November 21, the Five Area Telephone Cooperative will have an open house at their new facility which is located directly behind the Bailey County Civic Center and Coliseum. The open house will be in celebration of the final completion of the new buildings and a "home of their own" after 26 years.

Many employees, Directors and other members of the Five Area Telephone Cooperative group will be on hand to welcome members and other visitors during the hours between 2 and 6 p.m. with refreshments and door prizes being featured throughout the afternoon. "We are proud of our new facilities and of our new home, and we hope that Five Area Telephone Cooperative members will come and help us celebrate this opening," said Hubert Kidd, manager of the Coop.

Five Area Telephone Cooperative, Incorporated has come a long way since it's

beginning in the 1950's. Many hours have been spent, many miles traveled and much hard work done by area citizens with the help of representatives of the Rural Electrification Administration in Washington. After all of this hard work, telephone service was finally brought to rural areas in different parts of Bailey, Parmer, Lamb, Castro and Cochran counties. The six exchanges now include Lenham, Maple, Needmore, Lariat, Bula and Lazbuddie with the headquarters of the operation being located in Muleshoe.

Since the early years, the story of the Five Area has been one of a steady growth and development pattern, constantly upgrading service and developing office and warehouse facilities. Trained and experienced personnel has helped to make the Cooperative one of the best in the Southwest, according to experts.

The first manager was D.B. Lancaster, who was instrumental in founding the Five Area Telephone. Lancaster worked diligently with the area people and the REA personnel to establish the Coop. He served also as Manager of the Bailey County Electric during this time, resigning in 1967 to accept a position in another area.

For the following ten years, J.W. Coppedge served as manager (1967-77) for both the Bailey County and the Five Area until his death. He was instrumental and active in completing some of the long

Cont. Page 8, Col. 1

Alliance Plans Thanksgiving Worship

The annual Ministerial Alliance Thanksgiving service will be held on November 21, Sunday in the First Assembly of God church in Muleshoe beginning at 7 p.m.

The theme for this year is "I Will Praise Him." The invocation will be given by Lee Rich and the Scripture will be brought by Rev. J.E. Meeks with the prayer being offered by Roy Martinez.

The annual message that night will be presented by Rev. James Williams and all church congregations are invited to attend this community service.

A special choir rehearsal will be held at 6:15 on

Cont. Page 8, Col. 1

Commissioners Meet Friday

The Bailey County Commissioner's Court will meet in a special session in the Courthouse on Friday, November 19 beginning at 1 p.m. and lasting until 4 p.m.

The following items are on the agenda for this meeting: Bonds will be approved for the County Tax Assessor-Collector; and the County Treasurer's monthly report will be heard and approved.

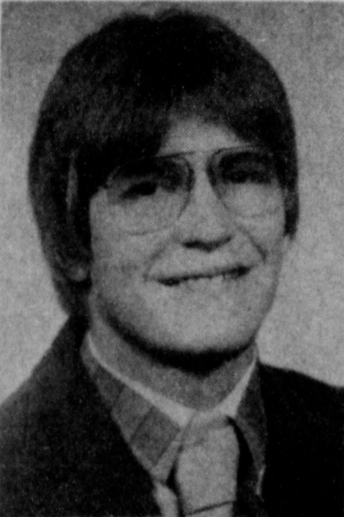
Other miscellaneous items will be considered and the public is invited to attend and to be heard, according to Bailey County Judge Glen Williams.

City Council Hears Phone Deregulation Explanations

"Deregulation of the telecommunications industry will bring about many and varied changes in the way that GTE is doing business," Janet Perkins, Public Affairs Manager for General Telephone Company told the Muleshoe City Council in their meeting Tuesday morning.

Mrs. Perkins explained the complexities of the deregulation and re-organization that GTE is undergoing. She also mentioned a number of different aspects that will affect consumers, noting that it will have an impact on every customer--lower for some services and higher prices for others. "Deregulation will put the communications business in a more competitive realm," Perkins stated.

According to Mrs. Perkins, the Federal Communications Commission believes that competitive markets are the most efficient, that deregulation and competition will encourage new services and open more options for customers. Congress, the Justice Department and the Reagan Administration, like others before it, are eager to deregulate the American telephone business.



GAYLAND INGRAM equipment will be excluded from regulation and so called enhanced services that involve data transmission and data based services. However, new equipment will be excluded from regulation and so called enhanced services that involve data transmission and data based

Cont. Page 8, Col. 2



STATE CHAMPS--The Cross Country team of Muleshoe High School captured the District 3A Championship Saturday in state competition at Georgetown. This is the first team championship ever won at Muleshoe High. From Front: (L to R) Tony Luna, Martin Mendoza, Allen Beasley, Chris Hopkins, Henry Carrion, Ronnie Logsdon, Tony Rojas and Aldo Almanza. Also Coach Robert Brandon.

Mable Black Services Held Here Tuesday

Services for Mable Black, 57, were held at 2 p.m. Tuesday, Nov. 16 in the Ellis Chapel of the Chimes with Clayton Hoffman, chaplain of the High Plains Baptist Hospital of Amarillo, officiating. Assisted by the Rev. E.K. Shepherd, associate pastor of the First Baptist Church of Brownfield.

Interment was in Bailey County Memorial Park under the direction of Ellis Funeral Home. Mrs. Black died at 10:30 a.m. Saturday in the High Plains Baptist Hospital of Amarillo.

A lifetime area resident, Mrs. Black was born April 22, 1925 in Sudan. She married Carroll Black August 16, 1943 in Sudan. She was a veterinarian assistant, housewife and a Baptist.

Survivors include her husband, Carroll; one son, Mark Black of Gilcrest, Colo.; two daughters, Mrs. Brenda Black of Yuma, Colo., and Mrs. Beverly Hays of Clay Center, Neb.; her mother, Mrs. Ruth Thomas of Amarillo; four sisters, Mrs. Hattie Boren of Amarillo, Mrs. Dauline Trulock of Conroe, Mrs. Dorothy Batchlor of Irving and Mrs. Donna Boone of Englewood, Colo.; two brothers, Frank B. Thomas, Jr. of Channing and Fred Thomas of Amarillo; and nine grandchildren.

The family requests memorials be made to the Oncology Department, eighth floor, High Plains Baptist Hospital, Amarillo, Texas.



MABEL BLACK

Stueve Infant Graveside Services Held

Graveside services for Angela Kay Stueve, infant daughter of Mr. and Mrs. Joe A. Stueve of Lubbock were held at 1:30 p.m. Monday, Nov. 15 in Resthaven Memorial Park with Tim Talley of the Broadway Church of Christ officiating.

Burial was under the direction of Rix Funeral Directors. The infant died at 2:10 a.m. Saturday in Methodist Hospital at Lubbock.

Survivors include her parents, Mr. and Mrs. Joe A. Stueve; grandparents, Mr. and Mrs. Roy O'Connor of Lazbuddie and Mrs. Bernadette Stueve of Kansas; and great grandparents, Mr. and Mrs. Claude Frey of Amarillo and J.T. O'Connor of Amarillo.

Defeatist philosophy: Doing work ahead of time means that you get more work to do.

Boy, these Maytags are really built!

MAYTAG

Your Authorized Sales & Service Dealer

HARVEY BASS

122 S. 1st
272-3030

COMPARE OUR SPECIALS!

PRICES EFFECTIVE NOVEMBER 18-20, 1982
WHILE SUPPLIES LAST - LIMITED SUPPLY!

SHURFINE ORANGE JUICE 12 oz. **69¢**
A GREAT BUY!
ALL BRANDS OF CIGARETTES CTN. **\$7.19**

ALL GRINDS
FOLGER'S COFFEE
\$1.99
1 LB. CAN

MORTON POT PIES
FRESH POPPED BAG POPCORN **19¢**
MUSTARD, TOMATO SAUCE, SOY BEAN OIL SARDINES 3 3/4 oz. **99¢**

BORDEN'S BUTTERMILK 1/2 GAL. CTN. **99¢**
COOLER CUPS **10¢**
JELL-O 3 oz. **3 / 99¢**

SHURFINE WHOLE KERNEL / CREAM STYLE
GOLDEN CORN
3 99¢
17 OZ. CANS

WASHINGTON DELICIOUS APPLES 5 FOR **\$1**
ALPO DOG FOOD 2 3 oz. **89¢**
SHURFRESH SLICED AMERICAN CHEESE 12 OZ. PKG. **\$1.19**
SHURFINE KRINKLE CUT POTATOES 32 OZ. BAG **79¢**
BORDEN'S ASSORTED POPSICLES EACH **10¢**
SHURFRESH QUARTERS MARGARINE 16 OZ. PKG. **25¢**
SHURFRESH BM / CS BISCUITS 4 OZ. CAN **5¢**

BORDEN'S ASSTD. PREMIUM ICE CREAM **\$1.59**
1/2 GAL. RD. CTN.

QUARTERS PARKAY MARGARINE **2 69¢**
1 LB. PKGS.

SHURFINE FRESH SHELLS BLACKEYES 4 15 OZ. CANS **99¢**
SHURFINE EARLY HARVEST PEAS SWEET 3 17 OZ. CANS **99¢**
SHURFINE WHOLE SWEET POTATOES 2 16 OZ. CANS **99¢**
SHURFINE STRAWBERRY PRESERVES 18 OZ. JAR **99¢**
SHURFINE GRAPE JELLY 18 OZ. JAR **69¢**
SHURFINE CRUNCHY / SMOOTH PEANUT BUTTER 18 OZ. JAR **89¢**
SHURFINE WAFFLE SYRUP 32 OZ. BTL. **69¢**

ALLSUP'S FRESH MILK **\$1.99**
GAL.

DELICIOUS BORDEN'S EGG NOG **99¢**
QT.

RAINBO WHEAT BREAD 1 1/2 lb. LOAF **2 / \$1**

DECKER'S RANCH STYLE BONELESS HALF HAMS 2 TO 4 LB. AVERAGE **\$1.99**
SHURFRESH SLICED BACON 1 LB. PKG. **\$1.49**
SHURFRESH PORK SAUSAGE 1 LB. ROLL **79¢**

DUNCAN HINES YELLOW, WHITE & CHOCOLATE CAKE MIXES **69¢**
SHURFRESH FRANKS 12 OZ. PKG. **79¢**
SHURFRESH HALFMOON LONGHORN CHEESE COLBY / CHEDDAR 10 OZ. PKG. **99¢**

REFRESHING PEPSI-DIET MOUNTAIN DEW PEPSI **89¢**
2 LITER BTL.

SHURFINE WATER, OIL PAK CHUNK TUNA 8 1/2 OZ. CAN **59¢**
SHURFINE TOMATO SAUCE 8 OZ. CAN **5 / \$1**
SHURFINE CATSUP 32 OZ. BTL. **89¢**
SHURFINE MAC. & CHEESE DINNERS 5 7 1/2 OZ. BOXES **\$1**
SHURFINE CRUSHED / SLICED PINEAPPLE 15 1/2 OZ. CANS **99¢**
SHURFINE CUT GREEN BEANS 4 16 OZ. CANS **\$1**
SHURFINE FANCY TOMATO JUICE 46 OZ. CAN **69¢**

GRADE "A" SELF-BASTING 10 TO 18 LB. AVG. SHURFRESH TURKEYS **79¢**
LB. YOUNG TURKEY

CANNED SHURFRESH HAMS **\$6.39**
3 LB. CAN

TRIAL SIZE, BAYER ASPIRIN 16 COUNT **39¢**
SHURFINE PURE VEGETABLE SHORTENING 40 OZ. CAN **\$1.19**
SHURFINE ALL GRINDS COFFEE 16 OZ. CAN **\$1.69**
SHURFINE TOILET TISSUE ROLLS **\$1.19**
SHURFINE SALTINE CRACKERS 16 OZ. BOX **49¢**
SHURFINE LITE YELLOW PEACHES CLING 2 16 OZ. CANS **99¢**
SHURFINE LITE BARTLETT PEARS HALVES 2 16 OZ. CANS **99¢**

SHURFINE STRAINED CRANBERRY SAUCE **2 89¢**
16 OZ. CAN

SHURFINE DEEP DISH PIE SHELLS **69¢**
12 CT. PKGS.

DETERGENT GIANT TIDE **\$1.79**
BOX

PRESTONE ANTI-FREEZE GAL. **\$3.29**
SHURFINE LIQUID BLEACH GAL. **59¢**
SHURFINE LITE FRUIT COCKTAIL 2 16 OZ. CANS **99¢**

SHURFINE DRY MAKES GRAVY DOG FOOD 25 LB. BAG **\$3.99**
SHURFINE TALL KITCHEN BAGS 15 CT. BOX **79¢**
SHURFINE ALUMINUM FOIL 12 X 25' ROLL **39¢**

ALLSUP'S UP TO \$299.99 MONEY ORDERS **19¢**
EACH

COOKED FOOD SPECIAL OF THE WEEK FROM OUR DELI

ALLSUP'S FRESH HAM SANDWICHES 99¢ EACH	ALLSUP'S FRESH CHILI DOGS 39¢	ALLSUP'S FRESH B-B-Q SANDWICH 99¢ EACH
---	--------------------------------------	---

FRESH START **\$4.49** MORTONS POT PIES **2 / 89¢**
SHURFRESH MEDIUM EGGS **59¢** MORTON'S ASSORTED T.V. DINNERS **69¢**

ALLSUP'S
CONVENIENCE STORES

OPEN 24 HOURS EVERYDAY!



"SPIRIT OF AMERICA"—This musical group from Wayland Baptist College will perform at the Richland Hills Baptist Church on Sunday, November 21 beginning at 6:30 p.m. The group is composed of talented musicians from all across the company and will appear here on night only. For further information contact Peggy Sanders at 272-3229.

Texas Farm Bureau Sets 49th Annual Convention

Texas Farm Bureau, the state's largest farm organization, will hold its 49th annual meeting in Dallas Nov. 28-Dec. 1, at which time some 1,400 voting delegates will decide policies for 1983.

Theme of the convention will be "United to Solve Problems."

The voting delegates from 216 organized counties will adopt state policies for the coming year. Approved resolutions on national issues will be forwarded to the 64th annual meeting of the American Farm Bureau Federation which meets Jan. 9-13, also in Dallas.

Dean Kieckner, president of the Iowa Farm Bureau Federation, will be the keynote speaker. He will address the organization during the Nov. 29 general session in the Dallas Hilton ballroom.

TFB President Carrol Chaloupka will deliver his annual address at the same

session. TFB Secretary-Treasurer Wayne Cranfill will precede with his annual report.

TFB Executive Director Warren Newberry will begin the business session on Nov. 30 with his annual administrative report and convention business will conclude on Dec. 1 with the election of new members of the board of directors and the TFB president.

Seven special conferences set for 1 to 3 p.m. will include livestock, transportation, field crops, natural resources, taxes and labor.

Youth activities will include selection of a TFB queen from 13 contestants; a talent find winner from 13 finalists, and a free enterprise speech contest winner from 25 contestants.

The speech and talent contests will be held beginning at 7 p.m. on Nov. 28. The queen contest will be held at 7 p.m. on Nov. 29. The Outstanding Young Farmer and Rancher of the year will be announced during the queen contest.

The speech winner receives a \$2,000 scholarship; the next five finalists a \$1,500 scholarship and the last four finalists, a \$1,000 scholarship.

The talent winner receives a \$1,500 scholarship, the runnerup a \$1,000 scholarship. The queen will receive a \$1,500 scholarship; the runnerup a \$1,000 scholarship.

The queen, her runner-up, and talent winner and runnerup will all receive trips to the AFBF Youth Leadership Conference in April 1983 in Missouri.

The top four speech finalists will receive trips to Washington D.C. and Williamsburg, VA.

The Outstanding Young Farmer/Rancher will receive free use of a 1983 Chevrolet Silverado for one year, contributed by friendly Chevrolet of Dallas, and free trip to the AFBF convention and the AFBF Young Farmers and Ranchers Leadership Conference Feb. 11-13 in Las Vegas.

During the convention,

the TFB Meritorious Service Award, and recognition for public relations, safety and membership acquisition will be announced.

October Drilling Report

Railroad Commission Chairman Jim Nugent announced that Texas operators reported 89 gas and 57 oil discoveries in October 1982.

On year ago, 103 gas and 48 oil discoveries were filed with the state's energy regulatory agency.

Gas discoveries in the tenth month of the year included 22 in the Refugio area, 20 in deep South Texas, 16 in Southeast Texas, 11 in West Central Texas, six in East Central Texas, five in the Panhandle, three in the San Antonio area, and two each in East Texas, North Texas, and the San Angelo area.

Oil discoveries included 15 in North Texas, 10 each in Southeast Texas and the Midland area, nine in the San Angelo area, four each in East Central Texas and the Refugio area, three in West Central Texas, and one each in the Lubbock area and deep South Texas.

Through the first ten months of this year, there have been 1,210 gas and 544 oil discoveries throughout the state. For the same period last year, there were 1,060 gas and 505 oil discoveries.

In October, operators reported 412 exploratory and field tests wound up as dry holes. New applications for permits to drill oil and gas tests totaled 2,598 in October compared with 3,146 in the same period of 1981.

Applications to drill, deepen, plug back and for service wells in October amounted to 2,910 against 3,442 a year earlier.

Operators filed 722 amended applications to drill. A year earlier they submitted 869 amended requests.

The reason some people have so few friends is that they think a friend should give them something for nothing.

Agency Offers Help To Disabled Worker

During the fiscal year ending September 30, 1981, a total of 44 disabled persons in Bailey County were provided services by the Texas Rehabilitation Commission.

John Snyder is the TRC counselor serving Bailey County. He may be contacted at 3428 Avenue H, Lubbock, Texas, 79404 or telephone (806) 747-1625 for additional information and to refer disabled persons who may be in need of assistance. Snyder is also in Muleshoe weekly or bi-weekly and will contact all referred persons individually.

The Texas Rehabilitation Commission is the state's principal authority on matters relating to the vocational rehabilitation of the handicapped. It is one of the largest agencies in the state government but one of the youngest (it became independent from the Texas Education Agency in 1969.)

The commission's main mission is to assist vocationally handicapped people to enter or return to the work force to become productive, taxpaying citizens.

The disabled population of Texas, some 1.6 million strong, is a diverse group of people with sometimes complex needs. To meet the varied needs of this group, Texas Rehabilitation Commission offers a variety of services.

Most people, whether they realize it or not, are disabled in some way. Some have relatively minor disabilities, such as nearsightedness or a speech impediment. Others have more severe disabilities, such as paralysis, an amputated limb or deafness.

People with relatively minor disabilities, such as

nearsightedness, can generally find a simple solution to overcome the disability, such as eyeglasses. Some people have disabilities that interfere with their lives to a greater extent. For instance, some disabled people find it difficult to maintain employment because of their disabilities. They are the people the Vocational Rehabilitation Division serves.

A person must meet two requirements to be eligible for Vocational Rehabilitation Division services: (1) he must have a physical or mental disability which results in a substantial handicap to employment, and (2) there must be a reasonable expectation that rehabilitation services will result in gainful employment.

Not all disabled people are candidates for vocational rehabilitation services. A lawyer who becomes a paraplegic can probably continue in a legal practice. The lawyer is disabled, but not vocationally handicapped. A professional ski instructor who becomes a paraplegic probably cannot continue in that profession. He is disabled and vocationally handicapped.

Not all cases are as cut and dried as these examples. That's why eligibility for vocational rehabilitation services is determined on an individual basis.

The Texas Rehabilitation Commission counselor is responsible for making the determination. The counselor works to assess the client's needs, develop a vocational rehabilitation plan

and follow up on the client's success. It might be that the client's only need is something as simple as a wheelchair or other assistive device to help him or her overcome the disability and enter the work force. In other cases, a client may require more assistance such as medical treatment, surgery or therapy to lessen the disability.

A client may need training to prepare for a job. These and other services are available to all clients. All of the services are aimed at one goal—to get the disabled person into the work force.

Without employers who are willing to hire disabled workers, all of the training and preparation might be wasted. Fortunately, many

Texas employers do hire disabled workers. Most employers find that disabled employees are as good or better than other workers.

Vocational rehabilitation benefits the taxpayer too. Before receiving vocational rehabilitation services, many disabled people must rely on public assistance to meet their financial needs. Once a disabled person enters the work force he becomes a taxpayer, instead of a tax-user.

National studies indicate that for every dollar spent on vocational rehabilitation, nine dollars are returned to the economy in taxes. Vocational rehabilitation is not a handout program. It is one of the few government programs actually returning money to the public coffers

through its successfully rehabilitated clients.

Never agree with a speaker or a writer; agree with his facts and his reasoning.

Few people decline an invitation to a good meal, regardless of how busy they may be.

The misery of miseries is to seek a place in the social whirl out of relation to one's income.

About half of the ills that afflict the human body originate in a pampered, idle mind.

No two people think exactly alike and it takes some married couples a lifetime to find that out.

Artist Award Offered By UT

The University of Texas Centennial Sculpture Competition is offering a \$500 cash award to the artist whose work is chosen to commemorate the UT Centennial in 1983.

The contest is open to all ex-students, current students and faculty members of The University of Texas at Austin.

The sculpture will be in sterling silver, which will be provided by the UT Ex-Students' Association. It may be cast or constructed and will be a minimum of two feet high and 18 inches in diameter if the work is in the round. The sculpture may be bas-relief or in the round.

Renderings of the work in either slide or photograph form are acceptable, and three examples of previous work are also required.

All entries must be received by the Ex-Students' Association by February 1. Interested artists may write or call the Association in Austin at P.O. Box 7278, 78712 (512) 476-6271, for more information.

The Association is also still accepting donations of sterling silver for the projects, as well as cash donations.

GTE To Host Demonstration

G.T.E. Business Sales representatives will be hosting a product demonstration of business telephone systems from 9:00 a.m. till 4:30 p.m. in Levelland November 19 at the First National Bank Community Room, Number 1 First Place.

According to Joe Zinser, Sales Supervisor for GTE "whether you're starting a business or enlarging your present business, the systems to be displayed are the latest in technology and offer the most sought after features by the business telephone user. We hope to educate all local consumers on the type of systems available and the new communication aids to better serve their business."

General Telephone entered the electric telephone market in the 1970's. The new products and enhancements are part of General Telephone's Marketing effort in this area. Sales personnel will be available to explain system application, pricing, and payment options.

Anyone interested in viewing the latest technology in business telephones is invited to attend. We will be happy to have you see our latest product line.

Vet Headstones Provided By VA

Families of veterans who select a burial site for a deceased veteran in a private cemetery have two options for Veterans Administration assistance in marking the grave.

VA will provide, upon request, a headstone or marker free of charge and ship it to the consignee designated on the application. Cost of placing the marker in a private cemetery must be borne by the applicant, however.

A second option is that VA will reimburse part of the cost of a headstone or marker bought privately and placed on the grave of a veteran. The current amount is \$67, the average cost of headstones purchased by VA.

Application for the VA headstone or marker should be addressed to Director, Monument Service (42), Department of Memorial Affairs, Veterans Administration, 810 Vermont Avenue, N.W., Washington, D.C. 20420.

Application for the \$67 reimbursement for a marker other than the VA standard should be filed at the VA Regional Office. Proper routing of the application will expedite service.

For further information, telephone the Waco VA Regional Office toll-free number listed in your telephone directory, or contact your county service officer.

Solid Brass Giftware

SET OF 2 CRANES
SET OF 2 SWANS
EAGLE BOOKENDS
UNICORN
COWBOY HAT

1/2 PRICE SALE!

EAGLE BOOKENDS REG. 39.95 \$19.95
UNICORN REG. 9.95 \$4.95
COWBOY HAT REG. 7.95 \$3.95
CRANES REG. 19.88 \$9.95
SWANS REG. 9.95 \$4.95

Fans & Fancies
FORMERLY THOMPSONS FURNITURE

1609 PRINCE 762-5704

MODEL CLOSE-OUT REBATES TO \$6500

On the last 40 Series John Deere Tractors we'll get—plus a bonus for financing with Deere

Your cash rebate comes directly to you from John Deere...in addition to the good deal we'll work out for you on the 40 Series tractor of your choice—2WD or 4WD. And you should also know that tractor carries a late-1981 sticker price, so we're offering rebates from prices that were already competitively low.

Boost your savings even more by paying cash for your new tractor or by financing it with John Deere (without waiver). See the chart for your additional cash rebate during November. You can elect to have John Deere finance charge waived to June 1, 1983 instead of taking the additional rebate.

This is it: the close-out on the top-selling line of 40 Series tractors...with features to give you years of top performance...and then command high trade-in value.

Special rebates, too, on 50 Series 4WD tractors that are replacing 40 Series 4WD's being closed out. Maximum

Model	Rebate on Purchase	In Lieu of Waiver	Maximum Rebate
228-hp 8640	\$4500	\$2000	\$6500
179-hp 8440	\$4000	\$1600	\$5600
180-hp 4840	\$3600	\$1400	\$5000
155-hp 4640	\$3400	\$1200	\$4600
130-hp 4440	\$2800	\$1000	\$3800
110-hp 4240	\$2300	\$900	\$3200
90-hp 4040	\$2200	\$800	\$3000
80-hp 2940	\$1800	\$500	\$2350
70-hp 2640	\$1300	\$450	\$1750
60-hp 2440	\$1200	\$400	\$1600
50-hp 2240	\$1100	\$350	\$1450
40-hp 2040	\$900	\$300	\$1200
370-hp 8850	\$8200	\$2700	\$10900
290-hp 8650	\$6400	\$2200	\$8600
255-hp 8450	\$5700	\$1800	\$7500

(Offer subject to tractor availability)

*John Deere finance plans subject to approved credit. These offers may be reduced in value or withdrawn at any time.

Dent-Rempe

1516 W. Amer. Blvd. 272-4296

AUCTION

RAIN, WIND, SNOW, OR SHINE

SUNDAY, NOVEMBER 21, 1982 - 2:00 P.M.

CLEAN-UP SALE

Ferguson Tractor and Equipment
Farmall 450 Tractor
Motorcycle
And Lots More

Furniture
Pickups
Vans
Cars
Lumber
Tools
TVs
Stereos

Consignment Welcome
LANNY KNOWLES

Knowles Auction Service
LICENSE TxE-021-0969
516 N. First 272-4993

True Value
HARDWARE STORES

TOOL VALUE OF THE MONTH

now **599**
While Supplies Last

Master **MECHANIC**®
15-Drawer Parts Cabinet
Easy organization for the hobbyist, seamstress, more! Steel cabinet, transparent drawers. MMC15
Quantities Limited

True Value
HARDWARE STORES

HARDWARE VALUE OF THE MONTH

SERVES

1699
While Supplies Last

Fan-Forced Radiant Heater
Features automatic thermostat, cool-touch metal case. Shuts off automatically if accidentally tipped. HR10
Quantities Limited

True Value
HARDWARE STORES

BARGAIN OF THE MONTH

WEST BEND

1299
While Supplies Last

Electronic Triple Timer™
Times 3 activities at once from 1 second to 10 hours in each channel. 2 "AA" batteries included. 400-110
Quantities Limited

FRY & COX, INC.

401 S.1st Muleshoe

4-H'ers Prepare For County Food Show

Lazbuddie 4-H Club Food Project group members have been busy getting ready for the Farmer County 4-H Foods Show to be held Saturday, November 20, at 3:00 p.m. in the Friona High School Cafeteria in Friona.

Maureen Jesko, junior leader, showed the group how to fill out information on the required project report forms at a meeting November 8 at 3:45 p.m. in the Lazbuddie School Cafeteria following the clubs regular meeting.

Adult leader Mrs. Ettie Jesko discussed the five food groups—breads and cereals, fruit and vegetables, meats, milk, and sweets and fats, and servings needed each day.

Attending this meeting were Trey Hinkson, Amy and Kevin McGehee, Pat and Lori McBroom, Kirk Jesko, Maureen and Frank Jesko, and Doug O'Connor. Mothers attending were Darla McBroom, Betty O'Connor, Liz Jesko, and Ertie Jesko.

A foods workshop was held Tuesday, November 9 at the home of adult leader Ettie Jesko with seven 4-H members participating.

Joyce McGehee, adult leader, demonstrated how to set the table for different occasions and table manners were discussed.

Use of standard measuring cups for dry ingredients and liquid measuring

spoons were demonstrated.

Each of the 4-H members showed the group how to measure different ingredients in a chocolate chip bar cookie recipe.

Each member took part in preparing a fruit salad. Paring and cutting knives and cutting board were used in cutting oranges, tangelos, grapes, bananas, and pineapple.

After the cookies were baked and fruit salad completed the young cooks were served refreshments.

Participating were Casey Bradshaw, Doug O'Connor, Kevin and Amy McGehee, Pat and Lori McBroom, and Trey Hinkson.

Elementary PTA Honors Grandparents

The Muleshoe Elementary PTA met Monday, November 15 in the cafeteria at Mary DeShazo to honor grandparents.

During a brief business meeting, the membership voted to purchase fabric to make new choir robe costumes for the second grade Christmas play. A report was given on the Halloween carnival, which grossed approximately \$3,000. Jean Richardson, president, announced that some carnival equipment is still out and should be returned immediately.

This week is American Education Week. Highlighting the week is open house Thursday, Nov. 18 at Dillman from 6:30 to 8:30 and at Mary DeShazo from 7 to 9 p.m.

Report cards will be sent home Wednesday, Nov. 17. School will dismiss early Wednesday, Nov. 24 for Thanksgiving break and will resume Monday, Nov. 29.

Christmas parties at the elementary schools will be Dec. 17. Christmas vacation will be Dec. 18 through Jan. 2. January 13 and 14 school will be closed for semester break.

Some Mini-Mule T-shirts are still available. Mrs. Richardson urged everyone to pay PTA dues. The price of dues is \$2.50 per person.

Joyce Scott introduced the program, which was a salute to grandparents through poetry. Many poems were read by the students.

Room count winners for the evening were Mrs. Grigsby's class from Dillman and Mrs. Chera Foster's room from De Shazo.

Muleshoe Singing Group

The Muleshoe Singing Group met in the fellowship hall of the Trinity Baptist Church at 6:30 p.m. Saturday, Nov. 13.

Cecil Rundell, president, opened the meeting and lead the first hymn. Invocation was given by Mrs. Mae Wilterding.

There were 16 present for singing followed by fellowship. The benediction was given by Mrs. Retta Ship.

Not all hunters are out for game.



NEW PLEDGES—Four new members were pledged into Epsilon Delta chapter of Epsilon Sigma Alpha Sorority in a candle light ceremony Tuesday, Nov. 9. (l-r) Robin Neptune, Ginger Caldwell, Lisa McElroy, president; Shirley Hicks, and Sue Holt.

Journal Files

40 Years Ago

1942
Mr. and Mrs. Gordon Murrah and Judy Ann visited in Levelland over the weekend.

Farm and ranch advertisement in the Journal included 80 acres, no improvements \$13 an acre; 320 acres in Bailey County \$13.50 per acre; 80 acres \$60 an acre with modern five room house; small house, 2 lots in Muleshoe \$250; 354 acres \$25 an acre; 1,000 acres, 2 irrigation wells 2 sets improvements \$30,000.

30 Years Ago

1952
Paul J. McMahan is home on leave from the U.S. Navy.

A shiny, bright object high up in the southwestern sky late Friday had the undivided attention of everybody for a couple of hours. In Muleshoe the streets were lined with people watching the strange light.

There appeared to be little doubt that it was a weather balloon, and one theory is that it had gotten

into an air pocket and so remained almost stationary for some time.

20 Years Ago

1962
Enrollment in Muleshoe's five schools, for the second straight week, broke all existing records by climbing to 1,978 for the current

Jana St. Clair Hosts XI Omicron XI

Xi Omicron Xi met Tuesday, November 9 in the home of Jana St. Clair with Anita Allgood serving as co-hostess. A regular business meeting was held and it was announced that the sorority Christmas party will be Friday, December 3 in the home of Anita Allgood.

Following the business meeting a program was presented by Linda Marr on the evaluation processes of children kindergarten through 11th grade.

Refreshments of apple spice twists, hot chocolate, spice tea and coffee were served to Lindy Schuster, Vicki Black, Anita Allgood, Gayla Toombs, Judy Wilbanks, Rene Anderson, Brenda Black, Pat Black, Joy Glover, Joan Lewis, Linda Marr, Jana St. Clair and Ricki Warren.

year. The previous week enrollment had climbed to 1,962 for a record figure.

New staff members have been announced for Texas Tech's yearbook, the Laventana. Heading the future section of the publication is Magann Lamb. She is a Tech sophomore.

10 Years Ago

1972
The Muleshoe Mighty "M" Band received a No. 1 rating at the U.I.L. Band contest in Lubbock Wednesday afternoon.

Mrs. Gerald Allison was among the 123 students initiated into Alpha Chi national honor society at West Texas State University.

Membership in Alpha Chi requires upperclass standing and a minimum of 2.15 average for juniors and 2.20 for seniors. Mrs. Allison is a senior elementary education major.

Hypertension, or high blood pressure, is a major health problem in the United States and is also a contributor to heart attacks and strokes. It has no clear signs or symptoms, and a person can have it and not know it, reminds

Dr. Mary Ann Shirer, health education specialist with the Texas Agricultural Extension Service, Texas A & M University System. It is important for all individuals to have their blood pressure checked regularly—and if it is high to follow the treatment prescribed by their doctors.

Epsilon Delta Pledges Four New Members

The Epsilon Delta Chapter of Epsilon Sigma Alpha Sorority met on November 9 in the home of Mrs. Elaine Burgess. Pat Young was the co-hostess.

Shortly after the members arrival, the meeting was adjourned to the home of Mrs. Sandy Turner, who presented the program.

Mrs. Turner displayed her collection of Madame Alexander dolls. She explained the history of the doll company and their value as collectables. Some of the dolls had been manufactured as a series, such as the President's wives or story book characters.

The club members returned to Mrs. Burgess' home for a buffet supper, cocktail sausages, cream cheese sandwiches, raw vegetables, and hot cheese sauce with chips, pumpkin nut bread, and pound cake were served.

During the business meeting Mrs. Lisa McElroy assumed the duties as the acting president. She appointed Mrs. Elaine Burgess as her vice-president.

Following the business meeting, four new members were pledged in a candle-lit ceremony. The new pledges were Ginger Caldwell, Shirley Hicks, Sue Holt, and Robin Neptune.

Members present at the meeting were Jan Crawford, Diana Harrison, Louvenia Garlington, Elaine Burgess, Debbie Kittrell, Lisa McElroy, Magann Rennels, Pat Young, and Sylvia Vourazeris.

West Plains Medical Center Report

ADMITTED
Nov. 11-Ladena Wright, George Turner, F.B. Gaede
Nov. 12-Vincente Montes
Nov. 13-Andrea Sena, Rebecca Feagley
Nov. 14-Connie Harland, Marcus Lopez, Corrine Hurtado
Nov. 15-Cathy Riley
DISMISSED
Nov. 11-Ollie Sebring, Juan Marquez
Nov. 12-Vance Wagon, Juan Cumpion, Anita Guest, Ethel Sanderson, Elizabeth King, Rebecca Garcia and baby boy
Nov. 13-B.J. Dominguez, Winona Spencer, John Burch, F.B. Gaede
Nov. 14-Jackson Robinson



NEW PRESIDENT—Mrs. Lisa McElroy (on right) assumed the duties of president of Epsilon Delta chapter of Epsilon Sigma Alpha Sorority, at their recent meeting. She appointed Mrs. Elaine Burgess (on left) as her vice president.

Jaycettes Sponsoring Art Sale

The works of local artists, as well as artists throughout Texas and Oklahoma, will be featured at a Starving Artist Sale November 20 & 21. Sponsored by the Lubbock Jaycettes, the exposition will be held at the National Guard Armory, 2901 4th Street in Lubbock.

Leigh Sims, chairman for the sale, said "many kinds of art, such as jewelry, oil paintings, ceramics, macrame, and wire sculpture will be featured." The sale will be open Saturday, November 20 from 9:30 AM until 8:00 PM and Sunday, November 21 from 1:00 PM until 6:00 PM. Proceeds from the sale will go to charities.

In past years, proceeds from the sale went to the March of Dimes, Multiple Sclerosis Society, Family Services of Lubbock, Area Children's Shelter, Lubbock Jaycettes' Children's Shopping Tour and the Texas Jaycee Campus.

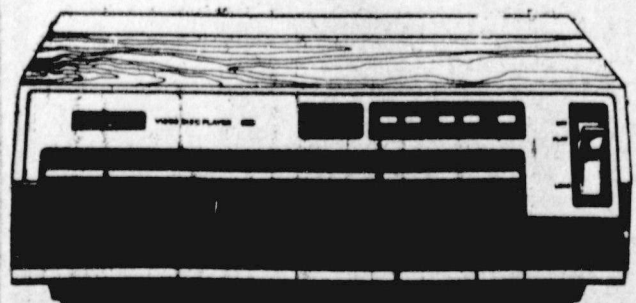
This will be the tenth annual sale the Jaycettes have sponsored.

We Love You,
B.D.W.T.B & J



You May Be Over The Hill But,
You're Not
Down In The Valley

Rent A Video Disc Player Overnight!



ZENITH VIDEO DISC PLAYER

We Now Have "On Golden Pond", Available. Disc Exchange Club Plan Available.

Wilson

117 MAIN Appliances 272-5531

Anthony's
C.R. ANTHONY CO.

WE ARE NOW OPEN

9 A.M. TO 9 P.M. DAILY

FOR YOUR SHOPPING CONVENIENCE



Hey Sleepy Head:
"We're Open Late,
So Come On In,
You'll Be Glad
You Did."

• Visa
• Master Charge
• Layaway

321 Main Street
Phone 272-3478



Let TOWN & COUNTRY do the cooking while MOM fixes the turkey.

COUNTRY-FRIED CHICKEN

1 WHOLE Chicken (8 Pieces)

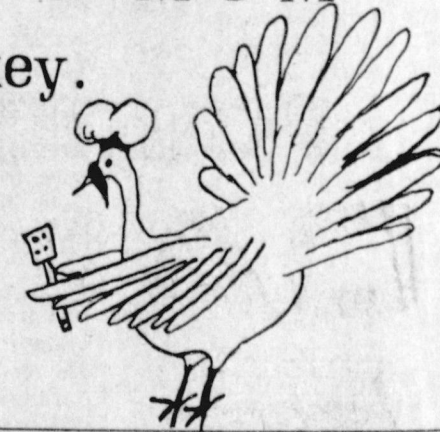
regularly \$4.89

Special 3.99



CORN DOGS

2 for \$1.00

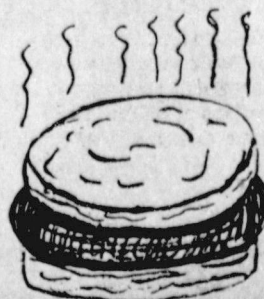


COUNTRY KITCHEN MADE- Breakfast Sausage

and Biscuit

reg. 69c

NOW 2 for 69c



SPECIAL prices effective 11/18 thru 11/24



1900 W. Amer. Blvd.



Lullabye Shower Honors

Mrs. Terry Graves

A Lullabye Shower honoring Mrs. Terry Graves was held Saturday in the home of Mrs. Pete Lance.

The table was covered with a white linen cloth with a white linen overlay caught up at the corners with green ribbon and yellow mini flowers. The table was centered with a fresh floral arrangement of yellow and white daisies with baby breath and surrounded by baby rattlers and toys.

Spiced tea and coffee were served from copper samovars and breads and a fruit plate were served in yellow and green crystal appointments.

The hostess gift was a car seat, which was on display along with the other gifts.

Mrs. Graves was presented a fresh daisy corsage and she was assisted in opening and recording of the gifts by Cheryl Phillips of Lubbock.

Hostesses for the event were Mrs. Clyde Flowers, Mrs. Norman Hymphreys, Mrs. Pete Phillips, Mrs. Leroy Fisher, Mrs. George Ritchie, Mrs. Audrey West,

Mrs. Kenneth Noles, Mrs. Billy Hanna, Mrs. J.C. Doty, Mrs. John Williams, Mrs. Noble Dudgeon, Mrs. Waymon Bellar, Mrs. Sara Woods, Mrs. Wayne Whiteaker, Mrs. Bobby Jack Markham, Mrs. Raymond Harper, Mrs. R.A. Lance and Mrs. Cheryl Phillips.

Special guests attending

Pep's Annual Celebration Scheduled

It's almost sausage, turkey and dressing time in the Pep Community. Pep's 37th Annual Thanksgiving Celebration to be held in the St. Phillip Neri Parish Hall; Thanksgiving Day, November 25, 1982.

Famous Pep Sausage, turkey, dressing and all the trimmings will be served continuously from 11 A.M. till 5 P.M. only. Adult plates will be \$5.00 and childrens under 12 \$3.00 per plate. Carry out plates will be 25 cents extra per plate.

County Store and Carnival attractions will be set up all day for family entertainment. An auction will be held at 4:30 P.M. in the Parish Hall.

The days activities will conclude with a dance featuring one of your favorite Western Bands, which will begin at 9 P.M.

For more information call 933-4355 or on Wed. only 793-1240. Or any member of the Publicity Committee; Mrs. Frank Simmacher; Mrs. J.W. Walker; Alvin Walker; and Mr & Mrs. Charles Burt.

were the honorees mother and sister, Mrs. Billy Chester and Mrs. Dale Masten, her grandmother, Mrs. Stella Chester of Littlefield, her great grandmother, Mrs. Annie Chester and aunts, Mrs. Viola Core and Mrs. Lela Chester all of Sudan and Mrs. Frances Gage of Brownfield.

SENIOR CITIZENS

A special concert for Senior Citizens featuring the Lubbock Symphony Orchestra, William A. Harrod founding conductor, will be performed on the afternoon of Sunday November 21st.

The concert will begin at 3:00 p.m. at the Lubbock Municipal Auditorium and will be free to all adults over 60 years of age.

This concert is made possible by a grant from Target Stores, an operating company of the Dayton Hudson Corporation.

The Lubbock Symphony will perform a wide range of music on this concert-music to turn back time, to bring yesterday to mind and bring today into focus...The concert will also feature a sing-a-long with some of your favorite tunes and melodies.

Don Voorhees, Lubbock Target Store Manager, has announced that door prizes will be awarded during the concert.

In addition, refreshments will be served immediately following the concert.



A watermelon is about 92 percent water.

Happy 39th



We Love You Mama

Wayne, Jay, Jackie & Jessie

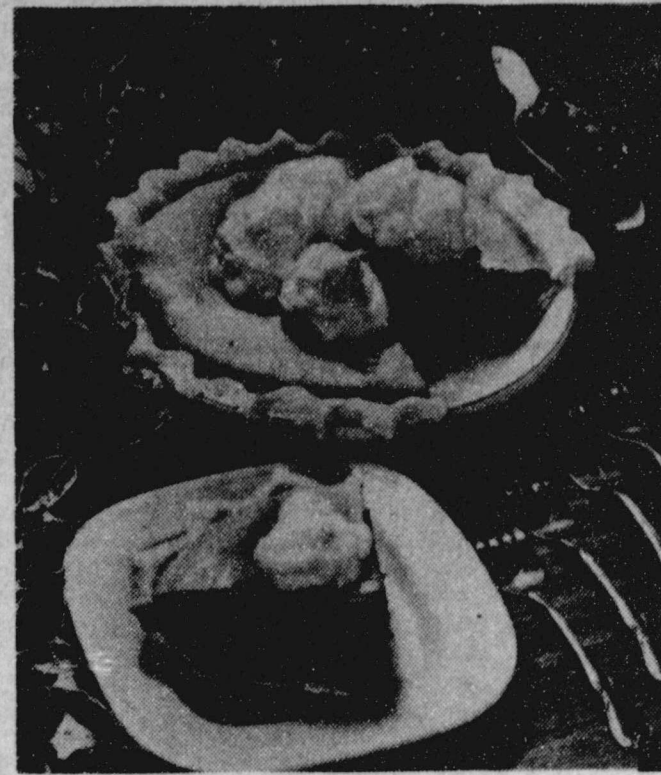
EASIER WAYS WITH MICROWAVES

The nip of autumn is in the air and families are making plans to celebrate the fruits of a bountiful harvest. According to home economists from Whirlpool Corporation, a microwave oven can be a terrific time saver during these busy fall days. They suggest that you try Glazed Turkey Roast for a new treatment to an old favorite... the sauce is a delicious change from gravy. Cranberries traditionally go with turkey, but here's a new way to serve them — in a luscious Cranberry Chiffon Pie. Light, delicate, and oh so good, this dessert will surprise and delight the entire family.

CRANBERRY CHIFFON PIE (shown)

- 1 envelope unflavored gelatin
- 1/2 cup cold water
- 2 cups fresh cranberries
- 2 egg whites
- 1 cup sugar
- 1 tablespoon lemon juice
- 1/4 teaspoon salt
- 1 9-inch baked pastry shell
- 1/2 cup whipping cream
- 1 tablespoon sugar

In bowl, soften gelatin in cold water. Add cranberries. Cook, covered, at HIGH for 5 minutes or till skins just pop, stirring twice. Stir well to dissolve gelatin; cool. In large mixer bowl, combine egg whites, the 1 cup sugar, the lemon juice, salt, and cranberry mixture. Beat till mixture holds firm peaks, about 8 to 10 minutes; pile into pastry shell. Chill 4 to 5 hours. Whip the cream and 1 tablespoon sugar; spoon in dollops atop pie.



To make an unusual turkey pie: Press mashed potatoes or mashed sweet potatoes into a pie plate to form a crust. Fill the pie with hot leftover creamed turkey and vegetables (see the white sauce recipe in your cookbook). Cook, covered, at MEDIUM HIGH (7) for 4 to 5 minutes or till hot.

GLAZED TURKEY ROAST

- 1 2 1/2- to 3-pound frozen boneless rolled turkey roast (without gravy)
- 1 cup plum preserves
- 1/2 cup French salad dressing
- 1 tablespoon cornstarch
- 2 tablespoons cold water

To thaw, remove metal closure from end of turkey package. Leave roast in plastic wrapping (or remove from foil pan). Place in 12 x 7 1/2 x 2-inch baking dish. Cook, covered with the plastic wrapping or waxed paper, at MEDIUM LOW (3) for 15 minutes. Turn turkey over and cook, covered, at MEDIUM LOW

(3) 15 minutes. Let stand 10 minutes to complete thawing. To cook, place thawed turkey, skin side up, on microwave roasting rack or inverted saucers in 12 x 7 1/2 x 2-inch baking dish. Cook, covered with waxed paper, at HIGH for 30 minutes giving dish a half turn once. In bowl, combine plum preserves and salad dressing. Spoon preserve mixture over turkey. Cook at HIGH for 5 minutes or till meat thermometer registers 180° F. Remove turkey to serving platter and let stand, covered with foil, for 10 minutes.

Meanwhile, in 4-cup glass measure, combine cornstarch and cold water. Stir in pan drippings. Cook at HIGH for 3 to 4 minutes or till thickened and bubbly, stirring 3 times. Slice turkey and arrange on platter. Spoon some sauce over turkey; pass remaining sauce. Makes 8 servings.



The phrase "the fourth estate," referring to journalists, was first used by Sir Edmund Burke during a speech made to the British Parliament, as he considered the various powers that be in the British government.

percent during this 10-year period, reports Judith L. Warren, family life education specialist-aging with the Texas Agricultural Extension Service, Texas A & M University System.

ROBERT D. GREEN, INC.
2400 West American Blvd.
MULESHOE, TEXAS 79407
CLDSMOBILE — BUICK — PONTIAC — GMC

TERRY YELL
Sales Representative

Business Phone 806 272-4588 Home Phone 806 272-4948

Society Guidelines

A processing charge of \$3 is made when a photo accompanies any wedding, engagement, or anniversary with the exception of anniversaries of 50 years or more.

Five dollars will be charged for any shower picture taken by the Journal and \$3 charged for any shower picture accompanying a story. Pictures may be picked up after the article appears in the paper.

Wedding, engagement, and anniversary stories must be in the Journal office by Monday noon for the Thursday paper, and by Thursday noon for the Sunday paper.

After that time, stories will be run on a space available basis. Any wedding more than two weeks old, when received, will be edited and only the basic information will be included.

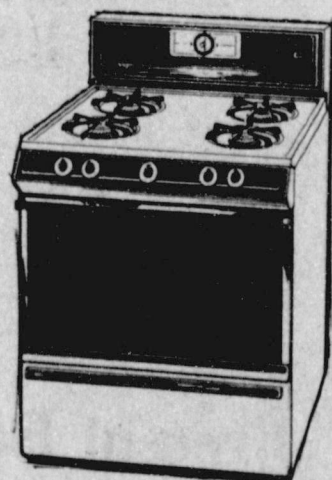
Shower pictures will not be taken without a 24 hour notice and copy must be in the office by 5 p.m., Monday for the Thursday paper and 5 p.m. Thursday, for the Sunday paper.

Old Range round-up time CALORIC®



Heritage Series

LIMITED WARRANTY TO CONSUMER
Good Housekeeping PROMISES
REPLACEMENT OR REFUND IF DEFECTIVE



CALORIC®
RLA112-20® Gas Range
• Separate Broiler • Large, Recessed Cooktop • Lift-up Cooktop • Up-Angle Control Panel • Safety Controls
• Lift-off Oven Door • Uni-Flo Heat Radiating Burner Grates • 2 Self-Stop Oven Racks

CALORIC® Heritage
RLB352-30® Gas Range
• Ultra-Gloss Up-Angle Control Panel
• Safety Controls • Clock • Oven Observer • Manual Oven Light • Black Glass Oven Door • Separate Broiler

299⁹⁵
With Trade

399⁹⁵
With Trade

HARVEY & BASS

122 South First

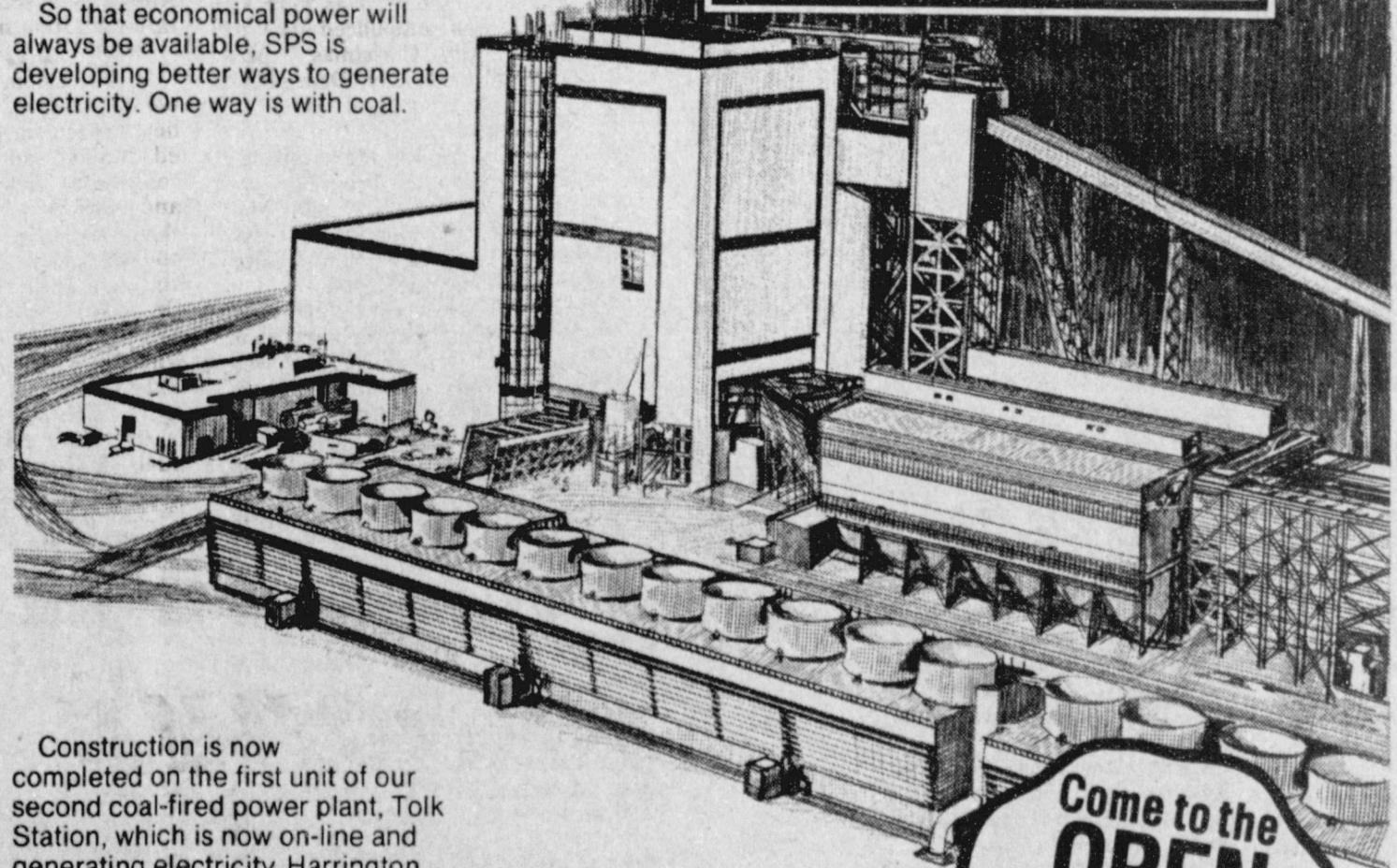
272-3030

How better energy decisions make the difference

You and Southwestern Public Service Company are partners, making energy decisions that make the difference.

How you manage electricity in your home helps us make our decisions about generating power to meet the electrical requirements of the Southwest. For when you install a High-Efficiency Add-On Heat Pump, you can manage the electricity used for your home's heating and cooling — which helps SPS determine how much power you, and the Southwest, will need.

So that economical power will always be available, SPS is developing better ways to generate electricity. One way is with coal.



Construction is now completed on the first unit of our second coal-fired power plant, Tolk Station, which is now on-line and generating electricity. Harrington Station, SPS's first coal-fired power plant, has been operating since the early 1970s.

As partners we have made energy decisions which have built Tolk Station. We're proud of the new power plant as you will be too. You're invited to the Open House of Tolk Station between Muleshoe and Earth, Texas. Just follow the map and join us Saturday 10 to 4 p.m., November 20, or Sunday 1 to 4 p.m., November 21. Come as you are, dress casually. There will be refreshments and guided tours for the whole family.

HOW TO GET TO TOLK STATION



Come to the OPEN HOUSE
Sat. November 20 10-4 p.m.
Sun. November 21 1-4 p.m.

You and SPS, partners managing electricity, make the difference.



SOUTHWESTERN PUBLIC SERVICE COMPANY

History

Five Area Telephone Cooperative, Inc. has come a long way since its inception in the 1950's. Following numerous meetings, many hours and miles of travel by area citizens with the representatives of the Rural Electrification Administration (REA), Washington, D. C., telephone service was brought to the rural areas in portions of Bailey, Parmer, Lamb, Castro and Cochran Counties. These five counties were to form the Five Area Telephone Cooperative. Service in Hockley County was added later. Our six exchanges are Lehman, Maple, Needmore, Bula, Lariat and Lazbuddie. Our headquarters building is in Muleshoe.

In 1949, President Truman saw the need for additional and improved telephone service in rural America. Rural telephones along with rural electricity and the construction of good roads and highways was very important to the economy of our country. President Truman signed a bill which provided loan funds at low interest to telephone cooperatives in order to establish themselves as the electric cooperatives did in the late 1930's. In some cases across our country, the electric cooperatives helped get the telephone cooperatives started by using the already established right-of-ways and pole lines as well as personnel. Later on, one by one, the joint telephone and electric operations began to separate. Their operations were placed under separate facilities, personnel, and Board of Directors. Five Area Telephone Cooperative followed this trend in January of 1980 when they separated their operations from Bailey County Electric Cooperative Assn. The Rural Electrification Administration (REA) in Washington recognized the growth in technology of the two completely separate operations and requested to the Board of Directors to separate the operations. Five Area Telephone was the last telephone cooperative to separate from the joint operations. There are two joint operations in the United States left, one in New Mexico and one in North Dakota.

In the beginning Five Area Telephone was served with eight (8) party service on open wire pole lines. Later on, electronic carriers were used to provide two (2) and four (2) party line service. Later on, the need for additional and improved service was recognized and construction began. These long range construction projects replaced the overhead lines with underground cables and established new Stomberg-Carlson switching offices. At this time, we have all one party service and underground lines.

Since the early years, the story of Five Area Telephone has been one of steady growth and development. The upgrading of service and the establishment of office and warehouse facilities along with experienced and trained personnel has labeled Five Area Telephone as one of the best telephone cooperatives in the Southwest.

The first manager of Five Area Telephone was D. B. Lancaster. Mr. Lancaster was instrumental in the founding of Five Area Telephone. He worked diligently with area people and REA personnel to establish our telephone cooperative. He was manager of Bailey County Electric Cooperative Association during this time, but also served as the telephone cooperative manager, beginning with the ground work in 1952 through its charter in 1956 and on until 1967 when he resigned to accept another position in another area.

Mr. J. W. Coppedge served as manager from 1967 through 1977 for both Bailey County Electric and Five Area Telephone until he passed away. Mr. Coppedge was very active in completing some of the long range plans for Five Area Telephone Cooperative. Much of the facilities we now use are due to Mr. Coppedge's foresight.

Mr. Connie Gupton assumed the duties as manager of Bailey County Electric and Five Area Telephone Cooperative in 1977 following Mr. Coppedge's death. Mr. Gupton also served as acting manager between Mr. Lancaster and Mr. Coppedge. He was very instrumental in the advancement of Five Area Telephone and helped lay the ground work for the separation of the two cooperatives. He also helped with the present connecting company contracts we now operate with.

On January 1, 1980 the two cooperatives separated its operations. Mr. J.T. Ross, previously Five Area Telephone's Plant Manager, was named as the cooperative's new manager. J. T. was very instrumental in the planning and completion of some of our outside plant facilities and central office equipment. Mr. Ross resigned in late 1980 to accept a position with General Telephone.

In November 1980, Hubert Kidd was hired to manage Five Area Telephone Cooperative, Inc. A native of Clarendon, Texas he worked for General Telephone 15 years and came to Five Area Telephone Cooperative from Navajo Communications Company in Window Rock, Arizona where he worked for 10 years. His last position with Navajo Communications was Assistant General Manager.

Five Area Telephone is 26 years old, but some 33 years of hard work by many directors as well as members has made us into a good cooperative. Our cooperative structure consists of 7 Board Members from 7 districts and 20 employees. Our Board Members are elected by the membership and can serve up to 4 consecutive 3 year terms. The present Directors are: Jack Angeley, President from District 3, Delbert Watson, Vice-President from District 4, Bob Byrd, Secretary-Treasurer from District 1, Richard Black from District 6, Bob Jones from District 2, Bob Foley from District 5 and Rex Griffiths from District 7.

Since 1949, when our cooperative was first being planned until now, we have been blessed with very good people as our Directors.

Our plan is to display the pictures of our Board Members, past and present, in our new office building. We have received some of these pictures, but not all of them. Those pictures that are not available will have their name on a plaque.

Our new building facilities are in part dedicated to our past and present Board Members and employees and their families.

Over the years there have been many good people employed by Five Area Telephone and Bailey County Electric. Since there was so many years that the two cooperatives were together, it is difficult to name the past employees, although they are remembered by many.

In outlining a few topics of our present operation, we have 6 Stromberg-Carlson dial exchanges with 1502 members and 2590 total telephones. Our Lazbuddie exchange is our largest with 570 members and 1078 total telephones, Maple has 208 members and 362 total telephones, Bula has 196 members and 298 total telephones, Lehman has 181 members and 301 total telephones, Lariat has 179 members and 282 total telephones and Needmore has 168 members

with 269 total telephones. We have 2 channels of mobile telephone service out of our Lazbuddie exchange with 60 members and 1 channel from Maple with 11 members. We have a very good mobile department with the latest in test equipment. Our total serving area covers an estimated 2500 square miles. We perform all of our billing and member records as well as other office functions with our System 34 IBM computer.

Some of our work is performed by consulting companies, such as large engineering and installation projects, tax accounting, legal, cost settlements with Bell telephone and tariff filing with the Public Utility Commission and Federal Communication Commission. Our office is equipped and staffed to handle all your telephone needs. We also have our phone store where anyone can purchase telephone equipment of your choice.

Five Area Telephone is connected through General Telephone for long distance services and they, in turn, connect us to Southwestern Bell in Lubbock for the completion of long range toll service. Operator service for Lazbuddie, Lariat, Needmore & Bula is located in Littlefield. Maple & Lehman use operator service in Levelland. Five Area Telephone has connecting service agreements with both General and Southwestern Bell Telephone.

Extended Area Service (EAS) is provided to our members in different locations in order for them to call a separate exchange and a trade center without long distance rates. For example, Bula can call Maple and Littlefield, Lariat can call Lazbuddie and Muleshoe, Lazbuddie can call Earth, Lariat and Muleshoe, Lehman can call Maple & Morton, Maple can call Bula, Lehman, Morton & Needmore and Needmore can call Maple and Muleshoe. We provide local private line service through underground cable facilities to all our members for a flat fee regardless of where you live in our operating territory.

Our business office is located in Muleshoe, however, our cooperative does not serve the city of Muleshoe. We operate only in the surrounding rural areas and communities. We are proud to be a part of the business district of Muleshoe. Most of our employees are long time natives of this area and all are taxpayers. Five Area Telephone supports a payroll of approximately \$350,000.00 a year. All supplies, material and equipment is purchased on a local basis and near by communities when possible. Five Area Telephone is in full support of community, school and church activities where our member's families are involved.

Five Area Telephone is represented throughout the industry as a member of the following: The National Telephone Cooperative Association, Texas Telephone Association, Texas State Wide Telephone Cooperative Association, New Mexico and Arizona Telephone Association, National Safety Council and through its employees involvement in community activities.

'Future Goals'

The future of tele-communications in our country is changing drastically. Five Area Telephone has to stay in step with the industry. Our main goal, regardless of what changes may occur, is to continue to try our best to provide our members with the best telephone service possible. We recognize that we still have problems in some areas of service, we are continually trying to correct these problems. We want to urge all our members to work with us in solving these problems by feeling free to come in and talk to us. We want to provide good service.

Some of our future plans are to upgrade our plant department by providing test equipment in order to be able to test lines by remote prior to dispatching repair people. This will save us dollars in transportation and labor.

We are in the process of upgrading our mobile telephone system by replacing and adding to our Lazbuddie terminal. Our Maple mobile system will also be re-engineered and updated.

Cellular radio tele-communications is a new era of telephony. We are already participating in a study group to test the feasibility of this new technology for our areas.

Long distance calling facilities are on the drawing board at the present time. We are working with General Telephone and Southwestern Bell on an almost daily basis trying to redesign and update these services. Our Needmore exchange will change over to a new facility into Muleshoe in 1983 providing new EAS and toll facilities. Our Lazbuddie exchange will follow with new EAS and toll facilities to Muleshoe and on to Littlefield. Lariat is being studied for a new carrier system for toll. Maple & Lehman will have new EAS and toll facilities into Morton and on to Levelland by mid 1984. Our Bula exchange will have additional circuits added into Littlefield in 1983.

Our construction and maintenance program is on a daily schedule maintaining and building lines. This is an ongoing program to keep our lines in good working condition.

A new electrical carrier system is in the process of being built to better serve our members in the Bledsoe area. This is out of our Lehman exchange.

We have a long range plan to change out our manual switch in the Lazbuddie exchange to a digital electrical switch. This will be done within the next five years if our growth pattern continues and if the study proves it necessary.

Additional services are planned for our exchanges, such as call forwarding and call waiting features.

We are continually striving to grow in our operation. We must do this in order to survive. We have had meetings with neighboring telephone companies concerning the sell of some of their serving areas to Five Area Telephone. This is being done in other parts of the country by other companies and cooperatives and it is working out very well.

As these changes come into reality we see no increase in manpower or rates. If additional operating territory is accrued, we would have to add some employees. Also our mobile telephone rates will possibly increase when we get the new systems installed. Our computer system could need additions also.

Our future is what our members need and want. We hope that all of you will take a positive interest in your cooperative and participate in our annual meetings and reading our monthly newsletter.

Five Area Telephone 1956 'It's Yours'



Five Area Telephone Cooperative Inc. General Office



Warehouse Building

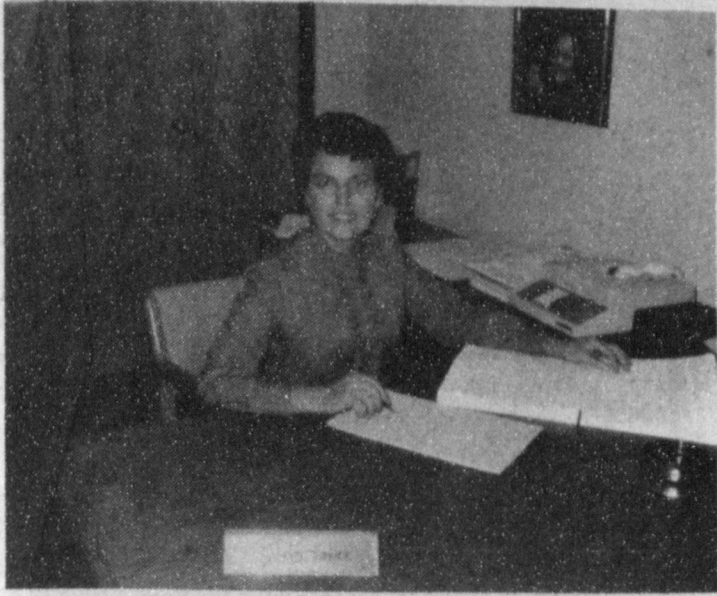
Directors

President	11-28-49 - 2-21-64
Vice-President	11-28-49 - 1-18-58
	11-28-49 - 12-6-54
	11-28-49 - 11-18-57 & 5-27-57 - 1-18-58
	11-28-49 - 1-18-58
Sec.-Treas.	11-28-49 - 2-3-60
	11-28-49 - 12-6-54
	1-25-55 - 12-18-57
	1-25-55 - 12-18-57
	1-18-57 - 11-19-62 & Vice-President 1-18-58 - 11-19-62
	1-18-57 - 1-18-58
	1-18-57 - 5-27-57
	1-18-57 - 1-18-58
	1-18-58 - 2-21-64
	1-18-58 - 2-19-65 & President 2-1-64 - 2-19-65
	1-18-58 - 2-18-61 & Secretary 2-3-60 - 2-18-61
	1-18-58 - 2-27-59
	2-27-59 - 2-15-63 & Secretary 2-18-61- 2-15-63
	2-3-60 - 2-21-64 & Vice-President 11-19-62 - 2-21-64
	2-18-61 - 2-3-67 & Secretary 2-15-63- 2-3-67
	11-19-62- 2-21-64
	2-15-63 - 2-19-65
	2-21-64 - 2-9-68 & Secretary 2-3-67 - 2-9-68
	2-21-64 - 2-21-70 & Vice-President 2-9-68 - 2-21-70
	2-21-64 - 2-9-68 & Vice-President 2-21-64 - 2-19-65 & President 2-19-65 - 2-9-68
	2-21-64 - 2-21-70 & Vice-President 2-19-65 - 2-9-68 & President 2-9-68 - 2-21-70
	2-19-65 - 2-19-72 & Vice-President 2-21-70 - 2-27-71 & President 2-21-71 - 2-19-72
	2-19-65 - 11-15-65
	11-15-65- 2-3-67
	2-3-67 - 2-19-72 & Secretary 2-19-68 - 2-27-71 & Vice-President 2-27-71 - 2-19-72
	2-3-67 - 2-19-72 & Secretary 2-27-71 - 2-19-72
	2-9-68 - 2-23-74 & President 2-21-70 - 2-21-71, 2-19-72-2-23-74
	2-9-68 - 2-23-74
	2-21-70 - 2-17-73 & Secretary 2-19-72 - 2-17-73
	2-21-70 - 2-22-76 & Vice-President 2-19-72 - 2-17-73 & Vice-President 2-23-74 - 2-28-76
	2-19-72 - 2-28-81 & Vice-President 2-17-73 - 2-23-74 & President 2-23-74 - 2-28-81
	2-19-72 - 2-15-75
	2-19-72 - 2-28-81 & Secretary 2-17-73 - 2-28-81
	2-17-73 - 2-22-76 & 2-28-76 - 3-20-78
	2-23-74 - 2-23-76
	3-20-78 - 2-24-79

Present Employees

Dusty Bailey	Combination Person	9 1/2 years
Manuel Balderas	Line Construction Person	3 1/2 years
R.G. Bennett III	Central Office Person	16 years
Judy Bruns	Bookkeeping Clerk	2 1/2 years
Alton Carpenter	Plant Superintendent	9 years
Raymond Davenport	Installer Repair Person	3 months
Violet Dean	General Billing Clerk	28 years
Arnold Gross	Installer Repair Person	21 years
Kevin Harris	D.E. Student	3 months
Wayland Harris	Warehouse Person	26 years
Kelvin Johnson	Line Construction Person	3 1/2 years
Nina Landers	General Accounting Clerk	4 1/2 years
Barbara Mills	Plant & Engineering Clerk	3 months
Margie Silguero	Commercial Clerk & Cashier	3 years
Rod Springfield	Installer Repair Person & Technician	2 1/2 years
Mary Stegemoller	Secretarial Clerk & Recpt	2 1/2 years
Kathryn Taylor	Office Manager	2 1/2 years
Mark Washington	Installer Repair Person	2 1/2 years
Hugh Young	Staff Assistant	7 1/2 years
Hubert Kidd	Manager	2 years

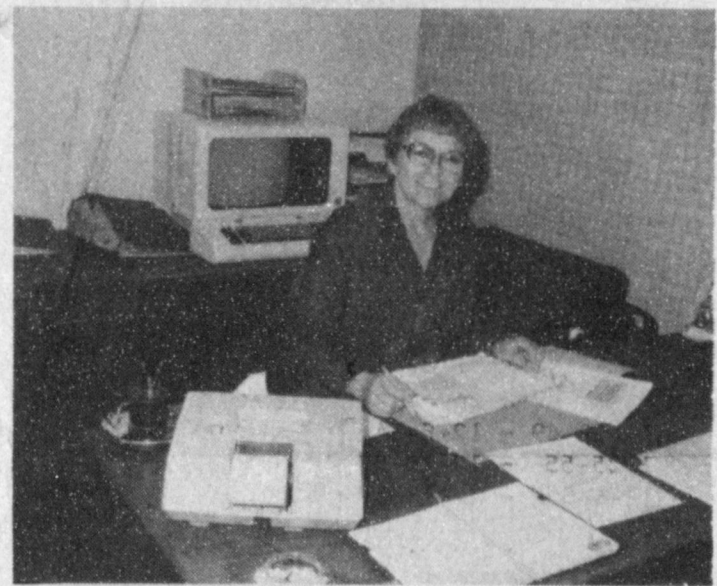
The Cooperative, Inc. Business' 1982



Kathryn Taylor Office Manager



Violet Dean Billing Clerk



Nina Landers Accounting Clerk



**Margie Silguero Cashier
Mary Stegemoeller Secretary**



Judy Bruns Bookkeeping Clerk



**Barbara Mills
Plant & Engineering Clerk**

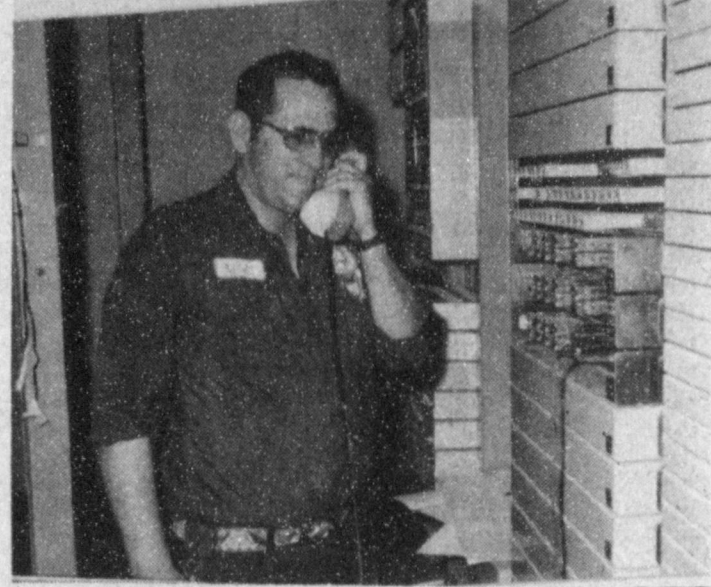
5

A
R
E
A

T
E
L
E
P
H
O
N
E



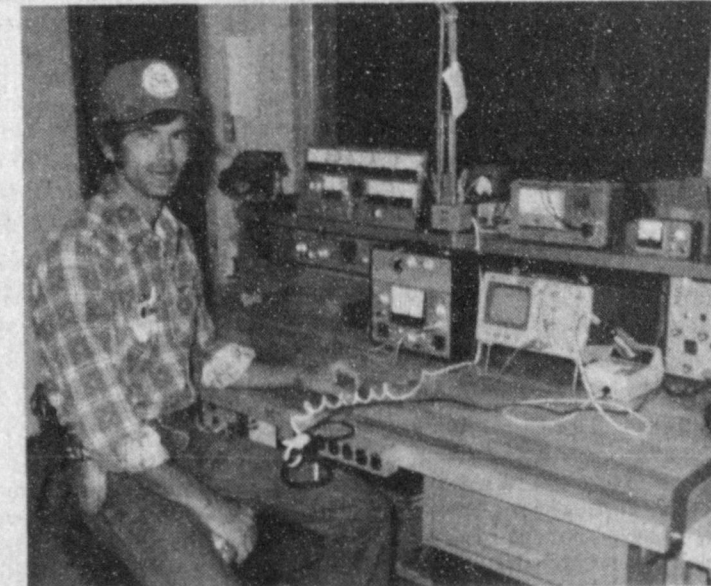
Hubert Kidd Manager



R.G. Bennett III Central Office Person



Dusty Bailey Combination Person



**Raymond Davenport
Installer Repair Person**



Wayland Harris Warehouse Person



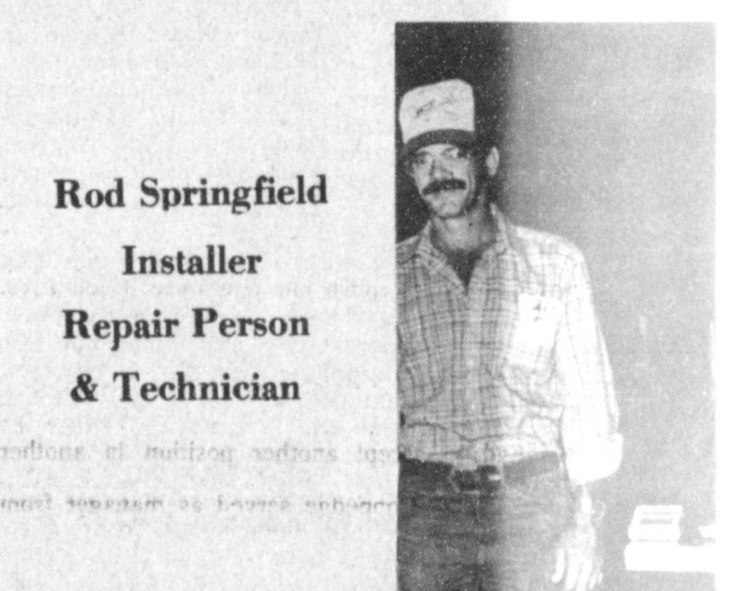
**Manuel Balderas Kelvin Johnson
Construction Linemen**



Alton Carpenter Plant Superintendent



Hugh Young Staff Assistant



**Rod Springfield
Installer
Repair Person
& Technician**



**Arnold Gross
Installer Repair Person**



**Mark Washington
Installer Repair Person**



Kevin Harris D.E. Student

C
O
O
P

E
M
P
L
O
Y
E
E
S

Five Area Opening

Cont. From Page 1

range plans that Five Area needed, and many of the present facilities now used are due to Mr. Coppedge's foresight.

Connie Gupton assumed the duties as manager of the two entities in 1977 following the death of J.W. Coppedge and served as acting manager between Lancaster and Coppedge. Gupton was instrumental in the advancement of Five Area Telephone and helped lay the ground work for the division of the two cooperatives.

On January 1, 1980 the two cooperatives separated their operations and J.T. Ross, previous Five Area plant manager was named as manager of the newly formed separate cooperative. He resigned in late 1980 to accept a position with GTE.

Upon Mr. Ross's resignation, in November, 1980, Hubert Kidd, a native of Clarendon, Texas and a former GTE & Navajo Communications Company in Arizona employee was hired to manage the Five Area Telephone Cooperative. He had previously worked for the Navajo Communications Company in Window Rock, Arizona for ten years serving as assistant general manager.

He is the present manager of the Five Area.

While Five Area is 26 years old, some 33 years of hard work by many directors, members and employees has made it the cooperative it is today. The cooperative structure consists of seven board members from seven districts and 20 employees. Board members are elected by the membership. "Since 1949, when the Coop was first being planned until now, we have been fortunate to have good directors. The list of men and women who have helped to build our operation is endless," Kidd commented.

The new building facilities are, in part, dedicated to past and present board members, employees and their families. "Our grand opening will celebrate the years gone before, and the expectations of the years to come," the manager said.

Communications are changing on a daily basis and Five Area will stay in step with the industry, trying to provide it's members with the best phone service possible and trying to solve what problems we have by communicating with our members, Kidd said of the Cooperative.

Rotary Hears '82 Basketball Outlook

The Muleshoe Rotary Club met at noon Tuesday for their regular weekly meeting. Guests present included Jay Messinger, Carlos Cabot, Allen White and John Gunter.

It was noted by Rotarians that Britt Birdwell had been accepted as an exchange student to Australia.

Dr. Tom Bonds was in charge of the program and had as guest speaker, Coach Jim Pope, Muleshoe High School Varsity Basketball coach.

Pope explained the various program levels and pointed out for the first time in some time, the basketball team has had time to prepare for a season due to the length of football schedules. Pope also explained that a lot of all-around athletes played basketball as well as football, and pointed out that there is more interest now in high school athletics due to the new playoff system. In this system, it is possible for a runner-up in a District play-off to win a State Championship.

The Varsity cagers will have four seniors returning to play for the Mules, as well as some other players with a lot of potential according to Coach Pope. A more detailed rundown of the team and outline will be in Sunday's Bailey County Journal.

PARADE...

Cont. From Page 1 Santa greet area youngsters as he arrives in the parade, but he will also be available to listen to their requests and to determine whether or not they have been good during the year. The schedule for Santa will be announced later.

The parade will line up at the Boy Scout Camp Grounds at the South end of Main Street on Saturday, December 4, at 1:00 p.m. The parade itself will begin at 2:00 p.m., and will travel North on Main Street, then on Avenue B over to First Street, and then South past the Muleshoe Nursing Home, before returning to the Boy Scout Camp Grounds.

City Council

Cont. From Page 1

services. As far as how this really affects the customers, the big change is in lease and purchase agreements for telephones and multiline systems along with other gear in a customer's home or business. After January 1, 1983 existing customers may continue to lease their phones from the telephone company with most of the traditional services. In addition, Mrs. Perkin said, "They will have the option

of purchasing phones, either from GTE or other suppliers. There will be no new terminal equipment offered for lease at the old regulated tariff rates." Also on hand to explain some of the various changes that deregulation will bring about was local service office manager, Bruce Chapman and Gayland Ingram, who has recently been appointed to the position of Central Office Supervisor. Ingram was formerly a switching technician in Brownfield, holding various technical positions since joining the communication utility in 1977.

In other city business, council passed an ordinance to amend the city code of 1974 by adding schedule II (c) to Article XIV, Section 19-70, which concerns the school zone near the old Gibson's building on American Boulevard. City Manager Dave Marr explained that when the median was removed from

that street, the school zone signs were also removed and had not been replaced. The Texas Highway Department has now replaced the signs, which indicate a 25 mile per hour zone in the same place as the old one was.

Council also passed an ordinance which amended Section 3 of Ordinance Number 227A, concerning ad valorem taxes. Marr explained that this was a technical change only, since the taxes were set and governed by State Law. The change has to do with the dates of penalties and interest on unpaid taxes.

-Grit.

JIMMY D. HILL, D.D.S.

ANNOUNCES THE OPENING OF HIS OFFICE FOR THE PRACTICE OF GENERAL DENTISTRY SOUTH PLAINS HOSPITAL DENTAL CLINIC 1400 MAIN AMHERST, TEXAS

ADULTS AND CHILDREN VISA/MASTERCARD Office Hours by Appointment

Telephone 246-3536



A WATCHFUL EYE--Carlos Saldiver, a control room operator surveys the control 'BTG' board, which is manned 24 hours daily. Every operation in the huge power plant is operated under the eye of the control board and trouble can be spotted as soon as it occurs by a glance at the board.

Police news

City Police have been active over the past week's time, with small thefts and various traffic violations.

On November 9 police arrested Fernando Romero regarding the investigation of burglary of a habitation. He was jailed and the Border Patrol notified. Also on the 9th, Danny Shipman reported the theft of a tool box from his pickup truck which was parked at the Junior High School.

A three auto collision occurred on November 10, involving Theodor Steinbock, Robert Keith Madole and Maria Hernandez Torres. The Steinbock vehicle was attempting a turn, when the Madole vehicle collided with it. There were some minor injuries.

Gilbert Lopez was arrested by City Police officers on November 13 and charged with public intoxication. Lopez was stopped after he was observed eastbound on American Boulevard, crossing the center several times and erratic driving. Upon stopping the vehicle officers discovered liquor in the aut. Lopez was arrested and placed in the county jail. The property was placed in the property room of the police station.

On November 12 a juvenile reported the theft of checks and \$56 in cash from the Pizza Hut. She indicated that the articles had been taken by someone while she was in the restrooms.

Delbert Wayne Wood was arrested on November 4 and charged with Driving while License suspended. City Officers had stopped Wood because a red paper buyer's tag on his vehicle was unreadable. A drivers license check revealed that the suspect was currently under safety responsibility suspension. He was taken to the Bailey County Jail and booked pending bonding.

Gilbert Castorena of H & W Hay Company reported the theft of some tires from a parked vehicle on November 15. The vehicle had been blocked up and Castorena was in the process of dismantling it to sell for parts. No estimate of the value of the articles taken was available.

On November 11, Pizza Hut employees reported damage to some lights caused by them being pulled off the wall by a suspect who was in the establishment. Charges of reckless damage and disorderly conduct are in the process of being filed, however, the suspect was not in custody at the time of this report. Three witnesses saw the incident.

Also on November 11, city officers arrested Richard N. Hager on a charge of driving while intoxicated. Hager was traveling on West American Boulevard at a high rate of speed. After he was stopped, he was given a sobriety test and then booked into county jail, pending bond.

Razorbacks Set For Big Contest In Conference

Although some of the glitter has gone out of the game, the Razorbacks meet the Mustangs in what is not only the biggest contest of the year in the South-west Conference, but has to be one of the finest match-ups of the season in college football.

The S.M.U. offense has been the most potent offense in the conference, but the Mustangs will be meeting an Arkansas defense that is the stingiest among all major college football teams. The Hogs gave up just 65 points in their first eight games, and 24 of them were given up in their loss to Baylor. The Mustangs may have to rely on their "tipped-pass" offense that broke open their contest with Texas. S.M.U. will be at home, but it's still a "Pick-em" ball game. And our pick-em: Southern Methodist.

The Harmon system's average for nine weeks through Saturday, October 30th: 1,129 right, 383 wrong for a picking percentage of .747. There were thirty ties. In Columbus, Ohio State hosts Michigan in what has come to be known as "Big Ten Decision Day" - usually for both title and Rose Bowl. Iowa upset the format last year. For the first time in fourteen years, a team other than Ohio State and Michigan represented the Big Ten in the Rose Bowl. Both Buckeyes and Wolverines come into this game with more blemishes

Debt Mountain
Of course there are bigger things than money. For example, bills. -Tribune, Des Moines.

Modern Trend
The feeling that you've done a job well is rewarding; the feeling that you've done it perfectly is fatal.

CASABLANCA
The World's Most Beautiful Fans

LIMITED EDITION OFFER!

AT NEVER BE' ORE PRICES

Zephyr III

Prices Good While Quantities Last! \$249.00 2 OR MORE \$229.00

ONLY AUTHORIZED SERVICE CENTER FOR CASABLANCA IN THE AREA WE WON'T BE UNDERSOLD

Fans & Fancies
1609 PRINCE 762-5704

National Farm-City Week November 19-25

Farm City Week, Nov. 19-25, focuses on the involvement of farm and city people as partners in growing, processing, marketing and consuming food and fiber.

"In Texas, movement of food and fiber from field to factory to the family table provides jobs and income for about a fourth of the working force," points out Dr. Carl Anderson, marketing economist with the Texas Agricultural Extension Service, Texas A & M University System.

"One out of every 30 Texans is a farmer or rancher, and 30 percent of the state's retail trade business is directly associated with agricultural production and selling of food and fiber products," says Anderson.

Many businesses, financial institutions and individuals are involved in providing supplies, credit and services to farmers and ranchers and in processing and marketing agricultural commodities.

Texas ranks in third place in total cash receipts among the leading agricultural states, behind California and Iowa. Texas, however, is number one in

the sales of cattle and calves, cotton, grain sorghum, sheep and wool, goats and mohair, cabbage and spinach.

Total farm assets in Texas are estimated at \$80 billion. With 186,000 farms in Texas, assets average \$430,000 per farm. Many commercial size, full-time operators, have in excess of a million dollars invested in their farm or

ranch businesses. "Producing an abundance of high quality food and fiber is inherent to American agriculture. Americans spend far less of their take-home pay on food than people in other countries of the world," Anderson points out. "Today that amounts to about 17 cents of every dollar of disposable income. "Together, farm and city people make the best food and fiber team in the world," he believes.

WAIT!

We'll Have Beautiful Trees For Christmas

BAKER FARM SUPPLY

1532 W. American 272-4613

Bell's Rain Control

1000 East Tatum Clovis

- AUTHORIZED LOCKWOOD DEALER
- NEW & USED SPRINKLER SYSTEMS
- PARTS IN STOCK
- WELDING OF ANY TYPE

CONTACT: 505-762-2104
AFTER 5: 505-985-2426

The Bob Harmon Forecast

Sat., Nov. 20—Major Colleges, Div. 1-A

Arizona	28	Oregon	7	Furman	23	The Citadel	10
Boston College	24	Holy Cross	8	Harvard	24	Yale	14
Bowling Green	28	Long Beach State	13	Jackson State	27	Alcorn	17
Brigham Young	20	Utah	10	James Madison	29	Towson	20
Central Michigan	27	Northern Illinois	14	Lafayette	24	Lehigh	17
Clemson	26	South Carolina	7	Middle Tennessee	28	Tennessee Tech	13
Florida State	27	L.S.U.	23	Morgan State	21	Howard	20
Florida	26	Tulane	13	Nevada-Reno	23	Idaho	21
Fresno State	28	Nevada-Las Vegas	14	Nicholls State	24	SE Louisiana	17
Fullerton	27	Pacific	21	NE Louisiana	28	NW Louisiana	17
Houston	23	Texas Tech	17	Ohio	21	Kent State	14
Indiana	24	Purdue	23	Pennsylvania	28	Cornell	20
Iowa State	24	Oklahoma State	20	Rhode Island	34	Springfield	0
Iowa	23	Michigan State	20	Richmond	23	William & Mary	17
Kansas State	28	Colorado	12	Southern Illinois	27	West Texas	24
Maryland	38	Virginia	7	Tennessee State	45	No. Carolina A & T	6
Memphis State	23	Louisville	21	Texas-Arlington	26	Lamar	21
Miami, Fla.	24	No. Carolina State	10	Texas Southern	31	Prairie View	6
Michigan	26	Ohio State	20	Weber State	21	Northern Arizona	17
Mississippi State	22	Mississippi	20	Western Carolina	27	Appalachian State	13
Missouri	23	Kansas	10	Western Kentucky	22	Murray State	20
New Mexico	25	Hawaii	20	Western Michigan	31	Eastern Michigan	7
North Carolina	28	Duke	10	Youngstown	24	Northern Iowa	19
Notre Dame	27	Air Force	13				
Oregon State	27	Montana	24	Other Games — East			
Pittsburgh	34	Rutgers	10	C. W. Post	27	Kutztown	16
San Diego State	21	Colorado State	14	Central Conn.	21	Lowell	20
San Jose State	20	Utah State	14				
Soth'n California	24	U.C.L.A.	17	Other Games — Midwest			
S.M.U.	24	Arkansas	21	Bishop	23	Cameron	21
So. Mississippi	26	Louisiana Tech	14	Hillsdale	24	Ashland	13
SW Louisiana	26	McNeese State	24	NE Missouri	35	Mankato State	0
Stanford	28	California	15	St. Norbert	25	Fordham	20
Temple	27	East Carolina	8				
Tennessee	26	Kentucky	12	Other Games — South & Southwest			
Texas A & M	21	T.C.U.	17	Ablene Christian	33	Howard Payne	7
Texas	24	Baylor	13	Alabama A & M	21	Ark.-Pine Bluff	7
Tulsa	29	North Texas	14	Angelo State	26	East Texas	24
Vanderbilt	27	Tenn.-Chattanooga	15	Central Arkansas	24	Harding	6
V.P.I.	42	V.M.I.	6	Central State, Oh.	35	Dist. of Columbia	10
Washington	24	Washington State	6	Fort Valley State	32	Albany State	6
West Virginia	21	Syracuse	7	Lenoir-Rhyne	21	Catawba	14
Wisconsin	21	Minnesota	10	North Alabama	24	Jacksonville State	23
Wyoming	23	Texas-El Paso	7	Ouachita	23	Henderson	17

Major Colleges—Division 1-AA

Akron	22	Austin Peay	10
Bali State	24	Illinois State	13
Bethune-Cookman	24	Central Florida	7
Boise State	24	Idaho State	21
Brown	27	Columbia	14
Cincinnati	21	Miami, Ohio	10
Colgate	22	Boston U.	21
Dartmouth	23	Princeton	20
Delaware	35	Bucknell	7
East Tennessee	20	Marshall	17
Eastern Kentucky	30	Morehead	14

Cal-Davis	42	Humboldt State	6
Cal Poly (S.L.O.)	38	Cal Poly (Pomona)	7
Chico State	27	San Fran. State	14
Eastern Wash'ton	28	Sacramento State	10
Portland State	22	Northridge	21
Santa Clara	23	St. Mary's	21
Southern Oregon	20	Sonoma State	10

Presented By:

Reynolds & Young, Inc.

1 Make Our Store
Your Favorite Place To Shop

SERV-ALL
THRIFTWAY

POST VS RIVER ROAD

2 For:

★ **INSURANCE**
★ **TIRES**
★ **BATTERIES**

Bailey County Farm Bureau
1612 W. Amer. 272-4567

ESTACADO VS ANDREWS

3 **ANY PRESCRIPTION ANYTIME!**

Western Drug
114 Main 272-3106

U.C.I.A. VS SOTH'N CALIFORNIA

4 For The Best
Insurance For Your Money -
See Your Independent Agent:

THE **BIG DIFFERENCE**
YOUR MONEY
TERRY FIELD Ins.
213 E. Ave. B 272-5551

TEXAS A&M VS T.C.U.

5 **PROFESSIONAL**
PIA INSURANCE AGENTS

Henry Insurance and Realty
"SERVING ALL YOUR INSURANCE NEEDS"

111 W. AVENUE B — MULESHOE, TEXAS — PHONE 806/272-4581

LITTLEFIELD VS FRENSHIP


BACK THE MULES FOOTBALL CONTEST

GRAND PRIZE \$100

1st \$6 2nd \$3 3rd \$2

CONTEST RULES:
1. Pick the winner of each of the games contained in the advertisements on this page. Write the name of the teams you think will win opposite the game number in the blanks provided on the official contest blank.
2. The contestant must be 12 years of age or older.
3. Only one entry per person may be made for any one contest.
4. Bring your entry blank by *The Journal* office by 5:30 p.m. Friday, or, if mailed, the entry must be post-marked not later than 5:30 p.m. Friday. Write "FOOTBALL CONTEST" on mailed entry, and mail to P. O. Box 449, Muleshoe, Tx. 79347.
5. Pick and write in the score of the tiebreaker game. This score will be used to break weekly as well as grand prize winners. Decision of *The Journal's* scoring judges will be final.
6. Check the team you think will win; 10 points for first place, 6 points for second place and 4 points for third place.
7. To count for grand prize, entries must be on official blank printed in the paper.

Congratulations To The Muleshoe Varsity Cross-Country Team



6 **B.T.S. Hair Care**

Main Street BEAUTY SALON
115 Main 272-3448

OREGON STATE VS MONTANA

7 **Need A Good Car For School?**
COME SEE US!

GM QUALITY SERVICE PARTS
GENERAL MOTORS PARTS DIVISION

Keep That Great GM Feeling With Genuine GM Parts.

THORNTON Chevrolet
201 Main 272-4521

TEXAS VS BAYLOR

8 HOME OF:
'THE GREEN MACHINE'

Robert D Green, Inc.
2400 W. American 272-4588

MEMPHIS STATE VS LOUISVILLE

9 *** SEED * FEED * SERVICE**

McCormick Seeds, Inc.
400 E. Ash 272-3156

TEXAS TECH VS. HOUSTON

10 'The Upper Crust of the Donut World'
Your Favorite Coffee & Sandwich Shop

SPUDNUT SHOP
328 Main 272-3542

MIAMI FLORIDA VS NORTH CAROLINA STATE

11 **'We Appreciate Your Business'**

Joe Shipman & Sons Body Shop
410 N. 1st 272-4408

UTAH VS BRIGHAM YOUNG

12 **First National Bank**
Your Home-Owned Bank

All The Bank You'll Ever Need

202 S. 1st 272-4515

OHIO STATE VS MICHIGAN

13 **Farmers Co-op Elevators**
"3 Locations To Serve You"

272-4335
ENOCHS MULESHOE
CLAY'S CORNER
INDIANA VS PURDUE

14 **'We're Ready To Serve You - Better!'**

See:
American Valley Irrigation & Reid Real Estate
West Highway 84 272-3142

L.S.U. VS FLORIDA STATE

15 **Featuring- The Latest In Fashions & Cosmetics**

Latrell's Fashions
1519 W. American 272-3459

MICHIGAN STATE VS IOWA

16 **JOIN SAM'S Sporting Goods**
In Supporting All Our Athletic Programs

226 Main St. 272-4414

TULANE VS FLORIDA

17 **Come See Us For All Your Farming Needs!**

Wooley International inc.
W. Hwy. 84 272-5514

MISSISSIPPI STATE VS MISSISSIPPI

18 **OPEN! After The Games At Home Or Away Dinner Bell**

2103 West American 272-3460

ANTON VS FOLLETT

19 Your Wedding. You Want It To Be Special. And We Do Too. Your Wedding wedding photographs are tangible moments of your special day. Trust them to a professional - Trust them to us. When you book your wedding with us, we'll give you a bridal portrait setting absolutely free.

We offer a complete line of wedding photography.
"Your Wedding Specialist"

Adrian Photography
214 West Street
MULESHOE, TEXAS 79347

HAWAII VS NEW MEXICO

20 **Money**
To Loan on Anything of Value
Bargains on Unredeemed Pledges

All Loans Strictly Confidential
"No Loan Too Large or Too Small"

Muleshoe Pawn
213 S. First 272-5105

IOWA STATE VS OKLAHOMA STATE

OFFICIAL ENTRY BLANK

NAME _____
ADDRESS _____ PHONE _____

1	11
2	12
3	13
4	14
5	15
6	16
7	17
8	18
9	19
10	20

TIEBREAKER
ARKANSAS VS S.M.U.

Don't Forget - The Annual 'Bowl Games' Contest Will Be Coming Up Next Month

Open House Scheduled Sunday

design and construction group manager, also oversee construction of the power plants they design, Springer said.

Touring the plant "will be quite an educational experience," Cavitt said. Visitors will see Tolk's coal-handling facilities, the coal pulverizers, the boiler, the turbine-generator, miles of steam piping, the plant maintenance shop, and the plant's state-of-the-art computerized control room.

Unit No. 1's boiler burns low-sulfur coal delivered from near Gillette, Wyoming, by 110-car trains. At maximum rating the boiler burns approximately 296 tons of coal per hour. That's 7,104 tons of coal each day.

The turbine at maximum output produces about 728,000 horsepower.

The main steam piping at the Unit contains high pressure steam with flow rates as high as 3,800,000 pounds of steam per hour.

Bert Ballengee, president and chief operating officer of Southwestern Public Service, said detailed planning and design for Tolk Station, which is named

after former SPS Board Chairman Roy Tolk, began in 1975.

General construction contractor for the plant was Missouri Valley Inc., of Amarillo; the electrical contract work was done by Budwine Service Electric of Carlsbad, N.M. Other companies were contracted to build the evaporative cooling towers and the rail spur to the plant, and to do fencing, paving and insulation work.

On-site construction of the plant involved hundreds of craftsmen and laborers over a period of more than four years. Sometimes, there were as many as 800 workers on site.

"Tolk Station to me is a marvel," said Pete Smith, an SPS engineer who helped manage the job of designing and building the plant. "Literally thousands of people were involved in putting it together and making it work."

Smith said SPS engineers, drafters, blueprint production people, secretarial help, and production department personnel, as well as employees of equipment and parts manufacturers and supp-

liers from across the United States, contributed to completing the plant.

"Take all those people," he said, "and then the workmen—the craftsmen who actually built that equipment—like the condensers, with the thousands of feet of tubes; the boiler fabrication, and all those parts; the turbine—a lot of machine work. I guess you're talking about hundreds of thousands of people whose hands touched some part of the plant at one time or another."

Only 150 people are required to operate the Tolk Unit 24 hours a day, Ballengee said.

Cost of the Unit was \$228.2 million, excluding Allowance for Funds Used During Construction of \$48.3 million. Cost per installed kilowatt of capacity was \$489.

"The unit came on-line on schedule and within budget," Ballengee said.

"We at SPS are especially proud that Tolk, like our coal-fired plants, Harrington Station near Amarillo, was completed for less than one-half the national average cost for coal-fired plants. Obviously, when

we can perform like that we're saving our customers a lot of money."

A second, identical unit at the Muleshoe site, Tolk Station Unit No. 2, is now under construction. It is scheduled to be in service in 1985. The second unit will share some of the Unit No. 1's largest equipment, the on-site coal-handling system, the water treatment facility, and the offices and control room.

Economy is the major benefit Tolk Station will afford SPS customers, Cavitt said, explaining, "The more we can use coal to fuel our power plants, the more money we can save our customers."

"Some people don't realize it," Ballengee said, "but electricity is a manufactured product that is made from some other energy source. Essentially, we start with one type of energy, for instance, the energy locked in coal or natural gas, and we use that power to heat water into steam. The steam, under pressure, is used as another kind of energy, mechanical energy, to turn a turbine generator. The generator creates a third energy form, electrical power.

"So, electricity is something that is made, or manufactured, from another energy source. And the cheaper that other energy form, the better for our electricity customer."

Historically, Southwestern Public Service used natural gas to fire the boilers which heat water into steam, Ballengee said. "But we saw in the early 1970's that the cost of natural gas would shoot up, and continue to get higher, so we began building coal-fired plants, because coal is cheaper to use."

SPS' average fuel cost in 1982 to make one kilowatt-hour of electricity generated by natural gas, Ballengee said, was 3.178 cents. The fuel cost of kilowatt-hour generated by coal, he said, "by contrast, was only 1.803 cents."

"So, one of the main ways we're helping our customers—or, as we express it in our Company's

theme, our partners—manage electricity," he concluded, "is by maximizing the use of our coal-fired plants."

The Company's theme is "You and SPS, partners managing electricity, make the difference."

Tolk Unit No. 1 in 1983 will raise SPS' generation by coal to 53.6 percent, Ballengee said.

The environmental control system at the Tolk Unit No. 1 is another money saver, he said. The fabric filter system, called a bag-house, sifts "fly ash" from the boiler flue gases on their way to the 400-foot-high stack. SPS sells the captured fly ash for use in oil well mud, concrete, road and parking lot fill, and as a soil conditioner.

The money made from the sale of the fly ash by-product is charged against the price SPS pays for coal. "That brings down the cost our customers pay for fuel," Ballengee said.

The coal-unloading system SPS uses at Tolk also saves customers' money, he said. Instead of bringing coal from Wyoming in heavy bottom-dump railroad cars, and emptying the coal from trestles into a stockpile, SPS has its Tolk coal shipped in lighter-weight "rotary dump" cars. The lighter-weight cars are rolled over on their sides in a "rotary dump house" at Tolk, and the coal is poured onto the stockpile. "That helps us keep down our customers' fuel costs," Ballengee said.

"because use of the lighter-weight cars means SPS is hauling in more coal per freight dollar."

Golden Gleams

Freedom is that faculty which enlarges the usefulness of all other faculties.

—Immanuel Kant.

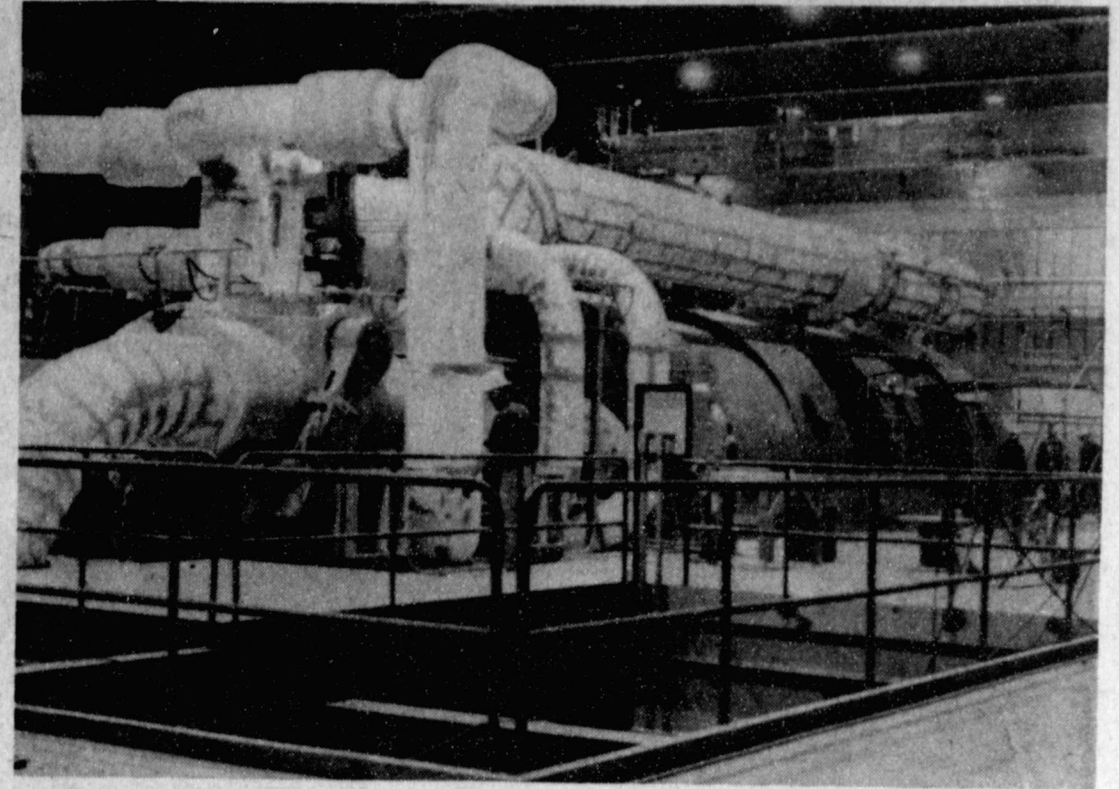
He is truly free who wishes only for that which he is able to accomplish, and does whatever pleases him.

—Rousseau.

It is not good to be too free. It is not good to have everything one wants.

None can love freedom heartily but good men; the rest love not freedom, but license.

Abundant Supply
Talk is cheap because the supply is greater than the demand.





TURBINE GENERATOR—Steam drives this enormous turbine-generator at Southwestern Public Service Company's coal-fired Tolk Station Unit No. 1. The generator stator alone (the unmoving part of the generator) weighs 636,000 pounds. The generator can produce 561,000 kilowatts—enough electric for 225,000 people. Above the still unpainted turbine is a movable hoist which can raise and lift out all the parts of the turbine generator for periodic maintenance. (SPS Photo)

In Fashion

Here are a few tricks with accessories that will spruce up blouses and, at the same time, enlarge one's wardrobe. Scarves of wool and silk dress-up sweaters and blouses. A contrasting silk bow can be added to a silk blouse. Use a gold stretch or colorful braided belt to add glamor to a simple dress.

For A Lovely Christmas

Plan On  A Tree

From  Baker Farm Supply

1532 W. American 272-4613



ONE DOWN AND ONE TO GO—The completed Roy Tolk Unit # 1 is seen to the right, with the structural steel on the number two unit seen in the foreground. The steel framed structure next to the finished building will house the second unit, scheduled for completion in 1985.

A&M    

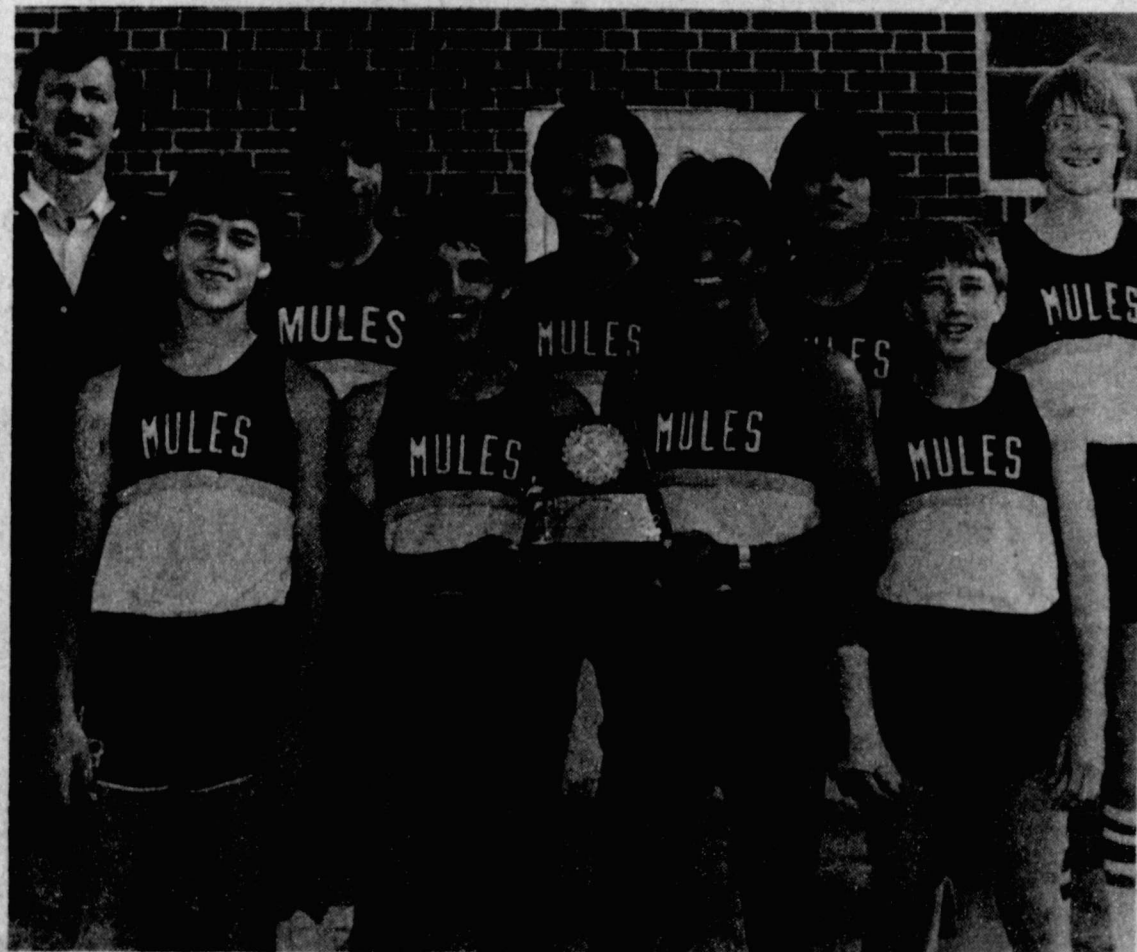
Five Point Dog Food
50 Lb. 875 25 Lb. 475 The dog food dogs really like.

Sportsman High Protein Dog Food
981 50 Lb.

Five Point Cat Food
318 10 Lb.

Big Congratulations

To The
Muleshoe Varsity Cross-Country Team
On Winning
The 1st State Team Championship
In The History of MHS



From Back L to R: Coach Robert Brandon, Tony Rojas, Aldo Almanza, Henry Carrion and Ronnie Logsdon. Front L to R: Allen Beasley, Tony Luna, Martin Mendoza and Chris Hopkins.

Sponsored By These Supporting Merchants

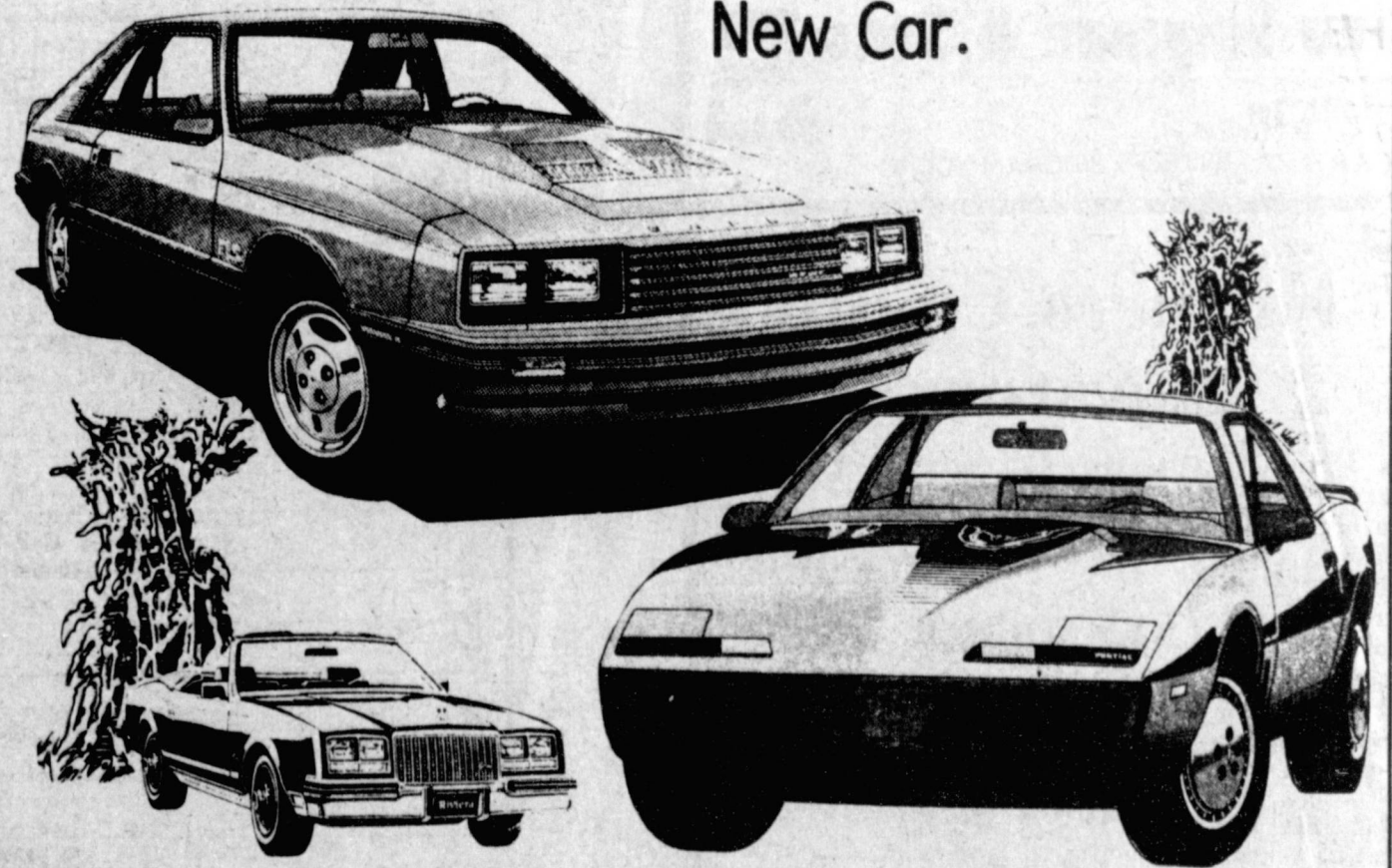
Lambert Cleaners

Wrinkle Welding

White's Cashways

Farmers Cooperative Elevator

In The Fall - Thoughts Turn
Toward The Purchase Of A
New Car.



See Our Local Dealers
For Your Car - - - Then
Check With Us For The
Best Financial Arrangement
For Your New Vehicle



First National Bank

Member FDIC

202 South First

272-4515

BUYING? SELLING? CHECK OUT THE...

CLASSIFIED ADS

WE RESERVE THE RIGHT TO CLASSIFY, REVISE OR REJECT ANY AD.
NOT RESPONSIBLE FOR ANY ERROR AFTER AD HAS RUN ONCE.

DEADLINE FOR CLASSIFIED ADS IS TUESDAYS AND FRIDAYS 11:00 A.M.

PERSONALS

Want to do babysitting in my home. Call 272-3222. 1-30t-tfc

WILL DO bookkeeping in my home. Call 272-5384. 1-46t-3tc

OWN YOUR OWN Jean-Sportswear, Infant-Preteen or Ladies Apparel Store. Offering all nationally known brands such as Jordache, Chic, Lee, Levi, Vanderbilt, Calvin Klein, Wrangler over 200 other brands. \$7,900 to \$16,500 includes beginning inventory, airfare for one to Fashion Center, training, fixtures, grand opening promotions. Call Mr. Loughling (612) 835-1304. 1-46t-1tpts

IDEAL CHRISTMAS GIFTS Parmer County History Books will be available at the Christmas in November Bazaar, at the Community Center, Friona, Nov. 19th and 20th. Later purchases available at Treider Electric Co., and Paula McBroom, Lazbuddie, Texas.

GIVE YOURSELF A CHRISTMAS BONUS. Sell Avon. Earn good money! Call 272-3208 or Phyllis Duff 794-3498, Lubbock, Tx. 3-44t-8tc

CAREER OPPORTUNITY. The largest financial services company in the U.S. is seeking an enthusiastic, ambitious college graduate to become an independent business person in Muleshoe. The position offers growth, responsibility, recognition and freedom. If interested, send confidential resume to P.O. Box 64308, Lubbock, Tx. 79464. 3-43T-TFC

WANTED: Men and Women 55 and older on limited incomes, desiring part-time employment in community service work. Contact: Texas Employment Commission, 121 E. Ave. C, Muleshoe, Texas 79347. 272-3260. Green Thumb, Inc. is an equal opportunity Employer. 3-46t-3tpts

PERSONALS

CARD OF THANKS
The Family of
REVEREND AND MRS. TRUETT G. CRAFT
Extend their deepest appreciation for the many expressions of love and sympathy expressed to us as we mourn the loss of our beloved parents, grandparents, and great grandparents.
46a-2tc

HELP WANTED

WANTED: Someone to scalp lawn. 272-5408. 3-46t-3tp

WANTED: full-time clerk typist. Must have typing speed of 60 wpm or more. Write Full-time % Muleshoe Publishing, Box 449, Muleshoe, Tx 79347. 3-46s-tfc

APARTMENTS

FOR RENT: 2 bedroom unfurnished apartment. Call 965-2188, days. After 5 call 272-4754. 5-46s-2tc

SARATOGA GARDENS
1300 N. Walnut-Friona
Phone 247-3666

NOW, 1 MONTH FREE RENT 1, 2 or 3 bedroom apartments, modern, wall to wall carpet, heating/cooling, kitchen equipped, laundry facilities, parking. Low rent for needy families. Call Collect.

2 BR APARTMENTS for rent. Located in Sudan. For more information, call collect at (806)-385-6309. We are an Equal Housing Opportunity. SP Regional Housing Authority. 4-43S-8TC

REAL ESTATE

FOR SALE: 25x46 government built, 3 bedroom home located 18 miles north west of Muleshoe, \$6,000. For further information, call A. J. Malouf, 744-5908, 1701 30th St., Lubbock, Tx.

FOR SALE: 22x26 furnished home with carpet to be installed. No reasonable offer turned down. Call 744-5908, A. J. Malouf, 1701 30th St. Lubbock, Tx. 8-46t-2tp

BUY EITHER house and get 2 room house free with cordated iron roof. 8-46t-2tp

LARGE 3 BR, 2 bath home \$67,500. Immediate possession, excellent terms. Excellent financing. Call your local realtor, owner broker. 806-794-5595. 8-31s-tfc

SMALLWOOD REAL ESTATE
232 main 272-4838
See us for
Buying or Selling
8-39S-TTFC

WANT TO SLIP INTO SOMETHING MORE COMFORTABLE

Stretch out in your very own Custom-Built
3 Bedroom Home
See if you qualify--
Little or Nothing Down
Low Monthly Payments

REID REAL ESTATE
272-3142
272-3565
Rex Harris, Broker

PERSONALS

USED CARS • TRUCKS

Cars \$100! Trucks \$75! Available at local government sales. Call (refundable) 1-714-569-0241 ext. 7964 for your directory on how to purchase. 24 hrs. 9-45t-6tp

FOR SALE: 1978 Plymouth Horizon, has 65,000 miles, good shape. Call 272-5197. 9-44t-tfc

FOR SALE OR TRADE

FOR SALE: 66 gal. High pressure propane tank for a pickup. 946-3654. 11-40T-TFC

FINANCE CO. Must sell 14 wide home. Assume payments of \$190.48. Call 373-9469. 11-43S-8TC

HONEY FOR SALE

Nick Landers
334 W. Ave. J.
272-3096
11-28S-TFC

FOR SALE: 1978 Honda 400cc automatic, motorcycle. Low mileage, good condition. Call 272-5604. 11-46t-tfc

FOR SALE: Pool table, good condition, regulation size. Call 272-3180. 11-46s-6tc

FOR SALE: Fiberglass top for Ranchero. 272-5168 after 5:00 p.m. 11-45t-tfc

FOR SALE: 2 cemetery lots in Muleshoe, Memorial Park. Call 799-3370. 11-46s-4tc

HOUSEHOLD GOODS

FOR SALE: Bedroom suite, in table and velvet foot bench. Call 272-3186. 12-46t-tfc

BURROWS UPHOLSTERY AND FURNITURE REPAIR
209 W. 2nd
phone 272-4255
12-44s-1tc

FOR SALE: 40 inch electric range. Avacado green, double oven. Real good shape. Call 946-3480. 12-45s-4tp

Classifieds

Get Results To Place Your Want Ads
Call 272-4536

REAL ESTATE

HOUSE FOR SALE: 3 BR brick home for sale or rent. Hyatt Addition, Earth, Texas. Assumable loan or owner will finance. 257-3721. 8-28t-tfc

FOR SALE by owner: 3-1/2-2. Large living room with Cathedral beam ceiling, fireplace, skylight, utility, covered brick patio. 272-4737. 8-44s-tfc

Bingham & Nieman Realty
116 E. Avenue C
272-5285
nights 965-2488
"We Appreciate Your Business!"
George & Dianne Nieman

PROPERTY FOR LEASE

LEASE - 260 Acres irrigated land. Located 6 miles West of Earth, Tx. If interested call (806)-797-9889. 13-41T-TFC

MISCELLANEOUS

FOR LEASE: Long Term Storage. New 60x100 flat grain storage building. A.S.C.S. approved. 3 miles North of Muleshoe on Friona Hwy. Call 272-4805, or 794-6419, or 272-4086. 15-44s-tfc

TO BUY: Used honey extractor. 272-4536. 42T-10TC

WANTED TO BUY: Used irrigation equipment. 3 in. and 4 in. x 30 ft. sprinkler pipe. Used pivots, 5 in. side rolls with 5 ft. wheels. Massey Irrigation, Lubbock. 806-793-4452 or 793-3121 Will pay cash. 15-41S-TFC

HUNTING LEASES: (Pheasants) at Farwell, Tx. 806-481-3805 or 825-2444. 15-46t-3tc

NEED BARN for combine. Call 925-6485, Matt Phelps. 15-46t-2tp

ESTATE GARAGE SALE: Sat. noon thru Sun. noon (20th & 21st). Furniture & household items. **CASH ONLY.** 1710 W. Ave. D. 15-46t-2tp

ALOE VERA and Vitamin E. A complete line of skin care products. Also Aloe Vera Juice. Call 272-5414. 15-45s-4tp

WE BUY USED FURNITURE AND APPLIANCES
CALL 272-3030
HARVEY BASS APPLIANCE
18S-TFC

W & S CONSTRUCTION: Carpentry, Electrical, Interior & Exterior painting. Acrylic ceiling and wall paper. Call us Weldon and Sherry Stevenson 272-5604. 15-46t-8tc

FRANK'S REFRIGERATION APPLIANCE & SERVICE PARTS & REPAIR
315 W. 3rd. Ph. 272-3822 15-7T-TFC

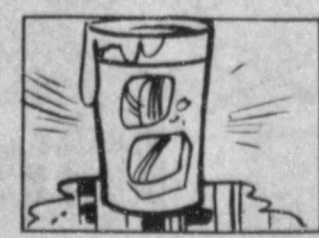
2 ROUND Balers. 1-60A Stack Hand running in Muleshoe area. Need jobs. Competitive prices. Call 285-2374. Ask for Shannon or Sam Thomas. 15-45s-6tc

SEED & FEED

FOR LEASE: Grain Sorghum Stalks for grazing, and lots of down grain. Also plenty of 82 cottonseed for sale. Call 925-6485. 17-46t-2tp

ATTENTION FARMERS Parmer County Cattle Co. will pay \$95 per ton for #1 whole cottonseed delivered to the feedlot. Seed must be clean and dry. Contact Frank McSwan. 806-225-4400. 17-45t-tfc

WANTED TO BUY milo. Call Paco Feed Yard 265-3281. 17-45s-4tc



Water has the rare property of being lighter per cubic inch as a solid than as a liquid. If this were not true, a lake would freeze from the bottom up instead of the other way around.

TIPS ON TRIPS

If you're bringing along a camera overseas, put a haze filter over the lens and leave it on. It won't interfere with the photography and may keep an expensive lens from being damaged while traveling. Carry a spare set of batteries for the camera. They are not always available abroad and often cost three times as much as batteries purchased in the United States. Take a time converter, a small magnifying glass for reading maps, an extra set of luggage keys, extra passport photos, plastic bags for soiled laundry and a sewing kit. Make an inventory list for quick checkups so nothing is left behind.

When traveling overseas check with your travel company or local consulate to determine what immunization shots are needed. A free brochure on sensible trip planning is available by writing to: Grand Circle Travel, Inc., 555 Madison Avenue, New York, N.Y. 10022, or by calling toll-free 1-800-847-4240.

LEGAL NOTICES

NOTICE TO ALL PERSONS HAVING CLAIMS AGAINST ESTATE OF BERTHA M. BEENE

NOTICE IS hereby given that the original Letters Testamentary upon the Estate of Bertha M. Beene, were issued to Norma Christine Smith on November 15th, 1982 in the Estate of Bertha M. Beene, No. 1529, now pending in the County Court of Bailey County, Texas, and that she now holds such Letters Testamentary. All persons having claims against such Estate, which is being administered in Bailey County, Texas, are hereby required to present the same to her at the place shown below before suit upon same are barred by general statutes of limitations, before such estate is closed and within the time prescribed by law. The mailing address of Norma Christine Smith is: 5424 41st Street, Lubbock, Texas 79414.

All persons having claims against such estate are required to present the same to Norma Christine Smith at the above address.

DATED, this the 15th day of November, 1982.
Norma Christine Smith
5424 41st Street
Lubbock, Texas 79414

Norma Christine Smith
5424 41st Street
Lubbock, Texas 79414

MISCELLANEOUS MISCELLANEOUS

Lindsay "Zimmatic"

Center Pivot With Drops Galvanized 6 1/3" Pipe

Ready To Run

\$24,200⁰⁰



LINDSAY MANUFACTURING CO.
Box 156, Lindsay, Nebraska 68844 USA
Telephone: 402-426-2131

Irrigation Pumps & Power Inc.

West Hwy 84 Muleshoe 272-4483

Nursing Home

News
By:
Joy Stancell

Cordelia Cochran was visited by Jewel Strong.

Ruby Mc Camish attended her granddaughter Terry's wedding Friday night at the Trinity Baptist Church. Her son Herb visited Sat.

Linda Lee took Lois Ethridge to the beauty shop Tues. for a perm.

Louise Sullivan's little grandson Scott visited her over the weekend.

Friday afternoon members of The Assembly of God Church came to have a devotional with the residents. Refreshments of ice cream and angel food cake were served.

Mrs. Armstrong's son and daughter-in-law visited her Wednesday.

Audell Beaty was visited by her niece Mary Kay of Abilene Saturday.

Dec. 7th (Tues.) at 10:00 we will be having our Country Store, where our residents will be shopping from a variety of donated gifts, for their family. We feel that giving is the real "joy" of Christmas. This way the residents will be able to give. If you have anything that you would like to give please contact the nursing home or bring it by. Thank you

Fri. morning Berta Mui-shont and her son showed slides of Guatemala to the residents.

The W.M.U. Class of the Trinity Baptist Church baked and served home made pies for the residents lunch Tuesday.

Lena Hawkins visited the nursing home Tues. Ray Edwards visited Sun. and brought a beautiful bouquet of flowers.

Barbara Case's son Jim visited her Tues.

Clara Weaver was visited by Marilyn Engeling, Mr. & Mrs. Finnis Jennings, Eula Dale, Glenda Jennings.

Ethel Askew was visited by Mr. & Mrs. Scarborough.

Enochs News

By
Mrs. J.D. Bayless

Glyn Stroud and son, Scott stopped for a visit with his parents, Mr. and Mrs. Goldman Stroud, their daughter, Mr. and Mrs. Craig Kirby and children also visited with them Sunday.

Visiting Mr. and Mrs. Harold Pollard Sunday were their daughters, Mr. and Mrs. Joel Sinclair and children of Muleshoe and Mr. and Mrs. Tommy Lewis and children of Littlefield.

On October 22 the High School boys played Southland. Southland won. They beat us 49 to 19. They will play Wellman next. The Junior High played Wellman October 28. Wellman won. They beat us 26 to 6. That was their last game.

Last Friday or Saturday all of our hamsters got out. We found three in our room. The people in annual found one in their room. And today Mrs. Ragsdale found one in the little office. We are still missing one. Hope you have a great week.

Bill and Pat Dupler welcomed their daughter Mary Jo into this world of September 29, 1964 at Muleshoe. Mary Jo is really enjoying her Senior Year and is looking forward to graduation. She wants to go to South Plains. Mary Jo loves grilled steaks and she thinks that anything yellow is great. Her favorite subject is Business Math. She wants to go into bookkeeping in College and needs all the math she can get while in High School.

On Thursday October 28 the Junior High played Wellman. We lost 6 to 26. The cheerleaders were fantastic. That was our last game. Oscar Guillen made the only touchdown. See you next year.

Mrs. Winnie Byars visited in the home of Mr. and Mrs. Carrell Pearson in Muleshoe, the past week.

Mrs. Dean McBee is home from a five week visit with her daughter, Mr. and Mrs. Terry Spell at Kenedelle, Indiana.

A REMINDER FROM THE VA



MISCELLANEOUS MISCELLANEOUS

Rent-To-Own
Color TV
Stereos Microwave Ovens Dryers
Refrigerators Freezers Washers Dishwashers
No Service Expense No Interest To Pay
Wilson
Appliance
117 Mai. MULESHOE 272-5531

BREAKFAST IS A HEALTHY HABIT

Do you habitually skip breakfast in order to keep your weight down? If you do, you might be surprised to learn that those who skip breakfast in order to lose weight often consume as many—if not more—calories during the day as they tried to avoid by not eating breakfast.

Did you know that without breakfast, people may become less efficient in the late morning and that students may show a poorer attitude toward school work? Nutritionists recommend that breakfast should supply about one-quarter of your daily nutrient intake, and include foods from at least three of the Basic Four Food Groups.

Adults say they "know" breakfast is a healthy habit, but as many as 46 percent of Americans are habitual breakfast-skippers. They were "running late" out of milk, had to get to work early, or would rather sleep. The excuses people have for not eating breakfast are almost endless.

Why not put creativity to better use by treating yourself to a nutritious and delicious breakfast every morning? For today's eat-on-the-run adults, nothing is easier—or faster—than ready-to-eat cereal with milk. For the nutrition and diet conscious, NUTRIGRAIN™, a whole grain flaked cereal with no sugar added, is a good choice. The cereal is available in three varieties, corn, wheat and wheat and raisins. It can be served with milk, juice, toast, and tea or coffee to meet the requirements for a nutritious breakfast.

If you can't face food first thing in the morning, pack a brown bag breakfast. It might include a single serving of ready-to-eat cereal, cartons of juice and milk, and a favorite muffin. Or perhaps you prefer a non-traditional breakfast. Try topping whole grain flaked wheat cereal with coffee-flavored yogurt; or sprinkle whole grain flaked wheat and raisins cereal over cottage cheese served in a half cantaloupe.

With all the alternatives available today, it's easy to develop the breakfast habit.

Letters To The Editor

Dear Editor:
Through your kindness in publishing the need for a home for an exchange student last summer, Sergio Zavallos Ortiz was able to come to Muleshoe to live with Mr. and Mrs. Don Martin and attend Muleshoe High School.

Circumstances beyond control of his family necessitate a new home in the near future if he is to remain in Muleshoe. Anyone willing to host this 18-year old Senior from Peru for the balance of the school year should please call Principal Wayland Ethridge at Muleshoe H.S. or collect to William R. Smith, Western Director of International Fellowship at 602-284-1413.

Sergio likes fishing, hunting, camping, carpentry, accounting, arts and crafts. He will not be a guest, but one of your family, sharing in the tasks, and will be tax deductible.

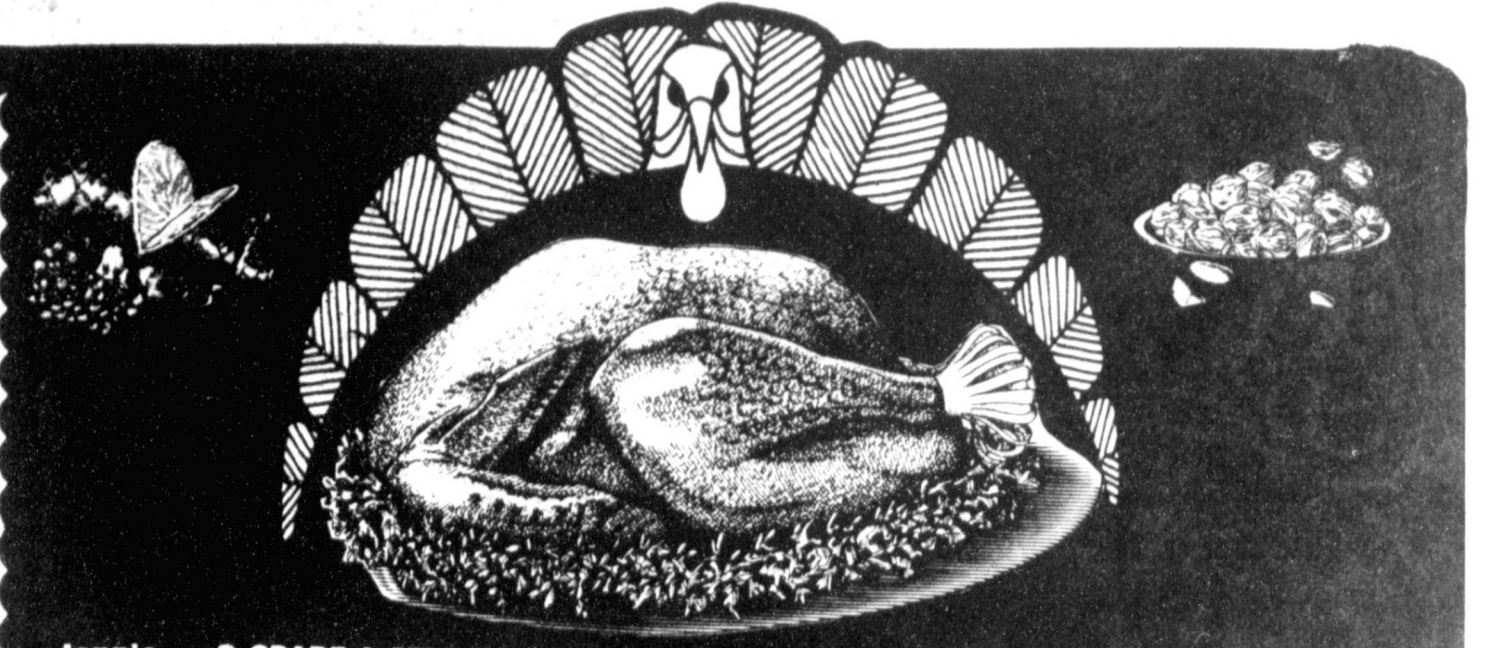
Thank you.
Cordially,
s/s W.R. Smith

White's Cashway Supermarket

Open 7:30 To 9:00
Monday To Saturday
12 P.M. To 9:00 P.M.
Sunday
Double Gunn Bros. Stamps Every Wednesday & Saturday

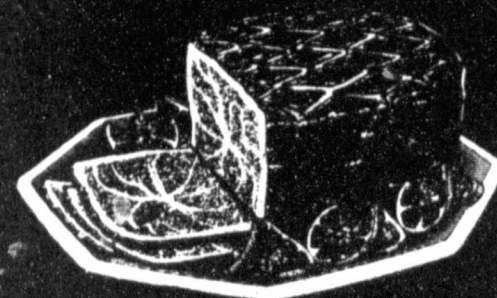
GOLD BOND STAMPS

PECOS VALLEY PECANS \$1.98 10 oz.
PILLSBURY MIX HOT ROLLS 98¢ 13 3/4 oz.



Jennie — 0 GRADE A SELF BASTING

TURKEYS FAMILY SIZE 18 to 22 Lbs. 69¢ Lb.
79¢ Lb.



SMALLER SIZE 10-16 Lbs.
HAM FARM LAND MAPLE RIVER BONELESS HALF OR WHOLE \$1.99 Lb.

Stock up on Fresh Produce

Everything you need for your Thanksgiving meal.

TART TASTY FRESH
CRANBERRIES
12 oz. 69¢

PASCAL NICE & FRESH
CELERY 3/89¢
GREAT FOR DRESSING
ONIONS YELLOW LB. 2/25¢
GOLDEN RIPE
BANANAS LB. 4/\$1.00

NEW CROP
SWEET POTATOES LB. 3/\$1.00



LONGMONT TURKEY
1/2 HAM 3-8 Lbs \$1.69 Lb.
COUNTRY PRIDE GRADE A SMOKED
TURKEYS \$1.29 Lb.
HONEYSUCKLE GRADE "A" BONELESS
TURKEYS 4-6 Lb \$1.69 Lb.

KRAFT PHILADELPHIA
CREAM CHEESE 8 oz. 69¢
OWENS COUNTRY
SAUSAGE 1 Lb. \$1.79
2 Lb. \$3.55

ATKINS SWEET
PICKLES 16 oz. jar \$1.29
ORLEANS WHOLE
OYSTERS 8 oz. 98¢
WHITE ALMOND OR CHOCOLATE
SATHER BARK 24 oz. \$1.79
DROME DARY PITTED
DATES 8 oz. \$1.69



PET-RITZ DEEP DISH
PIE SHELLS 2 Ct. 79¢
MRS. SMITH'S PUMPKIN
PIE 48 oz. \$2.39
HOLLAND HOUSE
CREAM OF COCONUT 16 oz. \$1.39
BIRDS EYE
COOL WHIP 8 oz. 79¢

Let's be Thankful

Enjoy An Old Fashioned Thanksgiving Dinner

Storewide values on everything you'll need for a memorable feast.

KRAFT MINI WHITE OR FLAVOR
MARSHMALLOWS 10.5 oz. 2/99¢
KRAFT MARSHMALLOW
CREME 7 oz. 59¢
SUGARY SAM
YAMS 23 oz. 69¢
SWANSON CHICKEN
BROTH 13.75 oz. 2/69¢
WIN - YOU CHERRY
PIE FILLING 21 oz. 98¢
WHITE SWAN WHOLE
GREEN BEANS 16 oz. 48¢
DEL MONTE MANDARIN
ORANGES 11 oz. 69¢
BORDEN'S SOUR CREAMS OR
DIPS 8 oz. 49¢
BORDEN'S
WHIPPING CREAM 1/2 pint 49¢
BORDEN'S
HI PRO MILK 1/2 gal 99¢

Let's be Thankful

OCEAN SPRAY WHOLE OR JELLED

CRANBERRY SAUCE

16 oz. 59¢

WHITE SWAN
FRUIT COCKTAIL

16 oz. 59¢

Pepsi & Diet Pepsi

in 6-Pack 16 oz. bottles

ALSO PEPSI LIGHT & MT. DEW

\$1.29

SOFT N LITE
DINNER ROLLS 9¢ pkg.
With Saver Booklet

6-16 oz.
PEPSI 79¢ doz.
OR DIET PEPSI COLA
With Saver Booklet

LARGE
LARGE EGGS 29¢
With Saver Booklet



STOKELY 4 Roll Pkg.
PUMPKIN 19¢
2 can
With Saver Booklet

WHITE SWAN
BATHROOM TISSUE 69¢
no. 303
With Saver Booklet

WIN YOU CHERRY
PIE FILLING 49¢
21 oz. Jar
With Saver Booklet