

### Weather

October 23	69	30
October 24	74	34
October 25	75	36
October 26	75	36
October 27	84	40

# MULESHOE JOURNAL



20¢

'The Community of Opportunity-Where Water Makes the Difference'

Volume 59, No. 43

12 Pages Today

Published Every Thursday at Muleshoe, Bailey County, Texas 79347

Thursday, October 28, 1982

## County Initiates Child Welfare Program

### ECP Program Sign Up Deadline Set October 29

According to Rusty Williamson, Bailey County ASCS Executive Director, time is running out on the sign-up period for the Emergency Conservation Program (ECP) for Bailey County. The deadline for the sign-up is October 29, and Williamson states that is the very last day a producer who is eligible may sign up for his grant-type program.

"Bailey County is the only county in our district who has the ECP program available to producers," Williamson explained. "This is a 'one-shot deal' and is available to all producers who are interested," the Director stated. Basically, this program will pay 64 percent of the costs of repairing and rebuilding land which suffered wash-outs and devastation due to the rains in Bailey County early last summer. The program is a cost-sharing program and the 64 percent that is payable under the

ECP program is a grant and does not have to be repaid, according to Williamson.

Williamson says that the "funds are available in the office and will be received by the participating producers upon completion of the repairs and final bills and inspections. "What we most need to know right now, is if a producer wants to sign up and what approximate acres or feet are involved in the repairs," the County officer states.

In other ASCS news, the upcoming County Committee Member election will be held on Wednesday, December 15, at the local ASCS office. November 1, is the last day for nomination by petition, and then on November 26, ballots will be mailed to all eligible county voters. December 6, is the last day to return voted ballots and on December 8, ballots will be counted in the ASCS office. Finally, on the 15th of December, new committee members will be named and will officially take office January 1, 1983. Voters who do not receive their ballots by mail, may pick them up at the ASCS office, and questions regarding procedures will be answered by ASCS county personnel upon request.

Regarding the disaster checks on 1982 crops, Wil-

liamson hopes to have all checks completed and mailed out within the next three weeks. A batch of checks go out each Friday, since the office staff works on them all week and reserve Friday for mailouts. Notification will be given to the public after all checks have been mailed; then, if any producer has not received his payment, he needs to notify the ASCS office at that time. "The checks we are speaking of are for the crops that were totally destroyed, not partial losses," Williamson said. Partial crop losses cannot be figured until harvest has been completed. All forms necessary for the payment to be received. "Our office is in relatively good shape, in comparison, with other offices in the district," Williamson explained. "Our staff has put in a lot of overtime hours and hard work trying to get these funds out, because we know how badly they are needed, and we appreciate the cooperation that the producers have given us," the Director stated.

No advance payments on 1983 farm programs are being made through the local ASCS office at this time. They will be made at a later date, since the disaster payments take prece-

Cont. Page 9, Col. 3



'WELCOME TO MULESHOE'...Mr. and Mrs. Pat Mudford and their youngest daughter, Brenda were presented recently with a welcome packet from Linda Guelker, (right), Chairperson of the Welcome Committee for the Women's Division of the Muleshoe Chamber of Commerce and Agriculture. Mudford is employed by the Wheelabrator Coal Services at the Talk Station. They have another daughter, Kathy who is a freshman at Muleshoe High School. This is a new project for the "Jennyslippers", and according to Ms. Guelker, "one we hope to make an ongoing project."

The Bailey County Commissioners' Court and County Judge Glen Williams working with the Texas Department of Human Resources, have recently formed and activated the Bailey County Child Welfare Board.

The purpose of the Board will be to dependent, abused, and neglected children of Bailey County.

It has also been set up to encourage and promote activities which will benefit all children who are in need of the Child Welfare Board's services, and to perform any specific duties in the field of child welfare that the County may require of it, by request of the Commissioner's Court or the Texas Department of Human Resources. One main concern of the Board is the well-being and protection of the neglected and abused child; both physically and mentally.

The second concern is the scarceness of State licensed foster homes in Bailey County and the surrounding communities. When an incident occurs and a dependent child (or children) has to be placed in temporary foster home care, the child usually is taken to Littlefield or Lubbock, because Bailey County does not have enough foster homes to meet the demand of temporarily placing a neglected or abused child from the surrounding areas.

Working with the Bailey County Child Welfare Board for foster home placement and State licensing of foster homes is Ms. Dorris Tilson and Bobby Marchbanks, workers with the Texas Department of Human Resources who will be co-ordinating NOVA training sessions for licensing of foster parents in Muleshoe beginning Tuesday, October 26, at 7:00 p.m. in the Community Room of the Summit Sav-

ings (Tri-County Savings) Building.

Training sessions will be held at the same time each Tuesday night through November 23. NOVA training is now required for all foster parents prior to licensing by the State as foster parents.

There is no age specification for becoming foster parents. They may be mature couples or single parents. Twenty-one (21) hours of NOVA training is required by the State to become a licensed foster parent. The prospective foster parent must have a sanitation inspection and fire inspection of the home. Also, negative tuberculosis test must be performed on every person living in the home. There is no charge and no obligation to remain in these training programs, but the first session is an orientation class in order to become familiar with the foster parent program.

Anyone having questions regarding the training sessions Ms. Tilson can be reached at area code: 806-762-8922. The Bailey

Cont. Page 9, Col. 3

### SPS Honors Employees

Thirteen employees of Southwestern Public Service Company in Muleshoe received awards for service at a dinner at the Lubbock Country Club in Lubbock Tuesday, October 26.

James L. Lambert and Billy Joe Barker received awards for 30 years of service to the Company and its customers.

Henry J. Logan and Clifford R. Bills were honored for 25 years of service.

Delmar J. Clements and Dave D. Cavitt received awards for 20 years of service.

Fredrick N. Lindt, Jamie D. Bowen, Sidney D.

Cont. Page 9, Col. 7

### Muleshoe Mules Face Friona Chieftains Friday

This Friday night, when the Muleshoe Mules take the field at Benny Douglass Stadium against the Friona Chieftains, the second place slot in Schoolboy High School Standings will be decided. Friona's record stands 5-3 overall and 2-1 in district play. In first place lead right now are the Littlefield Wildcats with a 7-1 overall record and a 3-0 record in district play.

This year, the two top teams in the district will advance to regional play against the top two there and so on right up to the State level.

Friona has lost a total of 83 points to their opponents, while Muleshoe has lost 110. However, Muleshoe has scored 148 points against opponents and Friona has scored 125.

Coach Windy Williams in a telephone interview Mon-

day, told the Journal that he has four outstanding offensive players of the week for the Littlefield game. One of these is Alex Paez who rushed for 112 yards and one touchdown. Another was quarterback Sam Gonzales, who completed 10 out of 18 passes for 126 total yards. Jim Holmes and Macario Reyes were also named for their outstanding blocking against the "Cats."

Outstanding defensive player for the past week was Hector Flores. Flores was the leading tackler in the game against the Wildcats, playing consistently good football, according to Williams.

This Friday may well be an all-out battle, since both teams will be up and playing tough football. Coach Tommy Moss while admitting that his Chieftains are larger than the Mules, says that they don't have enough speed nor the quickness of the Mules. However, Moss has quite a few returning lettermen, but lost his entire backfield to graduation last year. The Chief's are a little injured, with Ritchie Malouf, one of their outstanding running backs having been out most of the season. He played about 1/2 of the game last week against Dimmitt. Max Perea, the Chieftain's two way starter as starting fullback and linebacker will

likely be out of the game with injuries. Perea has served as quite a workhorse for the Friona team, averaging 85 yards per game rushing. Strong safety and split end two-way starter Mike Neill has also been injured and will possibly see some action Friday.

The Chief's have a strong suit in Carl Jackson, all district linebacker who is joined with all-state po-

Cont. Page 9, Col. 1

### September City 1982 Tax Rebate Down 3 Percent

State Comptroller Bob Bullock sent \$35.6 million to 967 Texas cities as their share of the one - percent city sales tax for October.

The 1982 statewide total so far this year is up 11 percent over the 1981 total up through the same date of last year. This payment reflects taxable sales made in August and reported to the state by the end of September.

Muleshoe and Bailey County's city sales tax net payment for the period ending in September amounted to \$8,895.78, down from the \$12,926.32 as listed the same time last year. Total 1982 payments to date for Muleshoe amount to \$151,407.01 as compared to \$157,491.60, which reflects a downward trend of minus 3.86 percent change from 81 to 82.

In Castro County a total of \$8,290.02 was received by the three cities therein. \$7,464.46 for Dimmitt as compared to the \$9,687.12 from last years total. Total 1982 payments to date for Dimmitt amount to \$112,542.91 as compared to \$117,516.06 in 1981 a reflected change on minus 4.23 percent. In Hart, a total of \$825.56 was the net payment for the September period, down from the \$561.39 of last years payment. Total payments to date for Nazereth were 1-0 down from the 1981 comparable payment of \$1,099.59. Total payments to date for 1982 in Hart amounted to \$12,225.78 as compared to \$12,155.87 for the same time in 1981, .58 percent change. In Nazereth total payments for 1982 reached \$11,217.79 as compared to \$12,705.03 for

1981 a difference of minus 11.71 percent change.

In Cochran County, the City of Morton reported \$2,005.21 net payment for this period in 1982, down from the \$802.12 in 1981. Total payments to date for Morton are \$37,718.63 for 1982 as compared to \$37,498.75 - a .59 percent change for the year to date. In Whiteface no payments were shown for the September period in 1981 or 1982; however, 1982 payments to date are \$7,992.91 as compared to \$4,480.19 in September of 1981, a change of 78.41 percent for the period ending 10/8/82.

Hereford, in Deaf Smith County, reported a total net payment for the September, 1982 periods of \$20,321.48, down from the \$26,138.59 reported in 1981 at the same time. Total 1982 payments to date for Hereford show \$378,598.03, a minus .69 percent down from the \$381,230.04 of 1981.

In Lamb County with five cities involved, total 1982 payments to date have reached \$263,843.63 as compared to \$277,319.21 of 1981 - a minus 4.86 percent change. The city of Amherst showed no payments for either 1981 or 1982 on the September date; however, total 1982 payments to date for Amherst are \$7,862.29 as compared to \$7,526.85 from 1981, a change of 4.46 percent. In Earth a total of \$1,239.42 net payment was sent for the September, 1982 period as compared to \$739.92 of 1981. Total payments for 1982 to date reached \$22,668.00 as compared to 1981 totals of \$27,410.93 of 1981, a decrease of minus

17.30 percent. In Littlefield, also in Lamb County, a total of \$9,526.94 net payment was reported for September, 1982 as compared to \$9,452.70 of 1981. Total payments of 1982 to date for Littlefield are \$190,568.40 as compared to \$197,444.59 for 1981 pay-

Cont. Page 9, Col. 5

### Chief Of Police Urges Halloween Safety

Chief of Police Les Irvin has issued the following notice for the upcoming Halloween Holiday:

"As you know, Saturday, October 30, we will be celebrating Halloween. The traditional trick or treating was intended to be a time of enjoyment but instead it has become a time of sadness and tragedy for many children and their families each year. Children across our nation have been hit by cars, assaulted, injured by foreign objects in candy, and poisoned, with death or permanent disfigurement the final result. We cannot allow ourselves to become complacent in our attitudes because we live in a small friendly city."

"I urge each parent to protect your children by providing an alternative to trick or treating this year. Such as a party for your children and their friends in your home. Another alternative that I highly recommend is the PTA Hal-

Cont. Page 9, Col. 2

### Around Muleshoe

With the upcoming Halloween trick or treating, L. T. Johnson, Chief Technician in X-Ray at West Plains Medical Center has announced that children may bring fruit, candy or other treats to the emergency entrance of the hospital between 8 and 10 p.m., on Saturday, October 30, to be fluoroscoped (x-rayed) for any metallic objects that they might contain. Children need to be accompanied by their parents. Technicians will also be available for this service on Sunday morning as well.

The Muleshoe Rotary recently installed two new members over the past two weeks. They were Johnny St. Clair and Lonnie Adrian. Visitors this week on Tuesday was Terry Hutton and last week's were Dale Jones and Bill Bolin of Texico-Farwell Club. Rotarians were reminded of the Inter-City Meeting at Lubbock on Wednesday, October 27, where the guest speaker will be The Honorable John Gavin, Ambassador to Mexico.

Mr. and Mrs. Casey Farmer were visiting from Colorado in Muleshoe the past weekend in the home of the Charles Farmers. Justin Collins, grand son of the Farmer's has also been

Cont. Page 9, Col. 7

### Scholarship Essay Contest Underway

The Lubbock Chapter of the Air Force Association (AFA) of Texas is sponsoring a \$3,000 scholarship essay contest open to all high school seniors in the state of Texas.

The topic of this year's essay is "Portrait of a Responsible American Citizen." The student submitting the best essay to the Lubbock Chapter will receive a \$100 Savings Bond. The winning entry will then be entered into the statewide competition against eighteen other chapter winners.

Five college scholarships will be awarded to the best entries statewide. First place will be worth \$1,250; second place \$750; third place \$500; and two fourth place entries will receive \$250 each.

To enter the contest, students should contact

their local high school counselor or Eldon K. Turner, Lubbock AFA Scholarship Chairman, 5306 77th Street, Lubbock, Texas 79424.

The author and the parents of the student submitting the best entry to the Lubbock AFA Chapter will be honored during the

Cont. Page 10, Col. 2

### W.I.F.E. Chapter Installs Officers

On October 21, the Muleshoe Area W.I.F.E. (Women Involved In Farm Economics) met in the Muleshoe State Bank building for the annual election and installation of 1982 - 83 officers.

Elected as president was

Janette Thorne of Friona, Johna Blackburn Vice president, Secretary Treasurer Shirley Bean, Reporter Tona Simmacher, Historian Jane McManis and state steering committee member, Savannah Killough.

The group was honored to have National WIFE President, June Saylor of Muleshoe on hand at their meeting. Following the election of the officers, outgoing president Debbie Redwine presented each incoming officer with a carnation and the explanation of the meaning of their jobs. The Muleshoe Chapter of WIFE plans to consolidate with the Friona branch, since Friona's chapter is rather small.

Announcements were made of a State Steering Committee Meeting in Tullia at Swisher County Electric, which was attended by Ms. Killough.

The Muleshoe W.I.F.E. Chapter plans to have a money-making raffle for the Texas State W.I.F.E. meeting to be held from November 10-14 and also a project for the National W.I.F.E. meeting in December. The local or state project involves a \$2 donation.

Cont. Page 9, Col. 7



W.I.F.E. OFFICERS ELECTED--On October 21, members of the Muleshoe Area W.I.F.E. organization (Women Involved In Farm Economics) met at the Muleshoe State Bank to elect 1982-83 officers. From left: Savannah Killough, State Steering Committee member; Shirley Bean, Secretary-treasurer; Johna Blackburn, Vice president and Janet Thorn, President. Other officers elected by not pictured were Jane McManis, Historian; Tona Simmacher, Reporter.

### Open Letter To The Public

The Texas Democratic Party has a full slate of statewide candidates who are well-qualified for the offices they are running for. In the several contested races, the Democratic incumbents or challengers have consistently shown they are the best people for the job.

The Bailey County Democratic Executive Committee fully endorses and urges you to vote for the following:

- DEMOCRATIC CANDIDATES**
- U.S. Senator-Lloyd Benson
  - Governor-Mark White
  - Lt. Governor-William P. Hobby
  - Attorney General-James A. Mattox
  - Comptroller of Public Accounts-Bob Bullock
  - State Treasurer - Ann Richards
  - Commissioner of General Land Office-Garry Mauro
  - Railroad Commissioner - James E. (Jim) Nugent
  - Justice, Supreme Court, Place 1-Ted Z. Robertson
  - Justice, Supreme Court, Place 2-William W. Kilgarrin
  - Justice, Supreme Court, Place 3-Charles W. Barrow
  - Presiding Judge, Court of Criminal Appeals-John F. (Jack) Onion
  - Presiding Judge, Court of Criminal Appeals-Place 2-Charles E. Miller, Jr.
  - U.S. House of Representatives, 19th Congressional Dist.-Kent Hance
  - Texas Senate, 31st Senatorial District-Bill Sarpalus
  - Texas Representative,

85th District-Pete Laney  
Judge, 287th District  
Jack Young  
Bailey County Judge-Gordon H. (Corky) Green  
Bailey County Attorney - Linda Guelker (write - in candidate)  
District Clerk - Nelda Merriott  
County Clerk - Barbara McCamish  
Tax Assessor / Collector-Kathleen Hayes  
Treasurer-Dorothy Turner  
Co. Commissioner, Precinct #2-Roy Whitt  
Co. Commissioner, Precinct #4-Rudolph Moraw  
Justice of the Peace, Precinct #1-Jack Bates  
Justice of the Peace, Precinct #4-Frank Ellis III  
Bailey County is very fortunate to have some very fine people running on the Democratic ticket for the county positions that are open. The Bailey County Democratic Executive Committee endorses and urges your support and vote for the county and state candidates.

The Bailey County Democratic Executive Committee encourages everyone, no matter their political preference, to get out and exercise their right to vote on November 2, 1982.

(Pd. Pol. Adv. by Bailey County Democratic Executive Committee-Chuck Smith, Chairman)



In ancient Egypt, nail color indicated a woman's social rank. Only the palest shades were permitted lower class women, and woe was the woman who painted her talons brighter than the Queen's.

### From Journal Files

#### 40 Years Ago

1942  
Harvesting of crops was held up again last Friday when more than an inch and a half of rain fell over this section, bringing the total for the week to 3.75 inches.  
Rain has caused some damage to open cotton, farmers say, but nothing serious.

Sam Damron, who is attending Baylor University at Waco, spent the week-end visiting in Muleshoe.

Mrs. Gordon Murrah and Judy Ann left Tuesday for a few days visit in Amarillo.

#### 30 Years Ago

1952  
Grocery specials advertised.



**HALLOWEEN PARTY...**Three year olds celebrating at a Halloween party at Hawkins and Purdy's School of Dance and Gymnastics are (standing L-R) Jason Brown, Quint Ellis, Aaron Purdy, John Bryan Cowart; (sitting L-R) Brice Foster, Darren Box and James Cox.

Tension and suppressed emotion kill many of our associates, and may kill you.

sed in the Journal included Coffee - 79 cents a pound; Hi-C, orange ade, 46 ounce can - 19 cents; salmon No. 1, tall can - 39 cents; 32 ounce strawberry preserves - 59 cents; cherries No. 303 can - 17 cents; pears No. 2 1/2 can - 29 cents; biscuits - 7 1/2 cents a can; cake flour - 39 cents; 9 ounce jar mustard - 13 cents; round steak - 85 cents a pound; sirloin or T-bone steak - 69 cents a pound; sirloin tips - 85 cents a pound; chuck roast - 55 cents a pound; rump or pikes peak roast - 69 cents a pound; ground beef - 59 cents a pound; green onions, two bunches - 9 cents; and apples - 19 cents a pound.

#### 20 Years Ago

1962  
Mrs. J.G. Arn hosted a called business meeting of the Muleshoe Study Club at 4:30 Wednesday afternoon.

**West Plains Medical Center Report**

**ADMITTED**  
Oct. 21 - T.G. Allen, Anna Thedford, Maudie Speck, Tom Jinks and Maria Barrias  
Oct. 22 - Ollie Sebring and Allan Vinson  
Oct. 23 - Peggy Brown, Thurlo Branscum, Adena Lindt, Karen Watson, Brandy May Rocha and Ermelinda Guillen  
Oct. 24 - Minnie Ellis, Ella Hauford, Bart Elliott, Evette Freeman and Ronald D. Angeley  
Oct. 25 - Galacion Arce

**DISMISSED**  
Oct. 21 - Evette Freeman, Pat Nino, Trey Pederson and Deborah Autrey and baby boy  
Oct. 22 - Ryan Herber, L.F. McCormick, Cheryl Trimble and baby girl and Annie Dunn  
Oct. 23 - Vivian Ward, Anna Thedford, and Maude Speck  
Oct. 24 - Brandy Rocha, Peggy Brown, Tom Jinks, Julian Culonga, Traci Ellis and Clarence Wilhite  
Oct. 25 - Bart Elliott and Allan Vinson

### Early Childhood Eye Test Important

Children starting school for the first time this fall will receive a vision test, as required by Texas law. It's equally important that children who are still at home also get a vision test says the Texas Society to Prevent Blindness because one child in 20 has an eye problem that can be best corrected if detected in the preschool years.

"Parents often have a false sense of security about their child's sight", says R.E. Margo, M.D., state medical chairman of the Society. "Young eyes with poor vision can look as bright and sparkling as those with 20/20 vision. Also, rarely does a child complain about poor vision because it doesn't pain to see blurred or with only one eye. What's more, since the child may have been seeing that way all his life, he has no way of knowing he should be or could be seeing things differently."

A child can give clues, however, to alert a parent of a possible eye problem, Dr. Margo went on. He listed these clues as including, excessive rubbing of the eyes, shutting or covering one eye, difficulty with close work, frequent blinking, squinting or frowning, undue sensitivity to light, inflamed or watery eyes, and recurring styes.

"But waiting for such signs to appear is chancy," he said. "For the best possible defense against the development of serious vision problems, Prevent Blindness recommends that a child's eyes be examined at birth and again about age four and regularly thereafter."

The importance of an early childhood eye examination was underscored in Texas three years ago by the passage of the school vision screening law. The law, he noted, helps insure that all children's eyes will be tested at least at school age. But because the major eye problem of childhood,

amblyopia or "lazy eye" can be best treated if detected early, the Society recruits volunteer groups to screen during the important preschool period.

If a child has not had either a professional examination or a vision screening, the Society encourages parents to send for its free Home Eye Test for Preschoolers.

"This simple little test has alerted many parents to their child's eye pro-

blem," Dr. Margo said. "Recently, in Houston, Mrs. Diane Barnard used it to test her daughters; Olivia, four, passed, but Sarah, three, didn't. A professional examination subsequently showed that Sarah had amblyopia. With treatment, her sight is improving; without treatment, she would have lost all functional vision in that eye."

To obtain a copy of the free Home Eye Test for Preschoolers write: Prevent Blindness, P.O. Box 20/20, Houston, Tx. 77252.

The Texas Society to Prevent Blindness is an affiliate of the National Society to Prevent Blindness.

Public speaking is easy. It's the thinking before speaking that's hard.

If in doubt, do a favor for the person who refused to do one for you.

When the world entirely fits your notions, you will be the only person on it.

The truth stands, regardless of where you find it, or from what source it comes.

Unfortunately, the man who thinks he can control strong drink, seldom does.

## Texas is \$2 billion richer, thanks to BOB BULLOCK.

Isn't it refreshing to have a statewide elected official who does the job he was elected to do.

**BOB BULLOCK makes money for Texas.**



Pol. Adv. Paid by Bob Bullock Campaign; Bill Echols, Chairman; Roy Minton, Treasurer; P.O. Box 2243, Austin, Texas 78767

**ROBERT D. GREEN, INC.**  
2400 West American Blvd.  
MULESHOE, TEXAS 79347  
OLDSMOBILE - BUICK - PONTIAC - GMC

**TERRY YELL**  
Sales Representative  
Business Phone 806 272-4588 Home Phone 806 272-4948

# ELECT

## THOMAS S. FREEMAN

### BAILEY COUNTY JUDGE

*The Office Of County Judge Is Actually The Highest Executive Position In The County. This Requires, In These Times, A Person With Training And Experience In Management, Budgeting, Planning & Organization. I Have Twenty Years Of Experience In These Fields And I Am Highly Qualified In Each Of Them. I Intend To Give The Office My Full Attention, If I Am Elected. I Would Also Encourage More Citizen Participation In Our Effort To Make Bailey County A More Prosperous, Progressive Area. Vote For Me On November The Second And Let's Make Bailey County A Better Place To Live And Work.*

Paid Political Advertisement By Thomas S. Freeman

Boy, these Maytags are really built!

**MAYTAG**

Your Authorized Sales & Service Dealer

**HARVEY BASS**

122 S. 1st  
272-3030

### HOME FOR THE HOLIDAYS

**ALLSUP'S ICE CREAM \$1.59** (1/2 GAL. HD. CTN.)

**KRAFT VELVEETA \$1.89** (1 LB. BOX)

**KRAFT AMERICAN CHEESE SINGLES \$1.99** (12 OZ. PKG.)

**BORDEN'S BUTTERMILK \$1.09** (1/2 GAL. CTN.)

**BORDEN'S ASSORTED DIPS \$0.59** (8 OZ. CTN.)

**CLOVER CLUB REG. \$2.29 POTATO CHIPS \$1.79** (1 LB. PKG.)

**KRAFT DELUXE CHEESE SLICES \$1.39** (8 OZ. PKG.)

**KRAFT HALFMOON LONGHORN CHEESE \$1.89** (8 OZ. PKG.)

**ALLSUP'S HALLOWEEN GRAB BAGS \$0.49** EACH (FULL OF FUN TREAT)

**WE HAVE A LARGE SELECTION OF HALLOWEEN BAG CANDY - LOOK FOR OUR SPECIALS**



## Players Of The Week

### Offense



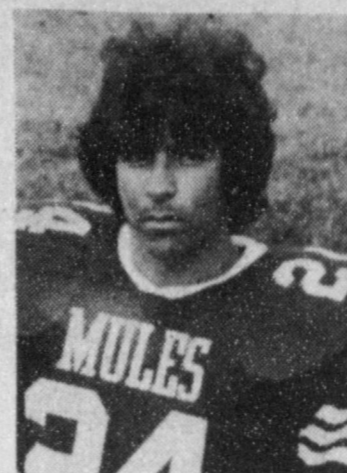
11 Sam Gonzales



77 Jim Holmes

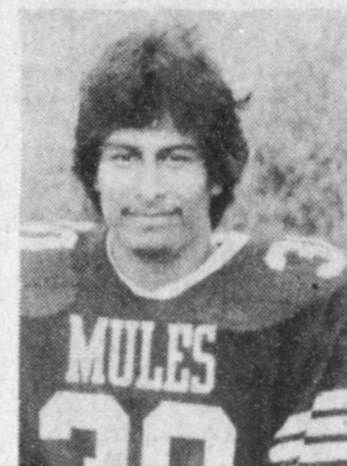


62 Macario Reyes



24 Alex Paez

### Defense



30-Hector Orozco

baker.

Mr. and Mrs. Hal Cardwell and children of Lubbock visited during the weekend of Oct. 8, with his brother, Mr. and Mrs. Glen Cardwell. They all attended the Air show in Plainview, Sunday afternoon, Oct. 10.

Among those from Sudan who were in Plainview Sunday afternoon, Oct. 10, to attend the Air Show were Edwin Harper and Chris, Mr. and Mrs. Rusty Gore, Mr. and Mrs. Randy Gore, Randy Humphreys, Chip and Trent, Pat Kent, Greg Harper and Ginger Gore.

Cheryl Phillips of Lubbock, visited during the weekend of Oct. 8, with her mother, Mrs. John Milam.

Among college students home for the weekend of Oct. 8, were Kendall Johnson, Dale Harper, Johnny Nelson, Becky Byerley, Lori Harper, and Pam and Paul Kent.

Mr. and Mrs. Tom Mills of Lubbock visited Sunday, Oct. 10, with her parents, Mr. and Mrs. Raymond Harper.

Mrs. Robert Graves and new infant son, Robby Lyn returned home from Lubbock General Hospital in Lubbock, the week of Oct. 10.

During about an hour long storm with winds up to 38 mph, and brilliant lightning and roaring thunder, Sudan and area received as much as an inch of much needed rain early Wednesday morning, Oct. 6. More was promised for late Wednesday night and/or early Thursday morning.

Mr. and Mrs. Hal Cardwell, of Greenville, and Mrs. Jennie Valcira and

their uncle, Blackie Seymour.

Tom Daniels visited in Stephenville, the early part of October, and Louzelle Serratt visited her son, Mr. and Mrs. Melvin Serratt. They accompanied Tommy Cate as he went to Corsicana to attend funeral services for Elsie's mother, Mrs. Cherry, who died, Wednesday night, Oct. 6.

Mrs. Vena Whiteaker was honored on her 87th birthday with a dinner with her son, Mr. and Mrs. Wayne Whiteaker. Also visiting with her during the week of Oct. 10, were her sister, Mrs. Kate Jones sister, Mrs. Kate Jones and Mrs. Ruby Brock of Abilene.

Miriam and Candace Whiteaker, daughters of Mr. and Mrs. Brent Whiteaker of Lubbock, visited the week of Oct. 3, with their grandparents, Mr. and Mrs. Wayne Whit-

and girls and Johnny Nelson, SPC student, were visiting during the weekend of Oct. 8, with the Bas-

Mrs. Nancy Davis, Mandy and Muffin of Euless, visited during the weekend of Oct. 8, with their parents and grandparents, Mr. and Mrs. Pete Lance, her sister, Mr. and Mrs. Steve Edwards and boys and her brother, Mr. and Mrs. Bo Lance and Danya.

Mr. and Mrs. Billy Hanna were in Vega during the weekend of Oct. 8, to visit their daughter, Mr. and Mrs. Dwayne Grey and children and help observe the birthday of their granddaughter, Stephanie.

Mr. and Mrs. Eddie Bond of Vega and Mrs. Sharon Thornton and Stephanie of Friona, visited Friday, Oct. 8, with their parents, Mr. and Mrs. Tommie Seymour and to attend funeral services for

## Sudan News

By Evelyn Ritchie

Mr. and Mrs. Neal Perry and Pat and Sharon Payne of Ruidoso, N.M., visited in the home of their nephew, Mr. and Mrs. Ansil Locke and James, the week of Oct. 10.

Mr. and Mrs. Raymond Hanna of Fort Worth returned to Sudan to be with their son, Mr. and Mrs. Dale Hanna, the week of Oct. 10, while Dale's wife, Mary, was hospitalized.

Mr. and Mrs. Raymond Gage returned home from Oklahoma, Oct. 10.

Mrs. Scott Bassett returned home in Rockland, the week of Oct. 10, following a visit with her parents, Mr. and Mrs. Bob Nelson and Donnie, Mr. and Mrs. Jackie Bruton

## Craft Services Conducted In Lubbock

Services for the Rev. Truett G. Craft, 88, of Lubbock were conducted at 2 p.m. Wednesday, October 27, in the First United Methodist Church, Bowman Chapel with Dr. Sam Nader officiating.

Interment was in Resthaven Memorial Park under the direction of Resthaven Funeral Home. Rev. Craft died at 11:20 a.m., Sunday in Methodist Hospital in

Lubbock following a lengthy illness. A longtime preacher, he married the former Ima Ragsdale, October 10, 1926 in Whitesboro. She died October 19, in Methodist Hospital following a sudden illness. He was a native of Raleigh, Miss., and was a 32nd Degree Mason, a member of the Muleshoe Masonic Lodge and a member of the Shrine.

Rev. Craft was a retired United Methodist minister who served churches in the North Texas Panhandle area for more than 40 years. He moved to Lubbock in 1966 from Muleshoe, where he was a

minister for six years. Survivors include one son, Truett Craft of Lubbock; two daughters, Mrs. Foy (Mary) Langford of Lubbock and Mrs. James (Betty) Jennings of Muleshoe; two brothers, O.J. Craft and T.M. Craft of Hatisburg, Miss.; five sisters, Ms. Mary Craft, Mrs. Hettie Truman, Mrs. Dora Paul Stacey, Mrs. Dimple Oliver, and Mrs. June Coutant, all of Hatisburg, Miss.; five grandchildren; and four great grandchildren.

Pallbearers were Frank Jones, David Cleveland, Larry Elliott, Rocky Farrar, Wes Reed, and James Daniel.

## Firefighters Report

By Wayne Peterson

Halloween celebrations of trick or treat, ghosts and goblins will take place this weekend. We at the fire department wish everyone a happy celebration and urge everyone to make it a safe accident free one.

We hope by now, each household has had its heating vents checked and made safe for use. Even so, accidents can happen. If you think it's always someone else who suffers, always someplace else which burns, not your family or home, think again.

You may never have a fire in your home, and we hope not. But if you ever do have a fire, being prepared for the worst will increase your chances of getting out alive. Make a plan now, its too late to plan after a fire. Make each family member familiar with escape procedures. Design a plan to handle a fire emergency which requires immediate evacuation, evacuate first, investigate later. Most fire deaths occur at night. Victims are filled by smoke, so install smoke detectors and check as required by manufacturer. Draw floor plans to show all floors, windows, doors, and stairways. Have an escape route and alternate routes from every room. It would be a good idea to have a home fire drill.

## Nursing Home News

By: Joy Stancell

Chellie Br. lley and Annie Dunn are in the hospital at this time. We miss you, get well soon.

The Nursing Home dining room was the scene Tuesday morning for a get-acquainted tea in honor of Clara Rickert. Mrs. Rickert's special guests were her daughter-in-law, Mrs. Don Rickert, and her mother of Clovis.

Jackie Johnson and Rendo visited the Nursing Home Wednesday. Jackie read to the residents in group.

The Jr. High Student Council visited the Nursing Home Tuesday, and served everyone delicious homemade cookies. Our thanks to them and to Mrs. Scoggins and Mike Richardson for bringing them.

The G.A.'s from the First Baptist Church came to visit Wednesday afternoon, and gave the residents magazines to read.

Thank you, Study Club for the nice folding chairs. We really do appreciate them.

Our thanks to Ben Room-

ing for the pumpkins, and to Ada Murray for helping us gather them.

The Methodist Church came to sing to the residents Sunday afternoon.

Maggie London was visited by her daughter-in-law, Margaret London, Tuesday.

Marie Engram was visited by Marjorie Preure, Lennie Ingram of Farwell, Josie Flowers, Nelda Merriott, Lona Embry, Mrs. D. B. Head, and Allie Barbour.

Cordelia Cochran was visited by her sister Wednesday. Mrs. Cochran attended services at the Muleshoe Church of Christ Sunday morning.

Ell Northcutt visited his wife, Lura Northcutt, Wednesday.

Effie Smith was visited by Mr. McCormick, Tuesday.

Melba Bratcher visited her father-in-law, Lynn Bratcher, Tuesday.

We welcome our new residents: Lowry S. Lewis, born May 25, 1900. He is a Methodist, and his room is #61. Also, Ethel Askew, born March 28, 1902, and is a member of the Northside Church of Christ.

# did you know?



The fuel cost adjustment pass-through is fair to our customers. Costs of coal, natural gas, and fuel oil Southwestern Public Service buys to generate electricity change frequently. Sometimes fuel costs go up, and — we're glad to report — sometimes they go down. As set forth by regulatory authorities, the fuel cost adjustment pass-through requires SPS to reflect those changing costs in each customer's monthly bill. The fuel cost adjustment is designed so that each customer is charged only for the fuel that was required to generate the amount of electricity he actually used. There is no profit for SPS figured in the fuel cost adjustment. The customer pays only the current price for that fuel.

Doyle Moore, Amarillo District Manager.

SPS works hard to keep down the cost of fuel. Some people say that because fuel costs are charged directly to the customer, SPS has no incentive to keep fuel costs down. That's just not true. We have a commitment to keep electric bills as low as we can. Our customers are our partners, and we want to help them save money. Too, we always remember that electricity competes with other energy forms for the customer's dollar. So it's simply good business to keep the total cost of electric service as low as possible.

Maurice Johnson, Senior Engineer, System Planning, Amarillo.



Coal-fired generating plants help you and SPS hold down fuel costs. SPS now has two coal-fired generating plants. The newest, Tolk Station near Muleshoe, Texas, has just come on line. Fuel costs at coal-fired plants are significantly lower than fuel costs at the older, natural gas-fired plants. On the average, in fiscal 1982, the fuel cost of a kilowatt-hour generated by natural gas was 3.178 cents. The fuel cost of a kilowatt-hour generated by coal was 1.803 cents. So maximizing use of Tolk and our other coal-fired plant, Harrington Station near Amarillo, will help us, as your partners, hold down fuel costs.

Kurt Shaughnessy, System Accounting Coordinator, Amarillo.

For answers to your questions, call or write your SPS manager.

You and SPS, partners managing electricity, make the difference.



SOUTHWESTERN PUBLIC SERVICE COMPANY

# Sensational Super Purchase

\*DISTRIBUTOR MIS-ORDERED — two carloads. Therefore; we're making this tremendous offer from us to you.

UNTIL LIMITED QUANTITY SOLD

\$399

Model EHT122DT

with a working trade

We Have A Trained Technician To Service Our Products

# Wilson Appliances

Mon. - Sat. 8:00 - 6:00

272-5531

117 MAIN

## ELECT

Paulette Cuevas



Justice Of The Peace

PRECINCT 1

BAILEY COUNTY

QUALIFIED-AVAILABLE

WILLING TO SERVE ALL PEOPLE OF THE COUNTY

POL. ADV. PAID FOR BY BRUCE D. PURDY, M.D., MULESHOE, TEXAS, TREASURER

## Pre-nuptial Shower Fetes Miss Terry McCamish

Miss Terry McCamish, bride elect of Danny Davis, was feted with a pre-nuptial shower Saturday, October 23, from 2 to 3:30 p.m., in the community room of Summit Savings and Loan.

Guests were greeted by the hostesses and registered by Mrs. Sheryl Altman, sister of the honoree. Jenny Ziegenfuss and Denna Harris served assorted sweet breads, nuts, mints, punch, and coffee from crystal and silver appointments.

The serving table was covered with a white lace over pink tablecloth and

accented with a gold and crystal candelabra accented with silk flowers in the bride's chosen colors of burgundy and pink. The honoree's corsage consisted of pink and burgundy silk flowers.

Special guests included Mrs. Barbara McCamish, mother of the bride; Mrs. Verna Davis, mother of the prospective groom; Mrs. R. C. Davis of Lazbuddie and Mrs. Ernest Martin of Muleshoe, grandmothers of the prospective groom; and Mrs. Ruby McCamish of Muleshoe, grandmother of the bride.

The hostesses gift was a vacuum cleaner. Hostesses for the occasion included Ann Moore, Evelene Harris, Billie Downing, Hazel Gilbreath, Nelda Merriotti, Elaine Parker, Ronda Spies, Dorothy Turner, Betty Carpenter, Gladys Black, Paula Tarter, Betty Campbell, Kathleen Haynes and Carol Kennebec.

The value of Bible-reading is so self-evident that we often overlook the importance of mentioning the fact.

The world is populated with people willing to tell everyone how important they are.

The best way to tackle a hard job is to begin on an easy section of it, and then go to it.



MISS TERRY MCCAMISH

## Best Way To Approach Art Knowing All Or Nothing

Viewing art is best approached with either no background at all or a great deal of background, a leading Texas art critic advised Texas Christian University students recently.

It frightens Janet Kutner, art critic for the Dallas Morning News, to think her readers take what she writes as gospel, she told a TCU Brown Bag Series audience.

"I think it's important either not to read anything at all and form your own judgments or to read lots of things -- not just criticism but art history and other things that help your thinking process," Ms. Kutner said.

Art in general is intimidating, she admitted, "and one of my roles as a newspaper art critic is to take that intimidating aspect away. There is the 'Catch 22,' because in trying to make art more accessible to people, I can't talk down to those who are knowledgeable."

The Dallas writer believes it is important that art from Texas be considered in terms of art in general, not as "regional" art. "We don't have one value system for art done in Fort Worth, another for art from Tyler, another for art from Dallas or from Galveston," she pointed out.

"Art is art, and emer-

ging artists are emerging artists, but after a certain point they are expected to work on a mature level. I cannot have a double standard about them or about people I know or don't know, those whom I like or don't like, those who are my friends or those who are not."

Ms. Kutner does not consider art criticism an art. "It is the artists who create," she said. "I am an interpreter, a communicator, and hopefully I make things more clear instead of more confusing. Hopefully I can occasionally write something that will help an artist to look at something in a way he hasn't thought of."

The Dallas critic was one of a variety of persons concerned with the arts -- artists, dancers, filmmakers, and others -- who present Brown Bag program at TCU each Monday at noon.

**Safest**  
The safest rule for predictions is to be indefinite about the date. Sooner or later almost anything can happen.

**Speed Warning**  
The speed and power of the new cars help to bring places closer together, like this world and the next.  
-Labor.  
-Chronicle, Abilene, Kan.



The Creative Woman

BY SHERYL BORDEN

Topics to be covered on "The Creative Woman" on November 2 and 6 include kitchen planning and storage ideas and toppings for oatmeal.

Linda Newberry is home economist and kitchen designer for T-bird Home Centers in Artesia and she will discuss why kitchens are usually ignored in building or redecorating plans. She'll discuss the work triangle and how to incorporate one in a kitchen, and will also discuss storage ideas for bathrooms, dens and bedrooms as well as ideas for the kitchen.

Informing consumers of ways to use oats is one important job of Nina Swan, Director of Consumer Relations with the National Oats Co., in Cedar Rapids, Iowa. Ms. Swan will share with viewers different toppings for oats for breakfast. One idea will be especially interesting to children.

On November 4, the topics will include information on hayfever, buttons and buttonholes and household cleaning products.

Dr. J.T. Olive, M.D. from Las Cruces, discusses hayfever and the irony of the name. As he explains, allergic rhinitis is not necessarily caused by hay, neither does it usually produce fever. Dr. Olive will explain the complications of hayfever and talk about some of the causes of hayfever in the southwest, and how to treat this and other allergies.

Kaye Cowan, Sales Manager for Ann Silva's Bernina Sewing Center in Albuquerque will demonstrate how to get a professional looking buttonhole and how to sew buttons on by machine.

To conclude the show, Joy Best, Extension Home Economist from Portales will continue her discussion of homemade cleaning products. Mrs. Best will talk about reading labels on products, safety precautions of homemade products and the commercial ones, and will inform viewers of the Poison Control Center telephone number.

"The Creative Woman" is produced and hosted for KENW-TV by Sheryl Bor-

den. The show is seen on Tuesdays and Thursdays at 12:30 p.m. and at 2:00 p.m. on Saturdays. Viewers can request copies of materials offered on the show by calling on KENW-TV's toll-free telephone lines. The numbers are: New Mexico: 1-800-432-2361 and Out of State: 1-800-545-2359. Portales and Roosevelt County residents are asked to call 562-2112.

## Make And Take Workshop Scheduled

Parents who currently have children enrolled in Kindergarten and also parents of 4-year olds who will start to kindergarten next year are urged to attend MAKE AND TAKE WORKSHOP on Tuesday, November 2, from 7:30 until 9:30 p.m. at Dillman Elementary School Cafeteria. This workshop is hosted by the Muleshoe Independent School District.

Moms and Dads will be actively involved in making instructional materials to help reinforce at home what their children are learning at school. All materials and instruction will be furnished by the teachers and aids who teach in the kindergarten at Muleshoe I.S.D.

There will be a very special presentation by a guest performer, Prunella, to help parents understand how their children are taught in kindergarten.

The evening promises to be an interesting one for everyone and there will be baby sitters (courtesy of the Muleshoe F.H.A. Girls) at the school for parents with small children. Refreshments will be served.

If you have a kindergarten student this year, or will one next year, you should make plans to attend. BOTH YOU AND YOUR CHILD WILL BENEFIT FROM WHAT YOU LEARN.



**MONEY DOLL WINNER...** Vickie Garner was the lucky winner of the Money Doll Saturday night, at the Civic Center. The doll which has 25 Susan B. Anthony dollars attached was given by Alpha Zeta Pi Sorority. Jeff Lewis, son of Mr. and Mrs. Charles Lewis, drew the winning ticket.



Pluto is no longer the most distant planet from the sun. In 1978, it and Neptune exchanged places. They change again in March, 1999.

## Introducing



**Paula Perry, Hairstylist**  
Specializing In The Latest In Men's Styles

Beginning Tuesday, Oct. 26  
Accepting Appointments

**The Honeycomb**

120 West C

272-5108

## TOPS Weekly Meeting

TOPS Club chapter No. 1163 met Thursday, October 21, in the meeting room of Summit Savings and Loan. Edna Haynes called the meeting to order. Minutes of the previous meeting were read and approved. Weekly best loser was Josie Pedrosa. First runner up was Ella Norman and Mary Garcia was second runner up.

A new contest "Auction" was started. The meeting was dismissed with the singing of the goodnight song.

## ELECT

**DOROTHY TURNER**



COUNTY TREASURER  
BAILEY COUNTY

**QUALIFIED—EXPERIENCED  
LIFE TIME RESIDENT**

**Your Vote Will Be Appreciated**

POLITICAL ADV. PAID FOR BY DOROTHY TURNER

## Difficult times demand wise decisions... and strong decision-makers like Lt. Gov. Bill Hobby.

Texans are facing some difficult times. Now, more than ever, we need experienced, compassionate leaders in our state government.



### EDUCATION.

HOBBY will not be satisfied until our education system is the best in the nation. His efforts to improve the quality of public education for your children and grandchildren begin in the classroom. He is for improving teacher salaries and benefits. He is for giving more control to local school districts.

We need a leader like Lt. Gov. Bill Hobby who has our interests at heart. Here's how Hobby stands on the issues concerning Texans:

### JOBS.

HOBBY is working to create more and better jobs for Texans. He is making sure jobless Texans receive their full unemployment benefits. He is working to increase the efficiency to the Texas Employment Commission. He is stimulating economic growth and new jobs through responsible state spending and one of the lowest tax rates in the nation.

### CRIME.

HOBBY is for strong laws and certainty of punishment of criminals, backed by better training and pay for our police officers. He is helping upgrade our courts to speed up trials of accused criminals. He is for improving our prison system and parole system.

Re-elect  
Bill  
**Hobby**

A STRONG  
LT. GOVERNOR,  
HONESTLY.

Political Advertisement paid for by the Re-elect Lt. Gov. Bill Hobby Committee, P.O. Box 567, Austin, Texas 78767

## ZENITH COMPLETE INDOOR/OUTDOOR VIDEO RECORDING SYSTEM

with Camera and Recorder Carrying Case



**SAVE  
\$300<sup>00</sup>  
ON COMPLETE  
SYSTEM**

Model VRT9550



Zenith Tuner/Timer with Remote Control

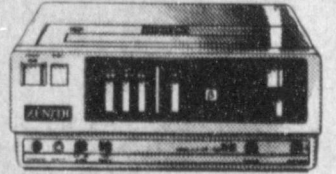
- For recording your favorite TV shows
- 24-hour Auto record timer
- 14-position Touch-Command channel selection
- Feather-Touch Controls
- Dependable Electronic Tuning

Deluxe Recorder Carrying Case



Model VRC98  
• Snap-on protection  
• Accessory pocket  
• Flip-up stand for easy access to controls

Model VR9500



Zenith Portable Video Recorder

- Weighs only 10 lbs 4 oz with battery and tape
- Auto Clean Edit Control
- Remote Action Record Special Effects
- Camera operated Record/Review
- Picture Speed Search
- Famous Beta Picture Quality

COMPLETE VIDEO SYSTEM  
Camera, Recorder  
Tuner/Timer and  
Carrying Case

**ONLY \$1959<sup>00</sup>**  
Regular Separate Prices Total \$2259<sup>00</sup>  
**YOU SAVE \$300<sup>00</sup>**

ZENITH The quality goes in before the name goes on

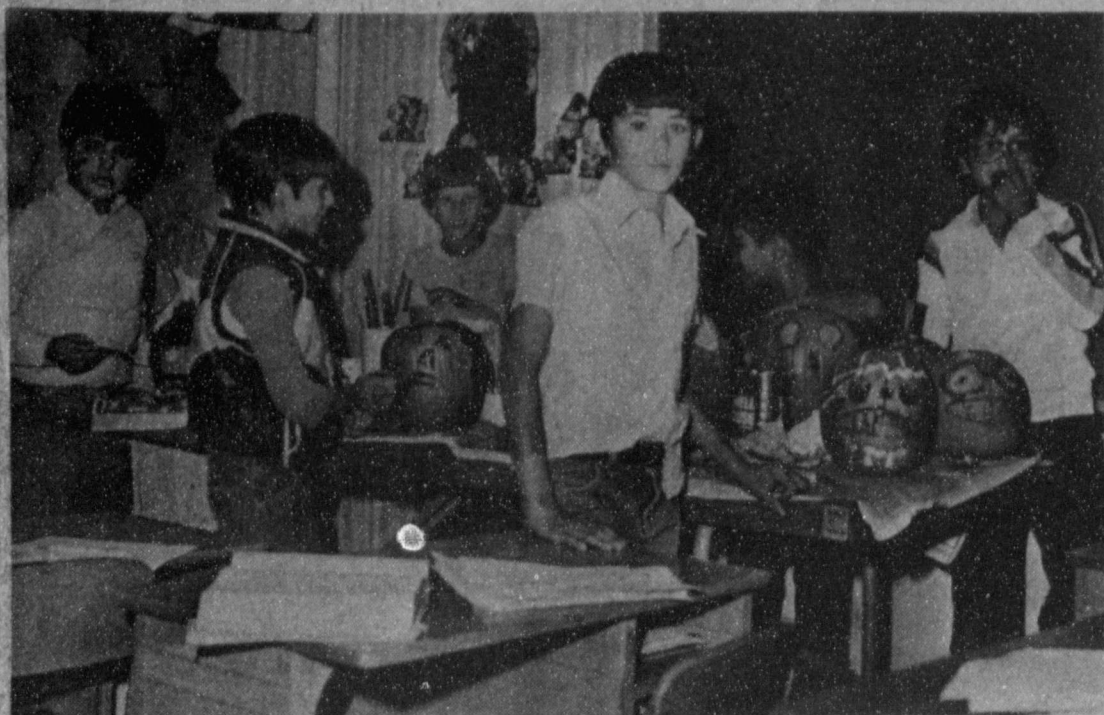
We Have A  
Trained Technician  
To Service  
Our Products

117 MAIN

**Wilson**  
Appliances

Mon. - Sat.  
8:00 - 6:00

272-5531



**ALMOST FINISHED...** These fourth grade students at Mary DeShazo Elementary School have almost finished painting pumpkins for Halloween as a class project. These students are in Mrs. Costen's class.

### Kitchen Band Of Clovis Entertains AARP

The regular meeting of Muleshoe Chapter No. 3169 American Association of Retired Persons, was held Friday, October 22nd, in Muleshoe Civic Center.

Preceding the luncheon, invocation was given by Mrs. Myrtle Creamer. Pledge of Allegiance, led by Mrs. Jewell Strong, was given and prayer was offered by Lee Pool.

Visitors introduced and welcomed were: Mrs. Eunice Stephens, of Lubbock, Assistant State Director of A.A.R.P. in Texas; Mrs. Melba Bratcher; Tom and Ora Berry; Mrs. Lillie Brooks, of Quanah, a sister of Maud Young; Mr. and Mrs. John H. Sain of Coery D'Alene, Idaho, a

brother of Mae Provence and Nan Gatlin; Willie Strong; Mr. and Mrs. Bill Lockwood of Walnut Creek, California, a daughter of Mr. and Mrs. A.R. McDaniel; Mrs. Alice Moore; and members of the Senior Citizens Kitchen Band, from Clovis, N.M.; Mrs. Bessie Douglass; Belle Savage; Madell Wilmoth; Mae Douglass; Refa Wilmeth; Velma Grimes; Louise Renshaw and Roland Douglass, (Bus Driver).

And from the Muleshoe Nursing Home: Ora Roberts; Alma Henley; Effie Smith; Russ Duncan; Cordelia Cochran; Charles Long; Bonnie Hurd; Linda Lee; Minnie Singletary; Joy Stancell and Helen Bayless Fice, L.V.N. Mr. and Mrs. Tom Berry became new members.

The Kitchen Band played several numbers. They received a love offering from

### PTA Annual Halloween Carnival

The annual Halloween Carnival will be held on Saturday, October 30, from 6 to 9 p.m., at the Bailey County Coliseum. The carnival will be sponsored by the Muleshoe Elementary PTA.

Costume judging will begin promptly at 5:30 p.m. The doors for the costume contest will open at 5 p.m., and children will be divided into age groups from preschool through elementary school.

Featured at the carnival will be game booths. Included this year will be a dunking board, cake walk, lollipop tree and sand dig.

Also available will be a duck pond, country store, balloons, T-shirts, and much more.

Tickets for the game booths are 25 cents each. Advance sale of the tickets will be Saturday from 9 a.m. to 3 p.m., at the coliseum. Tickets will also be sold during the carnival.

Refreshments will be sold during the carnival.



**CARNIVAL TIME...** These goblins are ready for the Halloween Carnival at the Bailey County Civic Center, which will be sponsored by the Elementary PTA, Saturday, Oct. 30. Pictured (L-R) Colin Zwickey, Taylor Robinson, and Rio Gregory.

### Keep Your Child From Choking

Halloween brings ghosts, goblins and, sometimes, real danger. The American Lung Association of Texas warns about one danger for children -- the risk of choking on holiday treats such as candy corn, hard candy, and peanuts.

At Halloween, children go door-to-door trying to fill their sacks full of candy and other goodies. Parents should insist youngsters bring the treats home for inspection. For the youngest -- two, three or even four years old -- some of the candy can be divided or mashed before eating.

The chewing and swallowing muscles of young children may not be sufficiently developed to cope with certain treats. Choking can result. Halloween goodies may also "go down the wrong way", and lodge in the lung instead of the stomach. This is called aspiration. A "foreign object" of any kind in the lung can cause life-long problems. At times, surgery for removal is required.

The best warning is: be sure children are old enough to chew and swallow correctly before trusting them with small, hard bits of food. Parents should always be on guard against "small objects" getting into the hands of children. Particularly those young enough to put EVERYTHING into their mouths. Choking, blocked air passages, even aspiration into the lung can result.

Moreover, such items as eyes and buttons might come loose from dolls, or wheels from toy cars. Set a good example. Don't put anything but food into your own mouth. Keep the coffee table clear of small objects a child might reach for. And remember: keep Halloween and all other times of the year safe for your child.

### LATEST ARRIVALS



#### David Justin Aylesworth

Mr. and Mrs. Smitty Aylesworth of Canyon are the proud parents of a son, David Justin, born at 6:29 a.m., October 18, in North West Texas Hospital in Amarillo.

David Justin weighed seven pounds and four ounces and was 21 inches long. He has a sister, Hilery Suzanne, who will be two years old on November 19.

Grandparents are Mr. and Mrs. Johnnie F. Williams of Muleshoe.

Great grandparents are Mrs. Frankie Williams and Mr. and Mrs. W. M. "Hap" Daniell, all of Muleshoe.

#### Tyson Lee Kerby

Mr. and Mrs. A.L. Kerby, Jr. of Bovina are the proud parents of a son born at 5 a.m., October 13, in South Plains Hospital in Amherst.

The young man weighed seven pounds and one ounce and was 19 inches long. He has been named Tyson Lee. The couple have one other child, Jason, four years of age.

Grandparents are Mr. and Mrs. A.L. Kerby of Bovina, and Mr. and Mrs. Roy L. Farley of Muleshoe.

Great grandparents are Mr. and Mrs. Henry Bass of Muleshoe.

#### Chad Eric Bales

Mr. and Mrs. Kem Bales are the proud parents of a son born at 7:13 p.m., October 16, in the Methodist Hospital in Lubbock.

He weighed seven pounds and four ounces and was 20 1/2 inches long. He has been named Chad Eric. He is the couple's first child.

Grandparents are Mr. and Mrs. Ike Wilcox and Mr. and Mrs. Doug Bales, all of Muleshoe.

Great grandparents are Mr. and Mrs. Clay Temple of Winterhaven, Calif., and Mr. and Mrs. W.W. Wilcox of Bovina.

#### William Ryan Autrey

Mr. and Mrs. Oran Autrey of Texico, N.M., are the proud parents of a son born at 3:28 p.m., October 19, in West Plains Medical Center.

The young man weighed eight pounds and 13 ounces and has been named William Ryan. He has a brother, Brandon, two years of age.

Grandparents are Mr. and Mrs. Bill Stephens of Clovis, N.M., and Mr. and Mrs. J.C. Autrey of Texico, N.M.

Great grandparents are Mr. and Mrs. Shorty Stephens and Mr. and Mrs. Specks Hodges of Clovis, N.M., Mr. and Mrs. A.D. Fine of Artesia, N.M., and Mr. and Mrs. Troyce Hoover of California.

A message from the American Lung Association of Texas, 7701 North Lamar, Suite 104, Austin, Texas, 78752 - 1088 or call (512) 458-2206.

\*\*\*\*  
The only way to become financially independent is to spend less than you make--now!

\*\*\*\*  
Some men think their families owe them a lot if they take them out to dinner once a year.

## ELECT



**GORDON H. (CORKY) GREEN**

### BAILEY COUNTY JUDGE

NOVEMBER 2, 1982

Born and reared in Bailey County.

Graduate of:  
Muleshoe High School  
University of Texas at El Paso  
University of Houston Bates College of Law

County Attorney of Bailey County, 1971-1980

Admitted to practice before:  
Texas Supreme Court and all other Texas Courts  
United States District Court for the Northern District of Texas.  
United States Court of Appeals for the Fifth Circuit in New Orleans, Louisiana and the Eleventh Circuit in Atlanta, Georgia.  
United States Supreme Court, Washington, D. C.

Your Vote Sincerely Appreciated.

Pol. Ad. paid for by Gordon H. Green, Muleshoe, Texas

## "Write In"



**LINDA GUELKER**

November 2, 1982

### BAILEY COUNTY ATTORNEY

Bailey County Resident Since December, 1981

Appointed Bailey County Attorney  
July 1, 1982

County Attorney Pro Tem from  
October 1, 1981 to July 1, 1982

Graduate of:  
Slaton High School  
Baylor University School of Law

Admitted to practice before:  
Texas Supreme Court and all other Texas Courts  
United States District Court for the Northern District of Texas.

Your "write-in" vote will be sincerely appreciated.

Write-in Votes are in the last column on the right hand side of the general election ballot.

Pol. Ad. Paid for by W.G. Harlan, Campaign Chairman for Linda Guelker



### Color 1 Wardrobe Workshop

Color 1 Associates, Inc.

Having trouble getting your wardrobe together? You don't have to have the "nothing to wear blues!" Learn how to create an effective, attractive, and economical wardrobe by attending this nationally successful Color 1 Wardrobe Workshop.

Presented by Lynn Wendel

Harper's Bazaar calls this Color 1 concept "ingenious"; Glamour calls it "revolutionary"; Family Circle says it's "Your Guide to Good Looks"; Architectural Digest calls it "intriguing"; Gentlemen's Quarterly says "color your world successful"; Cosmopolitan Living says "Live with colors that flatter you."

Three intense hours of color and wardrobe information and demonstration will give you a lifetime of personal and practical knowledge.

- Learn:
- How to get rid of the "closet full of clothes, and nothing to wear blues"
  - How to create looks in clothing, make-up, and accessories that are especially enhancing to your color type
  - What fabric textures and weights and pattern sizes look best on you

- How to build a Color 1 capsule wardrobe using just 2 suits, 2 neck accessories, and 5 shirts to make 30 different looks
- Which shoe styles go with which skirt lengths and slack shapes
- What color and size of jewelry is best for your color type, how much jewelry you can wear, and where to wear it
- How to build a Color 1 capsule coat wardrobe so you always have an appropriate wrap
- How to enhance all your outfits with very few purses, belts, and shoes
- How to tie scarfs
- Guidelines for combining clothing, make-up, jewelry, and accessories to make your apparel attractive and exciting within your budget

Date Saturday, November 6  
Time 1:00 p.m.

Place Marilyn Young's

Fee \$20<sup>00</sup> per person

Limited Seating Advanced Reservation Payment Required  
bring paper and pencil for taking notes.

Please Return This Portion

Name \_\_\_\_\_ State \_\_\_\_\_ Zip \_\_\_\_\_  
City \_\_\_\_\_ Phone \_\_\_\_\_

Number of Reservations \_\_\_\_\_ Total Amount Enclosed \_\_\_\_\_

Make Checks Payable To: Marilyn Young  
Return No Later Than November 3  
To: Marilyn Young 1807 W. Ave. H Muleshoe, Texas 79347

Muleshoe Journal 1979-82  
Established February 23, 1924. Published by Muleshoe Publishing Co., Inc. 11001 Thunders at 304 W. Second, Box 499, Muleshoe, Texas. Second class postage paid at Muleshoe, Texas.

MEMBER 1982  
TEXAS PRESS ASSOCIATION

11001 Thunders at 304 W. Second, Box 499, Muleshoe, Texas 79347

Muleshoe Journal and Bailey County Journal  
Bailey and surrounding counties 11¢  
Muleshoe Journal and Bailey County Journal  
Elsewhere

Advertising rates and conditions apply.

**White's Cashway Supermarket**

Open  
7:30 To 9:00  
Monday To Saturday  
12:P.M. To 9:00 P.M.  
Sunday  
Double Stamps  
Every  
Wednesday & Saturday

MEMBER  
**Waples West**  
ADVERTISING GROUP



# WHITE



SLICED, CRUSHED,  
OR CHUNK  
**PINEAPPLE**  
15 1/4 oz.  
**2/\$1**

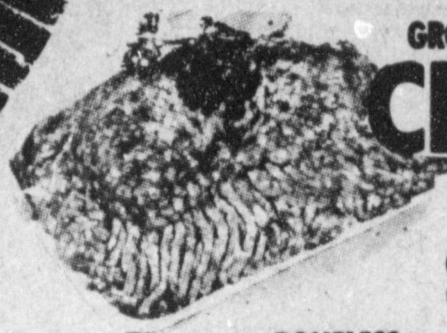
WHITE SWAN  
WHITE YELLOW DEVILS FOOD  
Ready - To - Spread  
**CAKE MIX**  
18 1/2 oz.  
**59¢**

WHITE SWAN  
**Black Pepper**  
4 oz.  
**69¢**

WHITE SWAN  
VANILLA CHOCOLATE  
16 oz.  
**FROSTING**  
**89¢**

U.S.D.A. CHOICE BEEF SALE  
CENTER CUT  
**CHUCK ROAST**  
FULL CUT  
**ROUND STEAK**

**\$1.59**  
Lb.  
**\$1.89**  
Lb.



GROUND (EXTRA LEAN )  
**CHUCK** ..... Lb. **\$1.69**  
BONELESS  
**STEW MEAT** ..... Lb. **\$1.79**  
BONELESS  
**SIRLOIN TIP OR RUMP ROAST** ..... Lb. **\$2.49**

DECKER QUALITY  
**FRANKS** 12 oz. Pkg. **89¢**  
BONELESS  
**ROUND STEAK** ..... Lb. **\$2.19**  
BEEF  
**FAJITAS** ..... Lb. **\$1.69**  
BEEF  
**SHORT RIBS** ..... Lb. **98¢**

CRUNCHY SMOOTH  
**PEANUT BUTTER** 13oz. **99¢**  
**SALAD DRESSING** 32oz. **79¢**  
WHITE SWAN  
**FRUIT COCKTAIL** 16 oz. **59¢**  
WHITE SWAN  
**PEAR HALVES** 16 oz. **2/\$1**  
WHITE SWAN  
**APPLE JUICE** 64oz. **\$1.59**  
WHITE SWAN  
**TOMATO JUICE** 46oz. **79¢**  
WHITE SWAN  
**INSTANT TEA** 3oz. **\$1.49**  
WHITE SWAN  
**SPINACH** 15 oz. **3/\$1**  
WHITE SWAN  
**POTATOES** 16oz. **3/\$1**  
WHITE SWAN  
**TOMATO SAUCE** 8oz. **5/\$1**  
WHITE SWAN  
**TOMATOES** 16oz. **2/89¢**  
WHITE SWAN TALL  
**MILK** 13oz. **2/89¢**  
WHITE SWAN SOFT N LITE  
**FLOUR** 5 lb. bag **69¢**

WHITE SWAN QUALITY  
**SLICED BACON** 16 oz. pkg. **\$1.59**

WHITE SWAN  
**LUNCHEON PEAS**  
17 oz.  
**3/\$1**

*Household Items*

WHITE SWAN 4 roll  
**BATH TISSUE** **89¢**  
WHITE SWAN DISHWASHING  
**DETERGENT** LEMON PINK 32oz. **59¢**  
WHITE SWAN LAUNDRY  
**DETERGENT** 42oz. **\$1.29**  
WHITE SWAN FABRIC  
**SOFTNER** gal. **99¢**  
WHITE SWAN  
**PAPER TOWELS** roll **69¢**  
WHITE SWAN  
**BLEACH** gal. **79¢**

**SURE'S BUYING**

WHITE SWAN <b>CAKE MIX</b> 18 oz. <b>9¢</b> With Saver Booklets	WHITE SWAN <b>SOFT N LITE FLOUR</b> 5 lb. Bags <b>19¢</b> With Saver Booklets	WHITE SWAN <b>BATH TISSUE</b> 4 Roll Pkg. <b>45¢</b> With Saver Booklets	WHITE SWAN <b>SOFT OLEO</b> 1lb. <b>9¢</b> With Saver Booklets	WHITE SWAN <b>WHIPPED TOPPING</b> 5 oz. <b>9¢</b> With Saver Booklets	WHITE SWAN <b>PEANUT BUTTER</b> 18 oz. Jar <b>59¢</b> With Saver Booklets
---	---	--	--	---	---




# SWAN FALL SALE

WHITE SWAN  
**CATSUP**  
32 oz.  
**99¢**



FRESH FROZEN FOODS

WHITE SWAN ORANGE JUICE	12 oz.	79¢
WHITE SWAN CRINKLE CUT POTATOES	2 LB.	89¢
WHITE SWAN WHIPPED TOPPING	8 oz.	49¢



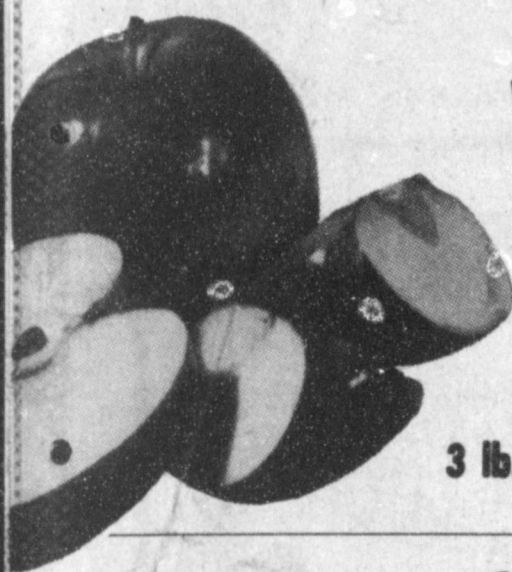
WHITE SWAN  
**CORN**  
WHOLE KERNEL  
17 oz. **2/79¢**



Fresh Produce

Best Produce Prices are Found at White's Cashway Grocery  
"Where Friends Meet and Prices Talk"


WASHINGTON RED DELICIOUS  
**APPLES**  
3 lb. Bag **99¢**



CALIFORNIA HASS  
**AVOCADOS**  
EACH **49¢**



CALIFORNIA - ICEBERG  
**LETTUCE**  
EACH **49¢**



COLORADO - ALL PURPOSE RUSSET  
**POTATOES**  
10 lb. Bag **98¢**




TEXAS YELLOW SWEET  
**ONIONS**  
LB. **19¢**

TEXAS RUBY RED  
**GRAPEFRUIT**  
LB. **29¢**

**PEPSI**  
6-32 oz. Bottle  
**\$1.79**



Health & Beauty Aids

- |   |        |
|---|--------|
| JERGENS ALSO EXTRA DRY LOTION 10oz.         | \$1.69 |
| FRESH GEL COLGATE 4.6 oz.                   | \$1.19 |
| SILKIENCE SHAMPOO 15oz.                     | \$2.39 |
| SILKIENCE ALSO EXTRA BODY CONDITIONER 15oz. | \$2.39 |
| LISTERINE 12oz.                             | \$1.69 |
- 

Dairy


**BISCUITS**  
BUTTERMILK • SWEETMILK  
**5/\$1**



**OLEO**  
SOFT 1 lb.  
**2/89¢**



WHITE SWAN CUT  
**GREEN BEANS**  
15 1/2 oz.  
**3/\$1**



**SAVER POWER**

Twice As Many Savings

WHITE SWAN BLACK PEPPER 4 oz. <b>19¢</b> With Saver Booklets	WHITE SWAN WHOLE GOLDEN CORN 17 oz. <b>5¢</b> With Saver Booklets	WHITE SWAN WHOLE PEELED TOMATOES 16 oz. <b>5¢</b> With Saver Booklets	WHITE SWAN BLEACH 1 gal. <b>29¢</b> With Saver Booklets	WHITE SWAN INSTANT TEA 3 oz. <b>99¢</b> With Saver Booklets	WHITE SWAN SLICED OR CHUNK PINEAPPLE 15 1/2 oz. <b>5¢</b> With Saver Booklets
---	--	--	--	--	--



1 Make Our Store  
Your Favorite Place To Shop

**SERV-ALL**  
**THRIFTWAY**

N. CAROLINA VS MARYLAND

2 For:  
★ INSURANCE  
★ TIRES  
★ BATTERIES

Bailey County Farm Bureau  
1612 W. Amer. 272-4567

SMU VS TEXAS A&M

3 ANY  
PRESCRIPTION  
ANYTIME!

**Western Drug**  
114 Main 272-3106

COLGATE VS SYRACUSE

4 For The Best  
Insurance For Your Money -  
See Your Independent Agent:

THE BIG DIFFERENCE  
YOUR Independent Agent's Difference

**TERRY FIELD Ins.**  
213 E. Ave. B 272-5551

OHIO ST. VS PURDUE

5 PROFESSIONAL  
PIA INSURANCE AGENTS

**Henry Insurance and Realty**  
"SERVING ALL YOUR INSURANCE NEEDS"

111 W. AVENUE B — MULESHOE, TEXAS — PHONE 806/272-4581

IOWA ST. VS KANSAS ST.

**BACK THE MULES**  
**FOOTBALL**  
**CONTEST**

GRAND PRIZE \$100

1st \$6 2nd \$3 3rd \$2

Players Of The Week

CONTEST RULES:

- Pick the winner of each of the games contained in the advertisements on this page. Write the name of the teams you think will win opposite the game number in the blanks provided on the official contest blank.
- The contestant must be 12 years of age or older.
- Only one entry per person may be made for any one contest.
- Bring your entry blank by *The Journal* office by 5:30 p.m. Friday, or, if mailed, the entry must be post-marked not later than 5:30 p.m. Friday. Write "FOOTBALL CONTEST" on mailed entry, and mail to P. O. Box 449, Muleshoe, Tx. 79347.
- Pick and write in the score of the tiebreaker game. This score will be used to break weekly as well as grand prize winners. Decision of *The Journal's* scoring judges will be final.
- Check the team you think will win; 10 points for first place, 6 points for second place and 4 points for third place.
- To count for grand prize, entries must be on official blank printed in the paper.

OFFENSE DEFENSE

See  
**Players Of The Week On Page 3**

October 28, 1982 OFFICIAL ENTRY BLANK

NAME \_\_\_\_\_ PHONE \_\_\_\_\_

ADDRESS \_\_\_\_\_

1	11
2	12
3	13
4	14
5	15
6	16
7	17
8	18
9	19
10	20

MULESHOE VS FRIONA

This Week:  
**Muleshoe vs. Friona**  
H - 7:30 p.m.

6 **B.T.S. Hair Care**

Main Street  
**BEAUTY SALON**  
115 Main 272-3448

L.S.U. VS MISSISSIPPI

8 HOME OF:  
"THE GREEN MACHINE"

**Robert D Green, Inc.**  
2400 W. American 272-4588

BAYLOR VS TULANE

10 'The Upper Crust  
of the Donut World'

Your Favorite Coffee & Sandwich Shop

**SPUDNUT SHOP**  
328 Main 272-3542

STANFORD VS WASHINGTON

12 **First National Bank**  
Your Home-Owned Bank

All The Bank  
You'll Ever Need

202 S. 1st 272-4515

WYOMING VS AIR FORCE

14 "We're Ready  
To Serve You - Better!"

See:  
**American Valley Irrigation & Reid Real Estate**  
West Highway 84 272-3142

DRAKE VS WEST TEXAS

16 JOIN **SAM'S Sporting Goods**  
In Supporting All Our Athletic Programs

226 Main St. 272-4414

LITTLEFIELD VS ABERNATHY

7 Need A Good Car  
For School?  
COME SEE US!

GM QUALITY SERVICE PARTS Keep That Great GM Feeling With Genuine GM Parts.

**THORNTON Chevrolet**  
201 Main 272-4521

PENN ST. VS BOSTON COLLEGE

9 ★ SEED  
★ FEED  
★ SERVICE

**McCormick Seeds, Inc.**  
400 E. Ash 272-3156

MICHIGAN ST. VS INDIANA

11 'We Appreciate  
Your Business'

**Joe Shipman & Sons Body Shop**  
410 N. 1st 272-4408

IOWA VS ILLINOIS

13 **Farmers Co-op Elevators**  
"3 Locations To Serve You"

272-4335  
ENOCHS MULESHOE  
CLAY'S CORNER  
TULIA VS DIMMITT

15 Featuring-  
The Latest In Fashions & Cosmetics

**Latrell's Fashions**  
1519 W. American 272-3459

CINCINNATI VS TEMPLE

17 Come See Us  
For All Your Farming Needs!

**Wooley International Inc.**  
W. Hwy. 84 272-5514

BROWN VS HARVARD

18 OPEN!  
After The Games  
At Home Or Away  
**Dinner Bell**  
2103 West American 272-3460

AUBURN VS FLORIDA

19 Your Wedding, You Want It To Be Special.  
And We Do Too. Your Wedding wedding photographs are tangible moments of your special day. Trust them to a professional - Trust them to us. When you book your wedding with us, we'll give you a bridal portrait setting absolutely free.

We offer a complete line of wedding stations.  
"Your Wedding Specialist"

**Adrian Photography**  
LAZBUD, IE VS NAZARETH

20 Money  
To Loan on Anything of Value  
Bargains on Unredeemed Pledges

All Loans Strictly Confidential

"No Loan Too Large or Too Small"

**Muleshoe Pawn**  
213 S. First 272-5105

TEXAS VS TEXAS TECH



# Mules Face Chieftains

Cont. from Page 1

tential Mark Montoya. Juan Samarron, Roddy Berend, Charlie Morgan, Charlie Veazy and Max Pera will be some of Moss's outstanding players to watch for. That is not to discount any of the squad, for they are all good players.

Moss says his quarterback, Charlie Morgan is about "an average player, but, he is a good hustler and is a good team leader. Moss also said that Charlie Morgan had rushed for a total of 1,146 yards this year. He respects the Mules' running and throwing game, but don't be fooled by his compliments, since Friona does not have any slouches.

"If we win this game, we have an excellent chance of being in the playoffs; if not, we may be out," says Williams. So look for a fired up Mule team and fans.

Starting lineup for the Friona Chieftains on offense is: #50 Roddy Berend center, guards Martin Lopez # 62 and Carl Jackson #70, tackles Mike Chaney #77, and Tim Kirk #66, ends K. Brogden #85, and Eloy Caballero #82 tailback Charlie Morgan #21, full-back Reese Fleming #30, flanker Alfredo Mata #40, and Bruce Patterson #15, quarterback. Juan Samarron #79, defensive ends Roddy Berend #50 and Mike Deaton #90. Linebackers are Reese Fleming #30 and Carl Jackson #70, wide line-backer #11 Pilo Castillo, center backs #33 Marc

Montoya and Bruce Patterson #15, free safety #89 Mike Neal and strong safety #42 Jeff Lundy.

This will be the last homegame for Muleshoe for this season, and the last chance for fans to turn out and support their hometown football heroes. Get your blankets and warm duds out and be at Benny Douglas Stadium at 7:30 p.m. Friday, October 29 to cheer the Mules on their playoff berth.

A pre-game supper will be served by the Muleshoe High School Junior Class which will consist of turkey and all the trimmings. Carry-out orders and pre-orders are available and you may get them by calling the phone number listed for the cafeteria. Serving times are from 5 p.m. until 7 p.m.

## Police Dept...

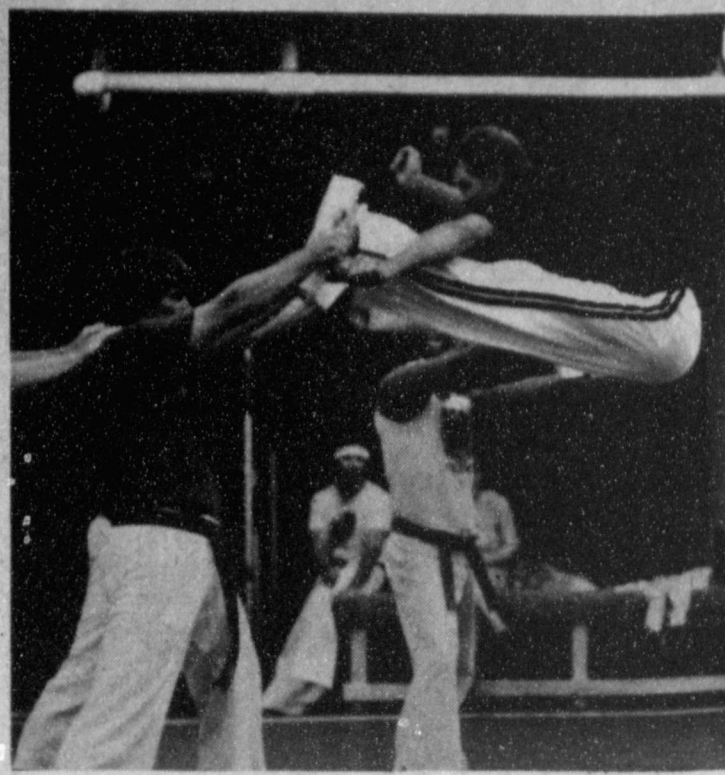
Cont. from Page 1

loween Carnival at the Civic Center. This is a worthy cause and those in attendance always have a good time."

Further, the Chief stated, "If you feel your children must trick or treat, I urge you to go with your children and only to the homes of close friends. Examine each item they collect carefully before allowing your children to eat it."

European pipeline deal finalized.

House vetoes money bill again.



KARATE DEMONSTRATION...Shown above is Danny Kelley, Head Instructor of West Texas Karate demonstrating a double front kick.

## Sign-Up for E.C.P.

Cont. from Page 1

dence at this time. As of last Friday, only one Bailey County producer had signed up in the 1983 farm program.

Deficiency payments for the 1982 crops will be made before the first of 1983, according to Williamson, and will come direct from Kansas City. At least, the ones on cotton, corn and grain sorghum.

The payments are based on 70 percent of the projected deficiency rate and advance payments will be calculated by multiplying the farm yield times the acres for payment times the rates for upland cotton, corn and grain sorghum. For each farm, the producer has three options: 1) to request and advance pay-

ment for any eligible crop to be made before the end of the year, 2) to request an advance payment for any eligible crop to be made early next year or 3) to elect not to receive an advance payment. In this case, the full payment will be made in February for cotton and in April for corn and grain sorghum. No advance payments can be issued unless requested. If a producer has questions regarding this matter, they need to contact the Bailey County ASCS office before December 1, 1982. The forms for requesting these payments are expected to be mailed out about the first of November.

## Welfare...

Cont. from Page 1

County Welfare Board will have fund-raising events in the future in order to help this project. Announcements will be made when these events occur. The Board will also have volunteers to take these children to appointments to the doctor, dentist, school, etc., as the need arises. All persons interested are invited and encouraged to attend the NOVA training sessions.

## Pac-10 Race Begins To Tighten This Week

Starting this weekend, the hair begins to get short in the title race in the Pac-10 Conference for three of the four favorites, Washington, Southern California, and Arizona State. The Huskies, in particular, will finally have to go to work as they face Stanford, then U.C.L.A., and Arizona State on successive weekends. To date, the powerhouse from Seattle has mangled four teams in the league, Arizona, Oregon, California, and Oregon State. However, the Huskies' record last year vs the three toughies coming up was just 33% as they beat Stanford in a wild 42-31 free-for-all, but took one-sided shellackings from both Arizona State and U.C.L.A. But first things first, and though it'll be on the road, Washington is favored over Stanford.

The other block-buster in the conference will be in Tempe, Arizona, where the Sun Devils host Southern Cal. They haven't played each other since the 1980 season when the Trojans barely emerged 23-21. Saturday could almost be called elimination day between the two except that if Arizona State wins, it still must play Washington. And if Southern Cal wins, it has U.C.L.A. to hurdle. And both of them have to play dangerous Arizona in Tucson. Very interesting conference race...we'll go with the Trojans in this one.

Illinois and Michigan are just two weeks away from their showdown in the Big Ten Conference. The Illini were 4-1 in the conference prior to a dangerous date at Wisconsin last week, and the Wolverines were 4-0 before playing Northwestern. Illinois is expected to beat home-standing Iowa this Saturday, and Michigan, in its annual Little Brown Jug meeting with Minnesota, is favored to retain the Jug.

Among the independents, Florida State will add to its ever-increasing prestige by nipping Miami. Notre Dame should prevail over tough Navy, and Penn State, facing its second straight challenge from eastern powers, is favored to edge Boston College.

## 1982 Tax Rebate

Cont. from Page 1

ments to date, a change of minus 3.48 percent. Olton's rebate for this period amounted to \$1,175.69 as compared with \$1,301.50 of 1981 and they have received a total of \$31,962.53 for the year, compared to \$33,543.76 for 1981 payments to date, a minus 4.71 percent change. In Sudan a total of \$566.20 was reported as net payment for the 82 period as opposed to the zero payment for 1981. Total payments to date in Sudan for 1982 are \$10,782.41 as compared to \$11,393.08 for 1981, a change of minus 5.36 percent.

In Parmer County, Bovina, received a September rebate of \$1,438.19 as compared to \$796.95 for September 1981. Total 1982 payments to date for Bovina reflect \$18,573.92 as compared to \$19,144.68 for 1981, a minus 2.98 percent

## Demonstration Held At Karate Academy

On Saturday, October 23, the West Texas Karate held their second annual family night. Approximately 50 persons attended including members along with friends and relatives of the students.

Students and head instructor Danny Kelley, displayed their abilities in forms, one-step sparring. Also demonstrated was women's self defense, and self defense against weapons. There were also various breaking techniques demonstrated from the beginner's level into the intermediate level and on through advanced levels.

change to date. For Farwell, a total of \$824.48 net payment is reported for this period in 1982 as compared to a zero reported at this time last year. Total payments for Farwell to date have reached \$17,927.68, up from the \$15,810.93 of 1981. This is a 13.39 percent change. In Friona which is the largest city in Parmer County a total of \$4,121.98 is reflected as a net rebate for this period in 1982, slightly lower than the \$4,815.89 for September, 1981. Total 1982 payments to date for Friona show to be \$75,038.79, up from the \$72,374.76 of 1981 payments to the same date. This shows a change of 3.68 percent.

Houston received \$7.7 million. So far in 1982, Houston's payments are up 14.1 percent over 1981. Dallas got \$4.2 million, up 8.9 percent so far in 1982.

San Antonio got \$1.9 million, up 10 percent for the year.

Fort Worth received \$1.2 million, bringing the total for 1982 to \$19.9 million, up 4.5 percent for the year. Austin received \$1.3 million, up 14.3 percent for the year.

El Paso received \$841,937 up 6.6 percent for 1982.

Bullock also sent October rebates to the state's two Metropolitan Transit Authorities. The Houston MTA received \$8.5 million, bringing the total received this year to \$136.1 million, up 10.9 percent over last year. The San Antonio MTA got a check for \$955,526, bringing the 1982 total to \$16.6 million.

These statewide figures included the impact in border cities of the August peso devaluation. Past devaluations have had an immediate negative impact on border sales but have returned to pre-devaluation levels within a year, Bullock noted.

## W.I.F.E. Officers

Cont. from Page 1

tion and for that donation the purchaser will receive a ticket on a drawing for \$500 cash. The national project is one with an artistic theme, which is being done by Marilyn Saylor.

Members were also reminded of an important upcoming meeting to be held in Lubbock on November 22. This is the Texas Agricultural Forum and will be held in the Civic Center. Many national farm leaders

will be present for this function and all who can are urged to attend.

W.I.F.E. meets each Thursday evening at 6 p.m. in the Muleshoe State Bank meeting room. Mrs. Redwine stated: "W.I.F.E. is not only for farm wives, it is for everyone who has an interest in agriculture, and as the saying goes, 'if you eat, you are involved in agriculture.'"

## Around Muleshoe

Cont. from Page 1

a guest in their home the past week. \*\*\*\*\*

Participating in the eighth Annual Allsup marathon in Clovis recently were Ricki Kelly, running in the ladies division of the 10K (6.2 miles) finishing with a time of 46:23.

Lonnie Adrian also entered running the half marathon (13 miles) finishing with a time of 1:27 and Johnny St. Clair also running the half marathon finishing with a time of **SPS...**

Cont. from Page 1

Duncan and Samuel Greenhouse received awards for 10 years of service.

Carlton L. Jobert, Troy W. Wright and Danny L. Kelley were honored for five years of service.

Bert Ballengee, president and chief operating officer of the Company presented the service awards.

SPS honored 106 of its Southern Division employees at the dinner. The 106 have served a total of 1,870 years. Southwestern Public Service primarily provides electric service to a population of more than one million in a 45,000-square-mile area of the Panhandle and south plains of Texas, eastern and southeastern New Mexico, the Oklahoma Panhandle, and southwestern Kansas.

Two of the food groups of the Muleshoe 4-Hers will be baby sitting, as a community service, on Tuesday, November 2 from 4 to 6 p.m., at the 16th and Ave. D, Church of Christ, so the mothers and fathers may go and vote. You may drop the children off at the church where the girls will serve them refreshments and entertain them at no charge. \*\*\*\*\*

Ray Lynk has announced that in the future all skating at the Bailey County Civic Center will be held from 7 to 9 p.m., only. \*\*\*\*\*

**Political Calendar**

**County Attorney**  
*Linda Guelker*

**Republican**

**Treasurer**  
*Jeann Treadwell*

**County Judge**  
*Thomas Freeman*

## ELECT

**JACK BATES**

Justice Of The Peace Precinct I

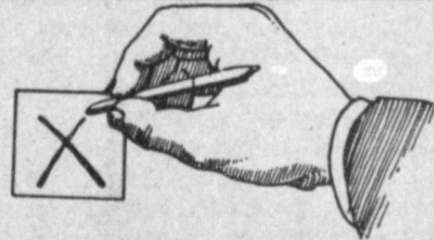
November 2, 1982

Your Vote & Influence Is Appreciated

POLITICAL ADV. PAID FOR BY Jack Bates

## VOTE FOR

**JIM HIGHTOWER**  
For Agriculture Commissioner



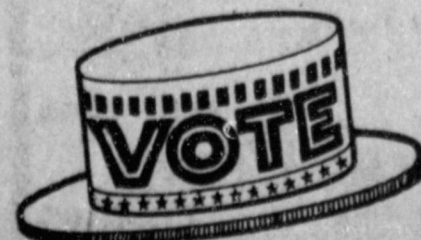
HAVING HAD THE OPPORTUNITY TO WORK MORE CLOSELY IN TEXAS POLITICS THAN MOST OF YOU FOR THE PAST FEW YEARS, WE HAVE BEEN ABLE TO DISTINGUISH WHO OUR REAL FRIENDS ARE.

JIM HIGHTOWER, DEMOCRAT CANDIDATE FOR AGRICULTURE COMMISSIONER IS INDISPUTABLY ONE SUCH FRIEND.

JIM HIGHTOWER IS VERY KNOWLEDGEABLE AND SENSITIVE TO THE DEPLORABLE ECONOMIC CONDITION OF TEXAS FARMERS AND RANCHERS TODAY, YET HAS THE UNIQUE SUPPORT AND TRUST OF URBAN PEOPLE TO SUPPORT MUCH NEEDED AGRICULTURE LEGISLATION.

JIM HIGHTOWER WILL PROVIDE MUCH NEEDED LEADERSHIP AND DIRECTIVE TO OUR STATE'S AGRICULTURE POLICY AND BE A STRONG VOICE FOR OUR CAUSE IN WASHINGTON, D. C. WHERE THE ULTIMATE CHANGES IN AGRICULTURE POLICY MUST BE MADE.

FOR THESE REASONS, PLEASE JOIN US, BERT WILLIAMS AND GUY AUSTIN WITH YOUR VOTE SUPPORT FOR JIM HIGHTOWER ON NOVEMBER 2.



Paid Political Advertising. Paid by Bert Williams and Guy Austin.

**True Value**  
Hardware Stores

**RAY-O-VAC** MULTI-PURPOSE LANTERN WITHOUT BATTERY

**LM1-B**

NOW ONLY **\$129**

Handy Like a VALUE PRICE

Economy Lantern  
Stylish and reliable — the quality art. looks of an expensive lantern at a low price. Use it almost any way, anywhere — home, auto, camping, emergency. Like a flashlight with a handle, yet brighter and longer lasting. Has no wires, just insert the battery and snap on the head. It's ready to go.

**Fry & Cox, Inc.**

401 S. First

272-4511

## The Bob Harmon Forecast

### Saturday, Oct. 30 — Major Colleges

Air Force	27	Wyoming	24	Lehigh	31	Bucknell	13
Alabama	26	Mississippi State	14	Maine	29	Northeastern	10
Appalachian State	21	East Tennessee	10	Montclair State	20	Trenton State	17
Arizona	24	Washington State	6	Muhlenberg	27	Dickinson	10
Arkansas	42	Washington State	6	New Hampshire	21	Rhode Island	17
Army	20	Columbia	7	Plymouth State	31	Western New England	0
Ball State	20	Eastern Michigan	10	Ramapo	20	New York Tech	10
Baylor	20	Tulane	21	Shippensburg	20	Slippery Rock	17
Bowling Green	30	Kent State	7	So. Connecticut	38	Lowell	10
Brigham Young	35	Utah State	6	Springfield	28	New Haven State	10
California	27	Oregon State	12	Tufts	22	Amherst	20
Central Michigan	24	Ohio	12	Wesleyan	29	Bowdoin	13
Citadel	24	Marshall	20	West Chester State	27	East Stroudsburg	10
Colorado State	25	Texas-El Paso	14	Carthage	24	Delaware	10
Cornell	36	Merchant Marine	14	Central Missouri	27	Carroll	6
Delaware	27	William & Mary	14	Central Oklahoma	24	Cameron	20
Duke	23	Georgia Tech	14	Centre	26	Illinois College	7
Florida State	25	Miami, Fla.	21	Concordia, Minn.	26	Lincoln	29
Florida	28	Auburn	21	E. Central Oklahoma	33	SE Oklahoma	12
Fresno State	24	Long Beach State	23	Findlay	27	St. Thomas	29
Furman	40	Memphis State	10	Franklin	23	St. Joseph's	0
Georgia	45	Memphis State	10	Friens	14	Kansas Wesleyan	0
Harvard	22	Brown	21	Graceland	33	Central Methodist	12
Hawaii	31	Cal-Fullerton	12	Hillsdale	13	Kentucky State	0
Holy Cross	21	Boston U.	13	Hope	24	Adrian	14
Houston	28	T.C.U.	17	Huron	38	Dakota Wesleyan	17
Illinois	24	Iowa	14	Middle Tennessee	21	Youngstown	14
Indiana State	37	Illinois State	7	Milikin	30	North Park	16
Iowa State	23	Kansas State	20	Missouri-Rolla	24	Evangel	13
L.S.U.	26	Mississippi	20	Missouri Southern	22	Missouri Western	10
Louisiana Tech	21	Arkansas State	17	Missouri Valley	49	Courier-Stockton	0
McNeese State	24	Arkansas State	17	Moorehead State	25	Nebraska-Omaha	10
Miami, Ohio	20	Toledo	14	Nebraska Wesleyan	20	Morningside	0
Michigan State	21	Indiana	20	Nebraska Wesleyan	20	Midland	17
Michigan	33	Minnesota	14	Nicholls State	27	Nicholls State	17
Missouri	22	Oklahoma State	13	No. Dakota State	24	Northern Colorado	21
Nebraska	44	Kansas	7	North Dakota	28	Augustana, SD	14
New Mexico	28	North Texas	10	Northern Michigan	36	Western Illinois	14
North Carolina	27	Maryland	20	Northwestern, Ia.	28	Chadron	14
NE Louisiana	31	Lamar	7	Northwood	26	Ferris	13
Northern Arizona	23	New Mexico State	21	Peru	20	Westmar	7
Notre Dame	24	Navy	14	So. Dakota State	26	South Dakota	21
Ohio State	21	Purdue	14	SE Missouri	27	NW Missouri	12
Oklahoma	23	Colorado	13	Wabash	26	Wayne, Mich.	24
Penn State	23	Boston College	16	Wayne, Mich.	23	Saginaw Valley	7
Pennsylvania	28	Princeton	20	Wilmington	41	Iowa Wesleyan	16
Pittsburgh	40	Louisville	7	Wis-Stevens Point	31	Wis-Oshkosh	14
Rutgers	31	Richmond	8	Wittenberg	33	Ohio Northern	13
San Jose State	23	Nevada-Las Vegas	13	Ablene Christian	25	S. F. Austin	20
South Carolina	24	No. Carolina State	15	Alabama A & M	21	Alabama A & M	7
Southern Calif.	30	Arizona State	27	Albany State	24	Clark	14
Southern Illinois	22	Eastern Illinois	20	Angelo State	24	Texas A & I	15
S.M.U.	20	Texas A & M	13	Ark-Monticello	17	Harding	10
So. Mississippi	24	SW Louisiana	7	Ark-Pine Bluff	42	Langston	7
Syracuse	25	Colgate	20	Catawba	27	Georgia Southern	13
Temple	23	Cincinnati	17	Central Arkansas	27	Arkansas Tech	14
Tenn.-Chattanooga	23	Western Carolina	22	Concord	27	West Liberty	8
Texas	26	Southern U.	7	Eastern Kentucky	34	Murray State	10
Tulsa	17	Texas Tech	10	Elizabeth City	17	Fayetteville	10
U.C.L.A.	35	Oregon	10	Florida A & M	14	Fayetteville	10
Utah	17	San Diego State	10	Gardner-Webb	24	Eion	10
V.P.I.	24	Kentucky	10	Grambling	33	Texas Southern	7
Virginia	21	V.M.I.	16	Hampden-Sydney	20	Emory & Henry	12
Washington	27	Stanford	23	Hampton	23	Gulford	17
West Texas	25	Drake	21	Jackson State	23	SE Louisiana	20
West Virginia	28	East Carolina	6	Mississippi State	23	Delta State	14
Western Michigan	27	Northern Illinois	8	Lenoir-Rhyne	21	Carson-Newman	20
Wisconsin	27	Northwestern	7	Mississippi College	20	Livingston	10
Yale	17	Dartmouth	8	North Alabama	26	Valdosta State	7

### Other Games — East

Albany State	21	Alfred	7
American Intern'l	28	Cent. Connecticut	12
Bates	23	Colby	10
California State	20	West Va. Wesleyan	6
Connecticut	23	Massachusetts	20
Gettysburg	20	Moravian	7
Ithaca	26	Hobart	13
James Madison	24	C.W. Post	10
Junista	23	Lycoming	21
Kutztown	31	Bloomsburg	12

### Other Games — South & Southwest

Cal-Davis	33	San Francisco State	7
Cal Lutheran	37	Sonoma State	7
Cal Poly (Pomona)	22	San Diego U.	20
Cal Poly (S.L.O.)	24	Santa Clara	23
Central Washington	21	Eastern Oregon	14
Chico State	22	Sacramento State	21
Colorado College	21	Trinity, Texas	20
Dayton	24	Humboldt State	13
Idaho	24	Boise State	10
Idaho State	20	Occidental	13
Idaho State	20	Occidental	13
Nevada-Reno	23	Northern Iowa	10
Nevada-Reno	23	Northern Iowa	10
Southern Utah	24	Central Florida	12
Western Utah	23	Eastern New Mexico	21
Whittier	26	Claremont	7

Presented By:

**Muleshoe Co-op Gins**</



**JUDGES ATTEND SEMINAR...** Seventy-nine justices of the peace attended a 20-hour Texas Justice of the Peace Training Center seminar Sept. 14-17, 1982, in Amarillo. Among the judges attending were, left to right, Trey Ellis, III of Muleshoe, Bailey County, Precinct 4; Tana Holmes of Muleshoe, Bailey County, Precinct 1; and Roy Tilley of Whiteface, Cochran County, Precinct 2. (SWT News Service Photo)

**Open Letter  
To The Public**

Being a county judge is a full time job. Should my opponent win the election, will he devote his full time to this important office? Will he leave his law practice for an \$18,000 a year salary? Does he intend to do both jobs? I don't think it's possible. Neither his clients nor the voters will receive the full attention they deserve. This county would remain in its present state of limbo, without the presence of an active, interested County Judge.

We need progress. Some fifty businesses have failed in Bailey County. We cannot look to the federal and state governments for help. All they do is send money. Once it's gone, we are back where we started. We need to take the initiative. It's time we helped ourselves. Only a full time County Judge can devote all his energies to the task plus give that little extra needed to help our county recover.

We can bring industry and jobs to this county, but it will take organization and effort. I offer you twenty years of management, budgeting, planning and organizational experience. I need your vote and your help.

Let's not continue to backslide. The office of Bailey County Judge will get my undivided attention, if I am elected. Vote for me and let's move Bailey County toward more successful, productive times.

Thomas S. Freeman  
Candidate for  
Bailey County Judge  
(Pd. Pol. Adv. Pd by  
Thomas S. Freeman)

**Muleshoe**  
Cont. from Page 1

Visiting in the home of Mr. and Mrs. Clyde Krebs Sunday, were their son, Dale, and his wife, Helen, granddaughters, DaLynn, Tina and Wilma Herring and Susie Biraure. Susie's home is in Emmenbrucke, Switzerland. She lives with the Herrings and attends Amarillo College.

The M.H.S. Student Council is sponsoring a blood drive by United Blood Services of Lubbock. The drive will be held in the High School auditorium on Thursday, October 28, from 9:00 a.m. - 3:00 p.m. Anyone age 17 with parental consent or age 18 thru 65 is eligible to donate. It is estimated that only 5% of all eligible donors give blood. Everyone is encouraged to come to the M.H.S. auditorium and give the gift of life.

New Dimensions held a **AFA...**

Cont. from Page 1  
Chapter's Spring meeting. The first place winner statewide will be honored at the Texas AFA Spring meeting in San Antonio.

The deadline for the return of entries to Mr. Turner is November 30, 1982. Contest entry forms may be obtained from either high school counselors or Mr. Turner. Entries must be between 500 and 600 words in length.

The AFA Texas Scholarship program is funded by the AFA and Mr. Eagle North Parker, Fort Worth industrialist. The Lubbock AFA Chapter entry has won the statewide competition in three of the past six years.

The Air Force Association is a nationwide organization committed to supporting a strong national defense establishment.

mixed doubles pool tournament last Saturday with trophies presented to the first three places.

Winners were Tony Slattery and Stella Mendoza; Richard Nichols and Annette Crabtree; and Rene Garcia and Rosemarie Quiroz.

The mixed pool doubles will be a monthly event in the future, according to Jeri Nell Wagon.

**Passport Fees, Validity  
Change Proposed**

THE PASSPORT SERVICES has just announced a PROPOSED change in passport fees and the validity period of passports. It is anticipated that these changes will become effective no earlier than December 1, and possibly as late as January 1.

The expected fee for a passport will be \$35.00 for adults, and \$20.00 for minors under 18 years of age. In addition, it is intended that the fee for execution will be increased from \$5.00 to \$7.00.

The validity period for new passports issued after the date the new fees become effective will be 10 years for persons 18 years of age and above, but will remain five years for persons under 18 years of age. The present passport fee is \$10.00 for all individuals plus the \$5.00 execution fee, a total of \$15.00.

At the present time, each individual must have his or her own passport. Persons who anticipate making a trip requiring a passport within the next five years, or who have a passport which will expire soon, may wish to apply before the new fees go into effect. In order to do so, new applicants will need to complete an application form, supply a certified copy of their birth certificate or other evidence of citizenship, fur-

**Energy May Be Conserved By Windbreak Planting**

Rising energy costs and unseasonably cold weather have focused attention on ways Texans can economically make their homes more comfortable. Living windbreaks have been utilized for many years but their value has increased with higher fuel bills. Fringe benefits of windbreaks can be protection for cattle and refuge for birds and other wildlife.

Evergreen windbarrier plantings on the north and west sides of the house can cut 10 to 40 percent off winter fuel bills. The location of the windbreaks is the key to their effectiveness. Since most cold winter winds come from the north or west, plantings should be placed on those sides with an extension on the eastern side if space permits. Experiments have shown that maximum wind reduction occurs at a distance from four to six times the height of the windbreak so plantings should be established at this distance from the house. Rapid growing species should be chosen which will reach from one to one-and-a-half times the height of the house at maturity.

Based on these recommendations, a 20-foot tall

house would benefit most from a hedge of tall evergreens located 80-120 feet from the north side of the house.

Six to eight foot spacings are appropriate for most evergreen plants used for windbreaks. Two or three rows about twelve feet apart are much more effective than single rows. The success of these plantings is dependent upon selection of plant species that are well adapted to the soil, climate and water conditions on the site.

Many of these trees can be ordered from the West Texas Nursery, Texas Forest Service, at Route 3 Box 216 in Lubbock. Order blanks and information sheets are available at the County Agents Office, if needed by area homeowners.

**Postal Clerk,  
Carrier Exams  
Scheduled**

"A Clerk-Carrier examination for the Brownfield, Texas area will be open from October 20, 1982, through November 2, 1982," says Elmer Reed, Jr. SC Mgr. Postmaster. Interested persons who wish to sign up to take the examination may do so at the following offices only: Brownfield, Denver City, Lamesa, Meadow, O'Donnell, Plains, Ropesville, Seagraves, Seminole, Sundown, Tahoka, and Wolf-orth, Texas.

Consideration to fill positions in any of the offices listed above will be made from those eligibles who have the highest test scores and have elected to be considered at that office. Candidates may choose a maximum of three (3) offices in which they wish to work. The choices may not be changed at a later time and they are made at the time the examination is given. An eligible who receives a career appointment at one office will not be considered for any other offices. Beginning salary is \$9.95 per hour. Eligibles will be considered for positions at the offices of their choice as vacancies occur; however, they will only be considered for one career appointment at a time. Eligibility for appointment resulting from this examination is for two years; eligibles may extend their eligibility for a third year, if they so request after the 18th month of initial eligibility.

nish two identical photographs made within the last six months of the size and quality required by the Passport office, and pay their \$15.00 fee.

Applicants who have expiring passports may apply direct to the Passport Agency if the expiring passport was issued less than eight years previously. Otherwise, they would follow the same procedure as an original applicant.

Application forms may be obtained from some State District Clerks' offices, Federal District Clerks' offices, some larger Post Offices or the Passport Agency offices.

The completed application form, birth certificate, pictures and fees should be taken to the executing office UNSIGNED for execution and further processing. The executing offices are the same as those from which application forms may be obtained.

Intense fighting between Iran-Iraq reported.



**WITCHES AND GOBLINS...** Celebrating Halloween at Hawkins and Purdy's School of Dance and Gymnastics are: back row (L-R) Taylor Robinson, Tyson Moncrief, Jim Bob Sides, Vic Mittal; front row (L-R) Mark McQuire, Colin Zwickey and Rio Gregory.

ers. Late winter and early spring are ideal planting times since adequate moisture and cool weather can promote root growth before hot dry weather. Mulching the newly set out plants helps prevent excess moisture loss and heat gain.

Ronald Reagan, President:  
"There's only one major cause of our economic problems: government spending more than it takes in and sending you the bill."

**'So That The People May Know'**

At the end of this year I will retire from public office, but my interest in the progress and development of Bailey County will continue. Therefore, and for the general information of the public, I make the following statement:

I have been associated with the county almost continuously since 1945. Bailey County is presently in as good financial condition as it has ever been. The funds all have adequate money and we have several hundred thousand dollars in the bank, much of which is on certificates of deposit, earning interest. We have never had an unbalanced budget, and Bailey County has NEVER defaulted on any obligation. Our budgets are carefully prepared, they are comprehensive enough to cover all items, yet simple enough to be workable and easily understood. The records are audited every three months by an independent auditor, with an annual audit at the end of each year. Copies of the budgets and audit reports are available for inspection at all times.

Budget hearings are held as the law directs, and copies of the agenda for each Commissioners' Court meeting are furnished to the local paper, the radio station, and TV Channel 6. News releases are published, and the public is cordially invited to attend every Court session, and to be heard.

Through the years we have granted several salary increases to the officials and employees. But they have been modest that have hardly kept up with inflation. At the time the officials and employees went six consecutive years without a salary increase of any kind. And, except for a few minor adjustments to make salaries more equitable, every person has received the same percent across-the-board increase. Salaries are based on position - not on personalities. The law forbids the commissioners from raising their own salary without raising that of at least one other official. Public notice of all salary increases must be given - and have been given. In my judgment, Bailey County officials and employees are not over paid. I have always encouraged the payment of good salaries, because good salaries attract high type employees. Good salaries contribute to employee satisfaction, which in turn contributes to better government.

For many years I periodically went through the criminal court docket with the County Attorney to arrange settings for the cases that could be tried, and remove the ones that could not be. That is proper procedure, and is practiced by most courts. In that way we kept the docket up to date. But during the years I was out of office that practice was discontinued. Then after coming back we did not work the docket as we had in years past. Consequently, over a period of years a back log of several hundred old cases built up. We were trying the ones that could be tried. But there were many in which the warrants were never served, nor arrests made. In most of them the whereabouts of the defendants was unknown, the witnesses were not available, some were deceased. Many were filed by businesses that no longer exist. They could hardly be tried, because they were too remote. Many of them were seven, eight, and ten years old, just lying dormant on the docket. Most of them were worthless checks given by transients that have not been seen or heard of since.

So by mutual agreement between myself and the prosecution we started systematically working the docket to bring it up to date. And in the process we dismissed a large number. The process was begun while Martha Brown was acting as County Attorney and was continued after Linda Guelker began serving. I signed the dismissal orders because it was a perfectly legitimate procedure and was the practical thing to do. There was nothing dishonest, underhanded, or unfair about it. It was NOT a matter of favoritism or of a reluctance to enforce the law. Judges and attorneys understand this. So the dockets are now up to date and in good condition.

Recently we had a call of the juvenile docket in which there were more than 30 cases to be heard. Some of the juveniles had more than one case pending against them. As a result of plea bargain agreements several judgments and several dismissals were entered. Every practicing attorney in town participated in those judgments AND in the dismissals. But it was perfectly open, honest, and proper procedure. In fact we have never conducted court in any other manner. Through the years we have tried thousands of criminal, civil, probate, and juvenile cases. ONLY TWO HAVE BEEN REVERSED.

There was two basic reasons why the Commissioners' Court appointed Linda Guelker as County Attorney:

1. She is the only person that appeared before the Court to make formal application, or to discuss County matters.
2. The Commissioners' Court believed she was the best qualified and the most favorably situated applicant for the position.

In this connection it is worthy of note that, in all her history, Bailey County has had only two officials who were republicans - one a Justice of the Peace, the other a County Commissioner. The Justice of the Peace was appointed by the Commissioners' Court, and the republican commissioner made the motion to appoint Linda Guelker County Attorney. In view of these facts it can hardly be said that it was a partisan affair. I mention this JUST TO KEEP THE RECORD STRAIGHT.

Our tax base is eroding because of exemptions initiated by the state legislature, and by depressed economic conditions, NOT by anything the Commissioners' Court has done. In 1981 more than 20 businesses in this area closed, and many farmers went out, principally because of bad conditions. There are serious economic problems, but Bailey County remains solvent and in good financial condition and continues to render the services that our people want. For example, we have a very fine lateral road system, we operate a senior citizen van, and outreach services under the Aging programs. We have one of the best extension service programs in the state. We have the first and one of the finest counseling services for the mental health program in the entire area. We have the finest Exhibition Center and Coliseum for any county our size on the plains of Texas. We render many other services, but our taxes are the lowest of any taxing entity in the county. We were the first county to re-apportion after the 1980 census and we did so without the expenditure of \$1 for professional help - not even a phone call.

Thus we have every right to be proud and many things to be thankful for. And, despite the problems of the moment, I am looking forward to many good years that surely lie ahead.

Personally, I am not a negative thinker or a fault finder. But rather, I face the future with faith and hope. I never engage in personalities or personal abuse. My desire is to help people - to build, and to save. To that end when we may be of service to you please feel free to call on us.

Thank you so very much,  
/s/ Glen Williams  
Glen Williams  
County Judge

**Sportsman Complete & Balanced Nutrition Dog Food**  
**PUPPY FOOD**  
27% PROTEIN  
20 LB. Bag \$5.95

**HI-PROTEIN DOG MEAL**  
26% PROTEIN  
50 LB. Bag \$10.59

**Five Point Dog Food**  
50 LB. Bag \$9.36  
25 LB. Bag \$5.15

**Alert Cat Food**  
10 LB. Bag \$3.45

**A&M FARM AND RANCH SUPPLY**

**Rent A Video Disc Player Overnight!**

**ZENITH VIDEO DISC PLAYER**

We Now Have "On Golden Pond", Available.  
Disc Exchange Club Plan Available.

**Wilson Appliances**  
117 MAIN 272-5531

**True Value Hardware Stores**

**Manager's Special**

The tool of unlimited uses. The MAASDAM Pow'R-Pull is used for Pulling, Lifting and Stretching.

MODEL 144SB-6  
2,000 LBS. (908.0 kg) CAPACITY  
SAFETY LATCH HOOKS INCLUDED  
AT NO ADDITIONAL COST...

**\$29.95**

**Maasdam POW'R-PULL**

Only Your Own Imagination Limits This Tool's Use!

**TOOL VALUE OF THE MONTH**

**Master MECHANIC® Hacksaw Frame**  
Nickel-plated steel frame adjusts to hold blade (incl.) in 1 of 4 positions. 100MM Quantities Limited

**FRY & COX, INC.**  
401 S.1st Muleshoe 272-4511

# BUYING? SELLING? CHECK OUT THE...

# CLASSIFIED ADS

WE RESERVE THE RIGHT TO CLASSIFY REVISE OR REJECT ANY AD.  
NOT RESPONSIBLE FOR ANY ERROR AFTER AD HAS RUN ONCE.

DEADLINE FOR CLASSIFIED ADS IS TUESDAYS AND FRIDAYS 11:00 A.M.

## PERSONALS

Want to do babysitting in my home. Call 272-3222. 1-30t-tfc

WILL DO babysitting in my home. Drop-ins are welcome. 272-5209. 1-39S-10TP

NEED CREDIT? Information on receiving Visa, Mastercard, with no credit check. Other cards available. Free brochure. Call Personal Credit Service: (602) 946-6203, Ext. 0511. 1-42T-4TTP

WANT TO DO babysitting. 272-5644. 1-43T-3TC2S

HANDY GIFT SHOP consignment shop opening soon, any handsome item welcome. Call 272-4785. 1-43T-4TP

OWN YOUR OWN Jean - Sportswear, Infant - Pre-teen or Ladies Apparel Store. Offering all nationally known brands such as Jordache, Chic, Lee, Levi, Vanderbilt, Calvin Klein, Wrangler over 200 other brands. \$7,900 to \$16,500 includes beginning inventory, airfare for one to Fashion Center, training, fixtures, grand opening promotions. Call Mr. Loughlin (612) 835-1304. 1-43T-1TP

INSTANT CREDIT  
Living room group or Bedroom set. \$699.95, \$75.00 down, \$60 per month. Baker Furniture, 108 E. Ave. B, 272-4000. We tote the note. 1-16t-tfc

Training and conditioning for sale or show. Let us put the polish and finish on your horse. Well-groomed animals bring higher sale prices. Call 272-5317 after 6 p.m. Reasonable rates. 1-34t-tfc

## HELP WANTED

IMMEDIATE POSITIONS available in 31-bed hospital for R.N.'s and L.V.N.'s. Must be eligible for Texas license. Base salary R.N.'s: \$20,000, L.V.N.'s: \$12,600. Excellent fringe benefits. Contact Trina Wilson, RN Director of nursing, Muleshoe, Texas. West Plains Medical Center, (806)-272-4524. Ext. 226 or 219. Equal Opportunity Employer. 3-42S-5TC

WANTED: full-time clerk typist. Must have typing speed of 60 wpm or more. Write Part-time % Muleshoe Publishing, Box 449, Muleshoe, Tx 79347. 3-40s-tfc

## HELP WANTED

GIVE YOURSELF A CHRISTMAS BONUS. Sell Avon. Earn good money! Call 272-3208 or Phyllis Duff 794-3498, Lubbock, Tx. 3-43S-3TC

CAREER OPPORTUNITY. The largest financial services company in the U.S. is seeking an enthusiastic, ambitious college graduate to become an independent business person in Muleshoe. The position offers growth, responsibility, recognition and freedom. If interested, send confidential resume to P.O. Box 64308, Lubbock, Tx. 79464. 3-43T-TFC

OPERATING ROOM supervisor position available in 31-bed hospital. Only Experienced persons need apply. Salary is negotiable. Benefits include hospitalization insurance, life insurance policy, six paid holidays, one mo., two weeks paid vacation after one year of employment. Excellent working conditions. Contact Trina Wilson, RN Director of Nurses, West Plains Medical Center, Muleshoe, Tx. (806)-272-4524, Ext. 226 or Ext. 219. 3-42S-5TC

MAKE CHRISTMAS MERRIER. Sell Avon! Earn Extra \$\$\$ for gifts. Call 272-3208 or 794-3498, Lubbock, Tx. 3-40S-9TC

## APARTMENTS

2 BR APARTMENTS for rent. Located in Sudan. For more information, call collect at (806)-385-6309. We are an Equal Housing Opportunity. SP Regional Housing Authority. 4-43S-8TC

SARATOGA GARDENS  
1300 N. Walnut-Friona  
Phone 247-3666  
NOW, 1 MONTH FREE RENT 1, 2 or 3 bedroom apartments, modern, wall to wall carpet, heating/cooling, kitchen equipped, laundry facilities, parking. Low rent for needy families. Call Collect. 4-43S-8TC

## REAL ESTATE

HOUSE FOR SALE BY OWNER: 3 BR, 1 bath, large utility room, built-ins in bedrooms. Fenced backyard. 272-3920 or (505) 477-2281. 8-42T-4TP

HOUSE FOR SALE: 3 BR, 1 1/2, LR, kitchen-dining combination, den, ample storage, corner lot, near 3 schools, 1928 sq. ft. living area, #21 West 6th. Phone 272-4732 days or 272-4827 evenings. 8-2s-tfc

HOUSE FOR SALE BY OWNER: Good well on 1 acre. Priced to sell. Call 272-5042 after 4:00 on weekdays. Anytime weekends. 8-42T-TFC

Do you need ----- a new brick home with 3 bedrooms and a garage? Do you want ----- to choose your plan to choose your location to choose your colors? Can you afford ----- little or nothing down and low monthly payments? Can you qualify???? 272-3142 REID REAL ESTATE Rex Harris, Broker 8-41T-TTFC

111 W. Avenue B, Muleshoe 272-4581 8-28t-tfc

## REAL ESTATE

HOUSE FOR SALE: 3 BR brick home for sale or rent. Hyatt Addition, Earth, Texas. Assumable loan or owner will finance. 257-3721. 8-28t-tfc

FOR SALE: by owner. 2 bedroom house with utility and garage, newly redecorated. Call 272-5578 or 272-3658, evenings and week ends. 8-37T-TFC

FOR SALE: by owner. 3 bedroom house, 2 baths, recreation room, library, 2 fireplaces, storeroom, large patio and carport. Call 272-5578 or 272-3658, evenings and week ends. 8-37T-TFC

FOR SALE BY OWNER: 50 acres near town, with pig pens, corrals, shed with storage room, and wash room. 6" well. 272-3920 or (505) 477-2281. 8-42T-4TP

LARGE 3 BR, 2 bath home \$67,500. Immediate possession, excellent terms. Excellent financing. Call your local realtor, owner broker. 806-794-5595. 8-31s-tfc

FOR SALE: by owner. 80 acres, irrigated land with good water, large barn, underground pipe. Make an offer. Call 272-5578 or 272-3658, evenings or week ends. 8-37T-TFC

FOR SALE: by owner. 2 bedroom house on corner lot. Newly painted and paneled. Call 272-5578 or 272-3658, evenings and week ends. 8-37T-TFC

Call 272-4536 To Place Your Want Ads

KREBBS REAL ESTATE  
201 W. Ave. C  
Appraisals 272-3191  
Serving Muleshoe Area 35 years. We Appreciate your business. 8-tfc

SMALLWOOD REAL ESTATE  
232 main 272-4838  
See us for Buying or Selling 8-39S-TTFC

Bingham & Nieman Realty  
116 E. Avenue C 272-5285  
nights 965-2488  
"We Appreciate Your Business!"  
George & Dianne Nieman 8-49t-1tc

Henry Realty

2 BR house, 2 bath. Stucco, 100 ft. lot. Ideal for apartment housing. Located near grade school and downtown.

Small acreage 3 miles east of Muleshoe on highway.

2 BEDROOM Stucco. Storm cellar with storage.

Excellent location, 3 BR, 2 bath brick home in Richland Hills Addition. Living room and large den with fireplace. Priced to sell.

111 W. Avenue B, Muleshoe 272-4581 8-28t-tfc

## FARM EQUIPMENT

FOR SALE: 3 sets of 6-stage, 10 L.B. Peerless Bowls. Used 2 years. Approximately \$500. GPM at 300 Ft. T.D.N. \$900 to \$1300. 3 Redco bowls, 900 GPM at 300 ft. T.D.N. We also have Column pipe, Gear heads, Discharge heads and 10 KW E phase Alternators. Call 965-2781. 10-38T-12TC

WANTED TO BUY: Used irrigation equipment. 3 in. and 4 in. x 30 ft. sprinkler pipe. Used pivots, 5 in. side rolls with 5 ft. wheels. Massey Irrigation, Lubbock. 806-793-4452 or 793-3121 Will pay cash. 15-41S-TFC

## FOR SALE OR TRADE

FOR SALE: 66 gal. High pressure propane tank for a pickup. 946-3654. 11-40T-TFC

FOR SALE: King size complete bed. 272-4784. 505 Austin St. 11-43S-2TC

FINANCE CO. Must sell 14 wide home. Assume payments of \$190.48. Call 373-9469. 11-43S-8TC

## HONEY FOR SALE

Nick Landers  
334 W. Ave. J. 272-3096 11-28S-TFC

FOR SALE OR LEASE: 17 million lb. grain storage. Five miles East of Littlefield, on rail. Perfect for group of farmers. Leo Smith, 797-5518, before 8:00 p.m. 11-42S-8TC

FOR SALE: 1-Telescoping pole, 50 foot with CB antenna, complete with wires, co-ax and clamps, to be moved. 1 - recliner chair, green cloth and leather. 1 - couch, beige - flower. 2 - wood end tables with drawers, slightly worn. 1 - Realistic stereo, AM-FM radio, big speakers. 1 - large green/gold couch. Call 272-3839 at night. 11-43T-TFC

## HOUSEHOLD GOODS

HARVEST GOLD Sears washer, \$75. 272-3175, nights 272-4846. 11-43S-2TC

BURROWS UPHOLSTERY AND FURNITURE REPAIR  
209 W. 2nd phone 272-4255 12-44s-1tc

## PROPERTY FOR LEASE

NOW LEASING: Las Bresas Mobile Park. Large spaces for all size mobile homes. Reasonable rates. Conveniently located at Birch and Ithaca Streets. Call 272-5696. 13-33s-tfc

LEASE - 260 Acres irrigated land. Located 6 miles West of Earth, Tx. If interested call (806)-797-9889. 13-41T-TFC

TRAILER SPACE for Rent: Contact Tommy Gunstream, 272-4515 or 272-3006. 13-40S-TFC

## MISCELLANEOUS

GRAZING PASTURE wanted. Corn stalks, maize stalks, or wheat for grazing. 272-3891 or 272-5090. 15-43T-4TC

FRANK'S REFRIGERATION APPLIANCE & SERVICE PARTS & REPAIR  
315 W. 3rd. Ph. 272-3822 15-7T-TFC

WE BUY USED FURNITURE AND APPLIANCES CALL HARVEY BASS APPLIANCE 18S-TFC

CUSTOM BUILT storm windows and doors. Call Carl Ellington, 272-5402 after 5:00 for appointment and estimate. 15-37S-TFC

WILL DO hay hauling with self-propelled bale wagon. Call Portales, 276-8319. 15-42T-4TC

TO BUY: Used honey extractor. 272-4536. 42T-10TC

MEN AND WOMEN 17-62 TRAIN NOW FOR CIVIL SERVICE EXAMS  
No High School Necessary Positions Start As High As \$9.38 HOUR  
POST OFFICE - CLERICAL - MECHANICS - INSPECTORS  
KEEP PRESENT JOB WHILE PREPARING AT HOME FOR GOVERNMENT EXAMS  
Write & include Phone No. To: National Training Svc., Inc. c/o Muleshoe Publishing Box 449 Muleshoe, Texas 79347 15-39T-6TTPTS

STORAGE ROOMS FOR RENT \$25.00 - \$30.00 TED BARNHILL 272-4903 15-14t-tfc

Now through Nov. 20, 1982. Big T Pump in Friona will do your pump work at 15% discount. On all work done, if paid within 10 days. Contact: Dean Butler at Big T Pump for more details. Big T Pump Inc. 247-3311 Res. 247-2171 15-41S-11TC

## LIVESTOCK

FOR SALE: Excellent, proven barrel and pole mare. Has also been used some on cattle. Call 272-5317 after 6 p.m. 16-39T-TFC

## SEED & FEED

FOR SALE: Vona Wheat. Please call 806-265-3482. Hub. 17-37T-TFC

## MISCELLANEOUS MISCELLANEOUS

Rent-To-Own Color TV Stereos Microwave Ovens Dryers Refrigerators Freezers Washers Dishwashers No Service Expense No Interest To Pay  
Wilson Appliance MULESHOE 272-5531  
117 Main

## LEGAL NOTICES

CITATION BY PUBLICATION NO. 4851

THE STATE OF TEXAS TO: R.J. OIL COMPANY, a corporation, and its unknown shareholders and directors, Defendants in the hereinafter styled and numbered cause:

You and each of you are hereby commanded to appear before the Honorable District Court of Bailey County, Texas, 154th Judicial District, at the Court-house in Muleshoe, Texas, at or before 10:00 A.M. on the first Monday after the expiration of 42 days from the date of issuance hereof; that is to say, on or before 10:00 A.M. on Monday, the 5th day of November, 1982, and answer the Petition of GETTY OIL COMPANY, Plaintiff in Cause No. 4851, styled GETTY OIL COMPANY vs. R. J. OIL COMPANY, in which GETTY OIL COMPANY is the Plaintiff and the parties herein named as Defendants are Defendants, which Petition was filed in said Court on the 6th day of August 1982, and the nature of which suit is, as follows:

Plaintiff seeks the appointment of a receiver of the interest had, owned or claimed by Defendants in the oil, gas and other minerals in and under Labors 14, 15, 16 and 17, League 178, Motley County School Land, Bailey County, Texas, containing 708.4 acres, more or less, with authority to execute and deliver to lessee an oil, gas and mineral lease covering said mineral interest had, owned or claimed by said Defendants upon such terms and conditions as the Court may prescribe, all as authorized by and in accordance with the provisions of Article 2320 (b), Revised Civil Statutes of Texas, 1925, as amended.

If this Citation is not served within ninety (90) days after date of its issuance, it shall be returned unserved. The Officer executing this writ shall promptly serve it and make due return thereof according to requirements of law, and the mandate hereof.

Issued under my hand and seal of said Court at office in the City of Muleshoe, this 23rd day of September, 1982.

/s/ Nelda Merriott Nelda Merriott Clerk of the District Court 154 Judicial District Bailey County, Texas pub. not. -39T-4TTC

Almost anyone can tell you how the election will come out in November.

Why is it women notice little things about others that a man never sees?

## Sudan News

By Evelyn Ritchie

Bobbie Boyd was released from the Methodist Hospital, Oct. 3, where she underwent surgery. She was an outpatient at the Hospital and had been taking treatments.

Shelley Chester was also released Oct. 3, from the Methodist Hospital where she had been a medical patient.

Patsy Fisher was released Oct. 3, from the Muleshoe Hospital where she had been a medical patient.

Mr. and Mrs. Billy Chester returned home, Oct. 3, from vacationing at Lake Brownwood. Their daughter, Mr. and Mrs. Terry Graves and Mr. and Mrs. Dale Masten and children, joined them for that weekend.

Adrian Martin, Pete Lance and Kyle Martin returned home, Oct. 3, from Lake Brownwood where they vacationed that week. It was reported that the fishing was good.

Mrs. Don Harper and Douglas Allan returned home, Oct. 3, from the Methodist Hospital.

Mr. and Mrs. Wayne Swart, Mr. and Mrs. Robert DeLoach, Mr. and Mrs. James Humphreys and Mr. and Mrs. John Humphreys and children were among the many from Sudan who attended the Fair.

Mrs. Bea Howell had been a surgical patient at the Methodist Hospital, the week of Oct. 3, where she underwent surgery.

Jamie Cox, son of Mr. and Mrs. Jerry Cox, Laura Powell, daughter of Mr. and Mrs. Donald Powell, and Laura Ramos, daughter of Mr. and Mrs. Ramos and all students at WTSU in Canyon, were home for the weekend of Oct. 3, and were here to attend the wedding of their classmate, Renee Ingle and Kerry Favor.

Mr. and Mrs. Byron Ford were in Albuquerque, N.M., the week of Oct. 3, to attend the New Mexico State Fair.

Dock Sorrell of Ft. Myer, Fla., was visiting his cousin, Mrs. Charlie Lowe, the week of Oct. 3. The cousins have not seen each other since 1918. Mr. Sorrell was also with Mr. and Mrs. John Williams and family.

Mr. and Mrs. Jerry Ethridge and children of Hereford, visited during the weekend of Oct. 3, with her parents, Mr. and Mrs. G. C. Churchman. Joining them were Mr. and Mrs. Scott Churchman and little Scott, on Sunday.

The home of Ruby Mince has been completed in the CDBG Rehabilitation program with the work done by contractor, Mike Hanna.

The work has begun on the second home, that of Mrs. Daisey Ford, with the work planned to be completed in two weeks.

This grant was first approved in 1979, but was finally approved Oct. 17, 1981.

Gloria Kessler, daughter of Mr. and Mrs. Louis Kessler, Sr., has taken the position of an elementary teacher in the Littlefield schools.

Among college students home during the weekend of Oct. 8, were Gina Gustin, Kendall Johnson, Dale Harper, and Johnny Nelson.

Some thirty persons were present, Monday, Oct. 3, when the Booster Club met for their regular meeting at the school cafeteria with Edward Fisher, president, opening the meeting.

Coach Mack Lowe showed the film between Sudan and Nazereth and made comments, and the scouting report on Valley was given.

Refreshments were served by Waynette Fisher and Janie Clay. The game tickets were won by Clyde Flowers.

Each and everyone was urged to attend the pep rally's at 3:30, Fridays, and attend the ballgames on Friday nights. Boost the Hornets to a victory.

Everyone is also invited to attend the Booster club meetings on Monday nights at 7:30 p.m., in the school cafeteria.

Hoyt Robertson returned home, Oct. 3, from spending the weekend in Brownwood, where he reported that the fishing was excellent.

Mr. and Mrs. Charlie Davis of Dallas arrived Monday, Oct. 4, to visit her mother, Mrs. Daisey Ford and sister, Mr. and Mrs. R.B. Knox and family.

Mr. and Mrs. Wayne Doty accompanied their son, Mr. and Mrs. David Doty and children to White River, the week of Oct. 4.

Mrs. Bea Howell remained a patient in the Methodist Hospital in Lubbock, where she underwent surgery the week of Oct. 4.

The Ruth Sunday School class of the FBC met Monday, Oct. 11, in the home of Jean Harvey for a salad supper.

Mr. and Mrs. Jack Engram returned from vacationing in Ohio, during September and the first of October, with her brother, Mr. and Mrs. Rhoetus Robinson. While they were there, they toured the glass factory in West Virginia and all along the Ohio River Valley.

Mr. and Mrs. Edward Fisher and Mr. and Mrs. Joe Fisher spent the week of Oct. 4, at the lake at Brownwood. Ricky Fisher of Dallas met them there. They returned home Tuesday night, Oct. 12.

Mrs. Joe Bellar attended the school board conference in San Antonio, during the weekend of Oct. 8, and visited in San Angelo with her son, Joey. Zanelle Martin accompanied her and visited with Maxine Chalcker.

Shelley Pickrell, who had been attending school in Abilene, and also working there, returned home for a few weeks before going back to college. She is the daughter of Mr. and Mrs. Gary Pickrell.

Visiting Sunday, Oct. 10, with Mr. and Mrs. Arnold Beckett, were their children and grandchildren, including Mrs. Alma Burton, Tanya Crawford and twins, Ashley and Jason, and Mr. and Mrs. Bob Donaldson, all of Mulcshoe.

Mrs. Bob Masten of Morton, visited Wednesday, Oct. 6, with her daughter, Carol Ann Bellar and family.

Mandy Gatewood moved from Tulsa back to Sudan where she will be finishing her senior year in the Sudan Schools.

S & H Passbook Booklets are ended  
- Bring in your passbooks - Full or not, We'll Redeem Them.

# STRETCH YOUR FOOD DOLLAR HERE

ROGER STAUBACH



**ICE** NOW AVAILABLE AT YOUR THRIFTWAY STORE

**Hi-C** ASSORTED HI-C FRUIT DRINKS  
With Bonus Booklet  
46 OZ. CAN  
**19¢**  
Reg. 69¢

**CHUCK ROAST** \$1.18  
BLADE CUT LB.

**White Cloud** BATHROOM TISSUE  
With Bonus Booklet  
4 ROLL PKG.  
**59¢**  
Reg. \$1.09

BETTY CROCKER ASSORTED READY TO SPREAD  
**CANNED FROSTING** 16 OZ. CAN \$1.39  
BETTY CROCKER SUPERMOIST LAYER  
**CAKE MIXES** 18 OZ. PKG. **79¢**

BONELESS <b>ROUND STEAK</b> LB. <b>\$1.88</b>	LEAN BEEF <b>SHORT RIBS</b> LB. <b>\$1.18</b>
COUNTRY STYLE <b>SPARE RIBS</b> LB. <b>\$1.88</b>	SEMI BONELESS <b>PORK STEAK</b> LB. <b>\$1.88</b>
BONELESS <b>STEW MEAT</b> LB. <b>\$1.88</b>	SLICE SLAB <b>BACON</b> LB. <b>\$1.58</b>
PEDRO'S <b>TAMALES</b> 12 OZ. <b>\$2.88</b>	BONELESS <b>TOP SIRLOIN</b> LB. <b>\$2.88</b>

25¢ OFF LABEL  
**AJAX LIQUID** 22 OZ. BTL. **\$1.09**  
25¢ OFF LABEL  
**AJAX DETERGENT** 49 OZ. BOX **\$1.49**

WHIPPED SHORTENING  
**BAKE-RITE**  
With Bonus Booklet  
42 OZ. CAN  
**69¢**  
Reg. \$1.19

IDEAL FOR TRICK OR TREAT  
RED DELICIOUS EXTRA FANCY  
**APPLES** 3 LB. BAG **99¢**  
CALIFORNIA **AVOCADOS** 3 FOR \$1.00  
NEW MEXICO **ROASTED PEANUTS** 1 LB. BAG 93¢  
U.S. NO. 1 RUSSET **POTATOES** 5 LB. BAG 69¢  
TEXAS JUICE **ORANGES** LB. 49¢

**COKE** Reg. \$1.09  
**SPRITE**  
**TAB** **59¢**  
With Bonus Booklet  
2 Liter

AMERICAN BEAUTY  
**ELBO RONI**  
With Bonus Booklet  
10 OZ. PKG.  
9¢  
Reg. 59¢

PURINA **DOG CHOW** 10 LB. BAG **\$3.99**

NABISCO **RITZ CRACKERS** 16 OZ. BOX **\$1.39**

HUNT'S ITALIAN STYLE **TOMATO PASTE** 6 OZ. CAN **39¢**

40¢ OFF LABEL  
**COLD POWER** KING SIZE **\$3.19**

DURACELL **9 VOLT BATTERIES** 2 CT. PKG. **\$2.99**

DURACELL BATTERY <b>9 VOLT</b> 1 CT. PKG.	<b>\$1.69</b>
DURACELL C OR D SIZE <b>BATTERIES</b> 2 CT. PKG.	<b>\$1.69</b>
DURACELL AA OR AAA SIZE <b>BATTERIES</b> 2 CT. PKG.	<b>\$1.49</b>
DURACELL AA SIZE <b>BATTERIES</b> 4 CT. PKG.	<b>\$2.69</b>

**TOTAL GROCERY SAVERS**

HUNT'S TOMATO SAUCE 15 OZ. CAN	<b>59¢</b>
LIPTON FAMILY SIZE TEA BAGS 24 CT. PKG.	<b>\$1.69</b>
VLASIC KOSHER DILL PICKLES 46 OZ. JAR	<b>\$1.79</b>
SKINNER'S SHORT CUT ELBO MACARONI 12 OZ. PKG.	<b>59¢</b>
HORMEL POTTED MEAT 2 3 OZ. CANS	<b>59¢</b>
SUNSHINE HONEY/CINNAMON GRAHAMS 16 OZ. BOX	<b>\$1.09</b>
PAY DAY/ ZERO/ BUTTERNUT/MILK SHAKE CANDY BARS 5 CT. PKG.	<b>99¢</b>

**FROZEN FOOD SPECIALS**  
ORE-IDA THINS/ PLANKS/ WEDGE POTATOES  
**HOME STYLE** 24 OZ. PKG. **\$1.29**  
VAN DE KAMP LIGHT & CRISPY  
**FISH STICKS** 13.5 OZ. PKG. **\$1.79**

**FRESH DAIRY SPECIALS**  
BORDEN BUTTERMILK 1/2 GAL. CTN. **99¢**  
BORDEN COTTAGE CHEESE 16 OZ. CTN. **69¢**

DISHWASHING DETERGENT  
**DERMASSAGE LIQUID** 32 OZ. BTL. **\$1.49**

ORVILLE REDENBACHER  
**POPCORN** 15 OZ. JAR **89¢**

**HEALTH & BEAUTY AID SAVINGS**  
COTYLENOL **COLD CAPSULES** 20 CT. PKG. **\$2.79**

COTYLENOL **COLD TABLETS** 24 CT. PKG. **\$2.79**

REGULAR OR CONDITIONING LOTION SHAMPOO  
**HEAD & SHOULDERS** 11 OZ. BTL. **\$2.19**

NEW IMPROVED! FOAMY  
**SHAVE CREAM** 6 1/2 OZ. CAN **\$1.49**

HOME PERMANENTS  
**LILT SPECIAL** EACH ONLY **\$2.59**

fall free for all  
BOUTIQUE FACIAL TISSUE  
**KLEENEX** 125 CT. BOX **59¢**  
KLEENEX TOWELS JUMBO ROLL **59¢**  
50¢ OFF LABEL-NEW FREEDOM  
**MAXI PADS** 30 CT. PKG. **\$3.29**  
40¢ OFF LABEL-NEW FREEDOM  
**MINI PADS** 30 CT. PKG. **\$2.39**  
NEW FREEDOM PANTY LINERS  
**ANY DAY** 30 CT. PKG. **\$2.39**



Open Monday thru Saturday  
8 A.M. - 9 P.M.

# SERV-ALL

# THRIFTWAY

Open Sunday 9 A.M. - 9 P.M.

Sale - 3 Days Only October 28, 29, 30  
WE RESERVE THE RIGHT TO LIMIT QUANTITIES  
WE ACCEPT FOOD STAMPS

**AT** AFFILIATED FOODS INC. MEMBER STORE