

Weather

October 3	80	44
October 4	80	44
October 5	89	55
October 6	88	51

MULESHOE JOURNAL



20¢

'The Community of Opportunity Where Water Makes the Difference'

Volume 59, No. 40

10 Pages Today

Published Every Thursday at Muleshoe, Bailey County, Texas 79347

Thursday, October 7, 1982

Masa Plant Sets Operational Target Date

Around Muleshoe

Jim Lutz of the Soil Conservation Service in Muleshoe has notified the Journal that order blanks are now available for the ordering of trees for planting of 1983 farmstead windbreaks. Orders must be in by February 7, 1983. Trees may be picked up on March 10, 1983 at the Lubbock TAMU Experimental Station. Lutz stated that the earlier you order your trees, the better your chances are of getting the type of tree you want.

State Comptroller Bob Bullock has announced that Phillip Land from his Lubbock field office will be at the Bailey County Courthouse in the county commissioner courtroom on October 12, 1982 from 2:00 P.M. to 4:00 P.M. A comptroller's representative is available to assist local residents at the courthouse the second Tuesday of each month.

The Muleshoe Jaycees have donated the sum of \$200 to the Youth Activities Committee to help in the construction and completion of the Muleshoe YAC Miniature Golf Course.

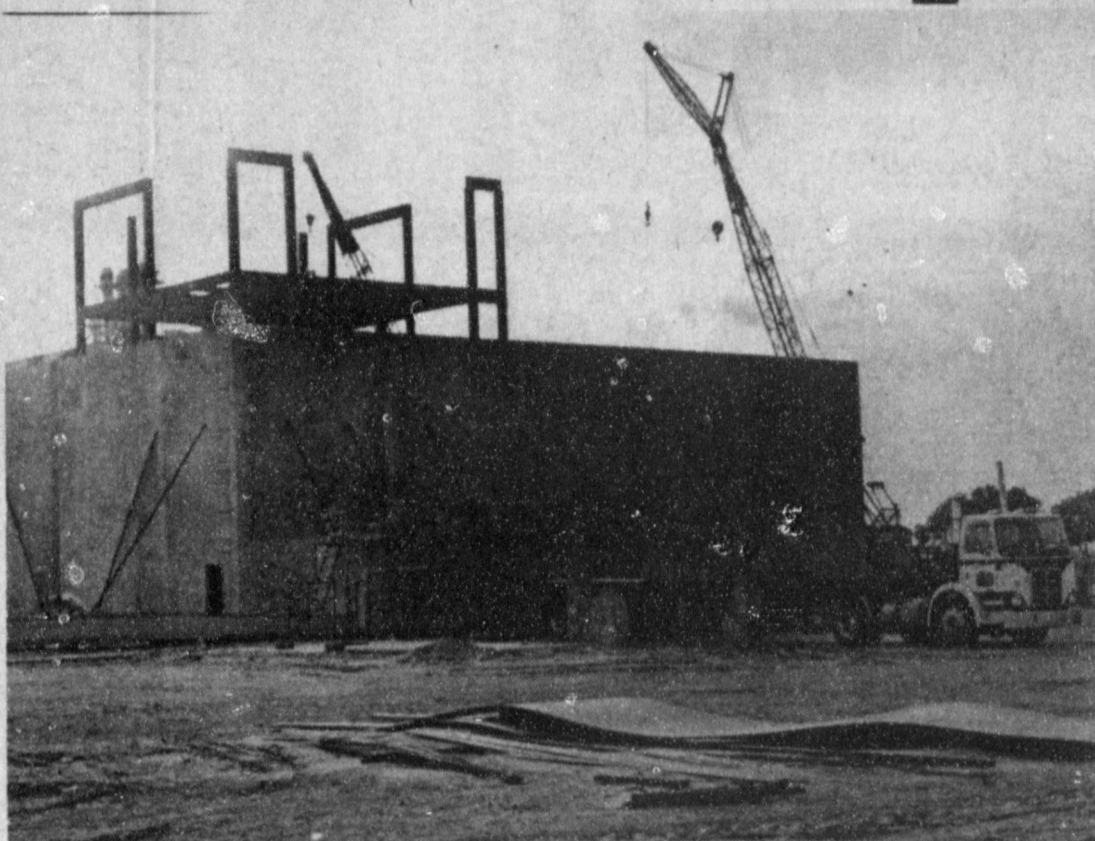
Muleshoe Rotary Club had as their guests for the regular Tuesday noon meeting, Dr. Henry Myszondt, Suzie Hamblen, Charles Aycock, Prentis Mills and Duane Hamer.

A short report on the county fair was given in Cont. on Page 6, Col. 1

Manasco Wins Journal Contest

Grand winner of the Journal's football contest this week was Kevin Manasco, who will receive 10 points and \$6 for his skills. Kevin missed four games and was six points off in the tiebreaker scores. Again, as in last week's contest, there are no two time winners in either first, second, or third places. One game was incorrect in this week's contest due to the fault of the Journal and that one was the Idalou-Slaton game. Neither of these teams played the other one. So, we just threw that game out, not counting it for nor against anyone.

Second place winner, receiving six points and \$3 Cont. Page 6, Col. 4



MASA PLANT UNDER CONSTRUCTION--The new Valley Grain Masa Plant is about 20 percent completed at this time. The \$2-\$2.5 million structure is scheduled for completion and beginning of operations on April 1, 1983. It will contain 35,000 square feet upon completion, according to Jeff Smith, Valley Grain Divisional Manager.

Diversions, Deficiency Payments Explained On Wheat Program

According to the 1983 Farm Program on wheat, a combination of 15 percent acreage reduction and five percent paid diversion (a 20% total) is the maximum required of producers in order to be in compliance and eligible for loans, purchases and payments for 1983 crops of wheat. The 83 wheat acreage base will be the same as the 82 for all producers. Exceptions, however, will be made for farms with a rotation base established in the preceding year.

According to Bailey County ASCS Executive Director, Rusty Williamson, the rate of pay on the paid diversion will be on five percent of the base, or \$2.70 per bushel for a producer's established yield, which can be found on the new base notices that have been mailed out the past few days.

New Manager Arrives At Wildlife Refuge

Muleshoe National Wildlife Refuge, 20 miles south of Muleshoe, Texas, has announced the arrival of Rodney F. Krey as the new complex manager for Muleshoe, Grulla and Buffalo Lake National Wildlife Refuges. Manager Krey will also be responsible for the High Plains areas of the Texas Panhandle and New Mexico.

Advance payments will be handled the same as advance payments on other commodities that are in set-aside and paid diversion plans, in that a producer may request a 50 percent advance of the diversion payment and of the deficiency payment. The advance deficiency payment is set at 32.5 cents per bushel times the farm yield times the acres intended to be planted. However, the same applies to wheat advance payments as with cotton and feed grain regarding refunds. A producer who accepts an advance payment, who later does not comply with program provisions must refund the total advance payment with interest at the rate in effect for loans at the time of the payment, plus an additional five percent interest. The 1983 estimated total deficiency

Plains areas of the Texas Panhandle and New Mexico. Krey is a native of Zenith, Kansas and attended high school in Stafford, Kansas. He attended Colorado State University and received a B.S. degree in Wildlife Management in 1969.

Krey began his career with the Fish and Wildlife Service on Arapaho National Wildlife Refuge, Walden, Colorado in 1971. After four years as a biological technician and assistant manager he transferred to Bear River National Wildlife Refuge, Brigham City, Utah. He resided at Bear River Refuge for seven years as the primary assistant manager before accepting the Muleshoe complex position.

Rodney Krey's wife, Donna and two daughters, Angie, age eight and Lindsay, age six, will be joining him shortly. They plan on residing in Littlefield, Texas once the move is completed.

Allen C. Jones, manager of Muleshoe and Grulla National Wildlife Refuges for the past four and one half years will remain at Muleshoe and be in charge of operations of the Muleshoe and Grulla Refuges. All inquiries about Buffalo Lake Refuge should be directed to the Muleshoe Complex Cont. Page 6, Col. 2

payment on wheat will be 65 cents per bushel.

Target prices for 1983 wheat is \$4.30 per bushel. The national average loan rate is set at \$3.65 per bushel for wheat placed under regular loan and \$4.00 per bushel for wheat placed into the farmer owned re-

Cont. Page 6, Col. 5

Bailey County 4-H's Fare Well At SP Fair

Starting off National 4-H week with a 'bang', a good number of Bailey County 4-H'ers took their steers to the South Plains Fair and one came back with a Reserve Grand Championship for her efforts.

Julie Claunch, daughter of Mr. and Mrs. Jim Pat Claunch of Bula, showed her Maine-Anjou-Limousine Cross to the reserve grand championship of the show. Julie's steer was raised in Bailey County from her father's herd. Julie showed in the Heavy Middle Weight class and won first and reserve champ there with her steer as well as the big one.

Also bringing back championship honors was Jerry Gleason who won second and Reserve Champ of the Heavy Weight Pure Bred division. County Agent Tanksley stated that of all the 4-H'ers who went to the show, all placed their calves and "did real good." "We had 18 of the top 24 steers in the cross-bred division," the agent commented.

In the light weight pure bred division placings were: first, Wade Wheeler, fifth, Colin Tanksley and eighth, Eddie Johnson.

In light weight cross breeds, Russell Brown placed first, Todd Bessire second, Jay Gleason third and Mitzie Robertson fourth.

In the heavy middle weight cross steers? first, Julie Claunch; second, Sharla Morrison; third, Jodie Wheeler; fourth, Jamie Wheeler; fifth, Mitzie Robertson; sixth, Jeannine Robertson; ninth, Greg Young; 11th, Sherri Bessire; 14th, Staci Kirby.

In heavy weight pure bred, Jerry Gleason second and reserve champ, third, Julie Claunch; ninth, Chris Young; 11th, Eddie Johnson.

In the light middle weight cross steer division Bailey County 4-H'ers took second through sixth place, with the placings as fol-

Alcohol Problems Lead Commissioners To Change Coliseum Guidelines

In an effort to stem the flow of alcoholic beverages consumption in public places in Muleshoe, the Bailey County Commissioners passed an order in their special session on October 1, which amended the operational guidelines for the Bailey County Exhibition Center and Coliseum.

The guidelines are modified so as to prohibit the consumption of alcoholic beverages ANYWHERE on the premises-including the parking lot and the building. These same guidelines also authorize Coliseum manager, Ray Lynk, at his discretion, to require those who rent the coliseum to provide their own security personnel to enforce these guidelines. The manager is also authorized by the order to require sufficient deposit of any lessee to secure compliance with the order and to refuse the use of the Coliseum or Civic Center to any organization that does not respect and abide by these guidelines. This order was made effective unanimously by the Commissioners Court on October 1, 1982.

In other business, an

4-H Club Week Observed By Bailey County 4-H'ers

According to Bailey County Extension Agent, Spencer Tanksley, nearly 133 4-H members and 60 volunteer leaders in Bailey County are taking part in special activities for National 4-H Week Oct. 3-9.

This year's theme, "4-H Pathways To The Future", challenges members to become self-directing, productive and contributing members of society, points out Spencer Tanksley, the county agent with the Texas Agricultural Extension Service, Texas A&M University System.

Through practical hands-on learning experiences, 4-H members select and follow pathways that lead to success in personal and career development.

4-H, America's largest out-of-school program for boy's and girl's between ages of 9 to 19, is the youth program of the Cooperative Extension Service of the state land-grant universities and the U.S. Department of Agriculture. Some five million youth are involved in 4-H across the nation, with 140,000 of these in Texas.

The overall mission of the Extension service in conducting 4-H programs, is the development of youth productive citizens, says Tanksley.

4-H members learn specific skills in programs such

Facility Expected To Use Local Corn

The new Valley Grain Products Masa Plant which is now under construction in the Muleshoe area is scheduled for completion and the beginning of operation approximately April 1, 1983. According to Jeff Smith, Valley Grain Divisional Manager, the new plant is about 20 percent complete at this time. "We have the outside walls up and the electricity and plumbing in," Smith explained, "and, we are about to start on the placement of the tanks for the cooking of the masa."

The new "masa" plant will have about 35,000 square feet of floor space and will cost somewhere in the realm of \$2 to \$2.5 million upon completion. The Valley Grain Plant in Muleshoe is the newest of three plants owned by the

Cont. Page 6, Col. 3

Mules Geared-Up For District Play Against Abernathy

All the stops will be pulled out as Muleshoe and their opponent, the Abernathy Antelopes will begin district play for the year. Up to now, the Antelopes have a 1-4 record and the Mules have a 2-2 record.

While the Abernathy squad has a lot of size over the Mules, they are a green team, according to Coach Murray of the Antelopes coaching staff. Randy Houston, who is considered an all state potential this year is out of the game, having received an ankle injury in a game about two weeks ago. Houston is a 6-2, 185 pound Junior who plays end both ways.

Cont. Page 6, Col. 7

Company. The other two are located in California. Upon completion, the production capacity will settle around 2,000 pounds of finished product per month. This will be sold or marketed in a 500 mile radius of Muleshoe. The total sales in this radius will run near 950 tons of usage, a portion of which will be shifted from the California plants, when the Muleshoe plant is operational.

Smith expects that when finished, the plant and office will use about 22 employees, which will be broken down to 14 shifts at 20 hours per day for four days a week. There will be a separate office for the masa plant, when it is operational, and office personnel will be separate from the original Valley Grain employees. Smith stated that he "hoped to use as many local people as possible, and that likely all but about two or three would be local, with those two or three being management."

What may be a boost to local economy is the fact that Valley Grain will try to purchase most of the corn used in the masa plant locally. "We have an 80 million pound capacity, and that sounds like a lot of corn," But Smith explained, "It is only approximately 20,000 acres total production." The masa plant is expected to use an additional 12,000 tons of corn per year for the area. "Most of our problems encountered with buying corn locally has been with the prices. We are hoping to

Cont. Page 6, Col. 2

Chamber Fall Membership Breakfast Set

The Muleshoe Chamber of Commerce and Agriculture's Fall Membership Breakfast will be at 6:30 a.m. at the Corral Restaurant this Thursday, October 7. The breakfast is courtesy of the First National Bank of Muleshoe. All members of the Chamber and those interested in the Chamber are invited to attend.

The program will include the introduction of new school personnel, the introduction of new Chamber of

Cont. Page 6, Col. 2



DIRECTOR HONORED--Mr. and Mrs. Clinton Kennedy were honored at a reception held Sunday, October 3, 1982 at the Muleshoe State Bank. Kennedy has been transferred to Plainview where he will be the District Supervisor for Farmers Home Administration. Hosting the event was the Federal Land Bank Association of Muleshoe, Plainview Production Credit, First National Bank, Muleshoe State Bank, Linda Turner and Laverne Winn.



4-H WEEK PROCLAIMED--Bailey County Judge Glen Williams, this week met with representatives of 4-H in Bailey County to sign an ordinance proclaiming October 3-9 as 4-H Week in Bailey County. 4-H'ers who met with the Judge were 1 to r: Holly Huckaby, Britta O'Tay, Shelly Sain and Zanna Huckaby. There are 133 4-H'ers in the County and approximately 60 volunteer 4-H leaders.



ThriftyMcSaver's HARVEST of SUPER VALUES



1/2 Gal. Hi Pro
MILK **99¢**
24 oz. Borden Cottage
CHEESE **\$1.29**

ICE NOW AVAILABLE AT YOUR THRIFTWAY STORE

SHURFINE GRANULATED
SUGAR
\$1.19
5 LB. BAG
LIMIT ONE WITH COUPON
THEREAFTER REGULAR PRICE

PURE VEGETABLE SHORTENING
CRISCO
\$1.79
3 LB. CAN
LIMIT ONE WITH COUPON
THEREAFTER REGULAR PRICE

SHURFINE WH. KERNEL/CR. STYLE
GOLDEN CORN
4 \$1
17 OZ. CANS
LIMIT FOUR WITH COUPON
THEREAFTER REGULAR PRICE

SHURFINE CUT
GREEN BEANS
4 \$1
16 OZ. CANS
LIMIT FOUR WITH COUPON
THEREAFTER REGULAR PRICE

FALL WAREHOUSE SALE
PET RITZ ASSTD. FRUIT
Cobblers
Reg. \$1.29 **79¢**
26 OZ. BOX With Bonus Booklet

OSCAR MAYER SLICED
Bologna
78¢
8 OZ. PKG.

no deposit, no return
Pepsi 16oz.
Diet Pepsi, Pepsi Light, Mt. Dew
79¢ Reg. \$1.29
With Bonus Booklet

DUNCAN HINES LAYER
CAKE MIXES
Reg. 79¢ **29¢**
18 OZ. BOX With Bonus Booklet

U.S.D.A. CHOICE BEEF
BLADE CUT
CHUCK ROAST lb. **1.28**

U.S.D.A. CHOICE BEEF 7-BONE ROAST CENTER CUT lb. \$1.48	100% PURE GROUND BEEF lb. \$1.28
ROUND BONE U.S.D.A. CHOICE SHOULDER ROAST lb. \$1.68	BONELESS STEW MEAT LEAN CUBES \$1.98
BONELESS U.S.D.A. CHOICE SHOULDER ROAST lb. \$1.78	BONELESS CHUCK ROAST USDA CHOICE \$1.68
BONELESS U.S.D.A. CHOICE SHOULDER STEAK lb. \$1.98	BONELESS CHUCK STEAK U.S.D.A. CHOICE \$1.88

CALIFORNIA JUICY
POMEGRANETS EACH **19¢**
THOMPSON SEEDLESS
GRAPES LB. **89¢**
CALIFORNIA GOLDEN
CARROTS 1 LB. PKG. **25¢**
CALIFORNIA GREEN PASCAL
CELERY LB. **29¢**
FRESH GREEN ONION OR CELLO PACK MIX OR MATCH
RADISHES 2 FOR **49¢**

WASHINGTON FANCY RED DELICIOUS
APPLES
49¢ LB.
US NO. 1 COLORADO
BAKING POTATOES 3 LBS. **89¢**

PAPER TOWELS
HI-DRI
Reg. 50¢ **2/50¢**
JUMBO ROLLS With Bonus Booklet

TOTAL GROCERY SAVERS
SCHILLING BLACK
PEPPER 4 OZ. CAN **99¢**
SUNSHINE ASSORTED DBL. CHOC. CREAMERS-GRAHAM CREAMERS-CLIP CUSTARD-PINE OTML
COOKIES 12 OZ. PKG. **89¢**
POST CEREAL
FRUIT & FIBRE 13 OZ. BOX **\$1.39**

Gillette \$1,000,000 WORLD SERIES BONANZA

DISPOSABLE LIGHTERS CRICKET EACH PKG. 59¢	DISPOSABLE SUPER CRICKET LIGHTER EACH PKG. 89¢
GILLETTE SHAVING CARTRIDGE ATRA 10 CT. PKG. \$3.29	GILLETTE SHAVING CARTRIDGE TRAC II 5 CT. PKG. \$1.79
GILLETTE GOOD NEWS DISPOSABLE RAZOR 3 CT. PKG. 89¢	DEODORANT BRONZE RIGHT GUARD 5 OZ. CAN \$1.99
DEODORANT BRONZE RIGHT GUARD 2.5 OZ. STICK \$1.49	GILLETTE SHAVING CREAM REG./MENTH/LEMON-LIME FOAMY 11 OZ. CAN \$1.89

FREE T-SHIRT OFFER BODY SPRAY DEODORANT
IMPULSE
2 1/2 OZ. CAN **\$2.69**

ASSORTED COLORS-WHITE
200 CT. BOX
KLEENEX
Reg. 69¢ **19¢**
With Bonus Booklet

BATHROOM TISSUE
DELSEY
4 ROLL PKG. **39¢** Reg. 89¢
With Bonus Booklet

FRESH DAIRY SPECIALS
KRAFT MARGARINE QRTS.
PARKAY 2 1 LB. BOX **\$1.00**
KRAFT STACK PAK AMERICAN
SINGLES 16 OZ. PKG. **\$1.99**
WITH STICKS-KRAFT VANILLA
CARAMELS 14 OZ. PKG. **\$1.19**
KRAFT CHEESE SPREAD
VELVEETA 16 OZ. PKG. **\$1.75**
KRAFT SOFT PHILADELPHIA
CREAM CHEESE 8 OZ. CTN. **99¢**
KRAFT GRATED
PARMESAN 3 OZ. CAN **99¢**
PILLSBURY CHOC. CHIP LOVER'S SIZE
COOKIES 27 OZ. ROLL **\$2.19**
KRAFT REFRIGERATED
ORANGE JUICE QT. BTL. **\$1.09**
PILLSBURY 2 COUNT ALL READY
PIE CRUSTS 15 OZ. PKG. **\$1.29**

THRIFTY GROCERY BUYS
PURE VEGETABLE
CRISCO OIL 48 OZ. BTL. **\$2.19**
DUNCAN HINES FAMILY
BROWNIE MIX 23 OZ. BOX **\$1.49**
DUNCAN HINES BRAN OR BLUEBERRY
MUFFIN MIX EACH BOX **\$1.29**
DUNCAN HINES CHOC. CHIP/DBL. CHOC/OATMEAL-MAKES 3 DOZ.
COOKIE MIX **\$1.29**
DUNCAN HINES SUGAR/PEANUT BUTTER
COOKIE MIX MAKES 3 DOZ. **\$1.29**

FROM OUR SHELVES
ASSORTED FLAVORS
CERTS MINTS 30' SIZE **4 \$1**
20' OFF LABEL
DAWN LIQUID 22 OZ. BTL. **\$1.19**

FROM OUR SHELVES
CAMPBELL'S TOMATO
SOUP 4 10 3/4 OZ. CANS **\$1.00**
NEW! CAMPBELL'S OLD FASHIONED
SOUP CHUNKY CHICKEN 2 10 3/4 OZ. CANS **\$1.00**
V-8 COCKTAIL
JUICE 46 OZ. CAN **99¢**
FRANCO AMERICAN
SPAGHETTI 3 14 3/4 OZ. CANS **\$1.00**
SPAGHETTIO'S W/MTBLS OR FRANKS, BF.RAVIOLI
FRANCO AMERICAN 15 OZ. CANS **69¢**
KOTEX
MAXI PADS 30 CT. PKG. **\$2.59**
KOTEX PANTYLINERS
LIGHT DAYS 30 CT. PKG. **\$2.49**
KOTEX REGULAR/SUPER
TAMPONS 30 CT. PKG. **\$2.89**
70' OFF LABEL
OXYDOL 171 OZ. BOX **\$5.89**

FROZEN FOOD SPECIALS
MINUTE MAID
ORANGE JUICE 12 OZ. CAN **99¢**
SWANSON ASSORTED BREAKFAST
ENTREES EACH PKG. **79¢**
SWANSON DINNER
MEAT LOAF 10 OZ. PKG. **99¢**
SWANSON DINNER
TURKEY 11 OZ. PKG. **99¢**
SWANSON SALISBURY STEAK
DINNER 11 1/2 OZ. PKG. **89¢**



SERV-ALL THRIFTWAY

We're proud to give you more!

STORE HOURS:
8 am-9 pm Weekdays&Sat.
9am-9pm Sunday

PRICES EFFECTIVE Oct. 7- Oct. 13, 1982
WE RESERVE THE RIGHT TO LIMIT QUANTITIES
WE ACCEPT FOOD STAMPS



FIREMEN PRESENT PLAQUE—On Wednesday, September 29, the Muleshoe Volunteer Fire Department, in connection with National Fire Prevention Week and in memory of Earl Ladd, Jr., presented a plaque to Ellen Ladd commemorating his 24 years of service to the Fire Department. The presentation was made by Jack Dunham, Fire Chief.

Nowlin Rites Conducted Tuesday

Funeral services for J. B. Nowlin, Jr., 59, were held at 2 p.m., Tuesday, October 5 at the Primitive Baptist Church with Elder K.B. Martin of Muleshoe and Elder Bernard Gowens of Friona, officiating. Graveside services were held at 11 a.m., Wednesday, in Post Oak Cemetery at Oglesby, Texas, under the direction of Ellis Funeral Home. Nowlin died Sunday, at Clovis High Plains Hospital. He was born December 22, 1922, in Oglesby and moved to Muleshoe eight years ago from Arlington. He was in the janitorial business and a member of the Primitive Baptist Church of Muleshoe. Survivors include one sister, Mrs. M.H. Gotcher of Arlington; two brothers, El-



J.B. NOWLIN
He who wants to lead a life of vice needs no schoolmaster.
—Danish Proverb.

Costillo Services Held Wednesday

Services for Ysidro Costilla, Sr., 62 were held at 3 p.m., Wednesday, October 6, in the Immaculate Conception Catholic Church with Father Patrick Maher, pastor, officiating. Burial was in the Muleshoe Cemetery under the direction of Ellis Funeral Home. Costilla died Sunday in Cook Memorial Hospital in Levelland. He was born May 15, 1920, in Goliad, Texas, and

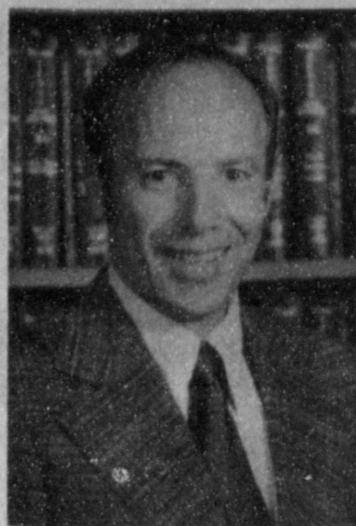
Alma Harris Services Held Here Tuesday

Services for Alma L. Harris, 61, of Grayville, Illinois, were held at 2 p.m., Sunday, October 3, in Strum Funeral Home of Grayville. Graveside services were held at 3 p.m., Tuesday, in the Muleshoe Cemetery, with James Johnson, minister of the 16th and Ave. D, Church of Christ, officiating. Burial was held under the direction of Ellis Funeral Home. Mrs. Harris died at 4:23 a.m., Friday, in Deacorness Hospital at Evansville, Indiana. She was born May 14, 1921, in Bell Rive, Illinois. She was a housewife and a member of the Church of Christ. Survivors include her husband, Robert A. Harris; four sisters - in - law, Opal Harris of Lubbock, Bernice Daughette of Amarillo, Faye Alderson of Baker, Oregon, and Maxine Harris of Muleshoe; two brothers - in - law, Alan Harris of Muleshoe and Clarence Harris of Grayville, Illinois; three sisters, Merea Horton of Salem, Illinois, Ruth Howard of San Antonio, and Noma Compton of Bell Rive, Illinois; one brother, Glen Richardson of Bell Rive, Illinois.

Parks Services Held Here Tuesday

Services for Edward Parks, 78, of Hobart, Oklahoma, were held at 10 a.m. Tuesday, October 5, in the Ellis Chapel of the Chimes with Rev. H.D. Hunter, pastor of the Community Church, officiating. Interment was in the Muleshoe Cemetery under the direction of Ellis Funeral Home of Muleshoe. Parks died at 10:30 p.m. Friday, in the B and K Nursing Home at Hobart. He was born January 22, 1903, in Blue Ridge, Texas and moved to Hobart two years ago from Muleshoe, where he lived since 1964. He was a farmer. Survivors include one daughter, Mrs. Veta Kay Crutsinger of Bangs, Texas; six sisters; three brothers; and three grandchildren.

moved to Muleshoe in 1958 from Goliad. He married the former Amelia Arrizola on May 24, 1941, in Goliad. He was a farm laborer, a veteran of W.W.II serving in the U.S. Army, and a member of the Immaculate Conception Catholic Church. Survivors include his wife, Amelia; five sons, Ysidro Costilla, Jr., of Amarillo, Marcus Costilla of San Angelo, Joe Costilla of Anton, Gilbert Costilla of Lubbock and Mario Costilla of Lubbock; 10 daughters, Mrs. Maria Garcia of Hamblin, Mrs. Gloria Castorena, Mrs. Anita Flores, Mrs. Adelia Leal, Mrs. Valentina Cicerenas, Mrs. Alice Gutierrez and Delores Olguin, all of Muleshoe, Mrs. Margie Villireal of Abilene and Mrs. Ophelia Villanueva of Hamblin; five sisters, Mrs. Enlinda Sanchez of Goliad, Mrs. Angelina Serna of Sanger, Mrs. Lupe Rangel of Goliad, Mrs. Ester Guerrero of Sinton, and Mrs. Hartencia Rodriguez of Florida; three brothers, Pedro Costella of Gregory, Sirilo Costilla of Madora, Calif., and Manuel Costilla of Muleshoe; and 46 grandchildren.



TOM FREEMAN

Letters To The Editor

OPEN LETTER TO THE PUBLIC

I have been asked, during discussions about the Bailey County Commissioners Court, why I became a candidate for the office of County Judge. The answer is easy. I live here, work, play, raise my family, pay taxes; the list is long. Therefore, why shouldn't I want to contribute toward improving the place where all this happens? I have served in many positions of authority and responsibility during my twenty years as an Air Force officer. This career developed in me, the desire to seek and accept responsibility and to strive for improvement. I am highly qualified in the fields of management of resources, budgeting, maintenance, construction and planning. Bailey County needs help in all these areas. We are facing hard times. We can not continue to operate as we have over the last half century. The antiquated management procedures, lack of planning and loose budgeting practices of the past have no place in today's society. Bailey County can not continue to face zero progress and survive. We are also losing our tax base, the growing number of exemptions is putting a larger tax burden on the land owner and a smaller segment of our population. What will happen when these people are asked to shoulder this continually increasing tax load? Will he sell out at a loss? Who wants property at higher tax rates? We must become better managers of our tax revenues if we are to survive. We need to plan for the future. We must look to new industry. Our economy can not continue to depend on agriculture with its attendant good and bad cycles. This is not smart economics. We need to attract several unrelated industries. This is an excellent way to increase our tax base and lighten our growing tax burden. It would also provide economic stability during hard times in our agriculture. Ladies and gentlemen, the keys to economic growth are responsible leadership, sensible budgeting practices and sound management policy. I have the qualifications, the ability and the experience. You must have the community spirit, motivation and desire. Take action and vote for me in November.

Respectfully,
/s/ Tom Freeman
Tom Freeman
Republican Candidate
Bailey County Judge
Pd. Pol. Adv.



YSIDRE COSTILLA, SR.

West Plains Medical Center Report

ADMITTED
Sept. 30 - Jennifer Davis, Roland Amberez
Oct. 1 - Donna Green, Willie Copeland, Minnie Kelly, James Jennings, Kenna Smith, Jean Treadwell, Libby Aguirre, and Vernon Bryant
Oct. 2 - Jerry Mick
Oct. 3 - Grady Box, Romolo Toscano
DISMISSED
Sept. 30 - Carol Rone-more
Oct. 1 - Nancy Luna, and Lillie Simpkins
Oct. 2 - Evelyn Hadley, Libby Aguirre, Donna Green, Jennifer Davis, Wesley Foster, and Vernon Bryant
Oct. 3 - Roland Ambriz, Naomi Julian, Inez McWilliams, and Jean Treadwell

BIBLE VERSE

"The Lord rewarded me according to my righteousness; according to the cleanness of my hands hath he recompensed me."

1. Who spoke these words?
2. Where are they recorded?
3. What was the occasion?

Answers to Bible Verse
1. David.
2. II Samuel 22:21.
3. Victory over the Philistines.

ROBERT M. BRODKIN, D.P.M.

PODIATRIC MEDICINE & SURGERY
FOOT SPECIALIST

ANNOUNCES
THE OPENING OF HIS OFFICE

AT
SOUTH PLAINS HEALTH PROVIDER

ORGANIZATION, INC.

211 W. Ave. C

HOURS BY APPOINTMENT 272-4008

NOTICE TO FARMERS

UNTIL January 1, 1983

BOB'S PUMP & MACHINE

Of Friona

Will Charge \$1⁰⁰ Per Foot

For Pulling And Setting Of
Irrigation Pumps, Plus An 8%

Discount On The Entire Bill If
Paid Within 10 Days Of Invoice.

We Also Handle All Types Of

Submersible Pumps, Including
Fairbanks-Morse Domestic Submersible
Pumps, 1/3 Thru 3 h.p. With A 5
Year Guarantee.

Contact : Bob Clark - 247-3236



Everything you expect in a refined European road car—except the high price!



1982 Mazda 626 Sport Sedan

\$7425⁰⁰

Includes dealer prep, freight charges, taxes, license, options extra.

37 est. hwy mpg 27 EST MPG

*With 5-speed transmission. Remember, compare this EPA estimate to the "estimated mpg" of other cars. You may get different mileage, depending on how fast you drive, weather conditions, and trip length. Your actual highway mileage will probably be less than the estimated highway mileage.

MAZDA RIERSON MOTORS

3500 Mabry Drive

CLOVIS, NM 88101

Bus. Phone 762-4586

McDANIEL'S INC.

YOUR WALL TO WALL STORE

ANNIVERSARY

SALE

ALL RECLINERS

30-40% OFF

OFF

• Furniture • Appliances • Gift Items • Bedding

1620 Main

"We Service What We Sell"

762-4481



MRS. KERRY FAVER
(nee Terrie Renee Ingle)

**Powell, Thompson
Engagement
Announced**

Mr. and Mrs. Donald Powell of Sudan announce the engagement and approaching marriage of their daughter, Lisa DeAun to Kenneth Wayne Thompson, son of Mr. and Mrs. George Thompson of Amherst.

The couple plans to be married November 27, at 7 p.m., in the First United Methodist Church of Sudan.

The bride elect is a 1980 graduate of Sudan High School and is employed at the First National Bank in Littlefield.

Thompson is a 1977 graduate of Amherst High School and is self employed.

The bride is the grand-

daughter of Mr. and Mrs. Truman Parrish and Mr. and Mrs. Forrest Powell, all of Sudan and Thompson is the grandson of Mrs. Lorene Walbrick of Sudan and Mrs. Bertha Thompson of Amherst.

**Fashionable Hemlines
Find Best Length**

In today's fashion picture, there are no "right" or "correct" hem lengths. It is up to each woman to wear what looks best, says Becky Saunders, clothing specialist with the Texas Agricultural Extension Service, Texas A&M University System.

How does one determine the best length? "A good way is to look at your current wardrobe. Try on your clothes. Check each outfit to see if it could be improved by raising or lowering the hemline. Often an inch can make all the difference -- so be sure you find the right hem location," Saunders says.

Most women -- especially those over 25 years old -- look best in a skirt length just below the knee, she adds.

"If you are short, you may find an inch below the knee is best. If you are tall two inches or more may be necessary. Another guide is the calf of the leg -- a smart hem often hits just where the curve starts," Saunders suggests.

Be careful, however, not to fall into the "hemline" rule" in dressing. "Do not assume that every hemline has to be 'so many inches' below the knee, such as about 'an inch'. If that length looks good in a A-line skirt, a straight skirt may need a slightly longer hem to look best. A dirndl may need even more to keep you from looking too youthful," she says.

While some styles can be modified to suit your "hemline rule", remember that a prairie skirt will look out of proportion unless it is cut full and long -- while a dark, heavy fabric in a straight skirt may well look matronly if cut too long, she cautions.

"Try every outfit on carefully. Each has its own personality and requires its own, best hemline to give you the look you want," Saunders says.

Attention, older adults. Don't overeat while you watch television. Poor diet stemming from high intakes of snack foods, fats and total calories is linked to excessive television viewing, reports Judith L. Warren, a family life education specialist-aging with the Texas Agricultural Extension, Texas A&M University System.

Muleshoe Journal
Established February 23, 1924. Published by Muleshoe Publishing Co., Inc., 1000 Thirteenth St., Muleshoe, Texas 79347. Telephone: 767-2111. Second-class postage paid at Muleshoe, Texas.

TA MEMBER '82
TEXAS PRESS ASSOCIATION

117 Main
Muleshoe Journal and Bailey County Journal
Bailey and surrounding counties
Muleshoe Journal and Bailey County Journal
117 Main

Miss Ingle, Faver United In Marriage

Before a candlelight altar and in the presence of family and friends, Terrie Renee Ingle and Kerry Lee Faver were united in marriage on Saturday, September 25, in the Sudan Church of Christ. Rick Kauffhold of Levelland read the double ring vows.

The bride is the daughter of Mr. and Mrs. Jim Ingle of Sudan and Faver is the son of Mr. and Mrs. Dean Faver of Fieldton.

The ceremony was performed before a large brass tree candelabra filled with apricot and white gladiolas, apricot and white carnations, silk apricot roses and baby's breath, which was flanked by two smaller brass tree candelabras also in apricot and white carnations, silk apricot roses and baby's breath.

The unity candle, made by the bride's mother, stood nearby and was decorated in the bride's chosen colors. Pew markers were apricot bows. White tapers were used throughout the church.

The registering table standing in the foyer, was covered with a white nylon lace cloth with white lace overlay, accented with a votive candle floral arrangement in apricot and white.

A white folding lattice screen was used for the background with a white wicker butterfly with apricot flowers on it. A five candle brass wall sconce was also used.

Guests were registered by Mrs. Kerry Drake of Littlefield.

Vocal selections included, "Love Is a Many Splendid Thing; Theme from 'Ice Castles', 'Annie's Song', 'The Twelfth of Never', 'My Sweet Lady', and 'May The Good Lord Bless and Keep You'.

Those who sang in the chorus were Sherry Fisher of Lubbock, cousin of the groom; Terry Swart, Mr. and Mrs. Wayne Swart, Mr. and Mrs. Pudd Wiseman and Mr. and Mrs. Calvin Wiseman, all of Sudan.

Presented in marriage by her father, the bride wore a formal length gown of white organza over bridal satin, fashioned with a Queen Anne neckline, edged with scalloped Chantilly lace.

The sheer lace sleeves were cuffed at the wrist by a wide band of matching lace. The empire waist bodice has an overlay of lace and featured a white satin bow in the back. The full skirt flowed into a chapel length train with three wide lace edged tiers forming the hemline of the skirt and train.

Her lace headpiece framed her face and was sprinkled with seed pearls. Her walking length veil of illusion was edged in lace matching the skirt and was adorned with lace appliques.

She carried a bridal cascade of apricot and white roses, accented with lilly of the valley and baby's breath with apricot and white ribbons. She also car-

ried a seeded pearl white handkerchief, made by a friend, Mrs. Donald Powell.

In keeping with tradition, the bride wore a pearl necklace belonging to her paternal grandmother for something old. As something new, she wore diamond earrings presented to her as a wedding gift from the groom. Her bridal gown was something borrowed from a friend, Mrs. Terry Swart, and something blue was the traditional garter, made by Mrs. Donald Powell. In her shoes, she wore pennies minted in the years of their births.

Mrs. Chester May of Hobbs, N.M., cousin of the bride, served as matron of honor. Bridesmaids were Deanna Faver of Fieldton, sister of the groom, Holly Stubbs of Littlefield and Kim Powell of Sudan.

They wore identical floor length gowns of apricot sheer delight and carried a brandy sniffer holding an apricot votive candle surrounded with apricot roses and white daisies with apricot and white streamers with baby's breath attached. In their hair, they wore a ringlet of apricot roses and white daisies with apricot and white streamers.

Darrel Bryant of Brownfield, served as best man. Groomsman were Tony Street of Ropes, cousin of

**Parmer County
Foster
Parenting**

Foster parenting can be enriching and rewarding. Parmer County now has four sets of foster parents.

Mr. and Mrs. Marvin Jones of Friona have been foster parents for about two years. They have eight year old twins and a seven and ten year old. Mrs. Jones says, "Foster children can make your home so happy but you need to have a lot of love for children".

Mr. and Mrs. Dee Pierson of Farwell have had foster children for four years. They have had nine children altogether and now have three children, a two, 12 and 13 year old. Some of the children still keep in touch with them. Mrs. Pierson says, "The children enrich our lives as much as we enrich theirs."

Mr. and Mrs. P.E. Bush have been foster parents only since December 1981. They have three children ages three, 14, and 16 years.

Thomas and Ruth Parson of Friona have been foster parents since 1962 having taken in around 30 children. They now have six children in their home. Their ages are six, eight, 11, 14, 16 and 17 years. They have adopted two of these children.

Darla Ivy says, "Quite a few of the children that have left still kept in touch with the Parsons. Ruth believes that not everyone can be a foster parent, but if you have deep love and patience with children, you will find it a rewarding experience. It has been a blessing for the Parsons."

the groom; Kyle Hill and Mike Spears, both of Littlefield.

Candlelighters were Deanna Faver, sister of the groom, and Jamie Ingle, brother of the bride.

Flower girl was Jennifer Faver of Spade, cousin of the groom. She wore an apricot floor length dress of sheer delight and in her hair, she wore a ringlet of apricot roses and white daisies. She carried a white lace basket of silk flowers and wore a corsage of apricot roses and baby's breath.

Ring bearer was Shadd Friday of Fieldton, cousin of the bride. He carried a pillow with the couples wedding date cross stitched in the center. This was also made by Mrs. Powell. He wore a boutonniere of apricot rosebuds and baby's breath.

Ushers were Jamie Ingle, brother of the bride; Kevin Fisher of Levelland, cousin of the groom; Ricky Streety, of Meadow, cousin of the groom and Paul Sebring of Littlefield.

Serving as coordinator for the wedding was Mrs. David Fisher of Fieldton, a cousin of the bride.

An apricot rose was given to the bride's mother as the bride went down the aisle and to the groom's

mother on the way out.

Following the ceremony a reception was held in the church fellowship hall, with a receiving line forming to greet the wedding guests. Serving at the bride's table were Carrie Collins of Palmer and Shanda Vernon of Sudan, cousins of the bride and Shawnda Masten, also of Sudan.

Serving at the groom's table were Mrs. Carey Suduth of Lubbock and Mrs. Ricky Streety of Meadow, cousins of the groom.

Houseparty members included Mrs. Carroll Legg, Mrs. Tommy Moss, Mrs. Pudd Wiseman, Mrs. Calvin Wiseman, Mrs. James Withrow, Mrs. Connie Franks, Mrs. Donald Powell, Mrs. Dwayne Powell, Mrs. Kenny Fisher, all of Sudan and Mrs. Rick Kauffhold of Levelland.

Kristy Friday of Fieldton and Brooke Baker of Sudan, both cousins of the bride, distributed apricot and white birdseed roses to the guests.

For a wedding trip, to Colorado Springs, Colorado, the couple chose matching western shirts and denim jeans. The bride wore a corsage her mother wore during the wedding.

The bride is a 1982 graduate of Sudan High School and the groom is a

1979 graduate of Littlefield High School. The couple will reside near Fieldton where he is engaged in farming.

Out of town wedding guests were registered from Palmer, Iowa Park, Arlington, Sunray, Meadow, Ropes, Canyon, Amherst, Fieldton, Plainview, Olton, Wolfforth, Lubbock, Levelland, Muleshoe, Brownfield, Anton, Needmore, Littlefield and Hobbs, N.M.

The wedding rehearsal supper, hosted by the groom's parents, Mr. and Mrs. Dean Faver, was held at K-Bob's in Littlefield on Thursday night, September 23.

A bridesmaid brunch was held in the home of Mrs. Corley Baker on Saturday morning, September 25.

Special guests included Mrs. Jim Ingle and T.J., mother and sister of the bride; Mrs. Dean Faver and Deanna, mother and sister of the groom. Mrs. W.H. Ingle, grandmother of the bride; Holly Stubbs of Littlefield, Mrs. Chester May of Hobbs, N.M., cousin of the bride; and Mrs. Kim Powell of Sudan.

Hostesses were Mrs. Loretta Reid, Mrs. Winona Dudgeon, Mrs. Carroll Legg and Mrs. Corley Baker.

McDANIEL'S INC
YOUR WALL TO WALL STORE

Anniversary Sale

another great idea from Quasar

You don't have to guess with

Insta-Matic
Cooking from
Quasar
one great idea after another

MICROWAVE OVEN
MODEL MQ7700

Touch Insta-Matic Control and the
OVEN DOES THE REST!

It automatically sets the cooking times, power settings and temperature settings... so there's NO GUESSWORK. Now Quasar's Insta-Matic Cooking makes it easier than ever to cook great meals in a microwave oven.

- Insta-Matic Frozen Foods Defrosts and cooks automatically
- Insta-Matic Cook Automatically cooks a variety of foods
- Insta-Matic Temp Cooks food by temperature automatically
- Automatic Warm/Hold
- Digital Clock/Timer/Temperature display
- Delay start • Deluxe Cookbook Included

Come see a Demonstration Today!

SHOP TODAY FOR OUR SPECIAL PRICES

• Furniture • Appliances • Gift Items • Bedding

1020 Main "We Service What We Sell" 762-4481

Welcome
REVIVAL MEETING
OCTOBER 10-17

Clayton Pennington
MESSAGE

PAUL & CHRISTY NEWBERRY
MUSIC

SERVICES

SUNDAY MORNING:

9:45 AM SUNDAY SCHOOL
11:00 AM MESSAGE

SUNDAY EVENING:

6:00 PM TRAINING UNION
7:00 PM PREACHING

WEEKDAY SERVICES
12:00 NOON & 7:30 EVENING

Trinity Baptist Church
A Southern Baptist Church

EAST 4th & AVE. B Muleshoe
— NURSERY PROVIDED —

**Rent A Video Disc
Player Overnight!**

ZENITH VIDEO DISC PLAYER

We Now Have "On Golden Pond", Available.
Disc Exchange Club Plan Available.

Wilson
Appliances 272-5531

117 MAIN



ATTENDS INVESTITURE SERVICE...Brownie Troop No. 247 recently attended the city-wide investiture service held at the Civic Center. Back row (L-R) Cathy Gable, leader; Winnie Ruthstrom, assistant leader; and Jeardean Lewis, helper; center row, (L-R) Regina Lewis, Paula Ruthardt, Shirley Lewis, Audrey Williams and Patricia Finch; front row (L-R) Amanda Ashford, Angie Gable, Melissa Lopez, Rose Marie Gloria, Santana Chavez and Shawnee Ruthstrom. Not pictured, Shanna Hodge, Jessica Orozco, donna Jaramillo and Diamond Lee Garza.

Nursing Education Courses Begin Here

Muleshoe will be an educational focal point for West Texas and Eastern New Mexico area nurses when West Plains Medical Center begins a series of 10 continuing nursing education courses in October.

The course series is the first developed under a new Personal Order Continuing Nursing Education Service of the Texas Tech University Health Sciences Center School of Nursing Continuing Nursing Education Program.

"Working with the nursing school at the Texas Tech Health Sciences Center in Lubbock, has enabled us to plan a series of continuing education courses specifically designed to meet the needs of nurses in our area," said Trina Wilson, R.N., M.S.N., director of nursing at West Plains Medical Center.

"Working with nurse educators from the school of nursing, we assess the needs of our staff and plan programs to meet those needs," Wilson said. "We then can offer courses at the medical center in Muleshoe. More of our nurses can participate in the courses because they don't have to travel to distant cities for programs. It is very cost efficient to bring an instructor here instead of sending several nurses out of town for a conference."

The first course will be on Coronary Care. The eight part course will be offered in weekly two hour sessions by Faye Dance, R.N., N.S.N. Course sessions will be offered twice each class day to enable nurses from different shifts to participate.

Each course in the series will be conducted by a nurse specialist from the topic area.

"We have brought other courses into the hospital in Democracy. A democracy is a country in which everyone has an equal right to feel superior to the other fellow."

-Telegram, Worcester.

the past," Wilson said. "They have been chosen from a list of available topics and have been conducted by a nurse generalist presenting pre-packaged materials."

"We are excited about the ability to develop custom courses with Texas Tech and the fact that a nurse specialist will conduct each course," Wilson said.

The Continuing Nursing Education Program at Texas Tech is accredited by the American Nurses' Association. Participants can earn nationally recognized continuing education units (CEUs) for their courses and also can receive Texas Nurses' Association CEARP recognition points. Records for participants will be maintained by the Continuing Nursing Continuing Program staff at Tech.

The courses offered at West Plains Medical Center are open to nurses from other area hospitals and practices. Registration information is available through Trina Wilson at West Plains.



SCOUT INVESTITURE...Girl Scout Troop No. 388 joined the Brownie Scouts at an investiture service recently. Back row, from left: Brenda Mudford, Melissa May Finch, Margaret Lewis, Bacy Sandoval and Pat Mudford, leader; front row, from left: Shellia Garner, Amy Turner, Lara Anzola, Lucy Anguiano and Christine Lewis.

Sudan Booster Club Meeting Held Monday

The Sudan Booster Club met Monday night, September 20, in the school cafeteria with 27 persons present.

The film of the Farwell - Sudan game was shown by Mack Lowe and comments made, in their first district game.

Pat Laceywell won the

football tickets and refreshments were served by Mrs. Seva Ray and Shirley Martin.

Son has sold 140 Booster Club membership cards as of Monday. He is still trying to reach his quota and any interested persons may contact him to purchase these membership cards for \$2.50 per person.

There is a great deal of vice which really is sheer inadvertence.

-Benjamin Disraeli.

Prevention of teen suicide should begin early in the life of a child through parental love and acceptance, opportunities to develop skills in decision-making and problem solving, development of positive parent-child communication, and a stable home environment, explains Cindy Wilson, a specialist in family life education with the Texas Agricultural Extension Service, Texas A&M University System.

From Journal Files

10 Years Ago

The Mighty Mules showed what they were made of Friday night as they bombed the favored Littlefield Wildcats, 42-14.

Area farmers are seeing more and more white in their cotton fields this week as bolls are really beginning to open up. Predictions are that this year will be one of the biggest cotton producing seasons in many years.

20 Years Ago

A local grocery store advertised these specials in the Journal this week, No. 300 can corn - 17 cents; sugar, 5 pounds - 49 cents; 4 roll package tissue - 49 cents; coffee - 65 cents per pound; crackers, 2 pound box - 53 cents; cake mixes - 3 for 89 cents; pudding - 3 for 19 cents; No. 303 can sweet peas - 19 cents; beans, 9 ounce can - 3 for 25 cents.

30 Years Ago

Grocery specials advertised in the Journal included fryers - 59 cents per pound; hamburger meat - 49 cents per pound; salt pork - 39 cents per pound; sliced bacon - 59 cents per pound; cheese - 99 cents, 2 pound box; biscuits - 10 per can - 9 cents each; Coca Cola, 6 bottle carton - 19 cents; and vienna sausage - 21 cents per can.

Society Guidelines

A processing charge of \$3 is made when a photo accompanies any wedding, engagement, or anniversary with the exception of anniversaries of 50 years or more.

Five dollars will be charged for any shower picture taken by the Journal and \$3 charged for any shower picture accompanying a story. Pictures may be picked up after the article appears in the paper.

Wedding, engagement, and anniversary stories must be in the Journal office by Monday noon for the Thursday paper, and by Thursday noon for the Sunday paper.

After that time, stories will be run on a space available basis. Any wedding more than two weeks old, when received, will be edited and only the basic information will be included.

Shower pictures will not be taken without a 24 hour notice and copy must be in the office by 5 p.m., Monday for the Thursday paper and 5 p.m. Thursday, for the Sunday paper.

MULESHOE MARKETS

Prices for grains and produce by Muleshoe Buyers as of Wednesday of this

Epsilon Delta Meeting Held Saturday

Approximately 45 members of the Epsilon Delta Chapter of Delta Kappa Gamma met at the Bailey County Civic Center on Saturday, October 2, at 10:30 for a brunch hosted by the Muleshoe members.

Mrs. Nettie B. Hilban presided over the meeting. The serving table was decorated with a horn of plenty from which flowed an array of fall flowers, fruit and grains. The brunch consisted of hash brown cheese bake, deviled ham twists, orange glazed apples topped with whipped cream, orange juice and coffee.

The meeting was started with a vocal musical selection by Virginia Bowers, accompanied on the piano by Bobbie Johnson.

There were reports given by the Membership Committee, chaired by Joyeline Costen and the Scholarship Committee, chaired by Sue Burgess. There were also some recommendations made by Mary Horton of the Finance Committee regarding adjustment of the budget.

Barbara Kinnison, Chairman of the Program Committee, introduced the program for the day - The Real World of Teaching by Oneta Gary. Mrs. Gary Masterfully presented a program emphasizing the importance of good teachers in molding student lives.

Muleshoe members attending the meeting were Dorene Harbin, Carrie L. Bishop, Joyeline Costen, Mary B. Obenhaus, Jane Rudd, Virginia Bowers, Blanche Johnson and Georgia Pena.

The next meeting of Delta Kappa Gamma will be held in Olton on November 6.

week are:

- Maize --- 75 cents
- Koffir --- 75 cents
- Sidan --- \$2.00
- Wheat bu. --- \$1.05
- Hogs --- \$14.00
- Eggs --- 31 cents
- Cream --- 47 cents
- Light Hens --- 14 cents
- Heavy Hens --- 17 cents
- Hides --- 8 cents

TOPS Club Chapter 34

TOPS Club Chapter No. 34 met at 6:30 p.m., Thursday, September 23, in the meeting room of Bailey County Electric with 16 members present.

Clara Lou Jones, president, called the meeting to order. Rose Sain, secretary, read the minutes of the previous meeting. They were approved.

Jenny Mitchell and Johnnie Ivy presented a new contest, which will run for eight consecutive weeks.

Members were reminded of Area Recognition Day to be held on October 9, at Tulia. Each one was reminded to pay their registration fee.

Rose Sain was named weekly best loser. First runner up was a tie between Lou Knowles and Evelyne Harris. Second runner up was Ruth Clements.

The meeting was dismissed with the singing of the good night song.

Remember Now So You Can Remember Then.

A Professional 8 x 10 Color Portrait For 88 Cents

All ages welcome - babies, adults, and families! Choose from our selection of scenic and color backgrounds. We'll select poses, and additional portraits will be available with no obligation.

One 88¢ portrait per subject or group. Backgrounds may occasionally change. Minors must be accompanied by a parent.

Thurs, Fri, Sat,
October 7-9

Daily: 10 am - 6 pm

Saturday: 10 am - 5pm

128 Main Muleshoe

PERRYS



Boy, these Maytags are really built!

MAYTAG

Your Authorized Sales & Service Dealer

HARVEY BASS

122 S. 1st
272-3030

WE'VE GOT JUST WHAT YOU NEED

<p>Special Grouping MENS SKI JACKETS \$19⁸⁸</p> <p>HAGGAR MENS COORDINATES Pants \$10 Blazers \$25 Men's Dress SLACKS \$9⁸⁸</p>	<p>Special Group LADIES QUILTED PANT COAT reg. to \$59⁸⁸ \$19⁹⁹</p> <p>Ladies VELVET BLAZERS reg. to \$45 \$34⁸⁸</p> <p>Corduroy BLAZERS \$27⁸⁸</p>
<p>Levi SADDLEMAN JEANS REG 20 \$16⁸⁸</p> <p>Buckhide & ATB CORDUROY Men's \$9⁸⁸ pr.</p> <p>STRAW WESTERN HATS Close-Out \$2⁸⁸ ea.</p>	<p>Ladies DAISY FASHIONED PANTS \$10⁸⁸ pr.</p> <p>Large Group LADIES COORDINATES 20% OFF</p> <p>LADIES and JUNIOR SPOTSWEAR RACKS \$5⁸⁸ \$7⁸⁸ \$10⁸⁸</p>
<p>Challenger BLANKETS REG. \$5⁹⁹</p> <p>2 for \$11</p> <p>Woven Bedspreads 16⁸⁸ full or queen Values to 24.99. A 100% pre-shrunk cotton woven thermal bedspread. Blue, white, or off-white.</p>	<p>Pre-Season Special STAY-WARM WINTER ROBES 20% OFF</p> <p>Special Group LINGERIE 75% OFF</p> <p>Special Groups PANTY HOSE 20%-40% Reduced from</p>
<p>Embroidered and Appliqued BATH TOWEL ENSEMBLE</p> <p>Choose from assorted styles</p> <p>Reg. 2.99 to 8.99 Bath 5⁹⁷ Hand 4⁹⁷ Wash 2⁷⁷</p>	<p>Boy's & Girl's Coordinatates 30% off Infants - 14</p> <p>Girls LEVI JEANS REGULAR 18 TO 20 \$10⁸⁸ pr.</p>

321 Main Street • Muleshoe

Anthony's
C.R. ANTHONY CO.

Muleshoe...

Cont. from Page 1
cating about \$1200 profit on the fair. Other items of interest include the planning of a Rotary Fish Sale on October 19. More information will be available on this at a later date.

Jeff Smith gave a report on the progress and operations of the Valley Grain's new masa plant.

While IRS toll-free assistance will be available on Monday through Friday 8 a.m. to 4:30 p.m., the Lubbock office of the Internal Revenue Service will no longer provide walk-in tax help, announced Don Whitlock, Lubbock IRS director representative. Taxpayers who wish to order forms or get answers to their federal tax questions should dial 1-800-492-4830.

Whitlock noted that IRS Examination and Collection activities would continue at the Lubbock location.

Wesley United Methodist Church of Hereford is hosting its Second Annual Wesley's Fall Festival of Arts and Crafts on Saturday, November 13, 9 a.m. - 6 p.m. at the Hereford Community Center. Only a limited number of booths are available with applications being screened. All area artists are invited to apply. So be getting your items ready now! For further information write Mrs. Gail Blain, Box 164, Hereford, Texas 79045.

Capt. Ralph D. VanWagner, son of Fred H. and Jessie VanWagner of San Antonio, is enrolled in the Air Force Institute of Technology education - with industry program at IBM, Owego, N. Y.

VanWagner will receive 12 months specialized training in quality assurance.

His wife, Linda, is the daughter of Billy J. and Marie Darnell of 1912 W. Ave. D, Muleshoe.

Most people want to be friendly, though they sometimes lack the personality to demonstrate it.

Masa Plant

Cont. from Page 1

be able to be more competitive in the future, so that we can be able to put a price on a corn contract in February that will stand good at harvest time," Smith said.

Another aspect of the masa plant's boost to local economy is Smith's hope for an eventual chip plant in Muleshoe, which could sell wholesale to local dealers. "We may be able to do this within two years' time," he said.

The new masa plant is located west of the Valley Grain Products building and will consist of a processing area, a boiler room, cooking tubs and a number of other items of machinery. The walls of the plant are 30 foot concrete walls and the tubs for cooking will hold 10,000 pounds of corn at a time, which will be cooked with steam, thereafter to be placed in a steeping process for 8-12 hours. The product will then be placed on a stainless steel mesh belt,

Chamber...

Cont. from Page 1
ficers and directors for 1983, the Chamber's new group insurance plan, and several other items of vital interest to the Chamber. Door prizes will also be awarded. Anyone desiring further information should call the Chamber at 272-4248.

4-H's...

Cont. from Page 1
to show at the State Fair of Texas which is in Dallas in about two weeks. Those planning to show animals are: Julie Claunch, Jay and Jerry Gleason, Eddie Johnson, Greg and Chris Young, Jodie, Jamie and Wade Wheeler and Colin Tanksley.

Refuge...

Cont. from Page 1
Manager, P. O. Box 549, Muleshoe, Texas 79347 or telephone 1-806-946-3341.

ground, dried and sifted before sacking for shipping. The brand name of the masa is MX "Masa Mixta."

Smith advised that the Nabisco Company has started production of a cracker, that if catches on, will use about 1/2 of what the Masa plant can produce. There are also nibbles from the Keebler Cookie company and a joint venture with the McCormick Company in the Tio Sancho products.

There are several different types of masa and each has a particular use, since it takes differently ground types of corn for each kind of product.

The Masa plants use a completely stone ground meal, which is similar to the old methods of grinding, except that it is done by machinery instead of by hand these days.

At any rate, new industry in the area has the capability of producing more jobs and increased usage of a home grown product. The construction of the Muleshoe Masa plant was actually started on July 12, and by April 1, 1983, the proof will be in the cooking.

Commissioners.

Cont. from Page 1
Further business taken care of in the special called meeting included the passage of an order creating the Hunter Order Division Plat, which consists of 5,086 acres out of the north part of Section 33, Block Y, WD and FW Johnson Subdivision in Bailey County. H.D. Hunter has plans for the construction and layout of ten mobile home lots, which will be constructed on a for sale basis.

The Commissioners also authorized the sale of an old tractor, owned by Precinct One. It is to be sold by R.L. Scott, Commissioner of that precinct, for the best price that can be negotiated.

Contest...

Cont. from Page 1
was James Whitson. Whitson missed five games, but was only one point off on his tie breaker scores.

Third place went to Gary Freeman for four points and \$2. Freeman missed five games and was seven points off in the tie-breakers.

Several entries were exact or only one point off in their tiebreaker scores, but missed more games, keeping them out of the running. We also received an entry that was not completed with the name, address, and other necessary information that is required at the top of the entry blank. So, be sure to fill in your name, etc., and use an official Journal entry form.

First place winners to date are: Jo Blackwell, Terry Field, Lloyd Pollard, Ruth Newell and Kevin Manasco. Second place winners are: James Whitson, James Byers, Carolyn Wiseman, Raymond Villalobos, and Larry Ross. Third place winners are: Gary Freeman, Jerry "Doc" Gleason, Kay Griswold, Barry Lewis and Marilyn Engelking.

Boosters Plan Harvest Festival

Due to circumstances beyond control, conflicting dates and inability to reserve the Civic Center, the Fine Arts Boosters will not have an Annual Halloween Carnival this year.

Instead, a "Harvest Festival" is planned for Saturday, November 6, from 6 to 10 p.m. in the Bailey County Civic Center.

All the usual booths will be available to all organizations at a charge of \$25. Each for the night, with all proceeds going to benefit the students of Fine Arts. At 9 p.m. we will crown the Harvest Queen and the Harvest Princess and their escorts. The candidates will be chosen as was the Halloween Queen last year and votes will be counted in the same manner.

Wheat Signup

Cont. from Page 1

serve. Williamson says that. "The estimated price for 1983 is not above \$3.65, the price will possibly stay below the loan rate."

As with other diverted acreage, wheat diversions must be devoted to conservation uses. Farmers who plant fewer than their permitted acres or 80 percent of their base will be allowed to devote fewer acres to conservation. Land designated for conservation use must be cropland that was devoted to row crops or small grains in two of the last three years, except land in a summer fallow rotation shall be cropped in one of the last two years.

A limited grazing program has been established for 1983 wheat crop. Grazing of the conservation use acreage will not be permitted during the six principal growing months. Producers are not permitted to mechanically harvest any crops on the conservation use acreage. There is no cross compliance nor offsetting compliance required on wheat.

Signup period for all wheat producers is from October 1 through March 31. Once again, Williamson encourages that "all producers need to be in the 1983 farm program; at least consider this program." He further commented, "We were lucky to have the disaster program this year,

in Washington."

Also coming up is the authorization for Emergency Conservation Programs in Bailey County. The sign-up period is from September 30 to October 29 and will be for funds approved to 1) repair broken terraces due to rain damage and/or 2) wash outs, or gulley in fields caused by rains.

The ECP program is similar to the ACP program, in that the farmer pays a percentage of the cost of repairs and the ECP pays a percentage. Information pertaining to these programs may be obtained by contacting the ASCS or the Soil Conservation Service in Bailey County.

"We will help the producers in any way we can, and encourage them to inquire about these programs or any other farm programs that we have information about," Williamson said.

Williamson stated that spot checks were still being done on summer seeded crops. Also, yield and acreage notices have been mailed out to producers, and there is one notice per farm. The Director encourages farmers to call the ASCS office if they have any questions or do not understand these notices.

The best counsellor is the man who gives you no advice.

Crimson Tide Set To Squash Nebraska

That delightful four-game home stand has come to an end for Penn State. The winning finale against Nebraska two weeks ago was a great finish to the four-week honeymoon. This Saturday, Alabama - in Birmingham. And memories of the Crimson Tide are anything but pleasant for the Nittanians after last year's 31-16 loss. The Tide has been rolling along in typical Alabama style running up impressive wins over Georgia Tech, Mississippi, and Vanderbilt. Well, Alabama beat Vanderbilt anyhow. The Tide schedule appears to be a straight shoot to another Southeast Conference title - or at least a share of it. The power quotients of the two don't indicate much of a point spread, and we're quick to agree - it'll be close. We're expecting Penn State to win its fifth straight.

Texas administered the big clobber to Oklahoma last fall 34-14, and Barry Switzer's Sooners may be in trouble again this Saturday as they meet the Longhorns in Dallas. Texas leads the series 46 wins to 27 for Oklahoma, and the Longhorns are expected to chalk up win number 47.

After four "warm-up" weeks n d s, powerful U.C.L.A. moves into Pac-10 competition vs. Arizona. The Bruins who missed the conference championship in 1981 by losing to Southern California 22-21 in the final game of the season, are out to make all kinds of amends. Victors over Muchigan 31-27 two weeks ago, the home-standing Uclans should handle Arizona.

Brigham Young, Arizona State, and S.M.U. had the most prolific offenses in the nation last fall. However, all three could be frustrated Saturday, at least in rolling up a lot of points. The Cougars of B.Y. will have the toughest assign-

Football Preview

Cont. from Page 1

the football and runs with it a lot. He will have a lot of good blockers in front of him for protection, so Williams expects an "all-out battle."

The Mules on the other hand are geared-up, fired-up and ready to go into District action, with only one serious injury in Todd Thornton's broken arm.

Chosen as players of the week for the Muleshoe - Morton game were Sam Gonzales on defense and Alex Paez on offense. Of the team's playing last week, Williams had this to say: "Our guys did an excellent job; we played lots of talent and beat them. Although we got a number of penalties, they were hurting type penalties, and we pulled out some plays in the second half that threw them off the track. The Morton team has tremendous talent, and expected to break loose on us late in the game, but they just didn't get it done. They were confident and played pretty loose, which cost them the game. We always save something back," says Williams, "so that we can have some kind of different play to run at an opponent to put a stop to their tactics."

As far as Abernathy's record of 4-1, and of Muleshoe's 2-2, according to Williams, both can be thrown to the wind, since district play always is a whole new ball game. The Mules are relatively healthy with the exception of Thornton.

Starting offensive lineup for the Antelopes is as follows: center, Trey Stone; guards, Scott Furgeson and Rene Vecchio; tackles, Bryan Stallings and Tracy Nickols; tight ends, Ross Bennett and Allan Lester; flanker, (alternating) Gordon Havens and Daryl Young; quarterback, Brian Smith; running backs, Chester Cooper and Harold Miller.

This first district game is a big one for the Mules, so all you Mule fans get on your school colors and get out and fill those stadiums to overflowing and support your hometown boys, as they go up against the Abernathy Antelopes. Gametime is 7:30 Friday night, Benny Douglass Stadium. BE THERE!!

NOTES--

--COMMENTS

It's easy to have friends if you pass out the favors. ****

You can best be someone by always being yourself. ****

Not everything that is cut to half price is worth buying. ****

The main purpose of education is to teach people to think. ****

The first fruit of a religious personality is an honest life. ****

Any excuse may justify delay but it doesn't get work accomplished. ****

ROBERT D. GREEN, INC.
2400 West American Blvd.
MULESHOE, TEXAS 79347

OLDSMOBILE - BUICK - PONTIAC - GMC

TERRY YELL
Sales Representative

Home Phone 272-4588
Business Phone 806 272-4948

The Bob Harmon Forecast

Saturday, Oct. 9 - Major Colleges			
Air Force	24	Navy	20
Appalachian State	23	Marshall	21
Arizona State	23	Stanford	17
Arkansas	29	Texas Tech	10
Auburn	24	Kentucky	13
Ball State	17	Ohio	13
Boston College	24	West Virginia	21
Boston U.	23	Yale	20
Bowling Green	24	Miami (Ohio)	14
Brigham Young	27	New Mexico	24
Central Michigan	22	Western Michigan	21
Cincinnati	31	Long Beach State	7
Clemson	35	Virginia	6
Drake	23	Western Illinois	7
Duke	24	V.P.I.	23
East Carolina	25	Richmond	10
Florida State	23	Southern Illinois	10
Florida	28	Vanderbilt	10
Fresno State	24	Pacific	13
Georgia	31	Mississippi	8
Harvard	26	Cornell	12
Hawaii	20	Utah	17
Holy Cross	22	Colgate	20
Houston	23	Texas A & M	22
Idaho State	25	Utah State	24
Illinois	37	Kent State	7
Iowa	21	Indiana	14
Kansas State	17	Missouri	10
Kansas	21	Oklahoma State	16
L.S.U.	23	Tennessee	17
Maryland	31	Indiana State	6
McNeese State	21	NW Louisiana	17
Michigan	28	Michigan State	17
Minnesota	42	Northwestern	7
Mississippi State	24	So. Mississippi	17
Nebraska	42	Colorado	0
North Carolina	41	Wake Forest	7
NE Louisiana	17	Louisiana Tech	16
Ohio State	26	Miami, Fla.	24
Penn State	27	Alabama	13
Pennsylvania	21	Bethune-Cookman	23
Princeton	21	Columbia	10
Rutgers	28	Army	13
San Jose State	27	Cal-Fullerton	7
S.M.U.	27	aylor	14
SW Louisiana	24	Arkansas State	22
Temple	26	Louisville	14
Tenn.-Chattanooga	27	East Tennessee	8
Tennessee State	27	Grambling	23
Texas-Arlington	20	North Texas	16
T.C.U.	30	Rice	6
Texas-El Paso	20	Nevada-Las Vegas	19
Texas	20	Oklahoma	13
Toledo	36	Eastern Michigan	6
Tulane	25	Georgia Tech	10
Tulsa	34	New Mexico State	10
U.C.L.A.	30	Arizona	10
V.M.I.	21	The Citadel	19
Washington State	27	Oregon State	10
Washington	23	California	14
Western Carolina	25	Furman	14
Wichita	28	Illinois State	6
William & Mary	22	Dartmouth	13
Wyoming	20	San Diego State	10

Other Games - East			
Bates	25	Hamilton	7
Central Connecticut	21	Allegany	6
Delaware	23	Norwich	8
Franklin & Marshall	26	Massachusetts	14
Kean	17	Western Maryland	14
Lafayette	24	New Haven State	24
Lehigh	22	Maine	23
Monclair State	22	Connecticut	21
Muhlenberg	27	New York Tech	9
New Hampshire	23	Susquehanna	20
Plymouth State	38	Bucknell	14
Rhode Island	27	Mass. Maritime	8
St. Lawrence	21	Northeastern	10
*Salisbury	23	Alfred	10
Slippery Rock	23	William Paterson	16
So. Connecticut	23	Santa Clara	22
		Albany	21

Other Games - Midwest			
Adrian	40	Olivet, Mich.	7
Augustana, Ill.	31	Carthage	10
Baldwin-Wallace	28	North Central	17
Benedictine	21	Baker	12
Black Hills	25	Dakota Wesleyan	12
Central Methodist	26	Culver-Stockton	13
Central Oklahoma	24	E. Central Oklahoma	13
Concordia, Minn.	20	Mankato	12
Dayton	23	Bluffton	21
Defiance	28	Kean	10
Doane	20	Midland	23
Eastern Illinois	24	Akron	12
Franklin	21	Butler	20
Hillsdale	31	Wayne, Mich.	7
Idaho	35	Northern Iowa	13
Illinois College	30	Iowa Wesleyan	6
Indiana Central	20	Evangel	14
Liberty Baptist	28	Evangel	6
McPherson	17	Kansas Wesleyan	7
Milikin	24	North Central	17
Missouri-Rolla	24	NW Missouri	12
Missouri Southern	24	Pittsburg	19
Missouri Valley	22	Mid-America	22
Missouri Western	20	Wayne, Neb.	13
Moorehead	38	SW Minn. State	6
Nebraska Wesleyan	30	Dana	6
North Dakota	21	Augustana, SD	7
NE Missouri	21	Nebraska-Omaha	17
NE Oklahoma	22	SE Missouri	13
North Carolina	24	South Dakota	21
Northern Michigan	23	North Dakota	10
Northern Colorado	23	Northwood	6
St. Ambrose	20	Westminster	6
St. John's	23	Gustavus Adolphus	17
St. Joseph	33	Georgetown, Ky.	9
St. Thomas	29	Augsburg	7
So. Dakota State	23	Morningside	22
SW Missouri	23	Central Missouri	22
Wabash	42	Washington, Mo.	6
Wis-Stevens Point	21	Wis.-Eau Claire	14
Wittenberg	42	Marietta	0

Other Games - South & Southwest			
Alabama State	24	Mississippi Valley	20
Alcorn	24	Texas Southern	12
Angelo State	28	S. F. Austin	12
Ark-Pine Bluff	20	Lane	13
Bethune-Cookman	35	Albany State	13
Carson-Newman	29	Newberry	10
Central Arkansas	21	Ark-Monticello	10
Centre	30	Principia	6
Concord	25	Fairmont	6
Davidson	21	Guilford	17
East Texas	33	Sam Houston	10
Eastern Kentucky	26	Middle Tennessee	21
Elizabeth City	17	Virginia State	10
Eion	21	Wofford	14
Fayetteville State	26	Bowie State	20
Florida A & M	24	Jackson State	23
Gardner-Webb	20	Lenoir-Rhyne	13
Harding	21	Arkansas Tech	20
Henderson	26	SE Oklahoma	10
Jacksonville State	23	Mississippi College	20
Livingstone	31	Tuskegee	7
Mars Hill	22	Savannah State	20
Morehead State	22	Washington & Lee	14
Nicholls State	17	Austin Peay	21
North Alabama	23	Southern U.	16
Presbyterian	22	Alabama A & M	17
Sewanee	23	Catawba	7
So. Arkansas	21	S'western, Tenn.	21
SW Texas	40	Quachita	10
Tenn.-Martin	21	Towers Payne	6
Texas A & I	24	Murray State	17
Troy State	21	Abilene Christian	17
Valdosta State	21	SE Louisiana	20
West Georgia	20	Delta State	16
West Va. State	21	Hampden-Sydney	17
West Va. Tech	20	West Liberty	13
Youngstown	23	Western Kentucky	22

Other Games - Far West			
Cal Poly (S.L.O.)	20	Cal Poly (Pomona)	20
Central Washington	23	Pacific Lutheran	23
Central Washington	24	Willamette	20
Eastern Oregon	24	Sacramento State	21
Hayward State	23	Redlands	13
Lavere	23	Lewis & Clark	17
Mcmurry	23	Colorado College	13
Northern Arizona	22	Nevada-Reno	21
Northridge	21	Chico State	20
San Diego U.	27	Whittier	7
San Francisco State	33	Sonoma	6
Santa Clara	26	Humboldt	13
SW Oklahoma	21	Eastern New Mexico	14



Discover these SAVINGS!

PRICES EFFECTIVE OCTOBER 7-9, 1982
WHILE SUPPLIES LAST - LIMITED SUPPLY

Borden's
HOME FOR THE HOLIDAYS
VALUE

LADY BORDEN PREMIUM ASSD. ICE CREAM 1/2 GAL. NO. CTK. **\$1.99**

BORDEN'S QUART ORANGE JUICE **89c**

BORDEN'S HI-PROTEIN MILK 1/2 GAL. CTK. **99c**

Allsup's Bread 1 1/2 lb. loaf **2/\$1.00**

SALAMI/BOLOGNA/LUNCHEON RATH MEATS **69c**

Shurfresh Medium Eggs **49c doz.**

1 Make Our Store
Your Favorite Place To Shop

SERV-ALL
THRIFTWAY

NEW MEXICO VS. BRIGHAM YOUNG

2 For:

★ INSURANCE
★ TIRES
★ BATTERIES

Bailey County Farm Bureau
1612 W. Amer. 272-4567

LSU VS. TENNESSEE

3 ANY
PRESCRIPTION
ANYTIME!

Western Drug
114 Main 272-3106

MISSOURI VS. KANSAS ST.

4 For The Best
Insurance For Your Money -

See Your Independent Agent:

THE BIG DIFFERENCE
YOUR INSURANCE AGENT

TERRY FIELD Ins.
213 E. Ave. B 272-5551

COLGATE VS. HOLY CROSS

5 PROFESSIONAL
INSURANCE AGENTS

Henry Insurance and Realty
"SERVING ALL YOUR INSURANCE NEEDS"

111 W. AVENUE B — MULESHOE, TEXAS — PHONE 806/272-4581

KANSAS VS. OKLAHOMA STATE

BACK THE MULES
FOOTBALL
CONTEST

GRAND PRIZE \$100

1st \$6 2nd \$3 3rd \$2

Players Of The Week

CONTEST RULES:

- Pick the winner of each of the games contained in the advertisements on this page. Write the name of the teams you think will win opposite the game number in the blanks provided on the official contest blank.
- The contestant must be 12 years of age or older.
- Only one entry per person may be made for any one contest.
- Bring your entry blank by *The Journal* office by 5:30 p.m. Friday, or, if mailed, the entry must be post-marked not later than 5:30 p.m. Friday. Write "FOOTBALL CONTEST" on mailed entry, and mail to P. O. Box 449, Muleshoe, Tx. 79347.
- Pick and write in the score of the tiebreaker game. This score will be used to break weekly as well as grand prize winners. Decision of *The Journal's* scoring judges will be final.
- Check the team you think will win; 10 points for first place, 6 points for second place and 4 points for third place.
- To count for grand prize, entries must be on official blank printed in the paper.

6 **B.T.S. Hair Care**

Main Street BEAUTY SALON
115 Main 272-3448

STANFORD VS. ARIZONA ST.

7 Need A Good Car
For School?
COME SEE US!

GM QUALITY SERVICE PARTS
GENERAL MOTORS PARTS DIVISION

Keep That Great GM Feeling
With Genuine GM Parts.

THORNTON Chevrolet
201 Main 272-4521

TULIA VS. FRIONA

8 HOME OF:
'THE GREEN MACHINE'

Robert D Green, Inc.
2400 W. American 272-4588

TEXAS TECH VS. ARKANSAS

9 ★ SEED
★ FEED
★ SERVICE



McCormick Seeds, Inc.
400 E. Ash 272-3156

MISSISSIPPI ST. VS. SO. MISSISSIPPI

CONTEST RULES:

- Pick the winner of each of the games contained in the advertisements on this page. Write the name of the teams you think will win opposite the game number in the blanks provided on the official contest blank.
- The contestant must be 12 years of age or older.
- Only one entry per person may be made for any one contest.
- Bring your entry blank by *The Journal* office by 5:30 p.m. Friday, or, if mailed, the entry must be post-marked not later than 5:30 p.m. Friday. Write "FOOTBALL CONTEST" on mailed entry, and mail to P. O. Box 449, Muleshoe, Tx. 79347.
- Pick and write in the score of the tiebreaker game. This score will be used to break weekly as well as grand prize winners. Decision of *The Journal's* scoring judges will be final.
- Check the team you think will win; 10 points for first place, 6 points for second place and 4 points for third place.
- To count for grand prize, entries must be on official blank printed in the paper.

OFFENSE DEFENSE

24 Alex Paez 11 Sam Gonzales

10 'The Upper Crust
of the Donut World'

Your Favorite Coffee & Sandwich Shop

SPUDNUT SHOP
328 Main 272-3542

CORONADO VS. PLAINVIEW

11 'We Appreciate
Your Business'

Joe Shipman & Sons Body Shop
410 N. 1st 272-4403

HOUSTON VS. TEXAS A&M

12 **First National Bank**
Your Home-Owned Bank

All The Bank
You'll Ever Need

202 S. 1st 272-4515

SMU VS. BAYLOR

13 **Farmers Co-op Elevators**
"3 Locations To Serve You"

272-4335
ENOCHS MULESHOE
CLAY'S CORNER
MULESHOE VS. ABERNATHY

October 7, 1982 OFFICIAL ENTRY BLANK

NAME _____
ADDRESS _____ PHONE _____

1	11
2	12
3	13
4	14
5	15
6	16
7	17
8	18
9	19
10	20

TIEBREAKER
PENN ST. VS ALABAMA

14 "We're Ready
To Serve You - Better!"

See:
American Valley Irrigation & Reid Real Estate
West Highway 84 272-3142

TEXAS VS. OKLAHOMA

15 Featuring-
The Latest
In Fashions
& Cosmetics

Latrell's Fashions
1519 W. American 272-3459

WEST VIRGINIA VS. BOSTON COLLEGE

16 JOIN
SAM'S
Sporting Goods

In Supporting All
Our Athletic Programs

226 Main St. 272-4414

DIMMITT VS. LITTLEFIELD

This Week:
MULESHOE vs. ABERNATHY
H - 7:30 p.m.

17 Come See Us
For All
Your Farming Needs!

Wooley International inc.
W. Hwy. 84 272-5514

PENNSYLVANIA VS. BROWN

18 OPEN!
After The Games
At Home
Or Away
Dinner Bell
2103 West American 272-3460

NAVY VS. AIR FORCE

19 Portrait Sittings
to
Wedding Photos

Featured At:
Adrian Photography
218 West 2nd 272-3487

GEORGIA VS. TULANE

20 Money
To Loan on Anything of Value
Bargains on Unredeemed Pledges

All Loans Strictly Confidential
"No Loan Too Large or Too Small"

Muleshoe Pawn
213 S. First 272-5105

NOTRE DAME VS. MIAMI FL.

**SUGAR 'N SPICE
THE BONUS
IS NICE!**

**100 BONUS
SURE SAVERS**

100 FREE STAMPS
(10 Golden Tens)
with purchase
IMPERIAL
2 LB. Bag

**POWDERED
SUGAR**

100 FREE STAMPS
(10 Golden Tens)
with purchase
1 oz. pkg.

**GROUND
SHRIMP**

100 FREE STAMPS
(10 Golden Tens)
with purchase

100 COUNT EQUAL
SWEETNER
LOW CALORIE

100 FREE STAMPS
(10 Golden Tens)
with purchase

SCHILLING
1.25 oz.
**GROUND
CLOVES**

100 FREE STAMPS
(10 Golden Tens)
with purchase

SCHILLING
7.37 oz.
**INSTANT MINCED
ONIONS**

100 FREE STAMPS
(10 Golden Tens)
with purchase

4 1/2 oz. can
ACCENT

100 FREE STAMPS
(10 Golden Tens)
with purchase

B&B
3 oz. pkg.
**HOT
CHILI**

100 FREE STAMPS
(10 Golden Tens)
with purchase

B&B
4 Pods
GARLIC

100 FREE STAMPS
(10 Golden Tens)
with purchase

B&B
2 oz.
COMINO

**WHITE'S CASHWAY
SUPERMARKET
MULESHOE, TEXAS**

Double Gunn Bros. Stamps Every Wednesday & Saturday
Open Monday-Saturday 7:30 A.M. to 8:00 P.M.
Sunday 12:00 P.M. to 8:00 P.M.
WE WELCOME WIC CARDS & USDA FOOD STAMPS



Prices Good October 7-13, 1982

- FIRM GREEN HEADS
CABBAGE**.....lb. **10¢**
- MEDIUM SIZE YELLOW
ONIONS**.....lb. **7/\$100**
- 5 LB. BAG
POTATOES**.....ea. **79¢**
- GOLDEN RIPE FRUIT
BANANAS**.....lb. **3/\$100**
- TEXAS SUGAR SWEET
HONEYDEWS**.....lb. **19¢**
- BARTLETTS
PEARS**.....lb. **49¢**

QUALITY MEATS

DECKER FULLY COOKED BONELESS

1/2 HAMS.....LB. **\$1.98**

1 Doz. PEDRO'S REG HOT

TAMALES.....PKGE. **\$2.99**

KRAFT RED RIND 1/2 MOON CHEDDAR

CHEESE.....LB. **\$2.25**

SLICED BEEF SKINNED AND DEVEINED

LIVER.....LB. **69¢**

HONEYSUCKLE SELF BASTING BONELESS

TURKEY.....LB. **\$1.69**

8 OZ. OSCAR MAYER MEAT BEEF

BOLOGNA.....PKGE. **89¢**

COUNTRY PRIDE GRADE A

BAKING HENS.....LB. **69¢**



CONTADINA TOMATO
SAUCE.....8 oz. **4/\$1**

KING SIZE TIDE
DETERGENT.....5 lbs. 4 oz. **\$3.39**

16 OZ.
NESTLES QUIK.....**\$1.39**

COMET LONG GRAIN
RICE.....14 oz. **39¢**

SPAM.....7 oz. **99¢**

4.6 OZ. CLOSE UP
TOOTHPASTE.....**\$1.29**

1 OZ.
MENTHOLATUM.....**99¢**

32 OZ. LISTERINE ANTISEPTIC
MOUTHWASH.....**\$2.99**

20 OZ. TOTINOS COMBO
PIZZA.....**\$2.59**

32 OZ. FISHERBOY
FISH STICKS.....**\$1.99**

12 OZ. MINUTE MAID
ORANGE JUICE.....**99¢**

HARVEST TIME

FOOD SAVINGS!

CARNATION EVAPORATED
MILK.....13 oz. **2/99**

DELTA TOILET
TISSUE.....4 ROLL **99¢**

HIGH POINT DECAFFINATED
COFFEE.....8 oz. **\$4.39**

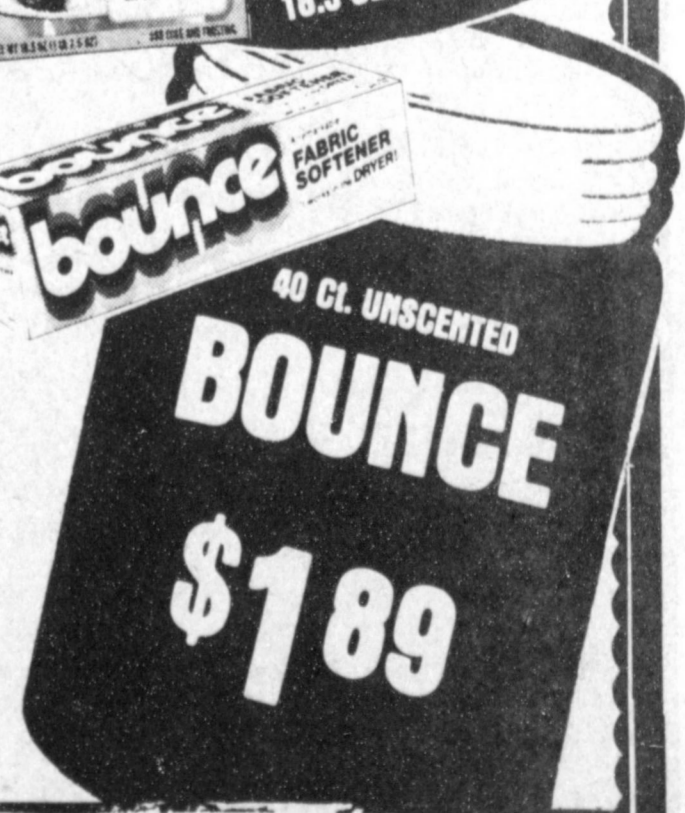
SAFEGUARD BATH
SOAP.....5 oz. **2/99¢**

PLEDGE FURNITURE
POLISH.....LEMON REGULAR 14 oz. **\$1.99**

LIQUID SOIL & STAIN REMOVER
SHOUT.....22 oz. **\$1.59**

GLADE
AIR FRESHNER.....7 oz. **99¢**

NO-SALT.....11 oz. **\$2.19**



White Swan
SUGAR 5 lb. bag
59¢ With 2-Super Booklets

100 FREE STAMPS
(10 Golden Tens)
with purchase
SCHILLING 4 oz. Pure
Extract **VANILLA**

100 FREE STAMPS
(10 Golden Tens)
with purchase
SCHILLING 6.25 oz. Instant
GARLIC
Powder

100 FREE STAMPS
(10 Golden Tens)
with purchase
Schilling 1 oz. Stick
CINNAMON

100 FREE STAMPS
(10 Golden Tens)
with purchase
SCHILLING 8 oz. Ground
**BLACK
PEPPER**

100 FREE STAMPS
(10 Golden Tens)
with purchase
SCHILLING 4 oz.
**GROUND
CINNAMON**