









## Cheese Rates Raahs In Spreads, Snacks

Armchair experts watching the weekly football classic have been known to develop strong cravings for food. It's possible they may even work up quite an appetite as they call a play, rush the quarterback, throw or catch a pass.

The home team, (Mom, that is), can score a few touchdowns of her own if she sets up a hearty snack and/or spread for the would-be-players, coaches and their cronies. It's an occasion for hearty, gutsy foods like cheese with character and flavor, olives, onions, tomatoes, dark rye bread, cheese spread and a bowl of seasoned buttery popcorn and pretzels.

Cheeses good with rye bread and salami are Colby, Caraway or Brick. They make an interesting contrast in shapes, as well. Swiss is also an excellent sandwich cheese while favorite Cheddar and Bleu combine well with dairy sour cream and seasonings

as a spread or dip. Buttered and seasoned popcorn with pretzels is one of those hard-to-resist combos that's good for nibbling, sure to bring in cheers from all sides.

**CHEDDAR - BLEU CHEESE SPREAD**  
2 cups (8 oz.) shredded sharp Cheddar cheese (room temperature)  
2 tablespoons crumbled Bleu cheese  
1/2 cup dairy sour cream  
1 tablespoon chopped chives  
1/4 teaspoon Worcestershire sauce

Beat together Cheddar cheese, Bleu cheese and sour cream until thoroughly blended. Stir in chives and Worcestershire sauce. Cover and refrigerate to blend flavors. Let come to room temperature to serve. Serve with thinly sliced rye bread, assorted crackers and raw vegetables. Approx. 1 1/2 cups.

**HERB BUTTERED SNACKS**  
1/2 cup butter, melted  
1 teaspoon oregano leaves, crushed  
1 teaspoon garlic salt  
1 teaspoon seasoned salt  
3 quarts popped corn  
2 cups pretzel sticks  
Combine butter and seasonings. Pour butter mixture over combined corn and pretzels; toss lightly. Spread into a shallow baking pan and heat in a 325 degree oven, 5 minutes. Approx. 3 1/2 quarts.



Although The Hague is the seat of the Netherlands government, the capital is actually Amsterdam and it is here that coronations take place.



**SNACK SPREAD**--Mom scores a touchdown with a snack-spread like this one. From left to right, Colby in half moon slices, Caraway cheese in strips, Brick in rectangles, Salami slices, Cheddar cheese cubes with olives, cherry tomatoes, Cheddar-Bleu Cheese spread, Swiss cheese, rye bread, onions and Colby and Gouda.

### Sudan Booster Club Elects New Officers

The Sudan Booster Club met Tuesday night, August 24, in the back yard of Mr. and Mrs. Pete Lance's home for ice cream and cake, with 60 persons present.

Those serving were Kim Powell, Ginger Gore, Stephanie Bickett, Missy Fisher, Jeannia Nix and Debbie Hill, Sudan cheerleaders.

Head coach Mack Lowe introduced the members of the football team and told what positions they will be playing and then introduced the coaching staff. They are Roger Boyles, Bo Lance and new head girls basketball coach, Jim Kirkland.

New officers were also elected with Edward Fisher remaining president; James Clay, vice president; Hoyt Robertson, secretary / president; reporter, Nell Ingle; and food chairpersons, Sue Peck, Patty Miller, Cheryl

Kinnie and Pee Wee Lance; projects committee chairman, Adrian Martin and Pete Lance.

Sudan Hornet Caps will be available soon and also the Sudan Booster Club Membership Cards. These can be purchased from Son Qualls or any of the club members for \$2.50 per person. There are also five children's jackets left to be sold and can be purchased at Lance Insurance for half price.

### Hints for Homemakers TIPS TO HELP YOU

The camping and picnic season is with us. This is the time to make lists of "don't forgets" that can make such happy occasions just that much more relaxing.

Many parents, traveling with small, sticky hands, find packing wet washclothes in sealed bags indispensable. Beverages, frozen after sealing in pouches will keep other foods cold and be refreshingly frosty for drinking after picnic time. The new Vacuum Seal-a-Meal® from Dazey can help make fun times even better.

### Auxiliaries Annual Meeting Scheduled

Auxiliaries from Muleshoe and throughout the Panhandle will be attending the Annual District Meeting for the Texas Association of Hospital Auxiliaries in Pampa next week, according to Nancy Meredith Hooker, president of the state-wide organization.

Coronado Community Hospital Auxiliary in Pampa is hosting the meeting which will highlight information about volunteer programs, new health programs, and a motivational speaker, Monday, September 13.

Mrs. Eleanore Gill, past president of the CCH Auxiliary and District TAHA Councilwoman, said the guest speaker for the day will be Margaret Keyes of Austin, an educator, organizational consultant, and professional speaker. Her topic is "Rx for Volunteers".

Running concurrently with the TAHA session will be a meeting of the Texas Association of Volunteer Services, likewise being hosted by the Pampa hospital auxiliary, according to Mrs. Nan Osborne, TAHA co-councilwoman and coordinator for the meeting.

Participants in the sessions include auxiliary volunteers from Amarillo, Brownfield, Canyon, Canadian, Denver City, Dimmitt, Friona, Dalhart, Hereford, Littlefield, and Lockney.

Also Lubbock, Muleshoe, Perryton, Plainview, Shamrock, Slaton, Spearman, and Tahoka.

For additional information, contact: Walter Johnson, Director Public Relations, Coronado Community Hospital, Pampa, Tx. (806) 665-3721.

### Gulf of Mexico sites studied for sanctuary program

**COLLEGE STATION**—Seven sites in the Gulf of Mexico are currently being evaluated for possible designation as National Marine Sanctuaries, says Dr. Thomas Bright, a Texas A&M University oceanographer who leads the selection team.

The Marine Sanctuary Program is intended to establish a system of national marine sanctuaries for the long-term benefit and enjoyment of the public. Bright said he expects about two sanctuaries to eventually be established in the Gulf region. He said the "sanctuary" designation would not preclude uses of the sanctuary and its resources by the public as long as the basic ecological integrity of the area is maintained.

### A Little Planning Saves Time, Money

Will buying the "large economy size" save money on your grocery bill?

"As a rule, food in large containers costs less than the same amount in smaller containers," says Mary K. Sweeten, food and nutrition specialist for the Texas Agricultural Extension Service, Texas A & M University System.

Left-overs that can't be stored properly, conveniently and safely may end up costing more, she says. If meals become monotonous, the large economy sizes may not be worth the money saved.

"However, if the food can be stored and used, buying large amounts can be easier. It will reduce shopping trips and save money on the food bill," Sweeten says.

Compare the cost per unit -- ounce, pound or pint -- of the food from different sized containers.

Look for "price per unit" on the display shelf or above the compartment. If unit pricing is not used, figure it by dividing the price of the item by the number of ounces it contains, she suggests.

"Be an informed shopper! Start relying on unit pricing to help you make an educated decision about the most economical food container size to buy."



Feverfew is a low, hardy plant with white daisy-like flowers. People once believed that it could drive away fever. Its name means to put fever to flight. It doesn't work.

### Muleshoe Singing Group

The Muleshoe Singing Group met Saturday, September 4th in the fellowship hall of the Trinity Baptist Church, at 7 p.m.

Twenty seven were present. Mrs. Mae Wilterding gave the invocation. There were several different arrangements and request numbers.

Clara Coffman said, "We would like to have more who are interested in gospel singing attend these singings."

The benediction was given by Zed Robinson.

## Happy Birthday Deb

From- DMJDKJSDJLSTGG

# Anthony's

C. R. ANTHONY CO.

## Something for Everybody Sale!

**Men's KNIT SHIRTS**  
\$ 7<sup>88</sup>  
2 FOR \$15.

**Men's DRESS SHIRTS**  
Short Sleeve \$4<sup>88</sup>  
2 FOR 9.

**Men's CORDUROY BLAZERS** \$39<sup>88</sup>

**MEN'S and LADIES LEATHER COATS** \$99 ea

**Women's Sweaters and Wool Skirts**  
Sweaters..... \$12<sup>88</sup>  
Skirts..... \$12<sup>88</sup>- \$16<sup>88</sup>

Swingy wool blend skirts in several styles and assorted solids and plaids. Sizes 6-16. Sweaters are 100% acrylic in v-neck and boat neck styles, assorted colors. Sizes S,M,L.

**Ladies Pull-On VELOUR TOPS**..... \$12<sup>88</sup>  
**LADIES OXFORD SHIRTS**..... \$10<sup>88</sup>

**Girls TOPS and BLOUSES**  
\$6<sup>88</sup> AND \$7<sup>88</sup>

One Group **KNICKERS and JEANS** \$7<sup>88</sup>  
Size 7-14 **ATB JEANS** \$12<sup>88</sup>

**Men's CORDUROY JEANS** \$14<sup>88</sup>  
One Group **MENS DRESS SLACKS** \$9<sup>88</sup>  
Boy's & Student **CORDUROYS** 10<sup>88</sup> to 12<sup>88</sup>

**Heritage Pumps** 16<sup>88</sup>  
Reg. 19.99. Updated traditional slip-ons in suede and smooth leather with unit soles. Four styles in brown, sizes 5 1/2-10.

**SALE RACKS**  
\$5<sup>88</sup> \$7<sup>88</sup> \$12<sup>88</sup>

**Children's Velcro Closure ATHLETIC SHOES** \$7<sup>88</sup> pr.  
One Group **Men's HUSHPUPIES** \$15<sup>88</sup>

Entire Stock **AMERICAN TOURISTOR SOFT-SIDE LUGGAGE** 1/2 PRICE



1 Make Our Store  
Your Favorite Place To Shop

**SERV-ALL**  
**THRIFTWAY**

LOUISIANA TECH VS. WEST TEXAS

2 For:

★ INSURANCE  
★ TIRES  
★ BATTERIES

Bailey County Farm Bureau  
1612 W. Amer. 272-4567

T.C.U. VS. UTAH STATE

3 ANY  
PRESCRIPTION  
ANYTIME!

**Western Drug**  
114 Main 272-3106

IDAHO STATE VS. DRAKE

4 For The Best  
Insurance For Your Money -

See Your Independent Agent:

THE (BIG) DIFFERENCE  
YOUR INDEPENDENT AGENT

**TERRY FIELD Ins.**  
213 E. Ave. B 272-5551

MULESHOE VS. LEVELLAND

5 PROFESSIONAL  
PIA INSURANCE AGENCY

**Henry Insurance and Realty**  
"SERVING ALL YOUR INSURANCE NEEDS"

111 W. AVENUE B --- MULESHOE, TEXAS --- PHONE 806/272-4581

OREGON STATE VS. ARIZONA

**BACK THE MULES**  
**FOOTBALL**  
**CONTEST**

GRAND PRIZE \$100

1st \$6 2nd \$3 3rd \$2

Players Of The Week

CONTEST RULES:

1. Pick the winner of each of the games contained in the advertisements on this page. Write the name of the teams you think will win opposite the game number in the blanks provided on the official contest blank.
2. The contestant must be 12 years of age or older.
3. Only one entry per person may be made for any one contest.
4. Bring your entry blank by *The Journal* office by 5:30 p.m. Friday, or, if mailed, the entry must be post-marked not later than 5:30 p.m. Friday. Write "FOOTBALL CONTEST" on mailed entry, and mail to P. O. Box 449, Muleshoe, Tx. 79347.
5. Pick and write in the score of the tiebreaker game. This score will be used to break weekly as well as grand prize winners. Decision of *The Journal's* scoring judges will be final.
6. Check the team you think will win; 10 points for first place, 6 points for second place and 4 points for third place.
7. To count for grand prize, entries must be on official blank printed in the paper.

OFFENSIVE PLAYER-----  
Alex Paez, tailback. He had 13 carries, a 25 yard gain and one touchdown. A senior, he is 5-6 and weighs 150 pounds. "He put in extra effort," added his coaches.

DEFENSIVE PLAYER-----  
Thurman Coleman, a junior. He had nine tackles, 2 quarterback sacks and put in extra effort, according to the coaches.

6 **B.T.S. Hair Care**

Main Street  
**BEAUTY SALON**  
115 Main 272-3448

SUDAN VS. EARTH

7 Need A Good Car  
For School?

COME SEE US!

GM QUALITY SERVICE PARTS Keep That Great GM Feeling With Genuine GM Parts.  
GENERAL MOTORS PARTS DIVISION

**THORNTON Chevrolet**  
201 Main 272-4521

COLORADO VS. CALIFORNIA

8 HOME OF:  
**'THE GREEN MACHINE'**

**Robert D Green, Inc.**  
2400 W. American 272-4588

LAZBUDDIE VS. WHITEFACE

9 ★ **SEED**  
★ **FEED**  
★ **SERVICE**

**McCormick Seeds, Inc.**  
400 E. Ash 272-3156

TULANE VS. S.M.U.

10 'The Upper Crust  
of the Donut World'

Your Favorite Coffee & Sandwich Shop

**SPUDNUT SHOP**  
328 Main 272-3542

ANTON VS. FARWELL

11 •Body Repair  
•Paint  
•Windows & Doors

**Joe Shipman & Sons Body Shop**  
410 N. 1st 272-4408

SOUTHERN CALIFORNIA VS. FLORIDA

12 **First National Bank**  
Your Home-Owned Bank

All The Bank  
You'll Ever Need

202 S. 1st 272-4515

HOUSTON VS. CINNCINATI

13 **Farmers Co-op Elevators**  
"3 Locations To Serve You"

272-4335  
ENOCHS MULESHOE  
CLAY'S CORNER

NORTH TEXAS VS. OKLAHOMA STATE

14 "We're Ready  
To Serve You - Better!"

See:  
**American Valley Irrigation & Reid Real Estate**  
West Highway 84 272-3142

NEW ENGLAND VS. BALTIMORE

15 Featuring-  
**The Latest In Fashions & Cosmetics**

**Latrell's Fashions**  
1519 W. American 272-3459

HOLY CROSS VS. NEW HAMPSHIRE

16 **Muleshoe's 'FINEST' Body Work Specialists**

**MULESHOE BODY SHOP**  
402 N. First 272-4246

MIAMI VS. NEW YORK JETS

17 Come See Us  
For All  
Your Farming Needs!

**Wooley International inc.**  
W. Hwy. 84 272-5514

ILLINOIS VS. MICHIGAN STATE

18 **OPEN!**  
After The Games  
At Home  
Or Away  
**Dinner Bell**  
2103 West American 272-3460

KANSAS STATE VS. KENTUCKY

19 Portrait Sittings  
to  
Wedding Photos

Featured At:  
**Adrian Photography**  
218 West 2nd 272-3487

TAMPA BAY VS. MINNESOTA

20 **Money**  
To Loan on Anything of Value  
Bargains on Unredeemed Pledges

All Loans Strictly Confidential  
"No Loan Too Large or Too Small"

**Muleshoe Pawn**  
213 S. First 272-5105

DENVER VS. SAN DIEGO

September 9, 1982

OFFICIAL ENTRY BLANK

NAME \_\_\_\_\_  
ADDRESS \_\_\_\_\_ PHONE \_\_\_\_\_

1	11
2	12
3	13
4	14
5	15
6	16
7	17
8	18
9	19
10	20

TIEBREAKER  
TEXAS TECH VS NEW MEXICO

This Week:  
**Muleshoe vs. Portales**  
H - 8:00 P. M.



# Muleshoe Area Business Directory



**Looking for a Good Deal on a Waterbed ?**

Come See Us !

*We Now Carry Waterbeds*

**Hunter Furniture**

2104 W. Amer. Blvd. 272-4315

**Contact Us**

**For**

**Your Wheat Fertilizer Needs**

**Lazbuddie Farmers Supply**

965-2949

**Waiver of Finance Charges**

On ALL New Case Tractors Until June 1, 1983

**Or...**

**Cash Rebates up to \$3500<sup>00</sup>**

**And...**

**Special Factory Allowances**

Make Your Trade-In Worth a Lot More Now

**SEE US SOON AND SAVE BIG**

**Reynolds & Young Equip.**

803 W. Amer. Blvd. 272-4236

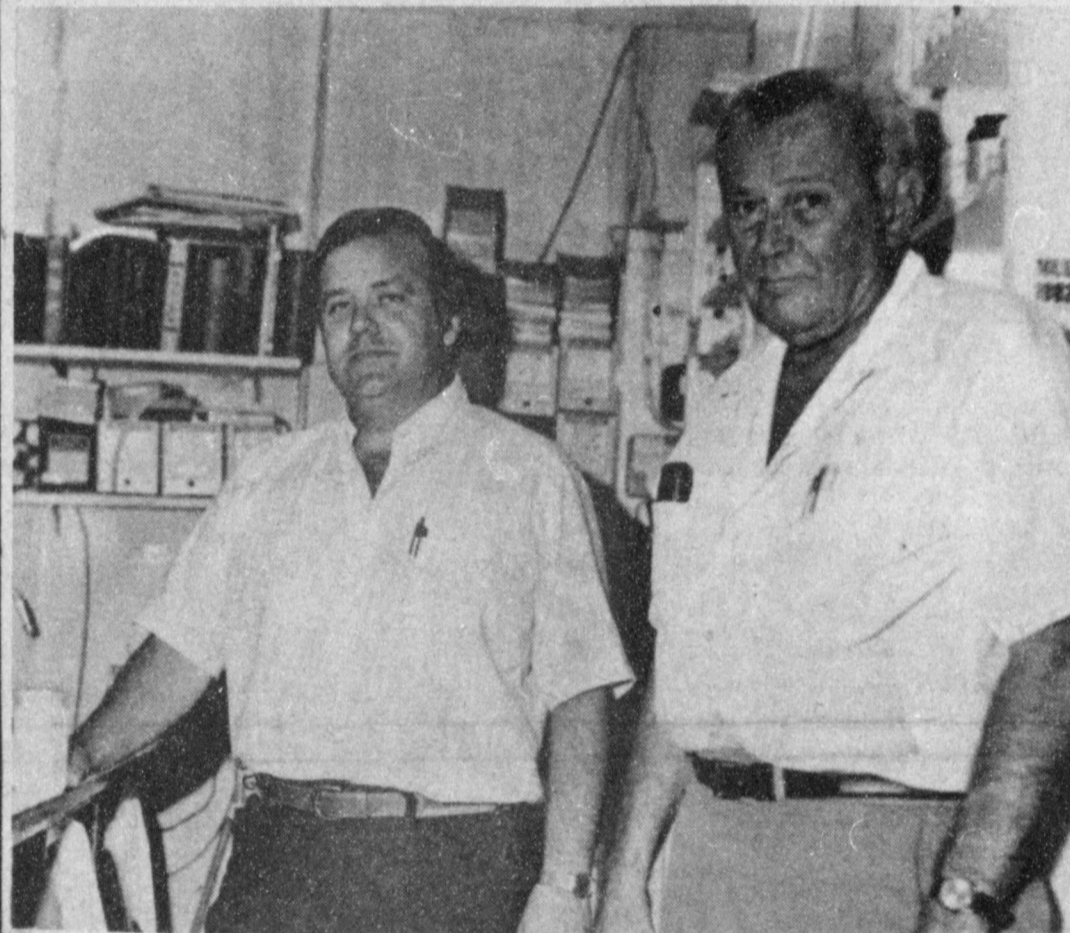


*The Upper Crust of the Donut World*

*The Potato Raised Donut*

**Spudnut Shop**

328 S. Main 272-3542



Paul Wilbanks and Harry Waddle

Harry and Wilma Waddle moved to Muleshoe in 1951 and he started working for Western Drug. The following year, they purchased the local drugstore and have continued to operate it since that time.

The couple has always believed in supporting the community. They have supported all the civic activities, and especially have been known for their support of youth and youth programs. Mrs. Waddle is a very strong supporter of West Plains Medical Center, and has long been known for her volunteer work at the facility.

They have provided funds for youths to attend college and obtain higher education. Although they have not "Blown their own horn" about supporting local and area youth, the Waddles are proud of achievements of various youth they have supported.

Paul Wilbanks started working part time at the pharmacy at Western Drug in 1965, then became a full time employee in 1967. Then, in 1972, he purchased an interest in the store.

Both he and Harry Waddle are graduates of Southwestern in Weatherford, Okla.

Currently, Paul Wilbanks is a member of the Muleshoe City Council, where he is mayor pro tem. He and his wife Judy, have two daughters, Melissa, a junior at Muleshoe High School, and Shea, who is in the second grade.

Harry and Paul commented, "We appreciate the patronage of our customers for all of these years. We always try to give good service, and plan to continue to give good service to all our customers."

Although the drugstore is a full-service drug store, complete with drugs, cosmetics and gift items, the pharmacy occupies much of the focal point of the operation.

Harry and Paul handle all types of prescriptions, and are available and willing to fill necessary medical needs at any time. They are always ready to help their customers, and stand ready to come out at any hour to fill their prescription needs.

Again, they thank all their customers for being faithful and pledge continued good, pleasant service.

**1/2 Beef**

**\$1.22**

lb. cut & wrapped



**Winkler Meat Co.**

401 Main 272-4703

**Leal's Will Be Closed Mondays .**

**Regular Hours Will Continue Thru Sat.**



**Leal's El Nuevo Restaurant**

1542 W. Amer. Blvd. 272-3294

MORTON

**Potato Chips**

FOR A TWIN PACK

Reg. \$1.29 **99¢**

No Deposit No Return Btls.

**Pepsi, Mountain Dew, Pepsi Lite, Diet Pepsi**

16 OZ. 6 PACK **\$1.29**



515 W. Amer. Blvd. 272-4406

**Save 30% to 60% on your heating & cooling cost!**

**GET YOUR ENERGY FOR RESIDENTIAL HEATING AND COOLING WITH HEAT RECOVERY FROM WELL WATER!**

Let your present water system or a new well solve the high cost of heating and cooling. Call us today for complete details.

**Wilson Drilling**  
W. Hwy. 84 272-5557

**Serving Farmers Through Marketing Corn, Wheat & Other Grains**

**Texas Sesame**

Division of Paris Milling Co.  
272-4231

**8 piece Living Room Group**

Couch, Loveseat, Chair,  
3 Tables, & 2 Lamps

**\$999<sup>95</sup>**

**Baker Furniture**

106 E. Ave. B 272-4000

**Come See Us For All Your Parts Needs.**

*We Have A Large Inventory Of Parts. Serving Your Needs For 15 Years*

**Bratcher Motor Supply**

107 E. Ave. B 272-4288

**Farmers**

**Co-Op Elevators**

272-4335

**"3 Locations To Serve You"**

Enochs Muleshoe  
Clay's Corner

**Come See Us For All Your Prescriptions And Medical Supplies**

Paul Wilbanks



Harry Waddle

**Western Drug**

114 Main 272-3106

**Keeping Up With The Times**

**Come By & Visit And Pick up All Your Wheat Fertilizer Needs.**

*"Serving You For 21 Years"*

**Foster Fertilizer**

965-2921





# Muleshoe Area Business Directory



**JUST IN CASE...** you need to be a quick-change artist, try this face-saver bonus: The Just in Case Face Case



with 12 of our most advanced makeup products. Only \$10.50 with an \$8.50 purchase of Merle Norman cosmetics. Get your Just in Case Face Case when you come in to see the beautiful Fall fashion styles of our Custom Face.

Offer good through October 1, 1982, while supplies last.

**Latrells Fashions**

1519 W. Amer. Blvd.  
272-3459

**MERLE NORMAN**  
The Place for the Custom Face

*Castleberry's Muffler World*  
(Custom Exhaust Specialists)



**We Have A Full Line Of Car & Pickup Accessories**

422 N. 1st

MULESHOE, TEXAS 79347

(806) 272-5333

**Diet Dr Pepper or 7-Up**

**\$1.59** 6-12 oz. cans

Thurs., Fri., & Sat. ONLY

**SERV-ALL**

**THRIFTWAY**

**New Hours**  
24 hours Tues. thru Sat.

Sun. 6AM - 2 PM

Mon. 6AM - 10 PM

Friday - Fish Fry

All You Can Eat \$3<sup>25</sup>

**Dinner Bell Cafe**

2103 W. Amer. Blvd.

272-3460

**Special limited-time financing offer on new John Deere combines**

If you buy a new John Deere combine now, no finance charges will accrue until January 1, 1983.

It's a great way to put a productive new combine to work in your fields this year.

Come on in and look over our new combines, select the one you want and let's talk a deal.

**Dent-Rempe Inc.**  
1516 W. Amer. Blvd. 272-4296

**Just In! New Shipments of Fragrances for Men & Women**

Women	Men
Norell Cologne	Glacier
Chloe'	Yves Saint Laurent
Tatiana	Halston Z-14
Lauren	Paco Rabanne Chaps

308 Main **Damron Rexall Drug** 272-4210

**Two New Dishes**  
Fajitas

**Tacos-Al Calbron**

Allow 5-10 minutes for preparation



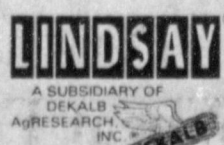
**Viola's**

2002 W. Amer. Blvd.

272-3838

**We Can Deliver A NEW Lindsay Center Pivot NOW With No Down Payment And Interest**

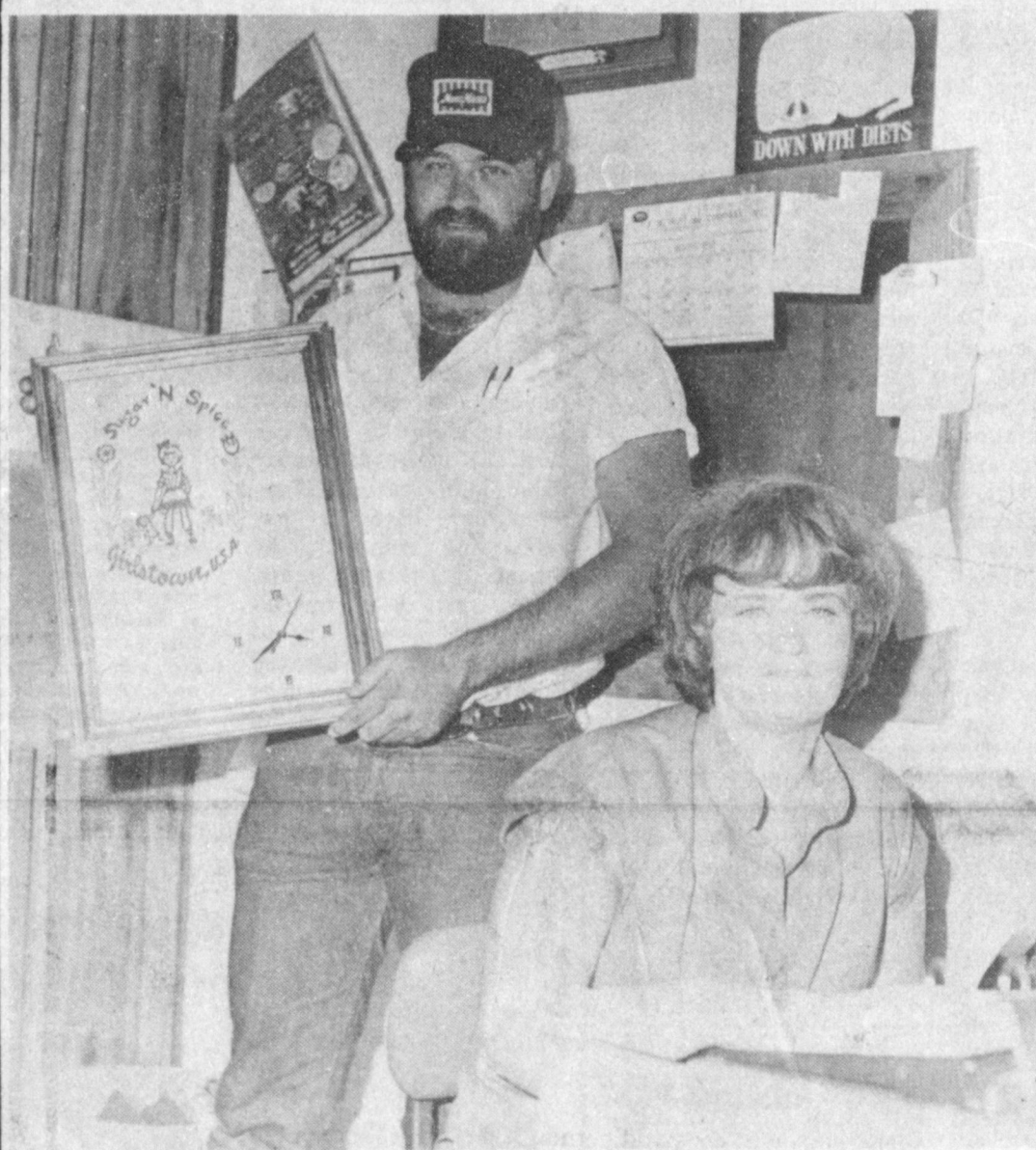
**FREE Until 1983**



**Irrigation Pumps & Power**

W. Hwy 84

272-4483



**Larry Winkler and Vickie Garner**

"Don't ever knock America to me," commented Larry Winkler, when he was asked about his operation of Winkler Meat Co. located on south Main Street in Muleshoe.

"Muleshoe has been good to me," said Winkler. "I left home several years ago and had nothing. I came to Muleshoe in October, 1975 and purchased the meat processing company. After I got here, people like M. D. (Gunstream) and his son, Tommy, have been very good to me."

"Now, I have my nice business, and a home. I have been able to expand the business, and will still be expanding the business more," he added.

When asked what he attributed his success to, Winkler said, "All I have done is to try to treat people I do business with the way I like to be treated. I have tried to be honest with people, and they come back to me."

Less than a year after he purchased the locker company, Winkler started expanding, something like 8-10 months after moving here. He has more than doubled the freezer capacity, doubled the cooling capacity, built another processing room, constructed a new office and is still constructing.

A native of Dickens, Winkler added, "Where else but America can a farm boy, with nothing, start out and begin with his own business, where he wants it, have people trade with him and be so nice to him and make a success of it."

"I am proud to be a resident of Muleshoe, and I am proud to serve the people of this area."

Although Winkler has not taken the time to join civic clubs as he started his steady climb to build his business, he has been active in various functions in and around this city. As one of the Girlstown boosters, Winkler, along with Jeff Smith of Valley Grain, are the organizers of the Mule Days, a benefit for Girlstown. The popular event, although started only a couple of years ago, is expected to become a major event in this city each year.

"I am proud to be a booster of this community," he concluded.

**Your Wedding. You Want It To Be Special. And We Do Too.**

Your wedding photographs are tangible moments of your special day. Trust them to a professional. Trust them to us. When you book your wedding with us, we'll give you a bridal portrait setting absolutely free.

We offer a complete line of wedding stations  
"Your Wedding Specialist"

**Adrian Photography**



**We Are Now Able To Offer**

**15% Off**

**On Automobile Insurance**

For Persons Who Qualify



**Terry Field Ins.**

213 E. Ave. B

272-5551



# BIGGER & BETTER REBATES...

## UP TO A NEW HIGH OF \$900<sup>00</sup>!

OFFER GOOD TILL SEPT. 22, 1982!

WHAT DO YOU CALL A DEALERSHIP THAT SELLS THE NO. 1, 2 & 3 BEST SELLERS IN OUR TRADE AREA?



OUR FIRST EVER **VAN SALE!**  
5 GOOD TIMES VANS IN STOCK  
**DISCOUNTED \$2000<sup>00</sup>!**  
THE ULTIMATE IN TRAVEL LUXURY. TRY ONE. YOU'LL LIKE IT.  
(60 MONTH FINANCING AVAILABLE TO APPROVED CREDIT.)

BUY AN ALL NEW S-TRUCK A **\$250<sup>00</sup> REBATE!**

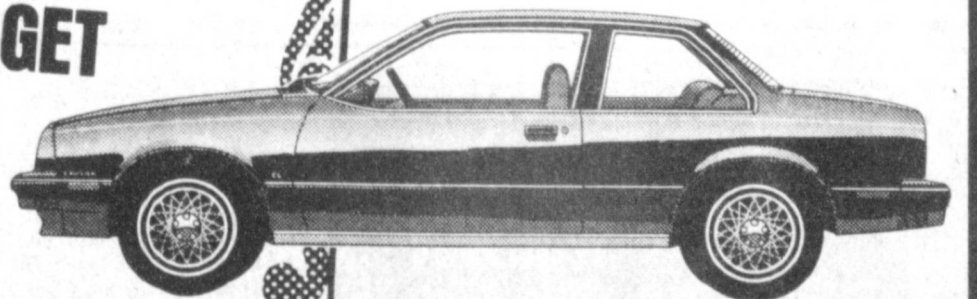


BUY ANY CAVALIER OR SKYHAWK & GET A REBATE OF **\$900<sup>00</sup>!**

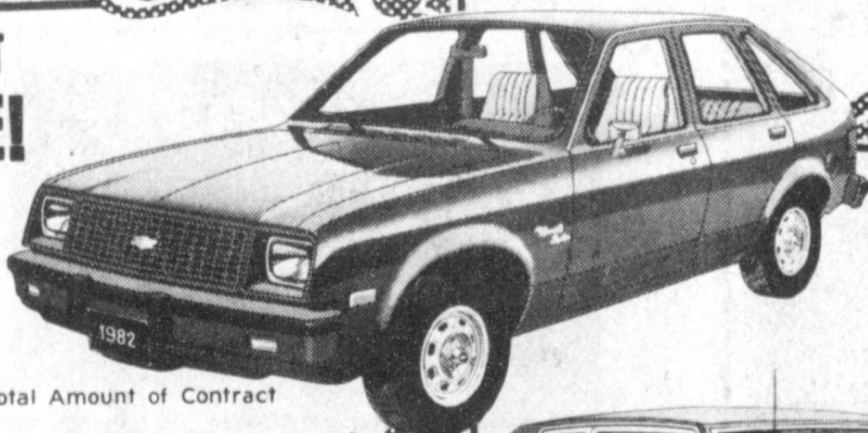
### DOC STEWART CO.

Clovis, New Mexico

BUY ANY CELEBRITY OR CENTURY AND GET A **\$700<sup>00</sup> REBATE!**



BUY A NEW CHEVETTE AND GET A **\$600<sup>00</sup> REBATE!**  
LIKE STOCK NO. 4561 - A 4 DOOR WITH TINTED GLASS, BODY SIDE MOLDINGS, PUSH BUTTON RADIO.  
LIST \$5760.00 LESS \$600 = \$5160  
DOWN PMT. \$600  
FINANCED \$4560  
Payments of 136.76 for 48 months, 16.80 A.P.R., Total Amount of Contract \$6564.48. License and Tax Not included.



BUY A NEW CITATION OR SKYLARK AND GET A **\$500<sup>00</sup> REBATE!**



DEMOS & DRIVER ED CARS INCLUDED IN REBATE PROGRAM!  
REBATES CAN BE USED AS PART OF DOWN PAYMENT!

**DOC STEWART**  
CHEVROLET BUICK  
2500 MABRY DR.



BUY A NEW CHEVROLET PICKUP AND GET A **\$400<sup>00</sup> REBATE!**







**Enochs News**  
By:  
**Mrs. J.D. Bayless**

Mrs. Ruby Waltrip and daughter, Sheryl attended the surprise birthday party for her sister, Mrs. Sue Chesshir gave for her mother, Mrs. Eula Johnson both of Floydada, at the home of Mrs. Chesshir's daughter, Mrs. Donna Keaton at Littlefield, 2:30 p.m. Saturday. Her daughter, grandchildren and great-grandchildren were present to help Mrs. Johnson celebrate her 86th birthday. Mrs. Johnson and Sue were former residents of Enoch.

College days are here again. Ronald Beasley will be finishing his last year at Tech and his sister, Renee Beasley will begin her first year. She went to South Plains College two years. This will be Keith Layton and Julie Carlisle's last year. Congratulations and best of luck to each of you.

Mr. and Mrs. Buford Peterson, accompanied by his sister, Mrs. Faye Montgomery of Idalou, visited the Peterson's son, Mr. and Mrs. Morris Peterson and family Friday thru Monday at Hillsboro.

Mr. and Mrs. E.N. McCall visited a friend, Mrs. Ella Hallford at Muleshoe last Saturday. Mrs. Hallford was a former resident of Enoch.

Guests in the home of Mr. and Mrs. Guy Sanders from Aug. 21 - 28, was his nephew, Eulas and Barbara Sanders from Santa Ana, Calif. They took them to Lubbock, Saturday afternoon to catch the plane for home.

Mr. and Mrs. E.N. McCall attended the wedding of her niece, Shala Winfield and John McBride, 7:30 p.m., Saturday, at the First Baptist Church in Littlefield. They will make their home in Oklahoma.

A wedding shower was given in honor of Mike Nichols and wife, Sherrie, of Amarillo, 2:30 p.m., Saturday, in the fellowship hall of the Enoch Baptist Church.

The refreshment table was covered with blue, overlaid with a white cloth, centered with a blue flower arrangement, blue punch, white sheet cake and nuts were served to the 15 guests.

Out of town guests were his mother, Mrs. Dorothy Nichols of Littlefield. Her mother, Mrs. Kat Seaton and sister, Barbie of Muleshoe, her grandmother, Mrs. Mildred Burreson, her step mother, Mrs. Rickie Seaton and Jeffery, an aunt, Mrs. Charlotte Redwine and Susan, all of Lubbock.

Mike assisted his wife, Sherrie in opening their gifts. His mother, Dorothy, registered the gifts in the brides book.

Hostesses were Mrs. Buford Peterson, Mrs. Burley Roberts, Mrs. Brian Roberts, Mrs. Nancy Whittner, Mrs. Joyce Beasley, Mrs. Bob Newton, Mrs. Eula Mae Archer and Mrs. Louise McCall.

Mr. and Mrs. Joe Miller of Elida were overnight guests Saturday night in the home of Mr. and Mrs. E.N. McCall.

Mrs. Rachel (Howell) Clifton, died Wednesday in Washington, D.C. Funeral services were in Lubbock, 10:00 a.m. Saturday. She lived at Enoch for many years. Her parents were the late Mr. and Mrs. G.P. Howell.

Mr. and Mrs. Clifford Snitker and his sisters, Rev. and Mrs. Gerold Moore of Las Vegas, N.M. and Mr. and Mrs. Dewie Johnson of Roswell, N.M. met at the Johnson's cabin at Ruidoso, N.M. for a visit and sight seeing, Aug. 16 and were dinner guests in the home of the Dewie Johnsons before returning home Monday, Aug. 23.

**WHITE'S CASHWAY SUPERMARKET**  
MULESHOE, TEXAS

Cashway's Now Gives Gold Bond Stamps! Double On Wed. & Sat.

**PRODUCE SALE**

CALIFORNIA ICEBERG LETTUCE	EACH	49¢
CALIF GRAPES	LB.	59¢
PEACHES	LB.	59¢
CORN	7 FOR \$1	
MULESHOE BLACK DIAMOND WATERMELONS	EACH	\$1.99
YAMS	LB.	39¢

16 OZ. KINGS HAWAIIAN BREAD	\$1.19	16 OZ. FISHERBOY FISH STICKS	\$1.09	32 OZ. STILLWELL COBBLERS	\$1.59
-----------------------------	--------	------------------------------	--------	---------------------------	--------

U.S.D.A. CENTER CUT CHUCK

**ROAST** ..... \$1.59 LB.

U.S.D.A. CHOICE BEEF GROUND CHUCK	\$1.59 LB.
U.S.D.A. CENTER CUT CHUCK STEAK	\$1.69
U.S.D.A. CHOICE BEEF BONELESS, CUBES FOR STEW	\$1.89

<b>BEEF FOR YOUR FREEZER CUT &amp; WRAPPED</b>		<b>COUNTRY PRIDE GRADE 'A' BAKING HENS</b>	
1/2 BEEF	\$1.29 LB.	69¢	
FORE QUARTER	\$1.19 LB.	ARMOUR STAR JUMBO HOT DOGS	\$1.49 1 lb. pkg.
HIND QUARTER	\$1.55 LB.	SWIFT SIZZLEAN BREAKFAST STRIPS	\$1.49 12 oz. pkg.

1 ct. SCOTT BIG ROLL TOWELS 69¢

171 OZ. TIDE DETERGENT \$5.89

16 OZ. SHOUT SOIL & STAIN REMOVER \$1.59

36 OZ. WBS. BUTTERWORTH SYRUP.....\$2.29

No. 303 DEL MONTE EARLY GARDEN SWEET PEAS ..... 2 FOR 98¢

13 OZ. MILNOT EVAPORATED MILK..... 2/99¢

5 OZ. LIBBY VIENNA SAUSAGE ..... 49¢

15 OZ. CHEERIOS CEREAL ..... \$1.59

10 OZ. BAMA APPLE JELLY..... 69¢

UNCLE BEN'S CONVERTED RICE ..... \$1.69

7.25 OZ. NRAFT MACARONI DINNER..... 2/89¢

6-32 OZ. BOTTLES COCA COLA \$1.89 PLUS DEPOSIT

16 OZ. PACE MEDIUM MILD EXTRA HOT PICANTE SAUCE \$1.09

2 LB. CASSEROLE PINTO BEANS 49¢

15 1/2 OZ. HONEY BOY CHUM SALMON \$1.59

KING SIZE CASCADE \$2.39 BOX

BELLS BUTTERMILK 1/2 gal. chm. \$1.09

4 OZ. HONZEMA SKIN CREAM..... \$1.29

8 OZ. ENHANCE SHAMPOO..... \$1.59

10 CL. CONTACT COLD CAPSULES..... \$2.19

MARISCA RITZ CRACKERS 99¢ BOX

<b>Super Savings</b> CASSEROLE PINTO BEANS 1¢ 2 lb. Bag	<b>Super Savings</b> SCOTT, BIG ROLL TOWELS 19¢	<b>Super Savings</b> 6-32 OZ. BOTTLES COCA COLA \$1.39 PLUS DEPOSIT	<b>Super Savings</b> SKINNER MEDIUM EGG NOODLES 12 OZ. 37¢	<b>Super Savings</b> CALIFORNIA ICEBERG LETTUCE 1¢ A HEAD	<b>Super Savings</b> 5 LB. BAG RUSSET POTATOES 59¢
--	---	---	--	--	--

**GET YOUR Super Savings 1.** Collect Golden Ten stamps every time you shop our store. One Golden Ten stamp is issued for every dollar you spend (except on products excluded by law).

**2.** Save your Golden Ten stamps (and singles placed in handy Super Savings booklets, available free at the checkstands. Each booklet holds 30 Golden Tens).

**3.** Redeem your filled Super Savings booklets toward the Super Savings specials of your choice. There are six new specials every week. Watch our ads!

**4.** You can also redeem your stamps for beautiful gifts from the Golden Bond catalog. Save your stamps in handy Gift Savers Booklets, available free at our store!