

April 6  
P.O. Box  
Plain

The Foreman Co.  
Box 68  
Monmouth Ill. 61462

### Weather

August 22	90	61
August 23	93	60
August 24	96	66
August 25	97	62

# MULESHOE JOURNAL



20¢

'The Community of Opportunity-Where Water Makes the Difference'

Volume 59, No. 34

12 Pages Today

Published Every Thursday at Muleshoe, Bailey County, Texas 73347

Thursday, August 26, 1982

## First County Farm Disaster Payments Made

★★★

### School Renovation Bid Awarded

On August 16, a special meeting of the Board of Trustees of the Muleshoe Independent School District was called with several items on the agenda. Also on August 24, a special meeting was called. The happenings of both these meetings are contained herein.

On the 16th, bids for the renovation of high school were opened. After consultation with contractors and each other, the board de-

cidied to give the bids further consideration and to award the bids at a later date.

The board adopted milk and gas bids for the 82-83 year. The milk bid went to Odell Rasco, distributor for Borden and the Gasoline went to Gary Dale.

Ronnie Holt was elected as vice president of the Board of Trustees.

Then, in the August 24 meeting at the Corral Restaurant, the 1982-83 School Budget was adopted. The budget estimated revenue and expenditures is \$4,103,220.

The board also adopted the 1982 tax rate of .88 cents per \$100 of assessed valuation. This figure was .02 cents below the effective tax rate which would bring in the same amount of revenue as last year. The district had a substantial loss in assessed value due to state mandated exemptions for farm machinery and livestock.

A bid was also awarded for renovation of the high school. White & Prutzman Construction Company of Plainview had the lowest bid and received the award.

The renovation will include energy conservation measures of lowering ceilings, enclosing windows and insulating and insulating the closures, installing new heating and air conditioning systems, a new bell and public address system.

Outside window closures will be of stucco; while inside closures will be of vinyl covered gypsum board. Cost of this renovation project is \$434,954. The money was obtained

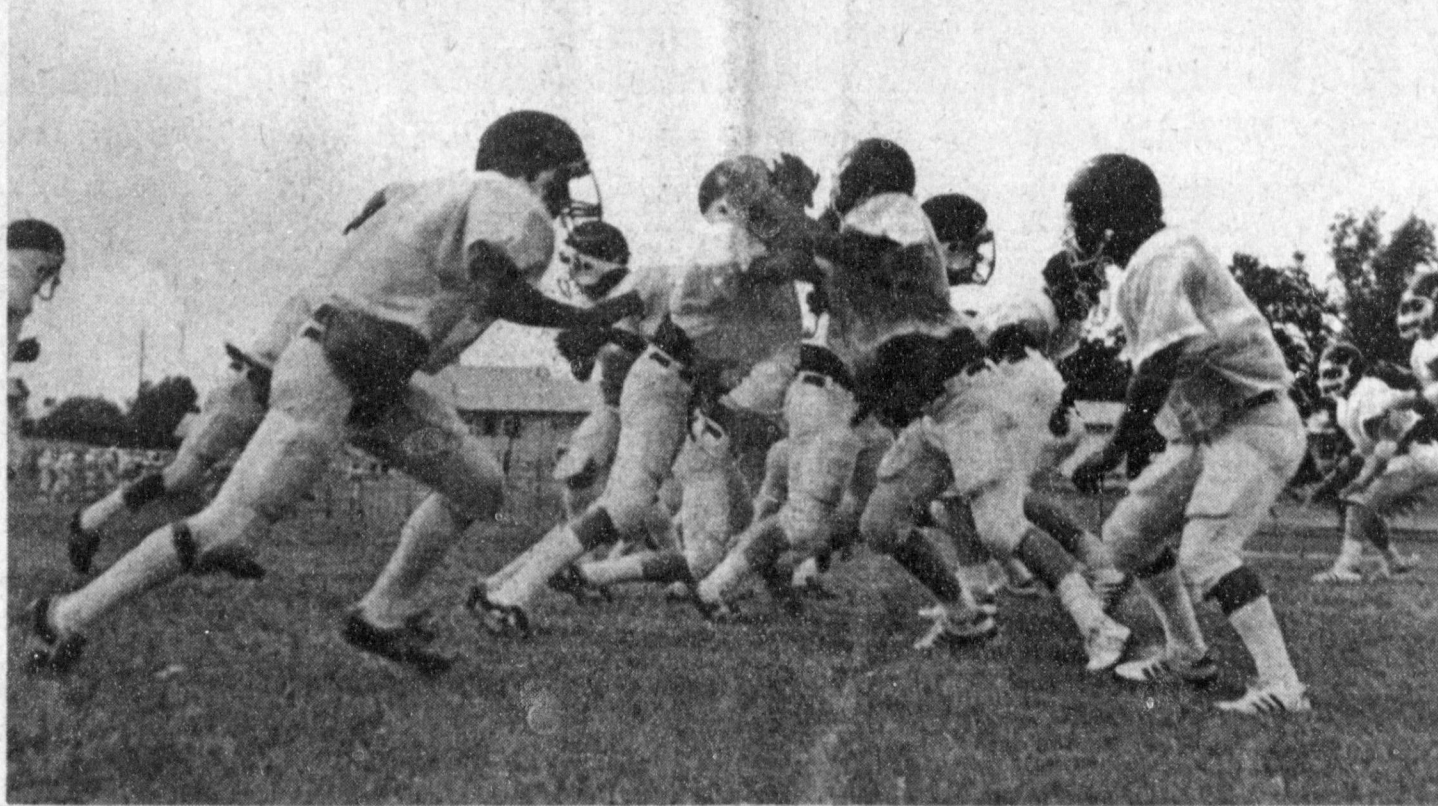
Cont. Page 6, Col. 4

### District Governor Is Guest At Rotary

The Muleshoe Rotary Club met at noon Tuesday for their regular meeting with their wives as special guests along with the Rotary District Governor John Collard and his wife.

A reception was held for the Collard's on Monday evening at the J. D. Cage home with about fourteen members and their wives present.

Collard spoke to the Ro-



MULES PULLING HARD--Full fledged workouts are underway with the Muleshoe Mules. According to Coach Windy Williams the team did well at the scrimmage in Shallowater last Friday. "They really hustled, they moved the ball rushing and their throwing was good." The Mules will scrimmage Denver City in Muleshoe on Friday, August 27 with games beginning at 5:00 p.m. for Freshman, JV and Varsity.

### Speed Is Three Way's Strongest Suit This Year

The Three Way Eagles will be coming back this season with an all-out effort to keep up the quality football they played last year. Coach Randy Peel is hopeful that "this year will be even better than last season." The Eagles were in the race for district until the final two games which took them out of the race. They ended the season with an 8-2 record.

The Eagles are playing a shuffling game to aid in replacing the all-purpose back, Tommy Brown, who led the Three Way crew last year in rushing and passing.

Peel however, has a solid bunch of experienced players on both offense and defense and speed is their strong suit. They have ten returning lettermen and of that ten six are seniors with plenty of experience, adding to the experience on both defense and offense. Peel says "Right now our offense is the strongest, but we're rebuilding on that end. On defense, we lost both our defensive ends and have three positions to fill."

What some would call the unbalanced offense includes an effective spread formation that Peel has placed in the hands of Louis Peacock, 165 pound senior, Tim Roberts, 135 pound senior and Bobby Marines, a 145 pound senior.

Peacock led the District 1-A backs last year averaging 11.2 yards per carry while rushing 1,113 yards

and scoring 14 touchdowns. He is a speed demon and according to Peel, "is capable of at least 1500 yards this season." Peel will key the Eagles offense around Peacock.

Tim Roberts, a 5'8" senior, will join Peacock in the backfield and complements his running mate with super quickness, tough running and some solid blocking.

Bobby Marines, a 5'11", 160 pound senior, will be playing his third season at the head of the Three Way offense. A sore arm kept Marines out a lot last year, but Peel says, "Bobby's arm looks good and his throwing is good now. Peel doesn't think that the passing will be any more important this year than it was last year with the speed that the Eagles have.

Other offensive players returning will be John Snit-

ker, a 5-8, 165 pound center, and 6-1, 165 pound Bill Eubanks. All of these are seniors.

Three Way's linebackers, which will be returning intact this year will be a

Cont. Page 6, Col. 3

### Law Enforcement Activities Pick Up

City Police activity has increased consider a bly since August 20, last Friday. On August 20, H. E. Reeder reported the theft of a bicycle from his front yard. Apparently the bike was taken sometime on the 19th or 20th. It was valued at \$100.

On August 23, Joe Torres Gonzales was arrested on two counts: DWI and fleeing a police officer. Officer John Dettien observed the suspect's vehicle at a high rate of speed going in a westerly direction on U. S. 84. Officers reports indicated that the pursuit at times was in excess of 100 miles per hour. Gonzales was finally stopped on FM 2097, but refused to leave his auto as ordered by Officer Dettien. Sheriff's Deputy Hal Bynum arrived on

### ASCS Director Says 'Patience Is Key'

County Executive Director of the ASCS office, Rusty Williamson, has told the Journal that "the first batch of disaster payments for Bailey County producers went out last week." Williamson expects another stack of payments to go out this week and so on until all payments are finally made. "We are working just as hard and fast as we can to get these payments out, since we know that the farmers are hard-pressed." However, it involves more than just writing a check and the best way a producer can help is to exercise patience and be sure that they have met all the requirements that will enable the ASCS to issue the disaster checks, the director explained.

The only hold-up of checks Williamson said will come from a producer not being in compliance with all of the phases of the farm bill and with not having their landlord's signature on proper papers or a power of attorney for the landlord, since landlords will also get a share of the disaster payments.

According to an earlier statement by the County Director, disaster payments will be handles basically in the same manner that those in 1981. Only the payment rates differ. In order to compute the amount of disaster funds a farmer will receive on cotton, the

estimated yield on record in the ASCS times the 75 percent (which has been set as the percentage of payment) will equal the disaster yield. Then: the disaster yield times the planted acres will equal the disaster level or number of pounds. Therefore, the disaster level less any production on a particular farm will equal the pounds of cotton which will be eligible for payment. By taking those pounds and multiplying them times the 20.5 cents per pound will give the total amount of the disaster payment a farmer will receive on a cotton loss.

Grains will be handled in the same way, except that the percentage on grain is 60 percent.

Reason for joy has been evident with the Friday announcement of the increases on corn payments from 15 cents per bushel to \$1.17 and from 18 cents on grain sorghum and barley to \$1.13. The payment levels on these commodities are 90 percent of what they were under the 1981 disaster program, and according to officials, make the payments more in line with those received for cotton and wheat. Disaster payments for wheat have been set at \$1.75 per bushel.

The dates for certification was August 1, and new estimated yield cards have already been mailed to all producers in the county. There is also a provision made for partial payments in cases where producers lost only a portion of their crop. This provision and procedure is now under study and a decision will be announced as soon as studies are completed. The percentages, as stated pre-

Cont. Page 6, Col. 6

### Commissioners Plan Special Session

The Bailey County Commissioner's Court will meet in a special session in the Courthouse on August 26, Thursday, beginning at 10 a.m. and continuing as long as is necessary to take care of business at hand.

The main item on the agenda is the receiving and opening of bids on the sale of a used automobile and generator set.

The public is invited to attend the meetings and to be heard.

### Around Muleshoe

Roy Don Dudgeon, 1978 graduate of Sudan High School has earned a Bachelor of Science degree in physical education from McMurry College.

Roy Don, the son of Mrs. Noble C. Dudgeon and the late Noble Dudgeon, graduated during Summer Commencement exercises at McMurry Friday, August 13.

Dr. and Mrs. Clarence Albus and family of Baytown, Texas returned recently from a visit with Mrs. Albus' parents, Mr. and Mrs. Tommy Galt of Goodland. While here, they spent a week in Red River, N.M. with the Galts, the C. J. Albus of Pep and the Cass Stegalls and Lavon. Frances Stegall and Lyndell Galt co-hosted a birthday party for Madalyn Galt's daughter on her 34th birthday.

The Muleshoe Young Homemakers are holding their annual "New Member" meeting August 26 at 7 p.m. in the home ec department at High School. There will be a salad supper for the adults.

Baby sitters will be provided for anyone needing their services.

Anyone between the ages of 18 and 35 who is interested in joining the Young Homemakers is welcome to attend. For more information you may call Terry Byers at 272-4468.

The Muleshoe Young Homemakers have received their orders of pecans. They are selling for \$4 per pound and extra pecans

Cont. Page 6, Col. 5



ROTARY DISTRICT GOVERNOR VISITS--Rotary District Governor John Collard and his wife visited the Muleshoe Rotary luncheon on August 24 at noon. A reception was held for the couple in the home of the J. D. Cage's the previous evening. Welcoming the pair to Muleshoe were (l to r) Buck and Lynn Campbell, and John Collard and his wife.

### Plains Dove Season Outlook Good

With opening day for North Zone mourning dove season just around the corner on September 1, hunters will again play the guessing game as to where the birds will decide to fly.

On the whole, Texas Parks and Wildlife Department biologists believe that prospects for the upcoming season are generally good.

Texas Parks and Wildlife Department district supervisor, Jack Young, who is based in Lubbock, says that more and more mourning doves are being sighted arriving in the South Plains area. Concentrations of the birds have been seen in the immediate Lubbock area. Local hunters should find good hunting prospects, according to field reports.

Dove program leader Ron George said that field biologists in many areas of the state are reporting sighting of significant numbers of doves, and he added that another plus factor is an estimated increase of 4.8 percent in the breeding population index in the central management unit states to the north of Texas.

In general, George belie-

ves that the best mourning dove hunting region is a north-south swath of the state, bounded roughly on the west by Vernon, Abilene, San Angelo and Del Rio and on the east by Interstate Highway 35 from Fort Worth south to Del Rio. Several counties southwest of San Antonio, including Uvalde, Medina, Frio, LaSalle and McMullen

Cont. Page 6, Col. 5

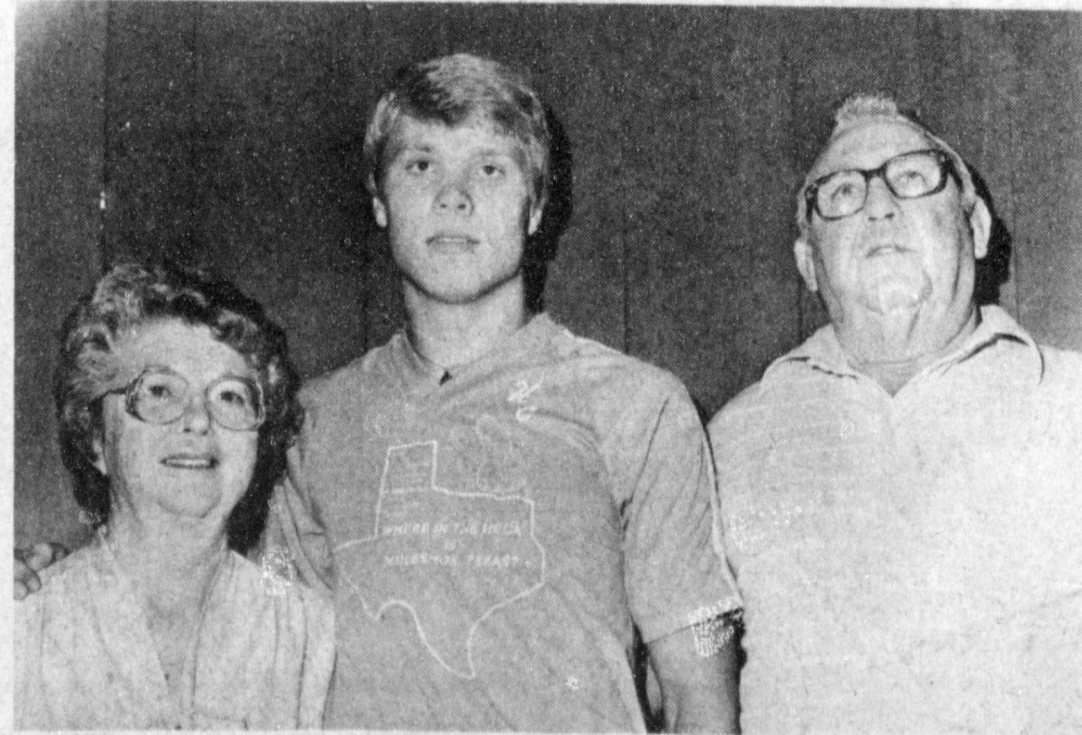
### Lazbuddie FFA Selling Sausage

The Lazbuddie FFA members will be selling Corn Gold Whole Hog Sausage as a fund raising project beginning on August 23, 1982, according to Mark Lust, President of the Lazbuddie Chapter.

For convenience, the Corn Gold sausage is formed into patties and is packed in a three pound box designed to fit into refrigerator or freezer. Each box contains 32 one and one half ounce servings.

To place an order per-

Cont. Page 6, Col. 6



DENMARK VISITOR--Mr. and Mrs. Bill Taylor had her cousin from Denmark, Hans-Christia: Christensen visiting with them last week. He lives on the West Coast of Denmark and is in the States on a YMCA Exchange program. For six weeks this summer he served as YMCA boy's camp counselor in North Carolina. He plans to return to his homeland the first part of October. Hans says "Denmark can be put in North Carolina three times, it's just that small."

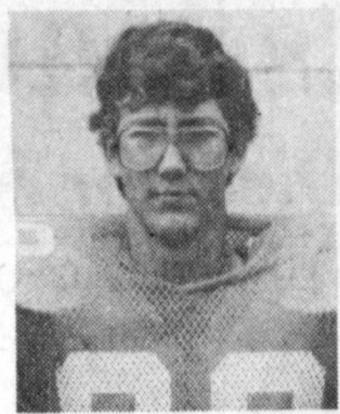


# Lazbuddie



# Longhorns

## 1982



89-Mark Lust



77-Jeff Jesko



65-Julian Ovalle



50-Rickie Dale



40-Bart Elliott



52-Joe Don Tarter



9-Danny Powell



3-Daniel Schacher



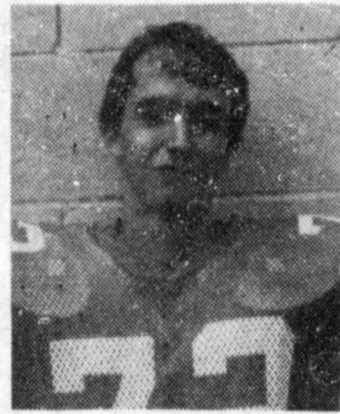
7-Casey McBroom



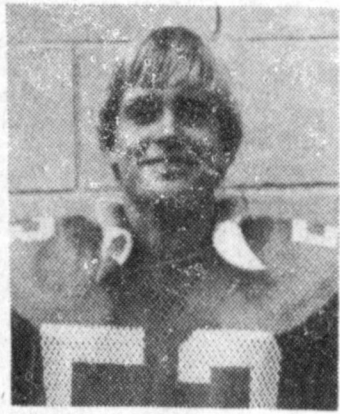
84-Noe Gonzales



44-Evaristo Sanchez



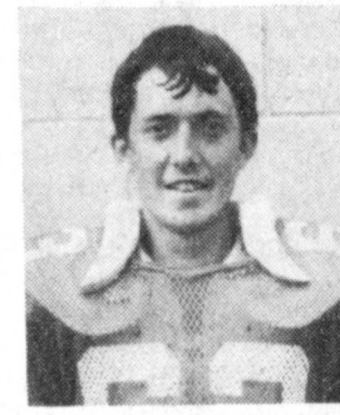
72-Dwayne Ivy



53-Lee Scott



80-Larry Nail



63-Kevin Fuqua



66-Roy Gonzales



60-Paul Stanley



74-Shannon Weaver



33-Ray Moron



32-David Schacher



88-Scotty Coker



62-Roy Moron



86-Paul Gonzales



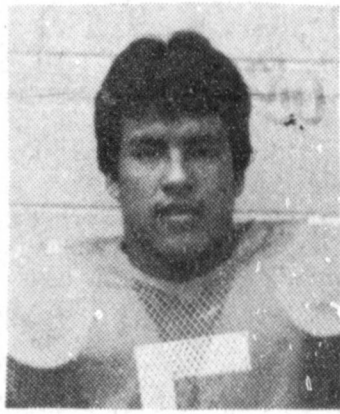
20-Guy Brockman



21-Kurt Miller



12-Todd Daniel



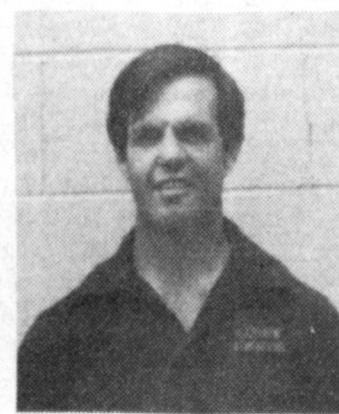
5-Jimmy Garcia



82-Ralph Gonzales



Coach Terry



Coach Campbell



Coach Glass



Sponsored By The Following Sports-Minded Businesses:

**Lazbuddie Garage & Supply**

**Five-Area Telephone Cooperative**

**Farmers Spraying Service**

**Lazbuddie Grain, Inc.**

**Foster Fertilizer, Inc.**

**Tide Products, Inc.**

**Coker & Sons Spraying**

**Lazbuddie Farmers Supply**

Lazbuddie Football Schedule		
Sept. 3	SMYER	H 8:00
Sept. 10	WHITEFACE	T 8:00
Sept. 17	SUNDOWN	T 8:00
Sept. 24	* VALLEY	T 8:00
Oct. 1	* AMHERST	H 8:00
Oct. 8	* HAPPY	H 8:00
Oct. 15	* VEGA	T 7:30
Oct. 22	* SILVERTON	H 7:30
Oct. 29	* NAZARETH	H 7:30
Nov. 5	* SUDAN	T 7:30

\* DENOTES 2-A ZONE GAMES

**Sherley Anderson Lazbuddie Elevator**

**Bailey County Electric Cooperative Association**





MRS. TERREE DONALDSON

## Baby Shower Honors Mrs. Terree Donaldson

Mrs. Terree Donaldson was honored with a baby shower Saturday, August 21 from 10 to 11:30 a.m. in the home of Peggy Sanders.

Guests were greeted by Mrs. Sanders and the honoree and registered by Donna Nickels.

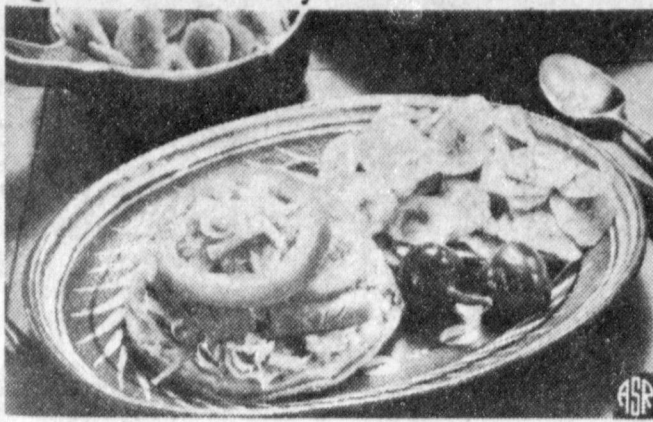
Louvenia Garlington and Euleta Stockard served coffee, pineapple punch, sausage balls and muffins from silver and crystal appointments.

The serving table was covered with an ecru lace over yellow cloth and accented with an arrangement of cut flowers in shades of gold and yellow. The honoree's corsage was a baby rattle with yellow ribbon.

Mrs. Bob Donaldson, mother in law of the honoree; Mrs. Joe Fletcher of Lubbock, mother of the honoree; Mrs. W. F. Lancaster, grandmother; and aunts, Mrs. Alton Burton and Mrs. Wayne Powell of Sudan.

The hostess gift was a high chair. Hostesses for the occasion included Mrs. Vic Benedict, Charlene Farley, Vicky Benedict, Evelyn Northcutt, Jody Whatley, Donna Redwine, Jo Phelps, Peggy Sanders, Louvenia Garlington, Brenda Robinson, Donna Nickels, Euleta Stockard, Lisa McElroy and Rue Kimbrough.

## Quick And Easy 'Texas Tostadas'



Tex-Mex foods have quickly become favorites in many families. What many people are learning is that Tex-Mex isn't always hot and spicy, especially when prepared at home, so the hot sauce can be added to-taste. Furthermore, it's easy to prepare, as demonstrated in this recipe from the Kraft Kitchens.

Texas Tostadas make perfect summer "Sandwich Days" fare. Fried tortillas are spread with a guacamole mixture, prepared with Miracle Whip salad dressing. Top this off with shredded lettuce, roast beef and tomato slices, and shredded monterey jack cheese, for a mouth-watering combination of flavors.

It would be wise to make extra "guacamole" for dipping with corn or tortilla chips. This sandwich and guacamole combination is sure to disappear quicker than you can say "Ole!"

- Texas Tostadas**
- |                                     |   |
|-------------------------------------|---|
| 6 tortillas                         | 1/4 teaspoon salt   |
| Oil                                 | 1/8 teaspoon hot pepper sauce                                     |
| 2 avocados, peeled, mashed          | 1-1/2 cups shredded lettuce                                       |
| 1/2 cup Miracle Whip salad dressing | 12 thin roast beef slices   |
| 3 tablespoons finely chopped onion  | 12 tomato slices  |
| 1 teaspoon lemon juice              | 1 cup (4-ozs.) shredded Casimo brand natural monterey jack cheese |
- Fry tortillas in 1/4-inch of hot oil until crisp and golden brown, turning once; drain.  
Combine avocados, salad dressing, onions, lemon juice and seasonings; mix well. For each sandwich, spread tortilla with avocado mixture; top with lettuce, meat, tomato and cheese.  
6 servings

**For Hail Resistant Energy Efficient Roof**  
Call Don Hunt 965-2888

## LATEST ARRIVALS



### Casey Jo Gentry

Mr. and Mrs. Larry Gentry are the proud parents of a daughter born at 12:59 p.m., August 20. The young lady weighed six pounds and 14 ounces and has been named Casey Jo. She has a sister Varrah Rae, six years of age.

Grandparents are Pearl Holderness of Beantland, South Dakota and Mr. and Mrs. J.W. Gentry of Wilberton, Okla.

Great grandparent is Feeby Estep.

### Jesue Campos, Jr.

Mr. and Mrs. Jesus Campos of Friona are the proud parents of a son born at 10:15 a.m. August 21 in West Plains Medical Center in Muleshoe.

The young man weighed eight pounds and three ounces. The couple has one other child, Claudia, four years of age.

Grandparents are Mr. and Mrs. Elias Rodriguez of Robstown and Mr. and Mrs. Isiro Campos of Friona.

Great grandparents are Mr. and Mrs. Guadalupe Villarreal of Robstown.

Great great grandpar-

rents are Mr. and Mrs. Manuel Rodriguez.

### Kathryn Nicole Wilke

Mr. and Mrs. Carl C. Wilke of Lazbuddie are the proud parents of a daughter born at 6:13 p.m., August 21, in West Plains Medical Center.

The young lady weighed seven pounds and 13 ounces and has been named Kathryn Nicole. She is the couple's first child.

Grandparents are Curtis and Linda Wilke of Slaton and M.W. and Dorothy Moore of Abernathy.

Great grandparents are Ben and Ella Wilke of Wilson, and Lucille German of Slaton.



The spaniel family of dogs contains more breeds—ten—than any other. The name comes from the word Spain.

## eye designs™

Now, the guesswork has been taken out of making up eyes with a revolutionary new eye shadow idea called EYE DESIGNS. This practically styled compact, developed by Max Factor,



combines three compatibly colored shadows in actual application sequence so that a woman can create her own polished to perfection look at just a glance.

The top shade in each compact is the highlighter, the middle is for contour and the bottom is the lid color. There are five color combinations in both matte and frosted shades to complement all the newest fashion looks. And, all are now available at leading cosmetic counters.

## olan mills

THE NATION'S STUDIO



One 11 x 14 Color Portrait \$1.50

Your choice of family group or individual

One special offer per family, one per person

### "Christmas Visit"

RANCH HOUSE MOTEL

Monday Aug. 30th

Photo Hours: 1:00 p.m. - 8:00 p.m.

MULESHOE, TX

**Muleshoe Journal** (ISSN 0047-3622)  
Published by Muleshoe Publishing Co., Inc., 1004 S. Broadway, P.O. Box 449, Muleshoe, Texas 79347. Second-class postage paid at Muleshoe, Texas, 79347.

**MEMBER 1982**  
**TEXAS PRESS ASSOCIATION**

E. B. Hall, President  
James Woods, Vice President  
James F. Finner, Secretary  
Eugene Harris, Treasurer  
Holt, Manager Advertising  
Nancy L. Hall, Bookkeeper

Muleshoe Journal and Bailey County Journal  
Bailey and surrounding counties 11¢  
Muleshoe Journal and Bailey County Journal  
Elsewhere 15¢

Advertising rate card on application

## Thornton Chevrolet

### Announces

The Association Of  
**George "Pee Wee" Williams**  
As Their New Salesman

*Pee Wee Is The Former Owner Of*  
George "Pee Wee" Williams  
*The Valley Motel. He Invites All His Friends And Neighbors To Come By & See Him For All Their New & Used Car Needs.*

## Thornton Chevrolet

201 Main 272-4521

## Whites Mileage Makers

Prices effective now thru Saturday, August 28, 1982

**Save \$12 to \$18 on Tough, Gas Saving Belted Radials**  
**BONUS: 35,000 mile LIMITED WARRANTY includes COMPLETE ROAD HAZARD COVERAGE you don't get with most leading brands!**  
Our warranty provides:  
•Tread wearout assurance  
•Free replacement for defects during first 25% of tread wear  
**Check these quality features:**  
•2 rugged fiberglass cord belts  
•2 tough, smooth riding polyester cord plies  
•Gas saving radial design  
•High mileage traction slotted tread  
Under our limited warranty, Whites will repair or replace the tire, based on use, at its option. Tire must be returned to Whites.  
**FREE MOUNTING of all tires**  
Extra charge for mounting mags  
Balancing available at most locations

P METRIC SIZE	REPLACES	F.E.* TAX	REG PRICE	SALE PRICE
P155/80R13		1.44	54.95	39.88*
P165/80R13	AR78x13	1.67	56.95	42.88*
P185/80R13		1.78	62.95	50.88*
P185/75R13	BR78x13	1.83	61.95	46.88*
P185/75R14	DR78x14	1.93	67.95	51.88*
P195/75R14	ER78x14	2.06	70.95	52.88*
P205/75R14	FR78x14	2.31	72.95	57.88*
P215/75R14	GR78x14	2.47	76.95	61.88*
P205/75R15	FR78x15	2.38	74.95	59.88*
P215/75R15	GR78x15	2.49	78.95	62.88*
P225/75R15	HR78x15	2.70	83.95	66.88*
P235/75R15	LR78x15	2.89	89.95	71.88*

\*Plus F.E. tax per tire

### Save \$12 to \$15 on rugged bias belted tires

as low as **35.88**  
(A78x13 whitewall plus F.E.T.)  
**30,000 mile LIMITED WARRANTY**  
Check these features:  
•Two fiberglass cord belts  
•Two polyester cord body plies

TIRE SIZE	F.E.* TAX	REG PRICE	SALE PRICE
A78x13	1.67	47.95	35.88*
E78x14	2.08	55.95	42.88*
F78x14	2.26	58.95	47.88*
G78x14	2.42	61.95	49.88*
G78x15	2.45	62.95	49.88*
H78x15	2.66	66.95	52.88*
L78x15	2.89	71.95	56.88*

\*Plus F.E. tax per tire

### Save Big on our Best Selling 4-Ply Poly

as low as **24.88**  
(A78x13 blackwall plus F.E.T.)  
**18,000 mile LIMITED WARRANTY**  
Full 4-ply polyester cord construction.

TIRE SIZE	F.E.* TAX	REG PRICE	BW SALE PRICE
A78x13	1.59	30.95	24.88*
B78x13	1.71	32.95	26.88*
C78x13	1.80	33.95	27.88*
C78x14	1.88	34.95	28.88*
D78x14	1.92	35.95	29.88*
E78x14	2.01	36.95	30.88*
F78x14	2.12	38.95	32.88*
G78x14	2.26	40.95	34.88*
G78x15	2.35	41.95	35.88*
H78x15	2.54	44.95	37.88*

\*Plus F.E. tax per tire  
Whitewalls \*3 extra per tire

**Prestone II Antifreeze**  
Whites sale price..... **3.79 gal**  
Less manufacturer's rebate **1.00 gal**  
Net cost after rebate... **2.79 gal**  
America's best selling anti-freeze now on sale at Whites RED HOT price...plus a factory rebate! 80-110.  
Maximum rebate \*2 per customer  
Limit 6 gallons per customer at our sale price

WHITE STORES, INC. ADVERTISING POLICY  
If for any reason an advertised item is not available, Whites will offer a rain check on request for the merchandise at the sale price when it becomes available, or Whites will offer a comparable item at a similar reduction in price. (Does not apply to special purchase, close out sales, or limited quantity merchandise.) Authorized Dealer stores are independently owned and operated; therefore, prices and terms may vary. Because of limited floor space, all stores may not carry every item featured in this advertisement. All items are available by special order from our nearest distribution center.

MasterCard  
**POYNOR'S**  
White's Stores Inc. 103 Main 272-4552

VISA





MRS. MIKE ELLIS NORTHCUTT  
(nee Rhonda Diane Briggs)

## Miss Briggs, Northcutt United In Marriage

Miss Rhonda Diane Briggs of San Angelo became the bride of Mike Ellis Northcutt Saturday, August 7 at 7:30 p.m. in the First Baptist Church of Muleshoe.

Parents of the couple are Mrs. Rosemary Fancher of Friona, and Mr. and Mrs. Edward Northcutt of Muleshoe.

Mrs. Marsella Jennings accompanied Mrs. Marilyn Hinkson as she sang "The Wedding Song," and "Endless Love."

### Hugh Gore Honored On 79th Birthday

Mrs. Hugh Gore surprised her husband, Hugh, during the weekend when most of their children and grandchildren were in Sudan to help observe his 79th birthday with a dinner.

Those attending were Mr. and Mrs. Billy Gore and Ginger, Mr. and Mrs. Richard Turner, Mrs. Shonda Phipps, Tara and Scotty, all of Muleshoe; Mr. and Mrs. Billy Wayne Gore, Dennis and Stephanie of Odessa; Mr. and Mrs. Randy Gore, Mr. and Mrs. James Gore, Tammi and Shelley, all of Sudan.

Ginger Gore played a special on the piano for her grandfather.

Following the meal, two special cakes were served. They were baked by three of the granddaughters, Ginger, Tammi, and Shelley with one having "Papaw" and the other in the shape of a Model T Ford.

In the afternoon, members of Hugh's Sunday School class visited for a get together with ice cream and slush punch being served to the 32 persons attending.

Given in marriage by her brother, Ronald Kent Briggs, the bride wore a formal length gown of whier organza and Pean D'ange lace, featuring a Queen Ann neckline and long full sleeves. Motifs of lace and seed pearls adorned the bodice.

The skirt was traditionally fashioned with tiers of organza ruffles and crystal pleating forming a chapel length train.

For a head piece the bride wore a picture hat with drapes of illusion overlaid with lace complimenting her gown.

She carried a bouquet of wine and pink silk roses accented with baby's bre-

ath, greenery and stephanatis.

Shannon Kennedy of Lubbock served as maid of honor. Bridesmaids were Lisa Phillips of San Angelo and Michelle Agee and Judy Owens, both of Muleshoe.

The attendants wore gowns of organza using cranberry as the color theme. The gowns were fashioned with a ruffle on the off-the-shoulder bodice. The full skirt had a flounce at the hemline coming up at the side accented with a tiny bow. They wore wide brimmed hats of the same color.

Chana Phillips of San Angelo served as flower

girl. Dickie Sudduth of Lubbock served as best man. Groomsmen were Dean Northcutt of Lubbock and Mark Northcutt of Pampa, brothers of the groom, and Mike Phillips of San Angelo.

Ushers were Kevin Evans and Dennis Green of San Angelo and Tim Black of Muleshoe.

Following the ceremony, a reception was held at the church. Guests were registered by Becky Black, cousin of the bride.

Melissa and Melinda Briggs, cousins of the bride, served the wedding cake. Susan Fancher, Trisha Cavazoo and Cheryl Northcutt served punch.

Following a wedding trip to Las Vegas, Nevada, the couple will make their home in San Angelo.

The bride attended Texas Tech University and San Angelo State University. She is presently employed with General Telephone in the security department at San Angelo.

Northcutt graduated from Muleshoe High and is presently attending San Angelo State University on a football scholarship.

Out of town wedding guests included Mr. and Mrs. Joe Briggs and Don and Keith Briggs, all of Willcox, Arizona; Tonya Johnson and children, Mrs. Marie Briggs, Easter Briggs and Mrs. Lil Lallar,



**ENGAGEMENT ANNOUNCED**--Mr. and Mrs. Robert L. Maurer of Athens would like to announce the engagement and approaching marriage of their daughter, Donna Darling to Billy Dan Vinson of Muleshoe, son of Mr. and Mrs. Dan C. Vinson, also of Muleshoe. Vinson is a graduate of Muleshoe High School. He attended Ranger Junior College and is currently attending Dallas Baptist College. The bride-elect is a graduate of Athens High School. She attended Henderson County Junior College and Tyler Junior College. She is currently attending Dallas Baptist College. The wedding is set for December 18, 1982 in Dallas.

## PRINCE FAN SALE

**COMPLETE PACKAGE**  
**\$99.95** \$279.00 value  
NOT PLASTIC

- 48" Bright or Antique Brass
- Wood Stencil Blades
- Variable Speed Control
- Reverse Switch for Winter Use
- Light Kit with Schoolhouse Globe
- Mounts to Outlet Box or Wood
- Four Function Switch
- Fan and Light Operate Independently
- Direct Drive-Sealed Bearings
- Maintenance Free • 5 Year Warranty

**NATIONAL MERCHANDISING ADVERTISING**

### The Lighting Center

2208 N. Prince Clovis, N.M.

### TOPS Club

TOPS chapter No. 1163, met Tuesday, August 17, in the meeting room of Summit Savings and Loan. Edna Haynes, president, called the meeting to order. The prayer was given by Brenda Murphy. The TOPS and KOPS pledges were recited and the fellowship song sung.

Minutes of the previous meeting were read by Linda Vinson. They were approved.

Linda Vinson called the roll with five members present. Best loser for the week was Linda Vinson, first runner up was Retha Knowles and Brenda Murphy was second runner up.

Ellawese Norman, celebrated her birthday. The group reported on their secret pals. It was decided to have their meeting night moved back to Thursday, at

the regular time; 5:30-7:30. The group will have a guest speaker on Thursday night. He will be speaking on running and how to build up to it.

### Muleshoe Singing Group

Muleshoe Singing Group met Saturday, August 21 in the fellowship hall of the Trinity Baptist Church at 7:30 p.m., with 30 present including visitors, four from Clovis, N.M.

Mr. and Mrs. Zed Robison and their daughter, Nelouise were back after spending a few days on vacation. Nelouise will be returning home soon as she is employed with a school system in California.

J. C. Shanks gave the benediction.

High court denies passing low home loans.

### Lingere Shower Honors Renee Ingle

Lisa (Smith) Whalin of Muleshoe hosted a lingere shower in honor of Renee Ingle, bride elect of Kerry Faver, in her home Tuesday evening with Laura Ramos as co-hostess.

Finger sandwiches, brownies, cookies and punch were served from crystal appointments.

Attending were the honoree, Sherry Fisher, Kim Powell, Judy Wiseman, Marie Withrow, Laura Powell, Gina Gustin, Shelly and Tammi gore and Sherry Powell, all of Sudan and Holly Stubbs of Littlefield, and the hostess.

**Right**  
A statesman is made out of the right kind of timber when he can lead the people out of the woods.  
-Herald, Greensboro.

**A REMINDER FROM THE VA**  
DENIES THE MERCH BY Black Ketcher

AREN I BORN OF 'N  
GONNA BE A VETERAN  
JILLYN? TALKS GUY  
GUY OF '82? GUY?

Know your rights & privileges?  
CALL THE VA OFFICE TODAY  
TOLL FREE

# Wilson Appliance

## LITTON'S MICROWAVE SALE OF THE YEAR!

Nobody knows more about microwave cooking than Litton.

Try to beat these microwave prices!

LITTON'S SALE OF THE YEAR PRICE ONLY	ELECTRONIC TOUCH CONTROL NOW ONLY
<b>\$288</b>	<b>\$398</b>

Model 1750  
• Electronic touch control  
• 100% solid state  
• 1.3 cu. ft. oven capacity  
• Meal-in-one performance  
• Automatic temperature control

**We Have A Trained Technician To Service Our Products**

# Wilson Appliances

Store Hours  
Mon-Sat. 8:00-6:00

272-5531 117 MAIN

**True Value Hardware**  
401 S. First  
Muleshoe, Texas 79347

Place your order by September 11, 1982  
Pick it up here by Sept. 23-24-25, 1982

## KIMBERLY • CLARK CASE-LOT SALE!

ORDER BY CASES	SALE PRICE PER CASE	EXTENDED AMOUNT	CODE / DESCRIPTION	QTY. PER CASE	REG. PRICE	LOT PRICE	SAVE PER CASE
\$15.00			5585 HI-DRI® Jumbo Towels (30 Rolls)	30/cs.	\$ .69	2/\$1.00	\$5.70
\$20.70			5570 KLEENEX® Jumbo Towels (30 Rolls)	30/cs.	\$ .97	\$ .69	\$8.40
\$23.76			4881 DELSEY® White Bath Tissue 4-Pack (96 Rolls)	24/cs.	\$1.14	\$ .99	\$3.60
\$23.76			4889 DELSEY Pastels Bath Tissue 4-Pack (96 Rolls)	24/cs.	\$1.14	\$ .99	\$3.60
\$23.76			4989 KLEENEX BOUTIQUE® Bath Tissue Prints 4-Pack (96 Rolls)	24/cs.	\$1.14	\$ .99	\$3.60
\$25.56			2721 KLEENEX Facial Tissue White 200 ct.	36/cs.	\$ .93	\$ .71	\$7.92
\$25.56			2729 KLEENEX Facial Tissue Assorted 200 ct.	36/cs.	\$ .93	\$ .71	\$7.92
\$24.84			2449 KLEENEX BOUTIQUE Facial Tissue Colors 125 ct.	36/cs.	\$ .89	\$ .69	\$7.20
\$24.84			2453 KLEENEX BOUTIQUE Facial Tissue Prints 125 ct.	36/cs.	\$ .89	\$ .69	\$7.20
\$23.76			2811 KLEENEX Facial Tissue White 280 ct.	24/cs.	\$1.29	\$ .99	\$7.20
\$23.76			2819 KLEENEX Facial Tissue Assorted 280 ct.	24/cs.	\$1.29	\$ .99	\$7.20
\$14.49			4670 KLEENEX Family Napkins 140 ct.	21/cs.	\$ .87	\$ .69	\$3.78
\$35.88			0110 KOTEX® Feminine Napkins Regular 30 ct.	12/cs.	\$3.49	\$2.99	\$6.00
\$35.88			0210 KOTEX Feminine Napkins Super 30 ct.	12/cs.	\$3.49	\$2.99	\$6.00
\$27.48			0190 KOTEX Maxi Feminine Pads 30 ct.	12/cs.	\$2.89	\$2.29	\$7.20
\$20.16			0293 KOTEX Mini Feminine Pads 30 ct.	12/cs.	\$2.09	\$1.69	\$4.92
\$35.88			0160 NEW FREEDOM® Maxi Feminine Pads 30 ct.	12/cs.	\$3.59	\$2.99	\$7.20
\$35.88			0260 NEW FREEDOM Super Maxi Feminine Pads 30 ct.	12/cs.	\$3.59	\$2.99	\$7.20
\$26.28			0170 NEW FREEDOM Mini Feminine Pads 30 ct.	12/cs.	\$2.79	\$2.19	\$7.20
\$22.68			0250 NEW FREEDOM ANYDAY® Pantliners 30 ct.	12/cs.	\$2.49	\$1.89	\$7.20
\$22.68			0280 KOTEX LIGHTDAYS® Deodorant Pantliners 30 ct.	12/cs.	\$2.49	\$1.89	\$7.20
\$22.68			0180 KOTEX LIGHTDAYS Regular Pantliners 30 ct.	12/cs.	\$2.49	\$1.89	\$7.20
\$29.16			1514 KOTEX SECURITY® Tampons Regular 30 ct.	12/cs.	\$2.99	\$2.43	\$6.73
\$29.16			1524 KOTEX SECURITY Tampons Super 30 ct.	12/cs.	\$2.99	\$2.43	\$6.73
\$39.48			17141 KLEENEX HUGGIES® Overnight Disposable Diapers 14 ct.	12/cs.	\$3.49	\$3.29	\$2.40
\$39.48			17553 KLEENEX HUGGIES Toddler Disposable Diapers 12 ct.	12/cs.	\$3.49	\$3.29	\$2.40

TOTAL CASES: \_\_\_\_\_ TOTAL \_\_\_\_\_

Use your convenient VISA or Master Card!

**NO DELIVERIES OR LAY-AWAYS!**  
All merchandise must be picked up by September 25, 1982 to receive these sale prices.

NAME \_\_\_\_\_  
ADDRESS \_\_\_\_\_  
CITY \_\_\_\_\_ STATE \_\_\_\_\_ ZIP \_\_\_\_\_  
PHONE \_\_\_\_\_

Here's how this special CASE LOT SALE works:  
PLACE YOUR ORDER ON THIS FORM BY SEPTEMBER 11, 1982  
PICK UP YOUR ORDER BETWEEN SEPTEMBER 23-24-25, 1982.

Muleshoe Journal



# Miss Seaton, Nichols Repeat Wedding Vows



MR. AND MRS. MICHAEL TRAVIS NICHOLS  
(nee Sherrie Renea Seaton)

Sherrie Renea Seaton became the bride of Michael Travis Nichols in a candlelight ceremony on Saturday July 31, at 7:00 p.m. in the United Methodist Church of Lazbuddie. Rev. Louis Crenshaw, pastor, read the double ring vows.

Parents of the couple are Mr. and Mrs. Jimmie Dale Seaton of Lazbuddie, Kay Seaton of Muleshoe, Dorothy Nichols of Littlefield, and Quinton Nichols of Enochs.

The church was centered with an arch topped with candles and lined with greenery. Two candle trees accented the setting. Blue and white lace bows marked the pews.

Mrs. J. B. Jennings provided organ music as the guests arrived. Susan Glover accompanied by Mrs. J. B. Jennings, sang "Endless Love" and Mrs. Frank Hinkson II sang "Annie's Song."

Presented in marriage by her father, the bride wore a full-length gown of Chantilly lace with victorian neckline. The ruffled hemline extended into a chapel length train. The fitted bodice was adorned with a

satin ribbon waist sash. The bride wore a lace fingertip veil and carried a circular bouquet containing baby blue and navy silk flowers accented with a touch of baby's breath. Baby blue and white lace streamers dropped to knee length. As something old, she wore her great grandmother's pearls, her dress was something new, something borrowed was her aunt's veil, something blue was her garter and in her shoes she wore pennies minted in the year of their births.

Attending the bride as maid of honor was her sister, Barbie Seaton of Muleshoe. Bridesmaids were Angie Jesko and Susan Redwine, cousin of the bride, both of Lazbuddie. The attendants wore floor length baby blue dresses. A satin ribbon around the waist and the sheer sleeves accented the dress. They each carried a white lace

parasol with baby blue and navy flowers streaming from the top.

Paula Nichols, cousin of the groom, registered the guests. Serving as best man was Richard Nichols, brother of the groom. Groomsmen included Gary Gatten and Troy Hayes, both of Amarillo, who also served as ushers.

Candlelighters were Jason Burreson, cousin of the bride, of Muleshoe and Russell Redwine, cousin of the bride, of Lazbuddie.

Jeri Lynn Burreson, cousin of the bride, was the flowergirl. She wore a dress like the bridesmaids. She carried a lace basket containing tiny blue ribbons tied in love knots.

Before exchanging vows, Mrs. Frank Hinkson II sang "The Wedding Song," accompanying herself on the guitar.

Following the ceremony, a reception was held in the fellowship hall. Serving were Mrs. Troy Hayes of Amarillo, Kim Gregory of Lazbuddie, Larresia Crenshaw of Amarillo, Shonnee Hodnett of Maple, Melissa O'Donald of Amarillo and Susan Redwine of Lazbuddie, cousins of the bride, and Michelle Nichols, cousin of the groom, of Idalou, gave out rice bags.

Following a wedding trip, the couple will reside in Amarillo where he is employed by Red Lobster. The bride is a 1981 graduate of Lazbuddie High School and will be a 1983 graduate of Amarillo College.

Out of town guests were registered from San Antonio, Lubbock, Amarillo, Abernathy, Shallowater, Idalou, Panhandle, Clovis, N. M., Hereford, Sudan, Maple, Spade, Enochs and Earth.

## RECIPE

By Sarah Anne Sheridan

### Tomato Julep Frappe

4 T mint leaves  
1/2 c lemon juice  
7 c tomato juice

Crush mint leaves, add lemon juice and 3 1/2 cups tomato juice. Chill 1/2 hour. Strain, freeze to mush in refrigerator tray. Chill remaining tomato juice; serve in glasses with a scoop of tomato juice frappe in each.

### Pineapple Cooler

2 1/2 c pale dry ginger ale  
2 1/2 c canned pineapple juice  
Ice  
Canned pineapple sticks  
Lemon slices  
Cherries  
Mint

Combine ginger ale and pineapple juice. Add ice as desired. In each glass place a pineapple segment, a lemon slice and a cherry. Fill with pineapple juice mixture. Garnish with mint.

## West Plains Medical Center Report

ADMITTED - Aug. 19 - R.G. Bennett, Julia Hawkins, Elaine Burgess

Aug. 20 - Toby Olivarez, Jewell Strong, Virgie Harding, Debra Gentry, baby Gentry, Diana Venzar, Jerry Nudget, Owen Jones, Gabriel Reyes, John Burch, Tommy Villalobos.

Aug. 21 - Janet Wilke, Mary Hodge, Elizabeth Canpoe, Juan Marquez, Jim Faulkner

Aug. 22 - Manuel Sanze, Wanda Cantee

Aug. 23 - Yalanda Rodriguez, Clara Crain, Jane Griffith

DISMISSED

Aug. 19 - Kathy Embry, Rosa Sneed

Aug. 20 - Louva Kersey, Sarah Mitchell, Naturdad Martinez, Orpha Bartley, LaDena Wright

Aug. 21 - L.H. Lewis, Sharon Jones, Stephen Cole, Elaine Burgess, Lorena Venable

Aug. 22 - Julia Hawkins, Ruby Faubus, Debra Gentry, baby Gentry

## Society Guidelines

A processing charge of \$3 is made when a photo accompanies any wedding, engagement, anniversary or other society picture, with the exception of anniversaries of 50 years or more.

Five dollars will be charged for any society picture taken by the Journal, due at the time of the appointment. Pictures may be picked up after the article appears in the paper.

Wedding, engagement and anniversary stories must be in the Journal office by Monday noon for the Thursday paper and by Thursday noon for the Sunday paper.

After that time, stories will be run on a space available basis. Any wedding more than two weeks old when received will be edited and only the basic information will be included.

No shower picture will be taken without a 24-hour notice and copy must be in the office by 5 p.m. Monday for the Thursday paper and 5 p.m. Thursday for the Sunday paper.

**Sportsman Complete & Balanced Nutrition Dog Food**

**PUPPY FOOD**  
27% PROTEIN  
20 LB. Bag **\$5<sup>95</sup>**

**HI-PROTEIN DOG MEAL**  
26% PROTEIN  
50 LB. Bag **\$10<sup>59</sup>**

**Five Point Dog Food**

50 LB. Bag **\$9<sup>36</sup>**      25 LB. Bag **\$5<sup>15</sup>**

**Alert Cat Food**

10 LB. Bag **\$3<sup>45</sup>**



## Young Homemakers, Farmers Award Banquet Scheduled

The Area I Young Homemakers and Young Farmers will host their annual conventions and award banquet at the Amarillo Civic Center, Saturday, August 28. The separate meetings will be held during the afternoon and the banquet at 6:30 p.m. Mrs. Jerry Annen, Area Young Homemaker president from Hereford presiding and assisting during the program by other area Young Homemakers and Young Farmer officers.

Awards to be presented during the banquet are: Outstanding Chapter, Associate Member, Area Officer and New Chapter, Agribusiness, Radio-TV, Newspaper Publicity and the Star Young Farmer. The Sponsors of these awards are Southwestern Public Service Company, Farmland Industries, Inc. and Production Credit Association of Texas. The sponsors of the meal are twelve electric and four business that serve these young adults.

The Young Homemakers will elect new officers during the morning and install them later in the afternoon. Mrs. Jerry Annen will preside during the meeting. Featured speakers will be

Mrs. Rita Welch of Dimmitt who will demonstrate and discuss "What's Under Your Hat" and Mrs. Joyce Cheatham, homemaking teacher at Monterey High School, Lubbock, who will help the audience understand "Cents That Make Sense." Both are very popular with audiences in West Texas.

During the afternoon session, the Young Farmers will hear Dr. Ray Simmons, TAMU discuss Computers in Agriculture. An auction of door prizes will be to raise money for a FFA scholarship. Ronald Groves, Area Young Farmer president of Hale Center will be presiding. Scotty Below, of Winters, Texas Young Farmer President will be an honored guest.

The Area officers for the Young Homemakers: president, Mrs. Jerry Annen, of Dimmitt; Vice Presidents, Mrs. Ronnie Sherrod, Hale Center and Mrs. Weldon Simmons, Wheeler; secretary-treasurer, Mrs. Dudley Wooten of Dimmitt; parliamentarian, Mrs. Lee Hibler of Wheeler. Mrs. Ima Dora Haile, Consultant for Homemaking Texas Educa-

tion Agency, Plainview, serves as the area advisor.

The officers for the Area Young Farmers are: President, Ronald Groves, Hale Center; vice president, Ray Schalbs, Hereford; Secretary, Larry Robb, Nazareth; reporter, Bill Reed, Silverton; state officer, Teddy Smithson, Dimmitt. Area advisor is Jay Eudy, Agriculture Consultant, Texas Education Agency, Plainview.



Iris take their name from Iris, the Greek goddess of the rainbow.

**WE'RE OVERSTOCKED!**      **MANY ITEMS REDUCED TO CLEAR THIS MONTH!**

321 MAIN STREET  
OPEN 9 TO 6

**Anthony's**  
C. R. ANTHONY CO.

WHEN ANTHONY'S HAS A SALE, YOU KNOW IT'S A SALE!

# Sidewalk Sale

THURSDAY, FRIDAY AND SATURDAY!

# Super Savings

ON EARLY FALL AND BACK TO SCHOOL ITEMS!  
PRICED TO CLEAR!

## Gymnastics-Dance

**Boys & Girls**  
3 Years & Up

Tumbling, Trampoline,  
Apparatus


Classes begin Sept. 7

Classes Limited

272-4017      272-3483

**Hawkins & Purdy**

School Of  
Dance



Members USGF, WTGA, GAT  
Home of the Muleshoe Twisters  
Gymnastics Team  
Boys & Girls Competition



## Police Activities Up

Cont. From Page 1

Jesus Medina Casanova in the rear as both cars were attempting a turn in the 100 block of North First. Gracie Sanchez was cited for no proof of liability insurance.

On August 23, Wally Perez was arrested on a disorderly conduct charge involving a fight at Allsup's parking lot. He was involved in a fist fight with Chris Kirvin who was also charged with disorderly conduct.

Both men were arrested and booked into county jail pending bond.

On August 22, Jessie Solero was arrested on two Failure to Appear warrants. He was transported to the county jail.

Jim Crawford of Muleshoe Pawn Shop reported on August 23, the theft of a tractor muffler and air cleaner off of a John Deere parked at H & J Equipment Company. Value of the items taken was \$210.

On August 21, Bruce Burson reported to city police, the theft of a tool box, which was removed from his pickup which was parked in front of his residence. Value of the tool box was \$90.

Samuel Mark Green was arrested on a public intoxication charge on August 20 at the corner of East Avenue B and E. 6th. Police received a call regarding a man lying in the weeds in this area. He was booked into the County Jail.

On August 22, Manuel Molina was arrested on a public intoxication charge in an alley behind 624 East 4th Street, where officers found him sleeping in a city dumpster. He was charged and booked into county jail.

On August 23, Moses G. Bryan was arrested on a charge of DWI and was reportedly armed with a 5-inch knife. He was driving erratically and bouncing off the curbs. He was taken to the county jail and booked.

Modesto Garcia was arrested on a charge of DWI and was reportedly armed with a 5-inch knife. He was driving erratically and bouncing off the curbs. He was taken to the county jail and booked.

Rotary... encouraged the local Rotary to build their club and to keep things going well.

Other special guests were John Boor, Walter Hughes, Otis McMillan, Martha Kent, Judy Wilbanks, Betty Clayton, Annette Bond, Joella Cowart, Julie Cage, Johnny St. Clair, Lynn Campbell, Jeanene Gunstream, Rene Anderson, Lonnie Adrian, Marie Bass, Francis Burrows, Suzie Hamblen, Dianne Nieman and Doug and Paul Emmons.

President Buck Campbell reported that about \$320 was made from the wrestling concession stand and a little over \$1,000 on the wrestling.

charged with public intoxication and carrying a prohibited weapon, and driving while license suspended. Officers found a pair of brass knuckles, and a lock-blade knife in his possession, upon pursuit after he passed officer Watson at a high rate of speed. Assisted by Sgt. Wayne Holmes, Detten performed a personal search which revealed the weapons. Garcia was arrested and placed in the county jail.

On August 22, Oraia Sotleo was arrested on a warrant for bad checks by Officers Dominguez and Watson. Sotleo was later released after paying a \$224.73 fine.

On August 21, city police investigated an accident involving John D. Hagman occurring in the 200 block of Ithaca. Hagman was issued a citation for unsafe backing; however, after a routine license check, officers found that Hagman was operating a vehicle, driving while license was suspended.

The Bailey County Sheriff's office report revealed an arrest of Manuel Daniel Felan for public intoxication. He paid a \$150 fine and was released.

Samuel Mark Peden was arrested by the Muleshoe Police, according to SO records on August 20. He was transferred to the Mental Health Center at Plainview, by his request.

Max Bachicha was arrested on August 20 on a capias warrant by city police as reported through the Bailey County Sheriff's office. He was later released on \$750 bond.

On August 19 Mark Cahill, charged with burglary of a building, William Dane Clark, charged with unauthorized use of a motor vehicle, Arlen Scott Thompson, charged with aggravated robbery, were placed in the Bailey County Jail to be held and boarded for Randall County.

On August 23, Moses G. Bryan was arrested on a charge of DWI and was reportedly armed with a 5-inch knife. He was driving erratically and bouncing off the curbs. He was taken to the county jail and booked.

Modesto Garcia was arrested on a charge of DWI and was reportedly armed with a 5-inch knife. He was driving erratically and bouncing off the curbs. He was taken to the county jail and booked.

TTI researcher says user fees needed to finance highways

COLLEGE STATION — Automobile owners should get used to the idea of higher fuel taxes and other fees to finance construction, repair and research on the nation's strained interstate highway system, says a transportation expert.

"Obviously, new sources of revenues — taxes and fees — will be needed to address the problems of new construction, proper rehabilitation of existing roads and to accommodate the exploding new growth in Texas," said Dr. C. V. Wootan, director of the Texas Transportation Institute, a research agency.

He said many transportation officials feel that money for building and repairing roads would come from user fees such as gasoline tax, license tag fees and earmarking sales taxes on new cars for highway purposes.



RIF DISTRIBUTION—Children at the Texas Migrant Center had open house on Monday, August 23, and distributed books to the children at the school. RIF means "Reading Is Fundamental."

## Eagles Plan To Soar

Cont. From Page 1

definite plus on their side. In fact, four linebackers — Marines, Roberts, Peacock and Snitker — give the Eagles a depth at that position. "We have all three linebackers returning, but we have a little difficulty in replacing the ends." Experience has taught Peel that it is hard for the younger players to hang in at that position.

Brad Stegall, a 6 footer-160 pound junior, who possibly could see some quarterback action; Dewayne Williams, a 5 - 10, 160 pound junior and Frank Medina a 5-9, 170 pound senior will be battling for second position of defensive end. The other likely candidate for defensive end is Bill Eubanks, who has the experience it will take to hold this position.

Bret Alexander, a senior, will give the Eagles experience at safety in their classic 2-3-1 defensive set up.

The Eagles are touted as one of the top four teams in District 1-A and will get their biggest test of the season against Southland and Wellman. Peel feels that the district race is going to be close since the Eagles will be playing a lot of heads-up, tough football games.

The lineup as it stands now other than the players mentioned above includes: David DeLaRosa, a 5'11" 190 pound senior at end position; Steve Roberts a 5' 8", 185 pound junior, who will be jousting as running back; Mike Whitehead, a 5' 11", 160 pound sophomore who will be making a bid for end position. Still others include Freshman Brett Stegall, a 5'9" freshman who will be backing up and making a bid for the quarterback slot along with Marines. Phil Oxford will be playing as running back and linebacker. Oxford is a 5'10" 150 pound freshman. Captains for the team are Louis Peacock, Tim Roberts and Bobby Marines.

Three Way plays a tough fast six man football game.

## Dove Season Opens

Cont. From Page 1

are a traditional mourning dove hunting hotspot.

This year, the US Fish and Wildlife Service has standardized season lengths for all management units at 70 days, which gives Texas hunters 10 more hunting days than they were allowed last season. In the north zone, the change will allow a winter season set for January 1-10, 1983, in addition to the September 1-October 30 regular season.

In the South Zone, the season will be September 20 to November 12 and January 1-16, 1983. In counties having a white-winged dove season, the first segment of the mourning dove season will end on November 8.

The daily limit for mourning doves remains

unchanged at 12 per day and 24 in possession. Bag limits for white-winged doves is 10 per day and 20 in possession. Hunters in counties with a whitewing season will be allowed to take a daily limit of both whitewing and mourning doves during the September 4, 5 and 11, 12 season.

Shooting hours for mourning doves is 30 minutes before sunrise, to sunset. In counties offering a whitewing season, shooting hours during that season will be noon to sunset.

## ASCS...

Cont. From Page 1

viably, of loss rates can be set by the County ASCS Committee for partial payments.

No word has yet been received on disaster loans for Bailey County. A farmer cannot however, obtain a disaster loan and a disaster payment in the same year. Deficiency payments will also be available in some cases on eligible commodities, but any pound figured at the disaster rate will be deducted before figuring the deficiency payments.

## Lazbuddie...

Cont. From Page 1

sons may call 965-2806 or contact any member of the Lazbuddie FFA.

The chapter will also be selling link sausage in 2 1/2 pound boxes. Each box contains 40 one ounce links. The cost per box is \$7.00. Contact the same number to order the link sausage.

## A&M biochemist says iron deficiency is worldwide problem

COLLEGE STATION — Nearly 30 percent of women in their child-bearing years exhibit some degree of iron deficiency, according to a Texas A&M University biochemist.

Dr. George Bates, who ranks as the most serious nutritional disease in both humans and plants today, said Dr. George Bates, and is second only to protein-calorie malnutrition in the worldwide severity of its effects.

## Renovations...

Cont. From Page 1

by underspending the budget for the past several years and by investing surpluses at high rates of interest.

## Renovations...

by underspending the budget for the past several years and by investing surpluses at high rates of interest.

## Renovations...

by underspending the budget for the past several years and by investing surpluses at high rates of interest.

## Farmers, Ranchers Need Knowledge Of Tax

Have you got down the principal provisions of the Economic Recovery Tax Act (ERTA) of 1981 that affect your farming or ranching business? Since income tax management requires year-round attention, a review of some of the ERTA provisions follows.

One of the more significant income tax provisions of ERTA was the implementation of a fast depreciation scheme, labeled the Accelerated Cost Recovery System (ACRS), points out Spencer Tanksley, county agent with the Texas Agricultural Extension Service, Texas A&M University System.

ACRS supplies to most new and used tangible depreciable property placed in service after 1980.

ACRS provides for depreciation or cost recovery over these periods:

•3-year property, such as autos, light trucks and swine.

•5-year property, such as equipment, beef and dairy cattle and single-purpose agricultural facilities.

•10-year property, such as mobile homes.

•15-year real property, such as farm buildings.

ACRS deduction is determined by multiplying the unadjusted basis by a percentage value which is obtained from the appropriate ACRS table.

A full year's deduction is available under ACRS, irrespective of when the 3-,

5-, or 10-year property is placed in service. The ACRS deduction for 15-year real property is calculated to the nearest month it is placed in service.

No salvage value is subtracted when computing the ACRS deduction, says Tanksley.

If the ACRS is not chosen, the Alternate Accelerated Cost Recovery Method is the straight line (SL) method of depreciation. This information is available from your tax consultant.

If the alternate ACRS method is chosen, the first year's depreciation is one-half the amount that would be allowed for a full year, irrespective of when property was placed into service during the year.

For 3-, 5-, and 10-year property, the same method and recovery period must be used for all property in the same class placed in service during that tax year. This restriction does not apply to 15-year real property, says Tanksley.

When the alternate ACRS method is chosen for real property, the first year's deduction and the deduction in the year of disposition must be prorated for the number of months used.

In general, ERTA provisions, including ACRS, should mean income tax savings for Texas farmers, which should help the cash flow situation and increase the average net worth

## Real Estate For Sale

By Owner

- 1-2 Bedroom house on corner lot
  - 1-2 Bedroom with utility, garage and concrete storm cellar
  - 1-3 Bedroom with large recreation room 2 fire places and 2 baths
  - 2 lots at Lake Clarendon
  - 80 Acres irrigated land with large barn
  - 20 Acres dryland
  - Dry Cleaning Business
- Call: 272-5578 or 272-3658 evenings

## The Muleshoe I.S.D Effective Tax Rate (Corrected)

NOTICE OF CALCULATION OF EFFECTIVE TAX RATE AND PUBLICATION OF ESTIMATED UNENCUMBERED FUND BALANCES

I Dale F. Jones, CA for the BCAD in accordance with the provisions of Sec. 26.01 of the Property Tax Code, have calculated the tax rate which may not be exceeded by more than three percent by the governing body of the MISD without holding a public hearing as required by the code. That rate is as follows:

.89 per \$100 of value

The estimated unencumbered balances for Maintenance & Operation fund: \$ 279253

The estimated unencumbered balances for Interest & Sinking fund: \$ 3695

(name) Dale F. Jones  
(title/position) Chief Taxp.  
(date) July 26 1982

### Calculations Used to Determine Effective Tax Rate

#### I. ASSUMPTIONS

1. 1981 Total Tax Levy from the 1981 Tax Roll	\$ 1,317,320
2. 1981 Tax Rate (\$ .79 MAO and \$.05 IAS)	\$ .84
3. 1981 Debt Service (IAS) Levy	\$ 78,380
4. 1981 Maintenance and Operation (MAO) Levy	\$ 123,940
5. 1981 Taxes Levied for Maintenance and Operation (MAO) on Property in Territory that Has Ceased to be a Part of the Unit in 1982	\$ 0-
6. 1981 Taxes Levied for Maintenance and Operation (MAO) on Taxable Value of Property Becoming Exempt in 1982	\$ 52,186
7. 1981 Taxes Levied for Maintenance and Operation (MAO) on Taxable Value of Property Lost Because Property is Required to be Appraised in 1982 at Less than Market Value	\$ 0-
8. 1982 Total Taxable Value of All Property	\$ 142,912,480
9. 1982 Taxable Value of New Improvements Added Since January 1, 1981	\$ 2,700,000
10. 1982 Taxable Value of Property Added Since January 1, 1981, by Annexation of Territory	\$ 0-
11. 1982 Tax Levy Needed to Satisfy Bonded Indebtedness or Debt Service (IAS)	\$ 0-

(E) Subtract 1981 Taxes Levied for Maintenance and Operation (MAO) on Taxable Value of Property Lost Because Property is Required to be Appraised in 1982 at Less than Market Value (Assumption No. 7)	\$ 0-
(F) Adjusted 1981 Tax Levy for Calculation	\$ 9,740
3. (A) Adjusted 1981 Tax Levy for Calculation (2F above)	\$ 1,177,014
(B) Divided by Adjusted 1982 Taxable Value for Calculation (1D above)	\$ 131,078,020
Multiplying by \$100 Valuation	\$ .8979
(C) Calculated Maintenance and Operation (MAO) Rate For 1982	\$ .8979

#### INTEREST AND SINKING RATE FOR 1982

4. (A) 1982 Tax Levy Needed to Satisfy Bonded Indebtedness or Debt Service (IAS) (Assumption No. 11)	\$ 0-
(B) 1982 Total Taxable Value of All Property (Assumption No. 8)	\$ .
(C) Divide the Adjusted 1982 Tax Levy for Debt Service (IAS) (4A above) by the Adjusted 1982 Taxable Value for IAS (4B above)	\$ .
Multiplying by \$100 Valuation	\$ .
(D) Calculated Interest and Sinking (IAS) Rate for 1982	\$ .

#### II. CALCULATION

MAINTENANCE AND OPERATION (MAO) TAX RATE FOR 1982	
(A) 1982 Total Taxable Value of All Property (Assumption No. 8)	\$ 142,912,480
(B) Subtract 1982 Taxable Value of New Improvements Added (Assumption No. 9)	\$ 2,700,000
(C) Subtract 1982 Taxable Value of Property Added by Annexation (Assumption No. 10)	\$ 0-
(D) Adjusted 1982 Taxable Value for Calculation	\$ 9,134,460

5. (A) Calculated Maintenance and Operation (MAO) Rate for 1982 (3C above)	\$ .
(B) Add Calculated Interest and Sinking (IAS) Rate for 1982 (4D above)	\$ .
(C) Calculated 1982 Effective Tax Rate	\$ .

1982 Effective Tax Rate is the tax rate published by the tax assessor, as required by Sec. 26.06 of the Property Tax Code.

#### III. MAXIMUM TAX RATE

1. (A) Calculated 1982 Effective Tax Rate (3C above)	\$ .897
(B) Multiplied by Three Percent (3%)	\$ .
(C) Equals Amount of Increase Allowed by Code	\$ 2.69
(D) 1982 Maximum Tax Rate [(A) + (C) above]	\$ .92

2. (A) 1981 Total Tax Levy from the 1981 Tax Roll (Assumption No. 1)	\$ 1,317,320
(B) Subtract 1981 Taxes Levied for Maintenance and Operation (MAO) on Property in Territory that Has Ceased to be a Part of the Unit in 1982 (Assumption No. 5)	\$ 0-
(C) Subtract 1981 Debt Service (IAS) Levy (Assumption No. 3)	\$ 78,380
(D) Subtract 1981 Taxes Levied for Maintenance and Operation (MAO) on Taxable Value of Property Becoming Exempt in 1982 (Assumption No. 6)	\$ 52,186

1982 Maximum Tax Rate is the tax rate which, if exceeded, triggers the public notice and public hearing requirements of Sec. 26.06 of the Property Tax Code.

**GALAXY**  
20-IN. 3-SPEED  
BREEZE BOX  
FAN  
\$23.99  
Reg. price 26.99

Use on floor to circulate air, or in window to exhaust hot air or bring in a cool breeze. Manually reversible. Quiet running. Stabilizer feet. 3713

While Supplies Last

**TOOL VALUE OF THE MONTH**

SEVERE  
Now \$5.49

6-in. and 8-in. Adjustable Wrenches  
Durable drop-forged, polished chrome-plated wrenches to handle most nut and bolt tightening jobs. 6080S  
Quantities Limited

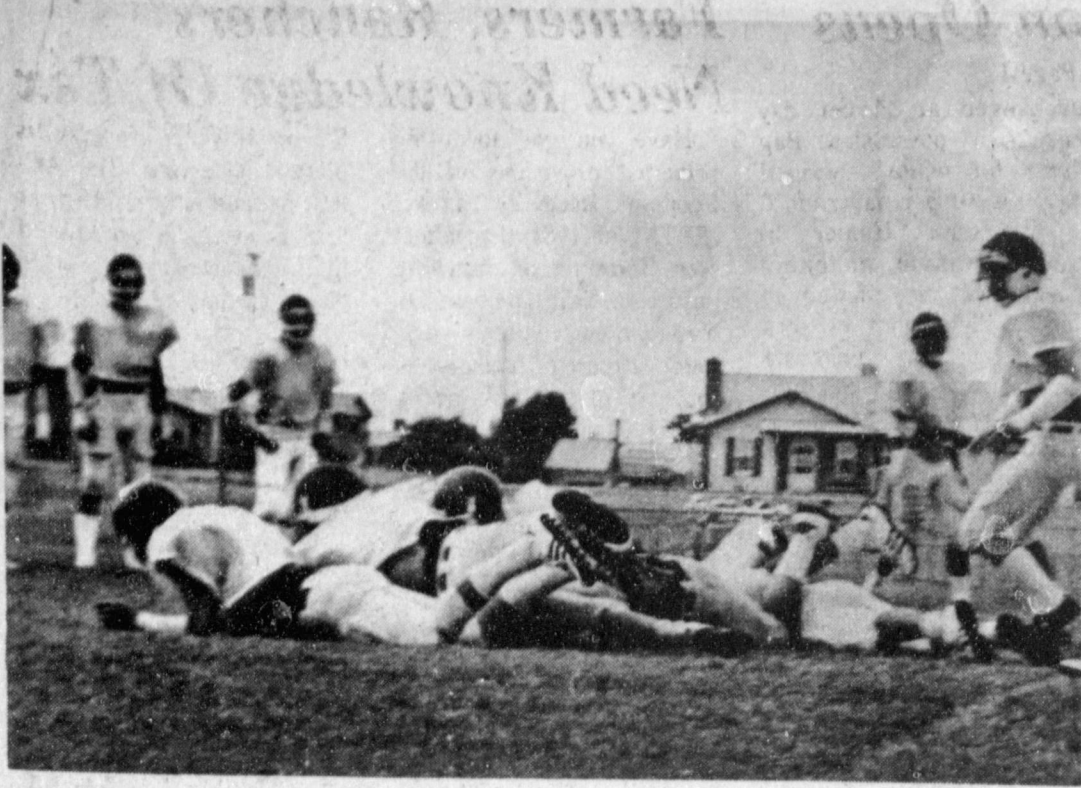
**HARDWARE VALUE OF THE MONTH**

Now \$4.99

Master Padlock  
Protect bikes, ladders and other valuables with this sturdy 3/16-in. steel chain with cover and Master padlock. 375X  
Quantities Limited

**Fry & Cox Inc.**  
401 S. 1st 272-4511





**DOG PILE**--Whatever caused this mess, at least shows that the Mules are going after it hot and heavy. They will scrimmage against Denver City this Friday, August 27, and will begin season play against the mighty Portales Rams on September 3.

## Fair Will Feature Cutting Contests

Non-professional and open championship cutting contests will be featured during the 65th annual Panhandle South Plains Fair here Sept. 25-Oct. 2.

The non-professional matchup, scheduled for 6 p.m. September 30, carries a \$750 purse.

Open championship cutting competition is set for 8 p.m. on Sept. 30 and has a purse of \$1,250, according to general manager Steve L. Lewis.

Both events include one go-round and finals and

there is an entry fee of \$200, including cattle and office charges for each.

Entries will be accepted up to one hour before each contest and horses must be on the grounds before 5 p.m. on Sept. 29.

The precision-like contests are approved by the National Cutting Horse Association (NCHA) and are sponsored locally by the fair and Lubbock County 4-H Clubs.

Randy Upshaw will be the superintendent and A. L. Wilson will be the

NCHA representative at the popular contests.

Health certificates are required for all entries.

Competition will be held in the Fair Park Livestock Pavilion.

A variety of free attractions have been scheduled throughout the eight-day run on the outdoor stage and the "Sensational Leighs" will make their third appearance here on the giant wheel.

In addition, seven shows have been arranged for Fair Park Coliseum. The lineup includes Mickey Gilley and Johnny Lee, Sept. 25; Crystal Gayle, Sept. 27; Don Williams and Lee Greenwood, Sept. 28; Ronnie Milsap and the Maines Brothers, Sept. 29; Louise Mandrell; R.C. Bannon and the Otwell Twins, Sept. 30; Conway Twitty and Helen Cornelius, Oct. 1; Roy Clark, Jimmy Henley and the Wild West, Oct. 2.

Shows will be presented at 5:30 p.m. and 8 p.m. daily. All seats are reserved and tickets are \$7 and \$8.

Tickets may be obtained at the fair office, 105 E. Broadway, Luskey's Western West, Dunlap's and Hemphill-Wells (mall store only).

Mail order requests should be sent to Show Tickets, P. O. Box 208, Lubbock, Texas 79408, and must be accompanied by a stamped, self-addressed envelope. Requests will be processed in the order in which received.

\*\*\*\*  
Almost everyone is enthusiastic over a new job with more pay.

## Watchdog

The Texas Consumer Association Education Fund's Report from Austin

By Rebecca Lightsey, Director

"The general picture is one of despair. The institutions are regarded with fear and hostility, and there are sharp increases in death associated with the institutionalization."

A U.S. Senate Report  
Many times, residents of the institutions are prohibited from wearing their own clothes, decorating their rooms, or keeping any prized possession on hand. The places are permeated with unpleasant odors. Residents have no opportunity for private visits with family or friends. They don't have access to a public phone. They are not allowed to go outside for fresh air and sunshine. They are rushed through meals, forced to gulp down nutritionally-poor food that is often cold. Little wonder there is fear and hostility associated with the institutions.

The description of these prisons may fit our image of prisons, but they are not -- they are nursing homes. The Senate report, "Nursing Home Care in the United States: Failure in Public Policy," found that homes which provide quality nursing care, occupational and recreational therapy, and good medical services are decidedly in the minority. Although this report is now eight years old, those who work with the elderly and nursing homes quickly point out that very little has changed in recent years.

They also are quick to point out, however, that

not all nursing homes are prison-like. Some, particularly the not-for-profit homes (run by churches, charitable organizations and the like), are pleasant, comfortable, friendly places to live. It's the profit-making ones that have the largest number of complaints, because as one nursing home expert put it, "they run the homes like a tire store--to keep profits up, they cut overhead." But when overhead is cut in nursing homes, that means the resident care is cut--something that is often at a minimal level of acceptability to begin with.

Yet even the minimal care residents receive is costly. And most of that cost, by the way, comes from taxpayers. Two out of every three dollars in nursing home revenues is publicly financed, mainly

through Medicare and Medicaid. Considering the elderly citizens' dread of nursing homes, the history of patient mistreatment, and the poor quality care in the homes, they do not appear to be a wise investment of taxpayer dollars.

But of course, we must provide the best care possible for our elderly when they cannot totally care for themselves. It's just that nursing homes do not seem to be the answer. There is a system that does seem to be the answer: home health care.

Home health care provides a way for the elderly to remain in their homes and still get all the assistance and medical attention they need. They get homemaking services, like cleaning, yard work and laundering, well-balanced meals through meal pro-

grams like Meals on Wheels, and routine visits from nurses and physical therapists, if necessary. And, most importantly, they get peace of mind by knowing they can stay in their own environment, surrounded by the things and people who are dear to them.

Taxpayers benefit from the home health care as much as the elderly do. Most estimates show that the programs are 40% to

60% cheaper than nursing homes. To find out more about home health services call the state Department of Human Resources in your area.

\*\*\*\*  
There are people in the world who hate to pay anyone for anything.

\*\*\*\*  
The smart man is not always the one who dodges work.



## Strake Talk

### CHANGING ATTITUDES ABOUT DWI

Few things in this country have changed as much during the past few years as public attitudes on drunk drivers. It is a change we can all be thankful for.

Most of that change, in my opinion, can be attributed to the organization of Mothers Against Drunk Drivers (MADD), and the attendant publicity and editorial support they have received from our newspapers. They have succeeded, where others have failed, in drawing attention to the tragedy that has claimed the lives of thousands of Texans.

It was not long ago, for instance, when some public officials who ought to lead by example were openly contemptuous of our laws against driving while drunk. Much of this problem started nine years ago when my opponent became Lt. Governor and helped pass the law reducing the legal drinking age from twenty-one to eighteen years of age. Now Mr.

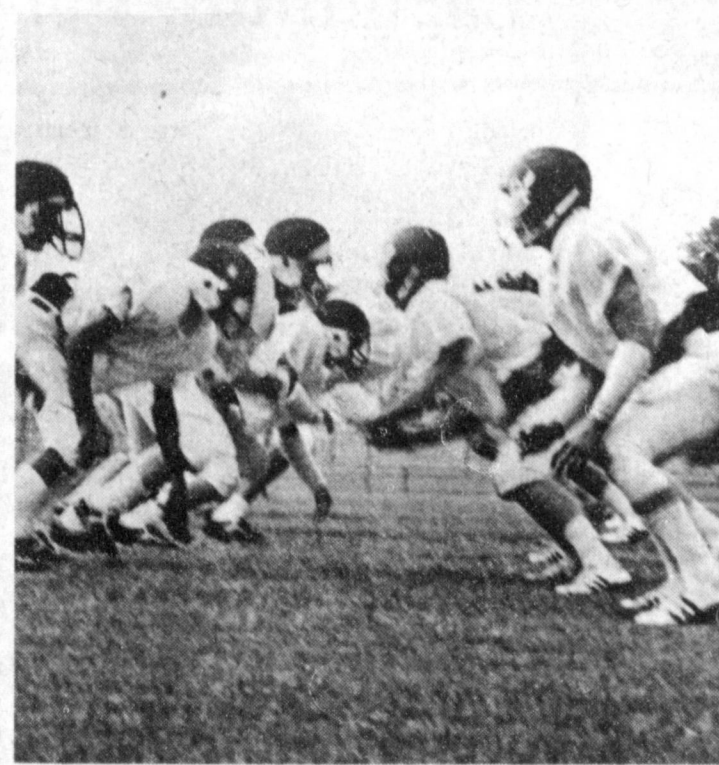
Hobby, feeling the heat of irate parents and loved ones, and perhaps personal remorse, has said he favors tougher drunk driving laws--another switch from a previous position. Political promises, however, are easily made. If a politician can't get excited about an issue of this magnitude in nine years, it seems unlikely that he would get excited and pursue corrective legislation in another four years.

So I hope the Mothers Against Drunk Drivers will stick to their guns, and I hope they continue getting support from the people of our state. Their efforts to put an end to this carnage on our highways has my support, and I hope it has yours.

Of one thing we can be reasonably sure: Starting next year we will have a new Lt. Governor, and that will make it easier. If you have thoughts on this subject, please write me at 1213 W. 34th, Austin, TX 78705.

*George W. Strake*  
George W. Strake, Jr.

Paid Political Advertisement. Texans for Strake 1213 W. 34th Street, Austin, Texas 78705. Bayard Friedman Treasurer.



**HEADS UP**--Muleshoe Varsity team and coaches have been busy the past week working out kinks in their plays and trying to get everything coming together. Coach Williams says that the boys are working hard, and are getting the spirit.

### The Sandhills Philosopher

Editor's note: The Sandhills Philosopher on his Johnson grass farm on Sandy Creek reacts to a recently filed court case.

Dear editor:

Some people were downright disgusted with the man who encouraged his 9-year old daughter to sue the crackerjack company because there wasn't a toy in the box she bought like there was supposed to be. That man ought to be ashamed of himself, they said. Those people don't understand. That man was merely teaching his daughter to get along in the present world. Anybody who can't find somebody else or some company to sue these days is behind the time.

For example, I had a flat on my pickup the other day. Picked up a nail on the road near my place.

I'm now planning to sue the tire company for making a tire that won't resist a nail.

If I lose that case, I'll sue the manufacturer of the nail. A company is responsible for its product, isn't it?

If I lose that case, I'll sue the contractor who built the road. If he hadn't build it, I wouldn't have been driving on it. In legal terms he was guilty of creating an inviting hazard.

If I lost there, I'll sue the State Legislator for voting the money to build the road. If it hadn't, the contractor couldn't have built the road and I wouldn't have had a flat there.

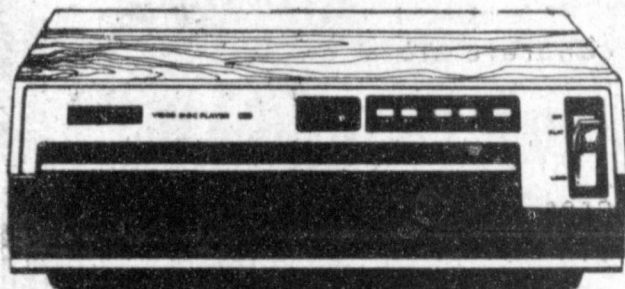
If by then my lawyer says he's tired of all these suits and quits, I'll get another lawyer to sue the first one for failing to live up to the principles of equal justice for all.

By the time I appeal all of these cases through the lower courts and they finally get to the Supreme Court, somebody is going to wish I hadn't had that flat tire, although I'm afraid it'll be me, which will be unfair because I had no chance to join that crackerjack suit. I don't like crackerjacks.

You can see how unfair life is.

Yours faithfully,  
J. A.

### Rent A Video Disc Player Overnight!



**ZENITH VIDEO DISC PLAYER**

We Now Have "On Golden Pond", Available.  
Disc Exchange Club Plan Available.

**Wilson**

117 MAIN Appliances 272-5531

## The Green Machines

2 - Custom GMC Vans In Stock SAVE \$3000<sup>00</sup>

1982 GMC 1/2 Ton Fully Loaded Discounted \$2383<sup>30</sup> Stock No. T468

1982 Pontiac - Buick Olds With Big - Big SAVINGS

27 - GMC Pickup To Choose From

All 1982 GMC's Sold at Dealer's Cost!

Free Tank Of Gas With All New Sales

**Mr. Goodwrench**

**Robert D. Green, Inc.**  
2400 W. American Muleshoe, Texas  
Shop and Parts Hours 7:30-6:00

ASSORTED FLAVORS  
**RUFFLES POTATO CHIPS** REG. \$1.29 PKG. **99¢**

### INFLATION FIGHTER SPECIALS

**6 PACK PEPSI-COLA \$1.59** 16 OZ BOTTLE

**KRISPY CRACKERS 1 LB 69¢**

**SUNSHINE VANILLA WAFERS 69¢**

**SUPER SUDS DETERGENT 40 OZ 99¢**

**SHURFINE BLEACH 64 OZ 39¢**

**BORDEN'S COTTAGE CHEESE 12 OZ CTN. 79¢**

**SHURFINE PEANUT BUTTER 18 OZ 99¢**

**KRAFT GRAPE JELLY 32 OZ 99¢**

**SHURFINE MUSTARD 16 OZ 2/\$1.00**

**BORDEN'S ASSORTED PREMIUM ICE CREAM \$1.59** 1/2 GAL. RD. CTN. VANILLA ICE CREAM

**HEY KIDS! JOIN THE ALLSUP'S DOORBELL BRIGADE FOR MDA! SEPT. 5 & 6th, 1982**

**ALLSUP'S CONVENIENCE STORES**

**"THERE'S ONE NEAR YOU"**

PRICES EFFECTIVE AUGUST 26-28, 1982 WHILE SUPPLIES LAST - LIMITED SUPPLY





# Muleshoe Area Business Directory



**Looking for a Good Deal  
on a Waterbed ?**

Come See Us !

*We Now Carry Waterbeds*

**Hunter Furniture**

2104 W. Amer. Blvd.

272-4315

**Contact Us**

**For**

**Your Wheat Fertilizer Needs**

**Lazbuddie Farmers Supply**

965-2949

**Waiver of Finance Charges**

On ALL New Case Tractors Until June 1, 1983

**Or...**

**Cash Rebates up to \$3500<sup>00</sup>**

**And...**

**Special Factory Allowances**

Make Your Trade-In Worth a Lot More Now

**SEE US SOON AND SAVE BIG**

**Reynolds & Young Equip.**

803 W. Amer. Blvd.

272-4236



**Spudnuts**

*The Upper Crust of the Donut World*

*The Potato Raised Donut*

**Spudnut Shop**

328 S. Main

272-3542



*Wayne Crittenden at Texas Sesame*

Originally constructed as a facility for handling sesame seed in Muleshoe, Texas Sesame opened here in 1954, and at its current location, across the railroad tracks north of West 16th Street.

In 1967, the facility was converted to a food corn handling operation following a merger with Paris Milling Company. For the next several years, Texas Sesame operated on a basis of purchasing food corn mostly from local farmers to be used for corn chips and tortillas.

Wayne Crittenden, manager of Texas Sesame, has been with the company since August 15, 1978. He moved to Muleshoe some 12 years ago to operate the former Ford Tractor Company.

He said most of the corn is obtained locally, although a few of their buyers request a special kind of corn that is grown in south Texas, so is imported to the local facility.

Some of the corn is contract corn, and some is purchased on bonus buying at the time of harvest. "We are happy to pay a bonus for quality corn," said Crittenden. He travels throughout the area purchasing corn for use of the Texas Sesame buyers, who are constantly looking for top quality food corn. Especially sought is white corn, which is grown in specific areas.

In 1981, Texas Sesame averaged handling 143 million pounds of food corn, and Crittenden said that although it is a little too soon to tell about the crop this year, following the early devastating weather, the crops have 'miraculously' recovered and a reasonably good harvest is expected.

Another change in the ownership of Texas Sesame occurred in 1981. In December, Paris Milling Company merged with Archer, Daniels and Midland Co., and corn is currently shipped to Colorado, California, Arizona, New Mexico, Oklahoma, Kansas, Arkansas and points in Texas.

**1/2 Beef**

**\$1.22**

lb. cut & wrapped



**Winkler Meat Co.**

401 Main

272-4703

**Leal's Will Be Closed  
Mondays .**

**Regular Hours Will  
Continue Thru Sat.**



**Leal's El Nuevo  
Restaurant**

1542 W. Amer. Blvd.

272-3294

**Come See Us For All  
Your Parts Needs.**

*We Have A Large  
Inventory Of Parts.*

*Serving Your Needs For 15 Years*

**Bratcher Motor Supply**

107 E. Ave. B

272-4288



515 W. Amer. Blvd.

272-4406

**Save 30% to 60% on your  
heating & cooling cost!**



**GET YOUR ENERGY FOR  
RESIDENTIAL HEATING AND  
COOLING WITH HEAT RECOVERY  
FROM WELL WATER!**

Let your present water system or a new well solve the high cost of heating and cooling. Call us today for complete details.

**Wilson Drilling**  
W. Hwy. 84 272-5557

**Serving Farmers Through  
Marketing Corn, Wheat &  
Other Grains**

**Texas Sesame**

*Division of Paris Milling Co.*

272-4231

**8 piece Living Room Group**

Couch, Loveseat, Chair,  
3 Tables, & 2 Lamps

**\$999<sup>95</sup>**

**Baker Furniture**

106 E. Ave. B

272-4000

**Keeping Up With The Times**

**Come By & Visit And  
Pick up All Your  
Wheat Fertilizer Needs.**

*"Serving You For 21 Years"*

**Foster Fertilizer**

965-2921

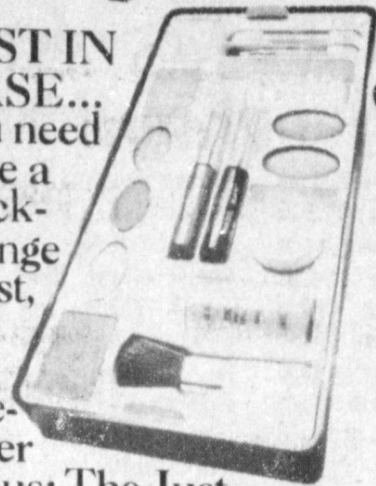




# Muleshoe Area Business Directory



**JUST IN CASE...** you need to be a quick-change artist, try this face-saver



**bonus: The Just in Case Face Case** with 12 of our most advanced makeup shades. Only \$10.50 with any \$8.50 purchase of Merle Norman cosmetics. Get your Just in Case Face Case when you come in to see the beautiful Fall fashion shades of our Color Collection.

Offer good through October 1, 1982, while supplies last.

**Latrells Fashions**

1519 W. Amer. Blvd.  
272-3459

**MERLE NORMAN**  
The Place for the Custom Face



(Custom Exhaust Specialists)

**We Have A Full Line Of Car & Pickup Accessories**

422 N. 1st

MULESHOE, TEXAS 79347

(806) 272-5333

**Diet Dr Pepper or 7-Up**

**\$1.59**  
6-12 oz. cans

Thurs.,  
Fri.,  
& Sat.  
ONLY

**SERV-ALL**

**THRIFTWAY**

**New Hours**  
24 hours Tues. thru Sat.

Sun. 6AM - 2 PM

Mon. 6AM - 10 PM

Friday - Fish Fry

All You Can Eat \$3.25

**Dinner Bell Cafe**

2103 W. Amer. Blvd.

272-3460

**Special limited-time financing offer on new John Deere combines**

If you buy a new John Deere combine now, no finance charges will accrue until January 1, 1983.

It's a great way to put a productive new combine to work in your fields this year.

Come on in and look over our new combines, select the one you want and let's talk a deal.

**Dent-Rempe Inc.**  
1516 W. Amer. Blvd. 272-4296

**Just In! New Shipments of Fragrances for Men & Women**

**Women**

Norell Cologne

Chloe'  
Tatiana  
Lauren

**Men**

Glacier  
Yves Saint Laurent  
Halston Z-14  
Paco Rabanne  
Chaps

308 Main **Damron Rexall Drug** 272-4212

**Two New Dishes**

**Fajitas**

**Tacos-Al Calbron**

Allow 5-10 minutes for preparation



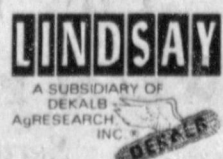
2002 W. Amer. Blvd.

**Viola's**

272-3838

**We Can Deliver A NEW Lindsay Center Pivot NOW With No Down Payment And Interest**

**FREE Until 1983**



**Irrigation Pumps & Power**

W. Hwy 84

272-4483



Jerry Hernandez at Thriftway

Advocating "Shop at Home - In a competitive store with good buys" Jerry Hernandez, manager of Servall Thriftway at the corner of American Blvd. and West 4th Street, firmly believes in his hometown of Muleshoe.

He graduated from Muleshoe High School in 1971 and was already an employee of the Pay and Save chain of grocery stores, owned by Roger Lowe of Littlefield.

Following graduation, he continued with Pay and Save and became the traveling manager for the stores, serving stores in Muleshoe, Tulia, Monahans, Kermit, Jal, N.M., Sudan, Earth and Plainview, as well as other stores.

When Lowe started the 'Servall Thriftway' line about a year and a half ago, Hernandez shifted his operations to those stores. Then, when Thriftway bought out Shop Rite in Muleshoe earlier this year, he moved back here as manager of the local store.

"If you ever have any complaints about our store, our merchandise or our personnel, I hope you will feel free to come to us with your problems," commented Hernandez. "You are our customer, and we want satisfied customers, because satisfied customers will come back to shop with us."

Assisting Hernandez with operation of the store are Kaye (Beene) Elliott and Mart Long, both with several years in the grocery business. Mrs. Elliott grew up at Needmore and helped operate the family grocery store there. Long, a native of Muleshoe, has spent all of his working years in the grocery business.

Hernandez and all of the employees of Servall Thriftway believe that if you will try the local Servall Thriftway, you will be so pleased, you won't want to shop anywhere else.

Servall Thriftway is associated with Affiliated Foods - who Hernandez says carries all national brands as well as its own labels of Shurfine and Shurfresh.

**Instead Of A Long Hot Summer See Us For A Cool Deal!**



Keep That Great GM Feeling With Genuine GM Parts.

**Thornton Chevrolet**

201 Main

272-4521

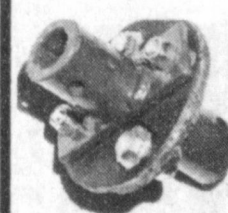
**ARE YOU A REGISTERED VOTER?**

**IF NOT, BECOME ONE NOW**



**Bailey County Farm Bureau**

**Products To Take The Irritation Out Of Irrigation**



**U-Joint Removal Tool**

Ball Valve installs between drop & nozzle.

Flexi Coupler with split round side or keyed Available in 1 inch or 1 1/2 inch round by 3/4 inch 7/8, or 1 inch sq., in various lengths to fit your needs.



**Pivot Products Distributors, Inc.**

W. Hwy. 84 272-5134

**Fresh Catfish**



&



**Vegetables**

**Progress Fish & Vegetable Farm**

272-4010

**Your Wedding, You Want It To Be Special. And We Do Too.**

Your wedding photographs are tangible moments of your special day. Trust them to a professional. Trust them to us. When you book your wedding with us, we'll give you a bridal portrait sitting absolutely free.

We offer a complete line of wedding services.

"Your Wedding Specialist"

**Adrian Photography**



**Terry Field Ins**

213 E. Ave. B

272-5551



## 1982 Lazbuddie Cheerleaders



Kim Gregory



Trestia Moore



Ginny Guy



Sharron Glover



Stacey Ivy

### Local Man's Father Dies At Tulia

Services for Alton C. Cox 68, of Tulia were held at 4 p.m. Monday, August 23, in the Central Church of Christ of Tulia with Curtis Camp, of Amarillo, and Harold Kenamer, minister officiating.

Interment was in Rose Hill Cemetery under the direction of Wallace Funeral Home. Cox died Saturday night at Swisher Memorial Hospital in Tulia following a brief illness.

He was born in Jayton and moved to Tulia in 1942. He married the former Ruby Williams on December 6, 1937 in Jayton. He was a banker and grain manager. He retired from C and W Gin in 1978. Cox was a member of the Central Church of Christ.

Survivors include his wife, Ruby; a daughter, Pegene Campbell of Olathe, Kan.; a son, Paul Cox, of Muleshoe; three sisters, Opal Blankinship of Irving, Vida Beach of Kingsland and Lea Duke of Tulia; two brothers, Sidney of Abilene and Owen of Seagraves and six grandchildren.

### Orozco Infant Graveside Services Held

Graveside services for Adrian Orozco, infant son of Mary Alice Orozco were held at 11 a.m. Monday, August 23 in the Muleshoe Cemetery, with Father Patrick Maher of the Immaculate Conception Catholic Church, officiating.

Burial was under the direction of Ellis Funeral Home. The infant was stillborn at 2:27 p.m. Saturday, in Lubbock General Hospital.

Survivors include the mother, Mary Alice Orozco, of Muleshoe; grandparents, Mr. and Mrs. Joe Orozco of Muleshoe.



Boy, These Maytags Are Really Built!

Your Authorized Sales & Service Dealer

**HARVEY BASS**

122 S. 1st  
272-3030

### Bud Skinner Services Held In Springlake

Services for Bud L. Skinner, 83, of Springlake were held at 2:30 p.m. Sunday, August 22 in the Springlake Baptist Church with Rev. Bill Potter, pastor, officiating.

Burial was in Earth Memorial Cemetery under the direction of Parsons Ellis Funeral Home of Earth. Skinner died at 6:50 a.m. Friday, in South Plains Hospital in Amherst.

He was born November 7, 1898 in Indian Territory, Oklahoma and moved to Springlake in 1926 from Eric, Oklahoma. He married the former Virgie Smith on October 31, 1915 in Wellington. He was retired from the grocery store business.

Survivors include his wife, Virgie; one son, William L. Skinner of Springlake; two daughters, Mrs. T.V. Murrell of Earth,

and Mrs. Lois Murrell of McFarland; two sisters, Mrs. Roy Ledbetter and Mrs. Ed Smith, both of Bakersfield, Calif.; one brother, Marvin Skinner of Pampa; six grandchildren; and seven great grandchildren.

### BIBLE VERSE

"The grass withereth, the flower fadeth; but the word of our God shall stand for ever."

1. Who was the author of the above statement?
2. What was his position at the time?
3. To whom was he talking?
4. Where may this statement be found?

### Answers to Bible Verse

1. Isaiah.
2. He was Israel's most outstanding prophet.
3. To the children of Israel.
4. Isaiah 40:8.

U.S. Marines may help peace-keeping in Lebanon.

### Nursing Home News

By: Joy Stancell

Annie Dunn was visited by her great grandson, Blake Douglass, Chubby Douglass, Benni Wiedebush and Josie Flowers.

Mae Provence visited the Nursing Home Wednesday.

The Lazbuddie Church of Christ ladies will bake pies for us Tuesday, August 31 -- Umm-m-m, Good!

Alva Shofner was visited by her daughter, Zora Mae on Wednesday.

Mr. and Mrs. D. B. Head visited Dottie Wilterding Wednesday. They attended the Sing-A-Long together.

Ray Griffiths was visited several times this week by his family.

Ethel Whisenunt was visited by Lucy several times during this week. Mrs. Whisenunt is making a beautiful apron by hand in her room.

Willie Mae Walker, our Ward Clerk, has just returned from her vacation. Sarah Mitchell is in the hospital at this time.

Come visit our residents. They will brighten up YOUR day.

We are enjoying having Mrs. Ruthardt to work with us in the nursing home.

Charles Long received a visit from his son and daughter-in-law from Hereford on Sunday.

### EVENTS AROUND THE NURSING HOME LAST WEEK

Thursday morning, Sharon Williams and Faye Houston from the Nazarene Church came to have devotional with the residents. Thursday afternoon, Mr. and Mrs. Burford, Retta Shipp, Maud Kersey, C. W. Wilhite, Florene Mills and J. E. Embry came to play 42 and dominoes with

the residents. . . On Sunday morning, E. B. Wilson came to have Bible Study with the residents. . . Sunday afternoon, the Methodist Church came to sing with the residents. . . Tuesday night, Stacey Campbell showed slides of her trip to Norway. Those attending were Marie Engram, Ora Roberts, Marjorie Precure, Cordelia Cochran, Effie Smith, Rosemary Pool, Mrs. Cliff Mardis, Celia Lopez and Josephine Lopez. . . Tuesday afternoon, the Hospital and Nursing Home Auxiliary came to shampoo and set the ladies hair and gave at least 10 ladies a manicure. . . Wednesday afternoon, Glenda Jennings, Bro. Louis Crenshaw from the Lazbuddie Methodist Church came to have a Sing-A-Long with the residents.

Cordelia Cochran was visited by Mrs. Gatewood and Mrs. Blair.

Annie Dunn was visited by Mary Austin, Jason Snell, Mel Eagan of Lubbock, Terry, Mrs. Dunn's granddaughter and sons, Blake and Drew Douglass. Annie spent the weekend in the home of her daughter, Bennie Wiedebush.

Margaret Beard received a nice letter from her niece Pattie McNeil of Wheeler.

Murphy Berry returned to the nursing home after being hospitalized. Welcome back, Mr. Berry!

Grace Kemp returned to the nursing home Wednesday after being hospitalized.

Bunnie Hurd had visits from her granddaughter, Joyce Olds, her son, Brandon Mrs. Hurd's grandson, Lee Palmer. The Olds are from Cozad, Neb. Her son, Edd Edmiston, also visited.

Ruby McCamish attended a family reunion at her son Frank McCamish on Sunday, August 15. All her children attended, also 12 of her grandchildren. They had a "cook out" having hamburgers and homemade ice cream.

Alma Henley was visited by Euna Reed Tuesday, by Thora Baker Saturday and Reta Shipp visited on Tuesday and Thursday. Her daughter, Cleo Seagroves and her two grandsons visited on Wednesday.

Mrs. Wenner was visited by Delter and Dorothy every day, C. L. Merriott of Littlefield, her grandson, Mickey Merriott from Amarillo, Mr. and Mrs. Kaufman, Mrs. Baker, Mrs. Glenn and Eva Ashford.

Janie Patton went out with her daughter, June Gore. Mrs. Patton had a birthday, August 17th.

Ruby Gore went to her daughter's, Louise Allen, for Sunday dinner.

Cordelia Cochran was visited by Mrs. Gatewood and Mrs. Blair.

Marie Engram was visited by Wilma Waddle, Jeff Whatley, Joann Puckett,

Nelda Merriott, Sonya Florence, Josie Flowers, Mary Austin, Jason Snell, Stacey Campbell, Maud Kersey, Stacey Barnhill, Bill Kent, Mrs. Glasscock of Earth, Mrs. Brice Higgins, Earth

It is so good to see Marie Engram coming to the activities. We are so glad she is able to.

Our thanks to the Mary Martha Class of the First Baptist Church for the generous donations for our craft class. We really appreciate it. They will help support our class monthly.

Rosemary was visited by Linda Davis, Hazel Robinson, Jodie Kay and Betty (Hill) Robinson.

Thursday, Margaret London visited her mother-in-law, Maggie London.

Mrs. Baker visited her husband, E. O. Baker on Wednesday. Mr. Baker celebrated his birthday last week.

Russ Duncan was visited by Betty (Hill) Robinson on Wednesday. She lives in California.

## Squelch For Unordered Office Supplies Perfect

A church in Nebraska which had been target before of receiving unordered office supplies, ( copier machine items, light bulbs, etc. ) came up with the perfect answer when again they received a shipment of supplies they never ordered with a bill. Instead of politely notifying the firm they never ordered the delivered items and becoming involved, as in the past, with costly telephone calls and lengthy correspondence, they sent the following letter.

"Dear Sirs:  
On (date) we received a shipment of merchandise from your company for

which we had issued no order. An ensuing statement followed listing the value of the items shipped at \$307.79.

Please use this letter as a statement of your contribution to our church and, remember, that your contribution is tax deductible. A record of your contribution will be kept in our office.

May the Lord bless you."

To no one's surprise, the church received a call the next day, apologizing and promising to send the money to cover the cost of returning the unordered supplies.

## H&R Block Tax Course Begins Soon

H & R BLOCK is offering a Basic Income Tax Course starting September 9th.

There will be a choice of morning or evening classes held at the H & R Block office at 224 W. 2nd, Muleshoe.

The twelve week course is taught by experienced H & R Block personnel and certificates are awarded to all grad-

uates. While thousands of job opportunities are available, graduates are under no obligation to accept employment with H & R Block. Courses are licensed by the Texas Education Agency.

Registration forms and brochures may be obtained by contacting the H & R Block office at 224 W. 2nd, Phone 272-3332. adv.

JOHN DEERE



# SUPER TRACTOR SAVINGS

Purchase, or lease from Deere, any tractor model listed here and qualify for a John Deere money bonus

300-hp 8850: \$8,200	110-hp 4240: \$2,300
235-hp 8650: \$6,400	90-hp 4040: \$2,200
185-hp 8450: \$5,700	80-hp 2940: \$1,800*
228-hp 8640: \$4,500	80-hp 2940: \$1,400**
179-hp 8440: \$4,000	70-hp 2640: \$1,300
180-hp 8440: \$3,600	60-hp 2440: \$1,200
155-hp 8440: \$3,400	50-hp 2240: \$1,100
130-hp 4440: \$2,800	40-hp 2040: \$ 900

\*without Sound-Gard® body  
\*\*with Sound-Gard body

# PLUS

## 1 MAR. '83 WAIVER OFFER

Finance your new tractor with Deere and get a second bonus: finance charge can be waived to March 1, 1983. This waiver plus the money bonus is yours, from John Deere, over and above our new tractor discount. And we're making specially good trades on your older models—3020's, 4020's and other tractors of that age. (Financing and leasing subject to approved credit.)

Get our best deal...get a John Deere money bonus...get a waiver of finance charge from Deere. Get moving...the whole deal can be withdrawn on short notice from Deere.

Dent - Rempe Inc.

1516 W. Amer. Blvd.

272-4296

# GRAND OPENING

Curtis Mathes 12 Inch Diagonal Black & White Portable. The perfect set for the kid's room



\$68

Regularly \$109.95

Curtis Mathes

HOME ENTERTAINMENT CENTER

1611 N. PRINCE

CLOVIS, N.M.

FREE!

PEPSI & POPCORN  
7UP & HOTDOGS  
ON FRIDAY & SAT.

FOUR YEAR EXCLUSIVE LIMITED WARRANTY

Curtis Mathes 25" Diagonal Remote Control Color Console \$799

Remote control!

SAVE \$200

25" COLOR CONSOLES

FROM JUST \$649

REG. \$799

\* 1983 MODEL NO. H2502

LIMITED TO QUANTITIES IN STOCK

CURTIS MATHES CONSOLE

Curtis Mathes 19 Inch Diagonal Color Table Model



SAVE \$60

\$399.

REGULARLY \$459\*\*

REGISTER FOR FREE PRIZES TO BE GIVEN AWAY SATURDAY, AUGUST 28th

OPEN THRU MONDAY, FRIDAY, AUGUST 27th AT THE NEW OWNED & OPERATED BY MIKE & LORNAE BOGGIN FREE DELIVERY IN TEXAS

The Most Expensive Television Set in America. And Worth It.

Curtis Mathes HOME ENTERTAINMENT CENTER

1611 N. PRINCE CLOVIS, N.M. 782-3743

FOUR YEAR EXCLUSIVE LIMITED WARRANTY



# BUYING? SELLING? CHECK OUT THE...

# CLASSIFIED ADS

**WE RESERVE THE RIGHT TO CLASSIFY, REVISE OR REJECT ANY AD.**

**NOT RESPONSIBLE FOR ANY ERROR AFTER AD HAS RUN ONCE.**

**DEADLINE FOR CLASSIFIED ADS IS TUESDAYS AND FRIDAYS 11:00 A.M.**

### PERSONALS

I would like to keep children in our home. Anytime day or night. Come by 1534 W. Ave. B. References. 1-34s-2tc

CAROLYN WISEMAN is offering children's Beginning Piano Lessons and Voice Lessons, starting September 13. Call 272-5197. 1-33t-7tc

**WE BUY USED FURNITURE AND APPLIANCES CALL 272-3030 HARVEY BASS APPLIANCE** 18s-tfc

Want to do babysitting in my home. Call 272-3222. 1-30t-tfc

Forming a car pool to Texas Tech. Tuesday - Thursday. Call 965-2461. 1-34t-1tc

Own your own Jean-Sports-wear, Infant - Preteen or Ladies Apparel Store. Offering all nationally known brands such as Jordache, Chic, Lee, Levi, Vanderbilt, Calvin Klein, Wrangler over 200 other brands. \$7,900 to \$16,500 includes beginning inventory, airfare for one to Fashion Center, training, fixtures, grand opening promotions. Call Mr. Loughlin 612-835-1304. 1-34t-1tp

Training and conditioning for sale or show. Let us put the polish and finish on your horse. Well-groomed animals bring higher sale prices. Call 272-5317 after 6 p.m. Reasonable rates. 1-34t-tfc

**PIANO LESSONS** will begin Sept. 7. To register call 272-3229. 1-34t-2tc

**SAVE**  
The high price of a full time bookkeeper you do not need fulltime, or even halftime. Take a look at home bookkeeping and help keep the cost of overhead reduced to a practical level. Call 272-3279 after 6 p.m., on Wednesday afternoon or on weekends. 1-34t-tfc

Potent male hormone! Genie, Box 4090 B&J, Yuma, Arizona 85364. 1-34t-1tp

**INSTANT CREDIT**  
Living room group or Bedroom set. \$699.95. \$75.00 down, \$60 per month. Baker Furniture, 108 E. Ave. B, 272-4000. We tote the note. 1-16t-tfc

### HELP WANTED

**WANTED:** Women needed full or part time, Tri-Chem (liquid embroidery). For more information call 986-2921. Springlake. 3-33s-4tsc

**WANTED:** Clerk - Typist. Average speed typing is required. Apply only in person to Sammye Hall at Muleshoe Publishing Co., 304 West 2nd St. 3-34s-tfc

**CRUISE SHIP JOBS**  
All occupations. Great income potential. For information call 602-998-0426. Dept. 0511. Phone call refundable. 3-33t-2tpp

**THORNTON CHEVROLET** is now accepting applications for the following positions:  
**TECHNICIAN:** Experienced line mechanic with tools. Plenty of work. Excellent pay plan.  
**TECHNICIAN TRAINEE:** Must have mechanical background and some tools. Will be provided training on the job and at South Plains College, if qualified.  
Phone 272-4521, ask for Mr. Thornton to discuss any of the above positions. 3-34s-2tc

### PERSONALS

**RETIRED**  
Supplement your income selling avon. Call 272-3208 or Phyllis Duff 794-3498, Lubbock, Tx. 3-32T-6TC

**NEEDED:** Nursery worker for Sunday services. Richland Hills Baptist Church. 272-5229. 3-34s-tfc

**WANTED:** Experienced beautician. Apply in person at Main St. Beauty Salon. 3-8s-tfc

### APARTMENTS

**SARATOGA GARDENS**  
1300 N. Walnut-Friona Phone 247-3666  
**NOW, 1 MONTH FREE RENT** 1, 2 or 3 bedroom apartments, modern, wall to wall carpet, heating/cooling, kitchen equipped, laundry facilities, parking. Low rent for needy families. Call Collect.

**FOR RENT:** 2 BR apartment. Call 272-4654 after 5 p.m. 4-34t-tfc

**APARTMENT FOR RENT:** Nice, 1 BR unfurnished apartment. Call 272-3107. 4-34s-tfc

### REAL ESTATE

**HOUSE FOR SALE:** 3 BR brick home for sale or rent. Hyatt Addition, Earth, Texas. Assumable loan or owner will finance. 257-3721. 8-28t-tfc

**HOUSE FOR SALE:** 3 BR, 1 1/4, LR, kitchen-dining combination, den, ample storage, corner lot, near 3 schools, 1928 sq. ft. living area, 621 West 6th. Phone 272-4732 days or 272-4827 evenings. 8-2s-tfc

**HOUSE FOR SALE:** 4 BR, 3 bath, basement, 2 car garage, study, Richland Hills. Call 272-3800. 8-27s-tfc

**LARGE 3 BR, 2 bath home** \$67,500. Immediate possession, excellent terms. Excellent financing. Call your local realtor, owner broker. 806-794-5595. 8-31s-tfc

**FOR SALE BY OWNER:** 3 BR, 2 bath, 3 car garage, workshop and a rent house and a trailer space. Price asking lower than appraised for. 227-2212. 504 Wilson in Sudan. 8-34t-2tp

**Bingham & Nieman Realty**  
116 E. Avenue C  
272-5285  
nights 965-2488  
"We Appreciate Your Business!"  
George & Dianne Nieman  
8-49t-1tc

**AAA - CHOO!!**  
Allergic to rent and high prices?  
Custom-Built 3 Bedroom Brick Homes  
Low Down Payment  
Low Monthly Payments  
Can YOU Qualify?  
272-3142  
Reid Real Estate  
8-34t-tfc

**HOUSE FOR SALE:** 3 BR, 1 bath, 1-car garage on 1 acre. Central heat, 3 miles north on 214, and 1/4 mile East. Call 272-5042. 8-33t-2tc

**KREBBS REAL ESTATE**  
201 W. Ave. C  
Appraisals  
272-3191  
Serving Muleshoe Area 35 years. We Appreciate your business. 8-tfc

**Smallwood Real Estate**  
232 Main  
272-4838  
\*\*\*\*\*

3 BR, Brick, 2 bath, 2 car garage, fireplace, fenced back yard. 12% financing. Richland Hills. 8-25s-2tp

Country living, .1 mile off pavement. 3 BR, 1 and 3/4 bath, 2 car garage, front and back porch, central heat, refrigerated air, storm cellar, fenced back yard. Fruit trees and grape vines. 1 acre of land. 8-22s-tfc

See or call Joe Smallwood, Broker. 8-22s-tfc

### Henry Realty

2 BR house, 2 bath. Stucco, 100 ft. lot. Ideal for apartment housing. Located near grade school and downtown. 12-44s-ttc

Small acreage 3 miles east of Muleshoe on highway. 11-16t-tfc

Owner financed - large brick 3 BR, 2 1/2 bath, 2 car garage, spacious living area with fireplace, central heat and refrigerated air, roomy closets and ample storage. 13-33s-tfc

Excellent location, 3 BR, 2 bath brick home in Richland Hills Addition. Living room and large den with fireplace. Priced to sell. 8-28t-tfc

111 W. Avenue B, Muleshoe 272-4581 8-28t-tfc

### USED CARS • TRUCKS

Jeeps, Cars, Trucks under \$100 available thru gov't sales in your area. Call (refundable) 1-714-569-0241 ext. 7864 for directory on how to purchase. 24 hrs. 3-33t-6tpts

1974 Ranchero 500. All new spoke wheels and tires. 272-5168 after 5 p.m. 9-34t-tfc

**FOR SALE:** 78 Yamaha 250 Enduro. Low miles, looks, runs good. Good for farm or town. 272-5134. 9-34s-3tp

**FOR SALE:** 1972 SL 350 off-on motorcycle. Good shape, runs good. Call 272-5282 after 5:00 p.m. 9-32T-6TC

### FOR SALE OR TRADE

Shelled Pecans for sale: \$3.50 lb. 5 or more, \$3.25. 801 E. Ave. D. Phone 272-4156. 11-34s-3tp

**FOR SALE:** 8 ft. Cabover camper, Nice! Fully equipped. Also 1978 Yamaha XS-750-E motorcycle. Full dressed for touring and show. Tommy Whatley. After 6 p.m. 272-5490.

**PARAKEETS** for sale: Murray Lemons, 225 Elm. 272-4608. 32s-11-tfc

**FOR SALE:** Green beans, black-eye peas, pinto beans Go 4 miles west on 1760, 1 mile north and 1/4 mile back west. Robert and Frankie Lunsford. 272-3748. 11-34t-tfc

**FOR SALE:** Yearling Quarter horse stud colt. Gentle, halter broke and will load in trailer. Call evenings, 965-2470. 11-32T-4TC

**HONEY FOR SALE**  
Nick Landers  
334 W. Ave. J  
272-3096  
11-28s-tfc

USED 25 hp VHS motor and switch, \$1100. Owen Electric, Hereford, Tx. Call 364-3572. 11-16t-tfc

### HOUSEHOLD GOODS

**BURROWS UPHOLSTERY AND FURNITURE REPAIR**  
209 W. 2nd  
phone 272-4255  
12-44s-ttc

**FOR SALE:** Brown Flair - range stove. Good condition. 946-3630. 11-30s-tfc

### PROPERTY FOR LEASE

**OFFICES FOR RENT:** Front office at 302 W. 2nd. Call 272-3107. Other offices available also. 13-34s-tfc

**NOW LEASING:** Las Bresas Mobile Park. Large spaces for all size mobile homes. Reasonable rates. Conveniently located at Birch and Ithaca Streets. Call 272-5696. 13-33s-tfc

### FARM EQUIPMENT

1-owner, 1-915 International combine, 24 ft. platform. 1972 Ford tandem truck, 20 ft. box. Call 806-995-2100. 14-34s-2tsc

### MISCELLANEOUS

**GARAGE SALE** Friday and Saturday, 27th and 28th, 1 mile west and 1/2 mile South of Clay's Corner. 9:00 - 5:00, weights and bench, baby swing, furniture, kitchen appliances, mattresses, lots of odds & ends. 15-34t-1tp

### MISCELLANEOUS

**Rent-To-Own**

**Color TV**

Stereos Microwave Ovens Dryers  
Refrigerators Freezers Washers  
Dishwashers

No Service Expense No Interest To Pay

**Wilson**

Appliance  
MULESHOE

117 Main 272-5531

**HANEY'S SWAP SHOP**  
Announcing the association of Dave Miller-25 years, Don Curry - 10 years. Appliance repair experience with Haney's Swap Shop, 102 Ave. A., Farwell, 481-9511. Call us for all your refrigeration, washer, dryer and dishwasher repair. Guaranteed used appliances as low as \$50 for sale. We also buy good used appliances. 15-26t-tfc

1979 COACHMAN Cadette trailer. 22 ft. long. Fully self-contained. \$5500. 272-3908.

**FRANK'S REFRIGERATION APPLIANCE & SERVICE PARTS & REPAIR**  
315 W. 3rd Ph. 272-3822 15-7t-tfc

**DUDLEY ROOFING:** Re-roof, new roof or repairs. Call 505-762-5558 under the association of Jerry Paul Trucking.

Rapid Roof. The roof of the future. Here today. For free estimates, Call Don Hunt, 965-2888. 15-34s-4tp

### LEGAL NOTICES

**NOTICE TO ALL PERSONS HAVING CLAIMS AGAINST THE ESTATE OF ERCELL WHITT, DECEASED**

Notice is hereby given that original Letters Testamentary for the Estate of Ercecel Whitt, Deceased, were issued on August 23, 1982, in Cause No. 1518, pending in the County Court of Bailey County, Texas, to:

**EUNICE BALES.**  
The residence of such Executrix is Bailey County, Texas. The post office address is:  
402 West 20th

Muleshoe, Texas 79347  
All persons having claims against this Estate which is currently being administered are required to present them within the time and in the manner prescribed by law.

**DATED** the 23rd day of August, 1982.

/s/ Gordon H. Green  
Gordon H. Green,  
Attorney for the Estate  
Post Office Box 442  
Muleshoe, Texas 79347  
806/272-4276  
pub. not.-34t-1tc

### NOTICE OF SALE THE STATE OF TEXAS COUNTY OF BAILEY

**KNOW ALL MEN BY THESE PRESENTS THAT**  
Whereas, on the 1st day of June 1979 and the 17th day of October 1980, Billy C. Snell, Muleshoe, Texas, executed and delivered to Dent-Rempe, Inc., Muleshoe, Texas certain Retail Installment Contract and Security Agreement which was subsequently assigned to John Deere Company, and thereon mortgaged the following described

property to wit:  
1 JD 400 #428 Rotary Hoe S/N 69270  
1 JD 283 Cotton Stripper S/N 6707  
1 CMC 3273 Cotton Module Builder S/N 632.

The maker of the Retail Installment Contract and Security Agreement has defaulted in compliance with the terms of said Retail Installment Contract and Security Agreement. John Deere Company, the owner and holder of said Retail Installment Contract and Security Agreement, is offering said property for sale in accordance with the terms of said Retail Installment Contract and Security Agreement. John Deere Company has the right to bid.

### CITATION BY PUBLICATION

The State of Texas  
TO: R.J. OIL COMPANY\* a corporation, and its unknown shareholders and directors, Defendants in the hereinafter styled and numbered cause:

You and each of you are hereby commanded to appear before the Honorable

District Court of Bailey County, Texas 154th Judicial District, at the Court-house in Muleshoe, Texas, at or before 10:00 A.M. on the first Monday after the expiration of 42 days from the date of issuance hereof; that is to say, on or before 10:00 A.M. on Monday, the 27th day of September, 1982, and answer the Petition of GETTY OIL COMPANY, Plaintiff in Cause No. 4581, styled GETTY OIL COMPANY vs. R.J. OIL COMPANY\* in which GETTY OIL COMPANY is the Plaintiff and the parties herein named as Defendants are Defendants, which Petition was filed in said Court on the 6th day of August 1982, and the nature of which suit is, as follows:

Plaintiff seeks the appointment of a receiver of the interest had, owned or claimed by Defendants in the oil, gas and other minerals in and under Labors 14, 15, 16 and 17, league 178, Motley County School Land, Bailey County, Texas, containing 708.4 acres, more or less, with authority to execute and deliver to lessee an oil, gas and mineral lease covering said mineral interest had, owned or claimed by said Defendants upon such terms and conditions as the Court may prescribe, all as authorized by and in accordance with the provisions of Article 2320 (b), Revised Civil Statutes of Texas, 1925, as amended.

If this Citation is not served within ninety (90) days after date of its issuance, it shall be returned unserved. The Officer executing this writ shall promptly serve it and make due return thereof according to requirements of law, and the mandate hereof.

Issued under my hand and seal of said Court at office in the City of Muleshoe, this 6th day of August, 1982.

/s/ Nelda Merriott  
Nelda Merriott  
Clerk of the District Court 154 Judicial District, Bailey County, Texas  
Pub. Not.-32T-4TTC

### NOTICE OF SALE

The State of Texas  
County of Swisher  
Know All Men By These Present That  
Whereas, on the 11th day of November 1980, Troy Langston, Tulia, Texas executed and delivered to Dent - Rempe, Inc., Muleshoe, Texas a certain Retail Installment Contract and Security Agreement which was subsequently assigned to John Deere Company, and thereon mortgaged the following described property, to wit:

1 IHC 560 Tractor S/N 56044  
1 IHC 30 Cotton Stripper S/N 973L

The maker of the Retail Installment Contract and Security Agreement has defaulted in compliance with the terms of said Retail Installment Contract and Security Agreement. John Deere Company, the owner and holder of said Retail Installment Contract and Security Agreement, is offering said property for sale in accordance with the terms of said Retail Installment Contract and Security Agreement. John Deere Company has the right to bid.

Now, therefore, notice is hereby given that on the 23rd day of August 1982 at 11:00 AM of said date, John Deere Company will offer for sale at Dent-Rempe, Inc., Muleshoe, Texas to the highest bidder the above described property.

**Terms of sale: CASH**  
Additional information concerning the security interest held by John Deere Company in the above described collateral may be obtained from:  
John Deere Company  
Financial Services  
P.O. Box 20598  
Dallas, Texas 75220  
Witness our hands this 5th day of August 1982.  
JOHN DEERE COMPANY  
By: /s/ W.J. Young  
W.J. Young  
Pub. Not.-32T-2TTC

Wednesday night, the fire department made its pre-school public school fire safety inspection. These inspections are conducted each year under the supervision of Fire Marshall Owen Jones. The inspections are carried out by the captains, lieutenants and firemen in accordance with the regulations set by the State of Texas. The findings of the inspection will be checked by the fire marshal and presented with recommendations to the proper persons connected with the public school systems.

We want to thank the school superintendent, principals and custodians for their help and cooperation. With out it, the inspection could have been a time-consuming job.

Cooking sometimes is a job, but it was an enjoyable chore for some of the firemen during the recent Mule Day celebration. The firemen are glad they could help.

Charles Percy, Senator (R-Ill):  
"Shultz is always a team player...but he will fight hard for what he thinks is right..."

David Stockman, Budget Director:  
"Unemployment will be a lot lower by the 1984 presidential election and the jobless rate is not the proper way to view the labor picture."

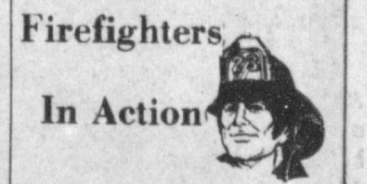
District Court of Bailey County, Texas 154th Judicial District, at the Court-house in Muleshoe, Texas, at or before 10:00 A.M. on the first Monday after the expiration of 42 days from the date of issuance hereof; that is to say, on or before 10:00 A.M. on Monday, the 27th day of September, 1982, and answer the Petition of GETTY OIL COMPANY, Plaintiff in Cause No. 4581, styled GETTY OIL COMPANY vs. R.J. OIL COMPANY\* in which GETTY OIL COMPANY is the Plaintiff and the parties herein named as Defendants are Defendants, which Petition was filed in said Court on the 6th day of August 1982, and the nature of which suit is, as follows:

Plaintiff seeks the appointment of a receiver of the interest had, owned or claimed by Defendants in the oil, gas and other minerals in and under Labors 14, 15, 16 and 17, league 178, Motley County School Land, Bailey County, Texas, containing 708.4 acres, more or less, with authority to execute and deliver to lessee an oil, gas and mineral lease covering said mineral interest had, owned or claimed by said Defendants upon such terms and conditions as the Court may prescribe, all as authorized by and in accordance with the provisions of Article 2320 (b), Revised Civil Statutes of Texas, 1925, as amended.

If this Citation is not served within ninety (90) days after date of its issuance, it shall be returned unserved. The Officer executing this writ shall promptly serve it and make due return thereof according to requirements of law, and the mandate hereof.

Issued under my hand and seal of said Court at office in the City of Muleshoe, this 6th day of August, 1982.

/s/ Nelda Merriott  
Nelda Merriott  
Clerk of the District Court 154 Judicial District, Bailey County, Texas  
Pub. Not.-32T-4TTC



Wednesday night, the fire department made its pre-school public school fire safety inspection. These inspections are conducted each year under the supervision of Fire Marshall Owen Jones. The inspections are carried out by the captains, lieutenants and firemen in accordance with the regulations set by the State of Texas. The findings of the inspection will be checked by the fire marshal and presented with recommendations to the proper persons connected with the public school systems.

We want to thank the school superintendent, principals and custodians for their help and cooperation. With out it, the inspection could have been a time-consuming job.

Cooking sometimes is a job, but it was an enjoyable chore for some of the firemen during the recent Mule Day celebration. The firemen are glad they could help.

Charles Percy, Senator (R-Ill):  
"Shultz is always a team player...but he will fight hard for what he thinks is right..."

David Stockman, Budget Director:  
"Unemployment will be a lot lower by the 1984 presidential election and the jobless rate is not the proper way to view the labor picture."

**CARD OF THANKS**  
We wish to express our sincere gratitude for all the phone calls, flowers, cards and sympathy given to us during the death of our loved one.  
Rose Collins,  
Lam Collins & Family,  
Johnny Collins & Family

**CARD OF APPRECIATION**  
We would like to express our sincere appreciation for all the love and support you have given to us during our time of sorrow. Thank you so much.  
The family of Justin Dupler



# WHITE'S CASHWAY SUPERMARKET

MULESHOE, TEXAS



Cashway's Now Gives Gold Bond Stamps! Double On Wed. & Sat.



LONGMONT TURKEY

## 1/2 HAMS

**\$1.49** Lb.

HALF MOON FULL MOON  
RED RIND LONGHORN CHEDDAR  
**CHEESE**  
**\$2.39** Lb.

OWENS COUNTRY  
**SAUSAGE**  
**\$1.89** 1 Lb. **\$3.75** 2 Lb.

12 OZ. TYSON CHICKEN  
**FRANKS**  
**69¢**

PORK CUBED  
**STEAKS**  
**\$1.89** Lb.

12 OZ. TYSON CHICKEN  
**BOLOGNA**  
**79¢**

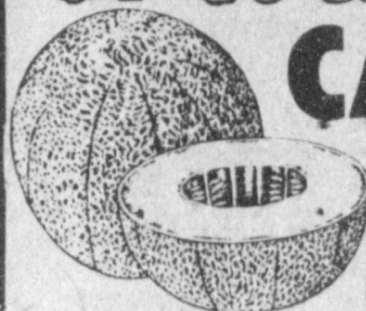
## PORK CHOPS

SLICED 1/4 LOIN  
**\$1.59** Lb.

CENTER CUT RIB  
**\$1.89** Lb.

CENTER CUT LOIN  
**\$1.99** Lb.

### DELICIOUS PRODUCE!



**CANTALOUPE** Lb. **25¢**

CALIFORNIA SWEET & JUICY

**PEACHES** Lb. **59¢**

FRESH GRN. BUNCHES

**BROCCOLI** Lb. **39¢**



MEDIUM SIZE  
**YELLOW ONIONS** Lb. **6/\$1**

1 LB. CELLO BAG  
**CARROTS** Lb. **4/\$1**

**CAULIFLOWER** Lb. **59¢**

16 OZ. FISHERBOY

**FISHSTICKS** **99¢**

11 OZ. BANQUET

**T.V. DINNER** **89¢**

6 OZ. WHITE SWAN

**ORANGE JUICE** **39¢**

1 Lb. WHITE SWAN SOFT TUB  
**MARGARINE**  
**2/99¢**

1 Lb. HILLS BROTHERS  
**COFFEE**  
REGULAR ELECTRIC DRIP  
**\$2.29**

1 CL. DELTA  
**TOWELS**  
**59¢**

**DR PEPPER**  
SUGAR FREE DR PEPPER  
**7-UP**  
SUGAR FREE 7-UP  
**\$1.49**  
6-12 OZ. CAN OR 5<sup>TH</sup> CASE

21.5 OZ. BETTIE CROCKER  
**BROWNIE MIX** **\$1.29**  
8 OZ. KRAFT BACON & TOMATO  
**DRESSING** **2/\$1.29**  
2 LITER  
**NEW RED** **79¢**  
4 ROLL DELTA TOILET  
**TISSUE** **89¢**  
20 COUNT ZIPLOC GAL. SIZE  
**STORAGE BAGS** **\$1.49**

GLADIOLA  
**FLOUR**  
5 Lb. **89¢** **\$3.79** 25 Lb.

12 OZ. SUNSHINE HI HO  
**CRACKERS** **99¢**

32 OZ. WHITE HOUSE APPLE  
**APPLE JUICE** **89¢**

19 OZ. NABISCO CHOCOLATE CHIP  
**COOKIES** **\$1.69**

8 OZ. WHITE SWAN  
**BISCUITS** **5/\$1.00**

16 OZ. STYLE ASST.  
**SHAMPOO** **\$2.19**

8 OZ. PEPSODENT  
**TOOTHPASTE** **\$1.99**

1 CL. DX SOFT  
**TOOTHBRUSH** **99¢**

5 OZ. COAST BATH  
**SOAP** **2/79¢**

22 OZ. SUNLIGHT DISH  
**DETERGENT** **\$1.09**

28 OZ. WHITE SWAN IODIZED  
FREE RUN  
**SALT** **4/\$1.00**

28 OZ. BOX COMET LONG GRAIN  
**RICE** **89¢**