



# MULESHOE JOURNAL



20¢

'The Community of Opportunity-Where Water Makes the Difference'

Volume 59, No. 26

12 Pages Today

Published Every Thursday at Muleshoe, Bailey County, Texas 79347

Thursday, July 1, 1982

## Around Muleshoe

Little League All Stars will be announced Thursday evening, July 1, following the last game of the evening.

The Muleshoe Roping Club has announced that the 'Miss Rodeo Muleshoe' contest for 1982 has been cancelled this year.

Kim Farmer, Miss Rodeo Muleshoe 1981, will continue her reign for the coming year and retain the title until the next contest.

While you're "Standing on the Corner" watching the parade go by, treat yourself to a cup of homemade ice cream.

The Muleshoe Young Homemakers will be serving cups of homemade ice cream in a variety of flavors in front of the Southwestern Public Service Office.

Marine 2nd Lt. Powell T. Calhoun, whose wife, Shannon, is the daughter of Mickey and Ann Sowder of Star Route, Goodland, Texas, recently participated in exercise "Ocean Venture 82."

He is an officer assigned to Weapons Company, 3rd Battalion, 6th Marines, 4th Marine Amphibious Brigade, Camp Lejeune, N.C. Conducted in the Caribbean, the Gulf of Mexico and along the southeastern U. S. seaboard, the exercise involved some 45,000 men and women, 57 ships and 345 aircraft. It was designed to improve the capability of U. S. and Western forces to protect and maintain free use of sea lanes in the exercise areas. "Ocean Venture" included all aspects of a war-at-sea scenario, including airborne and amphibious assault.

Cont. Page 6, Col. 2

## Courts Dispose Of Heavy Case Loads

Trials were held in Municipal Court on Monday, June 28 with Judge Linda Huckaby presiding.

One bond forfeiture was recorded on Todd Allsup for speeding; a continuance was granted to Jeff Carpenter on a charge of failure to yield right of way. A case on Devin Sisemore for alleged exhibition of acceleration was determined not guilty.

Joe Collins was fined \$50 and \$6 court costs after a conviction on a speeding violation. David Reed was found guilty of speeding and fined \$10; as was Scott Campbell on the same type charge.



**4-H CAMP PARTICIPANTS**—Several Bailey County youth recently attended a leadership lab at South Plains College in Levelland. Front (kneeling) Wes Hanks, Greg Young, Todd Bessire, Mandy Plank, Jamie Wheeler. Standing L to R: Jim Irwin, sponsor, Chris Young, Mike Dunham, Russell Brown, Jodie Wheeler and Britta O'Tay.

## Questions Are Answered For Alternate Planting

by Dr. John R. Abernathy  
Project Leader  
Associate Professor  
Texas Agricultural  
Experiment Station  
Lubbock, Texas

We would like to concern ourselves here with a few questions that are routinely

asked at this time of year about "what happens if I have already put out a pre-plant incorporated herbicide and I want to plant sorghum or hay grazer there? It was too dry to plant cotton or the cotton was hailed out. On the other hand, what if I have used Sancap

or Caparol on cotton and it got hailed out, what are the chances of planting sunflowers, cowpeas, or soybeans?"

We will begin by taking specific examples. What happens when the pre-plant incorporated herbicide, such as Treflan, Tolban, Basalin, or Prowl are incorporated in the soil in anticipation of planting cotton, yet there is not enough moisture to plant the cotton has been hailed out. Rotations that you may want to come back with may be sorghum or hay grazer or another grass crop. In this case, there is a good probability that the grower can get by with planting one of these grass crops if he will bust out or plant beneath where the herbicide treated soil is. Inherently, the preplant incorporated herbicides that are used do not move very much in our soils with rain. If a grower can anticipate how deep he incorporated that herbicide into the soil,

Cont. on Page 6, Col. 1

## Drivers Cautioned For July Holiday

The Department of Public Safety today estimated that as many as 47 persons could die in traffic accidents during this July 4th weekend unless drivers are exceptionally careful.

Colonel Jim Adams, DPS director, said the risk of traffic accidents will in-

crease during the 78-hour holiday period as more drivers take to the streets and highways for the holiday.

"As in many weekend traffic accidents, alcohol, excessive speed, and failure to use seat belts are the major contributing factors in the traffic deaths," he said.

DPS statistics show that 63 persons were killed during the last 4th of July holiday and 25 of those fatalities resulted from accidents in which driving while intoxicated was a factor.

"We know that 63 persons were killed during the last 4th of July holiday and 25 of those fatalities resulted from accidents in which driving while intoxicated was a factor.

"We know that drinking may have been involved in more of the traffic deaths, but since state law does not require blood alcohol samples from traffic victims we are uncertain how many more of the deaths may have involved drivers impaired by alcohol," Adams noted. "Additionally, 59

Cont. Page 6, Col. 4

## Film Series Shown At Lazbuddie

A film series "Whatever Happened to the Human Race?" will be shown Saturday and Sunday, July 3rd and 4th, at the First Baptist Church, Lazbuddie.

This 5-part film series presents a provocative expose of abortion, infanticide and euthanasia . . . and communicates a powerful scriptural challenge to the silent Christian.

It was produced by Francis A. Schaeffer in conjunction with C. Everett Koop, M. D. Dr. Schaeffer is a theologian, philosopher and author. He is recognized as one of the world's most respected thinkers. Dr. Koop is the Surgeon Gen-  
Cont. Page 6, Col. 3

## Elder Will Counsel WTSU Fall Retreat

Curtis Elder, a junior at West Texas State University from Muleshoe, will be among the 50 "wranglers" for Buffalo Branding '82, a fall retreat for beginning freshman students.

Elder, who is majoring in computer information systems and geology, will be among counselors for the fall retreat scheduled for Sunday through Tuesday, August 22-24.

# USDA Task Force Tours South Plains

## City Store Schedules Issued For Holidays

According to a survey taken by the Muleshoe Chamber of Commerce and Agriculture of its members, the following is a schedule of holiday closings for the July 4th weekend:

Scheduled to be closed on Saturday, July 3rd, ONLY:

Bratcher Motor Supply, Chapman Supply, Fry and Cox, Morrison Oil Co., Plains Auto Parts, S & G Antiques, Wrinkle Welding, Dale Oil Co., Higginbotham-Bartlett, Muleshoe Electric, St. Clair's, Watson Alfalfa, Wilson Appliance, Western Drug, Lindsey Jewelry.

Slated to be closed on Monday, July 5, ONLY:

Harvey Bass Appliance, First National Bank, Joyce Shafer, CPA, Bob Stovall Printing, Williams Bros. Office Supply, The Fair Store, Federal Land Bank, Muleshoe Abstract, Production Credit Assn., Texas Sesame, Valley Grain,

## Members Shocked At Crop Devastation

The U. S. Department of Agriculture Task Force toured western Bailey County, Curry County, N.M. and other western areas on Tuesday in an effort to take back to Secretary of Agriculture John Block an accurate account and survey of the actual disastrous damage that counties in this area have suffered over the past month due to winds, hail and flooding. The task force is being headed by former Lubbockite John Ford, the USDA Deputy assistant secretary for marketing and transportation.

According to Congressman Hance's office, the Secretary of Agriculture, John Block, has the authority to implement direct disaster payments to devastated farmers immediately under a provision in the 1981 Farm Bill. Officials expressed their hopes on Tuesday that Block would see the situation for what it really is and implement

Smith's LPGas will close at noon on Saturday, July 3rd, and will also be closed on Monday, July 5.

Lambert Cleaners will close at 12:00 p.m. on Saturday, July 3rd.

Cont. Page 6, Col. 8

## City Police, Sheriff Business 'Growing'

City Police had their share of activity over the past weekend. On June 28, Grace Gordon reported an attempted burglary of a residence at 201 East 4th. Damage to a metal screen door was sustained at an approximate cost of \$25.

On June 28, Alexander Garcia reported a burglary of his residence at 224 West 8th. A screen had been torn off a window of a rent house and a "weed eater" taken.

Nola Ivy reported to police a burglary of her vehicle in the 200 block of East Avenue B. A purse was taken from the vehicle and total value was estimated at \$59.

On June 23, Joe Louis Flores was arrested on a Hockley County warrant for revocation of probation. He was placed in Bailey County jail pending transfer.

Tony Allan Slattery was arrested June 25 on a criminal trespassing charge of a residence at 301 E. 6th, where he had allegedly broken out some windows. Also on the 25th, Billy Tosh reported the theft of a tiller valued at \$45. C. D. Gilbert of 1714 West Avenue F reported a hit and run wherein a cinder block fence was destroyed.

Cont. Page 6, Col. 4

A portion of Bailey County was included in the Tuesday tour. Spokesmen for the Task Force said that they hope to see some direct and beneficial results from this tour within the next week to ten days.

At a press conference and town meeting yesterday in Lubbock, Task Force members were placed with various tables of farmers and other interested persons to hear the problems on a one on one basis. Many of the Task Force members expressed shock and surprise later as they actually viewed the devastation on the high plains counties. Estimates have gone as high as a 24-county area disaster with approximately 2.5 million acres in crops lost.

The Task Force will be meeting throughout this week and surveying the damages in other surrounding counties.

Tony Price of Dallas, who is executive vice president of the Texas Cotton Growers Association stated that the description of disaster is a complete understatement. "Cotton gins depend on cotton to keep them open and if farmers cannot stay in business, there will be no ginning, since farmers are the only customers we have." Price estimated that in Bailey County, all but one, or possibly two gins could be closed due to the severe damages sustained."

According to Price, in 1981, each of some 20 odd gins in Bailey County ginned an average of 8 to 9 thousand bales.

Congressman Kent Hance is planning a town hall meeting in Muleshoe Tuesday at the Bailey County Civic Center beginning at 5 p.m. and it is hoped that he will be able to shed some light on the dark clouds hanging over this farming community. Hance also said: "We are not through with this battle, we can keep trying."

## Hance Sets Town Hall Meeting Here

United States Representative Kent Hance (D-Texas) has released a schedule of public appearances in the 19th congressional district during the week of the July 4 break in congress.

Hance's townhall meeting have proven successful in the past, giving him insight to the problems of the people in the various parts of the district.

On Tuesday, July 6, the Bailey County Coliseum will be the scene of the town hall meeting for Muleshoe beginning at 5 p.m. Earlier, at 3 p.m., Hance will speak at the Earth Citizen's State Bank, and at 7:30, Hance will be in Lamb County at the Lamb County Courthouse.

All citizens are urged to attend these meetings and take an active part in them.



**NEW ROTARY OFFICERS INSTALLED**—Tuesday at noon, new Rotary officers were installed for the coming year. From left: Hal Anderson, J. D. Cage, Max King, Randy Field, Paul Wilbanks, Jeff Smith, Bill Liles, Brian Pohlmeier and Buck Campbell. Directors are also included in the photo.



**NEW LIONS' OFFICERS**—Alton Griffin of Lubbock performed installation ceremonies for the Muleshoe Lions on Monday evening. New slate of officers are shown left to right: Darrell Turner, Roland McCormick, Mike Caldwell, Marleca Cox, sweetheart, Duane Lloyd, Paul Cox and Sam Fox. Other officers included but not shown are: Leon Dent, Lonnie Adrian, Ben Green, David Marris, Hubert Kidd and Harold Thornton.

Cont. Page 6, Col. 5

## Teaching Children About Babysitters

Do your children often resist staying with a babysitter? Parents can help by understanding why and taking definite steps to make resistance "not so necessary" in the child's mind, says Dorothy Taylor, a family life education specialist.

Taylor is on the home economics staff of the Texas Agricultural Extension Service, The Texas A&M University System.

Many children resist babysitting because they resent the child-like treatment they're pretty sure they'll get -- today's more sophisticated children want to participate in adult affairs, Taylor says.

Of course, some children -- as thought for many years -- are afraid their parents won't return home, but that's not usually the case any more, she says.

In helping children deal with these feelings, parents can take two definite steps: show children understanding and remind them that "rules of the house" still hold, Taylor says.

Give the child some responsibilities that focus on being a good host, which, in a way, is really is to his babysitter -- let him prepare a snack for everyone, help a brother or sister get ready for bed, or read a story to the others and the babysitter, the specialist suggests.

Also, issue a written list of household rules -- the do's and don'ts, so both sitter and children will know them, she adds.

Stay in touch with your babysitting arrangements as the years go by, too, Taylor advises. Some sitters respond differently to babies than to inquisitive five-year-olds, so you may want to change babysitters as children grow older.

Also, remember that different situations require different handling, she says.

For example, overnight care sometimes calls for a different babysitter. Some babysitters are more afraid of this kind of arrangement than the children they're caring for, so find a babysitter who feels comfortable

with the job.

Learn to recognize babysitting problems or concern as children who are newly resistant to babysitting are signaling you about concern or problems, Taylor notes.

When children -- some as young as five or six -- resent being left with a sitter, the problem is probably their desire to "be grown up."

One "sure-fire" way to meet this desire is the ability to control one's sitter.

Here are some behaviors that signal the problem of children trying to control a sitter:

--they may want to play parent or employee, telling the sitter what to do and what not to do

--they may want to do things expressly forbidden by their parents

--they may want to be pals or peers with the sitter, especially if the sitter is a pre-teen.

To achieve these "wants," a child might try acting

extremely helpful, cooperative and affectionate, the specialist says. Parents must then decide what behavior they will or will not allow.

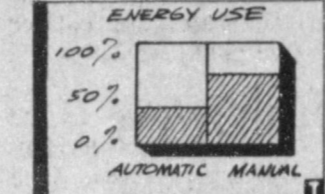
Finally, remember that care for children is a responsibility that requires special attention from parents and sitters alike, Taylor says.

### WATCH YOUR ENERGY

HERE ARE TWO HOT TIPS TO KEEP YOUR REFRIGERATOR COLD AND ENERGY-EFFICIENT. THEY'RE FROM THE NATIONAL ENERGY WATCH-YOUR REFRIGERATOR.



CONTROL SHOULD BE SET TO MEDIUM RANGE. AVOID UNNECESSARY COLDER SETTINGS THAT WASTE MONEY AND ENERGY. IF YOU NEED TO REPLACE YOUR REFRIGERATOR OR FREEZER,



CONSIDER BUYING ONE THAT IS MANUALLY DEFROSTED. AUTOMATIC DEFROST REFRIGERATORS USE MORE ENERGY. THESE TIPS ARE FROM THE NATIONAL ENERGY WATCH, AN ENERGY EFFICIENCY PROGRAM FROM THE ELECTRIC UTILITY INDUSTRY.



BY SHERYL BORDEN

Topics to be covered on "The Creative Woman" on July 6 and 10 include indoor plant care, decorating with starch and a new concept in children's toys.

Charles Guthals, owner of Guthals Nursery in Clovis, will talk about caring for indoor house plants. He'll talk about the humidity levels in homes, watering methods and light requirements for several different plants. Mr. Guthals will demonstrate one way to eliminate the salty solution that accumulates in some potted plants. Plant fertilizers will also be discussed.

The possibilities for decorating with fabric are numerous and can be a most inexpensive method to brighten up or change the appearance of a room. You can cover walls, cornices, boxes, trash cans, picture frames, room dividers, window shades -- the list is endless. Guest Joy Best, Extension Home Economist from Portales will demonstrate how to decorate with fabric and liquid starch.

A unique system of interlocking gears and capsules which snap firmly together is a new toy concept called Capsela. The visual dynamics of Capsela is captivating as you watch the moving parts and gears run with precision accuracy through the crystal clear capsules. Examples of this new toy concept will be displayed on the show.

On July 8 we'll discuss color analysis, decorating tips for coordinating two rooms and assembly line

bonding. Denise Nichols, a make-up and color consultant from Portales will talk about color analysis and discuss what an important role color plays in our life and how we can use it to our best advantage. This is Part I of a two-part series based on the book "Color Me Beautiful" by Carole Jackson.

Another guest, Kaye Willmon, owner of the Final Touch in Clovis, will share ideas for coordinating colors and fabrics in our homes -- especially in two adjoining rooms such as a bedroom and bath.

Ann Person, President and Founder of Stretch and Sew, Inc. will demonstrate a technique she calls "Assembly Line Bonding," which actually means to bond all pattern pieces that need interfacing at one time -- and it really is a time saver.

"The Creative Woman" is seen on Tuesdays and Thursdays at 12:30 p. m. (MST) and on Saturdays at 2:00 p. m. (MST) on Channel 3, KENW-TV. The show is produced and hosted by Sheryl Borden and the show is made possible in part by a grant from Security State Bank, Farwell, Texas.

Viewers can request copies of printed materials offered on the shows by calling on KENW-TV's toll-free telephone lines. The numbers are New Mexico: 1-800-432-2361 and outside New Mexico: 1-800-545-2359. Portales and Roosevelt County viewers can call 562-2112.

## Springer President Fusion Research

Berl M. Springer, board chairman and chief executive officer of Southwestern Public Service Company, is the new president of the Texas Atomic Energy Research Foundation.

The Texas Atomic Energy Research Foundation (TAERF) is a non-profit research organization created to advance knowledge of energy, particularly nuclear energy. The foundation was

### Fraud Sentence Cracking Down

A Texarkana, Texas woman has been ordered to repay almost \$10,000 to the Social Security Administration as a condition of probation after receiving a suspended sentence for defrauding the agency.

Sentence was imposed by U. S. District Judge William M. Steger, after Aline Kirk of 515 Bowie Street in Texarkana pled guilty to a federal charge of forging her mother's signature on Social Security checks negotiated after her mother's death.

According to Laura B. Purcell, manager of the Lubbock Social Security office, the scheme was uncovered in a record matching project between the Social Security Administration and the Health Care Financing Administration to identify people who had died according to Hospital Medicare reports, but whose death had not been reported to SSA.

formed in 1957 by the investor-owned electric utility companies of Texas.

TAERF is a primary supporter of the Fusion Research Center at the University of Texas at Austin. The Center houses on of the largest university experimental fusion programs in the world, and its group of theoretical physicists is considered among the best. They are searching for ways to control nuclear fusion reactions for the production of electric power.

Nuclear fusion is the source of the energy of the sun and stars. It is distinctly different from -- in fact, the opposite of -- nuclear fission, the process used in nuclear powered plants. Fusion reactions join, rather than split, nuclei of atoms. Harnessing the tremendous energy of fusion reactions to produce electricity would make available an almost unlimited supply of energy.

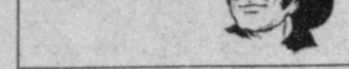
A likely fuel for fusion reactions is deuterium, which is low cost, clean, and abundant. Deuterium is available in water--which covers four-fifths of the earth.

A pitcher of ordinary water, researchers say, contains in its deuterium the energy equivalent of the electricity used in one year in a typical American home. The deuterium in a swimming pool of water could furnish all the electric energy needs of a city for a year.

However, many obstacles remain to be overcome in developing fusion technology. A primary problem is containing incredible heat generated by fusion reactions.

TAERF funds which support the research at UT-Austin are matched several times over by federal funds. But the TAERF support ensures that the interests of the customers of the electric utilities in Texas are served: The support influences the direction of the fusion research program in ways that should eventually produce the

### Firefighters In Action



Last night, Wednesday, the Muleshoe Fire Department hosted their wives at a Fireman's Family Social, around 7:30 p.m. at the Muleshoe Fire Department. They will be serving ice cream, cake and pie to the members of their families.

Members of the Muleshoe Fire Department said they would like to wish everyone a good and more important, a safe Fourth of July holiday.

"We ask that all persons remember -- there are hazards with fireworks," said Wayne Peterson, reporter for the department.

As the firemen had voted to conduct the annual fireworks display to cap off the July 4th celebration, the members are all geared up to wind up a full day of celebration at the new city park Saturday night.

most efficient and lowest cost electrical power.

Springer was elected TAERF president May 29. He is a native of Memphis, Texas, and an industrial engineering graduate of Texas Tech University. He started his SPS career as a draftsman in 1948. He later became a statistician-engineer, rate engineer, and rate manager, and in 1969 was elected vice president of rates and budgets. He was named executive vice president in 1972, and joined the board of directors in 1974. He was elected chairman of the board and chief executive officer in January, 1982.

Springer has been active in many local, regional, and national civic and business affairs. He has served as president of the Amarillo Chamber of Commerce, co-chairman of the Amarillo United Way, member of The President's Council at West Texas State University and at Texas Tech University, and as a director of the National Food and Energy Council. He received the "Distinguished Engineer" award from Texas Tech in 1975.

Members of TAERF are Southwestern Public Service Company, Dallas Power & Light Company, El Paso Electric Company, Central Power & Light Company, Gulf States Utilities Company, Houston Lighting & Power Company, Community Public Service Company, Texas Electric Service Company, Texas Power & Light Company, and West Texas Utilities Company. *Berl M. Springer*



Berl M. Springer WHO KNOWS?

1. When is Father's Day?
2. When does summer begin?
3. When was the battle of Bunker Hill fought?
4. On what date did Germany attack the Soviet Union in World War II?
5. Which state is bordered by only one other state?
6. Name the shortest book of the Old Testament.
7. What does the word "euthanasia" mean?
8. Who began the fight for "woman's suffrage"?
9. Who was serving as president in 1900?
10. Name the "Keystone State."

#### Answers To Who Knows

1. June 20
2. June 21, 1775
3. June 17, 1775
4. June 22, 1941
5. Maine
6. Obadiah
7. Painless, easy death
8. Susan B. Anthony
9. William McKinley
10. Pennsylvania

### West Plains Medical Center Report

#### ADMITTED

June 24-W. T. Smith  
June 25-Vashtie Fowler, Valencia Roque, Norma Bellar, Colleen Griffiths.  
June 26-Jill Turner, Jewell McCormick, Julia Allmore, Emmett Myers, Elton M. Malone.  
June 27-Tina Gallman, baby Gallman, Wayne Spears, Mattie Grimsley.

#### DISMISSED

June 24-Florence Holmes Gabriel Guevara, Lottie Bickel, Pam Richards.  
June 25-Marion Martinez Ryan Hodge, Bonnie Jones, John Burch, Lindy Chancey W. T. Smith.  
June 26-Louise Recio, Colleen Griffiths, Bessie Finch, A. M. Bradley.  
June 27-Jill Turner, Ronda Toscano.

### In a mad chase...



to catch up with changing investment options! Then come see us!

We handle resources worth millions for our association and our customers. And, we help them handle millions more. It's our business. So, to keep pace with your financial future, start by putting your money to work for you, start seeing us today!

We invite You To "JOIN US AT THE TOP!"

SUMMIT SAVINGS ASSOCIATION

# THERE'S A FRIENDLY GIANT IN TOWN!

He makes thunderous noise in your cash register.

## IT'S NEWSPAPER ADVERTISING!

Get this giant to work for you every day or week and you'll enjoy the noise in your cash register.

CALL 272-4536  
DISPLAY ADVERTISING  
Our representatives are waiting to serve you



# Muleshoe & Bailey County Journals

ferti-lome  
**ROSE FOOD**  
Beautiful roses demand a monthly feeding program  
ferti-lome  
Baker Farm Supply  
1532 W. Amer. Blvd.  
272-4613

**Letters To The Editor**

Dear Editor:  
As you know, the County Commissioners Court met at 10:00 a.m., Monday, June 28, 1982 for the purpose of appointing a County Attorney for Bailey County, Texas. They appointed Miss Linda Guelker as their choice for County Attorney to serve until the general election in November. According to the notice in the paper Sunday, June 27, 1982, applications were to be submitted and considered Monday morning, June 28, 1982. I submitted a short letter application that I felt was adequate on such short notice. I would like for you to print this letter application so that the people of Bailey County will know that I did make application for the position. In this regard, they will be able to decide if the County Commissioners represented their views on how our County government should be run.  
Thank you for your courtesy.

Sincerely,  
/s/ Lamar D. Treadwell, II  
Lamar D. Treadwell, II  
LDT/jt  
enc: letter to Commissioners Court

**APPLICATION FOR COUNTY ATTORNEY**  
TO: The Honorable Glen Williams, County Judge Commissioners Court of Bailey County, Texas

Gentlemen:

I saw in the Muleshoe Journal Sunday, June 27, 1982 where you caused to be printed the notice that you would be accepting applications and considering them for appointment of a County Attorney. As you know, I am running for the County Attorney position in the general election to be held in November, 1982.

I have often wondered why you have not appointed a County Attorney before now, especially since I have repeatedly stated that I was available. Of course, since the resignation of Corky Green in October, 1980, you have appointed 3 different attorneys to serve as County Attorney Pro Tem, on a case by case basis. These attorneys have been Jack Young, Martha Brown of Lubbock, Texas,

**Waddell Named Award Winner**

The United States Achievement Academy announced today that Rhonda Waddell has been named a 1982 U. S. National Award winner in the field of history and government.

This award is a prestigious honor very few students can ever hope to attain. In fact, the Academy recognizes less than five percent of all American high school students.

Rhonda, who attends Lazbuddie High School was nominated for this National award by Carl Glass, a basketball coach and history teacher at the school. Rhonda will appear in the U. S. Achievement Academy Official Yearbook, published nationally.

The academy selects USAA winners upon the recommendations of teachers, counselors or other school sponsors and based upon the standards for selection set forth by the Academy.

Rhonda is the daughter of Mr. and Mrs. Doyce Waddell. The grandparents are Mr. and Mrs. Robert O'Hair of Muleshoe and Mr. and Mrs. Willie Waddell of Lazbuddie.

**Muleshoe Journal** (575) 367-620  
Published by Muleshoe Publishing Co., Inc. Every Thursday at 304 W. Second, Box 449, Muleshoe, Texas, 79347. Second class postage paid at Muleshoe, Texas 79347.

MEMBER 1982  
**TEXAS PRESS ASSOCIATION**

L. B. Hall President  
James Woods Vice President  
Shirley Farmer News Editor  
Evelyn Harris Society Editor  
Holly Millage Advertising Manager  
Suzanne Hall Bookkeeper

Muleshoe Journal and Bailey County Journal  
Bailey and surrounding counties... \$12<sup>00</sup>  
Muleshoe Journal and Bailey County Journal  
elsewhere... \$13<sup>00</sup>

Advertising rate card on application

and Linda Guelker, formerly of Lubbock, Texas and presently residing in Bailey County, Texas. It is my impression that Miss Guelker has not resided in this county long enough by law

**The Sandhills Philosopher**

Editor's note: The Sandhills Philosopher on his Johnson grass farm on Sandy Creek discusses politicians and psychiatrists this week.

Dear editor:  
One of the first principles a politician anywhere in the world learns is that people have short memories. To stay in power any length of time however, the trick is to not miscalculate how short the memory is.

For example, take the politicians in Argentina. A couple of weeks before they lost the Falkland Islands war, and in order to pep the people up, they announced their forces had gloriously sunk the big British ship Canberra.

Half the front page of newspapers was used to carry the news in big block letters: **WE DESTROYED THE CANBERRA**. Television and radio stations blared the news and the people were whooping and hollering in the streets.

Three weeks later, the war miserably lost, here came the Canberra steaming toward Argentina carrying 4,000 Argentine prisoners of war back home. The Argentine people stopped their whooping and hollering and started hissing their leaders, who now have been replaced.

You'd think those Argentine politicians can remember longer than three weeks. You've got to give them about a year at least if you want to get away with something.

Speaking of memory, you reckon the defense lawyers who hired some psychiatrists to testify John Hinckley was insane and therefore not guilty when he opened fire on the President, will remember the names of the prosecution's psychiatrists who testified Hinckley was sane, and hire them when later on they try to prove that he's no longer unbalanced and therefore should go scot-free?

Yours faithfully,  
J. A.

**RECIPE**

By Sarah Anne Sheridan

**Peach Pie**  
1 c peach syrup  
1 pkg. lemon flavored gelatin  
½ c cold water  
1 pt. vanilla ice cream  
1/8 t almond extract  
Fresh sliced peaches about 2 to 2½ cups  
1 9-inch baked pastry shell  
Whipped cream  
Heat syrup to boiling. Remove from heat and add lemon gelatin. Stir until dissolved. Add cold water. Cut ice cream into six pieces and add to hot liquid. Stir until melted. Add almond extract. Chill until mixture begins to thicken—about 40 minutes. Fold in 2 cups of peaches. Pour into cooled, baked pastry shell. Chill until firm.

**Boy, These Maytag's Are Really Built!**



**MAYTAG**

Your Authorized Sales & Service Dealer



**HARVEY'S**

122 S. 1st  
272-3030

to be put on the ballot as a candidate in the November election, but is going to attempt a write-in campaign against me. I assume that you know something about this.

It is my understanding that the Commissioners Court, through Judge Williams, publicly announced that you were going to appoint persons to act as County Attorney to serve out the unexpired term on a case by case basis, since it would be cheaper to do so. Now, it seems you have reconsidered.

Once again, I request your consideration of this letter as my application for the job of County Attorney. My qualifications are that I have been a resident of Bailey County for six years, and I have extensive criminal experience on a statewide basis and I am dedicated to better government for the citizens of Bailey County, which includes giving the law enforcement personnel assistance and availability they deserve to provide an acceptable level of law enforcement and protection for every citizen of Bailey County.

If you decide to continue to treat the position of County Attorney as a political plumb, I will certainly understand. I doubt, however, whether the citizens of this county will.

I think that the people of this county deserve and expect more than petty political Democrat-Republican gameplaying. It is already an issue in the upcoming elections. I had hoped that individuality and the striving for the good of all people might prevail.

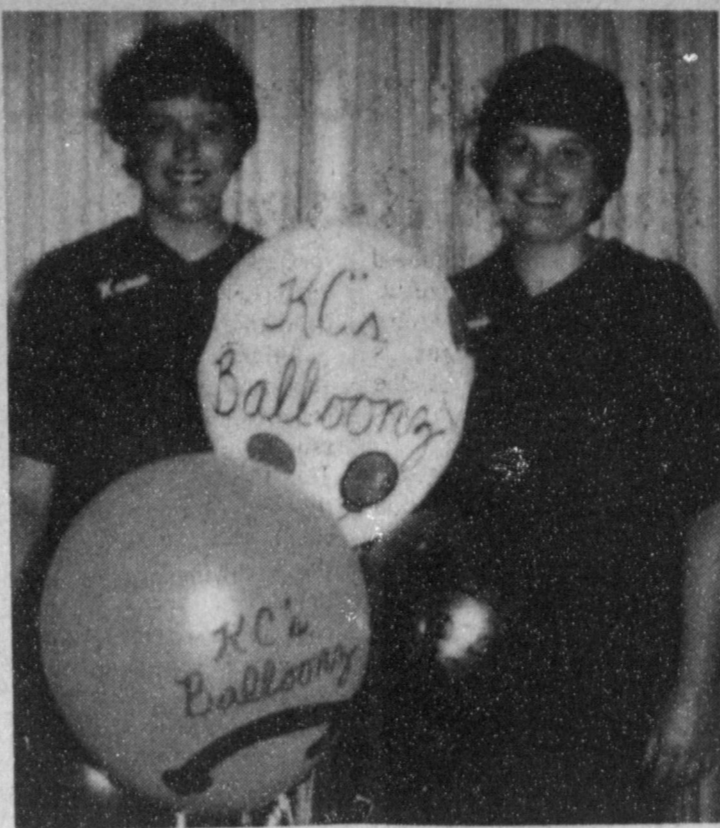
Very truly yours,  
/s/ Lamar D. Treadwell II  
Lamar D. Treadwell, II  
LDT/jt  
cc: Bailey County Republican Chairman  
Larry Hall, Bailey County Journal.

**BIBLE VERSE**

"We know that all things work together for good to them that love God, to them who are called according to His purpose."

1. Who made the above statement?
2. To whom was he writing?
3. Where was he at the time?
4. Where may this verse be found?

- Answers to Bible Verse
1. The Apostle Paul.
  2. The Christians at Rome.
  3. At Corinth.
  4. Romans 8:28.



**BALLOONS GALORE**—One of the attractions at the Civic Center on July 3 will include unique arrangements by KC's Balloons. A drawing will be held for a free bouquet and will be held at 1 p.m. The owners are Karen Kidd and Connie Bruns.

**Hance Seeks Aid For Ravaged Farmers**

U.S. Rep. Kent Hance, D-Texas, joined with fellow Texas Congressmen Charles Stenholm and Jack Hightower in asking Secretary of Agriculture John Block to restore federal disaster programs for hail-ravaged farmers on the High Plains.

In the letter, the three Texas Democrats noted that recent hail damage ran as high as 75 percent in some counties.

"To compound the losses suffered from natural disaster, most of these farmers either have no crop insurance or an inadequate amount of coverage due to the high cost of the greater yield coverage and other transitional problems," wrote Hance.

"Time has dealt a further blow to the farmer since it is now too late for the cotton farmers to replant and must now plant grain sorghum or soybeans, neither of which have a base yield established or will be eligible for any program benefits."

"Many of these farmers already have a substantial debt load due to the last several years of low commodity prices and ever-increasing cost of production. For these reasons, we would like to take this opportunity to urge you to use the discretionary authority given to you in the

Farm Act of 1981 to reinstate the disaster payment programs in order to alleviate the economic emergency these farmers are now facing."

The letter also urged Block to protect the yield for deficiency payment purposes. Hance, Stenholm and Hightower pointed out that without such protection, producers will find their base yields "drastically cut next year if they are forced to use a zero yield for this year. In past years, the base yields were not allowed to drop by more than 10 percent in any given year and we strongly urge you to return to a similar system."

Education makes a people easy to lead, but difficult to drive; easy to govern, but impossible to enslave.  
—Henry Broughman.

By Spencer Tanksley  
County Extension Agent

**Border States Discuss Alien Ruling**

U.S. Senator John Tower has announced he has called for a meeting of U.S. Senators from five border states to discuss the impact of last week's Supreme Court ruling that alien children illegally in the United States are entitled to free public education.

"This decision by the Court will have a tremendous impact in your state and mine. Under ruling in the case... school districts in our states must provide schooling for all children situated within school district boundaries, regardless of their status in the United States. This... will place a financial burden on school districts... which may have the detrimental effect of limiting the educational opportunities the district can provide to its students," said the senior senator from Texas.

In a letter sent today to senators from Arizona, California, Florida, New Mexico and Texas Tower said, "Rather than dilute our efforts to find a legislative solution to the dilemma facing our school districts following this decision, I would like to suggest a meeting on Thursday, June 24 in my office to discuss alternatives available to us."

Tower noted that Justice Powell, writing in concurrence with the opinion of the Court suggested legislative action to ameliorate the impact of this ruling.

Agriculture is this nation's leading employer, exporter, and the No. 1 industry in the U. S., Tanksley points out.

"Today, one U. S. worker now produces enough food for about 48 people at home and another 22 overseas. At the turn of the century, one American farm worker could feed only seven people," Tanksley emphasizes.

In Texas, one out of every 25 persons is a farmer or rancher, yet about 30 percent of the state's retail trade business is directly associated with agricultural production and selling of food and fiber products.

"Agriculture makes a large contribution to the wealth and well-being of our state. Because quality food is available at affordable prices, a larger part of our income is available to buy other things," the agent says.

"One group can't live without the other. Together they make the best food and fiber team in the world," Tanksley explains.

The county agent believes that a basic ingredient for the economic, political and social success of a country is a highly productive agricultural base, which gives a nation the capacity to feed its own people and to export for economic gain as well as humanitarian purposes.

"Food in this country is still an incredible bargain, with Americans spending about 19 percent of after-tax income for food and beverages."



Before baking, insert tubetype macaroni in the center of the top of your pie so that juice can bubble out.

**Horsemanship Clinic For Young Horsemen**

Clinic date: July 10 & 11  
Instructor: Jan C. Wise

- Brochures and films to be viewed furnished by American Quarter Horse Assn.
- Instructions Include:
- Proper Care: Feeding, Hoof Care, Grooming
  - Equipment: Care of Equipment, Proper Saddling, Proper Bits/Bridles/ Saddle Pads
  - Games: Barrel Racing, Reining, Western Pleasure, Other Timed Event Games
- For More Information or Enrollment Call:  
(806) 293-3524 after 5:00 p.m.

**4th of JULY CELEBRATION TIME**

Saturday July 3

7:30am Junior Rodeo Muleshoe

8:00am 10,000 Meter Run Omelet Rodeo Carnival

9:00am Mule Shoe Pitching Contest

10:00am Kid's Activities

11:30am Gymnastics & Karate Demos.

2:00pm Old Settler's Reunion

5:00pm Parade

6:00pm Mule Shoe Pitching Finals Awards for Days Events

8:00am Pony Express

**FIREWORKS 10:00pm**

Sponsored By **1st national bank** Member F.D.I.C.





**Jacques DISCOUNT LIQUORS**

Your Locally Owned Discount Liquor Store!  
3800 Mabry Drive Clovis, N.M.

**KEG BEER SPECIAL**

- ¼ Keg Miller-Lite \$19<sup>99</sup>
- or Michelob 29<sup>99</sup>
- ½ Keg Bud 29<sup>99</sup>

Old Milwaukee Hot Only Cs	7.89
Jax Hot Only Cs	7.39
Hofbrau Hot Only 6 Pk.	4.00
Eagle Rare 750	11.29
Old Taylor Bond 100 750	7.69
Malt Duck Hot Only Qt	99¢

**Executive Choice**

- Vodka 1.75 8<sup>99</sup>
- Malt Duck Quarts Hot Only 99¢

Watch Thurs. Paper For Our Wine Of the Week Special

- LARGEST LINE OF IMPORTED WINES
- LARGEST LINE OF IMPORTED BEER

**COLD KEGS TO GO!**

COORS, BUDWEISER, SCHLITZ  
MICHELOB, MILLER LITE,  
LOWENBRAU (LARGE & SMALL)



MRS. RUSTY TUNNELL  
(nee Christie JoAnn Manasco)

## Miss Manasco, Tunnell Exchange Wedding Vows

Miss Christie JoAnn Manasco of Muleshoe became the bride of Rusty Tunnell on Saturday, June 12 at 1 p.m. in the home of Mrs. Jerry Bookout of Clovis, N. M., sister of the bride. The Rev. Wayne McClemore read the wedding vows.

Parents of the couple are Mr. and Mrs. Ray Manasco of Muleshoe, JoNell Mayhugh of Sweetwater, Mr. and Mrs. Gene Tunnell of Muleshoe and Mr. and Mrs. Ben Severson of Frantown, Colo. Grandparents are Mrs. Ovie Ma-

### Bridal Shower Honors Tanya Ray

Tanya Ray, bride elect of Brad Bell, was honored Friday, June 18, in the home of Mechele Edwards, with a "Homemade Gift" shower.

Homemade ice cream and cake were served from china and crystal appointments. The serving table was covered with white linen cloth and accented with a gold candelabra entwined with rose colored silk flowers.

Special guests included Mrs. Peggy Ray, mother of the honoree; Phyllis Lynn, sister of the honoree; Mable Reed, grandmother of the honoree; and a Tech friend, Rosemary Cook.

Others present were Martha Drake of Littlefield, Pam Kent, Cathy Humphreys, Janet Nix, Mary Hanna, Carol Williams and the hostesses.

She was also honored at noon Friday with a luncheon at "Tara" in Lubbock.

The table boasted a centerpiece of fresh pink roses in a vase.

Attending other than the honoree and her mother, Peggy Ray, grandmother, Mable Reed, Mechele Edwards and the hostesses, Rosemary Cook of Lubbock,

nasco and Mrs. Ethel Allison of Muleshoe.

The couple stood before a tapered candelabra, entwined with greenery and yellow daisies. Rain trees stood on either side of the fireplace.

### Given in marriage by her Willingham's Host Family Reunion

Truman Lee Willingham hosted her family reunion during the weekend when some 42 persons attended.

Those attending included Zella and M. R. Slaughter, Jan Corey, Matt, Lorene Boggs, Linda, Stacey and Mark Hodges, Mitchell, Clifford, Vickie and Shellye Kimber, Linc Armes, Morris, Kay, Brady and Dusty Armes, Tammy, Tanna and Brandi Adkins, all of Levelland.

Also Etoy and Glen George of Decatur, Rick, Donna and Sherrie Harrison of Lubbock, Thurman, Ophelia and Dana Greenwalt of Houston, Dalton and Leona Harris of Muleshoe; Billie and Byron Ivey of Midland; J. T. and Dean Renfro, Rita and Rodger Wheeler of Brownfield; Glenda Mundy, Amanda and Willie Martin of Seagraves; Paul and Mozelle Armes of Odessa and the hostess.

father, the bride wore a formal length gown of white organza, trimmed with chantilly lace. The sheer sleeves were accented with lace bands at the cuffs. The skirt flowed into a chapel length train trimmed with lace appliques. Her chapel length veil of illusion was circled with chantilly lace.

She carried a bouquet of yellow silk daisies, accented with baby's breath.

Following tradition, the bride wore her sister's wedding gown as something borrowed, something blue was her garter, something old was her mother's wedding band and something new were her accessories.

Mrs. Rhonda Bookout, sister of the bride, served as matron of honor.

Matt Evans of Denver, Colo. served as best man.

Following the ceremony, a reception was held. Serving at the table was Mrs. Patty Manasco of Lubbock, sister in law of the bride.

The couple will make their home in Muleshoe where Tunnell is engaged in ranching.

Later in the month, they will be going to Pandareyes Village in New Mexico for a wedding trip.

Out of town guests were registered from Denver, Colo., Lubbock and Earth.



**ENGAGEMENT ANNOUNCED**—Mr. and Mrs. A. T. Sutton of Vernon announce the engagement and approaching marriage of their daughter, Mary Ann, to Richard N. Johnson of Lubbock, son of Mrs. Rita Johnson and the late M. L. Johnson of Muleshoe. Ms. Sutton is a 1971 graduate of Vernon High School and a 1975 graduate of Texas Tech University. She is presently the Director of LEARN Educational Talent Search in Lubbock. Johnson is a 1958 graduate of Muleshoe High School. He is affiliated with Mesa Oil Company in Lubbock. The couple will exchange wedding vows on August 21 at 7 p.m. at the First United Methodist Church Chapel in Vernon.

*She Is?*  
Love may be blind, but the average mother-in-law is an eye opener.  
—U.S. Coast Guard.

*Equality*  
A smile is one creature that looks just as good on a man as it does a woman.  
—Chronicle, Toledo.

### Bridal Shower Fetes Mrs Rhonda Harrison

Mrs. Rhonda Harrison, nee Rhonda Atwood, was feted with a bridal shower Saturday, June 26, 2-4 p.m. in the home of Mrs. Jack Young.

### West, Hinsley Marriage Announced

Bobbi West and Rodney Hinsley were married in a candlelight ceremony on Friday, June 11, at First Christian Church in Texhoma, Oklahoma.

Parents of the couple are Mr. and Mrs. Dwayne West of Sunray, former Sudan residents, and Mr. and Mrs. Robert L. Hinsley, also of Sunray.

The bride is the granddaughter of Mr. and Mrs. Carlos West of Anton, formerly of Sudan. Also the great granddaughter of Mrs. E. P. West and niece of Audrey West and Mrs. Billy Whitmire, all of Sudan.



There are about 290 species of pigeons in the world.

**Apply Now**

**ferti-lome WEED and FEED SPECIAL**

before you see the weeds

**ferti-lome Baker Farm Supply**

1532 W. Amer. Blvd. 2/2-4613

**On Top in Quality and Features!**

Model EHT141JK  
14.1 cu. ft. Capacity

**Whirlpool NO-FROST REFRIGERATOR-FREEZER**

Provision for optional ICEMAGIC™ Automatic Ice Maker... add now or later for ice when you want it!

**NOW JUST \$499<sup>95</sup> ★ W/T**

- 2 Adjustable Slide-Out Shelves resist rust and stains
- Separate Adjustable Temperature Controls and Power Saving Heater Control located up front for easy access
- Full-width slide-out Crisper helps keep produce fresh
- MILLION-MAGNET™ Doors with magnetic gaskets that form a tight seal

**★ With A Working Trade**

**Wilson Appliances**

Mon. - Sat. 8:00 - 6:00

117 Main 272-5531

**PERRYS DYNAMIC JULY SIDEWALK SALE**

IF YOU WANT VARIETY WE HAVE IT...

VISA master charge

<p>Short Lengths Cotton &amp; Cotton Blend</p> <p><b>Fabrics 99¢</b> yd.</p> <p>Values To *1"</p>	<p><b>BATH SIZE SOAP 63¢</b> BAR</p> <p><b>9-INCH 100-COUNT PAPER PLATES 77¢</b></p>
<p>4 Foot <b>Plastic Wading Pool</b></p> <p><b>\$4<sup>88</sup></b></p> <p>Reg. *6"</p>	<p>Roll-O-Matic <b>Sponge Mop</b></p> <p><b>\$5<sup>88</sup></b></p>
<p>Woven Rag <b>Throw Rugs</b></p> <p><b>\$1<sup>97</sup></b></p> <p>24" X 45"</p>	<p>5 Foot <b>Plastic Wading Pool</b></p> <p><b>\$8<sup>88</sup></b></p>
<p><b>WHITE SIZE 37 1/2" X 5 1/2"</b></p> <p><b>WINDOW SHADES 1<sup>27</sup> EACH</b></p>	<p>20 Inch <b>Box Fan</b></p> <p>Metal Blade Pastic Gaurd</p> <p><b>\$25<sup>88</sup></b></p>
	<p>Large Assortment <b>Hair Goods</b></p> <p><b>1/2 Price</b></p> <p>Barrettes Hair Nets Brushes Rollers Combs</p>
	<p>12 Inch <b>Deluxe Floor Fan</b></p> <p>3-Speed Whisper Quiet</p> <p><b>\$26<sup>88</sup></b></p>

## Baby Shower Honors Mrs. Terry Tracy

Mrs. Terry Bryant Tracy was honored with a baby shower Saturday, June 26 at 2:30 p.m. in the home of Mrs. Tennie Lambert. The guests were greeted by the hostesses and registered by Mrs. Jesse Rains of Amarillo.

Tennie Lambert and Faye Houston served cake, iced in yellow with sugar baby booties and baby rattlers.

The serving table was covered with a white polyester cloth, trimmed in lace and accented with an arrangement of dried flowers, tied with baby rattlers and booties.

Mrs. Bobbie Bryant, aunt of the honoree; Jackie Billings, cousin of the honoree, both of Lubbock; and Mrs. Alene Bryant, mother of the honoree.

The hostess gifts were a yellow gingham trimmed high chair and a baby feeding dish. Hostesses were the ladies of the Church of the Nazarene.

### TOPS Club Chapter 34

TOPS Club Chapter 34 met at 6:30 p.m. Thursday, June 24, in the meeting room of Bailey County Electric.

Clara Lou Jones, president, called the meeting to order. The TOPS pledge was recited and the fellowship song sung.

Mrs. Jones read a letter from the Area Coordinator, Mona Spencer of Plainview.

A new contest was started and will run for six consecutive weeks. Each member is asked to take a gift to be auctioned at the end of the contest.

Laverne James was named best loser for the week. First runnerup was Lena Gartin and Clara Lou Jones was second runnerup.

The meeting was dismissed with the singing of the goodnight song.

### Lori Pickett To Be In Sudan Concert

Lori Pickett, daughter of Mr. and Mrs. L. J. Pickett of Lubbock, former Sudan residents, will be in concert at 7 p.m. Sunday, July 11 at the First Baptist Church in Sudan.

She has been in concerts in Sudan before. A love offering is usually taken and the money goes toward the expense of the group that travels throughout the states as well as other countries.



MRS. TERRY TRACY

### From Journal Files

#### 40 Years Ago

1942

Some of the hottest weather on record was experienced here last week when the weather station recorded temperatures of 105 degrees for three consecutive days.

Grocery specials included pineapple, 3 flat cans, 25 cents; Jello, 3 for 20 cents; turnip greens, 10 cents can; apple juice 46 ounce can 21 cents; vanilla extract 8 ounce bottle 2 for 23 cents; shortening 8 pounds \$1.42; mustard, quart 10 cents and catsup 14 ounce bottle 2 for 23 cents.

#### 30 Years Ago

1952

June grocery specials include hams 1 1/2 pound can \$2.79; bacon 59 cents per pound; franks 59 cents per pound; salt pork 33 cents per pound; bologna pound for 59 cents; cantaloupe 12 and one half cents per pound; carrots (bunch) 2 for 25 cents; roasting ears 6 cents each; green beans

19 cents per pound; cabbage 5 cents per pound; lemons 15 cents per pound and ice cream 29 cents per quart.

#### 20 Years Ago

1962

Mae Provence, an employee of Cobb's Department Store, was named the best dressed participant in Saturday's Sidewalk Sale.

Dr. Ray E. Santos and family are spending ten days in New Mexico.

#### 10 Years Ago

1972

Muleshoe will dedicate its brand new postoffice in ceremonies Independence Day at 2:30 in the afternoon, and speakers will point with pride to the growth of postal facilities here.

Gunn Bros. Stamp Redemption Store will hold its formal opening in the old post office building Thursday, Friday and Saturday with a gala celebration, it was announced this week.

## Texas 4-H'ers Plan Washington Trip

Some 80 Texas teenage 4-H members will be taking part in the National 4-H Citizenship Short Course and Heritage Tour in Washington, D. C. this summer.

### LATEST ARRIVALS



Kathy Lynn Davis

Mr. and Mrs. Glenn Davis of Dumas are the proud parents of a daughter born at 1:30 p.m. June 26 in a Dumas hospital.

The young lady weighed six pounds 15 ounces and was 19 inches long. She has been named Kathy Lynn and is the couple's first child.

Grandparents are Mr. and Mrs. Charles Gresham of Hereford.

Great grandparents are Mrs. C. W. Gresham of Hereford and Mrs. T. C. Williams of Muleshoe.

### Kasey Lee Wilson

Mr. and Mrs. Kenny Wilson of San Antonio are the proud parents of a daughter born at 2:30 p.m. June 17 in the North East Baptist Hospital in San Antonio.

The young lady weighed six pounds and 15 ounces. She was 20 inches long and has been named Kasey Lee. Kasey Lee has a sister, Kelley, three years of age.

Grandparents are Mr. and Mrs. Bernard Wilson of Sudan and Mr. and Mrs. Fritz Wilson of Fort Worth.

### Tony Dean Newton

Mr. and Mrs. Steve Newton of Lubbock are the proud parents of a son, Tony Dean, born June 14 at 8:45 in Lubbock's Methodist Hospital. He weighed seven pounds and five ounces. He has an older brother, Billy, who is nearly three years of age.

Grandparents are Mr. and Mrs. Bob Newton of Enochs, Mr. and Mrs. J. W. Casey of Dimmitt, Mr. and Mrs. Bill Sowder of Littlefield and Maxie and George Ingles of Houston.

Great grandparents are Mr. and Mrs. L. G. Fred of Morton.

The group will leave July 14 from Garland and travel to the nation's capitol, making a stop at the World Fair in Knoxville, Tenn. and visiting several historical sites along the way. They will be at the nation's capitol from July 18 to 24.

The delegation will join some 5,000 4-H'ers from across the nation who will be taking part in the week-long sessions throughout the summer.

"These young people will study individual citizenship responsibilities, our national heritage and system of government," said Dr. Lanny Bullard, 4-H and youth specialist with the Texas

### Sudan Hotel Heritage Committee Meets

Members of the Sudan Hotel Heritage Committee met Thursday, June 17, at the bank with Sara Woods presiding over the meeting.

A report was given on the progress of repair on the hotel with work progressing on the kitchen. This is the main project at the moment. Terry Tennyson of Higginbotham-Bartlett Lumber Co. donated a new hot water heater and Luna Snow has done the plumbing.

Evelyn Ritchie says, "There is still much work and repairs to be done if anyone is interested your help is needed and appreciated. New screen doors are also needed and the kitchen needs painting."

"There is also a need for donations for a new roof for the entire hotel or for repairing of the hotel. If you want to help, contact Sara Woods or Dorothy Jones."

The committee is beginning a Sudan Heritage membership drive for those who are interested in furthering the work on the Sudan Heritage Center which is the old Sudan Hotel.

Pioneers, those who have lived in Sudan for the past 25 years at least are urged to register at the hotel on Saturday, July 3rd, during the celebration so that your name will be in the pot for the drawings which will be given throughout the day.

A plaque will be given to the earliest pioneer, the one who came the greatest distance to attend the celebration. Other prizes will be given off and on all day.

These prizes are on display at Bellar's Department Store in Sudan.

Agricultural Extension Service, Texas A&M University System.

Using the nation's capital as a classroom, the week-long program includes a day on Capitol Hill to meet with members of Congress and see the government in action plus visits to federal agencies and organizations.

Field trips to historical and cultural sites include Williamsburg, Va., Monticello (home of Thomas Jefferson), Mt. Vernon (home of George Washington), U. S. Library of Congress, Smithsonian Institution, U. S. Archives, Washington Monument, Jefferson Memorial, Lincoln Memorial and Arlington National Cemetery.

Special emphasis will be placed on citizenship and leadership skills related to economics, government, community, citizenship, international interdependence, food and agriculture, conservation and use of natural resources, jobs and careers, expressive arts and communications, noted Bullard.

Workshops and seminars will focus on citizenship and leadership skills, government and international interdependence, and ways to include knowledge and skills gained in local 4-H programs, said Bullard.

Workshops and seminars will focus on citizenship and leadership skills, government and international interdependence, and ways to include knowledge and skills gained in local 4-H programs, said Bullard.

The first Arbor day celebration was held on April 10, 1872 in Nebraska.

## Herb Tea --- More Than You Bargained For

Some herb teas may have possible side effects that are more than just relaxing, says Dr. Cass Ryan-Crowe, a food and nutrition specialist.

Ryan-Crowe is on the home economics staff of the Texas Agricultural Extension Service, the Texas A&M University System.

Reports have shown that senna tea can cause abdominal cramps and watery diarrhea, the specialist points out.

Deaths have even been reported in Africa from ingesting overdoses of senna preparations, she adds.

Chamomile, made from flower heads, can cause anaphylactic shock, an unusual or exaggerated reaction to a foreign protein, or allergic rhinitis in persons sensitive to ragweed pollen, she explains.

Many herbal teas don't have a list of ingredients, so be sure to ask what the teas contain before purchasing them, Ryan-Crowe suggests.



The moose is the largest member of the deer family.

### Society Deadlines Set

Weddings must be in the office by Monday noon for the Thursday paper and by Thursday noon for the Sunday paper. Any wedding more than two weeks old must be edited and only the basic information included.

No shower picture will be taken without a 24 hour notice and copy must be in the office by Monday at 5 p.m. for the Thursday paper and by Thursday at 5 p.m. for the Sunday paper. An honoree's picture will be taken at only one shower.

All club stories for following edition of paper must be in the office by 10 a.m. on Tuesday and Friday preceding the next issue of the paper.

### We Will Be Closed

July 3rd

through

July 12th

for Vacation

LAMBERT Cleaners

### Remember Now So You Can Remember Then.

#### A Professional 8 x 10 Color Portrait For 88 Cents

All ages welcome - babies, adults, and families! Choose from our selection of scenic and color backgrounds. We'll select poses, and additional portraits will be available with no obligation.

One 88¢ portrait per subject or group. Backgrounds may occasionally change. Minors must be accompanied by a parent.

July 1, 2, 3

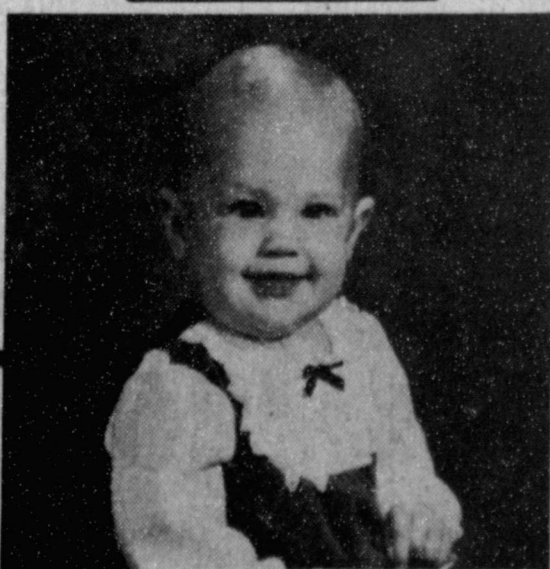
Thurs. & Fri.

10 a.m.-6 p.m.

Saturday

10 a.m.-5 p.m.

PERRYS



321 MAIN STREET  
OPEN 9 TO 6

Anthony's  
C. R. ANTHONY CO.

WHEN ANTHONY'S HAS A SALE, YOU KNOW IT'S A SALE!

# Sidewalk Sale

THURSDAY, FRIDAY AND SATURDAY!

Super Savings ON ALL SPRING AND SUMMER MERCHANDISE! PRICED TO CLEAR!

### Planting...

Cont. from Page 1

then if he can bust out and plant the seed beneath where the herbicide treated soil is he has a pretty good chance of getting the crop up and going. Once the grain crop is up and growing, then the treated soil now in the middle of the row can be cultivated back to the crop without very much damage.

Another example is a case where propazine or atrazine has been applied to the soil in anticipation of planting sorghum or corn. Perhaps planting intentions have changed and you want to plant sunflowers or soybeans or cotton. If these two herbicides have been incorporated in the soil there is a very poor chance of rotating to a broad-leaf-type crop simply because these herbicides are inherently quite phytotoxic on all the broadleaf crops that we might rotate to. Cotton is more tolerant of these specific herbicides than either soybeans or sunflower. Sunflowers are the most sensitive. Also, the sensitivity of the broadleaf crops are much greater to atrazine than they are to propazine. If these two herbicides have been incorporated in the soil and there has been any rain, they will have moved somewhat in the soil and the chances of planting beneath these would be difficult. It would be possible if they were incorporated and no rainfall had occurred that you might get below it and obtain a crop of sunflower, etc.

Another question that is asked is what happens if herbicides such as Caparol or Sancap have been applied as preemergence treatments on cotton, the cotton is hauled out, and I wish to replant cotton first; secondly, perhaps I would like to plant sunflower or soybeans because the season is now too short for cotton. When we are planting cotton into these two herbicides there is no problem. If you are going to bust out, and throw the herbicide out of the furrow, then additional herbicide may need to be applied if you need extra weed control. As long as you are bed planting and replanting back on top of that bed, then there should be no problem with replanting the cotton. When rotating to soybeans or sunflower, it would be important to knock off the top of the bed or get below these two herbicides because both of them will injure the soybeans, cowpeas, or sunflower to some extent. These herbicides do move with moisture in the soil. Depending on the amount of rainfall that might have occurred, it would be important to knock off the top of the bed and get below these herbicides for.

In our experience on the High Plains of Texas, sometimes we run across an example like this. A preplant incorporated yellow herbicide has been applied to the soil, the land has been bedded, in anticipation of planting cotton, however, the chemical applicator misapplied propazine to this same area of land. Then it becomes very difficult for any crop to grow under those conditions. In this case, if he is trying to grow a crop he has a better chance of getting beneath the yellow herbicide and planting sorghum or corn than he does getting beneath the propazine with cotton. He has a better chance of making a crop under those conditions. This is a pretty sad situation when two chemicals such as these are applied to the same land during the same year.

Some other commonly asked questions at this time of the year include the following. "I have planted sorghum and I intended to put on propazine before it got up, but it rained and I could not get in there in time to do it. The sorghum is already coming up; what can I do?" You still can apply propazine after the sorghum is up without any damage to the crop. The only concern is that the weeds are coming up, also. If that is the case you will miss some of the weeds that are already up. Do not use the herbicide Igran if your sorghum is up because it will completely kill the sorghum. It has post-emergence activity, whereas propazine does not. The same thing is true in corn. Once corn has emerged, atrazine can still be applied after it is up and is labeled for that treatment. It is also labeled for putting on the top of sorghum once it emerges. However, Evik should never be put on the top of corn. It is labeled only as a directed spray.

The same sort of question can be asked of cotton. "Cotton is now emerging and I wanted to put on Caparol or Sancap." If this is the case, then you are too late because applications of these chemicals over the top of emerging cotton will severely injure it and you have a very poor chance of it ever coming out of it. The best shot now is to wait until it gets up another 5 or 6 inches, and perhaps, look at a directed spray application which will give you post-activity as well as pre-emergence residual control.

### Muleshoe...

Cont. from Page 1

training. A Food Preservation workshop has been scheduled for Friday, July 30, from 9:30 a.m. to 3 p.m. in the fellowship hall of the 16th and Ave. D Church of Christ. Registration will begin at 9:15 a.m. and there is no charge for the workshop. Anyone planning on attending the workshop is asked to pre-register by July 21 by calling the Extension Office at 272-4583.

The Sidewalk Art Association of Lubbock will be holding a one day outside Arts and Crafts sale Saturday, August 7th at Monterey Shopping Center, at 50th and Flint. If you are interested in taking part, please call Danela Dickson at 792-9799 or Helen Dooley at 799-6551 or write P. O. Box 64272 Lubbock, Tx. 79424.

Lawrence Welk retires: 40 years of wonderful music.

### Court...

Cont. from Page 1

hibition of acceleration, running red light, criminal trespassing, and violation of drivers license restrictions.

Cases with convictions recorded include: twelve for speeding, six for exhibition of acceleration, four for expired stickers, three for bad checks, two for the following: no drivers license, running stop signs and one each for the following violations: failure to yield right of way, violation of city ordinance, criminal trespassing, defective headlights, failure to appear, disorderly conduct and public intoxication.

Cases filed in Justice Court with Justice of the Peace Tana Holmes included 13 for speeding, four for overallowed gross weight, three for failure to stop at stop signs, two for each of the following violations: displaying expired license plates, non valid MVI, theft certificates. One case on each of the following was filed: operating unregistered vehicle, operating unregistered trailer, defective equipment, public intoxication, passing in no passing zone, operating vehicle without headlights when required, excessive acceleration, failure to display proof of liability and violation of written promise to appear.

Dispositions in justice court included twelve for speeding, two each for the following: non valid MVI,

### Film...

Cont. from Page 1

eral of the United States. He is a Christian physician, and one of the world's most prominent surgeons.

The first two episodes will be shown Saturday night at 7:00 p.m. The next two Sunday morning, beginning at 9:30 a.m. and the last one Sunday evening at 6:00 p.m.

Everyone is cordially invited to attend the showing of these dynamic films. Admission is free.

### Elder...

Cont. from Page 1

freshmen in and the information we tell them is basic, but we don't tell them how to adjust to college life or how to cash a check and build pride," said Cindy Pearce, coordinator of residence hall programming. "If we teach them from the very beginning, they'll be better students in our organization and better alumni later."

### Fourth...

Cont. from Page 1

persons were seriously injured during the last holiday in traffic accidents."

The DPS director said additional troopers would be assigned to areas where heavy volumes of traffic are expected.

"Our troopers are working during this holiday period to assist travelers and to watch closely for drivers who may have had too much to drink or who insist upon exceeding the speed limits," he said.

The DPS says many municipal police and county sheriff's officers will also work local traffic safety programs during the holiday period.

The DPS Operation Motorcade counting period begins at 6 p.m. Friday, July 2nd and continues through midnight Monday, July 5th. The Department will tabulate city and highway traffic fatalities and release totals three times daily at 10 a.m., 3 p.m. and 8 p.m. The first report will be made at 10 a.m. Saturday, July 3.

### Tour...

Cont. from Page 1

damage to High Plains counties in the past months has been an unprecedented disaster and both Block and Reagan have been urged to take immediate and timely action to help these farmers by issuing the direct disaster payments which are provided for in the 1981 Farm Bill.

### Police...

Cont. from Page 1

for revocation of probation and returned to Lamb County law enforcement officers. Tony Allen Slattery who was charged with criminal trespassing on June 23, posted a \$100 cash bond and was released. Ruben Salazar was arrested on June 27 on a public intoxication charge by DPS troopers. He remained in the county jail at present time.

Rubens Salazar was arrested on June 27 for a public intoxication charge. He paid a \$106 cash bond and was released. DPS made the arrest.

**AG**  
**WEATHER**  
**ADVISORY**

Scattered precipitation fell last week in Bailey County. At Vinson farm 0.82 inch of precipitation fell.

For irrigated corn in Parmer County planted near 15 April, anthesis is predicted to occur on approximately 8 July. Current consumptive use for irrigated corn is approximately 0.25-0.30 inch per day. However with dry windy conditions and high radiation loads this value could easily increase to 0.5 inch per day on selected days. Due to low leaf areas, the consumptive use in dryland cotton is less, averaging only approximately 0.2 inch per day.

Examining historical precipitation data at Muleshoe shows that for the next three weeks there is a 18 percent chance of getting three inches or more of precipitation, a 63 percent chance of getting one inch or more of precipitation, and a 85 percent chance of getting 0.4 or more of precipitation. The mean precipitation for the next three weeks is 1.8 inches and the maximum ever occurring at Muleshoe during this time was 6.7 inches.

### Schedule...

Cont. from Page 1

The following businesses will be observing regular business hours: Poyner White's, El Haus-teco, Corral, King Grain, Barrett Produce, Sonic Drive-In, Irrigation Pumps, E. T. Ford Construction, Dr. G's, Pizza Hut, Perry's Anthony's, James Roy's Meat, John's Custom Mill, Pay And Save will close at 6:00 p.m. Sunday, Shafer's Bell, Valley Motel, Western '66', Purdy and Hawkins School of Dance and Gymnastics.

Cashway will be closed all day Sunday. Main Street Beauty Shop will be closed Sunday only. Annelia Villarreal was arrested on a charge of DWI on June 27 and still remains in county jail. Also Joahne T. Stevens was arrested on a charge of driving while intoxicated June 28. She paid a \$265 bond and was released.

In other sheriff's activities, T. G. Howard reported the theft of approximately 250 gallons of gasoline from his eight trucks sometime between June 23 and 28. Howard also reported the theft of two stereo speakers from a mobile home which his son occupied. It was apparent that the intruder entered the home through an unlocked trailer door and took the equipment. The speakers were valued at approximately \$176 total.

On June 28 the local VFW reported the theft of some liquor and beer from a cooler in the establishment. Suspects had appar-

ently knocked a hole in the wall to gain entrance. A total evaluation of the missing property was unavailable at the time of this report.

## Flea Markets Must Pay Sales Tax, Too

State Comptroller Bob Bullock said today Comptroller enforcement officers are visiting flea markets across the state to make sure all Texas retailers are treated equally.

"We have received complaints from taxpayers about competitors who don't charge or don't pay sales taxes. The business people who have made these complaints are only asking for what they deserve-to be treated just exactly like their neighbors and their competitors," Bullock said.

Bullock explained the enforcement officers now visiting flea markets aren't looking for the once-a-year garage sale a family might hold to clean out the overflow from their attic.

"We're looking for people who continually sell merchandise. When you start setting up shop week in and week out, you're not a garage sale anymore, you are a retailer. And the

Legislature says retailers must have a permit from the Comptroller, post the necessary bond, report and pay their taxes."

Bullock pointed out that businesses who do not pay sales tax gain an unfair advantage over the conscientious taxpayer.

"These operators are also short - changing their neighbors by not paying their local sales taxes," Bullock added.

The statewide canvass of flea markets--due to be finished later this summer--will yield an accurate picture of the number and location of such markets across the state. Using this information, the Comptroller's Office will tailor a program to insure voluntary compliance with the sales tax law in the future.

A child's education should begin at least one hundred years before he was born. -O.W. Holmes



**NEW LIONS**--Several Muleshoe men were installed this week as new members to the Muleshoe Lions Club in connection with their annual election of officers. Shown here are (l to r) Tim McCormick, Reagan Cox and Les Irvin. Also new members but not shown are Chuck Smith and Troy Stegemöller.

### REAL ESTATE FORECLOSURE SALE

Real estate located on South Main Street in Friona, Texas containing land and building presently being used to stable horses.

Legal Description:

A tract of land and building out of the Southeast part of Section 6, Township 4 South, Range 4 East of a Capitol Syndicate Subdivision in Parmer County, Texas, containing 5 acres of land more or less.

Place: Parmer County Courthouse

Date: July 6, 1982

Time: 1:00 p.m.

Terms: Cash to the highest bidder. Real estate is being sold subject to all taxes due thereon. Title will be conveyed by Substitue Trustee's Deed. For more information contact Kay Lewis, Small Business Administration, 1205 Texas Avenue, Lubbock, Texas 79401.  
Phone: (806) 762-7471

*Grand Opening*

# Sale

**Taylor Express Mart**

**Kerr - McGee**

1414 West American Blvd.

**Coca - Cola 16 oz. 20¢**

<b>Regular</b>	<b>Diesel</b>	<b>Unleaded</b>
<b>99¢</b>	<b>99¢</b>	<b>99¢</b>

**Watch For Love Tuesday**

<b>Amalie</b>	<b>Free Balloons</b>
<b>30 H D &amp; 10 w 40</b>	<b>For The Kids!</b>
<b>99¢</b>	

**ferti-lome**  
**PERMA-TRIM**

APPLICATOR INCLUDED

**Edge the easy way!**

**ferti-lome**

**Baker Farm Supply**

1532 W. Amer. Blvd. 272-4613

## Hearn Named GTE Operations Manager

O. D. Hearn, Brownfield Division manager for General Telephone, has been named operations manager of the newly formed Brownfield Operations Center, according to William J. (Jerry) Crowley, newly named general manager - Western Divisions Operations, which is headquartered in Hobbs, N. M.

The appointment is effective July 4. In his new position, Hearn will report to Crowley and will be responsible for directing the combined operating functions in the Brownfield Operations Center's service area.

Hearn has been active in civic and community affairs in Brownfield, serving as president of the Brownfield Chamber of Commerce (1979), the Brownfield Industrial Foundation (1979) and the Terry County United Way (1978-79). He is a board member of the West Texas Chamber of Commerce, South Plains Council - Boy Scouts of America and the Brownfield Industrial Corporation. He also serves as district chairman for sustaining membership enrollment for the Quanah

### Get Into Shape Before Jogging

Out of shape? You may have been active in high school athletics, but now all that remain are the memories and the extra pounds. You decide to get back into shape by jogging.

Before beginning, candidly assess your physical condition, advises the Texas Medical Association. If you are over age 30, are overweight, or have a history of health problems such as heart or lung disease, high blood pressure or diabetes, a medical check-up is important.

A person who plans to jog regularly should buy a pair of running shoes that fit well and absorb shock adequately. Because they are designed for running, they will be noticeably more comfortable than other athletic shoes.

Set up a carefully controlled running program by initially jogging only a short distance, combined with walking. Gradually increase the jogging distance when you feel comfortable. How often and far a person should jog depends on the individual. Many physicians agree that about 15 minutes of jogging three or four times a week is adequate to provide a "training effect," according to the National Jogging Association.

Your jogging speed is another consideration. One way joggers determine a suitable training pace is by checking their breathing with the "talk test." If you are out of breath and cannot talk comfortably while jogging, you should slow down.

Parker District of the Boy Scouts of America, and is a member of the Terry County Amateur Radio Club and the Economic Development Advisory Committee - South Plains Association of Governments.

The operations center in Brownfield will include all exchanges now served by the Brownfield Division office. The change in title in no way diminishes the operating role or the economic impact of General Telephone operations in Brown-

### Three Way News

By:

Mrs. H.W. Garvin

Mrs. H. W. Garvin from Maple and Mr. and Mrs. Kenneth Fox and son from Clovis spent Sunday and Monday in Lubbock with the James Gilentine family. Also visiting in the Gilentine home was Mrs. John Flinn from Phoenix, Arizona.

The children of Mr. and Mrs. J. L. Lemons from Arabia are visiting their aunt and uncle, the Bobby Kindles.

Mr. and Mrs. John Flinn from Phoenix, Arizona and Mr. and Mrs. Kenneth Fox and son from Clovis spent Monday night with their mother, Mrs. H. W. Garvin.

Mrs. Bobby Kindle was in Lubbock Thursday on business.

Mr. and Mrs. George Tyson spent Thursday night in Lubbock with their daughter, the Tommy Durhams.

Mrs. Pete Tarlton was in Lubbock Friday to be with her father who is a patient in Methodist Hospital.

Farmers in the community are busy replanting their crops after the hail.

Mrs. H. W. Garvin spent Tuesday night in Clovis with her daughter, the Kenneth Fox family.

Mr. and Mrs. Joe Sower spent Father's Day in Amarillo visiting her brother, the Gus Taylors.

Rev. and Mrs. James Gilentine from Lubbock spent Sunday with their mother, Mrs. H. W. Garvin and attended church at the Enochs Methodist Church.

Mrs. J. T. Lemons from Roswell spent Thursday and Friday visiting her daughter, the Bobby Kindel family.

Mrs. D. P. Brinker spent several days visiting in the community the past week.

field, according to Crowley.

The operations centers were developed to provide for those service areas which are a substantial distance from the division operations headquarters or which have very heavy concentration, according to E. L. "Buddy" Langley, General Telephone Company of the Southwest president. They will provide yet another vehicle through which service-affecting decisions will be brought nearer to the company's customers.

There will be 18 operations centers located in General Telephone's four-state service area in Texas, Arkansas, Oklahoma and New Mexico. Each of these will report to one of the 11 new general managers - divisions operations. Restructuring the company from five areas and 24 divisions to the new organization of 11 division operations and 18 operations centers is being done to make the company more responsive to individual customer needs and particular operating environments, Langley said.

Hearn joined General Telephone in 1956 as a lineman. He advanced to several positions with the company's operations in Texas prior to being named Brownfield Division manager in 1977.

### Mrs. Swanner Former Enochs Resident Dies

Funeral services for Mrs. Gracy Swanner were held at 10:30 a.m. Thursday, June 24 in Highland Baptist Church in Lubbock with Rev. Richard Waters and Rev. Kenneth Staton officiating.

Graveside services were held at 2 p.m. in Morton Memorial Park in Morton. Her grandsons were pallbearers.

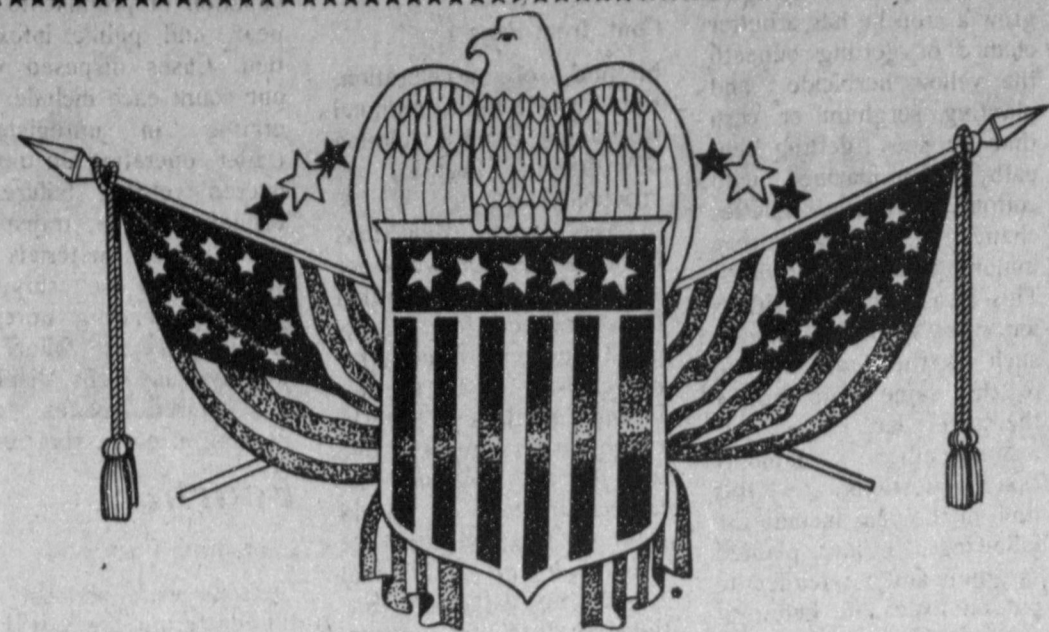
Mrs. Swanner died June 22 following a lengthy illness.

She was born October 14, 1901 in Dallas County. She was a former Enochs resident in the 1930s and a member of the Highland Baptist Church.

Survivors include three daughters, Mrs. Avenell Moffett of Cushion, Okla., Mrs. Odell Vaughn of Possum Kingdom, Mrs. Bernice Arant of Levelland; one son, Jim Swanner of Lubbock; three sisters, Mrs. Ida Henderson of Azle, Ellen Bayless of Enochs and Olene Cunningham of Fluvanna; 15 grandchildren and 20 great grandchildren.



MRS. GRACY SWANNER



# Come To Muleshoe July 3 And Help Celebrate Independence Day

Sponsored By The Following Merchants.

Albertson's Shop for Men

Irrigation Pumps & Power

Black Insurance Agency

John's Custom Mills

El Nuevo Leal's Restaurant

West Texas Industries

Muleshoe Body Shop

Shipman & Sons Body Shop

Serv - All Thriftway

Western Drug

Dinner Bell Cafe

Spudnut Shop

Cashway Grocery

Gulf Wholesale

Ray Griffiths & Sons Elevator

Robert Green Inc.

Main Street Beauty Salon

The Honey Comb

Shook Tire Co.

Chubby's Beauty Shop

Western '66' Co.

Muleshoe Pawn Shop

James Crane Tire Co.

Spurgeon's Motor Machine

Muleshoe Co-op Gins

A&M Farm & Ranch Supply

Williams Bros. Office Supply

West Plains Medical Center

Five Area Telephone Cooperative

Decorators Nursery & Floral

McCormick Seed Inc.

Bailey County Electric Cooperative Association

<p><b>HARDWARE VALUE OF THE MONTH</b></p> <p>QUANTITIES LIMITED</p> <p><b>Steel City</b></p> <p><b>NOW 3.99</b> While Supplies Last</p> <p>Hang Stuff Tool Holder Kit Two 3-ft. steel channels come with a set of attachments, 2 utility hangers and a tool caddy. HS-3</p>	<p><b>BARGAIN OF THE MONTH</b></p> <p><b>NOW 3.99</b> While Supplies Last</p> <p>High-Dome Covered Cake Pan For baking &amp; storage. Even-heating all-aluminum construction. Snap-on lid doubles as cookie sheet. 13x8x3 1/2 in. M0980</p> <p>QUANTITIES LIMITED</p>	<p><b>TOOL VALUE OF THE MONTH</b></p> <p>QUANTITIES LIMITED</p> <p><b>NOW 5.79</b> While Supplies Last</p> <p>Master <b>MECHANIC</b>® 25-Fl. Power Tape With positive toggle lock to hold 3/4-in. yellow blade firmly. Black markings for easy readability. Durable Cyclocac® case. MMP325</p>
---	---	--

Fry & Cox Inc.

401 S. 1st

272-4511





# Muleshoe Area Business Directory



## Carnival of Values Sale Still In Progress

We Will Be Open July 3

**MERLE NORMAN**  
The Place for the Custom Face

1519 W. Amer. Blvd. 272-3459

**Latrells Fashions**



(Custom Exhaust Specialists)

**We Have A Full Line Of Car  
& Pickup Accessories**

422 N. 1st

MULESHOE, TEXAS 79347

(806) 272-5333

**Watch For Our  
Grand Opening**

**SERV-ALL**

**THRIFTWAY**

**Instead Of A Long Hot  
Summer See Us For A  
Cool Deal!**



Keep That Great GM Feeling  
With Genuine GM Parts.

**Thornton Chevrolet**

201 Main

272-4521

## Daily Specials

Seafood  
Mexican Food

Open: Mon-Sat: 6 a.m.-10 p.m.  
Sun: 6 a.m.-2 p.m.

**Dinner Bell Cafe**

2103 W. Amer. Blvd.

272-3460

## Terry Field INSURANCE AGENCY

COMMERCIAL · HEALTH  
HOME · LIFE · BONDS  
GROUP · INSURANCE



Terry & Charlotte Field

When Terry Field decided to 'go on his own' and open his own insurance office in Muleshoe, the Muleshoe native chose 213 East Ave. B for the location of his office, and opened it in December, 1979.

After graduating from Muleshoe High School in 1968, he went to West Texas State University and received his degree from there in 1972. He returned to Muleshoe and was associated with another firm until opening his own office.

Field said that as an independent Agent, he can 'go shopping in the market place' to try to figure out the best coverage at the best price for any individual customer.

He commented, "We try to work with the people and try to take each situation for the best coverage at the best price." He said this was the main philosophy of the independent agent.

Terry Field Insurance has a full insurance line -- automobile, home and home furnishings, commercial, health, life -- whatever you may need at any time. "We can write just about any kind of insurance a person may ask for around here," added Field.

When someone calls on Terry Field Insurance, he asks whether the caller is interested in commercial or home insurance. If it is commercial, the next question is "What kind of business?" An appointment is made to look at the operation, and existing policies, if any, for the business. Field makes suggestions, and finds out what the business operator needs, and works to arrive at satisfactory figures for new insurance, or supplemental insurance.

Much the same process is used when a person inquires about home or automobile insurance.

Field is married to the former Charlotte Wagon, who helps in his office. They are the parents of Jody, eight; Bryan, five and Lindsey, two months old.

HAIL SIZE ISN'T IMPORTANT--HAIL DAMAGE IS IMPORTANT.



Insure your growing crops against loss from Hail Damage.

It's so easy to obtain hail insurance for your growing crops at low net cost—a dividend has been paid to Crop Hail Policyholders eight of the past eleven years, and for 1982—20% DEVIATION OFF OF TEXAS.

CROP HAIL RATES

Just call your Texas Farm Bureau Insurance Companies Agent

Ray Davis, Ricky Barrett, Durk Green

**Farm Bureau Insurance**



272-4567

1612 W. Amer. Blvd.

**Earn \$1,400 To \$12,900**

**Buy Your New John Deere  
Tractor In June & Get Bigger  
Than Ever Savings In  
John Deere Money!**



Extended to July 31

**Dent-Rempe Inc.**

1516 W. Amer. Blvd.

272-4296

**Beginning In July**

**We Will No Longer Be Open On Sunday Afternoons**

Regular Store Hours: **Monday - Saturday 7:00A.M. - 6:00P.M.**

IN CASE OF AN EMERGENCY CALL  
272-4641

REMEMBER TO CHECK YOUR PRESCRIPTIONS  
FOR REFILLS ON SATURDAY

Sam Damron R.Ph. Regina Finke R.Ph.

**Damron Rexall Drug**

308 Main

272-4210

**We Would Like To  
Welcome All The Workers**

**From The Valley**

**To Muleshoe.**



**Viola's**

2002 W. Amer. Blvd.

272-3838

**We Can Deliver A NEW Lindsay  
Center Pivot NOW With No Down  
Payment And Interest**

**FREE Until  
1983**



**Irrigation Pumps & Power**

W. Hwy 84

272-4483

**Your Wedding, You Want It  
To Be Special. And We Do Too.**

Your wedding photographs are tangible moments of your special day. Trust them to a professional--Trust them to us.

When you book your wedding with us, we'll give you a bridal portrait setting absolutely free.

We offer a complete line of wedding stationery.

"Your Wedding Specialist"

**Adrian Photography**



**We Are Now Able To Offer**

**15% Off**

**On Automobile Insurance**

For Persons Who Qualify

THE BIG DIFFERENCE



**Terry Field Ins.**

213 E. Ave. B

272-5551






# Muleshoe Area Business Directory

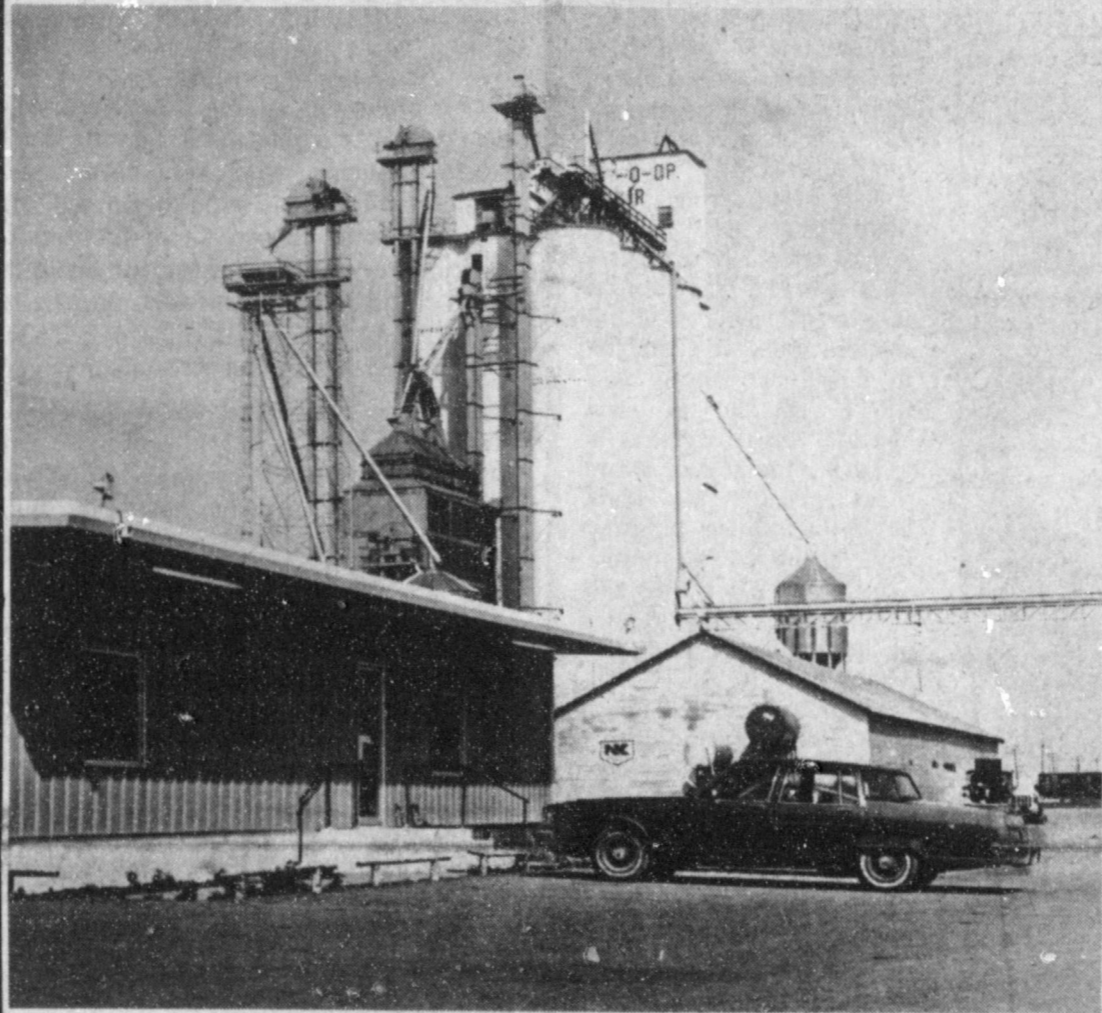


Buy A Sleeper And Receive A Silk Flower Arrangement  
Value Up To \$40  
From Muleshoe Floral & Gift.  
**Hunter Furniture**  
2104 W. Amer. Blvd. 272-4315

2 & 3 Gal. Sprayers.....\$22<sup>25</sup>  
3/4 x 50' Flexogen Garden Hose \$25<sup>75</sup>  
7 1/4 Skil Saws ..... Reg. 197.38 \$139<sup>00</sup>  
SK Tools 20% off  
Hurry, Quantities Limited!  
**Lazbuddie Farmers Supply**  
965-2949

**Now Is The Time To Buy!**  
8 Row Cultivators  
Priced From \$4,150.  
**Reynolds & Young Equip.**  
803 W. Amer. Blvd. 272-4236

  
**Spudnuts**  
The Upper Crust of the Donut World  
The Potato Raised Donut  
**Spudnut Shop**  
328 S. Main 272-3542



Farmer's Co-op Elevator

Sandwich Cheese..... 5lb. block..... \$9<sup>50</sup>  
Red Rind Cheese..... \$1<sup>99</sup> lb.  
Pork Chops..... \$1<sup>49</sup> lb.  
T-Bone Steak..... \$3<sup>25</sup> lb.  
 **Winkler Meat Co.**  
401 Main 272-4703

Serving Fine Mexican Food Since 1957  
Take Out Orders Open 7 Days A week  
 **Leal's El Nuevo Restaurant**  
1542 W. Amer. Blvd. 272-3294

Around 26 years ago when Robert Johnson, a native of Lamesa, first went to work for the Lubbock Grain Exchange, he had no idea that someday he would be in Muleshoe as the manager of the Farmer's Co-op Elevators, encompassing five total facilities.

However, in July, 1981, he moved from Lubbock to Muleshoe and took over the operations.

In Muleshoe, Farmer's Co-op Elevator has a storage capacity of just over five million. This fall, following the recent severe weather, Johnson said the elevators expect much more milo than usual, as many farmers are replanting with that crop following devastating hail storms, wind damage and drought.

Johnson said the Enochs area got most of the winter wheat cut and into the Co-op Elevator there before the severe weather hit, but the area has been hampered by lack of moisture to plant spring crops. "Despite the rain, hail and other bad weather, that area still needs rain," commented the Co-op manager.

With June generally the busy month for wheat, a slight reduction in incoming wheat to Muleshoe has been noted, but Johnson predicted the elevators would be busy in their peak season September 1 through November 1. The elevators receive corn, milo, wheat, soybeans and sunflowers.

Johnson said the principle markets for grains from Farmer's Co-op Elevator include selling to feed lots, exporters, dairies and feed mills.


He also said when the annual meeting for Farmer's Co-op Elevators is held Friday, July 9, one of the reports to be given will be on the progress of construction of a new storage facility at the Co-op Elevator at Clay's Corner. The new 'tank' is expected to be in position in the middle of next week.


Modern technology has also brought new innovations to the grain industry, including the Grain Instant News -- constant reception by teletype of up-to-the-minute markets, as well as events pertinent to the grain markets. "It is a service for our customers, as well as for persons directly involved in the grain business," added Johnson. He said the Grain Instant News is tied to the Chicago or Kansas City Board of Trade and saves a lot of long distance phone calls.

Come See Us For All Your Parts Needs.  
We Have A Large Inventory Of Parts.  
Serving Your Needs For 15 Years  
**Bratcher Motor Supply**  
107 E. Ave. B 272-4288

2 Liter **Pepsi** 89<sup>c</sup>  
Diet or Regular  
  
515 W. Amer. Blvd. 272-4406

**Farmers Co-Op Elevators**  
272-4335  
"3 Locations To Serve You"  
Enochs Muleshoe  
Clay's Corner

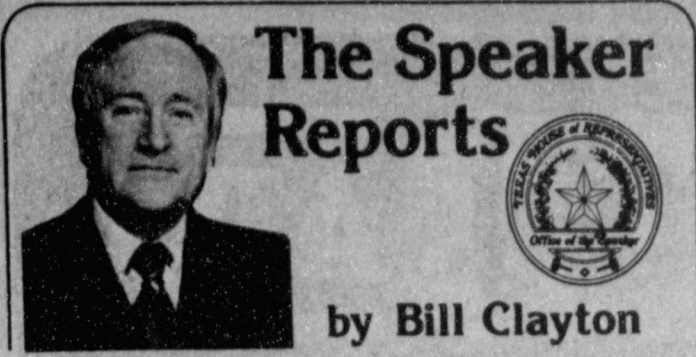
Sol•A•Terra II Heat Pump  
The Energy Saver By Mammoth  
 **Wilson Drilling**  
W. Hwy. 84 272-5557

Come See Us For All Your Prescriptions And Medical Supplies  
 **Western Drug**  
Paul Wilbanks Harry Waddle  
114 Main 272-3106

Serving Farmers Through Marketing Corn, Wheat & Other Grains  
**Texas Sesame**  
Division of Paris Milling Co.  
272-4231

8 pc. Living Room Group  
Sofa, Love Seat, Chair,  
3 Tables, & 2 Lamps  
\$ 899<sup>95</sup>  
Down payment \$94<sup>50</sup> Monthly payment \$77<sup>00</sup>  
10% Down Instant Credit  
**Baker Furniture**  
106 E. Ave. B 272-4000

Keeping Up With The Times  
Come By & Visit And Look Over Our New Liquid Fertilizer Plant.  
"Serving You For 21 Years"  
**Foster Fertilizer**  
965-2921



## The Speaker Reports

by Bill Clayton

AUSTIN—After the primary election on May 1, I received complaints from many people about the lengthy ballots which called for a knowledge of candidates for many judicial races in addition to other statewide offices.

This recent election reveals a sore spot in the minds of many people—the value of selection of judges by general election.

In response to this matter, I have created the Select Committee on Judicial Selection. The committee is charged to examine our present system of election of judges and to study alternative methods of judicial selection used in other states.

A common complaint against our present system is that so many judicial candidates come up for election that the general public has neither the time nor the inclination to keep the names straight, much less the candidates' stands on the issues, their qualifications, etc. Another complaint is that statewide elections cost the candidates tremendous amounts of money which either must be paid for by campaign contributions or by the candidates themselves.

One solution to these problems that has been offered is that judges should be appointed rather than chosen by a statewide election. The question then

would be who will do the appointing: it could be the Governor, a panel of qualified individuals, a group of judges, etc. Along this line of selection, more definite qualifications for the various judgeships would serve as the basis of a procedure of selection by merit.

The Select Committee on Judicial Selection is asked to make recommendations based on its research to the 68th Legislature.

Perhaps the committee will find that the present system of election is as workable a method of selection as any, but that certain changes could make the system more viable. For instance, legislation is expected to be introduced next session which offers some form of partial public funding for statewide campaigns. Other changes to our present system might be requiring judges to run in non-partisan elections or lengthening terms so that elections won't be so frequent.

The possible alternatives and changes to our judicial selection system are many. With the aid of the select committees' recommendations, the Legislature should be able to make important improvements in this area.

### Best Of Press

**Know Her Well**  
Secretary of office manager: "I've taken all the criticism of my work that I'm going to take! How do you spell 'quit'?"

—Times, Chicago.

**True**  
A platform is getting to be something a candidate stands on before election and falls down on afterward.

—Star, Minneapolis.

**Temporary**  
Many men who think they have closed their eyes to temptation are just two weeks ago.

—News, Breda, Ia.

**Difficult**  
Our politicians are perfectly familiar with all the questions of the day. The difficulty is that they don't know the answers.

—Democrat, Davenport, Ia.

## Southwestern Bell Has Rate Increase

Wait a minute. This doesn't make good sense. If AT&T's earnings rose nearly nine percent in just the last three months, why does Southwestern Bell, which is still owned totally by AT&T, need the largest rate hike ever?

Maybe because it's just that time again. Time for Southwestern Bell to try to sock ratepayers with another rate increase. They do it every year.

The only differences from year to year are that the "requests" (demands?) seem to get bigger and bigger, less and less justifiable, and in actuality, closer and closer together. So close, in fact, that it was just a couple of weeks ago that last year's request was finally finished.

At just this time last year, the phone company asked for their "annual" increase. In October, before the Public Utility Commission has time to make its determination, Bell hiked up phone bills to what they hoped the Public Utility Commission would give. They guessed wrong; the Public Utility Commission decided they didn't deserve as much as they were already charging us.

But instead of reducing our rates and refunding the overcharges, Bell took the PUC to court. After they dragged out the suit for months, the court told Bell they were too greedy and had to give us our money back (it was the second year in a row that the court found Bell was out of line). Bell finally had to admit defeat and made refunds just two weeks ago.

Now, here they are again. This time, though, what they want is a little different from the past, because this time they want most of the rate hike to come from areas where it will hit the residential folks who can't go elsewhere for phones, the hardest. They

want:  
1. A \$4.60 increase in your monthly charge (for residential service).  
2. To cut back Directory Assistance calls from 10 to 3.

3. A \$63.65 charge for connecting up a new phone -- if you pick up the phone and do the installing yourself.

In all, they want an additional \$471.5 million, that's 13.4 percent more than they get right now.

Why? "To assure our continuing ability to provide quality telephone service in Texas," explains their vice president in charge of all this, Paul Roth. Rates have to go up he says, because Bell's costs keep going up, Texas keeps growing, and some of our accounting rules have changed. We have to get adequate earnings on our Texas investments, which isn't happening right now, he says.

But what Roth doesn't say, is that AT&T, the parent company has been doing tremendously well, opponents to Bell's increase point out. In the past 12 months, each share of AT&T stock went up in value an additional \$8.71 a share. When most companies are barely holding even, that's quite a jump.

Now, considering that Southwestern Bell is the largest telephone subsidiary of AT&T, and that Texas is the largest part of Southwestern Bell, it's difficult to figure out exactly how "AT&T can be in such splendid shape, if Texas is in such pitifully poor shape those opponents say. Maybe the telephone company isn't giving us the whole story? Maybe it's time the PUC puts a halt to the phone company's yearly demands.

What are your feelings about Bell's demands? The Texas Consumer Association will be involved in the case this year.



LUBBOCK, Friday, June 25, 1982

An urgent telegram from Lubbock-based Plains Cotton Growers, Inc. to Secretary of Agriculture John Block tells the sad story.

Asking that appropriate action be taken immediately, the wire advised the Secretary that "Hail, rain, wind and cold temperatures have destroyed an estimated 1.5 million acres of High Plains cotton," and that such "unprecedented losses and the pre-existing financial plight of producers clearly justify activating the disaster payment program authorized in . . . the 1981 farm law."

Copies of the telegram went to area representatives, Texas Senators and to House Agriculture Committee Chairman Kika de la Garza.

Putting the disaster program into effect would mean more and possibly quicker income on lost crops and crops not planted because of insufficient moisture, and also would provide additional income on weather-damaged crops yielding less than 75 percent of the farm's payment yield.

Without the disaster program the farmers who planted cotton, whether or not it is harvested, could expect target price payments of from 10 cents to 13.92 cents per pound times the farm's payment yield, the actual payment rate depending on the average price paid to all U. S. farmers for all cotton during the 1982 calendar year.

Disaster provisions of the 1981 farm law under a given set of circumstances permits the Secretary to pay producers who were never able to plant or whose cotton has been destroyed 23.67 cents per pound times 75 percent of the farm's established payment yield. This payment could be made as soon as calculated, and the same farmers later would be eligible for the target price deficiency payment times the other 25 percent of their payment yield.

Crops carried to harvest under the disaster program would be eligible for 23.67-cent per pound payment times the difference between actual yield and 75 percent of the payment yield, plus the deficiency payment rate on that portion of the payment yield not receiving a disaster payment.

"Secretary Block has agreed to send one or more department officials to see for themselves the sorry state of our crops," notes PCG Executive Vice President Donald Johnson. "And, thanks to the National Cotton Council we have the full support of every segment of the industry, so we are encouraged that the Secretary may be persuaded to use his authority to give us as much relief as possible within

the limits of the law."

On other fronts, emergency federal loans are being sought for farmers through the FMHA and by way of asking the President to designate the High and Rolling Plains as disaster areas.

"Relief from all these sources and more is going to be necessary to forestall economic convulsions more severe than any ever seen before in the agricultural sector," Johnson said, "and we can only hope that federal officials will recognize this fact and act accordingly."

## CAPITOL UPDATE

John Tower  
U.S. SENATOR for TEXAS  
142 RUSSELL OFFICE BUILDING  
WASHINGTON, D.C. 20510



"We hold these truths to be self-evident, that all men are created equal, that they are endowed by their Creator with certain unalienable rights, that among these are Life, Liberty and the pursuit of Happiness."

With these words, a band of patriots declared the formation of a new nation, the United States of America. Though today the truths stated in the Declaration of Independence are indeed self-evident to us, in 1776, they represented a new and revolutionary basis on which to form a government.

That we, and many people throughout the world, today expect our governments to work on this principle is one of the highest testaments to our nation's greatness. Ours was the first nation to hold the dignity and equality of each individual as its basis for being. We have held to that course. In fact, we understand the true meaning of the concept of equality under the law much better now than then, and we are closer to that goal than our nation's creators ever could have envisioned.

During our history, the United States has been an example to many forming and developing nations. We continue to be a beacon of hope to those who yearn for the freedoms we enjoy as a matter of course.

We did not gain, nor have we kept, these freedoms without effort.

Today, more than anything else, we seek to create a stable and peaceful world so that all nations can determine their own destiny. We work vigilantly to find ways to reduce the threat of war, without capitulating to those who would expand their authoritarian domains.

Within our nation, we remember Benjamin Franklin's answer when he was asked what sort of government the Constitutional Convention had created: "A Republic, if you can keep it."

Wherever I travel, I am always impressed with the quiet, deeply felt patriotism and commitment to our system expressed by my fellow citizens in so many ways. School groups and civic clubs begin their programs with the Pledge of Allegiance to our flag. More and more flags fly in front of private homes on our national holidays. And most important of all, there is increasing interest and participation in our system of government.

## Public Notice

Southwestern Bell, in accordance with the rules of the Public Utility Commission of Texas, hereby gives notice of the company's intent to implement a new schedule of telephone rates in Texas, effective July 27, 1982, unless otherwise determined by the Commission.

It is expected that the requested rate schedule will furnish a 13.4 percent increase in the company's intrastate revenues.

A complete copy of the new rate schedule is on file with the Public Utility Commission at Austin, Texas, and with each affected municipality served by Southwestern Bell, and is available for inspection in each of the company's public business offices in Texas. The Commission staff has contended in the past that all rates are subject to change as a result of Southwestern Bell's rate application.

### Notice to El Paso Area Customers

Effective January 1, 1982, Southwestern Bell adopted the Mountain States tariffs in effect for El Paso County. Southwestern Bell proposes to merge the separate El Paso tariffs with its tariffs applicable to the rest of Texas. The resulting new rate schedule is on file with the PUC and the El Paso area municipalities served by Southwestern Bell, and is available for inspection at our El Paso business office.

### Notice to Customers of Other Telephone Companies

The filing includes, but is not limited to, proposals to increase rates for interexchange private line and foreign exchange (FX) service. Changes in such rates would also affect customers of other telephone companies because such companies provide interexchange private line and foreign exchange service in accordance with rates specified in Southwestern Bell's tariffs. While Southwestern Bell has proposed no increase in long distance rates, any change in those rates would also affect customers of other telephone companies.

## Aviso Público

Southwestern Bell, en conformidad a las reglas del Public Utility Commission (Comisión de Servicios Públicos) de Texas, por la presente hace saber su intención de establecer un nuevo arancel para servicio de teléfono en Texas con vigencia a partir del 27 de julio, 1982, a menos que la Comisión haga otra determinación.

Se espera que el nuevo arancel que se ha solicitado rendirá un aumento de 13.4 por ciento en los ingresos intraestatales de la compañía.

Una copia completa del nuevo arancel se ha archivado en las oficinas del Public Utility Commission en Austin, Texas, al igual que en cada municipalidad afectada y servida por Southwestern Bell, y cada una de las oficinas de la compañía para negocios con el público en Texas tiene una copia para lectura pública. En el pasado, la Comisión ha sostenido que toda tarifa está sujeta a cambios que resulten de la manera en la cual Southwestern Bell aplique sus tarifas.

### Aviso a Clientes en la Región de El Paso

Con vigencia a partir del 1o de enero de 1982, Southwestern Bell ha adoptado las tarifas de Mountain States efectivas en el condado de El Paso. Southwestern Bell propone unir las tarifas de El Paso con sus otras tarifas que se aplican al resto de Texas. El nuevo arancel que resulta de ésta unión se ha archivado en la Comisión de Servicios Públicos (Public Utility Commission), al igual que en las municipalidades de la región de El Paso servidas por Southwestern Bell, y está disponible para inspección pública en nuestras oficinas de El Paso.

### Aviso a los Clientes de Otras Compañías de Teléfono

El registro incluye, pero no se limita a, propuestas para aumentar las tarifas para servicio de línea privada entre centrales telefónicas (interexchange private line) y servicio de central telefónica extranjera (foreign exchange FX). Cambios en dichas tarifas de servicio también afectarían a clientes de otras compañías de teléfono porque dichas compañías proveen los servicios ya mencionados en conformidad a tarifas especificadas por Southwestern Bell. Aunque Southwestern Bell no ha propuesto un aumento en las tarifas para larga distancia, cualquier cambio en las mismas también afectaría a los clientes de otras compañías de teléfono.

# EXPLOSIVE VALUES!

PRICES GOOD JULY 1-3, 1982

SPECIALS GOOD WHILE SUPPLIES LAST

<p>6 PACK <b>COCA-COLA</b></p>	<p><b>\$1.69</b></p> <p>12 OZ. CANS</p>	<p>16 oz. Bottles <b>\$1.69</b></p>
<p>MORTON'S REG./BBQ RIBBIES/SOUR CREAM &amp; ONION <b>POTATO CHIPS</b></p>	<p>REG. 99¢ PKG.</p> <p><b>79¢</b></p>	<p><b>POTATO CHIPS</b></p>
<p>DELICIOUS <b>OSCAR-MAYER WIENERS</b></p>	<p>1 LB. PKG.</p> <p><b>\$1.28</b></p>	
<p>ATKINS HAMBURGER <b>DILL SLICES</b></p>	<p>32 OZ. JAR</p> <p><b>89¢</b></p>	<p><b>DILL SLICES</b></p>

**ALLSUP'S WILL BE OPEN JULY 4TH**

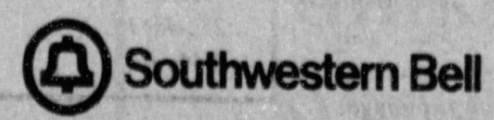
<p>BORDEN'S <b>ICE CREAM</b></p>	<p>ALLSUP'S <b>SPARKLING ICE</b></p>	<p>BORDEN'S <b>FRUIT DRINK</b></p>	<p>ARMOUR <b>100% GROUND BEEF PATTIES</b></p>
<p><b>\$1.59</b></p> <p>1/2 GAL. HD. CTN.</p>	<p><b>99¢</b></p> <p>LARGE BAR</p>	<p><b>99¢</b></p> <p>GAL.</p>	<p><b>\$2.99</b></p> <p>1 1/2 LB. BOX</p>

WE RESERVE THE RIGHT TO LIMIT

# ALLSUP'S

CONVENIENCE STORES

LIMITED SUPPLIES



# BUYING? SELLING? CHECK OUT THE...

WE RESERVE THE RIGHT TO CLASSIFY, REVISE OR REJECT ANY AD.  
NOT RESPONSIBLE FOR ANY ERROR AFTER AD HAS RUN ONCE.

**DEADLINE FOR CLASSIFIED ADS IS TUESDAYS AND FRIDAYS 11:00 A.M.**

## LEGAL NOTICES

### NOTICE TO ALL PERSONS HAVING CLAIMS AGAINST THE ESTATE OF JASPER LEROY THOMAS, DECEASED

Notice is hereby given that original letters testamentary upon the Estate of Jasper Leroy Thomas, Deceased, were issued to me, the undersigned, on the 28th day of June, 1982, in the proceeding indicated below my signature hereto, which is still pending, and that I now hold such letters. All persons having claims against said Estate, which is being administered in the County below named, are hereby required to present the same to me at the address below given, before suit upon the same are barred by the general statutes of limitations, before such estate is closed, and within the time prescribed by law.

My post office address is 323 East 3rd Street, Muleshoe, Texas 79347. Dated 28th, June, 1982.

Cora Skaggs Thomas, Executrix of the Estate of Jasper Leroy Thomas, Deceased, No. 1509, County Court Bailey County, Texas. legal notice-26t-1tp

Notice To Bidders  
The City of Sudan in behalf of applicants under the City's Community Development Block Grant Program is seeking bids for home improvement work. Sealed bids for five separate projects will be received until 6:00 p.m., Tuesday, July 8, 1982, at City Hall, 100 First Avenue, Sudan, Texas, and at that time publicly opened.

The right is reserved by the Owner/City of Sudan to reject any and/or all bids. All qualified bidders will receive consideration for award without regard to race, color, religion, sex, or national origin.

Bidding information for these projects may be obtained at City Hall, between the hours of 8:00 a.m. - 5:00 p.m., Monday - Friday.

Pete Phillips  
Housing Coordinator

There will be a pre-bid conference on the afternoon of July 6, 1982. All interested bidders may meet at city hall at 1:30 p.m., where I will answer any questions relevant to the projects. Everyone interested may then visit the project sites with me for inspection and further explanation of the work to be done. Bid packets will be available at that time if not picked up beforehand.  
26s-3tc

Court gives police power to search cars.

Israeli tanks cross border into Lebanon.

## PERSONALS

WANT TO DO babysitting in your home. Call 272-3707. 1-26t-1tc

WE BUY USED FURNITURE AND APPLIANCES CALL 272-3030 HARVEY BASS APPLIANCE  
1-18s-tfc

CAKE DECORATING For birthdays and special occasions. Call LaDelle GOWENS, 272-5419. 1-25t-4tp

FARMER LAND OWNER If you have land you would cash lease for hunting pheasant and ducks, large or small acreage, call 806-792-5608 or write: Wild Bird Leasing, Box 6626, Lubbock, Tx. 79413. 1-25t-6tc

FORMING A CARPOOL to Texas Tech. For information contact Denise at 225-6040. 1-26t-2tc

INSTANT CREDIT Living room group or Bedroom set. \$699.95. \$75.00 down, \$60 per month. Baker Furniture. 108 E. Ave. B, 272-4000. We tote the note. 1-16t-tfc

## HELP WANTED

WANTED: Cook at hospital Contact Ruby Clark. Equal opportunity employer. 3-26t-2tc

INFORMATION On Cruise Ship Jobs. Great income potential. Call 602-998-0426 Dept. 0511. Call refundable 3-25t-2tp

NEED AN EXPERIENCED FARM HAND. Preferably married. House and utilities furnished. Call 925-67-63. 3-26t-tfc

WANTED: Experienced beautician. Apply in person at Main St. Beauty Salon. 3-8s-tfc

HELP WANTED: Experienced welders and elevator personnel. Applications available at Valley Grain Products. Located 1/4 miles east of Muleshoe on Highway 84. No phone calls, please. 3-25s-8tc

FULL TIME HELP WANTED FOR 11 p.m. - 7 a.m. shift. Good benefits. Fast growing chain. Come by Town and Country Food. 1900 W. Amer. Blvd. 3-26t-tfc



3-26t-tfc

## APARTMENTS

FOR RENT: 2 BR mobile home in country. 965-2716. 5-26t-6tc

SARATOGA GARDENS 1300 N. Walnut - Friona Phone 247-3666

NOW, 1 MONTH FREE RENT 1, 2, or 3 bedroom apartments, modern, wall to wall carpet, heating, cooling, kitchen equipped, laundry facilities, parking. Low rent for needy families. Call collect.

FOR RENT: 14 x 70, 2 BR, 1 1/2 bath house trailer. Furnished or unfurnished. Central heat and air. Earth, Texas. 257-3776. 4-24s-tfc

## REAL ESTATE

FOR SALE BY OWNER: In Dodd County, 320 acres and 2 pivot sprinklers. 965-2630. 8-25s-4tc

HOUSE FOR SALE: 3 BR, 1 1/4, LR, kitchen-dining combination, den, ample storage, corner lot, near 3 schools, 1928 sq. ft. living area, 621 West 6th. Phone 272-4732 days or 272-4827 evenings. 8-2s-tfc

FOR SALE: 3 br, 2 bath, LR, fenced back yard, includes extra lot. In good location at Sudan, 313 Smith, 227-2151. 8-26s-4tc

Krebs Real Estate 201 W. Ave. C Appraisals

Serving Muleshoe Area 35 years. We Appreciate your business. 8-52t-tfc

We Want Your Business

REMEMBER REID REAL ESTATE 1614 W. American Blvd. 272-3142 Thurstie Reid 272-3142

Bingham & Nieman Realty 116 E. Avenue C 272-5285 nights 965-2488 "We Appreciate Your Business!" George & Dianne Nieman 8-49t-1tc

Smallwood Real Estate 232 Main 272-4838 \*\*\*\*\*

3 BR, Brick, 2 bath, 2 car garage, fireplace, fenced back yard. 12% financing. Richland Hills. 8-25s-2tp

3 BR, Brick, 2-bath, refrigerated air, 1 car garage, fenced back yard. 8-25s-2tp

See or call Joe Smallwood. Broker. 8-22s-tfc

## Henry Realty

2 BR house, 2 bath. Stucco, 100 ft. lot. Ideal for apartment housing. Located near grade school and downtown. 316 acres, 18 miles north of Muleshoe in Parmer County, 2-pivot systems, 2 irrigation wells. Established alfalfa hay. Low down payment. Good terms. 111 W. Avenue B. Muleshoe 272-4581 8-44s-tfc

316 acres, 18 miles north of Muleshoe in Parmer County, 2-pivot systems, 2 irrigation wells. Established alfalfa hay. Low down payment. Good terms. Reagan wins support to limit Soviet trade.

## USED CARS - TRUCKS

FOR SALE: 1976 Chevrolet Caprice Classic, loaded. \$1995. 946-3656. 9-25s-3tc

## FOR SALE OR TRADE

FOR SALE: Camper shell for long wheel base P.U. Extra good condition, except back glass. 272-4143 or 965-2693 after 8 p.m. 11-26t-3tc

FOR SALE: Kelvinator apartment refrigerator \$275. like new. Call 272-5371 before 2:30 p.m. 11-26s-2tc

FOR SALE: 11x18' carpet and 10'x8' carpet. Green with gold tones. 124 W. 6th. Also gold couch. 11-26t-2tc

FOR SALE: Male Golden Retriever puppies, AKC. \$100. 505-784-3622. 11-25s-8tc

FOR SALE: 17 ft. used trailer house. Good condition. Call 272-5035 or 272-4515. 11-23t-tfc

FOR SALE: 298 acres-pastureland, 262 acres - farm land. Tel. 1-806-795-1200. 11-25t-1tp

USED 25 hp VHS motor and switch, \$1100. Owens Electric. Hereford, Tx. Call 364-3572. 11-16t-tfc

## HOUSEHOLD GOODS

BURROWS UPHOLSTERY AND FURNITURE REPAIR 209 W. 2nd phone 272-4255 12-44s-1tc

## MISCELLANEOUS

SPECIAL: Limited Quantity 140 Lb. Black plastic baler twine, 2 rolls of 20,000 feet for \$23.50. 56 bags minimum order. Call 806-925-6676. 15-25s-4tc

FRANK'S REFRIGERATION APPLIANCE & SERVICE PARTS & REPAIR 315 W. 3rd Ph. 272-3822 15-7t-tfc

Circle 'B' Refrigeration and Service. Call S. M. Branscum, 272-3532. 15-26t-9tc

1st year from certified pin-to bean seed, \$30 per 100 weight. Will work on Treflan ground. 505-372-6555. 15-26s-2tc

STORAGE ROOMS FOR RENT \$25.00 - \$30.00 TED BARNHILL 272-4903 15-14t-tfc

**Rent-To-Own Color TV Stereos Microwave Ovens Dryers Refrigerators Freezers Washers Dishwashers No Service Expense No Interest To Pay**  
**Wilson** Appliance  
117 Main MULESHOE 272-5531



**The Consumer Alert**  
by Mark White Attorney General

AUSTIN—With the condition of the economy today, it is unfortunate that some businesses have resorted to high pressure sales tactics to entice customers into purchasing goods or services. However, it is a fact that some salespeople are highly trained to manipulate the potential buyer into a sale. Surprisingly, many consumers may not realize that high pressure sales tactics are being used until it is too late. The Consumer Protection Act provides relief for those persons who have been victims of high pressure sales tactics. Therefore, for the next two weeks, I will be pointing out some commonly used high pressure tactics.

1. The Guilt Trip: The idea of this tactic is to make you feel guilty if you don't buy. Example: "Do you want to deprive your children of the education and knowledge this encyclopedia could give them?"

2. Baffle You With Statistics: In many instances the salesperson will bombard you with statistics which in some cases are not accurate, or are given too quickly to comprehend.

Example: The government surveyed thousands of people during their productive years and came up with some very accurate figures:  
a) Out of 100 people who reach retirement ONLY ONE will be "well to do". That means that he will have sufficient money to enjoy life with no outside help.  
b) Out of 100 people, 4 will have an income maybe from stock in their company or from rental property.  
c) Out of 100 people, 3 will have to keep on working—not because they want to but because they have to.  
All in all the totals look like this: 92 out of 100 will either be dependent on their children, dead or dead broke. When we think of America being the land of opportunity it is a shame. That is why you should invest in this retirement plan TODAY!

3. Your Last Chance: A salesperson may convince you to make a hasty decision by saying to you, "this is the last one" or "this is the last time it will be offered at this price." Example: "You'll get a

## Hance Attacks Proposal

U. S. Rep. Kent Hance, D-Texas, and 13 fellow boll weevils attacked an Administration proposal that would place a 15 percent tax on expenses incurred by oil and gas producers.

In a letter to Secretary of the Treasury Donald Regan Hance wrote, "We are extremely concerned with a provision in your proposed alternative minimum tax for corporations which would include intangible drilling costs (IDC's) as a preference item subject to the minimum tax. This proposal would essentially place a 15 percent tax on expenses incurred by oil and gas producers actively exploring for domestic energy reserves."

The letter was signed by Hance and fellow Texans Charles Stenholm, Phil Gramm, Sam B. Hall, Jr., Richard White, Ralph Hall, Marvin Leath, and Jack Hightower. Also signing Call 505-762-5558 under the association of Jerry Paul Trucking.

HANEY'S SWAP SHOP Announcing the association of Dave Miller-25 years, Don Curry - 10 years. Appliance repair experience with Haney's Swap Shop, 102 Ave. A., Farwell, 481-9511. Call us for all your refrigeration, washer, dryer and dishwasher repair. Guaranteed used appliances as low as \$50 for sale. We also buy good used appliances. 15-26t-tfc

GORDON PLUMBING Licensed and bonded. New, repair, commercial work. Free estimates. 10% senior citizens discount. 24 hour service. 272-4111 406 E. Ave. B 15-22s-tfc

## FARM EQUIPMENT

FOR SALE: 3-292 Chevrolet irrigation motors. Good condition. Call 925-6687 after 8:00 p.m. 10-24s-6tc

the letter were Oklahoma's Glenn English and Dave McCurdy, Sonny Montgomery of Mississippi, Bob Stump of Arizona, Dan Daniel of Virginia, and Buddy Roemer of Louisiana.

"Including IDC's in the proposed minimum tax would immediately dry up a large portion of the outside investment necessary for financing domestic drilling ventures," wrote Hance. "This situation would be aggravated if the proposed minimum tax were extended to individuals, as some have advocated."



The latest 1982 news from weather scientists is that more and more indications point to a warming of the earth's weather. That's attributed to growth of a layer of carbon dioxide around the earth caused by the burning of fossil fuels—the experts believe.

This explains the recent rise in ocean levels, resulting from melting polar ice caps. The carbon dioxide layer helps prevent the sun's heat from escaping into outer space trapping it, in effect. This change will not have a major effect on Americans in the rest of this century, since it is annually infinitesimal. But it could have serious consequences within a hundred years.



**Sportsman Complete & Balanced Nutrition Dog Food PUPPY FOOD 27% PROTEIN**  
20 LB. Bag \$5.95  
**HI-PROTEIN DOG MEAL 26% PROTEIN**  
50 LB. Bag \$10.59  
Alert  
**Cat Food**  
10 LB. Bag \$3.45  
FARM AND RANCH SUPPLY

Act provides relief for those persons who have been victims of high pressure sales tactics. Therefore, for the next two weeks, I will be pointing out some commonly used high pressure tactics.

Example: "Your neighbor just bought one" or "everybody who's anybody is buying this product".

5. The Assumption: You may notice during a sales presentation that the salesperson talks as if you have already agreed to buy. Consequently, by relating to you in a positive manner, the salesperson attempts to manipulate you into signing a contract.

Example: After you complete what you thought was only a questionnaire and listening to a presentation, a slick salesperson may say, "Now if you will just approve this information as being complete and correct to the best of your knowledge we will get your plan started today".

These are just a few of the high pressure sales techniques used by some businesses. The salesperson who uses them is only interested in making a fast buck by saying whatever is necessary to get you to buy. Next week, I will discuss techniques you as a consumer can use to avoid being pressured into a sale.

The great secret of education is to direct vanity to proper objects.  
-Adam Smith.

Education is a process of driving a set of prejudices down your throat.  
-Martin H. Fisher.

### Information For Veterans

The Veterans Administration has been authorized to begin collecting monthly interest beginning next November 1 on an individuals' debts owed the VA through participation in its benefits program.

The VA also has been given authority to advise consumer reporting agencies when a debtor is delinquent, thus affecting personal credit ratings, said the Director, Waco VA Regional Office.

The new VA rules are to be implemented over a two year period. They affect those debtors who don't make full repayment within 60 days after notification by the VA district counsel or haven't established installment repayment plans with the district counsel.

The interest rate will be set by the U. S. Treasury, based on the rate paid for its borrowing. Administrative costs incurred in collecting these debts -- much of it in GI education overpayments -- also will be assessed.

Such debts currently total more than \$1 billion nationally and involve 1.3 million veterans, according to the VA General Counsel's Office.

The VA began legal action nationally 16 months ago to collect debts owed it. The decision to have the VA district counsel collect individual debts of up to \$1,200 or less is the result of Congressional legislation nearly three years ago and an agreement between the VA and the federal Justice Department.

Those interested in further information on the debt-collecting program can telephone the Waco VA Regional office toll free at the number listed in your local telephone directory.

VA has reduced down payments on VA Graduated Payment Mortgages for the purchase of new homes. The change was announced by W. E. Welstead, Loan Guaranty Officer of the VA Regional Office, Waco, as part of the Veterans' Disability Compensation, Housing and Memorial Benefits Amendments passed by Congress last year.

On new homes, the down payment requirement for a VA GPM may now be as low as 2.5 percent of the purchase price or the appraised value, whichever is lower.

In the traditional mortgage, the monthly payment stays the same during the entire life of the loan except for changes in taxes and insurance, Welstead explained. In a VA Graduated Payment Mortgage, the monthly payments start at a lower level, then increase by 7.5 percent each year for the first five years then remain the same for the balance of the loan term. In the early years of a GPM, part of the interest is added to the loan so the balance gets larger each year for the first five years.

The new lower down payment requirement and reduced monthly payments in the early years of a GPM should give many more veterans a better opportunity to buy homes, Welstead said.

Nine people prominent in the fields of education, labor and management--including two Texans--are on a new advisory committee to help Veterans Administration chief Nimmo direct education and training programs.

Those programs are for veterans, military-service personnel and dependents of veterans.

Committee chairman is Oliver Meadows of Godley, Texas, who, for many years was Staff Director of the House Veterans Affairs Committee, and a former Disabled American Veterans National Commander. Another member is John Hutchens, State Approval Program Director, Texas Education Agency in Austin.

This is the third group asked within the past month to act in an advisory capacity on various VA

programs. The others involve the VA's rehabilitation efforts and benefits for former prisoners of war.

The VA Administrator's Educational Assistance Advisory Committee will help evaluate educational programs and services, including the need for any new programs, and will contribute to long-range planning and development.

The committee's first meeting will be March 23

in Washington, D.C., at VA Central Office. Members will consider alternative methods of measuring educational courses for VA payment, review provisions of VA education programs and establish subcommittee assignments and tasks.

Other committee members: Hazel Benn, Assistant Executive Director, American Association of College Registrars and Administrators Officers, Washington,

D.C.; Dr. John J. Connolly, President, New York Medical College, Valhalla; Pamela Davenport, Veterans Services Coordinator, South Oklahoma City Junior College, Oklahoma City; J. Warren Davies, President, Lincoln Technical Institutes, Inc., West Orange, N.J.; Jack Howard, Assistant to the Business Manager, American Federation of State County and Municipal Employees, Washington,

D.C.; Theodore Shackelford, Jr., Coordinator, Pupil Welfare and Attendance, Wichita Public Schools, Wichita, Kansas; and Andrew Thornton, former Director, VA Education Service, Winchester, Virginia.

**Good Advice**  
The wise man doesn't expect to find life worth living; he makes it that way.

-The Grit.

### Texas peach growers expect drop in harvest

AUSTIN--Texas peach growers are expected to harvest 395,833 bushels this season, a 44 percent drop from last year when 615,000 bushels were picked. Agriculture Commissioner Reagan V. Brown said a dry spell and a late freeze

combined to reduce fruit set in the Gillespie County area, the state's biggest peach producer.

Some hail damage was also reported in scattered orchards across the state.

Texas peach harvest begins in late April and runs through August.

### NEWS VIEWS

Raymond Donovan, Labor Secretary:  
"I'm disappointed by the continuing high unemployment rate among American workers."

Alexander M. Haig Jr., Secretary of State:  
"Peace depends on the willingness of the Argentines to withdraw."

## WHITE'S CASHWAY SUPERMARKET

### MULESHOE, TEXAS

Double Gunn Bros. Stamps Every Wednesday & Saturday  
Open Monday - Saturday 7:30 A.M. to 9:00 P.M.  
Sunday 12:00 P.M. to 9:00 P.M.

**WE WELCOME WIC CARDS & USDA FOOD STAMPS**

### Your MONEY BACK Card Could Be Worth \$1,000.00!

Many are Worth \$100.00 or \$50.00 or \$10.00 and \$5.00

**We Want YOU in our Winner's Circle!**

**Our First \$100.00 Winners!**  
Mrs. Dee Clewett  
Pedro Izaguirre

**Our First \$50 Winners!**  
Manuela Esperante  
Susan Redwine  
Linda Lettiner

**\$10.00 Winners:**  
Mrs. Frank Ellis  
Tink Seaton  
Zona Gatewood  
Ella Ashford  
Velma Fried  
Barbara Puckett  
Maria Reyes

**A Few Of Our \$5.00 Winners:**  
Inez Gorza  
Steve Flores  
Shirley Farmer  
Amelia Gonzalez  
Albie Sanchez

**Get Started Today! It's Easy!**

**We Have a FREE MONEY BACK CARD For YOU**

## JULY 4<sup>th</sup> PRICE BLAST

FARMLAND, MAPLE BRAND BONELESS COOKED

**HAMS**.....**\$1.79** WHOLE 6-8 LBS.  
HALVES 3-5 LBS. ....**\$1.89**

ALL SELF **BASTED TURKEY'S** .....**59¢**

**Fresh Produce**

CALIF RED BEANS **PLUMS**.....**79¢**  
CALIF WHITE SEEDLESS PEARLETTES **GRAPES**.....**\$1.19**  
FINE FOR BAKING **POTATOES**.....**39¢**  
GOLDEN RIPE **BANANAS**.....**29¢**  
CALIF ARMBROS **NECTARINES**.....**49¢**  
CALIFORNIA **CARROTS**....**4/88¢**

**WILSON'S MEAT**  
**BOLOGNA**.....**\$1.49**  
**FRANKS**.....**99¢**  
**SMOKED SAUSAGE**.....**\$1.99**

**HORMEL'S LUNCH MEAT**  
COOKED HAM, CHOPPED HAM, HAM & CHEESE, RED PEPPER HAM, & BLACK PEPPER HAM **\$1.19**

**HEINZ BARBECUE SAUCE**  
REGULAR ONION W/SMOKE 16 OZ.  
**59¢**

**DR. PEPPER**  
6-12 oz. Can  
**\$1.19**

**ZEE LUAU NAPKINS**  
100 CT.  
**2/\$1**

**SILNIENCE REGULAR EXTRA BODY SHAMPOO** 7 OZ. **\$1.99**  
**ALKA SELTZER**.....**\$1.99**  
LADY'S CHOICE SOLID **ANTI PERSPIRANT** 2 OZ. **\$1.79**

**MAXWELL HOUSE MASTERBLEND COFFEE**  
13 OZ.  
**\$1.99**

**Kool-Aid**

10 QUART CANISTER ..... **\$2.99**  
2 QUART PACKAGE SUGAR-SWEETENED ..... **69¢**  
2 QUART PACKAGE UNSWEETENED ..... **2/33¢**

**GREEN GIANT CORN ON THE COB** 6 CT. .... **99¢**  
**MINUTE MAID LEMONADE** 12 OZ. .... **69¢**  
**STILLWELL BREADED OKRA** 24 OZ. .... **\$1.19**

**KINGSFORD CHARCOAL**  
10 lb.  
**\$2.29**

**BULFLITE CHARCOAL STARTER** 32 OZ. **\$1.49**  
**ATKINS DILL PICKLES**.....**99¢**  
**GLENPARK PAPER PLATES**.....**89¢**  
**FRENCH MUSTARD**.....**79¢**  
**18 OZ. SOLO PARTY CUPS**.....**83¢**

**DOVE DISH DETERGENT** 22 OZ. .... **99¢**  
**DOVE BATH SOAP**.....**\$1.29**  
**WISK LIQUID LAUNDRY DETERGENT** 32 OZ. .... **\$1.79**  
**NESTEA INSTANT TEA**.....**\$2.49**  
**10 OZ. GEBHARDT'S HOT DOG SAUCE**.....**2/79¢**  
**37.5 SQ. FL. REYNOLDS FOIL**.....**\$1.19**