

MULESHOE JOURNAL

'The Community of Opportunity-Where Water Makes the Difference'

Weather

February 21	72	32
February 22	79	35
February 23	79	39
February 24	80	35

Volume 59, No. 8

10 Pages Today

Published Every Thursday at Muleshoe, Bailey County, Texas 79347

Thursday, February 25, 1982

Around Muleshoe

Word has been received that the Muleshoe Texas Employment Commission office will be re-opened.

A date for the re-opening has not been scheduled as yet.

The Fine Arts Boosters of Muleshoe will host a salad luncheon on Friday, February 26 at the High School Cafeteria. The charge will be \$3 per person for advance or tickets at the door.

The annual meeting of the members of the Bailey County Electric Cooperative Association will be held in the Bailey County Coliseum Saturday, February 27, beginning at 1 p.m.

Honea Joins

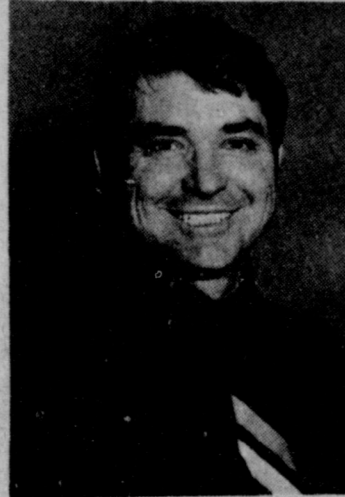
Sarpalius Staff

Senator Bill Sarpalius has announced that Henry Honea, 37, who is a Boys Ranch alumnus, has joined his staff as executive administrative assistant. Honea is a native of Swisher County and has been district office manager for the past year.

Honea will continue to travel the district in the Mobile office. Senator Sarpalius represents the 31st Senatorial District which covers the top 26 counties of the Texas Panhandle. The purpose of the mobile office is to give rural residents an opportunity to participate in state government on a grass roots level.

The mobile office has been successful in relieving the feeling of isolation of many Panhandle and South Plains residents because of the distance between them and Austin. When he is not traveling the district, Honea will be in Sarpalius' Amarillo office.

Cont. Page 6, Col. 1



HENRY HONEA



DR. ELMER V. KREHBIEL



"NEXT YEAR'S COUNTRY"--This is a phrase common to the farmer that lives on the land, coined from the hope that next year will be a better year. The American farmer may be daunted, but his spirit is still there, evidenced in the plowing and preparation of his land for the spring planting just around the corner.

Arson Attempts, Threats Made On Two Local Businesses

Around 11 a.m. Sunday morning, a local Shop Rite cashier answered a telephone ring in the store. The first time the phone rang, the caller hung up. The second time it rang, she answered once again; and, while she was unable to decipher the first part of the caller's words, the last part were "it's set to go off in one hour."

Local police were dispatched to the store and after clearing it of all customers, conducted a search with the aid of the employees. The search revealed nothing. The cashier reported that the caller had seemed to have "a rather strange voice."

Beef Short Course Scheduled March 8

A Beef Production Short Course for adult farmers will be held March 8-11 under the sponsorship of the Muleshoe High School Vocational Agriculture Department, according to Harold Horne, superintendent, and Carl Wheeler and John Reynolds, teachers of Vocational Agriculture.

Dr. Elmer V. Krehbiel, Beef Production Specialist with the Agricultural Education Adult Specialist

Program and the Department of Animal Science of Texas A&M University, will be the instructor for the course.

Dr. Krehbiel has a strong background in animal production and genetics. He received a B.S. degree from Oklahoma State University in 1950, a M.S. degree from the University of Arkansas in 1959, and a Ph.D. degree from Virginia Polytechnic Institute in 1966. His graduate studies were based on selection for type and reproduction performance of cow herds.

Between periods of formal training, Dr. Krehbiel worked with the beef cattle industry as artificial insemination technician, beef cattle herdsman, and ranch manager in Oklahoma. He also served as beef cattle research assistant in Arkansas and as animal geneticist for the USDA at Miles City, Mont. For two years prior to joining the Agricultural Education Adult Specialist Program, he served as Area Livestock Extension Agent in Ohio.

The short course at Muleshoe High School is scheduled to begin March 8 at 7:00 p.m. in the Vocational Agriculture Building.

Cont. Page 6, Col. 1

Another cashier reported a white male had been in the store and purchased some items and asked directions to the restrooms. She gave him the directions. The restrooms are near the storage area.

At noon, after a period of waiting, the store was re-opened. Then, shortly before 2 p.m. police received another call from the assistant manager, advising them that what they had been looking for had been found. Upon arrival, the assistant manager took the officer to a storage area near the restroom and showed him some burned ceiling tile. The store employee related that they

Trading Increases On Spot Cotton

Lubbock's spot cotton trading increased from the previous week, according to Mack Bennett, Area Director for USDA's Marketing Services Office at Lubbock. Grower owned cotton supplies remained heavy. Merchant demand improved as shippers filled March delivery commitments.

Growers with qualities not in demand or dissatisfied with current prices continued to move cotton into Commodity Credit's loan program. Bids for long equities ranged from \$4.00 to \$10.00 but no equity trading was reported, Bennett said. An estimated 1.1 million bales of 1981-crop High Plains cotton had entered the loan as Form G or seed cotton by early this week.

Muleshoe Area Plans Caravan To Lubbock

John Block, United States Secretary of Agriculture, and Mrs. Block, will be in Lubbock, on Thursday, today, to learn something first-hand about the problems of agriculture in the South Plains.

According to Vernon Highly, of Plains Cooperative Oil Mill, Secretary Block will meet with area farmers and other interested citizens of the area in the Lubbock Municipal auditorium on the Texas Tech campus at 8:00 p.m. on Thursday. This should not be confused with the Lubbock Civic Center on Avenue Q. The Municipal auditorium is on Avenue G.

Cont. Page 6, Col. 4

County Youth Place In Major Stock Shows

Lazbuddie FFA Members Will Show In Houston

Lazbuddie FFA members did well in the 35th annual Parmer County Junior Livestock Show held last Friday, February 19, in Friona.

Winning breed champion in Fine Wool Sheep was Sean Mason. Shane Mason showed the Reserve Suffolk and Sheldon Mason showed the Reserve Southdown.

Jeff Jesko of Lazbuddie had the Reserve Champion Heifer at the show.

According to Rick Copp, Vocational Agriculture Instructor at Lazbuddie, several FFA members from his classes will leave Saturday, February 27, on their way to Houston. They will stay the night at Humble and then travel on to Houston on Sunday.

Students who will be going are: Danny Powell, Kim Gregory, Jeff Jesko, Terry Steinbock, Wendy Jarman, Wesley Jarman, Sheldon Mason and Sean Mason.

Trading Increases On Spot Cotton

U. S. growers will plant 12.6 million acres to cotton this spring. This compares with about 13.8 million harvested during the 1981-crop year.

High Plains growers sold mixed lots of mostly grades 42 and 52, staples 31 and 32, mike 35 - 49 at about 44.50 cents per pound, unchanged from a week earlier. Grade 52, staple 32, mike 30 - 32 sold around 39.15 cents, down 25 points from a week earlier. Gins paid High Plains growers \$70 to \$80 per ton for cottonseed, mostly \$75 per ton.

Lubbock's Marketing Services Office classed 39,000 samples during the four-day week ended February 18 for a seasons total of 2,296,000. This compares with 1,614,000 classed by the same date one year ago.

Predominant grades were grade 42 at 14 percent, grade 52 - 40 percent, grade 43 - 13, and grade 53 at 21 percent. About 89 percent of the samples were reduced one grade because of bark. Eight

Muleshoe Native Named To Cotton Council

Dr. M. Dean Ethridge, a native of Muleshoe, has been named director of economic services, the National Cotton Council announced today.

Dr. Ethridge replaces Gaylon Booker, who has been serving as economic director and administrative director of program services. Booker will now be

Cont. Page 6, Col. 5

Harrison Claims Grand Champ Prize

Bailey County 4-H'ers placed well at three major stock shows over the past few weeks, including El Paso, Fort Worth and San Antonio.

At the Southwestern International Stock Show in El Paso, Alan Harrison, son of Mr. and Mrs. Ted Harrison of Muleshoe, showed the Grand Champion Steer. The steer was a Chianina-Limousin Cross, which weighed in at 1181 pounds. The steer, dubbed "Sico" was bred and raised in Bailey County. Alan also won the showmanship award in the steer division and a second place with a

lightweight medium Cross steer.

Others who placed well were Colin Tanksley with a third place light weight steer; and Todd Bessire with a fifth place Hereford and 10th with a light weight Cross. Sherri Bessire placed 14th with a light weight Cross steer and 15th with a medium weight Cross. She also placed second with a light weight Duroc in the swine division. Colin Tanksley placed fifth with a light weight Hampshire. Others who attended the show were Tracey Tunnell and Shelia Morrison.

A group of these 4-H'ers traveled to the Fort Worth Fat Stock Show on February 1-6. Julie Claunch, daughter of Mr. and Mrs. Jim Pat Claunch of Bula showed the Champion Angus Steer at the show. Alan Harrison placed first with a light weight Cross Steer. There were 91 head of steers. Colin Tanksley placed second with a heavy weight Cross. Alan Harrison, third with a light middle weight Cross and Jerry Gleason, with a heavy weight American Cross placed third, also.

Greg Young placed fourth with a middle weight Shorthorn; Jay Gleason placed fourth with a light heavy Cross, Mitzi Robertson placed fourth with a Cont. Page 6 Col. 3

Umpires Set First Meeting Thursday

The Southwest Baseball Umpire's Association (SBUA) will hold their first regular meeting on Thursday, February 25, at 7:30 p.m. at the 16th and Avenue D Church of Christ.

Items that need to be attended to at this meeting Cont. Page 6, Col. 4

Saturday Mishap Leaves One Dead, One Injured

One man was killed and another injured Saturday night about 7:30 p.m. approximately one and one half miles south of Muleshoe on Highway 214, when they were struck by an auto driven by Lester Howard of the Needmore community.

Felix Contreras, 18, was pronounced dead by Justice of the Peace Frank Ellis III at the scene of the mishap. His companion, Jesus Perez Garcia, 21, was transported to Methodist Hospital in Lubbock by Ellis Ambulance, where he underwent treatment for a broken leg. The two men were from Chihuahua, Mexico.

According to reports, the two men were walking south on the highway. The driver apparently failed to see the men before he struck them.

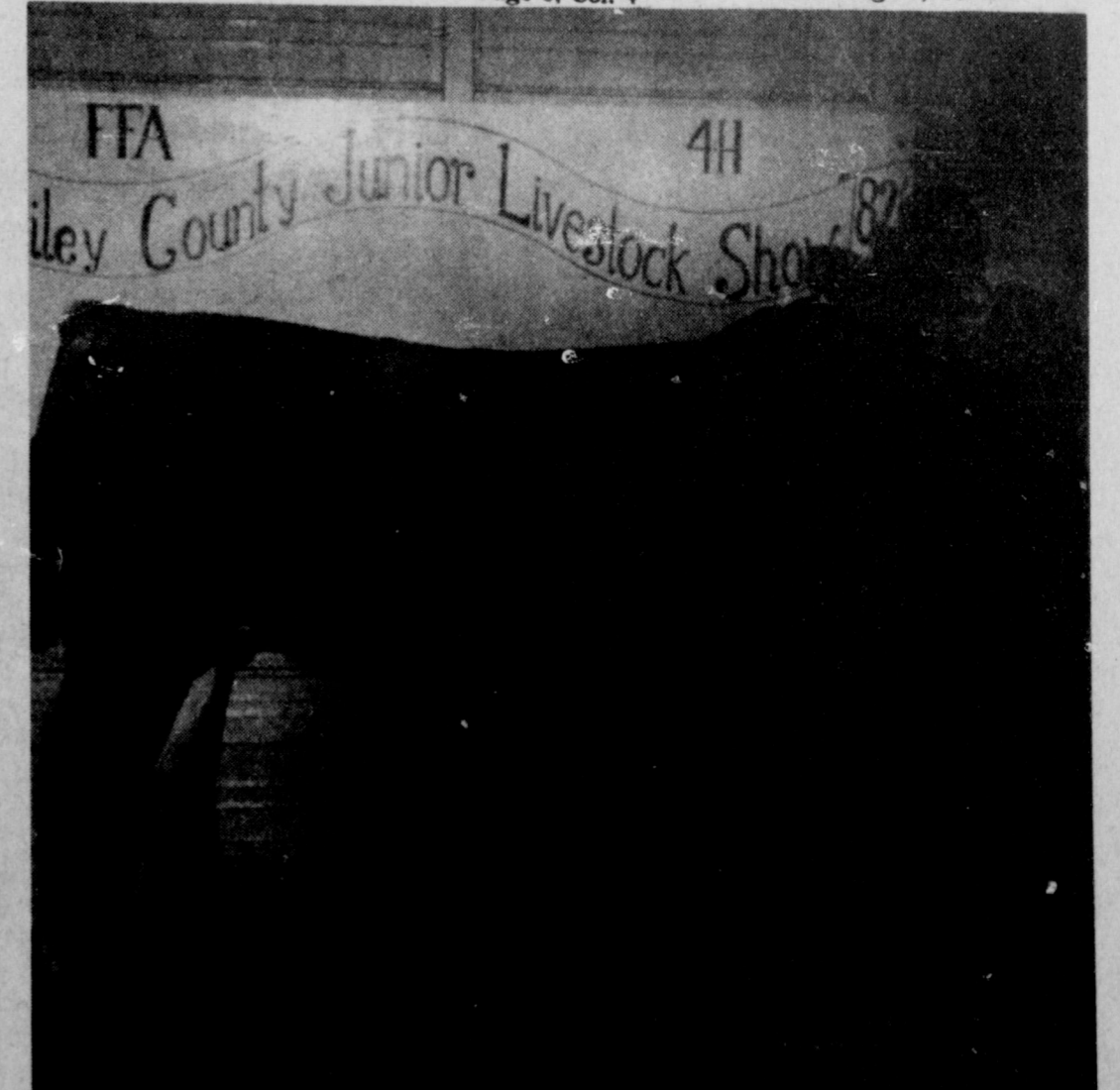
Services for Felix Contreras are scheduled in Villalidama, Mexico. He is survived by his parents, Mr. and Mrs. Carmen Contreras, of Villalidama, Mexico, three sisters, Mrs.

FFA Officers Present Rotary Program

The Muleshoe Rotary Club had as their special guests, Muleshoe FFA Chapter officers. President Starla Black gave a short resume on FFA Week and the activities planned. She also discussed the new ag barn that is presently under construction.

Kellie Overman, also an FFA officer, gave a report on the Chapter officer's trip to Kansas City. She told of the days spent at the convention as well as the workshops and sessions attended. All of the officers attended, along with the sponsors, Mr. and Mrs. Carl Wheeler.

Cont. Page 6, Col. 4



GRAND CHAMPION--Alan Harrison's Cross bred Steer "Sico" was named Grand Champion Steer at the Southwestern International Stock Show recently in El Paso. The steer was bred and raised in Bailey County. Alan is the son of Mr. and Mrs. Ted Harrison of Muleshoe.



**THIGHS
OR
DRUMSTICKS**
USDA Grade A
99¢
lb.



**ROUND
STEAK**
Beef Full Cut
Bone-In
\$1.75
lb.



**PORK
CHOPS**
Combination
1/4 Loin
\$1.29
lb.



**RUMP
ROAST**
Boneless Lean
& Tender Beef
\$1.99
lb.

PRICES EFFECTIVE FEB. 21 THRU FEB. 24

USDA Grade A Fryer
FRYER BREASTS.....lb. **\$1.09**

Country Style
SPARE RIBS.....lb. **\$1.27**

Beef Full Cut Boneless
ROUND STEAK.....lb. **\$1.89**

Wilson's Certified
SLICED BACON.....16 oz. **\$1.89**

POTATOES
Bake'em
Boil'em
Fry'em
\$1.39
10 lb. bag



Fresh
STRAWBERRIES.....pint **\$1.19**

ORANGES
Large Sweet &
Juicy Sunkist
lb. **39¢**



Rome Washington's Finest
APPLES.....lb. **47¢**

COFFEE
Maxwell House
1 lb. can
\$1.79

Kraft Real
MAYONNAISE.....32 oz. **\$1.49**

Super Moist
CAKE MIXES.....18 1/2 oz. **75¢**

Kraft
MAC & CHEESE 2 7/2 oz. boxes **79¢**

Peter Pan
PEANUT BUTTER 18 oz. **\$1.69**

King Size 35' Off Label
TIDE.....**\$3.19**

Shurfine
CAULIFLOWER... 2 10 oz. pkg. **99¢**

Armour 3' Off Label
POTTED MEAT.....4 3 oz. cans **\$1**

Shurfine Chicken w/Rice
SOUP.....3 10 1/2 oz. cans **\$1**

PEPSI
\$1.09
6 pak 12 oz. cans



KETCHUP
Heinz
14 oz.
65¢



BEANS
Ranch Style
2.79¢
18 oz. cans




**SHOP
RITE**

DOUBLE COUPONS EVERY SATURDAY

Each of these advertised items is required to be readily available for sale at or below the advertised price in each store, except as specifically noted in this ad. We reserve the right to limit quantities. None sold to dealers

PLAY

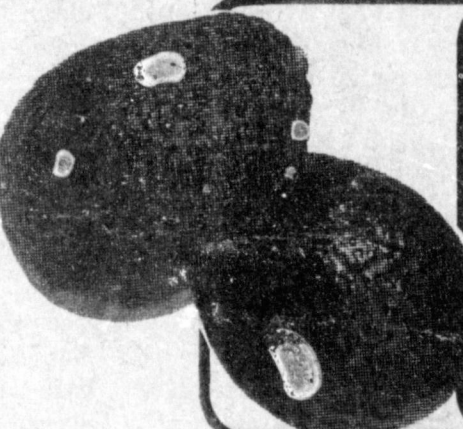
Put \$2,500
in your
pocket...play

**CASH
KING**

ODDS CHART EFFECTIVE JANUARY 26, 1982

PRIZE VALUE	NUMBER OF PRIZES	ODDS FOR ONE GAME TICKET	ODDS FOR 10 GAME TICKETS	ODDS FOR 20 GAME TICKETS PLUS 10 SAVER DISCS
\$1,000	7	1 in 187,143	1 in 18,714	1 in 9,357
100	70	1 in 18,713	1 in 1,871	1 in 935
10	140	1 in 9,356	1 in 935	1 in 467
5	300	1 in 4,678	1 in 467	1 in 233
2	1,200	1 in 1,200	1 in 120	1 in 60
1	12,000	1 in 120	1 in 12	1 in 6
TOTAL	13,880	1 in 95	1 in 7.4	1 in 2.7

Odds vary depending on number of Game Tickets you obtain. The more tickets you obtain, the better your chances of winning. Odds to obtain all ten (10) Saver Discs and qualify for Grand Prize Drawings are 1 in 25. Odds to win Grand Prize Drawings will depend on the number of Saver Discs obtained.
Cash King Series #CK89 is being played in 13 participating stores located in New Mexico and Texas.
Scheduled termination date of this promotion is April 20, 1982. However, Cash King officially ends when all game tickets are distributed.



Rich & Creamy
4 for **\$1**

Firm Green Stalks
BROCCOLI.....lb. **79¢**

LEMONS
Sunkist
Flavorful
8 for **\$1**



Pretty Boy
BIRD SEED 5 lb. bag **\$1.39**

All **FLOWER BULBS 1/2 PRICE**

CORN KITS **5** Pouches **\$1**

TOWELS
Hi Dry
2 rolls **99¢**

DOUBLE COUPON
Present this coupon along with any one manufacturer's "cents-off" coupon and get double the savings from Shop Rite. Not to include "retailer", "free" or tobacco coupons or exceed the value of the item.
Limit 1 coupon per manufacturer's coupon, limit 4 Double Coupons per customer.
Good Feb. 21 thru Feb. 27, 1982

DOUBLE COUPON
Present this coupon along with any one manufacturer's "cents-off" coupon and get double the savings from Shop Rite. Not to include "retailer", "free" or tobacco coupons or exceed the value of the item.
Limit 1 coupon per manufacturer's coupon, limit 4 Double Coupons per customer.
Good Feb. 21 thru Feb. 27, 1982

DOUBLE COUPON
Present this coupon along with any one manufacturer's "cents-off" coupon and get double the savings from Shop Rite. Not to include "retailer", "free" or tobacco coupons or exceed the value of the item.
Limit 1 coupon per manufacturer's coupon, limit 4 Double Coupons per customer.
Good Feb. 21 thru Feb. 27, 1982

DOUBLE COUPON
Present this coupon along with any one manufacturer's "cents-off" coupon and get double the savings from Shop Rite. Not to include "retailer", "free" or tobacco coupons or exceed the value of the item.
Limit 1 coupon per manufacturer's coupon, limit 4 Double Coupons per customer.
Good Feb. 21 thru Feb. 27, 1982

Investment Device For Savings

Investment Credit is a tax savings device designed to stimulate the purchase of business assets. Most business depreciable personal property qualifies for investment credit as well as some types of real estate. Business real estate which qualifies includes some single purpose agricultural buildings, livestock fences, irrigation wells, and fruit trees.

The credit serves to offset your income taxes dollar for dollar. For example, if your income taxes totaled \$3,000 for 1981 and your investment credit equals or exceeds that number, you would pay no income tax for the current year. Investment credit cannot be used to offset social security taxes.

Credit earned in a given year which is not used to offset current income taxes can be carried back to create tax funds. Any credit unused for the three year carryback is available under the new tax act for up to 15 years carryfor-

ward.

Property which qualifies for a three year write-off under the new tax act is entitled to investment credit equal to 6 percent of the purchase price. Property qualifying for a five year write-off or longer is entitled to a credit equal to 10 percent of the purchase price. If you dispose of the property before the write-off period expires you must pay back a pro rata share of the credit.

Investment credit is not elective; you must take it in the year earned and carry it back and forward appropriately. Investment credit is above and beyond all depreciation deductions and represents a true tax savings without a reduction in your depreciation benefits.

There are special rules for investment credit on leased property. Taxpayers undertaking leases on any business assets should investigate the effects of investment credit before signing a lease.

'81 Brings Many Changes In Social Security

Readers will be interested in the many changes in the Social Security Law of 1981, these changes are outlined below:

-The first month of entitlement has been changed to the month after the month of application or the first full month of age eligibility unless attainment was on the first day of the month of application or earlier. This means that a person cannot be entitled for the month he is age 62 unless the applicant was 62 or older the first day of the month he applied.

-The lump sum death payment can no longer be paid to anyone except a wife who was living with the deceased or a child of the deceased who was receiving a check the month of death.

-Termination of benefits to a pre-retirement spouse when the youngest child attains age 16.

-Broaden offset base for disability.

This means that persons now age 62 through age 64 will have their disability benefits offset against Workmen's Compensation past age 62 as it was in the old law.

-Repeal of the Supplemental Medical Insurance open season.

This means we now return to open season only in January, February and March each year.

-Repeal of age 70 as the age to draw benefits without regard to earnings.

This means that age 72 to draw without regard to the amount of earnings is reinstated through 1982.

Under the 1981 law, anyone age 70 in 1983 will be exempt from all earnings.

-Elimination of the minimum benefit amount for anyone not eligible before 12/31/81.

This means that all persons applying in 1982 or later will have benefits figured on the actual yield without a floor of the minimum benefit.

Everyone who has questions about these or any other subjects may call and get answers at 1-800-392-1603 or applications for any kind of social security benefit may call 806-762-7385.

Researcher studies uses of feet for handicapped drivers

COLLEGE STATION — A Texas A&M researcher is analyzing the basic behavior of human feet in a project to help those without arms.

In experiments designed to develop better adaptive driving equipment for people without arms, Charles Raab, a researcher with the Human Factors Division of the Texas Transportation Institute, is trying to learn if the feet are as good as the hands in certain tasks.

Muleshoe Journal USPS 367-630
 Established February 23, 1924. Published by Muleshoe Publishing Co., Inc. Every Thursday at 304 W. Second, Box 449, Muleshoe, Texas, 79267. Second class postage paid at Muleshoe, Texas, 79267.

MEMBER 1981
TEXAS PRESS ASSOCIATION

L.B. Hall, President
 James Woods, Vice President
 Shirley Farmer, News Editor
 Evelyn Harris, Society Editor
 Holly Millsap, Advertising
 Russ Bennett, Bookkeeper

Subscription Rates:
 Muleshoe Journal and Bailey County Journal
 Bailey and surrounding counties.....\$10.50
 Muleshoe Journal and Bailey County Journal
 Elsewhere in Texas.....\$11.95
 Muleshoe Journal and Bailey County Journal
 Outside of Texas.....\$12.95
 Yearly by Carrier.....\$11.50
 Monthly by Carrier.....\$.95
 Advertising rates card on application.

AN

O

TH

END OF MONTH CLEARANCE

321 MAIN STREET
 MULESHOE, TEXAS

Anthony's
 C. R. ANTHONY CO.

Ladies' Fashion Knit Pants

\$5⁸⁸ 2 for \$11

Pyke's® pull-on pant means pure comfort, pure style! It's made of 100% polyester double knit with an elastic waistband. In assorted solid and fashion colors, sizes 10-20. Reg. 6.97.



Boys' & Girls' Casual Sportswear

20% off



Charming sportswear for the tiny ones from Be Mine®. Choose from tops and bottoms in a colorful array of styles. Mom will like the easy care blends! In infants' and toddlers' sizes.

Softie Oxford

4⁸⁸ 2 for 9⁵⁰

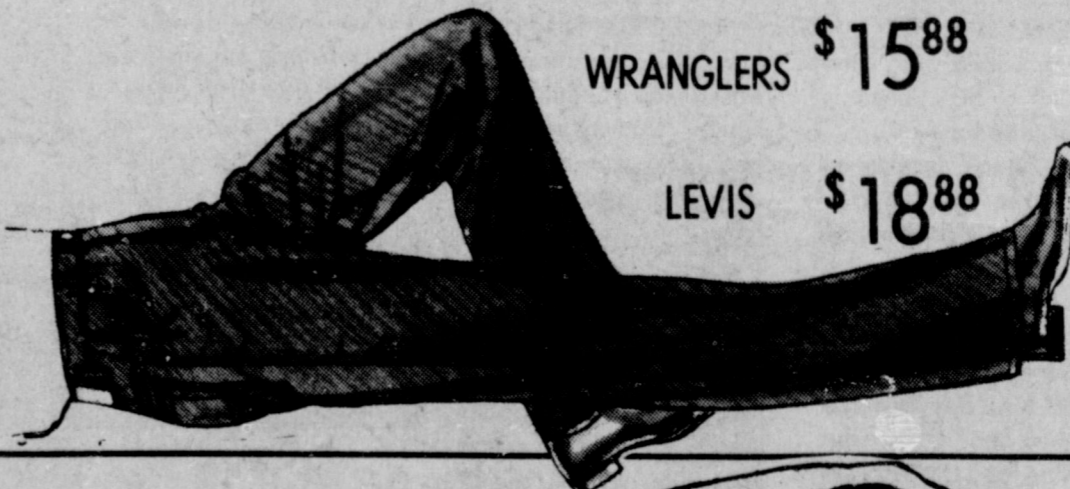
Sip into something comfortable with "Softie" oxford shoes! Features include a 3-eyelet styling and a cushioned insole. Choose from a multitude of colors in ladies' sizes 5-10.



MEN LEVI and WRANGLER JEANS

WRANGLERS \$15⁸⁸

LEVIS \$18⁸⁸



\$9⁸⁸

Junior "Camp" Shirts

The "camp" shirt goes colorful in 100% cotton with style that'll liven up your khakis and jeans. Choose from two floral patterns and a glittery Lurex stripe, sizes S,M,L. Reg. \$13.



Men's Western Shirts

\$9⁸⁸

Men's Western Boots

49⁸⁸

ATB® gives him the look he wants in poly-cotton western shirts. They're authentically styled to add color and fashion to his favorite jeans! In solids, prints, and plaids, sizes 14½-17. Reg. 12.99.



Acme® makes the boots that make the cowboy! These popular boots are durably constructed for years of good lookin' comfort. Assorted styles, sizes 6½-12. Reg. 59.99.

AUCTION
 AUCTION SALE EVERY SUNDAY 2:00 P.M.
 516 NORTH FIRST - MULESHOE, TEXAS
 Come Rain, Snow, or Sunshine
 NEW AND USED
 FURNITURE, APPLIANCES, TELEVISIONS
 AND LOTS MORE
 CONSIGNMENTS WELCOME
Knowles Auction Service
 516 NORTH FIRST MULESHOE, TEXAS PHONE 272-4993
 OPEN: 9:00 A.M. TO 7:00 P.M.
 CALL ANY TIME DAY OR NIGHT

Terms of Sale - CASH: All Accounts Settled Day Of Sale Please bring your own checkbook

LANNY KNOWLES MONTY BOND JACK KNOWLES
 516 NORTH FIRST, MULESHOE, TEXAS P. O. BOX 16, MULESHOE, TEXAS 516 WEST FIFTH, MULESHOE, TEXAS
 (806) 272-4993 (806) 272-4993 (806) 272-4993
 LICENSE T-6-01-0197

Conduct Sales Of All Kinds - Call 806 272-4993 For Free Estimate



CAMPERSHIP RECIPIENT—(L-R) Tina Copley, daughter of Mr. and Mrs. Wayne Copley; Allison Rhodes, daughter of Mr. and Mrs. Carol Rhodes; and Tami Randell, daughter of Annette Hodge, all received camperships to Camp Rio Blanco, for selling 120 or more boxes of Girl Scout cookies.

Three Muleshoe Brownies Earn Camperships

Brownie Troop #262 met Tuesday afternoon, February 16, and took a tour of KMUL Radio Station and gave their names on the air.

"The Brownies are busy wrapping up the cookie sales," says Sharon Shaw, leader. "They still have a few cookies left, if you would like cookies, you may contact any scout."

Three of the Brownies from Troop #262 received camperships for one week at Camp Rio Blanco, for selling 120 or more boxes of cookies.

Tina Copley, daughter of Mr. and Mrs. Wayne Copley, sold 202 boxes; Tami Randell, daughter of Annette Hodge, sold 201 and Allison Rhodes, daughter of Mr. and Mrs. Carol Rhodes, sold 120 boxes.

Mrs. Shaw said, "We really appreciate everyone's support of the Girl Scouts in their annual cookie sale."

There are approximately 30 Muleshoe girls in the Brownies this year. They are divided into three troops: Troop #262, Sharon Shaw, leader; Troop #168, Margie Hurtado, leader and Troop #247, Cndy Gable, leader.



BROWNIE TROOP 168—Members of Brownie Troop are busy wrapping up their cookie sales. Front row (L-R) Sissy Morris, Keisha Kemp, Chanda Kemp, Kathy Guillen; Back Row, Debbie Kemp, Lance Kemp, and Margie Hurtado.

Eastern Star School Held In Canyon

The annual Eastern Star School, for District Two, Section Three, was held in Canyon, February 16, under the supervision of Mrs. Elise Hammack, Fort Worth, Worthy Grand Matron, Mrs. Marjorie Errington, Amarillo, District Deputy Grand Matron, District Two, Mrs. Ocie Parsons, Canyon, Deputy Grand Matron, District Two, Section Three and Mrs. Betty Phillips, Darrouzett, Grand Examiner, District Two.

The school was called to order by Mrs. Ocie Parsons; the Invocation was given by M. J. McNeill, Floydada Chapter No. 31. Pledge of Allegiance led by John Butler, Happy Chapter No. 562, was repeated in unison and "America" was sung.

Mrs. Lavonne Hinkson, Worthy Matron of Muleshoe Chapter No. 792, participated in the drill for Worthy Matrons and Associate Matrons, Mrs. Hinkson filled the Star Point of Esther, in the morning session, the office of Associate Matron in the afternoon session; her husband, Frank, filled the office of Associate Patron, and Mrs. Hinkson filled the station of Marshal at the fraternal visit of the Worthy Grand Matron, in the evening.

Rev. Allen Forbis, Muleshoe Chapter, assisted in the examining room and Mrs. Ruth McCarty, Muleshoe, was organist in the afternoon session.

The study of the ritual, constitution and code of laws was under the supervision of Mrs. Marjorie Errington, District Deputy Grand Matron. Attending from the Muleshoe Chapter were Mr. and Mrs. Frank Hinkson; rev. and Mrs. Allen Forbis; Mrs. Eulaine Phillips; Mrs. Ruth McCarty; Mr. and Mrs.

Wayne Williams; Mr. and Mrs. Alton Epting and Mr. and Mrs. Alex Williams. A total of 190 were registered and 111 A and one B certificates of Proficiency were issued.

"Blest Be the Tie" was sung and the Mizpah benediction was repeated in unison.

The Hearts and Roses banquet was held at 6 p.m. in the West Texas State University dining hall.

The Hostess chapters included, Floydada No. 31; Tulia No. 33; Plainview No. 37; Lemond No. 38; Canyon City No. 105; Hereford No. 312; Lockney No. 437; Happy No. 562; Muleshoe No. 792; Dimmitt No. 819; Olton No. 847; Earth No. 870 and Petersburg No. 1001.

The Creative Woman
BY SHERYL BORDEN

Kaye Willmon, owner of The Final Touch, Clovis, will discuss decorating ideas featuring brass items on "The Creative Woman" show on March 2 and 6th. Ms. Willmon will demonstrate several different decorating concepts using baskets, brass, silk flowers and butterflies and talk about different levels in arrangements.

Recently a Psychology of Women class at Eastern New Mexico University was asked to write the types of questions they were most concerned with in relation to women and alcohol and drug abuse. Some of these questions and many others will be answered by a group of counselors who work in the field of alcohol and drug

treatment. Guests on this segment are Ed Duda, Prevention and education Specialist - Counselor, Alcoholism Treatment Unit for Mental Health Resources, Inc., Clovis, Lt. Ed Boyle, Cannon Air Force Base Drug and Alcohol Abuse Control officer, Clovis, and Kennie Hardee, Counselor for Mental Health Resources, Inc., Clovis and Portales.

To conclude the show, Jimmy Webb, CPA with the Public Accounting firm of Holloman, Woodard, Widener and Webb in Clovis, will discuss steps in preparing your 1981 tax return.

"The Creative Woman" is produced and hosted by Sheryl Borden for KENW-TV and is seen on Channel 3 on Tuesdays at 12:30 p.m. and on Saturdays at 2:00 p.m. Viewers can request copies of printed materials offered on the show by calling on KENW-TV's toll-free telephone numbers, which are: New Mexico: 1-800-432-2361 and Texas: 1-800-545-2359 and Portales and Roosevelt County residents can call 562-2112. All callers are asked to call Monday through Friday between 8 a.m. and 5 p.m.

In Fashion
Update your favorite blouses, sweaters and jeans with inexpensive metallic trim. Gold rick-rack trim, metallic ribbon, chain belts and lots of imagination can transform those plain blouses, sweaters and jeans into the latest fashion trend.

Statement Of Intent To Change Rates

General Telephone Company of the Southwest, in accordance with the Rules of the Public Utility Commission of Texas, hereby gives notice of the Company's intent to implement a new schedule of rates in Texas effective March 5, 1982.

The proposed changes in rates will affect all customer classes and are designed to increase the Company's intrastate revenue by 24 percent.

A complete set of revised rate schedules has been filed with the Public Utility Commission at Austin, Texas, and is available for public inspection in each of the Company's Business Offices in the State of Texas. A summary of the Mayor's Office of each affected Municipality.



Storewide Sale
20-50% OFF
Open 10-5:30 Mon. - Sat.
Expressions

Study Club

Muleshoe Study Club met Thursday, February 11, at 7 p.m. in the home of Mrs. Rufus Gilbreath for a Valentine covered dish dinner, with the member's husbands as guests.

The Valentine motif was carried out on the serving table and throughout the entertainment area.

Mrs. Joe Costen gave the blessing before the meal of brisket, gravy, creamed potatoes, green bean casserole, garden salad, fruit salad, hot rolls, cherry cobbler, tea and coffee.

Following the meal table games were played. Those present were Mr. and Mrs. J. G. Arnn, Mrs. Betty Jo Carpenter, Mr. and Mrs. Joe Costen, Mrs. Wesley Glover, Mr. and Mrs. R. O. Gregory, Mrs. A. C. Neely, Mr. and Mrs. Charles Shain, Mrs. Wilma Thompson, Mrs. Doyle Turner, Mrs. T. R. White, Mr. and Mrs. Ed Johnson, Mrs. Barry Lewis, Mr. and Mrs. Wilson Witherspoon, Mrs. Horace Blackburn, the hostess, Mrs. Rufus Gilbreath, and the co-hostess, Mrs. John Agee.

You can judge a statesman by his refusal to appeal to the prejudices and emotions of his constituents.

Announcing... Dinner Bell Cafe
Is Now Under New Management!
New Hours
Mon. Thru Sat. 6 a.m. - 10 p.m.
Sunday 11 a.m. - 9 p.m.
Starting Fri., Feb. 26
We Will Add Mexican Food To Our Menu



Tammy LeAnn Nichols

Mr. and Mrs. Robert Nichols of Bledsoe are the proud parents of a daughter born at 12:52 a.m. February 19 in West Plains Medical Center.

The young lady weighed seven pounds, eight ounces and has been named Tammy LeAnne. She has a five year old sister, Angela, and a brother, Steven, two and a half years of age.

Grandparents are Mr. and Mrs. James Oden of Mountain View, Arkansas and Mr. and Mrs. Bob Britter of Timewell, Illinois.

Great-grandparents are Oscar Scholls of Mountain View, Arkansas and Mable Gregory of New Port, Arkansas.

Ericka Minerva Nieto

Mr. and Mrs. Ruben Nieto of Friona are the proud parents of a daughter, Ericka Minerva, born at 8:44 a.m., February 12, in West Plains Medical Center.

Ericka Minerva weighed seven pounds and 12 ounces. She has a brother, Omar, two years of age.

Grandparents are Mr. and Mrs. Ruben Nieto and Mr. and Mrs. Ramon Solis, all of Mexico.

Great-grandparent is Manuel Contreras of Mexico.

Perle Yvonne Chico

Mr. and Mrs. Albert Chico of Friona are the

proud parents of a daughter born at 8:48 a.m. February 9 in West Plains Medical Center.

The young lady weighed six pounds and 12 ounces and has been named Perle Yvonne. She has a five year old brother, George, and a sister, Jessica, three years of age.

Grandparents are Mr. and Mrs. Luis Alvarado and Mr. and Mrs. Ruben Chico, all of Mexico.

ONE MINUTE SPORTS QUIZ

1. Who won the Bing Crosby National Pro-Am golf tournament?
2. Who won the LPGA Elizabeth Arden Classic?
3. Who won the Molson Tennis Challenge?
4. George Foster plays what pro sport?
5. Moses Malone plays pro basketball for what team?

Answers To Sport Quiz

1. Jim Simons.
2. Joanne Carner.
3. Ivan Lendl over John McEnroe.
4. Baseball.
5. Houston.

Family Dinner Honors Raymond Gage

A family dinner honored Raymond Gage last Sunday on his 70th birthday. The event was held in the Gage home with all the Gage children present.

Those present included Mr. and Mrs. Skinny Gage and Duane of Morton, Mr. and Mrs. Bob Gage and Mr. and Mrs. Calvin Meissner, all of Muleshoe, Mr. and Mrs. Raymond Gage Jr. and Joey of Hobbs, N.M. Mr. and Mrs. Dale Hanne, Mike and Mark, and Mr. and Mrs. Pete Edwards, all of Sudan.

They attended church services with their parents at the Circleback Baptist Church.

It's always easy to find an excuse for delaying hard work.

CARQUEST AUTO PARTS STORES

ANNIVERSARY SALE

CARQUEST MOTOR OIL
10W40 All Season or HD30 wt.
A product of Ashland Oil Co.

YOUR CHOICE 99¢ qt.

LIMIT 1 CASE PER CUSTOMER

COUPON 2.00 OFF

ANY Gates FAN BELT OR RADIATOR HOSE

LIMIT ONE PER CUSTOMER Expires March 7, 1982

CARQUEST HEAVY DUTY SHOCK
Fits most Domestic cars, light trucks and some imports. Big 1-3/16" piston.

Sug. List \$14.88
8.95

AC OIL FILTERS
Help protect your engine.

2.89 ea.

#PF2, PF20, PF24, PF25, PF30, PF35, PF40, PF45.

I CAN HELP.

QUALIFIED COUNTERMAN

GOT A PARTS PROBLEM? Ask a Qualified Counterman. Only CARQUEST has them.

ANCO WIPER REFILLS

Replace worn wiper blades.

3.59 pr.

Good at participating CARQUEST Auto Parts stores thru Mar. 7, 1982

Muleshoe Auto Parts
217 N. 1st
272-4596
CARQUEST: the Right Place to buy auto parts.

"I have 17 reasons why H&R Block should prepare your taxes."

REASON #3: H&R Block's fair prices.

At H&R Block, our prices are based solely on the complexity of your return. So you can expect to pay less for the 1040A Short Form than for the more complicated 1040 Long Form.

What do you get when we prepare your taxes? A complete interview by a person specially trained in the new tax laws. And a return that's double-checked for accuracy.

How much will your fee be? Call or visit a nearby H&R Block office and we'll be happy to give you an estimate. One thing is certain, H&R Block gives good value. That's why millions of our customers come back year after year.

H&R BLOCK
THE INCOME TAX PEOPLE
17 reasons. One smart decision.
224 W. 2nd
272-3332
Wklys 9-6 Sat. 9-5

Beef...

Cont. from Page 1
ing. During the dates the short course is in progress, Dr. Krehbiel will be available to assist cattlemen with individual problems and to provide on-the-farm instruction.

Cattlemen interested in attending the short course should write or call the teachers of vocational agriculture, Carl Wheeler or John Reynolds.

Beef Production Short Course Certificates will be presented to each cattleman who attends all four of the training sessions.

Dr. Krehbiel states that the field of beef cattle production must take a close look at efficiency of production in the future. With land prices, feed and taxes rising, the producer is meeting more and more competition for the consumer's dollar at the meat counter. From the economic view of the beef cattle business, there is every indication that in comparing the producer of yesterday and the producer of tomorrow, beef must be produced more efficiently in order to be a profit making business. Dr. Krehbiel indicated that the Beef Production Short Course will deal with methods of producing beef at a lower cost and the ways of producing the kind of beef that the homemaker wants to buy. The course will include such important topics as nutritional requirements, winter feeding, minerals, vitamins, feed additives, implants, facilities, equipment, selection of bulls and cows, animal identification including freeze branding, cross breeding, feeder cattle grades, diseases, parasites, reproduction, market trends, and management for efficient production. The course can be altered to meet the wishes and interests of the farmers and ranchers attending.

Short courses in beef production, as well as in other areas, are available to farmers throughout the state under this cooperative program between the Texas Education Agency and Texas A&M University. This program is designed to make the ser-

vice of specialists available to conduct short courses under the supervision of public schools. The program enables teachers of vocational agriculture to provide improved educational services to people engaged in agricultural production and agribusiness.

Specialists are available in the fields of Beef Production, Farm Arc Welding, Farm Electric Wiring and Safety, Horticulture, Oxy-Acetylene Welding, Pasture Management, and Tractor Maintenance.

Police...
Cont. from Page 1
by stuffing a rag into the top of a bottle of Cutex nail polish remover and then set it on fire. It was also noted that the arsonist had removed or raised a ceiling tile and set the crude fire bomb up into the ceiling.

On Saturday night, February 20, at approximately 10:12 p.m., the manager of the New Dimensions Arcade received a telephone threat "from a young male" saying there "there is a bomb under one of the games." Police were called and the arcade vacated of customers. A search conducted by Officer Tom Watson revealed no bomb, but police do have a suspect on the caller.

Sometime Sunday night, two show lambs were taken from the Muleshoe Ag farm. One of the lambs' remains were found encased in a plastic bag just outside of town south on Hwy. 214. The other had not been found at press-time. The lambs were scheduled to be taken to the Houston Stock Show next week. This is the second happening of this sort to hit FFA students this year.

On February 20, local police arrested one male for DWI and fleeing a police officer; another was arrested for the same two charges, compounded by fleeing the officer, after an attempt had been made to stop him for a traffic violation.

On February 21, two males were arrested for fighting and causing a disturbance in front of a local business establishment.

On the 19th, two juveniles were questioned in connection with recent burglaries at Southside Gulf and James Crane Tire Co. The juveniles were released after questioning to their parents.

Be sure the information you get is not misinformation.
A politicians' paradise is a campaign without opposition.

Show...

Cont. from Page 1
heavy middle weight Cross Steer.

Julie Claunch placed fourth with a light weight Cross Steer; Jeanine Robertson placed ninth with a light weight Polled Hereford and 11th with a heavy weight Cross. Colin Tanksley placed 11th with a heavy weight Polled Hereford; Mitzi Robertson placed 13th with a heavy weight Cross and Jay Gleason 19th with a light heavy weight Cross.

There were between 85 and 91 in the Cross bred classes, so Bailey County did exceedingly well. Eleven steers from the county made the sale at the show. Other 4-H members attending were Stacey Kirby, Belinda and Jodie Wheeler, Chris Young and Jacinda Gleason.

From Fort Worth, the 4-H'ers traveled to San Antonio on February 9-14, bringing back some top honors from there. Stacy Kirby, daughter of Mr. and Mrs. Reuel Kirby of Three Way showed the Reserve Champion in two breeds, being the Limousin and British Cross Steers. Sharla Morrison had a second place Hereford and a fourth place Simmental. Chris Young won a second place with a light weight Angus Steer. Alan Harrison won second with a Maine-Anjou and fourth with a Simmental.

Mitzi Robertson won second with a British Cross and Greg Young won third with a Santa Gertrudis. Jerry Gleason placed fourth with a Limousin and sixth with a Brahman. Julie Claunch placed fourth with a Maine-Anjou, Heath Burleson placed fourth with a Chianina and Jodie Wheeler placed sixth with a Maine-Anjou and 10th with a Simmental. Jay Gleason placed seventh with a Simmental; Heath Burleson placed ninth with a Chianina. Mitzi and Jeanine Robertson placed 11th and 12th, respectively, with their Maine-Anjou Steers.

In the swine division, Sharla Morrison was sixth with a heavy weight Chester; Todd Bessire placed 15th with a medium weight Chester; Mike Holt was 16th with a medium weight Chester; and Stephanie Brown was 21st with a medium weight Chester.

Todd Bessire placed 26th with a light weight Duro; Russell Brown, 20th with a medium weight Hampshire as Stephanie Brown, with a light weight Hampshire placed 23rd and Wade Wheeler placed 25th with a heavy weight Hampshire.

The next big show will be at Houston and plans are being made now for that trip. The Houston show is the 'big one' and will be held from March 1 through 6th. A large number of Bailey County youth in both 4-H and FFA will attend.

Umpires...

Cont. from Page 1
include collection of \$10 application fees, \$12 yearly dues to the Association and \$5 insurance fee from each member.

A schedule for conducting SBUA certification classes will be discussed at this meeting.

Any interested person desiring to become a certified baseball umpire for either high school, college or professional baseball games may contact Sam Gonzales, president, or David Gray, secretary of the SBUA.

Cotton...

Cont. from Page 1
percent was below grade.

Predominant staples were staple 29 - 10 percent, staple 30 - 36, staple 31 - 37 and staple 32 at 12 percent for an average of 30.6 thirty-seconds of an inch.

Micronaire 35 - 49 was 21 percent, 33 - 34 was 17, 30 - 32 was 31, 27 - 29 was 19 and 26 or below was 12 percent for an average of 31.

Block...

Cont. from Page 1
ditorium is located just off Fourth Street in Lubbock, on the north side of the Tech campus.

The Muleshoe Chamber of Commerce and Agriculture is encouraging area farmers, as well as local businessmen, to attend this meeting.

Anyone interested in participating in a car caravan to Lubbock on Thursday, should contact Johnny St. Clair at St. Clair's Department Store for further details.

Rotary...

Cont. from Page 1
Curtis Wheeler, vice president, spoke regarding officers and FFA teams and the various contests that FFA members may participate in. John Reynolds, also an ag teacher at Muleshoe High School, gave the Rotarians an overview of the new ag barn. It is to be 300 feet long and will house pig and lamb projects for the FFA members of Muleshoe High School.

The FFA officers were present and gave the program in observance of National FFA Week which is February 22-27.

Rural Banking Confab Scheduled March 1-3

Some 300 bankers from throughout Texas are expected to gather in College Station on March 1-3 to discuss such key issues as rural banking and the holding company movement, the economy, farm policy, the future of banking and of Texas agriculture, and the outlook for various agricultural commodities.

The discussions will be part of the 30th Texas Farm and Ranch Credit Conference for Commercial Bankers at Texas A&M University, says Dr. Bud Schwartz, economist with the Texas Agricultural Extension Service, Texas A&M University System, which is sponsoring the event.

Headlining the conference will be U. S. Congressman Tom Loeffler of Kerrville and Phil Gramm of College Station. Loeffler will discuss "Banking -- Now and Future" while Gramm will give an overview of the nation's economy.

The entire first afternoon of the conference will be devoted to the pros and

cons of the holding company movement as it relates to rural banks.

The second day's program will include talks on "Texas Agriculture in the '80s" by Texas Commissioner of Agriculture Reagan Brown and on "The Implications of National Farm Policy for Texas" by Dr. Ron Knutson, Extension economist in marketing and policy.

SPAG Will

Conduct

Election School

Tom Clark of the Elections Division staff of the Secretary of State's office will be conducting an election school to prepare municipal and special district election officials, as well as other interested persons, for the upcoming elections. The South Plains Association of Governments will be sponsoring this school for the South Plains region.

The training will be conducted at 9:00 a.m. to 12:00 noon on Tuesday, March 16, 1982, at the Energas Building, Flame Room, 1500 Broadway, Lubbock. Some of the topics to be discussed include:

Procedures for calling an election; conducting absentee voting; appointment of election judges and clerks; and procedures used in polling places such as assistance to voters, vote counting, opening and closing polls, and returning voting reports.

All interested persons are asked to contact SPAG no later than Friday, March 12. Any questions or for further information, please contact Arlene Miller at SPAG, 806/762-8721.

A session on "Recognizing and Managing Problem Farm Loans" and discussions on the special requirements of crop, livestock, dairy, and farm equipment loans will also be featured.

The conference will include a special session on oil and gas leasing hints since many agricultural landowners have witnessed increased oil and gas activity.

Of special importance to bankers will be the closing session of the conference which deals with the outlook for major agricultural commodities, notes Schwartz.

Extension economists will provide an up-to-date perspective on rice, dairy products, soybeans, grain, cotton, sheep, hogs and cattle to help bankers cope with farm loans and related matters.

Bankers and lending officials interested in taking part in more extensive training are invited to participate in an agricultural credit analysis workshop March 3-5. The workshop will include computer simulation techniques and the use of income statements, cash flows and balance sheets in making and servicing loans.

VARSITY TRACK SCHEDULE - 1982

DATE	SITE
March 6	Idalou
March 13	Floydada
March 20	Plainview
March 26-27	San Angelo
April 2	Tulia
April 9-10	Amarillo
April 17	Denver City
April 26	District - Hereford
May 7-8	Regional - Lubbock
May 14-15	State - Austin

Freshman Track Schedule 1982

DATE	SITE
March 6	Hereford
March 20	Tulia
April 3	Dimmitt
April 8	Plainview
April 26	District - Hereford

Jr. High Track Schedule 1982

DATE	SITE
March 6	Hereford
March 13	Farwell
March 19	Bovina
March 27	Springlake
April 3	Dimmitt
April 8	Plainview
April 26	District - Hereford

Notice Of Annual Meeting Of Members Of The Bailey County Cooperative Association

At
Bailey County Coliseum & Civic Center
Saturday, February 27, 1982
1 P.M.

FREE Noon Meal For Co-op Members & Families Registration Begins At 11:30 A.M. You MUST Register To Get Meal Tickets. Serving Lines Will Open At 12 Noon

The Business Of The Meeting Will Include:
Financial Report, Progress Report, & General Condition Report On The Cooperative.
There Will Be An Election Of Directors From District 1 & District 2.
Additional Nominations For Directors May Be Made At The Meeting.

There Will Be A Drawing For Door Prizes PLUS A New Feature This Year, Drawing For A Grand Prize.

Look to the Future Farmers of America

For pride in community and strength in achievement... we urge all of our citizens to support our local FFA Chapter. The FFA is a national educational, non-profit, non-political organization of, by and for vocational agricultural students.

Muleshoe Young Farmers

Three Way News By Mrs. H.W. Garvin

Mr. and Mrs. George Tyson spent Thursday night in Lubbock with their daughter the Tommy Durhams.

Jimmy Gillentine from Abilene spent Friday night with his grandmother Mrs. H.W. Garvin.

Mr. and Mrs. Marving Long and daughter from Amarillo spent Saturday night with the S.G. Long.

The Three Way Basketball teams played Sundown here Tuesday night with the Three Way boys winning and girls losing the game. Friday Three Way basketball teams played Anton there with Three Way boys losing and the Three Way girls winning.

Mr. and Mrs. Chuck Dupler and son from Post spent the weekend with the Bill Dupler family.

The community received snow and rain the past week, which will help the farmers.

Mrs. Lamar Pollard from Whitherrell visited her mother the Rayford Masten Friday.

Mr. and Mrs. George Tyson and Mrs. H.W. Garvin visited Mrs. Garvin daughter the Kenneth Fox family in Clovis Sunday.

Several families from the community spent part of last week in San Antonio at the Fat Stock Show. Some of the youth showed stock.

Malissa and Mery Ann Toombs from Muleshoe spent the weekend with their grandparents the H.C. Toombs.

Mr. and Mrs. Roy Oxford and children spent the past weekend in Welling-ton visiting his parents.

Texas judges learn to catch speeders

COLLEGE STATION — City judges from throughout Texas went back to school to learn what it takes to catch a speeder during a recent one-day seminar at Texas A&M University.

The course, presented by the Law Enforcement Training Division of the Texas Engineering Extension Service, taught the magistrates the basics of radar operation and speed violation evidence gathering. During the afternoon, the judges took to the test track to watch radar in use.

One of the best ways for sick people to get well is to become convinced that they can get well.

"A special reason why H&R Block should prepare your taxes."



The 1040A Express 24 hour turnaround on your 1040A Short Form. The new two-page Short Form calls for up to 63 entries and may refer you to the instructions 16 times. When H&R Block prepares your 1040A Short Form you'll get your return back in 24 hours, accurate and double-checked, ready for your signature. At a very fair price.

1040A Express Service. New from H&R Block.

H&R BLOCK
THE INCOME TAX PEOPLE
17 reasons. One smart decision.
224 W. 2nd
272-3332
Wkds 9-6
Sat. 9-5

Mrs. Jack Furgeson visited her daughter the Mary Corkery family in Levelland Wednesday.

Mrs. Pete Tarleton was in Lubbock Friday to be with her father who is a patient in Methodist Hospital.

Mr. and Mrs. George

Tyson spent Thursday night in Lubbock with their daughter, the Tommy Durhams, and visited in Sundown with their son, the Troy Tysons, on Friday.

Mr. and Mrs. Larry Flowers and daughter from Missouri, spent the past week with her parents, the Adolph Wittners.

The Elanco Products Co. sponsored a steak dinner for the farmers in the community Thursday night at the Three Way cafeteria.

The Three Way High School basketball teams played Bledsoe Tuesday night on their home court with Three Way winning all games.

Christa Self from Muleshoe spent the past week with her grandparents, the H. C. Toombs.

Mrs. Roy Oxford and children visited her father, Bill Eubanks, who is a surgical patient in a Lubbock Hospital on Friday afternoon.

Mrs. Jack Furgeson was in Lubbock Thursday on business.

Mrs. H. W. Garvin was a dinner guest in the home of her brother, Mr. and Mrs. George Tyson Sunday.

The Three Way Baptist Church had missionaries

holding services the past weekend.

The Three Way Baptist Church had a work day Wednesday at the Parsonage.

Mr. and Mrs. Don Dolle and family from Canyon visited the Bill Dolle family Sunday.

Mr. and Mrs. Joe Sower and Mr. and Mrs. Jack Lane were dinner guests in the Bud Huff home Sunday.

Boot & Shoe Repair
111 E. 4th

WHITE'S CASHWAY SUPERMARKET

MULESHOE, TEXAS
Double Gunn Bros. Stamps Every Wednesday & Saturday
Open Monday-Saturday 7:30 A.M. to 8:00 P.M.
Sunday 12:00 P.M. to 8:00 P.M.
WE WELCOME WIC CARDS & USDA FOOD STAMPS



U.S.D.A. CHOICE BEEF SALE

T-BONE STEAK
LB. \$2.99

SIRLOIN STEAK
LB. \$2.39

STEW MEAT
Boneless LB. \$1.89

ROUND STEAK
Boneless LB. \$2.39

RANCH STEAK
7-Bone cut LB. \$1.89

ROUND STEAK
Full Cut LB. \$1.99

SHORT RIBS
LB. 99¢

CHUCK ROAST
Center Cut LB. \$1.79

1/2 Beef Cut & Wrapped
To Order \$1.27
LB.

Boneless (Waste Free)
ROAST
Rump or Sirloin Tip LB. \$2.39

OSCAR MAYER FRANKS • MEAT • BEEF 16 OZ. \$1.59

RANCH STYLE
19 OZ.
CHILI
99¢

PILLSBURY PLUS
CAKE
MIXES
ASSORTED FLAVORS 18 1/2 OZ.
79¢

CASSEROLE
PINTO
BEANS
2 LB. **59¢**

Clorox
BLEACH
1/2 Gallon Bottle 69¢

TIDE
Detergent
\$1.99

Honey Boy Pink
SALMON
15 1/2 oz. \$1.89

DRAGON LONG GRAIN
RICE
28 OZ. **79¢**

CORN KITS
Corn Bread Mix
6 OZ. **4/\$1**

DOWNY
FABRIC SOFTENER
64 OZ. \$1.89

- Bell's BUTTERMILK 1/2 Gal. \$1.09
- ARM & HAMMER BAKING SODA 1 LB. 2/99¢
- SUNSHINE CRACKERS 1 LB. 69¢
- FIDDLE FADDLE SNACK 7 OZ. 69¢
- LONE STAR DOG FOOD 20 LB. \$2.99
- KOUNTY KIST CORN WHOLEKERNEL 12 OZ. 39¢
- FAULTLESS SPRAY STARCH 22 OZ. 99¢
- WHITE SWAN TOWELS 1 ROLL 69¢
- Bath Size Cashmere Bouquet BATH SOAP 4/\$1.29
- GLAD SANDWICH BAGS 150 CT. 99¢

PEPSI
Diet Pepsi or Mountain Dew
6-12 oz. **89¢**

NICE 'N SOFT BATH
TISSUE
6 ROLL **\$1.59**

Fresh Produce

CALIF. HAVEL ORANGES..... 3 \$1

U.S. NO. 1 RUSSET POTATOES... EACH... 79¢

CALIF. ICEBURG LETTUCE..... 39¢

CALIF. MINNEOLA TANGERINES 3 LBS \$1

CALIF. LEMONS 12 FOR \$1

CELLO RADISHES 6 OZ. BAG 3 FOR \$1

Frozen Foods

MR. P's PIZZA
• ITALIAN SAUSAGE
• PEPPERONI 11 1/2 OZ. 79¢
• COMBO 12 1/2 OZ.

Fisher Boy FISH STICKS 16 OZ. 99¢

Swenson PIES
• CHICKEN • TURKEY • BEEF 6 OZ. 2/99¢

Health & Beauty Aids

SIGNAL MOUTHWASH 18 OZ. \$1.99

Mennen SPEED STICK DEODORANT
• REG. • SPICE • LIME 2.5 OZ. \$1.39

ULTRA BRITE TOOTHPASTE 20' OFF \$1.09