

What's Doing in the Churches

FIRST METHODIST CHURCH
L. S. Dubberly, Pastor
Church School 10:00 a.m.
Morning Worship 11:00 a.m.
Evening Worship 7:00 p.m.

CHURCH OF CHRIST
Wayne Zuck, Minister
Bible School 10:00 a.m.
Morning Worship 11:00 a.m.
Young People's Class 6:15 p.m.
Evening Worship 7:00 p.m.
Tuesday, Ladies Bible
Class 9:30 a.m.
Wednesday, Mid-Week
Bible Study 7:00 p.m.

FIRST BAPTIST CHURCH
Claude B. Stovall, Pastor
Sunday School 10:00 a.m.
Morning Worship 11:00 a.m.
T. U. 6:30 p.m.
Evening Worship 7:30 p.m.

FIRST PRESBYTERIAN CHURCH
Baxter D. D. Greer, Pastor
Sunday School 10:00 a.m.
Morning Worship 11:00 a.m.
Evening worship 7:30 p.m.

Most of the News-Record subscriptions expire at the end of the year. Don't let yours expire.

How Christian Science Heals
"Meeting Emergencies
Through Prayer"
KGKL (960 kc.)
Sunday 8:15 a.m.

Presbyterian Church

"God's Benevolent Plan for Us" will be the sermon subject of Dr. Baxter Greer at the First Presbyterian Church, Sunday at 11 a.m. The sermon topic at 7 p.m. will be "The Tragedy of An Unfruitful Life." Sunday School at 10 a.m. with Aaron Clark as general superintendent.

Dr. and Mrs. Greer will go to Carlsbad and conduct worship services at the Presbyterian Church Sunday at 4 p.m.

METHODIST CHURCH

The Sterling City Methodist Church was well represented in two church-wide meetings in San Angelo this week. Mrs. Lester Foster, Mrs. Lee Augustine and Rev. and Mrs. Dubberly attended the District meeting of the Board of Missions Tuesday in San Angelo. On Thursday, Mrs. Roy Foster and other members of the Woman's Society of Christian Service attended the Sub-District meeting of that group that met in the Angelo Heights Methodist Church.

The pastor, Rev. L. S. Dubberly, announces the following sermon topics for next Sunday's services: "They Found It So." will be the subject for the morning worship service and the subject for the evening service will be "Mistaken Tears."

FOR SALE—1953 8-ft. Frigidaire refrigerator like new. See C. B. Stovall. Phone 151.

IRONING WANTED—See or call Mrs. Carol Reed, % Ansel Reed. Phone 246.

FOR RENT—The Garlyn Hoffman house. See Worth Durham.

When you want a treat
This is the place to eat!
Where shall we meet
Carter's Cafe can't be beat! (Ad)

TAKE
TIME —
TO KEEP
YOUR WATCH
ON
TIME



Balance wheel travel nearly 4000 miles yearly

Don't wait till your watch goes wrong! A watch checkup takes so little time—and it can save you money by preventing future breakdowns. Let our Service Department inspect your watch today.

A L H A R T

Water Valley Texas

City Barber Shop

H. F. MERRELL, Prop.
"Satisfaction Guaranteed"

OLD GOLDS

REGULAR and KING SIZE



Insurance & Abstracting

Reliable Abstract Work
Fire and Automobile Insurance
DURHAM ABSTRACT CO.
DURHAM INSURANCE AGCY.
Worth B. Durham, Mgr.

New 1956-57 Texas Almanacs on sale at the News-Record for \$1.25.

HAVE AN EXTRA KEY



MADE WHILE YOU WATCH IN ONE MINUTE

Lowe Hardware Co.



You Can Have That

Printing

DONE HERE IN STERLING CITY AT THE

News-Record

ONE 5-MILE DRIVE WILL PROVE IT

Your driving is easier — you feel safer — in THE BIG M



The stunning Mercury Montclair 2-door hardtop with distinctive low profile and Flo-Tone color styling.

Easier riding and handling on sharp turns—new comfort on bumpy roads—widest choice of safety features in its field help explain why THE BIG M is the big buy for 1956.

Riding is so much better than reading. That's why we invite you to take a demonstration drive in our BIG M.

Then you'll feel THE BIG M's reflex action firsthand—how ball-joint front suspension adjusts itself instantly to rough roads, ruts, and curves.

And you'll experience the reflex-action response of THE BIG M's new SAFETY-SURGE V-8 engine—how it takes the tension out

of passing, makes hill-climbing as effortless as breathing.

You'll discover the new peace of mind provided by THE BIG M's new Safety-First Design. For this year Mercury offers 10 new safety features, including the only impact-absorbing steering wheel in its field.

So see us for a test ride. Compare our prices and you'll find that THE BIG M is as easy to own as it is to drive.

BIG 4 OF THE BIG M

- 1 **NEW REFLEX-ACTION PERFORMANCE.**
THE BIG M responds to your every command—go, stop, climb, pass—quick as an athlete's reflex. On all roads and curves, Mercury adjusts instantly, automatically, for your ease and comfort.
- 2 **BIG M BEAUTY.**
New long, low profile. Distinctive Flo-Tone color styling. Clean-lined beauty for young-minded people.
- 3 **NEW SAFETY-FIRST DESIGN.**
Widest choice of safety features; impact-absorbing steering wheel, safety door locks at no extra cost; padded instrument panel, safety belts, optional.
- 4 **PROVABLE VALUE.**
Low price when you buy—low cost while you drive. For 4 years, best resale value in its field. Many dividend features for greater performance and convenience.

For 1956—the big move is to THE BIG MERCURY

Sterling Motor Company

Phone 197

STERLING CITY, TEXAS

STERLING CITY NEWS-RECORD

JACK DOUTHIT, Publisher

Entered Nov. 10, 1902, at the Sterling City postoffice as second class matter.
PUBLISHED EVERY FRIDAY

SUBSCRIPTION RATES
\$1.50 a year in Sterling County
\$1.75 Elsewhere in Texas
\$2.00 Outside State of Texas

NEWS established in 1890
RECORD established in 1899
Consolidated in 1902

We still serve the best steaks in town, but the pretty girls are gone. Still have a mighty good cook, however, at **Carter's Cafe**, East Highway. (Adv.)

We have the new 1956-1957 Texas Almanacs at the News-Record for \$1.25 each.

Plate lunch 85c. Steaks, Sandwiches, Haamburgers and Hot Dogs our Specialty. **Carter's Cafe** (Adv.)

H. L. HENNIGAN
REPRESENTING

Oil Industry Life Insurance Company

Box 637

Big Lake

PROMOTED TO CAPTAIN

Howard L. Bruton, test pilot at Webb Air Force Base at Big Spring, has been promoted to Captain. He is the husband of the former Carol Campbell, daughter of Mr. and Mrs. Earl Campbell of Sterling City. The couple lives at Big Spring.

STERLING CITY EAGLES 1955-1956 BASKETBALL SCHEDULE

Jan. 12-13-14—Garden City Tournament	
Jan. 17—Knott	Here
Jan. 20—Garden City	Here
Jan. 26-27-28—Christoval Tournament	
Feb. 3—Robert Lee	Here
Feb. 7—Knott	There
Feb. 10—Garden City	There
Feb. 14 or 17—Wall	Here

BILLY J. LITTLEFIELD DIES IN MINE MISHAP

Billy J. Littlefield, son of Mr. and Mrs. Collie Littlefield of San Angelo and formerly of Sterling City, was killed in a mine mishap near Carlsbad, N.M. last week.

Billy J., 29, and one other man was killed when the elevator they were on fell 237 feet.

Burial was in Carlsbad last Friday. Among those attending the rites were Mr. and Mrs. Ted Brown of Sterling City. Survivors include the widow and two sons.

FOR SALE—Baled alfalfa hay, \$30 ton. Walter Gregory, Floyd, New Mexico. Phone 3349

Have You

been visiting had visitors sold anything bought anything had a party been to one joined a club or been thrown out of one got engaged been jilted got married been divorced had triplets quadruplets or even one baby?

That's News!

and we, and your friends would like to know about it

Call The News-Record

ask for the society editor, that's me

Or If You're Scared

we can't spell your name or somebody else's

Then Write It Up

FOR RENT—House on West Highway. See Green Williams.



Call 123 for Appointment
MRS. RUBY GRUNY

Vanity Beauty Shop
Sterling City, Texas

(All appointments not cancelled 1 hour before time to be charged for)

on a piece of scratch paper and bring it in or mail it in or something and we'll all know it and we'll all be happy!

Thank You!

SPORTING GOODS

FISHING TACKLE, GUNS, AMMUNITION, CAMPING, etc.

C. C. AINSWORTH

PHILLIPS 66 STATION
Phone 148

FIRESTONE TIRES
Sterling City, Texas

R. T.
Caperton Insurance Agcy.

Motors Insurance Corp.
ALL KINDS AUTO INSURANCE
STERLING CITY, TEXAS

Realtors -- Land Loans

YOUR LISTINGS APPRECIATED
Rentals, Homes, Land

Sterling Finance Co.

Po. O. Box 668, Sterling City, Tex.

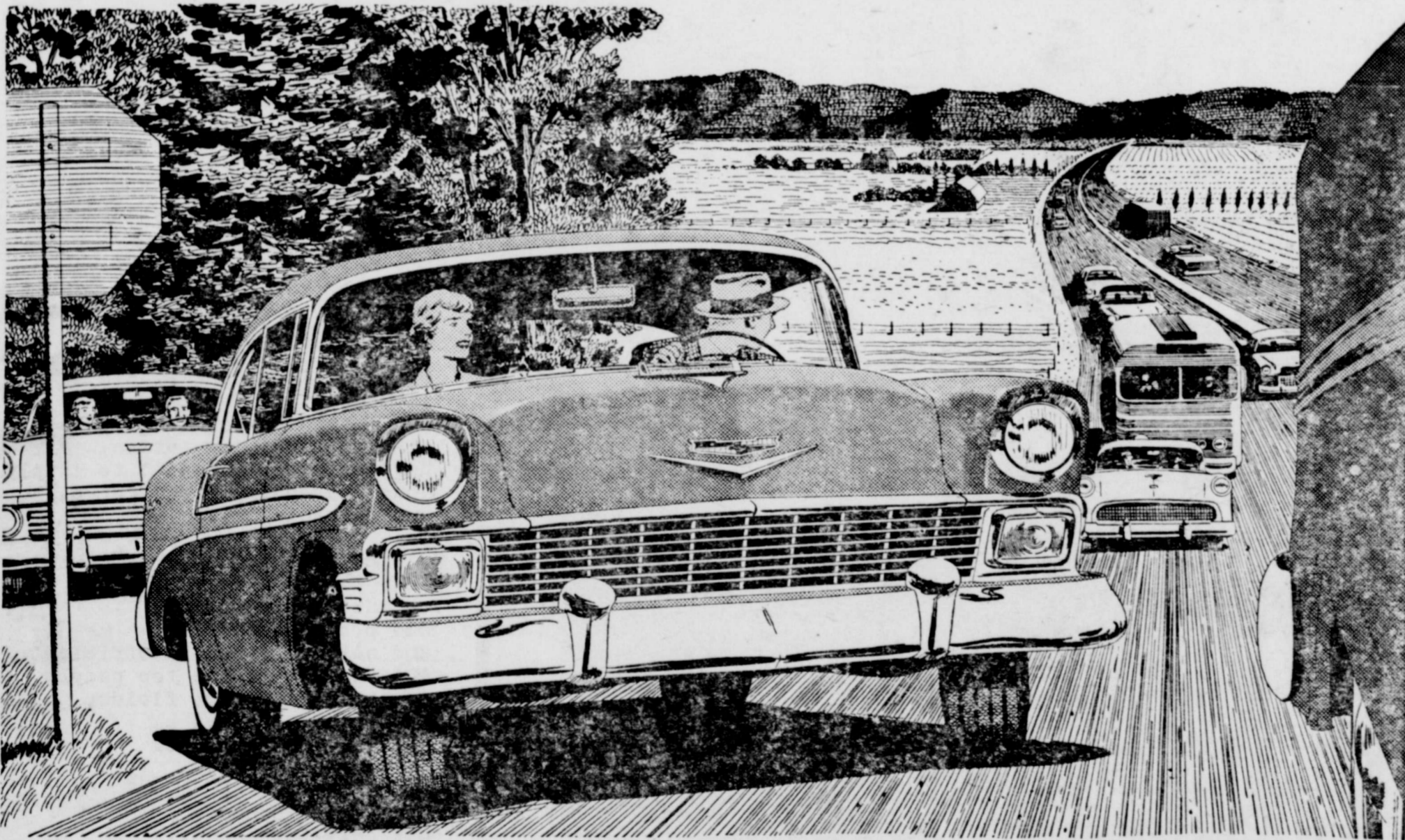
The Texas Co.

Petroleum and its Products
HENRY BAUER, Jr.
Consignee
Phone 157

D. L. HARALSON, JR.

INSURANCE OF ALL KINDS
20% Less than Texas Published rate
On Fire Insurance
Phones 115 or 94 Sterling City

Speaks softly and packs a powerful wallop!



THE BEL AIR SPORT COUPE—one of 19 high-priced-looking Chevrolets, all with Body by Fisher

Whether idling at curbside or cruising, this new Chevrolet talks in a well-mannered whisper. You scarcely ever hear more than a soft undertone of power from its deep-chested V8. (One reason is the hydraulic-hushed valve lifters now in all Chevrolet engines—V8 or 6.)

Soft-spoken, yes—but this handsome traveler packs a wallop that ranges up to 205 h.p.! It's charged with sheer action!

Action that can save you precious seconds for safer passing on the highway! Action that lets you take steep hills in stride!

Action that helps you zoom out of trouble spots almost as quickly as they develop!

And action isn't all. Chevy holds the road like part of the pavement! You feel added assurance in the way it clings to curves.

Of course, Chevrolet brings you the security of safety door latches in all models. Instrument panel padding and seat belts, with or without shoulder harness, are offered at extra cost.

Come in and drive a new Chevrolet. We've got one ready and waiting for you.



R. T. Caperton Chevrolet Co.

PHONE 35

STERLING CITY, TEXAS



By JANE ASHLEY

Here is an amazing new quick and easy method for preparing a pastry that is mixed in the pan and shaped in the pan. The pie crust is unusually rich and tender and keeps its perfect shape.

Mazola No-Roll Pastry Shell
(Single 8 or 9-inch Crust)
1½ cups sifted all-purpose flour
1½ teaspoons sugar
1 teaspoon salt
½ cup salad oil
2 tablespoons cold milk

Sift dry ingredients into pie pan. Combine salad oil and milk in measuring cup. Whip with fork and pour all at once over flour mixture. Mix with fork until flour is completely dampened. Press evenly and firmly with fingers to line bottom of pan; then press dough up to line sides and partly cover rim. Be sure dough is pressed to uniform thickness. To flute, pinch dough lightly with fingers. Do not use a high fluted edge.

For Baked Shell: Prick entire surface; bake in hot oven (425° F.) 12 to 15 minutes. Cool; fill as desired.

For Unbaked Shell: Fill as desired and bake in hot oven (400° F.) 15 minutes, then reduce to mod-

erate (350° F.) and bake until filling tests done.

Always prepare filling before making pastry.

Use a baked 9-inch No-Roll Pastry Shell in preparing this delicious pie.

Strawberry Pie

1 envelope gelatin
4 tablespoons cold water
2 egg yolks
¾ cup light corn syrup
1 cup crushed strawberries
1 tablespoon lemon juice
2 egg whites
½ teaspoon salt
2 tablespoons sugar
¾ cup heavy cream, whipped

Soften gelatin in cold water. Beat egg yolks slightly in top of double boiler. Add corn syrup. Cook over boiling water, about 5 minutes, stirring constantly, until mixture is slightly thickened. Add gelatin; stir until gelatin is dissolved. Cool slightly. Combine strawberries and lemon juice and add to gelatin mixture. Chill until slightly thickened. Beat egg whites and salt until stiff but not dry; gradually beat in sugar. Fold in strawberry mixture; then lightly fold in whipped cream. Fill into baked pie shell. Chill thoroughly.

We strive to please with Courtesy and Merchandise— "The Best Service Possible Is Our Pledge." Carter's Drive-In Grocery & Cafe.

SUBSCRIPTION Renewing time is here. Renew your News-Record before it expires.

MORE MONEY

for CAST IRON AND HEAVY STEEL DELIVERED TO OUR YARD than you can get elsewhere. SAN ANGELO IRON AND METAL Co. 700 Block West 14th Street San Angelo, Texas Tel. 21421

Best coffee in town and only 5c. Open 7 days a week. Carter's Cafe and Drive-In Grocery. (Adv.)

Palace Theater

Fri., Sat., Jan. 13-14

"TALL MAN RIDING"

Randolph Scott

Sun., Mon., Tues., Jan. 15-16-17

"BATTLE CRY"

Van Heflin, Aldo Ray

Wed., Thurs., Jan. 18-19

THE LONG GREY LINE

Tyrone Power, Maureen O'Hara

Fri., Sat., Jan. 20-21

"ROAD TO DENVER"

John Payne, Mona Freeman

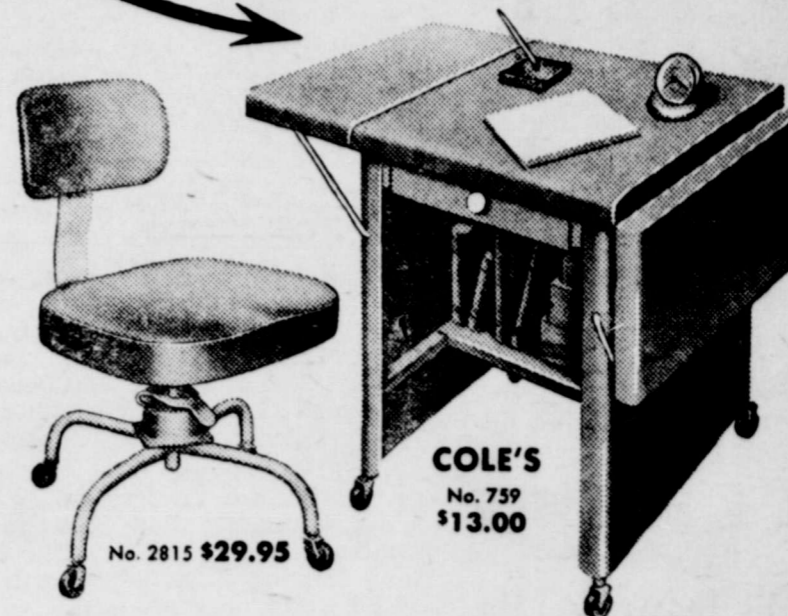
Sun., Mon., Tues., Jan. 22-23-24

"THE VIOLENT MEN"

Glenn Ford, Barbara Stanwyck

Engraving Orders at the News-Record

This \$13.00 table for only \$1.00



Order Cole's new steno chair and receive a \$13.00 STEEL TABLE for \$1.00

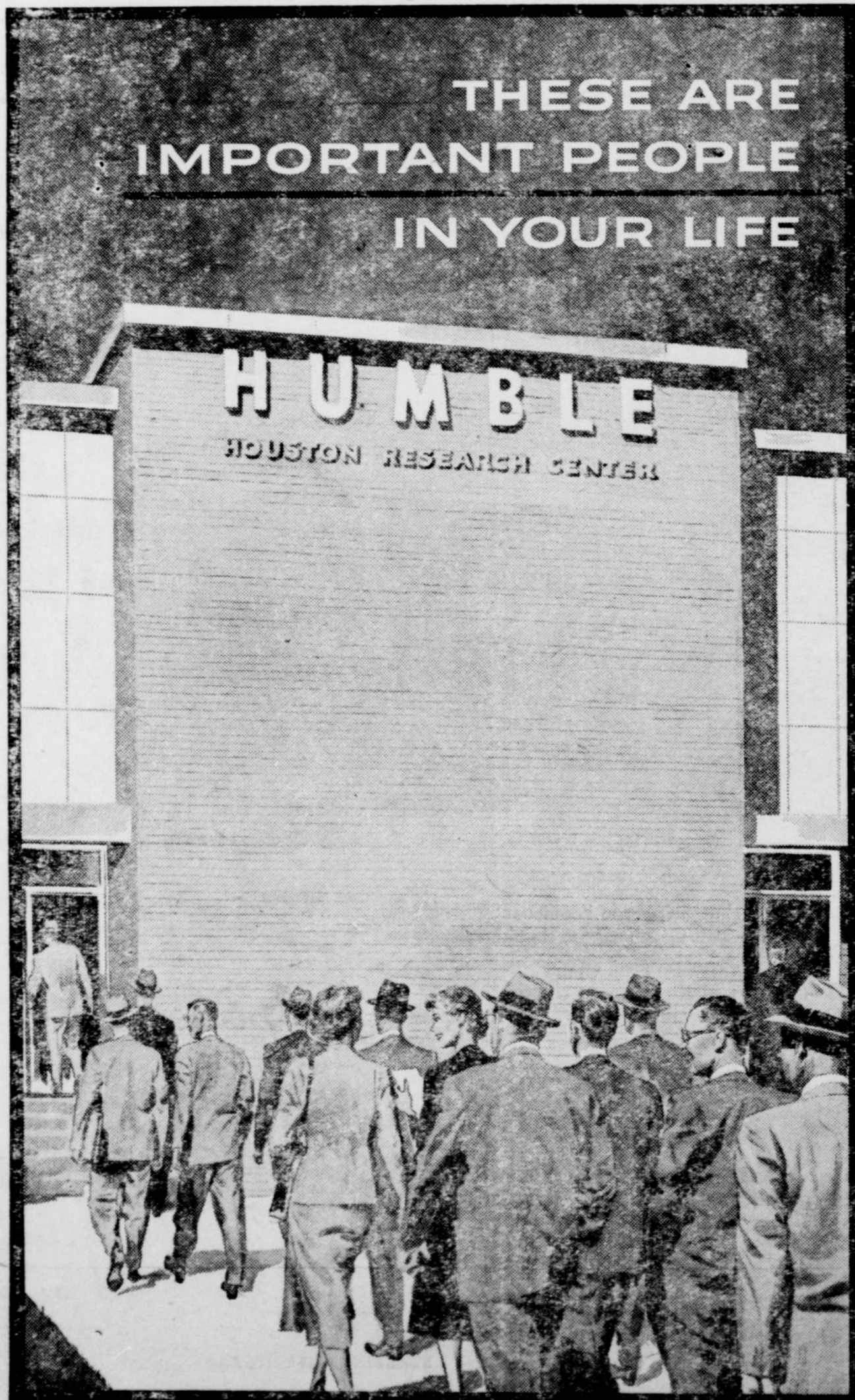
"STENO" CHAIR

Prevents office fatigue, improves efficiency. Foam rubber cushion, quality casters, adjustable seat 16½" x 13½". Brown, green, gray or wine No. 2815 \$29.95

TYPEWRITER TABLE

Use it as a salesman's desk where space is scarce. Ideal for the student in the family. Center drawer for supplies and a shelf for books. Typewriter desk height, 39" wide x 17" deep. Heavy steel. Olive green or Cole gray finish No. 759 \$13.00

FOR SALE at NEWS-RECORD



Dear Friends

The people in the picture in this advertisement are Humble researchers on their way to work in Humble's Houston Research Center.

They are important people in your life, because their studies and their constant experimentation have only one purpose: to supply your increasing needs for oil and natural gas.

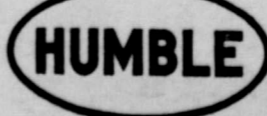
At the Houston Research Center, they pool their efforts to make the finding and production of oil and natural gas more efficient. And since they are top people in their different fields, their work has met with notable success.

It has helped to make the Humble Company not only the largest but also one of the most efficient producing companies in the country.

The new ideas, new methods and new practices developed by Humble researchers have resulted in the discovery of new reservoirs of a valuable natural resource; in making these reservoirs more productive; and in prolonging their life for your future benefit.

Sincerely

HUMBLE OIL & REFINING CO.



TAL
BEA
TOM
CHA
COLI
KOTI
ROSI
PORI
25-lb.



This is the way to bake a cake



Let electric servants take over the job. Your automatic electric range cooks without watching — leaves you free to play with the kids or attend a meeting.

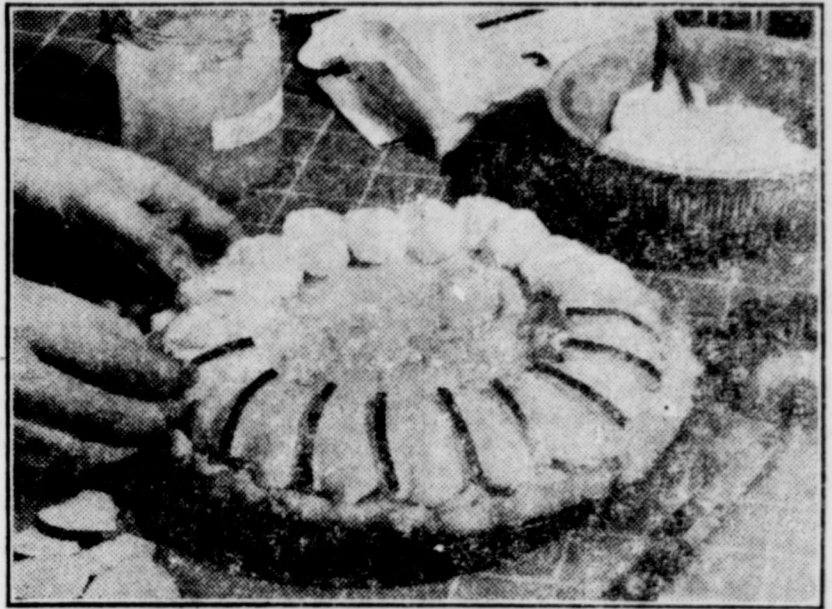
All over the house, electric servants are ready to help at the flick of a switch; they give you time for other things. And

whether it's washing the dishes, doing the laundry, or cleaning a rug, electric servants do the job in half the time.

Electricity works for such low wages that it's today's biggest bargain. And your electric service company is constantly working to keep it that way.

West Texas Utilities Company

Easy As Pie RECIPE OF THE MONTH



By BETTY BARCLAY

With all the extra work incident to holiday entertaining, even the best organized of hostesses is bound at times to feel harassed and over-worked. A wonderful dessert for these occasions is Parfait Pie. It's not fussy to fix, but it has all the deliciousness and eye appeal people want and expect in a holiday dessert. Here is a version bound to be popular . . .

Applesauce Parfait Pie
1 cup applesauce
1/2 cup water
1 package orange-flavored gelatin
1 pint vanilla ice cream
2 tablespoons chopped pecans or walnuts
1 baked 8 or 9-inch pie shell, cooled

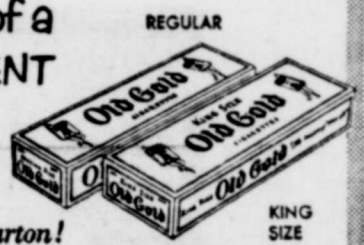
Heat applesauce and water in 2-quart saucepan. Add gelatin to hot applesauce mixture and stir until dissolved. Then add ice cream by spoonfuls, stirring until melted. Chill until thickened but not set (10 to 20 minutes). Fold in nuts. Pour into pie shell. Chill until firm (15 to 25 minutes). Garnish with whipped cream and unpeeled apple slices.

TYPewriter PAPER, TYPewriter CARBON
TYPewriter RIBBONS, SECOND SHEETS
Rubber Stamps at the News-Record



DENNIS JAMES says:

For a TREAT
instead of a
TREATMENT



Buy **OLD GOLDS**

Regular or King Size by the carton!



Large Box

29c

Del Monte Catsup
Bottle **17¢**

3-Minute Oats
Small **15¢**

Mayfield Corn
6 cans **75¢**

TALL PET OR CARNATION MILK, 2 for . . . 25c
BEANS & POTATOES, Sun Spun, 6 cans . . . 98c
TOMATOES, 6 No. 1 Cans . . . 55c
CHARMIN TISSUE, 4 Roll Pkg. 35c
COLD DRINKS, 12-Bottle Carton 45c
KOTEX, Junior, Regular or Super box . . . 29c
ROSE DALE PEAS, 6 Cans 98c
PORK & BEANS, Our Value, 6 Cans . . . 55c

25-lb. Sack AUNT JEMIMA FLOUR 1.89
(45c Coupon Inside Sack)

SPECIALS Sat. & Mon.

CIGARETTES



CARTON

Reg. Size. ALL POPULAR BRANDS

Carton \$2.19

Sugar 5# 49c



6
12-oz.
Cans
69c

Scott Towels
Roll **19c**

MARKET

Sausage 3 lbs. Pan Sausage .95



Fully Cooked
Ready To
Eat lb. 39¢

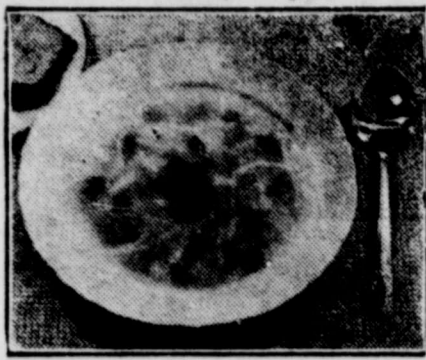
Salt Jowls # 18¢

Sirloin Steak
Pound **65¢**

Longhorn
Cheese lb. 49c

CHAPPLE'S

"WE APPRECIATE YOUR BUSINESS"



By BETTY BARCLAY

It's a dandy time of year to serve chicken or turkey soup. Stewing hens are cheap, turkeys are plentiful, and the most delicious soup can be made from the leftovers and frame. Bony pieces of chicken can also be bought at budget prices, so soup is a natural.

To make it the center of attraction, however, dress it up with sparks of color by cutting different shapes from festive-looking red pimientos. Keep a can or jar of pimientos on the pantry shelf to give star billing to many a plain dish.

Homemade Chicken or Turkey Soup

with Pimiento Cut-outs

Chicken or turkey bones
Chicken or turkey leftovers
Pimientos from a 4-oz. can or jar
Noodles or rice

Cover the bones with water and simmer them—slowly—to extract all the essence. Remove the bones, add the leftover pieces of fowl, the noodles or rice, and heat. Gently drop in the garnish of bright, rosy-red pimiento pieces or cut-outs; and play up the fact that soup is the star of the meal by placing a fat pimiento star in the center of each bowlful. Children will love the colorful bits of red floating in the soup, and everyone will enjoy the piquant flavor. Watch the spoons fly!

Note: Pimiento garnishes added to canned soup will give it a party-planned look and taste.

STERLING LODGE
A. F. & A. M.
No. 728

Regular Meetings on
the Second Tuesday of
Each Month

We strive to please with Courtesy and Merchandise—“The Best Service Possible Is Our Pledge.”
Carter's Drive-In Grocery & Cafe.

New Almanacs at News-Record.

Get-Acquainted
Tip

By Betty Barclay

BAKE a loaf of Grape-Nuts Bread to serve or to sell at your group's first “get-acquainted social”



of the year. Makes excellent sandwiches with butter and cream cheese . . . and, of course, it's wonderful to nibble with a cup of tea!

Grape-Nuts Bread

1½ cups milk, scalded; ½ cups Grape-Nuts Cereal; 2 cups sifted flour; 2½ teaspoons double-acting baking powder; 1½ teaspoons salt; ½ cup sugar; 1 egg, well beaten; 3 tablespoons shortening, melted.

Pour milk over cereal and let stand until cool. Sift flour once, measure, add baking powder, salt, and sugar, and sift again. Add egg and shortening to cereal mixture and mix well. Then add flour mixture and stir enough to dampen flour. Turn into 10x5x3-inch loaf pan, lined on bottom with paper. Bake in moderate oven (350° F.) 1 hour, or until done. Wrap in waxed paper and store several hours or overnight before slicing.

HERB SHRINER says:
Get your OLD GOLDS by the carton
Same famous quality Regular and King Size!

Bailey Bros.

Jan. Clearance

SALE

Saturday Monday Tuesday
JANUARY 14-16-17

ONE LOT OF MEN'S DRESS PANTS, ½ OFF

ONE LOT OF HATS, ½ OFF

SALE ON SUITS, SHIRTS, SPORT COATS

ONE-FOURTH OFF ON LUGGAGE

All Sale Prices Cash Three Big Days of Bargains

BAILEY BROS.

BROOKS & BAILEY JAN. CLEARANCE SALE

January 14, 16 & 17

3 Days Only

LADIES DRESSE AT ½ PRICE

CHILDRENS DRESSES

1 Group at Half Price, and 1 Group One-Third Off.

LADIES SKIRTS, One-Third OFF

PURSES--JEWELRY, ¼ OFF

1 Group of Men's, Women's and Children's Sox for 29c a Pair

BRAS, 1 Group at \$1.00. \$3.50 Strapless Bras for \$2.00

SHOES 1 Group \$2.00; 1 Group \$1.00

1 GROUP LADIES HOSE 29c

UNDERWEAR--Ladies and Girls Outing and Challis Gowns & P.J.'s ¼ Off

CHILDRENS QUILTED ROBES

4.95 & 5.95 Values for \$3.00

BLANKETS ¼ OFF

COTTONS, Assorted Material 29c

1 Group of Rayon and Print. Wool .39

1 Group 54" Material for 79c

Wool Jersey, 2.98 Value for \$1.98

Crepe-Gaberdine, 1.59 Value for 98c

All Wool Light Weight Materials

3.75 Value for 2.50

INFANT SLEEPING BAGS

3.25 Value for 1.75

PLAYTEX BABY OIL & CREAM

49c Value for 29c

LADIES & CHILDRENS BLOUSES

On Sale at \$2.00 Girls Blouses \$1.00

BOYS JACKETS, SWEATER,

SHIRTS, PANTS, & COVERALLS

¼ OFF

GIRLS RAYON GOWNS--PAJAMAS

2.95 and 3.50 Values for \$2.00

ALL SALES PRICES CASH

THREE BIG DAYS, SATURDAY, MONDAY, TUESDAY

Bargains All Over the Store.

January Clearance