

# MULESHOE JOURNAL



20¢

'The Community of Opportunity-Where Water Makes the Difference'

## Weather

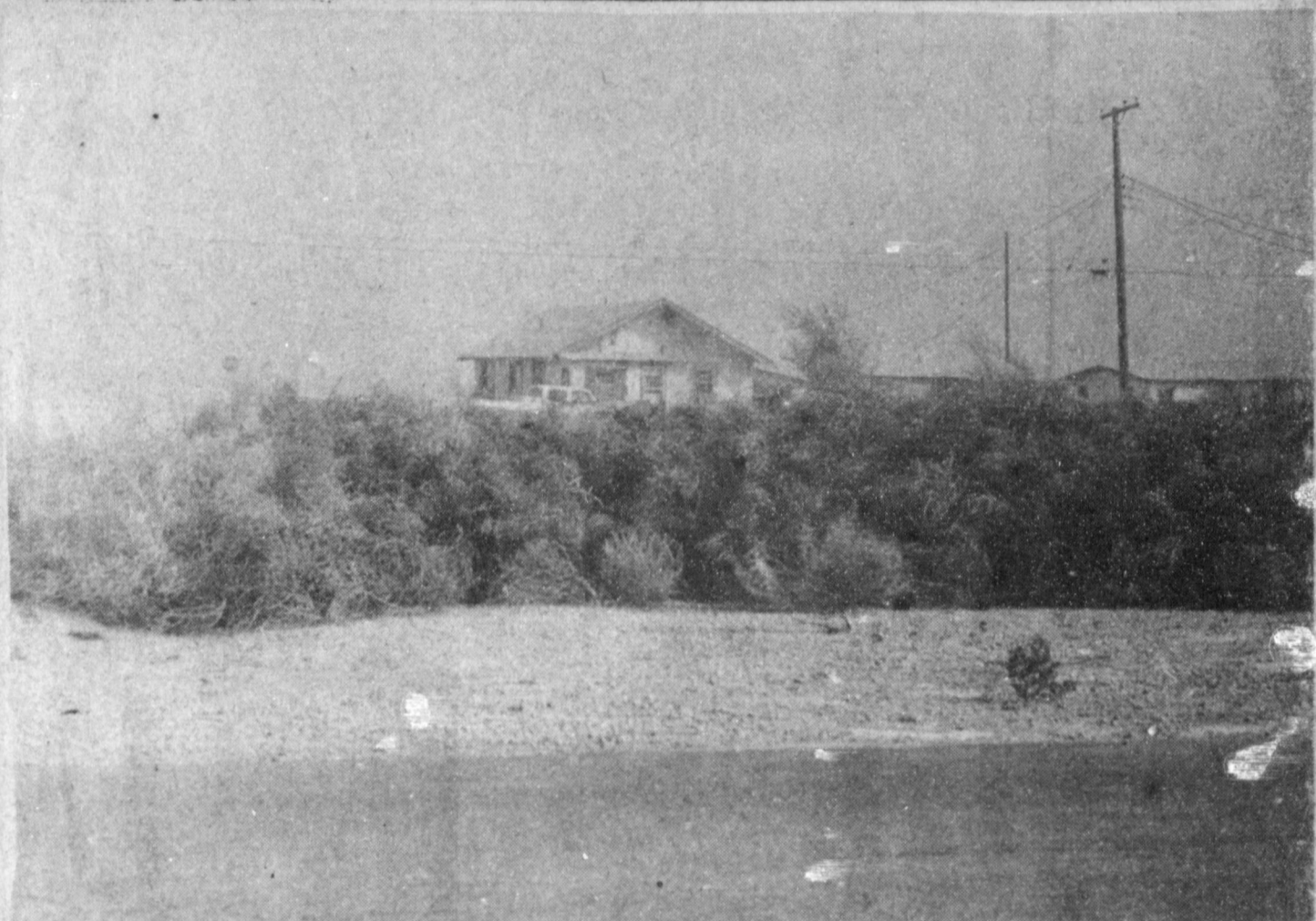
March 27	45	32	.04
March 28	52	31	.04
March 29	46	32	.04
March 30	72	36	
March 31	72	33	

Volume 59, No. 13

10 Pages Today

Published Every Thursday at Muleshoe, Bailey County, Texas 79347

Thursday, April 1, 1982



**DUST BOWL???**—Rolling tumbleweeds stacked up in many city streets on Monday as winds clocked at 35 to 50 miles per hour ravaged the South Plains. Visibility was down to zero and power outages were reported due to the high winds. Tuesday morning, many area residents could be seen digging out of the brush and sand that was deposited in yards, alleyways and streets during the storm. Seems that March is truly going out "like a lion."

## Local Ministerial Alliance Will Sponsor Holy Week

The Bailey County Ministerial Alliance will again sponsor Holy Week Services beginning April 5 to the 9 from 12:05 to 12:55 in the First United Methodist Church in Muleshoe.

This year's theme will be "God's Intervening Hand"



### ATTENTION!

Jacinto Bara, Babe Ruth League President, has called a special meeting for parents, managers and coaches to be held on Thursday, April 1 at 8 p.m. at the Corral Restaurant.

Bara is making a special appeal to Latin American citizens who have children playing.

The Babe Ruth League will fold if this call is not responded to by interested people.

Junior and senior mothers will begin working on Prom decorations Thursday April 8 at the Civic Center. All mothers are asked to  
Cont. Page 6, Col. 3

and the order of service each day will include the prelude, hymn, scripture, prayer, special music, message, benediction and postlude. The sacrificial meal will be served each day at a cost of \$2.50 per person.

On Monday, April 5, J. E. Meeks will be the worship leader. The special music will be by Pat Clements and the speaker for that day will be Herman Schelter. The First United

Methodist Church will prepare the Monday meal.

Don Knight will serve as worship leader on Tuesday and special music will be presented by Mona Kinder. The sermon, "Earthquake," will be presented by Louis Crenshaw and the First Assembly of God will be in charge of the meal.

Wednesday's worship leader will be James Williams with special music presented by M. D. Gun-

stream. The sermon will be given by David Lira and will be "Rendering of the Temple Vail." The Spanish  
Cont. Page 6, Col. 3

## Varsity Mules Ninth At San Angelo Meet

The San Angelo track meets were a little less than kind to the Varsity Mules over the weekend. While the Mules seemed to be plagued with some bad luck and starts in some events, Coach Kevin Wiseman stated that he was proud of the men and their efforts. "I feel that we did rather well, with this being our first outing at a meet of this size," Wiseman said. The Mules came out with ninth place in competition with 24 other schools.

In the high jump, Ronnie Cox placed second with a jump of 6'2", maintaining the same quality work he is capable of doing.

Tony Luna broke his own current school record in the

## Waggoner Services Held Monday

Services for Clyde Waggoner, 76, were held at 2 p.m. Monday, March 29, in the Ellis Chapel of the Chimes with Rev. Bill Kent pastor of the First United Methodist Church and the Rev. Don Knight, pastor of the Trinity Baptist Church, officiating.

Interment was in Bailey County Memorial Park under the direction of Ellis Funeral Home. Waggoner died at 3:07 p.m. Saturday in West Plains Medical Center.

He was born April 29, 1905 in Cleburne and moved to Muleshoe in 1939 from Tahoka. He was in the grocer store business and a member of the First United Methodist Church. His wife, Dovie Mayhall Waggoner died in May of 1977.

Survivors include one son, Robert Waggoner of Clarendon; two daughters, Mrs. Ida P. Clark of Muleshoe and Mrs. Dorothy  
Cont. Page 6, Col. 8

## County Spelling Bee Deemed Successful

### ★★ Freshmen Mules Cop First Place Win ★★ Noble Reveals Good 'Staying Power'

Freshmen Mules happily brought home a first place trophy from recent Tulia meets which were held on March 20. The results are as follows:

Smiley Orozco, Eddie Perez, John Isaac and Michael Del Toro made up the 800 relay team and placed third with a time of 48.7. Tony Rojas placed first in the 800 meter run with 2.21, while Charlie Mata placed second with a 2.22 time. In the 110 meter high hurdles, Mark Moton took a second place win with 17.2 and Todd Jones took fourth with 18.3. Eddie Perez took second in the 100 meter dash and Charlie Mata picked up fifth place in that same event; Eddie's time was 12.4 and Charlie had 12.9.

Michael Del Toro placed second in the 400 meter dash with a time of 58.2; in the 300 meter intermediate

hurdles, Mark Moton took first with 43.7; Eddie Perez took second with 46.8 and Todd Jones took fifth with 47.3.

In the 200 meter dash, Smiley Orozco placed third with a time of 25.1 and John Isaac placed fifth with a 26 flat. Tony Rojas placed first in the 1600 meter run with a time of 5:22.4.

In the 1600 meter relay, team members, John Isaac, Mark Moton, Smiley Orozco and Michael Del Toro on Page 6, Col. 1

## City, School Elections Set Saturday

City and school elections are scheduled for this Saturday, April 3. Those who wish to vote in the school elections may do so from 7 a.m. to 7 p.m. on April 3 at the High School Cafeteria. City election voting may be done at the City Hall from 7 a.m. to 7 p.m. on Saturday, April 3.

Incumbent Mayor of Muleshoe, Charles Bratcher, is running for re-election and is unopposed.

The School Board race will involve five county men who have made public filing, being Steven J. Neptune, a feed mill operator; George Nieman, a realtor; Gordon Wilson, owner of Wilson Appliance and Sam Gonzales and Royce Harris, who have their political announcements in this Journal issue.

Cont. Page 6, Col. 4

## Sam Gonzales In Election For Trustee

Sam (Sammy) Gonzales, 36, a local businessman, has authorized *The Journal* to announce his candidacy for Trustee on the Muleshoe Independent School District Board of Trustees in the election Saturday, April 3.

Gonzales has spent nearly 32 years as a resident of Muleshoe, and is currently the owner of Sam's Sporting Goods. He is a former employee of the U. S. Post Office.

He and his wife, Amelia, are the parents of three sons, Sammy Jr., a junior at Muleshoe High School; Jerry Don, fifth grader and Larry, a third grader.  
Cont. on Page 6, Col. 2

## Calvary Baptist Plan Revival

Pastor James Williams has announced revival services at the Calvary Baptist Church beginning April 4 through April 9. The Church is located at 18th Street and Avenue C.

Revival evangelist will be Buck Hatfield, pastor of the Faith Baptist Church of Snyder, Texas. The Snyder pastor was formerly a pastor to James Williams.

Special musical selections will be rendered during the revival by Johnny  
Cont. Page 6, Col. 6

It took 415 words Monday afternoon before 10-year old Lisa Noble, the daughter of Mr. and Mrs. Sandy Noble, and a fifth grader at Mary DeShazo Elementary School spelled down her 14 opponents to become the 1982 Bailey County Spelling Bee Champion.

She is maybe the youngest person to win the Spelling Bee in Muleshoe and is the first girl in several years to win the contest.

Last year's champion, Loy Triana, was the third place winner, going down on the word, 'Goldbrick.' Second place Ed Chance, fell out of the contest on 'Intercut' which was successfully spelled by Lisa before she went on to correctly spell 'Intruder,' to win the contest.



## Harris Seeks Re-Election To School Board

Royce Harris, incumbent, has announced to *The Journal* his intentions to run for re-election to the Board of Trustees of the Muleshoe Independent School District in the April 3 election.

Harris has been a resident of Muleshoe since 1955, having graduated from Muleshoe High School in 1969 and from West Texas State University with a Bachelor of Sciences degree in 1973.

He is married to the former Kay Killingsworth  
Cont. Page 6, Col. 5

The contest was held in the Speech Department at Muleshoe High School. Following two practice rounds with pronouncer, John Gulley, the Spelling Bee got underway before Judges Linda Guelker, a local attorney; Max Crittenden from Valley Grain Inc. and Bruce Woods, the president of Summit Savings and Loan.

Competing were five elementary school students from Three Way; five from Mary DeShazo Elementary and five from Muleshoe Junior High School.

'Affixed' proved to be too much for the first speller to go down, and 'Apparel' and 'Arena' took out two more. 'Bicycle' was the only 'B' that took out a speller.

None of the spellers missed a 'C', but the 'D's' took down four spellers on 'Demise,' 'Devilish,' 'Dilute' and 'Docket.'

It was almost inevitable that 'Evadable' proved to be the downfall of another  
Cont. on Page 6, Col. 1

## Insurance Law In Effect April 1

A three month grace period given by the Texas Department of Public Safety before enforcing the law requiring drivers to show proof of liability insurance expired at midnight Wednesday and area motorists will be expected to furnish proof of insurance after that time.

The minimum penalty for the first offense is a \$75 fine, and the minimum penalty for the second offense is a \$200 fine. Those unable to furnish insurance proof will be issued a citation similar to a traffic ticket.

The Texas Motor Vehicle Safety Responsibility Act went into effect January 1, requiring all drivers to furnish proof of financial responsibility in the form of liability insurance.

Anyone convicted of driving without liability insurance could have his driver's license suspended  
Cont. Page 6, Col. 4



**THEY'RE WINNERS IN THE SPELLING BEE**—Pronouncer John Gulley, standing rear, is pictured with the three top winners in the annual *Muleshoe Journal/Lubbock Avalanche-Journal* Spelling Bee to determine the county winner. From left are Lisa Noble, Bailey County Champion; Ed Chance, second and Loy Triana, third. Lisa will compete in Lubbock this Saturday for an opportunity to go to Washington, D. C. for the national competition.



**REGIONAL WINNERS**—Mrs. Jean Allison's Civics and Government Mock Trial team won regional honors and the right to compete on the state level in Dallas the last of April last Monday. The team won out over Monterrey High School of Lubbock. Shown, back, L to R: George Vela, Kevin Robinson, Jamey Chancy, Jimmy Green. Front: Stacey Barnhill, Mrs. Allison and Sandra Graves.

**Aylesworth**

**Services Held In Plainview**

David Roswell Aylesworth, 74, of Plainview, and formerly of Muleshoe, died at 10 p.m. Monday at his home, apparently of a heart attack. He was born in Tucumcari, N.M. September 10, 1907. He lived in Muleshoe many years before moving to Lubbock where he lived until 1979

**Local Man's Brother Dies In Sundown**

Services for William K. Dean, 58, of Sundown were held at 2 p.m. Tuesday, March 30 at the First Baptist Church of Sundown with the Rev. Glen Smith, pastor, and the Rev. Robert Edwards, of Sundown, officiating.

Interment was in the Sundown Cemetery under the direction of George C. Price Funeral Home of Levelland. Dean died at 8:15 a.m. Sunday in Lubbock's Methodist Hospital.

A native of Post, he had lived in Sundown for 55 years. He was a self employed welder and a veteran of World War II. He married the former Mary Bell on January 30, 1943, in Morton.

Survivors include his wife; two daughters, Jolene Streetman and Janie Carter, both of Sundown; a brother, Kenyon Dean of Muleshoe; a sister, Thelma Bates of Mertzon and three grandchildren.

**West Plains Medical Center Report**

**ADMITTED**  
March 26-Gerald Allison, Tonya Roedler, Goldie Baker, Robbie Young, Dasha Dykes, Susan Salazar, Dean Waltrip and Evette Freeman.

March 27-Milissa Lozano and Celestine Lewis.

March 28-Ted Millsap, Elizabeth Range and Wenhonah Gibson.

March 29-LaMuriel Stowers, Rebecca Luano and Adam Romas.

**DISMISSED**  
March 25-Klyde Krebbs.  
March 26-Yolanda Bara, Chad Parker, Dona Fague, Melinda Landrum, Dixie Upton.

March 27-Mable Tharp and A. K. Robinson.

March 28-Susan Salazar, Dean Waltrip and Cozette Blackwood.

March 29-Gary Toombs, Tonya Roedler, Ruby Stickney and Nina Glasscock.

"Here's #5 of my 17 reasons why H&R Block should prepare your taxes."



REASON #5: If the IRS audits your return, H&R Block goes with you at no extra cost.

An IRS audit can be an anxious time for any taxpayer. But, if you're audited, Block will go with you at no extra cost. Not as a legal representative, but to explain how your return was prepared. We're always ready to stand behind you, year-round.

**H&R BLOCK**  
THE INCOME TAX PEOPLE

17 reasons. One smart decision.  
224 W. 2nd  
272-3332  
Wkds 9-6  
Sat. 9-5

when he moved to Plainview.

He was a graduate of Wayland Baptist University. He was a member of the First Christian Church where he served as a deacon. He was a WWII Veteran. He was a real estate broker for most of his life.

Funeral services will be at 11 a.m. Friday at the First Christian Church in

Plainview. Doug Skinner, minister of the church, will conduct the services. Burial will be at 3 p.m. at the Bailey County Memorial Park in Muleshoe.

He married Nell Marie Sanders in January of 1979 in Lubbock.

He is survived by his wife of Plainview; four sons; Rufus Aylesworth of Shallowater; Bill of Clovis;

John of Hobbs and Smitty of Canyon; two step sons, Richard and Ted Sanders, both of Lubbock; two daughters, Mrs. Amarina Wilbanks of Ft. Worth and Mrs. Beatrice Moore of Farmington, N.M.; one stepdaughter, D'Aun Sanders of Lubbock; two sisters, Mrs. Violet Callahan of Plainview and Mrs. Regan Jones of Dumas; three

brothers, Jack Aylesworth of Baton Rouge, La.; Clyde Aylesworth of Midland and Gene Aylesworth of El Paso; 17 grandchildren and seven great grandchildren.

**ADDITIONAL BENEFITS**  
A House subcommittee, moving swiftly to cope with a deep recession, granted President Reagan's request for an additional \$2.3 billion for unemployment benefits and personnel.

**"Car-train" crash barrier protects highway crews**

COLLEGE STATION — An experimental, mobile crash barrier designed to protect road repair crews performed "excellently," says a state highway department official who watched a recent crash test at Texas A&M University. The unconventional barrier, consisting of five old station wagons, guardrails and wood,

was designed by researchers of the Texas Transportation Institute (TTI) to stop vehicles from hitting workers performing repair work on busy freeways and streets. Last year, 12 workers were killed in Houston alone.

The barrier — designed by TTI researchers Don Ivey, Hayes Ross and Ted Hirsch — is five cars connected together. Only the first car needs to run, and like a train engine, pulls the others along. Guardrail is attached to the sides of the vehicles with heavy wood

beams and metal bolts. At present, workers are protected by either orange plastic cones or concrete, the researchers said. The cones offer virtually no protection and the concrete barriers are expensive and time-consuming to position.

**Boot & Shoe Repair**  
111 E. 4th

**WHITE'S CASHWAY SUPERMARKET**  
MULESHOE, TEXAS  
Double Gunn Bros. Stamps Every Wednesday & Saturday  
Open Monday-Saturday 7:30 A.M. to 8:00 P.M.  
Sunday 12:00 P.M. to 8:00 P.M.  
WE WELCOME WIC CARDS & USDA FOOD STAMPS

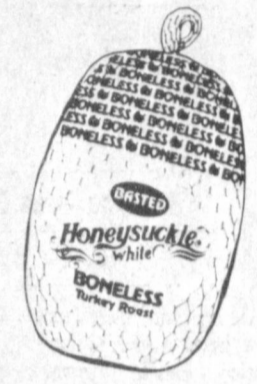


**SLICED QUARTER PORK LOIN CHOPS... \$1.49 LB.**  
CENTER CUT RIB PORK CHOPS... \$1.79 LB.  
CENTER CUT LOIN PORK CHOPS... \$1.89 LB.  
QUICK FRY WAFER THIN PORK CHOPS... \$1.99 LB.

**WHITE SWAN SLICED BACON... GUEST QUALITY 16 OZ. PKG. \$1.49**  
**SLICED BEEF LIVER... SKINNED & DEVEINED LB. 75c**  
**BATTER CRISP BROWN 'N SERVE COD FISH PORTIONS... LB. \$1.49**  
**RED RIND LONGHORN CHEDDAR CHEESE... LB. \$1.99**

**LONGMONT BONELESS FULLY COOKED TURKEY HALF HAMS 3-5 LB. AVG. LB. \$1.49**

**Honeysuckle white HONEYSUCKLE BASTED BONELESS TURKEY ROAST LB. \$1.39**



**CLOROX PREWASH 16 OZ. \$1.29**  
SPRING CLEANING VALUES

**CLOROX 2 BLEACH 40 OZ. \$1.59**

**FORMULA 409 SPRAY CLEANER 22 OZ. \$1.09**  
SPRING CLEANING VALUES

**CLOROX LIQUID BLEACH 1 GAL. \$1.09**

**GLADIOLA FLOUR 5 LB. 79c**  
25 LB. \$4.59

**SPAM LUNCHEON LOAF 7 OZ. 79c**

**POST RASIN BRAN FLAKES 15 OZ. \$1.29**

**WHITE SWAN SOFT OLEO 1 LB. TUB 49c**

**KRAFT BARBECUE SAUCE 18 OZ. 69c**  
REG. ONION HICKORY SMOKED

**GENERIC DOG FOOD 25 LB. \$3.99**

**LIQUID-PLUMBER 32 OZ. \$1.19**

**DELSEY BATH TISSUE 4 ROLL 99c**

**PEPSI 6-32 OZ. \$1.79 PLUS DEPOSIT**

**PETER PAN PEANUT BUTTER... SMOOTH CRUNCHY 28 OZ. \$2.49**  
**SUNSHINE HI HO CRACKERS 12 OZ. 79c**  
**WHITE SWAN GRAPEFRUIT JUICE 46 OZ. 79c**  
**BUSH'S HOMINY... WHITE GOLD 14 1/2 OZ. 4/\$1**  
**LIPTON TEA BAGS... \$1.79**

**JUMBO ROLL HI-DRI TOWELS 49c**

**Fresh Produce**  
**EXTRA FANCY RED DELICIOUS APPLES... LB. 49c**  
**COLLARD, MUSTARD OR TURNIP GREENS... EACH 39c**  
**YELLOW FANCY SQUASH... LB. 49c**  
**CALIF. VALENCIA ORANGES... LB. 29c**  
**JALAPENO PEPPERS... FRESH HOT PODS LB. 59c**  
**YELLOW MEDIUM ONIONS... TEXAS NEW CROP LB. 19c**

**Frozen Foods**  
**GREEN GIANT NIBLETS CORN ON THE COB... 6 OZ. 99c**  
**BRIGHT & EARLY ORANGE DRINK... 12 OZ. 59c**  
**BIRDSEYE COOL WHIP... 8 OZ. 69c**

**Health & Beauty Aids**  
**PEPTO BISMOL... 12 OZ. \$2.29**  
**JERGEN'S ALOE & LANOLIN LOTION... 8 OZ. \$1.59**  
**ROLAIDS... REG. SPEARMINT WINTERGREEN 3 PK. 89c**



**DOING THE HONORS**—Mayor Charles Bratcher, assisted by Bruce Woods and Nelda Merriott, performed ribbon cutting ceremonies Monday, March 29, at the new B and W Fun Shop in Muleshoe. The shop owners are Gail Wilcox and Ginger Bales and they will handle ceramics and other arts and crafts supplies.



**FACTORS INFLUENCING MICROWAVE COOKING TIME**

Microwave cooking usually saves energy because most foods can be cooked in about one-fourth of the time necessary to cook them by conventional heat. Some portable appliances such as electric skillets and coffeemakers prepare some foods more efficiently than a microwave appliance. Research on the energy efficiency of microwave cooking indicates that foods containing large quantities (more than a quart) of liquid or vegetables can be cooked more efficiently on a range surface unit than in a microwave oven. The foods include stews, soups and other foods that need to simmer.

Here are some factors to consider when cooking in the microwave:

**Volume:** The more items cooked at one time, or the larger the item, the longer the cooking time because more food is absorbing the microwaves.

**Starting Temperature:** The colder the food is when it begins to cook, the longer it will take to heat or cook.

**Density:** Dense or compact foods require a longer cooking time. A thick hamburger patty will take longer to heat than a porous bread or roll.

**Standing Time:** Allowing food to stand midway through or at the end of cooking time will let the heat penetrate toward the center without additional cooking in the outer areas. This is important when you are cooking large items such as roasts and when cooking other protein food such as eggs. Variable cooking cycles mentioned under "Microwaves" make it possible to alternate cooking and standing time automatically. Standing must also be planned at the end of the cooking cycle since the molecules slowly stop moving and create some heat after the microwave power stops.

**Fat and Sugar Content:** Foods with high fat or sugar content cook rapidly. The sugary filling of a sweet roll will cook faster than the rest and the fat portion of a steak will heat faster than the lean.

**Arrangement:** Since Microwaves penetrate the outer edges of the food, arrange thicker areas near the edge and thinner areas toward the center of the cooking dish. In the case of chicken pieces, the point of the drum stick, the wings and other thin pieces will be placed near the center.

**Stirring:** Some foods will need to be stirred because the outside of food heats faster than the inside. This distributes the already warmed food to the cooler areas.

**Rotating:** For foods that can't be stirred, the cooking dish should be rotated one-fourth turn halfway through the cooking time. If a food requires more than one rotation during cooking, the recipe will say so.

Microwaves do not brown food. Foods such as meat that contain fat will brown some when heated by microwaves. Appliances such as a toaster or conventional oven may be used to brown foods. Some microwave models include a browning element and others provide browning trays. These trays have a special finish on the bottom surface to absorb microwaves and sear or brown food. Pastries, pie shells and some meats may be given a brown appearance by brushing them with vanilla extract or brown seasoning sauces.

The microwave appliances will not produce crispy coatings on foods. Steam produced when the food is heated moistens the coating. A microwave appliance will not fry or broil. It can grill and toast if a browning tray or browning element is included.

Less tender cuts of meat

are not cooked effectively by microwaves. Large cuts of meat may not be as tender as when cooked conventionally.

For more information on microwave cooking, attend one of the two microwave schools planned for April 13, in the meeting room of the Civic Center. The afternoon school will be held from 1 p.m. to 3 p.m. The school will be repeated from 7 to 9 p.m. that evening.

**Grain embargo unfair to American farmer**

**COLLEGE STATION** — Each time the president declares a grain embargo against an unfriendly government, American farmers — who already can't meet their expenses — are pushed even further into the red, says a Texas A&M University agricultural economist.

A professor of agricultural economics and an economist with the Texas Agricultural Extension Service, Dr. William Black says not only have other countries "emptied their pantries," but left the United States with all the world's food reserves.

"We're the only ones left with a full pantry," Black said. "Sure, the embargo was one cause for current low prices since it increased inventories, which has acted to keep farm prices low," he added. "But there was another reason. Last year was a big crop year. There was record production in cotton, corn, wheat, rice and grain sorghum, and near-record production in soybeans."

Black said American farmers must begin to market their products on a collective basis, rather than bargain as individual competitors.

"It cost 52-65 cents to make a pound of dryland cotton last year and 72-85 cents to make a pound of irrigated cotton. But farmers only got 35-40 cents a pound," he said. "That tells the whole story right there. Farmers are on the brink of disaster."

**ON OPEC PRODUCTION** — NEW YORK — OPEC's crude oil production recorded its steepest decline in history last year and plummeted to the lowest level since 1969, Petroleum Intelligence Weekly reported recently. OPEC produced 22.5 million barrels a day in 1981, down 4.4 million barrels a day from 1980 output.

**Quarter Horse Tops TSCRA Sale**

It was a cattlemen's auction at a cattlemen's convention, but it was a horseman's horse that brought the top money.

The Cattle Raisers Heritage Sale, managed by Texas and Southwestern Cattle Raisers Association, drew more than 1,500 TSCRA members and their guests to Market Hall March 10 to bid on 15 Quarter Horses, two stallion breeding services, 16 bulls of various beef breeds and 11 pieces of Western Art. At sale's end, the livestock and art had grossed \$308,750 to average \$7,017.

Featured to win, a bay-colored yearling stallion, highlighted the sale as it sold for \$129,000 to Bob White of Dallas and Joe Imparto of Houston. The 1981 colt, an own son of Feature, set a new record for the Heritage Sale. He was consigned by Mike Hughes, Inc. of Sanger, Tex.

A red Brahman bull consigned by McKellar Ranch of Mount Pleasant, Tex., brought the top money in

the offering of beef cattle. The bull, McKellar Navegant 2/637, sold for \$5,100 to Bradley E. Smith of Smith Brothers Farm in Chatham, La.

The fine selection of bronzes and paintings — each with a Western theme — was topped by a bronze by Jim Ward of Canyon, Tex. The bronze, "Countdown," sold for \$6,000 to C. C. Burgess of Amarillo.

Overall, 17 horses lots brought \$239,300 to average \$14,956; 16 bulls brought \$38,600 to average \$2,969; and 11 Western art pieces brought \$30,830 to average \$2,805.

The sale was held as part of Texas and Southwestern Cattle Raiser's Association's 105th annual convention March 10-13 at the Loews Anatole in Dallas. Auctioneer for the sale was Col. Ruben Reyes of San Antonio. Dale Segraves of the TSCRA staff served as sale manager.

New china used for first time with President Mubarak.

U.S. has changed its goals for autonomy.

**Watchdog**

The Texas Consumer Association Education Fund's Report from Austin

By Rebecca Lightsey, Director

Depression. Economists who have been muttering about the coming recession are now whispering that it may well be a depression. For the first time, a couple of weeks ago the President's economists admitted that there is a very real possibility that the U.S. is on the verge of an actual depression.

The warning signs of worsening economic times are glaring here in Texas. One in 20 homeowners are at least a month late on mortgage payments, and the mortgage lenders are starting to foreclose on those homes, forcing the homeowners out into the

streets. But these distress signals, to some, are interpreted as enticing invitations to others—notably the creditors of the state. They see the economic squeeze as the perfect time to take a crack at changing one of the longest-standing family protections in the state, the homestead lien safeguard.

The Texas Constitution prohibits a creditor from taking a person's home because of debts. Any family who keeps up with their mortgage payments and property taxes is safe from having other creditors take the roof

over their heads. Only if they fail to pay their mortgage loan, a home improvement loan or delinquent property taxes can they lose their home.

The law's protection, though, also means that families can't use their homes as collateral for other types of loans. If a family wants to take out a loan to buy a new car, get away for a Las Vegas vacation, or send a child off to school, they can't put up their house as security on the note. So later, if they can't pay off the note, they won't lose their home.

The lender lobby, which last legislative session was successful in getting the interest rate ceiling on consumer loans increased (by spending over \$2 million), is mounting a campaign to help those folks who want to borrow money, but have only the equity in their homes to put up. The creditors are trying to gut the homestead lien protection completely so Texans can use their homes for any type of loan.

Panics and depressions don't last, but once a family has lost its home, it's lost forever. And when things recover, those with the property are sitting pretty, while those who are now homeless have nothing left with which to rebuild their lives. Now is the worst of all possible times to tamper with Texas' precious family protection.

**West Texas KARATE**

Offering Karate Classes Beginning April 5. Come By 215 E. Ave. B. Or Call 272-5190, Danny Kelley, 2nd Degree Black Belt, Inst.

Sample No. [redacted]

REGULAR ELECTION (ELECCION REGULAR)

MULESHOE INDEPENDENT SCHOOL DISTRICT, MULESHOE, TEXAS (DISTRITO ESCOLAR INDEPENDIENTE DE MULESHOE, TEXAS)

April 3, 1982 (3 de Abril de 1982)

**OFFICIAL BALLET BOLETA OFICIAL**

INSTRUCTION NOTES (NOTA DE INSTRUCCION): Vote for the candidate of your choice in each race by placing an "X" in the square beside the candidate's name. (Vote por el candidato de su preferencia por cada candidatura marcando con una "X" el cuadro al lado del nombre del candidato.)

For Trustee — Three Year Term (Para Regentes — Termino de 3 años)

Vote for 2 (Vote por 2)

[ ] STEVEN J. NEPTUNE

[ ] ROYCE HARRIS

[ ] SAM GONZALES

[ ] GEORGE NIEMAN

[ ] GORDON WILSON

[ ] \_\_\_\_\_

[ ] \_\_\_\_\_

**Muleshoe Journal** (ISSN 0047-4120)

Established February 13, 1924. Published by Muleshoe Publishing Co., Inc. Every Thursday at 304 W. Second, Box 491, Muleshoe, Texas, 79347. Second class postage paid at Muleshoe, Texas 79347.

MEMBER 1982 TEXAS PRESS ASSOCIATION

L.B. Hall, President  
James Woods, Vice President  
Shirley Farmer, News Editor  
Evelene Harris, Society Editor  
Holly Milligan, Advertising Manager  
Hill-Burke, Circulation Manager

Muleshoe Journal and Bailey County Journal  
Bailey and surrounding counties.....12¢  
Muleshoe Journal and Bailey County Journal  
Elsewhere.....15¢

Advertising rate card on application

**STOP WEEDS**

ferti-lome Crabgrass Preventer PLUS LAWN FOOD

Feeds too

ferti-lome

**Baker Farm Supply**  
1532 W. Amer. Blvd.  
272-4613

**Tax Relief!**

- 1 The State Property Tax Board reminds you that if you own farm or ranch land, you may qualify for significant tax relief. For details, contact your county appraisal district or local tax office before May 1st.
- 2 You can help protect your rights as a taxpayer by estimating and rendering the value of your property on a rendition form. Contact your county appraisal district or local tax offices before May 1st for details.
- 3 Homeowners may lower their property taxes by applying for exemptions before May 1st. The State Property Tax Board suggests you contact your county appraisal district or local tax offices for details.
- 4 A new pamphlet by the State Property Tax Board explains property taxation in Texas and outlines your rights and remedies as a taxpayer. Pick up your free copy at your county appraisal district or local tax offices.
- 5 If you are 65 or over or disabled, you may qualify for additional property tax exemptions on your home. The State Property Tax Board says contact your county appraisal district or local tax offices for details.
- 6 The State Property Tax Board reminds you that the filing deadline for property tax exemptions in Texas is April 30. Contact your county appraisal district or local tax offices for additional information.
- 7 Texas taxpayers have the right to render their property... to provide local tax officials with their opinion of what their property is worth. For information, contact your county appraisal district before May 1st.

**Bailey County Appraisal District**

104 E. Ave C Muleshoe 272-5501

**GET PLANTING**

**Paymaster**

Food Corn, 3 Varieties

Milo

Cotton, 303 & 792

Hybrid Sudan

**Brown Seed**

272-3335

2015 W. Amer. Blvd.

**First National Bank**

Member F.D.I.C.

## Baby Shower Honors Mrs. Khristi Phelps

Khristi Phelps was honored with a baby shower Saturday, March 27, at the home of Mrs. J. D. Cage. The shower was unique in that it consisted of a salad luncheon beginning at 11:30. During the luncheon, Mrs. Phelps opened the gifts which were later put on display for closer viewing by the guests.

Decorations for the serving table included pink and yellow gingham table runners along with a centerpiece. Highlighting the table, the centerpiece was a basket filled with colorful balloons, bows and nursery items.

As a hostess gift, the

honoree received a high chair along with the centerpiece and a corsage of spring daisies and balloons.

Special guests were the honoree's mother, Mrs. Ray Gressett of Spearman; mother-in-law, Mrs. Bernard Phelps of Muleshoe; sister, Mrs. Tom Sinclair of Lubbock and close friend, Mrs. Bob Collier of Spearman.

Hostesses for the shower included Julie Cage, Lindy Schuster, Christie Whitt, Marilyn Riley, Gwyn Murray, Joan Lewis, Jana St. Clair, Tonya Pool, Sarah Black and Rayniel Bamert.



KHRISTI PHELPS

## The Creative Woman

BY SHERYL BORDEN

Topics to be covered on "The Creative Woman" show this week will be candy molding, healthy snacks, color in decorating and cooking with herbs and spices. These topics will be presented on April 6 and 10 on KENW-TV, Channel 3.

Martha Schueler from Friona, Texas is with the show once again, and this time she has lots of ideas for candy molding for Easter. She'll discuss the characteristics of the molding

chocolate, shows different molds available and will demonstrate how to make these candies.

Snacking can be good for us, depending on what we choose to eat -- says Beverly Harder, Home Economist for Arrowhead Mills, Hereford, Texas. She will talk about snacking as it pertains to different age groups and will illustrate samples of good, nutritious snacks.

Christi Clancy, Interior Decorator with Clancy Car-

pet and Draperies in Clovis will talk about the importance of color in decorating. She will illustrate this principle with samples of draperies, upholstery and carpet.

Another guest on the show will be Mary Ellen Payne, Extension Home Economist from Carrizozo and she will talk about cooking with herbs and spices. She will talk about the history of cooking with spices and herbs and give some hints about storage and suggested usage of these products.

"The Creative Woman" is produced and hosted by Sheryl Borden for KENW-TV. The show is seen on Tuesdays at 12:30 p.m. and on Saturdays at 2:00 p.m. Viewers can request copies of printed materials offered on the show by calling KENW-TV's toll-free telephone numbers, which are: New Mexico: 1-800-432-2361 and Texas: 1-800-545-2359.

The only argument available with an East wind is to put on your overcoat.

J.R. Lowell.

## Muleshoe Rebekah Lodge Meeting Held

Muleshoe Rebekah Lodge No. 114 met Tuesday, March 23, with 28 members present. Noble Grand Frances Stevens and vice grand Patsy Chance presided over the meeting.

Lena Hawkins was in charge of undraping the charter for the two part President of Rebekah Assembly.

A program on Schuyler Calfox, founder of the Rebekah Degree of Oddfellowship, was given by Ruby Green.

Fern Davis was in charge of the practice of draping the charter for the meeting in Lubbock.

A report on the state meeting in Corpus Christi was given by Dodie Actkinson.

Lodge was dismissed by a prayer by Lena Hawkins. Imogene Tiller, Juanita Busby, Lela Atchley and Jessie Robinson were in charge of the social.



GIFT OF APPRECIATION--Ruth Clements (on left) presented a gift of appreciation (money tree) to Clara Lou Jones, outgoing president of TOPS Club Chapter TX #34.

### No connection between fat and heart disease

COLLEGE STATION — Confusing reports about dietary fats, high cholesterol levels and heart disease shouldn't cause unnecessary worry for most Americans as long as they're eating properly, says a professor of biochemistry and biophysics at Texas A&M University.

"Hardly a week goes by that we aren't bombarded by commercials or recommendations from some institute about what we should eat in terms of dietary fats," said Dr. Randall Wood, who with Dr. Raymond Reiser, a Texas A&M professor emeritus, has studied cholesterol in the human body for 10 years.

For most Americans there is no relationship between diet and coronary disease, Wood said, and people react differently to different amounts of fat in their diets. The biochemist pointed to the Texas A&M research which suggests that most people don't react to high levels of fats in their diet.



The Lincoln Penny was first issued by the Philadelphia mint in 1909. It replaced the Indian-head penny which had been in circulation for 50 years.

### TOPS Weekly Meeting

The Muleshoe TOPS Club met Thursday night, March 25, in the meeting room of Bailey County Electric. The meeting was called to order by the president, Clara Lou Jones.

The TOPS pledge was recited and the fellowship song sang. Jerri Serna, the weight recorder, called the roll with 31 members answering with pounds they had lost or gained.

Minutes of the previous meeting were read by Linda Vinson, secretary, they were approved.

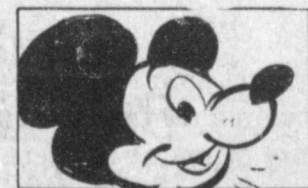
Best loser of the week was Cleta Robertson, with Rose Sain named first runner up and Leavell Parker second runner up.

The highlight of the meeting was the installation of officers by Millie Mitchell. New officers installed were President, Edna Haynes; vice president, Linda Vinson; secretary, Rose Sain; treasurer, Vickie Garner; weight recorder, Leavell Parker; and assistant weight recorder, Evelene Harris.

Ruth Clements presented Clara Lou Jones a money tree from the members in appreciation of her job as president.

Edna Haynes presented Millie Mitchell a gift in appreciation of installing the new officers.

The meeting was closed with the singing of the goodnight song.



For twenty years, the voice of Mickey Mouse was none other than his creator, Walt Disney.



TOPS CLUB INSTALLS OFFICERS--Edna Haynes (on left) was installed as president of the TOPS Club Thursday night. (L-R) Mrs. Haynes; Linda Vinson, vice president; Mildred Mitchell, installing officer; Rose Sain, secretary and Leavell Parker, weight recorder. Not pictured, Evelene Harris, assistant weight recorder.

### Muleshoe Singing Group

The Muleshoe Singing Group met on Saturday, March 27, in the fellowship hall of the Trinity Baptist Church with 22 present.

J. M. Crawford gave the invocation. "Everyone enjoyed the arrangements, some solos, quartets, and duets. Also request numbers," says Clara Coffman.


"The group will not meet on April 3, but everyone will be welcome to hear the "Believer's Quartet" from Tahoka at the church at 7:30 p.m."

Benediction was given by Fred Wilbanks.



The oldest known song written in English is a ballad called Judas. A manuscript of this survives from the 13th century.

**Apply Now**



before you see the weeds

**ferti-lome**  
Baker Farm Supply  
1532 W. Amer. Blvd.  
272-4613

**Announcing...**  
Marilyn Cox Is Now Your Dealer For White & Elna Sewing Machines  
See Her For All Your Sewing Machine Sales & Repair Needs.  
FREE Sewing Lessons With Each Sewing Machine  
Call: 965-2781

<p><b>True Value</b> TOOL VALUE OF THE MONTH</p> <p>now <b>477</b> White Supplies Last</p> <p><b>DELUXE 24-TINE LAWN RAKE</b> Spring-steel tines and coil-spring tension provide maximum flexibility for fast cleanups with very little effort. CDR24</p>	<p><b>True Value</b> HARDWARE VALUE OF THE MONTH</p> <p>now <b>499</b> White Supplies Last</p> <p><b>4-PC. VINYL CAR MAT SET</b> Protect car floors from tracked-in mud and debris with these quality twin front and twin rear clear vinyl car mats. 6465 QUANTITIES LIMITED</p>	<p><b>True Value</b> BARGAIN OF THE MONTH</p> <p>now <b>688</b> White Supplies Last</p> <p><b>TRIG® WHISTLING TEAKETTLE</b> Prepare instant foods &amp; beverages fast! Gleaming stainless-steel 2½-qt. body; solid copper bottom; trigger spout. 4522</p>
---	--	--

**Fry & Cox, Inc.**  
401 S. Main 272-4511

**VISIT THE EASTER BUNNY SATURDAY**  
2:30 TO 4:30 p.m.

Come Talk To The Real Live Easter Bunny At Anthony's Saturday Afternoon And See The Television Re-Broadcast Sunday Afternoon At 1:30 On Channel 6

BRING THE KIDS!  
BRING THE FAMILY!  
BE ON TV WITH THE 6 FOOT EASTER BUNNY!

All This Saturday At.....  
321 Main St.



**Anthony's**  
C. R. ANTHONY CO.  
celebrating our 60th year!

## Lubbock Arts Festival Scheduled April 16-18

Lubbock's fourth annual "Celebration of the Arts" will be held on April 16-18. This showcase of the arts and humanities, one of the largest indoor arts festivals in the Southwest, will be held in the Lubbock Memorial Civic Center. There will be no admission charge.

A phrase often associated with the festival is "there is something for everyone." That will certainly be true again this year. There will be visual arts, performing arts, culinary arts, displays by area humanities organizations, a half-marathon running event, and special children's and senior citizens' art areas.

As a special supplement to the visual arts sales areas, a number of artists and craftsmen will provide demonstrations of their work. Scrimshaw, lithography and portraiture will be among the thirty art forms demonstrated during the festival.

Besides the visual arts, there will be a variety of performing arts -- everything from chamber music to avant-garde electronics. These performances will take place on three primary stages, a children's theatre and in the Civic Center's patio.

The festival will begin with a gala opening on Thursday, April 15. This event, for which there will be an admission charge, will provide serious art collectors from throughout the southwest an opportunity to view and purchase art in

a quiet and uncrowded environment. Friday, the first day of the festival, will be the traditional 'Kids' Day,' with school children visiting during the morning and afternoon.

Festival hours will be 10 a.m.-8 p.m. on Friday and Saturday. The festival will be open from 1-6 p.m. on Sunday.

Persons wishing to make reservations for the gala opening or wanting further information on the festival may contact the Lubbock Arts Festival office, P. O. Box 561, Lubbock, Tx. 79408. The telephone number is (806) 763-4666.

## American Families Host Students

Five thousand American families will qualify this year to host carefully-selected high school students from 24 countries for a year, according to Youth for Understanding. YFU, one of the world's most experienced international student exchange organizations, has worked with over 100,000 American host families in its 30 year history.

Applications are now being accepted from families interested in learning about the world through providing a home to a young person from Latin America, Europe, or Asia and the Pacific, who will arrive in August. These students, who are chosen for their character, adaptability, and scholastic ability, all share an enthusiasm for learning about the United States and becoming part of a typical American family and community.

To qualify, a family must be personally interviewed and provide two references. Responsibilities of hosting include providing caring and guidance, housing and food for the student. All students speak English, have medical insurance and their own spending money, and attend the local high school.

Families interested in teaching an international student about America should contact YFU's Regional office for an application and information:

Dave Lintner, YFU Regional Director, 1438 Campbell Road, Suite 208, Houston, Texas 77055. Or telephone (713) 932-0066-call collect.



CHECK PRESENTATION--Loyce Davis (left), president of Llano Estacado Civic Club, presented Anne Camp, librarian, a check from the Llano Estacado Civic Club to be used to help pay for the recently purchased projector for the library.

## From Journal Files

40  
Years  
Ago

1942  
Bailey County cotton ginnings for the 1941 season were 17,626 bales, 818 bales below the 1940 figure of 25,644. It was learned this week, from a Bureau of the Census report, giving the final figures for the ginnings up to early March.

The Progress Home Demonstration Club held its regular meeting with Mrs. Fern Davis.

30  
Years  
Ago

1952  
Forty five boys and girls have signed up for membership in the newly formed Junior High School Safety Patrol, installed in a ceremony performed Monday in the Junior high building with members of the State Highway Patrol in attendance. The patrol is sponsored by the Muleshoe Rotary Club.

Wise Man  
Fly Fisherman--Did you catch all those trout with nothing but worms?  
Boy--Oh, no! There was brains at 'other end of the line.

20  
Years  
Ago

1962  
Mr. and Mrs. Tom Berry visited their son and family last weekend in Dallas. They returned to Muleshoe Monday evening.

Burglars got very little money, but did considerable damage in four break-ins Monday night in Muleshoe.

Businesses broken into were Dinner Bell, Cox's Fine Food, Baker's Farm Supply and Patzer Clinic.

10  
Years  
Ago

Danita Throckmorton, who is also the daughter of Mr. and Mrs. Lloyd Throckmorton, showed a Poland China and Spotted Poland China Breed Champion at Houston last week.

Mr. and Mrs. James Wedel attended the H&R Block Personnel banquet at the Gridiron in Lubbock Saturday. Mrs. Wedel is the manager of the Muleshoe H&R Block Income Tax Service office.

Nearly four million veterans who keep their GI life insurance policies in force will share in a record \$664.6 million veterans who have kept their GI life insurance policies in force will share in a record \$664.6 million dividend during 1982. No application form from the veteran is needed and dividends will be paid automatically on the anniversary date of the policy.

## Sewing With Silk, Silk-Like Fabrics

Fantasize yourself in an exquisite garment of fabulous shimmering silk, silk taffeta, satin or crepe--sewn by you.

When sewing with these luxurious and delicate fabrics, keep in mind the type of material used, nature of the fabric and special sewing and care techniques, says Becky Saunders, a clothing specialist.

Saunders is on the home economics staff of the Texas Agricultural Extension Service, the Texas A&M University System.

### SILK FABRIC TYPES

Today's silk and silk-like fabrics are made of 100 percent silk fibers, synthetic fibers of blends or both.

Knowing how the different fabrics "behave" helps homesewers choose the right fabric for each particular garment design, Saunders says.

For example, if a garment design calls for soft gather, look for a fabric that will "drape" easily rather than a stiffer fabric which would make the gathers too rigid, the specialist explain.

Here is a list of some popular silk or silk-like fabrics and their "behavior" traits:

1. charmeuse--fine, very soft satin-faced crepe with a lustrous surface and beautiful "drape"
2. crepe de chine--fine, lightweight crepe with a smooth, lustrous surface and soft "drape"
3. georgette -- lightweight, semi-sheer crepe fabric with a grainy surface which "drapes" beautifully and resists wrinkles.
4. noil silk-- soft, slightly nubby fabric having a cotton-like appearance. "Noil" yarn comes from the inner part of the silk cocoon and is shredded,

combed and spun like cotton thread. This sportier fabric is less expensive than most silks. It "behaves" as pongee and other medium-weight woven fabrics. It acts a bit stiffer than other silks.

In choosing fabric for a certain garment design,

remember that weight of the fabric determines its "behavior," the specialist notes.

Lightweight silk, such as organza and crepe de chine, "drape" gently and gather softly, while medium-to heavyweight silks, such as silk taffeta and

brocade give a crisp tailored or full look.

For a graceful, loose flowing effect, choose soft sheers, such as georgette, chiffon, batiste or organza, as well as crisper sheers, such as organdy.

### PRESHRINK SILKS

Before sewing silks, preshrink them, Saunders says.

To preshrink handwashable silk, dip the fabric in warm water. Then roll it in a towel to remove excess water.

If fabric is off-grain, adjust or straighten it while it's damp. Dry it unfolded over a shower rod. Then press with a dry iron.

To preshrink dry-cleanable fabric, steam it on the "wrong" side with a press cloth to protect the finish and avoid spotting, the specialist says.

## Friends Of The Library Undertake Projects

The Friends of the Muleshoe Area Public Library undertake a project each year to donate a much needed item to the library.

Some of the past items have been a large display case; a record browser for the children's section; mobile carts; films and filmstrips and other furniture and fixtures. The past year the project was to purchase a 16mm Movie Projector to be used by the public as well as for programs at the library. By purchasing on sale, the price was \$788.30 a discount from the regular price of \$1,200.00.

In the past years, many clubs, organizations, and churches, have used the library projector as well as films available at the Library. However, the projector that has been used does not belong to the Library, it is on loan from the West Texas Library System and subject to recall, so we have purchased a projector that will belong to the library for the use of the community.

If your club or organization would like to help on this project, or if you have individual members who would like to make a donation, please make your check to Friends of the Library and send to 322 W. 2nd St., or contact Sharon

Grant, Treasurer, FOL, Rt. 2, Muleshoe, Texas. Your help will be much appreciated.

The Friends of the Muleshoe Area Public Library would like to thank the following for their generous donations:

Muleshoe AAUW, Kappa Kappa Iota, Muleshoe Lions Club, Muleshoe Young Homemakers and Llano Estacado Civic Club.

**Now Open**  
**Furniture Unlimited**  
124 Main  
Muleshoe, Texas

**New Furniture**  
**Freight Damaged**  
*Buy, Sell or Trade For Anything*  
**Lay-A-Way Available**  
**Retail Wholesale**

Open: 8 a.m. - 7 p.m.  
Call Night 272-5398

**Boy, These Maytags Are Really Built!**

**MAYTAG**

Your Authorized Sales & Service Dealer  
**HARVEY BASS**  
122 S. 1st  
272-3030

**PX 83**

**Check these high yielding hybrids. Let's talk today!**

You're looking for high-yielding hybrids, and I've got them--Northrup King's hybrids, specially adapted to this area. Drop by and we'll talk about the strengths of each.

**Brown Seed**  
2015 W. Amer. Blvd.  
272-3335  
Check with me today

**ferti-lome**

VEGETABLE GARDEN PLANT FOOD

- Better growth
- Better flavor
- Bigger harvests
- For all vegetables

**ferti-lome**  
Bakers Farm Supply  
1532 W. Amer. Blv  
272-4613

**You Are Invited... Revival**

**Sunday April 4-  
Friday April 9**

**Evangelist:**  
**Bro. Buck Hatfield**  
*Faith Baptist Church, Snyder Texas*

**Special Music:**  
**Johnny & Nelda Flanagan**  
*Full Time Gospel Music Evangelists*

Bro. Buck Hatfield

**Services:**  
**Sunday:**  
11 a.m. & 7 p.m.  
**Monday - Friday**  
7:30 p.m.

**Nursery Provided**

**Need A Ride? Call 272-4012**

**Calvary Baptist Church**  
Muleshoe  
18th & Ave. C

Johnny & Nelda Flanagan

### Bee...

Cont. from Page 1  
speller and going into the 'F's' only six spellers were left, three boys and three girls.

Another speller went down on the word 'Galley' leaving the top three contenders.

As the Bailey County Spelling Bee is co-sponsored by Muleshoe Publishing Co. Inc. and The Lubbock Avalanche-Journal, the local paper presented checks of \$25 for first place; \$15 for the second place winner and \$10 for third place to the top three spellers in the county.

Also, Lisa will represent Bailey County this Saturday, April 3 at 1 p.m. in the Regional Spelling Bee at Lubbock Christian College. The Spelling Bee is scheduled for 1 p.m. in Moody Auditorium at LCC. At the Regional Bee, Lisa will be presented a plaque by the Lubbock Avalanche Journal for winning the county Spelling Bee.

Four fifth graders from Three Way were in the Bee this year; Misty Oxford, daughter of Roy and Karen Oxford; Stacy Lowe, the daughter of Glen and Marie Lowe; Jeanine Robertson, daughter of Mr. and Mrs. Darwin Robertson and Ernesto Rubalcava, son of Mr. and Mrs. Leo Rubalcava. The sixth grader was Brian Kindle, son of Mr. and Mrs. James Kindle.

From Mary DeShazo Elementary were the champion, Lisa Noble; Edmond Clements, son of Mr. and Mrs. Larry Clements; Billy Murphy, son of Mr. and Mrs. Billy Murphy; Jason Buckner, son of Mr. and Mrs. Ted Millen and Dusty Rhodes, son of Mr. and Mrs. Joe Rhodes. Alternate from the school was Johnny Horn, son of Mr.

### Freshmen...

Cont. from Page 1  
Toro came in with a third place with a total time of 3:48.6. In the pole vault, Ray Vinson had a height of 8'6" for third place. John Isaac jumped 5'2" for third place in the high jump and Mark Moton placed sixth with a 5 flat. Moton also placed first in the long jump with 18' 3/4".

In the discus, Chris Hernandez placed third with 110'8 1/2", Charlie Mata placed fourth with 109'9" and Ray Vinson placed sixth with 102'4".

In the shot put, Hector Flores placed fourth with 40'4 1/2" and Mata seventh with 39'10".

and Mrs. Jerry Hutton.

From Muleshoe Junior High were Loy Triana, son of Mr. and Mrs. Jose Triana; Ed Chance, son of Mr. and Mrs. Eddie Chance; Brent Black, son of Mr. and Mrs. Gaylon Black; Caroline Liles, daughter of Mr. and Mrs. Bill Liles and Rammie Garner, son of Mr. and Mrs. Ronnie Garner. Alternate was Karen Kenemer, daughter of Mr. and Mrs. Darrell Kenemer.

Coordinating the Spelling Bee and outlining the rules was Elizabeth Watson, curriculum director of the Muleshoe Independent School System, and representing *The Journal* and introducing the pronouncer and judges, as well as presenting the winner's prizes was Cletis Williams.

### Gonzales...

Cont. from Page 1  
Gonzales is a well known referee in baseball, basketball and football. He is former president of Muleshoe Little League and has worked with the Babe Ruth League. He was the person who instituted T-Ball in Muleshoe, and has been active with both the Major and Minor Leagues in Little League.

His wife, Amelia, has been with the Muleshoe Independent School District for the past nine years.

Gonzales said of his candidacy, "My main concern is the Muleshoe Schools. I want the best for Bailey County, and not just for my kids, but all students."

"If I am elected, I will do the best of my ability to serve the community. I would appreciate your vote and influence in the election this Saturday, April 3."

Edward R. Madigan, Congressman, (R-III) supporter of Amtrak: "Amtrak survival so far has been in part because of the congressional districts it serves."

### Muleshoe...

Cont. from Page 1  
attend and help with this project.

Richland Hills Baptist Church will sponsor a bake sale Saturday, April 3, beginning at 10 a.m. at Pay and Save Grocery Store.

Clyde McMahan and Danny Ward of Abilene visited relatives and friends in Muleshoe over the weekend.

Air Force Sgt. Jose R. Moreno, son of Josefa Moreno of Muleshoe is with the Panama National Guard for exercise Kindle Liberty in Panama.

### Holy Week...

Cont. from Page 1  
Assembly of God will supervise the meal preparations on Wednesday.

James Golaz will be the worship leader on Thursday with Josephine Mitchell presenting the special music. The sermon will be delivered by Brock Sanders on the "Three Hours of Darkness." The Lazbuddie Methodist Church will prepare the Thursday meal.

On Friday, Jim Williams will lead the worship and Carolyn Wiseman will provide special music. The sermon will be presented by Bill M. Kent on the "Resurrection" and the Richland Hills Baptist Church will be in charge of the meal.

Carroll Rhodes and Roger M. Cloud will be the musicians for Holy Week Services. Child care will be provided daily and parents are requested to feed children before ringing them to the church or pick them up immediately following the benediction and provide their meal.

This is a come as you are event and townspeople and businessmen are asked to attend the services and the meals.

Moreno is a fire protection specialist with the 24th Civil Engineering Squadron at Howard Air Force Base, Panama.

Shelley K. Splawn, a sophomore majoring in computing science, of Muleshoe, has earned "Distinguished Student" status at Texas A&M University.

Recipients of the 'Dean's Honor Roll' honor must earn at least a 3.75 grade point ratio, out of a possible 4.0, during the most recent grading period.

First call to all area artist/craftsmen, all media to join in a grand festival of the arts in San Angelo, Texas.

ARTS F'ALL will be held October 8-10, 1982, at the San Angelo Convention Center. Booth space for exhibit and sales will be available.

For more information, write ARTS F'ALL, P. O. Box 60632, San Angelo, Texas, 76906. Deadline is May 1, 1982.

### Election...

Cont. from Page 1  
Of these five men, Harris is the only incumbent up for re-election. Two positions are open on the Board of Trustees of the Muleshoe Independent School District, and with the filing of five interested men, the race promises a lot of competition.

### Insurance...

Cont. from Page 1  
and license registration plates cancelled.

Beginning at midnight Wednesday, police will begin listing insurance companies and policy numbers on all accident reports. If a person gives false information about insurance coverage, charges may be filed.

The law will include motorcycles as well as cars and trucks.

### Harris...

Cont. from Page 1  
of Muleshoe and the couple have two children - one in Junior High and one in Dillman Elementary.

Following his graduation from WTSU, Harris returned to Muleshoe and engaged in a business partnership with his father, the late Earl Harris, at Western Auto. Following the death of the elder Harris, Royce took over sole ownership of the Western Auto and has done business in that role. "Although the store is closing, I have a position with Southwestern Public Service at the Tolk Plant, and we fully intend to remain in Muleshoe," said Harris.

The Harris' are members of the First Methodist Church where Royce is a member of the Board of Trustees. He has also been active in civic groups, serving as Boy Scout Cub Master, Vice president of the Chamber of Commerce, President of the American Cancer Society and the Jaycees. He has served on the School Board as Trustee for the past three years.

Regarding his qualifications, Harris said, "I feel since I have previously served on the School Board that I am acquainted with problems and needs of the Muleshoe Schools. Having lived here most of my life, I feel that I can cope with the situations and problems which might arise. I have always tried to make myself available for input from parents and others regarding our schools. Besides having a deep personal interest because of my children, I have an equally deep civic interest and pride in my community and want to see our schools and children receive every advantage possible. If I am re-elected, I will strive to maintain the same pride and interest as I have in the past."

### Little League

#### Deadline Extended

ATTENTION! Parents of Little Leaguers. For those who could not make the registration dates, March 30 and 31, contact Robin Neptune, at 272-5113 after 5 p.m. or go to the Chamber of Commerce office at City Hall to pick up a registration form and have your child's name added to the registration list, before May 1.

Persons interested may contact George or Dianne Nieman at 272-5285 or at their home, 965-2488. Your child should be registered as soon as possible, so the board can get players on a

#### Revival...

Cont. from Page 1  
and Nelda Flanagan, who are fulltime gospel music evangelists.

Sunday services will be at 11 a.m. and 7 p.m.; Monday through Friday, services will begin at 7:30 p.m. A nursery will be provided and bus transportation will be made available to those in need by calling 272-4012.

Williams stated that he hopes to have 250 in attendance on Sunday, April 4.

#### Mules...

Cont. from Page 1  
seemingly holding his own.

Luna placed fifth in the 1600 meter run with a time of 4:48.7, which pretty well keeps him up to par in that event.

Monty Hysinger ran a 16 flat in the 110 meter high hurdles for a sixth place win, which is not quite as good a time as he is capable of. All in all, the Mules did a good job and are still driving hard toward district meets which will be held in Hereford April 26.

team and get the shirts, caps and equipment ordered in plenty of time to get the season off to a great start.

If you have any questions concerning this, please call the League President, Brock Sanders at 272-3229. All boys and girls who played last year must re-register.

#### Trial...

Cont. from Page 1  
students and the long hours they had put into working on this project. Several local attorneys helped the students in the preparations and the team's thanks go to them.

Plans are being made to present this trial to parents and possibly to some civic clubs before the time arrives for state competition.

When the wind's in the South,  
It blows the bait into the fishes' mouth.  
-Old English Rhyme.

### Fair Store

#### Dribbler's Team Undefeated

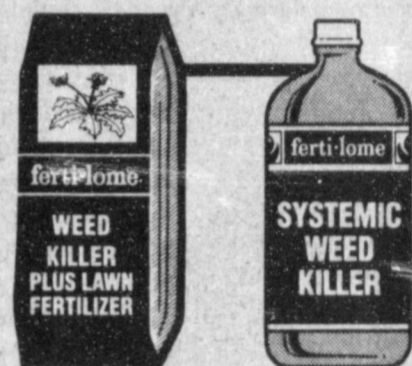
The Fair Store went undefeated in Little Dribblers tournament. Fair Store won over Spudnut Shop 17-14.

High point men for Fair Store were Michael Dunham and Benny Parker, both scoring six; Jerry Bob Graves hitting four and Bradley Long with one.

High scorers for Spudnut Shop were Gant Barnhill and David Sanders, both scoring three; Kevin Atwood, Billy Murphy and George Salinas, hitting two with Allan Vinson and Johnny Garcia, with one.

#### Waggoner...

Cont. from Page 1  
Wyer of Waxahachie; two sisters, Mrs. Gladys Black of Muleshoe and Mrs. Effie Evans of O'Donnell; eight grandchildren and eight great grandchildren.



Systemic action goes directly into the root system.

Kill dandelions and other lawn weeds

**ferti-lome**  
Bakers Farm Supply

1532 W. Amer. Blvd. 272-4613

# Tax Relief!

1

State law on property taxation seeks to ensure that Texas property owners pay their fair share—no more, no less. You have the right to file a rendition statement before May 1st, telling tax officials what you think the value of your property should be. You may also apply for available exemptions to reduce your tax bill. For information about property taxation, pick up a free copy of the "Taxpayers' Rights and Remedies" pamphlet at your new county appraisal district office, or contact your school, city or county tax office.

2

If you own farm or ranch land, you may be able to substantially reduce the amount of property tax you pay each year by having your land value based on its productivity rather than market value. This valuation is not automatic, however. You must apply for this tax relief at your new county appraisal district office before May 1st. While you're there, pick up your free copy of the Texas "Taxpayers' Rights and Remedies" pamphlet which explains property taxation and gives details on other exemptions for which you may qualify.

3

Did you know that Texas law provides important tax exemptions for qualified property owners? For example, a \$5,000 homestead exemption from the appraised value of your home for school taxes! An additional \$10,000 residence exemption for property owners 65 and over or for those who are disabled! Plus tax relief for disabled veterans! These exemptions are NOT automatic. You must apply for them before May 1st. For more information, contact your new county appraisal district office or your city, county or school tax office.

## Bailey County Appraisal District

104 E. Ave C

Muleshoe

272-5501

# did you know?



Many owners of SPS common stock are also customers who live within its 45,000-square-mile service area. Twenty-nine percent of the total shareholders live in the southwestern part of the United States. Of this group, 80% live in Texas and about one-half of the Texas shareholders live in the area served by Southwestern Public Service Company. SPS has common shareholders in all 50 states, the District of Columbia and 12 foreign countries.

Bill Helton, Assistant Secretary, Amarillo.

An energy-efficient electric water heater can save you money when installed close to the point of use. And, since the heater is glass-lined and fully-insulated, it keeps water hot longer. You can reduce the amount of water your household uses by filling the dishwasher to capacity before turning it on or by using the short cycle. Using your clothes washer only when you have a full load and taking showers rather than baths also can save money on water and electric bills.

Don Pemberton, Consumer Services Representative, Lubbock.

Keeping track of the amount of electricity your family uses is easy when you know how to read your own electric meter. Many customers are confused by the four or five dials they see on the meter, yet reading the meter is not difficult and may help you budget for your monthly electric bill even before it arrives. For complete instructions on reading your meter, check the back of the envelope your electric bill comes in or contact your local SPS office for the free booklet "Reading Your Meter."

Charles McVay, Meterman Journeyman, Roswell.

Knowing what electricity is worth is worth knowing. For answers to your questions, call or write your SPS manager.



SOUTHWESTERN PUBLIC SERVICE COMPANY

830.1

### AUCTION

Fixtures & Inventory!  
Nix Department Store  
218 Main Street  
Muleshoe, Texas  
Friday - April 2  
11:00 a.m.

FIXTURES:  
French Provincial Store  
Fixtures by Bridge Mc...  
Gold on White - Shelving  
Glass Displays - Adjustable  
Shelving - Wall Shelving  
Chrome Hanger Racks  
Mirrors - Soft Top Air  
Conditioner - NCR 250  
Cash Register - Recorder -  
INVENTORY:  
Resistol Western Hats -  
Yankee Shirts - by Koda  
Hoodie by Red Wings - Peros,  
Bronco 3 Texas brand  
Hudson 3 Haneswear Under-  
wear - Jump Suits - Jackets -  
Ties - Blue Jeans by Levi's,  
Wrangler & Slogskold  
Sleepwear - Belts - Bedding -  
Towels - Pillows - Night  
Wear - Cosmetics - Gift  
Items - Hair Goggles - Hats -  
Electric Blankets - Costume  
Jewelry - Purse - Hand  
Hosiery - Billfold - Playtex  
Bras - Dresses - CLOTHING FOR  
THE LITTLE FAMILY!  
SPECIAL: Couch Heat Transfer  
Machine - W/Timer - Letters &  
Numbers  
INSPECTION: Thursday, April 1,  
10:00 a.m. to 5:00 p.m.  
TERMS OF SALE: Cash or Cashier's  
Check. Personal or Company  
Checks MUST be accompanied  
by bank Letter of Guarantee,  
Toll-free 1-877-  
For Brochure Contact:

Ernest St. Clair  
AUCTIONEERS  
4101 WEST 34TH  
AMARILLO, TEXAS 806-358-4523

# Our Special Senior Citizens



The Lazbuddie Young Homemakers are honoring special senior citizens from their area.

**JOSEPHINE WENNER**—Josephine Wenner moved to Parmer County in 1927, along with her husband, Frank, and five children. One son Gilbert, was born in 1929, after moving to the farm. Frank farmed the land, along with his wife and sons.

Josephine and the girls did the housework and tended the cows and chickens. She loved making quilts and has made one for each grandchild. One year she made over 100 dresses for the orphanages and needy children of the area.

She has also painted many pictures and given most of them away.

Her husband, Frank, passed away April 4, 1954. Josephine then moved to town where she resided for 27 years. She moved into the nursing home in 1980.

She is 92 years of age and has four living children, Delter, who is a retired farmer now living in Muleshoe; Reaford, who lives and farms at Lazbuddie; Ralph, now retired and lives in San Diego, Calif. and Doris works and lives in Muleshoe. She has one daughter, Deola Merriott, who passed away in 1975 and one son, Gilbert, who passed away in 1980.

She has nine grandchildren and 11 great grandchildren. Her hobbies are ink painting on glass and covering coat hangers.

This is her first year as our "Senior Citizen," and we are real proud of her.

**LORENE WILSON**—Lorene Wilson, her husband, Bob and three year old son Harold moved to Parmer County in 1932 from Amarillo. They moved to the farm and began working it. In December, 1939, she had another son, Leon. Bob farmed until he passed away in 1954.

Her son Harold, lives in Wilcox, Arizona and Leon lives in Parmer County. He operates Longhorn Spraying Service.

Lorene has seven grandchildren and seven great grandchildren. One of her grandsons farms her place for her now.

For her hobbies, she enjoys sewing and crocheting. She also enjoys working outside when she feels like it.

**SAM LAYMAN**—Samuel Silas Layman was born on September 5, 1891 near Hamilton. In 1907, at the age of 16, he left that area and went to Plains, in Yoakum County. There he cowboied, ran a freight wagon and unloaded the first load of lumber in that county.

In 1914, he married Bessy Kellar. They moved to the present home place in 1925. They were married 62 years and had four children. Arlene Ashley lives in Hereford and works in the pharmacy of the county hospital; Donald lives in Earth where he managed Layman Bros. Butane, He has recently retired. L. G. manages the family farm. He has been on the family farm all his life except three years. Sam says, "L. G. makes the money and I spend it." Clifford is deceased.

Sam has 11 grandchildren and 12 great grandchildren. He is a member of the Earth Baptist Church. He and his wife were two of the five people to help start the Buckner Boy's Ranch in 1949, 1950 and 1951. He is now reading the Bible through for the third time.

He enjoys the outdoors and gardens and loves to fish.

**MRS. DIXIE BARNES**—Mrs. Dixie Barnes has lived in the Lazbuddie community for 52 years, since the death of her husband, Perry, in 1949. Mrs. Barnes was formerly Dixie McKinney. She and Barnes were married in Westminster in 1914.

They had six children, Wesley Barnes of Lazbuddie; ary Lou Menefee of Friona; Sarah Donnell of Brazoria; Fink Seaton of Lazbuddie; Perry Barnes Jr. of Clovis and Cotton Barnes, who is deceased, and whose family lives in San Antonio.

Mrs. Barnes has 21 grandchildren, 14 boys and seven girls, 25 great grandchildren and one great grandchild.

Mrs. Barnes spends a lot of time in her front yard working with her flowers, trees and shrubs. But, as pretty as her yard always is, "quilting" is truly her pride and joy and would be counted as her favorite pasttime. She has made countless quilts and has pieced and brian stitched a silk quilt for each of her granddaughters and great granddaughters.

On July 25 of this year, Dixie Barnes will be celebrating her 88th birthday.

**THEODORE STEINBOCK**—Theodore Steinbock was born on October 30 in Reinbeck, Iowa, but spent most of her childhood in Frederick, Okla. There she met and married Ed Steinbock on October 3, 1924.

On February 25, 1925, they moved to the Lazbuddie Community and lived her ever since. Theodore belongs to the Lutheran Church of Littlefield. Her hobbies are crochet, yard work and raising a garden.

In 1975, she and her husband built and moved into their present home on the highway just about a mile from where they had lived all their married life in Lazbuddie.

Ed and Theodore never had any children of their own so when Demp and Annette Foster married, they went to work for Ed and Theodore and their children became their grandchildren. Now she enjoys their children and has the privilege of being a great grandmother.

**WILLIAM FREDERICK [Willie] STEINBOCK**—William Frederick (Willie) Steinbock, son of John F. and Alma Steinbock, was born December 26, 1900 in Marlin. He was the first of eleven children.

Willie's family was among the first to settle in Parmer County. They moved to the Lazbuddie community in February of 1935 from Oklahoma.

Willie purchased land three miles east and one mile south of Lazbuddie where he built his home. He later bought more land which he farmed for many

years. He has two sons, Rex and Max, who both farm at Lazbuddie. He also has five grandchildren and four great grandchildren.

Willie is now living in the Muleshoe Nursing Home. He enjoys playing dominoes, listening to his sons play music and watching his grandsons participate in sports.

**MRS. NOLA TREIDER**—Mrs. Nola Treider was born in Rollo, Missouri on January 17, 1909. She was one of nine children in the family of Mr. and Mrs. Jesse Vaughn. The Vaughn family had moved to Lazbuddie from Frederick, Okla. in February, 1925, with six other families.

The following year, Nola was married to R. J. Treider, and the young couple settled in Lazbuddie. The Treiders enjoyed riding horses and rabbit hunting together in their spare time. "I was a good shot with a .22," Nola commented.

"I've seen a lot of changes here," she added as she told about the early days before paved roads were constructed from Lazbuddie to Friona and Muleshoe.

Treider died of cancer on July 29, 1965. Nola has occupied her time since then babysitting for many children in the Lazbuddie community. She also enjoys quilting, crocheting, caring for house plants and reading her Bible and history books.

She has a special interest in Oklahoma history, since she spent her childhood there.

She has five grandchildren and three great grandchildren.

**ALFRED SCOTT**—Alfred Scott, born May 12, 1890, and moved to Castro County from Iowa in 1907. He came with the family of Marcus Stiles and helped build houses and barns for Grandpa Stiles and the families of his married children who moved here also. After the homes were completed, they moved the families and possessions by train to Hereford, and then came the 35 miles on to the settlement that was later named Big Square, because all the homes they had built were big square two storied houses.

In 1908 he married Lula Stiles, daughter of Marcus and Sarah Stiles. They made their home in the Big Square community where Alfred still resides. Mrs. Scott died in February of 1976. They reared three children, Glenn Scott, Maxine Scott Elliott (deceased) and Gloria Elliott. Alfred has 13 grandchildren and 15 great grandchildren.

He has a sharp memory and loves to relate the stories of those early days on the plains, such as a time when a group of the young people went by horse and wagon on a camping trip to Tulia Canyon to go fishing. Needless to say, they didn't have much luck catching fish, but on the trip back home they had pretty good luck catching frying chickens on a fish hook loaded with kernels of fresh corn.

All the memories are not of such happy times, but

all go together to make a very colorful life and history.

**EFFIE JENNINGS**—Effie Jacobs married Oris M. Jennings on December 25, 1912 at Sage, Ark. in a home wedding. They had six children, two deceased and four living, Elvie, Nerine, Helen and James H. "Bill."

In December 1922, the J. E. W. Jennings family all moved to the present farms and when they all moved from Cing, there was only one set of improvements and the men had to build three houses for O. M., O. N. and Ernest to live in. Then came the bringing in of the livestock. Waterwells for three had to be drilled. There was only one plot of farm land that was plowed up and all the other three plots had to be plowed and got ready for spring planting.

All the men were busy from early till late. They all worked together, the women cared for the chickens, helped with all the many chores, made gardens, all working together. When the men had the small two room shacks completed, and the water wells drilled, they had to get busy with the land.

So the prairie land site began to get a big change showing. No one ever gave up and each day held another challenge. Trips across the grass field pastures to Muleshoe were for necessary supplies.

Years have come and passed away swiftly. The land was good soil and yielded good crops. The three older children attended school at "Cracker Box" and rode shetland ponies about two miles.

O. M. passed away April 7, 1969. After his death, Mrs. Jennings continued living alone and having help to do many of the necessary chores and yard care.

Last July 13, all her family gave her a "Surprise 88" birthday party with all of the family present. She gave all the great grandchildren a crocheted afghan while letting the moms do their picking.

She now resides in the Muleshoe Nursing Home.

**CLARA WEAVER**—Clara Weaver was born March 24, 1919 in Arkansas. She married Quinn Weaver on April 11, 1935 in Arkansas. They moved to Lazbuddie in 1954.

They have four children, two daughters, Pat Henson and Linda Harness, both of Ft. Worth, and two sons, Jerry and Jimmy Weaver, both of Lazbuddie, where they are engaged in farming with their dad.

Clara has seven grandchildren, five boys and two girls ranging in age from five to 17.

She moved to the Muleshoe Nursing Home in 1975 where she now resides. She enjoys reading, listening to tapes and watching TV.

Clara is a wonderful person and the Young Homemakers are proud to have her as one of our senior citizens.

**BERTHA HARDAGE**—Bertha Hardage, wife of the late Lacy Hardage, was born January 19, 1905, in

Stephenville, Tex. She and Lacy were married on September 3, 1922 in Seymour, Texas. Mrs. Hardage lives one mile west of Clay's Corner and has been a resident of Parmer County for over fifty years.

Her favorite color is blue and her hobbies include going to church, watching television and reading. She enjoys green plants and her favorite flowers are mums.

Mrs. Hardage has three children: Dortha Mason of Clovis, N.M.; Wayne Hardage of Vernon and Billy Hardage of Plainview.

Her six grandchildren include Mrs. Brenda Robison of Muleshoe; Mrs. Jan Noffske of Clovis; Tim and Cindy Hardage of Plainview; Ricky Hardage of Canyon; and Rachelle Hardage of Lubbock.

Mrs. Hardage has three great grandchildren, Chantel and Collin Robison of Muleshoe and Christopher Hardage of Canyon.

Mrs. Hardage also has one sister, Audria Ady, living in Burkburnett, Tex.

The Lazbuddie Young Homemakers are proud to have Bertha Hardage as one of our honored senior citizens.

**MYRTLE STEINBOCK**—Myrtle Steinbock was born December 1, 1905, in Missouri to Jesse E. and Hortense Vaughn. In December 1923, she married Willie Steinbock at the Frederick, Oklahoma courthouse. Along with other family members, Willie and Myrtle moved to Lazbuddie in 1925. At first, all 39 family members lived together in a four room house. Eventually, each of the families moved into their own home.

Myrtle has two living sons, Rex and Max, both of whom live at Lazbuddie with their families. She also has five grandchildren and four great grandchildren.

Myrtle now makes her home three miles east of Lazbuddie. Through the years, she has enjoyed oil painting, working with ceramics, quilting, and caring for her yard and plants. Many of her paintings are displayed in her home as are the lovely quilts she has made. Many times, one can drive by Myrtle's house and see her out working in the yard and with her flowers.

This has been Myrtle's first year as one of our Senior Citizens, and we are proud to have her as one.



Myrtle Steinbock



Bertha Hardage



Josephine Wenner



Willie Steinbock



Alfred Scott



Dixie Barnes



# Lazbuddie Young Homemakers

## City & County Investigate Thefts & Burglaries

Bailey County Sheriff's officers have recently been investigating a number of shop and farm thefts and burglaries. On March 27, Gene McGuire at Charmec Plant in Progress reported a criminal mischief involving someone turning on an auger, thereby wasting a truck load of grain valued at \$2500. On the 26th, the State Highway Department reported the loss of an in-pact driver wrench valued at \$273; it was apparently stolen from the shop area. On March 22 Jim Pat Claunch reported the theft of two radio speakers from a tractor valued at \$20, the tractor was located near Circleback. Willis James, who lives in the West Camp area, reported on March 20, theft of approximately \$1,000 worth of tools taken from his garage in his absence. On March 21, Irrigation Pump and Power reported the theft of fuel from tanks on the property. The locks on the tanks had been knocked off. No estimate of

value lost was available. On March 16, Carolyn Collins who lives west of Muleshoe reported burglary of personal property amounting to \$1400 from her mobile home. On March 28, two sheriff's deputies were dispatched to the south of the county and arrested Carlos Morin on a public intoxication charge. Morin was fined and released after laying out one day in jail. His total fine was \$105.

City police investigated two accidents on the 26 and 29, one involving a one car accident where slick streets caused a motorist to hit a cement wall and the other was a two car accident on North 214 with no injuries. On March 28, a motorist swerved to miss an auto and hit a traffic light pole, causing slight damage to his vehicle. On March 27 an abandoned auto was reported at E. American Boulevard and Ithaca. An attempt was made to contact the owner and then the auto was tak-

en to Combination Motor. A two car accident March 30 on American Boulevard resulted in some minor injuries.

On March 28, Ray Link reported a broken glass at the Civic Center, however, a check of the premises revealed nothing amiss. On March 27, Billie Jones reported a possible criminal mischief in which the top cinder blocks of a two foot fence were knocked down. A number of these reported losses are under investigation at this time.

## RRC Proposes New Insurance Limits

The Railroad Commission has approved for public comment proposed new minimum insurance coverage for motor carriers.

The proposed amendment to current regulations contains a \$500,000 minimum in coverage for bodily injuries and deaths and for loss or damage to property in any accident. The property damage coverage will not include cargoes.

In addition, the proposed new rules increase minimum coverage for cargoes carried on a single motor vehicle to \$10,000. The current minimum is \$2,000.

Rory McGinty, assistant director of the RRC's Transportation Division, recommended publication of the proposed rules in the Texas Register to the Commission at a public conference on Transportation Division matters.

He said that for the first five years there will "not be any fiscal implications as a result of enforcing or administering the rule."

McGinty added that insurance coverage needs to be increased to offset increased costs for medical care and repairs or replacement for damaged property.

Comments on the proposed changes may be submitted to Owen T. Kinney, Director, Transportation Division, Railroad Commission of Texas, P. O. Drawer 12967, Capitol Station, Austin, Texas 78711. Comments will be accepted for 30 days after publication in the Texas Register.

Arieh Naor, Israeli Cabinet secretary, on U.S. arms sale to Jordan: "If such a deal goes through, it would bring new and most dangerous elements into the Middle East..."

## By Spencer Tankley County Extension Agent



Developing a strong central leader is vital to a successful apple, pear, persimmon, cherry, pecan or apricot tree.

First year. Head back young trees to 30 inches high immediately after planting. Remove all side shoots or branches. When new shoots are four to six inches long, select the strongest, upright sprout as the central leader (the trunk) and remove other upright sprouts. New branches will be chosen along the central leader.

Begin selecting scaffold branches early but remove all suckers and branches below 18 inches to leave room for hoeing and machinery. Permanent scaffolds should grow horizontally from the main trunk and be spaced every four to six inches up the trunk. Do not choose branches arising from the same point on the trunk or directly over each other. During the end of the first growing season, have one strong central leader and at least three to four permanent scaffold limbs.

Second year. In January and February, head back the central leader at least one-third of last year's growth. This promotes more scaffold branches along the central leader. Head back each branch to encourage lateral branching and discourage competition with the central leader. The lowest branch should be at least 18 inches above the ground. Select new scaffold branches every four to six inches up the trunk during the growing season.

Early in the growing season, select the strongest, upright sprout as the central leader and remove competing upright sprouts.

Continue selecting scaffold limbs with shoots four to six inches long. Remove any fruit this year to encourage good vegetative growth. Lateral branches held in a horizontal position with limb spreaders or ties promote early flower bud formation.

Third and following years. In February, head back the central leader at least one-third of last year's growth. Older scaffolds will have new branches forming secondary shoot or laterals. Remove vigorous upright suckers and head back all lateral shoots and follow general pruning rules and remove poorly positioned limbs. The tree should begin to develop a Christmas tree shape. Upper branches should not shade lower scaffolds.

During the growing season select only one upright shoot to maintain the central leader. Fruiting on side scaffolds spreads the limbs and encourages more fruiting next year. Do not let fruit grow on the central leader. Lateral scaffold branches held in a horizontal position with limb spreaders or ties set fruit buds for next year.

Mature trees. The main framework is established and the central leader now needs no further encouragement. Do not cut the central leader back unless it's necessary to lower the height. Follow general pruning rules to maintain shape and allow light to enter the tree's interior.

Remember, no two plants grow and develop exactly alike. Trying to obtain identical frameworks in young trees can be frustrating. The best solution is to compromise -- know the idea and modify it to suit each individual.

Fruit trees often are neglected for several years and become tall, bushy and unmanageable. These trees can be brought back into production by careful pruning for two to three years to rejuvenate new fruiting wood.

Start by making a few, large thinning cuts to remove entire limbs that crowd or rub. Reduce the height by removing taller branches. Do not remove more than one-fourth of the larger branches in any one year. This heavy pruning stimulates tree growth and promotes suckers and water spouts. Remove the undesirable branches during the summer months to prevent shading in the center of the tree.

Every dormant season, remove a few more large branches until the tree form is obtained. Make a few heavy cuts rather than many small ones. In several years, the tree will be back into fruit production.

**QUOTA RAISED**  
WASHINGTON -- Agriculture Secretary John Block recently set the 1982 national marketing quota for burley tobacco at 681 million pounds, up 3 percent from the 1981 quota. Burley tobacco is the second largest type of tobacco grown in the United States.

## Brown proposes four programs to aid farmers

COLLEGE STATION -- Agriculture Commissioner Reagan V. Brown outlined four short-term solutions to reverse the downward trend of agriculture profits in an address to the Texas Farm and Ranch Credit Conference held recently at Texas A&M University.

"In the drive to eliminate large Federal budgets and accompanying deficits, this nation must realize that we cannot destroy American agriculture in the process. There is something wrong with our priorities if we allow this to happen," he said.

The four solutions proposed by Brown are all national or international in nature. "First, the Federal government must act now, this month, to make changes and stimulate participation in the acreage reduction program. We must have increases in the set-aside acreage provisions to levels that will effectively cut back production this year," Brown said.

The second proposal concerned ways to increase foreign sales. "Export programs in the farm bill should be funded adequately to initiate purchases of U. S. grain and cotton. The CCC export credit program, the export credit revolving fund, and the food aid program can make the difference in tons of grain sitting in warehouses across the nation and ships moving that grain to make

way for this year's crop. Stepping up negotiations with the European Economic Community and Japan to reduce subsidized trade barriers was the third proposal.

The fourth proposal was maintaining a highly flexible program in handling loans from the Farmers Home Administration.

New federal program adjustment may hurt some.

\*\*\*\*\*  
**MEET THE CANDIDATES**  
**Muleshoe ISD School Board**  
 Steve Neptune  
 Gordon Wilson  
 George Nieman  
 Sam Gonzales  
 Royce Harris  
 \*\*\*\*\*

**Summit Savings Association**  
 Introduces  
**"No Cost Checking"**  
 Summit Pays You  
 5 1/4 % Compounded Daily  
 And Your First Check Order  
 Is FREE  
 You Pay  
 No Service Charge  
 And  
 No Minimum Balance  
 Is Required  
 Open Your Account Today!  
 We Invite You To  
 "JOIN US AT THE TOP"  
**SUMMIT SAVINGS ASSOCIATION**  
 OFFICES IN  
 PLAINVIEW, FLOYDADA, MATADOR, HALE CENTER, MULESHOE,  
 LITTLEFIELD, FRIDON, FARWELL PLAZO and ALLEY.  
 MEMBER FDIC

**MEET THE CANDIDATES**  
**Parmer County Democratic Commissioner Precinct 4**  
 Raymond McGehee  
 Raymond Treider, Jr.

**VOTE FOR THE CANDIDATES OF YOUR CHOICE!**  
 Rates for listing in the Journal's Political Column is: \$35 for all offices except those for City Council and School Board post which is \$15. This fee includes a front page announcement article and a one column photograph at the time the announcement is made, in addition to the listing in the Political column from the date of announcement until the final election.  
 Charges for announcements are cash in advance, and this same policy to applies to all political advertising carried in the columns of this newspaper.  
 Names for each office will be listed in the Political Column in the order they are received at the newspaper office.  
 The Journal has been authorized to announce the following candidates for public office:

- Democratic**
- \* County Clerk \*  
Barbara McCamish
  - \* District Clerk \*  
Nelda Merriott
  - \* County Treasurer \*  
Dorothy Turner
  - \* Tax Assessor \*  
Kathleen Hayes
  - \* Justice Of Peace \*  
Precinct No.1  
Tana Holmes  
Jack Bates
  - \* County Commissioner \*  
Precinct No. 4  
Rudolph Moraw  
Frankie Dee Fine  
Dale Middlebrooks  
Pete Hurtado
  - \*287th Judicial District Judge \*  
Bailey & Parmer Counties  
Jack D. Young
  - \* County Judge \*  
Gordon H. (Corky) Green
  - \* Commissioner \*  
Precinct No. 2  
Glen Dalton Harris  
Roy Whitt  
Don Seales  
William Carl Patterson  
Charles Glover
  - Republican**
  - \* County Treasurer \*  
Jean Treadwell
  - \* County Attorney \*  
Lamar Dee Treadwell
  - \* County Judge \*  
Thomas S. Freeman
  - \* Justice of Peace \*  
Precinct 1  
Paulette Cuevas

**PAG SEEDS SX70W**

**Local favorite**

This is one of the truly outstanding hybrids for this area from PAG Seeds.  
 We want to give you the most current information on this and other high-performance PAG companion hybrids. Call us.  
 It's a fact: when you start the season with PAG, you'll finish the season saying, "Man, that's corn."  
 Food Corn Approved.

**Don Bryant**  
 965-2464 Mobile 965-2227  
**Ray Griffiths & Sons Inc.**  
 272-4586

**Sportsman Complete & Balanced Nutrition Dog Food**  
**PUPPY FOOD**  
 27% PROTEIN  
 20 LB. Bag \$5.95

**HI-PROTEIN DOG MEAL**  
 26% PROTEIN  
 50 LB. Bag \$10.59

**Five Point Dog Food**  
 50 LB. Bag \$9.36  
 25 LB. Bag \$5.15  
 Alert

**A&M Cat Food**  
 10 LB. Bag \$3.45  
 FARM AND RANCH SUPPLY







Combination Pak 1/4 Loin  
**PORK CHOPS**  
**\$1.29**  
LB.



Pork Country Style  
**SPARE RIBS**  
**\$1.29**  
LB.



Sunco USDA Grade A  
**TURKEYS**  
**55¢**  
LB.



Sirloin Tip Whole Cry-O-Vac  
**BEEF ROAST**  
**\$1.89**  
LB.

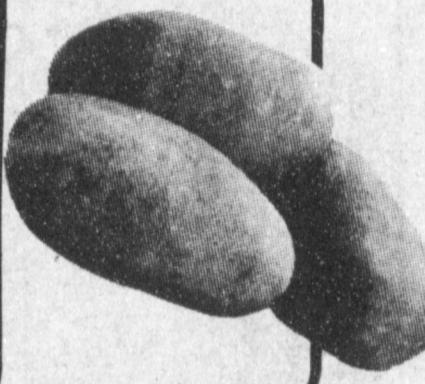
# Last Big Three Days On Shurfine Sale



**SHOP RITE**  
Prices Effective March 28 Thru April 3  
Each of these advertised items is required to be readily available for sale at or below the advertised price in each store, except as specifically noted in this ad. We reserve the right to limit quantities. None sold to dealers.

- Sirloin Tip Cap On Mkt. Trim  
**BEEF ROAST**.....**\$1.99**  
LB.
- Sirloin Tip Boneless Waste FREE  
**BEEF STEAK**.....**\$2.59**  
LB.
- Center Cut Rib or Loin  
**PORK CHOPS**.....**\$1.69**  
LB.

- Pork Loin Center Cut 3 lb. Avg.  
**ROAST**.....**\$1.69**  
LB.
- Sliced Shurfresh Meat or Beef  
**BOLOGNA**.....**\$1.09**  
12 OZ.
- Shurfresh Pure Pork  
**PORK SAUSAGE**.....**\$1.09**  
LB.
- Shurfresh  
**HAM SALAD**.....**\$1.09**  
8 OZ.



Russet, All Purpose  
**POTATOES**  
**\$1.29**  
10 Lb. Bag

Texas Ruby Red  
**GRAPEFRUIT**.....**5 LB. BAG 99¢**



California Fuerte  
**AVACADOS**  
**4 For 99¢**

## PLAY

Put **\$2,500**  
in your  
pocket...play

### CASH KING

ODDS CHART EFFECTIVE JANUARY 20, 1982.


PRIZE VALUE	NUMBER OF PRIZES	ODDS FOR ONE GAME TICKET	ODDS FOR 15 GAME TICKETS	ODDS FOR 15 GAME TICKETS PLUS 15 SAVER DISCS
\$1,000	7	1 in 97,143	1 in 14,566	1 in 1,944
100	70	1 in 18,715	1 in 1,440	1 in 500
10	140	1 in 9,358	1 in 720	1 in 250
5	300	1 in 4,679	1 in 320	1 in 122
2	1,200	1 in 1,169	1 in 80	1 in 31
1	12,172	1 in 108	1 in 8.4	1 in 3
TOTAL NO PRIZES	13,889	1 in 85	1 in 7.4	1 in 2.7

Odds vary depending on number of Game Tickets you obtain. The more tickets you obtain, the better your chances of winning. Odds to obtain all ten (10) Saver Discs and qualify for Grand Prize Drawings are 1 in 25. Odds to win Grand Prize Drawings are based on the number of Saver Discs redeemed.  
Cash King Series #12389 is being played in 13 participating stores located in New Mexico and Texas.  
Scheduled termination date of this promotion is April 20, 1982. However, Cash King officially ends when all game tickets are distributed.



California, Sunkist  
**ORANGES**  
**3 Lbs. 99¢**

Fresh Large Ties  
**GREEN ONIONS**.....**2 Bunches 49¢**



California, Green  
**BROCCOLI**  
**Lb. 49¢**

### DOUBLE COUPONS ON SATURDAY

Shurfresh 1 1/2% Low Fat  
**MILK**  
**99¢**  
1/2 Gal.

Shurfine  
**SHORTENING**  
**\$1.49**  
48 oz. Can

Always Fresh  
**BREAD**  
**2 Loafs 99¢**

Shurfine  
**TEA BAGS** 100 Ct. **\$1.69**

Shurfresh  
**MARGARINE** 3 16 oz. Pkgs. **\$1**

Shurfine Cream or Whole Kernel  
**CORN** 5 17 oz. Cans **\$1.99**

Shurfine  
**TOMATO SAUCE** 8 8 oz. Cans **\$1.89**

Shurfine Oil or Water  
**TUNA** 6 1/2 oz. Can **79¢**

Shurfine  
**PORK & BEANS** 6 16 oz. **\$1.99**

Shurfine Cut  
**GREEN BEANS** 5 16 oz. **\$1.59**

Shurfine  
**COFFEE** 16 oz. Can **\$1.99**



Shurfresh Buttermilk or Sweetmilk  
**BISCUITS**  
**6 \$1**  
8 oz. cans



**PEPSI**  
**\$1.59**  
6 Pak Cans



Shurfine  
**CRACKERS**  
**2 \$1**  
16 oz. Boxes

**DOUBLE COUPON**  
Present this coupon along with any one manufacturer's "cents-off" coupon and get double the savings from Shop Rite. Not to include "retailer", "free" or tobacco coupons or exceed the value of the item. Limit 1 coupon per manufacturer's coupon, limit 4 Double Coupons per customer. Good Thru April 3

**DOUBLE COUPON**  
Present this coupon along with any one manufacturer's "cents-off" coupon and get double the savings from Shop Rite. Not to include "retailer", "free" or tobacco coupons or exceed the value of the item. Limit 1 coupon per manufacturer's coupon, limit 4 Double Coupons per customer. Good Thru April 3

**DOUBLE COUPON**  
Present this coupon along with any one manufacturer's "cents-off" coupon and get double the savings from Shop Rite. Not to include "retailer", "free" or tobacco coupons or exceed the value of the item. Limit 1 coupon per manufacturer's coupon, limit 4 Double Coupons per customer. Good Thru April 3

**DOUBLE COUPON**  
Present this coupon along with any one manufacturer's "cents-off" coupon and get double the savings from Shop Rite. Not to include "retailer", "free" or tobacco coupons or exceed the value of the item. Limit 1 coupon per manufacturer's coupon, limit 4 Double Coupons per customer. Good Thru April 3