



MULESHOE JOURNAL



20¢

'The Community of Opportunity-Where Water Makes the Difference'

Volume 58, No. 43

14 Pages Today

Published Every Thursday at Muleshoe, Bailey County, Texas 79347

Thursday, October 15, 1981

Bank Deposits Up At September 30 Closing



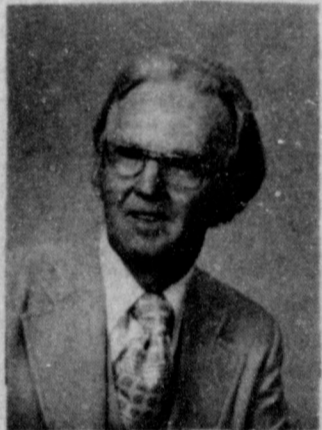
A Western Dance will be held Sat. night from 9-12 at the Civic Center. Double A-A from Clovis will provide music. Admission will be \$3 per person. Sponsored by The Triangle CB Club.

The Muleshoe Mules will have an open date this Friday night and will come back on October 23 to play the Olton Mustangs on their home grounds, starting off district play.

Harold King shot a hole in one Friday at the Muleshoe Country Club. It was on the ninth hole in the man's par three, 122 yards in length. C.V. (Claude) Riley witnessed this shot.

The Muleshoe Jaycees are planning a Father-Son Retreat to be held on October 24.

The Jaycees plan to purchase 40 tickets to the Texas Tech-Washington game to be played in the afternoon of October 24. These tickets will be on sale to all past and present Jaycees, who are urged to take part and invite their sons or some other deserving boy to accompany them to the game.



L.L. AMMONS

Assembly Begins Revival

Evangelist L.L. Ammons will begin revival services on Sunday, October 18, 11:00 a.m., at the 1st Assembly of God in Muleshoe, according to the Rev. James Golaz. Services will continue thru October 28 with the exception of Saturday night Oct. 24 and Monday Oct. 26.

Rev. Ammons has been active in evangelistic and pastoral work since his ordination with the Assemblies of God in 1950. He is well known throughout the United States for his series of sermons on the Holy Spirit.

Rev. Ammons and his family have pastored in Dallas, Texas; Elsinore, California, and Topeka, Kansas, since pioneering their first church in Atlanta, Texas. Currently they make their home in Springfield, Mo., headquarters city of the Assemblies of God.

Rev. Ammons is a native of Texas and attended Southwestern Assemblies of God College in Waxahatchie, Texas.

These special services will begin at 7:30 p.m. Monday thru Friday and 6:30 p.m. on Sunday.



DISTRICT GOVERNOR VISIT....Muleshoe Rotarians were honored Tuesday by the presence of John R. Seay and his wife Charlotte at their regular weekly meeting. Other Rotary wives were special guest at the noon meeting.

Court Accepts Resignation, Designates Polling Locations

The Bailey County Commissioner's Court met Tuesday in regular session in the Bailey County Courthouse.

The Court accepted the resignation of Edith Wilt as Bailey County Treasurer effective November 15, 1981. Ms. Wilt gave health reasons as her need for resignation. In connection with the position to be filled, two met and requested consideration for appointment to the position vacated as the result of Ms. Wilt's resignation. They were Dorothy Turner and Billie Downing.

No action was taken on these requests at this time. The positions will be filled on November 2, after consideration of all applications made at that time.

The Court also passed an order setting the county tax rate at the total of \$0.45 per \$100 of valuation

as per the proposed increase.

The 1982 Budget for the county was approved as proposed and the Court approved an order on the Extension Service budget as proposed.

Court also ordered the loan of one filing cabinet to the Bailey County Appraisal Board, with the understanding that it be marked "Property of Bailey County."

Bud Street who is juvenile probation officer for Bailey County, recently compiled his annual reports and came up with some facts that proved to be interesting. Street feels that probation is an economical alternative to incarceration; how-

ever, he states that "is not in favor of probation for everyone. Each case must be weighed carefully and judged on its own merits."

"Not all defendants are eligible, nor do all defendants deserve probation. Our judges; the Honorable Jack Young, Judge of the 287th Judicial District; the Honorable Glenn Williams, Bailey County Judge; and the Honorable Norvell Roberts, Parmer County Judge, are to be commended for the way they have made their decisions (not always easy ones) as to

points are Jerry Roddom, Mrs. John Hayes, Mrs. J.K. Adams, and this week's second place winner, Ina Dennis.

Since there are quite a

Cont. Page 6, Col. 1

Rotary Hears District Governor

Guest speaker for the Muleshoe Rotary Club Tuesday was District Governor John R. Seay and his wife, Charlotte of Midland, Texas.

Seay spoke to the Rotarians regarding their community service and projects, urging them to attain even higher goals.

All Rotary members are reminded of the District Conference at Midland in April, 1982. Events for the ladies are also planned for this district meeting.

The 1982 International Conference in Dallas is scheduled in the future and will provide a chance for international fellowship for Cont. Page 8, Col. 1

City Council Adopts Speed Limit Change

In the Muleshoe City Council meeting Tuesday morning an ordinance was adopted fixing the maximum rate of speed for motor vehicles; allowing for speed zones; providing for a penalty and declaring an emergency. The Council also passed a resolution requesting the State Highway Department to come into the city limits and erect speed zone signs on this highway according to a survey conducted by the Texas Highway Department.

These resolutions were made in answer to the Hospital Board's request to slow traffic around the hospital. The recommended changes affect the speed limits on south 214. The Council found this action necessary to the immediate preservation of the public health and safety.

In other business, Police Chief Les Irvin met with the Council regarding amendments and changes for the city Animal Control Ordinance. The definition of "Running at Large" is proposed to be changed to pertain to any dog off lead leash or chain or not securely restrained within a fenced area and not

under the physical, viable or audible control of the owner or his authorized representative. An animal intruding upon the property of a person other than the owner shall be termed "running at large". An animal within the automobile or other vehicle of its owner shall not be deemed "running at large."

Also to be considered for addition to the existing ordinances is certain humane items, regarding dog fights, dying of animals, etc. At such time as these changes are made, they will be published in more depth along with other recommended changes.

Council members will be traveling to San Antonio on October 24-27 to attend the Texas Municipal League Convention. Those attending will be: Councilmen Cont. Page 6, Col. 2

Pageant Recieves Additional Entries

Several late entries were received after press time for the last Journal issue for the Miss Tri County Pageant scheduled to be held on October 17.

Brenda Ellis is the 13 year old daughter of Mr. and Mrs. James Ellis of Muleshoe. She is an 8th grader at Muleshoe Junior High School. Brenda lists basketball as her favorite recreation and track and basketball as hobbies. She has green eyes and brown hair.

Stacy Kindle is a 6th grade student at Three Way schools. She is the daughter of Mr. and Mrs. Robert Kindle of Maple. Stacy lists water skiing and snow skiing as favorite sports and she also enjoys painting and sewing in her spare time. Stacy is active in her 4-H Club, plays basketball, runs track and has been a cheerleader. She also received a math award and was selected as class favorite. This blue-

eyed miss plans to become a veterinarian when she finishes school. Her sponsor is Maple Seed and Delinting.

Rhonda Lingau is the daughter of Mr. and Mrs. Delbert Lingau of Farwell. This blond, blue-eyed young lady is an 8th grader at Farwell Junior High. She lists basketball and swimming among her favorite recreations and loves to listen to music and play the organ.

Rhonda has been selected as class favorite and is active in booster club and band at her school.

Cassie Cuevas is the daughter of Mr. and Mrs. Aurelio Cuevas of Muleshoe. She is two years old and according to her entry, Cont. Page 6, Col. 1

Loans Show Increase Over 1980 Figures

Deposits of eight area banks, including the two in Muleshoe, have shown an increase of \$16,787,200 during the past year according to figures compiled and compared on bank calls for September 30 of this year. Deposits totals on September 30 of this year were \$167,918,256 as compared to \$151,131,052 on the same date last year.

Loans have increased \$4,977,369 for the same banks during the year. Loans at the close of business on September 30, 1981 were \$86,157,310 as compared to \$81,179,941 for September 30, 1980.

In Muleshoe deposits at the two banks show an increase of \$4,249,510 for the year. Deposits at the two banks totaled \$53,944,252 for September 1980 and \$58,193,762 at close of business September 30, 1981.

Loans for the two local banks show a total increase

of \$3,601,308 with loans of \$35,437,518 at close of September 30 this year compared to \$31,836,210 at this same time last year.

The First National Bank of Muleshoe shows deposits of \$28,930,762 on September 30 this year and \$24,932,252 at the same time last year for an increase of \$3,998,510. Loans in this bank also show an increase of \$1,061,308 with September 30, 1981 loans in the amount of \$17,154,518 compared to \$16,093,210 in 1980.

At Muleshoe State Bank, deposits are up by \$251,000 with September 1980 showing a total deposit of \$29,012,000 over September 30, 1981 deposits of \$29,263,000. Loans at this bank are up by \$2,540,000 comparing 1980 September total of \$15,743,000 against September 30, 1981 total of \$18,283,000.

First State Bank of Morton shows \$1,931,297 increase in deposits from September 1980 figures of \$18,632,164 against \$20,563,443 for close of business on September 30, 1981. Loans at First State have also increased and show to be \$138,679 up

Cont. Page 6, Col. 4

Watson Named To Advisory Committee

According to South Plains Association of Governments Board of Directors Chairman, Dickens County Judge H.L. Young, Bailey County Deputy Sheriff Tom D. Watson has been appointed to the Criminal Justice Advisory Committee of S.P.A.G. for a two year term.

The Criminal Justice Advisory Committee was Cont. Page 6, Col. 2

McVicker Maintains Contest Lead

The Journal's football contest yielded three new winners this week. Taking first place with ten points was Dwayne Dale. Dale missed only two games. Second was won by Ina Dennis. Ms. Dennis missed three games, having a 17 point difference on tie-breaker games. In third place is Barbara McCamish. Barbara missed three games but had a 32 point difference in tie-breaker games.

So....David McVicker's lead of 16 points still stands him in first place overall in the contest. That is not to say, however, that this lead will stand unchallenged, as the next contest could tie or overtake his lead.

Several have a second place chance with ten points each. They are: Margreth Taylor, Marilyn Engkeling, Ramond Villalobos, Joe Ellis and adding this week's contest winner, Dwayne Dale.

Those having a total of 6

Probation: An Economical Alternative To Incarceration

ever, he states that "is not in favor of probation for everyone. Each case must be weighed carefully and judged on its own merits."

"Not all defendants are eligible, nor do all defendants deserve probation. Our judges; the Honorable Jack Young, Judge of the 287th Judicial District; the Honorable Glenn Williams, Bailey County Judge; and the Honorable Norvell Roberts, Parmer County Judge, are to be commended for the way they have made their decisions (not always easy ones) as to

points are Jerry Roddom, Mrs. John Hayes, Mrs. J.K. Adams, and this week's second place winner, Ina Dennis.

Since there are quite a

Cont. Page 6, Col. 1

Rotary Hears District Governor

Guest speaker for the Muleshoe Rotary Club Tuesday was District Governor John R. Seay and his wife, Charlotte of Midland, Texas.

Seay spoke to the Rotarians regarding their community service and projects, urging them to attain even higher goals.

All Rotary members are reminded of the District Conference at Midland in April, 1982. Events for the ladies are also planned for this district meeting.

The 1982 International Conference in Dallas is scheduled in the future and will provide a chance for international fellowship for Cont. Page 8, Col. 1

School Board Changes Honor Selection Method

The Board of Trustees of the Muleshoe Independent School District met Monday, October 12th.

Action was taken on a discipline case occurring in high school.

The board approved the adult education courses that are being held in the Muleshoe Junior High School. Courses approved were adult basic education and GED courses.

Also considered was the proposed renovation program. It is agreed that the board will meet with a financial advisor at a time and place that will be assigned at a later time.

A change in the method for selecting the valedictorian, salutatorian, and

honor students in high school was approved. This will go into effect next year. The new system will use a weighted approach in assigning grade points for various courses. Courses with high difficulty will be assigned a higher grade point. Courses with lesser difficulty will be assigned lesser grade points. The purpose of this proposal is to protect those students who take difficult courses.

The first of the special education policy that was proposed by the Texas Association of School Boards dealing with the destruction of confidential information was read by the Board.

The board heard a re-

quest from the band director for additional band equipment. Mr. Chance showed that the band has grown over 100 students this year and there are some more instruments that are needed. The board approved the purchase of additional instruments for additional students in the band.

Travel guidelines were approved for Muleshoe I.S.D. The board will stay with the state guidelines for travel re-imbursment.

In a report concerning restroom facilities at the football field, it was decided that the school would continue with the present facilities for the remaining Cont. Page 6, Col. 1



GIANT VEGETABLES.... Reverend Gene H. Davis grew this icicle radish in his garden. It weighed 1 44/100 pounds. The radishes were planted approximately August 28.



Bottom Round or rump
Beef Roast
 lb. **\$2.09**

Flower Bulbs Plant now for spring
 20 Count Tulip Bulbs ea. **\$2.68**

Beef & Tater Values



SHOPRITE

501 W. Amer. Blvd.

Prices Effective Thru Wednesday 21, 1981



Potatoes
 Bake'em, Boil'em Fry'em
 5 lb. bag **89¢**

Red Apples Rome Cooking lb. **39¢**

Pork Chops
 Combination Pak 1/4 loin
 lb. **\$1.29**

Franks
 Oscar Mayer Meat or Beef 16 oz. **\$1.81**

Spare Ribs
 Country Style
 lb. **\$1.39**

Bologna
 Sliced Wilson Certified 12 oz. **\$1.29**

Butterball
Turkey
 Self Basting 14 lbs. & Up
 lb. **95¢**

Fish Sticks
 Van De Kamp 10 oz. **\$1.79**

Tomatoes
 Red Ripe
 lb. **49¢**

Pickles
 Claussen's Whole or Half 1 qt. **\$1.49**

Welch's
Grape Juice 40 oz. **\$1.09**

Bisquick
Flour 40 oz. **\$1.39**

Oreo Cookies 19 oz. pkg. **\$1.59**

Each of these advertised items is required to be readily available for sale at or below the advertised price in each store, except as specifically noted in this ad. We reserve the right to limit quantities. None sold to dealers.

Maryland Club
Coffee 1 lb. can **\$2.29**

American Beauty
Elbo Roni 24 oz. **99¢**


With Beans
Austex Chili 24 oz. **\$1.49**

Carnation
Instant Milk 8 qt. **\$3.19**

Welch
Grape Jelly 20 oz. **\$1.09**



Campbell
Soup
 Chicken Noodle
 3 10 3/4 oz. can **88¢**



Downy
 Fabric softner
 64 oz. **\$2.09**



Minute Maid
Orange Juice
 Frozen
 16 oz. **\$1.19**



Parkay
Margarine
 1 lb. **2.89¢**



Kraft
Mayonnaise
 32 oz. **\$1.29**



Kraft
Mac & Cheese
 Dinners 7 1/4 oz. pkg. **\$1**

Jackson Rites Held Here

Services for Albert Jackson, 73, of Cleveland were held at 3 p.m. Wednesday.

Reeves Services In Shallowater

Funeral services for J.L. Reeves, 48, of Shallowater were held Monday, Oct. 12 in the 12th Street Church of Christ in Shallowater with Harold Moore and Darrell Boswell, officiating.

Interment was in Resthaven Memorial Park under the direction of Rest Haven Funeral Home of Lubbock. Reeves died Saturday after a lengthy illness.

He was a native of Wichita and moved to Shallowater in 1963 from Arch. He married the former Glenna Dawn Pate Dec. 3, 1951 in Muleshoe.

Survivors include his wife, Glenna; two daughters, Mrs. Vickie Koinzan of DeLeon and Mrs. Kathi Hutton of El Paso; one son, Bobby Jack of Plainview; one brother, Jack of Maple; four sisters, Mrs. Dorothy Davis of Arch, N.M., Mrs. Lillie Conner of Post, Mrs. Shirley Harrison of De Leon and Mrs. Joan Percy of Slaton; and four grandchildren.

West Plains Medical Center Report

ADMITTED

- Oct. 8, C.W. Bradshaw
- Oct. 9, Josefa Mareno, Theadora Steinbock, Cynthia Godinez, Sheryl Welch, Earnest D. Martin
- Oct. 10, San Blackwell, Adele Thompkins, Linda Martinez
- Oct. 11, Rosa Allison, Joe Truelock, Rafael Gonzales, Ettie Jesko
- Oct. 12, Dewey Stovall, Nicey Burrelson, Chrestine Howard

DISMISSED

- Oct. 9, James Blessingame, Thomas Carlson, Francis Velerio, Ruby Stickney
- Oct. 10, Sheryl Welch, Rudolph Wiedebush, Tammy Miller, Cynthia Godinez, Stella Dominguez and baby girl
- Oct. 11, Clarence Lewis, Daniel Gage, O.C. hall, Laverne Adrain
- Oct. 12, Anita Golaz, Linda Martinez

Muleshoe Journal USPS 367-820
Established February 23, 1924. Published by Muleshoe Publishing Co., Inc. Every Thursday at 204 W. Second, Box 449, Muleshoe, Texas, 79347. Second class postage paid at Muleshoe, Texas 79347.

MEMBER 1961
TEXAS PRESS ASSOCIATION

L.E. Hall, President
James Woods, Vice President
Shirley Farmer, News
Evelene Harris, Society
Holly Milhag, Advertising
Beau Bennett, Bookkeeper

MEMBERSHIP:
Muleshoe Journal and Bailey County Journal "Daily and evening" 48 months... \$10.50
Muleshoe Journal and Bailey County Journal "Evening only" 48 months... \$11.95
Muleshoe Journal and Bailey County Journal "Outside of Texas" 48 months... \$12.95
Yearly by Carrier... \$11.50
Monthly by Carrier... \$1.00
Advertising rate card on application

October 14 in the Second Baptist Church in the Progress Community with Rev. C.C. Slay, Baptist minister from Clovis, Rev. Arthur Hayes and Rev. James Grady, officiating.

Burial was in the Friona Cemetery under the direction of Ellis Funeral Home. Jackson died at 11:10 a.m., October 9 in the Veterans Administration Hospital in Amarillo.

He was born November 9, 1907 in Evergreen, Texas. He had been a Cleveland resident since 1976, moving there from Muleshoe, where he had lived from 1959-1976. He was a farmer, a member of the Second Baptist Church at Progress, and a veteran of WW II serving with the U.S. Navy.

Survivors include three sons, James of Friona, Archie of St. Louis, Missouri and Roy of Cleveland, Texas; one step son, Ira Chester of Muleshoe; three daughters, Vesta Marie Jackson, Emma G. Jackson and Essie B. Jackson, all of Houston; one brother, Jimmy Jackson of Houston; 22 grandchildren and seven great grandchildren.

DRUG QUIZ

by Curt Scarborough, Ph.D.
Used by permission; all rights reserved by DATE, St. Louis, Mo.
QUESTION - Heroin addicts often are treated with the drug, Methadone, which is:
a) A cure for addiction
b) Similar to heroin in its potential for addiction
c) A type of stimulant
d) Capable of producing a heroin like euphoria
ANSWER - Methadone, like heroin, is physically addictive. But in clinical doses given to an addict, it does not produce the euphoria that heroin does. Methadone is available at low cost. These factors help the user return to a more normal behavior pattern, but administration of Methadone alone does not cure addiction.
Correct answer - b.

Do you have a question or a comment about drugs? Write: TANE Texas Alcohol Narcotic Education Inc., 6778 Greenville Ave., Dallas, Texas 75231-6499

Boy, These Maytags Are Really Built!



MAYTAG

Your Authorized Sales & Service Dealer

WATKINS & BASS

122 S. 1st
272-3030

MANAGEMENT CAREER OPPORTUNITY
COME GROW WITH US

The Lexington Apartments and Motor Inns is a privately held family owned company of 25 properties based in Texas. Our properties feature one and two bedroom suites rented on a daily or weekly basis. We have no restaurants or clubs.

The opportunity? To fill the immediate management openings created by a growing company expanding throughout Texas. We are seeking couples or mature persons to join our team. No experience necessary. We pay you a good salary while you train.

- Paid Training Program • Incentive Bonuses
- Great Starting Salary • Paid Vacation
- Company Car (most locations)
- Furnished Apt. • Advancement Opportunity
- Major Medical/Hospitalization

THE **Lexington** APTS. and MOTOR INNS
"A DAY OR A LIFETIME"

Please send resume or letter to 1003 S. Midkiff, Midland, Texas 79701. If you have any questions, call Rex Briscoe at (915) 697-3155.

Please join up - we may be just right for you!

McDANIEL'S INC.

YOUR WALL TO WALL STORE

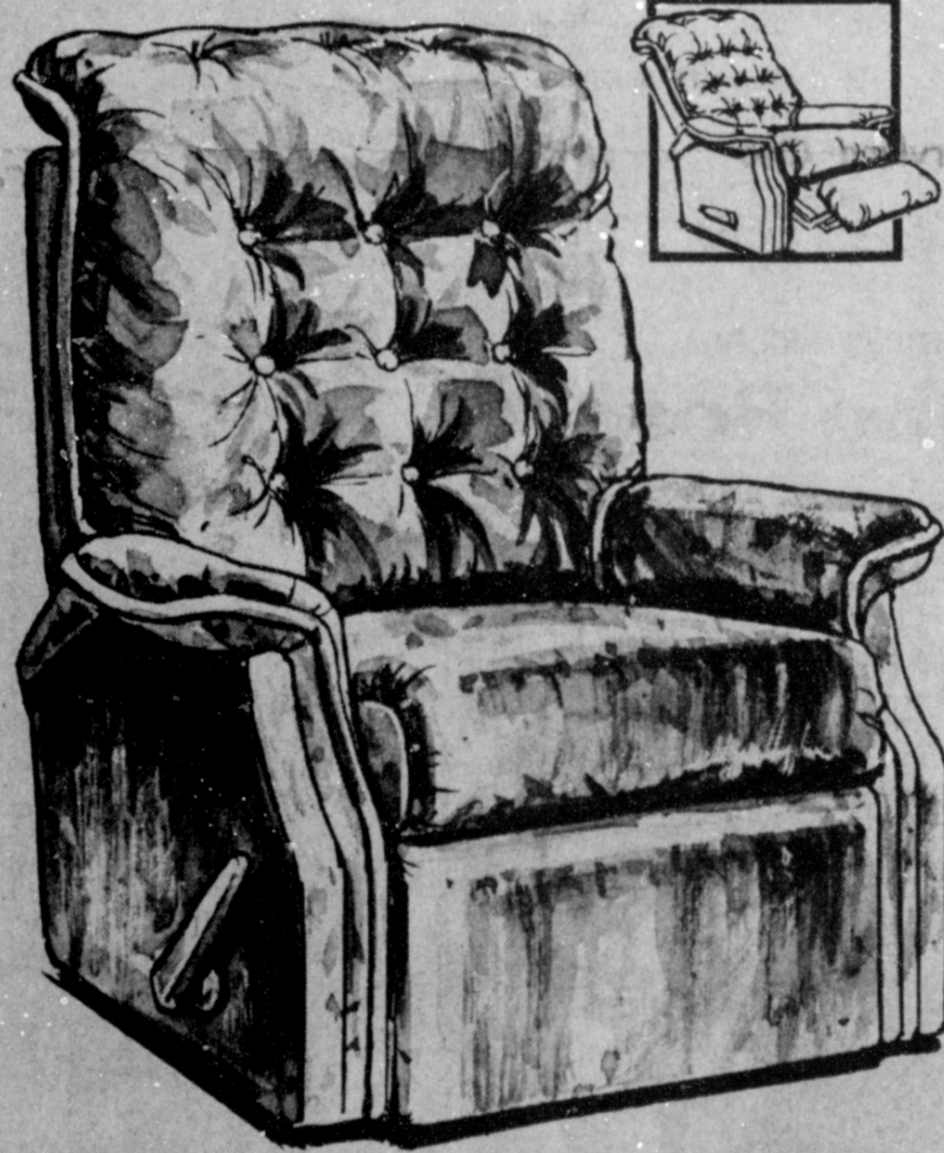
Anniversary SALE

You'll wait a whole year and maybe never again see these luxurious recliners

priced so low!

OVER 200 IN STOCK!

What a tremendous value! One of these roomy and comfortable recliners or rocker-recliners, with a mechanism that allows it to recline fully while only inches from the wall! All are beautifully tailored in durable designer fabrics, and priced to sell quickly! Better hurry, or the selection will be gone!



\$199⁹⁵

Come try our space-saving Wall-Saver recliner!

Sit down and let the plush luxury of this pillow-back recliner envelop you. Thick cushioning cradles your arms, your head, your back... everywhere! And it can fully recline while only inches from the wall! In a sleek designer fabric. Reg. 329.95

ALL RECLINERS MARKED AT SUPER SALE PRICES!!

"We Service What We Sell"

• Furniture • Appliances • Gift Items • Bedding

1020 Main

Clovis, N.M.

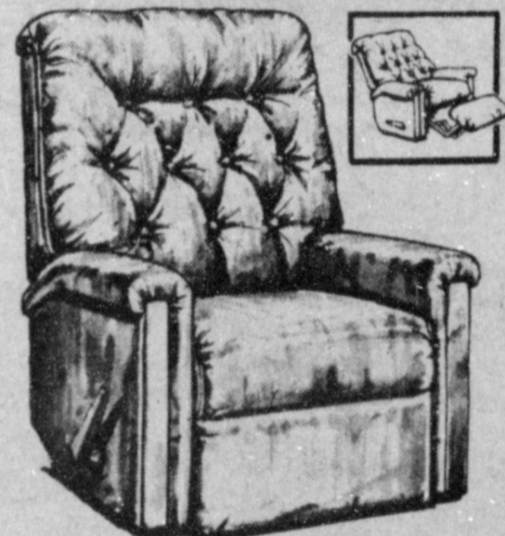
762-4481



Massive modern pillow-back Recliner Reg. 469.95 \$389.95



Traditional recliner with tufted back. Reg. 449.95 \$399.95



Pillow-back recliner with extra thick seat. Reg. 369.95 \$309.95



Skirted traditional recliner with T-cushion. Reg. 369.95 \$269.95



Big button-tufted rocker-recliner with pillow back. Reg. 389.95 \$289.95

Miss Merrill, Peterson Exchange Wedding Vows



MRS. EARL BRUCE PETERSON
[nee Brenda Rene Merrill]

Miss Brenda Rene Merrill of Plainview became the bride of Earl Bruce Peterson, also of Plainview in a candlelight ceremony August 8 at 7 p.m. in the chapel of the First Baptist Church in Plainview. Dr. Dan McLallen, dean of academic affairs at Wayland Baptist University read the vows.

Parents of the couple are Mr. and Mrs. Ray A. Merrill, Sr. of Tucumcari, N.M. and Mr. and Mrs. Earl B. Peterson, Sr. of Muleshoe.

The couple stood before an arch, intertwined with white and yellow spider mums and English ivy. Two spiral candle stands with silver ribbons com-

pleted the decorations.

Natalyn Whitia of Plainview and Michelle Merrill of Tucumcari, sisters of the bride were the soloists. Martin Duckett of Plainview accompanied the soloist, at the piano.

Escorted by her father, the bride wore a white organdy and Chantilly lace gown that featured a flowing train accented with seed pearls. She wore a white derby hat with blue-

sher and long veil that was also scattered with seed pearls. Completing her outfit was a single strand of freshwater pearls, a gift from the groom.

The bride carried a lace fan with a purple orchid in the center, trimmed in miniature orchids.

Patricia Salerni of Little Elm, Texas served as maid of honor. Bridesmaids were Kathy Booth of Farwell and Michelle Merrill, sister of the bride, of Tucumcari.

Wayne Peterson, brother of the groom, of Muleshoe served as best man. Loy Dale Clark of Portales and Chuck Bastel of Albuquerque were groomsmen.

Candlelighters were Ray Merrill of Tucumcari and Michael Vaughn of Plainview. Ray A. Merrill, brother of the bride and Michael Vaughn, nephew of the groom, were ushers.

Following the ceremony a reception was held in the reception hall of the church. Denise Peterson regis-

tered the guests.

Reception assistants included Francine McKinley, sister of the bride; Nathalyn Whitis, sister of the bride; Sandy Peterson, sister in law of the groom; Denise Peterson, niece of the groom; Earlene Vaughn and Patricia Maxwell, sisters of the groom.

After a wedding trip to Red River, N.M. and Albuquerque the couple are at home in Plainview.

The bride is a senior, majoring in biology at Wayland Baptist University and teaches gymnastics at Barnyard Academy. Peterson is employed by Bobby Marshall.

Make And Take Workshop Set For Oct. 20

If you have a child enrolled in Dillman Elementary School Kindergarten class this year, make plans now to attend the "Make and Take" workshop in the Dillman Elementary School Cafeteria on Tuesday, October 20, from 7:30 until 9:30 p.m.

The kindergarten teachers and aides are prepared to work with parents to help them make instructional materials to use at home with the students in reinforcing what the teachers are working on at school.

Our children's education must be joint effort of home and school and, therefore, working together is a must. This is an enjoyable evening and every parent who attends will go home with at least 3 or 4 items to help their child.

Refreshments will be served and babysitters will be at the school for parents with small children.

Time is running out for approximately 900,000 veterans to use their GI Bill educational benefits. Current law permits within 10 years following discharge, or by Dec. 31, 1989, which ever is earlier.

Robin Burgess Named AAUW Girl Of Month

Miss Robin Burgess, the 17 year old daughter of the Mr. and Mrs. Jim Burgess was selected girl of the month of October by the Muleshoe Branch of the American Association of University Women. Robin was selected on the basis of school and church participation and leadership qualities. A high school senior, Robin is Student Council Secretary, National Honor Society Parliamentarian, FTA Treasurer, and a member of Fellowship of Christian Athletes. Robin

is a varsity cheerleader, a last year was the Lieutenant for the Flag Corps. She was a 1980 Football Homecoming Queen Attendant, Junior Class favorite, and 2nd runner-up for Princess of Friendship. She was also runner-up the past two years in the Miss Tri-County Pageant.

Robin is a member of the First Baptist Church and is very active in the youth organizations.

AAUW members congratulate Robin and are happy to have Robin as one of the girls of the month.



ROBIN BURGESS

Muleshoe Singing Group Meets

The Muleshoe Singing Group met at 7:30 p.m. Saturday, October 10, in the fellowship hall of the Trinity Baptist Church.

Jess Pruitt gave the invocation. Forty four were present including Mr. and Mrs. J.B. Bates of Clovis and Mr. and Mrs. B.J. Snanks of San Jose, Calif.

Benediction was given by Klyde Krebbs.



"Buy Something Original This Year"

Attend The Seventh Annual Running Water Arts and Crafts Festival

October 16-18, 1981
Hale County Agricultural Center
Plainview, Texas

Friday 12:00 p.m. to 8:00 p.m.
Saturday 10:00 a.m. to 9:00 p.m.
Sunday 12:00 p.m. to 5:00 p.m.

McDANIEL'S INC.

YOUR WALL TO WALL STORE



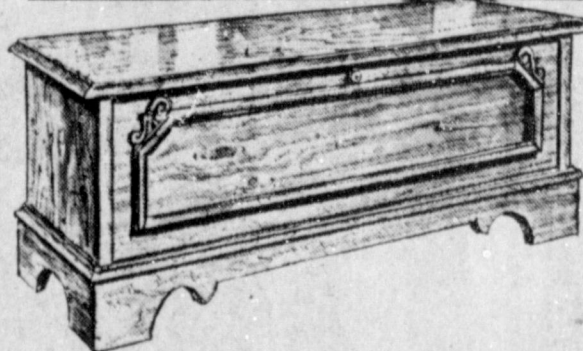
over 20 Styles in stock!

Shop Now During Our Anniversary Sale

Buy Now & Lay-A-Way

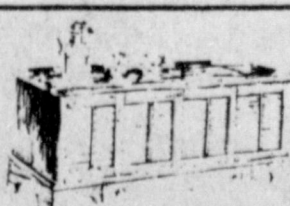
For Christmas!

Low introductory LAYAWAY SALE PRICES this week!



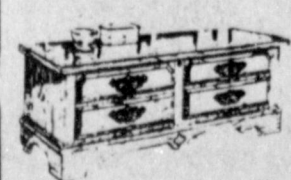
No. 4461 Fruitwood finish \$119⁹⁵

American traditional beauty and charm that will enrich rooms of many moods. Fully lined with fragrant, protective cedar.



\$168⁰⁰

No. 2929 Early American Maple with imported fabric top.



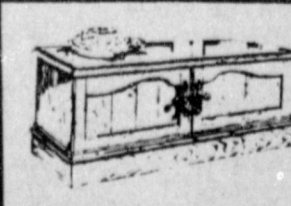
\$196⁰⁰

No. 4756-09 Early American in a rich Cherry finish.



\$231⁰⁰

No. 2746 Time honored traditional in a White finish.



\$154⁰⁰

No. 5108-70 Rich traditional in a light Oak finish.

ALL CEDAR CHESTS 30% OFF
Clovis, N.M.

• Furniture • Appliances • Gift Items • Bedding

1020 Main

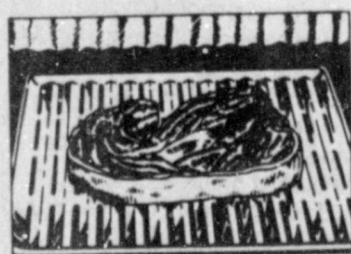
"We Service What We Sell"

762-4481

You are personally invited to see a live cooking demonstration of the exciting new



CALORIC waist high Ultra Ray® Broiler cuts gas use 30%



Ultra Ray® Broiler



- Automatic Pilotless Ignition
- Self-Cleaning Oven
- Ultra Ray® Broiler
- Tilt-Top Cooktop with Support Rod
- Tri-Set® Burner Controls
- Full Black Glass Door
- Radial Clock and 60-Minute Timer
- Keep-Warm Oven Setting
- Manual Oven Light and Surface Light.

Exclusive Caloric Gas Range broiler brings outdoor cooking flavor indoors

CALORIC ULTRA RAY BROILER GAS RANGES

DATE: Thurs. Oct. 15, 1981
TIME: 2 p.m. to 5 p.m.

PLACE: Harvey Bass Appliance

HARVEY BASS

122 S. 1st

272-3030

Louva Kersey Named Artist Of The Month

Louva Kersey of Bovina has been named "Artist of the Month" of October at the Muleshoe Public Library.

In 1977 Mrs. Kersey began taking painting lessons under the instruction of Billie Land Homer of Friona.

She has taken classes from 24 instructors, some of whom are Ben Canis, Robert Schwlsler, Larvin Rains, Merle Doose, Jean Green and Barbara Carpenter.

Mrs. Kersey has had classes in oils, watercolors, acrylics, pastel tole, rub-out, charcoals, and ink drawing.

Some of her other hobbies include ceramics, sewing, raising flowers and gardening. She now has a flower garden in her yard and 35 house plants.

She is a member of the Muleshoe Art Association and the Texas Women Western Artist.

She and her husband moved to Bovina from Hobbs, N.M. in 1970, where they had been pastoring the Pentecostal Holiness Church. They farmed in Bovina until 1979, when

they sold their farm.

They have three daughters and two sons, who are all married. Also 13 grandchildren and three great grandchildren.

Dimmitt Young Homemakers Bazaar Planned

Dimmitt Young Homemakers will sponsor an Arts and Crafts Bazaar December 5, in the Castro County Expo Building in Dimmitt.

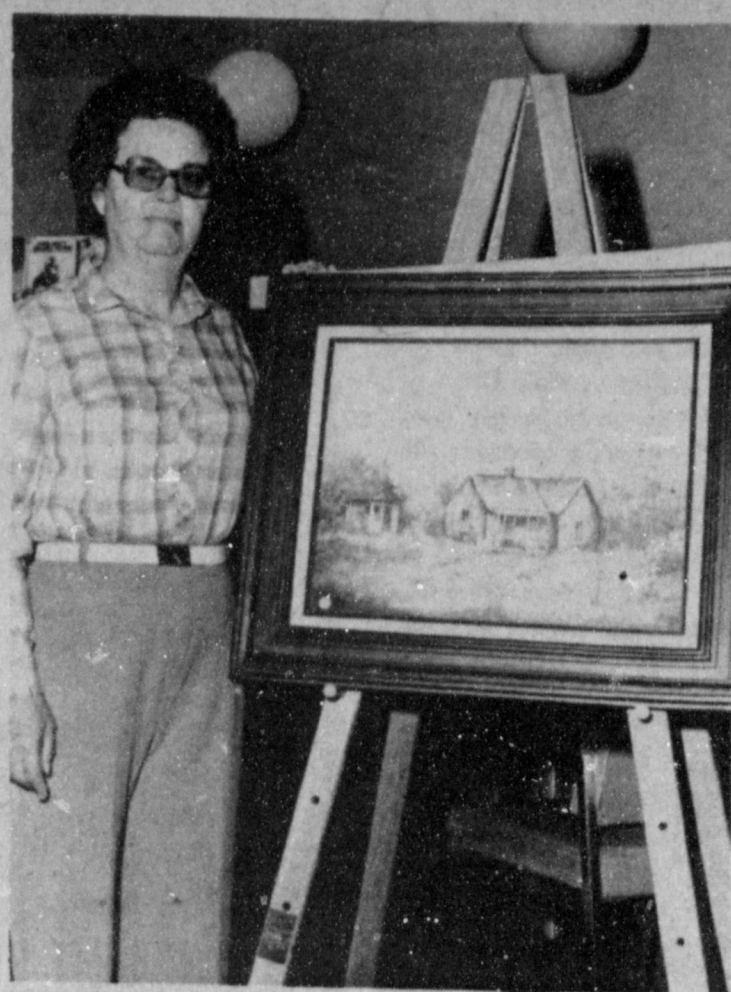
Booth spaces are available at \$20 for one person booths, and \$25 for more than one person in a booth.

The deadline for reserving booths is November 15. To reserve spaces contact Sherri Baldrige at 647-3686 after 4 p.m. or Teresa Parsons at 647-4553.

There will be no admission charge at the bazaar and door prizes will be awarded.

A concession stand will serve food and drinks.

It's surprising what some people will do in the expectation of monetary gain.



LOUVA KERSEY

Christmas Bazaar Planned By Morton YM Study Club

A Christmas Bazaar, sponsored by the Y.M. Study Club of Morton, will be held Saturday, Nov. 21 from 10 a.m. to 6 p.m. in the banquet room of the Cochran County Activity Building in Morton.

Persons interested in renting a 10 foot by 10 foot booth may do so for \$10.

Items acceptable for the bazaar are arts, crafts, paintings, handmade Christmas decorations, stocking stuffers, homemade gift items, etc.

A table and two chairs will be furnished with each

booth-any other display materials will be the responsibility of the displayer.

There will be no cleanup fee but all booths are expected to be cleared at the end of the bazaar.

For booth reservations or further information you may contact Mrs. Nancy Dewbre at 266-5978, Mrs. Kathy McBee at 933-4451 or Mrs. Sandra Betts at 266-5378 or 933-4435.

Baked goods and snack bar are reserved by the Y.M. Study Club.



BINGO PRIZES....Dani Heathington, on left, and Brenda Black are showing some of the prizes to be given away at the Alpha Zeta Pi Bingo Carnival, to be held Friday, Oct. 16 from 7-10 p.m. in the Bailey County Civic Center. Bingo tickets are \$1 each in advance and \$1.50 at the door.

Lindsay Brook Smith

Tara Brook Smith

Mr. and Mrs. Louis Smith are the proud parents of twin daughters, Lindsay Brook and Tara Brook, born October 8.

Lindsay was born at 6:52 p.m. and weighed six pounds and 12 ounces. Tara was born at 6:54 p.m. and weighed five pounds and 14 ounces.

Maternal grandparents are Mr. and Mrs. Clo Webb of Muleshoe. Paternal grandparents are Mr. and Mrs. Bill Smith of Clovis.

Great grandparents are Mrs. Letha Webb of Paducah, Mrs. Louis Smith and Mrs. Rex Peacock, both of Clovis.

Great grandmother is Mrs. Mary Harris of Garden City, Kansas.



The lovely camellia is named after George Joseph Kamel, a missionary who first brought the shrub from the Orient to Europe.

Genie Garage Door Openers
 Don Terrell
Sales & Service
 Plainview Overhead Door
 3014 Dimmitt Hwy
 293-8577

How To Control Color In Cooking Vegetables

Know why vegetables change colors in cooking and you'll have some ideas on how to obtain the colors you want, says Dr. Dymple Cooksey, a food and nutrition specialist.

Cooksey is on the home economics staff of the Texas Agricultural Extension Service, The Texas A&M University System.

Chemical compounds -- pigments -- in vegetables are responsible for their colors. Changes that these pigments undergo during cooking produce the finished-product colors, Cooksey says.

Vegetable pigments have three classes -- chlorophylls, carotenoids and flavonoids.

Levels of acidity or alkalinity in cooking water determine whether the cooked vegetable color will be appealing or unappealing, the specialist explains.

Chlorophyll, the green pigment in all green vegetables, produces a drab olive-color in vegetables if they're cooked in slightly acid water.

Keeping the fresh green color in these vegetables is

probably the greatest problem in cooking vegetables.

You can combat the drab color by boiling vegetables UNCOVERED for the first three minutes. That permits the escape of volatile organic acids present in vegetables, which, in turn, reduces the cooking water's acidity.

Don't add baking soda -- an alkali -- to green vegetables, however, to keep them fresh green. That destroys Vitamin C (ascorbic acid) and some B vitamins, and it has a not-so-appealing effect on texture

and flavor.

Unfortunately, once the drab-green color appears, nothing can be done to bring the fresh green back, Cooksey says.

Vegetables that contain large amounts of carotenoid pigments are those in a wide range of yellows and oranges.

These vegetables don't present color problems in ordinary food preparation.

Because the pigments are not water soluble -- that is, these pigments will not dissolve in water -- they won't dissolve out of foods cooked in water.

In addition, these pigments stay relatively unchanged in the presence of dilute acid or alkali.

You can cook these veg-

etables with a cover from start to finish and the color won't change.

Flavonoid pigments, the third class, actually contain two distinct groups of compounds.

Anthocyanin pigments give the "red" to beets, red cabbage, cherries, berries and plums.

Anthoxanthin pigments are contained in white potatoes, onions, cauliflower, turnips, salsify and parsnips. Anthoxanthin, colorless or white pigments, often are masked by other pigments in plants, but in those mentioned above, no masking occurs.

Giving money to a worthy cause is one way in which a person extends his helpfulness.

Jodi's
 Tradewinds Plaza
 272-5611
 Now Through Saturday, Oct. 17, 1981
 MISSES Purse JUNIOR Jewelry
 Pants \$7.88
 Blouses \$12.88

Report of Condition Muleshoe State Bank

PUBLISHER'S COPY

CONSOLIDATED REPORT OF CONDITION (Including Domestic Subsidiaries)

LEGAL TITLE OF BANK			
MULESHOE STATE BANK			
CITY	COUNTY	STATE	ZIP CODE
MULESHOE	BAILEY	TEXAS	79347
STATE BANK NO.	FEDERAL RESERVE DIST. NO.	CLOSE OF BUSINESS DATE	
1631	11	SEPTEMBER 30, 1981	
ASSETS	Mill.	Thou.	
1. Cash and due from banks	2	684	1
2. Due from other depositories and all cash items in the process of collection	4	163	2
3. U.S. Treasury securities	4	786	3
4. Obligations of other U.S. Government agencies and corporations	3	457	4
5. Obligations of States and political subdivisions in the United States	4	226	5
6. All other securities	none	none	6
7. Federal funds sold and securities purchased under agreements to resell	18	283	8
8. Total loans (including overdrafts totaling \$ 35m) (From Schedule A, Item 8)	none	none	9
9. Lease financing receivables	468	none	10
10. Bank premises, furniture and fixtures, and other assets representing bank premises	none	none	11
11. Real estate owned other than bank premises	43	none	12
12. Letters of credit and customers' liability on acceptances outstanding	1	336	13
13. All other assets	35	446	14
14. TOTAL ASSETS (sum of items 1 thru 13)			
LIABILITIES	Mill.	Thou.	
15. Demand deposits of individuals, partnerships, and corporations	4	507	15
16. Time and savings deposits of individuals, partnerships, and corporations	18	964	16
17. Deposits of United States Government	42	none	17
18. Deposits of States and political subdivisions in the United States	2	169	18
19. Due to banks	none	none	19
20. All other deposits (Includes 3,295 in NOW Deposits)	3	295	20
21. Certified and officers' checks	286	none	21
22. Total Deposits (sum of items 15 thru 21)	29	263	22
a. Total demand deposits	8	906	22a
b. Total time and savings deposits	20	357	22b
23. Federal funds purchased and securities sold under agreements to repurchase	none	none	23
24. Interest-bearing demand notes issued to the U.S. Treasury and other liabilities for borrowed money	1	182	24
25. Mortgage indebtedness for which the bank is directly liable	none	none	25
26. Unearned discount on loans	129	none	26
27. Letters of credit and acceptances outstanding	43	none	27
28. All other liabilities	875	none	28
29. TOTAL LIABILITIES (excluding subordinated notes and debentures) (sum of items 22 thru 28)	31	492	29
30. Subordinated notes and debentures	none	none	30
31. Allowance for possible loan and investment losses	522	none	31
EQUITY CAPITAL	Mill.	Thou.	
32. Common stock (No. of shares outstanding 50,000)	1	000	32
33. Certified surplus	1	000	33
34. Undivided profits	1	432	34
35. Uncertified surplus, reserve for contingencies, and other capital reserves	none	none	35
36. TOTAL EQUITY CAPITAL (sum of items 32 thru 35)	3	432	36
37. TOTAL LIABILITIES AND EQUITY CAPITAL (sum of items 29, 30, 31 and 36)	35	446	37

NOTE: This report must be signed by an authorized officer and attested by not less than three directors other than the officer signing the report.

I, the undersigned officer, do hereby declare that this Report of Condition (including the supporting schedules) has been prepared in conformance with the instructions and is true to the best of my knowledge and belief.

SIGNATURE OF OFFICER AUTHORIZED TO SIGN REPORT: *Troy L. Stegemoller*
 AREA CODE/TELEPHONE NO.: 806-272-4561
 DATE SIGNED: 10-14-81

NAME AND TITLE OF OFFICER AUTHORIZED TO SIGN REPORT: TROY L. STEGEMOLLER, ASST. CASHIER

SIGNATURE OF DIRECTOR: *Walter Lambert*
 SIGNATURE OF DIRECTOR: *James A. Cox*
 SIGNATURE OF DIRECTOR: *Paul R. Tenney*

(MAKE MARK FOR NOTARY'S SEAL) State of TEXAS Sworn to and subscribed before me this 14TH day of OCTOBER 1981 My commission expires 6-6

SAVE \$50 DURING LITTON REBATE DAYS.



Get a \$50 rebate direct from Litton on the amazing Auto-Cook.

The 1580 Auto-Cook makes you a microwave expert on the first try! Just touch a button. The display panel asks you a few simple questions. What you're cooking. How much you're cooking. And how you'd like it done. Then Auto-Cook calculates time and temperature. So you get great results without a great fuss. Only Litton's amazing Auto-Cook makes it that simple.



Get a \$50 rebate direct from Litton on the new Litton-Aire.™

The Litton-Aire saves you counter space because it fits above your range. It has an exhaust vent and stove-top light. Plus Litton's exclusive Meal-In-One® cooking system. With two sources of microwave distribution. So it cooks evenly whether you're cooking a roast or custard, several dishes or just one. Now you can save space without settling for less than a Litton.

Nobody knows more about microwave cooking than Litton.

Wilson
 Appliances

Come In Today & Let "Smiling" Gordon Wilson Make You A Deal!

117 MAIN

We Have A Trained Technician To Service Our Products
 Store Hours Mon. - Sat. 8:00 - 6:00
 272-5531

Pageant...

Cont. From Page 1
loves dance and gymnastics. This sandy-haired blond has green eyes and plans to be a Dallas Cowboy cheerleader when she grows up. Cassie's sponsor is Hawkins-Purdy School of Dance.

FootbaLL...

Cont. From Page 1
few more chances to win this contest, everyone is urged to get out that old pencil and fill out your entry. It costs you nothing but postage. But, remember to get your entry blank in the Journal office by 5:30 on Friday afternoon or have it postmarked by that date.

School...

Cont. From Page 1
two games of this year. It was also decided that new facilities for women's restroom will be constructed prior to next years football season.
In other matters, Tom Jinks negotiated a contract with Honeywell for preventive maintenance on heaters, coolers, etc. in the school system. The board approved this contract.
Various board members gave reports concerning the TASA/TASB convention attended in San Antonio by four of the board members.
Superintendent's report of school activities was given by Harold Horne. It consisted of a report of various activities going on in the schools.

The educated individual who ceases to study soon becomes uneducated.

City...

Cont. From Page 1
Finney, Shafer, Wilbanks, and Wood.
Paul Wilbanks was elected to be the City of Muleshoe's representative to the Board of Directors of the Bailey County Appraisal District for the years 1982 and 1983.
Those present for Council meeting were: Councilmen Finney, Wood, Wilbanks, Mayor Bratcher and City Manager Dave Marr. Also present was Police Chief Les Irvin, City secretary, Mary Watkins and Shirley Farmer of the Journal.

Watson...

Cont. From Page 1
created by S.P.A.G. to advise the Association in matters related to criminal justice and recommends plans and programs to reduce crime and to improve the criminal justice system throughout the region. The committee carries on a continuous planning program to identify criminal justice problems; to determine the needs of the region; to analyze the existing Criminal Justice system and available resources; and to establish goals and priorities.
Before returning to Bailey County 3 1/2 years ago, Watson was a Police Sergeant for the Dallas suburb of Lewisville. Watson held the office of Constable of Precinct #4 before joining the Sheriff's Department. He graduated from Abilene Christian University and holds an Advance Certificate from the Texas Commission on Law Enforcement Standards and Education.

The greatest effort made by many workers is to look busy while doing nothing.

Probation...

Cont. From Page 1
102.91 restitution to victims of crimes in this district the past year.
Misdemeanor probationers paid \$19,343.00 court costs and fines the past year.
Felony probationers paid \$4,290.94 court costs and fines.
This made a total of \$40,736.00 paid to Bailey and Parmer counties by probationers.
Had the misdemeanor probationers been incarcerated in County jails, the cost to county tax payers would have been \$27,300.00. Cost of probation was \$2,563.47, a savings to tax payers of \$24,736.53.
Had the felony probationers been incarcerated in Texas Department of Correction, the cost to the State would have been \$540,748.00. Cost of probation was \$4,169.16, a savings of \$536,178.84 to taxpayers of the State.
Based on these statistics, probation is definitely an economic alternative to incarceration.
Other benefits of probation are:
The community is protected and secured through the rehabilitation of the offender and the prompt removal of probationers whose conduct indicate an inability to follow the rules of their probation;
Persons on probation remain in their communities at their jobs and with their families.
Persons on probation continue to contribute to the tax base of the community rather than becoming a liability to the tax paying public.
It might be well to note that 97% of probationers live up to their probation.

Banks...

Cont. From Page 1
over last year's total. September 1980 showed \$5,955,632 and September 1981 recorded \$6,094,311.
At Farwell's Security State Bank deposits are up

Dewey Concert Scheduled

A very talented family will soon be appearing in Muleshoe. The Singing Deweys of Nashville, Tennessee will present a gospel music presentation at 8:00 p.m. Thursday, Oct. 15 in the First Assembly of God Church.
The family group consists of Levo and Cleon Dewey and their two daughters, Cindy and Susie. The Deweys have traveled as a family unit since 1967, singing across the United States at denominational conventions, churches, fairs, colleges, and have been on such T.V. programs as PTL, 700 Club and The Jimmy Swaggart Show. They have sung on the Grand Ole Opry, at the People's Church in Toronto, Canada, and in the Avon Shakespearean Theatre. Recent trips include several visits to Central America, Pacific Islands, India with Dr. Mark Buntain and Europe; one of which resulted in a fund raising effort to help build a church for missionary work among the Indians of the San Blas Islands. A large part of their remaining schedule is taken up by churches and conventions on a regular basis.
The Deweys play 15 different instruments during their program ranging from various stringed instruments to keyboard and wind instruments. Bring the whole family because it is truly a musical experience to remember.

some \$1,344,811 from last year's total of \$20,836,783 as compared with September 1981 of \$22,181,594. Loans for Security State show a marked difference being \$4,195,243 down. September of 1980 showed \$10,223,997 against 1981 figures of \$6,028,754 for the year total.
Citizens State Bank at Earth was the second bank to show a decrease in deposits. Citizens recorded \$10,005,678 in 1980 as compared to \$9,463,000 at close of business September 30, 1981, a decrease of \$542,678. Loans at Earth show an increase of \$676,564 when comparing this year's total of \$7,232,000 over last year's total of \$6,555,436.
Friona State Bank shows an increase of \$2,997,699 deposits over last year's total of \$32,028,301. This year's total deposits were \$35,026,000. Total loans also show to be up from 1980's total of \$18,469,822 to 1981 total of \$20,919,000 an increase of \$2,449,178 at the end of business September 30, 1981.
The First National Bank at Sudan shows an increase in deposits this year in the amount of \$4,013,075. Last year showed \$6,570,025 compared to \$10,583,100

for September 1981. Loans at the Sudan bank are also up, showing \$2,298,361 for 1981 against \$2,060,053 for 1980, an increase of \$238,308.
The First State Bank at

showed a Bovina \$2,793,508 increase in deposits comparing September 1981 total of \$11,907,357 over \$9,113,849 at September 30, 1980 close of business.

Loans at this bank show \$8,147,366 for September 1981 against \$6,078,791 September 1980, an increase of \$2,068,575 in loans for September 1981 closing.

Touch Calling available in most areas

Get thin.

Slim down to a Styleline® phone. Or change your shape altogether. We've got a lot of different ones for you to choose from. Discover the phone that's you by calling your General Telephone business office.

STYLELINE
GTE

Report of Condition First National Bank

REPORT OF CONDITION

Consolidating domestic subsidiaries of the

First National Bank of Muleshoe
Name of Bank City

In the state of Texas, at the close of business on September 30th, 1981
published in response to call made by Comptroller of the Currency, under title 12, United States Code, Section 161.

Charter number 14745 National Bank Region Number 11

Statement of Resources and Liabilities		Thousands of dollars
ASSETS		
Cash and due from depository institutions		3,469,682.97
U. S. Treasury securities		999,414.07
Obligations of other U. S. Government agencies and corporations		500,561.64
Obligations of States and political subdivisions in the United States		4,472,621.93
All other securities		39,000.00
Federal funds sold and securities purchased under agreements to resell		17,013,329.58
Loans, Total (excluding unearned income)		186,056.23
Less: Allowance for possible loan losses		
Loans, Net		15,827,273.35
Lease financing receivables		NONE
Bank premises, furniture and fixtures, and other assets representing bank premises		1,181,215.64
Real estate owned other than bank premises		NONE
All other assets		1,183,174.52
TOTAL ASSETS		38,197,944.12
LIABILITIES		
Demand deposits of individuals, partnerships, and corporations		6,955,944.29
Time and savings deposits of individuals, partnerships, and corporations		20,363,856.88
Deposits of United States Government		49,760.08
Deposits of States and political subdivisions in the United States		948,264.92
All other deposits		25,000.00
Certified and officers' checks		587,936.05
Total Deposits		28,930,762.22
Total demand deposits		7,788,883.13
Total time and savings deposits		21,141,879.09
Federal funds purchased and securities sold under agreements to repurchase		NONE
Interest-bearing demand notes (note balances) issued to the U. S. Treasury and other liabilities for borrowed money		NONE
Mortgage indebtedness and liability for capitalized leases		NONE
All other liabilities		878,400.90
TOTAL LIABILITIES (excluding subordinated notes and debentures)		28,809,163.12
Subordinated notes and debentures		NONE

MEMORANDA		EQUITY CAPITAL	
Preferred stock	No. shares outstanding	NONE	(par value) NONE
Common stock	No. shares authorized	50,000	
	No. shares outstanding	50,000	(par value) 500,000.00
Surplus			800,000.00
Undivided profits and reserve for contingencies and other capital reserves			2,088,781.00
TOTAL EQUITY CAPITAL			3,388,781.00
TOTAL LIABILITIES AND EQUITY CAPITAL			38,197,944.12
Amounts outstanding as of report date			
Standby letters of credit, total			NONE
Time certificates of deposit in denominations of \$100,000 or more			5,725,223.14
Other time deposits in amounts of \$100,000 or more			NONE
Average for 30 calendar days (or calendar month) ending with report date			5,487,254.59

We, the undersigned directors attest the correctness of this statement of resources and liabilities. We declare that it has been examined by us, and to the best of our knowledge and belief is true and correct.

Ted Barnhill
Vice President & Cashier

/s/ M. D. Gunstream
/s/ Tommy C. Gunstream
/s/ Frank H. Ellis II

of the above-named bank do hereby declare that this Report of Condition is true and correct to the best of my knowledge and belief.

October 14th, 1981

WAREHOUSE SALE

KRAFT MACARONI AND CHEESE DINNERS

4 \$1
7 1/2 OZ. BOXES

BUY A CHICKEN FRIED STEAK SANDWICH ONLY \$1.49

AND RECEIVE A 24 OZ. COKE FREE

REFRESHING COCA-COLA \$1.29
2 LITER BTL.

WAREHOUSE SALE

RATH'S SALAMI/BOLOGNA LUNCHEON/PICKLE LOAF

LUNCH MEATS 6 1/2 OZ. PKG. 79c

BORDEN'S ASSORTED ICE CREAM 1/2 GAL. RD. CTN. \$1.69

WAREHOUSE SALE

MARGARINE QUARTERS KRAFT PARKAY

289c
1 LB. PKGS.

WAREHOUSE SALE

KRAFT REAL MAYONNAISE

\$1.29
32 OZ. JAR

ROCK NEW HARDBACK EDITION REG. \$9.95

TIME ENOUGH TO WIN \$6.95
BY ROGER STAUBACK

BUY ANY SIZE SLUSH PUPPIE AND RECEIVE A HALLOWEEN GOODIE BAG FREE

RATH'S COOKED HAM 5 OZ. PKG. \$1.39

BORDEN'S BUTTERMILK 1/2 GAL. \$1.19

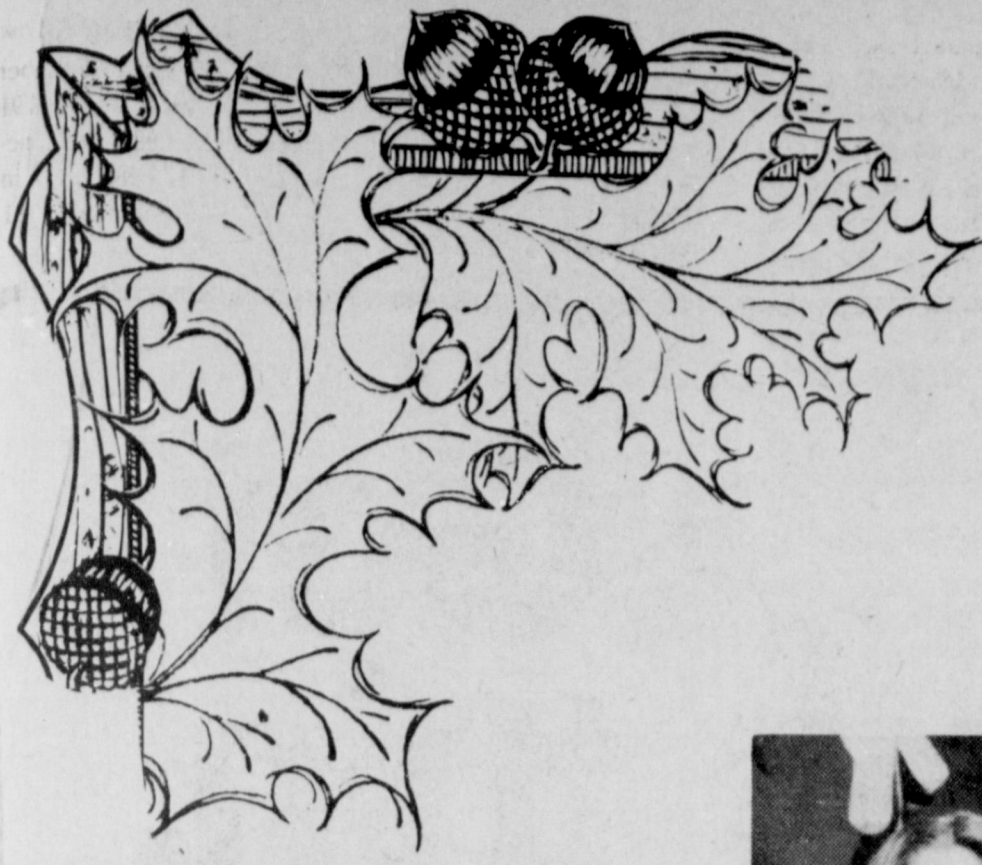
KRAFT JET PUFFED MARSHMALLOWS 10 OZ. BAG 79c

MORTON'S BEEF/CHICKEN POT PIES 3 8 OZ. PKGS. \$1

PRICES EFFECTIVE
OCTOBER 15-17, 1981
WHILE SUPPLIES LAST



"THERE'S ONE NEAR YOU"



1981 Miss Tri-County



Contestants



RHONDA DUNHAM



APRIL FREEMAN



SHERRI BESSIRE



KIM WILSON



STACY KINDLE



GLENDA PEACOCK



SHAWNIA BRANSCUM



SUSAN GLOVER



MARLEEA COX



CONNIE SHELTON



ERICA POPE



GALA MORRIS



CRISTAL TAYLOR



CYNTHIA LANE



MELINDA TURNEY



CRYSTAL COX



KEETHA GLOVER



RHONDA LINGNAU



TERRESA MANN



LORI SHALYN OURSBOURN



LAUREL DILLARD



ANGELA KIDD



SHANE SCHUSTER



CARRIE KINDLE



SHELLI TERRELL



KENDRA WILSON



LISA LOWE



SABRINA FAZ



MISTY DAWN COLE



POPPY GRIMSLEY



BRENDA ELLIS



CASSIE CUEVAS



NOEL VOURAZERIS



KIMBERLEA MELTON



SHANNON SANDEFER



Local Heart Unit Receives Torch Award

Members of the Bailey County Unit of the American Heart Association attended the Region 2 Leadership Workshop October 7 in Lubbock.

Lloyd Haire, president, accepted the Heart and Torch Award for Bailey County. This award denotes that more money was raised in Bailey County during 1980-81 for the American Heart Association than any previous year. Don and Laura Seales received a research award named in their honor and Clara Lou Jones and Don Seales both received service awards.

Dr. Wayne Cooper, of Texas Tech Medical School was the guest speaker and reviewed the newest breakthroughs in research related to heart problems.

Q- What is the current interest rate for buying a home with a VA guaranteed home loan?

A- Effective August 17, 1981, the interest rate was increased to 16 1/2 percent for home loans, 18 percent for mobile homes and 18 1/2 percent for mobile home lots.

Rotary...

Cont. From Page 1

Rotarians.

Other special guests Tuesday were wives of Rotary members, a California Rotarian, Henry Littlejohn, Walter Hughes, Farwell; Howard Watson, Bruce Prudy and Barry Cowart. Littlejohn presented the club a banner from his Rotary club in California.

Pauline Heffley, Council 1 Vice President, Amarillo, welcomed the group and challenged the volunteers to continue their dedicated efforts and time to help the American Heart Association.

Those attending from Muleshoe were Mr. and Mrs. Lloyd Haire, Mr. and Mrs. Don Seales, Mrs. Owen Jones and Mrs. Elizabeth Watson.

Michigan's Wolverines Face Iowa Hawkeyes

Miami (Florida, that is) is three and one, losing only to Texas 14-7, and Mississippi State is four and one, losing a big one to Missouri on national television 14-3. The Bulldogs of Mississippi State are the hosts in another of this year's clutch games for national ranking. Mississippi State won in a free-scoring affair last fall, 34-31, as both teams went on to appear in post-season bowl games. The Bulldogs have been on our list of Top Twenty Teams almost since the start of the season, and the Hurricanes could move in with a win here. Miami is the underdog by six points.

In the Big Ten, Michigan has already received one shock, that from the Wisconsin Badgers in the opening game of the season. Now the Wolverines are facing more trouble against the resurgent Hawkeyes of Iowa. The Hawks have bared their claws in upsetting both Nebraska and U.C.L.A. Another loss would probably knock Michigan out of the conference race for the first time in

The Sandhills Philosopher

Editor's note: The Sandhill Philosopher on his Johnson grass farm on Sandy Creek endorses one particular budget cut this week.

Dear editor:
Nobody can imagine space extending out forever and ever without end, nor

Michigan's Wolverines Face Iowa Hawkeyes

about two thousand years. Michigan may just squeak through....it's favored by a point.

North Carolina State entertains North Carolina in the 71st renewal of their intra-state Atlantic Coast Conference rivalry. The Tar Heels prevailed 35-21 last fall and look to be 25 points too tough for the Wolfpack again this year.

And Florida State is still barnstorming. Its fourth successive on-the-road performance is an invasion of Pittsburgh. Could be trouble either way...Pitt is favored by only six points.

Southern Methodist and Houston tangle in another headliner in the Southwest Conference. Houston edged S.M.U. 13-11 last fall as the two teams tied for the runner-up spot in the final conference standings. This year: S.M.U. by 5 points.

In the Big Eight Conference, Missouri should beat Iowa State by twenty points, and the Pac-10 will feature Southern California hosting Stanford...the Trojans should win by 24 points.

can anybody imagine what's beyond that if it does end, which brings me to one of the items out from the national budget.

For several years scientists have been using giant dish-shaped receivers to listen to sounds called microwaves coming from outer space, hoping to pickup something that would indicate there are intelligent creatures out there.

But the budget ax has fallen on the multi-million-dollar project and scientists manning it will have to try something else, possibly going back to listening to sea shells.

The scientists are disappointed, claiming that if they could keep on listening sooner or later they are bound to pick up a meaningful message from those microwaves, apparently never considering those waves might be coming from a fast-food cafe's microwave oven down the street.

I don't want to belittle those scientists' efforts. There very well could be intelligent creatures somewhere else out in the vast void of space on planets billions of miles away. But the reason they haven't contacted us is they're not interested.

Their receiving sets may have picked up sounds from earth and their scientists, on hearing say rock and roll music and worn-out political speeches, con-

cluded the sounds weren't coming from intelligent creatures.

Moreover, it's possible they heard about our high interest rates and high inflation rates and quickly turned their antennae in the other direction.

If they have a postal system out there too, the last thing they'd want its managers to hear is that the way to fight inflation is to raise the cost of mailing a letter 30 percent in one year.

Yours faithfully,
J.A.

Studying the Bible may not end warfare but it will improve human beings.

Texas Major Crimes Still On Rise

The number of major crimes reported in Texas during the first six months of 1981 rose 3.3 percent compared to the same period last year, according to DPS Director Colonel Jim Adams.

"Although this is a significant increase, it does indicate that the volume of major crimes in our state is rising at a lower rate that we saw last year," Adams said.

In 1980, major criminal offenses in Texas increased

9.9 percent in comparison to 1979.

Major index crimes recorded by the DPS Uniform Crime Reporting Bureau during the first half of this year totaled 431,409.

"Based on reports from Texas police agencies for the first six months of 1981, burglary showed the largest increase by category, rising 8.2 percent to 133,621 cases," Adams pointed out.

The DPS director said one of the major crime categories actually registered a decline.

"Murder cases reported

during the first half of this year totaled 1,143—a decrease of 2.1 percent from the same period in 1980."

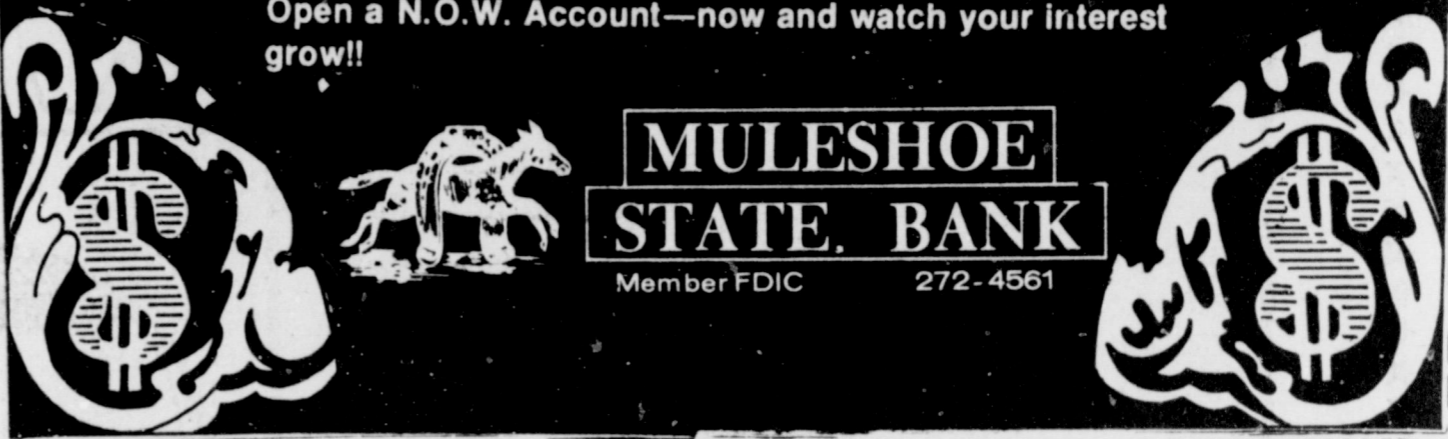
The remaining violent crime categories showed increases, with aggravated assaults up 3.8 percent and rape and robbery each posting increases of 3.5 percent.

The property crime categories of motor vehicle theft and larceny-theft rose 2.5 percent and point-five percent respectively.

Total property loss attributed to major index crime in the first half of 1981 was estimated at \$400 million.

If Not N.O.W. When?

If you haven't yet combined your savings and checking accounts into a Muleshoe State Bank N.O.W. Account, you're losing interest—fast!! The N.O.W. Account acts like a regular checking account—there when you need it. Open a N.O.W. Account—now and watch your interest grow!!



MULESHOE STATE BANK
Member FDIC 272-4561

Harmon Forecast

Saturday, Oct. 17 — Major Colleges

Alabama	23	Tennessee	7
Appalachian State	21	V.M.I.	10
Arizona State	24	California	10
Arkansas State	15	Tenn.-Chattanooga	14
Army	28	Princeton	10
Auburn	17	Georgia Tech	14
Bail State	21	Kent State	14
Brigham Young	33	San Diego State	14
Central Michigan	23	Toledo	22
Citadel	37	Davidson	7
Clemson	26	Duke	7
Colgate	22	Lafayette	10
Colorado	22	Oklahoma State	20
Cornell	21	Brown	20
Dartmouth	20	Harvard	16
East Carolina	22	SW Louisiana	21
East Tennessee	26	Western Carolina	24
Florida	23	Mississippi	10
Furman	24	James Madison	8
Georgia	38	Vanderbilt	17
Hawaii	21	New Mexico	12
Holy Cross	21	Connecticut	13
Indiana State	23	Tulsa	21
Kentucky	23	L.S.U.	20
Lamar	23	Louisiana Tech	14
Long Beach State	24	Pacific	14
Louisville	25	Tennessee State	7
Marshall	17	William & Mary	13
Maryland	24	Wake Forest	12
McNeese State	27	NE Louisiana	12
Michigan	24	Iowa	23
Minnesota	28	Indiana	20
Mississippi State	20	Miami, Fla.	14
Missouri	30	Iowa State	10
Navy	27	Boston College	13
Nebraska	38	Kansas State	7
New Mexico State	24	Illinois State	21
North Carolina	38	No. Carolina State	13
Northern Illinois	24	Bowling Green	22
Ohio State	27	Illinois	21
Ohio	36	Eastern Michigan	6
Oklahoma	28	Kansas	13
Oregon	20	Arizona	7
Penn State	31	Syracuse	7
Pittsburgh	23	Florida State	17
Purdue	41	Northwestern	6
Richmond	21	Cincinnati	16
San Jose State	38	Cal-Fullerton	8
South Carolina	21	Virginia	7
South'n California	34	Stanford	10
Southern Illinois	20	Fresno State	19
S.M.U.	25	Houston	20
Soth'n Mississippi	23	Memphis State	13
Temple	27	Rutgers	20
Texas A & M	24	Baylor	23
T.C.U.	26	Utah State	14
Texas Tech	21	Rice	20
Texas	26	Arkansas	20
Tulane	21	Air Force	12
U.C.L.A.	28	Washington State	21
Utah	34	Colorado State	6
Washington	28	Oregon State	6
West Texas	21	Wichita	17
West Virginia	24	V.P.I.	20
Western Michigan	26	Miami (Ohio)	21
Wisconsin	24	Michigan State	13
Wyoming	35	Texas-El Paso	0
Yale	42	Columbia	6

Other Games — South & Southwest

Angelo State	23	Abilene Christian	21
Carson-Newman	21	Mars Hill	10
Concord	21	West Va. Tech	6
East Texas	24	Howard Payne	20
Eastern Kentucky	35	Dayton	10
Elon	28	Presbyterian	13
Emory & Henry	17	West Va. State	6
Fairmont	17	West Va. State	6
Gardner-Webb	20	Catawba	10
Grambling	16	Randolph-Macon	8
Hampden-Sydney	17	Washington & Lee	14
Henderson	23	Arkansas Tech	13
Howard	20	Virginia State	7

Other Games — South & Southwest (Cont.)

Jackson State	34	Southern U.	7
Jacksonville	21	Alcorn	17
Liberty Baptist	22	Lenoir-Rhyne	20
Livinston	31	Harding	7
Mississippi College	24	Duquesne	7
Murray State	24	Middle Tennessee	20
Nicholls State	23	Texas Southern	0
North Alabama	41	Langston	0
Shepherd	25	West Va. Wesleyan	6
SE Louisiana	21	Tenn.-Martin	6
Southern Arkansas	24	Central Arkansas	14
So. Connecticut	22	Towson State	21
SW Texas State	49	Sam Houston State	14
Texas A & I	28	F. Austin	14
Troy Duke	34	Delta State	6
West Georgia	31	Centre	6
Western Kentucky	37	Louisiana Tech	12
Winston-Salem	27	Fayetteville	10
Wofford	26	Newberry	14

Other Games — East

Albany State	20	Cortland State	6
Alfred	31	Hobart	6
Allegheny	17	Washington & Jeff'n	14
Baldwin-Wallace	24	Westminster	14
Boston U.	23	Rhode Island	13
Bucknell	28	West Chester State	13
Delaware	33	Youngstown	10
Gettysburg	28	Swarthmore	12
Ithaca	30	Brockport State	6
Junia	38	Wilkes	0
Lehigh	28	New Hampshire	7
Massachusetts	30	Maine	0
Millersville	34	Bloomsburg	0
Monclair State	34	William Paterson	7
Muhlenberg	42	Carleton Valley	17
Northeastern	21	American Intern'l	19
R.P.I.	20	Union	19
Salisbury State	21	Trenton State	20
Slippery Rock	23	Edinboro	21
Springfield	26	Cent. Connecticut	14
Thiel	21	John Carroll	12
Trinity	24	Colby	21
Tufts	22	Middlebury	12
Wesleyan	29	Bates	12
Williams	21	Bowdoin	13

Other Games — Midwest

Adrian	37	Kalamazoo	6
Albion	17	Olivet	7
Ark. Monticello	21	SE Missouri	20
Bethany	20	Southern, Kan.	16
Butler	19	Georgetown, Ky.	14
Carnegie-Mellon	21	Case Reserve	16
Carroll	21	Illinois Wesleyan	16
Carthage	31	North Park	6
Concordia, Minn.	7	St. Thomas	6
Concordia, Neb.	37	Doane	6
Defiance	25	Bluffton	10
E. Central Oklahoma	23	NW Oklahoma	14
Eastern Illinois	28	Western Illinois	16
Elmhurst	23	Milikin	6
Evansville	24	Valparaiso	7
Gustavus	20	Augsburg	17
Hope	23	Alma	8
Indiana Central	22	St. Joseph's	13
Iowa Wesleyan	27	St. Ambrose	15
Kansas Wesleyan	20	Tabor	13
Kearney	26	Missouri Western	17
Midland	15	Nebraska Wesleyan	13
Missouri Southern	26	Emporia	20
Missouri Valley	33	Central Methodist	6
Moorhead State	33	Northern State	0
Morehead State	21	Akron	10
No. Dakota State	35	Augustana, SD	10
North Dakota	24	Nebraska-Omaha	10
NE Missouri	24	Central Missouri	15
NE Oklahoma	35	Evangel	6
Northern Michigan	34	Northwood	6
Ohio Northern	21	Muskingum	13
Peru State	24	Chadron State	6
South Dakota Tech	40	Dakota Wesleyan	7
Wabash	33	Heidelberg	13
Wayne, Mich.	24	Michigan Tech	17
Westmar	21	Yankton	13
Wis-Stevens Point	21	Wis-Superior	12
Wittenberg	27	Woodbury	7

Other Games — Far West

Bishop	22	Eastern New Mexico	20
Cal-Davis	24	Cal Poly (S.L.O.)	17
Cal Poly (Pomona)	21	Santa Clara	14
Hayward	26	Chico State	20
Macalester	15	Colorado College	14
Nevada-Reno	27	Weber State	14
Northern Arizona	24	Portland State	12
Northern Colorado	22	South Dakota	21
Pacific Lutheran	27	Williamette	6
Puget Sound	23	Northridge	13
Redlands	21	Azusa	14
Sacramento State	23	Cal Lutheran	17
San Francisco State	23	Humboldt	17
Sacramento State	24	Central Washington	20
Whittier	20	Pomona	17

Announcing...

Members Of The Muleshoe Bands Are Selling Subscriptions To The Muleshoe & Bailey County Journals During Their Annual Magazine Drive Friday, October 9 - Friday, October 16

The Muleshoe Publishing Co. Will give the Bands 50% Of Any NEW Subscription & 25% Of Any Renewals.


So Answer Those Doorbells!

The Money Raised Will Go Into A Special Fund Used For Travel Expenses.

The Band Members Selling The Most Subscriptions Will Be Awarded \$100

From The Muleshoe Publishing Co.

Support The Mighty "M" Band



Presented By:
**Barry & Young
Equipment**

803 W. Amer. Blvd. 272-4236 Muleshoe, Tx.

Back The Mules

FOOTBALL CONTEST

1st Place **\$5** 2nd Place **\$3** 3rd Place **\$2**

Grand Prize \$50 & 2 Tickets To Cotton Bowl Jan 1.

Also There Will Be A Contest & Prizes For The Bowl Games

NAME THE WINNING TEAM EACH WEEK...

You Have Until 5:30 p.m. Friday To Enter

OFFICIAL ENTRY FORM
PICK THE WINNING TEAMS

1. Harvard _____	<input type="checkbox"/>	Dartmouth _____	<input type="checkbox"/>
2. Rice _____	<input type="checkbox"/>	Texas Tech _____	<input type="checkbox"/>
3. Cornell _____	<input type="checkbox"/>	Brown _____	<input type="checkbox"/>
4. Auburn _____	<input type="checkbox"/>	Georgia Tech _____	<input type="checkbox"/>
5. L.S.U. _____	<input type="checkbox"/>	Kentucky _____	<input type="checkbox"/>
6. Pittsbureh _____	<input type="checkbox"/>	Florida State _____	<input type="checkbox"/>
7. Oklahoma State _____	<input type="checkbox"/>	Colorado _____	<input type="checkbox"/>
8. Tulsa _____	<input type="checkbox"/>	Indiana State _____	<input type="checkbox"/>

TIEBREAKER

1. Texas A&M vs Baylor

2. Houston vs SMU

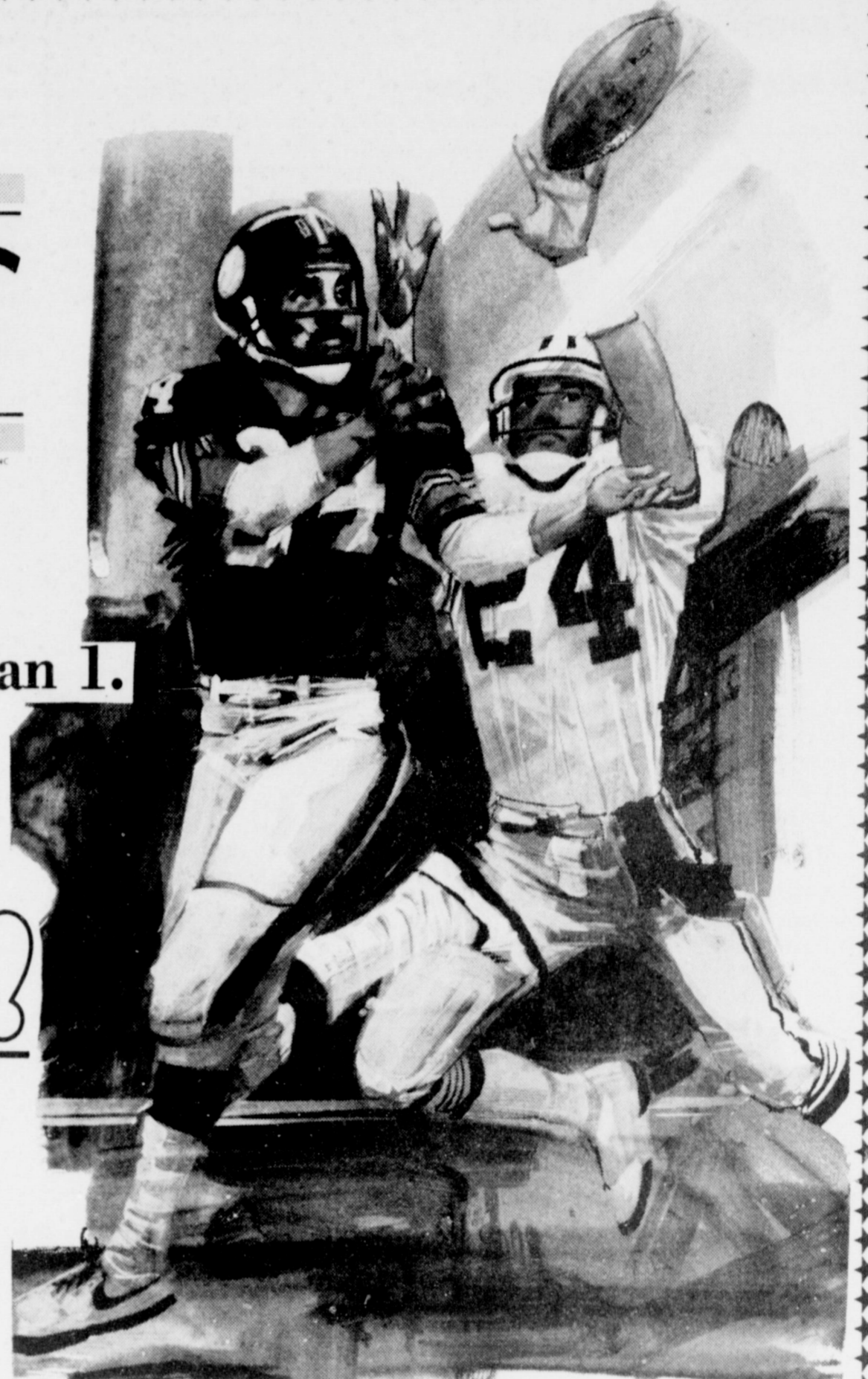
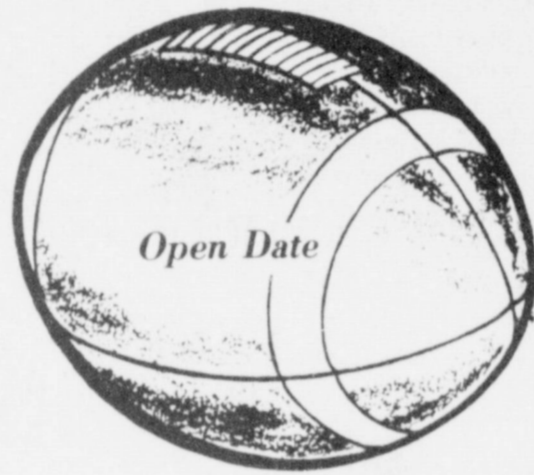
YOU MUST PREDICT THE SCORE OF BOTH TIEBREAKER GAMES.

NAME _____

ADDRESS _____

CITY _____ PHONE _____

WIN!



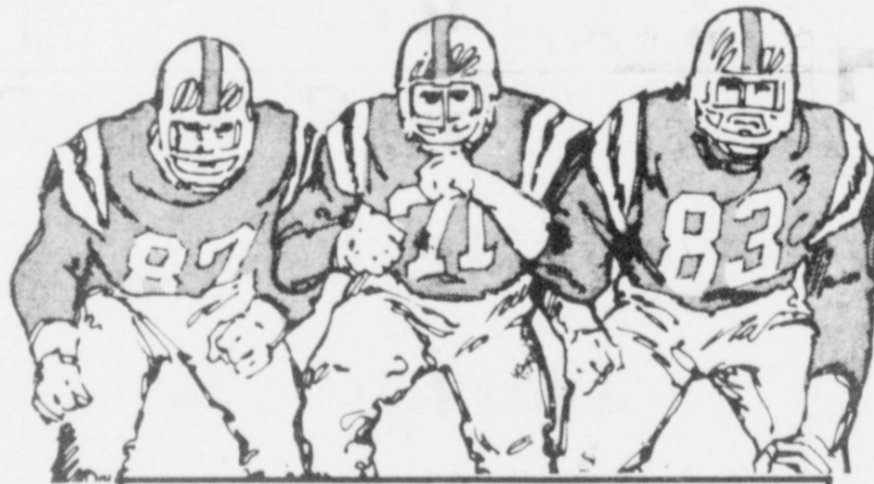
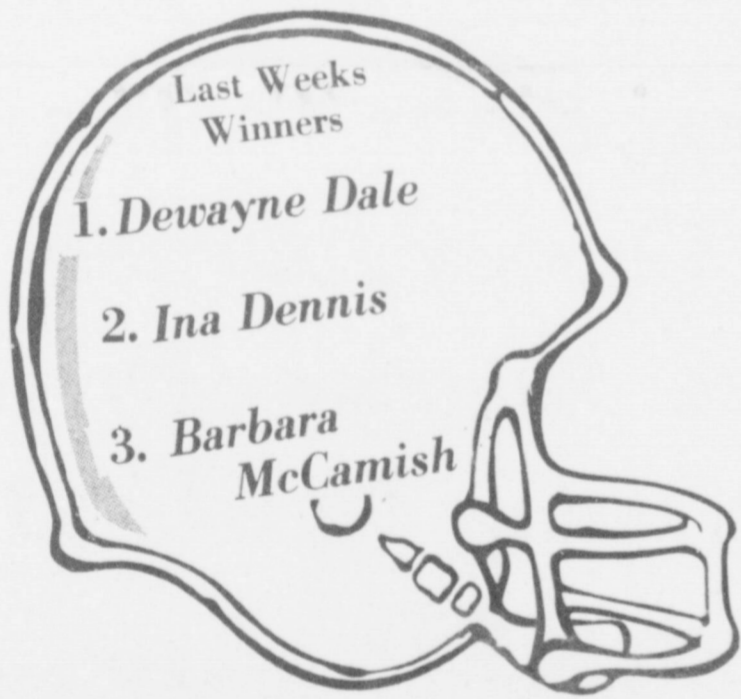
Rules Of The Games:

1. The contestant must be 12 years or older.
2. Only one entry per person may be made for any one contest.
3. Weekly contests are open to everyone except employees and families of this newspaper; bring or mail your entries to the Journal office.
4. Mailed entries must be postmarked not later than 5:30 p.m. Friday; winners names will be published in this newspaper each Thursday following the close of the weekly contest.
5. Check the team you think will win; 10 points for 1st place, 6 points for 2nd place and 4 points for 3rd place determines the Grand Prize winner.
6. The tiebreakers will count as one of the games picked, the predicted scores will be used to determine the top three places in that week's contest, if necessary, and cash prizes and points will be divided between winners in event of ties. Please write FOOTBALL CONTEST on the envelope of the mailed entry. Decision of the Journal's scoring judges will be final.

Please write FOOTBALL CONTEST Box 449, Muleshoe, Texas on envelope of mailed entry.

You Have Until 5:30 p.m. Friday To Enter

Please Write Football Contest, Box 449, Muleshoe, Texas on Envelope of Mailed Entry.



**Decorators
Nursery & Floral**

<p>Brian Pohlmiel Mgr.</p>	<p>Main Street Beauty Salon</p>	<p>Terry Field Insurance</p>	<p>MULESHOE STATE BANK 101 AMERICAN BLVD 272-4561 MEMBER FDIC</p>
<p>Latrell's Fashions PHONE 806 272-3459 1519 WEST AMERICAN BLVD</p> <p>MERLE NORMAN COSMETICS</p>	<p>First National Bank</p>	<p>Robert Green Inc. "Your Oldsmobile, Buick, Pontiac & GMC Dealer"</p>	<p>Wooley International Inc.</p>
<p>Bailey County Electric Cooperative Association</p>	<p>Shipman & Sons Body Shop</p>	<p>Cliff Allen Custom Saddles</p>	<p>Spudnut Shop Beth and Cleo Webb, Owners</p>
<p>Western Drug</p>	<p>Looking Good</p>	<p>American Valley Inc.</p>	<p>Lambert Cleaners</p>
<p>Thornton Cheverolet</p>	<p>McCormick Seeds Inc.</p>	<p>Shook Tire Co.</p>	<p>Muleshoe Antenna Co.</p>
<p>Western "66" Co.</p>	<p>Farmers Co-op Elevators</p>	<p>El Nuevo Leal's Restaurant</p>	<p>Henry Insurance & Realty</p>

Sudan News

By Evelyn Ritchie

Mrs. Marge Nelson has been a patient in the Methodist Hospital following a fall at her home Saturday when she received two broken arms.

Mr. and Mrs. Wayne Doty were in Odessa during the weekend to visit their daughter and family, Mr. and Mrs. Billy Wayne Gore, Stephanie and Dennis.

Alma Fiveash was taken by ambulance Thursday evening to the Littlefield Hospital. She is the sister of Ruby Fulcher.

Frogs are lucky, they can eat what bugs them!

Some 47 persons left Sudan early Saturday, Sept. 26 for Dallas to attend the Dallas Cowboy-New York Giants game held on Sunday afternoon.

Dottie LaGrone was coordinator for the trip with the help of the Lions Club president, Tommy Moss and Chamber of Commerce president, Ron Montgomery.

The group included Mr. and Mrs. Jim Bob Hargrove, Mr. and Mrs. Clyde Flowers, Mr. and Mrs. Kim Hurst, Mr. and Mrs. Kevin Humphreys, Mr. and Mrs. Pete Phillips, Shirley Martin, Joe and Gordon and Shirley's mother, Ruby Owenby, Terry Tennyson and Ricky, Terry's brother-in-law, Terry.

Frances Gardner and Bill, Mart Davison, Larry Bellar, James Locke, Ron Cosby, Elton Booth, Dottie LaGrone, Joe Bellar and Jared, Mr. and Mrs. Al Harrison, Sharla and Jay, Patty Miller, Misty and Stephanie, Joyce Crouch (Patty's aunt), Mr. and Mrs. George Ritchie, Mr. and Mrs. B.A. Beauchamp, Mr. and Mrs. Edward Fisher and Charlie, Mr. and Mrs. Tommy Moss, Mr. and Mrs. Ron Montgomery and Chris Kelp.

Mr. and Mrs. Jim Hargrove have been vacationing in Inks Lake near Buchanan and attended the Sedgwick family reunion there.

Bernadette May has been notified by the State Board of Nurse Examiners that she passed her state board exams and is now classified as an RN. Congratulations. Bernadette is the daughter of Mr. and Mrs. Harold May.

Mr. and Mrs. Tom Word of Lockney visited Sunday in the home of Mr. and Mrs. Claud Kropp.

Mrs. J.C. Doty and Mrs. Bertie Gann were in Lubbock to attend a lingerie shower honoring their daughter and granddaughter, Vicki. The event was hosted by employee of the Security National Bank there where she also is employed.

Stephanie Grey, daughter of Mr. and Mrs. Dwayne Grey of Vega spent a weekend with her grandparents, Mr. and Mrs. Billy Hanna.

Mrs. Ruby Serratt and Mrs. Helen Hall of Muleshoe visited with Mable Reed.

Wynelle Williams and Larue Edwards were in Spearman to attend an art show.

Roy Ingram left for Midland after having been

here several days with his parents, Mr. and Mrs. Jack Ingram.

Heather Harrison, daughter of Mr. and Mrs. Freddie Legg, was honored Saturday with a party in the home of her parents.

Strawberry Shortcake Doll theme was carried out with a Strawberry Shortcake tablecloth, cups, napkins and plates.

Punch and cake baked and decorated by Mechelle Edwards were served to the guests.

Attending were her cousins, Amy and Michael Reasoner of Levelland and Austin Muller of Littlefield. Others were Kyle Edwards, Brooke Baker, Brad Hanna, Ryan and Stacie Masten, Missy Kuykendall, Charlie Smith, Chris and Kiki Kelp, Bo

and Keiff Baker and Justin Harrison, brother of the honoree. Others attending were his grandmother, Mrs. Louise Legg; aunt, Velma Reasoner of Levelland, Connie Edwards, Tanya Masten, Beckee Kelp and Mary Kay Baker.

Mr. and Mrs. Elmer Peterson of Almagordo, N.M. have been visiting

his sister, Mr. and Mrs. Guy Walden.

Mr. and Mrs. Dodd Harragan were in Spearman during the weekend for an art show and sale, while Mrs. John Humphreys attended one in Lubbock.

Mr. and Mrs. James Carroll Williams of Here-

ford visited Friday with their parents, Mr. and Mrs. Early Bartley and Mr. and Mrs. Henry Williams. Also visiting the Williams was Mrs. Bud Williams of Edinburg.

Visiting with Mr. and Mrs. Audrey West were their daughter and son-in-law, Mr. and Mrs. Rory Glidewell.

Kay Lynn and Joe Ethridge of Hereford visited during the weekend with their grandparents, Mr. and Mrs. Gilbert Churchman and uncle, Mr. and Mrs. Scott Churchman and little Scott.

Mr. and Mrs. Audrey West returned home from Vernon where they spent a

few days. Mr. and Mrs. Glen Cardwell were in Lubbock Saturday and visited with his sister, Mr. and Mrs. Ernie Fish and other relatives.

Boot & Shoe Repair
111 East 4th

Don't let a few big specials fool you!

SMALL CHANGE SAVINGS ADD UP TO DOLLAR SAVINGS FAST!

COUNTRY PRIDE GRADE A Baking Hens 5-7 LB. 59¢ LB.

PEYTON'S HAMS QUICK CAN FULLY CUT BONELESS 1 LB. \$1.89

HOT LINKS RATH 1 LB. 89¢

OWENS COUNTRY SAUSAGE REG.-HOT-MILD-SAGE 1 LB. \$1.69

WHITE SWAN PIMENTO CHEESE SPREAD 7 1/2 OZ. 79¢ 14 OZ. \$1.49

CORNED BEEF BRISKET MORTON 2-3 LB. 1.89

JOIN in the SAVINGS CELEBRATION!

Save on these fine products from Colgate

- Palmolive Dishwashing Liquid 13¢ OFF LABEL 22 OZ. \$1.09**
- Dynamo Laundry Detergent 50¢ OFF LABEL 64 OZ. \$3.19**
- Fab Laundry Detergent 20¢ OFF LABEL 49 OZ. \$1.99**
- Irish Spring Deodorant Soap 6¢ OFF LABEL 5 OZ. 49¢**

HEALTH & BEAUTY AIDS

- FLEX SHAMPOO 20¢ OFF 16 OZ. \$1.59**
- FLEX NET HAIR SPRAY 20¢ OFF 12 OZ. \$2.19**
- COLD TABS TRIAMINIC 20 CT. \$3.19**

Paper Towels 89¢
BOUNTY WHITE ASSORTED DESIGNERS JUMBO ROLL

Heirloom quality European 24% Lead Crystal FREE

Collect our CASH SAVER COUPONS and save over \$287 on a complete 48-pc. service for 8

It's so easy - just fill in the Cash Saver Card with Cash Saver Coupons. You'll receive one coupon with every \$5 purchase. For example, if you make a \$15 purchase, you'll receive 3 coupons. It only takes 20 coupons to fill each card. Each completed card entitles you to your choice of 1 place setting piece* FREE! Start today - collect a complete set of sparkling Sheffield crystal at unbelievable savings.

*One Stemmed Water Goblet, Stemmed Wine, On-the-Rocks, Cordial, Beverage or Champagne/Sherbet

FRESH FROZEN FOODS

Corn on the Cob BIRDEYE \$1.09 4 CT.

BRIGHT & EARLY ORANGE DRINK 12 OZ. 59¢

HORMEL BURRITOS BEEF-CHEESE-HOT CHILI 16 OZ. \$1.59

Spam LUNCHEON MEAT \$1.39 12 oz.

MAXWELL HOUSE MASTERBLEND Coffee \$1.89 13 OZ.
REGULAR ELECTRIC AUTOMATIC

COFFEEMATE 16 OZ. \$1.69

VIENNA SAUSAGE ARMOUR CHICKEN 5 OZ. 45¢

AMERICAN BEAUTY LONG SPAGHETTI 24 OZ. 99¢

RAGU SPAGHETTI SAUCE PLAIN-MEAT-MUSHROOM 32 OZ. \$1.49

INSTANT NESTEA 100% TEA \$2.39 3 OZ. JAR

SOFT'N PRETTY BATH Tissue \$1.59 6 ROLL PKG. ASSORTED

WHITE SWAN Shortening \$1.39 3 lb.

Potatoes \$1 4 lbs. FOR COLORADO RUSSET
FIRM GREEN HEADS CABBAGE 10¢ LB.

CALIFORNIA SUNKIST Lemons 10 \$1 FOR
FLORIDA Corn GOLDEN EARS 5 \$1 FOR
CALIFORNIA HASS AVOCADOS 5 \$1 FOR
YELLOW MEDIUM SIZE ONIONS 6 \$1 LBS.

COCA COLA \$1.69 6-32 oz. cnt. Plus Deposit

PET EVAPORATED MILK 13 OZ. 59¢

PAM COOKING SPRAY 6 OZ. \$1.59

OWEN'S CHILI \$1.89 1 lb. ROLL

SOFT'N LITE ALL PURPOSE FLOUR \$4.49 25 lb.

GARDEN CLUB GRAPE JELLY 18 OZ. 75¢

VANISH BOWL CLEANER 20 OZ. 69¢

FIELD TRIAL CHUCK DOG FOOD 25 LB. \$4.49

GLASS CLEANER SPRAY WAY 19 OZ. \$1.69

White's Cashway Supermarket
Open 7:30 To 9:00 MondaY To SaturdaY 12 P.M. To 9:00 P.M. SundaY
Double Gunn Bros. StampS Every Wednesday & SaturdaY

THE BIG DOUBLE BARREL SHOOT OUT

Sudan News

By Evelyn Ritchie

Mr. and Mrs. James Humphreys and Mr. and Mrs. Terry Swart have been vacationing on the coast for the past few days.

Mr. and Mrs. Tommy Moss and Troy, Mr. and Mrs. Carroll Legg and Courtney and Mr. and Mrs. Pal Legg vacationed at Colorado City Lake during the Labor Day holidays. Jo Ann Williams accompanied them.

Mr. and Mrs. Ansel Locke and James vacationed with relative in Abilene during the holidays.

Mrs. Marge Nelson, Johnny and Donnie attended her family reunion held at Possum Kingdom during the Labor Day holiday.

Son Qualls visited recently in Littlefield with his sister and brother-in-law.

Mr. and Mrs. Frank Prokop and girls of Odessa visited during the weekend with their parents and grandparents. Mr. and Mrs. Dorman Chester and were

here to attend the celebration honoring her grandmother, Mrs. Annie Chester on her 90th birthday.

Mr. and Mrs. Scott Churchman and son accompanied his parents, Mr. and Mrs. Gilbert Churchman to Hereford to visit their sister and daughter, the Jerry Ethridge family.

The Sudan Cooster Club met Monday evening in the school cafeteria with Edward Fisher, president, calling the meeting to order.

Seventeen members attended with Coach Boyles showing the film of the game Friday night between Sudan and Motley County.

Son reported that he has sold 169 Booster Club membership cards and has sold all the caps.

Pee Wee Lance won the football tickets for this week.

Tana Stephens and Lisa Boyles furnished refreshments.

The Junior High played Springlake-Earth here Thursday night and the Hornets played at Springlake-Earth on Friday.

Remember, Booster Club meets every Monday night at 7:30 and everyone is invited to attend.

Mrs. Mary Tollett, Mrs.

Bob Drake and Mrs. Herb Potter were in Childress last week to attend the North Texas Conference of United Methodist Women annual meeting.

Mrs. Tollett is the Treasurer of the Plainview District UMW and participated in the pledge service on Saturday.

Bishop Louis Schowengerdt of Northwest Texas Conference of Albuquerque, N.M. was the main speaker for the event.

Don't forget to attend the pep rallies--Jr. High at 12:30 p.m. on Thursdays and at 3:25 p.m. on Fridays for High School Hornets. Everyone is invited and urged to attend these and help the Hornets to a win.

Den 1 Pack #635 Cub Scouts met Tuesday at 5:00 at the Community Center. Boys showed their projects they had made for the September theme: Communication.

Two new members are Shannon Fisher and Cris Kelp.

Refreshments were served to those attending including Len Kuykendall, Treney Humphreys, Charlie Smith, Doug Provence, Cris Kelp, Shannon Fisher, and Charles Williams.

The Cub Scouts meet

every Tuesday at 5:00 p.m. at the Community Center.

Mr. and Mrs. Claude Blanchard have been vacationing at Del Rio and Zapata.

Mr. and Mrs. Billy Gerik of Morton visited Thursday with her mother, Mrs. Opal Pennington and had lunch with her at the Main Place.

Truman Lee Willingham was released Thursday from the Amherst Hospital.

Donald Doty, son of Mr. and Mrs. Wayne Doty has been in Dallas this week to attend a Mechanic school.

Mr. and Mrs. Wayne Whiteaker hosted a dinner Sunday in honor of the 86th birthday of his mother Mrs. Vena Whiteaker.

Others attending included Mr. and Mrs. Paul Costello of Wolforth and Mr. and Mrs. Brent Whiteaker and Miriam of Lubbock.

Sherry Whiteaker is attending the Asbury Seminary in Wilmore, Kentucky and is also employed at the University of Kentucky at Lexington. She is the daughter of Mr. and Mrs. Wayne Whiteaker.

Marleea Cox, Granddaughter of Mr. and Mrs. Matt Nix is an entry in the Miss Tri County pageant. She is the 16 year old daughter of Mr. and Mrs. Reagan Cox of Muleshoe, and enjoys swimming, watching football and reading, sewing, cooking and playing the piano. She is active in school and church activities.

Susan Glover, 17 year

old daughter of Mr. and Mrs. Jerry Don Glover of Lazbuddie and niece of Mrs. Billy Chester is an entry in the Miss Tri County pageant. She is active in basketball, water-skiing and enjoys the piano in her leisure time. She is active in FHA, vice presi-

dent of the Senior class at Lazbuddie High and plans to attend SPC upon graduation.

Mr. and Mrs. J.L. Hargrove of Lubbock visited during the weekend with their children, Mr. and Mrs. Dale Newson and

family and Mr. and Mrs. Jim Bob Hargrove and family.

Mr. and Mrs. Roy Gene Graves, Jim Bob and Amanda Kay of Amarillo visited last week with his parents, Mr. and Mrs. Roy Graves and his brother.

Mr. and Mrs. Bob Graves. They also visited with his grandmother, Mrs. Annie Glasscock.

Elaine Hollingsworth has been released from the Littlefield Medical Center where she recently underwent surgery.

Upland Cotton Forecast At 6.6 Million Bales

The 1981 Upland crop in New Mexico, Oklahoma and Texas was forecast at about 6.6 million bales on September 1. If a crop of this size is realized, it would be 83 percent larger than the 1980 crop of 3.6 million bales.

After getting off to a slow start in some areas of the three states, almost ideal weather and growing conditions brightened prospects of an excellent crop. Early Texas areas suffered weather related losses which may be the forerunner of things to come in the later Texas areas. Rainfall and cooler than normal temperatures the latter part of August and the first half of September delayed maturity and caused rank new growth in some areas. Bollworm activity increased and caused damage in many fields; however, near mid-September activity appeared to be winding down, although some hot spots still existed.

Generally the crop in New Mexico, Oklahoma and Texas is in good to excellent condition. However, some fields in South-

central Texas were plowed under due to poor development and prospects. Market conditions do not appear too favorable at the present for the expected large crop. Cool, wet weather has delayed maturity of the crop and may affect quality. A later than normal freeze date and warm open weather is needed for the 1982 crop to reach its potential.

Defoliation of the San Joaquin Valley cotton crop commenced at mid-September and final repairs of the cotton harvesting equipment were winding down.

While reports indicate the acreage for harvest in California will be down slightly, the predicted yield per acre is expected to jump from last year's output of 995 lbs. per acre to 1,063 lbs. and the total production will show a gain of some 191,000 bales - from 3,109,000 to 3,300,000 bales. If realized, this year's crop will be 3 percent smaller than the record crop produced in 1979. Development is almost one month ahead of last year.

Progress of the Arizona cotton crop has been above average this season and near ideal growing conditions have prevailed. Since about mid-season, Arizona's cotton fields in some areas have been plagued with insect problems requiring more pesticide applications than normal.

Faced with an unstable market price, some growers may terminate their cotton earlier than usual, as additional expenditures might not be justified.

Arizona's upland cotton is forecast at 1,500,000 bales which, if realized, will be an increase of 11 percent above last year's output and will be a new all-time record.

Total U.S. cotton production was forecast at 15.5 million bales this year up 39 percent from the 1980 crop, according to the September 1 U.S.D.A. report. Of the total U.S. cotton crop, the major Santa Fe-served states of Arizona, California, New Mexico, Oklahoma and Texas were forecast at 11,452,000 bales about 74 percent of the total U.S. crop.

Gas heating saves \$226 per year!

Compared to the heat pump, gas heating can save you \$226 per year on your utility bills. So if you hear that a heat pump is "more economical", remember, that is comparing it to other electric heating... not to gas! No other heating system even comes close to gas for economy. At Energas, we are committed to help you get the most for your heating dollar. Gas heating, combined with good conservation practices, saves energy, too.

ENERGAS
Efficient Gas Energy for West Texas

Based on 1981 U.S. Fuel-Bills Average Values

We're Explaining Many New Tax Savings Opportunities And You're Invited

With the Economic Recovery Tax Act of 1981, Congress made some sweeping changes in the Internal Revenue Code. These changes will affect tax rate reductions, savings incentives, depreciation rules, investment credit, research and development. Hopefully, they will also create capital for reinvestment into American business.

But, even better still, the Economic Recovery Tax Act of 1981 means big savings opportunities for you. That's why we are sponsoring a seminar to explain all the ramifications the act entails and you're invited to attend.

Seminar Relating to The Economic Recovery Tax Act of 1981
Monday, October 19, 1981
Bailey County Coliseum Meeting Room
Lunch and seminar materials provided.
Please RSVP 272-4561 if you plan to attend. 8:30 AM

Co-sponsored by Williams, Adair, Sudduth & Company and Muleshoe State Bank

<p>True Value HARDWARE STORES</p> <p>TOOL VALUE OF THE MONTH</p>	<p>True Value HARDWARE STORES</p> <p>BARGAIN OF THE MONTH</p>	<p>True Value HARDWARE STORES</p> <p>HARDWARE VALUE OF THE MONTH</p>
<p>WISE-GRIP Quantities Limited</p> <p>Reg. 7.19 now 3.79 SOLD OUT supplies last</p> <p>SKINNING PLIERS Vise Grips are the original pliers with adjustable jaws that lock securely but release easily. 7-inch Vise-Grip also has wire cutter. 7WR</p>	<p>Rubbermaid Roughneck Wastebasket Reg. \$25.95 Now \$14.88 30 Gallon Choice Of: Dark Green W/Lighter Top Dark Brown W/Lighter Top</p>	<p>Reg. 10.00 SOLD OUT While Supplies Last</p> <p>True Value 12 OF 20 Value Bright Frosted Light Bulbs You'll be burning bulbs longer as days get shorter, so stock up now with a case of twelve 60-watt and eight 100-watt bulbs. VB9020 Quantities Limited</p>

Fry & Cox, Inc.
401 South 1st Muleshoe 272-4511

WHAT'S HAPPENING IN THE...

CLASSIFIED SECTION

Deadline For Classified Ads Is 11:00 Tuesdays And Fridays

CLASSIFIED RATES 1st Insertion, Per Word--\$.15 Minimum Charge--\$2.00

Need mature waitress, part time. Available to work Saturdays and Sundays.

Work at home jobs available! Substantial earnings possible.

8. REAL ESTATE FOR SALE FOR SALE: Rancho No Tango barn and 2 acres and home.

1/2 section irrigated land. 3 1/2 miles southeast of Lubbock. 2 liveable houses.

J.B. SUDDERTH REALTY INC. Box 627 109 Fifth St.

140 acres irrigated with circle sprinkler SW of Muleshoe

2 bdrm, 2 bath, 2 car garage, stucco 310 W. 16th Tommy Gunstream

HOUSE FOR SALE: By owner in Richland Hills. 3-2-2 Fireplace.

Choice Building site in Richland Hills. Will finance.

FOR SALE: 3 bedroom, 2 bath, brick, living room.

HOUSE FOR SALE BY OWNER: 3-2-1 Excellent location.

The world stands on three pillars: law, worship, and charity.

TOWN and COUNTRY REAL ESTATE

HIGHWAY 214 NORTH MULESHOE, TEXAS

Nice large brick home with 3 bedrooms, 2 baths, 2 car garage.

3 bedroom, 2 bath, 2 car garage, fireplace and storm cellar.

3 bedroom, 2 bath, brick V home. Has it's own well and lots of extras.

Nice 3 bedroom, 2 bath, 2 car garage, brick veneer house in Country Club Addition.

Nice 2 bedroom, 1 bath, 1 car garage, stucco house. Has many other extras.

Stucco house, 3 bedroom, 2 bath, remodeled inside and out.

FARMS RANCHES HOMES JOHN W. SMITH, Broker

For all your real estate needs call: GLAZE & GOFORTH

91 4/10 acres 17 miles north. Irrigated farm with 3 bedroom home.

VA appraised-No down payment to qualified Veteran.

FOR SALE: Brick home, 1702 Ave. C. 2 Br., 2 bath, fireplace, garage, many extras.

FOR SALE: Brick home, 1702 Ave. C. 2 Br., 2 bath, fireplace, garage, many extras.

Beautiful new 3 bedroom home priced for quick sale.

Quarter section land in Lamb Co.

Several good business lots.

We Want Your Business REMEMBER REID REAL ESTATE 1614 W. American Blvd.

9. AUTOMOBILES FOR SALE 1975 Ford Gran Torino. Excellent condition.

1979 Z28 Camaro. All new tires. New A/C system, AM/FM radio and 8 track tape player.

FOR SALE: 1973 2-door Mercury. Been garaged nearly all its life.

10. FARM EQUIPMENT FOR SALE

FOR SALE: IHC #95 Cotton Harvester. Excellent condition.

1969 (G) combine 20 ft. platform 4 row corn header with corn savers.

FOR SALE: 1959 International grain truck. In barn all its life.

11. FOR SALE OR TRADE

FOR SALE: Double wide mobile home on east side of Farwell.

NOW AVAILABLE IN MULESHOE U.S.S. STEEL SIDING & TRIM

SPLIT-oak Firewood for sale. Rick or Cord. Will deliver.

Tested "Trust her? You surely don't think she could keep a secret?"

15. MISCELLANEOUS MEN AND WOMEN 17-62 TRAIN NOW FOR CIVIL SERVICE EXAMS

Honey for Sale Nick Landers 334 W. Ave. J. 272-3096

BRUCE ELECTRIC Residential, commercial, wiring, repairs, supplies, fixtures, 24 hour service

Want a propane system? check with SMITH LP GAS MULESHOE

FOR SALE: Tomatoes and okra. 4 miles west on 1760, 1 mile north, 1/4 mile back west.

WANTED TO BUY-used aluminum pipe of all sizes. Also side roll sprinklers of all sizes.

FRANK'S REFRIGERATION APPLIANCE & SERVICE PARTS & REPAIR

14. FARM PROPERTY TO RENT

WANTED TO RENT: Farmland for '82 irrigated or dry land.

12. HOUSEHOLD GOODS

BURROWS UPHOLSTERY AND FURNITURE REPAIR 118 W. AVE. C

16. LIVESTOCK

Cattle for Sale: 102 Heifers 370 lbs. 57 Okie steers 294 lbs. 63 Okie steers 439 lbs.

One half of the world must sweat and groan that the other half may dream.

JIMMIE CRAWFORD REAL ESTATE & INSURANCE P. O. BOX 421 201 WEST AVENUE C MULESHOE, TEXAS 79507

Public Notice ORDINANCE NO. 418A

AN ORDINANCE FIXING THE MAXIMUM RATE OF SPEED FOR MOTOR VEHICLES; allowing for speed zones; PROVIDING FOR A PENALTY; AND DECLARING AN EMERGENCY.

WHEREAS, the City Council of the City of Muleshoe, Texas, upon the basis of engineering and traffic investigations, finds it necessary to establish maximum speed limits, and create speed zones in certain areas, all within the Corporate Limits of the City of Muleshoe, Texas.

WHEREAS, the City Council of the City of Muleshoe, Texas, also finds it is necessary to immediate preservation of the public health and safety to provide for the immediate enactment of such measures, constituting an emergency;

NOW THEREFORE BE IT ORDAINED BY THE CITY COUNCIL OF THE CITY OF MULESHOE, TEXAS:

SECTION 1. Subsection (A). Speed restriction. It shall hereafter be unlawful for any person to drive or operate a motor vehicle upon any street, roadway or highway in the City Limits of the City of Muleshoe, Texas, at a speed greater than is reasonable and prudent under the conditions then existing, having regard to the actual and potential hazards when approaching and crossing an intersection or a railway grade crossing, when approaching and going around a curve, when approaching a hill crest, when traveling upon any narrow or winding roadway, or when special hazard exists with respect to pedestrians or other traffic or by reason of weather or highway conditions; and in every event, speed shall be so controlled as may be necessary to avoid colliding with any person, vehicle, or other conveyance on or entering the highway in compliance with legal requirements and the duty of all persons to use due care.

Subsection (B). Where no special hazard exists that requires lower speed for compliance with Subsection 1 (A) of this Section, the speed for any vehicle not in excess of the limits specified in this Subsection or established as hereinafter authorized shall be lawful, but any speed in excess of the limits specified in this Subsection or established as hereinafter authorized shall be prima facie evidence that the speed is not reasonable or prudent and that it is unlawful;

(1) The speed zones established by this ordinance shall include all of S.H. 214, 1st Street, within the Corporate Limits of the City of Muleshoe, Texas; the maximum legal speed shall be as follows: (a) Beginning at the point of intersection with the North City Limit, the point of intersection with the centerline of an unpaved city road, the maximum legal speed for southbound traffic only shall be 55 mph for a distance of 0.168 mile southerly to a point; thence 40 mph for a distance of 0.200 mile to the point of intersection with the centerline of U.S. 70, N. 1st Street. (b) Beginning at another point of intersection with the center line of U.S. 70, N. 1st Street, the maximum legal speed for northbound traffic only shall be 40 mph for a distance of 0.250 mile northerly to a point; thence 55 mph for a distance of 0.109 mile to the point of intersection with the North City Limit, the point of intersection with the centerline of an unpaved city road. (c) Beginning at the point of intersection with U.S. 84, American Boulevard, the maximum legal speed for southbound traffic only shall be 30 mph for a distance of 0.290 mile to the point of intersection with the centerline of Avenue E; thence 35 mph for a distance of 0.360 mile to the point of intersection with the centerline of Avenue J; thence 45 mph for a distance of 0.225 mile to the point of intersection with the South City Limit, a point 0.007 mile south of point of intersection with the centerline of Avenue K. (d) Beginning at the South City Limit, a point of 0.007 mile south of the centerline of Avenue K, the maximum legal speed for northbound traffic only shall be 50 mph for a distance of 0.225 mile to a point of intersection with the centerline of Avenue J, thence 35 mph for a distance of 0.290 mile to the point of intersection with the centerline of Avenue F, thence 30 mph for a distance of 0.360 mile to the point of intersection with the centerline of U.S. 84, American Boulevard. And all ordinances and parts of ordinances in conflict herewith are hereby repealed.

SECTION 2. Any person violating any of the provisions of this ordinance shall, upon conviction thereof, be fined in any sum not less than Ten (\$10.00) nor more than Two Hundred (\$200.00) Dollars. SECTION 3. That the hazards and dangers to public health and safety create a necessity requiring all rules providing that no ordinance shall be finally passed on the day of its introduction be suspended; and this ordinance is declared to be an emergency measure, to take effect from and after the date of its first publication. PASSED AND APPROVES THIS THE 13th DAY OF OCTOBER, 1981.

Charles Bratcher (s) Mayor, City of Muleshoe

ATTEST: Mary Watkins (s) City Secretary, City of Muleshoe 1-42t-ltc

Nursing Home News

By Joy Stancell Tuesday Sherry White decorated the Oct. birthday bulletin board for us. Thank you Sherry.

The Spudnut Shop brought Spudnuts to the residents Friday. We enjoyed these so much.

Celo Bellar was visited this week by her husband and her son and daughter in law.

Mr. Bartlett has a beautiful new painting hanging in his room. His daughter painted it for him.

Willie Steinbock was visited Tuesday by Sherry White and his wife.

Abraham Garcia had lot of company Tuesday.

Keith Fuller and Ruby McCormick listen to "talking" books, together in their room.

Friday morning Mrs. Dawson came to help the residents make a candy jar in crafts. Residents participating were Ora Roberts, Alma Henley, Rosemary Pool, Lena Bell Thomas, Edith Bruns. Ruby McCamish, Ruby Gore, Archie Scarlett, and Lura Northcutt observed and visited with the residents during crafts.

Thursday afternoon C. W. Wilhite, Mrs. Shipp, Mrs. Kersey, and Mrs. Taylor came to play 42 and dominoes with Alma Henley, Russ Duncan, Rosemary Pool, Mr. Mudgett, Mr. Caraway, Ora Roberts and Bertie Hendrix.

Friday afternoon members of the Assembly of God Church came to give a Devotional to the residents. Refreshments of ice cream and cake were served afterwards.

Sunday morning E.B. Wilson came to have Bible School with the residents.

Sunday afternoon the Calvary Baptist Church came to have singing with the residents.

Tuesday afternoon, the Hospital and Nursing Home "Pink Ladies" came to shampoo and set the ladies hair.

Mr. and Mrs. Homer Milsap visited the nursing home Friday.

Effie Jennings was visited by Mrs. Bill Jennings Tuesday.

CESSPOOL PUMPING - SEPTIC TANK CLEANING DIPPING VATS CLEANED - GREASE PITS CLEANED FLOODED CELLARS DRAINED - MUD PITS CLEANED Davis Cesspool Pumping "IF IT'S PART LIQUID & NOT OVER 20 FT. DEEP WE'LL TRY TO DRAIN IT." Phone 806 272-3467 or 272-3622 PO Box 71 1510 W. Ave. D. Muleshoe, TX

Anthony'sTM C. R. ANTHONY CO.

COLD WEATHER Sale

321 MAIN • MULESHOE

OPEN 9 to 6

Junior's ATB[®] Ski Jackets

You don't have to ski to love the looks, the warmth, the price of ATB[®] ski jackets! Just take one look at them, and you'll know they're the best buy in town...with nylon shells, warm polyester insulation, and ATB's[®] knack for color and detail. Sizes S,M,L.

\$35



Boys' & Girls

Velour Tops

Sizes 4-6X & 4-7

788 - 2 for \$14

Sizes 7-14 & 8-18

988 - 2 for \$17

Boys and girls love the softness of velour! These poly/cotton tops come in either crew neck or v-neck styling. Reg. 9.99 and 11.99; assorted solids.



Boy's and Girl's Outerwear 20% OFF

Save on favorite styles of boys' and girls' outerwear! You'll find coats, jackets, and more, all made to beat the cold in style! Sizes from tots to teens.



Ladies' Coats 20% off

It's a great time to buy your favorite coat at Anthony's - 'cause every women's coat in our selection is now 20% off! We have many popular styles in the season's best colors!



100% Goosedown Down Coat 78⁸⁸

Anthony's own down-filled coat for men keeps him warm during the coldest weather! The 31" quilted shell is filled with 100% goose down, and features a pile collar, 2-way zip front, elastic sides, and 2 lower double entry pockets. In Tan, Silver, and Brown, sizes S,M,L,XL. Reg. \$95.



Men's Flannel Shirts 5⁴⁴ 3 for \$15

100% cotton gives these flannel shirts for men soft, warm comfort. In assorted plaids, sizes S,M,L,XL. Reg. 6.99.



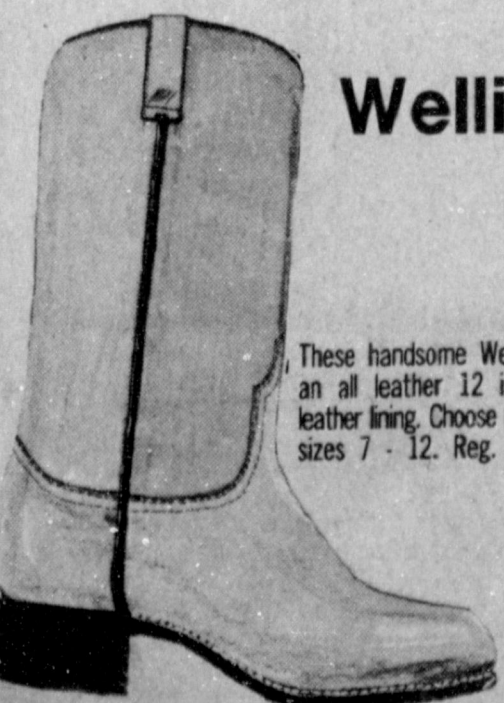
Poly Filled Men's Vests 10⁸⁸

Rugged and good-looking, these nylon shell vests have polyester lining. In assorted styles and colors, sizes S,M,L,XL. Reg. 14.99.



Wrap Sack[®] Quilted Body Wrap 9⁹⁷

The "Wrap Sack" wraps you in warmth! This quilted body wrap is perfect for reading or relaxing on those chilly nights. Plus, some styles open out into a twin or full size bed comforter! Choose from Medium or Large in assorted solids or patterns. Reg. 12.99.



Wellington Boots 34⁸⁸

These handsome Wellington boots have an all leather 12 inch shaft with full leather lining. Choose from Brown or Black, sizes 7 - 12. Reg. 44.99.



Western Shirts 9⁸⁸

2 for \$18

100% cotton gives these flannel shirts for men their soft, warm comfort. In assorted plaids, sizes S,M,L,XL. Reg. 6.99.



Ladies' Thermal Underwear 3⁸⁸ 2 for 7⁵⁰

Ladies' thermal print underwear made of 50% polyester-50% cotton. Choose from long sleeve shirt or ankle length pant in S,M,L,XL; reg. 4.50 each.



Lustre Super Suede 1⁹⁷ yd

Super Suede at a super price! Our Lustre Super Suede is 58"/60" wide and made of 80% Arnel[®] Tricelate[®]/20% nylon in rich solid colors. Reg. 2.99 yd.