

## Weather

August 23 87 58  
 August 24 84 59  
 August 25 88 58  
 August 26 87 59

# MULESHOE JOURNAL



20¢

'The Community of Opportunity-Where Water Makes the Difference'

Volume 58, No. 36

14 Pages Today

Published Every Thursday at Muleshoe, Bailey County, Texas 79347

Thursday, August 27, 1981

## Heigh-ho Come To The Fair

Fair Time -- a time for coming together of friends and neighbors has been a traditional event since the early days of settling in this country.

In keeping with this tradition, the Bailey County Fair Board urges the town-people, farmers and businessmen to attend the 2nd annual Bailey County Fair beginning at 3p.m. Thursday, August 27.

Many items will be on display, totting the skills and aptness of the three county area. Arts and crafts, canned goods, wood-working, decoupage, baked goods and home grown items are just a few of many to be seen.

Several businesses will have booths open displaying their particular products for the general public. Cont. Page 6, Col. 2

## Around Muleshoe

State Comptroller Bob Bullock has announced that Phillip Land from his Lubbock field office will be at the Bailey County Courthouse in the Commissioner's Courtroom on Tuesday, September 8, 1981 from 2:00p.m. to 4:00p.m. A comptroller's representative is available to assist local residents at the courthouse every second Tuesday of each month.

Jana Durham, the daughter of Mr. and Mrs. Milton Oyer of Muleshoe, has been named Assistant Editor at The Franklin Library, a publishing house in New York. Ms. Durham, a 1975 graduate of Muleshoe High School, joined The Franklin Library as an Editorial Assistant in July 1980. Her husband Bill, also an MHS graduate is currently appearing in two Off-Off Broadway shows in New York.

According to officials, all defendants indicted in the recent food stamp fraud have been picked up. They will now be arraigned and a time set for trial at a later date.

The Rotary Seafood Sale will be in full swing on the Energas Parking Lot Friday, August 28 from 10 a.m. to 6 p.m. Cont. Page 6, Col. 2

## New 1981-82 School Calendar Compiled

Muleshoe Independent School District has started out the 1981-82 school year with four inservices days from August 19 to 24. August 25 will serve as a class preparation day for all faculty.

The first beginning day of school will be August 26 will be followed on September 7 Labor Day as the first 1981 school holiday. September will have 21 school days and the first 6 weeks will end on October 6. October will have 29 school days. November 13 will see the end of the second 6 week period followed by November 26 and 27 as Thanksgiving Holidays.



JENNYSLIPPERS ORGANIZE...A Tuesday luncheon set the works in motion for the newly created Women's Division of the Chamber of Commerce. Officers are scheduled for election on September 29.

## Lazbuddie Longhorns Approach Season Play

The Lazbuddie Longhorns will scrimmage Hart this Friday, August 28 at 6:30 p.m. on their home turf.

Coach Terry Campbell said that he has seven offensive lettermen and 5 defensive lettermen returning for play this year. Out of the twelve returning, four will be classified as seniors in 82.

When questioned about the outlook of the Longhorns this year, Campbell said: "They are trying hard -- real hard. We have put in a whole new system, and of course, some mistakes are being made. I can't complain however, for their effort is very good."

Lazbuddie is looking forward to a good 1981-82 season of play and will

## Threeway Outlines New Lunch Program

The Three Way ISD will be serving lunches for the 1981-82 school term at 60 cents for lunches and breakfasts for 35 cents.

Children from families whose income is at or below the level shown on the scale may be eligible for either free meals or meals at a reduced price of 40 cents per lunch and 30 cents for breakfast.

To apply for free and reduced price lunches or breakfasts, families must complete an application for same and return it to the school. Within ten (10) days of receipt application,

open on September 4 against Sudan at Sudan. Terry Steinbock, a senior member will be starting quarter **Skate Rally Planned**

The Bailey County Coliseum in Muleshoe will be the location for the West Plains Youth "Roller Skating Rally", Monday, August 31, at 7:30 p.m. Bring your own skates and enjoy free skating along with a film entitled "Senior Year".

Youth from the ages of 12 years to early 20's are urged to attend. Other activities will be provided for those not skating. Refreshments will also be available. This rally is being sponsored by the First Assembly of God in Muleshoe.

the school will notify applicant if application has been approved or disapproved.

The application requires the name and Social Security number of all adult family members. Adults without a Social Security number must indicate on the application that they do not have one. The school may verify the source and amount of income as well as house hold composition.

In certain cases, foster children are eligible for benefits. If you have foster children living with you and you wish to apply for Cont. Page 6, Col. 1

Casey McBroem another senior backing him up at that position. Other players include Daniel Schacher and Jimmy Garcia at half-back position, Danny Powell, split end Ray Moran and Bart Elliot will take over the fullback position. Guards include Ricky Dale, Franky Garcia, Jeff Jesko, and Larry Nail. Starting at tackle positions are Joe Cont. Page 6, Col. 4

## Re-districting Plan Goes To Washington

Judge Glen Williams has notified the Journal that the completed re-districting plan was mailed to the Department of Justice in Washington last Friday. The Department has 60 days to respond to the plan.

Williams expressed hope that a quick reply would be forthcoming, since the deadline for announcing for office will be February 1, 1982. Commissioners must know the precincts involved in order to be able to file. State and County first primary election will be in May of 82 and second primary will be held in June of 82.

According to Judge Williams, a completed copy of the re-districting as well as maps and several other instruments were mailed to Austin as well as Washington. Due to the detail work involved in setting boundaries of maps of commissioner's precincts and voting precincts, a good

## Women's Division Stirs Much Interest

\*\*\*

### School Employs New Personnel

According to information issued by the Muleshoe Independent School District, each school in Muleshoe will have several new teachers beginning this semester.

New faculty for the high school includes band director, Eddie Chance; Mrs. Molle Degge, Resource; Scott Murray, Coach; Mrs. Gwen Murray, Tutor; Jim Pope, Coach; John Reynolds, Agriculture as well as Carl Wheeler, Agriculture; Mrs. Linda Tanksley, H.E.C.E.; Windy Williams, Head Coach and Kevin Wiseman, 1st Assistant Coach.

Muleshoe Junior High will employ three coaches; Ross Dodson, Leslie Soto and Nanette Soto who will be girls coach. Mrs. Helen Adrian will teach art and Mrs. Ruth Page will be responsible for Bilinguals. Two new Aides will be

Mrs. Jacque Wheeler and Mrs. Kay Seaton.

Mary DeShazo Elementary School will employ three bilingual staffers, being: Jane Foster, Tawna Stewart and Victoria Vigil. Teaching fourth grade will be Mrs. Carol Chance and third grade, Mrs. Chera Foster. Mrs. Debra Cloud will be in resource, as well as Valarie Reynolds.

Neil B. Dillman Elementary will have Julie Cathey for Kindergarten; Mrs. Venida Collins, resource; Mrs. Vowery Dodd, second grade oral language; Mrs. Amy Gilliland, early childhood; and Helen Grigsby, JoAnn Herrington and Diane Skipworth for first grade faculty. Joy Thornton will be employed as Title I with Shirley Hicks as playground aide. Mrs. Christine Gonzales will also serve as aide.

### Multiple Projects Under Consideration

The Women's Division of the Muleshoe Chamber of Commerce met at a Dutch treat luncheon on Tuesday, August 25 for the purpose of organization.

Various projects which have been suggested were discussed by ladies present. Some of these include the possibility of a Bailey County Museum, a welcoming committee for newcomers, and activities aimed at the agricultural community. While these are just a few of the proposed projects and some will be accomplished with time, the "JennySlippers" have plans for many more activities.

The name of the organization, unofficially adopted by those present, is to be "JennySlippers". This is a name that is thought to be easily identifiable with Muleshoe and the surrounding community.

Copies of a constitution for the organization were

given to each one present for study. Changes or suggestions for change will be approached at the next meeting on September 29. At that meeting the constitution will be adopted and officers elected. A nominating committee was formed from the steering committee and several other ladies who were interested. The committee will present the candidates at the September 29 meeting.

### Carnival Adds To Fair Flavor

The Muleshoe Chamber of Commerce and the Bailey County Fair Committee are co-sponsoring a carnival produced by the Aero Space Shows which will be open from 7 p.m. to 11:30 p.m. daily through Sunday, August 30.

The carnival will be located at the Boy Scout grounds at the end of South Main Street in Muleshoe.

Cont. Page 6, Col. 5

### Football Contest Begins Soon

Well fans, it's that time again! Football is in the air and the Journal's annual football contest will begin September 3, when the first Bob Harmon Forecast will be published.

Rules for the contest are relatively simple in that anyone over the age of 12 years may enter the contest. Restrictions are placed on the immediate families of employees of the Journal.

Each following week after the third the Journal will publish the football contest. Entries must be turned in to the Journal office by 5:30p.m. each Friday; and, if mailed must be postmarked no later than Friday afternoon.

Contestants should remember to include a score on the tiebreaker games. The tiebreakers are counted as a part of the total overall score. For instance, missing a winner in a tiebreaker will be counted against you.

Each year a few entries become ineligible because a name has been left off the entry. You must include your name and address, along with your telephone number. No entries will be graded without this information.

Cash prizes and points will go towards the final outcome and the winner will be awarded accordingly. First place award each week is given a cash prize and points toward the final decision for the grand championship. Second and third place winners are also given both weekly prizes and points.

Overall grand prize will be two tickets to the Cotton Bowl in Dallas on January 1 and an expense check. Be sure to get your entries in on time!



MUSICAL NOTES...Muleshoe Fine Arts Boosters have been busy the past few weeks making signs like the ones shown above for members of the Mighty M Band and Speech Department. These signs will be placed in the yards of members to identify them as band members.

## Ag Boosters Welcome Two New Instructors

Muleshoe Ag Boosters met Monday, August 24 in the high school ag department for their first yearly meeting of 1981-82.

Two new ag instructors were welcomed to the Muleshoe schools by Curby Brantley, outgoing president of the organization. The two instructors are Carl Wheeler and John Reynolds. Brantley stated that "the Boosters feel very lucky to have such fine men as these and expect to have a good year in 1981-82."

Line up of 1981-82 officers for the Ag Boosters were announced and they are: President-Bill Harmon, Vice-President, Keith Parish; Secretary-Treasurer, Norma Prather; Reporter-Necce Burlison; Historian - Marcia Overman and Jesse Gilliland. A membership committee will be compiled of the officers of the

Boosters.

Some events that are planned for the Booster organization this year are skating and several trap shoots. The trap shoots have been planned for four week-ends beginning in Cont. Page 6, Col. 2

### Rotary Hears Head Coach

Muleshoe Rotary club met Tuesday and were favored with a talk by Head Coach Windy Williams. Williams introduced his first assistant to the group being Kevin Wiseman.

The coach gave a run-down on the 1981 Mules and pointed out that "their physical condition is as it should be at this time, and our defense is solidifying."

Williams urged everyone to be loyal to the effort Cont. Page 6, Col. 3



WELCOME TO MULESHOE...Curby Brantley, outgoing president of the Muleshoe Ag Boosters welcomes new ag teachers, Carl Wheeler and John Reynolds to Muleshoe. The Boosters are looking forward to a good year with the new personnel.

**Schedule ...**

Cont. From Page 1  
St & Cedar Ave., Cedar Ave & Austin St., DeShazo School, West 10th & Ave D, West 14th & Ave D and Richland Hills School. Bus # 5 will stop at Highway 214 & Ave I, Ave F & 3rd St., DeShazo School, West 10th & Ave D., West 14th & Ave D and Richland Hills School. Bus # 6 will stop at Joliet & Fir Street, Fir & Ithaca Street, DeShazo School, West 10th & Ave D, West 14th & Ave D and Richland Hills School.

Bus # 7 stops will be at Richland Hills School, West 14th & Ave C, West 10th & Ave C, DeShazo School. Bus # 8 stops will be: West Birch & Boston St., West Birch & Dallas St., DeShazo School, 10th St & Ave D, 15th St & Ave D and Richland Hills School.

Bus # 9 stops will be at Ivy & Joliet Streets, Ithaca & Country Club, 400 Dallas Street, Austin & Birch Street, DeShazo School, West 10th & Ave C, West 14th & Ave C and Richland Hills School. Bus # 10 will stop at Richland Hills School, West 14th & Ave C, West 10th and Ave C, and DeShazo School. Bus # 11 will stop at Richland Hills School, West 14th & Ave C, West 10th & Ave C and DeShazo School.

Bus # 12 stops at west 19th st off Hwy 84, Richland Hills School, 14th St & Ave C, 10th St & Ave C and DeShazo School. Bus # 13 stops are: Austin St. & Elm Ave, Austin St. & Cedar Ave, DeShazo School, West 10th & Ave C, West 14th & Ave C and Richland Hills School. Bus # 27 makes stops at Richland Hills School, West 14th & Ave C and DeShazo School and Bus # 28 will stop at Joliet St & Gum Ave., Houston & Hickory Street, DeShazo School, West 10th & Ave D, West 14th & Ave D and Richland Hills School.

The 3rd, 4th & 5th Grade stops will be Ave C & West 10th, Ave C & West 14th, and the Richland Hills School.

The Kindergarten, 1st & 2nd Grade will load and unload at Richland Hills School, Ave D & West 14th, Ave D & West 10th and DeShazo School.

**Allsup's Marathon Slated October 3**

The 7th annual Allsup's Marathon is slated to be held in Clovis, New Mexico on Saturday, October 3rd.

Those interested in participating are requested to register no later than September 25th. Registration fees on or before that date will be \$7.00 Registrations

after that date will cost \$9.00 and will be accepted through Friday, October 2nd at the race headquarters in the Holiday Inn, 2700 E. Mabry Drive. All proceeds go to the Clovis Track Club. Marathon activities will begin October 2nd with a spaghetti dinner at the Holiday Inn.

The marathon, sanctioned and certified by the Amateur Athletic Union (AAU), will give runners a choice of the full 26.2 mile course, a 13.1 mile course or a 10 kilometer course. The race will start at the Clovis High School track at 7 a.m.

According to Lonnie All-

sup, president of Allsup's Convenience Stores, Inc. and sponsor of the race, "At 12 noon t-shirts will again be given to all contestants who complete the race and 117 trophies will be awarded to the winners." The number of trophies in three categories has been expanded this

year to reflect the growing number of runners competing in the following age groups: Female 0-15 years; Males 15-29 and 30-39.

Competition reached new heights last year with 440 runners participating, some from as far away as California and Florida. An individual record for the state of New Mexico was set in the half marathon

with Al Waquie wimming in 1:07:47. In fact, the first five finishers in the half marathon all bettered the old state mark. Benito Arrellano took the marathon with a time of 2:34:27 and Kyle Smith the 10 kilometer in 33:59. A field of over 500 runners in anticipated for this year's race.

Persons who desire additional information about

the Allsup's Marathon, or who wish to receive a registration for, may do so by writing: Royce Jones, 3532 Brynhurst Ct., Clovis, New Mexico, or by calling (505) 762-5010.

**Boot & Shoe Repair**  
111 East 4th

*Choose Your Favorite Chicken Parts*  
**THEY'RE SPECIAL THIS WEEK AND ESPECIALLY GOOD**

**Fryer Parts** U.S.D.A.

Breast.....	lb.	\$1.19
Thighs.....	lb.	98¢
Drumstick.....	lb.	98¢

**WHITE SWAN GUEST QUALITY SLICED BACON** 16 OZ. **\$1.29**

**BORDEN CHEEZ TWIN**

2 LB. LOAF.....	<b>\$2.49</b>
12 OZ. SINGLES.....	<b>\$1.19</b>

**OSCAR MAYER COOKED HAM** **\$1.69**

**SWIFT BUTTER BASTED TURKEY ROAST**

2 LB. WHITE.....	<b>\$3.69</b>
2 LB. WHITE & DARK.....	<b>\$3.19</b>
2 LB. DARK MEAT.....	<b>\$2.79</b>

**WHITE SWAN**  
Cooking OIL 48 OZ.  
Salad Oil  
**\$1.69**

**Dawn**  
liquid detergent  
30¢ Off Label  
48 oz.  
**\$2.39**

**WHITE SWAN**  
FROSTING  
READY TO SPREAD  
16.5 OZ.  
VANILLA  
CHOCOLATE  
**79¢**

**WHITE SWAN**  
CAKE MIX  
18.5 OZ.  
DEVILS FOOD  
WHITE  
YELLOW  
**69¢**

**CRISCO**  
OIL  
25¢ OFF LABEL  
48 OZ.  
**\$2.19**

**6 Muleshoe Mules Football Season Tickets To Be Given Away At Cashway Sept. 3rd!!!**

**FAB FAMILY**  
Detergent  
1 OFF LABEL  
171 OZ.  
**\$5.99**

**GREEN GIANT BLUE LAKE**  
Green Beans  
16 OZ.  
**49¢**

**ZEE**  
TOWELS  
**2/99¢**

**CLOROX**  
Bleach  
1 GAL  
**79¢**

**Health & Beauty Aids**

**SHAMPOO** \$1.89

**MUM CREAM DEODORANT** 1 OZ. **\$1.29**

**PONDS COCOA BUTTER LOTION** 8 OZ. **\$1.44**

**SHIELD**  
SHIELD EXTRA STRENGTH  
DEODORANT SOAP  
5 OZ. **2/88¢**

**ZIPLOC**  
FREEZER BAGS  
20 CT. **99¢**

**Dr. Pepper**  
Sugar Free Dr. Pepper  
**\$1.39**  
6-12 oz. can

**AMERICAN BEAUTY LONG SPAGHETTI**  
24 OZ. **\$1.19**

**STEP SAVER**  
FLOOR FINISH  
32 OZ. **\$2.09**

**Frozen Foods**

**BRIGHT & EARLY**  
Orange Drink **2/99¢**

**STILWELL COBBLERS**  
ASST. FRUITS **\$1.49**

**WHITE SWAN WHIPPED TOPPING** 8 OZ. **59¢**

**BIRDSEYE COOL WHIP** 8 OZ. **69¢**

*One Big Salad-Bowl of Savings*  
Here's where the world's finest fresh fruits and vegetables get together to save you money

**CALIFORNIA Tomatoes** LARGE SIZE LB. **39¢**

**PEACHES** CALIFORNIA O'HENRY LB. **49¢**

**HONEYDEWS** LOCALLY GROWN LB. **29¢**

**LIMES** 175 SIZE LB. **29¢**

**CELERY** CALIFORNIA PASCAL EACH **39¢**

**BROCCOLI** FRESH GREEN BUNCHES LB. **49¢**

**SUNNY FRESH EGGS** LARGE SIZE DOZEN **79¢**

Borden's 1/2 gal round cnt  
**ICE CREAM** **\$1.89**

**White's Cashway Supermarket**

Open 7:30 To 9:00  
Monday To Saturday  
12:00 P.M. To 9:00 P.M.  
Sunday

Double Gunn Bros. Stamps Every Wednesday & Saturday

**Muleshoe Journal** USPS 367-820  
Established February 23, 1924. Published by Muleshoe Publishing Co., Inc., 2000 Highway 84, Muleshoe, Texas 79241.  
MEMBER 1981  
**TEXAS PRESS ASSOCIATION**

L.B. Hall, President  
James Woods, Vice President  
Walt Turner, News Editor  
Eugene Harris, Secretary  
Holt Millip, Advertising Editor  
Bennie Brown, Bookkeeper  
VIRUS REPRODUCED

Muleshoe Journal and Ballew County Journal  
Subscription rates: Single copy \$1.00; 6 months \$5.00; 1 year \$9.00.  
Muleshoe Journal and Ballew County Journal  
Subscription rates: Single copy \$1.00; 6 months \$5.00; 1 year \$9.00.

**NOTICE**  
Energies Company, a division of Pioneer Corporation, hereby gives notice of its intent to implement new rates for industrial and commercial type, small industrial and large air conditioning/electric generating customer classes in the 63 cities and towns on its West Texas City Plant System, effective September 4, 1981. It is anticipated that the new rates will result in a 16% increase in Energies' gross revenues on its West Texas City Plant System, which increase is a "major change" as defined in Section 43(b) of Article 1446c, V.A.T.C.S.

A Statement of Intent to change said rates was filed with each of the cities and towns listed below on or about July 31, 1981, and is available for inspection at the Company's Amelio office, 301 S. Taylor Street.

**CITIES AND TOWNS AFFECTED:**

Abernathy	Muleshoe
Amherst	Nazareth
Artes	New Deal
Big Spring	New Home
Bovina	O'Donell
Brownfield	Ottom
Canyon	Pampa
Coahoma	Panhandle
Crosbyton	Patterson
Dinmitt	Patterson
Earth	Pineblow
Edmonson	Pine
Floydada	Quitovaq
Forsan	Ralls
Frisco	Roperville
Hale Center	Seagraves
Happy	Seminole
Hart	Shallowater
Hartford	Shelton
Idolito	Shelton
Kress	Smyer
Lake Ransom	Southeast
Canyon	Springlake
Lake Tangwood	Stanton
Lamesa	Sudan
Levelland	Tahoka
Litfield	Tule
Lockney	Tulsa
Lovato	Vega
Lubbock	Wellman
Meadow	Wilson
Midland	Woolfirth

**Barnhouse Services Held Here Sunday**

Funeral services for Merle Barnhouse, 68, were held at 2 p.m. Sunday, August 23 in the Muleshoe Church of Christ with members Joe Embry and W.B. Wagnon officiating.

Interment was in the Friona Cemetery under the direction of Ellis Funeral Home. Barnhouse died at 10 p.m. Friday in West Plains Medical Center.

He was born February 12, 1913 in Alva, Okla. and moved to Muleshoe in 1942 from Friona. He married the former Lillie Gatlin in Clovis July 27, 1934. He was a retired mechanic and a 25 year member of the Church of Christ.

Survivors include his wife, Lillie; one son, Charles Barnhouse of Weatherford; one daughter, Mrs. Marvinna Martin of Muleshoe; three sisters, Mrs. Gertrude Rockey of Bryan, Mrs. Ida Walters of Ellenwood, Kan. and Mrs. Norene O'Brian of the Hub Community; and four children.

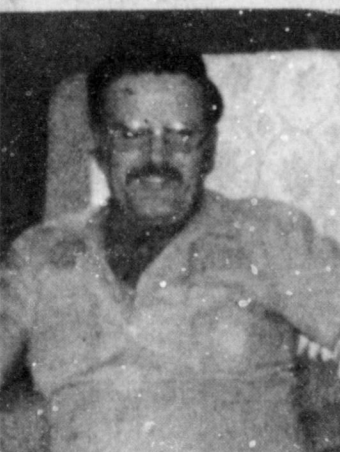
**Howard Services Held Here Tuesday**

Funeral services for Glen Ray Howard, 41, were held at 2 p.m. Tuesday, August 25 in the Assembly of God Church with Rev. J.W. Farmer of Lovington, a former minister of the Muleshoe Assembly of God Church, officiating.

Burial was in the Bailey County Memorial Park under the direction of Ellis Funeral Home. Howard was dead on arrival at West Plains Medical Center at 7:45 a.m. Saturday.

He was born October 13, 1939 in Lazbuddie and moved to Muleshoe 12 years ago from Burnet, Texas. He was a bricklayer.

Survivors include two daughters, Mrs. Deloris Gilbert of Burnet and Mrs. Nelda Hawthorne of Temple; his parents, Mr. and Mrs. O.T. Howard of Muleshoe; three sisters, Mrs. Jenelle Singleterry of El Sereno, Calif. and Mrs. Naomi Owen and Mrs. Margie Howard, both of Muleshoe; three brothers, Melvin of Odess, Thomas of Muleshoe and Loren of Dallas; and two grandchildren.



GLEN RAY HOWARD

Leaders get credit for the work that they can persuade others to do.



MERLE BARNHOUSE

**Merrell Services Conducted Wednesday**

Funeral services for Carroll Edger Merrell, 86, were held at 2p.m. Wednesday, August 26 in the Ellis Chapel of the Chimes with Rev. Gene Davis, an Assembly of God minister, of Muleshoe officiating.

Burial was in Bailey County Memorial Park under the direction of Ellis Funeral Home. Merrell died at 4:15p.m. Sunday in the West Plains Medical Center.

He was born November 7, 1894 in Lockney and moved to Muleshoe in 1937 from Ft. Sumner, N.M. He married the former Virginia Hensley, October 21, 1928 in Tucumcari, N.M. He was a rancher and cattleman and a Baptist.

Survivors include his wife, Virginia, two daughters, Mrs. Bertha Rendon and Mrs. Laverne Adrian, both of Muleshoe; one sister, Mrs. Ethel McMurren of Payette, Idaho; seven grandchildren and 10 great grandchildren.

Survivors include his wife, Virginia, two daughters, Mrs. Bertha Rendon and Mrs. Laverne Adrian, both of Muleshoe; one sister, Mrs. Ethel McMurren of Payette, Idaho; seven grandchildren and 10 great grandchildren.



CARROLL EDGER MERRELL

**WHO KNOWS?**

1. Labor Day falls on what day?
2. When did World War II begin?
3. California became a state on what date?
4. When was the second Battle of Bull Run fought?
5. Who developed the Braille system of reading and writing?
6. Which continent has no desert areas?
7. How old is the Berlin Wall?

**Answers To Who Knows**

1. September 7, 1981.
2. September 1, 1939.
3. September 9, 1805.
4. August 29, 1862.
5. Louis Braille (1809-1852), a French teacher of the blind who was himself blinded in an accident at the age of three.
6. Europe.
7. It was 20 years old August 13.

**Pingel Services Conducted In Vega**

Services for Wayne Pingel, 54, of Vega were conducted at 11a.m. Thursday, August 27 at the First United Methodist Church in Vega with Rev. J.B. Fowler, pastor of the First United Methodist Church in Pampa, and Rev. Steve Campbell, pastor of the First United Methodist Church in Vega, officiating.

Interment was in Vega Memorial Park under the direction of N.S. Gibbs and Sons Funeral Directors in Amarillo. Pingel died Monday, August 24 in his home.

He was born August 28, 1926 in Aurelia, Iowa and moved to Vega in 1930 from Aurelia. He was a farmer and a member of the First United Methodist Church in Vega.

Survivors include his wife, Billie; four sons, Ron Pingel of Gruver, Texas, Steve Pingel Ken Pingel

and Keith Pingel all of Amarillo; one daughter, Mrs. Cindy Rea of Vega; four sisters, Mrs. Frank Ellis of Muleshoe, Mrs. Gordon Molyneaux of Roswell, N.M., Mrs. Pat Skeipsa of Phoenix, Ariz. and Miss Beulah Pingel of Arlington, Texas; and six grandchildren.

**BIBLE VERSE**

"Wherefore, if any man is in Christ, he is a new creature; the old things are passed away; behold all things are become new."

1. Who wrote the above statement?
2. Of whom is it particularly descriptive?
3. To whom was it first written?
4. Where may this verse be found?

**Answers to Bible Verse**

1. Paul, the Apostle.
2. Paul, himself.
3. To the new Christians of Corinth.
4. II Corinthians 5:17.

A morsel of genuine history is a thing so rare as to be always valuable.

-Thomas Jefferson.

**The Sandhills Philosopher**

Editor's note: The sandhill Philosopher on his Johnson grass farm on Sandhill explains how inflation is universal, more or less.

Dear editor:

A friend handed me a newspaper clipping reporting that a survey among big shot executives making an average of \$88,500 a year reveals they are having to struggle with inflation the same as everybody else.

"That's the kind of struggle I'd like to have," he said.

I told him he doesn't understand.

Say an executive making \$88,500 a year has a \$200,000 house and a man in that bracket can't live in a house costing a piddling \$100,000. Be in the wrong neighborhood. Say he paid \$25,000 down, leaving a balance due of \$175,000. At 15 percent interest,

that's \$26,500 a year he has to dig up before he pays anything on the principal, which itself would be at least \$10,000 a year.

If he has two children, that means he has to have four cars, one for him, one for his wife and one apiece for the kids. You'd be surprised to learn how many cars, even Cadillacs, are bought on the installment plan among upper bracket people. Add another \$10,000 for that. I don't know what gas and upkeep would come to, but add another \$5,000. If the two kids are in an elitist college, and where else would they be, add \$20,000 more a year, with a little more for the year one of them wrecks his car.

Add say \$10,000 more for income tax and a lawyer's fee for keeping it from going any higher, and probably that much for property taxes and insurance, and the total outlay for that executive making \$88,500 a year comes to \$91,500, before he buys a single sack of groceries or pays his utility bills.

Clearly, that man is way below poverty level and is entitled to welfare, unless supply side economics can double his salary before his bank loan comes due.

My friend said he hadn't thought of it like that, but still he'd like to give living on \$88,500 a year a try.

Yours faithfully,  
J.A.

*In Fashion*

Fall and winter materials are available in fabric shops. The thrifty woman, who sews, can enlarge her wardrobe by selecting a good basic pattern-preferably a Chanel or collarless jacket--for easier sewing.

**Best Of Press**

**Definition**  
Tact: To lie about others as you would have them lie about you.  
-Gospport, Pensacola.

**Strange**  
Conceit is a queer disease. It makes everyone sick except the fellow who has it.  
-Grit.

**Insanity**  
The reason some people are overweight is because at times they go starch craving mad.  
-Record, Columbia, S.C.

**Fair Play**  
The trouble with being a good sport is that you have to lose to prove it.  
-Klying K., Kingsville.

**Gymnastic & Dance Classes**  
Now Taking Fall Registration  
**Boys & Girls**  
Call 272-3483 or 965-2353  
*Hawkins & Purdy's*  
School of Dance & Gymnastics

**GIBSON'S** "WHERE YOU ALWAYS BUY THE BEST FOR LESS"

**All Sales Final** Open 10-7 Mon.-Sat.

● No Pay Roll Checks ● No Charge Cards ● Local Area Checks ONLY  
● No Phone Calls ● No Layaways ● No Exchanges

<b>Drugs</b>  <b>30% OFF</b>	<b>Fantastic Markdowns</b>  In Every Department	<b>Pictures</b> <b>MUST</b> Be Picked Up Before Saturday
<b>Most Hardware</b>  <b>75% OFF</b>	<b>Big Sale</b> <b>\$1</b>	<b>Outside Marguee Sign</b> <b>\$300</b>
<b>Paint</b> <b>\$1</b> ..... Quart <b>\$4</b> ..... Gallon		<b>5 NCR Cash Registers</b> <b>\$250</b> Each
<b>Auto Filters</b> <b>\$1.00</b> <b>Spark Plugs</b> <b>44¢</b>	<b>Everything Goes!!</b>	<b>All Clothing</b> <b>70% Off</b>
		<b>Last Chance For Garage Sale Prices!</b>

**H & R BLOCK TAX COURSE TO BEGIN**

H&R BLOCK is offering a Basic Income Tax Course starting September 10th.

There will be a choice of morning or evening classes held at the H&R BLOCK office at 224 West 2nd.

The 12 week course is taught by experienced H&R BLOCK personnel and certificates are awarded to all graduates. While thousands of job opportunities are available, graduates are under no obligation to accept employment with H&R BLOCK. Courses are licensed by the Texas Education Agency.

Registration forms and brochures may be obtained by contacting the H&R BLOCK office at 224 West 2nd, phone 272-3332.



MRS. BRENT BURROWS

## Mrs. Burrows Honored With Bridal Shower

Mrs. Brent Burrows nee Melinda Morrison was honored with a bridal shower August 1 from 2:30 to 4 p.m. in the home of Mrs. Doyce Turner.

Guests were greeted by Mrs. Burrows, Mrs. Doyce Turner, Mrs. Larry Morrison of Dumas, mother of the honoree, and the groom's mother Mrs. Olan Burrows of Muleshoe. Amy Turner registered the guests.

### Hobby Club

The Muleshoe Hobby Club met with 12 members present. Those attending included Fiddle Shafer, Allie Barbour, Mae Loyd, Gertie Kirk, Myrtle Chambliss, Opal Robinson, Bernice Amerson, Dora Phipps, Ruth Bass, Sammie Ethridge, Mabel Caldwell and LeVina Pitts.

Articles on display were three crochet dolls, two needlepoint Kleenex box covers, one telephone book cover, one wisteria seed mouse and painted bridge table, cocoon shell necklace, appliqued tote bag, patchwork quilt top and a woven wheat straw wall hanging.

Mrs. Debbie Gleason, sister of the groom, of Midland; Mrs. Nancy Burrows and Mrs. Gail Burrows, sisters in law of the groom, of Lubbock served finger sandwiches, nuts, mints, lemon punch and coffee from brass and crystal appointments.

The serving table was covered with an ivory linen cloth. An arrangement of fresh garden flowers in a brass vase accented the table. The honoree's corsage was made of yellow and white daisies.

Special guests were Mrs. Morris Morrison and Mrs. Jesse Baker, grandmothers

of the bride, of Dumas.

The hostesses gift was Faberware cookware. Hostesses for the occasion included Mrs. Ernest Ramm, Mrs. Ted Barnhill, Mrs. Jim Shafer, Mrs. Owen Jones, Mrs. Max Bush, Mrs. Gary Dale, Mrs. Alton Burton, Mrs. Harvey Bass, Mrs. Harmon Elliott, Mrs. Odell Rasco, Mrs. Frank Ellis, Mrs. Roger Albertson and Mrs. Doyce Turner.

Try "detergent foods" for your teeth, suggests Mary K. Sweeten, a foods and nutrition specialist.

Crisp, crunchy vegetables, such as celery, carrots or radishes are "detergent foods," because they remove particles from the teeth, she says.

Mrs. Sweeten is on the home economics staff of the Texas Agricultural Extension Service.

## Washing Tuna To Reduce Sodium Content

On a sodium-restricted diet? and you wash off regular tuna so you can

still eat it?

Washing regular canned tuna or other fish will NOT reduce the sodium content, says Mary K. Sweeten, a food and nutrition specialist.

On the other hand, buying dietetic pack tuna or salmon prepared without oil or salt WILL allow you to have those items without the sodium, she says.

## Safe Start For The School Year

When your child goes off for his first day at school, don't let yourself be caught unprepared. There are school registration forms to be filled out ahead of time. Some school boards also require general health and dental check-ups before the school year begins. Even if your own school district has no such requirements, the Texas Medical Association (TMA) suggests that you take your child for a physical examination if he hasn't had a general check-up recently. Your child may have some special condition, such as poor eyesight or hearing, which could affect his or her work in school.

In addition to making sure that your child is physically ready to start school, the state has certain specific immunization requirements for admission into kindergarten or first grade. According to the Texas Department of Health, beginning school children must have up-to-date polio, DPT (diphtheria-tetanus-pertussis), measles, rubella and mumps vaccinations. You will be required to present proof of vaccinations, and have the immunization form signed either by a physician or by a public health clinic.

Equally important in ensuring your youngster a healthy start in school is preparing him for a safe journey to and from the school. First, decide whether your child will walk or ride. Consider factors such as traffic, distance and your child's maturity. Is your child old enough to

walk to school by himself? Does he know the rules of traffic and safe crossing? If you do decide to let your child walk, you may want to contact the parents in your area and find a "buddy" for your child to walk with.

Select a safe route. Look at traffic flow, crossing, busy parking lots, blind alleys, garage entrances and exits. Choose the least dangerous path, even if it's a little longer. Take the walk with your child at least a few times, to let him learn familiar landmarks. Time the trip so that you know when to expect him home. Point out hazards along the way, and explain the dangers to your child. Be sure to tell him or her not to talk to strangers or get into a stranger's car.

If your child is going to school by city bus, take a few rides with him beforehand so that he can become familiar with the route. Make certain that he knows the name of his stop and what it looks like. If he's traveling by school bus, find out the driver's name. It will make your child much more comfortable if the driver is a "real person" to him. And when it's finally time for your little one's first day of real school, be brave!

Women's roles in medicine have expanded recently and promise more rapid growth in the future, says Dr. Mary Shirer, a health education specialist.

While only six percent of all physicians were female in 1963, the numbers reached 11 percent by 1979 she says.

Shirer is on the home economics staff of the Texas Agricultural Extension Service, Texas A&M University System.

**Ladies Morning Exercise Classes**  
Beginning in September  
Enroll Now!  
272-3483 or 965-2353  
Hawkins & Purdy's School of  
Gymnastics & Dance

**Further Reductions!**  
Starting Thurs, Aug. 27  
All summer Merchandise  
Will Be  
**75% Off**  
3 Days Only  
Thurs, Fri & Sat  
Aug. 27-28-29  
**Lookin' Good**  
206 Main Phone 272-5052

**Whirlpool® FREEZERS ON SALE NOW!**

**BIG!**  
12.0 cu. ft. Upright Freezer

- ★ Adjustable Temperature Control
- ★ Defrost Drain
- ★ 3 Fast-Freeze Shelves with built-in cold coils
- ★ Textured Steel Door

**NOW ONLY \$398** Model EEV124F

**Family-Size 20.0 cu. ft. Upright Freezer**

- ★ Durable Porcelain-on-Steel Interior Liner
- ★ Key-eject Lock prevents unwanted opening
- ★ Power Interruption Light warns of power failure
- ★ Adjustable Temperature Control with easy-to-read dial

**NOW ONLY \$578** Model EEV204F

**Compact 9.0 cu. ft. Chest Freezer**

- ★ Adjustable Temperature Control with easy-to-read dial
- ★ Power Interruption Light warns of power failure
- ★ Simulated Walnut Grain vinyl-on-steel Lid
- ★ 2 Slide and Store Baskets, slide or lift out for easy access

**NOW ONLY \$348** Model EHH090F

Mon. - Sat. 8:00 - 6:00

**Wilson Appliances**

*We Have A Trained Technician To Service Our Products*

117 Main 272-5531

**ANNIVERSARY SALE**

121 W. 2nd Downtown Thur-Fri-Sat Aug. 27-28-29

Three years ago on Aug. 28th we bought Rubye's to say "Thank You for your wonderful support," we offer these outstanding values. Sale prices good 3 days while quantities last.

Rubye's of Portales, Dale & Sid Chapman

**True Value HARDWARE STORES**

**Manager's Special**

**HAMILTON BEACH**

**All-Around Hole-in-the-Handle Electric Knife**

- Famous Hole-in-the-Handle design for perfect carving balance
- Honed stainless steel blades with serrated edge
- Extra-long attached cord
- Versatile knife can be used to cut meats, fruits, vegetables, etc.
- Powerful 100 watt motor

**HOT! \$19.99**  
**SAVE \$9.00**  
**ONLY \$10.99**

**Fry & Cox Inc.**  
401 S. 1st 272-4511

**Waist Size Pants**  
Sizes 30-42

**Sale Price \$15.00**  
3 Days Only  
Reg. Price \$18.00

**FREE Register For Free Gift Certificates FREE**

Drawing Held Each Day Of Our Sale 3 big Days

**FREE You Need Not Be Present To win But Must Register For Each Days Drawing FREE**

**Velvet Blazers by Fire Islander**  
Sizes 8-18  
Colors: Black, Wine, Brown, Navy

**Sale Price \$50.00**  
3 Days Only  
Reg. Price \$65.00

**One Group Blouses**  
Sizes 6-46

**20% Off**

**SUPER SALE RACKS**  
Mostly Fashions Left Over From Last Season

Now **1/2** Of **1/2** Price

Example Of Savings: Reg. \$100.00 Sale 50.00 Now 25.00

**SLEEPWEAR SALE**

**One Group \$10.00**  
Reg. \$15.00 to \$20.00

**DOORS OPEN AT 9:00**  
121 W. 2nd Downtown Portales

**RUBYE'S** Where Quality Is Tradition Established In 1964

## Texas Artists And Cougars Israel Bound

When sixteen artists from Texas head for Israel on September 17, they will take paintings, sculpture, crafts and two young cougars. The art work is for a three day exhibit of Texan arts at Maskit, the official crafts gallery of Israel in Tel Aviv. The cougars are for the Zoological Center in Tel Aviv and provide an interesting footnote to the cultural exchange between Texas and Israel.



Jason Bradley Davis

Mr. and Mrs. Gary Davis of Olton are the proud parents of a son born August 21 at 8:41a.m. in the West Plains Medical Center.

He weighed seven pounds and 12 ounces and has been named Jason Bradley. He is the first child for the couple.

Grandparents are Mr. and Mrs. L.T. Davis and Mr. and Mrs. Leon St. Clair all of Olton.

Great grandparents are Mr. and Mrs. N.J. Fowler and Mr. and Mrs. E.F. St. Clair of Crosbyton and Mrs. Leoma Hardwood of Lubbock.

The participating artists were all exhibitors at the 1981 Texas State Arts and Crafts Fair in Kerrville, a prerequisite for the trip. The exhibit in Israel is the second part of the exchange. Several Israeli artists exhibited at the May event in Kerrville.

While in Israel, each artist and craftsman will do a special research project on the roots of his artistic persuasion in the ancient country. They also will visit museums and art schools, and attend lectures and demonstrations by Israeli artists. Returning from Israel, they will spend the night in Amsterdam, where the group will visit the Van Gogh Museum and the Rijksmuseum.

The trip and exhibit are sponsored by the Texas Arts and Crafts Educational Foundation in Kerrville. It was coordinated and will be led by the executive director of the Foundation Audie Hamilton. In response to a special invitation, Hamilton traveled to Israel in January to work out details for the new Foundation project.

Across Texas, businesses and individuals interested in the arts have provided important aid, since grants are very difficult to secure. According to Hamilton, much credit goes to KLM Royal Dutch Airlines. Although the group will travel to Israel on KLM flights, the airline provided many other services, inclu-

ding complimentary airfare for her trip to Israel to set up the tour, transportation of the exhibit to Israel at no additional cost, and coordination of the transportation of the two live cougars.

Many individuals and businesses also provided sponsorship of individual artists for the cultural exchange. Each artist was responsible for his or her own funding raising. Hamilton stated the group was very enthusiastic to leave.

When Audie Hamilton was asked to see if a Texas cougar could be found for the Tel Aviv Zoo, she called Tom Dieckow, with the Houston Zoological Gardens. Dieckow, a wildlife artist who is a member of the "Artists As Ambassadors" group, was instrumental in finding a sponsor for the project, locating two healthy young cougars and arranging transfer. A presentation will be made at the Tel Aviv Zoo on September 21.

## No Meat Mexican Supper

Tired of the same old cheese omelet or tuna sandwich when you're not in the mood for beef? Try a Mexican-style meal that's so tasty and filling (and easy to fix!) that you'll never miss the meat.

Rice con Queso is spicy and hearty cheese, rice and tomato dish. Combine 1 can (8 oz.) whole tomatoes (cut into pieces with a fork), 1 cup water and 1 tablespoon instant minced onion in a saucepan. Bring to a full boil. Stir in 1 1/2 cups of Minute rice and 1 cup shredded cheddar cheese. Cover, remove from heat and let stand for 10 minutes.

As the dish cooks, the rice puffs up tender and flavorful, absorbing the tasty juices. Stir in 1/2 cup sour cream and serve to four.

For more south-of-the-border flavor, add a tossed salad with avocado slices and olives. Lemonade completes the meal.

## Homemakers, Farmers Schedule Convention

The Area 1 Young Homemakers and Young Farmers will stage conventions in Amarillo Saturday, September 5 at the Civic Center.

Both organizations will elect and install new officers during the day. The Young Homemakers hold their business meeting and election at 10:30 a.m. with Mrs. Mike Richardson, area president from Muleshoe presiding. The Young Farmers will have an executive meeting at the same time. The Young Homemakers will host a luncheon at the Quality Inn for incoming and outgoing officers.

Registration for the Young Homemakers will be at 10:00a.m. and 1:00 p.m., while registration for the Young Farmers will begin at 1:00p.m.

Guests speakers for the Young farmers include Ernie Houdashell, Farm Director of radio KGNC in Amarillo, State Young Farmer president, Thomas Bowden and past state Young Farmer president Bobby Bauch.

The theme for the Young Homemakers Convention program will be Families, Our Firm Foundation. The program is under the direction of Mrs. Max Eubanks, vice president from Farwell. Featured on the program will be Rev. Robert Slaton of Amarillo with "Our Family Life" and Mrs. Betty Musick from the American Heart Association presenting a program on "Project Life-saver."

The joint awards banquet will also be held at the Civic Center beginning at 6:30p.m. Entertainment will feature Bob Jett from Lone Star Gas Company in Dallas. Master of Ceremonies for the banquet will be Teddy Smithson, Area 1 Young Farmer president from Dimmitt.

Awards presented for the Young Homemakers are: Outstanding area 1 Young Homemaker, Outstanding Future Homemaker, Outstanding Cha-

pter and Outstanding New Chapter, Electrical Energy Management, Honorary membership.

The Young Farmer awards to be presented are: Outstanding Associate Member, Agribusiness, Outstanding Area Officer, Radio - Television, Outstanding Chapter and Outstanding New Chapter, Young Star Farmer, Newspaper, Electrical Energy Management.

The Area Young Homemaker officers are: President -- Mrs. Mike Richardson, Muleshoe, First vice president--Mrs. Max Eubanks, Farwell, Second vice president--Mrs. Jerry Annen, Dimmitt, Secretary Treasurer--Mrs. James Sides, Farwell, Parliamentarian--Mrs. Weldon Simmons, Wheeler, State Officer--Mrs. Ronnie Sherrod, Hale Center.

The Area Young Farmer officers are: President -- Teddy Smithson, Dimmitt, Vice president -- Ronald Groves, Hale Center, Secretary--Ray Schlabs, Hereford, Treasurer -- Larry Robb, Nazereth, Reporter--Jim Campbell, Hereford, State Officer-- Roy Carlson, Hereford.

The two organizations are for young adults under 35 interested in agriculture or homemaking. The Texas Education Agency is the sponsor and advisors of chapters are employed agriculture or homemaking teachers. Area 1 includes 38 Panhandle South Plains counties of Texas. Mrs. Ima Dora Halle is the Area 1 Young Homemakers advisor and Jay Eudy is the Area 1 Young Farmers advisor.

## Rejuvenate Mascara

Rejuvenate dried up mascara by holding the tube under hot water for two or three minutes, advises Nancy Brown a clothing specialist on the home economics staff of the Texas Agricultural Extension Service, Texas A&M University System.

## Billy Graham To Speak At Bold Mission Rally

Evangelist Billy Graham will head a cast of speakers from a wide geographic area at the 96th annual session of the Baptist General Convention of Texas October 27-29.

Messengers from many of the state's 4,000 Southern Baptist churches will consider major business including a proposed record-breaking \$45 million budget for the denomination's Cooperative Program of support for missions causes around the world.

They will elect a new Convention president to succeed Carlos McLeod, pastor of First Baptist

Church in Plainview who has served the maximum two terms.

Graham, a Southern Baptist, will speak at a Bold Missions rally in the Heart O'Texas Coliseum Wednesday evening, October 28. He will share the podium with Joao Filson Sorren, president of the Brazil Baptist Convention. Through an evangelistic program called Mission to Brazil, hundreds of Texas Baptist volunteers have gone to help Brazil Baptists and Southern Baptist missionaries achieve a Centennial goal of doubling the number of Baptist churches and church members in the South American country.

Blind musician Ken Medema will do a concert at the same session.

Other key speakers will include McLeod, John Bisagno, pastor of First Baptist Church, Houston; Caesar Clark, pastor of the Good Street Baptist Church, Dallas; James H. Landes, BGCT executive director; Russell H. Dilday, Jr., president of Southwestern Baptist Theological Seminary, Fort Worth; Evangelist Jay Strack; Winfred Moore, pastor of First Baptist Church, Amarillo; James Pleitz, pastor of Park Cities Baptist Church, Dallas; and D. Michael Toby, pastor of Woodway Baptist Church, Waco.

## Happy 40th Anniversary



Love.

Vivian & Michelle Dalfino  
Kelvin, Janice & Mendy  
Jenny, Fernie & Kids

## "Roller Skating Rally"

The Bailey County Coliseum in Muleshoe will be the location for the West Plains Youth "Roller Skating Rally," Monday, August 31, at 7:30p.m. Bring your own skates and enjoy free skating along with a film entitled "Senior Year." Youth from the ages of 12 years to early 20's are invited to attend. Other activities will be provided for those not skating. Refreshments will also be available. Come and bring a friend for a night of fun and fellowship. This rally is being sponsored by the First Assembly of God in Muleshoe.

## If Not N.O.W. When?

If you haven't yet combined your savings and checking accounts into a Muleshoe State Bank N.O.W. Account, you're losing interest—fast!! The N.O.W. Account acts like a regular checking account—there when you need it. Open a N.O.W. Account—now and watch your interest grow!!

MULESHOE STATE BANK  
Member FDIC 272-4561

# EOM

## End-of-the-Month STOCK REDUCTION SALE

STARTS 12 NOON THURSDAY (Closed Thursday Morning)

- MENS SHORT SLEEVE KNIT SHIRTS ..... \$4.44 3 for \$13
- MENS WESTERN SHIRTS ..... \$8.88 2 for \$17
- HANES BRIEFS & T-SHIRTS ..... 20% off
- LEVI FLARE DENIMS ..... Reg. \$20 \$14.88
- LEVI SADDLEMAN & BIG BELLS ..... \$17.88
- MENS HAGGAR SLACKS ..... \$14.88
- SUEDE BLAZERS and LEATHER COATS ..... \$99

- Entire Stock LEVI BENDOVERS ..... \$17.88
- VELVETEEN BLAZERS ..... \$39.88
- WOOL SKIRTS ..... 20% Off
- CORDUROY BLAZERS ..... \$29.88
- JUNIOR ATB FASHION JEANS ..... \$3 Off
- JR. LEVI'S, WRANGLER, BRITANNIA ..... \$4 Off
- Entire Stock JUNIOR TOPS ..... 20% off

- FABRIC TABLES ..... 50¢ yd. and 97¢ yd.
- WASHABLE WOOLENS ..... 2 yds \$9
- GAUZE KNIT and Suede CLOTH ..... 2 yds \$5
- Large Group BATH RUGS ..... 1/2 Price
- Amer. Tour and Samsonite LUGGAGE ..... 1/2 Off
- One Rack BRA'S, SLIPS, LINGERIE ..... 1/3 Off
- BRUSHED NYLON FLOATS ..... \$5.88 2 for \$11

- LADIES DRESS & CASUAL SHOES ..... \$5 and \$10
- WESTERN BOOTS ladies, mens, childrens ..... 20% Off
- LEATHER CASUAL SCHOOL SHOES ..... \$18.88
- Boys and Students WRANGLERS ..... \$8.88 \$10.88 \$12.88
- GIRLS FASHION JEANS ..... 4-6x \$7.88 7-14 \$10.88
- GIRLS SCHOOL TOPS ..... 4-6x \$5.88 7-14 \$6.88
- TODAYS GIRLS PANTYHOSE ..... 6 For \$6

We need to Reduce Our Stock Now!  
You Save! Can't Beat It!

"Muleshoe's Favorite Department Store"

Sale Prices Good Thursday, Friday, & Saturday  
*Anthony's*  
C. R. ANTHONY CO.

## Square Dance Lessons Offered

Squaredance lessons will be offered starting Sept. 15 8 p.m. at the American Legion Hall, 15th and Ave. B, Muleshoe.

Lessons will be held every Tuesday for 30 weeks. Upon graduation students will be eligible to join the Muleshoe Square Dance Club or one of their choice and be able to dance at most area square dances.

The first three lessons are free for those interested in trying it out. Children welcome. Prices for baby-sitting is \$1 per child per evening.

Two regular dances are scheduled before lessons begin. Both will be at the American Legion Hall. August 28 from 8-10 p.m. and Sept 11 from 8 to 10 p.m.

## Threeway...

Cont. From Page 1  
free or reduced meals for them, please notify the school, or indicate it on the application.

The Three Way ISD, practices non-discrimination, in that all children are treated the same, regardless of ability to pay. In the operation of the child feeding program, no child will be discriminated against because of race, sex, creed because of race, sex, creed, color or national origin.

Families not agreeing with the school's decision on their application, have the right to a fair hearing by calling or writing the President of the School Board, Mrs. Jack Lane, Star Route, Goodland, Texas 79327. Telephone number 946-3688.

## Muleshoe...

Cont. From Page 1  
Mr. and Mrs. Earlton Wall have returned from attending his sister's funeral in Atlanta, Texas on August 10. His sister was Mrs. Bernice Wall Cox. Others from Muleshoe attending were Bill Wall and Ireen Reece, Also Jim Wall of Portales.

\*\*\*\*\*  
Lynn Moore of Muleshoe recently won a first place trophy belt buckle in the bull riding event at the Gray County 4-H Youth Rodeo. Lynn is the son of Mr. and Mrs. Dewey Moore.

## Fair...

Cont. From Page 1  
The Fair Board urges active participation of the three county area, as your time is still sufficient to enter a project in any category.

"Get out and enjoy this year's fair and help to make it one of the biggest in history," said Spencer Tanksley, Bailey County Agricultural Extension Agent.

## Boosters...

Cont. From Page 1  
Plans were announced for a new ag building to be built on the ag farm sometime within the next year.

The Ag Boosters are dedicated to helping the Muleshoe Ag Department and FFA in activities; and they also provide needed equipment for the ag students. They also travel to the stock shows with the students. Several scholarships are presented each year to qualifying ag students by the boosters.

Ag Boosters next meeting night will be September 21, when the new officers will be installed.

## Police Report

Muleshoe Police Department has been beset with a rash of burglaries and thefts over the last week.

On August 20 a report was given on destruction of private property, being the restrooms at the City Park. Also on that date one was arrested for no drivers' license.

An auto hit and run was reported on 8-21 along with a theft of a bicycle from a residence, and burglary of a motor vehicle at Robert Green, Inc. A radio was taken from a car. One was arrested for no drivers' license.

August 22 two thefts were reported, with an additional theft being reported this date from the Muleshoe Country Club.

August 23 netted police 3 public intoxications, 1 with no drivers license and DWI, 1 for no driver's license and one illegal alien with no drivers' license. Theft of a residence was also reported on August 23.

A battery was reported taken from Joe's Garage on August 24.

## Rotary...

Cont. From Page 1  
that the coaches and players put forth rather than the games they win. "We can't guarantee wins," said Williams, "but, we can guarantee our extreme effort. Our depth could be a problem for us." At this time, there are 37 varsity players, 27 junior varsity and 30 freshmen.

Program chairman for the meeting was Randy Field. Guests were Eddie Ruiz, Mike Kerr and Bany Cowart.

Silverman resigns as president of NBC.

## Jennyslippers...

Cont. From Page 1  
The first project for the Jennyslippers will get underway on September 12 when they will sponsor a bicycle parade and watermelon feast for youth from the 12th grade down to kindergarten.

Ladies present at Women's Division Organization meeting August 25, 1981 were Erald Gross, Nelda Merriott, Izeta Shain, Janet Shain, Jeanine Gunstream, Joyeline Costen, Vi Lindsey, Martha McCormick, Thursie Reid, Lena Hawkins, Vivian White, Marjorie Merritt, Fern Warren, Shirley Farmer, Linda Marr, Brenda Scott, Carlean Hamilton, Donna Kirk, Jean Treadwell, Joyce Shafer, Bernice Bynum, Billie Downing, Irec Bobo, Linda Lee, Zeldia Toler and Arlene Phelps.

Applications for membership may be obtained from Linda Lee at the Chamber office or Nelda Merriott at the Court House.

## Lazbuddie...

Gonzales, Dewayne Ivy, Doug Stanley, Lonnie Nail and Shannon Weaver.

Center position will be covered by Joe Dan Tarter and Lee Scott with tight end being played by Kenneth Bell and Mark Lust. Rafael Gonzales and Tony Wadell will also be at split end positions.

After the opening game with Sudan, the Longhorns will meet the opposing teams of Anton on September 11; Sundown, September 18; Amnerst, September 25; Bovina, October 2; Nazareth, October 9; Valley, October 16; Motley County, October 23; Silverton, October 30; and Happy on November 6.

## Calender...

Cont. From Page 1  
21 will feature High School Graduation and May 27 will end the 6th six weeks period as well as the second semester. This will be the last day of school unless the two extra days scheduled in case of inclement weather are not used; then, school will be dismissed two days early.

May 28 will be a work-day for faculty.

## Carnival...

Cont. From Page 1  
On Saturday and Sunday the rides will be open from 1 til 7 p.m. and on those days six dollars will buy a ride on everything.

The Chamber and Fair Committee express their hopes that this will be well-received and become an annual part of the Bailey County Fair.

## Cannon AFB Community Day August 30

The Cannon Air Force Base 1981 Community Appreciation Day will start at 11a.m., Aug 30. Festivities will conclude at 5p.m.

Streaking through the sky at about 12:20p.m. will be the 27th Tactical Fighter Wing's own stars -- the F-111D tactical fighter.

About 2p.m. men will jump from a moving aircraft and glide gently to earth. They are the U.S. Navy "Leapfrogs" precision parachute demonstration team. The "Leapfrogs" are the official Navy western region parachute team.

After the parachutists are finished, the Thunderbirds will begin the featured aerial show at 3:30p.m. Military aircraft and facilities will also be on display.

## Eastern Offers Dunlap Course

Basic knowledge and skills for identifying life threatening emergencies and treating them will be taught in an "Emergency Medical Technician" course this fall at Eastern

New Mexico University. Frequently referred to as EMT-A, the nationally recognized Dunlap course includes 80 one-hour sessions of classroom lectures, practical skills and hospital,

orientation. A New Mexico certified instructor will teach the course.

Registration for the course is being conducted in the Office of Continuing Education. \*\*\*\*\* History repeats itself. -English Proverb.

# ATTENTION: COTTON FARMERS

*Recent Rainfalls Have Been Invaluable To You As A Cotton Producer. The Needed Moisture Has Given Your Cotton Crop That Needed Push Toward A More Profitable Harvest.*

**NOW Is The Time To Look Into A Foliar Application Of 3-18-18.**

**BENEFITS:**  
*Slows Down Excessive Stalk Growth  
Hastens Crop Maturity  
Matures More Top Bolls  
Aids In Final Turnout Of Your Cotton Production*

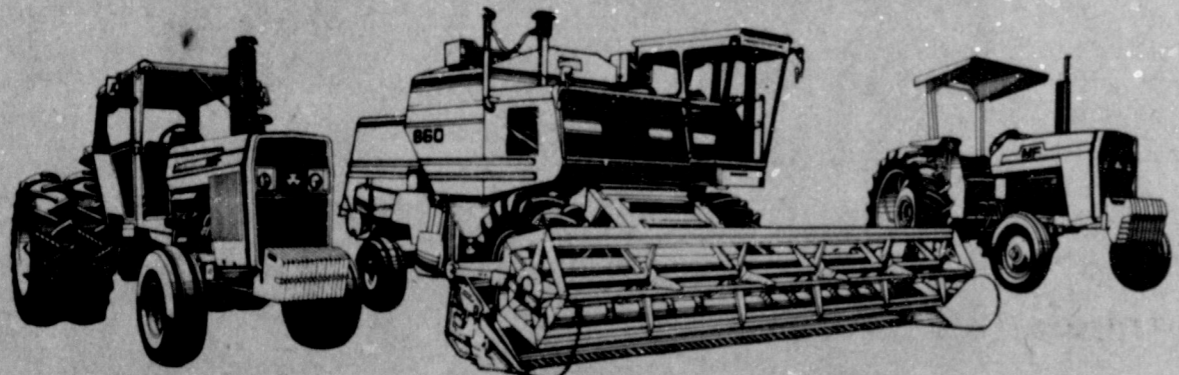
**For More Information: Contact Ron Kidd-Custom Application**

**272-3705**

**965-2262**

# MAKE A DEAL

**With factory allowances and special financing options, we can deal the way you want on every new Massey on our lot.**



### Big Factory Allowances

We're dealing now like never before. And that means you can buy any new Massey machine on our lot at a specially reduced price, thanks to big factory allowances that we have to work with. Come in, find the model that meets your needs, and check our deal. We're out to sell machines, and it's your chance to haul in the savings.

### 13.9% APR Financing\*

We have a broad range of financing options to work with, including Massey's special "Beat the Prime with 13.9" Annual Percentage Rate financing for two years. You'll have to look hard to find a deal like this again. See us for all the details.

### Waiver up to July 1, 1982\*

We have waiver of finance charge options, too. You can take advantage of buying now at today's prices, and pay no finance charges until next year -- even as late as July 1st, 1982.

We have the right machines, at the right time, and the deals have never been better. Come in and Make-A-Deal on the Massey of your choice. But don't wait. These offers end October 31, 1981.



Now more than ever, Massey makes sense.

**Fry & Cox Inc.**

401 S. Main

272-4511

**BORDEN'S ASSTD. ICE CREAM OR SHERBET \$1.49**  
1/2 GAL. RD. CTN.

**LABOR DAY WEEKEND JERRY LEWIS TELETHON**

**HEY KIDS! JOIN THE ALLSUP'S DOORBELL BRIGADE FOR MDA! AUGUST 29-30, 1981**

MORTON BEEF OR CHICKEN POT PIES	3 8 OZ. PKGS.	\$1.00
GLADIOLA FLOUR	5 LB. BAG	\$1.29
BORDEN'S FRUIT DRINK	1 GAL.	99¢

FULL FEATURE MEMORY CARD CALCULATOR REG. \$24.95	COOKED FOOD CORNDOGS 3/99¢	WESTERN COWBOY HATS REG. \$9.95 WHILE SUPPLIES LAST
SHURFINE BISCUITS 10/\$1	SUNSHINE SUGAR WAFERS 69¢	SHURFINE BLEACH 1/2 gal. 39¢
SHURFINE LEMONADE 8/\$1	REGULAR OR LIGHT ASSORTED FLAVORS DORITOS REG. \$1.09 PKG. 99¢	KRAFT MIRACLE WHIP qt. size \$1.29

SCHILLING BLACK PEPPER 4 OZ. CAN	\$1.39
GEM MIRROR SUNGLASSES REG. \$7.00 PAIR	\$4.99
SUNSHINE COOKIES CHIP-A-ROO'S 12 OZ. PKG.	\$1.29



PRICES EFFECTIVE AUGUST 27-29, 1981

**2 LITER BOTTLE COCA-COLA ONLY \$1.29**

# Lazbuddie



# Longhorns

## 1981



75 Lonnie Nail



77 Jeff Jesko



53 Lee Scott



64 Joe Gonzales



12 Terry Steinbock



52 Joe Dan Tarter



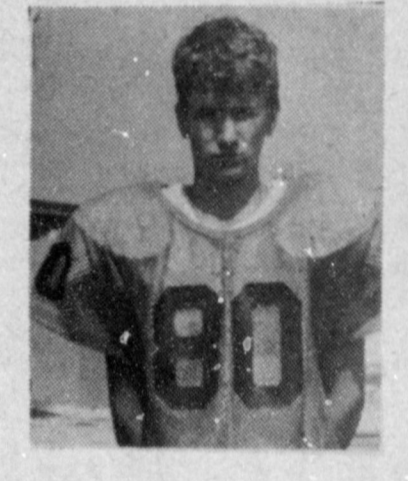
74 Shannon Weaver



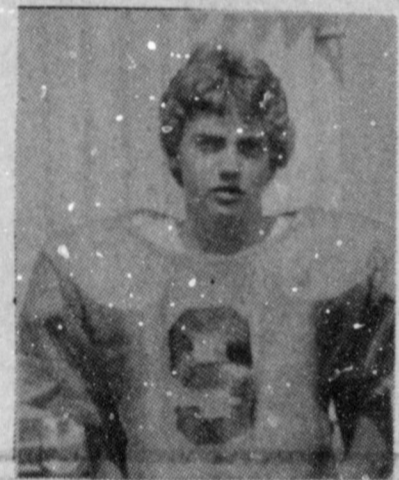
39 Ray Moron



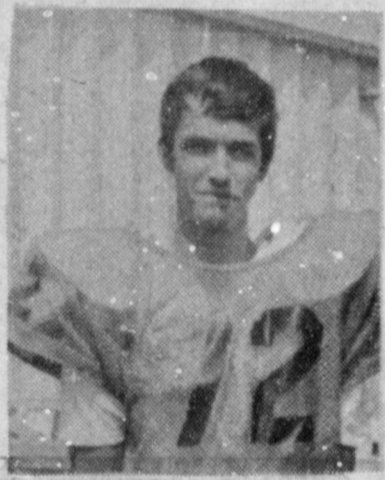
89 Mark Lust



80 Tony Waddell



9 Danny Powell



72 Dewayne Ivy



5 Jimmy Garcia



7 Casey McBroom



66 Rogelio Gonzales



50 Ricky Dale



88 Kenneth Bell



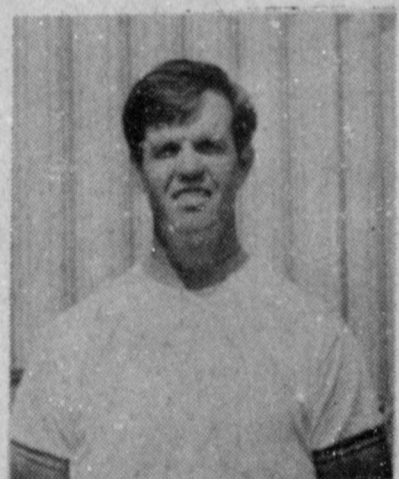
3 Daniel Schacher



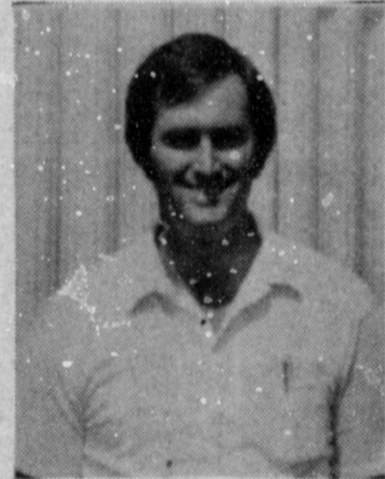
40 Bart Elliot



65 Franky Garcia



Coach Campbell



Coach Carlyle



Coach Glass



Coach Cole



82 Rafael Gonzales

Sponsored by the following sports-minded businesses

**Tide Products**

**Coker & Sons Spraying**

**Foster Fertilizer Inc.**

**Lazbuddie Garage & Supply**

**Lazbuddie Grain Inc.**

**Farmers Spraying Service Inc.**

**Sherley Anderson Lazbuddie Elevator**

**Bailey County Electric Cooperative Association**

## Texas Livestock Brands Must Be Re-Recorded

Texas livestock producers must re-record all brands and marks on their livestock with the county clerk's office in the counties where they raise livestock, beginning August 30, 1981, says Don C. King, secretary-general manager of Texas and Southwestern Cattle Raisers Association.

The law provides for a six-month re-registration period. After Feb. 28, 1982, any unrecorded brand becomes available for use on a "first-come" basis.

The Texas brand law, passed in 1971, was the subject of a recent ruling by Texas Attorney General Mark White that says owners of marks and brands must re-register them during the same six-month period every 10 years, without regard to when they originally recorded them. A small fee is charged for each re-recording by the county clerk.

The law also notes that it is illegal to brand livestock without first properly recording the brand with the county clerk in the county in which the livestock are held, King said.

The primary objective of the brand law is to provide the county clerks with an accurate, updated report of marks and brands every 10 years.

Producers operating in several counties must re-record their marks and brands in each county because the county clerk has the responsibility for recording this information in his or her county only.

Minors may have marks and brands separate from that of the father, mother or guardian, but they must also be re-recorded.

When the marks and brands are re-recorded or recorded for the first time, the location on the animal where the brand is applied must be shown. If the brand is applied to more than one location of the animal, it must be recorded as a separate record of that brand.

The county clerk of each county will publish a notice

announcing the re-recording of livestock brands order in some newspaper of general circulation in the county for a period of 30 days.

The county clerk also must make sure that no more than one brand of a kind be recorded on the same location of the animal. This eliminates the chance of two or more people in the county duplicating the same brand and location. Further, the county clerk must make certain that the brand location on the animal be designated. Failure to do so is punishable by a fine of not less than \$10 or more than \$50.

King encouraged all livestock producers to use marks and brands and to re-register these marks and brands promptly.

"A properly applied, legally recorded brand is proof of ownership. It increases the chances of recovering stray, missing or stolen livestock and serves as a great deterrent to thefts as well," King said. "A good brand eliminates many markets and outlets where a thief may dispose of an animal."

The marks and brand

information collected through the Texas county clerks and through brand inspection at livestock auction markets and terminals in the state on a weekly basis has proven invaluable in the recovery of stolen and strayed livestock, King said. In 1980, TSCRA field inspectors, working with the TSCRA computer in Fort Worth and other state and local law enforcement agencies,

## Selective Service Seeking Volunteers

As a part of a nationwide program to revitalize the Selective Service System, Colonel Paul D. Aiken, the State Director of Selective Service for Texas, is seeking volunteers to become local board members.

A Selective Service local board, once known as a draft board, will be a vital part of the nation's defense of the President determines to return to a military draft in this country. Plans call for 138 local boards in Texas, with a minimum of 690 local board members, including at least one from each county in Texas. Colonel Aiken must complete the job of identifying and recruiting almost 700 board members by the end of

recovered or accounted for livestock and ranch property with an estimated total market value of \$1.13 million.

For more information about branding and the brand re-recording process, livestock producers can contact their county clerk's office or TSCRA at 1301 W. Seventh St., Fort Worth, Texas 76102 or 817/332-7064.

August this year. He said, "We need to process the paperwork on volunteer local board members as soon as possible in order to meet our deadline."

The State Director has several Reserve and National Guard officers who may be contacted by any person who would like to volunteer to be a local board member. In the Muleshoe area, Persons may contact Lt. Colonel Bob Capps by calling 796-2119 in Lubbock. Prospective board members must be citizens of the United States between 18 and 69 years of age; not be members of the Armed Forces, including reserve and retired status; of previously a board member, have served not more than 15 years; be a resident of the area served; be willing to attend a few hours of training and devote an adequate amount of time serving as board members without pay, if and when appointed.

Colonel Aiken urges any qualified person, who wants to serve as a board member, to contact him at P.O. Box 5218, Austin, Texas 78763, telephone number 512/397-5945, or the person indicated above, as soon as possible.

A 5 percent efficiency improvement of industrial boilers through microprocessor control would save Texas' five largest energy consuming industries 14.8 trillion British thermal units (Btu's) a year, according to Honeywell's Energy Management Information Center.

## World War II Planes Will Fly Again

World War II planes will fly again on August 29th over Brownfield, Texas, as Colonels of the Confederate Air Force take to the air in a dazzling and exciting display of various fly-bys and maneuvers. Types of historic combat aircraft included in the display are trainers, bombers and fighter planes.

The Panhandle Squadron of Brownfield is sponsoring this event and invitations have extended to Colonels throughout the Texas and New Mexico area to participate.

Gates will open at the Terry County Airport 5 miles east of Brownfield at 10:00 a.m., and the aircraft will be on display to the public until airshow time at

2:00 p.m. Admission is \$4 per person, with children under 12 admitted free. Concession stands will be available, along with a mobile PX with various WWII memorabilia.

Harley Wilke, Airshow Chairman, anticipates a great deal of interest in this area and estimates a large crowd will enjoy a "close up" look at the historic aircraft as well as the excitement of seeing them in action.

The Colonel's participating the show are members of the Confederate Air Force, an organization dedicated to the preservation of the combat aircraft of World War II, to be maintained in flying condition.

# Going Out of Business Sale

# 20% OFF

## Everything In Our Store!

with \$5 purchase or more

### (Fresh Merchandise!)

### Friday - Saturday

### Sunday - Monday

### August 28 - 29 - 30 - 31

"Less Than 15 Min. From Muleshoe"

# Western Food Supply

Hours 7a.m.-7p.m.  
Open til 8p.m. Sat.

946-3421

Needmore

Hwy 214 South

## ENERGAS

### Gas water heating saves 73 percent!

Efficient gas water heating saves you 73% over electricity. Modern gas water heaters, with improved design features, use 1/4 less energy than earlier models and can still supply all of the hot water you need. A gas water heater combined with good conservation practices saves energy . . . and money. At Energas, we are committed to keeping you in hot water the most efficient way.

**ENERGAS**  
Efficient Gas Energy for West Texas

Based on 1981 D.O.E. Established Average Values



# Insurance Deadline For Small Grains Near

Small grain producers in Texas will need to decide soon if they wish to sign up for Federal Crop Insurance.

The insurance, available from any local Federal Crop Insurance Corp. representative, replaces the disaster payment program that has been in effect in recent years. Producers interested in insurance protection should contact local FCIC representatives for the sign-up deadline. The FCIC program is sponsored by the U.S. Department of Agriculture.

"Federal crop insurance protection is available to all wheat and barley producers in Texas and to oat producers in the northern blacklands and central areas of Texas," points out Dr. James Ahrenholz, economist in management with the Texas Agricultural Extension Service, Texas A&M University System.

The economist notes that there are three levels of insurance coverage available to producers. These are based on 50, 65 and 75 percent of the farm's average historical yield.

Producers can also make three price (per bushel) selections: wheat--\$2.50, \$3.50 and \$4.50; barley--\$2.00, \$2.25 and \$2.60; and oats--\$1.20, \$1.40 and \$1.70.

"Premium rates for the 50 and 65 percent level of coverage include a 30 percent reduction as a program subsidy," notes Ahrenholz. "The premium for the 75 percent coverage level includes a reduction which is 30 percent of the 65 percent level premium."

The economist gives this example in explaining the crop insurance program. If a farm in northern Texas has an average historical yield of 25 bushels of

wheat per acre, the producer can select coverage levels of either 12.5, 16.5 or 19 bushels (50, 65 or 75 percent of the historical average, respectively). If he chooses the 19 bushels per acre coverage and a price level of \$4.50, his premium, for example on a Cooke County farm including subsidy, would be \$7.75 per acre.

Premiums will vary according to the coverage and price level chosen by the farmer as well as by the location of the farm, says Ahrenholz.

For the cost of the premium, the farmer (in the above example) is buying income protection (at the selected price) for himself when his crop yield drops below the 19-bushel level. If his yield is reduced to 10 bushels, then he will receive an indemnity for nine bushels (19 minus 10) at \$4.50 each for a total of \$40.50 per acre.

"In addition to providing protection from all unavoidable hazards, the crop insurance program offers several other aspects," notes Ahrenholz. "The premiums are tax deductible, they need not be paid until the crop is harvested, and the insurance policy can be used as collateral."

"Crop insurance is one way farmers can protect themselves against some of the adverse financial consequences of a crop loss," says the economist.

## BRIEFS

Texas swamped by flash floods, some fatalities.

Fourteen die as Navy jet crashes into carrier.

Reagan recalls U.S. envoy from Mideast.

Plenty of gas for motorists this summer.

Dole calls for 25 percent tax-rate cut.

## IT'S YOUR HEALTH

Answers to your questions from the Texas Department of Health

The general public may not hear much about head lice—or pediculosis—but this public health problem is prevalent in Texas today. The following column from the Texas Department of Health answers some of the frequently asked questions about head lice and what can be done about them.

**QUESTION:** What are human lice and what are the symptoms of an infestation?

**ANSWER:** Human lice are a group of insect parasites which live on the bodies of their victims. These sucking lice depend on the blood of their hosts for nourishment. The louse is small, ranging from 1/16th to 1/8th of an inch in length. First symptoms of lice may be an itching and burning of the scalp, which leads to scratching and may produce an infection.

The eggs of lice—called nits—are attached to the hair shafts of their hosts with a cement-like substance. These nits are seen in clusters along the hair near the scalp and may be a give-away that a person is infested.

# COME TO THE FAIR

In

## Bailey County

August 27, 28, & 29, 1981

At

## Bailey County Coliseum

In

## Muleshoe, Texas

Presented By The Following Civic Minded Merchants:

Wilson's Appliance

Western Drug

Wooley International, Inc.

Bailey County Electric Cooperative Association

Dinner Bell Cafe

Main Street Beauty Salon

John's Custom Mill

Albertson's Shop For Men

Black Insurance Agency

Pay-N-Save

West Plains Pharmacy

Cliff Allen Custom Saddles

McCormick Seeds, Inc.

Terry Field Insurance

Campbell Irrigation, Inc.

Berry Electric

Alton Burton Service Center

Baker Farm Supply, Inc.

Kemp Discount Furniture

Spudnut Shop

Spurgeons Motor Machine

Ray Griffiths & Sons, Inc.

Diet Center

Muleshoe Publishing Co.

EXHIBITS AND PRIZES



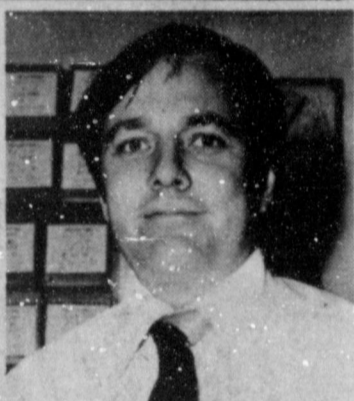
## Announcing...

West Plains Hospital

Pharmacy Is Now Under New

Management.

**Larry Durrett RPh**



Larry Durrett RPh

Of Pharmanco, Inc. Is On Hand To Service And Advise Your Many Prescription Needs.

Larry Invites His Many Friends To Come By & Visit With Him.

Located In The Hospital Lobby

West Plains Pharmacy



708 S. 1st

272-4524

INTERNATIONAL HARVESTER PRESENTS

# THE GREAT AMERICAN TRACTOR SALE



HERE'S YOUR CHANCE TO MAKE YOUR BEST BUY OF THE YEAR ON NEW INTERNATIONAL® 2+2 AND 2-WHEEL DRIVE TRACTORS OVER 100 PTO HP. SAVE WITH OUR SPECIAL DEALS... THEN GET A CASH REBATE OF UP TO

# \$10,000

Now's the time to trade. Buy any new Series 88 tractor or 2-wheel drive Series 86 tractor over 100 PTO hp and receive a cash rebate of up to \$10,000 from International Harvester. See us for complete details. But hurry. You must buy and take delivery during August 1981.



INTERNATIONAL AGRICULTURAL EQUIPMENT

Wooley International Inc.

W. Hwy 84

272-5514

# AERO SPACE SHOWS



## FAIR TIME IN MULESHOE

**CARNIVAL**  
**NOW THRU SUNDAY, AUGUST 30th**

**7: P.M. to 11:30 P.M. DAILY**

**OPEN AT 1:00 P.M.**

**SATURDAY AND SUNDAY**

Carnival Is Located At Boy Scout Grounds  
On South Main

**Bailey County 4-H Fair**

At Civic Center

Open Thursday, Friday And Saturday

**SPECIAL**  
**Ride All Rides For**  
**ONLY \$6**

**1-7 p.m. ONLY**  
(Must Have Hand Stamped)

**HEY, KIDS!**  
**COME ONE,**  
**COME ALL**  
**& HAVE A BALL**



## FUN AND EXCITEMENT

### FOR ALL!

CLIP THIS COUPON

**THIS COUPON**  
Is Good For  
**ONE**  
**FREE**  
**RIDE**  
On Any Ride  
Compliments of  
Fair Committee  
&  
Chamber Of Commerce



## Beef Cattle Cross Breeding Systems

The main benefits of crossbreeding are hybrid vigor, favorable breed combinations and complementarity, says Dr. Stephen P. Hammack.

Hammack, area beef cattle specialist with the Texas Agricultural Extension Service, based in Stephenville, says the performance of crossbred cattle must exceed the best purebred otherwise crossing serves little purpose.

Heterosis, or hybrid vigor, is often thought to be the only benefit of crossbreeding, but favorable breed combinations increase the frequency of desired traits, Hammack notes.

So, he adds, benefits might be obtained from crossing even if no heterosis exists.

"Heterosis is generally small for any one production trait, but the cumulative effect on total production is significant," Hammack says.

He explains that complementarity deals not only with matching desired features of breeds, but also with getting rid of or reducing undesirable traits.

The cross of two pure breeds, or first-cross, is often called an F-1. But a better definition,

Hammack noted, "is crossing of two genetically unlike parents." maximum hybrid vigor is expressed in such crosses.

It is the actions after the first-cross that determine the type of crossbreeding systems used, Hammack explains.

"The terminal of 'specific cross' systems end at a planned point while the rotation or 'criss-cross' systems are continuous.

In the three-breed terminal cross or multi-breed cross, two breed F-1 cows are bred to a third sire breed.

Hammack says the important thing to remember in multi-breed terminal crosses is the opportunity to obtain high degrees of heterosis, favorable combinations and complementarity. However, since all calves produced in terminal crosses are sold, replacement females must be purchased or generated in other breeding groups.

In the two breed rotation system, F-1 females are bred to bulls of breeds other than their sire-breed.

Eventually, in this system, there will be two distinct groups which will contain about two thirds of the genetics of the sire and one third of the grand sire. In the three-breed rota-

tion, the first-cross females are not backcrossed, but rather mated to a third breed. This system eventually develops three groups.

"Mating plans of rotations can be confusing unless we remember that individual cows are not moved from one breeding group to another," Hammack says. Any rotation system, he points out, results in decreased heterosis because of the back-cross feature at which point the same breed will appear in both sire and dam. However, replacement females are produced in rotations, unlike terminal crosses.

Hammack says there are simple one and two herd systems which use several breeds but do not require numerous breeding groups. Or artificial insemination can be used to expand crossbreeding options.

Hammack emphasizes that a crossbreeding system should be chosen with care because some could be too complex for many operations.

**Effective**  
There's nothing like a dishtowel for wiping that contented look off a married man's face.

-Busy Bee, Davisville.

**He Is**  
A psychologist is a person who used \$2 words to explain a failure caused by laziness.

-News, Buffalo, N.Y.

## Gas Production Down From May '80

Texas oil and gas wells produced 567,645,159 Mcf of gas in May 1981, down 2.15 percent from field runs a year earlier.

Marketed gas production totaled 471,962,974 Mcf and reflected a 2.92 percent decrease from the May 1980 volume. Marketed production is the total gas to transmission lines, carbon black and plant fuel and lease use.

### West Plains Medical Center Report

#### ADMITTED

Aug. 20, James Curtis, Harry Freeman, Lyndon Foster, Tite Vierners, Janalynn Davis, Welma Bowington, Rosa Toscano, Edith Hanson

Aug. 21, Sharon Tamplin, Aurora Rejino, Elbert Shelby, Mike Elliott, Allen Guinn

Aug. 22, Janie Gonzales, Trisha Burgess, Wade Estrada

Aug. 23, Vergie Spencer, Robbie Vaughn, LaRhonda Gray

Aug. 24, Joe Siminacher

**DISMISSED**  
Aug. 20, Mary Houston, Nelda Castorena, Carolyn Kirby and baby boy, Florence Holmes, Alice Lara and baby girl, Leatrice Johns, Polly Birdsong, Rosie Martin, Mary Garcia, Ronald Landon

Aug. 21, Jo Ann Flannery, Edna Moreno, Francisco Gonzales, Bertha Beene, J.W. Holmes, Julia Martinez, Sherri Wikenson, Anita Foster, Denise Bland

Aug. 22, Lyndon Foster, Ken Garrison

Aug. 23, Sharon Tamplin, Tite Vierners

Aug. 24, Janalynn Davis and baby boy, Wade Estrada, Harry Freeman, Janie Gonzales, Mike Elliott, Sheely Elbert

Gas exported from Texas in May totaled 264,193,209 Mcf. El Paso Natural Gas Co. was the month's largest exporter, moving 64,710,815 Mcf of gas of which 37,609,368 Mcf was Texas produced gas.

Exports of Texas produced gas in May totaled 196,243,211 Mcf, and reflected a 5.90 percent decrease from the year earlier month.

Texas gas production in May came from 215,462 oil and gas wells.

In April 1981, Texas wells produced 552,503,975 Mcf of gas.

# TAKE A FRIEND TO COLLEGE!



Take along a little home when you're away from home. Subscribe to Muleshoe Journal and keep in touch with the local and county news of friends, family and community. There's no better way to brighten a school day! Our special student rate is only \$10

ENCLOSED IS MY CHECK FOR \$10 FOR A STUDENT SUBSCRIPTION

NAME \_\_\_\_\_  
COLLEGE \_\_\_\_\_  
CITY \_\_\_\_\_  
STATE \_\_\_\_\_

Bailey County & Muleshoe Journal

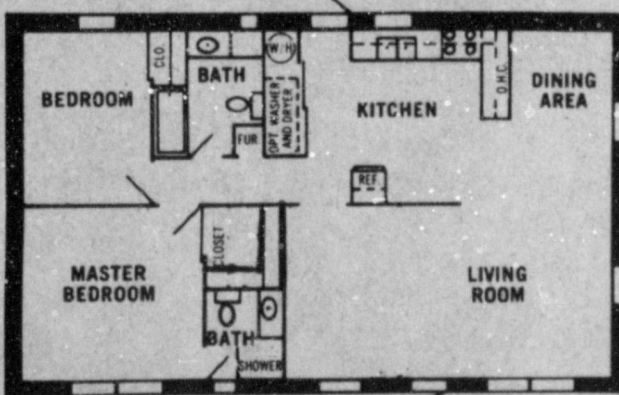
Box 449

272-4536

## THE AFFORDABLE ALTERNATIVE To High Cost Housing



### The Manufactured Home



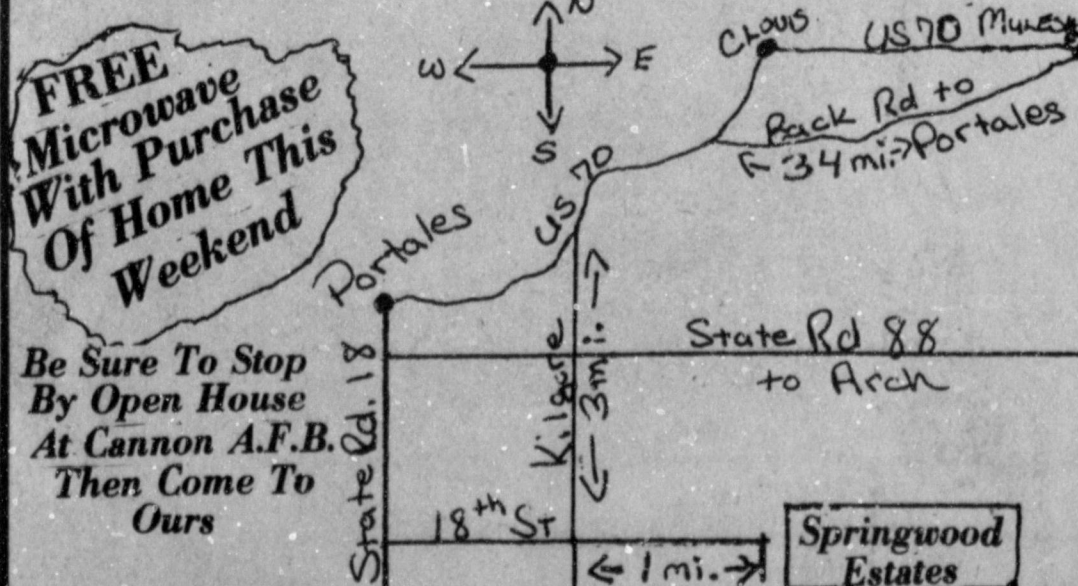
- 960 SQ. FT. • 2 or 3 Bedroom • 1 1/2 Baths • Deluxe Elec. Range • 2 Dr. Refrigerator • Dishwasher • Plush Carpet Thru-Out • Total Electric • Heavy Colorado Insulation Pkg • Self Storing Storms

- SITUATED ON SPACIOUS 1/2 ACRE SITES • ALL UTILITIES IN & PAID FOR •

Just 5 Minutes From Downtown Portales Here is The Best Part

Total Price Only **\$29,990<sup>00</sup>**

\* Also 1344 A SQ. FT. Model 3 or 4 Bedroom on Display \*



OPEN HOUSE Aug 29-30 1 to 7 p.m.  
**SPRINGWOOD ESTATES**  
505-356-5600

## FROM OUR COUNTRY KITCHEN LOOK WHAT TOWN & COUNTRY FOOD STORES HAVE FOR YOU!!

**COUPON**  
2 PIECES FRIED CHICKEN  
FRENCH FRIES & ROLL  
reg. \$1.80 **\$1.19**  
Valid through Aug. 31, 1981.

**COUPON**  
2 BURITTOS  
& FRENCH FRIES  
reg. \$1.95 **\$1.19**  
Valid through Aug. 31, 1981.

**COUPON**  
SAUSAGE on a STICK  
FRENCH FRIES & ROLL  
reg. \$1.61 **\$1.19**  
Valid through Aug. 31, 1981.

**COUPON**  
2 CORN DOGS  
& FRENCH FRIES  
reg. \$1.75 **\$1.19**  
Valid through Aug. 31, 1981.

**COUPON**  
FISH ON A BUN  
& FRENCH FRIES  
reg. \$1.74 **\$1.19**  
Valid through Aug. 31, 1981.

**COUPON**  
9 PIECES CHICKEN, FRENCH  
FRIES, ROLLS & SALAD OF  
YOUR CHOICE  
reg. \$7.75 **\$5.95**  
Valid through Aug. 31, 1981.

Prices good ONLY WITH COUPON  
Cooking Hours 10 - 10 Daily

No. 72 1900 W. American  
272-5337  
Muleshoe, Texas



**TOWN & COUNTRY FOOD STORES COUNTRY KITCHENS**

## Fair Quarter Horse Show Judge Named

Mary H. Hopkins of Vicksburg, Mississippi has been named to judge entries in the Quarter Horse Show slated in conjunction with the 64th annual Panhandle South Plains Fair in Lubbock.

The competition is scheduled to begin at 8 a.m. on Oct. 3, final day of the eight-day run, according to general manager Steve L. Lewis.

Earnest Kiker has been tabbed as show superintendent and Alan Day will serve as assistant. Bob Middleton will be ring steward and Gina Burns, secretary.

Contestants will be competing for \$3,550 in premiums.

The show is approved by the American Quarter Horse Association and all AQHA rules will prevail during the show.

Entry fees include \$7 per horse in halter classes, \$4 per horse in youth activity, \$12 per horse (\$8 jackpot) in performance classes, \$15 (\$10 jackpot) in calf roping, \$25 (\$17.50 jackpot) in both junior and senior cutting.

Twenty-four classes of competition are carded for halter entries and 20 in performance.

The following premiums are set for open and amateur classes: \$35 for first,

\$25 for second, \$20 for third, \$10 for fourth, \$5 for fifth and sixth spots. In open and amateur classes, rosettes will be awarded to first place winners and ribbons for second through sixth. In youth activity classes, trophies will go to the first place winner and ribbons for second through sixth. Entries are not limited.

Seven stage shows have been booked for Fair Park Coliseum during the 1981

## Farmers May Face Depressed Prices

Peanut farmers may be facing depressed prices later in the year in the wake of a bumper harvest. So contracting this year's crop could be an important move, says an economist with the Texas Agricultural Extension Service, Texas A&M University System. Since most farmers have considerable expenses tied up in their crop, forward contracting would enable them to reduce some of the risk by assuring a reasonable market price. Peanut plantings are up about 4 percent across the U.S. this year, but edible usage is down 17 to 20 percent due to last year's short crop and high prices.

exposition. The line-up includes: Charley Pride, Sept. 26; Mickey Gilley and Johnny Lee, Sept. 28; Don Williams, Sept. 29; Marty Robbins and Little David Wilkins, Sept. 30; Slim Whitman and Boxcar Willie, Oct. 1; Mel Tillis and the Maines Brothers, Oct. 2; Jacky Ward and the Kendalls, Oct. 3.

Shows will be at 5 p.m. and 8 p.m. daily except for Williams who may be seen at 8 p.m. only.

All seats are reserved and tickets are priced at \$6, \$7 and \$8.

Tickets may be obtained at the fair office, Hemphill-Wells (South Plains Mall store only), Dunlap's, Luskey's Western Wear and Ed's Wagon Wheel.

Mail order requests also will be accepted by the fair at P.O. Box 208, Lubbock, TX 79408. Orders will be filled in the order in which received and requests must be accompanied by a stamped, self-addressed envelope.

### Too Many

What worries me is that there are so many people in this country who are willing to watch the same kind of television junk I do.

-Advocate, Cumberland.

## Farming Is Big Business--The Biggest!

A recent report by the U.S. Department of Agriculture points up some interesting facts:

- Agriculture is the nation's largest industry. Its assets, totaling a whopping \$927 billion, are equal to about 88 percent of the capital assets of all manufacturing corporations in the United States.

- Agriculture is also our biggest employer. Between 14 and 17 million people work in some phase -- from growing food and fiber to selling it.

- The foods that pour into supermarkets come in 6,000 to 8,000 different forms, many of which did not even exist five years ago and may very well not exist

five years from now. (This is attributed to the fact that Americans are attracted to newer foods with more built-in conveniences -- as well as to food in attractive packages that preserve the quality.)

- Despite recent rises in food prices, family income still buys considerably more food today than 30 years ago, partly because agriculture has become much more efficient and partly because consumer incomes have risen faster than food prices.

- The U.S. has approximately 2.3 million farms. This number is less than previous years, continuing a downward trend that started in 1936.

- Of all farms in this country producing at least \$2,500 worth of products

to market annually, 89 percent are family-owned.

On the typical family farm of today, the husband and wife are equal partners sharing in major decisions.

Because of the complexities of running a successful farming operation today, more and more farm families are turning to modern technology for assistance.

Farm management consultants now provide all kinds of data, from how much feed to buy for livestock to marketing and economic expertise.

The kitchen table is no longer an adequate office for a farm business. Office areas with office conveniences are being set up in farm homes.

The familiar copy machine -- long a fixture in almost every office in the city -- is proving to be a valuable asset on the farm, as well. Small, low-cost copiers, developed by 3M research, require no inks, toners or solvents. They are being used in farm operations to copy everything from planting and rotation schedules, to expense and production records, to stock bloodline

entries. Normal household papers often duplicated by farm families on the 3M copiers include: tax returns, bills, recipes and club bulletins.

And, returning to the Department of Agriculture report, here are more facts and figures. They indicate the size and importance of the business in which these farm families work:

**"BEST FINANCE PLAN AVAILABLE"**  
**CMC**  
**COTTON MODULE BUILDERS**  
 ★Faster Tamping & Stronger Design  
 ★Direct Access Controls & Drive Motors  
 ★Handy Hose Track Carrier  
 ★Patented Delta Beam Construction



**KMP MANUFACTURING CO.**  
 Earth, Tx. 806-257-3411  
 3/4 Miles On S. Amherst Rd.

**EXTRA SPECIAL, SPECIAL**  
 Five Point  
**DOG FOOD**  
 50 LB BAG 25 LB BAG  
**9<sup>36</sup> 5<sup>1</sup>**

**Alert Cat Food**  
 3<sup>45</sup>  
 10 LB. Bag

**A&M**  
 FARM AND RANCH SUPPLY

## Improvement Program Under Study

The Texas Agricultural Extension Service is gearing up to launch a new program designed to help towns and cities become more attractive physically, economically and socially.

It's called the Texas Certified City Program and is patterned after the Texas Community Improvement Program that has been under way for the past 32 years to help rural communities of under 1,000 population.

"We are currently field-testing the new program, and it should be available to all Texas cities by next summer," points out Tim Shaunty, community development specialist with the Extension Service.

"According to Shaunty, the intent of the Texas Certified City Program is to assist city leaders in identifying shortcomings and then finding resources necessary to correct them. Support provided by the Extension Service will be primarily training in educational programs.

"The gist of the program is to provide information

assistance which will allow city leaders to do a self-analysis and then to follow up with training and workshops as needed," explains Shaunty. "Those electing to participate will maintain written documentation regarding results of their analysis and actions taken to correct shortcomings. This documentation will be included in the form of verification for preselected criteria, enabling the city to become 'certified'.

"It is important for all town and city officials interested in the Texas Certified City Program to recognize that its purposes are to identify those areas that are critical for significant improvement and to develop training materials to support those needs," adds the specialist.

Major segments of the certification program include self-evaluation, planning and initiating, human relations and cultural enrichment, economic development, physical environment, community facilities and services, and conservation programs.

# SHOP RITE



## Treasure Chest of Coupon Savings!

"Coupon Savings You Can Bank On"

### CUSTOMER COUPON CENTER

#### Bring Your Extra coupons

From Home and Exchange  
 Them with Your  
 Friends And  
 Neighbors



Better Organization Means Bigger Savings  
**COUPON ORGANIZERS \$2.49**



**True Value** HARDWARE STORES

**TOOL VALUE OF THE MONTH**

QUANTITIES LIMITED

• LIFTS  
 • PULLS  
 • PRYS  
 • POUNDS

now **3<sup>99</sup>**

**15-INCH SUPERBAR®**

A versatile tool forged from spring tempered steel. Unique rocker head gives maximum leverage for fast results with any job. 13215

**True Value** HARDWARE STORES

**HARDWARE VALUE OF THE MONTH**

Master

now **1<sup>99</sup>**

**COMBINATION LOCK**

For school lockers, bikes, more. Double-wall steel lock with 3-number dialing, self-locking mechanism. Rust-resistant inner parts. 1500D

QUANTITIES LIMITED

**Fry & Cox Inc.**  
 401 S. 1st 272-4511

Regular and Diet Shasta **Save 78¢ On**  
**Soft Drinks 6/\$1**

With an additional minimum purchase of \$7.50, excluding cigarettes and other Shop Rite coupon items. Limit one per coupon, one coupon per customer. Thereafter 3/89¢ each. Redeemable thru Wed., September 2, 1981

Your choice of One complete Piece **Save \$1<sup>00</sup> On**  
**Diana China \$1**

With an additional minimum purchase of \$7.50, excluding cigarettes and other Shop Rite coupon items. Limit one per coupon, one coupon per customer. Thereafter \$1 each. Redeemable thru Wed., September 2, 1981

Kids Love'em **Save 50¢ On**  
**Oreo Cookies \$1<sup>29</sup>**

With an additional minimum purchase of \$7.50, excluding cigarettes and other Shop Rite coupon items. Limit one per coupon, one coupon per customer. Thereafter \$1<sup>29</sup> each. Redeemable thru Wed., September 2, 1981

All Beef or All Meat Oscar Mayer **Save 58¢ On**  
**Franks \$1<sup>49</sup>**

With an additional minimum purchase of \$7.50, excluding cigarettes and other Shop Rite coupon items. Limit one per coupon, one coupon per customer. Thereafter \$2<sup>07</sup> each. Redeemable thru Wed., September 2, 1981

Minute Maid, chilled **Save 55¢ On**  
**Orange Juice \$1<sup>39</sup>**

With an additional minimum purchase of \$7.50, excluding cigarettes and other Shop Rite coupon items. Limit one per coupon, one coupon per customer. Thereafter \$1<sup>34</sup> each. Redeemable thru Wed., September 2, 1981

Golden **Save 30¢ On**  
**Carrots 30¢**

With an additional minimum purchase of \$7.50, excluding cigarettes and other Shop Rite coupon items. Limit one per coupon, one coupon per customer. Thereafter each. Redeemable thru Wed., September 2, 1981





# SHOP RITE

501 W. American Blvd.

Double  **Wen, Sat, sun.**

**ON SALE NOW!**

Now you can collect a beautiful set of china through this exclusive offer. Each week a different place setting piece will be featured at this special price and purchase requirement.

Matching accessories are also available to complete your collection. Each accessory is available throughout the program with no purchase requirement!

**THIS WEEK'S FEATURE ITEM:**

**DINNER PLATE** **69¢** EACH  
with each \$5.00 Grocery Purchase



**Pork Chops**  
Rib or Loin End cut

**\$1.23**  
lb.

**Pork Chops**  
Rib or Loin Center Cut

**\$1.87**  
lb.

Lean **Ground Beef**  
Not less than 80% Lean

lb. **\$1.78**

Sliced **Bacon**  
Wilson Certified 16 oz.

**\$1.49**

Roll **Sausage**  
shurfresh Pure Pork

**99¢**

Longhorn **Cheese**  
Kraft 1/2 Moon Cheddar or colby 10 oz.

Fried **Fish Fillets**  
Mrs. Paul's 14 oz.

**\$2.29**

**\$1.89**

**Arm Roast** **\$1.68**  
Boneless Center cut lb.

**Arm Steak** **\$1.73**  
Boneless Center cut lb.

**Beef Roast** **\$1.68**  
Boneless Chuck Tender lb.

**Fryer Breast**  
U.S.D.A. Grade A

**\$1.19**  
lb.

**Chuck Roast**  
Boneless Beef Center Cut

**\$1.48**  
lb.

**Chuck Steak**  
Boneless Beef Center Cut

**\$1.59**  
lb.

## Shop Rite Put's More Savings in the Bag!

**Margarine** **88¢**  
Mazola corn oil Quarters

**Gravy Train** **\$8.49**  
Dog food 25 lb.

**Koolaid** **\$2.39**  
Sugar Sweetened All Flavors 10 qt. can

**Tide** **\$3.29**  
35¢ Off Lable 84 oz.

**Spam** **\$1.39**  
Smoked Flavored 12 oz. can

**Tang** **\$3.29**  
Orange Drink Mix 40 oz. can

Kleenex **Tissue** **77¢**  
Facial Botique 125 ct.

Prices Good Thru Wed.,  
Sept. 2, 1981.

**Joy Liquid** **\$1.69**  
Dish Detergent 20¢ Off 32 oz.

**PRODUCE DEPT**

**Oranges**  
School Lunch Treat 5 lb. bag

**\$1.25**

**Avocados** **5/\$1**  
Salad Favorite

**Cantalopes** **69¢**  
breakfast Treat ea.

**Radishes** **Nectarines** **Pears**  
Icy Fresh Summer time Treat Northwestern

bunch **3/\$1**

lb. **49¢**

lb. **49¢**



Minute Maid **Orange Juice**

16 oz. can

**1.19**



Gold Medal **Flour**

5 lb. bag

**98¢**



Kraft **Salad Dressing**  
Assorted

8 oz. btl

**63¢**



**Low Fat Milk**

1/4 gal. **1.89**



Ritz **Crackers**  
Value-Pack

16 oz. **89¢**



**Post Toasties**  
Cereal

18 oz. **99¢**

Trash Can **Liner** Shurfine 20 ct. **\$2.59**

**Caress** Body Soap bath size **59¢**

**Pledge** Furniture Polish Regular Lemon 7 oz. **\$1.39**

**Cat's Pride** Absorbent 5 lb. bag **69¢**

Bon Ami **Cleanser** Powered-14 oz. can **59¢**

**Cornbread Mix** Gladiola Yellow White 6 oz. pkg. **4/99¢**

**Sweet & Low** Artificial Sweetener 50 ct. pkg. **69¢**

**Shout** Pre-Wash 12 oz. can **\$1.59**

**Country Time** Lemonade Mix 10 qt. can **\$2.99**

**Karo** Waffle syrup 32 oz. btl. **\$1.79**

Sun-Mnid **Raisins** 6/1 1/2 oz. **\$1.09**

Del Monte **Cucumber Chips** Sweet 15 oz. **99¢**