

## Weather

Aug. 16 89 64 .90  
 Aug. 17 82 61 .03  
 Aug. 18 78 61 .26  
 Aug. 19 78 57 .05

# MULESHOE JOURNAL

'The Community of Opportunity Where Water Makes the Difference'



20¢

Volume 58, No. 35

10 Pages Today

Published Every Thursday at Muleshoe, Bailey County, Texas 79347

Thursday, August 20, 1981

## Around Muleshoe

Don't forget to buy season football tickets at Damon Drug. They are on sale now.

Muleshoe AgBoosters will meet Monday, August 24 at 8 p.m. in the High School Ag Department. All members and prospective members are urged to attend this meeting.

Persons who ordered or were used as photographers models in July may pick up their pictures at the Muleshoe Journal office during regular office hours. A.J. Melnick was the photographer from Dallas, Texas.

Reminder is made of starting school date on August 26. This will be a full day of school, buses will run and lunch will be served.

Muleshoe Mules will scrimmage Shallowater, Thursday August 20 at 4 p.m. Both varsity and junior varsity will be involved.

On September 6, Channel 28, KMAC-TV will be in Muleshoe to film the newly created SWAT team in action. According to reports given, this team is rather unique, in that it was developed in a town as small as Muleshoe.

### Rotary Hears Talk Progress Report

Muleshoe Rotary Club met August 18 with guests Kent Rempe and Arthur Jones. Ben Green, who is manager at the Southwestern Public Service Talk Plant brought the program.

Green gave a progress report on the plant and noted that 42 permanent employees have been hired and beginning mid-October 25 more employees will be selected. April, 1982 will

### SPAG Meeting August 20

The Board of Directors of the South Plains Association of Governments is holding an area meeting Thursday - August 20 at 7:30 p.m. in Morton that should be of special interest to minority people in Bailey County.

The meeting is to be held in the Community Building and it's purpose

Cont. Page 6, Col. 1



A HELPING HAND.....Rotary Exchange Student, "Shin" from Japan received a little help and a lot of advice from Chris Young of Muleshoe. "Shin" has become a victim of the urban cowboy look during his stay in the States.

## Stockpiled Surplus Grain Depressing Local Markets

Concentration of government-held grain on the High Plains of Texas is unfair to Texas producers who are about to harvest one of their best crops on record, Texas Farm Bureau President Carrol Chaloupka said Friday.

"Farm Bureau has asked Secretary of Agriculture John Block to avoid dumping this stockpiled grain on the market because of the price-depressing effect," Chaloupka said. "We assured the Secretary that Farm Bureau backs his promised efforts to liquidate the grain -- mostly corn from the Midwest -- in an orderly manner over a period of time to avoid disrupting grain markets."

The grain was bought by the government in 1980 in an effort to shore up grain prices following the embargo of 17 million tons of feed grains to the Soviet Union.

"The government shipped about 45 million bushels of this surplus grain from midwestern states to elevators in the Texas Panhandle," the farm leader said.

"This heavy concentration of surplus grain has had a depressing effect on grain prices in West Texas

for some months now," he said. "As we face harvest of good to record crops in the area, the stockpiled grain not only affects our markets, but we are likely to have a shortage of elevator space in the area."

The farm leader, who raises livestock, wheat and feed grains near Dalhart, said the emergency in West Texas points up the danger of having the government own grain.

"Any time the federal government buys up commodities with the idea of helping farmers, the ultimate result is lower prices for farmers because this grain either overhangs our markets or is dumped deliberately to depress farm prices," Chaloupka said.

"Farm Bureau opposed the embargo of the grain shipments to Russia in the

### Calendars On Sale

The new Lazbuddie birthday and activity calendars have arrived.

Persons wishing to purchase one of these community calendars may contact Glenda Jennings, Linda Elliott, Sandra Gregory or the Lazbuddie Methodist Parsonage. The price of the calendar is \$2.00.

first place," the farm leader said. "If it weren't for the embargo, we wouldn't be faced with the present emergency in Texas. We believe any politically-inspired embargo should include all exports of everything."

## FM Road Building Starts September

August 24 will officially start work on FM Highway 3397 in Bailey County. On this date, barricades will be set on this project.

At an August 17 pre-construction meeting, the contractors and department officials discussed safety, personnel, specifications and schedule of operations.

Rhea E. Bradley, supervisor of the project reviewed particulars of the proposed road. Location is to be from FM Highway 298 at Circleback, South 8.3 miles to FM 54, 1.0 mile west of Bula, Texas.

Low bidder on the project was Borsberry Construction Company. Burt Borsberry stated that the hauling of caliche will begin in October, with the first asphalt being put down in November. These dates however will depend

## Girls Physicals On August 23

Coach Robert Brandon reminds all junior high and high school girls coming out for basketball and volleyball this season that physicals will be given on Sunday August 23 beginning at 2 p.m. in the high school gymnasium.

All girls who are coming out for sports must have these physicals before they are eligible to play in this season's sports.

In the event a girl misses these school sponsored physicals, she will be required to obtain her own at her own expense before being able to play.

# Abundant Moisture Aids Crop Potential

★★★

## Police Chief Urges Safety Awareness

On August 26, another school year will begin in Muleshoe.

In keeping with safety measures through the years, Police Chief Les Irvin issued reminders to all motorists that buses will be operating on highways and in the city. "School children are excited about a new year and are not always safety-minded. Therefore, as citizens it is our responsibility to take extra measures to guarantee their safety," noted Irvin.

The chief stated that "Our main goal for strictness is the safety and well-being of the students. Speed limits and traffic signs will be strictly enforced in school area. There will be no lee-way-if the sign says 30 miles per hour it MEANS 30--not thirty-plus."

School crossovers will be patrolled during school hours and officers will be instructed to keep watch for violators.

Motorists are advised to

watch for busses stopping at railroad crossings to avoid possible collisions. According to state law, all traffic must stop and remain stopped while busses are picking up or delivering passengers.

Special care should be exercised around the school area, since many students cross to lunch rooms and for other classes. Places are provided for parents to leave or pick up students, and they are re-

Cont. Page 6, Col. 1

## Local Photographer Receives Print Award

Local photographer, Lonnie Adrian, owner of Adrian Photography, was presented a distinguished print award at the Texas Professional Photographers of America (TPPA) Summer Seminar at Kerrville this past weekend, August 8-11 at the Inn of the Hills in Kerrville.

Adrian's photograph, "This Little Band of Gold," was judged superior by a panel of five judges from throughout the United States and Canada. Judged in the wedding candid division, the photograph was chosen from a field of over three hundred

## Police Report

Local law enforcement agencies have reported a number of "fender benders" during the recent wet weather; however none included injuries.

August 11, Muleshoe Police Department recorded one burglary and one theft, involving a bike wheel from a residence. August 11 also recorded a burglary and a theft. On August 13 two mischief reports were recorded as well as a theft involving a stolen purse.

July 23, Allsup's Convenience Store reported a theft by forgery.

An assault was reported on August 14; unauthorized use of a motor vehicle and gunshots were reported on the 15th. Investigation of the gunshots yielded no evidence.

Criminal mischief was reported on August 16, involving destruction of window screens of a residence. An arrest on a traffic warrant from Johnson City, Texas was made on the 17th.

The Muleshoe Police Department reported that Detective Julian Dominguez and Officer Johnny Rivas are presently involved in a police report writing school in Dimmitt. Also, Officer Diana Fox has just returned from Abilene, where she was instructed in defense tactics for female officers.

## Area Farmers Hope For Dry Autumn

Heavy skies opened up and dumped another one to two inches on an already soggy Bailey County over the past three days. The consistent moisture has been a life saver to many of the dry land farmers in this area. According to individual reports, it would appear that the southern part of the county has received.

The general consensus shows that most of all parts of Bailey County has shared a portion of the 6 to 7 inch total amounts of rain. Some places have recorded more moisture than others

but all portions of the county have received benefits.

Re-current rains in the South Plains have caused some flooding of crops in Bailey and surrounding counties. Farmers who have received upwards of six to seven inches of moisture and now hoping for days of hot sunshine and warm nights to help the crops along.

Beginning the latter part of July and on into August the persistent moisture has 1-ft much of the area in extremely good shape moisture wise. Along with the moisture, has come insects and weeds. Up to now neither of these have seemed to be detrimental to crop growth. However, if these rains continue on the same frequency and basis, problems could arise.

Farmers are now ready to begin cutting ensilage from corn and harvest time is not too far away for corn producers.

Cotton farmers have been elated at the moisture that has come their way.

Cont. Page 6, Col. 2



PHOTOGRAPHY AWARD.....Lonnie Adrian of Muleshoe is presented the distinguished print award at Kerrville by Eddie Hinds of Tyler. Hinds is president of the Texas Professional Photographers of America.

## Lazbuddie School Begins August 26

Lazbuddie ISD will register and begin classes Wednesday, August 26, 1981. Buses will run their regular routes, weather permitting.

Students registering for the first time must bring their immunization records in order to register.

Lazbuddie Elementary Faculty is as follows:

Kindergarten- Alene Pi-ttock; First Grade- Adeana Carlyle; Second grade- Rhonda Buie; Third grade- Pat Spencer; 4th grade- Hester Barnes; 5th grade- Debra Hall; 6th grade- Linda Welch; Special Education- Jerry Stickrod; Migrant- Alice Barber.

Aides in Elementary are Leona Crenshaw, Carri Flores, Kathy Everett, Charles Bean is Elementary Principal.

High School Faculty

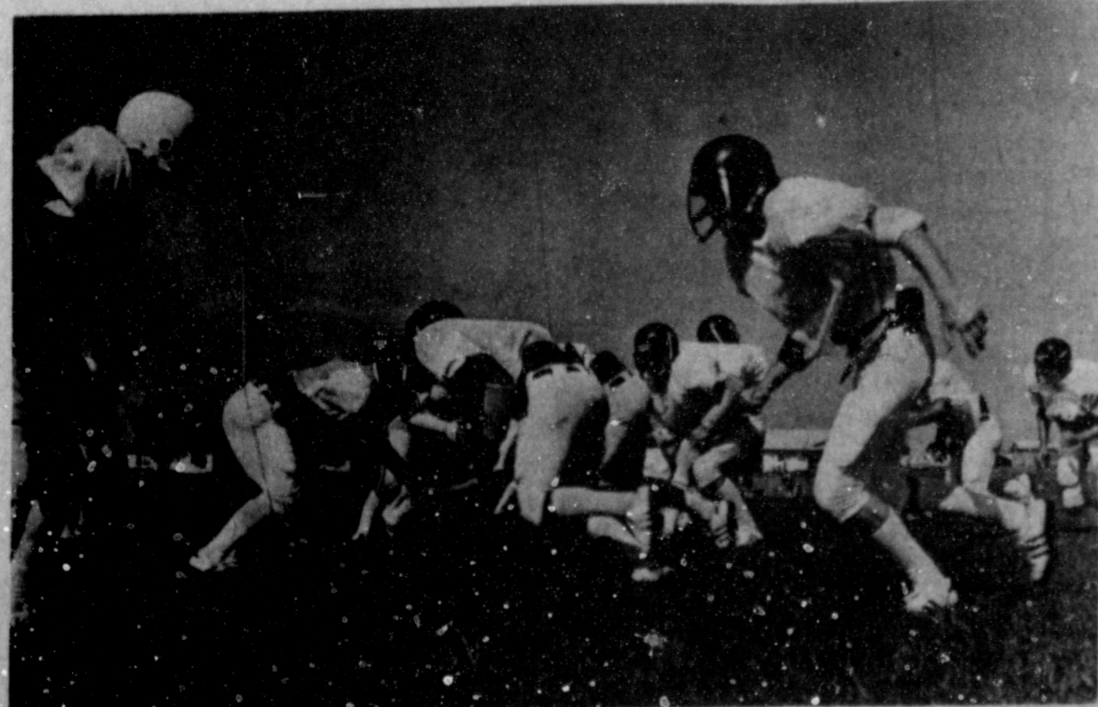
members are as follows:

Elizabeth Stone- Science Carl Glass- Coach & Social Studies; Terry Campbell- Athletic Director, Football and math; Sharon Tate- Business; Carl Wilke- Band; Hardy Carlyle- English and Coach; Charles Cole- Industrial Arts, chemistry, coach; Cassandra Cargile- Home Ec.; Ricky Copp- Vocational Ag.; Pat Seymore- Migrant; Toby Booth is the High School principal and Math.

Ragina Buchenau- teacher aide; Robin Glass- Library Aide; Tax A/C- Dennis Owen; School Secretary- Gloria Elliott and Superintendent Sam Barnes.

Lunchroom manager is Dorothy Gregory. Cooks are Mrs. R.C. Davis and June Clark.

Cont. Page 6, Col. 3

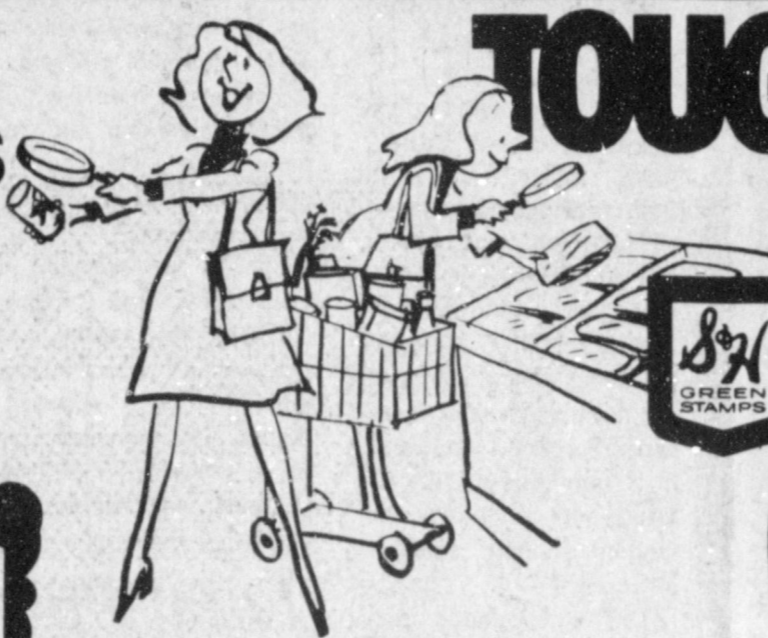


'HERE I COME'.....Ready to do battle again the Mules starting out with their first scrimmage on August 20 on their home field against Shallowater.



 <p>Beef <b>Roast</b> Blade cut chuck <b>\$1.28</b> lb.</p>	 <p><b>Box-O-Chicken</b> Or Split Fryers USDA Grade A <b>49¢</b> lb.</p>	 <p>Sliced Shurfite <b>Bacon</b> <b>\$1.49</b> lb.</p>	 <p>Beef <b>Roast</b> Center Cut 7-Bone <b>\$1.59</b> lb.</p>
<p>Beef <b>Roast</b> \$1.83 lb. Arm Cut Bone In</p> <p>Beef <b>Steak</b> \$1.79 lb. Center Cut 7-Bone</p>	<p>Wilson All Meat <b>Franks</b> 12 oz. \$1.09</p> <p>Shurfresh <b>Bologna</b> 12 oz. \$1.19</p>	<p>Beef <b>Steak</b> \$1.89 lb. Arm Cut Bone In</p> <p><b>Ground Beef</b> \$1.19 lb. Not less than 70% lean 3 lbs. or over</p>	

**DOUBLE S&H GREEN STAMPS EVERY WED. SAT. & SUN.**



**TOUGH CUSTOMERS KNOW!**

Prices Good Thru Aug. 26, 1981.

YOU GET MUCH MORE AT A GREEN STAMP STORE

**SHOP RITE**

Bordens Round  
**Ice Cream**  
**\$1.69**  
1/2 gal.

Open Daily 8 am TO 9 pm



Hunts 8 oz.  
**Tomato Sauce**  
**4 for \$1**

**Job Squad** 83¢  
Paper Towels 1 roll



**ON SALE NOW!**  
Beautiful, Fine Porcelain China  
THIS WEEK'S FEATURE ITEM:  
**BREAD & BUTTER 69¢ EACH**  
with each \$5.00 Grocery Purchase

**Pizza** \$1.04  
Jeno's 13 oz. pkg.

**Gravy Train** \$1.99  
Dog Food 5 lb. bag

**Pinesol** \$1.09  
Cleaner 15 oz.

**Doritos** 79¢  
All Types Tortilla Chips Crispy Light  
Reg. \$1.09

**Mac & Cheese Dinners** 79¢  
Kraft Twin 14 1/2 oz. pkg.

**Sausage** 48¢  
Swift Vienna 5 oz. can

**Corned Beef** 1.79  
Hereford 12 oz. can

**Morton Dinners** 69¢  
Frozen 11 oz. pkg.

**Maxi Pads** \$3.29  
New Freedom 30 ct.

**Applesauce** 79¢  
White House Natural 25 oz.

**Black Pepper** \$1.09  
Schillings 4 oz. can

**Detergent** \$1.29  
Crystal White Liquid 48 oz.

**Cheese Cake** \$2.19  
Sara Lee 17 oz.

**Salad Dressing** 66¢  
Kraft Assorted 8 oz. btl.

Large Slicing **Cucumbers** 5/\$1

Russet **Potatoes** 98¢  
5 lb. bag

Red or White Seedless  
**Grapes** 78¢  
Your Choice lb.

**Mushrooms** \$1.98  
Snow White lb.

**Green Squash** 59¢  
lb.

**Bell Peppers** 5/\$1

**Cleaner** \$2.29  
Formula 409 1/2 gal.

**Cascade** \$1.69  
Automatic Dish Detergent 35 oz.

**Behold** \$1.88  
Furniture Polish 14 oz.

**Apple Juice** 89¢  
white House 32 oz.

**Lighter** \$1.39  
Charcoal Gulfite 32 oz.

**Bleach** 79¢  
Clorox Liquid gal. jug



# Older Texans Take Summer Seriously

Older Texans, take the "summer sizzle" seriously, warns Judith Warren, a family life education-aging specialist.

Weather forecasts for a lengthy sizzler during July, August and September seem to be true, so for older Texans this means "watch out for heat-danger signals and be ready to take action," the specialist cautions.

"Better yet, know how to prevent heat problems. Summer survival depends on it," she stresses.

Warren is on the home economics staff of the Texas Agricultural Extension Service, The Texas A&M University System.

As the body ages, it becomes less able to respond to physical stress, such as long exposure to heat, Warren explains.

Older Texans with heart and circulatory disease, stroke or diabetes should be especially cautious of overexposure to heat, she says.

Use a four-pronged plan to avoid heat-related illness: prevention, preparation, knowledge of danger signals and appropriate action when necessary, Warren suggests.

The best tactic to prevent heat problems is to stay out of direct sunlight—stay in an air-conditioned room, if possible, Warren advises.

If the home is not air-conditioned or has no fan, find a cool place to stay during the hottest hours of the day -- public facilities such as the library, a movie theatre or a shopping mall can serve as a haven many days.

Avoid strenuous activity, too.

Recognize and pay attention to the first signs of physical fatigue. Restrict your outdoor activity to early morning or early evening.

Other good ways to keep cool are to take a bath or shower, place ice bags or wet towels on the body and to use an electric fan. REMEMBER: electricity and water don't mix, so turn on the fan BEFORE dampening your body.

Choose lightweight, light-colored and loose-fitting clothing to allow perspiration to evaporate. Drink plenty of such liquids as water, fruit and vegetable juices and ice tea to replace lost body fluids. Avoid alcoholic beverages or fluids that have too much salt, since salt can

complicate existing medical problems. Use salt tablets ONLY with your doctor's approval.

Eat less food as your physical activity decreases. Set your air-conditioning thermostat sensibly. For example, when outdoor temperatures soar into the 100's, set your thermostat around 80 degrees. Trying to save pennies on an energy bill may cost more than a few dollars in medical expenses.

Remember, pets also need plenty of fresh water, good air circulation and less food because they are much less active. Provide a shady place outdoors or keep your pet inside in cooled environment.

Keep important phone numbers handy--in your purse or billfold and near the telephone. These include phone numbers for the doctor, the community

ambulance service and a relative or close friend.

Also, keep a list of your special medical conditions or drug allergies in easy view.

"Buddy up" for safety. The "buddy system" works as well out of the water as in it, Warren says. Find a "buddy" and either call each other or visit each day. Be sure your buddy has your list of emergency numbers and you have hers, she stresses.

Know the danger signals of various heat-related illnesses to help yourself and others.

HEAT CRAMPS are painful spasms often experienced in the leg or abdomen due to loss of salts and water.

Other symptoms include pale, wet and cool skin, yet the body temperature is about normal.

HEAT EXHAUSTION

also results from loss of body water and salts.

This takes longer to develop than other heat-related illnesses.

Symptoms include weakness, heavy sweating, nausea and giddiness. The body temperature is about normal with pale, wet and cool skin.

HEAT STROKE requires immediate attention and medical treatment.

Symptoms are faintness, dizziness, headache, rapid pulse and hot, flushed but dry skin. The body temperature may vary from 104 degrees to 110 degrees.

For HEAT CRAMPS, apply warm, wet towels and firm hand pressure to the affected muscle. Drink

small amounts of liquid.

For HEAT EXHAUSTION, remove the victim to a cool room and allow him or her to lie down. Give cool liquids to drink.

HEAT STROKE requires immediate medical help--

but until help arrives, cool off the victim rapidly.

Remove or loosen clothing, and apply cold towels or wet ice packs.

If there are no ice packs, or cold towels available, take the victim to a cool

room and wrap him in a wet sheet.

Above all, take heat seriously and heed any danger signal, Warren reminds

\*\*\*\*\*  
Justice Potter Stewart retiring from Supreme Court.

## NOTICE OF CALCULATION OF EFFECTIVE TAX RATE

City Of Muleshoe

I, Dale F. Jones, tax assessor-collector for the Bailey County Appraisal District, in accordance with the provisions of Article 7244c, Sec. 1, VTCS, have calculated the tax rate which may not be exceeded by more than three percent by the governing body of the City of Muleshoe without holding a public hearing as required by Art. 7244c, Sec. 2, VTCS.

That rate is as follows:

\$.60 per \$100 of value

Dale F. Jones  
Tax Assessor-Collector

8-20-81

Muleshoe Journal (USPS 367-000)  
Established February 23, 1928. Published 4 times a week.  
Published by: The Texas Press Association, 400 W. 10th St., Muleshoe, Texas 79347. Second class postage paid at Muleshoe, Texas.  
MEMBER 1981  
TEXAS PRESS ASSOCIATION  
L. B. Hall, President  
James Woods, Vice President  
Newspaper News Service  
Feature News Society  
Radio, TV, and Advertising  
Newspaper Business Bureau  
MEMBER PUBLISHERS  
Muleshoe Journal and Bailey County Journal  
Muleshoe Journal and Bailey County Journal  
Muleshoe Journal and Bailey County Journal  
Muleshoe Journal and Bailey County Journal  
Muleshoe Journal and Bailey County Journal  
Muleshoe Journal and Bailey County Journal  
Muleshoe Journal and Bailey County Journal  
Muleshoe Journal and Bailey County Journal  
Muleshoe Journal and Bailey County Journal  
Muleshoe Journal and Bailey County Journal



YOUTH vs EXPERIENCE....At the Mule Rodeo held August 15 the young competed against the seasoned hands in all events. The gentleman pictured, Grady Pierce, from Clovis is 80 years young and "going strong". Pierce won several events riding his mule, as did the young man from Dalhart pictured with him.

## If Not N.O.W. When?

If you haven't yet combined your savings and checking accounts into a Muleshoe State Bank N.O.W. Account, you're losing interest--fast!! The N.O.W. Account acts like a regular checking account--there when you need it. Open a N.O.W. Account--now and watch your interest grow!!



SPECIALS GOOD ONLY DURING HOURS STATED!

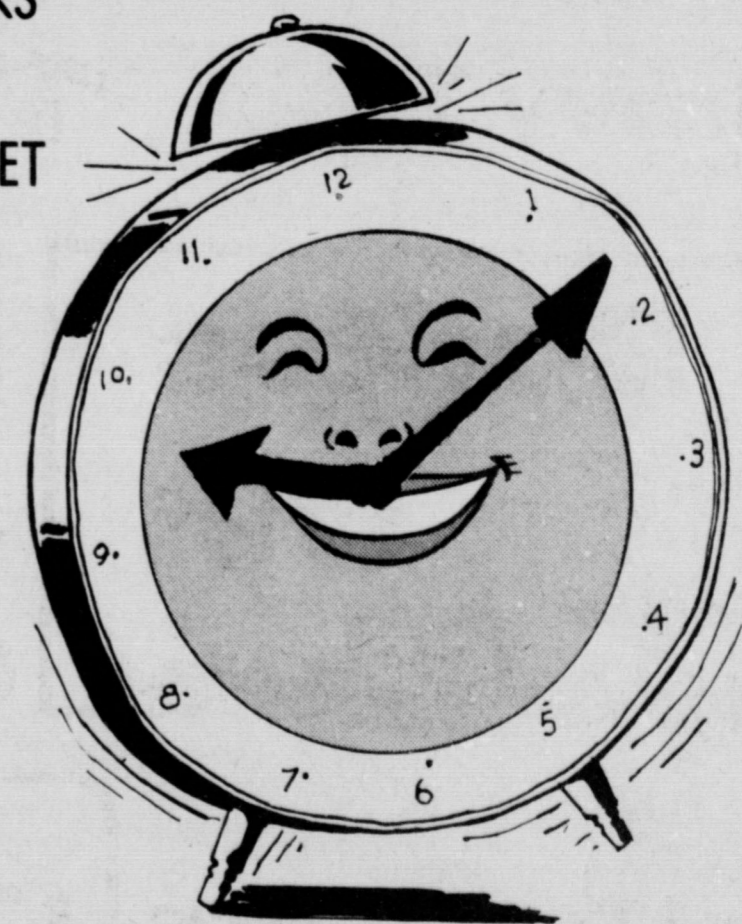
# Anthony's

C. R. ANTHONY CO.

- NO RAIN CHECKS
- NO HOLDS
- 321 MAIN STREET

# Hourly Specials Thursday BACK-TO-SCHOOL MADNESS SALE

## OPEN 9 a.m. to 8 p.m.



THESE SPECIALS GOOD FROM 9 TO 11 a.m.

One Table of Fabrics	50¢ YD
Ladies PULL ON PANTS	\$3.97 PR
Mens 2 PKT SHORT SLEEVE SHIRTS	\$2 EA
MENS ATB FASHION JEANS	\$10.88
LADIES FASHION TOPS	\$3.88
MENS & BOYS WESTERN BOOTS	20% OFF

THESE SPECIALS GOOD ALL DAY THURSDAY

WRANGLER MENS JEANS	\$13.88
BOY WRANGLER JEANS	\$8.88 \$10.88 \$12.88
GIRLS COORDINATES	20%
Entire Stock of LUGGAGE	1/2 PRICE

REMEMBER, SPECIALS GOOD ONLY DURING HOURS SPECIFIED. NO RAIN CHECKS! NO HOLDS!

THESE SPECIALS GOOD FROM 3 to 5 p.m.

Mens LEVI ACTION SLACKS	\$10.88
LADIES LEVI BENDOVERS	\$18.88
Entire Stock LADIES BLOUSES	20% OFF
MENS & BOYS ATHLETIC SHOES	\$10.88
Special Group LADIES HANDBAGS	\$5.88
GAUZE KNIT FABRICS	2 YD \$5

THESE SPECIALS GOOD FROM 11 a.m. to 1 p.m.

WASHABLE WOOLENS	2 YDS \$9
ASSORTED LACE TRIMS	10 YDS \$1
BRUSHED NYLON FLOATS	\$5.88 2 FOR \$11
LADIES SHOES	\$5 \$10
Special Group MENS DRESS SHIRTS	\$4
Junior SKIRT AND VEST SETS	\$24.88

THESE SPECIALS GOOD FROM 1 TO 3 p.m.

Mens Western Short Sleeve Shirts	\$5.88 2 FOR \$11
LADIES LEATHER BLAZERS	\$99
WINTUK YARN	6 FOR \$6
MENS STRAW WESTERN HATS	\$4 EA
CHILDRENS ATHLETIC SHOES	\$9.88
Entire Stock JUNIOR BLOUSES	20% OFF

THESE SPECIALS GOOD FROM 5 to 8 p.m.

One Group LADIES COORDINATES	75% OFF
LADIES VELVETEEN BLAZERS	\$39.88
Mens LEVI SADDLEMAN JEANS	\$14.88
LADIES LEATHER CASUAL SHOES	\$14.88
JUNIOR ATB FASHION JEANS	\$3 OFF
Mens KNIT SHIRTS	\$4.44 3 FOR \$13



## Mrs. Lenderson Named Artist Of The Month

Blanche Lenderson has been selected as artist of the month at Muleshoe Public Library. She was born at Ennis, Texas. She attended school in Ennis and Sudan.

She also attended Texas Tech and studied painting at Froman School of Art at Cloudcroft, with Ray Froman, Gary Pierce of Tucson, Rex Brandt of California, John Pike of New York and Dr. Emelio Caballero from West Texas State University.

Mrs. Lenderson has had one person exhibits at W.T.S.U., Eastern New Mexico Junior College, Plainview Library, Methodist Hospital in Lubbock among others and private collections.

She belongs to Lubbock Art Association, Southwest Watercolor Society, West Watercolor Society and the Muleshoe Art Association. She is now interested in

Western painting.

"I teach workshops over the area and love to help others with their creativity," Mrs. Lenderson said.

Her husband is Jack Lenderson who is a retired implement dealer. They are both enjoying traveling with the same clubs.

### Best Of Press

**An Expert**  
It takes a mighty good bookkeeper to make a deficit look like a surplus.  
-World, Tulsa, Okla

**Just More Open**  
The modern generation isn't more wicked than any other age. It just fails to pull down the blinds.  
-Times, Chicago.

**Naturally**  
Every famous man's wife has an uneasy feeling that something will happen to open the world's eyes.  
-Times, Hartford.



MRS. BLANCHE LENDERSON

## Baby Shower Fetes Mrs. Lena Gartin

Mrs. Lena Gartin was feted with a baby shower Thursday, August 13 from 7:30-9 p.m. in the fellowship hall of the First Assembly of God Church.

Guests were greeted by Mrs. Gartin, Mrs. James Kemp and Mrs. Don Gartin and registered by Tina Ruthardt.

Jamey Thrasher served thumbprint cookies, nuts and nuts from crystal and silver appointments.

A white lace over satin cloth covered the serving table. The table was enhanced by a baby vase filled with pink, yellow and blue silk flowers. The honoree's corsage was made of yellow silk roses.

Special guests were Mrs. James Kemp, mother of the honoree; Prissy Tredway, sister of the honoree;

Mrs. Don Gartin, mother in law of the honoree; and Mrs. Durk Green, sister in law.

The hostess gifts were a car seat and baby book. Hostesses for the occasion included Jamey Thrasher, Treva Taylor, Janet Ethridge, Anita Golaz, Alma Pierson, Sheryl Morris, Ann Moore, Cindy Magby, Wilma Magby, Joyce Scott, Jeannie McDaniel, Lee Meason, and Pat Watson.

**ON PUBLICATION**  
PHILADELPHIA -- The Bulletin, one of America's oldest and largest daily newspapers, said recently it would cease publication Aug. 16 unless its employees accept wage cuts and other concessions totaling nearly \$6.3 million annually. The 147-year-old daily, which has a daily circulation of 412,268 lost \$13.4 million in 1980 and \$10.3 million in the first six months of this year.

## Three Day Art Exhibit In Hereford

Texas Women Western Artists, a professional women's artist organization with headquarters in Cresson, near Fort Worth, will be featured at a three day art exhibit, August 21-23.

## Final Sections Delivered

The Parmer County History Book Committee has delivered the final sections of the book to Craftsman Printers in Lubbock.

"We are now waiting for the printers to send the first draft to us to be proofed" Grace Whitefield said.

She added "the committee appreciates everyone who contributed information, stories, pictures, sketches, also those who encouraged others to do so, in short everyone who contributed in any way to make the history book of the county possible."

"We especially appreciate the four newspapers who have given such excellent publicity so generously on the book activities these past 18 months".

"They are the Bovina Blade, Friona Star, State Line Tribune and the Muleshoe Journal."

"Also all who have ordered books and we would like everyone to know we are again taking prepaid orders for books," "If picked up locally they are \$35. and if mailed they are \$37.50," she added.

Money orders and checks may be mailed to Parmer County Book, P.O. Box 577, Friona, Texas 79035.

The site will be the National Cowgirl Hall of Fame and Western Heritage Center at Hereford, in conjunction with the Hereford Town and Country Jubilee and All Girl Rodeo.

T.W.W.A., which features a statewide membership, stresses recognition of talented women artists in a variety of mediums. Several of these will be on view at the National Cowgirl Hall of Fame located at Hereford's public library. Local Hereford Banks will provide a showcase for the group's art a few days before the official opening of the exhibit on August 21.

After their art exhibition in hereford, T.W.W.A. has scheduled its Second Annual Statewide Show in Cresson during the month of October. Also confirmed by T.W.W.A. state directors is an art exhibit next February at the Greer Garson Theater in Santa Fe,

sponsored by the Business and Professional Women of that city. T.W.W.A.'s recent show at the Capitol Rotunda in Austin was met with high praise by many in attendance. An offer for a future exhibit in Washington D.C. came from the successful Austin show.

State Directors Barbara Gibson of Cresson and Sherri Knight of Abilene, Texas announce that several other T.W.W.A. shows are taking shape in both in and out of state. Those interested in more information should contact: T.W.W.A., 2534 N. Willis, Abilene, Texas 79603.

## RECIPE

By Sarah Anne Sheridan  
Cheese has increased in popularity because of the way it fits into modern menu planning and because of the many wonderful cheeses you can buy in your super market.

### Frozen Cheese Salad

- 3 oz. cream cheese
  - 1 c grated American cheese
  - 6 green minted cherries, chopped
  - 1 c cream whipped
  - 1 c mayonnaise
- Mash cream cheese and work in American cheese. Add cherries. Combine whipped cream and mayonnaise. Fold into cheese mixture and freeze.

## Gymnastic & Dance Classes Now Taking Fall Registration

Boys & Girls  
Call 272-3483 or 965-2353  
Hawkins & Purdy's School of Dance & Gymnastics

## EXCEPTIONAL OPPORTUNITY ★ CAREER INSURANCE AGENTS ★ GLOBE LIFE & ACCIDENT INSURANCE COMPANY

Famous For Hospitalization And Life Insurance  
Now building one of the best sales organizations in Texas.

Our representatives are offered:

- ★ Top Commissions In Industry
- ★ Lifetime Renewal Paid Monthly
- ★ Persistency Bonuses Paid Quarterly
- ★ Retirement Program, Death & Disability Benefits At No Cost To Agent
- ★ Annual Free National convention For Agents & Spouse
- ★ All Plans Guaranteed Renewal
- ★ Hospital Plan With Up To \$150 Room Coverage & 2,100 Surgery
- ★ Hospital Income Plans Up To \$1,050 Per Week
- ★ Medicare Supplement Plan Payable In Or Out Of Hospital
- ★ Accident, Cancer, And Disability Also Available
- ★ Cash Burial Up To 60 Years Of Age
- ★ Organized Work Programs
- ★ Local & National Advertising
- ★ Override For supervisory Work

Ranch House Motel 272-4261  
For Personal Interview Phone 806-793-6606 Lubbock and ask for Mr. Buddy Clements

## Quitting Business Sale

2 Big Nights!

All Merchandise 45% OFF

Thurs. & Fri. Aug 20 - 21 7 - 10 p.m.

All Sales Final! Imagination Plus

Tradewinds Plaza 272-5290

The '82's are here and we need more space!

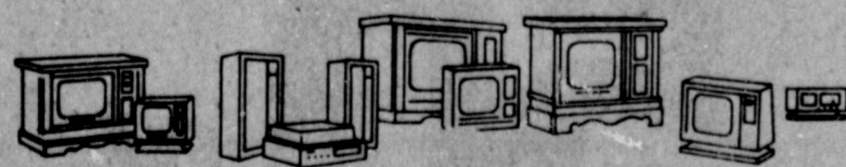
# LAST CALL!

All 1981 Model



TV's and STEREO'S

MUST GO!



Our new models are here so the '81's must go. Save now on all 1981 model Zeniths. Hurry!

**Wilson** Appliances

We Have A Trained Technician To Service Our Products

Store Hours Mon. - Sat. 8:00 - 6:00



HEY KIDS! JOIN THE ALLSUP'S DOORBELL BRIGADE FOR MDAI AUGUST 29-30, 1981

PRICES EFFECTIVE AUGUST 20-22, 1981 WHILE SUPPLIES LAST

CHICKEN OF THE SEA TUNA 8 1/2 OZ. CAN 99¢

Shurfine Pizza 12 oz. 79¢	Shurfine Lemonade Frozen 6 oz. 5/8 1.00
Shurfine Crackers 1 lb. box 49¢	Kingsford Charcoal 10 lb. bag \$1.39
Shurfine Mac & Cheese Dinner 7 1/4 oz. 5/8 1.00	Shurfine Applesauce 16 oz. 3/8 1.00

BORDEN'S NUTTY BUDDIES 8 CT. PKG. 99¢

Shurfine Bleach 64 oz. 49¢

Shurfine Vegetable Oil 38 oz. 99¢

TIDE qt. size \$1.59

GLADIOLA YELLOW/WHITE CORNBREAD MIXES 4 1/2 OZ. PKG. \$1.00

BORDEN'S ICE CREAM SANDWICHES 8 CT. PKG. 89¢

BORDEN'S COTTAGE CHEESE 12 OZ. CTN. 79¢

Freshed cooked Steak Finger Sandwich 59¢

BORDEN'S ASSORTED ICE CREAM ON SHERBET 1/2 GAL. NO. CTN. \$1.49

REFRESHING COCA-COLA 2 LITER BTL. \$1.29

**ALLSUP'S** CONVENIENCE STORES

"THERE'S ONE NEAR YOU"





Keetha, four years of age. Grandparents are Mr. and Mrs. Ralph Glover of Muleshoe, Mrs. J.M. Flowers of Progress and Mr. and Mrs. M.G. Killough of Needmore. Great grandfather is Joe Lee Truelock of Earth.

**Kristy Michelle Leal**

Mr. and Mrs. Ruben Leal are the proud parents of a daughter born at 11:34 a.m. August 10.

The young lady weighed six pounds and 10 ounces and has been named Kristy Michelle. She has an eleven year old brother, Ruben, Jr.

Grandparents are Mr. and Mrs. John Soliz of Morton and Mr. and Mrs. Arnold Leal of Yancey, Texas.

**Jim Eric Carmen**

Mr. and Mrs. Carmen Vega are the proud parents of a son born at 11:34 p.m. August 13.

The young man weighed six pounds, nine ounces and has been named Jim Eric. He is the couple's first child.

Grandparents are Mr. and Mrs. Roman Reyna and Mr. and Mrs. Carmen Vega, Sr. all of Muleshoe.

Great grandfather is Jose Reyna of Muleshoe.

**Gary Judd Glover**

Mr. and Mrs. Gary Glover are the proud parents of a son, Gary Judd, born August 16 at 4:17 a.m.

Gary Judd weighed eight pounds, two ounces. The couple have two other children, Jana, five and



**WEDDING PLANS REVEALED....** Mr. and Mrs. James L. Black of Albuquerque and Mr. and Mrs. Royce D. Clay of Big Spring wish to announce the engagement and approaching marriage of their children Linda Ruth Black and Royce Don Clay, students at Texas Tech. Clay is the grandson of Mr. and Mrs. Billy J. Darnell of Muleshoe. The couple plans to be married September 4 in the Broadway Church of Christ in Lubbock.

**JOY Choir Sing-A-Long Monday Night**

Monday night August 17, the J.O.Y. Choir of the First Baptist Church met in the fellowship hall for their regular supper and Sing-A-Long.

Due to illness, vacations and other conflicts it was reported that the group was smaller than usual with only 26 members and one visitor present.

The Choir was happy to have their pianist, Wanda Lewis, back after a long illness. Also welcomed back was the director, Carroll Rhodes, who was absent at the last meeting.

Sherman Inman, J.O.Y. Choir president, was in

charge of the meeting. Lester Howard led in a prayer of thanks for the meal. Songs were led by various choir members.

Carroll Rhodes and Maude Kersey assisted Wanda Lewis at the piano. Carroll also accompanied himself as he sang a song for the group.

The one visitor was Miss Denise Bynum of Friona. She was the guest of her grandmother Dorothy Bowers.

As usual the group joined hands to form a friendship circle as they sang their closing song "Blessed Be The Tie".

Mrs. Lena Hawkins led the dismissal prayer.

**Dreams Being Fulfilled With 'Cowboy Morning'**

The dream of Eastern dudes, foreign folks and even big city Texans is being fulfilled this summer with the debut of the "Cowboy Morning" on the Tom Christian Figure 3 Ranch near Amarillo.

Tour groups and individuals can enjoy a ride across the prairie in a wagon drawn by a team of horses and breakfast on the rim of spectacular Palo Duro Canyon.

The chuckwagon-style breakfast consists of sourdough biscuits prepared on a campfire in a dutch oven, Texas-size eggs, country sausage and gallons of cowboy coffee in tin cups. A delicious layer of Tom Christian's own special recipe gravy tops the whole meal.

For folks interested in the arts of branding and roping, Figure 3 cowboys will give a complete demonstration in Old West fashion.

The Figure 3 Ranch is part of the original JA Ranch once run by Col Charles Goodnight of Goodnight-Loving cattle trail fame.

The "Cowboy Morning" was developed by the Christian family in order to give visitors the opportunity to see a ranch as it operated 100 years ago.

"Since so much of our land and livestock are in the canyon, we still utilize the horse extensively to work out cattle", notes Christian.

Visitors arrive at the ranch house in a modern vehicle. But from there it is a trip back into the Old West.

Visitors take a wagon ride across the prairie to the breathtakingly beautiful spot on the edge of the

canyon.

"One thing that most people don't realize, is that it's not an easy thing to put a team of horses and a wagon together", says Christian. "We had some horses and purchased some more. Then we began to build our wagons and train the teams."

"We found the average age of an experienced team driver is between 75 and 80 years old. So we had to train our sons and others to drive the wagons."

The "Cowboy Morning" is a family operation with Christian, his wife Anne, and all of their children, Joe, Rit, Mary and Frannie.

When they are not running their "Cowboy Morning", the Christians run an Aoudad sheep and buffalo hunting operation on the floor of the canyon.

The buffalo are a part of the original herds that roamed the plains and canyon during Indian times.

Bookings for the "Cowboy Morning" can be made through the Amarillo Convention & Visitors Bureau, 1000 Polk Street, Amarillo, TX 79101. The

telephone number is (806) 374-9812 or in Texas only (800) 692-1338. Cost of the "Cowboy Morning" is \$15.00 per person.

**"BEST FINANCE PLAN AVAILABLE"**  
**CMC**  
**COTTON MODULE BUILDERS**  
 ★ *Faster Tamping & Stronger Design*  
 ★ *Direct Access Controls & Drive Motors*  
 ★ *Handy Hose Track Carrier*  
 ★ *Patented Delta Beam Construction*

**KMP MANUFACTURING CO.**  
 Earth, Tx. 806-257-3411  
 3/4 Miles On S. Amherst Rd.

**H & R BLOCK TAX COURSE TO BEGIN**

H&R BLOCK is offering a Basic Income Tax Course starting September 10th. ★★ ★★

There will be a choice of morning or evening classes held at the H&R BLOCK office at 224 West 2nd. ★★ ★★

The 12 week course is taught by experienced H&R BLOCK personnel and certificates are awarded to all graduates. While thousands of job opportunities are available, graduates are under no obligation to accept employment with H&R BLOCK. Courses are licensed by the Texas Education Agency. ★★ ★★

Registration forms and brochures may be obtained by contacting the H&R BLOCK office at 224 West 2nd, phone 272-3332.

**EXTRA SPECIAL, SPECIAL Five Point DOG FOOD**

50 LB BAG 25 LB BAG

9<sup>36</sup> 5<sup>1</sup>

**A&M FARM AND RANCH SUPPLY**

**Alert Cat Food 3<sup>15</sup> 10 LB. Bag**

**GIBSON'S** "WHERE YOU ALWAYS BUY THE BEST FOR LESS"

**Open 10-7 Mon.-Sat. 1-6 Sunday We Will Be Closed Wednesday!**

**Drugs, Groceries, Soap**

**25% OFF**

**Clothing 50%-70% OFF**

**Hardware 50%-75% OFF**

**GOING OUT OF BUSINESS SALE**

**All Sales Final**

- No Pay Roll Checks ● No Charge Cards
- Local Area Checks ONLY
- No Phone Calls ● No Layaways ● No Exchanges

**Final 10 days!**

**ALL Departments**

**50% Off**  
 (Except Groceries & Drugs)

**Grab Tables 75% OFF**

**Auto Supplies 50% OFF**



**Spag..**

Cont. From Page 1  
is to elect a minority member to the S.P.A.G. Board to represent Bailey, Cochran, Lamb and Yoakum Counties.

The member will actually be elected by the S.P.A.G. Board, but public participation is invited and public sentiment will be considered. All members of minority communities are urged to attend Thursday evening in the Morton Community Building at 7:30 p.m.

**Scholarships...**

Cont. From Page 1  
received Don and Sybil Harrington Honor Scholarships of \$200 each have been awarded to 369 high school graduates who were members of high school National Honor Society chapters in seven states. The scholarships, awarded through the WTSU Development Office, have been accepted by students in 115 cities and communities in Texas, Oklahoma, New Mexico, Kansas, Colorado, Ohio and New York.

**Muleshoe...**

Cont. From Page 1  
Debra Delia Zamora, daughter of Mr. and Mrs. Erasmo Zamora of Muleshoe, participated in graduation ceremonies at Texas State Technical Institute in Amarillo, Friday, August 14, 1981 at 10 a.m. The graduation ceremonies were held at the TSTI Chapel. Zamora is a Lazbuddie graduate.

**Safety...**

Cont. From Page 1  
quested to use these specified points  
Blind corners are also a possible hazard, since a child may dart out quickly, before a motorist has time to stop his vehicle.  
Since school is in full-swing during harvest time, caution should be exercised by trucks as well as the students themselves.  
Lives can be protected and in many instances tragedy averted when carelessness is eliminated.

**FM Road...**

Cont. From Page 1  
question of labor, the contractor stated that there would possibly be openings for laborers when the actual work begins. This would be at \$3.95 starting salary and equal opportunity employment will be in effect.

Those present for the meeting included: Nolan Harlan, R.L. Clark, Stanton Burson, Judge Glen Williams, Juan Sanchez, Jimmie Bass, Rhea Bradley, Lloyd Lust, L.J. Albus, Jr., Burt and Sam Borsberry and Shirley Farmer.

**Crops...**

Cont. From Page 1  
Since it is now time for the final or "laying-by" cultivation, the wet fields have impaired work in them. Some areas in the county have reported aphids and most farmers are on the lookout for bollworms. However, there has been little chemical spraying on cotton, due to the destroying of beneficial insects that it would cause.

W heat producers have viewed the moisture received as a blessing. With the 6 to 7 inches recording, wheat growers are in excellent shape for planting and those who already have wheat planted are extremely pleased with the moisture which will help the growth of the crop.

Hay that had been cut and still in the fields will be damaged to some extent; however, moisture received will serve to help the overall picture for alfalfa producers.

County Agent Spencer Tanksley cummed up the past few weeks in stating that "we are really thankful for the good rains received, but we are now ready for some good hot sunshine and warmer weather to get this crop back to a healthy stage. Farmers are anxious to get back into the fields and get them worked up and ready for fall harvest. Those who have to spray for insects also need some dry weather to aid the chemicals to work."

**14th Old-Time Fiddlers Contest At SP Fair**

Fiddlers of all ages will be competing for cash and trophies during the 14th annual old time fiddlers contest, one of the features of the Panhandle South Plains Fair.

General manager Steve L. Lewis said the competition is scheduled at 1 p.m. on Sept. 27 in Fair Park Coliseum. Admission is free. The 64th annual exposition has set its eight-day run for Sept. 26-Oct. 3.

Tommy Burger of Burleson will be the guest host and master of ceremonies while Gwen Robison will serve as contest secretary. Fiddlers will be vying in four age brackets, including under 20, 21 to 49, 50 to 64 and 65 and over, Lewis said. Winners in each division will receive \$15 and a trophy. Cash awards of \$100 are pegged for second place, \$80 for third, \$60 for fourth and \$50 for fifth place.

A championship round is carded for 7 p.m. on the coliseum stage with first

and second place winners from all age groups competing for top money. The grand champion fiddler will pocket \$150 while \$120, \$100 and \$80 earmarked for first, second and third runners-up, respectively.

In addition, the oldest fiddler will receive \$50, the best guitar accompanist will get \$80 and the first runner-up, \$60. All championship round winners will receive plaques. Membership in the Tex-

as Old Time Fiddlers Association is required of all contestants including those who reside in Lubbock County. County residents may not enter this year without membership according to the rules of the Texas Old Time Fiddlers Association.

Association dues are \$8 per year for accompanists, \$13 for Texas fiddlers and \$8 for associate members (those who live out of state, friends or just fans). A total of \$2,300 in prize

money is being offered the fiddlers, part of a record \$75,000 in premiums pegged for the 1981 fair.

Seven other stage shows have been slated for the coliseum, including a record 10th appearance by Charley Pride on opening day. He'll be followed by Mickey Gilley and Johnny Lee, Sept. 28; Don Williams, Sept. 29; Marty Robbins and Little David

Willkins, Sept. 30; Slim Whitman and Boxcar Willie, Oct. 1; Mel Tillis and the Maines Brothers, Oct. 2; Jacky Ward and the Kendalls, Oct. 3.

Shows will be at 5 p.m. and 8 p.m. daily, except for Williams, who will perform only at 8 p.m.

All seats are reserved and tickets are \$6, \$7 and \$8 for all shows. Tickets may be obtained at the fair

offices, Dunlap's, Luskey's Western Wear, Ed's Wagon Wheel and at Hemphill-Wells (South Plains Mall store only). Ticket information may be obtained by calling 744-9557.

Mail order reservations also are being accepted by the fair at P.O. Box 208, Lubbock, Texas 79408. Requests will be filled in the order in which received and must be accompanied by a stamped, self-addressed envelope.

**Mens, Ladies Golf Tournaments Scheduled August 29**

The Muleshoe Country Club will sponsor their Mule Race, August 29. There will be seven races for 70 couples. Partners must be spouses.

A non-golfers gallery fee of \$7.50 each will be charged.

Post time for the first race is 2 p.m. There will be a putting contest.

At 7:30 there will be a buffet dinner followed by dancing and presentation

of awards at 8:30 p.m.

Cost will be \$25.00 per couple.

There will also be a Men's City Tournament on September 5, 6, and 7. First and second days will be match and the 3rd day will be medal.

Non-members must pay green fees.

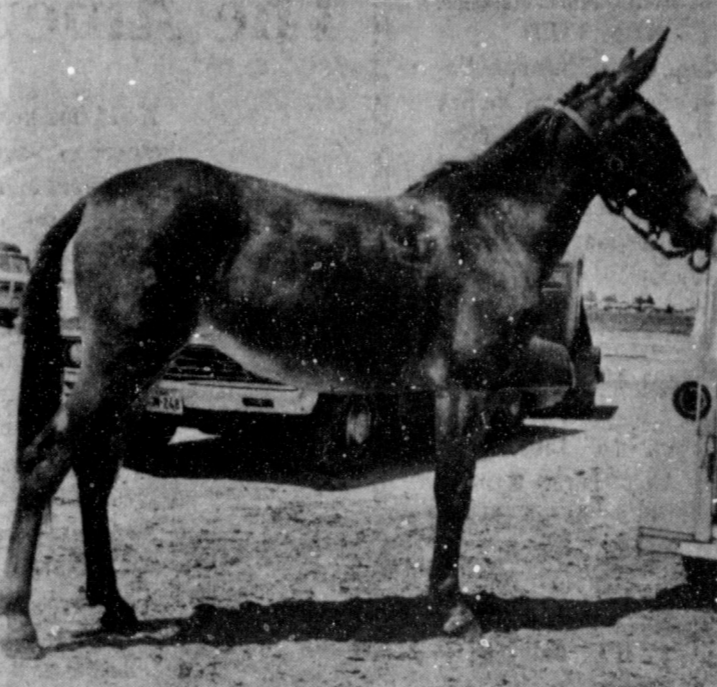
There will be 8 player flights with a \$15.00 entry fee. Payoff will be figured as follows: 1st-\$60.00;

2nd-\$40.00 and consolation-1 dozen pro staff balls.

A calcutta will be held on Friday, September 5 along with a free dance on Saturday the 6th.

A Ladies' City Tournament is scheduled for the same times and dates. Details were not complete at press time.

Rise seen in counterfeiting food stamps.



"MAN'S BEST FRIEND?"... Some of the participants in last week's Mule-O-Rama Rodeo would have other ideas. This mule seems to be resting while he can and is thinking up new capers to pull.

**Fair Offers Entertainment For All**

The 1981 Amarillo Tri-State Fair, September 21-26, has something for all ages to see and enjoy: livestock, poultry, rabbits, textiles, foods, free entertainment, product exhibits, an art show, a midway of rides, and first class entertainment in the coliseum each day by top western artists. A special day has been set aside for the older citizens of the area. On Thursday, September 24, a medicare card will admit the holder to the fair free of charge all day until 5:00

p.m. At 1:30 p.m. that same day, a program of free entertainment and door prizes has been arranged for the enjoyment of the senior citizens in attendance. All citizens of the tri-state area who have a medicare card are welcome to attend the fair and entertainment as special guests of the fair on Thursday, September 24.

Optimism is the quality that permits us to hope that someone will do something for us.

**NOTICE OF CALCULATION OF EFFECTIVE TAX RATE**

Muleshoe Independent School District  
Dale F. Jones, tax assessor-collector for the  
Bailey County Appraisal District, in accordance  
with the provisions of Article 7244c, Sec.1, VTCS,  
have calculated the tax rate which may not be  
exceeded by more than three percent by the  
governing body of the Muleshoe ISD without  
holding a public hearing as required by Art.  
7244c, Sec. 2, VTCS.

That rate is as follows:

\$.85 per \$100 of value

Dale F. Jones  
Tax Assessor-Collector

8-20-81

**ATTENTION: COTTON FARMERS**

*Recent Rainfalls Have Been Invaluable To You As A Cotton Producer. The Needed Moisture Has Given Your Cotton Crop That Needed Push Toward A More Profitable Harvest.*

**NOW Is The Time To Look Into A Foliar Application Of 3-18-18.**

**BENEFITS:**  
Slows Down Excessive Stalk Growth  
Hastens Crop Maturity  
Matures More Top Bolls  
Aids In Final Turnout Of Your Cotton Production

For More Information: Contact  
**Ron Kidd-Custom Application**

272-3705  
965-2262

**FROM OUR COUNTRY KITCHEN**

**LOOK WHAT TOWN & COUNTRY FOOD STORES HAVE FOR YOU!!**

<p><b>COUPON</b></p> <p>2 PIECES FRIED CHICKEN FRENCH FRIES &amp; ROLL reg. \$1.80 <b>\$1.19</b></p> <p>Valid through Aug. 31, 1981.</p>	<p><b>COUPON</b></p> <p>2 BURITTOS &amp; FRENCH FRIES reg. \$1.75 <b>\$1.19</b></p> <p>Valid through Aug. 31, 1981.</p>
<p><b>COUPON</b></p> <p>SAUSAGE on a STICK FRENCH FRIES &amp; ROLL reg. \$1.61 <b>\$1.19</b></p> <p>Valid through Aug. 31, 1981.</p>	<p><b>COUPON</b></p> <p>2 CORN DOGS &amp; FRENCH FRIES reg. \$1.75 <b>\$1.19</b></p> <p>Valid through Aug. 31, 1981.</p>
<p><b>COUPON</b></p> <p>FISH ON A BUN &amp; FRENCH FRIES reg. \$1.94 <b>\$1.19</b></p> <p>Valid through Aug. 31, 1981.</p>	<p><b>COUPON</b></p> <p>9 PIECES CHICKEN, FRENCH FRIES, ROLLS &amp; SALAD OF YOUR CHOICE reg. \$7.75 <b>\$5.95</b></p> <p>Valid through Aug. 31, 1981.</p>

Prices good ONLY WITH COUPON  
Cooking Hours 10 - 10 Daily

No. 72 1900 W. American  
272-5337  
Muleshoe, Texas

**TOWN & COUNTRY FOOD STORES COUNTRY KITCHENS**



By Spencer Tanksley  
County Extension Agent



Although there is still plenty of hot weather ahead, its time to start getting things in shape for your fall vegetable garden.

Much of Texas is well suited for year-round gardening, and fall vegetables generally have better quality and flavor than those grown in the spring, says Dr. Sam Cotner, horticulturist with the Texas Agricultural Extension Service, Texas A&M University System.

Many popular warm-season vegetables such as tomatoes, peppers, eggplants, pole beans, potatoes, okra, cucumbers and squash can be planted during the coming weeks.

Also, the so-called "winter" vegetables such as broccoli, cabbage, cauliflower, greens, parsley and carrots can be planted now for early harvesting. Later plantings of

these cold-hardy crops will supply fresh vegetables well into winter.

What are some of the important aspects of fall gardening?

First of all, get the land into good shape, suggests Cotner. If you had a garden this spring and fertilizer was applied, little if any additional fertilizer will be needed before fall planting.

For new gardens, apply two or three pounds of a complete fertilizer such as 10-20-10 per 100 square feet and work it into the soil, recommends the horticulturist. If plants make slow growth, apply a light amount of fertilizer between rows and water it into the soil.

Adequate water is vital for a successful fall garden, particularly for seed germination and early plant growth. Cotner sug-

gests "pre-irrigation" before planting followed by subsequent, light waterings three or four times a week to keep soil from drying and crusting. Water stress during early growth of plants can reduce later yields.

Transplanting is a good practice in the fall since this allows seed to be started in areas sheltered from high temperatures and drying winds. Check at garden centers for recommended varieties of vegetables and strong, vigorous, healthy plants. Or you may want to grow your own transplants, notes the horticulturist.

#### ONE MINUTE SPORTS QUIZ

1. Who won the Canadian Open golf tournament?
2. Jim Rice plays pro baseball for what team?
3. Who won the LPGA Boston Five Classic?
4. Who was the first lady golfer to go over one million dollars in winnings?
5. Andrea Jaeger is known in what sport.

#### Answers To Sport Quiz

1. Peter Oosterhuis.
2. Boston Red Sox.
3. Donna Caponi.
4. Kathy Whitworth.
5. Women's tennis.

### Thommarson Services Held In Albuquerque

Funeral services for John E. Thommarson, 60, of Albuquerque were held Wednesday, August 12 at 10 a.m. in the Palm Chapel of Strong-Thorne.

Interment was in Sunset Memorial Park with Albuquerque Lodge 60 A.F. & A.M. officiating at grave-

side.

Thommarson died August 9 in an Albuquerque hospital. He was a member of Albuquerque Masonic Lodge 60 A.F. & A.M. and was senior warden Animas Masonic Lodge 15 A.F. & A.M. of Farmington.

Survivors include his wife, Shelley Thommarson; five daughters, Linda Jean White of Jackson, Florida,

Beverly Elaine White of Liberal, Kansas, Josephine Ann Blasi, Theresa Ann Sackreiter and Patricia Agnes Warwick, all of Albuquerque; one son, William Anthony Warwick of Albuquerque; one sister, Eddie Lou Wood of Muleshoe; and four grandchildren.

Poll indicates Americans concerned about crime.

### Golden Gleams

Harken unto thy father that beget thee.  
-Proverbs 23:22.

One father is more than a hundred schoolmasters.  
-George Herbert.

It is impossible to please all the world and also one's father.  
-Jean De La Fontaine.

A father, when punishing, is always a father; a slight punishment suffices for his anger.  
-Jean Racine.

Father, dear father, come home with me now;...  
-Henry Clay.

A father is a banker provided by nature.  
-French Proverb.

### West Plains Medical Center Report

#### ADMITTED

August 13, Thurman Bartlett, Sam Barron, James Cunningham, Arland Tyio, Mareana Murillo, Woodrow Buchanan, Darrell Kennemer, Sandra Vega

August 14, Marina Wilson, Maria Almara, Ruby Davis

August 15, Mary Houston

August 16, Julia Allmond, Alice Lara, Cynthia Crawford, Ricky Rasco, Lottie Moore, Marvin Davenport, Jack Lee, Sherry Ellis, Jov Glover

August 17, Mario Camarena, Rosie Martin, Julia Martinez, John Wait, Ralph Franie, Florence Holmes, Shorty Holmes, Francisco Gonzales

#### DISMISSED

August 14, Crystal Herring, Walter Bartholf, Danny Kemp, Dale Grado, D.P. Brinker, Jerrell Otwell, Woodrow Buchanan, Judy Bruns, Harry Freeman, Joe Caballero

August 15, Darrell Kennemer, Janie Gonzales, Sandra Vega, Linda Frazier and baby boy

August 16, Maria S. Almara, Lee Kimbrough, Jerry Cunningham, Jack Little

August 17, Reyes Estrada, Ruby Davis, Joy Glover, Sam Barron, Mariana Murillo, Bob Bradley

### NOTICE OF CALCULATION OF EFFECTIVE TAX RATE

#### Three Way Independent School District

I, Dale F. Jones, tax assessor-collector for the Bailey County Appraisal District, in accordance with the provisions of Article 7244c, Sec. 1, VTCS, have calculated the tax rate which may not be exceeded by more than three percent by the governing body of the Three Way ISD without holding a public hearing as required by Art. 7244c, Sec. 2, VTCS,

That rate is as follows;

.73¢ per \$100 of value

Dale F. Jones  
Tax Assessor-Collector

8-20-81

INTERNATIONAL HARVESTER PRESENTS

# THE GREAT AMERICAN TRACTOR SALE



HERE'S YOUR CHANCE TO MAKE YOUR BEST BUY OF THE YEAR ON NEW INTERNATIONAL® 2+2 AND 2-WHEEL DRIVE TRACTORS OVER 100 PTO HP. SAVE WITH OUR SPECIAL DEALS... THEN GET A CASH REBATE OF UP TO

## \$10,000

Now's the time to trade. Buy any new Series 88 tractor or 2-wheel drive Series 86 tractor over 100 PTO hp and receive a cash rebate of up to \$10,000 from International Harvester. See us for complete details. But hurry. You must buy and take delivery during August 1981.



INTERNATIONAL AGRICULTURAL EQUIPMENT

Wooley International Inc.

W. Hwy 84  
272-5514

## Attention Farmers! Accomplishments Of The American Agriculture Movement

AAM has provided a farmer created and farmer built organization within which farmers themselves have been the leaders, speakers and organizers. In becoming involved with government and politics, farmers have spoken for themselves and have developed the skills to express the agriculture viewpoint directly themselves.

AAM has begun to make Americans more aware of the importance of agriculture as the largest single sector of our economy.

AAM has helped consumers to realize the gravity of the situation facing agriculture today and the impact that changes in the structure of agriculture can have on the future of a reasonably priced food supply.

AAM has shown American voters how both Republican and Democratic Administrations over the last twenty-five years have prompted a "cheap food policy" which has helped deteriorate the value of the dollar and undermine American economic strength.

AAM uncovered facts about beef import practices and revealed them to the nation and the USDA.

AAM discovered and revealed that Mexican beef was being brought into the U.S. where it was being placed in the boxes of domestic packers for shipment to domestic markets labelled as if it were domestic beef.

AAM action resulted in stopping the utilization of imported beef in school lunch programs across America.

AAM has exposed the fact that chemically contaminated produce was being imported into the U.S. with misleading labeling, indicating that it could have been grown domestically.

AAM is working to obtain legislation requiring that all commodities be labeled with their country of origin. There are currently several bills active in both houses of Congress.

AAM uncovered and released information about the purchase of U.S. farmland by foreign investors, which led directly to investigations by the Congress and the news media, which in turn resulted in Congressional action to require registration of foreign purchases of U.S. farmland.

AAM is directly responsible for expanding the definition of emergency to include Economic emergency, thereby opening up additional avenues of finance.

AAM farmers have become involved much more directly in the political conventions at the state and national level. They have helped to write platform positions and shape national political debate.

AAM has helped to elect to office in many states those who have taken more favorable positions on agricultural issues.

AAM action has directly caused existing farm groups to become more responsive to the best interests of both farmers and consumers.

AAM has exposed USDA manipulation and distortion of farm income and production cost statistics.

AAM has illuminated the way that federal policy has served to promote the increasing concentration of farmland ownership in the hands of corporations and wealthy individuals.

AAM has worked for inheritance tax reform, as this tax affects agriculture. Included in the new tax legislation is an increase from \$175,000 to \$600,000 exemption.

AAM efforts have been responsible for several increases in commodity target prices and loan rates. For instance, wheat loan rates have increased from \$2.00 in 1978 to \$3.20 currently with additional increases coming in the 1981 farm bill. There are also similar increases in other commodities.

AAM has been responsible for many local and state actions beneficial to agriculture.

AAM has helped to intensify the political support for legislation favoring the development of alcohol and other biomass fuel. We are directly responsible for the 4 cent exemption and bringing this country into an alcohol fuels policy.

AAM has convinced CCC to change its policy on the resale of government owned feed grains. They lowered the weekly amount sold, and set the price of 15 cents to 20 cents over the cash price for any large sales. This should take the downward pressure off the farmer's backs.

AAM has been able to keep \$250 million for alcohol fuels in the rescission package to be used by FmHA for loan guarantees.

AAM has been successful in bringing to the front, concerns about conservation of our soil and water. As a result of AAM, legislation is now pending to provide a conservation investment tax credit.

AAM has been directly responsible for a new USDA demonstration program showing the longer term serviceability and profitability of organic agriculture.

AAM's successes have shown that individual citizen effort still can make a difference.

AAM has worked to focus public and Congressional attention on the tax advantages available to foreign owners of American farms giving them a competitive advantage over American farm producers. As a result of the effort, legislation is now pending to tax foreign investors in farmland the same as U.S. citizens.

In other areas, AAM is involved in producing educational material, including films to educate the public and fellow farmers as to the role we are playing in shaping policy in this country.

We are also pursuing thru the legal system changes in laws and programs that are unfair to producers.

As a result of AAM efforts, changes are being considered in the bankruptcy laws to protect farmer's private property when elevators file for bankruptcy.

We are pressing FmHA to implement the moratorium provisions on loan and interest already enacted by Congress.

AAM is seeking to serve the best interests of the country. We do not ask anyone to accept what we say without examining the facts. We urge everyone to inform themselves on the issues we are addressing and become involved as they think best.

If you decide that we are right, we hope that you will join us. We believe that we can be most effective if we work together-organized-if not for our sake, then for the benefit of our country.

Above all, do not leave the job to elected officials, without the supporting vigilance of us all, they cannot and will not get the job done.

## We Still Have A Farm Bill To Pass !

## Want To Get Involved?

Please Call:

Morris Killough 946-3467, Lloyd Williams  
925-6741 Or State Office 806-364-7820



## Elderly Persons Receive Cooling Assistance

To help relieve the harsh effects of the Texas summer heat on elderly persons, low-income families with members age 65 or older may apply for financial aid to help pay their

summer cooling costs. Under the Home Energy Assistance Program (HEAP), households eligible by reason of low income and containing at least one person 65 or older may

qualify for one-time payments that will range from \$91 to \$114. The cooling assistance announcement was made today by Marlin W. Johnston, commissioner of the Texas Department of Human Resources (TDHR) which is administering the program.

Some elderly Texas will receive the cooling assistance automatically. These are people already receiving benefits from Aid to Families with Dependent Children, Food Stamps, or Supplemental Security Income.

Other low-income households which do not receive the automatic payment will be required to apply for HEAP benefits during an application period from August 3 through August 31. A face-to-face interview is required for certification, as is verification of household income.

Johnston said the following guidelines can be used in determining if an elderly member of a household is eligible for the federally-funded cooling assistance:

A household's resources cannot exceed \$1,800 for one person or \$3,000 for more than one person. The value of the homestead, cars, personal and house-

hold belongings will not be considered as resourced. Household gross monthly income cannot be more than the following figures for eligibility:

Numbers of people in household, in parentheses, precede income limits: (1 person) -- \$296.49; (2 persons) -- \$446.49; (3 persons) -- \$613.49; (4 persons) -- \$756.49; (5 persons) -- \$893.49; (6 persons) -- \$1044.49; (7 persons) -- \$1195.49

Each county in Texas will have a designated location for households to apply for energy assistance. These locations may be determined by calling the local office of the Texas Department of Human Resources. If there is not a local TDHR office in a particular county, an applicant should contact the nearest TDHR office or any local organization serving the elderly to inquire about the arrangements for that particular county. If certified as eligible for the assistance, applicants should receive their payments within 20 to 30 days.

### The Bare Facts

BMI--You brag about your ability to judge people by their dress. What about that little blonder over on the beach?  
SN -- Insufficient evi-

## State Cattle Down 1% At 14.8 Million Head

AUSTIN--Texas cattle and calves totaled 14.8 million head on July 1, a 1 percent decline from 1980. Agriculture Commissioner Reagan V. Brown has reported.

In the July 1 inventory by the Texas Crop and Livestock Reporting Service, beef cows decreased only marginally at 6.075 million head while milk cows increased to 325,000 head, a 3.5 percent increase from last year, Brown noted.

The biggest decrease in all cattle came in the Upper Coast region which stood at 500,000 head, a 27.5 percent decline. The Cross Timbers region increased its cattle inventory the most at 1,350,000 head, an 18.5 percent increase from 1980.

These are the breakdowns for the other crop reporting districts:

Northern High Plains cattle inventory totaled 2.1 million head, a 2.4 percent increase from last year; Southern High Plains, 370,000 head, down 13.9 percent; Northern Low Plains, 530,000 head down 11 percent.

Southern Low Plains cattle inventory stood at 550,000 head, up 7.8 percent; Blacklands, 1.8 million head, down 10 percent; East Texas 1.65 million head, down 4.6 percent.

South East Texas cattle also decreased at 850,000 head, a 10.5 percent decline; Trans-Pecos, 500,000 head, a 2 percent increase; South Central, 1.9 million head, a 2 percent increase from last year.

The Edwards Plateau region totaled 1.2 million head, a 10 percent increase from 1980; Coastal Bend, 200,000 head, an 11 percent increase; South Texas, 1.1 million head, increased 6.7 percent; Lower Valley, 200,000 head, a 20 percent decrease.

Statewide, the 1981 calf crop is estimated at 5.4 million head, down 2 percent from 1980.

### Puzzle

Inquiring Son--Father, may I ask one more question?

Patient Father--Yes, my son, just one more.

Son--Well, then, father, how is it that while night falls, day breaks?

**IRISH ADVISORY COUNCIL**  
LONDON -- In a new attempt to end Northern Ireland's crisis, the British government announced plans to create an advisory council with Protestant and Roman Catholic members representing the embattled province. But leaders of both religious communities rejected the idea.

### NOTICE

Energies Company, a division of Pioneer Corporation, hereby gives notice of its intent to implement new rates for domestic and commercial type, small industrial and large air conditioning/electric generating customer classes in the 83 cities and towns on its West Texas City Plant System, effective September 4, 1981. It is anticipated that the new rates will result in a 16% increase in Energies' gross revenues on its West Texas City Plant System, which increase is a "major change" as defined in Section 43(b) of Article 1446c, V.A.T.C.S.

A Statement of Intent to change said rates was filed with each of the cities and towns (listed below) on or about July 31, 1981, and is available for inspection at the Company's Amarillo office, 301 S. Taylor Street.

### CITIES AND TOWNS AFFECTED:

Abilene	Muleshoe
Amherst	Nazareth
Anton	New Deal
Big Spring	New Home
Bovina	Odessa
Brownfield	O'Donnell
Canyon	Olton
Coahoma	Panora
Crosbyton	Parhulde
Dimmitt	Petersburg
Earth	Fairview
Edmonson	Post
Floydade	Quitque
Forsan	Ralls
Friona	Roperville
Hale Center	Sageview
Happy	Seminole
Hart	Shallowater
Hartford	Silverton
Idolado	Slater
Kress	Smyer
Lake Ranom	Southern
Lake Tanglewood	Sprigle
Lamesa	Stanton
Levelland	Sudan
Littlefield	Tahoka
Lockney	Tule
Lozano	Turkey
Lubbock	Vega
Maddox	Walker
Midland	Wilson
	Wolforth

## Senator Bill Sarpalius Reports



### Reports

#### NEW MONEY -- NEW JOBS

AUSTIN -- In the waning hours of the special session of the Legislature, after a battle of more than six months, we were able to pass a bill that should pump hundreds of millions of dollars into the economy of the Panhandle.

That bill provides for a tax exemption for gasohol that should make gasohol competitive with unleaded gasoline.

Here's what the bill should mean for the Panhandle: Three new plants are on the drawing board, in Muleshoe, Dumas and Hutto. Because two of the three are in the Panhandle, we should get at least two-thirds of the benefit of these plants. Plus we expect several other plants in the near future in the Panhandle.

The construction costs of the three plants will be about \$200 million. Most economists agree that each dollar spent for new industries creates about \$3.50 in "spinoff" industries, so the gasohol total should approach \$900 million. Of that sum, we expect about \$600 million will be made in the Panhandle.

Of course, there should be other benefits of the gasohol bill that are not readily predictable. One is

that it creates a new market for agricultural products.

The bill specifies that the alcohol used to make the gasohol be from a renewable source. That will be grain for the near future, but it could be other renewable sources later. Either way, gasohol will decrease our dependence on foreign oil.

Someone will have to run the gasohol plants, so we expect the industry will bring in hundreds of jobs at good wages. This is in addition to the construction jobs to build the plants.

We believe gasohol is perfect for the Panhandle. It brings together three of the important things of this decade -- agriculture, energy and jobs. We have the market and the means of production in our part of the state; all we needed was to give gasohol a fighting chance.

We have given gasohol its chance. Now we expect to see a thriving Panhandle industry that was not there before.

Many of you have opinions on gasohol production and on the future of the Panhandle, and we want to hear from you. Please write to Senator Bill Sarpalius, P. O. Box 12068, Austin, Texas 78711.



CAREFUL OBSERVERS... Viewing the Mule Rodeo from a safe perch, these youngsters seem to enjoy watching the goings-on of the event held here last Saturday.

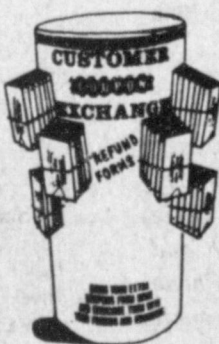
# SHOP RITE



## Treasure Chest of Coupon Savings!

"Coupon Savings You Can Bank On"

### CUSTOMER COUPON CENTER



#### Bring Your Extra Coupons

From Home And Exchange Them With Your Friends And Neighbors!



Better Organization Means Bigger Savings  
COUPON ORGANIZERS \$2.49



**True Value**  
HARDWARE STORES

**TOOL VALUE OF THE MONTH**

QUANTITIES LIMITED

White Supplies Last

LIFTS  
PULLS  
PRYS  
POUNDS

now **3.99**

**15-INCH SUPERBAR®**

A versatile tool forged from spring tempered steel. Unique rocker head gives maximum leverage for fast results with any job. 13215

**True Value**  
HARDWARE STORES

**HARDWARE VALUE OF THE MONTH**

Master

now **1.99**

White Supplies Last

**COMBINATION LOCK**

For school lockers, bikes, more. Double-wall steel lock with 3-number dialing, self-locking mechanism. Rust-resistant inner parts. 1500D

QUANTITIES LIMITED

**Fry & Cox Inc.**  
401 S. 1st 272-4511

Totinos Frozen 11 1/2 oz. pkg. **Save 49¢ On**

**Party Pizza 88¢**

With an additional minimum purchase of \$7.50, excluding cigarettes and other Shop Rite coupon items. Limit one per coupon, one coupon per customer. Thereafter \$1.37 each. Redeemable thru Wed., August 26, 1981.

Shurfresh Doz. Ctn. **Save 20¢ On**

**Large Eggs 69¢**

With an additional minimum purchase of \$7.50, excluding cigarettes and other Shop Rite coupon items. Limit one per coupon, one coupon per customer. Thereafter 89¢ each. Redeemable thru Wed., August 26, 1981.

Morton 2 lb. pkg. **Save \$1.47 On**

**Fried Chicken \$2.29**

With an additional minimum purchase of \$7.50, excluding cigarettes and other Shop Rite coupon items. Limit one per coupon, one coupon per customer. Thereafter \$3.76 each. Redeemable thru Wed., August 26, 1981.

Kraft Halfmoon Longhorn Cheddar Colby **Save 58¢ On**

**Cheese \$1**

With an additional minimum purchase of \$7.50, excluding cigarettes and other Shop Rite coupon items. Limit one per coupon, one coupon per customer. Thereafter \$1.49. Redeemable thru Wed., August 26, 1981.

All Ass't Grinds Maryland Club 2 lb. can **Save \$1.12 On**

**Coffee \$3.59**

With an additional minimum purchase of \$7.50, excluding cigarettes and other Shop Rite coupon items. Limit one per coupon, one coupon per customer. Thereafter each. Redeemable thru Wed., August 26, 1981.

Golden Ripe **Save 5¢ On**

**Bananas 3 lbs./\$1**

With an additional minimum purchase of \$7.50, excluding cigarettes and other Shop Rite coupon items. Limit one per coupon, one coupon per customer. Thereafter 39¢ each. Redeemable thru Wed., August 26, 1981.



# WHAT'S HAPPENING IN THE...

# CLASSIFIED SECTION

**Deadline For Classified Ads Is 11:00 Tuesdays And Fridays**

**CLASSIFIED RATES**  
 1st Insertion, Per Word--\$.15  
 Minimum Charge--\$2.00  
 2nd Insertion, Per Word--\$.13  
 3rd Insertion, Per Word--\$.10  
 Minimum Charge--\$1.80  
 1/2 Cheaper to run Classifieds 3 times or more  
**CARD OF THANKS**  
 25 Words--\$3.00  
 Over 25 Words Charged at regular Classified Rates  
 Classified Display--\$1.55 per column inch  
 Double Rate for Blind Ads  
**DEADLINE FOR INSERTION**  
 11 a.m. Tues. for Thurs.  
 11 a.m. Fri. for Sun.  
**WE RESERVE THE RIGHT TO CLASSIFY REVISE OR REJECT ANY AD. NOT RESPONSIBLE FOR ANY ERROR AFTER AD HAS RUN ONCE.**

RN Wanted for supervisory position. West Texas Home Health opening office in Muleshoe. Call 747-2814 3-34t-4tc

Avon Representatives Needed in Muleshoe area. Call Nettie 272-3208 or Oneida 272-3346. 3-28t-tfc

Experienced full-time sales help needed for Lingerie and Hosiery Departments at Anthonys. Sales Bonus, Discount, Insurance and Other Benefits. Sales experience necessary. Must Work Saturdays. Apply in person. 3-33s-2tc

**5. APTS. FOR RENT**  
**FOR RENT:** 1,2, & 3 bedroom apartments. (utilities paid. Unfurnished except stove and refrigerator. Starting \$215 or less. Call collect 1-806-247-3666. 5-22t- tc Friona, Texas.

**8. REAL ESTATE FOR SALE**

## TOWN and COUNTRY REAL ESTATE

HIGHWAY 214 NORTH MULESHOE, TEXAS

3 bedroom, 2 bath, 2 car garage, fireplace and storm cellar. All for \$65,000.00 1714 W. Ave. G

3 bedroom, 2 bath, brick V home. Has it's own well and lots of extras. \$64,000.00 1816 W. Ave. C

Nice 3 bedroom, 2 bath, 2 car garage, brick veneer house in Country Club Addition, \$45,000

Stucco house, 3 bedroom, 2 bath, remodeled inside and out, priced at \$25,000 207 W. 12th.

**FARMS RANCHES HOMES**  
**JOHN W. SMITH, Broker**  
 806-272-4678  
 Also 272-4307  
 OR  
 272-3725  
 8-27s-tfc

**Krebbs Real Estate Sales and Appraisals**  
 201 W. Ave. C  
 Muleshoe, Texas

House for sale by owner. Need to sell immediately! 3 bedroom, 1 bath. Good condition. 1913 W. Birch. Call 272-3843. 8-24s-tfc

**FOR SALE:** Brick home, 1702 Ave. C. 2 Br., 2 bath, fireplace, garage, many extras. Custom drapes, ref. air, fence and outside storage. Call 272-4450 or 272-3921 8-31s-tfc

**HOUSE FOR SALE BY OWNER:** 3 bedroom 1 bath at 309 W. 7th Call after 6 p.m. 272-5091. 8-32s-tfc

**J.B. STODDERTH REALTY INC.**  
 Box 627  
 109 Fifth St.  
 Farwell, Texas 79325  
 Phone [806] 481-3288 or 481-9149

160 acres irrigated with circle. East of Lariat. 200 ft. plus water

181 acres irrigated, leased circle sprinkler. 2 wells. Hwy 70-84 West Muleshoe

160 acres northwest of Muleshoe, 2 wells, lays good on FM highway. 8-49s-tfc

**FOR SALE:** 3 bedroom, 2 bath, brick, living room, den with fireplace, office, Richland Hills. 272-4701. 8-21t-tfc

3 bdrm, 2 bath, 2 car garage, stucco 310 W. 16th Tommy Gunstream 272-3006 after 5 8-31s-tfc

**SMALLWOOD Real Estate**  
 232 Main 272-4838  
 Joe & Ricky

1815 W. Ave. B 3 bedroom brick, 2 baths, 4 ceiling fans, refrigerated air, 1 car port. \$45,000.00 8-34t-tfc

**HOUSE FOR SALE BY OWNER:** 3-2-1 Excellent location. Brick, 2,000 sq. ft. Priced to sell. 1816 W. Ave. C. phone 272-4501 days; 272-3722 evenings 8-30T-tfc

8 lots for sale Ayleworth Acres Call 272-5023 or 272-3477 8-34t-2tc

**We want your business. REMEMBER REID REAL ESTATE YHURSE REID 272-3142**  
 OR  
 George Nieman 965-2488  
 OR  
 Dianne Nieman 965-2488  
 8-1's-tfc

**For all your real estate needs call: GLAZE & GOFORTH**  
 112 AVE. C  
 272-4208  
 8-11-tfc

**9. AUTOMOBILES FOR SALE**

**FOR SALE:** Motorcycle - 1977 Kawasaki KZ 1000, cruise, vetter farrings, saddle bags and box, and custom seat. Call 385-4659 after 6 p.m. Roland Bell, Littlefield. \$2,400.00 11-11s-tfc

Surplus jeeps, cars and trucks available. Many sell under \$200. Call 312-742-1143 ext. 794 for information on low to purchase. 9-34t-4teotc

1978 250 motorcycle w/low mileage and good condition Call 272-3159 or go by Southside Gulf. 9-33t-tfc

**FOR SALE:** 77 Ford Station Wagon. Asking \$2,500 2 miles west of Muleshoe at Pete Planks farm. 9-34t-4tp

1978 Ford Super Cab. Good condition. Butane system. 272-3819 9-34t-2tc

**FOR SALE:** Yamaha 125 510 20th 272-3743 15-34t-2tc

**11. FOR SALE OR TRADE**

**FOR SALE:** Alfalfa Hay  
 Ricky Bennett  
 Call 806-825-3822 11-20t-tfc

**12. HOUSEHOLD GOODS**

**BURROWS UPHOLSTERY AND FURNITURE REPAIR**  
 118 W. AVE. C  
 in the rear  
 PHONE 272-4255  
 12-30s-tfc

Unclaimed furniture. New covers. Antique clubchair-velvet cover. Occasional chair-black & gold. Ranch oak divan, makes bed-vinyl cover. See at Burrows Upholstry Shop, 118 W. Ave. C, in rear. 12-32t-8tc

**15. MISCELLANEOUS**  
 Need someone to do housecleaning at 516 W. 8th 15-33s-2tc

Space Available soon for small shop or offices. Tradewinds Plaza 800 W. America Blvd. 272-5180 15-33s-tfc

**BRUCE ELECTRIC**  
 Residential, commercial, wiring, repairs, supplies, fixtures, 24 hour service 272-4027 15-33s-19tc

Used air conditioner for sale. Williams Bros. Office Supply 272-3113 15-32s-tfc

**FOR SALE:** 1974 Honda motorcycle. Call 272-3222 or come by Southside Gulf 9-29t-tfc

**WANTED TO BUY:** used aluminum pipe of all sizes. Also side roll sprinklers of all sizes. No quantities too large. Top prices paid. Stateline Irrigation 272-3819 or 272-3450 15-33t-tfc

Piano Lessons Experienced Call 272-3229 15-32t-tfc

17 foot inboard, outboard, hydro-dyne boat for sale. Call 933-4641 for details. 15-34t-tfc

Want to keep 2-3 year old child. Will do sewing in my home. 272-4012 15-34t-tfc

Band instruments- Good wood clarinets \$175-\$475. Beginner trombones \$50-\$185. Besson Professional coronet \$100. Earth 257-2173 15-34t-4tc

## Enochs News By Mrs. J.D. Bayless

Mr. and Mrs. Henry Hardaway and son Robert of Brownfield visited her mother, Mrs. Winnie Byars last Saturday.

Mrs. Bill Key and Mrs. Chester Petree went to Morton last Sunday afternoon to hear Kent Hance speak at the First National Bank.

Mr. and Mrs. J.E. Layton and Mrs. J.W. Layton drove to Dell City Tuesday afternoon and spent till

Thursday afternoon in the home of Mr. and Mrs. Harold Layton.

Mrs. Dannie Petree and children of Lubbock and Mrs. Donna Moon and children of Clovis, N.M. visited Mr. and Mrs. Chester Petree Saturday and got some beans and peas to can.

Mr. and Mrs. Dale Nichols and Paula returned home Saturday after spending their vacation at Red River. Their sons, Mr. and Mrs. Jerry Nichols and Kristen of El Paso and Mr. and Mrs. Donnie Nichols of Canyon met them there for a visit.

Mrs. Audra Hill and Mrs. Clara Williamson of Lubbock were guests in the home of their sister, Mr. and Mrs. Chester Petree Sunday.

Mike Sowder of Three Way gave a concert at the Baptist Church at Enoch's Sunday night.

Mrs. Audra Hill and Mrs. Clara Williamson of Lubbock were guests in the home of their sister, Mr. and Mrs. Chester Petree Sunday.

Mike Sowder of Three Way gave a concert at the Baptist Church at Enoch's Sunday night.

Mrs. Audra Hill and Mrs. Clara Williamson of Lubbock were guests in the home of their sister, Mr. and Mrs. Chester Petree Sunday.

Mike Sowder of Three Way gave a concert at the Baptist Church at Enoch's Sunday night.

Mrs. Audra Hill and Mrs. Clara Williamson of Lubbock were guests in the home of their sister, Mr. and Mrs. Chester Petree Sunday.

Mike Sowder of Three Way gave a concert at the Baptist Church at Enoch's Sunday night.

Mrs. Audra Hill and Mrs. Clara Williamson of Lubbock were guests in the home of their sister, Mr. and Mrs. Chester Petree Sunday.

**1. PERSONALS**  
**WE BUY USED FURNITURE AND APPLIANCES**  
 CALL 272-3030 HARVEY BASS APPLIANCE  
 1-18s-tfc

Let us put your wedding in beautiful pictures. Call Oetia for your date. 385-5169, 512 Phelps, Littlefield, Texas 79339. 1-28t-tfc

Custom farming, 8 row equipment. Reasonable rates call 272-5317 before 8 a.m. or after 7 p.m. 1-16s-tfc

**SKIN CARE & BEAUTY BY MARY KAY**  
 Dorris Carter  
 [806] 246-3483  
 Box 226 Amherst, Tx. 1-29t-tfc

**3. HELP WANTED**  
 B & H Feeders needs push button operator for mill and work with figures. Contact Candace Sims at 965-2644 or 965-2853 3-34t-tfc

Clerical mail agents urgently needed by the hundreds for inserting sales material into envelopes. Permanent part or full time opportunity. Experience unnecessary. Excellent income potential. For details and application, send self-addressed, stamped envelope. SYLVESTER\*Box 96, Chicago Hgts. IL 60411 3-34t-8tc

**HELP WANTED**  
 Auto mechanic. Experienced, with tools. Excellent pay plan and benefit program. Thornton Chevrolet 201 Main Muleshoe, Texas 272-4521 3-30s-tfc

Needed shop personnel willing to train. KMP Manufacturing, Earth, TX 3/4 mile south on Amherst Road. 3-33s-2tp

Mr. and Mrs. Cleo Hall of Phoenix, Arizona arrived Sunday afternoon for a visit with her parents, Mr. and Mrs. J.D. Bayless and his sister, Mr. and Mrs. J.E. Layton.

Mrs. Audra Hill and Mrs. Clara Williamson of Lubbock were guests in the home of their sister, Mr. and Mrs. Chester Petree Sunday.

Mike Sowder of Three Way gave a concert at the Baptist Church at Enoch's Sunday night.

Mrs. Audra Hill and Mrs. Clara Williamson of Lubbock were guests in the home of their sister, Mr. and Mrs. Chester Petree Sunday.

Mike Sowder of Three Way gave a concert at the Baptist Church at Enoch's Sunday night.

Mrs. Audra Hill and Mrs. Clara Williamson of Lubbock were guests in the home of their sister, Mr. and Mrs. Chester Petree Sunday.

Mike Sowder of Three Way gave a concert at the Baptist Church at Enoch's Sunday night.

Mrs. Audra Hill and Mrs. Clara Williamson of Lubbock were guests in the home of their sister, Mr. and Mrs. Chester Petree Sunday.

Mike Sowder of Three Way gave a concert at the Baptist Church at Enoch's Sunday night.

Mrs. Audra Hill and Mrs. Clara Williamson of Lubbock were guests in the home of their sister, Mr. and Mrs. Chester Petree Sunday.

Mike Sowder of Three Way gave a concert at the Baptist Church at Enoch's Sunday night.

Mrs. Audra Hill and Mrs. Clara Williamson of Lubbock were guests in the home of their sister, Mr. and Mrs. Chester Petree Sunday.

Mike Sowder of Three Way gave a concert at the Baptist Church at Enoch's Sunday night.

Mrs. Audra Hill and Mrs. Clara Williamson of Lubbock were guests in the home of their sister, Mr. and Mrs. Chester Petree Sunday.

Mike Sowder of Three Way gave a concert at the Baptist Church at Enoch's Sunday night.

**TOWN & COUNTRY, is seeking individuals who are interested in a management career with a fast growing convenience food store chain in this area. If you are aggressive, hard working, goal oriented and willing to learn & contribute, call after 6:00 at 272-5537 or 385-6740**



**TRITICALE HAS PROVEN ITSELF AND IS HERE TO STAY**  
 More Beef or Milk From Every Acre.  
 Research Proven  
 Consistently More Forage  
 Nutritionally Superior  
 Disease Resistant  
**Kershner Triticale Co.**  
**Ted Millen Dist. 965-2733**

**NOTICE OF CALCULATION OF COUNTY'S EFFECTIVE TAX RATE Bailey County**  
 I, Dale F. Jones, tax assessor-collector for Bailey County in accordance with the provisions of article 7244c, Sec.1, VTCS, have calculated the tax rate which may not be exceeded by more than three percent by the commissioner's court of Bailey County without holding a public hearing as required by Art. 7244c, Sec.2, VTCS, That Rate is as follows:  
 \* .29¢ per \$100 for the general fund, permanent improvement fund, jury fund, and road and bridge fund tax rates;  
 \* .7¢ per \$100 for special road maintenance tax rate; thus  
 \* .36¢ per \$100 total county tax rate.  
**Dale F. Jones**  
 Tax Assessor-Collector  
 8-20 81



## Earned Income Credit Received In Two Ways

Persons qualified for the Earned Income Credit may continue receiving the credit in paychecks or as a part of their tax refund at the end of the year, according to the Internal

Revenue Service.

Before the 1979 law change, qualifying persons received Earned Income Credit in the form of a tax refund after they filed their Federal income tax return. Now, eligible taxpayers can receive the credit in the same way, or, may choose to get it in advance

payments each payday. Qualified persons must present a signed Form W-5, "Earned Income Credit Advance Payment Certificate," to their employers, if they choose the paycheck option.

The law change raised the base amount to 10 percent of earned income

up to \$5,000, for a maximum credit of \$500. In other words, the closer earned or adjusted gross income gets to \$10,000, the smaller the credit, until it reaches zero at \$10,000.

For additional information on the Earned Income Credit and advance payments, taxpayers may

telephone IRS. The number is located in the telephone directory under "Federal Tax Information."

Always

There's always an argument when an unimpeachable source disagrees with an unquestioned authority.

-News, Indianapolis.

**Sound Advice**  
Don't stay away from church because it attracts so many hypocrites; there's always room for one more.

-Dispatch, Kan.

**Boot & Shoe Repair**

111 East 4th

**Ladies Morning Exercise Classes**  
Beginning in September  
**Enroll Now!**  
272-3483 or 965-2353  
Hawkins & Purdy's School of  
Gymnastics & Dance

### The Sandhills Philosopher

Editor's note: The Sandhill Philosopher on his Johnson grass farm on Sandy Creek discusses diamonds, gold and Prince Charles' farming this week.

Dear editor:

If I were a jeweler I'd start lobbying against any further exploration of space. Leave those far reaches of the universe alone.

According to an article I read last night while not listening to a televised baseball game, the planet Uranus and Neptune are covered with diamonds. A scientist says "the methane there has separated into the carbon and hydrogen atoms that form it and the carbon atoms have been squeezed into layer and layers of diamonds."

you can see immediately what this will do to the diamond market if some astronaut lands there with a shovel and wheelbarrow.

When he gets back to earth with his load, a diamond now costing \$5,000 will be worth about 25 cents, if you throw in a box of crackerjacks.

The law of supply and demand will take hold and Prince Charles, who gave Lady Diana a diamond ring that costs \$75,000 will look like a cheapskate.

The same thing could happen to gold. Suppose somebody discovered a vein in some mountain with tons and tons of the stuff. Instead of \$400 an ounce or \$6,400 a pound, gold would then be worth about \$1.25 a pound. Governments now miserly storing the stuff could empty their vaults and use them to store surplus butter, and gold cap on a tooth would no longer bankrupt you.

Speaking of Prince Charles, in the welter of news about him I read that he owns 128,000 acres of land and made \$500,000 off them last year. That's \$25.60 an acre, not counting taxes like we have to pay. Over here he'd probably have cleared \$10 an acre.

It's said there will always be an England, but not with sort of farming.

Yours faithfully,  
J.A.

**NOTICE**

Energas Company, a division of Pioneer Corporation, hereby gives notice of its intent to implement new rates for domestic and commercial truck, small industrial and large air conditioning/electric generating customer classes residing in the unincorporated areas (environs) of its West Texas System. It is anticipated that the new rates will result in a 1.0% increase in Energas' gross revenues, which increase is not a "major change" as defined in Section 43(b) of Article 1446c, V.A.T.C.S. A Statement of Intent to change said rates was filed with the Railroad Commission of Texas on or about August 7, 1981, and is available for inspection at the Company's Amarillo office, 301 S. Taylor Street.

The proposed increase will not become effective until or except to the extent that the same rates are approved for service within the municipalities on the West Texas System.

**UNINCORPORATED AREAS (ENVIRONS)**

**OF THE FOLLOWING CITIES AND TOWNS ARE AFFECTED:**

- |                 |             |
|-----------------|-------------|
| Abernathy       | Muleshoe    |
| Amherst         | Nassoth     |
| Anton           | New Deal    |
| Big Spring      | New Home    |
| Bovina          | Oakes       |
| Brownfield      | O'Donnell   |
| Canyon          | Olton       |
| Coahoma         | Pampa       |
| Conorton        | Panhandle   |
| Dinwiddie       | Petersburg  |
| Earth           | Plainview   |
| Edmonson        | Fort        |
| Floyd           | Quilley     |
| Fonon           | Ralls       |
| Frisco          | Ropesville  |
| Hale Center     | Seagraves   |
| Haley           | Seville     |
| Hart            | Shallowater |
| Haskell         | Silverton   |
| Kelou           | Stanton     |
| Kress           | Smyer       |
| Lake Ramon      | Southland   |
| Canyon          | Springlake  |
| Lake Tanglewood | Stanton     |
| Lamesa          | Sutton      |
| Llewellyn       | Tahoka      |
| Littlefield     | Tule        |
| Lookney         | Turkey      |
| Lorenco         | Vega        |
| Lubbock         | Wellman     |
| Meadow          | Wilson      |
| Mulford         | Woolforth   |



Pick a Winner!

**STEAK**  
Ranch ..... LB. \$1.69  
Boneless Sirlion Tip ..... LB. \$2.49  
Sirlion ..... LB. \$2.49

**TURKEY HAMS** LONGMONT 1/2 HAMS LB. \$1.49  
**HOT LINKS** RATH SMOKED LB. 98¢

YOU CAN TREAT YOUR FAMILY TO DELICIOUS STEAK FOR LESS THAN THE COST OF EATING HAMBURGERS OUT!

For the tenderest, tastiest, thriftiest steaks in town... stop in and see us

**Hi-C** FRUIT DRINKS 12 OZ. 3 \$1

**HUNT'S** Ketchup 32 OZ. 99¢

**WHITE SWAN** Shortening 42 OZ. \$1.09

**FRANKS** WILSON MEAT 12 OZ. PKG. 98¢  
**SIZZLERS** HORMEL 12 OZ. PKG. \$1.19  
**PROCESSED CHEESE** QUESO JALAPENO PEPPER LB. \$1.29

**Health & Beauty Aids**  
AIM Toothpaste 25' OFF LABEL 6.4 OZ. \$1.27  
TOOTHBRUSH PEPSODENT 5 OZ. 2/\$1  
MOUTHWASH SIGNAL 25' OFF LABEL 18 OZ. \$1.47

**JOY LIQUID** DETERGENT 32 OZ. \$1.49

**POTTED MEAT** ARMOUR 3 OZ. 4/\$1 3' OFF LABEL

**PLEDGE** ORIGINAL POLISH 7 OZ. \$1.29

**VIENNA SAUSAGE** ARMOUR 5' OFF LABEL 5 OZ. 2/\$1

**PEPSI** Diet Pepsi or Mountain Dew \$1.19 6-12 oz. Can  
FREE All Day Sat. Aug. 22  
12 oz. Cup Cold Pepsi!

**PRUNE JUICE** DEL MONTE 32 OZ. 89¢

25 Lb. Field Trial  
**Dog Food** \$3.99

**PEACHES** DEL MONTE YELLOW CLING 16 OZ. 59¢

**One Big Salad-Bowl of Savings**  
Here's where the world's finest fresh fruits and vegetables get together to save you money

**PINEAPPLE** DEL MONTE 8 OZ. 3/\$1

**Potatoes** ALL PURPOSE 10 LB. BAG \$1.59

**SLICED BEETS** DEL MONTE PICKLED 16 OZ. 49¢

**FIRM GREEN HEADS CABBAGE** LB. 11¢

**Frozen Foods**  
MINUTE MAID Lemonade 6 OZ. 3/\$1 PINK OR REGULAR

**ONIONS** YELLOW MEDIUM SIZE LB. 4/\$1  
**JALEPENOS** FRESH GREEN PEPPERS LB. 49¢

**MORTON'S MINI HONEY BUNS** 16 OZ. \$1.09

**PLUMS** CALIFORNIA SWEET & JUICY LB. 4/\$1  
**CANTALOUPE** TEXAS VINE RIPE LB. 19¢

**Tide** 35¢ OFF LABEL 84 OZ. \$2.99

**MARYLAND CLUB** Coffee 1 LB. \$1.89

**STILWELL** STEW 20 OZ. VEGETABLES 79¢

32 oz. Best Maid  
**Salad Dressing** 98¢

**White's Cashway Supermarket**  
Open 7:30 To 9:00 Monday To Saturday 12:00 P.M. To 9:00 P.M. Sunday  
Double Gunn Bros. Stamps Every Wednesday & Saturday  
We Welcome WIC Card & USDA Food Stamps  
Get Ready on the Firing Line for...  
"THE BIG DOUBLE BARREL SHOOT OUT"