



# MULESHOE JOURNAL

'The Community of Opportunity-Where Water Makes the Difference'



20¢

Volume 57, No. 42

12 Pages Today

Published Every Thursday at Muleshoe, Bailey County, Texas 79347

Thursday, October 16, 1980

## Harrison, Gleason Gold Star Winners

Bailey County 4-H members were honored Monday night during the annual awards banquet. "Expanding Horizons"

was the theme of the banquet, carrying out the 4-H theme for the year.

Awards were presented by Bailey County Judge Glen Williams. Master of Ceremonies was Greg Harrison and the welcome was given by Joe Harbin of Bailey County Electric Co-operative.

Receiving the Gold Star Awards, the highest awards for achievement presented in a county were Jacinda Gleason and Kelly Harrison.

"The Gold Star is the symbol of excellence in the 4-H program," said Bailey County Extension Agents Linda Mullin and Jim Irwin. "Many years of hard dedicated 4-H work go into the making of a Gold Star 4-H'er traditionally."

"Gold Star 4-H'ers are those who strive for excellence, set goals and achieve them," they added. "They have high ideals and exhibit superior leadership."

Jacinda is the daughter of Dr. and Mrs. Jerry Gleason and has been a 4-H member for the past nine years. She has been active in all phases of 4-H activity and has carried projects in beef, food and nutrition, clothing, veterinary science and others.

She has attended teen leader lab, district electric camp, and has been a junior leader. Jacinda has served on various positions in leadership in the county and on the county committee. Jacinda has been a leader in school and community activities and is a junior at Muleshoe High School. Cont. Page 6, Col. 1



**GOLD STAR WINNERS....**Each year, during the annual 4-H Achievement and Award Banquet, two persons are chosen to receive the Gold Star Award, the highest award given to a 4-H member on the county level. Winners of the award Monday night were from left, Jacinda Gleason, daughter of Dr. and Mrs. Jerry Gleason and Kelly Harrison, son of Mr. and Mrs. Ted Harrison.

## City Rebate Check Shows 11% Increase

State Comptroller Bob Bullock said late last week that October payments to cities levying the optional one-percent city sales tax brings the 1980 total rebates to more than \$446.8 million.

He said payments of \$28.2 million were made to cities for the month of October.

Bullock said the October payments bring rebates to Texas cities this year within \$20.2 million of total

## Dennis Takes First Place In Contest

If you missed more than one game in the football contest for the past week, you were just out of luck. Both the first and second place winners did not miss any games. A tie resulted in the third place, between two contestants who each missed one game.

With a perfect score, and only 30 points away on the double tiebreaker was Weldon Dennis. He showed up in the winner's column in years past, but this is his first appearance this year.

You will have to work harder now, as a prior first place winner for the year has come back with a second place win this week, and 16 'big' points.

Shane Smith, who has a prior first place win also had a perfect scorecard, except, he was 37 points off on the double tiebreaker scores.

A tie came up for third place between Nona Blake Douglass and Terry Field, who each missed one game, in fact, both contestants missed the Dartmouth-William and Mary game. But they tied up on the double tiebreaker at 30 points each.

Three persons who missed just missed one game, also tied up on the tiebreaker at 33 points off. They were James Hanson, a previous winner; Joann McDonald and Gerry Pierce.

Others missing one game and their tiebreaker scores included: J.E. McVicker, 34; Randall Stevens, 37; Jose Triana, 40; Fred Bara, 41; Mike Perez, 45; Ina Dennis, 46; Dwayne Dale. Cont. Page 6, Col. 1

## Miss Tri-County Pageant Slated

★★

### Sandhill Cranes Here For Winter

Bailey County's population has suddenly taken a drastic shift upward, as the winter population has started arriving in Southern Bailey County.

Al Jones, manager of the Muleshoe National Wildlife Refuge said the sandhill crane population at the refuge is now over 6,000 as the giant bird started arriving there September 28 and 29.

Monday, the population of the elusive bird was around 5,000, a number that is expected to peak out somewhere over 100,000 by February, 1981.

Last year, said Jones, more than 200,000 sandhill cranes were counted in February.

The birds were on time again this year, and Jones expects more than 100,000, but does not expect the 200,000 plus, counted last year at the peak population.

There is a little more water for the birds this year, and more grain sorghum, the crane's favorite food, has been planted.

In this area, the hunting season is October 31 to January 31, 1981. Bag limit daily is three with a possession limit of six. Permits are required to hunt the

### Corn Harvest Nearly Over For This Area

Corn harvest for this area is 70-98 percent complete, according to various corn elevators in Muleshoe.

All were unanimous that the corn yields are down 25-35 percent for the year, and also all said the corn quality had suffered through the long hot summer and drought.

Wayne Crittenden of Texas Sesame said the yellow corn harvest for their business is some 98 percent completed now, while the white corn harvest is only about 70 percent complete.

At Griffiths and Sons, Cliff Griffith said they figure they are a little more than 85 percent completed with the harvest, although there is still quite a bit of unharvested corn to the west and north of Muleshoe.

From King Grain Co., Joe Bob Stevenson reported they purchase yellow feed corn, and their harvest has been completed for this year. He said the yield is down some 35 percent from last year.

Cotton Burleson said the corn harvest for Farmer's Co-Op Elevator is around 90 percent completed.

With the corn harvest virtually completed at this time, the next crop expected will be the cotton harvest, which is slowly getting underway.

### 32 Contestants Vie In Four Categories

"Saturday Night Fever" will reign this Saturday night in Muleshoe as this is the theme for the 1980 Miss Tri-County Pageant, hosted by the Muleshoe Jaycees.

Chairman Troy Stegemueller said the pageant will be staged in the Muleshoe High School Auditorium, and said the Jaycees hope a good crowd will attend and watch the bevy of beauties of all ages who will be seeking the four titles up for grabs.

Preliminary judging gets underway at 10 a.m. Saturday, when the judges will begin the final weeding out process for the contestants who will be hoping to be named Miss Tri-County, Junior Miss Tri-County, Little Miss Tri-County and Miss La Petite.

A total of 32 entries have been received in the various categories, and when the contestants take to the stage for the 7:30 p.m. pageant, the local and area beauties will far outshine anything else in the area for that night.

Tickets for the pageant will be \$3 for adults with the price of the program set at \$1.25, which will just cover the cost of printing the multi-page program including pictures of all the contestants.

Contestants are from Muleshoe, Three Way, Amherst, Friona, Earth and

other locations in the three counties represented.

Outgoing Miss Tri-County, Laura Ellis, daughter of Mr. and Mrs. Bill Ellis of Friona, will be performing during the pageant prior to crowning her successor. Mr. and Mrs. Ellis are former Muleshoe residents.

A graduate of Friona High School, Laura has performed for the last two summers in the production of 'Texas' at Palo Duro Canyon and has also been featured with Six Flags Cont. Page 6, Col. 3

### Fine Arts Group Making Plans For Carnival

David Gray, president of the Muleshoe Fine Arts Booster Club has reminded it is time to reserve your booth for the annual Halloween Carnival.

The carnival is scheduled for Saturday, November 1, at the Bailey County Exhibition Center and Coliseum from 6 to 10 p.m.

Gray said interested persons may call him at 272-4412 after 5 p.m. on weekdays or during the weekend, to reserve booth space, or for further information on space available.

During the evening, the Halloween Queen and King will also be crowned.

### Around Muleshoe

Absentee voting for the November 4 General Election got underway yesterday, Wednesday, in the office of Bailey County Clerk Hazel Gilbreath.

Persons who expect to be out of town, or those over the age of 65, may cast absentee ballots through Friday, October 31.

Application may be made by mail for absentee ballots according to Mrs. Gilbreath.

Funeral services were conducted Tuesday morning in Las Vegas, Nevada for 19 year old Pete Alan Toten who was killed in a motorcycle accident in that city.

He was the son of the late Dorman Toten. Local survivors include his grandparents, Mr. and Mrs. Harvey Toten; and aunts, Frances Bland, Theresa Jones, and Carolyn Collins.

Lana Wagon Sooter, daughter of Mr. and Mrs. W.B. Wagon, was among 987 students awarded degrees for the summer session at North Texas State University in Denton.

She received the bachelor of business administration degree in marketing.

Marine Pfc. Robert C. Posadas, son of Mr. and Mrs. Alfonso Posadas, participated recently in an amphibious combat training session at the Naval Amphibious Base, Coronado, California.

A 1979 graduate of Muleshoe High School, he is a member of the 3rd Battalion, 7th Marines, based at Camp Pendleton, California.

### Area Business Has Big Loss In Burglary

Sunday night, burglars broke into Play-O-Rama Fruit and Vegetable Stand at Texico, taking a large amount of cash and checks. In the process, the burglar or burglars also tore up vending machines as they also robbed the machines in the business.

Mrs. Red Prather, operator of Play-O-Rama, told The Journal by telephone Tuesday morning that several of the checks had been given by persons residing in and around Muleshoe.

She asked that persons who gave the business a check on October 10, 11 or 12 to please contact your bank and stop payment on the checks. Also, if you did give Play-O-Rama a check on those dates, please notify her or the Sheriff's Office at Clovis.

Members of the Curry County Sheriff's Office at Clovis are currently investigating the Sunday night burglary.

### Mission Conference Slated This Weekend

Muleshoe's First United Methodist Church will host their fifth annual weekend missionary conference on Saturday, October 18 and Sunday, October 19.

Participating as special speakers will be Miss Elizabeth Johannaber, who has served in the far east; Rev. Norman Hudson, who served in South Africa and Mrs. Martha Kent, who has served in Bolivia.

Conference activities begin on October 18 with a men's breakfast at 7 a.m., a coffee for all participants at 10 a.m., followed by a salad luncheon at noon for the ladies. In the afternoon, children's hour will be at 4 p.m., with the junior and senior high school age cook out at 6 p.m. Worship service on Saturday will be at 7:30 p.m.

Sunday, Miss Johannaber will speak to the combined Sunday School classes, and will conduct the morning worship service.

Miss Johannaber, presently of Dallas, will be the director of the Fifth Annual Weekend Mission Conference. She was served in Szechow, China, teaching kindergarten teachers, and spent three years in Singapore, teaching in Trinity Theological Seminary. Miss Johannaber also served in Manila, Phillipines, teaching in a deaconess training school and as a district missionary. She was educated at the

Universities of Nebraska and Minnesota, Garret E-Con't on page 6, Col. 6

### Band, Paper Join Effort For Drive

It's time for the annual Muleshoe Bands / Journal subscription sale to magazines and The Journal.

Band members will be contacting the local and area citizens with their colorful brochures of magazines, and will also sell new subscriptions and renewals to The Journals.

L.B. Hall, publisher of The Muleshoe Journal and Bailey County Journal will be giving the bands 50 percent of any new subscription and 25 percent of any renewals during the drive. The only exclusion made by the publisher is that Journal carriers are not eligible for renewal credit on their own route.

If the carrier obtains a renewal from sources other than his own newspaper route, the carrier may be credited with the sale.


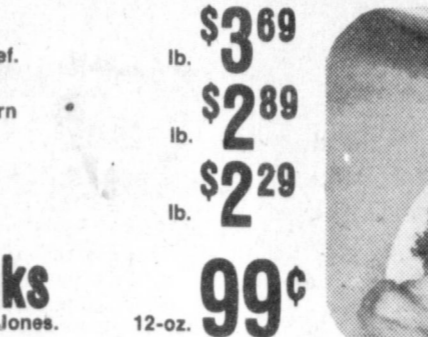

Also, the band member selling the most subscriptions during the drive will be awarded \$100 from Muleshoe Publishing Co.

Charles Faulkner, band director for the Muleshoe Schools, said the funds will be used for travel expenses for the band.



**TO CROWN SUCCESSOR....**Laura Ellis, the 19 year old daughter of Mr. and Mrs. Bill Ellis of Friona, will be crowning her successor as Miss Tri-County Saturday night in Muleshoe. Laura will be relinquishing the title and crown she has held for approximately a year and a half.

<b>ORANGE JUICE</b> Kraft <b>19¢</b> 32-oz. btl. With One Filled S&H Bonus Special Booklet.	<b>WHITE SWAN BISCUITS</b> Buttermilk or Sweetmilk <b>2 39¢</b> 10-ct. pkgs. With One Filled S&H Bonus Special Booklet.	<b>FRUIT COCKTAIL</b> Del Monte <b>39¢</b> 30-oz. can With One Filled S&H Bonus Special Booklet.	<b>PARMESAN CHEESE</b> Kraft <b>19¢</b> 3-oz. pkg. With One Filled S&H Bonus Special Booklet.	<b>CHARMIN TISSUE</b> White & Colors <b>49¢</b> 4-roll pkg. With One Filled S&H Bonus Special Booklet.
---	---	--	---	--

 <b>T-Bone Steaks</b> Select Western Beef. lb. <b>\$3.69</b>	 <b>Sirloin Steaks</b> Bone-in Select Western Beef. lb. <b>\$2.89</b>	 <b>Lean Stew Beef</b> lb. <b>\$2.29</b>	 <b>Silced Bacon</b> \$1.39 Glover's Mkt. Style. lb.	 <b>Franks</b> 99¢ Farmer Jones. 12-oz.	 <b>Amer. Cheese</b> \$2.77 Kraft Singles. 16-oz.	 <b>Bologna</b> \$1.09 Farmer Jones. 12-oz.
<b>GROUND BEEF</b> Fresh. Not Less Than 70% Lean 3-lbs. or more <b>\$1.38</b> lb.	<b>BONELESS HAMS</b> Wilson's Certified <b>\$1.89</b> lb.	<b>BOSTON BUTT PORK ROAST</b> Lean. <b>\$1.39</b> lb.	<b>PORK STEAKS</b> Lean <b>\$1.49</b> lb. Fresh.			


**DOUBLE STAMPS WEDNESDAY**



# SHOP RITE

**Your Place To Shop If You Really Enjoy Saving On Fall Foods!**  
 Prices Good Thursday Thru Wednesday, Oct. 16-23, 1980. Each of these advertised items is required to be readily available for sale at or below the advertised price in each store, except as specifically noted in this ad. We reserve the right to limit quantities. None sold to dealers. U.S.D.A. Food Stamps and W.I.C. Checks Freely Honored.

**FOLGERS COFFEE**  
All Ass't Grinds  
1-lb. can **\$2.67**  
2-lb. can \$5.32



**DEL MONTE CORN**  
Whole Kernel or Cream Style  
17-oz. cans **\$1**  
3 cans



**GREEN BEANS**  
Del Monte. French Style or Cut  
16-oz. cans **\$1**  
3 cans



**COCA-COLA**  
32-oz. Returnable Btlis.  
6-pack **\$1.73**



**Syrup**  
White Swan. 32-oz. btl. **89¢**

**Sara Lee Danish** **\$1.39**  
Frozen, Ass't Varieties. 7 1/2-oz. pkg.

**Pumpkin Pie** **\$1.49**  
Mrs. Smith's, Frozen. 26-oz. pkg.

**Peanut Butter** **\$1.29**  
Skippy, Creamy or Crunchy. 18-oz.

**Coffee Mate** **\$1.69**  
Carnation. 16-oz. jar

**Refried Beans** **2 83¢**  
Old El Paso. 16-oz. cans

**Heinz Ketchup** **\$1.19**  
Keg. 32-oz. btl.

**Italian Dressing** **69¢**  
Kraft, Reg. or Creamy. 8-oz. btl.

**Waffles** **69¢**  
Aunt Jemima, Frozen Buttermilk or Orig. 10-oz. pkg.

**Austex Chili**  
With Beans. 24-oz. can **\$1.19**

**Spaghetti Sauce** **\$1.49**  
Ragu Plain, Meat or Mushroom. 32-oz. jar

**Macaroni & Cheese** **93¢**  
Kraft Deluxe. 14-oz. pkg.

**Ritz Crackers** **99¢**  
Nabisco. 16-oz. pkg.



**American Beauty Spaghetti** **88¢**  
Elbo Roni or Roni Macaroni. 24-oz. pkg.



**Oreo Cookies** **\$1.39**  
Nabisco. 19-oz. pkg.



**Krispy Saltines** **69¢**  
Sunshine Crackers. 16-oz. pkg.

**Golden Delicious Apples** **3 \$1**  
Crisp, Washington. lbs.



**Cocoa Mix** **\$1.49**  
Swiss Miss. 1-oz. envs. 12-ct. pkg.

**Chicken Noodle** **59¢**  
Lipton Instant Soup. 2-ct. pkg.

**Pascal Celery** **28¢**  
Crisp & Snappy. lb.

**Marshmallows** **43¢**  
Kraft, Jets or Miniature. 10-10 1/2-oz.

**Chicken** **69¢**  
Chunk, Swanson. 5-oz. can

**Bartlett Pears** **48¢**  
Northwestern. lb.

**Raw Honey** **\$2.19**  
Aunt Sue. 32-oz. jar

**Stove Top Stuffing** **89¢**  
Ass't Varieties. 6-oz. pkg.

**Mushrooms** **\$1.58**  
Gourmet's Delight. lb.

**CALIFORNIA ICEBERG HEAD LETTUCE** **\$1**  
3 lbs.

**Chocolate Chips** **\$1.19**  
Baker's. 12-oz. pkg.

**KRAFT Mayonnaise** **\$1.39**  
32-oz. jar with coupon and \$10.00 minimum purchase. Limit one jar per coupon, one coupon per customer. Thereafter \$1.79 jar. Coupon good thru Wednesday, Oct. 23, 1980.



**Broccoli** **58¢**  
Icy Fresh, California. lb.

**VELVEETA** **\$2.79**  
KRAFT. 2-lb. pkg. with coupon and \$10.00 minimum purchase. Limit one pkg. per coupon, one coupon per customer. Thereafter \$0.00 per pkg. Coupon good thru Wednesday, Oct. 23, 1980.





**VICTORY MARCH FOR ARTHRITIS.....** The Bailey County Arthritis Foundation Board met recently to finalize plans for the Victory March. Pictured back row from left; Jim Burgess, Georgia Pena, Marilyn Cox, Terry Young, Reagan Cox, front row from left; Elaine Damron, Rita Lane, Sharon Grant, Judy Lambert and Sandra Franks of Sudan.

### Arthritis Foundation Victory March

The Bailey County Arthritis Foundation Board met at the K & L Steak House to finalize plans for the upcoming Victory March to raise funds to help fight this dread crippling. Members present for the meeting were Elaine

Damron, Rita Lane, Sharon Grant, Jim Burgess, Sandra Franks, Marilyn and Reagan Cox, Terry Young, Judy Lambert and Georgia Pena.

Terry Young, Finance Chairman, announced that the Arthritis Drive would be conducted on Tuesday, October 28 from 5:00-7:00 p.m. in the city limits of Muleshoe and the Rural Drive would be on October 27, 28 and 29. Plan now to make your contribution to fight one of the worst crippling of all ages ---

**are eager to share their information about arthritis with any interested people. Pamphlets and brochures are available from any member of the Board -- just give them a call.**

"Arthritis is more than aches and pains," Mrs. Damron asserts. "It is America's number onecrippler. Here in this area alone, there are approximately one out of every seven people of all ages affected with some kind of arthritis."

### mothers and babies

**LITTLE KNOWN FACTS**  
When traveling with a baby, it's often a good idea to bring along a couple of plastic tablecloths for covering beds and carpets on which the baby may sleep, crawl, sit or be changed.

A good pramsuit can be a big boon for the traveling baby. One from Mothercare, retailing specialists for mothers-to-be, babies and children under five zips up the front for easy dressing and has mitten cuffs for warmer hands.

### Muleshoe Singing Group Meets

The Muleshoe Singing Group met at the Nazarene Church Saturday at 7:30 p.m. There were 28 present including visitors, Mr. and Mrs. Bub Shafer of Muleshoe, Mr. and Mrs. Mayme Lewis of Lovington and Argust Curtis of Brownfield.

Several solos, duets, quartets and congregational songs were rendered. J.C. Shanks gave the benediction. Next Saturday the singers will meet in the fellowship hall of the Trinity Baptist Church.

**Muleshoe Journal** (USPS 367-820)  
Established February 23, 1924. Published by Muleshoe Publishing Co., Inc. Every Thursday at 304 W. Second, Box 497, Muleshoe, Texas, 79347. Second class postage paid at Muleshoe, Texas, 79347.

**MEMBER 1980**  
**TEXAS PRESS ASSOCIATION**

L.B. Hall - President  
James Woods - Vice President  
Cleta Williams - News  
Eveline Harris - Society  
Holly Millage - Advertising  
Joy Williams - Bookkeeper

**SUBSCRIPTIONS:**  
Muleshoe Journal and Bailey County Journal  
Bailey and surrounding counties.....\$10.50  
Muleshoe Journal and Bailey County Journal  
Elsewhere in Texas.....\$11.95  
Muleshoe Journal and Bailey County Journal  
Outside of Texas.....\$12.95  
Yearly by Carrier.....\$11.50  
Monthly by Carrier.....\$1.00  
Advertising rate card on application

### Ask the Land Bank about rural home financing.

Federal Land Bank loans feature long terms with low payments. And no prepayment penalty. So before you buy, build or remodel, stop in and see us.



**The Land Bank**  
**Bill Liles, Mgr.**  
FLBA of Muleshoe  
316 Main Ph. 272-3010

## Longhorn Spraying Inc.



- **Area Cotton Ready For Defoliation.**
- **Get Best Grade & Price For Your Cotton Before The Sandstorms.**
- **We Have Carryover Chemical From Our South Texas Company.**

**We Will Not Be Undersold**

Call  
**Leon Wilson - 272-4983**  
or  
**Glen Watkins - 925-6743**

**LONGHORN**  
**SPRAYING**  
**INC.**

Route 3 - Box 175-B  
Phone 965-2365  
Muleshoe, Texas 79347

## GIBSON'S DISCOUNT CENTERS

Prices Effective  
**Oct. 16-18**

Store Hours:  
Mon-Sat. 9-7  
Sun. 1-6

### HEALTH & BEAUTY AIDS

#### Crest Toothpaste



9 oz.  
Mint or Reg.

**\$1.55**



#### Dove

Bath Soap  
4.75 oz. Bar

**2/\$1**



**Vicks**  
Day Care 10 oz.

**\$2.59**



Clairol Condition  
**Shampoo**

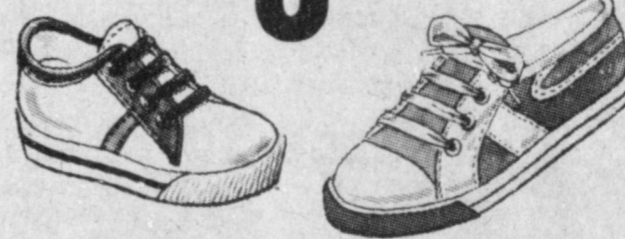
16 Fl. oz.

**\$1.79**

#### Canvas Oxfords

Blue or Beige No. 4283 C288

**\$8.66**



Men's L/S  
**Western**  
**Shirts**

Reg. \$13.97

**\$9.97**

#### Weather Jack by Ely Walker Quilted Nylon Jackets

No. 2240  
Reg. \$16.99

**\$12.99**



#### Coats

Toddlers Quilted Nylon  
Hooded Jackets

Size 2-4  
Reg. \$11.99

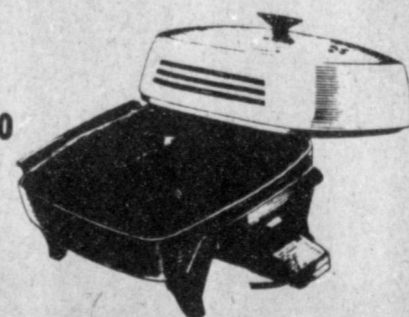
**\$8.88**

#### Sunbeam Multi-Cooker Electric

#### Fry pan

Silver Stone Coating No. 7-260

**\$27.88**



#### Battery Booster Cables

100% Copper Clad Conductor

8 ft. long  
No. BC-84

**\$2.99**

#### Anchor Hocking Covered Casserole Dish Amber

**\$2.59**

#### New! Wood Plus

All Purpose Polishing Cleaner

**\$1.66**

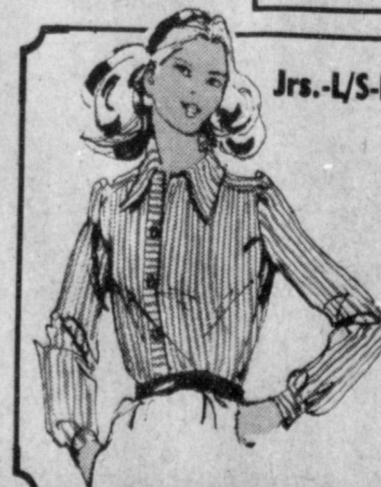
16 oz.



#### Jell-O

3 oz.

**3/99¢**



Jrs.-L/S-Button Collar-Shirt Style

#### Blouses

Reg. \$10.99

**\$8.88**



#### Canister Set

4 pc.  
No. 480

**\$3.00**

#### Lawn & Leaf Rake

**\$1.99**

Reg. \$2.99



#### EVERY DAY LOW PRICES

- Gal. Homo Milk.....\$2.29
- 1/2 Gal. Homo Milk.....\$1.15
- Gal. Lowfat Milk.....\$1.99
- 1/2 Gal. Lowfat Milk.....\$1.03
- 1/2 Gal. Buttermilk.....\$1.03
- 2 lb. Cottage Cheese.....\$1.93
- 1 lb. Cottage Cheese.....\$1.03
- Sour Cream......53¢



**RAINBOW INSTALLATION.....** Tori Hunt was installed Worthy Advisor Saturday evening at the Masonic Lodge. She is the daughter of Mr. and Mrs. Robert Hunt. Pictured back row, from left; Kim Merritt, Kristi Henry, Sally Lunsford, front row from left; Betsy Lunsford, Tammy Nowell, Tori Hunt, Heather Merritt, and Vana Pruitt.

### Tori Hunt Installed Worthy Advisor

Public Installation was held Saturday night, October 11 at the Masonic Hall. Basing the theme and decor around her trip to Japan this past summer, Tori had a very unusual installation.

Guests were registered by Twila Downing, Tori's cousin. The registration table centerpiece was an Oriental figurine standing amidst a manzanita branch with cherry blossoms. A lit hanging Japanese lantern completed the entry setting.

The guests entered through a Tori (Japanese gate) into the simulated Japanese Garden. The focal point was a low table with a collection of keepsakes from Japan. Hanging lanterns, garland cornerposts and topiary trees outlined the garden area.

A pictorial display was

interesting as it covered Tori's Rainbow activities since being initiated July 25, 1977. Oriental screen panels complimented the garden setting.

The installation was opened by the Mother Advisor, Mrs. Nelda Hunt. Kimono clad Installing Officers were introduced: Installing Officer, Shelia Black; Installing Marshall, Pam Young; Installing Chaplain, Kanetha Hysinger; Installing Recorder, Linda Lee; and Installing Musician, Gayla Wagon.

The Book of Time was read and the elected officers formed a bow in the Assembly Room.

The stations held arrangements of small rainbows around paper mache world globes. A large world globe with a Rainbow and cherry blossoms was at the Worthy Advisor station. A ginger jar arrangement on the piano completed the Assembly Room decorations.

Officers installed were: Worthy Advisor, Tori Hunt; Worthy Asso. Adv., Sally Lunsford; Charity, Kristi Henry; Hope, Betsy Lunsford; Faith, Tena Landers; Chaplain, Vana Pruitt; Drill Leader, Tammy Nowell; Religion, Karan Kelton; Immortality, Paula Snell; Nature, Heather Merritt; Patriotism, Shelley Sain; and Confidential Observer, Kim Merritt.

The installation was followed by Japanese Greetings from Tori. She played recorded piano and organ music by Maki and Miki Asada of Osaka, Japan, her

### Arts And Crafts

The Clovis Junior Woman's Club will host their 6th annual Arts and Crafts Fair November 8 and 9 at the Curry County Commercial Building on the Curry County Fair Grounds in Clovis.

Hours for the event are 10:00 a.m.-5:00 p.m. on Saturday and 1:00 p.m. to 5:00 p.m. on Sunday. Registration for exhibitors is 11:00 a.m.-7:00 p.m. Friday, November 7 and 8:00 a.m.-10:00 a.m. Saturday, November 8. Booth fee for the two days is \$20.00 for a single exhibitor plus an added charge of \$5.00 for each additional exhibitor in one booth.

Artisans from a tri-state area will be displaying their works and many of them will be donating items for door prizes to be given away on Sunday afternoon. In addition to arts and crafts, a bake sale and snack bar will be open during the exhibition hours.

For more information, call Rhonda Gray, (505) 769-0012 or Michal Lydick, (505) 762-0620.

Japanese sisters.

Tori's theme is 'Rainbow Around the World'; symbol is Rainbow; colors are Burgandy and Pink; Flower is Cherry Blossoms; and her scripture is "I do set my bow in the cloud and it shall be for a token of a covenant between me and the earth." Gen. 9:13.

Tori introduced her family, Mr. and Mrs. Robert Hunt, Curtis and Mr. and Mrs. Kim Black; also her aunts and cousins, Mrs. Marcia Henry and Kacy, Mrs. Elmer Downing and Twila. Also introduced were Mr. and Mrs. Frank Hinkson, Worthy Matron and Patron of the Order of the Eastern Star.

Rainbow meetings are on the 2nd and 4th Mondays of each month and girls may petition for membership after their 12th birthday.

### XI Omicron Xi

XI Omicron Xi Chapter of Beta Sigma Phi met Tuesday, October 7, in the home of Barbara Finney. Donna Green served as co-hostess. President Rhonda Little called the meeting to order, with 15 members answering the roll call.

A short business meeting was held. International coordinator, Lindy Schuster, read the Golden Moments of Beta Sigma Phi.

Anita Allgood announced the Alpha Zeta Pi would be having their Bingo Carnival Friday, October 17 at the Civic Center and ask everyone to attend.

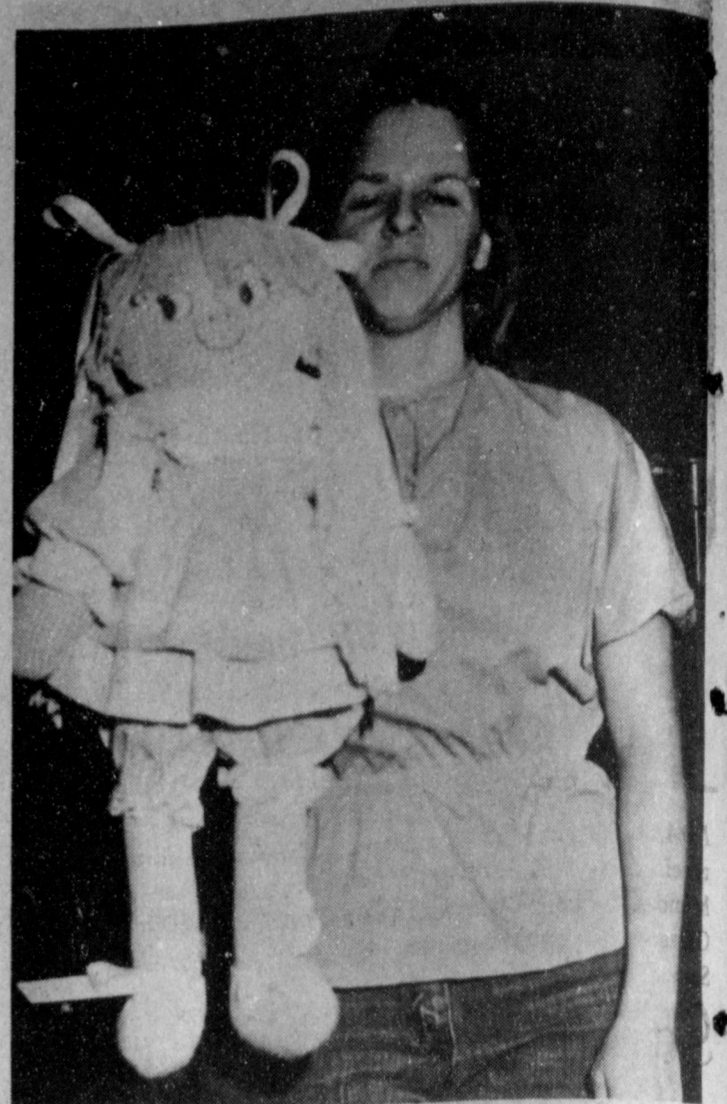
The closing ritual was held. The program was presented by Pam Miller and Margorie Merritt on fashion. Several members modeled new clothes of their own.

Refreshments of fresh apple cake, soft drinks and tea were served. Members present were Margorie Merritt, Rhonda Little, Anita Allgood, Debbie Foster, Lindy Schuster, Pam Miller, Sherri Shipman, Doris Scoggin, Linda Marr, Gayla Toombs, Barbara Finney, Donna Green, Vicki Black, Judy Wilbanks and Jama Brown. The door prize was won by Debbie Foster.

### Nation's supply of engineers is falling short

COLLEGE STATION — The dean of the nation's largest college of engineering warned recently the nation's supply of engineers falls far short of industry demand and there is no sign of relief.

Shortages have developed for petroleum, chemical, electrical, mechanical, aerospace, civil and safety engineers, said Dr. Robert H. Page of Texas A&M University. Although Texas A&M graduated a record 881 engineers in 1979, including 80 women, recruiters from industry and business still demand more.



**MONEY DOLL DRAWING.....** Alpha Zeta Pi of Beta Sigma Phi will be holding a Bingo Carnival Friday, October 17 from 7-10 p.m. in the Civic Center. Bingo cards are \$1 each. The drawing for the money doll, Sherri Hawkins is holding, will be held during the Carnival. The lucky winner will receive \$25 along with the doll. Tickets may be bought in advance from any member or at the door for 25 cents.

### Curtis Reynolds On Winning Team

Curtis Reynolds, foster son of Mr. and Mrs. R. D. (Tub) Angeley and senior finance major at Angelo State University, was captain of the winning team at the Goodfellow A.F.B. Annual Chili Cookoff, October 4.

He is a member of the Arnold Air Society, the Professional Society of Air Force R.O.T.C. The Arnold Air Society entered a com-

bined team with Angelo High. This team will represent the U.S. Armed Forces in Terlingua, November 1 at the World Championship Chili Cookoff.



Restarting a car can use less gasoline than a minute's idling. Turn off your engine if you'll be stopped for more than a minute.

### Sixth Running Water Draw Arts And Crafts Festival

"Buy something original this year" is the slogan of the sixth Running Water Draw Arts and Crafts Festival. The annual event opens on Friday, October 17 at the Hale County Ag Center with 125 artists and craftsmen displaying their homemade items for sale. Plainview Rotary Club and the Llano Estacado Museum sponsor the festival and share the proceeds for their projects in the community and at the museum.

Artists from Texas, New Mexico, Colorado and from as far away as Ohio. "We even have an exhibitor who lives in Switzerland! She knew about the show because she has relatives in Plainview," according to Festival director Rob Strong.

"If you can't find a unique Christmas gift or something beautiful for yourself, you are not looking," Strong commented. All artistic media are represented in this show. They include painting, stained glass, sculpture, leatherwork, needle crafts, eggery, woodwork, toys, calligraphy, candlemaking, drawing, photography, zinc engraving, pottery, and

Scherenschnitte (scissor-cut pictures).

In addition to the artists and craftsmen, the Backstage Company of the Plainview Civic Theatre will be demonstrating stage make-up and face painting. Food will be available for all visitors who will have a wide choice of edible goodies. Wayland College's French and German Clubs will offer authentic food, and Plainview TOPS Clubs will have a variety of food items.



**STATE FAIR WINNERS.....** Tommacita Yregas of Sudan won first place on her crocheted sweater and tablecloth in the Eastern New Mexico State Fair at Roswell recently. Pictured are the winning articles.

Many of the artists are returning, some for the sixth time. "They've told us they like doing shows in this area because the people are so friendly," commented Strong. Muleshoe artists in the show are Era'd Long Gross, china-painter, and Keith Taylor who paints with oils.

The festival is open from 10:00 a.m. to 9:00 p.m. on Friday and Saturday and from noon to 5:00 on Sunday. Admission is \$1.00 for adults and \$.25 for children under 12. Visa and Master Charge are accepted for all purchases.

### Alpha Zeta Pi

Alpha Zeta Pi Chapter of Beta Sigma Phi met Tuesday, October 7 for a brief business meeting. The meeting was held in the home of Cindy Purdy. The opening was repeated by all members present. Roll was called by Joy Glover. Members present were Renee Anderson, Pat Black, Linda Bullock, Betty Bush, Debbie Hutto, Jeanine Gunstream, Sherri Hawkins, Melissa Kelly, Alice Liles, Ruth Locker, Claire Brown, Pam Stockard, Pam Shipman, Janis Nichols, Debbie Nickels, Jean Treadwell, Marilyn Saylor, Rickie Warren, Marilyn Riley, Terri Hahn, Peggy Pohlmieir, Cindy Purdy, and Joy Glover.

The minutes of the previous meeting were read and approved. Committee reports were given. Correspondence was read. There was a discussion concerning the Area Convention in Hereford and it was decided to have 3 representatives from our chapter attend. The Bingo Carnival which is to be October 17 in the Civic Center was discussed and all last minute questions concerning it were answered. The 1980-81 pledges were placed on committees, and the closing ritual was said.

Deserts of various pies was served by hostesses Joy Glover and Cindy Purdy. A program was presented by Pam Shipman, Linda Bullock, and Jean Treadwell on the the Health Services in our community in which they are involved.

### bringing up baby.

By Dr. George Purvis, Director of Nutrition Gerber Products Company

Q: I know infants usually start with cereals as semi-solid foods, but I'm not sure when my baby is ready for strained fruits and vegetables. What are the signs I should look for?

- A: The following guidelines will help you recognize when a baby is ready for "solids," or strained, baby food:
- if your baby has almost doubled in weight since birth, or weighs about 13 pounds; and
  - if your breast-fed baby frequently demands feeding more often than every three hours;
  - if your formula-fed baby demands more than a quart of formula daily;

These events usually occur between a baby's third and fourth months. If you have any other questions, consult a health-care professional for advice.

**Wrangler White Jeans**  
Now In Stock For Those Band Students Student & Men Sizes  
Layaway  
**ee's WESTERN WEAR**  
1910 W. Amer. Blvd. 272-4663

**ATTEND THE SIXTH ANNUAL Running Water Draw Arts and Crafts Festival**  
October 17-19, 1980  
Hale County Agricultural Center Plainview, Texas  
Friday and Saturday, 10:00 a.m. to 9 p.m.  
Sunday, 12:00 p.m. to 5:00 p.m.  
"Buy Something Original This Year"

SERVING YOU FOR 26 YEARS  
**20% off**  
Select Group Of Diamond Necklaces & Earrings  
Remember.... It's Not Too Early To Layaway For Christmas.  
**Lindsey Credit Jewelers**  
202 Main 272-3355  
WATCH BANDS BRACELETS DIAMOND RINGS NECKLACES EARRINGS STAINLESS FLATWARE

Expressions of Love  
Gifts For All Occasions  
Bridal Selections for Type Wagon Bride-Elect of Blake Stevens  
**Expressions**  
Open 9 - 6 Mon. - Sat.  
800 W. Amer. Blvd. 272-5393

**WATCH THE HIGH PLAINS WITH KENW**  
YOU'LL LIKE THE LOOKS OF:  
SCENE 3 NEWS 5:30 WEEK DAYS  
PM NEW MEXICO FOURTH FRIDAY OF THE MONTH  
YOU SHOULD KNOW 9:00 TUESDAYS  
SPORTS LOOK 9:00 THURSDAYS  
LIVING THE REST OF YOUR LIFE 9:00 MONDAYS  
WATCH PUBLIC TV. YOU'LL LIKE THE LOOKS OF IT.  
**kenw3**



**I DARE YOU AWARD.....** Jimmy Gleason and Shelly Sain received the 'I Dare You Award' at the 4-H Club banquet Monday evening. Jimmy is the son of Dr. and Mrs. Jerry Gleason; Shelly is the daughter of Mr. and Mrs. Walter Sain.

## Something For All Ages

by Lewis Crenshaw

The West Plains Nursing facility covers a city block where highway 214 runs through Muleshoe on its north-south route, sprawling like a massive ranch house on the Panhandle Plains. Inside its brick walls older people have found the comforts of a friendly hacienda.

Usually I enter the home from its south elevation. Parking under the elms, I mused that this home was a page from the text book of life. There is something for all ages within those walls. Each age has its own compensation if one would but see it and would be satisfied with its rewards. We must pass through many stages of maturity as we journey down the stream of life.

Walking down the sidewalk through the horseshoe spanned entrance, I took note of the mini garden of flower and shrub. Often one of the home residents sat in a lawn chair soaking up the sun. He reminded me of a noble character in Alex Haley's *Roots*, as he dozes in the afternoon sun. Because he is at the entrance, I usually speak to him first. Obviously he had adjusted himself to the process of growing old gracefully.

Small clusters of people may be seen in the lobby and wide hallways during social hours. A few begin to gather in the reception room made folksy by a large fireplace. Landscape paintings of the seasons dominate the walls of the split-level reception hall.

The Lazbuddie UMC choir leader and instrumentalists have developed a music program. While the West Plains activities director assists the aged to their places, the music leader charms the residents with wit and music. Most who sit around the circle join in the sing-along. Old hymns are sung with unusual vigor and though some of the voices are past 80, "the golden bowl is not broken at the cistern" (Ecclesiastes 12:6). There is harmony remarkable for their ages. Several ladies can still sing alto well.

I look over the group. The years have added their weight and left their deposit of sorrow on minds and bodies. This is reflected in bits of conversation and responses to thoughts evoked by the lyrics. Suffering and pleasure were brought to mind by the stirring of the memory.

One faithful member of the weekly song-fest is an old gentleman who is 93. He is in good physical form and assists the ladies who can't walk well. Once he was a choir leader. He still has a fine voice. Usually he comments about remembering a certain song because his mother sang it to

him 80 years ago. One old hymn he had remembered and sung for 87 years. The years had left their deposit of life's joys and sorrows upon him and he had responded well.

The home is serviced by a staff trained and taken from all ages. Minority groups are well represented and serve with their skills. The youth are preponderant in white uniforms. Activity is ceaseless. I have never been at West Plains without seeing several kinds of work being done by the helpful staff from nurses in sterile white to blue colors with cleaning tools, from the yard to those on the linen carts moving down the corridors. The place was well staffed and serviced.

John wrote (Revelation 22:2) that the tree of life had a different fruit for each month of the year. Age has its own fruit for the changing years. The point is that we should adjust to the change and accept the attendant awards.

One of the ladies of the home is 92. She comes to the song-fest in a wheel chair. On the last visit, she got out of the chair (with assistance) and danced a waltz with our song leader. Though she had not forgotten her youthful days with a happy husband and home, life still had its rewards for her.

The older people of West Plains enjoy the good life because the younger care enough to share their time and service with them. They are pleasant to be with because they are responsive to loving care.



**Sunny Sally**  
**Have Your Picture Taken**  
 With  
**Sunshine Sally**  
 At The  
**E.S.A. .... Skating Party**  
**Sunday, October 19**  
**1:30-5:00 p.m.**  
**Admission: \$1.00 Pictures: \$3.00**  
*(Pictures Will Be Taken 1:30-3)*

## O.E.S. Holds Meeting

Mr. and Mrs. Frank Hinkson, Worthy Matron and Worthy Patron of Muleshoe Chapter No. 792, Order of the Eastern Star, presided at the meeting of the Chapter, Tuesday evening, October 7th in Masonic Hall.

The Bible was opened upon the altar; the Pledge of Allegiance was given and "God Bless America" was sung. Routine business was transacted.

Rev. and Mrs. Allen Forbis, members of Merkel Chapter No. 212, were guests. Rev. Forbis is the minister at Oklahoma Lane Methodist Church.

Invitations were received from Canyon Chapter No. 105, to their Friendship Night, October 11th at 6:30 p.m.; from Friends in San Antonio, to a luncheon honoring Mrs. Buelah Speer, Grand Examiner of District No. 2, October 12th at 2:00 p.m.; from Abernathy Chapter No. 877 to After Session Parties at the Grand Chapter in Dallas.

## Miss Texas TEEN Pageant

Young ladies of this area between the ages of 14 and 18 years of age are invited to enter the Miss Texas T.E.E.N. pageant. The 1981 State Finals will be held at the Sheraton Dallas Hotel, April 17, 18, and 19, 1981, Dallas, Texas. The Texas Pageant is the Official State Preliminary for the Miss T.E.E.N. Pageant to be held in November of 1981.

Contestants will be judged on: Scholastic Achievements, Civic Involvement, Beauty, Poise, Personality, and Patriotic Speech or talent. No swimsuit competition is involved.

Each Contestant accepted will be required to participate in the Volunteer Service Program of the Miss T.E.E.N. Pageant and must maintain a "B" or better grade average in school.

The Winner of the Texas Pageant will receive an ALL-EXPENSE PAID TRIP to compete in the Nationals Final of the Miss T.E.E.N. Pageant, a \$1,000 Cash Scholarship, and a self-improvement Course. Among the prizes that will be awarded at the National Pageant in 1981 is \$20,000 in Awards and Scholarships.

\*\*\*\*  
 Criticism springs from two sources--intelligent disapproval and emotional reactions.

honoring Mrs. Buelah Speer, October 27-29 in rooms E-409&410 in the Convention Center; from Wills Point Chapter No. 388 to a special meeting honoring Mrs. Thelma Chandler, Past Grand Matron, October 11th at 6:00 p.m. in Wills Point.

Reports were given on the Friendship Nights in Littlefield and Hereford, which Muleshoe members attended.

At the close of the meeting refreshments were served by Mrs. Barbara Lust.



## William Wayne Torbett

Mr. and Mrs. William Wayne Torbett of Monahans are the proud parents of a new son born September 26 at 2 a.m. in the Ward Memorial Hospital in Mon-

ahans. He weighed 8 lbs. and 3 ozs. and has been named William Wayne Torbett, II. He has two sisters, Kristi and Misti.

Grandparents are Mr. and Mrs. Bobby Burris and Loden Spears all of Muleshoe and James Torbett of Monahans.

Great grandparents are Mr. and Mrs. John Fried, Mrs. Ester Magby, all of Muleshoe, Mrs. Myrtle Burris of Springdale and the late Zelma Newton Burris.

**Pan Mexicano**  
 Fresco Todos Los Dias

*Menudo y Barbacoa*  
 Los  
 Sabados y Domingos

*Kake Para Todas Ocasiones*

**Panaderia**  
**Azltan**  
 (En El Ranch House Cafe)  
 Marco Antonio Munoz

# Anthony's Cold Weather Sale

Entire Stock!  
**MENS, LADIES, JUNIORS AND CHILDRENS COATS**  
**20% OFF** Regular Price  
 • Outerwear and Ski Wear included

**72" X 90" Granada Blankets**  
**3 FOR 12.97**

Get beautiful warmth at beautiful savings! "Granada" is a 72" X 90" 100% polyester blanket with nylon binding. Machine washable and dryable, it's a luxurious winter weight blanket in rich solid colors. Reg. 4.99

**Ladies' Quilted Robe**

Lounge in beauty with this quilted nylon robe by Charm®. It features a gripper front, full lace front panel, lace trim and cuffs, two patch pockets, and is filled with Kodofil® polyester. Sizes S,M,L, in Turquoise and Pink, reg. \$15.

**9.88**

**Men's Flannel Shirts**  
**4.88**  
**2 for \$9**

The warmest (and best looking) shirt for Winter is flannel! Made of 100% cotton, they have long sleeves and two front pockets. Assorted plaids in sizes 14 1/2, 17, Reg. \$9.99.

**Ladies' Flannel Shirts**  
**5.44**  
**2 FOR \$10**

Women like the soft comfort and great styling of our flannel shirts from Amy Barr®. Made of 100% cotton, they have a button front and two front pockets. Assorted colorful plaids, sizes 32-38, Reg. \$10.

**Velour Shirts**

Men who like great fashion will like our assortment of plush velour shirts! Besides being easy care, they're handsomely masculine in assorted stripes and solids. Reg. \$20-27.50.

**20% OFF**

**Levi's® Action Slack**

Levi's® gives great fit and comfort in their Action Slacks! Made of 100% stretch polyester, they've got European styling with belt loops, 3/4 top pockets and slight flare bottoms. Colors are Brown, Tan, Navy and Heather Grey in sizes 32-38, Reg. 21.95.

**17.88**

**321 MAIN MULESHOE, TX.**  
**OPEN 9 to 6**

### Winners...

Con't from page 1

School. She is a member of the Progress 4-H Club.

Kelly is a senior at Muleshoe High School and is the son of Mr. and Mrs. Ted Harrison. He has been a 4-H member for eight years.

During this time, Kelly has carried projects in beef, gun safety, food and dog care and others. He has served his club, the Progress 4-H Club, as treasurer, vice president and president. Kelly also served as a county and district council delegate. A member of the Muleshoe High School football team, he is currently District 4-H Council Public Information Officer.

Also, annually, the William H. Danforth Foundation presents two awards in the county 4-H program. The awards go to 4-H'ers who have exhibited superior leadership abilities, who have accepted challenges and who aspire toward high goals.

This year, as in past years, it was considered a hard task to choose the winners of the award.

In recognition of their achievements, the two winners were presented the copy of William Danforth's "I Dare You" book.

First, the winner is a seven year member of 4-H. She has been active in various activities and has served on various committees. Shelley Sain, the winner is the daughter of Mr. and Mrs. Walter Sain and

### Contest...

Con't from page 1

48 and Clifford Buckner, 53.

With the contest approximately half over, Shane Smith has taken the current lead, a lead that will possibly change as the season progresses. Continue to get your entries in to *The Journal*, and join the fun of predicting the winners.

### Cranes...

Con't from page 1

bird, and Jones said these special permits are available at the Muleshoe National Wildlife Refuge. Shooting hours are from one-half hour before sunrise to sunset.

Again this year, the Wildlife Refuge will be measuring cranes with the help of hunters. Information will be released on the measurements at a later date.

is a student at Muleshoe Junior High School.

Jimmy Gleason, the second winner, is the son of Dr. and Mrs. Jerry Gleason. He also has been active in various 4-H projects during his eight years as a member of 4-H.

He is a past Gold Star winner and is a member of the Muleshoe High School football team.

Other awards presented included:

#### BEEF

Jerry Gleason, Jimmy Gleason, Kelly Harrison and Tracy Tunnell.

#### SWINE

Sharla Morrison and Greg Harrison.

#### GARDENING

Shelley Sain.

#### PHOTOGRAPHY

Tim Sain.

#### PUBLIC SPEAKING

Marlin Bynum.

#### ACHIEVEMENT

Mandy Plank.

#### DOG CARE

Tamara Gilliland.

#### CLOTHING

Delia Shaw, Chantel Robinson, Jayna Harris and Lisa Hamilton.

#### VETERINARY SCIENCE

Jacinda Gleason.

#### SAFETY

Jay Gleason.

#### FOOD AND NUTRITION

Glen Flowers, Brenda Flowers, Donae Parker, Zanna Huckaby, Debbie Isaac, Mercedes Sayago, Jamie Robberson, Joey Kramer and Audrey Marshall.

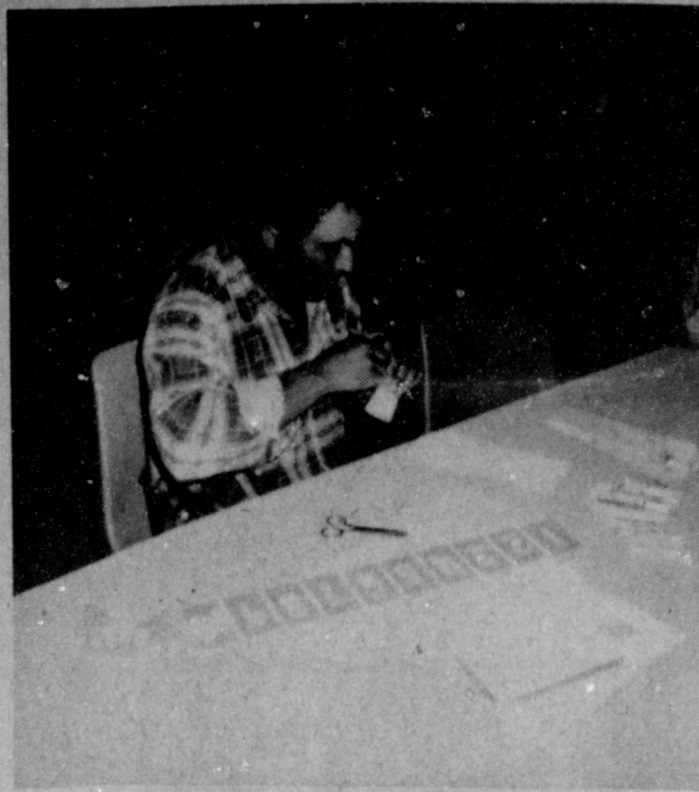
#### HORSE

Kim Farmer and Casey Farmer.

### Hurricane Allen proves good test of preparedness

COLLEGE STATION — One bonus provided by Hurricane Allen, which caused hundreds of millions of dollars in damage on the lower Texas coast, was to prepare Texans along the upper coast for major evacuation.

"Hurricane Allen was unique. It provided an excellent trial for evacuation of both vessels and coastal residents," said Dr. Wallace Klussman, state leader of the Marine Advisory Service of Texas A&M University's Sea Grant College Program.



**CONCENTRATING....** One of the parents at the PTA sponsored workshop for parents of kindergarten students at Richland Hills Primary School, is concentrating as he works on one of the projects.

### Rebate...

Con't from page 1

\$39,806.94.

At Littlefield, the increase for the year is three percent. To date this year,

### Pageant...

Con't from page 1

Over Texas in the dancing troupe at Southern Palace at Arlington.

Laura is associated with the Tanya Blair Talent Agency in Dallas and is studying with the Dallas Metropolitan School of Ballet. She is a former student of West Texas State University, Canyon.

Laura will be bringing a guest artist to dance with her. Lonnie Hanlon of Los Angeles, her partner, is currently studying on a scholarship with the Dallas Metropolitan Ballet Company. They plan to do a modern classical pas de deux.

Scholarships, flowers, crowns and other awards are in store for the four young ladies chosen to represent this area for the next year. Be sure to make your plans to attend the annual pageant, Saturday night.

Littlefield has received \$179,553.52 in tax rebates, compared to \$173,167.89 for the same time last year. For October, the tax rebate was \$10,435.58, while it was \$10,331.15 for October 1979.

From Friona, it has been reported that the rebates for that city have increased by four percent for the year. In October, 1979, the tax rebates were \$60,258.91 and are \$63,246.07 for the same time this year. Friona's rebate for October this year was \$3,616.81, compared to \$5,490.68 for the same time last year.

Dallas will receive a check this month for \$2.8 million, bringing that city's payment this year to \$52.1 million, up 11 percent over last year. Houston's check will be for \$5.6 million, pushing that city's yearly total to \$93.1 million, up 14 percent over 1979.

Fort Worth will get \$1.1 million in October making the city's yearly total \$17.5 million, an 11 percent increase over last year.

San Antonio's check this month is \$1.7 million, bringing the city's year-to-date total to more than \$25 million.

### PTA Workshop Crowd Enjoys New Experience

"Parental involvement" is what it was all about at the Richland Hills Primary School on Tuesday evening, when approximately 80 parents of kindergarten students gathered to make and take things home to be used by them to re-enforce what the children are learning at school.

While their own children were being entertained by some volunteer high school students from the FHA Chapter, parents were actively involved. They were making instructional materials such as number lines, games, alphabetical tools and many other things that they can use with their children at home.

This instruction was provided by the kindergarten teachers and their aides; Norma Jo Prather and her aide, Frances Perez; Virginia Bowers and her aide, Margie Alarcon; Pat Brewer and Kathleen Hamilton and their aide, Yolanda Jaramillo; Pam White and her aide, Shirley Aguirre. Mrs. Katherine Sanders and her aide, Janie Hughes also helped in the absence of two of the regular teachers.

Refreshments were served to all children and their parents by Ann Oyler, Janie Balderas and Georgia Pena.

Everyone who attended agreed "the evening was not long enough" and they took home a lot of good ideas.

**Don't Ignore It**  
Indigestion is a common complaint, but if it persists the American Cancer Society suggests a visit to the doctor. Frequent heartburn, nausea, or loss of appetite also should be checked, the Society says.

### Conference...

Con't from page 1  
vangelical Seminary and Scarritt College.

Rev. Norman Hudson is currently pastor of Grace United Methodist Church of Dallas. From 1951 to 1975, he served many areas in South Africa at Witwatersrand Mission, as superintendent of the Zoutpansberg Circuit, the Pietersburg Methodist Church, Good Hope Mission, and as general secretary of the South African Board of Missions.

### Muleshoe...

Con't from page 1

\*\*\*\*\*

Marine Lance Cpl. Robert B. Rodriguez, son of Feliz B. Carrion of Muleshoe, has been promoted to his present rank while serving with the 1st Marine Division, Marine Corps Base, Camp Pendleton, California.

A 1979 graduate of Muleshoe High School, he joined the Marine Corps in June of 1979.

\*\*\*\*\*

Angela Matthews, daughter of Mr. and Mrs. C.C. Matthews, Jr., Rt. One, Muleshoe will attend the Office Education Association fall leadership conference Oct. 16-18 in Corpus Christi.

Angela, a freshman fashion merchandising major at South Plains College, graduated in 1980 from Lazbuddie High School.

\*\*\*\*\*

Private Billy D. Frankson son of Mr. and Mrs. Bill Franklin of Muleshoe, recently completed basic training at Fort Sill, Oklahoma.

During the training, students received instruction in drill and ceremonies, weapons, map reading, tactics, military courtesy, military justice, first aid, and Army history and traditions.

### Sheriff's Office Report

Several arrests were logged at the Bailey County Sheriff's Office during the past weekend.

According to the arrests, one person was charged with public intoxication and fleeing an officer. He paid a \$100 fine, as well as \$25 for a pair of handcuffs he was wearing at the time he fled from the arresting sheriff's officer.

Also, another person was charged with public intoxication and fleeing an officer after he fled from the same officer following his arrest.

One person was jailed for non-child support; one for reckless driving and no driver's license; one for forgery; three for public intoxication and illegal alien; one for worthless check and two for public intoxication.

Two other persons were released on bond after being charged with possession of a controlled substance, and one was also charged with no driver's license.



**Make Your Vote Count, November 4th**

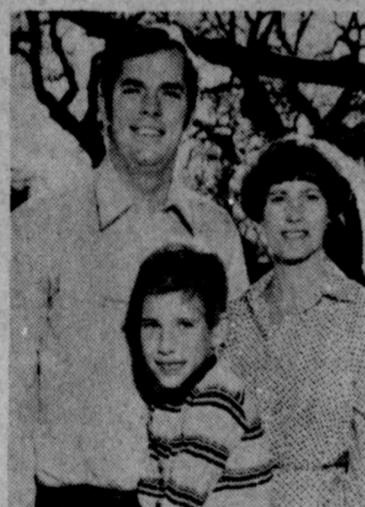
**Vote For James Warren**  
**Commissioner Precinct 3**

**Precinct 3 Takes In Precinct 4 & 5 On Your Registration Certificate.**

*Political Advertising Paid By James Warren*

## SARPALIUS FOR SENATE

An Effective Conservative



#### Humanitarian:

Bill Sarpalius and his two brothers were raised at Cal Farley's Boys Ranch. After college graduation, Bill returned to Boys Ranch with his wife, Donna, and his son, David, to work for five years as a staff member and teacher.

#### Agriculture:

A former State President of the Future Farmers of America, Bill Sarpalius has earned both Bachelor and Masters degrees in Agriculture from Texas Tech University and West Texas State University. He

understands the importance Agriculture plays in our economy.

#### Educator:

As a school teacher Bill Sarpalius understands the value of a good education. As a parent, he is concerned with the role quality education plays in the future of our state.

#### Businessman:

As a businessman, Bill Sarpalius can relate to the problems facing businesses in the 1980's. A longtime District resident, Bill is sensitive to the needs of business in the area.

#### Experience:

Bill Sarpalius understands the Texas Legislative process. He believes that to be an effective State Senator you must make yourself available to the people. Bill intends to do this through the use of a mobile office.

"I believe we must go back to having an effective voice in the State Senate... someone who will listen to the people and work for their concerns."

## It's Time For A Change

Bill Sarpalius for 31st Senatorial District

# FOOD SPECIALS

ALL SUP'S DELICIOUS **BAR-B-QUE SANDWICH** BUY ONE GET ONE FREE!

BORDEN'S **NUTTY BUDDIES** 6 CT. PKG. **99¢** BORDEN'S ICE CREAM SANDWICHES 6 CT. PKG. **99¢**  
BORDEN'S **BUTTERMILK** 1/2 GAL. CTN. **\$1.09** BORDEN'S CHOCOLATE MILK 1 QT. **69¢**

16 OZ. NON-RETURNABLE BOTTLE **PEPSI-COLA** \$1.49 6 PACK  
ALL SUP'S MILK **\$1.99** Gal.

FOLGEN'S FLANKED **COFFEE** 13 OZ. CAN **\$2.69** GIANT SIZE **TIDE** BOX **\$1.89**  
LARGE REUSABLE TIFFANY STYLE TUMBLER FILLED WITH FOUNTAIN **COCA-COLA** EACH **49¢** Del Monte Fruit 17 oz. **FRUIT COCKTAIL** 2/89¢

All Brands **CIGARETTES** Ctn. **\$5.99** Fresh Cooked **BURRITOS** **49¢**  
**SPAM** 12 oz. **\$1.39** Shurfresh Colby **CHEESE** 10 ounces. **\$1.09**

WE RESERVE THE RIGHT TO LIMIT SPECIALS GOOD WHILE SUPPLY LAST LIMITED SUPPLY

# ALL SUP'S CONVENIENCE STORES

PRICES EFFECTIVE OCTOBER 16-18, 1980 SAVE MORE BY SHOPPING WITH US!

True Value Hardware Store

Hardware value of the MONTH

Quantities Limited NOW **2.49**

White Supplies Last

REFLECTOR CLAMP LAMP  
Ideal for patio, garage, basement. Features 8 1/2-in. aluminum shade. Adjustable swivel. Heavy spring clamp goes anywhere. 6-ft. cord. A2302-006

401 S. 1st.  
Muleshoe  
272-4511

**COX**

# 1980 Miss Tri-County Contestants



Sheryl Waltrip



Kim Farmer



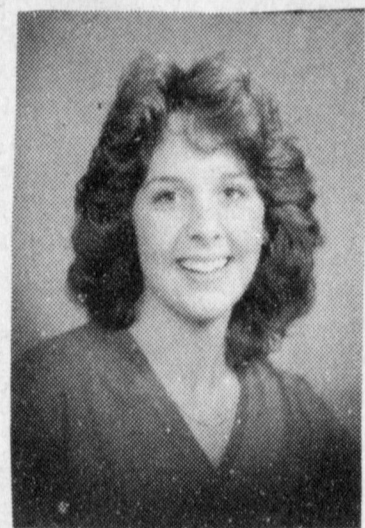
Sally Lunsford



Nancy Garcia



Robin Burgess



Jan Whitt



Shelli Hawkins



Kipi Fleming



Melissa Allison



Crystal Kim Taylor



Denise Young



Terri Whitecotton



Kristine Miller



Cindy Lane



Tamara Randall



Tiffany Mitchell



Dayna Hamilton



Lisa Hamilton



Kristin Chitwood



Renee Lowe



Cara Smith



Sheila Jordan



Shelley Sain



Shawnda Kemmison



Shea Wilbanks



Rhonda Dunham



Lisa Lowe



Traci Walker



Noel Vourazeris



Holly Grimsley



Ashley Foster



Poppy Grimsley

## Alabama, Tennessee May Be 'Smasher'

UCLA and Texas have been given the day off Saturday, but some of the rest of the super-powers will have their hands full. And in the case of Alabama and Tennessee it'll be with each other. The Tide and Vols meet for the 63rd time in their long series. Alabama leading by seven games in the win column. Last year Alabama won three games by ten points or less -- against LSU, Auburn, and Tennessee -- and this year the game is being played in Knoxville. The Volunteers opened their season with a one-point loss to Georgia followed by a 3 point loss to Southern California. So --

they're tough enough. Alabama - 28, Tennessee - 24. And the Trojans of Southern California will have their hands full in Eugene, Oregon, with the Oregon Ducks. Oregon handled the high-powered Washington Huskies with ease two weeks ago, beating them 34-10. The Trojans struggled against both Tennessee and Arizona State, winning by just three and two points respectively. We could be wrong -- sometimes are -- but we're picking Oregon to whup Southern Cal by three points. Ohio State has already taken its lumps, losing to

UCLA two Saturdays ago. However, losing within the Big Ten Conference -- other than to Michigan -- would be unheard of. The Buckeyes entertain a real upset-minded group of Indiana Hoosiers. Indiana has only beaten Ohio State ten times in 57 meetings, and this may not be their year to win either. The Hoosiers were destroyed last year in Bloomington 47-6. It'll be closer this year...Ohio State by 14.

North Carolina hosts North Carolina State in one of the big intra-state rivalries in college football. (Personally I think they're noisier when they meet in basketball!!) At the start of the season, we thought the Wolfpack was the stronger of the two. But we've been forced to think differently. The Tar Heels should win it by 11 points.

### Teacher Of The Week

The Journalism Staff would like to congratulate Mrs. Aileen Siewert for being selected teacher of the week by Student Council. She teaches 8th grade English and Spelling. Mrs. Siewert started teaching when she was 19 years old and has been teaching 31 years, with 22 of them here at MJHS. She commented that this year has gone very well so far. Mrs. Siewert has two children, Carry, who is 33 and Sharon who is

27. She graduated from Whiteface High School and went on to get her B.S. and M.E. degrees from Texas Tech University. Her hobbies are travelling and reading.



MRS. AILEEN SIEWERT

### Band Halloween Candidates

This year the Band Candidates for the Halloween Prince and Princess are John Isaac and Laurie Kelton.

Laurie is the daughter of Carroll and Doris Jean Kelton. Her hobbies are water skiing, gymnastics, and swimming, and her favorite food is pizza.

John is the son of Mr. and Mrs. Charles Isaac. He likes to hunt, fish, and enjoys all sports, and his favorite food is steak.

Good luck to both of you!!



LAURIE KELTON

Every man shall receive his own reward, according to his own labor.

-I Corinthians 3:8.



JOHN ISAAC

Texas ranks first in the nation in 1980 in total farm and ranch land with 138.4 million acres, Agriculture Commissioner Reagan V. Brown has reported.



TOP PLAYERS IN THE LOCKNEY GAME....Credited with their playing during the Muleshoe-Lockney homecoming game here last Friday night are from left, back row, Benny Pena, offensive receiver; Greg Harrison, offensive lineman and Wesley Rasco, defensive lineman. Front row, from left, Felix Norman, offensive back; George Vela, defensive line and Jimmy Gleason, defensive back.



PARENT'S DAY....More than 900 parents participated in Parent's Day activities at West Texas State University. A morning reception honored parents of the more than 300 President's Honor Scholars. Attending the reception from the Muleshoe area were, from left to right, F. Collins, Rose Collins (in back), Jaylayne Collins, Leah Collins, Tina Collins, Ann Hall and Roy Hall. They visit with Dr. James Thompson, dean of the WTSU School of Agriculture. (WTSU Photo)

**LIGHT BULB**

**Special!**

**SAVE!**

60, 75, 100 Watt  
FROSTED BULBS

**4/1.99**

**Fry & Cox,**

401 S. 1st.

### The Harmon Forecast

#### Saturday, Oct. 18 — Major Colleges

Alabama	28	Tennessee	24
Appalachian State	33	Lenoir-Rhyne	6
Arizona	21	Washington State	16
Auburn	22	Georgia Tech	7
Bail State	31	Eastern Michigan	7
Baylor	26	Texas A & M	21
Boise State	27	Fullerton	13
Bowling Green	15	Kent State	13
Brigham Young	33	Utah State	20
Brown	24	Oregon State	16
California	24	Northern Illinois	14
Central Michigan	24	Princeton	13
Clemson	17	Holy Cross	21
Colgate	26	West Texas	12
Connecticut	21	Western Carolina	12
Drake	24	East Tennessee	12
East Carolina	17	Boston College	6
Eastern Kentucky	43	Vanderbilt	10
Florida State	42	Dartmouth	10
Georgia	21	Kansas	17
Iowa State	24	Northwestern	13
Iowa	30	Kentucky	10
L.S.U.	23	NW Louisiana	21
Louisiana Tech	25	Indiana State	20
Louisville	23	Mississippi State	10
Miami, Fla.	24	Ohio	10
Miami (Ohio)	27	Wisconsin	20
Michigan State	17	Minnesota	17
Michigan	24	Florida	22
Mississippi	49	Colorado	12
Missouri	24	Villanova	14
Navy	38	Oklahoma State	6
Nebraska	31	Texas-El Paso	12
Nevada-Las Vegas	23	Hawaii	6
New Mexico	24	No. Carolina State	13
North Carolina	20	Memphis State	13
North Texas	20	Arizona State	13
NE Louisiana	29	Arkansas	14
Notre Dame	34	Indiana State	10
Ohio State	28	Kansas State	10
Oklahoma	34	Southern Cal	24
Oregon	27	Fresno State	13
Pacific	21	Syracuse	13
Penn State	25	Lafayette	17
Pennsylvania	20	West Virginia	10
Pittsburgh	27	Illinois	10
Purdue	17	V.M.I.	14
Richmond	37	William & Mary	20
Rutgers	26	San Diego State	20
San Diego State	28	Long Beach State	17
San Jose State	35	Cincinnati	22
Southern California	27	Hastings State	41
Southern Illinois	21	Hillsdale	24
S.M.U.	21	Houston	14
South'n Mississippi	42	Arkansas State	22
Stanford	23	Washington	10
Tenn. Chattanooga	30	Akron	10
Texas-Arlington	24	New Mexico State	20
Texas Tech	23	Rice	20
Toledo	17	Western Michigan	10
Tulane	31	Air Force	10
Tulsa	13	T.C.U.	10
V.P.I.	22	Virginia	20
Wake Forest	23	Maryland	37
Wyoming	23	Utah	13
Yale	33	Columbia	0

#### Other Games—South and Southwest

Alcorn State	30	Albany State	7
Angelo State	29	Abilene Christian	10
Austin	19	Sul Ross	6
Austin Peay	23	Nicholls State	21
Carson-Newman	21	Mars Hill	20
Central Arkansas	20	Southern Arkansas	6
Concord	28	West Virginia Tech	6
East Texas	27	Howard Payne	15
Elor	17	Presbyterian	15
Fairmont	21	West Virginia State	19
Grambling	34	Mississippi Valley	6
Guilford	23	Bridgewater	6
Hampden-Sydney	23	Washington & Lee	6
Henderson	20	Arkansas Tech	10
Howard	24	Virginia State	7
Jackson State	28	Southern U.	7
Liberty Baptist	22	Davidson	14
Livingston	22	Gardner-Webb	7
Marville	17	Harding	14
McMurry	24	Southwestern, Tenn.	13
Murray State	35	Tartleton	7
New Hampshire	21	Quachita	5
North Alabama	21	Central Tennessee	7
Randolph-Macon	18	Townson	7
Rose-Hulman	21	Central Florida	14
Salem	17	Emory & Henry	7
Shepherd	20	Centre	13
SE Louisiana	35	Greenville	17
SW Texas	35	West Va. Wesleyan	13
		Texas Southern	7
		Texas Houston	7
		Whittier	7

#### Other Games—East

Albany State	29	Cortland	7
Air Force	23	Hobart	7
American Internat'l	27	Northeastern	14
Boston U.	21	Rhode Island	10
Bowdoin	32	Coast Guard	6
Bucknell	28	West Chester	13
Canisius	17	Buffalo State	0
Carnegie-Mellon	42	Case-Reserve	0
Dayton	41	Kings Point	6
Delaware	24	Northern Michigan	15
Edinboro	23	Sloopy Rock	15
Fordham	16	Southern Connecticut	10
Franklin & Marshall	31	Dickinson	0
Ithaca	36	Brockport	0
Massachusetts	30	Maine	10
Middlebury	24	Colby	7
Millersville	21	Bloomsburg	7
Muhlenberg	26	Ursinus	13
New Haven	21	Nichols	10
North Carolina	26	Central Connecticut	10
Springfield	24	Williams	15
Tufts	24	Alligheny	20
Washington & Jeff'n	12	Amherst	20
Wesleyan	16	Bates	12
Worcester Tech	6		

#### Other Games—Midwest

Adrian	34	Albion	13
Anderson	27	Findlay	14
Ashland	26	Butler	14
Baker	45	Culver-Stockton	0
Baldwin-Wallace	27	Westminster	18
Bethany	30	Kansas Wesleyan	6
Central Missouri	20	NE Missouri	19
Central Oklahoma	22	Cameron	20
Defiance	21	Bluffton	20
DePauw	23	Olivet, Ill.	7
Doane	17	Concordia, Neb.	7
E. Central Oklahoma	27	NW Oklahoma	13
Eastern Illinois	35	Western Illinois	17
Elmhurst	28	Millikin	14
Franklin	23	Evansville	22
Gustavus	23	St. Olaf	0
Hastings	41	Dana	0
Hillsdale	24	Michigan Tech	13
Hope	21	Alma	7
Illinois College	29	St. Ambrose	6
Illinois Wesleyan	38	Carroll	19
Indiana Central	21	Georgetown, Ky.	14
John Carroll	20	Thiel	14
Manchester	15	Taylor	14
Mankato State	21	SW Minnesota State	10
Midland	34	Nebraska Wesleyan	10
Missouri Southern	20	Missouri Western	17
Missouri Valley	41	Central Methodist	0
Nebraska-Omaha	37	South Dakota	15
North Dakota State	24	South Dakota State	13
North Dakota	33	Morningside	8
NE Oklahoma	36	Evangel	7
Northern Iowa	24	SE Missouri	10
Northwood	21	Saginaw Valley	16
Ohio Northern	17	Muskingum	6
Sewanee	16	Principi	21
Southwestern	22	Missouri-Rolla	0
SW Missouri	31	SE Oklahoma	0
SW Oklahoma	31	Heidelberg	0
Wabash	27	Ferris	12
Wayne, Mich.	38	Yankton	10
Westmar	27	Washington, Mo.	16
Wheaton	22	Ottawa	7
William Jewell	27	Wisconsin	10
Wis. Stevens Point	27	Wittenberg	19
Wooster	24	Humboldt	19
Youngstown	22	Mohrhead	10

#### Other Games—Far West

Augsburg	21	Colorado College	13
Cal-Davis	24	Cal Poly (Pomona)	14
Colorado Western	20	Colorado Mines	17
College of Oregon	23	College of Oregon	10
Eastern Oregon	25	Chico State	20
Hayward	27	Willamette	6
Linfield	33	Northridge	7
Nevada-Reno	21	Weber State	17
Northern Arizona	24	Augustana, SD	7
Northern Colorado	24	Central Washington	13
Oregon Tech	28	Whitworth	6
Pacific Lutheran	28	Eastern Washington	13
Portland State	7	Azusa	6
Redlands	21	Cal Lutheran	19
Sacramento State	21	Humboldt	19
San Francisco State	21	Pomona	7
Whittier	21		

Presented By:

**Texas Sesame**

Announcing.....

**Members Of The Muleshoe Bands**

**Will Start Selling Subscriptions To The**

**Muleshoe & Bailey County Journals**

**With Their Annual Magazine Drive**

**Monday, October 13**

**Thru**

**Tuesday, October 21.**

The Muleshoe Publishing Co. Will Give The Bands 50% Of Any New Subscriptions & 25% Of Any Renewals.

(Our Carriers Are Not Eligible On Renewals In Their Area)

**Band Members Will Start Knocking On Your Door Monday!**

The Money Raised Will Go Into A Special Fund Used For Travel Expenses.

**The Band Member Selling The Most Subscriptions Will Be Awarded \$100.**

**From The Muleshoe Publishing Co.**

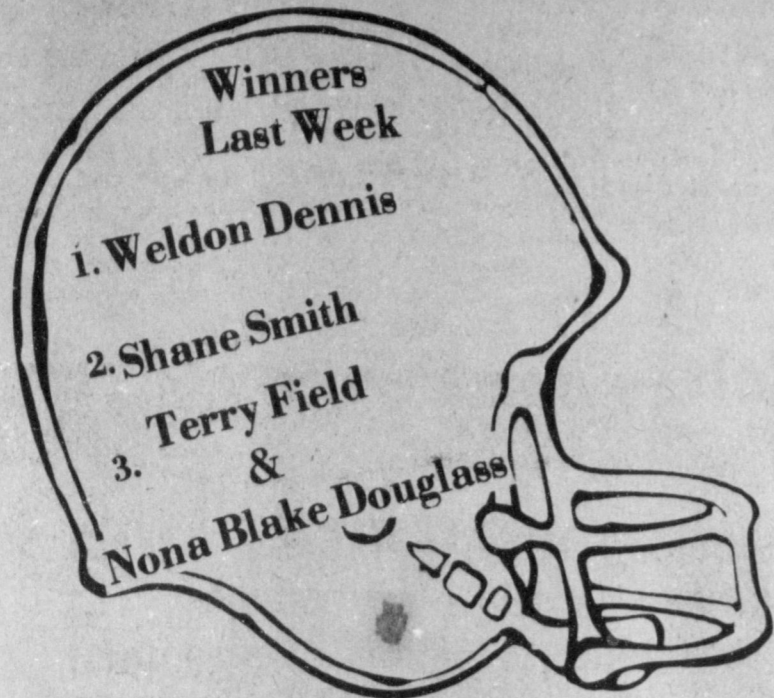
**So... Support Muleshoe's Mighty "M" Band!**



Back The Mules

# Football Contest

## WIN!



1st Place \$5    2nd Place \$3    3rd Place \$2

Grand Prize \$50 and 2 Tickets To Cotton Bowl January 1.

There Will Also Be A Contest and Prizes For The Bowl Games

NAME THE WINNING TEAM EACH WEEK...

### RULES OF THE GAME...

1. The contestant must be 12 years or older.
2. Only one entry per person may be made for any one contest.
3. Weekly contests are open to everyone except employees and families of this newspaper; bring or mail your entries to the Journal office.
4. Mailed entries must be postmarked not later than 5:30 p.m. Friday; winners names will be published in this newspaper each Thursday following the close of the weekly contest.
5. Check the team you think will win; 10 points for 1st place, 6 points for 2nd place and 4 points for 3rd place determines the Grand Prize winner.
6. The tiebreakers will count as one of the games picked, the predicted scores will be used to determine the top three places in that week's contest, if necessary, and cash prizes and points will be divided between winners in event of ties. Please write FOOTBALL CONTEST on the envelope of the mailed entry. Decision of the Journal's scoring judges will be final.

You Have Until 5:30 p.m. Friday To Enter

Please Write FOOTBALL CONTEST, Box 449, Muleshoe, Texas on envelope of mailed entry.

### OFFICIAL ENTRY FORM

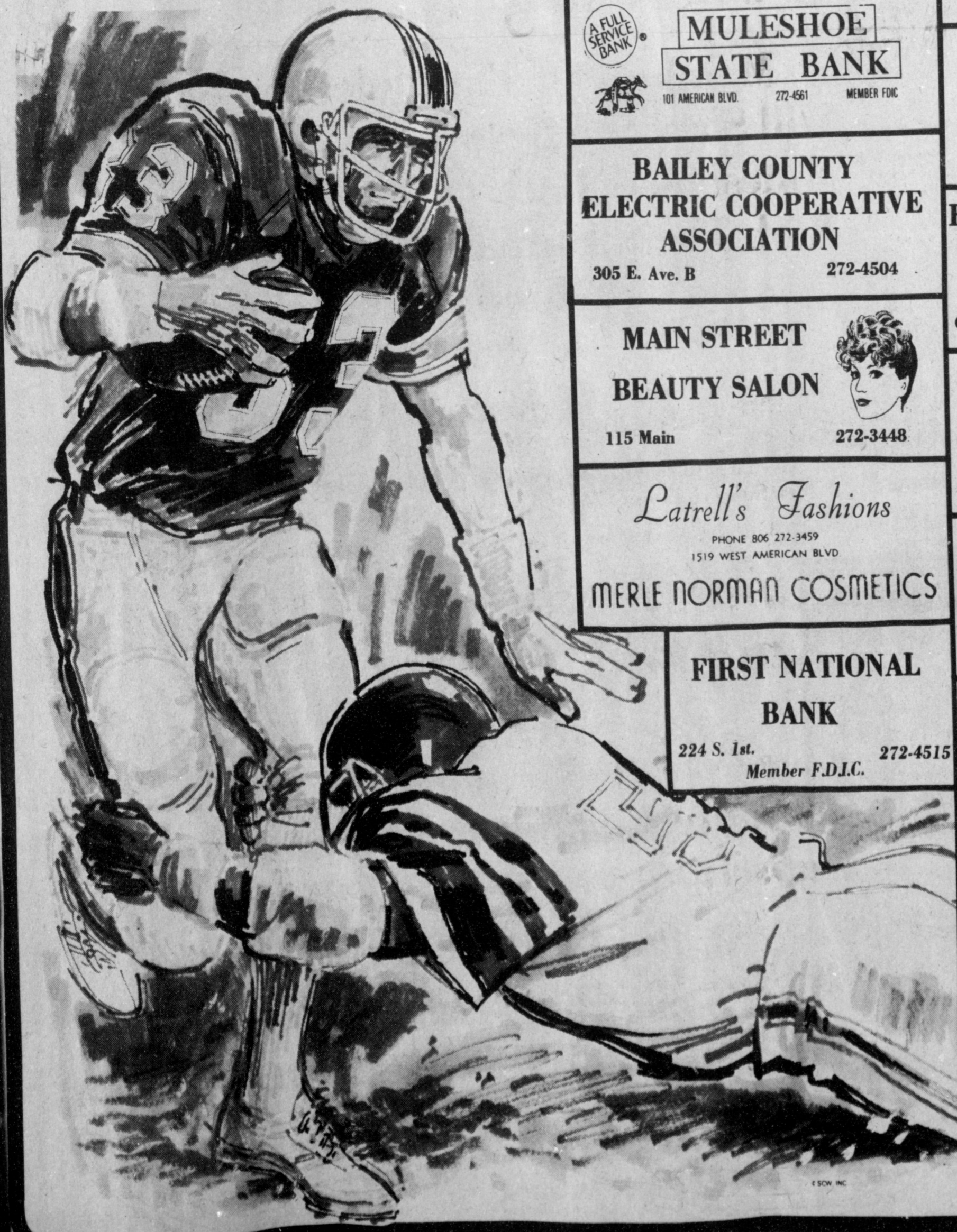
NAME \_\_\_\_\_  
 ADDRESS \_\_\_\_\_  
 CITY \_\_\_\_\_ PHONE \_\_\_\_\_

- |                         |                   |
|-------------------------|-------------------|
| 1. Mississippi          | 1. Florida        |
| 2. Southern California  | 2. Georgia        |
| 3. Tennessee            | 3. Alabama        |
| 4. Tulsa                | 4. TCU            |
| 5. Pennsylvania         | 5. Lafayette      |
| 6. California           | 6. Oregon St.     |
| 7. North Carolina State | 7. North Carolina |
| 8. Cornell              | 8. Brown          |

**Tiebreaker**

1. Texas Tech ..... VS Rice .....  
 2. Houston ..... VS SMU .....

You Must Put Score On Tiebreaker!!



<b>Terry Field Ins.</b> 213 E. Ave. B 272-5551	<b>Nixs Dept. Store</b> 218 Main 272-5511
<b>SPUDNUT SHOP</b> 328 S. Main 272-3542	<b>Muleshoe Home Center</b> 105 E. Ave. B. 272-5105
<b>WESTERN DRUG</b> 114 Main St 272-3106	<b>Shipman &amp; Sons Body Shop</b> 410 N. 1st. 272-4408
<b>lee's WESTERN WEAR</b> 1910 W. Amer. Blvd. 272-4663	<b>Watson Alfalfa Inc.</b> 272-4038
<b>ROBERT GREEN INC</b> "Your Oldsmobile, Buick, Pontiac & GMC Dealer" Clovis Hwy. 272-4588	<b>McCormick Seed &amp; Grain Inc.</b> 400 E. Ash Ave. 272-3156
<b>WILSON DRILLING</b> W. Hwy. 84 272-5521	<b>Western "66" Co.</b> 272-4556
<b>Brian Pohlmer Mgr.</b> 312 W. 2nd. 272-4229	<b>Wooley-Hurst Inc.</b> 272-5514
<b>SAMS SPORTING GOODS</b> 226 Main 272-4414	<b>Irrigation Pump Service</b> 272-5182
<b>EARL LADD &amp; SONS INC.</b> 602 W. Amer. Blvd. 272-3308	<b>Henry Insurance Agency</b> 111 W. Ave. B. 272-4581
<b>MULESHOE COOPERATIVE GINS</b> 272-4794	<b>A&amp;M Farm Store</b> Clovis-Portales Muleshoe

**MULESHOE STATE BANK**  
101 AMERICAN BLVD. 272-4561 MEMBER FDIC

**BAILEY COUNTY ELECTRIC COOPERATIVE ASSOCIATION**  
305 E. Ave. B 272-4504

**MAIN STREET BEAUTY SALON**  
115 Main 272-3448

**Latrell's Fashions**  
PHONE 806 272-3459  
1519 WEST AMERICAN BLVD  
**MERLE NORMAN COSMETICS**

**FIRST NATIONAL BANK**  
224 S. 1st. 272-4515  
Member F.D.I.C.

## Coping With Cash During Inflation

Agricultural producers must know what their production costs are to make sound management decisions, particularly in today's cost-price squeeze situation.

This calls for a good record system as well as prepared budgets, points out Spencer Tanksley, county agent with the Texas Agricultural Extension Service, Texas A&M University System. Informed decisions are best supported by information as applied to individual farming and ranching operations.

In dealing with production costs, Tanksley suggests dividing them into variable and fixed costs. Variable costs are sometimes referred to as operating costs and are those that change with the level of production, such as fertilizer, chemical and feed costs. These costs can be controlled by the producer. On the other hand, fixed costs are those that do not change or cannot be controlled, such as property taxes, insurance and depreciation.

To maximize profits or minimize losses, production should continue, in the short run, as long as expected returns are greater than variable costs, says Tanksley. Returns in excess of variable costs will contribute to payment of fixed costs that are incurred whether production takes place or not. Of course, in the long run, all costs—both fixed and variable—must be covered for production to continue.

Maximizing profits from various production inputs revolves around a number of fundamental economic principles:

1. Add input units as long as the value of the resulting change in output or added returns is greater than added costs.
2. Substitute one production input for another as long as the cost of the added input is less than the cost of the input which is replaced, and output is maintained.
3. Substitute one product or enterprise for another as long as the value of the added alternative output is greater than the value of the output which is replaced, and cost is constant.
4. With limited resources, use each resource unit where it will give the highest returns.
5. When different prob-

### Muleshoe 4-H Club

The Muleshoe 4-H Club met October 6, at the 16th and Ave. D Church of Christ. Vice president, Michelle Logsdon conducted the meeting. Mandy Plank reported that the Muleshoe 4-H Club won second place in the number of exhibits at the Lubbock Fair.

Shelley Sain reported on the County 4-H Council. The program was mailing National 4-H Week posters, under the instructions of Jim Irwin and Linda Huckaby.

Refreshments were prepared by Ronnie and Michelle Logsdon. Those present were Mandy and Pam Plank, Kristi and Misti Taylor, Zanna and Holly Huckaby, Tim and Shelley Sain, Tommy Lucero, Ronnie and Michelle Logsdon, Terri Whitecotton, Chantel and Collin Robinson and Krystal Angeley.

Also Mrs. Doug Logsdon, Mr. and Mrs. Pete Plank and Julie, Miss Linda Mullin, Jim Irwin, Mrs. Walter Sain, Mr. and Mrs. Lyndon Huckaby, Mrs. Wendell Robinson and Mrs. Tub Angeley.

lems involve different time periods and elements of risk, base comparisons on discounted values.

In evaluating these principles, Tanksley reminds producers to also consider the law of diminishing returns: "If increasing amounts of one input are added while all other inputs are held constant, the amount of the output resulting from each added unit of the variable input will eventually decrease."

Since producers today are facing capital shortages that may limit the purchase of various inputs, limited input capital should be allocated between production activities so that "the last dollar spent in one activity will yield a return equal to the last dollar spent in other uses." This means using resources where the greatest returns can be realized.

With the economic crisis situation in which many producers find themselves today, inputs should be used at levels where added costs equal added returns, emphasizes Tanksley. To

do otherwise will likely lead to financial ruin.

For in-depth information dealing with the current economic problems faced

by farmers and ranchers, the agent suggest a copy of "Coping With Economic Crisis in Agriculture", available at the county Extension office.



**LARGE POTATOES.....**Janet Shain is shown with two of the large sweet potatoes grown in the back yard of the home of Mr. and Mrs. Charles Shain. Each of the sweet potatoes weighed over two pounds.



**JUDGES ATTEND SEMINAR.....**Ninety-six justices of the peace attended a 20 hour Texas Justice of the Peace Seminar September 16-17 in Amarillo. The training center is based at Southwest Texas State University in San Marcos. The seminars are held in compliance with Article 5872, Section B, of the Texas Revised Civil Statutes. Among the judges attending were, left to right, Carl Kernell of Morton, Cochran County, Precinct 1, Place 1; Roy Tilley of Whiteface, Cochran County, Precinct 2, Place 2, and Tana Holmes of Muleshoe, Bailey County, Precinct 1, Place 1.

### FHA Activities

This past week three Area officers from Muleshoe attended an Area meeting and Mini Leadership class in Littlefield.

At the Monday night FFA meeting, Kay Lynn Prather was elected Sweetheart and Kellie Overman was elected Plowgirl.

FFA members are selling sausage all year and October 20 the fruit sale will begin. For sausage or fruit contact any FFA members, Mr. Jerry Lawrence or Mr. Terry Singleton.

The next meeting is scheduled for October 20 at 8:00 p.m. in the Ag Building. There will be a lady present to discuss the fruit sales.

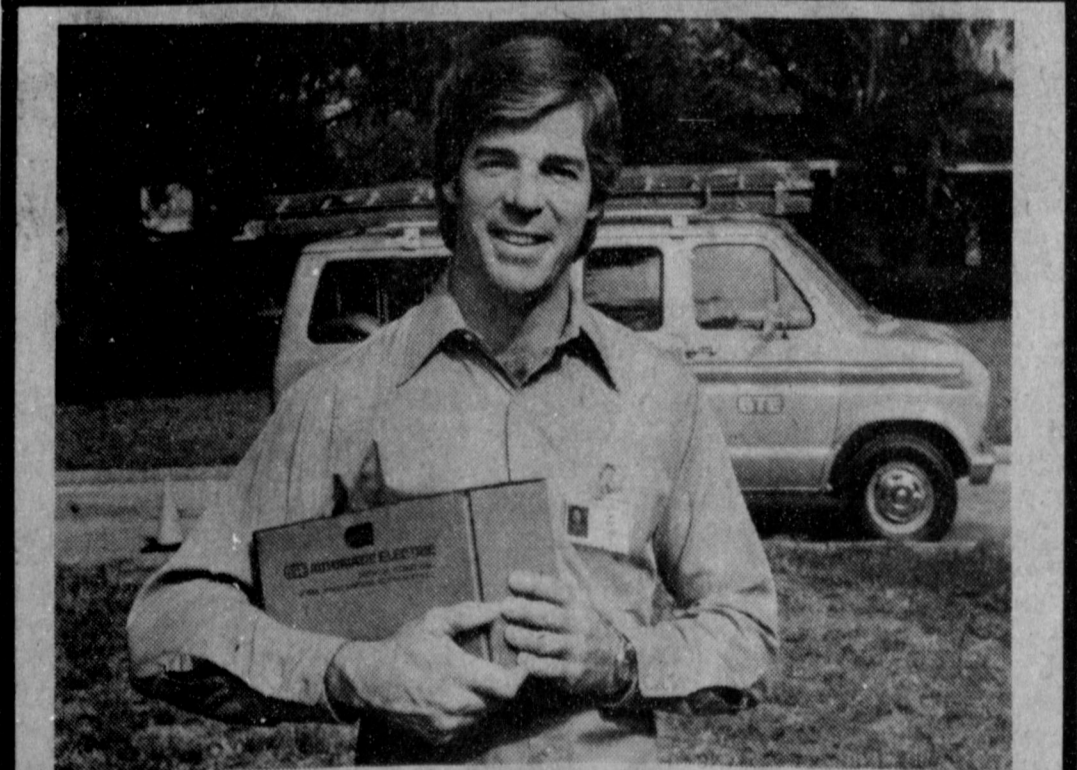
### Remember To Vote

As you all know Election time is growing near, I would like for you to know I am still running for Commissioner in Precinct 3. I would like your support and influence for I have no farming to do or anything else to occupy my time but put in my fulltime to the Commissioner's job.

I want to apologize to the people in Muleshoe for not making a door to door canvas but my legs won't permit me to walk that far. I would appreciate your vote and influence.

I am still on the S.P.A.G. Board at Lubbock and the Tax Appraisal Board in Muleshoe. Be sure and vote on November 4.

**Democratic Candidate  
Commissioner Precinct 3  
R.P. (Bob) Sanders**



**Who doesn't charge extra for house calls?**

We don't...we're General Telephone. If anything ever goes wrong with a phone you rent from us, we'll be there to fix it. And we don't charge you an extra cent for the visit.

We realize how important it is to keep you in touch with your world. So we do all we can to give you a wide selection of phones that are not only reliable, but also available

in exciting colors and styles to match your every mood and decor. And every one guaranteed for life.

We spend hundreds of millions of dollars every year, making sure that when you pick up your phone... it works.

**We keep you talking.**



# October 1980 Cooperative Month

Discover Cooperatives During  
October Co-op Month

## Cooperatives Are People!

All kinds of people belong to cooperatives. More than 23 million American families are members of one kind of co-op or another. They have joined together to provide themselves with all kinds of goods and services.

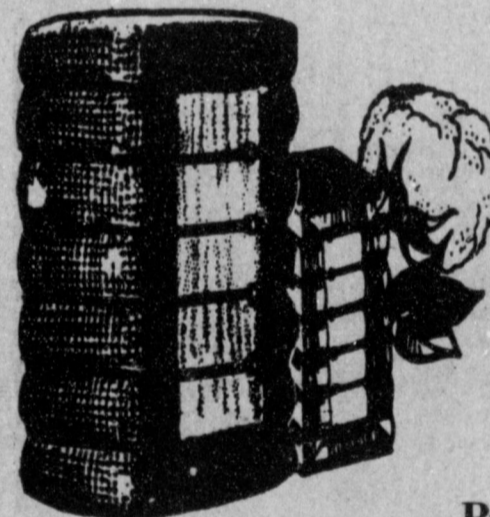
Through cooperatives, people market farm products and buy farm supplies, fuel oils, gasoline, and even groceries.

Other cooperatives provide their members with credit, health care, electricity and telephone service. Still others provide housing, insurance and other services.

Whatever the human need, people can fill it themselves through cooperatives.



In a cooperative,  
PEOPLE are number one



**Cooperatives-  
Focus On  
The Future.**

Presented In Public Interest By:

**Muleshoe Co-op Gins  
Farmers Co-op Elevators  
Muleshoe**

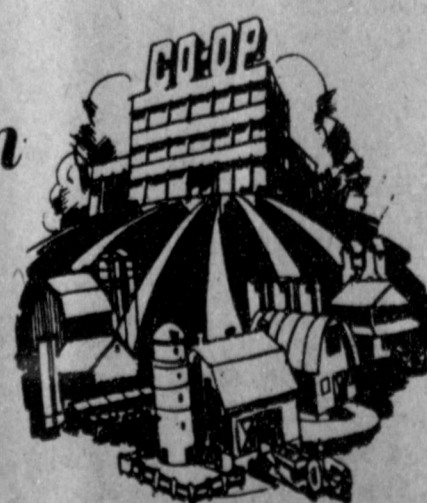
**Plains Co-op Mill  
Lubbock**



**Lazbuddie Farmers  
Supply Inc.**

**Farmers Co-op Association  
Enochs**

**Bailey County Electric  
Cooperative Association**



**October is Co-op Month.**

**BUY  
SELL  
AND  
TRADE  
WITH...**

# Classified Ads

**Deadline For Classified Ads is 11:00  
Tuesdays And Fridays**

**CLASSIFIED RATES**  
1st Insertion,  
Per Word-\$15  
Minimum Charge--  
\$2.00  
2nd Insertion,  
Per word--\$.13  
3rd Insertion,  
Per Word--\$.10  
Minimum Charge  
\$1.80  
1/3 Cheaper to run  
Classifieds 3 times or more  
**CARD OF THANKS**  
25 words-\$3  
Over 25 words  
charged at regular  
classified rates  
Classified Display--  
\$1.55 per column inch  
Double Rate for  
Blind Ads  
**DEADLINE FOR  
INSERTION**  
11 a.m. Tues. for Thurs.  
11 a.m. Fri. for Sun.  
**WE RESERVE THE  
RIGHT TO CLASSIFY  
REVISE OR REJECT  
ANY AD.  
NOT RESPONSIBLE  
FOR ANY ERROR  
AFTER AD HAS RUN  
ONCE.**

**1. PERSONALS**  
\$5 TOP DOLLAR \$5  
Cash paid for GOLD Rings,  
Sterling Silver, diamonds,  
Coins, Stereo Equipment,  
CB's, TV's, Tapes, Knives,  
Ski Equipment, anything of  
value. **BENBROOK DIS-  
COUNT TRADING CO. in  
VILLAGE behind VILLAGE  
BARBER SHOP, 7th and  
Main 505-762-0111. Clovis,  
New Mexico.**  
1-38s-tfc

Bernice Bynum is doing  
decorated cakes. Speciali-  
zing in birthday, wedding,  
shower and character  
cakes. Call day - 272-4989  
or evening 272-4786.  
1-40s-8tc

**MARTIN ROOFING**  
All Work Guaranteed  
Butch Martin  
923 South First Street  
Phone 806-272-5360  
Muleshoe, Texas 79347  
1-11s-tfc

**COTTON  
DEFOLIATION**  
Ron Kidd  
965-2262  
or  
272-3705  
Ground Rigs  
1-38s-9tc

**Public Notice**  
**NOTICE OF INTENTION  
TO INCORPORATE  
GOING BUSINESS**  
Notice is hereby given  
that W.C. Wooley, Jr.,  
doing business as W.C.  
Wooley, Jr. Farms, Trans-  
feror, doing business at  
Muleshoe, Texas, will be  
dissolved and that after  
August 30, 1980, the busi-  
ness will be conducted  
without a change of firm  
name by Wooley Farms,  
Inc., transferee, a Texas  
Corporation at Muleshoe,  
Texas. This Notice is given  
pursuant to Article  
1302-2.02 of the Texas  
Miscellaneous Corporation  
Laws Act and Section 6.103  
(7) of the Texas Business  
and Commerce Code.  
1-42t-4tfc

**WE BUY  
USED FURNITURE AND  
APPLIANCES  
CALL 272-3030  
HARVEY BASS  
APPLIANCE  
1-18s-tfc**

**3. HELP WANTED**  
**TOWN AND COUNTRY  
FOOD STORE** now hiring.  
Full time positions are a-  
vailable. Apply at 1900  
American Blvd. 272-5337.  
3-42t-2tc

**AIRLINES**  
Major airlines are now  
hiring for the following  
opportunities:  
**FLIGHT ATTENDANTS  
RAMP & BAGGAGE PERS.  
TICKET AGENTS  
RESERVATIONS AGENTS  
CLERICAL POSITIONS  
CUSTOMER SERVICE  
FOOD SERVICE**  
Individuals interested in  
applying with these airlines  
companies must be career  
oriented, have a public  
relations personality, be  
willing to travel if required,  
and be in good health. For  
further information on how  
to immediately apply  
directly with these major  
airlines companies, write  
to:  
**TRAVELEX, INC.  
ATTEN: AIRLINES  
APPLICATION  
INFORMATION**  
3865 S. WASATCH BLVD.  
SUITE 101  
SALT LAKE CITY, UTAH  
84109  
Please indicate briefly your  
background, what airlines  
position (s) you are interest-  
ed in applying for and  
enclose a stamped, self-  
addressed envelope so that  
you may receive further  
information as to what  
steps to take so that pos-  
sible interviews might be  
arranged by these airlines.  
All major airlines compan-  
ies are EQUAL OPPOR-  
TUNITY EMPLOYERS.  
3-41s-2tc

Seamstress needed. Good  
positions for qualified  
ladies. Full or Part time.  
Contact **Charlie's Originals**  
272-5180 for more informa-  
tion.  
3-41t-tfc  
Unlimited opportunity, salary  
negotiable for shop  
foreman, parts person and  
auto machinist. Truck and  
tractor shop in West Texas  
town. Reply to Box 449,  
Muleshoe, Texas 79347.  
3-40t-15tc  
Experienced farm hand  
needed. Please call  
806-965-2344 before 7 a.m.  
or after 9 p.m.  
3-35s-tfc  
Beauticians needed imme-  
diately. Call 272-3448.  
3-33s-tfc  
The Texas Migrant Council  
is accepting applications for  
Center-Director.  
Call 272-3992  
3-35s-tfc

**ROOMS FOR RENT**  
Self-Storages for rent.  
Ranch House Motel  
272-4261.  
6-39s-tfc  
**FOR RENT:** 2 business  
buildings - 1 garage and 1  
suitable for business pur-  
poses. W.T. Miller  
965-2696.  
6-40s-8tp

**WANT YOUR OLD  
BRICKS HAULED OFF?**  
Youth activities needs  
bricks for the miniature golf  
course, will pick up 1 to 100  
or more. To donate, call  
272-4051 or 272-4536.  
15-26t-tfc

**We want your business.  
REMEMBER  
REID REAL ESTATE  
THURSIE REID  
272-3142  
OR  
George Nieman  
965-2488  
OR  
Dianne Nieman  
965-2488  
OR  
Lucille Harp  
272-4693  
8-19s-ttfc**

**FOR SALE:** 2 bedroom, 2  
bath, separate dining, large  
kitchen and living room.  
1260 sq. ft. Buy equity.  
Owner will carry balance.  
Call 272-5279.  
8-41t-tfc  
**FOR SALE BY OWNERS:** 2  
bedroom home in Muleshoe  
on 6 clean lots. Approxi-  
mately 3/4 acres. All utili-  
ties available. 806-272-4885  
8-41s-2tc  
**FOR SALE:** Lot #6 Block #8  
Pool Addition, replat. 125 X  
75, 600 block facing Ave. K  
Call 272-4536.

**FOR SALE BY OWNERS:** 1  
70 ft. clean lot in Muleshoe.  
All utilities available. Call  
806-272-4885.  
8-41s-2tc  
**For all your real estate  
needs call:  
GLAZE & GOFORTH  
112 Ave. C  
272-4208  
8-11-tfc**

**FOR SALE BY OWNERS:** 3  
clean 50 ft. adjoining lots in  
Muleshoe. All utilities  
available. 806-272-4885.  
8-41s-2tc  
**SMALLWOOD  
REAL ESTATE  
232 Main 272-4838  
Joe and Ricky  
Smallwood**  
96 acres with electric  
sprinkler. 3 miles north  
west of Muleshoe. Will  
take house in trade.

2 bedroom, 1 bath, brick  
house, 1500 sq. ft., 1 car  
garage. Close to Rich-  
land Hills School.  
2 mobile homes, 2 bed-  
rooms each.  
We need listings.  
8-40s-tfc

Quiet country living, but  
still close to town. 3 bed-  
room house on one acre.  
Call 965-2488 after 7 p.m.  
8-40s-tfc

**TOWN and  
COUNTRY  
REAL ESTATE**  
3 bedroom brick, double  
garage, 2 bath, 1916 W.  
Ave. H. \$55,000.  
3 bedroom, brick, single  
garage, 2 bath, new  
paint and carpet. 1920  
W. Ave. E. \$38,500.  
3 or 4 bedroom. Car  
port, 2 bath, stucco. 518  
W. 7th St. \$35,000.  
Richland Hills lot. 103  
foot, front on West Ave.  
H.  
8-35t-tfc  
**FRESH HONEY FOR SALE**  
Nick Landers  
334 W. Ave. J  
Muleshoe, Texas  
272-3096  
15-33s-tfc

**KREBBS  
REAL ESTATE  
122 W. Ave. C  
Ph. 272-3191**  
New 3 bedroom, brick in  
country with 10 acres  
150 acre farm, irrigated.  
160 Acres, irrigated pi-  
vots.  
80 acre, irrigated.  
Lots of all sizes - terms.  
1 - 3 bedrooms, 1700  
square foot house.  
8-40s-tfc

**SUDDERTH  
REALTY INC.  
Box 627  
109 Fifth St.  
Farwell, Texas 79325  
Phone [806] 481-3288  
or 481-9149**  
160 acres northwest of  
Muleshoe, 2 wells, lays  
good on FM highway.  
320 acres irrigated with  
2 electric wells and  
circles all wheat, fenced  
excellent water area.  
Near Bovina Feeders.  
160 acres irrigated, cir-  
cle sprinkler, 2 wells,  
200 ft. water, plus 3  
bedroom house, new  
steel barn, on highway  
northwest of Muleshoe.  
320 acres Bailey County  
2 circle sprinklers. Four  
8" and one 6" wells. 12  
miles west of Muleshoe  
on FM highway 1760.  
Lay excellent.  
1285 acres, circle  
sprinklers, 7-8 inch  
wells, corrals and feed  
pens, trailer house.  
Priced to sell. Owner  
will finance. 29 percent  
down or will take cash.  
60 acres east of Mule-  
shoe. One 8" well side  
row sprinkler. 3 small  
barns, all irrigation e-  
quipment goes. Priced  
to sell.  
320 acres near Lazbud-  
die, excellent water  
area, 2 - 8" wells and  
one 6" well without  
pump. One leased cir-  
cular sprinkler. Priced  
for immediate sale.  
8-38t-tfc

**9. AUTOMOBILES  
FOR SALE**  
**FOR SALE:** 1965 Ford, 4  
wheel drive, 4 speed. Call  
after 8 p.m. 965-2356.  
9-42t-2tp  
**FOR SALE:** 1980 Mazda  
GLC. Call 272-5544.  
9-41t-tfc  
**FOR SALE:** 1972 Lincoln  
Continental. Good Con-  
dition. Joann Puckett after  
5 p.m. 965-2767.  
9-39t-tfc  
**10. FARM EQUIP.  
FOR SALE**  
**FOR SALE:** Early harvest  
cotton separator basket.  
Ideal for bole buggy. Also,  
8 steel cotton trailers, No.  
22 Int. cotton stripper and  
split oak firewood. Call  
272-5309 or 385-4597.  
10-41t-4tc  
**FOR SALE:** 484 John Deere  
Stripper, 1978 model. Low  
hours (nice). Ready to  
move. Call 806-965-2344.  
10-36s-tfc  
**FOR SALE:** 1976, 4 door  
Datsun 810. \$5300.00. Also  
30 inch Frigidaire Electric  
Range. \$75.00. Call  
272-4319.  
15-32s-tfc

**11. FOR SALE  
OR TRADE**  
Over 100 sq. yds. of used  
green carpet. \$1.00 per sq.  
yd. 5 1/2 X 8 1/2 beige oval  
braided rug, \$45.00.  
137" X 21" braided runner  
in blue and green, \$15.00.  
26" X 48" oval braided rug,  
blue and green, \$10.00.  
Phone 272-4815 after 4  
p.m.  
11-39t-tfc  
**FOR SALE:** 12X50  
mobile home. Carpeted,  
completely furnished inclu-  
ding washer and dryer -  
\$5,000. Call 356-3801  
Portales after 5:30 p.m. or  
weekends.  
11-39s-000

**FOR SALE BY OWNER:**  
Used 14X75 Astro Mobile  
Home to be moved. 2  
bedroom, 1 3/4 bath and  
fireplace. Call 806-825-2618  
11-38s-tfc  
Acid, Paraquat, Accelerate,  
Humix, etc. for sale.  
**WATSON CHEMICAL  
AND APPLICATION.**  
272-4737.  
11-39t-tfc  
**New Prime Pipe:** 1 1/2" pipe  
500 ft. or more - 60 cents.  
1" pipe, 500 ft. or more - 40  
cents. Highest prices for  
scrap iron and junk cars.  
Call Farwell Pipe & Iron  
481-3287.  
11-39s-6tc  
AKC Bassett puppies. Call  
933-4678.  
11-41s-2tc

**FOR SALE:** Well estab-  
lished floral shop, over  
\$285,000 gross yearly in-  
come. Owner retiring. East-  
ern New Mexico area.  
Reply to Box 449, Mule-  
shoe, Texas 79347.  
11-39s-6tc  
**FOR SALE:** Tomatoes, bell  
peppers and okra. Go 4  
miles west on 1760, 1 mile  
north, 1/4 mile back west.  
Robert and Frankie Luns-  
ford. Call 272-3748.  
11-37t-tfc  
3 door Stutz camper for  
LWB pickup, \$285.00. 1304  
West Avenue B #9.  
11-41s-2tp

**13. PROPERTY FOR  
LEASE**  
**FOR LEASE WITH  
OPTION TO BUY:** 3 bed-  
room, 2 bath, patio, gas  
grill. 1-647-4478 after 6  
p.m.  
13-42t-2tp  
Texaco Service Station for  
lease. Call 272-4688.  
13-38s-tfc

Land for cash lease, irriga-  
ted. 1120 acres with house,  
Curry County, New Mexico  
call 505-765-7191 office or  
505-794-4216 home.  
13-42t-2tc  
**15. MISCELLANEOUS**  
**BURROWS  
UPHOLSTERY AND  
FURNITURE REPAIR**  
118 W. Ave. C  
In the rear  
Phone 272-4255  
12-39s-tfc

Want a propane system?  
Check with **SMITH LP GAS  
MULESHOE.**  
15-30s-tfc  
**WANTED:** Do you speciali-  
ze in children's and teen's  
clothing, handicrafts and  
hobbies? Contact us for  
specialized handling. Call  
965-2622.  
15-40t-tfc  
Will babysit part time in my  
home. 272-5366.  
15-41s-4tc

**Three Way  
News**  
By Mrs. H.W. Garvin  
The Three Way High  
School football team played  
Wetherell Friday there,  
with Wetherell winning the  
game.  
\*\*\*\*\*

**Mary DeShazo  
Honor Students**  
**THIRD GRADE**  
Ronnie Gail Barret, Mi-  
chelle Clayton, Stephanie  
Cox, Virginia Espinoza,  
Michelle Finney, Tim Gray,  
Wendy Green, Amber  
Green, Kimberly Harris,  
Amy Harrison, Holly  
Huckaby, Marcy Jaramillo,  
Jackie Luna, Stacy McEl-  
roy, Ramon Martinez,  
Brenna Matthews, Robert  
Coronado Martinez, Amy  
Montgomery, Gloria Oroz-  
co, Eric Pitman, Pam  
Plank, Frank Precure, Ca-  
rissa Sanderson, Shonda  
Strahan, Stacy Stroud,  
Misty Taylor, Kendra Wil-  
son, Terri Whitecotton, and  
Tisha Young.  
**FOURTH GRADE**  
Shane Burris, John  
Chamberlin, Edmund  
Clements, DeAnn Crozier,  
Andrew Espinoza, Jiff  
Hicks, Kevin King, Bar-  
bara McGrath, Christy  
Mata, Lisa Noble, Dusty  
Rhodes, Jennifer Sorgen,  
and Brandon Wilson.  
**FIFTH GRADE**  
Amy Bean, Steve Brad-  
shaw, Misti Brewer, Meli-  
sa Burnett, Ali Cage, Lisa  
Cazarez, Annette Davis,  
Chris Faulkner, Jammie  
Gant, Quay Gregory, Jerry  
Bob Graves, Van Gregory,  
Sue Haire, Angela Kidd,  
Cynthia Lane, Lisa Laredo,  
Caroline Liles, Audrey  
Marshall, Donnie Nowlin,  
Britta O'Tay, Elizabeth  
Posados, Tonia, Roedler,  
Mary Jane Sanchea, Julia  
Seymour, Mariana Shaw,  
Scotty Spies, and Richie  
Tillema.  
We do electrical wiring for  
residents, motors and mo-  
tor controls, underground  
faults, industrial wiring.  
Call 272-5521  
15-30s-tfc

**FRANK'S  
REFRIGERATION  
AND  
APPLIANCE SERVICE**  
315 W. 3rd, Muleshoe  
Phone 272-3822  
15-41t-16tp  
Own your own jean shop;  
go direct - no middle man,  
no salesman's fee. Offering  
all the nationally known  
brands such as Jordache,  
Vanderbilt, Calvin Klein,  
Sedgefield, Levi and over  
70 other brands. \$14,500.00  
includes beginning inven-  
tory, airfare for 1 to our  
national warehouse, train-  
ing, fixtures and Grand  
Opening Promotions. Call  
Mr. Loughlin at Mademoi-  
selle Fashions 612-835-1304  
15-40t-2tp

**MEN & WOMEN, 17-62  
TRAIN NOW FOR  
CIVIL SERVICE  
EXAMS**  
No high school neces-  
sary. Positions start as  
high as \$7.47 an hour.  
Post Office, Mechanics,  
clerical, inspectors.  
Keep present job while  
preparing at home for  
Government exams.  
Write & include phone  
number to: National  
Training Svc., Inc., Box  
449, Muleshoe, Texas  
79347.  
15-41s-5tp

Mr. and Mrs. Jim Green  
and children from Shallo-  
water spent the weekend  
with her parents, the Jack  
Furgesons.  
\*\*\*\*\*  
Mr. and Mrs. S.G. Long  
spent the weekend in Ama-  
rillo and Canyon visiting  
their children.  
\*\*\*\*\*  
Mrs. J.T. Lemons from  
Roswell and her brother  
from California visited her  
daughter, the Bobby Kin-  
dles, Friday.  
\*\*\*\*\*  
Mr. and Mrs. George  
Tyson spent part of the past  
week in Lubbock with their  
daughter, the Tommy Dur-  
hams and came by Level-  
land Friday evening and  
visited their son, the Troy  
Tysons.  
\*\*\*\*\*  
Mr. and Mrs. H. C.  
Toombs and Janice Self and  
girls were in Lubbock Sat-  
urday shopping.  
\*\*\*\*\*  
The community received  
rain early Monday morning  
with amounts varying from  
1/2 inch to an inch.  
\*\*\*\*\*

The young wheat in the  
community is really grow-  
ing and other crops are  
maturing.  
\*\*\*\*\*  
Jodie Flowers from  
Missouri is visiting her  
grandparents the Adolph  
Witners.  
\*\*\*\*\*  
Mr. and Mrs. Gary  
Toombs and girls from  
Muleshoe visited his  
parents, the H.C. Toombs,  
Sunday.  
\*\*\*\*\*  
The Three Way Baptist  
revival meeting started  
Monday with church at 11  
a.m. and lunch after  
church.  
\*\*\*\*\*  
Mrs. T.D. Davis of Lub-  
bock was visiting in the  
community Monday.  
\*\*\*\*\*  
The nation includes  
those "open-minded"  
persons who listen to only  
one side.  
Robert C. Byrd, Senate  
Democratic leader, on  
debate:  
"I think he (President  
Carter) is right and I hope  
he sticks to it."

**ANTIQUES AND COLLECTABLES  
SHOW AND SALE**  
November 1 10 AM - 9 PM  
November 2 1200 - 5 PM  
**Knights of Columbus Hall  
East 21st Street - Clovis, NM**  
Information: Contact Mavis Bricker  
(505) 762-5320

**1,500,000 FRESH ACCURATE  
NAMES WANTED**  
We'll pay you top rates to compile  
these names according to our instructions.  
Send Stamped Addressed  
Envelope for Details.  
Promotions - 7, Box 316,  
Irvington, N.J. 07111.  
3-41t-8tc

**Hypnosis Effective  
The Key To A Better You  
Group or Individual  
Programs**  
Weight Loss - End Tension -  
Stop Smoking And Much More  
Call  
**Frank Staski**  
806-355-7662  
For Appointment

**FOR THE  
CANDIDATES  
OF YOUR CHOICE!**  
**★ Commissioner ★**  
Precinct No. 1  
**Thomas Freeman**  
Precinct No. 3  
**Robert Sanders**  
**★ Constable ★**  
Precinct No. 1  
**Claude Holmes**

### Courthouse News

**MARRIAGE LICENSE**  
Richard Dale Lewallen of Friona and Rebecca Lee Davis of Lubbock

Fred Bara of Amherst and Sherry Kay Hanaway of Muleshoe  
Magnus Dereumus Gunstream and Thelma Dean Sprayberry both of Muleshoe

**WARRANTY DEEDS**  
Wallace Ferrell Burris to Virgie Maudene Pruitt and husband, Jasper L. Pruitt--All my rights, title and interest in and to Labor 12, League 175, Sutton County School Land, Bailey County Texas.

Creston L. Faver and wife, Louise Faver to David A. Faver and wife, Jean Ann Faver--A 63.4 foot by 140 foot tract of land out of Section 39, Block Y, W.D. & F.W. Johnson Subdivision No. 2, within the Corporate Limits of the City of Muleshoe, Bailey County, Texas

Joe L. Smallwood to Jose Edwards Sierra and wife, Maria Elena Sierra--All of Lot (7), Block (3), Highland Addition to the town of Muleshoe, Bailey County Texas.

David Pedroza, Sr. and wife, Mary Pedroza to Martha G. Pedroza--All of Lots No. 16, 17, and 18, Block No. 39, Original Town to the City of Muleshoe, Bailey County Texas.

### West Plains Medical Center Report

**ADMITTED**  
October 9, Peggy Jones, J.F. Montgomery, J. C. Autrey, Victor Benedict, Frank Butter  
October 10, William Lancaster  
October 11, Cleo Bellar, Julie Lingonau, Dennis Humiston, Clara Trevino  
October 12, Rose Marie Anzaldua  
October 13, Candace Sims, Maria Toscano, Walter Rendon, Floyd Grimsley, Ray Bevers

**DISMISSED**  
October 9, Laura Seales, Walter Bartholf, O.C. Hall, Manuel Nunez  
October 10, E.R. Wall, Bob Donaldson, Sandra Gray, Patsy Pierce, Jody Mills  
October 11, Vic Benedict, Mary Williams, Jason Brandon, Ted Millsap, Frank Butter, William Lancaster

**True Value**  
**TOOL VALUE**  
OF THE MONTH  
Master MECHANIC  
White Supplies Last  
now **1.39**  
9-Position UTILITY KNIFE  
6-in. long cutting tool with 9-position retractable blade. Incl. extra blade for wood, rubber, wallboard. 109819  
QUANTITIES LIMITED  
401 S. 1st.  
Muleshoe  
272-4511  
**COX**

Jewell L. Griffiths and Byron Griffiths to Ely J. Shafer and wife, Mary J. Shafer--All of Lot No. (16), in Block No. (7), Highland Addition, Muleshoe, Bailey County Texas.

**COUNTY COURT**  
Hector Posados-Judgement  
**DISTRICT COURT**  
Muleshoe Independent School District, City of Muleshoe and State of Texas and County of Bailey VS Andres Perez, et ux Palestina Perez -- Order of Dismissal.

The best way to keep from being tired all the time is to rest at the right time.

\*\*\*\*  
The finest sermons are seen, not heard; they live in the lives of men and women.

### Hamilton Services Held In Plainview

Funeral services for Mrs. Cleve Hamilton, 93, of Plainview, were held at 4 p.m. Saturday in the Chapel United Methodist Church with Dr. R.L. Kirk, pastor, officiating. Burial was in the Plainview Memorial Park under the direction of the Lemons Funeral Home.

Mrs. Hamilton died October 10 at 1:50 a.m. in the West Plains Medical Center. She had been in ill health for several years.

She was born August 22, 1887 in Henderson, Tennessee and married Cleve Hamilton in July of 1926 in Amarillo. She moved to Plainview after their marriage.

She had been in nursing homes in Dimmitt, Plainview, and Muleshoe several years. She was a member of the First United Methodist Church.

Survivors include her husband, Cleve, three daughters, Mrs. Emmett (Wynoma) Myers of Earth; Mrs. Warren (Patricia) Givens of Muleshoe; Mrs. Floyd (Dora Lee) Poer of Vernon; three brothers, A. A. Priddy of Austin; Charles Priddy of Vernon; S.P. Priddy of Lubbock; two sisters, Mrs. Geneva Mitchell of San Jose, California; Mrs. Mary Callton of San Antonio; 11 grandchildren and 17 great grandchildren.

Pallbearers were grandsons and nephews.

### Art Club Elects Officers

Wednesday, September 24, the Art Club elected officers for the 1980-81 school year. Elected as president was Michael Davenport; vice president, Sharon Carpenter; secretary, Cara Bass; treasurer, Marsha Williams; reporter,

Susie Pierce; parliamentarian, Denise Wilson; and Student Council representative, Sherri Henry. Art Club Board of Directors are Denese Peterson, Todd Allison, Darin Bratcher, Rhonda Dunham, Terrie Martin, William Orozco, Misti Prater, and Manual Garcia.

Art Club is very busy this

month making plans for the carnival and is excited about the year.

\*\*\*\*  
There is a vast and fundamental difference between promise and performance

**Who Gets Cancer?**  
Cancer strikes at any age. It kills more children between the ages of 3 and 14 than any other disease. Cancer also strikes more frequently with advancing age, according to the American Cancer Society.

**Whitson Dragline Service**  
Formerly McKillip Dragline Service  
**Dozer Work-Dragline Scraper Service**  
Office: 481-3302  
Home: 481-9453  
Farwell, Texas

**Dealerships Are Now Available**  
**Low Investment--High Return Planterra**  
Is Now Being Widely Used In The South Plains Area - The New Proven Low Cost System Of Fertilization.  
Contact: Jean D. Smith Planterra Soil Inoculating, Inc. 7502 Ave. H Office B  
Lubbock, Texas 79404  
806/745-3073

# FOODS for LESS!

Shop & Compare Our Everyday Low Prices- Quality & Service

**TOP QUALITY**

**Gracery Specials**

No. 303 Can White Swan's Leaf Spinach..... **3/\$1.00**

Cleaner Disinfectant 40 oz. Bottle Pine-Sol..... **\$2.49**

28 oz. Bottle Mr. Clean..... **\$1.39**

Furniture Polish with Lemon Oil 7 oz. Can Behold..... **99¢**

Campbell's No. 1 Can Tomato Soup..... **4/\$1.00**

Campbell's 16 oz. Can Pork & Beans..... **3/\$1.00**

No. 303 Can White Swan's Whole Peeled Tomatoes..... **3/\$1.00**

No. 303 Can White Swan's Whole Kernel Corn..... **3/\$1.00**

White Swan's 32 oz. Bottle Tomato Catsup..... **89¢**

White Swan's 10-Count Biscuits..... **7/\$1.00**

White Swan's 32 oz. Bottle Waffle Syrup..... **89¢**

White Swan's 7 1/4 oz. Box Macaroni & Cheese..... **4/\$1.00**

**Owen's Country Style Sausage**..... **\$2.99** 2 lb. Pkg.

**Owen's Country Style Sausage**..... **\$1.59** 1 lb. Pkg.

**Meat Specials**

U.S.D.A. Choice Beef **Ground Beef**..... **\$1.39** lb.

U.S.D.A. Choice Beef **Briskets**..... **\$1.39** lb.

White Swan All Meat **Franks** 12 oz. Pkg..... **99¢**

**Produce Specials**

California Fresh Crisp **Lettuce**..... **39¢** each

Washington Fancy Red Delicious **Apples**..... **39¢** lb.

East Texas Golden **Sweet Potatoes**..... **39¢** lb.

**Best Meat Buys In Town Are At**

★ **White's Cashway Gro.** ★

**White Swan's Veg. 1 lb. Cr. Margarine**

**39¢**

**White Swan's 4-Roll Bathroom Tissue**

**89¢**

**Gladiola All Purpose Flour**

**\$3.99** 25 lb. Bag

**Chef Boy-Ar-Dee Mini-Bites, Beef Ravioli or Cheese Ravioli**

**69¢** 15 oz. Can

**Ctn. 6-32 oz. Bottles Pepsi-Cola**

**\$1.59** Plus Deposit

**U.S.D.A. Grade "A" Large Eggs**

**69¢** doz.

**White's CASHWAY**

402 Main 272-4244

*We Reserve The Right To Limit Quantities*

**COME TO CASHWAY FOR YOUR WIC CARD PURCHASES**

7:30 a.m. til 9:00 p.m.  
**MONDAY - SATURDAY**

Open On Sunday  
12:00 p.m. to 8:00 p.m.

**WE WELCOME USDA FOOD STAMP COUPONS**

**Double Gunn Bros.**  
Stamps Every  
Wednesday  
And Saturday.



**Produce Specials**

California Fresh Crisp Lettuce..... 39¢ each

Washington Fancy Red Delicious Apples..... 39¢ lb.

East Texas Golden Sweet Potatoes..... 39¢ lb.

★ 6 1/2 oz. Can  
**White Swan's Chunk Light Tuna**  
**89¢**

★ **Admiration Coffee**  
**\$2.49**  
(All Grind) 1 lb. Can

★ **U.S.D.A. Grade "A" Large Eggs**  
**69¢** doz.