

Weather

HIGH	LOW
January 17 59	26
January 16 68	25
January 15 50	14
Precip. to date .10"	

# BAILEY COUNTY JOURNAL

'The Community of Opportunity-Where Waier Makes the Difference'



Volume 12 Number 3

14 Pages

Published Every Sunday at Muleshoe, Bailey County, Texas 79347

10 Cents

Sunday, January 18, 1976

## Casady Guilty Criminally Negligent Homicide

### Fine, Jail Term Both Suspended

## Hospital Construction Projected For Spring

Preliminary plans for construction of a new wing and renovation of the present hospital facility in the City of Muleshoe have been approved and final plans are now in the drawing stage, stated Marshall Cook, hospital administrator for West Plains Medical Center.

Brscher-Joyette and Papier, architectural firm in Lubbock are presently working on the plans, Cook said.

"We are probably looking at a starting date somewhere between March and April," stated Cook. "We had hoped we could start earlier, but things just take more time than we had anticipated," he explained.

About a year and a half ago, when it looked like Muleshoe would lose their hospital and there was a need for more doctors, local citizens banded together and started raising funds in an effort to keep the hospital and build a new facility.

The hospital had an obligation at the bank which they were unable to meet and funds raised by the citizens committee enabled the hospital to meet this obligation, plus provide some needed equipment. The funds provided a fire alarm system for the hospital and nursing home as well as a new sprinkler system and solid core doors for

the nursing home which were necessary to meet life safety requirements.

The funds raised by the citizens committee provided funds for loan to induce two new doctors to come into practice here. This loan, which helped with moving expenses and helped the physicians set up practice is being paid back to hospital action fund by the doctors.

The rest of the funds, said Cook, have been put in certificates of deposit so they will be earning some interest.

When asked who administers the funds, Cook replied, "the hospital has absolutely no control over these funds, they are still in the hands of the citizens committee." He pointed out that members of the citizens committee are not members of the hospital board, but are just concerned citizens nominated and elected during a public meeting, who have taken it upon themselves to raise the necessary funds.

Cook stated that when the citizens organized they had two main objectives... To keep this hospital in operation and try and build a new facility.

They have accomplished the first objective and have raised the necessary funds to match Farmers Home Administration

funds and federal funds, so that a new facility will soon be constructed in Muleshoe.

The Journal contacted Mary Moore, secretary-treasurer of the citizens committee in order to learn just how much money had been raised to date by the committee; how much was used to help the hospital meet their bank obligation in an effort to remain open; how much was spent for the fire alarm system at the hospital and nursing home and how much went for the new sprinkler system and solid core doors at the nursing home; how much was loaned to acquire two new doctors to set up practice here and how much is presently in certificates of deposit and earning interest for construction of the new facility.

Several questions have been asked of the Journal staff concerning this matter, therefore an effort was made to answer the question. Since this is a very busy time at the Muleshoe State Bank where Mrs. Moore is employed, she did not have the necessary time to provide the information for today's paper. However, she did promise to compile the information for the Journal and a story will be carried by this paper with the figures as soon as the information is available.



SHIRLEY COTHAN, MISS AMERICA 1975

## Former Miss America To Be Guest At C Of C Event

Shirley Cothran, Miss America 1975, from Denton, Texas will

be guest speaker at the Muleshoe Chamber of Commerce and

Agriculture Annual Banquet to be held Thursday, January 22, 8 p.m. at the high school cafeteria.

Master's in Guidance, and is currently working toward a Doctorate degree in Counseling and Parent Education.

## New Chamber Board Takes Over Duties

The Board of Directors of the Muleshoe Chamber of Commerce and Agriculture met January 8, 1976, at the Corral Restaurant for their monthly board meeting. The new officers and directors assumed duties at this meeting. Ted Barnhill, president; John Clark, vice-president; Darrell Turner, Secretary-treasurer; and directors Pat Shafer, Howard Watson, Robert Finney, Edwin Cox and Gary Dale (Gary fills a two year vacancy), expressed their gratitude for the confidence shown them by the membership in selecting them as members of the Board of Directors.

Kenneth R. Henry, outgoing President, also expressed his appreciation to the membership and the committee people for their work and cooperation this past year.

The lovely Denton native relinquished her title to Miss New York this past September and has won almost \$21,000 in scholarship money to continue her education.

Some media people have given her the tag of "Bible-quoting, tee-totaler Texan" following several appearances she made in the last year, giving Christian testimony. She recently gave testimony at the Denny Duron Crusade at Calvary Temple in Plainview.

## Adult Class Attendance Is Lagging

Tom Jinks, director of special programs for the Muleshoe Independent School District reminds everyone that the school is offering Adult Education classes, a program which began on September 30, 1975, as long as there is enough local participation. Jinks would like to encourage people to take advantage of the program which will continue through April.

class mail permit to be used only on the Newsletter. This will be a yearly savings of approximately \$156.

Miss Cothran, only four months removed from a whirlwind reign as Miss America, is the first to tell you that that coveted honor is not a beauty contest but a scholarship contest.

The lovely Denton native relinquished her title to Miss New York this past September and has won almost \$21,000 in scholarship money to continue her education.

Level 1, Level 2, Level 3 and GED classes will continue if enough interest is demonstrated by local participation.

Any persons wanting to serve on any of the Committees are asked to contact Ted Barnhill or Tommy Black and let them know. If possible, you will be put on your first choice of committees and your help will be greatly appreciated.

Some media people have given her the tag of "Bible-quoting, tee-totaler Texan" following several appearances she made in the last year, giving Christian testimony. She recently gave testimony at the Denny Duron Crusade at Calvary Temple in Plainview.

Shirley enjoys being involved and has appeared on such shows as the "Mike Douglas Show", "The Tonight Show", "Sonny Bono Review", and has appeared with Bob Hope on several occasions. She has been a guest at many youth conferences and evangelistic crusades all over America.

A minimum enrollment of 20 students per level must be maintained if a teacher and teacher aide are to be provided.

Ted Barnhill, banquet chairman, announces that all plans are finalized for this year's Annual Banquet. Shirley Cothran, former Miss America, will be the guest speaker. The Kappa Pickers of Kappa Kappa Gamma Sorority (Texas Tech) will provide the entertainment. Dr. Charles Lewis will be the master of ceremonies. Tickets are on sale from any of the Board of Directors, the ASCA office, or the Chamber office.

Shirley is always ready to travel and meet people... and yes, being Miss America 1975 is certainly a golden opportunity to do just that," she stated.

The Muleshoe Chamber banquet will be catered by the XII Steak House. The meal will consist of nine ounce KC Strips. Entertainment will be furnished by the Kappa Kappa Gamma group known as the Kappa Pickers, from Lubbock. Dr. Charles Lewis will be master of ceremonies.

Every effort will be made to provide each and every individual with the highest quality of instruction by professional educators, Jinks stated.

It has been suggested to the Chamber that they put a live evergreen tree at the Mule Memorial Site and use it as a permanent Christmas tree. Your comments and suggestions are welcome.

Tickets to the event sell for \$8 per person and are on sale now by Chamber directors.

Everyone is urged to come out for an evening of fun and entertainment.

The board accepted the recommendation of the manager that the Chamber apply for a 3rd

yearly savings of approximately \$156.

Shirley Cothran, only four months removed from a whirlwind reign as Miss America, is the first to tell you that that coveted honor is not a beauty contest but a scholarship contest.

Shirley enjoys being involved and has appeared on such shows as the "Mike Douglas Show", "The Tonight Show", "Sonny Bono Review", and has appeared with Bob Hope on several occasions. She has been a guest at many youth conferences and evangelistic crusades all over America.

Cont. on Page 3, Col. 1.

## Reduce Burglary Control Keys Sensibly

In an interview designed to help Muleshoe businessmen protect their establishments against crime, Wayne Holmes of the Muleshoe Police Department crime prevention unit cautioned, "No lock will protect a place if a burglar gets hold of the keys. Many burglaries result from current or ex-employees having keys. Employers can greatly reduce this problem by implementing a sensible program of key control."

garages, Holmes added that cars should always be locked and the keys removed whenever they're left unattended. He went on to caution against letting anyone "hide" keys above visors, under floor mats and so forth, because burglars know where to look for hidden keys, too.

For further information on key control and other aspects of the crime prevention programs sponsored by Muleshoe Police Department, members of the Muleshoe business community should contact Wayne Holmes at 272-4268.

Holmes recommended that businessmen monitor their employees' access to keys. When someone leaves the company, all locks should be rekeyed. (It's not necessary to have them replaced.) Also, when an establishment moves to a new location a locksmith should rekey all the locks so that former occupants cannot use their keys.

"Identification tags on keys should be avoided," Holmes said. "Tags tell burglars which locks they fit. Locks that open with skeleton keys are bad news, because anyone can buy a skeleton key in a hardware store."

The commercial crime prevention program conducted by Muleshoe Police Department is partially funded by the Criminal Justice Division of the Governor's Office through the South Plains Association of Governments.

"A manager or proprietor should be extremely careful about who has access to keys to any part of his operation, even for short periods of time," Holmes continued. "Particular attention should be paid to possession of keys by persons providing the company with maintenance contract services. If keys get lost, tumblers should be reset immediately."

In closing, Holmes urged managers and proprietors to assign key control to one reliable employee, making keys available for legitimate purposes but easily monitored.

The lovely Denton native relinquished her title to Miss New York this past September and has won almost \$21,000 in scholarship money to continue her education.

Suggesting that business people always separate their home and office keys from their ignition keys when they leave their cars in parking lots or

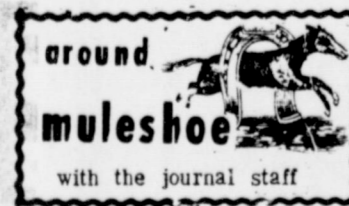
Mr. and Mrs. Cecil Osborne had as guests in their home Sunday, her niece and husband, Mr. and Mrs. Bill Jay Davis, of Lubbock; a nephew, Howell Panter and his niece and husband, Mr. and Mrs. Ray Carley, from Plainview.

Shirley Cothran, only four months removed from a whirlwind reign as Miss America, is the first to tell you that that coveted honor is not a beauty contest but a scholarship contest.

Shirley Cothran, only four months removed from a whirlwind reign as Miss America, is the first to tell you that that coveted honor is not a beauty contest but a scholarship contest.

Shirley enjoys being involved and has appeared on such shows as the "Mike Douglas Show", "The Tonight Show", "Sonny Bono Review", and has appeared with Bob Hope on several occasions. She has been a guest at many youth conferences and evangelistic crusades all over America.

Shirley is always ready to travel and meet people... and yes, being Miss America 1975 is certainly a golden opportunity to do just that," she stated.



Mr. and Mrs. Cecil Osborne had as guests in their home Sunday, her niece and husband, Mr. and Mrs. Bill Jay Davis, of Lubbock; a nephew, Howell Panter and his niece and husband, Mr. and Mrs. Ray Carley, from Plainview.

Mr. and Mrs. Cecil Osborne had as guests in their home Sunday, her niece and husband, Mr. and Mrs. Bill Jay Davis, of Lubbock; a nephew, Howell Panter and his niece and husband, Mr. and Mrs. Ray Carley, from Plainview.

Shirley Cothran, only four months removed from a whirlwind reign as Miss America, is the first to tell you that that coveted honor is not a beauty contest but a scholarship contest.

Shirley enjoys being involved and has appeared on such shows as the "Mike Douglas Show", "The Tonight Show", "Sonny Bono Review", and has appeared with Bob Hope on several occasions. She has been a guest at many youth conferences and evangelistic crusades all over America.

Shirley is always ready to travel and meet people... and yes, being Miss America 1975 is certainly a golden opportunity to do just that," she stated.

Shirley enjoys being involved and has appeared on such shows as the "Mike Douglas Show", "The Tonight Show", "Sonny Bono Review", and has appeared with Bob Hope on several occasions. She has been a guest at many youth conferences and evangelistic crusades all over America.

Ted Barnhill, president of the Muleshoe Chamber of Commerce and Agriculture and his wife, as well as Tommy Black, executive director of the Chamber and his wife went to Hereford to attend their Annual Chamber of Commerce banquet. About 650 persons were in attendance, according to Black.

Shirley Cothran, only four months removed from a whirlwind reign as Miss America, is the first to tell you that that coveted honor is not a beauty contest but a scholarship contest.

Shirley enjoys being involved and has appeared on such shows as the "Mike Douglas Show", "The Tonight Show", "Sonny Bono Review", and has appeared with Bob Hope on several occasions. She has been a guest at many youth conferences and evangelistic crusades all over America.

Shirley is always ready to travel and meet people... and yes, being Miss America 1975 is certainly a golden opportunity to do just that," she stated.

Shirley enjoys being involved and has appeared on such shows as the "Mike Douglas Show", "The Tonight Show", "Sonny Bono Review", and has appeared with Bob Hope on several occasions. She has been a guest at many youth conferences and evangelistic crusades all over America.

Shirley is always ready to travel and meet people... and yes, being Miss America 1975 is certainly a golden opportunity to do just that," she stated.

Ed Hennessey was the guest speaker.

Shirley Cothran, only four months removed from a whirlwind reign as Miss America, is the first to tell you that that coveted honor is not a beauty contest but a scholarship contest.

Shirley enjoys being involved and has appeared on such shows as the "Mike Douglas Show", "The Tonight Show", "Sonny Bono Review", and has appeared with Bob Hope on several occasions. She has been a guest at many youth conferences and evangelistic crusades all over America.

Shirley is always ready to travel and meet people... and yes, being Miss America 1975 is certainly a golden opportunity to do just that," she stated.

Shirley enjoys being involved and has appeared on such shows as the "Mike Douglas Show", "The Tonight Show", "Sonny Bono Review", and has appeared with Bob Hope on several occasions. She has been a guest at many youth conferences and evangelistic crusades all over America.

Shirley is always ready to travel and meet people... and yes, being Miss America 1975 is certainly a golden opportunity to do just that," she stated.

Cont. on Page 3, Col. 1.

Shirley Cothran, only four months removed from a whirlwind reign as Miss America, is the first to tell you that that coveted honor is not a beauty contest but a scholarship contest.

Shirley enjoys being involved and has appeared on such shows as the "Mike Douglas Show", "The Tonight Show", "Sonny Bono Review", and has appeared with Bob Hope on several occasions. She has been a guest at many youth conferences and evangelistic crusades all over America.

Shirley is always ready to travel and meet people... and yes, being Miss America 1975 is certainly a golden opportunity to do just that," she stated.

Shirley enjoys being involved and has appeared on such shows as the "Mike Douglas Show", "The Tonight Show", "Sonny Bono Review", and has appeared with Bob Hope on several occasions. She has been a guest at many youth conferences and evangelistic crusades all over America.

Shirley is always ready to travel and meet people... and yes, being Miss America 1975 is certainly a golden opportunity to do just that," she stated.

Cont. on Page 3, Col. 1.

Shirley Cothran, only four months removed from a whirlwind reign as Miss America, is the first to tell you that that coveted honor is not a beauty contest but a scholarship contest.

Shirley enjoys being involved and has appeared on such shows as the "Mike Douglas Show", "The Tonight Show", "Sonny Bono Review", and has appeared with Bob Hope on several occasions. She has been a guest at many youth conferences and evangelistic crusades all over America.

Shirley is always ready to travel and meet people... and yes, being Miss America 1975 is certainly a golden opportunity to do just that," she stated.

Shirley enjoys being involved and has appeared on such shows as the "Mike Douglas Show", "The Tonight Show", "Sonny Bono Review", and has appeared with Bob Hope on several occasions. She has been a guest at many youth conferences and evangelistic crusades all over America.

Shirley is always ready to travel and meet people... and yes, being Miss America 1975 is certainly a golden opportunity to do just that," she stated.



**On Wall Street**  
By Bob Hill  
Lentz, Newton & Co.

The home smoke detector market is heating up. Two major manufacturing giants are going all out to get their smoke detectors well established in the market. Norelco and General Electric are both going full blast to snare a major share of what is termed "the hottest market around." According to an officer of Norelco, "The fire safety market is as yet untapped."

Safety experts say the smoke detector alarm is the first step in proper home fire protection, even before a fire extinguisher. The self-contained smoke detector sounds an alarm when it senses a fire. There are 70 million residences in the U.S. and less than 2 million of them have smoke detection devices. Household fires cause about 200,000 injuries and 7,000 deaths annually and fire protection specialists believe these figures could be sharply cut with more of the smoke detectors installed.

Some manufacturers of smoke detector alarms are concentrating on the new home construction market, working with contractors, architects and manufacturers of mobile homes. Other companies are concentrating

on the industrial market where the cost of a built-in sprinkler system is prohibitive. General Electric and Norelco are heading straight for the consumer with massive TV advertising planned.

A built-in market already exists for the alarms. HUD requires smoke alarms in all new houses built with funds from the Federal Housing Administration. State and local building codes are requiring the installation of the alarms in new homes. The sales of home smoke alarms has doubled in just the past two years.

Retail prices of the units is currently around \$40, but this price is dropping and lower prices for the alarms is expected to increase sales sharply in older homes. Some manufacturers are looking for the market to develop into a \$200 million a year giant by 1980.

Hugh Carey, New York Governor: "President Ford's promise of federal loans for the city does not mark an end of our difficulties."

**Farm-facts**  
A Weekly Report Of Agri-Business News  
Compiled From Sources Of The Texas Department of Agriculture  
John C. White, Commissioner

**Up and Down Again... A Better Buy... Prospects Brighten.**

Farm costs are up, farm prices are down. That's the summary of the latest agricultural price report from the Texas Crop and Livestock Reporting Service.

Parity is now down to 73; a month ago it was 76, as was the case a year ago. Only two commodities--oats and mohair--are above parity.

Meanwhile, prices paid by farmers showed a six per cent increase compared to a year ago. Lower prices for livestock feed were noted, but higher prices were paid by farmers for clothing and motor vehicles.

Hog prices showed a big decrease, averaging \$47.60 for November, which is \$7.20 under a month ago. Parity for hogs is \$48.80.

In other categories of livestock, beef cattle averaged \$31.20, up \$1.50 from a month ago but still more than 50 per cent below parity ratios. Calves averaged \$26.60 compared with parity at \$68.90. Sheep prices were only a dime below parity, averaging \$15.90.

Most crop prices are under levels of a month ago. Wheat averaged \$3.54 per bushel, which is 50 cents under a month ago and more than a dollar below parity. Grain sorghum averaged \$4.04; that is 42 cents under a month ago and \$1.16 below parity. Cotton price average in Texas, at 43 cents, is under a month ago and about half of the parity level.

Eggs showed an increase of 10 cents per dozen from a month ago; mohair was about 25 cents per pound above parity; oats were 19 cents a bushel above parity.

All this points up to one fact of agricultural life: while prices farmers receive decline, the cost of food to the consumer is continuing to increase.

**STILL A GOOD BUY FOR CHRISTMAS** this year is Texas farm produced food. One of the good buys you should consider now is citrus. The quality of grapefruit coming out of the Rio Grande Valley continues to be excellent. Another good suggestion is Texas pecans, now being harvested throughout the state.

**MEANWHILE, WHEAT AND OAT FIELDS** generally are making satisfactory progress, but a rain is needed to push them along; some areas report grain fields dying due to lack of moisture.

The only major crop yet to be harvested in the state this year is cotton. Harvesting of that commodity is more than 50 per cent complete.

**PROSPECTS FOR A GOOD COTTON YEAR** in 1976 are now shaping up, according to a number of economists and forecasters.

They point up the fact that demand for cotton is increasing while the supply is down.

The textile industry is reviving from its doldrums and it is anticipated that cotton will be a popular fabric in the coming fashion season.

Costs of producing cotton for some inputs are expected to be about steady in 1976 compared to this year.

Putting it all together, the forecasters say cotton has a bright prospect for 1976. A year ago, cotton was being relegated to extinction by some of its critics. But cotton has always managed to survive each crisis it has encountered in years past.

Cotton is proving again to be popular as well as durable. It should continue to be a major factor in Texas agriculture for years to come.

**NK Proudly Announces NK**  
**MARVIN NIEMAN**  
272-5564  
Has been appointed New Northrup King Seed Dealer handling corn, sorghum, alfalfa & sunflowers More From Every Acre Through Creative Seed Research.  
**NK NORTHROP, KING & CO.**  
1500 JACKSON ST. N.E., MINNEAPOLIS 13, MINN.

**GIBSON'S DISCOUNT CENTER**

**GROCERY DEPT.**  
**CHIFFON TOILET TISSUE**  
REG. 59¢  
**49¢**

**JIFFY POP POP CORN**  
REG. 53¢  
**39¢**

**ZEE PAPER TOWELS**  
REG. 61¢  
**49¢**

**AUTOMOTIVE DEPT.**  
**VALVOLINE MOTOR OIL**  
REG. 70¢  
**59¢**

**Prestone BRAKE FLUID**  
12oz. CAN  
**88¢**

**HARDWARE DEPT.**  
**HUNTER ELECTRIC HEATER**  
1350 WATT  
REG. 17.97  
**\$12.97**

**SKIL DRILL**  
REG. 1.97  
**99¢**  
#1710 REG. 9.97  
**\$7.99**

**PET DEPT. SPECIALS**  
**UNBREAKABLE PET FOOD DISHES**  
REG. 1.19  
**59¢**

**JANUARY BUDGET BUYS**

... where you always buy the BEST for LESS.

**CAMERA DEPT.**  
**POLAROID Super Shooter**  
**18<sup>97</sup>**  
Polaroid's most versatile camera. Uses 6 different kinds of instant color and black & white film.  
**Polaroid Type 88 Color Film**  
Special Price! **3<sup>17</sup>**

**HEALTH & BEAUTY AIDS**  
**GIBSON'S FRUIT ESSENCE SHAMPOOS**  
REG. 67¢  
**49¢**  
**Phase III**  
2 BAR PAK  
REG. 79¢  
**59¢**  
**COMET CLEANSER**  
21oz. REG. 41¢  
**3/\$1.00**

**SUPER SAVINGS SALE**

**30% OFF Ladies and Girls Wear**  
**Panties**  
Briefs & bikinis. Ass'd styles, colors and sizes. Save 30%  
**FLUFF SCUFFS**  
REG. 2.49  
**\$1.66**

**BOYS-GIRLS WINTER TOG-A-LONGS**  
**1/3 OFF**

**Men & Boys Underwear**  
T-Shirts or Briefs  
50% Cotton-50% Polyester  
**MEN'S**  
Sizes S-M-L-XL  
Pkg. of 3 **2<sup>77</sup>** REG. 3.69  
**BOYS**  
Sizes SX-S-M-L  
Pkg. of 3 **1<sup>97</sup>** Reg. 2.99

**Special Group of Ladies' & Girls Panty Hose**  
High quality panty hose in a variety of shades & sizes for ladies & girls.  
**3 PAIR 1.00**  
#S 462 OR 494

**HOUSEWARES DEPT.**  
**Pyrex 9 1/2" Pie Plate**  
Flavor Saver No. 229-S  
**69¢**  
REG. 1.23

**SPORTING GOODS DEPT.**  
**Zebco 1545 Combination Rod and Reel Combo**  
No. 404 spincast reel with 2-piece, 5 1/2' fiberglass rod No. 4040.  
**6<sup>88</sup>**

**4-Piece Canister Set**  
Country kitchen still life on antique crockery background.  
**3<sup>33</sup>** REG. 5.13  
Ballonoff No. 02-085

**COLLAPSIBLE FISHING BASKET**  
REG. 3.49  
**\$2.66**

**Photo Album**  
REG. 2.49  
**99¢**  
**CALICO MUGS**  
**59¢**

**PRICES EFFECTIVE THRU JAN. 20**



# Briscoe Asks CPB To Help Make Texas 'No 1'

COLLEGE STATION -- Gov. Dolph Briscoe has challenged County Program Building Committees in each Texas county to move ahead vigorously in 1976 toward the state's goal of making Texas No. 1 in agricultural income.

In a letter to County Program Building Committee chairmen, the Governor stated: "As our Nation begins its Bicentennial observance, Texans can look back on a proud heritage of accomplishments. No industry has contributed more to the pride we have in our heritage than agriculture. Progress resulting from the dedicated efforts of our citizens in the past indicates that we can move forward with confidence into Century III."

In 1973, Briscoe declared that one of the highest objectives of his administration was to make Texas No. 1 among the states of the Nation in agricultural income.

"It is my conviction that Texans have the resources, the energy, and the managerial ability to achieve first place in both gross and net income from agricultural production. Achievement of this goal has important economic and humanitarian implications for our State, Nation and the World," the Governor said.

Continuing, Briscoe pointed out that based on current income trends, Texas producers will need to earn \$9.1 billion in annual cash receipts to become No. 1 by 1980. This would have an impact of more than \$30 billion on the State's economy, the Governor emphasized.

Established trends indicate

that, barring droughts or other disasters, the goal of making Texas No. 1 is within our reach, Briscoe said.

Agricultural income in Texas increased from \$2.68 billion in 1968 to \$5.8 billion in 1974. When all receipts are in for 1975, Texas farmers and ranchers are expected to market products totaling nearly \$6 billion.

"There is, of course, no advantage in being No. 1 in gross income unless our producers are also No. 1 in profitability. Our concern for sound agricultural policy and for successful marketing systems must be in accord with our productive ca-

capacity," Briscoe noted.

He stressed that cooperation and coordination among all segments of the State's agricultural industry are essential to success.

"I consider the County Program Building Committee in each county best represents the leadership, experience, and knowledge required to establish challenging but obtainable goals for success. It is my hope that your County Program Building Committee -- including each of the economically important commodity committees -- will give this goal priority consideration of 1976," the Governor said.

"I am certain that the staff of the Texas Agricultural Extension Service and all other professional agricultural agency representatives will respond to any requests made by County Program Building Committee chairmen. Together, we can achieve this goal which has so great a potential," Briscoe concluded.

The Extension Service, under the leadership of Dr. John E. Hutchison, director, has joined in the intensive effort to help Texas reach this important goal. "On our way to No. 1" is an effort to promote development of the full potential of the State's agricultural industry, and County Program Building Committees can establish priority programs for reaching this goal," said Hutchison.

# Reagan For President Chairman Is Announced

The Texas Citizens for Reagan for President committee announced today the appointment of a chairman and co-chairman for the Nineteenth Congressional District.

Robert L. Monaghan of Midland will serve as chairman and Dr. Melville Monte of Lubbock has accepted appointment as co-chairman, County Chairman within the district will be announced soon, according to Judge Barbara G. Culver of Midland, State Reagan Committee coordinator for West Texas' 16th and 19th Congressional districts, which includes Bailey County.

The major emphasis at present

is in circulating petitions for signatures in support of Reagan delegates to the 1976 Republican National Convention in Kansas City from Texas.

"A Texas delegation with strong support for Ronald Reagan can have a significant impact on the Republican national convention," said Judge Culver. "Now is the time for Reagan supporters to work to get his delegates on the primary ballot in May".

Ernest Angelo of Midland is Texas Co-chairman for Reagan, and has been in contact with

supporters all over Texas. "It will be no trouble to find enough Reagan supporters in Texas to get his delegates names on the primary ballot. We hope to exceed the statutory minimum number of names and express the sentiments of Republicans in Texas loud and clear of the administration which inflicted the Energy Bill on our State."

Anyone interested in circulating a petition for Reagan supporters may contact Dr. Monte in Lubbock or Mr. Monaghan, Judge Culver or Mayor Angelo in Midland.

named Brandon Lee. The couple has another little boy at home.

Grandparents are Mr. and Mrs. Orbe Chandler of Lubbock and Mr. and Mrs. Max Bush of Muleshoe.

Great-grandparents are Mr. and Mrs. Charles Watson of Muleshoe and Mrs. Viola Calvert of Flomot.

Gavin Ray Clark

Mr. and Mrs. Mike Clark of Seminary, Miss. are the proud parents of a new baby boy born January 14, 1976, at 1:05 p.m. in Seminary. The baby weighed eight pounds and was named Gavin Ray. He is the couple's first child.

Grandparents are Mr. and Mrs. Bob Hardaway of Muleshoe and Mr. and Mrs. W.C. Clark of Seminary.

Learning makes a good man better, and an ill man worse.



Brandon Lee Bush

Mr. and Mrs. Randy Bush of Muleshoe are the proud parents of a new baby boy born January 9, 1976, at 2:25 p.m. at St. Mary's Hospital in Lubbock. He weighed seven pounds, fourteen and a half ounces and was

# Parmer County Court Against Cloud Seeding

The Commissioners Court of Parmer County, Texas has filed a formal protest against the issuance of a license to engage in weather modification activities by Atmospherics, Incorporated, 5652 East Dayton Avenue, Fresno, California 93727; also Plains Weather Improvement Association, Incorporated, P.O.

Box 1627, Plainview, Texas 79072.

It is the feeling of the Court and they believe, of the County, that weather modification activities over Parmer County infringe on the individual rights of the people of Parmer County, and unless a vote of the people of Parmer County authorizes such action, the Court requests that no permits be issued.

The Court strongly urges that the necessary changes be instituted immediately whereby the Texas Water Development Board would have more reasonable control of the issuance of this type of permit.

# Gable Makes Honor Roll

Dwayne F. Gable was recently named to the President's Honor Roll at the Mid-Continent Campus of Texas State Technical Institute, according to Lovell A. Pillow, General Manager of the Amarillo Campus. Membership to the President's Honor Roll is attained by maintaining a 4.0 grade average.

Dwayne is majoring in Boot and Shoe Operations and is the son of Mr. F.H. Gable of Littlefield, Texas and is a graduate of Friona High School.

# Casady...

Cont. From Page 1  
testimony indicated that the wounds inflicted when Casady struck Hargett with the shotgun were on the wrong side of the head of Casady, being left-handed, had wrestled the gun away and struck him in the manner in which he stated that he had. Trying to prove, that when Casady saw the gun on the ground, he saw he had the opportunity to over-power the man and then proceeded to attack him.

Mrs. Hargett was the last witness to testify in the case. Judge Boone then instructed the jury, informing them that they must seek a verdict in the charge of murder, manslaughter, involuntary manslaughter or criminally negligent homicide. Their verdict was guilty of the latter charge and sentence was pronounced and then suspended.

# Adult...

Cont. From Page 1  
A minimum of 100 hours free instruction will be available to anyone interested in taking advantage of this opportunity, provided the minimum number of students are enrolled and attendance maintained.

# DID YOU EVER THINK OF ADVERTISING AS . . . .

... Hiring an employee who could . . . contact over 2750 families each day and tell them about your merchandise?

... present himself neatly and precisely to the public?

... and work for exactly what you could afford to pay him?

# WE HAVE.

272-4536

Muleshoe Journal  
Bailey County Journal

**Bailey County Journal**  
Established March 31, 1963  
Published by Muleshoe Publishing Co., Inc.  
Every Sunday at 20¢ a copy, except the 4th

**TEXAS PRESS ASSOCIATION**  
1975

L. R. Hall - President  
Jessica P. Hall - Treasurer  
L. B. Hall - Managing Editor  
Charles Reid - News Editor  
Linda Jo Simonsen - Society Editor  
Jolly (Sue) - Office  
Deryl - News-Advertising

**SUBSCRIPTIONS:**  
Muleshoe Journal and Bailey County Journal \$4.50  
Muleshoe Journal and Bailey County Journal - \$6.95  
Elsewhere in Texas  
Muleshoe Journal and Bailey County Journal - \$8.95  
Outside of Texas  
Yearly by carrier \$9.50  
Monthly by carrier \$7.95  
Advertising rate card on application

SAVE
SAVE

**ALSUPS #34 MULESHOE, TEXAS**

## Shop Our 1/2 Price Clearance Sale

### OVER \$3,000 OF INVENTORY REDUCTION SAVE \$

**SHURFINE CRINKLE CUT POTATOES**

2# BAG **2/\$1.00**

**VICTOR FOIL**

LARGE BOX **39¢**

**SHURFINE BISCUITS**

**5¢**

**STUFFED TOYS**

REG. 4.69 **\$1.89**

**TIDE DETERGENT**

**99¢**

**SHURFINE STRAWBERRY SODA**

28 OZ. **2/69¢**

**SHURFINE FROZEN ORANGE JUICE**

6 OZ. CAN **5/\$1.00**

**BORDEN'S ORANGE DRINK**

GAL. **89¢**

**SHURFINE OLEO**

1# QUARTERS **3/\$1.00**

**TURKEYS**

**39¢**

**ZEREX ANTI-FREEZE**

GAL. **\$2.99**

**CUSTOM 8 TRACK TAPES**

GUARANTEED IF DEFECTIVE REPLACED

**\$1.69**

# ALLSUP'S

CONVENIENCE STORES



# Miss Loyd, Stockard Vows Solemnized



Mrs. Silas Perry Stockard

The Muleshoe Church of Christ was the scene Friday evening for the wedding of Silas Perry Stockard, Jr. and Miss Pamela Jane Loyd. Rev. Glen Harlin, pastor of the First Baptist Church of Plains, performed the double-ring ceremony. Mr. and Mrs. S.P. Stockard and Mr. and Mrs. B.E. Loyd, all of Muleshoe are parents of the couple.

The main entry to the church was marked with Hurricane lamps entwined with greenery. Aisle markers featuring bouquets of daisies, snowflake mums and gypsophila, southern simalax and mist green picot in candleglow lined the aisle leading to the altar.

The bridal couple stood amidst an arch of tiered cathedral candelabrum with spiral and cathedral candelabrum flanking either side. The candelabrum were decorated with southern simalax, camellia, mist lace carnations and gypsophila.

Given in marriage by her father, the bride wore a gown of white Swiss Net all-over appliqued in Alencon lace combined with Venise lace. The gown was designed by Priscilla-of-Boston with a decollete Sweetheart neckline edged in the Venise lace. Long candlestick sleeves repeated the all-over lace motif with button and loop closure at the wrists. The princess silhouette was accented in a pyramid shape with the waistline defined in the venise lace rising to a point to the neckline. The a-line skirt was completely appliqued in vertical medallions with a double border of Gothic Venise lace points encircling the hemline and train. She wore a long mantilla style veil designed to match her gown of the two

laces, cascading down from a Camelot headpiece covered in matching laces. She carried a classic "Snowdrift" bouquet; white on white cattleya and pipette orchids, froesia, and imported silk European Lilly-of-the Valley.

Mrs. Robert Copeland of Lubbock was matron of honor. Bridesmaids were Mrs. Jimmy Evans of Post, Texas, sister of the bride, Mrs. Richie Warren of Muleshoe, sister of the groom, Rhonda Stevenson of Muleshoe and Jan Harlin of Plains, Texas. They wore identical gowns of leaf-green jersey. The softly draped bodices featured hi-duches necklines accented in key-hole effect by draping. Long fitted sleeves ended in circular bell cuffs. The pyramid skirts were worked to fullness at the back hinting of tiny trains and the waistlines were defined in self fabric sashes and a tailored bow at the back. They carried "Verdant" hand bouquets of silk frusia, spring mist poppies, gypsophila and lily-of-the-valley.

Flower girl was Miss Melissa Carr of McAllen, cousin of the bride. She wore a mint-green polyester dotted swiss dress styled with a bouffant skirt and an overskirt of white, with deep ruffle. The long sleeves ended with a bell cuff, edged with deep lace. She carried a lace flower basket holding love knots.

Sheldon Mason, the ring bearer carried a white satin and lace pillow which held the rings.

Fred Locker served as best man and groomsmen were David Saylor, David Wheat, Don Long and Dusty Davis. Jimmy Evans and Richard Warren served as ushers.

The mother of the bride wore an apricot chiffon gown with a white gardenia corsage. The mother of the groom wore emerald green chiffon and a gardenia corsage.

A reception was held immediately after the ceremony at 101 American Boulevard. The bride's table was covered with a floor length white satin cloth overlaid with chantilly lace gathered to the floor. Centering the table was a four-tiered cake topped with an enchanting pyramid of white roses and lily of the valley. A splashing fountain surrounded by roses and gypsophila.

An executive, is one who cannot work unless he has assistants.

philia centered the bottom tier, reflecting the glory of the wedding cake. A silver punch bowl held a fruit punch enhanced by a fresh fruit ice ring.

The groom's table was covered with a green crushed velvet cloth with antique wood, bronze and brass appointments. An arrangement of tiered brass and antique wooden candlesticks sat amidst an arrangement of mint

figi mums. Assorted finger sandwiches and Hor'D'oeuvres were served.

The junior table was covered with floor length white linen overlaid with green crushed velvet and held the bronze tilt coffee urn, an antique candle holder and other appointments in brown ironstone.

Guests were registered by Mrs. Bruce Lester at the church. Assisting in the serving were Mrs. David Saylor, and Mrs. Glenda Harlin, Brenda St.Clair, Laverne Carpenter and Mrs.

Terry Pollard. Reception guests were registered by Mrs. Gary Lackey.

After a wedding trip to Colorado the couple will be at home at 310 West 15 Street in Muleshoe.

The houseparty consisted of Mr. and Mrs. Robert Hooten, Mr. and Mrs. Jim Shaw, Mr. and Mrs. Don Harmon, Mrs. Cecil Carr, Mrs. Ed Nickels, Mrs. Wayne Williams, Mrs. Arnold Prater, Mrs. Woodie Lambert, Mrs. Eugene Black, Mrs. E.T. Ford, and Mrs. Bobby Free.



Mrs. Gary Lackey

## Christian Women Held Meet

The Christian Women's Fellowship of the First Christian Church met Tuesday, January 13, 1976 at 4:00 p.m. in the home of Mrs. Sylvan Robison. Mrs. Long presided over the business meeting.

Mrs. White, program director,

led the group in a discussion on the sixteenth chapter of John. Then Mrs. Long gave the worship in which she discussed the background of John.

The meeting adjourned with the Fellowship Benediction said in unison.

## Miss Shafer, Lackey United In Marriage

Ellen Shafer, daughter of Mr. and Mrs. Lewis Wayne Shafer of Star Route, Sudan and Gary Lackey, son of Mr. and Mrs. J.H. Lackey of Muleshoe were united in marriage in the First United Methodist Church of Muleshoe, Friday, January 9, at 7:00 p.m.

The double-ring ceremonies were performed by Rev. Floyd Dunn of the First United Methodist Church of Muleshoe. Rev. Dunn also performed the wedding ceremony of the bride's parents 21 years ago in Sudan.

Given in Marriage by her father, the bride wore a classic wedding gown of winter white silk Peau-d'ange with enrichments of pearls, alencon lace and French pearl edging. The graceful gown of Baroque design was made especially for her by the House of Banchi. The moulded bodice featured a deep yoke of silk english net with enrichments of Alencon lace flower-lets with pearl accents. A High Wedding band neckline of French pearl banding accented the bodice. Long slender candlestick sleeves tapered to her wrist and were cuffed in the French pearl ruffles with accents of dainty buffing at the wrist. The graceful redingote skirt swept to form a chapel train. The bride wore a Baroque Capulet of matching Alencon lace with pearl accents. From the matching capulet fell her cloud veil of imported silk illusion which swept beyond the train of her wedding gown.

The bride carried a bouquet

made in sophisticated style of gladiola blossoms ringed with yellow daisies.

The bride carried out the traditional theme of something old, something new, something borrowed and something blue. Something old was a ring she wore that belonged to her great-grandmother, something new was her dress, something borrowed was the Bible she carried, belonging to her mother and something blue was her garter.

Maid of honor was Miss Linda Shafer, sister of the bride. Bridesmaid was Miss Jan Harlin of Plains. Their dresses were gray and yellow floral viose over a yellow underlining. They were made in an empire style with an inset neckline of yellow chiffon outlined with yellow lace. The Capelet sleeves were edged in lace. Their yellow picture hats were trimmed with bows and streamers of velvet ribbon. They carried colonial type bouquets of white and yellow daisies.

Candle lighters were Miss Traci Walker of Muleshoe and Miss Nancy Robinson of Lubbock, cousins of the bride. Flower girl was Miss Shelli Walker of Muleshoe, also a cousin of the bride. They wore dresses fashioned like the other attendants. Their headpieces were yellow lace caps, with velvet bows and streamers, with love knots.

Robert King of Eastland served as best man. David Partain of Houston served as groomsmen.

Ushers were Jessie Lackey, brother of the groom, Robert Shafer, brother of the bride, Johnny Walker of Houston and Chuck Use of Nederland.

Registering the guests at the wedding and the reception was Miss Diane Dale of Muleshoe.

Mrs. Mickey Sowder of Three-Way played selections on the piano and organ. Dr. David Hamblin of Muleshoe sang "The Lord's Prayer" during the ceremony.

A reception was held in the fellowship hall. Miss Laverne Carpenter of Muleshoe, Miss Cindy Kimbrough of Clovis and Mrs. Terry Pollard of Three-Way presided at the serving table.

For a wedding trip to Vail, Colorado the bride wore a moss-green sweater pants set.

The couple plans to live in College Station where he will continue his education.

The bride graduated in 1975 from Muleshoe High School and has attended Texas Tech. The groom graduated from Muleshoe High School in 1973. He is now attending Texas A&M as a Senior.

The rehearsal dinner was held at the Corral Restaurant, Thursday, January 8, hosted by the groom's parents, Mr. and Mrs. J.H. Lackey.

Members of the House Party were Mrs. Mickey Sowder, Mrs. John Gunter, Mrs. J.A. Nickels, Mrs. J.K. Adams, Mrs. Leland Jones, Mrs. Lewis Dale, Mrs. M.G. Killough, Mrs. Jodie Barrett, Mrs. Clifford Mardis, Mrs. Curtis Walker and Mrs. Kenneth Henry.

Timely Warning

You can't change the past, but you can ruin the present by worrying about the future.

-Sun, Sac City, Ia.

## Judge Williams Presented Program On "Community Issues"

The Muleshoe Study Club met in the home of Mrs. T.R. White, Thursday, January 8, with Mrs. George Johnson as co-hostess. The Pledge of Allegiance was led by Mrs. Mildred Neely.

The director, Mrs. J.G. Arnn, introduced Judge Glenn Williams, who gave a talk on "Community Issues". After the program was presented, a question and answer session followed, clarifying any questions. Mrs. Mildred Neely held a business meeting following the program.

Refreshments were served to the following members: Mrs. J.G. Arnn, Mrs. John Agee, Mrs. Joe Costen, Mrs. Lewis Embry, Mrs. Ed Johnson, Mrs. George Johnson, Mrs. Mildred Neely, Mrs. Luther Pitts, Mrs. Doyle Turner, Mrs. Wilson Witherspoon, hostess, Mrs. T.R. White and guest, Judge Glenn Williams.

The next meeting will be held in the home of Mrs. J.G. Arnn, with Mrs. Lewis Embry co-hostess.

## Hobby Club Elected New Officers

The Muleshoe Hobby Club met Thursday, January 15, at the R.E.A. community room for their first meeting of the year. The new members presiding and new officers elected for two years are Mrs. Ola Epperly, president; Mrs. Levina Pitts, vice-president; Mrs. Sylvan Robison, secretary-treasurer; Mrs. Verna Dement, assistant secretary-treasurer; Mrs. Allie Barbour, reporter and Mrs. Bernice Amerson, assistant reporter.

New members for the year 1976 are Mrs. Allie Barbour, Mrs. Bub Shafer, Mrs. Henry Bass, Mrs. S.L. Robison, Mrs. Levina Pitts, Mrs. Mable Cald-

well, Mrs. Ola Epperly, Mrs. Dora Phipps, Mrs. C.E. Briscoe, Mrs. Bernice Amerson, Mrs. George Chambliss and Mrs. Ethel Julian. Mrs. Peggie Jones as a visitor from Lubbock.

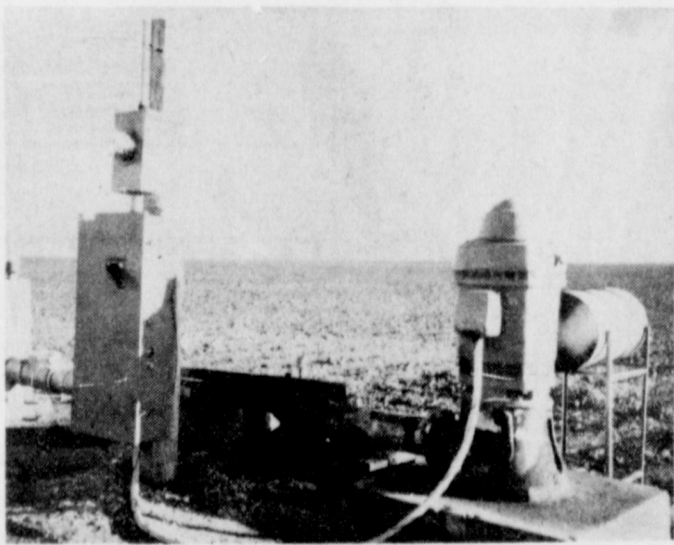
Those members bringing crafts to share with the others were Mrs. Bub Shafer, candle; Mrs. S.L. Robison, crochet house shoes; Mrs. Levina Pitts, cross stitch picture; Mrs. Mabel Caldwell, sand painting-Eagle; Mrs. Dora Phipps, shell boxes and purse; Mrs. C.E. Briscoe, drift wood planter; and Mrs. Ethel Julian brought a sand painting.

Names were drawn for secret pals and the dates for hostesses. The hostess gift was drawn by

well, Mrs. Ola Epperly, Mrs. Ruth Bass was hostess.

The next meeting will be held January 29, for an all day work shop at the Muleshoe State Bank.

Need An  
**Electric  
Irrigation  
Motor?**



**WE HAVE IT!**  
CALL US.

**Muleshoe Electric**

Phone 272-3330  
210 E. 3rd St. - P. O. BOX 670  
MULESHOE, TEXAS 79347

**ATTENTION HOME OWNERS**  
February 16, Homeowner insurance rates are increasing  
We may be able to save you as much as 32%. Come See Us Now  
Personalized Service  
**J&J Insurance**  
John & Joan Lowry  
272-4545 232 Main

**Cobb's**  
January  
**CLEARANCE SALE**  
NOW IN PROGRESS  
Drastic Reduction  
**Don't Miss Such Bargains**



# Miss Gray, Bride of Robert Kiser



Mr. and Mrs. Robert Kiser

Della Geraldine Gray, daughter of Mr. and Mrs. Jessie Gray of Muleshoe and William Robert Kiser, son of Mr. and Mrs. William Elmer Kiser of Tamps, Florida were united in marriage in the Lariat Church of Christ at 7:00 p.m. Saturday, December 20.

Double ring ceremonies were performed by Ron Gregory of McDade.

Given in marriage by her father, the bride's white velvet bridal gown was accented with a Chantilly lace yoke edged in lace. Gathered full length sleeves extended to wide cuffs. A gathered skirt fell from an empress waistline which ended in wide scallops. Each scallop had a white bow accent. Chantilly lace extended from below the scallops. Pearl buttons were used on the back closure accented with a large white bow at the back waistline. Her finger tipped veil of Chantilly lace was accented with two layers of bridal illusion and attached to a velvet camelot cap.

The bride carried her great-grandmother's Bible, topped with a white orchid, greenery and long white streamers tied in love knots. She had pennies in her shoe in the year of the couple's birth. Keeping with traditional the bride wore her wedding dress for something new, carried her grandmother's Bible for something old; wore pearl earrings for something borrowed from bride's maid; and a baby ring with blue forget-me-nots for something blue.

The maid of honor wore a formal length gown of forest green trimmed in beige lace at the collar, waist and cuffs. Her dress has long straight sleeves, v-neck and a sash in the back. The bride's maid's dress was styled like the maid of honor only in Cranberry red. Each one carried a long-stemmed white rose.

Bob Sistik of Miami, Florida served the groom as best man and Ron White of Corpus Christi served as groomsman.

The church was decorated with an arrangement of Pine branches and white candles in the windows of the church. The couple stood before an arch of pine branches and white candles.

Music selections chosen for the wedding were "Follow Me", "Color My World", "This Guys in Love", "Let It Be Me", Eres Tu. Processional-Faithful and True and in the recessional, "Joyful, Joyful We Adore thee" were sang by Debbie Rich of Floral City, Florida and Chris and Roland Diaz, both of Miami, Florida.

After the ceremony a reception was held in the dining room of the Lariat Church of Christ. Dana McCrary of Big Spring registered the guests. Servers were Mrs. June Teague of Clovis, N.M., sister of the bride and Mrs. Becky Gregory, of McDade.

The table was laid with a red cloth, covered with white lace. Centering the table was a four-tiered wedding cake decorated with roses. The bride's bouquet, crystal punch bowl,

with pale green punch and a dark green ice ring, completed the table decor. A glass swan held green rice bags.

For the couple's wedding trip the bride and groom wore matching blue and white overalls with matching red, white and blue flannel shirts.

The bride graduated from Muleshoe High School in 1972, graduated from ACC, December 1975 with BSed in Art. She is a member of Kappa Delta Pi, CSO, ISTA, NAEA, and SEA.

The groom graduated from Miami Killiam Sr. High School in 1972; graduated from ACC in December of 1974. He is a member of Circle K-Pre., Dorm Pres., Student Advisory Board, Alpha Chi, TASCAs, graduated Camlaude now a student at the University of South Florida Medical School.

Out-of-town guests were Mr. and Mrs. George Newman, George Jr., Gamar, Kyra and Kathy Davis, all of Abilene; Mr. and Mrs. John Hale of Big Spring; Mr. and Mrs. Ed Gray of Lorenzo; Bobby Bryant of Philadelphia, Penn.; Peter Acosta of Miami, Florida; Mr. and Mrs. Leon Coffey and Roger of Friona and Mrs. Bobby Morris of Amarillo.

The couple will be residing at 14001 N. First St. #4, Tampa, Florida.

The couple will be residing at 14001 N. First St. #4, Tampa, Florida.

## Best Of Press

Hazardous Duty

Teachers in some lower grades feel that they are at least entitled to as much pay as other wild animal trainers.

-Herald, Miami.



Mrs. Don Julian

## Gift Coffee Fetes Mrs. Don Lenau

A gift coffee was given in honor of Mrs. Don J. Lenau, Saturday, January 10, in the home of Mr. and Mrs. Vance Wagon. Guests called during the hours of 10:00 and 11:30 a.m.

Registering guests was Mrs. Katie Busbice Nicewarmer of Farwell. Mrs. Charles Ball, Jr. of Muleshoe presided at the

coffee service. The serving table was covered in a white lace cloth over white and featured a dark green Boston Frilled Fern and silver appointments. Refreshments were assorted fruit breads, fresh fruits and coffee.

Hostesses gifts were a round folding table with four matching chairs and the Boston Frilled Fern with its hanging basket.

Mrs. Don Lenau presented the hostesses with their choice of potted house plants.

Serving as hostesses were Mrs. Buck Wood, Mrs. Morris Douglass, Mrs. Howard Elliott, Mrs. Dudley Malone, Mrs. Wilbur LeVeque, Mrs. Sherman Sweatman, Mrs. A.E. Lewis, Mrs. Milton Forbes, Mrs. George Mayo, Mrs. Woodie Lambert, Mrs. Jack Wood, Mrs. Leon Smith, Mrs. Wayne Williams, Mrs. H.D. King, Mrs. Frances Graham, Mrs. Ed Manning and Mrs. Vance Wagon.

## Muleshoe FHA Girls Assist In The March Of Dimes

The Epsilon Chi Chapter of Epsilon Sigma Alpha sorority, along with the FHA girls of Muleshoe High School held their Mothers' March Drive for the March of Dimes, Monday and Tuesday afternoons of this week.

Philanthropic Chairman, Mrs. Derrell Matthews, announced the community of Muleshoe supported the Mothers' March for birth defects with a fantastic response of \$785.00.

Epsilon Chi wants to give their warmest thanks to the following FHA girls: Melody Mauldin, Rosa Guillen, Terri Wilmon, Beatrice Edmundson, Cindy Harris, Debra Washington, Vivian Briscoe, Debbie Hall, Anita Davis, Sherri Edwards, Frances Brown, Jo Linda Hawkins, Dana Holmes and their home economics sponsors, Mrs. Jay Harbin

and Mrs. Derrell Stephens, for their cooperation in helping to make the 1976 Mothers' March the most successful drive, the ESA sorority has ever had in its history in Muleshoe.

ESA also wants to express their appreciation to the news media of Muleshoe; the Muleshoe Publishing Company, Radio KMUL, and the Muleshoe Antenna Company, for the publicity given to the Mothers' March for the March of Dimes. Without their support ESA could not have had a successful campaign march for birth defects.

Most of all Epsilon Sigma Alpha wants to express their appreciation to Muleshoe, the community, for opening up their hearts and giving to such a worthy cause as the March of Dimes.

## ESA Assists In Cancer Society Unit, Tuesday

The Epsilon Chi Chapter of Epsilon Sigma Alpha sorority will assist the local American Cancer Society Unit in setting up a Cancer Awareness Clinic in Muleshoe, Tuesday night, January 20, in the Muleshoe State Bank Community Room, starting at 7:30 p.m.

The instructional film will be on Breast-Self Examination. The clinic will be free, and will be opened to all women of the community. President of ESA, Mrs. Ed Cox, also added the film would be suitable for mothers to bring their teenage daughter. Dr. Jerry Gregory, local physician, will be present to answer any questions.

Make plans to attend the Cancer Awareness Clinic; for breast self-examination, is a woman's best protection against cancer.



A DONATION... Mrs. Derrell Matthews, Philanthropic Chairman of Epsilon Sigma Alpha sorority, is presenting a check to Mrs. Buddy Embry, of the First National Bank, for \$785.00 raised from the volunteers Mothers' March for the March of Dimes.



Mrs. Allen Smyer and Craig

## Coffee Honors Mrs. Smyer And Son, Craig

Mrs. Allen Smyer and baby boy, Craig were honored at a coffee in the home of Mrs. Rickey Barrett, on Wednesday Morning, January 14. The guests were served coffee and doughnuts.

The centerpiece was of pastel blue pompoms accented by a stork. The honored mother and daughter Melissa wore pastel

blue pom corsages. The guests attending were Mrs. Tommy Sisemore and daughters, Mrs. James Brown and daughter, Mrs. Melvin Morris and daughter, Mrs. Lee Embry and son, sister-in-law of the honoree, Mrs. Chester Embry, Mrs. Smyers and Mrs. Gerald Shanks, an aunt, Mrs. Ronnie Barrett and daughter, Mrs. Gary Elliott and son, Mrs. Jim Crawford, Mrs. Wayne Peterson, and Mrs. Ricky Barrett and son.

## To Be Wed

Janice Cain of Farwell and Gene Snell of Oklahoma Lane are to be married, Friday, February 6, at 8:00 CST at Westbrook Baptist Church, 1420 Thornton in Clovis.

**Henry Block has 17 reasons why you should come to us for income tax help.**

Reason 16. We'll try to do everything we can to save you money. After all, we want your business again next year.



**HENRY BLOCK**  
THE INCOME TAX PEOPLE  
224 W 2nd  
Weekdays - 9-6 Sat - 9-5  
272-3283

**ATTENTION MULESHOE AREA CATTLEMEN**  
...In regard to dead stock removal... If you have a problem with service... whether in the feed yard or on the farm... Please give US a chance! Thank You.  
**YOUR LOCAL USED COW DEALER IN MULESHOE**  
Ph. 965-2903  
Mobil 965-2429  
**Muleshoe BI-Products**

# SALE

# 79¢

**IT'S A BIG 'UN!**

Bust your belt while you ease up on your pocketbook.

The 79c Beltbuster: two big patties cooked from a fresh start, giant bun to load 'em on, garnished with crispy lettuce, crunchy pickles, juicy tomatoes, the works!

The 79c Beltbuster Sale. A really big deal in more than 900 neighborhood Dairy Queen stores.

**Wednesday through Sunday only, JANUARY 14 THROUGH 18**  
At participating stores.

## BESTFORM® SILVER SAVER™

**PANTS LINER**  
\$6.

Specially designed to control you under slacks, ski pants and pant suits. Nylon and Lycra® spandex. Double panels front and sides, curving rear control for a slim long look. Tri-col stretch. Sizes S thru XXXL.

**LADIES' STRETCH PANTIES**  
76c 3 for \$2

All Helanca stretch nylon panty brief with cotton seat. One size. White and pastel shades.

**FIBERFILL CROSS-OVER DOUBLE KNIT BRA**  
2.59 2 for \$5

Cross-over design with adjustable stretch straps for comfort. Entire bra of white lustrous double knit. Thin, flat, "no show" cup seams. Sizes 32-38, A-B-C.

**"It's Your Best Buy" PANTY GIRDLE**  
4.99 5.99

A. Panty girdle in sizes M-L, XL-XXL. B. Extra size panty girdle in sizes 32-42.

If you want a lightweight figure firming Nylon/Lycra® power-net panty girdle with reinforced control panels, detachable garter, nylon tricot stretch at a low price... this is it. White only.

**PERFECT FOR THE TEENS**  
2.29

Comfortable, good fitting. Smooth nylon lace cups with light fiberfill padding and continuous elastic band bottom. Lycra® stretch sides and back. Sizes 28-36, A-A-A.

**Seamless FIBERFILL BRA**  
2.59 2 for \$5

Fantastic bra with ultra smooth cup of light fiberfill padding. Lycra® stretch band bottom, back and sides. Adjustable stretch straps. Sizes 32-38, A-B-C.

**FRONT HOOK CONVERTIBLE BRA**  
2.59 2 FOR \$5.

100% polyester lightly padded with Kodol® Polyester fiberfill for natural shaping. Straps convert to halter. Nylon, Lycra® Spandex sides and back. Sizes 32-38 A-B-C.

**FULL-FIGURE BRA**  
2.59 2 for \$5

Lycra® spandex stretch band back and sides. Smooth double knit cup. Sizes 34-44 B-C-D.



## STATE CAPITAL Highlights AND Sidelights

by Lyndell Williams  
TEXAS PRESS ASSOCIATION

**AUSTIN** — The Texas Senate resumed its long-delayed trial of the O. P. Carrillo impeachment case after taking steps to shorten the proceedings.

In spite of warnings by their counsel, Leon Jaworski, senators voted to accept the entire transcript of a Judicial Qualifications Commission removal hearing on Carrillo for use in the trial.

Attorneys estimated use of the JQC testimony and exhibits may shorten the Senate proceeding from the

expected six weeks or more to three.

Meanwhile, the Judicial Qualifications Commission continued to move forward on its own course toward continuing the 229th district judge from office.

Carrillo's attorney, Arthur Mitchell of Austin, made clear he will try to show the impeachment effort was launched as the result of a political break between the Carrillo and George Parr factions in stormy Duval County last year.

Carrillo has been suspended from his court since last August when the House of Representatives voted articles of impeachment, but he continues to draw full pay.

### Bentsen Starts

U. S. Sen. Lloyd Bentsen began his re-election cam-

aign with a two-day barnstorming tour which ranged from Houston to the Panhandle and from Dallas/Fort Worth to San Antonio.

Bentsen also campaigned in Austin, Lubbock, Amarillo, Abilene and Laredo.

### Senate Inquiry

A new task force is investigating tangled state Senate financial affairs over a five-year period.

The inquiry is part of the independent investigation set in motion by Atty. Gen. John Hill after indictment of Senate Secretary Charles Schnabel on charges of theft and misconduct.

Sensors voted last week to keep Schnabel, who has been their chief administrative officer for 20 years, on the job pending trial on the charges.

### Lease Sales Set

The School Land Board has scheduled oil, gas and sulphur lease sales February 3, June 1 and October 5 to encourage domestic exploration and development.

Total bonuses received from three oil and gas lease sales last year came to

more than \$11.8 million.

Primary areas of interest in the 1976 sales are the lower Laguna Madre and the central coastal region near Matagorda Island. The latter has been restricted to development because of activities on the now-abandoned U. S. Air Force Base and bombing range.

### Hearings Begin

The Railroad Commission will start a series of hearings February 3 in Austin and Dallas which could have significant impact on shippers of packages weighing from 100 to 350 pounds.

Nine carriers seek to show present service is inadequate. More than two dozen carriers already operating protest the applications.

### Courts Speak

The Texas Supreme Court refused to grant Texaco Inc.'s application for writ of error in a case that could have cost the state \$30.8 million in franchise tax revenues. The decision again upheld constitutionality of the state's method of collecting franchise taxes from multi-national corpo-

rations.

In another case, the high court affirmed a \$134,156 judgement against Texaco, favoring a Sweetwater man hurt when oilfield equipment fell on him in a warehouse.

Court of Criminal Appeals reversed a Hillsboro murder case because a divorce petition filed by the slain woman was read to the jury by a prosecutor.

### AG Opinions

Salaries of state employees and officers may not be supplemented unless the source of the supplement is reported to the Secretary of State, Attorney General Hill held.

Comptroller Bob Bullock said, on the basis of the new opinion, he will issue no state warrant to personnel receiving supplements from unidentified sources.

In other recent opinions, Hill concluded:

Examinations given by

the Merit System Council to prospective employees are confidential by law and excepted from the Open Records Act.

### Appointments

Gov. Dolph Briscoe reappointed William B. Blake II of Midland to the Public Safety Commission for a six-year term.

Ray D. Payne will head the new Texas Railroad Commission surface mining and reclamation division.

Gerald P. Coley of Houston was appointed chairman of a special State Bar committee to study the American Bar Association proposal to relax restrictions on lawyer's advertising.

Briscoe appointed Dr. Nathan Hale Pepper of Galveston to the Texas Board of Physical Therapy Examiners.

And he named William W. Fisher of Houston to the

Polygraph Examiners Board.

Bill Wright of Austin recently was picked by U. S. Sen. Lloyd Bentsen to head up his 1976 Senate campaign in Texas.

Richard W. Harrison of Hughes Springs will head the attorney general's tax division.

Sen. Lindon Williams of Houston is serving as general chairman for the Texas Medal of Honor Grove Committee. The Grove, in Valley Forge, Pa., is a permanent memorial to war heroes.

### Short Snorts

The state's unemployment rate dropped near the end of the year to six per cent. National rate was 7.8

per cent.

Domestic oil and gas men drilled more wells last year than anytime since 1966.

The new Texas Register publication of agency orders, rules and meeting notices began rolling off the presses this month. It sells for \$25 a year and is put out by the Secretary of State.

The Texas Ranger Hall of Fame will be dedicated in Waco February 6-7.

Texas farms and ranches will decline by 2,000 — a loss of one per cent — in 1976. There are now 207,000.

U. S. Sen. John Tower is spending 10 days in the state and has scheduled visits in a dozen cities.

## Local Cadets Earn Honors

**ROSSELL** — Two Muleshoe youths are among the 200 New Mexico Military Institute cadets who earned President's List honors during the fall semester grading period, according to the President's Office of the Institute.

Cadets George A. Mitchell, the son of Mr. and Mrs. George Mitchell, P.O. Box 89, and Ronald D. Davis, the son of Mrs. Mary Porter Davis, Route 3, 407 Ihaca, are President's List honorees on the merits of their military science and department grades as well as their classroom performance.

President's List scholars are those earning a B plus average or above in their academic subjects and A's in Military Science and Department. Only just above 10 percent of the Corps achieve this high honor consistently, as the demands of the scholar extend beyond academic marks into the realm of demonstrated school citizenship and displayed leadership.

## Morton Area Students On Dean's List

**LEVELLAND** — A total of 25 students from the Morton area have been named to the dean's honor list for the fall 1975 semester at South Plains College. Morton, Whiteface, Pep, Enochs, Maple and Sundown are represented on the honor roll.

In order to be named to the SPC dean's list, students must maintain a 3.25 grade point average while carrying 12 or more semester hours with no failing grades, announced Nathan Tubb, academic dean at SPC. Seven students from the Morton area earned all A's (4.0) during the semester.

Students named to the honor roll grouped by hometowns are as follows:

**MORTON:** Debra Adams, Donna Coleman, Melody Crone (4.0), Susan Dubberly (4.0), Debra Furgeson (4.0), Susan Legan, Tommy Lewis, Marie Lowe, Kathy Mason, Robert Perry, Charles Rice, Thomas Rice (4.0) and Debra Sue Wells.

**WHITEFACE:** Fred Allen, James Bills (4.0), Allen Cooper, Rita Craddock, Rebecca Owens, Richard Stocks (4.0) and Leslie Johnson.

**PEP:** Roger Vick.

**ENOCHS:** Jerry Sowder (4.0).

**MAPLE:** Avelina Estrada.

**SUNDOWN:** Jervadean Carpenter and Eva Parker.

## Students On Dean's List

**PORTALES** — Senior Johanna Wrinkle, freshman Marcia L. Rudd and senior Mary K. Jennings of Muleshoe have been named to the 1975 fall semester Dean's Honor Roll at Eastern New Mexico University, according to Dr. George Jones, interim vice president for Academic Affairs.

To be included on the Dean's Honor Roll, students must have earned a 3.25 or better grade point while enrolled in 15 or more hours of academic credit courses. Students at Eastern are graded on a 4.0 scale.

More than 4,200 students from all New Mexico counties, 49 states, and several foreign countries, were enrolled during the fall semester.

## Belton Hearing Aids



KEN WADE

\*Free Hearing Tests  
\*Clean And Adjust Hearing Aids  
\*Sell Fresh Batteries  
\*Clean And Service All Brands Hearing Aids  
In Muleshoe the 2nd Wednesday of each month.

Highland Motel  
10:00 - 1:00

2815 AVE. Q  
LUBBOCK, TEXAS  
747-1675

An investment in Your Future

# ATTEND CHURCH

## The Carpenter's FRIEND

To build... one must have plans, and plans give exact measurements. The carpenter who makes careful measurements finds that the work is made easier. Careful measuring prevents waste... waste of time and materials. Therefore the measuring device is truly a friend to the carpenter.

The church wants to be your friend, and help you to a easier and better way of life. The Bible clearly gives us a way to measure life. Through many centuries man has found no better rules than those given in the Bible.

Attend church and receive the friendly welcome that awaits you.



The Church is God's appointed agency in this world for spreading the knowledge of His love for man and of His demand for man to respond to that love by loving his neighbor. Without this grounding in the love of God, no government or society or way of life will long persevere and the freedom which we hold so dear will inevitably perish. Therefore, even from a selfish point of view, one should support the Church for the sake of the welfare of himself and his family. Beyond that, however, every person should uphold and participate in the Church because it tells the truth about man's life, death and destiny, the truth which alone will set him free to live as a child of God.

**GIBSON'S**  
DISCOUNT CENTER  
1723 West American Blvd.  
272-4306

SPANISH BAPTIST MISSION  
E. 3rd and Ave. E  
John Jaquez, Pastor

PROGRESS SECOND BAPTIST CHURCH  
Clifford Slay, Pastor  
1st and 3rd Sundays  
MULESHOE BAPTIST CHURCH  
8th Street & Ave. G  
Bob Dodd, Pastor  
ST. JOHN LUTHERAN  
Lariat, Texas  
Herman J. Scholter-Pastor  
Sunday School Classes  
10:00 a.m.  
Worship Services  
11:00 a.m.

FIRST BAPTIST CHURCH  
220 W. Ave. E  
Rev. J. E. Meeks  
SPANISH ASSEMBLY OF GOD  
East 6th and Ave. F  
Rev. Hipolito Pecina

ST. MATTHEW BAPTIST CHURCH  
W. Third  
E. McFrazier, Pastor

NORTHSIDE CHURCH OF CHRIST  
117 E. Birch Street

PROGRESS BAPTIST CHURCH  
Progress, Texas  
Danny Curry

SIXTEENTH & D CHURCH OF CHRIST  
Sunday-10:30 a.m.  
Evening-6 p.m.  
Wednesday-8 p.m.  
Terry Bouchelle, Minister

IMMACULATE CONCEPTION CATHOLIC CHURCH  
Father Timothy Schwertner  
Northeast of City in Morrison Edition

MULESHOE CHURCH OF CHRIST  
Clovis Highway  
Royce Clay, Minister

Treflan 119.25/5 Gal  
Eradicane 18.00/Gal  
Altrex 2.50/Lb.  
Milogard 2.53/Lb.  
Heptaclor 2.35/Lb.

**CASH**  
(WHILE IT LASTS)

**EARTH AG SUPPLY INC.**  
EARTH, TEX. 806-257-3762

Compliments of <b>AVI, INC.</b> Hwy. 84 W. 272-4266	Compliments of <b>CHARLES LENAU LUMBER CO.</b> 202 E. Ash St. 272-4222	<b>TORO GRAIN</b> Division of Olton Feed Yards, Inc. Olton, Texas 285-2634	<b>LEO'S BLACKSMITH &amp; MACHINE SHOP</b> Welding & Pump Service 310 W. American Blvd. 272-4418
<b>BEAVERS FLOWERLAND</b> "Flowers for all occasions" 272-3024 or 272-3116	<b>MORRISON OIL COMPANY</b> Consignee for Texaco, Inc. 272-4688	<b>HOWARD I. WATSON</b> Alfalfa Hay 272-3552 272-4038	<b>MAIN STREET BEAUTY SALON</b> 115 Main 272-3448
<b>BERRY ELECTRIC</b> Residential-Commercial-Industrial service 104 E Ave B 272-3375 Res #272-4746	<b>MULESHOE CO-OP GINS</b>	<b>WESTERN DRUG</b> 114 Main	<b>MULESHOE MACHINE &amp; WELDING</b> Gear Head repair, Sales & Service. 123 Fir St. 272-3145
<b>BRATCHER MOTOR SUPPLY</b> 107 E Avenue B 272-4288	Compliments of <b>HENSLEY RUSSELL, INC.</b>	<b>WHITE'S CASHWAY GROCERY</b> 402 Main "Where friends meet and price is talk"	<b>SOUTHSIDE GULF</b> Road Service 501 S 1st 272-4818
<b>DOLLY CUP DRIVE IN</b> Hamburgers-chicken-shrimp Twist Cone Ice Cream 102 E Ave B 272-8957	<b>ST. CLAIR'S</b> 110 Main	<b>WHITT-WATTS-REMPE IMPLEMENT CO.</b> John Deere dealer Muleshoe 272-4297	<b>SPUDNUT SHOP</b> 328 Main 272-3542
<b>Dairy Queen</b> Manager 27-3412	Compliments of <b>STATE LINE IRRIGATION</b> Littlefield-Muleshoe-Levelland	<b>WRINKLE WELDING &amp; MACHINE</b> 909 W. American Blvd. 272-4486	<b>WEST 6TH TEXACO</b> Road Service 272-4633 W 6th at W. American Blvd.





# MULE'S TALE



Official Publication of Muleshoe High School Written and Edited by Students of the Muleshoe Schools

Vol. 10 Number 3

EDITOR Jana Bruns

Sunday, January 18, 1976

## Young Homemakers Attend State Convention



STEPHANIE BRANTLEY



SUSAN CRITTENDEN



SHARLA FARMER



EVELYN GRACE



ANNA HERNANDEZ



BETH WHITT



JANET HOPPER



CHERYLEE BRYANT



CONNIE HARMON



ELIZABETH ISAAC



DANI DUNHAM



SHAE PENNA

Representatives for the Muleshoe Chapter of Young Homemakers of Texas attended the YHT State Convention in Houston along with over 700 Young Homemakers from chapters all across the state.

"Our Heritage, Our Homes, Our Hope" was the theme of the 1976 state meeting which was held at the Marriott Motor Hotel in Houston on January 16 and 17. Mrs. Mike Richardson, Muleshoe Chapter Vice-President and Program Chairman, and Advisor, Mrs. Dorine Harbin represented the Muleshoe Chapter.

The keynote speaker for the two-day event was Bill Thompson, journalist, lecturer, and expert on nuclear energy.

Thompson, Supervisor of Information Services, Texas Power and Light Company, has twice been the recipient of the Freedoms Foundation's prestigious George Washington Honor Medal. His address for Young Homemakers to Texas was entitled "You Can't Go Home Again."

A Bicentennial Highlight of the convention was Friday afternoon's presentation, "Singing With the President," by Mrs. Morgan Willeford of Longview. Period costume enhanced this unique musical view of our country's history.

on Saturday with "The Importance of Being a Woman." A Friday noon luncheon recognized the 1975 Outstanding Chapter, Outstanding New Chapter, and State Little Sister. The winners were presented YHT awards at the luncheon which is jointly sponsored by Young Homemakers of Texas, Young Farmers of Texas and Texas Electric Cooperatives.

On January 17, the voting delegates elected a new president to succeed Mrs. Eileen Koliba, Port Lavaca, who served in 1975. Officers recently elected to begin a two-year term on the State Executive Committee are Mrs. Kay Hallman, Sweetwater; Mrs. Billie McKeever, Haskell; Mrs. Peggy Hannah,

Tyler; Mrs. Rebecca Vasquez, Somerville; and Mrs. Joyce Eichhorn, Yorktown. Continuing to serve on the State Executive Committee are Mrs. Nancy Cannon, Hale Center; Mrs. Barbara Wayland, Houston; Mrs. Jeanne Kreymer, Wylie; Mrs. Johnnie Kay Peril, Harper; and Mrs. Nancy McLeone, San Augustine.

Young Homemakers of Texas is a state association of young women not over 35 years of age who are interested in improving their knowledge and skills related to homemaking. Homemaking Education, Texas Education Agency, sponsors this organization. Homemaking teachers serve as chapter advisors.

## Letter To Parent Concerns Lunches

Editors note: Tom G. Jinks, director of special programs sent the following letter to parents of students:

The Muleshoe Schools serve nutritious meals every school day. Students may buy lunch for - Kindergarten, First and Second - 50 cents; Third, Fourth, and Fifth - 55 cents; Sixth through Twelfth - 65 cents and extra milk for five cents.

Children from families whose income is at or below levels shown on the attached scale are eligible for free or reduced-price meals. If the children are eligible for free meals they are also eligible for free extra milk. The reduced price for lunch is 20 cents. If your income is greater than those shown, but you have unusually high medical bills, shelter costs in excess of 30 percent of your income, special education expenses due to the mental or physical condition of a child, or disaster or casualty losses, your children may still be eligible.

The school children of parents or guardians who become unemployed or eligible for free or reduced-price meals and free milk during the period of unemployment, provided that the loss of income causes the family income during the period of unemployment to be at or below the levels shown on the scale.

To apply at any time during the year for free meals and free milk or reduced-price meals for your children, complete the attached application and return it to the school. Within ten days of receiving your application, the school will let you know whether or not your children are eligible. If you do not agree with the school's decision you have a right to a fair hearing. This can be done by calling or writing Neal B. Dillman, Supt. - 272-

3389 - 514 West Ave. G., Muleshoe, Texas.

In certain cases foster children are also eligible for these benefits. If you have foster children living with you and wish to apply for such meals and milk for them, please notify us or indicate it on the application. All children are treated the same regardless of ability to pay. In the operation of child feeding programs, no child will be discriminated against because of race, sex, color, or national origin.

## February Honor Students

Honor students for the month of January are Senior Bill Durham, Junior Susan Puckett, Sophomore Connie Harmon, and Freshman Karen Stovall.

Bill is the son of Mr. and Mrs. C.W. Durham. Bill is President of the Speech and Drama organization, reporter for the National Honor Society, and is involved in one-act plays. Susan Puckett is the daughter of Mr. and Mrs. Vernon Puckett. Susan's activities include art. Connie Harmon is the daughter of Mr. and Mrs. Don Harmon. Connie participates in speech contests, FTA, and Student Council. She is a Basketball manager, and is Secretary-Treasurer for the sophomore class. Karen is the daughter of Mr. and Mrs. David Stovall. Karen is involved in Basketball, Student Council, and FTA. Congratulations to these students for being elected Honor students of the month!!!!

If we can be of any further assistance or if your family size or income changes during the year, please contact us.

Applications may be obtained at Richland Hills, Mary DeShazo, Muleshoe Junior High, and Muleshoe High School.

Family size of one; Annual family income for free meals, up to \$3,230; Annual family income for reduced-price meals, \$3,230 - \$5,040.

Family Size of two; Annual family income for free meals, up to \$4,240; Annual family income for reduced-price meals, \$4,240 - \$6,620.

Family size of three; Annual family income for free meals, up to \$5,250; Annual family income for reduced-price meals, \$5,250 - \$8,200.

Family size of four; Annual family income for free meals, up to \$6,260; Annual family income for reduced-price meals, \$6,260 - \$9,770.

Family size of five; Annual family income for free meals, up to \$7,190; Annual family income for reduced-price meals, \$7,190 - \$11,210.

Family size of six; Annual family income for free meals, up to \$8,110; Annual family income for reduced-price meals, \$8,110 - \$12,650.

Family size of seven; Annual family income for free meals, up to \$8,950; Annual family income for reduced-price meals, \$8,950 - \$13,970.

Family size of eight; Annual family income for free meals, up to \$9,790; Annual family income for reduced-price meals, \$9,790 - \$15,280.

Family size of nine; Annual family income for free meals, up to \$10,550; Annual family income for reduced-price meals, \$10,550 - \$16,460.

Family size of 10; Annual family income for free meals, up to \$11,310; Annual family income for reduced-price meals, \$11,310 - \$17,640.

Family size of 11; Annual family income for free meals, up to \$12,060; Annual family income for reduced-price meals, \$12,060 - \$18,820.

Family size of 12; Annual family income for free meals, up to \$12,810; Annual family income for reduced-price meals, \$12,810 - \$20,000.

Each additional family member, add \$750 for free meals and \$1,180 for reduced-price meals. Price charged for reduced price lunch - 20 cents.

Family income for free meals, up to \$7,190; Annual family income for reduced-price meals, \$7,190 - \$11,210.

Family size of six; Annual family income for free meals, up to \$8,110; Annual family income for reduced-price meals, \$8,110 - \$12,650.

Family size of seven; Annual family income for free meals, up to \$8,950; Annual family income for reduced-price meals, \$8,950 - \$13,970.

Family size of eight; Annual family income for free meals, up to \$9,790; Annual family income for reduced-price meals, \$9,790 - \$15,280.

Family size of nine; Annual family income for free meals, up to \$10,550; Annual family income for reduced-price meals, \$10,550 - \$16,460.

Family size of 10; Annual family income for free meals, up to \$11,310; Annual family income for reduced-price meals, \$11,310 - \$17,640.

Family size of 11; Annual family income for free meals, up to \$12,060; Annual family income for reduced-price meals, \$12,060 - \$18,820.

Family size of 12; Annual family income for free meals, up to \$12,810; Annual family income for reduced-price meals, \$12,810 - \$20,000.

Each additional family member, add \$750 for free meals and \$1,180 for reduced-price meals. Price charged for reduced price lunch - 20 cents.

Family income for free meals, up to \$7,190; Annual family income for reduced-price meals, \$7,190 - \$11,210.

Family size of six; Annual family income for free meals, up to \$8,110; Annual family income for reduced-price meals, \$8,110 - \$12,650.

Family size of seven; Annual family income for free meals, up to \$8,950; Annual family income for reduced-price meals, \$8,950 - \$13,970.

Family size of eight; Annual family income for free meals, up to \$9,790; Annual family income for reduced-price meals, \$9,790 - \$15,280.

Family size of nine; Annual family income for free meals, up to \$10,550; Annual family income for reduced-price meals, \$10,550 - \$16,460.

Family size of 10; Annual family income for free meals, up to \$11,310; Annual family income for reduced-price meals, \$11,310 - \$17,640.

Family size of 11; Annual family income for free meals, up to \$12,060; Annual family income for reduced-price meals, \$12,060 - \$18,820.

Family size of 12; Annual family income for free meals, up to \$12,810; Annual family income for reduced-price meals, \$12,810 - \$20,000.

Each additional family member, add \$750 for free meals and \$1,180 for reduced-price meals. Price charged for reduced price lunch - 20 cents.

Family income for free meals, up to \$7,190; Annual family income for reduced-price meals, \$7,190 - \$11,210.

Family size of six; Annual family income for free meals, up to \$8,110; Annual family income for reduced-price meals, \$8,110 - \$12,650.

Family size of seven; Annual family income for free meals, up to \$8,950; Annual family income for reduced-price meals, \$8,950 - \$13,970.

Family size of eight; Annual family income for free meals, up to \$9,790; Annual family income for reduced-price meals, \$9,790 - \$15,280.

Family size of nine; Annual family income for free meals, up to \$10,550; Annual family income for reduced-price meals, \$10,550 - \$16,460.

Family size of 10; Annual family income for free meals, up to \$11,310; Annual family income for reduced-price meals, \$11,310 - \$17,640.

Family size of 11; Annual family income for free meals, up to \$12,060; Annual family income for reduced-price meals, \$12,060 - \$18,820.

## Sophomore Mulettes Featured

This week the Mule's Tale Staff is presenting the sophomore Mulettes and the team managers. These sophomores represent the players that the coaches will depend on now and in the future. The managers work hard for the team so that the players can practice and play without interference.

Stephanie Brantley is the 15 year old daughter of Mr. and Mrs. Curby J. Brantley. She is a sophomore who lists her activities as FTA and basketball. Stephanie is a guard on the Junior Varsity.

Susan Crittenden is a 16 year old sophomore who takes an active part in FTA and basketball. She is also a Junior Varsity Cheerleader. Susan is a Varsity guard and the daughter of Mr. and Mrs. Wayne Crittenden.

Sharla Farmer is the sophomore daughter of Mr. and Mrs. Charles Farmer. She is a 15 year old who participates in Ag I and basketball. Sharla is a Junior Varsity guard.

Evelyn Grace is a sophomore Varsity forward. At school, her activities include Drama and basketball. Evelyn is the 16 year old daughter of Mr. and Mrs. Albert Grace. When asked about her opinion on basketball, Evelyn replied, "I think basketball is a great sport. I love to play. This year our team is very young and inexperienced; however, the team does have good potential."

Anna Hernandez is a sophomore at M.H.S. She is a Junior Varsity guard who enjoys basketball. Anna is the 17 year old daughter of Mr. and Mrs. Frank Hernandez.

Beth Whitt plays forward on the Junior Varsity and she has also had some Varsity experience this year. She is a 15 year old sophomore. Beth is the daughter of Mr. and Mrs. Roy Whitt. She commented, "I think we have outstanding basketball teams this year. We are improving each year and we should have a great season next year. The greatest thing the Mulettes have is sportsmanship."

Janet Hopper has served the Mulettes this year as the Senior manager. She is the 17 year old daughter of Mr. and Mrs. Sam Hopper. Janet is involved in FTA, the Contest Play, and the Youth Board. She gave this comment, "At this time, our

record is 11 wins and 10 losses. I have worked closely with these girls and I feel that if they link up and play as a team, they can do well in the district games."

Cheryl Lee Bryant is a basketball manager. She is a sophomore and an FTA member. She is the 15 year old daughter of Mr. and Mrs. Jess Bryant.

Connie Harmon is another sophomore manager. She is the 15 year old daughter of Mr. and Mrs. Don Harmon. Connie is active in FTA, Speech, Student Council; and she is a sophomore class officer.

Elizabeth Isaac is the 15 year old daughter of Mr. and Mrs. Charles Isaac. She is a sophomore forward. Elizabeth lists her activities as band and basketball. She commented, "Although we have a young team, we have gained a lot of experience this year. Next year, we hope to have the best team we've ever had."

Dani Dunham is a sophomore. She is a J.V. Cheerleader who is involved in basketball. She is a sophomore Junior Varsity guard.

Congratulations to the Sophomore Mulettes who contribute so much to the overall effort of the team.

Dunham are Dani's parents. Dani said, "We have done well this year, and I am looking forward to the District games. I believe we have a chance in district, although Canyon will be tough. We will be hustling extra hard."

Shae Penna is the 16 year old daughter of Mrs. Nancy Miller. She is a J.V. Cheerleader who is involved in basketball. She is a sophomore Junior Varsity guard.

Congratulations to the Sophomore Mulettes who contribute so much to the overall effort of the team.

Elizabeth Isaac scored 12 points; and Evelyn Grace scored 20 points; Joie Carpenter led the guards with 4 rebounds and 5 steals; Cindy Isaac had 4 rebounds; Tanya Burton had 1 rebound and 3 steals; Nancy Ramm had 1 steal; and Susan Crittenden had 4 rebounds and 2 steals.

The improving Mulettes have won seven of their last nine games as they head into district play this week. Tuesday the Mulettes will play at Levelland and Friday they will play at Canyon.

On January 9, the Varsity Mulettes lost to Roosevelt 43-34. The Mulettes' defense did an excellent job as they held Roosevelt to only 43 points. Roosevelt has lost only one game. The Junior Varsity Mulettes raised their record to 11-2 with a 40-36 victory over Roosevelt's J.V.

Tuesday, January 13, the Varsity Mulettes played a solo game against Cooper. The Mulettes got their 11th win this season by beating Cooper 65-62. In this game, the forwards shot 83 percent from the free throw line, their best effort this year. Sheryl Stovall scored 33 points;

Elizabeth Isaac scored 12 points; and Evelyn Grace scored 20 points; Joie Carpenter led the guards with 4 rebounds and 5 steals; Cindy Isaac had 4 rebounds; Tanya Burton had 1 rebound and 3 steals; Nancy Ramm had 1 steal; and Susan Crittenden had 4 rebounds and 2 steals.

The improving Mulettes have won seven of their last nine games as they head into district play this week. Tuesday the Mulettes will play at Levelland and Friday they will play at Canyon.

On January 9, the Varsity Mulettes lost to Roosevelt 43-34. The Mulettes' defense did an excellent job as they held Roosevelt to only 43 points. Roosevelt has lost only one game. The Junior Varsity Mulettes raised their record to 11-2 with a 40-36 victory over Roosevelt's J.V.

Tuesday, January 13, the Varsity Mulettes played a solo game against Cooper. The Mulettes got their 11th win this season by beating Cooper 65-62. In this game, the forwards shot 83 percent from the free throw line, their best effort this year. Sheryl Stovall scored 33 points;

Elizabeth Isaac scored 12 points; and Evelyn Grace scored 20 points; Joie Carpenter led the guards with 4 rebounds and 5 steals; Cindy Isaac had 4 rebounds; Tanya Burton had 1 rebound and 3 steals; Nancy Ramm had 1 steal; and Susan Crittenden had 4 rebounds and 2 steals.

The improving Mulettes have won seven of their last nine games as they head into district play this week. Tuesday the Mulettes will play at Levelland and Friday they will play at Canyon.

On January 9, the Varsity Mulettes lost to Roosevelt 43-34. The Mulettes' defense did an excellent job as they held Roosevelt to only 43 points. Roosevelt has lost only one game. The Junior Varsity Mulettes raised their record to 11-2 with a 40-36 victory over Roosevelt's J.V.

Tuesday, January 13, the Varsity Mulettes played a solo game against Cooper. The Mulettes got their 11th win this season by beating Cooper 65-62. In this game, the forwards shot 83 percent from the free throw line, their best effort this year. Sheryl Stovall scored 33 points;

Elizabeth Isaac scored 12 points; and Evelyn Grace scored 20 points; Joie Carpenter led the guards with 4 rebounds and 5 steals; Cindy Isaac had 4 rebounds; Tanya Burton had 1 rebound and 3 steals; Nancy Ramm had 1 steal; and Susan Crittenden had 4 rebounds and 2 steals.

The improving Mulettes have won seven of their last nine games as they head into district play this week. Tuesday the Mulettes will play at Levelland and Friday they will play at Canyon.

On January 9, the Varsity Mulettes lost to Roosevelt 43-34. The Mulettes' defense did an excellent job as they held Roosevelt to only 43 points. Roosevelt has lost only one game. The Junior Varsity Mulettes raised their record to 11-2 with a 40-36 victory over Roosevelt's J.V.

Tuesday, January 13, the Varsity Mulettes played a solo game against Cooper. The Mulettes got their 11th win this season by beating Cooper 65-62. In this game, the forwards shot 83 percent from the free throw line, their best effort this year. Sheryl Stovall scored 33 points;

Elizabeth Isaac scored 12 points; and Evelyn Grace scored 20 points; Joie Carpenter led the guards with 4 rebounds and 5 steals; Cindy Isaac had 4 rebounds; Tanya Burton had 1 rebound and 3 steals; Nancy Ramm had 1 steal; and Susan Crittenden had 4 rebounds and 2 steals.



We are proud of the three seniors, Carey Sudduth, Tommy St. Clair, and Robert Shafer. All of these boys are starters on our team and they do a good job on the playing floor. Not only do they do a good job on the playing floor, but they are also outstanding in leadership and encouraging our young players. The relationship between our seniors and younger players is really amazing and is one of the joys in coaching. When you have a group of players that are unselfish and are dedicated to the team, we are going to win some games against some teams who may have more talent than we have. All of this would not be possible if it were not for our three Senior leaders.

This week the Mules start district play with Perryton. Next week the Mules will travel to Levelland on Tuesday and to Canyon on Friday.

**Basketball Roster**  
SENIORS: Robert Shafer, Tommy St. Clair and Carey Sudduth.

JUNIORS: Gary Herring, Mike Wisian, Randy Whalin, Joe Don Prather, Jimmy Ybarra and

Ricky Hayes.  
SOPHOMORES: Dean Northcutt, Mark Washington, Billy Vinson, Marcus Beversdorf, Brad Baker, Danny Wilson, Curtis Carpenter, Doug Precure, Mack Norman, Billy James and Edwin Watson.  
MANAGER: Kim Helker.  
STATS: Doug Cowan, Tom Pepper.

## Junior Class Plans Events

To get the new year off to a good start, the Junior Class held a class meeting in the auditorium Monday, January 12, 1976. With Gary Gunter presiding over the meeting, topics discussed were the stock shows and the Junior-Senior Banquet committee.

The Junior Class will have the concession stand at the stock shows both January 17 and February 6. Juniors signed up to bring food and work in the concession stand. Another line of business was the Theme committee for the Banquet in May. Those on the committee are Gary Gunter, Patty Pena, Patti Poyner, Sheryl Stovall, Nicky Bamert, Darrell Rasco, Donita Dale, Karen Head, Fran Dunbar, Laura Been, Cindy

Issac, Jo Roring, Tanya Burton, Tammy Bruns, Jed Davis, Robert Martin, Robert Brown, Renee Douglas, Lupe Audis, Dora Torres, Eva Gonzales, and Belinda Augiano.



SUSAN PUCKETT



CONNIE HARMON



KAREN STOVALL



BILL DURHAM

## FTA Has Teaching Project

Muleshoe High's Blackburn-Moore FTA Chapter has initiated a new project for the 1975-76 school year. The project is teaching basic English and vocabulary to the Vietnamese students and their parents.

The program began in November and continues every Tuesday evening from 7:30 - 9:30 in the high school.

Future Teacher members divide into several groups and teach according to age levels and the necessary English needed to communicate with others.

Members helping with the project are Alta Ramm, Sherrill Rasco, Donann Harmon, Janet Hopper, Linnie Davis, and Jack Barber. FTA members are enjoying the project because they are teaching a group of students and parents who want to learn and are very enthusiastic about learning.

The FTA Chapter plans to enter this project in state competition at the state convention in February.

## Speech Dept.

January 16-17 - Midland Tournament.

February 7 - Hereford Tournament.

February 13-14 - Texas Tech Tournament.

February 20-21 - West Texas State Tournament.

March 13 - Cooper of Lubbock Tournament.

March 20 - Friona Tournament.

April 3 - District One Act Play Contest - Claridon College.

April 9 - District Literary Tournament - WISU.

April 22-23-24 - Odessa College Regional Tournament.

May 7-8-9 - University of Texas State Tournament.



### Muleshoe School Lunch

January 19-23, 1976  
**MONDAY**  
 Milk  
 Barbeque on Bun  
 Pinto Beans  
 Macaroni Salad  
 Buns  
 Apricot Cobbler  
**TUESDAY**  
 Milk  
 Hamburger  
 Pickles & Onions  
 Lettuce and Tomato Salad  
 Tater Tots  
 Buns  
 Peanut Butter Confection  
**WEDNESDAY**  
 Milk  
 Turkey and Dressing  
 Cranberry Sauce  
 Green Beans  
 Candied Yams  
 White Bread  
 Fruit Crisp

**THURSDAY**  
 Milk  
 Corn Dogs  
 Cheese Sticks  
 Crackers  
 Veg. Beef Soup  
 Cinnamon Rolls  
**FRIDAY**  
 Milk  
 Fish Portions  
 Eng. Peas  
 Creamed Potatoes  
 Hot Rolls  
 Strawberry Shortcake

### Lazbuddie School Menu

January 19 - 23, 1976  
**MONDAY**  
 Mexican Meat loaf  
 Green Beans  
 Vegetable Salad  
 Hot Rolls - Butter  
 Chocolate Pudding  
 1/2 Pt. Milk  
**TUESDAY**  
 Barbequed Wieners  
 Blackeyed Peas  
 Creamed Potatoes  
 Yeast Biscuits  
 Butter - Jelly  
 1/2 oz. Peanut Butter  
 1/2 Pt. Milk  
**WEDNESDAY**  
 Beef & Cheese Tacos  
 Hot Sauce  
 Buttered Hominy  
 Peas  
 Cornbread - Butter  
 1/2 Pt. Milk  
**THURSDAY**  
 Sandwiches - Tuna & Pimento Cheese  
 French Fries  
 Pickles - Lettuce  
 1/2 Orange  
 1/2 Pt. Milk  
**FRIDAY**  
 Beef Stew  
 Crackers  
 Buttered Rice  
 Cheese Sticks  
 Peanut Butter Cookies  
 1/2 Pt. Milk

### Calendar Of Events

**Monday, January 19:** Junior Class Meeting - Auditorium - Orientation - First Period.  
 Junior Class Banquet Committee Meeting - Second Half of First Period.  
 9th Boys Basketball - Littlefield - here - 5:00 p.m.  
 9th Girls Basketball - Littlefield - there - 7:00 p.m.  
 Homemaking Student Teachers Arrive - Marca Mote and Joan Nix.  
**Tuesday, January 20:** Varsity & JV Boys and Girls Basketball - Levelland - there - 4:00 p.m.  
**Thursday, January 22:** All Region Band - Coroando High School - Lubbock.  
**Friday, January 23:** Varsity & JV Boys and Girls Basketball - Canyon - there - 4:00 p.m.  
 All Region Band - Coronado High School - Lubbock.  
**Saturday, January 24:** All Region Band - Coronado High School - Lubbock.

### Highway Patrol Reports

The Texas Highway Patrol investigated three accidents on rural highways in Bailey County during the month of December, 1975, according to Sergeant Thurman Keffer, Highway Patrol supervisor of this area. These crashes resulted in one person killed and seven persons injured. The rural traffic accident summary for this county during the first 12 months of 1975 shows a total of 56 accidents resulting in three persons killed and 36 persons injured.



accidents resulting in 22 persons killed and 325 persons injured, as compared to December, 1974, with 598 accidents resulting in 11 persons killed and 340 persons injured. This was 64 less accidents, 11 more killed, and 15 less injured in 1975 at the same period of time. The traffic deaths for the month of December, 1975, occurred in the following counties: Four in Parker; three in Hardeman; two in Lubbock; and one each in Bailey, Dickens, Hockley, Jack, Montague, Palo Pinto, Wise, Young, Gray, Ochiltree, Farmer, Potter, and Wheeler.

**COUPON**

Limit ONE per Family

**Something to SQUAWK about!**

PRESENT THIS COUPON FOR A **FREE** DINNER OF 2 LARGE PIECES CHICKEN & ROLL  
REG. 99¢

**RICH'S** GOLDEN FRIED CHICKEN

22nd & Prince, Clovis, New Mexico

Void After Feb. 7, 1976



Prices good thru Jan. 21, 1976. We reserve the right to limit quantities. None sold to dealers.

## The People Pleasin' Store

Collect Duet China Every Week For The Next 15 Weeks And Save Every Time This Weeks Feature Bread & Butter Plate **49¢** with each \$3.00 purchase

Discover The People And Events That Made Our Nation Great With "Our Great Heritage" This Weeks Special Vol. 2 Revolutionary Years 1763-1783 **\$1.99**

#### Dairy

Piggly Wiggly Buttermilk 1/2-Gal. On. **93¢**  
 Piggly Wiggly Cottage Cheese 12-oz. Size **69¢**  
 Piggly Wiggly All Varieties Refrigerated Cookies 16-oz. Pkg. **89¢**

#### Frozen Specials

West Pac French Fry Potatoes 2 2-Lb. Bag **89¢**  
 6 Varieties Freezer Queen Cooking Pouches 4 5-oz. Pkg. **\$1.00**  
 Morton's Apple, Cherry or Peach Fruit Pies 24-oz. **69¢**  
 Chef Boy-Ar-Dee 4 Varieties Pizza 13-oz. Pkg. **89¢**

We Gladly Redeem Federal Food Stamps

#### Rain Check

Piggly Wiggly now marks the price of all its advertised items on the package itself... so that you can be assured that you are being charged the advertised price at the checkout.

#### Advertised Items

If we are sold out of the sale item you particularly wanted, we will gladly give you a "Rain Check" guaranteeing you of the sale price if presented within 30 days.



Piggly Wiggly Vegetable Oil **69¢**  
 24-oz. Btl.  
 Sunshine Krispy Crackers 1-Lb. Box **49¢**

Plain, Meat or Mushroom Ragu Spaghetti Sauce **59¢**  
 15 1/2-oz. Jar  
 American Beauty Long Spaghetti 24-oz. Pkg. **69¢**

USDA Good Heavy Aged Beef

**Round Steak** Lb. **\$1.39**

USDA Good Heavy Aged Beef

**Rib Steak** Lb. **\$1.39**

USDA Good Heavy Aged Beef

**Sirloin Steak** Lb. **\$1.39**

Chuck Quality, Lean

**Ground Beef** Lb. **\$1.19**

Lean Meaty Beef

**Short Ribs** Lb. **69¢**

USDA Good Heavy Aged Beef

**Chuck Roast** Lb. **89¢**

USDA Good Heavy Aged Beef Boneless

**Strip Steak** Lb. **\$2.98**

USDA Good Heavy Aged Beef Boneless

**Rump Roast** Lb. **\$1.79**

Lean & Meaty Tender

**Cube Steak** Lb. **\$1.99**

Skinned and Deboned, Sliced Fresh

**Beef Liver** Lb. **99¢**

USDA Good Heavy Aged Beef

**Chuck Steak** Lb. **\$1.19**

Boston Butt Cut, Fresh

**Pork Steak** Lb. **\$1.39**

Quarter Pork Loins Sliced Into 9 to 11

**Pork Chops** Lb. **\$1.59**

Water Thin

**Pork Chops** Lb. **\$1.98**

Smoked

**Pork Chops** Lb. **\$1.98**

Kraft's Midget Horn

**Cheddar Cheese** Lb. **\$1.89**

Kraft's Grated

**Parmesan Cheese** 8-oz. Pkg. **\$1.57**

USDA Good Heavy Aged Beef, Chuck

**Boneless Roast** Lb. **\$1.39**

Sliced

**Slab Bacon** Lb. **\$1.39**

Piggly Wiggly Sliced

**American Cheese** 12-oz. Pkg. **\$1.27**

Farmer Jones Regular or Beef

**Sliced Bologna** 12-oz. Pkg. **98¢**

Farmer Jones Regular or

**Beef Franks** 12-oz. Pkg. **98¢**

Mrs Paul's

**Fish Stick's** 9oz. Pkg. **89¢**

Mrs Paul's Fried

**Fish Fillet** 8oz. **89¢**

Fisher Boy

**Fish Sticks** 8oz. **49¢**

Fisher Boy

**Round Shrimp** 16oz. **\$1.61**

California Sunkist

**Navel Oranges** 5 Lb. **\$1.00**

Delicious

**New Red Potatoes** Lb. **19¢**

Golden Rip

**Bananas** Lb. **22¢**

Medium White

**Mushrooms** Lb. **98¢**

Piggly Wiggly

**Applesauce** 2 25-oz. Jars **\$1.00**

Piggly Wiggly Sliced or Halves

**Yellow Cling Peaches** 3 16-oz. Cans **\$1.00**

Piggly Wiggly Halves

**Bartlett Pears** 3 16-oz. Cans **\$1.00**

Piggly Wiggly

**Fruit Cocktail** 3 16-oz. Cans **\$1.00**

Bayer

**Aspirin** 50-Ct. Btl. **69¢**

Cough Mixture

**Vicks Formula 44** 6-oz. Btl. **\$1.49**

Texasweet

**Ruby Red Grapefruit** Lb. **19¢**

Florida

**Zipper Skin Tangerines** Lb. **29¢**

Florida

**Sweet Corn** 6 FOR **\$1.00**

5-Lb. Bag **99¢**

**Crunchy Radishes** 5-Lb. Bag **25¢**

Saled Size

**Tomatoes** Ctn. **59¢**

Piggly Wiggly

**Whole Tomatoes** 3 16-oz. Cans **\$1.00**

Piggly Wiggly

**Mixed Vegetables** 3 16-oz. Cans **\$1.00**

Piggly Wiggly

**Tomato Sauce** 3 15-oz. Cans **\$1.00**

Piggly Wiggly

**Green Peas** 3 16-oz. Cans **\$1.00**

Gillette Deodorant, Bronze Can

**Right Guard** 7-oz. Can **99¢**

Regular or Extra Dry Jergen's

**Hand Lotion** 10-oz. Btl. **99¢**

Purex Laundry Detergent **79¢**  
 42-oz. Box

Piggly Wiggly Facial Tissue **3 \$1**  
 200-Ct. Boxes

Piggly Wiggly, Instant Chocolate Drink **\$1.49**  
 2-Lb. Can

Piggly Wiggly Pancake Mix **59¢**  
 2-Lb. Box

Pace's Picante Sauce **79¢**  
 16-oz. Jar

Piggly Wiggly Dry Dog Food **99¢**  
 5-Lb. Bag **\$1.99**  
 10-Lb. Bag **\$4.49**  
 25-Lb. Bag

Piggly Wiggly Regular Quarters Margarine **3 \$1**  
 16-oz. Pkgs.

Piggly Wiggly Bleach Gal. Jug **69¢**

Piggly Wiggly 375 Sheet 2 Ply Bath Tissue 4-Roll Pkg. **69¢**

Chocolate Drink, Neutle's Quik 2-Lb. Can **\$1.89**

Piggly Wiggly Pancake Syrup 32-oz. Btl. **99¢**



**WANT  
... A JOB?  
A JOB DONE?**

**WANT ADS**

**OPEN RATES**  
1st insertion, per word - 9¢  
2nd and add., per word - 6¢  
**NATIONAL RATES**  
1st insertion, per word - 11¢  
2nd and add., per word - 7¢  
Minimum Charge - 50¢  
CARD OF THANKS - \$3.00  
Classified Display - \$1.25  
per column inch.  
Double Rate for Blind Ads -  
**DEADLINE FOR INSERTION**  
Noon Tuesday for Thursday  
Noon Friday for Sunday  
**WE RESERVE THE**  
Right to classify, revise or  
reject any ad.  
**NOT RESPONSIBLE**  
For any error after ad has  
run once.

**3. HELP WANTED**

**WANTED:** Operator needed,  
Main Street Beauty Shop.  
3-18-tfc

**WANTED:** Still taking applica-  
tions for workers at Allsup's  
7-11.  
3-46s-4tc

**4. HOUSES FOR RENT**

**FOR RENT:** 1 bedroom house.  
Call 3163 after six.  
4-52s-tfp

**5. APARTMENTS FOR RENT**

**MOVING NOW** - Nice 1, 2 and 3  
bedroom apartments. Fully car-  
peted, individual heat-air. 1 1/2  
baths, utilities paid, play-  
ground, laundry facilities.  
Saratoga Gardens  
1300 Walnut Street  
Frona, Texas  
247-3666  
Office hours 10-6

**6. REAL ESTATE FOR SALE**

**FOR SALE:** 3 bedroom, 2 bath.  
413 Dallas Street. Paul Wil-  
banks 272-3571 or  
8-31-tfc

**FOR SALE** by owner 354 acre  
dry land south of Muleshoe. Call  
272-3047.  
8-1s-8tp

**FOR SALE:** One of the best 320  
a at Maple. Highly improved.  
Small wells. Carry paper. 1/2  
mile East of Three-Way School.  
927-5305.  
8-51t-10tp

**FOR SALE:** 3 bdr. brick home.  
Double car garage; 2 1/2 baths;  
fenced yard. Good location. Call  
965-2834.  
8-49s-tfc

**FOR SALE:** 320 acres irrigated,  
lays nearly perfect, West Camp  
Area.  
530 acres irrigated, lays very  
good, well improved, Pleasant  
Hill Area.  
90 acres irrigated, lays real  
good, West of Progress.  
Nice 462 acres irrigated farm, 5  
wells, some grassland with very  
nice three bedroom home on  
highway 84 east of Amherst.  
8-2s-tfc

**FARM FOR LEASE** in Bailey  
County, 531 acres, labors 3, 4,  
5, League 207, Bailey County,  
Texas.  
The lease shall be for a one (1)  
year period and will contain a  
restriction that all operations  
will be dry land with no water  
use. There is a small well  
available to supply enough water  
for any cattle which may be  
grazed on this land. Land will  
be leased on an as is basis and the  
maintenance of fences shall be  
the responsibility of the lessee.  
The Public Services Depart-  
ment will be available to answer  
questions, from interested po-  
tential bidders. Contact Mr. Al  
Couch, City Hall, Lubbock, Tex-  
as. Telephone (806) 762-6411,  
Ext. 300.  
8-3s-1tc

**FOR SALE:** 7 used side rows.  
6,000 ft. 4" sprinkler pipe.  
Contact A.V.I. Inc. 272-4266.  
15-37s-tfc

**J.I. COX SPRAYING  
GREENBUGS - WHEAT  
TREFLAN.** New precision  
ground rig.  
For all your spraying needs.  
BULA 806-933-2300  
15-3s-tfc

**DOZERWORK.** 965-2622 or  
647-2528.  
15-3s-8tc

I want to do baby sitting in my  
home. 272-3634.  
15-3t-6tc

**PHILLIPS HOUSE OF MUSIC**  
118 Main  
Clovis, New Mexico  
Pianos, organs, band instru-  
ments, new and used. Profes-  
sional repairs, sheet music,  
rentals, terms.  
Phone: 505-763-5041.  
15-30s-tfc

**FOR SALE:** 16" well casing,  
new steel 18" 2c a lb.; 6" and  
8" column pipe. 1/2 prices for  
junk iron.  
**FARWELL PIPE & IRON**  
601 Ave. A  
Farwell, Texas  
15-46t-tfc

**WANTED:** Wheat and stalk  
pasture for cattle. Call James  
Glaze 272-4743 or 272-4208.  
15-37t-tfc

**SALES, LOANS  
AND  
APPRAISALS**  
In Bailey County 30 Years  
**KREBBS  
REAL ESTATE**  
210 S. 1st

**FOR SALE:** 3 8/10 Acres  
land. Small 2 bdr. house on  
Clovis Hgw. West of town.  
**FOR SALE:** 4 bdr., 2 bath,  
brick home. Fully carpeted  
and drapes.  
**FOR SALE:** 1/4 sec. good  
land, 5 miles n.w. of Mule-  
shoe. 1 8" irrigation well, 2  
bdr. house.  
8-46t-tfc  
Smallwood Real Estate  
116 E. Ave. C  
Muleshoe, Texas

**NEEDED:** Listings, 1/4, 1/4  
& section Ranchland.  
E.E. HOLLAND  
REAL ESTATE  
113 E. Ave. D  
8-45s-tfc

**9. AUTOMOBILES**

**FOR SALE:** 1975 Ford LTD  
4-door sedan. Call Boyd Landers  
3778.  
9-3s-4tc

**10. FARM EQUIP. FOR SALE**

Your neighbors trade at **STATE  
LINE IRRIGATION** for all their  
irrigation needs. Why not you?  
Muleshoe, Littlefield, & Level-  
land.  
10-45s-tfc

**FOR SALE:** 3 HDA 800 mm  
irrigation engines. Excellent  
condition. 965-2303.  
10-2s-6tc

**FOR SALE:** 2 used side roll  
sprinkler systems. Good condi-  
tion. Sandhills Irr. 272-5533.  
Muleshoe, Texas.  
10-49s-4tc

**11. FOR SALE OR TRADE**

**FOR SALE:** Grain-fed beef  
calves. For your locker. 1/2 or  
whole. 925-3510. Leldon Phillips  
11-2t-tfc

**FOR SALE:** Beauty Shop equip-  
ment. 965-2622.  
11-3s-tfc

**FOR SALE:** Fire extinguishers.  
General and kiddie. All sizes  
and types. Recharging and in-  
spection service. Reasonable  
prices. Call 272-4602 after 5  
p.m. or weekends.  
11-3t-2tc

**FOR SALE:** Amway products.  
Call 272-4128.  
11-2t-8tp

**SALE OR TRADE** 200 ft. at end  
S. Main with large metal stor-  
age barn. 272-4984.  
11-52t-tfc

**FOR SALE:** Attrex. Milogard  
52.70. Treflan Eradicane and  
Round-up. Wholesale on most  
all Ag. chemicals - Farmers  
sales - Dendy ... Lorenzo. Call  
806-634-5382.  
11-50s-31tc

Spinet Piano, must relocate.  
small monthly payments may be  
arranged for individual with  
good credit. Write Credit Man-  
ager, Box 3068, Lubbock, Texas  
79410.  
11-3t-2tc

**ONE OF A KIND**  
Our 13-year history has proven a  
**KWIK KAR WASH** to be one of  
the highest investment return  
businesses known. We provide  
financing, site analysis, con-  
struction and service. Call Ray  
Ellis collect (214) 243-3521.  
15-3s-3tp

I want to do baby sitting in my  
home. 272-3634.  
15-3t-6tc

**PHILLIPS HOUSE OF MUSIC**  
118 Main  
Clovis, New Mexico  
Pianos, organs, band instru-  
ments, new and used. Profes-  
sional repairs, sheet music,  
rentals, terms.  
Phone: 505-763-5041.  
15-30s-tfc

**FOR SALE:** 16" well casing,  
new steel 18" 2c a lb.; 6" and  
8" column pipe. 1/2 prices for  
junk iron.  
**FARWELL PIPE & IRON**  
601 Ave. A  
Farwell, Texas  
15-46t-tfc

**WANTED:** Wheat and stalk  
pasture for cattle. Call James  
Glaze 272-4743 or 272-4208.  
15-37t-tfc

**SALES, LOANS  
AND  
APPRAISALS**  
In Bailey County 30 Years  
**KREBBS  
REAL ESTATE**  
210 S. 1st

**FOR SALE:** 3 8/10 Acres  
land. Small 2 bdr. house on  
Clovis Hgw. West of town.  
**FOR SALE:** 4 bdr., 2 bath,  
brick home. Fully carpeted  
and drapes.  
**FOR SALE:** 1/4 sec. good  
land, 5 miles n.w. of Mule-  
shoe. 1 8" irrigation well, 2  
bdr. house.  
8-46t-tfc  
Smallwood Real Estate  
116 E. Ave. C  
Muleshoe, Texas

**Officer Wants  
Tape Eliminated**

An officer of the Brazos River Authority this week challenged the National Commission on Water Quality to take the red tape out of federal guidelines for water quality improvement and let qualified and "on the ground" agencies get on their work.  
Carson Hoge, assistant general manager for the authority, told the commission in a meeting Monday in Fort Worth, that the authority has been "long engaged in the day to day struggle to protect the quality of a portion of the Nation's waters" through detailed planning, construction and operation of facilities needed to accomplish specific jobs of water pollution control.  
Hoge said the stated objective of the Federal Water Pollution Control Act of 1972 is clear and concise: "to restore and maintain the chemical, physical and biological integrity of the Nation's waters."  
Toward this objective, the authority has planned, built and is operating sewerage treatment facilities for the Waco area, the Temple-Belton area and the Sugarland area.  
But, Hoge said, under the guidelines set forth to apply the Act, there is so much red tape and so many unrealistic goals and complicated procedures outlined that "all we will find ourselves doing is trading words and paper."  
Hoge said that the Act sets goals for mandatory quality for wastewater effluents, to be reached on a nationwide scale within specified time spans, that in many instances would have no relation to achieving required water quality standards and that the overall program under the Act does not take into proper consideration emergencies nor

Jury finds Lynette Fromme guilty.

**Card of Thanks**  
Thanks for the flowers, cards and comforting words of sympathy expressed to our family at the death of our mother, especially to the staff at West Plains Hospital and Bro. Dunn, Methodist Church.  
3s-1tc

**DAY CARE DIRECTOR**  
Qualifications:  
A. High School diploma and three years experience in group child care, family day care, teaching, administration, or management  
or  
one year of college and two years of experience  
or  
two years of college and one year of experience  
or  
A child Development Associate Credential.  
B. 18 years of age or older.  
C. Bi-lingual person preferred.

**DAY CARE EDUCATION/COORDINATOR**  
Qualifications:  
A. High School diploma or its equivalent.  
B. Previous experience.  
C. 18 years of age or older.  
D. Bi-lingual person preferred.

**ONE REGISTERED NURSE**  
F. Luis Esparza, Jr.  
Project Director  
Manpower Education & Training  
105 East Houston St.  
Cleveland, Texas 77327  
Telephone 713/592-6483  
3s-2tc

**NEED A HOME LOAN?**  
FIRST FEDERAL SAVINGS  
AND LOAN COMPANY  
801 Pile St.  
LEADER 762-4417  
Clovis, New Mexico

**TOWN & COUNTRY**  
336 Acres-3 miles East  
6 wells-\$744.00 per acre  
60 Acres North  
2 wells, \$600.00 per acre  
160 Acres 8 miles East  
\$500.00 per acre  
Good existing loan.

**TOWN & COUNTRY**  
160 Acres 5 miles west  
2 wells, circular sprinkler  
\$775.00 acre  
160 Acres 3 miles North East  
3 wells, \$625.00 per acre.

**FARMS RANCHES HOMES**  
**JOHN W. SMITH**  
272-4678  
M. P. POPE, JR. BROKER

which may be determined by the agencies actually doing the work of planning the protection of waters in a specific area such as the Brazos River basin.  
"From the standpoint of agencies such as ours that are trying to actually provide the needed facilities," Hoge said, "The most serious obstacles are embodied in the great loss of time and resources caused by the tremendous amount of bureaucratic red tape that is presently incorporated into the program."  
"At the present," Hoge said, "Not only months but years are wasted in connection with each effort to provide pollution control facilities in reviewing and approving and re-reviewing and re-approving at the State and then the Federal level every aspect of each proposed project's development."  
"Thus the wheel is reinvented at every step of the review process," Hoge said, "creating a bureaucratic game which generates paper storms and delays that have done much to create frustration and added expense."  
Hoge suggested three steps which the commission could take to remedy the situation.  
1. Revise the goals for specific achievement of the objectives of the Act and reorder the priorities so that "on the ground, agencies" may take first things first.  
2. Make a clear delineation of responsibilities between the Federal, state and local governments to eliminate duplication of effort and waste of time and money.  
3. Revise the law to make clear the intent of Congress with regard to the extent of Federal bureaucratic control it desires to impose on the country.

**Gerald Ford, President:**  
"The three-year federal loan plan will keep New York from financial collapse, without expense to other American citizens."

**Corretta King, widow of Martin Luther King:**  
"I don't have the facts but at this stage I say it appears there was a conspiracy in the death of my husband."

**Roy Rogers Makes Comeback**  
LUBBOCK -- Roy Rogers is back. After a 20-year absence from movie making, the legendary star returns in "Mackintosh and T.J.," which will have its world premiere at the Winchester Theatre in Lubbock February 5.  
A gala evening is planned for West Texas' first world premiere of any major movie. Roy Rogers will be on hand for the event which will benefit the Ranching Heritage Center at The Museum of Texas Tech University.  
The center now is planning its formal opening for July 2-5, 1976. It is an authentic outdoor exhibit depicting the history of ranching in America's West.  
Those attending the premiere will have a reception at 7 p.m. in the lobby of the Winchester. The film will start at 8 p.m. Row tickets will attend an after-theatre supper party with Roy Rogers. Tickets are \$10, \$25 and \$50. All seats are reserved and may be purchased at The Museum of Texas Tech or by writing P.O. Box 4612, Texas Tech University. All proceeds are for the development of the Ranching Heritage Center.  
"Mackintosh and T.J." is a contemporary western, filmed

at the 208,000 acre 6666 Ranch, 92 miles east of Lubbock near Guthrie. None of the sets were constructed. All are set against the backdrop of the famous 6666. Instead of a 10-gallon hat and buckskin, Roger's costuming is usually a straw hat and cotton shirt. Instead of Trigger, Roy's transportation is a broken-down pickup truck.  
Roger's co-star is Clay O'Brien who was born six years after Roy's last picture, "Son of Paleface," was released.  
O'Brien is no newcomer, however. Now 14 years old, he began his career when he was 9 in "The Cowboys." He followed that with another John Wayne vehicle, "Cahill, U. S. Marshall." Most recently, he added a Huck Finn appeal to Disney's "Apple Dumpling Gang," and he has played opposite Fess Parker and with James Garner in "One Little Indian."  
Rogers, the star of 87 feature films before the long dry spell, chose "Mackintosh and T.J." because of the story.  
"There's action -- bronc busting, brawls, a rabies epidemic, and even murder."  
"But it's the relationship between the tough old cowboy and the fatherless boy that gives the picture its 'heart,'" said Roy Rogers adds understanding to

**New Kind Of Librarian Changes Role**

If you think librarians seldom venture from amongst their shelves of books, take a look at a new kind of librarian who is beginning to change that traditional role. Clinical medical librarians do not wait for people to come to them, they take their services to medical professionals and students in the clinical environment.  
A new service provided by the Texas Tech University School of Medicine, (TTUSM) Health Science Information Center send library staff members to area hospitals and clinics to accompany medical faculty and students on their rounds to better meet their specific information needs.  
The librarians return to the library to search the available literature for information about specific medical subjects. The library then provides copies of that information.  
Ann Gilmer, chief reference librarian in charge of the program, said its main purpose is to get information to clinical faculty and students as quickly as possible. She said the presence of the librarian during actual cases allows those attending to note and request any necessary material.  
"The clinical librarian can listen to cases and, at the request of the instructor or student, conduct literature searches," Gilmer said. "Also, we do what we call 'anticipatory searches,' she said, "if in listening (to the case presentations) we think someone has a question about something."  
Gilmer said resources available to the clinical medical librarians include textbooks, journals and Medline, a computerized procedure for searching the data bases of medical journal citations of the National Library of Medicine.  
She explained that the program is patterned after a system used at the University of Missouri Kansas City Medical School. "There, it is an integral part of the medical students' education," she continued. "The medical librarian conducts rounds with the students every day."  
"We find that they ask for it (case literature) this way, where as before they often couldn't take the time to go into the library," she added.  
Three clinical medical librarians currently conduct rounds in the program, which began in early November. Shirley Brandon attends the Family Practice clinical conference every weekday morning at St. Mary of the Plains Hospital; Don Roush accompanies Dr. Francis Jackson, professor and chairman of Surgery, on his Wednesday rounds at the Amarillo Veterans Administration Hospital; and each Thursday when Dr. Jackson attends grand rounds at Malone and Hogan Clinic or the Veterans Administration Hospital at Big Spring, Gilmer accompanies him.  
Gilmer said the clinical medical librarians now are working with the Departments of Family Practice and Surgery, but plan to extend the service in the future.

**TOWN & COUNTRY Real Estate**  
WE HAVE FARM BUYERS FOR RED LAND NORTH OF MULESHOE. BRING US YOUR LISTINGS FOR ANY SIZE FARM.  
CONTACT IMMEDIATELY  
FARMS RANCHES HOMES  
**JOHN W. SMITH**  
272-4678  
M. P. POPE, JR. BROKER

**SEALED BIDS**  
938 Acres-Irrigated-L.W. Smith Estate  
Located: Lazbuddie Community  
3 Half Sections of Land, to be sold together or separately.  
Legal Descriptions:  
A. SE 1/4 of Sec. 3 and NE 1/4 of Sec. 14, Block W, Warren Subdivision. Two 8-inch wells, one 10-inch well. Austin stone house, two-story. Four bedrooms, 2 baths, basement, barn, domestic well. Will consider no offer of less than \$600 per acre.  
B. S 1/2 of Sec. 104, Kelly Subdivision. 10-inch well, 8-inch well and lake pump. Nice frame house and smaller frame house. Storage shed. 1 1/2 miles underground concrete irrigation tile. Strong water. Will consider no bid of less than \$600 per acre. 320 acres.  
C. N 1/2 of Sec. 12, Block W. Three 8-inch wells, lake pump. 1 1/2 miles underground concrete irrigation tile. No improvements. 318 Acres. Will consider no bid of less than \$500 per acre.

Sealed bids will be accepted by Richard Collard, Box 849, Frona, Texas, 79035, through February 4.

Please indicate by A, B or C which tract you are bidding on, and mark envelope "Land bids."

Bids to be opened in Richard Collard's office in Frona at 11 a.m., February 5.

**TERMS:** 29 per cent down payment in cash. Remainder to be carried by the heirs of the estate. Interest rate to be negotiated.

**POSSESSION:** To be negotiated.  
Heirs reserve the right to reject any or all bids.

For more information, or appointment to see land, call:  
Richard Collard  
247-2716  
Frona, Texas  
or  
Gene Smith  
965-2138 or 865-2634  
Lazbuddie, Texas  
27-4tc

**The Journals**  
Political Column  
**MEET THE CANDIDATES**

Rate for listing in the Journal's Political Column is \$35 for all offices except those for city council and school board offices, which are \$30. This fee includes a front page announcement article and a one-column photograph at the time the announcement is made, in addition to the listing in the Political Column from the date of the announcement until the final election.  
Charges for announcements are cash in advance, and this same policy applies to all political advertising carried in the columns of this newspaper.  
Names for each office will be listed in the Political Column in the order they are received at the newspaper office.  
The Journal has been authorized to announce the following candidates for public office:

**DISTRICT ATTORNEY**  
Jack Young  
**BAILEY COUNTY COMMISSIONER**  
Robert P. (Bob) Sanders  
Precinct No. 3  
**BAILEY COUNTY SHERIFF**  
Dee Clements  
**PARMER COUNTY COMMISSIONER**  
Cecil Atchley  
Precinct No. 3

**The Lonely Heart**  
DOG SHOW

**For Rent**  
You're doing without a Zimmatic center pivot. Saving your hard-earned capital for other improvements. Don't want to borrow right now.  
But it's costing you money every year you wait. Two ways. First, you're losing the extra crop production you get under irrigation. Second, inflation is at work. Boosting prices, dropping the value of your dollars.  
Why not rent a Zimmatic under our new lease plan? Let the system pay for itself and put some extra money in the bank for you at the same time.  
Our rates are reasonable. You can include freight, installation, pump... other "above ground" items in one flexible package, tailored to your needs. Why wait to irrigate? It's just costing you money. Call us today for details on our new lease plan.  
Phone 806/272-5533  
522 West American Blvd.  
MULESHOE, TEXAS - 79347  
**LINDSAY SANDHILLS IRRIGATION**  
ZIMMATIC CENTER PIVOT SYSTEMS



# New Wheat Varieties Produce High Yields

**LUBBOCK** -- Several new high yielding wheat varieties and basic research with wheat hybrids are results of research conducted by Texas Agricultural Experiment Station small grain research scientists. Dr. Kenneth Porter, Wheat Breeder from the USDA Research Center at Bushland, elaborated on these research accomplishments at the Annual Meeting of the Texas Certified Seed Producers in Lubbock, January 13 and 14.

Short wheats for high production levels released in the last five years have added up to 20 bushels per acre on irrigated wheat. Development and release of wheat R-lines for male parents of wheat hybrids, varieties with high protein, and insect and disease resistant varieties are other major research accomplishments by Experiment Station scientists.

TAM W-101 released in 1971 has become an important variety in both Texas and Oklahoma. TAM W-103, released in 1974, is well adapted for irrigation anywhere in the Great Plains and for dryland in the Rolling Plains of Texas. In 1975, Texas has joined Nebraska in releasing Lancota, a new variety with 1 to 2 percent more protein than other commercial hard red winter wheat varieties. Lancota is adapted to the same cropping areas as Scout 66. "More promising experimental short wheats are in the making", Porter continued. At Bushland in 1975, some new wheat lines produced 90 to 100 bushels per acre in irrigated trials. This was 15 to 20 bushels more than TAM W-101. Sturdy, Centurk or Scout, the best commercial varieties in the test. These experimental lines also equalled yields of the best varieties on dryland and consequently, have potential for use on large acreages.

In addition to producing high yielding varieties, researchers are hunting for resistance to wheat streak mosaic, a highly destructive virus disease, the scientist stated. Resistance is being selected from bulk hybrid populations by artificially inoculating young seedlings. This is accomplished by spraying water solutions of virus at high pressure to penetrate leaf surfaces.

In the last year, twenty thousand plants have been inoculated at Texas A&M by Dr. Earl Gilmore and Dr. Robert Toler. At least as many will be treated at Bushland. "We expect to isolate several hundred plants for additional evaluation", Porter said.

Attempts are being made to transfer greenbug resistance to wheat from a greenbug resistant rye. This is difficult because wheat and rye are hard to cross. Another line of investigation for greenbug resistance has shown that pubescence or hairs on wheat leaves slow the speed at which aphids crawl. This seems to reduce insect reproduction and plant injury. Because resistant lines have to be crossed on present varieties, it will be several years before new greenbug resistant wheats will be available to farmers.

"We have had research on hybrid wheat for over 10 years", Porter stated, "and our hybrids

have promise, but are not better than regular varieties". The Experiment Station is comparing five wheat hybrids with hybrids from commercial companies and commercial varieties in a regional trial at 15 locations. In addition to making experimental hybrids, last year the Station released a short wheat R-line which may be useful to commercial hybrid wheat breeders as germplasm. Dr. Neal Tuleen at Texas A&M has developed another wheat R-line from a cross of male sterile wheat and rye, which may be released to wheat breeders over the Great Plains. These two lines are expected to provide resistance to both mildew and wheat streak mosaic.

"We are still hoping to develop a hard red winter wheat with quality equal to hard red spring wheat", Porter continued. The best experimental wheat lines grown at many locations are evaluated for milling and baking

characteristics at the Quality Laboratory at Texas A&M. If a new variety does not make bread as good or better than old varieties, it is discarded. Dr. Porter concluded by stating that, "hard red winter wheat breeding is exciting, productive research carried on by many experiment stations and USDA scientists in Texas and other states. It may take 10 years to make a new variety with improved characteristics needed by farmers, but if the past is an indication of the future, new and better varieties will soon be available".

**THE SCIENTISTS TELL ME ...**  
By Robert L. Haney, Science Writer  
The Texas Agricultural Experiment Station

## Goats Are a Neglected Resource

Goats have often been called "the poor man's cow" because in many parts of the world the meat and milk from goats have been used to supplement the diet of the poor. But it seems that in this country, we may be failing to take full advantage of a livestock resource that is highly adaptable to a variety of conditions.

In the Southwestern United States and Mexico, where goat meat is not excluded by prejudice, kid goat is today a favorite food for festive occasions, a consensus of opinion being that goat meat, when properly prepared, has a flavor preferred by many to beef. But more could be done on market development to expand usage of this food.

In addition to their desirability as meat animals, and their rather limited and specialized use as milk animals, the value of goats in the grazing system has been well established. Goats are particularly valuable as a tool for biological brush control where brush has become a range problem, according to Leo B. Merrill and Charles A. Taylor, range scientists, Texas Agricultural Experiment Station (TAES) at Sonora.

Traditionally, goats have not played a very important part in United

States agriculture, but they have long been important in and adjacent to the Edwards Plateau region of Texas. Outside this area there are only limited numbers of goats in a few dairy flocks or as hobby flocks. Approximately 95 percent of the goats in the United States are found in Texas according to Maurice Shelton, TAES geneticist and physiologist specializing in sheep and goats at San Angelo.

In the past, most of the goat population of Texas has been made up of Angora goats, raised primarily for hair production. Our all time high of nearly 5 million head was reached in the 40's. However, beginning in the mid 60's the number of Angoras started dropping markedly. Jim Bassett, fiber technologist at College Station, says this was due to changes in fashion, labor problems, predators, and competition from artificial fibers. These Angoras have been partially replaced by Spanish or meat-type goats, and the numbers of non-Angora-type goats in Texas continues to increase.

The Spanish goat was probably introduced on the American continent by the early Spaniards, according to Taylor. It has had a widely varied breeding background and

has been crossed indiscriminately with the Angora and various milk-type goats. The Spanish goat will survive on vegetation which is too harsh for other domestic animals. It is able to browse to heights of 7 feet or more, and because it is more prolific and less vulnerable to predators and extreme weather conditions than the Angora goat, it is more frequently used for biological brush control. With higher prices and increased restriction on chemicals and energy and with labor costs continuing to climb, there's renewed interest in an animal that can eat brush and change it into money.

The Angora goat was developed primarily for its mohair production. It has been the subject of intensive research to improve the quality and quantity of its mohair which can in favorable years provide a valuable part of the ranching income.

Under conditions where the Angora female is producing 8 to 10 pounds of good-quality mohair valued at \$1.00 or more per pound, and a kid crop of 60 percent or more, Angora goats will produce greater economic returns per animal unit than either cattle or Spanish goats at present market prices. According to results from the Sonora station, Merrill says with good management Angora goats are producing an 80 percent kid crop, mohair at \$2.00 or more per pound, and the returns greatly exceed those from either cattle or

Spanish goats. If the Spanish females produce a 150 percent kid crop with a market value of \$15.00 per kid, the money return will gross \$135.00 per animal unit, using 6 goats to represent one unit. Cattle, with a 95 percent calf crop at an average calf weight of 450 pounds per head will, at 33 cents per pound, produce \$141.00 in gross returns per animal. The Spanish goat, however, requires little if any supplementary feed. Therefore, a feed bill of \$6.00 per cow year would place cattle and Spanish goats at the same production level.

Thus, Merrill points out, it is possible for Spanish goats to compete with cattle on the basis of money returns, perform a valuable service in clearing the range of unwanted brush, and provide a delectable meat that adds to human food resources.

## Briscoe Tells Of New Grants

Governor Dolph Briscoe announced approval today of \$308,807 in Community Services Administration grants for Emergency Energy Conservation programs.

The ten grants are effective retroactively from December 1, 1976, through February 29, 1976. They are funded under Title II of the Head Start, Economic Opportunity and Community Partnership Act of 1974.

Four of the ten grants are new fundings while the remaining six constitute supplemental funding of previously short-funded actions. The four new grants include Economic Opportunities Development Corporation of San Antonio and Bexar County in San Antonio, \$30,000; West Texas Opportunities, Inc., in Lamesa, \$50,000; Texas Panhandle Community Action Corporation in Amarillo, \$70,000; and Hill Country Community Action Association, Inc., in San Saba, \$50,000.

Other grantees include: South

Plains Community Action Association, Inc., in Levelland, \$11,450; Community Council of South Central Texas, Inc., in New Braunfels, \$11,400; Capital Area Human Services, Inc., in San Marcos, \$30,000; El Paso Community Action Program, Project BRAVO, Inc., \$30,000; Community Services, Inc., in Corsicana, \$11,057; and Community Action Corporation of Wichita Falls and North Texas Area in Wichita Falls, \$14,900.

Activities of the Emergency Energy Conservation program include repair and winterization of housing of low-income persons through replacement of broken windows, patching roofs, caulking cracks and joints, weatherstripping and insulation. In addition, emergency assistance is provided for fuel and utility payments and transportation.

Grant processing and program liaison are through the Economic Opportunity Division of the Texas Department of Community Affairs.

## Applications Taken For Positions

The U.S. Civil Service Commission announced today that from January 19 through February 2, 1976, applications will be accepted for a limited number of Mid-Level Administrative Career positions. According to Vere B. Robinson, Area Manager of the Dallas Area Office, an announcement containing instructions on how to apply is now available at Federal Job Information Centers in Texas, Oklahoma, Arkansas, Louisiana, and New Mexico. Also available is a bulletin which lists the kinds of jobs and duty locations for which applications are needed. Additional information can be obtained by contacting the nearest Federal Job Information Center. You may call or write to the address as listed below:

DALLAS, TEXAS, Federal Job Information Center, local tel: (214) 749-3156, U.S. Civil Service Commission, 1100 Commerce, Rm. 1C42, Dallas, Texas 75202. (toll-free (800) 492-4400)

## Area Students Earn Honors

**LEVELLAND** -- A total of 12 students from the Muleshoe/Friona area have been named to the dean's honor list for the fall 1975 semester at South Plains College. Muleshoe, Friona, Sudan, Earth, Springlake, Olton and Farwell are represented on the list.

In order to be named to the dean's list, students must maintain at least a 3.25 grade point average while carrying 12 or more semester hours with no failing grades, announced Nathan Tubb, academic dean at SPC. Two students from the Muleshoe area earned all A's (4.0) during the semester.

Students named to the dean's list grouped by hometowns are as follows:

**MULESHOE:** Donna Kim McDonald and Janie Perez.  
**FRIONA:** Dusty Peters and Lagsyla Self (4.0).  
**EARTH:** Joyce West.  
**SPRINGLAKE:** Arletta Schoenberger.  
**FARWELL:** Sharon Booth and Karla Smart.  
**OLTON:** Susan Culwell (4.0) and Pedro Rivera.  
**SUDAN:** Janice Sokora and Charlotte Brownd.

**Three Way News**  
By Mrs. H. W. Garvin

\*\*\*\*\*  
Mr. and Mrs. O.A. Warren attended the funeral of a niece at Levelland Saturday.

\*\*\*\*\*  
Mrs. Ed Neutzler and daughter, Reena, took her parents, the B.J. Emersons to Oklahoma Thursday, to be with Mrs. Emerson's brother who is very ill.

\*\*\*\*\*  
Harold Drennon from Morton preached at the Three-Way Baptist Church Sunday.

\*\*\*\*\*  
Mrs. Ferris Locke is a medical patient in Methodist Hospital in Lubbock.

\*\*\*\*\*  
Tommy Terrell underwent surgery in Methodist Hospital in Lubbock, Monday.

\*\*\*\*\*  
Mr. and Mrs. Jack Furgeson were in Lubbock Monday on business.

\*\*\*\*\*  
Mr. and Mrs. T.D. Davis were in Lubbock Monday to be with Tommy Terrell who underwent surgery.

\*\*\*\*\*  
Mrs. Jay Boyce left Monday for Dallas to be with her grandson who is to undergo heart surgery this week.

\*\*\*\*\*  
Mr. and Mrs. D.S. Fowler were dinner guests in Muleshoe Sunday with the John Gunters.

\*\*\*\*\*  
Mrs. S.G. Long, Mrs. Bulah Toombs and Mrs. Sally Robinson attended the reception for Mr. and Mrs. Red Coleman, in Morton, Sunday afternoon. Rev. Coleman was pastor of Maple Baptist Church several years ago.

\*\*\*\*\*

## County Treasurer's Report

Report of Edith Wilt County Treasurer of Bailey County, Texas, of Receipts and Expenditures from July 1, to December 31, 1975 inclusive:

JURY FUND. 1st Class			
Balance last Report, Filed			\$165.85
To Amount received since last Report			\$6347.07
By Amount paid out since last Report	\$3462.65		
Amount to Balance	\$3050.27		
Balance	\$6512.92	\$6512.92	\$3050.27
ROAD AND BRIDGE FUND 2nd Class			
Balance last Report, Filed			\$165,987.69
To Amount received since last Report			\$156,636.96
By Amount paid out since last Report	\$207,206.83		
Amount to Balance	\$115,417.82		
Balance	\$322,624.65	\$322,624.65	\$115,417.82
GENERAL COUNTY FUND. 3rd Class			
Balance last Report, Filed			\$29,144.59
To Amount received since last Report			\$233,091.90
By Amount paid out since last report	\$168,747.72		
Amount to Balance	\$93,488.77		
Balance	\$262,236.49	\$262,236.49	\$93,488.77
ROAD BOND SERIES 1961 INT. & SINKING FUND			
Balance last Report, Filed			\$36,216.83
To Amount received since last Report			\$1,765.48
Amount to Balance	\$37,982.31		
Balance	\$37,982.31	\$37,982.31	
ROAD DIST. I-A INT. & SINKING FUND			
Balance last Report, Filed			\$75,194.22
To Amount received since last Report			\$4,572.38
Amount to Balance	\$79,766.60		
Balance	\$79,966.60	\$79,966.60	
RECAPITULATION.			
Jury Fund Balance			\$3050.27
Road and Bridge Fund Balance			\$115,417.82
General County Fund Balance			\$93,488.77
Road Bond Series 1961 Int. & Sinking Fund Balance			\$37,982.31
Road Dist. I-A Int. & Sinking Fund Balance			\$79,766.60

The State of Texas, County of Bailey, Before me, The undersigned authority, on this day personally appeared Edith Wilt, County Treasurer of Bailey County, who being by me duly sworn, upon oath, says that the within and foregoing report is true and correct.

Signed,  
Edith Wilt County Treasurer  
Sworn to and subscribed before me, this 15th day of January, 1976  
Hazel Gilbreath, Clerk,  
County Court, Bailey County, Texas

# TO BE SWITCHED TO ELECTRIC HEAT



## BE SWITCHED TO ELECTRIC HEAT

Two hundred years ago, the witch hunters would have burned us at the stake for even daring to dream of a clean, practical means of heating our homes like electric heat. Fortunately, things have changed since then and today you can choose a heating system that is not only clean and efficient, but also economical and environmentally sound. You don't even have to look for a witch to give you a great deal like this one. Call the electric company... we'll show you how easy it is to BESWITCHED to real comfort home heating that's as modern tomorrow as it is today.

**ASK ABOUT THE HEAT PUMP**  
**IT'S NOT MAGIC... IT JUST ACTS THAT WAY**

You'll think it's magic when you see what the heat pump does, but it's not at all. It probably will seem quite impossible that one unit can provide clean, efficient electric heating and cooling with only one unit, one thermostat setting. The important thing to remember is the heat pump is today's answer to improving your lifestyle—economically and efficiently. Sound like magic? Not at all.

**ELECTRICITY-IT DOES SO MUCH GOOD**

ENERGY EFFICIENCY ALLOWANCE

We, at Southwestern, are interested in your getting the most for your energy dollar. That's why we're offering an Energy Efficiency insulation allowance to our customers in existing homes who install electric comfort heating. Ask us about it.



**The ELECTRIC Company**

FOR SO MANY PEOPLE

**CALL US FOR A FREE PERSONALIZED HOME HEATING COST SURVEY**

EQUAL OPPORTUNITY EMPLOYER