

### Weather

October 28 70 32  
October 29 71 35  
October 30 80 36  
October 31 40 34  
Moisture to Date: 16.66

# MULESHOE JOURNAL



20¢

'The Community of Opportunity-Where Water Makes the Difference'

Volume 56, No. 43

12 Pages

Published Every Thursday at Muleshoe, Bailey County, Texas 79347

Thursday, November 1, 1979

## Rain, Snow Herald Winter's Approach

\*\*\*      \*\*\*      \*\*\*      \*\*\*      \*\*\*

### Business Construction Planned

#### A&M Farm Supply Will Locate Here

Tuesday afternoon, Nels E. Anderson, president of A&M Farm and Ranch Supply Inc. of Clovis announced a new store to be constructed in Muleshoe.

A&M Farm and Ranch Supply has been in business in Clovis for the last seven years and constructed a new facility in Portales three years ago.

The Clovis native said the new A&M Farm and Ranch Supply would be constructed on the location of the old Dearing property on the Clovis highway across from Whitt Chevrolet's Used Car Lot.

A&M has purchased the 300 front footage on American Blvd. and expect to construct a 14,000 square foot building which will house an inventory in excess of \$210,000.

Anderson said construction is expected to begin

around December 15 and the tentative opening date for the new business in Muleshoe will be March 1, 1980.

Weldon Stevenson of Muleshoe, who is currently employed by A&M Farm and Ranch Supply, has been selected as the Muleshoe store manager. **Con't Page 6, Col 2**

#### Gutierrez Winner For This Week's Football Contest

There's one thing you can say about the annual merchant's Football Contest -- it's popular. This week, the weekly winners are different again.

In first place is Beatriz Gutierrez. Members of the Gutierrez family have been faithful for the past several years in entering the weekly contest in the fall. And at some point in the season, different members of the family have come up with weekly wins.

This week, Beatriz Gutierrez was the first place winner by missing only one game. She guessed wrong on the South Mississippi - Mississippi State game.

No one missed only two games, and the only person missing three games to end up in second place was Debbie Weir, who, along with her husband, are other faithful entrants.

Debbie missed the Auburn - Wake Forest game; Clemson - North Carolina State and North Carolina - East Carolina for her second place win.

It finally took some figuring to come out with the third place winner, as several persons missed four games. Using the double tie-breaker scores, it was determined that Margaret Adams was the third place winner by missing four games, but being only 16 points away on the double tiebreaker.

Close behind, and missing four games were Robert Brandon, 20 points away; Anna Gutierrez, 21; Russell Treider, 22; J. E. McVicker, 26; Barbara McCamish, 31; Larry Price, 31; Jim Young, 31; Mike Perez, 34; James Roy Jones, 34 and James Whitson, 35.

Midway through the contest, no leader has been established, so it is still a wide-open contest. Get your entry in. This week, again, one entry blank came in with no name. Fortunately for the entrant, it would not have been a winner. It would be difficult to discard a winning entry. Be sure to sign the entry blank before it is mailed in, or placed in the contest box at the Journal.

Last week, Jess (Pesky) Winn, manager of Pioneer Natural Gas Company in Muleshoe was presented a 30 year award during Pioneer's Annual Awards Dinner in Lubbock.

He was presented a watch commemorating the occasion.



**HALLOWEEN ROYALTY**--Crowned at the conclusion of the annual Halloween Carnival last Saturday night at the Bailey County Exhibition Center and Coliseum were from left, Excort Richard Toscano and Princess Erna Olivarez; and escort Rodney Unrein and Halloween Queen Laura Burgess. They will reign until the new royalty are crowned next year at Halloween.

### Blue Clad Mustangs Next For The Mules

Beware of Blue Mustangs! They are probably hungry and if they can tame the Mules to lead, then they will be adding a 'big' feather to their caps.

The Olton Mustangs are 1-6 for the year, and 0-2 in district play. But, and that's a mighty big one too, if you will recall that Friona was 0-6 for the year when the Mules traveled to Friona two years ago on a straight string of wins and were put down by the Chieftains. That proves it can be done.

Thus far this year, the Mules have proven to be outstanding and if they are not overconfident going into the Friday night game, and decide the game will be a 'walkway' then they will probably add another scalp to the collection they have this year.

#### Panhandle State ENMU Greyhounds Meet Saturday

Two 1979 graduates of Muleshoe High School, who were both football standouts while students here, and are now starters with Panhandle State College at Goodwell, Okla., will be playing football in this area Saturday.

Terry Shafer, who is a strong safety on defense for Panhandle State College and Jeep Shanks who is a flanker on Panhandle State Offense, will both be playing Saturday at Eastern New Mexico University.

Gametime will be 2 p.m. at Greyhound Stadium on the Portales-Clovis highway. It is the same location where the Muleshoe Mules play Portales High School.

Terry is the son of Mr. and Mrs. Jim Shafer and Jeep is the son of Mr. and Mrs. Gerald Shanks. **Con't Page 6, Col 3**

Last Friday night, the Mules got by Littlefield by a score of 16-3 and fooled all the predictors, who thought Littlefield would outplay and outscore the Mules.

#### Juvenile Escapee Captured

Around 1:30 a.m. Sunday, dispatcher Melba Cunningham, at the Bailey County Law Enforcement Center, received a telephone call from the Clovis Police Department.

The caller from Clovis informed Mrs. Cunningham that Clovis officers were in pursuit of a vehicle, driven by an escapee from the Clovis police.

According to Mrs. Cunningham's report, she was informed that the escapee was wanted for escaping officers after being taken to the police department for investigation of burglary. At the time of the telephone call, Mrs. Cunningham was informed that Clovis officers had just reached Lariat in the high speed chase toward Muleshoe.

City Police Officers Julian Dominguez and Forrest Williams, and DPS Trooper Jim Dulin set up a road block at the roadside park at the west city limits and Deputy Sheriff Bob Henderson went just beyond the roadblock in an attempt to stop the vehicle.

However, to the accompaniment of what sounded like nearly all the sirens in the state of Texas, the stationwagon ran the roadblock.

As the chase moved through Muleshoe, with some eight police cars

thought Littlefield would outplay and outscore the Mules.

Now, with the last three games of regular season play coming up, the Mules are probably looking forward to the playoffs again this year, and it is beginning to look like Idalou will again be the bi-district competition and Childress the regional competition. Dimmitt stopped the Olton Mustangs by a score of 14-7 and the Morton Indians also stopped the Mustangs 14-7.

Keep an eye out for Danny Garcia on the Olton Mustang team. The speedster has been known to run punts back to the end zone, such as the 65-yarder in the Dimmitt game. Garcia has scored both of Olton's touchdowns in district play.

In the meantime, the **Con't Page 6, Col 1**

#### Wrestling Scheduled Saturday

Saturday wrestling is scheduled at the Bailey County Exhibition Center and Coliseum. The bouts will get underway at 8:30 p.m. with two preliminary matches and two main event matches.

As in the past, the Muleshoe Rotary Club will be sponsoring the Big Time Wrestling to Muleshoe. Preliminary events will pit Silvana Susa against Don Factor and Dennis Stamp meeting Rickidozen.

A special tag team match will feature Ricky Romero, a well known name in wrestling circles and his partner, Gary Young. They will be matched against James Dillon, another well known name and Super Destroyer.

In the main event for the evening, Dick Murdoch will take on Killer Karl Krupp, both well known in the wrestling world.

Ringside seats will be available on a first come, **Con't Page 6, Col 4**

#### Cotton Is Damaged By Wind And Hail

Monday night, brilliant lightning danced through the sky all around Muleshoe and booming thunder filled the night as a thunderstorm deposited the first measurable moisture in the area in some two months.

However, along with the .7 rain received in Muleshoe, and up to two inches in the West Camp and Lariat areas, some hail peppered down, leaving varying amounts of damage to the cotton crop.

Little hail, and most of that pea-size, fell in Muleshoe, with an accumulation of up to two inches reported from West Camp and in the Progress area.

Lesser amounts of hail and one inch of rain were reported in the Coyote Lake area.

By Tuesday morning, light snow was falling and a high wind kept temperatures on the chilly side during the day. By night, very high wind was blowing and the area's first 'killing' freeze had been predicted.

Even with the wind, which avated during the night Tuesday, and the light snow, the killer freeze failed to materialize, and the overnight low on Tuesday was reported at 39 degrees.

To the north and west of Muleshoe, heavier amounts of snow were reported, with accumulations of two to eight inches being common reports.

In New Mexico, several highways were closed due to blowing snow and drifting. Also, the Panhandle of Texas reported several highways blocked from two to five foot snowdrifts, although only approximately two inches of snow were reported in those areas.

Wind and hail caused some damage to cotton in the fields, and some 'stringing' of cotton from bolls had been reported on Tuesday, with most of the damage being confined to the West Camp area, where a September hailstorm left considerable damage.

Bus schedules went awry **Con't Page 6, Col 3**

By Tuesday morning, light snow was falling and a high wind kept temperatures on the chilly side during the day. By night, very high wind was blowing and the area's first 'killing' freeze had been predicted.

Even with the wind, which avated during the night Tuesday, and the light snow, the killer freeze failed to materialize, and the overnight low on Tuesday was reported at 39 degrees.

To the north and west of Muleshoe, heavier amounts of snow were reported, with accumulations of two to eight inches being common reports.

In New Mexico, several highways were closed due to blowing snow and drifting. Also, the Panhandle of Texas reported several highways blocked from two to five foot snowdrifts, although only approximately two inches of snow were reported in those areas.

Wind and hail caused some damage to cotton in the fields, and some 'stringing' of cotton from bolls had been reported on Tuesday, with most of the damage being confined to the West Camp area, where a September hailstorm left considerable damage.

Bus schedules went awry **Con't Page 6, Col 3**

ported, with accumulations of two to eight inches being common reports.

In New Mexico, several highways were closed due to blowing snow and drifting. Also, the Panhandle of Texas reported several highways blocked from two to five foot snowdrifts, although only approximately two inches of snow were reported in those areas.

Wind and hail caused some damage to cotton in the fields, and some 'stringing' of cotton from bolls had been reported on Tuesday, with most of the damage being confined to the West Camp area, where a September hailstorm left considerable damage.

Bus schedules went awry **Con't Page 6, Col 3**

#### Firemen's Ball Slated Saturday Near Muleshoe

Muleshoe Fire Chief H.E. Reeder said the annual Firemen's Ball will be conducted Saturday night, November 3.

It will be in Jeff Smith's barn, located one mile east of Muleshoe on Highway 70, then one-half mile south to the first house on the left.

Playing for the dance will be "Broken Spokes" of Littlefield, and the dance will be 9 p.m.-1 a.m. Admission will be \$5 per couple and 'Couples Only' will be admitted to the dance.

Chief Reeder reminded that this is the only fund-raising event for the firemen each year, and proceeds will be used to buy radios and other equipment for the fire department. He urged good participation and good attendance for the annual 'Fireman's Ball'.

### Cotton Harvest Gets Underway

Although cotton harvest started some two to three weeks ago in southern Bailey County, for some cotton gins it was just getting underway this week in the northern portion of the county.

Early reports were indicating an average to better crop this year, despite numerous weather-related setbacks.

At Maple, Co-Op Gin Manager Jack Feagley reported 1,534 bales ginned by early Monday afternoon. According to the report, the cotton harvest is just about on time in that area.

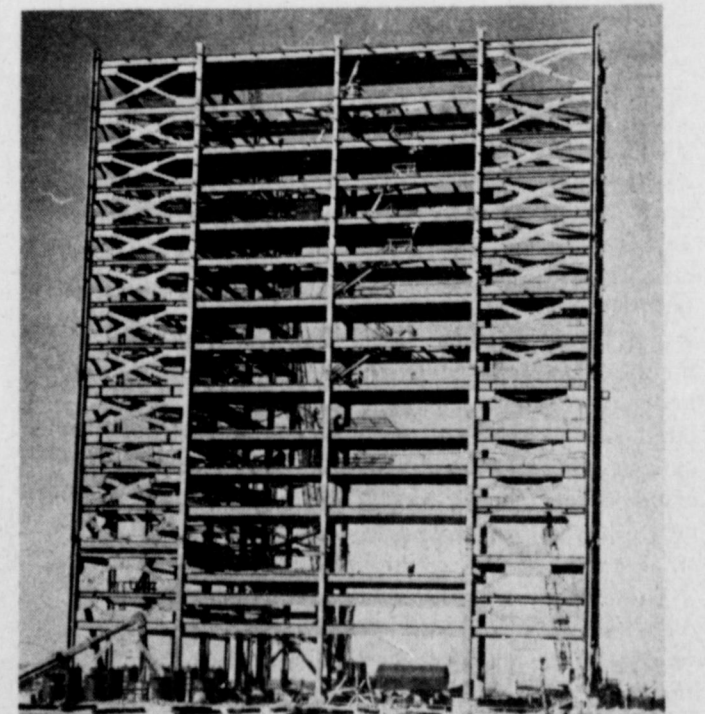
Also, in the Maple area, cotton is expected to average around one to one and a quarter bales.

He figured a freeze at this time would possibly hurt some of the late planted cotton, however, cited the warm weather of the last two weeks as helping the **Con't Page 6, Col 4**

John Sowers of the Lubbock Small Business Administration office said all area farmers are encouraged to attend the SBA disaster loan meeting in Olton tonight, Thursday, at 6:30 p.m.

The meeting is scheduled for the Agricultural Building in Olton and is being hosted by the Olton Grain Co-op and Fritz Richards. Sowers said two loan officers will attend the meeting and answer questions and give out loan applications.

He said that during the two weeks the temporary SBA offices were open in Muleshoe, a total of 94 applications were given local and area farmers who had severe crop losses due to weather conditions.



**STEEL GOING UP**--The boiler structure for the first Southwestern Public Service Company Talk Station coal-fired electric plant is now under construction east of Muleshoe. This section of the plant will house the boiler that will produce the steam used to generate electricity. Approximately 125 people are now at work on the plant site.

# New Officers Elected By SWCD For Texas

TEMPLE--District Directors at the Thirty-ninth Annual State Meeting of Soil and Water Conservation Districts elected Hermon Petty of Mineral Wells president, and Joe Montgomery of Abilene vice president of the Association of Texas Soil and Water Conservation Districts. Over 900 persons attended this meeting including directors representing the 199 conservation districts in Texas. The meeting was held recently in El Paso.

Petty, a cattle, swine, and pecan producer, has served as an alternate director of the State Association for Area Five for the past two years. Area Five consists of 36 SWCDs which cover 51 counties in North Central Texas. Petty has also served on the Association's Resolutions Committee. He is a past chairman and current vice-chairman of the Palo Pinto SWCD which is located in Mineral Wells. Petty has been a member of the board of directors of the

district for 12 years. Petty is also chairman of the County Committee of the Agricultural Stabilization and Conservation Service, director of the Mineral Wells Chamber of Commerce, president of the Palo Pinto County Farm Bureau, director of the First National Bank of Santo, Texas and president of Holiday Hills Country Club.

Montgomery, who has a row crop of livestock operation near Abilene, has served as the alternate director from Area Two for several years and is on the Association's Resolutions Committee. Area Two consists of 41 SWCDs covering 51 counties in the Hill Country and Trans Pecos area of the state.

Montgomery is currently chairman of the Middle Clear Fork SWCD headquartered in Abilene. He has been a member of the board of directors of his local SWCD since 1969. Montgomery has been active in the farmers Union, Farm Bureau, Roll-

ing Plains Production Credit Association and Hamby Water Supply Corporation. Association of Texas

Other new directors of the State Association are W.Q. Richards of Paducah, Clarence F. Schendel of Goliad and J.E. Clark, Jr., of Dayton.

Richards, a farmer and rancher, is vice-chairman of the Cottle SWCD headquartered in Paducah. He has been a member of the board of directors of his local district since April 1973 and has served as chairman of the Association's Organization Committee.

Richards represents Area One which consists of 47 SWCDs covering 51 counties in the Panhandle and

South Plains region of Texas.

Schendel, current chairman of the Karnes-Goliad SWCD headquartered in Kenedy, has been a member of his local SWCD board of directors since 1961. He is a past president of the Gulf Coast Association of SWCDs and has served as an alternate director of the State Association for Area Three.

As a member of the board of directors of the State Association, Schendel will represent 40 SWCDs covering a 50 county area in the South Central/Rio Grande Valley section of the state. Schendel has also served on the State Association's Resolutions Committee. He is currently a member of the Nat-

ional Association of Conservation District's Water Resources Committee.

Schendel has an extensive livestock, dairying and row crop operation near Goliad.

Clark has been active in the Texas and Southwest Cattle Raisers Association, American Soy Bean Association, Society of Agronomy, American Grain Association, American Rice Growers Association and Brazoria Cattleman's Association.

Kenneth Kuykendall, immediate past president of the State Association, will continue to serve on the board of directors as an ex-officio member. He ranches near Cherokee, Texas.

The Association of Texas Soil and Water Conser-

vation Districts is a non profit organization dedicated to assisting the state's conservation districts with the conservation, orderly development and judicious use of natural resources through local initiative, decision making and self-government.

Headquarters for the Association of Texas Soil and Water Conservation Districts are in Temple.

## HOW HIGH IS YOUR E.Q.?

(Economics Quotient)  
Write for a free booklet.  
"Economics"  
Pueblo, Colorado 81009.  
The American Economic System. We should all learn more about it.  
A public service message of The Newspaper & The Advertising Council & U.S. Department of Commerce.  
AMERICAN ECONOMIC SYSTEM  
NEWSPAPER AD NO.  
AES-77-876(A)-1 COL.

## Check Antifreeze Registration To Ensure Proper Protection

AUSTIN--Don't be caught out in the cold this winter with an antifreeze product unsuited to your needs, advises Agriculture Commissioner Reagan V. Brown.

"If the price of a particular brand of antifreeze seems too good to be true, it would be wise to find out if it meets certain minimum standards of freeze and corrosion protection," Brown said. "This is especially important if you are not familiar with the brand in question."

By law, all antifreeze offered for sale in Texas must meet rigid performance standards and be registered by the Texas Department of Agriculture (TDA). Brown noted that consumers may check to see if a particular brand of antifreeze is registered by calling the nearest TDA district office or the Weights and Measures Section in Austin at (512) 475-6577. He pointed out,

however, that the Department will not give specific details about a product and will not endorse any brand.

Before certifying any antifreeze for sale in the state, the TDA tests the product to make certain it offers the exact level of freeze protection as is stated on the label. Specifications also require that the antifreeze not foam excessively (which can cause the radiator to boil over and damage the engine) and that it contains ingredients to inhibit cooling system corrosion.

Also, because methyl alcohol evaporates easily at high temperatures, any product that uses this substance as its base must state on the label that it is not suitable as a summer engine coolant.

Energy official: gas supply adequate.

## Use Harvest-Aid Chemicals Right

Delaying cotton harvest after the crop is ready can result in lower grades, shorter staple and possibly a loss in yield. In early maturing fields, harvest-aid chemicals can be used to prepare a crop for timely harvest. But used improperly, these chemicals can lower profits by reducing lint quality and yield, the area cotton agronomist with the Texas Agricultural Extension Service cautions.

The most common and costly error is applying harvest-aid chemicals before the cotton crop is mature, Dr. James R. Supak, the Extension agronomist, said. "Sometimes there is a mistaken notion that these chemicals somehow speed-up maturity of the crop. But just the opposite is true--all fiber development stops when plant growth stops or leaves are removed. Only time and warm, sunny weather will promote maturity of cotton. So harvest-aid chemicals should be used only on mature cotton. The chemicals are only what their name implies--a chemical to aid in the harvesting of a naturally matured crop," Supak said.

There are two types of harvest-aid chemicals--defoliant and desiccants. True defoliant are mild materials that act slowly and cause leaves to drop off. In contrast, desiccants kill the entire plant rapidly so rapidly that most leaves "freeze" or stick on the stalk.

Before a defoliant is applied, 65 percent or more of the bolls should be open, Supak said. And before applying a desiccant, 80 percent or more of the bolls should be open. At those stages, the remaining unopened bolls are mature enough to open later. But if chemicals are sprayed too soon, smaller or immature bolls may never open and yields drop off sharply.

"This year, as in most years on the South Plains, we need all the time before frost to mature our crop. So as long as bolls are closed and are still producing fiber, increasing maturity process should not be stopped with harvest-aid chemicals," Supak said.

Materials such as sodium chlorate (Shed-a-leaf) and organic phosphates (Def, Folex) are defoliant, the agronomist said. these

chemicals are normally used to prepare cotton for picker harvesting; generally, the defoliant do not provide adequate defoliation and plant drying for stripper harvest, he noted.

Desiccants, on the other hand, kill plant tissue and cause rapid loss of moisture from foliage, stems, and unopened (mature) bolls. Desiccated plants can usually be stripper harvested within five to ten days after treatment.

Proper application is essential for good results regardless of the chemical used, Supak said. Coverage is highly important. On cotton less than two feet tall, use three cone-type nozzles per row, he advised. Use five nozzles per row if cotton is taller than two feet. "Before application check the weather reports. If a cold front is moving in, hold off application until the weather settles or some prolonged warm period can follow application. Poor results usually occur if harvest-aid chemicals are applied during or just ahead of a cool, wet spell."

Normally, desiccated plants will be ready for stripping eight to 10 days after chemical application. Before starting the stripper, check the crop, Supak urged. Leaves and stems should break and crumble easily.

"Remember, high lint grades and seed quality come from cotton that is harvested when it is dry. Cotton should be harvested at approximately eight percent moisture."

Every producer is well aware of the high costs in producing a crop from start to finish, the agronomist said. "So when we get a crop to this point, let's don't cut our profits short by starting too early with an application of harvest-aid chemicals or apply these chemicals when they are not necessary."

Supak said a good rule of thumb is: If the crop is not ready for a freeze, it is not ready for harvest-aid chemicals. "After all, Mother Nature's method of killing cotton is still the cheapest method."

Further information can be obtained by visiting your county Extension agent and requesting L-145 cotton defoliation guide, the agronomist said.

 Fresh Picnic Style <b>Pork Roast</b> 78¢ lb.	 Boneless Bottom <b>Round Roast</b> 168¢ lb.	 John Morrell Hot or Mild <b>Pork Sausage</b> 88¢ lb.	 Serve So Many Delicious Ways Halves <b>Boneless HAM</b> Wilson Certified Wilson Foods \$178 lb.
 Menu - For a Change of Taste <b>Beef Tripe</b> 39¢ lb.	 U.S.A. Tender Western Beef <b>Rump Roast</b> Borden's Individual Slices American Cheese 168¢ 12-oz. pkg. 129¢	 Wilson All Meats, None finer <b>Certified Bologna</b> Booth, Beer Better Fish 'N Chips 109¢ 99¢ 8-oz. pkg.	 Wilson's Try a B-L-T. Sandwich <b>Certified Bacon</b> Wilson - Please the kids Certified Franks 119¢ 78¢ 12-oz. pkg.



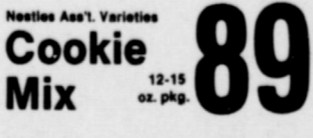
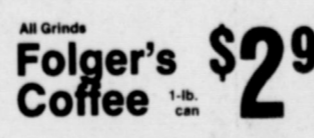
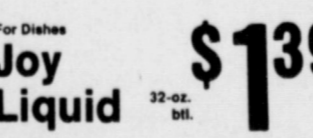

**PIGGLY WIGGLY**


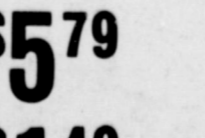



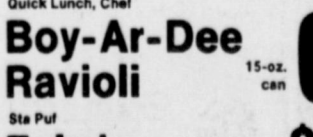
Prices Good Thru Sat., Nov. 3, 1979

## You Save Everyday At Piggly Wiggly!

**TRIPLE THE DIFFERENCE**  
Come into Piggly Wiggly and buy 25 different grocery items, any items you wish except for meat or produce, since quality and trim varies from company to company. Then compare our prices on those items at any other supermarket in town. If you find a lower total on those items at your Piggly Wiggly store, we'll give you TRIPLE THE DIFFERENCE in CASH! Now, that's a serious money saving offer!

 Buy 3 You Save 24c on Libby <b>Green Beans</b> 17-oz. cans 387¢ cans	 Buy 3 You Save 24c on Libby <b>Whole Kernel Corn</b> 16-oz. cans 387¢ cans	 Buy 3 You Save 24c on Libby <b>Sweet Peas</b> 16-oz. can 387¢ cans	 Piggly Wiggly Grade A <b>Large Eggs</b> doz. 69¢
 Fresh Tasting Dessert Topping <b>Dream Whip</b> 6-oz. pkg. 119¢	 You Save 18c on Ass'l. Frozen <b>Banquet Dinners</b> 11-oz. pkg. 54¢	 Breakfast Delight, Swiss Miss <b>Frozen Waffles</b> 5-oz. pkgs. 4100¢ pkgs	 You Save an Extra 10c on (10c off label) <b>Tide Detergent</b> 49-oz. pkg. 139¢

 Nestle's Ass'l. Varieties <b>Cookie Mix</b> 12-15 oz. pkg. 89¢	 All Grinds <b>Folger's Coffee</b> 1-lb. can 299¢	 For Dishes <b>Joy Liquid</b> 32-oz. bot. 139¢	 White Swan Quarters <b>Margarine</b> 1-lb. pkg. 39¢
----------------------------------------------------------------------------------------------------------------------------------------------------------------	---------------------------------------------------------------------------------------------------------------------------------------------------	-------------------------------------------------------------------------------------------------------------------------------------------------	-------------------------------------------------------------------------------------------------------------------------------------------------------

 All Grinds <b>Folger's Coffee</b> Quick Mixing, Chocolate Flavor 2-lb. can 579¢	 Quick Mixing, Chocolate Flavor <b>Milk Mate</b> 20-oz. bot. 149¢	 Mr. Pibb, Tab, Sprite or <b>Coca Cola</b> Banquet, Frozen 20-oz. pkg. 177¢	 Arm & Hammer <b>Apple Pies</b> 20-oz. pkg. 69¢	 Quick and Easy <b>Baking Soda</b> 16-oz. pkg. 45¢	 <b>Showboat Spaghetti</b> 14-oz. cans 99¢
------------------------------------------------------------------------------------------------------------------------------------------------------------------------------------	-------------------------------------------------------------------------------------------------------------------------------------------------------------------	---------------------------------------------------------------------------------------------------------------------------------------------------------------------------------	--------------------------------------------------------------------------------------------------------------------------------------------------	-----------------------------------------------------------------------------------------------------------------------------------------------------	------------------------------------------------------------------------------------------------------------------------------------------

 Ideal for between meal snacks Washington State Red or Gold <b>Delicious APPLES</b> U.S. No. 1 Pinks. Serve up hot from the oven <b>Baking Potatoes</b> Crisp Cooks in a Bag 1-lb. 38¢	 Crisp Lettuce Salads Add Zest to your Meals. Icy Fresh <b>Head LETTUCE</b> Savouring for salads, soups or stews <b>Pascal Celery</b> Non-Fattening Fresh 2 stalks 48¢	 A stick to the vegetable <b>Sweet Potatoes</b> 28¢	 <b>Spinach</b> 38¢
-------------------------------------------------------------------------------------------------------------------------------------------------------------------------------------------------------------------------------------------------------------------------------------------------	-------------------------------------------------------------------------------------------------------------------------------------------------------------------------------------------------------------------------------------------------------------------------------	---------------------------------------------------------------------------------------------------------------------------------------------------	----------------------------------------------------------------------------------------------------------------

 Quick Lunch, Chef <b>Boy-Ar-Dee Ravioli</b> 15-oz. can 65¢	 Sta Pul <b>Fabric Softener</b> 1-gal. jug 139¢	 Overnight <b>Johnson's Diapers</b> 18-ct. pkg. 239¢	 Household Cleaner <b>Pine Sol Liquid</b> 28-oz. bot. 159¢	 Kal Kan Ass'l Varieties <b>Dog Food</b> 3 14-oz. cans 100¢	 Gravy Train <b>Dog Food</b> 25-lb. bag 599¢
--------------------------------------------------------------------------------------------------------------------------------------------------------------	--------------------------------------------------------------------------------------------------------------------------------------------------	-------------------------------------------------------------------------------------------------------------------------------------------------------	-------------------------------------------------------------------------------------------------------------------------------------------------------------	--------------------------------------------------------------------------------------------------------------------------------------------------------------	-----------------------------------------------------------------------------------------------------------------------------------------------

# SPS Passes Savings To Customers Module Dry Cotton, Agronomist Cautions

The base rate for electricity for most of Southwestern Public Service Company's customers in Texas went down one-half cent per kilowatt hour on October 1, according to division manager, Bob Brummal.

Brummal commented, "The reason is that SPS's winter rates went into effect at this time. During the summer months -- June, July, August and September -- the base rate or residential service is .75 cents per kilowatt hour for all KWH after the first 30. The rest of the year, or during the winter months, the base rate after 0 kilowatt hours is 2.25 cents per KWH."

According to the division manager, a customer who used 500 kilowatt hours in September received an electric bill for \$30.94 plus tax. His bill in October or 500 kilowatt hours would have been \$27.08 plus tax.

Not all of the savings this customer would realize would come from the lower winter rate, however, he added. SPS paid less for its fuel in October than it did in September, so these savings were passed onto the customers. The fuel cost portion of the September bill was \$13.52 while the October fuel cost portion dropped to \$12.02.

For a customer who uses 500 kilowatt hours per month, the winter base rate saves him \$2.36 over the summer rate.

Here's the way Brummal breaks the bill down: September (summer rate): Base Rate, first 30 KWH is \$4.50; next 470 KWH is

\$12.92 for a total base rate of 500 KWH at \$17.42. Fuel cost (factor \$.027047) is \$13.52 and the total electric bill, less city tax is \$30.94.

October (winter rate) base rate for the first 30 KWH is \$4.50; next 470 KWH is \$10.56 for a total base rate of \$15.06. The fuel cost (factor \$.024040) is \$12.02 making the total electric bill, less city tax \$27.08.

Brummal said the fuel cost factor is determined by averaging the fuel costs for all of Southwestern's eleven generating stations. This includes the cost of coal, natural gas and fuel oil.

"Southwestern Public Service Company's base rates for winter months are lower than for summer months because the Texas Public Utilities Commission requires all electric utilities in this state to design their rates this way," explained the division manager.

"SPS customers use more electricity in the summer months because of air conditioning and irrigation," he concluded. "The summer load determines the amount of generating capability that SPS must have. If SPS customers used the same amount of electricity in the winter months, the cost of generating a kilowatt hour would be less."

\*\*\*\*

The best advice for modern people, young and old, facing all sorts of propaganda, is the single word: think.

Rapidly opening cotton is encouraging many area producers to prepare their crop for an early harvest, before frost, with the use of harvest-aid chemicals. With a large crop predicted for this area, much of the harvested cotton will be stored in modules before ginning, and this necessitates careful attention to the moisture content, the area Extension cotton agronomist cautions.

Research has shown that "dry" cotton, having only 8 to 12 percent moisture, can be stored in modules for prolonged periods with no deterioration of lint and seed quality, said Dr. James R. Supak, specialist with the Texas Agricultural Extension Service.

But research also has shown that modulating "wet" cotton, with greater than 12 percent moisture, is detrimental to lint and especially to seed quality, he warned.

This means that a good plant kill is essential, the agronomist said. All plant components--lint, seed, burs, stems--going into the module must be dry. In a once-over harvest area such as the Texas High Plains, desiccants (Paraquat and arsenic acid) are usually used to rapidly kill and dry plant tissues of the cotton.

"Normally, it takes seven to 10 days after a good job of chemical desiccation, or after a killing frost, for the plant components to dry," Supak noted. Harvesting too soon results in accumulations of green (high moisture) trash that can contribute to excessive

heat buildup in modules. Therefore, if cotton is to be modulated, wait until leaves and stems are dry and crisp. Supak said.

When placing cotton into a module, be sure that the moisture from dew, rain or snow has dried, he urged.

One way to avoid problems with morning dews, he suggested, is to make the first two or three dumps into a trailer and then begin forming the module.

"A good way to check to see if the cotton is dry enough to store is to squeeze a handful," he said. "If the cotton sticks together in a ball, it is too wet.

Temperatures within modules should be monitored with the long stem thermometer designed specifically for this purpose, the Extension specialist said. Daily readings should be obtained and recorded for each module until it becomes apparent that temperatures have stabilized.

Normally, the temperatures designed specifically

for this purpose, the Extension specialist said. Daily readings should be obtained and recorded for each module until it becomes apparent that temperatures have stabilized.

Normally, the temperatures within a module rise 15 to 20 degrees Fahrenheit during the first three to five days as moisture within the module reaches a balance. Thereafter, if the module stays dry, temperatures will tend to remain fairly stable, fluctuating slightly with changes in air temperature.

Usually, Supak said, a troublesome module will show a temperature rise of 12 to 15 degrees Fahrenheit. Thereafter, temperatures in such a module will continue to increase at 10

to 15 degrees a day for several days.

The cut-off temperature for sending a module to the gin as quickly as possible is around 110 to 120 degrees Fahrenheit, the Extension specialist said. "Seed from modules that reach these temperatures could be damaged and shouldn't be saved for planting seed without careful inspection and testing," he cautioned.

## Shipments of Sheep, Goats To Mexico Boost Exports

AUSTIN--Extremely large shipments to Mexico of slaughter sheep and goats helped to make August the largest volume month this year for livestock exports through the Texas Department of Agriculture export pens.

"Mexico has become a very valuable market for Texas sheep and goat raisers," commented Agriculture Commissioner Reagan V. Brown, "since few other ready outlets exist for their slaughter-type animals."

There were 6,476 head of slaughter sheep and 4,323 head of Spanish slaughter goats shipped through TDA facilities during August. This brought the total number of cattle, horses, swine, sheep and goats exported to 13,943. These animals were valued at \$2,474,246. Although August was a record month as far as volume of livestock shipped, the total dollar-value figure for that period has been surpassed four times in recent months.


Customers of Texas livestock during the month included Mexico, South Africa, West Germany and Guatemala. Mexico, as usual, was the leading buyer.

Commissioner Brown noted that these figures show only animals which were processed through Texas Department of Agriculture facilities, and do not include those shipped through other export pens. The total number shipped from all points in Texas would, of course, be much greater.

The Department maintains five export pens along the Texas-Mexico border, and one at Houston Intercontinental Airport. All animals passing through these facilities are certified by veterinarians from both Texas and Mexico for healthiness and proper registration.


1422 W. Amer. Blvd. Muleshoe

**Comin' in for good**



# One Good Pizza Deserves Another.

**Comin' in for good**



**Buy One Handmade Pizza. Get One Free.**

Buy a large pizza, we'll give you a medium free. Buy a medium pizza, we'll give you a small free. So come on in to Pizza Hut. After all, two good pizzas are better than one.

Offer good on large and medium pizzas only. Offer good only on regular menu prices through.

One coupon per party per visit at participating Pizza Hut® restaurants. Offer good only on regular menu prices through.



# WIN \$1,000 OVER \$60,300 IN CASH PRIZES!

**18,061 INSTANT WINNERS**

**19,251 TOTAL PRIZES**

**It's Easy To Win!**

● Pick up a FREE Instant Vegas Bingo Collector Card at our checkout counter or store office. No purchase necessary. Each card contains Instant Vegas Bingo games where you could win \$5, \$10, \$100 and \$1,000! Plus you can win \$1 or \$2 INSTANTLY!

● Each time you visit our store pick up a FREE Instant Vegas Bingo game ticket. Simply punch out the perforated sections to reveal 4 game markers. Match the markers to the squares on your Collector Card. Just follow the easy rules on the back of your Collector Card.

**NO PURCHASE NECESSARY!**

# Instant Vegas Bingo

THOUSANDS OF INSTANT \$1 & \$2 WINNERS

**Don't Miss Your Chance To Be A Winner!**

ODDS CHART EFFECTIVE NOVEMBER 1, 1979

PRIZE VALUE	NUMBER OF TICKETS	ODDS FOR ONE GAME TICKET	ODDS FOR 13 GAME TICKETS	ODDS FOR 28 GAME TICKETS PLUS 10 SAVED CHIPS
\$1,000	15	1 in 119,332	1 in 9,179	1 in 3,315
100	175	1 in 10,229	1 in 787	1 in 284
10	250	1 in 5,114	1 in 393	1 in 142
5	850	1 in 2,754	1 in 212	1 in 77
2	3,000	1 in 597	1 in 46	1 in 17
1	15,061	1 in 119	1 in 9	1 in 3.1
TOTAL NO. PRIZES	19,251	1 in 93	1 in 7.1	1 in 2.8

Instant Vegas Bingo #WMS2 is being played in 17 participating Piggly Wiggly Stores located in Alamogordo, Carlsbad, Carrizo, Clovis, Espanola, Gallop, Las Vegas, Roswell, Silver City, Tular and Truth or Consequences, New Mexico, and Floydella, Muleshoe, Hockley, Seminole Station and Tulsa, Texas. The above stores are served by Shop-Rite Foods, Inc., 617 Truman NE, Albuquerque, New Mexico.

Scheduled termination date of this promotion is January 30, 1980, however, Instant Vegas Bingo officially ends when all game tickets are distributed.

**PICK UP YOUR FREE COLLECTOR CARD AND GAME TICKET AT PIGGLY WIGGLY TODAY!**

**WIN \$1,000 • \$100 • \$10 • \$5 • \$2 • \$1**



**CINDY PURDY'S GYMNASTIC CLASS** . . . Students from Cindy Purdy's School of Gymnastic and Dance class attended a clinic and meet in Corpus Christi Thursday through Sunday. Those attending were: Coach Waldo Casarez, Kristi Campbell, Melissa Wilbanks, Chandra Engelking, Sherri Bessire, Wes Hanks, Brett King, Lisa Black, Krystal Angeley, Greg Young, Ronald Briggs, Tonda Gunstream, K-K Flowers, Michael Angeley, Chaun Gunstream, Cynthia Lane, Lance King, Britt Engelking, Michelle Finney, Todd Bessire.

### Muleshoe Twisters JG Gymnastic Team

The Muleshoe Twisters Gymnastic Team from Cindy Purdy's School of Dance and Gymnastics attended a clinic and meet hosted by Gymnastica Olympics of Corpus Christi, Thursday through Sunday. Coach Pat Yeager, 1964, World Olympic Coach, and his wife Nikki were master instructors. Coach Tom Lewis, Kingsville gymnastic coach and Willie Gipson, Texas A and I trainer also attended the clinic.

In the girls division, each competed on the uneven bars, vault, balance beam, and floor exercise.

In the 11 year and under category: Krystal Angeley, daughter of Mr. and Mrs. Tub Angeley placed fifth on bars, fifth on beam, sixth on floor exercise, and sixth in all-around and received a participation ribbon.

Lisa Black, daughter of Mr. and Mrs. Ronnie Black placed sixth on beam, sixth on vault, and received a participation ribbon.

Michelle Finney, daughter of Mr. and Mrs. Bob Finney placed fifth on beam, fifth on floor exercise, sixth on bar and received a participation ribbon.

Cynthia Lane, daughter of Mr. and Mrs. Lionel Lane placed fourth on beam and received a participation ribbon.

Britt Engelking, daughter of Mr. and Mrs. Jerry Engelking received a participation ribbon.

In the 12 years old and older girl's category:

Chandra Engelking, daughter of Mr. and Mrs. Jerry Engelking and Kristi Campbell, daughter of Mr. and Mrs. Buck Campbell received participation ribbons.

Melissa Wilbanks, daughter of Mr. and Mrs. Paul Wilbanks placed sixth in

floor exercise and received a participation ribbon.

K-K Flowers, daughter of Mr. and Mrs. Charles Flowers placed fifth in floor exercise and received a participation ribbon.

Tonda Gunstream, daughter of Mr. and Mrs. Tommy Gunstream placed sixth on beam and received a participation ribbon.

Sherri Bessire, daughter of Mr. and Mrs. Travis Bessire placed third on vault, fifth on floor exercise, fifth on beam, sixth on bars and received a participation ribbon.

In the boys division, each competed on the vault, side-horse, floor exercise, rings and high bar.

In the 11 year old and under category:

Greg Young, son of Mr. and Mrs. Jim Young placed fourth on vault, fourth on side-horse, third on rings, second on floor exercise, sixth on high bar and third in all-around.

Todd Bessire, son of Mr. and Mrs. Travis Bessire placed first on vault, first on side horse, first on floor exercise, second on rings, second on high bar and first in all-around.

Lance King, son of Mr. and Mrs. Max King placed second on vault, second on side-horse, first on rings, third on floor exercise, first on high bar, and second in all-around.

Chaun Gunstream, son of Mr. and Mrs. Tommy Gunstream placed fourth of floor exercise, third on high bar, third on rings, fifth on vault, fifth on side-horse and fourth in all-around.

In the boys 12 years old and older category:

Brett King, son of Mr. and Mrs. Max King placed third on vault, second on side horse, sixth on rings, third on floor exercise, fourth on high bar and fourth in all-around.

Ronald Briggs, son of

Mrs. Rosemary Briggs placed fifth on vault, fourth on side horse, fourth on rings, and sixth in all-around.

Michael Angeley, son of Mr. and Mrs. Ken Angeley placed fourth on vault, third on side horse, third on rings, second on floor exercise, third on high bar, and third in all-around.

### A.A.R.P. Holds Meeting

The regular meeting of Muleshoe Chapter No. 3169, American Association of retired persons, was held Oct. 26th, with a luncheon at 11:30 a.m. in Muleshoe Civic Center.

Invocation was given by M. H. Laney.

The meeting was called to order by Clarence Wilhite, President; Prayer was offered by Shorty Davis; Pledge of Allegiance, led by Mrs. Lena Hawkins was repeated.

Minutes of the previous meeting were read and approved and the Treasurer's report given.

Visitors introduced by Mrs. Iva Smith were her son and wife, and her grand son and wife, Mr. and Mrs. Stanley White and Mr. and Mrs. Ron White of Carlsbad, New Mexico.

A letter from the Chamber of Commerce, invited the group to enter a float in the Christmas parade.

Mrs. Clara Lou Jones introduced Sgt. Wayne Holmes of the Muleshoe Police Department, who gave a very interesting and informative talk on "Home Security". He showed slides and explained how easily accessible some homes are to burglars. Different kinds of door locks and other security devices were on display and brochures "Vacation Enjoyment" and "Operation Identification" were distributed.

Wes Hanks, son on Mr. and Mrs. Kenneth Hanks placed sixth on vault, fifth on side horse, fifth on rings, sixth on floor exercise, fifth on high bar, and fifth in all-around.

Gymnastics Coach Waldo Casarez, Cindy Purdy, Sheri Hawkins, and Judy Wilbanks accompanied the 19 gymnasts. Besides the clinic and meet the children were also treated to an evening in a Haunted House and a day at Padre Island beach.

### Reception To Honor Mr. and Mrs. N. C. Moore

The Children of Mr. and Mrs. N.C. Moore are hosting a reception in honor of their parents' Sixtieth Anniversary, Sunday, November fourth, from Two to Four in the afternoon. The reception will be held in the home of the honorees. They are asking no gifts please.

The Children of Mr. and Mrs. N.C. Moore are hosting a reception in honor of their parents' Sixtieth Anniversary, Sunday, November fourth, from Two to Four in the afternoon. The reception will be held in the home of the honorees. They are asking no gifts please.

### Muleshoe Singing Group Meets

The Muleshoe Singing Group meeting was called to order by singing the theme song, "The Old Country Church" led by Mr. Zed Robinson.

Invocation was given by Mr. J.C. Shanks. There were thirty-four present including seven from Clovis, N.M.

Mr. Omer Kelton brought with him his daughter Elva, and Elva's friend Sylvia Luna both from Sweetwater, Texas.

Mr. Esland Upchurch and Floyd Houston from Earth, Mr. and Mrs. J. C. Chamley from Portales, N.M., Mr. and Mrs. William Skeen from Texico.

After singing solos, duets, quartets and congregational singing the Benediction was given by Mrs. J.C. Slaughter.

The Muleshoe singing group meets each Saturday at 7:30 p.m. in the fellowship hall of the Trinity Baptist Church. All are invited reports Clara Coffman.

### Broiler Hatches Increase by 11%

AUSTIN--The 21.3 million broiler chicks hatched in Texas during July represents an 11 percent increase over the same month a year ago, according to the Texas Department of Agriculture.

Slaughter of broilers was also up in July, by some 14 percent, while the 876,000 turkey poult hatched in July increased four percent over 1978.

July egg production was pegged at 224 million, up 8 percent from July of 1978. The number of laying hens on hand totaled 11.3 million, 6 percent more than last year.

The number of egg-type chicks hatched in July was up 22 percent from a year ago, and totaled 2.3 million.

Some 23,416,000 chickens were slaughtered during the month, 14 percent more than last year. Turkey slaughter, while up 8 percent from June, was 4 percent below 1978 levels.

Jimmy Carter, President:

"The most important thing we must do now is to ensure that the windfall profits tax passes so that it can give us energy security."



**BROWNIE TROOP #274 HOLDS INVESTITURE**--Monday night eight girls, received their pins and became Girl Scouts, L. to R. Julie Recio, Beth Johnson, Misty Hillin, Lillie Garza, Brandie Estep, LaTavia Copley, Lisa Coleman, Marcia Blackwell.

### Brownies Hold Investiture Service

Brownie Troop No. 247 held their Investiture Ceremony, Monday night, October 29th in the Girl Scout Hut. Marcia Blackwell and Julie Recio handed out programs at the door. Misty Hillin and Tavia Copley showed the guests to their seats. The ceremony opened with the Brownies leading the

### Trinity Baptist Sunday School Revival Slated

Trinity Baptist Church will observe a Sunday School Revival on Sunday through Wednesday, Nov. 4-7. Leader of the revival will be Buddy Wells, the new Church Services Director for the Caprock Plains Area.

A Sunday School Worker Appreciation luncheon is planned on Monday, Nov. 4. Each member is asked to bring a covered dish for the meal, and the church will serve the drinks, according to the minister, Rev. Gene Prevo.

Revival Prayer Service will be 9 a.m. Sunday in the auditorium; adults and youth will meet in the auditorium at 9:45 a.m. for the Sunday School hour; Worship service will be at 11 a.m., followed by the noon meal.

Buddy Wells will take the Church Training hour and evening worship on Sunday and the meetings Monday through Wednesday nights will be at 7 p.m.

Pledge of Allegiance, then each girl was called forward to explain why they wanted to become Brownies. The girls then recited the Brownie Promise and was pinned. The Brownie Leader read the Brownie Law and the girls promised to try to abide by the law. The Ceremony closed with the newly pinned Brownies singing the Brownie Smile Song. Lillie Garza thanked the guests for coming and invited them to stay for refreshments. Brandi Estep, Beth Johnson and Lisa Coleman served the refreshments. Members of

Brownie Troop No. 247 are: Marcia Blackwell, Lisa Coleman, LaTavia Copley, Brandi Estep, Lillie Garza, Misty Hillin, Beth Johnson and Julie Recio. Brownie Leaders are Cherry Estep and Betty Campbell.

- \*\*\*\*\*
- Tangy French Dressing**
- 1 cut clove garlic
  - 1/2 t salt
  - Black Pepper
  - 3 T vinegar
  - 1 to 2 t Worcestershire sauce
  - Combine ingredients in a jar. Cover and shake well.

You Are Cordially Invited To A Housewarming For Mr. & Mrs. Elvis Powell In Their Home On Saturday, November 3, 1979 7:pm. Directions: 1 Mile East & 2 Miles South Of Clays Corner

**We sell an American tradition that will never wear out.**

It's called Santa Rosa Brand. A brand of shoes and boots for work and sport that people have sworn by since 1906. It's the way they're made. Out of the finest leathers, with soles that are right for the job or terrain. So walk in soon. And if one pair doesn't fit your needs, walk out with one of the other Santa Rosa Brand styles.

You'll have one heck of a pair of shoes or boots.



**SANTA ROSA BRAND**

SHOES AND BOOTS FOR WORK AND SPORT

**\$50<sup>00</sup>**

(Style 8080)

**St. Clair's Since 1930**

Zip-in<sup>000</sup> A FALL LAWN With GREEN GRASS INSTALATION

Now s A Good Time To Sod Your Lawn. No Dust or Mud this Fall, Winter, or Spring. A G. Sod. inc. is offering 1¢ per sq ft. discount this Fall.

A. G. SOD. INC. ph. 1-505-384-2430 McIntosh, N.M.

Join your Neighbor & get a semi-load. Save on Freight

BEAUTIFUL BLUEGRASS - BERNUDA Available.

PERRYS

WE WOULD LIKE FOR ALL OF OUR FRIENDS AND CUSTOMERS To Come For Our Annual No Money Down LAY-A-WAY SALE

NO MONEY DOWN—NO CARRYING CHARGES—MAKE YOUR 1ST PAYMENT WITHIN 30 DAYS

SHOP EARLY & LAYAWAY FOR CHRISTMAS COME ON IN!!

Perry's has an excellent assortment of large toys Dolls, Tricycles, Bicycles, Wagons, Desk Sets and many many other items ... Be Wise Lay-Away now while our selection is good!



MISS SHARLA FARMER

### Sharla Farmer Honored With Bridal Shower

Sharla Farmer bride elect of Claude Ray Collins, was honored with a bridal shower in the PCA room on Monday Oct. 29. Her chosen colors of blue and white were carried out in her corsage of white carnations and blue daisies and the center piece with blue and white daisies. The table was covered in white lace over blue. Refreshments of thumb print cookies, mints, and pineapple punch were served. Sharla was assisted in opening her gifts by her

mother, Mrs. Charles Farmer, her sister, Kim and Betty Carpenter. The hostess gift was a Hamilton Beach stand mixer with dough hook. The hostesses were, Mrs. George Wheeler, Mrs. Raleigh Mason, Mrs. Betty Carpenter, Mrs. Gentry Lynn, Mrs. James Glaze, Mrs. Ronnie Spies, Mrs. Robert Hunt, Mrs. Eugene Shaw, Mrs. W.R. Welch, Mrs. Jim Pat Claunch, Mrs. Jack Hodnett, Mrs. Jack Dunham, and Clea Williams.



MISS VAL BASS

### Val Bass Feted With Shower

Val Bass was feted with a wedding shower Oct. 27, at 2:00 p.m. in the home of Nell Woods. Val Bass (honoree) her mother, Melisha Bass and Nell Bass greeted the guest. Robbie Collins registered the guest. The serving table was covered with a yellow cloth with white lace trim. The center piece was a bouquet of yellow, orange, and white silk flowers. Carol

Jones and Lynette Shafer served an assortment of cakes and punch. Special guests were Mrs. Troy Lance (grandmother of the bride) Mrs. T.G. Lance and Tania (aunt and cousin of the bride) Mrs. Mike Crain (aunt of bride) and Mrs. Omar Nealey. The hostess gift was a set of cookware and tupperware. They presented Val with a corsage made of tupperware kitchen gadgets. Hostess were, Mrs. James Collins, Mrs. Ronnie Hedges, Mrs. Doc Jones, Mrs. Kenneth Martin, Mrs. Buck Creamer, Mrs. Willis Wood, Mrs. Bob Gage, Mrs. Joel Nowlin, Mrs. June Magness, Mrs. Linda Gerier, Mrs. J.L. Phipps, Mrs. Burl Jones, Mrs. Johnnie Patterson, Mrs. Ronnie Shafer and Mrs. Morris Nowlin.

### Lullaby Shower Fetes Mrs. Burns

Mrs. Keith (Paula) Burns was honored with a Lullaby shower Oct. 26, in the Community Room of Tri-County Savings. The table was covered with a beige lace cloth. The center piece was a fall flower arrangement of beige, gold and brown. Brownies, Congo squares, cheese logs, assorted crackers, coffee, and apple cider were served. The hostess gift was a play pen and a corsage of yellow and white daisies.

Hostesses were Rene Anderson, Claire Brown, Carel Cox, Paulette Foster, Ann Mount, Karen Tunnell and Marilyn Young.

### 10 Years Ago

New City Hall officially opened for business at their new location. Rufus Gilbreath and Roland McCormick left Wednesday for San Antonio where they attended Texas Seedman's convention, returning to Muleshoe Saturday.

### 20 Years Ago

A new club Future Teachers of America (FTA) has been added to the list of Clubs at Muleshoe High School.

### 30 Years Ago

Muleshoe Study Club met in the home of Mrs. Julian Lenau. The WSCS of the Progress Methodist Church met in the home of Mrs. Johnny Westbrook.

### 40 Years Ago

Mr. and Mrs. Bill Millen were in Clovis, N.M. visiting Sunday afternoon.

### 50 Years Ago

Work started this week on building of Lone Star Theatre, preparatory to installing talking movies.



MRS. KEITH BURNS



### Albert Mendoza Jr.

Mr. and Mrs. Albert Mendoza, are the proud parents of a baby boy born Oct. 26, at 1:35 p.m. He has been named Albert Orozco Mendoza, he weighed 7 pounds and one ounce.

Grand parents are Mr. and Mrs. Joe Orozco, Muleshoe and Mr. and Mrs. Consolacion Mendoza, Chihuahua Mexico. Great grand parents are Mr. and Mrs. R.T. Castorena, Muleshoe.

### Jessica Ann Rodriguez

Mr. and Mrs. Fernando Rodriguez are the proud parents of a baby girl born Oct. 28, at 10:16 a.m. She weighed seven pounds and twelve ounces. She has been named Jessica Ann Rodriguez. Jessica has one brother Fernando Jr. Two years, and one sister D'Ann Two years old. Grand parents are Mr.

and Mrs. Noe Anzaldua, Muleshoe, and Mr. and Mrs. Joe Rodriguez, Littlefield. Great grandparents, Marcus Rodriguez, of Littlefield.

### Jason Randall Thomas

Mr. and Mrs. Randy Thomas are the proud parents of a baby boy, born Oct. 12. He weighed six pounds and eleven ounces. Jason has one brother Britt age Three. Grandparents are Mrs. E. E. Welch of Lubbock, Mr. and Mrs. J. H. Thomas, of Slaton. Great grandparents are Mrs. J. O. Womble of Lubbock, and Mrs. Lilly May Thomas of Slaton.

### The Lonely Heart



### Red Meat Supplies Decline Due to Beef Drop Despite Higher Output of Pork, Lamb, Mutton

AUSTIN--The 13-percent decline in total red meat output in Texas, resulting from continuing downward supplies of beef during July, was partially offset by higher production of pork, lamb and mutton, according to Agriculture Commissioner Reagan V. Brown. "Nationwide, commercial red meat production was up 3 percent in July," Brown noted. "However, a net decrease in meat production was recorded in Texas during the month because we are the top beef producing state, and sharp declines in cattle slaughter are more strongly reflected here."

Brown pointed out that increased production of pork and poultry will be a major factor in keeping retail meat price increases well below their previous levels for the rest of 1979.

During July, Texas commercial slaughter facilities produced 280 million pounds of red meat, said Brown. This was 13 percent less than a year ago, and was down 5 percent from the previous month. "So far this year, Texas red meat production is running 7 percent below 1978, although

this does not include poultry, which has been increasing," he added. Thus far this year, U. S. red meat production totals 21.1 billion pounds, down 4 percent from the same period a year ago. Cattle slaughtered during July in Texas numbered 412,300 head, down 102,700 head from a year ago. However, average weight was up 20 pounds per animal, and helped ease the dropoff in beef production. Veal production

(from calves) has shown a 47-percent dropoff over the first seven months of this year, since declining cattle herds have made these younger animals increasingly valuable for breeding purposes. July hog slaughter, at 103,200 head, topped July 1978 by over 28,000 head, and average live weight was up by 9 pounds. So far this year, Texas pork production is up 10 percent from a year ago. Total sheep and lamb kill was up substantially at 69,800 head.

**The Difference**  
"So your son is in college? How is he making it?"  
"He isn't making it. I'm making it and he's spending it."

**Special ANNIVERSARY Bargains**

**Winkler Meat Co. Has Been In Business For 4 Years And Larry Says "THANKS" To His Friends & Neighbors.**

**1/2 or Whole Hog 59¢ lb.**

Processed & Ready For Your Freezer.

**Winkler's Has 1/2 or 1/4 Beefs**

**"Let Us Do Your Custom Processing"**

**Winkler Meat Co.**

401 Main Muleshoe 272-4703

**True Value**  
HARDWARE STORE

**BARGAIN OF THE MONTH**

**ELECTRIC CASSEROLE GRILL**

WEST BEND

now **12.99**

While Supplies Last

Non-stick grill with removable 2-qt. pot that's oven/microwave safe. 1 1/2-qt. casserole lid. 5268

Quantities Limited

**Gray & Cox**

Pn. 272-4511  
401 S. 1st.  
Muleshoe, Texas

## The Lazbuddie Senior Class Says.

# "Thanks"

"Your Contributions Helped Make Our Halloween Carnival A Success."

To The Following Merchants.

- |                                                                                                                                                                                                                                                                                                                                                                                                                                                                                                                                                                                                                                                                                                                                                           |                                                                                                                                                                                                                                                                                                                                                                                                                                                                                                                                                                                                                                                                                                                               |                                                                                                                                                                                                                                                                                                                                                                                                                                                                                                                                                                                                                                                                                                                                                              |
|-----------------------------------------------------------------------------------------------------------------------------------------------------------------------------------------------------------------------------------------------------------------------------------------------------------------------------------------------------------------------------------------------------------------------------------------------------------------------------------------------------------------------------------------------------------------------------------------------------------------------------------------------------------------------------------------------------------------------------------------------------------|-------------------------------------------------------------------------------------------------------------------------------------------------------------------------------------------------------------------------------------------------------------------------------------------------------------------------------------------------------------------------------------------------------------------------------------------------------------------------------------------------------------------------------------------------------------------------------------------------------------------------------------------------------------------------------------------------------------------------------|--------------------------------------------------------------------------------------------------------------------------------------------------------------------------------------------------------------------------------------------------------------------------------------------------------------------------------------------------------------------------------------------------------------------------------------------------------------------------------------------------------------------------------------------------------------------------------------------------------------------------------------------------------------------------------------------------------------------------------------------------------------|
| <p>Lazbuddie Garage<br/>Lillian Smith<br/>Lazbuddie Grocery<br/>Shirley-Anderson Elevator<br/>Foster Fertilizer<br/>Lazbuddie Grain<br/>Clay's Corner Gin<br/>James Crane Tire Co.<br/>Shook Tire Co.<br/>Gulnn Wrecking<br/>James Roy's Market<br/>Allis-Chalmers<br/>Corral Restaurant<br/>Pizza Hut<br/>John Deere-Dent-Rempe<br/>Wiedebush &amp; Co.<br/>Mohawk Auto Parts<br/>The Fair Store<br/>Buddy's Shoes<br/>Damron Drug<br/>Anthony's<br/>Plains Auto Parts<br/>Farmers Co-Op Gin<br/>Ray Griffith's &amp; Sons<br/>Bratcher Motor Supply<br/>Perry's 5 and 10 Store<br/>Harvey Bass<br/>Decorators 216<br/>Flowerland<br/>Fry &amp; Cox<br/>Singleton-Ellis Funeral Home<br/>John D. Hamblen, D.D.S.<br/>King Grain Co.<br/>Western '66'</p> | <p>Lindsey Jewelry<br/>Lenau Lumber Co.<br/>Piggly Wiggly<br/>Johnson Furniture<br/>Patrick's Jewelry<br/>Little Tyke<br/>Fabric Mart<br/>Tagr's<br/>Teen Scene<br/>Winns Cover-Up<br/>It's A Small World<br/>Shipley Furniture<br/>Stork Shop<br/>Teens and Queens<br/>Queens and Teens<br/>Whites Auto<br/>Medfords Shoes<br/>Bryson Furniture<br/>Lazbuddie Farmers Co-Op<br/>Winklers Meat Market<br/>Muleshoe Co-Op Elevator<br/>Ken Russell Spraying Service<br/>Tide Products<br/>Jim's Pay N Save<br/>Gulf Oil Company<br/>Sanitary Barber Shop<br/>Poynor's Whites Store<br/>Main Street Beauty Shop<br/>Radio Shack-Gordon<br/>Wilson<br/>Muleshoe Floral<br/>Lamberts Cleaners<br/>Crow Chevrolet<br/>Dot Shop</p> | <p>Higginbotham-Bartlett Co.<br/>Williams Brothers Office Supply<br/>Albertson's Mens Wear<br/>Sam's Sporting Goods<br/>Western Auto<br/>Western Drug<br/>Cobb's<br/>St. Clairs Dept. Store<br/>Something Special<br/>Lookin Good<br/>Sonic Drive In<br/>Hidden Talents Craft Shop<br/>Lee's Western Wear<br/>Leal's Restaurant<br/>Baker Farm Supply<br/>Valley Grain Co.<br/>Morrison Oil Co.<br/>Lazbuddie Cafe<br/>Lowe Drilling<br/>Robert Green Pontiac &amp; Bulck<br/>Wilson Drilling<br/>Wooley Hurst Imp.<br/>Valley Sprinkler<br/>Texas Sesame Growers<br/>Art Loft<br/>Capitol Freehold Land &amp; Investment Restaurant<br/>Latrell's Fashions<br/>Muleshoe Motor Co.<br/>Roy Winkle Welding<br/>Barry &amp; Young Equipment Co. Equip. Co.</p> |
|-----------------------------------------------------------------------------------------------------------------------------------------------------------------------------------------------------------------------------------------------------------------------------------------------------------------------------------------------------------------------------------------------------------------------------------------------------------------------------------------------------------------------------------------------------------------------------------------------------------------------------------------------------------------------------------------------------------------------------------------------------------|-------------------------------------------------------------------------------------------------------------------------------------------------------------------------------------------------------------------------------------------------------------------------------------------------------------------------------------------------------------------------------------------------------------------------------------------------------------------------------------------------------------------------------------------------------------------------------------------------------------------------------------------------------------------------------------------------------------------------------|--------------------------------------------------------------------------------------------------------------------------------------------------------------------------------------------------------------------------------------------------------------------------------------------------------------------------------------------------------------------------------------------------------------------------------------------------------------------------------------------------------------------------------------------------------------------------------------------------------------------------------------------------------------------------------------------------------------------------------------------------------------|



**ROTARY GOVERNOR VISITS MULESHOE**--Tuesday at noon, Muleshoe Rotary Club President Clinton Kennedy, left, welcomed District Governor and Mrs. J. Davis Armistead of Lubbock. Dr. Armistead spoke to the Rotarians reminding that this is the 75th year of Rotary. He gave a brief review of Rotary accomplishments during the past 75 years, and praised the local Rotarians for their accomplishments on a local basis.

## District Governor Visits Rotary

"The Rotary Club in Review ... The First 75 Years," became a theme for Dr. J. Davis Armistead, District Governor for Rotary when he spoke to the Muleshoe Rotary on Tuesday at noon.

He admonished members to remember the Rotary Slogan "Service Above Self" and to liken their membership to that of the Olympic runner. He said the runner passes along the torchlight, and called on the Rotarians to pass along the torchlight of service from one generation to another. He called upon the members to look upon themselves as 'Torch Bearers', and keep with the Rotary Slogan.

Dr. Armistead, who is a native of Sulphur Springs, has been an Optometrist in Lubbock for the past 30 years, and has been a member of the Lubbock Downtown Rotary Club that length of time. He has held all offices in the Rotary Club where he is a member and has been active in many other service, civic and professional organizations.

He and his wife, Cora, are the parents of a son and a daughter, and have been named Church Family of the Year. He is a member of the Lubbock Chamber of Commerce, the Boy Scout Council is on the Board of Regents for the University of Houston and serves with other organizations and on

## Mules...

Cont. from Page 1.

Mules have racked up a 5-1-1 record for this year and are relatively free of injury going into Friday night's action. Muleshoe's only loss of the year has been a 2-7 season opener against the Portales Rams, and they tied 20-20 with Abernathy in pre-district action.

In regular season play, the Mules will still have, following the Olton game, the Dimmitt Bobcats and the Morton Indians. Morton is 2-0 in district play and Dimmitt is 1-1 in district action. Both the final regular season games are scheduled to be played in Muleshoe.

The coaching staff and players continue to express their appreciation to the Muleshoe football fans, who pack the grandstands for all the Mules' games.

Game-time Friday night will be 7:30 p.m. at Olton.

### Help is Available

If you have cancer, or know someone who does, the American Cancer Society can help. Whether it's just a caring volunteer visitor or a comprehensive rehabilitation program, ACS services can make a rough journey a lot easier. Contact your local Society today.

boards.

The Rotary Governor cited some of the accomplishments of the local Rotary. Included are the two scholarships awarded each year; one person sponsored to the RYLA camp; sponsorship of a Little League Baseball team; helping the gymnastic team; sponsoring wrestling; the Christmas Lighting program; and the Pride and Respect the name Rotary means in this community.

He said the next 75 years is in the hands of Rotarians like those he was addressing during the meeting. "What you do with the years is according to what you do as an individual in the Club," he commented.

He urged the members to combine their efforts and live by the Rotary slogan.

## Business...

Cont. from page 1.

Anderson said. Included with the new store will be an office for A&M Building Systems Inc., in order to provide better service for metal buildings and components for the Muleshoe area, he added.

Anderson expects to include a complete line of hardware, tools, batteries, tires, a tire service department which will include mounting and balancing, lawn and garden supplies, field sprayers, tillage tools, a full line of steel products, paint, trailer parts, work clothing and boots and chain saws.

President Anderson commented, "A&M Farm and Ranch Supply looks forward to opening the new business in Muleshoe."

"We think the agribusiness future of the Muleshoe area continues to show a steady growth pattern, and we are delighted to become a part of the growing Muleshoe community. Our intention will be to serve you fully, regardless of your agricultural and home needs in our lines."

John Smith of Town and Country Realtors completed the real estate transaction for the property on American Blvd.

### Sheriff's Office Report

In weekend activities by the Bailey County Sheriff's office, Deputy Bob Henderson reported he checked a house burglary in the Stegall community.

Reported as missing were a Portable TV, \$100 in \$20 bills and a six pack of beer.

Sunday night, Deputy Monte Phipps returned from Denver with a juvenile.

Special guests at the meeting included several Rotary-Anns, Mrs. Alex Williams, Mrs. Clinton Kennedy, Mrs. Bob Stovall, Mrs. Kenneth Henry; also Ralph Unrein and Jeff Smith, along with Jewel Anderson of Lubbock, and Clea Williams.

## Winter...

Cont. from Page 1

as the buslines cancelled trips to the north and west and Southwest Airlines cancelled several flights due to extremely high wind.

Tornadoes and high winds played havoc with several areas, leaving varying amounts of damage.

Hundreds of motorists were reported to be stranded in the Panhandle and Eastern New Mexico, and motels quickly filled to capacities and beyond.

Bright sunshine and calm winds greeted area residents Wednesday morning, and the National Weather Service predicted temperature would rise to the high 50s during the day Wednesday, and continue to climb until the weekend when another cold front was expected.

Harvesting operations were delayed by the rain and wind, but drying conditions from mid-week to the weekend were expected to allow farmers back in most fields in the area by the weekend.

## Escapee...

Cont. from Page 1.

from Texas and New Mexico in pursuit, the small stationwagon continued southeastward toward Lubbock. Approximately a mile and half southeast of Protein Processors, the stationwagon stopped after losing all the gas from the gas tank and the right rear tire flat.

The pursuing officers quickly surrounded the vehicle and took the 16-year old driver into custody. After a brief stop at the Bailey County Law Enforcement Center, the youth was returned to Clovis by Clovis officers.

All the officers involved in the pursuit expressed their gratitude that no one was injured in the 40 mile high speed chase which extended through portions of two states.

**Church of Christ**  
16th and Avenue D

SERVING CHRIST AND OUR FELLOW MAN

Sunday 10:30 am  
6:00 pm

## Harvest...

Cont. from page 1.

late cotton.

A bale to a bale and a quarter per acre was reported by the Claunch Gin at Bula where "ginning is just about on time." The dryland cotton is reported to be showing up good this fall, and was compared to the crops of last year.

Monday afternoon, Bailey County Extension Agent Spencer Tanksley said "we are very fortunate that the month of September was warm and we had the high temperatures. Also, the first two weeks in October added considerably to the maturity of this year's cotton."

Tanksley also said that the present warm temperatures are, however, adding little to the maturity, even without a freeze right now, will be very slow and very little. About the only crop to benefit will possibly be of some of the very late planted cotton." He added that many farmers are waiting for the first "killing" freeze in order to start stripping the cotton, although defoliation and stripping is being done now on some dryland cotton.

"We have gotten as much out of the good September and early October weather as we could have possibly expected," he continued. "We have had cooler weather for the last 10 days and the cold night temperature has hurt the cotton. Most cotton is approximately 85 percent open now, and the freeze now will just allow the farmer to start stripping."

He cautioned that it is time for cotton farmers to start getting into the fields and get the cotton into module builders before the stringing to the cotton bolls becomes enough to cause a lint loss in the crop.

Corn harvest is basically over, he added, and maize harvesting is just getting underway.

The county agent said moisture is needed for wheat, as much of the wheat crop is suffering. However, that situation was alleviated somewhat by rain on Monday night.

Farmers were also hurting for moisture for land preparation as land could not be prepared following early maturing and early harvested crops. Most fresh vegetable harvesting has been completed, added the county agent, with very few vegetables left in the field.

Monday night's moisture was expected to cause a brief delay in harvesting, but the long range good effects were expected to offset the temporary inconvenience in harvesting.

## Wrestling...

Cont. from page 1.

first serve basis at \$4.50 each; and general admission will be \$3.50 for adults and \$2.50 for children under the age of 12.

The Rotarians will also be operating a concession stand during the evening.

\*\*\*\*

Today's successful business or social personality is too often a smiling front rather than a genuine or sincere individual.

**Muleshoe Journal** (USPS 367-820)  
Published Primary 21, 24th Published by Muleshoe Publishing Co., Inc. Every Thursday at 300 W. Second, Box 494, Muleshoe, Texas, 79361. Second class postage paid at Muleshoe, Texas 79361.

**TEXAS PRESS ASSOCIATION**

L.B. Hill, President  
James Ward, Vice President  
Clara Williams, News

Full Service Office  
Elite Printer Subscription

MEMBER RATES:  
Muleshoe Journal and Bailey County Journal  
Bailey and surrounding Counties... \$10.50  
Muleshoe Journal and Bailey County Journal  
Flowerdale in Texas... \$11.95  
Muleshoe Journal and Bailey County Journal  
Outside of Texas... \$12.95  
Yearly in Advance... \$9.50  
Monthly by Carrier... \$1.85  
Advertising rate card on application.

WHERE YOU ALWAYS BUY THE BEST FOR LESS

# GIBSON'S

## DISCOUNT CENTERS

**Boy's Hooded Survival Jackets**  
Sz. 8-18  
Reg. '21" - '23"  
**\$16<sup>99</sup>**

**Men's Survival Jackets**  
Reg. '33"  
**\$27<sup>00</sup>**

**Boy's Hooded Nylon Jackets**  
Sz. 3-7  
Reg. '16"  
**\$12<sup>49</sup>**

**Little Girl's Hooded Coats**  
Reg. '29"  
**\$23<sup>49</sup>**

**Lysol Disinfectant Spray**  
12 oz.  
**\$1<sup>75</sup>**

**Shredded Foam**  
1 lb. Bags  
**69<sup>c</sup>**

**Superlectric Automatic Portable Heater**  
No.627  
**\$13<sup>99</sup>**

**Crest Toothpaste**  
7 oz. Mint or Reg.  
**89<sup>c</sup>**

**The Party Perk**  
12 to 30 Cups.  
Brews Coffee and is also Insulated for Cold Beverages  
**\$12<sup>49</sup>**

**EVERY DAY LOW PRICES**

Gal. Homo Milk	\$2 <sup>05</sup>
1/2 Gal. Homo Milk	96 <sup>c</sup>
Gal. Lowfat Milk	\$1 <sup>89</sup>
1/2 Gal. Lowfat	94 <sup>c</sup>
1/2 Gal. Buttermilk	98 <sup>c</sup>
2 Lb. Cottage Cheese	\$1 <sup>69</sup>
1 Lb. Cottage Cheese	91 <sup>c</sup>
Sour Cream	49 <sup>c</sup>
Whipping Cream	58 <sup>c</sup>

**Skip-Bo Card Game**  
**\$4<sup>59</sup>**

**Fruit of the Loom Men's Insulated Underwear**  
Top or Bottom  
**\$2<sup>69</sup> ea.**

**West Bend 11 in. Electric Skillet**  
No. 1430  
**\$19<sup>99</sup>**

**Dove Bath Soap**  
4.75 oz. Bar  
**2/\$1**

**Johnson's Baby Oil**  
10 Fl. Oz.  
**\$1<sup>59</sup>**

**Faberge' Organics Shampoo or Conditioner**  
15 Fl. Oz.  
**\$1<sup>49</sup>**

**V-05 Hair Spray**  
**\$1<sup>99</sup>**

**Kleenex Tissue**  
100 ct.  
**4/\$1**

**Braided Oval Rugs**

19 in. x 32 in.	<b>\$3<sup>96</sup></b>
22 in. x 40 in.	<b>\$4<sup>96</sup></b>
30 in. x 52 in.	<b>\$8<sup>96</sup></b>

**All Purpose Super Heavy-Duty Cover**  
9 ft. x 12 ft. Great for Air Conditioner Cover, Window, Cars  
**\$1<sup>69</sup>**

**Store Hours:**  
Mon-Sat. 9-7  
Sun. 1-6

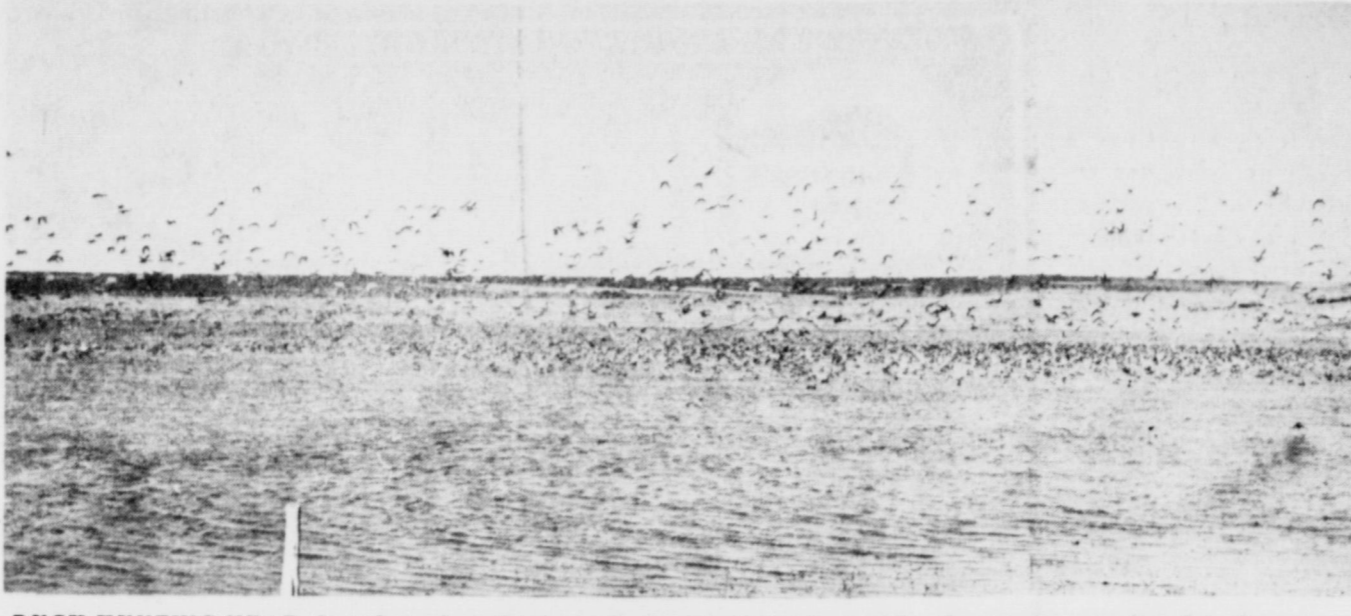
**Prices Effective**  
**Nov. 1-3**

**Nursing Home News**  
By Joy Stancell

Friday afternoon Mr. Gilliland took Edna Henderson, Arthur and Chellie Bradley, Abe Mallouf, Marie Engram, Maggie London, Bulah Connell, W.W. Parker, Charlie Garth on a bus ride. They looked at pumpkin fields, and cotton and some corn being harvested. They stopped at the store at Lazbuddie and got a coke.

Tuesday the Hospital and Nursing Home Aux. came to give manicures and set and shampoo the ladies hair.

Those having a shampoo and set were Marie Engram, Edna Henderson, Marie Patton, Maggie London, Chellie Bradley,



**DUCK HUNTING NEAR**--Last Saturday, this large flock of ducks, mixed with a few geese, was found in Parmer County, just northwest of Lazbuddie. It is a reminder that duck hunting is near and the duck population is reported to be good at this time. Several thousand ducks were estimated to be on the pond at the time the picture was taken. Also noticed in the area were quite a number of pheasants, and the pheasant population continues to grow. Also in the area are a few sandhill cranes, with the larger population expected around the first of the year.

Bertie Hendrix, Docia Myers.

Dykes, Birdie Phelps, Ladies having a manicure were Marie Engram, Onnie McDaniel, Dess Pritchard, Effie Splawn, Birdie Phelps, Lottie Hall, Annie Brown, Roie Stein, Maggie London, Edna Henderson, Dess Pritchard, Docia Dykes, Annie

Brown, Onnie McDaniel, Chellie Bradley. The Ave. D. Church of Christ came to sing to the residents Sunday. Residents singing were Dottie Wilterding, Marie En-

gram, Bertie Hendrix, Maggie London, Lottie Hall, Archie Scarlett, Guy Nickles, John Crim, Annie Brown, Ida Collins, Marie Patton. Sunday Morning E. B.

Wilson came to have Bible Study with Marie Engram, Maggie London, Edna Henderson, Marie Patton, Onnie McDaniel, Effie Splawn, Archie Scarlett, W. W. Parker, Dottie Wilterding, Rose Sebring, John Crim, Arthur and Chellie Bradley.

Wednesday morning Glenda Jennings and the Lazbuddie Methodist Preacher and his wife came to have a Sing - A - Long with the residents. Many old songs were sang and enjoyed.

Thursday afternoon the Needmore Community Club came to give a birthday party for the residents having a birthday in the month of October.

Edana Henderson was visited by Mrs. C. W. Wilhite, Mrs. Odom Mrs. Day, Mrs. C. W. Wilhite took her to supper and singing at the Methodist

Church Monday night.

Ida Collins was visited by her grandson and his wife, Mr. and Mrs. Paul Galyon of Dumas. She was visited by her daughter, Mrs. E.C. Galyon.

Marie Engram was visited by Mrs. Burford, Lena Hawkins, Mrs. Chamless, Mrs. Murl Stevenson, LaVerne Stevens, Hazel Randolph, Michelle Hardage, Barbara Milburn, and Terry Bouchelle.

Bertie Hendrix was visited by Mr. and Mrs. Burford, Mr. and Mrs. Embry, Mr. and Mrs. Gable.

Alpha Neely was visited by her daughter.

Ruth Myers was visited by her sister and Billie Jo Smith.

Onnie McDaniel was visited by Mr. and Mrs. Alton Garth, Mr. Audry Jones from Lubbock, Florence Harvey from Clovis,

Royce Garth, Janie Moraw, Anita Allgood.

Ida Roberts was visited by her grandson Bruns Duncan.

Sarah Graham was visited by Mrs. Kersery, Mrs. Dorothy Scott, Mrs. Bob Blackwood, Mrs. Betty Burlsmith and Terry Bouchelle.

Charley Garth was visited by Mr. and Mrs. Odom, C. W. Wilhite, his nephew, Mr. and Mrs. Audry Jones, his daughter Florence Harvey, Mrs. Minnie Underdown.

Clara Weaver, was visited by Johnny and Chad Weaver, Teri Nelson, Saturday, Eula Dale and daughter Pat visited Loren Gallman and brought her a fresh baked apple pie. Clara went to her home Thursday for a visit.

Willie Steinbock went to the football game at Lazbuddie Friday night. He watched his grandsons play.



**WINTER TIME BARGAIN HUNTERS SALE**



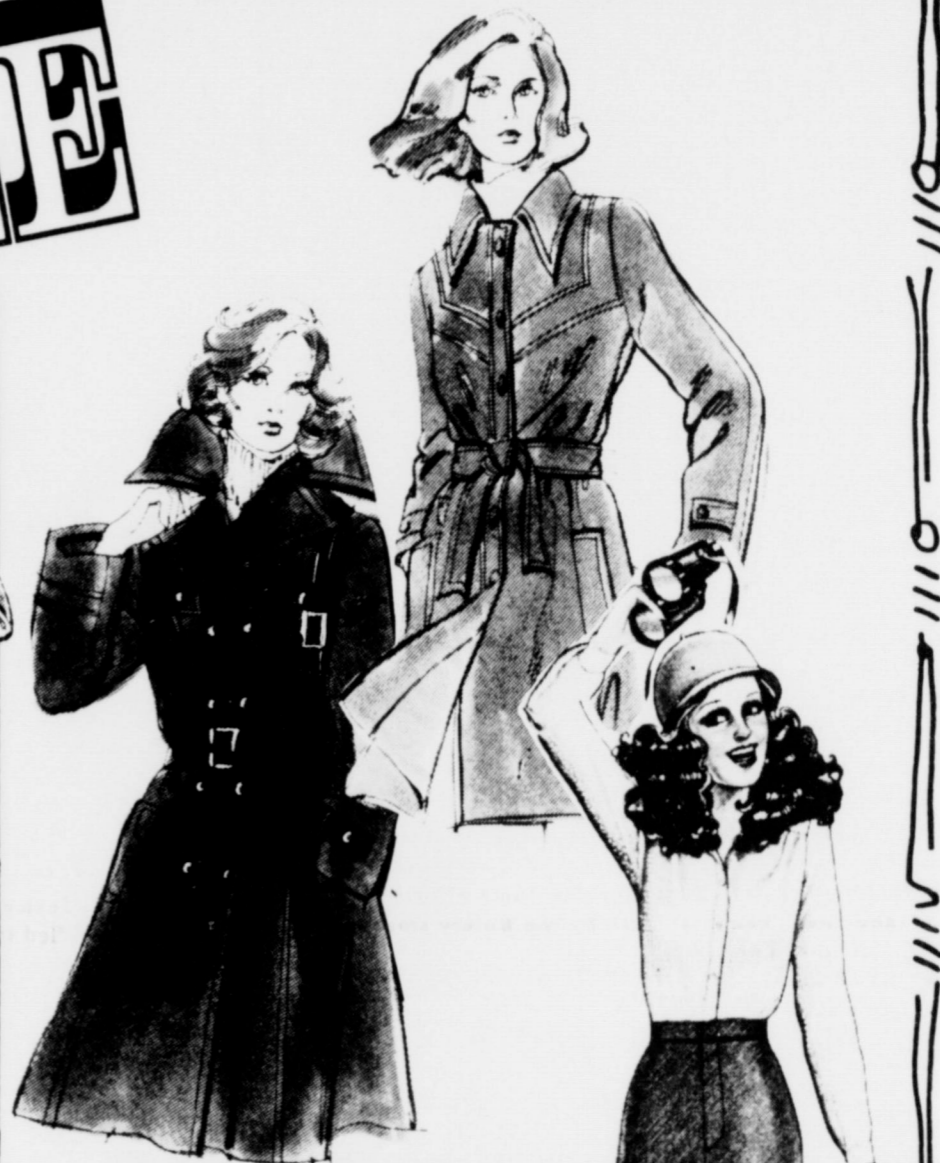
**PEPPERMINT JUNIOR TOPS**

Reg. to \$10.  
**\$7.97**

ASSORTED PATTERNS AND COLORS

**Ladies Circular Knit Thermals**

Long Sleeve Shirt \$3.33  
Ankle Length Pant \$3.33  
50% Polyester  
50% Cotton  
Colors Floral Print  
**3.33**  
2 for \$6.50



**PVC LEATHER-LOOK PANT COATS \$15.**

**LADIES OR JUNIOR LEVI BEND-OVER PANTS \$19.95**

**PRE-WASHED BOOT JEAN AND BIG BELLS**  
Reg. to \$15.  
**\$9.97**

All cotton heavy weight denim boot-cut jean. Stitched with golden thread. Slightly brushed for comfort. Popular sizes.

★ BUCKHIDE  
★ BIG SMITH

**MEN'S THERMAL UNDERWEAR \$5.88**  
**2 FOR \$10.**

Thermal rachel knit long sleeve shirts or ankle length drawers. 50% textured polyester and 50% cotton blend. Sizes S-M-L-XL.

Reg. 1.29 ea. **\$1.19 EA.**  
**6 FOR \$6.**

**COATS & CLARK**  
Red Heart "Wintuck" Yarn

Excellent bulk, shape retention, and a minimum of pilling and stretching. DuPont® "Bi-Component" Orlon® 4 ply yarn. Machine washable colors. The advantages are apparent in both the ease of wearability and the quality of the finished garment.

**VELOUR \$1.97 YD.**

- SHORT LENGTHS
- BOLTED, SOLIDS

**OUTING FLANNEL 97¢ YD.**

321 MAIN MULESHOE

**LADIES FASHION SHOES**  
Regular to \$22.99  
**\$12.88**  
**2 FOR \$25.**

- Assorted Styles
- While Selection Lasts
- Rich Fall Fashion

Colors

**45" COTTON BLEND PRINTS 97¢ YD.**

**FASHION TERRY'S & CHENNILES \$2.97 YD.**

- 60 INCH
- FALL COLORS



# ENTER OUR ANNUAL **BACK THE MULES**

## Football Contest

Muleshoe at Olton November 2, 1979 7:30 pm

HERE'S YOUR CHANCE TO WIN WEEKLY WIN CASH PRIZES

1st Prize \$5 2nd PRIZE \$3 3rd PRIZE \$2

GRAND PRIZE \$50<sup>00</sup>

And TWO tickets to the Cotton Bowl, January 1st.

There Will also be a contest and prizes for the

Bowl games.

### RULES:

1. The contestant must be 12 years or older.
2. Only one entry per person may be made for any one contest.
3. Weekly contests are open to everyone except employees and families of this newspaper; bring or mail your entries to the Journal office.
4. Mailed entries must be postmarked not later than 5:30 p.m. Friday; winners names will be published in this newspaper each Thursday following the close of the weekly contest.
5. Check the team you think will win; 10 points for 1st place, 6 points for 2nd place and 4 points for 3rd place determines the Grand Prize winner.
6. The tie-breakers will count as one of the games picked, the predicted scores will be used to determine the top three places in that week's contest, if necessary, and cash prizes and points will be divided between winners in event of ties. Please write FOOTBALL CONTEST on envelope of mailed entry. Decision of the Journal's scoring judges will be final.

**LAST WEEK'S WINNERS**  
 FIRST PRIZE Beatriz Gutierrez  
 SECOND PRIZE Debbie Weir  
 THIRD PRIZE Margaret Adams

YOU MUST PREDICT THE SCORE OF BOTH TIEBREAKER GAMES.

You Have Until 5:30 p.m. Friday To Enter

**OFFICIAL ENTRY FORM**  
 PICK THE WINNING TEAMS

1. AIR FORCE .....	<input type="checkbox"/>	ARMY .....	<input type="checkbox"/>
2. BOSTON U. ....	<input type="checkbox"/>	HOLY CROSS .....	<input type="checkbox"/>
3. GEORGIA .....	<input type="checkbox"/>	VIRGINIA .....	<input type="checkbox"/>
4. NEW MEXICO.....	<input type="checkbox"/>	UTAH .....	<input type="checkbox"/>
5. PURDUE .....	<input type="checkbox"/>	IOWA .....	<input type="checkbox"/>
6. SOUTH CAROLINA .....	<input type="checkbox"/>	NO. CAROLINA STATE .....	<input type="checkbox"/>
7. STANFORD .....	<input type="checkbox"/>	ARIZONA STATE .....	<input type="checkbox"/>
8. TEXAS A&M .....	<input type="checkbox"/>	SMU .....	<input type="checkbox"/>

**TIEBREAKER**

1. CLEMSON .....	vs. ....	WAKE FOREST
2. TEXAS .....	vs. ....	TEXAS TECH

NAME \_\_\_\_\_  
 ADDRESS \_\_\_\_\_  
 CITY \_\_\_\_\_ PHONE \_\_\_\_\_

Please write FOOTBALL CONTEST Box 449, Muleshoe, Texas on envelope of mailed entry.



**Henry Insurance Agency**  
 111 W. Ave. B. 272-4581

**DENT REMPE INC.**  
 JOHN DEERE 272-4296

**DARI DELITE**  
 210 N. 1st. 272-4482

**MULESHOE STATE BANK**  
 101 AMERICAN BLVD. 272-4561 MEMBER FDIC

**WESTERN DRUG**  
 114 Main St 272-3106

**TEXAS SESAME**  
 Division of Paris Milling Co.  
 Railroad Street 272-4231

**Lee's WESTERN WEAR**  
 1910 W. Amer. Blvd. 272-4663

**MAIN STREET BEAUTY SALON**  
 115 Main 272-3448

**W. Q. CASEY INSURANCE**  
 121 E. Ave. C 272-4331

**ROBERT RUIZ, INC.**  
 Hwy. 70 272-4226

**Cobb's**  
 218 Main 272-5511

**BAILEY COUNTY ELECTRIC COOPERATIVE ASSOCIATION**  
 305 E. Ave. B 272-4504

**CARL BAMERT SEED FARMS**  
 272-3308

**ATTEND THE GAMES**

**RIEHL'S CAR WASH**  
 Clovis Hwy. 272-3251

**FAIR DEPT STORE**  
 129 Main 272-3500

**SAN FRANCISCO CAFE**  
 121 Main 272-3502

**D L PLUMBING**  
 201 W. 10th 272-4769

**MULESHOE COOPERATIVE GINS**  
 272-4794

**EARL LADD & SONS INC.**  
 602 W. Amer. Blvd.

**SAMS SPORTING GOODS**  
 226 Main 272-4414

**CORRAL RESTAURANT**  
 MULESHOE, TEXAS 272-3182  
 HAL AND RENÉE ANDERSON

**DECORATORS**  
 Nursery & Floral  
 Telephone 272-3660 616 South First

**Brian Pohlmer**  
 312 W. 2nd. 272-4229

**WILSON DRILLING**  
 W. Hwy. 84 272-5521

**ROBERT GREEN INC.**  
 "Your Oldsmobile, Buick, Pontiac & GMC Dealer"  
 Clovis Hwy. 272-4588

**RANCH HOUSE MOTEL**  
 W. Hwy. 84 272-4261

**SPUDNUT SHOP**  
 328 S. Main 272-3542

**FARMERS COOP ELEVATOR**  
 272-4335

**LEAL'S EL NUEVO RESTAURANT**  
 1542 W. American Blvd. 272-3294

**IRRIGATION INC.**  
 W. Hwy. 84 272-5597

**WILLIAMS BROS OFFICE SUPPLY**  
 322 Main 272-3113

**FIRST NATIONAL BANK**  
 224 S. 1st. 272-4515  
 Member F.D.I.C.



### Sudan News

By Evelyn Ritchie

Brenda Eicke of Riedoso visited recently with Mr. and Mrs. Arnold Beckett.

Mr. and Mrs. Butch Hall and Debbie, Mrs. Opal Pinnington were in Lubbock, Friday night to celebrate Butches and Opal's birthdays with dinner at the Red Lobster. They also went to see Burt Reynolds in Smokey and the Bandit.

Mr. and Mrs. Earl Davison of Spearman have been visiting with relatives here.

Two and one half year old Rodney Ames Bowling Jr. announces the birth of a new brother, Rodrick James Bowling born Sept. 28, weighing nine pounds and five ounces. Their parents are Dr. and Mrs. Roda Bowling of Fort Col-

### West Plains Medical Center Report

ADMITTED:

Oct. 23-Allie Barbour, Donna Vega, Robert Copeland, Stanley Bernard.

Oct. 24-Mary Brantley, Weldon Eagle, Brian Woods, Webb Perry.

Oct. 25-David Martinez, Darlene Duncan, Angeley Kidd, Dorine Harbin, Ronnie Shafer, Jeryl Bellar Jr., Jose Martinez, Alfred Sammiann, Boyd Magby, Myrtle Pruitt, Patricia Mendoza, Hector Brozco.

Oct. 26-Eva Cruz, Paul Stout.

Oct. 27-Johnny Morales, Erasmo Vega Jr., Guadalupe Garcia, Levina Pitts, Edord Farmer.

Oct. 28-Noelia Rodriguez, Ted Millsap, Shanna Burch.

DISMISSED:

Oct. 23-Muri Carrell, Nikey Chavez, Debbie Weir and Baby Boy, Johnnie Boyce, Sheryl Taylor, Billie Walden, Susie Raymond.

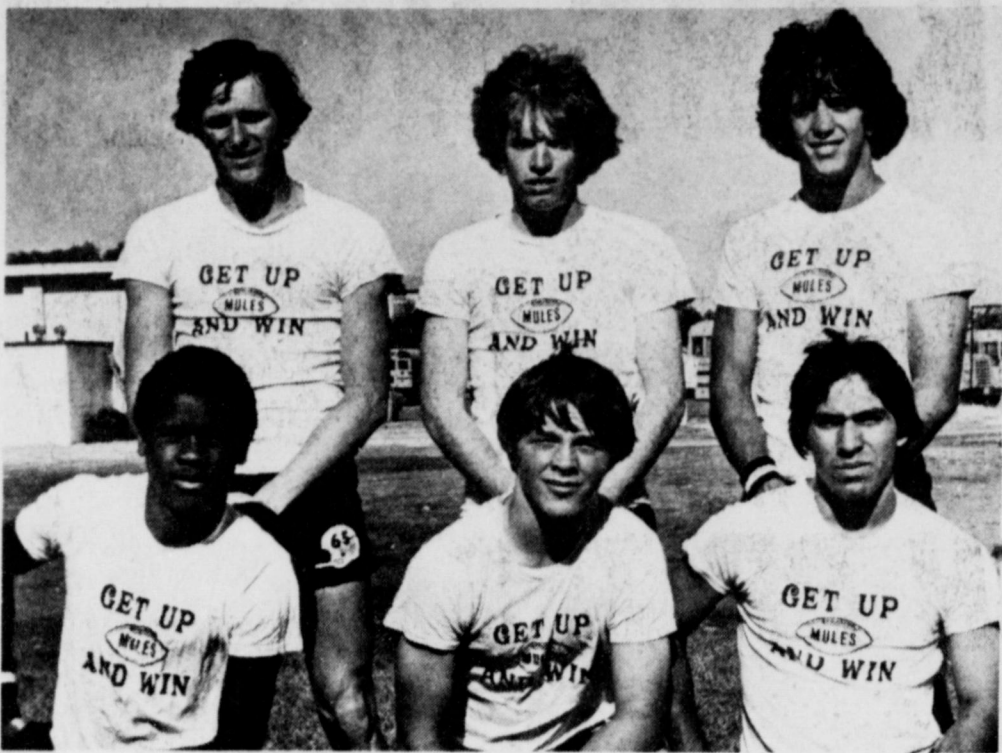
Oct. 24-Eugene Hawkins, Chench Basquez, Marley Hall.

Oct. 25-Letha Patterson, Lenora Evans, Eulio Ruiz, Wesley May, Murphy Berry, Mary Janice Brantley, Mary Pool, Webb Perry, Euselico Vedona, Estella Simpon, Allie Barbour.

Oct. 26-Adon Zamora, Mae Provence, Brian Woods, Robert Copeland, Weldon Eagle, Sofornia Burks, Margaret Lewis, Darlene Duncan, Hector Orozco, Mary Wedel.

Oct. 27-Holly Millsap, Stanley Bernold, Jeryl Bellar Jr., Boyd Magby, Dorine Harbin, Eva Cruz.

Oct. 28-David Martinez, Ronnie Shafer.



**HONORED FOR FOOTBALL ACTION**--Following the Muleshoe-Littlefield game last Friday night, the six players above were honored for outstanding action in the game. They are from left, back row, James Atwood, defensive linebacker; Curtis Elder, defensive linebacker; and Mike Northcutt, defensive secondary; and front row, from left, Jim Norman, offensive receiver; Jeff Meeks, offensive linebacker and Zeke Pecina, offensive back.

lins, Colorado. Grandparents are Mr. and Mrs. Marvin Bowling of Sudan, and Mr. and Mrs. C.L. Bagley of Marfa, Texas.

Mrs. Edna Dent is visiting her brother, Millard Dent and Mrs. Dent at Haskell this past week.

Mr. and Mrs. Byron Lynn are spending a few days in Houston with their daughter and family, Mr. and Mrs. Larry Jones and Jason.

Mr. and Mrs. Roger Bellar and son visited recently in Jacksonvill with his brother, Mr. and Mrs. Mike Bellar and family, and also in Tyler with her parents.

Guy Walden and Gene Gerik were at Ute Lake near Logan, N.M. a couple of days last week for fishing.

Mr. and Mrs. B. A. Beauchany Jr. were in Farwell Wednesday afternoon to visit his sister, Mrs. Cotton Robertson.

Mrs. Marvin May has been visiting in Houston and Galveston with her daughter and son Ginger and Rick.

Mrs. Joe Rone and Mrs. Ves Terry were in Muleshoe, Wednesday, where Mrs. Terry had a dental appointment.

Mrs. Guy Walden and Mrs. Ves Terry were in Littlefield Monday, for shopping.

Brad Lynskey returned home Friday after spending some time with his grandparents, Mr. and Mrs. Bud Provence and his uncle, Mr. and Mrs. Damon Provence, Doug and Danette.

Visiting Tuesday with the Elray Rasu family was her

sister, Nelda of Lubbock.

Lee Roy Fisher remains an out patient at the M. D. Anderson hospital in Houston. He is reportedly doing as well as can be expected, and plans to return home in about three weeks.

Bula B. Hemphrys recently celebrated a birthday, and was honored by her Co-Workers with a Dr. Pepper T-shirt and a Mickey Mouse Cake.

Mary Kay Baker has been a patient in the Littlefield hospital.

Mr. and Mrs. Harry Williamson of Lubbock are parents of a son, Bradley Kyle, born Oct. 7, at the Methodist Hospital in Lubbock. Bradley Kyle weighed eight pounds six and three-fourths ounces.

Grandparents include Mr. and Mrs. Gilbert Jones of Brownwood. Great grandmother is Mrs. Madge Williamson of Clovis, N.M. The couple had a daughter, Krissie.

Weekend visitors in the home of Mr. and Mrs. Glen Cardwell were his parents, Mr. and Mrs. Hal Cardwell of Lubbock, and his brother, and sister, Mr. and Mrs. Junior Cardwell, and Dr. and Mrs. Ernest Fish also of Lubbock, and Mr. and Mrs. Jerry Cardwell of Greenville.

Mrs. Juanda Feilds has been in Lubbock, to be with their daughter Mrs. Sam Bingham who was hospitalized there.

Dusty and Kent Williamson, sons of Mr. and Mrs. Robert Earl Williamson of

Vernon are visiting with their grandparents, Mr. and Mrs. D.W. Williamson while their mother has been hospitalized, after she was injured in an auto accident. Also visiting with them has been their granddaughter, Krissie Williamson of Lubbock.

Mr. and Mrs. R. B. Knox, and their granddaughter, Melissa Kuyherdall, have returned home from several days vacation in Symore where they joined other family members.

Mr. and Mrs. Claud Krop were in New Mexico recently to visit their son, Mr. and Mrs. John Krop, Sonny and Blue. Their daughter, Mr. and Mrs. Charles Minckeu, and boys, and granddaughter, Terry Waller all of Hereford, joined them for the weekend.

Mrs. Dewey Coldiron returned home Sunday from Guymon, Oklahoma.

Mr. and Mrs. Ferrol Ford of Torrance, California left Tuesday after visiting with his mother, Mrs. Daisey Ford, and his sister, Mr. and Mrs. R.B. Knox and family.

Mrs. C. T. Wright has been in Dallas and attended their family reunion. Mrs. Daisey Ford accompanied her.

Diana Gardner, student a SPS, was home for the weekend with her parents, Rev. and Mrs. Doug Gardner.

Mr. and Mrs. Bill Myer and girls, left Friday for their home in Houston following a visit here with her parents, Mr. and Mrs. Bob Drake, Andy, and

Adrin remained here for a few days while their parents were in New Mexico.

Mr. and Mrs. Jimmy Newman and girls were honored Saturday in their new home with a housewarming with some 200 persons calling. The serving table was covered with a yellow

cloth, and centered with a "Money Tree" which was also the hostess gift.

Punch and cookies were served.

Host and Hostesses were, Bobby Carson, Wix Gaston, Joe Ellison, Malcom Martom, Gene Bartley, Cliff Stephens, Kerry Hurst, F.M. Smith, Ralph May, Brent Whieaker, Joe Burt Markham, Matt Nix

Jr., Mike Nx, Edwin Harper, Al Harrison, Randy Humphreys, Larry Baker, and Joe Beller.

Jimmy Carter, President:

"As long as I am president, the government of the U.S. will struggle for the enhancement of human rights... the soul of our foreign policy."

# ALLSUP'S

## CONVENIENCE STORES

The ULTIMATE FALL FOOD SALE  
a new high in food savings!

WE RESERVE THE RIGHT TO LIMIT!  
PRICES EFFECTIVE OCT. 29 - NOV. 10, 1979  
SPECIALS GOOD WHILE SUPPLY LASTS! LIMITED SUPPLY!

<p>SELF-BAKING TENDER-TIMER 10-22 LB. AVG. <b>SHURFRESH TURKEYS</b> 69¢ LB.</p>	<p>GRANULATED <b>SHURFINE SUGAR</b> \$1.09 5 LB. BAG</p>
<p>ALLSUPS BREAD 1 1/2 lb. 3/\$1</p>	
<p>SHURFRESH SLICED BACON 1 LB. PKG. 99¢</p>	<p>SHURFRESH MEAT FRANKS 12 OZ. PKG. 89¢</p>
<p>SHURFRESH MEAT BOLOGNA 12 OZ. PKG. 99¢</p>	<p>SHURFRESH DM OR SM BISCUITS 8 OZ. CANS 45¢</p>
<p>SHURFINE MAC. &amp; CHEESE DINNERS 7 1/2 OZ. BOXES \$1.00</p>	<p>SHURFINE BLEACH GAL. JUG 59¢</p>
<p>SHURFINE CRANBERRY SAUCE 16 OZ. CANS 27¢</p>	<p>SHURFINE YC SLICED PEACHES 16 OZ. CANS 89¢</p>
<p>ENRICHED SHURFINE FLOUR 5 LB. BAG 69¢</p>	<p>SHURFINE CS OR WK GOLDEN CORN 17 OZ. CANS 4 \$1.00</p>
<p>SHURFINE PINEAPPLE 15 1/2 OZ. CANS 2 89¢</p>	<p>SHURFINE CUT GREEN BEANS 16 OZ. CANS 3 \$1.00</p>
<p>SHURFINE WHOLE PEELED TOMATOES 16 OZ. CANS 3 \$1.00</p>	<p>SHURFINE PINK SALMON 15 OZ. CAN \$1.69</p>
<p>BORDEN'S ICE CREAM SANDWICHES 6 CT. PKG. 79¢</p>	<p>BORDEN'S BUTTER MILK 1/2 GAL. CTN. 89¢</p>
<p>BORDEN'S CHOCOLATE MILK 1/2 GAL. CTN. 59¢</p>	<p>BORDEN'S NUTTY BUDDIES 6 CT. PKG. 79¢</p>
<p>BORDEN'S PREM. ASSD. ICE CREAM 1/2 GAL. RD. CTN. \$1.39</p>	
<p>RATH'S HICKORY LEAN 12 OZ. PKG. \$1.19</p>	<p>FRESH RATH'S BOLOGNA 12 OZ. PKG. 99¢</p>

## CARQUEST AUTO PARTS STORES

### ANNUAL TOOL SALE... NOW!

CARQUEST is proud to offer at substantially reduced prices, these hand tools from Proto - a company in business for nearly 75 years - providing the American working man with quality products with a reputation for dependability and performance.

<p><b>CHALLENGER 3/8" DRIVE-20 PIECE SOCKET SET</b> Sug. List \$78.33 <b>NOW 39.95</b> SAVE 49% #2127</p>	<p><b>CARQUEST HEAVY DUTY HACK SAW PLUS 10 FREE BLADES</b> Sug. List \$14.28 <b>ONLY 6.79</b> SAVE 52% #7229FP</p>	<p><b>MULTI-GROOVE PLIERS</b> Sug. List \$6.47 <b>JUST 4.49</b> SAVE 30% #32-42</p>
<p><b>KEY RING SCREWDRIVER</b> Sug. List \$1.16 <b>NOW 75¢</b> SAVE 35% #100</p>	<p><b>CHALLENGER 7-PIECE HEXAGONAL BIT SET</b> Sug. List \$28.31 <b>ONLY 17.99</b> SAVE 36% #1490A</p>	<p><b>CHALLENGER 5-PIECE PUNCH &amp; CHISEL SET</b> Sug. List \$12.78 <b>JUST 9.49</b> SAVE 25% #99A</p>
<p><b>12-PIECE METRIC SOCKET SET</b> Sug. List \$30.66 <b>NOW 14.80</b> SAVE 51% #2400MA</p>	<p><b>CHALLENGER 6-PIECE SCREWDRIVER SET</b> Sug. List \$19.79 <b>ONLY 9.04</b> SAVE 54% #7505FP</p>	<p><b>LEVER-WRENCH PLIERS</b> Sug. List \$6.97 <b>ONLY 5.49</b> SAVE 21% #3093</p>
<p><b>12" ADJUSTABLE WRENCH</b> Sug. List \$14.65 <b>NOW 10.69</b> SAVE 27% #4012</p>	<p><b>6" COMBINATION SLIP-JOINT PLIERS</b> Sug. List \$4.35 <b>JUST 2.99</b> SAVE 31% #3126G</p>	

Good at all participating CARQUEST Auto Parts Stores through Nov. 30, 1979.

## Muleshoe Auto Parts

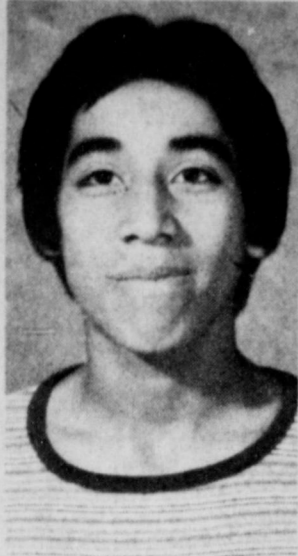
217 N. First Ph. 272-4596  
Muleshoe, Texas

WE KNOW WHAT YOU MEAN WHEN YOU'RE TALKING PARTS

# Earn 12.193%

## With Our Money Market Certificates

Tri-County SAVINGS AND LOAN ASSOCIATION  
OFFICES IN MULESHOE, FARWELL, FRONIA, LITTLEFIELD



MIKE PECINA



MARK MOTON

**Players Of The Week**

Mark Moton, son of Mr. and Mrs. Frank Moton, named player of the week in the 7th grade for his outstanding performance in the game against Littlefield. Coach Jones stated that Mark was a good all-around quarterback. He also caught a quarterback throwback and almost broke it for a touchdown, which concluded the game. While playing defensive safety, he intercepted a pass.

Congratulations to Mark for this well deserved honor. The 8th grade player of the week for October 22-27 was Mike Pecina, the son of Rev. and Mrs. Paul Pecina. Mike played extremely well in the game against Littlefield last Tuesday night. He had a

good running game, played good defense as defensive end and ran an 80-yard touchdown on a kick-off return.

**Seventh Grade Mules Downed By Littlefield**

The 7th grade Mules traveled to Littlefield for their second district game of the season. Although the Mules played a hard fought game, they were defeated by a score of Mules 0, Wildcats, 8. A half-time score of 0 - 0 showed a good defensive game by both teams. In the third quarter, the game remained scoreless. The fourth quarter showed the Mules on a good offensive drive; however, this drive ended on a pass interception. The Wildcats ran the interception back for the only score of the game.

**Teacher Of The Week**

Mrs. Mary Scoggin was elected by the M.J.H.S. Student Council of the week Oct. 23, 1979. She has lived in Muleshoe for 30 years. She was raised and went to school at Field, New Mexico. Then she attended Eastern New Mexico University and graduated there. Mrs. Scoggin taught 3 years in New Mexico, then came to Muleshoe and this is her 20th year teaching here.

Mrs. Scoggin teaches 7th and 8th grade Science and is one of the Student Council sponsors. She loves teaching and plans for her students to develop an open mind, learn some new concepts, and become interested in the world around them. The Student Council appreciates everything Mrs. Scoggin does for them.

CONGRATULATIONS!!



TOOL VALUE OF THE MONTH



now 1.69  
MINI-HACK™ SAW  
A small tool for big jobs in small places. Uses regular blades or broken pieces. Durable molded frame with contoured handle. 15-210  
Quantities Limited



Ph. 272-4511  
401 S. 1st  
Muleshoe, Texas

**MJHS Coaches Comments**

Muleshoe's 7th and 8th grade teams both lost close contests to Littlefield this week. Despite the fact that our 7th grade team held Littlefield to only one first down for the game, they were beaten by the score of 8-0. This loss was especially hard to take as Littlefield scored on a pass interception after time had run out in the first half of play. Neither team seriously threatened to score otherwise. Muleshoe fell to Littlefield 18-15 in the 8th grade and again could have won the game. For the second week in a row our 8th graders were three points on the short end at the game's completion. Both teams were disappointed at the game's completion. Both teams were disappointed at the outcome but are continuing to work hard to improve and hopefully next weeks games with Olton will provide different results.

Muleshoe's 7th and 8th "B" teams performed during half times of the "A" games and each team battled Littlefield "B's" to a 0-0 draw.

**A Difference**  
New Resident-I hear that the village boasts a choral society.

**Old Inhabitant-Well,** we don't boast about it-we suffer in silence.



CHEERING THE MULES: Pictured from left to right are Lori Ellis, 7th grader, Sherri Bessire, 8th grade head, Keisha Johnson, 8th grader, Kelly Hamblen, 8th grade mascot, Melissa Wilbanks, 8th grader, and Louise Lopez, 7th grader.

**Meet Your Counselors**

Last week the journalism staff interviewed Mrs. Betty Jennings, the counselor at Muleshoe Jr. High. She has been working in MISD for 21 years. She spent her first 8 years teaching in Jr. High, where she taught language arts, reading, and was part time librarian. She then taught 8 years in high school, teaching math, English, and Latin, and she taught one year in grade school. She returned to Jr. High as counselor 4 years ago.

Mrs. Jennings went to college at McMurry College in Abilene, where

she got her bachelor's degree. She earned her masters degree at ENMU and did her graduate work at Texas Tech. She majored in math, English, reading, elementary and secondary education, counseling and supervision. Mrs. Jennings' husband, James teaches work history in high school. They have one daughter, Mrs. Kathleen Hamilton, who teaches kindergarten. They also have one grandson, who is six months old. When asked what she thought about the Jr. High students she said, "Muleshoe has the finest, greatest, and most polite students I have ever seen." She is very proud of our school.

For all of her life she has been working and helping young people, and plans to continue. We would like to give our thanks to Mrs. Jennings for brightening up the days at Jr. High.

**Getting A Break.**  
Texan dictating his will: "To my son I leave \$3,000,000. He's lucky I didn't cut him off entirely."

**Cats Claw 8th. Grade**

This week the 8th grade Mules traveled to Littlefield to face the Wildcats for the first time this year only to be defeated by the score of Mules 15 and the Wildcats 18. The game was plagued by fumbles with eleven in the first half. The Wildcats struck first in the first quarter to lead six to nothing, but the conversion failed. The Mule's defense held for the remainder of the half. In the third quarter the Wildcats scored again and missed the conversion to lead 12 to nothing. But on the kickoff Mike Pecina ran the ball all the back, he followed this with the PAT to bring the score to Mules 7 and the Wildcats 12.

The Wildcats scored again early in the fourth quarter, but again missed the conversion. Then with no time left in the game Dennis Ruthardt ran 15 yards and on a final desperate plunge scored the touchdown. Mike Pecina ran the two point conversion to bring the final score to Mules 15 and the Wildcats 18. The Mules next game is November first at Olton at five o'clock.

**Alabama Facing Tough Challenge**

As the 1979 football season begins to grind down (only four full weeks remain) or as the conference races begin to heat up, let's take a capsule look at who some of the title-chasers will contend with this week.

Alabama, going after its eighth Southeast Conference title in the past nine years, could get one of its roughest tests this week. The high-scoring Mississippi State Bulldogs are the opponents. Winners over Tennessee and Florida and 11-point losers to Florida State, the Bulldogs will make the Tide work a little harder than usual. Alabama's favored by 21 points.

Big Ten powers Michigan and Ohio State should have no problems. The Wolverines are 26-point favorites over Wisconsin, and the Buckeyes will down Illinois by twenty-five. To show the dominance in one of the series, Wisconsin has beaten Michigan only seven times in 38 meetings.

A rather amazing statistic in the Southwest Conference: Rice leads in its series with Arkansas, 27 wins to 24. This week, Arkansas will put Rice away by 27 points, as in recent years the Razorbacks have been rapidly closing the gap. The two other biggies in the conference, Houston and Texas, are also in driver

seat positions. The Cougars will beat T.C.U. by 22, but Texas Tech will make it closer for Texas. The Longhorns are the pick by only 14 points.

The feature in the Pacific-10 Conference is the contest between Arizona State and Stanford. We give the Indians the edge by just one point. Southern California should defeat Arizona by 17 points.

Finally, super powers Oklahoma and Nebraska won't have things all their way in their Big Eight Conference games. The Sooners meet intra-state rival Oklahoma State and Oklahoma is the favorite by twenty points. Nebraska runs into unpredictable Missouri. However, if the Cornhuskers stay predictable, they'll beat Missouri by 21.

**Desert plant produces rubber**

COLLEGE STATION — A dowdy little desert shrub that grows wild in the Southwest produces, once it's processed, a rubber chemically identical to that of the Asian rubber tree.

It is known in scientific circles as guayule (we-OO-lee).

The problem is converting the plant from its current wild state to one that could be commercially produced in mass quantities.

"We are only beginning to investigate this plant," said Dr. Jimmy Tipton, Texas Agricultural Experiment Station scientist headquartered at the Texas A&M University Agricultural Research Center at El Paso.

Guayule has great economic potential for the arid areas of the Southwest in addition to its rubber-making capabilities. It is one of the few agricultural crops that is perfectly suited to a desert environment.



MRS. MARY SCOGGIN

**Sherri's Spots**  
By Sherri Bessire

What's happening around Jr. High?

The students at Jr. High were very glad to hear that there was no school last Friday. I am sure the teachers enjoyed a holiday too!!!

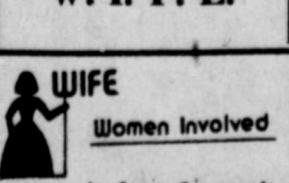
The Twisters gymnastics team received an invitation to a workshop in Corpus Christi. They left last Thursday the 25th and returned Sunday the 28th. Coach Pat Yeager will be running this workshop. The ones going from Junior High are Sherri Bessire, Ronald Briggs, Kristi Campbell, K-K Flowers, Tonda Gunstream, Wes Hanks, Brett King, and Melissa Wilbanks. Work hard!!!

We have a "problem" lady in Jr. High School, did you know that? If you have a problem, come see Mrs. Jennings!

See you next week. Keep smiling!

**HELP!**

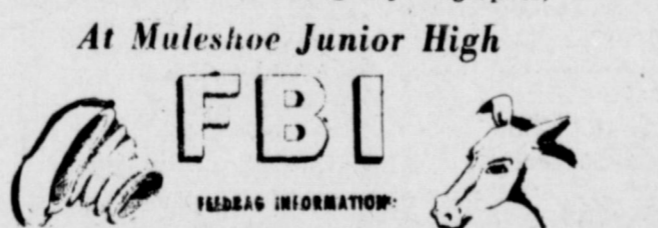
Nov. 6th.  
W. I. F. E.



In Farm Economic



MJHS ANNUAL STAFF: Annual staff members who produce the F.B.I. each week and do the yearly annual. Back row left to right are Tina Ruthardt, Kristi Spies, Melissa Wilbanks, Randall Stevens, and Jason Scoggin. Front row from left to right are Polly Harrison, Kristi Campbell, Sherri Bessire, and Sharla Morrison. Not pictured Mercedes Sayago. (photographer)



\$575 50 Lb. Bag

**FFA SPECIAL Hog Feed**

Contact Mickey Price In Muleshoe  
CALL 272-3801

FOR DELIVERY - CALL 48 HOURS IN ADVANCE

**D & L Fertilizer & Grain Earth, Tex. Ph. 257-2123**

NET WEIGHT 50 POUNDS

D & L FERTILIZER AND GRAIN - FFA SPECIAL HOG - MEDICATED

Reduction of the incidence of cervical abscesses; treatment of bacterial swine enteritis; prevention of these diseases during times of stress; maintenance of weight gains in the presence of atrophic rhinitis; growth promotion and increased feed efficiency in swine weighing up to 75 lb.

GUARANTEED ANALYSIS		ACTIVE DRUG INGREDIENTS	
Crude Protein - not less than	18.50%	Chlortetracycline	100 gm/ton
Crude Fat - not less than	2.50%	Sulfamethazine	0.011%
Crude Fiber - not more than	3.50%	Penicillin (from procaine penicillin)	50 gm/ton

**INGREDIENTS**  
Dried skimmed milk, dried whey, dried whey product, dried whey solubles, animal fat (preserved with BHA, propyl gallate, citric acid, and propylene glycol), soy flour, casein, dextrose, lecithin, fish meal, blood meal, meat meal, defatted soybean meal, corn distillers dried solubles, choline chloride, niacin, riboflavin in supplement, calcium pentothionate, vitamin A acetate, vitamin E supplement, menadione sodium bisulfite complex (source of vitamin K activity), vitamin B12 supplement, d-activated animal sterol (source of Vitamin D3—stability improved), BHT (a preservative), low fluorine ground rock phosphate, dicalcium phosphate, defluorinated phosphate, salt, calcium carbonate, iron sulfate, zinc oxide, copper sulfate, copper carbonate, mineral oil, manganese oxide, magnesium oxide, potassium iodide, sodium selenite, zinc sulfate, manganese sulfate, ethylene diamine dihydrochloride, cobalt sulfate, magnesium sulfate, sodium silico aluminate, potassium chloride, sodium bicarbonate, artificial flavor.

MANUFACTURED BY  
D & L FERTILIZER AND GRAIN - EARTH, TEXAS 79031  
WARNING: Feeding Directions: Feed as Sole Ration. Withdraw 15 days before slaughter.

**The Bob Harmon Forecast**

1-ALABAMA	6-TEXAS	11-PITTSBURGH	16-NOTRE DAME
2-NEBRASKA	7-OKLAHOMA	12-MICHIGAN	17-NORTH CAROLINA
3-OHIO STATE	8-BRIGHAM YOUNG	13-PENN STATE	18-TEMPLE
4-LUTHERAN CAL	9-FLORIDA STATE	14-WASHINGTON	19-WAKE FOREST
5-HOUSTON	10-ARKANSAS	15-TENNESSEE	20-BAYLOR

Saturday, Nov. 3 - Major Colleges		Other Games - East	
Air Force 23	Army 21	S F Austin 31	Howard Payne 7
Alabama 31	Mississippi State 21	SE Louisiana 26	Delta State 14
Arkansas 34	Rice 7	Southern State 12	Handing 6
Auburn 21	Florida 13	Southern U. 27	Howell 6
Bail State 35	Eastern Michigan 20	Tartan 24	Trinity 12
Boston U. 21	Holy Cross 20	Texas A & I 29	East Texas 15
Brigham Young 33	Colorado State 10	Troy State 29	Mississippi College 13
Brown 21	Harvard 7	West Liberty 21	West Va. Wesleyan 16
Central Michigan 28	Toledo 14	West Va. State 23	West Va. Tech 14
Citadel 26	Marshall 7	Western Kentucky 28	Middle Tennessee 7
Clemson 24	Wake Forest 20	Wofford 28	Catawba 17
Colgate 20	Lafayette 17		
Colorado 27	Iowa State 10		
Colombia 7	Columbia 7		
Dartmouth 27	Northern Michigan 16		
Drake 28	Appalachian State 18		
East Carolina 27	North Alabama 10		
East Tennessee 31	Cincinnati 13		
Florida State 37	Cincinnati 13		
Furman 24	Davidson 7		
Georgia Tech 21	Duke 14		
Georgia 24	Virginia 21		
Houston 29	T.C.U. 21		
Kansas 25	Kansas State 12		
Kentucky 21	Bowling Green 12		
Lama 21	NE Louisiana 16		
L.S.U. 30	Mississippi 8		
McNeese State 27	NW Louisiana 8		
Memphis State 23	No. Carolina 9		
Miami (Ohio) 33	Western Michigan 6		
Michigan State 33	Northwestern 7		
Michigan 33	Wisconsin 13		
Minnesota 27	Indiana 13		
Nebraska 34	Missouri 13		
Nevada-Las Vegas 28	Fresno State 13		
New Mexico 26	Utah 24		
North Carolina 28	Maryland 17		
North Texas 20	Louisiana Tech 10		
Northern Illinois 20	Kent State 13		
Notre Dame 30	So. Carolina 23		
Ohio State 35	Illinois 10		
Oklahoma 34	Oklahoma State 14		
Pacific 22	Long Beach State 20		
Penn State 28	Miami (Fla.) 6		
Pittsburgh 28	Syracuse 10		
Princeton 20	Pennsylvania 6		
Purdue 22	Iowa 21		
San Diego State 23	Wyoming 15		
South Carolina 24	No. Carolina State 7		
Arizona 7	Eureka 7		
Southern Illinois 23	Indiana State 10		
South'n Mississippi 10	Arizona State 22		
Stanford 23	Arizona State 22		
Temple 20	Hawaii 17		
Tenn.-Chattanooga 23	Western Carolina 20		
Tennessee State 35	No. Carolina A & T 8		
Tennessee 28	Rutgers 17		
Texas A & M 27	S.M.U. 10		
Texas-Arlington 24	Arkansas State 21		
Texas 25	Texas Tech 10		
Tulane 22	Boston College 14		
Tulsa 22	Wichita 14		
Villanova 24	Richmond 6		
V.M.I. 21	Connecticut 19		
V.P.I. 22	West Virginia 17		
Washington State 22	Fullerton 6		
Washington 26	Oregon State 13		
West Texas 23	California 20		
Western Illinois 27	New Mexico State 14		
Yale 20	Illinois State 20		
	Cornell 16		

Other Games - South and Southwest		Other Games - Far West	
Abilene Christian 30	Sam Houston 12	Adams State 21	Colorado Mines 17
Akron 22	Morehead State 14	Boise State 31	Northern Arizona 13
Albany State 20	Clark 14	Boise State 31	St. Mary's 17
Angelo State 21	Southwest Texas 20	Cal Lutheran 23	Puget Sound 7
Arkansas-Monticello 28	Henderson 12	Central Washington 20	Southern Oregon 17
Arkansas-Pine Bluff 22	Prairie View 16	Claremont 20	Whittier 16
Bishop 19	Texas Lutheran 7	Colorado College 35	Kansas Wesleyan 0
Carson-Newman 17	Lenoir-Rhyne 14	Eastern New Mexico 27	Eastern Oregon 10
Concord 21	Glennville 16	Eastern Oregon 30	Western Washington 13
Eastern Kentucky 17	Tennessee Tech 7	Hayward 22	Sacramento State 19
Fayetteville 28	Bowie State 14	Nevada-Reno 28	Idaho 14
Grambling 18	Alabama State 10	Northern Colorado 34	Eastern Washington 6
Jackson State 38	Texas Southern 10	Northridge 23	Cal Poly-Pomona 20
Jacksonville State 24	Livingston 7	Pacific Lutheran 26	Willamette 10
Kenyon 22	Georgetown, Ky. 13	Portland State 33	San Francisco State 6
Mars Hill 22	Washington & Lee 7	Redlands 17	Pomona 7
Maryville 26	Washington & Peay 16	Santa Clara 27	Cal-Davis 14
Murray State 22	Newberry 12	St. Mary's 6	Oberlin 6
Newberry 17	Elon 12	St. Mary's 7	Hillsdale 9
Nicholls State 21	Tennessee-Martin 12	St. Mary's 6	St. Stevens Point 10
Ouachita 22	Arkansas Tech 6	St. Mary's 7	Otterbein 7
Presbyterian 35	Gardner-Webb 6	Whitworth 23	

Presented In The Public Interest By:  
**Texas Sesame**  
Railroad Street 272-4231

# AID TO MILLIONS CLASSIFIED ADS



### Deadline For Classified Ads Is 11:00 Tuesdays And Fridays

**CLASSIFIED RATES**  
1st Insertion, per word -- \$5.11  
Minimum Charge -- \$1.80

2nd Insertion, and thereafter per word -- \$5.09  
Minimum Charge \$1.50

**CARD OF THANKS**  
25 words -- \$3.00  
Over 25 words charged at regular classified rates

**Classified Display** -- \$1.55 per column inch  
Double Rate for Blind Ads.

**DEADLINE FOR INSERTION**  
11 a.m. Tues. for Thurs.  
11 a.m. Fri. for Sun.

**WE RESERVE THE RIGHT TO CLASSIFY, REVISE OR REJECT ANY AD.**

**NOT RESPONSIBLE FOR ANY ERROR AFTER AD HAS RUN ONCE.**

**1. PERSONALS**

**WE BUY USED FURNITURE & APPLIANCES**  
CALL 272-3030  
**HARVEY BASS APPLIANCE**

1-18s-tfc

**3. HELP WANTED**

**HELP WANTED:** Muleshoe Publishing Co. is now accepting applications for employment. Must be able to type 55 words per minute and some creative ability would be helpful.

Apply in person, to Polly, at Journal Office, 304 W. Second St. 3-23t-ffhp

Secretarial opening in County Extension Agent's Office. Job description includes typing, filing, mimeograph, receptionist. Prefer typing to be 60 words per minute. Apply in person at the County Extension Office located in the Courthouse. Deadline for applying is November 8, 1979. An Equal Opportunity Employer.

3-43t-3tc

**OPERATOR WANTED:** Contact Faye Montgomery at Patio Beauty Shop. Phone 272-4318. 3-42s-tfc

NOW taking applications for a Nurses Aide Class. West Plains Medical Center, Muleshoe, Tx. Call 806-272-4524. 3-43s-3tc

**WE ARE NOW ACCEPTING** applications for cooks and waitresses for the Dinner Bell Restaurant, under New Management. Call 272-3732. 3-44t-4tp

**8. REAL ESTATE FOR SALE**

80 Acres for sale, irrigated, 55 - 60 acres in Alfalfa. Contact Jim Shafer 272-3658 after 5 p.m. or 8 a.m. - 5 p.m. at 272-5578. 8-44t-4tc

**KREBBS REAL ESTATE**  
122 W. Ave. C  
Ph. 272-3191

All Your Real Estate Needs. **APPRAISALS**  
8-18t-tfc

**HOUSE AND LOT FOR SALE:** Located on 120 Reno Street, in Harvey addition. Lot 150 x 50 feet, house is 3 bedroom, 1 1/2 bath. Call 272-3672 or see Claud Coffman 316 W. 10th, Muleshoe Texas. 1-43t-2ttf

If you have good credit and make \$16,000 or less you can qualify for a FmHa approved home. In most cases no down payment, only loan closing cost required.

**Call J & R Construction, your National Home Builders.**  
272-3758 or 272-4347  
8-31s-tfc

**FOR SALE:** 3-2-1, carpet, drapes, outdoor grill, storm windows, asbestos siding. A energy saver - \$33,000.00 or assume 9 1/2 % loan. Call 272-4754. 8-36t-tfc

**FOR SALE:** 14 x 72 Lancer trailer, 210 W. 9th, lot and completely furnished. Call 272-4398 or 272-3142. 8-43s-2tp

**We want your business "REMEMBER" REID REAL ESTATE THURSDAY 272-3142**  
8-30t-tffc

**CASH LEASE OR SELL:** 300 acres, 1/2 mile east Three Way School, Call 927-5305. 8-42s-6tp

**1625 Avenue. J. New 3 bedroom, fireplace, built-in appliances, super nice**

**One - 3 bedroom brick, 2 bath, all carpet and fence. \$34,000.**

**3 bedroom brick with double garages in Country Club Addition.**

**Country Home** 1 year old 3 bedroom, 2 bath, fireplace, double garage on 1 1/2 acres of land. 2 miles from town. Approximately 2150 sq. ft.

**5 bedroom, 3 bath house on corner lot West 10th. Ideal for large family or convert to 2 apartments.**

**4 chair Beauty Shop for sale. Immediate possession. Bargain Price.**

**3 bedroom house in Lenua Addition. \$28,500.00. Immediate possession. Single garage, fence and storm cellar.**

**4 bedroom house on Ave. J, \$26,500.00**

**FARMS RANCHES HOMES**  
**JOHN W. SMITH, Broker**  
HIGHWAY 214 NORTH  
MULESHOE, TEXAS

**TOWN and COUNTRY REAL ESTATE**  
806-272-4678  
or 4307  
8-43s-tfc

**FOR SALE:** 3 bedroom, 2 bath stucco home, cellar and lots of extras, must sell. Call 272-4403. 8-43t-tfc

**SMALLWOOD REAL ESTATE**  
272-4838 232 Main Street  
Joe Smallwood & Ricky Smallwood

907 W. 7th, 3 bedroom, 2 bath, car port, brick, fenced back yard.

New brick homes, 3 bedroom, 2 bath. 8-43s-tfc

**THREE LOTS for sale on Ivy in Country Club Addition.** Call 214-572-9264 or 214-572-5628 after 5 p.m. 8-43t-tfc.

**For all your real estate needs Call:**  
**GLAZE & GOFORTH**  
112 Ave. C  
272-4208  
8-11s-tfc

**HOUSE IN RICHLAND HILLS,** 3 bedroom, 2 bath, livingroom and den, 2 car garage, 2124 sq. ft. Call 272-4744. 8-38t-tfc

**Ludderth Realty, Inc.**  
Box 627 - 109 5th St  
Fawcett, Texas 79235  
Phone (806) 481-3288 or 481-9149

**160 acres North of Progress, good water area, 1 well, priced to sell.**

**160 Acres northwest of Muleshoe, 2 wells, lays good, on FM highway.**

**160 Acres near Nichols Gin, 1 1/2 miles north of Highway 70. Good water area, lays good.**

**WE NEED YOUR FARM & RANCH LISTINGS**  
320 Acres in Lazbuddie area, good water area, circular sprinkler, 1 mile off highway. 8-42t-tfc

**FOR SALE:** Richland Hills 3 bedroom, 2 bath, living room, den, playroom, fireplace, office, large covered patio, fenced, storage building, 2,000 sq. ft. 1907 W. Ave. G. by appointment only. Call 272-4701 8-36s-tfc

**FOR SALE:** 2 bedroom home. Large livingroom and kitchen. Built in appliances. Laundry Room, office, Sewing room. Large Yard with water well, Brick fence, & large bearing pecan & fruit trees. 218 W. 18th. Shown by appointment. **Phone 272-4860 after 6 or weekends.** 8-39t-tfc

**FARM FOR SALE:** 145 Acres east of Muleshoe, in good water area. Has Valley electric low pressure sprinkler. Priced to sell immediately. Call 806-364-6565 or 364-4753. Jerry Hardin Realtors. 8-44t-2tc

**9. AUTOMOBILES FOR SALE**

**FOR SALE:** 1970 Chevrolet pickup, CST/10, 8 cyl., 350 engine, power steering, brakes, air, radio. Recent motor overhaul, and rebuilt transmission. Good condition. Call 257-3758. 9-43s-2tc

**FOR SALE:** Mac truck, 10 speed, 318 Detroit 80 percent rubber, new paint, \$8,500.00 Call 1-800-545-2163. 9-43s-2tc

**FOR SALE:** 1968 Mack truck, 10 speed, 250 Cummins, 80 percent rubber, new overhaul, \$10,500. Call 1-800-545-2163. 9-43s-2tc

**BARGAIN:** 1974 Grand Prix loaded, AM Tape, CB A P Michelin radials. Call 272-4287 or 272-4140. 9-42s-4tp

**10. FARM EQUIP. FOR SALE**

**FOR SALE:** 560 tractor with 22 stripper and basket. Call 927-5423. 10-43t-8tc

**FOR SALE:** Low Boy implement trailer. Call 925-6736. 10-44t-2tc

**USED & NEW center pivots and siderolls for sale.** Call after 6 p.m. Gary 272-3891 or Ray 272-4808. 10-42s-tfc

**FOR SALE:** John Deere 4020 Tractor, diesel, power shift, cab, weights. Good condition. Call Jinks Meyers, 272-3424. 10-42s-tfc

**FOR SALE:** Model 33 J.D. cotton stripper. 24-A Heston stripper, basket model, fits J.D. 4010 - 4020. Call 946-3679. 10-42s-tfc

**11. FOR SALE OR TRADE**

**FOR SALE:** Honda On-off Road Bike, 1972 SL 350, good motor-500 miles ince overhaul. Good condition. Call 272-4793. 11-40s-tfc

**FOR SALE MOTOR CYCLES:** 1975 Honda CL 360, 1972 Honda CL 100, 1971 Yamaha 125, 618 W. 5th or call 272-4625. 11-43s-2tp

**FOR SALE OR RENT:** Several 40 ft. tandem axle dry storage vans. Call 1-800-545-2163. 11-43s-2tc

**FOR SALE:** 1967 Diamond T, 5-4 transmission, 250 Cummins, new paint, \$8,000.00. Call 1-800-545-2163. 11-43s-2tc

**FOR SALE:** International, 10 speed, 250 Cummins, Michelin tires, new paint, \$8,750.00. Call 1-800-545-2163. 11-43s-2tc

**FOR SALE OR TRADE for Farm Equipment:** 1968 Olds 98, 4 door sedan. \$8,000 actual miles, new steel belted tires. Call 257-4382, Earth Tx. 11-43t-4tc

**FOR SALE:** 5 trailer chassis, \$200.00 each. New fast hitch cotton stripper - \$500.00. Old refrigerator, runs good - \$40.00. Call 257-3482, Earth, Tx. 11-43t-4tc

**FOR SALE:** Field run white potatoes, 3 miles east of Friona on Hwy. 60. Available after 5 p.m. and on weekends. Call 295-6011. 11-42s-4tc

**12 HOUSEHOLE ITEMS**

Repossessed houseful of furniture. Includes stove, refrigerator, washer & dryer, livingroom suite, 2 bedroom suites, box springs & mattresses, diningroom suite. Can be bought all or part, take over payments. Free delivery.

**DISCOUNT FURNITURE 7TH & PRINCE**  
Clovis, N.M.  
Phone 565-769-0887  
12-42s-6tc

**BURROWS UPHOLSTERY & FURNITURE REPAIR**  
118 W. Ave. C  
in the rear.  
Phone 272-4255  
12-39s-tfc

**15. MISCELLANEOUS**

**CUSTOM HOME - ADD ON - REMODELING CALL**  
**J & R CONSTRUCTION**  
272-3758  
OR  
272-4347  
15-14t-tfc

**Are You Ready For Winter?**  
Call RICK'S Insulation And We'll Get You Ready  
**FREE ESTIMATES**  
Rick Claybrook  
272-3159 or 272-4818  
15-40s-tfc

**FOR SALE:** Irish Setter puppies. 7 weeks old, subject to register. Call 925-6763 after 5 p.m. 15-43t-4tp

**FRANK'S REFRIGERATION**  
Domestic & Commercial Auto Air Conditioning  
1206 W. American Blvd.  
Ph. (Days) 272-5023 or (Night) 272-3822  
15-37t-16tp

**TO GIVE AWAY** to a good home 5 puppies, 6 weeks old. Call 272-4614. 15-43t-4tc

**PROFESSIONAL DOG GROOMING**  
By a graduate of Barkers Barber Grooming Academy.  
Call for appointments  
**272-3061**  
15-42t-8tc

**FOR SALE:** 1972 International Cat over, Cargo Star 1710 with 18 ft. box, electric tail gate, new paint, \$6,000.00. Call 1-800-545-2163. 15-43s-2tc

**FRESH HONEY** for sale, with or without comb. Nick Landers, 334 W. Ave. J., Muleshoe. Phone 272-3096 15-41t-8tc

**FOR SALE:** Sweet potatoes, \$3.50 bushel. On Clovis Hwy. near Portales, turn at Turnbow store, go 1 mile and then back west, 2nd house on left. Balls Farm. Call 356-3111. 15-43t-2tc

**PYROTHERM INSULATION**  
Guaranteed for life of structure  
**FREE ESTIMATE**  
Marvin or George Nieman  
272-5564 or 965-2488  
15-29s-tfc

**16. LIVESTOCK**

**FOR SALE:** Two Registered Hamp Gilts, excellent show pigs, and feeder pigs. Call 806-481-3633, Farwell, after 7 p.m. 16-42s-4tc

**FOR SALE:** Two Registered Hamp Gilts, excellent show pigs, and feeder pigs. Call 806-481-3633, Farwell, after 7 p.m. 16-42s-4tc

**Public Notice**  
NOTICE TO ALL PERSONS HAVING CLAIMS AGAINST THE ESTATE OF HELEN JONES DECEASED

Notice is hereby given that original letters testamentary upon the Estate of Helen Jones, Deceased, were issued to me, the undersigned, on the 29th day of October, 1979, in the proceeding indicated below my signature hereto, which is still pending, and that I now hold such letters. All persons having claims against said estate, which is being administered, in the County below named, are hereby required to present the same to me at the address below given, before suit on the same are barred by the general statutes of limitations, before such estate is closed, and within the time prescribed by law. My post office address is 1103 Avenue F Northwest, Childress, Texas 79201

Dated this the 29th day of October, 1979.  
(s)Lloyd Walkup  
Lloyd Walkup, Executor of

**WANTED:** Wheat and stalk pasture. Call James Glaze, 272-4743 or 272-4208. 15-42t-8tc

**ASPHALT ROOFING COMPOSITION SHINGLES**  
new roof and repairs.  
Free Estimates.  
Call Collect  
Ron Foshee  
385-5680  
LITTLEFIELD ROOFING  
15-16s-tfc

**FOR SALE:** Lake CB radio, asking \$25.00  
Call 272-4144 after 5 p.m. 15-36s-tffc

**ELECTRICAL WORK:** Reasonable rates, jobs large or small, Jerry Teaff Electric.  
Phone 931-4659, Bula  
15 31t-tfc

**NOW REFURNISHING FURNITURE,** Antiquing, staining, or painting. Sherry Stevenson and Betty carpenter. Phone 272-4902 or 272-4686. 15-42s-8tp

**FOR SALE:** 1972 International Cat over, Cargo Star 1710 with 18 ft. box, electric tail gate, new paint, \$6,000.00. Call 1-800-545-2163. 15-43s-2tc

**FOR SALE:** 1967 Diamond T, 5-4 transmission, 250 Cummins, new paint, \$8,000.00. Call 1-800-545-2163. 11-43s-2tc

**FOR SALE:** International, 10 speed, 250 Cummins, Michelin tires, new paint, \$8,750.00. Call 1-800-545-2163. 11-43s-2tc

**FOR SALE OR TRADE for Farm Equipment:** 1968 Olds 98, 4 door sedan. \$8,000 actual miles, new steel belted tires. Call 257-4382, Earth Tx. 11-43t-4tc

**FOR SALE:** 5 trailer chassis, \$200.00 each. New fast hitch cotton stripper - \$500.00. Old refrigerator, runs good - \$40.00. Call 257-3482, Earth, Tx. 11-43t-4tc

**FOR SALE:** Field run white potatoes, 3 miles east of Friona on Hwy. 60. Available after 5 p.m. and on weekends. Call 295-6011. 11-42s-4tc

**12 HOUSEHOLE ITEMS**  
Repossessed houseful of furniture. Includes stove, refrigerator, washer & dryer, livingroom suite, 2 bedroom suites, box springs & mattresses, diningroom suite. Can be bought all or part, take over payments. Free delivery.

**DISCOUNT FURNITURE 7TH & PRINCE**  
Clovis, N.M.  
Phone 565-769-0887  
12-42s-6tc

**BURROWS UPHOLSTERY & FURNITURE REPAIR**  
118 W. Ave. C  
in the rear.  
Phone 272-4255  
12-39s-tfc

**Public Notice**  
NOTICE TO ALL PERSONS HAVING CLAIMS AGAINST THE ESTATE OF HELEN JONES DECEASED

Notice is hereby given that original letters testamentary upon the Estate of Helen Jones, Deceased, were issued to me, the undersigned, on the 29th day of October, 1979, in the proceeding indicated below my signature hereto, which is still pending, and that I now hold such letters. All persons having claims against said estate, which is being administered, in the County below named, are hereby required to present the same to me at the address below given, before suit on the same are barred by the general statutes of limitations, before such estate is closed, and within the time prescribed by law. My post office address is 1103 Avenue F Northwest, Childress, Texas 79201

Dated this the 29th day of October, 1979.  
(s)Lloyd Walkup  
Lloyd Walkup, Executor of

the Estate of Helen Jones, Deceased, No. 1351, County Court, Bailey County, Texas.  
15-44t-1tc

**Public Notice**  
NOTICE OF PUBLIC SALE  
On Tuesday, November 6, 1979, at 11:00 a.m., at the Courthouse door of Parmer County, Texas, the following goods will be sold for cash at public auction, to-wit:

2 Circular Sprinklers described as follows:  
1-1977 Valley Electric 7 tower sprinkler system and panel with corner machine attached, Serial No. 22815  
1-1970 Gifford Hill Electric 360-10 tower sprinkler system, Serial No. 722970-31970  
4 Irrigation Motors described as follows:  
1-8 cy. Olds, Serial No. 412753  
1-8 cy. Olds Serial No. 380145  
1-6 cy. Ford, Serial No. D5TE-6015-AA  
1-800 H.D. M-M Serial No. 34901384

2 Gearheads situated on Irrigation Pumps:  
1-Amarillo, Serial No. 3BC44803  
1-Green, Serial No. 22G8546

2 Byron Johnson Pumps, described as follows:  
1-10" Serial No. None  
1-8" Serial No. None

The above goods may be inspected at their present location, which is upon the South Half (S) of Section Eight (8), Block H, Thomas Kelly Subdivision, Parmer County, Texas, by previous arrangements with J.R. Johnson, 1602 Ave. C, Muleshoe, Texas, Phone No. 806-272-4744.

This sale is held to enforce the rights of J.R. Johnson of 1602 Ave. C, Muleshoe, Texas 79347, as the secured party arising under a security agreement executed with Robert L. McAnally, as Trustee, of Mimbres, Grant County, New Mexico 88049, as debtor.

The above described property may be sold as a unit with the above described land.

Signed this 11th day of October, 1979.  
Gordon H. Green,  
Attorney for the secured party.

**Economic indicators show steady growth.**

**15-42t-3tcc**

**Public Notice**  
NOTICE TO ALL PERSONS HAVING CLAIMS AGAINST THE ESTATE OF ALLENE L. CHAPMAN DECEASED

Notice is hereby given that original Letters Testamentary upon the Estate of Allene L. Chapman, Deceased, were issued to me, the undersigned, on the 29th day of October, 1979, in the proceeding indicated below my signature hereto, which is still pending, and that I now hold such letters. All persons having claims against said estate, which is being administered, in the County below named, are hereby required to present the same to me at the address below given, before suit on the same are barred by the general statutes of limitations, before such estate is closed, and within the time prescribed by law. My post office address is General Delivery, Goodland, Texas 79327.

Dated this the 29th day of October, 1979.  
(s) Landrum W. Chapman  
Landrum W. Chapman, Executor of the Estate of Allene L. Chapman, Deceased, No. 1352, in the County Court, Bailey County, Texas.  
15-44t-1tp

**Public Notice**  
NOTICE TO ALL PERSONS HAVING CLAIMS AGAINST THE ESTATE OF JOE THURL LEMONS DECEASED

Notice is hereby given that original Letters Testamentary for the Estate of Joe Thurl Lemons were issued on May 21, 1979, in Cause No. 1330, pending in the County Court of Bailey County, Texas, to: Natalie Lemons

The residence of such Executor is Chaves County, New Mexico. The post office address is: Natalie Lemons 1609 Mesa Drive Roswell, New Mexico 88201

All persons having claims against this Estate which is currently being administered are required to present them within the time and in the manner prescribed by law.

DATED the 21st day of May, 1979.  
Natalie Lemons  
(s) Natalie Lemons  
15-44t-1tp

**Beef Cattle Gains Help Boost In Overall Agricultural Prices**

AUSTIN--Prices received for beef cattle and calves showed the largest gains in Texas in September and helped to boost overall agricultural prices by 4 percent in a month's time, according to Agriculture Commissioner Reagan V. Brown.

Agricultural prices were also up from a year ago, by some 19 percent. Beef cattle sold for an average price of 51 cents a pound in September 1978; this past month the average was 69.4 cents. Calves showed the largest increase, from 69.5 cents in 1978 to the current September average of 91.7 cents a pound.

Other livestock prices were lower than those a year ago, with swine down 9.8 cents a pound to 36.5 cents in September 1979. Lambs were 3.4 cents less. Sheep prices rose only .07 cents a pound over the year period.

Among the major grains, corn had the lowest increase, 42 cents a bushel more than the average a year ago, raising the 1979 average to \$2.76 a bushel. Wheat had the highest increase with the preliminary average for September 1979 of \$4.01 a bushel some \$1.11 over 1978. Grain sorghum

brought an average of \$4.42 a bushel, 82 cents above the price in 1978.

Only minimal increases were reported in cottonseed, now at \$1.24 a ton, cotton with an average of \$8.3 cents a pound and peanuts, with a one-cent increase to 21 cents a pound.

Poultry prices were down, with live turkeys taking the greatest cut, 11 cents a pound for an average of 36 cents. Mohair prices decreased 35 cents to \$4.50, but wool prices rose 16 cents to 95 cents a pound.

"Right along with the increases in farm prices were rising prices for feed, with the highest increases in mixed dairy feed and laying feed, both up about \$25 a ton," Brown said.

The average prices paid for wages, interest and taxes were up 1 percent from mid-August for the U. S. No individual percentage was given for Texas.

"Inflationary increases in energy, land rental and other inputs hit farmers and ranchers at the same rate as other businessmen," Brown added.

**TV & Appliance Service**

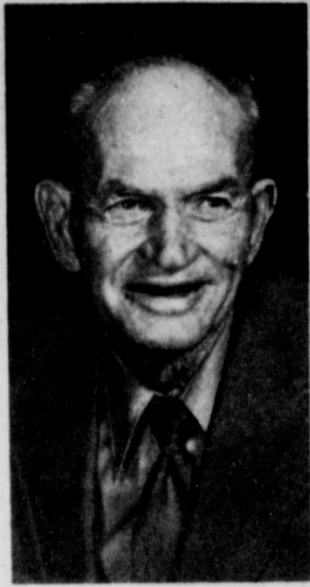
# Wilson

**117 Main Appliances 272-5531**

15-33t-tffc

To my many customers I would like to take this opportunity to say "THANK YOU FOR MAKING THIS ONE OF MY BEST YEARS." I have appreciated your patience and confidence in the work that I do. Muleshoe is truly a place of opportunity for someone who wishes to apply their skill. For the next few months I shall be working in a different area of Texas (Bryan, Texas). So during the winter months or at least for a couple of them, I shall not be here to answer my phone. I am taking schedule applications for the Spring-Summer-Fall season of 1980 and am pleased to have six (6) jobs scheduled already. So should you be thinking of doing some painting or repair work next year, I would be glad to give you an estimate (no charge) and put you on the schedule.

Normally my message is very short: HAVE BRUSH-WILL PAINT. Call Charles K. Harvey, Box 534, Muleshoe, Texas 79347. Phone 806-272-4059. 15-44t-4tp



**TOBIE HATCH**  
**Tobie Hatch**  
**Final Rites**  
**Slated Today**

Tobie Hatch, 74, of Muleshoe died at 7:56 a.m. Tuesday in Highland Hospital in Lubbock where he had been a patient for the last 15 days.

He was a farmer and had lived in Muleshoe since, January, 1950, moving here from Ralls. He was born May 12, 1905 at Rochester, Tex. and was a member of the First Baptist Church Muleshoe, and the Oddfellow Lodge.

Funeral services are scheduled for 10:30 a.m. today, Thursday, at the First Baptist Church with the Rev. Jim Green, minister from Jal, N.M. and Rev. J.E. Meeks, pastor of the First Baptist Church, Muleshoe, officiating. Burial will be in Bailey County Memorial Park under direction of Singleton-Ellis Funeral Home.

Survivors include his wife, Lorene; one son, Bill Hatch, Carrollton, a daughter, Mrs. Christing Auld, Lovington, N.M.; a sister, Mrs. J.C. Smith, Albuquerque, N.M.; seven grandchildren and eight great-grandchildren.

**Peace Justice**  
**Rules Motel**  
**Death 'Natural'**

The body of Mildred William Glasscock, 58, was transferred Monday night to Womack-Manard Funeral Home in Crowell for services. Mrs. Glasscock was found dead in a room at a local motel on Monday shortly before noon.

Justice of the Peace K.B. Martin ruled that Mrs. Glasscock apparently died of natural causes.

She was a daughter-in-law of Mattie Glasscock, who resides at the Muleshoe Nursing Home.

**Graveside Rites**  
**Held At Sudan**  
**For Roscoe Baker**

Graveside services were conducted at the Sudan Cemetery Monday at 1:30 p.m. for Roscoe Baker, 70, of Amarillo. Rev. Doug Gardner, pastor of the Circleback Baptist Church conducted the services. Arrangements were by Singleton-Ellis Funeral Home of Muleshoe.

He died in Amarillo last Saturday. He was born October 25, 1909 at Aippers, Okla. and moved to Potter County in 1935 from Muleshoe. Roscoe Baker was a member of the Methodist Church and was a laborer.

Survivors include his wife, Pauline; a son, Jim Baker, Odessa; a daughter, Robbie Baker, Plainview; a sister, Mrs. Hugh Gore, Circleback; and three brothers, Homer Baker, San Diego, Calif.; and Randolph Baker and Hershel Baker, both of Amarillo, and one grandchild.

New guidelines allow firms to hike prices.

**P. E. Wilemon**  
**Funeral Held**  
**Here Wednesday**

Funeral services for P. E. Wilemon, 92, were conducted at the Chapel of the Chimes at 2:30 p.m. Wednesday. Officiating were Rev. J.E. Meeks, pastor of the First Baptist Church and Rev. J. E. Stone, pastor of the First Assembly of God Church. Interment was in Muleshoe Cemetery under direction of Singleton-Ellis Funeral Home.

He died at 12:45 a.m. Monday in the Muleshoe Nursing Home. He was born November 23, 1886 in Birmingham, Ala. and moved to Bailey County in

1923 from Childress County. He was a retired farmer and trucker. His wife, Artie Mae Shubert preceded him in death in 1955. He was a member of the First Baptist Church and the Oddfellow Lodge.

Survivors include two sons, Claud Wilemon, Muleshoe; and Roy B. Wilemon, Albuquerque, N.M.; two daughters, Mrs. Rita Johnson, Muleshoe and Mrs. Georgia Jackson, Hereford; a brother, Joe Wilemon, Dallas; 13 grandchildren and 22 great-grandchildren.

**FOREIGN AID BILL**

The Senate passed an \$8.1 billion foreign aid bill barring aid to any Western Hemisphere nation that permits foreign military forces to be stationed within its borders.



**P. E. WILEMON**  
**ABC & OLYMPIC GAMES**  
**LOS ANGELES -- ABC has been awarded television rights for the 1984 Olympic Games at a cost of \$225 million, one of the largest single contracts in television history.**

**Rites Pending**  
**For Escobedo**  
**In Muleshoe**

At presstime, funeral services for Lazaro Escobedo, 76, were pending with Singleton-Ellis Funeral Home in Muleshoe. He died Monday at 5:20 p.m. in West Plains Medical Center.

He was born December 17, 1903 in Campbellton, Tex. and moved to the Amherst community 19 years ago from the Lazbuddie community. He was a retired farmer. He was married to Micaela Saenz Escobedo on October 27, 1957 in Roma, Tex. He was a member of the Catholic Church.

Survivors include his wife, Micaela; one son, Pascual Escobedo, Modesto, Calif.; a sister, Mrs. Maria Espinosa, Bryan; a brother, Uvaldo Guzman, Bryan; and four grandchildren. He is also an uncle of Mr. and Mrs. Lupe Rejino, Muleshoe.

Study: south's schools more integrated than north's.

**TEST YOUR**  
**E.Q.**

(Economics Quotient)  
Write for a free booklet. "Economics," Pueblo, Colorado 81009.  
The American Economic System. We should all learn more about it.  
A public service message of The Newspaper & The Learning Council & U.S. Department of Commerce.

**Ranchers Get Their Penny's**  
**Worth In Grasshopper Fight**

AUSTIN--Who says a penny won't buy anything anymore? Not the ranchers up in the Panhandle region, at any rate, where every cent recently spent managed to account for the deaths of some 1,815 grasshoppers.

When it was all over, billions of the critters were gone, and the Panhandle ranchers whose land had been infested were crossing their fingers in hopes that the great grasshopper invasions of the past two summers were finally over.

The hoppers, which infested range at the rate of 20-80 a square yard or 242,000 an acre, were treated in 13 Panhandle counties under a cost-sharing program of the state and federal government. Agriculture Commissioner Reagan V. Brown reported that 1.4 million acres of range

had been sprayed at a cost of \$1.7 million or \$1.20 per acre. The Texas Department of Agriculture, U.S. Department of Agriculture and the ranchers whose land was treated each paid one-third. Spraying began June 21 and ended in late July when the grasshoppers had matured and were laying eggs. Brown said 90-99 percent control had been achieved.

"Federal guidelines require that treatment be made before eggs are laid," said the Commissioner. "This reduces the size of next year's hatch and may eliminate the need for further treatment."

This summer's treatment covered four times as many acres in Texas as last year's though the per acre rate of infestation was about the same. Around 7 million acres in 17 states were treated.

**WE WELCOME**  
**USDA**  
**FOOD STAMP**  
**COUPONS**

**Whites**

402 Main  
272-4244

**CASHWAY**

*We Reserve The Right To Limit Quantities*

**Double Gunn Bros.**

Stamps  
Every  
Wednesday

7:30 a.m. til 9:00 p.m.  
**MONDAY-SATURDAY**  
NEW STORE HOURS 12:00 pm to 8:00pm  
**OPEN ON SUNDAY**

---

**November Beef Sale**

**For Locker or Deep Freeze**

**Swifts Premium Proten Beef** \$1.27 lb.

**Half Beef Cut and Wrapped**

**Swifts Premium Proten Beef** \$1.45 lb.

**Hind Quarter Cut and Wrapped**

**Swifts Premium Proten Beef** \$1.19 lb.

**Fore Quarter Cut and Wrapped**

**Gunn-Ho**

**Round Steak** Swifts Premium Proten Beef \$1.98 lb.

**Sirloin Steak** Swifts Premium Proten Beef \$1.98 lb.

**T-Bone Steak** Swifts Premium Proten Beef \$2.89 lb.

**Arm Roast** Swifts Premium Proten Beef \$1.69 lb.

**Chuck Roast** Swifts Premium Proten Beef \$1.59 lb.

**Roast Boneless** Swifts Premium Proten Beef \$2.09 lb.

**Bologna** Peytons Ranch Brand (12oz.pkg.) 98¢

---

**Plus**

**Pork Chops** Hormels Super Select Center Cuts \$1.49 lb.

**Pork Steak** Hormels Super Select \$1.29 lb.

**Pork Roast** Hormels Super Select \$1.09 lb.

**November Pork Sale**

**Pork Chops** Hormels Super Select Family Pack \$1.19 lb.

**Bacon** Hormels Ranch Brand (2lb.pkg.) \$2.49

---

**Tide** Detergent \$1.59

**Syrup** Blackburns Crystal White 32oz. Jar 89¢

**Apples** Washington Red Delicious 3lb. Bag 89¢

**Potatoes** Colorado All Purpose White 10lb. Bag 79¢

**Pepsi-Cola** 2 Liter Bottle 79¢

**Sausage** Swifts Premium Vienna 3oz. Can 39¢

**Cabbage** -Texas Crisp Green Heads 9¢ lb.

**Carrots** California Crisp Yellow (1lb.Bag) 19¢

**Frozen Food**

Banquet T.V. Dinners 11oz. Pkg 59¢

Stihwell's Breaded Cut 24oz. Pkg. 89¢

Okra 24oz. Pkg. 89¢

Birdseye International Spanish Rice 11oz. Pkg. 69¢

---

**Liquid Dishwashing Soap**

**Ivory** 32oz. Bottle \$1.39

**Kraft Asst. Flavors Miniature** 10 1/2oz. Pkg. 39¢

**Marshmallows** Purex All Fabric 40oz. Box 99¢

**Bleach** Fabric Softener 64oz. Bottle \$1.99

**Downy** Borden's Chips 12oz. Cello Pkg. 99¢

**Chocolate** Kollogg's 25oz. Box \$1.49

**Raisin Bran** Under-Wood Mustard Tomato or Reg. 3 1/4 Can 59¢

**Sardines**

**Eggs** U-S-D-A Grade A Medium (doz) 59¢

**Tuna** Star-Kist Chunk Light 6 1/4 Can 79¢

**Plain Chili** Gebhardt's No.2 Can 99¢