

Weather

JAN. 14 --	34	13
JAN. 15 --	41	13
JAN. 16 --	58	24
JAN. 17 --	60	28
Moisture to date --	.38	

Volume 56, No. 3

10 Pages

Published Every Thursday at Muleshoe, Bailey County, Texas 79347

Thursday January 18, 1979

MULESHOE JOURNAL

'The Community of Opportunity-Where Water Makes the Difference'



20¢

'78 Bank Deposits Reach Record High

Multi-Activities Scheduled By YAC

Before long, Muleshoe and area youth will no longer be able to say there isn't anything to do in Muleshoe.

During a meeting Monday night of the membership of the Muleshoe Area Youth Activities Committee.

Around Muleshoe

Mr. and Mrs. Irvin St. Clair have returned to their home from a New Year's trip to Cancun, Mexico.

He reported they enjoyed 'swimsuit' weather while there.

St. John's Lutheran Church at Lariat reports services are now being conducted one half hour later.

Sunday School and Bible Classes are at 10 a.m., followed by worship service at 11 a.m.

Two Muleshoe students are listed on the dean's honor roll for the fall semester at Angelo State University in San Angelo. On the 3.00 to 3.49 list are Julia Jennifer Hettinga, a nursing major and Curtis Ray Reynolds a business major.

Also on the honor roll were Peggy Lee White, Jacquelyn Lanell Langford and Natalie Gayle Dollar, all of Farwell.

Named to the Dean's honor list from Muleshoe at West Texas State University, Canyon, are Kelly Head, senior agricultural business and economics major; Susan Murray, senior kindergarten education major and Betetta Roming, freshman computer and information systems major.

Western '66' hosted an appreciation dinner for their customers last Friday night at the Bailey County Civic Center and Coliseum, with over 500 persons enjoying a barbecue dinner.

Music was presented by the Sandy Land Opry Band from South Plains College in Levelland.

Winning televisions were Mrs. Marshall Head, Jody Barrett and Mrs. Joe Ferris. Mrs. Gordon Duncan won a stereo.

Muleshoe Merchants met Tuesday morning to make preliminary plans for another 'Mule Days' promotion.

They tentatively scheduled March 18 as the kick-off.

Cont. page 6, Col. 2

Deadline Friday

For Student Signup

On Washington Trip

Tomorrow, Friday, will be the deadline for students who wish to sign up for a trip to Washington, D.C. during spring break for the local schools.

The trip, which is for high school students, is a non-school sponsored function, and sponsors will be Mr. and Mrs. Stan Black and Stephen Johnson.

A minimum of 40 students must sign up in order for the trip to be scheduled, and it will be April 13 - 16, according to the sponsors.

Interested persons may contact Stephen Johnson at 272-3522 or Mrs. Black at 272-4815. They ask that they be called at the numbers during evening hours and please do not call the high school.

tee of the Chamber of Commerce and Agriculture. Many upcoming activities were discussed.

Included will be the skating party Friday, tomorrow, night; another skating party on February 2; and a game night on February 16, along with another game night on March 10.

Vice president Don Prather, conducting the meeting in the absence of president Keith Pate, explained the new executive board of directors and released names of the members.

Serving as co-chairmen on the executive board include, Don Prather, Betty Hopper and Pat Angeley, Planning; Terry Young and Jim Shafer, Fund-Raising and Financial; Wayne Holmes and Joe Rhodes, Property and Galen Bock and Cleta Williams, Publicity. Bock was also designated youth coordinator to meet with the youth branch of the organization.

It was decided to schedule the game nights and skating on a regular basis and attempt to find sponsors, such as a civic.

Cont. page 6, Col. 3



COACH BUD CASEY

Jaycees Plan Bosses' Night Honor Monday

Monday night, January 22, the Muleshoe Jaycees will host their bosses and special guests for the annual Bosses' Night banquet. The banquet is scheduled at 7 p.m. in fellowship hall of the First United Methodist Church, and will cost \$5 per person.

Four awards will be presented during the evening, including plaques to the Outstanding Young Man; Outstanding Young Farmer; Outstanding Merchant and Boss of the Year.

Guest speaker for the program will be Bud Casey, offensive coordinator for the Red Raiders at Texas Tech University, Lubbock.

He will show films of the Highlights of the '78 Season for the Red Raiders.

Coach Casey is a veteran of 10 years of college coaching. He joined the Tech Staff in 1978, coming to Lubbock from Georgia Tech where he had been since 1972.

Prior to his six seasons at Georgia Tech, Coach Casey served at the University of Tampa for one season and at Northeastern Oklahoma State for three seasons.

He graduated from Northeastern State in 1966 with a B.S. in Physical Education and in 1968 received his Master's from Northeastern State in Physical Education, Guidance and Counseling.



AND THE TRACTORS ROLLED...Late last week, preparations were underway to move tractors from the local area into a tractorcade enroute to Washington, D.C. Here, Guy Austin prepares to move a local tractor to Friona. He did not make the Washington trip, but sent a tractor and a driver.

School Board Checks New Federal Program

Public schools, already hardpressed for finances to keep up with mandatory federal programs, have received another setback in financing. Monday night, during the regular monthly meeting of the Muleshoe Independent School District Board of Trustees, the latest mandatory program was discussed.

The newest Federal law is Federal Public Law 94-142, Education of the Handicapped. Muleshoe School

Superintendent Neal B. Dillman said, "This will have a far reaching effect and impact on Public Schools. Under the present guidelines, all costs of the program has been put upon the local school districts for physical plant changes, personnel additions, and curriculum offerings."

"I don't know how the schools will pay for all the mandatory changes without going broke," he added.

Tractorcade Rolls, Enroute Washington

In pioneer days, it was "Wagons, Ho-o-o-o," but the modern caravan for across country travel consists of tractors and support vehicles. A cry still rings out, but it is "Tractors, Ho-o-o-o," and the call does not ring out loud and clear in the early morning air, but is heard over a CB radio.

Thus, the tractorcade to Washington, D.C., is underway, with a target date for arrival from across the entire United States being February 2.

From Muleshoe, seven persons, with tractors, motor homes and support vehicles left last Friday afternoon, to join the tractorcade at Friona. From Friona, the tractors traveled to Amarillo.

Doug Bales reported that he traveled to Sayre, Okla. Monday where the tractors were escorted into town to a cotton gin lot and circled to spend the night.

Bales' son, Kim, who is traveling with the tractorcade, telephoned his father Tuesday morning and said the tractorcade was underway Tuesday morning around 8:15 a.m.

Traveling from the Muleshoe area are Mr. and Mrs. Kenny Kittrell, Mr. and Mrs. Lloyd Williams, Mr. and Mrs. Morris Kilgough and Ken Bales.

The group expected to spend Tuesday night at El Reno, Oklahoma. Bales said they are picking up additional tractors and support units as they travel. He said that at present, the strung out tractorcade and support vehicles, numbering 80 tractors and 150 support vehicles is approximately 10 miles long.

Kem Bales is expected to call The Journal twice a week with reports from the tractorcade as it traverses the U.S. enroute to Washington.

Peace Justice Report

The month of December, 1978 was busy, busy for Justice of the Peace K.B. Martin, who had 236 cases filed in his court at the Bailey County Law Enforcement Center.

Filed were 154 speeding cases, to lead the list of offenses in his court. This was followed by 18 cases of no motor vehicle inspection sticker. Twelve cases of failure to display Texas driver's license were logged in the docket book. Drunk pedestrian charges accounted for nine of the cases. Driving with expired license plates and an expired license plate on a trailer accounted for another eight cases filed.

Unsafe speed and overweight vehicles were filed in five instances each. There were four cases each of defective tail lights, unregistered trailers and running stop signs.

Three persons were charged with failure to report a change of address and failure to drive in a single lane.

Two persons were charged with failure to yield right of way and there was one case each on failure to appear, driving an unregistered vehicle; violation of driver's license restriction; failure to dim lights; expired license plate on trailer and overloaded vehicle.

Skating Party Is Scheduled Here Friday

This Friday, January 19, the Youth Activities Committee of the Muleshoe Chamber of Commerce and Agriculture, will sponsor a skating party for all area youth at the Bailey County Civic Center and Coliseum.

It will only cost 50 cents to skate from 7-10 p.m. at the Coliseum and the doors will be opened to all youth from throughout the area. Skates and skateboards may be brought to use, and a concession stand will be operated.

Youth attending the skating party are asked to use the arena doors to enter. And, remember, the party is not limited to Muleshoe youth, if you live anywhere in the area and want to attend, bring your skates or skateboards and join the fun and activity.

The Youth Activities Committee functions for all youth throughout the area, and are not limited to Muleshoe youth.

Triangle CB Will Sponsor Youth Dance

Calling ALL area youth! You are wanted! If you are from Muleshoe, Farwell, Sudan, Lazbuddie, Earth, Maple, Enoch, Morton, or any area between or beyond, you are encouraged to attend the youth dance in Muleshoe Saturday night.

The Triangle CB Club is sponsoring the dance from 8-12 Saturday night at the Bailey County Civic Center and Coliseum.

It will cost \$3 for couples

Cont. page 6, Col. 2

Soil Fertility

Meet Scheduled Here Monday

Next Monday, the annual Bailey County Soil Fertility Meeting will be conducted at 7:30 p.m. at the Bailey County Civic Center and Coliseum, according to Bailey County Extension Agent Spencer Tanksley.

Four speakers will discuss various aspects of farm technology and Tanksley said he would encourage all farmers, ranchers and agribusinessmen to attend the seventh annual fertility meeting.

It will be conducted without charge to any participant and a question and answer session will follow the presentation by the speakers.

"Farm Labor Management" will be discussed by Ken Wolf, farm economist and he will give information on handling farm labor personnel.

Dr. Carl Anderson, state cotton marketing specialist will speak on the "Marketing Outlook," for both cotton and grain sorghum.

Dr. James Supek will talk about "Cotton Hybrids." Cotton hybrids will soon join corn and grain sorghum hybrids, presently available on open market.

The fourth speaker will be Leon New, who will discuss "Tenchometers," the new method of checking for soil moisture, and will be a saving to the irrigation farmer.

The Bailey County agent suggested that all farmers and ranchers make plans to attend this meeting.

Area Deposits Shown Above \$159 Million

At the close of 1978, the eight banks and one savings and loan institution in the immediate and surrounding area, show an increase in deposits of \$10,441,264, bringing them to a record high in total deposits of \$159,310,252. In Muleshoe, the two banks and the savings and loan office headquartered in Muleshoe, show an increase of \$6,945,637 in deposits during the year of 1978. Total deposits in Muleshoe at the end of 1978 were \$69,578,644.

On December 30, 1978, loans in Muleshoe also showed an increase of \$14,001,138 from the figures of the previous year.

First National Bank reported deposits of \$21,816,255 up \$1,650,212 from the \$20,166,043 on deposit at the end of 1977.

During the same period of time, their loans increased by \$3,193,420. On December 31, 1978, the figures were \$15,369,845, compared to the end of 1977 figure of \$12,176,425.

Muleshoe State Bank had loans of \$13,259,000 at the end of 1977, up at the end of 1978 to \$14,088,000, an increase of \$829,000. During the same time, their deposits increased by \$937,000. On December 30, 1978, deposits were \$22,723,000, compared to \$21,786,000 at the end of 1977.

Tri-County Savings and Loan Association, headquartered in Muleshoe, and with branch offices in Littlefield, Friona and Farwell, showed a combined

Spanish Assembly Slates Concert On January 23

Rev. Paul Pecina of the Spanish Assembly of God Church in Muleshoe, has announced a concert scheduled at 7:30 p.m. on Tuesday, January 23.

The concert will be conducted by the Joe Perales family of San Antonio. Perales is the pianist for the Galileans.

Rev. Pecina said there will be no admission for the concert at the church, located at 413 East Ave. F., but a free will offering will be taken.



LETTER OF INTENT...Well known high school athlete Charles Briscoe, signed a letter of intent with West Texas State University, Canyon, on Tuesday morning. He received a full athletic scholarship. Looking on is Muleshoe High School Athletic Director and Head Football Coach Mike Wartes.

Hotter Water Causes Increased Danger

Scalding water from many taps can burn you within two seconds. But who would get caught under hot water even that long? The sad answer is that scalding tap water injures at least 3,000 people, mostly children, annually. The handicapped and elderly also are likely victims of water that is too hot in about 80 percent of all homes, a Seattle study showed.

Hot water also has energy implications. Lowering water heater temperatures from the standard 140-150 degrees F. to 135 degrees could save about 20 percent of the home's water heating bill in some areas of Texas, one electric company spokesman said.

Water in the 130 degree range still is not totally safe. It can cause severe skin burns within about 30 seconds. The U.S. Consumer Product Safety Commission has said most households only need 120 degree water.

Better Business Bureau Chooses New Chairman

Kicking off its 25th year of operation, the Better Business Bureau of the South Plains, Inc. today installed Leon Harris of Webster & Harris Advertising Agency of Lubbock as its Chairman of the Board. Other Officers named were: Mal T. Cleland, president and manager, C.B. Carter, president of Texas Commerce Bank, First Vice-President; Henry Huneke, First Manufactured Homes, Second Vice-President and Lester Grimes, Grimes Insurance, Treasurer. A. C. White of Galbraith Steel and Supply is immediate Past Chairman of the Board.

During 1978, the Bureau increased its membership by 126 members and introduced a new auto repair program designed to guarantee quality workmanship at fair prices in conjunction with new car dealerships and independent garages. It was successful in resolving 100 percent of utility, bank, buying clubs, airlines and telephone company complaints and had a high percentage rating in resolving complaints regarding new car dealerships, hospitals, clinics, magazine, insurance, finance, loan and dept. stores. It processed 29,769 complaints and inquiries (a 28.8 percent increase over 1977; with leading users of the toll free Watts line being citizens of Plainview, Lamesa, Levelland, Brownfield, Littlefield, Muleshoe, Denver City, Floydada, Snyder, Post, Lockney and Ralls. Complaints were up by 11.8 percent; complaint satisfaction reached 82.5 percent as compared to 79.2 in 1977.

The Bureau covers an 18 county area including Bailey, Lamb, Hale, Floyd, Motley, Cochran, Gaines, Dawson, Borden, Hockley, Crosby, Dickens, Yoakum, Terry, Lynn, Garza, Kent and Lubbock.

True Value
BARGAIN OF THE MONTH
INSULATE your PIPES!
PREVENT FREEZING IN BRIEF COLD SNAPS use **WRAP-ON® 40** FIBER GLASS INSULATION

E-POX
401 S. 1st
MULESHOE, TEX.

Even at the relatively safe temperature of 120 degrees, an unattended child might be exposed long enough to be hurt. Burns could occur if a child

slipped into a sink or bathtub or accidentally turned on the hot water. The Texas Medical Association said. Parents can decrease this risk by keeping children away from hot water sources, carefully testing bath water and turning down water heaters.

To turn down the temperature, you need to locate the thermostat. Gas water heaters usually have a thermostat on the bottom outside of the tank. The low setting usually is about 120 degrees. Electric water heaters usually have either two panels screwed onto the top and bottom

front of the tank or a single panel spanning the height of the tank. Remove these panels, remove some insulation and set the thermostats at "low". The physicians who did the Seattle study doubt that stressing carefulness and lower water temperatures to parents will eliminate all scalding. Writing in Pediatrics journal, they said intentional scalding was the cause of 60 percent of the cases where an adult turned on the water in a scalding incident.

Breakthrough in energy legislation claimed.



LENDING RATE HIKE
NEW YORK -- The nation's five largest commercial banks--and a number of others--raised their prime lending rate 1/4-point to 9 1/4 percent recently in a move that had been widely predicted because other key interest rates have been on the way up.

Food Savings are In The Bag at Piggly Wiggly



"Each of these advertised items is required to be readily available for sale at or below the advertised price in each store, except as specifically noted in this ad." Prices good January 14 through January 20, 1979.

"Look for us around town in our bright yellow and green Volkswagens. We're Piggly Wiggly's Price Watchers, and our job is to go from store to store comparing prices. Our aim is to make sure you always find competitive prices -- at Piggly Wiggly."

PIGGLY WIGGLY FLOUR
5 LB. BAG 58¢

SALAD MUSTARD	PIGGLY WIGGLY	16-OZ. SIZE	39¢
STRAWBERRY PRESERVES	PIGGLY WIGGLY	32-OZ. JAR	\$1.49
STEWED VEGETABLES	PIGGLY WIGGLY	20-OZ. SIZE	75¢
INSTANT TEA	NESTLE	3-OZ. JAR	\$2.19
KITCHEN BAGS	PIGGLY WIGGLY, TALL	15-CT. SIZE	99¢
SOUP STARTER	BEEF BARLEY, BEEF VEGETABLE, CHICKEN NOODLE	6.3 TO 7.2-OZ. SIZE	99¢
BANQUET PIES	APPLE, PEACH, CHERRY	8-OZ. SIZE	39¢

DOWNY FABRIC SOFTENER 64-OZ. BTL. **\$1.68**

EXTRA ABSORBANT DAYTIME DIAPERS **PAMPERS** 24-CT. BOXES **\$4.99**

PURINA MEOW MIX	CAT FOOD	18-OZ. SIZE	69¢
LEMON JUICE	REAL LEMON	16-OZ. BTL.	59¢
PAM OIL		9-OZ. SIZE	\$1.19
AUSTEX TAMALES	SPAM	15-OZ. CAN	59¢
DEVILED SPREAD		3-OZ. CAN	39¢
STAYFREE MAXI PADS		48-CT. BOX	\$3.69
SWEET PICKLES	VLASIC	16-OZ. JAR	89¢

Barney's Butcher Shop Sale "BE SATISFIED WITH PIGGLY WIGGLY MEAT OR DOUBLE YOUR MONEY BACK!"

USDA GRADE A BOX O' CHICKEN OR SPLIT FRYERS WITH BACKS **55¢** LB.

OLD FASHIONED MARKET STYLE SLICED BACON **\$1.29** LB.

FARMER JONES, ALL MEAT OR BEEF FRANKS 12 OZ. 89¢	USDA HEAVY WESTERN BEEF BLADE CUT CHUCK STEAK LB. \$1.29	LEAN, FLAVORFUL BOSTON BUTT PORK ROAST LB. \$1.39	LEAN, FLAVORFUL PORK SHOULDER STEAK LB. \$1.49	USDA HEAVY WESTERN BEEF, CENTER CUT, 7-BONE CHUCK ROAST LB. \$1.39
GLOVER SLICED BOLOGNA 16-OZ. PKG. \$1.39	USDA GRADE A, SPLIT FRYER BREASTS LB. \$1.19	USDA GRADE A, FRYER THIGHS OR DRUMSTICKS LB. \$1.09	HILLSHIRE FARMS BEEF OR REGULAR SMOKED SAUSAGE LB. \$1.69	

PIGGLY WIGGLY QUARTERS OLEO 3 1-LB. PKGS. **\$1**

POT PIES 4 8-OZ. PIES **\$1**

PIGGLY WIGGLY, LARGE GRADE A EGGS DOZ **72¢**

PIGGLY WIGGLY, WHOLE PEELED TOMATOES 16-OZ. CAN 39¢	PIGGLY WIGGLY VEGETABLE SHORTENING 3-LB. CAN \$1.69	PIGGLY WIGGLY PEANUT BUTTER SMOOTH OR CRUNCHY 18-OZ. JAR 89¢	PIGGLY WIGGLY ASSORTED CAKE MIXES 18 1/2-OZ. PKG. 59¢	PIGGLY WIGGLY GRAPEFRUIT JUICE 46-OZ. CAN 63¢
---	---	--	---	---

FAB POWDERED DETERGENT 49-OZ. BOX **\$1.39**

PALMOLIVE LIQUID DETERGENT 22-OZ. BTL. **89¢**

Stan's Produce Sale! "BE SATISFIED WITH PIGGLY WIGGLY PRODUCE OR DOUBLE YOUR MONEY BACK!"

SWEET JUICY CALIFORNIA NAVEL ORANGES 10 FOR **98¢**

GENUINE RUSSET BAKING POTATOES 10 LB. BAG **88¢**

YELLOW ONIONS LB. **15¢**

Enochs News By Mrs. J.D. Bayless

Paula Nichols was a patient in the Littlefield Hospital Thursday afternoon til Sunday for tests and observation.

Those from Enochs attending the Golden Wedding Anniversary reception for Mr. and Mrs. John Blackman at Littlefield Sunday afternoon were Mr. and Mrs. J.D. Bayless, Mrs. Flo Nichols, Mrs. Johnny Cox and Mrs. J.W. Layton.

Mrs. J.W. Layton visited her sister, Mr. and Mrs. H.H. Snow in Muleshoe Thursday.

Broke Sinclair of Muleshoe spent Friday and Saturday night with her grandparents, Mr. and Mrs. Harold Pollard. Her parents, Mr. and Mrs. Joel Sinclair came for her and spent the night.

The cold front that blew in Friday night lowered the temperature to 10 degrees Sunday morning. There were snow flurries Saturday morning.

Mrs. Jerry Nichols and baby and Mrs. J.W. Layton were in Morton one afternoon the past week and visited Mrs. Clemie Speck.

Mrs. Orbe Phillips has been a patient in the Methodist Hospital in Lubbock. She is home, doing fine.

Mr. and Mrs. E.N. McCall drove to Lubbock to visit their daughter, Mr. and Mrs. Don Vanlandingham and family and Mr. and Mrs. Robert George and family.

Mr. and Mrs. Kenneth Coats, Mrs. Mable Coats and Mrs. Alma Altman of Morton helped their grandson, Courtney Coats celebrate his first birthday, Sunday. Other guests were his parents, Mr. and Mrs. Keith Coats, his aunt, Mr. and Mrs. Robert Jones and son Kris, of Lubbock and Mr. and Mrs. Melvin Coffey of Clovis.

West Plains Medical Center Report

ADMISSIONS...
January 12 -- Iva J. Vinson
January 13 -- Earl Ware, Lou Hail, Romona Ber-lange, Barry Coker
January 15 -- Holly Mill-sap, Wayne Ware, Jr., Walter B. Little

DISMISSALS...
January 11 -- Gladys Mad-dox
January 12 -- Walter Dam-ron, Jackie D. Bruns, Mel-va Davis, Oscar Allison, Verbie Griffiths, Kenneth Harris, Hazel Myers.
January 13 -- Ella Doo-little, Vernon Brown
January 14 -- Mary Autry and baby girl, Le Ann Gallman, Iva Vinson and Barry Coker.

Mr. and Mrs. Elwood Autry and Jo Ann visited in the home of their son, Mr. and Mrs. Mitch Autry Sunday afternoon to see their new granddaughter, Amy Michele of Muleshoe.

Mrs. Bobbie Adams and daughter, Linda began classes on Monday at South Plains College.

Harlan Reeses Landed 52 Pound Catfish

During a fishing trip at Lake Corpus Christi on December 14, Mr. and Mrs. Harlan Reese caught a 52 pound yellow catfish. The catfish was caught on a trout line and Reese states that he was unable to pull the fish into the boat. After some time of wrestling with the fish, he gaffed him and drug him into the boat. At one time, the catfish hung his fin on the dip net and pulled it from Reese's hand and took the net to the bottom of the lake some 35 or 40 feet.

During their trip, the Reeses stayed at the Fiesta Marina. Aside from the 52 pound cat, they caught a 28 and one half pound blue catfish; two, thirteen pound blue catfish; a nine pound catfish, a seven and one half pound catfish and several smaller fish.



52 POUNDER... Mr. and Mrs. Harlan Reese caught this 52 pound yellow catfish on December 14 during a fishing trip at Lake Corpus Christi. The Reeses caught several catfish including a 28 and one half pound blue catfish.

TDA Directory Provides Export Information

AUSTIN--The Texas Department of Agriculture's 1979 Texas Agricultural Export Directory will be available to the public in January, it has been announced.

The Export Directory is a book containing valuable information for those who wish to export or import Texas agricultural products,

according to Agriculture Commissioner Reagan V. Brown. There are over 300 listings of Texas companies interested in exporting their products, as well as information on Texas ports and transportation support services. Also included is a list of Texas commodity boards.

For a free directory write: Commissioner Reagan V. Brown, Texas Department of Agriculture, P. O. Box 12847, Austin, Texas 78711.

New Grain Sorghums Plant Is Researched

Fitting all the pieces together to come up with a grain sorghum plant with optimum growth for dryland conditions is a tall order, but one researcher is optimistic about the eventual outcome.

Dr. Daniel R. Krieg, jointly employed as a plant physiologist by Texas Tech University and Texas Agricultural Experiment Station, said both the sorghum variety and the climate have strong effects on grain sorghum yield. But more important are the rates of leaf area development and photosynthesis because plant moisture is lost through the leaves.

Krieg is trying to identify the exact effect of these factors to help facilitate the future development of a better grain sorghum plant by cooperating plant breeders for marginal production conditions -- a plant that responds well under good conditions but remains stable under water stress conditions.

"The problem with several sorghum types capable of tolerating water stress conditions is that they do not respond well to good conditions," Krieg said.

One of the challenges in developing a better hybrid strain is that the hybrid tends to follow characteristics from one parent plant or another and not to combine the influences. Krieg has found that under non-stress conditions the hybrids follow the female parent characteristics in leaf development and the male parent's in photosynthesis. Under water stress the reverse is true -- the hybrid follows the fe-

male parent in photosynthesis and the male in leaf development.

Krieg said the ultimate goal is to develop a plant with smaller leaves and at the same time to increase the photosynthetic rate. Photosynthesis contributes as much as 95 percent of the dry, solid portion of the plant. Knowing how a parent plant will respond will aid Krieg and his team in identifying superior hybrid crosses.

The researchers are also studying the effect of particular sorghum varieties on grain production. Some sorghum is classified as perennial -- under drought conditions these plants will contribute the majority of the photosynthesis material to the grain and sacrifice plant growth. A farmer facing dryland conditions will want to choose a type best suited to his rainfall pattern.

The final contributing factor in breeding the ideal plant is weather, Krieg said. Climatic data need to be gathered for areas where grain sorghum is a major crop. With that data researchers should be able to predict a type of weather distribution pattern which might statistically occur during specific times periods each year -- all with about 80 percent accuracy. With a relatively accurate long-term prediction farmers not only will be able to choose a variety more exactly, but plant breeders will also have a better idea of which characteristics to breed into the sorghum.

Although he is working with a limited number of parent plants and hybrids,

Krieg eventually plans to devise a quick screening system for the 12,000 to 15,000 different types of grain sorghum in the world. He predicts that it may take three to five years, but the screening, based on known characteristics and reactions of each plant, would yield information within a relatively short time about which seed to choose for specific weather conditions.

Krieg is also doing limited work with the effect of photosynthesis rates on cotton's yield and plans to expand that work once he finishes his sorghum research.

Krieg emphasized that developing a superior sorghum for dryland conditions will have to be a cooperative effort between plant physiologists, plant breeders, land managers and others.

He has received research funding from the U.S. Department of Agriculture, the Texas Tech Water Resources Center and College of Agricultural Sciences, and the Texas Agricultural Experiment Station.

Organizing for community action... Community improvement and development depends on people working together, emphasizes a community resource development specialist with the Texas Agricultural Extension Service. Good leaders are the catalyst to community improvement, and the Extension Service can assist in leadership development and in planning and organizing for action.

WHERE YOU ALWAYS BUY THE BEST FOR LESS

GIBSON'S

DISCOUNT CENTER

STORE HOURS:
MON-SAT. 9-7
SUN. 1-6

PRICES EFFECTIVE JAN 18-20

Value Pack
BIC PENS 2/69¢
3 pk. Reg. 49¢

COLORIX 79¢
1 Gal.

LOMA PLASTICS
Reg. 2.29 & 2.79
\$1.85

30 PC. 1/4" Drive Forged-
SOCKET SET \$9.49
S-A-E and Metric Reg. 11.59

JANUARY THAW SALE

Silver
DUCT TAPE \$3.29

STP OIL Treatment \$7.05
Reg. 1.49

Furnace FILTERS 65¢
Reg. 99¢

5 Ft. Wooden
STEP LADDER \$9.99
Reg. 12.97

Pentel Roll-n-Glue
GLUE 2/\$1
Reg. 77¢

ROLL'N GLUE
Liquid Adhesive

Hi-Dri Paper
TOWELS 2/79¢
Reg. 2/1.00

FAB \$1.29
Laundry Detergent Reg. 1.48

FINAL NET \$1.45
8 Oz. Reg. 1.79

Clairol Condition SHAMPOO \$1.49

SUPER GLUE 99¢
Reg. 1.39

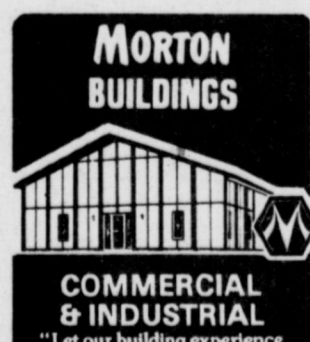
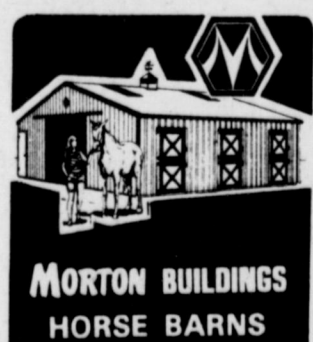
Sylvania LIGHT BULBS 59¢
Reg. 77¢

750 Pcs.
PUZZLES \$1.25
Reg. 1.59

AJAX Cleanser 4/\$1
Reg. 33¢

PALMOLIVE 77¢
Reg. 97¢

Men's Dress
SOCKS 99¢
Reg. 1.29



☐ Please send more information

Type _____

☐ Please have your salesman phone me

Name _____

Address _____

Telephone _____



MORTON BUILDINGS, INC.

Box 1928

Plainview, Texas

806-293-4386

EVERY DAY LOW PRICES

GAL. HOMO MILK.....	2.09
1/2 GAL. HOMO MILK.....	1.05
GAL. LOWFAT MILK.....	1.89¢
1/2 GAL. LOWFAT.....	95¢
1/2 GAL. BUTTERMILK.....	97¢
1 LB. COTTAGE CHEESE.....	87¢
2 LB. COTTAGE CHEESE.....	1.63
WHIPPING CREAM.....	49¢



Miss Lambert, Seymore Wed In Dallas Ceremony

The Lakewood United Methodist Church, Dallas, set the scene of the nuptials of Miss Helen Patricia Lambert of Dallas and David Leon Seymore of Olton. Rev. Larry D. Ravert, assisted by Rev. Ken Shamblin, Jr., performed the double ring ceremony on January 5, at 7:30 p.m.

Miss Lambert is the daughter of Dr. and Mrs. Joe P. Lambert of Dallas and Seymore is the son of Mr. and Mrs. Melvin Leon Seymore of Muleshoe.

The altar was arranged with white gladiolas and mums. It was graced with four baskets of white and yellow flowers and flanked with two spiral candleabras, and four seven-branched candleabras entwined with greenery. The unity candle was made by the groom's mother.

Dr. Wilford Crawford, Dallas, organist, played a program of nuptial music and accompanied by Mrs. Carol Ann Ravert who sang "The Wedding Song" and the "Lord's Prayer", at the close of the ceremony.

Dr. Lambert escorted and gave his daughter in marriage. She wore a formal gown of white Peau de soie, with a high neckline, sleeveless fitted bodice and long flowing skirt with detachable train. Motifs of Chantilly lace adorned the neckline and bodice. Her three-tiered bouffant veil of English illusion was worn with a fitted crown of seed pearls. She carried a cascade of white carnations with white orchids in the center. It was tied with white satin ribbons.

For the traditional something old, the bride wore a diamond ring which belonged to the groom's grandmother. Something borrowed and blue was a garter which the groom's sisters wore in their weddings. Her dress was something new.

Miss Charlotte Lambert, sister of the bride, was the maid of honor. Bridesmaids were Mrs. Paul Bladwin, Irving, sister of the bride; Miss Cindy Burkhardt, Dickinson; Miss Karen Davis, Dallas and Miss Linda Kloxin, Midland.

The attendants wore identical gowns of ice blue with a draped shoulder which formed the split sleeves. It featured a blouson bodice and A-line skirt. They carried garden arrangements of yellow flowers and yellow satin streamers.

Mike Seymore, father of the groom, was best man. Groomsman were Tommy Lambert, brother of the bride of Dallas; Paul Baldwin, Irving; Steve Collins, Lubbock and Dale Jahay, Olton. Ushering the guests were Tommy Lambert, Paul Baldwin and Dale Jahay.

The groom wore a black tuxedo. His attendants wore silver grey tuxedos. Their tuxedos were complimented with yellow rose boutonnières.

Mrs. Lambert, the bride's mother wore a powder blue long dress with matching accessories and a white Glamellia corsage. Mrs. Seymore, mother of the bride-groom, chose a mauve colored long dress complimented with a white orchid corsage.

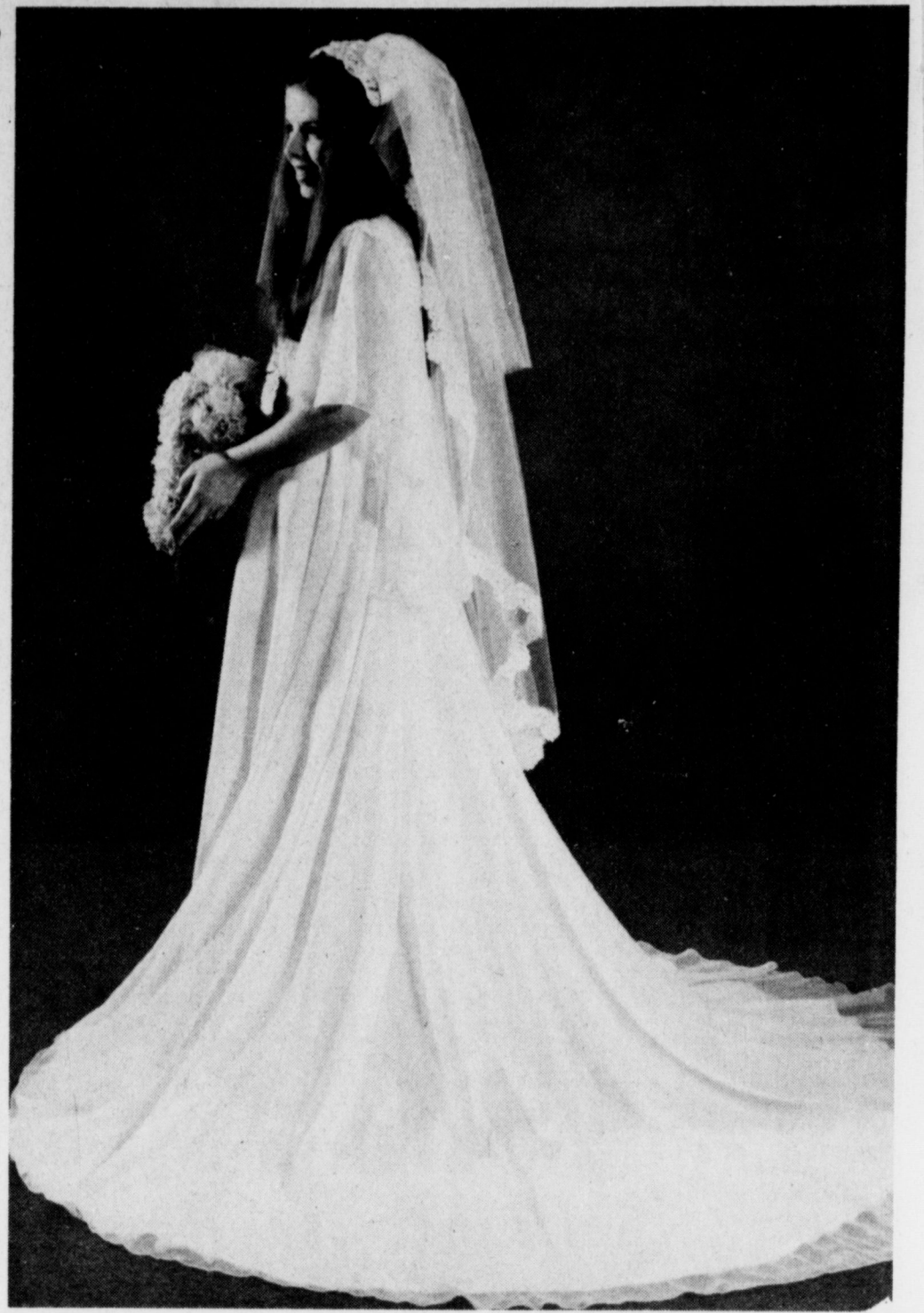
A reception followed the wedding in the Fellowship Hall of the Church. Mrs. Howard Kaxnes, Dallas, presided at the guest registry. Others assisting were Mrs. Dale Jahay, Olton, and Mrs. Steve Collins, Lubbock.

The bride's table was laid with a blue satin cloth with an overlay of white lace arranged bouffant style. An arrangement of white and yellow carnations with yellow rosebuds centered the table. The bride's four tiered, columned cake was decorated with pastel flowers. Silver and crystal appointments were used to serve nuts, mints and ginger ale punch.

Out of town guests were Mr. and Mrs. Burkhardt of Dickinson; Dr. and Mrs. William Burch, Forney; Dr. and Dr. Logan Swords, Ft. Worth and Miss Karissa Jahay of Olton.

Mrs. Seymore is a 1975 graduate of Bryan Adams High School, Dallas and attended Baylor University for one year. She is presently a junior at West Texas State University in Canyon.

Seymore is a 1973 graduate of Muleshoe High School and attended West Texas State University in Canyon. He is presently the manager of State Line Irrigation. The couple will make their home in Olton.



MRS. DAVID LEON SEYMORE [nee] MISS HELEN PATRICIA LAMBERT

SPRING WEDDING PLANS...Mr. and Mrs. Roy N. Wrinkle wish to announce the engagement and approaching marriage of their daughter, Sharon to Bill W. Bolding, son of Mrs. Beatrice Bolding and the late Roy Bolding of Fort Worth. The couple will repeat wedding vows March 10 at the Community Church in Muleshoe. Miss Wrinkle is a 1974 graduate of Muleshoe High School and a 1976 graduate of South Plains College at Levelland. She is employed as Office Supervisor for Equifax, Inc. in Midland. Bolding is a 1967 graduate of Eldorado High School, Eldorado, Ark. and a 1971 graduate of the University of Arkansas at Fayetteville, Ark. He is employed as Branch Manager for GAB Business Services in Midland.

XI Omicron Xi Met To Plan Fund

Xi Omicron Xi, chapter of Beta Sigma Phi, met Tuesday, January 9 in the home of Mrs. Ken Box. Mrs. Bob Finney, vice president, presided over the business meeting.

The chapter voted to contribute to the International Endowment Fund. The idea for the International Endowment Fund established in 1948, came from the realization that in the combined strength of Beta Sigma Phi chapters, lay the means of great good to mankind, beyond that already being accomplished in their immediate communities. The International Endowment Fund project for 1979 are the Canadian Arthritis and Rheumatism Society and St. Jude's Children's Hospital. The chapter voted to accept these projects.

Mrs. Finney announced the State Convention that will be in Dallas on June 8, 9, and 10. She also announced the "Read-a-thon" that will begin on March 5. The chapter voted to sponsor this project annually. The project benefits the Multiple Sclerosis Society.

The social committee announced that the Valentine Ball will be on February 9. The next Chapter meeting

will be January 23 in the home of Mrs. Spencer Tankley. Refreshments were served by Mrs. Box and Mrs. Eric Smith.

Members attending were Mrs. John Agee, Mrs. Clifford Black, Mrs. Dick Chitwood, Mrs. Bob Finney, Mrs. Tom Jinks, Mrs. Ronnie Kidd, Mrs. Tommy Merritt, Mrs. Charles Pummill, Mrs. Kearney Scoggin, Mrs. Gary Shipman, Mrs. Spencer Tankley, Mrs. Jerry Wenmohs, Mrs. Paul Wilbanks, Mrs. Don Peterson, Mrs. Eric Smith and Mrs. Ken Box.

Miss Hanna, Dale Masten Repeat Vows

Miss Tanya Hanna and Dale Masten, both of Sudan were united in marriage on Wednesday, January 3 in the pastor's study of the First United Methodist Church of Sudan. Rev. Kerry Hurst officiated the ceremony.

Parents of the couple are Mr. and Mrs. Billy Chester and Mr. and Mrs. W.C. Masten, all of Sudan. Mrs. Gladys Glenn, his grandmother also attended the ceremony.

Following a wedding trip to Las Vegas, Nev., the couple will reside in Sudan where he is engaged in farming.

Mrs. Bishop Honored With Layette Shower

Mrs. Larry Bishop of Sudan was honored with a layette shower Saturday, January 6 in the home of Mrs. Harold May.

The gift table was laid with an ecru cloth and centered with the gifts. Bernadette and Mary May served coffee and spiced tea to the guests.

Special guests included Mrs. Neil West, mother of the honoree, of Littlefield; her aunt, Mrs. Sharon West; Mrs. Valda Bishop and Lisa, sister and mother of the honoree's husband.

Hostesses for the occasion were Barbara May, Truman Willingham, Linda Powell, Jean Muller and Doris May.

Good Sams Met To Elect Officers

The Muleshoe Area Good Sams met Monday, January 8 at 8 p.m. in the Bailey County Civic Center.

New officers for 1979 were elected as follows: J.W. Herington, president; Boyd Landers, v.p.; Bill Loyd, sec.-treas.; and Mrs. Jerrell Otwell, publicity.

New members joining the club were Mr. and Mrs. C.J. Feagley and Mr. and Mrs. H.L. Stratton.

The next meeting will be on February 12 at 8 p.m. in the Bailey County Civic Center.

The March meeting will be held at the Yokum City State Park in Plains on March 9, 10 and 11.

After the meeting, refreshments were served and games and visiting were enjoyed.

Dr. Harvey Will Present African Slides

Dr. and Mrs. Clark Harvey will present a slide program on January 21 and speak of their experiences during the two years that they spent in Niger, Africa. The program will be held in the Trinity Baptist Church.

They will tell of the church and the mission-ary they met. Dr. and Mrs. Harvey left September 10, 1976 from Lubbock to do research work in Niger. They arrived back in Lubbock on December 21, 1978.

Dr. Harvey finished high school at Baileyboro. He entered college in Canyon at the West Texas State University and earned his B.S. degree before spending several years in the Navy. After returning home from the Navy, he entered college at A&M in Bryan and received his masters degree before going to Ames, Iowa to receive his doctorate in Agronomy. After receiving his doctors degree, he taught several years in West Texas State University, Canyon. He then moved to Lubbock to teach and do research work at Texas Tech University.

Dr. Harvey is the brother of T.L. Harvey, Mrs. Lois Witherspoon and Mrs. Claude Coffman, all of Muleshoe and the son of the late Mr. and Mrs. H.G. Harvey.



GOOD SAM OFFICERS...New officers for the Muleshoe Area Good Sams were elected on January 8 at their monthly meeting. Pictured from left to right, back row, Boyd Landers, vice president; J.W. Herington, president; front row, Mrs. Jerrell Otwell, publicity and Bill Loyd, secretary - treasurer.

Muleshoe Singing Group Met

The Muleshoe Singing Group met at 6:30 p.m. Saturday, January 13 in the First Church of the Nazarene.

The meeting opened with the theme song, "Showers of Blessings". J.C. Shanks led the prayer.

A small attendance was reported due to the weather. The meetings will be held regularly again if weather permits.

Anyone that is interested in singing or playing an instrument or just listening is invited to attend.

The meeting was dismissed with a prayer by Fred Wilbanks.

Praise the child, and you make love to the mother.
-William Cobbett.

EARN 9.784%

With Our MONEY MARKET CERTIFICATES!!

5.25% - PASSBOOK SAVINGS ACCOUNTS

- **6.50% - \$1,000 Minimum - 1 year
- **6.75% - \$1,000 Minimum - 30 months
- **7.50% - \$1,000 Minimum - 4 years
- **7.75% - \$1,000 Minimum - 6 years
- **8.00% - \$1,000 Minimum - 8 years
- **9.784% - Money Market Certificate - 182 days

****In the event of a withdrawal prior to the conclusion of the original term or any renewal period, the passbook rate will apply to the amount withdrawn and in addition, a penalty amounting to 90 days interest (at the passbook rate) or the total interest earned since opening the account, whichever is less, will be assessed.**

Tri-County SAVINGS AND LOAN ASSOCIATION

Offices in:

MULESHOE / FRIONA / LITTLEFIELD / FARWELL

January Clearance Is Still In Progress At Albertson's

228 Main Shop For Men 272-3000

Let Us Help You Remember The One You Love This Valentine's Day, February 14

With a lovely assortment of cut flowers, orchids, long stem roses, potted flowers, plants and hanging baskets.

Beaver's Flowerland

520 S. 1st. 272-3116

Storm Windows & Doors NOW REDUCED

STORM WINDOWS CONSERVE HEAT!

Poor windows cause as much as 40% of a home's heat loss. Add storm windows and doors to combat heat loss and gain. We have a complete selection to choose from.

POYNORS' Whites Stores, Inc.

"Your Home Owned Discount Store" 272-4552
103 MAIN



MRS. FREDDIE LOCKER [nee] MISS RUTH STREET

Mrs. Gregory Gave Epsilon Delta Program

The Epsilon Delta Chapter of Epsilon Sigma Alpha met Tuesday night, January 9 in the Bailey County Electric meeting room. Hostess for the occasion was Mrs. Jerry Harrison.

Mrs. Jerry Gregory presented a program titled, "Something We Must All Face - Death and Dying". Discussions were held on the importance of wills and funeral arrangements.

Mrs. Jerry Harrison, chaplain, led the prayer. Mrs. Hugh Young, president, read the opening ritual and then conducted the business meeting.

Mrs. Jim Crawford reported that the Santa social had been a success. Ms. Judy Lambert reported on the school project.

A discussion was held on the project, "Eyeglasses for the Needy". It was

voted to collect old eyeglasses and watches for this project. Ms. Virginia Bowers conducted a survey of general information on each member.

Mrs. Harrison served refreshments to the following members. Mrs. Loyd Garlington, Mrs. Jack Rennels, Mrs. Hugh Young, Mrs. Jim Crawford, Mrs. Richard Kimbrough, Mrs. Cotton Burleson, Ms. Judy Lambert, Mrs. Andy Douglass, Mrs. Corkey Biggerstaff, Mrs. Jerry Gregory, Ms. Virginia Bowers, Mrs. Terry

Pep Will Hold Annual Class Reunion

Pep Ex-Student Association extends a cordial invitation to all former students, teachers, patrons and friends of Pep to their Annual Homecoming, Saturday, January 27, 1979. All activities are to be held at the Pep Parish Hall.

Registration will begin at 5 p.m. Classes of 1932 - 1942 - 1952 - 1962 - 1972 will have their class reunions after registering.

Banquet will be at 6:30 p.m., followed by a meeting of the Ex - Student Association. Queen will be crowned and recognitions are to be made.

The queen will be elected from the Seniors of 1979 that live in the Pep Community.

At 9 p.m., a country and western dance will conclude the evening's activities. All are invited. Hope to see you at Pep on January 27, 1979.

"Using the Short Form could cost you money!"



Henry W. Block
If you don't know tax laws, you need H&R Block to review your tax situation. You want to be sure you are using the proper tax form. Even if you filed the Short Form last year, your circumstances this year could let you save money by filing the Long Form. At H&R Block, we'll take all the time necessary because we want to be sure you pay the lowest legitimate tax.

H&R BLOCK
THE INCOME TAX PEOPLE
224 W. 2nd
272-3383

Wk days 9 - 6 Sat - 9 - 5

BOOTS

Mon. - Sat.
9:00 - 6:00

ee's WESTERN WEAR

1910 W. Amer. Blvd Muleshoe 272-4663

Earth Ceremony Unites Miss Ruth Street, Locker

Miss Ruth Street and Freddie Locker were married in the chapel of the Earth United Methodist Church at 8 p.m., December 23, with Jim Eckman, minister of the Earth Church of Christ, officiating.

Parents of the couple are Mr. and Mrs. Donald Street of Earth and Mr. and Mrs. Morgan Locker of Muleshoe.

Mrs. David Saylor of Muleshoe, at the piano, presented the traditional wedding music and accompanied Mrs. Kenny Hamilton as she sang, "Sunrise, Sunset", "Devoted to You" and "Wedding Prayer".

The bride was presented in marriage by her father. She wore a candlelight velvet dress with a chapel length train. The dress was fashioned with a fitted bodice and a countoured waistline. The lace collar and cuffs were crocheted by the bride's great-grandmother. She wore a wreath of baby's breath in her hair and carried a bouquet of baby's breath and holly accented with candlelight streamers.

Miss Margaret Street, sister of the bride and Don Locker, brother of the groom, were honor attendants. Miss Street wore a red velvet gown and carried a votive candle and flower arrangement.

Miss Gay Locker, niece of the groom, served as flower girl. Candles were lighted by Mrs. Kent Kelley.

Brian Sanderson of Earth and Perry Stockard of Muleshoe served as ushers.

Following the ceremony, a reception was held in the fellowship hall at the church. Mrs. Billy Street, the bride's sister in law, served the cake. Punch

was served by Miss Karen Locker, sister of the groom.

The bride's table was laid with white satin. The three layered cake was topped with baby's breath and encircled with holly. Crystal appointments were used on the table.

Sudan Homemakers Regular Meeting

The Sudan Young Homemakers held their regular meeting Monday, January 8 in the Homemaking Cottage with President, Deanna Humphreys, presiding.

The guest speaker was Art Lynch. His topic was "Self Image".

Refreshments were served by Kay Wiseman, Celia Kuykendall and Jodie Tennyson. Others present were Nell Ingle, Rita Conley, Jo Ann Gaston, Ann Carson, Linda West, Deb Phillips, Phyllis Lynn, Shelley Chester, Donna Fields, Kim Hurst, Nancy

Harrison, Patsy Fisher, Pam Bales and Jana Synatsch.

The next meeting will be Monday, February 5 and the program will be on the microwave oven. All members are urged to be present.

By age 16, the average child spends more hours watching TV than in attending school, reports Pat Lamson, family life education specialist with the Texas Agricultural Extension Service, The Texas A&M University System.

The bride is a 1975 graduate of Springlake - Earth High School and is attending Texas Tech. The groom graduated from Muleshoe High School in 1974, attended TSTI in Amarillo and is now associated with Ag Aviation in Springlake.

Following a wedding trip to Colorado, the couple will reside in Muleshoe.

Estate Planning Seminar..

A seminar dealing with various issues of estate planning will be held at Texas A&M University Jan. 29-30. The seminar is mainly for those involved in estate planning and management and will feature a number of viewpoints of professional estate planners, points out an economist with the Texas Agricultural Extension Service. Speakers will include attorneys, accountants, insurance underwriters and trust officers.

Thirty-five percent of all house holds will have microwave ovens by 1983, compared to 10 percent today, says Nancy Granovsky, family resource management specialist with the Texas Agricultural Extension Service, The Texas A&M University System.

Consumers can expect to find new lines of housewares and food products designed exclusively for microwave oven use, the specialist adds.

Store butter in its original wrapper or container and it will not pick up flavors from other foods, recommends Mrs. Gwendolyn Clyatt, consumer marketing information specialist with the Texas Agricultural Extension Service, The Texas A&M University System.

Did You Miss Us Last Week?
Our January Clearance Sale
Is Still In Progress
St. Clair's
110 Main 272-4453

fall and winter
Clearance CONTINUES 1/2 OFF

MATERNITY DRESSES
PANTSUITS & BLOUSES
1 RACK BABY ITEMS

LOTS OF OTHER INFANT FASHIONS PRICED FOR CLEARANCE!

1312 main the stork shop
Clovis, N.M.

IF YOU WANT VARIETY, WE HAVE IT...

PERRYS

REGULAR METAL
PORTA FILE BOX
GIANT SIZE 477

ASSORTMENT
STAMPED GOODS
FOR EMBROIDERY OR PAINTING
99¢

LARGE BATH TOWELS
IRREGULARS
177

JANUARY SUPER SALE

master charge

BLACK
20-GALLON TRASH CAN
WITH LID
444

YOUR CHOICE
100 CT. SIZE 6 1/2 ENVELOPES
50 CT. SIZE 10 ENVELOPES
100 CT. RULED TABLETS
2 FOR 1.00

9-OZ. SIZE
SUNSHINE MUGS
ASSORTED COLORS
3 FOR 1.00

PLASTIC
WINDOW SHADES
\$1.67
36" x 6' White Only

VACUUM CLEANER BAGS
SPECIAL
47¢
STYLES AVAILABLE TO FIT MOST VACUUM CLEANERS

10-PAGE SELF-STICK
PHOTO ALBUM
157

Rubbermaid SALE
• CUTLERY TRAY
• VANITY WASTEBASKET
• DISHPAN • MINI BUCKET
• MINI DRAINER
YOUR CHOICE 117

DECORATOR COLORS
100% NYLON CUT & LOOP
BATHROOM ENSEMBLE
YOUR CHOICE 196

SHOP AND SAVE IN OUR GREATEST JANUARY SALE!

Bank...

Cont. from page 1

State Bank reported an increase in deposits of \$117,484. Deposits on Dec. 30, 1978 were \$9,401,798, compared to deposits of \$9,284,314 at the close of 1977. Their loans increased by \$462,734 during the same period of time. Loans in 1977 at the end of the year were \$6,775,924, compared to \$7,238,658 at the end of 1978.

First State Bank in Bovina noted an increase of \$349,134 in deposits at the end of 1978. Deposits at the bank at the end of 1977 were \$8,202,529, and had risen to \$8,551,663 at the

Farwell Grain Gets Official Designation

W.D. Prince of Clovis, owner and chief inspector of Farwell Grain Inspection Co., at Farwell, will be presented a certificate of designation by the U.S. Department of Agriculture at 11 a.m. on Wednesday, January 24.

Jerry Cotter, Southwest Regional Director for USDA's Federal Grain Inspection Service in Dallas, will make the presentation at the company's office, 112 Ninth Street in Farwell.

USDA said Farwell Grain Inspection Co. requested the designation to operate as the official grain inspection agency. Leland E. Bartelt, administrator of FGIS, said the request was made to eliminate any possible appearance of a conflict of interest in the inspection of grain at Farwell, as provided by 1976 amendments to the Grain Standards Act.

The designation authorizes Prince to provide official inspection services to all or a portion of 12 counties in Texas and New Mexico, including Deaf Smith, Parmer, Bailey and Lamb in Texas; and Chaves, Curry, DeBaca, Eddy, Lea, Quay, Roosevelt and Union in New Mexico.

The Federal Grain Inspection Service is the agency responsible for administering a nationwide system of official inspection.

Prince's career in grain inspection began in Amarillo in 1940. He worked as a sampler for the Amarillo Grain Exchange, then moved to the Lubbock Grain Exchange in 1944. He left his position as assistant inspector in Lubbock to become Chief Inspector for the Mexia Grain Inspection agency in 1956 and moved to Farwell in 1958 to open his own inspection firm.

His staff represents more than 20 combined years of inspection, grading and analytical experience in grain inspection. Prince serves as chief inspector, and Sam McGee, of Clovis, licensed inspector for two years, serves as his assistant.

Muleshoe Journal
Established February 23, 1924. Published by Muleshoe Publishing Co., Inc. Every Thursday at 304 W. Second, Box 448, Muleshoe, Texas, 79401. Second class postage paid at Muleshoe, Texas, 79401.

TEXAS PRESS ASSOCIATION
L.B. Hall, President
James Wood, Vice President
Cora Williams, News Editor
Beverly Watson, Society Editor
Patty Givens, Office Manager
Hilly Millage, Advertising Manager
Elaine Parker, Subscriptions

SUBSCRIPTIONS
Muleshoe Journal and Bailey County Journal... \$12.50
Muleshoe Journal and Bailey County Journal... \$11.00
Muleshoe Journal and Bailey County Journal... \$9.50
Monthly by Carrier... \$9.50
Advertising rate card on application

end of 1978. Loans at the bank increased by \$984,539, from the \$4,178,653, reported at the end of 1977 to the December 30, 1978 figure of \$5,163,192.

At Farwell, Security State Bank reported deposits of \$19,910,912 to end 1978, an increase of \$1,341,774 over the end of 1977 deposits of \$18,569,138. Their loans increased slightly at the end of 1978. Loans were \$8,700,234 on December 30, 1978, up \$450,202 over the 1977 figure of \$8,250,032.

First State Bank at Morton showed deposits of \$17,455,764 on December 30, 1978, up \$343,153 over the December 1977 figure of \$17,112,611. Loans at the bank decreased slightly during the same period of time. They were down for the year by \$78,772. Loans on December 30, 1978 were \$7,441,905, compared to \$7,520,677 at the close of 1977.

Dance...

Cont. from page 1

and \$2 for singles to attend the dance, and dance to the live music of "Last of a Kind" from Sudan.

Bring your date, or come by yourself, get on your dancing shoes and join the fun at the coliseum.

Next month, Mary Beth and the Travelers, a well known band from Meadow, will join Last of a Kind for the dance sponsored monthly by the Triangle CB Club.

Muleshoe...

Cont. from page 1

off for another townwide sale.

Monsanto Fertilizer Co., of Farwell, hosted an appreciation steak supper for about 75 people at K-Bob's Steak House in Clovis.

Drawings were held for door prizes and an attentive crowd enjoyed the speakers and films that were presented.

Among those attending from Muleshoe were Mr. and Mrs. Ken Berg and Mr. and Mrs. Ralph Vanatta. *****

Consumer Food News

Best buys at Texas grocery markets this week are fryer chickens and several fresh fruits and vegetables, Mrs. Gwendolyn Clyatt reports.

However, adverse weather conditions have made citrus supplies uncertain, she adds.

Mrs. Clyatt is a consumer marketing information specialist with the Texas Agricultural Extension Service, The Texas A&M University System.

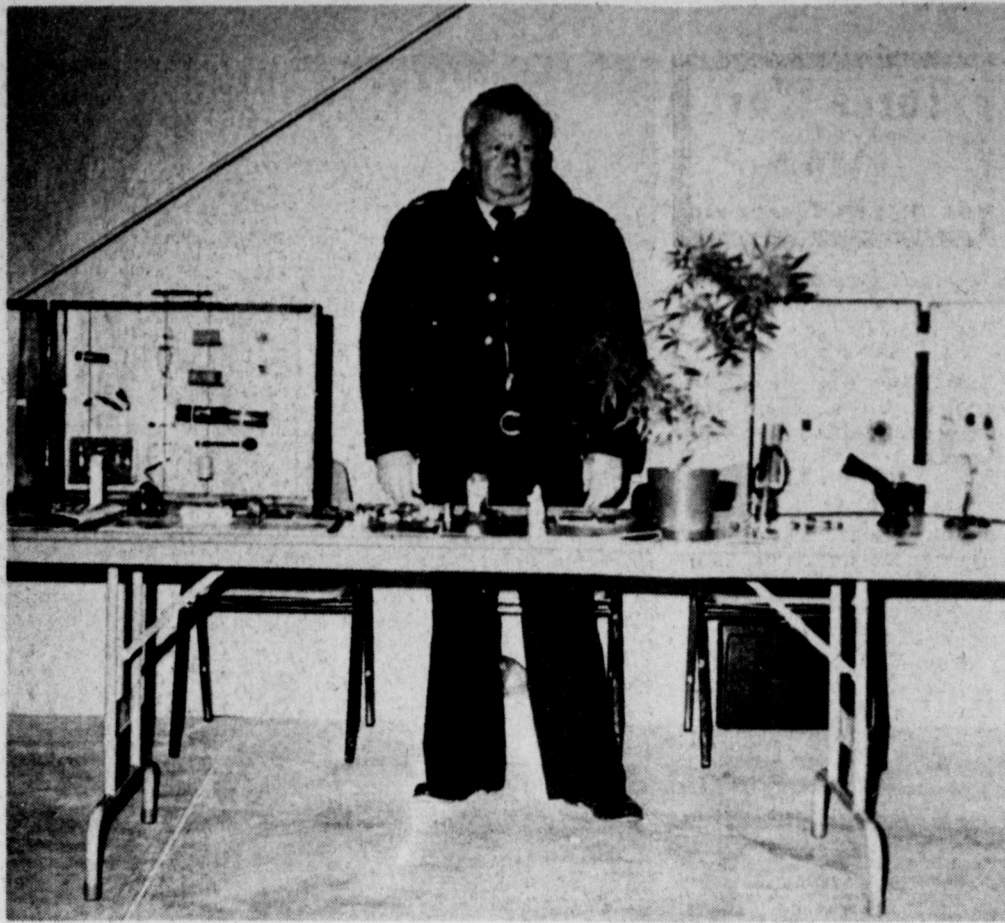
Poultry is a bargain with features including whole fryers and fryer parts. Also, look for special prices on whole turkey and turkey parts.

Grapefruit by the bag is the most economical choice in most markets as far as fresh fruits go.

Other items in best supply and most economical include bananas, apples, pears and pineapples.

Best buys on fresh vegetables include potatoes, cabbage, carrots, turnips, rutabagas and hard shell squash. Onion supplies are plentiful.

Dairy features include, milk, yogurt, sour cream and a variety of cheeses.



DRUG DISPLAY AT HEALTH FAIR...Muleshoe City Police Officer Wayne Holmes had a drug display at the Bailey County Health Fair conducted at the Bailey County Civic Center and Coliseum last Saturday. He displayed various types of drugs and paraphernalia used in taking the drugs.

School...

Cont. from page 1

School Tax Assessment Practices Board were discussed, along with Agriculture - Productivity laws being considered in the legislature with other various bills.

Jesse Click, the tax assessor - collector, has completed his final examinations and is now a Registered Professional Tax

YAC...

Cont. from page 1

fraternal or social organization to sponsor or co-sponsor the activities. A group of private citizens plans a Disco Dance on Saturday, February 10, as an interest has been designated by local and area youth for this type activity.

It was also announced that although basketball, volleyball and table tennis will be featured at the first game night, young people are encouraged to bring their own games, especially table games to the first game night, and to indicate what type games they would like to have included on a regular basis.

A letter was read to the members concerning the proposed miniature golf course to be built on city property in the community park on West Ave. D. The letter had been written by Muleshoe City Manager Dave Marr to the Housing and Urban Development's Dallas office, requesting permission to construct the facility. Although HUD had given verbal approval for the miniature golf course to be located in the park, the city requested a written approval prior to the start of construction.

Construction of the miniature golf course is expected to begin in early February. Next meeting of the YAC is scheduled for Monday, January 29 at 7:30 p.m. in the Bailey County Civic Center and Coliseum.

When using a fire place, never pour kerosene or any lighting fluid on wood, coal or charcoal to start or replenish a fire, cautions Claudia Kerbel, consumer information specialist with the Texas Agricultural Extension Service, The Texas A&M University System.

Lazbuddie Longhorn Stampede



The Lazbuddie Longhorns hosted the Happy Cowgirls and Cowboys, January 9 at Lazbuddie. There were 4 games. The J.V. girls won a close one by 17-15, led by Angie Jesko with 6 pts.

The J.V. boys lost 44-37. Top scorers for the Horns was Mickey Powell and Terry Steinbock each with ten points.

The Varsity girls came out ahead to win 55-38, led by Sherrie Seaton with 14 pts., followed by Barbie Ivy with 13 pts. and Susan Glover with 11 pts.

The Varsity boys lost 77-47. Top scorer for the Horns was Andy Rogers with 12 pts., followed by Charleson Steinbock with 10 pts., and Keith Hicks with 6.

The Lazbuddie Longhorns hosted the Sudan Hornets in their first district game Friday, Jan. 12, at Lazbuddie.

The J.V. girls lost 36-15. Top scorer for the Horns was Rachel Summar with 6 pts., followed by Cynthia Everett with 5 pts.

The J.V. boys lost 57-48. Top scorer for the Horns was David Lust with 14 pts., followed by Dennis Steinbock with 11 pts., and Todd Gregory with 9 pts.

The Varsity girls won in a hard fought game 40-37, led by Terri Clark with 14

pts., followed by Darshan Jennings with 10 pts., and Sherrie Seaton with 7 pts. The Girls district record is 1-0.

The Varsity boys won 71-46, led by Charleson Steinbock with 20 pts., followed by Andy Rogers with 15 pts. The boys district record is now 1-0.

The Horns will play Nazareth Friday, January 19, at Nazareth.

Senator Price Was Appointed To Committees

Senator Bob Price, Republican from Pampa, attended the swearing in ceremony of many of his colleagues in the Texas State Senate Chamber as The Legislature convened for the 66th Legislative Session Tuesday.

Senator Price was appointed to three key Senate Committees. Price will serve on the Economic Development, the Human Resources, and the Natural Resources Committees, as well as the Natural Resources Subcommittee on Water.

"In terms of the interests, concerns, and well-being of my constituents, and the State of Texas as a whole, these Committees are important Senate Committees," Price said.

"The Economic Development Committee deals with banking, commerce and industry, as well as insurance and transportation."

"The Human Resources Committee pertains to public health, labor and management relations, military and veteran affairs, privileges and elections, and youth affairs."

West Camp Family Night

The January West Camp Community Family Night

was held Saturday night, January 13 at the Community Center. The host couples were Mr. and Mrs. J.W. Herrington and Mr. and Mrs. Robert Hunt.

The group enjoyed sandwiches, chips and dips then table games were played.

The community chairman, Joe Simnacher, conducted a short business session in which a treasurer statement was given by Mrs. Ernest Ramm.

Mrs. Robert Hunt reported on the collection of Betty Crocker coupons from the community and Muleshoe. Mrs. Ernest Ramm reported on the silverware pattern chosen by the women and the cost involved. A motion passed to redeem the coupons for a service for 50 for the community center. Members of the silverware committee are Mrs. Ramm, Mrs. George Wheeler and Mrs. J.W. Herrington.

Attending the first family night of 1979 were Mr. and Mrs. C.E. Grant, Kevin, Laurie and Clay; Mr. and Mrs. Joe Simnacher; Mr. and Mrs. Ernest Ramm; Mr. and Mrs. Willis James; Mr. and Mrs. Robert Gallman and Johanna; Mr. and Mrs. Glen Harris; Mr. and Mrs. Barry Wilson and Brandon; Jay Herrington; Mr. and Mrs. Dean Hukill; Mr. and Mrs. Leldon Phillips; Mr. and Mrs. George Wheeler, Tom and Curtis; and the hosts, Mr. and Mrs. Robert Hunt and Mr. and Mrs. J.W. Herrington.

Muleshoe State Bank Report Of Condition

8040/35 (12-78) STATE

CONSOLIDATED REPORT OF CONDITION (Including Domestic Subsidiaries)

LEGAL TITLE OF BANK

MULESHOE STATE BANK

CITY	COUNTY	STATE	ZIP CODE
MULESHOE	BAILEY	TEXAS	79347
STATE BANK NO.	FEDERAL RESERVE DISTRICT NO.	CLOSE OF BUSINESS DATE	
1631	11	DECEMBER 29, 1978	

ASSETS

	Mill.	Thou.	
1. Cash and due from depository institutions	4	023	1
2. U.S. Treasury securities	2	149	2
3. Obligations of other U.S. Government agencies and corporations		None	3
4. Obligations of States and political subdivisions in the United States	3	883	4
5. All other securities		100	5
6. Federal funds sold and securities purchased under agreements to resell		350	6
7. a. Loans, Total (excluding unearned income)	14	353	7a
b. Less: allowance for possible loan losses		265	7b
c. Loans, Net		14	7c
8. Lease financing receivables		None	8
9. Bank premises, furniture and fixtures, and other assets representing bank premises		553	9
10. Real estate owned other than bank premises		96	10
11. All other assets		542	11
12. TOTAL ASSETS (sum of items 1 thru 11)	25	784	12

LIABILITIES

13. Demand deposits of individuals, partnerships, and corporations	8	596	13
14. Time and savings deposits of individuals, partnerships, and corporations	11	947	14
15. Deposits of United States Government		4	15
16. Deposits of States and political subdivisions in the United States	1	969	16
17. All other deposits		None	17
18. Certified and officers' checks		207	18
19. Total Deposits (sum of items 13 thru 18)	22	723	19
a. Total demand deposits	9	406	19a
b. Total time and savings deposits	13	317	19b
20. Federal funds purchased and securities sold under agreements to repurchase		None	20
21. Interest-bearing demand notes (note balances) issued to the U.S. Treasury and other liabilities for borrowed money		112	21
22. Mortgage indebtedness and liability for capitalized leases		76	22
23. All other liabilities		442	23
24. TOTAL LIABILITIES (excluding subordinated notes and debentures) (sum of items 19 thru 23)	23	353	24
25. Subordinated notes and debentures		None	25

EQUITY CAPITAL

26. Preferred stock	a. No. shares outstanding	None	(par value)	None	26
	a. No. shares authorized	50,000			
27. Common Stock	b. No. shares outstanding	50,000	(par value)	1	000
				1	000
28. Surplus				431	29
29. Undivided profits and reserve for contingencies and other capital reserves				2	431
30. TOTAL EQUITY CAPITAL (sum of items 26 thru 29)				25	784
31. TOTAL LIABILITIES AND EQUITY CAPITAL (sum of items 24, 25 and 30)					

MEMORANDA

1. Amounts outstanding as of report date					
a. Standby letters of credit, total				5	1a
b. Time certificates of deposit in denominations of \$100,000 or more				1	594
c. Other time deposits in amounts of \$100,000 or more				497	1c
2. Average for 30 calendar days (or calendar month) ending with report date					
a. Total deposits (corresponds to item 19 above)				21	599

NOTE: This report must be signed by an authorized officer(s) and attested by not less than three directors other than the officer(s) signing the report.

I/We, the undersigned officer(s) do hereby declare that this Report of Condition (including the supporting schedules) is true to the best of my knowledge and belief.

SIGNATURE OF OFFICER(S) AUTHORIZED TO SIGN REPORT
Robert Montgomery
NAME AND TITLE OF OFFICER(S) AUTHORIZED TO SIGN REPORT
ROBERT MONTGOMERY, CASHIER

AREA CODE/TELEPHONE NO.
806-272-4561
DATE SIGNED
January 15, 1979

WE, the undersigned directors, attest the correctness of this Report of Condition (including the supporting schedules) and declare that it has been examined by us and to the best of our knowledge and belief has been prepared in conformance with the instructions and is true and correct.

SIGNATURE OF DIRECTOR
SIGNATURE OF DIRECTOR
SIGNATURE OF DIRECTOR



State of Texas, County of Bailey, 17th day of January, 1979.
Sworn to and subscribed before me this 17th day of January, 1979.
My commission expires June 6, 1979.
Notary Public.

Nickels Gin

At Goodland & Baileyboro

Would appreciate Ginning Your Modules

There will be no delivery charge to our Gin. For further information call

946-3411 or 927-5131

Nickels Gin

Goodland & Baileyboro

Record Breaking Cold Spell Tests Utility

"Pioneer Gas Company has come through the current record prolonged cold spell in an entirely satisfactory manner. We are very pleased with the operation of the gas system during this 12-day period," K.B. Watson, company president, told

reporters today. "In spite of the record-breaking duration of below freezing temperatures that exceeded the 261 hours which occurred in 1895, we have been able to provide uninterrupted gas service to all but our largest special contract industrial users. These industries continued operating under curtailments of 25 percent generally, and for a short

period as high as 75 percent," Watson said. "We know of no job disruption such as often occurs in other areas of the country during gas curtailments."

The Pioneer executive went on to explain that industrial curtailments are provided for in the contractual arrangements the industries have with the company, and the customer is prepared to use alternate fuels. This curtailment plan is designed to accommodate extreme situations, and the curtailments this time were less severe than in some previous cold periods in the company's service area when smaller industrial users were required to reduce gas use.

"In spite of the fact that we had numerous of our gas well supply sources freeze, gas supply was never a problem," Watson explained. "During this cold spell, gas consumption by our customers was greater than any winter season in the company's history," Watson continued.

He went on to say that Pioneer's transmission system is engineered to accommodate the needs of our customers through fairly sub-normal conditions. "The costs of providing a system that would handle the exceptional situation that occurs from time to time would be prohibitive both to the company and to our customers. This is the reason that we have the curtailment plan," Watson said. Watson complimented Pioneer employees for their work during the cold spell, pointing out that extra special effort was put forth by the employees to maintain the service in the face of the extreme cold and snowy weather.

Three Way News

By Mrs. H.W. Garvin

Mr. and Mrs. Jack Ferguson were in Lubbock Monday on business.

Mr. and Mrs. Paul Allison of Clovis spent the weekend visiting the S.G. Long.

Mr. and Mrs. George Tyson spent Thursday night in Lubbock with their daughter, the Tommy Durhams.

Mrs. H.W. Garvin spent Sunday in Clovis visiting her daughter, Mr. and Mrs. Kenneth Fox and family.

Clarence Benton from Littlefield spent Friday night with his daughter, the Rayford Mastens.

Mr. and Mrs. R.J. Vinson and Mr. and Mrs. Crag Vinson and daughter of Morton visited Mrs. Bulah Toombs Tuesday evening.

A baby shower honoring Travis James Davis was given Tuesday afternoon at the Three Way Baptist Church. He is the new son of Mr. and Mrs. Allen Davis.

Mr. and Mrs. Joe Wheeler spent Friday in Levelland at the bedside of her father, Fred Carter who is a patient in the Levelland Hospital.

The Three Way High School basketball boys played Cotton Center Tuesday night with Three Way winning one and losing one game. Friday night, the teams played Welman at Welman with Three Way girls winning their game and the boys losing.

Commissioner Reagan Brown To Visit Area

Texas Agriculture Commissioner Reagan V. Brown will be the luncheon speaker at the 12th Annual Membership Meeting of Water, Inc., here in Lubbock next month.

The commissioner will speak at noon, Saturday, February 17, following the morning program in the Lubbock Memorial Civic Center. The meeting program will focus on the area's crucial water problem and its agricultural productivity.

Brown was appointed Commissioner of Agriculture by Gov. Dolph Briscoe in early 1977 to replace long-time commissioner John C. White, who resigned to take a position as U.S. Deputy Secretary of Agriculture. Brown was subsequently elected to a term as commissioner in the 1978 elections.

Since becoming commissioner, Brown has become one of the most highly sought speakers among state elected officials because of his unique brand of humor.

Water, Inc., is a non-profit corporation promoting water importation for the High Plains of West Texas and Eastern New Mexico.

G. S. Armstrong Funeral Rites Held At Earth

Services for Gentry S. Armstrong, 91, of Earth were held at 2 p.m., Tuesday in the First Baptist Church of Earth with Rev. David Burum, pastor, officiating, and the Rev. John Street, pastor of the First Baptist Church in Dimmitt, assisting.

Burial was in the Earth Cemetery under the direction of Parsons - Ellis - Singleton Funeral Home. Armstrong died at 9:30 p.m. Sunday in the Plains Memorial Hospital at Dimmitt after a lengthy illness.

The Lyon County, Ky., native had lived in Earth 54 years. He was a retired farmer and a member and deacon of the First Baptist Church in Earth.

Survivors include two daughters, Billie Kurby of Dimmitt and Rowena Cleavinger of Springlake; two sisters, Lena Durant of Canadian and Minnie Redwine of Muleshoe; a brother, Goebel of Clovis, N.M.; ten grandchildren; 13 great-grandchildren and three great-great-grandchildren.

ALLSUP'S CONVENIENCE STORES

PRICES EFFECTIVE JANUARY 18-21, 1979

SHOP AND SAVE AT ALLSUP'S

SHURFINE PINTO BEANS

2/\$1

Hunt-Wesson's TOMATO-RAMA

HUNT'S HALVES/SLIC. 3 99¢
PEACHES 15 OZ. CANS

SWISS MISS COCA 89¢

HUNT'S SPINACH 4 99¢
13 1/2 OZ. CANS

HUNT'S STEWED TOMATOES 3 99¢
14 1/2 OZ. CANS

HUNT'S KETCHUP 32 OZ. BTL. 89¢

HUNT'S MANWICH SANDWICH SAUCE 2 \$1
15 1/2 OZ. CANS

BORDEN'S CHOCOLATE MILK 1 QT. CTN. 59¢

PURE WESSON OIL 48 OZ. BTL. \$1 89

HUNT'S HALVES/SLIC. 3 99¢
PEARS 15 OZ. CANS

SHURFINE SODA 6/\$1

HUNT'S TOMATO JUICE 46 OZ. CAN 69¢

SNOWDRIFT SHORTENING 48 OZ. CAN \$1 49

BORDEN'S COTTAGE CHEESE 12 OZ. CTN. 59¢

ALLSUP'S ICE CREAM 1/2 GAL. RD. CTN. \$1 19

HUNT'S WHOLE TOMATOES 3 99¢
14 1/2 OZ. CANS

SHURFINE NAPKINS 5/\$1

HUNT'S FRUIT COCKTAIL 3 99¢
15 OZ. CANS

HUNT'S WHOLE NEW POTATOES 3 99¢
14 1/2 OZ. CANS

SHURFINE BLEACH 1/2 GAL. 39¢

HUNT'S TOMATO SAUCE 6 \$1
8 OZ. CANS

SHURFINE CRANBERRY SAUCE 4/\$1

MEDIUM OR LARGE EGGS 69¢

BATHROOM CLEANER FANTASTIK 79¢



FIRE DEPARTMENT ON DISPLAY...Members of the Muleshoe Fire Department manned the station all day last Saturday at the Bailey County Health Fair. They displayed equipment and the Jaws of Life Rescue tool. Pictured here from left, as they waited for persons to see their display, were, from left, Tom Ladd, J.O. Parker, Bill Kinard, Fire Chief H.E. Reeder, Don Harrison and Wayne Wauson.



SAVINGS AND LOAN ASSOCIATION

Offices In: Muleshoe/ Friona/ Littlefield/ Farwell

City Muleshoe

Ass'n Name Tri-County Savings & Loan Association Charter Date 3-10-64
Street Address 304 Main Street Date Insured 2-17-65
City Muleshoe State Texas Zip 79347 No. Authorized Branches 3
County Bailey No. Operating Branches 3
Area Code & Phone No. 806-272-5527 No. Operating Agencies ---
President * Donald W. Harmon Executive Vice President ---
Vice President Wanda Harmon Secretary Lindal L. Murray
(Managing Officer designated by asterisk)

STATEMENT OF CONDITION-DECEMBER 31, 1978

ASSETS

First mortgage loans	01\$ 22,374,975.46
All other loans	02 4,434,318.39
Real estate owned	03 -0-
Loans and contracts made to facilitate sale of real estate	04 -0-
Stock in Federal Home Loan Bank	05 260,900.00
Cash on hand and in banks	06 199,269.78
Investments and securities	07 1,485,935.88
Office building, less depreciation	08 383,597.01
Furniture, fixtures, equipment and leasehold improvements, less depreciation	09 79,311.43
Land purchased for development	10 646,892.74
Investment in subsidiaries	11 -0-
Deferred charges and other assets	12 89,566.10
TOTAL ASSETS	13\$ 29,954,766.79

CAPITAL AND LIABILITIES

Savings Accounts	14\$ 25,039,389.92
Advances from Federal Home Loan Bank of Little Rock	15 3,103,300.00
Other borrowed money	16 -0-
Loans in process	17 60,680.24
Other liabilities	18 551,474.03
Specific reserves	19 37,233.00
Capital stock	20 349,662.50
Paid-in surplus	21 197,937.32
General reserves:	
Legal reserve and/or Federal Insurance Reserve	541,796.00
Reserve for contingencies	-0-
Other reserves	45,000.00
Undivided Profits	23 28,293.78
TOTAL CAPITAL AND LIABILITIES	24\$ 29,954,766.79

Board of Directors (Chairman designated by asterisk)

* Donald W. Harmon
Frank H. Ellis
Robert I. Hooten
Lindal Murray
Alex H. Williams

Certified to be true and correct by

Title President

EDITORIALS

The 14.5 Percent

More sober analysis has now determined that the recent oil price hike by OPEC nations won't damage the U.S. economy as much as had been feared. Since the price increase will take place in stages, the effect on the U.S. economy in 1979 will be as if prices had been hiked about eight percent.

This should not cause an increase in gasoline prices of more than two cents, though other factors may also add inflationary pressure on gas prices. The effect on the overall rate of inflation will also not be as adverse as had been initially calculated, and publicized.

As one analyst pointed out recently, the price hike will do little more than restore to Arab nations buying power in dollars (the international oil currency) equal to what it was a year ago, and offset U.S. inflation this year.

One can't fault producing nations too much for seeking such an adjustment—especially in view of the lack of fiscal discipline displayed by politicians in Washington, which has produced both inflation and the decline in the dollar.

Voluntary Military Failure

The vast military bureaucracy and Pentagon public relations spokesmen continue to brainwash the American public with the claim that today's all-voluntary military manpower system is working. That's partly because few in the establishment want to end the high pay and goodies system.

But the system obviously isn't working. On the same day of a recent, rosy Pentagon PR release, the Army announced new, additional \$2,000 bonuses for enlistees.

The worst part of the failure is, however, that military pay now consumes well over half the total U.S. defense appropriation. That doesn't leave enough money, after maintenance of bases and hardware, for new weapons. That's why the U.S. will never be able to keep pace in the weapons acquisition race as long as the U.S. manpower system is a high-pay, voluntary one.

Most politicians haven't the courage to say so, but the crying need today is for mandatory, low-pay service from the nation's youth. Each could choose between civilian and military jobs and all are not needed. If the critical need were properly explained to the nation's youth, they would almost certainly respond, as American youth always has.

It is mamma and papa who scream loudest in protest against compulsory service. Until the nation asks this of its young people—and most young generations have been asked to make some sacrifice for their country—the U.S.-Russian military comparison will grow more ominous each year. For Russians have no high-pay, voluntary manpower system and spend far more on weapons than this country.

ON PUBLIC FORESTS

A proposal that would add 15.1 million acres of public forest land in 38 states and Puerto Rico to the nation's wilderness system has been announced by the Agriculture Department.

ON MORTGAGE INTEREST

Mortgage interest rates for new homes averaged above 10 percent nationally for the first time in December and inflation is expected to push the future rates even higher, the Federal Loan Bank Board reported.

"PUT 'ER THERE OL' BUDDY!"



WASHINGTON NEWS REPORT

Carter & Iran-Carter & China-Carter & NATO-Carter & 1980

WASHINGTON, D. C. -- It's now obvious that President Carter unintentionally played into the hands of dissidents and students in Iran when he began his administration with so much talk about human rights.

After having toned down his human rights idealism—for other countries—somewhat, Carter more recently gave the impression the U.S. didn't really totally support the Shah. This also helped enemies undermine the Shah. How big a factor all this was in the deterioration of the king's position is a question. Abuses in Iran were widespread.

The official State Department attitude at the turn of the year was that the U.S. backed the Shah, would not suggest

he step down, but if he stepped down, would not ask him to stay on. That was also less than the Shah hoped for; reasoning at State was that to back the sovereign any stronger might preclude the possibility of a close U.S. relationship with a new regime.

President Carter's decision to recognize Red China and break official diplomatic relations with Taiwan was inevitable. Whether it turns into a political asset or liability depends on actions and words from Peking in the next two years. The report in Washington is that Carter has good reason to believe no violence will be used against Taiwan while he is President.

President Carter reportedly pleased NATO leaders recently with assurances U.S. spending for NATO would be increased ten percent, which would mean a real increase of the promised three percent, figuring inflation at seven percent.



The Speaker Reports

by Bill Clayton

AUSTIN—The Immigration and Naturalization Service's proposed 6 1/2 mile barrier between Juarez, Mexico and El Paso, Texas is of great concern to me. The proposed barrier is not going to stop undocumented aliens from entering the United States. They come to our country because of the poverty and high unemployment of their own country. They will cross at other areas along the 1,000 mile Texas-Mexico border should the fence be constructed.

Mexico has long been an ally of the United States. Because of our common heritage, Texas and Mexico share a special relationship which the proposed "Tortilla Curtain" could seriously impair.

The pressures on the relationship between the United States and Mexico impact most seriously on Texas. Dealing with the politics of undocumented alien children and the resultant financial impact on Texas' state and local governments, and the

trade balance between Texas and Mexico are but a few of such problems.

I am confident that solutions to these problems will be found with a positive effort on the part of both parties. The proposed wall, however, will create an atmosphere of animosity and distrust and would make it more difficult to reach the solutions we must all find.

I have written President Carter urging him to cancel the proposal for the additional barrier between the United States and Mexico. I also urged the President to meet with President Lopez Portillo to discuss the economic circumstances in his

country that are forcing millions of his country's citizens to flee Mexico. Only by this positive effort to seek solutions to the causes of our common problems will the symptoms disappear.

scandalously weak and ill-prepared to meet a military emergency.

Mr. Carter's political future may well rest on an economic decision to be made this year, when the expected slowdown begins, whether to prime the pump again, to

WASHINGTON NOTES

NEW RETIREMENT LAW

Some 700,000 workers who turn 65 in 1979 can remain on the job due to a new law that bars forced retirement before age 70. Government employment experts estimate only about 200,000 older workers will take advantage of the new law.

A CONSPIRACY?

A House committee has concluded that President John F. Kennedy "was probably assassinated as a result of a conspiracy" and that a conspiracy likely was behind the murder of Martin Luther King Jr.

PRODUCTS BRING MORE

The Agriculture Department said prices that farmers get for raw products rose 3 percent in December and matched the all-time record set more than five years ago. Higher prices for cattle, hogs, eggs, calves, corn and soybeans contributed most to the gain in the price index from November.

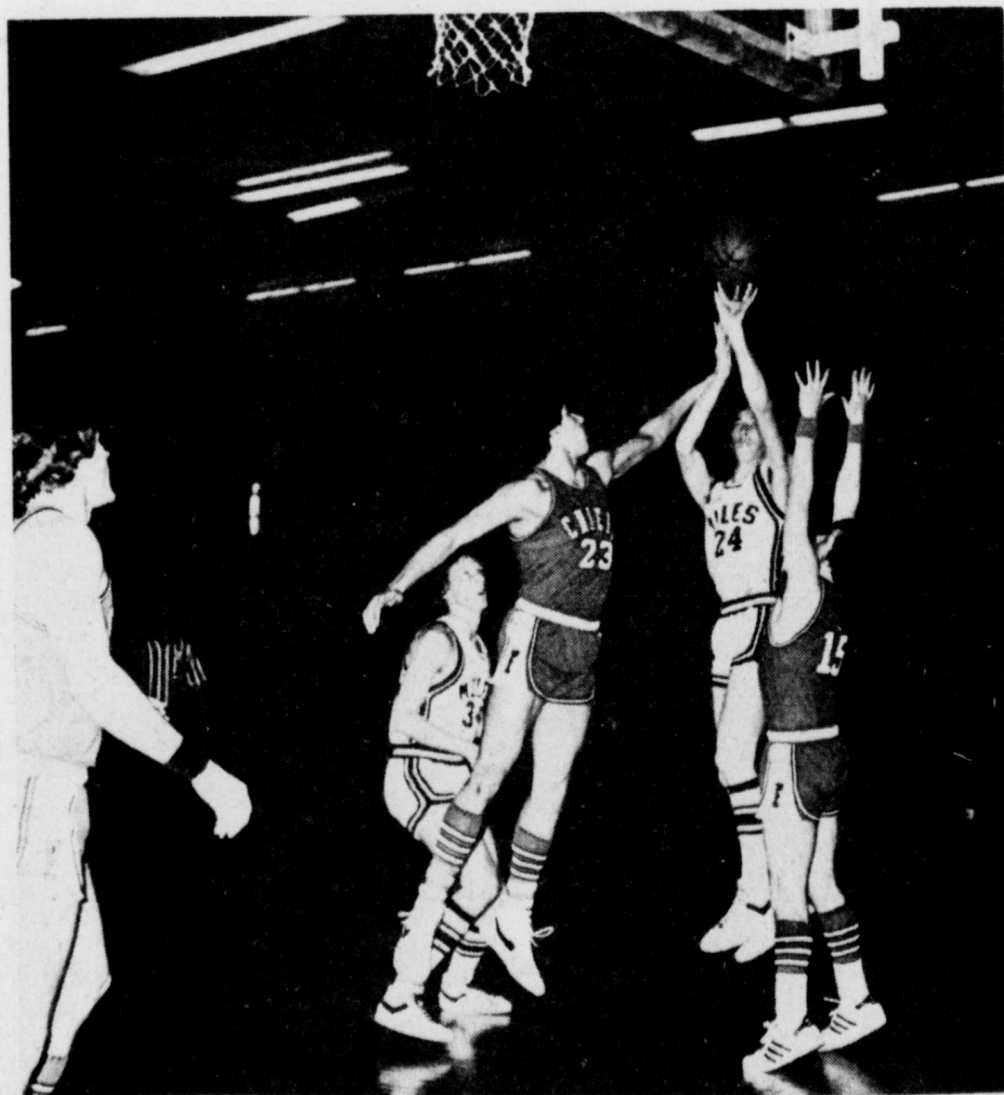
ON POPULATION

The Northeast's population has stopped growing, but the South and the West are continuing to make gains, the Census Bureau reports. In the year ending last July, the U.S. population grew almost 2 million, from 216,383,000 to 218,059,000 people, the bureau said.

create jobs, and expand the money supply. Many think that decision will be forced on him by spring.

Church: foreign policy must be restructured.

BASKETBALL SUPPORT THE HOME TEAM



January 19 Morton District 3-AA Game There

January 23 Dimmitt District 3-AA Game Here

The Following Firms Urge You To Back The Mules & Mulletos:

★ Muleshoe Coop Gin ★★ Alfreds '66' ★

Muleshoe State Bank ★ Lee's Western Wear ★ Watson Alfalfa

Sonic Drive In ★ San Francisco Cafe ★ Robert Green, Inc.

El Nuevo Leal Restaurant ★ Muleshoe Publishing Co.

Smallwood-Harmon-Field Insurance ★ Beavers Flowerland

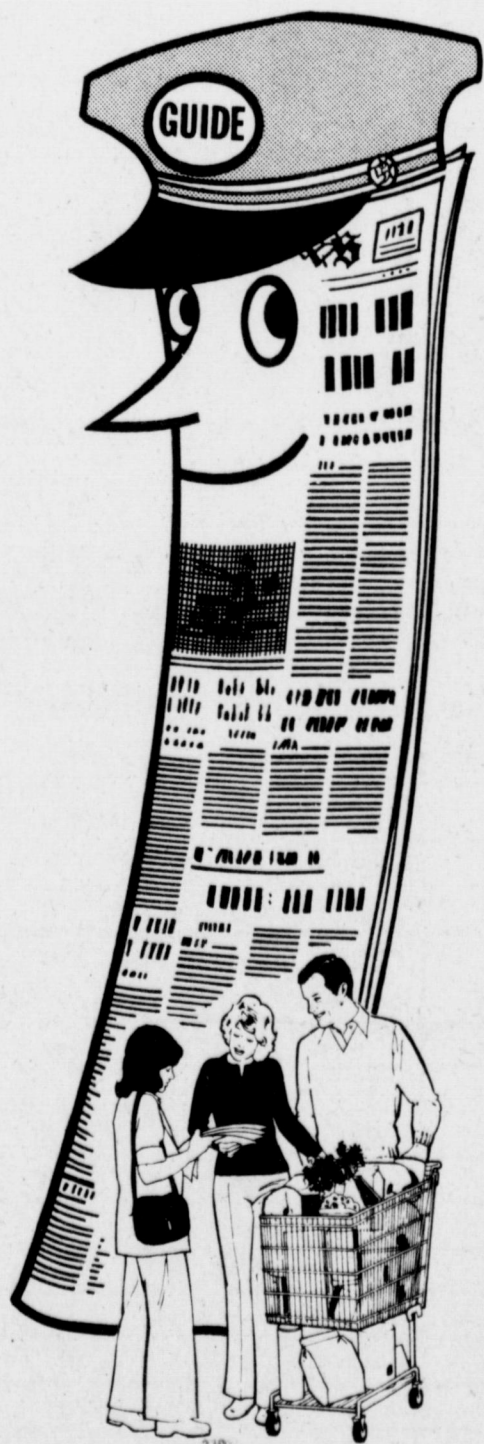
★ Bailey County Electric Cooperative Association ★

The
Muleshoe & Bailey
County Journals
your guide
to the
marketplace!

Travel through our
newspaper ads for
price and value, let
the paper guide you
as you check and
compare. Then,
when you're ready
to market, you'll
find that your
money and time
go farther.

YOUR MARKETING GUIDE

**Muleshoe & Bailey
County Journals**





CLASSIFIED ADS

THE PLACE TO LOOK



**Deadline For Classified Ads Is At 11:00
Tuesdays And Fridays**

OPEN RATES

1st insertion, per word - \$.11
2nd and add., per word - \$.09
NATIONAL RATES
1st insertion, per word - \$.11
2nd and add., per word - \$.07
Minimum Charge:
1st insertion - \$1.65
2nd insertion - \$1.35
CARD OF THANKS
30 words - \$3.00
Over 30 words charged at
regular classified rates.
Classified Display \$1.55 per
column inch.
Double Rate for Blind Ads.

DEADLINE FOR INSERTION
11:00 Tuesday for Thursday
11:00 Friday for Sunday
WE RESERVE THE RIGHT
TO CLASSIFY, REVISE OR
REJECT ANY AD.

NOT RESPONSIBLE FOR
ANY ERROR AFTER AD HAS
RUN ONCE.
Effective May 1, 1978.

1. PERSONALS

Are you allergic to most
skin preparations? Try
Aloe Vera Products. See
Doris Wedel, 224 W.
2nd. Phone 272-3283.
1-46s-tfc

3. HELP WANTED

HELP WANTED: Cocktail
waitress, food waitress
and kitchen help. Call
965-2666 or apply in person,
Dodd Community.
3-2t-8tc

WANTED: Sales person
wanted to work route
around Muleshoe area.
Must be neat, bondable,
have good driving record
and furnish work and
character references. Call
Western Tom's Sales,
Lubbock 745-1141.
3-3s-2tc

MOTHERS Do you want to
stay home with your children
while you earn extra
money? 8 - 12 hours a
week. You can. We Train.
Call 257-3723 after 6 p.m.
Monday thru Friday.
3-3t-6tc

4. HOUSES FOR RENT

FOR RENT: 2 bedroom, 1
1/2 bath. Fenced back-
yard, no pets. Close to
Richland Hills Elementary.
Unfurnished with
built-ins. Call 933-4386 or
946-3681.
4-3s-tfc

5. APTS. FOR RENT

FOR RENT: 3 bedroom
and bath Apartment.
Adults only. Call 272-3024.
5-3s-3tc

8. REAL ESTATE

KREBS REAL ESTATE
122 W. Ave. C
Phone 272-3191
13 acre tract - terms
One 3 bedroom home -
lease or trade.
One 3 bedroom home -
lease purchase.
Two bedroom, 2 lots -
reasonable.
8-2t-tfc

FOR SALE
BEAVERS
FLOWERLAND
CALL
272-3024.
8-42s-tfc

FOR SALE: 160 acres - 80
sq. ft. brick, large covered
patio, 2-car garage, stor-
age house, concrete tile
fence, excellent location,
near High School. Call
272-3839 after 6p.m.
8-1t-3tpt

HOUSE FOR SALE: Rich-
land Hills, 3 bedroom, 2
bath, fire place, electric
double car garage door
opener, storage building,
1,800 sq. ft. Corner lot.
Call 272-4617.
8-46t-tfc

FOR SALE: One lot in
Richland Hills between
19th and 20th on Ave. H.
60' x 140' for \$3,000.00.
Call 272-4251 daytime ask
for Cleve or 272-3015 after
6 p.m.
8-2s-4tc

FOR SALE: 3 bedroom
house, 1 bath, 1340 sq. ft.
Redecorated inside. Own-
er will finance to respon-
sible family. Call 272-4488
after 5:30 p.m.
8-2s-8tp

160 Acres irrigated with
circle sprinkler, good
water.

CALL
J.B. SUDDUTH
REALTY, INC.
806-481-3288
FARWELL, TEXAS
8-51s-tfc

HIGHWAY 214 NORTH
MULESHOE, TEXAS

TOWN and COUNTRY REAL ESTATE

3 bedroom, 2 bath, 2
garage Brick, in Coun-
try Club Addition. Good
fence and yard.

New 3 bedroom, 2 bath,
1 car garage, Muleshoe
Park Addition.

We have 11 one acre
tracts left in restricted
rural subdivision. Three
miles East of town on
F.M. pavement.

Mobile home lots for
sale, either in City or
Rural.

FARMS HOMES
RANCHES
JOHN W. SMITH
272-4678
broker
8-49s-tfc

IF YOU MAKE \$16,000 or
less a year and have a good
credit rating you can qual-
ify for a new FmHa home.
Contact J&R Construction
about their FmHa approved
homes. Call 272-3758 or
272-4347.
8-50s-tfc

RICHLAND HILLS HOME
FOR SALE: 3 bedroom, 2
bath, single garage, cap-
pet and drapes. Fenced
backyard with storage
house. Call after 5 p.m.,
272-3041.
8-43t-tfc

"remember"
REID REAL ESTATE
We Need Your Business
Visit with us for your
Real Estate business.

Garage (Mechanic), ap-
proximately 2 acres,
good location, on high-
way.

177 Acres in Wheat.

160 Acre farm, 154
acres in cultivation with
circular sprinkler - very
reasonable.

Call 272-3142.
8-2t-tfc

LOT FOR SALE: 114' x
140' near school, corner
lot, house can be moved
in. 801 W. 8th. Call 806-
965-2351.
8-53s-tfc

HOUSE FOR SALE: 2150
sq. ft. brick, large covered
patio, 2-car garage, stor-
age house, concrete tile
fence, excellent location,
near High School. Call
272-3839 after 6p.m.
8-48s-tfc

FOR SALE: 2 bedroom
house with extra lot, good
well, 2 storage buildings.
Second house west of Bap-
tist Church in Progress.
Call 925-6418 or 272-4907.
8-3s-4tp

HOUSE FOR SALE: 3
bedroom, 1 bath, fenced
back yard, 1208 W. Ave.
B. Call 272-3908.
\$16,000.00 or equity and
take over payments.
8-1t-8tc

E.E. HOLLAND
REAL ESTATE
113 W. Ave. D
Ph. 272-3293
DAY OR NIGHT

ROBIN DAVIS
SALESMAN

156 Acres, 3 bedroom
home domestic well, 2
wells 30 and 50 hp.
motors, underground
pipe for sprinkling, on
Frisona Highway close
in. Exclusive.

Need dry land, have
buyer.
8-51t-tfc

FOR SALE OR TRADE:
Dinner Bell Cafe. Price
includes business, fix-
tures, building and lots.
Call 505-546-6233 or write
P.O. Box 1279, Deming,
N.M. 88030.
8-44s-tfc

For all your real estate needs
Call:
GLAZE & GOFORTH
112 Ave. C
272-4208
8-11s-tfc

FOR SALE: New 3 bed-
room energy efficient brick
home, 1 car garage, 1 3/4
baths, wood fence, by J&R
Construction. 707 Ave. J.
8-50s-tfc

SMALLWOOD
REAL ESTATE
272-4838
232 Main
New 3 bedroom, 2 bath,
brick home.
New 3 bedroom, 2 bath,
2 car garage, fenced
back yard.

Three bedroom, two
bath, brick home, two
car garage, 2,000 sq. ft.
8-2t-tfc

FOR SALE: 2 acres,
fenced, trees, well, storm
cellar and barn. Four miles
NorthEast of Muleshoe.
\$6,500.00. Call 272-5061.
8-2t-4tc

HOUSE FOR SALE BY
OWNER: 2400 sq. ft. -
livingroom, den, 2 large
bedrooms, 2 baths, utility
room, dining room. All
carpeted, 2 cedar closets, 2
car garage, fenced in yard,
corner lot, underground
sprinkler system. Call 272-
3483 after 6 p.m.
8-47s-tfc

FOR SALE: 320 acres dry
land, all in cultivation. For
further information Call
272-3630, Muleshoe, Tx.
79347.
8-1t-3tpt

HOUSE FOR SALE: Choice
location, 3 bedroom, brick,
fireplace, at 314 Ave. J.
Call 272-4772 or 272-3100.
8-3t-tfc

9. AUTOMOBILES FOR SALE

FOR SALE: 1978 Datsun
King Cab, 5 speed and
1977 Ford 1 ton, will sell
with or without welder.
Call 965-2668.
9-3t-2tc

10. FARM EQUIP. FOR SALE

LOOK
AT STATELINE IRRIGATION
WE HAVE PVC PIPE
FOR ALL YOUR NEEDS
160 PSI 4" 6" 8" 10" 12" 14" 16" 18" 20" 22" 24" 26" 28" 30" 32" 34" 36" 38" 40" 42" 44" 46" 48" 50" 52" 54" 56" 58" 60" 62" 64" 66" 68" 70" 72" 74" 76" 78" 80" 82" 84" 86" 88" 90" 92" 94" 96" 98" 100" 102" 104" 106" 108" 110" 112" 114" 116" 118" 120" 122" 124" 126" 128" 130" 132" 134" 136" 138" 140" 142" 144" 146" 148" 150" 152" 154" 156" 158" 160" 162" 164" 166" 168" 170" 172" 174" 176" 178" 180" 182" 184" 186" 188" 190" 192" 194" 196" 198" 200" 202" 204" 206" 208" 210" 212" 214" 216" 218" 220" 222" 224" 226" 228" 230" 232" 234" 236" 238" 240" 242" 244" 246" 248" 250" 252" 254" 256" 258" 260" 262" 264" 266" 268" 270" 272" 274" 276" 278" 280" 282" 284" 286" 288" 290" 292" 294" 296" 298" 300" 302" 304" 306" 308" 310" 312" 314" 316" 318" 320" 322" 324" 326" 328" 330" 332" 334" 336" 338" 340" 342" 344" 346" 348" 350" 352" 354" 356" 358" 360" 362" 364" 366" 368" 370" 372" 374" 376" 378" 380" 382" 384" 386" 388" 390" 392" 394" 396" 398" 400" 402" 404" 406" 408" 410" 412" 414" 416" 418" 420" 422" 424" 426" 428" 430" 432" 434" 436" 438" 440" 442" 444" 446" 448" 450" 452" 454" 456" 458" 460" 462" 464" 466" 468" 470" 472" 474" 476" 478" 480" 482" 484" 486" 488" 490" 492" 494" 496" 498" 500" 502" 504" 506" 508" 510" 512" 514" 516" 518" 520" 522" 524" 526" 528" 530" 532" 534" 536" 538" 540" 542" 544" 546" 548" 550" 552" 554" 556" 558" 560" 562" 564" 566" 568" 570" 572" 574" 576" 578" 580" 582" 584" 586" 588" 590" 592" 594" 596" 598" 600" 602" 604" 606" 608" 610" 612" 614" 616" 618" 620" 622" 624" 626" 628" 630" 632" 634" 636" 638" 640" 642" 644" 646" 648" 650" 652" 654" 656" 658" 660" 662" 664" 666" 668" 670" 672" 674" 676" 678" 680" 682" 684" 686" 688" 690" 692" 694" 696" 698" 700" 702" 704" 706" 708" 710" 712" 714" 716" 718" 720" 722" 724" 726" 728" 730" 732" 734" 736" 738" 740" 742" 744" 746" 748" 750" 752" 754" 756" 758" 760" 762" 764" 766" 768" 770" 772" 774" 776" 778" 780" 782" 784" 786" 788" 790" 792" 794" 796" 798" 800" 802" 804" 806" 808" 810" 812" 814" 816" 818" 820" 822" 824" 826" 828" 830" 832" 834" 836" 838" 840" 842" 844" 846" 848" 850" 852" 854" 856" 858" 860" 862" 864" 866" 868" 870" 872" 874" 876" 878" 880" 882" 884" 886" 888" 890" 892" 894" 896" 898" 900" 902" 904" 906" 908" 910" 912" 914" 916" 918" 920" 922" 924" 926" 928" 930" 932" 934" 936" 938" 940" 942" 944" 946" 948" 950" 952" 954" 956" 958" 960" 962" 964" 966" 968" 970" 972" 974" 976" 978" 980" 982" 984" 986" 988" 990" 992" 994" 996" 998" 1000" 1002" 1004" 1006" 1008" 1010" 1012" 1014" 1016" 1018" 1020" 1022" 1024" 1026" 1028" 1030" 1032" 1034" 1036" 1038" 1040" 1042" 1044" 1046" 1048" 1050" 1052" 1054" 1056" 1058" 1060" 1062" 1064" 1066" 1068" 1070" 1072" 1074" 1076" 1078" 1080" 1082" 1084" 1086" 1088" 1090" 1092" 1094" 1096" 1098" 1100" 1102" 1104" 1106" 1108" 1110" 1112" 1114" 1116" 1118" 1120" 1122" 1124" 1126" 1128" 1130" 1132" 1134" 1136" 1138" 1140" 1142" 1144" 1146" 1148" 1150" 1152" 1154" 1156" 1158" 1160" 1162" 1164" 1166" 1168" 1170" 1172" 1174" 1176" 1178" 1180" 1182" 1184" 1186" 1188" 1190" 1192" 1194" 1196" 1198" 1200" 1202" 1204" 1206" 1208" 1210" 1212" 1214" 1216" 1218" 1220" 1222" 1224" 1226" 1228" 1230" 1232" 1234" 1236" 1238" 1240" 1242" 1244" 1246" 1248" 1250" 1252" 1254" 1256" 1258" 1260" 1262" 1264" 1266" 1268" 1270" 1272" 1274" 1276" 1278" 1280" 1282" 1284" 1286" 1288" 1290" 1292" 1294" 1296" 1298" 1300" 1302" 1304" 1306" 1308" 1310" 1312" 1314" 1316" 1318" 1320" 1322" 1324" 1326" 1328" 1330" 1332" 1334" 1336" 1338" 1340" 1342" 1344" 1346" 1348" 1350" 1352" 1354" 1356" 1358" 1360" 1362" 1364" 1366" 1368" 1370" 1372" 1374" 1376" 1378" 1380" 1382" 1384" 1386" 1388" 1390" 1392" 1394" 1396" 1398" 1400" 1402" 1404" 1406" 1408" 1410" 1412" 1414" 1416" 1418" 1420" 1422" 1424" 1426" 1428" 1430" 1432" 1434" 1436" 1438" 1440" 1442" 1444" 1446" 1448" 1450" 1452" 1454" 1456" 1458" 1460" 1462" 1464" 1466" 1468" 1470" 1472" 1474" 1476" 1478" 1480" 1482" 1484" 1486" 1488" 1490" 1492" 1494" 1496" 1498" 1500" 1502" 1504" 1506" 1508" 1510" 1512" 1514" 1516" 1518" 1520" 1522" 1524" 1526" 1528" 1530" 1532" 1534" 1536" 1538" 1540" 1542" 1544" 1546" 1548" 1550" 1552" 1554" 1556" 1558" 1560" 1562" 1564" 1566" 1568" 1570" 1572" 1574" 1576" 1578" 1580" 1582" 1584" 1586" 1588" 1590" 1592" 1594" 1596" 1598" 1600" 1602" 1604" 1606" 1608" 1610" 1612" 1614" 1616" 1618" 1620" 1622" 1624" 1626" 1628" 1630" 1632" 1634" 1636" 1638" 1640" 1642" 1644" 1646" 1648" 1650" 1652" 1654" 1656" 1658" 1660" 1662" 1664" 1666" 1668" 1670" 1672" 1674" 1676" 1678" 1680" 1682" 1684" 1686" 1688" 1690" 1692" 1694" 1696" 1698" 1700" 1702" 1704" 1706" 1708" 1710" 1712" 1714" 1716" 1718" 1720" 1722" 1724" 1726" 1728" 1730" 1732" 1734" 1736" 1738" 1740" 1742" 1744" 1746" 1748" 1750" 1752" 1754" 1756" 1758" 1760" 1762" 1764" 1766" 1768" 1770" 1772" 1774" 1776" 1778" 1780" 1782" 1784" 1786" 1788" 1790" 1792" 1794" 1796" 1798" 1800" 1802" 1804" 1806" 1808" 1810" 1812" 1814" 1816" 1818" 1820" 1822" 1824" 1826" 1828" 1830" 1832" 1834" 1836" 1838" 1840" 1842" 1844" 1846" 1848" 1850" 1852" 1854" 1856" 1858" 1860" 1862" 1864" 1866" 1868" 1870" 1872" 1874" 1876" 1878" 1880" 1882" 1884" 1886" 1888" 1890" 1892" 1894" 1896" 1898" 1900" 1902" 1904" 1906" 1908" 1910" 1912" 1914" 1916" 1918" 1920" 1922" 1924" 1926" 1928" 1930" 1932" 1934" 1936" 1938" 1940" 1942" 1944" 1946" 1948" 1950" 1952" 1954" 1956" 1958" 1960" 1962" 1964" 1966" 1968" 1970" 1972" 1974" 1976" 1978" 1980" 1982" 1984" 1986" 1988" 1990" 1992" 1994" 1996" 1998" 2000" 2002" 2004" 2006" 2008" 2010" 2012" 2014" 2016" 2018" 2020" 2022" 2024" 2026" 2028" 2030" 2032" 2034" 2036" 2038" 2040" 2042" 2044" 2046" 2048" 2050" 2052" 2054" 2056" 2058" 2060" 2062" 2064" 2066" 2068" 2070" 2072" 2074" 2076" 2078" 2080" 2082" 2084" 2086" 2088" 2090" 2092" 2094" 2096" 2098" 2100" 2102" 2104" 2106" 2108" 2110" 2112" 2114" 2116" 2118" 2120" 2122" 2124" 2126" 2128" 2130" 2132" 2134" 2136" 2138" 2140" 2142" 2144" 2146" 2148" 2150" 2152" 2154" 2156" 2158" 2160" 2162" 2164" 2166" 2168" 2170" 2172" 2174" 2176" 2178" 2180" 2182" 2184" 2186" 2188" 2190" 2192" 2194" 2196" 2198" 2200" 2202" 2204" 2206" 2208" 2210" 2212" 2214" 2216" 2218" 2220" 2222" 2224" 2226" 2228" 2230" 2232" 2234" 2236" 2238" 2240" 2242" 2244" 2246" 2248" 2250" 2252" 2254" 2256" 2258" 2260" 2262" 2264" 2266" 2268" 2270" 2272" 2274" 2276" 2278" 2280" 2282" 2284" 2286" 2288" 2290" 2292" 2294" 2296" 2298" 2300" 2302" 2304" 2306" 2308" 2310" 2312" 2314" 2316" 2318" 2320" 2322" 2324" 2326" 2328" 2330" 2332" 2334" 2336" 2338" 2340" 2342" 2344" 2346" 2348" 2350" 2352" 2354" 2356" 2358" 2360" 2362" 2364" 2366" 2368" 2370" 2372" 2374" 2376" 2378" 2380" 2382" 2384" 2386" 2388" 2390" 2392" 2394" 2396" 2398" 2400" 2402" 2404" 2406" 2408" 2410" 2412" 2414" 2416" 2418" 2420" 2422" 2424" 2426" 2428" 2430" 2432" 2434" 2436" 2438" 2440" 2442" 2444" 2446" 2448" 2450" 2452" 2454" 2456" 2458" 2460" 2462" 2464" 2466" 2468" 2470" 2472" 2474" 2476" 2478" 2480" 2482" 2484" 2486" 2488" 2490" 2492" 2494" 2496" 2498" 2500" 2502" 2504" 2506" 2508" 2510" 2512" 2514" 2516" 2518" 2520" 2522" 2524" 2526" 2528" 2530"

Sudan News

By Evelyn Ritchie

June Bartley was a holiday visitor in the homes of her sisters, Mr. and Mrs. Calvin Walser of Chillicothe and Mr. and Mrs. Tom White of Stephenville. They all went to Houston to visit their only brother, Austin Chandler and they also attended the Blue Bonnet Bowl.

Visiting with Mr. and Mrs. Tom King, Jr., has been her mother, Mrs. White of Dallas.

Rev. and Mrs. Kerry Hurst were in Tahoka recently to attend the wedding of her brother.

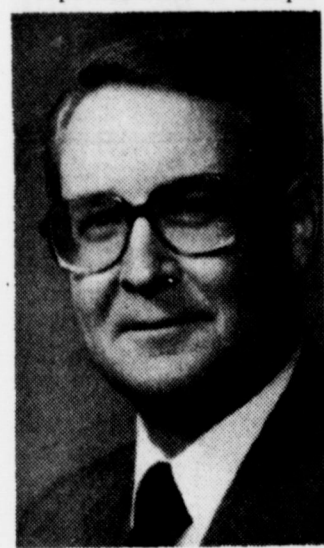
Chad Nichols, grandson of Mrs. Gina Nichols, underwent eye surgery, Jan. 3 in Houston. He has been released and it is reported that he is doing fine.

Christmas day guests in the home of Mrs. W.L. Rice and Willie Mae were their son and brother, Mr. and Mrs. Dale Rice and family of Lubbock. Later that day, Mr. and Mrs. Gary Gatewood and boys joined them.

Visiting Mr. and Mrs. Charles Logan during the holidays were Mr. and Mrs. Alton Noblett and daughter of Arizona; Mr. and Mrs. Jack Noblett of Lubbock; Mr. and Mrs. Darrell Haisley and children of Dimmitt; Mr. and Mrs. Roy Hunter and family of Amarillo; Mr. and Mrs. Randy Jordon and son of Breckenridge; Mr. and Mrs. Bush Jordon; Hank Jordon and fiancée, Ethal Logan of Littlefield.

Also attending were Retha Jordon, Maurine Logan, Jim Wagoner, Randy Haisley, Mr. and Mrs. Harry Jones and Mr. and Mrs. Carry Logan and family.

Mr. and Mrs. Jimmy Carpenter were in Temple



Bert Ballengee Elected V-P For SWPS

Bert M. Springer, president and chief operating officer of Southwestern Public Service Company, has announced that at a meeting of the Board of Directors held January 10 in Amarillo, Bert Ballengee was elected executive vice president of the Amarillo-based utility company.

A native of Amarillo, Ballengee is a graduate of Amarillo High School and the University of Texas where he earned a degree in Business Administration.

Ballengee began his work with SP in 1949 as a clerk in the accounting department in the Amarillo office. He became chief clerk in 1951 and in 1957 was named the Company's personnel manager. With the acquisition of the Company's first data processing computer in 1961, Ballengee was named director of data processing.

In April 1972, Ballengee was appointed director of finance and in January 1974, he was elected financial vice president.

Ballengee has served on the budget committee of the Amarillo United Way, Board of Directors of the Amarillo Club, the Red Cross and the Finance Committee of the Edison Electric Institute. He is also currently serving as financial vice president of the Llano Estacado Council of the Boy Scouts of America in Amarillo.

Springer said that a successor to Ballengee as financial vice president will be announced at a later date.

to visit her parents, and Mrs. O.L. Turner for the holidays.

Mrs. Clovis Bridwell has recently returned home from the Amherst Hospital where she was a medical patient for several days.

Mr. and Mrs. Bob Nelson were in Levelland Sat., to visit their daughter, Mr. and Mrs. Jackie Bruton.

Viola Core has recently returned home after a few weeks visit in California, Washington and Oregon.

Joe Dorsey has returned home from the Amherst Hospital where he was a medical patient for several days.

Visiting Mr. and Mrs. Lee Roy Fisher during the holidays were Mr. and Mrs. Fred Annen and Jannette of Dimmitt; Margaret Mills and family of

Amarillo; Mr. and Mrs. Don Mills of Turkey; Roy Killion and Rickey of Amarillo; Mr. and Mrs. Jerry Annen and family of Dimmitt; Mr. and Mrs. Hollis Annen of Dallas; Mr. and Mrs. Ramon Lowe of California; Mr. and Mrs. Keith Lowe and children of Idaho and Mrs. Ethal Lowe of Amarillo.

Lee Hardy underwent surgery at the Methodist Hospital.

Viola Core has returned home from a holiday visit that took her to Oregon, California and Washington.

Mr. and Mrs. Lunn Drum and children returned to their home in Caddo Mills following the holidays with their grandparents, Mr. and Mrs. Martin Maxwell and her sister, Mr. and Mrs. Glen Testerman.

Ricky May has been home during the holidays with his parents, Mr. and Mrs. Marvin May.

Babby, Charity, Tiffany and John Van Ness of Fort Worth were here for the holidays with their grandparents, Mr. and Mrs. Guy Walden.

Marine Cpl. Alice Aills of Camp Lejeune, N.C. was home prior to the Christmas holidays with her mother, Mrs. Dee Aills and brother, David. She is presently a recruiting officer in Cincinnati, Ohio.

Mr. and Mrs. Hubert Dykes were in Amarillo for the holidays with their son, Mr. and Mrs. Don Dykes and family.

The Sudan School lunchroom employees held a Christmas party, Dec. 21, at the Tasty Taco in Little-

field. Attending were June Bartley, Noreen Moore, Emilie Pickard, Rubie Shannon, Thelma Lewis, Louise De La Riva, Mary Kay Baker, Deborah King, Margaret Williams and Rita Ann Corley.

Mr. and Mrs. Mike Masten and family of Detroit, Mich., were here for the holidays with his sister, Mr. and Mrs. Joe Bellar and in Morton with his parents, Mr. and Mrs. Bob Masten.

Mrs. Eriah Doty returned home Friday from the Methodist Hospital in Lubbock where she underwent surgery last week.

Jo Gaye Doty of Lubbock was a holiday visitor in the home of her parents, Mr. and Mrs. Wayne Doty.

Mrs. J.A. Turner recently was in Lubbock for a

medical checkup following her surgery.

Mrs. Sam Smith is convalescing in a Nursing Home in Clovis following her release from the Methodist Hospital, Mrs. Smith recently underwent surgery.

Mr. and Mrs. Glen Cardwell and Glenda have returned home from Georgia where they visited during the holidays with their daughter, Mr. and Mrs. Barry Nettles.

Teresa Baccus of Lubbock was a holiday visitor in the home of her daughter, Mr. and Mrs. Tom Moss and Troy Wayne and her granddaughter, m and Mrs. Carrol Legg.

A good loafer is an artist at his profession.

Cotton Prices Conclude Week Mixed, Varied

High Plains cotton prices were \$1.25 higher to \$6.25 per bale lower the week ended January 11, according to Paul R. Dickson, Area Director at Lubbock's Marketing Services Office. Growers sold mixed lots of mostly grades 42 and better, staples 30 - 33, mikes 35 - 49 around \$4.40 cents per pound. New crop lots of mostly grades 43 and 53, staples 30 and 31, mikes 35 - 49 brought about \$1.85 cents per pound, Dickson said. Gins paid High Plains growers \$115 and \$130 per ton for cottonseed. USDA's High Plains Marketing Services Office graded 163,000 samples this week, bringing this season's total to 1,506,000.

This compares to 2,859,000 graded by January 12 last year.

Predominant High Plains grades this week were grade 41 at 12 percent, grade 51 accounted for 12 percent, grade 42 amounted to 38 percent and grade 52 was 24 percent. Thirty-two percent were reduced one grade because of bark. Staple lengths were mostly staple 31 at 26 percent, staple 32 was 40 percent and staple 33 accounted for 21 percent, according to USDA's Agricultural Marketing Service.

Micronaire was mostly in the desirable 35 - 49 range at 66 percent of the total. Thirty-four percent was lower. Breaking strength averaged 85,000 pounds per square inch.

Pope vows to continue work of predecessor.

Double Gunn Bros.

Stamps Every Wednesday

Whites CASHWAY

We Reserve The Right To Limit Quantities

7:30 a.m. til 9:00 p.m.

402 Main 272-4244

MONDAY-SATURDAY
NEW STORE HOURS 12:00 pm to 8:00pm
OPEN ON SUNDAY

TOWELS
Jumbo Roll
69¢

Compare

WHITES CASHWAY GROCERY
Meat And Produce Departments
For FRESHNESS, QUALITY And PRICE!

TUNA
Carnation Chunk Light
6 1/2 Oz. Can
69¢

Wright Brand Market Sliced

BACON
\$1.19
LB.

Wilson Certified All Meat

FRANKS
99¢
(12 Oz. pk Pkg.)

Pork Extra Lean

SPARE RIBS
99¢
LB.

U.S.D.A. GRADE 'A'

FRYER PARTS
\$1.15
LB.

FRESH MARKET CUT

BREAST
\$1.09
LB.

WINGS
39¢
LB.

THIGHS
\$1.09
LB.

BACKS
27¢
LB.

DRUM STICKS
\$1.09
LB.

NECKS
27¢
LB.

AJAX CLEANSER 14 Oz. Can **25¢**

409 CLEANER 22 Oz. Liquid All Purpose **99¢**

Super Suds Laundry

DETERGENT 40 Oz. Box **99¢**

Crystal White Liquid

DETERGENT 48 Oz. Bottle **\$1.09**

Hershey Chocolate

SYRUP 16 Oz. Can **59¢**

Hunts

SNACK-PAK 20 Oz. Pkg. **89¢**

Assorted Flavors

JELLO 3 Oz. Pkg. **5/\$1**

Milnot Canned

MILK 13 Oz. Can **39¢**

Hunts Stewed

TOMATOES No. 300 Can **2/89¢**

Del Monte

SAUERKRAUT No. 303 Can **3/\$1**

Del Monte Freestone halves

PEACHES No. 303 Can **59¢**

Nestea

INSTANT TEA No. 303 Jar **\$1.99**

Whitfield Salad

OLIVES 15 Oz. Jar **\$1.19**

White Swan Soft

OLEO 1 Lb. Tub **59¢**

DORITO'S 89¢ Pkg. **69¢**

Bell Reg. or Slim & Trim

COTTAGE CHEESE 24 Oz. Ctn. **\$1.09**

FRESH PRODUCE

Washington Golden Delicious

APPLES **39¢** LB.

California Sunmist

LEMONS **39¢** LB.

California

TOMATOES (Cello Pkg.) **45¢**

Colorado No. 2 White Russets

POTATOES (20 Lb. Bag) **\$1.75**

Swanson Hungry-Man

POT PIES **89¢** 16 Oz. Pkg.

Mrs. Paul's

FISH STICKS **99¢** 9 Oz. Pkg.

Southern Style

HUSH PUPPIES 16 Oz. Pkg. **67¢**

Birds Eye

CAULIFLOWER 10 Oz. Pkg. **65¢**

BUTTERMILK
1/2 Gallon
79¢

CORN
12 Oz. Can
2/79¢

COME TO CASHWAY FOR YOUR WIC CARD PURCHASES

WE WELCOME USDA FOOD STAMP COUPONS