

Weather

March 19	81	32
March 20	70	37
March 21	77	30
March 22	70	35

Rainfall to date 2.79

MULESHOE JOURNAL

'The Community of Opportunity-Where Water Makes the Difference'



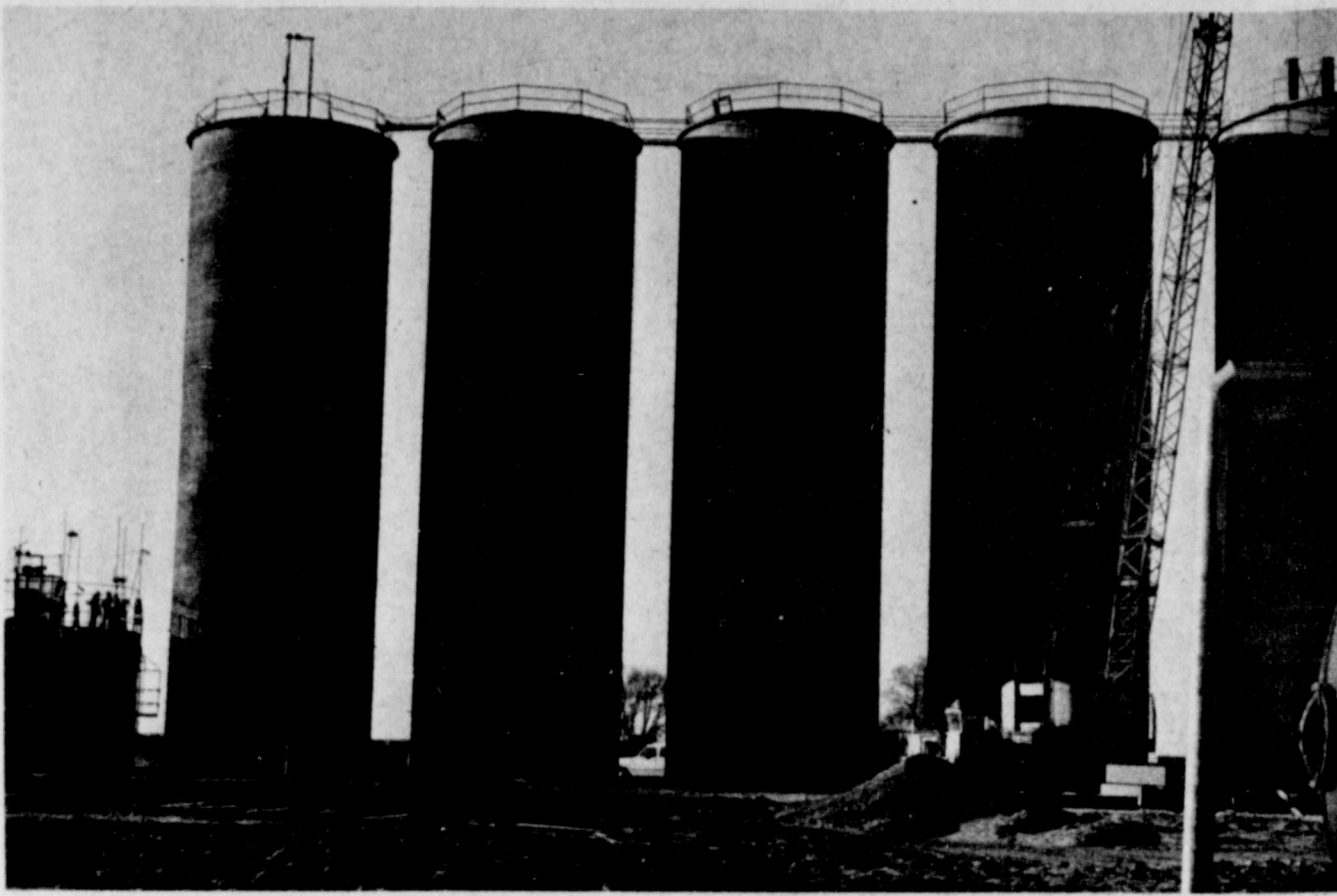
Volume 55 Number 12

12 Pages

Published Every Thursday at Muleshoe, Bailey County, Texas 79347

10 Cents

Thursday March 23, 1978



TOWERING GOING UP—Workmen continue construction of the large Valley Grain Corporation complex east of Muleshoe on Highway 84. Another large tower is under construction for the huge corn handling facility. Construction is expected to be completed on

the initial phase of the operation prior to corn harvest time. Also under construction are other buildings at the site being installed by a California-based corporation. The facility will handle food corn, and eventually plan to construct a corn flour mill at the location.

Lupe Rosales 'Initiates' Local Bee Championship

A quiet, shy eighth grader 'initiated' a win at the annual Bailey County Spelling Bee Monday afternoon.



Muleshoe's Fire Department will be the honored guests at a breakfast sponsored by the Muleshoe Chamber of Commerce and Agriculture at 6:30 a.m. today (Thursday) in the Corral Restaurant.

All Chamber of Commerce members and interested persons are urged to attend.

Election of officers for the upcoming season in Little League Baseball will be the main item on the agenda for a meeting next Monday, March 27, at 7 p.m. in Tri-County Savings and Loan Meeting Room.

President Sammy Gonzales asks all parents, officers and prospective coaches to attend.

The Texas Health Resources office, in conjunction with the Corral Restaurant, will host a special film on the Heimlich Maneuver, a lifesaving technique, today (Thursday) at 2:30 p.m. at the Corral.

Of special interest will be the technique which will be highly beneficial to persons in the food industry. The Heimlich Maneuver is a quick, easy way to remove foreign objects, such as food, from the breathing passage.

The film is free of charge for interested persons.

Sherrell Rasco, a sophomore business education major at West Texas State University, has been elected to the 1978-79 Student Senate from the WTSU College of Education.

She is the daughter of Mr. and Mrs. Odell Rasco.

A Texas Tech student from Muleshoe, Bill Durham, son of Mr. and Mrs. Charlie Durham, is among the cast of "The Wager," a modern tragic-comedy, at the Texas Tech University Laboratory Theatre in early April.

Durham plays the part of Leeds, one of the students. He is a junior theatre arts major.

Marcia Lynn Rudd, daughter of Mr. and Mrs. W.O. Rudd, and a senior at Eastern New Mexico University, has been elected president of Phi Gamma Nu, a professional business sorority.

She is an accounting major and a member of Cardinal Key, a junior women's honor society.

Olga Costilla of Muleshoe, has been named an honor student for the just-completed fall trimester at Oklahoma State Tech, Okmulgee, Okla. She earned a 3.7 grade point average on a 4.0

day afternoon. Lupe Rosales, son of Mr. and Mrs. Rosalio Rosales, correctly spelled 'initiate' after it was missed by Stacey Campbell, also the eighth grader, and then went on to spell 'inject' correctly for the win.

Stacey, the daughter of Mr. and Mrs. Buck Campbell was second place winner and designated alternate to the regional spelling bee and Suzette Rojas, daughter of Mr. and Mrs. Tony Rojas, and a sixth grader, was in third place. Last year's winner, Tim Sain, son of Mr. and Mrs. Walter Sain, was spelled out of the competition while still in school competition eliminations. His sister, Shelly, a fifth grader, was in the County Spelling Bee, but failed to place.

In fourth place was Becky Mardis, Doug Dupler, fifth; Tammy Nowell, sixth; Gabriel Rodriguez, seventh; Angie Salas, eighth; Alan Finney, ninth; Laurie Latimer, 10th; Tony Luna, 11th and Shelly Sain, 12th.

Judges for the County Spelling Bee were Mrs. Lyndon Huckaby; Mrs. Jack Hodnett of Three Way and Tommy Black. Mrs. Beatrice Blackburn was pronouncer; Mrs. Elizabeth Watson, school coordinator and Clea Williams, county director.

The Bailey County Spelling Bee

License Tags Sales Slow Near Deadline

Jean Lovelady, Bailey County tax assessor, reminds that although the deadline is near to purchase 1978 license stickers, the sale of the required tag is lagging.

She said, "Don't plan to wait until April 1 to obtain your 1978-79 motor vehicle registration validation sticker. If you do, you may wind up paying a fine for driving with an expired license."

Adding to her word of caution is Bob Townsley, director of the Motor Vehicle Division of the State Department of Highways and Public Transportation. He pointed out that many county tax offices will be closed on April 1, since that day falls on Saturday this year. In some counties registrations will not be obtainable from Friday, March 31, to Monday, April 3.

Townsley said he has advised all county tax assessor-collectors that "there is no authority in law for anyone to grant extensions."

Whether or not they keep their offices open on Saturday, April 1, is strictly up to the county tax assessor-collector.

The deadline for having validation stickers on vehicle license plates is midnight, falling between April 1 and 2 according to Mrs. Lovelady. Local peace officers may arrest any motorist driving with an expired validation sticker on April 2.

is co-sponsored by the Muleshoe and Bailey County Journals and the Lubbock Avalanche-Journal.

Lupe Rosales, who won the county bee will be competing on a regional basis in Lubbock on Saturday, April 15, at 1:30 p.m. in Moody Auditorium at Lubbock Christian College.

He received a check for \$25 from the Muleshoe Journal a ribbon and will be presented his plaque at the regional bee for his county win.

Alternate Stacey Campbell received a check for \$15 from the Journal and third place winner Suzette Rojas was presented a check for \$10 from the Journal. They also received blue ribbons.

Competing from Three Way School were three eighth graders; Doug Dupler, son of Mr. and

Con't. on page 3 col 4

Senator Price Notifies City Of Park Grant

Senator Bob Price has been advised by Governor Dolph Briscoe that a project proposal for Muleshoe Parks has been approved for 50 percent of federal assistance under the Land and Water Conservation Fund Program of the Bureau of Outdoor Recreation. Senator Price made the announcement this week from his office in Austin.

He also said that the \$11,180 grant will enable Muleshoe to further develop three parks - Community Park, East Park and Tennis Court Site - to include restrooms, tennis court renovation and irrigation.

Price said the Parks and Wildlife Department will be available to assist the city in administering the fund program.

Government Workers Cautioned On Taxes

Any state of local government workers who are considering ending their participation in the Social Security program should use caution in such a decision, a Social Security official has warned.

"I am concerned about the number of state and local entities that have expressed a desire to withdraw from the Social Security program due to widespread publicity about increases in the Social Security tax, as well as the decreases in the trust funds," said Social Security Regional Commissioner Martha A. McSteen in Dallas today.

The question of terminating coverage is of concern to individuals who are employed by state and local governments because these groups, unlike other employees, have the option of withdrawing from social security coverage. Once coverage is terminated, however, they are not permitted to reenter the program.

"Much has been said about how the new law is going to triple

taxes in the next ten years," stated Mrs. McSteen. "This may be true, if you are fortunate enough to be in 7 percent of wage earners in this country who earned above the amount on which Social Security taxes are collected. But, if you are like most workers, who make a more moderate yearly income, you will not pay as much in taxes as you may think."

"The increases amount to about \$2.50 a week. A worker having average earnings of \$10,800 in 1978 will have estimated average earnings of \$18,600 by 1987, and would have paid under the old law an estimated \$1,201 in taxes. Instead, under the new law, his 1987 tax will be \$1,330, an increase of only \$129 for the year over what he would have paid under the old law."

"Today, many Americans view Social Security as a retirement program for older workers," she continued. "but it is much more."

Muleshoe City Council Approves Record Budget

Exceeds \$1 Million; But No Tax Increase

Members of the Muleshoe City Council Tuesday morning approved a record budget for the 1978-79 fiscal year of \$1,035,334; but, with the record amount, the city taxes remained the same.

Last year, 69 cents was budgeted for city taxes, however, this amount was reduced to 66 cents per \$100 valuation and that rate was continued for the new year.

They appropriated \$635,407 for payment of operating expenses and capital outlay; \$94,406 for paying accruing interest and redeeming serial bonds and warrants as they mature, on general debt service bonds and warrants; the sum of \$303,102 for operating expenses, capital outlay, and debt service for the Water and Sewer department at \$93,687 for operating expenses and capital outlay from the revenue sharing funds.

Approved was an ordinance adopting the budget and revenue sharing fund budgeted funds and for levying and collection of the 66 cents per \$100 valuation on taxes.

City Manager Dave Marr reported that Tri-County Savings and Loan Association had complied with all requirements prerequisite to the filing and approval of their plat for the Parkridge Addition, in south Muleshoe. Council members unanimously approved the plat following a discussion on the placement of water and sewer lines; paving easements; and streetlights.

No one appeared for the public hearing on annexation of the Parkridge Addition to the city of Muleshoe.

Nor was any one present for the public hearing on the 1978-79 budget, although Councilman Max King asked that it be noted that he was early for one consecutive meeting now.

Sealcoating of city streets was discussed with the city approving the extension of a contract with Jake Diel Paving to do the

sealcoating at a total cost of \$24,321.54, which includes engineering fees.

A bid for a new city pickup was approved. Bids were received from Muleshoe Motor, \$4,073.27 for a compact model with a short wheelbase and \$4,299 for a regular one-half ton compact pickup. Crow Chevrolet had submitted a bid of \$4,403.15 for a compact pickup with a short wheelbase and Robert Green Inc. won the bid with \$4,200 for a one half ton GMC pickup. Robert Green Inc. had no substitution or deletion of specifications.

Also discussed was the status of the Airport negotiations with the present fixed-base operator, Morgan Locker. City Manager Marr said the meetings are being conducted with good cooperation on all sides, and new standards for operation and maintenance are being drawn up.

Approved was to seek bids for a new city well at West Ninth

Con't. on page 3 col 4

They also had a second in the 880 relay at 150.5.

The mile relay team was third at 4:24.6. Team members were Frances Brown, Lupe Pacheco, Shelly Dunham and Evelyn Grace.

In the 880 yard run, Denise Reeder was sixth with 2:43; Sandra Hughes was eighth in the mile run at 6:27.1 and Debra Washington was fifth in the 80 yard hurdles at 12.5.

Shelly Dunham was second in the shot put at 35 feet, seven inches; Shelly Dunham was third in the discus at 91 feet, 11 and three fourths inches and Glenda Rasco was fifth at 84 feet, 11 inches.

Charles Briscoe put forth his personal best effort of the season when he was sixth place with a good time of 10.4 in the 100 yard dash. He also had the top team in the mile relay with 55.7 and Coach Gary Goodin said his overall performance was excellent. He was also in the 440-relay and was fourth in the high jump at five feet, 10 inches.

Also on the 440-relay team were Jeep Shanks, Jerry Wheat, Bones Norman and Charles Briscoe, with a team time of 48.2.

In the 880-run, Curtis Elder was seventh at 2:14.5; Monty Jones had 2:19.3 and James Atwood had a time of 2:24.3.

Terry Shafer had a time of 17.9 on the 120 high hurdles and Terry Shafer had a time of 47.4 on the 330 intermediate hurdles. Rodney Unrein turned in no time as he fell.

Times in the 440 dash were Jim Norman, 58.7; Jerry Wheat, 58.4 and Mac Norman, 59.0.

Dennis Patterson had 24.8 in the 220; Pablo Gonzales, 25.8 and David Patterson, 26.7.

Lee Elder was first again in the theme run with a time of 4:51.5 and Joe Rangel was sixth at 5:21.7.

Other members of the mile relay team, who were in sixth place at 4:48.6 were Mac Norman, Jerry Wheat and Bones Norman.

In the weight division, Sam Whalin had 44 feet in the shot put, as did Abel Ontiveroz and Oscar Hernandez had 36 feet. Mark Harmon had 99 feet for the discus and Arnold Madrid had 96 feet. John Carrion had 85 feet.

Keith Hawkins didn't clear his opening height in the pole vault and Brent Maddox was injured and did not compete.

Mark Washington scratched three times in the long jump and Pablo Gonzales had a distance of 16 feet.

Doug Precure was first in the high jump at six feet, two inches, to tie the meet record and Charles Briscoe was fourth at five feet, 10 inches.

At Hereford, the Mulettes turned in a first in the 440 relay at 51.8. Team members were Frances Brown, Evelyn Grace, Debra Washington and Shelly Dunham.

Con't. on page 3 col 4

Con't. on page 3 col 4

Con't. on page 3 col 4

Con't. on page 3 col 4

Con't. on page 3 col 4

Con't. on page 3 col 4

Con't. on page 3 col 4

Con't. on page 3 col 4

Con't. on page 3 col 4

Con't. on page 3 col 4

Con't. on page 3 col 4

Con't. on page 3 col 4

Con't. on page 3 col 4

Con't. on page 3 col 4

Con't. on page 3 col 4

Con't. on page 3 col 4

Con't. on page 3 col 4

Con't. on page 3 col 4

Con't. on page 3 col 4

Con't. on page 3 col 4

Con't. on page 3 col 4

Con't. on page 3 col 4

Con't. on page 3 col 4

Con't. on page 3 col 4

Con't. on page 3 col 4

Con't. on page 3 col 4

Con't. on page 3 col 4

Con't. on page 3 col 4

Con't. on page 3 col 4

Con't. on page 3 col 4

Con't. on page 3 col 4

Con't. on page 3 col 4

Con't. on page 3 col 4

Con't. on page 3 col 4

Con't. on page 3 col 4

Con't. on page 3 col 4

Con't. on page 3 col 4

Con't. on page 3 col 4

Con't. on page 3 col 4

Con't. on page 3 col 4

Con't. on page 3 col 4

Con't. on page 3 col 4

Con't. on page 3 col 4

Con't. on page 3 col 4

Con't. on page 3 col 4

Con't. on page 3 col 4

Con't. on page 3 col 4

Con't. on page 3 col 4

Con't. on page 3 col 4

Con't. on page 3 col 4

Con't. on page 3 col 4

Con't. on page 3 col 4

Con't. on page 3 col 4

Con't. on page 3 col 4

Con't. on page 3 col 4

Con't. on page 3 col 4

Con't. on page 3 col 4

Mules Second In Tournament At Hereford

Under leadership of golf coach Raymond Schroeder, the Muleshoe Mules golfers won second in the Deaf Smith County Festival Two-Day Golf Tournament at Hereford last Friday and Saturday.

Tulia was first with a 700; Muleshoe had 730; Littlefield 740 and Friona 825.

On the first day, Wade Wilson had 87 and an 86 on Saturday for 173; Dickie Sudduth had 92 the first day and 90 the second day for 187; Edwin Watson had 94 both days for 188 and Doug Cowan had 95 the first day and 99 the second day for 194.

Thursday, the junior varsity golfers played at Hereford and had a score of 376. Billy Vinson had 89; Randy Watkins 91; Dan McVicker 96; Lyndall Stovall and Jeff Hyde each had 100.

Con't. on page 3 col 4

Con't. on page 3 col 4

Con't. on page 3 col 4

Con't. on page 3 col 4

Con't. on page 3 col 4

Con't. on page 3 col 4

Con't. on page 3 col 4

Con't. on page 3 col 4

Con't. on page 3 col 4

Con't. on page 3 col 4

Con't. on page 3 col 4

Con't. on page 3 col 4

Con't. on page 3 col 4

Con't. on page 3 col 4

Con't. on page 3 col 4

Con't. on page 3 col 4

Con't. on page 3 col 4

Jaycees Easter Egg Hunt Set

Hey, youngsters! Did you know about the Jaycee Easter Egg Hunt? Have you been let in on our secret yet, the hunt is Saturday. That's right, it will be at 3:30 p.m. at the ball field just south of Radio Station KMUL.

And, do you know what? There are four age groups you can enter. Yea! and there's prizes in each age group.

Dan Shipman, chairman of the project this year for the Muleshoe Jaycees is issuing his personal invitation for all youngsters up to the age of 12 to help hunt Easter Eggs Saturday.

Now, don't forget! Remind your mother and make sure you are there.

Con't. on page 3 col 4

Con't. on page 3 col 4

Con't. on page 3 col 4

Con't. on page 3 col 4

Con't. on page 3 col 4

Con't. on page 3 col 4

Con't. on page 3 col 4

Con't. on page 3 col 4

Con't. on page 3 col 4

Con't. on page 3 col 4

Con't. on page 3 col 4

Con't. on page 3 col 4

Con't. on page 3 col 4

Con't. on page 3 col 4

Con't. on page 3 col 4

Con't. on page 3 col 4



FORMER GOVERNOR VISITS—An ardent admirer of former Governor Preston Smith visited with him Monday at the Corral Restaurant in Muleshoe. Four year old Amy Foster, daughter of Mr. and Mrs. Steve Foster of Oklahoma Lane, is the visitor. Her great-grandparents are Mr. and Mrs. T.W. Kent of Muleshoe.

GIBSON'S
DISCOUNT CENTERS

PRICES EFFECTIVE MARCH 23-25



GOOD EASTER BUYS

CLOSED ON
EASTER SUNDAY

PAAS EGG
COLOR KITS
REG 79¢

GRASS

COLEMAN 2 BURNER
CAMP
STOVE
REG \$39.99
\$30⁹⁹

COLEMAN 1 GAL
WATER JUG
REG \$7.99
\$5⁸⁹

GRADE A
LARGE
EGGS
63¢

STUFFED EASTER
ANIMALS
30% OFF

FLASHBAR
OR
MAGICUBES
REG \$1.99
\$1⁵⁹

KING SIZE
TIDE
\$2³⁹

ZEBCO
COMBINATION
202 REEL 4020 ROD
REG \$9.99
\$6⁶⁹

COLEMAN CAMP
FUEL
REG \$2.47
\$1⁹⁹

32 OZ
MIRACLE WHIP
REG \$1.29
99¢

7 OZ
CREST
REG \$1.29
99¢

50 OZ
CASCADE
\$1⁶⁵

ZEBCO OMEGA
113 REEL
REG \$18.97
\$14⁵⁹

PAUL'S
CATFISH BAIT
REG \$1.49
\$1⁰⁹

FRENCH'S
MUSTARD
24 OZ
REG 73¢
61¢

12 OZ
SPAM
99¢

SAFEGUARD
BATH SOAP
3/\$1

ZEBCO
33 REEL
REG \$13.99
\$10⁹⁹

GREAT FOR CAMPERS
OR EMERGENCY
RAY-O-VAC WIRELESS
**LIGHT
FIXTURES**
REG \$6.73
\$4⁹⁹

SHASTA
SODA
ASST FLAVORS
6/\$1

VAN CAMPS
**PORK &
BEANS**
REG 37¢
4/\$1

SUREFRESH
**POTATO
CHIPS**
PLAIN OR DIP
2/1

HEAD & SHOULDERS
2.5 OZ REG \$1.29
93¢

BADMINTON SETS
REG \$1.59
\$1⁰⁹

SHASTA
SODA
ASST FLAVORS
6/\$1

VAN CAMPS
**PORK &
BEANS**
REG 37¢
4/\$1

SHURFINE
CORN
CR OR WK
REG 29¢
5/\$1

COPPERTONE
TANNING LOTIONS & OILS
30% OFF
FOSTER-GRANT
SUNGLASSES
25% OFF

CHINET PLATES
40 CT
\$1²⁹

STYROFOAM
CUPS
15 OZ 20 CT
49¢

ZEE LUU AST
NAPKINS
100 CT
2/69¢

**ALL FISHING
LURES**
30% OFF

CYROS SCOTT
MEN'S DOUBLEKNT
SLACKS
REG \$9.97
\$7⁴⁹

FUJI FILM
12 EXPOSURE PRINTS
110/126 CARTRIDGE
99¢
20 EXPOSURE PRINTS
110/126 CARTRIDGE
\$1¹⁹

SPILLMATE
PAPER TOWELS
REG 83¢
2/\$1⁰⁹

**EVERY DAY
LOW PRICES**
GAL HOMO MILK.....\$1.77
1/2 GAL HOMO MILK.....93¢
GAL LOWFAT MILK.... \$1.53
1/2 GAL LOWFAT..... 83¢
1/2 GAL BUTTERMILK... 83¢
1 LB COTTAGE CHEESE...67¢
2 LB COTTAGE CHEESE.\$1.33
WHIPPING CREAM..... 53¢
SOUR CREAM..... 45¢

LO-BOY
COOLER
REG \$5.99
\$4²⁹

FISH STRINGER
REG 59¢
43¢

MINNOW BUCKETS
REG \$3.79
\$2⁴⁹

YOUR CHOICE
FISHING WEIGHTS
REG 33¢
2/55¢

FISH BASKETS
REG \$3.99
\$2⁷⁹

TACKLE BOX
REG \$2.89
\$2¹⁹

SHURFINE
SUGAR
5 LB
REG \$1.13
89¢
1 BAG LIMIT



FIRE DESTROYS PLAYHOUSE—Late last Friday afternoon, firemen were summoned to a blaze in the 300 block of West Second Street to extinguish a blaze in a children's playhouse. Deputy Sheriff James Williams utilized a nearby garden hose to keep the fire from reaching a house adjacent to the playhouse, until the members of the Muleshoe Volunteer Fire Department arrived.

Governor...

Cont. from page 1
 "Responsible state officials, in other times, have asked us to pay for specific programs and services only. The present governor, on the other hand, allows the legislature to create additional or expanded programs and services to exhaust the revenue surplus. He does not seem to realize that this is not his money, not the legislature's money, but it belongs to the people of this state, and it should be given back to them in the form of a tax cut."
 "This could be accomplished with an automatic reduction in the state's sales and use tax. At the end of each year, or every two

Taxes...

Cont. from page 1
 Social Security is clearly the economic mainstay for the vast majority of older Americans. It will continue to be for the foreseeable future. Termination of Social Security coverage can be a risky decision for employees of state and local entities.
 "Pressure to drop Social Security coverage is quite often initiated by employees. They want more take-home pay to cope with inflation. In addition, many younger employees are often more concerned with meeting current living expenses than retirement income in later years. Thus, younger workers opt for a pay raise in their take-home pay by reducing their payroll deduction."
 "But Social Security is family security, protecting workers, and their families from loss of earnings because of the young worker's death or disability as well as future retirement. In addition, today's workers are building hospital insurance protection under medicare for themselves and their spouses."
 "However, a section of the 1977 Amendments to the Social Security Act provides that, under certain conditions, some individuals receiving public retirement payments or pensions based upon their own earnings may have their Social Security benefits as auxiliaries offset by the amount of their pensions."
 Persons affected by the offset provisions are those beneficiaries who are entitled to Social Security only as father, mothers, wives, husbands, widows, divorced wives, surviving divorced wives, and surviving divorced mothers of insured workers. For more detailed information about this provision, individuals should get in touch with their nearest Social Security offices.
 "Before considering termination of Social Security coverage, state and local government employees should carefully weigh the benefits offered by Social Security and those offered by other insurance plans. Most of these plans are significantly weaker than Social Security, especially in the area of hospital insurance protection, survivor protection and disability protection.
 "Essential benefit protection must be maintained for state and local government employees. Otherwise, individuals who become unable to work must rely on savings, relatives, friends, or welfare, which may be a less desirable choice than obtaining the insurance protection while working."

Bee...

Cont. from page 1
 Mrs. Gib Dupler; Laurie Latimer, daughter of Mr. and Mrs. Charles Latimer and Gabriel Rodriguez, son of Mr. and Mrs. Joe Rodriguez. They were accompanied to Muleshoe by Mrs. Buck Raggsdale.
 All the contestants from Muleshoe Junior High School included Dusty Puckett, son of Mr. and Mrs. D.W. Puckett; Tim Sain, son of Mr. and Mrs. Walter Sain.; Stacey Campbell, daughter of Mr. and Mrs. Buck Campbell; Lupe Rosales, son of Mr. and Mrs. Rosalio Rosales; Robert Nowlin; son of Mr. and Mrs. Joel Nowlin; Cathy Lopez; Suzette Rojas, daughter of Mr. and Mrs. Tony rojas; Angie Salas, daughter of Mr. and Mrs. Lino Salas; Paula Snell, daughter of Mr. and Mrs. Bill Snell; Kevin Huckaby, son of Mr. and Mrs. Joe Huckaby and Eugene Porras.
 Competing overall from the

Budget...

Cont. from page 1
 Street and Avenue B and several reports were given.
 Terry Field reported a meeting with a Southwestern Public Service Company representative and said the city decided not to sell land to the SWPS for a substation.
 In his stop at Muleshoe, former Texas Governor Preston Smith, said he advocates removing controls from oil and gas and returning the energy sources to free enterprise for energy control.
 He deplored the constant rises in energy costs, citing the need for older persons with fixed incomes to be aided by reduced prices in taxes and in energy sources.
 As he left Muleshoe for a stop in Morton, Smith said he would continue to contact personally as many people of the state as he possibly could and would maintain an 'open door' policy in Austin as he did when he was serving as governor in a previous term.

The city manager reported that the city has been awarded a Certificate of Conformance in Financial Reporting by the Municipal Finance Officers Association. He said Muleshoe is one of fewer than 150 cities receiving the certification in the nation.
 He also reported that the grant/loan for the farm labor housing project was closed last Friday and reported on the March 13 meeting of the City Planning Commission.
 He said it was recommended by the planning commission that the extraterritorial jurisdiction to be set at one mile, with an option for future extension if necessary and a possible FmHA planning grant for a land use study and zoning ordinance.

STUDENT LOAN PROBE
 HEW Secretary Joseph Califano has announced plans to crack down on the fraud and sloppy management practices that have cost the government's three largest student aid programs millions of dollars. He said HEW will experiment with the use of private collection agencies to collect money from student loan defaulters in its Atlanta and San Francisco regions.

ON BEAM WEAPONS

William J. Perry, Defense Department research chief, has proposed a spending boost to push development of new weapons that could destroy attacking missiles and hostile enemy satellites with highly concentrated light beams.

Mary DeShazo fifth grade were Shelly Sain, daughter of Mr. and Mrs. Walter Sain; Becky Mardis, daughter of Mr. and Mrs. Burl Mardis; Tammy Nowell, daughter of Mr. and Mrs. Darrell Nowell; Alan Finney, son of Mr. and Mrs. Bob Finney; Tony Luna, son of Mr. and Mrs. Tonly Luna Sr.; Richard Lence; Dorinda Shafer, daughter of Mr. and Mrs. Ronnie Shafer; Kevin Peterson, son of Mr. and Mrs. Wayne Peterson and R.G. Bennett III, son of Mr. and Mrs. R.G. Bennett, Jr.

Muleshoe...

Cont. from page 1
 system throughout the 15-week fall trimester.

Visitors in the home of Mr. and Mrs. Buck Creamer last weekend were her sister and husband, Mr. and Mrs. Andrew Carroll of Paducah.
 Visiting in the Creamer home also were Mr. and Mrs. Bert Darling of Morton.

Mr. and Mrs. Frank Skala of Arkache, Okla. were weekend guests in the home of Mr. and Mrs. Homer Millsap.

Edward Kennedy, Senator (D-Mass.), on defense budget study: "This study impresses us with the need to scrutinize the military budget to insure that there is no waste, no fat, no expenditures which do not materially improve our national security."

**** Leaders get credit for the work they can persuade others to do. ****
 **** Much time is wasted preparing for what doesn't happen. ****
 **** Few people complain about being over-rewarded by life's fortunes. ****

AC OIL FILTERS
 Popular spin-on type PF2, PF 20, PF 24, PF 25, PF 30.
LIMIT 2
\$1.99 ea.
 FOR MOST U.S. CARS

VALVOLINE OIL
 HD Super HPO
LIMIT ONE CASE
65¢ QT.

OIL AND FILTER SALE

VINYL-CLAD OIL SPOUT
 Sturdy, leak-proof design of heavy gauge steel with vinyl coating. #C012
SPECIAL 99¢

ADJUSTABLE OIL FILTER WRENCH
 Fits all disposable filters for domestic and imported cars. #T86C
NOW ONLY \$1.60

BRAND NEW! BERRYMAN B-33 ENGINE CLEANER
 Removes grease and grime fast! 16 oz. spray can
LOW \$1.43

CHAMP UTILITY FILLER
 Metal 5 1/2" funnel with 15 1/2" flexible tube and tapered spout. #9-785
SPECIAL \$3.34

Prices good at participating CARQUEST Auto Parts Stores through March 19, 1978.

Muleshoe Auto Parts
 217 N. 1st.

ALLSUP'S CONVENIENCE STORES
OPEN EASTER
 ALLSUP'S IS OPEN ALL DAY EASTER FOR YOUR SHOPPING CONVENIENCE

WE WISH YOU A HAPPY EASTER

BORDEN'S CHOC-O-LADE
 \$1.29 1 GAL. PLASTIC CTN.

SHURFINE GOLDEN CORN
 5 VAC PAK 12 OZ. CAN \$1

BORDEN'S PREMIUM ICE CREAM
 \$1.29 NO. CTN.

SHURFINE SAUERKRAUT
 4 16 OZ. CAN 99¢

SHURFINE VEGETABLE OIL
 99¢ 38 OZ.

BORDEN'S COTTAGE CHEESE
 98¢ 24 OZ. CTN.

SHURFINE MONEY ORDERS
 00 - \$200.00 09¢ FOR ONLY

SHURFINE DOG FOOD
 10 LB 69¢

SHURFINE RANCH STYLE BEANS
 4 NO. 200 CANS \$1

SHURFINE BATHROOM TISSUE
 2 PLY 8 ROLL PKG. PINK/YELLOW \$1.29

BATH PURE PORK SAUSAGE
 69¢ 1 LB. PKG.

COLONIAL COOKIES
 2 FOR 69¢

COCA COLA
 6 Bottle Ctn. 32 Oz. \$1.19 Plus Deposit

SHURFINE NAPKINS
 5 60 CT. PKG. 99¢

SHURFINE FROZEN CRINKLE CUT POTATOES
 \$1.39 5 LB. BAG

SHURFINE MARGARINE
 39¢ 1 LB.

SHURFINE TUNA
 79¢ JUMBO 9 1/2 OZ. CAN

SHURFINE FISH STICKS
 2 8 OZ. PKG. 89¢

SHURFINE CRUSHED OR SLICED PINEAPPLE
 2 1 LB. CAN 79¢ 15 1/2 OZ.

SHURFINE FROZEN BARTLETT PEARS
 2 JUMBO 29 OZ. CAN 99¢

SHURFINE FRUIT COCKTAIL
 2 JUMBO 30 OZ. SIZE 89¢

318 W AMER BLVD

Shoes For The Whole Family
CASH LAYAWAY

Men's Dress Shoes 12.99
 Sleek toe slip-on Easy-to-clean polyurethane upper Healthy sole Rubber heel Shock or Blow Sizes 6 1/2 - 12

Ladies' Fashion Shoes For Spring 15.97
 Smartly styled spring shoes for dress and casual wear in a bright array of colors. A beautiful blend of comfort and quality. Available in sizes 5 1/2 - 10 at hard-to-beat prices.

Boys' and Girls' Stylish Spring Shoes 9.97
 Picture pretty, shiny dress-up shoes and popular practical casuals featuring both durability and comfort. Available in popular sizes for boys and girls.

Anthony's Muleshoe Texas

Muleshoe Journal
 Established February 23, 1952. Published by Muleshoe Publishing Co., Inc. Every Thursday at 306 W. Second, Box 495 Muleshoe, Texas 79361. Second class postage paid at Muleshoe, Texas.

TEXAS PRESS ASSOCIATION

S. B. Hall, President
 James Wood, Vice President
 Chris Williams, News
 Bob Franklin, Secretary
 Patsy Orndorff, Editor
 Bill McHenry, Advertising
 April Beutler, Subscription

MEMBERSHIP: Muleshoe Journal and Bailey County Journal \$4.00
 Bailey and surrounding Counties \$5.00
 Muleshoe Journal and Bailey County Journal (elsewhere in Texas) \$10.00
 Muleshoe Journal and Bailey County Journal (elsewhere in Texas) \$11.00
 Single Copy \$0.25
 Monthly by Carrier \$1.75
 Advertising rates upon application.



GIRL SCOUT BANQUET. Karen Kinemer, and Shannon Springfield sold 120 boxes of cookies and won a free week to Camp Rio Blanca. Those receiving Sponsorship Certificates were: John Street,

accepting the certificate for the Muleshoe Journal, and Lyndall Murray, accepting the certificate for Anthony's. H.E. Reeder, middle, accepted the Sponsorship Plaque for the V.F.W.

You can travel a thousand miles and you won't find any better people than those living around you now.

This is the time of year to buy the seed for that garden you plan each year.

We suspect more energy is expended in the effort to avoid work than is expended in actual work itself.

There's never any scarcity of excuses for doing what you want to do.



Josie Jessica Vidana

Mr. and Mrs. Eusebio Vidana are the proud parents of a new baby girl, born March 19, 1978, at 12:35 p.m., in the West Plains Hospital in Muleshoe. The baby weighed seven pounds and three ounces, and was named Josie Jessica Vidana. The couple have one other child, Laura.

Grandparents are Mr. and Mrs. Amelio Gonzales, Clovis, N.M., and Mr. and Mrs. Jose Vidana, Mexico. Great grandparents are Mr. and Mrs. Valentino Gonzales, Clovis, N.M., and great great grandmother is Lola Baca, of Vaughn, N.M.

A little politeness goes a long way with most people, and is usually repaid twofold.

After a man stays in public office for ten years, he naturally gets the idea that the office belongs to him.



WEDDING PLANS ANNOUNCED. Mrs. Celia Lopez announces the approaching marriage of her daughter, Peggy, to Frank DeLeon, son of Mr. and Mrs. Frank DeLeon, of Earth. The couple plan a March 31, 1978 wedding.

Peanut Balls
With ice cream scoop shape vanilla ice cream into balls. Roll in chopped peanuts. Serve in chocolate sauce.

Whether you realize it or not, a sixth of 1978 has already passed into history.

Girl Scout Banquet Held, March 17

A Girl Scout Banquet was held Friday, at 7:30 p.m., at the May DeShazo Elementary School Cafeteria.

Speaking were Mrs. Jan Springfield and Sharon Stevenson. Mrs. Springfield presented the Sponsorship Certificates and the Sponsorship Plaque. Sharon Stevenson presented the Cookie Awards to the troops.

Those receiving Sponsorship Certificates were: Lyndall Murray, Anthony's, Reverend Hunter, Community Church, Terry Bouchelle, 16th and Ave. D, Church of Christ, and the Mule-

Baptist Church Celebrates 35th Anniversary

On Sunday evening, March 12, 1978, West Camp Baptist Church celebrated its 35th Anniversary. The Church History was read by Mrs. Dalton Harris. The Special Music was brought by Mrs. Dean Hukill. Two former Pastors were present for the occasion. Bruce Slayden, of Muleshoe, served as Pastor in 1946, and Glenn Harlen, of Plains, served as Pastor in 1970-1975.

Glenn Harlen brought the evening message. Following the services, refreshments and fellowship was enjoyed by all present. Present for the celebration were 95 members and guests.

Mr. and Mrs. Everett Roark are the only two remaining Charter Members who are presently members of the church. Lewis N. Johnson is the present Pastor.

The Journal, H.E. Reeder received the Sponsorship Plaque for the V.F.W.

Troops 119 and 258 received their first year Brownie B badges. Troops 119, 258, and 388 received their year stars.

Other honored guests was KMUL.

4-H Meets

The Bailey County 4-H Council met after school Thursday, March 16, in the Bailey County Courtroom.

The meeting was called to order by the secretary, Todd Holt.

The 4-H'er of the month project was discussed. Council members are to take the tentative rules back to their club for approval by club members.

Method demonstrations were also discussed. The method demonstration workshop to be held Friday, March 17, was announced. The District Method Demonstration Contest to be held Saturday, April 29, was also announced. The meeting was then adjourned.

Members present were: Todd Holt, Mike Holt, Tamara Gilliland, Mandy Plank, Jimmy Gleason, Greg Harrison, Perry Flowers, Eddie Black, Tim Sain, and County Agents: Spencer Tanksley, and Miss Linda Mullin.



MISS PATTI POYNOR

Miss Patti Poynor Honored With Shower

Patti Poynor was honored with a Lingerie Shower Saturday, March 18, at the home of Mrs. Dave Engelking.

Miss Diane McGuire served fresh fruit plate, vegetable plate and dip, and lemon pound cake. The hostess gift was a negligee set.

Hostesses for the occasion were Mrs. Charles Pummill, Miss Perri Poynor, Mrs. Paul Poynor, Miss Tammie Smith, and Miss Jana Bruns.

Careful driving is always important because your life is at stake on the highways.

And then there are politicians who like to hear themselves talk, about themselves.

The only unvarying law we know of is that on tipping. The receiver never refuses the tip.

Sudan News

Evelyn Ritchie

Mrs. Birdie Shuttlesworth will return home soon from California.

Truman Lee Willington was in Levelland this weekend. While there, she put her mother in a Levelland Rest Home.

Mr. and Mrs. John Burnett gave a birthday dinner, Sat. for Mr. and Mrs. Dail Burnett. Those attending were: Sam Burnett, of Littlefield, and Mr. and Mrs. Charles Burnett.

Mrs. W.G. DeLoach visited last week, in Lubbock, with her daughter, Mrs. Jimmy Coward. She returned home Sunday afternoon.

California Concept Hair Design Center

Individual Cuts

For Men & Women

g-g's

Jacquie McKenna

Design Cut Specialist

3306-82nd Lubbock 792-5700

Boots
Check Our Styles & Prices
ee's WESTERN WEAR
Open Mon.-Sat. 9 a.m.-6 p.m.
1910 W. Amar Blvd 272-4663

Easter Begins At St. Clair's Dresses
Toddler 2-4
Regular 3-6x
Girls 7-14

Select Your Favorite Dress From Our Collection Of Martha's Miniatures Or Jill Lynn's Beautiful Spring Colors In Polyester, Nylons, And Blends

\$12.00 - \$46.00

St. Clair's
110 Main 272-4453

Buy a Pepsi and keep this cartoon "Action" glass



Buy A Hamburger & French Fries & Get A Small Pepsi

Free Thurs. & Fri. Only

SONIC Happy Eating

Come Help Us With Our **Spring Clean-Up**

Save \$100 \$699.99 w/Trade

Model LDE 9800- (gold only) 2 speeds, electronic drying or timed drying, extra large drum, no-iron care for permanent Press, finish guard control, 5 temp settings, & full width door.

Model LDA 9800- (gold only) 2 speeds, 6 cycles, super size washing capacity, variable load-size water Selector magic clean filter, electric bleach & fabric softener dispenser, and a cool down care for Permanent Press fabrics.

Save on these Whirlpool one of a kind Dryers
2) LDE7800W1 (white only)
1) LDE6900W0 (white only)

Save \$80 on freight damaged KITCHEN-AID built-in dishwasher. You pick the color. REG. 499.95 Now \$419.95

Save \$320 on a LITTON combination cooking microwave & regular heat, both in the same BIG OVEN. Makes all others obsolete. REG. 869.95 Now \$549.95

Wilson Appliances
117 Main Store Hours 8 a.m.-6p Mon.-Sat 272-5531



EPSILON DELTA EASTER EGG HUNT...Epsilon Delta held its annual Easter Egg Hunt Saturday. Pictured above, left to right, are: Lauri Burgess, Spirit Gregory, Drew Douglass, Quay Gregory, Trisha Burgess, Melanie Blackwell, Canyon Gregory, and Robin Burgess. Second row: Tisha Young, Amy Harrison, Ronnie Gail Barrett, Mandi Golden, and Tadd Young. Third row: Gilbert Rennels, Ramey Kimbrough, and Brooke Barrett. Kneeling: Andy Crawford, Julie Kimbrough, and Marcia Blackwell.

Miss Cruz Honored With Bridal Shower

A bridal shower honoring Esther Cruz, of Sudan, was held in the Community Room of the Muleshoe State Bank, March 19. Special guests attending were the bride's sister, Mrs. Tony Montez, and Mrs. Rosendo Valenzuela, and bride's sister-in-law, Mrs. Manuela Cruz, and the bride's mother, Mrs. Refugio Cruz.

A peach lace table cloth covered the serving table. The center piece was peach and white. Mrs. Jessie Anzaldua, and Mrs. Lupe Rejino served peach slush punch, with peach and white cake, and wedding cookies.

Mrs. Rosendo Valenzuela, sister of the bride, greeted guests upon arrival and attended the registration book.

Mrs. Martin Alarcon registered the gift, a T.V. set.

Hostesses were: Mrs. Esperanza Guillen, Mrs. Dorothy Hernandez, Mrs. Margie Alarcon, Mrs. Antonia Gusman, Mrs.

Cabela Valenzuela, Mrs. Elva Anzaldua, Mrs. Carlota Almanza, Mrs. Sulema Moron, Mrs. Frances Romas, Mrs. Mary Devinney, Mrs. Benita Gauna, Mrs. Clara Flores, Mrs. Betty Rejino, Mrs. Aurora Mata, Mrs. Frances Perez, Mrs. Lucy Bachicha, Mrs. Le's Vellarreal, Mrs. Esther Cruz.

Easter Egg Hunt Held

Epsilon Delta held its Annual Easter Egg Hunt Saturday, March 18, at 2:00 p.m. at the home of Mrs. Jerry Gregory.

The two, three, and four year olds were allowed to start first, then close behind came the rest of the children. Drew Douglass won the prize for the most eggs found. Julie Kimbrough found the prize egg.

Taylor expresses himself in a crisp, flowing style that is easy-to-read and thought-provoking. The life-oriented book is not designed for the critic, but for the average person who wants new courage and inspiration for living. The reader soon discovers that the God who lifted the ancient Hebrews from hopelessness and despair wants to help man today.

The author grew up on a farm and served as a missionary in South America.



MISS ESTHER CRUZ

Hero Banquet March 20

A large crowd attended the Hero Employer/Parent Appreciation Banquet, Monday night, March 20. Mistress of Ceremonies, and President, Cindy Harris, introduced First Vice-President, Frances Brown, who gave the invocation.

Following the invocation Loveta Black, led the Creed, and Student Council Representative, Nina Pitcock gave the welcome. Bob Stovall offered the response.

Providing entertainment and dinner music was the Muleshoe High School Stage Band. Introduction of the speaker, Keith Winter, was made by Stephanie Bell.

Introduction of Past Honorary Members was made by, Second Vice-President, Jane Green, and Historian, Christine Vela introduced 1978 Honorary Members.

1978 Honorary Members were: Mr. and Mrs. Waylon Harris, Wayland Ethridge, and Tommy Black.

The Chamber of Commerce Award was presented to the Outstanding Hero, Cindy Harris, by Tommy Black.

Loafing becomes respectable when the doctor tells you it's necessary.

Ybarra, Mrs. Roman Lopez, Mrs. Julia Alarcon, Mrs. Julia Salazar, Mrs. Lucy Reicio, Mrs. Maria Montez, Mrs. Teresa Valdes, Mrs. Mary Cruz, Mrs. Manola Cruz, and Mrs. Elvira Cruz.

Members attending were: Barbara Hugg, Joan Gilley, Wanda Hamblin, Blanche Lenderson, Bertha Beene, Katherine Rogers, Jerry Wheatley, Beth Watson, Debbie Davis, Jama Brown, Rheata White, Elsie McMillan, Gayle Littleton, Mary Forbes, Betty Embry, Velma Davis, Carrie Lee Bishop, Mary Foster, Barbara Carpenter, Vera Fox, Ruth Hammock, Gladys Dorsey, Beatrice Shirey, Emily Clayton, Lucy Lewis, Hazel Nowell, Cara John Schuster, Louise Alair, Rhonda Pummil, Jauree Smallwood, Olive Garrett, Myrtle Steinbock, Fern Kelley, Jayne Williams, and Dana Arnold.

Guests were: Ernestine Steinbock, Rose Nichols, Brenda Cook, Naomi Burgess, Robin Taylor, Geraldine Green, Helga Stein, and Joe Stein.

Hostess for the meeting were Juaree Smallwood, and Rhonda Pummil.

Members attending were: Barbara Hugg, Joan Gilley, Wanda Hamblin, Blanche Lenderson, Bertha Beene, Katherine Rogers, Jerry Wheatley, Beth Watson, Debbie Davis, Jama Brown, Rheata White, Elsie McMillan, Gayle Littleton, Mary Forbes, Betty Embry, Velma Davis, Carrie Lee Bishop, Mary Foster, Barbara Carpenter, Vera Fox, Ruth Hammock, Gladys Dorsey, Beatrice Shirey, Emily Clayton, Lucy Lewis, Hazel Nowell, Cara John Schuster, Louise Alair, Rhonda Pummil, Jauree Smallwood, Olive Garrett, Myrtle Steinbock, Fern Kelley, Jayne Williams, and Dana Arnold.

Guests were: Ernestine Steinbock, Rose Nichols, Brenda Cook, Naomi Burgess, Robin Taylor, Geraldine Green, Helga Stein, and Joe Stein.

Hostess for the meeting were Juaree Smallwood, and Rhonda Pummil.

Members attending were: Barbara Hugg, Joan Gilley, Wanda Hamblin, Blanche Lenderson, Bertha Beene, Katherine Rogers, Jerry Wheatley, Beth Watson, Debbie Davis, Jama Brown, Rheata White, Elsie McMillan, Gayle Littleton, Mary Forbes, Betty Embry, Velma Davis, Carrie Lee Bishop, Mary Foster, Barbara Carpenter, Vera Fox, Ruth Hammock, Gladys Dorsey, Beatrice Shirey, Emily Clayton, Lucy Lewis, Hazel Nowell, Cara John Schuster, Louise Alair, Rhonda Pummil, Jauree Smallwood, Olive Garrett, Myrtle Steinbock, Fern Kelley, Jayne Williams, and Dana Arnold.

Guests were: Ernestine Steinbock, Rose Nichols, Brenda Cook, Naomi Burgess, Robin Taylor, Geraldine Green, Helga Stein, and Joe Stein.

Hostess for the meeting were Juaree Smallwood, and Rhonda Pummil.

Members attending were: Barbara Hugg, Joan Gilley, Wanda Hamblin, Blanche Lenderson, Bertha Beene, Katherine Rogers, Jerry Wheatley, Beth Watson, Debbie Davis, Jama Brown, Rheata White, Elsie McMillan, Gayle Littleton, Mary Forbes, Betty Embry, Velma Davis, Carrie Lee Bishop, Mary Foster, Barbara Carpenter, Vera Fox, Ruth Hammock, Gladys Dorsey, Beatrice Shirey, Emily Clayton, Lucy Lewis, Hazel Nowell, Cara John Schuster, Louise Alair, Rhonda Pummil, Jauree Smallwood, Olive Garrett, Myrtle Steinbock, Fern Kelley, Jayne Williams, and Dana Arnold.

Guests were: Ernestine Steinbock, Rose Nichols, Brenda Cook, Naomi Burgess, Robin Taylor, Geraldine Green, Helga Stein, and Joe Stein.

Hostess for the meeting were Juaree Smallwood, and Rhonda Pummil.

Members attending were: Barbara Hugg, Joan Gilley, Wanda Hamblin, Blanche Lenderson, Bertha Beene, Katherine Rogers, Jerry Wheatley, Beth Watson, Debbie Davis, Jama Brown, Rheata White, Elsie McMillan, Gayle Littleton, Mary Forbes, Betty Embry, Velma Davis, Carrie Lee Bishop, Mary Foster, Barbara Carpenter, Vera Fox, Ruth Hammock, Gladys Dorsey, Beatrice Shirey, Emily Clayton, Lucy Lewis, Hazel Nowell, Cara John Schuster, Louise Alair, Rhonda Pummil, Jauree Smallwood, Olive Garrett, Myrtle Steinbock, Fern Kelley, Jayne Williams, and Dana Arnold.

Guests were: Ernestine Steinbock, Rose Nichols, Brenda Cook, Naomi Burgess, Robin Taylor, Geraldine Green, Helga Stein, and Joe Stein.

Hostess for the meeting were Juaree Smallwood, and Rhonda Pummil.

Members attending were: Barbara Hugg, Joan Gilley, Wanda Hamblin, Blanche Lenderson, Bertha Beene, Katherine Rogers, Jerry Wheatley, Beth Watson, Debbie Davis, Jama Brown, Rheata White, Elsie McMillan, Gayle Littleton, Mary Forbes, Betty Embry, Velma Davis, Carrie Lee Bishop, Mary Foster, Barbara Carpenter, Vera Fox, Ruth Hammock, Gladys Dorsey, Beatrice Shirey, Emily Clayton, Lucy Lewis, Hazel Nowell, Cara John Schuster, Louise Alair, Rhonda Pummil, Jauree Smallwood, Olive Garrett, Myrtle Steinbock, Fern Kelley, Jayne Williams, and Dana Arnold.

Guests were: Ernestine Steinbock, Rose Nichols, Brenda Cook, Naomi Burgess, Robin Taylor, Geraldine Green, Helga Stein, and Joe Stein.

Hostess for the meeting were Juaree Smallwood, and Rhonda Pummil.

Members attending were: Barbara Hugg, Joan Gilley, Wanda Hamblin, Blanche Lenderson, Bertha Beene, Katherine Rogers, Jerry Wheatley, Beth Watson, Debbie Davis, Jama Brown, Rheata White, Elsie McMillan, Gayle Littleton, Mary Forbes, Betty Embry, Velma Davis, Carrie Lee Bishop, Mary Foster, Barbara Carpenter, Vera Fox, Ruth Hammock, Gladys Dorsey, Beatrice Shirey, Emily Clayton, Lucy Lewis, Hazel Nowell, Cara John Schuster, Louise Alair, Rhonda Pummil, Jauree Smallwood, Olive Garrett, Myrtle Steinbock, Fern Kelley, Jayne Williams, and Dana Arnold.

Guests were: Ernestine Steinbock, Rose Nichols, Brenda Cook, Naomi Burgess, Robin Taylor, Geraldine Green, Helga Stein, and Joe Stein.

Hostess for the meeting were Juaree Smallwood, and Rhonda Pummil.

Members attending were: Barbara Hugg, Joan Gilley, Wanda Hamblin, Blanche Lenderson, Bertha Beene, Katherine Rogers, Jerry Wheatley, Beth Watson, Debbie Davis, Jama Brown, Rheata White, Elsie McMillan, Gayle Littleton, Mary Forbes, Betty Embry, Velma Davis, Carrie Lee Bishop, Mary Foster, Barbara Carpenter, Vera Fox, Ruth Hammock, Gladys Dorsey, Beatrice Shirey, Emily Clayton, Lucy Lewis, Hazel Nowell, Cara John Schuster, Louise Alair, Rhonda Pummil, Jauree Smallwood, Olive Garrett, Myrtle Steinbock, Fern Kelley, Jayne Williams, and Dana Arnold.

Guests were: Ernestine Steinbock, Rose Nichols, Brenda Cook, Naomi Burgess, Robin Taylor, Geraldine Green, Helga Stein, and Joe Stein.

Introduction of Employers was made by reporter, Jolinda Hawkins, and presentation of certificates was made by Maria Pacheco. Recognition of Past HECE Members was made by Anna Hernandez. Treasurer of Muleshoe HECE is Rhonda King.

Following the invocation Loveta Black, led the Creed, and Student Council Representative, Nina Pitcock gave the welcome. Bob Stovall offered the response.

Providing entertainment and dinner music was the Muleshoe High School Stage Band. Introduction of the speaker, Keith Winter, was made by Stephanie Bell.

Introduction of Past Honorary Members was made by, Second Vice-President, Jane Green, and Historian, Christine Vela introduced 1978 Honorary Members.

1978 Honorary Members were: Mr. and Mrs. Waylon Harris, Wayland Ethridge, and Tommy Black.

The Chamber of Commerce Award was presented to the Outstanding Hero, Cindy Harris, by Tommy Black.

Loafing becomes respectable when the doctor tells you it's necessary.

Ybarra, Mrs. Roman Lopez, Mrs. Julia Alarcon, Mrs. Julia Salazar, Mrs. Lucy Reicio, Mrs. Maria Montez, Mrs. Teresa Valdes, Mrs. Mary Cruz, Mrs. Manola Cruz, and Mrs. Elvira Cruz.

Members attending were: Barbara Hugg, Joan Gilley, Wanda Hamblin, Blanche Lenderson, Bertha Beene, Katherine Rogers, Jerry Wheatley, Beth Watson, Debbie Davis, Jama Brown, Rheata White, Elsie McMillan, Gayle Littleton, Mary Forbes, Betty Embry, Velma Davis, Carrie Lee Bishop, Mary Foster, Barbara Carpenter, Vera Fox, Ruth Hammock, Gladys Dorsey, Beatrice Shirey, Emily Clayton, Lucy Lewis, Hazel Nowell, Cara John Schuster, Louise Alair, Rhonda Pummil, Jauree Smallwood, Olive Garrett, Myrtle Steinbock, Fern Kelley, Jayne Williams, and Dana Arnold.

Guests were: Ernestine Steinbock, Rose Nichols, Brenda Cook, Naomi Burgess, Robin Taylor, Geraldine Green, Helga Stein, and Joe Stein.

Hostess for the meeting were Juaree Smallwood, and Rhonda Pummil.

Members attending were: Barbara Hugg, Joan Gilley, Wanda Hamblin, Blanche Lenderson, Bertha Beene, Katherine Rogers, Jerry Wheatley, Beth Watson, Debbie Davis, Jama Brown, Rheata White, Elsie McMillan, Gayle Littleton, Mary Forbes, Betty Embry, Velma Davis, Carrie Lee Bishop, Mary Foster, Barbara Carpenter, Vera Fox, Ruth Hammock, Gladys Dorsey, Beatrice Shirey, Emily Clayton, Lucy Lewis, Hazel Nowell, Cara John Schuster, Louise Alair, Rhonda Pummil, Jauree Smallwood, Olive Garrett, Myrtle Steinbock, Fern Kelley, Jayne Williams, and Dana Arnold.

Guests were: Ernestine Steinbock, Rose Nichols, Brenda Cook, Naomi Burgess, Robin Taylor, Geraldine Green, Helga Stein, and Joe Stein.

Hostess for the meeting were Juaree Smallwood, and Rhonda Pummil.

Members attending were: Barbara Hugg, Joan Gilley, Wanda Hamblin, Blanche Lenderson, Bertha Beene, Katherine Rogers, Jerry Wheatley, Beth Watson, Debbie Davis, Jama Brown, Rheata White, Elsie McMillan, Gayle Littleton, Mary Forbes, Betty Embry, Velma Davis, Carrie Lee Bishop, Mary Foster, Barbara Carpenter, Vera Fox, Ruth Hammock, Gladys Dorsey, Beatrice Shirey, Emily Clayton, Lucy Lewis, Hazel Nowell, Cara John Schuster, Louise Alair, Rhonda Pummil, Jauree Smallwood, Olive Garrett, Myrtle Steinbock, Fern Kelley, Jayne Williams, and Dana Arnold.

Guests were: Ernestine Steinbock, Rose Nichols, Brenda Cook, Naomi Burgess, Robin Taylor, Geraldine Green, Helga Stein, and Joe Stein.

Hostess for the meeting were Juaree Smallwood, and Rhonda Pummil.

Members attending were: Barbara Hugg, Joan Gilley, Wanda Hamblin, Blanche Lenderson, Bertha Beene, Katherine Rogers, Jerry Wheatley, Beth Watson, Debbie Davis, Jama Brown, Rheata White, Elsie McMillan, Gayle Littleton, Mary Forbes, Betty Embry, Velma Davis, Carrie Lee Bishop, Mary Foster, Barbara Carpenter, Vera Fox, Ruth Hammock, Gladys Dorsey, Beatrice Shirey, Emily Clayton, Lucy Lewis, Hazel Nowell, Cara John Schuster, Louise Alair, Rhonda Pummil, Jauree Smallwood, Olive Garrett, Myrtle Steinbock, Fern Kelley, Jayne Williams, and Dana Arnold.

Guests were: Ernestine Steinbock, Rose Nichols, Brenda Cook, Naomi Burgess, Robin Taylor, Geraldine Green, Helga Stein, and Joe Stein.

Hostess for the meeting were Juaree Smallwood, and Rhonda Pummil.

Members attending were: Barbara Hugg, Joan Gilley, Wanda Hamblin, Blanche Lenderson, Bertha Beene, Katherine Rogers, Jerry Wheatley, Beth Watson, Debbie Davis, Jama Brown, Rheata White, Elsie McMillan, Gayle Littleton, Mary Forbes, Betty Embry, Velma Davis, Carrie Lee Bishop, Mary Foster, Barbara Carpenter, Vera Fox, Ruth Hammock, Gladys Dorsey, Beatrice Shirey, Emily Clayton, Lucy Lewis, Hazel Nowell, Cara John Schuster, Louise Alair, Rhonda Pummil, Jauree Smallwood, Olive Garrett, Myrtle Steinbock, Fern Kelley, Jayne Williams, and Dana Arnold.

Guests were: Ernestine Steinbock, Rose Nichols, Brenda Cook, Naomi Burgess, Robin Taylor, Geraldine Green, Helga Stein, and Joe Stein.

Hostess for the meeting were Juaree Smallwood, and Rhonda Pummil.

Members attending were: Barbara Hugg, Joan Gilley, Wanda Hamblin, Blanche Lenderson, Bertha Beene, Katherine Rogers, Jerry Wheatley, Beth Watson, Debbie Davis, Jama Brown, Rheata White, Elsie McMillan, Gayle Littleton, Mary Forbes, Betty Embry, Velma Davis, Carrie Lee Bishop, Mary Foster, Barbara Carpenter, Vera Fox, Ruth Hammock, Gladys Dorsey, Beatrice Shirey, Emily Clayton, Lucy Lewis, Hazel Nowell, Cara John Schuster, Louise Alair, Rhonda Pummil, Jauree Smallwood, Olive Garrett, Myrtle Steinbock, Fern Kelley, Jayne Williams, and Dana Arnold.

Guests were: Ernestine Steinbock, Rose Nichols, Brenda Cook, Naomi Burgess, Robin Taylor, Geraldine Green, Helga Stein, and Joe Stein.

Hostess for the meeting were Juaree Smallwood, and Rhonda Pummil.

Members attending were: Barbara Hugg, Joan Gilley, Wanda Hamblin, Blanche Lenderson, Bertha Beene, Katherine Rogers, Jerry Wheatley, Beth Watson, Debbie Davis, Jama Brown, Rheata White, Elsie McMillan, Gayle Littleton, Mary Forbes, Betty Embry, Velma Davis, Carrie Lee Bishop, Mary Foster, Barbara Carpenter, Vera Fox, Ruth Hammock, Gladys Dorsey, Beatrice Shirey, Emily Clayton, Lucy Lewis, Hazel Nowell, Cara John Schuster, Louise Alair, Rhonda Pummil, Jauree Smallwood, Olive Garrett, Myrtle Steinbock, Fern Kelley, Jayne Williams, and Dana Arnold.

Guests were: Ernestine Steinbock, Rose Nichols, Brenda Cook, Naomi Burgess, Robin Taylor, Geraldine Green, Helga Stein, and Joe Stein.

Hostess for the meeting were Juaree Smallwood, and Rhonda Pummil.

Members attending were: Barbara Hugg, Joan Gilley, Wanda Hamblin, Blanche Lenderson, Bertha Beene, Katherine Rogers, Jerry Wheatley, Beth Watson, Debbie Davis, Jama Brown, Rheata White, Elsie McMillan, Gayle Littleton, Mary Forbes, Betty Embry, Velma Davis, Carrie Lee Bishop, Mary Foster, Barbara Carpenter, Vera Fox, Ruth Hammock, Gladys Dorsey, Beatrice Shirey, Emily Clayton, Lucy Lewis, Hazel Nowell, Cara John Schuster, Louise Alair, Rhonda Pummil, Jauree Smallwood, Olive Garrett, Myrtle Steinbock, Fern Kelley, Jayne Williams, and Dana Arnold.

Guests were: Ernestine Steinbock, Rose Nichols, Brenda Cook, Naomi Burgess, Robin Taylor, Geraldine Green, Helga Stein, and Joe Stein.

Harvey Bass offered the recognition of Mrs. Ben Gramling. The HECE girls received tokens of appreciation from their employers.

Benediction was pronounced by Secretary, Melody Mauldin.

Art Association Holds Meeting

The Muleshoe Art Association met Tuesday, at 2:00 p.m., in the community room of the Muleshoe State Bank, with Mrs. Jack Schuster, president, presiding. Guests were recognized and the minutes and treasurer's report were given.

A nominating committee was appointed, and brochures were distributed for the Annual Art show. Interested parties may contact Mrs. Jerry Wheatley, Louise Alair introduced guest artist, Joe Stein, of Lubbock. Stein gave a presentation on technique in landscapes, touching in particular on cloud formation, and tree structure. Several of the artists' paintings were on

display, depicting lovely landscapes in oil.

For March, the artist of the month is Debbie Davis, who will be displaying some of her work at the Muleshoe Public Library.

The next regular meeting will be April 11, at 2:00 p.m., in the community room with Mrs. Helga Stein as guest artist. The program will be portraiture in pastels.

Hostess for the meeting were Juaree Smallwood, and Rhonda Pummil.

Members attending were: Barbara Hugg, Joan Gilley, Wanda Hamblin, Blanche Lenderson, Bertha Beene, Katherine Rogers, Jerry Wheatley, Beth Watson, Debbie Davis, Jama Brown, Rheata White, Elsie McMillan, Gayle Littleton, Mary Forbes, Betty Embry, Velma Davis, Carrie Lee Bishop, Mary Foster, Barbara Carpenter, Vera Fox, Ruth Hammock, Gladys Dorsey, Beatrice Shirey, Emily Clayton, Lucy Lewis, Hazel Nowell, Cara John Schuster, Louise Alair, Rhonda Pummil, Jauree Smallwood, Olive Garrett, Myrtle Steinbock, Fern Kelley, Jayne Williams, and Dana Arnold.

Guests were: Ernestine Steinbock, Rose Nichols, Brenda Cook, Naomi Burgess, Robin Taylor, Geraldine Green, Helga Stein, and Joe Stein.

Hostess for the meeting were Juaree Smallwood, and Rhonda Pummil.

Members attending were: Barbara Hugg, Joan Gilley, Wanda Hamblin, Blanche Lenderson, Bertha Beene, Katherine Rogers, Jerry Wheatley, Beth Watson, Debbie Davis, Jama Brown, Rheata White, Elsie McMillan, Gayle Littleton, Mary Forbes, Betty Embry, Velma Davis, Carrie Lee Bishop, Mary Foster, Barbara Carpenter, Vera Fox, Ruth Hammock, Gladys Dorsey, Beatrice Shirey, Emily Clayton, Lucy Lewis, Hazel Nowell, Cara John Schuster, Louise Alair, Rhonda Pummil, Jauree Smallwood, Olive Garrett, Myrtle Steinbock, Fern Kelley, Jayne Williams, and Dana Arnold.

Guests were: Ernestine Steinbock, Rose Nichols, Brenda Cook, Naomi Burgess, Robin Taylor, Geraldine Green, Helga Stein, and Joe Stein.

Hostess for the meeting were Juaree Smallwood, and Rhonda Pummil.

Members attending were: Barbara Hugg, Joan Gilley, Wanda Hamblin, Blanche Lenderson, Bertha Beene, Katherine Rogers, Jerry Wheatley, Beth Watson, Debbie Davis, Jama Brown, Rheata White, Elsie McMillan, Gayle Littleton, Mary Forbes, Betty Embry, Velma Davis, Carrie Lee Bishop, Mary Foster, Barbara Carpenter, Vera Fox, Ruth Hammock, Gladys Dorsey, Beatrice Shirey, Emily Clayton, Lucy Lewis, Hazel Nowell, Cara John Schuster, Louise Alair, Rhonda Pummil, Jauree Smallwood, Olive Garrett, Myrtle Steinbock, Fern Kelley, Jayne Williams, and Dana Arnold.

Guests were: Ernestine Steinbock, Rose Nichols, Brenda Cook, Naomi Burgess, Robin Taylor, Geraldine Green, Helga Stein, and Joe Stein.

Hostess for the meeting were Juaree Smallwood, and Rhonda Pummil.

Members attending were: Barbara Hugg, Joan Gilley, Wanda Hamblin, Blanche Lenderson, Bertha Beene, Katherine Rogers, Jerry Wheatley, Beth Watson, Debbie Davis, Jama Brown, Rheata White, Elsie McMillan, Gayle Littleton, Mary Forbes, Betty Embry, Velma Davis, Carrie Lee Bishop, Mary Foster, Barbara Carpenter, Vera Fox, Ruth Hammock, Gladys Dorsey, Beatrice Shirey, Emily Clayton, Lucy Lewis, Hazel Nowell, Cara John Schuster, Louise Alair, Rhonda Pummil, Jauree Smallwood, Olive Garrett, Myrtle Steinbock, Fern Kelley, Jayne Williams, and Dana Arnold.

Guests were: Ernestine Steinbock, Rose Nichols, Brenda Cook, Naomi Burgess, Robin Taylor, Geraldine Green, Helga Stein, and Joe Stein.

Hostess for the meeting were Juaree Smallwood, and Rhonda Pummil.

Members attending were: Barbara Hugg, Joan Gilley, Wanda Hamblin, Blanche Lenderson, Bertha Beene, Katherine Rogers, Jerry Wheatley, Beth Watson, Debbie Davis, Jama Brown, Rheata White, Elsie McMillan, Gayle Littleton, Mary Forbes, Betty Embry, Velma Davis, Carrie Lee Bishop, Mary Foster, Barbara Carpenter, Vera Fox, Ruth Hammock, Gladys Dorsey, Beatrice Shirey, Emily Clayton, Lucy Lewis, Hazel Nowell, Cara John Schuster, Louise Alair, Rhonda Pummil, Jauree Smallwood, Olive Garrett, Myrtle Steinbock, Fern Kelley, Jayne Williams, and Dana Arnold.

Guests were: Ernestine Steinbock, Rose Nichols, Brenda Cook, Naomi Burgess, Robin Taylor, Geraldine Green, Helga Stein, and Joe Stein.

Hostess for the meeting were Juaree Smallwood, and Rhonda Pummil.

Members attending were: Barbara Hugg, Joan Gilley, Wanda Hamblin, Blanche Lenderson, Bertha Beene, Katherine Rogers, Jerry Wheatley, Beth Watson, Debbie Davis, Jama Brown, Rheata White, Elsie McMillan, Gayle Littleton, Mary Forbes, Betty Embry, Velma Davis, Carrie Lee Bishop, Mary Foster, Barbara Carpenter, Vera Fox, Ruth Hammock, Gladys Dorsey, Beatrice Shirey, Emily Clayton, Lucy Lewis, Hazel Nowell, Cara John Schuster, Louise Alair, Rhonda Pummil, Jauree Smallwood, Olive Garrett, Myrtle Steinbock, Fern Kelley, Jayne Williams, and Dana Arnold.

Guests were: Ernestine Steinbock, Rose Nichols, Brenda Cook, Naomi Burgess, Robin Taylor, Geraldine Green, Helga Stein, and Joe Stein.

Hostess for the meeting were Juaree Smallwood, and Rhonda Pummil.

Members attending were: Barbara Hugg, Joan Gilley, Wanda Hamblin, Blanche Lenderson, Bertha Beene, Katherine Rogers, Jerry Wheatley, Beth Watson, Debbie Davis, Jama Brown, Rheata White, Elsie McMillan, Gayle Littleton, Mary Forbes, Betty Embry, Velma Davis, Carrie Lee Bishop, Mary Foster, Barbara Carpenter, Vera Fox, Ruth Hammock, Gladys Dorsey, Beatrice Shirey, Emily Clayton, Lucy Lewis, Hazel Nowell, Cara John Schuster, Louise Alair, Rhonda Pummil, Jauree Smallwood, Olive Garrett, Myrtle Steinbock, Fern Kelley, Jayne Williams, and Dana Arnold.

Guests were: Ernestine Steinbock, Rose Nichols, Brenda Cook, Naomi Burgess, Robin Taylor, Geraldine Green, Helga Stein, and Joe Stein.

Hostess for the meeting were Juaree Smallwood, and Rhonda Pummil.

Members attending were: Barbara Hugg, Joan Gilley, Wanda Hamblin, Blanche Lenderson, Bertha Beene, Katherine Rogers, Jerry Wheatley, Beth Watson, Debbie Davis, Jama Brown, Rheata White, Elsie McMillan, Gayle Littleton, Mary Forbes, Betty Embry, Velma Davis, Carrie Lee Bishop, Mary Foster, Barbara Carpenter, Vera Fox, Ruth Hammock, Gladys Dorsey, Beatrice Shirey, Emily Clayton, Lucy Lewis, Hazel Nowell, Cara John Schuster, Louise Alair, Rhonda Pummil, Jauree Smallwood, Olive Garrett, Myrtle Steinbock, Fern Kelley, Jayne Williams, and Dana Arnold.

Guests were: Ernestine Steinbock, Rose Nichols, Brenda Cook, Naomi Burgess, Robin Taylor, Geraldine Green, Helga Stein, and Joe Stein.

Hostess for the meeting were Juaree Smallwood, and Rhonda Pummil.

Members attending were: Barbara Hugg, Joan Gilley, Wanda Hamblin, Blanche Lenderson, Bertha Beene, Katherine Rogers, Jerry Wheatley, Beth Watson, Debbie Davis, Jama Brown, Rheata White, Elsie McMillan, Gayle Littleton, Mary Forbes, Betty Embry, Velma Davis, Carrie Lee Bishop, Mary Foster, Barbara Carpenter, Vera Fox, Ruth Hammock, Gladys Dorsey, Beatrice Shirey, Emily Clayton, Lucy Lewis, Hazel Nowell, Cara John Schuster, Louise Alair, Rhonda Pummil, Jauree Smallwood, Olive Garrett, Myrtle Steinbock, Fern Kelley, Jayne Williams, and Dana Arnold.

Guests were: Ernestine Steinbock, Rose Nichols, Brenda Cook, Naomi Burgess, Robin Taylor, Geraldine Green, Helga Stein, and Joe Stein.



MISS CINDY HARRIS

West Plains Medical Center Briefs

ADMISSIONS
 March 16-James Elder, David Hamblin, and Adelina Gutierrez.
 March 17-Rafael Flores, Norberto Olivias, Tony Granado, and M.L. Fine.
 March 18-Howard Elliott, W.O. Williams, Manuel Lopez, Jean Wimberly, Ben Murdock, George Johnson, Betty Witherspoon, Financio Guzman, Lottie Orteg.
 March 19-Stella Vidana, Irma Purdy, Vivian White, Ida M. Shafner, and John Noland.
 March 20-Rogelio Puentu, Em-

ma L. Dudley, W.C. McMahan, Janette K-aird, Minnie Dunn, Maria P-driquez, Ross Feagley, Char-ltte Redwine, Scott Bickel, ...MISSALS

March 17-Darlene McMurtrey, Melanie Blackwell, Maria Ramirez, Susan Cardinal and baby boy, and R.T. Davis.

March 18-Walter Damron, Fred Horn, Margaret Lewis, Edna Henderson, David Hamblin, Adelina Gutierrez.

March 19-Sallie Robinson, and Manuel Lopez.

March 20-Maria Carranza, James Elder, Financio Guzman, Norberto Olivias, George Johnson, M.L. Fine, and Yolanda Hernandez.

March 21-Betty Witherspoon, Stella Vidana and baby girl, Rogelio Puentu, and Tony Granado.

CLOSEOUT

of '77-100% Frost-Proof Models
Frigidaire Refrigerators

Save big on all remaining 1977 100% Frost-Proof Refrigerators.

HARVEY BASS
 122 S. 1st Ph 272-3030

Let Us Trade For Your Old Refrigerator

Anthony's WE GOTTA REDUCE CASH & LAYAWAY

321 MAIN ST. TREMENDOUS STOCK REDUCTION SALE CONTINUES!! THURS FRI SAT

SPECIAL GROUP JR TOPS \$4.50

TWILL JEANS \$6.97 PR

ENTIRE STOCK PLAYTEX GIRDLES \$2 OFF REG PRICE BRAS \$1 OFF REG PRICE SPECIAL GROUP PURSES \$7.97

ENTIRE STOCK MENS 2&3 PC.SUITS REG \$69 TO \$125 20% OFF SHALMAR, SANTA CRUZ & DELICATE DAISY TOWELS 3 PC SET \$4.97

100% COTTON WRANGLERS NO-FAULT JEANS BOYS \$8.97 3 PR \$25 STUDENTS \$10.97 3 PR \$36 MENS BLUE DENIM SUPER BELLS \$10.88 3 PR \$30 HAGGAR LEISURE SUITS REG \$39 REG \$44 \$35 100% TEXTURIZED POLYESTER PANT \$10 REG \$13 JR SIZES 3 TO 15 100% NYLON PANTIES 6 PR \$5 FOR THE LADIES ENTIRE STOCK PANTS \$7.99 3 PR \$22

all dressed up

In snappy clothes and patent shoes! A bright, bold look that your guy will flip over! Long-lasting, good fitting and comfortable, too.

Size 11-3 B & D Widths \$19.00

JAGUAR Jumping-Jacks. Most feet are born perfect. They should stay that way.

St. Clair's

Read what your neighbor says about P-A-G SX98

BRIAN HAMILTON
 Dimmitt, Texas

"At an average plant population of 25,000, SX98 yielded 12,206 pounds per acre, dry weight at 15.5% moisture. It stood well and threshed well. I will plant P-A-G SX98 next year."

FOR MORE INFORMATION CONTACT Don Bryant Muleshoe, Texas Tide Products Clay's Corner Muleshoe, Texas Lazbuddie Farm Supply Lazbuddie, Texas

Ask your P-A-G Dealer about the 1978 REBATE PROGRAM. It will save you money on your P-A-G purchases.

PAG P-A-G SEEDS BOX 10303 LUBBOCK, TEXAS 79408

Performance of this seed may be adversely affected by environmental conditions, mutant strains of insects or diseases, or other factors beyond the control of P-A-G.

Letters To The Editor

[Editor's note: The following is a copy of a letter written to Dale E. Hathaway, assistant secretary, Department of Agriculture.]

Dale E. Hathaway
Assistant Secretary
International Affairs and
Commodity Programs
Department of Agriculture
Washington, D.C. 20250

Dear Secretary Hathaway,
Thank you for your informative reply to our mailgram about the farmer's plight. On paper it looks and sounds just great, but the fact remains that the Administration is turning a deaf ear to the farmer's pleas. (American Agriculture had four minutes to present their case to the President in that hour-long meeting you mentioned), and the current farm bill is NOT in the farmer's best interests.

You are an intelligent man and I will not reiterate to you what hundreds of farmers better informed than I have already told

Rather, I would prefer to address something of which you are probably knowledgeable but may not now the extent to which we in "Grassroots America" are aware.

Through American Agriculture strike offices across the nation and farmers who went to Washington in January, we have become alerted to an organization called the Trilateral Commission, established in 1973 by the Rockefeller, the major Eastern banks and those of Western Europe and Japan, and political and multi-national corporate leaders.

According to the Congressional Record, Jimmy Carter, himself David Rockefeller's handpicked man, has filled key cabinet posts with fellow Trilateral members, including the Commission's "Brainchild," Zbigniew Brzezinski, our National Security Advisor.

Among the Trilateralists advising the President are Vice President Walter Mondale, Sec. of State Cyrus Vance, Sec. of Defense Harold Brown, Treasury Secretary W. Michael Blumenthal, Ambassador to the

Elderly to pay 50 cents more for Medicare July 1.

U.S. Andrew Young, and Senator Herman Talmadge, who is chairman of the Senate Agriculture Committee. I do not know whether Sec. of Agriculture Robert Bergland is a member.

Carter's political strategy so far has been in complete harmony with the aims of the Trilateral Commission, and we have learned that the President,

on Oct. 5 at the U.N., signed two United Nations treaties which will commit the United States to giving up our constitutional right to own private property, and our constitutional right to keep the government from confiscating private property without compensation. These: perfidious Human Rights Covenants... the United Nations Covenant on Civil and Political Rights, and the United Nations Covenant on Economic, Social and Cultural Rights... are a direct violation of the 5th and 14th Amendments. They currently await ratification by the U.S. Senate.

Given that perspective, how do you expect the nation's farmers to trust this bill or others like it which still refute 100 per cent parity and push farmer dependency upon the government in every level of agriculture? The present farm bill does not control supply, and is attempting to subsidize the farmers into overproduction, resulting in a cheap market, forcing the farmers to rely upon the government for their income.

Two months ago, when a farmer told me about a senator who told him to urge the farmers not to give up or the U.S. would be under communism in 18 months, I thought it couldn't happen. And if it could, certain-

Out of Orbit



ly not in the short span of 18 months.

The control of the nation's farms and agriculture could do it in that short a time. Agriculture is the very foundation of the nation's economy.

The farm bill you advocate, which is being crammed down our throats, will only need to be in force for one year to get such a stranglehold on the agricultural economy that it will be a very short time until the nation's farmers have fallen like dominoes.

And the agriculture of the United States will be under the absolute control of a Trilateralist government, which will use cheap food as a tool to manipulate foreign policy to suit its own objectives. Parity for agriculture would mean a major setback in their economic takeover plan. Rather than allow the farmers a break-even price in

markets place. President Carter is doggedly pursuing subsidizing the farmers' loss out of the U.S. Treasury, i.e., the farmer's pocket.

Jimmy Carter is selling out the United States of America, and the price tag is the Presidency. I am aware you that farmers do not have a price tag on the integrity of the country, and American Agriculture is not merely seeking to fill the farmer's pocket, as when it first began, but has become a last-ditch weapon against an insidious group of powerful, greedy men who will ultimately cut their own throats as well as ours if they do achieve their objectives of socialist world power.

I appeal to you not to sell us short. We are your last bulwark if the United States is to remain a democracy.

A farmer's wife,
Mrs. Jay M (Jan) Turner
Rt. 1, Friona, TX 79035



JUDGES IN BEE—Judges in the Bailey County Spelling Bee Monday afternoon were from left, Mrs. Lyndon Huckaby, Tommy Black and Mrs. Jack Hodnett from Three Way. It is the judges' decision when a child missed spelling a word correctly.

he will also call again for repeal of the state sales tax on utility bills.

Courts Speak

Ending 17 years of lawsuits, the State Supreme Court turned down the latest contest of the 1960 will of Sarita Kennedy East whose estate included 178,000 acres of oil and gas rich lands in Jim Hogg and Kennedy counties.

In other actions, the high court:

Upheld a verdict favoring Gibson's discount firm in a lawsuit resulting from a rattlesnake's biting a customer in the grocery section of a

Del Rio Store.

The Court of Criminal Appeals affirmed a death penalty murder conviction in the fatal shooting of a Mesquite policeman and a highway patrolman.

Sales Taxes Rise

More than 900 Texas cities received checks totaling \$69.2 million as their share of the one percent local sales tax levy for March.

Comptroller Bob Bullock said the soaring collections are an indication times are getting better.

Bullock said the March collections are 17.4 per cent higher than recorded during

the same period in 1977.

So far this year, the 915 cities have collected \$101.5 million, an increase from \$89.4 million for the first three months of 1977.

No man sacrifices his honor, even for the one he loves.
-Henrik Ibsen.

One honor won is surety for more.
-La Rochefoucauld.

The louder he talked about his honor the faster we counted our spoons.
-R.W. Emerson.

shine on

In a bright patent sandal styled just like Moms... but carefully constructed to take care of growing feet! T-strap sling-back style looks sensational on the trendy little wedge! Sure to be every little girls favorite this season!

Black & White
\$17.00

SUNDAE

Jumping-Jacks. Pre-Teens 4½-7½ N&M

Most feet are born perfect. They should stay that way.

St. Clair's

STATE CAPITAL Highlights AND Sidelights
by Lyndell Williams

AUSTIN—Attorney General John L. Hill has served notice he will oppose Southwestern Bell Telephone's request for a new \$214.3 million rate increase.

Hill has filed a motion with the Public Utility Commission to intervene in the case.

The commission set March 27 as first pre-hearing date on Bell's latest proposal. Although the company asked to put new rates in effect April 14, PUC General Counsel John Bell is preparing a motion to suspend the rates for 120 days, until August 12.

If Hill is given permission to intervene, he would have authority to cross-examine Bell witnesses, present witnesses and argue before PUC.

The attorney general told a news conference he is advised the Bell request is "substantially out of line."

Bell said the rates are necessary to give the company an adequate rate of return on its investment and permit expansion of its services to an

increasing number of customers.

Hill said he has not ruled out the possibility that the telephone company may be entitled to some additional rate relief.

A \$58 million increase was allowed in rates December 1976, but that was small potatoes compared to the \$298 million requested.

Racing on Ballot

Both Democrats and Republicans will vote May 6 on whether pari-mutuel on-track race horse gambling should be legalized in Texas on a local option (county) basis.

Party executive committees last week certified the non-binding referendum for the May primary ballot along with the list of statewide and multi-county candidates.

Actually, Republicans earlier had agreed to the straw vote. Democrats waited until horse race advocates submitted petitions signed by 96,000 asking for a referendum.

In a surprise move, which irked consumer loan representatives, Democrats also submitted for a vote the question of whether the 1979 legislature should authorize higher interest rates on loans under \$5,000.

Sen. Bill Patman of Galveston guided the latter through the committee. Consumer loan advocates have been pushing for an increase in rates. Since voters are almost certain to vote "no," the referendum (although not binding on the legislature) is seen as a major obstacle to an increase.

Money News

Money and taxes are making news again in the Capital City.

Comptroller Bob Bullock said it's likely Texas legislators will have about \$650 million more to spend next year over and above the present level.

Meanwhile, Gov. Dolph Briscoe is serving notice repeatedly that, if re-elected, he will urge legislators to devote at least half of any surplus in the state treasury to a tax reduction. If Bullock's figure stands, and if Briscoe wins another term, that means he will be asking a cut of about \$325 million, with priority to relief for homeowners and family farmers. Briscoe said

WHITES Home and Auto Automotive Big Event

Power Custom 78's
A78-13BW
As Low As **19.97**
plus 1.69 FET
Designed and built for reliability over the road, these modern 78 series low profile tires offer full 4-ply polyester construction for strength and puncture resistance and the added plus of advanced polybutadiene tread compounds for extra mileage.

FREE MOUNTING!

TIRE SIZE	F.E.* TAX	SALE PRICE
E78-13	1.77	21.97*
E78-14	2.13	25.97*
F78-14	2.26	26.97*
G78-14	2.42	27.97*
G78-15	2.45	28.97*
H78-15	2.65	31.97*

*Plus P.E. tax

WHITEWALLS \$3 EXTRA PER TIRE

36.97 exch
Whites Magic 50 four-year battery. From 54 to 78 heavy duty plates produce 295 to 450 cold cranking amps for surer starts even in extreme conditions...start after start! Gives needed power for operation accessories and as an emergency power source. We back its performance with our famous Whites limited warranty.

69¢ each
Champion regular spark plugs—world's best seller. Sizes to fit most cars.

69¢
Champion resistor spark plugs. Sizes to fit most cars.

5.88
Oil & Filter change
Your choice of Whites 20 or 30 wt oil in stock and a Whites oil filter.
All season oil 50¢ extra
Major brand filters \$1 extra
The most important step in preventive maintenance!

P O Y N O R ' S

WHITE'S STORES, INC. ph. 272-4552 103 Main Street

NEW but PROVEN

NC + 59

Efficient
Yields more on the same amount of inputs, thus returning more money per acre.

Consistent
Produces top yields under varied conditions
Top Yield in Nation—National Corn Growers Yield Contest-1976
No. 1 in Texas — National Corn Growers Yield Contest - 1977
240.26 bu. (13,455 lbs.) 25 Acres Avg., Offutt Farms, Dalhart
No. 1 Hybrid in Texas A & M Disease & Yield Test-Dimmitt-1977
No. 1 in Farmers Fields

Dependable
guaranteed 95% Germination
strong seedling vigor
uniform and in desired seed sizes

"A CORN YOU CAN TRUST"

Ricky Barrett

Rt. 3 Box 201
Muleshoe, Texas Phone: 272-3808

Spring Sale
EARLY BIRD SPECIALS!!

Irrigation Motor Covers

Reg \$80 **\$75**

Green Bros., Inc.

Hwy 70 Muleshoe 272-3157

Easter Eggs A Way Of Life For Pinky Godfrey

Easter egg decorating time is just business as usual for Houstonian Mrs. E.W. "Pinky" Godfrey, Jr. Her 1,300 decorated eggs make up possibly the largest collection in the country, and Mrs. Godfrey designed and decorated them all in the last six years.

She is currently packing up her collection to take to her hometown of Memphis, Texas for the first one-woman egg show in Texas, Saturday and Sunday, April 1 and 2, in the town's community center. The show is

being sponsored by the Atalantean Club in Memphis.

Egg art is a very old art form used by such cultures as the Persian to celebrate the first sign of spring, and the Romans as part of the feast of the new year, explains Mrs. Godfrey. Many famous works of art emulate the egg, perhaps the most famous being the fabulous Faberge Imperial Easter eggs made of precious jewels, pearls, silver, gold and special enamels. Mrs. Godfrey has faithfully reproduced all of the Imperial Easter eggs

designed by Faberge using real eggs as the base and covering them with special painting techniques, gold findings and a variety of flea market finds.

Extensive research has gone into all 57 of these egg creations, and they have been carefully reproduced to the exact dimensions of the original jeweled eggs. Mrs. Godfrey's husband, Jack, designs and makes the bases for eggs by studying pictures and descriptions in reference books. The same careful study goes into the egg's design

to match the enameling, the jewels, the intricate detailing. A close examination will reveal the only obvious difference. Where Faberge placed photos of Russian royalty, Mrs. Godfrey honors her own royalty, the members of her family.

The variety of these jeweled eggs is amazing, most of them either open up or have pieces which fold in or pop out. One gold egg folds out into eight screens showing all of the Texas universities; Faberge's version displayed famous Russian buildings.

"Pinky knows how to start it and finish it, but I handle all the mystery in between," explains Jack Godfrey about his contributions to his wife's art. Exactly how did they both get

hooked on eggs? Mrs. Godfrey says she got started by trying to prove a point. At an art show she saw a velvet covered egg and inquired how to do one. When the exhibitor refused to reveal her secret, Mrs. Godfrey got mad, went home, and in two hours had created her first velvet egg. She had then officially joined the more than 150,000 others in the country who look at eggs as something more than breakfast.

Her acquaintance with eggs does go back to the breakfast variety, however. The daughter of a farmer in Giles, Texas, a small town outside of Memphis, she says her chore was gathering the eggs each morning. She admits enjoying eggs as art much more than she did when they were merely a chore.

Her work with eggs today begins with a small hole being drilled in the top and a larger one in the bottom of the egg. An air compressor is used to "blow" the egg from the shell. The eggshell must then be thoroughly rinsed and dried before it can become a work of art.

From that point on, every egg is handled a little differently, depending on which of her collections it is destined for, says Mrs. Godfrey. If it is to be cut for a jewel box, or a shadow box, or perhaps a cut-out lace egg, the shell is painted with at least two coats of base paint and a delicate saw is used.

Lettering, flowers, patriotic pictures, birds, faces can all be decouped on either the outside or the inside of the eggshell. One

of Mrs. Godfrey's prize eggs, which won first place in Dallas a few years ago, has birds decouped in more than 250 layers of special varnish at various thicknesses, giving it a three-dimensional appearance.

The cut-out eggs have a lacy pattern of flowers or leaves decouped on them, and all of the space between the pattern is carved out with the fine saw. They are some of the most impressive eggs, says Mrs. Godfrey.

Almost any egg will serve as the canvas for Mrs. Godfrey's art. She has over 100 different types of eggs including quail, ostrich, peacock, dove, pigeon, goose and guinea eggs (considered the most fragile). Wild bird eggs are about the only kind of egg she won't

work with because they are protected by federal law. Most of her eggs are given to her by friends and other eggsters, often in exchange for Mrs. Godfrey's egg blowing expertise.

Every egg Mrs. Godfrey does is unique, and every one has a story. She has at least 13 different collections, including 300 varieties of jewel boxes, small hinged eggs, large enough to hold one or two favorite rings; and no two are alike. Her favorite collection is the "Sense of Humor" eggs all based on puns or funny sayings, like her take-off on the "Pet Rock" -- the "Flying Rock", a winged pebble suspended in a small egg.

She also has a grouping of eggs in bottles. How did they get there? Her secret is they are not really eggs, merely the membranes from inside the eggshell which she has carefully removed, decouped inside and out, and then delicately placed inside the bottles to dry, giving the appearance of a whole egg in a small bottle.

Patriotism is one of Mrs. Godfrey's strongest emotions. She has a major collection of U.S. History commemorating important happenings and dates. All 50 states have special eggs for their songs, flowers and birds. The Old West is also remembered in eggs in Mrs. Godfrey's home.

There is a collection of nursery rhymes, seasonal and zodiac eggs, Christmas eggs and children's eggs, a collection of old sayings and charms, and her newest collection, inspired by last summer's Women's Conference, a collection honoring famous women in American history.

What does she do with all those eggs? Her husband explains that most of their closets look more like egg hatches. "Where you're supposed to have clothes hanging, we have eggs," he laughs.

Mrs. Godfrey's egg collection is growing every day, particularly since she spends from 10-15 hours daily working on her art. She says she will never sell any of her eggs, but she has given many of them away to her friends, including Alabama Governor George Wallace. When she presented Mississippi Governor Bill Waller with a special egg honoring his role in Mississippi government, he made her an honorary citizen of the state. However, she quickly points out that she is only one percent Mississippian and 99 percent Texan!



If fuel costs are squeezing the profit out of your corn crop, plant

The Cost Cutter



Less Irrigation Cost — Lower Harvest Costs Because of Lower Moisture — Less Drying Cost

Pioneer brand 3780 can cut your costs to improve corn profits in four ways —

- ★ **Less Irrigation Cost** — 3780 needs less total water than commonly grown corns because it grows off fast. And because of its early water use, 3780 uses early-season rainfall more efficiently than other corns or crops.
- ★ **Less Harvest & Hauling Cost** — Fast drydown with good standability and ear retention lets 3780 dry in the field — you harvest and haul less moisture from the field.
- ★ **Less Dockage** — Less water hauled from the field means less dockage or drying expense.
- ★ **Lower Potential Weather and Insect Loss** — Because of its rapid growth feature and fast drydown, 3780 is ready for harvest well ahead of commonly grown corns. Fewer days in the field mean less exposure to potential bad weather and late-season insect problems.

3780 — 96 High Plains tests — 4-year average — 7,817 lbs./A.
Here's How 3780 Performed For 5 Area Farmers in 1977

Helmuth Quebe — Plainview
Planting date: April 11
Harvest date: August 20
Results: 8,200 lbs./A. at 15.0% moisture; pre-water plus three waterings; outyielded later maturing competitive corn by 800 lbs./A.
His comment: "I like 3780 because of its early maturity."

Vernon Jackson — Stratford
Planting time: April 7
Harvest date: August 5
Results: 8,680 lbs./A. at 16.5% moisture; watered 5 times. Popular competitive variety in same field planted earlier, received 1 additional watering, yielded less, and was harvested 12 days later at 24.5% moisture.

R. E. Lance — Hereford
Planting date: April 20
Harvest date: September 25
Results: 6,590 lbs./A. at 19% moisture; watered 3 times.
His comment: "3780 did as good as I thought it would."

Don Ott — Dimmitt
Planting date: April 27
Harvest date: September 10
Results: 8,590 lbs./A. at 19% moisture; watered 5 times.
His comment: "3780 had a very good yield for a fast maturing variety."

J. L. Francis — Kress
Planting date: June 2
Harvest date: October 20
Results: 7,100 lbs./A. at 14% moisture; watered 5 times.
His comment: "My 3780 was planted after a hail and I was really satisfied with the results."



PIONEER HI-BRED INTERNATIONAL, INC., Southwestern Division, Plainview, Texas

The limitation of warranty and remedy attached to each bag of Pioneer brand seed is part of the terms and conditions of the sale thereof. Pioneer is a brand name, numbers identify varieties. Registered trademark of Pioneer Hi-Bred International, Inc. © 1978 78

MORE NET INCOME PER ACRE

High Plains farmers have consistently found 3780 producing more net income per acre than competitive corns of later maturity . . . even though the green weight of later maturing corns may have been more.

With 3780, you don't take big cuts in yield like you might expect. In fact, in 96 tests under many conditions in the past four years, 3780 has averaged 7,817 pounds per acre. Few farmers will boast of a higher four-year-average, dry-corn yield than this.

Yields like you'd expect from corn with input costs similar to grain sorghum . . . that adds up to more net income per acre.

Cotton Farmer's Corn

3780 is an ideal companion crop for cotton because of its unusual water use pattern. Because it reaches peak demand much earlier than cotton or sorghum, 3780 promises better irrigation efficiency than sorghum when used as a companion crop to cotton.

Your Pioneer seed dealer has a brochure that tells the whole story. See him soon!

RECIPE

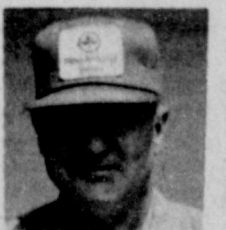
By Sarah Ann Sheridan
Here's a collection of quick and very easy recipes. Try one of these the next time you get in a rush.

Bacon Waffles
Sprinkle bits of bacon, either cooked crisp or uncooked, over your waffle batter in waffle iron before baking. Use 1 slice for each waffle.

Cranberry Chicken Salad
Arrange slices of jellied cranberry sauce on lettuce. Top with your favorite chicken salad.

Skewer Sausages
String skewer with brown and serve sausages, peach halves with a cherry in the center and mushroom caps. Brush with melted butter. Cook 4 to 5 inches from heat for about 5 minutes on each side.

Beets
To buttered beets add 2 to 3 tablespoons of mint jelly. Heat slowly until the jelly melts.



Bill Watson
of Springlake
"RA 1501 is consistently the best corn I've planted."

RA 1501 Hybrid Corn

- Premium single cross
- Highest yields
- Medium maturity
- Fine grain quality
- Fast dry down
- Excellent Standability

Dealerships Available In This Area



Ring Around
P.O. Box 1629
Plainview, Texas



HERE ARE JUST
A FEW MORE OF OUR
1742
REDUCED PRICES
FROM PIGGLY WIGGLY

	WAS	NOW		WAS	NOW
1-oz. Boxes			Del Monte Blended Green		
Cracker Jacks 3-Ct. Box	53¢	49¢	Lima Beans 17-oz. Can	61¢	59¢
Baby Fresh			Seaside		
Wipes 40-Ct. Pkg.	\$1.09	\$1.05	Butter Beans 15-oz. Can	42¢	39¢
Strained Hi Meat Beef/Vegetable			Golden Whole Kernel		
Gerber Dinners 4 1/4-oz. Jars	3 1/3	89¢	Niblets Corn 7-oz. Can	31¢	29¢
Baby Cereal			Mixed Vegetables		
Gerber Oatmeal 8-oz. Pkg.	45¢	43¢	Larsen's Veg-All 15-oz. Can	45¢	43¢
Teething Biscuits			Green Giant Whole		
Gerber Biscuits 4 1/2-oz. Pkg.	49¢	47¢	Mushrooms 4 1/2-oz. Jar	\$1.15	\$1.09
Frosty A & W. 16-oz. Btls.			Ranch Style		
Root Beer 6 Pack	\$1.63	\$1.59	Blackeye Peas 23-oz. Can	51¢	49¢
Orange			Sunshine Sliced		
Kool Aid 33-oz. Cnstr.	\$2.19	\$2.09	Pimentos 4-oz. Jar	73¢	69¢
Grape Drink Mix			American Beauty Instant		
Wyer Mix 24-oz. Pkg.	\$1.89	\$1.79	Potatoes 8-oz. Pkg.	45¢	39¢
Hot Cocoa Mix			Libby's		
Swiss Miss 23-oz. Can	\$2.49	\$2.39	Sauerkraut 32-oz. Can	79¢	73¢
General Mills Cereal			Del Monte		
Cherrios 15-oz. Box	\$1.17	\$1.13	Zucchini 16-oz. Can	53¢	49¢
General Mills Cereal			Del Monte Peeled		
Fruit Brute 12-oz. Box	\$1.11	\$1.07	Tomatoes 16-oz. Can	65¢	59¢
General Mills Cereal			Beef		
Wheaties 12-oz. Box	99¢	75¢	Cup-O-Noodles 2.5-oz. Pkg.	59¢	53¢
Kellogg's Cereal			Del Monte		
Rice Krispies 6-oz. Box	57¢	53¢	Tomato Sauce 8-oz. Can	49¢	23¢
Nabisco Cereal			Orange Flavored		
100% Bran 16-oz. Box	89¢	79¢	Tang 18-oz. Jar	\$1.49	\$1.39
Nabisco Cereal			Whitehouse		
Team Flakes 13-oz. Box	89¢	85¢	Apple Cider 64-oz. Can	\$1.59	\$1.49
Chicken With Stars			Whitehouse		
Campbell's Soup 10 1/4-oz. Can	32¢	31¢	Apple Juice 32-oz. Can	87¢	79¢
Quaker Cereal			Ocean Spray		
Puffed Rice 5-oz. Box	59¢	55¢	Cranberry Juice 32-oz. Can	\$1.09	99¢
5 Minute Cooked Cereal			Pineapple-Grapefruit, Del Monte		
Cream Of Wheat 14-oz. Box	55¢	53¢	Fruit Drink 46-oz. Can	67¢	63¢
Plain Flavor Cooked Cereal			Welch's Unsweetened, 3-Ct.		
Malt O Meal 24-oz. Box	73¢	71¢	Grape Juice 4-oz. Btls.	77¢	73¢
Instant Cooked			Lemon Juice		
Ralston Cereal 18-oz. Box	73¢	69¢	Realemon 16-oz. Btl.	73¢	69¢
Piggly Wiggly Chocolate			Piggly Wiggly Unsweetened, 6-oz. Cans	6 Pack	\$1.15
Marshmallow Pie 14-oz. Pkg.	75¢	69¢	Orange Juice 6 Pack		99¢
Pinata Taco Flavor, 1-Ct. Pkg.			Golden Whole Corn		
Tortilla Chips 10-oz. Pkg.	\$1.45	\$1.29	Niblets Corn 7-oz. Can	31¢	27¢
Spoon-Up Butterscotch			Piggly Wiggly		
Sego Pudding 8-oz. Can	67¢	59¢	Prune Juice 32-oz. Can	93¢	89¢
Miracle			Instant Beef		
Goat Milk 14-oz. Can	\$1.19	\$1.09	Wyer's Bouillon 6 1/4-oz. Pkg.	\$1.15	\$1.09
Diet Delight			Tomato Juice Cocktail, 6-oz. Cans		
Grape Jelly 8-oz. Jar	79¢	73¢	Snap-E-Tom 3-Ct. Pkg.	82¢	79¢
Catalina Diet			Libby's Pink		
Kraft Dressing 8-oz. Btl.	69¢	63¢	Salmon 16-oz. Can	\$2.19	\$2.09
Carnation Milk Chocolate Liquid			Underwood's, In Tomato Sauce		
Slender 10-oz. Can	57¢	54¢	Sandines 3 1/4-oz. Can	77¢	69¢
Very Chocolate			Orlean Broken, 4 1/2-oz. Can	\$1.25	\$1.13
Sego Liquid 10-oz. Can	57¢	53¢	Shrimp 4 1/2-oz. Can		
Regular Long Grain			Chicken Of The Sea, In Oil, Light		
Comet Rice 28-oz. Box	95¢	89¢	Chunk Tuna 12 1/2-oz. Can	\$1.89	\$1.59
Arm & Hammer			Piggly Wiggly		
Baking Soda 16-oz. Box	55¢	53¢	Apricot Preserves 32-oz. Jar	\$1.05	69¢
Hershey's Milk Chocolate			Austex		
Chocolate Chips 11 1/2-oz. Pkg.	\$1.99	\$1.79	Beef Stew 15-oz. Can	79¢	73¢
Twin Pack, For Chicken			Dinty Moore		
Shake N Bake 4 1/4-oz. Pkg.	99¢	93¢	Beef Stew 24-oz. Can	\$1.19	\$1.09
Duncan Hines Fudge			Libby's Corned		
Brownie Mix 15 1/2-oz. Pkg.	\$1.07	99¢	Beef Hash 15 1/2-oz. Can	87¢	83¢
Pillsbury			Underwood's		
Hot Roll Mix 14-oz. Pkg.	89¢	73¢	Deviled Ham 2 1/4-oz. Can	41¢	39¢
Kellogg's Cherry			Sweet Sue Whole		
Poptarts 11-oz. Pkg.	77¢	73¢	Chicken 3 1/4-Lb. Can	\$2.09	\$1.99
Aunt Jemima Pancake Flour			Van Camp's		
Pancake Mix 1-Lb. Box	57¢	53¢	Pork & Beans 31-oz. Can	77¢	63¢
Hungry Jack Complete			Van Camp's		
Pancake Mix 24-oz. Box	\$1.13	\$1.09	Kidney Beans No. 300 Can	41¢	39¢
Betty Crocker Butter Pecan			Van Camp's		
Frosting Mix 14 1/4-oz. Pkg.	\$1.05	99¢	Chili Weenes 8-oz. Can	45¢	43¢
Whitehouse			La Choy Beef		
Applesauce 16-oz. Can	53¢	45¢	Chow Mein 16-oz. Can	\$1.03	99¢
Del Monte Unpeeled			La Choy		
Apricot Halves 17-oz. Can	73¢	69¢	Soy Sauce 10-oz. Btl.	69¢	59¢
Piggly Wiggly			Chef Boy-Ar-Dee Pepperoni		
Fruit Cocktail 29-oz. Can	79¢	67¢	Pizza Mix 17-oz. Pkg.	\$1.33	\$1.29
Del Monte Freestone			Spaghetti With Meatballs		
Sliced Peaches 16-oz. Can	65¢	59¢	Franco-American 15-oz. Can	65¢	59¢
Del Monte			Spaghetti Sauce With Mushrooms		
Pear Halves 16-oz. Can	65¢	57¢	Ragu 15 1/2-oz. Jar	83¢	79¢
Piggly Wiggly in Natural Juice, Chunk			With Beans		
Pineapple 15 1/2-oz. Can	57¢	53¢	Wolf Chili 10-oz. Can	57¢	49¢
Libby's			Wolf		
Purple Plums 29-oz. Can	59¢	49¢	Tamales 15-oz. Can	59¢	53¢
Del Monte Whole			Chunky Sirloin Burger		
Green Beans 16-oz. Can	53¢	49¢	Campbell's Soup 19-oz. Can	87¢	83¢

Students In Area Wide Spelling Bee

Many students at Muleshoe Jr. High have really been busy studying for the Lubbock Avalanche Journal National Spelling Bee. The students had two practice sessions in the month of March. Mrs. Elizabeth Watson is the chairman for the Spelling Bee and she has helped the students alot. Eliminations were held on March 13, during 3rd period in room 20. The following people qualified to compete against Mary DeShazo and Three Way students on March 20th at the Muleshoe High School auditorium. First place went to Angie Salas, second place went to Stacey Campbell, third place went to Suzette Rojas, fourth place went to Lupe Rosales and alternate was Paula Snell. The Journalism staff wishes these students the best of luck. CONGRATULATIONS!!!



Junior High Students In UIL Contest

Many students in Muleshoe Jr. High have been actively interested in the University of Interscholastic League contests. These students won the local eliminations and will represent Muleshoe in the District U.L.L. Literary meet to be held on April 8.

ORAL READING
The 5th and 6th grade winners are first place Kelly Hamblin, second place Sherri Bessire, third place Betsy Lunsford, and the alternate is Sheila Long.

The 7th and 8th grade winners are first place Freddy Vela, second place Laura Leal, third place Misti Prater, while the alternate is John Wuertlein.

SPELLING AND PLAIN WRITING

The 5th and 6th grade winners are first place Suzanne Williams, second place Lori Ellis, third place Sharla Morrison, and Jana Wuertlein, alternate.

The 7th and 8th grade winners are first place Lupe Rosales, second place Lori Hartline, third place Shelley Davis, and Sharla Hawkins, alternate.

READY WRITING
The Ready Writing winners will compete on April 3rd, Monday. The 5th and 6th grade

Men may differ in opinions but they should not dispute as to facts.

SPELLING BEE WINNERS--Top winners in the 1978 Bailey County Spelling Bee included from left, Stacey Campbell, second; and Lupe Rosales, first place; both standing. Seated from left are Suzette Rojas, third and Mrs. Beatrice Blackburn, pronouncer.

Results Of MJHS Play With Words

The Gold Medal wait.

Once OSCAR Meyer was walking along and said Mr. FORD having trouble with a COBRA. So he got an ERA and stabbed the COBRA. Then he got a GOLD MEDAL. But then a little SHORT AND SASSY girl came along and wanted the GOLD MEDAL.
The HILLS BROTHERS said no, and the SHORT AND SASSY girl started crying. The HILLS BROTHERS had to CHEER her up with a piece of a HERSHEY bar and she said FANTASTIC.

David Marth
Trent Hysinger
Perry Whalin
Randall Stevens

THE RAID
It started at the WATTA-PIZZARIA in the town of SIZZLER, the TOWNHOUSE crackers met secret agent #1, PALMOLIVE ASPCO, who was assigned to meet SECRET agent #2, MAYBELENE HITACHI at the tree tots firehouse.

SECRET agent #1 was sneaking into BARBIE'S TOWNHOUSE to take BARBIE'S maid LUSITE out of the way of SECRET agent #2 so she could lead BARBIE out of her room and the TOWNHOUSE crackers could DASH in, crack the SAFE and take all of the FURRS, and take them to CAP. CRUNCH, leader of the gang.

BARBIE returned to her TOWNHOUSE, the phone rang. It was CATALINA REMINGTON who asked if she could use one of her FURRS to wear to the EUREKA ball. BARBIE went to her safe and the FURRS were gone. She screamed LUSITE, LUSITE my FURRS, they're gone!

BARBIE DIALed Gen. ELEC-TRIC. Gen. the TOWNHOUSE crackers have stole all of my FURRS. GEN. said, "We'll get'em this time." She hangs up and get into her TOYOTA and drives to the COAST. There the TOWNHOUSE Crackers were, loading up on the high TIDE, the ship. There was nothing BARBIE could do but

place SURE TO GLEEM. JOHNNY CAT joined the MARYLAND CLUB to save his NINE LIVES while he was still in BABY WORLD. He wanted to STAYFREE without OSCAR MEYER giving him HEAVY DUTY. It ALL happened on a ZESTful day in PILSBURY.

Candy Long
Dee Kindard
Shannon Neiman

Mashed Potatoes
To 2 cups hot mashed potatoes add 1 1/2 tablespoons finely chopped spring onions. Pile in halves of tomatoes, brush with melted butter. Bake in an over 400 degrees about 20 minutes.



At Muleshoe Junior High

Save With Our Low Overhead Come In Soon

Johnson Chevrolet

201 Commerce Sudan 227-2050

Limited Time Only!
50% off List Price
(With Exchange)

For Your Irrigation Motors

We'll give you 50% off list price when you buy Exide's Go* battery.

The Go* battery has more acid and more plates than the usual new-car battery to give you 80% more cranking power.

401 South First
MULESHOE, TEXAS 79347

Juanita Palm Reader
She will tell you your past, present and future and will give never failing advice in all matters of life such as love, business, health, marriage and transactions of all kinds.
Open 7 Days 7 A.M. - 10 P.M.
In Tesco On 60-084 E.
Look For The Palm Sign
505 482-3614

Don't Overlook Deductions After Your Casualty Loss

The countdown has started. Only days remain until the tax deadline is here. So naturally, there are hundreds of last-minute income tax questions, many relating to property losses.

What tax deduction are you entitled to if a fire destroys an antique table appraised at \$350, although you only paid \$15 for it?

Can you realize a tax saving if a storm destroys your expensive new landscaping?

If your home is flooded but you have no flood insurance, can you claim a tax deduction?

The Texas Insurance Information Center of the Insurance Information Institute says many people overlook real tax savings because they don't understand how to handle property losses on their income tax returns.

CASUALTY LOSSES
Tax advantages are offered for any "casualty" loss. According to the Internal Revenue Service (IRS), a casualty loss means property damage or loss resulting from any sudden, unexpected event such as a storm, fire, robbery or automobile accident.

Deductions are available for losses to both personal property (such as automobiles and furniture) and to real property (such as business and homes).

Computations are based on the reduction in value of the property (whether insured or not). Therefore, uninsured flood damage to a home would be tax deductible. If damage is covered by insurance, the amount of any insurance settlement must, of course, be subtracted from the total "loss."

Because people often do not insure their property to its proper value, loss payments from insurers often must be calculated at a depreciated value. Additionally, insurance payments are tied to the actual cost of making repairs or replacing lost goods, so the loss for income tax purposes can sometimes exceed the insurance payment. When this happens, the difference can be claimed as a "casualty loss" deduction on your income tax return.

Example: Suppose your home, which originally cost \$30,000, was damaged by a tornado. The appraised value of the property prior to the storm was \$32,500 and immediately after the storm was \$27,500. The overall "loss" would be \$5,000. If the insurance company paid \$3,000 to cover the cost of repairs, you still have an additional \$2,000 "loss" on property for tax purposes and most of this is deductible.

Keep in mind that a \$100 deduction is applied to private property losses (but none to business property losses), so the actual loss for tax purposes in the example above would be \$1,900.

Terminology used in making insurance claims may not always apply to an income tax return, so it is helpful to consult definitions on both the policy and in tax information for these distinctions.

APPRAISAL INVENTORY HELPFUL

The real property value includes any improvements to property such as extra buildings and ornamental trees. Since landscaping is considered an integral part of the reality, damage to landscaping can be a tax deduction.

To help prove the value of property after damage, the IRS recommends that an experienced, reliable appraiser be hired. The appraiser will probably be able to provide evidence as to the value of the property before

and after the damage. Cost of this appraisal is tax deductible. Photographs made before and after damages will also be helpful in proving a loss.

In no event can the "loss" claimed on the income tax return exceed the amount originally paid for the property. Therefore, you cannot claim a \$350 total loss on an antique table if you only paid \$15 for it.

It is also helpful to remember that there are different sets of rules that apply when calculating losses to "real property" (such as houses) and "personal property" (such as furniture), even though the losses occurred because of the same catastrophe.

Computing the loss on personal property is a more time-consuming process for the taxpayer since each item of personal

property must be computed separately.

Insurance companies have for years recommended that homeowners keep an up-to-date inventory of personal property, with photos to help settle insurance claims. That same inventory would serve as a starting point for a taxpayer trying to compute personal pro-

perty losses for income tax purposes. Directs make the job easier. Data are often available from insurance companies on a pre-printed form is distributed free by the Texas Insurance Information Center, 1011 Congress, Suite 501, Austin, Texas 78701. FOR FURTHER INFORMATION

request information about how to handle specific insurance problems and casualty losses on income tax returns is available in IRS Publication No. 547, "Tax Information on Disasters, Casualty Losses and Thefts." The IRS maintains information centers all over Texas to provide inquiries about

preparation of tax returns. A copy of this publication can be obtained free by calling one of the IRS Phone numbers are: Amarillo 376 2184, Austin 472 1974, Beaumont 835 5076, Corpus Christi 888 9431, Dallas 412 2110, El Paso 522 6116, Ft. Worth 335 1370

Houston 965 0440, Lubbock 747 4366, San Antonio 229-1700, Waco 767 6535, Wichita Falls 763-6702. Persons living outside these metropolitan exchanges may call the IRS toll-free information line. That number is 1-800-492-8321.



CLOSED EASTER SUNDAY



WE GLADLY REDEEM USDA FOOD STAMPS

Egg-stra Special Eastertime Values



Shop PIGGLY WIGGLY

Boston Butt Cut Fresh

PORK ROAST

\$1.09

Lb.

10 to 20-Lbs. Avg.

ARMOUR TURKEYS

79¢

Lb.

USDA Grade A, 3 Breast Quarters with Backs, 3 Leg Quarters with Backs, 3 Necks, 3 Wings & 3 Giblets

BOX-O CHICKEN

45¢

Lb.

Wilson's Corn King Buffet

Boneless Ham Lb. **\$2.09**

DOUBLE YOUR MONEY BACK MEAT & PRODUCE GUARANTEE

If for any reason, the fresh meat and produce you buy at Piggly Wiggly does not completely satisfy you, please see your store manager and the purchase price will be refunded DOUBLE!

Swift 10 to 20-Lb. Avg.

Butterball Turkeys Lb. **79¢**

Piggly Wiggly Grade A

LARGE EGGS

69¢

Doz.

SAVE 40¢

All Temperature

CHEER DETERGENT

99¢

49-oz. Box

Limit one (1) 49-oz. Box with \$10.00 or more

Plus Deposit

COCA-COLA

6 \$1.39

32-oz. Btls.

SAVE 37¢

Piggly Wiggly Sweet

CREAM BUTTER

99¢

1-Lb. Pkg.

Limit two (2) 1-Lb. Pkgs. with \$10.00 or more

Daytime Extra Absorbent

Pampers Diapers 24 Ct. Pkg. **\$2.29**

Piggly Wiggly Chunk, Crushed or Sliced In Natural Juice

Pineapple 20-oz. Can **59¢**

SAVE 39¢ on 3 Ctns.

Piggly Wiggly

WHIPPED TOPPING

3 \$1

9-oz. Ctns.

SAVE 20¢

Pillsbury

CRESCENT ROLLS

39¢

8-oz. Can

FROZEN FOODS

Trophy

Strawberries

3 \$1

10-oz. Pkgs.

Piggly Wiggly Broccoli Spears or Cauliflower

39¢

8-oz. Pkg.

Cartridges

Gillette Trac II

\$1.99

9-Ct. Pkg.

Color Print C110-12 or C126-12

Kodak Film

\$1.25

Roll

All Purpose, Economy Pack

RUSSET POTATOES

\$1.39

15-Lb. Bag

Washington Extra Fancy

DELICIOUS APPLES

6 89¢

For

Texas Ruby Red

GRAPEFRUIT

6 99¢

For

Del Monte 6-oz. Bonus Pack

Catsup 32-oz. Btl. **59¢**

Dishwasher Detergent

Cascade 35-oz. Pkg. **99¢**

Piggly Wiggly 2 Ply

Bath Tissue 4-Pk. Pkg. **69¢**

Early California Stuffed Manzanillo

Olives 7-oz. Can **99¢**

Rainbo Sweet Midget

Pickles 8-oz. Jar **79¢**

DAIRY SPECIALS

Kraft

Orange Juice 64-oz. Ctn. **\$1.49**


Pillsbury

Cinnamon Rolls 9.5-oz. Can **59¢**

Delicious

Whipping Cream 8-oz. Ctn. **39¢**

"We stand behind our work. That's Reason No. 5 why you should let us do your taxes."



Henry W. Block

If we prepare your return and the IRS should call you in for an audit, Block will go with you at no extra charge. Not as your legal representative, but to answer any questions about how your taxes were prepared.

WEEKDAYS 9-6 - SAT. 9-5

H&R BLOCK

THE INCOME TAX PEOPLE

224 W. 2nd.

Ph. 272-3283

The Sandhills Philosopher

Editor's note: The Sandhills Philosopher on his Johnson grass farm on Sandy Creek takes an inverted look at the South Korean scandal this week.

Dear editor:
Some people are misplaying their outrage over the South Korean scandal.

As I understand it, and as the newspapers have reported, Tongsun Park, the South Korean wheeler-dealer, freely admits that he gave about \$750,000 in political contributions to U.S. Congressmen, in addition to throwing all sorts of parties honor- some of the leading members.

A lot of people are outraged over this and the Ethics Committee is trying to find out who got the money unless it was one of them, how much they got, and was it legal. Some cynical people say the way to do it is simply to divide the number of Congressmen into the \$750,000 and call it even, but that won't work. Some Congress- men didn't get anything, as

obviously Mr. Park isn't an equal opportunity employer. To rig a basketball game, you don't have to bribe the whole team.

There is something outrageous about this affair but, like I say, the outrage is being misplaced.

That outrageous thing is that a foreigner should come in an pull such a stunt when everybody knows that contributing money to influence U.S. politicians is an American prerogative and we don't need any outside help. Foreign imports of beef, steel, cars and television sets are one thing, but foreign imports of political contributions, that's going too far. This country is fully capable of producing its own lobbying and bribery money with- out some foreigner trying to horn in and capture the market.

Why, it's nothing for a Senator running for reelection to raise a million dollars for his campaign and the total raised in all elections is a staggering amount, evidence enough that this country can produce its own influence money.

Congress should immediately establish strict quotas on imported contributions. Some Congress- men may wish they'd done it a long time ago.

Your faithfully,
J.A.



THE 1978 SPELLING BEE GROUP--Included in the picture are the three contestants from the Three Way School; contestants from both Mary DeShazo Elementary and Muleshoe Junior High School; the

judges for the bee and pronouncer, Mrs. Beatrice Blackburn. It took several rounds before the outstanding group of spellers shown here started thinning out.

View From The Plains by J.D. Peer I & E Field Officer

77 WILDLIFE VIOLATIONS LUBBOCK--Game violations accounted for 89 percent of all citations issued in the Lubbock region during 1977.

Of the 902 citations issued for game, fish, commercial fishing, water safety, litter and others, 806 were for various game violations such as no hunting license, shooting from the road, hunting out of season and over the bag limit.

The Lubbock law enforcement region is comprised of the Amarillo, Abilene and Lubbock districts.

The Amarillo district, which is patrolled by 13 game wardens, accounted for 417 citations, Nine Abilene district game warden issued 280 citations and 11 Lubbock game wardens issued 205.

Most of the citations were the result of the sportsmen's failure to know the law, but most of the complaints from landowners were for shooting from the road and trespassing which is handled by P&WD wardens.

Trespass complaints are generally initiated by the landowner

and represent violations against private property instead of state property. The landowner usually contacts the local game warden when a violation occurs and the complaint is signed by the landowner before charges are filed in the local court. Most of the hunting opport-

unities in Texas occur on private land. Many landowners allow sportsmen to harvest surplus wildlife each year. Several landowners have turned to leasing to control the number of hunters.

H.H. Robinson Funeral Held At Amherst

Funeral services for H.H. Robinson, 88 of Amherst, were conducted at 10 a.m. Monday in the Amherst First Baptist Church with Rev. Glenn Wilson, pastor, officiating. Burial was in Amherst Cemetery under direction of Hammons Funeral Home of Amherst.

The Estelina native and father of Mrs. Ray (Corine) Clayton of Muleshoe, died at 6:05 a.m. Saturday in South Plains Hospital in Amherst following a lengthy illness.

He moved to Amherst in 1928 from Plainview and was a rancher and race horse breeder until his retirement. He married Willie Winton May 3, 1913 in Childress.

Other survivors include his wife; another daughter Eloise Gifford, Plainview; four sons, Her man, Borger; Oscar Lee, Loving, N.M.; Leon, Amherst and Owen, Quemada, N.M.; two sisters, Cleo Noles, Amarillo and Lillian Bradley, Dallas; 22 grandchildren and 20 great-grandchildren.

The human race, for all its boasting and puffing, is merely standing on the threshold of knowl- edge.

Hill Seeks Investigation

Texas Attorney General John Hill today called for a joint state and federal investigation of the cottonseed industry, which he said has been the subject of complaints from cotton farmers.

"For some months, my office has been investigating numerous complaints from cotton farmers in the South Plains area of Texas regarding the prices they have received for cottonseed," Hill said.

"The farmers allege the existence of a conspiracy between cottonseed oil mills to depress artificial prices paid farmers for their cottonseed.

"The cottonseed market does appear to be behaving abnor- mally. Our investigation reveals that correlations one would expect to find in a normal, competi- tive market are absent," Hill said.

For instance, he continued, the price of cottonseed has fallen while prices for cottonseed products have risen or remained

Golden Gleams

He who has lost honor can lose nothing more. -Publius Syrus.

An ill deed cannot bring honor. -George Hubert.

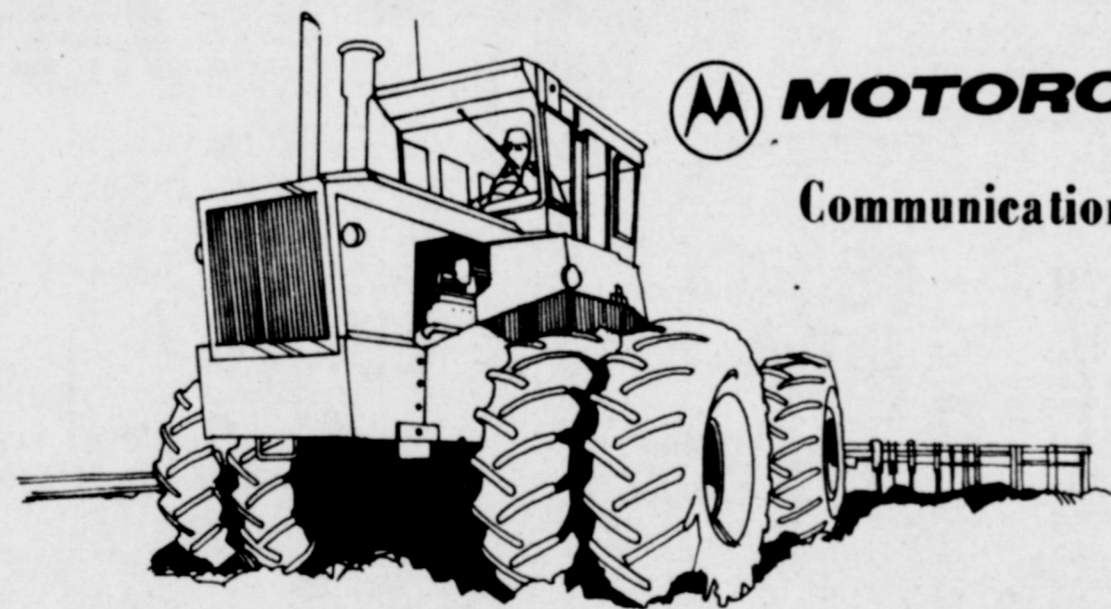
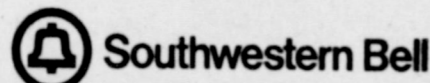
To those whose god is honor, disgrace alone is sin. -J.C. and A. W. Hare.

Public Notice

Southwestern Bell, in accordance with the rules of the Public Utility Commission of Texas, hereby gives notice of the company's intent to imple- ment a new schedule of telephone rates in Texas effective April 14, 1978.

It is expected that the requested rate schedule will furnish an increase of 11.4 percent in the company's intra- state revenues.

A complete copy of the new rate schedule is on file with the Public Utility Commission at Austin, Texas, and with each affected municipality, and is available for inspection in each of the Company's public business offices.



MOTOROLA
Communications And Electronics, Inc.

Invites You To
Attend An

Open House

To Be Held Through The Courtesy Of

Fry & Cox, Inc.

Friday, March 24, 1978

8:00 a.m. To 4:p.m.,

401 S. First

Muleshoe, Texas

* Refreshments
* Door Prizes

* Free Consultation
* Information

Get Acquainted Time

You've probably toyed
with CB ...



Maybe now you're ready
for professional quality
MOTOROLA
FM 2-Way Radio.

If you're tired of missing messages and other guys butting in, we can offer you a talking tool. Cost is sur- prisingly low. Jobs fall into place. You get business back under control.

How? By leasing you space on a Motorola FM 2-way radio community repeater! It's much cheaper than own- ing the repeater, and there are no paperwork or logistic headaches. You'll find the options on our Mobile FM radios equally as appealing.

Motorola can provide you
with the same WIDE-AREA
FM 2-Way Radio Coverage



as the system with 50
mobiles at about 15%
of the costs!

MOTOROLA Communications and Electronics Inc.
Amarillo, Texas Phone: 806/376/7389
Plainview, Texas Phone: 806/296/7181

Local Business A Source Of Economic Growth

COLLEGE STATION -- Community leaders seeking economic growth may often be able to find it in existing businesses in the industry.

Dr. Richard Floyd, an economist in business development with the Texas Agricultural Extension Service, says that a large outside firm locating in a small community may not have the same economic impact as the expansion of an existing local business firm.

"Development of local oppor- tunities can be very important," points out Floyd. "In fact, relocation of a large industry to most rural areas of Texas is not feasible. Rural Communities of populations below 10,000 that are not centrally located usually are not good candidates for man- ufacturing plants."

"Small businesses, locally own- ed and operated, are a far more

practical approach to develop- ment in many cases, believes Floyd. Industrial recruitment dollars redirected to "buy at home" campaigns and other market promotions designed to enhance existing small business profits may be dollars well spent.

"So, community leaders con- cerned about economic growth may need to look no further than their own community. The op- portunities may well be there."

Fish Tale

Angler--Yeah, the fish was too small to bother with, so I got a couple of guys to help me throw it back in the lake.

-Bluejacket, Memphis.

CAR REPAIR SPECIALISTS



EXPERT RADIATOR SERVICE

When your radiator is leaking, it's time to have it checked to save more costly repairs later. You get fine service at low cost. Low terms too.





CLASSIFIED ADS

THE PLACE TO LOOK



OPEN RATES
1st insertion, per word - \$1.10
2nd and add., per word - \$0.75

NATIONAL RATES
1st insertion, per word - \$1.11
2nd and add., per word - \$0.77
Minimum Charge - \$5.00
CARD OF THANKS - \$3.00
Classified Display - \$1.30 per column inch.

Double Rate for Blind Ads - DEADLINE FOR INSERTION 11:00 Tuesday for Thursday 11:00 Friday for Sunday

WE RESERVE THE RIGHT TO CLASSIFY, REVISE OR REJECT ANY AD.

NOT RESPONSIBLE FOR AN ERROR AFTER ADS HAS RUN ONCE.

1. PERSONALS

FOR YOUR SHAKLEE PRODUCTS. See or call Pete or Marieta Wilkinson. 272-3026. 1-28-tfc

3. HELP WANTED

Need operators at Main Street Beauty Shop. Call 272-3448. 3-12-tfc

NEEDED: Man to learn Domestic electric servicing. MULESHOE ELECTRIC 272-3330. 3-12s-2tc

HELP WANTED: front end frame and wheel balancing technician. Experienced in all phases of frame, front end alignment and wheel balancing work. Also truck and automotive technician. Experienced in phases of automotive and truck repair. Excellent working conditions. Insurance and paid vacation. See HAL STONE service manager. DOC STEWART CHEVROLET, 2500 Mabry Dr., Clovis, N.M.

STEEL BUILDINGS
AGRA STEEL CORP., A LEADER IN FARM BUILDINGS, WILL APPOINT A LEADER FOR THIS AREA. BIG EARNINGS POSSIBLE. COMPANY TRAINING. FOR INFORMATION CALL MR. FRANK 800-821-7310 OR WRITE, AGR STEEL, BOX 10310, KANSAS CITY, MO. 64111. 3-12t-1tp

NEEDED SOMEONE TO babysit two small children. Good for high school student looking for summer job. Call 272-4492 or come by 904 E Hickory. 3-12t-tfc

5. APTS. FOR RENT

NEW 2 bdr. apartment for rent 4889 or 4726. 5-12s-tfc

APT FOR RENT, well decorated and expensive. Call 272-4096. 5-12t-tfc

8. REAL ESTATE

3 bdr. house for sale to be moved at Earth. 257-3736. 8-11t-tfc

KREBBS REAL ESTATE
122 W AVE C
From 1 to 18A tracts
Nice 3 br home for sale or trade
14A - well improved
1/2 sec., circular sp - improved
APPRAISALS AND SALES
8-2s-tfc

FOR SALE BY OWNER: 3 bedroom brick home; adaptable to 4 bedroom; 2 full baths; game room; separate dining room; den with fireplace; living room; 2450 sq. ft. Fenced back yard; storage building. Richland Hills area, near school. Call 272-4632. 8-9s-tfc

HOUSE FOR SALE: 3 bedroom, brick front, bath and half, garage, celler, fenced back yard. 272-4919. 8-8t-tfc

FOR SALE: 3 bedrooms, 1 3/4 baths, carpeted throughout, 2 car garage, fenced yard. Call 272-4683 after 4:30. 8-12s-tfc

E.H. Hall Real Estate
505 Austin St.
Muleshoe, TX 272-4784

Three bedroom house on 75' lot 2 two bedroom houses
5 lots for sale
10 acres in country with 4 bedrooms.
11 acres out in country with 2 bedroom house
8-12t-tfc

FOR SALE: 3 bedroom, 2 bath home, has 1537 square feet, 3 bedrooms, with master bedroom at the opposite end of the other two bedrooms, fireplace, central air and heat and built ins. Also a large patio with gas double charcoal grill and cedar fence. Owner will sell for appraisal price. Phone 272-4617 for appointment. 8-12t-tfc

FOR SALE: 4 acres - 3 br-2 bath brick home 2064 sq. feet-40x60 Butler Barn- 24x26 Barn-846 sq. feet frame house-1 mi. west of Goodland on highway #54. 927-5351. 8-12t-tfc

9. AUTOMOBILES-FOR SALE

FOR SALE: Good school car. 1971 DODGE DEMON, 318-V-8. 3 speed standard transmission. Call 272-4596 or see at 217 N 1st. 9-5s-tfc

EXTRA NICE 1976 Buick Regal. Loaded. 617 W Ave G. 272-5053. 9-11t-tfc

10. FARM EQUIP. FOR SALE

FOR SALE: complete grain drying station to be moved. 450 Bus M.W. grain driers, 130,000# overhead truck dump, augers, mixers, switches and panels complete. Phone 806-847-2665, Ray Teeple, Silvertown, Texas. 9-10s-8tc

FOR SALE: 40 H electric motor, vertical shaft with panel boxes. 272-4642. 10-10s-tfc

STALKCUTTERS, 8 row, bearings \$1160.00
BEDKNIFER, 9 runners \$590.00
CHISEL, 11 shank, 3-bars \$1495.00
CHISEL, 9 shank, 3-bars \$1175.00
CULTIVATOR, 8 row, 2-4x4's on bottom \$1650.00
LISTER, 9 shanks, 4x7 bar \$1250.00
COULTERS, 28" BLADE, HEAVY DUTY \$126.00 each
GAGE WHEELS, HEAVY DUTY \$105.00 each
TOOL BARS, ALL 8 ROW SIZES IN STOCK
CLAMPS, all sizes
SHANKS, HIGH CARBON C 1080 STEEL
EXTENSION, all sizes
KNIFING ATTACHMENTS
ROD WEEDEAR ATTACHMENTS
DEALER INQUIRIES INVITED
Morton Manufacturing Co., Inc., Rt. 2 Box 40-A, Morton, TX 79346 10-12t-10tc

FOR SALE: 4" & 6" aluminum pipe. Call 272-4872. 10-12t-2tc

FOR SALE: 6 No. 71 JOHN DEER flex planters with acre plant knives. Call 272-4872. 10-12t-2tc

11. FOR SALE OR TRADE

FOR SALE: 16' LONE STAR boat and trailer with 3C HP Johnson motor. See at DON'S STANDARD, 323 W American Blvd. 11-12s-4tc

73 ZUZUKIE Dirt Bike. Excellent condition. \$450.
20" color Motorola Quasar TV. Excellent condition. \$175. Call 965-2390. 11-5s-tfc

FOR SALE: oak firewood, 1/2 split. Delivered in area. Call 925-6736. 11-11s-8tc

HAVE ONE DELUXE CAMPER shell for sale. 272-3113 or 272-5038 nights. Or go by WILLIAMS BROS. OFFICE SUPPLY. 11-11t-4tc

FOR SALE: oak firewood, 1/2 split. Delivered in area. Call 925-6736. 11-11s-8tc

E.E. HOLLAND REAL ESTATE
113 W. Ave. D
PHONE 272-3293
DAY OR NIGHT
Robin Davis, Salesman

For all your real estate needs call:
GLAZE & GOFORTH
112 Ave. e
272-4208
8-11s-tfc

Cost not quantity major obstacle in food supplies.

FOR SALE: 1970 NOMAD 21' Travel Trailer, self-contained. Days 272-4511 nights 272-3553. 11-11t-tfc

FOR SALE: Appollo Guitar. \$75. 11-12t-2tc

12. HOUSEHOLD GOODS

BURROWS Upholstering. Reasonable rates. Also Furniture and Appliances bought and sold. Moved to 213 South 1st Street. Phone 272-4255. 12-7t-tfc

GENERAL ELECTRIC STOVE with self cleaning oven for sale. 4889 or 4726. 12-12s-tfc

13. PROPERTY FOR LEASE

FOR LEASE: Texaco Service Station. Phone 272-4688. 13-50t-tfc

FOR RENT: Trailer space and overnight parking. 1304 W. Ave B. Call 272-3448. 15-6t-tfc

15. MISCELLANEOUS

Custom Designed and Made-To-Order **RINGS-N-THINGS BY JEROLLY**
918 E Hickory
Phone 272-3163

WATER PILLS and laxatives may deplete your body's essential Potassium - ask for **K FORTE WESTERN DRUG.** 15-8t-3tp

SEWING WANTED: Childrens, ladies and mens. Formal and western. Turn off Hwy 84 at Wiedebush & Co. First mobile home on right. 15-12s-3tc

SANDSTORMS and Kirby's. They don't mix, but they do go together. Kirby rebuilds. As low as \$79.95. **LOYD WHITE, LITTLEFIELD, CALL 385-3357. KIRBY SALES & SERVICE.** 15-12s-tfc

ASPHALT ROOFING, COMPOSITION singles, new roof and repairs. Free estimates. Call collect **RON FOSHEE 385-5680. LITTLEFIELD ROOFING** 15-42s-tfc

FOR SALE: 15,000 bales Alfalfa hay in Barn. Oak firewood 50 percent split. 1974 Chevrolet pickup - New valve job. Butane and gas. Phone 257-3482 Earth. 15-12t-2tc

Trailer spaces to rent. Water furnished. Own meters. Apts. Kitchenettes. 272-4440. 15-19t-104tp

PHILLIPS HOUSE OF MUSIC
118 MAIN
CLOVIS, NEW MEXICO
Pianos, organs, band instruments, new and used. Professional repairs, sheet music, rentals, terms.
Phone: 505-763-5041.
15-30s-tfc

\$100 REWARD Offered for arrest and conviction of anyone doing damage to paper stands. Muleshoe Publishing Co. 272-4536. 11t-15-tfc

REDUCE SAFE AND fast with **GOBESE** tablets and **E-VAP "water pills"** DAMRON DRUG. 1-9t-8tp

14. PROPERTY TO RENT

FARMS FOR RENT: 300A, 4 miles east of Muleshoe and 160A, 20 miles southwest of Muleshoe. Phone 799-7342 or 799-5881. 11-12s-tfc

FARM FOR RENT: 55 to 100 acres with 8" irrigation pump, 2 miles east of Muleshoe. 799-5881 Lubbock. 11-12s-tfc

Caution!
Speed Fiend: "It's great speeding along like this. Don't you feel glad you're alive?"
Passenger: "Glad isn't the word, I'm amazed."

Longhorn's Place In Track Meet

The Longhorn track teams ran in the Borden County Relay's at Gail last Friday. There were 24 schools at the meet, representing the southern half of our track region.

Legal Notice

NOTICE TO ALL PERSONS HAVING CLAIMS AGAINST THE ESTATE OF N.L. JOHNSON, DECEASED

NOTICE IS HEREBY GIVEN that original Letters of Testamentary for the Estate of N.L. Johnson, was issued on the 20th day of March, 1978, in Cause Number 1272 pending in the County Court of Bailey County, Texas, to:

JOE KING whose mailing address is: P.O. Box 469 - Muleshoe, Texas 79347

All persons having claims against this Estate which is currently being administered are required to present them with in the time and manner as prescribed by law.

Dated this the 20th day of March, 1978.

Joe King (s)
Joe King, Independent Executor
12t-1tp

Legal Notice

THE MULESHOE INDEPENDENT SCHOOL DISTRICT IS ACCEPTING BIDS FOR ONE METAL BUILDING 60 x 100 x 16 FEET WITH PAVING IN FRONT. SEALED BIDS MUST BE RECEIVED NO LATER THAN 7:30 P.M. THURSDAY, APRIL 13, 1978. PLANS AND SPECIFICATIONS, ARE AVAILABLE FROM TOM JINKS, BUSINESS OFFICE, 514 WEST AVENUE G, MULESHOE, TEXAS 79347. BIDS WILL BE OPENED DURING A SPECIAL MEETING APRIL 13, 1978 AT 7:30 P.M. AT THE SCHOOL BUSINESS OFFICE. 12t-2tc

Steinbock, Quinten Mimms, Mike Windham, and Russell Windham, placed 2nd with a time of 3:41.3. Charleson Steinbock won the Long Jump with a jump of 19' 53/4", and placed second in the Pole Vault with a vault of 12'5". In the 120 High Hurdles Mike Windham placed 2nd with a time of 16.1, and Russel Windham placed 6th with a time of 17.0. Russell placed 2nd in the 330 yard Intermediate Hurdles with a time of 43.2 seconds. Mike won the High Jump with a jump of 6', and Reggie Trieder placed 5th with a jump of 5'8". Quinten Mimms placed 2nd in the 880 yard run with a time of 2:11.2, and Appalonio Sanchez placed 7th in the 880 with a time of 2:15.5. Carl Fuqua placed 6th in the mile run with a time of 5:18.1. Charleson Steinbock won 2nd in the 440 yard dash with a time of 54.0, and 4th in the 220 yard dash with a time of 24.9. In the Discus, Keimh Smith placed 2nd with a throw of 119' and Dennis Steinbock placed 5th with a throw of 111'.

Legal Notice

Maple Water Supply Corporation has filed with the Public Utility Commission of Texas for a proposed rate increase from \$12.50 per month to \$15.50 per month. This in essence will affect 32 residential and five commercial businesses.

Anyone opposed to the rate change must file with the Public Utility Commission and with Applicant Utility notice of his intent to participate in a Public Hearing within (10) days of the filing date of the rate application with the commission. 11t-4tc



LAZBUDDIE TRACK WINS MEET-Varsity track members from Lazbuddie won the meet at Borden County Relays last weekend. The team members shown are from left, standing, Andy Rogers, Mike Windham, Quinten Mimms, Reggie Trieder, Randy Smith, Keimh Smith, Phillip Jesko, Keith Hicks, Robert Stanley, Russell Windham, Charles Steinbock, Appalonio Sanchez and Johnny McDonald. Kneeling from left are Carl Fuqua, Dennis Steinbock, Coach Jimmy Noland, Coach Dewayne Sexton and Tommy Hill.

Lazbuddie News

By Judy Lust

Mrs. Pug Jennings and daughter Debbie are in Florida visiting Pug's parents over Easter.

Mr. and Mrs. Derrell Jennings and Jonessa were in El Paso over the weekend.

Some of those that went skiing in Taos this week were Mr. and Mrs. Mickey Wilson, the Jim Standridges, and Mike and Russell Windham and Keimh Smith.

Jeana Cole visited friends in Logan, New Mexico last weekend.

Mr. and Mrs. Bill Jennings and children Debbie, Jim Don and Darshan, and Pam McDonald and Kim LaRue all attended the "Holiday on Ice" show at the Civic Center in Lubbock last Saturday night. They were celebrating Darshan's birthday.

Mr. and Mrs. Jimmy Briggs and family spent Easter vacation in El Paso and McAllen.

Conditional To remain a woman's ideal a man must remain a bachelor. -News, Buffalo.

MEET THE CANDIDATES

Rates for listing in the Journal's Political Column is: \$25 for all offices except those for City Council and School Board post which is \$10. This fee includes a front page announcement article and a one-column photograph at the time the announcement is made, in addition to the listing in the Political Column from the date of announcement until the final election.

Charges for announcements are cash in advance, and this same policy applies to all political advertising carried in the columns of this news paper.

Names for each office will be listed in the Political Column in the order they are received at the newspaper office.

The Journal has been authorized to announce the following candidates for public office:

- COUNTY JUDGE**
Glen Williams
COUNTY CLERK
Hazel Gilbreath
- Nelda Merriott**
COUNTY TREASURER
Edith Wilt
COMMISSIONER BAILEY COUNTY
PRECINCT #2
Lloyd Stephens
Lewis Embry
PRECINCT #4
Rudolph Moraw
Jerry Ray
COMMISSIONER PARMER COUNTY
PRECINCT #4
Raymond McGohee
Pete Jesko
Jimmy Briggs
JUSTICE OF PEACE
PRECINCT #1
K.B. Martin
MULESHOE INDEPENDENT
SCHOOL DISTRICT
Jama Maritt Brown
Marcia Henry

REBUILT MATTRESS BOX SPRINGS
2-Piece Set
\$69.00
Lowest Price Ever!
Free Delivery!
Call 272-4440

LEGAL NOTICE

General Telephone Company of the Southwest has filed tariffs with the Public Utility Commission of Texas to implement the Federal Communications Commission's telephone equipment registration program (FCC Docket 19528). The tariffs have an effective date of April 15, 1978. The proposed changes will reduce rates for extension telephones and 25 foot long cords; will restructure one-time charges for service connection, moves and changes, increasing some and reducing others; and will offer reduced monthly rates for one-party business and residence customers who provide their own primary telephone instrument. The proposed changes in rates, with some increasing and others decreasing, will reduce General's gross revenues from its Texas operations by \$2,565.00.

GTE
GENERAL TELEPHONE
10t-4tc

ACTION
INSULATION CO.
Top quality insulation for free estimates call 806-986-3544 day or night.

Yes I Am Interested

Name

Phone

Action Insulation
Mail to: Box 115 Springlake 79082

Green Thumb Specials

See Brown Seed For Your Bulk Garden & Vegetable Seeds.

New Improved Pinto Bean & Calumet Sweet Corn & All Other Seeds.
Ferry Morse Seeds Available

To Split Your Corn Harvest Plant Trojan Brand TXS-102 & TXS-115A.
Trojan Brand Milo; M-56G & M-60G For Dry Land & Irrigation.

BROWN SEED
Ph. 272-3335 Muleshoe

A life insurance policy is not a life insurance program. A program comes from a careful analysis of your individual needs and goals. From working together to structure the best solution—for you. A total program.

Curtis Walker
Box 563 / 806 / 272-4581

Southwestern Life
Serving the people since 175 years

PROGRAM

Southwest Farmers Plan Lubbock Show

MILLIONS OF DOLLARS IN FARM EQUIPMENT TO BE ON DISPLAY
The most modern farm implements and equipment in the world will go on display here

March 30-April 1 at the first South Plains Farm Show in the Lubbock Memorial Civic Center. Sponsor of the Farm Show is the Southwest Hardware & Implement Association.

The free three-day exhibition, bringing exhibitors from across the country, also will feature a public forum on the economic plight of the farmer, a Natural Fibers Fashion Revue, a special day for members of the Future Farmers of America, and a championship micro-mini tractor pulling contest.
The fashion revue and forum are being sponsored by the implement dealers' association, The Texas Agricultural Extension Service, Texas Tech and the Lubbock Chamber of Commerce.

Farmer like to see what's new in farm equipment" and several million dollars worth of farm machinery will be on view in the largest such show ever assembled on the South Plains of Texas. Gene Cudd, President of Hansford Implement in Spearman and President of SWHIA, said.
Most farm machinery is getting more refined, Cudd said, requiring less labor to farm acreage than ever before. Before mechanization, he noted, one man and a team of horses could plow about three acres a day. That meant the farmer might be able to grow about 80 acres of crops annually.
Today, one American farmer feeds more than 50 people a day.
"We've got to operate more efficiently today than we did

yesterday, especially in the face of the economic pinch being felt by farmers across the land," said Dale Elms, President of Elms Equipment of Lubbock and a Past-President of the Association.
The trends in farm equipment are efficiency and "as opposed to other nations of the world, driver comfort," Elms said.
Not only farmers, but city dwellers unfamiliar with farming will find the free show informative and entertaining, Elms said. Hundreds of dollars worth of door prizes will be given away each day.

The displays of equipment will be open in the Civic Center from 10 a.m. to 6 p.m. Thursday, March 30, and Saturday, April 1, and from 10 a.m. to 9 p.m. Friday, March 31.
At 10:15 a.m. Thursday, March 30, spokesmen for the American Agriculture Movement, the National Farmers Union and an Agricultural economist from Texas A&M University will discuss "The Agricultural Dilemma: To Farm or Not To Farm," in the Banquet Hall at the Civic Center. The panelists then will face questions from a reaction panel of farm writers and broadcasters.
At 2 p.m. the same day, sewing enthusiasts from throughout the South Plains will display their handiwork in the Natural Fibers Fashion Revue. Television personality Jane Prince will provide commentary for the show, with hundreds of dollars in prizes being awarded to the winning entries.
Friday, March 31, has been designated "FEA Day" and will feature two micro-mini tractor pulls, at 2 and 6 p.m. The

competitions are sanctioned by the National Micro-Mini Tractor Pullers Association. One of the fastest growing competitive hobbies in the nation, the micro-mini pulls duplicate the contests of the full-size tractors, but use scale models powered

by model airplane engines. A final micro-mini pull will be held at 11 a.m. Saturday, April 1.
Cudd stressed that all events at the farm show are free and there will be ample free parking around the Civic Center.



The Speaker Reports

by Bill Clayton

AUSTIN—There is considerable good news about our state if we look at the statistical data that tells us where we are and where we are going economically.
Data indicates that as far as state taxes are concerned, Texas has the second lowest per capita tax burden in the fifty states; the lowest among sunbelt states, industrial states, and states without an income tax. There is no corporate income tax, no personal income tax, and the other state taxes—sales, fees, severance, etc.—are considered reasonable by comparison to other states.

State have suffered from these increases as well as depressed market prices. It is a problem with which lawmakers must cope. We cannot afford to let this issue cloud an otherwise bright picture.

In 1977, 38% of all taxes collected were in the form of sales and use tax; 20% came from oil and gas production; 10% from motor fuels taxes; and the rest from cigarette, motor vehicle, franchise, alcohol, and other small taxes. The revenue produced by these taxes accounted for 60% of the 1977 state expenditures.

With this revenue, the state has been operating efficiently and well. In 1977, only 1.5% of the budget was spent on executive administration. Welfare spending declined from 20.2% of the 1973 budget to 17.6% in 1977 and 17.5% in the present fiscal year. Financial administration is also low—this operation cost Texans \$5.15 per capita in 1976 compared with a national average of \$9.14.

As a result of the frugal management of state government, Texas spent \$547 per capita in 1976 which places Texas 48th in the nation in terms of spending. This ranking places Texas 24% below the average in state expenditures. Certainly this is a good indication of the health of both the Texas government and its economy.

Specifically, how are these funds spent? In the 1978-79 biennium, the total appropriations amounted to almost \$16.5 billion. Education accounted for 45.2%; welfare 17.5%; highways, 13.9% employee and teacher retirement 6.9%; mental health and corrections, 6.4%; general government and other, 5.4%; health, 2.8%; and parks and natural resources 1.9%.

All of these factors are indicative of the good business climate in Texas and the financial health that our state government enjoys.

However, we are not without problems. Local taxes must also be considered when looking at the tax picture. Our school districts, counties, cities, and other taxing entities depend on the property tax to finance their functions. With rising costs and changing needs, these districts have increased their reliance on this tax base, and as a result, there have been certain pressures.

Property taxes—particularly those for schools—have doubled and tripled in the last four years. Many of the state's citizens with fixed or low incomes have felt a big pinch. In addition, the farmers and ranchers in the

Whenever we hear an old man lambasting the youth of today we wonder what kind of child he was.

ATTENTION MULESHOE AREA CATTLEMEN

... In regard to dead stock removal ... If you have a problem with service ... whether in the feed yard or on the farm ... Please give US a chance! Thank You.

YOUR LOCAL USED COW DEALER IN MULESHOE
Phone 965-2903
Mobile 965-2429
Muleshoe Bi-Products

Whites CASHWAY

Double Gunn Bros. Stamps Every Wednesday

7:30 a.m. til 9:00 p.m. MONDAY-SATURDAY CLOSED ON SUNDAY

402 Main 272-4244

We Reserve The Right To Limit Quantities

<p>32 Oz. Bottle Liquid For Dishes PALMOLIVE \$1.09</p> <p>12 Ct. Pkg. Johnsons Polish GLOSS N TOSS \$1.19</p> <p>14 Oz. Can Johnsons KLEAN & SHINE \$1.29</p> <p>No. 303 Can Del Monte Early Garden Sweet PEAS 3/\$1</p> <p>1/2 Gallon Cloverlake Asst. Flavors MELLORINE 89¢</p> <p>1/2 Pt. Cloverlake WHIPPING CREAM 2/ 89¢</p> <p>8 Oz. Ctn. SOUR CREAM OR DIPS 2/ 89¢</p> <p>1 Lb. Pkg. Chiffon Soft Stick OLEO 59¢</p> <p>No. 303 Can Bushs Best Chopped MIXED GREENS 4/\$1</p> <p>U.S.D.A. Grade A EGGS Doz. 59¢</p> <p>4 Roll Pkg. Delsey BATHROOM TISSUE 89¢</p> <p>No. 303 Can White Swan FRUIT COCKTAIL 2/ 89¢</p> <p>Mrs. Bairds Angle Food CAKE \$1.19</p> <p>20 Oz. Box, Kelloggs 40% BRAN FLAKES 89¢</p> <p>Case 24/ 12 Oz. Cans COKE OR DR. PEPPERS \$4.99</p>	<h2 style="text-align: center;">EASTER HAM SPECIALS</h2> <p style="text-align: center;">Wrights Brand Fully Cooked Shank Half</p> <div style="display: flex; justify-content: space-around;"> <div style="text-align: center;"> <h1 style="font-size: 4em;">HAMS</h1> <h1 style="font-size: 4em;">99¢</h1> <p>Lb.</p> </div> <div style="text-align: center;"> <h1 style="font-size: 4em;">HAMS</h1> <h1 style="font-size: 4em;">\$1.69</h1> <p>Lb.</p> <p>Norbest Hickory Smoked Fully Cooked Boneless</p> <p>2 To 3 Lb. Avg.</p> </div> </div> <div style="text-align: center; border: 1px solid black; padding: 5px; margin: 10px 0;"> <p>WE WELCOME USDA FOOD STAMP COUPONS</p> </div> <table style="width: 100%; border-collapse: collapse;"> <tr> <td style="width: 50%;">Wrights Brand Fully Cooked Dry Cured Whole HAMS Lb. \$1.09</td> <td style="width: 50%;">Wrights Brand Fully Cooked Butt Half HAMS Lb. \$1.09</td> </tr> <tr> <td>Swifts Premium Proten Beef ARM ROAST Lb. \$1.09</td> <td>Swifts Premium Proten Beef RANCH STEAK Lb. \$1.09</td> </tr> <tr> <td>Swifts Premium Proten Beef RIB STEAK \$1.19</td> <td>Chicken WIENERS Tysons Skinless (12 Oz. Pkg.) 59¢</td> </tr> </table>	Wrights Brand Fully Cooked Dry Cured Whole HAMS Lb. \$1.09	Wrights Brand Fully Cooked Butt Half HAMS Lb. \$1.09	Swifts Premium Proten Beef ARM ROAST Lb. \$1.09	Swifts Premium Proten Beef RANCH STEAK Lb. \$1.09	Swifts Premium Proten Beef RIB STEAK \$1.19	Chicken WIENERS Tysons Skinless (12 Oz. Pkg.) 59¢
Wrights Brand Fully Cooked Dry Cured Whole HAMS Lb. \$1.09	Wrights Brand Fully Cooked Butt Half HAMS Lb. \$1.09						
Swifts Premium Proten Beef ARM ROAST Lb. \$1.09	Swifts Premium Proten Beef RANCH STEAK Lb. \$1.09						
Swifts Premium Proten Beef RIB STEAK \$1.19	Chicken WIENERS Tysons Skinless (12 Oz. Pkg.) 59¢						

ARMOURS SPEEDY-CUT Fully-Cooked Boneless Half

HAMS

\$1.98

Lb.

3 To 5 Lb. Avg.

LISTEN TO THE MULETRAIN
10:15 a.m. MONDAY-FRIDAY OVER KMUL
SPONSORED BY **WHITES CASHWAY**

<p>5 Lb. Bag Gladiola All Purpose FLOUR 69¢</p>	<p>42 Oz. Tin Mrs. Tuckers SHORTENING 89¢</p>	<p>No. 303 Can Cur Darling Whole Kernel CORN 4/\$1</p>	<p>Glen Park Sliced PEACHES 49¢</p> <p>No. 2 1/2 Can</p>	<p>Sunlite Brown & Serve ROLLS 3/\$1</p>
--	--	---	---	---

COME TO CASHWAY FOR YOUR WIC CARD PURCHASES

<p>California Large Green AVOCADOS 4/\$1</p>	<p>Washington Extra Fancy Winesaps APPLES 3 Lbs. \$1</p>	<p>12 Oz. Can Luncheon Meat SPAM 99¢</p>	<p>6 Oz. Can Teksun ORANGE JUICE 3/99¢</p>	<p>8 Oz. Pkg. Banquet POT PIES 4/\$1</p>
---	---	---	---	---

<p>Florida Fresh Golden Ears CORN 5/\$1</p>	<p>California Garden Fresh GREEN ONIONS Bunch 2/29¢</p> <p>California Purple Top TURNIPS Lb. 19¢</p>	<p>10 Oz. Pkg. Birds Eye BROCCOLI With Cheese Sauce 69¢</p> <p>10 Oz. Pkg. Pepperidge Farms PATTY SHELLS 69¢</p>
--	--	--