



MULESHOE JOURNAL

'The Community of Opportunity-Where Water Makes the Difference'



Volume 55 Number 5

14 Pages

Published Every Thursday at Muleshoe, Bailey County, Texas 79347

10 Cents

Thursday February 2, 1978

Snow Slows Traffic, Closes Schools

No Injuries Recorded In One Car Accident

Bailey County Youth Show Lambs, Swine

Bailey County Agent Spencer Tanksley said the second half of the annual Bailey County Junior Livestock Show is scheduled for Thursday and Friday, February 2 and 3.

The second half will be in the bus barn at Muleshoe High School with the animals scheduled to be weighed in on Thursday. He reminded that the entry fee of \$1 per animal must be paid at the time the animal arrives.

At 8 p.m. today (Thursday), the Lamb Show will be conducted.

BULLETIN

Muleshoe School Superintendent Neal B. Dillman said school would be dismissed at 2:30 p.m. in Muleshoe Friday for the stock show.

Buses will leave high school at 2:30 p.m., and will be at the other schools shortly after that time.

ed, followed by the swine show beginning at 8:30 a.m. Friday.

Judging will be Bob Ballard, a former Vo-Ag teacher, who is presently the Co-op Gin Manager at New Home. Tanksley also said the 4-H youth of Bailey County will be conducting the concession stand during the two day show.

Tanksley also reported on the Fort Worth Livestock Show which was attended by several local youths last weekend.

He said they brought home four second places and other placings from the large show.

Jacinda Gleason won second in the heavy middle weight cross division with a Simmental who weighed 1120 pounds, named Monkey.

A 1050 pound Limosin cross by the name of Peaches won a second place for Belinda Wheeler, in the heavy light weight division.

Jimmy Gleason showed Tiger Man, a 1085 pound Limosin cross, and won second in the light middle weight division.

Top Deck won the light weight division second place for Jay Gleason. Top Deck is a 935 pound Hereford.

Jay Gleason also won sixth place in the light weight division with an Angus weighing 935 pounds and named Steve Austin.

Lick proved to be a 14th place winner in the light weight cross division for Jerry Gleason. The Maine-Anjou weighs 950 pounds.

Jimmy Gleason also won a 14th place in the heavy weight cross division with a 1225 pound Simmental named Magnum.

Felix was a 15th place winner for Michael Davenport. Felix is a 1150 Maine-Anjou who was shown in the heavy middle weight division.

Jacinda Gleason showed the 20th place heavy weight cross, a Simmental weighing 1325 pounds and named Bananas.

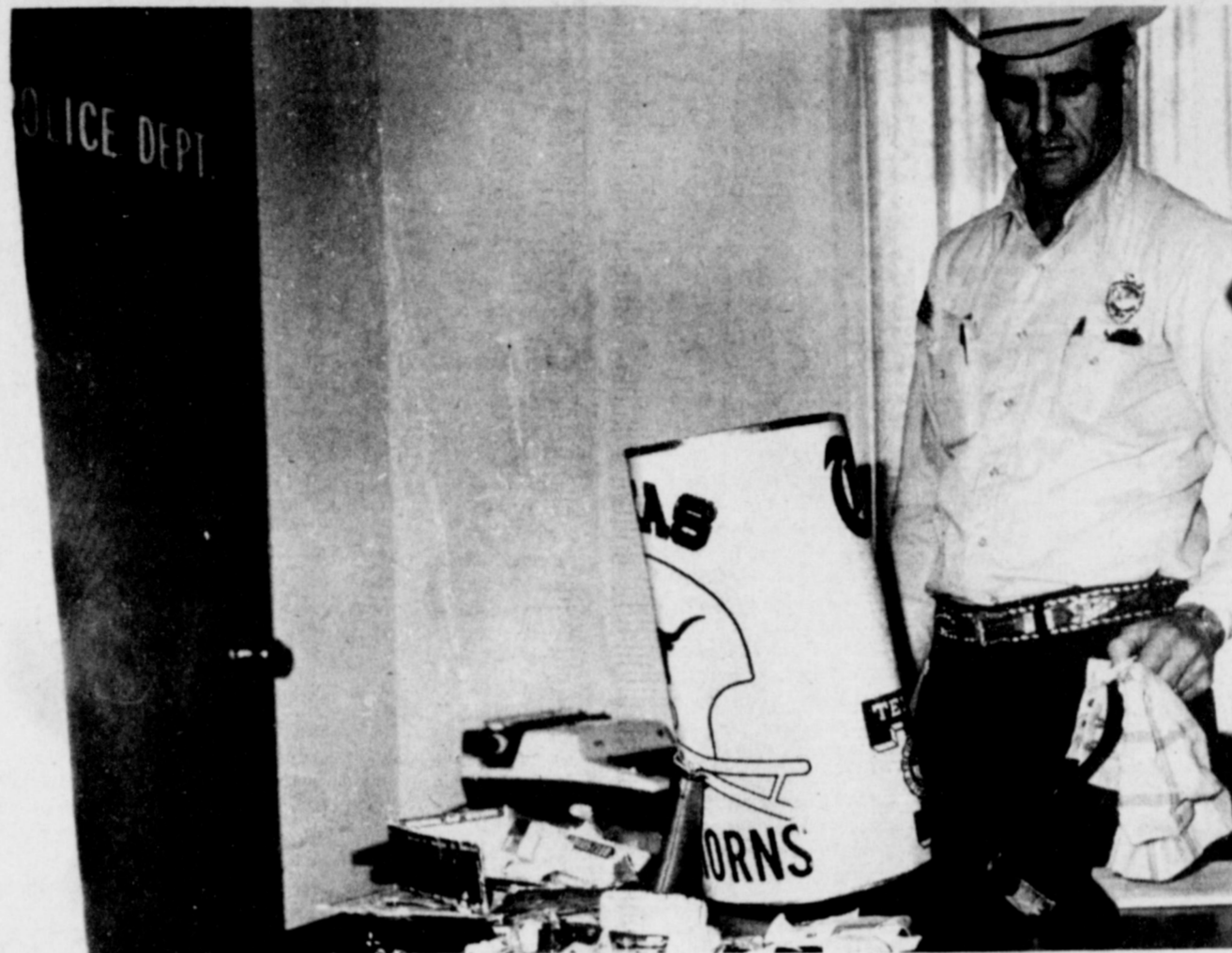
Sampson, a 1125 pound Simmental cross, was a 23rd place winner for Belinda Wheeler in the middleweight division.

Jerry Lionel Gleason and Michael Davenport both had non-placers in the cross division at the show.

Trap Shoot Scheduled On Sunday

The Friona-Bovina Knights of Columbus plan a trap shoot for Sunday, February 5, from 1:30 to dark at the Longhorn Spraying Service, eight miles north of Muleshoe on 214.

Phil Brockman said ammunition would be available at the trap shoot, and invited anyone who wanted to participate.



RECOVERED MERCHANDISE...Muleshoe City Police Chief Buddy Black looks over some of the recovered items which were tossed from a vehicle being pursued by Muleshoe police early Saturday morning. The merchandise, much of which carried 'Damron Drug' identifying labels, was recovered in a six mile

stretch of highway east of Muleshoe. The wastebasket was also taken from the drug store, and apparently was used by the intruders to carry out some of the money and drugs taken from the store. Two persons have been charged with the burglary and one person is still being sought by police.

Money, Drugs Reported Taken From Damron Drug

Early Saturday morning, Muleshoe City Patrolmen Forrest Williams and Leroy Sandefer had just left Allsup 7-11 store, the only all night business in Muleshoe, other than the law enforcement center and hospital when they found trouble.

It was just after 3:30 a.m. Saturday and they drove east on American Blvd. in two separate vehicles. Williams turned down Main Street and Sandefer continued east on 84. Williams saw a white Cadillac near the post office and as he neared the vehicle, it took off in a burst of speed, he said.

Officer Williams radioed to Officer Sandefer, who made an attempt to stop the car to no avail. In the ensuing chase east on Highway 84, as the late model Cadillac continued to pull away from pursuing police various items started flying from the car windows.

Near the Lubbock water works, about nine miles east of Muleshoe, officers determined they could not catch the vehicle, so returned and started picking up some of the merchandise as other officers were summoned.

At 4:16 a.m., officers found the front door of Damron Drug open, and owner Sam Damron was notified. When he arrived at the Drug, he found the burglars had 'jimmied' open the front door and had gone into the office at the drug store.

Missing were a large amount

of drugs, checks and cash, five wrist watches, a silver dollar

Lubbock Bank Promotion To John Elliott

Wayne Finnell, president and chief executive officer of the Lubbock National Bank announced the promotion of John Freeman Elliott to assistant vice president and trust officer. The promotion was granted during the January meeting of the board of directors of the Lubbock Bank.

Elliott has been associated with the Lubbock National Bank for five years. He was supervisor of the part-time drive in teller windows for two years while attending Texas Tech University. In 1973, he graduated from Texas Tech University with a Bachelor of Business Administration Degree.

After graduation, he joined Lubbock National Bank on a full time basis and entered an officer training program for six months. Upon completion of the training program, he transferred to the trust division of the bank where in January, 1976, he was promoted to his previous position of trust officer.

Elliott has been active in the Membership Drive of the Lubbock YMCA, worked with the employee committee of the United Way, assisted on the enrollment committee for sustaining members of the South Plains Council of Boy Scouts of America; is a member of the Greater Lubbock Rotary Club, president of the board of Chapter Advisors, as well as Alumni advisor, for the Fraternity of Phi Gamma Delta (FDJ) at Texas Tech. At the present time, John Elliott is also a second year student at the Southern State Graduate School of Banking at Southern Methodist University, where he is doing extension work toward a graduate degree in trust banking.

His parents are Mr. and Mrs. Harold Elliott of Muleshoe where he graduated from Muleshoe High School in 1969. His wife, Nancy, also is a graduate of Texas Tech University, and is currently teaching Home Economics at Roosevelt High School in Lubbock.

collection, two shotguns, and possible other merchandise.

The intruders had taken a 'very large' amount of cash, drugs and merchandise said Damron, as he attempted to inventory the loss.

An Ithaca shotgun was recovered from where it had been thrown from the pursued vehicle, along with shattered drug bottles, smashed wrist watches, various papers, and plastic drug bottles which had been run over by oncoming traffic.

Also in the items recovered was a paper with an address in Lubbock and Lubbock officers were notified. At the address in Lubbock, two men were arrested and charged with the burglary of Damron Drug.

Police Chief Buddy Black said one other individual is being

sought in connection with the burglary, as three persons were seen in the vehicle as it left

Cont. on Page 2, Col. 1

Subdivision Plat Revision To Be Studied

Members of the Bailey County Commissioners Court will meet today (Thursday) at 10 a.m. in the commissioner's courtroom.

In session until 5 p.m., commissioners will pay county bills and consider revised plat for the K.K. Krebs subdivision. During the all day session, commissioners will also consider other miscellaneous items, according to Bailey County Judge Glen Williams.

First Baptist Sets Special Youth Rally

Sunday, February 5, the First Baptist Church of Muleshoe will be hosting a Youth Rally for all junior and senior high school age youths.

The rally, which will begin at 6 p.m., will be in the fellowship room of the church. Special speakers for the conference and rally will be Dan Irons, All-American tackle from Texas Tech and Mark Julian, running back from Tech.

Also on the evening's program will be David Hampton, All-District football player at Pampa High School, and now a Tech student, and Nancy Neill and Dixie Douglass, singers from Texas Tech.

During the evening worship hour, the special guests will be sharing testimonies and songs as the entire service is youth-oriented.

Immediately following the evening worship service, all youth will be traveling to Littlefield to the Pizza Inn for a pizza buffet. The cost for the pizza (all you can eat) and a drink will be \$2.50 per person. The church bus and several cars will be taking the youths and sponsors.

Kenny Carter, youth minister, said all youths in the Muleshoe area are invited to attend this special youth rally.



HEART MONTH PROCLAIMED...February is the traditional 'Heart Month' and the Muleshoe Chapter of the American Heart Association presented a proclamation to the Muleshoe mayor designating the month as 'Heart Month'. Pictured are from left, Terry Gunter, member of the American Heart Association, Mayor Kenneth Henry and Mrs. Ben Yeager, member of the American Heart Association.



JERRY RAY

Precinct Four Commissioner Race Growing

Jerry Ray announced as candidate for Bailey County Commissioner of Precinct Four.

He has farmed in the Bula and Circleback communities for 30 years, and has lived in Bailey County for the past 17 years.

Ray and his wife, Peggy, are the parents of four daughters, three who are married, and the youngest, Tanya, at home.

He said he has served on numerous boards in the county and community that have brought him in contact with his county, state and national legislative bodies.

He says that he feels well at ease in speaking to or meeting the public.

"If elected, I would take the responsibility of the office of commissioner as a challenge to serve the county in a worthwhile, upright and Christian manner," he commented. "I sincerely ask for the support and vote of everyone in Precinct Four."



SNOW ALMOST STOPS TRAFFIC...Monday night's snowfall almost left Main Street deserted Tuesday as traffic slowed to a crawl, and the streets were virtually abandoned, as evidenced by this picture taken in front of Tri-County Savings and Loan shortly after noon Tuesday.



DRUGSTORE MESSED UP...Burglars who broke into Dameron Drug Store early Saturday left a messy office as they broke into safes, and rummaged through storage drawers in their search for money and drugs. Two men, who were apprehended in Lubbock, are charged with the early morning burglary. One other suspect is being sought in the burglary.

Drug...

Cont. from page 1

Muleshoe with local officers in pursuit.

Officers Williams and Sandefur said the pursued vehicle apparently turned off the main highway somewhere around the Lubbock water works and was believed to traveled dirt roads instead of the Main highway as officers in Sudan, Littlefield and Lubbock were watching for the car.

Officers and other spent a

major part of Saturday morning gathering up the scattered merchandise where it had been thrown from the car. About a six mile stretch of highway was littered with items which had been taken from the drug store. Dameron said his Ithaca shotgun was damaged when it was tossed from the car, and the other shotgun was not recovered. No cash was recovered and only a small amount of drugs.

Officers continue to check the latest burglary in Muleshoe, and perhaps the largest burglary recently.

Snow...

Cont. from page 1

ing a close watch on energy consumption.

Weather forecasters said the shallow pool of cold air at the surface would move only slightly through Wednesday, but would be replaced by a push of cold Canadian air Wednesday for a continuing bout with cold, treacherous ice and snow.

Lower nighttime temperatures were expected to enhance traveler's danger through most of the week, with no immediate relief in sight for the slick, icy roads.

Water Resource Group Names Chairman

A. Black, a nationally recognized soil and water conservation leader of Friona, Texas, was elected chairman of the six-state High Plains Study Council this week. The Council is an organization of states with substantial land areas overlying the Ogallala Aquifer, the area's principal source of water.

The Council was organized a year ago to advise and assist the federal government in a \$6 million study of the area's natural resource needs.

Black, chairman of the Texas Water Development Board, succeeds Governor David Boren of Oklahoma as head of the Council. Member states are Texas, Oklahoma, Kansas, Colorado, New Mexico and Nebraska. The Council's first annual meeting was held in Oklahoma City earlier this week to review plans for the study about to get underway.

The new chairman is a farmer, banker and agribusiness leader with substantial livestock interests.

The U.S. Department of Commerce's Economic Development Administration (EDA) has requested proposals from private consultant firms to serve as the general contractor to oversee and conduct the study of the economic impact of the dwindling natural resources of the area.

Black said a bidders' conference will be held February 14 at the Airport Marina Hotel, D-FW Airport, midway between Dallas and Fort Worth.

The full Council and EDA representatives plan to meet early in May to evaluate the proposals and select a contractor to conduct the study.

Public Works legislation enacted by Congress late in 1976 authorized the study. A total of \$3 million has been appropriated for fiscal year 1978 for the

study was authorized to ensure an adequate supply of water. Bill Clayton Will Speak To Water Inc.

Texas House Speaker Bill Clayton will be a featured speaker at the 11th Annual Membership Meeting of Water, Inc., Feb. 11 in the Amarillo Quality Inn.

Clayton, known in the state legislature as "Mr. Water" for his support of water resource development, is a long-time advocate of water importation. He is a former executive director of Water, Inc., a non-profit corporation dedicated to seeking alternative water resources for the High Plains.

He has served in the Texas House of Representatives since his first election in 1962. Currently, he is in his second term as House Speaker and he has announced he will seek a third term.

During his legislative tenure, Clayton has played a key leadership role in most major water and conservation legislation. He is past chairman of the Southern Environmental Resources Conference, former chairman of the Interstate Conference on Water Problems and a board member of the Texas Water Conservation Association.

The Springlake resident maintains farming, ranching and banking interests in Lamb County, along with other business investments.

About 200 people are expected to attend the Water, Inc., meeting which is being dedicated to retiring Congressman George Mahon. Congressman Jack Hightower will also participate in the program and dedication.

to the nation and to promote the economic vitality of the High Plains Region." The Congressional action authorizing the study noted the declining water resources of the

WHO KNOWS?

1. Name the U.S. Presidents born in February?
2. How many U.S. Presidents were buried in Arlington National Cemetery?
3. Where is the longest suspension bridge outside the U.S.?
4. What is the collective name for crows?
5. Where and when was the first U.S. Bureau of Mint established?
6. Define contingent.
7. What fish is called the "tiger of the sea"?
8. Where is the O'Shaughnessy Dam?
9. Name the flower and birthstone for February?
10. When is Ash Wednesday?

Answers To Who Knows

1. Washington, Harrison and Lincoln.
2. Two: Taft and Kennedy.
3. Tagus River Bridge, Portugal.
4. A murder.
5. Philadelphia, April 2, 1792.
6. A representative group that is part of a larger body of people.
7. The barracuda.
8. California.
9. Violet, amethyst.
10. February 8.

Nothing is gained by sacrificing principles for the sake of peace.

Ogallala Aquifer and charged the EDA, in cooperation with state and other federal agencies, to develop plans to increase water supplies in the area and report recommendations to Congress for further action.

Black said the multi-state organization set up to work with the federal government is a unique and unusual approach to seek solutions and bring about to cope with a critical situation developing in the High Plains Region.

The High Plains study will consider all past and ongoing studies, plans, and work on depleted water resources in the region, and will examine the feasibility of various alternatives to provide adequate water supplies in the area.

The study will include, but is not limited to, the study of transfer of water from adjacent areas. This portion of the study will be conducted by the U.S. Corps of Engineers in cooperation with the EDA and the High Plains Council. If water transfer is found to be a part of a reasonable solution, the report to Congress shall include a recommended plan for allocating and distributing water in an equitable fashion, taking into account existing water rights and the needs for future growth of all affected areas.

An interim report will be made to Congress no later than October 1, this year, and a final report with recommendations shall be made to Congress no later than July 1, 1980.

"From our studies in Texas, we know the problems and importance of the declining water supplies in the Ogallala in our State, and we recognize the importance of the area's food and fiber production," stated Black.

BIBLE VERSE

"To every thing there is a season, and a time to every purpose under the heaven."

1. Who made the above statement?
2. Whose son was he?
3. What was the theme of the book from which it was taken?
4. Where may this statement be found?

Answers To Bible Verse

1. Most scholars agree that Solomon made it.
2. He was the son of David.
3. How man may obtain real, substantial happiness.
4. Ecclesiastes 3:1.

Howard H. Baker, Senate Republican Leader, on Jan. trip to Panama: "I intend to make judgment (on treaty) as careful, as thorough and as correct as I know how to do."

ATTENTION MULESHOE AREA CATTLEMEN

... In regard to dead stock removal ... If you have a problem with service ... whether in the feed yard or on the farm ... Please give US a chance! Thank You.

YOUR LOCAL USED COW DEALER IN MULESHOE

Phone 965-2903
Mobile 965-2429

Muleshoe Bi-Products

Muleshoe Journal
Established February 21, 1924. Published by Muleshoe Publishing Co., Inc. Every Thursday at 304 W. Second, Box 404 Muleshoe, Texas 79241. Second class postage paid at Muleshoe, Texas, 79241.

TEXAS PRESS ASSOCIATION

L.R. Hall - President
James Wood - Vice President
Clara Williams - News
Homer Hockberry - Society
Ralph O'Neil - Office
Robby Millip - Advertising
Lloyd Hatfield - Subscription

SUBSCRIPTIONS:
Member Journal and Bailey County Journal
Bailey and surrounding Counties - \$6.50
Member Journal and Bailey County Journal
Elsewhere in Texas - \$12.00
Member Journal and Bailey County Journal
Outside of Texas - \$11.00
Yearly by Carrier - \$6.50
Monthly by Carrier - \$1.00
Advertising rate card on application

BASKETBALL
SUPPORT THE HOME TEAM



Girls		Boys
February 3	Olton	There 4:00
February 7	Morton	There 4:00

- The Following Firms Urge You To Back The Mules And Mullettes*
- Watson Alfalfa
 - The Fair Store
 - John's Custom Mill
 - Beaver's Flowerland
 - Muleshoe Publishing Co.
 - Bailey County Electric Cooperative Association
 - Dari Delite
 - Flower's Auction
 - Alfreds 66 Service
 - San Francisco Cafe
 - Bob's Safety Service

Announcement

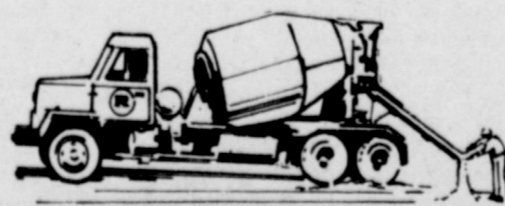


Muleshoe Concrete Is Now Open For Business.

They Will Do All Kinds Of Concrete Work For You.
Sidewalks-Foundations-Patios
Muleshoe Concrete Will Also Handle Wire Mesh, Rebars & Cement In Sacks.

Go By & See Don Barnes Today & Let Him Help You With Your Concrete Needs.

Open Mon-Sat. At 8 a.m.



Muleshoe Concrete

Friona Highway Muleshoe 272-3720



CHAMPION HEREFORDS...Shown is the Champion pen of Hereford Feeder Steers at the 1978 National Western Show, Denver, which was won by J.E. Birdwell and Sons of Muleshoe. The calves weighed 637 pounds and sold for an average price of \$732 each. Birdwell said he has used bulls from Nash Herefords, Canon City, Colorado, for several years. Also, this week, a pen of 20 commercial Hereford heifers won Grand Champion for J.E. Birdwell and Sons at the Fort Worth Fat Stock Show. (American Hereford Association Photo)



EXTRA EXERCISE...Mrs. Howard Elliott was caught unaware Tuesday afternoon as she shoveled snow from her driveway on West Fifth Street. She was just one of many persons who had a lot of unaccustomed exercise following the three to four inch snowfall.

How Explosive Are Various Grain Dusts?

(Editor's Note: This is the first of a three-part series on grain dust explosions.)

Two factors determine the explosive hazard potential of any dust, including various grain dusts, says a safety engineer with the Texas Agricultural Extension Service.

"The first factor is a measure of 'ignition sensitivity' or how

Lazbuddie News By Judy Lust

Several Lazbuddie FFA and 4-H members participated in the Hereford Stock Show last weekend. With the pigs Vandi Tarter showed the Champion Hamper and Barbie Seaton showed the Champion Poland. Russell Windham showed the Reserve Grand Champion lamb. Mike Windham showed the Champion Fine Wool Cross and Sean Mason showed the Champion Southdown. Mike Windham also received the Showmanship Trophy in the lamb division.

Mr. and Mrs. Glenn Lust and Frank Hinkson II were in Ft. Worth this past week attending the Ft. Worth Stock Show.

Tammie Husted hosted a party last Saturday night for the High School students and for the teachers. Quite a number of people attended the party and everyone really enjoyed themselves.

DROP Anchor at our... **Shrimp Feast**

All Jumbo Fried Shrimp

All You Can Eat

W/French Fries
Hush Puppies &
Cole Slaw
\$3.95
All Day
Friday, Feb. 3

XIT
STEAK HOUSE
Muleshoe

Hospitals Opposing Revised Guidelines

Hospital planning and services will be substantially removed from local and state authority if the Department of Health, Education and Welfare (DHEW) revised guidelines are adopted.

Ray Hurst, President of the Texas Hospital Association (THA) as he described the revised guidelines proposed by DHEW as published in the Federal Register on January 20, 1978.

Hurst went on to point out that these proposed regulations as revised from the September 23, 1977 draft, will cause all hospitals in the state some problems.

Hurst stated that "we are concerned with the failure of DHEW to separate its continued insistence on awkward and unworkable cost controls from the primary intent of P.L. 93-641, the Health Planning, Resources and Development Act. Although the revised proposed guidelines permit the twelve (12) Health Systems Agencies (HSA) in Texas to apply for exceptions to the guidelines, the Secretary of DHEW could have the final say by withholding funding and resignation of the HSA. This would be a serious blow to local and state authority in the planning process."

THA did a survey of hospitals in Texas based on the first set of guidelines. That survey indicated that over 90 percent of Texas hospitals could not comply. The announcement of these results disturbed hospitals and the public. Over 25,000 communications were sent to DHEW from Texas.

Hurst stated "the new thrust of these proposed guidelines is to have compliance in an overall HSA area. As an example, since hospitals in the HSA area must have a composite occupancy of at least 80 percent, then if some hospitals fall below this amount, others must make the difference. Another part permits smaller hospitals to have obstetric departments that provide primary or uncomplicated delivery services. Complicated obstetrical cases and intensive neonatal cases would be referred to other hospitals and as a result, patients currently being

born at their homes will have to travel many miles for medical care at greatly increased total cost and inconvenience to the patient."

Hurst pointed out by Hurst that the HSA's in other areas of the United States have come to view themselves as "regulators" and "enforcers." This was not the intent of the planning law, P.L. 93-641. Hurst stated "the law calls for a cooperative planning process at the local and state level. We have difficulty finding this in the revised guidelines with their overriding emphasis on cost control."

Hurst and the public have been waiting since February 20, 1978 to see if these new proposals should be sent to the Office of Planning, Health Resources and Administration Building, Room 1022, 500 East West Highway, Hattiesville, MD 20782.

Hurst closed by saying "we strongly recommend that DHEW withdraw these proposed regulations or as a minimum close the state that they are bench mark with final implementation

in the hands of local and state authority. Since there appears to be a difference of opinion between the intent of Congress and DHEW concerning P.L. 93-641 we will consult with the Texas Congressional Delegation early next week on this matter. I will be testifying on February 1st before a Congressional Committee concerning renewal of the planning law, P.L. 93-641, which expires in September 1978."

THA is the Austin based trade association of hospitals and health care institutions in Texas with over 700 institutional members.

BIBLE VERSE

"Arise, go to Nineveh, that great city, and cry against it; for their wickedness is come up before me."

1. To whom was this command given?
2. Did Jonah obey God?
3. Where is the above recorded?
4. Is the prophesying of Jonah mentioned elsewhere?

Answers To Bible Verse

1. Jonah.
2. No, he fled to Tarshish on a ship.
3. Jonah 1:2.
4. Yes, II Kings 14:25.

Introducing

3541

MORE INCOME PER ACRE!

In 61 field comparisons during 1977, 3541 recorded an average income advantage of more than ***\$25 an acre over competitive hybrids...** and averaged 2.7 points drier at harvest. This new medium-maturity hybrid dries faster and stands better than competitive full-season corns. But 3541 yields more than others of similar maturity, so it gives you a greater potential for profit. 3541 has the performance characteristics you need...

- Excellent head smut tolerance
- Outstanding yields
- Good ear retention
- Excellent standability
- Easy harvester
- Fast drydown

3541... a proven performer in 1977

In 61 side-by-side comparisons on the High Plains, this outstanding corn beat the competition in all categories:

	Yield		Moisture at Harvest	Income per acre after harvest, hauling & dockage	
	(adjusted to 15% moisture) Pounds/A	Bushels/A		(\$3.70/cwt)	(\$3.00/cwt)
3541	7,991	142.7	17.2	\$ 258.86	\$ 203.71
Competitors	7,428	132.6	19.9	\$ 233.13	\$ 183.00
3541 Advantage Per Acre	563	10.1	2.7	\$ 25.73	\$ 20.71

*Based on corn price of \$3.70

SNOW'S HERE

GET A GMC

With rugged plowing power. Brawny built and convenient for on- and off-the-road service. In stock and ready for immediate delivery. Snow's here.

Robert Green Inc.

W Hwy 84 Muleshoe

272-4588

See your Pioneer dealer today.

PIONEER
SEED CORN

Pioneer Hi-Bred International, Inc.
Southwestern Division
Plainview, Texas

The limitation of warranty and remedy attached to each bag of Pioneer brand seed is a part of the terms and conditions of the sale thereof.

Fighting Three Way Eagles



By The Three Way School



MELONIE GAY ROBERTS

Senior Spotlight

Our Senior of the week is Melonie Gay Roberts, daughter of Burley and Carolyn Roberts. Melonie made her appearance in this world on August 24, 1960 at Lubbock. Melonie's favorite subject at Three Way High is government because she enjoys her teacher Mrs. Tyson. Her favorite foods are pizza, cowboy casserole, chicken and spaghetti. Her favorite hobbies are horseback riding, camping, hiking, and cooking. Melonie likes anything blue.

Melonie is a member of FHA, Pep Club, and works on the annual. She also is a proud new sister of a baby brother born this month.

Melonie plans to work after graduation. She is looking forward to many things during her Senior year. She is enjoying working on the annual, looking forward to the Jr. Sr. Banquet, and most of all graduation night and the Senior Trip.



MRS. RESSIE MORRISON

Teacher Feature

Our teacher of the week is Mrs. Ressie Morrison. Mrs. Morrison is head of Special Education for Three Way Schools. She is the proud parent of Atha, 28, Scott, 27, Deborah 25, Felecia 23, Keith 21, and David 16. She also has three grandchildren. Bill is five and Erica three months and Shannon three months.

Mrs. Morrison was born in Wetumka, OK. She has taught at Clovis, Zula, and has been at Three Way for five years.

Her favorite color is Aztec Gold and she loves any kind of salad. Her pastimes are sewing, reading and gardening.

Mrs. Morrison is co-sponsor of the Sophomore Class.

Kindergarten Kut-Ups

We welcomed Selene Media into our class. Now we have 18 students.

We have been studying transportation this month.

We studied land transportation, such as cars, trains, horses, and of course feet. We studied water transportation, such as canoes, steamboats, oceanliners and submarines. This week we studied air transportation, such as balloons, helicopters, and jets.

We have been coloring a mural each week to show in the hall what type of transportation we

Three Way School Menu

- MONDAY**
Super Dog with mustard
Buttered Potatoes
English Peas
Cobbler
Milk
- TUESDAY**
Taco with lettuce and cheese
Ranch Style Beans
Potato Chips
Pears
Milk
- WEDNESDAY**
Pinto Beans
Whole Kernel Corn
Chopped Greens
Cornbread
Cookies
Milk
- THURSDAY**
Oven Fried Chicken
Creamed Potatoes
Green Beans
Rolls
Fruit
Milk
- FRIDAY**
Hamburger
French Fries
Tossed Salad
Fruit Cocktail
Milk

Three Way News

By Mrs. H.W. Garvin

Three Way basketball teams played Anton at Anton Friday with Three Way losing both games. Saturday night Three Way played Whitherell at Whitherell with Three Way losing both games.

Rev. and Mrs. Vernon Stephens and girls were in Wichita Falls Friday to attend the funeral of his grandfather.

Mr. and Mrs. George Tyson spent the weekend in Lubbock with their daughter the Tommy Durhams.

Mr. Clarence Benton from Littlefield spent Friday with his daughter the Rayford Mastens.

Mr. and Mrs. Jack Furgeson were in Lubbock Friday on business and visited their daughter the Jim Green Family.

Mrs. H.W. Garvin spent the weekend in Clovis visiting her daughter the Kenneth Fox family.

Mr. and Mrs. Marvin Long from Amarillo and Mrs. H.W. Garvin from Maple were supper guests in the S.G. Long home Wednesday evening.

Mr. and Mrs. Elbert Kelley from Dalhart spent the weekend with Mrs. Fred Kelley.

Mr. and Mrs. S.G. Long spent Friday and Saturday in Clovis with their niece family.

Mr. and Mrs. D.S. Fowler attended signing at Dora N.M. Sunday afternoon.

Mrs. Sally Robinson is in the Rest Home at Muleshoe and is doing fine at this time.

Mr and Mrs. S.G. Long visited in Brownfield Sunday with the Carr-Fleming family.

Mrs. Bobby Kindel, Mrs. James Kindel and Mrs. Joey Kindel and children were in Clovis Sunday to attend a show.

were studying.

This week we went for our Head Start physicals. The nice Public Health nurses tested our eyes, ears and blood.

Then, Dr. Albertson and Dr. Gregory, at the hospital, checked our muscles and bones. They tickled our stomachs, too. We want to make sure that we stay nice, healthy boys and girls.

Even though it was snowing, we went for ice cream and hamburgers at the Dairy Queen. Starring at nap time were, Sammy Belez, Debra Locke, Kristi Risinger, Norma Rubalcava, Scott Terrell, Sheila Tucker, Melinda Turney, Rosa Linda Baeza, Armando Ramirez and Selene Medina.

We wish D'nae Dewbre a happy birthday with cake and punch.

We studied space transportation this week. We learned about gravity, rockets and the planets. For the mural in the hall, we drew the Sun and all

nine planets. Then we put our spaceships and rockets flying around in space.

When it snowed, we got to go outside and play. We really love to play in the snow.

Second Grade Kapers

We are sorry that Greg Castillo moved and will no longer be in our class.

We have been having fun making snowflakes. We learned that no two snowflakes are ever alike. Some of the shapes we came up with were a big surprise and all of them were beautiful.

We are looking forward to starting on cursive writing soon.

The trouble about the candidates who know it all is that there are so many of them.

Eagle Report

The Eagles had rough "sliding" this week. The girls lost to Anton on Friday night 55-48. High point for the Eagles was Belinda Richardson with 20 and Tammy Davis with 17. On Saturday night they lost to the Whitharral Panthers 65-55. Belinda Richardson had 29 points and Tammy Davis had 14. The Eagles lost Princess Parkman in the Anton game with a sprained ankle, but Jackie Carlisle came in and played a great ballgame. The girls wind up the first half of district with a 2-2 record and are 15-8 overall.

The boys lost a heartbreaking game to Anton 47-43 in overtime. The score was tied at 42 all at the end of regulation play. Anton outscored the Eagles 5-1 in the overtime to take the victory. Albert Rand was high with 14 and Ken Eubanks had 10. Then on Saturday night we journeyed to Whitharral and lost

by the narrow score of 58-55. Albert Rand was high with 20 and Ken Eubanks had 16. The Eagles really had two tough games back to back. They were 2-2 in first half of district and 12-11 overall. The loss to Anton was the first game in the second half so the boys are 0-1 in second half.

The J.V. girls played Anton and lost by 4 points 31-27. High point for the Eagles was Renee Cooley with 20.

HATFIELD APPOINTED HELENA, MONT. -- Democratic Montana Gov. Thomas Judge has appointed Chief Justice Paul Hatfield of the State Supreme Court to complete the unexpired term of U.S. Sen. Lee Metcalf, who died recently.

Warning
Watch out for school children-especially if they're driving.
-Beacon, Philadelphia.

Funeral Rites For Zula Woody Set Thursday

Zula Woody, 91, died at 11:36 p.m. Monday in West Plains Medical Center. Funeral services are scheduled for 3 p.m. today (Thursday) in the 16th and D Church of Christ with Terry Bouchelle, pastor, and Rev. Vernon Stephens, pastor of the Three Way Baptist Church, officiating.

Burial is scheduled for 2:30 p.m. Friday in the Mountain Park Cemetery in Mountain Home, Okla. under direction of Singleton-Ellis Funeral Home of Muleshoe.

She moved to Bailey County in 1934 from Davidson, Okla. Mrs. Woody was born August 28, 1886 in Woodbury, Tenn. and was a member of the Church of Christ.

Survivors include three sons,

Milton Basham, Polcau, Okla.; Sanford Basham, Highland, Okla. and Donald Basham, Skellytown; three daughters, Mrs. Ruby Yates, Post; Mrs. Thelma Reid, Muleshoe and Mrs. Marie Tombs, Maple; 26 grandchildren, 46 great-grandchildren and one great-great-grandchild.



ZULA WOODY

WHITE SWAN



WHITE SWAN EVAPORATED MILK
3 / \$1
13 oz. CAN



WHITE SWAN PURE CANE SUGAR
99¢
5 lb. BAG

16 oz. CAN WHITE SWAN WHOLE PEELED TOMATOES
3 / \$1



WHITE SWAN TOMATO SAUCE
6 / \$1
8 oz. CAN

15 oz. CAN WHITE SWAN WHITE OR YELLOW HOMINY	5 FOR \$1
18 oz. JAR WHITE SWAN (SMOOTH OR CHUNKY) PEANUT BUTTER	79¢
7 1/4 oz. BOX WHITE SWAN MACARONI & CHEESE DINNER	4 FOR \$1
15 oz. BOX WHITE SWAN INSTANT POTATOES	59¢
16 oz. JAR WHITE SWAN COFFEE CREAMER	89¢
4 oz. CAN WHITE SWAN PURE GROUND BLACK PEPPER	59¢
42 oz. CAN WHITE SWAN SHORTENING	\$1.09
1/2 GALLON WHITE SWAN BLEACH	49¢
1 GALLON WHITE SWAN FABRIC SOFTENER	79¢
26 oz. CAN WHITE SWAN REGULAR OR IODIZED SALT	2 FOR 39¢
1 lb. TUB WHITE SWAN SOFT SOFT MARGARINE	2 FOR \$1

PRODUCE Specials

CALIFORNIA SUNKIST NAVELS
ORANGES 4 LB. \$1

CALIFORNIA RED RIPE
TOMATOES 49¢ CTN.

COLORADO NO. 2 WHITE RUSSET (10 lb. BAG)
POTATOES 77¢

CALIFORNIA ZUTANO LRG. SIZE
AVOCADOS 3 LB. \$1

COME TO CASHWAY FOR YOUR WIC CARD PURCHASES

WE WELCOME USDA FOOD STAMP COUPONS

MEAT

HORMAL'S LEAN FAMILY PAC
PORK CHOPS \$1.09 LB.

HORMEL'S EXTRA LEAN CENT
PORK CHOPS.....
HORMEL'S BLACK LABEL (12 oz.)
LITTLE SIZZLER!
HORMEL'S EXTRA LEAN BOSTON
PORK STEAK.....
ARMOUR STAR SKINLESS MEAT
HOTDOGS.....
SWIFT'S PREMIUM PROTEIN BEEF
SOUP BONE.....

Why Pay More
See Randy Or One Of His Salesmen Today!

Johnson Chevrolet

201 Commerce Sudan 227-2050

Double Gunn Bros.
Stamps Every Wednesday

Whites CAS
We Reserve The Right

STATE CAPITAL Highlights AND Sidelights

by Lyndell Williams

AUSTIN—Movements are underway on several fronts to improve the state's income on billions of dollars in public funds it invests at interest.

—State Treasurer Warren G. Harding announced creation of a money management task force to review fiscal policies.

—A House cash management committee also is exploring steps needed to improve state earnings.

—The issue of state money management is a live campaign issue in the state treasurer's race.

In the interest of increasing income, Harding said he already has increased the percentage of funds invested at interest from 85.7 per cent to 88.3 per cent. The remaining 11.7 per cent is in demand accounts to pay outstanding bills.

If all outstanding state warrants came due at once, the Treasury Department would be \$113 million short of having enough cash to pay up immediately, the legislative committee was told. However, chances of an immediate demand on all out-

standing warrants is remote. The issue boils down to just how much ready cash the state should keep in non-interest-bearing accounts. Rep. Frank Hartung of Houston maintains studies show states can operate with only one to five per cent of their funds in "demand" (non-interest) accounts. But others feel that is cutting it a little too thin.

Other proposals for improved money management include consolidation of state funds held by agencies outside the treasury for investment purposes and pooling of local government funds under an investment expert's guidance. The latter apparently will prove too controversial for the study committee.

"I'm not going to have anything to do with telling a county how to run its business," said Rep. Bill Healy of Paducah, a committee member.

Reagan To Visit

Presidential contender Ronald Reagan will campaign in Texas February 22-23 for four Republican congressional candidates.

The former California governor, on his first campaign swing through the state, will visit Longview, Garland, Lampasas, Brownwood, Abilene and Fort Worth.

He plans to give his personal support and endorsement to Frank Glenn in the East Texas fourth district, Tom Pauken in the fifth (Dallas) district, Jack Burgess of Waco in the 11th district and Bill Fisher of Abilene in the 17th district of West Texas.

Reagan will wind up his Texas visit at a \$50-admission reception in Fort Worth to raise funds for the state Republican party.

Appointments Announced

Gov. Dolph Briscoe reappointed Durwood Manford Jr. to the State Board of Insurance for a term extending until 1983. Manford has served since 1961.

Robert R. Shelton of Kingsville was chosen chairman of the Texas Public Safety Commission and Charles D. Nash of Austin was sworn in as a new commission member.

Briscoe also reappointed James Willis Kirby of El Paso and Robert E. Layton Jr. of Tyler to the State Board of Registration for professional engineers.

Amendment Pushed

A "Jobs for Texas" group already has started pushing for a constitutional amendment on the November ballot which would give local governments power to issue revenue bonds for industrial facilities.

The facilities would not be

exempt from ad valorem taxes unless they are used exclusively for public purposes.

Competition is expected to get keener for industry in years ahead, and 46 other states already have the power sought by the amendment, Briscoe reminded the group at a meeting here.

Courts Speak

A district court jury in Austin convicted former Supreme Court Associate Justice Donald B. Yarbrough of felony perjury.

Texas Supreme Court declined to require a libel suit defendant to reveal his sources of information. Former Dallas Assistant Police Chief Troy F. Moore filed the action against the author of a newsletter.

The Court of Criminal Appeals overturned the misdemeanor conviction of a Houston taxicab driver on charges of carrying a handgun, holding a policeman

may not detain a person "on a hunch" he is doing something wrong.

Third Court of Civil Appeals concluded that auto parts, such as tires, batteries and shock absorbers, installed by repair shops are covered by the sales tax. The ruling allowed the state to retain \$79,616 paid under protest by Firestone Tire and Rubber Company.

AG Opinions

A law giving persons a right to expunge their arrest records does not conflict with the right of local public entities to destroy police records pursuant to the same authority by which they are maintained, Atty. Gen. John Hill said.

Hill's opinion said the law merely describes certain instances in which a law enforcement agency may be required to destroy such records.

In other recent opinions, Hill concluded:

In the absence of any by-law provision to the contrary, a member of a savings and loan association may not cumulate his votes.

The Advisory Council for Technical-Vocational Education in Texas is a state agency and its executive director is entitled to reimbursement for actual travel expenses under the state appropriations act.

Short Snorts

Land Commissioner Bob Armstrong announced he has turned down a federal appointment and will seek re-election.

Reported and estimated unreported production of Texas crude totalled 89,466,484 barrels in November 1977, compared with 93,029,517 in November 1976.

Most major utilities companies are aiding the attorney general in forecasting statewide impact of increased coal hauling rates proposed by a 50 per cent increase in rates. Burlington Northern Railroad charges for moving Wyoming coal to San Antonio generating plants.

Cases of influenza or influenza-like ailments are filtering into the Texas Department of Health from throughout Texas.

Texas farmers produced the second \$1 billion upland cotton crop in Texas history last year, according to Agriculture Commissioner Reagan V. Brown. Brown said the 1977 crop was valued at \$1.32 billion, and exceeded the \$1.27 billion crop of 1973.

The State Bar met here last week to consider ways to make the public aware of the problem of persons and organizations practicing law without a license.

Attorney General John Hill paid his gubernatorial \$1,500 filing fee with three stacks of \$5.00 bills.

Veteran Sen. Pete Snelson of Midland announced for re-election in the 25th district.

The Sandhills Philosopher

Dear Editor: The Sandhills Philosopher on his Johnson grass farm on Sandy Creek takes a look at the farm strike this week, in his own peculiar way.

I was watching on television when the striking farmers drove their tractors around the White House in Washington.

Trying to get both sides, a TV reporter first had his camera zoom in on a young farmer who got out of his tractor and explained he was there because, while he enjoyed helping feed America, he didn't enjoy going by the long line. Then the camera switched to a by-stander, obviously a well-fed city dweller, who said, when asked what he thought of the strike: "If the farmers can't make a living farming, why don't they sell out and try something else?"

The network then switched to a report on the Middle East, which Congress and I don't know any more about than the people living over there.

A few days later I was reading a newspaper account of the President's new budget, and down toward the end it reported that city mayors were unanimously upset because the budget has reduced appropriations for cities.

Cities are in dire financial trouble," a prominent mayor said, "and if the Federal government doesn't give us more relief the whole country is in for serious trouble."

That evening on the network news I kept looking for some farmer to pop up and say: "If the cities can't make it on their own, why don't they sell out and try something else?"

Another thing that amuses me is the way some city people jeer when they see striking farmers driving tractors with enclosed cabs. "Look at that!" they say. "If farmers are so hard up, how can they afford those tractors with heated cabs? Probably air-conditioned for summer too." Then they go back into their winter-heated and summer air-conditioned offices and do whatever it is people do in a 20-story office building from 9 to 5, after which they drive home in cars with enclosed tops and sides, first stopping by a grocery store to pick up a 50-cent loaf of bread, the wheat in which a farmer was paid 3 cents.

But if it'll make them feel any better, my tractor out here on this Johnson grass farm doesn't have a cab. What's a cab good for on a 30-year-old tractor with four flat tires? But I will say this, and I don't care what they say, my house is heated in the winter time. And in the summer, if no city people are around I turn on a window air-conditioner.

Yours faithfully,
J.A.

Education is the art of learning to read.

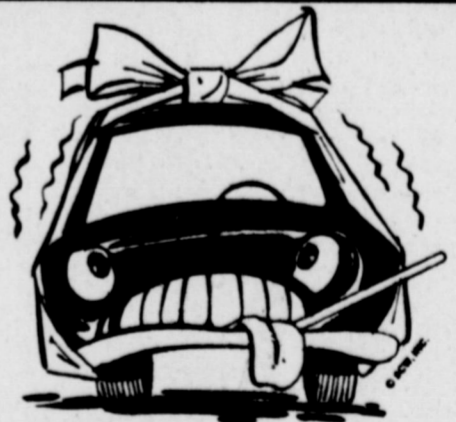
The Lonely Heart



"I'M WORKING LIKE MAD ON YOUR CASE!"

Home Insulation Co.

You Pick Coverage & Decide How Many Bags of Cellulose Insulation You Need and Pay Only \$10 for 30 lb. Installed in Attic. Sudan 227-2204 or Littlefield 385-4362



FEEL YOU'RE SLIPPING?

Stop in and have your transmission adjusted before the problem becomes a major repair situation. In either case, our service charges are the most reasonable you'll find.

Plains AUTO PARTS
P. O. Box 306
MULESHOE, TEXAS
79347

WINTER SALE

D FAVORITES

- | | |
|--|-----------|
| 16 oz. CAN WHITE SWAN FRUIT COCKTAIL | 39¢ |
| 16 oz. CAN WHITE SWAN PEACHES SLICES OR HALVES | 2 FOR 79¢ |
| 16 oz. CAN WHITE SWAN PEAR HALVES | 39¢ |
| 46 oz. CAN WHITE SWAN GRAPEFRUIT JUICE | 59¢ |
| 46 oz. CAN WHITE SWAN TOMATO JUICE | 59¢ |
| 17 oz. CAN WHITE SWAN WHOLE KERNEL OR CREAM STYLE CORN | 4 FOR \$1 |
| 5 lb. BAG SOFT N' LITE FLOUR | 59¢ |
| 15 oz. CAN WHITE SWAN W/SNAPS BLACKEYE PEAS | 3 FOR 89¢ |
| 32 oz. JAR WHITE SWAN TOMATO CATSUP | 79¢ |
| 16 oz. CAN WHITE SWAN WHOLE NEW POTATOES | 3 FOR 89¢ |
| 15 oz. CAN WHITE SWAN FANCY SPINACH | 4 FOR \$1 |



WHITE SWAN BUTTERMILK OR SWEET MILK BISQUITS

8 oz. CAN

8/\$1

WHITE SWAN CUT GREEN BEANS

16 oz. CAN

3/89¢

WHITE SWAN LUNCHEON PEAS

17 oz. CAN

4/\$1

1 lb. BOX WHITE SWAN CRACKERS

39¢



WRIGHT'S HICKORY SMOKED THICK SLICED

SLAB BACON

. pkg.

\$2³⁹

.....LB. \$1.49

CUTLB. \$1.09

.....LB. 69¢

.....2 LB. FOR \$1

FROZEN FOOD SAVINGS

10 oz. PKG. SUNFRESH FROZEN STRAWBERRIES

3 FOR \$1

8 oz. PKG. BANQUET POT PIES

4 FOR \$1

10 oz. PKG. KEITHS GREEN PEAS

3 FOR 89¢

9 oz. PKG. MORTONS HONEY BUNS

49¢

LISTEN TO THE MULETRAIN
10:15 a.m. MONDAY-FRIDAY
OVER KMUL
SPONSORED BY WHITES CASHWAY

WAY
Limit Quantities

7:30 a.m. til 9:00 p.m.

402 Main MONDAY-SATURDAY
272-4244 CLOSED ON SUNDAY



MRS. HOWARD ZIMMERMAN

Bridal Shower Honors Starla Zimmerman

A bridal shower honored Mrs. Howard Zimmerman, the former Starla Magby, on Sunday, January 29, in the Tri-County community room, 2:30-4 p.m.

Special guests of the honoree were her mother, Mrs. Boyd Magby; sisters, Tonya Magby and Belinda Magby; her grandmother, Mrs. W.W. Wilson; sisters-in-law, Mrs. Skip Magby and Mrs. Richard Magby and two aunts, Mrs. Ray Lynk and Mrs. Lee Magby.

The registration table was covered with a lace cloth and silk roses in the bride's chosen color of orange. Tonya Magby presided at the table.

A lace cloth covered the serving table, centered with an artificial arrangement of orange and beige which was presented to the honoree by the hostesses.

Mrs. Skip Magby and Mrs. Richard Magby served banana punch, orange mints, thumb print cookies and mixed nuts. Hostess gift was a set of stainless steel cookware.

Hostesses for the occasion were Mrs. Tom Lobaugh, Mrs.

Dean Sprayberry, Mrs. Dee Pierson, Mrs. Joe Stone, Mrs. John Moore, Mrs. R.L. Scott, Mrs. Clayton Myers, Mrs. Delbert Watson, Mrs. Wayne Hawkins, Mrs. Bud Street, Mrs. Billy Gilbert, Mrs. Bill Turnbow and Mrs. Herb Ramage.

Spring Fabrics Brighter, And More Colorful

Spring fabrics will offer a wide variety of colors and textures to satisfy every taste, says Margaret Ann Vanderpoorten, clothing specialist with the Texas Agricultural Extension Service, The Texas A&M University System.

Fresh and exciting textures range from suedes to linen gauze, from towelling to seersucker, and from satin to silk tweed, she continues.

Damask and shot taffeta are the newest look for day wear, with silk jersey seen at night.

Combine fabrics and textures—surprise combos are the newest, such as velvet with cotton knit, silk with leather, or cotton twill worn with linen gauze and silk clip-dot shirting.

By unusual color combinations for fun and fantasy, the specialist suggests. True blue, white-white, and many shades of brick, rust, wheat, mushroom, and ginger provide an interesting contrast for plum, tea rose, blush, saffron, and willow.

Use one color from head to toe or layer several. For example, pink, blue, violet and blue-green over bronze are a color-clashing bid for attention.

From The Mirror Flattery is the art of describing others as they see themselves.

—Coast Guard News.

Consumer Food News Report

Grapefruit, oranges, fryer chickens, turkey and some pork specials are among this week's most economical buys at Texas grocery markets, according to Mrs. Gwendolyn Clyatt, consumer marketing information specialist.

However, weather is affecting the grocery picture—especially the fresh vegetable market, she reports.

Mrs. Clyatt is with the Texas Agricultural Extension Service, The Texas A&M University System.

This is how the food-buying situation will look across Texas this week:

FRSH VEGETABLES—Although weather has disturbed the market, items to consider for economy are cabbage, turnips,

rutabagas, hard-shell squash, carrots, broccoli, dry yellow onions and potatoes.

FRESH FRUITS—Besides grapefruit and oranges, other fruits offering budget-buy values are apples, avocados and bananas.

BEEF—Prices are about the same as last week or a bit higher. Look for specials on chuck cuts, a variety of steaks, ground beef and liver.

PORK—Economy buys are "specials" on Boston butt roasts, quarter-loins cut into chops and rib-end roasts, along with bacon, frankfurters and liver.

POULTRY—Ten-pound turkeys and even larger sizes are features in some markets, and eggs offer economical protein buys.

4-H's To Sponsor Concession

Bailey County 4-H Clubs will have a concession stand during the Lamb and Barrow Show, Thursday, February 2 and Friday, February 3.

The concession stand will be set up in the bus shop. The 4-H's will be serving coffee, hot chocolate, cold drinks, spud-nuts, homemade pie, BBQ, sloppy Jo's,rito pies and large dill pickles.

All the 4-H's wish the participants and onlookers to stop by and try out their food and drinks.



SENIOR CITIZENS KITCHEN BAND...Serving as entertainment at the open meeting held by the Muleshoe Oddfellows and Rebekahs were members of the Clovis Senior Citizens Kitchen Band. They are Wilma Edwards, piano; Bessie Douglas, Tub, Belle Savage, Fry-

pan, Mae Wallace, tambourine, Reda Wilmeth, Marmonica and spoons, Madell Wilmeth, flower pot and wooden spoon, Mary Chiles, drum, Mayme Day, washboard and coffee pot, and Mamie Provence, grater and navy spoon.

Oddfellows, Rebekahs Honors Past Leaders

Oddfellows and Rebekahs of Muleshoe conducted an open meeting Thursday, January 26 to honor the past Noble Grand of the Rebekahs and Past Grand of the Oddfellows.

During the evening they were entertained by the Clovis Senior Citizen Kitchen Band. Members of the band and their instruments included: Wilma Edwards, piano; Bessie Douglas, tub; Bille Savage, frying pan; Mae Wallace, tambourine; Reda Wilmeth, harmonica and spoons; Madell Wilmeth, flower pot and wooden spoon; Mary Chiles, drum; Mayme Day, washboard and coffee pot and Mamie Provence, grater with navy spoon.

Accompanying the kitchen band to Muleshoe were Rachel Jones, director of the Division of Older Citizens from Clovis, and Ann Scott.

Guests at the meeting included E.V. Riley, Brownfield, Past Grand Master of the Texas Oddfellows and a trustee; Raymond Gage, Needmore, Past Grand Master of Texas Oddfellows and representative of the Sovereign Grand Lodge; Mrs.

Thelma Gage, Needmore, Past President of Rebekah Assembly of Texas and Past President of International LAMP; Norene Green Pearson, Noble Grand of Friendship Rebekah Lodge 21 of Clovis, New Mexico, and E.L. Ivy of Dimmitt, District Deputy Grand Master.

Other visitors included Mrs. Bob Newton of Enochs; Sam Savage and J.C. Pearson and Angel Clovis; Earl Walker, Earth; Jim Gage, Dumont; Mr. and Mrs. J.W. St. Clair, Lazbuddie and Aubrey Tenell, Lubbock.

Muleshoe guests included Mrs. Willie Welch, Mrs. Doris Lambert, Mrs. Jov Williams and

Scott, Duane Stevens, Billy Stevens, Troebe Lane and Tommy Green.

Study Club Home Craft Show Held

The Muleshoe Study Club met Thursday, January 26, 1978, at 4:00 p.m. in the home of Mrs. T.R. White.

President, Mrs. A.C. Neely, called the meeting to order. Mrs. T.L. Kent gave a prayer and Mrs. J.G. Arnn led the club in saying the Pledge of Allegiance to the United States flag and the Texas flag.

Mrs. Lewis Embry presented the program, "Show and Tell". Each member brought something she made and told how she made the item.

After the program a short business meeting was held. Mrs. Wilson Witherspoon was voted to represent the club as Outstanding Woman to go to West Texas State University to

be honored.

The officers for 1978-1980 were elected and will be installed in May.

Members present were Mrs. J.G. Arnn, Mrs. H.L. Blackburn, Mrs. Joe Costen, Mrs. Lewis Embry, Mrs. Rufus Gilbreath, Mrs. Ed Johnson, Mrs. T.L. Kent, Mrs. A.C. Neely, Mrs. Luther Pitts, Mrs. Charles Shain and Mrs. T.R. White.

LETTERS ARRIVE LATE SPARTANBURG, S.C. — Some Spartanburg residents received unexpected mail Christmas-letters and post-cards mailed as long ago as 1943. A cache of undelivered mail was discovered during remodeling of the old Spartanburg Airport terminal.

LOUISA'S LETTER

Dear Louisa,

Why is it that people who commit terrible crimes are tried over and over again and are sometimes paroled after a few years while another fellow who steals something is put in jail?

I live in a small town and if some of the things that happen today would have occurred thirty-five years ago, the rapist who murdered an innocent little girl would have been hung up on the nearest tree or been shot down. I know they say that people shouldn't take the law in their own hands but I tell you this—acts such as this were rare in those days and caused general alarm in a community.

People who rape, mutilate and murder people are no better than mad dogs and should be treated like the animals

they are.

Incensed—Tenn.

Answer:

All of us are worried over the number of vicious crimes being committed particularly by young people today. And the law seems to be unreasonably slow in punishing these people.

What you say about the apathy of the community which seems to be conditioned to hearing about such crimes is true. This changes when the crime strikes home.

But there is one thing to remember—many innocent people were killed for crimes they did not commit in the old days when mob rule or vigilantes were in action.

Louisa

Address letters: Louisa, Box 532, Orangeburg, S.C. 29115

Nursing Home News

By Annie Brown

We welcome Mr. E.L. Clark of Friona to the Home. He is 91 years old.

Relatives of Mattie Glasscock visited her on Sunday, January 29, to help her celebrate her 89th birthday. Included were Alice Glasscock, Bledsoe; Mr. and Mrs. L.E. McCornack, Rusty and Eldonna, Bledsoe; Mr. and Mrs. Price Stevens, Clyde; Mr. and Mrs. Bill Lindley, Muleshoe; and Mr. and Mrs. Henry Randolph and Mr. and Mrs. Lynn Randolph, all of Earth.

Visiting Mrs. Ella Chambers were her son and daughter-in-law, Elmer and Corrie Chambers of Portales, N.M.; Junior Mills and wife, Winnie; Ethel and Graden, Bovina; Jackie Hall and family of Amarillo.

Rudolph and Janie Moraw visited her sister, Onie McDaniell and friend, Mrs. Linnie Doyle.

Mrs. Anita Allgood visited her grandmother, Mrs. Onie McDaniell last Thursday.

Mrs. Pauline Tunnell of Muleshoe visited Mrs. Barbara Case Sunday.

Mrs. Case reports that her son, Jim Burkhead of Albuquerque, N.M. is doing fine after heart surgery.

Troy Page of Muleshoe visited Mrs. Lon Cochran Sunday.

Mr. and Mrs. Sherman Inman, Mrs. Ruby Garner, Mrs. Mildred Neely visited Mrs. Bray and Mrs. Horace Blackman last Sunday.

Mr. and Mrs. Ernest Green of Springlake visited Mrs. Lottie Orteg on Sunday.

Sunday visitors with Mrs. Carrie Boydston Sunday were her children Mr. and Mrs. Clyde Knight and Children of Lubbock and Mr. and Mrs. Talley of Muleshoe.

Mrs. Glenda Jennings and Mrs. Jackie Johnson of Lazbuddie visited the Home Friday afternoon and entertained us with music and songs.

Some members of the First Baptist Church visited Monday afternoon and sang for us.

"Saving you money. That's Reason No. 1 why we should do your taxes."



Henry W. Block

We are income tax specialists. We ask the right questions. We dig for every honest deduction and credit. We want to leave no stone unturned to make sure you pay the smallest legitimate tax.

H&R BLOCK
THE INCOME TAX PEOPLE
WEEKDAYS 9-6 SAT. 9-5

224 W. 2nd
Ph. 272-3283

Anthony's
C.R. ANTHONY CO.

3 PIECE MATCHING OUTFIT HAGGAR® GALLERY™
\$90. A SET

- Sport Coat Sizes 36-46 Reg. & Longs \$55
- Vest Sizes 36-46 \$17
- Slacks Sizes 30-42 \$21

Sport coat, matching vest and slacks. In Kakhii The two-button coat features notch lapel, hacking flap pockets, and deep center vent. The slacks are styled with quarter-top pockets and a gentleman's flare.

HAGGAR

MEN'S SLACKS BY HAGGAR®

A. Styled with a slight flare leg, fashion pockets and belt loops. Available in popular solid colored 100% Enclon® polyester double knit. Sizes 30-42. **\$15.**

B. Expand-O-Matic solid colored slacks with a deep inside elastic waistband that bends and stretches with you. 100% Dacron® polyester doubleknit with VISA® finish for easy care. Sizes 30-42. **\$18.**

Big Shirt Sale
All Shirts 1/2 Price
Thurs-Fri-Sat

Coats Down Filled \$45.00
OPEN 9 a.m.-6 p.m.

EE'S WESTERN WEAR
1910 W. Amer. Blvd. 272-4663

Little Boys Double Knee Jeans
Double Knit Shirts & Fashion Jeans Now In Stock



GROCERY GRAB! WINNER...T.R. White, owner of White's Cashway is pictured with Mrs. Vic Benedict and Keith Burns, right, following Mrs. Benedict's successful Grocery Grab! at Cashway last Friday night. Mrs. Benedict "grabbed" \$147.93 in groceries during her allotted time after winning the Jaycee-sponsored event. Also, she is shown receiving a check in the amount of \$40 from Keith Burns, Jaycee chairman of the event. They expressed their appreciation to the people participating in the project. The funds will be used for local civic projects.

Llano Estacado Hosts Plainview Speaker Duo

The Llano Estacado Civic Club met for their regular meeting Tuesday, January 10, at the First National Bank.

Instead of the regular meeting in December, a Christmas dinner was held in the home of Mrs. Betty Hopper on December 13, 1977, and gifts were exchanged between Secret Pals.

Prior to the business meeting, Kent Bridenstine, a representative from the Hale County Child Welfare Department of Human Resources, presented a program on Child Abuse showing a film entitled "Incest - the Victim Nobody Believes". He reported that a large percent of child sexual abuse is by someone known to the child, such as a

parent or relative. The problem was then discussed with a series of questions and answers.

Mrs. Richard Kelton, president, then called the meeting to order. Mrs. Fred Clements br-

ought the inspirational. Mrs. Willie Reeder led the creed, minutes of the last meeting and a call meeting were read and approved. treasurers report given and correspondence read.

The members were advised that they had been asked to decorate for the Chamber of Commerce Banquet again this year. The date for the banquet is February 17, incoming president is Gene McGuire, with the theme to "Hop On Our Freight in '78". Mrs. Willie Reeder was appointed chairman of the decorating committee and the members were assigned their duties.

The upcoming events for the club are a spring social in February and a membership night in March.

Following the program a light buffet was served to Mrs. Stanley Burreson, Mrs. Betty Carpenter, Mrs. Fred Clements, Miss Sandra Hopper, Mrs. Richard Kelton, Mrs. Glen Mor-

ris, Mrs. Willie Reeder, Mrs. Keith Turner, Mrs. Mike Kiggins, Mrs. Betty Hopper and guests Miss Carol Ogle and Kent Bridenstine of Plainview, Texas.

Fashion
Spring shoes are being shown in black, navy, camel and brown calf in the smart looking sling-back.

Some fashion designers are featuring long dresses for the little miss. These spring creations are showing ruffles, tucks, ribbons and sashes tied in back. Skirts are full to allow the little miss to run and jump.

While half the population is trying to stamp out heart disease, the other half is going around saying, "Drop dead!"

Centus Bureau study: fewer men attending college.

Nutrition, Principles In Focus

Consumer food buying habits focus on using nutrition and buying principals when shopping, says Mary K. Sweeten, foods and nutrition specialist with the Texas Agricultural Extension Service, The Texas A&M University System.

A recent survey shows that consumers are using available nutrition information and coupons, they are more interested in checking ads and they are buying food in volume if it offers a lower price, she adds.

Some 66 percent of those surveyed always checked food labels for ingredients listed before buying it. Nutritional information was utilized by 59 percent.

Food shopping habits in 1977 compared to the 1976 shopping habits showed that 31 percent almost always shopped more than one store for the best prices and 23 percent sometimes did this, Mrs. Sweeten

continues. This survey was conducted by the USDA Economic Research Service--and it shows that many consumers are taking advantage of nutrition information and other conveniences in the market place.

Since consumers pay for these conveniences, taking advantage of them is a wise shopping idea, the specialist suggests.

Princess Anne gives birth to baby boy.

A FISTFUL OF SAVINGS DOLLAR DAYS

THUR., FRI., & SAT.
AMERICA'S FINEST

\$12. SLACKS
Sizes 32-42

- Men's quality double knit solid colored dress slacks.
- Flare finished bottoms with western pockets.
- Snag-free with Ben-roll waistband.

REG. \$18 TO \$20 VALUE
• NAVY
• BROWN
• GREY

WHY WEAR A GIRDLE
PANTY HOSE 2 FOR \$1.

- A blend of nylon and spandex.
- Ribbed control panty gently molds and holds you.
- Ventilated cotton crotch.
- Sizes Petite/Medium, Medium/Tall.
- Beige, Taupe, Sunset, Coffee.

Children's **KNIT POLO SHIRTS**
Reg. 1.99
3 FOR \$4.

- Short sleeve - Crew neck.
- Polyester and cotton knit blend.
- Solids and stripes.
- Sizes 3-7.

LADIES' **NYLON BRIEFS**
Reg. \$1 SAVE \$2
6 FOR \$4.

- Cotton lined seat.
- White and colors.
- Sizes 5-10.

WOMEN'S PULL-ON PANTS AND TOPS
REG. \$6. EACH

NOW ONLY **\$5.**
SAVE \$1.00

Don't Miss This Low, Low Price

Fine first quality double knit polyester pull-on pant in solids and checks. Sizes 10-20. To coordinate with these stylish pants - beautiful printed, striped, and solid colored tops... all of 100% polyester. Sizes S-M-L.



READY-TO-SEW **T-SHIRT KNIT KITS**
Reg. 2.99 Pkg.
\$2.

SAVE 99¢

- Quick and easy
- Use any T-Shirt pattern
- Popular colors in stripes, solids and fashion prints
- Includes 1 1/2 yards of fabric and the rib trim for a total coordinated look.

MEN'S & BOYS' **TUBE SOCKS**
Reg. 79¢ SAVE 74¢
Reg. 89¢ SAVE 84¢
6 FOR \$4. 6 FOR \$4.50

PILLOW TEX™ CUSHIONY DEBUT™ **PILLOWS**
Reg. 5.99 SAVE 99¢
\$5.

- 100% Dacron™ 22 polyester filled
- One size stretches to fit comfortably
- All white or white with stripe tops

MEN'S **WESTERN SHIRTS**
5.88 2 FOR \$10.

- 65% polyester, 35% cotton
- Full western make long sleeve shirt
- Peat snap front closure - 3 snap cuffs
- 2-Flap pockets
- Front and back western yoke
- Permanent press solids and prints
- Sizes 14 1/2 - 17

45" DRESS & SPORT FABRIC

Reg. 1.29 yd.

\$1. YARD

Tremendous selection of fabrics in the season's most popular colors and prints. All first quality full bolts. Cottons and cotton blends.

Anthony's
C. R. ANTHONY & CO.

OPEN 24 HOURS **ALLSUP'S** **CONVENIENCE STORES** **OPEN 24 HOURS**



SPECIALS GOOD FEB. 2-5, 1978



WILSON'S BOLOGNA
12 OZ. PKG. 89¢



BORDEN'S 2% LOWFAT MILK
PASTIC JUG GAL. CTN. \$1.59



BORDEN'S ICE CREAM
1/2 GAL. SO. CTN. 99¢



8 TRACK TAPES
BY ORIGINAL ARTIST
REG. \$4.99 FOR **\$3.98**
REG. \$8.99 FOR **\$5.98**
THESE ARE NOT SOUND ALIKES!

ALLSUPS BANG-UP PRICES!

PEPSI 32 OZ 6 PAC \$1.59

DISCONTINUED ITEMS (CAN GOODS, CRACKERS, JUICES, ETC.) 50% OFF



WILSON'S FRANKS
12 OZ. PKG. 69¢

FRESH COOKED BURRITOS 3 FOR \$1



Frito Corn CHIPS
REG. 83¢ PKG. **59¢**

318 West Amer. Blvd. OUR PRICES ARE RIGHT

EDITORIALS

Tax Cut Hope

Any tax cut finally voted by Congress this year will be a gamble—that putting extra money into the economy in this manner will stimulate business, thus increasing tax collections.

If tax collections don't rise next year as a result of the tax cuts, they'll have been unjustified.

The root cause of U.S. economic troubles today is excessive federal spending, which produces inflation, an eroding dollar and a mushrooming national debt.

Mr Carter will have no chance to balance the budget by 1980 if tax collections do not appreciably rise as a result of a tax reduction.

Who Backs Carter?

Congressional Quarterly, the news research organization, reports that in the 1977 session of Congress northeast liberals were Carter's most loyal backers. Of the ten Democrats in the House who voted most consistently with Carter, four are liberal New York Democrats and all ten are non-southerners and members of the liberal House Democratic Study Group.

The ten Democrats who opposed Carter's proposals most consistently are all Southerners, two of them Georgians! The picture is approximately the same in the Senate.

Ironically, then, while Carter won the 1976 election largely by carrying ten of the eleven old Confederate States, his support in Congress isn't coming from the people of the South—as represented by their elected solons in Congress.

This poses some interesting political and legislative questions for the last session of the 95th Congress this year and for the 96th Congress and the 1980 presidential election. The big one is whether Mr. Carter can hope to carry the South almost solidly again.

In 1976 southern voters to some extent exhibited their frustration at not having had a Dixie President for a hundred years. In 1980 that will not again be a factor.

Federal Spending

Though some may tire of hearing the facts, it's proper that the American people are constantly reminded of the financial condition, and current spending, of the federal government.

As of the beginning of 1978, the federal government is more than 700 billion in debt, and by spending more than it collects, is going deeper in debt each week by more than a billion dollars.

The interest of this growing debt is now costing the taxpayer \$800 millions a week and with interest rates going up and the debt total rising, interest costs might soon reach a billion a week!

For 1978, it's estimated, the federal government will spend \$250 billions in welfare payments of one form or another. That's well over half the federal budget—and the payments come from 182 different welfare programs. Spending for this fiscal year (ending in October) is estimated to exceed tax collections by up to sixty billion dollars.

President Carter recently reaffirmed his intention to balance the budget by 1980, amid widespread predictions this is now impossible, especially if Carter's proposal for \$30 billions in tax cuts this year is enacted into law.



WASHINGTON NEWS REPORT

The Tax Cut—Brock's View—The Politics—The Economy—

WASHINGTON, D. C. — There isn't much in the 1978 prospect for tax cuts for most Americans. The best that can be said is that cuts will offset sharply higher taxes, perhaps preventing things from getting worse—for a year.

Inflation—if it continues at almost seven per cent—will tighten the squeeze on most Americans this year. Tax cuts—as Republicans like Bill Brock point out—will take effect only on October 1st (if the President's recommendation is followed). That means they'll hardly be felt before the end of the year.

Social security taxes, however, will continue to rise sharply in the immediate years ahead. Thus there's not any long-term relief, no permanent relief, on the horizon for most Americans.

Increased spending by the Carter Administration meanwhile promises to keep inflation at today's levels or rising. Oil prices are certain to rise, which means rising gasoline and heating costs.

There might be some relief in tax cuts for business, since many corporations will be able to raise prices to pay the new taxes, while enjoying lowered rates on net income.

Congress, of course, might alter the President's proposed tax cutting proposals. So it's impossible this early in the year to know what the effect of the tax cuts enacted by the second session of the 95th Congress will be.

Politically, they may help Democrats in this fall's elections, as anticipated. But higher taxes by 1980 and inflation may add to whatever troubles Democrats face that presidential election year.

CARTER'S TAX PLAN

President Carter, while calling for income tax reductions, is asking Congress to take away deductions for state and local gasoline, sales and personal-property taxes and to reduce the allowance for medical expenses.

\$700,000 trust fund set up for inaugurations.

WASHINGTON NOTES

GOLDWATER ON TREATIES
Sen. Barry Goldwater said chances for Senate ratification of the Panama Canal treaties would improve if President Carter went to Panama to sign an agreement spelling out U.S. rights to defend the canal.

WOMEN & SPACE
The U.S. space agency has named six women, three black men and an Oriental among 35 candidates to fly on the nation's space shuttles in the next decade. It was the first

time that women and minority-group members have been named to the astronaut corps.

ON HOME BUILDING
Home building was one of the brightest spots in the nation's economy in 1977. A total of 1,986,400 new homes were started during the year, up 29 per cent from a year earlier, the Commerce Department reported.

ON FORECLOSURE
Leaders of the nationwide farm strike movement winding

up a series of demonstrations in Washington have urged President Carter to order an immediate moratorium on farm loan foreclosures.

ON SOVIET BUDGET
A CIA study has revealed the Soviet Union spent about 40 per cent more on military power last year than the United States, investing three times as heavily in nuclear-armed strategic forces and 50 per cent more in conventional fighting might.



The Speaker Reports

by Bill Clayton

NEWS NOTES

AMBASSADOR EXPELLED
NAIROBI, KENYA — Ethiopia expelled West Germany's ambassador in apparent retaliation for Bonn's grant of \$1.8 million in credits to Somalia that could be used to buy arms.

ARABS CRITICIZE U.S.
BEIRUT, LEBANON — Arab hard-liners and moderates alike criticized the United States following the break-off in Egyptian Israeli peace talks, and some looked toward Washington for the next move in the Mideast deadlock.

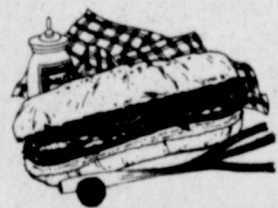
ROOF CRASHES
HARTFORD, CONN. — The snow-laden roof of the Hartford Civic Center Coliseum collapsed before dawn recently, dumping tons of steel, ice and snow onto an empty arena that had been filled with thousands of basketball fans six hours before. There were no injuries.

DOCKING SUCCESS
MOSCOW — The Soviet Union accomplished the world's first unmanned space supply mission of docking a shuttle capsule to an orbiting space laboratory occupied by two Soyuz 26 cosmonauts.

CHECKS COST STORES
WASHINGTON — It costs a food store about 26 cents to accept a check, which is the way 75 per cent of all grocery purchases are made, a new study by the Food Marketing Institute shows.

AN ANTARCTICA FIRST
ESPERANZA ARMY BASE, ANTARCTICA — The first human ever born on this desolate continent, Emilio Marcos Palma, born Jan. 7 at the base infirmary, has already been honored by the Argentina government which is trying to reinforce its territorial claims on Antarctica.

FIRST



**HAMBURGERS
ONION RINGS**

ANNIVERSARY Sale

Everything Will Be

1/2 PRICE

SATURDAY ONLY

Sorry We Had To Close So Early Sunday - We Ran Out Of Food.

Come By & Try Our New Item:

5 Pieces Boneless Chicken (White Meat Only) W/Toast & French Fries \$1.80

Come Celebrate With Us!

America's favorite drive-in



1633 W. Amer. Blvd.

272-3998



CLASSIFIED ADS

THE PLACE TO LOOK



OPEN RATES
1st insertion, per word - \$ 10
2nd and add., per word - \$ 07
NATIONAL RATES
1st insertion, per word - \$ 11
2nd and add., per word - \$ 07
Minimum Charge - \$ 50
CARD OF THANKS - \$3.00
Classified Display - \$1.30 per column inch.
Double Rate for Blind Ads - DEADLINE FOR INSERTION 11:00 Tuesday for Thursday 11:00 Friday for Sunday
WE RESERVE THE RIGHT TO CLASSIFY, REVISE OR REJECT ANY AD.
NOT RESPONSIBLE FOR ANY ERROR AFTER AD HAS RUN ONCE.

1. PERSONALS
FOR YOUR SHAKLEE PRODUCTS. See or call Pete or Marieta Wilkinson. 272-3026. 1-28t-tfc

3. HELP WANTED
PROFESSIONAL HAIRDRESSER NEEDED 272-3258. MULESHOE BEAUTY SALON. 3-48s-tfc

NEED FULL TIME LVN for 4-12 shift. Also part time relief LVN. Excellent pay. Contact MAMIE DANGELFIELD or KAREN RASCO. Phone 246-3583. 3-4s-5tc

WANTED: Combination alteration and sales clerk. Apply in person. Call for appointment. 272-4726. 3-4s-tfc

Need operators at Main Street Beauty Shop. Call 272-3448. 3-12t-tfc

WANTED: Experienced mechanic. Call 806-825-2103. BOVINA FEEDERS INC. 3-3t-4tc

HELP WANTED: Member records clerk-dispatcher for Bailey Electric Cooperative Association. Apply at 305 E Ave B, Muleshoe, Texas. Closing date 1-31-78. An equal opportunity employer. 3-3t-4tc

OPERATOR WANTED at Patio Beauty Shop to take over established clientele. Phone 272-4318. 3-5t-tfc

Trailer spaces to rent. Water furnished. Own meters. Apts. Kitchens. 272-4440. 5-19t-104tp

TO RENT: New one bedroom apts. with dishwasher, disposal, stove, refrigerator, carpet and custom drapes. \$185 \$195 at Earth 257-2005. 5-4s-4tc

8. REAL ESTATE
Have buyer for large acreage ranch land
Wanted . . . Small acreage.
E.E. HOLLAND REAL ESTATE 113 W. Ave. D PHONE 272-3293 DAY OR NIGHT
Robin Davis, Salesman

FOR SALE: 3 bdr., 2 bath brick home. Fully carpeted, fenced back yard. Good location. Priced for quick sale. Call 272-5594. 8-3t-tfc

FOR SALE: Business, Boards & A Beds. Call 272-4344 or 272-3575. 8-52s-tfc

SMALLWOOD REAL ESTATE 232 MAIN MULESHOE, TEXAS 79347 phone 272-4838
FOR SALE: Beautiful 3 bdr., brick home. Large Steel barn and small steel shop. 15 acres on pavement.
3 bdr., stucco house with 10 acres. 5 miles from Muleshoe. I have two 160 acre farms. One 340 acres and one 480 acres for sale all irrigated. 8-4t-tfc

KREBBS REAL ESTATE 122 W AVE C 272-3191
Approved. Close in. 1 1/2 ac. improved dry
and 1 1/2 bdr.
APPRAISALS AND SALES 8-2s-tfc

FOR SALE: 3 bedroom house. 522 W. 8th. Call Lucille Nash 806-246-3203. 8-2s-tfc

FOR SALE: 3 bedroom home, 2 baths, call 3501 before 8:30 a.m. or 5 p.m. 8-3t-tfc

NEW 3 bdr., 2 bath built in kitchen appliances, all carpet. John Smith 272-4678. 8-3t-tfc

FOR SALE: 160 A in cultivation, 2 irrigation wells. 4 1/2 miles west of Arch, N.M. With 5 room house and out buildings. Immediate possession. 272-4957. 8-4s-tfc

FOR SALE: 2 bdr., brick home 2700 sq. feet. Fireplace, good location. Day 272-4726, night 272-4889. 8-38s-tfc

9. AUTOMOBILES FOR SALE

FOR SALE: 1975 Buick Regal. Extra clean. 272-3664. 9-2t-4tp

FOR SALE: 1970 1/2 ton CHEVY pickup. New 292 6 cyl. 4 speed. Priced right 3,000 miles. 209 W. 5th, Muleshoe. 9-4t-1tc

1974 DODGE VAN Low mileage. Custom interior and wheels, Stereo AM and FM Tape Immaculate condition. Call 272-3827. 272-3827. 9-25-1tc

FOR SALE: 1965 Chevy Pickup 283. Good tires and motor \$300 Phone 965-2383. 9-4t-2tp

FOR SALE: 1974 Ford LTD Broughman. 40,000 miles, nice all around, clean, fully loaded, electric window and seat. \$300. Call 965-2467. 9-5s-3tp

FOR SALE: Good school car. 1971 DODGE DEMON, 318-V-8, 3 speed standard transmission. Call 272-4596 or see at 217 N 1st. 9-5s-tfc

10. FARM EQUIP. FOR SALE

FOR SALE: 8 row MF Planter with Gandy Boxes. 8 row lister 8 row lister rolling cultivator 8 row water furrowing rig 8 row rod weeder. All equipment is in excellent condition and has many extras. RAY PRECURE 806-272-4795. 10-50s-tfc

MORTON MFG. CO., INC. 806-266-5342
MORTON, TEXAS 79346
Stalkcutters, 8 row, bearing, \$1,160.
Chisel plows, 9 shank, complete, 3 bar, \$1,175.
Chisel plows, 11 shank, complete, 3 bar, \$1,495.
Tool bars, all sizes.
Clamps, shanks, foot pieces, gauge wheels, coulters.
We have all the attachments for your tool bars. Our products are all guaranteed. Call or come by for very competitive prices. DEALER INQUIRIES INVITED 10-3s-10tc

FOR SALE: 1969 GMC Feed truck with assault mixing bed. 1972 6 cylinder Chevrolet pickup. John Deere 418 conveyer with truck unloading equipment. 4 row Cawdell shredder. M-M UT tractor and two row shredder. 6 row John Deere corn planter. Call 925-6423. 10-3s-tfc

11. FOR SALE OR TRADE

FOR SALE: 1977 Mini-Motor Home, on Ford chassis, Coachman 20'. Phone 965-2256. 11-5t-12tc

FOR SALE: 4200 Air Conditioner, used only two months \$200 phone 965-2383. 11-5s-2tp

73 ZUZUKIE Dirt Bike. Excellent condition. \$450.
20" color Motorola Quasar TV. Excellent condition. \$175. Call 965-2390. 11-5s-tfc

Mobile Home, exceptionally nice. 12 x 62, 2 bdr., 1 1/2 bath. Call 925-6717. 11-3t-tfc

12. HOUSEHOLD GOODS
FURNITURE UPHOLSTERING: Reasonable rates. 303 E. Cedar. Phone 272-4255. 15-41s-tfc

ORNAMENTAL IRON WORK hand rails, decorative plaques, fire screen. Call 385-3475
LITTLEFIELD after 5:00 o'clock. 12-51s-20tp

15. MISCELLANEOUS
RICKY GALT IN GOODLAND community has two CB's for sale. PACE DX-2300-B base station 23 channel. JOHNSON MESSAGES 130 telephone type. 927-5313. 11-5t-4tc

WILL DO ALTERING: Call 272-3672 or see me at 120 Reno St. CLARA COFFMAN, Muleshoe, Texas. 15-3t-4tp

ARTEX PRESENTS the new 1978 line of linens, pictures and accessories. Also openings for sales instructors. For information call 806-986-2921. 15-3t-4tp

SIGNS PAINTED
Kenneth Kiog 272-3664. 15-52s-10tp

ASPHALT ROOFING, COMPOSITION singles, new roof and repairs. Free estimates. Call collect RON FOSHEE 385-5680. LITTLEFIELD ROOFING 15-42s-tfc

WANTED: Typist, must be able to type 50 words per minute. Apply in person at Muleshoe Publishing Company, 304 W. 2nd.

D.O. CESSPOOL PUMPING Cesspool pumping, septic tank cleaning, dipping vats cleaned, grease pits cleaned, flooded cellars drained and mud pits cleaned. "If it's part liquid and not over 20" deep we'll try to drain it." Phone 806-272-4116.

FOR LEASE: Texaco Service Station. Phone: 272-4688. 13-50t-tfc

PHILLIPS HOUSE OF MUSIC 118 MAIN CLOVIS, NEW MEXICO
Pianos, organs, band instruments, new and used. Professional repairs, sheet music, rentals, terms.
Phone: 505-763-5041. 15-30s-tfc

TO TRADE 3 bdr., living-dining-kitchen combination, 2 baths, 2 car garage. Would like to trade for larger home (1800 to 2400 sq. ft.) in South West part of Muleshoe. Also have 1974 31' Air Stream (loaded) with rear bedroom, center bath, sleeps 4. Excellent Shape. 272-4544 or 4455. 15-5s-4tc

Custom Designed and Made-To-Order RINGS-N-THINGS BY JEROLLY 918 E Hickory Phone 272-3163

\$100 REWARD Offered for arrest and conviction of anyone doing damage to paper stands. Muleshoe Publishing Co. 272-4536. 11t-15-tfc

Grand opening of West Texas largest muzzle loading gun dealer (retail and wholesale). **Bill's Bullet Shop, 910 Columbia Plainview, Texas, 79072, 806-296-6226.** Shop will be open full time beginning Feb. 1, 1978, 9-6 p.m. Monday-Saturday, 9-9 Friday. After hours please call. Grand opening special, 50 cal. Hawken rifle, reg. \$189.95. Special thru Feb. 18, 1978 \$149.95. Come in and sign up now for drawing, the following prizes to be given away Sat., Feb. 18 at 4 p.m. (need not be present to win). 1st-Western Arms Confederate 44 cal. percussion revolver, 2nd-Deluxe powder horn, 3rd-Powder flask (blackpowder, \$3.95 lb. always in stock). Modern guns, reloading components, ammunition, gunsmith, gun repair, buy sell and trade. Dealers inquiries invited. 15-5t-5tc



PLAYING IN THE SNOW. Mrs. Curtis Walker got a jeep and rigged up a sled to take her children and several neighborhood children on an impromptu sleighride through the streets, alleys and in the park at Muleshoe following Monday night's snow. The youngsters rode their sleigh around in the park as they enjoyed an unplanned vacation from school.

Enochs News

By Mrs. J.D. Bayloss

Rev. and Mrs. Charlie Shaw received word Sunday night of the death of her cousin, Francis Thomas of Watsonville, Calif. who fell from a ladder and broke his neck. Funeral services will be Wednesday February 1, at 11:00 a.m.

Mrs. Alma Altman was dismissed from the West Texas hospital in Lubbock Thursday, and

L'ALLEGRA FIFTH ANNUAL ANTIQUE SHOW AND SALE. HEREFORD, TEXAS COMMUNITY CENTER, February 3 and 4 - 1:00 to 9:00 p.m. FEBRUARY 5 - 1:00 to 6:00 p.m. ADMISSION \$1.50. 15-5s-2tc

Card Of Thanks

I wish to thank all who phoned, visited, sent cards, letters, flowers, gifts, food and money, which I will buy rose bushes to remember the six nights that I spent in Littlefield and M.D. Anderson Hospital in Houston. Dr. Ruthledge, the worlds sonoma cancer specialist told us I had one year of severe treatments. I think the worst is over. Remember me in your prayers. God bless each of you.
Mrs. H.M. Gable 5t-tfc

Legal Notice

NOTICE TO ALL PERSONS HAVING CLAIMS AGAINST THE ESTATE OF MAGGIE PEARL FINE, DECEASED

Notice is hereby given that original letters testamentary upon the Estate of Maggie Pearl Fine, Deceased, were issued to us, the undersigned, on the 30th day of January, 1978, in the proceeding indicated below our signatures hereto, which is still pending, and that we now hold such letters. All persons having claims against said estate, which is being administered, in the County below named, are hereby required to present the same to us at the addresses below given, before suit upon the same are barred by the general statutes of limitations, before such estate is closed, and within the time prescribed by law. Our post office addresses are Star Route, Sudan, Texas, and 118 Parkwood, Levelland, Texas, respectively.
Dated this 30th day of January, 1978.

Naomi Julian (s)
Naomi Julian, Executrix of the Estate of Maggie Pearl Fine, Deceased, No. 1267, County Court Bailey County, Texas.
James E. Fine (s)
James E. Fine, Executor of the Estate of Maggie Pearl Fine, Deceased, No. 1267, County Court Bailey County, Texas.

REBUILT MATTRESS BOX SPRINGS
2-Piece Set
\$69.00
Layaway Now

she had supper with a daughter, Mr. and Mrs. R.H. Baker in Morton before she went back to the Roberts Memorial Rest Home. She is improving.

Mr. and Mrs. Sid Key of Pampa spent the weekend with his parents, Mr. and Mrs. Bill Key.

Baptist Mens Day was observed at the church Sunday. Mr. C.C. Snitker was in charge of the program, Mr. W.B. Peterson was in charge of the music. Those on program Sunday morning was Dale Nichols, Lester Bounds, J.D. Bayless, Ronald Beasley and Carl Hall. Chester Petree and W.B. Peterson brought the special music with Homer Edwards brought the message. Those on program Sunday night were Ted Belez, Jarrol Layton, Jerry Nichols, Harold Layton. Special music was by Chester Petree and J.C. Snitker and W.B. Peterson the message was by Dr. G.O. Smith.

We wish to welcome Mr. and Mrs. T.H. Blackstock to our community they have moved into the former E.C. Gilliam house.

Miss Jerry Terrell of Midland fell Monday due to the bad weather and broke her hip and underwent surgery at a hospital in Midland Tuesday she is the niece of the Walter Laytons'.

Johny Cox returned home Sunday afternoon after spending 10 days visiting his children and

other relatives at Fort Worth.

Mr. and Mrs. Don Vanlandingham and children, of Lubbock were dinner guests in the home of her parents, Mr. and Mrs. E.N. McCall Sunday.

Gary Nichols left Monday for Washington D.C. with a group from Muleshoe.

Mr. and Mrs. Chester Petree were dinner guests in the home of Mr. and Mrs. J.W. Laytons Sunday.

ONE MINUTE SPORTS QUIZ

- Name the winner of the men's singles Grand Slam tennis tournament.
- Who won the Bing Crosby National Pro-Am Golf Tournament?
- Who holds the World Lightweight boxing championship?
- For the first time this season Kentucky lost to what team?
- Name the winner of the NFL Pro Bowl game.

Answers to Sports Quiz

- Bjorn Borg over Jimmy Connors.
- Tom Watson.
- Roberto Duran, Panama.
- Alabama.
- National Conference 14, American Conference 13.

WHO KNOWS?

- When was gold discovered in California?
- When was the Space Treaty signed?
- Define tandem.
- When did the military draft end?
- How fast can a domestic cat run?
- With what does gerontology deal?
- Name the state flower of Georgia.
- Where is the oldest U.S. city?

- Who was the 13th U.S. President?
- What is the capital of Alaska?

Answers To Who Knows

- Jan. 24, 1848.
- Jan. 27, 1967.
- One after another in a single file.
- Jan. 27, 1973.
- 30 mph.
- Problems of the aging.
- The Cherokee Rose.
- Saint Augustine, Fla.
- Millard Fillmore.
- Juneau.

MEET THE CANDIDATES

Rates for listing in the Journal's Political Column is: \$25 for all offices except those for City Council and School Board post which is \$10. This fee includes a front page announcement article and a one-column photograph at the time the announcement is made, in addition to the listing in the Political Column from the date of announcement until the final election.

Charges for announcements are cash in advance, and this same policy applies to all political advertising carried in the columns of this news paper.

Names for each office will be listed in the Political Column in the order they are received at the newspaper office. The Journal has been authorized to announce the following candidates for public office:

- COUNTY CLERK**
Hazel Gilbreath
- DISTRICT CLERK**
Nelda Merritt
- COUNTY TREASURER**
Edith Willt
- COMMISSIONER BAILEY COUNTY**
PRECINCT #2
Loyd Stephens
PRECINCT #4
Rudolph Moraw
- Jerry Ray**
- COMMISSIONER PARMER COUNTY**
PRECINCT #4
Pete Josko
Jimmy Briggs
- JUSTICE OF PEACE**
PRECINCT #1
K.B. Martin

Save With Our Low Overhead!
Come In Soon!
Johnson Chevrolet
201 Commerce Sudan 227-2050

ACTION INSULATION CO.
Top quality insulation for free estimates call 806-986-3544 day or night.

Yes I Am Interested

Name _____
Phone _____
Action Insulation
Mail to: Box 115 Springlake 79082

Before You Buy!
Check Lindsay's Lifetime Corrosion Guarantee

Western Sprinklers, Inc.
West Hwy. 84
Muleshoe, Texas
79347
Phone:
806-272-4544

WESTERN SPRINKLERS INC.
P.O. Box 546 - Phone 806/272-4544 MULESHOE, TEXAS 79347

ZIMMATIC CENTER PIVOT SYSTEMS



NO REFUNDS
OR
EXCHANGE

CLEAN SWEEP SALE

STORE HOURS
MON - SAT 9-7
SUN 1-6
PRICES EFFECTIVE
FEB 2-5

WATCH FOR RED TAGS IN ALL DEPARTMENTS

HARDWARE

- SCREW BALL RACKET DRIVER REG \$11.49 **\$7.99**
- EUROPO PERSONAL SHOWER REG \$24.99 **1/2 PRICE**
- VACOR RAT KILL REG 27c **23c**
- KENNEDY #KK19 TOOL BOXES REG \$11.97 **\$8.59**
- SMALL PARTS ORGANIZER SPACE MAKERS **1/2 PRICE**
- TOOL AID KEEPER REG \$2.99 **1/2 PRICE**

AUTOMOTIVE

- DUPONT DE ICER REG 97c **2/\$1**
- JENSON CONSOLE REG \$4.99 & \$5.29 **\$3.49**
- ICE SCRAPERS REG 73c **49c**
- \$1.13 **83c**
- \$1.99 **\$1.39**
- SIPHON PUMP REG 87c **65c**
- CENTURY AUTO SEAT COVERS REG \$6.77 **1/2 PRICE**
- AUTO LITTER BASKETS REG \$1.19 **89c**
- SAFETY FLARES REG \$11.17 **\$7.99**
- BATTERY CASES REG \$4.99 **\$3.09**
- CAPACITY 3 TONS HYDRAULIC JACK REG \$15.99 **\$11.59**
- GILA WINDOW SCREENS REG \$11.99 **\$8.19**
- WHITE SIDEWALL CLEANER J-WAX REG \$1.09 **59c**
- GENERAL PURPOSE CLEANER GUNK REG \$1.29 **67c**
- AUTO COMPASS REG \$2.89 **\$1.89**
- BATTERY CHARGERS
- 1 AMP REG \$10.97 **\$8.99**
- 2 AMP REG \$11.99 **\$8.99**
- ANTI-FREEZE TESTERS REG 67c **45c**
- END BATTERY CORROSION CHEM-CAPS REG \$1.69 **1/2 PRICE**
- SPLASH GAURDS REG 89c **69c**
- \$1.99 **\$1.45**
- OIL CHANGE KIT REG \$2.87 **\$1.99**
- AIR TANKS REG \$27.97 **\$19.99**
- \$34.97 **\$25.99**
- PRE-SOFTEN WAX J-WAX KIT REG \$1.83 **99c**
- LIQUID KIT REG \$1.79 **99c**
- MECHANICS CREEPER REG \$7.97 **\$5.99**
- CHROME CLEANER POLISH REG 59c **39c**

SPORTING GOODS

- COLLAPSIBLE FISH BASKET REG \$3.99 **\$2.89**
- WILSON BASKETBALLS REG \$11.97 & \$10.97 **\$8.97**
- FOOTBALLS REG \$6.97-\$7.49-\$8.99 **\$4.99**
- REG \$9.99-\$10.29-\$12.49 **\$6.99**
- SOCCER BALLS REG \$7.79 **\$4.99**
- FISH N' FILLET BOARD REG \$9.79 **\$6.99**
- DUCK DECOYS REG \$2.99 **\$1.99**
- FISH DIP NETS REG \$2.39 **\$1.79**
- REG \$3.22 **\$2.39**
- FISHING ROD HOLDERS REG \$3.39 **\$1.69**

HOUSEWARES

- SKILLETS, TEA KETTLES, COOKY CUTTERS, BISCUIT CUTTERS POTS, CAKE PANS, MUFFIN PANS, BUNDT PANS, CORNSTICK PAN, REG 27c, 33c, 59c **3/69c**
- REG 63c, 67c, 83c **2/99c**
- REG 97c, 99c, \$1.06, \$1.07, \$1.09 **2/\$1.49**
- REG \$1.47, \$1.53, \$1.63, \$1.67, \$1.73 **\$1.09**
- REG \$1.99, \$2.09, \$2.39, \$2.49, \$2.59, \$2.79, \$2.69 **\$1.59**
- REG \$3.29, \$3.39, \$3.47, \$3.49, \$3.59, \$3.69, \$3.79, \$3.89, \$3.99 **\$2.39**
- REG \$4.17, \$4.19, \$4.29, \$4.39, \$4.69, \$4.79, \$4.87, \$4.99 **\$2.89**
- REG \$5.19, \$5.29, \$5.49, \$5.69, \$5.93, \$5.99, \$6.59, \$6.69, \$6.79 **3.99**
- REG \$7.09, \$7.49, \$7.87, \$7.59 **5.49**
- REG \$8.39, \$9.29, \$9.49 **\$6.09**
- REG \$10.13, \$10.97, \$11.19 **\$6.59**
- REG \$11.97, \$12.49, \$12.69 **\$7.19**
- REG \$19.97 **\$12.59**
- REG \$17.29 **\$10.99**
- COOKING SET REG \$21.99 **\$14.99**
- REG \$28.97-\$29.99 **\$19.99**
- REG \$31.19-\$36.49 **\$23.99**
- REG \$44.99-\$49.97 **\$29.97**

- ECKO KITCHEN TOOL SET REG \$8.99 **\$4.99**
- QUICK 6 REG \$34.99 **\$24.99**
- DONUT BAKER **\$24.99**
- MUNSEY REG \$58.49 **\$35.99**
- SUPER-BAKER **\$35.99**
- PRESTO AUTOMATIC 4-SL REG \$27.37 **\$19.99**
- TOASTER **\$19.99**
- WARING REG \$33.99 **\$25.99**
- BLENDER **\$25.99**
- LADY VANITY HAND REG \$15.97 **\$10.99**
- MIXER **\$10.99**
- RIVAL ELECTRIC REG \$15.99 **\$10.99**
- KNIFE **\$9.99**
- WARING REG \$11.99 **\$9.99**
- CAN OPENER **\$11.99**
- MERIT LIGHT TOUCH REG \$18.49 **\$11.99**
- HAIR DRYER **\$11.99**
- CONAIR HAIR DRYERS REG \$13.88 **\$11.99**
- REG \$29.99 **\$17.99**
- REG \$20.99 **\$16.99**
- REG \$32.09 **\$19.99**
- THE NAIL MACHINE REG \$11.99 **\$7.99**
- CONAIR CURLING WAND REG \$12.99 **\$8.99**
- NORTHERN 4-WAY LIGHTED MIRROR REG \$25.99 **\$15.99**

- FOOTBALL SHOULDER PADS REG \$5.97 \$7.97 **3.99**

EVERY DAY LOW PRICES

- GAL HOMO MILK **\$1.67**
- 1/2 GAL HOMO MILK **87c**
- GAL LOWFAT MILK **\$1.57**
- 1/2 GAL LOWFAT **81c**
- 1/2 GAL BUTTERMILK **81c**
- 1 LB COTTAGE CHEESE **67c**
- 2 LB COTTAGE CHEESE **\$1.29**
- WHIPPING CREAM **45c**
- SOUR CREAM **39c**

- LIL' BEN BOW, 3 ARROWS, TARGET TARGET SET REG \$16.99 **\$12.79**
- BEN PEARSON-48" FIBERGLASS BOW REG \$9.29 **\$7.49**
- DAISY LEATHER HOLSTER REG \$2.49 **\$1.25**
- UTILITY SUITS REG \$2.99 **\$1.59**
- SANDBAG ASH TRAYS REG 73c **59c**

TOYS

- JUMBO TIDDLEY WINKS OR PIN THE TAIL ON THE DONKEY REG \$1.33 **1/2 PRICE**
- RISK REG \$8.99 **\$7.49**
- OUIJA REG \$5.99 **2.99**
- BIONIC CRISIS REG \$4.99 **\$2.59**
- BLOCKHEAD REG \$3.69 **\$2.69**
- PASSWORD REG \$2.69 **\$2.09**
- HAPPY APPLE REG \$4.79 **\$3.89**
- MODELING CLAY REG 64c **55c**
- TRIGGER JET PLANE, NERF MOBILES, BOUNCING BUGGY REG \$3.99 **\$2.09**

AMMUNITION

- FIELD LOAD 12 GAUGE 7 1/2 SHOT REG \$4.39 **\$3.89**
- FIELD LOAD 12 GAUGE 8 SHOT REG \$4.39 **\$3.89**
- GAME LOAD 12 GAUGE 8 SHOT REG \$3.39 **\$2.99**
- GAME LOAD 12 GAUGE 6 SHOT REG \$3.29 **\$2.99**
- DUCK & PHEASANT 12 GAUGE 7 1/2 SHOT REG \$4.29 **\$3.79**
- HI POWER 12 GAUGE 8 SHOT REG \$5.19 **\$4.59**
- HI POWER 12 GAUGE 7 1/2 SHOT REG \$5.19 **\$4.59**
- HI POWER 12 GAUGE BB SHOT REG \$5.19 **\$4.59**
- HI POWER 12 GAUGE 4 SHOT REG \$5.19 **\$4**
- 3" MAG 12 GAUGE 2 SHOT REG \$7.69 **\$6.75**
- FIELD LOAD 16 GAUGE 8 SHOT REG \$3.99 **\$3.49**
- GAME LOAD 16 GAUGE 8 SHOT REG \$3.19 **2.79**
- HI POWER 16 GAUGE 4 SHOT REG \$4.69 **\$4.19**
- HI POWER 16 GAUGE 7 1/2 SHOT REG \$4.69 **\$4.19**
- HI POWER 20 GAUGE 7 1/2 SHOT REG \$4.49 **\$3.99**
- 2 1/4 MAG 20 GAUGE 7 1/2 SHOT REG \$5.19 **\$4.59**
- DUCK & PHEASANT 20 GAUGE 6 SHOT REG \$3.69 **\$3.29**
- 2 1/2" HI POWER 410 GAUGE 6 SHOT REG \$3.49 **\$3.09**
- 100 CT BOX 22 LG, RFL REG \$2.15 **\$1.89**
- 100 CT BOX 22 LG, RFL HP REG \$2.35 **\$2.09**
- 22 LG RFL REG \$1.69 **\$1.09**
- 22 LG RFL REG \$1.19 **99**
- 22 SHORT REG 95c **87c**



LOOK! WHAT 88¢ WILL BUY AT PIGGLY WIGGLY

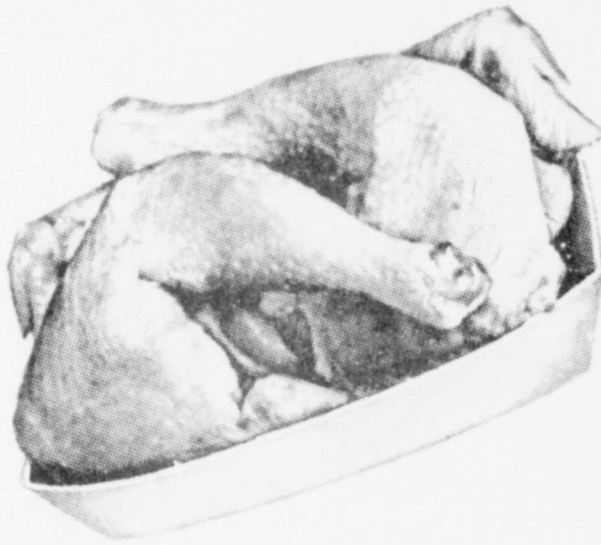
"Supplement to the Amarillo Daily News & Amarillo Globe Times"
 "Supplement to the Floyd County Hesperian and the Lockney Beacon"
 "Supplement to the Muleshoe Journal"
 "Supplement to the Plainview Daily Herald"
 "Supplement to the Tulia Herald"



"Each of these advertised items is required to be readily available for sale at or below the advertised price in each store, except as specifically noted in this ad."



WE GLADLY REDEEM FEDERAL FOOD STAMPS



USDA Grade A

BOX-O-CHICKEN
38¢
 Lb.

3 Breast Quarters with Backs, 3 Leg Quarters with Backs, 3 Wings, 3 Necks, 3 Giblet Packets



Plus Deposit
COCA-COLA

SAVE 72¢

6 \$1.18
 32-oz. Btls.

Limit one (1) with a \$10.00 or more purchase excluding beer, wine & cigarettes.

Piggly Wiggly
ICE CREAM

SAVE 17¢



½-Gal. Ctn.

78¢

Limit one (1) with a \$10.00 or more purchase excluding beer, wine & cigarettes.



Western Heavy Grain Fed Beef, Full Cut-Bone In

ROUND STEAK
\$1.18
 Lb.



All Purpose

RUSSET POTATOES
78¢
 10-Lb. Bag

PRICES EFFECTIVE FEBRUARY 1 THRU FEBRUARY 4, 1978 AT THESE LOCATIONS:

3609 E. Amarillo Blvd. - Amarillo

4400 S. Washington - Amarillo
 307 E. Hastings - Amarillo
 3520 E. 27th St. - Amarillo

200 SE 2ND St. - Tulia

3300 Olton Rd. - Plainview
 501 American Blvd. - Muleshoe
 309 S. Wall St. - Floydada



LOOK WHAT AT PIGGLY

"Each of these advertised items is required to be readily available for sale at or below the advertised price in each store, except as specifically noted in this ad."

Prices good thru February 4, 1978. We reserve the right to limit quantities. None sold to dealers.

Seven Seas Creamy Italian or DeLuxe 1000 Island Salad	8-oz. Btl.	58 ^c
Piggly Wiggly Salt	26-oz. Pkg.	18 ^c
Hunt's Tomato Catsup	32-oz. Btl.	88 ^c
Post Toasties	18-oz. Box	68 ^c
Bama Grape Jam	18-oz. Jar	78 ^c
Bama Strawberry Preserves	18-oz. Jar	98 ^c
Piggly Wiggly Peanut Butter	18-oz. Jar	88 ^c
Piggly Wiggly Vegetable Oil	24-oz. Btl.	88 ^c

SAVE 72^c

Plus Deposit 32-oz. Btls.

COCA COLA

\$1.18

6-Pack

Limit one (1) 6-Pack 32-oz. Btls. with \$10.00 or more purchase excluding beer, wine & cigarettes.

SAVE 17^c

Piggly Wiggly

ICE CREAM

78^c

1/2-Gal. Ctn.

Limit one (1) 1/2-Gal. Ctn. with \$10.00 or more excluding beer, wine & cigarettes.

SAVE 20^c

Flour

GOLD MEDAL

58^c

5-Lb. Bag

Limit one (1) 5-Lb. Bag with \$10.00 or more purchase excluding beer, wine & cigarettes.

SAVE 24^c on 3 cans

Del Monte Cut

GREEN BEANS

3 88^c

16-oz. Cans

SAVE 24^c on 3 cans

Whole Kernel or Cream Style

DEL MONTE CORN

3 88^c

16-oz. Cans

SAVE 12^c on 3 cans

Leaf

DEL MONTE SPINACH

3 88^c

15-oz. Cans

- Sliced, Crushed or Chunks
Del Monte Pineapple 8-oz. Cans **3 88^c**
- Del Monte Green Peas 16-oz. Cans **3 88^c**
- Piggly Wiggly Crisp Crackers 16-oz. Boxes **2 88^c**
- 4 Varieties, Piggly Wiggly Chicken Soups 10 1/2-oz. Cans **3 78^c**
- Ranch Style Blackeye Peas 14 1/2-oz. Cans **3 88^c**
- Golden Best Bath Tissue 4 Roll Pkg. **58^c**

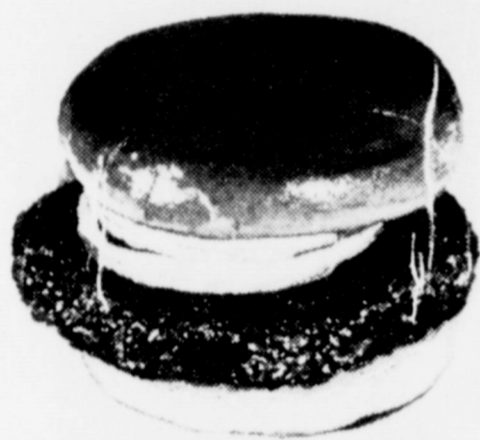
- Piggly Wiggly Paper Towels Jumbo Rolls **2 88^c**
- Assorted Zee Napkins 60-Ct. Pkgs. **3 88^c**
- Piggly Wiggly Liquid Bleach 128-oz. Btl. **68^c**
- Golden Best Powder Detergent 42-oz. Box **88^c**
- 4 Varieties, Solid Glade Deodorizer 6-oz. Pkgs. **2 88^c**
- 5 Varieties Nine Lives Cat Food 6 1/2-oz. Cans **3 88^c**

FROZEN FOOD SPECIALS

Frozen TROPHY STRAWBERRIES 10-oz. Pkgs. 2 68^c	Ida Treat FRENCH FRIED POTATOES 5-Lb. Bag 98^c	3 Varieties FOX DE LUXE PIZZA 13-oz. Pkg. 88^c	Piggly Wiggly FROZEN WAFFLES 5-oz. Pkgs. 4 88^c
---	---	---	--

88¢ WILL BUY WIGGLY

**WE GLADLY REDEEM
USDA FOOD STAMPS**



Premium Extra Lean
**GROUND
CHUCK**

Lb. **98¢**

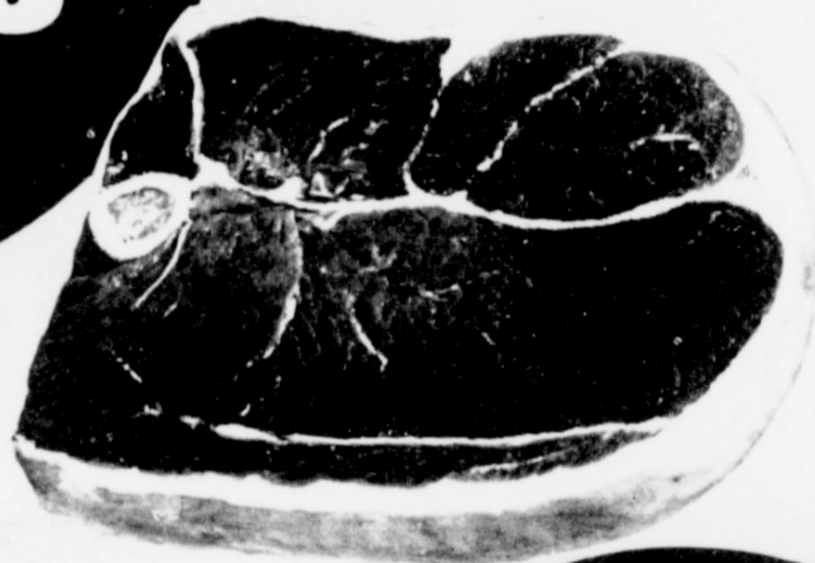
Western Heavy Grain Fed Beef,
Full Cut, Bone-In

**ROUND
STEAK**

\$1.18

Lb.

- USDA Grade A Fryer Breasts Lb. **98¢**
- USDA Grade A Fryer Thighs or Drumsticks Lb. **98¢**
- USDA Grade A Breast or Leg Fryer Quarters Lb. **68¢**
- Western Heavy Grain Fed Beef T-Bone Steak Lb. **\$1.98**
- Western Heavy Grain Fed Beef, Lean Cube Steak Lb. **\$1.98**
- Western Heavy Grain Fed Beef, Round Boneless Steak Lb. **\$1.58**
- Farmer Jones Bologna 12-oz. Pkg. **88¢**



**DOUBLE YOUR MONEY BACK
MEAT GUARANTEE**

If for any reason, the fresh meat you buy at Piggly Wiggly does not completely satisfy you, please see your store manager, and the purchase price will be cheerfully refunded, DOUBLE!

Patties

**ELGIN
OLEO**

4 88¢

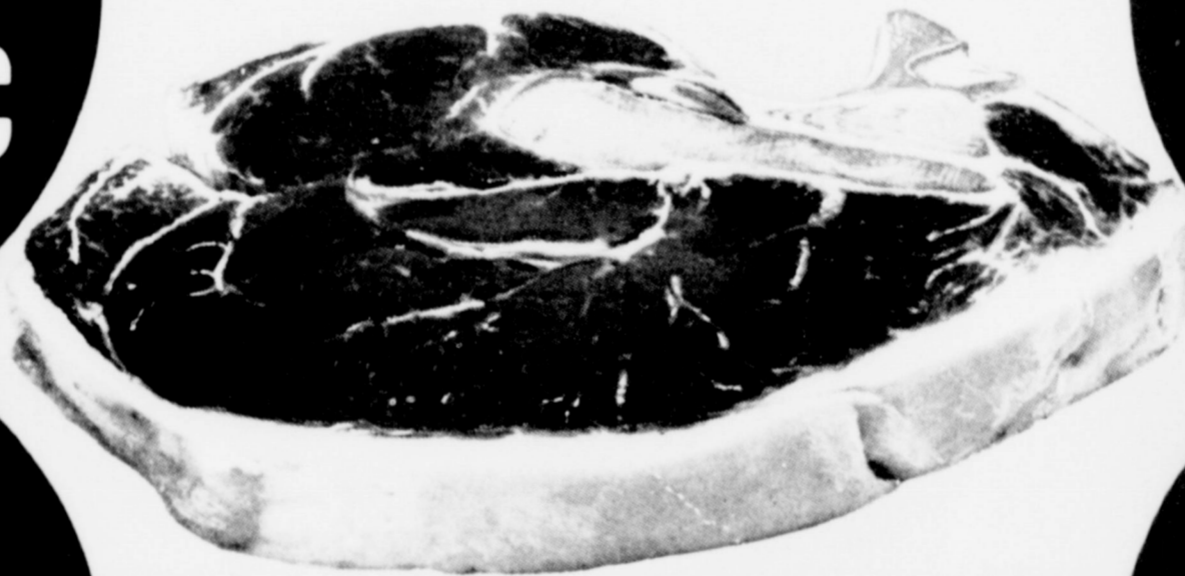
8-oz. Pkgs.

Western Heavy Grain Fed Beef

**SIRLOIN
STEAK**

\$1.38

Lb.



Piggly Wiggly
Sweetmilk or Buttermilk

**CANNED
BISCUITS**

8 88¢

8-oz. Cans.

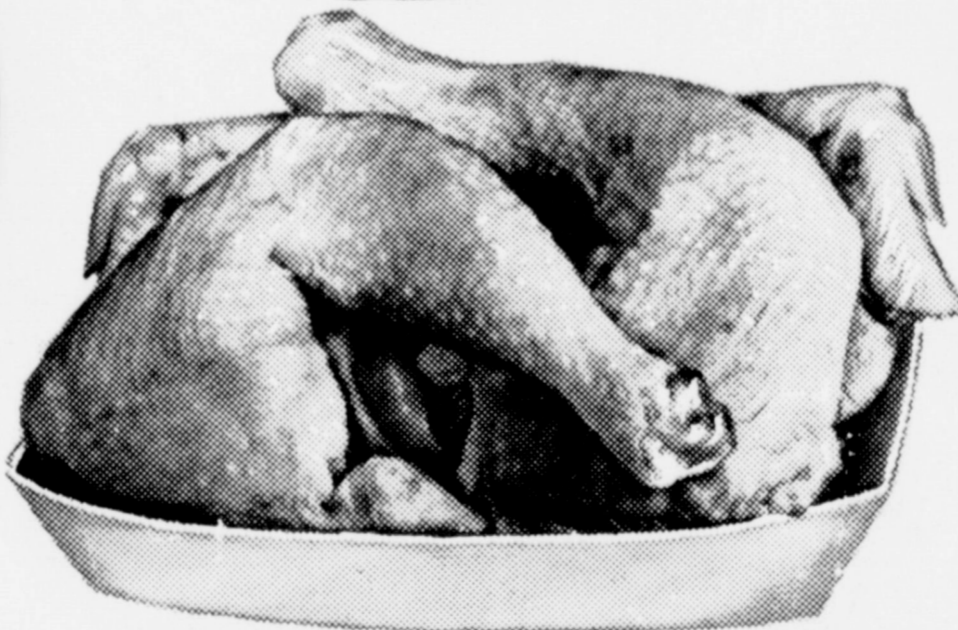
USDA Grade A

**BOX-O-
CHICKEN**

38¢

Lb.

3-Breast Quarters with Backs
3-Leg Quarters with Backs
3-Wings, 3-Necks, 3-Giblets



**WE GLADLY
REDEEM USDA
FOOD STAMPS**

- Clearfield Half or Full Moon Longhorn Cheese ... Lb. **\$1.58**
- Farmer Jones Hot or Mild Pure Pork Sausage Lb. **\$1.18**

- Farmer Jones All Meat Franks 12-oz. Pkg. **68¢**
- Fisher Boy Shrimp Tidbits 16-oz. Pkg. **\$1.88**
- Piggly Wiggly American Singles 16-oz. Pkg. **\$1.48**

SAVE MONEY THIS WEEK WITH PRODUCE FROM PIGGLY WIGGLY



All Purpose
**RUSSET
POTATOES**
10-Lb. Bag **78¢**



Full of Juice &
Seedless
**NAVEL
ORANGES**
10 For **88¢**

Garden Fresh

Bell Peppers 10 For **98¢**

Mustard or Collard

Fresh Greens 3 Bu. **98¢**

Crisp &

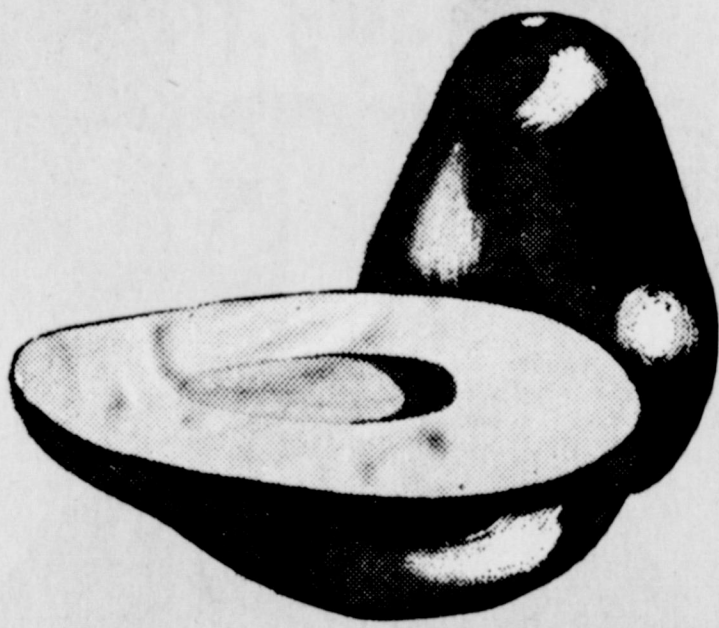
Crunchy Carrots 4 1-Lb. Bags **98¢**

Salad Bowl, Red Leaf, Romaine

Leaf Lettuce 3 Bu. **98¢**

Ripe
**GOLDEN
BANANAS**
5 Lbs. **98¢**

Ruby Red
**TEXAS
GRAPEFRUIT**
5 For **98¢**



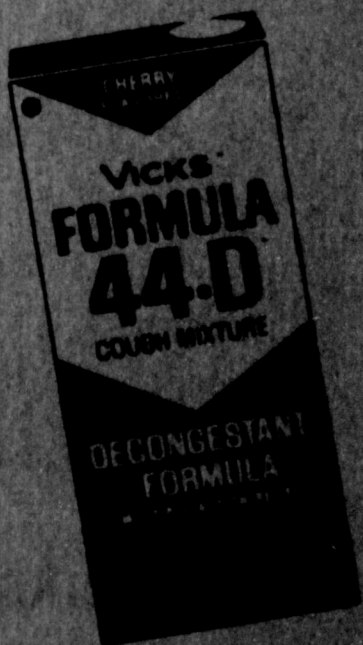
Smooth Skin, California
AVOCADOS
3 For **98¢**



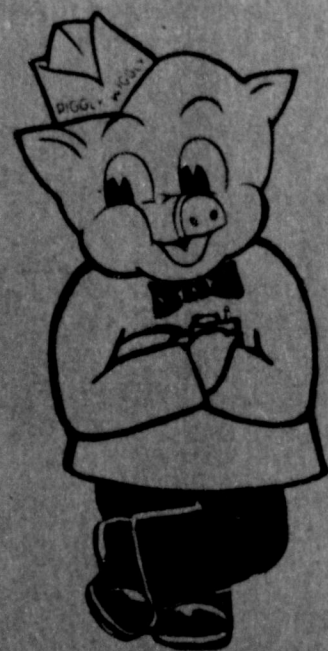
California
Sunkist Lemons 6 For **98¢**

Texas, Full of Juice
Juice Oranges 5-Lb. Bag **98¢**

HEALTH & BEAUTY AIDS



Cough Syrup
FORMULA \$1.58
44-D 3-oz. Btl.



4-Tip
Cosmetic Puffs **78¢**

Agree Conditioner
Cream Rinse 8-oz. Btl. **\$1.28**

Skin Care Cream
Rose Milk 8-oz. Btl. **\$1.18**