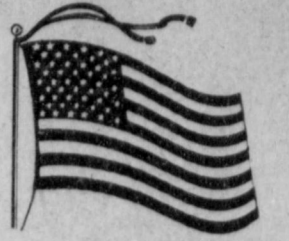


Weather

	HIGH	LOW	PREC
December 30	62	18	
December 31	40	08	C.
January 1	45	09	
January 2	30	14	
January 3	50	16	
January 4	60	28	
January 5	55	22	

MULESHOE JOURNAL

'The Community of Opportunity-Where Water Makes the Difference'



Volume 54, Number 1

8 Pages

Published Every Thursday at Muleshoe, Bailey County, Texas 79347

10 Cents

Thursday, January 6, 1977



OFFICIALS SWORN IN . . . To start the new year off right, Bailey County Judge Glen Williams swore in various elected county officials on New Year's Day. Pictured from left are Jack Young, county attorney; Dee Clements, sheriff; John Blackwell, constable;

W.E. Young, constable; Jean Lovelady, tax assessor; Gordon (Corky) Green, county attorney and Matt Dudley, county commissioner. Not pictured is Commissioner Bob Sanders, who also won his election as commissioner of Precinct Three.

City Approves Application Federal Funding Plan

★★
Local Registration
For Classes Slated

★★
City Could Receive
\$250,000 Windfall

Registration for college courses for Muleshoe will be at 7 p.m. tonight (Thursday) at Muleshoe High School cafeteria. The courses are being offered through the Division of Continuing Education at South Plains College at Levelland, and classes are scheduled to begin on Monday, January 17.

Late registration for Muleshoe classes will be January 7 through January 21 in the business office of the Muleshoe Independent School District. The cost for three semester hours is \$58; six semester hours, \$76 and for nine semester hours, \$90. Final exams will be given May 5-11 at Muleshoe High School.

A minimum enrollment of fifteen persons is required for a course said Tom Jinks, who added, "Persons must be a high school graduate or possess the GED certificate. Persons without the GED may apply for probationary enrollment to the Dean of Continuing Education at South Plains College."

Anyone wishing to attend the classes must complete the application for admission; submit an official transcript from high school or college and must file an immunization certificate as required by state law.

Spring classes in Muleshoe include Personnel Management; College Composition and Rhetoric and Child Growth and Development on Mondays from 7-10 p.m.

On Tuesdays, classes will include Business Law; History of U.S. since 1865 and General Psychology. Thursday classes

will be Drawing I with Mrs. Elizabeth Black as instructor and also on Thursday will be Masterpieces of Literature. For further information, contact Tom Jinks at the school business office or call him at 272-3911.

Sandstorm, Wind Lead Winter Storm

After untypical, or atypical, Christmas weather in the Muleshoe area, with the weather remaining clear and dry, snow was expected to start falling throughout the area sometime on Wednesday.

A vicious sandstorm on Tuesday, producing high winds and lowering visibility with dust and small debris, heralded the approach of the winter storm which promised to deposit the first moisture in the area for several weeks.

Wednesday morning, low clouds and colder temperatures prevailed with a hint of snow to come, however, by presstime, snow had not started falling. The off again, on again weather forecast called for a possibility of snow in the area sometime Wednesday, with chances increasing by the end of the week. National Weather Service called the approaching winter storm a "major winter storm" and issued traveler's warnings throughout a wide area.

Tourists Adding To State Economy

Tourists . . . you just can't figure 'em. So say the professional tourist watchers at the State Department of Highways and Public Transportation after toying up last fall's facts and figures.

"Taking the pulse of the Texas tourist industry every three months," said a departmental tourist-watcher, "you'd think we'd spot trends and get a handle on why tourists behave like they do. Like the 'travel thrifty' trend," he explained. That penny-pinching trend was duly noted every quarter since the fall of 1975. Tourists still came, by the droves, but spend less per day. Supporting evidence checked out. In posh hotel rooms, trash baskets were reported stuffed with burger wrappers.

"We had a reasonable theory going," said a state statistician. "Travel dollars just don't go as far as they once did, so travelers were spreading 'em thinner. Then came the fall of '76, and they blew our theory to smithereens. These tourists wheeled into Texas spending money 23 percent faster than they had just three months earlier . . . bless 'em!"

The typical fall tourist spent \$21.13 a day in Texas, and he and his traveling companions left \$323.97 in the state during their stay.

"On the other hand," pointed out another tabulator, "fall tourists always seem to spend rather freely. They did in 1975, too."

Sure enough, the tourist watchers' quarterly comparisons show that fall-season visitors to Texas are indeed more generous than those who come in other seasons.

The report just issued by the State Department of Highways and Public Transportation will delight analysts whose joy is reducing even the vagaries of human nature to neat columns of figures. It says that last fall's average auto party from out of state consisted of 2.4 persons who stayed 6.39 days in Texas

Following several months of intensive investigation, pre-planning, and public meetings, the final draft of the proposed Housing and Community Development Improvement plan was approved by Muleshoe City Council members during their regular meeting on Tuesday morning.

Muleshoe Assistant City Administrator Jack Eades presented the formal application for approval and explained the lengthy procedure necessary to apply for the \$246,920 in federal funds sought to upgrade three different portions of the city. He said the three target areas were selected following intensive investigation and checking into the needs of various sections of low-to-moderate income areas of the city.

According to Eades, the first Program Area was chosen because it has deteriorating housing; vacant and obsolete structures in the neighborhood; a lack of paved streets and the residents' lack of information concerning the opportunities of housing rehabilitation, repair, and homeownership.

Proposed renovation activities for the first area is located in

southeast Muleshoe and is bounded by American Boulevard on the north to East Avenue G on the south, East Third on the west to East Sixth Street on the east.

Total funding sought for that area includes \$102,395, which would be used to aid 130 families, with 84 percent of the number, or 109 families, considered to be in the low-to-moderate income range.

The second Program area has the same needs as the other two target areas except for paving. According to Eades' survey, more than two dozen abandoned structures are in the area and need removal. He said that many of the abandoned structures are only burned frames of buildings and houses.

A total of \$46,686 is being sought for renovation of the area which is located North of Highway 84 and the downtown Muleshoe area. It is bounded by West Ash Avenue on the south and by West Fir Avenue on the north. On the west it is bounded by West Dallas Street and on the east by West Boston Street.

The assistant to the City Manager said 30 families would benefit from the program in Area Two and that 100 percent of that number would be low-to-moderate income families.

He added that they are hopeful of being able to renovate and upgrade the entire neighborhood and provide a more healthy and sanitary neighborhood for the residents of that area. He anticipates no real trouble acquiring funding for that particular area, along with the first area.

However, he was not as optimistic about the third area which is located in the north-

Cont. on Page 3, Col. 1

Commissioners In Routine Bill Payment

Members of the Bailey County Commissioners Court met in session on Monday, January 3, for their regular bill payment meeting and to kick off the 1977 commission hearings.

The only business conducted during the day was payment of routine bills and transfer of funds from one department to another.

The regular meeting of the commissioners is scheduled for 10 a.m. on Monday, January 10, in the commission meeting room at the Bailey County courthouse.

School Board Chooses New Tax Assessor

Board of Trustees for the Muleshoe Independent School District met in special session on Monday, January 3, and reviewed applications for the position of tax assessor/collector for the Muleshoe I.S.D.

Following interviews, the board approved employment of Jesse L. Click to replace J.M. Brown, who had submitted his resignation in December.

Click is a native of Hereford. He is a graduate of Hereford High School and attended McMurry College for two years, majoring in general business. He also had computer training at West Texas State University.

After serving with the U.S. Coast Guard from 1952-56, he was in the motel and restaurant management for eight years. During the past year and a half, he has been employed as tax appraiser for McMorries & Co., and Southwestern Appraisal Company. He will begin his new position in Muleshoe as soon as he can complete his work with Southwestern Appraisal.

The 44-year-old tax assessor is married and has grown children who live away from home.

around Muleshoe

Mr. and Mrs. Charlie Durham and son, Bill, have returned from Moline, Ill., where they spent Christmas with their daughter and family, Mr. and Mrs. Larry (Karen) Ohrberg and Vicki Jeanne.

Accompanying the Durhams back to Muleshoe was their son, Tom, who is a senior at Cornell College in Mount Vernon, Iowa.

Mr. and Mrs. Ben Chapman left Tuesday for Puerto Rico to visit his brother, Dwight Chapman, a retired engineer.

Carl Bamert, who broke his leg in an accident at his farm Monday, is receiving treatment at Highland Hospital in Lubbock.

Mrs. Lula Kister, who has been with her daughter, Mrs. Ethel Arwine, in Floydada for the last two months, has sent her regards to friends in the Muleshoe area.

She plans to return to her home in the near future, and said she would appreciate mail from her friends at 901 Virginia in Floydada.

Man Injured On New Year's Eve Has Improved

Nineteen-year-old Floyd Cruse, who was injured on Friday, December 31, while visiting relatives in the Clay's Corner area, is reported to be showing some improvement at Methodist Hospital in Lubbock.

He is reported to be talking some, although is still listed in critical condition at the hospital. He suffered injuries to his throat and neck in the New Year's Eve accident, and received emergency treatment at West Plains Medical Center before being transferred to Lubbock.

A spokesman said the young man and his wife were visiting area relatives from Portales, N.M. at the time of the accident on a farm north of Muleshoe.

Vehicle Registration Forms Nearly Ready

Texas will begin registering their motor vehicles for fiscal 1977 February 1. Registration renewal notices will be in the mail soon.

Some vehicle registration renewal notices will arrive a little later this year. Usually they are mailed immediately after Christmas to facilitate postal distribution. However, this year, inmates at the State Department of Corrections prison facilities at Huntsville are sorting by zip code all of the

approximately 10 million renewal notices.

The State Department of Highways and Public Transportation will save approximately \$50,000 in postage discounts for performing this service, which is contracted by the prison system.

The 1977 stickers will have a solid red background with white year figures and state name. The sticker serial number will be printed in blue in the upper right-hand corner. Fiscal 1976 stickers had a blue background,

white figures and red serial numbers in furtherance of the Bicentennial theme which will be continued in 1977.

Robert W. (Bob) Townsley, director of DHT's Motor Vehicle Division, said he anticipates less motorist confusion in affixing 1977 stickers to the metal license plates.

DHT first issued multi-year metal license plates in fiscal 1975. Last year was the first for attaching annual stickers to the metal plates.

"Although most motorists followed instructions and experienced no problems, others failed to read the instructions for affixing the stickers with -- sometimes -- laughable results," Townsley commented.

The 1977 stickers will be applied to the depressed area in the upper right-hand corner of the REAR metal license plate, Townsley explained. The 1976 sticker should remain in its present location -- the upper left-hand corner of the rear license plate.

Inmates of the Wynne Unit industrial plant at Huntsville make license plates, print stickers and prepare record-keeping materials for DHT and county tax assessors-collectors who are responsible for actual registration processes.

As previously, mail registrations will be accepted from vehicle owners for an additional fee between February 1 and March 1. Motorists who wish to register their vehicles in person can save time, energy and frustration by visiting county tax offices as soon as possible after February 1. Deadline for having the stickers affixed is midnight April 1.

Above all, avoid lengthy registration lines by not waiting until the last minute to obtain 1977 stickers. Said Townsley: "Motorists can ease the pain by heeding the Christmas warnings -- shop early!"

Beginning in 1978 the State Department of Highways and Public Transportation will initiate a year-round licensing system with some registrations expiring each month thereafter. This will mark demise of the half-century-old, 60-day registration periods and one-date deadlines for acquiring and affixing new stickers without penalty.

Police Report

After staying fairly quiet through the holidays with a minimum of reported thefts, several have been reported during the past several days.

Betty Ramsour reported stolen Indian jewelry in the amount of more than \$650; Bobby E. Free reported a stolen CB radio and antenna; Mrs. Johnny Vaughn reported a stolen .22 rifle; Ed Ziegenfuss reported as lost or stolen a license plate, AV8965.

Also reported by Wilson Drilling were several antenna towers and antenna springs and Bill Long at the Muleshoe National Wildlife Refuge reported as missing a .410 magnum.

Arrests included one for no sticker, no registration on a truck and worthless checks; one for drunk, contempt of court and burglary; two for driving while intoxicated and one for worthless checks.

Weldon Dennis Wins Bowl Game Contest

If there's a secret to winning the big ones, Weldon Dennis apparently holds the key. He came up with the big win in the annual College Bowl Game Football Contest. After a sneak attack win earlier in the annual Merchant's Football Contest, Dennis came back this week to win the annual contest and walk home with the prize.

In his earlier entry, he had written on the corner "Good Luck To Me." Of all his entries throughout the season, this was the only contest he won during the regular season. Sure enough, when his Bowl Game entry came in, on one corner was written "Good Luck To Me Again." -- and he had good luck. He won the contest with only one wrong guess, U.C.L.A.

Alabama and was only nine points off on the tiebreaker score. He predicted the Maryland-Houston score as 24-28 and the Texas Tech-Nebraska score as 21-28 to make his total of nine points.

Just out of the winner's column were an additional pair of entries. Also missing one game, the U.C.L.A.-Alabama game was Mike Perez, who was 21 points away on the tiebreaker. Missing one game, Penn State-

Notre Dame, was Curtis Elder, who was 23 points away on the tiebreaker.

An additional seven persons missed only two games in the contest. Included were former regular season winners Mary Watkins, Nona Blake Douglass, J.E. McVicker, L.C. Rogdham and Jim Shafer.

The annual Bowl Game contest ended football contests for the 1976-77 season. Stay tuned to the same newspaper for the contests which will begin again with the excitement of football in the fall of 1977.

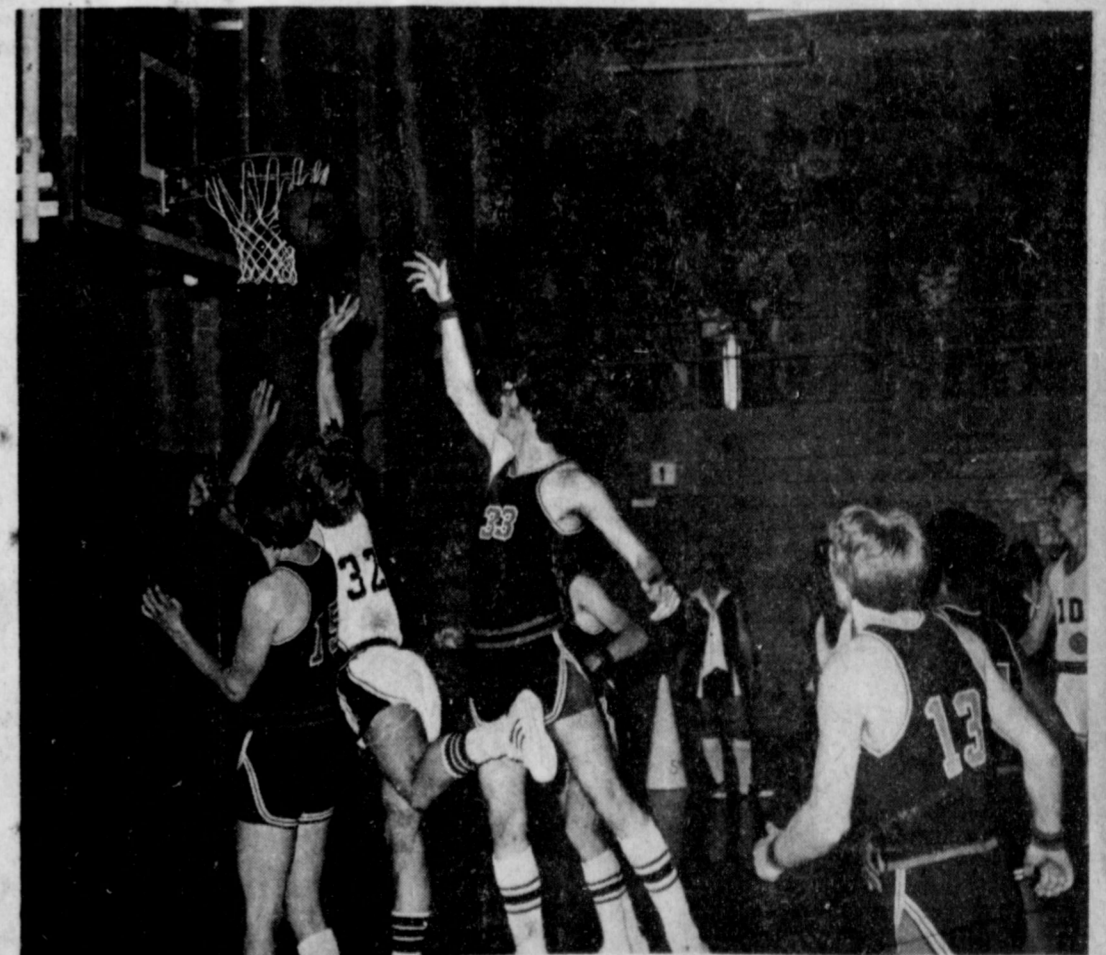
Athletic Booster Meeting Tonight At High School

Muleshoe High School Athletic Boosters will meet on Thursday (tonight) at 7 p.m. to hear an update on the school basketball program.

Athletic Director Don Cumpton said the meeting will be in Room 14 at Muleshoe High School instead of the high school cafeteria because of the college registration scheduled the same night in the cafeteria.



PRESENTING -- THE WINNER! . . . Weldon Dennis, left, receives a check for \$25 from The Journal's Bonnie Huckleberry for winning the annual Bowl Game Football contest. Dennis missed only one game and was nine points away on the tiebreaker to take the final contest of the season. He also won one time during the regular season.



TOURNAMENT ACTION . . . It was fast and furious basketball action in Muleshoe to ring out the old year and ring in the new last weekend at the Muleshoe Invitational Basketball Tournament. Several area boys' and girls' teams came to Muleshoe for the three day tournament. Muleshoe boys won third and Muleshoe girls won consolation in the tournament.

TDA Steps Up Inspection With Grain Elevators Full

AUSTIN--With grain elevators filled to the brim this year in Texas, Agriculture Commissioner John C. White has asked for a stepped-up program to protect those in the business. "Grain handling is probably one of the most complex market systems in agriculture -- and the one where the potential is greatest for farmers and elevator operators to sustain losses," White said.

The Texas Department of Agriculture (TDA) Grain Warehouse Division has a two-pronged program to decrease the dollars lost each year.

One is the monitoring of accounts and the actual measurement of grain in warehouses licensed by TDA. The other is continuous

investigation into criminal activity in relation to grain handling.

Grain storage capacity in Texas elevators is over 392 million bushels, and monitoring the actual amount of grain stored is a big job, White stated.

TDA inspectors record all of the grain that has been brought into elevators by the individual grain-weight tickets and receipts to determine how much grain is in storage for farmers and time -- the time when thieves take advantage of farmers and warehousemen pressed for transportation and storage space.

Department personnel also aid law enforcement officers in investigating methods of grain thefts and

scale manipulation and in obtaining evidence against thieves.

Other types of warehouses require the inspector to get down inside the container to get an average height of the grain so that volumes can be computed. "It's no place for a man with an allergy," White said.

Taken into consideration are such factors as trash, chaff, dust, damaged kernels, settling of grain, and moisture. If there is a three per cent difference, there may be a complete re-check of books and grain, but if the

Has A Point
Professor: Can you tell me something about the word "statistics?"
Sophomore: Well, they're something like a Bikini--what they reveal is interesting, but what they conceal is vital.

shortage is proved, the company must make up the difference.

Tips on how to avoid grain thefts from fields and warehouses are published periodically by the Texas Department of Agriculture, especially during harvest

After determining how much grain should be stored in a particular warehouse, inspectors physically measure the grain. To do this in an upright elevator, the inspector drops a line from the top of the structure (sometimes 60 feet high) to determine the depth of the grain and by further calculations, check to see that the company's books are correct.

Mr. and Mrs. Tommy Cate spent the Christmas holidays in Pennsylvania with their son and family. Mr. and Mrs. Rodney Cate and girls.

The Speaker Reports



by Bill Clayton

AUSTIN--Revenue sharing has been granted a new life and state and local governments will see their first checks in April.

The extension comes in the form of a new law--State and Local Fiscal Assistance Amendments of 1976--and means that the program did not expire at

the stroke of midnight on the last day of 1976.

The extension is for 45 months, ending at the completion of fiscal year 1980. During that period total funds of \$25.5 billion will be sent home from Washington.

The program began in 1972 and through the end of 1976 about \$30 billion in tax revenues have been provided state and local governments--although that money comes from Washington with some strings.

According to the wording of the bill some of the strings contained in the original program have been removed and others have been strengthened in the areas of antidiscrimination, auditing and citizen participation requirements.

The section which required that local governments use revenue sharing funds only for certain priority expenditures has been deleted. Also removed is the provision which prohibited state

and local governments from using revenue sharing funds to match other federal programs.

Washington still has its thumb on the money. For one thing, sharing from 1978-80 will be tied to federal income tax receipts. There will be more money if revenues are high, but less if times are not so prosperous. The provision will have little impact as far as increasing the amount because Congress placed a ceiling of \$6.85 billion per fiscal year.

Some new requirements have been placed on the funds. One provision calls for an increase in citizen participation by requiring at least one public hearing on proposed use of the funds and at least one hearing on the relation of the proposed use to the entire local budget.

Procedures for enforcing the antidiscrimination provision of the 1972 act are included and apply to any program or activity using rev-

enue sharing funds. Congress established a timetable for compliance once a complaint is made. Violators who do not comply will have funds suspended. Individuals can also file private civil suits for violation of nondiscrimination and citizen participation and auditing as well.

Texas can certainly use the funds. The state will collect \$83.8 million and local government \$167.5 million for the first nine months of 1977. We should remember that these monies are coming to us via Washington. I cannot help but believe that instead of our taxpayers sending the money first to Washington and then the federal government returning it with strings attached, we could have eliminated the middle man's part and his cost with some comprehensive tax law changes.

USDA projects 1977 food price increases.



Prices good thru Jan. 5, 1977. We reserve the right to limit quantities. None sold to dealers.

invites you to play

BANK VAULT BINGO

FREE! No Purchase Required--Adults Only

GAME	NUMBER OF PRIZES	ODDS FOR ONE GAME PIECE	ODDS FOR 13 GAME PIECES	ODDS FOR 26 GAME PIECES
\$1,000	61	1 in 179,885	1 in 13,837	1 in 6,919
\$500	66	1 in 166,258	1 in 12,789	1 in 6,395
\$250	128	1 in 85,727	1 in 6,584	1 in 3,292
\$100	444	1 in 24,714	1 in 1,901	1 in 951
\$50	888	1 in 12,357	1 in 951	1 in 475
\$25	5,001	1 in 2,194	1 in 169	1 in 84
\$10	7,824	1 in 1,402	1 in 108	1 in 54
\$5	29,291	1 in 375	1 in 29	1 in 14
TOTAL	43,703	1 in 200	1 in 19	1 in 10

This Program is available at 110 Piggly Wiggly stores located in Texas, New Mexico and Oklahoma. Scheduled termination date of this Program is January 15, 1977, but game officially terminates with distribution of all game pieces. This Program may be repeated by popular demand. Game pieces and game folders may be obtained free by writing Bank Vault Bingo, Program No. 478, P.O. Box 5055, Dallas, Texas 75222. Only one game piece and game folder may be requested per envelope and a self-addressed stamped envelope must accompany each request.

Heavy Aged Beef Chuck
Boneless Roast
\$1.08
Lb.

Heavy Aged Beef
Round Steak
\$1.19
Lb.

Heavy Aged Beef "Shoulder Arm Cut"
Swiss Steak
\$1.08
Lb.

Heavy Aged Beef, Boneless Rump or Bottom
Round Roast
\$1.48 c
Lb.

BEEF SPECIALS

- Heavy Aged Beef, **Shoulder Arm Roast** Lb. **\$1.78**
- Heavy Aged Beef, Tenderized **Bottom Round Steak** Lb. **\$1.58**
- Heavy Aged Beef Chuck **Boneless Steak** Lb. **\$1.08**
- Tender **Cube Steak** Lb. **\$1.88**
- Heavy Aged Beef **T-Bone Steak** Lb. **\$1.98**
- Boneless Lean **Stewing Beef** Lb. **\$1.18**

PORK SPECIALS

- Boston Butt **Fresh Pork Roast** Lb. **98c**
- Fresh **Country Style Spare Ribs** Lb. **\$1.18**
- Fresh **Pork Steak** Lb. **\$1.18**
- Quarter Pork Loin 8 to 10 **Pork Chops** Lb. **\$1.18**
- Fresh **Pork Spare Ribs** Lb. **\$1.18**
- Fresh -- 3-Lbs. or More **Ground Beef** Lb. **78c**

FRESH POULTRY

- Breast or Leg, Fresh **Fryer Quarters** Lb. **49c**
- USDA GRADED **FAMILY PAK.** Lb. **89c**
- FRYER BREAST** Lb. **\$1.29**
- Swift's **Cornish Game Hens** each **\$1.29**
- Banquet **Chicken Livers** 1-Lb. Cup **79c**
- Banquet **Chicken Gizzards** 14-oz. Cup **79c**
- "Chuck Quality" Lean **Ground Beef** Lb. **\$1.18**

SPECIAL TREATS

- Farmer Jones **Tasty Franks** 12-oz. Pkg. **79c**
- Farmer Jones **Sliced Bologna** 12-oz. Pkg. **88c**
- Farmer Jones **Sliced Bacon** 12-oz. Pkg. **98c**
- Heat & Serve Eckrich **Smoked Sausage** Lb. **\$1.59**
- Owen's Country Style (2-Lb. Pkg.) **Roll Sausage** 1-Lb. Pkg. **\$1.31**
- Kraft's Slices **American Cheese** 12-oz. Pkg. **\$1.19**



PIGGLY WIGGLY'S



ALL PURPOSE
Russet Potatoes
79c
10-Lb. Bag

FANCY GOLDEN DELICIOUS
APPLES
\$1
3 lb.

- California **Avocados** 3 For **\$1**
- Sweet **Yellow Onions** Lb. **19c**
- Crisp **Carrots** 1-Lb. Pkg. **37c**
- California Choice **Navel Oranges** 5 Lb. **\$1**

- Red Delicious **Apples** 3-Lb. Bag **99c**
- Texas Sweet **Juice Oranges** 5-Lb. Bag **99c**
- Delicious **D'Anjou Pears** Lb. **00c**
- Texas **Ruby Red Grapefruit** 4 Lb. **\$1**

Frozen Foods



- All Varieties Frozen **Patio Dinners** 13-oz. Pkg. **49c**
- Piggly Wiggly Frozen **Orange Juice** 6-oz. Can **\$1**
- Piggly Wiggly Frozen **Waffles** 5-oz. Pkg. **21c**
- Piggly Wiggly Whipped **Topping** 9-oz. Ctn. **49c**
- Pet Ritz 2-Pack **Pie Shells** 10-oz. Pkg. **49c**
- Green Giant Frozen **Niblets Corn** 2 10-oz. Pkgs. **99c**

Fresh Dairy



- Piggly Wiggly, USDA Grade A **Large Eggs** Doz. **79c**
- Piggly Wiggly, Sweetmilk or **Buttermilk** 2 8-oz. Can **25c**
- Piggly Wiggly **Cottage Cheese** 12-oz. Ctn. **59c**

City...

Cont. from Page 1
west portion of Muleshoe. It is bounded by American Boulevard on the South and Railroad Street on the north. On the west, it is bounded by Sherman Street and on the East by Odessa Street.
Since a major portion of the \$97,839 sought would be for paving streets in that program area, he was not as hopeful as he explained that although it would upgrade the neighborhood for the 59 families residing there, paving is a low priority item on the Housing and Development federal program.
Although little interest was generated when the public meetings were held during November and December, a total of 219 families in Muleshoe could and would benefit with approval of the program.
Council members approved the proposal which will be officially made to the Housing and Com-

munity Development group later this week.
Also approved by council members was a work schedule for the 1977-78 fiscal year budget for the city. Included will be hearings concerning the budgeting of city funds and revenue sharing entitlements, explained City Manager Dave Marr.
The first public hearing on proposed uses of Revenue Sharing funds will be on Tuesday, January 18 at 7 p.m. in the Muleshoe City Hall council chamber.
Approved by council members was the \$50 dues for the American Association of Small Cities in the amount of \$50; and a proclamation was signed by Muleshoe Mayor Ken Henry proclaiming National Volunteer Blood Donor Month during January.
Following a discussion of possible repairs to a couple of the city wells, the meeting was adjourned.

Tourists...

Cont. from Page 1
The fact is, tourist watchers don't really know where a big chunk of out-of-staters go in Texas, much less what they do at night. They know that 10 percent went to Dallas last fall, eight percent paid a visit to Houston, three percent headed down to the Valley, etc. But 28 percent reported no single destination, thus being catalogued in the "touring" category.
That makes the tourist watchers beam. "Just think of all those people spending all that money all over Texas," they say. They point out that the tourists' money is earned down in Florida, over in California and up in Illinois. "They bring it to Texas," say the pollsters, "leave it here fresh and green, and then go back home. Isn't that wonderful!"
Economists agree. Tourism is the state's major industry without smokestacks. Its annual receipts rank above those from

livestock or farm products and amounted to \$3.5 billion in 1975 from out-of-staters alone. Just what the totals will be for 1976 awaits year-end analysis of data still being received.

In the meantime, the fall-quarter report provides a comprehensive yardstick about seasonal travel habits. It is available from the State Department of Highways and Public Transportation, Travel & Information Division, Austin 78701.

Muleshoe Journal
Established February 23, 1924. Published by Muleshoe Publishing Co., Inc. Every Thursday at 204 N. Second, Box 449, Muleshoe, Texas, 79401, second class Postmaster paid at Muleshoe, Texas, 79401.

TEXAS PRESS ASSOCIATION

I. B. Hall - President
John Wood - Vice President
Clara Williams - Editor
Nancy Blackburn - Secretary
P. O. Orsick - Office
H. H. Malloy - Advertising
April Haddock - Subscription

SUBSCRIPTIONS:
Muleshoe Journal and Bailey County Journal - \$1.50
Muleshoe Journal and Bailey County Journal - \$3.00
Muleshoe Journal and Bailey County Journal - \$6.00
Muleshoe Journal and Bailey County Journal - \$12.00
Muleshoe Journal and Bailey County Journal - \$24.00
Muleshoe Journal and Bailey County Journal - \$48.00
Muleshoe Journal and Bailey County Journal - \$96.00
Muleshoe Journal and Bailey County Journal - \$192.00
Muleshoe Journal and Bailey County Journal - \$384.00
Muleshoe Journal and Bailey County Journal - \$768.00
Muleshoe Journal and Bailey County Journal - \$1536.00
Muleshoe Journal and Bailey County Journal - \$3072.00
Muleshoe Journal and Bailey County Journal - \$6144.00
Muleshoe Journal and Bailey County Journal - \$12288.00
Muleshoe Journal and Bailey County Journal - \$24576.00
Muleshoe Journal and Bailey County Journal - \$49152.00
Muleshoe Journal and Bailey County Journal - \$98304.00
Muleshoe Journal and Bailey County Journal - \$196608.00
Muleshoe Journal and Bailey County Journal - \$393216.00
Muleshoe Journal and Bailey County Journal - \$786432.00
Muleshoe Journal and Bailey County Journal - \$1572864.00
Muleshoe Journal and Bailey County Journal - \$3145728.00
Muleshoe Journal and Bailey County Journal - \$6291456.00
Muleshoe Journal and Bailey County Journal - \$12582912.00
Muleshoe Journal and Bailey County Journal - \$25165824.00
Muleshoe Journal and Bailey County Journal - \$50331648.00
Muleshoe Journal and Bailey County Journal - \$100663296.00
Muleshoe Journal and Bailey County Journal - \$201326592.00
Muleshoe Journal and Bailey County Journal - \$402653184.00
Muleshoe Journal and Bailey County Journal - \$805306368.00
Muleshoe Journal and Bailey County Journal - \$1610612736.00
Muleshoe Journal and Bailey County Journal - \$3221225472.00
Muleshoe Journal and Bailey County Journal - \$6442450944.00
Muleshoe Journal and Bailey County Journal - \$12884901888.00
Muleshoe Journal and Bailey County Journal - \$25769803776.00
Muleshoe Journal and Bailey County Journal - \$51539607552.00
Muleshoe Journal and Bailey County Journal - \$103079215104.00
Muleshoe Journal and Bailey County Journal - \$206158430208.00
Muleshoe Journal and Bailey County Journal - \$412316860416.00
Muleshoe Journal and Bailey County Journal - \$824633720832.00
Muleshoe Journal and Bailey County Journal - \$1649267441664.00
Muleshoe Journal and Bailey County Journal - \$3298534883328.00
Muleshoe Journal and Bailey County Journal - \$6597069766656.00
Muleshoe Journal and Bailey County Journal - \$13194139533312.00
Muleshoe Journal and Bailey County Journal - \$26388279066624.00
Muleshoe Journal and Bailey County Journal - \$52776558133248.00
Muleshoe Journal and Bailey County Journal - \$105553116266496.00
Muleshoe Journal and Bailey County Journal - \$211106232532992.00
Muleshoe Journal and Bailey County Journal - \$422212465065984.00
Muleshoe Journal and Bailey County Journal - \$844424930131968.00
Muleshoe Journal and Bailey County Journal - \$1688849860263936.00
Muleshoe Journal and Bailey County Journal - \$3377699720527872.00
Muleshoe Journal and Bailey County Journal - \$6755399441055744.00
Muleshoe Journal and Bailey County Journal - \$13510798882111488.00
Muleshoe Journal and Bailey County Journal - \$27021597764222976.00
Muleshoe Journal and Bailey County Journal - \$54043195528445952.00
Muleshoe Journal and Bailey County Journal - \$10808639105689184.00
Muleshoe Journal and Bailey County Journal - \$21617278211378368.00
Muleshoe Journal and Bailey County Journal - \$43234556422756736.00
Muleshoe Journal and Bailey County Journal - \$86469112845513472.00
Muleshoe Journal and Bailey County Journal - \$17293822569102944.00
Muleshoe Journal and Bailey County Journal - \$34587645138205888.00
Muleshoe Journal and Bailey County Journal - \$69175290276411776.00
Muleshoe Journal and Bailey County Journal - \$138350580552823552.00
Muleshoe Journal and Bailey County Journal - \$276701161105647104.00
Muleshoe Journal and Bailey County Journal - \$553402322211294208.00
Muleshoe Journal and Bailey County Journal - \$1106804644222588416.00
Muleshoe Journal and Bailey County Journal - \$2213609288445176832.00
Muleshoe Journal and Bailey County Journal - \$4427218576890353664.00
Muleshoe Journal and Bailey County Journal - \$8854437153780707328.00
Muleshoe Journal and Bailey County Journal - \$17708874307561414656.00
Muleshoe Journal and Bailey County Journal - \$35417748615122829312.00
Muleshoe Journal and Bailey County Journal - \$70835497230245658624.00
Muleshoe Journal and Bailey County Journal - \$14167099446049137248.00
Muleshoe Journal and Bailey County Journal - \$28334198892098274496.00
Muleshoe Journal and Bailey County Journal - \$56668397784196548992.00
Muleshoe Journal and Bailey County Journal - \$113336795568393097984.00
Muleshoe Journal and Bailey County Journal - \$226673591136786195968.00
Muleshoe Journal and Bailey County Journal - \$453347182273572391936.00
Muleshoe Journal and Bailey County Journal - \$906694364547144783872.00
Muleshoe Journal and Bailey County Journal - \$1813388729094289567744.00
Muleshoe Journal and Bailey County Journal - \$3626777458188579135488.00
Muleshoe Journal and Bailey County Journal - \$7253554916377158270976.00
Muleshoe Journal and Bailey County Journal - \$14507109832754316541952.00
Muleshoe Journal and Bailey County Journal - \$29014219665508633083904.00
Muleshoe Journal and Bailey County Journal - \$58028439331017266167808.00
Muleshoe Journal and Bailey County Journal - \$116056878662034532335616.00
Muleshoe Journal and Bailey County Journal - \$232113757324069064671232.00
Muleshoe Journal and Bailey County Journal - \$464227514648138129342464.00
Muleshoe Journal and Bailey County Journal - \$928455029296276258684928.00
Muleshoe Journal and Bailey County Journal - \$1856910058592552577369856.00
Muleshoe Journal and Bailey County Journal - \$3713820117185105155539136.00
Muleshoe Journal and Bailey County Journal - \$74276402343702103111078272.00
Muleshoe Journal and Bailey County Journal - \$148552804687404206222155544.00
Muleshoe Journal and Bailey County Journal - \$297105609374808412444311088.00
Muleshoe Journal and Bailey County Journal - \$594211218749616824888622176.00
Muleshoe Journal and Bailey County Journal - \$1188422437499233649777244352.00
Muleshoe Journal and Bailey County Journal - \$2376844874998467299554488704.00
Muleshoe Journal and Bailey County Journal - \$475368974999693459910897408.00
Muleshoe Journal and Bailey County Journal - \$950737949999386919821794816.00
Muleshoe Journal and Bailey County Journal - \$1901475899998773839443589632.00
Muleshoe Journal and Bailey County Journal - \$3802951799997547678887179264.00
Muleshoe Journal and Bailey County Journal - \$7605903599995095357774358528.00
Muleshoe Journal and Bailey County Journal - \$15211807199990190715548717056.00
Muleshoe Journal and Bailey County Journal - \$30423614399980381431097435136.00
Muleshoe Journal and Bailey County Journal - \$60847228799960762862194870272.00
Muleshoe Journal and Bailey County Journal - \$121694457599921525724399740544.00
Muleshoe Journal and Bailey County Journal - \$243388915199843051448799481088.00
Muleshoe Journal and Bailey County Journal - \$486777830399686102897598962176.00
Muleshoe Journal and Bailey County Journal - \$973555660799372205795197924352.00
Muleshoe Journal and Bailey County Journal - \$1947111321598744411590395848704.00
Muleshoe Journal and Bailey County Journal - \$3894222643197488823180791697408.00
Muleshoe Journal and Bailey County Journal - \$7788445286394977646361583394816.00
Muleshoe Journal and Bailey County Journal - \$15576890572789952892723767789312.00
Muleshoe Journal and Bailey County Journal - \$31153781145579905785447535578624.00
Muleshoe Journal and Bailey County Journal - \$6230756229115981157089507115745248.00
Muleshoe Journal and Bailey County Journal - \$124615124582319623141790142314896.00
Muleshoe Journal and Bailey County Journal - \$249230249164639246283580284629792.00
Muleshoe Journal and Bailey County Journal - \$498460498329278492567160569259584.00
Muleshoe Journal and Bailey County Journal - \$996920996658556985134321138519168.00
Muleshoe Journal and Bailey County Journal - \$199384199331711397026864277038336.00
Muleshoe Journal and Bailey County Journal - \$398768398663422794053728554066672.00
Muleshoe Journal and Bailey County Journal - \$797536797326845588106747108133344.00
Muleshoe Journal and Bailey County Journal - \$159507359465369117621349421626688.00
Muleshoe Journal and Bailey County Journal - \$319014718930738235242698842453376.00
Muleshoe Journal and Bailey County Journal - \$638029437861476470485397644906752.00
Muleshoe Journal and Bailey County Journal - \$1276058875722952940970795299813504.00
Muleshoe Journal and Bailey County Journal - \$2552117751445905881941590599627008.00
Muleshoe Journal and Bailey County Journal - \$5104235502891811763883181199254016.00
Muleshoe Journal and Bailey County Journal - \$1020847100578362352776636399650832.00
Muleshoe Journal and Bailey County Journal - \$2041694201156724705553272799301664.00
Muleshoe Journal and Bailey County Journal - \$4083388402313449411106545598603328.00
Muleshoe Journal and Bailey County Journal - \$8166776804626898822213091197206656.00
Muleshoe Journal and Bailey County Journal - \$16333553609253797644426183994413312.00
Muleshoe Journal and Bailey County Journal - \$32667107218507595288852367988826624.00
Muleshoe Journal and Bailey County Journal - \$65334214437015190577704735977653248.00
Muleshoe Journal and Bailey County Journal - \$13066842875403038115540947195530496.00
Muleshoe Journal and Bailey County Journal - \$261336857508060762310818883911069952.00
Muleshoe Journal and Bailey County Journal - \$522673715016121524621737767822139904.00
Muleshoe Journal and Bailey County Journal - \$104534743003224304924347555644427808.00
Muleshoe Journal and Bailey County Journal - \$209069486006448609848695111288855616.00
Muleshoe Journal and Bailey County Journal - \$418138972012897217697739022577771232.00
Muleshoe Journal and Bailey County Journal - \$83627794402579443539547804515554464.00
Muleshoe Journal and Bailey County Journal - \$167255588805158887079095609031108896.00
Muleshoe Journal and Bailey County Journal - \$3345111776103177741581912180622177952.00
Muleshoe Journal and Bailey County Journal - \$669022355220635548316382436124435584.00
Muleshoe Journal and Bailey County Journal - \$13380447104413710966327648722487117168.00
Muleshoe Journal and Bailey County Journal - \$267608942088274219326552974449742336.00
Muleshoe Journal and Bailey County Journal - \$535217884176548438653105948899484672.00
Muleshoe Journal and Bailey County Journal - \$1070435768353096773106611197999769344.00
Muleshoe Journal and Bailey County Journal - \$2140871536706193546213322395999538688.00
Muleshoe Journal and Bailey County Journal - \$4281743073412387092426644791999077376.00
Muleshoe Journal and Bailey County Journal - \$8563486146824774184853289583998154752.00
Muleshoe Journal and Bailey County Journal - \$1712697229364954836770657967996309504.00
Muleshoe Journal and Bailey County Journal - \$3425394458729909673541315935992619008.00
Muleshoe Journal and Bailey County Journal - \$6850788917459819347082631871985238016.00
Muleshoe Journal and Bailey County Journal - \$1370157783491963869416526754397077032.00
Muleshoe Journal and Bailey County Journal - \$2740315566983927738833053508794154064.00
Muleshoe Journal and Bailey County Journal - \$54806311339678554776661071375888880128.00
Muleshoe Journal and Bailey County Journal - \$10961262267935711555332142751777760256.00
Muleshoe Journal and Bailey County Journal - \$21922524535871423110666425503555520512.00
Muleshoe Journal and Bailey County Journal - \$438450490717428462213332500071110402024.00
Muleshoe Journal and Bailey County Journal - \$876900981434856924426665000142220804448.00
Muleshoe Journal and Bailey County Journal - \$175380196286971384853330000284441608896.00
Muleshoe Journal and Bailey County Journal - \$3507603925739427697066600005688832177792.00
Muleshoe Journal and Bailey County Journal - \$7015207851478855394133200011377663555584.00
Muleshoe Journal and Bailey County Journal - \$140304157029577107882666400022753327111168.00
Muleshoe Journal and Bailey County Journal - \$28060831405915421576533280004550664222232.00
Muleshoe Journal and Bailey County Journal - \$56121662811830843153066560009101328444464.00
Muleshoe Journal and Bailey County Journal - \$11224332562366168306013312001820265688896.00
Muleshoe Journal and Bailey County Journal - \$22448665124732336612026624003640531377792.00
Muleshoe Journal and Bailey County Journal - \$44897330249464673224053248007281062755584.00
Muleshoe Journal and Bailey County Journal - \$897946604989293464481064960014562125111168.00
Muleshoe Journal and Bailey County Journal - \$179589320997858728962128960029124250222336.00
Muleshoe Journal and Bailey County Journal - \$359178641995717457924257920058248500444672.00
Muleshoe Journal and Bailey County Journal - \$718357283991434915848515840011649700888944.00
Muleshoe Journal and Bailey County Journal - \$1436714567922869317169703168002329941777888.00
Muleshoe Journal and Bailey County Journal - \$2873429135845738634339406368004659883555776.00
Muleshoe Journal and Bailey County Journal - \$5746858271691477268668812736009319767111552.00
Muleshoe Journal and Bailey County Journal - \$11493716543382954537337625520018639534222204.00
Muleshoe Journal and Bailey County Journal - \$22987433086765909074675251040037279068444408.00
Muleshoe Journal and Bailey County Journal - \$4597486617353181814935050208007455813688896.00
Muleshoe Journal and Bailey County Journal - \$919497323470636362987010041600149113777792.00
Muleshoe Journal and Bailey County Journal - \$183899464954127272597402003200298227555584.00
Muleshoe Journal and Bailey County Journal - \$367798929908254545194804006400596455111168.00
Muleshoe Journal and Bailey County Journal - \$735597859816509090389608012800119291222336.00
Muleshoe Journal and Bailey County Journal - \$147119571963301818077921625600385824444672.00
Muleshoe Journal and Bailey County Journal - \$2942391439266036361558425520077164888944.00
Muleshoe Journal and Bailey County Journal - \$5884782878532072723116850401543387777888.00
Muleshoe Journal and Bailey County Journal - \$11769565757064145462233700803086775577776.00
Muleshoe Journal and Bailey County Journal - \$23539131514128290924467401606173511555552.00
Muleshoe Journal and Bailey County Journal - \$4707826302825658184893480321234702222204.00
Muleshoe Journal and Bailey County Journal - \$941565260565131636978696642469404444408.00
Muleshoe Journal and Bailey County Journal - \$18831305213302632739573932849388088896.00
Muleshoe Journal and Bailey County Journal - \$37662610426605265479147865698776177792.00
Muleshoe Journal and Bailey County Journal - \$7532522085321053095829573139755355584.00
Muleshoe Journal and Bailey County Journal - \$1506504417064210619649154627951111168.00
Muleshoe Journal and Bailey County Journal - \$30130088341284212392883092559022222336.00
Muleshoe Journal and Bailey County Journal - \$60260176682568424785766181118044444672.00
Muleshoe Journal and Bailey County Journal - \$12052035336513684957153262224008888944.00
Muleshoe Journal and Bailey County Journal - \$24104070673027369914306524448017777888.00
Muleshoe Journal and Bailey County Journal - \$4820814134605473982861304889603555584.00
Muleshoe Journal and Bailey County Journal - \$9641628269210947965722609792071111168.00
Muleshoe Journal and Bailey County Journal - \$192832565384218959314452195840142222336.00
Muleshoe Journal and Bailey County Journal - \$385665130768437918628904391680284444672.00
Muleshoe Journal and Bailey County Journal - \$77133026153687583725780878336056888944.00
Muleshoe Journal and Bailey County Journal - \$1542660523073751674515615667201137777888.00
Muleshoe Journal and Bailey County Journal - \$308532104614750334903123133440227555584.00
Muleshoe Journal and Bailey County Journal - \$617064209229500669806246266880455111168.00
Muleshoe Journal and Bailey County Journal - \$1234128418459001339612525337760902222336.00
Muleshoe Journal and Bailey County Journal - \$2468256836918002679225050675521804444672.00
Muleshoe Journal and Bailey County Journal - \$493651367383600535845010135104280888944.00
Muleshoe Journal and Bailey County Journal - \$9873027347672010716900202702085617777888.00
Muleshoe Journal and Bailey County Journal - \$19746054695344021433800405404173511555552.00
Muleshoe Journal and Bailey County Journal - \$3949210939068804286760081080834702222336.00
Muleshoe Journal and Bailey County Journal - \$789842187813760857352016216166940444672.00
Muleshoe Journal and Bailey County Journal - \$157968437562752171470403232333880888944.00
Muleshoe Journal and Bailey County Journal - \$3159368751255043429408064646677617777888.00
Muleshoe Journal and Bailey County Journal - \$6318737502510086858816132893355355584.00
Muleshoe Journal and Bailey County Journal - \$12637475005020177177632265787067111168.00
Muleshoe Journal and Bailey County Journal - \$252749500100403543552645357741342222336.00
Muleshoe Journal and Bailey County Journal - \$5054990002008070871045107154684444672.00
Muleshoe Journal and Bailey County Journal - \$1010998000401614174209021483097777888.00
Muleshoe Journal and Bailey County Journal - \$202199600080322834841804376619555584.00
Muleshoe Journal and Bailey County Journal - \$404399200160645669683608753239111168.00
Muleshoe Journal and Bailey County Journal - \$8087984003212913393672175064782222336.00
Muleshoe Journal and Bailey County Journal - \$16175968006425826787344351131574444672.00
Muleshoe Journal and Bailey County Journal - \$32351936012851653574688702263148888944.00
Muleshoe Journal and Bailey County Journal - \$64703872025703307149377404526297777888.00
Muleshoe Journal and Bailey County Journal - \$1294077440514066142987548090525955584.00
Muleshoe Journal and Bailey County Journal - \$2588154881028132285975097810519111168.00
Muleshoe Journal and Bailey County Journal - \$51763097620562645719501956210382222336.00
Muleshoe Journal and Bailey County Journal - \$10352619524112529139003912420774444672.00
Muleshoe Journal and Bailey County Journal - \$20705239048225058278007824841548888944.00
Muleshoe Journal and Bailey County Journal - \$41410478096450116556015649683097777888.00
Muleshoe Journal and Bailey County Journal - \$828209561929002331120312993671555584.00
Muleshoe Journal and Bailey County Journal - \$165641912385800462224061997343111168.00
Muleshoe Journal and Bailey County Journal - \$331283824771600924448133876682222336.00
Muleshoe Journal and Bailey County Journal - \$662567649543201848896267753364444672.00
Muleshoe Journal and Bailey County Journal - \$132513529908640369779353550678888944.00
Muleshoe Journal and Bailey County Journal - \$265027059817280739558707101357777888.00
Muleshoe Journal and Bailey County Journal - \$53005411963456147911741420271555584.00
Muleshoe Journal and Bailey County Journal - \$10601083932691229582348840543111168.00
Muleshoe Journal and Bailey County Journal - \$212021678653824591646976810862222336.00
Muleshoe Journal and Bailey County Journal - \$424043357307649183293953617724444672.00
Muleshoe Journal and Bailey County Journal - \$848086714615298366587907355448888944.00
Muleshoe Journal and Bailey County Journal - \$1696173429230596733175781410897777888.00
Muleshoe Journal and Bailey County Journal - \$339234685846119346635156282179555584.00
Muleshoe Journal and Bailey County Journal - \$678469371692238693270312564359111168.00
Muleshoe Journal and Bailey County Journal - \$13569387433844773865406252887182222336.00
Muleshoe Journal and Bailey County Journal - \$2713877486768954773081250577434444672.00
Muleshoe Journal and Bailey County Journal - \$5427754973537909546162501154868888944.00
Muleshoe Journal and Bailey County Journal - \$10855509947075819092325002309737777888.00
Muleshoe Journal and Bailey County Journal - \$2171101989415163818465000461947555584.00
Muleshoe Journal and Bailey County Journal - \$4342203978830327636930000923895111168.00
Muleshoe Journal and Bailey County Journal - \$86844079576606552738600018477902222336.00
Muleshoe Journal and Bailey County Journal - \$173688159153213105477200036955804444672.00
Muleshoe Journal and Bailey County Journal - \$347376318306426210954400073911608888944.00
Muleshoe Journal and Bailey County Journal - \$694752636612852421908800147823217777888.00
Muleshoe



Cranberries will keep for 4 to 8 weeks in your refrigerator. Or you can freeze them with no preparation.

"The best way to cheer yourself is to try to cheer somebody else up."
Mark Twain

Thomas C. Reed, Air Force Secretary:
"It would be irresponsible not to initiate B1 production at this time."
-News, Toronto.

And Teeth
One way to save face is to keep the lower half shut.

From The Journal Files

10 Years Ago

Annual Chamber of Commerce banquets are being slated over the area with Muleshoe's set for 7:30 p.m. Monday, January 30, at the Muleshoe High School auditorium.

Jaycees have announced plans to construct signs to be placed on Highway 84 southeast and one later to be placed on Clovis Road.

Mr. and Mrs. Charlie Neeley of Oklahoma were holiday guests in the home of their daughter, Mr. and Mrs. Raymond Treider, Jr.

Dr. Charles Lewis spoke to the Bailey County League of Vocational Nurses in the community room of the Muleshoe State Bank. His topic was "Positive Mental Thinking".

Cecile Foster will speak to the members of the Muleshoe Art Association.

20 Years Ago

Larry Don Hood was the first child reported to be born in Bailey County after midnight of December 31.

Troy Monroe is a new teller at Muleshoe State Bank. Monroe has been employed with the Citizen's National in Clovis, N.M.

The high-scoring Muleshoe Mules continued their winning streak by winning the Amherst invitational tournament.

Mrs. Sam McKinstry returned from Greenville and Dallas Sunday after having spent a week with relatives.

AAUW Has Speaker On Energy

The Muleshoe Branch of the American Association of University Women met Monday, January 3, at 7:30 p.m. in the home of Mrs. Roland McCormick. Mrs. Jim Shafer was co-hostess. Bob Carthel, Agricultural Representative for Pioneer Gas from Amarillo, Texas, showed a very informative and challenging film entitled "Energy - Critical Decisions Ahead". Carthel answered questions relative to problems posed in the film produced by the United States Department of Commerce.

Mrs. Tony Clines, president, presided during the business meeting. A nominating committee composed of Virginia Bowers, Terry Young and Vicki Lynn was elected.

Members attending were Mrs. Gerald Allison, Miss Virginia Bowers, Mrs. Tony Clines, Mrs. Joe Costen, Mrs. Clifton Finley, Mrs. Marcus Gist, Mrs. Arvis Grogan, Mrs. Paul Hindelang, Mrs. E.W. Johnson, Mrs. Ed Kramer, Mrs. David Lynn, Mrs. Roland McCormick, Mrs. W.O. Rudd, Mrs. Jim Shafer, Mrs. Kay Swint, Mrs. John Watson, and Mrs. Mabel Wolfe.

TOPS Six Months Queen Celebration Jan. 6

The TOPS regular weekly meeting was held Tuesday, December 30, in the Bailey County Electric Cooperative Meeting Room. Mrs. J.O. Parker, president, was in charge of the meeting. She led the meeting with the TOPS pledge and the TOPS song.

Minutes of the last meeting were read by Mrs. Owen Jones and were approved by the members.

The next meeting will be Thursday, January 6. The TOPS Six Month Queen celebration and crowning was held. Each member was reminded to bring a gift for the Six Month Queen achievements. The members

Warmest congratulations on your birthday. Our sincere wish to you on this special day is that the blessings of health and happiness may be yours in the years to come.

Betty Ford Gerald R. Ford

CONGRATULATIONS FROM THE WHITE HOUSE . . . Mrs. Mattie Duke of 716 West Avenue D received this birthday card from the Fords for her 99 birthday on Christmas day. She is the mother of Mrs. O.D. "Blondie" Ray.

Since much colder weather is predicted for some areas, it would be wise to check your emergency supplies such as batteries, candles and matches, oil for lamps, canned heat or camp-type stoves for cooking. Where water is supplied by electric pumps, store water in clean containers.

new saturday banking hours

Beginning Saturday, January 8, the drive-in windows at Muleshoe State will be open from 8:00 a.m. to 3:00 p.m. every Saturday (except holidays). However, in order to make these extended drive-in banking hours possible, our bank lobby will be closed all day on Saturdays.

We hope that the longer drive-in hours along with the round the clock operation of the ready bank automatic teller will make your weekend banking much more convenient.

MULESHOE STATE BANK

Member FDIC 272-4561

here is purpose for **LIFE**

Begin Your New Year With
Dr. Vance Havner
Nationally Known Evangelist



Parkland Baptist Church
Lexington At Ashford
Clovis, New Mexico



DR. VANCE HAVNER
Greensboro, N.C.

January 9-16
Services Nightly, 7p.m.
Sunday Services
10:30 a.m. And 6:15p.m.

MARION WARRON
Singer
Eules, Texas

TOM SUMRALL - PASTOR

Anthony's warehouse sale

in store

Big once a year event - Special price concessions from our Oklahoma City warehouse brings you extra savings on needs for the family and the home.



WOMEN'S P.V.C. COATS
Reg. \$19 to \$29.90
\$15.

Wrap her in elegance in a luxurious P.V.C. coat at bargain prices! Five stunning styles in short and full lengths accented with lovely trims. Sizes 8-18.

- 50% cotton/50% Rayon
- Insulated polyester and twill
- Permanent press finish
- Rain and Stain repellent
- 2-way zipper front
- Knit hidden cuffs
- Color: Olivewood
- Sizes S-M-L-XL
- Lengths: Short, Regular, and Tall



INSULATED COVERALLS
Reg. \$24.99 Value
19⁹⁷
3 for \$55.



WOMEN'S SOFTIE TIE OXFORD

60" POLYESTER DOUBLE KNIT
3 YARDS
137⁹⁷ 3 YARDS
1 YD for \$4.
SAVE UP TO 50% AND MORE!



WOMEN'S SOFTIE TIE OXFORD

Reg. 3.99
2⁹⁷
3 for \$8.

The great little two-eyelet tie with crepe sole and heel. Black, White, Bone, Red, and Navy. Sizes 5-10.



TEXAS



Anthony's
C.R. ANTHONY CO.

Bare spots in lawns can be seeded now. Rain, freezing and thawing will mix soil and seed for early spring germination.

West Camp Family Night Jan. 8

The West Camp community will be holding their monthly Family Night Saturday, January 8, at 7:30 p.m. in the West Camp Community Center. The entire family is invited to enjoy table games and fellowship. Bring cake or cookies for refreshments.

Amy Carter to attend public school.

Belle's Patterns with a WESTERN Flair

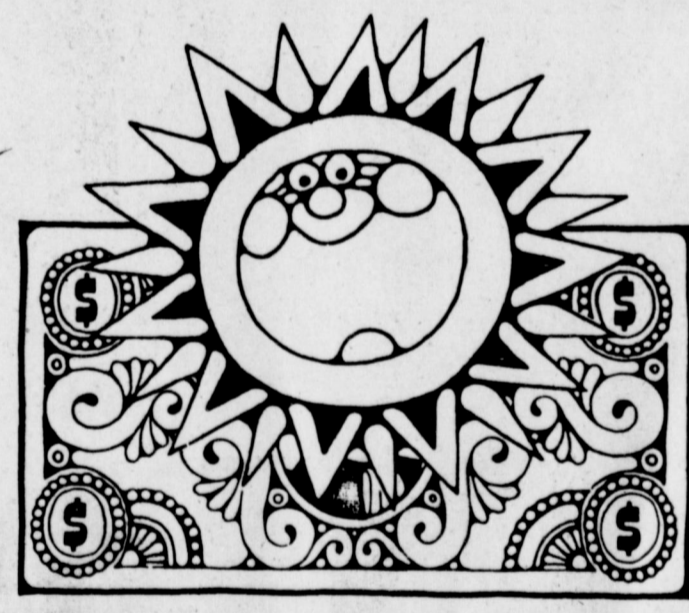


Ladies' Short Sleeve Jacket and Cuffed Pants

This semi-fitted unlined jacket has a notched collar of self or contrast fabric. The short sleeves have contrast turn-back cuffs. Yoke detailing on the back is set off by top-stitching. The cuffs are carried out in the pants which has yoke detailing and a contoured waistband.

Printed pattern #1262 in sizes 6 to 18. Send \$2.50 for this pattern . . . add 50c handling and postage. Send to:

Belle's Patterns
P.O. Box 841 - Dept
Hurst, Texas 76053




SUNNY-MONEY SHELTERED FROM TAXES IN YOUR OWN INDIVIDUAL RETIREMENT ACCOUNT

NOW IS THE TIME TO PLAN FINANCIALLY FOR THAT BRIGHT FUTURE THAT WE ALL DREAM OF. NO MATTER WHAT YOUR AGE OR WHAT YOU ARE DOING FOR A LIVING. THE TIME TO THINK ABOUT RETIREMENT IS NOW! IF YOU ARE PRESENTLY WORKING AND DON'T HAVE A PENSION PLAN, PROFIT-SHARING OR OTHER QUALIFIED RETIREMENT PROGRAM, WE WILL HELP TAILOR ONE TO YOUR PERSONAL NEEDS.

FIFTEEN PERCENT OF YOUR INCOME (UP TO \$1500) CAN BE DEPOSITED ANNUALLY IN AN IRA ACCOUNT. WHILE IT IS BUILDING FINANCIAL SECURITY FOR YOUR RETIREMENT YEARS, IT WILL ALSO BE EARNING TAX DEDUCTIONS FOR YOU NOW.

COME IN AND TALK TO US TODAY ABOUT PLANNING FOR YOUR SUNNY FUTURE. DON'T DELAY. DECEMBER 31ST IS THE DEADLINE FOR DEPOSITS WHICH MAY BE DEDUCTED FROM 1976 TAXES.



Tri-County SAVINGS AND LOAN ASSOCIATION
Offices in MULESHOE / FARWELL / FRONA / LITTLEFIELD

Nursing Home News

By Annie Brown

Those coming to play "42" were Mr. and Mrs. Russell Campbell of Oxnard, Calif.; Connor Burford, Rosie McKillop, Walter Damron, D.B. Head, Mac Witterding, Royce Clay and Opal Pugh. Royce Clay was champion player.

We have two new residents in the home. They are Mrs. Eula Fyke and Miss Lena Maxey of Whitharral. They are sisters. We hope they will be happy here.

Mr. and Mrs. J.E. Embry visited Miss Dottie Witterding Thursday afternoon. Calvin and Luna Embry visited in the evening.

Janie Moraw visited her sister, Mrs. Onie McDaniel, Tuesday afternoon.

Mr. and Mrs. Marvin McDaniel of Denver City visited his mother, Mrs. Onie McDaniel, Thursday.

Anita Allgood and her daughter visited her grandmother, Mrs. Onie McDaniel, Thursday.

Max and Nelda Mays of Lawrence, Kan. are here visiting her grandmother.

Mrs. Alice Tosh of Clovis, N.M. visited her mother, Mrs. Martha Williams, Tuesday.

Tonnaire Duncan of Lubbock visited her mother, Dahlia Barnes, Friday.

We just had eleven people in Sunday School Sunday.

The Needmore Singers came Sunday afternoon and sang for us. We enjoyed them very much.

West Plains Medical Center Briefs

ADMISSIONS
December 30 - Mattie Heard, Vesta Loughridge and Nitalynn Lee.

December 31 - Floyd H. Davis, Adelino Rodriguez and Katherine Hernandez.

January 1 - Michael Gutierrez, Carlos Garcia, Clara Weaver, Leandra Saucedo and Irene Steinbock.

January 2 - Lanille Ethridge, January 3 - Cecil Defoor and August Zientara.

DISMISSALS
December 31 - Lou Hail, Toby Hatch, Betty Jennings, Vesta Loughridge and Lora Mears.
January 1 - R.L. Hughes, Joseph Hawkins and Preston Bable.

January 2 - Pauline Greene, Carlos Garcia, Michael Gutierrez, Katherine Hernandez, Nitalynn Lee and baby girl.
January 3 - Clara Weaver, Goldie Baker, Irene Steinbock, Adeline Rodriguez, Mattie Heard, Floyd H. Davis and Rufus Vinson.

RECIPE

By Sarah Anne Sheridan

There are two holiday sweets that are easy to make and keep several weeks. The holiday season always puts me in the mood to have guests come by often and the more I can do ahead and have on hand just makes company that much more enjoyable.

Date Loaf

1 lb. graham crackers, rolled fine.
1 pkg. dates, chopped.
16 marshmallows, chopped.
1 c pecans, chopped.

Mix with enough cream to hold together. Roll into logs and wrap in waxed paper. Keeps well in refrigerator or freezer. Slice and serve.

Brandy Balls

Vanilla wafers, 3 small boxes, crushed
1 1/2 T cocoa
2 T karo
1 c powdered sugar
1 c broken pecans
8 T Bourbon whiskey

Mix all ingredients together and form into balls about one inch in diameter. Roll in more powdered sugar and place in sealed cans.

Scotch Triumph

Polly--When Jim and Elizabeth came back from their bridal trip he still had \$2.50 in his pocket.
Peggy--The stingy thing.

Three Way News

By Mrs. H.W. Garvin

Mr. and Mrs. W.H. Eubanks spent the Christmas holidays in Houston visiting their daughter, the Glenn Bankston family.

Mr. and Mrs. H.W. Garvin were in Lubbock Wednesday on business.

Bonnie Long is spending a few days with her son, Marvin Long, in Amarillo.

W.E. Latimer was a medical patient in Cochran Memorial Hospital in Morton part of last week.

Mr. and Mrs. Wheeler visited his parents, the Johnnie Wheelers, in Comanche the past week.

Mr. and Mrs. Kenneth Fox and son spent the weekend with her parents, the H.W. Garvins.

Mr. and Mrs. Troy Tyson and children visited his parents, the George Tysons, Sunday afternoon.

Mrs. Jack Furgeson and Mrs. T.D. Davis were in Lubbock Sunday night to sit with Mrs. Maggie Fine, who is a patient in Methodist Hospital.

Mr. and Mrs. S.G. Long and Mr. and Mrs. Chester Petree visited in the D.S. Fowler home Friday evening.

School at Three Way resumed classes Monday after the Christmas holidays.

Mr. and Mrs. Ray Fowler and the James Flower family from Lubbock visited the D.S. Fowler family over the weekend.

Mrs. Adolph Wittner was in Lubbock Wednesday shopping.

After fighting their way through Christmas crowds to do the annual holiday buying, many housewives will be thankful Christmas comes only once a year.

A happy spirit is the greatest possession that comes to man, regardless of his wealth or lack of it.

Enrollment drops by 1,200 at UT

AUSTIN, Texas (Spl.) — Enrollment decreased by more than 1,200 students this fall at The University of Texas. The total enrollment is 41,387, a figure that includes 23,479 male and 17,908 female students.

Even though the College of Business Administration had a two per cent drop in enrollment, it still led all other UT colleges in number of students—6,987.

Nine of the colleges had fewer students than last year, while six made gains. The biggest increase came in the College of Engineering, which showed an enrollment gain of more than 15 per cent.

William Lilley, III, acting director of the Wage and Price Stability Council:

"What determines whether the increase (steel) is justified or unjustified is whether the market will absorb it."

Temptations may overwhelm anyone but not those who intelligently avoid temptation.
Every mile is two in Winter.
—George Herbert.

Henry Kissinger, Secretary of State: "He (Cyrus Vance) is exceptionally well qualified for his new responsibilities. I wish him well."

LOUISA'S LETTER

Dear Louisa,
My girl friend and I are having a problem about boys. We like these guys because they are very good friends and act like each other.

They watch us all the time in class even when we are not doing anything.

This girl who has a big bust goes after both of them and they fall for it. But like I say they stare at us in class and talk to us. They especially hang with us at free library time but when that other girl shows up there they go.

We asked this girl if she liked one of these boys or both and she says they bug me to death. It seems to me that she bugs them.

Thank you.
Two Concerned Friends

Answer:

There are always girls who attract the other sex more than other girls do. But if the only asset your competitor has is a more developed body, don't give up hope. Personality, kindness, good grooming and many other things are longer lasting assets than a big bosom.

Try not to be jealous and say mean things about this girl. There is an old saying that "if you can't beat 'em, join 'em" so if this girl is a nice girl try being friends with her. You may end up being a winner.

Good luck.
Louisa.

Address letters: Louisa, Box 532, Orangeburg, S.C. 29115

Fashion

For that special man, a pair of silk-lined gloves, a cashmere scarf or a good leather belt would be a welcome gift for the holidays.

Turtleneck sweaters are quite popular this season, which is supposed to be a very cold winter. Mufflers and knitted caps are also much in the picture.

For The Record

Tips On Choosing And Using Your Record Player

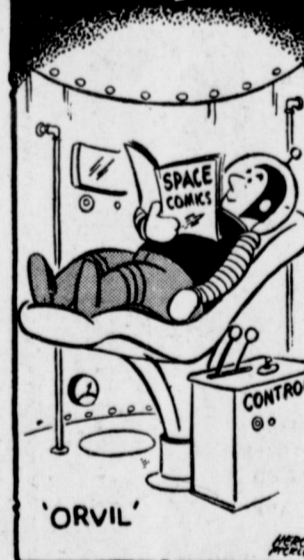
To be eligible for warranty service you are sometimes required to fill out and mail a warranty card that is packaged with the equipment. It's a good idea to do this as soon as you unpack the unit. Also, file the sale slip away should proof of the purchase date be required later, say the experts at the Electronic Industries Association.

If there's no power coming in to your stereo unit, before you call the repairman, check to see if your unit is plugged in. If it is, check the fuses in the rear of your receiver. If one has burnt out, it is very inexpensive to replace.

Much of the poor performance in audio equipment is the result of not properly installing and operating the equipment. Before you buy, ask a salesman to familiarize you with the installation requirements and operating instructions. Follow the directions carefully and be sure to save all manuals and operating instructions in case you have a question later on.

Good music often achieves surprising results.

Out of Orbit



Anthony's
TEXAS
TODAY'S GIRL ALL-TOGETHER™ PANTY HOSE WITH REAL PANTIES KNIT RIGHT IN!
159

Anthony's
TEXAS
Ventilated Cotton Crotch Panty Hose
Reg. 1.19 **\$1. or 3 pr. 2.75**

More than pantyhose... the cotton crotch with ventilation eliminates the need for an additional panty. No panty outline to show. Soft, absorbent cotton for comfort. Color: Beige, Taupe, Sunset, Coffee, Off Black and White. Sizes Petite, Medium and Medium Tall.

LARGE GROUP OF REDUCED FORMALS & BRIDAL GOWNS & VEILS

Freeman's Bridal Shop
AND WEDDING PHOTOGRAPHY
"COMPLETE WEDDING ATTIRE & ACCESSORIES"
113 W. 4th 762-0474

GIBSON'S DISCOUNT CENTER

NEW STORE HOURS 9 AM - 7 PM PRICES EFFECTIVE JAN. 6 - JAN. 8

AQUA ZEST DEODORANT BEAUTY BAR 5 1/2 oz.	3 \$1
BIZ 38 oz. LAUNDRY PRE-SOAK AND DETERGENT BOOSTER	\$1.39
JIF 12 oz. PEANUT BUTTER	59c
ST. JOSEPH ASPRIN 200 CT. REG 99c	75c
STAYFREE MINI-PADS 30 CT	\$1.27
LADIES LOUNGING CAFTANS REG 7.73 TO 8.57	\$6.39
SELECTED LADIES COORDINATES	1/3 OFF

WINTER SALE ALL COATS, BLANKETS, ELECTRIC BLANKETS, & INSULATED COVERALLS 30% OFF EVERY COAT, BLANKET, AND PAIRS OF INSULATED COVERALLS IN STOCK ARE PRICED 30% OFF. FIRST COME FIRST SERVED. ALL LUGGAGE & LUGGAGE SETS ARE 30% OFF.	
ALL LUGGAGE	30% OFF
GOOP 14 oz. HAND CLEANER	69c
VAN WYCK ELECTRIC PORTABLE MIXER VW-5 REG 7.99	\$5.88
NORTHERN 1 GAL CAPACITY AUTOMATIC VAPORIZER REG 7.77 MODEL 1301	\$6.19
SWINGLINE WHAMMER 2001 NAIL GUN REG 18.99	\$14.88
HEDDON SPIN CASTING REEL REG 5.99	\$2.89
SWINGLINE AUTOMATIC FEED ELECTRIC GLUE GUN REG 9.50	\$4.77
FAMILY SIZE SCOPE	99c

**J. Ann Parsley
Funeral Service
Held Monday**

Funeral services for J. Ann Parsley, 43, of Plainview were conducted at 2 p.m. Monday in Trinity United Methodist

Church in Plainview. Officiating was Rev. Tommie Beck, pastor. Burial was in Plainview Memorial Park under direction of Wood-Dunning Funeral Home of Plainview.

Mrs. Parsley, who was born in Dimmitt, grew up in Muleshoe and graduated from Muleshoe High School. She married Kenneth Parsley on July 18, 1952 in

Muleshoe and moved to Plainview in 1957. She died at 7:48 p.m. on Friday, December 31, in Central Plains General Hospital in Plainview following a lengthy illness.

Survivors include her husband, Jerry Kenneth; a son, Scott and a daughter, Cindy, both of the home; her parents, Mr. and Mrs. Jay Wyer of Muleshoe and a brother, David of Lubbock.

**Bula News
By
Mrs. J. Blackman**

The community Christmas tree was attended by a good sized crowd Wednesday, December 22.

Mr. and Mrs. Fred Locker had all their children meet them at the home of a daughter, Dr. and Mrs. Jim Nelson and girls for Christmas in Stillwater, Okla.

Mrs. Pearl Walden had her daughter, Marie Aarou, and her daughter, Nancy, and children from Carlsbad, N.M. with her for Christmas.

Mrs. C.A. Williams had all of her children but Barbara, who lives in Oregon, with her for dinner on Sunday after Christmas.

Visiting with the Dewitt Tillers on Christmas day were her parents, Mr. and Mrs. John Aduddell from Lake Hubbard.

Mr. and Mrs. V.C. Weaver had two grandsons visiting with them over the holidays, Beb Eli Huffman of Austin and his brother Earl Huffman from San Antonio were visitors.

Mr. and Mrs. Jerry Smith and son from Eules, spent Monday until Wednesday with her parents, the J.C. Withrows.

Mr. and Mrs. Ewell Battles spent Christmas day in the home of his brother, Mr. and Mrs. Roy Battles of Dimmitt.

Mr. and Mrs. Buck Medlin had Christmas with all of their children in the Medlin home.

Mr. and Mrs. Jack Withrow and children met with the James Withrow family at the home of Mr. and Mrs. John Wirthrow of Sudan, Christmas eve and had supper with their parents.

The John Lathams had their daughter and family, Beverley and Warner DeSautell and boys from Slaton, with them Christmas day.

The I.L. Clawsons had most of their children and grandchildren with them on Sunday.

Miss Diane Crume, teacher in a primary school in Temple, spent the Christmas holidays with her parents, Mr. and Mrs.

Ed Crume.

Yvette Cox accompanied her grandparents, Mr. and Mrs. Harvey Whittenburg, on a visit to all their children's homes.

Mr. and Mrs. Clarence Cannon had Christmas dinner with their son and wife, Jimmy and Madge Cannon and children of Bula. Also her parents, Mr. and Mrs. John Johnson of Muleshoe, were with them.

Seventeen members from the Church of Christ had a get-together and dinner Sunday, December 18, at the home of Mr. and Mrs. John Blackman.

Visiting in the home of the H.M. Blacks over the holidays were her son, Mr. and Mrs. James Goldston and boys of Amarillo; Mr. and Mrs. Marion Smith and son of Lubbock and grandsons Stacy Smith and Mr. and Mrs. Lynn Smith of Lubbock, and Mr. and Mrs. Alan Black of Bula.

Mr. and Mrs. Ed Crume and daughter spent Sunday in Hereford visiting with her mother, Mrs. Irene Parker, and Mrs. Vida Cash and several of her children.

Mr. and Mrs. Larry Jones from Duncan, Okla. spent the holidays visiting her parents, Mr. and Mrs. Bernie Davila.

Mr. and Mrs. Charles Powell and children of Brownwood, visited over the holidays with her parents, the Jim Claunchs, and with his parents, Mr. and Mrs. Olin Powell of Littlefield.

Mr. and Mrs. Nolan Harlan and son visited Christmas eve with his mother, Mrs. Lula Harlan, at the Knights Rest Home.

Oralia Davila, student in Nursing Training at South Plains College, is working for two weeks at the Littlefield Hospital as part of her training to be an L.V.N.

Mr. and Mrs. Earl Shields and children of Lelia Lake spent Christmas with her mother, Mr. Christmas with her mother, Mrs. Lorilla Jones, and son, Wendell.

Mr. and Mrs. Lee Simmons and sons of Littlefield were dinner guests Sunday with Mr. and Mrs. F.L. Simmons.

Darlene Alexander and boys left Friday for their home at Eules after spending the holidays with her parents, Mr. and Mrs. Cecil Jones.

Mr. and Mrs. John Blackman spent Christmas day with their daughter and family, Mr. and

Mrs. Dudley Cash and children.

Christmas day dinner guests in the J.L. Cox home were his mother, Mr. and Mrs. Harvey Whittenburg and Mr. and Mrs. D.J. Cox and children of Bula.

Sunday, Mr. and Mrs. J.L. Cox and children spent the day with her parents, Mr. and Mrs. Morris Phillips, and son, Leon.

Mr. and Mrs. Gene Bryan had with them Christmas day their daughters and husbands and several of their grandchildren.

Mr. and Mrs. Tommie Fipps and son of Littlefield spent Christmas day with her grandmother, Mrs. E.A. Eakes, and Dennis.

Mrs. John Hubbard returned home from Grants, N.M., where she spent Christmas with her daughter and family, Mr. and Mrs. Barney Oldfield and girls.

Visiting Christmas day with their mother and grandmother, Mrs. Rowena Richardson, and her sister, Miss Vina Tugman, were Mr. and Mrs. Donald Grusendorf of Plainview; Mr. and Mrs. Sammie Nichols of Fort Worth; Mr. and Mrs. Dennis Newton of Stinnett; Mr. and Mrs. John Richardson of Lovington; Miss Connie Richardson from Patagonia, Ariz.; Mr. and Mrs. Ashel Richardson of Bula and Mr. and Mrs. Jerry Teaff of Bula.

The P.R. Pierces had their four daughters home with them for Christmas.

WMU met Tuesday at 2:30 with Mrs. C.A. Williams in charge of their Bible study. Attending were Miss Vina Tugman, Mrs. J.R. Teaff, Mrs. Fred Locker, Mrs. P.R. Pierce, Mrs. Rowena Richardson, Mrs. Clyde Hogue, Mrs. Ewel Battles and Mrs. C.A. Williams.

Mr. and Mrs. Tom Bogard had all their children visiting with them during the Christmas holidays.

Mr. and Mrs. E.E. Lancaster spent Christmas visiting with their daughter and family, Mr. and Mrs. Erskin Grayson and family, and Mr. and Mrs. Gayland Lancaster at Dumas.

Mr. and Mrs. John McCormack and children drove to Clovis, N.M. Christmas day and had Christmas dinner at the home of his sister, Mr. and Mrs. Lonnie Pickle.

Mr. and Mrs. Nolan Harlan's home was the scene for a family get-together Sunday, December 26. Nearly all the family was there.

**Cotton Price Steady
As Season Nears End**

The United States Department of Agriculture's Agricultural Marketing Service reported cotton trading was moderate to active during the week ending December 30, according to Paul R. Dickson, in charge of the Lubbock Cotton Classing Office. Growers sold mixed lots of mostly grades 43, 53, and 44; staples 30 - 32; mikes 3.5 through 4.9 for \$5.00 to \$7.00 cents per pound, about steady compared with the week before. Demand was good, Dickson said.

Prices paid growers for cottonseed ranged from \$85 to \$115 per ton, mostly \$95 to \$105. Grades 42, 43, and 53 were predominant in classings at Lubbock this week. Grade 42 accounted for 17 percent, 43 was 26 percent, and 53 made up 10 percent. Bark reduction was assigned to 51 percent of the samples classed.

Predominant lengths were staples 30, 31, and 32. Staple 30 was 27 percent, 31 accounted for 36 percent, and 32 was 21 percent. Mike readings in the desirable

3.5 - 4.9 range amounted to 31 percent of the total. Mike 3.3 - 3.4 was eight, 3.0 - 3.2 accounted for 19 percent, 2.7 - 2.9 claimed 21 percent, while 2.6 and below was 20 percent.

About 55,000 samples were classed by the Lubbock Cotton Classing Office during the week. Season's total stands at 836,000 compared to 656,000 on this same date a year ago.

ONE MINUTE SPORTS QUIZ

1. Name the new coach of the Tennessee football team.
2. Who was named Driver of the Year?
3. What was the score of the recent Colts-Cardinals game?
4. For whom does Andy Atuegbu play soccer?
5. Ken Stabler quarterbacked for what team?

Answers To Sports Quiz

1. Johnny Majors.
2. David Pearson.
3. 24-17, Cardinals.
4. Indiana.
5. Oakland Raiders.

Deadline: January 15, 1977

SAVE UP TO 10%!

ON **P-A-G** SEED

5% CASH REBATE on certain size purchases of 11 or more bags when your signed order is on record by Jan. 15, 1977.

5% CASH DISCOUNT if you elect to pay for your P-A-G Seed by Jan. 15, 1977. See your local P-A-G Dealer today.

P-A-G SX98 HYBRID FIELD CORN IS THE ONE TO PLANT FOR THIS AREA!

Yield/Acre at 15.5%*	% Head Smut	Tons/Acre Forage
210.68 bu.	0.5%	28.02

Results from Corn Disease Demonstration conducted by Dr. Robert W. Berry, Area Plant Pathologist, Texas Agricultural Extension Service, during 1976 on George Sides farm in Castro County. *Complete results available upon request.

FOR MORE INFORMATION, CONTACT YOUR LOCAL P-A-G DEALER.

P-A-G SEEDS, BOX 10303, LUBBOCK, TEXAS 79408

Performance of this seed may be adversely affected by environmental conditions, mutant strains of insects or diseases, or other factors beyond the control of P-A-G

View From The Plain

by J.D. Peer
I & E Field Officer

Read the Instructions

Now that you have had a chance to look over the new outdoor gear you received for Christmas, find that one very important item -- the instruction manual.

Fishing lures, trolling motors, hunting knives, and shotguns all have one thing in common, an owner's manual telling you how to use, store, sharpen, clean, or adjust the new item.

Most new outdoor items contain a guarantee from the manufacturer giving the address and mailing instructions in event there is a defect in workmanship or materials.

Some items are stamped with serial numbers. Make a list of all these numbers along with a description of each item in event of theft and for insurance purposes.

File the owner's manual in a safe place for future reference in case the new item will not be used until next summer or the operations are forgotten.

Many sporting items require accessories before they can be used in the field such as gun cases for firearms, life preservers for boats, and fishing line for reels. If you must purchase these items, be sure you match the right accessory to the new gift. A wrong-sized fishing lure and fishing line could damage or break an expensive fishing rod.

Usually, damage to sporting goods from misuse or neglect are not covered under the manufacturer's guarantee.

Test the new equipment before heading for the lake or field. Nothing irritates an outdoorsman more than failure of a piece of equipment on a big fishing or hunting trip.

Quality sporting goods items received as a gift or purchased should last a lifetime if properly used and maintained.

OPEN 24 HOURS

ALLSUP'S CONVENIENCE STORES

ALLSUP'S JANUARY SPECIALS!

PRICES EFFECTIVE THURSDAY THRU SATURDAY JANUARY 6-8, 1977

BORDEN'S HI PROTEIN MILK 79¢ (1/2 GAL. CTN.)

CANNED HAMS \$3.99 (3 LB. CAN)

BORDEN'S ICE CREAM \$1.09 (1/2 GAL. RD. CTN.)

ORANGES 6lb./\$1.

TURKEYS 1lb. 39¢

BORDEN'S WHIPPING CREAM 5/\$1.00

BORDEN'S SOUR CREAM & DIPS 4/\$1.

GOLD MEDAL FLOUR 5lb. 65¢

HOT COOKED FOODS

- BBQ CHICKEN
- HOT LINKS
- BURRITOS
- GERMAN SAUSAGE
- BBQ RIBS
- MILD LINKS
- CORN DOGS
- BULK BBQ BEEF
- BBQ BEEF SANDWICHES

TOP QUALITY BUY

GREAT WITH MILK! **HYDROX COOKIES 19 OZ. PKG. 69¢**

SHOP THE FRIENDLY, CONVENIENT ALLSUP'S STORE NEAR YOU!

414 W. AMERICAN BLVD.

BIG T PUMP CO.

FRIONA, TEXAS

"Come See Us For All Your Pump Needs"

**YOUR WELL DRILLING
YOUR GEAR HEAD REPAIRS
YOUR PUMP REPAIRS**

Contact: **S.D. Baize MGR.**
OFFICE: 247-3311
HOME: 247-3752

Big T Pump Co.

Box 785
FRIONA, TEXAS

Want Ads

OPEN RATES
1st insertion, per word - \$.09
2nd and add., per word - \$.06
NATIONAL RATES
1st insertion, per word - \$.11
2nd and add., per word - \$.07
Minimum Charge - \$.50
CARD OF THANKS - \$3.00
Classified Display - \$1.25 per column inch.
Double Rate for Blind Ads - DEADLINE FOR INSERTION Noon Tuesday for Thursday Noon Friday for Sunday
WE RESERVE THE RIGHT TO CLASSIFY, REVISE OR REJECT ANY AD.
NOT RESPONSIBLE FOR ANY ERROR AFTER AD HAS RUN ONCE.

1 Personal

PTL (PRAISE THE LORD) Channels 28 and 3. 8:30 - 10:30 a.m. Mon-Fri through Friday. 1-12s-tfc

2 Lost & Found

Reward for return of stolen valuable silver Indian necklace and blue velvet box. No questions asked. 272-4447. 2-1s-2tc

3 Help Wanted

FARM BUREAU seeks outstanding person to sell and service established farm and ranch accounts. Our good first year people earn \$15,000 plus, and can expect steady increase during a three year training program leading to management. No travel. Over 200 hours of professional training. For confidential interview call 806-272-4567. 3-2s-4tc

TEXAS REFINERY CORP. offers PLENTY OF MONEY plus, cash bonuses, fringe benefits to mature individual in Muleshoe area. Regardless of experience, airmail A.P. Pate, Pres. Texas Refinery Corp., Box 711, Fort Worth, Texas 76101. 3-1t-1tc

Need a baby sitter for two weeks. 946-3372 after 3. 15-1t-1tc

7 Wanted To Rent

WANTED TO RENT: Land in West Camp or Needmore area. Phone 272-4441 or 946-3628. 7-1s-5tp

8 Real Estate

SALES, LOANS AND APPRAISALS In Bailey County 30 Years KREBBS REAL ESTATE 122 W. Ave. C.

FDR SALE OR TRADE: 20 acres irrigated land. 2 miles from Muleshoe. Phone 272-5578 or after 6 phone 272-3658. 8-38t-tfc

House for Sale: 712 W. Ave. C. 965-2667. 8-53t-tfc

Bargain! 15 acres with nice 3 bedroom home. Large haybarn. 1/2 mile off highway near Muleshoe. J.B. Sudderth Realty, Inc. Box 627 Farwell, Texas 481-3288 8-35t-tfc

FARM FOR SALE: 330 acres. 2 1/2 miles west of Goodland store. \$125 acre. 1/2 down. Terms on Balance. Mrs. O.A. Warren, 606 Elgin, Big Springs, Tex 79720. 915-263-0904. 8-51s-tfc

FOR SALE: 160 acres: 11 miles west - 4 miles north of Portales: 4 irrigation wells. 70 acres alfalfa, hay shed, allotments: peanut, cotton, corn, 4 bedroom house, tenant house. Phone 505-356-8160. 8-41s-tfc

FOR SALE: 180 acres for sale: Eight miles west of Muleshoe on south side of highway 84. Three irrigation wells. Smallwood Real Estate 116 E. Avenue C Muleshoe, Texas

FOR SALE: 3 bedroom house, to be moved. Phone 257-3736 - Earth. 8-51t-tfc

Good 3 bedroom house. Well located. 32 acres irrigated near Muleshoe. Sec. of irrigated land near Friona. 1/4 Sec. of land in Lamb County. Well irrigated. POOL REAL ESTATE 214 E. AMER. BLVD. 272-4716 8-45s-tfc

FOR SALE: 80 acres irrigated land. East of YL 1/2 mile underground pipe. 50 H.P. Electric motor. 1/2 minerals right. Erwin Nieman Rt. 1 Muleshoe 965-2638 8-53t-3tp

9 Automobiles

1976 CAMARO Ocean blue with all black interior. A/C, power, 350 engine, with automatic transmission. Low mileage, very pretty car. 272-3319 or 272-4739, ask for Randy. 9-53t-tfc

FOR SALE: 1972 Chevrolet Blazer, low mileage, excellent condition. 272-3541. 9-1s-tfc

10 Farm Equipment

Your neighbors trade at STATE LINE IRRIGATION for all their irrigation needs. Why not you? Muleshoe, Littlefield, & Levelland. 10-45s-tfc

FOR SALE: * 4320 John Deere tractor with air condition and duals. * 16 row John Deere planter. * Rod weeder. * 7 row lister. * Cotton trailers. * IHC 85 cotton stripper. * 4020 John Deere tractor. Call 272-5544. 10-52s-tfc

11 For Sale Or Trade

FOR SALE: PVC pipe and fittings. 1/2 inch through 10 inch STATE LINE IRRIGATION LEVELLAND, LITTLEFIELD AND MULESHOE. 11-41s-tfc

WANTED: Alternations in my home. EVA ASHFORD. PHONE 272-3977. 15-1t-1tp

Complete Load Leveler Hitch. Call 272-4343 after 6. 11-1t-tfp

FOR SALE: 500 gallon propane bottle. 200 lbs. pressure. \$225. Vance Wagnon 272-4637 11-51s-tfc

FOR SALE: New 14' Open top stock trailer, 6 ply tires. New Carl Darr Saddle, assorted tack. 272-3541. 11-1s-tfc

FOR SALE: 3 truck tires. 700 x 20 - 10 ply. H.L. Stratton 321 East Dallas 272-3925 11-52t-tfc

Parents and friends of the mentally retarded will be selling sandwiches, pies and coffee, at the Nash and Boren farm sale Monday, January 10. Also we'll have poem and recipe books on sale. 11-1t-2tc

Batteries. 12 volt. \$10 exchange. Guaranteed 3 months. Border Town Battery Co. 722 Wheeler Texico, N.M. 11-1s-4tc

FOR LEASE: 164 acres in Bailey County, on FM 746 near New Mexico line. Phone Bob Couch, 799-7342, 3304 39th Street, Lubbock. 13-53t-4tc

Want to buy houses and buildings to be moved. J.V. Privett & Son House Movers Phone 505-356-4990 Portales, N.M. 15-40t-tfc

FOR LEASE: 164 acres in Bailey County, on FM 746 near New Mexico line. Phone Bob Couch, 799-7342, 3304 39th Street, Lubbock. 13-53t-4tc

Want to buy houses and buildings to be moved. J.V. Privett & Son House Movers Phone 505-356-4990 Portales, N.M. 15-40t-tfc

FOR LEASE: 164 acres in Bailey County, on FM 746 near New Mexico line. Phone Bob Couch, 799-7342, 3304 39th Street, Lubbock. 13-53t-4tc

Want to buy houses and buildings to be moved. J.V. Privett & Son House Movers Phone 505-356-4990 Portales, N.M. 15-40t-tfc

FOR LEASE: 164 acres in Bailey County, on FM 746 near New Mexico line. Phone Bob Couch, 799-7342, 3304 39th Street, Lubbock. 13-53t-4tc

Want to buy houses and buildings to be moved. J.V. Privett & Son House Movers Phone 505-356-4990 Portales, N.M. 15-40t-tfc

FOR LEASE: 164 acres in Bailey County, on FM 746 near New Mexico line. Phone Bob Couch, 799-7342, 3304 39th Street, Lubbock. 13-53t-4tc

Want to buy houses and buildings to be moved. J.V. Privett & Son House Movers Phone 505-356-4990 Portales, N.M. 15-40t-tfc

FOR LEASE: 164 acres in Bailey County, on FM 746 near New Mexico line. Phone Bob Couch, 799-7342, 3304 39th Street, Lubbock. 13-53t-4tc

Want to buy houses and buildings to be moved. J.V. Privett & Son House Movers Phone 505-356-4990 Portales, N.M. 15-40t-tfc

FOR LEASE: 164 acres in Bailey County, on FM 746 near New Mexico line. Phone Bob Couch, 799-7342, 3304 39th Street, Lubbock. 13-53t-4tc

FOR SALE: 16" well casing, new steel 18" 2c a lb.; 6" and 8" column pipe. 1/2 prices for junk iron.

FARWELL PIPE & IRON 601 AVENUE A FARWELL, TEXAS 15-46t-tfc

Public Notice

NOTICE OF SALE THE STATE OF TEXAS COUNTY OF BAILEY

By virtue of the execution issued out of the District Court of Bailey County, Texas, on a Judgment rendered in said Court on the 9th day of August, 1976, in favor of Ruby D. Green, dba Green Butane Co., and against Leslie Mills, dba Les Mills Farms, in the case of Ruby D. Green, dba Green Butane Co., versus Leslie Mills, dba Les Mills Farms, Number 3967 in such Court, I did on the 20th day of December, 1976, at 2:00 p.m., levy upon the following described land situated in Bailey County, Texas, as the property of the said Leslie Mills, to-wit:

All of Labor Number One [1], League Number One Hundred Seventy-One [171], Hale County School Lands, Bailey County, Texas, containing One Hundred Seventy-Seven Acres [177A], more or less.

And on the 1st day of February, 1977, being the first Tuesday of said month, between the hours of 10:00 a.m. and 4:00 p.m., on said day, at the Courthouse door of Bailey County, Texas, I will offer for sale and sell at public auction, for cash, all the right, title and interest of the said Leslie Mills, dba Les Mills Farms, in an to the above described real property.

Singed at Muleshoe, Texas, this 30th day of December, 1976.

Dee Clements Sheriff, Bailey County, Texas 11-3tp

Public Notice

Persons interested in making written or oral comments on the possible uses by the City of Muleshoe of entitlement funds under the State and Local Fiscal Assistance Act of 1976 are encouraged to attend a public hearing to be held Tuesday, January 18, 1977 in the council chambers at the City Hall, 215 South First, Muleshoe, Texas at 7:00 p.m.

Mary Watkins City Secretary 11-1t-1tc

Courthouse News

MARRIAGES: Jose Acencion Germain to Elvia Mendez, both of Muleshoe.

Thomas Delena Willis of Lubbock to Olena Ann Seaton of Muleshoe.

James Walter Maritt of Lubbock to Ruby Lee Myers of Lubbock.

Thomas Gregory Manis of Lubbock to Vicky Diane Griffin of Muleshoe.

Robert H. Taylor of Abilene to Chenelia Bettie Bryant of Albuquerque, N.M.

DIVORCES: Virginia C. Mendoza Berumen and Jesus Berumen.

Civil Service Seeking Applicants

Mrs. Vere B. Robinson, Area Manager of the U.S. Civil Service Commission's Dallas Area Office, announced the need to fill three vacancies which currently exist within Federal agencies in the North Texas area: an Autopsy Assistant in Temple, Texas, starting salary \$8316 per annum; a Nuclear Medicine Technician in Big Spring, Texas, starting salary \$10,370 per annum; a Social Services Assistant at Fort Hood, Texas, starting salary \$11,523 per annum. Similar positions may occur in other locations in the future.

An Autopsy Assistant performs duties such as assisting the pathologist or physician in conducting autopsies by preparing the body before and after the autopsy, by laying out instruments and by carrying out technical procedures during the autopsy.

A Nuclear Medicine Technician uses radionuclides for diagnostic, therapeutic and investigative purposes. This position requires a technical knowledge of the principles and practices of nuclear medicine and the ability to perform tests and examinations using radionuclides, radiation detectors, a scanning apparatus and related equipment.



BETTIE BURKHEAD

Former Resident Buried Thursday

Former Muleshoe resident, Bettie Burkhead, 61, died Monday, December 27, in Anna Kaseman Hospital in Albuquerque following a lengthy illness. She was born in Hall County on December 9, 1915 and lived most of her life in Muleshoe. Her husband, Jim, retired from Fry & Cox in 1974 and they moved to Albuquerque.

Funeral services were held Thursday, December 30, at 2:30 p.m. in First United Methodist Church in Muleshoe, with burial following at Bailey County Memorial Park.

Survivors include her husband, Jim; two sons, Dewayne of Albuquerque and Dwight of San Antonio; her mother, Mrs. G.A. Nelson, of Muleshoe; two sisters, Mrs. Rufus (Hazel) Gilbreath of Muleshoe and Mrs. Virginia Kirk of Levelland and nine grandchildren.

The family requests that persons wishing to make memorials contribute to the Multiple Sclerosis Foundation at First National Bank in Muleshoe.

Ranchers Chance To Eliminate Screw Worm

If everyone does his part this winter stockmen will have the best chance ever to eliminate screw worms from Texas ranges, says Dr. M.E. (Cotton) Meadows, Jr., director of the South-

west Screwworm Eradication Program.

"Cooler than normal weather in November and December aided the Eradication effort. Mexico produced sterile flies are being released in that country south of the Texas border," says the Animal and Plant Health Inspection Service (APHIS) veterinarian.

Meadows says the 171 laboratory confirmed December cases from Texas ranges brought the year's case total to 29,241. This is exceeded only by 90,980 cases in 1972, and 49,484 in 1962 -- year the program started.

Only 20 cases were tallied the last half of December. Armando Cantu collected the Starr County case on E.W. Schader's Cenizo Ranch northwest of Roma. Mrs. Frank Smith of Pearsall submitted a screwworm case from Frío County. The last case identified in 1976 was collected by Dan Butler on the H. Yurria Ranch in Willacy Co.

The other 17 cases came from the Cagle Ranch in Brooks

County. They were submitted by F. Trevino, A. Trevino, A. Garza, P. Almandarez, and Pres. Cagle.

Screwworm are larvae of the screwworm fly. Adult females of this species deposit eggs on wounds in warm blooded animals. As eggs hatch the tiny maggots enter the wound to feed on living flesh.

The APHI Program is based on

the fact female screwworm flies mate only once in their lifetimes. Millions of artificially reared and sexually sterilized screwworm flies are released among known wild populations. A fertile female fly will produce eggs after mating with a sterile male, but the eggs won't hatch. When enough sterile to fertile matings occur eradication is achieved.

Farwell Grad Is Commissioned

Navy Ensign Robert W. Anderson II, son of Mr. and Mrs. R.W. Anderson of Farwell, has been commissioned in his present rank upon graduation from Officer Candidate School (OCS), located at the Naval Education and Training Center, Newport, R.I., is designed to prepare students to assume the duties and responsibilities of commissioned officers.

During the 19-week course, candidates studies the principles of leadership, manpower management techniques, navigation and communications. They additionally studied Navy history, traditions and missions; the structure and organization

of naval commands; military courtesy; uniform regulations; seamanship; and the Uniform Code of Military Justice.

A 1972 graduate of Farwell High School, and a 1976 graduate of Texas A&M University, College Station, with a bachelor of arts degree, he joined the Navy in November 1975.

A friend is one upon whom you can count, regardless of your misfortunes.

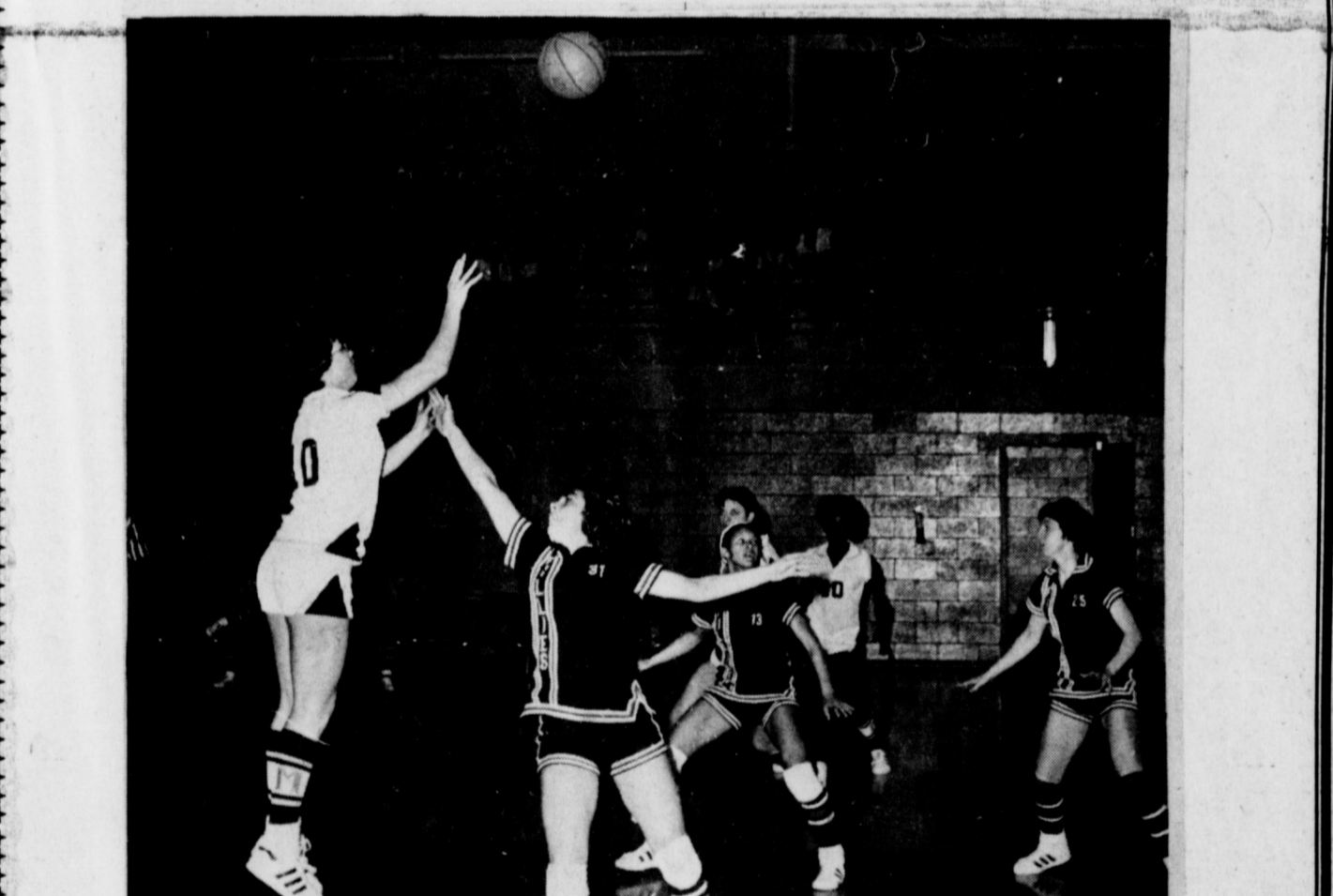
Weather Master Seed Dealer Interstate Fertilizer Farwell, Texas

AREA REPRESENTATIVES
MAX CRIM Clays Corner Hub Muleshoe 965-2742
BETSY STONE Amherst Sudan Littlefield 246-3616

ATTENTION MULESHOE AREA CATTLEMEN

...in regard to dead stock removal... If you have a problem with service... whether in the feed yard or on the farm... Please give US a chance! Thank You, YOUR LOCAL USED COW DEALER IN MULESHOE Ph. 965-2903 Mobil 965-2429 Muleshoe Bi-Products

BASKETBALL SUPPORT THE HOME TEAM



BOYS
Jan. 4 Idalou H 5:00
Jan. 7 Lockney H 5:00
Jan. 11 Idalou T 7:30

GIRLS
Jan. 4 Idalou H 5:00
Jan. 7 Friona H 5:00
Jan. 11 Olton T 5:00

The Following Firms Urge You To Back The Mules And Mullettes

Watson Alfalfa
Johns Custom Mill
Alfreds 66 Service
The Fair Store
Muleshoe Publishing Co.
Wooley - Hurst Inc.
Bailey County Electric Cooperative Association

Bob Stovall Printing
Baker Farm Supply
Beavers Flowerland
Dari Delite
San Francisco Cafe
King Grain & Seed

AUTO ENGINE REPAIR SERVICE Engines Rebuilt

Need a new motor? We repair and rebuild standard American engines for all models using factory parts.

- Complete electrical tune-ups
- Carburetor repairs
- Heating and air conditioning repairs

Plains AUTO PARTS P.O. Box 306 MULESHOE, TEXAS 79347

Enochs News

By Mrs. J.D. Bayless

Mrs. Winnie Byars spent Christmas with her family at the home of Mr. and Mrs. Jack Parr. She also visited a sister, the Rubin Payne family in Lubbock.

Mr. and Mrs. Carlton Gilliam of Lubbock spent Christmas eve with his parents, Mr. and Mrs. E.C. Gilliam. Christmas day the Gilliam family met at the Morton Activity building in Morton for their family gathering.

Mr. and Mrs. Curtis Snitker and family of Hart spent Monday through Wednesday with his parents, Mr. and Mrs. Clifford Snitker. John Snitker of Old Glory visited with them Friday.

Visitors in the E.N. McCall's

Tuesday and Wednesday were Mr. and Mrs. J.C. McCall and Elizabeth Chadoak of Harlingen.

Mrs. L.B. Davis and sons, Larry and Dewayne of Shallowater, visited her mother, Mrs. L.E. Nichols, and brother, Gary Friday.

Clifford Snitker and son, Curtis, and Quinton Nichols had an old time hog killing at Clifford's hog barn Tuesday.

Richard Nichols was dismissed from the Littlefield Hospital Wednesday.

Jeff Austin of Lubbock and Kevin and Jimmy Tate of Cotton Center visited their grandparents this past week.

Rev. and Mrs. Charlie Shaw left Thursday, December 23, to spend Christmas with her father, L.B. Baker at Oklahoma City. They also visited his brother, the Bill Shaw's at

Whitdeer, and their daughter, Mr. and Mrs. James Crocker and sons at Tucumcari, N.M. and drove to Las Vegas, N.M. and visited their other daughter, Mr. and Mrs. Ralph Jarros and sons.

Howard Parsley and son, Tony of Denver City, visited with the Dale Nichols family New Years Day.

Mr. and Mrs. W.B. Peterson left December 20, and spent that week with their son, Mr. and Mrs. Morris Peterson and children at Hillsboro. They had Christmas with their daughter, Rev. and Mrs. Harold Abney and children at Bynom. They drove to Baytown to visit her sister, Mr. and Mrs. J.D. Houghton, before returning home Friday.

Mr. and Mrs. Bill Key, Kevin and Kenneth visited friends and relatives at Canadian, Tulsa, Okla.; Fort Smith, Ark. and Weatherford. They returned home Sunday afternoon.

Former Resident Finishes Arctic Training Session

Sergeant Juan M. Pesina-Avila, son of Mr. and Mrs. Ambrosio C. Pesina, 207 E. Fifth Street, Muleshoe, recently completed four weeks of arctic training at Ft. Wainwright, Alaska.

Sgt. Pesina-Avila and approximately 700 paratroopers from the 82nd Airborne Division at Ft. Bragg, N.C., made a parachute jump onto Ft. Wainwright to begin the training, which included mountain and cold weather survival techniques. The sergeant, a section leader with Combat Support Company, First Battalion of the division's 504th Infantry, entered the Army in July 1972. He is a 1972 graduate of Muleshoe High School.

Elections a step toward Democracy in Brazil.

The Sandhills Philosopher

Editor's note: The Sandhills Philosopher on his Johnson grass farm on Sandy Creek comes to the defense of Congress this week, we think. Dear editor:

Some people argue that one trouble with government today from precinct to Washington is that we don't select the brightest people to run it.

"Whatta you expect, with dunderheads like that in charge," they'll say.

Wait a minute, let's take a look at those dunderheads. Take a Congressman, for example. He now makes, by a vote of himself and his fellow members, \$46,500 a year. That's per year, he isn't paid by the day or the hour, and anytime he wants to take off a few days to vacation or a few months to campaign for some other office, his pay goes right

on. In addition, he gets 32 round trips back home during each session to look after the people's business or, if they have none, his own. He gets \$5000 a year for stationery and envelopes and can mail his letters without stamps. If he gets sick he can go to a government hospital where he's charged only half what other patients pay. He can eat in the House restaurant where inflation has been whipped and the prices are about half what private restaurants have to charge to stay in business. And I almost forgot, he has a staff, some of whom make around \$25,000 a year, at a cost of about \$300,000 a year. The staff of course does most of the work.

If he retires from office, or if he gets beat, he has a pension coming of around \$20,000 a year.

Now if you call that being a dunderhead, all I've got to say is, where do you sign up?

You may think I'm criticizing all this, but you're wrong. I want the system extended. For example, take farming. Say a

farmer makes, in a good year that comes along once in a great while, \$20,000, without any free trips to town and back. But finally he retires or, so to speak, gets beat, not by the voters but by a combination of the weather, insects, low prices for what he sells and high prices for what he buys plus high taxes to support his government in the manner it's accustomed to. Shouldn't he get a pension of about half of what he used to

earn, say \$10,000 a year? The trouble with farmers is that not enough of them are dunderheads.

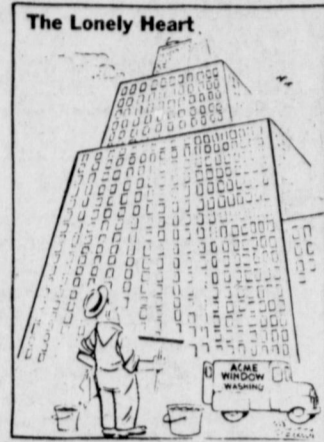
Yours faithfully,
J.A.

Future lawyers

AUSTIN, Texas (Sp.)—A research project under way at The University of Texas may enable law schools to devise curricula for what the law will be like 30 years from now.

Entitled "Lawyers in the Next Generation," the project will focus on future innovations that may affect the legal profession. Among such innovations are advertising by lawyers, no-fault insurance, paralegal personnel, entry of women and minorities into the field and use of administrative hearings to settle disputes.

Conducting the study are Profs. Alfred G. Smith of the Center for Communication Research and Allen E. Smith of the Law School.



Mid-Winter FOOD BARGAINS!

Pre-Christmas Drawing Winners

Free Turkeys

Charles D. Ball
Sandy Turner
Fern Warren
Jerry Redwine
Mildred Lambert
Mrs. Norman Head
Texanna Townsel
Socorro H. Gomez

Free Groceries

Antonio L. Huerta
Ruth Johnson
Sandra Navajar
Mrs. Everett Lookadoo

Pre-New Years Drawing Winners

\$25.00 Cash

Irene Medlock
Mrs. Frank Kemp
Oscar Bartley

Free Groceries

Phyllis Beavers
Roy Bayless
Sarah Burkhart
Ruth Newell
Velma Fried
Rose Lee Powell

"U.S.D.A." GOVERNMENT INSPECTED VEAL "FOR WEIGHT WATCHERS and PRICE WATCHERS"

ROUND STEAK	lb.	99¢
SIRLOIN STEAK	lb.	99¢
T-BONE STEAK	lb.	\$1.19
RIB STEAK	lb.	89¢
CHUCK ROAST	lb.	79¢
ARM ROAST	lb.	79¢

WRIGHT'S SLICED SLAB BACON	(2 lb. pkg.)	\$1.98
EL JACALITO CORN TORTILLAS	(40 COUNT pkg.)	55¢

5 lb. BAG
PURE CANE
SUGAR 79¢
LIMIT 1 WITH \$7.50 PURCHASE

YOUR BUDGET WILL LOVE THESE FOOD BARGAINS

46 oz. CAN TEXAN ORANGE JUICE	59¢
#303 CAN DEL MONTE CHOPPED SPINACH	29
#303 CAN DEL MONTE SWEET PEAS	3/89¢
#300 CAN RANCH STYLE BEANS	3/89¢
5 oz. CAN HORMELS VIENNA SAUSAGE	3/\$1
24 oz. CAN AUSTEX BEEF STEW	79¢
10 oz. pkg. AMERICAN BEAUTY VERMICELLI	39¢
CORNET ULTRA IV BATHROOM TISSUE	79¢
4 oz. CAN WHITE SWAN PURE BLACK PEPPER	45¢
14 oz. CAN JOHNSON POLISH PLEDGE	\$1.59
14 oz. CAN JOHNSON KLEAN & SHINE	\$1.29
32 oz. BOTTLE BEACON MOP & GLO	\$1.59
1 lb. BOX WHITE SWAN CRACKERS	49¢
1 lb. Ctn. SWEET SIXTEEN OLEO	39¢
qt. BOTTLE WHITE SYRUP KARO	\$1.09
A 5 lb. BAG WHITE GLADIOLA CORN MEAL	79¢

GIANT SIZE BOX
TIDE 89¢
LIMIT 1 WITH \$7.50 PURCHASE

3 1/2 lb. BOX ASST. FLAVORS
JELLO 2/29¢

FRESH PRODUCE
IDAHO NO. 1 BAKER RUSSET POTATOES LB. 19¢
CALIFORNIA SUNKIST NAVEL ORANGES 4 LB. / \$1
TEXAS NO. 1 YELLOW ONIONS LB. 15¢
TEXAS NO. 1 YELLOWS BANANA SQUASH LB. 39¢
WASHINGTON ROME BEAUTY'S APPLES 3/\$1

32 oz. 6 BOTTLE Cnt.
COCA-COLA \$1.39

48 oz BOTTLE
WESSON OIL \$1.79

18 oz. JAR KRAFT STRAWBERRY PRESERVES
69¢

Listen to MULETRAIN
10:15 a.m.
Monday-Friday
Over KMUL
Sponsored by Whites Cashway.

Whites CASHWAY
7:30 a.m. til 9 p.m. MONDAY-SATURDAY
CLOSED SUNDAYS
Double Gunn Bros Stamps Every Wednesday
We Reserve The Right To Limit Quantities

We Welcome USDA FOOD STAMP COUPONS

Come To CASHWAY For Your WIC Card Purchases

THIS COUPON IS GOOD FOR 100 EXTRA GUNN BROS. STAMPS AT WHITE'S CASHWAY With the Purchase of \$7.50 or more
Please fill in your name and city, Only One Coupon Per Customer—Coupon Expires