

Weather

Table with 4 columns: Date, High, Low, Precip. Rows for May 5, 4, 3, 2.

MULESHOE JOURNAL

'The Community of Opportunity-Where Water Makes the Difference'



Volume 53 Number 19

10 Pages

Published Every Thursday at Muleshoe, Bailey County, Texas 79347

10 Cents

Thursday, May 6, 1976

Carter, Reagan Win Bailey County



Charles Isaac, Ambassador Chairman, and the committee announced that the Ambassadors for the coming year have been chosen...

There will be a meeting of Mothers of all Seniors in Muleshoe High School Thursday, May 6, in room 14, at 3:30 p.m. of the High School.

There is a little girls softball team being organized. The team will be for ages eight to twelve.

Mr. and Mrs. Ray Clayton, spent the weekend in Raton, N.M., visiting with her brother.

Cynthia Chandler, a 1974 graduate of Muleshoe High School, has been elected Vice President of Psi Chi, the National Honor Society for Psychology majors...

The Lackey family held a reunion this past Sunday, May 2, at the home of Mr. and Mrs. Orville Lackey, 1003 West Sixth in Muleshoe.

Attending the affair were: Mr. and Mrs. Bob Ellis, Lamesa; Mrs. Nell Gibbs, Brownfield; Mr. and Mrs. W.D. Lackey, Longview; Mr. and Mrs. James Lackey, Ruidosa; Mr. and Mrs. Ray Greaser, Estagado, Oregon; Mr. and Mrs. Denny Burch, Portales, N.M.; Mrs. J.F. Lackey, and son, Lubbock; Mr. and Mrs. John Lackey, Portales, N.M.; Mr. and Mrs. Homer Lackey and son, Muleshoe; Walter Lackey and family, Earth; Mr. and Mrs. Eddie Platt and son, Amarillo; Mr. and Mrs. Gary Young, Meadow and Mr. and Mrs. Curtis Snyder and children, Ropes.

Seal Coating In Muleshoe, May 10

The annual seal coating program will begin in Muleshoe, May 10. This is done each year to prevent the streets from deteriorating.



ONE MORE SCORE... There were two men on base and the batter hit and brought two men in on the Cats' team Saturday.



DEE CLEMENTS

Jaycee Banquet To Be Held

The Muleshoe Jaycees are planning their Installation Banquet for May 22, at 7:30 p.m., at the Catholic Center.

Wenmohs Reports SCS Has Funds For Program

Jerry Wenmohs, with the local Soil Conservation Service, announced that additional funds have been made available for the Great Plains Conservation Program in Bailey County.

Three Men Injured In Local Shooting

A shooting occurred at Lillie Harris' Cafe in the flats Sunday morning, about 1:30 a.m. Mrs. Harris reported a fight in her cafe to the police.

Babe Ruth Season Opened Saturday

The Babe Ruth Season was opened Saturday, May 1, as Mayor Kenneth Henry threw the first ball.

'76 Arthritis Drive Tallied \$2,415.73

The Arthritis Victory March for the city and rural area is over. The total results for the city is \$2415.73.



MATT DUDLEY

presented to Citizen of the Year, Jaycee of the Year, Committee Chairman of the Year and awards won at the Station awards won at the State Convention in Ft. Worth, on May 13, 14 and 15, will be presented.

each couple to a T-Bone steak dinner, and admission to the dance to be held following the Banquet.

Jaycee Volleyball Winners Announced

The Muleshoe 13th Annual Volleyball Tournament sponsored by the Muleshoe Jaycees was held April 19-24. First, second and third and consolation team trophies were distributed.

Bailey County 4-Her's Win At District

There were 99 South Plains 4-Hers from 13 of the 20 counties in Extension District, May 1, qualified to compete in the State 4-H Roundup.

Dillman Announces Spring Round-Up Friday May 7

Neal B. Dillman announces that Friday, May 7, 1976, from 8:30 a.m. to 3:30 p.m. is Spring Round-Up at Richland Hills Primary, for kindergarten and first grade children.

'76 Arthritis Drive Tallied \$2,415.73

The Arthritis Victory March for the city and rural area is over. The total results for the city is \$2415.73.

Fertilizer Efficiency Vital For Forages

COLLEGE STATION -- Fertilizer must be used efficiently if forage production is to be a profitable business.



JOHN BLACKWELL

Muleshoe Weather Forecasts Missing

The daily Muleshoe weather report has vanished from San Antonio television and the man who made it a routine part of his weather show hopes the absence is felt.

Migrant Housing Considered By Council

The City Council meeting was held Tuesday, May 4, at 8:30 a.m. They first discussed a petition by W.M. Pool and wife, and Lee R. Pool and wife to vacate lots on the south edge of town.

Seal Coating In Muleshoe, May 10

The annual seal coating program will begin in Muleshoe, May 10. This is done each year to prevent the streets from deteriorating.

Babe Ruth Season Opened Saturday

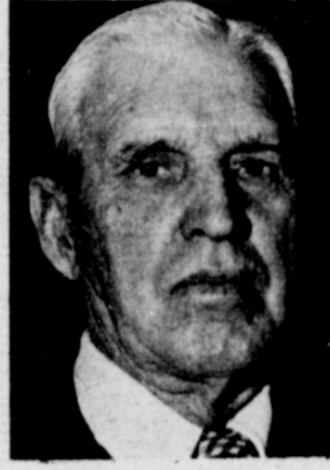
The Babe Ruth Season was opened Saturday, May 1, as Mayor Kenneth Henry threw the first ball.

'76 Arthritis Drive Tallied \$2,415.73

The Arthritis Victory March for the city and rural area is over. The total results for the city is \$2415.73.

Fertilizer Efficiency Vital For Forages

COLLEGE STATION -- Fertilizer must be used efficiently if forage production is to be a profitable business.



ROBERT SANDERS

Muleshoe Weather Forecasts Missing

The daily Muleshoe weather report has vanished from San Antonio television and the man who made it a routine part of his weather show hopes the absence is felt.

Migrant Housing Considered By Council

The City Council meeting was held Tuesday, May 4, at 8:30 a.m. They first discussed a petition by W.M. Pool and wife, and Lee R. Pool and wife to vacate lots on the south edge of town.

Seal Coating In Muleshoe, May 10

The annual seal coating program will begin in Muleshoe, May 10. This is done each year to prevent the streets from deteriorating.

Babe Ruth Season Opened Saturday

The Babe Ruth Season was opened Saturday, May 1, as Mayor Kenneth Henry threw the first ball.

'76 Arthritis Drive Tallied \$2,415.73

The Arthritis Victory March for the city and rural area is over. The total results for the city is \$2415.73.

Fertilizer Efficiency Vital For Forages

COLLEGE STATION -- Fertilizer must be used efficiently if forage production is to be a profitable business.



JACK YOUNG

Muleshoe Weather Forecasts Missing

The daily Muleshoe weather report has vanished from San Antonio television and the man who made it a routine part of his weather show hopes the absence is felt.

Migrant Housing Considered By Council

The City Council meeting was held Tuesday, May 4, at 8:30 a.m. They first discussed a petition by W.M. Pool and wife, and Lee R. Pool and wife to vacate lots on the south edge of town.

Seal Coating In Muleshoe, May 10

The annual seal coating program will begin in Muleshoe, May 10. This is done each year to prevent the streets from deteriorating.

Babe Ruth Season Opened Saturday

The Babe Ruth Season was opened Saturday, May 1, as Mayor Kenneth Henry threw the first ball.

'76 Arthritis Drive Tallied \$2,415.73

The Arthritis Victory March for the city and rural area is over. The total results for the city is \$2415.73.

Fertilizer Efficiency Vital For Forages

COLLEGE STATION -- Fertilizer must be used efficiently if forage production is to be a profitable business.

Local Incumbents Remain In Office

The Democratic, Republican and Raza party primaries were held in Muleshoe on Saturday, May 2. An average number of Bailey County residents turned out at the polls...

Delegates to Jimmy Carter tallied 1,946 votes. Wallace's delegates brought him a total of 602 votes.

Fertilizer Efficiency Vital For Forages

COLLEGE STATION -- Fertilizer must be used efficiently if forage production is to be a profitable business.

Migrant Housing Considered By Council

The City Council meeting was held Tuesday, May 4, at 8:30 a.m. They first discussed a petition by W.M. Pool and wife, and Lee R. Pool and wife to vacate lots on the south edge of town.

Seal Coating In Muleshoe, May 10

The annual seal coating program will begin in Muleshoe, May 10. This is done each year to prevent the streets from deteriorating.

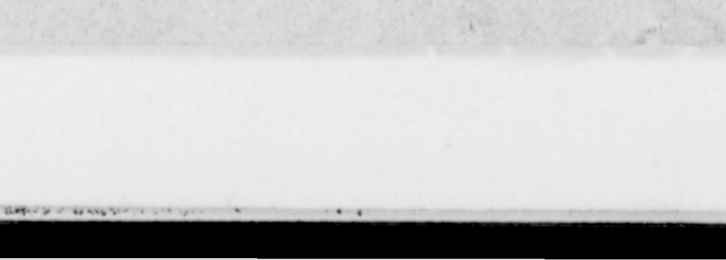
Babe Ruth Season Opened Saturday

The Babe Ruth Season was opened Saturday, May 1, as Mayor Kenneth Henry threw the first ball.

'76 Arthritis Drive Tallied \$2,415.73

The Arthritis Victory March for the city and rural area is over. The total results for the city is \$2415.73.

Fertilizer Efficiency Vital For Forages



BAILEY COUNTY WINNERS... The winning Bailey County 4-Hers entering the May 1 competition at District are first team: In Handskills left to right are Belinda Wheeler and Stacy Kirby.

Local...

Cont. from Page 1

ried the vote with 768. Precinct Chairman Two, Phil Garrett won with six votes, Cheryl Gist had three, George Wheeler, five, Ernest Ramm, one, and Ken Box, one. Precinct Chairman Three was won by Gil Lamb with three votes. Ray Precure was unopposed for Precinct Chairman One and received two votes. The Republicans had five statements to vote on. These statements were voted on as listed: Statement No. One, for 248, against 16; State No. Two, for 246, against 14; Statement No. Three, for 200, against 48; Statement No. Four, for 226,

against 35; and Statement No. Five was 225 for and 11 against. The results of the Raza Unida Party was no votes in the first Precinct. In Precinct Two, Fred Rodriguez Garza received one vote for Railroad Commissioner and Alberto G. Daniel received one vote for County Chairman. In Precinct Three, Fred Rodriguez Garza received nine votes, as Railroad Commissioner; Alberto G. Daniel, nine, County Chairman; Domingo Ramos, seven as County Commissioner and Julian Dominquez, three as Precinct Chairman. In Precinct Four, Fred Rodriguez Garza received 22 votes for Railroad Commissioner; Alberto G. Daniel, 23, for County Chairman; Juan Chavez, 13 votes for Precinct

Chairman; and Pete Black one for Precinct Chairman. There were a total of 33 votes overall. Jack Young defeated his opponent, Doyle Elliott, by 60 percent for his bid as District Attorney in the three-county area. Votes cast were Bailey County for Young 880; for Elliott 429. Parmer County, Young 1,312 and Elliott, 831. Lamb County for Young 1935 and for Elliott 1616. Young carried Bailey County by a two to one margin. For the Democratic County Commissioner, Precinct One incumbent W.M. (Matt) Dudley won over C.R. Black and John W. Smith. Black had 67; Smith had 110 and Dudley won with 216. For County Commissioner Precinct Three, boxes four and five incumbent, with R.P. (Bob) Sanders won with 249, compared to James Warren's 144. For Contable Precinct One, in the Democratic Primary, John R. Blackwell carried the race with 247 votes to Claude Don Holmes, 113. Other local candidates who ran unopposed in the Saturday primaries were: Gordon H. Green, County Attorney, 1,026; S.D. (Dee) Clements, County Sheriff, 1,118; Jean Lovelady, County Tax Assessor-Collector, 1,151; K.B. Martin, Justice of the Peace, Precinct One with 252; Randall L. Clayton, Constable, Precinct Three, 200; W.E. (Wendell) Young, Constable, Precinct Three, 260; Harvey Bass, County Chairman, 852; Clifford Black, Precinct Chairman, Voting Box One, 273; Joe Costen, Precinct Chairman, Voting Box Two, 56; Don Williams, Precinct Chairman, Voting Box Three, 154; Jack Furguson, Precinct Chairman, Voting Box



THE TOTALS ARE OUT... The Arthritis Drives are all over and the totals are out. President of the Bailey County Arthritis Foundation, Mrs. Sam Dameron, and Victory Chairman, Mrs. Doyce Turner, are looking over the literature that people had requested, that was collected on the house to house canvass. This is the part of the drive that is to be a service to the arthritic, as well as a money drive.

Four and Five, 252; John Hubbard, Precinct Chairman, Voting Box Six, 55; Fred Beene, Precinct Chairman, Voting Boxes Seven and Eight, with 60. Two write-ins were Charlie Tiller, two and Lewis Shafer, one. Total votes cast in the democratic race were 1,329. In the Republican Primary for Reagan, delegates cast 1,015 votes. Ford's delegates gave him 68 votes. Two votes were uncommitted. Alan Steelman won the bid for the U.S. Senatorial race with 151 votes. Hugh Sweeney was second with 35 and Louis Leaman was last with 14. Jim Reese received 212 votes

for the 19th Congress. Walter Wendland received 163 for Railroad Commissioner. Clarence E. Mason received 26 votes and Joe Sooter had four for Bailey County Chairman.

Bailey...

Cont. From Page 1 College Station next month by taking top honors in district competition. Those winning from Bailey County were first team, Bailey County, Belinda Wheeler and Staci Kirby, of Goodland; Public Speaking, Senior first, Lamb County, was Glenn Branscum, of Muleshoe; and first, Lamb County in the Clothing Educational Activity was Senior, Dawn Branscum, of Muleshoe.

Babe... Cont. From Page 1 slaughtered the Colts 20 to nothing. Charlestone Steinbock was the winning pitcher. There were no homeruns. On Monday night, Lazbuddie ran over the Pilots, 22 to two. Mike Windom was the winning pitcher. The losing pitcher was Cody Crittenden. No homeruns were on either team. On Tuesday, May 4, the second Babe Ruth league game was played. The two teams playing were the Eagles and the Colts. The Eagles beat the Colts by a score of 17 to three. The winning pitcher was Roland Perez and the losing pitcher was Al Ontiveroz.

Dillman... Cont. from Page 1 talk to parents about their children. Texas law now requires the following immunizations for all students through age eleven: three doses of oral polio, three doses of D.P.T., one measles vaccine and one Rubella vaccine. Public health nurses will be available to give immunizations at Richland Hills from 8:30-12:00. If you have questions or know of an eligible child, please contact Milton Oylar, principal at Richland Hills Primary School, Telephone 272-4313.

Around... Cont. from Page 1 The Republican County Convention will be held Saturday afternoon at 3:00 p.m. in the District Court room at the Bailey County Court House.

The Speaker Reports by Bill Clayton

AUSTIN--A recent study of the 48 continental states has confirmed what we in Texas have been preaching to manufacturers and business people throughout the nation. We have here in Texas the most attractive business climate in the United States. One portion of the very thorough nationwide study indicated how many manufacturing jobs were won or lost from 1967-1974. Texas, at the top of the list, has a growth of 150,000 new jobs won for a 22.6 per cent increase. What that means is that states such as Texas with favorable business climates tended to gain thousands of manufacturing jobs, while those with poor business climates generally lost jobs. The factors that went into ranking the states are things that we know well in Texas. Included are taxes, labor laws, size and cost of government, welfare costs, state indebtedness and similar state and local government related conditions. I think it is also appropriate to note the other states listed in the top ten for attractive business climate. In order after Texas are Alabama, Virginia, South Dakota, South Carolina, North Carolina, Florida, Arkansas, Indiana and Utah. It is interesting that all the states but Indiana have "right to work" laws and that most are southern states. The report said the ten worst states in terms of business climate are: New York, at the bottom, California, Massachusetts, Michigan, Delaware, Connecticut, Pennsylvania, Minnesota, Oregon and Washington. Texas is one of only four states that does not rely upon corporate income taxes to finance its activities. The other states are Nevada, Washington and Wyoming. It has been found that the greater the proportion of the state's income which comes from corporations, the greater the likelihood that the

legislature has adopted the philosophy of letting business and industry carry the load for the improvement and enlargement of state services. Once a tax source is tapped, a state is not likely to relinquish it easily. More frequently, the source is tapped again and again. In Massachusetts, for example, 12.6 per cent of state taxes comes from taxes on corporations. A great majority of the states derive more than five per cent of their taxes from business. While talking about taxes, it is also important to the business climate to note that Texas is one of only six states that does not have a per capita personal income tax on its citizens.

Fertilizer...

Cont. from Page 1 tends, is to include in a fertilizer a nutrient that does not boost yield. In many cases -- phosphorus in particular -- benefits are recovered in later years. The short-term effect, however, is to defray part of the cost from the value of increased yield produced by another nutrient, usually nitrogen. "To say that fertilization is profitable is not good enough," emphasizes the Texas A&M University System specialist. "We must be able to identify the profit from nitrogen, profit from phosphorus, profit from liming, and so forth." "Efficiency" in use of plant nutrients usually refers to the percentage of the nutrient applied that is recovered in the harvested crop. It implies that the nutrient is applied only to a deficient soil, points out Welch. "Therefore, efficient use of plant nutrients means using soil tests and other information to identify the need for a nutrient before it is applied." Efficient use of nutrients also means harvesting forages for maximum quality and applying nutrients at a rate below that needed for maximum yield. Recovery as a measure of efficiency generally decreases as the rate increases, says Welch.

THIS IS THE COTTON FOR NEMATODE COUNTRY



Lockett BXL has excellent resistance to nematodes and fusarium wilt with the potential for big yields of long, strong fiber in all types of soil dry or irrigated. BXL is rugged enough to deal with the tough growing conditions you sometimes have. There are a lot of reasons you'll like it.

- CHECK THESE CHARACTERISTICS:
• Germinates fast, comes up fast
• Excellent seedling vigor
• Excellent tolerance to cold weather
• Good root system for drought resistance
• Early fruiting
• Resistant to nematode/fusarium wilt
• Moderately determinate
• Medium early maturity
• Storm resistant bolls
• Excellent stripper variety
• Well-adapted to one-time-over harvesting
• Staple length in the 1" and longer range
• Exceptional fiber strength
• Micronaire in the premium range (under normal growing conditions)

- CHECK THESE RESULTS:
• Texas Agricultural Experiment Station (TAES) at Lubbock shows dryland yield 394 lbs. and irrigated yield 544 lbs. of lint per acre over a five (5) year period along with 32 fiber length and very good fiber strength.
• Strip tests reported by Bill Taylor, Hockley County Agent, over the past three (3) years show that Lockett BXL has good nematode resistance.
• In 1974, Lynn County irrigated strip test conducted by the County Agent on Oihell Meek farm, Lockett BXL outyielded the closest competitive variety more than 14% or 143 lbs. of lint per acre.
• Dawson County—1974 TAES Irrigated Cotton Variety Test—Lockett BXL had a lint yield of 36 lbs. per acre above the test average—staple length 34—87.1 PSI (X1000) fiber strength.

If you raise cotton in this area where nematodes and fusarium wilt are a problem, go with Lockett BXL this year. You can get Lockett BXL planting seed from your ginner.

Produced and Distributed by PIONEER BRAND SEEDS Pioneer Hi-Bred International, Inc. Southwestern Division P. O. Box 788, Plainview, Texas 79072

Lockett BXL is a U.S. Protected Variety. Unauthorized Propagation is prohibited. It is to be sold by variety name only as a class of certified seed.

Performance of seeds or the crop produced therefrom may be adversely affected by factors beyond our control including environmental conditions, insects and diseases. The limitation of warranty and remedy attached to each bag of seed is a part of the terms and conditions of the sale thereof.

Registered trademark of Pioneer Hi-Bred International, Inc., Des Moines, Iowa

Muleshoe Journal
Published February 23, 1976. Published by Muleshoe Publishing Co., Inc. Every Thursday at 804 W. Second, Box 441, Muleshoe, Texas, 79267. Second class Postpaid at Muleshoe, Texas, 79267.

It's No. 1 Mother's Day Gift...
Amana Radarange MICROWAVE OVEN



Cooking with this Amana Radarange microwave oven takes only 1/4th the usual time! So your wife can devote 3/4th of the time she'd usually spend cooking, to other things! That's almost as good as retiring!
• Clean-up is quick, too, because you cook on glass, china, or right on serving plates. Even on paper plates!
• Automatic gourmet-defrost cycle. Lets her slow-cook or simmer. Defrosts meats and other frozen foods in minutes.
• Only the food gets hot. The oven and your kitchen stay cool. So does she.
• The stainless steel oven interior wipes clean in a jiffy, because splatters can't bake on.
• Big enough to roast a 20 lb. turkey.
• The Radarange saves energy, too—uses 50% to 75% less electricity than a conventional range!

If it doesn't say Amana - it's not a Radarange

HARVEY BASS
122 South First Phone 272-3030

GIBSON'S DISCOUNT CENTER
Price Reduction Spectacular
Where You Always Buy the Best for Less
SAVE MISSY and Half Size Pant Suits
Sensational Savings on go-anywhere pant suits for all occasions! Many attractive styles and colors to choose from in Missy and Half Sizes. Hurry for the best selections at these fantastic prices!
REG. to 14.97
8.97
ENTIRE PANT SUIT LINE REGULAR 15.97-19.97 FOR 13.97 REGULAR 20.97-29.97 FOR 18.97
Blouses Long or Short Sleeve Styles
Now is the time to buy! Stock up and save!
Many attractive styles to choose from in a wide variety of pretty solid colors and gay prints. Assorted sizes.
SAVE ALL REG. 5.97-8.97
Bras
Several styles to choose from. Assorted sizes available. Now is the time to stock up and save!
SAVE REG. 2.47
Panties
Brief or Bikini styles in a variety of solids and prints. Assorted sizes available. Stock up now and save!
SAVE REG. 87¢-1.17
Girdles Assorted styles & sizes. Entire Line
SAVE 20% OFF
Our Regular Retail Price
PRICES GOOD MAY 6-8

Pink And Blue Shower Honors Mrs. Whatley



MRS. TOMMY WHATLEY

Tribute Paid To Founders Of Delta Kappa Gamma

The Epsilon Delta Chapter of the Delta Kappa Gamma Society International met in Olton, at the Olton State Bank, Saturday, May 1, at 7:30 p.m. for a Founders Day Dinner.

Following the dinner, Mrs. Mary Rowlette, Lubbock, Area IX Director paid tribute to the founders of Delta Kappa Gamma using the theme "Keep Thou Thy Dreams."

Mrs. Jack Obenhaus, Muleshoe, was presented the Chapter Achievement Award by Mrs. Linnie Campbell, Olton.

Mrs. Clifton Finley, Muleshoe, chairman of the Ceremonials Committee, directed the installation of the officers for the new biennium 1976-78. The officers are President, Mrs. Jack Obenhaus, Muleshoe; First Vice-President, Mrs. Frank Cummings, Littlefield; Second Vice-President, Mrs. Eric Smith, Muleshoe; Recording Secretary, Mrs. Oneta Gary, Olton; Corresponding Secretary, Mrs. Gladys Parrish, Earth; and Treasurer, Mrs. Virginia Bowers, Muleshoe.

Mrs. Howard Cummings led the group in the singing of "America" and The "Delta Kappa Gamma Song."

Muleshoe members attending were Miss Virginia Bowers, Mrs. Joe Costen, Mrs. Clifton Finley, Mrs. Dorine Harbin, Mrs. E.W. Johnson, Mrs. John Miller, Mrs. Jack Obenhaus, Mrs. Oscar Rudd, Mrs. Eric Smith, and Mrs. John Watson.

Family Night To Be Held At West Camp

The West Camp Community will hold their monthly Family Night Saturday, May 8, at 8:00 p.m., at the West Camp Community Center.

Each family will bring either homemade ice cream or cake, to be served as refreshments.

There will be several games to play, some of which are "42", volleyball, horse shoes, and an assortment of table games.

A pink and blue shower honoring Mrs. Tommy Whatley, was given on Sunday, April 25, in the fellowship hall of the Richard Hills Baptist Church. Special guests were the honoree's mother, Mrs. Jackie Brown, her mother-in-law, Mrs. Susie Whatley, her maternal grandmother, Mrs. C.M. Splawn and her sister, Mrs. Wayne Peterson.

Mrs. Charles Hamilton served pineapple slush punch and yellow thumbprint cookies to the guests. Mr. Stork presided over the serving table as the centerpiece.

The hostess gift was a blue gown and robe with matching scarves. Serving as hostesses were: Mrs. Gerald Pepper, Mrs. Charles Hamilton, Mrs. Roy Whitt, Mrs. Lee Lewis, Mrs. Wendell Robison, Mrs. Loyd Garlington, Mrs. Bill Snell and Mrs. Jarrell Pruitt.

Muleshoe 4-H Club Met Monday

The Muleshoe 4-H Club met Monday, May 3. The meeting was called to order by Jimmy Gleason, president. Allan Harrison lead the pledge.

Robin Taylor, county extension agent, gave a talk about the Dress Review and the Record Book Workshop.

Reports were given by Kelly Harrison on the District Judging Contest held in Lubbock and Mrs. Jerry Gleason gave a report on the county 4-H Council Meeting held April 10. She also reported on the 4-H Fair to be held in September.

There was a short program on growing gardens and material concerning the subject was handed out to each member.

Refreshments were served by Jimmy, Jacinda and Jay Gleason to the following members present:

Michael Isaac, Jay Gleason, John Isaac, Tracy Tunnell, Casey McGlaun, Allan Harrison, Kelly Harrison, Holly McGlaun, Tamera Gilliland, Tim Sain, Justin Heltan, Mark Peden, Clyde Deuer Jr., Willie Joe Coleman, Jr., Shelly Cabrera, Penny Cabrera, Jana Grumbles, Shelly Sain, Theresa Coleman, Sean Shipman, Mandy Plank, Jacinda Gleason, Nettie Coleman and new member, Donald Jones.

Beth Watson Named Artist Of Month

The Muleshoe Art Association has named Beth Watson as artist of the month for May. She and her husband, Delbert, live south of the sandhills in the Baileyboro community, where she and her husband have farm and ranch interests. They also have a ranch in Deaf Smith County near Hereford.

Mrs. Watson has been painting about five years. Even though she still feels like a newcomer to the Art, she stated she feels lucky to live in a part of the country so rich in things to paint. Mrs. Watson likes to paint the common everyday things we encounter in our daily lives. She grew up locally and loves the wide open feel of the Plains.

She and her husband, Delbert, enjoy traveling. They have their own plane, which they hangar on their farm. They are a flying family as she and her husband and two sons fly. One son, Tom, is a police officer in Lewisville. He and his wife, Mary, have a son, Thomas. The other son, Jim, lives in Muleshoe and is a spray pilot, employed by Ken Russel.

The Watsons are interested in all community affairs. They are also involved in church work.

They attend First Assembly of God Church in Muleshoe, where he is a trustee and usher and she is song leader. She is an active member of the Muleshoe Hospital and Nursing Home Auxiliary, where she does volunteer work at the Hospital and Nursing Home and works at the Auxiliary Thrift Shop, where they are currently helping furnish the new hospital. She is Project Chairperson for the Auxiliary.

Mrs. Watson is a member of the Muleshoe Art Association. She has served as president and in various other offices. She has paintings hanging in several places of business in Muleshoe as well as in private homes in other states. She has won ribbons and awards in local shows. Mrs. Watson paints in oils, acrylic and water color but stated she prefers the watercolor and acrylic mediums, as they are faster and more suited to her temperament.

Her hobbies are sewing, quilting, collecting antiques and glassware. When asked how she felt about her painting, Mrs. Watson made this statement, "I don't consider painting a hobby, but a God given gift."

Mrs. Wrinkle Receives Degree

Mrs. Roy Wrinkle of Muleshoe, received her B.S. Degree from Eastern New Mexico University in Portales, N.M., Friday, April 30.

Weekend visitors in Mr. and Mrs. Roy Wrinkle's home for the occasion were: Mr. and Mrs. Elmer Schuster and Clay of Tucumcari, N.M.; Mr. and Mrs. Curtis Green of Del Rio; Otto Schuster, Jr., of Portland; Mrs. Emma Schuster of Tulsa, their daughters, Mrs. Terrell Ott of Denton and Miss Sharon Wrinkle, who attends South Plains College at Levelland and Gary Wrinkle, of the home.

Mrs. Ott is spending the week in Muleshoe so that she can also attend the graduation of her sister, Sharon, from South Plains College Friday, May 7, in the Texan Dome in Levelland.

West Plains Hospital Briefs

ADMISSIONS

April 30 - Maria L. Chavez and Gabriel Toscano.
May 1 - Lucille Lewis and Iva Lena Estep.

May 2 - Earlene Ragland and Jo Anne Head.

May 3 - R.B. Chappell, Charlie W. Durham, Winnie O. Davis and Leatrice Mardis.

DISMISSALS

May 1 - Zula Woolly, Nelda Mullins, Gustavo Carrera Jr., Sharon Rodgers, Inez Rodgers, Iva Joan Vinson, Hugh Young,

Cathy Gable, Eloise Gray and Lucille Lewis.

May 2 - Gabriel Toscano.

May 3 - Helen Grado, Odessa Shanks and Maria L. Chavez.
May 4 - Iva Lena Estep, Jo Anne Head, Earlene Ragland, and Leatrice Mardis.

BIBLE VERSE

"Honor thy father and mother, that thy days may be long in the land which Jehovah thy God giveth thee."

1. The above reference is what commandment in the Decalogue?
2. What is unique about this particular commandment?
3. Do parents have any responsibility in respect to this commandment?
4. Where may this commandment be found?

Answers To Bible Verse

1. The fifth.
2. It is the only one of the ten which includes a promise to those who obey it.
3. They are to live so as to be worthy of their children's honor.
4. Exodus 20:12.

Eastern Star Attends Tea

Hereford Chapter No. 312, Order of the Eastern Star, hosted a Tea, honoring Grand Officers in District 2 Section 3, Sunday afternoon, in the Community Center.

The decorations and refreshments were in keeping with the Patriotic observance of the Bicentennial.

Mrs. Roberta Russell, Floydada, Deputy Grand Matron, District 2, Section 3, received the guests and presented them to the guest Grand Officers in the receiving line.

Grand Officers from Muleshoe Chapter were: Mrs. Mary Farley, member of American Heritage Committee and Wayne Williams, Champions of Freedom Committee. Others attending from Muleshoe Chapter were: Mr. and Mrs. Derrill Nowell, Worthy Matron and Worthy Patron; Mrs. Frank Hinkson and Mr. and Mrs. Bob Phillips.

Get Back At Him
Mrs. Gray - And did you enjoy your camping trip, my dear?

Mrs. Young-Immensely. It was the first chance I had to complain of my husband's cooking.



Shane Everett

Mr. and Mrs. Gary Don Rodgers of Friona are parents of a new baby boy, named Shane Everett. He was born April 30, at 3:14 a.m. at the West Plains Medical Center and weighed six pounds and 11 ounces.

John Evan

Mr. and Mrs. Danny Kelley of 815 West Avenue B, Muleshoe, are the parents of a new baby boy, named John Evan Kelley. He was born April 24, at 3:07 a.m., at the West Plains Memorial Hospital and weighed six pounds and eleven ounces. This is the Kelley's second child. He has a two and a half year old daughter, Erin.

Paternal grandparents are Mr. and Mrs. John Frances Kelley of DeQueen, Arkansas. Maternal grandparents are Shirlee Richardson of Muleshoe and Jack Richardson of Pinedale, Wyoming.

Great grandparents are Mrs. Leonard Evans and the late Leonard Evans, who the baby was named after, and Ida Evans, of Tulsa.


PTA Members Attend Spring Conference

Members of the 14th District PTA, held their Spring Conference Friday, April 23, at the Springlake-Earth School. State PTA President, Mrs. A.T. Leveridge and Senator, Kent Hance, were the special guests and spoke to approximately 225 delegates.

The Progress 4-H members presented the musical entertainment during the noon luncheon break.

Attending from the Muleshoe Elementary PTA were Mrs. Tom Flowers, Mrs. Butch Duncan, Mrs. Gary Shipman, Mrs. Robert Hunt and Superintendent, Neil Dillman.

A MOTHER'S DAY DREAM




TOWN & COUNTRY AUTO has a long line of New Pontiacs, Oldsmobiles, and Buicks. They also have a wide selection of good used cars. Come by and let us help you choose your new car today!

Your GMC truck Headquarters.

TOWN & COUNTRY AUTO





Something for MOTHER

Christy Ivy, Of St. Clair's Department Store Has Just Received 5 Dozen New Pieces Of Lingerie.

Now Is The Perfect Time To Come In And Select A Gift For Mother's Day


All Employees Of St. Clairs Will Be Happy To Help You Choose A Gift.

St. Clair's

Muleshoe
272-4453

Fri. - Sat. - Sun.

Sidney Michael Poitier Caine



The Wilby Conspiracy

starring **Nicol Williamson**

PG COLOR United Artists

May 7, 8, 9

X. I. T.

DRIVE-IN THEATRE
MULESHOE, TEXAS

GARAGE SERVICE

MAJOR/MINOR TUNE-UP



It pays you to keep your car engine in top operating condition; you get better mileage and far more dependability. When you have a major or a minor tune-up you will pay less when you bring your car to us.



FREE ESTIMATES
Phone 272-4567
South Main
Muleshoe



Mrs. Delbert Watson

MMTA Install New Officers

The Muleshoe Music Teachers Association met Friday, April 30, at the Corral Restaurant, for their final meeting of the year. The meeting was called to order by Mrs. Sam Damron, president.

First order of business was a treasurer's report, given by Mrs. Jean Craft. It was approved by the members attending. Arrangements were then discussed for the trip to the State Convention in Austin. All members were encouraged to attend.

Appreciation was expressed to Mrs. Loveta McKinstry for years of service and dedication to MMTA. She will be resigning this year as a member. Mrs. McKinstry was one of the founding members of MMTA and a member stated they are very grateful for her interest and concern through the years.

Officers for the 1976-77 year were then installed by Mrs. Sam McKinstry. They are as follows: President, Mrs. Micky Sowder; Vice-President, Mrs. Sam Damron; Secretary and Treasurer, Mrs. John Jones; Student Affiliate Chairman, Mrs. Jimmy Craft; Nominating Committee Chairman and Historian, Mrs. Dale Jahay.

Possible programs were then discussed for the 1976-77 year. The following suggestions were discussed: Another Olton-Muleshoe Piano Festival in April, Joint Recitals in November and January and Texas Composer and Theory Test in March and February.

Members attending were: Mrs. Sam McKinstry, Mrs. Sam Damron, Mrs. Micky Sowder, Mrs. Dale Jahay, Mrs. Jimmy Craft and Mrs. John Jones.

Chocolate Cream Cake



This extraordinarily moist chocolate cake almost shouts, "Surprise!" — with its party-filling baked right inside. One secret ingredient, buttermilk, provides rich tenderness. Another, vanilla pudding, adds creamy texture to the filling. Prepare the pudding filling early, then assemble the final cake when convenient.

Spread half of the batter in the pan, cover with pudding and top with remaining batter. After baking, frost with chocolate frosting or simply dust with confectioners' sugar to add the finishing touch.

Chocolate Cream Cake is really something to boast about when you bake it with enriched flour. Enrichment adds the essential B-vitamins — niacin, thiamine and riboflavin — and the mineral, iron, to the natural goodness already available in flour.

- Chocolate Cream Cake
one 13 x 9-inch cake
- | | |
|--|---|
| <p>1 package (3 1/4 oz.) vanilla pudding and pie filling (not instant)</p> <p>2 cups enriched flour*</p> <p>1 teaspoon baking soda</p> <p>1 teaspoon baking powder</p> <p>1/2 teaspoon salt</p> <p>1/2 cup butter</p> <p>1 cup sugar</p> <p>2 eggs</p> | <p>2 square (1 oz. each) unsweetened chocolate, melted</p> <p>1 teaspoon vanilla extract</p> <p>1/4 cup buttermilk</p> <p>1/4 cup chopped pecans</p> <p>Chocolate Frosting OR sifted confectioners' sugar</p> |
|--|---|
- Prepare pudding according to package directions. Cool completely. Stir together flour, soda, baking powder and salt. Cream butter and sugar until light and fluffy. Beat in eggs. Blend in chocolate and vanilla. Add flour alternately with buttermilk, beginning and ending with flour. Stir in nuts. Spread 1/2 of the batter in greased 12 x 9-inch baking pan. Spoon pudding evenly over batter. Spoon and spread remaining batter over pudding. Bake in preheated 350° oven 40 minutes. Cool completely. Frost with chocolate frosting or sprinkle with confectioners' sugar.
- *Spoon flour into dry measuring cup; level. Do not scoop.

Beta Sigma Phi Chapters Hold Annual Founder's Day Banquet



Mrs. Tommy Little



Mrs. Eric Smith



Mrs. Kearney Scoggin



MR. Kearney Scoggin



Dr. Charles Pummil

Forty-five years ago, Walter W. Ross had an idea to begin a women's organization with the purpose of enriching its members' lives culturally and socially, so on April 30, 1931, in Abilene, Kansas, Beta Sigma Phi began with seven members. Since then it has grown to be the largest Greek letter organization for women in the world, with over 250,000 active members in over 10,000 chapters. Founder's Day is a time to remember the past, to plan for the future, and to appreciate the present. In honor of this occasion, Alpha Zeta Pi and Xi Omicron Xi, chapter of Beta Sigma Phi, held their annual Founder's Day banquet, Friday, April 30, at the Muleshoe Country Club, which was decorated in Calico Country style. Marcia Henry served as Mistress of Ceremonies. Mrs. Eric Smith led the opening ritual and the invocation was given by Mrs. Ken Box.

A meal of salad, steaks, baked potatoes, rolls, tea and coffee was served. Marcia Henry welcomed the husbands, who were special guests, and the members attending. Highlights of Alpha Zeta Pi's year were given by Mrs. Monty Dollar. Some of these were Kid's Day, July 4, the Ben Marney show, Fall rush, the Bingo Carnival, building a float for the Christmas Parade, helping a needy family, a Valentine Ball, and a party for the Nursing Home. Mrs. Joe King gave the highlights for Xi Omicron Xi's year which were a raffle for a painting for the Hospital, a Halloween party, the Christmas Home Tour, helping a needy family, a party for new members, a Bingo party for the Nursing Home, and parties for the special education class at richland Hills. Mrs. Tom Jinks gave the Founder's Day Pledge. A message from Bill Ross, son of the late Founder Walter W. Ross, was read by Mrs. Tommy Black. Out-going President, Mrs. Kearney Scoggin, recognized retiring officers and committee chairmen of Alpha Zeta Pi. They are Mrs. Monty Dollar, vice-president and membership; Mrs. Gary Shipman, recording secretary; Mrs. Jerry Wenmohs, corresponding secretary and courtesy; Mrs. Tommy Black, treasurer; Mrs. Jerry Gleason, extension officer and telephone; Mrs. Ted Barnhill, and Mrs. Dick Chitwood, social; Mrs. Mike Miller, ways and means; Mrs. Louis Cardinal, service; Mrs. Bob Finney, Program; Mrs. Danny Noble, publicity; Mrs. Paul Wilbanks, yearbook; and Mrs. Tommy Merritt, scrapbook. Mrs. Monty Dollar presented Mrs. Kearney Scoggin with a gift of appreciation for her loyal service as president of Alpha Zeta Pi.

to any member of Beta Sigma Phi and Mrs. Scoggin and Mrs. Smith were chosen by their fellow members because of their dependable and dedicated service to their chapter. They worked hard all year and helped to promote the Life, Learning, and Friendship of Beta Sigma Phi. It was announced that the international theme for 1976-77 will be "Follow the Rainbow Road" then Mrs. Max King led the closing ritual.

Members and their husbands attending were Mr. and Mrs. Eric Smith, Mr. and Mrs. Max King, Mr. and Mrs. Curtis Walker, Mr. and Mrs. Danny Noble, Mr. and Mrs. Monty Dollar, Mr. and Mrs. Kearney Scoggin, Dr. and Mrs. Charles Pummil, Mr. and Mrs. Gary Toombs, Mr. and Mrs. Jerry Wenmohs, Mr. and Mrs. Tommy Merritt, Mr. and Mrs. Ted Barnhill, Mr. and Mrs. Bob Finney, Mr. and Mrs. Tommy Black, Mr. and Mrs. Steve Black, Mr. and Mrs. Dave Marr, Mr. and Mrs. Mac Brown, Dr. and Mrs. Jerry Gleason, Mr. and Mrs. Tim Foster, Mr. and Mrs. Louis Cardinal, Mr. and Mrs. Mike Miller, Mr. and Mrs. Paul Wilbanks, Mr. and Mrs. Tommy Little, Mr. and Mrs. Ken Box, Mr. and Mrs. Gary Shipman, Mr. and Mrs. Clifford Black, Mr. and Mrs. Corky Green, Mr. and Mrs. Spencer Tankley, Mr. and Mrs. Dick Chitwood, Marcia Henry, Mrs. Joe King, Mrs. Doyce Turner, Mrs. Tom Jinks, and Mrs. Glen Watkins.

Fashion

Hats are beginning to come back in style—particularly in the larger cities. The huge hair-dos were responsible, to a large extent, for the custom of women going hatless these past few years. Straws are popular and turban scarfs are also favorites.

Hair-dos are more natural this season than in several years past. They may be curly or straight but all have a clean look.

New Station For SPS Nearing Completion

Southwestern Public Service Company's new Harrington Station northeast of Amarillo, is nearing completion, and it will be the first SPS generating plant to use coal as its primary fuel. The coal that will be used in the plant is low-sulphur western coal mined and brought in by unit train from Gillette, Wyoming. The trains have about 110 cars designed and built specifically to haul coal. Each unit train brings about 10,000 tons of coal to the plant on a twice-a-week schedule.

The BTU content of the coal SPS is receiving from the mines in Wyoming will average about 8,700 per ton. The test is computer programmed and a digital thermometer records the temperature rise as the sample burns while a digital printer records the results on tape.

The next test is to determine the percent of volatile elements in the coal—primarily the amount of hydro-carbons and fixed carbon in the sample. A weighed sample is placed in a crucible and placed in a 555 degree C. electric furnace for six minutes to remove the moisture. The sample is then placed in a second oven for an additional six minutes at 950 degrees C. Then the sample is weighed and the weight loss represents the amount or percent of volatile materials.

Another important aspect of the coal that must be determined in the laboratory is the percent of ash it contains. To make this test, the sample is placed in a 750 degree C. furnace equipped with forced air. Complete combustion is attained in this analysis and all that remains is the ash—oxides of iron, aluminum, silica, calcium and magnesium.

The coal that SPS is receiving for use at Harrington Station has approximately five percent ash. This means that in every 100 ton car of coal there will be about five tons of ash. The 350,000 kilowatt unit at the new plant will use about 1-million tons of coal per year, leaving about 50,000 tons of fly ash.

Southwestern Public Service Company engineers are now looking at various markets and uses for the fly ash. It is particularly suited for use as a roadbed material, as an additive for concrete mixes and for landfill uses.

When coal is burned in a boiler, it is necessary to know the fusibility or melting point of the ash. At certain temperatures, the ash begins to form slag inside the boiler and on the outside of the boiler tubes. This can eventually cause major problems in the boiler and lead to a complete shut-down for cleaning and repairs.

To determine the fusibility of ash, the sample is shaped into a cone and heated in an ash fusion furnace. By viewing the sample through an optical pyrometer, a device for measuring the temperature of glowing objects, the melting point can be determined.

The percent of trace metals in the coal sample are determined by the use of an atomic absorption spectrophotometer. The sample is burned in a graphite furnace and a spectral light beam analyzes the sample. Finally, the coal sample is given a sieve analysis to check the size of the coal and to make sure it is not too large for the crusher equipment at the power plant. On the other hand, if the coal is too fine, it will be hard to control and create dust problems. This test also checks the performance of the coal pulverizer at the plant.

The introduction of coal as a boiler fuel marks a milestone in the energy picture for the 45,000 square miles served by Southwestern Public Service Company. No more power plants will be built by SPS that use natural gas as the primary fuel. However, gas will play an important role for some time to come. But, the future belongs to coal and ultimately to uranium and nuclear power.

The organization is also sharply critical of the present Welfare System, saying that it "discourages free enterprise and encourages dependency upon the government."

TFWC Urges HEW Dissolution

Approximately 600 delegates of the Texas Federation of Women's Clubs approved Wednesday a resolution calling for the "immediate and complete dissolution of the Department of Health, Education and Welfare." The TFWC members from throughout Texas also voted to join the Texas and Southwestern Cattle Raisers Association and Independent Cattlemen's Association in urging the passage of Senate Bill No. 2875, which raises the estate tax exemption to \$200,000, announced TFWC President Harriette Williford Whatley.

Along with these two emergency resolutions, delegates also voted to encourage Congressional restudy of the National Health Planning and Resources Development Act of 1974. Mrs. Ramon Liles serves as TFWC Resolutions Chairman.

In their action on HEW, the Texas Federation cites the excessive growth of HEW, an excessive budget, the increasing bureaucracy of the National Health Service and the deficiencies in the education system as prime reasons for the proposed HEW dissolution.

"We feel strongly that the control of education should be returned to the local community and that the financing of education should be a duty of the state, with tax monies remaining within the state," say TFWC members in the resolution.

The TFWC Convention continues through Friday at the South Park Inn.

Addressing themselves to Senate Bill No. 2875, the organization has urged the raising of the estate tax exemption to \$200,000, for "immediate and direct relief to farm and ranch businesses essential to the economy of the country."

By encouraging a restudy of the National Health Planning and Resources Development Act of 1974, the Federation voices serious doubt on the necessity of this massive reorganization of women, to act upon both of these emergency resolutions.

SMILES

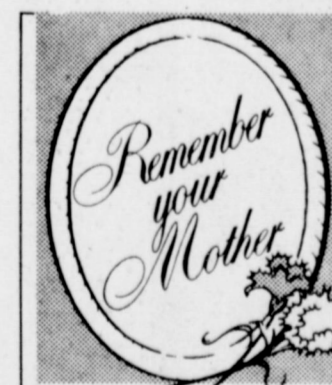
Frank
Father: "My boy, I never kissed a girl until I met your mother. Will you be able to say the same thing to your son?"
Junior: "Yes, Dad. But not with such a straight face."

Hope So
A small boy, visiting New York for the first time, went in an elevator to the top of a skyscraper. As he shot past the 62nd floor at breathtaking speed, he gulped, turned to his father, and asked "Daddy, does God know we're coming?"

No Conversation
The telephone operator answered an agitated summons from a call box.
"Oh, miss," came a tearful feminine voice, "can I have my ten cents back? Albert won't speak to me."

Dog Team
Jim: Why do you call your dog Baseball?
John: He catches flies, chases fowls, and runs for home when he sees the catcher coming.

Definition
Secret--Something that is hushed about from place to place to place.



Remember Your Mother This Year With Beautiful Flowers. We Have Hallmark Cards, Corsages, & Arrangements. Muleshoe Floral & Gift 272-4287

MOTHER

Just like you, and we think she deserves the best while dining out on her day.

The Corral offers many different types of food, and you can enjoy your meal in a relaxed atmosphere.

Corral Restaurant

1008 W. Amer. Blvd. Muleshoe 272-3182

REMEMBER MOTHER ON MOTHERS DAY

SUNDAY MAY 9th

Have your selection beautifully gift wrapped free.

Texsheen LINGERIE

Candy Stripes...

...frosted with white lace for Mother's Day giving!

A truly beautiful sleepwear collection with the luxurious look of nylon tricot yet the easy-care comfort of polyester and nylon. In Pink or Aqua. Long gown and robe in sizes Small, Medium and Large. Mini gown in Extra-Small, Small, and Medium.

- A. Long robe to fling on over the short or long gown. Sleeve flounce repeats the tiered effect. \$13
- B. The Camisole look atop a tiered skirt with all the charm of an old-fashioned petticoat—for thoroughly modern mothers. \$12
- C. A brief answer to your gift problems: pure flattery in this mini gown with separate bikini panties. \$9

GET PROFESSIONAL carpet cleaning results!
(At do-it-yourself prices)

RENT OUR RINSEVAC—the new portable, easy-to-use hot water extraction carpet cleaning machine that gently...

- rinses carpet fibers with hot water and cleaning solution
- loosens and lifts dirt, grime and residues to the carpet surface where they are immediately vacuumed up
- leaves your carpets CLEAN and FRESH!

Rent for only \$12.00 a day

Western Auto associate store
The Family Store

The Pastor Speaks
By Rev. Evetts

THE MISSION OF THE CHURCH: Matthew 28:19-20 "Go ye therefore, and teach all nations, baptizing them in the name of the Father, and of the Son, and of the Holy Ghost: Teaching them to observe all things whatsoever I have commanded you: and, lo, I am with you always, even unto the end of the world." Amen.

This is one of the last earthly scenes in life of our Lord and Saviour. We find Him giving His final word to the disciples before he left to go back to His Father. If we look carefully at the passage - we will find that it contains several very interesting things.

WE FIND FIRST A MISSIONARY TASK: God did not leave the church without a work to do. Neither did He leave it without instruction as to how to do it. Christ seemed to reduce the sum-total of Christianity into one burning motto and then lay it upon the hearts of His followers.

WE FIND SECOND THE MISSIONARY FUNCTION: This passage reveals the nature of the Holy Crusade on which the disciples were sent. They were to win men to the Lord by teaching them their need of God - their dependence upon God for help - and by showing them how to find God. Of the ten living religions today - Christianity is the only one that bases its program upon truth, knowledge, light and information.

NEW & USED Furniture Swap Shop
272 3074 213 S. 1st

And one can easily see that these words give us everything He had taught the disciples in the three years of His public ministry. He unfolded the One Supreme purpose in the heart of God - The Motive for Christ's coming to earth - the purpose for which the church was organized - and the task of all Christians till He would come again. The winning of a lost world is the Supreme Task of the church and every individual believer. This command from God has not yet been fulfilled - neither has it been repealed. It therefore, hangs over our heads as a challenge - calling us to our best and to our duty.

WE FIND SECOND THE MISSIONARY FUNCTION: This passage reveals the nature of the Holy Crusade on which the disciples were sent. They were to win men to the Lord by teaching them their need of God - their dependence upon God for help - and by showing them how to find God. Of the ten living religions today - Christianity is the only one that bases its program upon truth, knowledge, light and information.

And it is the only living religion that can point to a living Saviour. Christianity figures that the more people know - the greater the possibility of winning them to the Lord Jesus Christ. Christianity deals in a relative manner with both the head and the heart of man. The appeal is made to the intellect as well as to the passions of the soul.

WE ALSO FIND THE MISSIONARY SYMBOLISMS: Judaism was a religion of symbols - The Temple, the white-robed priests - the sacrifice - the altar - the candlesticks - the table of shew bread - and everything that went to make up the Jewish religion was symbolic of a greater spiritual truth. Christianity also is a religion of symbols. We are instructed in this passage to baptize the believers. We have two symbols - baptism and the Lord's Supper. Each one of them separately and both together symbolize the death, burial and resurrection of our Lord and Saviour. In fact, the entire spiritual phase of our gospel is crowded into each of

these ordinances. They become a living - moving picture of the central facts and truths of the Christian Religion.

AND THEN WE ALSO FIND A MISSIONARY GUARANTEE: Christ promised to be with His disciples to the end of time and even to the end of the world. No greater assurance can come to the heart of the Christian than the fact that Jesus is with him in every undertaking. Every burden, every sorrow, every heartache, and every step of the way, Jesus is with us. We have the wisdom, the guidance, and the strength of God as we seek to carry out His will. This vital fact is further reinforced by other promises made by Him. On one occasion Jesus said: "Upon this rock I will build my church and the gates of hell shall not prevail against it." In simple language this means that: "all of the forces of evil may throw themselves against the work of the church - but they cannot overcome it." This promise is enough by itself to strengthen the people who are seeking to carry out the Great Commission of the Lord.

And it is the only living religion that can point to a living Saviour. Christianity figures that the more people know - the greater the possibility of winning them to the Lord Jesus Christ. Christianity deals in a relative manner with both the head and the heart of man. The appeal is made to the intellect as well as to the passions of the soul.

WE ALSO FIND THE MISSIONARY SYMBOLISMS: Judaism was a religion of symbols - The Temple, the white-robed priests - the sacrifice - the altar - the candlesticks - the table of shew bread - and everything that went to make up the Jewish religion was symbolic of a greater spiritual truth. Christianity also is a religion of symbols. We are instructed in this passage to baptize the believers. We have two symbols - baptism and the Lord's Supper. Each one of them separately and both together symbolize the death, burial and resurrection of our Lord and Saviour. In fact, the entire spiritual phase of our gospel is crowded into each of

MULESHOE LITTLE LEAGUE MAJORS - 1976

FIRST HALF	SECOND HALF
May 10 Veterans - Mustangs	June 3 Lions - Cardinals
Cardinals - Lions	Sox - K-Bars
May 11 K-Bars - Sox	June 4 Savers - Longhorns
Longhorns - Savers	Mustangs - Veterans
May 13 Sox - Cardinals	June 7 Mustangs - Lions
Lions - Mustangs	Cardinals - Sox
May 14 Longhorns - Veterans	June 8 K-Bars - Savers
Savers - K-Bars	Veterans - Longhorns
May 17 K-Bars - Lions	June 10 Longhorns - Sox
Sox - Longhorns	Lions - K-Bars
May 18 Cardinals - Mustangs	June 11 Savers - Veterans
Veterans - Savers	Mustangs - Cardinals
May 20 Mustangs - Longhorns	June 14 Cardinals - K-Bars
Sox - Veterans	Longhorns - Mustangs
May 21 Savers - Lions	June 15 Veterans - Sox
K-Bars - Cardinals	Lions - Savers
May 24 Cardinals - Savers	June 17 Longhorns - K-Bars
K-Bars - Longhorns	Savers - Cardinals
May 25 Lions - Veterans	June 18 Sox - Mustangs
Mustangs - Sox	Veterans - Lions
May 27 K-Bars - Veterans	June 21 Lions - Sox
Sox - Lions	Veterans - K-Bars
May 28 Longhorns - Cardinals	June 22 Savers - Mustangs
Mustangs - Savers	Cardinals - Longhorns
May 31 Longhorns - Lions	June 24 Veterans - Cardinals
K-Bars - Mustangs	Lions - Longhorns
June 1 Sox - Savers	June 25 Mustangs - K-Bars
Cardinals - Veterans	Savers - Sox

— Make-Up games will be played June 28, 29, July 1, 2 if necessary. Home team is listed last. First game is to begin no later than 6:15 p.m. No inning of first game may start after 7:30 p.m. Second game is to begin no later than 8:00 p.m. No inning of second game may begin after 9:30 p.m. Official time is kept by umpire.



SPECIAL PRICES from

Golden Central American
BANANAS
Lb. **19**^c

Vine-Ripened
Cantaloupe Lb. **39**^c

Add the Gourmet Touch
Artichokes Ea. **39**^c

California Fresh
Broccoli Lb. **49**^c

We Have A Complete Selection Of
Flower & Garden Needs

Florida New Crop
SWEET CORN
Ears **\$1**⁸

Heavy Aged Beef
Blade Cut,
CHUCK ROAST
Lb. **78**^c

Farmer Jones
— Lean
SMOKED PICNICS
Lb. **68**^c

Piggly Wiggly, Grade A
Large EGGS
Doz. **59**^c

Boneless, Lean
Stewing Beef Lb. **\$1**¹⁹

Farmer Jones
Franks 12-oz. Pkg. **78**^c

Smoked Hot
Link Sausage Lb. **98**^c

Double Your Money Back Meat Guarantee
At Piggly Wiggly, we are so confident of the superior quality of our fresh meats that we proudly offer an unconditional guarantee that gives you double your money back on any fresh meat purchase which does not completely please you. So, if the meat you buy does not completely satisfy you, see our store manager and the purchase price will be refunded, double!

7-Bone, Heavy Aged Beef,
Steak You Can Broil
CHUCK STEAK
Lb. **88**^c

USDA Grade A,
Breast or Leg
FRYER QUARTERS
Lb. **49**^c

Bell
Sour Cream 8-oz. Ctn. **65**^c

Piggly Wiggly
Butter 1-Lb. Pkg. **\$1**²⁹

Piggly Wiggly
Cottage Cheese 12-oz. Ctn. **49**^c

Halves, Sliced, Or Diced
DEL MONTE PEACHES
16-oz. Cans **\$1**³

Bula News
By
Mrs. J. Blackman

Miss Oralia Davila, daughter of Mr. and Mrs. Ben Davila of Bula, was in Snyder the past weekend, representing the Bu-

la-Enochs Lions, as Sweetheart, at their District 2T2 Convention. Her escort for the banquet Saturday night was Donnie Nichols, of Three Way, son of Mr. and Mrs. Dale Nichols. Lions attending the District 2T2 Convention were president of the local Lions, D.J. Cox, accompanied by his wife, Laverne, and James Sinclair, zone chairman and his wife, Ann. Sinclair was appointed Deputy

District Governor for zones 7-A and 7-B. Both lions were voting delegates.

Mrs. Pearl Walden accompanied by her daughter, Mrs. Marie Aaron of Carlsbad, N.M. have recently returned from a visit of several days with rela-

tives in Oklahoma and Arkansas. They visited with her sister, Mrs. Cathrine Balcom, at Ringland, Okla. Another sister, Mrs. Tina Brooks and two brothers, Henry and Clarence Allred at Duncan, Okla, two brothers, Clyde and R.B. Allred at Commanche, Okla. They also visited

with a daughter of Mrs. Walden, Mr. and Mrs. Perry Lynch at Clinton, Arkansas and a grandson of Mrs. Walden's.

Mr. and Mrs. Ronnie Walden at Rushfield, Arkansas.



CHILDREN'S CRUSADE . . . On Thursday, April 29, at 7:30 p.m. at the Assembly of God Church, the Owen Family Crusade started off with a bang. There were between 150-250 children attending each night all week long. The program was started off with the children giving their offerings. Both girls and boys had a team and the boys won. The winning team got play money that they cashed in later for candy and



games. Then Rev. Owen and his puppets presented a program to the children. He also had his talking monkey, Koko with him. Rev. Owen and Koko sang a duet and the service was closed with a chalk talk. This was a picture painted with fluorescent pastels.



Thank You
for your support and
confidence in me during
the recent election.
John Blackwell

PIGGLY WIGGLY

Duet China
Complete Your Collection
Now. **49c**
Each Piece Only

Cloverlake
ICE CREAM
\$1.09
1/2-Gal. Round Ctn.

Plus Deposit
COCA COLA
\$1.39
32-oz. Btls. 6-Pk.

Del Monte, Cut
GREEN BEANS
\$1.41
16-oz. Cans

Piggly Wiggly, Frozen
WHIPPED TOPPING
\$1.49c
9-oz. Ctn.

Piggly Wiggly, All Layer Varieties
Cake Mix 18 1/2-oz. Box **59c**

Sunshine's Vanilla
Wafers 11-oz. Pkg. **69c**

Piggly Wiggly, Light
Chunk Tuna 6 1/2-oz. Can **45c**

Piggly Wiggly, Assorted Colors, 1 Ply,
Paper Towels 2 145-Ct. Rolls **89c**

Piggly Wiggly, Chocolate
Drink Mix 2-Lb. Box **\$1.69**

Van Camp's
Pork & Beans 2 15-oz. Can **69c**

Piggly Wiggly, Natural Juice Chunk, Crushed, or Sliced
Hawaiian Punch 15-oz. Can **49c**

Piggly Wiggly, Instant
Potatoes 15-oz. Pkg. **69c**

Piggly Wiggly, All Varieties
Frozen Vegetables 3 8-oz. Pkgs. **\$1**

All Varieties,
Piggly Wiggly Shampoo 16-oz. Btl. **79c**

Del Monte
FRUIT COCKTAIL
\$1.31
17-oz. Cans

Del Monte
GREEN PEAS
\$1.31
16-oz. Cans

Cream Style or Whole Kernel
DEL MONTE CORN
\$1.41
17-oz. Cans

Colgate
Dental Cream 5-oz. Tube **73c**

Sudan News

By Mrs. Wayne Doty

Grandma (Mrs. S.A.) Williams, resident of the Knights Rest Home, Littlefield, was admitted to the Medical Arts Hospital, Wednesday, April 7, suffering with pneumonia. Last report she was feeling some better. Her son, Mr. and Mrs.

C.A. Williams, of Bula, was visiting in California at the time she took ill. They rushed home and also his sisters, who they were visiting came too. Mrs. Ruth Henrick of Carmichael and Mrs. Christine Kulhanek of Los Angeles. Another daughter,

Mrs. Velma Smith and sons, Ray, Wayne and H.L., came up from Burleson, and are here to help take care of their mother. Grandma Williams is 93 years old, and was a resident of the Bula community for many years before moving to the Knights Rest Home.

Mr. and Mrs. W.R. Adams spent the weekend in Lubbock, visiting in the home of his nephew, Mr. and Mrs. Alan Telford.

Mr. and Mrs. Earl Shields and children Rosslyn, Kennon and Patrice, came up over the weekend to visit in the home of her mother, Mrs. Lorilla Jones and also to be with her sister and children, Mrs. Carl Jones, Britt and Leslie, who are visiting here from Swainsboro, Georgia. Shields and Kennon went home Sunday afternoon, with Mrs. Sheild and girls staying over until Wednesday.

Mr. and Mrs. Joe Halthcock of Carlsbad, New Mexico visited in the home of the Nolan Harlans. They went on to Amherst for a visit with her mother, Mrs. Mary Britt.

Mr. and Mrs. John Latham drove to Elida, New Mexico Sunday afternoon for a visit with friends, Mr. and Mrs. Tom Best.

Mrs. V.C. Weaver met her niece, Mrs. Bill Maxwell Black of Ventura, California, at the Lubbock air terminal, Sunday afternoon. Monday the ladies drove to Portales, New Mexico, where she will visit with other relatives, before coming back here for a longer visit.

Mr. and Mrs. Nolan Harlan visited with his mother Mrs. Lula Harlan, at the Knights Rest Home Saturday, and took her out for lunch. They try to do this for her each week.

Jeff Austin of Lubbock, went home Wednesday, after spending a week here with his grandparents, the Raymond Austins.

Three-Way School turned out for their Easter vacation, Thursday afternoon at 2:00 p.m. Classes will resume at 8:30 a.m. Tuesday morning. Thursday morning an Easter program was put on by students of the grade school in the school cafeteria.

Mr. and Mrs. Doyle Terrell are vacationing at Pine Top, Arizona.

Mrs. Ann Walker and girls are vacationing at San Saba.

Coach and Mr. Jackie Stewart

vacationed at Lake Amstead and also in Mexico during the holidays. They also visited Mr. and Mrs. Al Scott and children.

Mrs. Dorothy Drake recently returned home from Bogota, South America, where she visited ten days with her sister and family, Mr. and Mrs. Fred Phillips. She and another sister, Mrs. G.L. Goodwin of North Carolina met in Miami where they planned for Bogota. Upon their return to the States she

visited with a niece and her family, Mr. and Mrs. Bill Murphy, Sean, Brian and Patrick.

Mrs. Bill Myer of Houston, is visiting this week in the home of her parents, Mr. and Mrs. Bob Drake. She plans to return to Houston on Thursday.

Radney Nichols has returned home from Houston, where he received tests and treatment.

Decline of U.S. joblessness rate predicted.

Best Of Press

No Clock Watcher
The secret of success is to do all you can without thought of fame.

Definition
Hangover: Something to occupy a head that wasn't used the night before.

-Review, Plymouth, Wis.

GIFTS for MOM

ON HER DAY

Mother Should Have The Best,
And At Cobb's You'll Find It.

Cobb's Has A Wide Selection
Of Dresses, Lingerie, Sportswear,
Shoes And Much More.

We Will Be Happy To Help
You Select The Perfect Gift
For Her.

Cobb's



ATTENTION MULESHOE AREA CATTLEMEN

In regard to dead stock removal... If you have a problem with service... whether in the feed yard or on the farm... Please give US a chance! Thank You.

YOUR LOCAL USED
COW DEALER IN
MULESHOE
Ph. 965-2903
Mobil 965-2429
Muleshoe
BI-Products

Anthony's
CR ANTHONY CO.

MAY DAY SALE

THURSDAY
FRIDAY
SATURDAY
ONLY

3 DAY GIANT

JUNIOR
Or
LADIES
PANTS
TOPS
DRESSES
Or
GIRLS
DRESSES
And
TOPS

All Sales
Final
Extra Charge
For
Alterations &
Gift Wrap

Buy 1 at
Regular price
Get 1 of
Equal Value
For 1¢ More

SALE

Thurs.,
Fri.,
Sat.
Only

FINAL 3
DAYS

PANT SUIT CARAVAN

JUST IN TIME
FOR
MOTHERS
DAY

FAMOUS 'HAMILTON 8'

15 STYLES. SIZED 8 TO 20
100% POLYESTER DOUBLE KNIT WITH
LONG OR SHORT SLEEVES.

\$17.88 Reg. \$20
SUIT to \$36
YOUR CHOICE Value
3 \$49 FOR



GOLDEN VEE
SHIRTS **\$3**
Value to \$9

Denim or Twill
MENS
JEANS Value to \$14.50 **\$5**
Levi, Lee, Blue
Buckle
Flare & Super Bell
While they last.

SPECIALLY SELECTED GROUP
MENS AND LADIES
SPRING SHOES **1/2** PRICE
3 DAYS ONLY

3 DAYS ONLY
MENS
LEISURE
TRIOS
100% Polyester
Double Knit
Linen Stitch
JACKET & MATCHING
PANTS PLUS
COORDINATING
CHECK PANTS
All 3 Pieces
Reg. \$40
Value **\$28.88**



"ACCORDING TO OUR LATEST POLL YOU'RE FOUR POINTS AHEAD IN DALLAS, BUT THIRTY POINTS BEHIND IN MULESHOE."

The Muleshoe Art Loft WANTS YOU TO KNOW EVERYTHING

you always wanted to know about proper care and repair of your furniture.

Saturday, May 8th 1976

SEE THE NEW
FORMBY ANTIQUE WORKSHOP FILM
A representative will be here to give a demonstration and answer your questions in addition to the film.

Mr. Formby's NEW hour-long training film reveals the secrets of the experts. This second edition of FORMBY'S ANTIQUE WORKSHOP offers more in depth, detailed instruction in the art of furniture refinishing. Learn how to remove cigarette burns, remove water rings and layers of wax, hand rub a finish, repair cracks and holes, repair veneer, repair picture frames, clamp and glue woods, clean silver and brass, and many other tips to help you restore and preserve your beautiful furniture. Because of the scarcity of fine woods many of today's pieces are irreplaceable. Bring a pencil and paper to take notes. Naturally, there's no charge for admission.

May 8th, 1976

One O'clock p.m.

The Muleshoe
Art Loft

1529 W. Amer. Blvd.

Ph. 272-3485

Muleshoe, Texas

Chic, easy-to-handle and surprisingly roomy featuring multi-compartments. Available in White and Bone.

Lovely Handbags
Values to \$13
\$8.76

**WANT...
TO BUY?
TO SELL?
RESULTS?**

WANT ADS

**...WILL
WORK
FOR YOU!**

OPEN RATES
1st insertion, per word - 9¢
2nd and add., per word - 6¢
NATIONAL RATES
1st insertion, per word - 11¢
2nd and add., per word - 7¢
Minimum Charge - 50¢
CARD OF THANKS - \$3.00
Classified Display - \$1.25
per column inch.
Double Rate for Blind Ads -
DEADLINE FOR INSERTION
Noon Tuesday for Thursday
Noon Friday for Sunday
WE RESERVE THE
Right to classify, revise or
reject any ad.
NOT RESPONSIBLE
For any error after ad has
run once.

FOR SALE: 181 Acres irrigated, 1 well. Lays real good on highway. West of Progress. 160 acres irrigated, 6" wells. North of Bovina on FM highway. 320 acres north of Bovina. Priced to sell.
15 acres with new 3 bedroom 1 3/4 bath home. Has 4" well. Sheds and corrals. Near Progress.
J.B. SUDDERTH REALTY INC.
BOX 627
FARWELL, TEXAS
481-3288
8-15t-tfc

FOR SALE: 16" well casing, new steel 18" 2c a lb.; 6" and 8" column pipe. 1/2 prices for junk iron.
FARWELL PIPE & IRON
601 Ave. A
Farwell, Texas
15-46t-tfc

Foster Homes For The Aged, Blind, Disabled Needed

Foster homes are needed in Lubbock and surrounding south plains counties to provide care for aged, blind, or other disabled adults who can no longer continue living in their homes, but who are not medically eligible for nursing home care, according to Orand Carroll, adult social services supervisor, Texas State Department of Public Welfare. The foster family home program is one of the adult programs provided by the department as an alternative to institutional care.

"We are seeking warm hearted people who have room in their homes for one to three aged or disabled people who are not related to them," Carroll said. "The foster family must be willing to help provide opportunities for social, recreational and religious activities as appropriate. They would not need to provide health related services."

Upon notification, the social worker will interview prospective foster care providers and check to see that the home meets health and safety standards. They will also give ongoing consultation to approved providers on any problems that may arise, Carroll added.

"We would help the persons seeking foster care and those wishing to give it to get acquainted before further arrangements are made," Carroll stated. "This is, really, a family-sharing program where all concerned need to be congenial. We expect it to enrich the lives of all concerned."

Cost of the foster care is shared by each receiver and the welfare department, who together pay a total of \$220 per person per month to the provider, according to agency regulations.

Carroll asked persons interested in learning more about providing this service to contact the local social services worker. Local residents may write Carol White at P.O. Box 631, Littlefield, Texas 79339, or call her at (806) 385-4416.

1 PERSONALS
PTL(PRAISE THE LORD) Channel 28, 8:30 - 10:30 a.m. Monday through Friday.
15-12s-tfc

FOR SALE: One 2 bedroom house to be moved. Contact Ed Cox at Fry and Cox. 272-4511. 8-14s-6tcc

ALCOHOL AND DRUG ABUSERS
Want help... need a home... want a new start in life? Call collect Plainview (806) 293-8651. 15-17t-8tc

ONE MINUTE SPORTS QUIZ

1. Who won golf's Tournament of Champions?
2. Name the winner of the Phoenix Ladies Pro Golf Tournament.
3. Julius Erving plays pro basketball for what team?
4. Ken Rosewall is associated with what sport?
5. Who won the Boston Marathon?

- Answers To Sports Quiz**
1. Don January.
 2. Judy Rankin.
 3. New York Nets.
 4. Tennis.
 5. Jack Fultz.



Services Held For Logan

On Sunday, May 2, funeral services were held for Henry Otto Logan, 82, of Quitaque. The services were held at 2:30 p.m. in the First Baptist Church in Quitaque, with Floyd Bradley and Elgin Conner officiating.

Burial was in the Resthaven Cemetery under the direction of Quitaque Funeral Home.

Logan died about 3:30 p.m., Friday, in West Plains Medical Center, in Muleshoe where he had been a patient for one week. He was a native of Howard County, Arkansas. Logan married the former Bertha Jacobs, May 1, 1917, in Empire, Arkansas. She died in 1967. Logan was a member of the Turkey First Baptist Church.

Survivors include two daughters, Mrs. Ruth Brunson of Quitaque and Mrs. Bettie Harrison of Muleshoe; two sons, Odell of Amarillo and Jack of Denver City; a brother, C.L. of Glenwood, Arkansas; 11 grandchildren and eight great-grandchildren.

3 HELP WANTED
WANTED: Still taking applications for workers at Allsup's 7-11.
3-46s-4tc

FOR SALE: 1968 Chevrolet pickup. Call 272-4831.
9-18s-2tc

DEPENDABLE SERVICE. Backhoe - Frontloader Cesspool Pumping Drain Cleaning Roto-Rooter Roto-Tilling Light-Hauling
DWAIN WHEAT
272-3378
If no answer call at noon or after 5 p.m.
15-11t-tfc

Thank You

I appreciate your help in winning this election.

Feel Free to visit the Commissioners Court any time.

Again may I say "Thank You" for your support.

W.M. (Matt) Dudley

Dear Friends,

I would like to take this means to express my gratitude and appreciation for your support in my bid for re-election as District Attorney for the 154th Judicial District. I thank you for the confidence shown in me, and I pledge to you my continued efforts to carry out the duties of this office.

Sincerely,

JACK YOUNG

WANTED: Apartment manager for 60 units in Friona. Experienced, mature, and dependable. Also part time maintenance manager. Write details to:
SARATOGA GARDENS
BOX 305
FRIONA, TEXAS 79035
3-19t-2tc

9 AUTOMOBILES
FOR SALE: 1969 Ford pickup. Call 965-2417.
9-19t-tfc

PHILLIPS HOUSE OF MUSIC
118 Main
Clovis, New Mexico
Pianos, organs, band instruments, new and used. Professional repairs, sheet music, rentals, terms.
Phone: 505-763-5041.
15-30s-tfc

AVON
Need cash for Mother's Day, Father's Day, Easter and graduations? Make good earnings on your own time selling quality products. Call 272-3208.
16t-3-6tc

FOR SALE: 1968 Chevrolet pickup. Call 272-4831.
9-18s-2tc

REDUCE SAFE AND FAST with GoBese tablets and E-Vap "water pills". **DAMRON DRUG.**
15-17t-10tpt

WANTED: Life guard at Muleshoe Country Club. Contact Bob Lee.
3-17s-3tc

FOR SALE: 1974-428 Ford Irrigation motor \$400. 40 HP Electric motor and panel 440 volts \$675. 50 HP gear head 3 to 4 ratio \$300. Phone 272-4602 after 5 or 266-5969 after 8.
10-18s-3tc

FOR SALE: In-dash Am/8 track stereo taken out of a 76 Camaro. Under-dash Teac automatic reverse cassette player. Both with speakers. Call Randy at 272-3319 or 272-4739.
15-18t-tfc

5 APTS. FOR RENT
MOVING NOW - Nice 1, 2 and 3 bedroom apartments. Fully carpeted, individual heat-air. 1 1/2 baths, utilities paid, playground, laundry facilities.
Saratoga Gardens
1300 Walnut Street
Friona, Texas
247-3666
Office hours 10-6
5-3t-tfc

FOR SALE: 1969 travel trailer. Sleeps six. \$1050. 321 East Dallas. 272-3925.
11-19t-2tc

FOR SALE: Heavy truck tarps, 10' x 22'. \$40 each. Trade Center. 272-4592.
15-18t-3tc

6 ROOMS FOR RENT
FOR RENT: One bedroom. Call 272-4831.
6-18s-2tc

FOR SALE OR TRADE: Car wash on Highway 84. We are capable and want to help you with your hair problems. We are located at the Hideaway Style Shop in Cactus Alley, 2610 Salem Ave., Lubbock, Tex. Behind the Concord House on the Brownfield Highway. Please call for an appointment or drop by for consultation. 795-8008.
15-18t-4tp

FOR SALE: 1970 Model 2 bedroom mobile home. Ideal for lake or mountain cabin. Call 272-4411
11-15s-0tc

8 REAL ESTATE
FOR SALE: 1/2 sec. good land, 5 miles n.w. of Muleshoe. 1 8" irrigation well, 2 bdr. house.
80 acres for sale. Eight miles west of Muleshoe on south side of highway 84. Three irrigation wells.
Smallwood Real Estate
116 E. Ave. C
Muleshoe, Texas
Ready built house to be moved. Two bedroom. 1028 square feet. To be sold by sealed bids to the highest bidder. We refuse any or all bids. Located 1/2 mile east of Bula. Phone 933-2120.
8-19t-7tc

FOR SALE: Grain-fed beef calves. For your locker. 1/2 or whole. 925-3510. Leldon Phillips
11-2t-tfc

FOR SALE: Attrex, Milogard 52.70. Treflan Eradicane and Round-up. Wholesale on most all Ag. chemicals - Farmers' Sales - Dendy. Lorenzo. Call 806-634-5382.
11-50s-31tc

FOR SALE: Three bedroom 1 1/2 bath carpeted with garage, fenced yard. Phone 272-3520.
8-19t-8tc

FOR SALE: Attrex, Milogard 52.70. Treflan Eradicane and Round-up. Wholesale on most all Ag. chemicals - Farmers' Sales - Dendy. Lorenzo. Call 806-634-5382.
11-50s-31tc

FOR SALE: 1974-428 Ford Irrigation motor \$400. 40 HP Electric motor and panel 440 volts \$675. 50 HP gear head 3 to 4 ratio \$300. Phone 272-4602 after 5 or 266-5969 after 8.
10-18s-3tc

FOR SALE: 2 bedroom and bath, large living room. Kitchen and dining room combination. Refinished throughout. 309 Ave. J Call 965-2868.
8-7t-tfc

FOR SALE: 1976 14' x 72' Mobile home. 2 bedroom - 2 bath. Furnished or unfurnished. Call 272-3331 after 5 p.m.
11-17t-tfc

FOR SALE: 1976 14' x 72' Mobile home. 2 bedroom - 2 bath. Furnished or unfurnished. Call 272-3331 after 5 p.m.
11-17t-tfc

SALES, LOANS AND APPRAISALS
In Bailey County 30 Years
KREBBS REAL ESTATE
210 S. 1st

FOR SALE: Used Singer sewing machine. Touch and Sew with cabinet. Straight stitch. \$100. Also used Kirby vacuum cleaner. Call 272-3826.
11-18s-tfc

FOR SALE: 12 x 64 mobile home. Two bedroom. 1 1/2 bath. Call after 6, 272-4192 or during day 272-5531.
11-18s-3tc

EXCLUSIVE LISTING: 160 acres for sale. Good land. 34 acres for sale. Good land. For quick sale call:
POOL REAL ESTATE
272-4716

FOR SALE: 16' 1969 Aristocrat Lo-Liner trailer, sleeps six. See at 512 West Avenue B after 5:30. 272-3436.
11-19t-2tp

FOR RENT OR LEASE: Business building, 5200 square feet. 422 N. 1st. 272-3767.
13-5s-tfc

Kirby Sales & Service
NEW & REBUILT
Carolyn Duncan Ph. 4182

FOR SALE: 16' 1969 Aristocrat Lo-Liner trailer, sleeps six. See at 512 West Avenue B after 5:30. 272-3436.
11-19t-2tp

FOR RENT OR LEASE: Business building, 5200 square feet. 422 N. 1st. 272-3767.
13-5s-tfc

ERADICANE 17 Plered 15-gal.
ATTREX 253 lb.
MLOGARD 258 lb.
HEPTACHLOR 2 lb.
ROUNDUP ?
I think I have the lowest discount on all Ag Chemicals.
FARMERS SALE - DENDY
806-634-5382
CALL COLLECT
LORENZO, TEXAS
17-18t-12tc

WHEAT, Mites, chinchbugs, greenbugs are killing your wheat, not just dry weather. Don't lose irrigation investments.
J.L. COX SPRAYING
933-2300
17-13s-10tc

Definition
Nonchalance: The ability to look like an owl when you've acted like a jackass.
-Argosy, Nickerson, Kan.

Good Idea
Few question the benefit of taking a brisk early-morning walk. Few take such walks.
-News, Boone, Ia.

17 SEED AND FEED
ATTENTION FARMER!! We now have **WEATHER MASTER SEEDS:** Hybrid Corn, Alfalfa, grain sorghum, forage sorghum, soybeans, and cereal grain. Call Laverne Harvey collect 806-272-4626 or 247-8828
17-13t-tfc

I Would Like To Express My THANKS And Appreciation To Those Who Supported Me In The Recent Election

James Warren

OPEN 24 HOURS

ALLSUP'S CONVENIENCE STORES

OPEN 24 HOURS

WE'VE GOT ROUND-THE-CLOCK BARGAINS FOR YOUR CONVENIENCE!

PRICES GOOD THURSDAY THRU SUNDAY, MAY 6-9, 1976

HOT COOKED FOODS

•BBQ CHICKEN •BBQ RIBS
 •HOT LINKS •MILD LINKS
 •BURRITOS •CORN DOGS
 •GERMAN SAUSAGE •BULK BBQ BEEF
 •BBQ BEEF SANDWICHES

32 oz. 6 BTL. CTN.
COCA-COLA
\$1.29
 PLUS DEPOSIT

PRINGLES BUY 1 PAK GET 1 FREE
POTATO CHIPS \$1.25
RANCH STYLE Has a d Pleasing
BEANS 16 oz. Can 4/\$1
FOLGERS 1lb. Can
COFFEE \$1.49
LIQUID 22 oz.
JOY 69¢
SHURFRESH SALTINE 1 lb. Box
CRACKERS 2/89¢

LADY BORDEN'S ICE CREAM

39¢

ALLSUP'S DAIRY FAVORITES

BORDEN'S DUTCH CHOCOLATE MILK 49¢
BORDEN'S LITE-LINE COTTAGE CHEESE 59¢

SHOP THE FRIENDLY, CONVENIENT ALLSUP'S STORE NEAR YOU!

ALLSUP'S 824 MULESHOE, TEXAS
414 W. AMERICAN BLVD.

STATE CAPITAL Highlights AND Sidelights

by Lyndell Williams
TEXAS PRESS ASSOCIATION

AUSTIN — Another auto rate increase will be requested this summer.

An industry spokesman last week said companies which write insurance on cars are in a "back to the wall" bind due to inflation and the soaring cost of repairs.

Rates were boosted on an average of 17 per cent effective January 1.

The State Board of Insurance annual auto insurance hearing has been slated for July 15.

Jerry Johns, president of Southwestern Insurance Information Service, claimed the worst inflation in a quarter century is gripping insurers.

"Unless the industry seeks additional rate increases, the state's insurance industry stands to lose hundreds of millions of dollars next year," said Johns.

The SIIS spokesman estimated company losses nationwide last year at \$4.5 billion.

Johns said car repair costs and medical expenses covered by auto policies have tripled during eight years.

Many companies, said Johns, are facing escalating costs which "seem to rise almost daily" and must have rate relief to survive.

Bell Rapped

A State Senate sub-

committee by a three-to-two vote adopted a staff report criticizing Southwestern Bell Telephone Company expenditures for entertainment.

The report claims Bell inflated figures going into its rate base by inclusion of "questionable expenses."

Company spokesmen challenged the report and said it "reaches conclusions not supported by fact" and ignores testimony contradicting the conclusions.

Courts Speak

Texas Supreme Court held the press and public have no blanket rights to see all police records.

Third Court of Civil Appeals upheld a 1975 act regulating mobile home manufacturers and distributors.

In other actions, the Supreme Court upheld a \$155,000 damage award

to E. J. Richard, a Union Oil Co. ship officer, and a \$55,000 settlement to a San Antonio city employee burned by gasoline.

The Court of Criminal Appeals affirmed a life sentence conviction of a Dallas repeat offender for carrying a pistol into a place selling alcoholic beverages.

Suit Filed

Atty. Gen. John Hill

filed civil suits for more than \$2 million which he alleged was stolen from the Duval County Conservation and Reclamation District.

The largest of three suits alleges establishment of a secret account at the First State Bank of San Diego used to make payments and purchases with water district tax money.

Funds Reallocated

More than \$4.5 million

in federal Hill-Burton construction funds have been reallocated to 14 facilities across the state by the Texas Department of Health Resources board.

About \$3.8 million worth in loan funds went to hospitals in Dallas, Beaumont, Lubbock, Clarksville and Mount Pleasant.

Rehabilitation grant funds went to Houston, Fort Worth and Lubbock institutions.

Modernization funds were reallocated to El Paso, Dallas, Denton, Liberty, Woodville and Coleman hospitals.

Rehabilitation grants totaled \$151,754 and modernization funds \$525,198.

AG Opinions

A contract to purchase land for a school building is public information which must be produced for inspection or duplication under the open

records act, Atty. Gen. Hill said.

A contracting governmental authority may require a prime contractor to execute a bond for contracts not in excess of \$15,000, Hill concluded in another new opinion.

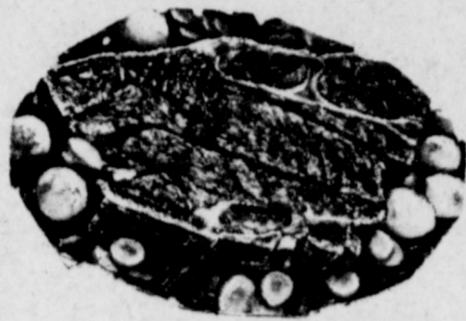
Hill also stated, in a third opinion, that persons may not represent themselves as landscape architects unless they are licensed as such.

Challenge Suggested

Texas Water Quality Board Director Hugh Yantis suggested a state suit may be needed against the federal Voting Rights Act decisions hamper efforts to control water pollution.



Aisles of Good Savings



SWIFTS PREMIUM PROTEN BEEF
ARM ROASTS lb. **\$1.09**

SWIFTS PREMIUM PROTEN BEEF
RIB STEAK lb. **\$1.19**

PEYTONS' RANCH BRAND SKINLESS
FRANKS 12 oz. Pkg. **59¢**



EL JACALITO CORN 40 COUNT
TORTILLAS PKG. **55¢**

SWIFTS PREMIUM PROTEN BEEF
RANCH STEAK lb. **\$1.09**

HORMELS BLACK LABEL THIN SLICED
BACON 1 lb. Pkg. **\$1.59**

ARMOUR'S MUENCHNER BRAND
SUMMER SAUSAGE lb. **\$1.09**

HORMELS WRANGLER'S SMOKED
FRANKS 1 lb. Pkg. **\$1.29**

OWENS PURE PORK HOT OR MILD
SAUSAGE 2 lb. Bag **\$2.57** 1 lb. Bag **\$1.29**

Belle's Patterns With A WESTERN Flair



SIZES
6 TO 18
\$2.50

#1260

Ladies' Squaredance Dress with Three Versions

Step into the swing of things with this squaredance dress in three versions. View A is sleeveless featuring a ruffled neckline that scoops low in the back and a large ruffle around the hem of the 8-gore skirt. View B is a basic style with a modified scoop front neckline and short puffed sleeves, and a large ruffle around the hem of the skirt.

Printed pattern 1260 in sizes 6 to 18. Send \$2.50 for this pattern... add 50¢ handling and postage. Send to:

Belle's Patterns
P. O. Box 841 - Dept. 451
Hurst, Texas 76053

MULESHOE BABE RUTH BASEBALL 1976

- President
CHARLES BRATCHER
- Vice-President
JACINTO BARA
- Secretary-Treasurer
DAVE SUDDUTH
- Player Agent
WAYNE CRITTENDEN
- Directors
EUGENE HAWKINS
CLARENCE COPELAND
ED NORTH CUTT
CLAUDE GREGORY, JR.

- SCHEDULE -

May 1	Cats - Pilots	3:00
May 1	Colts - Lazbuddie	5:00
May 3	Lazbuddie - Pilots	7:00
May 4	Colts - Eagles	7:00
May 6	Lazbuddie - Cats	7:00
May 7	Pilots - Eagles	7:00
May 10	Pilots - Colts	7:00
May 11	Eagles - Cats	7:00
May 13	Eagles - Lazbuddie	7:00
May 14	Cats - Colts	6:30
May 17	Pilots - Cats	8:00
May 18	Lazbuddie - Colts	7:00
May 20	Pilots - Lazbuddie	7:00
May 24	Eagles - Colts	7:00
May 25	Cats - Lazbuddie	7:00
May 27	Colts - Cats	7:00
May 28	Eagles - Pilots	7:00
June 1	Cats - Eagles	7:00
June 3	Colts - Pilots	7:00
June 4	Lazbuddie - Eagles	7:00
June 7	Colts - Lazbuddie	7:00
June 8	Cats - Pilots	7:00
June 10	Colts - Eagles	7:00
June 11	Lazbuddie - Pilots	7:00
June 14	Lazbuddie - Cats	7:00
June 15	Pilots - Eagles	6:30
June 17	Pilots - Colts	7:00
June 18	Eagles - Cats	7:00
June 21	Eagles - Lazbuddie	7:00
June 22	Cats - Colts	7:00

— Home Team Listed First —

FARMSTEAD ASST. FLAVORS ICE CREAM

1/2 GAL. CTN. **99¢**

- 64 oz. Bottle Downy
FABRIC SOFTENER **\$1.59**
- 14 oz. Ajax
CLEANSER **25¢**
- 14 oz. Johnson Floor
FURNITURE POLISH **\$1.59**
- Fab Giant Size Box
DETERGENT **\$1.19**
- 10 oz. Cello Pkg. American Beauty Long
SPAGHETTI **35¢**
- 46 oz. Can White Swan Pink
GRAPEFRUIT JUICE **49¢**
- #309 Can White Swan
WHITE HOMINY **5/\$1**
- #3 Can Diamond Cut
YAMS **39¢**
- 24 oz. Bottle Kraft Pure
SAFFLOWER OIL **\$1.39**
- 5 oz. Can Swifts Premium
VIENNA SAUSAGE **39¢**
- 7 1/2 oz. Can Mountain Pass
TACO SAUCE **35¢**
- 2 lb. Box Nestle
CHOCOLATE QUIK **\$1.99**
- 30 lb. Bag Purina
DOG FOOD **\$5.99**
- 12 oz. Can County Kist Golden Whole Kernel
CORN **3/89¢**
- 2 lb. Box River
RICE **69¢**
- 16 oz. Bottle
PREM **\$1.29**
- 1 lb. Tub White Swan
SOFT OLEO **49¢**



Frozen Food

- 9 oz. Ctn. Birdseye
COOL WHIP **59¢**
- Mortons
DONUTS **69¢**
- Banquet
T.V. DINNERS **59¢**
- 10 oz. Pkg. Birds Eye Chopped
TURNIP GREENS **29¢**

Fresh Produce

- Colorado White Russets 10 lb. Bag
POTATOES **79¢**
- California Sunks:
LEMONS **1b. 29¢**
- California K.Y.S.
GREEN BEANS **1b. 29¢**
- Banana Yellow
SQUASH **1b. 35¢**

CLOSE OUT SPECIALS

New!

1975 Malibu Sport Coupe
Loaded!

Two- 1975 Low Mileage
Impalas
Personal Cars Of John &
Arthur Crow



**CROW
CHEVROLET**

We Welcome
**USDA
FOOD STAMP
COUPONS**

COME TO CASHWAY
FOR YOUR
**WIC
CARD PURCHASES**

**GUNN BROS
STAMPS
DOUBLE
EVERY
WEDNESDAY**

White's CASHWAY
STORE HOURS: 7:30 a.m. THRU 9:00 p.m. Monday Thru Saturday - CLOSED SUNDAY
We Reserve The Right To Limit Quantities

Listen To
MULE TRAIN
Over KML
10:15 a.m.
Sponsored By
WHITE'S CASHWAY

STORE HOURS
7:30 a.m. til 9: p.m.
MONDAY thru SATURDAY
CLOSED SUNDAY