

Weather

Table with 3 columns: Date, High, Low. Rows for Nov. 9, 10, 11, 12.

MULESHOE JOURNAL

'The Community of Opportunity-Where Water Makes the Difference'



Volume 53 Number 46.

10 Pages

Published Every Thursday at Muleshoe, Bailey County, Texas 79347

10 Cents

Thursday, November 13, 1975

Tower, 'Funds Available For Hospital'

ISD Trustees Okay Board Policies

The Board of Trustees of the Muleshoe Independent School District approved several Board Policies Monday night during their regular meeting.

personnel file in the School Administration office. Refer: Texas Education Code, Chapter 2, Section 2.06

B. Foreign visiting instructors, refugees, and political refugees from conquered countries are exempted from the requirements in Subsection (a) of this section if they file an affidavit, on a form prescribed by the attorney general of Texas, stating, among other things, that they are not members of the Communist, Fascist, or Nazi parties, nor of any band, or affiliated organization, and that they will not engage in any un-American activities, nor teach any doctrines contrary to the constitution and laws of the United States of America or of the State of Texas.

Mrs. Gorrell Honored By Veterans



Mrs. Lula Gorrell was honored during the Armistice Day Breakfast held November 11 at the American Legion Hall.

Christian Gives Jaycee Program

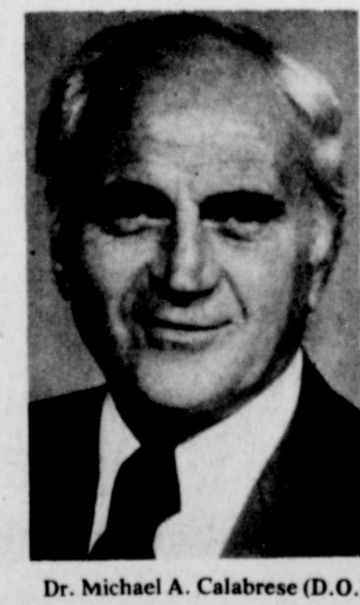
The Muleshoe Jaycees met at noon Monday at the American Legion building for their regular meeting.

TCOM Change To State Med School

Dr. Michael A. Calabrese (D.O.), president of the Texas Osteopathic Medical Association, will report on the conversion of the Texas College of Osteopathic Medicine into a state medical school in his official visit to TOMA District X at the Gridiron in Lubbock at 4:00 p.m. Sunday, November 16.

Shower Planned For Hao Family

A Welcome To Muleshoe Shower is being given for the nine members of the Doan Viet Hao family from Vietnam, who recently moved to the Muleshoe area and are sponsored by Mr. and Mrs. R.H. Black.



Dr. Michael A. Calabrese (D.O.)



PINNED UNDER PICKUP . . . Fred Esquivel had his hand pinned underneath a pickup parked in a garage at 710 S. Sixth. The accident occurred between 11 and 11:30 a.m. Tuesday.

Local Branch Top In Fund Raising

The Bailey County Branch of the West Texas Chapter of the Arthritis Foundation received the Arthritis Foundation Distinguished Public Service Award for the branch in the chapter that raised the most money, percentage-wise to their goal,

through the third quarter of the year. The Bailey County Branch had at that time raised 267% of their goal and something over \$400 had yet to be counted, as raised from the ticket sales for

the CB radio given away last week.

This award was presented at the annual meeting of the West Texas Chapter held in Amarillo at the Villa Inn, Saturday, November 8th, and was accepted on behalf of the Bailey County Branch by Mrs. Sam Damron, local branch president.



Mrs. Sam Damron

Hearing Slated For November 20

AUSTIN--A public hearing to consider proposed regulations under the Texas Pesticide Control act will be held here at 10 a.m. November 20, Agriculture Commissioner John C. White has announced.

The new state pesticide control act regulating the sale and use of pesticides was enacted to enable the state to conform to Federal regulations.

The act provides for the registration of pesticides, licensing of dealers, and testing and licensing of applicators of restricted use pesticides.

The hearing will be conducted by representatives of the Texas Department of Agriculture, the Texas Water Quality Board, the Texas Animal Health Commission and the Texas Department of Health Resources.

All interested persons are encouraged to attend. Cont. on Page 3, col. 3

MHS Rodeo Club Sets Turkey Shoot

The Muleshoe High School Rodeo Club, a member of the Tri-State Rodeo Association, is sponsoring a Turkey Shoot November 15-19 one mile west on the Clovis Highway.

Early School Dismissals Announced

Superintendent Neal B. Dillman has announced that school will be dismissed in Muleshoe at 2 p.m. on Friday, November 14, in order to have bus drivers to go to the Dumas Football Game.

Rosie Gutierrez Is Contest Winner

Rosie Gutierrez, 412 W. Fifth in Muleshoe is the winner of the football contest this week. The contest is sponsored by the Muleshoe Journal. She missed only two games.

record is being kept of weekly winners. The winner of the contest will receive two tickets to the Cotton Bowl in Dallas and \$50 in cash.

Weekly contest winners may pick up their checks at the Journal office.

ESA Radio-Thon Brings In \$1,197

The Community of Muleshoe supported the Epsilon Sigma Alpha Radio-Thon with a "fantastic" response of \$1,197, reported the Epsilon Chi Chapter of the sorority Tuesday. The Radio-Thon was held over Radio Station KMUL Saturday, November 8, which began at 6:30 a.m.

The sorority reports with the total from last years Cake Auction, the above amount makes a total of \$2,587 raised by ESA to give to the Hospital Action Fund.

ESA expresses their appreciation to Rev. H.D. Hunter, chairman of the Action Committee, Mrs. J.E. McVicker, member of the Action Committee, serving as Memorial Chair-

City Schools To Note Education Week

Neal B. Dillman announces that the Muleshoe Schools will observe American Education Week November 16-22, and this is an appropriate time for all to recommend themselves to making America's schools better.

Fred Mardis, High School principal, and Wayland Ehrig, Junior High principal invite all parents to Open House at the High School and Junior High on Monday evening, November 17, from 7:00 to 9:00 p.m.

Milton Oyler, principal of Ryeland Hills Primary invites everyone to visit this campus from 6:30 to 8:30 p.m., on Tuesday November 18, and confer with teachers and other staff members.

Bill Taylor, principal of Mary DeShazo Elementary announces that Open House for Mary DeShazo will be from 7:00 to 9:00 on Tuesday, November 18.

Trustees Call Special Meet

Don Harmon, president of the Muleshoe Independent School District Board of Trustees called a special meeting of the board Tuesday November 11 at 7:30 p.m. to examine, study and discuss in detail a draft contract to combine the School and City Tax offices.

Also on the agenda will be discussion and a review of problems encountered with computer services on the Tax Roll.

Mayor Williams Commends People

U.S. Senator John Tower announced Tuesday that the Farmers Home Administration has approved a \$600,000 loan to the West Plains Medical Center, Inc. in Muleshoe.

The Federal funds will be used to build a hospital and renovate present facilities in the Medical office.

Max King, president of the local hospital board said, "I am very glad this happened."

Clinton Kennedy, Farmers Home Administration in Muleshoe also said he is very happy about the announcement and stated his office will try to move ahead with the necessary paper and legal work as quickly as possible.

Mayor Alex Williams said, I am extremely pleased and feel

the funds could not be used in a better way. The Board of Directors, Hospital Administration and the people of Muleshoe and surrounding area are to be commended for a job well done. I think the hospital improvements are a necessity for our community and I feel the funds can be repaid as the loan requires.

Rev. H.D. Hunter, chairman of the Citizens Committee to raise funds for the hospital when told of the approval said, "Oh, this is what we have been waiting for. This is a real thrill. I'm happy and thankful. We felt in our hearts this would come through and were still going ahead on faith. This is the final step, with the EDA Grant, FmHA loan and with notes and pledges the people have signed, this is what we will be able to build with. There were three steps that had to be taken and this is the final phase. We should be under construction by

Farm Bureau Drafts Proposed Resolution

WACO--The resolutions committee of the Texas Farm Bureau has finished drafting a set of proposals which will be submitted to voting delegates at the organization's annual meeting Nov. 30-Dec. 3 in San Antonio.

Meeting in Waco Nov. 10-12, the 41-member committee had the responsibility of studying more than 1,000 county recommendations on scores of subjects and then writing a set of proposed resolutions incorporating the consensus of opinion expressed.

The majority of county recommendations dealt with union and governmental interference with farm exports, animal health regulations, environmental restrictions, energy

policies, taxation, forced busing and inflation. Bill Reid of Lamesa, TFB vice president, is chairman of the resolutions committee. M.L. (Bob) Price of Plantersville, TFB state director, District II, is vice chairman; and Doyle Condra of Talpa, TFB state director, District 7, is committee secretary.

Other members of the committee are: R.B. Phillips, Memphis; Carol Wall, Perryton; Jack Osborne, TFB state director, District 1, Pampa; Danny Grant, Levelland; Phil Garrett, Muleshoe; Larry Hausmann, Muleshoe; A.L. Bell, Jr., Chillicothe; Arnold J. Koester, Olney; and T.J. Richards, TFB state director, District 3, Paducah. Also, Charles M. Rice, Gunter; Cont. on Page 3, Col. 4.



ESA CHECK TO HOSPITAL . . . Mrs. Jerry Harrison, treasurer of ESA presents Rev. H.D. Hunter, Chairman of the Hospital Citizens Committee, with a check in the amount of \$1,197 raised by Epsilon Sigma Alpha's Radio-Thon. Looking on are Mrs. Ed Cox, president of ESA, and Mrs. Wiley Moore, member of the Hospital Citizens Committee. Pictured left to right are Mrs. Harrison, Mrs. Cox, Mrs. Moore and Rev. Hunter.

# Recovery Brightens Outlook For Cotton Use

RALEIGH--While good weather is improving the prospects for the final outturn of the 1975 cotton crop, signs of continued economic recovery are pointing to a substantial improvement in domestic cotton consumption.

Economists at Cotton Incorporated here now think domestic consumption of cotton may reach 7.4 million bales in the 1975-76 crop year, an increase over their previous expectations of 7.0 million bales.

At the same time, because of a month of good weather throughout much of the cotton belt, they are increasing their estimate of the final outturn of the 1975 crop from 8.5 million to 8.7 million bales.

At the same time, because of a month of good weather through-

out much of the cotton belt, they are increasing their estimate of the final outturn of the 1975 crop from 8.5 million to 8.7 million bales.

"The economic recovery has been far more robust than most observers considered possible," says David Cox, Cotton Incorporated vice president for economic research and development.

The Gross National Product increased 11.2 per cent in the third quarter of 1975, and industrial production increased in September at its highest monthly rate in 11 years, Cox points out.

"Both the textile industry in general and cotton in particular have been sharing in those advances," he adds.

August retail sales of cotton goods increased nine per cent

over sales in August 1974 and three per cent over sales in August 1973, a period of strong sales, Cox's figures show.

"Over the past year cotton has shown more market strength at the retail level than the synthetic fibers posted gains of only 1.5 and 2.0 per cent over sales in August 1974 and August 1973."

In September the seasonally adjusted daily mill use of U.S. upland cotton was 27.5 thousand bales, according to Cotton Incorporated economists. "That figures out to an annual rate of 7.2 million bales," Cox points out.

Cox says duPont, the giant of the synthetic fiber industry, recently announced a five cents

a pound price hike for polyester staple. The increase raises the company's price of polyester to 55 cents a pound. It is the second price increase since June, when duPont sold polyester staple at 42 cents a pound.

The price hike indicates that duPont also views the economy as still strengthening, Cox believes.

As the U.S. economy moves briskly ahead, economies of foreign nations are just emerging from the doldrums, Cox reports.

Improvements in foreign economies of foreign nations are just emerging from the doldrums, Cox reports.

Improvements in foreign economies, coupled with signs

of a decrease in expected foreign cotton production, should mean stronger export sales later in the crop year, he speculates.

"The United States is in an enviable position to benefit from a worldwide economic recovery next year," Cox declares.

He warns, however, "The U.S. economy must still be con-

sidered fragile." A fully recovered domestic economy, Cox believes, will depend on increased consumer confidence, sustained retail sales, and a tolerable inflation rate.

The outlook of the Cotton Incorporated economists is in the October "Cotton Summary" just published by the company.

## Consumer Deputies Look For Dangerous Yule Lights

WASHINGTON, D.C. (Oct. 31)

The U.S. Consumer Product Safety Commission today launched its sixth Consumer Deputy program to utilize the assistance of hundreds of volunteers nationwide to canvass stores for potentially hazardous Christmas lights.

Last December, the Commission issued a warning that approximately 300,000 sets of indoor-outdoor miniature Christmas lights that sold around the country over the past two years could present severe hazards of electric shock. The companies involved initiated a voluntary recall of potentially dangerous sets.

A CPSC area office survey underway since July of manufacturers, importers, and distributors already has turned up over 100 cases of decorative lights with possible defects or hazards. The Commission is seeking voluntary corrective action by the companies, but could initiate a hearing to seek mandatory repair, replacement, or refund for consumers.

According to a CPSC spokesperson, the Consumer Deputy programs augment official agency inspection efforts and serve important educational functions for both consumers and retailers.

The Consumer Deputies are trained by staff from the Commission's 14 area offices. The estimated 500-600 students, consumer and community organization members, and

state and local government workers will visit department, hardware, grocery and drug stores and ask store managers to survey the shelf stock.

Deputies also will provide retailers with a copy of a special fact sheet to help them evaluate the comparative safety of Christmas lights through five screening methods: cracked sockets, loose add-on end connectors, exposed bare wires, exposed bulb contact wires, and exposed socket contacts.

Past Consumer Deputy programs relating to children's fire resistant sleepwear in sizes 0-14, poison prevention packaging and toys have found virtually 100 percent cooperation by retailers. In some cases, official CPSC inspectors will make follow up visits.

The Consumer Deputy program for Christmas lights is being coordinated with the Commission's holiday season information program. Among the publications available free are: "Toy Safety, Always in Season," "The Safe Use of Electrical Toys," "Think Toy Safety Coloring Book," and fact sheets with safety tips on decorations, fireplaces, tricycles, bicycles and toboggans, sleds and snow disks.

To obtain any of these publications, as well as the special Christmas light guide for retailers, or for further information on the Consumer Deputy program call the Commission's toll free hotline: 800-638-2666. Maryland resident's only - 800-492-2937.

## Lobough Is Promoted

Oct. 30 - Marine Lance Corporal Larry G. Lobough, son of Mr. and Mrs. Tommie Lobough of Muleshoe, Tex., has been promoted to his present rank while serving at the Marine Corps Air Base, El Toro, Calif. A 1974 graduate of Littlefield High School, Littlefield, Texas, he joined the Marine Corps in June 1974.



## J. Otwell's Dad Buried

Funeral services were held for Robert Flurnoy Otwell, father of Jerrell Otwell of Muleshoe, on October 25 in New Orleans, La. The services were conducted by members of Forum Lodge No. 395 F and AM.

Otwell was born in Altus, Oklahoma on June 4, 1900. He served with the U.S. Merchant Marines during World War II.

Survivors include one son, Jerrell Robert of Muleshoe; one brother, Jay of Snyder, Oklahoma; two sisters, Mrs. Bell Murrell of Norman, Oklahoma and Mrs. Floyd Pershall of Snyder, Oklahoma. Also surviving are three grandchildren and one great grandchild.

## J.W. Moore Rites Slated

John William Moore, age 71, former Deputy Sheriff in Muleshoe from 1957 to 1969 died Tuesday morning at 8:00 a.m. in Fort Worth.

He was a sheriff, tax Assessor and collector in Claude from 1946 to 1957.

Moore is survived by his wife, Mrs. Alta Moore, one son, John W. Moore, Jr. and one daughter, Mrs. Elaine Brown all of Fort Worth; two brothers, Robert J. Moore of Amarillo and George R. Moore of Espanola, N.M. and one sister, Mrs. Bess Hill of Durango, Colo.

The services will be held at South Hills Christian Church in Fort Worth at 10:00 a.m. Friday. Burial services will be held in the Laureland Cemetery in Fort Worth.

**WINS CB RADIO** - Mrs. James Merritt is the winner of the CB Radio donated by the Reagan Cox, and given by the Arthritis Foundation. The drive was a success, a spokesman for the Foundation said as around \$450 was made from ticket sales. The Arthritis Foundation expresses their appreciation to the HECE students from Muleshoe High School for their help with the project.

## AG Exports Boost Activity

**COLLEGE STATION** - Two dollars for one! That's what happens when agricultural products are exported.

"In addition to being the main contributor to the United States' trade balance, agricultural exports spawn added business activity in the country," points out Dr. Russell McDonald, a marketing economist for the Texas Agricultural Extension Service.

"Agricultural products at the port of shipment were worth \$22 billion last year and generated an additional \$21 billion worth of business in the U.S. in the form of goods and services needed to produce these exports. This means that for every dollar's worth of agricultural exports, almost another dollar was generated in other areas of the economy," notes the Texas A&M University System economist.

The \$21 billion spinoff included \$6 billion in the farm sector, \$5 billion in food processing, \$5 billion in other manufacturing services, \$2 billion for trade and transportation, and \$6 billion for various other services.

# Perfectly Seasoned

With a "dash" of SAVINGS!

NORBEST TURKEY USDA GRADE 'A' SELF BASTED YOUNG HENS 10-15lb. AVG. **69¢** lb.

DECKERS QUALITY THIN SLICED BACON 12oz. Pkg. **1.19**

ARMOURS' MUENCHNER SUMMER SAUSAGE lb. **98¢**

NORBEST USDA GRADE 'A' SELF BASTED YOUNG TURKEY TOMS lb. **65¢**

SWIFTS' PREMIUM USDA GRADE 'A' SELF BASTED BUTTERBALL TOM TURKEY lb. **79¢**

VANCE'S PURE PORK COUNTRY STYLE SAUSAGE 2lb. Bag **\$2.89**

PEYTON'S FULLY COOKED BUTT HALF HAMS **\$1.19**

Swans Down CAKE MIX Asst. Flavors **45¢** 18 1/2 oz. Box

SPICY SPECIAL Maryland Club COFFEE **\$1.25** All Grades 11b. Can

PEYTON'S FULLY COOKED SHANK HALF HAM **1.09** lb.

**FREE! FREE! FREE!**

100 GUNN BROS. STAMPS WITH PURCHASE OF \$7.50 OR MORE AND THIS COUPON

**COLD POWER** \$1.19 32oz. Liquid For Dishes

**JOY** 99¢ 12oz. Johnsons Kit Softened Paste

**WAX** \$1.19 38oz. Box Biz Laundry

**PRE SOAK** \$1.59 30 Count Box Super Feminine Napkins

**KOTEX** \$1.39 5lb. Bag Gladiola All Purpose

**FLOUR** 69¢ 14oz. Bag Bakers Angel Flake

**COCONUT** 89¢ 48oz. Bottle

**CRISCO OIL** \$1.79 6oz. Box Topping Mix

**DREAM WHIP** \$1.19 6 Bottle Ctn. 32oz. Plus Deposit

**COKE** \$1.59 26oz. Heinz Tomato

**KETCHUP** 79¢ 15oz. Can Ranch Style

**BEANS** 3/89¢ 11oz. Can Del Monte Mandarin

**ORANGES** 39¢ 21oz. Win You Cherry

**PIE FILLING** 69¢ #303 Can White Swan W.K. Golden

**CORN** 25¢ #303 Can White Swan Luncheon

**PEAS** 25¢ 4 3/4oz. Gerber Strained

**BABY FOOD** 15¢

**ORANGE JUICE** 35¢ 6oz. Can Minute Maid

**COBBLER** 99¢ 21b. Pkg. Still Well Fruit

**CHOW MEIN** 99¢ 15oz. Chun King Chicken

**CAULIFLOWER** 39¢ 10oz. Pkg. Birds Eye

We Welcome USDA FOOD STAMP COUPONS

**TOMATOES** 39¢ CELLO PAK.

**WALNUTS** lb. 49¢ FRESH CALIFORNIA

**CUCUMBERS** lb. 19¢ LONG GREEN SLICERS

**APPLES** lb. 19¢ COLORADO DELICIOUS

**Bordens ICE CREAM** 1.09 1/2 Gallon Ctn.

**GUNN BROS. STAMPS**

DOUBLE EVERY WEDNESDAY

# White's CASHWAY

STORE HOURS 7:30 a.m. til 9:00 p.m. MONDAY thru. SATURDAY CLOSED SUNDAY

We Reserve The Right To Limit Quantities

Listen to MULETRAIN over KMUL 10:15 a.m. Sponsored by WHITE'S CASHWAY



### West Camp Social Held For November

The monthly social for the residents of the West Camp community was held Saturday night in the Beck Gin Store Building. Refreshments of sandwiches, coffee and tea were with the monthly social for the residents of the West Camp community was held Saturday night in the Beck Gin Store Building. Refreshments of sandwiches, coffee and tea were served while everyone visited before the table games began. Robert Hunt was honored with the birthday song and a cake to celebrate his birthday. Everyone spent the evening participating in "42" and "Aces and Fives".

Those attending the social were Mr. and Mrs. Joe Simnacher, Mr. and Mrs. Leldon Phillips, Mr. and Mrs. Willis James, Mr. and Mrs. Jimmy Carpenter, Sharon, Joe Rhodes, Jo Rhonda, Lavon and Dusty,

Mr. and Mrs. George Wheeler, Curtis and Tommy, Mr. and Mrs. Eugene Shaw, Delia and Darin, Mr. and Mrs. C.E. Grant, Kevin, Laurie and Clay and Mr. and Mrs. Robert Hunt, Sheila, Curtis and Tori.

The next social will be Dec. 13 and all residents of the West Camp Community are urged to come and attend. No invitations are sent. Plans are being made to improve the building so it can be used for more community activities. If anyone has card tables or chairs (folding or dinnette) that they would donate, please let some of the above listed people know.

### West Plains Hospital Hospital Briefs

**ADMISSIONS**  
Nov. 7 - Shirley Lewis, B.A. Schranz, Jr., Amos Torres, Mrs. Amelia Costella and Leonardo Saucedo.

Nov. 8 - Carl Cody, Mrs. Otis Hendrix, Wendell Speck and Mrs. V.J. Perkins.  
Nov. 10 - Mrs. Cecil Davis and Lonnie Wood.

**DISMISSALS**  
Nov. 7 - Mrs. Georgia Valencia and baby boy, Maria L. Chavez, Mrs. Lupe Flores, Christopher Wilson, Arthur Crow and Mary S. Davis.

Nov. 8 - Mrs. Osidro Costilla, Cephas Roebuck, Mrs. D.W. Pierson, Mrs. Homer Long and B.A. Schranz.

Nov. 9 - Mrs. John Agee, Robert Warner, Chris Black, Mrs. Otis Hendrix.

Nov. 10 - Mrs. V.J. Perkins, Joe Morris and Amos Torres.



RECEPTION HELD . . . The children of Mr. and Mrs. W.O. (Bill) Williams are hosting a reception in honor of their parents Fiftieth Wedding Anniversary to be held on Sunday, Nov. 16, 1975 from 2 p.m. to 5 p.m., in the Fellowship Hall of the Trinity Baptist Church. No gifts requested.

### Y-L 4-H Club Held Annual Installation Banquet

The Y-L 4-H Club held their banquet on Monday, Oct. 27 at the 16 and Avenue D Church of Christ for the purpose of installing officers. The banquet room was decorated in a Halloween theme and a Mexican dinner was served.

Mrs. Spencer Tanksley installed the officers as follows: president, Benny Harmon; vice president, Staci Vandiver; reporter, Dana Smith and Council Delegates were Tyrry Vandiver and Beth Harmon.

After the officers were installed Mrs. Butch Vandiver presented year pins to the

following children; first year, Tyrry Vandiver, Beth Harmon, and Mike Mills; second year, Rhonda Mills, Kim Gatewood, Cora Patterson, Staci Vandiver, Greg Williams and Mark Freid; third year, Hope Free; fourth year, Monti Vandiver and Ben Harmon; sixth year, David Head; seventh year, Kirk Lewis and Toby Tucker; eighth year, Karen Head and ninth year was Kelly Head and Paul Harbin. Also the Pee Wee's Brenda Flowers and Zonell Gatewood were given year pins.

Those attending the banquet were Mr. and Mrs. Gaylon Baldwin, Missy Shantel and Coby; Mr. and Mrs. Tom Flowers, Perry, Brenda and Glen; Mrs. Billy Seales, Danny and Trena; Mr. and rs. Bill Harmon, Ben, Beth and Jason; Mr. and Mrs. Butch Vandiver, Monti, Staci and Tyrry; Mrs. Lavayne William and Greg; Mr. and Mrs. C.L. Taylor; Mrs. Spencer Tanksley and Mr. and Mrs. Curtis Smith, Dana and Stacy.

### Fashion

A definite part of make-up this season is the brush. There are brushes for brows, lips, cream and powder. One designer lists eleven different facial brushes.

Travel clothes this season are washable, comfortable and attractive. Wide leg pants with an easy over blouse is a favorite with pants wearers.

**Belle's Patterns with a WESTERN Flair**

SIZES 6 TO 18  
\$3.00

**Ladies' Two-Piece Western Suit**

The tailored princess cut jacket features single point front yokes, three point back yoke, western flap welt pockets, and side vents. The pants feature western flared legs with smart boot cut hem. Three point back yoke, western belt loops, and false pocket front add to the authentic western look.

Printed pattern #1206 in sizes 6 to 18. Send \$3.00 for this pattern... add 50c handling and postage. Send to: Dept. #451  
Belle's Patterns  
P.O. Box 841 - Dept.  
Hurst, Texas 76053

### Bridal Shower Fetes Mrs. Richard Stovall

Mrs. Richard Stovall was feted with a bridal shower, in the Fellowship Hall of the Trinity Baptist Church, on October 23, from 7:30 to 10:00 p.m.

Special guests attending were the honoree's mother, Mrs. Evelyn Moore, her mother-in-law, Mrs. Bill Stovall and the bride's grandmother, Mrs. L.E. Bratcher, all of Muleshoe. Other guests attending were Mrs. John Copley, the groom's sister and Kandi Moore, sister of the bride. The guests were registered by Elizabeth Isaac.

The table was decorated with a white lace cloth over yellow centered with an artificial arrangement of yellow flowers. Refreshments were banana punch, white cake, nuts and mints which were served by the hostesses.

The hostess gifts were the centerpiece and Club Aluminum Cookware. Those serving as hostesses for the occasion were Mrs. John Harris, Mrs. Clarence Wilhite, Mrs. Ansel Ashford, Mrs. Jake Lambert, Mrs. Lester Baker, Mrs. Kenneth King, Mrs. Roy Baker, Mrs. Marvin Lewis, Mrs. Darrell Kenemer, Mrs. R.G. Bennett,

III, Mrs. Tommy Lobough, Mrs. Homer Redwine, Mrs. Ed Harp and Mrs. Virgil Maxwell.

### Methodist Women Elect New Officers

Wesleyan Service Guild of First United Methodist Church met at 7:30 p.m. Nov. 10, with Miss Elizabeth Harden. The meeting was called to order by the President, Mrs. Earld Gross. Minutes were read by the Sec. Elizabeth Harden and approved. Treasurers report was given by the Treasurer, Mrs. Hazel Gilbreath. Officers for 1976 were elected as follows: Mrs. Betty McNeill - president; Mrs. Lola Crim - vice president; Miss Elizabeth Harden, secretary; and Mrs. Hazel Gilbreath, treasurer.

The study on 1st Corinthians on chapters 12 through the 16 was led by Mrs. Bess Edwards. Refreshments were served to nine members as follows: Mrs. Earld Gross, Mrs. Hazel Gilbreath, Mrs. Ruby Dunn, Mrs. Lola Crim, Mrs. Betty McNeill, Mrs. Bess Edwards, Mrs. Faye Krebs, Mrs. Evelyn Johnson and the hostess, Miss Elizabeth Harden. Meeting adjourned until the Thanksgiving meeting which will be at 7 p.m., Nov. 24, in the home of Mrs. Evelyn Johnson at 315 W. Ninth.



Mrs. Richard Stovall

### Final Meeting Held By Baking Beauties 4-H

The Baking Beauties 4-H club foods group met November 5, 1975. Mrs. Susan Black took us to the grocery store where we looked at prices and qualities of foods. Then we went back to the church and discussed the things that we did at the grocery store.

Those members attending were Jacinda Gleason, Stacy Campbell, Carla Edwards, Mary Kathryn Flowers and Kim Bray.

On Saturday, the Baking Beauties 4-H club held another meeting from 11:00 to 1:00 at the 16 and Ave. D Church of Christ. Mrs. Buddy Black met with them.

The group cooked Guacamole salad, chili, doritos, tea and for dessert, ice-cream with chocolate nut topping. After eating they cleaned-up. This was the final meeting for the group until just before the food show.

### CYO Elects New Officers

The C.Y.O. members have re-elected officers for the 1975-76 year. They were elected Wednesday night, Nov. 5, 1975. The new officers are president, Rene Torres; vice president, Keith Rempe; secretary, Cynthia Isaac; treasurer, Dora Torres; Reporter, Christine Vela and parliamentarian, Peggy Lopez.

The C.Y.O. is an organization for youths. C.Y.O. has meetings every month and religion classes every Wednesday night, at 7:30 p.m. The organization feels that they will be involved in many activities this year with the election of new officers.

### Water To Prevent Frost Damage

COLLEGE STATION -- The first frost of the fall season need not spell doom for your garden vegetables. A vegetable specialist with the Texas Agricultural Extension Service suggests using water to protect cold-susceptible plants from freezing temperatures.

"When water freezes it gives off heat," says Sam Cotner. "In fact, when a pound of water loses a degree of temperature, it gives off more heat than any other substance. This heat can warm the air around plants and protect them from freezing."

The most effective way to protect plants is with a sprinkler, contends the Texas A&M University System specialist. Apply water continually during the time freezing temperature exist. This may mean sprinkling the garden all night.

"If a frost is expected, sprinkling in the early morning will probably be sufficient," notes Cotner.

Another method of protecting plants from freezing temperatures is furrow watering. However, this method is not as effective as sprinkling.

Cotner warns against washing plants off with warm water after a frost occurs.

"Plant tissues can be badly damaged when they are forced to thaw in such a short time. It's better to let them thaw out gradually."

So don't let the first frost or freeze put an end to your supply of nutritious, home-grown vegetables this fall. If light freezing conditions are expected, crank up the water sprinkler, advises the specialist.



LAZBUDDIE ROOKIES . . . L to R are Mark Lust, Launa Brockman, Maureen Jesko, Mrs. Pete Jesko, Adult leader, Frank Jesko and Sean Mason. They are all members of the Lazbuddie 4-H Foods and Nutrition group, Level I.

### 4-H Club Learns About Nutrition

Five Lazbuddie Rookies in the 4-H Foods and Nutrition's group have been meeting in the home of their adult leader, Mrs. Pete Jesko.

Wednesday, November 5 the group learned how to measure liquid and dry ingredients accurately. Dry measuring cups were used to measure flour after it was sifted. Mrs. Jesko showed how much more flour would have been used in the Butter-scotch Brownies they prepared and baked, if flour had not been sifted before measuring. Brown sugar was firmly packed for

measuring in the dry measuring cups.

Liquids were measured in glass liquid measuring cups so that the accurate amount could be seen at eye level. Standard measuring spoons were used to measure the baking powder and vanilla and leveled off with a knife.

Rookies, Launa Brockman, Maureen Jesko, Sean Mason, Mark Lust, and Frank Jesko also studied how to read and follow a recipe. Different baking pans were measured so proper sized pans would be used in recipes.

Friday, November 7, the Foods Rookies visited a local grocery store where they observed different forms of carrots and other foods available as canned, frozen, dehydrated, and fresh. Weights and costs of cans and packages were compared. Panned carrots were prepared by the 4-H boys and girls as the cooking rules for vegetables were observed. Launa, Maureen, Sean, Mark, and Frank then studied how to store foods safely to prevent food spoilage. Bad bacteria grows and multiplies with food, moisture, and warmth. Further lessons will include how good nutrition can work for healthy bodies. Food is what you eat. Nutrition is the way your body used this food. The Daily Basic Four Food Guide should be used in planning good nutritious meals and snacks for you and your family. And good table manners and setting an attractive table makes mealtime a happy time. Parmer County 4-H boys and girls are making plans for a County 4-H Foods Show to be held Saturday, November 22 in Farwell.

**Introducing old-fashioned slow-cooked goodness at microwave speeds.**

**New Litton solid-state Vari-Cook™ oven control makes it possible. In up to one-fourth the time.**

For the first time, the new Litton Minutemaster® "416" microwave oven lets you set the cooking speed. With Vari-Cook infinite oven control, you change speeds as you change foods: Cook, reheat, roast, simmer, warm, defrost—or any microwave speed in between.

**Check these Litton features:**

- 60-minute Micro-Timer™ digital control
- Vari-Cook oven control with separate "Cook," "Defrost" and "Vari-Cook" switches
- Automatic defroster
- Extra large 1.2 cubic ft. usable oven interior
- Easy-clean acrylic interior
- Intrusion-proof, tempered glass door with safety latch door release
- Sealed-in ceramic shelf for easy cleaning
- Vari-Cook oven control indicator light
- Oven interior light
- End-of-cycle bell
- Simulated rosewood styling
- 168-page cookbook
- Plugs into any standard 110 volt outlet
- Vari-Cook cooking guide

OPTIONAL: Micro Bowser - stack-pull and Micro Temp. food thermometer.  
Litton Minutemaster "416"

**Litton... changing the way America Cooks.**

Make the change to microwave. Taste a Litton microwave cooking demonstration.

USE OUR LAY-A-WAY PLAN & BUY NOW WHILE SELECTION IS GOOD.

Litton Microwaves As Low As \$219.95

Buy Quality, Dependability, & Service. Buy From:

**Wilson Appliances**

117 MAIN 272-5531

MULESHOE



BINGO CARNIVAL . . . L to R are Mrs. Monty Dollar (center) Mrs. Tommy Black and Mrs. Tommy Merritt, all members of Beta Sigma Phi. They are sponsoring the Bingo Carnival scheduled for November 20, at 8:00 p.m. in the Catholic Center. The money doll in the picture will go to some service project. Tickets will be \$1.00 in advance or \$1.50 at the door. Fun and games will be available for the whole family. Food will also be served, so everyone is urged to attend.

**Collar a pet in the Yellow Pages**

ANYONE FOR GRIBBLES?

For those who are not familiar with the City of Corpus Christi, that "Sparkling City by the Sea" owns what is known as the Corpus Christi Inner Harbor where ships from around the world call to pick up and deliver their cargoes. Back in 1970 the Inner Harbor was a polluted body of water. Not much lived in it. It didn't look very pretty and it didn't smell very nice. In the intervening years, however, industries along the harbor, at the direction of the Water Quality Board, have cleaned up their discharges so that pollution loading has decreased enormously. The people in Corpus Christi like it and so do the gribbles. Gribble? A gribble is a tiny bug (isopod Crustacean) which

**Etiquette**  
Mother (to small boy who is going to a party)--"Now, dear, what are you going to do when you've had enough to eat?"  
Little Tommy -- "Come home."

**Words on Water**

TEXAS WATER QUALITY BOARD  
AUSTIN TEXAS 78711

**From The Journal Files**

**10 Years Ago**

District I, Texas Library Association, is having a luncheon meeting at Wayland Baptist College in Plainview next Saturday. The session is open to all public librarians and "friends of the library," according to Anne Camp, Muleshoe Public Librarian. Those wishing to attend should contact her.

Louis Guana, Muleshoe, won the coffee percolator and Alvin Allison, Muleshoe, is the winner of the luggage in the week-end drawings. The Guadalupan's club made the announcement. \$130 cash gift has been turned over to the Immaculate Conception BV Mary Catholic Chapel here from this project.

Unit 1 of Lazbuddie 4-H club met Friday in the Home Economics building with eight girls present.

Ann Blackstone taught a lesson on measuring and table setting. Dalton Mimms, Mrs. Roy Farley, Mrs. Jay McDonald, Mrs. Max Bush and Mrs. Harvey Blackstone.

Girls present were LeAnn Farley, Terina Whalin, Terri Whalin, Nancy Blackstone, Karen Mimms, Kim McDonald, Nancy Bush and Jeannie Morris.

Open house will be held at the Art Loft Sunday from 1 until 5 p.m., according to Mrs. Pat Bobo. The general public is invited to attend.

Fertilizer management and technology short courses are being held in this area during November and December, according to J.K. Adams, county agent. The agent has a schedule for the meeting.

**20 Years Ago**

Mrs. Sam McKinstry leaves Friday afternoon for Lovington, N.M. where she will join her daughter Mrs. Kenneth Osborn and travel to Hobbs, N.M., where they are to attend a concert by the noted blind pianist, Alec Templeton.

Mr. and Mrs. John Thomson and children visited over the weekend at Canyon with their daughter and son-in-law and Mrs. Carl Dwyer.

Mr. and Mrs. Tom Smith are at their ranch at Clayton, N.M., this week attending to business interest.

Mr. and Mrs. Raymond Houston and children and Mrs. Clyde Henry and Shirley visited in New Deal with the parents of Mrs. Houston and Mrs. Henry, Sunday.

Mr. and Mrs. Luther Ham visited in Midland Friday evening and Saturday.

**30 Years Ago**

Mrs. Pat Bobo left Sunday to visit a sister, Mrs. William McFarlane Stowe in Nashville, Tenn. She took an airliner from Amarillo.

F.S.A. has moved to the AAA Building Leo Baker has announced. Connie Gupton has moved his office into the F.S.A.

Miss Patterson and her sister of Medicine Mound, Texas are here visiting Mrs. Ernest Holland who is their niece.

Mrs. Harold Weyer accepted a position with the Tax Assessor and Collectors Office. Mr. Weyer is with Arnold Morris in the parts department.

The W.M.U. of the First Baptist Church is sponsoring the packing of a box of good used clothing for the Buckner's Orphan's Home.

A quilt they quilted on the 5th Wednesday will be included in the box.

All who wish to contribute to the gift are urged to bring all items to the church or to Mrs. Ray Griffith's home by Wednesday Nov. 14.

Books and other items will be appreciated.

Those who make on-the-spot opinions usually have to correct many of them.

**40 Years Ago**

Mr. and Mrs. Arnold Morris were in Lubbock, Tuesday attending to business and visiting friends.

Mrs. Julian Lenau and Mrs. Elvin Smith were in Lubbock Tuesday shopping and visiting friends.

Mr. and Mrs. Jim Cox were in Amarillo Armistice day visiting friends and attending the football game.

Mr. and Mrs. Roy Bayless and children were in Lubbock Tuesday afternoon.

L.S. Barron, Junior Winn, Houston Hart and George Woods were in Clovis, N.M., visitors last Monday evening.

**Bi-Purpose Turkeys Best For Economy**

COLLEGE STATION-Economy conscious consumers will buy "bi-purpose" turkeys this season--that's turkey big enough for Thanksgiving dinner, with lots left over for other meals, Frances Reasonover, a foods and nutrition specialist, says.

"Allow three-fourths to one pound per serving if the turkey is 12 pounds or under, or one-half to three-fourths pound per serving for a heavier bird."

Miss Reasonover is with the Texas Agricultural Extension Service, The Texas A&M University System. "Protect leftovers from bacterial contamination by refrigerating right after dinner. Since refrigerator space is usually at a premium during the holiday season, remove meat from bones before wrapping for storage. And remember to store stuffing separately. Freeze all the meat that cannot be used within two or three days," Miss Reasonover advised.

Make broth to use in soup and casserole dishes later, she suggested.

Put bones and bits of meat and skin in a large kettle, cover with cold water. Add sliced onion and carrot, a garlic clove, spices and two teaspoons of salt. Cover and bring to a boil. Simmer two hours, then strain the broth. Refrigerate in a covered jar for two days or less.

She suggested some specific uses for the "bi-purpose" turkey.

**CELEBRATION TURKEY SOUP**

1/4 cup butter or margarine  
1 cup chopped, cooked turkey  
2 tablespoons finely chopped onion

2 cups diced raw potatoes  
2 1/2 cups cream-style corn  
1 tall can evaporated milk  
1 teaspoon salt

1/4 teaspoon ginger  
1 cup diced celery  
2 cups turkey broth  
1/4 teaspoon paprika  
dash pepper

2 tablespoons chopped parsley  
Melt butter or margarine. Add turkey and onion. Cook until turkey is transparent. Add potatoes, celery and broth. Stir and cook until slightly thickened. Simmer until vegetables are tender. Then add corn, milk and seasonings. Season to taste. Garnish with parsley and serve with crackers.

**WHO KNOWS?**

1. What well-known comment is associated with the late Gen. Anthony McAuliffe?
2. Name the President born in September?
3. Citizenship Day observed, September 17th, replaces what two days?
4. When was the constitution adopted?
5. Which river was discovered September 12, 1609?
6. What is the significance of the Harvest Moon?
7. When is Harvest Moon?
8. When is the Autumnal Equinox?
9. When was Labor Day first observed?
10. Name the flower and stone for September.

**Answers To Who Knows**

1. "Nuts".
2. William H. Taft, September 15, 1857.
3. I Am An American Day and Constitution Day.
4. September 17, 1787.
5. The Hudson River.
6. The full moon nearest the Autumnal Equinox rises soon after sunset giving farmers in the temperate latitudes extra hours.
7. September 20th.
8. Sept. 23rd, 10:55 a.m.
9. September 5, 1882.
10. The aster and sapphire.

**New X-Ray Technique Used**

An EMI Brain Scanner, a new X-ray technique for producing pictures of the brain, is now in operation in Methodist Hospital, George M. Brewer, president announced today.

"This new diagnostic device provides detailed information on brain tissue abnormalities in a new perspective. It is more comfortable and less costly for the patient, as hospitalization is avoided. It is safer than previous procedures used to diagnose conditions within the brain," Brewer states.

The EMI Scanner system, located in the Nuclear Medicine area of the hospital, uses small

amounts of X-ray in conjunction with a computer to produce clear pictures, which are cross-section views from the top of the head, looking down.

Methodist Hospital staff physicians in neurology and neurosurgical services are scheduling patients to be evaluated for tumors, blood clots or strokes, brain hemorrhages, hydrocephalus, acute head injuries, epilepsy, multiple sclerosis and degenerative brain disease.

There is no pain during the examination. The patient wears normal clothing and reclines on an adjustable couch with the head positioned in a water-filled

rubber head-cap. The examination does not cause headaches or nausea, and hospitalization is not required for a recovery period.

During the scan, a portion of the machine rotates around the patient's head, taking readings of X-ray transmission. These readings are converted to electronic form and fed into the computer. Within seconds, the results are shown on a viewing screen, similar to television. The pictures are recorded on permanent discs. Additionally, the X-ray results are reproduced as a numerical printout, giving another permanent record of

conditions within the brain.

The EMI Scanner system includes a Diagnostic Display Console and a Viewing Unit, where the pictures are shown on monitoring screens and are recorded as Polaroid prints for examination by radiologists and physicians.

Prior to development of the EMI Scanner, normal and abnormal conditions within the brain could be displayed only by injecting substances which created contrasts between tissue structures. Radiological methods most commonly used include injections of radioisotopes or dyes into the arteries

or the introduction of air into the ventricles of the brain. These procedures normally can be done only when the patient is in the hospital, and they involve various degrees of discomfort.

The new EMI Scanner does not make these methods obsolete, but it does offer the radiologist and surgeon a method of mapping out the contents within the skull to make an early, definite and painless diagnosis.

Happiness is in part the conclusion that you can't remake people or the world.

**ONE MINUTE SPORTS Q&A**

1. Who won the U.S. P. Tennis Championship?
2. Name the pitcher who pitched the first no-hitter in two years in the N.L.
3. Who won the Tournament Players Golf Championship?
4. Carl Yastrzemski plays pro baseball for what team?
5. Steve Barthowski plays pro football for what team?

**Answers To Sports Quiz**

1. Bjorn Borg of Sweden.
2. Ed Halicki, San Francisco Giants.
3. Al Geiberger.
4. Boston Red Sox.
5. Atlanta Falcons.



# Founder's Day Sale!

**THUR FRI SAT**      **OPEN 8 A.M. TILL 8 P.M.**

**3 BIG DAYS! OUR LARGEST ANNUAL EVENT!**



**Men's Down Insulated Jackets**  
SALE PRICED  
**\$20.**

Nylon taffeta shell with down proof rip-stop nylon lining. 2 patch pockets, zipper front and elastic wristlets. Colors: brown, green, blue and navy. S-M-L-XL.



**Men's LEISURE SUITS**  
Reg. \$27.  
**\$20.**

100% polyester double knit. Two breast pockets & contrasting stitching. Colors: Brown, navy, rust and tan. Sizes 36 to 46.



**Ladies' Fleece & Polyester ROBES**  
Reg. \$13. **\$10.**

Zipper front & full belt styles. Many lovely colors. Sizes: S-M-L-XL.



**Men's LEISURE SHIRTS**  
Values up to 8.99  
**6.88 3 for \$15.**

Soft easy to care for fabrics. Dozens of exciting prints and scenes with the season's newest colors. Long sleeve styling! S-M-L-XL.



**Beautiful Junior TOPS**  
100% polyester, short sleeve  
Reg. \$5  
**SPECIAL PRICE 2.97 3 for \$8.**

Several great styles. Many beautiful colors. Top your wardrobe off the right way and at this special price. You will want several. S-M-L.



**Ladies' "E-Z Walker" SHOES**  
Reg. 13.99  
**\$10.**

Gold, Reg. 14.99. Sole priced \$11. Comfortable, casual walking shoe, buckle ornament, top stitched around toe, leather sole. Sizes: 5 to 11. Colors: Black, red, blue, camel, bone & gold.



**Men's Tube Socks THERMAL TUBE SOCKS**  
Reg. 79c pr.  
**6 pair \$4.**

Cotton and nylon blends. Choose from regular or thermal knits.



**Dan River "Daisy Mae" Sheets**  
A no-iron blend of 50% Fortrel® polyester and 50% cotton. Floral stripe with eyelet lace solid color border on a white background. Yellow, blue & pink.  
TWIN... Reg. 3.99 **2 for \$5.**  
FULL... Reg. 4.99 **2 for \$6.50**  
CASES... Reg. 3.49 **2.50 pair**



**Double Knit and Sublistic PRINTED KNIT FABRIC**  
Reg. 2.88 yd.  
**\$2. yd. 3 yds. 5.50**

60" 100% polyester double knit crepe, interlocks and pique stitches. Many beautiful fashion colors.



**Boys' & Girls' Quilted Nylon JACKETS**  
Reg. 14.95  
**SALE PRICED \$10.**

Two pocket shell. 100% nylon storm closure front, zipper and snaps. Dacron® 88 polyester filled. Velcro closure on pockets. Colors: Navy & green. Sizes: S-M-L. Machine washable!



**Ladies' "ROYAL PARK" Double-O-Five Pants**  
Reg. \$9.  
**5.97 3 pair \$17.**

Proportioned to fit pull-on pants. Heavy weight 100% Fortrel® polyester for easy care and comfort. The season's newest colors! Sizes: 6 to 16, Petite, 8 to 20, Average, 10 to 20, Tall.



SALE STARTS NOV 13-ENDS NOV 19



USE OUR CONVENIENT LAY-A-WAY PLAN

# GIBSON'S

## SUPER BUYS SUPER SAVINGS



USE OUR CONVENIENT LAY-A-WAY PLAN



ALL GRINDS  
**MARYLAND CLUB COFFEE**  
2LB \$2.49



**CRISCO**  
SHORTENING  
3LB \$1.39  
OIL  
24 OZ 89¢



**TAMPAX**  
TAMPONS

10'S  
REGULAR OR SUPER  
REG 57¢  
**39¢**



DU PONT  
**SPONGE**  
ASSORTMENT

REG 62¢ ..... **49¢**  
REG 35¢ ..... **29¢**  
REG 49¢ ..... **39¢**

NORTHERN  
**NAPKINS**

60CT  
REG 27¢  
**19¢**



**KOTEX**  
FEMININE NAPKINS

30'S  
REGULAR OR SUPER  
REG 1.59  
**\$1.19**



AUSTEX  
**POTTED MEAT**

30Z  
REG 2.39  
**3 / 83¢**

**JIF**  
PEANUT BUTTER

CREAMY OR CRUNCHY  
28OZ \$1.28



AUSTEX  
**VIENNA SAUSAGE**

50Z  
REG 39¢  
**6 / \$1.00**

**CONTAC**  
DECONGESTANT CAPSULES

10'S  
REG 1.09  
**88¢**



PRINGLES  
POTATO CHIPS

90Z  
REG 1.09  
**69¢**

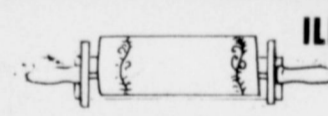


AMF  
**STYROFOAM CUPS**

90Z SIZE  
51 CT  
**67¢**

ILL SIM  
FOLEY  
PAPER TOWEL HOLDER

REG 99¢  
**79¢**



**JIFFY POP**  
POPCORN

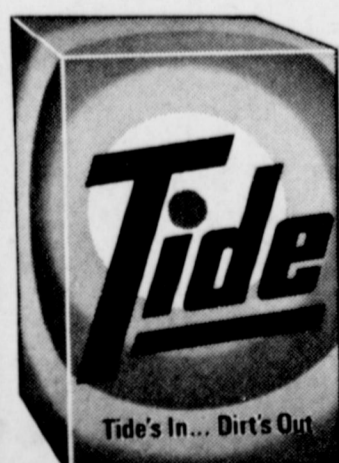
50Z  
REG 53¢  
**41¢**

ALAMO BRAND  
**DOG FOOD**

4LB  
REG 1.39  
**\$1.09**

**TIDE**  
LAUNDRY DETERGENT

GIANT SIZE  
**\$1.09**



NUT CLUB  
**NUTS**

CHOICE OF WALNUTS OR MIXED NUTS  
REG 1.79  
2lb. BAG  
**\$1.49**

LADIES CONTROL TOP PANTYHOSE



REG 1.37  
**89¢**



**DISCOUNT CENTER**

**ONLY 36 MORE SHOPPING DAYS TILL CHRISTMAS GIFTS**

**Fisher-Price Toys**  
**ROCK A STACK**  
 #740  
 REG 2.79  
**\$1.89**

# Toyland

LAY-A-WAY NOW FOR CHRISTMAS

**FREE MOVING BARBIE**  
 #7270  
 REG 5.79  
**\$3.79**

**NERF ANIMALS**  
 REG 3.79  
**\$2.49**

**NERF Gliders**  
 Parker Brothers' safe, soft, indoor gliders that really fly! Three models; Delta Wing... Jumbo Jet... Sport Plane.  
 REG 2.99  
**\$2.19**

**REVELL FORD & CHEVY CLASSIC CAR MODELS**  
 REG 2.39  
**\$1.69**

**SAYELLE YARN**  
 40Z SKEIN  
 REG 1.29  
**88¢**

**COLORING BOOKS**  
 REG 62¢.....**49¢**  
 REG 44¢.....**35¢**  
 REG 35¢.....**29¢**

**JOHN DEERE SOUND IDEA TRACTOR**  
 REG 3.19  
**\$2.29**

**ERTL SEMI-HYDRAULIC DUMP TRUCK/TRAILER**  
 #6852  
 REG 16.99  
**\$11.09**

**SHATTER PROOF FULL LENGTH MIRRORS**  
 REG 5.99  
**\$4.49**

**EMPIRE HOT CYCLE**  
 #1776  
 IN RED, WHITE & BLUE  
 REG 17.99  
**\$11.88**

**MONOPOLY NEW PACKAGE 40th ANNIVERSARY EDITION**  
 REG 8.99  
**\$5.88**

**KENNER SWITCHEROO LIGHT SWITCH COVER**  
 EYES MOVE, GLOW IN DARK  
 REG 2.99  
**\$2.09**

**SHATTER RESISTANT MIRRORS**  
 ANTIQUE  
 REG 9.99  
**\$6.99**  
 WHILE THEY LAST

**DECORATIONS**  
**35 LIGHT CHRISTMAS TREE LIGHT SET**  
 #HL235  
 REG 99¢  
**79¢**

**NORTHERN LIFE STYLER HAIRDRYER WITH ATTACHMENTS**  
 REG 16.99  
**\$12.99**

**LADIES FLOOR LENGTH GOWNS**  
 NYLON TRICOT LOVELY COLORS  
 SIZES S-M-L  
**25% OFF**

**SATIN ORNAMENTS**  
 SIZE SMALL, MEDIUM OR LARGE - 6 GALA COLORS  
 PKG OF 12 OR 18  
 REG 1.97  
**\$1.49**

**FEDERAL HEATPROOF BAKING DISHES**  
**25% OFF**

**MENS INSULATED COVERALLS**  
 SIZE SMALL/SHORT TO EXTRA LARGE/TALL  
 REG 24.97  
**\$17.99**

**WRAPPING PAPER GIANT ROLLS**  
 REG 1.77  
**\$1.29**

**CHRISTMAS CARD ASSORTMENT**  
 BOXES OF 10 OR 12 CARDS  
 REG 69¢  
**49¢**

**MEN'S INSULATED AND WATERPROOF HUNTING BOOTS**  
 REG 5.49, 7.49 & 10.99  
**1 2 PRICE**

**HOLIDAY BOW ASSORTMENT**  
 36 BOWS  
 REG 59¢  
**44¢**

**6 FOOT BLACK FOREST TREE**  
 EASY TO ASSEMBLE INSTA SHAPE #1560  
 REG 35.99  
**\$27.99**

## Football For Fun In Ivy League

Just for a change of pace - rather than discuss the same familiar football foundries for the entire column - how about the Ivy League where football is still played for fun... we think! Brown, the door-mat of the conference for years and years and... meets Harvard Saturday in a game that could decide the championship. Harvard was upset by Princeton last week... Brown was tied earlier in the season by Dartmouth. We think the Bruins from Providence are going to win the big one... Brown is favored by just one over the Harvard Crimson. Nope, not quite foundry time yet

It's been interesting this fall to follow one of the new major college football teams... Arkansas State, located in State University in Northeast Arkansas. The Indians are undefeated, having just won their ninth straight game. Their power quotient of 91.3 puts them, believe it or not, just five points below our twentieth-ranked team. They're a real powerhouse out of the Southland Conference. Ok... it's Foundry Time!  
Notre Dame - Pittsburgh... this has to be a real close one. The Irish are two-time losers

## High Plains Board Concludes Meetings

On October 30, the newly formed High Plains Research Co-ordinating Board, Inc. concluded a series of meetings designed to acquaint the members with the agricultural research personnel and capabilities of most of the research facilities in West Texas. This meeting was comprised of a short seminar and field tours of West Texas State University at Canyon, Texas.

The group was welcomed by Dr. Lloyd Watkins, President of West Texas State University, who stated, "The University is seriously committed to business and agriculture, and the school of agriculture, under the leadership of Dr. Charles Smallwood, is prepared to assist, in any way possible, in a better total agricultural research program for West Texas."

Dr. Smallwood told the group that he was proud of the facilities at West Texas State University, and that in the last ten years approximately \$1,500,000 has been placed into improvement of the school of agriculture.

Dr. John McNiell presented an overview of the research potential at the University, and a very informative tour of all research facilities was enjoyed, which included a demonstration of the excellent computer capabilities. Also seen on the tour was the agriculture building, a modern new Science Center, the Horse center, swine facilities, a new meats laboratory, the Killgore Research Center, and cattle operations at the Nance Ranch east of Canyon.

Previously, this Co-ordinating Board has met at Halfway, Texas Tech University, and the Texas Agricultural Experiment Station at Lubbock.

The Board is composed of representatives from Texas A&M University, Texas Tech

and the Panthers lost their third game last Saturday. Notre Dame whipped Georgia Tech last week while Pitt was upended by West Virginia. In a real coin-flipper, Notre Dame by three.

Among the leading teams in our Top 20, Oklahoma is the only one that once again might have a problem. They meet Big 8 rival Missouri, and Mizou has to be one of the best three-time losers in the nation. The Sooners meet Nebraska a week from Saturday, and if Missouri doesn't catch them looking ahead, Oklahoma should win by 4.

Minnesota played Michigan on close to even terms two weeks ago, losing only by seven points. However, we don't think they can repeat that effort against Ohio State. The Bucks are favored over the Gophers by 23 points.

The old (in its 19th year) crystal ball really rolled around in ecstasy two Saturdays ago as it came up with another strong forecasting weekend. It hit 80% on all games to bring the average through Saturday, November 1st, to .767. This is based on 1,277 right and 389 wrong. There have been 37 ties.

University, West Texas State University, the High Plains Research Foundation, Texas Agricultural Experiment Station, Texas Agricultural Extension Service, along with representatives from each of the major commodity organizations which serve the High Plains. It is under the direction of Don Anderson, Lubbock, who serves as President.

The purpose of this Board, Chartered September 9, 1974, is to provide the inputs, both from a knowledge standpoint, and eventually a financial standpoint, to produce the most complete total agricultural research program possible for West Texas. It is possible that the High Plains Research Co-ordinating Board, Inc. can help eliminate any duplication of research effort and help make more efficient use of research dollars spent, by having a thorough knowledge of all research capabilities in the area, and by encouraging cooperation between agencies involved in agricultural research. It may also play an important role in contacting both State and Federal legislators, to help them have a working knowledge of the research needs of area farmers and the capabilities of all the area research facilities.

When the Co-ordinating Board was originated, a position was created for the addition of a member to represent one of our most precious commodities; water. In a short business session, George McClesky, president of Water, Inc. was nominated and elected unanimously to fill this position, with Duncan Ellison, Executive Director of Water, Inc., to serve as alternate. This now completes the structure of the Board according to its original Charter and By-laws.



**On Wall Street**  
By Bob Hill  
Lentz, Newton & Co.

The Federal Safety Law was passed three years ago. It, among other things, established the Consumer Product Safety Commission. The CPSC has the exclusive authority to initiate the rules for establishing safety on consumer products. If the CPSC doesn't move fast enough in clearing the safety features of various consumer products, then the consumer can take the CPSC to court and force action. No other federal agency has such a time limit imposed on matters before it. The CPSC has to move in 120 days or into court they go, if a private party wants action. The provision was placed in the legislation as an experiment which might eventually be used with other federal agencies. The reason for this was that no outside party could force the federal agencies to take action on any issue.

The big users were expected to be consumers. But, business is threatening to cause a tremendous burden to the Commission's legal problems by getting in early with safety problems for individual industries in order to

blunt what could be excessive safety demands by various consumer groups.

Business is also trying to get the pressure off one industry by asking for tougher safety standards in other industries. A National Bureau of Standards report found that cigarettes were the "dominant ignition source" of furniture fires. The furniture manufacturers paid for a study by Arthur D. Little which showed that "96% of furniture fires would not have occurred if cigarettes had self-extinguished within 10 minutes of contact." So a group of furniture upholsterers last year asked the CPSC to regulate cigarettes as the primary source of ignition in furniture fires.

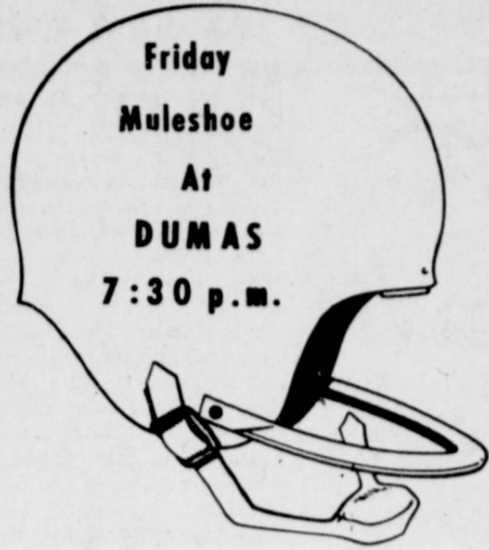
The CPSC didn't want to get into the middle of the cigarette issue. It asked Congress to remove its power to regulate the cigarette safety rules. But, you know, that really isn't a bad idea—a cigarette that self-extinguishes in ten minutes!

W.T. Grant Company goes bankrupt.

# Football Contest

"PICK-A-WINNER"

Last Weeks Winners



- 1st Rosie Gutierrez
- 2nd Mary Sweatmon
- 3rd Joe Gutierrez

Back The Mules  
All The Way

Enter Our Contest Each Week  
...Nothing to buy - Just Pick Winners

HERE'S YOUR CHANCE TO  
WIN CASH WEEKLY PRIZES!



WIN FIRST PRIZE \$5  
WIN SECOND PRIZE \$3  
WIN THIRD PRIZE \$2



GRAND PRIZE \$50 For expenses and two tickets to the Cotton Bowl at Dallas, Texas. There will also be a contest and prizes for the Bowl Games!

WINNERS TO BE ANNOUNCED  
IN NEXT WEEK'S PAPER

Please write FOOTBALL CONTEST  
Muleshoe Publishing Company  
Box 449 Muleshoe, Texas  
on envelope of mailed entry.

Read the rules... Start Winning  
RULES OF THE CONTEST:

1. The contestant must be 12 years or older.
2. Only one entry per person may be made for any one contest.
3. Weekly contests are open to everyone except employees and families of this newspaper; bring or mail your entries to the Journal office.
4. Mailed entries must be postmarked not later than 5:30 p.m. Friday; winners names will be published in this newspaper each Thursday following the close of the weekly contest.
5. Check the team you think will win; 10 points for 1st place, 6 points for 2nd place and 4 points for 3rd place determines the Grand Prize winner.
6. The tie-breakers will count as one of the games picked, the predicted scores will be used to determine the top three places in that week's contest, if necessary, and cash prizes and points will be divided between winners in event of ties. Please write FOOTBALL CONTEST on envelope of mailed entry. Decision of the Journal's scoring judges will be final.

You Have Until 5:30 pm  
Friday to Enter Contest



### OFFICIAL ENTRY FORM PICK THE WINNING TEAMS

- |               |       |                                     |              |       |                          |
|---------------|-------|-------------------------------------|--------------|-------|--------------------------|
| 1. Missouri   | _____ | <input type="checkbox"/>            | Oklahoma     | _____ | <input type="checkbox"/> |
| 2. Yale       | _____ | <input type="checkbox"/>            | Princeton    | _____ | <input type="checkbox"/> |
| 3. West Texas | _____ | <input type="checkbox"/>            | McNeese      | _____ | <input type="checkbox"/> |
| 4. Harvard    | _____ | <input type="checkbox"/>            | Brown        | _____ | <input type="checkbox"/> |
| 5. Houston    | _____ | <input type="checkbox"/>            | Memphis St.  | _____ | <input type="checkbox"/> |
| 6. Kansas     | _____ | <input type="checkbox"/>            | Colorado     | _____ | <input type="checkbox"/> |
| 7. Navy       | _____ | <input type="checkbox"/>            | Georgia Tech | _____ | <input type="checkbox"/> |
| 8. Wichita    | _____ | <input checked="" type="checkbox"/> | Drake        | _____ | <input type="checkbox"/> |

#### TIEBREAKER

- |                |       |       |            |       |       |
|----------------|-------|-------|------------|-------|-------|
| 9. Notre Dame  | _____ | SCORE | Pittsburgh | _____ | SCORE |
| 10. Texas Tech | _____ | SCORE | Baylor     | _____ | SCORE |

NAME \_\_\_\_\_  
ADDRESS \_\_\_\_\_  
CITY \_\_\_\_\_  
STATE \_\_\_\_\_ ZIP \_\_\_\_\_  
PHONE NO. \_\_\_\_\_

THE FOLLOWING FIRMS URGE  
YOU TO BACK THE MULES AND  
ATTEND ALL GAMES

**D-L Plumbing**  
Phone 272-4769 Attic Insulation

**RASCO**  
THE FAMILY STORE

**Dairy Delite**

**SANDHILLS IRRIGATION**  
ZIMMATIC CENTER PIVOT SYSTEMS

**Western Drug**

**Farm Bureau, Ins.**  
Ray Davis, Agency Manager

**Int. County Savings and Loan Association**  
Donald W. Harmon President

**Whites Cashway Grocery**

**Bailey County Electric  
Cooperative Association**

**Ray Griffiths And Sons**

**First Street Conoco**

**Fry and Cox**

**Muleshoe State Bank**

**Muleshoe Co-op Gins**

**Williams Bros Office Supply**

**Doris Wedel Bookkeeping**  
H & R Block

**Wooley-Hurst Imp.**

**GIBSON'S**

**Barry and Young Imp.**

**Wilson**  
Appliances

**John's Custom Mill**

**Howard I Watson Alfalfa**

**Beaver's Flowerland**

**Bob's Safety Center**

**Baker Farm Supply**

*Henry Insurance Agency*  
Certified Insurance Counselor







Prices good thru November 15, 1975. We reserve the right to limit quantities. None sold to dealers.

Piggly Wiggly  
100% Pure Florida Frozen  
**Orange Juice**  
**4** 6-oz. Cans **\$1**

All Varieties, Frozen  
**Patio Dinners** 2 11-oz. Pkgs. **\$1.00**

Piggly Wiggly, Frozen Cut  
Corn or  
**Chopped Broccoli** 3 10-oz. Pkgs. **\$1.00**

Cal-Ida, Frozen Shoestring or Slim Jim  
**Potatoes** 4 20-oz. Pkgs. **\$1.00**

Piggly Wiggly  
Sweetmilk or Buttermilk  
**Biscuits**  
**10c**  
8-oz. Can

Piggly Wiggly  
Regular Quarters  
**Oleo**  
**3** 16-oz. Pkgs. **\$1**



Piggly Wiggly



Tide's In...Dirt's Out

**All Purpose Flour** **69c**  
5-Lb. Bag

**Tide Detergent** **89c**  
49-oz. Box

Baker's Baking Flavored  
**Chocolate Chips** 12-oz. Pkg. **79c**

Angel Flake  
**Griffin Coconut** 14-oz. Pkg. **89c**

Piggly Wiggly, Creamy or Crunchy  
**Peanut Butter** 18-oz. Jar **89c**

Piggly Wiggly, All Flavors Except  
Vegetable Beef and Tomato  
**Canned Soup** 5 10 1/2-oz. Cans **\$1.00**

Piggly Wiggly  
**Fabric Softener** 64-oz. Btl. **69c**

Piggly Wiggly, 1 Ply  
**Paper Towels** 2 145-Ct. Rolls **89c**

Van Camp's  
**Pork & Beans** 15-oz. Can **25c**

Armour's  
**Vienna Sausage** 3 5-oz. Cans **\$1.00**

**Grocery Specials**

Piggly Wiggly Bartlett  
**Pear Halves** 15-oz. Cans **\$1**

Piggly Wiggly,  
Cream Style or Whole Kernel  
**Golden Corn**

Larsen's Mixed Vegetables  
**Veg All**

Piggly Wiggly  
**Whole Tomatoes** 15-oz. Cans **\$1**

Piggly Wiggly  
**Applesauce** 16-oz. Cans **\$1**

Piggly Wiggly, Cut  
**Green Beans**

Piggly Wiggly  
Sliced or  
**Whole Potatoes** 16-oz. Cans **\$1**

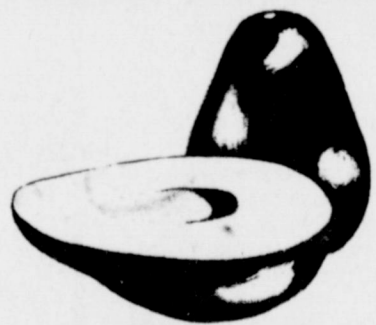
Piggly Wiggly 6-oz. Cans  
**Tomato Paste**

Looking for a convenient holiday gift idea? Give Piggly Wiggly Gift Certificates to friends, employees, and business acquaintances.

For more information, see your local Piggly Wiggly Store Manager.

**OLD FASHIONED SAVINGS**

**Fresh Produce**



Florida Medium Size  
**Creamy Avocados**  
**5** For **\$1**

Salad Size  
**Tomatoes** Ctn. **49c**

Mild  
**Yellow Onions** Lb. **19c**

Large, Texas Ruby Red  
**Grapefruit** Lb. **19c**

Sunkist California  
**Navel Oranges** Lb. **29c**

Golden  
**Ripe Bananas** Lb. **19c**



**Ground Beef**

**79c**

Superb Valu-Trim  
**Round Steak** Lb. **\$1.39**

Lb. Superb Valu-Trim  
**Chuck Steak** Lb. **98c**

Mott's, 4 to 6 Lb. Average  
**Baking Hens** Lb. **59c**

Farmer Jones  
**Pork Sausage** 1-Lb. Roll **\$1.69**



Swift's, 20 to 22 Lb. Average

**Butterball Turkeys**

**79c**

Superb Valu-Trim  
**Rib Steak** Lb. **\$1.39**

Superb Valu-Trim  
**Sirloin Steak** Lb. **\$1.49**

SWIFTS LIGHT & DARK  
**Turkey Roast** 2 Lb. **\$3.39**

ECKRICH  
**Smoked Sausage** Lb. **\$1.79**

Swift's 16 to 22 Lbs. Turkeys  
**Butterball** Lb. **79c**

Grade A, 16 to 20 Lbs.  
**Yearling Turkeys** Lb. **65c**

**OLD FASHIONED Everyday Low Prices**

Piggly Wiggly  
**Pancake Mix** 2-Lb. Box **69c**

Piggly Wiggly  
**Pancake Syrup** 32-oz. Btl. **99c**

Piggly Wiggly, Assorted  
**Facial Tissue** 200-Ct. Boxes **45c**

Betty Crocker, All Varieties, Hamburger  
**Helper** 5 1/2-oz. Pkg. **59c**

Carol Ann  
**Salad Dressing** 32-oz. Jar **89c**

Morton, Blueberry  
**Frozen Muffins** 9-oz. Pkg. **59c**

All Flavors  
**Royal Gelatin** 3-oz. Box **24c**

Libby  
**Pumpkin** 3 16-oz. Can **\$1.00**

Kraft's Miniature  
**Marshmallows** 10 1/2-oz. Pkg. **49c**

Piggly Wiggly  
**Cut Yams** 29-oz. Can **49c**

Dromedary  
**Pitted Dates** 8-oz. Pkg. **59c**

Borden Condensed  
**Eagle Brand Milk** 14-oz. Can **65c**

Calrose  
**Mandarin Oranges** 3 11-oz. Can **\$1.00**

Piggly Wiggly, All Varieties  
**Cake Mix** 18 1/2-oz. Pkg. **49c**