

Weather

	HIGH	LOW	PREC.
July 13	82	59	
July 14	83	59	
July 15	88	61	
July 16	86	59	

MULESHOE JOURNAL



'The Community of Opportunity-Where Water Makes the Difference'

Volume 53 Number 26

8 Pages

Published Every Thursday at Muleshoe, Bailey County, Texas 79347

10 Cents

Thursday, July 17, 1975

\$695,710 School Tax Collected

Street Light Contract Tabled

Phone Rate Hike

Delayed Until Later

The Muleshoe City Council, presided over by Mayor Alex Williams, tabled action on a proposed street lighting contract until Jeff Peeler, representing Southwestern Public Service Company could obtain additional financial reports on

why the 15 percent increase requested was justified. Councilmen were not satisfied with the contract presented by SWPS concerning removal of light poles and not getting to keep them; they wanted to see in writing a breakdown of SWPS's expenses to justify the rate increase and wanted clarification as to whether or not, after a three-year period, SWPS could come back to the council and renegotiate the contract, asking for an additional rate increase. Peeler asked the council to let him know what changes they would like to have in the contract and said he would take it back to his company and see what they would agree to.



Prospective buyers of Wildlife Seedling Packets are urged to contact their local Soil Conservation Service and get their name on the list. "This is necessary," said Jerry Wenmohs, "in order to determine whether the SCS will participate in the program.

The packets are being made available by the Texas Forest Service and will be available for the 1976 spring planting season. It is anticipated that each packet of 150 seedlings will cost around \$7.50 per packet.

The Blackwater Valley Soil and Water Conservation District will make the packets available to this area if enough persons show an interest.

The Highway 84 widening project scheduled to start this week has been postponed until July 21. The reason for the delay is because the contractors are finishing up another job elsewhere and are not quite through. The project will widen Highway 84 through Muleshoe.

Three local students, Oralia Davila, Robert Shafer and Shannon Sowder, are on the campus of Baylor University in Waco, attending a four-day

Potato Harvest Is Presently In Full Swing

The local potato harvest is in full swing as truck-load after truck-load hauls in the crop to the two produce companies in Muleshoe for processing.

Spokesman from Barrett Produce said the potatoes started running July 5 and as of now, they have processed 25,000 sacks of potatoes. After processing, the potatoes are sent, refrigerated, all over the United States, from California to Florida and even to Canada.

The potatoes are sold on open market. Barrett says he has 500 acres of reds and whites annually. He reported a little hail on the crop this year and says each year's production depends on the weather.

The potatoes are graded no. 1 or 2 and are first dug in the field, brought into the plant, washed, sold and shipped all in the same day.

T. J. Power Company reports potatoes started coming into his plant on Monday, July 14. Very few have been brought in as yet, Power says and they seem to be a little smaller than normal, being smaller than last year's potatoes.

Power ships his potatoes all over the country, east, north and southeast. They are packed in 50 pound boxes or 100 pound sacks and sold through brokers. They are machine graded by size. Power raised 360 acres of potatoes this year and the harvesting is all done by machine. The Potato season lasts about six weeks.

The T. J. Power Company can process 10-12 acres of potatoes a day or 150 thousand pounds per day.



LITTLE LEAGUE ALLSTARS TO PLAY . . . Muleshoe Little League Allstars line up before they take off for Plainview to play the winner of the Plainview-Olton Allstar game, Tuesday at 6 p.m., July 15. If they beat their competition, they will play in Muleshoe Friday, July 18, for the area playoff. Allstars are: (left to right, front row) Steffan Moore, Ariel Sanchez, Lupe Rosales, Ramon Guillen, Todd Gregory, Brad Poyner, Ruben Reyna, and Jimmy Jaramillo. Back row, (left to right) Curly Brantley, William Drozco, Raymond Cabrera, Jr., Phillip Jesko, Russell Windham, Dennis Johns, Andy Rogers, and David Lust. Raymond Cabrera, coach is on the left and Scotty Windham, manager on the right.

Six New Teachers Hired By Board

It was a busy evening for members of the Muleshoe Independent School District Board of Trustees, when they met Monday, July 14 at 8 p.m. The Trustees learned that 93.05 percent of all current school taxes have been collected. A Board of Equalization was appointed, dates for special board meetings set, bids opened and awarded, and teacher resignations accepted with new personnel employed to fill the vacancies.

The tax report reflected a total of \$695,710.77 taxes collected as of July 14, 1975. Delinquent taxes collected amounted to \$11,346.48. In 1973 a total of \$651,387.51 was collected, which was 95.69 percent of the current taxes at that time. The Trustees also reviewed the progress made toward converting Tax Rolls over to a computer.

July 30, 1975 at 9 a.m. is the date set for the Board of Equalization. The following persons were appointed to serve on the board: Horace Hutton, R. L. Scott, Don Bryant, Jim Young and Lewis Wayne Shafer. Alternates are Tommy Haley, Jim Hartline and Frank Ellis.

The following dates have been selected for special Board of Trustee meetings to be held in August: 1975-76 Budget Hearing, August 18 at 8 p.m.; and 1974-75 Budget Amendment, August 28 at 6:30 a.m.

Muleshoe State Bank was selected and was the only bid submitted on the Bank Depository for School Funds for the next biennium, 1975-77.

A proposal submitted by Gulf Oil Company on gasoline for student transportation for 1975-76, was accepted with the beginning price of 36.5 cents per gallon, amount of allocation guaranteed based on the prior

Muleshoe All Stars Beat Olton

Muleshoe and Plainview Americans Little League will play for the District Championship at Roger Miller Park in Muleshoe Friday night at 8 p.m. The winner will then go to the Regional Tournament at Borger or Pampa.

Tuesday night's game pitted Muleshoe against Olton in the first game with Muleshoe coming out on top with a score of 8-5. The Plainview Americans eked out a win over Littlefield, batting in a score of 3-2.

Ramon Guillen of Muleshoe was the batting star of the game, with four hits including a home run. He drove in five runs. Andy Rogers pitched the first five innings and was the winning pitcher. Todd Gregory pitched the sixth inning and held the Olton team scoreless.

Other members of the Muleshoe Little League All Star Team include Russell Windham, Dennis Johns, Ruben Reyna, David Lust, Phillip Jesko, Ariel Sanchez, Brad Poyner, William Orozco, Curby Brantley, Lupe Rosales and Raymond Cabrera, Jr. Team Manager is Scotty Windham and the Coach is Raymond Cabrera, Sr.

Screwworms On Increase In Texas

Screwworms are rapidly becoming a serious threat to livestock and pets east of the Continental Divide in New Mexico and in extreme West Texas, warns a U. S. Department of

Agriculture (USDA) veterinarian. Dr. James E. Novy, director of field operations for the Screwworm Eradication Program, says cases are increasing rapidly in the region. He expects summer rains to improve the habitat for the live flesh eating parasite of all warm blooded animals.

The first full week of July saw the year's first screwworm cases confirmed by identification in the Animal and Plant Health Inspection Service (APHIS) laboratory from five separate counties within this area.

Worms (larvae) from an infested wound near Tinnie, in Lincoln County, and another in the Lake Valley community of Sierra County, New Mexico, proved to be screwworms. In Texas' Big Bend area, new infestations in El Paso, Ward, Winkler counties joined earlier cases in most adjacent counties.

Eggs hatch only a few hours after the female screwworm fly deposits them on the edge of a wound in any warm blooded

Cont. on Page 3, col. 8

Miss Muleshoe Pageant Entries Accepted

The 12th Annual Miss Muleshoe Pageant will be held Saturday, August 16 at the Muleshoe High School Auditorium, Mike Armstrong, Jaycee member, and chairman for this year's pageant, says that any girl between the ages of 16-21, who lives within the Muleshoe, Lazbuddie, Three-Way area, is eligible to enter the contest.

The local Jaycees are sponsoring the 1975-76 Miss Muleshoe Pageant. Anyone wishing to enter the competition may do so by contacting Armstrong, 272-4645; Leon Logsdon, 272-3304; Hugh Young, 272-4738 or any Muleshoe Jaycee member.

Highlights of the Miss Muleshoe Pageant will be the crowning of the new Miss Muleshoe by the reigning Miss Muleshoe 1974-75, Miss Sharon Kellton.

Queen Contest Is Called Off

The Farm Bureau has called off their Farm Bureau Queen Contest due to lack of contestants. It was hoped there would be at least six girls participating in the contest, but not enough girls turned in entry forms.

Cont. on Page 3, col. 4

Sunflower Field Day Set In Halfway

HALFWAY-A sunflower field day at the Texas Agricultural Experiment Station at Halfway 14 miles west of Plainview has been set for Thursday afternoon, July 17.

Announcement of the event was made by Dr. George McBee, resident director of TAES at Lubbock, with co-chairmen Dr. Raymond Brigham, associate professor, oilseed crops at Lubbock, and Dr. Douglas Owen, research scientist at Halfway.

New developments in sunflower research will be spotlighted. Until now, little has been known about disease and insect problems associated with sunflower production on the High Plains, said Brigham. Scientists also have had few answers for farmers wanting to know about planting rates, irrigation, and fertilization of the new crop.

Sunflowers were grown on 5,000 acres in the area last year. This season the acreage is estimated at 300,000.

Activities for the afternoon event are from 2:00 until 5:00. A series of tours plus a farm machinery display are featured attractions.

Brigham said the tours of research plots will include stops at test sites ranging from hybrid trials, fertilization and

Cont. on Page 3, col. 3



SORTING - GRADING PROCESS . . . It takes a little time to sort and grade the potatoes as they come into the plant before sacking or boxing them and shipping them out, but Barrett Produce of Muleshoe processes 25,000 sacks of potatoes a day. Processing began at the Barrett plant on July 5.

Jaycees Report On Projects Underway

Progress reports were given on several projects now underway and soon to get underway at the Muleshoe Jaycee meeting held at noon Monday, July 14, at the XIT Steak House.

The invocation was given by Chaplain Ray Halsell and the Pledge of Allegiance was led by Ken Ferguson. John Fuston led the group in the Jaycee Creed.

Project H.E.L.P. was reviewed by Ted Barnhill. Derrel Oliver stated that the 1975 Ford L.T.D. to be given away by the Jaycees was displayed Wednesday at Muleshoe State Bank and will be shown at Fry and Cox today (Thursday) and Friday, on Saturday and Monday, it can be seen at the First National Bank.

Chairman Mike Armstrong reported that the Miss Muleshoe Pageant will be held August 16 and told the Jaycees

Wrong Left Turn Causes Truck Wreck

A Slaton man was cited for making a left turn from the wrong lane which resulted in two trucks colliding Friday, July 11, around 4:40 p.m., 17, 10 miles southeast of Muleshoe on Highway 84.

Texas Highway Patrolmen, who investigated the accident said Anthony Perales, 50, driver of a 1974 GMC truck, made a left turn in front of a 1970 Kenworth tractor-trailer rig, driven by Stephen Bruce Wood, 24, of El Paso, causing the wreck.

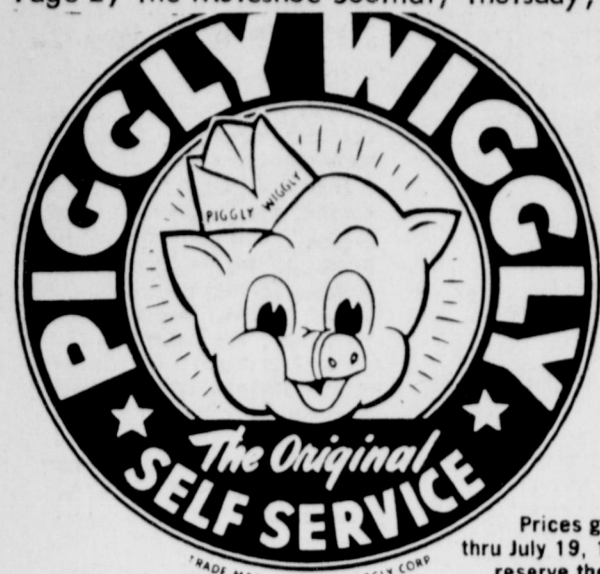
Both vehicles were northwest bound, with the Perales vehicle traveling on the outside lane and the Wood vehicle on the inside lane. The accident report indicated that Wood tried to stop when Perales made the turn, but was unable to do so, and the collision occurred.

There were no injuries, but officers cited Perales for making a left turn from the wrong lane.

Cont. on Page 3, col. 5




LOAD THEM UP-MOVE THEM OUT . . . Is just what is happening at T. J. Powers Company, as potatoes are hauled in, processed and shipped to places all over the country. Power says the potatoes he is receiving are somewhat smaller this year than last years crop. Hundred pound sacks are stacked and loaded into refrigerated trucks for shipment.



Prices good thru July 19, 1975. We reserve the right to limit quantities. None sold to dealers.

Compare Quality and Savings at the PEOPLE PLEASIN' STORE





Tide's In...Dirt's Out!

Tide Detergent

\$1.69

84-oz. Box



Grated

Van Camp's Tuna

3 \$1

6 1/2-oz. Cans



"Mix or Match"
Piggly Wiggly Green Beans or

Golden Corn

4 \$1

16-oz. Cans



LIMIT 2 PLEASE
Piggly Wiggly Grade A Large

Fresh Eggs

49^c

Dozen

Ladies Like It Too!

Irish Spring Bar Soap

3 \$1

3 1/2-oz. Bars

Piggly Wiggly Assorted Flavors

Soft Drink

73^c

1/2-Gal. Btl.

Piggly Wiggly Canned Biscuits

10^c

Husband Pleasin'

Ranch Style Beans

3 \$1

15-oz. Cans

Kraft's 6 Stick

Miracle Oleo

55^c

Lb. Pkg.

Piggly Wiggly Fresh Buttermilk

69^c

1/2-Gal. Ctn.

Betty Crocker

Hamburger Helpers

59^c

6-oz. Box

New Roll-On, Double-Protection Anti-Perisprant, Regular or Unscented

Gillette Right Guard

69^c

1.5-oz.

Frozen Sparetime Pot Pies

6 \$1

6-oz. Pkgs.

Carol Ann

Salad Dressing

69^c

Qt. Jar

Your Choice! Spray Powder or Spray Liquid For Treatment of Athlete's Foot

Aftate Treatment

\$1.59

5-oz. Can

Flav-r-Pac, Frozen Shoestring Potatoes

4 \$1

20-oz. Pkgs.

Superb Valu-Trim

Round Steak

\$1.69

Lb.

Superb Valu-Trim

Sirloin Steak

\$1.69

Lb.

Superb Valu-Trim, Blade Cut

Chuck Roast

98^c

Lb.

Superb Valu-Trim

Chuck Steak

\$1.19

Lb.

Superb Valu-Trim

Rib Steak

\$1.59

Lb.

Superb Valu-Trim, Seven Bone

Shoulder Roast

\$1.39

Lb.

USDA Grade A, Breast or Leg

Fryer Quarters

69^c

Lb.

New Low Prices

Shasta, All Flavors Diet Pop	6	12-oz. Cans	\$1.00
Coffee Creamer Coffee-mate		16-oz. Jar	\$1.19
Luncheon Meat Armour's Treet		12-oz. Can	89 ^c
Del Monte Sauerkraut	3	16-oz. Cans	\$1.00
Friskies Cat Food	5	15-oz. Cans	\$1.00
Fannings, Bread & Butter Pickles		14-oz. Jar	49 ^c
Larsen's, Mixed Vegetables Veg-All	3	16-oz. Cans	\$1.00
Delicious Hi-C Drinks		46-oz. Can	63 ^c
Whole Del Monte Potatoes	3	16-oz. Cans	\$1.00
All Varieties Patio Dinners		13-oz. Pkg.	59 ^c
Piggly Wiggly Pancake Mix		2-Lb. Box	59 ^c
Libby's, Vienna Sausages	3	5-oz. Cans	\$1.00

New Low Prices

Refreshing Wagner Drinks		Qt. Btl.	45 ^c
Rainbo, Hamburger Pickles		Qt. Jar	79 ^c
Trappey's, With Jalapenos Pork N Beans	3	15-oz. Cans	\$1.00
Piggly Wiggly, Macaroni Dinners	4	7-oz. Pkgs.	\$1.00
Libby's Potted Meat	5	3 1/4-oz. Cans	\$1.00
Chef Boy-Ar-Dee, All Flavors Pizzas		13-oz. Pkg.	99 ^c
Kal-Kan Dog Food	3	15-oz. Cans	\$1.00
Piggly Wiggly, Regular Oleo Quarters		Lb. Pkg.	39 ^c
All Flavors Jell-O Concentrate		3-oz. Box	27 ^c
Real Lemon		24-oz. Btl.	59 ^c
Bonne, Laundry Detergent		49-oz. Box	99 ^c
Mountain Pass Chili Peppers	3	4-oz. Cans	\$1.00

Sprightly Tasting

Santa Rosa Plums

69^c

Lb.

Eat The Tops Too!

Green Onions

2 FOR 29^c

Colorful As The Crown Jewels

Red Grapes

69^c

Lb.



We Welcome Federal Food Stamp Customers

Red Potatoes

15^c

Lb.

Yellow Squash

29^c

Lb.

Golden Globes Of Juice Luscious

Peaches

59^c

Lb.

A Prime Delicacy, Plump

Nectarines

59^c

Lb.

\$695,710 ...

Cont. from Page 1
 year and in accordance with the regulations in Phase IV of the Federal Mandantory Allocation Program.
 The Board of Trustees also accepted a bid submitted by Borden Milk Co. in the amount of .0925 cents per one half pint of milk for the 1975-76 school lunch program. This included both regular and chocolate milk. The price was guaranteed for one year.
 Six local teachers resigned from the school system and their resignations were accepted by the board. Those leaving their teaching positions in Muleshoe were: Mrs. Vickie Burch - Title I Reading Lab Teacher, Junior High School, who resigned for personal reasons; Mrs. Gail Bruns, seventh grade reading teacher at Junior High, also resigning for personal reasons; James Parrish, English and art teacher at Jr. High, gave personal reasons for his resignation; Mrs. Donna Doshier, Title I Migrant teacher, Mary DeShazo Elementary School, for personal reasons; Ronnie W. Clifton, teacher and coach at Jr. High School, has accepted a position at Vernon, Texas and Mrs. Beth Skipworth, bookkeeper Muleshoe L.S.D. who is going into the teaching profession.
 Mrs. Ellen Jo Glover was hired as librarian at Mary DeShazo Elementary. She holds a Master of Education from Eastern New Mexico University and has seven years teaching and librarian experience at Richland Hills Primary School. She did not teach last year.
 Miss Rose Mary de la Cerda, was employed as a teacher at Richland Hills Primary School. She is a graduate of Mercedes, Texas High School and earned a B. S. Degree in Elementary Education at Pan American University. She is taking additional work at P. A. U. this summer.
 M. Dean Minor will be a science teacher and coach at Jr. High School. He is a graduate of Corona New Mexico High School, where he lettered in football, basketball and track. He also lettered in football, basketball and track at Navarro Junior College, Corsicana, Texas. Minor played three years


of college basketball at Stephen F. Austin University, and earned both his B.S. and M.E. degrees at that university. Minor has five years teaching and coaching experience at the Nacogdoches Independent School District and Central Heights School. He is married and has three children.
 Mrs. Linda Marr, will be teaching Language Arts at Junior High School. She is a graduate of North Dallas High School and earned a B.S. degree and Master of Education at North Texas State University. She has five years teaching experience in Dallas I.S.D. and one year at Clover Park School District, Tacoma, Washington. Her husband is the Muleshoe City Manager.
 Miss Brenda Scott will also fill a vacancy at Junior High. She is a 1970 graduate of Muleshoe High School and has earned an associate degree at South Plains College and a B.S. Degree at Texas Tech University. Her parents are Mr. and Mrs. R. L. Scott of Muleshoe.
 Mrs. Beth Skipworth will be teaching at Mary DeShazo Elementary School and is a graduate of Copper Rural High School. She earned her B.S. Degree in Elementary and Special Education at Eastern New Mexico University.
 In other business, the Board of Trustees discussed new school policies as related to the Title IX Civil Rights Act of 1972; the new law regarding the reporting of suspected child abuse; new state law on smoking in school buildings and other public buildings. No action was taken until more accurate information can be obtained and some clarifications and interpretations of those laws given.
 Price quotes on painting at the high school, junior high school and Mary DeShazo schools were approved as were prices on repair of the blacktop at Junior High and High schools. It was noted that all three gym floors have been cleaned, repainted and recoated with Gym Finish. All classrooms and corridors are in the process of being cleaned and floors refinished.
 The board discussed several problems faced with the New State Finance Plan, classification of personnel, new Compensation Education Program, the number of working days in each

pay grade category, as well as reviewed the property insurance coverage on school buildings and contents. They approved raising the replacement values to meet the 80 percent CO-Insurance Standards.
 After hearing reports on the increased costs of Workman's Compensation premiums, they discussed the removal of candy and soft drinks containing refined sugar from the vending machines on the school campuses. No action was taken on this matter.
 After reviewing a letter received from Mark White, Secretary of State, relating to vital matters concerning the election process as it would affect the school district, the meeting adjourned until the next regular meeting, Monday, August 11, 1975.

Street...

Cont. from Page 1
 that the motor in the vehicle would be replaced with both the city and county sharing the expense.
 Authorization was given by the council to go out for bids on materials for a 12 inch water line to link the existing facilities with the 500,000 gallon overhead storage tank presently being constructed. This line would feed the new elevated storage tank. It was pointed out by City Manager Dave Marr, that the reason for this new line is that after the tank was moved to the new site, the water lines didn't have the capacity to fill the new tank. Total cost of the lines will amount to approximately \$19,750 and will be paid for from bond money set aside for the storage tank and water wells. City forces will do all the labor on the project.
 The councilmen went into executive session to discuss a personnel memorandum concerning the Municipal Court Judge. When the matter has been appropriately resolved, it will be brought out in open session.
 Several other items came before the council for discussion, including a request for refuse collection outside the city limits by the Ranch House Motel. No action was taken on this matter until the city staff can work up a charge rate on refuse collection outside the city.
 The city received a letter concerning the million gallon reservoir, telling them that it was in need of some repairs. Action was tabled on this matter until the elevated tank is completed and city officials can see what funds are left to repair it with. They decided to hold off on this matter until the end of summer.
 The City Manager went over a memorandum received from Dessie Berry, Tax Assessor-Collector, reporting on the 1974 taxes delinquent as of July 1, 1975. The report reflected that as of July 1, 1974 the city had collected \$144,030, or 94.35 percent of the 1973 levy of \$152,665.
 Since January 1, 1975, \$1,751.29 of the \$20,542.43 delinquent tax roll has been collected. Taxes are placed on the delinquent roll as of July 1, 1975.
 The decision as to what color to paint the new 500,000 gallon overhead water storage tank was delayed until the council could obtain a cost estimate for an extra color for the tank.

Sunflower ...

Cont. from Page 1
 irrigation studies to insect and weed control tests.
 Lubbock-based TAES scientists will join the Halfway research staff in interpreting the studies for guests.
 Dr. Douglas Owen will explain crop rotation programs at Halfway, and Jim Schrib, weed control scientist, will talk about herbicide studies.
 Of the Lubbock staff, Dr. Art Onken who heads up soil chemistry research will discuss fertilization of sunflowers. Dr. George Teetes, entomologist, is slated to report the results of planting date tests associated with insect control. Brigham will be explaining data on hybrid trials, and Dr. Charles Wendt, soil physicist, is to discuss irrigation studies. Anyone interested in sunflower production is encouraged to attend, said Brigham. The Halfway Station is on Highway 70, 14 miles west of Plainview.
The Lonely Heart

 "DON'T JUST STAND THERE, GIVE ME THE BILL!"

Around...

Cont. from Page 1
 school. The students, sponsored by the Farm Bureau are attending the 13th Annual Texas Farm Bureau High School Citizenship Seminar.
 While there, they will learn the fundamentals of the free enterprise system, how communistic systems work, and the basic responsibilities of good citizenship. They are among 450 junior and senior high school students from across Texas who are attending the school.
 Area farmers are reminded of the appreciation breakfast Thursday, July 17 at the Corral Restaurant. The event is being sponsored by the Muleshoe Chamber of Commerce and is held in appreciation of all farmers and agricultural people.
 The local CowBelles will be hostesses for the event which will begin at 6:30 a.m.
 Mr. and Mrs. Tom Burgess, Jodi and their daughter, Mrs. Ronnie Leonard and son, Clint of Levelland have returned from a 10 day visit in Wyoming at Mrs. Burgess's parents, Mr. and Mrs. Dee Burch. They ranch in Carbon County, near Rawlins. Mrs. Burgess's parents plan on spending the winter in Muleshoe. Mr. Burgess is a Livestock Inspector for the Texas Animal Health Commission.
 Alcoholics Anonymous is having an open round robin meeting Sunday, July 19 at 2:30 p.m. at their meeting place, 212 S. First. There will be two speakers, one an Independent Oil man and the other a Home Furnishings man. Both are from Midland.
 All interested persons are welcome at the meeting.
NEW ROAD SURFACE
 LONDON - Scientists at Birmingham University have developed a new accident-saving road surface, with a tread pattern like an automobile tire. The design should stop skidding and cut spray hazards on wet roads.

Jaycee...

Cont. from Page 1
 Members attending Monday's Jaycee meeting included Mike Armstrong, Terry Field, John Fuston, Clarence Christian, Edwin Cox, Ken Ferguson, Max King, Derrel Oliver, Charles Morow, Hugh Young, Curtis Walker, Royce Harris, Leon Logsdon, Gene McGuire, Kevin Tucker, Larry Goree, Montee Dollar, Roger Williams, Gerald Carnes, Ray Haisell, Ted Barnhill, Bob Finney, Johnny St. Clair, Jeff Smith and Richard Kimbrough.

Mildew Is Problem Of Cantaloupes

Powdery mildew is a major disease problem of cantaloupes, cucumbers and squash, and home gardeners must be ready to begin a control program when the disease appears, says the Texas Agricultural Extension Service.
 The disease is characterized by a white powdery growth on the upper surface of leaves. It develops rapidly under hot, dry weather conditions while most diseases prefer high humidity and mild temperatures. Once leaves become severely infected, they turn yellow and die. In severe cases, the fruit will be stunted and malformed.
 The fungicides Benlate and Karathane have proven effective in controlling powdery mildew if applications are started as soon as the disease appears. Spraying must continue at five-to-seven-day intervals until the disease is no longer a problem. It is suggested to add a wetting agent to the spray to improve control.
 Some vegetable varieties have resistance to powdery mildew. Among resistant cantaloupe varieties are Perleta, Top Mark, Gulf Stream and PMR 45. Resistant cucumber varieties include Poinsett, Ashley and Palomar.
 However, no varieties of squash have sufficient resistance to rely on it alone for disease control.
 The Texas Agricultural Extension Service advises gardeners to use a combination of resistant varieties and fungicides to combat powdery mildew. And, when plants become diseased to the point that they cannot be recovered, they should be destroyed so as not to serve as a source of further disease infection.

Screwworms...

Cont. from Page 1
 animal. Emerging larvae (worms) burrow into the wound to feed on live flesh.
 Repeated infestations, if untreated, can result in death of the host animal. Novy recommends killing the worms with an approved larvicide.
 Only trained specialist can determine the difference between screwworms and larvae of the common blowfly which feeds on dead flesh. For the Screwworm Eradication Program to succeed, it is essential that samples be submitted from deep in the center of all infested wounds.
 Sample kits are available from County Agents, veterinarians, and livestock inspectors. Pre-addressed, postage paid, labels route the samples to the APHIS laboratory for identification.
 Female screwworm flies usually mate only once in their lifetimes. Eggs they produce after mating with a sterile male will not hatch. Millions of screwworm flies are raised on an artificial media in the APHIS insectary and then sterilized by brief exposure to a toxic agent.
 The sterile, but sexually active, flies are released in the area on known screwworm populations to mate with fertile, wild, flies. When enough sterile matings have occurred, eradication is achieved.
 Livestock owners can protect their animals against possible screwworm infestation by spraying or dipping regularly with Corral or Korlan; by avoiding all unnecessary wounding of animals during the warm weather screwworm season, and by treating unavoidable wounds (such as navels of newborn animals) with an approved smear to prevent infestation.

TO CUT CAR THEFTS
 The government has launched a campaign to cut in half the annual car theft toll of nearly \$1.5 billion in five years through coordinated federal, state and industry efforts, known as the Interagency Committee on Auto Theft.

Out of Orbit
 SALES MANAGER
 AJAX SOAP INC.

 "BOSS, I'VE OPENED UP A BRAND NEW TERRITORY!"

TAPPAN Slide-in Range



- Smart built-in look
- Black glass oven door
- Clock and timer
- Lift-off oven door

\$ 219.95
 Model 32-1365

TAPPAN Microwave Oven



- Save energy and time and money
- Features automatic defrost cycle
- Cuts cooking time up to 75%
- No installation - fits on kitchen counter

\$ 348.00
 Model 56-3454

Wilson Appliances

Queen...

Cont. from Page 1
 The contest would have been held July 18 at the High School Cafeteria at 8 p.m. The purpose of the contest was to recognize farm and ranch girls in the State of Texas. The local county winner would have received a scholarship to the college of her choice, in the amount of \$150.
 District winners would have received an expense paid trip to the State Farm Bureau Convention.

MULESHOE JOURNAL
 Established February 23, 1934
 Published by Muleshoe Publishing Co., Inc.
 Every Thursday at 304 W. Second Box 443
 Muleshoe, Texas, 79847
 Second class postage paid at Muleshoe, Texas 79847

TEXAS PRESS ASSOCIATION
 L. S. Hall, President
 Jackita V. Hall, Sec. - Treas.
 L. B. Hall, Managing Editor
 NIKKI BROWN, Advertising
 Charlene Bland, News Reporter
 Frances GIBBO, Copy Reporter
 Polly Okwili, Office

SUBSCRIPTIONS:
 The Muleshoe Journal and Bailey County Journal: Bailey and surrounding counties \$4.00
 The Muleshoe Journal and Bailey County Journal: elsewhere in Texas \$6.00
 The Muleshoe Journal and Bailey County Journal: Outside of Texas \$12.00
 Yearly by Carrier \$6.50
 Monthly by Carrier \$7.00
 Advertising rate card on application

ferti-lome WEED and FEED
 Apply before weeds reach maturity. Excellent lawn food combination.
ferti-lome your ECOLOGICAL choice
BAKER FARM SUPPLY INC.
 W. HWY. 84
 272-4613

STORE HOURS
 9am-8pm
 CLOSED SUNDAY

GIBSON'S DISCOUNT CENTER
 1723 W. AMERICAN BLVD

PRICES GOOD JULY 17 THRU JULY 19

<p>DAWN DISHWASHING LIQUID  32oz Reg \$1.07 88¢</p>	<p>DYNAMO LIQUID DETERGENT  GIANT SIZE Reg 99¢ 79¢</p>
<p>FINISH FOR AUTOMATIC DISHWASHERS 50oz Reg \$1.27 99¢</p>	<p>ADORN HAIRSPRAY  13oz Reg \$1.89 \$1.39</p>
<p>LADIES TUMMY CONTROL PANTYHOSE  13oz Reg \$1.37 89¢</p>	<p>SEEN ON TV ARRID XX  6oz REG \$1.07 77¢</p>



Mr. and Mrs. John Stephen Luttrell

Couple United In Candlelight Ceremony

Miss Nelda Jo Vernon and John Stephen Luttrell were united in marriage Saturday afternoon, July 12, 1975 at 7:30 p.m. in the Muleshoe Independent Baptist Church, Rev. Bob Dodd performed the double-ring ceremony.

The bride is the daughter of Mr. and Mrs. D. L. Vernon of Muleshoe and the granddaughter of Mr. and Mrs. Ernest Gatlin. The groom is the son of Mr. and Mrs. Jack Luttrell of Farmington, N.M.

The couple stood before an archway of yellow candles decorated with greenery and pastel satin bows of green, pink, orchid and yellow. Seven-stick candlebras were used on each side of the archway. Wedding selections were played by Faith Morgan with soloist, Phyllis Smith, accompanying her. Miss Smith sang, "We've Only Just Begun".

Given in marriage by her father, the bride wore a formal length gown of white peau de soie fashioned with a lace bodice and stand-up collar. The sheer sleeves were fastened on to lace cuffs and had a chapel length lace-edged train. Accenting the neckline, the bride wore a pearl necklace belonging to the mother of the groom, which also served as something old, pearl ear-

rings were borrowed from Cindy Harvey. The traditional blue garter was worn by the bride and she wore pennies minted in the year of the birth of the couple in her shoe. She also wore a new watch presented by the groom. The train was carried by her niece and nephews, two year old Tonia Vernon, daughter of Mr. and Mrs. Verley Vernon and Brian and Jared Vernon, ages three and four, sons of Mr. and Mrs. Rickey Vernon.

Little Miss Vernon wore a formal length dress of white voile with baby lace and fashioned with long lace sleeves. She wore spring flowers in her hair. The young trainbearers wore white jackets with navy pants and navy bow ties.

Attending the bride as maid of honor was Carolyn Swope, daughter of Rev. and Mrs. Bill Swope of Buchanan Dam, Texas. Mrs. Rickey Vernon was bridesmaid. The attendants wore long princess dresses of flocced orchid voile with cape collars and angel sleeves. They wore matching picture hats and carried spring bouquets.

Becky Barber, daughter of Mr. and Mrs. Carroll Barber served as flower girl and carried a white straw basket filled with pastel love knots. The ringbearer was Wayne Precure, son of Mr. and Mrs. Ray Precure and he carried a pale blue satin pillow edged in lace.

Candle lighters were Verley Vernon and Wendell Vernon, brothers of the bride and they also served as ushers.

Bob Knapp from Pennsylvania served as best man and Rickey Vernon, brother of the bride, served as groomsman.

The couple kneeled at a white satin kneeling bench while Miss Smith sang the "Lord's Prayer". The bride sang "Faith Will Move Mountains" to the groom, accompanied by Cindy Harvey. A memory candle was lighted by the couple and the bride presented a red rose to each mother.

For her daughter's wedding Mrs. Vernon, chose a baby blue double-knit dress trimmed in white and accented by white carnation corsage. Mrs. Luttrell wore a silk, long-sleeved cream dress and a red carnation corsage.

Immediately following the ceremony, a reception was held in the home of Mr. and Mrs. Spencer Beavers. Mrs. Joe Copley served the three-tiered wedding cake which was topped by a miniature bride and groom and featured pastel roses. Banana punch was served by Mrs. Kenneth King. Nuts and mints were also served. Mrs. James Johnson handed out the rice

bags made of yellow net with yellow ribbons.

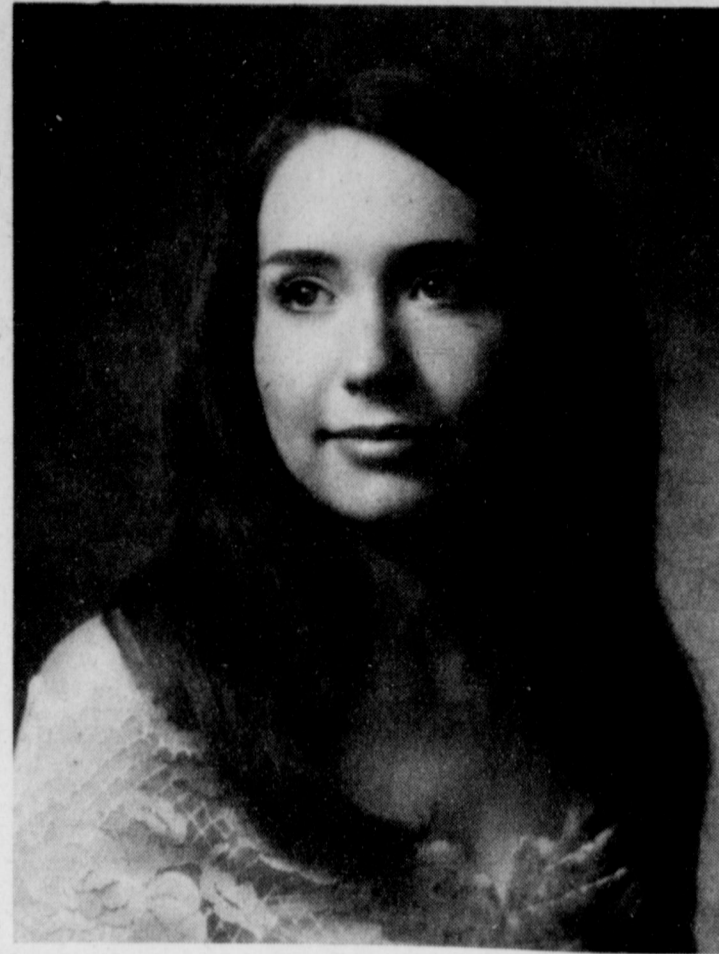
For travel the bride chose a white A-line skirt with a orchid shell and matching flocced organza over-blowse with white accessories. She lifted the corsetage from her bouquet.

After a wedding trip to Carlsbad and points of interest in New Mexico, the couple will be at home in Muleshoe until August, when they will go to Westboden, Germany, where Luttrell will be stationed with the Air Force.

The bride is a 1974 graduate of Muleshoe High School and the groom is a 1969 graduate of Gallup New Mexico High School.

A rehearsal dinner was prepared and hosted by Mrs. Lonnie Merriott and Mrs. Wannie Lorraine on Friday, July 11 at the Legion Hall. Mr. and Mrs. James Moore and Mrs. Bill Martin of Amarillo attended the rehearsal dinner.

Out of town guests attending the wedding were Mr. and Mrs. Ted Vernon, Don, Ken and Gail from Albuquerque, N.M. and Mr. and Mrs. Ralph Peeler and Renee, from Denver City, Texas.



AUGUST WEDDING PLANNED. Mr. and Mrs. Paul Rains of El Paso announce the engagement and approaching marriage of their daughter, Vicki Lou, to David Keith Henderson, son of Mr. and Mrs. A. T. Henderson of Muleshoe. Miss Rains is a 1973 graduate of Midland High School. The prospective groom is a 1970 graduate of Muleshoe High School and a 1974 graduate of Texas Tech University. The couple plan an August 16 wedding in Midland.

Miss Archer, Kirkland Exchange Wedding Vows

Miss Dianna Dean, daughter of Mr. and Mrs. Martin Kirkland Dean of Muleshoe, and David Alan Archer, both of Houston, were married Saturday, July 12, in a small afternoon wedding at Saint James' Episcopal Church, Clovis, N.M. Archer is the son of Mr. and Mrs. James D. Archer of Wichita Falls.

The Reverend Joseph M. Fasel, rector, officiated.

Given in marriage by her father, the bride wore a chapel length dress of ecru white, styled with a deep V-neckline, flared bell short sleeves and softly belted waistline. The matching brimmed hat complimented the ensemble. She wore a gold topaz and pearl heirloom pin which belonged to her great-great grandmother, Ann Word Collins. The bride carried an informal bouquet of long-stemmed Shasta daisies.

Honor attendants for the couple were Mrs. James Cone of Lubbock and the groom's father, James D. Archer.

John Dean, brother of the bride, of Muleshoe, and John

Three of Clovis, N.M., served as acolytes at the wedding service. Ushers were Perry Hall and Ronnie Bullock, both of Muleshoe.

Following the 4 p.m. services, a reception was held in Saint James' Parish Hall. Shasta daisies were the appointed decorations in the receiving rooms.

Presiding at the serving table was Mrs. Richard Snyder, Clayton, N.M., aunt of the bride. Mrs. Steven Smith, Sudan, and Miss Lauren Hall and Miss Lashelle Lewis, both of Muleshoe, assisted in the house-party.

A traditional two-tiered white wedding cake was encircled with a wreath garlanded with tiny fresh grapes, baby's breath and heads of wheat laid on grape leaves. Silver and white china appointments and Shasta daisy bouquets, set on leafgreen linen, completed the table service.

The bride, a graduate of Coronado High School, Lubbock, received her degree in second-

dary education from Texas Technological University and attended the University of Texas, Austin. She is a member of Pi Beta Phi sorority. The bride is associated with Continental Airlines in Houston.

Her husband, who attended Wichita Falls schools, is a graduate of the University of Texas, Austin, where he holds a degree in marketing. He is a member of Beta Theta Pi fraternity and is associated with Quaker Oats Company, Houston.

Following a wedding trip to the Bahama Islands, the couple will be at home in Houston.

20 Years Ago

Mr. and Mrs. Clyde Holt and daughter, Mary Jo, Elaine Evans, Doris Jean Childers and Ginger Roberts spent the past weekend at Ruidosa, N.M.

Mr. and Mrs. Morris Douglas spent the past weekend at Conchas, fishing.

John Thompson represented the Progress Methodist Church in a district meeting, which was held at the First Methodist Church in Plainview, Monday.

When the farmers around Clay's Corner need small hardware, such as nails, bolts, pipe fittings and even up to air conditioners, these things have been added to the stock in this store. Clay says that he can also charge batteries now.

Mr. and Mrs. Otis Blaylock and children spent the July 4 weekend visiting in Wellington with relatives and friends.

Friendship Club Held Meeting

The Friendship Club met July 10 in the home of Mrs. E. N. Darsey for their monthly business and social meeting. A patio dinner was served by the hostesses, Mrs. E. N. Darsey and Mrs. Scott Swafford. The meeting was conducted by the President, Mrs. Jewell

Griffiths. After the business meeting, Mrs. Cecil Cole presented the program for the evening, with Life of Hannah, character of the Bible. Study sessions continue with women of the Bible. The members attending the meeting and program were Mrs. W. T. Andrews, Mrs. Jewell Griffiths,

Mrs. C. E. Layne, Mrs. J. B. Smith, Mrs. W. F. Watts, Mrs. J. W. Witherspoon, Mrs. Tye Young, Mrs. Cecil Cole, and the hostesses, Mrs. E. N. Darsey and Mrs. Scott Swafford.

There's only one way to be happy and that lies in mental satisfaction.

Cherry Lemonade
2 c sweetened cherry juice
1 c lemon juice
1 c sugar

Make a syrup of the sugar by adding 1/2 cup of water and boil 3 minutes. Combine ingredients and pour over cracked ice.

West Plains Hospital Hospital Briefs

ADMISSIONS
July 7 - Sheryl Waltrip, and Birdie Warren.

July 12 - Curtis Smith and Richard Johnson.

July 14 - Lois Robinson, Hal Bynum and Beulah Gatewood.

DISMISSALS
July 11 - Lois West and Delfina Contreras.

July 12 - Sheryl Waltrip and Mrs. Mike Fabelin and son.

July 13 - Mrs. Pat Barrios and daughter.

July 14 - Mrs. Guinn Weaver, Mrs. C. A. Harsley, Oscar Reed, Mrs. Raymond Mears of Farwell and Horace Holt.



100% Polyester Blue Denims
\$32. \$36.

A. Beautiful Blue Denim pant suit highlighted with beaded novelty design on shirt yoke and pant leg. Machine washable. Sizes 10-20.

B. Blue Denim pant suit. Has solid colored pants and long sleeve shirt jac featuring a beaded design on the collar and back. 100% polyester. Machine washable. Sizes 10-20.

CASH

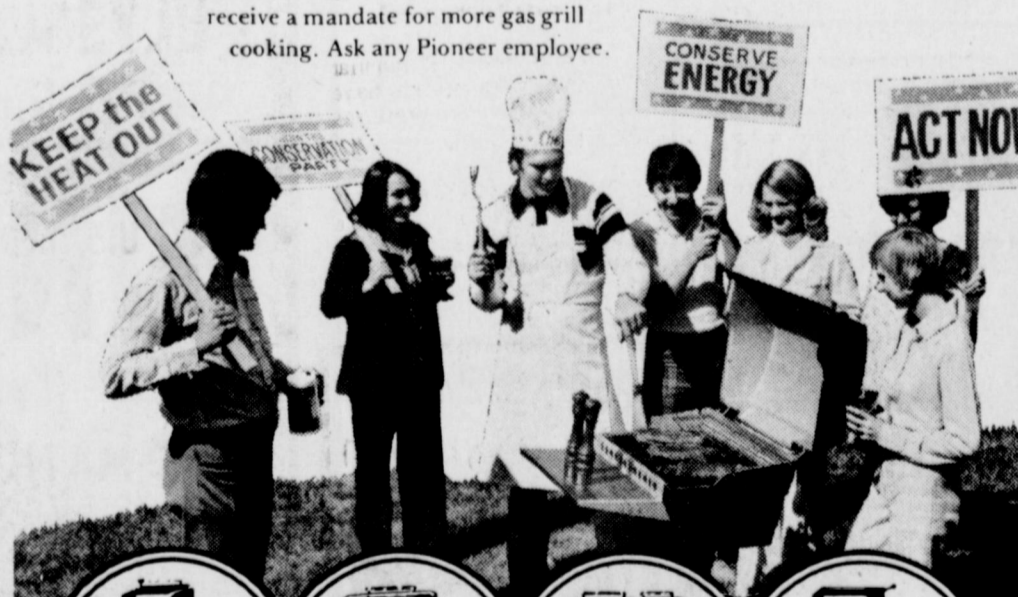


LAY-A-WAY



The Conservation Party. Join In.

Do your bit for conservation while you do your thing. A gas grill lets you cook outside and take the heat with you. You don't put an added tax on your air conditioner with cooking heat. A gas grill is so convenient (no charcoal mess or bother) eating "out" will become an everyday affair. And, it will add a charisma to your outdoor living that will last all year long. Get the voters "out" and that wonderful charcoal taste will earn you a vote of confidence from family and friends. You'll receive a mandate for more gas grill cooking. Ask any Pioneer employee.



 MASTER CHEF (AMK) The better grill Cash price: \$145.71 *Budget price: \$176.40 Budget terms: no down payment, \$4.90 per month for 36 months	 PARTY HOST (HEJ) The professional one Cash price: \$174.15 *Budget price: \$210.60 Budget terms: no down payment, \$5.85 per month for 36 months	 CHEF'S CHOICE (CC-1) The outdoor range Cash price: \$250.20 *Budget price: \$302.76 Budget terms: no down payment, \$8.41 per month for 36 months	 FLAVOR TWIN (GRB-40C) Dual burner grill Cash price: \$187.74 *Budget price: \$227.16 Budget terms: no down payment, \$6.31 per month for 36 months
--	---	--	---

Buy now and receive FREE this aluminum shelf... Offer expires July 31, 1975

*Budget terms are available at 12.75% annual interest on declining balance. Prices include normal post-type installation and 5% sales tax.

PIONEER NATURAL GAS COMPANY

Cobb's
invites you to their **JULY CLEARANCE SALE**
Now In Progress



OFF ON A BUS . . . Pictured left to right are Ruben Fabilo, Chris Kinen, and two aides, Lupe Agundis and Angie de la Cruz. They are on their way to the Farmers and Ranchers Auction Sale barn, then to the Zoo in Clovis. These students are part of the Summer Migrant Program.

Blaylocks Return From Trip

Mr. and Mrs. Ottis Blaylock left July 4, going to El Paso, through New Mexico and Arizona on a trip. They stayed the first night with their son and family, Mr. and Mrs. Dabney Blaylock. The next day the couple started out for Ruidosa, N.M., and from there to Prescott, Ariz. While Mr. and Mrs. Blaylock were in Arizona they visited the Grand Canyon, in Arizona, they stopped and

Petrified Forest, Indian ruins and also went to Jerome, Ariz. which is an old deserted mining town. Jerome was one of the highlights of the trip.

During the time they were visited relatives along the way. Mrs. Blaylock said, "If you have never seen the Petrified Forest or the Grand Canyon, you just have to go see it." She was impressed with the wonders of the desert. They went through several different museums and Indian ruins during the trip.

The return trip home took the Blaylocks through Wellington and Memphis where they stopped off and visited with relatives. Leaving from Memphis,

they started home and got in Sunday evening, with 1,923 miles behind them.

BIBLE VERSE

"Except a man be born of water and of the Spirit, he cannot enter into the kingdom of God."

1. Who made the above statement?
2. To whom was it made?
3. What was this man's standing in the community?

Answers To Bible Verse

1. Jesus, as recorded by John.
2. Nicodemus.
3. A ruler of the Jews.

Migrant Students Plan Program

Mrs. Elizabeth Watson, director of the Summer Migrant Program, invites all parents and interested persons to attend the Migrant Program, Friday, July 18, at 10 a.m. in the High School Auditorium.

The theme of the program will be "America's 200th Birthday Celebration". Everyone is invited to eat lunch in the Cafeteria after the program. Prices will be \$1.00 for adults, and .50 cents for children not enrolled in the Summer Program.

The six weeks Summer Program began June 9 and will end July 18. Buses will run at 12:45 Friday.

The daily schedule began at 8 a.m. and continued through 2 p.m. Included in the daily activities were music, arts and crafts, social studies, science, math, swimming, library, T.V. and field trips.

Each class was scheduled at the Muleshoe Library one day a week and special activities were planned for Fridays, such as trips to Clovis Park and Zoo and Walt Disney movies.

Enrollment for the summer has been 204 students and average daily attendance has been approximately 150 students.

Bula News

By Mrs. John Blackman

Mr. and Mrs. S. G. Long were called to Oklahoma Monday, due to the death of Mrs. Long's brother, Erman Bledsoe who was buried at Paris, Texas Tuesday.

Mr. and Mrs. David Kelley from Dallas, spent Thursday night with his grandmother, Mrs. Fred Kelley.

Mr. and Mrs. Gary Bailey from Las Vegas, Nevada visited the O. A. Warrens, Tuesday.

Mr. and Mrs. Jack Furgerson spent Sunday in Tulsa visiting their daughter, the Jim Green family.

Mr. and Mrs. D. S. Fowler were dinner guests in the Zed Robinson home Sunday in Muleshoe and attended church at the Methodist Church, Sunday evening.

Mrs. Fred Kelley was the guest Friday evening of her grandson, Wendell Kelley of Morton, at the graduation of officers training school held at South Plains college at Levelland. Also graduating was Travis Kelley, son of Mrs. Fred Kelley.

Mr. and Mrs. T. D. Davis and family, Mr. and Mrs. Tommy Terrell and children, Debbie Corkery spent the weekend at Possum Kingdom attending a family reunion.

Mr. and Mrs. D. S. Fowler attended a birthday dinner Wednesday for their granddaughter, Kim Fowler and grandson, Brad Fowler, in Lubbock.

Several girls from the Three Way Baptist church attended church camp at Floydada the past week.

Mr. and Mrs. H. W. Garvin were in Clovis, N.M. Sunday to help their granddaughter celebrate her birthday at the Kenneth Fox home.

Mr. and Mrs. O. A. Warren were in Lubbock Wednesday on business.

Mr. and Mrs. D. S. Fowler and Sally Robinson attended the Jamboree at Morton Saturday night at the activity building.

Mrs. James P. Long and boys visited the S. G. Longs



HANGING BASKET DONATED . . . Pictured are Mrs. Mildred Howell, owner of Decorators 216 and Mrs. Larry Goree, Chairman of the Jaycee-Ette Ways and Means Committee. Mrs. Howell is donating the hanging basket of Swedish Ivy to the Jaycee-Ettes. Tickets for chances on the ivy are being sold for 25¢ and can be obtained from any Jaycee-Ette. The basket will be given away Wednesday, July 23, at 10:30 a.m. and will be announced over K.M.U.L. Anyone wishing to see the ivy may go by Decorators 216.

and Mrs. P. L. Fort and Bonnie the past week.

Ima Bobbitt from Crockett spent the weekend with her sister the George Tysons and her brother, the H. W. Gar-

vins. Mrs. Bobbitt is on her way to Roswell to visit her son, the Elvis Flemings.

Mr. and Mrs. D. S. Fowler visited the Troy Wilkersons in Lubbock Sunday after-

noon. The home of R. R. Kindler was the scene of a bridal shower Saturday honoring Jonice Killough, bride-elect of Terry Pollard.

Heart Is No Gambling Matter

"With a heart attack, there is no time for second guessing. There is no such thing as a 'safe' gamble--you could be dead wrong," said Mrs. Dean Sprayberry, chairman for the local Heart Association.

"It's crucial to recognize a heart attack immediately and get the victim to a hospital emergency room at once. Minutes count, and delay can be deadly.

"When a heart attack strikes too many of its victims believe they are suffering from indigestion or heart burn, even after the symptoms and pain persists for as long as six hours. That is when it can become a fatal mistake.

"More than 680,000 people die each year from heart attacks. The average victim waits three hours before seeking help. As a result, more than half of all heart attack victims die before they reach the hospital. Thousands of lives could be saved if they had known and heeded the early warning signs of a heart attack.

"What are the early warning signs? Prolonged, oppressive pain or unusual discomfort in the center of the chest; pain may radiate to the shoulder, arm, neck or jaw; pain or discomfort is often accompanied by sweating, nausea, vomiting and shortness of breath may also occur. Sometimes these symptoms subside and then return.

"Recognition of these symptoms is one key to survival. Getting under emergency care at the hospital is another. Two thirds of the country's general hospitals have special facilities to treat emergency cases.

"Most heart attack victims who survive, return to productive lives. Having a heart attack does not mean a person will be disabled for life. Normal work, exercise and sexual activity are possible, based on a doctor's advice.

"Although it is possible to survive a heart attack by knowing the early warning signs and getting immediate care. It is better to do everything possible to prevent it from happening in the first place.

"Several risk factors which

increase the risk of heart attacks and strokes have been identified. The major ones are high blood pressure, high blood cholesterol and excessive cigarette smoking. Others include heredity, lack of proper exercise, a diet high in saturated fats, cholesterol and being over weight.

"By knowing the risk factors and warning signs, by changing lifestyles to reduce

risk and acting promptly in an emergency, people can increase their chances of longer, healthier lives."

Mrs. Sprayberry suggests citizens support the American Heart Association with contributions, and have a part in carrying out heart research and other heart saving programs. Contributions may be sent to the First National Bank in Muleshoe.

Consumer Food News

COLLEGE STATION--Fresh fruits head economy buys in the market this week, Mrs. Gwendolyn Clyatt, consumer marketing information specialist, reported.

Currently soft fresh fruits--plums, nectarines, grapes, apricots, Bing cherries and peaches--are available in varying amounts at various price levels, the specialist with the Texas Agricultural Extension Service, The Texas A&M University System, said.

"Other good fruit values are Valencia oranges, bananas, lemons, cantaloupes, watermelons and honeydew melons. "Increasing supplies of fresh vegetables make this an ideal time to can extras. Those worth considering, pricewise, are soft shell squash, corn, carrots, snap beans, cabbage, green onions and potatoes."

More economical vegetable buys are lettuce, tomatoes, radishes and green onions. Nonfat milk will continue in heavy supply for at least a month or more.

Fryer chickens are in good promotional favor, and Mrs. Clyatt suggested either chicken or an economical small turkey would make a good barbecue treat.

Grade A large size eggs continue to offer the best combination of quality and economy.

Turning to beef, she reported prices about the same as last week. In general, best beef values are round steaks and roasts, ground beef and chuck roasts and steak.

Pork prices remain relatively high, but some good buys can be found by comparison

shopping from newspaper ads, she said.

CONSUMER WATCHWORDS: Consider the many forms of fish available. They add variety to the menu and protein for good nutrition.

Beef Recipes, Spice Guide In Cookbook

AUSTIN--Twelve new recipes and a spice guide appear in "Texas Beef Recipes," a cookbook published by the Texas Department of Agriculture (TDA).

The booklet concentrates on less expensive cuts of beef and includes a section on comparing baby, grass-fed and grain-fed beef.

There are recipes for casseroles, chili, stew, outdoor beef cookery, marinades and barbecue sauce. Each has been tested by TDA home economists.

For a free copy write to Agriculture Commissioner John C. White, Texas Department of Agriculture, P.O. Box 12847, Austin, Tex. 78711.

Suggestive

"What makes you think your wife is getting tired of you?"

"Every day this week she's wrapped my lunch in a road map."



Jason Eugene Rogers

Mr. and Mrs. Gene Rogers of Muleshoe are the proud parents of a new baby boy born July 9, 1975 at 8:59 p.m. in the St. Mary's Hospital of Lubbock. The baby weighed eight pounds and six ounces and was named Jason Eugene Rogers. He is the couple's first child. The maternal grandparents are Mr. and Mrs. Max Bush of Lazbuddie. The paternal grandparents are Mr. and Mrs. Clinton Rogers of Muleshoe. The maternal great grandparent is Mrs. Viola Calvert of Flomot, Texas. The paternal great grandparents are Mr. and Mrs. Van Rogers of Circleback.

Dominic Lee Brian

Mr. and Mrs. Mike Fabella of Lazbuddie are the proud parents of a new baby boy born July 11, 1975 at 12:15 a.m. in the West Plains Hospital of Muleshoe. The baby weighed six pounds and thirteen ounces and was named Dominic Lee Brian. He is the couple's second child.

Denicia Ann Barrios

Mr. and Mrs. Patricio Barrios of Dimmitt are the proud parents of a new daughter born July 12, 1975 at 3:50 p.m. in the West Plains Hospital of Muleshoe. The baby weighed eight pounds and eight ounces and was named Denicia Ann. She is the couple's second child.

Ford signs bill to protect privacy.

Some of the swimsuits are most attractive this season--especially those of materials that mold the figure into shape and use splashy colors on dark backgrounds.

Bikinis are still popular but the ones which have wider bottoms are preferred by many.

Take care of the eyes this summer with proper sun glasses. These glasses not only protect one from the glare but from dust and wind.

dallas' northpark inn motor hotel



has everything...you'll have to see it to believe it.

An overnight stay or a business meeting will be enjoyable at the Northpark Inn. They're in business to serve you. 300 Texas size, air conditioned guest rooms with direct dial telephone, TV, radio; 13 individual meeting/ luncheon / exhibit rooms accommodating 10 to 550. (Total meeting space for more than 1000). 2 swimming pools. Helicopter Service. Free limo service to Love Field, 7 minutes away. 10 minutes from downtown. Fine restaurant and coffee shop. Club facilities. Ample free parking.

American Express Space Bank 800-528-7700 Call Collect 214/363-2431 NORTH PARK INN 9300 N. Central Expressway Dallas, Texas 75231



COMES TO ULYSSES IRRIGATION PIPE COMPANY

A DIVISION OF U.S. INDUSTRIES



In just a few years, hiGromatic pivotal irrigation systems have grown from a nationwide to a worldwide operation. And, now hiGromatic has come to Ulysses Irrigation Pipe Company.

Ulysses Irrigation Pipe Company has been awarded an area dealership for sales and service of hiGromatic self-propelled circular irrigators. Contact us for an appointment to see the hiGromatic TODAY!

hiGromatic - a sensible machine pivotal irrigation systems by Enresco, Inc.

Dealerships at the following locations:

Joe Camp
CLOVIS, NEW MEXICO



P.O. Box 7406
Coto Springs, Colo 80923

HARVEY & BASS

APPLIANCES

Huge July Clearance Sale is now in progress.

Great savings on everything in the store.



POTATO CROP UNLOADED . . . Potatoes are being unloaded and washed at Barrett Produce. These potatoes were unloaded on Tuesday morning. They were sorted, graded and shipped out to locations all over the United States and even Canada. Processing began at Barrett Produce on July 5, with around 25,000 100-pound sacks a day being processed here.

SPSC Completes Area Survey Of Industries

The Area Development Department of Southwestern Public Service Company has completed a survey of industries in the area served by the electric company.

The first phase of the survey, completed in March, was made in all of the towns that SPS serves in Texas except Amarillo and Lubbock. The second phase of the survey covers these two metropolitan areas.

"The purpose of the survey is to assemble information that will aid in the design of programs to assist existing manufacturers expand their production facilities," commented Larry Milner, Area Development manager for SPS in Amarillo.

The survey, representing twenty-three communities on the North and South Plains, reveals that 52.4 percent of the

existing industries responding to the survey plan future expansion. Forty-seven of the companies surveyed plan expansion within the next twelve months, while another sixty-one plan expansion in the next three years. During the next five years, twenty-five more companies plan expansion.

Employment expansion for the near future was projected in the range of forty-three percent.

The survey covers general manufacturing, agri-related, and oil and gas related industries, with a total employee representation of more than 14,000. Of this number, about 9,000 are production workers, 1,000 are management employees and the remainder work in clerical or administrative jobs.

In discussing the survey, Milner said, "Some of the major problems faced by industry when

planning expansion are labor supply, reduced sales, resources, financing, lack of technical information, transportation, building space, management and air pollution laws.

"Helping all the towns in our service area with new and existing industries is one of our primary functions. We feel that the information in this industrial survey will aid us in providing that help," Milner concluded.

News Of Our Servicemen

Keith Pease

Camp Hovey, Korea -- Keith A. Pease, 24, son of Mr. and Mrs. William H. Pease, III E. Avenue H, Muleshoe, was promoted to Army sergeant while serving as a supply sergeant with the Second Infantry Division here.

Miguel Garcia

July 10 - Navy Aviation Fire Control Technician Third Class Miguel Garcia Jr., of Muleshoe, Tex., has returned to the Naval Air Station, Whidbey island, Wash., after a seven-month deployment with Attack Squadron 95.

His unit was embarked aboard the attack aircraft carrier USS Coral Sea in the Western Pacific.

The squadron helped provide air support during the evacuation of U. S. citizens and foreign nationals from Saigon, South Vietnam, and during the Mayaguez incident off the coast of Cambodia.

Garcia also participated in various training exercises and visited Perth, Australia, and Singapore.

A 1971 graduate of Muleshoe High School, he joined the Navy in September 1971.



The Consumer Alert

by John L. Hill
Attorney General

AUSTIN—Ever see a child's face light up when he or she is given that first puppy or kitten? It's enough to make the training period that follows almost bearable.

But our Attorney General's Consumer Protection lawyers say that some persons who purchase pets occasionally get far more than they expect—or want.

They may get animals that appear healthy but quickly get sick; they may discover that an animal is not as represented to them; or they may find for some reason, perhaps size or temperament, that the animal simply doesn't fit into the

family. In cases where misrepresentation of merchandise or other false, misleading, or deceptive sales practices have occurred, consumers who purchase pets have recourse under the Texas Deceptive Trade Practices-Consumer Protection Act.

But otherwise, if a consumer just has second thoughts about the purchase, there could be some disappointment. That's because no store is required to give refunds or exchanges, although many do so to maintain customer good will.

Our Consumer Protection Division has had complaints

from several pet purchasers. In one case, a man ordered and paid in advance for a lion cub. Later, after talking it over with his wife, he changed his mind and requested a refund. The pet store owner refused, saying he had already ordered the cub from a supplier and couldn't cancel the order.

Another complaint involved an out-of-state consumer who ordered a woolly monkey from a Texas seller. After arrangements and payment had been made, the seller backed out of the deal.

Even though the consumer's money was refunded in this instance she still was unhappy since what she really wanted was the monkey.

Such examples illustrate the fact that, with pet purchases, as with all others, the consumer should check refund and exchange policies in advance.

Far more common than complaints involving exotic pets such as these, however, are problems some consumers have with purchase of domestic pets. In some cases,

purchasers of expensive pedigreed dogs or cats are told proper registration papers and "family trees" will be sent by mail, but never receive the information. Without such papers, an animal may be less valuable for breeding, and may be unable to enter shows and competitions.

Other problems can arise when an animal becomes ill after it is taken home. While many pet stores or individual breeders offer money-back guarantees if an animal gets sick within a few days after purchase, some diseases don't show up for weeks. Some conditions, such as hip dysplasia, a disabling condition affecting certain large dog breeds, may not show up for a year or more.

Our Consumer Protection attorneys recommend the following precautions: (1) Get all promises or guarantees about an animal or about refund and exchange policies in writing; (2) Always have a veterinarian inspect the animal before the purchase or immediately after it; and (3) Ask for an animal's registration

papers or bloodline information at the time of purchase. If they are unavailable, get a delivery date in writing.

BIBLE VERSE

"When I consider Thy heavens, the work of thy fingers, the moon and the stars, which thou has ordained, what is man that thou are mindful of him? And the son of man, that thou visited him?"

1. Can you locate this quotation in the Bible?
2. Do you know the author?
3. Have you an idea of the answer to these questions?
4. Where can the answer be found?

Answers To Bible Verse

1. Psalms 8:3,4.
2. David, great king of the Jews, who died about 1016 B.C., according to Josephus, the Jewish historian.
- 3-4. It is to be found in the verses following the quotation.

SHOP your Hometown

STORES and SERVICES

where the "buys" are

Your local merchants who offer a wide variety of goods and services also offer a bonanza of "bargains" . . . and you'll find him always willing and able to help you get the "most for your money."

IT PAYS TO BUY WHERE YOU LIVE

***** SPEND YOUR MONEY AT HOME. *****

EVERYONE PROSPERS WHEN YOU SHOP LOCALLY

WED-THUR-FRI-SAT
JULY 16, 17, 18, 19

Above all...it's a love story.
Alan James Arkin • Caan
Freebie and the Bean

SUN-MON-TUES
JULY 20, 21, 22

Peter Fonda
Warren Oates
RACE WITH THE DEVIL
Color

X. I. T.
DRIVE-IN THEATRE
MULESHOE, TEXAS

GIBSON'S

DISCOUNT CENTER

Western Auto associate store
the Family Store

320 MAIN ST.
MULESHOE, TEXAS 79347

RCA-QUASAR-FRIGIDAIRE-AMANA-WASTE KING-
JEN-AIR-SINGER-VIKING-NECCHI-KIRBY VAC-
FURNITURE

HARVEY BASS APPLIANCE

Art-Craft PRINTING COMPANY

105 E. Avenue D • Phone 272-4681
• Muleshoe, Texas - 79347 •

White's Cashway Grocery

"Where Friends Meet and Prices Talk"

FIRST NATIONAL BANK
MULESHOE, MEMBER FDIC TEXAS

YOU AUTO GET A LOAN

SEE US FOR A NEW CAR
LOAN TODAY...

MULESHOE STATE BANK
MEMBER FDIC

The Best Selection For Your
Wardrobe

St. Clair's

Save At Home

Tri-County DONALD W. HARMON
SAVINGS AND LOAN ASSOCIATION
PRESIDENT
P. O. BOX 528 • MULESHOE, TEXAS

LATEST FASHIONS! BEST VALUES!

Cobb's

Henry Insurance Agency

111 W. AVE. B - PH 272-4581
Muleshoe, Texas - 79347

perry's
FAMILY CENTER
Your Shop At Home Headquarters

ferti-lome Rose Care Program

ferti-lome
ROSE FOOD
Containing SYSTEMIC INSECTICIDE

ferti-lome
ROSE DUST

Systemic Rose Food. Feed your roses and control insects.

Rose Dust. Control black spot, powdery mildew, etc. Control insects.

ferti-lome
ROSE SPRAY

Rose & Flower Garden Spray

Rose Spray. Combination insecticide-fungicide-miticide.

Systemic Rose & Flower. Aerosol insecticide-fungicide-miticide.

ferti-lome
SYSTEMIC FUNGICIDE

Systemic Fungicide. Controls black spot, powdery mildew, etc.

your ECOLOGICAL choice

BAKER FARM SUPPLY INC.
1532 W. American Blvd.
ph. 272-4613 Muleshoe, Tx.

WHAT'S HAPPENING IN THE...

CLASSIFIED SECTION

OPEN RATES
1st insertion, per word - 9¢
2nd and add., per word - 6¢
NATIONAL RATES
1st insertion, per word - 11¢
2nd and add., per word - 7¢
Minimum Charge - 50¢
CARD OF THANKS - \$3.00
Classified Display \$1.25
per column inch.
Double Rate for Blind Ads -
DEADLINE FOR INSERTION
Noon Tuesday for Thursday
Noon Friday for Sunday
WE RESERVE THE
Right to classify, revise or
reject any ad.
NOT RESPONSIBLE
For any error after ad has
run once.

FOR SALE: 2 bedroom house,
to be moved. Contact Ed Cox
at Fry & Cox, Muleshoe.
8-28t-10t

FOR SALE: Attractive house,
fire place and patio. Call for
appointment a.m. 272-3185
8-28s-tfc

FOR SALE: 3 bedroom brick,
Livingroom, den, 2 baths, fire-
place and covered patio. 6%
Loan. Richland Hills addition.
272-4632
8-18t-tfc

FOR SALE: 1972 furnished
12 x 70 mobil home. Take up
payments. Call 965-2658 or
272-3694.
8-28t-4t

STATE CAPITAL
Highlights
AND
Sidelights
by Lyndell Williams
TEXAS PRESS ASSOCIATION

AUSTIN — The House of Representatives may be returning to Austin before September 1 to consider the first impeachment proceedings in more than 40 years.

A select House committee already has directed its staff to draft several articles of impeachment against 229th District Judge O.P. Carrillo of Duval County.

Committee members rounded out their examination of the record in their inquiry into allegations against Carrillo last week in closed-door session.

They will vote in open session on the proposed articles.

If a majority of the 11-member panel vote to press any of the articles, the House must be called into session to consider them on the third Monday following the committee report.

The constitution further provides that the Senate must try impeachment charges brought by the House against certain state officials, including district judges.

A two-thirds vote in the Senate is required to convict.

Fewer than a dozen serious impeachment proceedings have been brought in a century. Only one of these—the 1917 case against then Gov. James E. Ferguson—actually resulted in a removal from office.

Raids Continue

Comptroller Bob Bullock led more raids against sales tax-delinquent firms in the Dallas area which, he said, owe more than \$200,000 to the state and city.

The Comptroller's agents locked a restaurant, closed a concrete manufacturer, took inventories and equipment from a photo shop, appliance shop, air conditioning firm and microfilm service company.

Property seized will be sold at public auction to satisfy tax claims unless owners pay up, Bullock said.

He scheduled an auction July 21 in San Antonio for nearly 15,000 cases of whiskey, wine and beer taken

Public Notice

NOTICE OF BOARD OF EQUALIZATION MEETING, MULESHOE INDEPENDENT SCHOOL DISTRICT

In obedience to an order of the Board of Equalization regularly convened and sitting, notice is hereby given that said Board of Equalization will be in session at its regular meeting place, the Muleshoe Independent School Tax Office, located at 514 West Avenue G, in the City of Muleshoe, Bailey County, Texas, at 9:00 o'clock A. M. beginning on Wednesday, 30th day of July, 1975, for the purpose of determining, fixing and equalizing the value of any and all taxable property, situated in the said Muleshoe Independent School District, until such values have finally been determined to taxable purposes for the year 1975, and any and all persons interested, or having business with said Board, are hereby notified to be present.

Done by order of the Board of Equalization of the Muleshoe Independent School District, Bailey County, Texas, at Muleshoe, Texas, this 14th day of July A. D. 1975
15-29t-2tc

SPECIAL
Every Friday
CATFISH FRY
Featuring Whole Catfish,
Hushpuppies, French Fries
and Cole Slaw.
\$1.95
XIT STEAK HOUSE
YA'LL COME - AND
BRING A FRIEND

CARPENT SALE Thursday
and Friday, July 17 and 18,
1721 W. Ave. E.
15-23t-1tp

NEED A HOME LOAN?
ON
FIRST FEDERAL
FIRST FEDERAL
SAVINGS
AND LOAN ASSOCIATION

801 Pile St.
762-4417
Clovis, New Mexico

ATTENTION MULESHOE AREA CATTLEMEN

...In regard to dead stock removal... If you have a problem with service... whether in the feed yard or on the farm... Please give US a chance! Thank You!

YOUR LOCAL USED COW DEALER IN MULESHOE
Ph. 965-2903
Mobil 965-2429
Muleshoe Bi-Products

LECTITHIN! Vinegar! B 6! Kelp!
Now all four in one capsule ask for VB6+ Western Drug
15-27t-12tp

KREBBS REAL ESTATE
Bring Us Your Listings
If You Want Action!
SALES* LOANS
APPRAISALS

Kirby Sales & Service
NEW & REBUILT
Carolyn Duncan -Ph. 4182

16. LIVESTOCK
Horse shoeing and trimming.
All work guaranteed. Robert
Clark 272-3866.
16-25t-9tp

pany attorneys were not permitted to show proof the widow had remarried.

County funds must pay cost of publishing divorce case citations for the poor.

Third Court of Civil Appeals held the state sales tax constitutional.

AG Opinions

A city commissioner's continued interest in an old contract to buy water from the municipality for resale to rural customers would be a civil law violation, Atty. Gen. John Hill held.

In other recent opinions, Hill concluded:

A county jail commissary must collect the state and city sales tax on all items

Highways in Trouble

Texas Highways and Public Transportation Department cancelled August contract lettings because of inflated costs and declining gasoline taxes.

Both T.H.P.T.D. Engineer-Director B.L. DeBerry and Gov. Dolph Briscoe, meanwhile, expressed concern over President Ford's federal highway program.

DeBerry said reducing the federal highway trust fund would impose a heavier tax load on the states and further reduce construction.

Appointments

John H. Poerner of Hondo has been named director of the new Commission on Education Resources to assess school district finance capabilities.

Vernon McDaniel of Wichita Falls will succeed Poerner as executive director of the Governor's Committee on Aging.

Governor Briscoe named Dr. Bob D. Glaze of Gilmer to the Texas Board of Health Resources, succeeding Dr. Ronald M. Garrett of Waco who resigned soon after his appointment.

Courts Speak

The Supreme Court upheld an injunction against a \$45 million Southwestern Bell Telephone Company long distance rate increase in Texas, pending outcome of a state legal challenge.

The High Court also denied Coastal States Gas Producing Company's proposal to move a suit over San Antonio gas rates and supplies from the city.

In other recent cases, the Supreme Court held:

The State Board of Pharmacy should not be allowed to shut down 59 Walgreen drug stores during an appeal of a case involving a law against advertising prescription drug prices.

Conservation and reclamation districts can use maintenance funds to compensate persons damaged due to negligent use of motorized equipment.

Exxon Corp. is entitled to reversal of \$227,000 judgment arising from a job death case because com-

Public Notice

NOTICE OF BOARD OF EQUALIZATION MEETING, MULESHOE INDEPENDENT SCHOOL DISTRICT

In obedience to an order of the Board of Equalization regularly convened and sitting, notice is hereby given that said Board of Equalization will be in session at its regular meeting place, the Muleshoe Independent School Tax Office, located at 514 West Avenue G, in the City of Muleshoe, Bailey County, Texas, at 9:00 o'clock A. M. beginning on Wednesday, 30th day of July, 1975, for the purpose of determining, fixing and equalizing the value of any and all taxable property, situated in the said Muleshoe Independent School District, until such values have finally been determined to taxable purposes for the year 1975, and any and all persons interested, or having business with said Board, are hereby notified to be present.

Done by order of the Board of Equalization of the Muleshoe Independent School District, Bailey County, Texas, at Muleshoe, Texas, this 14th day of July A. D. 1975
15-29t-2tc

Public Notice

NOTICE OF BOARD OF EQUALIZATION MEETING, MULESHOE INDEPENDENT SCHOOL DISTRICT

In obedience to an order of the Board of Equalization regularly convened and sitting, notice is hereby given that said Board of Equalization will be in session at its regular meeting place, the Muleshoe Independent School Tax Office, located at 514 West Avenue G, in the City of Muleshoe, Bailey County, Texas, at 9:00 o'clock A. M. beginning on Wednesday, 30th day of July, 1975, for the purpose of determining, fixing and equalizing the value of any and all taxable property, situated in the said Muleshoe Independent School District, until such values have finally been determined to taxable purposes for the year 1975, and any and all persons interested, or having business with said Board, are hereby notified to be present.

Done by order of the Board of Equalization of the Muleshoe Independent School District, Bailey County, Texas, at Muleshoe, Texas, this 14th day of July A. D. 1975
15-29t-2tc

Public Notice

NOTICE OF BOARD OF EQUALIZATION MEETING, MULESHOE INDEPENDENT SCHOOL DISTRICT

In obedience to an order of the Board of Equalization regularly convened and sitting, notice is hereby given that said Board of Equalization will be in session at its regular meeting place, the Muleshoe Independent School Tax Office, located at 514 West Avenue G, in the City of Muleshoe, Bailey County, Texas, at 9:00 o'clock A. M. beginning on Wednesday, 30th day of July, 1975, for the purpose of determining, fixing and equalizing the value of any and all taxable property, situated in the said Muleshoe Independent School District, until such values have finally been determined to taxable purposes for the year 1975, and any and all persons interested, or having business with said Board, are hereby notified to be present.

Done by order of the Board of Equalization of the Muleshoe Independent School District, Bailey County, Texas, at Muleshoe, Texas, this 14th day of July A. D. 1975
15-29t-2tc

Public Notice

NOTICE OF BOARD OF EQUALIZATION MEETING, MULESHOE INDEPENDENT SCHOOL DISTRICT

In obedience to an order of the Board of Equalization regularly convened and sitting, notice is hereby given that said Board of Equalization will be in session at its regular meeting place, the Muleshoe Independent School Tax Office, located at 514 West Avenue G, in the City of Muleshoe, Bailey County, Texas, at 9:00 o'clock A. M. beginning on Wednesday, 30th day of July, 1975, for the purpose of determining, fixing and equalizing the value of any and all taxable property, situated in the said Muleshoe Independent School District, until such values have finally been determined to taxable purposes for the year 1975, and any and all persons interested, or having business with said Board, are hereby notified to be present.

Done by order of the Board of Equalization of the Muleshoe Independent School District, Bailey County, Texas, at Muleshoe, Texas, this 14th day of July A. D. 1975
15-29t-2tc

Public Notice

NOTICE OF BOARD OF EQUALIZATION MEETING, MULESHOE INDEPENDENT SCHOOL DISTRICT

In obedience to an order of the Board of Equalization regularly convened and sitting, notice is hereby given that said Board of Equalization will be in session at its regular meeting place, the Muleshoe Independent School Tax Office, located at 514 West Avenue G, in the City of Muleshoe, Bailey County, Texas, at 9:00 o'clock A. M. beginning on Wednesday, 30th day of July, 1975, for the purpose of determining, fixing and equalizing the value of any and all taxable property, situated in the said Muleshoe Independent School District, until such values have finally been determined to taxable purposes for the year 1975, and any and all persons interested, or having business with said Board, are hereby notified to be present.

Done by order of the Board of Equalization of the Muleshoe Independent School District, Bailey County, Texas, at Muleshoe, Texas, this 14th day of July A. D. 1975
15-29t-2tc

Public Notice

NOTICE OF BOARD OF EQUALIZATION MEETING, MULESHOE INDEPENDENT SCHOOL DISTRICT

In obedience to an order of the Board of Equalization regularly convened and sitting, notice is hereby given that said Board of Equalization will be in session at its regular meeting place, the Muleshoe Independent School Tax Office, located at 514 West Avenue G, in the City of Muleshoe, Bailey County, Texas, at 9:00 o'clock A. M. beginning on Wednesday, 30th day of July, 1975, for the purpose of determining, fixing and equalizing the value of any and all taxable property, situated in the said Muleshoe Independent School District, until such values have finally been determined to taxable purposes for the year 1975, and any and all persons interested, or having business with said Board, are hereby notified to be present.

Done by order of the Board of Equalization of the Muleshoe Independent School District, Bailey County, Texas, at Muleshoe, Texas, this 14th day of July A. D. 1975
15-29t-2tc

Public Notice

NOTICE OF BOARD OF EQUALIZATION MEETING, MULESHOE INDEPENDENT SCHOOL DISTRICT

In obedience to an order of the Board of Equalization regularly convened and sitting, notice is hereby given that said Board of Equalization will be in session at its regular meeting place, the Muleshoe Independent School Tax Office, located at 514 West Avenue G, in the City of Muleshoe, Bailey County, Texas, at 9:00 o'clock A. M. beginning on Wednesday, 30th day of July, 1975, for the purpose of determining, fixing and equalizing the value of any and all taxable property, situated in the said Muleshoe Independent School District, until such values have finally been determined to taxable purposes for the year 1975, and any and all persons interested, or having business with said Board, are hereby notified to be present.

Done by order of the Board of Equalization of the Muleshoe Independent School District, Bailey County, Texas, at Muleshoe, Texas, this 14th day of July A. D. 1975
15-29t-2tc

A court hearing on the State Insurance Board's medical malpractice insurance rate freeze was postponed until July 17.

Texas' economy will soon "ascend more prosperous heights," according to a University of Texas Bureau of Business Research writer's prediction.

While the just are preparing to inherit the earth, the unjust are rapidly grabbing it.

One of the best things about a vacation is the opportunity to get back home and rest.

those primitive spectacles he wore, to see that a solvent man is a road-block to economic recovery, that refusing to spend actually is sabotaging the economic machinery.

But he was a smart man, he could adapt to change and new ideas, and if he were around today no doubt would be saying "a penny saved is a money wrench thrown."

By the way, do you sell subscriptions to The Muleshoe Journal on credit? Aren't you in favor of whipping the recession?

Yours faithfully,
J. A.

Advertising is the servant of those who know how to use it.

Advertising is the servant of those who know how to use it.

Advertising is the servant of those who know how to use it.

Advertising is the servant of those who know how to use it.

Advertising is the servant of those who know how to use it.

Advertising is the servant of those who know how to use it.

Advertising is the servant of those who know how to use it.

Advertising is the servant of those who know how to use it.

Advertising is the servant of those who know how to use it.

Advertising is the servant of those who know how to use it.

Advertising is the servant of those who know how to use it.

Advertising is the servant of those who know how to use it.

Advertising is the servant of those who know how to use it.

Advertising is the servant of those who know how to use it.

Advertising is the servant of those who know how to use it.

Advertising is the servant of those who know how to use it.

Advertising is the servant of those who know how to use it.

Advertising is the servant of those who know how to use it.

Advertising is the servant of those who know how to use it.

Advertising is the servant of those who know how to use it.

Advertising is the servant of those who know how to use it.

Advertising is the servant of those who know how to use it.

Advertising is the servant of those who know how to use it.

Advertising is the servant of those who know how to use it.

Advertising is the servant of those who know how to use it.

Advertising is the servant of those who know how to use it.

Advertising is the servant of those who know how to use it.

Advertising is the servant of those who know how to use it.

Advertising is the servant of those who know how to use it.

Advertising is the servant of those who know how to use it.

Advertising is the servant of those who know how to use it.

Advertising is the servant of those who know how to use it.

Advertising is the servant of those who know how to use it.

ferti-lome
CRABGRASS PREVENTER
PLUS
LAWN FOOD

Feed your lawn and prevent crabgrass in one easy step.

ferti-lome
your ECOLOGICAL choice

BAKER FARM SUPPLY INC.
W HWY. 84
272-4613

W-W Trailers **DALLAS KINARD** **HALE Trailers**

WE TRADE FOR ANYTHING!
TRADE CENTER AUTO

NEW & USED CARS & TRUCKS
Hay For Sale, by the bale or by the ton

DAY 272-4194 **2015 Clovis Hwy.** **NIGHT 272-3282**

GARAGE SERVICE

MAJOR/MINOR TUNE-UP

It pays you to keep your car engine in top operating condition; you get better mileage and far more dependability. When you have a major or a minor tune-up you will pay less when you bring your car to us.

FREE ESTIMATES
Phone 272-4567
South Main Muleshoe

Plains AUTO PARTS
P. O. Box 506
MULESHOE, TEXAS
76847

To IRRIGATION SUPPLY
FOR ALL YOUR IRRIGATION FARMING NEEDS

FARWELL WE FIX LEAKS

IRRIGATION SUPPLY

2nd & Ave A Ph. 481-3393

- * ZIMMATIC PIVOT SPRINKLING SYSTEMS
- * SIDE ROLL SYSTEMS
- * GATED AND ALUMINUM FLOW LINE PIPE- GAS PIPE
- * LOW & HIGH PRESSURE PVC UNDERGROUND PIPE

A COMPLETE INVENTORY OF IRRIGATION SUPPLIES ON HAND, WITH QUALIFIED SALES, REPAIR, AND INSTALLATION PERSONNEL.

Texas Taxes



By BOB BULLOCK, State Comptroller

Austin-- Little leagues and other youth sports organizations across Texas will get a couple of tax breaks starting September 1.

This tax relief comes as the result of a small tax reduction bill passed by the Legislature.

The sales tax division of my office will prepare rules and regulations for provisions in the new law which will exempt little league sporting groups from having to pay sales tax on the uniforms and equipment they use.

But let me point out that the legislation is very specific in stating that the new

exemptions applies only to a league organization itself and does not apply to individuals who play in that league.

This means that league officers can go to the sporting goods store and buy uniforms and equipment for everyone playing in the league and that purchase won't be subject to the sales tax. But Johnny or Johnny's dad will still have to pay the sales tax when they make purchases individually.

Another very important part of the new law specifies that this exemption applies only to organizations in which all participants are less than 19 years old.

Between now and September 1 when the new law takes effect, any and all items purchased by these young sports groups will continue to be subject to the sales tax.

As the date of the new law's effectiveness nears my office will be contacting as many sporting stores as possible and explain the new law. We want to give them as much information as possible

so they will know for certain when the exemption applies and when it doesn't.

Little League groups also will receive property tax relief from the new tax bill effective September 1. Under this provision all property owned by any non-profit organization which uses that property for youth sports programs will be exempt from all ad valorem property taxes.

I expect that the state will

lose very little revenue because of these new exemptions. On the other hand, these exemptions can mean a lot to the groups involved in making ends meet.

There tax breaks were, of course, an attempt by the Legislature to encourage and assist more widespread development of youth sporting programs as a means of giving our young people healthy outlets for their energy and spare time.

Garden Pests Create Nuisance

Spider mites cause severe damage to many vegetable gardens in many Texas counties.

Although tomatoes and green beans are the favorite targets of these insect pests, they also feed on and damage most other garden crops, points out the Texas Agricultural Extension

Service.

Spider mites are red in color and extremely small in size. They are usually found on the underside of leaves and cause damage by sucking plant juices. Large populations of mites can build up rapidly. Severe infestations can cause leaves and flower buds to fall from the infested plant.

Control of spider mites is often difficult. The Texas Agricultural Extension Service offers these suggestions for control:

1. Select a pesticide that is registered for use against spider mites--diazinon, kelthane, sulfur or ethion.
 2. Do not allow infestations to build up to large numbers before applying a pesticide.
 3. After initial applications of pesticide, inspect plants to determine if live mites are present. Generally two to four applications are needed to control an infestation of spider mites.
- As with all pesticides, be sure to read the label and follow all directions.

A Weekly Report Of Agri-Business News

Farm-facts

Compiled From Sources Of The Texas Department of Agriculture
John C. White, Commissioner

Higher, Higher, How Much Higher? ... Changes in Brucellosis Indemnity ... Summertime Harvests.

Last March, during the annual National Pork Congress held in the Midwest, a few brave optimists were talking about hogs "hitting \$50 a few markets by late summer." It sounded good, but not too much was made of it.

Now hog prices during the first few weeks of summer have hit the \$60 area in many markets across the nation.

Why? Take a look at the hog numbers. Here in Texas we are not the nation's leading hog state, but what happened here is similar to the situations in the major hog states.

As of June 1, hogs and pigs on Texas farms totaled 800,000 head. That doesn't mean much by itself, but put it in perspective and you find that hog numbers in the state are at their lowest level since 1966. It also is a decrease of 14 per cent from a year ago. Breeding hog numbers are 20 per cent under a year ago.

Nationwide, the same story is true. Hog numbers are at their lowest level since 1964. The number kept for breeding, at 7.4 million, is down 17 per cent, and market hogs and pigs are down 19 per cent.

For the future, it appears, say economists, that hog prices should hold up through the year. Hog producers intend to farrow 4.7 million sows now through November, which is 13 per cent below a year ago and down 19 per cent from two years ago.

REVISION IN THE REGULATIONS for paying indemnity to owners of cattle destroyed because of brucellosis as well as tuberculosis have been announced. They are:

1. Allowing indemnity payments for nonregistered (grade) bulls affected with brucellosis. Formerly, no indemnity was paid for these bulls.

2. Limiting to 15 days the extension periods which may be allowed for each of the following: identifying infected cattle, destroying infected and exposed cattle, and cleaning and disinfecting contaminated premises.

Changes in the tuberculosis indemnity payments are:

A. Allowing indemnity payments for unregistered (grade) bulls and steers affected with tuberculosis and for certain cattle which have been exposed to the disease.

B. Allowing payments for half the cost of destroying cattle disposed of because of tuberculosis--including half the cost of transporting such animals to the point of disposal--with prior approval by the federal veterinarian in charge.

C. Limiting to 15 days the extension periods allowed for destroying affected cattle, and cleaning and disinfecting contaminated premises.

SUMMERTIME HARVEST of wheat, sorghum, and other crops in Texas continues in spite of the usual slowdowns for showers and equipment repairs.

Wheat harvest for the state is now more than three-fourths completed; this is behind schedule of the past few years. Harvesting on the dryland crop is virtually complete, and is now underway in the irrigated sections.

Cotton harvesting on a major basis is still in the offing, although the first bale of cotton for the 1975 crop has been ginned.

Sorghum harvest is moving northward from South Texas; yields in that area are down from earlier estimates due to dry weather.

WE'VE DISHED UP... MORE SAVINGS!

FOR WEIGHT & PRICE WATCHERS
USDA GOVERNMENT INSPECTED VEAL

HI-DRI JUMBO ROLL PAPER TOWELS 39¢

DOUBLE LUCK CUT GREEN BEANS #303 CAN 4 FOR \$1

ARMOUR STAR ALL MEAT OR ALL BEEF SKINLESS FRANKS 79¢

ROUND STEAK .LB. \$1.29
RIB STEAK .LB. 98¢
SIRLION STEAK .LB. \$1.29
T-BONE STEAK .LB. \$1.29

BLUE MARROW FULLY COOKED STEAK FINGERS .LB. 98¢
ARMOUR STAR PAN SIZE BACON 12 oz. pkg. \$1.29
MENUDO .lb. 29¢

ARM ROAST .LB. 89¢
CHUCK ROAST .LB. 87¢
SHORT RIBS 2 lb. for \$1

VALUABLE COUPON

FREE! FREE! FREE!

100 GUNN BROS. STAMPS

WITH PURCHASE OF \$7.50

OR MORE AND THIS COUPON

COCA COLA OR DR. PEPPER

6 BOTTLE KING SIZE 69¢

CALIFORNIA SANTA ROSA PLUMS .LB. 39¢

GREEN CALIFORNIA BELL PEPPERS .LB. 49¢
CALIFORNIA RED RADISHES .6 oz. pkg. 15¢

TEXAS GARDEN FRESH SQUASH .LB. 10¢

MARYLAND CLUB COFFEE (ALL GRINDS) \$1.89

2 LB. TIN

EGGS GRADE 'A' SMALL 39¢

DOZ.

Frozen Foods ...FEATURES

10 oz. Pkg. Keiths Sliced YELLOW SQUASH 29¢
20 oz. Pkg. Flav. R. Pac SHOESTRING POTATOES 29¢
26 oz. Pkg. Mrs. Smiths FRUIT PIES 99¢
11 oz. Pkg. Banquet T. V. DINNERS 55¢

1/2 Gal. Ctn. Borden's BUTTERMILK	69¢
24 oz. Ctn. Borden's COTTAGE CHEESE	89¢
#300 Can Ranch Style PINTO BEANS	29¢
7 1/4 oz. Box Macaroni & Cheese KRAFT DINNERS	25¢
#300 Can Ranch Style CHILI	75¢
2 oz. Pkg. Gladiola Instant POTATOES	17¢
#300 Can Hunts Whole TOMATOES	3 for \$1.00
#2 1/2 Can White Swan SWEET POTATOES	49¢
5 lb. Bag GLADIOLA FLOUR	89¢
5 lb. Bag White GLADIOLA CORN MEAL	99¢
3 1/4 oz. Box (Asst. Flavors) JELLO PUDDING	4 for \$1.00
12 oz. Box Nabisco VANILLA WAFERS	59¢
32 oz. Jar Best Maid Hamburger SLICED DILLS	69¢
14 oz. Can Ajax CLEANSER	19¢
Kim - Giant Size Box DETERGENT	89¢
7 oz. Can Glade AIR FRESHENER	59¢
12 oz. Ctn. J Wax Kit PASTE WAX	\$1.39

ferti-lome TREE & SHRUB FOOD

ferti-lome TREE SPRAY

The finest products you can buy for your trees!

Penetrates deep to feed roots directly. Not necessary to dig holes. Water thoroughly.

Highly effective insecticide-miticide-scalicide. Controls sap-sucking, leaf-chewing insects.

BAKER FARM SUPPLY INC.

W. HWY. 84 272-4613

GUNN BROS STAMPS

DOUBLE EVERY WEDNESDAY

White's CASHWAY

STORE HOURS 7:30 a.m. til 9:00 p.m. MONDAY thru. SATURDAY
CLOSED SUNDAY

We Reserve The Right To Limit Quantities

Listen to MULETRAIN over KMUL 10:15 a.m.
Sponsored by WHITE'S CASHWAY