



THE MULESHOE JOURNAL

'The Community of Opportunity-Where Water Makes the Difference'

Weather

	HIGH	LOW	PREC
Oct. 30	74	43	
Oct. 29	67	40	1/2 inch
Oct. 28	57	40	
Oct. 27	64	41	

Rainfall To Date: 17.96

Vol. 52 No. 44

10 Pages

Published Every Thursday at Muleshoe, Bailey County, Texas 79847

10 CENTS

Thursday, October 31, 1974

Thunderstorms Slow Down Harvest

Rain Reported Over Large Area

Rain, hail and high winds rumbled through Bailey County Sunday night after a day of rain, drizzle and fog.

A moderate amount of moisture fell during the thunderstorm which also produced some pea size hail and strong winds.

Bailey County and surrounding counties were placed in a severe thunderstorm alert for most of the evening.

Residents woke up Sunday to rain and fog. This condition continued throughout the day putting the area in fall-like weather.

Some damaging hail was reported over the area, but most of the hail was small and not very intense.

A brilliant electrical display also accompanied the storm.

Northeast of town at Clay's corner, one and a half inches of rain was recorded along with some moderate rain.

Eddie Beene at Beene Grocery at Needmore reported .7 of an inch of rain and no hail.

Tom Bogard, 23 miles south of Muleshoe, received 1.6 inches of rain and no hail.

With rainsoaked fields this week, farmers are restlessly waiting to get back into the fields.

Corn is still only about 85 per cent harvested and the milo harvest was just beginning to get underway before the rains came.

One good point for the rain is that the underground water level is increasing and the underground moisture is vital to next year's crops.

Golden Gloves Tourney Set For Saturday

Fight fans will be in for a treat Saturday night, November 2, when the Muleshoe Golden Gloves Boxing Club will fight at 8 p.m. in the Mary DeShazo Gym.

They will fight boxers from Levelland, Hereford, Tullia and Olton.

Golden Gloves is sponsored in Muleshoe by the Rotary and Kiwanis of Muleshoe.

Experienced fighters from all clubs should make for some exciting fights Saturday.

Local Jaycees Host Regional Visitation

The Muleshoe Jaycees hosted a Regional Visitation Saturday, October 26, at the Muleshoe Country Club. Master of Ceremonies was Bill Dale, State Vice President, Region 114. Guest speaker for the visitation was Roy Alexander of Plainview. His topic for the evening was on drug abuse.

Approximately 80 Jaycees and wives attended this event which included a chicken supper and live entertainment.

Con't on Page 3, Col. 5

Friday Is Last Day For Absentee Vote

Friday, November 1, will be the last day to vote absentee for the Nov. 5 General Election. Absentee voting is being held at the County Clerk's Office in the Bailey County Courthouse.

Larry Trider, "Country Soul Man", will headline the big show to be presented by the Business Activities Committee of the Muleshoe Chamber of Commerce on Tuesday, November 12, at 7 p.m.

Trider is from Lazbuddie and his family still lives in that area. He has traveled in several states and has made several recordings. In the fall of 1973, Trider's career took a positive upward swing with an engagement at the fabulous and famous Golden Nuggett in Las Vegas.

The timing was right. Folks were returning time and time again to see and hear this talent. He was asked to make a second appearance at the 1974 contract to follow. His first album, Larry Trider, Country Soul Man, was released on the eve of the opening of the 1974 International Fan Club Organizations annual Fan Fair in Nashville. The popularity of this album

and several singles indicate a bright future for the talented Trider and his group. There are those who readily predict that he will attain the status in the industry of a Pride or a Cash.

Appearing with Trider will be former "Miss Texas" Judy Mallett and the Caison Trio from Hereford. Miss Sandy Caison was one of the ten finalists in Miss Texas competition in 1973 and was a talent winner that year.

"The Big Show" looks to be a grand night of entertainment. Tickets are available at the Chamber of Commerce office, 215 South First. There are only a very limited number of reserved seats. All tickets sold at the door will be slightly higher, so get your tickets in advance.

Don't forget, November 12, 7 p.m. at the Muleshoe High School Auditorium.



MOVING UTILITIES FOR CONSTRUCTION . . . The city began this week moving water lines along Highway 84 in preparation for the widening of U.S. Highway 84 in Muleshoe. Water lines were dug up and relocated this week providing for some aggravation to motorists on the highway. This phase of construction and relocation should be completed soon.

around muleshoe with the journal staff

Mr. and Mrs. Ronnie Garner and children, Rammie and Sheila, visited Mrs. Garner's parents, Mr. and Mrs. Harold Freeman and LaQueta in Ruidosa, N.M. Friday. They returned home Monday night.

Mr. and Mrs. Gene Hamilton visited their son, Benny at San Angelo College this past weekend.

Mr. and Mrs. T.R. White recently returned from Oak and California where they visited their son and daughter-in-law, Capt. and Mrs. Clifford White and their two sons and baby daughter. He is stationed at the Oakland Army Transportation Base. The Whites spent two weeks there and returned home Sunday. Mrs. Joe Pat Wagon also went with them but she returned home a week earlier.

Mrs. T.W. Bewley of Lazbuddie had visitors the past week. They are her cousins, a retired Indian Evangelist, David C. Reynolds of Oklahoma City, a retired Yankee ball pitcher, Allie Reynolds and Herbert Centers of Hamet, California.

Eastern New Mexico University will feature a variety of activities on November 1 and 2 for their 41st Homecoming. This includes many events for the celebration of the 40th anniversary. There will be an anniversary banquet, a continental breakfast which will be honoring the classes of 1944, 1954, 1964, and 1974. Also a parade will be happening. The football action will be the Greyhounds against East Central University at 2:30 p.m., and an evening concert featuring Johnnie Nash will conclude the celebration.



HUNTER . . . Steve Pierson of Farwell was one of many hunters who braved the rain and cold early Sunday morning to try their luck in hunting Sandhill Cranes. He was a lucky one and is shown with his bird. The Crane Hunt will be held again for two more weekends. It is sponsored by the Muleshoe Jaycees.

Lazbuddie Seniors Will Hold Shoot

The Lazbuddie Senior Class will sponsor a Turkey Shoot on Saturday, November 9, beginning at 8:30 a.m. The shoot will be held at the north end of the football field.

Shells may be purchased at the shoot. A concession stand will be set up to serve coffee, hot chocolate, sandwiches, etc. Winners may choose either a turkey or \$5.

Gil Lamb Announce New Seal Chairman

Gilbert Lamb board representative of the West Texas Area, American Lung Association from Bailey County has announced the appointment of Don Chastain as 1974 Christmas Seal Chairman.

Mr. Chastain is the Vice-President of Lubbock National Bank. He is the president of the Lubbock Optimist Club. As a member of the Chamber of Commerce, Chastain has served on the Convention Committee and the President's Ambassadors. He is well qualified to head the Christmas Seals Fund Drive having been 1973 Lubbock National Bank employee chairman for the United Fund and hav-

ing served on the YMCA Fund Raising Committee.

Having a personal interest in emphysema, Chastain said more than 300,000 Americans will learn that they have the disabling lung disease, and more than 21,000 will die from it during 1975.

Other New Year predictions for the nation's health released by the American Lung Association are:

- * The taxpayers' bill for disability benefits for emphysema and other chronic respiratory diseases will total more than \$400,000,000.
- * More than 8,000 newborn infants

will die from it during 1975.

Con't on Page 3, Col. 5

General Election Set For Tuesday

The General Election will be held in Bailey County on Tuesday, November 5.

State and local offices will be up for election on the ballot.

On the ballot Tuesday will be George Mahon, running unopposed for U.S. Representative of the 19th Congressional District.

Gov. Dolph Briscoe will be opposed by Republican Jim Garberry; Ramsey Munez of the

Raza Unida Party; Sherry Smith of the Socialist Workers Party and S.W. (Sam) McDonnell on the American Party.

Bill Hobby, Democrat; Gaylord Marshall, Republican; and Don Fein, Socialist Workers Party; will all be running for Lt. Governor.

Running for Attorney General will be John Hill, Democrat; Tom Cole, Republican; and Pedro Vasquez, Socialist Workers Party.

For Comptroller of Public Accounts, Bob Bullock, Democrat, and Robert G. Holt, Republican.

Bob Armstrong, Democrat, Mary Lou Grier, Republican, and William Rayson, Socialist Workers Party, will be running for Commissioner of the General Land Office.

Running for Commissioner of Agriculture will be John C. White, Democrat, and Zack Fisher, Republican.

Candidates for Railroad Commissioner are Jim C. Langdon, Democrat, Joe P. Cain, Republican, Fred R. Garza, Raza Unida Party, and Rick Congress, Socialist Workers Party.

Running for Railroad Commissioner, unexpired term, will be Mark Wallace, Democrat and Dale W. Steffes, Republican.

Other state offices and the Democratic Candidates who are

unopposed are Associate Judge, Supreme Court, Pace One, Sears McGee; Associate Justice, Supreme Court, Place 2, Thomas M. Reavley; Associate Justice Supreme Court, Place 3, Zolite Streakley; Judge, Court of Criminal Appeals, Place 1, W.A. Morrison; Judge, Court of Criminal Appeals, Place 2, Leon Douglas; State Representative, District 74, Bill Clayton; Member, State Board of Education, District 19, James H. White-side; Associate Justice, Court of Criminal Appeals, District 7, Mary Lou Robinson; District Judge, 154th Judicial District, Pat Boone, Jr.

Local offices on the ballot

include District Clerk, Nelda Merriott, unopposed; Glen Williams, County Judge, unopposed; Hazel Gilbreath, County Clerk, unopposed; County Treasurer, Edith Wilt, unopposed; County Commissioner Precinct 4, Ru-Cont. on Page 3 col. 4

Peeler, Mrs. Garrett Recieve Service Award

Two Muleshoe residents were among 92 Southern Division employees honored Wednesday night in Lubbock at an awards dinner. Members of the group

were honored for periods of service ranging from 5 to 40 years.

James V. Peeler, Muleshoe manager, received a diamond-studded award for 40 years' service from Roy Tolk, chairman and president of the electric company.

Five years is the first period of service honored in the Southwestern program, and Dolores Claire Garrett received a five-year emblem.

This was the second of four

Con't on Page 3, Col. 5

Dream Comes True For New Pilot

John Thomson, 67, of Muleshoe, recently completed both his written and flying exams and has received his private pilots license.

Mrs. Thomson was the first passenger for Thomson and he took her up Tuesday morning. She reported being a little apprehensive, but after the flight said she really enjoyed and loved flying.

Locker taught a pilot, the pilot knew how to do everything connected with flying.

Thomson said that there seems to be a different perspective when flying and the country is seen from a different angle.

Thomson has been working for his pilots license off and on since last May. He soloed on June 8 and took his writing and flight tests this month.

Thomson, who is semi-retired, plans to use the license only for pleasure. This license is something he has wanted for a long time, but never had the time before.

He was an aircraft welder in World War II and the Korean War, working as a civilian for the U.S. Air Force.

Thomson also had much praise for his instructor, Morgan Locker. He stated that when



RECEIVES LICENSE . . . John Thomson received his pilots license this month and the first passenger to take a ride with him was his wife. He took Mrs. Thomson up Tuesday morning for what she described as a wonderful trip. Thomson, who is 67 years old, began working on his license last May and took his exams this month. Morgan Locker, his instructor, told the Journal, that Thomson was the oldest student he has ever instructed.

Perfect Entry Wins Football Contest

Winning the football contest was Howard Splawn. Last week he tied for third in the contest.

Second place winner this was Adele Tompkins who just missed one game, the Yale-Cornell game. She was off 19 points on

the tiebreakers.

Don McMakin won third place in the contest, also missing one game, the Montana State-Idaho game and was off 20 points.

Others missing just one game were Judy Brockman, off 22 points; Nona Blake Douglass, off 25; Dudley Malone, off 42; Richard A. Darko, off 29; Dan McVicker, off 22; and David Stevens, off 55.

This week's winner will receive \$5 and 10 points; the second place winner will receive \$3 and six points; and

the third place winner will receive \$2 and four points.

At this time, Hugh Young is ahead in the contest with 14 points. Tying for second place at this time are Danny Waggoner with 12 points, W.E. English with 12 points and Howard Splawn with 12 points.

The winner of the contest will receive two tickets to the Cotton Bowl Game in Dallas and \$50 cash.

Jaycees Have Noon Meeting

The Muleshoe Jaycees met Monday for their noon general membership meeting with President Charles Moraw presiding.

Butch Duncan gave the invocation, Mike Armstrong led the Pledge of Allegiance and Marlin Mills led the Jaycee Creed.

Jim Dockery, DVM, was a guest at the meeting.

Joe Bob Stevenson reported on Youth Football and stated that the last game was played Thursday.

Butch Duncan reported on the Morton Extension. There will be an election Tuesday night at the Tic Toe Restau-

Crane Hunt Kicks Off At Muleshoe

The annual Sandhill Crane Hunt, sponsored by the Muleshoe Jaycees, kicked off Saturday morning, October 26.

Approximately 75 hunters from all parts of the country attended the first day of the hunt.

Headquarters again this year is the XIT Restaurant.

The Muleshoe Jaycees are encouraging hunters to try their skill by registering and winning a 10 ga. shotgun.

This year's hunt is by reservation, so call Charles Moraw at 272-3846 or 272-4236, or call Carter Reed at 272-3879 or 272-4567.

Two more weekends are scheduled for the hunt.

Radio-Thon Scheduled For Nov. 9

The Epsilon Chi Chapter of Epsilon Sigma Alpha will have a Radio-Thon Saturday, November 9, on KMUL Radio.

Citizens are asked to call in bids for homemade baked goods to KMUL 272-4273.

All proceeds from the Radio-Thon will go to the Hospital Action Fund.

PIGGLY WIGGLY

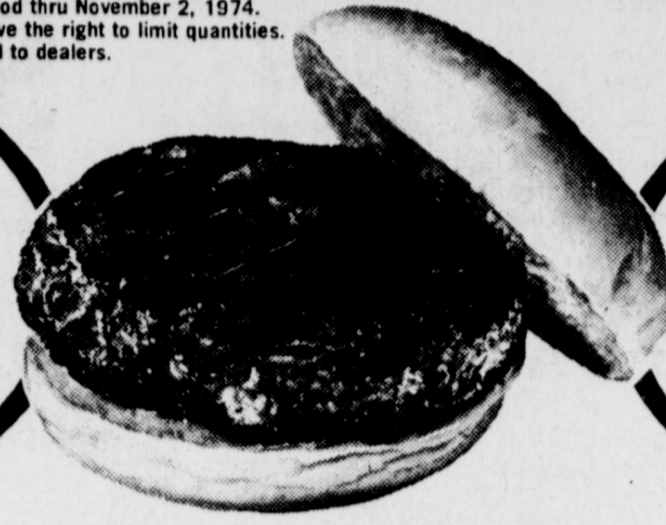
STORE HOURS 8AM-10PM DAILY 9AM-9PM SUNDAYS
 We Welcome Food Stamp Customers

Prices good thru November 2, 1974.
 We reserve the right to limit quantities.
 None sold to dealers.



We Welcome Federal Food Stamp Customers

Piggly Wiggly Chub Pack Fresh
Ground Beef
 Lb. **79¢**



USDA Good Heavy Aged Beef,
Round Steak
 Lb. **\$1.09**

Quarter Pork Loin Sliced Into 9 to 11
Pork Chops
 Lb. **\$1.19**

- Ranch Style Sliced Smoked Bacon Lb. \$1.09
- Ham Halves Lb. \$2.29
- Hormel's Cure 81 Country Manner Fully Cooked Canned Ham 3-Lb. 4.89
- Farmer Jones Sliced Salami Or Luncheon Meat 12-oz. Pkg. 98¢
- Cudahy Skillet Bacon 12-oz. Pkg. \$1.09
- Blue Morrow Breaded And Cooked Beef Patties, Steak Fingers And Pork Choppettes Lb. \$1.05
- Armour Star USDA Inspected, Grade A, 9 to 11-Lbs. Self-Basting Turkeys Lb. 59¢
- USDA Inspected, Grade A, 12-Lbs. And Up Honeysuckle Turkeys Lb. 79¢
- Piggly Wiggly All Meat Franks 12-oz. Pkg. 79¢

Fresh Lean Boston Butts
Pork Roast
 Lb. **89¢**

Smoked
Hot Links
 Lb. **98¢**

Mr. Boston
Codfish Sticks
 Lb. **59¢**

Cut From Lean Boston Butts
Pork Steak
 Lb. **98¢**



Fresh, Picnic Cut
Pork Roast
 Lb. **69¢**

USDA Good Heavy Aged Beef, Boneless
Chuck Roast
 Lb. **\$1.29**

Tasty
Yellow Onions
 Lb. **15¢**

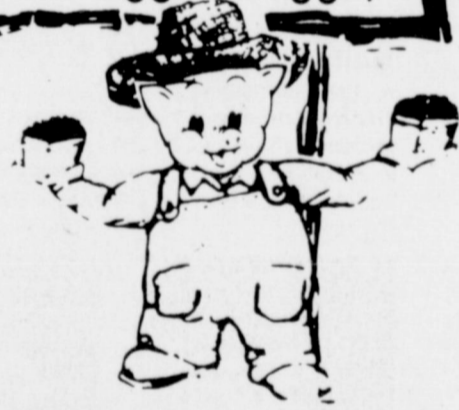
Sweet Potatoes
 Lb. **17¢**

- Piggly Wiggly, Uncooked Ocean Catfish Fillets 12-oz. Pkg. \$1.29
- Piggly Wiggly, Uncooked Haddock Fillets 16-oz. Pkg. \$1.59
- Piggly Wiggly, Uncooked Flounder Fillets 16-oz. Pkg. \$1.49
- Piggly Wiggly, Uncooked Ocean Catfish Fillets 16-oz. Pkg. \$1.29
- Kraft Half Moon Longhorn Cheese 10-oz. Pkg. \$1.05
- Kraft Half Moon Colby Longhorn Cheese 10-oz. Pkg. \$1.05
- Kraft Cracker Barrel Cheddar Cheese 12-oz. Pkg. \$1.21
- Kraft Cracker Barrel Colby Cheese 12-oz. Pkg. \$1.21
- Kraft Sliced Swiss Cheese 6-oz. Pkg. 79¢
- Kraft, Bacon, Garlic, Jalapeno Nippy And Smoked Cheese Links 6-oz. Pkg. 69¢
- Kraft With Jalapeno Monterey Jack Cheese 8-oz. Pkg. 91¢

USDA Inspected, Grade A 12-Lbs. And Up
Yearling Turkeys
 Lb. **59¢**

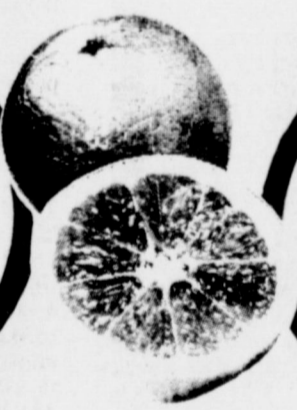
- Ruby Red Grapefruit Lb. 25¢
- Red Rome Apples Lb. 45¢
- Tangy Lemons Lb. 59¢
- Vitamins Galore Pineapple Ea. 69¢
- Tangy Cranberries Lb. 49¢
- High Quality Celery Hearts Pkg. 69¢

Crispy-Fresh Produce from Piggly Wiggly



- Firm Bell Pepper Ea. 5¢
- Firm Cucumbers Lb. 29¢
- Baking Potatoes Lb. 29¢
- Delicious Bulk Nuts Lb. 98¢
- Low in Calories Stalk Celery Each 29¢
- Tart Limes Lb. 49¢

Detergent
Tide
 Limit one with \$7.50 or more purchase
99¢



Juicy
Texas Oranges
 Bag **69¢**

6 Bottle 32 oz. Plus Deposit
Coca Cola
\$1.59

Beauty Aids

- General Electric Soft White 60-75-100 Watt Light Bulbs 4 Pack **99¢**
- Antiseptic Listerine 14-oz. Btl. **99¢**
- Hand Lotion Jergens 15-oz. Btl. **\$1.29**
- Hair Spray Alberto VO-5 9-oz. Can **\$1.09**

Fresh Dairy

- Piggly Wiggly, Sweetmilk & Buttermilk Canned Biscuits 10-Ct. Cans **10 \$1**
- El Jacalito Tortillas 40 Ct. Pkg. **69¢**
- Delicious Elgin Oleo 8-oz. Pkg. **5 \$1**

Frozen Foods

- Mrs. Smith 8", Frozen Pumpkin Pie 26-oz. **89¢**
- Piggly Wiggly, Frozen Whipped Topping 10-oz. Ctn. 57¢
- Piggly Wiggly, Frozen Waffles 5-oz. Pkg. 25¢
- Piggly Wiggly, Frozen Corn On The Cob 4-Ear Pkg. 83¢
- Patio, All Varieties, Frozen Mexican Dinners 12-oz. Pkg. **39¢**

Piggly Wiggly
Facial Tissue
3 \$1
 200-Ct. Boxes

- Piggly Wiggly Grape Juice 24-oz. Btl. 69¢
- Bonne, Heavy Duty Laundry Detergent 49-oz. Box 79¢

- Regular or With Iron Enfamil Formula 13-oz. Can 49¢
- Piggly Wiggly, Evaporated Canned Milk 13 1/2-oz. 30¢
- Ranch Style Blackeye Peas 15-oz. Can 39¢

Enriched Flour
Gold Medal
 Limit one with \$7.50 or more purchase
 5-Lb. Bag **69¢**

ON SALE THIS WEEK

La Mesa Dinner Plate With Each \$3.00 Purchase 49¢	Maria Grande Tea Spoon With Each \$3.00 Purchase 33¢
---	---

Three Way News

By Mrs. H.W. Garvin

Three Way school held open house Friday. Several people toured the school as we have a new addition of class rooms this year.

Grain harvest has started in the community this past week as a few fields of early irrigated grain is ready to cut.

Mrs. Carrol Fort from Brownwood spent the weekend visiting relatives in the community.

Mrs. Beadie Powell and Mrs. Dutch Powell will be in Lubbock, Friday to be with B.H. Tucker who underwent surgery.

Mr. and Mrs. George Tyson of Maple and Mr. and Mrs. D.A. Williams and boys from Enoch were in Snyder, Sunday at the Bud Scaggs home to celebrate the birthday of Mrs. D.A. Williams and her twin brother, Troy Tyson.

Mr. and Mrs. Joe Wheeler and Belinda attended the Dallas Fair this past week, where Belinda showed hogs in the fat stock show. Jodie, Jamie and Wade Wheeler spent the week with their grandparents, the Johnnie Wheelers at Comanche. Raveell Todd from Levelland, Laqueta Corsey from Levelland, Mrs. Lawanda Enos and baby and Nell Wise from Amarillo, and Mrs. Dutch Powell were supper guests in the home of Beadie Powell Saturday night.

Mr. and Mrs. Zed Robinson from Muleshoe were dinner guest in the D.S. Fowler home, Sunday.

Johnnie Furgeson, a Texas Tech student spent the weekend with his parents, the Jack Furgeson's.

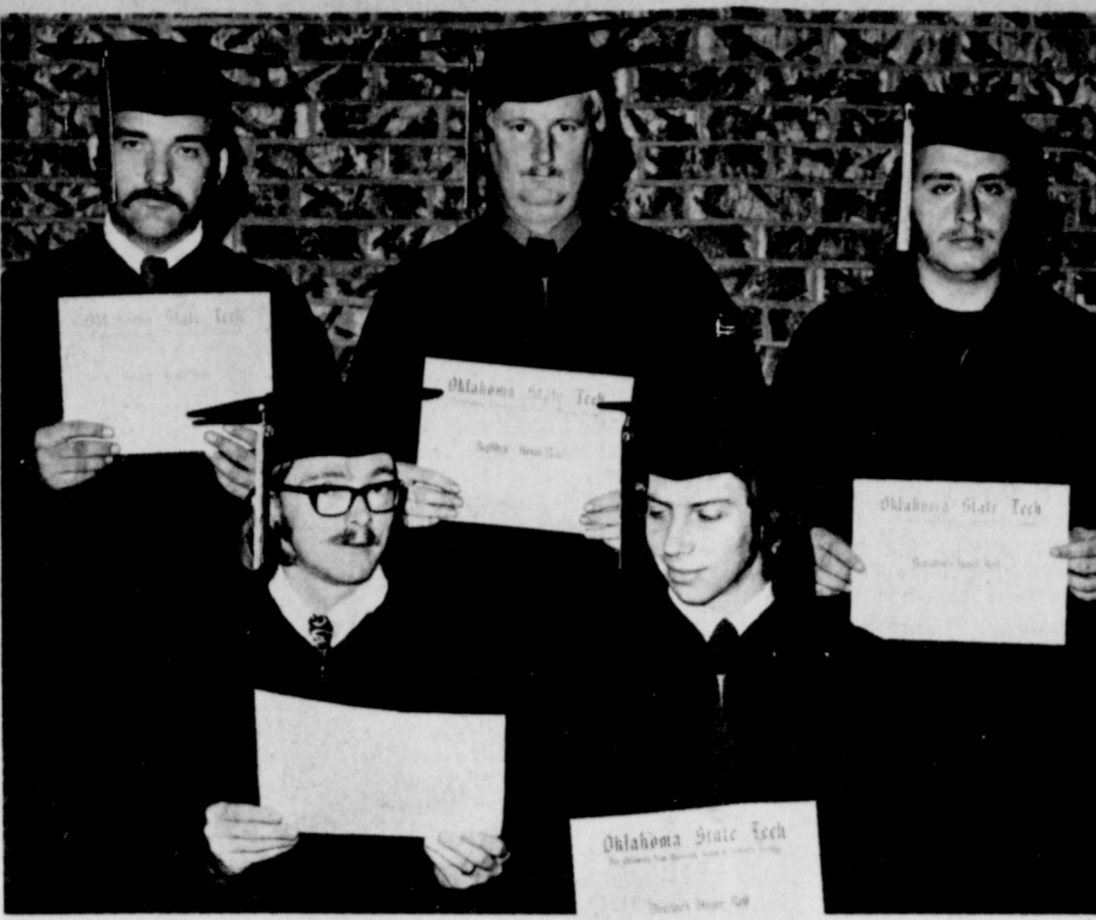
Mr. and Mrs. Dewy Tucker from Sherman visited his sister, Mr. and Mrs. Fred Kelley the past week.

Mr. and Mrs. D.S. Fowler and Mr. and Mrs. Zed Robinson visited the sick in the hospital in Lubbock, Sunday and were supper guests in the James Fowler home.

Shellie Terrell was a patient in Methodist Hospital in Lubbock the past week.

Three Way will have their annual Carnival and crowning of their King and Queen Thursday night at the Three Way School.

Mr. and Mrs. D.S. Fowler spent Thursday night in Lubbock visiting their sons and families the James and Ray Fowler's.



LOCAL MAN GRADUATES . . . Local students who were graduated from Oklahoma State Tech, Okmulgee, look at certificates naming them as honor students throughout their program of study. Students compiling between a 3.5 and 4.0 grade point average on a 4.0 scale in all subjects are listed on the Director's Honor Roll; graduates earning between a 3.0 and 3.49 grade point average are listed on the Registrar's Honor Roll. Admiring certificates presented to them Sept. 25 during an honors and awards assembly are (seated from left): Royce G. Steed, 1916 Wood St., Texarkana, Tex., baking; Gary W. Smith, 108 Del Rancho, Borger, Tex., numerical control machinist; (back row from left) Terry L. Obenhaus, Rt. 5, Muleshoe, Tex., farm tractors and machinery; and David N. West, 1732 Cascade, Mesquite, Tex., auto body. Steed, Smith and Obenhaus were named to the Director's Honor Roll.

and children from Jal, N.M. spent the weekend visiting her parents the Jack Furgeson's.

Mr. and Mrs. Buford Tombs from Austin visited the D.V. Terrells in the community last week.

Mr. and Mrs. D.S. Fowler were dinner guests in the home of Earl Roberts at Farwell, Sunday and attended a singing in Clovis, Sunday afternoon.

Mr. and Mrs. H.W. Garvin their grandson, Steven Flinn and Reamler Montgomery were dinner guests in the home of S/Sgt. and Mrs. Kenneth Fox at Clovis, Sunday and attended the Air show at Cannon A.F.B.

There were several girls from Three Way school entered the style show sew it with cotton at Littlefield Saturday night. Shonnee Hodnett placed second in sports wear and Shiry Waldrip placed third in Sugar Plum division and fourth in School Time. Ford to seek curbs on growing U.S. spending.

The community has received about an inch of rain over the weekend. Wheat in the community is pretty.

Mr. and Mrs. Joe Wheeler visited her parents the Fred Carters in Levelland Friday evening.

Elections...

Cont. from Page 1
dolph Moraw, opposed by Alberto Daniel; Justice of the Peace, Precinct 4, Brian Craddock and Frank H. Ellis; Commissioner, Precinct 3, Loyd Stephens, unopposed; and in Precinct 1, Morris Nowlin, Justice of the Peace, unopposed.

Education makes a people easy to lead but difficult to drive; easy to govern, but impossible to enslave. -Henry Brougham.

The things taught in schools and colleges are not an education but the means of education. -R.W. Emerson.

Award...

Cont. from Page 1
service award dinners to be held throughout the company's territory. 293 employees, with a combined service of 4,665 years, will be honored. The longest period of service being recognized this year is 45 years, with Lynis S. Cotter, Amarillo, the senior honoree.

Visitation...

Cont. from Page 1
Vice President of Region 114, Members attending were Royce Harris, Charles Moraw, Hugh Young, Leon Logsdon, Butch Duncan, Curtis Walker, Joe Bob Stevenson, Darrell Oliver, Andy Douglass, James Brown, Ken Ferguson, Jack Hysinger, Mike Armstrong and Ray Halseil.

Chairman...

Cont. from Page 1

Harmon Football Forecast

Eight weeks down, just four weeks to go in another wild college football season. It always seems to us football nuts that it hardly gets started and all of a sudden it's over. Every year statistics bear out the facts that there are more and more upsets with the collegians, and in recent seasons the increased use of pro-type offenses at all levels has undoubtedly helped bring this about. It becomes a more exciting sport every year. So, what's in store for the ninth week of the '74 season!

There are two features in particular. . . Florida hosts Auburn in a Southeast Conference game, and independent Penn State, entertains Maryland of the Atlantic Coast Conference. The Gators had high hopes for a Southeast Conference championship until they ran into an aroused bunch of Commodores from Vanderbilt a few weeks ago. Auburn is undefeated and tied for the lead in the Southeast Conference with Alabama, but we're not giving much of an edge to the undefeated Tigers, just five points.

Penn State, upset by Navy earlier this season, faces a real challenge from Maryland. Although the Terrapins have lost twice to Florida and Alabama - they're one of the strongest teams in the country. (Power quotient comparison again) Maryland will beat Nittany Lions by six points.

The three "I's" - Illinois, Iowa State, and Indiana - have the dubious pleasure of playing the top three teams in the

Jaycees...

Cont. from Page 1
Out of town guests included Jaycees from Hereford, Bovina, Friona, Happy and Lubbock. Hereford won the Out of Region Trophy and Happy won the In-Region Trophy. Also present was Bill Blackburn, National Director for Area I-A from Amarillo. Chairman of the Regional Visitation was Leon Logsdon.

country Saturday. The Illini meet Ohio State, the Cyclones face Oklahoma, and the Hoosiers have a date with Michigan. And the point spreads, not surprisingly, are rather heavy. Iowa State is no pushover for anyone, but they're 35 points underdogs to top-ranked Oklahoma. Ohio State shouldn't bomb out Illinois, but their heavy artillery makes them 32 point favorites. And Michigan will whit Indiana by 29 points.

Taking a look at our forecast average, we've had one rough

week and one acceptable one since the last figures. Through Saturday, October 19th in all games - we've picked 958 correctly - 332 bummers - and there have been 36 ties for an overall average of .743.

Alabama faces a rugged Mississippi State team that has been beaten only by Florida. The Tide will win by 13. Southern Cal will trip California by 17 points to stay unbeaten in the Pacific 8 Conference, and Notre Dame will beat Navy by 29 points.

Trouble

Champagne is a beverage that makes you see double and feel single.

-Tribune, Chicago.

Worth Telling

The secret of success is to do all you can without thought of fame.

-Grit.

OPEN HOUSE Roberts Memorial Nursing Home

Sunday November 3,
2:00 To 4:30
Morton, Texas

WE INVITE YOU
TO SEE OUR NURSING
AND
RETIREMENT FACILITIES
AND MEET
THE NEW OWNERS
Richard & Mary Snow

FARMERS Olsons Center Pivot Self Propelled Irrigation Systems

HAVE

- flex units have heavy ball joints on each tower.
- Long wheel base.
- Positive, single location controls.
- Works efficiently at low capacity well output.
- Rugged extra strength construction thru out.
- Easy maintenance with fewer working parts.

Complete Parts And Service

BJM

Hwy. 385 P.O. Box 33,
Ph. 806-364-6871 Hereford, Tex. 79045

RE-ELECT GOVERNOR BRISCOE

HE KEPT THE PROMISE

You know, the worse inflation gets the more we need somebody like Briscoe. He's created a lot of good jobs and he knows how to get things started.

In times like these when the economy is so shaky, I'm going to stay with Governor Briscoe.

It's quite refreshing for me to know that we have a man like Dolph Briscoe... a man who puts integrity before all things....

Dolph Briscoe's proved he has the contacts and the know how to bring new business to the State of Texas. We can't afford to lose him at a critical time like this.

I think Dolph Briscoe is a Governor you can believe in. I'm looking forward to voting for him in November.

We need new jobs and more income in this state and Governor Briscoe is helping us get them.

Briscoe's kept pace without adding new taxes - I voted Republican in 1972, but I'm voting for Briscoe this time.

They all promised no new taxes; Dolph Briscoe kept his promise.

RE-ELECT GOVERNOR BRISCOE

Political advertising. Paid for by the Briscoe '74 Campaign Committee, David A. Dean, Campaign Manager, 1212 Goodships, Austin, Texas. Published by: (publisher's name and address must be inserted here.)

Chairman...

Cont. from Page 1

fants will die from respiratory distress syndrome, including hyaline membrane disease. * More than 246,000,000 acute respiratory diseases will be reported to physicians, an average of 1.2 per American for the year. These diseases will cause U.S. employers to lose more than 135,000,000 work-days. * Breathing of 1,500,000 Americans will be crippled by emphysema, of 6,500,000 by chronic bronchitis and of more than 6,000,000 by chronic asthma. * About 31,000 Americans will begin to take daily doses of anti-TB medicines, because they have new, active cases of TB. Fortunately, most of these TB patients will be cured without hospitalization. They will have to visit an out-patient clinic regularly. And, they won't be able to skip their pills for even one day, without jeopardizing their treatment. * More than 200 million tons of pollutants in the form of waste gases and particles will be dumped into the air to threaten humans and animals and damage vegetation and buildings. * About 300,000 persons will die from cases related to smoking and estimated one million teenagers will take up the habit in 1975.

"These high tolls in illness and health must be reduced," Mr. Chastain said, "Each of us can help by supporting the work of the West Texas Lung Association. Answer your Christmas Seal letter. A contribution will help the Christmas Seal Association expand its year-round fight for life and breath."

Singing star, Vikki Carr is National Honorary Chairman of the 1974 Christmas Seal campaign.

The Harmon Football Forecast

1-OKLAHOMA	6-NOTRE DAME	11-NEBRASKA	16-FLORIDA
2-OHIO STATE	7-SOUTHERN CAL	12-TEXAS	17-GEORGIA
3-MICHIGAN	8-MARYLAND	13-ARIZONA STATE	18-WISCONSIN
4-ALABAMA	9-OKLAHOMA STATE	14-OKLAHOMA STATE	19-TEMPLE
5-AUBURN	10-TEXAS A & M	15-PENN STATE	20-ARKANSAS
Saturday, Nov. 2 - Major Colleges			
Alabama 27	Mississippi State 14	Tennessee State 24	Chattanooga 22
Arizona State 38	U.T.E.P. 0	Texas A & M 49	Tarleton 0
Auburn 21	Florida 16	Tuskegee 27	Harding 34
Baylor 27	T.C.U. 2	Virginia Union 28	American Intern'l 2
Boston College 24	West Virginia 23	West Liberty 21	Florida State 10
Bowling Green 21	Ohio U 7	Western Kentucky 30	Concord 7
Brigham Young 21	Air Force 7		Morhead 7
Clemson 31	Wake Forest 7		
Colorado State 28	Wyoming 27		
Cornell 31	Columbia 6		
Dayton 20	Central State, Ohio 17		
Delaware 30	Villanova 6		
Drake 20	Wichita 17		
East Carolina 23	The Citadel 26		
Fresno State 28	Norridge 20		
Georgia Tech 23	Appalachian State 14		
Hawaii 25	Duke 10		
Georgia Tech 25	Houston 21		
Guilford 20	Davidson 10		
Hawaii 25	Western Illinois 13		
Holy Cross 20	Boston U 10		
Kent State 24	Marshall 15		
Kentucky 26	Tulane 15		
Lamar 17	West Texas 16		
Long Beach 17	Southern Illinois 14		
LSU 28	Mississippi 14		
Maryland 27	Penn State 21		
Massachusetts 21	Colgate 17		
Memphis State 21	Florida State 15		
Miami, Fla. 24	V.P.I. 7		
Miami (Ohio) 38	Western Michigan 7		
Michigan 35	Indiana 24		
Minnesota 26	Northwestern 15		
Missouri 28	Kansas State 13		
Nebraska 34	Colorado 17		
New Mexico 30	New Mexico State 17		
North Carolina State 22	South Carolina 13		
North Carolina 38	Virginia 13		
Notre Dame 38	Navy 9		
Ohio State 38	Illinois 6		
Oklahoma State 26	Kansas 7		
Oklahoma 42	Iowa State 7		
Pacific 21	Arlington 6		
Pennsylvania 24	Central Oklahoma 22		
Pittsburgh 27	Syracuse 17		
Princeton 17	Brown 20		
Purdue 22	Iowa 20		
Rutgers 23	Connecticut 12		
San Diego State 24	North Texas 17		
San Jose State 22	Utah 17		
Southern Cal 24	California 7		
Southern Mississippi 17	SW Louisiana 14		
Stanford 17	Oregon State 8		
Temple 20	Cincinnati 13		
Texas A & M 28	Arkansas 11		
Texas Tech 28	Rice 16		
U.C.L.A. 27	S.M.U. 10		
Utah State 28	Northern Illinois 17		
Tulsa 25	Louisville 10		
U.C.L.A. 27	Washington 13		
Vanderbilt 35	Army 6		
Washington State 21	Richmond 12		
Wisconsin 27	Oregon 23		
Yale 27	Michigan State 23		
	Dartmouth 8		
Other Games - South and Southwest			
Athlete Christian 24	Angelo State 14		
Arkansas State 24	NE Louisiana 7		
Bail State 26	Martin 14		
East Texas 28	Middle Tennessee 13		
Elon 21	SW Texas 10		
Fayetteville 20	Elizabeth City 12		
Glenview 21	West Va. State 6		
Grambling 22	Texas Southern 10		
Hampden-Sydney 21	Emory & Henry 13		
Henderson 21	Livingston 20		
Jackson State 24	Bethune-Cookman 23		
Jacksonville 21	Delta State 17		
Lenoir-Rhyne 25	Carson-Newman 14		
Louisiana Tech 21	SE Louisiana 9		
Madison 20	Randolph-Macon 17		
Mary Hill 14	Gardner-Webb 7		
McNeese 35	Nicholls 7		
Mississippi 19	Maryville 7		
Mississippi College 23	North Alabama 21		
Murray 17	Eastern Kentucky 16		
Presbyterian 14	Catawba 10		
Sam Houston 17	Howard Payne 14		
Southern State 28	Quachita 7		
Southwestern, Tenn. 21	Washington & Lee 12		
State College 24	Arkansas Tech 6		
Tennessee Tech 22	East Tennessee 21		
Other Games - East			
Amherst 24	Tufts 0		
Bowdoin 6	Bates 6		
Bridgeport 27	Southern Connecticut 13		
Central Connecticut 23	American Intern'l 2		
Claron 20	Shippensburg 15		
East Stroudsburg 22	Cortland 6		
Franklin & Marshall 31	Lebanon Valley 7		
Indiana U 21	California State 6		
Illiana 20	W. Post 17		
Junata 22	Delaware Valley 13		
Lafayette 24	Bucknell 23		
Lehigh 13	Gattysburg 7		
Marion 10	Vermont 7		
Middlebury 23	Norwich 7		
Millersville 23	Chesapeake State 12		
Montclair 27	Trenton 7		
Muhlenberg 30	Swartmore 20		
New Hampshire 29	Woods Island 27		
Slippery Rock 45	Lock Haven 0		
Springfield 17	Gettysburg 7		
Towson 30	Johns Hopkins 6		
Trinity 10	Coast Guard 10		
Western Maryland 7	Rickinson 7		
Wilkes 38	Upsala 0		
Worcester 24	R.P.I. 14		
Other Games - Midwest			
Akron 25	Indiana State 21		
Baldwin-Wallace 24	Ottawa 6		
Cameron 9	SE Oklahoma 17		
Capital 21	Franklin 20		
Central Methodist 28	Graceland 13		
Central Michigan 27	Eastern Michigan 7		
Central Missouri 23	NE Missouri 13		
Central Oklahoma 22	Washington U 16		
Colorado College 21	Washington U 12		
Cornell, Iowa 20	Delaware 7		
DePaul 28	Taylor 21		
Evansville 10	Valparaiso 21		
Grand Valley 15	Northwood 14		
Hastings 34	Dana 21		
Hillsdale 35	Northern Michigan 21		
John Carroll 17	Thiel 7		
Midland 18	Nebraska Wesleyan 7		
Missouri 29	Carthage 12		
Milwaukee 21	Wayne, Mich. 17		
Missouri Southern 14	William Jewell 14		
Missouri Valley 26	Denison 15		
Mt. Union 20	Denison 15		
Muskingum 23	NW Oklahoma 22		
Northern Illinois 17	Missouri State 16		
NE Oklahoma 28	Pittsburg 17		
Northern Colorado 20	Case-Reserve 17		
Oberlin 20	Findlay 14		
Ohio Northern 23	Lincoln 20		
Rolla 23	Northern Iowa 14		
South Dakota State 24	North Dakota State 17		
South Dakota 27	North Dakota State 17		
SE Missouri 14	NW Missouri 6		
Southern U 30	Omaha 10		
Wayne, Neb. 42	Ohio Wesleyan 12		
Wittenberg 31	Eastern Illinois 6		
Youngstown 21			
Other Games - Far West			
Boise State 40	Idaho 15		
Cal Poly (S.L.O.) 23	Nevada (Reno) 20		
Chico State 23	Southern Utah 14		
Davis 33	Humboldt 12		
East Central Okla. 23	Eastern New Mexico 22		
Eastern Oregon 20	Eastern Washington 17		
Fullerton 17	Cal Poly (Pomona) 15		
Idaho College 24	Lewis & Clark 20		
Oregon Tech 21	Western Washington 7		
Pacific Lutheran 24	Linfield 21		
Portland State 31	Idaho State 20		
Puget Sound 24	Central Washington 7		
Redlands 31	Pomona 0		
Riverside 22	Los Angeles 21		
San Francisco 30	Sacramento 13		
Santa Clara 28	Hayward 13		
Western New Mexico 21	Colorado Mines 14		
Whittier 23	Clemson 6		
Whitworth 31	Whitman 13		
Willamette 30	Pacific 7		

Presented in the public interest for football fans by

DIAL 272-4549

JAMES GLAZE CO.

JOHN AND JOAN LOWRY

GENERALL INSURANCE LOANS- REAL ESTATE

232 MAIN ST. MULESHOE, TEXAS

MULESHOE JOURNAL
Established February



COUPLE PLANS DECEMBER WEDDING . . . Mr. and Mrs. J.B. James of Olton, announce the engagement and approaching marriage of their daughter, Renay, to Paul Bell, son of Mr. and Mrs. L.M. Bell of Muleshoe. Miss James is a 1973 graduate of Springlake-Earth High School and is a Sophomore at West Texas State University of Canyon. The prospective groom is a 1973 graduate of Muleshoe High School and is presently employed by ASARCO in Amarillo. The couple will exchange vows December 21 at the First Baptist Church at 7:00 p.m. in Springlake-Earth.

British trade deficit rose in July. U.S. mortgage rate up to record 9.5%.

Llano Estacado Working On Hoedown

On Saturday, November 2 at the Muleshoe Catholic Center from 9:00 p.m. to 1:00 a.m., the Llano Estacado Civic Club will hold its Fourth Annual Harvest Hoedown. Music will be provided by the West Texas Express from Amarillo. Doug Collins, from KDJW radio station in Amarillo, is lead guitarist, and the band has performed in several area towns. The theme of this year's Hoedown is the "Gold Nugget Saloon". All members of the club

and their husbands will be dressed in saloon-type attire and the theme will be carried out in all their decorations. Refreshments will be served.

Tickets for the Hoedown may be purchased for \$7.50 a couple by contacting any Llano Estacado member or \$8.50 at the door.

The Llano Estacado Civic Club was re-organized in 1963 from the charter members. The object of the club was to train its members moral facilities

and to work to enhance the worth of the community. Being a civic organization, all activities and money raising drives are conducted for the community with all money going back into the town.

In the past, Llano Estacado has helped plan and conduct the Christmas parades, worked with the Heart Fund, helped local Girl Scouts, decorated for Chamber of Commerce banquet, and assisted in "Story Hour" at the local library. The club always remains "on call" to help the community in any way it can.

Two of Llano Estacado's main fund raising activities are their Harvest Hoedown in the Fall and their Spring Style Show. Lately, money raised from these activities have been used to aid the Hospital Action Fund, buy chairs and supplies for the Muleshoe Public Library, send local needy and handicapped children to summer camp, and in many other worthy charities. The Llano Estacado Civic Club is funded only by its yearly dues and all work done by members is carried out on a volunteer basis.



DRESSING FOR THE HOEDOWN . . . Mr. and Mrs. Wayne Peterson and Mrs. and Mrs. Jerry Hulcy are shown dressed and ready for the Llano Estacado Fourth Annual Hoedown. Their theme is the Gold Nugget Saloon. They are dressed as saloon girls and cowboys.

Epsilon Chi Chapter Has Birthday Social

Epsilon Chi Chapter of Epsilon Sigma Alpha met October 22 at the Tri-County Savings and Loan Community Room. Hostesses for the Birthday Social were Mrs. Don Golden and Mrs. Jim Burgess.

The meal consisted of homemade stew, mexican cornbread, assorted breads with creamed cheese toppings and cake decorated with a pumpkin man, tea and coffee.

A game was played before the opening of birthday gifts.

Members attending were Mrs. Ronnie Barrett, Mrs. John Blackwell, Mrs. Edwin Cox, Mrs. Jim Crawford, Mrs. Don Golden, Mrs. Jerry Harrison, Mrs. Jack Rennels, Mrs. Carter Williams, Mrs. Hugh Young, Mrs. Jim Burgess, Mrs. Charles Isaac, Miss Judy Lambert, Mrs. Charles Moraw, Mrs. Andy Douglass, Mrs. Wayne Tunnell, Mrs. Dean Allen, Mrs. Mack Garrett and Mrs. Derrell Mathews.

Turkey Dinner To Be Held In Bovina

The St. Ann's Ladies Society is presenting their Annual Turkey Dinner Sunday, November 3 at St. Ann's Hall on Third Street, Bovina Texas.

Menu consists of turkey, dressing, home-made sauerkraut, home-canned green beans, desert and coffee or tea. They will serve at 11:30 a.m. to 2:00 p.m. Ticket donations are \$2.50 for adults and \$1.50 for children under 12.

Door prizes will be awarded and a country store featuring home-made goods.

FORD FRONTRUNNER PRINCETON, N.J.--A recent Gallup Poll shows Vice President Gerald Ford as the frontrunner among Republicans and independents for the 1976 GOP presidential nomination.

Nursing Home News by Myrtle Guinn

Mr. and Mrs. Louie Norwood visited her mother, Mrs. Norwood on Sunday and are leaving for Truth or Consequences on Monday.

Mrs. Whitford is still in the hospital and also, Mrs. Lewis and Mrs. McDaniels.

Mr. and Mrs. Pete Guinn, Sr. are here from Mesa, Ariz. visiting the Pete Guinn's, Jr. and Mr. and Mrs. Roy Dyer while they were here visited his mother, Mrs. Myrtle Guinn.

Mrs. Jessie Lewis came back

to her room on Tuesday. She is feeling better, but Mrs. McDaniel and Mrs. Whitford remain in the hospital.

Mrs. Lewis' son, Leon and wife came to see her on Tuesday morning.

Our day room is gay with all its decorations of elves, pumpkins, bats and witches. We are sure proud of Jeanne for them.

Harold Williams of Clovis spent Sunday and Monday night visiting his parents, Mr. and Mrs. Ben Williams.

Mrs. Jackie Herring of Anchorage, Alaska is visiting here with her uncle, Mr. and Mrs. T.L. Glascock and also with Mrs. Gilbreath.

Tuesday was Sanford Gilbreath's birthday and his sister, Mrs. T.L. Glascock and her two sisters came with a big birthday cake and helped him celebrate it.

Mrs. Tabor of Blythe, Calif. is visiting her sister, Mrs. Lewis and her nephew, Mr. and Mrs. Leon Lewis for several days.

I had the following article in my items last year but it is so full of truth and sentiment that I would like to have it repeated and maybe it will remind us to tell our mothers we love them and appreciate their teachings. It follows, "The world is full of folks, but none quiet like her. The first friend, Truest, Kindest, Stanchest--all these she has been and more. Nothing to hard for her to undertake; no burden comes but what she wished to share; our joys are her joys, our sorrows are her sorrows. Though we had no learning, her example would teach us, did not tell us of friendship and love, we would have seen its glory reflections in her eyes. Though none spoke of God, her presence would have told us that he was near. The world is full of people--but none like mother!"

I learned this through my own precious mother for her life was a blessing to me, all through her life--I love her memory.

Population outpacing world food supply.

U.S. Army gets its first woman chaplain.

HAND & BODY LOTION \$1.00
MISC ITEMS 50¢
SLEEPING NETS 50¢
JEWELRY 1/2 price

Main Street Beauty Salon
 MULESHOE PH 272-3448

OPEN DAILY 9 A.M.-8 P.M. CLOSED SUNDAYS

GIBSON'S DISCOUNT CENTER
 WHERE YOU ALWAYS BUY THE BEST FOR LESS
 1723 W. AMERICAN BLVD.

PRICES GOOD OCT. 31 THRU NOV. 2

CUTEX OILY POLISH REMOVER
 REG. AND LEMON SCENTED
39¢
 OUR REG 53¢

HI-VI DOG FOOD
 KING SIZE 26OZ
3 FOR 69¢
 OUR REG 29¢ CASE OF 12 **\$2.75**

GIRLS RIB KNIT SHELL SWEATERS
 SZ. 3-6X
 100% ACRYLIC
\$2.39
 OUR REG \$3.67

GILLETTE TRAC II INJECTOR BLADES
 Gillette TRAC II Twin injector blades
 5 twin injector blades
69¢
 OUR REG 95¢

SUNBEAM TODAY IRON
 Use as a hand steamer--ideal travel companion for on-the-spot freshening of garments. Switch to dry setting to iron modern synthetics.
 REG \$17.49
\$11.99

CHILDRENS BLUE DENIM SUITS
\$5.99
 OUR REG \$8.99

MENS B.V.D THERMAL UNDERWEAR
 TOPS AND BOTTOMS
\$2.67
 REG 3.99

SYLVANIA INSIDE FROST BULBS
 60-75-100 WATT
47¢
 2 BULB PACKAGE

T V Program To Teach Wall Repairs

"Homemakers can repair even serious-looking wall damage, according to television hostess Cindy Kidwell of the "You Can Do It" series.



RE-ELECT JOHN HILL

Attorney General Democrat

Attorney General John Hill, "the people's lawyer," is dedicated to the belief that his clients--The State of Texas and its nearly 12 million citizens--deserve the best legal services available.

Putting ideas into action in his first 21 months in office, the 45th Attorney General of the State of Texas has provided legal leadership on many fronts:

- CONSUMER PROTECTION
- ENVIRONMENTAL PROTECTION
- LAW ENFORCEMENT
- REGIONAL OFFICES
- LEGAL OPINIONS
- PUBLIC LAW
- STATE'S RIGHTS
- HUMAN RIGHTS
- ECONOMIC RIGHTS
- ENERGY

Vote November 5

Pol. Adv. Paid for by John Hill Campaign Fund Charles Morris, Chairman

Can Do It" series, seen locally each Saturday at 4:30 p.m. on KLBK-TV, Channel 13.

This week's program, "The Great Coverup," will teach viewers how to repair walls with cracks, holes or missing plaster.

Also, it will discuss techniques for fastening things to the walls, according to Mrs. Robin Taylor, county Extension agent.

The 13-part "You Can Do It" educational series for local you-can-do-it-yourselfers is sponsored by the Bailey County Family Living Committee and KLBK-TV.

It was created and produced by home economics specialists with the Texas Agricultural Extension Service, The Texas A&M University System, through a special United States Department of Agricultural grant.

Next week's program, "Paint It Yourself," will feature house interiors.

Kennedy concedes error on election law.

Senate votes lottery tax exemption.

Simon sees hope for "gas" price cut.

A.B.A. debates control of profession.



"YOU CAN DO IT" Television show on KLBK, Channel 13 every Saturday at 4:30 p.m. will present how to paint your walls.

REMEMBER TO VOTE NOVEMBER 5

Vote For Rudolph Morrow For Re-Election-Commissioner Of Precinct 4

"I HAVE SERVED ONE TERM AS YOUR COUNTY COMMISSIONER AND REMEMBER THAT EXPERIENCE COUNTS"

Paid Political Adv.



LAZBUDDIE HALLOWEEN CORONATION . . . Les Barnes and Sheryl Ivy representing Kindergarten won the title of Prince and Princess. Seated in center representing the senior class was Mike Eubanks and Reta Davis and King and Queen. Standing right the sixth grade Angie Jesko and Russell Windham were crowned Duke and Duchess. Crown bearers and other contestants are in the background. They had their Halloween Coronation, Saturday, October 26 at Lazbuddie.

Study Club Has Business Meeting

The Muleshoe Study Club met in the home of Mrs. J.G. Arna, Thursday, October 24, at 4:00 p.m. with Mrs. Lewis Embry as director.

Mrs. Barry Lewis called roll and read minutes of their last meeting. Mrs. Rufus Gilbreath gave a treasury report. Club president, Mrs. R.F. Wright conducted the business meeting. Mrs. Wilson Witherspoon gave a report on the Caprock District Board Meeting held in Floydada recently.

Mrs. Lewis Embry introduced a visitor, Mrs. Sheryl Borden, Extension Home Economist of Curry County, New Mexico. Mrs. Borden told the club members of the Festive Food Shortcourse she is conducting November 4, 11, 18 and 25 at the Southwestern Public Service Reddy Room in Clovis and urged the club

members to attend. Mrs. Borden is the daughter of Mrs. Elmo Stevens and is a Muleshoe High School graduate.

Mrs. Mervin Wilterding gave the program on making Christmas decorations and showed some decorations she has made.

Refreshments were served to the following members: Mrs. Joe Costen, Mrs. Lewis Embry, Mrs. Rufus Gilbreath, Mrs. R.O. Gregory, Mrs. Harold Griffiths, Mrs. Ed Johnson, Mrs. George Johnson, Mrs. T.L. Kent, Mrs. Barry Lewis, Mrs. A.C. Neely, Mrs. Luther Pitts, Mrs. G.L. Spawn, Mrs. Elmo Stevens, Mrs. Doyle Turner, Mrs. Mervin Wilterding, Mrs. Wilson Witherspoon, Mrs. R.F. Wright, and visitor, Sheryl Borden.

Market Report

COLLEGE STATION--Seafood and meat prices are down, because supplies are up, one expert says.

She's Mrs. Gwendolyn Clyatt, consumer marketing information specialist with the Texas Agricultural Extension Service, The Texas A&M University System.

"There's a wide variety of fish in supply--with all varieties of raw and breaded shrimp in excellent supply.

"Smaller-size shrimp is particularly well-priced, and many large-size shrimp are moving into 'good-buy' categories," she said.

Frozen fish filets, including flounder, ocean perch and pollock, are other choices.

At meat counters, beef supplies are larger--and prices are more attractive than in the past few weeks, Mrs. Clyatt reported.

She also noted that grass-fed beef costs less per pound than grain-fed (heavy) beef.

In addition, grass-fed beef has less fat, and the meat contains fewer calories. However, lean for lean, the nutritive value is the same for both grass-fed and grain-fed beef, the specialist added.



MISS WEST TEXAS STATE UNIVERSITY ENTRY . . . Jan Jinks, a Junior at W.T., is among 24 coeds who will be competing in the 1974-75 Miss West Texas State University Pageant, November 1 at the Amarillo High School Auditorium. Miss Jinks is the daughter of Mr. and Mrs. Tom Jinks of Muleshoe. Preliminaries will be held October 31 to select the 10 finalists of the group. These coeds will be announced during the actual pageant when the five former Miss Texas Pageant judges will select the new Miss W.T., after rating the contestants on talent abilities, personality interview, formal attire and swim suit competition.

WHO KNOWS?

1. How many man-made objects are flying around in space?
2. Name the plane that made the record trans-Atlantic flight recently.
3. How long did it take this plane to fly from New York to London?
4. When it is full in the Northern Hemisphere, what is it in the Southern Hemisphere?
5. What do you call a group of ants?
6. Where is the largest lake in the world located?
7. Who is credited with naming constellations?
8. How large is the island of Honu Kona?

Answers to Who Knows

1. About 3200, reportedly.
2. The Lockheed Blackbird SR71.
3. One hour, fifty-five minutes and 42 seconds.
4. Spring.
5. A colony of ants.
6. The Caspian Sea, bounded by the Soviet Union and Iran.
7. Astrologers of the Near East in 2000 B.C.
8. Thirty-two square miles.



Katherine Jeannette
Mr. and Mrs. Rudy Kipling Brock of Muleshoe are the proud parents of a new baby

girl born October 27 at 12:40 p.m. in the West Plains Memorial Hospital of Muleshoe. The baby weighed five pounds eleven ounces and was named Katherine Jeannette Brock. She is the couple's first child.

Jennifer Lynn Johnson

Mr. and Mrs. James Lee Johnson of Muleshoe are the proud parents of a new baby girl born October 25 at 11:38 p.m. in the West Plains Memorial Hospital of Muleshoe. The baby weighed five pounds and fifteen ounces and was named Jennifer Lynn Johnson. She is the couple's second child.

BIBLE VERSE

"The grass withereth, the flower fadeth; but the word of our God shall stand forever."

1. Who was the author of the above statement?
2. What was his position at the time?
3. To whom was he talking?
4. Where may this statement be found?

Answers to Bible Verse

1. Isaiah.
2. He was Israel's most outstanding prophet.
3. To the children of Israel.
4. Isaiah 40:8.

Sewing Velvet Requires Care

COLLEGE STATION--A fashion trend for the fall is the "push" look for dressy or sportswear attire. Pile fabrics such as velvet or velveteen create this popular look, one clothing specialist said this week.

"A few helpful sewing hints may help the homemaker create beautiful fashions at home with velvet," Beverly Rhoades, with the Texas Agricultural Extension Service, The Texas A&M University System, said.

Choose a pattern with a few design lines. The fabric itself will create interest. When purchasing a pile fabric, look for yardage requirements under "with nap" on the pattern envelope. If it's not listed, add 3/8 to 3/4 yard to amount given, she suggested.

"Be sure to cut all pattern to assure a uniform look. For a deeper, richer look, cut pattern pieces all going up. And for a frosted look, cut pattern pieces all going down.

"To determine pile direction, brush hand lightly over the surface. The surface feels smooth in the direction of the pile--the pile feels rough against the direction."

The specialist suggested when sewing on velvet or velveteen, use a size 11 needle and 8-12 stitches per inch. The heavier the fabric, the longer stitching will be needed. To prevent shifting of fabric layers, re-

Congress vows to cooperate with Ford.

duce pressure on the presser foot and stitch in the direction of the pile. Loosen thread tension to produce a balanced stitch, she advised.

Baste seams together by hand if needed, and machine stitch over the basting. This eliminates the need to remove machine basting stitches which may mar the pile surface, Miss Rhoades explained.

"Pressing must be done carefully side down on a velvet board (needle board) or on a thick turkish towel. Hold the iron over the fabric and let the steam do the work. Never place velvet directly on an ironing board.

"To press an entire garment, hand it in a steam filled bathroom for 30 minutes," she said.

Sudan Exes To Have Homecoming

The twenty-second annual homecoming of the exes of Sudan High School will be held November 2, in the Sudan School Cafeteria.

The Sudan Future Teachers of America plan to honor the exes with a reception from 6:00 to 7:00 p.m. during registration. Dinner will be served by the Band Parents at 7:00 p.m.

The classes to be honored this year will be the classes of 1933, -1943, -1953, -1963, 1973.

The Sudan Hornet football team will be playing Amherst on Friday night, November 1st.



PUBLIC SCHOOL WEEK . . . Muleshoe Schools had their open house October 28, at High School and Junior High and October 29, at Mary DeShaze and Richland Hills. Mr. and Mrs. Stanley Wilson and children, Casey and Roloy are shown talking to Mrs. Ruby Lambert about the children.

PPV FUN MACHINE PPV
Christmas Lay-aways Now On The PEOPLE-POWERED VEHICLES--Uses No Gas

Fun-Exercise-Transportation Street Legal Street Legal-No License-Easy To Pedal-Noiseless-Easy Storage-And Many Colors
Enclosed tops & Surrey tops

See it at **2420 19th & Y LUBBOCK** **ner-o**
Authorized Dealer For People-Powered Vehicles

799-6121-747-5443

West Plains Hospital Hospital Briefs

ADMITTANCE:
October 25: Eddie Black, Mitch Black, Edna M. Danforth, Rebecca Ann Ritchie, Mack B. Hernandez, Nelda Mullins and Claude Allen Black.

October 27: Luther Banta, Mrs. Kippy Brock, and Mrs. Larry Kemp.

October 28: Mrs. Raymond Caballero, Mrs. George Cabrera and Mrs. Vida Criswell.

DISMISSALS:
October 24: Minnie Dupler.

October 25: Herman White and Mrs. Reynold Lucero, Sr.

October 26: Luther Banta, Mrs. Ben Gramling, Mack Hernandez and W.O. Williams.

October 27: Mrs. James Johnson and baby daughter, Eddie Black and Mitch Black.

October 28: Mrs. Joe Vela, Sidney Provence, Sallie Schuster, Mrs. Lewis Sanders, Mrs. R.B. Chappell, and Mrs. Ernest Perez and baby son.

Rockefeller Center vacancies at high level.



PACK 622 WON PRIZE FOR A MONTH . . . Pack 622, Webelo Troop won a Traveling Dog Trophy for the October meetings for having the most parents attend their meetings. The boys will be able to keep the Trophy for a month and then let the winners for the next month with the most parents attending keep it.

SAVE 25%

Hanes

SLIM TRIM TUMMY TIME

Save 75¢ on every pair of Hanes TUMMY CONTROL Pantyhose

New Hanes Tummy Control has more stretchy spandex in the panty, more firmness in smoothing bulges. If you've just barely needed a girdle lately, now you can do without. And your legs will look their loveliest because new Hanes Ultra Sheer gives you the sheerest sheer ever attained. Come now and get all this at our special low prices.

Right now **\$2.25** After Nov. 9 **\$3.00**

Hanes TUMMY CONTROL Pantyhose, Reinforced Toe or Sandalfoot

Cobb's

Learn to dance. Step to the

Yellow Pages

Natural Gas Has No Odor.

So How Come It Smells?

Pioneer adds the distinctive odor. Its purpose is to make even the smallest gas leak detectable long before it could cause any problem.

If you should smell gas -- or think you smell it -- telephone Pioneer. Our servicemen are on call every hour of the day, every day of the year. They will determine the source and take the steps necessary to insure your safety.

As part of our constant vigilance and safe operating procedures, we have built an enviable reputation for providing you with the safest, most dependable, economical form of energy -- natural gas, and we want to keep it that way.

PIONEER NATURAL GAS COMPANY

Hay Making Now A Matter Of Economics

COLLEGE STATION—There was a time when hay making was a routine operation each summer and the standard hay baler was the only unit available. But how times have changed, with the advent of round bales and stacks. Now a producer must take a closer look at his total operation, especially as far as economics are concerned, before making a decision on hay harvesting methods and equipment.

"Whether you have your hay custom harvested or whether you make your own hay depends on the amount of hay to be harvested and your particular farming or ranching operation," points out Don Parks, area economist for the Texas Agricultural Extension Service.

"Due to increased wire and twine costs and the shortage of

labor, the regular hay baler is now the most expensive unit to own and operate. However, if wire and twine costs could be reduced and family labor was available, this baler might still be the best method for harvesting hay," noted Parks.

"Also, producers need to consider the marketability of the hay and whether it will all be consumed on the farm or possibly sold later. Regular bales can be transported easily, but what about those round bales and stacks weighing a ton or more?"

And as far as feeding is concerned, Parks says studies at Purdue University have shown that there is considerable waste in allowing animals to have free access to large bales and stacks—up to one-third, in fact. Overfeeding is also a problem and is expensive. And

some hay will be lost due to weather deterioration.

"Another factor producers must consider is the horsepower needed for new hay harvesting equipment. Investing in such new equipment may also call for a larger tractor to operate the unit," explains the economist.

Now, with these various factors under consideration, let's

take a look at actual harvesting costs and hay volumes needed to justify a particular hay making system.

Park lists the initial investment costs of the standard hay baling system (without tractor) at about \$5000. Operating costs are around \$15 a ton, including wire and hauling. Figuring custom baling and hauling costs at 60 cents

a bale, a producer would have to put up about 8,000 bales a year to "break even" with his own hay baling equipment.

A round baler that will make a 1500-pound bale, a mower and a rake will cost about \$7,000, with operating costs of almost \$8 a ton. The break-even point of such a unit with custom baling and hauling at 60 cents a bale would be about

4,000 of the standard size hay bales annually. The total cost per 1500-pound bale, round, would be \$13.75 with this 4,000 standard bale or 120-ton annual harvest.

About 4,250 of the standard bales would have to be harvested annually to break even with a stacker unit producing a 1.25-ton stack. The unit, including a mower and rake,

costs about \$9,000 and has an operating cost of some \$7 per ton of hay. Its total harvest costs per 2,500-pound stack would be \$25 with a 4,250 regular bale annual harvest.

"Of course, owning your own equipment can be a major factor when it comes to making high quality hay," points out Parks. With your own equipment, you can harvest hay at the proper stage of growth when protein content and quality are tops. This is important because high quality hay will reduce feed costs

while providing sufficient protein to maintain livestock in good condition. And with current high feed costs and a depressed cattle market, the use of high quality hay is even more important for a profitable farming or ranching operation.

"Furthermore, the convenience factor must also be considered. With your own equipment you can harvest hay whenever you're ready or whenever your schedule allows."



Plains Cotton Growers, Inc., 25-county, Lubbock-based cotton producer organization, is urging the U.S. Department of Agriculture to set the loan level for 1975-crop U.S. upland cotton at "the highest level permissible under the language of current law," and to not sell Commodity Credit Corporation stocks of cotton at less than 115 per cent of the target price for the year plus carrying charges.

In a letter to the USDA on September 12, PCG Executive Vice President Donald A. Johnson pointed out that unless the market price of cotton improves substantially, these two actions will be badly needed to prevent acreage being shifted from cotton to feed grains, soybeans or other more profitable crops in 1975. The 1974 crop loan level is 27.06 cents per pound, basis Strict Low Middling 1-1/16 inch cotton, 3.5 to 4.9 micronaire at average location.

CCC's minimum resale price is now 115 per cent of the loan level, as opposed to PCG's recommended 115 per cent of the 38-cent target price for 1975.

Under the Agriculture and Consumer Protection Act of 1973, the USDA can set the 1975 loan at 90 per cent of the average market price for American cotton in world markets for the 1971-72 through 1972-73 marketing years. Or, if the Secretary so decrees, the loan can be 90 per cent of the "then current" world market price for American cotton—which would be considerably lower.

Johnson's letter points out that current market prices for cotton offer little or no return on producer investment and that "Unless USDA uses every means at its disposal to encourage cotton production, the acreage needed to meet domestic and export demands for cotton will not be planted."

The 1974 Annual Meeting of the Plains Ginners Association will be held on Saturday, September 21, at the Lubbock Country Club from 9:30 a.m. to 2:00 p.m., according to PGA President Bill Weaver of Lamesa. Over 300 High Plains ginners and allied industry people are expected to attend.

The meeting will feature addresses by Donald A. Johnson, Executive Vice President of Plains Cotton Growers, Inc., Lubbock; Tony Price, Executive Officer of the Texas Cotton Ginners Association, Dallas, and Charles Russell, Foreign Trade Economist of the National Cotton Council, Memphis, Tennessee.

Johnson will speak on expanded market opportunities opening up for High Plains cotton as a result of spinning research on the revolutionary open-end spinning system and other new technology.

Price will talk to the ginners about practical solutions to problems arising out of existing and pending government regulations on air pollution and safety.

Russell is expected to give an overview of world cotton trade conditions and possible ways to improve the market position of U.S. cotton in world markets.

Luncheon speaker will be the widely known Dr. Charles Jarvis of San Marcos, Texas, dentist turned motivational speaker and humorist.

PCG members will elect nine directors at the meeting and the new directors will elect officers for the coming year. Current officers, in addition to Weaver, are Bill McCasland, Vice President, and Dixon White, Secretary, both of Lubbock.

Preceding the business meeting on Saturday will be the Association's annual golf tournament, with players teeing off at the Lubbock Country Club from 9:30 to 11:00 a.m. on Friday, September 20.



bob bullock
democrat /
comptroller

Bob Bullock is the overwhelming choice of Texas Democrats for Comptroller. He won the primary election with 76 per cent of the vote.

Bob Bullock is a tough-minded, straight-talking lawyer. He was described as "the best Secretary of State that Texas ever had."

Bob Bullock knows Texas government from one end to the other. He has proven himself in public service.

the job — comptroller
the man — bullock.

Pol. Adv. Paid for by Bob Bullock Campaign Fund, Box 12787, Austin, Tx 78711, Bob Bullock, Campaign Mgr.

Compare our FOOD PRICES

GLOVERS FULLY COOKED SUGAR CURED



HAM

SHANK HALF LB. 79¢

BUTTHALF LB. 89¢

WHOLE LB. 83¢

BACON

HORMEL BLACK LABEL THIN SLICED

1 LB PKG \$1.19

WHITE SWAN COFFEE 1 TIN

LIMIT 1 WITH 7.50 PURCHASE LB. 89¢

FROZEN FOODS

10 oz. Pkg. Trophy Sliced STRAWBERRIES 3 for \$1.00

14 oz. Pkg. Chun King SWEET & SOUR PORK 99¢

20 oz. Pkg. Westpac MIXED VEGETABLES 63¢

9 oz. Pkg. Mortons HONEY BUNS 59¢

SWIFT PREMIUM PROTEN BEEF RIB STEAK LB. \$1.09

JIMMY DEAN'S PURE PORK SAUSAGE 24 OZ. ROLL \$1.65

12 oz. Roll 85¢

HORMEL BLACK LABEL SKINLESS FRANKS 12 OZ. PKG. 69¢

HORMEL KOLBASE POLISH SAUSAGE 12 OZ. PKG. 98¢

SWIFT PREMIUM PROTEN BEEF RANCH STEAK LB. \$1.09

EVERLITE FLOUR 25 LB. \$3.99

CALIFORNIA SUNKIST LEMONS LB. 39¢

EAST TEXAS GOLDEN SWEET POTATOES LB. 19¢

EGG PLANT LB 19¢

CALIFORNIA CRISP GREEN CELERY LB. 15¢

WHITE SWAN OVEN READY BISCUITS 8¢ EACH

PINTO BEANS 76¢

2 1/2 CAN PENTHOUSE FREESTONE PEACHES 39¢

BORDENS BUTTER MILK 1/2 GAL CTN. 69¢

GUNN BROS STAMPS

DOUBLE EVERY WEDNESDAY

White's CASHWAY

STORE HOURS 7:30 A.M. TIL 9:00 P.M., Monday Thru Saturday CLOSED Sunday

We Reserve The Right To Limit Quantities

Listen to MULETRAIN over KMUL 10:15 a.m. Sponsored by WHITE'S CASHWAY

STORE HOURS

7:30 a.m. til 9:00 p.m. MONDAY thru SATURDAY CLOSED SUNDAY

Bula News
By Mrs. John Blackman

Mr. and Mrs. Darnell Williams and son, Dewayne, drove to Snyder, Sunday to observe the birthday of both Mrs. Williams and her brother, Dean Tyson, who lives at Snyder. The brother and sister are twins, Floy Jean and Troy Dean. The Williams were accompanied by her parents, Mr. and Mrs. George Tyson of Threeway.

Jeff Withrow enjoyed his 16th birthday Saturday, by having several relatives and friends to enjoy a supper of hot dogs and all the trimming at Crescent Park in Littlefield. After playing on the park playgrounds for awhile, Mrs. Withrow took them bowling.

To enjoy the evening were Terry Swart, Gary Ham, Kevin Pickrell, Earla, Jarod, Jackie Withrow, Walter White, Lubbock, and Mr. and Mrs. Freddie Maxwell.

Mr. and Mrs. J.D. Rowland and Mr. and Mrs. Gene Bryan attended the evening services Monday evening at the Moody Auditorium at L.C.C. college. This being the first evening service for their annual lecture-ship.

Nolan Harlan, who suffered a heart attack two weeks ago is still a patient in the Amherst hospital. He is making improvement real good, now able to walk around in the hospital some. If no other complications he hopes to be able to be released from the hospital this coming Monday. But is to go to Lubbock for further observation by heart specialist.

Mr. and Mrs. James Sinclair were in Albuquerque, Friday thru Sunday attending a Lay thru Sunday meeting at the Sandia Baptist Church. Mrs. Sinclair was pianist for the meeting.

Dinner guests Sunday in the John Latham home were their children, Mr. and Mrs. Warner DeSautell and boys, Chris and Cliff, and a friend Ronnie Smallwood all of Slaton, Albert Gillioz of Littlefield, Mrs. Bertie Clawson and Mr. and Mrs. L.C. Jackson of Littlefield and Mrs. J.D. Rowland visited in the afternoon with them.

We are glad to report that our friend Mr. A.P. Fred is slowly improving from a very serious operation, at the Methodist Hospital, Lubbock. Surgery was done Friday Oct. 18.

Mr. and Mrs. John Blackman spent Friday night with the Cash family at Portales and attended school activities at Brown Elementary School, where their granddaughter, Pattie Cash participated.

Mrs. Cecil Jones drove to Littlefield, Sunday afternoon and brought her mother, Mrs. Janie Thompson, resident of the Knights Rest Home, out to spend the night. She gave Mrs. Thompson a new permant Monday and made her hair look so pretty, that always makes a woman feel better.

Mrs. Paul Young and daughter Mrs. Tommie Kirk, drove to McCauley Sunday returning Monday afternoon. They visited in the home of Mrs. Young's sister, Mrs. F.B. Hoghton, other sisters to also visit with them were Mrs. Clara Doggett from Fort Worth, Mrs. C.N. Clark from Eldorado, Tex. and Mrs. E.E. Sumerlin of Roby.

Jack Withrow drove his parents Mr. and Mrs. J.H. Withrow of Sudan to Holdenville, Okla. this weekend to visit with Mrs. Withrow's sister and other relatives.

Mr. and Mrs. Gene Bryan also her brother, Raymon Teston and her sister, Mrs. Vera Farington of Littlefield, returned late Wednesday from a visit of several days with the ladies parents, Mr. and Mrs. H.P. Teston at Riverside, Calif.

Mr. and Mrs. Don Potter of Carlesbad spent two nights the past week with Mrs. Potter's grandmother, Mrs. Pearl Walden. Also a son, Mr. and Mrs. Lowell Walden of Earth spent a night with her.

Mr. and Mrs. Erwin Neiman of Muleshoe and Mr. and Mrs. P.R. Pierce of Bula drove to Big Springs, Sunday, for a visit with an uncle of the ladies, Mr. Hugh Kerby, confined in a hospital there.

Sunday company in the V.C. Weaver home were their daughter and husband, Mr. and Mrs. Bob Suggs of Odessa, a granddaughter, Mr. and Mrs. Tim Wochamurka and Children of Lubbock and Mr. and Mrs. Rick-ey Arend of Bula.

Mr. and Mrs. W.T. Aury of Dimmitt visited Sunday afternoon in the home of his brother, Mr. and Mrs. Elwood Aury.

Mr. and Mrs. John Latham and

Mr. and Mrs. L.C. Jackson of Littlefield, spent Tuesday with the Latham's daughter, Mr. and Mrs. Warner DeSautell of Slaton.

Bula - Enochs Lions entertained their wives and lady friends Thursday evening Oct. 17, with a barbecue beef and goat supper. The barbecue was prepared by the Lions, salads and sweets were brought by the ladies. District governor Haskell Lasater of Slaton was speaker for the evening. Mrs. James Sinclair furnished organ music. Other guests were Mrs. Lasater, Bill Payne, Zone chairman from Littlefield and Lions sweetheart, Miss Rhea Lyn Casey.

Bula High School played Spade, here, Friday evening, Bula girls won their game, while boys lost to Spade, Tuesday evening they drove to Union, girls won their game and boys lost. Junior high went to Bledsoe Monday evening, girls lost their game, with boys winning. Their next game is scheduled with Bledsoe here Oct. 28.

Mrs. Virginia Davila, Miss Gayla Underwood and Mrs. James Sinclair, were in Lubbock Thursday evening and Friday, attending a Head Start Health Service Work Shop, held at the South Park Inn.

School children had a holiday Friday, while teachers were attending the 17th district teachers meeting in Lubbock.

Three persons from the Migrant Service Center in Lubbock, visited Thursday, with our Migrant department in the school.

A two day work shop on Bilingual material, was given the past week, by a consultant from the Austin office.

A representative from Hennington Photo Studio from Wolfe City, Texas, will be at the Bula school Monday Oct. 28, to take



RAM IS SON OF FORMER RESIDENT Portales Ram Jimmy Amerson, a 160 pound junior who stopped three offensive attacks by the Muleshoe Mules recently is the son of Mr. and Mrs. Pete Amerson of Portales. Mrs. Amerson is the former Edith Johnson, of Muleshoe and is the daughter of Fred Johnson. Amerson had two recoveries and one interception during the Muleshoe-Portales football game.

pictures of all the school children. Parents out side of the school may bring their children also if they wish. He is to be there at 11:00.

Mr. and Mrs. Cleo McCormack of Clovis spent Tuesday and Wednesday with their son and family, the John McCormack's.

John and his father attended the basketball game at Union Tuesday evening. Cleo played with the Bula Bulldogs in 1931 and 32. His wife Neole played on the girls team in 1932.

The schedule for both boys

Bullock Favors Auditing Out Of State Companies

WICHITA FALLS--Bob Bullock, Democratic nominee for Comptroller, said Wednesday that Texas is losing millions of dollars a year by failure to audit big out-of-state companies doing business in Texas.

"There's no sense or justice in making a nickle-and-dime audit of Joe's Diner in Pecos while the big corporations go

unquestioned just because they are out-of-state," Bullock said.

Bullock pointed out that out-of-state corporations represent more than 30 per cent of the largest 1,100 sales tax reports filed in Texas and that these 1,100 account for more than half of all sales taxes remitted.

"These corporations handle our tax money in staggering

sums. Let's go where the action is," Bullock said.

Bullock said that the present Comptroller's office audits out-of-state corporations "only when they smell a rat--and even these penny-ante efforts have produced from \$200 to \$300 in revenue for every hour worked by one of our auditors."

"In fact, in one recent month-

-admittedly an unusually good month--the fledging out-of-state audits produced \$1,900 for the state for every auditor-hour worked," Bullock said. "A good audit program means not just money for the state. It means fairness to all in collecting taxes--and it means that taxes paid by Texans come back to their treasury instead of ending up on an out-of-state corporation's balance sheet," he said.

Bullock said out-of-state audits should apply to all major state taxes, including sales taxes, franchise, oil and gas production and motor fuels.

F U Prexy Attacks "Negative Thinking"

The state Farmers Union president, addressing the annual meeting of the Hall County Farmers Union in Memphis Thursday night, attacked what he called "negative thinking" on the part of the Administration and the Secretary of Agriculture.

Jay Naman, of Waco, told the audience of farm and ranch people that "the Administration hasn't taken one positive step to alleviate the grave economic conditions of livestock producers and cotton farmers."

Naman said that Farmers Union has handed the Administration a positive program to solve the problems of depressed livestock prices and cotton markets. "We have set forth a constructive program to reverse the serious conditions that exist, but our recommendations have been ignored," Naman said.

"We have asked the President to immediately embargo livestock imports until the market begins to strengthen. We have urged the Administration to stop the 'rip-off' between the farmer and the government by requiring that those processing meat products for the government pay a reasonable price for the live

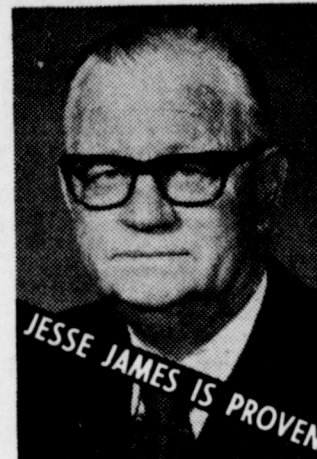
animals. We have asked that the Administration immediately increase the price support on manufacturing milk and on cotton. The Administration should pledge its support to Congress for an emergency bill to immediately increase the price support on cotton to not less than 50 cents a pound," Naman said.

Naman charged that Secretary Butz is "unsympathetic"

to the needs of farmers and ranchers, and said that the new Administration was following the same agricultural policies, dictated by Butz, that was followed by the Nixon Administration.

"The Secretary of Agriculture could do much to correct our problems with a 'sweep of his pen,' and the Administration could change the whole picture with some position action," Naman said.

The president of the statewide farm group called for more unity in agriculture. He said that Farmers Union has pledged to work with other groups toward solving agriculture's problems. "Farmers and ranchers can no longer afford the luxury of being divided along commodity lines. We must work together as a unit and approach the problems of agriculture with a solid front," Naman said.



JESSE JAMES IS PROVEN
JESSE JAMES STATE TREASURER

Let's Re-elect
JESSE JAMES
STATE TREASURER
HIS PROVEN RECORD
MERITS YOUR VOTE AND SUPPORT

During the past 12 Months

JESSE JAMES STATE TREASURER

1. Earned interest on State Deposits in over 1200 Texas banks \$ 51,673,752.19
2. Collected cigarette tax 242,366,191.70
3. Earned interest and dividends processed and collected in Bond Division 260,525,502.76
4. Escheat & other taxes 2,603,672.39

Total major direct collections (Treas. Dept.) \$557,169,119.04

LET'S VOTE FOR AND
RE-ELECT JESSE JAMES STATE TREASURER
Pol. Adv. Paid for by Jesse James Box 12404 Capitol Sta. Austin, Texas 78711

GENERAL ELECTION
Bailey County, Texas
November 5, 1974
OFFICIAL BALLOT

No. 0455
Sample Ballot
GENERAL ELECTION
Bailey County, Texas
November 5, 1974
Note: Voter's signature to be affixed on the reverse side.

INSTRUCTION NOTE:
Vote for the candidate of your choice in each race by placing an X in the square beside the candidate's name.
You may vote a straight ticket (that is, vote for all the candidates of a certain party, and for no candidates outside that party's column) by placing an X in the square beside the name of the party of your choice at the head of the party column. (If you use this straight-ticket method of marking, do not mark squares besides the names of individual candidates.)

Candidates for:	<input type="checkbox"/> Democratic Party	<input type="checkbox"/> Republican Party	<input type="checkbox"/> Raza Unida Party	<input type="checkbox"/> Socialist Workers Party	<input type="checkbox"/> American Party	<input type="checkbox"/> Independent Party	Write-In
U. S. Representative, 19th Congressional District	<input type="checkbox"/> GEORGE MAHON						<input type="checkbox"/>
Governor	<input type="checkbox"/> DOLPH BRISCOE	<input type="checkbox"/> JIM GRANBERRY	<input type="checkbox"/> RAMSEY MUNIZ	<input type="checkbox"/> SHERRY SMITH	<input type="checkbox"/> S. W. (SAM) McDONNELL		<input type="checkbox"/>
Lieutenant Governor:	<input type="checkbox"/> BILL HOBBY	<input type="checkbox"/> GAYLORD MARSHALL		<input type="checkbox"/> DAN FEIN			<input type="checkbox"/>
Attorney General	<input type="checkbox"/> JOHN HILL	<input type="checkbox"/> TOM COLE		<input type="checkbox"/> PEDRO VASQUEZ			<input type="checkbox"/>
Comptroller of Public Accounts	<input type="checkbox"/> BOB BULLOCK	<input type="checkbox"/> NICK ROWE		<input type="checkbox"/> SAS SCOGGINS			<input type="checkbox"/>
State Treasurer	<input type="checkbox"/> JESSE JAMES	<input type="checkbox"/> ROBERT G. HOLT					<input type="checkbox"/>
Commissioner of General Land Office	<input type="checkbox"/> BOB ARMSTRONG	<input type="checkbox"/> MARY LOU GRIER		<input type="checkbox"/> WILLIAM RAYSON			<input type="checkbox"/>
Commissioner of Agriculture	<input type="checkbox"/> JOHN C. WHITE	<input type="checkbox"/> ZACK FISHER					<input type="checkbox"/>
Railroad Commissioner	<input type="checkbox"/> JIM C. LANGDON	<input type="checkbox"/> JOE P. CAIN	<input type="checkbox"/> FRED R. GARZA	<input type="checkbox"/> RICK CONGRESS			<input type="checkbox"/>
Railroad Commissioner, Unexpired Term	<input type="checkbox"/> MACK WALLACE	<input type="checkbox"/> DALE W. STEFFES					<input type="checkbox"/>
Associate Justice, Supreme Court, Place 1	<input type="checkbox"/> SEARS MCGEE						<input type="checkbox"/>
Associate Justice, Supreme Court, Place 2	<input type="checkbox"/> THOMAS M. REAVLEY						<input type="checkbox"/>
Associate Justice, Supreme Court, Place 3	<input type="checkbox"/> ZOLLIE STEAKLEY						<input type="checkbox"/>
Judge, Court of Criminal Appeals, Place 1	<input type="checkbox"/> W. A. MORRISON						<input type="checkbox"/>
Judge, Court of Criminal Appeals, Place 2	<input type="checkbox"/> LEON DOUGLAS						<input type="checkbox"/>
State Representative, District 74	<input type="checkbox"/> BILL CLAYTON						<input type="checkbox"/>
Member, State Board of Education, District 19	<input type="checkbox"/> JAMES H. WHITESIDE						<input type="checkbox"/>
Associate Justice, Court of Civil Appeals, District 7	<input type="checkbox"/> MARY LOU ROBINSON						<input type="checkbox"/>
District Judge, 154th Judicial District	<input type="checkbox"/> PAT BOONE, JR.						<input type="checkbox"/>
District Clerk	<input type="checkbox"/> NELDA MERRIOTT						<input type="checkbox"/>
County Judge	<input type="checkbox"/> GLEN WILLIAMS						<input type="checkbox"/>
County Clerk	<input type="checkbox"/> HAZEL GILBREATH						<input type="checkbox"/>
County Treasurer	<input type="checkbox"/> EDITH WILT						<input type="checkbox"/>
County Commissioner, Precinct 4 (Voting Boxes 6, 7 & 8)	<input type="checkbox"/> RUDOLPH MORAW		<input type="checkbox"/> ALBERTO DANIEL				<input type="checkbox"/>
Justice of the Peace, Precinct 4 (Voting Boxes 6, 7 & 8)			<input type="checkbox"/> BRIAN R. CRADDOCK			<input type="checkbox"/> FRANK H. ELLIS	<input type="checkbox"/>
Justice of the Peace, Precinct 1 (Voting Box 1)	<input type="checkbox"/> MORRIS NOWLIN						<input type="checkbox"/>
County Commissioner, Precinct 2 (Voting Boxes 2 & 3)	<input type="checkbox"/> LOYD STEPHENS						<input type="checkbox"/>

Presented In The Public Interest By:

First National Bank
MEMBER FDIC MULESHOE

Football CONTEST



You Have Until 5 P.M. Friday to Enter Contest

Enter Our Contest Each Week
...Nothing to buy = Just Pick Winners
HERE'S YOUR CHANCE TO

WIN CASH WEEKLY PRIZES!

WIN FIRST PRIZE \$5
WIN SECOND PRIZE \$3
WIN THIRD PRIZE \$2



GRAND PRIZE \$50 For expenses and two tickets to the Cotton Bowl at Dallas, Texas. There will also be a contest and prizes for the Bowl Games!

WINNERS TO BE ANNOUNCED IN NEXT WEEK'S PAPER

Please write FOOTBALL CONTEST Muleshoe Publishing Company Box 449 Muleshoe, Texas on envelope of mailed entry.

Read the rules... Start Winning RULES OF THE CONTEST:

- The contestant must be 12 years or older.
- Only one entry per person may be made for any one contest.
- Weekly contests are open to everyone except employees and families of this newspaper; bring or mail your entries to the Journal office.
- Mailed entries must be postmarked not later than 5 p.m. Friday; winners names will be published in this newspaper each Thursday following the close of the weekly contest.
- Check the team you think will win; 10 points for 1st place, 6 points for 2nd place and 4 points for 3rd place determines the Grand Prize winner.
- The tie-breakers will count as one of the games picked, the predicted scores will be used to determine the top three places in that week's contest, if necessary, and cash prizes and points will be divided between winners in event of ties. Please write FOOTBALL CONTEST on envelope of mailed entry. Decision of the Journal's scoring judges will be final.

Watch for the Official Entry Blank Each Week.

OFFICIAL ENTRY FORM PICK THE WINNING TEAMS

- | | | | |
|-------------------|--------------------------|---------------|--------------------------|
| 1. Iowa | <input type="checkbox"/> | Purdue | <input type="checkbox"/> |
| 2. Duke | <input type="checkbox"/> | Georgia Tech | <input type="checkbox"/> |
| 3. Colorado State | <input type="checkbox"/> | Wyoming | <input type="checkbox"/> |
| 4. Northwestern | <input type="checkbox"/> | Minnesota | <input type="checkbox"/> |
| 5. Pennsylvania | <input type="checkbox"/> | Harvard | <input type="checkbox"/> |
| 6. Houston | <input type="checkbox"/> | Georgia | <input type="checkbox"/> |
| 7. Boston College | <input type="checkbox"/> | West Virginia | <input type="checkbox"/> |
| 8. Auburn | <input type="checkbox"/> | Florida | <input type="checkbox"/> |

TIEBREAKER

- | | | | |
|----------------|-------|------------|-------|
| 9. Maryland | SCORE | Penn State | SCORE |
| 10. West Texas | SCORE | Lamar | SCORE |

NAME _____
ADDRESS _____
CITY _____
STATE _____ ZIP _____
PHONE NO. _____

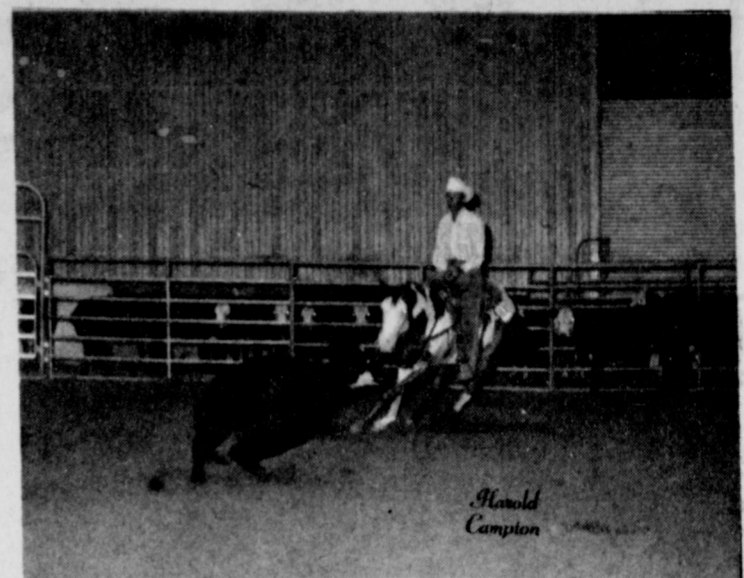
"PICK-A-WINNER" LAST WEEK'S WINNERS

HOWARD SPLAWN
FIRST PLACE
ADELE TOMPKINS
SECOND PLACE

DON McMAKIN
THIRD PLACE

The Following Firms Urge You to Back The "MULES" & Attend All The Games:

- TRI-COUNTY SAVINGS & LOAN
- MULESHOE IMPLEMENT & SUPPLY CO.
- BOB STOVALL PRINTING
- HENRY INSURANCE CO.
- FIRST NATIONAL BANK
- FRY & COX
Your Friendly One Stop Farm Service
- MULESHOE STATE BANK
- REDWINE '66'
- WHITE'S CASHWAY GRO.
- BAILEY COUNTY FARM BUREAU INS.
Ray Davis, Agency Manager
- RAY GRIFFITHS & SONS
- MULESHOE MOTOR CO.
- BEAVER'S FLOWERLAND
- GIBSON'S
- WILSON APPLIANCES
- MULESHOE CO-OP GINS
- BAKER FARM SUPPLY
- GROW CHEVROLET COMPANY
MULESHOE, TEXAS • Telephone 272-3100
- WESTERN DRUG
- HARMON-FIELD INS.
- JOHN'S CUSTOM MILL
- DARI-DELITE
- ART - CRAFT PRINTING
- WOOLEY - HURST, INC.
- WESTERN AUTO
Earl Harris, Owner
- Bailey County Electric Cooperative Association



ONE MAN'S OPINION... One Man's Opinion, pictured in action, won first in Junior Cutting at the Texas State Fair in Dallas and the Heart of Texas in Waco. He is owned by Pearson and Bullock of Muleshoe. Jim Pearson showed and trained him.

Farm-facts

A Weekly Report Of Agri-Business News
Compiled From Sources Of The Texas Department of Agriculture
John C. White, Commissioner

Production Down, Too... Cotton Declines... Sorghums Down, Corn Up... New Wheat Crop Coming

NOT ONLY ARE prices paid to farmers down from last year but production in most major crops is also down. Production of corn, rice, sugar cane and sugar beets, and pecans is expected to be up over the not-so-good crops of 1973; but production of cotton, grain sorghum, peanuts, soybeans and sweet potatoes is not expected to be as good as in the good year of 1973, says the Texas Crop and Livestock Reporting Service. Dry conditions during the planting season plus a wet fall when low temperatures came early have caused the prediction of lesser yields in most major crops.

COTTON IS an example of what has happened with most major crops in Texas. The USDA estimated October 1 that 3,100,000 bales would be made in Texas this year, compared to 4,673,000 bales last year. And the October 1 estimate was 80,000 bales less than the previous monthly estimate and is still too high, according to some Texas estimates. Cool, wet weather set back cotton on the High Plains in September, and October's weather has not given it a chance to recover. The yield this year is expected to be 310 pounds of lint an acre, compared to 431 pounds an acre in 1973; and the estimated 4,800,000 acres to be harvested are 400,000 fewer than last year, although more acres were expected to be and were planted last spring than were planted in 1973. Cotton picking is expected to pick up in West and North Texas now that frost is causing defoliation. September rains slowed harvest as well as cotton growth. In the Lower Rio Grande Valley, South Texas, and the Upper Gulf Coast; harvest is over and many farmers have plowed up stalks in preparation for the next crop. Cotton prices ranged from 38 cents a pound (on the Plains) to around 47 cents, although trading was slow. Cottonseed prices over Texas ranged from \$80.30 to \$99.90 a ton during the first part of October.

SORGHUMS, THE Number 2 crop in Texas, have also suffered a decline in production. Now it is estimated that Texas will produce 295,000,000 bushels with harvest about 60 per cent complete, a rate of harvest behind last year's. In 1973, sorghum production totaled 417,000,000 bushels off 6,950,000 acres. This year 5,900,000 acres are expected to be harvested... Texas is expected to produce almost 70,000,000 bushels of corn this year off 775,000 acres, compared to almost 61,000,000 bushels last year off 640,000 acres. This yield is expected to average 90 bushels an acre, compared to 95 bushels an acre in 1973. The corn harvest is about 70 per cent complete... Cutting of the second crop of rice is underway in most of the growing areas. Yields average around 4,500 pounds an acre, compared to 3,740 an acre in 1973; and Texas production this year is predicted at 25,335,000 hundredweights, compared to 20,530,000 cwts. last year.

WHILE THE 1974 harvest heads down the home stretch, planting of the next wheat crop is progressing. Texas Crop and Livestock Reporting Service estimated that wheat seeding was 78 per cent complete by October 15, rate slower than last year due to rain. Early stands are good, and moisture is reported enough to send the new crop into winter in good condition. Some Low and High Plains cowmen have had some grazing on wheat... Oat planting is also about three-fourths complete, and some grazing of oats in the Blacklands and East Texas has been available... Range conditions over the State are reported to be about 80 per cent of normal, West Texas and Panhandle areas not having fully recovered from the effects of dry weather. Rains in September and October, however, improved range conditions all over the State.

WE HAVE A LIMITED SUPPLY OF "NEW CASE AND DAVID BROWN TRACTORS" BEST BUYS IN THE COUNTRY SCOTT TRACTOR CO. PLAINVIEW, TEXAS ph. 293-4116

WANTED ADS

OPEN RATES
1st insertion, per word - 9¢
2nd and add., per word - 6¢
NATIONAL RATES
1st insertion, per word - 11¢
2nd and add., per word - 7¢
Minimum Charge - 50¢
CARD OF THANKS - \$2.00
Classified Display \$1.25
per column inch.
Double Rate for Blind Ads -
DEADLINE FOR INSERTION
Noun Tuesday for Thursday
Noun Friday for Sunday
WE RESERVE THE
Right to classify, revise or
reject any ad,
NOT RESPONSIBLE
For any error after ad has
run once.

FOR YOUR Stanley Home Products,
Jewel Broyles, call
965-2481.
1-16t-tfc

LOST OR STRAYED from the
FFA Ag. farm, 1 flat bed trailer,
if whereabouts of said trailer
is known call, 806-272-3332
or 806-272-3283
1-43s-3tp

3.HELP WANTED

WANTED: Typist must type 50
words per minute at least,
Inquire in person at Journal,
21s-3-tp

ACCEPTING Applications for
R.N. at Plains Memorial Hospital
at Dimmitt, Texas, Call
647-2191 and ask for Verle
West, Administrator or Allan
Bradley, Shift preference will
be considered.
3-25s-tfc

WANTED: 2 mechanics. Excel-
lent opportunity and working
conditions. Apply in person,
Town & Country Auto Inc., Clovis
Highway.
3-32t-tfc

5. APARTMENTS FOR RENT

FRIONA APTS. now have avail-
able 1,2, and 3 bedroom.
\$145.00. Call 247-3666 or come
by 1300 Walnut Street, Friona.
Sorry no pets.
5-24s-tfc

FOR RENT: 2 bedroom unfur-
nished apartment, Phone 272-
4838, Smallwood Real Estate.
5-47s-tfc

7.WANTED TO RENT

Would like to lease wheat pas-
ture and stalks for 1,000 head
of cattle, Call Randy Johnson,
806-272-3056 or 806-965-2224.
7-41s-tfc

WANTED: Irrigated land to rent
or buy, A.E. & Bobby Redwine,
Phone 806-965-2437 or 806-
965-2845.
7-41t-tfc

WANTED TO RENT or lease
irrigated land, Call 806-965-
2160, John Mitchell.
7-38s-tfc

WANTED TO RENT: Wheat pas-
ture, Pat Moss Box 241, Por-
tales, N.M. 505-478-2444.
7-44t-tfc

8 REAL ESTATE, FOR SALE

FOR SALE: 2 A with 5 room
house, carpeted, House, cellar
and barn.
Call 806-946-2567.
F.O. Warren
8-43s-6tp

FOR SALE: 356 A irrigated
farmland, 2 wells, 1-6", 1-8"
Good allotments and good yields
Wheat, cotton and feed.
Call 806-946-2612
8-43t-4tp

FOR SALE: 4 bedroom, 8 room
house, fully carpeted, built in
range & double oven, attached
garage & carport. Call 806-
272-4208 or 806-272-4412 after
6 p.m.,
8-44t-6tc

FOR SALE: 4 lots & house lo-
cated 118 W. Second St, Randy
Thomas, 274-5920, Phillips,
Texas.
8-44t-2tp

FOR SALE: 65' Mobile Home,
Also 3 bedroom house. Call
806-272-4411 5 p.m. to 8 p.m.
8-42s-8tp

FOR SALE: 2 bedroom brick,
1 bath, livingroom, den and kit-
chen, utility room, garage, fenced
back yard, Call 806-272-
5564.
8-41s-tfc

FOR SALE: 2 bedroom house,
1 bath, livingroom, carpeted.
Call 806-272-4459 or 806-272-
3182.
8-42t-6tc

FOR SALE: Nice 2 bedroom
house in Lenau Addition. Call
806-272-3749.
8-42t-4tc

FOR SALE BY OWNER: 216
acres 4 miles E. 1 North, 1/4
E. of Muleshoe, See Harlan
Reese, 806-965-2760, or Mor-
ris McKillip 806-965-2765.
8-43t-11tp

FOR SALE: 3 bedroom, 1 3/4
bath, brick home with fenced
backyard, located in Richland
Hills near school, Call 806-
272-4375.
8-42t-tfc

FOR SALE: Beauty shop, call
965-2660 or 272-4375.
8-33s-tfc

FOR SALE: 3- 320 A tracts
all cult. level irrig. wells, nat.
gas, tilled, 5 mi. to town pri-
ce 350-400 & 450 per A.
Other tracts if interested.
Friona Realty, L.R. White,
Friona, Texas. Phone 806-247-
3156.
8-43s-2tp

9.AUTOMOBILES FOR SALE

FOR SALE: 1970 Rambler Sta-
tion Wagon. Good condition and
good gas mileage. Call Gary
McCray at 806-925-3433.
9-42s-4tp

FOR SALE: White over gold
'69 Chevelle Malibu. Bucket
seats, console, positive tract,
good tires. Call 806-933-2543
after 5:30 p.m.
9-44t-tfc

FOR SALE: 1965 Chevrolet; 6
cylinder, 4 speed pick-up. Good
condition. Call 806-925-3510.
9-38t-tfc

FOR SALE: J.C. model 282
brush cotton stripper with row
sensors and model 70 basket
in very good condition.
\$5,000.00. Call 806-965-2468.
10-42s-tfc

FOR SALE: John Deere 105
Combine, with 4 row corn head-
er. Air conditioned cab & gas
engine. Ready to go, Miller
Seed Co. Box 886, Hereford,
Texas. Phone 806-364-5250.
10-44t-2tc

FOR SALE OR TRADE: Layne
Apartments, See Mrs. Layne at
524 S. 1st. Street.
11-25s-tfc

12.HOUSEHOLD GOODS

Pianos, organs, band instru-
ments, new and used. Profes-
sional repairs, sheet music, ren-
tals, terms.
Phillips House Of Music
118 Main, Clovis, N.M. Phone
505-763-5041
12-34s-tfc

FOR SALE: Marantz 2220 Am-
plifier, AM-FM with Garrard
turn-table, Magnetic needle, 2
Utah speakers, 10 1/2" Woofer-
3" tweeter.
Blue trailer behind Tom's El-
ectric after 6,
12-44t-2tp

13.MISCELLANEOUS

WANTED TO BUY: Damaged
corn in the shuck, Hugh Collis,
806-965-2920 or 806-965-2746
evenings,
15-41s-tfc

FOR SALE: 10 X 54 Mobile
Home. Completely carpeted and
appliances. Good condition. Call
806-272-4456 between the hours
of 8 a.m. and 7 p.m.,
15-42t-tfc

PIANO LESSONS- Wanted; a
few more students.
15-44t-2tc

SEWING WANTED: Experienc-
ed; Reasonable rates, 519 W.
5th. Call 806-272-3497.
16-42t-2tp

FOR SALE: 1970 Melody Mobile
Home. 2 bedroom, 1 1/2 bath,
partially furnished.
Call 806-272-3252
15-43s-2tc

Public Notice

THE STATE OF TEXAS
TO: SHARON NIGH
GREETING:
You are commanded to appear
by filing a written answer to
the plaintiff's petition at or
before 10 o'clock A.M. of the
first Monday after the expiration
of 42 days from the date of
issuance of this Citation, the
same being Monday the 25th day
of November, A.D., 1974, at or
before 10 o'clock A.M., before
the Honorable District Court of
Bailey County, at the Court
House in Muleshoe, Texas. Said
plaintiff's petition was filed on
the 9th day of Oct., 1974. The
file number of said suit being
No. 3751
The names of the parties in
said suit are:
IN THE MATTER OF THE MAR-
RIAGE OF LARRY JOE NIGH
AND SHARON NIGH, AND IN
THE INTEREST OF SHEILA JO
NIGH, A CHILD.
The nature of said suit being
substantially as follows, to wit:
Divorce.
If this Citation is not served
within 90 days after the date
of its issuance, it shall be re-
turned unserved. Issued this
11th day of October A.D.,
1974.
Given under my hand and seal
of said Court, at office in Mule-
shoe, Texas, this 11th day of
October A.D., 1974.
Nelda Merriott Clerk
District Court Bailey County,
Texas
15-42t-4tp

FOR SALE: Beauty shop, call
965-2660 or 272-4375.
8-33s-tfc

FOR SALE: 3- 320 A tracts
all cult. level irrig. wells, nat.
gas, tilled, 5 mi. to town pri-
ce 350-400 & 450 per A.
Other tracts if interested.
Friona Realty, L.R. White,
Friona, Texas. Phone 806-247-
3156.
8-43s-2tp

9.AUTOMOBILES FOR SALE

FOR SALE: 1970 Rambler Sta-
tion Wagon. Good condition and
good gas mileage. Call Gary
McCray at 806-925-3433.
9-42s-4tp

FOR SALE: White over gold
'69 Chevelle Malibu. Bucket
seats, console, positive tract,
good tires. Call 806-933-2543
after 5:30 p.m.
9-44t-tfc

FOR SALE: 1965 Chevrolet; 6
cylinder, 4 speed pick-up. Good
condition. Call 806-925-3510.
9-38t-tfc

FOR SALE: J.C. model 282
brush cotton stripper with row
sensors and model 70 basket
in very good condition.
\$5,000.00. Call 806-965-2468.
10-42s-tfc

FOR SALE: John Deere 105
Combine, with 4 row corn head-
er. Air conditioned cab & gas
engine. Ready to go, Miller
Seed Co. Box 886, Hereford,
Texas. Phone 806-364-5250.
10-44t-2tc

FOR SALE OR TRADE: Layne
Apartments, See Mrs. Layne at
524 S. 1st. Street.
11-25s-tfc

12.HOUSEHOLD GOODS

Pianos, organs, band instru-
ments, new and used. Profes-
sional repairs, sheet music, ren-
tals, terms.
Phillips House Of Music
118 Main, Clovis, N.M. Phone
505-763-5041
12-34s-tfc

FOR SALE: Marantz 2220 Am-
plifier, AM-FM with Garrard
turn-table, Magnetic needle, 2
Utah speakers, 10 1/2" Woofer-
3" tweeter.
Blue trailer behind Tom's El-
ectric after 6,
12-44t-2tp

13.MISCELLANEOUS

WANTED TO BUY: Damaged
corn in the shuck, Hugh Collis,
806-965-2920 or 806-965-2746
evenings,
15-41s-tfc

FOR SALE: 10 X 54 Mobile
Home. Completely carpeted and
appliances. Good condition. Call
806-272-4456 between the hours
of 8 a.m. and 7 p.m.,
15-42t-tfc

PIANO LESSONS- Wanted; a
few more students.
15-44t-2tc

SEWING WANTED: Experienc-
ed; Reasonable rates, 519 W.
5th. Call 806-272-3497.
16-42t-2tp

FOR SALE: 1970 Melody Mobile
Home. 2 bedroom, 1 1/2 bath,
partially furnished.
Call 806-272-3252
15-43s-2tc

FOR SALE: Honda 175 C.C.,
good condition. Perfect for ir-
rigating. Call 806-925-3536
after 7 p.m.
15-39t-tfc

CUSTOM STONE: Ground Corn
meal. 313 W. Washington, Mor-
ton, Texas.
806-266-8941
15-43t-4tp

16.LIVESTOCK

Calves 7 to 14 days old, Heal-
thy and started on bottle. Free
delivery of 10 or more. Call
214-223-5171 after 7 p.m.,
16-28s-24tc

**All type roofing &
building repair.**
FREE ESTIMATES
Phone 806-272-3756
**DON'S ROOFING
CO.**
15-32s-tfc

Several good tracts of land
for sale. Some at 29% down.
Good water.
8-37s-tfc

Public Notice

THE STATE OF TEXAS
BY VIRTUE OF AN ORDER OF
SALE
COUNTY OF BAILEY
DATED October 22, 1974 and
issued pursuant to a judgment
decree of the District Court
of Bailey County, Texas by the
Clerk of said Court on said
date in a certain suit No. 3556,
and styled the Muleshoe In-
dependent School District vs.
Bailey County Co-op Associa-
tion, et al and to me direct-
ed and delivered as Sheriff
of said County, I have on Oc-
tober 22, 1974 Seized, levied
upon, and will, on the first
Tuesday in December 1974, the
same being the 3rd day of said
month at the Courthouse door
of said County, in the City of
Muleshoe, between the hours of
10 o'clock A.M. and 4 o'clock
P.M. on said day, proceed to
sell for cash to the highest
bidder all of the right, title,
and interest of the defendants
in such suit in and to the fol-
lowing described real estate
levied upon as the property of
said defendants, the same lying
and being situated in the County
of Bailey and State of Texas,
to wit:
The following property being
located in Original Township
of the City of Muleshoe: Lots
1,2,3, Block 16; Lots 7 to 10,
Block 47; Lots 7,8, Block 48.
The following property being lo-
cated in Plum Street, Original
Township of Progress: Lot 54,
Block 5. The following property
being located in Morrison #2
Addition to the City of Muleshoe:
Lots 2,3,4,8,9, Block 2; Lot
1, Block 3. The following prop-
erty being located in North-
west Addition to the City of
Muleshoe: Lots 2 to 6,7,8,19,
20, 21, 22,23, 24,25, 35,36,37,
38, Block 1; Lots 5, 6, 7, 8,
9, 21, 22, 23, 35, 36, Block
2, or upon the written request
of said defendants or their at-
torney, a sufficient portion
thereof to satisfy said judgment,
interest, penalties and costs;
subject, however, to the right
of redemption, the defendants
or any person having an inter-
est therein, to redeem the said
property, or their interest
therein, at any time within two
years from the recordation of
the deed in the manner pro-
vided by law, and subject to
any other and further rights to
which the defendants or anyone
interested therein may be enti-
tled, under the provisions of law.
Said sale to be made by me
to satisfy the judgment rendered
in the above styled and numbered
cause, together with interest,
penalties, and costs of suit,
and the proceeds of said sale
to be applied to the satisfac-
tion thereof, and the remainder,
if any, to be applied as the
law directs.
DATED at Muleshoe, Texas,
this 22nd day of October
1974.
Dee Clements by Bud Street,
Deputy Sheriff, Bailey Count-
y, Texas.
15-44t-3tc

**News Of Our
Servicemen**

Navy Hull Maintenance
Technician Third Class Jer-
rell C. Otwell, son of Mr. and
Mrs. Otwell of Route 3, Mule-
shoe, Tex., has returned to
San Diego aboard the destroy-
er escort USS Bradley, after a
six-month deployment to the
Western Pacific and Indian O-
ceans.
The ship participated in at-
sea training exercises with
other units of the U.S. Seventh
Fleet and navies of other
countries, including Austral-
ia, Great Britain, Kenya and
the Republic of China.
During the cruise, Otwell
visited Manila, Republic of
the Philippines; Kaohsiung,
Taiwan; Melbourne; Yoko-
suka, Japan; Guam; and Hong
Kong.
A former student of Mule-
shoe High School, he joined the
Navy in April 1971.

**LEASE A
SELF-PROPELLED
VALLEY
SPRINKLER SYSTEM**
Available now for wheat
planting season. Call or come
by and let us explain the advan-
tages of leasing a valley sprin-
kler.
AVI INC.
W HWY 84 272-3565

FOR SALE
New & Rebuilt Kirbys
Carolyn Duncan
Ph. 272-4182 220W.10

**Cess Pool
Cleaning**
Cesspools pumped with a
MUD-PUMP & treated with
bacteria & enzymes to li-
quidize solids & loosen sides
for better drainage. Dipping
vats drained and liquids haul-
ed to your disposal pit.
Grease pits drained & treat-
ed. Molasses pits drained.
Phone 272-3677 or 272-3467
ELMER DAVIS

HELP WANTED:
Amarillo Daily News Needs A Carrier
For The Muleshoe Area .
Contact Buck Creamer 806-272-3265 OR
CALL COLLECT 806-376-4488
IN AMARILLO

INDEPENDENT BEVERAGE DISTRIBUTOR
FOR MULESHOE AREA
Dr Pepper, Seven-Up and complete line
of National Brand Flavors.
Contact: Dr Pepper-Seven-Up Bottling
505 E. 50th Street Lubbock, Texas
Phone 806-763-4311

**ATTENTION
MULESHOE AREA
CATTLEMEN**
.....In regard to dead
stock removal.....
If you have had a prob-
lem with service.....
whether in the feed yard
or on the farm.....
Please give US a chance! Thank you.
Your local used cow dealer is
muleshoe-bi-products
Phone-965-2903 Mobil Phone 965-2429

FOR SALE: Mesquite firewood,
Phone 806-272-4842
15-43t-tfc

FOR SALE: Honda 175 C.C.,
good condition. Perfect for ir-
rigating. Call 806-925-3536
after 7 p.m.
15-39t-tfc

CUSTOM STONE: Ground Corn
meal. 313 W. Washington, Mor-
ton, Texas.
806-266-8941
15-43t-4tp

16.LIVESTOCK

Calves 7 to 14 days old, Heal-
thy and started on bottle. Free
delivery of 10 or more. Call
214-223-5171 after 7 p.m.,
16-28s-24tc

At Muleshoe Junior High



"B" Team Slips Past Levelland

Last Thursday's game start-
ed off with an attempted on-side
kick by the Mules' George Vil-
larael. The kick traveled out
of bounds before it could be re-
covered. The Mules then kick-
ed again from five yards back,
and tackled the Lobos runner on
the Lobos thirty. The Mules
held the Lobos four downs and
forced them to punt. Pablo Gon-
zales ran back the punt for the
Mules to the fifty.
The Mules ran three plays

making a first down on the Lobo
thirty-five. They then, in two
plays, made three more yards
and on third and seven Terry
Shafer threw a thirty-two yard
T.D. pass to Johnny Densman
to draw first blood and put
the Mules ahead, Dickey Sud-
duth made the two points, and
made the score 8-0.
On the following kick-off the
Mules gave the Lobos good
field position on the Levelland
forty. The Mules again forced
the Lobos to punt. On the
punt Mario Costillo broke
through the line and blocked the
punt. He then picked the ball up
and ran thirty yards for another
touchdown. The conversion fail-
ed; and the first quarter ended
with the Mules leading 14 to 0.
In the following kickoff the
Levelland receiver ran the ball
back 70 yards for a touchdown.
The conversion failed and when
the half ended the Mules lead 14

-6.
Early in the second half, the
Lobos ran another T.D. and the
conversion became important.
The Levelland team tried a
pass; but, the Mules defense
broke through to make the tack-
le.
The rest of the game was a
stand-off between the thirty
yard lines until the last of the
game when the Mules moved to
the 20. Dickey Sudduth threw a
pass to Johnny Densman for a
touchdown. The play was nulli-
fied by a penalty. The Mules
then proceeded to run out the
clock. When the game ended,
the score was the Mules 14, Lev-
elland 12.

Seventh Grade Football

Last Thursday, October 24,
the football teams in seventh
grade played another football
game. The game was played be-
tween the Dolphins and the Vik-
ings. The beginning kick was
kicked by the Vikings. The kick
was good and went back to Vic-
tor Leal, one of the deep men.
On first and 10, the Dolphins
gained about three. Three plays
later the Dolphins had to punt.
The punt was kicked by Mike
Northcutt. It was a pretty good
punt and went to Roby Kelton,
one of the deep men for the
Vikings. He picked it up and
was tackled before he could run.
On first, the Vikings gained
about two. On second, they ran
a play gaining about two more.
On third they threw a pass
which was intercepted by Mike
Northcutt, who ran with it back
to the 10 yard line. On first,
the Dolphins ran a sweep around
the end with Victor Leal, carry-
ing it in for a touchdown.
The extra point failed. Several
plays later the Vikings moved
down to the Dolphins 27 yard
line. In three plays the Vikings
made another first down on the
16 yard line. For a few plays
the Dolphins held, and halftime
occurred. The Dolphins kicked
to the Vikings at their 37 yard
line. On first, they ran a play
with Blake Stevens for a gain
of four. A few plays later, the
Vikings were deciding what to
run on the last play of the game
and they only gained three yards
for the first down. But they li-
ked 11 yards for a touchdown.
They decided to run a pass;
but, the pass was blocked by
Mark Green and the game was
over. The Dolphins won 6-0.

The world's best after
dinner speech: "Waiter, give
me both checks."
-Gospert, Pensacola.

Slave Auction

Last week the seventh and
eighth grade choir had a Slave
auction. The auction was to
help the choir candidate, Elsa
Ochoa, in the Halloween Prin-
cess race.
This is how the auction
worked: Mr. Murphy would
choose a person to go stand
in front of the class, the peo-
ple sitting down would bid un-
til the highest bidder got the
slave. The "Masters" could
command the slaves to do such
things as open and close lock-
ers, carry books, and other
minor things. This proved to
be an interesting and fun-way
of getting funds for the Hal-
loween Carnival.

Science Class Study Magnets

Mrs. Gunter's sixth grade
science classes have been stud-
ing magnetism. They are learn-
ing about the different kinds of
magnets and how they effect
different materials. They are
also learning about the earth's
magnetic field and how it effects
the earth's atmosphere.
During their study, each stu-
dent is required to perform an
experiment in front of the class,
then write a report over what
they have done.
Mrs. Gunter is trying to help
each student to understand the
principles of magnetism and she
is encouraging them to look
further into the study of mag-
netism.

ONE MINUTE SPORTS QUIZ

1. Who won the U.S. Open Tennis Championship in the men's singles?
2. Name the winner of the women's singles in the U.S. Open Tennis Championship.
3. The World Series of Golf was won by whom?
4. Who does Jim Plunkett quarterback for?
5. Name the manager of the New York Yankees.

Answers to Sports Quiz

1. Jimmy Connors.
2. Billy Jean King.
3. Lee Trevino.
4. New England Patriots.
5. Bill Virdon.

J. C. Otwell

Navy Hull Maintenance
Technician Third Class Jer-
rell C. Otwell, son of Mr. and
Mrs. Otwell of Route 3, Mule-
shoe, Tex., has returned to
San Diego aboard the destroy-
er escort USS Bradley, after a
six-month deployment to the
Western Pacific and Indian O-
ceans.
The ship participated in at-
sea training exercises with
other units of the U.S. Seventh
Fleet and navies of other
countries, including Austral-
ia, Great Britain, Kenya and
the Republic of China.
During the cruise, Otwell
visited Manila, Republic of
the Philippines; Kaohsiung,
Taiwan; Melbourne; Yoko-
suka, Japan; Guam; and Hong
Kong.
A former student of Mule-
shoe High School, he joined the
Navy in April 1971.

Band News

On October 10 and 17 the
Muleshoe Junior High Band
played at their first football
games when the Mules played
against Morton and Levelland.
During the games, the band
played "The Mascot", "Beau-
tiful Sunday", "Fort Bragg",
"Fight Song", and the "School
Song."
The Journalism Staff would
like to congratulate the band
on doing a fine job of playing
and helping to raise the spirit
at the football games.

VOTE NOVEMBER 5
**Agriculture is our
Most Vital Industry**
Re-elect
JOHN C. WHITE
Commissioner of Agriculture
• Integrity • Leadership
Pol. Adv. paid by T. P. Flahive, Chmn, John C. White Comm, 221 E. 11th, Austin, Tx.
78701

**CAR
TUNE-ING**
By Jones, Harrison and Gilbreath

Can't Figure Where
All The Water GOES,
Better Let Us
Check That HOSE.

Plains AUTO PARTS
P. O. Box 566
MULESHOE, TEXAS
79647
**South Main
Muleshoe**
Phone 272-4574

3- BIG DAYS

SAVE NOW DURING OUR BIG ONCE A YEAR FOUNDERS DAY SALE!

Anthony's
C. R. ANTHONY CO.

FOUNDERS DAY

OCT. 31-NOV. 1-2

Name Brand Merchandise • Top Quality Materials • Beautiful Selection of Colors.

SALE



CASH
TEXAS
Master Charge
LAY-A-WAY

Ladies QUILTED ROBES
They are long, lovely, cuddles and oh so easy care. Made from high quality washable acetate, these robes will last and last. Choose from pastel color in reg. sizes 10-18 and X sizes 42-48.
7.77

Ladies' FIRST EDITION SHIRT BLOUSE AND PANTS
Our very finest First Edition shirt blouse, beautifully tailored in polyester prints to match our famous First Edition Pants. Encron® double knit polyester. Assorted colors. Blouse 7 to 18, Pants 6-14 (short) 8-20 (average) 10-20 (talls)
YOUR CHOICE 7.87
2 FOR \$15.00

Ladies' TOPS
Three great styles... all of 100% polyester in S.M.L.XL. Complete color selection.
BELL SLEEVE REG. \$16.00 6.87
SHORT SLEEVE SHELL REG. \$8.00 4.37 EACH
SLEEVELESS SHELL REG. \$7.00 4.37 EACH

MEN'S LEISURE SUITS
The casual look... contrasting top stitching, 100% textured polyester. S.M.L.XL. Navy, green, brown, black, Lt. blue. **REG. \$35.00 22.77**
SPORT COATS AND BLAZERS
Founder's Day prices on this group will save you a lot of money. Select several in 100% polyester in solids and patterns. **REG. \$35. 24.97**
MEN'S SLACK
Anthony's has made this special grouping of top quality 100% polyester slacks in solid and fancies especially for this sale. **6.97 REG. \$14.**

Men's FLANNEL SHIRTS
These flannel plaid work shirts are permanent press 35% polyester, 65% cotton with a long tail and two button flap pockets. S.M.L.XL. **REG. \$6.99 4.97**
FLARE JEANS
Men, these are heavy weight 100% cotton blue denim jeans. Waists 28-40. Lengths S. M. L. SAVE NOW! **REG. \$8.50 6.97**

Men's FAMOUS BRAND NAME THERMAL SHIRTS AND DRAWERS
Hey fellows... want to stay warm this winter? Do it at SALE PRICES... do it now! This is your opportunity to buy these 75% cotton, 25% poly Raschel Knit thermals in natural color at our low price. S. M. L. XL. **REG. \$3.69 2 FOR \$4.77 \$2.77 EACH**

BUCKHIDE INSULATED COVERALLS
One piece insulated, zip front. Permanent press. S.M.L.XL. Short, Reg., Tall. Black, Olive. Hood \$3.99. **REG. 19.97 \$26.99**
HOODED SWEAT SHIRTS
Great buy... 100% cotton, laminated, hooded, zip front, muff pocket, ribbed cuff and band sweat shirt. Red, Navy, Dark Green. S.M.L.XL. **6.67**

VALUES TO \$3.88
100% POLYESTER DOUBLE KNITS
Tremendous selection of assorted 60" wide fancies and solids. Save now... during Founder's Day Sale!
1.57 yd.

Women's "ACCENT" CASUAL SHOE
Great looking... great feeling crinkle patent 2 eyelet casual oxford with crepe sole and heel. Black, White, Navy, Red, Tan in sizes 5-10.
8.77 REG. \$13.99

Girls' TURTLENECK TOPS
Little girls love to look pretty in these 100% polyester, long sleeve tops with back zipper. Colors: Navy, Red, Pink and Blue.
2.37

Men's SPORT AND DRESS SHIRTS
It's your choice and it's a good one. These are all quality shirts made from easy care knits and polyester and cotton blends. Choose from solids, tone-on-tone and fancies. Sportshirts S.M.L.XL. Dress shirts 14 1/2 to 17.
2 FOR 7.77 \$4. EACH

Boys' WESTERN JEANS AND JACKETS
Tri-blend blue denim jeans of 50% cotton, 26% nylon, 24% polyester
4 TO 7 JEANS REG. 4.99 \$3.37
8 TO 12 JEANS REG. 5.99 \$4.37
4 TO 7 JACKETS REG. \$7.99 \$5.37
8 TO 12 JACKETS REG. \$9.99 \$6.37

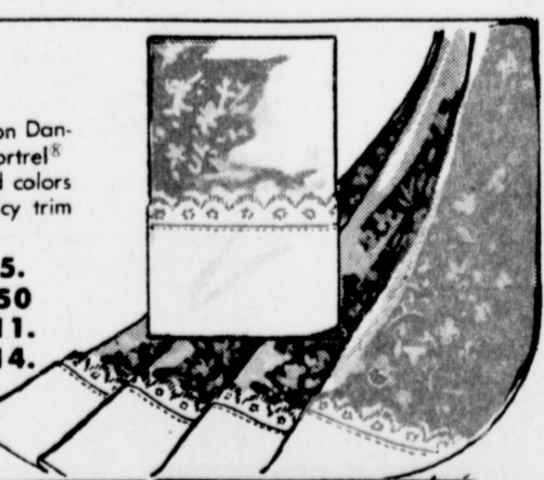
88¢ Family SOCK SALE
Orlon® Acrylic, Cable Stitch Design Knee Highs. Colors: White, red, navy.
2 pairs 88¢
Today's Girl Queen Size Panty Hose—One size Regular panty, reinforced toes. **88¢ ea.**
Today's Girl Knee Hi Nylon Hose—One Size fits all.
2 pairs 88¢
White Tube Socks with Ribbed Top. No heels to wear out. Cushion foot for comfort. One size fits 9 to 15.
3 pairs 1.88

SALE BEDSPREADS
Make your selection from this group of first quality medium to heavy weight 100% cotton woven bedspreads. Beautiful colors.
7.77 REG. \$12.99 to \$14.99

Beautiful CO-ORDINATED DOUBLE KNITS
Anthony's is now offering this outstanding group at our lowest price. Positive and negative yarn dyed fancies are made to match to a complete range of yarn dyed solids... all 100% polyester.
2 YARDS 5.47 REG. \$3.99 & 4.99

NO-IRON MULLIN DAN-RIVER® SHEETS
BUY NOW—SAVE NOW. Dantrel® no-iron Dan-Press® Sheet made of 50% Celanese® Fortrel® polyester and 50% cotton in striking solid colors with white flowers over all and white lacy trim border.
Twin **2.67 Each 2 FOR \$5.**
Full **3.47 Each 2 FOR 6.50**
Queen **5.77 Each 2 FOR \$11.**
King **7.47 Each 2 FOR \$14.**
42x36 Cases **2.47 pr.**
42x46 Cases **2.87 pr.**

OPEN 9AM TO 6PM THUR & FRI-SAT OPEN TILL 8PM



Anthony's
C. R. ANTHONY CO.